

# 1 Mismatch repair gene specifications to the ACMG/AMP 2 classification criteria: Consensus recommendations from 3 the InSiGHT ClinGen Hereditary Colorectal Cancer / 4 Polyposis Variant Curation Expert Panel

5 John Paul Plazzer<sup>1</sup>, Finlay Macrae<sup>1,2</sup>, Xiaoyu Yin<sup>2</sup>, Bryony A. Thompson<sup>3</sup>, Susan M Farrington<sup>4</sup>, Lauren Currie<sup>5</sup>,  
6 Kristina Lagerstedt-Robinson<sup>6</sup>, Jane Hübertz Frederiksen<sup>7</sup>, Thomas van Overeem Hansen<sup>7,8</sup>, Lise Graversen<sup>9</sup>, Ian M.  
7 Frayling<sup>10</sup>, Kiwamu Akagi<sup>11</sup>, Gou Yamamoto<sup>11</sup>, Fahd Al-Mulla<sup>12</sup>, Matthew J. Ferber<sup>13</sup>, Alexandra Martins<sup>14</sup>, Maurizio  
8 Genuardi<sup>15,16</sup>, Maija Kohonen-Corish<sup>17</sup>, Stéphanie Baert-Desurmont<sup>18</sup>, Amanda B. Spurdle<sup>19</sup>, Gabriel Capellá<sup>20,21</sup>,  
9 Marta Pineda<sup>20,21</sup>, Michael O. Woods<sup>22</sup>, Lene Juel Rasmussen<sup>23,24</sup>, Christopher D. Heinen<sup>25</sup>, Rodney J. Scott<sup>26,27</sup>, Carli  
10 M. Tops<sup>28</sup>, Marc S. Greenblatt<sup>29</sup>, Mev Dominguez-Valentin<sup>30</sup>, Elisabet Ognedal<sup>31</sup>, Ester Borrás<sup>32</sup>, Suet Y. Leung<sup>33</sup>,  
11 Khalid Mahmood<sup>34,35,36</sup>, Elke Holinski-Feder<sup>37,38</sup>, Andreas Laner<sup>37</sup>

12

13 <sup>1</sup> Department of Colorectal Medicine and Genetics, Royal Melbourne Hospital, Parkville, Australia

14 <sup>2</sup> Department of Medicine, University of Melbourne, Royal Melbourne Hospital, Parkville Australia

15 <sup>3</sup> Department of Pathology, Royal Melbourne Hospital, Parkville, Australia

16 <sup>4</sup> Colorectal Cancer Genetics Group, CRUK Edinburgh Centre, Institute of Genetics and Cancer, University of Edinburgh, Scotland

17 <sup>5</sup> GeneDx LLC, Gaithersburg, MD, USA

18 <sup>6</sup> Department of Clinical Genetics, Karolinska University Hospital, Stockholm, Sweden

19 <sup>7</sup> Department of Clinical Genetics, Rigshospitalet, Copenhagen University Hospital, Copenhagen, Denmark

20 <sup>8</sup> Department of Clinical Medicine, Faculty of Health and Medical Sciences, University of Copenhagen, Denmark

21 <sup>9</sup> Department of Clinical Genetics, Aarhus University Hospital, Aarhus, Denmark

22 <sup>10</sup> Inherited Tumour Syndromes Research Group, Institute of Medical Genetics, Cardiff University, CF14 4XN, UK

23 <sup>11</sup> Department of Molecular Diagnosis and Cancer Prevention, Saitama Cancer Center, Saitama, Japan

24 <sup>12</sup> Department of Genetics and Bioinformatics, Dasman Diabetes Institute, Kuwait

25 <sup>13</sup> Department of Laboratory Medicine and Pathology, Mayo Clinic, Rochester, Minnesota, USA

26 <sup>14</sup> Univ Rouen Normandie, Inserm U1245, F-76000 Rouen, France

27 <sup>15</sup> Dipartimento di Scienze della Vita e Sanità Pubblica, Università Cattolica del Sacro Cuore, Rome, Italy

28 <sup>16</sup> UOC Genetica Medica, Fondazione Policlinico Universitario A. Gemelli IRCCS, Rome, Italy

29 <sup>17</sup> Woolcock Institute of Medical Research, Macquarie University, Sydney, Australia

30 <sup>18</sup> Univ Rouen Normandie, Inserm U1245 and CHU Rouen, Department of Genetics, F-76000 Rouen, France

31 <sup>19</sup> Population Health Program, QIMR Berghofer Medical Research Institute, Herston, Australia

32 <sup>20</sup> Hereditary Cancer Program, Catalan Institute of Oncology, Institut d'Investigació Biomèdica de Bellvitge (IDIBELL), ONCOBELL Program,  
33 L'Hospitalet de Llobregat, Barcelona, Spain

34 <sup>21</sup> Centro de Investigación Biomédica en Red de Cáncer (CIBERONC), Spain

35 <sup>22</sup> Discipline of Genetics, Memorial University of Newfoundland, St John's, NL, Canada

36 <sup>23</sup> Center for Healthy Aging, University of Copenhagen, Copenhagen, DK-2200 Copenhagen, Denmark

- 37 <sup>24</sup> Department of Cellular and Molecular Medicine, University of Copenhagen, Copenhagen, DK-2200 Copenhagen, Denmark
- 38 <sup>25</sup> Center for Molecular Oncology, UConn Health, Farmington, CT, USA
- 39 <sup>26</sup> Division of Molecular Medicine, NSW Health Pathology North – Newcastle, NSW 2305, Australia
- 40 <sup>27</sup> The Hunter Medical Research Institute and the University of Newcastle, Newcastle, NSW, Australia
- 41 <sup>28</sup> Department of Clinical Genetics, Leiden University Medical Center, The Netherlands
- 42 <sup>29</sup> Department of Medicine, University of Vermont Cancer Center, Larner College of Medicine, Burlington VT, USA
- 43 <sup>30</sup> Department of Tumor Biology, Institute for Cancer Research, Oslo University Hospital, Oslo, Norway.
- 44 <sup>31</sup> Western Norway Familial Cancer Center, Department of Medical Genetics, Haukeland University Hospital, Bergen, Norway
- 45 <sup>32</sup> Invitae Corporation, San Francisco, California, USA
- 46 <sup>33</sup> Department of Pathology, School of Clinical Medicine, The University of Hong Kong, Queen Mary Hospital, Pokfulam, Hong Kong SAR, China
- 47 <sup>34</sup> Colorectal Oncogenomics Group, Department of Clinical Pathology, Victorian Comprehensive Cancer Centre, The University of Melbourne, Parkville, Victoria, 3010, Australia
- 48 <sup>35</sup> University of Melbourne Centre for Cancer Research, Victorian Comprehensive Cancer Centre, Parkville, Victoria 3010 Australia
- 49 <sup>36</sup> Melbourne Bioinformatics, The University of Melbourne, Melbourne, Victoria, Australia
- 50 <sup>37</sup> MGZ – Medizinisch Genetisches Zentrum, Bayerstr. 3-5, 80035 Munich, Germany
- 51 <sup>38</sup> Medizinische Klinik und Poliklinik IV, Campus Innenstadt, Klinikum Der Universität München, 80336 Munich, Germany
- 52
- 53
- 54 On behalf of the InSiGHT - ClinGen Hereditary Colon Cancer / Polyposis Variant Curation Expert Panel
- 55

## 56 List of abbreviations:

- 57 • ACMG – American College of Medical Genetics and Genomics
- 58 • AMP – Association for Molecular Pathology
- 59 • B – Benign
- 60 • BA – Benign Stand-Alone
- 61 • BS – Benign Strong
- 62 • BP – Benign Supporting
- 63 • ClinGen – Clinical Genome Resource
- 64 • CMMRD – constitutional mismatch repair deficiency
- 65 • GI – gastrointestinal
- 66 • gnomAD – Genome Aggregation Database
- 67 • FDA – Food and Drug Administration (United States)
- 68 • HCI – Huntsman Cancer Institute
- 69 • HGVS – Human Genome Variation Society
- 70 • IARC – International Agency for Research on Cancer
- 71 • IHC – immunohistochemistry

- 72 • InSiGHT – International Society for Gastrointestinal Hereditary Tumours
- 73 • IVS – intervening sequence (intron)
- 74 • LB – likely benign
- 75 • LP – likely pathogenic
- 76 • LOVD – Leiden Open Variation Database
- 77 • LS – Lynch syndrome
- 78 • MANE – matched annotation from National Center for Biotechnology Information and European  
79 Molecular Biology Laboratory and European Bioinformatics Institute
- 80 • MMR – mismatch repair (genes)
- 81 • MSI – microsatellite instability
- 82 • NGS – next generation sequencing
- 83 • NMD – nonsense-mediated mRNA decay
- 84 • P – Pathogenic
- 85 • PVS – Pathogenic Very Strong
- 86 • PS – Pathogenic Strong
- 87 • PM – Pathogenic Moderate
- 88 • PP – Pathogenic Supporting
- 89 • SVI WG – Sequence Variant Interpretation Working Group
- 90 • VCEP – variant curation expert panel
- 91 • VUS – variant of uncertain significance

## 92 Abstract

93 **Background:** It is known that gene- and disease-specific evidence domains can potentially improve the  
94 capability of the ACMG/AMP classification criteria to categorize pathogenicity for variants. We aimed to  
95 include gene–disease-specific clinical, predictive, and functional domain specifications to the  
96 ACMG/AMP criteria with respect to MMR genes.

97 **Methods:** Starting with the original criteria (InSiGHT criteria) developed by the InSiGHT Variant  
98 Interpretation Committee, we systematically addressed specifications to the ACMG/AMP criteria to  
99 enable more comprehensive pathogenicity assessment within the ClinGen VCEP framework, resulting in  
100 an MMR gene-specific ACMG/AMP criteria.

101 **Results:** A total of 19 criteria were specified, 9 were considered not applicable and there were 35  
102 variations of strength of the evidence. A pilot set of 48 variants was tested using the new MMR gene-  
103 specific ACMG/AMP criteria. Most variants remained unaltered, as compared to the previous InSiGHT  
104 criteria; however, an additional four variants of uncertain significance were reclassified to P/LP or LB by  
105 the MMR gene-specific ACMG/AMP criteria framework.

106 **Conclusion:** The MMR gene-specific ACMG/AMP criteria have proven feasible for implementation, are  
107 consistent with the original InSiGHT criteria, and enable additional combinations of evidence for variant  
108 classification. This study provides a strong foundation for implementing gene–disease-specific  
109 knowledge and experience, and could also hold immense potential in a clinical setting.

110  
111  
112  
113  
114  
115  
116  
117  
118  
119  
120

## 121 1 Introduction

122 Lynch syndrome, previously referred to as hereditary nonpolyposis colorectal cancer, is caused by a  
123 heterozygous constitutional pathogenic loss of function of a mismatch repair (MMR) gene, which is  
124 either *MLH1* (OMIM 120436), *MSH2* (OMIM 609309), *MSH6* (OMIM 600678), or *PMS2* (OMIM 600259).  
125 It can also arise from the deletion of the 3' end of *EPCAM* (TACSTD1), which results in hypermethylation  
126 of the *MSH2* promoter. These factors foster the accumulation of somatic mutations that cannot be  
127 corrected by the defective machinery, resulting in tumors with a microsatellite instability (MSI)-high  
128 phenotype. Although the tumor spectrum is variegated, colorectal or endometrial cancers predominate.  
129 Strategies aimed at identifying carriers of pathogenic variants range from ascertainment of family  
130 history, testing for MMR-deficient cancers in patients, to universal constitutional sequencing of patients  
131 presenting with colorectal (Tiwari, 2016) or endometrial cancers (Kahn, 2019).

132  
133 A public database of germline MMR variants and variants involved in other familial gastrointestinal (GI)  
134 cancer syndromes has long been maintained by the International Society for Gastrointestinal Hereditary  
135 Tumors (InSiGHT), the preeminent professional body representing healthcare workers, researchers, and  
136 medical geneticists interested in familial GI cancer. The InSiGHT databases for inherited GI cancer  
137 syndromes centralize data and aid expert variant classification (Plazzer, 2013). Since the 1990s, MMR  
138 variants have steadily accrued, with changes in technology accompanying significant increases in the  
139 identified variants. By 2023, the number of unique constitutional MMR variants in public variant  
140 databases reached over 6,500 in LOVD and over 23,000 in ClinVar. In 2014, the InSiGHT Variant  
141 Interpretation Committee criteria for the classification of MMR variants were published (Thompson,  
142 2014), and the committee was thereafter recognized as an external expert panel by ClinGen (Rehm,  
143 2015). The landmark American College of Medical Genetics and Genomics/Association for Molecular  
144 Pathology (ACMG/AMP) variant classification criteria were published in 2015 (Richards, 2015), proposing  
145 generic classification criteria requiring gene or disease specifications. They were soon adopted by many  
146 gene–disease expert groups, including those within the Variant Curation Expert Panel (VCEP) framework  
147 developed by ClinGen (Rivera-Muñoz, 2018). Latterly these have been recognized by the Food and Drug  
148 Administration (FDA) as a regulated source for curating variants.

149  
150 Following an agreement between InSiGHT and ClinGen, the Hereditary Colorectal Cancer/Polyposis VCEP  
151 (<https://clinicalgenome.org/affiliation/50099/>) was formed out of the existing InSiGHT Variant

152 Interpretation Committee, and was expanded to other genes predisposing hereditary GI cancer,  
153 including *APC*, *MUTYH*, *STK11*, *POLD1*, *POLE*, *SMAD4*, and *BMPR1A*, for which there is substantial  
154 expertise within the membership of InSiGHT. As this VCEP covers multiple genes for several hereditary  
155 GI tumors, it has been divided into sub-VCEP groups for organizational efficiency. Here, we describe the  
156 work of the MMR VCEP subgroup in adapting gene-specific ACMG/AMP criteria and the validation of the  
157 criteria through pilot variant classification.

## 158 2 Methods

### 159 2.1 InSiGHT-ClinGen MMR VCEP

160 We made an application to be recognized as a ClinGen internal VCEP to ClinGen, which was approved by  
161 ClinGen in February 2021. This involved listing of the group's members, expertise, and scope of our  
162 curation activity. Members of the InSiGHT ClinGen Hereditary Colorectal Cancer/Polyposis Variant  
163 Curation Expert Panel (<https://clinicalgenome.org/affiliation/50099/>) have diverse technical and clinical  
164 expertise from the private, public, research, and healthcare sectors. There is a broad international  
165 representation of GI surgeons, genetic counsellors, medical geneticists, oncologists, scientists,  
166 bioinformaticians, and clinical laboratory diagnosticians.

### 167 2.2 Gene–disease specifications to the ACMG/AMP criteria

168 Previously, the InSiGHT criteria (<https://www.insight-group.org/criteria/>) used predetermined  
169 combinations of evidence and a Bayesian analysis component, which incorporated *in silico* prediction,  
170 tumor characteristics, functional assay, and variant-disease segregation (Thompson, 2013). These  
171 criteria inform the new ACMG/AMP specifications for MMR genes. The ACMG/AMP framework uses  
172 weight of evidence corresponding to Supporting, Moderate, Strong, and Very Strong categories (Figure  
173 1). Furthermore, these categories are calibrated against likelihood ratio (LR) thresholds from modelling  
174 that align the ACMG/AMP criteria with a Bayesian probability framework (Tavtigian, 2018). Therefore,  
175 while both current and original InSiGHT criteria utilize Bayesian methods, the new criteria integrate the  
176 evidence combinations and Bayesian probabilities into a single framework. Our ACMG/AMP  
177 specifications are updated periodically; to find the latest information, please visit:  
178 <https://cspec.genome.network>.

179

## 180 2.3 LS penetrance

181 The ACMG/AMP criteria can classify high-penetrance MMR variants for LS, while comparatively low- or  
182 moderate-risk variants cannot be classified owing to scarcity of data (Dominguez-Valentin, 2021). *PMS2*  
183 variants are an exception, as this gene is recognized for having low-penetrance; therefore, loss of  
184 function variants are presumed to confer a low risk of cancer in carriers of heterozygous *PMS2*  
185 pathogenic variants. Information on risks of cancer according to organ, age, gender, and gene  
186 (Dominguez-Valentin, 2020) is available on the Prospective Lynch Syndrome Database (PLSD:  
187 [www.PLSDB.eu](http://www.PLSDB.eu)). Estimates of the penetrance of LS also inform segregation analysis by accounting for LS-  
188 specific cancer risk, dependent on the age of the patient at diagnosis and their sex. This VCEP  
189 recommends the COsegregation OnLine v3 tool (Belman, 2020), which incorporates penetrance for  
190 MMR genes and has a free public web interface (<https://fengbj-laboratory.org/cool2/manual.html>).

191

## 192 2.4 Inclusion of tumor characteristics

193 One of the hallmarks of LS, observed in respective tumors, is the microsatellite instability (MSI) and  
194 MMR immunohistochemistry (IHC) pattern demonstrating a loss of protein expression. Loss of MMR  
195 protein expression is highly concordant (98%) with the MSI status in LS, though MSI more commonly  
196 occurs outside the context of LS in sporadic colorectal or endometrial cancer (Latham, 2019). It is also  
197 recognized that individuals with LS can still develop sporadic microsatellite stable (MSS) cancers, which  
198 is not due to their constitutional variant. In a study (Li, 2020) on MSI/IHC status and the application of  
199 variant classification, the researchers achieved 98% accuracy in variant classification when combined  
200 with *in silico*, clinical/family history, co-segregation, allele frequency, and co-occurrence data. The  
201 ACMG/AMP criteria incorporates these data types and the updated tumor characteristic likelihood  
202 ratios from the study by Li *et al.* MSI/MSS and IHC data are specified in the criteria for colorectal and  
203 endometrial cancers owing to existing calibration studies of these particular tumor characteristics with  
204 germline pathogenic variants. Reciprocally, tumor IHC is also specified for any LS spectrum tumor having  
205 protein expression that is inconsistent with the gene demonstrating the variant.

206

## 207 2.5 Functional assay specifications

208 New recommendations for the application of the functional evidence types PS3/BS3 (Brnich, 2020)  
209 assign the strength of the ACMG/AMP evidence, depending on the level of statistical analysis used for  
210 assay validation. As per the Brnich *et al.* recommendation, at least 11 controls are required to reach a  
211 Moderate level evidence and a rigorous statistical analysis to reach a Strong level of evidence. There are  
212 currently three assays recognized with calibrated odds of pathogenicity that reach a Strong level of  
213 evidence (PS3), namely, the Complete *in vitro* MMR Assay (CIMRA) for *MLH1*, *MSH2*, *MSH6*, and *PMS2*  
214 (Drost, 2019), (Drost, 2020), (Rayner, 2022), a deep mutational scan of *MSH2* (Scott, 2022) (Jia, 2021),  
215 and a cell-based assay for *MLH1* (Rath A, 2022). These assays employed rigorous statistical analysis  
216 calibrating the level of *in vitro* MMR activity to the corresponding probability of pathogenicity. They  
217 have, therefore, been validated to reach Supporting, Moderate, or Strong level of evidence for PS3 and  
218 Supporting or Strong for BS3 evidence (Supplementary Table 1).

219  
220 In addition to the calibrated functional assays, a decision tree (Figure 2) logically combines other types  
221 of functional assay to test different aspects of MMR function, such as protein expression, subcellular  
222 localization, and RNA splicing, to determine if a variant leads to proficient or deficient function. It was  
223 published in 2014 (Thompson, 2014) and updated in 2020 (Thompson, 2020), and is now incorporated  
224 into the VCEP MMR criteria, though calibrated assays are recommended for prospective variant analysis.  
225 For the assays detailed in the functional assay decision tree, as per Brnich *et al.*, the criterion of a  
226 minimum number of 11 pathogenic and benign controls has been met for each type of assay  
227 (Supplementary Table 1); this excludes splicing assays, which have specific requirements in the criteria  
228 descriptions. The decision tree is used for interpreting previous or historical assay results, not as a guide  
229 for performing prospective assays of which we recommend the calibrated assays.

230

## 231 2.6 In silico variant effect predictions tools

232 *In silico* meta-predictor tools and tools calibrated for all missense variants in specific genes offer  
233 improved performance, as compared to individual predictors (Tian, 2019) (Pejaver, 2022). Here, the  
234 PP3/BP4 criteria for *in silico* evidence were derived from previous analyses described in (Thompson,  
235 2013). Briefly, Thompson et.al. (2013) calibrated individual *in silico* variant effect prediction tools against  
236 MMR variants with designated pathogenicity, showing that a combination of MAPP-MMR and Polyphen-



237 2 predictors showed higher performance, in terms of specificity and sensitivity, as compared to other  
238 individual tools. For MLH1, MSH2, and MSH6 missense variants, pre-computed prior probabilities are  
239 available online (<https://hci-priors.hci.utah.edu/PRIORS/>) that map to Supporting, Moderate, or Strong  
240 evidence. Similarly, for PMS2 missense variants, we recommend using the HCI “MAPP/PP2 Prior P”  
241 predictions available at [http://hci-lovd.hci.utah.edu/variants.php?select\\_db=PMS2\\_priors](http://hci-lovd.hci.utah.edu/variants.php?select_db=PMS2_priors). For intronic  
242 and synonymous variants, we recommend predicting splice altering consequence with SpliceAI (Riepe,  
243 2021).

## 244 2.7 Pilot variant classification

245 A series of teleconferences between 2020 and 2021 were held to merge the existing InSiGHT MMR-  
246 specific criteria with the ACMG/AMP criteria in a ClinGen VCEP framework. Feedback from the ClinGen  
247 Sequence Variant Interpretation Working Group (SVI WG) was incorporated into the criteria, and the SVI  
248 WG approved the criteria in May 2022. Following the creation of the initial draft of the criteria, a pilot  
249 batch of 48 variants were manually selected from the InSiGHT and ClinVar databases to assess whether  
250 their classification could be changed from variant of uncertain significance (VUS), likely benign (LB), or  
251 likely pathogenic (LP), using the new criteria and/or new information. The variants were curated for this  
252 study using existing information from public databases and literature, the Colon Cancer Family Registry  
253 ([www.coloncfr.org](http://www.coloncfr.org)), as well as information from VCEP members which are available on LOVD. The types  
254 of variants included intronic, splice site, missense, synonymous, in-frame deletion, nonsense, and  
255 frameshift variants. Variants were reviewed independently by experts and biocurators, followed by  
256 VCEP teleconference discussions. Disparities between reviewers were discussed and appropriate  
257 revisions to the criteria were made. Biocurators entered the variants, the ACMG/AMP criteria that was  
258 met, summary text and classifications into the ClinGen Variant Curation Interface tool (Preston, 2022) to  
259 obtain a 3-star VCEP classification status within the FDA-recognized ClinGen framework.

## 260 2.8 Selection of transcripts

261 The preferred MANE Select transcripts are NM\_000249.4 (*MLH1*), NM\_000251.3 (*MSH2*), NM\_000179.3  
262 (*MSH6*), and NM\_000535.7 (*PMS2*). Variants are described using the Human Genome Variation Society  
263 (HGVS) nomenclature (<https://varnomen.hgvs.org/>).

264

## 265 3 RESULTS

266 The MMR-specific ACMG/AMP criteria are listed on <https://cspec.genome.network>. A total of 19 criteria  
267 are specified, with 35 variations of the criteria when including the different strength options. Of these,  
268 nine were not used (PS4, PM1, PM4, PP2, PP5, BP1, BP2, BP3, and BP6). The criteria were the same for  
269 all four MMR genes, unless indicated otherwise. The allowable combinations of evidence were also  
270 updated based on the ClinGen Sequence Variant Interpretation Recommendation for PM2, Version 1.0  
271 (<https://clinicalgenome.org/working-groups/sequence-variant-interpretation/>) and the findings from  
272 Tavigian et al.

273

### 274 3.1 Variant Allele Frequency thresholds (PM2, BA1, and BS1)

275 The population allele frequency of a variant represents the frequency or incidence of the variant in a  
276 reference population, such as the genome aggregation database (gnomAD) (Karczewski, 2020). The  
277 ACMG/AMP criteria are met when the frequency of a population allele is higher than expected for  
278 disease-causing variants (BA1 and BS1), or reciprocally, are rare or non-existent in the reference  
279 population, which can imply a possible pathogenic role of the variant (PM2). The CardioDB allele  
280 frequency calculator allows the calculation of allele frequency thresholds for both Benign Stand Alone  
281 (BA1) or Strong (BS1) evidence for a disease of interest, with appropriate input parameters (Whiffin,  
282 2017). These thresholds were adapted from a study that calculated allele frequency thresholds at 99%  
283 confidence for each MMR gene (Canson, 2022), using published penetrance and prevalence values. For  
284 pathogenic PM2\_supporting evidence to be met, the threshold is set at 1/50,000 alleles (Grpmax  
285 filtering allele frequency of 0.00002 in gnomAD v4.1.0 dataset).

286

### 287 3.2 Variant type and location (PVS1, PS1, and PM5)

288 We modified the PVS1 flowchart using recommendations from Tayoun et al. (Tayoun, 2018) to reflect  
289 the current understanding of pathogenesis from loss of function variants within MMR genes. We  
290 created a simplified version of the PVS1 decision tree (Figure 3) and show the logic for assigning the  
291 ACMG/AMP criteria to truncating, canonical splice site (intervening sequence (IVS) $\pm$ 1/2 invariant

292 nucleotides within an intron), confirmed splice defect, large genomic alteration, and initiation codon  
293 variants.

294

### 295 3.2.1 Nonsense/frameshift variants

296 PVS1 is assigned if the variant is predicted to encode a protein termination codon located at least 50 bp  
297 before the last exon–exon junction, as per the nonsense-mediated mRNA decay (NMD) rule (Lewis,  
298 2003), or, if available, before the reference codon of the most distal (3') truncating variant,  
299 unambiguously classified as pathogenic in the last exon of the gene of interest (Figure 3). For MMR  
300 genes, the truncated/altered region that is critical to protein function is defined as  $\leq$  codon 753 in *MLH1*  
301 using the location of known pathogenic variant *MLH1*: c.2252\_2253del;  $\leq$  codon 891 in *MSH2* using the  
302 location of known pathogenic variant *MSH2*: c.2662del;  $\leq$  codon 1341 in *MSH6* using the location of  
303 known pathogenic variant *MSH6*: c.3984\_3987dup; and  $\leq$  codon 798 in *PMS2* using the  $\geq 50$  nucleotide  
304 NMD-rule.

305

### 306 3.2.2 Splicing aberrations

307 Variants affecting the canonical splice sites (IVS $\pm 1/2$ ) were previously considered pathogenic due to  
308 their likely impact on splicing. The ACMG/AMP recommendations by Tayoun et al. provide additional  
309 nuance and fine-tuning of the strength of PVS1 based on whether the impact is in-frame, out-of-frame,  
310 and/or NMD-based. For canonical splice site variants, PVS1 is met if the predicted splicing alteration  
311 results in a frameshift mutation and NMD is predicted. If exon skipping or cryptic splice site usage  
312 preserves the reading frame, then PVS1\_Strong is to be applied. If exon skipping or cryptic splice site  
313 usage disrupts the reading frame, and is not predicted to undergo NMD, then PVS1\_Moderate is  
314 applied, as per the guidelines of Tayoun et al. PP3 cannot be used together with this criterion as the  
315 variant type already incorporates Very Strong prediction. For splicing aberrations confirmed using  
316 patient mRNA, PVS1 can be assigned where additional requirements are met, including complete defect  
317 (no full-length transcript produced from the variant allele) and confirmation in a minigene assay or an  
318 additional RNA assay from an independent laboratory, if it is not a predicted splice site variant.

319

### 320 3.2.3 Large genomic rearrangements

321 MMR exon deletions are considered to meet PVS1 due to deletion of functional domains, altered  
322 reading frame, and/or truncation leading to NMD. Exon duplications are presumed to be in tandem  
323 (Richardson, 2019) and, if predicted to result in a frameshift with NMD, are considered as PVS1\_Strong,  
324 as described in Tayoun et al. Whole gene duplications and other duplications affecting the first and last  
325 exons are excluded from this criterion.

### 326 3.2.4 Variants in the initiation codon

327 Variants in the initiation codon of *MLH1* are deemed to meet PVS1 owing to previously known and well  
328 established pathogenic variants at this location (Zhang, 2018). For *MSH6* and *PMS2* initiation codons,  
329 PVS1\_Strong is recommended due to pathogenic variants reported on LOVD (Fokkema, 2021). For  
330 *MSH2*, alternative ATGs exist inframe in exon 1 (Cyr, 2012), so this criterion is not applicable at any  
331 evidence weight.

### 332 3.2.5 Substitution at same position as a previously classified pathogenic variant 333 (PS1, PM5)

334 PS1 and PM5 criteria seek to assign evidence based on the pathogenic classification of another variant at  
335 the same location. PS1 is Strong evidence derived from another pathogenic variant that causes the same  
336 presumed amino acid change or splice site impact. For missense variants, it is required that a splicing  
337 defect is neither predicted nor the basis of the other variant's classification. The same presumed amino  
338 acid change for both variants implies the same impact on protein function. PM5 is similar except the  
339 previously classified variant is for a different amino acid at the same position, with an additional caveat  
340 that *in silico* PP3 is met and only at a Supporting level. This is to ensure the variant to be classified is  
341 predicted to be damaging while avoiding overuse of *in silico* predictions at this location if PP3\_Moderate  
342 was met. For variants affecting the same non-canonical splice site nucleotide as a confirmed pathogenic  
343 splice-site variant with similar or worse splicing *in silico* predictions, PS1 is specified.

344

### 345 3.3 In silico predictions (PP3, BP4, AND BP7)

346 Computed predictions based on combined MAPP-MMR and MaxEntScan predictions for all MLH1,  
347 MSH2, and MSH6 missense variants are available online at <https://hci-priors.hci.utah.edu/PRIORS/> and  
348 therefore can be converted to ACMG criteria evidence using the Bayesian framework LR thresholds. For  
349 synonymous and intronic variants, the MMR VCEP approves the use of SpliceAI to predict the impact on  
350 splicing. Synonymous and deep intronic variants (past +/-21 nucleotides within an intron) with  
351 predicted non-impact on splicing can be classified as LB using BP4 and BP7.

352

### 353 3.4 Clinical data-driven rules

#### 354 3.4.1 Phenotype and segregation data (PP4, PS2, PM3, PM6, PP1, BP5, BS2, and 355 BS4)

356 Phenotype evidence is based on the MSI/MMR IHC pattern in colorectal or endometrial cancer tumors,  
357 which are a hallmark of LS. The number of tumors required correspond to the odds calculated in  
358 published methods (Thompson, 2013) (Thompson, 2014) and have been recently updated (Li, 2020).  
359 Briefly, MSI and somatic *BRAF* mutation characteristics were used to assign odds ratios to tumor  
360 phenotypes, derived as the ratio of characteristics of known pathogenic carrier cases *versus* that of  
361 known non-carrier cases. Finally, the number of tumors required to meet the odds ratios, as defined in  
362 the Bayesian framework of the ACMG/AMP criteria, were assigned the corresponding strength of the  
363 ACMG/AMP criteria.

364

365 For PP4 evidence, the number of colorectal or endometrial cancer tumors is counted; whereby, one  
366 MSI-H tumor is PP4 (Supporting), two is Moderate, and three or more is Strong. Multiple tumors can be  
367 included from an individual patient if they are independent tumors. Somatic MLH1 promoter  
368 methylation should be excluded in MLH1-/PMS2- tumors. Loss of expression of MMR genes by IHC  
369 evidence should be consistent with the variant gene and the protein that is tested and must take into  
370 account the MutS $\alpha$  and MutL $\alpha$  heterodimers: MLH1 and PMS2 loss is consistent with an *MLH1*  
371 pathogenic variant, MSH2 and MSH6 loss is consistent with an *MSH2* pathogenic variant, MSH6 loss is  
372 consistent with an *MSH6* pathogenic variant, and PMS2 loss is consistent with a *PMS2* pathogenic  
373 variant.

374  
375 BP5 requires two colorectal or endometrial cancer tumors with MSS and/or no loss of MMR protein  
376 expression, or LS-spectrum tumors with a loss of MMR protein(s) that is inconsistent with the variant  
377 gene. BP5 can also be met with one *BRAF* V600E mutation tumor (colorectal cancer alone) or MLH1  
378 methylation (in LS-spectrum tumor alone) with MSI-H/MLH1 loss. For BP5, MSS is an indicator of a  
379 benign role for the variant. Originally, only one MSS tumor was required to meet BP5, as per the odds  
380 ratio calculations. However, upon classifying several variants as LB with one tumor combined with *in*  
381 *silico* BP4, the VCEP decided that this could lead to unwarranted LB classification. Thus, while the  
382 Bayesian analysis may indicate a benign classification, the experience of clinical experts overruled  
383 quantitatively derived evidence in this instance. This is in contrast to the PP4 criteria, which does allow a  
384 single tumor to meet the criteria. This may be attributed to the fact that benign criteria are fewer in  
385 number and are restricted in strength (Supporting or Strong only); therefore, more stringent criteria are  
386 required to meet a benign classification. It may also reflect the possibility that a single incorrect clinical  
387 result for tumor characteristics, due to technical issues, phenocopies, or errors, could significantly alter  
388 the original Bayesian likelihood analysis. To resolve this issue, it was agreed that two MSS tumors are  
389 required to meet BP5 and four are required for BP5\_Strong.

390  
391 3.4.2 Co-segregation odds to assign PP1 (Supporting, Moderate, and Strong) and  
392 BS4 (Supporting and Strong)

393 Co-segregation odds ratios were used previously for the InSiGHT criteria and are incorporated into the  
394 ACMG/AMP criteria. Recently, a web-based tool COsegregation OnLine v3 ([COOL v3 Manual](#)), enables  
395 a relatively easy way of calculating the co-segregation odds for a given pedigree and, thereby, mapping  
396 this to the ACMG/AMP criteria at different strength levels (Belman, 2020). It should also be noted that  
397 multiple families with the same variant can have their co-segregation odds multiplied together to  
398 produce a more informative result, either in favor or against pathogenicity. For PP1\_Strong, there is a  
399 requirement for two or more families to be met so that a pathogenic (P/LP) classification is not reached  
400 based on data from one family alone.

401

### 402 3.4.3 De novo variants (PS2/PM6)

403 Criteria for *de novo* variants are based on the 2018 ClinGen Sequence Variant Interpretation  
404 Recommendation for *de novo* Criteria (PS2/PM6) guidelines, Version 1.1  
405 (<https://clinicalgenome.org/working-groups/sequence-variant-interpretation/>), for a points-based scale  
406 using tumor characteristics (MSI/IHC) from any LS-spectrum tumors to meet the criteria for pathogenic  
407 evidence. This criteria allows multiple cases of *de novo* variants to be combined using the points-based  
408 system (Table 2).

409

### 410 3.4.4 Co-occurrence with a known P/LP variant (PM3, BS2)

411 For classification of variants seen in LS-suspected cases, evidence towards or against pathogenicity can  
412 be assigned (Table 3) if the variants co-occur *in trans* with known P/LP variants in the same gene. The  
413 evidence is in a benign or pathogenic direction, depending on whether cases have constitutional  
414 mismatch repair deficiency (CMMRD), which is caused by biallelic pathogenic MMR variants and  
415 predisposition to childhood cancer. A variant in cases of CMMRD can be assigned to PM3 if the CMMRD  
416 international working group recommendations are met (Table 4), as recommended by the CMMRD  
417 international working group (Aronson, 2022). Strong evidence for a benign role (BS2) is recommended if  
418 the CMMRD phenotype is not present in patients with an LS-associated cancer, over 45 years of age and  
419 with a known pathogenic variant in *trans* in the same gene. Careful consideration is required of cancer  
420 risk for MSH6 and PMS2 variants, as heterozygous variants in these genes may not significantly increase  
421 disease risk and the CMMRD phenotype may not be expressed or may be expressed at a later stage.

422

## 423 3.5 Experimental data-driven rules for PS3 (Supporting, Moderate, and 424 Strong) and BS3 (Supporting and Strong)

425 Functional assay data that follows the functional assay flowchart (Figure 2) to arrive at a deficient or  
426 proficient function can meet PS3\_Moderate or BS3\_Moderate. The functional assay flowchart is a  
427 general framework for evaluating functional assays that were already performed, or from historic  
428 publications, and is not recommended for prospective studies on variants. The VCEP recommends use of  
429 the calibrated assays for prospective testing. For calibrated assays, variants can reach a maximum of  
430 PS3/BS3 level. Other assays were validated with the recommendations of Brnich et al., as per

431 Supplementary Table 1. For missense or in-frame indel variants, MMR activity, protein  
432 expression/stability, and subcellular location are required to determine if the function is deficient or  
433 proficient, when complete splicing impact is not shown.

434

### 435 3.6 Unused criteria (PS4, PM1, PM4, PP2, PP5, BP1, BP2, BP3, and BP6)

436 PS4 - Due to the availability of tumor IHC data for variant classification (see PP4), PS4 has not been  
437 utilized for MMR variant classification using proband counting.

438 PM1 - Located in a mutational hot spot and/or critical and well-established functional domain. There are  
439 no recognized mutational hot spots that could be used for classification purposes. While there are  
440 functional domains in the MMR genes, the distribution of pathogenic variants is generalized over all the  
441 domains (unpublished data).

442 PM4 - Protein length change from an in-frame variant is not used due to lack of evidence.

443 PP2 - Missense variant in a gene with low rate of benign missense changes does not apply.

444 PP5 - Not recommended by ClinGen/SVI WG (Biesecker, 2018).

445 BP1 - Missense variant in a gene where only loss of function causes disease is not applicable.

446 BP2 - BS2 is used instead.

447 BP3 - In-frame deletions/insertions in a repetitive region without a known function is not used.

448 BP6 - Not recommended by ClinGen/SVI WG (Biesecker, 2018).

### 449 3.7 Validation through pilot variant classification

450 The set of 48 variants in the pilot batch covered a range of variant types commonly encountered in  
451 genetic testing, including 27 presumed missense, 3 presumed synonymous, 3 last base of exon single  
452 nucleotide variant, 8 splice site, 4 intronic, 1 in-frame deletion, 1 nonsense, and 1 frameshift (Table 5).  
453 Final consensus classifications show that 28 variants (58%) reached a P/LP classification and 12 (25%)  
454 reached a B/LB classification; the remaining eight (17 %) were VUS.

455 We compared the final ACMG/AMP-based classifications to the InSiGHT criteria classifications. It should  
456 be noted that the InSiGHT criteria included Bayesian methodology, which informed the VCEP on the  
457 number of tumors to count for PP4 and BP5 criteria, therefore general concordance was expected.  
458 Bayesian probabilities of pathogenicity that were calculated using tumor characteristics, segregation,  
459 and CIMRA functional data were compared to the ACMG/AMP classifications by converting the Bayesian



460 probability using standard International Agency for Research on Cancer (IARC) probability categories for  
461 assigning B/LB (0.001/0.05) and P/LP (0.99/0.95).

462 The results show concordance of 40/48 (83%) variants between the ACMG/AMP and the InSiGHT criteria  
463 classifications. Reasons for discordance include four classifications that were achieved only with  
464 ACMG/AMP criteria evidence: PM5/PS1 (other variant at the same location classified as pathogenic),  
465 PVS1\_Strong (last base of exon criteria), or BP4 (Missense variant with HCl combined MAPP+PolyPhen-2  
466 prior probability). These evidence types were not used by the InSiGHT criteria. For three variants, the  
467 VCEP deemed that the InSiGHT classification using Bayesian probability was not appropriate due to  
468 insufficient clinical evidence, which also required changing the BP5 criteria to reflect this. Finally, one  
469 variant, *MLH1* c.1889T>A, reached 97% probability of pathogenicity based on tumor (PP4\_Supporting),  
470 segregation data (PP1\_Supporting), and *in silico* data (PP3\_Moderate); however, this evidence combined  
471 with rare allele frequency (PM2\_Supporting), Class 4 was not met using the ACMG/AMP combining  
472 rules. Overall, 47/48 (98%) of the ACMG/AMP-based classifications were concordant with InSiGHT  
473 outcomes or deemed by the VCEP to be more clinically appropriate.

474  
475 Finally, the ACMG/AMP classifications were compared with clinical testing classifications on ClinVar.  
476 During which, 20/22 (91%) ClinVar variants were concordant with the ACMG/AMP classifications. An  
477 additional 23 variants on ClinVar had conflicting laboratory-submitted interpretations and 17 are now  
478 classified as P/LP or B/LB by this VCEP. The 3-star rating given to VCEP classifications will resolve the  
479 conflicting interpretations. One variant, *MLH1* c.2041G>C, was classified as LP on ClinVar but was a VUS  
480 using our ACMG/AMP criteria. The discrepancy was due, in part, to *in silico* analysis of protein structure  
481 showing a deleterious impact, reported by laboratories on ClinVar. However, the calibrated *in silico* prior  
482 probability used by this VCEP does not indicate an impact. Two variants, *MSH6* c.1723G>T and *MLH1*  
483 c.1646T>C, were reported on ClinVar as VUS from single submitters without any evidence provided,  
484 while the ACMG/AMP classification is LP for both. For these discordant variants, the VCEP 3-star  
485 classifications would take precedence over the existing laboratory-submitted classifications of LP.

## 486 4 Discussion

487 The VCEP approach of multidisciplinary experts and adoption of the ACMG/AMP criteria has been  
488 successful in achieving consensus and clinical validity for the complex task of variant interpretation  
489 (Ritter, 2019). The VCEP membership and classification process shares a strong overlap and similarity

490 with the previous InSiGHT approach for variant classification. Adopting the ACMG/AMP criteria provides  
491 a solid foundation for organizing gene–disease-specific knowledge and experience and adds flexibility to  
492 use information that had not been formally calibrated for multifactorial likelihood analysis. In this work,  
493 we have implemented the ACMG/AMP-based criteria, superseding previous criteria for MMR genes. Our  
494 new ACMG/AMP criteria for LS-specific cancers were used to classify a pilot batch of 48 variants across a  
495 range of variant types, with diverse evidence to achieve pathogenic and benign classifications for 83% of  
496 variants. It is important to note that, owing to the selection of variants with available evidence for  
497 classification, it is not a representative sample of the whole variome for LS.

498 There are several important points to consider while using these criteria. The criteria apply to patients  
499 with LS-spectrum tumors, and specifically colorectal or endometrial cancer tumors for certain criteria.  
500 Although the CMMRD phenotype is a part of the criteria, variants should only be classified in the context  
501 of LS. We highlight that variants can be classified as B/LB for LS while causing the CMMRD phenotype in  
502 biallelic cases because of null/low penetrance in heterozygous carriers. Further development of the  
503 criteria is likely; therefore newer versions may provide different classifications of variants. Updated  
504 guidance and recommendations from ClinGen should also be considered alongside these criteria, as the  
505 ACMG/AMP criteria evolve due to advancements in variant classification, such as the recently proposed  
506 *in silico* analyses (Pejaver, 2022).

507 The advantages of the ACMG/AMP framework, as compared to our previous InSiGHT criteria, are  
508 evident. It is more flexible in combining disparate types of evidence than the InSiGHT criteria, which  
509 used predetermined combinations of evidence alongside a Bayesian multifactorial component.  
510 However, despite the ACMG/AMP criteria being compatible with Bayesian reasoning, in certain cases it  
511 may not reach a classification that the strictly Bayesian multifactorial likelihood calculation approach  
512 would provide. This may be a possible avenue for fine-tuning of the criteria. Nevertheless, the new  
513 ACMG/AMP criteria for the MMR genes, with set minimum thresholds for evidence (e.g., BA1, BS1 allele  
514 frequency thresholds, *in silico* odds, tumor characteristics, functional assay odds, and co-segregation  
515 odds), varied evidence types, and logical combining rules, will fill a valuable role in the classification  
516 process for clinical genetics. A purely quantitative approach might have less usability in routine clinical  
517 diagnostics due to inherent complexity or impracticality. This is evident in the global uptake of the  
518 ACMG/AMP criteria and the sharing of classification criteria between different VCEPs for improving the  
519 criteria over time. Overall, these new criteria complement the MMR-specific Bayesian multifactorial  
520 likelihood methods and supersede the previous InSiGHT classification criteria for MMR genes, providing

521 capacity for wider clinical application. This VCEP supports expert specifications to the original  
522 ACMG/AMP criteria, owing to elaborate gene-specific criteria for frequently analyzed genes, such as  
523 MMR, to improve clinical care.

## 524 5 Conclusion

525 The ACMG/AMP criteria offer a flexible and standardized system for MMR variant classification, with  
526 gene–disease-specific knowledge to enhance the criteria. By adopting existing recommendations and  
527 incorporating efforts from functional assays, computational analyses, and clinical domains, a coherent  
528 and practical set of criteria for variant classification was achieved for MMR genes, using the ACMG/AMP  
529 framework. These MMR-specific ACMG/AMP criteria set a foundation, with the ability to include  
530 additional *in silico* predictors, functional assays, and clinical evidence, as science advances over time.  
531 The InSiGHT ClinGen VCEP will employ these criteria for ongoing MMR variant classifications and will  
532 seek to update and enhance the criteria in alignment with ClinGen and other VCEP groups.

533

## 534 6 Data availability

535 Variant classifications are published in ClinVar (<https://www.ncbi.nlm.nih.gov/clinvar/>) and  
536 curated evidence is available on the ClinGen Evidence Repository  
537 (<https://erepo.clinicalgenome.org/evrepo/>).

538

## 539 7 Acknowledgments

540 JPP was supported by the Alan Watt and Chris Geyer Oncology Fellowship through The Royal Melbourne  
541 Hospital Foundation and NIH PA-18-591 Administrative Supplements to Promote Data Sharing in Cancer  
542 Epidemiology Studies. ABS was supported by NHMRC Funding (APP1104808). Grant funding for MKC:  
543 Cancer Council NSW, RG19-1. In Spain, this study has been partially funded by Ministerio de Ciencia e  
544 Innovación, which is part of Agencia Estatal de Investigación (AEI), through the Retos Investigación  
545 grant, number PID2019-111254RB-I00, and La Marató de TV3 (202028-30). We also thank CERCA  
546 Programme / Generalitat de Catalunya for institutional support. MG was supported by Italian Ministry of  
547 Health RC 2022. KA and GY was supported by Japan Agency Medical Research and Development (AMED)  
548 under grant JP 18kk0205004, JSPS KAKENHI Grant Number JP18K07339 and JP22K07266. We would like  
549 to thank Ms. Lubaina Koti for editing the manuscript for language, structure, and accuracy. We  
550 acknowledge Marissa Rose for analysis of an early draft of the criteria.

551  
552

## 553 8 Conflict of Interests

554 Becky Milewski previously had a role with the pilot variant classification efforts in 2020/2021. She was  
555 previously an employee of GeneDx, LLC.

556 Lauren Currie is an employee of GeneDx, LLC

557 Ester Borrás is an employee and shareholder of Invitae Corporation.

558 John Paul Plazzer has previously consulted as curator for an external diagnostic testing company.

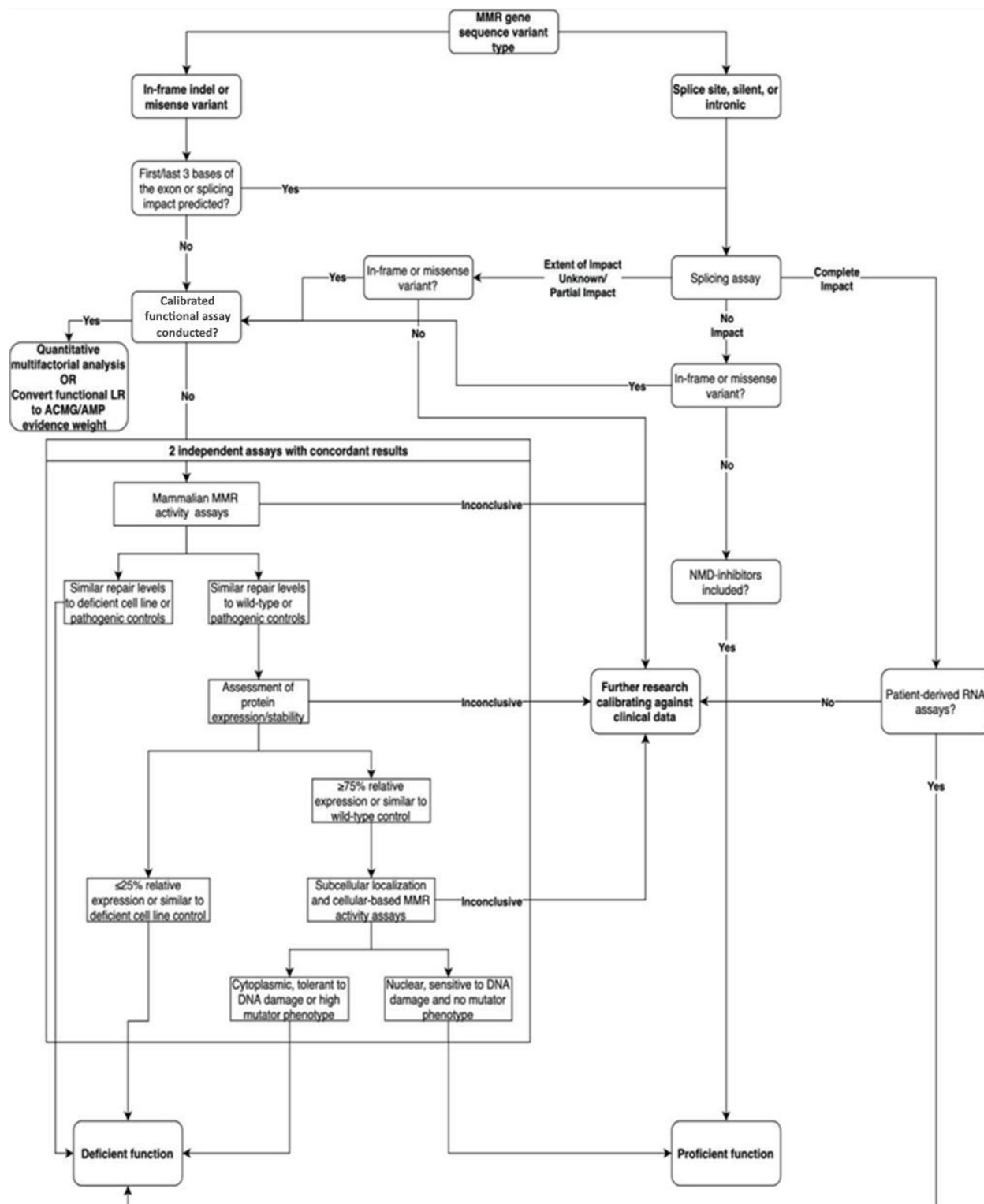
559

		BENIGN CRITERIA		PATHOGENIC CRITERIA			
Strength of evidence		Strong	Supporting	Supporting	Moderate	Strong	Very Strong
Odds of Pathogenicity		-18.7	-2.08	2.08	4.33	18.7	350.0
Evidence Category and Corresponding ACMG/AMP Codes	Population Data	BA1 BS1 BS2		PM2		<del>PS4</del>	
	Allelic Evidence & Cosegregation Data	BS4 → ← BP5	<del>BP2</del>	PP1 →	PM3 PM6 ← PS2		
	Computation & Predictive Data		<del>BP1</del> <del>BP3</del> BP4 BP7	<del>PP2</del>	PM1 ← <del>PM4</del>	PS1	
	Functional Data	BS3 →		PP3 →	PM5 ←	← PS3	PVS1
	Other		<del>BP6</del>	PP4 →	<del>PP5</del>		

560

561 *Figure 1. Specifications of the ACMG/AMP criteria. Arrows indicate the range of strength of the evidence,*  
562 *adapted from (Strande, 2018). BA1 is included with Strong criteria even though it is Stand Alone*  
563 *strength. PM3, PM6, and PS2 are subject to strength changes using a points-based system.*

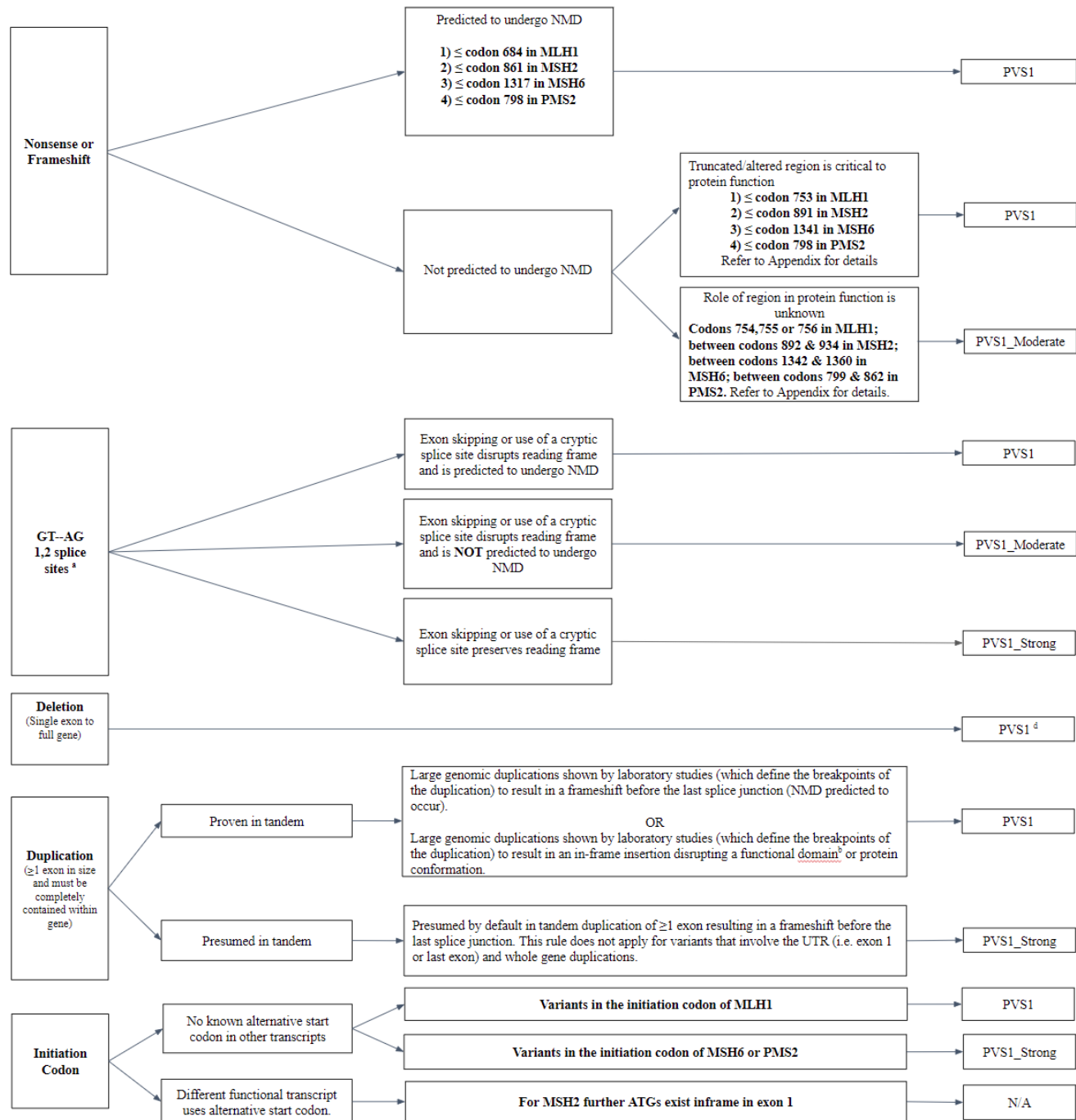
564  
565  
566



567

568 *Figure 2. Flowchart demonstrating the interpretation of functional assay data, adapted from Thompson*  
 569 *et al. 2020. If RNA splicing is used for PVS1, it should not be used for PS3.*

Plazzer et al., *MMR* specific ACMG-AMP criteria



570

571 *Figure 3. The PVS1 decision tree, adapted from Tayoun et al. 2018.*

572

573

574 RULES FOR COMBINING PATHOGENIC CRITERIA – Adjusted for Bayesian consistency

575 **Pathogenic**

576 1. 1 Very Strong AND

577 a.  $\geq 1$  Strong OR

578 b.  $\geq 1$  Moderate OR

579 c.  $\geq 2$  Supporting

580 2.  $\geq 2$  Very Strong

581 3.  $\geq 3$  Strong

582 4. 1 Strong AND

583 a.  $\geq 3$  Moderate OR

584 b. 2 Moderate AND  $\geq 2$  Supporting OR

585 c. 1 Moderate AND  $\geq 4$  Supporting

586 **Likely Pathogenic**

587 1. 1 Very Strong AND 1 Supporting

588 2. 2 Strong

589 3. 1 Strong AND 1--2 Moderate

590 4. 1 Strong AND  $\geq 2$  Supporting

591 5.  $\geq 3$  Moderate

592 6. 2 Moderate AND  $\geq 2$  Supporting

593 7. 1 Moderate AND  $\geq 4$  Supporting

594

595 **RULES FOR COMBINING BENIGN CRITERIA**

596 **Benign**

597 1. 1 Stand--Alone (BA1)

598 2.  $\geq 2$  Strong (BS1--BS4)

599 **Likely Benign**

600 1. 1 Strong and 1 Supporting

601 2.  $\geq 2$  Supporting

602 SVI WG Recommendation for De Novo Criteria (PS2 & PM6) - Version 1.0

603 [https://clinicalgenome.org/site/assets/files/3461/svi\\_proposal\\_for\\_de\\_novo\\_criteria\\_v1\\_0.pdf](https://clinicalgenome.org/site/assets/files/3461/svi_proposal_for_de_novo_criteria_v1_0.pdf)

604

605

606

607

608 Table 2. The combined point value of all *de novo* occurrences used to determine the applicable evidence  
609 strength level.

Plazzer et al., *MMR* specific ACMG-AMP criteria

Supporting (PM6_Supporting)	Moderate (PS2_Moderate or PM6)	Strong (PS2 or PM6_Strong)	Very Strong (PS2_VeryStrong or PM6_VeryStrong)
0.5	1	2	4

610

611 ClinGen Sequence Variant Interpretation Recommendation for in *trans* Criterion (PM3) - Version 1.0

612 [https://www.clinicalgenome.org/site/assets/files/3717/svi\\_proposal\\_for\\_pm3\\_criterion -](https://www.clinicalgenome.org/site/assets/files/3717/svi_proposal_for_pm3_criterion_-_version_1.pdf)  
 613 [\\_version 1.pdf](https://www.clinicalgenome.org/site/assets/files/3717/svi_proposal_for_pm3_criterion_-_version_1.pdf)

614

615 Table 3. Recommendation for determining the appropriate ACMG/AMP evidence strength level for *in*  
 616 *trans* occurrence(s)

Supporting (PM3_Supporting)	Moderate (PM3)	Strong (PM3_Strong)	Very Strong (PM3_VeryStrong)
0.5	1	2	4

617

618

619

620

621

622

623

624

625

626

627

628

629

630

631

632

633



634 Table 4: Scoring system for aiding CMMRD diagnosis from C4CMMRD (adapted from Aronson et al  
635 2022; PMID: 33622763)

<i>Malignancies/premalignancies: one is mandatory; if more than one is present in the patient, add the points:</i>	<b>&gt;=3 points = CMMRD features meets PM3 criteria after excluding the diagnosis of NF1 or LFS as individuals with those disorders could easily get to 3 points.</b>
Carcinoma from the LS spectrum* at age <25 years.	3 points
Multiple bowel adenomas at age <25 years and absence of APC/MUTYH mutation(s) or a single high-grade dysplasia adenoma at age <25 years.	3 points
WHO grade III or IV glioma at age <25 years.	2 points
NHL of T cell lineage or sPNET at age <18 years	2 points
Any malignancy at age <18 years.	1 point
<i>Additional features: optional; if more than one of the following is present, add the points:</i>	
Clinical sign of NF1 and/or ≥2 hyperpigmented and/or hypopigmented skin alterations Ø>1 cm.	2 points
Diagnosis of LS in a first-degree or second-degree relative.	2 points
Carcinoma from LS spectrum* before the age of 60 in a firstdegree, second-degree or third-degree relative.	1 point
A sibling with carcinoma from the LS spectrum*, high-grade glioma, sPNET or NHL.	2 points
A sibling with any type of childhood malignancy.	1 point
Multiple pilomatricomas in the patient.	2 points
One pilomatricoma in the patient.	1 point
Agenesis of the corpus callosum or non-therapy-induced cavernoma in the patient.	1 point
Consanguineous parents	1 point
Deficiency/reduced levels of IgG2/4 and/or IgA.	1 point

\*Colorectal, endometrial, small bowel, ureter, renal pelvis, biliary tract, stomach, bladder carcinoma

CMMRD, constitutional mismatch repair deficiency; LS, Lynch syndrome; NF1, neurofibromatosis type 1; NHL, non-Hodgkin's lymphoma; sPNET, supratentorial primitive neuroectodermal tumours.

636  
637  
638  
639

640 Table 5: Comparison of ACMG/AMP and InSiGHT criteria classifications.

641

Variant	Predicted protein change	Variant type	ACMG/AMP criteria met	ACMG/AMP Class	InSiGHT Class	Concord/Disco rd
MLH1:c.42A>C	p.(Thr14=)	Synonymous	BS1, BP4, BP7, BS4	Benign	Benign	Concordant
MLH1:c.1732-19T>A		Intronic	BA1, BS3	Benign	Likely Benign	Concordant
MSH6:c.107C>T	p.(Ala36Val)	Missense	BS1, BP4, BS2	Benign	Likely Benign	Concordant
MLH1:c.649C>T	p.(Arg217Cys)	Missense	BS3, BS1, BP5	Benign	Likely Benign	Concordant
MLH1:c.2074T>C	p.(Ser692Pro)	Missense	PM2_supportin g, BP4, BS4	Likely benign	Benign	Concordant
MSH2:c.1277-16T>C		Intronic	BP4, BS1	Likely benign	Likely Benign	Concordant
MSH2:c.1748A>G	p.(Asn583Ser)	Missense	BP4, BS3	Likely Benign	Likely Benign	Concordant
MSH2:c.913G>A	p.(Ala305Thr)	Missense	BP5, BS4_supportin g, BS3_supportin g, PP3_moderate, BS2	Likely benign	Likely Benign	Concordant
MSH2:c.1563T>C	p.(Tyr521=)	Synonymous	BS1, BP4, BP7	Likely benign	Likely Benign	Concordant
MLH1:c.2040C>T	p.(Cys680=)	Synonymous	PM2_supportin g, BP4, BP7	Likely Benign	Likely Benign	Concordant
MLH1:c.277A>G	p.(Ser93Gly)	Missense	PM2_supportin g, BP4, BS3_supportin g	Likely benign	Likely Benign	Concordant
MSH6:c.3482CTG[1]	p.(Ala1162del)	Inframe deletion	PM2_supportin g, PS3, PP4	Likely pathogenic	Likely pathogenic	Concordant
MLH1:c.1558+1G>A		Splice site	PM2_supportin g, PVS1	Likely Pathogenic	Likely Pathogenic	Concordant
MSH2:c.2210+2T>C		Splice site	PM2_supportin g, PVS1	Likely pathogenic	Likely pathogenic	Concordant
MSH2:c.792+1G>T		Splice site	PM2_supportin g, PVS1_strong, PP4	Likely pathogenic	Likely Pathogenic	Concordant
MLH1:c.1646T>C	p.(Leu549Pro)	Missense	PP1_strong, PP3_moderate, PM2_supportin g	Likely pathogenic	Likely pathogenic	Concordant
PMS2:c.1144+1G>A		Splice site	PP4, PM2_supportin g, PVS1_strong	Likely pathogenic	Likely pathogenic	Concordant
MSH6:c.1296T>G	p.(Phe432Leu)	Missense	PS3, PP3, PM2_supportin g	Likely pathogenic	Likely Pathogenic	Concordant

Plazzer et al., *MMR* specific ACMG-AMP criteria

PMS2:c.989-2A>G		Splice site	PVS1_strong, PP4_moderate, PM2_supporting	Likely pathogenic	Likely pathogenic	Concordant
MSH2:c.1807G>A	p.(Asp603Asn)	Missense	PM2_supporting, PP3, PP1, PP4_strong, PS3_moderate	Likely pathogenic	Pathogenic	Concordant
MSH6:c.1282A>G	p.(Lys428Glu)	Missense	PM2_supporting, PP3, PP4, PS3	Likely pathogenic	Pathogenic	Concordant
MSH2:c.1862G>T	p.(Arg621Leu)	Missense	PM2_supporting, PP4_strong, PP3_moderate	Likely pathogenic	Pathogenic	Concordant
MSH6:c.1723G>T	p.(Asp575Tyr)	Missense	PM2_supporting, PP4_strong, PP3_moderate	Likely pathogenic	Pathogenic	Concordant
MLH1:c.350C>G	p.(Thr117Arg)	Missense	PM5, PM2_supporting, PP1_moderate, PP3_moderate, PP4_moderate	Likely pathogenic	Pathogenic	Concordant
MSH2:c.490G>T	p.(Gly164Trp)	Missense	PM5, PM2_supporting, PP3_moderate, PP4_moderate	Likely pathogenic	Pathogenic	Concordant
PMS2:c.241G>T	p.(Glu81Ter)	Nonsense	PVS1, PM2_supporting	Likely pathogenic	Pathogenic	Concordant
MLH1:c.790+1G>T		Splice site	PM2_supporting, PVS1, PP3	Pathogenic	Likely Pathogenic	Concordant
MSH2:c.366+1G>C		Splice site	PM2_supporting, PVS1, PP1	Pathogenic	Likely Pathogenic	Concordant
MSH2:c.929T>G	p.(Leu310Arg)	Missense	PM5, PM2_supporting, PP3_moderate, PP4_moderate, PP1_strong	Pathogenic	Likely Pathogenic	Concordant
MLH1:c.589-2A>C		Splice site	PVS1, PM2_supporting, PP4	Pathogenic	Likely Pathogenic	Concordant
MSH2:c.1276G>A	p.(Gly426Arg)	Last base of exon	PM2_supporting, PP4, PVS1	Pathogenic	Pathogenic	Concordant
MSH2:c.2075G>T	p.(Gly692Val)	Missense	PM2_supporting, PS3, PP3_moderate, PP4_strong	Pathogenic	Pathogenic	Concordant
PMS2:c.1571dup	p.(Gly525ArgfsTer17)	Frameshift	PM2_supporting, PVS1, PM3_supporting	Pathogenic	Pathogenic	Concordant

Plazzer et al., *MMR* specific ACMG-AMP criteria

MSH2:c.1012G>A	p.(Gly338Arg)	Missense	PS3, PM2_supporting, PP1, PP3_moderate, PP4_moderate	Pathogenic	Pathogenic	Concordant
MLH1:c.923A>C	p.(His308Pro)	Missense	PS3, PP1_strong, PM2_supporting, PP3_moderate	Pathogenic	Pathogenic	Concordant
MSH2:c.2459-12A>G		Intronic	PVS1, PM2_supporting, PP4_strong	Pathogenic	Pathogenic	Concordant
PMS2:c.1753C>A	p.(Leu585Ile)	Missense	PM2_supporting, BP4	Uncertain significance	Uncertain significance	Concordant
PMS2:c.614A>C	p.(Gln205Pro)	Missense	PM2_supporting, PM3, PP4, PP3	Uncertain significance	Uncertain significance	Concordant
MLH1:c.2041G>C	p.(Ala681Pro)	Missense	PM2_supporting, PP4	Uncertain significance	Uncertain significance	Concordant
MLH1:c.2042C>T	p.(Ala681Val)	Missense	PP4_strong, PM2_supporting	Uncertain significance	Uncertain significance	Concordant
MSH6:c.663A>C	p.(Glu221Asp)	Missense	BS1, BP4	Likely benign	Uncertain significance	Discordant
MSH2:c.2634+5G>T		Intronic	PM2_supporting, PP4_moderate, PS1, PP3	Likely pathogenic	Uncertain significance	Discordant
MLH1:c.1667G>A	p.(Ser556Asn)	Last base of exon	PVS1_strong, PP4_moderate, PM2_supporting	Likely pathogenic	Uncertain significance	Discordant
MSH2:c.211G>C	p.(Gly71Arg)	Last base of exon	PVS1, PM2_supporting, PP4_strong	Pathogenic	Uncertain significance	Discordant
MSH6:c.884A>G	p.(Lys295Arg)	Missense	BS4_supporting	Uncertain significance	Likely Benign	Discordant
MLH1:c.1270G>A	p.(Ala424Thr)	Missense	PM2_supporting, BP4	Uncertain significance	Likely Benign	Discordant
MLH1:c.1963A>T	p.(Ile655Phe)	Missense	PM2_supporting, BP4	Uncertain significance	Likely Benign	Discordant
MLH1:c.1889T>A	p.(Ile630Asn)	Missense	PM2_supporting, PP1, PP3_moderate, PP4	Uncertain significance	Likely Pathogenic	Discordant

642

643

644

645

## 646 References

- 647 André, T., 2020. Pembrolizumab in Microsatellite-Instability–High Advanced Colorectal Cancer.  
648 *New England Journal of Medicine*, pp. 2207-2218.
- 649 Aronson, M., 2022. Diagnostic criteria for constitutional mismatch repair deficiency (CMMRD):  
650 recommendations from the international consensus working group. *Medical Genetics*, pp. 318-  
651 327.
- 652 Belman, S., 2020. Considerations in assessing germline variant pathogenicity using  
653 cosegregation analysis. *Genetics in Medicine*, 22(12), pp. 2052-2059.
- 654 Biesecker, L. a. H. S., 2018. The ACMG/AMP reputable source criteria for the interpretation of  
655 sequence variants. *Genetics in Medicine*, 20(12), pp. 1687-1688.
- 656 Biller, L., 2022. Lynch Syndrome-Associated Cancers Beyond Colorectal Cancer.  
657 *Gastrointestinal Endoscopy Clinics of North America*, pp. 75-93.
- 658 Brnich, S., 2020. Recommendations for application of the functional evidence PS3/BS3 criterion  
659 using the ACMG/AMP sequence variant interpretation framework. *Genome medicine*, 12(1), pp.  
660 1-12.
- 661 Canson, D., 2022. The splicing effect of variants at branchpoint elements in cancer genes.  
662 *Genetics in Medicine*, 24(2), pp. 398-409.
- 663 Cyr, J., 2012. The predicted truncation from a cancer-associated variant of the MSH2 initiation  
664 codon alters activity of the MSH2-MSH6 mismatch repair complex. *Molecular carcinogenesis*,  
665 51(8), pp. 647-658.
- 666 Dominguez-Valentin, M., 2020. Cancer risks by gene, age, and gender in 6350 carriers of  
667 pathogenic mismatch repair variants: findings from the Prospective Lynch Syndrome Database.  
668 *Genetics in Medicine*, 22(1), pp. 15-25.
- 669 Dominguez-Valentin, M., 2021. No difference in penetrance between truncating and  
670 missense/aberrant splicing pathogenic variants in MLH1 and MSH2: a prospective lynch  
671 syndrome database study. *Journal of clinical medicine*, 10(13), p. 2856.
- 672 Dominguez-Valentin, M., 2023. Mortality by age, gene and gender in carriers of pathogenic  
673 mismatch repair gene variants receiving surveillance for early cancer diagnosis and treatment: a  
674 report from the prospective Lynch syndrome database. *EClinicalMedicine*.
- 675 Drost, M., 2019. A functional assay–based procedure to classify mismatch repair gene variants  
676 in Lynch syndrome. *Genetics in Medicine*, 21(7), pp. 1486-1496.
- 677 Drost, M., 2020. Two integrated and highly predictive functional analysis-based procedures for  
678 the classification of MSH6 variants in Lynch syndrome. *Genetics in Medicine*, 22(5), pp. 847-  
679 856.
- 680 Fokkema, I., 2021. The LOVD3 platform: efficient genome-wide sharing of genetic variants.  
681 *European Journal of Human Genetics*, 29(12), pp. 1796-1803.
- 682 Georgeson, P., 2019. Tumor mutational signatures in sebaceous skin lesions from individuals  
683 with Lynch syndrome. *Molecular Genetics & Genomic Medicine*, p. e00781.
- 684 Jia, X., 2021. Massively parallel functional testing of MSH2 missense variants conferring Lynch  
685 syndrome risk. *The American Journal of Human Genetics*, 108(1), pp. 163-175.
- 686 Kahn, R., 2019. Universal endometrial cancer tumor typing: How much has  
687 immunohistochemistry, microsatellite instability, and MLH1 methylation improved the diagnosis  
688 of Lynch syndrome across the population?. *Cancer*, 125(18), pp. 3172-3183.

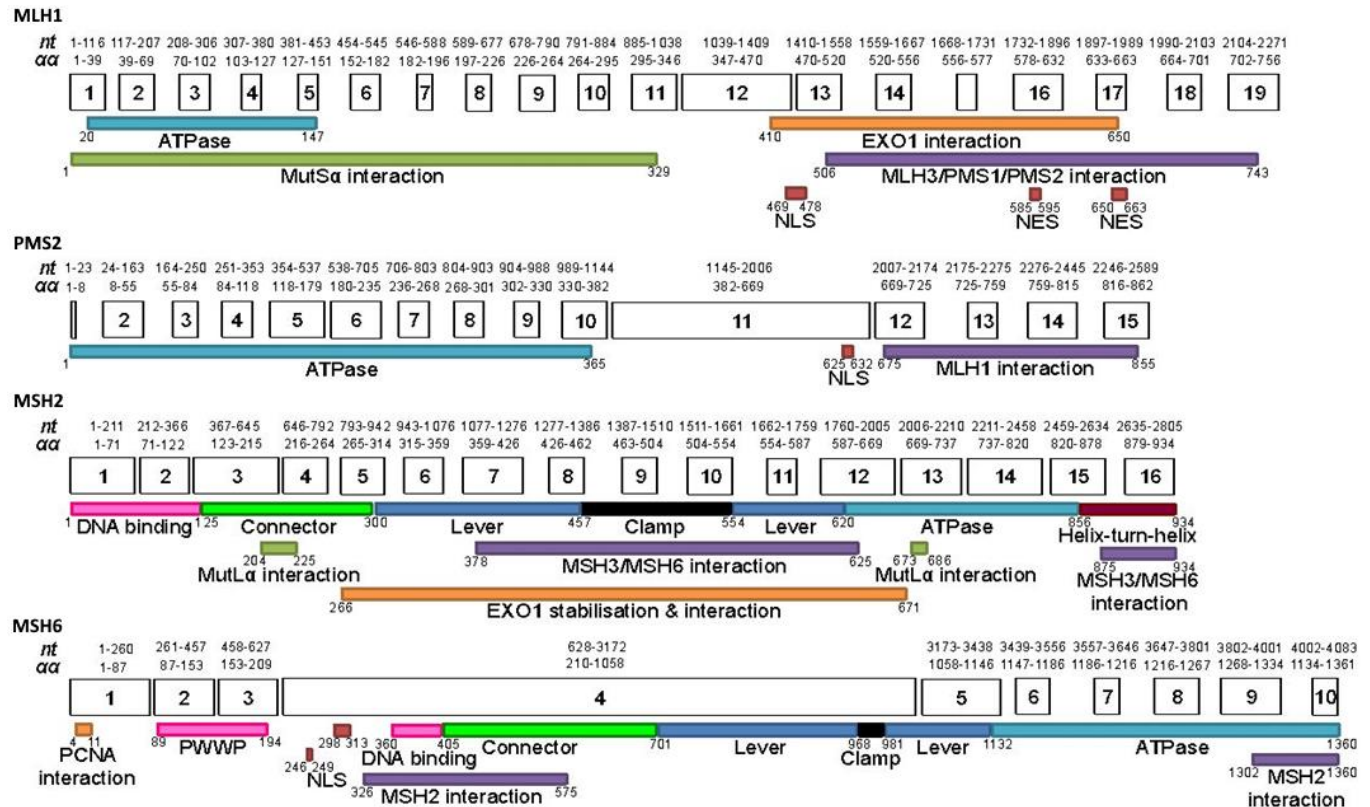
- 689 Karczewski, K. J. F. L. C. T. G. C. B. B. A. J. W. Q. .. & M. D. G., 2020. The mutational  
690 constraint spectrum quantified from variation in 141,456 humans.. *Nature*, 581(7809), pp. 434-  
691 443.
- 692 Latham, A., 2019. Microsatellite instability is associated with the presence of Lynch syndrome  
693 pan-cancer. *Journal of clinical oncology*, 37(4), p. 286.
- 694 Lewis, B., 2003. Evidence for the widespread coupling of alternative splicing and nonsense-  
695 mediated mRNA decay in humans. *Proceedings of the National Academy of Sciences*, 100(1),  
696 pp. 189-192.
- 697 Li, S., 2020. Tumour characteristics provide evidence for germline mismatch repair missense  
698 variant pathogenicity. *Journal of Medical Genetics*, 57(1), pp. 62-69.
- 699 Nugroho, P., 2022. Risk of cancer in individuals with Lynch-like syndrome and their families: a  
700 systematic review. *Journal of Cancer Research and Clinical Oncology*, pp. 1-22.
- 701 Pejaver, V., 2022. Calibration of computational tools for missense variant pathogenicity  
702 classification and ClinGen recommendations for PP3/BP4 criteria. *The American Journal of*  
703 *Human Genetics*.
- 704 Plazzer, J., 2013. The InSiGHT database: utilizing 100 years of insights into Lynch syndrome.  
705 *Familial cancer*, pp. 175-180.
- 706 Preston, C., 2022. ClinGen Variant Curation Interface: a variant classification platform for the  
707 application of evidence criteria from ACMG/AMP guidelines. *Genome Medicine*, 14(1), pp. 1-12.
- 708 Rath A, R. A. R. K. G. R. H. J. C. M. T. S. G. J. H. C., 2022. A calibrated cell-based functional  
709 assay to aide classification of MLH1 DNA mismatch repair gene variants. *Human Mutation*,  
710 43(12), pp. 2295-2307.
- 711 Rayner, E., 2022. Predictive functional assay-based classification of PMS2 variants in Lynch  
712 syndrome. *Human Mutation*, 43(9), pp. 1249-1258.
- 713 Reese, M. G. E. F. H. K. D. & H. D., 1997. Improved splice site detection in Genie. *Proceedings*  
714 *of the first annual international conference on Computational molecular biology*, pp. 232-240.
- 715 Rehm, H., 2015. ClinGen—the clinical genome resource. *New England Journal of Medicine*,  
716 372(23), pp. 2235-2242.
- 717 Richardson, M., 2019. DNA breakpoint assay reveals a majority of gross duplications occur in  
718 tandem reducing VUS classifications in breast cancer predisposition genes. *Genetics in*  
719 *Medicine*, 21(3), pp. 683-693.
- 720 Richards, S., 2015. Standards and guidelines for the interpretation of sequence variants: a joint  
721 consensus recommendation of the American College of Medical Genetics and Genomics and  
722 the Association for Molecular Pathology. *Genetics in medicine*, pp. 405-423.
- 723 Riepe, T., 2021. Benchmarking deep learning splice prediction tools using functional splice  
724 assays. *Human Mutation*, 42(7), pp. 799-810.
- 725 Ritter, D., 2019. A case for expert curation: an overview of cancer curation in the clinical  
726 genome resource (ClinGen). *Molecular Case Studies*, 5(5), p. a004739.
- 727 Rivera-Muñoz, E., 2018. ClinGen Variant Curation Expert Panel experiences and standardized  
728 processes for disease and gene-level specification of the ACMG/AMP guidelines for sequence  
729 variant interpretation. *Human Mutation*, pp. 1614-1622.
- 730 Scott, A., 2022. Saturation-scale functional evidence supports clinical variant interpretation in  
731 Lynch syndrome. *Genome Biology*, 23(1), pp. 1-16.

- 732 Strande, N., 2018. Navigating the nuances of clinical sequence variant interpretation in  
733 Mendelian disease.. *Genetics in Medicine*, 20(9), pp. 918-926.
- 734 Tavgitian, S., 2018. Modeling the ACMG/AMP variant classification guidelines as a Bayesian  
735 classification framework. *Genetics in Medicine*, 20(9), pp. 1054-1060.
- 736 Tayoun, A., 2018. Recommendations for interpreting the loss of function PVS1 ACMG/AMP  
737 variant criterion. *Human mutation*, 39(11), pp. 1517-1524.
- 738 Thompson, B., 2013. A multifactorial likelihood model for MMR gene variant classification  
739 incorporating probabilities based on sequence bioinformatics and tumor characteristics: a report  
740 from the Colon Cancer Family Registry. *Human Mutation*, 34(1), pp. 200-209.
- 741 Thompson, B., 2014. Application of a 5-tiered scheme for standardized classification of 2,360  
742 unique mismatch repair gene variants in the InSiGHT locus-specific database. *Nature genetics*,  
743 pp. 107-115.
- 744 Thompson, B., 2020. Contribution of mRNA splicing to mismatch repair gene sequence variant  
745 interpretation. *Frontiers in genetics*, Volume 11, p. 798.
- 746 Tian, Y., 2019. REVEL and BayesDel outperform other in silico meta-predictors for clinical  
747 variant classification. *Scientific reports*, 9(1), pp. 1-6.
- 748 Tiwari, A., 2016. Lynch syndrome in the 21st century: clinical perspectives. *QJM: An*  
749 *International Journal of Medicine*, pp. 151-158.
- 750 Whiffin, N., 2017. Using high-resolution variant frequencies to empower clinical genome  
751 interpretation. *Genetics in Medicine*, 19(10), pp. 1151-1158.
- 752 Yeo, G. & B. C. B., 2004. Maximum entropy modeling of short sequence motifs with  
753 applications to RNA splicing signals. *J Comput Biol*, 11(2-3), pp. 377-94.
- 754 Zhang, Y., 2018. A Novel MLH1 Initiation Codon Mutation (c.3G>T) in a Large Chinese Lynch  
755 Syndrome Family with Different Onset Age and mRNA Expression Level. *BioMed Research*  
756 *International*.

757  
758  
759  
760  
761  
762  
763  
764  
765  
766

Supplementary Table 1. Validation of functional assays (See supplementary excel file).

Plazzer et al., *MMR specific ACMG-AMP criteria*



767  
768 *Figure 3. Linear schematic of mismatch repair gene functional domains according to amino acid*  
769 *positions. Adapted from InSiGHT criteria v2.4 ([https://www.insight-](https://www.insight-group.org/content/uploads/2018/08/2018-06_InSiGHT_VIC_v2.4.pdf)*  
770 *group.org/content/uploads/2018/08/2018-06\_InSiGHT\_VIC\_v2.4.pdf)*

771  
772  
773  
774  
775 **APPENDIX**

776  
777 **Important Notes**

778 *PMS2* NGS results need confirmation by other orthogonal assays as well as functional assessment (e.g.  
779 Long-Range or cDNA), if variants are located in the *PMS2CL* pseudogene homologous regions (exons 11-  
780 15).

781  
782 Gene-specific penetrance estimates are available at <http://lscarisk.org/>

783  
784 **Justification for last exon PVS1 boundaries:**

785 Nonsense/frameshift variant introducing Premature Termination Codon (PTC):

- 786 1)  $\leq$  codon 753 in *MLH1* using location of known pathogenic variant *MLH1* c.2252\_2253del  
787 2)  $\leq$  codon 891 in *MSH2* using location of known pathogenic variant *MSH2* c.2662del



Plazzer et al., *MMR* specific ACMG-AMP criteria

788 3)  $\leq$  codon 1341 in MSH6 using location of known pathogenic variant *MSH6* c.3984\_3987dup

789 4)  $\leq$  codon 798 in PMS2 using  $\geq 50$  nucleotide NMD-rule.

790

791 **Protein Expression and consistency with variant location**

792 IHC evidence should be consistent with the variant gene and the protein that is tested and take into

793 account the MutS $\alpha$  and MutL $\alpha$  heterodimers: MLH1 and PMS2 loss is consistent with an *MLH1*

794 pathogenic variant, MSH2 and MSH6 loss is consistent with an *MSH2* pathogenic variant, MSH6 loss is

795 consistent with an *MSH6* pathogenic variant, and PMS2 loss is consistent with a *PMS2* pathogenic

796 variant.