

1 **Daily consumption of ketone ester, bis-octanoyl (R)-1,3-butanediol, is safe and tolerable**  
2 **in healthy older adults, a randomized, parallel arm, double-blind, placebo-controlled,**  
3 **pilot study.**

4  
5 Brianna J. Stubbs<sup>a\*</sup>, Elizabeth B. Stephens<sup>a</sup>, Chatura Senadheera<sup>a</sup>, Sawyer Peralta<sup>a</sup>, Stephanie  
6 Roa-Diaz<sup>a</sup>, Laura Alexander<sup>a</sup>, Wendie Silverman-Martin<sup>a</sup>, Thelma Y. Garcia<sup>a</sup>, Michi  
7 Yukawa<sup>b, c</sup>, Jenifer Morris<sup>c</sup>, Traci M. Blonquist<sup>d</sup>, James B. Johnson<sup>e</sup>, John C. Newman<sup>a, b</sup>

8  
9 <sup>a</sup>Buck Institute for Research on Aging, 8001 Redwood Blvd, Novato, CA, USA, 94945-1400

10 <sup>b</sup>Division of Geriatrics, UCSF, 3575 Geary Blvd, Fl 1, San Francisco, CA, USA, 94118-  
11 3212.

12 <sup>c</sup>Geriatrics, San Francisco VA Medical Center, 4150 Clement St, San Francisco, CA, USA,  
13 94121-1563.

14 <sup>d</sup>Biofortis, Mérieux NutriSciences, 800-A South Rohling Rd, Addison, IL, USA, 60101-  
15 4219.

16 <sup>e</sup>Independent Researcher, Greenbrae, CA, USA.

17

18 **SHORT TITLE: Ketone ester safety and tolerability in older adults**

19 \* Correspondence: Dr. Brianna J. Stubbs: [bstubbs@buckinstitute.org](mailto:bstubbs@buckinstitute.org) ;

20 Dr. John C. Newman [jnewman@buckinstitute.org](mailto:jnewman@buckinstitute.org) ;

21 8001 Redwood Blvd, Novato, CA, USA 94945-1400

22

23 **Abbreviations**

ALT	Alanine Transaminase
AST	Aspartate Aminotransferase
BH-BD	Bis-hexanoyl (R)-1,3-butanediol
BHB	Beta-hydroxybutyrate
BIKE	Buck Institute Ketone Ester
BMI	Body Mass Index
BO-BD	Bis-octanoyl (R)-1,3-butanediol
BTQ	Beverage Tolerability Questionnaire
CI	Confidence Interval
GI	Gastrointestinal
HDL	High Density Lipoprotein
ITT	Intent to Treat
KE(s)	Ketone Ester(s)
LDL	Low Density Lipoprotein
MCT	Medium Chain Triglyceride
PLA	Placebo
PP	Per Protocol
T4	Thyroxine

24

25

26 **Abstract**

27 **Objectives:** Ketone bodies are endogenous metabolites produced during fasting or a  
28 ketogenic diet that have pleiotropic effects on aging pathways. Ketone esters (KEs) are  
29 compounds that induce ketosis without dietary changes, but KEs have not been studied in an  
30 older adult population. The primary objective of this trial was to determine tolerability and  
31 safety of KE ingestion in older adults.

32 **Design:** Randomized, placebo-controlled, double-blinded, parallel-arm trial, with a 12-week  
33 intervention period (NCT05585762).

34 **Setting:** General community, Northern California, USA.

35 **Participants:** Community-dwelling older adults, independent in activities of daily living,  
36 with no unstable acute medical conditions (n=30) were randomized and n=23 (M= 14, F=9)  
37 completed the protocol.

38 **Intervention:** Participants were randomly allocated to consume either KE (bis-octanoyl (R)-  
39 1,3-butanediol) or a taste, appearance, and calorie-matched placebo (PLA) containing canola  
40 oil.

41 **Measurements:** Tolerability was assessed using a composite score from a daily log for 2-  
42 weeks, and then via a bi-weekly phone interview. Safety was assessed by vital signs and lab  
43 tests at screening and weeks 0, 4 and 12, along with tabulation of adverse events.

44 **Results:** There was no difference in the prespecified primary outcome of proportion of  
45 participants reporting moderate or severe nausea, headache, or dizziness on more than one  
46 day in a two-week reporting period (KE n =2 (14.3% [90% CI = 2.6 – 38.5]); PLA n=1 (7.1%  
47 [90% CI = 0.4 – 29.7])). Dropouts numbered four in the PLA group and two in the KE group.  
48 A greater number of symptoms were reported in both groups during the first two weeks;  
49 symptoms were reported less frequently between 2 – 12 weeks. There were no clinically  
50 relevant changes in safety labs or vital signs in either group.

51 **Conclusions:** This KE was safe and well-tolerated in healthy older adults. These results  
52 provide a foundation for use of KEs in aging research.

53 **Words Count:** 305

54 **Keywords:** ketones, ketone ester, exogenous ketone, beta-hydroxybutyrate, safety, tolerance.

55

56 **Highlights**

- 57 • Ketones esters induce ketosis without dietary changes and may target aging biology
- 58 • Studies of ketone esters were limited in duration and focused on younger adults
- 59 • We found ketone esters were safe and tolerable for 12 weeks in healthy older adults

60

61 **1.0**

62 **Introduction**

63 Nutrition and aging have long been intertwined through years of research of the effects of  
64 dietary restriction and fasting on aging in model organisms [1] and now humans (e.g.  
65 CALERIE [2], HALLO-P (NCT05424042)). A deepening understanding of the molecular  
66 mechanisms involved in fasting and dietary restriction has led to small molecule interventions  
67 now under investigation in clinical trials targeting various aging phenotypes, as well as a  
68 popular upswell of public and scientific interest in these dietary strategies as geroscience  
69 interventions. Geroscience is a research paradigm based on addressing the biology of aging  
70 and age-related disease. The geroscience approach of modulating fundamental aging  
71 mechanisms holds promise for generating new therapeutics for multifactorial conditions of  
72 aging which contribute to functional decline, disability, and loss of independence in older  
73 adults [3, 4].

74 A key shared element of the metabolic state induced by fasting and dietary restriction is  
75 the production and oxidation of ketone bodies. Ketone bodies are small molecules synthesized  
76 from lipids primarily in the liver, which circulate in the blood to provide non-glucose energy  
77 to extrahepatic tissues. The most abundant circulating ketone body is beta-hydroxybutyrate  
78 (BHB). Ketone bodies are synthesized constitutively at low concentrations, but are also  
79 strongly induced during fasting [5]; during a prolonged fast, humans can produce up to ~150 g  
80 of ketone bodies per day [6]. The energetic and molecular signaling activities of ketone  
81 bodies, including supporting mitochondrial function and regulating inflammatory activation,  
82 support a mechanistic role in modulating aging [7]. We, and others, previously demonstrated  
83 that implementing a ketogenic diet, a nutritional method characterized by reduced  
84 carbohydrate intake and increased fat intake without fasting, extended the healthy lifespan of  
85 wild-type mice by slowing declines in overall aging-related functions, murine clinical frailty  
86 scores, and muscle strength [8, 9].

87 Exogenous ketones, including KEs, such as bis-octanoyl-(R)1,3-butanediol (BO-BD), are  
88 small molecules that nutritionally deliver ketone bodies without other dietary changes [10,  
89 11]. KEs are hydrolyzed in the gut to release ketogenic fatty acids and a ketogenic alcohol,  
90 which are then metabolized in the liver, independent of insulin levels or fasting state, to  
91 release ketone bodies [12]. In preclinical models, ketone bodies and KEs have been found to  
92 impact multiple aging-relevant outcomes in the muscle [13, 14], heart [15, 16], and immune  
93 system [17, 18]. Clinically, KEs have been shown to impact a range of endpoints in younger  
94 adults, such as blood glucose control [19-22], physical [23-25], cognitive [26-28], immune  
95 [29], and cardiovascular [28, 30] function. These examples support our central hypothesis that  
96 ketone bodies delivered through KEs may be a candidate geroscience intervention, to target  
97 clinical syndromes of aging via direct action on aging biology. However, studies of KE have  
98 been limited in duration (28 days) and focused on younger adults; no KE has been studied in  
99 an exclusively older adult population.

100 To be a feasible geroscience intervention, KE must be both tolerable and safe for daily,  
101 prolonged use by older adults. Older adults are typically considered to be a more vulnerable  
102 population, with a two-fold higher risk of hospitalization with adverse reactions to  
103 interventions compared to younger counterparts [31]. One-month studies of KE in younger  
104 adults have consistently demonstrated safety and generally good tolerance, although side  
105 effects such as nausea, headache, upper abdominal pain, and diarrhea were occasionally  
106 reported at mild intensity [32, 33]. Similarly, a 28-day study of bis hexanoyl (R)-1,3-  
107 butanediol (BH-BD), a KE that is closely related to BO-BD, reported an increased proportion  
108 of young adult participants who experienced headache, nausea, and dizziness at least once in  
109 the BH-BD group, but the absolute incidence was low, and severity was generally mild [34].  
110 The lack of data on KE use in older adults represents a major knowledge gap and barrier to  
111 translation in this field.

112 To facilitate future aging-focused investigations using KE, we undertook this 12-week  
113 randomized, placebo-controlled, double-blinded, parallel arm, pilot clinical trial with the  
114 objective of generating the first human safety and tolerance data for KEs in a generalizable  
115 population of older adults, as well as the longest KE intervention study known to date. Based  
116 on the data with younger adults, we hypothesized that the KE would be safe and tolerable in  
117 healthy older adults.

118 **2.0**

119 **Methods**

120 **2.1**

121 **Study Design**

122 The Buck Institute Ketone Ester (BIKE) Study was a randomized, double-blind, placebo-  
123 controlled, parallel arm, pilot trial designed to assess the feasibility, safety, and tolerability of  
124 up to 25 g/day of KE ingestion for 12 weeks compared to a placebo in older adults, 65 years  
125 of age and older (**Figure 1**), in preparation for a planned study of KE in pre-frail older adults  
126 (NIH funding ID: **1R01AG081226-01**). Volunteers underwent consent and screening (Visit  
127 1), and then were confirmed to be eligible for participation by medical officers. Upon  
128 confirmation of eligibility, acute ketone kinetics were measured (Visit 2, results described in  
129 [35]). Baseline safety measures were collected at day 0 (Visit 3), and daily KE or placebo  
130 consumption began at day 1. For 12 weeks (or until Visit 5), participants consumed one daily  
131 serving of BO-BD or a visually, calorically and taste-matched placebo that contained a  
132 matched mass of non-ketogenic fat (canola oil) formulated into a 75 mL beverage.  
133 Participants completed a Beverage Tolerability Questionnaire (BTQ) after consuming the  
134 study beverage each day for the first 14 days (acclimation period) to assess the tolerance of  
135 the study beverage. Tolerance was further assessed by verbal administration of the BTQ  
136 during phone calls every 2 weeks, starting at week 2. An interim safety assessment was  
137 performed at week 4 (Visit 4). Upon completion of the 12 weeks, post-intervention safety  
138 measures were collected, without study product consumption on the day of the test visit (Visit  
139 5). An optional kinetics visit took place at least 1 week after Visit 5, measuring acute ketone  
140 kinetics after consumption of an equivalent serving of a newly developed powder formulation  
141 of BO-BD. This study, and all study material was approved by Advarra IRB (WIRB-  
142 Copernicus Group, Puyallup, WA, ID# 20213716, current version 1.3 approved on 16<sup>th</sup>  
143 October 2023) and was conducted in accordance with the Declaration of Helsinki. Signed



144 informed consent was provided by the participants prior to implementing any protocol-  
145 specific procedures. The study was registered in the [clinicaltrials.gov](https://clinicaltrials.gov) database:  
146 **NCT05585762**. Study visits took place at Buck Institute for Research on Aging (Novato, CA,  
147 USA) between November 2022 - January 2024; the trial ended when the last enrolled subject  
148 completed the protocol. Details of investigator and institutional conflict of interest  
149 management plans can be found in our protocol paper [36].

## 150 **2.2** 151 **Participants and Screening**

152 Participants (n = 30) were community dwelling older adults ( $\geq 65$  years of age) in stable  
153 health. We aimed to enroll a broad sample of older adults, allowing common chronic diseases  
154 and multiple medications to reflect the intended future study population. Specific exclusion  
155 items were chosen based on possible interaction with anticipated KE side effects, such as  
156 gastrointestinal (GI) upset. The full inclusion and exclusion criteria have been previously  
157 described in our methods paper [36]. At the screening visit, participants completed a medical  
158 history questionnaire in addition to assessment of height, weight, body mass index (BMI),  
159 vital signs, last menses (females only), current medication / supplement use, and review of  
160 inclusion / exclusion criteria to determine eligibility. Additionally, blood and urine were  
161 collected for analysis. This information was reviewed by a medical officer for approval to  
162 participate. Participants had the opportunity to taste the study beverages to evaluate  
163 palatability. Following medical officer approval, participants were randomized during Visit 2  
164 based on order of enrollment to one of the study groups, based on a statistician-generated  
165 block allocation sequence (block size 4, intended to equally randomize male and female  
166 participants). Participants were asked to maintain habitual exercise, meal / diet, and  
167 medication / supplement use during the study. The flow of study participants is illustrated in  
168 the CONSORT diagram (**Supplementary Figure 1**). Based on studies of symptoms in older  
169 adults [37, 38], we predicted the primary outcome rate in the placebo group will be

170 approximately 10%. N=30 (15 per arm) provides 36% power to detect a 25% increase (from  
171 10% to 35%) in the proportion of subjects meeting this primary outcome in the KE condition  
172 with two-sided  $\alpha=0.10$ . If we assume a larger effect of the KE intervention, N = 30 (15 per  
173 arm) provides approximately 75% power to detect an increase (from 10% to 55%) in the  
174 proportion of subjects meeting this primary outcome in the KE condition, with two-sided  
175  $\alpha=0.10$ .

### 176 **2.3** 177 **Study Beverages**

178 The study KE beverage was a tropical-flavored beverage containing the KE bis-octanoyl (R)-  
179 1,3-butanediol (Cognitive Switch, BHB Therapeutics Ltd, Dublin, IRE). Each bottle was 75  
180 mL and contained 25 g of KE. Participants were instructed to consume the study beverage at  
181 home daily for 12 weeks within 5 minutes of their first meal of the day. Half of a bottle (12.5  
182 g KE) was consumed daily during week 1, and a full bottle (25 g KE) was consumed daily for  
183 the remainder of the study. The placebo used in the study was custom manufactured by BHB  
184 Therapeutics; the KE was replaced by non-ketogenic canola oil. It was matched for volume,  
185 appearance, flavor, and calories. Nutritional facts for study beverages are shown in  
186 **Supplementary Table 1**. Beverages were provided as single serving bottles, labeled with the  
187 coded group allocation. All personnel involved with the data collection, analysis, and  
188 interpretation were blinded to the intervention assigned to participants. Compliance was  
189 assessed at week 4 (Visit 4) and week 12 (Visit 5) by asking participants to return any unused  
190 product and by review of a daily Study Beverage Log, which was compared to the number of  
191 unused bottles returned. Participants who consumed between 80 – 120% of their allocated  
192 study product were considered compliant.

### 193 **2.4** 194 **Study Questionnaires**

195 **2.4.1**

196 **Study Beverage Log**

197 The daily Study Beverage Log queried compliance with daily beverage intake. Participants  
198 noted if they had consumed the beverage, the time of consumption, and noted if they had  
199 experienced any tolerance issues or other adverse events (AE).

200 **2.4.2**

201 **Beverage Tolerability Questionnaire (BTQ)**

202 The BTQ used in this study was similar to that used in previous tolerability studies [34, 39,  
203 40]. Ten tolerability issues were included in the BTQ: gas / flatulence, nausea, vomiting,  
204 abdominal cramping, stomach rumbling, burping, reflux (heartburn), diarrhea, headache, and  
205 dizziness. Participants were either asked if the issue occurred since they took the study  
206 beverage (paper questionnaire completed daily 3-6 h after KE consumption during 2-week  
207 acclimation period) or during the last two weeks (completed verbally during bi-weekly  
208 telephone call), and asked to rank the intensity as none, mild (awareness of symptoms but  
209 easily tolerated), moderate (discomfort enough to interfere with but not prevent daily activity)  
210 or severe (unable to perform usual activity). These correspond to scores of 0-3 respectively  
211 for each issue, giving a maximal composite score of 30. After acclimation, participants were  
212 asked to report the number of days that each symptom occurred at the respective severity.

213 **2.5**

214 **In-Clinic Procedures**

215 For testing visits on Days 0, ~28, and ~84 (Visits 3, 4, and 5, respectively), participants  
216 reported to the clinic after an overnight fast and having avoided exercise, alcohol, and  
217 psychoactive cannabis products for at least 10 h. On arrival, fasted blood and urine samples  
218 were collected and processed for analysis, including hematology, chemistries, liver function  
219 tests, thyroid function tests, and urinalysis. Vital signs (heart rate, seated and standing blood

220 pressure), and body anthropometrics (height, weight, waist circumference) were assessed  
221 after the participant had been at rest. Cognitive and physical function were assessed, and  
222 quality of life questionnaires were administered during Visits 3 and 5; as these results will be  
223 described separately, detailed procedures are not described here, but can be found in the  
224 detailed description of the protocol [36].

## 225 **2.6** 226 **At-Home Procedures**

227 Each day, at home, participants consumed their regular first meal of the day and consumed  
228 the study beverage within 5 minutes of finishing their meal. Participants were asked to  
229 complete the BTQ 3-6 hours after consumption of the study beverage.

## 230 **2.7 Study Outcomes**

### 231 **2.7.1**

#### 232 **Primary outcome**

233 The primary outcome of the BIKE Study was tolerability of the KE intervention, assessed  
234 using the BTQ. Specifically, the prespecified primary outcome was the proportion of  
235 participants reporting the same moderate to severe symptom (among dizziness, headache, or  
236 nausea) occurring on more than one day within any given two week recall period (after week  
237 0–2 acclimation period) during a phone interview. Headache, nausea, and dizziness were  
238 selected as they occurred significantly more often at mild severity in our previous 28-day  
239 study of a KE in healthy younger adults [34]. The ‘moderate to severe’ intensity was selected  
240 as ‘mild’ symptoms are common in this population [37], and may be acceptable if they are  
241 outweighed by benefits of the intervention. Moderate to severe symptoms are less common  
242 [38] and more likely to be detrimental to quality of life or function. The frequency of ‘more  
243 than one day per period’ is used to reduce the impact of idiosyncratic symptoms on the  
244 analysis given the common occurrence of such symptoms in the target population.

245 **2.7.2**

246 **Secondary outcomes**

247 The secondary outcome of the BIKE Study was safety, assessed through changes over time in  
248 clinical and laboratory measures throughout the study, within each group. Changes in body  
249 weight, waist circumference, heart rate, systolic and diastolic blood pressure, and orthostatic  
250 changes in blood pressure were followed at the last three study visits. The key safety outcome  
251 is the within-group change in safety blood parameters. The occurrence of adverse events was  
252 also tabulated.

253 **2.8**

254 **Biological Sample Analysis**

255 All blood and urine sample analysis for clinical laboratory measures took place at accredited  
256 Quest Diagnostics laboratories in California. The clinical chemistry profile included albumin,  
257 alkaline phosphatase, alanine transaminase (ALT), aspartate aminotransferase (AST), total  
258 bilirubin, blood urea nitrogen, creatinine with glomerular filtration rate, carbon dioxide,  
259 chloride, globulin, glucose, potassium, total protein, and sodium. A standard lipid panel was  
260 performed, including total cholesterol, high density lipoprotein (HDL), low density  
261 lipoprotein (LDL), non HDL cholesterol, and triglycerides. High-sensitivity C-reactive  
262 protein and a thyroid panel, including triiodothyronine uptake, total thyroxine (T4), and free  
263 T4 index were measured. The hematology profile included white blood cell count, red blood  
264 cell count, hemoglobin, hematocrit, mean corpuscular volume, mean corpuscular hemoglobin  
265 concentration, neutrophils, lymphocytes, monocytes, eosinophils, basophils, and platelet  
266 count. Urinalysis parameters included glucose, urobilinogen, ketone body, protein, blood  
267 cells, bilirubin, specific gravity, and pH. Normal ranges for all values were provided by the  
268 analytical lab and accounted for age and gender.

269 **2.9**

## 270 **Statistical Methods**

271 All analyses were based on intention to treat and were conducted by a blinded external study  
272 statistician. The proportion of participants reporting at least 2 occurrences of the target  
273 symptoms in the phone interview during the post acclimation period (week 3 onward) was  
274 estimated along with an exact 90% confidence interval (CI) within each group and compared  
275 between groups with the Fisher's exact test. Additionally, the 10-item composite score,  
276 defined as the sum of the respective items, was analyzed with a repeated measures model  
277 with an unstructured covariance structure imposed upon the residuals. The frequency of  
278 each individual symptom was described with counts and percentages overall and by symptom  
279 severity for the 14-day acclimation period (using the daily logs) and in the post acclimation  
280 period (using the phone interview). During the 14-day acclimation period, due to the number  
281 of no symptom responses, the 3-item (dizziness, headache nausea, maximum score 63) and  
282 10-item (maximum score 210) weekly composite score was calculated as the sum of the  
283 individual items each day and compared between group with the Wilcoxon rank sum test.  
284 Additionally, the within-group change in safety labs, from baseline to each of the interim and  
285 final timepoints, was compared between groups with a Wilcoxon rank sum test and a false  
286 discovery rate adjustment to control for multiple comparisons..

287 The intent-to-treat (ITT) population comprised data for all participants who were randomized  
288 and consumed one serving of the study beverage and was the primary population used to  
289 assess safety and tolerability. Additionally, the population of completers was analyzed.  
290 Missing data was not imputed.

## 291 **3.0**

## 292 **Results**

### 293 **3.1**

## 294 **Participants and completion**

295 Participant anthropometric characteristics at baseline are shown in **Table 1**. A total of 30  
296 participants were randomized; 1 participant completed the acute kinetics visit but did not start  
297 the main study without giving a reason, and 6 participants dropped out after Day 0 and did  
298 not complete the full protocol (KE n= 2 (2F), PLA n = 4 (3F, 1M)). The reasons and times of  
299 withdrawal were as follows: GI issues (KE n = 2, week 3 and 5, one participant self-  
300 withdrew, one participant withdrawn by medical officer; PLA n =1, week 4, participant  
301 withdrew), tiredness (PLA n = 2, week 2 and 6, both participants self-withdrew), and  
302 increased cholesterol in safety labs (PLA n = 1, week 4, withdrawn by medical officer). The  
303 analysis population (n = 29) consisted of all participants who started the main study, a  
304 CONSORT diagram is shown in **Supplemental Figure 1**.

305 Adherence with consumption of the study products for the overall population was high, with  
306 n = 15 reporting 100% adherence and a range of 94 – 99 % for the remaining 8 participants  
307 who completed the study, based on study logs and returned bottles.

## 308 **3.2**

### 309 **Tolerance**

310 There was no evidence to support that there was a difference between groups in the study  
311 primary end point: the proportion of participants experiencing moderate or severe dizziness,  
312 nausea, or headache on more than one day during any of the two-week post-acclimation time  
313 periods (**Table 2**). Similarly, there was no evidence of a difference between groups in the  
314 proportion of participants reporting any of the 10 items at moderate or severe intensity on  
315 more than one day in any of the two-week post acclimation periods.

316 Other tolerance analyses were exploratory in nature and focused on temporal changes  
317 through the study, and on other symptom types and severity. The first two weeks of the  
318 intervention was an acclimation period, where serving size increased from 12.5 to 25 g from

319 Day 8 onwards, and participants completed a tolerance questionnaire every day. During this  
320 acclimation period n = 5 participants (KE = 1, PLA = 4) experienced no symptoms at any  
321 time, n = 8 participants reported at least one ‘mild’ symptom (KE = 5, PLA = 3), n = 13  
322 participants reported at least one ‘moderate’ symptoms (KE = 6, PLA = 7), and n = 3  
323 participants experienced one ‘severe’ symptoms (KE = 2, dizziness on day 6, dizziness on  
324 day 14; PLA = 1, headache on day 7).

325 As there was a high rate of ‘no’ symptom reports each day for both groups, three (dizziness,  
326 headache and nausea) and ten item composite scores for the tolerance questionnaire were  
327 calculated as the total of all scores on days 1- 7 (week 1 composite) and 8 – 14 (week 2  
328 composite) (**Table 2**). There was no difference between groups in the week 1 composite for  
329 the three major symptom items ( $p = 0.67$ ), or in the week 1 composite score for all ten  
330 symptom items ( $p = 0.38$ , **Figure 2A**). In the second week, when study product serving size  
331 increased, there was no difference in the week 2 composite score for the three major items ( $p$   
332 = 0.42), but there was a significantly greater week 2 composite score for all ten items in the  
333 KE group compared with the PLA group ( $p = 0.037$ , **Figure 3A**). When the 14-day  
334 acclimation period was considered overall, (day 1 -14 composite), there was no difference in  
335 the three-item composite score ( $p = 0.43$ , **Table 2**). However, a significant difference was  
336 suggested in the distribution of the ten item composite, where the KE group tended higher  
337 (median (25<sup>th</sup>, 75<sup>th</sup> percentile (KE = 11.5 (3, 28); PLA = 4 (0, 13)  $p = 0.091$ ).

338 In the post-acclimation period between 3 – 12 weeks (**Table 2**) participants continued to  
339 consume the 25 g serving size, but tolerance was assessed less frequently - every 2 weeks –  
340 by interview and referral to the daily study log where symptoms could be recorded. There  
341 was no main effect of group on the ten-item tolerance score ( $p = 0.20$ , **Figure 2B**), a  
342 composite of all reported symptoms at their maximum severity, and no group x time



343 interaction ( $p = 0.89$ ), or time ( $p = 0.36$ ). No post hoc testing was performed due to the  
344 absence of an interaction effect.

345 In parallel to our primary outcome which focused on moderate to severe symptoms, we also  
346 analyzed the proportion of participants who experienced mild dizziness, nausea, or headache  
347 at least twice in a two-week period, post acclimation. This was not different between groups.

348 The proportion of participants who reported any of the ten items at least twice at a mild  
349 intensity in a two-week period, post acclimation, was also not different between groups.

350 When all symptoms were considered, the most common symptoms reported at least once  
351 during acclimation were abdominal cramping ( $n = 5$ ) and burping ( $n = 5$ ), and post  
352 acclimation were abdominal cramping ( $n = 6$ ) and reflux ( $n = 6$ ) for the KE group.

353 Overall, it appeared that up to 25 g of KE taken daily did not meaningfully increase the  
354 occurrence of either the expected symptoms based on younger adult studies (dizziness,  
355 nausea, or headache), or other symptoms not previously linked to KE consumption.

### 356 **3.3**

#### 357 **Safety**

358 Consumption of up to 25 g per day of KE or PLA by older adults was not associated with any  
359 statistically significant or clinically relevant changes in vital signs (**Table 3**) or any of the  
360 laboratory tests conducted: clinical chemistry, hematology, lipid panel, thyroid panel, or  
361 urinalysis; selected laboratory values that were expected to be affected by KE metabolism are  
362 shown in **Table 3**; all were unchanged. As described above, two participants dropped out of  
363 the KE group due to GI issues, compared to four participants dropping out of the placebo  
364 group; all dropouts were judged to be at least ‘possibly’ related to the study products. There  
365 were no study product related AEs reported during the study. Seven participants in total  
366 reported non-related AEs including: twisted ankle, upper respiratory tract infection ( $n = 3$ ),  
367 broken toe, hairline foot fracture, and back pain.

368 **4.0**

369 **Discussion**

370 The results of this study demonstrate that healthy older adults can tolerably and safely  
371 consume up to 25 g per day of the ketone ester, bis-octanoyl-(R)1-3, butanediol. These  
372 findings considerably extend the duration of previous KE tolerance and safety studies, as well  
373 as provide the first data exclusively in older adults. This establishes a critical platform for  
374 future studies investigating exogenous ketones and ketone esters as a geroscience intervention,  
375 addressing age-related disease by targeting aging biology.

376 Despite previous studies of KE finding good adherence, limited symptoms, and no  
377 safety concerns, exogenous ketones have a reputation for being difficult to implement in long  
378 term interventions [41]. Acute side-effects of a similar nature to those seen in this study (i.e.,  
379 nausea, headache, dizziness) have been seen with all types of exogenous ketones products that  
380 are functionally similar to BO-BD, including medium chain triglycerides (MCT), 1,3-  
381 butanediol, ketone salts, acetoacetate ketone di-ester, and BHB-ketone mono-ester [42-45].  
382 These side-effects are seen at a range of serving sizes (10 - 85g), under different conditions  
383 (fed, fasted, rest, exercise), and manifest as both acute GI discomfort and distress, as well as  
384 systemic symptoms such as headache, nausea, and dizziness that range in frequency and  
385 intensity from mild to severe. In the current study, symptoms occurred at a similar rate in both  
386 ketone ester and placebo groups, and symptoms were not more frequent than seen in studies of  
387 BH-BD or BO-BD in younger adults [11, 34], despite the expectation that older adults might  
388 have either an increased risk of intervention-related symptoms or an increased rate of non-  
389 related, sporadic symptoms. Overall, these data support the conclusion that BO-BD is well  
390 tolerated in healthy older adults at the serving sizes studied.

391 Alongside tolerance, an often cited concern with longer term studies of ketone esters  
392 is lack of adherence due to poor palatability [41], leading investigators to compare product  
393 palatability as an important component of intervention selection [46]. In a recent study, the

394 sensory characteristics of BO-BD to BH-BD were compared and found BO-BD was more  
395 palatable [11]. In the current study, the high adherence rate of participants indicates that this  
396 KE was acceptable, and that palatability issues would not be a barrier to longer term  
397 implementation.

398         A final area of concern is safety of long-term KE consumption, which was a key  
399 endpoint of this study given the expected vulnerability of the older adult population. Based on  
400 previous studies of exogenous ketones, there were several areas that were carefully monitored  
401 here. Firstly, as KE have previously been seen to suppress appetite [47], which would be  
402 undesirable in an older population, we monitored body weight and saw no change in either  
403 group. Secondly, as the KE is a lipid-based molecule that is metabolized in the liver and the  
404 canola oil placebo contained lipids, we closely tracked changes to lipid panels (withdrawing  
405 one participant in the PLA group) and liver function tests. No changes in these lab tests were  
406 deemed clinically significant by the independent study medical officers. Thirdly, exogenous  
407 ketones can acutely alter blood acid-base balance and electrolytes [48] which could be  
408 problematic either in isolation or via medication interactions; no changes were seen in related  
409 endpoints here. Finally, we monitored vital signs, as exogenous ketones have been  
410 demonstrated to acutely increase heart rate and decrease blood pressure [49]; these were again  
411 unchanged in this study. Notably, we did not see changes in fasting glucose in either group; a  
412 decrease in glucose might have been expected in the KE group given the consistent  
413 hypoglycemic effect of exogenous ketones [19]. Overall, in this relatively healthy population  
414 of older adults, 25 g of KE daily for 12 weeks did not lead to any safety concerns. Still, safety  
415 monitoring should remain a key feature of future geroscience studies using ketone esters, as  
416 less healthy populations or populations with specific comorbidities may be more vulnerable to  
417 metabolic and physiologic perturbation.

418           Given that there were no tolerance, safety, or compliance concerns raised by this  
419 study, increased KE dosing could be considered in future work. Up to 50 g/day for one week  
420 of BO-BD per day has been studied in younger adults [11], and servings of up to 75 g /day for  
421 28 days of other KE has been reported [32, 33]. As we saw symptoms increase with increasing  
422 dose between days 8 – 14 and then decline over the remainder of the study, we suggest that  
423 gradually increasing the daily serving over several weeks may provide optimal tolerance. This  
424 would be consistent with the gradually increasing serving size recommended in clinical  
425 protocols for MCT use in therapeutic ketogenic diets [50]. The advantage of providing a  
426 higher dose, split into multiple servings across the day, would be an increased time in a state  
427 of hyper-ketonemia. It is currently unknown if greater peak ketone concentrations or greater  
428 time of ketone exposure time drives clinical efficacy. Studies that have found benefits of  
429 exogenous ketones in metabolic [19], cardiac [49], and cognitive [51] function have linked  
430 blood ketone concentration to improved efficacy. These observations reinforce the need to use  
431 the maximal tolerable and safe dose in studies designed to explore new applications of  
432 nutritional ketosis.

433           The strengths of this study include the free-living, pragmatic-inspired design (e.g.  
434 participants were instructed to maintain their usual diet and exercise habits) being highly  
435 relevant for future uses of KE as a geroscience intervention, the high adherence observed, the  
436 equal enrollment of men and women, the average age (76 y) being well over the lower limit  
437 (65 y), and the close matching achieved between the KE and PLA beverage. The weaknesses  
438 of this study were to be expected, given that it was planned as a pilot to help design a larger  
439 clinical trial targeting physical function related to frailty in older adults. Firstly, the sample  
440 size was small, and predominantly identified as non-Hispanic white; results in this population  
441 may not be generalizable to larger studies or to all populations of older adults. Secondly, the  
442 overall incidence of dropouts was 23%, slightly higher than our expected 20%, but this rate

443 decreases if accounting for the participant who was randomized but did not start the 12-week  
444 study, and more participants in the PLA group did not complete the study compared to the KE  
445 group. Thirdly, we relied on beverage logs and bottle return to confirm compliance but there is  
446 not a validated biomarker that allows us to verify that beverage consumption was accurately  
447 reported. Finally, although we encouraged participants to use the beverage log to record any  
448 symptoms in their daily log, they did not have to complete a full questionnaire every day after  
449 day 14, meaning some symptoms may have been forgotten and not reported. We expect that  
450 this effect might be more relevant to mild symptoms, as moderate and severe symptoms would  
451 be more disruptive and more likely to be remembered and reported.

452           In conclusion this pilot study demonstrated the safety and tolerability of 12-weeks of  
453 consumption of up to 25 g per day of the ketone di-ester, bis-octanoyl-(R)-1,3-butanediol in  
454 healthy older adults. These findings will facilitate the application of ketone body biology in  
455 human health and disease in aging.

456 **Sources of Funding:**

457 Funding for the study was provided by philanthropic donations from Dr. James B. Johnson  
458 and from members of the Buck Institute Impact Circle. Dr. Johnson assisted with  
459 conceptualization of the study and reviewed this manuscript but has no further role in study  
460 design, management, data collection, analysis, interpretation of data, decision to submit  
461 publications, or writing of publications. The Buck Institute Impact Circle had no role in  
462 conceptualization, study design, management, data collection, analysis, interpretation of data,  
463 decision to submit publications, review, or writing of publications.

464 Dr. Newman's participation in the study was supported by Buck Institute institutional funds.  
465 Dr. Brianna Stubbs' participation in the study was supported by the NIH (NIA) under award  
466 number K01AG078125.

467 The KE intervention was provided gratis by BHB Therapeutics Ltd (Ireland). BHB  
468 Therapeutics also arranged for manufacture of the matched placebo, paid for by study funds.  
469 BHB Therapeutics (Ireland) markets formulated KE beverages to consumers. BHB  
470 Therapeutics (Ireland) provided no funding for the study, and had no role in the design,  
471 management, data collection, analysis, interpretation of data, decision to submit publications,  
472 or writing of publications.

473 **Author Declarations and Conflict Management:**

474 The Buck Institute holds shares in BHB Therapeutics (Ireland) and Selah Therapeutics. B.J.S.  
475 has stock in H.V.M.N Inc, and stock options in Selah Therapeutics Ltd, BHB Therapeutics  
476 (Ireland) Ltd., and Juvenescence Ltd. J.C.N. has stock options in Selah Therapeutics Ltd and  
477 BHB Therapeutics (Ireland) Ltd. J.C.N and B.J.S. are inventors on patents related to the use  
478 of ketone bodies that are assigned to The Buck Institute. Individual and institutional conflict  
479 management plans were developed and approved by the Buck Institute and submitted to the  
480 reviewing IRB. Actions and decisions important to participant safety and study integrity were

481 carried out by ‘honest brokers’ with no potential financial conflict. Participant consent was  
482 obtained by licensed registered nurses (L.A and W.S.M) who have no financial conflict.  
483 Decisions on participant enrollment, continuation, and were made by independent medical  
484 officers (J.M and M.Y) unaffiliated with Buck Institute and with no financial conflict. Data  
485 analysis for the primary outcome was carried out by an independent statistician with no  
486 financial conflict (T.B). All other authors have no conflicts to report.

487 **Author Contributions:** Conceptualization, J.C.N, B.J.S; methodology, J.C.N, B.J.S;  
488 investigation, B.J.S, E.B.S, C.S, S.R.D, S.P, W.S-M, L.A, M.Y, J.M; data curation, B.J.S,  
489 E.B.S, C.S, S.R.D, S.P; formal analysis, T.B, B.J.S; writing—original draft preparation, B.J.S,  
490 E.B.S; writing—review and editing, all; visualization, B.J.S, T.B; project administration,  
491 B.J.S, J.C.N, T.G; supervision: B.J.S, T.G, J.C.N; funding acquisition, B.J.S, J.C.N; All  
492 authors have read and agreed to the published version of the manuscript.

493 **Data Availability Statement:** The data presented here may be available upon reasonable  
494 request from the corresponding author and in accordance with intellectual property  
495 considerations.

Reference List

496

497

498 [1] C. L. Green, D. W. Lamming, and L. Fontana, "Molecular mechanisms of dietary  
499 restriction promoting health and longevity," *Nat. Rev. Mol. Cell Biol.*, vol. 23, no. 1,  
500 pp. 56-73, Jan 2022, doi: 10.1038/s41580-021-00411-4.

501 [2] A. D. Rickman *et al.*, "The CALERIE Study: design and methods of an innovative  
502 25% caloric restriction intervention," *Contemp. Clin. Trials*, vol. 32, no. 6, pp. 874-  
503 81, Nov 2011, doi: 10.1016/j.cct.2011.07.002.

504 [3] J. C. Newman, S. Milman, S. K. Hashmi, S. N. Austad, J. L. Kirkland, J. B. Halter,  
505 and N. Barzilai, "Strategies and Challenges in Clinical Trials Targeting Human  
506 Aging," *J. Gerontol. A Biol. Sci. Med. Sci.*, vol. 71, no. 11, pp. 1424-1434, Nov 2016,  
507 doi: 10.1093/gerona/glw149.

508 [4] J. Justice *et al.*, "Frameworks for Proof-of-Concept Clinical Trials of Interventions  
509 That Target Fundamental Aging Processes," *J. Gerontol. A Biol. Sci. Med. Sci.*, vol.  
510 71, no. 11, pp. 1415-1423, Nov 2016, doi: 10.1093/gerona/glw126.

511 [5] G. F. Cahill, Jr., "Fuel metabolism in starvation," (in English), *Annual Review of*  
512 *Nutrition*, Review vol. 26, pp. 1-22, 2006.

513 [6] G. Reichard Jr, O. Owen, A. Haff, P. Paul, and W. Bortz, "Ketone-body production  
514 and oxidation in fasting obese humans," *J. Clin. Invest.*, vol. 53, no. 2, p. 508, 1974.

515 [7] J. C. Newman and E. Verdin, "beta-Hydroxybutyrate: A Signaling Metabolite," (in  
516 eng), *Annual review of nutrition*, vol. 37, pp. 51-76, Aug 21 2017, doi:  
517 10.1146/annurev-nutr-071816-064916.

518 [8] M. N. Roberts *et al.*, "A Ketogenic Diet Extends Longevity and Healthspan in Adult  
519 Mice," *Cell Metabolism*, vol. 26, no. 3, pp. 539-546.e5, 2017, doi:  
520 10.1016/j.cmet.2017.08.005.

521 [9] J. C. Newman *et al.*, "Ketogenic Diet Reduces Midlife Mortality and Improves  
522 Memory in Aging Mice," (in eng), *Cell metabolism*, vol. 26, no. 3, pp. 547-557.e8,  
523 2017, doi: 10.1016/j.cmet.2017.08.004.

524 [10] C. D. Crabtree *et al.*, "Bis Hexanoyl (R)-1,3-Butanediol, a Novel Ketogenic Ester,  
525 Acutely Increases Circulating r- and s-ss-Hydroxybutyrate Concentrations in Healthy  
526 Adults," *J Am Nutr Assoc*, pp. 1-9, Mar 25 2022, doi:  
527 10.1080/07315724.2021.2015476.

528 [11] B. J. Stubbs *et al.*, "A randomized, open-label, cross-over pilot study investigating  
529 metabolic product kinetics of the palatable novel ketone ester, bis-octanoyl (R)-1,3-  
530 butanediol, and bis-hexanoyl (R)-1,3-butanediol ingestion in healthy adults,"  
531 *Toxicology Research*, 2023 (submitted).



- 532 [12] B. J. Stubbs *et al.*, "In vitro stability and in vivo pharmacokinetics of the novel  
533 ketogenic ester, bis hexanoyl (R)-1,3-butanediol," (in eng), *Food Chem. Toxicol.*, vol.  
534 147, p. 111859, Jan 2021, doi: 10.1016/j.fct.2020.111859.
- 535 [13] A. P. Koutnik *et al.*, "Ketone Bodies Attenuate Wasting in Models of Atrophy," (in  
536 eng), *J Cachexia Sarcopenia Muscle*, Apr 2 2020, doi: 10.1002/jcsm.12554.
- 537 [14] A. P. Koutnik, D. P. D'Agostino, and B. Egan, "Anticatabolic Effects of Ketone  
538 Bodies in Skeletal Muscle," *Trends Endocrinol. Metab.*, vol. 30, no. 4, pp. 227-229,  
539 Apr 2019, doi: 10.1016/j.tem.2019.01.006.
- 540 [15] S. R. Yurista *et al.*, "Ketone Ester Treatment Improves Cardiac Function and Reduces  
541 Pathologic Remodeling in Preclinical Models of Heart Failure," *Circ. Heart Fail.*, vol.  
542 14, no. 1, p. e007684, Jan 2021, doi: 10.1161/CIRCHEARTFAILURE.120.007684.
- 543 [16] J. L. Horton *et al.*, "The failing heart utilizes 3-hydroxybutyrate as a metabolic stress  
544 defense," (in eng), *JCI Insight*, vol. 4, no. 4, Feb 21 2019, doi:  
545 10.1172/jci.insight.124079.
- 546 [17] Q. Y. Ang *et al.*, "Ketogenic Diets Alter the Gut Microbiome Resulting in Decreased  
547 Intestinal Th17 Cells," (in eng), *Cell*, vol. 181, no. 6, pp. 1263-1275.e16, Jun 11 2020,  
548 doi: 10.1016/j.cell.2020.04.027.
- 549 [18] E. L. Goldberg, R. D. Molony, E. Kudo, S. Sidorov, Y. Kong, V. D. Dixit, and A.  
550 Iwasaki, "Ketogenic diet activates protective  $\gamma\delta$  T cell responses against influenza  
551 virus infection," (in eng), *Sci Immunol*, vol. 4, no. 41, Nov 15 2019, doi:  
552 10.1126/sciimmunol.aav2026.
- 553 [19] K. Falkenhain, A. Daraei, S. C. Forbes, and J. P. Little, "Effects of Exogenous Ketone  
554 Supplementation on Blood Glucose: A Systematic Review and Meta-Analysis," *Adv  
555 Nutr*, Apr 5 2022, doi: 10.1093/advances/nmac036.
- 556 [20] G. Greaves, R. Xiang, H. Rafiei, A. Malas, and J. P. Little, "Prior ingestion of a  
557 ketone monoester supplement reduces postprandial glycemic responses in young  
558 healthy-weight individuals," *Appl Physiol Nutr Metab*, vol. 46, no. 4, pp. 309-317,  
559 Apr 2021, doi: 10.1139/apnm-2020-0644.
- 560 [21] É. Myette-Côté, H. G. Caldwell, P. N. Ainslie, K. Clarke, and J. P. Little, "A ketone  
561 monoester drink reduces the glycemic response to an oral glucose challenge in  
562 individuals with obesity: a randomized trial," *The American Journal of Clinical  
563 Nutrition*, vol. 110, no. 6, pp. 1491-1501, 2019, doi: 10.1093/ajcn/nqz232.
- 564 [22] E. Myette-Cote, H. Neudorf, H. Rafiei, K. Clarke, and J. P. Little, "Prior ingestion of  
565 exogenous ketone monoester attenuates the glycaemic response to an oral glucose  
566 tolerance test in healthy young individuals," (in eng), *J. Physiol.*, vol. 596, no. 8, pp.  
567 1385-1395, Apr 15 2018, doi: 10.1113/JP275709.

- 568 [23] P. J. Cox *et al.*, "Nutritional Ketosis Alters Fuel Preference and Thereby Endurance  
569 Performance in Athletes," *Cell Metabolism*, vol. 24, pp. 1-13, 9th August 2016 2016,  
570 doi: 10.1016/j.cmet.2016.07.010.
- 571 [24] C. Poffe, M. Ramaekers, S. Bogaerts, and P. Hespel, "Bicarbonate Unlocks the  
572 Ergogenic Action of Ketone Monoester Intake in Endurance Exercise," *Med Sci  
573 Sports Exerc*, vol. 53, no. 2, pp. 431-441, Feb 1 2021, doi:  
574 10.1249/MSS.0000000000002467.
- 575 [25] C. Poffe, M. Ramaekers, R. Van Thienen, and P. Hespel, "Ketone ester  
576 supplementation blunts overreaching symptoms during endurance training overload,"  
577 *J. Physiol.*, vol. 597, no. 12, pp. 3009-3027, Jun 2019, doi: 10.1113/JP277831.
- 578 [26] K. Coleman, J. Phillips, M. Sciarini, B. Stubbs, O. Jackson, and D. Kernagis, "A  
579 Metabolic Intervention for Improving Human Cognitive Performance During  
580 Hypoxia," *Aerospace medicine and human performance*, vol. 92, no. 7, pp. 556-562,  
581 Jul 1 2021, doi: 10.3357/AMHP.5767.2021.
- 582 [27] M. Evans and B. Egan, "Intermittent Running and Cognitive Performance after  
583 Ketone Ester Ingestion," (in eng), *Med Sci Sports Exerc*, vol. 50, no. 11, pp. 2330-  
584 2338, Nov 2018, doi: 10.1249/MSS.0000000000001700.
- 585 [28] J. J. Walsh, H. G. Caldwell, H. Neudorf, P. N. Ainslie, and J. P. Little, "Short-term  
586 ketone monoester supplementation improves cerebral blood flow and cognition in  
587 obesity: A randomized cross-over trial," *J. Physiol.*, vol. 599, no. 21, pp. 4763-4778,  
588 Nov 2021, doi: 10.1113/JP281988.
- 589 [29] H. Neudorf, É. Myette-Côté, and J. P. Little, "The Impact of Acute Ingestion of a  
590 Ketone Monoester Drink on LPS-Stimulated NLRP3 Activation in Humans with  
591 Obesity," *Nutrients*, vol. 12, no. 3, 2020, doi: 10.3390/nu12030854.
- 592 [30] S. Selvaraj *et al.*, "Acute Echocardiographic Effects of Exogenous Ketone  
593 Administration in Healthy Participants," *J. Am. Soc. Echocardiogr.*, vol. 35, no. 3, pp.  
594 305-311, Mar 2022, doi: 10.1016/j.echo.2021.10.017.
- 595 [31] H. J. Beijer and C. J. de Blaey, "Hospitalisations caused by adverse drug reactions  
596 (ADR): a meta-analysis of observational studies," *Pharm. World Sci.*, vol. 24, no. 2,  
597 pp. 46-54, Apr 2002, doi: 10.1023/a:1015570104121.
- 598 [32] A. Soto-Mota, H. Vansant, R. D. Evans, and K. Clarke, "Safety and tolerability of  
599 sustained exogenous ketosis using ketone monoester drinks for 28 days in healthy  
600 adults," (in eng), *Regul. Toxicol. Pharmacol.*, vol. 109, p. 104506, Dec 2019, doi:  
601 10.1016/j.yrtph.2019.104506.
- 602 [33] A. Soto-Mota, N. G. Norwitz, R. Evans, K. Clarke, and T. M. Barber, "Exogenous  
603 ketosis in patients with type 2 diabetes: Safety, tolerability and effect on glycaemic  
604 control," *Endocrinology, Diabetes & Metabolism*, 2021, doi: 10.1002/edm2.264.

- 605 [34] O. Chen *et al.*, "Tolerability and Safety of a Novel Ketogenic Ester, Bis-Hexanoyl  
606 (R)-1,3-Butanediol: A Randomized Controlled Trial in Healthy Adults," *Nutrients*,  
607 vol. 13, no. 6, Jun 16 2021, doi: 10.3390/nu13062066.
- 608 [35] E. B. Stephens *et al.*, "A randomized open-label, observational study of the novel  
609 ketone ester, bis octanoyl (R)-1,3-butanediol, and its acute effect on  $\beta$ -  
610 hydroxybutyrate and glucose concentrations in healthy older adults," *medRxiv*, April  
611 18, 2024 2024, doi: 10.1101/2024.04.16.24305925.
- 612 [36] B. J. Stubbs *et al.*, "Rationale and protocol for a safety, tolerability and feasibility  
613 randomized, parallel group, double-blind, placebo-controlled, pilot study of a novel  
614 ketone ester targeting frailty via immunometabolic geroscience mechanisms  
615 (Preprint)," *MedRxiv*, 2023, doi: 10.1101/2023.10.25.23297571.
- 616 [37] M. A. Han, M. E. Tinetti, J. V. Agostini, L. Han, H. Lee, and L. M. Walke, "The  
617 impact of medication use on symptom burden in older patients with multiple medical  
618 morbidities," *Journal of Clinical Gerontology and Geriatrics*, vol. 4, no. 3, pp. 84-88,  
619 2013, doi: 10.1016/j.jcgg.2013.03.002.
- 620 [38] S. I. Chaudhry, T. E. Murphy, E. Gahbauer, L. S. Sussman, H. G. Allore, and T. M.  
621 Gill, "Restricting symptoms in the last year of life: a prospective cohort study," *JAMA*  
622 *Intern Med*, vol. 173, no. 16, pp. 1534-40, Sep 9 2013, doi:  
623 10.1001/jamainternmed.2013.8732.
- 624 [39] K. C. Maki, T. M. Rains, K. M. Kelley, C. M. Cook, A. L. Schild, and E. Gietl,  
625 "Fibermalt is well tolerated in healthy men and women at intakes up to 60 g/d: a  
626 randomized, double-blind, crossover trial," *Int. J. Food Sci. Nutr.*, vol. 64, no. 3, pp.  
627 274-81, May 2013, doi: 10.3109/09637486.2012.738652.
- 628 [40] B. M. Boler, M. C. Serao, L. L. Bauer, M. A. Staeger, T. W. Boileau, K. S. Swanson,  
629 and G. C. Fahey, Jr., "Digestive physiological outcomes related to polydextrose and  
630 soluble maize fibre consumption by healthy adult men," *Br J Nutr*, vol. 106, no. 12,  
631 pp. 1864-71, Dec 2011, doi: 10.1017/S0007114511002388.
- 632 [41] S. R. Yurista, C. R. Chong, J. J. Badimon, D. P. Kelly, R. A. de Boer, and B. D.  
633 Westenbrink, "Therapeutic Potential of Ketone Bodies for Patients With  
634 Cardiovascular Disease: JACC State-of-the-Art Review," *J. Am. Coll. Cardiol.*, vol.  
635 77, no. 13, pp. 1660-1669, Apr 6 2021, doi: 10.1016/j.jacc.2020.12.065.
- 636 [42] B. J. Stubbs, P. J. Cox, T. Kirk, R. D. Evans, and K. Clarke, "Gastrointestinal Effects  
637 of Exogenous Ketone Drinks are Infrequent, Mild, and Vary According to Ketone  
638 Compound and Dose," *International journal of sport nutrition and exercise*  
639 *metabolism*, vol. 29, no. 6, pp. 596-603, Nov 1 2019, doi: 10.1123/ijsnem.2019-0014.
- 640 [43] D. M. Shaw, F. Merien, A. Braakhuis, D. Plews, P. Laursen, and D. K. Dulson, "The  
641 Effect of 1,3-Butanediol on Cycling Time-Trial Performance," (in English),  
642 *International journal of sport nutrition and exercise metabolism*, vol. 29, no. 5, pp.  
643 466-473, Sep 1 2019, doi: 10.1123/ijsnem.2018-0284.

- 644 [44] S. T. Henderson, J. L. Vogel, L. J. Barr, F. Garvin, J. J. Jones, and L. C. Costantini,  
645 "Study of the ketogenic agent AC-1202 in mild to moderate Alzheimer's disease: a  
646 randomized, double-blind, placebo-controlled, multicenter trial," (in eng), *Nutr Metab*  
647 (*Lond*), vol. 6, p. 31, 2009, doi: 10.1186/1743-7075-6-31.
- 648 [45] J. J. Leckey, M. L. Ross, M. Quod, J. A. Hawley, and L. M. Burke, "Ketone Diester  
649 Ingestion Impairs Time-Trial Performance in Professional Cyclists," *Front. Physiol.*,  
650 10.3389/fphys.2017.00806 vol. 8, p. 806, 2017. [Online]. Available:  
651 <https://www.frontiersin.org/article/10.3389/fphys.2017.00806>.
- 652 [46] K. Falkenhain, A. Daraei, and J. P. Little, "The Effect of Novel Exogenous Ketone  
653 Supplements on Blood Beta-Hydroxybutyrate and Glucose," *Journal of Dietary*  
654 *Supplements*, pp. 1-15, 2023, doi: 10.1080/19390211.2023.2179152.
- 655 [47] B. J. Stubbs, P. J. Cox, R. D. Evans, M. Cyranka, K. Clarke, and H. de Wet, "A  
656 Ketone Ester Drink Lowers Human Ghrelin and Appetite," *Obesity*, vol. 26, no. 2, pp.  
657 269-273, 2018, doi: 10.1002/oby.22051.
- 658 [48] B. J. Stubbs *et al.*, "On the Metabolism of Exogenous Ketones in Humans," *Front.*  
659 *Physiol.*, vol. 8, p. 848, 10/30  
660 08/22/received  
661 10/11/accepted 2017, doi: 10.3389/fphys.2017.00848.
- 662 [49] R. Nielsen *et al.*, "Cardiovascular Effects of Treatment With the Ketone Body 3-  
663 Hydroxybutyrate in Chronic Heart Failure Patients," *Circulation*, vol. 139, no. 18, pp.  
664 2129-2141, Apr 30 2019, doi: 10.1161/CIRCULATIONAHA.118.036459.
- 665 [50] Y.-m. C. Liu, "Medium-chain triglyceride (MCT) ketogenic therapy," *Epilepsia*, vol.  
666 49, no. s8, pp. 33-36, 2008/11/01 2008, doi: 10.1111/j.1528-1167.2008.01830.x.
- 667 [51] M. Fortier *et al.*, "A ketogenic drink improves cognition in mild cognitive  
668 impairment: Results of a 6-month RCT," *Alzheimer's & dementia : the journal of the*  
669 *Alzheimer's Association*, vol. 17, no. 3, pp. 543-552, Mar 2021, doi:  
670 10.1002/alz.12206.  
671  
672

673 **Table 1: Study participant characteristics**

	<i>Statistic/Group</i>	<i>Total Enrolled (n=30)</i>	<i>KE (n=15)</i>	<i>PLA (n=15)</i>
Sex	Female	15 (50%)	8 (53.3%)	7 (46.7%)
	Male	15 (50%)	7 (46.7%)	8 (53.3%)
Age (years)	Mean (SD)	76.5 (6.4)	75.2 (5.6)	77.9 (7.0)
	Median (min, max)	75.8 (65.1, 89.8)	75.1 (65.1, 87.3)	76.4 (67.5, 89.8)
Ethnicity	Hispanic/Latino	2 (6.7%)	1 (6.7%)	1 (6.7%)
	Not Hispanic/Latino	28 (93.3%)	14 (93.3%)	14 (93.3%)
	Prefer not to say	0 (0%)	0 (0%)	0 (0%)
Race	American Indian/Alaskan Native	0 (0%)	0 (0%)	0 (0%)
	Asian	1 (3.3%)	1 (6.7%)	0 (0%)
	Black/African American	0 (0%)	0 (0%)	0 (0%)
	Hispanic, Latinx, or Spanish Origin	2 (6.7%)	1 (6.7%)	1 (6.7%)
	Native Hawaiian or Other Pacific Islander	0 (0%)	0 (0%)	0 (0%)
	Prefer not to say	0 (0%)	0 (0%)	0 (0%)
	Two or more races	0 (0%)	0 (0%)	0 (0%)
	Unknown	0 (0%)	0 (0%)	0 (0%)
	White	27 (90%)	13 (86.7%)	14 (93.3%)
	Weight (kg)	Mean (SD)	72.9 (15.8)	70.3 (15.0)
Median (min, max)		72.1 (47.8, 101.3)	70.3 (47.8, 101.3)	76.4 (50.5, 99.7)
Height (cm)	Mean (SD)	168.0 (10.8)	166.2 (11.0)	169.8 (10.6)
	Median (min, max)	168.8 (150.0, 189.0)	166.0 (150.0, 188.0)	169.0 (153.0, 189.0)
BMI (kg/m <sup>2</sup> )	Mean (SD)	25.2 (3.0)	24.5 (2.2)	25.9 (3.6)
	Median (min, max)	25.8 (19.9, 32.7)	25.0 (21.0, 28.0)	26.7 (19.9, 32.7)
Waist Circumference (cm)	Mean (SD)	91.2 (12.2)	88.5 (12.5)	94.0 (11.6)
	Median (min, max)	92.0 (66.5, 118.0)	88.0 (66.5, 118.0)	98.0 (75.5, 113.0)

674 Description of characteristics of randomized study participants. Data represents all  
 675 individuals' values obtained at their screening visit.

676 **Abbreviations:** BMI, body mass index; KE, ketone ester; max, maximum; min, minimum;  
 677 PLA, placebo; SD, standard deviations.

678

679 **Table 2: Tolerance outcomes**

Time Period	Score	Statistic	Group	
			PLA	KE
<b>Acclimation</b>				
Day 1 - 7	10-item composite total, max /210 <i>(daily scores added)</i>	N	15	14
		Mean (SD)	3.9 (6.0)	5.6 (6.6)
		Median (Min, Max)	2.0 (0.0, 22.0)	4.0 (0.0, 23.0)
		P25, P75	0.0, 6.0	0.0, 11.0
		p-value	0.38	
3-item composite total, max /63	Dizziness, headache, nausea <i>(daily scores added)</i>	N	15	14
		Mean (SD)	0.7 (1.8)	0.8 (1.8)
		Median (Min, Max)	0.0 (0.0, 6.0)	0.0 (0.0, 6.0)
		P25, P75	0.0, 0.0	0.0, 0.0
		p-value	0.67	
Day 8 - 14	10-item composite total, max /210 <i>(daily scores added)</i>	N	15	14
		Mean (SD)	4.5 (7.5)	10.6 (11.8)
		Median (Min, Max)	2.0 (0.0, 26.0)	9.0 (0.0, 45.0)
		P25, P75	0.0, 7.0	2.0, 17.0
		p-value	0.037	
3-item composite total, max /63	Dizziness, headache, nausea <i>(daily scores added)</i>	N	15	14
		Mean (SD)	1.3 (3.3)	1.9 (3.9)
		Median (Min, Max)	0.0 (0.0, 12.0)	0.0 (0.0, 14.0)
		P25, P75	0.0, 1.0	0.0, 1.0
		p-value	0.42	
14-day TOTAL	10-item composite total, max /420 <i>(daily scores added)</i>	N	15	14
		Mean (SD)	8.4 (12.8)	16.3 (16.2)
		Median (Min, Max)	4.0 (0.0, 48.0)	11.5 (0.0, 56.0)
		P25, P75	0.0, 13.0	3.0, 28.0
		p-value	0.091	
3-item composite total, max/126	Dizziness, headache, nausea <i>(daily scores added)</i>	N	15	14
		Mean (SD)	2.0 (5.1)	2.7 (4.5)
		Median (Min, Max)	0.0 (0.0, 18.0)	0.0 (0.0, 14.0)
		P25, P75	0.0, 1.0	0.0, 6.0
		p-value	0.43	
Time Period	Score	Statistic	PLA	KE
<b>Post-acclimation</b>				
Week 3-4	10-item composite, max /30 <i>(max severity in 2 wk)</i>	N	14	14
		Mean (SD)	0.8 (1.0)	1.9 (2.2)
		Median (Min, Max)	0.5 (0.0, 3.0)	1.0 (0.0, 8.0)
		P25, P75	0.0, 1.0	1.0, 2.0
		Estimate (90% CI)	0.8 (0.0, 1.6)	1.9 (1.1, 2.6)
Week 5-6	10-item composite, max /30 <i>(max severity in 2 wk)</i>	N	13	12
		Mean (SD)	1.6 (1.8)	1.5 (2.5)
		Median (Min, Max)	1.0 (0.0, 7.0)	1.0 (0.0, 9.0)
		P25, P75	1.0, 2.0	0.0, 2.0

Time Period	Score	Statistic	Group	
			PLA	KE
		Estimate (90% CI)	1.6 (0.4, 2.8)	2.1 (0.9, 3.3)
Week 7-8	10-item composite, max (max severity in 2 wk)	N	12	12
		Mean (SD)	0.4 (0.9)	0.9 (1.2)
		Median (Min, Max)	0.0 (0.0, 3.0)	1.0 (0.0, 4.0)
		P25, P75	0.0, 0.5	0.0, 1.0
		Estimate (90% CI)	0.4 (-0.1, 1.0)	0.8 (0.2, 1.3)
Week 9-10	10-item composite, max /30 (max severity in 2 wk)	N	11	12
		Mean (SD)	1.0 (1.7)	1.3 (1.4)
		Median (Min, Max)	0.0 (0.0, 5.0)	1.5 (0.0, 4.0)
		P25, P75	0.0, 2.0	0.0, 2.0
		Estimate (90% CI)	1.2 (0.2, 2.3)	1.9 (0.9, 3.0)
Week 11-12	10-item composite, max /30 (max severity in 2 wk)	N	11	12
		Mean (SD)	0.6 (1.6)	1.3 (1.3)
		Median (Min, Max)	0.0 (0.0, 5.0)	1.0 (0.0, 4.0)
		P25, P75	0.0, 0.0	0.0, 2.0
		Estimate (90% CI)	0.7 (-0.2, 1.6)	1.7 (0.8, 2.5)
<b>Post-acclimation</b>				
<b>Severity</b>	<b>Score</b>	<b>Statistic</b>	<b>PLA</b>	<b>KE</b>
Mod/Sev, >1 day	3-item (dizziness, headache, nausea) *	No - n (%)	13 (92.9)	12 (85.7)
		Yes- n (%)	1 (7.1)	2 (14.3)
		90% CI	0.4, 29.7	2.6, 38.5
Mod/Sev, >1 day	10-item (any symptom)	No - n (%)	12 (85.7)	11 (78.6)
		Yes- n (%)	2 (14.3)	3 (21.4)
		90% CI	2.6, 38.5	6.1, 46.6
Mild, >1 day	3-item (dizziness, headache, nausea)	No - n (%)	12 (85.7)	10 (71.4)
		Yes- n (%)	2 (14.3)	4 (28.6)
		90% CI	2.6, 38.5	10.4, 54.0
Mild, >1 day	10-item (any symptom)	No - n (%)	7 (50.0)	4 (28.6)
		Yes- n (%)	7 (50.0)	10 (71.4)
		90% CI	26.4, 73.6	46.0, 89.6

680 Tolerance data for healthy older adults consuming ketone ester or placebo daily for 12 weeks.  
681 Data is shown for the acclimation period, where serving was escalated from 12.5 to 25 g  
682 daily (assessed by daily questionnaire), and for the 10 weeks post acclimation (assessed in bi-  
683 weekly phone interview). Data is shown for all 10 items on the beverage tolerance  
684 questionnaire as well as the 3 pre-selected items of interest (dizziness, nausea, headache).  
685 Proportion of participants with mild OR moderate/severe symptoms on more than one day is  
686 show; the primary study outcome is indicated with \*. **Abbreviations:** CI, confidence  
687 interval; Mod, moderate; Sev, severe, PLA, placebo; KE, ketone ester.  
688 All data are 'all reported' at each time point.

**Table 3: Vital signs and selected safety labs.**

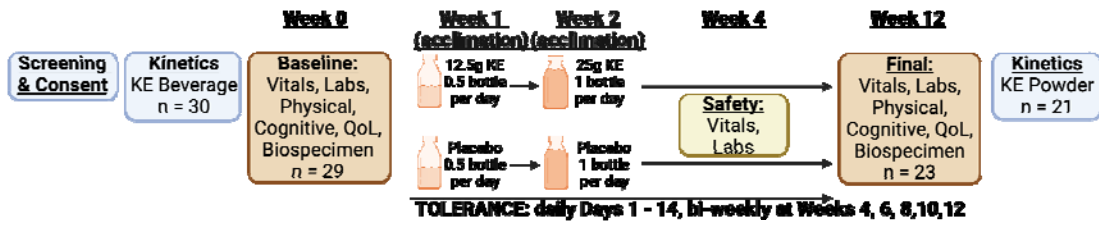
		BL			W4			W12			ΔBL vs W4 KE vs PLA p value				ΔBL vs W12 KE vs PLA p value			
		Mean	SD	N	Mean	SD	N	Mean	SD	N	Mean	SD	N	p value	Mean	SD	N	p value
<i>Vital signs</i>																		
Resting HR (BPM)	KE	69.1	13.3	14	65.4	12.6	14	71.9	12.7	12	-3.6	10.0	14	*0.0386	3.5	8.8	12	0.4955
	PLA	64.3	6.0	15	67.6	9.1	14	65.6	9.5	11	3.0	7.4	14		0.9	5.7	11	
Weight (kg)	KE	71.4	14.2	14	71.9	14.7	14	69.5	12.1	11	0.5	1.0	14	0.1821	0.8	2.0	11	0.1105
	PLA	75.7	16.8	15	76.9	16.1	14	78.3	17.4	11	-0.2	1.3	14		0.1	1.1	11	
Waist Circumference (cm)	KE	90.6	13.7	14	91.5	12.5	13	87.9	11.4	12	0.0	3.9	13	0.8403	-0.8	2.7	12	0.9538
	PLA	92.9	13.2	15	94.8	11.9	14	93.5	11.5	11	0.4	5.8	14		-0.6	4.0	11	
Seated Systolic BP (mmHg)	KE	132.9	18.7	14	135.2	28.8	14	140.7	17.0	12	2.3	20.9	14	0.4619	5.6	16.6	12	0.9844
	PLA	132.7	15.0	15	130.4	13.6	14	138.4	16.5	11	-2.5	13.5	14		3.2	14.8	11	
Seated Diastolic BP (mmHg)	KE	78.4	11.9	14	73.7	11.4	14	80.1	9.4	12	-4.7	7.6	14	0.2052	0.4	7.7	12	0.2781
	PLA	78.1	7.2	15	78.5	11.3	14	82.8	11.0	11	-0.4	10.9	14		3.1	8.0	11	
Standing Systolic BP (mmHg)	KE	121.8	19.2	14	127.7	24.5	14	127.6	20.5	12	5.9	12.3	14	0.6651	3.4	11.2	12	0.7605
	PLA	123.7	14.7	15	128.2	20.6	14	131.0	18.5	11	3.7	15.1	14		4.0	13.8	11	
Standing Diastolic BP (mmHg)	KE	72.6	10.0	14	74.4	13.5	14	71.7	10.1	12	1.8	7.5	14	0.4017	-1.5	6.9	12	0.0535
	PLA	72.7	7.6	15	77.4	11.7	14	78.8	9.1	11	4.5	11.6	14		4.4	6.0	11	
<i>Selected safety labs</i>																		
		BL			W4			W12			ΔBL vs W4				ΔBL vs W12			
		Mean	SD	N	Mean	SD	N	Mean	SD	N	Mean	SD	N	FDR	FDR			
LDL	KE	98	26	14	89	23	14	99	24	12	-6.9	16.9	14	0.93	-5.9	18.6	12	0.93
	PLA	97	27	15	91	33	14	89	23	11	-5.0	24.5	14		-4.4	10.9	11	
Total Cholesterol	KE	194	33	14	181	29	14	194	36	12	-9.5	18.0	14	0.88	-5.2	21.9	12	0.83
	PLA	179	35	15	175	46	14	171	31	11	-1.6	29.3	14		-0.6	14.4	11	
Triglycerides	KE	70	16	14	69	15	14	72	21	12	-1.9	14.2	14	0.96	2.5	16.8	12	0.83
	PLA	98	30	15	105	53	14	92	25	11	4.9	28	14		-0.6	22.1	11	



ALT	KE	20	10	14	18	8	14	17	6	12	-2.4	7.7	14	0.83	-0.9	3.5	12	0.74
	PLA	27	33	15	20	8	14	19	6	11	-7.5	30.7	14		0.5	3.9	11	
AST	KE	25	12	14	22	10	14	24	12	12	-3.4	6.1	14	0.83	-0.5	4.1	12	0.93
	PLA	23	14	15	20	5	14	20	4	11	-3.2	11.5	14		0.3	3.0	11	
Potassium	KE	4.7	0.5	14	4.6	0.4	14	4.6	0.3	12	-0.1	0.4	14	0.74	-0.1	0.5	12	0.96
	PLA	4.8	0.5	15	4.8	0.5	14	4.7	0.4	11	0.0	0.6	14		-0.1	0.5	11	

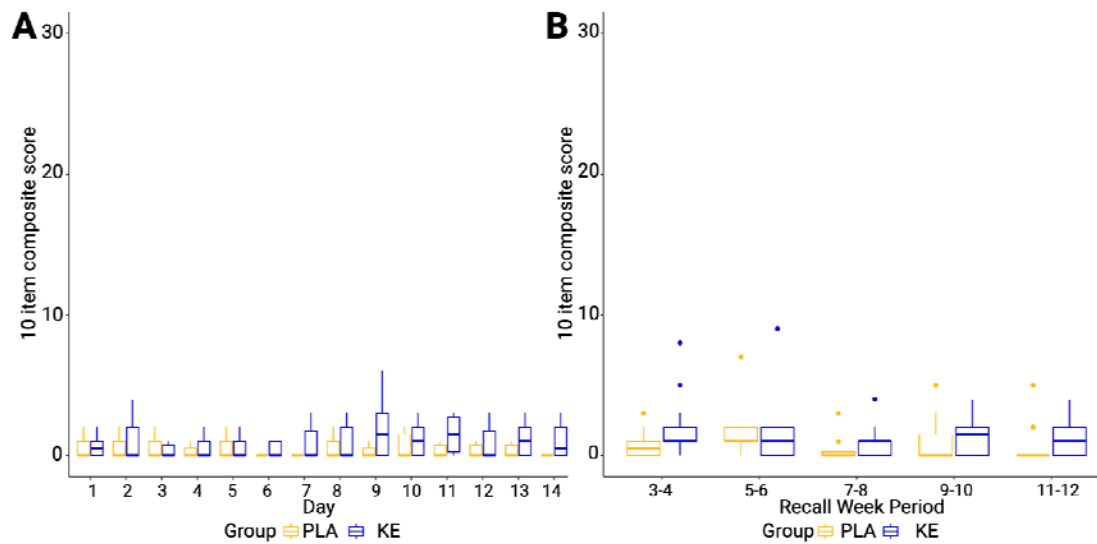
690 Vital signs, morphological data and selected safety labs (based on expected interaction with ketone biology) from older adults consuming KE or  
 691 PLA at baseline, week 4 visit and week 12 visit, and delta from baseline at both week 4 and week 12. P value is for KE vs PLA, \* indicates  $p <$   
 692 0.05. **Abbreviations:** BL, baseline; BP, blood pressure; KE, ketone ester; PLA, placebo; HR, heart rate; BPM, beats per minute.

693 **Figure 1: Study Schematic**



694  
695

696 **Figure 2:**



697  
698  
699  
700  
701

Composite scores for all 10 items assessed in the Beverage Tolerability Questionnaire (BTQ) either by daily during questionnaire during the two week acclimation period (A) or by bi-weekly phone interview in the post acclimation period (B). The maximum score is 30.

702

---

	KE	PLA
BO-BD (g)	25	0
Energy (kcal)	240	246
Carbohydrate (g)	2	2
Fat (g)	0.5	25
Protein (g)	2	2

---

703 **Supplementary Table 1. Nutritional Information.** Nutritional information for the KE and PLA beverages.

704 **Abbreviations:** BO-BD, bis-octanoyl (R)-1,3 butanediol; KE, ketone ester; PLA, placebo

705

706

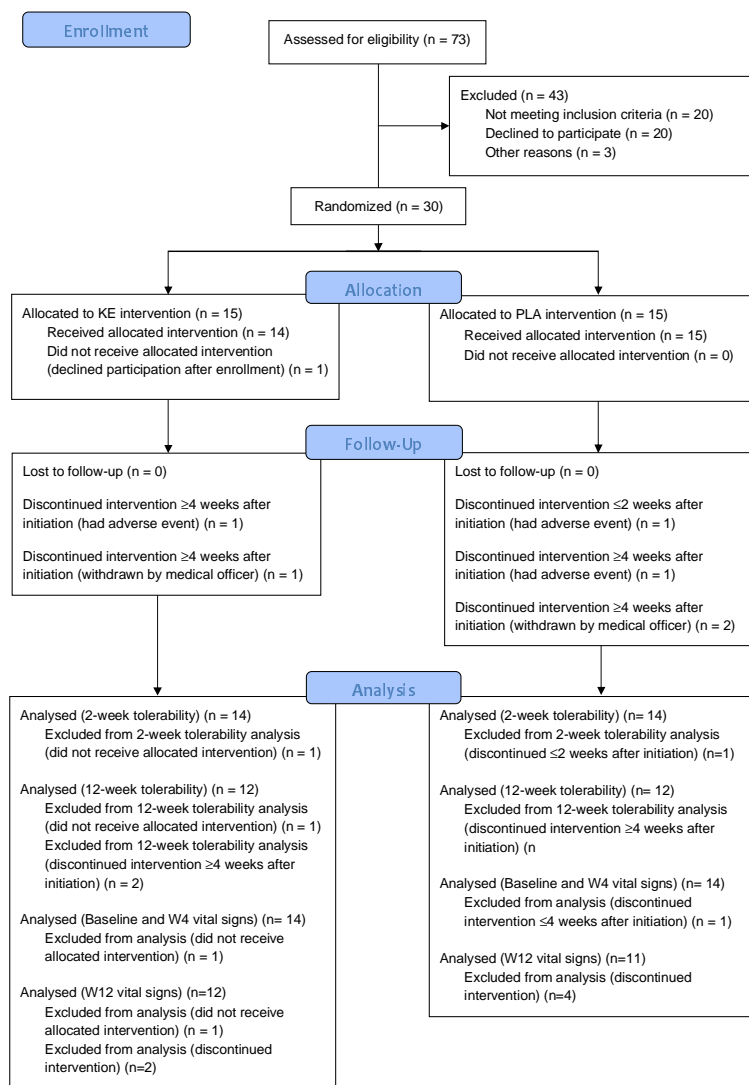
Symptom	Severity	Acclimation Period		Post Acclimation Period	
		Placebo	KE	Placebo	KE
Any	Any	9 (60.0)	12 (85.7)	10 (71.4)	14 (100.0)
	Mild	9 (60.0)	11 (78.6)	10 (71.4)	13 (92.9)
	Moderate/Severe	4 (26.7)	6 (42.9)	5 (35.7)	7 (50.0)
Abdominal cramping	Any	2 (13.3)	5 (35.7)	6 (42.9)	6 (42.9)
	Mild	1 (6.7)	4 (28.6)	5 (35.7)	5 (35.7)
	Moderate/Severe	1 (6.7)	3 (21.4)	2 (14.3)	1 (7.1)
Burping	Any	4 (26.7)	5 (35.7)	3 (21.4)	4 (28.6)
	Mild	4 (26.7)	5 (35.7)	3 (21.4)	4 (28.6)
	Moderate/Severe	0 (0.0)	1 (7.1)	0 (0.0)	0 (0.0)
Diarrhea	Any	4 (26.7)	4 (28.6)	5 (35.7)	4 (28.6)
	Mild	4 (26.7)	3 (21.4)	5 (35.7)	3 (21.4)
	Moderate/Severe	3 (20.0)	2 (14.3)	3 (21.4)	2 (14.3)
Dizziness	Any	1 (6.7)	1 (7.1)	1 (7.1)	6 (42.9)
	Mild	1 (6.7)	1 (7.1)	0 (0.0)	3 (21.4)
	Moderate/Severe	1 (6.7)	1 (7.1)	1 (7.1)	3 (21.4)
Gas	Any	4 (26.7)	5 (35.7)	5 (35.7)	4 (28.6)
	Mild	4 (26.7)	5 (35.7)	5 (35.7)	4 (28.6)
	Moderate/Severe	1 (6.7)	2 (14.3)	2 (14.3)	1 (7.1)
Headache	Any	1 (6.7)	2 (14.3)	2 (14.3)	4 (28.6)
	Mild	1 (6.7)	1 (7.1)	1 (7.1)	4 (28.6)
	Moderate/Severe	1 (6.7)	1 (7.1)	1 (7.1)	1 (7.1)
Nausea	Any	2 (13.3)	3 (21.4)	2 (14.3)	4 (28.6)
	Mild	2 (13.3)	2 (14.3)	2 (14.3)	3 (21.4)
	Moderate/Severe	0 (0.0)	1 (7.1)	0 (0.0)	2 (14.3)
Reflux	Any	1 (6.7)	4 (28.6)	1 (7.1)	5 (35.7)
	Mild	1 (6.7)	3 (21.4)	1 (7.1)	4 (28.6)
	Moderate/Severe	0 (0.0)	2 (14.3)	0 (0.0)	3 (21.4)
Stomach rumbling	Any	4 (26.7)	4 (28.6)	3 (21.4)	2 (14.3)
	Mild	3 (20.0)	4 (28.6)	3 (21.4)	2 (14.3)
	Moderate/Severe	2 (13.3)	1 (7.1)	0 (0.0)	0 (0.0)
Vomiting	Any	0 (0.0)	0 (0.0)	0 (0.0)	0 (0.0)
	Mild	0 (0.0)	0 (0.0)	0 (0.0)	0 (0.0)
	Moderate/Severe	0 (0.0)	0 (0.0)	0 (0.0)	0 (0.0)

707 **Supplementary Table 2. Symptom reports during bi-weekly phone interview, listed by**  
 708 **type and severity.** Number of participants that reported during a bi-weekly phone interview  
 709 that the listed symptoms occurred at least once during the pre- (week 1 and 2) and post-  
 710 (week 3 – 12) acclimation phases of the study. **Abbreviations:** KE, ketone ester.

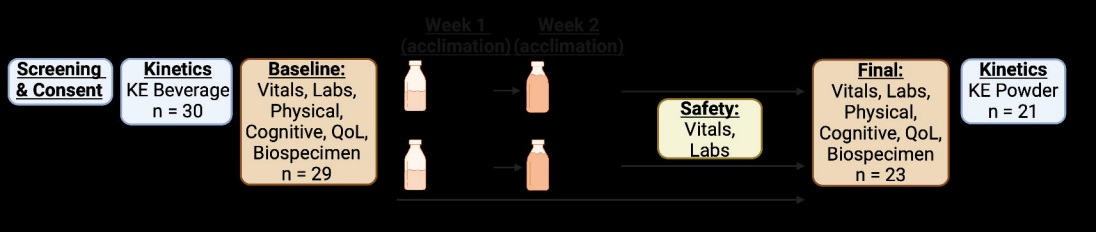
711

712 **Supplementary Figure 1**

CONSORT 2010 Flow Diagram



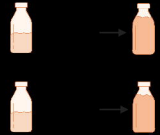
713



**Screening & Consent**

**Kinetics**  
KE Beverage  
n = 30

**Baseline:**  
Vitals, Labs,  
Physical,  
Cognitive, QoL,  
Biospecimen  
n = 29



**Safety:**  
Vitals,  
Labs

**Final:**  
Vitals, Labs,  
Physical,  
Cognitive, QoL,  
Biospecimen  
n = 23

**Kinetics**  
KE Powder  
n = 21

