

Antidepressant Exposure and DNA Methylation

Antidepressant Exposure and DNA Methylation: Insights from a Methylome-Wide Association Study

Authors: Davyson E^{1,2}, Shen X¹, Huider F^{3,4}, Adams M¹, Borges K¹, McCartney D², Barker L⁵, Van Dongen J^{3,4}, Boomsma D^{3,4}, Weihs A^{6,7}, Grabe H^{6,7}, Kühn L⁶, Teumer A^{6,8}, Völzke H^{8,9}, Zhu T^{10,11}, Kaprio J¹⁰, Ollikainen M^{10,11}, David FS^{12,13}, Meinert S^{14,15}, Stein F^{13,16}, Forstner AJ^{12,17,18}, Dannlowski U¹⁴, Kircher T^{13,16}, Tapuc A^{19,20}, Czamara D²⁰, Binder EB²⁰, Brückl T²⁰, Kwong A^{1,21}, Yousefi P^{21,22,23}, Wong CCY²⁴, Arseneault L²⁴, Fisher HL^{24,25}, Mill J²⁶, Cox S²⁷, Redmond P²⁷, Russ TC^{1,28,29}, Marioni RE², Wray NR^{5,30}, McIntosh AM^{1*}

Affiliations

¹Division of Psychiatry, Centre for Clinical Brain Sciences, University of Edinburgh, Edinburgh, UK

²Institute of Genetics and Cancer, University of Edinburgh, Edinburgh, UK

³Department of Biological Psychology, Vrije Universiteit Amsterdam, Amsterdam, the Netherlands

⁴Amsterdam Public Health Research Institute, Amsterdam, the Netherlands & Amsterdam Reproduction & Development, Research Institute, Amsterdam, the Netherlands

⁵Institute for Molecular Bioscience, University of Queensland, Brisbane, QLD 4072, Australia.

⁶Department of Psychiatry and Psychotherapy, University Medicine Greifswald, 17475 Greifswald, Germany

⁷German Center for Neurodegenerative Diseases (DZNE), Site Rostock/Greifswald, 17489 Greifswald, Germany

⁸German Centre for Cardiovascular Research (DZHK), Partner Site Greifswald, 17489 Greifswald, Germany

⁹Department SHIP/Clinical-Epidemiological Research, Institute for Community Medicine, University Medicine Greifswald, 17475 Greifswald, Germany

¹⁰Institute for Molecular Medicine Finland FIMM, HiLIFE, University of Helsinki, Helsinki, Finland.

¹¹Minerva Foundation Institute for Medical Research, Helsinki, Finland

¹²Institute of Human Genetics, University of Bonn, School of Medicine & University Hospital Bonn, Bonn, Germany

¹³Department of Psychiatry and Psychotherapy, University of Marburg, Marburg, Germany

¹⁴Institute for Translational Psychiatry, University of Münster, Münster, Germany

¹⁵Institute for Translational Neuroscience, University of Münster, Münster, Germany

¹⁶Center for Mind, Brain and Behavior, University of Marburg, Marburg, Germany

¹⁷Institute of Neuroscience and Medicine (INM-1), Research Center Jülich, Jülich, Germany

¹⁸Center for Human Genetics, University of Marburg, Marburg, Germany

¹⁹Max Planck School of Cognition, Leipzig, Germany

²⁰Max-Planck-Institute of Psychiatry, Department Genes and Environment, Munich, Germany

²¹Medical Research Council Integrative Epidemiology Unit at the University of Bristol, University of Bristol, Bristol, UK

²²Population Health Science, Bristol Medical School, University of Bristol, Bristol, UK

²³NIHR Bristol Biomedical Research Centre, University Hospitals Bristol and Weston NHS Foundation Trust and University of Bristol.

²⁴Social, Genetic & Developmental Psychiatry Centre, Institute of Psychiatry, Psychology & Neuroscience, King's College London, London, UK

Antidepressant Exposure and DNA Methylation

²⁵ESRC Centre for Society and Mental Health, King's College London, London, UK

²⁶University of Exeter Medical School, University of Exeter, Exeter, UK

²⁷Lothian Birth Cohorts, Department of Psychology, University of Edinburgh, Edinburgh, UK

²⁸Alzheimer Scotland Dementia Research Centre, University of Edinburgh, Edinburgh, UK

²⁹Neuroprogressive and Dementia Network, NHS Research Scotland, Scotland, UK

²⁹Department of Psychiatry, University of Oxford, Oxford, UK

Corresponding author*

Andrew M McIntosh

Division of Psychiatry

University of Edinburgh

Royal Edinburgh Hospital

Edinburgh EH10 5HF

+44 131 537 6000

andrew.mcintosh@ed.ac.uk

Antidepressant Exposure and DNA Methylation

3 Key Points

Question Is antidepressant exposure associated with differential whole blood DNA methylation?

Findings In this methylome-wide association study of 16,536 adults across Scotland, antidepressant exposure was significantly associated with hypermethylation at CpGs mapping to *KANK1* and *DGUOK-ASI*. A methylation profile score trained on this sample was significantly associated with antidepressant exposure (pooled β [95%CI]=0.196 [0.105, 0.288], $p < 1 \times 10^{-4}$) in a meta-analysis of external datasets.

Meaning Antidepressant exposure is associated with hypermethylation at *KANK1* and *DGUOK-ASI*, which have roles in mitochondrial metabolism and neurite outgrowth. If replicated in future studies, targeting these genes could inform the design of more effective and better tolerated treatments for depression.

Antidepressant Exposure and DNA Methylation

Abstract

Importance: Understanding antidepressant mechanisms could help design more effective and tolerated treatments.

Objective: Identify DNA methylation (DNAm) changes associated with antidepressant exposure.

Design: Case-control methylome-wide association studies (MWAS) of antidepressant exposure were performed from blood samples collected between 2006-2011 in Generation Scotland (GS). The summary statistics were tested for enrichment in specific tissues, gene ontologies and an independent MWAS in the Netherlands Study of Depression and Anxiety (NESDA). A methylation profile score (MPS) was derived and tested for its association with antidepressant exposure in eight independent cohorts, alongside prospective data from GS.

Setting: Cohorts; GS, NESDA, FTC, SHIP-Trend, FOR2107, LBC1936, MARS-UniDep, ALSPAC, E-Risk, and NTR.

Participants: Participants with DNAm data and self-report/prescription derived antidepressant exposure.

Main Outcome(s) and Measure(s): Whole-blood DNAm levels were assayed by the EPIC/450K Illumina array (9 studies, $N_{\text{exposed}} = 661$, $N_{\text{unexposed}} = 9,575$) alongside MBD-Seq in NESDA ($N_{\text{exposed}} = 398$, $N_{\text{unexposed}} = 414$). Antidepressant exposure was measured by self-report and/or antidepressant prescriptions.

Results: The self-report MWAS ($N = 16,536$, $N_{\text{exposed}} = 1,508$, mean age = 48, 59% female) and the prescription-derived MWAS ($N = 7,951$, $N_{\text{exposed}} = 861$, mean age = 47, 59% female), found hypermethylation at seven and four DNAm sites ($p < 9.42 \times 10^{-8}$), respectively. The top locus was cg26277237 (*KANK1*, $p_{\text{self-report}} = 9.3 \times 10^{-13}$, $p_{\text{prescription}} = 6.1 \times 10^{-3}$). The self-report MWAS found a differentially methylated region, mapping to *DGUOK-AS1* ($p_{\text{adj}} = 5.0 \times 10^{-3}$) alongside significant enrichment for genes expressed in the amygdala, the “synaptic vesicle

Antidepressant Exposure and DNA Methylation

membrane” gene ontology and the top 1% of CpGs from the NESDA MWAS (OR = 1.39, $p < 0.042$). The MPS was associated with antidepressant exposure in meta-analysed data from external cohorts ($N_{\text{studies}} = 9$, $N = 10,236$, $N_{\text{exposed}} = 661$, $\beta = 0.196$, $p < 1 \times 10^{-4}$).

Conclusions and Relevance: Antidepressant exposure is associated with changes in DNAm across different cohorts. Further investigation into these changes could inform on new targets for antidepressant treatments.

Antidepressant Exposure and DNA Methylation

Introduction

Major Depressive Disorder (MDD) is predicted to become the leading cause of disability worldwide by 2030¹, partly due to the limitations of current treatments². Although antidepressants are commonly prescribed effective treatments³, they prove to be ineffective in a high proportion of cases, with an estimated 40% of those presenting with MDD developing treatment-resistant depression^{4,5}. Furthermore, many treatments are commonly accompanied by side effects, including weight changes, fatigue and sexual dysfunction². There is a need for more effective and better-tolerated antidepressant treatments and to target existing treatments to those most likely to respond. Advances are hampered by poor mechanistic understanding of both MDD itself^{1,16,17} and how currently prescribed antidepressants lead to therapeutic effects⁹.

The mechanism of currently prescribed antidepressants is incompletely understood. Initial theories surmised that their therapeutic effects were due to an increase in monoamine brain synaptic concentrations¹⁰. However, antidepressant treatment has a delayed onset for symptomatic improvement, which does not reflect the immediate effect on monoamine levels⁷. This casts doubt on the simple role of monoamines as a causal factor in MDD⁷⁻⁹, although other experimental paradigms continue to suggest their importance¹¹. Another prominent theory of antidepressant action suggests that their therapeutic mechanism involves increasing synaptic remodelling¹² and neuronal plasticity^{9,13}. The evidence for the effect of antidepressants on DNA methylation (DNAm) is growing^{14,15}. In vitro studies found that the antidepressant paroxetine interacted with DNA methyltransferase (DNMT), a key enzyme involved in DNAm¹⁶. Furthermore, studies of chronically stressed rodent models have found

Antidepressant Exposure and DNA Methylation

that stress-induced DNAm and behavioural changes are reversed through both antidepressant treatment¹⁷ and DNMT inhibitors¹⁸.

DNAm, the addition of a methyl group at a cytosine-phosphate-guanine (CpG) site, regulates gene expression and impacts cellular function^{19,20}. In 2022, Barbu *et al.*²¹ performed a methylome-wide association study (MWAS) of self-reported antidepressant exposure in a subset of participants in Generation Scotland (GS, N = 6,428) and the Netherlands Twin Register (NTR, N = 2,449)²¹, identifying altered DNAm near to genes involved in the innate immune response in those exposed to antidepressants²¹. As self-report measures may be unreliable due to volunteer recall bias, a poor understanding of the medication nosology, and non-disclosure²²⁻²⁴, Barbu *et al.*²¹ also performed an MWAS of antidepressant exposure based on recorded antidepressant prescriptions in the last 12 months. However, this assumes continuous treatment, potentially overestimating exposure due to general low adherence to antidepressant medication²⁵. Calculation of active treatment periods from consecutive prescribing events provides a potentially more reliable identification of antidepressant exposure²⁶.

In our study, we build upon previous analyses by Barbu *et al.*²¹ by analysing a larger sample of GS (N = 16,536), and by estimating active treatment periods from prescribing records to identify those exposed to antidepressants at DNAm measurement. First, an MWAS was performed on both the self-report and prescription-derived measures of antidepressant exposure. Second, to assess the potential confounding by MDD, the MWAS analyses were restricted to MDD cases only. Third, functional follow-up analysis of differentially methylated CpG sites was performed. Fourth, we investigated the enrichment of top CpGs in GS and an independent MWAS conducted in the Netherlands Study of Depression and

Antidepressant Exposure and DNA Methylation

Anxiety (NESDA). Fifth, the relationship between time in treatment and DNAm at significant CpG sites was investigated. Finally, a methylation profile score (MPS) for self-report antidepressant exposure was trained in GS and tested for an association with antidepressant exposure in eight independent external datasets: Finn Twin Cohort (FTC), Study of Health in Pomerania (SHIP-Trend), Lothian Birth Cohort 1936 (LBC1936), FOR2107, NTR, Avon Longitudinal Study of Parents and Children (ALSPAC), Munich Antidepressant Response Study/Unipolar Depression Study (MARS-UniDep) and the Environmental Risk (E-Risk) Longitudinal Twin Study, alongside a prospective sample of GS: Stratifying Depression and Resilience Longitudinally (STRADL) (Figure 1).

Figure 1: Schematic of study design.

Methods and Materials

Generation Scotland

Generation Scotland: The Scottish Family Health Study (GS) is a family-based cohort study (N ~ 24,000), investigating the genetic and environmental factors influencing health within Scotland (eMethods)^{27,28}. Data collection including biological sampling occurred between February 2006 and March 2011. Written consent was provided before any assessment and/or sampling took place. Ethical approval was provided by the Tayside Research Ethics Committee (REC reference 05/S1401/89).

Methylation data

DNAm was profiled from baseline blood samples using the Illumina MethylationEPIC array for 19,390 individuals. Methylation typing was performed in 4 distinct sets between 2017 and 2021. Sets 1, 2 and 4 included related individuals within and between each set while all individuals in set 3 were unrelated to each other and to individuals in set 1 (genetic

Antidepressant Exposure and DNA Methylation

relationship matrix (GRM) threshold ≤ 0.05). Following quality control (QC) (eMethods), the sample sizes were Set 1: 5,087, Set 2: 459, Set 3: 4,450 and Set 4: 8,873 individuals. The sets were combined and dasen normalisation was performed across all individuals²⁹. In total, 752,741 probes and 18,869 individuals passed QC. Beta-values were transformed to M-values using the ‘*beta2M()*’ function in the *lumi* R package³⁰, and standardised using the ‘std-probe’ flag in the OSCA software³¹.

Antidepressant exposure phenotypes

Prescription-derived antidepressant exposure was measured using antidepressant prescriptions from Public Health Scotland (eMethods), according to the British National Formulary (BNF) paragraph code ‘040303’, which largely corresponds to Anatomical Therapeutic Chemical (ATC) subclass ‘N06A’ (eTable 1) ($N_{\text{prescriptions}} = 174,454$, $N_{\text{people}} = 7,544$) (eTable 2, eFigures 1-8). After removing ambiguous prescriptions ($N_{\text{prescriptions}} = 5,484$, $N_{\text{people}} = 171$) (eMethods, eTable 3), active treatment periods were defined by consecutive dispensing of antidepressant medications (eMethods, eFigures 9-11). Those who had their blood-draw appointment ≥ 7 days after treatment initiation or < 7 days after the end of a treatment period were defined as exposed ($N_{\text{exposed}} = 861$) (eFigure 12). Those with no antidepressant prescriptions on record were defined as unexposed ($N_{\text{unexposed}} = 7,090$). Self-reported antidepressant exposure was derived from questionnaires sent 1–2 weeks before venepuncture (eMethods, eTable 4, eFigure 13). Those who did/did not self-report antidepressant use were defined as exposed and unexposed respectively ($N_{\text{exposed}} = 1,508$, $N_{\text{unexposed}} = 15,028$). Out of 6,473 individuals with both self-report and prescription-derived phenotypes, 6,355 exhibited concordant classification of antidepressant exposure (eFigure 14). The MDD-only phenotypes were derived by stratifying the samples to those with a lifetime MDD diagnosis, ascertained by the Structured Clinical Interview of the Diagnostic

Antidepressant Exposure and DNA Methylation

and Statistical Manual, version IV (SCID)³² (prescription-derived: $N_{\text{exposed}}=380$, $N_{\text{unexposed}}=412$, self-report: $N_{\text{exposed}}=766$, $N_{\text{unexposed}}=1,502$) (eMethods, eFigure 15).

Methylome-wide association study

The MWAS were performed using a Mixed-linear-model Omics-based Analysis (MOA) in the OSCA software³¹. To account for relatedness within GS, each phenotype was regressed on a GRM³³ using the Best Linear Unbiased Prediction (BLUP) tool in GCTA software³⁴. The residuals were entered into a MOA model, which included a methylation omics-relatedness matrix as a random effect and age, sex, AHR probe (cg05575921) M-values to proxy for smoking status, and predicted monocyte and lymphocyte cell proportions as fixed effects. Statistical significance was assessed using the p-value threshold 9.42×10^{-8} , as recommended for case-control MWAS analyses³⁵. Effect sizes represent a per-1 standard-deviation increase in CpG methylation M-values.

Differentially methylated regions (DMRs) were identified using the *dmrff* R package³⁶, which performs an inverse-variance-weighted meta-analysis of MWAS beta and standard-error estimates per region, adjusting for estimate uncertainty and the correlational structure between probes. Candidate DMRs are identified as sets (>2) of CpGs ≤ 500 bp apart with nominal significance ($P < 0.05$) and consistent effect direction. DMRs achieving Bonferroni-corrected p-value < 0.05 were considered statistically significant.

Functional annotation

Gene-sets for both MWAS were collated by annotating the top 100 CpGs (by p-value) by the Infinium MethylationEPIC BeadChip database³⁷. Hypergeometric tests, using '*phyper()*', were used to assess the overlap of CpGs and gene-sets from both analyses. The background set consisted of CpGs and genes on or annotated to the EPIC array (eTable 5). The

Antidepressant Exposure and DNA Methylation

‘GENE2FUNC’ analysis in functional mapping and annotation web-tool (FUMA) was used to assess enrichment of both gene-sets across 54 specific tissues in the Genotype-Tissue Expression (GTEx)^{38,39} Project. Both gene-sets were tested for enrichment in synapse-related GO terms using the SynGo web tool⁴⁰ and for enrichment in GO: Biological Processes gene-sets ($20 < ngenes < 500$) in the msigdb database⁴¹, using the ‘*gsameth()*’ function from *missMethyl* R package⁴² (eTable 6).

Methylation profile score

A least absolute shrinkage and selection operator (LASSO) penalised regression model was applied using ‘*cv.biglasso()*’ from the *glmnet* R package⁴³ on the GS sample. First, the self-report phenotype was regressed against the GRM (using BLUP), age, sex, AHRR probe M-values as a proxy for smoking status, batch, and white blood cell (monocyte and lymphocyte) proportions. The residuals were used as the dependent variable and the standardised CpG sites on both EPIC and 450K Illumina arrays ($N = 365,912$) were included as independent variables. Ten-fold cross-validation was applied and the mixing parameter was set to 1. The non-zero weighted CpGs identified in the LASSO model were used to calculate a weighted-sum MPS in external datasets (FTC, SHIP-Trend, FOR2107, NTR, LBC1936, ALSPAC, MARS-UniDep and E-Risk, $N_{total} = 9,578$, $N_{exposed} = 619$) and a prospective sample of GS (STRADL, $N_{total} = 658$, $N_{exposed} = 42$) (eMethods). The association between antidepressant exposure and the MPS was assessed using; generalised linear mixed models, generalised linear models and generalised estimation equations, depending on the cohort’s population structure (i.e., twin studies vs unrelated participants) and DNAm pre-processing (eMethods, eTables 7-9). Age, sex, batch (where applicable), white blood cell proportions/counts and M-values at the AHRR probe were included as covariates. A random-effects meta-analysis using

Antidepressant Exposure and DNA Methylation

a DerSimonian-Laird estimator was performed to assess the overall association between the MPS and antidepressant exposure, using the *meta* R package⁴⁴.

Results

The demographic features of both antidepressant exposure phenotypes in the GS are shown in Table 1.

Table 1: Demographics of antidepressant exposed and unexposed individuals using the prescription-derived and self-reported measures in Generation Scotland. M = Mean, SD = Standard Deviation.

Methylome-wide association studies

The self-report MWAS (Figure 2A, Table 2) and prescription-derived MWAS (Figure 2B, eTable 10) identified seven and four hypermethylated CpGs respectively, in those exposed to antidepressants (eFigure 16, eFigure 17). The effect estimates from all CpGs in both analyses were significantly correlated ($R = 0.54$, $p < 2.2 \times 10^{-16}$) (eFigure 18).

Table 2: Eight CpGs associated with self-reported and/or prescription-derived antidepressant use. The EWAS catalog was searched using the *ewascatalog* R package⁴⁵ for other studies ($n > 1000$) which report a significant CpG-trait association, accessed on 17/03/2024.

Figure 2: Methylome-wide association study of self-reported (A) and prescription-derived (B) antidepressant exposure. (C) The standardised effect sizes and 95% confidence-intervals for

Antidepressant Exposure and DNA Methylation

associated CpGs ($p < 9.42 \times 10^{-8}$) for the full sample (dark-green) and MDD-only sample (light-green).

In the MDD-only self-report MWAS, only cg08527546 exhibited a significant association with antidepressant exposure ($\beta = 0.050$, $p = 3.57 \times 10^{-8}$); no CpGs were significantly associated in the MDD-only prescription-derived MWAS (eTable 11, eFigure 19). For both phenotypes, there was a significant correlation between CpG effect estimates in the full and MDD-only analyses ($R_{\text{self-report}} = 0.57$, $p_{\text{self-report}} < 2.2 \times 10^{-16}$, $R_{\text{prescription}} = 0.43$, $p_{\text{prescription}} < 2.2 \times 10^{-16}$) (eFigure 20). Notably, restricting the analyses to MDD cases did not attenuate the effect sizes of the significant CpGs (Figure 2C).

Differentially methylated regions

There were 719,506 candidate regions considered in the dmrff analysis. The self-report MWAS had one significant DMR ($\beta = 0.096$, $p_{\text{adj}} = 4.98 \times 10^{-3}$) (eTable 12), consisting of two CpGs (cg01964004 and cg15071067), which maps to deoxyguanosine kinase antisense RNA1 (*DGUOK-ASI*) (eFigure 21). The prescription-derived MWAS identified no significant DMRs (eTable 13).

Functional Annotation

The most significant 100 CpGs from the self-report and prescription-derived MWAS were annotated to 77 and 83 genes respectively (eTables 14-17). There was a significant overlap between both the CpG-sets ($N_{\text{overlap}} = 17$, $p = 1.95 \times 10^{-48}$, eFigure 22) and the gene-sets ($N_{\text{overlap}} = 16$, $p = 1.3 \times 10^{-25}$, eFigure 23). The self-report gene-set was significantly enriched for the genes expressed in the amygdala (eTable 18, eFigure 24), whilst the prescription-derived gene-set had no significant enrichment (eTable 19, eFigure 25). There was significant

Antidepressant Exposure and DNA Methylation

enrichment of the self-report gene-set in GO:0008021;” synaptic vesicle membrane” ($p_{FDR} = 0.030$, SF26-28, ST20-23). There was no significant enrichment for any GO:Biological Processes pathways tested for either gene set (eFigure 29-30, eTable 24-25)

Enrichment analysis: Netherlands Study of Depression and Anxiety

An MWAS of self-reported antidepressant exposure was performed in the NESDA cohort⁴⁶ ($N = 812$, $N_{\text{exposed}} = 398$), with all participants having a recent (~ 6 months) MDD DSM-IV diagnosis (eResults). The DNAm assays were obtained from whole blood samples using methyl-CG binding domain sequencing (MBD-Seq)⁴⁷⁻⁴⁹ (eResults). Enrichment tests were performed to assess the overlap of top findings from GS and NESDA, using the *shiftR* R package⁵⁰. For both MWAS’, CpGs were filtered to those which showed a concordant direction of effect and three thresholds (0.1, 0.5 and 1%) were used to define top (by p-value) findings. Results suggested a small (OR: 1.39) but significant ($P < 0.042$) enrichment between the top 1% of results from both MWAS’.

Methylation differences by time in treatment

To investigate the relationship of DNAm at significantly associated CpGs ($n = 8$) with the length of antidepressant exposure, a Spearman correlation test was performed between the DNAm levels and time in current treatment for those within a treatment period ($N = 863$). Two probes, cg15071067 (*DGUOK-ASI*) and cg26277237 (*KANK1*), showed a significant correlation between methylation and time in treatment (cg15071067: $\rho = 0.085$, $p = 0.012$, cg26277237: $\rho = 0.087$, $p = 0.011$) (eFigures 31-33, eTable 26), with the same direction of effect found in the MWAS.

Methylation Profile Score

Antidepressant Exposure and DNA Methylation

There were 212 CpGs identified by the LASSO regression model (eFigures 34-36, eTable 27), used to calculate the MPS in external cohorts (Figure 3A, eFigures 37-46). All cohorts bar one (NTR) showed a positive relationship between antidepressant MPS and antidepressant exposure ($\beta_{\text{FTC}} = 0.156$, $\beta_{\text{SHIP-Trend}} = 0.134$, $\beta_{\text{STRADL}} = 0.149$, $\beta_{\text{LBC1936}} = 0.228$, $\beta_{\text{FOR2107}} = 0.349$, $\beta_{\text{MARS}} = 0.263$, $\beta_{\text{ALSPAC}} = 0.170$, $\beta_{\text{ERISK}} = 0.342$, $\beta_{\text{NTR}} = -0.031$) (eFigure 47, eTable 28). Nagelkerke's pseudo R^2 estimates ranged from 1.11×10^{-3} (NTR) to 0.03 (LBC1936) (Figure 3B). The random-effects meta-analysis found a significant association between antidepressant exposure and the MPS (pooled β [95%CI]: 0.196 [0.105, 0.288], $p < 1 \times 10^{-4}$), with low heterogeneity between studies (I^2 [95%CI] = 0% [0, 64.8%]) (eTable 29).

Figure 3: Antidepressant exposure ~ MPS in external cohorts. A) The sample sizes of each dataset, B) Nagelkerke's pseudo R^2 , C) The effect sizes and confidence intervals of MPS ~ antidepressant exposure analysis in each cohort. Square size = study weight, diamond = meta-analysed effect.

Discussion

This study presents the largest investigation of the impact of antidepressant exposure on the methylome⁵¹. The results from self-report or prescription-derived antidepressant exposure were broadly consistent, corroborating previous findings²⁶. There was evidence of hypermethylation at eight CpGs and a region on Chromosome 2 (BP: 74196550-74196572) in those exposed to antidepressants. The CpG with the highest significance and the largest effect size, cg26277237, mapped to KN motif and ankyrin repeat domains 1 (*KANK1*), was previously reported by Barbu *et al.*²¹ on a smaller sample of GS. The DMR analysis indicated antidepressant exposure is also significantly associated with hypermethylation near *DGUOK-ASI*, a long non-coding RNA (lncRNA). *KANK1* facilitates the formation of the actin

Antidepressant Exposure and DNA Methylation

cytoskeleton and has an active role in neurite outgrowth and neurodevelopment⁵². A meta-analysis of copy-number variant association studies found a significant duplication in *KANK1* in those with five different neurodevelopmental disorders, including MDD⁵³. *DGUOK-AS1* has an inhibitory role on the expression of a nearby gene *DGUOK*⁵⁴, which encodes a mitochondrial enzyme involved in the production of mitochondrial DNA⁵⁴, and has previously been implicated as a risk gene in schizophrenia⁵⁵ and Alzheimer disease⁵⁶. A recent review reported evidence that antidepressants do influence mitochondrial function, although the effects are heterogeneous between different types of antidepressants, independent of their current classification^{57,58}.

Seven of the CpGs significantly hypermethylated with antidepressant use have been reported previously to also be significantly hypermethylated with incident and/or prevalent type 2 diabetes (T2D)⁵⁹ in GS. Previous epidemiological studies have indicated that antidepressant use leads to an increased risk of T2D onset in a time- and dose-dependent manner^{60,61}. Future prospective and longitudinal research into the link between antidepressant use, DNAm and T2D, alongside the use of other independent datasets is required.

The performance of the GS-trained MPS in discriminating antidepressant exposure across eight external datasets, demonstrates that this may be a generalizable biomarker indicative of antidepressant exposure and adds to a growing set of MPS that could potentially provide clinically relevant phenotypic information⁶²⁻⁶⁵. Accurate estimation of this exposure history could be highly valuable for epidemiological studies where prescribing data may not be available. Taken in combination with MPS for other risk factors, an MPS for antidepressant exposure may help provide a robust characterisation of an individual's medical history.

Antidepressant Exposure and DNA Methylation

There are several strengths of this study. The comparison of self-report and prescription-derived measures is valuable, as the former is often cheaper and easier to obtain in large-scale cohort studies²⁵. Furthermore, the MDD-only analysis indicates that the hypermethylation associated with antidepressant use is not driven by MDD indication. Additionally, the significant association of an MPS trained in GS with antidepressant exposure in external datasets, and the significant enrichment with an independent MWAS consolidates our findings.

This study has various limitations. Both measures of antidepressant exposure do not discriminate between antidepressant drugs, classes, or dosages. However, we anticipate the opportunity to investigate more medication-specific effects on the methylome using prescription-linkage data as biobanks increase in size. Additionally, all the cohorts used primarily consist of European ancestry. It is paramount that this analysis is conducted in non-European ancestral groups to further verify our findings and disentangle any ancestry-specific effects^{66–68}. Finally, by design, this epidemiological study cannot directly address causality between antidepressant exposure and DNAm. The integration of DNAm analysis into randomised controlled trials of antidepressants is important to establish the exact nature of the association and to inform potential new targets for antidepressant therapy.

This study indicates that antidepressant exposure is associated with hypermethylation at *DGUOK-AS1* and *KANK1*, which have roles in mitochondrial metabolism and neurite outgrowth respectively. Future research should include more cohorts of non-European ancestry, alongside the incorporation of DNAm in randomised trials of antidepressants to further consolidate findings and establish causality. If replicated, targeting of these genes could inform the design of more effective and better tolerated treatments for depression.

Antidepressant Exposure and DNA Methylation

Acknowledgments

This work has made use of the resources provided by the Edinburgh Compute and Data Facility (ECDF, 2024) (<http://www.ecdf.ed.ac.uk/>).

Generation Scotland (GS) & Stratifying Resilience and Depression Longitudinally (STRADL)

We thank the participants in Generation Scotland for making this research possible. We also acknowledge the team at Generation Scotland for collecting and preparing the data for analyses.

FOR2107

We are deeply indebted to all study participants and staff. A list of acknowledgments can be found here: www.for2107.de/acknowledgements.

Netherlands Twin Register (NTR)

We warmly thank all twin families of the Netherlands Twin Register who make this research possible.

Munich Antidepressant Response Study / UniPolar Depression Study (MARS-UniDep)

We would like to thank all contributors to the research project including physicians, psychologists, study nurses, researchers and research assistants, and of course patients of the hospital of the Max Planck Institute of Psychiatry in Munich and psychiatric hospitals in Augsburg and Ingolstadt.

Avon Longitudinal Study of Parents and Children (ALSPAC)

We thank all the families who took part in this study, the midwives for their help in recruiting them, and the whole ALSPAC team, which includes interviewers, computer and laboratory technicians, clerical workers, research scientists, volunteers, managers, receptionists and nurses.

E-risk Longitudinal Twin Study (E-risk)

We are grateful to the E-Risk study mothers and fathers, the twins, and the twins' teachers for their participation. Our thanks to Professors Terrie Moffitt and Avshalom Caspi, the founders of the E-Risk study, and to the E-Risk team for their dedication, hard work, and insights.

Funding

ED was supported by the UK Research and Innovation (Grant No. EP/S02431X/1), UK Research and Innovation Centre for Doctoral Training in Biomedical AI at the University of Edinburgh, School of Informatics.

Antidepressant Exposure and DNA Methylation

This work was supported by the United Kingdom Research and Innovation (grant EP/S02431X/1), UKRI Centre for Doctoral Training in Biomedical AI at the University of Edinburgh, School of Informatics. For the purpose of open access, the author has applied a creative commons attribution (CC BY) licence to any author accepted manuscript version arising.

AMM is also supported by a UK Research and Innovation award (Grant No. MR/W014386/1) and by European Union Horizon 2020 funding (Grant No. 847776).

GS & STRADL

This work was supported by 3 Wellcome Trust grants (220857/Z/20/Z, 226770/Z/22/Z and 104036/Z/14/Z [AMM]). Funding from the Biotechnology and Biological Sciences Research Council and Medical Research Council (Grant Nos. MR/X003434/1 and MR/W014386/1) and the European Union (Grant agreement 847776) is also gratefully acknowledged. The Psychiatric Genomics Consortium (including AMM) has received major funding from the U.S. National Institute of Mental Health (Grant No. 5 U01MH109528-03).

Finnish Twin Cohort (FTC)

Phenotype and genotype data collection in FT12 and FT16 studies of the Finnish twin cohort has been supported by the Wellcome Trust Sanger Institute, the Broad Institute, ENGAGE – European Network for Genetic and Genomic Epidemiology, FP7-HEALTH-F4-2007, grant agreement number 201413, National Institute of Alcohol Abuse and Alcoholism (grants AA-12502, AA-00145, and AA-09203 to R J Rose; AA15416 and K02AA018755 to D M Dick; R01AA015416 to J Salvatore) and the Academy of Finland (grants 100499, 205585, 118555, 141054, 264146, 308248, 265240, 263278 to J Kaprio, 328685, 307339, 297908 and 251316 to M Ollikainen, and Centre of Excellence in Complex Disease Genetics grants 312073, 336823, and 352792 to J Kaprio), NIH/NHLBI (grant HL104125 to X Wang), and Sigrid Juselius Foundation to M Ollikainen and J Kaprio.

Study of Health in Pomerania (SHIP-Trend)

SHIP is part of the Community Medicine Research net of the University of Greifswald which is funded by the Federal Ministry of Education and Research (01ZZ9603, 01ZZ0103, and 01ZZ0403), the Ministry of Cultural Affairs and the Social Ministry of the Federal State of Mecklenburg-West Pomerania. DNA methylation data have been supported by the DZHK (grant 81X3400104). The University of Greifswald is a member of the Caché Campus program of the InterSystems GmbH.

FOR2107

The German multicenter consortium “Neurobiology of Affective Disorders. A translational perspective on brain structure and function” is funded by the German Research Foundation (Research Unit FOR2107). Principal investigators are Tilo Kircher (speaker FOR2107, DFG grant numbers KI588/14-1, KI588/14-2, KI588/20-1, KI588/22-1, KI 588/15-1, KI 588/17-1), Udo Dannlowski (co-speaker FOR2107; DA1151/5-1, DA1151/5-2, DA1151/6-1), Axel Krug (KR3822/5-1, KR3822/7-2), Igor Nenadic (NE2254/1-2, NE2254/2-1, NE2254/3-1, NE2254/4-1), Carsten Konrad (KO4291/3-1), Marcella Rietschel (RI 908/11-1, RI 908/11-2),

Antidepressant Exposure and DNA Methylation

Markus Nöthen (NO 246/10-1, NO 246/10-2), Stephanie Witt (WI 3439/3-1, WI 3439/3-2). Tilo Kircher received unrestricted educational grants from Servier, Janssen, Recordati, Aristo, Otsuka, neuraxpharm.

NTR

This work was supported by the Royal Dutch Academy for Arts and Science (KNAW) Academy Professor Award (PAH/6635) to DIB; the Netherlands Organization for Scientific Research (NWO 480-15-001/674) and Biobanking and Biomolecular Resources Research Infrastructure (BBMRI-NL: 184.021.007; 184.033.111).

MARS-UniDep

The MARS cohort was sponsored by the Max Planck Society. The UniDep cohort was funded by the Bavarian Ministry of Commerce and by the Federal Ministry of Education and Research in the framework of the National Genome Research Network, Foerderkennzeichen 01GS0481 and the Bavarian Ministry of Commerce. DNA methylation analysis of a subset of both cohorts was financed by ERA-NET NEURON.

Lothian Birth Cohort 1936 (LBC1936)

The LBC1936 is supported by the Biotechnology and Biological Sciences Research Council, and the Economic and Social Research Council [BB/W008793/1] (which supports SEH), Age UK (Disconnected Mind project), the Medical Research Council [G0701120, G1001245, MR/M013111/1, MR/R024065/1], the Milton Damerel Trust, and the University of Edinburgh. SRC is supported by a Sir Henry Dale Fellowship jointly funded by the Wellcome Trust and the Royal Society (221890/Z/20/Z). Methylation typing of was supported by Centre for Cognitive Ageing and Cognitive Epidemiology (Pilot Fund award), Age UK, The Wellcome Trust Institutional Strategic Support Fund, The University of Edinburgh, and The University of Queensland.

ALSPAC

The UK Medical Research Council and Wellcome (Grant Ref: 217065/Z/19/Z) and the University of Bristol provide core support for ALSPAC. ASFK is funded by a Wellcome Early Career Award (Grant ref: 227063/Z/23/Z). A comprehensive list of grants funding is available on the ALSPAC website (<http://www.bristol.ac.uk/alspac/external/documents/grant-acknowledgements.pdf>). This publication is the work of the authors and ED, PY & ASFK will serve as guarantors for the ALSPAC contents of this paper. PY's work is supported by the National Institute for Health and Care Research Bristol Biomedical Research Centre and the Medical Research Council Integrative Epidemiology Unit at the University of Bristol (MC_UU_00032/4, MC_UU_00032/6). The views expressed are those of the authors and not necessarily those of the NIHR or the Department of Health and Social Care.

E-Risk

The E-Risk Study is funded by grants from the UK Medical Research Council [G1002190; MR/X010791/1]. Additional support was provided by the US National Institute of Child

Antidepressant Exposure and DNA Methylation

Health and Human Development [HD077482] and the Jacobs Foundation. Chloe C. Y. Wong was supported by the National Institute for Health and Care Research (NIHR) Maudsley Biomedical Research Centre at South London and Maudsley NHS Foundation Trust and King's College London [NIHR203318]. Helen L. Fisher was supported by the Economic and Social Research Council (ESRC) Centre for Society and Mental Health at King's College London [ES/S012567/1]. The views expressed are those of the authors and not necessarily those of the NIHR, the Department of Health and Social Care, the ESRC, or King's College London.

Conflicts of Interest

REM is an advisor to the Epigenetic Clock Development Foundation and Optima Partners.

HJG. has received travel grants and speaker honoraria from Fresenius Medical Care, Neuraxpharm, Servier, and Janssen Cilag, as well as research funding from Fresenius Medical Care. H.J.G. had personal contracts approved by the university administration for speaker honoraria and one IIT with Fresenius Medical Care.

TK received unrestricted educational grants from Servier, Janssen, Recordati, Aristo, Otsuka.

All other authors report no biomedical financial interests or potential conflicts of interest.

Data & code availability

Summary statistics from the MWAS analyses are being submitted for open access on the

EWAS catalog. All code and analysis scripts are available on GitHub

(<https://github.com/Elladavyson>).

Antidepressant Exposure and DNA Methylation

References

1. GBD 2017 Dis Injury Incidence Pr, James SLG, Abate D, et al. Global, regional, and national incidence, prevalence, and years lived with disability for 354 diseases and injuries for 195 countries and territories, 1990-2017: a systematic analysis for the Global Burden of Disease Study 2017. *The Lancet*. 2018;392(10159):1789-1858. doi:10.1016/S0140-6736(18)32279-7
2. Braund TA, Tillman G, Palmer DM, Gordon E, Rush AJ, Harris AWF. Antidepressant side effects and their impact on treatment outcome in people with major depressive disorder: an iSPOT-D report. *Transl Psychiatry*. 2021;11(1):1-8. doi:10.1038/s41398-021-01533-1
3. Cipriani A, Furukawa TA, Salanti G, et al. Comparative efficacy and acceptability of 21 antidepressant drugs for the acute treatment of adults with major depressive disorder: a systematic review and network meta-analysis. *Lancet*. 2018;391(10128):1357-1366. doi:10.1016/S0140-6736(17)32802-7
4. Souery D, Serretti A, Calati R, et al. Switching antidepressant class does not improve response or remission in treatment-resistant depression. *J Clin Psychopharmacol*. 2011;31(4):512-516. doi:10.1097/JCP.0b013e3182228619
5. Sackeim HA. The definition and meaning of treatment-resistant depression. *J Clin Psychiatry*. 2001;62 Suppl 16:10-17.
6. McIntosh AM, Sullivan PF, Lewis CM. Uncovering the Genetic Architecture of Major Depression. *Neuron*. 2019;102(1):91-103. doi:10.1016/j.neuron.2019.03.022
7. Berton O, Nestler EJ. New approaches to antidepressant drug discovery: beyond monoamines. *Nat Rev Neurosci*. 2006;7(2):137-151. doi:10.1038/nrn1846
8. Robinson E. Psychopharmacology: From serendipitous discoveries to rationale design, but what next? *Brain and Neuroscience Advances*. 2018;2:2398212818812629. doi:10.1177/2398212818812629
9. Harmer CJ, Duman RS, Cowen PJ. How do antidepressants work? New perspectives for refining future treatment approaches. *Lancet Psychiatry*. 2017;4(5):409-418. doi:10.1016/S2215-0366(17)30015-9
10. Hirschfeld RMA. History and Evolution of the Monoamine Hypothesis of Depression. *J Clin Psychiatry*. 2000;(61):Suppl 6, 4-6.
11. Jauhar S, Arnone D, Baldwin DS, et al. A leaky umbrella has little value: evidence clearly indicates the serotonin system is implicated in depression. *Mol Psychiatry*. Published online June 16, 2023:1-4. doi:10.1038/s41380-023-02095-y
12. Bessa JM, Ferreira D, Melo I, et al. The mood-improving actions of antidepressants do not depend on neurogenesis but are associated with neuronal remodeling. *Mol Psychiatry*. 2009;14(8):764-773. doi:10.1038/mp.2008.119

Antidepressant Exposure and DNA Methylation

13. Duman RS, Aghajanian GK. Synaptic Dysfunction in Depression: Potential Therapeutic Targets. *Science*. 2012;338(6103):68-72. doi:10.1126/science.1222939
14. Webb LM, Phillips KE, Ho MC, Veldic M, Blacker CJ. The Relationship between DNA Methylation and Antidepressant Medications: A Systematic Review. *International Journal of Molecular Sciences*. 2020;21(3):826. doi:10.3390/ijms21030826
15. Menke A, Binder EB. Epigenetic alterations in depression and antidepressant treatment. *Dialogues in Clinical Neuroscience*. 2014;16(3):395-404. doi:10.31887/DCNS.2014.16.3/amenke
16. Gassen NC, Fries GR, Zannas AS, et al. Chaperoning epigenetics: FKBP51 decreases the activity of DNMT1 and mediates epigenetic effects of the antidepressant paroxetine. *Sci Signal*. 2015;8(404):ra119. doi:10.1126/scisignal.aac7695
17. Le François B, Soo J, Millar AM, et al. Chronic mild stress and antidepressant treatment alter 5-HT1A receptor expression by modifying DNA methylation of a conserved Sp4 site. *Neurobiology of Disease*. 2015;82:332-341. doi:10.1016/j.nbd.2015.07.002
18. Sales AJ, Joca SRL. Effects of DNA methylation inhibitors and conventional antidepressants on mice behaviour and brain DNA methylation levels. *Acta Neuropsychiatrica*. 2016;28(1):11-22. doi:10.1017/neu.2015.40
19. Nabais MF, Gadd DA, Hannon E, Mill J, McRae AF, Wray NR. An overview of DNA methylation-derived trait score methods and applications. *Genome Biol*. 2023;24:28. doi:10.1186/s13059-023-02855-7
20. Bird A. Perceptions of epigenetics. *Nature*. 2007;447(7143):396-398. doi:10.1038/nature05913
21. Barbu MC, Huider F, Campbell A, et al. Methylome-wide association study of antidepressant use in Generation Scotland and the Netherlands Twin Register implicates the innate immune system. *Mol Psychiatry*. 2022;27(3):1647-1657. doi:10.1038/s41380-021-01412-7
22. Klungel OH, de Boer A, Paes AHP, Herings RMC, Seidell JC, Bakker A. Influence of question structure on the recall of self-reported drug use. *Journal of Clinical Epidemiology*. 2000;53(3):273-277. doi:10.1016/S0895-4356(99)00167-5
23. Nielsen MW, Søndergaard B, Kjølner M, Hansen EH. Agreement between self-reported data on medicine use and prescription records vary according to method of analysis and therapeutic group. *Journal of Clinical Epidemiology*. 2008;61(9):919-924. doi:10.1016/j.jclinepi.2007.10.021
24. Stirratt MJ, Dunbar-Jacob J, Crane HM, et al. Self-report measures of medication adherence behavior: recommendations on optimal use. *Transl Behav Med*. 2015;5(4):470-482. doi:10.1007/s13142-015-0315-2
25. McClintock HF, BeKampis AN, Hartmann E, Bogner HR. Adherence to Antidepressants in Underserved Communities: A Comparison of Electronic Monitoring

Antidepressant Exposure and DNA Methylation

- and Self-report Measures. *Community Ment Health J.* 2020;56(4):727-734. doi:10.1007/s10597-019-00533-2
26. Hafferty JD, Campbell AI, Navrady LB, et al. Self-reported medication use validated through record linkage to national prescribing data. *Journal of Clinical Epidemiology.* 2018;94:132-142. doi:10.1016/j.jclinepi.2017.10.013
27. Smith BH, Campbell A, Linksted P, et al. Cohort Profile: Generation Scotland: Scottish Family Health Study (GS:SFHS). The study, its participants and their potential for genetic research on health and illness. *International Journal of Epidemiology.* 2013;42(3):689-700. doi:10.1093/ije/dys084
28. Smith BH, Campbell H, Blackwood D, et al. Generation Scotland: the Scottish Family Health Study; a new resource for researching genes and heritability. *BMC Med Genet.* 2006;7:74. doi:10.1186/1471-2350-7-74
29. Pidsley R, Y Wong CC, Volta M, Lunnon K, Mill J, Schalkwyk LC. A data-driven approach to preprocessing Illumina 450K methylation array data. *BMC Genomics.* 2013;14(1):293. doi:10.1186/1471-2164-14-293
30. Du P, Kibbe WA, Lin SM. lumi: a pipeline for processing Illumina microarray. *Bioinformatics.* 2008;24(13):1547-1548. doi:10.1093/bioinformatics/btn224
31. Zhang F, Chen W, Zhu Z, et al. OSCA: a tool for omic-data-based complex trait analysis. *Genome Biology.* 2019;20(1):107. doi:10.1186/s13059-019-1718-z
32. First MB, Spitzer RL, Gibbon M, et al. The Structured Clinical Interview for DSM-III-R Personality Disorders (SCID-II). Part II: Multi-Site Test-Retest Reliability Study. *Journal of Personality Disorders.* 1995;9(2):92-104. doi:10.1521/pedi.1995.9.2.92
33. Hall LS, Adams MJ, Arnau-Soler A, et al. Genome-wide meta-analyses of stratified depression in Generation Scotland and UK Biobank. *Transl Psychiatry.* 2018;8(1):1-12. doi:10.1038/s41398-017-0034-1
34. Yang J, Lee SH, Goddard ME, Visscher PM. GCTA: A Tool for Genome-wide Complex Trait Analysis. *The American Journal of Human Genetics.* 2011;88(1):76-82. doi:10.1016/j.ajhg.2010.11.011
35. Campagna MP, Xavier A, Lechner-Scott J, et al. Epigenome-wide association studies: current knowledge, strategies and recommendations. *Clinical Epigenetics.* 2021;13(1):214. doi:10.1186/s13148-021-01200-8
36. Suderman M, Staley JR, French R, Arathimos R, Simpkin A, Tilling K. dmrff: identifying differentially methylated regions efficiently with power and control. Published online December 31, 2018:508556. doi:10.1101/508556
37. Hansen KD. IlluminaHumanMethylationEPICanno.ilm10b2.hg19: Annotation for Illumina's EPIC methylation arrays. R package version 0.6.0. Published online 2016. https://bitbucket.com/kasperdanielhansen/Illumina_EPIC.

Antidepressant Exposure and DNA Methylation

38. Watanabe K, Taskesen E, van Bochoven A, Posthuma D. Functional mapping and annotation of genetic associations with FUMA. *Nat Commun.* 2017;8(1):1826. doi:10.1038/s41467-017-01261-5
39. THE GTEX CONSORTIUM, Ardlie KG, Deluca DS, et al. The Genotype-Tissue Expression (GTEx) pilot analysis: Multitissue gene regulation in humans. *Science.* 2015;348(6235):648-660. doi:10.1126/science.1262110
40. Koopmans F, van Nierop P, Andres-Alonso M, et al. SynGO: An Evidence-Based, Expert-Curated Knowledge Base for the Synapse. *Neuron.* 2019;103(2):217-234.e4. doi:10.1016/j.neuron.2019.05.002
41. Dolgalev I. msigdb: MSigDB Gene Sets for Multiple Organisms in a Tidy Data Format. Published online 2022. Accessed February 27, 2024. <https://CRAN.R-project.org/package=msigdb>
42. Phipson B, Maksimovic J, Oshlack A. missMethyl: an R package for analyzing data from Illumina's HumanMethylation450 platform. *Bioinformatics.* 2016;32(2):286-288. doi:10.1093/bioinformatics/btv560
43. Friedman JH, Hastie T, Tibshirani R. Regularization Paths for Generalized Linear Models via Coordinate Descent. *Journal of Statistical Software.* 2010;33:1-22. doi:10.18637/jss.v033.i01
44. Balduzzi S, Rücker G, Schwarzer G. How to perform a meta-analysis with R: a practical tutorial. *Evid Based Ment Health.* 2019;22(4):153-160. doi:10.1136/ebmental-2019-300117
45. Battram T, Yousefi P, Crawford G, et al. The EWAS Catalog: a database of epigenome-wide association studies. *Wellcome Open Res.* 2022;7:41. doi:10.12688/wellcomeopenres.17598.2
46. Penninx BWJH, Beekman ATF, Smit JH, et al. The Netherlands Study of Depression and Anxiety (NESDA): rationale, objectives and methods. *International Journal of Methods in Psychiatric Research.* 2008;17(3):121-140. doi:10.1002/mpr.256
47. Aberg KA, Chan RF, Shabalin AA, et al. A MBD-seq protocol for large-scale methylome-wide studies with (very) low amounts of DNA. *Epigenetics.* 2017;12(9):743-750. doi:10.1080/15592294.2017.1335849
48. Aberg KA, Chan RF, van den Oord EJCG. MBD-seq - realities of a misunderstood method for high-quality methylome-wide association studies. *Epigenetics.* 2019;15(4):431-438. doi:10.1080/15592294.2019.1695339
49. Chan RF, Shabalin AA, Xie LY, et al. Enrichment methods provide a feasible approach to comprehensive and adequately powered investigations of the brain methylome. *Nucleic Acids Res.* 2017;45(11):e97. doi:10.1093/nar/gkx143
50. Cabrera CP, Navarro P, Huffman JE, et al. Uncovering Networks from Genome-Wide Association Studies via Circular Genomic Permutation. *G3 Genes/Genomes/Genetics.* 2012;2(9):1067-1075. doi:10.1534/g3.112.002618

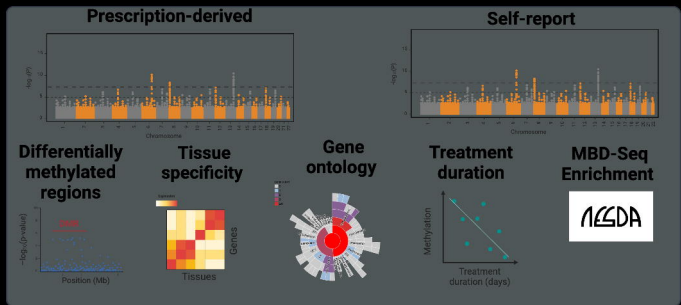
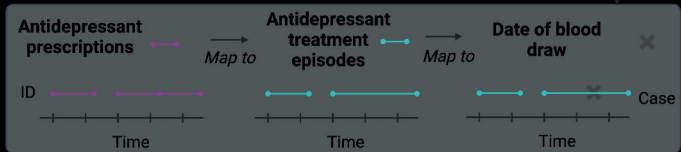
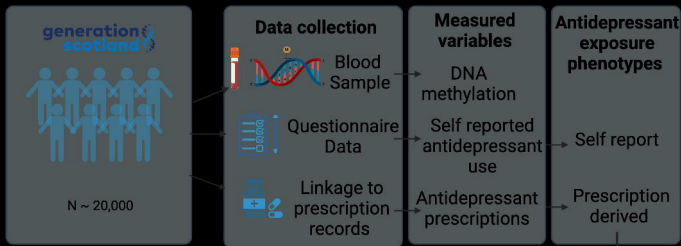
Antidepressant Exposure and DNA Methylation

51. Monster TBM, Janssen WMT, de Jong PE, de Jong-van den Berg LTW, Group for the PS. Pharmacy data in epidemiological studies: an easy to obtain and reliable tool. *Pharmacoepidemiology and Drug Safety*. 2002;11(5):379-384. doi:10.1002/pds.722
52. Chandra Roy B, Kakinuma N, Kiyama R. Kank attenuates actin remodeling by preventing interaction between IRSp53 and Rac1. *Journal of Cell Biology*. 2009;184(2):253-267. doi:10.1083/jcb.200805147
53. Glessner JT, Li J, Wang D, et al. Copy number variation meta-analysis reveals a novel duplication at 9p24 associated with multiple neurodevelopmental disorders. *Genome Medicine*. 2017;9(1):106. doi:10.1186/s13073-017-0494-1
54. Fazel-Najafabadi M, Rallabandi HR, Singh MK, et al. Discovery and Functional Characterization of Two Regulatory Variants Underlying Lupus Susceptibility at 2p13.1. *Genes (Basel)*. 2022;13(6):1016. doi:10.3390/genes13061016
55. Lm H, A D, Dm R, et al. Gene expression imputation across multiple brain regions provides insights into schizophrenia risk. *Nat Genet*. 2019;51(4):659-674. doi:10.1038/s41588-019-0364-4
56. Nazarian A, Yashin AI, Kulminski AM. Methylation-wide association analysis reveals AIM2, DGUOK, GNAI3, and ST14 genes as potential contributors to the Alzheimer's disease pathogenesis. Published online May 15, 2018:322503. doi:10.1101/322503
57. Emmerzaal TL, Nijkamp G, Veldic M, et al. Effect of neuropsychiatric medications on mitochondrial function: For better or for worse. *Neuroscience & Biobehavioral Reviews*. 2021;127:555-571. doi:10.1016/j.neubiorev.2021.05.001
58. Holper L, Ben-Shachar D, Mann JJ. Psychotropic and neurological medication effects on mitochondrial complex I and IV in rodent models. *European Neuropsychopharmacology*. 2019;29(9):986-1002. doi:10.1016/j.euroneuro.2019.06.010
59. Hillary RF, McCartney DL, Bernabeu E, et al. Blood-based epigenome-wide analyses on the prevalence and incidence of nineteen common disease states. Published online January 11, 2023:2023.01.10.23284387. doi:10.1101/2023.01.10.23284387
60. Miidera H, Enomoto M, Kitamura S, Tachimori H, Mishima K. Association Between the Use of Antidepressants and the Risk of Type 2 Diabetes: A Large, Population-Based Cohort Study in Japan. *Diabetes Care*. 2020;43(4):885-893. doi:10.2337/dc19-1175
61. Andersohn F, Schade R, Suissa S, Garbe E. Long-Term Use of Antidepressants for Depressive Disorders and the Risk of Diabetes Mellitus. *AJP*. 2009;166(5):591-598. doi:10.1176/appi.ajp.2008.08071065
62. Hillary RF, Ng HK, McCartney DL, et al. Blood-based epigenome-wide analyses of chronic low-grade inflammation across diverse population cohorts. Published online November 3, 2023:2023.11.02.23298000. doi:10.1101/2023.11.02.23298000
63. Thompson M, Hill BL, Rakocz N, et al. Methylation risk scores are associated with a collection of phenotypes within electronic health record systems. *npj Genom Med*. 2022;7(1):1-11. doi:10.1038/s41525-022-00320-1

Antidepressant Exposure and DNA Methylation

64. Yousefi PD, Suderman M, Langdon R, Whitehurst O, Davey Smith G, Relton CL. DNA methylation-based predictors of health: applications and statistical considerations. *Nat Rev Genet.* 2022;23(6):369-383. doi:10.1038/s41576-022-00465-w
65. Stevenson AJ, Gadd DA, Hillary RF, et al. Creating and Validating a DNA Methylation-Based Proxy for Interleukin-6. *The Journals of Gerontology: Series A.* 2021;76(12):2284-2292. doi:10.1093/gerona/glab046
66. Genetics for all. *Nat Genet.* 2019;51(4):579-579. doi:10.1038/s41588-019-0394-y
67. Elliott HR, Burrows K, Min JL, et al. Characterisation of ethnic differences in DNA methylation between UK-resident South Asians and Europeans. *Clin Epigenetics.* 2022;14:130. doi:10.1186/s13148-022-01351-2
68. Li B, Aouizerat BE, Cheng Y, et al. Incorporating local ancestry improves identification of ancestry-associated methylation signatures and meQTLs in African Americans. *Commun Biol.* 2022;5(1):1-12. doi:10.1038/s42003-022-03353-5
69. Breeze CE, Batorsky A, Lee MK, et al. Epigenome-wide association study of kidney function identifies trans-ethnic and ethnic-specific loci. *Genome Med.* 2021;13(1):74. doi:10.1186/s13073-021-00877-z
70. Hannon E, Dempster EL, Mansell G, et al. DNA methylation meta-analysis reveals cellular alterations in psychosis and markers of treatment-resistant schizophrenia. *Elife.* 2021;10:e58430. doi:10.7554/eLife.58430
71. Singmann P, Shem-Tov D, Wahl S, et al. Characterization of whole-genome autosomal differences of DNA methylation between men and women. *Epigenetics Chromatin.* 2015;8:43. doi:10.1186/s13072-015-0035-3
72. Mulder RH, Neumann A, Cecil CAM, et al. Epigenome-wide change and variation in DNA methylation in childhood: trajectories from birth to late adolescence. *Hum Mol Genet.* 2021;30(1):119-134. doi:10.1093/hmg/ddaa280
73. Zhang L, Silva TC, Young JI, et al. Epigenome-wide meta-analysis of DNA methylation differences in prefrontal cortex implicates the immune processes in Alzheimer's disease. *Nat Commun.* 2020;11(1):6114. doi:10.1038/s41467-020-19791-w

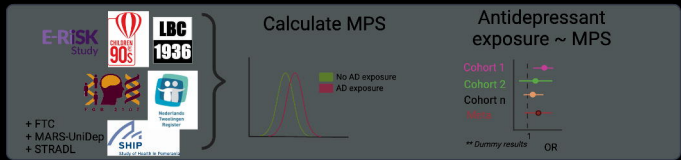
Antidepressant Exposure and DNA Methylation

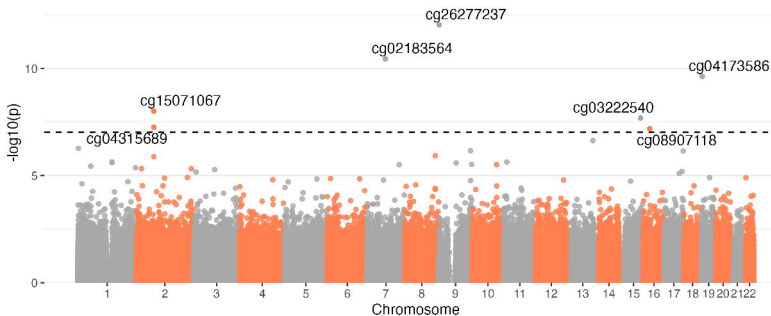
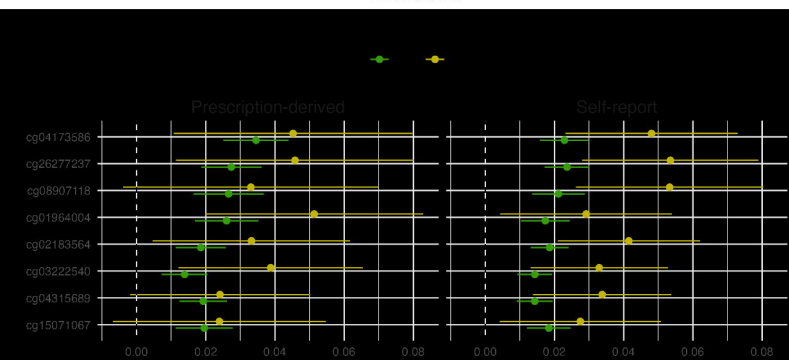
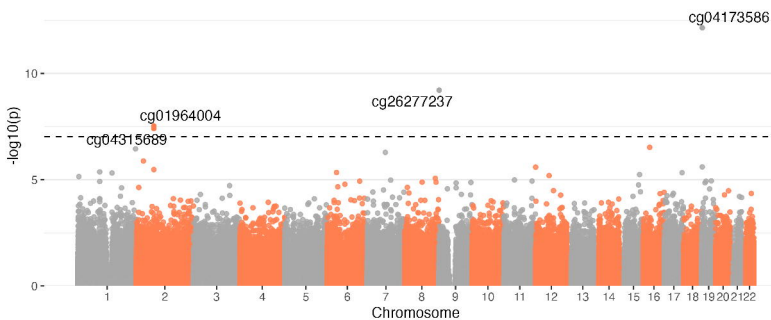


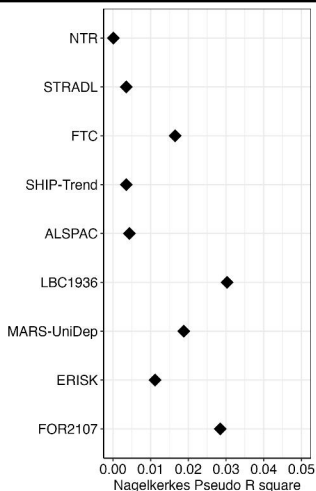
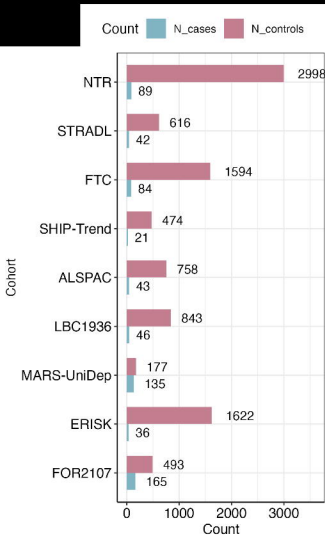
generation scotland

LASSO regression: AD exposure ~ DNAm

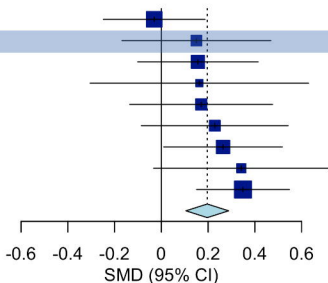
$$MPS = \beta_1 CpG_1 + \beta_2 CpG_2 + \dots + \beta_p CpG_p$$



A Self-report (N = 16, 536)**B Prescription-derived (N = 7, 951)**



Source	SMD (95% CI)
NTR	-0.03 [-0.25; 0.19]
STRADL	0.15 [-0.17; 0.47]
FTC	0.16 [-0.10; 0.41]
SHIP-Trend	0.16 [-0.30; 0.63]
ALSPAC	0.17 [-0.14; 0.48]
LBC1936	0.23 [-0.09; 0.54]
MARS-UniDep	0.26 [0.01; 0.52]
ERISK	0.34 [-0.03; 0.72]
FOR2107	0.35 [0.15; 0.55]
Total	0.20 [0.10; 0.29]



Heterogeneity: $\chi^2_8 = 7.58$ ($P = .48$), $I^2 = 0\%$

Antidepressant Exposure and DNA Methylation

Table 1 | Demographics of antidepressant exposed and unexposed individuals using the prescription-derived and self-reported antidepressant exposure phenotypes in Generation Scotland. M = Mean, SD = Standard Deviation.

	Prescription-derived phenotype		Self-report phenotype	
	Unexposed	Exposed	Unexposed	Exposed
N	7090	861	15028	1508
Age: M (SD)	47.6 (15.2)	51.1 (12.7)	46.6 (14.9)	50.2 (12.4)
BMI: M (SD)	26.4 (4.78)	28.5 (6.11)	26.4 (5.01)	28.2 (6.05)
Sex				
Female: N (%)	3746 (53)	631 (73)	8552 (57)	1151 (76)
Male: N (%)	3342 (47)	230 (27)	6464 (43)	354 (23)
Smoking behaviours				
Current: N (%)	963 (14)	214 (25)	2448 (16)	402 (27)
Former: N (%)	1942 (27)	273 (32)	4183 (28)	481 (32)
Never: N (%)	3913 (55)	328 (38)	8114 (54)	576 (38)
Pack years: M (SD)	6.3 (13.1)	12 (17.1)	6.55 (13.3)	11.6 (16.9)
Major Depressive Disorder (Lifetime status)				
Cases: N (%)	414 (5.8)	382 (44)	1502 (10)	766 (51)
Controls: N	6514 (92)	373 (43)	12704 (85)	556 (37)

Antidepressant Exposure and DNA Methylation

(%)				
-----	--	--	--	--

Table 2 | Eight CpGs associated with self-reported and/or prescription-derived antidepressant use. The EWAS catalog was searched using the *ewascatalog* R package⁴⁵ for other studies (n > 1000) which report a significant CpG-trait association, accessed on

Antidepressant Exposure and DNA Methylation

17/03/2024.

Antidepressant Exposure and DNA Methylation

Probe	Chr	BP	Gene	β_{SR}	SE_{SR}	P_{SR}	β_{PD}	SE_{PD}	P_{PD}	Other traits associated with the CpG (EWAS catalog) ⁴⁵
cg26277237	9	631910	<i>KANK1</i>	0.024	0.0033	9.3×10^{-13}	0.027	0.0044	6.1×10^{-10}	C-reactive protein levels ⁶² (basic model), Chronic kidney disease (basic model) ¹³ , Type 2 diabetes (basic model) ⁵⁹ , Estimated glomerular filtration rate ⁶⁹
cg04173586	19	2167496	<i>DOT1L</i>	0.023	0.0036	2.35×10^{-10}	0.034	0.0048	7×10^{-13}	Alcohol consumption ⁷⁰ , COVID-19 severity (basic model) ⁵⁹ , Sex ⁷¹ , Age ⁷² , Alzheimer's disease Braak stage ⁷³ , Estimated glomerular filtration rate ⁶⁹ , Schizophrenia ⁷⁰
cg08907118	16	27482516	<i>GTF3C1</i>	0.021	0.0039	6.46×10^{-8}	0.027	0.0052	3.0×10^{-7}	C-reactive protein levels (basic model) ⁶² , Chronic pain (basic model) ⁵⁹ , Type 2 diabetes

Antidepressant Exposure and DNA Methylation

										(basic model) ⁵⁹ , Sex ⁷¹ , Age ⁷²
cg02183564	7	76874892	CCDC146	0.019	0.0028	3.59x10 ⁻¹¹	0.019	0.0037	5.17x10 ⁻⁷	Birthweight ⁷² , C-reactive protein levels (basic model) ⁶² , Gestational age, Chronic pain (basic model) ⁵⁹ , Type 2 diabetes (basic model) ⁵⁹ , Age ⁷²
cg15071067	2	74196550	DGUOK-AS1	0.018	0.0032	9.84x10 ⁻⁹	0.020	0.0042	3.3x10 ⁻⁶	C-reactive protein levels (basic model) ⁶² , Incident chronic pain (basic model) ⁵⁹ , Incident type 2 diabetes (basic & fully adjusted model) ⁵⁹ , Chronic pain (self-report) ⁵⁹ , Type 2 diabetes (basic model) ⁵⁹
cg01964004	2	74196572	DGUOK-AS1	0.017	0.0036	1.3x10 ⁻⁶	0.026	0.0047	3.0x10 ⁻⁸	C-reactive protein levels (basic model) ⁶² , Incident type 2 diabetes (basic & fully adjusted model) ⁵⁹ , Chronic pain (basic model) ⁵⁹ , Ischemic heart disease (basic model) ⁵⁹ , Type 2 diabetes (basic

Antidepressant Exposure and DNA Methylation

										model) ⁵⁹ 01/05/2024 03:23:00
cg03222540	15	90575080	ZNF710	0.014	0.002	2.05x10 ⁻⁸	0.014	0.0034	3.7x10 ⁻⁷	C-reactive protein levels (basic model) ⁶² , Chronic kidney disease (basic model) ⁵⁹ , Type 2 diabetes (basic & fully adjusted model) ⁵⁹
cg04315689	2	74198896	DGUOK- AS1	0.014	0.0026	5.56x10 ⁻⁸	0.019	0.0035	3.85x10 ⁻⁸	C-reactive protein levels (basic model) ⁶² , Incident type 2 diabetes (basic model) ⁵⁹ , Chronic kidney disease (basic & fully adjusted model) ⁵⁹ , Chronic pain (basic model) ⁵⁹ , Type 2 diabetes (basic & fully adjusted model) ⁵⁹