

# The effectiveness of telemedicine in the prevention of type 2 diabetes: a systematic review and meta-analysis of interventions

## Authors

Laura Suhlrie, MPH<sup>1</sup>

Raga Ayyagari, MS<sup>2</sup>

Camille Mba, MD, PhD<sup>3,4</sup>

Kjell Olsson, MPH, RD<sup>5</sup>

Harold Torres-Aparcana, MD, MHS<sup>6,7</sup>

Steven James, PhD, GradCert DEM, FHEA, RN<sup>8,9,10</sup>

Elpida Vounzoulaki, PhD<sup>11</sup>

Daniel B. Ibsen, PhD<sup>3,12,13,14</sup>

## Affiliations

<sup>1</sup>Professorship of Public Health and Prevention, TUM School of Medicine and Health, Technical University of Munich, Germany

<sup>2</sup>Mathematica, Princeton, New Jersey, United States

<sup>3</sup>MRC Epidemiology Unit, University of Cambridge School of Clinical Medicine, Cambridge, United Kingdom

<sup>4</sup>Faculty of Medicine and Biomedical Sciences, University of Yaoundé 1, Yaoundé, Cameroon

<sup>5</sup>Department of Clinical Sciences Malmö, Lund University, Malmö, Sweden

<sup>6</sup>Universidad Peruana Cayetano Heredia, Lima, Perú

<sup>7</sup>Clínica San Felipe, Lima, Perú

<sup>8</sup>School of Health, University of the Sunshine Coast, Petrie, Australia

<sup>9</sup>Department of Medicine, University of Melbourne, Parkville, Australia

<sup>10</sup>School of Medicine, Western Sydney University, Campbelltown, Australia

<sup>11</sup>Leicester Real World Evidence Unit, Diabetes Research Centre, University of Leicester, Leicester, United Kingdom

<sup>12</sup>Department of Public Health, Aarhus University, Aarhus, Denmark

<sup>13</sup>Steno Diabetes Center Aarhus, Aarhus University Hospital, Aarhus, Denmark

<sup>14</sup>Department of Nutrition, Sports and Exercise, University of Copenhagen, Frederiksberg, Denmark

## **ORCID**

Laura Suhlrie	0000-0002-8810-7181
Raga Ayyagari	NA
Camille Mba	0000-0001-6186-8944
Kjell Olsson	0000-0002-1008-2690
Harold Torres-Aparcana	0000-0002-7489-4145
Steven James	0000-0002-3928-9206
Elpida Vounzoulaki	0000-0003-3137-8295
Daniel B. Ibsen	0000-0002-7038-4770

## **Acknowledgments**

This work was initiated as part of the Global Diabetes Journal Club, an open online journal club for researchers interested in diabetes. We would like to acknowledge all those who participated in the meetings and those part of the idea generation in the working groups. A special thanks to Enzo Cerullo for commenting on the protocol and librarian Selina Lock from Leicester University for assistance with the systematic searches.

## **Funding support**

None.

## **Declaration of conflicts of interest**

The authors declare no conflict of interest.

## 1 **ABSTRACT**

2 **Objective:** To evaluate the effectiveness of telemedicine-delivered diet and/or exercise  
3 interventions to prevent type 2 diabetes (T2D) in people at risk.

4 **Methods:** Embase (via Ovid), Medline (via Ovid), Web of Science, CINAHL, Scopus and  
5 SciELO were searched from January 2010-December 2020 for intervention studies using a  
6 diet and/or exercise intervention delivered through telemedicine for T2D prevention in people  
7 at risk. Parallel randomised controlled trials were meta-analyzed and other intervention  
8 designs narratively synthesised.

9 **Results:** We identified 11,645 studies via database searches, of which 226 were full text  
10 screened, and 52 interventions included; 32 were included in the meta-analysis and 20 in the  
11 narrative synthesis. Telemedicine interventions reduced body weight (mean difference (MD):  
12 -1.66 kg, 95% confidence interval (CI) -2.48,-0.90,  $I^2=81%$ ,  $n_{studies}=17$ ), body mass index (MD  
13 -0.71 kg/m<sup>2</sup>, 95% CI -1.06,-0.37,  $I^2=70%$ ,  $n_{studies}=11$ ), waist circumference (MD -2.82 cm,  
14 95% CI -5.16,-2.35,  $I^2=84%$ ,  $n_{studies}=7$ ) and HbA1c (MD -0.07%, 95% CI -0.14,0.00,  $I^2=71%$ ,  
15  $n_{studies}=11$ ). No significant effects were found for other clinical outcomes. The narrative  
16 synthesis supported the results.

17 **Conclusions:** Our study highlights the potential for telemedicine-delivered interventions in  
18 preventing T2D in people at risk.

## 19 INTRODUCTION

20 Diabetes is the fastest-growing chronic disease world-wide, and is universally acknowledged  
21 as posing a significant health, economic, and social burden in all populations. Globally,  
22 around 537 million adults aged 20-79 years were estimated to be living with the disease in  
23 2021, with more than 80% of people with diabetes living in low- and middle-income countries  
24 (1). Recent projections estimated an increase in global prevalence from 10.5% in 2021 to  
25 12.2% in 2045 (1). Type 2 diabetes (T2D) accounts for approximately 90% of all cases (1).  
26 With many health systems currently struggling to meet the demands of diabetes and its  
27 sequelae, especially in low- and middle-income countries, it is vital that actions are taken to  
28 prevent these projections from becoming a reality.

29 Weight loss and lifestyle modifications, including a healthy diet and exercise, are  
30 cornerstones in T2D prevention (2-4). The American Diabetes Association recommends an  
31 intensive behavioural lifestyle intervention program, modelled on the Diabetes Prevention  
32 Program (DPP), to achieve and maintain a 7% loss of initial body weight and to increase  
33 moderate-intensity physical activity to at least 150 minutes per week (5). The adoption of  
34 individual- and group-based in-person interventions to assist with lifestyle modifications is  
35 most common in primary care settings, and have been shown to be effective (6). However,  
36 common bottlenecks of the success of diabetes prevention programmes include lack of  
37 professionally trained staff, limited financial resources, and time constraints, which lead to  
38 high absenteeism among participants (7). Similarly, a lack of follow-up in healthcare settings  
39 has also been identified (7).

40 Telemedicine is defined as the “use of information and communication technologies (ICT) for  
41 health service delivery” and has been suggested as a viable support tool for primary care  
42 physicians for the follow-up of patients with T2D (8, 9). Historically, telemedicine was  
43 primarily used to provide care for patients in rural and remote geographical locations (10). In

44 recent years, telemedicine interventions have evolved, and now involve technology such as  
45 smartphones, laptop or desk computers to enable communication through voice messages,  
46 text and email messages, or live audio or video streaming. During the COVID-19 pandemic,  
47 the value of telemedicine was further highlighted, enabling healthcare providers to care for  
48 patients remotely (11).

49 A meta-analysis described DPP-based lifestyle interventions delivered via eHealth and found  
50 a mean weight loss of -3.98% (95% confidence interval: -4.49%,-3.46%) from baseline to  
51 follow-up of up to 15 months (12), highlighting the effectiveness of telemedicine in supporting  
52 weight loss. However, when considering T2D prevention, the effectiveness of other  
53 telemedicine interventions, e.g., including different apps and monitoring, to support lifestyle  
54 changes and improving multiple health outcomes remains unclear. In addition, to our  
55 knowledge there is no evidence on the effectiveness of telemedicine interventions for  
56 specific high-risk groups, e.g., people with overweight/obesity, metabolic syndrome or  
57 prediabetes. Our systematic review and meta-analysis sought to determine the effectiveness  
58 of telemedicine interventions relevant to primary care settings in the prevention of T2D, in  
59 people at high risk. We also examined differences in effectiveness among subgroups,  
60 including type of control group, degree of behavioural support, type of lifestyle intervention,  
61 criteria for being at risk of T2D, risk of bias, and duration of intervention. The protocol of this  
62 systematic review and meta-analysis was registered in PROSPERO (CRD42020210829).

## 63 **METHODS**

64 A quantitative systematic review was conducted using processes adapted from established  
65 review methods set out by the Centre for Reviews and Dissemination (13). Standards  
66 derived from the Preferred Reporting Items for Systematic Reviews and Meta-Analysis  
67 (PRISMA) were applied (14).

## 68 Literature search methods

69 Embase (via Ovid), Medline (via Ovid), Web of Science, CINAHL, Scopus and SciELO were  
70 systematically searched independently by five authors (EV, KO, CM, HT and SJ). All articles  
71 published between January 2010-December 2020 were retrieved. The rationale behind  
72 including only articles published after 2010 is that broadly available telemedicine  
73 technologies emerged around this time period (15, 16). The MESH headings 'glucose  
74 Intolerance [mh]', 'Telemedicine [mh]', 'Mobile Applications [mh]' and 'Cell Phone [mh]', 'Text  
75 Messaging [mh]', 'Internet-Based Intervention [mh]', 'Internet of Things [mh]', 'Internet [mh]',  
76 'Primary Prevention [mh]', 'Life Style [mh]', 'Healthy Lifestyle [mh]', 'Risk Reduction Behavior  
77 [mh]', 'Sedentary Behavior [mh]', 'Diet [mh] Exercise [mh]', 'habits [mh]', 'Primary Health  
78 Care [mh]', 'Care Nursing [mh]', 'Nutritionists [mh]', 'Physical Therapists [mh], and 'Nurses  
79 [mh]' were used. Full details of the search strategy for Medline (via OVID) that was then  
80 adapted for the other database searches are provided in **Supplemental Table 1**. The search  
81 strategy used was initially designed by five authors (EV, KO, CM, HL and SJ) and revised by  
82 a librarian with expertise in conducting systematic reviews and meta-analyses. Articles  
83 identified from database searches were exported to EndNote (Clarivate Analytics) where  
84 duplicates were removed. Duplicates were further identified and removed after import into  
85 Covidence. Titles and abstracts were then independently screened by three pairs of  
86 researchers (RA, CM, KO, HT, SJ and DBI). Full-text articles were obtained if the abstracts  
87 were considered eligible by at least two reviewers. Each full text was then independently  
88 screened by two reviewers for final inclusion; if an agreement could not be reached, then  
89 conflicts at each stage were resolved by a third independent researcher. Reference lists of  
90 relevant studies were hand-searched to identify additional potentially eligible studies for  
91 inclusion. We corresponded with the study authors to request missing data required to  
92 conduct the meta-analysis.

## 93 Eligibility criteria

94 Inclusion criteria comprised adult populations at high risk of developing T2D (diagnosis of  
95 prediabetes confirmed by clinical parameters or screening tools, metabolic syndrome, or  
96 overweight/obesity). Interventions assessed involved any technologically assisted primary  
97 prevention strategies, including video conferencing, text messages, e-mail, internet,  
98 smartphone applications, phone calls. No restrictions were made regarding the control group  
99 (if available). Any clinically relevant outcomes related to metabolic syndrome were  
100 considered for the meta-analysis. The primary outcome was change in body weight. For the  
101 meta-analysis, only randomised controlled trials (RCTs) were included. We included non-  
102 randomized designs in the narrative review. No limitations were made regarding the  
103 language of the study and country where the intervention took place as long as the  
104 intervention setting was primary care or was relevant to primary care (17) (**Supplemental**  
105 **Table 2**).

106 Studies including populations aged less than 18 years old, adults with known diabetes, and  
107 adults not at high risk of developing T2D were excluded. Furthermore, interventions not  
108 delivered via telemedicine were excluded. Intervention types consisting of other means than  
109 primary prevention or targeting other types of diabetes than T2D (i.e. type 1 diabetes (T1D),  
110 gestational diabetes, atypical diabetes) were not considered in this review. Any  
111 observational studies, literature reviews, commentaries, opinion pieces, narrative overviews,  
112 and qualitative studies were also excluded, as were studies that did not take place or were  
113 not relevant to the primary care sector (e.g. studies including hospitalised patient  
114 populations).

## 115 Risk of bias assessment

116 Risk of bias assessment was undertaken by three authors (SJ, KO and LS) using the  
117 Cochrane risk of bias tool (18) (**Supplemental Table 3**). To ensure reliability in data

118 extraction and quality appraisal, a sample of papers included in the review were  
119 independently appraised and data extraction was compared by three additional authors  
120 (DBI, RA and LS). Agreement was reached for all papers.

## 121 **Data extraction and synthesis**

122 Study information was extracted using a standardised form created in Covidence and data  
123 for meta-analyses were compiled in an Excel spreadsheet. Data extracted included: Study  
124 ID, outcome, estimate description, estimate value, confidence intervals, standard error, p-  
125 value, criteria for high-risk of T2D, intervention setting, telemedicine strategy used, medium  
126 of communication used, lifestyle intervention focus, intervention duration, degree of  
127 behavioural support, type of control group, number of participants, mean baseline age,  
128 percentage female, ethnicity. Categorizations informed by previous research were performed  
129 to generate subgroups (19), including criteria for high-risk of T2D (overweight/obese,  
130 prediabetes, prediabetes and overweight/obese, metabolic syndrome, other), intervention  
131 setting (home, hospital, pharmacy, other), telemedicine strategy (taxonomy as classified by  
132 Lee et al. (19): teleconsultation, tele-education, telecase-management, telemonitoring,  
133 telementoring, tele-education & telecase-management, tele-education and telemonitoring,  
134 tele-management & telemonitoring, tele-management and teleconsultation), medium of  
135 communication used (App, internet, short messages, telephone), lifestyle intervention focus  
136 (diet, diet and exercise, diet, exercise and medication, and exercise alone), intervention  
137 duration in months, degree of behavioural support (no support, supported by face-to-face  
138 contact, supported by remote and face-to-face contact, and supported by remote contact),  
139 type of control (usual care, wait list control, usual care and minimal telemedicine only).

## 140 **Statistical analysis**

141 Identified interventions were grouped according to the design of the studies as follows:  
142 parallel-group RCTs, other types of RCTs (e.g. cross-over or cluster RCTs) and non-



143 randomized and non-controlled interventions. For consistency, only parallel-group RCTs  
144 were meta-analysed. Other study designs were used as supporting evidence and included in  
145 the narrative synthesis.

146 Random-effects meta-analytic models were fitted using Bayesian methods, as these have  
147 been suggested to be more stable than frequentist methods (i.e. DerSimonian and Laird),  
148 particularly when notable between-study heterogeneity is present and when the number of  
149 studies is small (20). All models were fitted using R version 4.3.1, using the ‘bayesmeta’  
150 (ref), ‘metaviz’, and ‘meta’ packages (21). The prior for the mean effect was set  
151 conservatively as 0 and the standard deviation of the prior was set as the maximum  
152 observed standard deviation among the included studies for each outcome (22).

153 Heterogeneity was quantified using the proportion of variability that is due to between-study  
154 heterogeneity ( $\tau$ ) and within-study variability (Higgins’  $I^2$ ). A 95% confidence interval (CI)  
155 was estimated for  $\tau$ , rather than a point estimate, as these are known to be difficult to  
156 estimate unless the number of studies is large. We used the half-Cauchy distribution for the  
157 heterogeneity ( $\tau$ ), set at 1, which is considered “fairly high” (22).

158 Subgroup meta-analyses were performed using the standard inverse variance methods. -  
159 Subgroups included: 1) comparison groups, 2) degree of behavioural support, 3) type of  
160 intervention, 4) type of population, 5) risk of bias, and 6) duration of intervention. The type of  
161 comparison group was investigated, as this is important for the interpretation of results and  
162 relevance of the interventions. The degree of behavioural support and type of population  
163 was investigated as each intervention and population subtype has different implications in  
164 primary care settings. Because we used a broad definition of telemedicine interventions, the  
165 interventions were likely to vary substantially and use different types of technology. Thus, we  
166 investigated the subtypes of telemedicine interventions. Risk of bias was investigated to  
167 assess how study bias may impact the estimates. Lastly, the duration of the intervention was  
168 investigated to assess long-term adherence.

169 In sensitivity analyses, we used different prior distributions for the heterogeneity, using either  
170 the half-Cauchy or half-normal distribution with different scales. Publication bias was  
171 evaluated using funnel plots, Egger's test and the trim-and-fill-method (23, 24).

## 172 **RESULTS**

### 173 **Search results**

174 A total of 15,158 records were retrieved in Endnote with 1660 duplicates identified; 13,498  
175 studies were uploaded into Covidence and further 1853 duplicates identified. In total, 11,645  
176 studies were identified via electronic database searches Embase (via Ovid), Medline (via  
177 Ovid), Web of Science, CINAHL, Scopus and SciELO, with 226 included for full text  
178 screening (**Figure 1**). Full text screening resulted in 52 eligible studies being included, of  
179 which 32 parallel RCTs were eligible for inclusion in the meta-analyses and 20 studies in the  
180 narrative synthesis (four cluster-randomised controlled trials, seven non-randomized  
181 controlled trials and nine non-controlled trials).

182

### 183 **Study characteristics**

184 Of the 32 RCTs included in the meta-analysis (**Table 1**), most (15/32) included participants  
185 based on being overweight or obese, performed the intervention in the home setting (13/32)  
186 in a Western country (26/32), focused on diet and exercise (24/32), included tele-monitoring  
187 and/or tele-education (30/32), were supported by remote contact (20/32), and compared the  
188 telemedicine intervention with usual care (15/32).

189 In total, 12 of the 32 studies were judged to be at high risk of bias, 8 to have some risk of  
190 bias and 12 to have low risk of bias (**Supplemental Table 3**). The most common reason for  
191 being at high risk of bias was incomplete outcome data.

192

193 For the narrative synthesis, we identified 4 cluster-randomised studies, 6 non-randomized  
194 studies, and 10 non-controlled interventions. Of those 20 studies (**Table 2**), the majority  
195 included populations with prediabetes (6/20), followed by populations with prediabetes and

196 overweight/obesity (4/20) and populations with overweight/obesity only (4/20). The  
197 remaining studies included populations with other risk factors such as metabolic syndrome  
198 (3/20). The intervention setting comprised home (5/20), community (5/20), clinic (4/20),  
199 workplace (2/20) and a combination of different settings (4/20). Ten studies were conducted  
200 in Asia, seven studies in North America and three studies in Europe. Like the RCTs included  
201 in the meta-analysis, most studies in the narrative analysis emphasized diet and exercise  
202 interventions. Most focused on both diet and exercise (16/20), and some on diet only (3/20)  
203 or exercise only (1/20). One study involved medication management.  
204 Most telemedicine strategies included education and monitoring (10/20) as well as only tele-  
205 education (5/20). Furthermore, the intervention groups mostly received remote support  
206 (11/20) as well as remote and face to face support (5/20). The intervention duration was 9  
207 months on average (range between 2.5 months and three years) and 432 participants on  
208 average (range between 27 and 2219).

209

## 210 **Randomised controlled trials**

211 Using telemedicine in people at risk of T2D reduced body weight (mean difference (MD) -  
212 1.66 kg, 95% confidence interval (CI) -2.48, -0.90,  $I^2 = 81%$ , n studies = 17), body mass  
213 index (BMI) (MD -0.71 kg/m<sup>2</sup>, 95% CI -1.06, -0.37,  $I^2 = 70%$ , n studies = 11) and waist  
214 circumference (MD -2.82 cm, 95% CI -5.16, -2.35,  $I^2 = 84%$ , n studies = 7), though with  
215 substantial heterogeneity (**Table 3, Supplemental Figure 1**). In subgroup analyses of body  
216 weight changes, the largest weight reductions were found when comparing the telemedicine  
217 intervention to wait list controls or intervention without telemedicine, as opposed to usual  
218 care or minimal telemedicine (**Table 4**). Telemedicine interventions in people with  
219 overweight/obesity showed greater average weight reductions than in people with  
220 prediabetes, prediabetes and overweight/obesity, or metabolic syndrome (**Table 4**).  
221 Interventions between 6 to 12 months also showed slightly larger weight reductions than  
222 shorter or longer duration interventions (**Table 4**). No substantial differences were observed

223 with different degrees of behavioural support, type of lifestyle intervention, or risk of bias  
224 (**Table 4**). Similar patterns were observed for type of control group and intervention duration  
225 for BMI and waist circumference (**Supplemental Tables 4-5**). A greater average reduction in  
226 BMI was observed for studies with low risk of bias compared to some or high risk of bias  
227 (**Supplemental Table 4**).

228

229 There was no evidence of an effect of the telemedicine-delivered intervention on fasting  
230 plasma glucose (FPG) compared with different comparison groups (**Table 3, Supplemental**  
231 **Figure 1**). A reduction in HbA1c by 0.07% (95% CI -0.14, 0.00,  $I^2 = 71%$ ) was observed  
232 among the 11 included studies with available data (**Table 3**). In subgroup analyses, we  
233 observed a reduction in FPG and HbA1c among telemedicine interventions supported by  
234 remote contact and graded as low risk of bias (**Supplemental Tables 6-7**). The greatest  
235 reduction in HbA1c was observed among people with overweight/obesity (MD -0.13%, 95%  
236 CI -0.21, -0.05,  $I^2 = 28%$ ). A reduction in HbA1c was found in short and medium duration  
237 intervention (<12 months) but not among long-term studies ( $\geq 12$  months).

238

239 No statistically significant differences between telemedicine interventions and comparison  
240 groups for low-density lipoprotein (LDL) cholesterol, high-density lipoprotein (HDL)  
241 cholesterol and triglycerides were found in the overall analysis (**Table 3, Supplemental**  
242 **Figure 1**). Similarly, no statistically significant differences were observed in subgroup  
243 analyses (**Supplemental Table 8-10**). The exception was that one study found reduced  
244 triglycerides when the telemedicine intervention was supported by remote and face-to-face  
245 contact, whereas two studies found increased triglycerides when compared to no support  
246 (**Supplemental Table 10**).

247

248 No statistically significant difference was observed for systolic or diastolic blood pressure in  
249 the overall meta-analysis comparing telemedicine intervention with different comparison

250 groups (**Table 3, Supplemental Figure 1**). Reduced systolic and diastolic blood pressure  
251 was found among interventions focusing on both diet and exercise (systolic blood pressure -  
252 1.91 mmHg, 95% CI -3.81, -0.01),  $I^2 = 57\%$ ), among participants with prediabetes (systolic  
253 blood pressure -3.31 mmHg, 95% CI -6.48, -0.17,  $I^2 = 63\%$ ) and in studies with high risk of  
254 bias (**Supplemental Tables 11-12**).

255

256 In sensitivity analyses, different prior distributions were set. The overall mean differences  
257 were like those estimated in the main analyses (**Supplemental Table 13**). Publication bias  
258 was investigated using Egger's test, trim-and-fill analysis and visually by inspection of funnel  
259 plots (**Supplemental Table 14 and Supplemental Figure 2**). Egger's test indicated  
260 publication bias in the analysis of body weight ( $p = 0.043$ ) and trim-and-fill analysis  
261 suggested a lower reduction in body weight (MD -0.95 kg, 95% CI -1.80, -0.11). Trim-and-fill  
262 analysis also suggested estimates closer to the null for systolic and diastolic blood pressure  
263 (**Supplemental Figure 2**).

264

## 265 **Cluster-randomised controlled, non-controlled and non-randomized** 266 **interventions**

267 In the cluster-randomised controlled trials, significant improvements in clinical and  
268 anthropometric parameters were found in the telemedicine intervention compared to the  
269 control groups (25, 26). However, in one study, reductions in weight and BMI were greater in  
270 the face-to-face intervention delivery mode compared to a telemedicine intervention without  
271 behavioural support (26). Two studies found that participants participating in telemedicine  
272 interventions had significantly increased physical activity and less sedentary time compared  
273 to controls (25, 27). Further, two studies found that telemedicine interventions improved  
274 dietary behaviour (25, 26). One study found a significantly lower risk of developing metabolic  
275 syndrome in overweight or obese individuals (28). Davies et al. found significant

276 improvements in illness perception rates, quality of life, and anxiety but no significant  
277 changes related to depression, and sleep behaviour (25).

278

279 Within the non-randomized controlled trials, mobile health interventions to decrease  
280 metabolic risk significantly improved clinical (29-31) and health behaviour (32, 33) primary  
281 outcomes. The studies showed improvements in secondary outcomes such as in blood  
282 pressure, FPG, triglycerides, and HDL (31, 34), but only one study had statistically  
283 significant changes (31). Regarding anthropometric improvements, two studies showed  
284 significant improvements of clinically relevant 5% weight loss (29, 31). Although they had  
285 smaller effect sizes, two studies showed maintained weight loss effects after one year (30,  
286 31). Improved health behaviours included significant improvements related to nutrition (e.g.  
287 preference for low sodium diet, having breakfast) (32) and increased moderate physical  
288 activity (32, 33). In three out of five studies, no significant between-group effect differences  
289 were found between telehealth intervention groups compared to face-to-face comparison  
290 groups (29, 30, 32-34). In one study waist circumference significantly decreased in the face  
291 to face group compared to a telehealth intervention but other between-group differences  
292 were not significant (34). In another study health behaviour improved significantly in a  
293 telehealth intervention group compared to a face-to-face group (32).

294

295 Within the non-controlled trials, nine studies showed significant improvements in weight at  
296 follow-ups between 2.5 months and three years (35-43). Seven studies showed  
297 improvements in BMI at follow-ups between 2.5 to six months (35, 36, 38, 39, 42-44).  
298 Four studies found significant improvements in waist circumference (36, 39, 42, 43). Four  
299 studies reported significant improvements in HbA1c-Levels (36, 37, 40, 44). The studies  
300 showed insignificant impacts on glucose levels, triglycerides, HDL-C, LDL-C and total  
301 cholesterol (36, 40, 42-44). Five studies reported significant blood pressure changes (38-40,  
302 43, 44), and one study showed only significant changes in men but not in women (39).  
303 Further outcomes included improved physical activity frequency (38, 43) vegetable intake,

304 caloric intake, and improved dietary habits such as adopting a Mediterranean diet (38, 39,  
305 42, 43). Additionally, positive effects of telemedicine interventions on work absenteeism (35),  
306 self-efficacy, and knowledge regarding nutrition (38) were found. One study examined the  
307 effect of a telemedicine intervention and also assessed depression but did not find a  
308 significant effect for patients with prediabetes (40). Two studies observed that stronger  
309 intervention involvement was associated with increased effects (37, 41).

310

## 311 **DISCUSSION**

312 This systematic review of interventions for T2D prevention delivered using telemedicine  
313 found a reduction in some but not all risk factors for developing T2D. Our meta-analysis  
314 found that lifestyle interventions, primarily diet and exercise delivered using telemedicine,  
315 reduced body weight, BMI, waist circumference, and Hba1c. No changes were seen in FPG,  
316 blood lipids or blood pressure. The subgroup analysis found larger effects for people with  
317 obesity/overweight. Subgroup meta-analyses supported the overall results. The degree of  
318 behavioural support did not seem to impact the effect. These findings highlight the potential  
319 for further application of telemedicine in primary care.

320 Previous meta-analyses have primarily focused on people with T2D or prevention of  
321 diabetes using the DPP approach. One meta-analysis of interventions, including 13 RCTs  
322 investigating the effect of the DPP using telemedicine, found a reduction in body weight (12).  
323 Like our review, the studies identified used many different telemedicine approaches,  
324 including web-based Apps, mobile phone Apps, text messages, digital video discs (DVDs),  
325 interactive voice response telephone calls, video conferencing, and video on-demand  
326 programming. In contrast to our study, they found that a higher degree of behavioural  
327 support led to a greater magnitude of weight loss, whereas this was not observed in our  
328 study. This discrepancy may be due to differences in the approaches used for behavioural  
329 support, which we were not able to group more specifically because of the heterogeneity in

330 approaches and interventions. Another systematic review and meta-analysis, evaluating the  
331 effect of using mobile phone apps to promote weight loss, identified 12 RCTs and a  
332 reduction of body weight of -1.04 kg 95% CI: -1.75, -0.34) (45). In this systematic review and  
333 meta-analysis, we found a slightly higher decrease in body weight, but our population also  
334 had to be at a high risk of T2D, whereas Matteo et al did not have this inclusion criterion.  
335 This was particularly supported by our finding of a stronger effect among people with  
336 overweight/obesity as criterion for being at risk of T2D. A systematic review of people  
337 diagnosed with T2D and telemedicine interventions, including any type of intervention with  
338 focus beyond diet and exercise, showed a reduction in HbA1c (-0.415%, 95% CI: -0.482, -  
339 0.348) (46). These results were in the same direction as we observed, but stronger, which  
340 may be due to the lower initial HbA1c in the participants included in our studies. Also, our  
341 review included other intervention types that focused primarily on lifestyle changes and not  
342 reduction of blood glucose specifically. While other systematic reviews of telemedicine  
343 interventions addressing participants with prediabetes have found a reduction in blood  
344 pressure, we did not observe a statistically significant reduction (47). This may be because  
345 few interventions included in our review did not focus on blood pressure and investigated  
346 changes in blood pressure as a secondary outcome.

347 Our findings in the subgroup meta-analysis highlighted that delivering diet and exercise  
348 interventions to prevent T2D using telemedicine was most effective in studies focused on  
349 people with overweight/obesity for reducing body weight, waist circumference, and HbA1c,  
350 but not for blood lipids or blood pressure. These results may reflect that most studies  
351 primarily targeted body weight, waist circumference and/or HbA1c. Regarding the duration of  
352 intervention, the effect seemed to be strongest for interventions lasting fewer than 12  
353 months, whereas longer interventions tended to show no benefit. A reason for this could be  
354 that adherence to any lifestyle intervention is often reduced over time, with or without  
355 telemedicine. Hence, telemedicine may not necessarily improve adherence in the long-term  
356 but rather facilitate delivery of the intervention. Because the telemedicine interventions in this



357 study varied in terms of using different combinations of telemedicine approaches (e.g., tele-  
358 education, tele-monitoring and tele-mentoring) and the technology used, we could not  
359 conclude that a specific approach was better than others. Given the current pace of  
360 technological development, for example, with large language models (48), telemedicine  
361 interventions are likely to evolve rapidly in the near future (49).

362 Our results suggest that there is a benefit of delivering prevention of T2D through  
363 telemedicine that could be implemented in a primary care setting. With the rising number of  
364 people at risk of T2D (1), and stretched health care systems, cost-effective prevention is of  
365 utmost importance. Telemedicine, in its many forms, offers such opportunities. Though the  
366 effect sizes observed in this study were modest, future technological improvements may  
367 improve these results, translating to stronger effect sizes. It has also been suggested that  
368 this may be particularly useful in rural areas with limited access to health care (50). While the  
369 direction of the effects is consistent, given the heterogeneity of the interventions, we urge  
370 readers to interpret the effects with caution.

371 In this systematic review and meta-analysis, we performed a comprehensive search in a  
372 wide range of databases, conducted analysis, and reported results according to current best  
373 practice guidelines. While similar systematic reviews on the topic only evaluated study  
374 quality, this study also assessed the risk of bias (12). Because there was a small number of  
375 included studies, we used a Bayesian meta-analysis approach, though results were largely  
376 similar compared with inverse variance weighted meta-analysis. Our study also included  
377 multiple risk factors instead of only investigating body weight (12).

378 A limitation of our study is that the search was not updated after December 2020. Many  
379 recent studies were performed during the Covid-19 pandemic or use newer technologies,  
380 which may be difficult to compare with the studies already included in the review. We did not  
381 obtain complete information on results to perform a meta-analysis for all eligible RCTs  
382 because several authors did not respond to provide the necessary data that was requested.

383 Lastly, some publication bias was identified in sensitivity analyses. These sensitivity  
384 analyses show that the effect on body weight may be attenuated due to publication bias, but  
385 still shows a reduction.

386 In conclusion, our systematic evaluation highlights a clear potential for telemedicine-  
387 delivered interventions in primary care settings to prevent T2D in people with high risk of  
388 developing T2D. The effects were relatively strong among people with overweight/obesity,  
389 though the effect sizes in general were modest. The use of telemedicine may improve  
390 outcomes for people at high risk of T2D in primary care. Given the current technological  
391 advances, telemedicine today will likely not be the telemedicine of tomorrow. Future  
392 interventions may benefit from investigating how telemedicine can facilitate long-term  
393 adherence to interventions.

## Tables

**Table 1.** Characteristics of individually randomised intervention studies included in the meta-analysis investigating effectiveness of telemedicine intervention on prevention of type 2 diabetes.

Study, year (ref)	Criteria for high-risk	Setting	Region	Intervention focus	Telemedicine	Support	Control group	Intervention duration	N participants	Risk of bias assessment
Aguiar 2016 (51)	Overweight/obesity	Home	Australia	Diet and exercise	Tele-education, Telemonitoring	No support	Wait list control	6	101	Low
Allman-Farinelli 2016 (52)	Overweight/obesity	Home	Australia	Diet and exercise	Tele-education, Telemonitoring	Supported by remote contact	Usual care + minimal telemedicine only	3	250	High
Apinaniz 2019 (53)	Overweight/obesity	Combination	Europe	Diet and exercise	Tele-education	Supported by remote contact	Intervention without telemedicine	6	110	Some
Bender 2018 (54)	Prediabetes & overweight	Combination	North America	Diet and exercise	Tele-education, Telemonitoring, Telementoring	Supported by remote	Wait list control	3	67	Some
Block 2015 (55)	Prediabetes & overweight	Home	North America	Diet and exercise	Tele-education, Telemonitoring	No support	Wait list control	6	339	Low
Bosak 2010 (56)	Metabolic syndrome	Combination	North America	Exercise	Tele-education, Telemonitoring	Supported by remote contact	Usual care	1.5	22	High

Carnie 2013 (57)	Overweight/obesity	Pharmacy	North America	Diet and exercise	Tele-education	Supported by remote and face-to-face contact	Usual care + minimal telemedicine only	6	199	Low
Chen 2020 (58)	Prediabetes	Combination	Asia	Diet	Combination	Supported by remote and face-to-face contact	Usual care	3	138	Some
Cho 2020 (59)	Metabolic syndrome	Home	Asia	Diet and exercise	Telementoring, Telemonitoring	Supported by remote contact	Usual care	6	129	Low
Cicolini 2014 (60)	Hypertension	Clinic	Europe	Diet, exercise and medication	Tele-education	Supported by remote contact	Usual care	6	203	Low
Fischer 2015 (61)	Prediabetes & overweight	Combination	North America	Diet and exercise	Tele-education	Supported by remote contact	Usual care	12	163	High
Fukuoka 2015 (62)	Prediabetes & overweight	Combination	North America	Diet and exercise	Tele-education, Telemonitoring	Supported by face-to-face contact	Usual care	5	61	High
Green 2014 (63)	Overweight/obesity	Clinic	North America	Diet	Tele-education, Telemonitoring	Supported by remote contact	Usual care	6	101	Some

Hebden 2014 (64)	Overweight/obesity	Home	Australia	Diet and exercise	Tele-education, Telemonitoring	No support	Usual care	3	51	Some
Hurkmans 2018 (65)	Overweight/obesity	Home	Europe	Diet and exercise	Other	Supported by face-to-face contact	Wait list control	3	102	High
Jahangiry 2015 (66)	Metabolic syndrome	Home	Asia	Diet and exercise	Tele-education, Telemonitoring	Supported by remote contact	Wait list control	6	160	High
Johnson 2019 (67)	Overweight/obesity	Home	North America	Diet and exercise	Telemonitoring, Telementoring	Supported by remote contact	Usual care + minimal telemedicine only	3	30	Low
Kempf 2018 (68)	Overweight/obesity	Other	Europe	Diet and exercise	Tele-education, Telemonitoring, Telementoring	Supported by remote contact	Usual care	3	180	Low
Lison 2020 (69)	Overweight/obesity	Hospital	Europe	Diet and exercise	Tele-education, Telemonitoring	No support	Wait list control	3	105	Low
Ma 2013 (70)	Prediabetes & overweight	Clinic	North America	Diet and exercise	Tele-education, Telemonitoring	Supported by remote contact	Usual care	15	241	Low
McLeod 2020 (71)	Prediabetes	Combination	Australia	Overall behaviour	Tele-education, Telemonitoring, Telementoring	Supported by remote contact	Usual care	12	225	Low

Patel 2019 (72)	Overweight/obesity	Home	North America	Diet	Tele-education, Telemonitoring	Supported by remote contact	Intervention + minimal telemedicine only	6	105	High
Pérez Ewert 2016 (73)	Prediabetes & overweight	Home	South America	Diet and exercise	Tele-education, Telemonitoring	Supported by remote contact	Usual care	9	70	Low
Peyer 2017 (74)	Overweight/obesity	Combination	North America	Diet and exercise	Telemonitoring	Supported by face-to-face contact	Intervention without telemedicine	2	89	Some
Rogers 2016 (75)	Overweight/obesity	Combination	North America	Diet and exercise	Tele-education, Telemonitoring	Supported by remote contact	Intervention without telemedicine	6	39	High
Silina 2017	Overweight/obesity	Home	Europe	Diet and exercise	Tele-education	No support	Intervention without telemedicine	12	129	Some
Staite 2020 (76)	Prediabetes & overweight	Home	Europe	Diet and exercise	Tele-education, Telemonitoring	No support	Usual care + minimal telemedicine only	12	200	High
Tanaka 2018 (77)	Prediabetes & overweight	Home	Asia	Diet	Tele-management, Telemonitoring	Supported by remote contact	Usual care	3	112	Low
Tarraga Marcos 2017 (78)	Overweight/obesity	Clinic	Europe	Diet	Tele-education, Telemonitoring	Supported by face-to-face contact	Usual care	12	120	Some

Toro-Ramos 2020 (79)	Prediabetes	Home	North America	Diet and exercise	Tele-education, Teleconsultation, Telemonitoring	Supported by remote contact	Intervention without telemedicine	12	202	High
Weinstock 2013 (80)	Metabolic syndrome	Home	North America	Diet and exercise	Tele-education, Telecase- management	Supported by remote contact	Usual care + minimal telemedicine only	24	257	High
Wu 2011 (81)	Overweight/obesity & other risk factors	Home	Asia	Diet and Exercise	Tele-education, Teleconsultation, Telemonitoring	Supported by remote contact	Usual care	9	135	High

**Table 2.** Characteristics of cluster-randomised, non-randomised and non-controlled intervention studies excluded from the meta-analysis investigating effectiveness of telemedicine intervention on prevention of type 2 diabetes.

Study, year (ref)	Design	Criteria for high-risk	Setting	Region	Intervention focus	Telemedicine	Support	Control group	Duration, months	N	Results summary
Chee 2014 (27)	Cluster randomised parallel group design	Metabolic syndrome	Home	Asia	Exercise	Tele-education	Supported by face-to-face contact	Intervention without telemedicine	4	147	Within-group analyses revealed that the intervention group significantly increased the step number per day with a stronger increase between baseline and two months compared to between two months follow up and four months,
Davies 2016 (25)	Cluster randomised parallel group design	Prediabetes	Clinic	Europe	Diet and exercise	Tele-education	Supported by remote and face-to-face contact	Usual care	36	880	A 6-hour intervention followed by yearly 3-hour refreshers showed a non-significant 26% reduced risk of developing T2DM and statistically significant improvements in HbA1c (-0.06%, CI[-0.11, -0.01]), LDL cholesterol (-0.08 mmol/mol CI[-0.15, -0.01]), sedentary time (-26.29 min, CI[-45.26, -7.32]) and step count (498.15, CI[162.10, 834.20]).
Rusali 2018 (26)	Cluster randomised parallel group design	Overweight/obesity	Workplace	Asia	Diet and exercise	Tele-education	No support	Usual care group and face-to-face group	4	108	The online intervention group showed lower reductions in body weight (-1.12 kg) compared to the face-to-face intervention group (-5.80 kg) and control group (-1.82 kg) and similar trends were observed in BMI (-2.6 kg/m <sup>2</sup> in face-to-face group vs. -0.4 kg/m <sup>2</sup> in telemedicine group vs. -1.1 kg/m <sup>2</sup> in control



											group) (p-value interaction effect <0.01).
Sakane 2019 (28)	Cluster randomised parallel group design	Prediabetes	Community	Asia	Diet and exercise	Tele-education, Telemonitoring	Supported by remote contact	Usual care + minimal telemedicine only	12	1597	It was observed that 8.0% of the participants in the intervention group and 12.0% in the control group developed Metabolic Syndrome. In the overall analysis, the hazard ratio for the development of metabolic syndrome in the intervention group was insignificant, however, when focusing on individuals who were overweight or obese the hazard ratio was significantly reduced to 0.63 (95% CI: 0.41–0.95, P=0.029).
Ciemins 2018 (29)	Non randomised controlled trial	Prediabetes & overweight	Combination	North America	Diet and exercise	Tele-education	Supported by remote and face-to-face contact	Intervention without telemedicine	4	667	The modified group DPP showed overall improvements in reaching 5% and 7% weight loss. There were no significant differences between the face-to-face and telehealth groups (33.5% and 34.6% for 7% weight loss; 49.6% and 46.6% for 5% weight loss).
Kim 2019 (32)	Non randomised controlled trial	Metabolic syndrome	Combination	Asia	Diet and exercise	Tele-education, Telemonitoring	Supported by remote and face-to-face contact	Intervention without telemedicine	6	1117	Preference for low-sodium diet, reading nutritional facts, having breakfast, and performing moderate physical activity significantly increased in the mobile health intervention group.

Laitinen 2010 (34)	Non randomised controlled trial	Other	Combination	Europe	Diet and exercise	Tele-education	No support	Intervention without telemedicine	21	74	The outcomes of the intervention showed mostly no significant differences between both study groups. Waist circumference decreased significantly between baseline and 6 months of counselling and was significantly lower at 21 months than at baseline in the telemedicine intervention group.
Moin 2018 (30)	Non randomised controlled trial	Prediabetes & overweight/obesity	Community	North America	Diet and exercise	Tele-education, Telemonitoring	Supported by remote contact	Intervention without telemedicine	12	268	The online DPP showed significant reductions in weight at 6 and 12 months with -4.7 kg [-6.5 kg, -2.8] and -4.0 kg [-4.9 kg, -3.0 kg] respectively, and no significant difference compared with in-person DPP.
Toro-Ramos 2017 (31)	Non randomised controlled trial	Overweight/obesity	Home	Asia	Diet and exercise	Tele-education, Telemonitoring	Supported by remote contact	Intervention without weight loss curriculum	3.8	159	The study showed that participants achieved a significant reduction in body weight of 7.5%, in percent body fat (ranging from -6.0% to -5.4%) and visceral fat (decreasing from -3.4 kg to -2.7 kg) at the end of a 15-week program as well sustained effects at 52-week follow-up (5.2% weight loss).
Vadheim 2010 (33)	Non randomised controlled trial	Overweight/obesity & other diabetes risk factors	Community	North America	Diet and exercise	Tele-education, Telemonitoring	Supported by remote contact	Intervention without telemedicine	4	27	On average, both study arms increased physical activity levels and reduced weight by at least 7% with no significant differences between the groups.

Alwashmi 2019 (35)	Uncontrolled trial	Prediabetes	Combination	North America	Diet and exercise	Tele-education, Telemonitoring	Supported by remote contact	No control group	4	273	This study investigated the impact of participation in the Transform DPP program and found significant reductions in weight (-13.3 lbs or -6.5%), BMI (-1.9 kg/m <sup>2</sup> ), increased exercise frequency (1.7 days per week), and reduced work absenteeism.
An 2019 (36)	Uncontrolled trial	Overweight/obesity	Home	Asia	Diet	Telemonitoring	Supported by remote contact	No control group	2.5	40	The outcomes of the intervention revealed significant reductions in body weight (-0.6 kg), BMI (-0.2 kg/m <sup>2</sup> ), waist circumference (-1.4 cm), and body fat mass (-0.7 kg) among all the participants as well as significant improvements in anthropometric parameters, glycemic control, and lipid profile in the high-adherence-group.
Cameron Sepah 2017 (37)	Uncontrolled trial	Prediabetes & overweight/obesity	Home	North America	Diet and exercise	Tele-education, Telemonitoring, Telementoring	Supported by remote contact	No control group	36	220	Participants who completed four or more lessons and those who completed nine or more lessons of the digital DPP achieved sustained weight loss (-3.0% and -2.9%, respectively) and experienced a notable reduction in HbA1c levels (-0.31 and -0.33, respectively).
Chen 2014 (38)	Uncontrolled trial	Prediabetes	Clinic	Asia	Diet and exercise	Telecase-management	Supported by remote and face-to-face contact	No control group	6	2219	Patients with prediabetes taking part in a Smart Web Aid for Preventing Type 2 Diabetes showed improvements from baseline to 6-months follow-up in

											vegetable intake, calorie intake, leisure-time exercises, body weight, and body mass index as well as improvement in self-efficacy for modifying diet, increasing physical activities, engaging relatives, and knowledge about diabetes and risks of an imbalanced diet and inadequate physical activity.
Choi 2014 (39)	Uncontrolled trial	Other	Community	Asia	Diet	Tele-education	Supported by remote contact	No control group	4	29	Intervention outcomes showed significant decreases in body weight, waist circumference, and BMI among female and male participants. The frequency of certain dietary habits such as snacking, eating out, and dining with others decreased, while the frequency of consuming foods like whole grains, seaweed, fruit, and low-fat milk increased.
Kim 2019 (40)	Uncontrolled trial	Prediabetes	Community	North America	Diet and exercise and medication	Tele-education, Telemonitoring	Supported by remote and face-to-face contact	No control group	6	247	The feasibility study showed significant improvements of clinical outcomes (e.g., HbA1c, weight, depression, and blood pressure, cholesterol) and no one with prediabetes progressed to diabetes.

Michaelides 2016 (41)	Uncontrolled trial	Prediabetes & overweight/obesity	Home	North America	Diet and exercise	Tele-education, Telemonitoring	Supported by face-to-face contact	No control group	6	54	Results of the virtual DPP showed significant weight reductions at 4 and 6 months (-5.4±4.43 kg and 6.22±5.00 kg respectively) follow-up with people who completed the program showing stronger engagement and more weight loss (-6.0 ±4.34 kg and -7.01±4.83 kg).
Noh 2020 (44)	Uncontrolled trial	Prediabetes	Workplace	Asia	Diet and exercise	Tele-education, Telemonitoring	Supported by remote contact	No control group	3	62	The authors found significantly reduced HbA1c values by -0.38 ± 0.65% in all participants and stronger reductions in the participant group with HbA1c above 6.4% at baseline (-0.78 ± 0.79%).
Rossi 2010 (42)	Uncontrolled trial	Overweight/obesity	Clinic	Europe	Diet	Tele-education, Telemonitoring	Supported by remote contact	No control group	5	140	The mobile phone based intervention resulted in an increased percentage of participants reaching Mediterranean diet targets (14.4% to 69.8%), a mean (95% confidence interval) reduction in body weight by 2.5 (3.2; 1.8) kg, whereas the reduction in waist circumference and BMI were 3.7 (4.6; 2.9) cm, and 1.0 (0.7; 1.2) kg/m <sup>2</sup> .
Song 2011 (43)	Uncontrolled trial	Metabolic syndrome	Clinic	Asia	Diet and exercise	Tele-management, Teleconsultation	Supported by remote contact	No control group	6	316	Significant reductions in blood pressure, weight, abdominal visceral fat, physical age, the extent of walking, waist size

											and blood sugar (p < 0.01); body fat and BMI (p < 0.05); and body fat (triacylglycerol; p < 0.1) were found after the implementation of a metabolic syndrome care service model.
--	--	--	--	--	--	--	--	--	--	--	-------------------------------------------------------------------------------------------------------------------------------------------------------------------------------------------------

**Table 3.** Overview of pooled results from randomised controlled trials investigating telemedicine for prevention of type 2 diabetes.

Risk factor	N RCTs	N	MD (95% CI)	95% prediction interval	Tau (95% CI)	I <sup>2</sup>
<b>Measures of anthropometry</b>						
Body weight, kg	17	2484	-1.66 (-2.48, -0.90)	-4.60, 1.21	1.28 (0.61, 2.13)	81%
Body mass index, kg/m <sup>2</sup>	11	1546	-0.71 (-1.06, -0.37)	-1.77, 0.34	0.42 (0.12, 0.83)	70%
Waist circumference, cm	8	1136	-2.70 (-4.62, -0.74)	-8.11, 2.76	2.04 (0.60, 4.35)	70%
<b>Measures of blood glucose</b>						
FPG, mmol/L	9	1127	-0.05 (-0.19, 0.11)	-0.40, 0.33	0.12 (0.01, 0.30)	0%
HbA1c, %	11	1480	-0.07 (-0.14, 0.00)	-0.29, 0.15	0.09 (0.03, 0.17)	71%
<b>Measures of blood lipids</b>						
LDL cholesterol, mmol/L	8	1142	-0.04 (-0.17, 0.09)	-0.35, 0.27	0.10 (0.00, 0.26)	40%
HDL cholesterol, mmol/L	9	1271	0.02 (-0.02, 0.07)	-0.09, 0.14	0.04 (0.00, 0.10)	18%
TG, mmol/L	8	1170	0.00 (-0.24, 0.26)	-0.67, 0.68	0.22 (0.01, 0.57)	92%
<b>Measures of blood pressure</b>						
Systolic blood pressure, mmHg	10	1378	-2.06 (-4.38, 0.15)	-8.43, 4.16	2.25 (0.23, 5.06)	58%
Diastolic blood pressure, mmHg	8	1105	-1.82 (-4.05, 0.18)	-7.58, 3.65	1.94 (0.15, 4.54)	64%

FPG, fasting plasma glucose; LDL, Low-density lipoprotein cholesterol; HDL, high-density lipoprotein cholesterol; TG, triglycerides.

Prior distribution for Tau was set using a half-Cauchy distribution and prior distribution for the mean was set to 0 with a standard deviation as the maximum value among the studies. Maximum standard deviation for body weight = 42.5, Body mass index = 5.3, waist circumference = 27.0, fasting plasma glucose = 14.0, HbA1c = 1.9, LDL = 2.2, HDL = 4.6, TG = 3.0, systolic blood pressure =30.8, diastolic blood pressure =23.0.

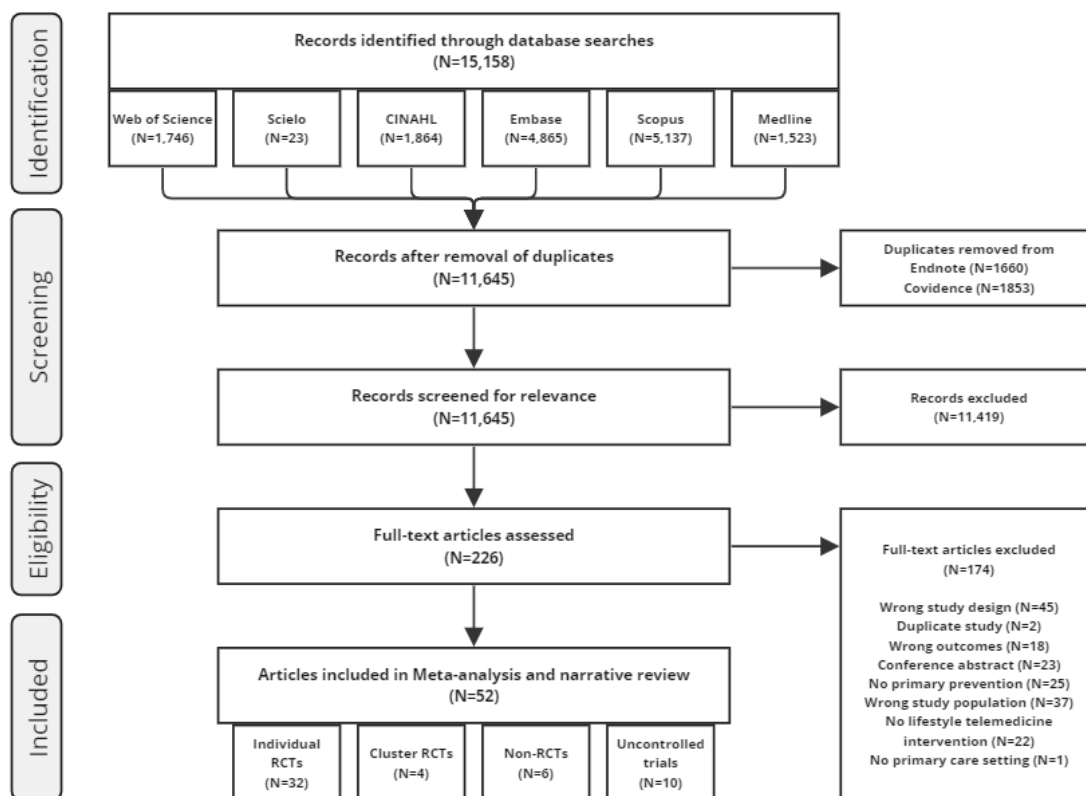


**Table 4.** Subgroup meta-analysis of randomized controlled trials delivering lifestyle interventions using telemedicine to reduce body weight

Subgroup	N RCTs	MD (95% CI)	I <sup>2</sup>
<b>Overall</b>	17	-1.66 (-2.48, -0.90)	81%
<b>Type of control group</b>			
Intervention without telemedicine	3	-2.48 (-4.48, -0.47)	0%
Usual care	8	-1.26 (-2.18, -0.34)	32%
Minimal telemedicine	3	-1.09 (-2.81, 0.63)	73%
Wait list control	3	-2.74 (-4.29, -1.19)	92%
<b>Degree of behavioral support</b>			
No support	4	-2.07 (-3.60, -0.54)	89%
Supported by remote contact	12	-1.58 (-2.46, -0.70)	44%
Supported by remote and face-to-face contact	1	-1.40 (-4.06, 1.26)	-
<b>Type of lifestyle intervention</b>			
Overall behaviour	1	-0.50 (-3.16, 2.16)	-
Diet	4	-1.57 (-2.98, -0.17)	40%
Diet and exercise	12	-1.84 (-2.71, -0.97)	73%
<b>Population at high-risk</b>			
Overweight/obese	7	-2.64 (-3.81, -1.47)	75%
Prediabetes	3	-1.19 (-2.59, 0.20)	24%
Prediabetes and overweight/obese	4	-0.90 (-2.16, 0.35)	18%
Metabolic syndrome	3	-1.57 (-2.99, -0.15)	55%
<b>Risk of bias</b>			
Low	5	-1.84 (-3.12, -0.56)	83%
Some	7	-1.57 (-2.74, -0.40)	53%
High	5	-1.65 (-3.05, -0.25)	67%

<b><u>Duration of intervention</u></b>			
Short (<6 months)	5	-1.34 (-2.45, -0.19)	45%
Medium (6 to <12 months)	5	-2.47 (-3.70, -1.24)	79%
Long (>= 12 months)	6	-1.31 (-2.41, -0.20)	54%

## Figures



## References

1. Sun H, Saeedi P, Karuranga S, Pinkepank M, Ogurtsova K, Duncan BB, et al. IDF Diabetes Atlas: Global, regional and country-level diabetes prevalence estimates for 2021 and projections for 2045. *Diabetes research and clinical practice*. 2022;183:109119.
2. Kanat M, DeFronzo RA, Abdul-Ghani MA. Treatment of prediabetes. *World journal of diabetes*. 2015;6(12):1207.
3. Haw JS, Galaviz KI, Straus AN, Kowalski AJ, Magee MJ, Weber MB, et al. Long-term sustainability of diabetes prevention approaches: a systematic review and meta-analysis of randomized clinical trials. *JAMA internal medicine*. 2017;177(12):1808-17.
4. AG IT, Herder C, Rathmann W. Prediabetes: a high-risk state for diabetes development. *Lancet*. 2012;379(9833):2279-90.
5. Association AD. 3. Prevention or delay of type 2 diabetes: Standards of Medical Care in Diabetes—2020. *Diabetes Care*. 2020;43(Supplement\_1):S32-S6.
6. Galaviz KI, Weber MB, Straus A, Haw JS, Narayan KV, Ali MK. Global diabetes prevention interventions: a systematic review and network meta-analysis of the real-world impact on incidence, weight, and glucose. *Diabetes Care*. 2018;41(7):1526-34.
7. Messina J, Campbell S, Morris R, Eyles E, Sanders C. A narrative systematic review of factors affecting diabetes prevention in primary care settings. *PLoS One*. 2017;12(5):e0177699.
8. Rodríguez-Idígoras MI, Sepúlveda-Muñoz J, Sánchez-Garrido-Escudero R, Martínez-González JL, Escolar-Castelló JL, Paniagua-Gómez IM, et al. Telemedicine influence on the follow-up of type 2 diabetes patients. *Diabetes technology & therapeutics*. 2009;11(7):431-7.
9. Organization WH. Telemedicine: opportunities and developments in member states. Report on the second global survey on eHealth: World Health Organization; 2010.
10. Smith AC, Bensink M, Armfield N, Stillman J, Caffery L. Telemedicine and rural health care applications. *Journal of postgraduate medicine*. 2005;51(4):286.
11. Haleem A, Javaid M, Singh RP, Suman R. Telemedicine for healthcare: Capabilities, features, barriers, and applications. *Sens Int*. 2021;2:100117.
12. Joiner KL, Nam S, Whittlemore R. Lifestyle interventions based on the diabetes prevention program delivered via eHealth: a systematic review and meta-analysis. *Preventive medicine*. 2017;100:194-207.

13. Dissemination CfRa. Systematic Reviews CRD's guidance for undertaking reviews in health care: CRD, University of York; 2009 2009.
14. Liberati A, Altman DG, Tetzlaff J, Mulrow C, Gøtzsche PC, Ioannidis JP, et al. The PRISMA statement for reporting systematic reviews and meta-analyses of studies that evaluate health care interventions: explanation and elaboration. *Annals of internal medicine*. 2009;151(4):W-65-W-94.
15. Islam N, Want R. Smartphones: Past, present, and future. *IEEE Pervasive Computing*. 2014;13(4):89-92.
16. Arigo D, Jake-Schoffman DE, Wolin K, Beckjord E, Hekler EB, Pagoto SL. The history and future of digital health in the field of behavioral medicine. *Journal of behavioral medicine*. 2019;42:67-83.
17. England N. Primary care services 2022 [Available from: <https://www.england.nhs.uk/get-involved/get-involved/how/primarycare/>].
18. Higgins J, Altman D, Sterne J. on behalf of the Cochrane Statistical Methods Group and the Cochrane Bias Methods Group. Chapter 8: Assessing risk of bias in included studies. *Cochrane handbook for systematic reviews of interventions* version. 2011;5(0).
19. Lee SWH, Chan CKY, Chua SS, Chaiyakunapruk N. Comparative effectiveness of telemedicine strategies on type 2 diabetes management: a systematic review and network meta-analysis. *Scientific reports*. 2017;7(1):1-11.
20. Seide SE, Röver C, Friede T. Likelihood-based random-effects meta-analysis with few studies: empirical and simulation studies. *BMC Medical Research Methodology*. 2019;19(1):16.
21. Michael Kossmeier [cre a, Ulrich S. Tran [aut], Martin Voracek [aut]. *metaviz: Forest Plots, Funnel Plots, and Visual Funnel Plot Inference for Meta-Analysis 2020* [Available from: <https://cran.r-project.org/web/packages/metaviz/index.html>].
22. Röver C. Bayesian Random-Effects Meta-Analysis Using the bayesmeta R Package. *Journal of Statistical Software*. 2020;93(6):1 - 51.
23. Egger M, Smith GD, Schneider M, Minder C. Bias in meta-analysis detected by a simple, graphical test. *Bmj*. 1997;315(7109):629-34.
24. Duval S, Tweedie R. Trim and fill: A simple funnel-plot-based method of testing and adjusting for publication bias in meta-analysis. *Biometrics*. 2000;56(2):455-63.
25. Davies MJ, Gray LJ, Troughton J, Gray A, Tuomilehto J, Farooqi A, et al. A community based primary prevention programme for type 2 diabetes integrating identification and lifestyle intervention for prevention: the Let's Prevent Diabetes cluster randomised controlled trial. *Preventive Medicine*. 2016;84:48-56.

26. Rusali R, Manaf ZA, Shahar S, Mazri FH, Ibrahim N, Ludin AFM, et al. Comparison of the effectiveness of online and face-to-face weight-loss interventions in the workplace: Evidence from Malaysia. *Sains Malaysiana*. 2018;47(10):2437-45.
27. Chee H, Hazizi A, Barakatun Nisak M, Mohd Nasir M. A Randomised Controlled Trial of a Facebook-based Physical Activity Intervention for Government Employees with Metabolic Syndrome. *Malaysian Journal of Nutrition*. 2014;20(2).
28. Sakane N, Kotani K, Suganuma A, Takahashi K, Sato J, Suzuki S, et al. Prevention of metabolic syndrome by telephone-delivered lifestyle intervention in a real-world setting: sub-analysis of a cluster-randomized trial. *Metabolic Syndrome and Related Disorders*. 2019;17(7):355-61.
29. Ciemins EL, Coon PJ, Coombs NC, Holloway BL, Mullette EJ, Dudley WN. Intent-to-treat analysis of a simultaneous multisite telehealth diabetes prevention program. *BMJ Open Diabetes Research and Care*. 2018;6(1):e000515.
30. Moin T, Damschroder LJ, AuYoung M, Maciejewski ML, Havens K, Ertl K, et al. Results from a trial of an online diabetes prevention program intervention. *American journal of preventive medicine*. 2018;55(5):583-91.
31. Toro-Ramos T, Lee D-H, Kim Y, Michaelides A, Oh TJ, Kim KM, et al. Effectiveness of a smartphone application for the management of metabolic syndrome components focusing on weight loss: a preliminary study. *Metabolic Syndrome and Related Disorders*. 2017;15(9):465-73.
32. Kim T-Y, Lee Y-S, Yu E-J, Kim M-S, Yang S-Y, Hur Y-I, et al. Effects of a mobile healthcare service provided by public health centers on practicing of health behaviors and health risk factors. *Nutrition Research and Practice*. 2019;13(6):509-20.
33. Vadheim LM, McPherson C, Kassner DR, Vanderwood KK, Hall TO, Butcher MK, et al. Adapted diabetes prevention program lifestyle intervention can be effectively delivered through telehealth. *The Diabetes Educator*. 2010;36(4):651-6.
34. Laitinen J, Korhonen E, Alahuhta M, Keinänen-Kiukkaanniemi S, Rajala U, Timonen O, et al. Feasibility of videoconferencing in lifestyle group counselling. *International journal of circumpolar health*. 2010;69(5):500-11.
35. Alwashmi MF, Mugford G, Abu-Ashour W, Nuccio M. A digital diabetes prevention program (transform) for adults with prediabetes: secondary analysis. *JMIR diabetes*. 2019;4(3):e13904.
36. An J, Yoon SR, Lee JH, Kim H, Kim OY. Importance of adherence to personalized diet intervention in obesity related metabolic improvement in overweight and obese Korean adults. *Clinical nutrition research*. 2019;8(3):171-83.

37. Sepah SC, Jiang L, Ellis RJ, McDermott K, Peters AL. Engagement and outcomes in a digital Diabetes Prevention Program: 3-year update. *BMJ Open Diabetes Research and Care*. 2017;5(1):e000422.
38. Chen P, Chai J, Cheng J, Li K, Xie S, Liang H, et al. A smart web aid for preventing diabetes in rural China: preliminary findings and lessons. *Journal of Medical Internet Research*. 2014;16(4):e98.
39. Choi Y, Lee MJ, Kang HC, Lee MS, Yoon S. Development and application of a web-based nutritional management program to improve dietary behaviors for the prevention of metabolic syndrome. *CIN: Computers, Informatics, Nursing*. 2014;32(5):232-41.
40. Kim MT, Kim KB, Nguyen TH, Ko J, Zabora J, Jacobs E, et al. Motivating people to sustain healthy lifestyles using persuasive technology: a pilot study of Korean Americans with prediabetes and type 2 diabetes. *Patient education and counseling*. 2019;102(4):709-17.
41. Michaelides A, Raby C, Wood M, Farr K, Toro-Ramos T. Weight loss efficacy of a novel mobile Diabetes Prevention Program delivery platform with human coaching. *BMJ Open Diabetes Research and Care*. 2016;4(1):e000264.
42. Rossi MC, Perozzi C, Consorti C, Almonti T, Foglini P, Giostra N, et al. An interactive diary for diet management (DAI): a new telemedicine system able to promote body weight reduction, nutritional education, and consumption of fresh local produce. *Diabetes technology & therapeutics*. 2010;12(8):641-7.
43. Song T-M, Ryu S, Lee SH. U-health service for managing chronic disease: a case study on managing metabolic syndrome in a health center in South Korea. *Healthcare informatics research*. 2011;17(4):260-6.
44. Noh B-H, Lee M-J, Kwon S-G, Kim B-K. The Effect of Healthcare Service of Employees at a Workplace Using Mobile. *Medico-legal Update*. 2020;20(1).
45. Mateo GF, Granado-Font E, Ferré-Grau C, Montaña-Carreras X. Mobile phone apps to promote weight loss and increase physical activity: a systematic review and meta-analysis. *Journal of medical Internet research*. 2015;17(11):e4836.
46. Hangaard S, Laursen SH, Andersen JD, Kronborg T, Vestergaard P, Hejlesen O, et al. The effectiveness of telemedicine solutions for the management of type 2 diabetes: a systematic review, meta-analysis, and meta-regression. *Journal of Diabetes Science and Technology*. 2023;17(3):794-825.
47. Deng L, Wu Q, Ding F, Liu Y, Shen J, Lin Y, et al. The effect of telemedicine on secondary prevention of atherosclerotic cardiovascular disease: A systematic review and meta-analysis. *Frontiers in Cardiovascular Medicine*. 2022;9:1020744.
48. Health TLD. Large language models: a new chapter in digital health. 2024. p. e1.

49. Battineni G, Sagaro GG, Chintalapudi N, Amenta F. The benefits of telemedicine in personalized prevention of cardiovascular diseases (CVD): A systematic review. *Journal of Personalized Medicine*. 2021;11(7):658.
50. Kolluri S, Stead TS, Mangal RK, Coffee Jr RL, Littell J, Ganti L. Telehealth in response to the rural health disparity. *Health psychology research*. 2022;10(3).
51. Aguiar EJ, Morgan PJ, Collins CE, Plotnikoff RC, Young MD, Callister R. Efficacy of the type 2 diabetes prevention using lifestyle education program RCT. *American journal of preventive medicine*. 2016;50(3):353-64.
52. Allman-Farinelli M, Partridge SR, McGeechan K, Balestracci K, Hebden L, Wong A, et al. A mobile health lifestyle program for prevention of weight gain in young adults (TXT2BFIT): nine-month outcomes of a randomized controlled trial. *JMIR mHealth and uHealth*. 2016;4(2):e5768.
53. Apiñaniz A, Cobos-Campos R, Sáez de Lafuente-Moríñigo A, Parraza N, Aizpuru F, Pérez I, et al. Effectiveness of randomized controlled trial of a mobile app to promote healthy lifestyle in obese and overweight patients. *Family practice*. 2019;36(6):699-705.
54. Bender MS, Cooper BA, Flowers E, Ma R, Arai S. Filipinos Fit and Trim-A feasible and efficacious DPP-based intervention trial. *Contemporary clinical trials communications*. 2018;12:76-84.
55. Block G, Azar KM, Romanelli RJ, Block TJ, Hopkins D, Carpenter HA, et al. Diabetes prevention and weight loss with a fully automated behavioral intervention by email, web, and mobile phone: a randomized controlled trial among persons with prediabetes. *Journal of medical Internet research*. 2015;17(10):e240.
56. Bosak KA, Yates B, Pozehl B. Effects of an Internet physical activity intervention in adults with metabolic syndrome. *Western journal of nursing research*. 2010;32(1):5-22.
57. Carnie A, Lin J, Aicher B, Leon B, Courville AB, Sebring NG, et al. Randomized trial of nutrition education added to internet-based information and exercise at the work place for weight loss in a racially diverse population of overweight women. *Nutr Diabetes*. 2013;3(12):e98.
58. Chen X, Su H, Kunii D, Kudou K, Zhang Y, Zhao Y, et al. The Effects of Mobile-App-Based Low-Carbohydrate Dietary Guidance on Postprandial Hyperglycemia in Adults with Prediabetes. *Diabetes Ther*. 2020;11(10):2341-55.
59. Cho SMJ, Lee JH, Shim JS, Yeom H, Lee SJ, Jeon YW, et al. Effect of Smartphone-Based Lifestyle Coaching App on Community-Dwelling Population With Moderate Metabolic Abnormalities: Randomized Controlled Trial. *J Med Internet Res*. 2020;22(10):e17435.



60. Cicolini G, Simonetti V, Comparcini D, Celiberti I, Di Nicola M, Capasso LM, et al. Efficacy of a nurse-led email reminder program for cardiovascular prevention risk reduction in hypertensive patients: a randomized controlled trial. *Int J Nurs Stud*. 2014;51(6):833-43.
61. Fischer HH, Fischer IP, Pereira RI, Furniss AL, Rozwadowski JM, Moore SL, et al. Text message support for weight loss in patients with prediabetes: a randomized clinical trial. *Diabetes care*. 2016;39(8):1364-70.
62. Fukuoka Y, Gay CL, Joiner KL, Vittinghoff E. A Novel Diabetes Prevention Intervention Using a Mobile App: A Randomized Controlled Trial With Overweight Adults at Risk. *Am J Prev Med*. 2015;49(2):223-37.
63. Green BB, Anderson ML, Cook AJ, Catz S, Fishman PA, McClure JB, et al. e-Care for heart wellness: a feasibility trial to decrease blood pressure and cardiovascular risk. *Am J Prev Med*. 2014;46(4):368-77.
64. Hebden L, Cook A, van der Ploeg HP, King L, Bauman A, Allman-Farinelli M. A mobile health intervention for weight management among young adults: a pilot randomised controlled trial. *J Hum Nutr Diet*. 2014;27(4):322-32.
65. Hurkmans E, Matthys C, Bogaerts A, Scheys L, Devloo K, Seghers J. Face-to-Face Versus Mobile Versus Blended Weight Loss Program: Randomized Clinical Trial. *JMIR Mhealth Uhealth*. 2018;6(1):e14.
66. Jahangiry L, Shojaeizadeh D, Abbasalizad Farhangi M, Yaseri M, Mohammad K, Najafi M, et al. Interactive web-based lifestyle intervention and metabolic syndrome: findings from the Red Ruby (a randomized controlled trial). *Trials*. 2015;16:418.
67. Johnson KE, Alencar MK, Coakley KE, Swift DL, Cole NH, Mermier CM, et al. Telemedicine-Based Health Coaching Is Effective for Inducing Weight Loss and Improving Metabolic Markers. *Telemed J E Health*. 2019;25(2):85-92.
68. Kempf K, Röhling M, Stichert M, Fischer G, Boschem E, Könner J, et al. Telemedical Coaching Improves Long-Term Weight Loss in Overweight Persons: A Randomized Controlled Trial. *Int J Telemed Appl*. 2018;2018:7530602.
69. Lisón JF, Palomar G, Mensorio MS, Baños RM, Cebolla-Martí A, Botella C, et al. Impact of a Web-Based Exercise and Nutritional Education Intervention in Patients Who Are Obese With Hypertension: Randomized Wait-List Controlled Trial. *J Med Internet Res*. 2020;22(4):e14196.
70. Ma J, Yank V, Xiao L, Lavori PW, Wilson SR, Rosas LG, et al. Translating the Diabetes Prevention Program lifestyle intervention for weight loss into primary care: a randomized trial. *JAMA Intern Med*. 2013;173(2):113-21.
71. McLeod M, Stanley J, Signal V, Stairmand J, Thompson D, Henderson K, et al. Impact of a comprehensive digital health programme on HbA(1c) and weight after

12 months for people with diabetes and prediabetes: a randomised controlled trial. *Diabetologia*. 2020;63(12):2559-70.

72. Patel ML, Hopkins CM, Brooks TL, Bennett GG. Comparing Self-Monitoring Strategies for Weight Loss in a Smartphone App: Randomized Controlled Trial. *JMIR Mhealth Uhealth*. 2019;7(2):e12209.

73. Pérez Ewert JC, Bustamante C, Alcayaga C, Medina M, Sánchez H, Campos S, et al. Evaluación del Modelo Multi-componente de Telecuidado de apoyo a Personas con Pre-diabetes en Chile. *Actualidades en Psicología*. 2016;30(121).

74. Peyer KL, Ellingson LD, Bus K, Walsh SA, Franke WD, Welk GJ. Comparative effectiveness of guided weight loss and physical activity monitoring for weight loss and metabolic risks: A pilot study. *Prev Med Rep*. 2017;6:271-7.

75. Rogers RJ, Lang W, Barone Gibbs B, Davis KK, Burke LE, Kovacs SJ, et al. Applying a technology-based system for weight loss in adults with obesity. *Obes Sci Pract*. 2016;2(1):3-12.

76. Staite E, Bayley A, Al-Ozairi E, Stewart K, Hopkins D, Rundle J, et al. A Wearable Technology Delivering a Web-Based Diabetes Prevention Program to People at High Risk of Type 2 Diabetes: Randomized Controlled Trial. *JMIR Mhealth Uhealth*. 2020;8(7):e15448.

77. Tanaka K, Sasai H, Wakaba K, Murakami S, Ueda M, Yamagata F, et al. Professional dietary coaching within a group chat using a smartphone application for weight loss: a randomized controlled trial. *J Multidiscip Healthc*. 2018;11:339-47.

78. Tarraga Marcos ML, Panisello Royo JM, Carbayo-Herencia JA, Rosich Domenech N, Alins Presas J, Castell Panisello E, et al. Application of telemedicine in obesity management. *European Research in Telemedicine / La Recherche Européenne en Télémédecine*. 2017;6(1):3-12.

79. Toro-Ramos T, Michaelides A, Anton M, Karim Z, Kang-Oh L, Argyrou C, et al. Mobile Delivery of the Diabetes Prevention Program in People With Prediabetes: Randomized Controlled Trial. *JMIR Mhealth Uhealth*. 2020;8(7):e17842.

80. Weinstock RS, Trief PM, Cibula D, Morin PC, Delahanty LM. Weight loss success in metabolic syndrome by telephone interventions: results from the SHINE Study. *J Gen Intern Med*. 2013;28(12):1620-8.

81. Wu Y-T, Hwang C-L, Chen C-N, Chuang L-M. Home-based exercise for middle-aged Chinese at diabetic risk: a randomized controlled trial. *Preventive Medicine*. 2011;52(5):337-43.