

1 **Rational Empiric Antibiotic Escalation Applied to Specific Patient Groups**

2

3 **Ranjeet Bamber**

4 Department of Population Health Sciences, Bristol Medical School, Faculty of Health Sciences,  
5 University of Bristol, Bristol. UK

6 **Brian Sullivan**

7 Department of Population Health Sciences, Bristol Medical School, Faculty of Health Sciences,  
8 University of Bristol, Bristol. UK

9 **Léo Gorman**

10 Jean Golding Institute, University of Bristol, Bristol. UK

11 **Winnie WY Lee**

12 School of Cellular and Molecular Medicine, Faculty of Life Sciences, University of Bristol, Bristol. UK

13 **Matthew B Avison**

14 School of Cellular and Molecular Medicine, Faculty of Life Sciences, University of Bristol, Bristol. UK

15 **Andrew W Dowsey**

16 Department of Population Health Sciences, Bristol Medical School, Faculty of Health Sciences,  
17 University of Bristol

18 **Philip Williams\***

19 University Hospitals Bristol and Weston NHS Foundation Trust, Bristol Royal Infirmary, Bristol. UK

20

21 **Running title: Rational Empiric Antibiotic Escalation Applied to Specific Patient Groups**

## **Rational Empiric Antibiotic Escalation Applied to Specific Patient Groups**

22  
23  
24  
25  
26  
27  
28  
29  
30  
31  
32  
33  
34  
35  
36  
37  
38  
39  
40  
41  
42  
43  
44  
45  
46  
47  
48  
49  
50  
51  
52  
53

### **Abstract**

### **Background**

Clinicians commonly escalate empiric antibiotic therapy due to poor clinical progress, without microbiology guidance. When escalating, they should take account of how resistance to an initial antibiotic affects the probability of resistance to subsequent options. The term Escalation Antibigram (EA) has been coined to describe this concept. One difficulty when applying the EA concept to clinical practice is understanding the uncertainty in results and how this changes for specific patient subgroups.

### **Methods**

A Bayesian model was developed to estimate antibiotic resistance rates in Gram-negative bloodstream infections based on phenotypic resistance data. It provides an expected value (posterior mean) with 95% credible interval to illustrate uncertainty, based on the size of the patient subgroup, and estimates probability of inferiority between two antibiotics. This model can be applied to specific patient groups where resistance rates and underlying microbiology may differ from the whole hospital population.

### **Results**

Rates of resistance to empiric first choice and potential escalation antibiotics were calculated for the whole hospitalised population based on 10,486 individual bloodstream infections, and for a range of specific patient groups, including ICU, haematology-oncology, and paediatric patients. Differences in optimal escalation antibiotic options between specific patient groups were noted.

### **Conclusions**

EA analysis informed by our Bayesian model is a useful tool to support empiric antibiotic switches, providing an estimate of local resistances rates, and a comparison of antibiotic options with a measure of the uncertainty in the data. We demonstrate that EAs calculated for the whole population cannot be assumed to apply to specific patient groups.

54

55 **Key Summary Points**

- 56
- Clinicians commonly escalate empiric antibiotic therapy due to poor clinical progress,  
57 without microbiology guidance.
  - When escalating, they should take account of how resistance to an initial antibiotic affects  
58 the probability of resistance to subsequent options.
  - We describe a Bayesian model to guide empiric antibiotic escalation, based on local  
59 resistance data, that can be applied to small patient groups to predict rates of resistance  
60 with credible intervals.
  - We demonstrate that the optimal antibiotic escalation for the whole population cannot be  
61 assumed to apply to specific patient groups, such as ICU or haematology patients.  
62  
63  
64

65

66 **Introduction**

67 In many countries, initial empiric antibiotic (AB) choices for the management of bacterial infections  
68 are informed by local guidelines that in turn rely on an understanding of local phenotypic AB  
69 resistance (ABR) patterns from blood culture isolates and other sample types. This initial AB  
70 selection usually takes place within an hour of diagnosis of infection, and well before any  
71 microbiological results are available. Furthermore, microbiological culture is a relatively insensitive  
72 technique. Even in patients with sepsis, only 30–50% will have a positive blood culture (1, 2). Hence,  
73 it is also common for clinicians to empirically escalate AB therapy due to poor clinical progress in the  
74 absence of positive microbiology as a guide. While a poor clinical response may be due to a variety  
75 of factors, for example inadequate source control, it is the possibility of resistance to the first-choice  
76 treatment that usually drives escalated AB therapy. In this context, therefore, it is not the local rate  
77 of resistance to the possible second-choice AB options that should be considered, but the rate of co-  
78 resistance to these agents in isolates resistant to the first AB choice. Though widely available, local  
79 phenotypic resistance data are an underused resource, and could be used to gain a better  
80 understanding of circulating co-resistance patterns and improve initial and escalated empiric AB  
81 choice.

82 Some prior studies have explored this approach. As part of a medical decision support system tool  
83 Zalounina *et al* (3) included prior AB treatments and local co-resistance data to guide subsequent AB  
84 choice. Wong *et al* (4) investigated 3,280 Gram-negative bacillus (GNB) blood stream infections (BSI)  
85 looking at the correlation coefficients between pairs of ABs, and the ABR profiles of subsets of  
86 isolates resistant to a specified AB. They discussed examples of how these data could be used to  
87 guide empiric AB escalation. They also suggested that local, unit based, ABR profiles and co-  
88 resistance patterns may be more useful than nationally collected data. Recently, Teitelbaum *et al* (5)  
89 took a similar approach looking at GNB BSIs. They coined the term “escalation antibiogram (EA)” to  
90 describe a profile of resistance to a set of ABs given resistance to an initial set of 12 ABs. Their local  
91 resistance patterns were stable over the period studied, including 6577 GNB BSI episodes, from 6  
92 hospitals in their area allowing the data to be combined and averaged over time. They noted local  
93 EAs were easy to generate, however they did not have the data available to subgroup by presumed  
94 BSI source, and noted that the data may not generalise to specific patient groups.

95 One difficulty faced when applying the local EA concept to specific patient groups is the small  
96 numbers involved. Moreover, rates of ABR may vary over time and can vary significantly from  
97 country to country (6) and between regions within a country (7,8). Hence when attempting to  
98 produce an EA applicable to certain patient groups, taking an average over several years will not  
99 always be appropriate, nor is it possible to get extra power by combining data from other regions  
100 without diluting the desired effects of providing an EA based on local resistance data. Hence, our  
101 objective was to develop and validate a model that allows tracking of variation in local ABR and co-  
102 resistance over time, and so maximises our ability to define an EA for specific patient groups. Our  
103 focus here was on ICU patients, haemato-oncology patients, patients with specific sources of BSI,  
104 and adults over 80 years. The Bayesian model scripts we developed for local use can be applied to  
105 train the model for any region.

106

107

## 108 **Methods**

### 109 **Data collection and cleaning**

110 Data were collected from 3 NHS Trusts covering 4 hospitals in the Southwest of England serving a  
111 population of approximately 1.5 million people (Royal United Hospital Bath NHS Foundation Trust,  
112 University Hospitals Bristol & Weston NHS Foundation Trust, and North Bristol NHS Trust) which  
113 share a single laboratory information management system (Winpath Enterprise 7.23, Clinisys).  
114 Positive blood cultures from all 4 hospitals where GNBs were isolated over a 6-year period, from  
115 2017 to 2022, were included.

116 For each isolate, the ABR profile was determined by the European Committee on Antimicrobial  
117 Susceptibility Testing (EUCAST) disc testing or by the Biomerieux Vitek 2 automated system. Direct  
118 disc sensitivities were obtained using EUCAST criteria following the Gram stain. In most cases (85%)  
119 isolates from a purity plate were tested using the Vitek 2 system the following day giving ABR  
120 profiles for a wider range of ABs. Vitek results, when available, were used in preference to the initial  
121 disc testing. Results were expressed as “Sensitive”, “Intermediate”, or “Resistant”. Following usual  
122 clinical practices “Intermediate” and “Resistant” isolates were grouped together as non-susceptible,  
123 which from now on we will refer to as “Resistant”. Healthcare systems that have adopted EUCAST  
124 V14 break points may elect to combine “Sensitive” and “Increase dose” as one group. When using a  
125 time series of categorical data, changes to the definition of a category e.g. a change in break points  
126 should be dealt with by re-categorising the whole data set for affected organisms using MIC data and  
127 new break points. Producing an R script to do this would be a trivial task.

128 Repeat samples from the same patient with an indistinguishable isolate (Species ID and ABR profile)  
129 which occurred within 1 year were removed. Following de-duplication, we had 10,486 GNB BSIs over  
130 the 6-year period. For *Pseudomonas* spp. and *Stenotrophomonas* spp. isolates, ABs that are not  
131 tested due to assumed intrinsic resistance were automatically set to Resistant.

132 From 2020 onwards, the presumed source of BSI was recorded in a two-level hierarchical system,  
133 with the highest level consisting of the following groups: central nervous system, cardiac, gastro-  
134 intestinal, urine/renal, bone/joint, skin/soft tissue, respiratory, reproductive tract, mouth/head and  
135 neck, line infection, contaminant, unknown, or other. Data were extracted every 3 months and  
136 missing data filled in by case note review.

137

### 138 **Technical details of the Bayesian model**

139 A Bayesian model was developed that estimates ABR rate in GNB BSI and provides an expected value  
140 (posterior mean) and 95% credible interval of ABR rate for a given AB at any chosen time point  
141 within the 6 years of data collected.

142 Formally, we use a generalised additive model with a Bernoulli likelihood and logit link function for  
143 the binary outcome (Sensitive/Resistant) and a time varying covariate modelled by a penalised thin-  
144 plate regression spline. The model generates a series of “credible” curves to fit the resistance data,  
145 each with the same probability of representing the true rate given the inherent uncertainty. To avoid  
146 overfitting, an integrated penalisation term adaptively smooths the curves given the level of  
147 evidence. The model is implemented with the R package ‘brms’ (9), which adopts the Stan platform  
148 for Bayesian inference with Hamiltonian Monte-Carlo sampling (10). Four chains are run for 4,000  
149 iterations, with the first 50% discarded as warm-up, leading to 8,000 plausible curves fitting the data.

150 Statistics such as mean and credible intervals can be directly computed from samples of the curves  
151 at the required times.

152 Resistance rates between two groups or time points are compared by subtracting one set of curves  
153 from another, allowing us to calculate the posterior probability of an increase (PPI) or decrease  
154 (PPD) in resistance over time or the posterior probability of inferiority (PPIInf), or superiority (PPSup)  
155 between two AB options. In keeping with the philosophy of a Bayesian approach we do not attempt  
156 to define what probability of difference or superiority is significant, but to simply provide that  
157 probability of a difference with the 95% credible interval.

158

159

## 160 **Results & Discussion**

### 161 **Changes in ABR over time**

162 Over a 6-year period between 2017 to 2022, ABR rates were calculated for deduplicated GNB BSI in  
163 patients across our local hospitals (n=10,486). An example of this output, piperacillin/tazobactam  
164 resistance in haemato-oncology patients is reported (Fig. 1).

165 The resistance rate increased for meropenem (1.5% to 2.2%, PPI = 88.7%), but reduced slightly (See  
166 supplementary material) in all other ABs studied (piperacillin/tazobactam (Tazocin), gentamicin,  
167 amikacin, cefotaxime, ceftazidime, ciprofloxacin, trimethoprim/sulfamethoxazole (Cotrimoxazole)  
168 and amoxicillin/clavulanate (Coamoxiclav). The reductions ranged from 2.3% in Ceftazidime (Fig. 2a)  
169 (PPD = 94.3%), to 6.9% in trimethoprim/sulfamethoxazole resistance rate (Fig. 2b) (PPD = 98.5%).

170 This larger reduction in resistance may be related to the removal of trimethoprim as first-line  
171 treatment for lower urinary tract infection in local community guidelines from April 2017, which  
172 resulted in a reduction in trimethoprim resistance in *E. coli* from community urine samples (11).

173

174

175

## 176 **Informing empiric AB choice in specific patient groups**

177 When examining resistance to specific ABs in specific patient populations, the 95% CI tends to widen  
178 due to the reduced sample size. For example, piperacillin/tazobactam resistance in GNB BSIs in ICU  
179 patients has a much wider 95% CI compared to the whole hospital data, as the former is based on  
180 695 positive blood cultures compared to 10,486 for the latter (Fig. 3a, 3b). Over time,  
181 piperacillin/tazobactam resistance rates have increased for ICU patients and haemato-oncology  
182 patients (fig. 3b, 3c), while reducing over the whole hospital population (fig. 3a). Clearly, therefore,  
183 using the mean resistance rate for piperacillin/tazobactam over the 6-year period to inform empiric  
184 AB choice would underestimate the current resistance rate in the ICU and haemato-oncology  
185 populations, while using only the last year or few months data would be excessively influenced by  
186 random month-to-month variation in small patient groups. Our model overcomes this issue as the  
187 time series data allows us to estimate current ABR rates, and the uncertainty, while the model  
188 borrows information from the earlier data.

189 Following this example, the posterior means between piperacillin/tazobactam resistance rates in  
190 GNB BSI isolates from the ICU population and the whole hospital population are different (27.4% vs  
191 13.4%, respectively), and the 95% CIs do not overlap, suggesting this difference is reliable. The  
192 probability that ICU patients have higher resistance rates can be computed simply as the proportion  
193 of curves that are higher in models of the ICU population than the whole hospital population at this  
194 timepoint, in this case, PPI = 99.9%.

195 In contrast, the difference between the posterior mean piperacillin/tazobactam resistance rates for  
196 BSI GNBs from ICU and haemato-oncology patients is small (27.4% vs 30.7%) and there is a  
197 considerable overlap in the 95% CIs. This is reflected in the calculated posterior probability of 67.5%  
198 that piperacillin/tazobactam resistance rate is lower in the ICU population compared with the  
199 haemato-oncology population (e.g., PPD = 67.5%) or conversely there is a 32.5% probability that the  
200 resistance rate is greater in ICU patients than in haemato-oncology patients (e.g., PPI = 32.5%).

201 The situation for ceftazidime is similar, with a higher (and increasing) rate of resistance in both ICU  
202 and haemato-oncology patients compared to the whole hospital population. Both ICU and haemato-  
203 oncology patients have a higher proportion of potentially AmpC hyper-producing "SPACE" (*Serratia*,  
204 *Pseudomonas*, *Acinetobacter*, *Citrobacter* & *Enterobacter*) isolates compared to the whole  
205 population (ICU 38% vs 25%, PPD = 99.3%) and haemato-oncology (30% vs 25%, PPD = 87.0%) which  
206 explains a proportion of the higher resistance rates.

207 The increase in ceftazidime resistance over time is likely greater in haemato-oncology patients  
208 (15.2% to 24.5%, PPI = 89.4%) than ICU (17.6% TO 20%, PPI = 66.3%), and is due to both increased  
209 resistance in non-*E. coli* isolates include in SPACE organisms, (Figure 4) and in an increase in the  
210 proportion of non-*E. coli* isolates (*E. coli* reduced from 44% to 35%, PPD = 82%, in haemato-  
211 oncology, while in ICU the proportion of *E. coli* remained at 27%)

212

213

## 214 **Calculating an escalation antibiogram (EA) for specific patient groups**

215 To calculate an EA, our Bayesian model is applied for any given second-choice AB to all isolates  
216 resistant to the first-choice AB. Table 1 reports these data for the whole hospital population express  
217 as a most likely rate of resistance with 95% credible intervals. In this population if moving away from  
218 piperacillin/tazobactam we would predict 27% (95% CI 18 to 24) if moving to gentamicin and 31%  
219 (95% CI 21 to 40) if switching to ciprofloxacin.

220 We can also calculate the probability of inferiority (PPI<sub>inf</sub>) between pairs of alternative antibiotics.  
221 This is shown in figure 5 using data for ICU patients assuming piperacillin/tazobactam resistance.  
222 When making a clinical decision on antibiotic selection, the probability of inferiority is only useful  
223 when both alternatives have a suitably low rate of resistance.

224 It is worth noting that GNB BSI resistance rates to meropenem are low in this region (~2%), where  
225 meropenem is invariably superior as an empiric choice. Our analysis has therefore focused on other  
226 ABs as meropenem-sparing alternatives. Similarly within our region, resistance rates to newer  
227 antibiotics such as Cetazidime-Avibactam or Meropenem-Vaborbactam are currently too low to  
228 allow inclusion in our analysis.

229

## 230 **Escalation Antibiogram Example 1**

231 In severe Gram-negative infections, two of the most commonly used  $\beta$ -lactams are  
232 piperacillin/tazobactam (first-line AB for neutropenic sepsis and widely used in ICU) and ceftazidime  
233 (a useful alternative to piperacillin/tazobactam especially in non-severe penicillin allergy). In our  
234 region, piperacillin/tazobactam and ceftazidime resistance rates among GNB BSIs are similar: 13.4%  
235 (95% CI 10.8 to 16.1) and 10.6% (95% CI 8.9 to 12.7) respectively. The merits of the addition of an  
236 aminoglycoside to a  $\beta$ -lactam has been much debated (12,13) but will inevitably depend on local  
237 resistance and co-resistance rates. We will look at the effect of resistance to piperacillin/tazobactam  
238 and ceftazidime on the probability of resistance to gentamicin (our mostly widely used  
239 aminoglycoside) and amikacin (which is rarely used locally) in two specific patient groups, ICU  
240 patients and haemato-oncology and compare these results with those generated from the whole  
241 hospital population.

242 When comparing a wide group of second line options when adding to, or switching from  
243 piperacillin/tazobactam or ceftazidime (Tables 2 and 3), ABs are ordered in preference for whole  
244 hospital populations, showing the percent resistant with 95% CI, and with the PPI<sub>inf</sub> to that in the  
245 column on its left in the table. Values under 50% indicate the AB is superior to that on its left.

246 Resistance rates to both aminoglycosides are much higher in isolates resistant to either ceftazidime  
247 or piperacillin/tazobactam, with resistance rates vary from 14% to 39% depending on the patient  
248 group and antibiotic combinations compared to 3% to 13% aminoglycoside resistance in all isolates.

249 Within the whole hospital population, amikacin remains the best option for patients switching from  
250 either ceftazidime or piperacillin/tazobactam, with a 97% & 95% probability of superiority compared  
251 to gentamicin, although there is a greater relative increase in amikacin resistance compared to  
252 gentamicin (see Tables 2 and 3).

253

254 Within the ceftazidime and piperacillin/tazobactam resistant isolates, both the ICU and haemato-  
255 oncology populations differ from the whole hospital population with lower rates of aminoglycoside  
256 resistance in ICU, and higher rates of resistance in haemato-oncology patients (Fig 6). Within ICU



257 patients amikacin is likely to be superior, PPSup = 69.8% if switching from piperacillin/tazobactam  
258 and PPSup = 71% if switching from ceftazidime. For the haemato-oncology patients there is little  
259 difference between amikacin and gentamicin, (PPSup = 52%) although there is a noticeably higher  
260 rate of resistance for both when switching from ceftazidime compared to piperacillin/tazobactam  
261 (also see plots in supplementary material).

262

263 A difference between whole population and ICU or haemato-oncology populations are seen in a  
264 range of other antibiotics. Within the ICU patients, ciprofloxacin, trimethoprim/sulphamethoxazole  
265 and gentamicin have a similar probability of sensitivity, which is noticeably lower than in the whole  
266 hospital population. While within the haemato-oncology cohort, resistance rates to amikacin and  
267 gentamicin are higher than in the general population, and resistance rates to ciprofloxacin and  
268 trimethoprim/sulphamethoxazole are similar, despite both being used in some prophylaxis regimes.  
269 The resistance rates for all options are high (30-40%), so in a neutropenic patient, meropenem  
270 would be a more suitable alternative.

271 It is clear therefore, that sub-population analysis will be required by those intending to apply the EA  
272 in clinical practice.

273

#### 274 **Escalation Antibigram Example 2**

275 Having noted how changes in resistance over time differ between species, for example cefotaxime  
276 resistance in *E. coli* and non-*E. coli* (See supplementary material), we confirmed that this effect was  
277 also present in piperacillin/tazobactam resistant isolates. (Fig 7). We then looked at two clinical  
278 groups with a high proportion of *E. coli* infections (patients over 80 years old and patients with a  
279 urinary source of infection) to determine if they differed from the whole hospital population (Tables  
280 4 and 5).

281 Overall, the proportion of BSI caused by *E. coli* has very likely decreased from 59.1% (95%CI 54.9 to  
282 63.8) at the start of 2017 to 51.4% (95%CI 47.1 to 55.5, PPD = 99.6%) at the end of 2022. Within  
283 patients over 80 years old, and patients with a BSI of urine or renal tract source we have seen a  
284 similar decrease in the proportion of *E. coli* BSI, to a current rate of 59.7% (95%CI 54.3 to 64.4) from  
285 68% (95%CI 63.5 to 72.9, PPD = 99.3%) and 57.8 (95%CI 48.5 to 64.4) from 65.6% (95%CI 58.2 to  
286 71.9, PPD = 94.5%) respectively.

287 When switching from piperacillin/tazobactam (Table 4) it appears that amikacin is the best option,  
288 but in circumstances where an aminoglycoside could not be used (e.g., poor renal function),  
289 cefotaxime is comparable to ciprofloxacin and superior to co-trimoxazole for urinary source  
290 infections.

291 We would not usually think of empirically changing from piperacillin/tazobactam to cefotaxime, as  
292 the former is usually considered to be broader spectrum, and it is often assumed that resistance to  
293 piperacillin/tazobactam would also confer resistance to 3<sup>rd</sup> generation cephalosporins. While AmpC  
294 enzymes can confer resistance to both classes, when ESBL-producing isolates are reported as  
295 piperacillin/tazobactam resistant, this can be due to a range of  $\beta$ -lactamases which are not routinely  
296 identified in clinical isolates.  $\beta$ -Lactamases including OXA-1, inhibitor resistant TEM, or the high  
297 levels of TEM-1 can result in piperacillin/tazobactam resistance, independently of 3<sup>rd</sup> generation  
298 cephalosporins resistance (14).

299 Assuming ceftazidime resistance (Table 5) showed that amikacin is clearly superior in the urinary  
300 source group, whereas for over 80s, amikacin or gentamicin are broadly comparable. Due to the high  
301 resistance rates of co-trimoxazole and ciprofloxacin, meropenem would be suitable if an  
302 aminoglycoside could not be used.

### 303 **Conclusions**

304 Failure of empiric AB therapy is a regularly encountered clinical problem for infection specialist. EA  
305 analysis informed by our Bayesian model is a useful tool to support clinician decision making in  
306 escalation of empiric AB therapy for the deteriorating patient when microbiology results are not  
307 available. The model produces a mean resistance rate, with 95% credible intervals for any AB option,  
308 and allows the calculation of a posterior probability that one AB choice is superior to another based  
309 on local ABR patterns.

310 The clinical application of this model requires the use of data appropriate to the patient group being  
311 treated and an understanding of the uncertainty in the data – this uncertainty will increase when  
312 applying the concept to relatively small patient groups. We conclude that within our region, the  
313 application of whole hospital data to groups with different underlying presentations and AB  
314 exposures such as haemato-oncology patients or paediatric patients is not appropriate. To overcome  
315 this shortcoming of simple EA analysis, we have focused on patient groups that can be determined  
316 before blood culture results are known, based on age, presumed source of infection, ICU patients or  
317 haemato-oncology patients. We have avoided the use of species-specific antibiograms, preferring to  
318 use those based on the mix of species found in the patient group under consideration. We note the  
319 differences in species proportions between groups appears to explain a significant amount of the  
320 resistance difference.

321 We anticipate that the results of our EA analysis in a given institution would be utilised by infection  
322 specialists, rather than general clinicians, to avoid potentially inappropriate AB choices, such as the  
323 use of aminoglycosides as a single agent where this contraindicated, and to ensure that alternative  
324 reasons for poor response to empiric AB therapy (e.g. lack of source control) are considered.

325 Our model can be easily introduced in any institution using the freely available software package, R.  
326 It requires only appropriately cleaned and de-duplicated ABR data which, in many cases, is already  
327 generated regularly to inform antimicrobial guideline development. This process of gathering data  
328 can also be automated, as in our centre, to further reduce the associated workload, and the model  
329 can be run as often as indicated by local demands. We suggest that this model is suitable for  
330 widespread adoption across institutions where infection specialists are making antimicrobial  
331 escalation decisions in the absence of helpful microbiological results.

### 332 **Ethics**

333 This was a retrospective study using anonymised data already collected as part of routine clinical  
334 care. This project was approved by Public Health England's Research Ethics and Governance Group  
335 (REGG).

336

### 337 **Funding**

338 P.W., M. B. A. & A.W.D. were supported by Medical Research Council grant MR/T005408/1

339 R.B., & B.S. were supported by Health Data Research UK via the Better Care Partnership Southwest  
340 (HDR CF0129).

341 W.W.Y.L. received a scholarship from the Medical Research Foundation National PhD Training  
342 Program in Antimicrobial Resistance Research (MRF-145-0004-TPG-AVISO).

343

#### 344 **Transparency declarations**

345 All authors confirm that they have no conflicts of interest to declare.

346

#### 347 **Author Contributions**

348 Conceived the Study and Obtained Funding: P.W., A.W.D., M.B.A.

349 Cleaning and Analysis of Data: R.B., B.S., L.G., W.W.Y.L., A.W.D., P.W.

350 Initial Drafting of Manuscript: P.W., M.B.A.

351 Corrected and Approved Manuscript: All authors

#### 352 **References**

353 1. Scheer, C. S., Fuchs, C., Gründling, M., Vollmer, M., Bast, J., Bohnert, J. A., ... & Kuhn, S. O. (2019).  
354 Impact of antibiotic administration on blood culture positivity at the beginning of sepsis: a  
355 prospective clinical cohort study. *Clinical Microbiology and Infection*, 25(3), 326-331.

356

357 2. Murray, P. R., & Masur, H. (2012). Current approaches to the diagnosis of bacterial and fungal  
358 bloodstream infections for the ICU. *Critical care medicine*, 40(12), 3277.

359 3. Zalounina, A., Paul, M., Leibovici, L., & Andreassen, S. (2007). A stochastic model of susceptibility  
360 to antibiotic therapy—the effects of cross-resistance and treatment history. *Artificial Intelligence in*  
361 *Medicine*, 40(1), 57-63.

362 4. Wong, P. H., von Krosigk, M., Roscoe, D. L., Lau, T. T., Yousefi, M., & Bowie, W. R. (2014).  
363 Antimicrobial co-resistance patterns of gram-negative bacilli isolated from bloodstream infections: a  
364 longitudinal epidemiological study from 2002–2011. *BMC infectious diseases*, 14(1), 1-10.

365 5. Teitelbaum, D., Elligsen, M., Katz, K., Lam, P. W., Lo, J., MacFadden, D., ... & Daneman, N. (2022).  
366 Introducing the Escalation Antibigram: A Simple Tool to Inform Changes in Empiric Antimicrobials in  
367 the Nonresponding Patient. *Clinical Infectious Diseases*, 75(10), 1763-1771.

368 6. Murray, C. J., Ikuta, K. S., Sharara, F., Swetschinski, L., Aguilar, G. R., Gray, A., ... & Tasak, N. (2022).  
369 Global burden of bacterial antimicrobial resistance in 2019: a systematic analysis. *The Lancet*,  
370 399(10325), 629-655.

371 7. Quarterly laboratory surveillance of acquired carbapenemase-producing Gram-negative bacteria  
372 in England: October 2020 to September 2022  
373 [https://assets.publishing.service.gov.uk/government/uploads/system/uploads/attachment\\_data/file](https://assets.publishing.service.gov.uk/government/uploads/system/uploads/attachment_data/file/1135930/hpr0223-CPGNB-Q32022-v2.pdf)  
374 [/1135930/hpr0223-CPGNB-Q32022-v2.pdf](https://assets.publishing.service.gov.uk/government/uploads/system/uploads/attachment_data/file/1135930/hpr0223-CPGNB-Q32022-v2.pdf)

375 8. English surveillance programme for antimicrobial utilisation and resistance (ESPAUR) Report 2021  
376 to 2022

377 [https://assets.publishing.service.gov.uk/government/uploads/system/uploads/attachment\\_data/file](https://assets.publishing.service.gov.uk/government/uploads/system/uploads/attachment_data/file/1118310/ESPAUR-report-2021-to-2022.pdf)  
378 [/1118310/ESPAUR-report-2021-to-2022.pdf](https://assets.publishing.service.gov.uk/government/uploads/system/uploads/attachment_data/file/1118310/ESPAUR-report-2021-to-2022.pdf)

379 9.. Bürkner P (2017). “brms: An R Package for Bayesian Multilevel Models Using Stan.” Journal of  
380 Statistical Software, 80(1), 1–28. doi:10.18637/jss.v080.i01.

381 10. Stan platform for Bayesian inference with Hamiltonian Monte-Carlo sampling. Stan Development  
382 Team. 2022. Stan Modeling Language Users Guide and Reference Manual, VERSION. [https://mc-  
stan.org](https://mc-<br/>383 stan.org)

384 11. Hammond, A., Stuijzand, B., Avison, M. B., & Hay, A. D. (2020). Antimicrobial resistance  
385 associations with national primary care antibiotic stewardship policy: Primary care-based, multilevel  
386 analytic study. PloS one, 15(5), e0232903.

387

388 12. Paul, M., Soares-Weiser, K., & Leibovici, L. (2003).  $\beta$  lactam monotherapy versus  $\beta$  lactam-  
389 aminoglycoside combination therapy for fever with neutropenia: systematic review and meta-  
390 analysis. Bmj, 326(7399), 1111.

391 13. Tang, Y., Wu, X., Cheng, Q. *et al.* Inappropriate initial antimicrobial therapy for hematological  
392 malignancies patients with Gram-negative bloodstream infections. *Infection* 48, 109–116 (2020).  
393 <https://doi.org/10.1007/s15010-019-01370-x>

394

395 [14](#)): Davies TJ, Stoesser N, Sheppard AE, Abuoun M, Fowler P, Swann J, Quan TP, Griffiths D,  
396 Vaughan A, Morgan M, Phan HTT, Jeffery KJ, Andersson M, Ellington MJ, Ekelund O, Woodford N,  
397 Mathers AJ, Bonomo RA, Crook DW, Peto TEA, Anjum MF, Walker AS. Reconciling the Potentially  
398 Irreconcilable? Genotypic and Phenotypic Amoxicillin-Clavulanate Resistance in Escherichia coli.  
399 Antimicrob Agents Chemother. 2020 May 21;64(6):e02026- 19. doi: 10.1128/AAC.02026-19. PMID:  
400 32205351; PMCID: PMC726950

401

402

403

404

405

406

407

408

409

410

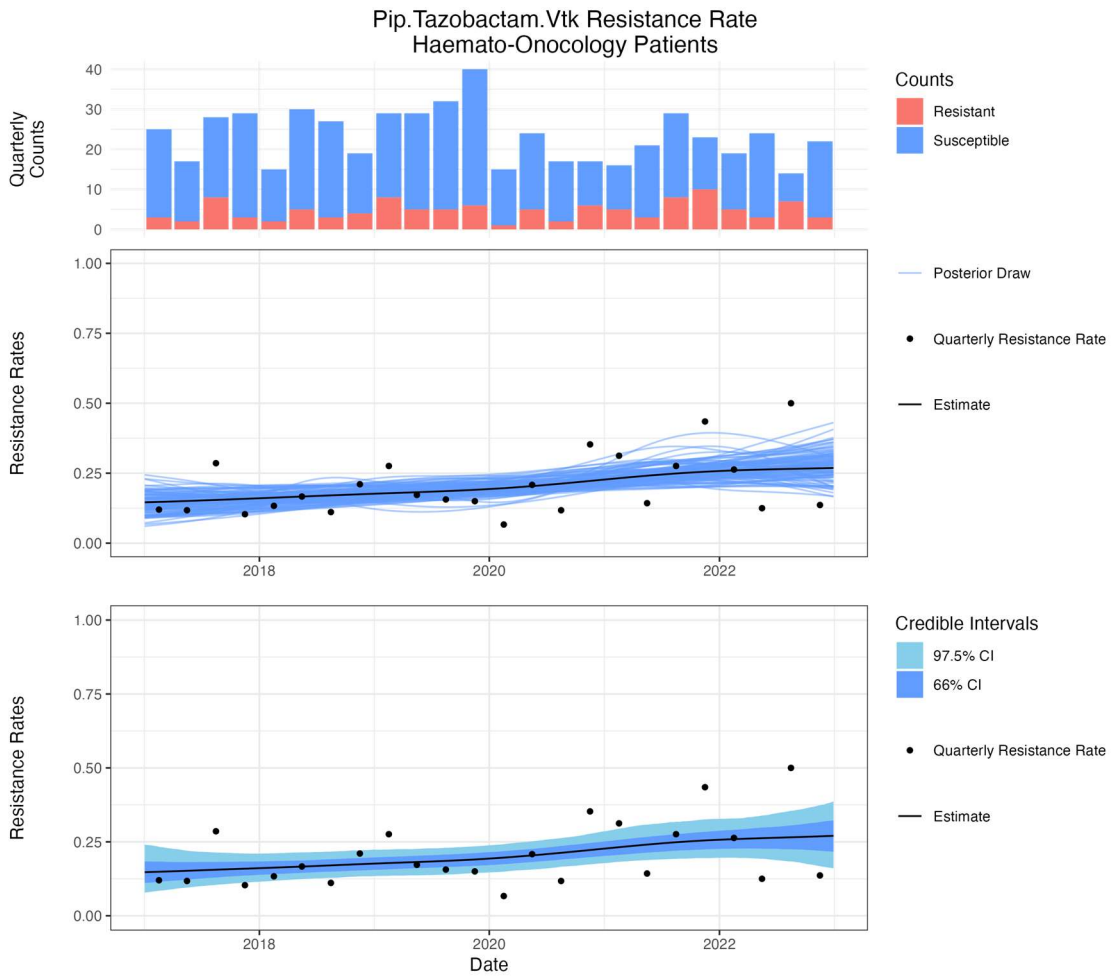
411

412

413

414

415 **Figures**

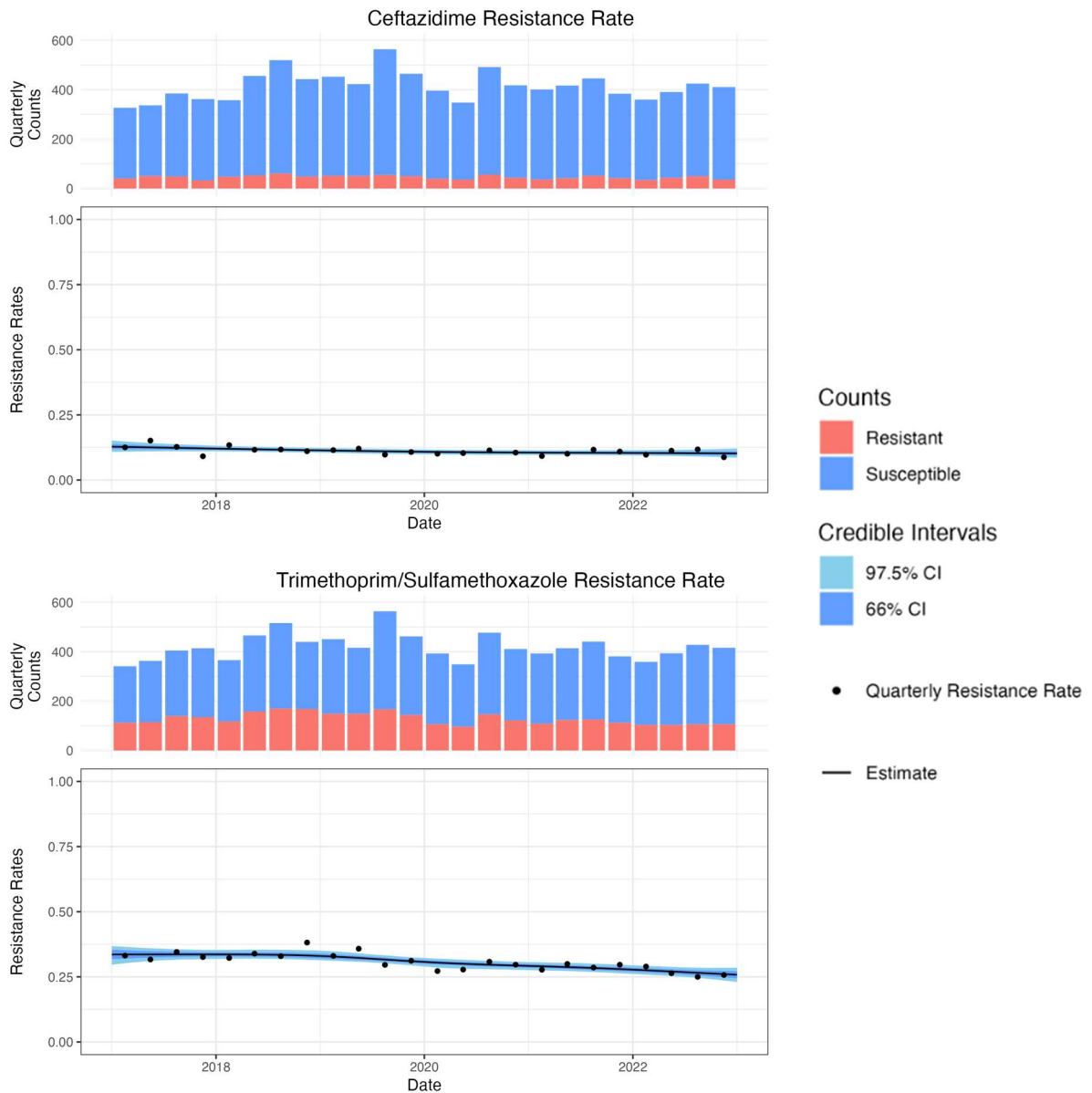


416

417

418 **Figure 1.** Piperacillin/tazobactam resistance in haemato-oncology patients. (Top) A stacked barplot  
419 representing the number of samples in the data. (Middle) A 'spaghetti plot' of a random selection of  
420 splines fitted to the data that make up the model, and (Bottom) a 'ribbon' plot showing the inferred  
421 posterior mean (black line) with the 66% and 95% credible interval (dark and light blue shaded  
422 areas) with the quarterly rates shown as dots.

423



424

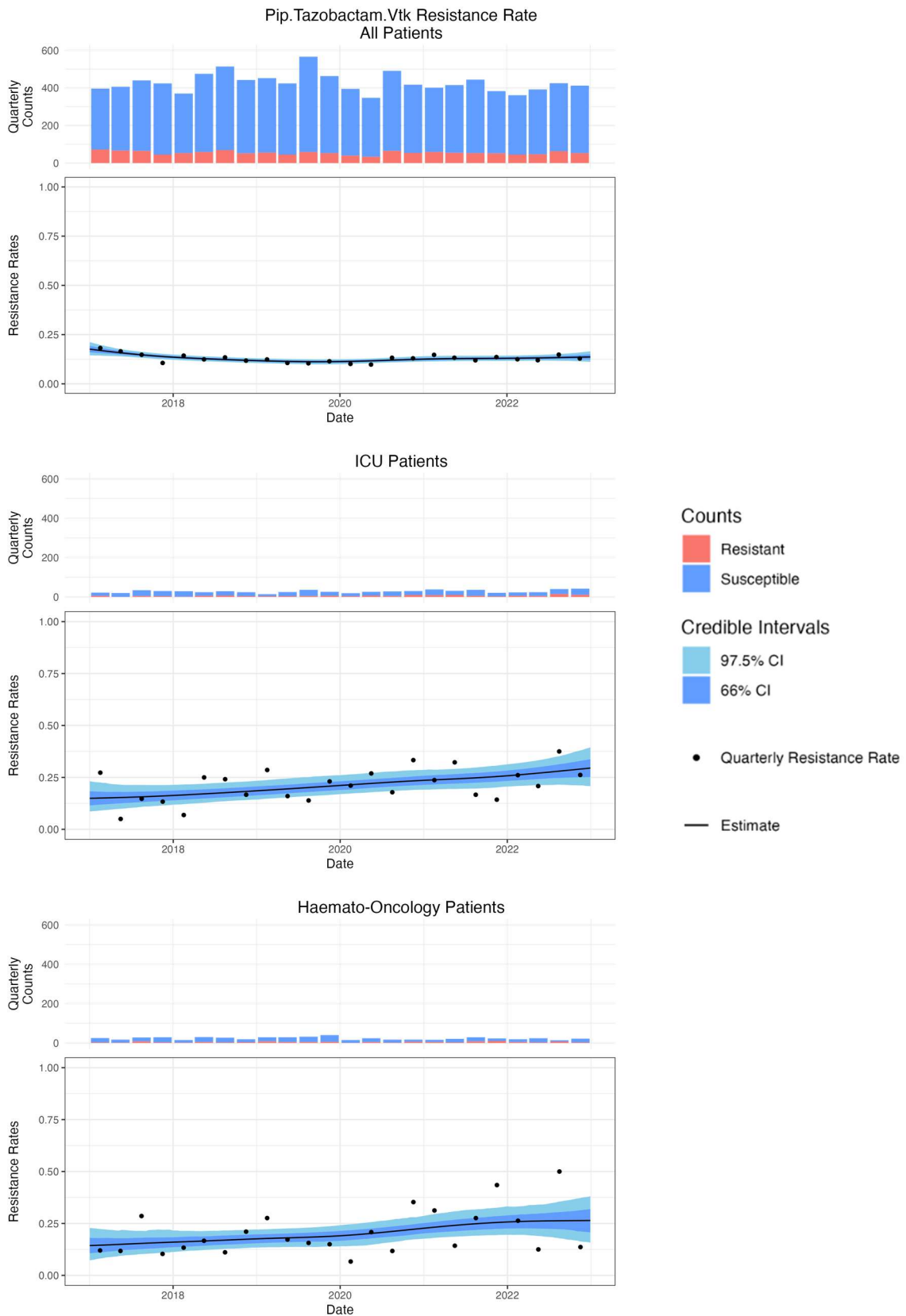
425 **Figure 2.** All deduplicated GNB BSI isolates ( $n=10486$ ) (a) Percent Resistance to Ceftazidime reduces  
 426 from 12.9% (95% CI 10.9 to 15.3) in 2017 to 10.6% (95% CI 8.8 to 12.9) in 2022. (b) % Resistance to  
 427 trimethoprim/sulfamethoxazole reduces from 32.9% (95% CI 28.3 to 36.4) in 2017 to 26.0% (95% CI  
 428 22.7 to 29.4) in 2022

429

430

431

432

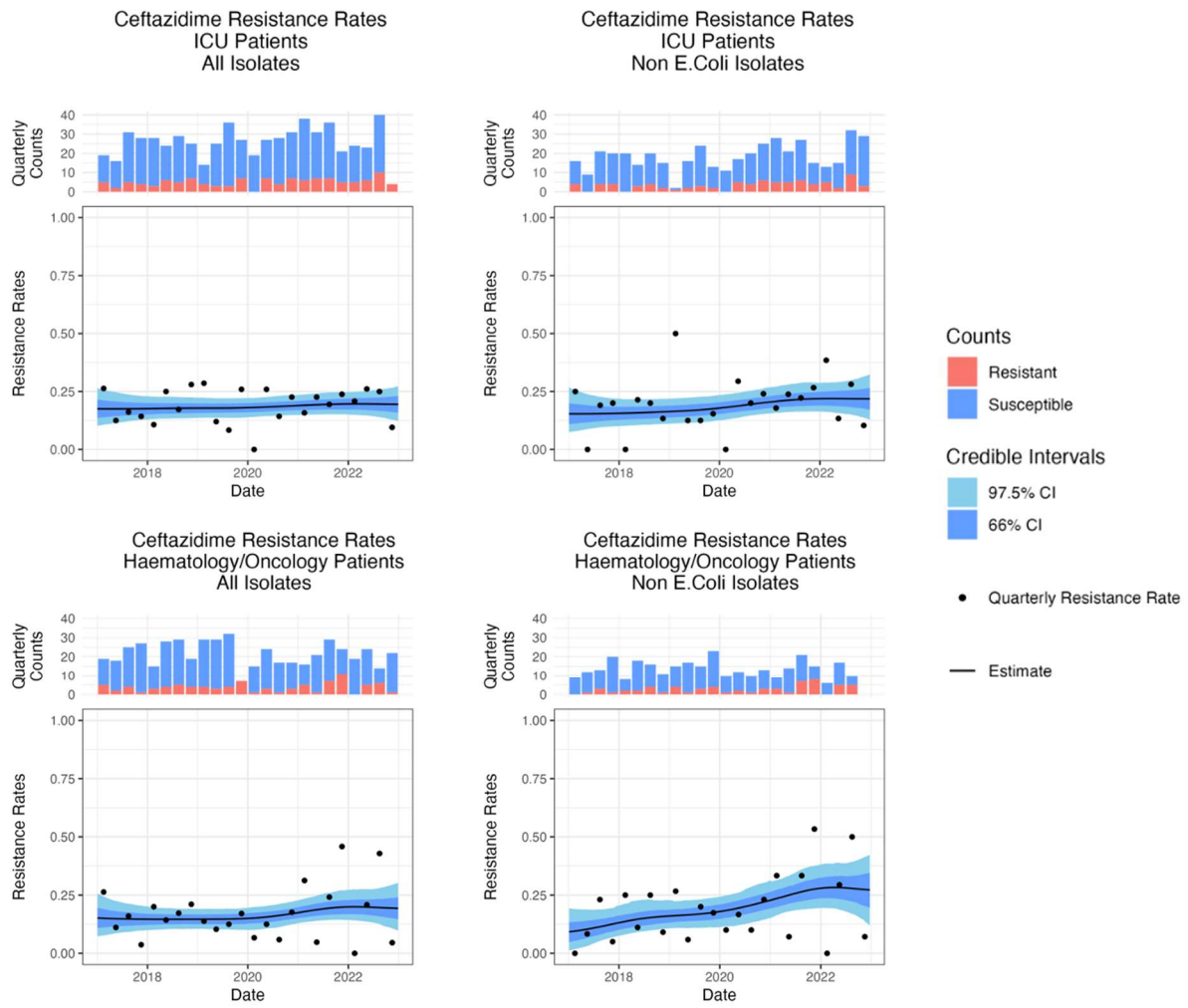


433

434 **Figure 3.** Piperacillin/tazobactam resistance for all patients (Top) compared to ICU patients (Middle)

435 and haemato-oncology patients (bottom)

436



438

439 **Figure 4.** Percent resistance to ceftazidime in all isolates (left column) and non-E coli isolates (right  
 440 column) located in either (Top Row) ICU (Bottom row) or Haematology/Oncology.

441

442

443

444

445

446

447

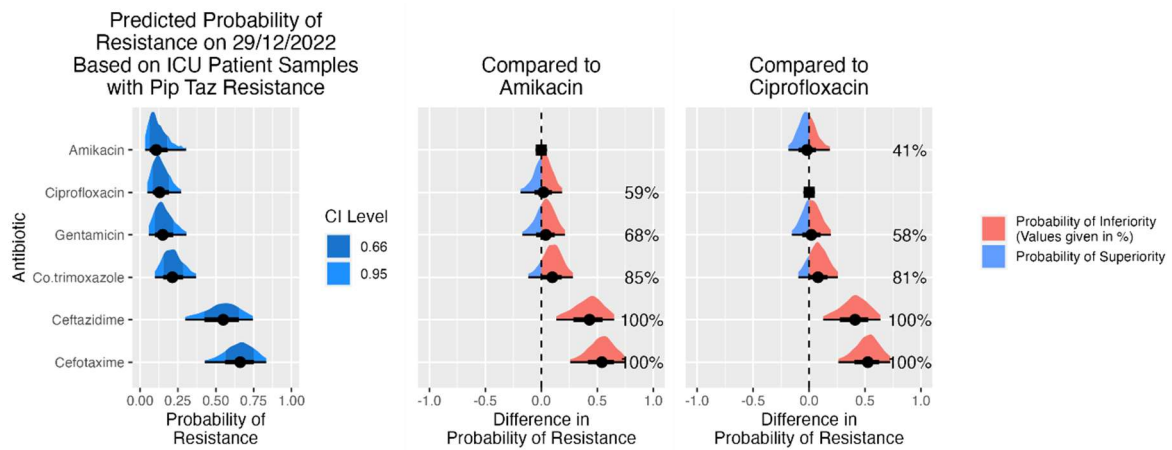
448

449

450

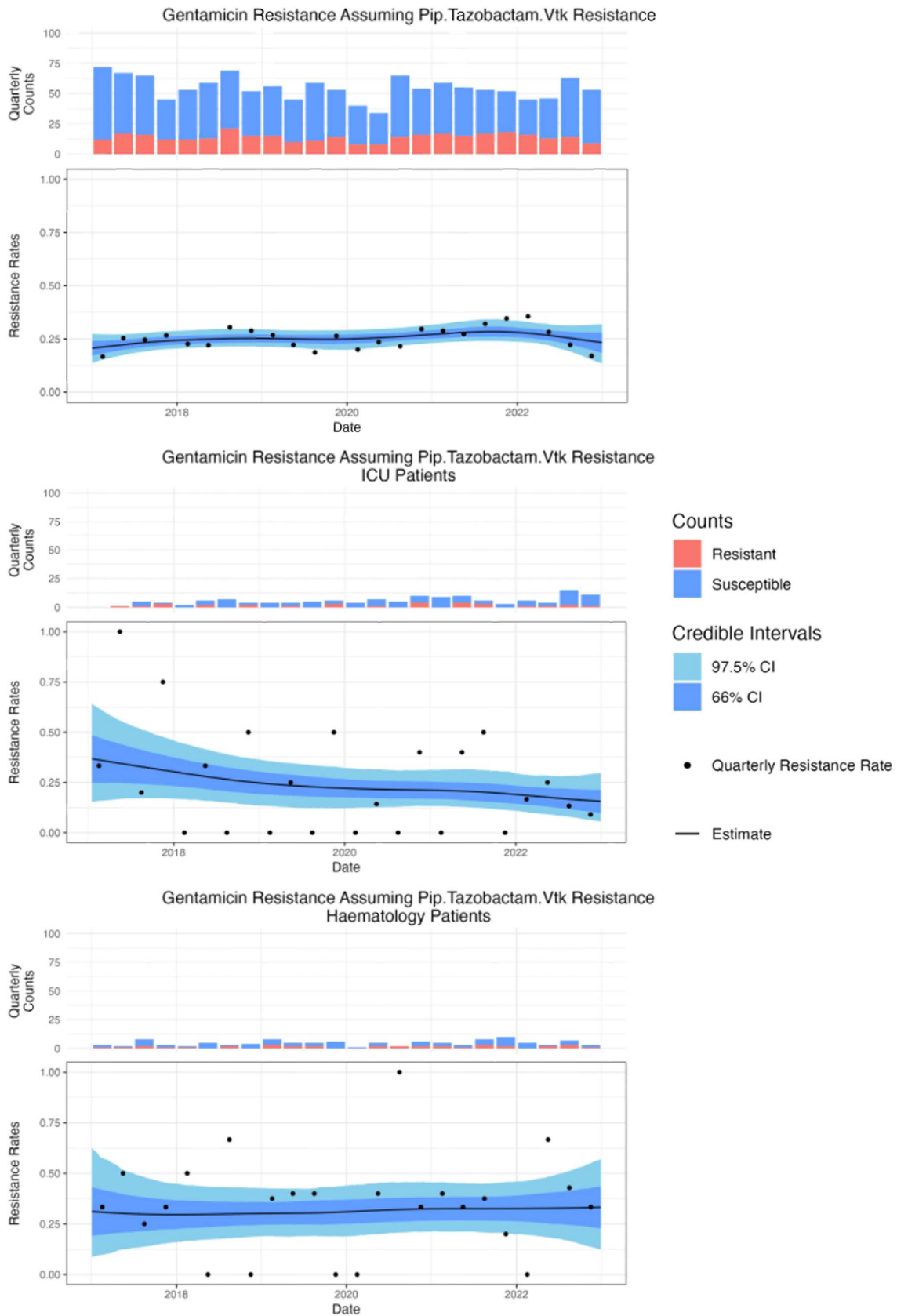
451





453

454 **Figure 5.** For ICU patients with assumed resistance to piperacillin/tazobactam. The estimated  
 455 resistance rate to 6 antibiotic options with the 66% and 95% credible interval is shown on the left.  
 456 The centre and right plots each show a head to head comparison between one antibiotic (Amikacin  
 457 or Ciprofloxacin) and the other five antibiotics. This gives the estimated difference in probability of  
 458 resistance, for example, there is 41% probability of higher resistance in amikacin compared to  
 459 ciprofloxacin (right), only marginally favouring amikacin, while there is an 81% probability of higher  
 460 resistance in co-trimoxazole compared to ciprofloxacin (right) favouring the use of ciprofloxacin.

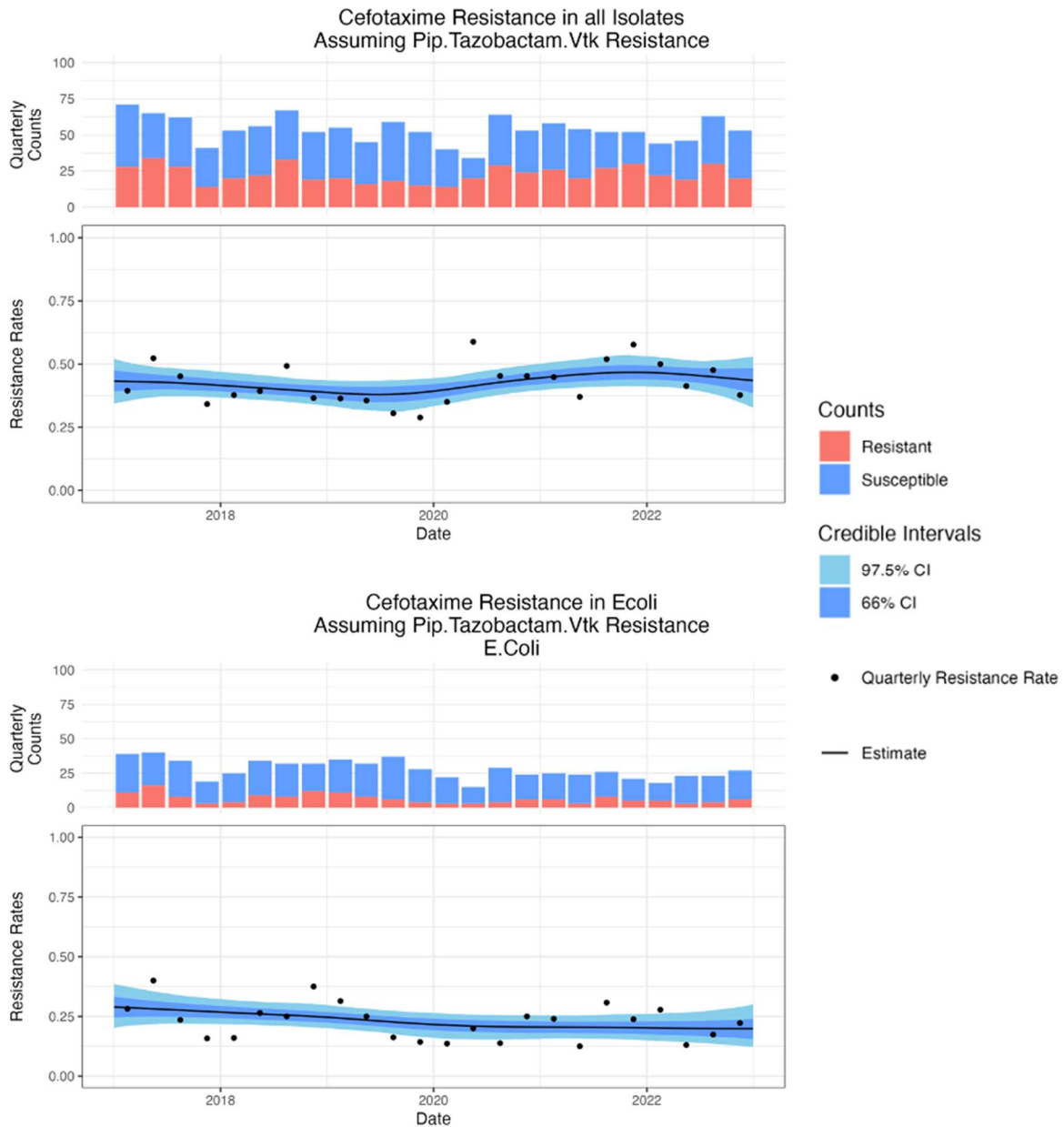


461

462 **Figure 6.** Percent Resistance to gentamicin assuming piperacillin/tazobactam resistance in (Top) all  
 463 isolates 27.0% (95% CI 18.5 to 34.5), (Middle) ICU 19.2% (95% CI 7.1 to 37.0), (Bottom) haemato-  
 464 oncology 33.5% (95% CI 14.6 to 57.5)

465

466



467

468 **Figure 7.** (Top) Cefotaxime resistance in all isolates assuming piperacillin/tazobactam resistance was  
469 stable over time 43.7% (95% CI 33 to 53) PPD = 46.1%. (Bottom) Cefotaxime resistance in E. coli  
470 assuming piperacillin/tazobactam resistance reduced from 29.2% (95%CI 20.4 to 38.6) to 18.3%  
471 (95%CI 11 to 28) PPD = 95.5%

472

**Second Choice Antibiotic  
Meropenem**

	Posterior Mean	Upper 97.5% CI	Lower 2.5% CI
<b>Meropenem</b>	NA	NA	NA
<b>Pip.Taz</b>	0.12	0.18	0.07
<b>Ceftazidime</b>	0.13	0.21	0.07
<b>Cefotaxime</b>	0.12	0.18	0.08
<b>Cefuroxime</b>	0.07	0.11	0.05
<b>Gentamicin</b>	0.15	0.28	0.07
<b>Amikacin</b>	0.24	0.46	0.11
<b>Coamoxiclav</b>	0.05	0.07	0.03
<b>Ciprofloxacin</b>	0.03	0.07	0.01
<b>Cotrimoxazole</b>	0.04	0.07	0.02

**Second Choice Antibiotic  
Piperacillin/Tazobactam**

	Posterior Mean	Upper 97.5% CI	Lower 2.5% CI
	0.67	0.83	0.47
	NA	NA	NA
	0.57	0.68	0.43
	0.34	0.44	0.24
	0.29	0.36	0.22
	0.46	0.58	0.33
	0.65	0.89	0.44
	0.26	0.32	0.21
	0.34	0.45	0.23
	0.18	0.23	0.13

**Second Choice Antibiotic  
Ceftazidime**

	Posterior Mean	Upper 97.5% CI	Lower 2.5% CI
<b>Meropenem</b>	0.62	0.78	0.43
<b>Pip.Taz</b>	0.47	0.56	0.38
<b>Ceftazidime</b>	NA	NA	NA
<b>Cefotaxime</b>	0.51	0.59	0.44
<b>Cefuroxime</b>	0.36	0.42	0.31
<b>Gentamicin</b>	0.45	0.59	0.35
<b>Amikacin</b>	0.67	0.88	0.47
<b>Coamoxiclav</b>	0.2	0.24	0.17
<b>Ciprofloxacin</b>	0.41	0.5	0.33
<b>Cotrimoxazole</b>	0.18	0.22	0.14

**Second Choice Antibiotic  
Cefotaxime**

	Posterior Mean	Upper 97.5% CI	Lower 2.5% CI
	0.89	0.99	0.62
	0.44	0.53	0.33
	0.78	0.86	0.67
	NA	NA	NA
	0.57	0.62	0.52
	0.45	0.59	0.35
	0.74	0.9	0.58
	0.32	0.37	0.27
	0.42	0.52	0.33
	0.42	0.49	0.34

**Second Choice Antibiotic  
Cefuroxime**

	Posterior Mean	Upper 97.5% CI	Lower 2.5% CI
<b>Meropenem</b>	0.95	1	0.82
<b>Pip.Taz</b>	0.63	0.71	0.53
<b>Ceftazidime</b>	0.97	0.99	0.93
<b>Cefotaxime</b>	0.99	1	0.98
<b>Cefuroxime</b>	NA	NA	NA
<b>Gentamicin</b>	0.58	0.71	0.47
<b>Amikacin</b>	0.81	0.94	0.67
<b>Coamoxiclav</b>	0.53	0.59	0.47
<b>Ciprofloxacin</b>	0.63	0.74	0.54
<b>Cotrimoxazole</b>	0.5	0.57	0.43

**Second Choice Antibiotic  
Gentamicin**

	Posterior Mean	Upper 97.5% CI	Lower 2.5% CI
	0.45	0.64	0.28
	0.27	0.34	0.18
	0.33	0.41	0.25
	0.21	0.27	0.16
	0.15	0.2	0.12
	NA	NA	NA
	0.61	0.78	0.41
	0.13	0.17	0.1
	0.35	0.43	0.27
	0.17	0.22	0.12

Initial Choice Antibiotic

Initial Choice Antibiotic

Initial Choice Antibiotic

		<i>Second Choice Antibiotic</i> <b>Amikacin</b>		
		Posterior Mean	Upper 97.5% CI	Lower 2.5% CI
<i>Initial Choice Antibiotic</i>	<b>Meropenem</b>	0.41	0.62	0.23
	<b>Pip.Taz</b>	0.18	0.25	0.11
	<b>Ceftazidime</b>	0.2	0.3	0.12
	<b>Cefotaxime</b>	0.16	0.23	0.1
	<b>Cefuroxime</b>	0.1	0.15	0.06
	<b>Gentamicin</b>	0.23	0.37	0.11
	<b>Amikacin</b>	NA	NA	NA
	<b>Coamoxiclav</b>	0.06	0.09	0.03
	<b>Ciprofloxacin</b>	0.16	0.25	0.08
	<b>Cotrimoxazole</b>	0.05	0.09	0.02

		<i>Second Choice Antibiotic</i> <b>Coamoxiclav</b>		
		Posterior Mean	Upper 97.5% CI	Lower 2.5% CI
		0.99	1	0.94
		0.91	0.96	0.84
		0.87	0.92	0.8
		0.9	0.94	0.83
		0.85	0.89	0.8
		0.82	0.89	0.73
		0.85	0.94	0.71
		NA	NA	NA
		0.72	0.8	0.64
		0.78	0.82	0.73

		<i>Second Choice Antibiotic</i> <b>Ciprofloxacin</b>		
		Posterior Mean	Upper 97.5% CI	Lower 2.5% CI
<i>Initial Choice Antibiotic</i>	<b>Meropenem</b>	0.23	0.45	0.09
	<b>Pip.Taz</b>	0.31	0.4	0.21
	<b>Ceftazidime</b>	0.45	0.54	0.35
	<b>Cefotaxime</b>	0.29	0.38	0.22
	<b>Cefuroxime</b>	0.24	0.31	0.19
	<b>Gentamicin</b>	0.55	0.66	0.43
	<b>Amikacin</b>	0.66	0.86	0.41
	<b>Coamoxiclav</b>	0.17	0.21	0.13
	<b>Ciprofloxacin</b>	NA	NA	NA
	<b>Cotrimoxazole</b>	0.24	0.3	0.19

		<i>Second Choice Antibiotic</i> <b>Cotrimoxazole</b>		
		Posterior Mean	Upper 97.5% CI	Lower 2.5% CI
		0.58	0.75	0.39
		0.37	0.45	0.27
		0.43	0.53	0.33
		0.67	0.75	0.58
		0.46	0.52	0.39
		0.58	0.71	0.45
		0.45	0.64	0.24
		0.44	0.48	0.39
		0.58	0.67	0.49
		NA	NA	NA

476 **Table 1.** Posterior mean resistance estimates with 95% credible intervals for the whole hospital  
 477 population. Tables for haemato-oncology, paediatrics, GI or urinary source infections are in the  
 478 supplementary material.

Pip/Taz Resistant	Amikacin	Gentamicin	Ciprofloxacin	Co-trimoxazole	Cefotaxime	Ceftazidime
<b>All (% R with CI)</b>	<b>18% (11 to 25)</b>	<b>27% (18 to 34)</b>	<b>31% (21 to 40)</b>	<b>37% (28 to 45)</b>	<b>44% (33 to 53)</b>	<b>47% (37 to 55)</b>
All (% inferior)		95.0%	73.7%	81.9%	82.8%	72.5%
<b>ICU (% R with CI)</b>	<b>14% (4 to 33)</b>	<b>19% (7 to 37)</b>	<b>17% (6 to 33)</b>	<b>23% (10 to 40)</b>	<b>65% (41 to 83)</b>	<b>63% (46 to 84)</b>
ICU (% inferior)		69.8%	39.4%	74.6%	99.9%	45.5%
<b>Haem (% R with CI)</b>	<b>31% (9 to 55)</b>	<b>32% (7 to 57)</b>	<b>31% (8 to 62)</b>	<b>42% (16 to 74)</b>	<b>58% (32 to 81)</b>	<b>62% (34 to 84)</b>
Haem (% inferior)		52.8%	49.5%	71.5%	81.7%	41.2%

485 Table 2. Escalation antibiogram for piperacillin/tazobactam (pip/taz) resistant isolates showing  
486 resistance rate and the posterior probability of inferiority (PPIInf) to the antibiotic choice to the  
487 choice to the immediate left (e.g., Gentamicin v. Amikacin, Ciprofloxacin v. Gentamicin, etc.) across  
488 the whole hospital and in subgroups from ICU and Haematology/Oncology. Numbers in brackets  
489 indicate upper and lower bounds for the 95% credible interval.

490

Ceftazidime Resistant	Amikacin	Gentamicin	Co-trimoxazole	Ciprofloxacin	Pip/Taz	Cefotaxime
<b>All (% R or I)</b>	<b>21% (12 to 30)</b>	<b>33% (24 to 41)</b>	<b>43% (33 to 52)</b>	<b>45% (35 to 54)</b>	<b>57% (43 to 687)</b>	<b>78% (67 to 86)</b>
All (% inferior)		97.2%	94.4%	62.4%	92.4%	99.7%
<b>ICU (% R or I)</b>	<b>17% (4 to 42)</b>	<b>24% (7 to 44)</b>	<b>27% (10 to 49%)</b>	<b>28% (11 to 52)</b>	<b>86% (66 to 98)</b>	<b>88% (70 to 98)</b>
ICU (% inferior)		71.0%	58.3%	53.5%	99.9%	59.7%
<b>Haem (% R or I)</b>	<b>38% (18 to 62)</b>	<b>39% (19 to 64)</b>	<b>39% (16 to 64)</b>	<b>35% (13 to 61)</b>	<b>77% (54 to 92)</b>	<b>88% (69 to 98)</b>
Haem (% inferior)		52.3%	50.1%	40.1%	99.2%	84.6%

491 Table 3. Escalation antibiogram for Ceftazidime resistant isolates showing resistance rate and the  
492 PPIInf to the antibiotic choice to the choice to the immediate left (e.g., Gentamicin v. Amikacin,  
493 Ciprofloxacin v. Gentamicin, etc.) across the whole hospital and in subgroups from ICU and  
494 Haematology/Oncology. Numbers in brackets indicate upper and lower bounds for the 95% credible  
495 interval.

496

Pip/Taz Resistant	Amikacin	Gentamicin	Ciprofloxacin	Co-trimoxazole	Cefotaxime	Ceftazidime
<b>All (% R or I)</b>	<b>18% (11 to 25)</b>	<b>27% (18 to 34)</b>	<b>31% (21 to 40)</b>	<b>37% (28 to 45)</b>	<b>44% (33 to 53)</b>	<b>47% (37 to 55)</b>
All (% inferior)		95.0%	73.7%	81.9%	82.8%	72.5%
<b>Over 80 (% R or I)</b>	<b>16% (5 to 29)</b>	<b>19% (7 to 34)</b>	<b>39% (22 to 54)</b>	<b>39% (25 to 55)</b>	<b>37% (20 to 53)</b>	<b>43% (28 to 56)</b>
Over 80 (% inferior)		60.0%	94.6%	48.2%	43.6%	67.3%
<b>U/R Source (% R or I)</b>	<b>13% (3 to 27)</b>	<b>29% (13 to 46)</b>	<b>33% (16 to 53)</b>	<b>39% (22 to 59)</b>	<b>29% (15 to 47)</b>	<b>36% (19 to 59)</b>
U/R Src (% inferior)		93.2%	63.5%	68.3%	20.9%	68.4%

497 Table 4. Escalation antibiogram for piperacillin/tazobactam resistant isolates showing resistance rate  
498 and the posterior probability of inferiority (PPIInf) to the antibiotic choice to the the choice to the  
499 immediate left (e.g., Gentamicin v. Amikacin, Ciprofloxacin v. Gentamicin, etc.). Data for whole  
500 hospital, and subgroups of patients over 80 years, and infections with urine/renal source. Numbers  
501 in brackets indicate upper and lower bounds for the 95% credible interval.

502

Ceftazidime Resistant	Amikacin	Gentamicin	Co-trimoxazole	Ciprofloxacin	Pip/Taz	Cefotaxime
<b>All (% R or I)</b>	<b>21% (12 to 30)</b>	<b>33% (24 to 41)</b>	<b>43% (33 to 52)</b>	<b>45%(35 to 54)</b>	<b>57% (43 to 687)</b>	<b>78% (67 to 86)</b>
All (% inferior)		97.2%	94.4%	62.4%	92.4%	99.7%
<b>Over 80 (% R or I)</b>	<b>21% (9 to 35)</b>	<b>25% (11 to 40)</b>	<b>44% (27 to 60)</b>	<b>44% (24 to 63)</b>	<b>49% (33 to 66)</b>	<b>77% (62 to 88)</b>
Over 80 (% inferior)		68%	94.3%	52.7%	60.9%	99.3%
<b>U/R Source R or I)</b>	<b>13% (2 to 33)</b>	<b>34% (15 to 54)</b>	<b>48% (24 to 72)</b>	<b>57% (35 to 76)</b>	<b>49% (29 to 72)</b>	<b>80% (55 to 96)</b>
U/R Src (% inferior)		93.7%	80.8%	72.2%	28.3%	96.6%

503 Table 5. Escalation antibiogram for ceftazidime resistant isolates showing resistance rate and the  
504 posterior probability of inferiority (PPIInf) to the antibiotic choice to the the choice to the immediate  
505 left (e.g., Gentamicin v. Amikacin, Ciprofloxacin v. Gentamicin, etc.). Data for whole hospital,  
506 andsubgroups of patients over 80 years, and infections with urine/renal source. Numbers in brackets  
507 indicate upper and lower bounds for the 95% credible interval.