

# Impact of seasonal malaria chemoprevention timing on clinical malaria incidence dynamics in the Kedougou region, Senegal

Short title: Impact of seasonal malaria chemoprevention timing on clinical malaria

Betty Kazanga<sup>1</sup>, El-Hadj Ba<sup>2</sup>, Eva Legendre<sup>1</sup>, Mady Cissoko<sup>3</sup>, Laurence Fleury<sup>4</sup>, Lucas Bérard<sup>4</sup>, Abdoulaye Diop<sup>5</sup>, Cheikh Sokhna<sup>6</sup>, Fode Danfakha<sup>7</sup>, Issaka Sagara<sup>3</sup>, Jean-Louis Ndiaye<sup>8</sup>, Jean Gaudart<sup>9</sup>, Jordi Landier<sup>1\*</sup>.

<sup>1</sup> Aix Marseille Univ, IRD, INSERM, SESSTIM, ISSPAM, Marseille, France

<sup>2</sup> Aix Marseille Univ, IRD, MINES, IRD-UCAD International Campus, Dakar, Senegal

<sup>3</sup> Malaria Research and Training Center (MRTC), Bamako BP 1805, Mali

<sup>4</sup> Aix Marseille Univ, IRD, LPED, Marseille, France

<sup>5</sup> OPSE, Representation IRD, Dakar, Senegal

<sup>6</sup> Aix Marseille Univ, IRD, MINING, Marseille, France

<sup>7</sup> Kedougou District Hospital, Kedougou, Senegal

<sup>8</sup> Service Parasitologie Mycologie, UFR Santé Thiès, Université Iba Der Thiam, Thiès, Senegal

<sup>9</sup> Aix Marseille Univ, IRD, INSERM, SESSTIM, ISSPAM, AP-HM, Hop. La Timone, BioSTIC, Marseille, France

\*Corresponding author

Email: [Jordi.landier@ird.fr](mailto:Jordi.landier@ird.fr) (JL)

NOTE: This preprint reports new research that has not been certified by peer review and should not be used to guide clinical practice.

## 24 Abstract

25 Seasonal malaria chemoprevention (SMC) with sulfadoxine-pyrimethamine and amodiaquine is  
26 recommended by the World Health Organization since 2012 for clinical malaria prevention in children in  
27 the Sahelian region of Africa. In Senegal, SMC implementation began in 2013 and is given to children  
28 under 10 years old. This study aimed to describe clinical malaria incidence in the general population  
29 during routine SMC implementation and to analyse how SMC timing impacted clinical malaria dynamics  
30 in eligible children.

31

32 We conducted an ecological study in the Kedougou region of Senegal in 27 villages included in the  
33 Bandafassi Health and Demographic Surveillance System (HDSS). We calculated weekly *Plasmodium*  
34 *falciparum* malaria incidence by age group using malaria case data recorded by community health  
35 workers and health-posts, and population denominators obtained from Bandafassi Health and  
36 Demographic Surveillance System. We used negative binomial generalized additive multilevel models to  
37 analyse the incidence of clinical episodes in children under 10 years during the expected SMC  
38 prophylactic period and at the end of the transmission period.

39

40 Malaria incidence was strongly seasonal with a high transmission period starting in June. Children under  
41 SMC presented an overall lower incidence compared to older children and young adults. Among children  
42 eligible for SMC, the incidence was lowest for approximately 3 weeks after treatment administration and  
43 increased subsequently, suggesting a gradual loss of protection. At the end of the high transmission  
44 period, a higher malaria incidence was recorded from the 3<sup>rd</sup> to 6<sup>th</sup> week after the week of administration  
45 of the fourth (final) SMC round.

46

47 While protecting children under 10 years, SMC warrants adjustment to reduce exposure before the next  
48 round, to increase protection of 5-9 years, and to cover the high transmission period completely. The

49 addition of a 5<sup>th</sup> round of SMC in 2023 was necessary to cover the end of the transmission season, but  
50 individual-level studies are required to ensure that drug efficacy and adequate dosing are maintained.

51

## 52 Introduction

53

54 Seasonal malaria chemoprevention (SMC) has been recommended by the World Health Organization  
55 (WHO) since 2012 for the prevention of clinical malaria cases in children in the Sahel region of Africa  
56 where transmission is high and seasonal (1). It consists of a full treatment course of sulfadoxine-  
57 pyrimethamine (SP) and amodiaquine (AQ) given at monthly intervals during the high transmission  
58 season (2). Initially, SMC was recommended for children under the age of 5 years but has been extended  
59 to include children up to 10 years in Senegal (3). In Senegal, SMC has proven to be effective in reducing  
60 malaria incidence directly in targeted age groups and indirectly in non-target age groups by 60% and  
61 26% respectively (4). Furthermore, SMC has been associated with a reduction of 45% in the incidence of  
62 severe malaria and of over 42% in-hospital deaths due to malaria (4,5).

63

64 Senegal is a malaria-endemic country located in the Sahel region of Africa with a population of 17,2  
65 million inhabitants in 2021 (6). Malaria transmission is strongly seasonal with a high transmission  
66 season that coincides with the rainy season, from May to November, with regional variations (7). From  
67 2015 to 2019, the country recorded a 38% reduction in malaria incidence and a 52% reduction in  
68 malaria-related deaths, in the context of increasing access to malaria diagnostic and treatment (8).  
69 However, progress appears to have stalled since 2020, with increasing incidence (26.7 cases/1000 in  
70 2020 to 31.2 in 2021) and stable mortality (2.3 deaths per 100,000) (6). This increase was attributed to  
71 the impact of the COVID-19 pandemic and longer rains (9). The burden of malaria is now largely  
72 concentrated in the 3 southeastern regions of Kedougou, Kolda, and Tambacounda, with respective  
73 incidence rates of 537, 150 and 215 cases/1000 in 2021. All other regions reported incidence <10  
74 cases/1000 (6).

75

76 In Senegal, the implementation of SMC began in 2013 and is led by the National Malaria Control Program  
77 (NMCP). Community health workers (CHW) administer monthly SMC to children between 3 months to

78 10 years of age during the high transmission season. All 3 days of treatment are directly observed by  
79 CHW with a door-to-door approach (12). SMC is currently conducted in 16 high-burden districts of 5  
80 regions (12). The number of rounds in the campaign is defined by region and depends on the duration  
81 of the high transmission season. In 2020 and 2021, there were 4 rounds administered-in the Kedougou  
82 region and 3 rounds in the other selected areas with a campaign coverage of 95% and 87% respectively  
83 (9,10). In addition to SMC, the current malaria control strategies in Senegal are free early diagnosis and  
84 treatment available through community health workers and health posts, vector control (long-lasting  
85 insecticide-treated nets and indoor residual spraying in 2020 and 2021), and intermittent preventive  
86 treatment in pregnancy (IPTp) (9).

87

88 Despite the deployment at high coverage of all these recommended malaria strategies in Senegal, the  
89 country has not yet attained zero-malaria status. Therefore, optimizing ongoing interventions to reduce  
90 the burden of malaria in high-incidence regions is a critical step toward country-level elimination.  
91 Previous studies conducted in Sahelian countries have shown that SMC protects children for 28 days and  
92 thus requires a strict timing of SMC programs with repeated treatments at monthly intervals to achieve  
93 optimal results (2,11). Other studies suggested that the number of rounds should be adapted to the  
94 duration of the high transmission season(12) Indeed, the Senegalese NMCP reported that >50% of  
95 malaria cases in 2020 occurred after the final round of SMC despite high coverage of SMC (9,13),  
96 suggesting that the 4 rounds may not provide adequate cover throughout the entire high-risk season. In  
97 addition, resistance to sulfadoxine-pyrimethamine remains a major threat to SMC effectiveness (14).  
98 Therefore, this study evaluated the dynamics of clinical malaria incidence in relationship with the timing  
99 of SMC drug delivery in the Kedougou region of Senegal during the 2020 and 2021 SMC campaigns. The  
100 aim was to determine how it can be fine-tuned to maximize the impact of the intervention in terms of  
101 malaria incidence reduction.

102

## 103 **Methods**

### 104 **Study design and setting**

105 This ecological study of *P. falciparum* clinical malaria incidence was conducted in the Kedougou region,  
106 bordering Mali and Guinea, 700km from Dakar. The regional population was estimated around 200,000  
107 inhabitants in 2021 (3,6). We included villages covered by the Bandafassi Health and Demographic  
108 Surveillance System (HDSS) and within the catchment area of two health posts, Thiabedji and  
109 Bandafassi (15). The main ethnic groups in the study villages are Bedik, Mandinka, and Fula Bande.  
110 Access to malaria diagnosis and treatment is available from Thiabedji and Bandafassi health posts, as  
111 well as community health workers (DSDOM (dispensateurs de soins à domicile, i.e. "home-based care  
112 providers") and ASC (agents de santé communautaire, i.e. "community health workers") (10) in most  
113 villages. In this study, we use community health workers (CHW) to refer to DSDOM and ASC because  
114 they provide similar malaria diagnosis and treatment at the community level in Senegal using rapid  
115 diagnostic tests (RDT) and treating uncomplicated malaria with artemisinin-based combination therapy  
116 (ACT) while referring severe malaria, and malaria cases in children under 5 or pregnant women to the  
117 nearest health post.

118

### 119 **Malaria case data**

120 At the beginning of each year, RDT-confirmed *P. falciparum* malaria individual case data was collected  
121 from consultation registries of CHW and health posts for the previous year and entered in Microsoft  
122 Excel. The individual patient information was anonymized and included age, sex, address, date of  
123 consultation, RDT result and treatment provided.

124

125

## 126 **Population data**

127 Population data by age group and village used in this study was collected by the Bandafassi Health and  
128 Demographic Survey System (HDSS) in 2020 and 2021 (15). Since 2019, the population data is updated  
129 through yearly home visits by field survey teams, who record the status of all household members by  
130 interviewing an adult of the household who was present all year long to record births, deaths, newly  
131 arrived members, or those who left.

132

## 133 **Ethics**

134 This study is included in the "Malaria Asymptomatic Reservoir in the Sahel" research project and its  
135 protocol was approved by the National Ethics Committee for Health Research of Senegal (protocol  
136 SEN20/10, N°0000052/MSAS/DPRS/CNERS)

137 Since 2020, a written formal consent was obtained from each head of household or his/her  
138 representatives by signing an informed consent form allowing the collection of demographic data by the  
139 HDSS. The written formal consent is valid for several rounds. In 2021 and 2023, new consent forms are  
140 signed in cases where there is a new household or when the head of the household has changed.

## 141 **SMC campaign**

142 In 2020 and 2021, the SMC campaigns consisted of 4 rounds from the end of June to early October  
143 (Table 1)

144 **Table 1. Dates of beginning and end of SMC rounds in 2020 and 2021**

<b>SMC round</b>	<b>2020</b>	<b>2021</b>
1	26 <sup>th</sup> to 29 <sup>th</sup> June	25 <sup>th</sup> to 28 <sup>th</sup> June
2	24 <sup>th</sup> to 27 <sup>th</sup> July	28 <sup>th</sup> to 31 <sup>st</sup> July
3	30 <sup>th</sup> August to 2 <sup>nd</sup> September	30 <sup>th</sup> August to 2 <sup>nd</sup> September
4	30 <sup>th</sup> September to 3 <sup>rd</sup> October	2 <sup>nd</sup> October to 5 <sup>th</sup> October

## 145 **Study population selection**

### 146 **Inclusion criteria**

147 This study included all individuals matching the following criteria: *P.falciparum* RDT positive (malaria  
148 cases), date of diagnosis documented in 2020 or 2021, age documented, and residing in a village  
149 included in the Bandafassi HDSS and within the catchment area of Bandafassi and Thiabedji health  
150 posts.

151

### 152 **Exclusion criteria**

153 Individuals from unknown and out-of-zone villages were excluded. In addition, individuals from villages  
154 within the study area that had incomplete malaria case data (eg missing age) were also excluded. Villages  
155 within the Bandafassi and Thiabedji health post catchment area that had no functional CHW serving the  
156 village or no documentation of malaria cases by health workers for an extended period (up to months)  
157 in a year were also excluded after identification due to low malaria cases counts and confirmation of a  
158 local health personnel

## 159 **Data analysis and statistical methods**

160 All analysis was conducted using R software version 4.2.2, and {mgcv} package for the GAMM analysis.

161

## 162 **Descriptive analysis**

163

### 164 **Malaria incidence**

165 Malaria incidence was expressed as the number of cases per 1000 population per week. Based on this  
166 descriptive analysis and a previous study assessing climate-driven variations in malaria transmission in  
167 Senegal (16), the years were divided into 2 transmission periods: low transmission period and high  
168 transmission period. Incidence was calculated for 5-year age groups for individuals <20 years, using age-



169 group and village-specific denominators, including both 0-4 and 5-9 eligible for SMC and 10-14 and 15-  
170 19 uneligible for SMC.

171

## 172 **Statistical analysis**

### 173 **Variable definition**

174 The weeks after the SMC round variable is defined as the number of weeks that passed after the  
175 administration of the SMC round. Week 0 therefore corresponds to the week in which SMC was  
176 administered and week 1, is the first week after the week of the SMC round and so forth (S1 Fig). We  
177 defined the week of the year as the calendar week (1-52), and this variable was used to adjust for varying  
178 incidence levels across a given season (Fig 5).

179

### 180 **Evaluation of SMC protection during the expected prophylactic period**

181 This analysis was restricted to children targeted with SMC i.e. 3 months to <10 years (or 3-120 months)  
182 and to the period between the first day of the first round of SMC to 5 weeks after the 4<sup>th</sup> and final round.  
183 The outcome variable was the weekly count of clinical malaria cases diagnosed per age group and village  
184 over time. Explanatory variables were the number and weeks elapsed since the latest SMC round, age  
185 group, week of the year, and the year (2020 or 2021). A negative binomial generalized additive multilevel  
186 model including the log-transformed person-weeks which was added as an offset was used to estimate  
187 incidence rate ratios (IRR) and a 95% confidence interval (CI). Generalized Additive models were used to  
188 rely on smoothing functions to adjust for temporal (week of the year, univariate spline) autocorrelations,  
189 without assuming a specific shape of the relationship. Random intercepts were included to account for  
190 multiple non-independent observations for each village (indexed by i) and for each age group within a  
191 village (indexed by j). The default thin plate regression spline settings were used for the smooth term  
192 (f).

193

194 The final model for this analysis is given in Equation 1 as follows:

195 Equation 1:  $\text{Log}(\text{Cases}_{i,j,t}) = \beta_1 \text{Year} + \beta_2 \text{age\_group} + \beta_3 \text{weeks\_after\_smc} + f(\text{week\_of\_year})$   
196  $+ b_1(i) + b_2(i,j) + \text{offset}(\log(\text{person\_weeks})) + e(i,j,t)$

197

198  $\text{Cases}_{i,j,t}$  represent the number of clinical malaria cases diagnosed per village ( $i$ ) and age group ( $j$ ) over  
199 time ( $t$ ),  $\beta$ 's are the parametric coefficients,  $f$  is the smooth (spline) functions, while  $b$ 's are the random  
200 effects,  $\log(\text{person-weeks})$  is the offset and  $e$  is the error term

201

## 202 **Evaluation of SMC protection at the end of the transmission period**

203 This analysis was also restricted to malaria cases and the population of children targeted with SMC i.e. 3  
204 months to <10 years (or 3-120 months) and to the period following the final SMC round, from week 0 of  
205 the 4<sup>th</sup> SMC round to the end of the year. The aim was to evaluate if the 4-round SMC campaign extended  
206 effective protection until transmission reached sufficiently low levels. Univariate and multivariate GAMM  
207 similar to the previous analysis were used. The outcome variable was the weekly count of clinical malaria  
208 cases diagnosed per age group and village over time. The explanatory variables were the year of case  
209 diagnosis, age group of cases, and weeks after SMC round 4. Random intercepts were included to  
210 account for multiple non-independent observations for each village and each age group within a village.  
211 The log-transformed person weeks were added as an offset. In addition, a negative binomial model was  
212 used to estimate incidence rate ratios (IRR) and a 95% confidence interval (CI).

213

214 The final model for this analysis is given in Equation 2 as follows:

215 Equation 2:  $\text{Log}(\text{Cases}_{i,j,t}) = \beta_1 \text{Year} + \beta_2 \text{age\_group} + \beta_3 \text{weeks\_after\_smc} + b_1(i) + b_2(i,j) +$   
216  $\text{offset}(\log(\text{person\_weeks})) + e(i,j,t)$

217

## 218 Results

### 219 Data selection

220 After data entry, we obtained 8,480 confirmed malaria cases diagnosed by 29 CHWs and 2 health posts  
221 in 31 villages within the study area in 2020 and 2021 (Fig 1). After applying exclusion criteria, 3 426  
222 clinical cases in 25 villages with a population of 8910 in 2020 and 3 319 clinical cases from 27 villages  
223 with a population of 9 348 were added in this study. Overall, 15.7% (n=1062) of cases and approximately  
224 25% of the population were under 10 years of age.

225

226 **Fig 1. Flow chart of data selection.** In 2020, 6 villages were excluded due to incomplete community-  
227 based records and 4 villages in 2021 (461 cases in total).

228

### 229 Incidence of malaria

230 The annual malaria incidence in the study area was 385 and 355 cases per 1000 population in 2020 and  
231 2021 respectively. The time series of malaria incidence showed that incidence was seasonal in both  
232 years, with the high transmission beginning in June, and peak incidence reaching early August for both  
233 years (Fig 2). In 2021, malaria incidence persisted longer than in 2020, with a slower decrease and  
234 persistence until the end of December (Fig 2).

235

236 **Fig 2: Weekly malaria incidence per 1000 population at risk in Bandafassi HDSS area, 2020-21**

237

238 Children aged 0-4 (covered by SMC) had the lowest incidence, while individuals aged 10-14 and 15-19  
239 had the highest (Fig 3, Fig S2).

240

241 **Fig 3: Yearly malaria incidence per 1000 population at risk in Bandafassi HDSS area, 2020-21**

242

## 243 **Timing and duration of protection provided for each SMC round**

244 The interval between the SMC rounds in 2020 was not constant and ranged from 27 to 36 days. In  
245 contrast, the interval between the rounds in 2021 was constant with 32 days between each round (S1  
246 Fig). In children 0-4 and 5-9, incidence appeared to fluctuate between SMC rounds with lower incidence  
247 in the weeks immediately after the SMC distribution, and an increase 1-2 weeks before the next round.  
248 (Fig 4) This pattern was specific to SMC eligible groups, and not identified among 10-14 or 15-19 years  
249 old.

250

251 The start of the high transmission period was not uniform across all age groups in both years with some  
252 of the age groups having a slower start (e.g. 0-4 years) (S2 Fig). Likewise, all groups presented an  
253 increase towards the end of the high transmission season, but the timing differed between SMC-  
254 eligible and ineligible groups.

255

### 256 **Fig 4: Weekly incidence by age groups (<20 years) in the Bandafassi HDSS area (2020-2021).**

257 The SMC round number is represented by the letter R followed by the round number. The vertical  
258 dashed lines represent the start and end dates for SMC treatment during each round.

259

## 260 **SMC protection during the expected prophylactic period**

261 After adjustment on year, age group, and week of the year, there was no statistically significant  
262 difference in risk from week 0 (week starting on the first day of the SMC round) to week 2, i.e. during  
263 the first 3 weeks since the start of each SMC round (Fig 5, S1 Table). The risk increased thereafter from  
264 week 3 and was highest during week 5 after SMC (IRR 2.77, 95% CI 1.62-4.72). In this analysis, malaria  
265 risk was lower in 2021 (adjusted IRR= 0.70, 95% CI 0.60-0.83) compared to 2020, and children aged 5-

266 9 years had a statistically significant higher risk of malaria (IRR= 2.15, 95% CI 1.75-2.65) compared to  
267 children under 5 (S1 Table). The univariate spline for the week of the year exhibited oscillations  
268 between SMC rounds and corresponding to increasing risk occurring before the deployment of the  
269 next round from approximately 3 weeks onwards(Fig 6a). In contrast, after adjustment of the week  
270 since SMC, the multivariate spline matched the shape of the general malaria incidence (Fig 6b, Fig 2),  
271 suggesting good adjustment over seasonal transmission dynamics. A model using the SMC period  
272 variable was also tested and gave the same results for increasing risk from week 3 onwards.

273

274 **Fig 5: Results of the multivariate GAMM evaluating the relationship between malaria incidence and**  
275 **year of diagnosis, age groups receiving SMC, and weeks after SMC round.**

276

277 **Fig 6: Smoothing components of week number in the GAMM.**

278 The week of the year an SMC round was administered is represented by a red vertical line (R1: round  
279 1...). This "week of year" variable provides a temporal adjustment. (a) Spline for the week of the year in  
280 the univariate model, displaying incidence oscillations. (b) Spline for the week of the year in the  
281 multivariate model: after adjusting for the number of weeks since SMC, the spline presents with the  
282 overall shape of the general population incidence as presented in Fig 2. Week 25 corresponds to the  
283 week of 22<sup>nd</sup> and 21<sup>st</sup> June 2020 and 2021 respectively which is the onset of the SMC campaign.

284

285 **SMC protection at the end of the transmission period**

286 After adjusting for year, age group, and number of weeks after SMC, there was no statistically significant  
287 difference in risk from week 0 to week 2 after SMC round 4. Malaria risk was persistently higher from  
288 week 3 till week 6 after SMC with the highest risk during week 4 (IRR 1.75 95% CI 1.09-2.83). Thereafter,  
289 there was a decrease in risk from week 7 to the end of the year where the risk was lowest (week 10-12)

290 with an IRR of 0.14 (95% CI 0.05-0.38). Similarly to the previous model, the 2021 risk was lower and  
291 children aged 5-9 had higher risk (Fig7, S2 table).

292

293 **Fig 7: Multivariate GAMM evaluating the relationship between malaria incidence and year of**  
294 **diagnosis, age groups receiving SMC and week after SMC.**

295

## 296 Discussion

297 In this study, malaria incidence in the Kedougou region of Senegal remains highly seasonal and shows  
298 large variations across age groups, in particular among younger individuals. While providing a significant  
299 reduction in incidence to eligible children, SMC protection was inconsistent for targeted age groups. At  
300 population level, protection started waning 3 weeks after treatment administration, which proved  
301 further detrimental when SMC rounds were inconsistently timed: the lowest risk was obtained from day  
302 0 to day 20, a 50% increase from day 21 to day 27, a 100% increase from day 28 to day 34, and a 177%  
303 increase beyond. Furthermore, the round 4 protection waned too early to cover the end of the high  
304 transmission period. Lastly, children aged 5-9 had higher incidence levels compared to children 0-4.

305 This ecological study shows that, at the population group level, SMC protection wanes off 1 to 2 weeks  
306 before the next round. An increased incidence was already reported when comparing the effect of SMC  
307 in children before and after 28 days since treatment uptake (2). Our study suggests that this is also taking  
308 place in the Senegalese context, where SMC is directly observed for all 3 days of treatment. Therefore,  
309 the longer intervals between rounds in 2020 likely contributed to the higher risk of malaria compared to  
310 2021. The results also show that, in Kedougou, 4 rounds were insufficient to cover adequately the end  
311 of the transmission season. Thus, they fully support the decision of Senegalese NMCP to add a fifth round  
312 of SMC in the Kedougou region (9). Evidence-based improvement of SMC intervention allocation is also

313 ongoing in several countries, to adapt the start and duration of SMC campaigns to regional malaria  
314 transmission patterns (12).

315

316 The lower protection observed for children aged 5-9 compared to younger children is unexpected: in an  
317 earlier clinical trial conducted in the nearby Saraya district in the Kedougou region, both groups  
318 experienced comparable incidence levels (17). The difference could originate from different malaria  
319 preventive behaviors, leading to lower exposure in younger children: children under 5 could enjoy better  
320 protection from long-lasting insecticide-treated nets (LLINs) than those aged 5-9 years since they usually  
321 sleep earlier and are closely monitored by their parents, while children aged 5-9 years are more likely to  
322 be outdoors in the evening. Alternatively, lower uptake of SMC among older children could also  
323 contribute to the higher baseline levels observed among 5-9-year-olds. We lack disaggregated SMC  
324 participation data to compare coverage of intervention precisely across age groups and villages, but  
325 health-area-level coverage reported by Bandafassi and Thiabedji health posts is high (>90%) and  
326 homogenous across all reported age groups (3-11 months, 12-59 months, 60-120 months) (13). If higher  
327 incidence among the 5-9 resulted was solely from lower coverage, it would not follow patterns matching  
328 the timing of SMC rounds, but rather seasonal patterns as observed in older individuals.

329

330 Beyond the difference between younger and older SMC-eligible children, the duration of protection from  
331 SMC appeared short, around 3 weeks. Individuals may be reaching drug levels permissive for parasite  
332 multiplication earlier than the expected four weeks, either due to increasing resistance levels in parasites  
333 or to insufficient dosing of drugs (18). In Senegal, SMC is administered under 3-day supervision, which  
334 increases drastically the number of children receiving the complete SP-AQ regimen including all 3 doses  
335 of AQ. Recent analyses on genetic markers of *Plasmodium falciparum* drug resistance reported evidence  
336 of selection on genetic loci associated with SP resistance(19).

337

338 Our results also highlight a high incidence observed in individuals aged 10-19 years old, who now  
339 represent the most affected group. We lack comparable retrospective data to understand if their higher  
340 burden results from a specific increase in incidence, or a lesser decrease compared to younger  
341 individuals, now targeted with SMC. Their exposure to SMC was very different: while the youngest were  
342 likely exposed to SMC throughout most of their childhood, the oldest may only have received it for a few  
343 years. The comparable incidence between the age groups suggests that multiple factors are at play.  
344 Children 10-19 are likely to have lower immunity compared to older individuals. They also may have  
345 higher exposure, likely due to different behavioral patterns such as nighttime outdoor activities, use and  
346 adherence to preventive interventions (e.g. SMC, insecticide-treated nets), and mobility patterns that  
347 make an individual susceptible to clinical infection.

348

349 The key strength of this ecological study of clinical malaria incidence was that it relied on a wealth of  
350 data available through a combination of routinely collected malaria case data and high-precision  
351 population denominators at the age-group level obtained from the yearly census conducted in the  
352 Bandafassi DHSS. The routine individual case data combined with yearly updated census data allowed  
353 studying weekly incidence by age group and village. Such analyses are usually limited by the availability  
354 of up-to-date census in these settings. In addition, the context of community-based, free access to  
355 diagnostic and treatment alleviates geographic and financial barriers to seeking care, which provides a  
356 less biased evaluation of the clinical burden in the general population (20). This study also demonstrates  
357 how disaggregated routine clinical malaria data or aggregated by 5-year age groups enables the  
358 identification of relevant signals such as age-specific incidence dynamics and consistency of SMC  
359 protection. Our analysis assumed a constant denominator during a given transmission season, which  
360 suggests that analyzing the dynamics of well-documented case time series (e.g. from sentinel health  
361 facilities) alone could provide relevant insights to monitor changes in SMC effectiveness. The main  
362 limitation is the absence of village-level SMC coverage data, which could not be retrieved retrospectively



363 as done for consultation registries. While health-area level coverage appears homogenous across age  
364 groups and rounds, village and round-specific participation data could have improved our assessment of  
365 SMC-associated incidence dynamics. Furthermore, in this study, the week of the year was used to adjust  
366 for seasonal changes in malaria risk. In other studies, these seasonal changes can be modeled using  
367 meteorological parameters, such as rainfall, temperature, and/or composite indicators, and their effect  
368 on incidence can be quantified (16,21).

369

370 Beyond the description of ranges of improvement of SMC, this study highlights the persistence of *P.*  
371 *falciparum* transmission in the Kedougou region despite a high level of coverage with control measures.  
372 While deploying SMC with SP-AQ every 3 weeks (before the protection wanes off) may not be feasible,  
373 efforts should be made to maintain the 30-day interval between rounds as a maximum to reduce  
374 exposure before the next round. Our results also highlight the need to assess SP-AQ efficacy to provide  
375 definitive evidence regarding the need for an alternative treatment, more efficient than SP-AQ and lasts  
376 for 4 weeks or longer (18). In addition, other malaria control strategies such as seasonal vaccination in  
377 younger children may be considered to be given alongside SMC and provide cumulative protection (22).  
378 However, it is critical to consider the cost-effectiveness of deploying additional control strategies to  
379 children <10 years considering that the largest burden of cases now affects mainly older age groups,  
380 despite vector control measures though limited. The results of the 2020-2021 malaria indicators survey  
381 in Senegal show that only 66.5% of the population in the Kedougou region had access to an insecticide-  
382 treated net in the household (23). Indoor residual spraying was undertaken in Kedougou in 2020 and  
383 2021 but discontinued in 2022. Designing effective additional vector control interventions requires an  
384 evaluation of outdoors and residual transmission: outdoor biting was reported at high levels in 2019  
385 (24). After nearly two decades of indoor vector control, it is likely to have further increased.

386

387 Individuals aged 10 years and older now support the majority of the clinical malaria burden, but they are  
388 also likely responsible for *P. falciparum* persistence and circulation across dry and wet seasons. In  
389 addition, there are new risk groups that have been identified such as gold miners, transhumants, and  
390 talibés in Qur'anic schools that can also benefit from targeted interventions. Designing and  
391 implementing interventions targeting individuals at high risk of parasite carriage could represent a  
392 relevant strategy to further decrease transmission in Kedougou and similar settings with a high degree  
393 of interventions already targeting groups at high risk of severe disease.

394

## 395 **Conclusion**

396 Kedougou region now harbors the highest malaria incidence in Senegal despite significant  
397 epidemiological changes resulting from control activities over the past 15 years. SMC presents a striking  
398 effect on eligible children under 10 years, who no longer bear the heaviest clinical burden. While  
399 protecting children under <10 years, SMC timing could be improved to avoid increased incidence 1-2  
400 weeks before the next round. Surveillance of incidence patterns among eligible groups in routine data  
401 could also contribute to monitoring SMC performance. Finally, malaria elimination strategies in this area  
402 should not overlook the shift in burden to older age groups, asymptomatic carriage, mobile individuals,  
403 and newly identified risk groups.

404

## 405 **Acknowledgments**

406 We would like to thank the population of Bandafassi, the CHW, and the health personnel of the  
407 Kedougou district and Bandafassi and Thiabedji health posts. We also thank Moussa Ba and Gérald Keita  
408 for their major help for onsite data collection, and Victorine for data entry at IRD Dakar. We acknowledge  
409 the interviewers and supervisors of Bandafassi HDSS census teams who collected the door-to-door,  
410 yearly updated population information.

411

412 For the purpose of Open Access, the authors have applied a CC BY public copyright license to any Author  
413 Accepted Manuscript version arising from this submission.

## 414 **References**

- 415 1. World Health Organization. WHO policy recommendation: seasonal malaria chemoprevention (SMC)  
416 for plasmodium falciparum malaria control in highly seasonal transmission areas of the Sahel sub-  
417 region in Africa [Internet]. Geneva: World Health Organization; 2012. Available from:  
418 <https://apps.who.int/iris/handle/10665/337978>
- 419 2. Cairns M, Ceesay SJ, Sagara I, Zongo I, Kessely H, Gamougam K, et al. Effectiveness of seasonal malaria  
420 chemoprevention (SMC) treatments when SMC is implemented at scale: Case–control studies in 5  
421 countries. Ashley EA, editor. PLOS Med [Internet]. 2021 Sep 8 [cited 2023 May 3];18(9):e1003727.  
422 Available from: <https://dx.plos.org/10.1371/journal.pmed.1003727>
- 423 3. Manga IA, Tairou F, Seck A, Kouevidjin E, Sylla K, Sow D, et al. Effectiveness of seasonal malaria  
424 chemoprevention administered in a mass campaign in the Kedougou region of Senegal in 2016: a case-  
425 control study. Wellcome Open Res [Internet]. 2023 Apr 12 [cited 2023 Jul 4];7:216. Available from:  
426 <https://wellcomeopenresearch.org/articles/7-216/v3>

- 427 4. Cissé B, Ba EH, Sokhna C, NDiaye JL, Gomis JF, Dial Y, et al. Effectiveness of Seasonal Malaria  
428 Chemoprevention in Children under Ten Years of Age in Senegal: A Stepped-Wedge Cluster-  
429 Randomised Trial. Noor AM, editor. PLOS Med [Internet]. 2016 Nov 22 [cited 2023 May  
430 3];13(11):e1002175. Available from: <https://dx.plos.org/10.1371/journal.pmed.1002175>
- 431 5. Baba E, Hamade P, Kivumbi H, Marasciulo M, Maxwell K, Moroso D, et al. Effectiveness of seasonal  
432 malaria chemoprevention at scale in west and central Africa: an observational study. The Lancet  
433 [Internet]. 2020 Dec [cited 2023 Jul 4];396(10265):1829–40. Available from:  
434 <https://linkinghub.elsevier.com/retrieve/pii/S0140673620322273>
- 435 6. National malaria control program. Annual epidemiological bulletin 2021 of malaria in Senegal [Bulletin  
436 épidémiologique annuel 2021 du paludisme au Sénégal]. 2022.
- 437 7. U.S. President’s Malaria Initiative. Senegal Malaria Operational Plan FY 2020 [Internet]. 2020 [cited  
438 2023 May 5]. Available from: <https://www.pmi.gov/where-we-work/senegal/>
- 439 8. National malaria control program. Annual epidemiological bulletin 2019 of malaria in Senegal [Bulletin  
440 épidémiologique annuel 2019 du paludisme au Sénégal] [Internet]. 2020 [cited 2023 Jul 4]. Available  
441 from: <http://www.pnlp.sn/>
- 442 9. U.S. President’s Malaria Initiative. Senegal Malaria Operational Plan FY 2023 [Internet]. 2023 [cited  
443 2023 May 9]. Available from: <https://www.pmi.gov/where-we-work/senegal/>
- 444 10. U.S. President’s Malaria Initiative. Senegal Malaria Operational Plan FY 2022 [Internet]. 2023  
445 [cited 2023 May 3]. Available from: <https://www.pmi.gov/where-we-work/senegal/>
- 446 11. Zongo I, Milligan P, Compaore YD, Some AF, Greenwood B, Tarning J, et al. Randomized  
447 Noninferiority Trial of Dihydroartemisinin-Piperaquine Compared with Sulfadoxine-Pyrimethamine  
448 plus Amodiaquine for Seasonal Malaria Chemoprevention in Burkina Faso. Antimicrob Agents

- 449 Chemother [Internet]. 2015 Aug [cited 2023 May 24];59(8):4387–96. Available from:  
450 <https://journals.asm.org/doi/10.1128/AAC.04923-14>
- 451 12. Cissoko M, Sagara I, Landier J, Guindo A, Sanogo V, Coulibaly OY, et al. Sub-national tailoring of  
452 seasonal malaria chemoprevention in Mali based on malaria surveillance and rainfall data. *Parasit*  
453 *Vectors* [Internet]. 2022 Aug 4;15(1):278. Available from: [https://doi.org/10.1186/s13071-022-](https://doi.org/10.1186/s13071-022-05379-4)  
454 [05379-4](https://doi.org/10.1186/s13071-022-05379-4)
- 455 13. PNLP. Summary of the implementation of the SMC in the Kédougou health district [Synthèse de  
456 la mise en œuvre de la CPS dans le district sanitaire de Kédougou]. 2021.
- 457 14. White NJ, Bonnington C, Nosten FH. A proposed method of grading malaria chemoprevention  
458 efficacy. *Trans R Soc Trop Med Hyg*. 2023 Nov 3;117(11):761–4.
- 459 15. Pison G, Douillot L, Kante AM, Ndiaye O, Diouf PN, Senghor P, et al. Health & Demographic  
460 Surveillance System Profile: Bandafassi Health and Demographic Surveillance System (Bandafassi  
461 HDSS), Senegal. *Int J Epidemiol* [Internet]. 2014 Jun 1 [cited 2023 Oct 13];43(3):739–48. Available  
462 from: <https://doi.org/10.1093/ije/dyu086>
- 463 16. Fall P, Diouf I, Deme A, Sene D. Assessment of Climate-Driven Variations in Malaria Transmission  
464 in Senegal Using the VECTRI Model. *Atmosphere* [Internet]. 2022;13(3). Available from:  
465 <https://www.mdpi.com/2073-4433/13/3/418>
- 466 17. Ndiaye JLA, Ndiaye Y, Ba MS, Faye B, Ndiaye M, Seck A, et al. Seasonal malaria chemoprevention  
467 combined with community case management of malaria in children under 10 years of age, over 5  
468 months, in south-east Senegal: A cluster-randomised trial. *PLOS Med* [Internet]. 2019 Mar  
469 13;16(3):e1002762. Available from: <https://doi.org/10.1371/journal.pmed.1002762>

- 470 18. Chotsiri P, White NJ, Tarning J. Pharmacokinetic considerations in seasonal malaria  
471 chemoprevention. *Trends Parasitol*. 2022 Aug;38(8):673–82.
- 472 19. Ndiaye YD, Wong W, Thwing J, Schaffner SS, Tine A, Diallo MA, et al. Two decades of molecular  
473 surveillance in Senegal reveal changes in known drug resistance mutations associated with historical  
474 drug use and seasonal malaria chemoprevention. *MedRxiv Prepr Serv Health Sci*. 2023 Apr  
475 26;2023.04.24.23288820.
- 476 20. Landier J, Parker DM, Thu AM, Carrara VI, Lwin KM, Bonnington CA, et al. The role of early  
477 detection and treatment in malaria elimination. *Malar J*. 2016 Jul 15;15:363.
- 478 21. Cissoko M, Sagara I, Sankaré MH, Dieng S, Guindo A, Doumbia Z, et al. Geo-Epidemiology of  
479 Malaria at the Health Area Level, Dire Health District, Mali, 2013–2017. *Int J Environ Res Public Health*  
480 [Internet]. 2020 Jun 4 [cited 2023 Oct 16];17(11):3982. Available from: [https://www.mdpi.com/1660-](https://www.mdpi.com/1660-4601/17/11/3982)  
481 [4601/17/11/3982](https://www.mdpi.com/1660-4601/17/11/3982)
- 482 22. Chandramohan D, Zongo I, Sagara I, Cairns M, Yerbanga RS, Diarra M, et al. Seasonal Malaria  
483 Vaccination with or without Seasonal Malaria Chemoprevention. *N Engl J Med* [Internet]. 2021 Sep 9  
484 [cited 2023 Oct 2];385(11):1005–17. Available from:  
485 <http://www.nejm.org/doi/10.1056/NEJMoa2026330>
- 486 23. National Agency for Statistics and Demography. Malaria Indicators Survey in Senegal 2020-2021  
487 [Enquête des Indicateurs du Paludisme au Sénégal 2020-2021]. 2022.
- 488 24. Diop A, Ndiaye F, Sturm-Ramirez K, Konate L, Senghor M, Diouf EH, et al. Urban malaria vector  
489 bionomics and human sleeping behavior in three cities in Senegal. *Parasit Vectors* [Internet]. 2023 Sep  
490 19;16(1):331. Available from: <https://doi.org/10.1186/s13071-023-05932-9>

491

## 492 **Supporting information**

### 493 **S1 Fig: Graphical definition of variables (not showing exact rounds or dates).**

494 The SMC round number is represented by the letter R followed by the round number. Each round has 3  
495 days of directly observed treatment. Week 0 is the week in which SMC was administered. The "SMC  
496 period" variable was defined as the interval between SMC rounds. For instance, SMC period 1  
497 corresponds to the time between round 1 and round 2. Between two rounds, the maximum duration of  
498 a period was 36 days. The duration of SMC period 4, corresponding to the last round of SMC was  
499 therefore set up to week 5.

500

### 501 **S2 Fig: Weekly incidence by age groups in Bandafassi HDSS area (2020-2021).**

502 The scale of the y-axis changes differs across panels.

503

504 **S1 Table: Multivariate multilevel GAM evaluating the relationship between malaria incidence and**  
505 **year of diagnosis, age groups receiving SMC, and week after SMC, during the expected prophylactic**  
506 **period after each SMC round.**

507

508 **S2 Table: Multivariate multilevel GAM evaluating the relationship between malaria incidence and year**  
509 **of diagnosis, age groups receiving SMC, and week after SMC, during the period starting with the 4<sup>th</sup>**  
510 **and final SMC round and finishing at the end of the year.**

511

512 **S1 Checklist: STROBE checklist**

# PF weekly incidence in 2020-21, Bandafassi

Binwidth = 4 weeks

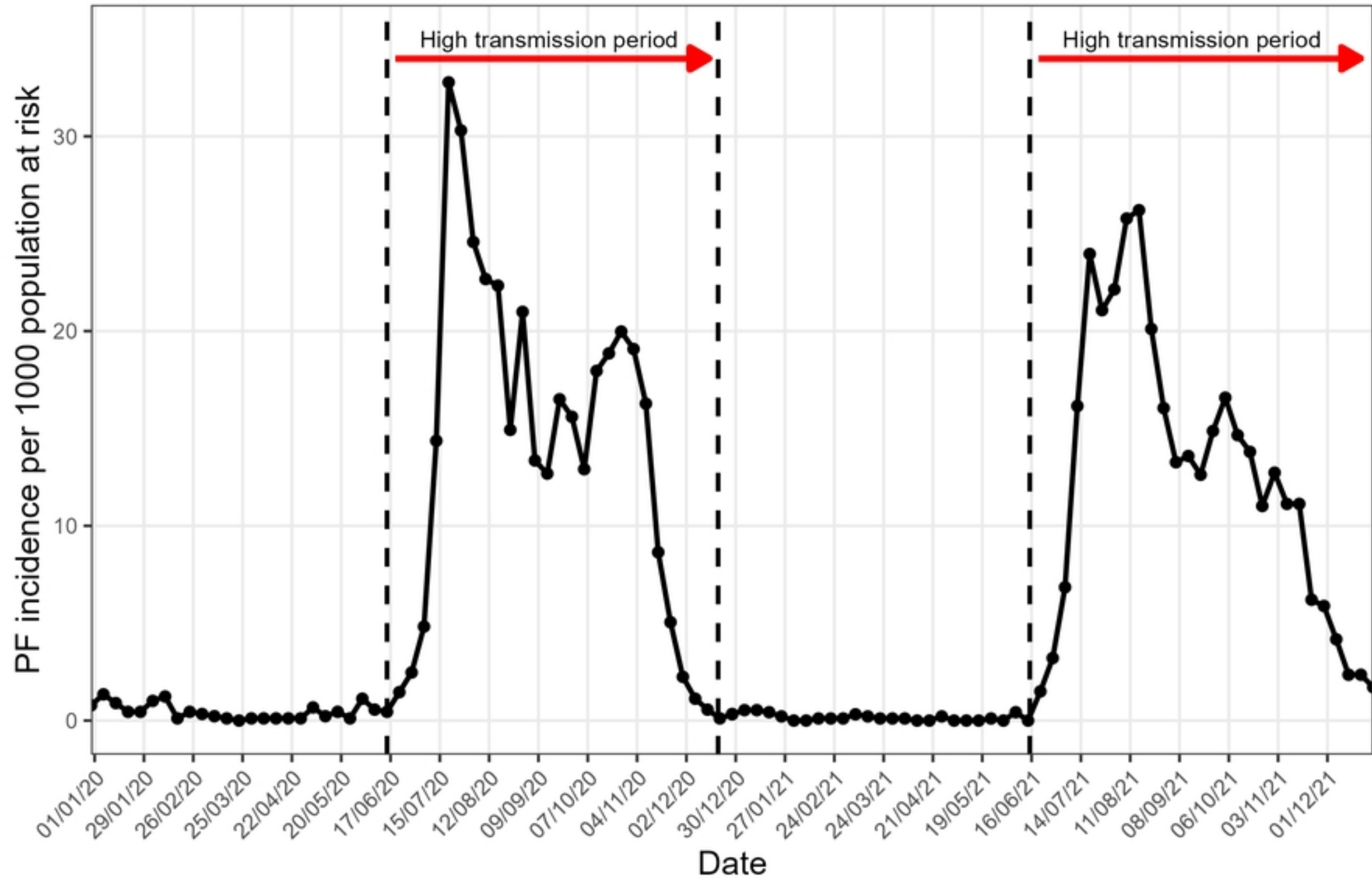


Fig 2



# PF yearly incidence in 2020-21, Bandafassi

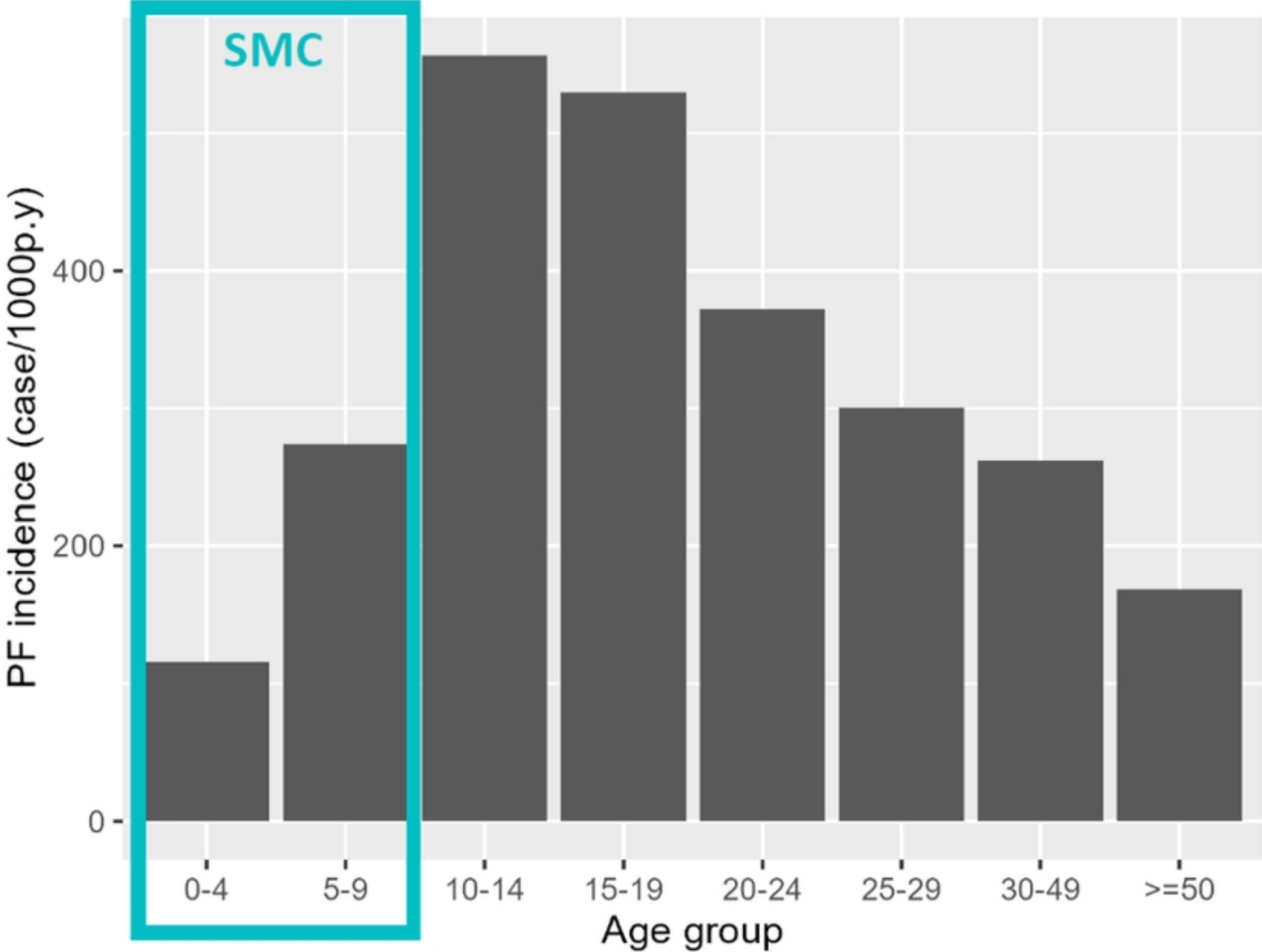


Fig 3

Binwidth = 4 weeks

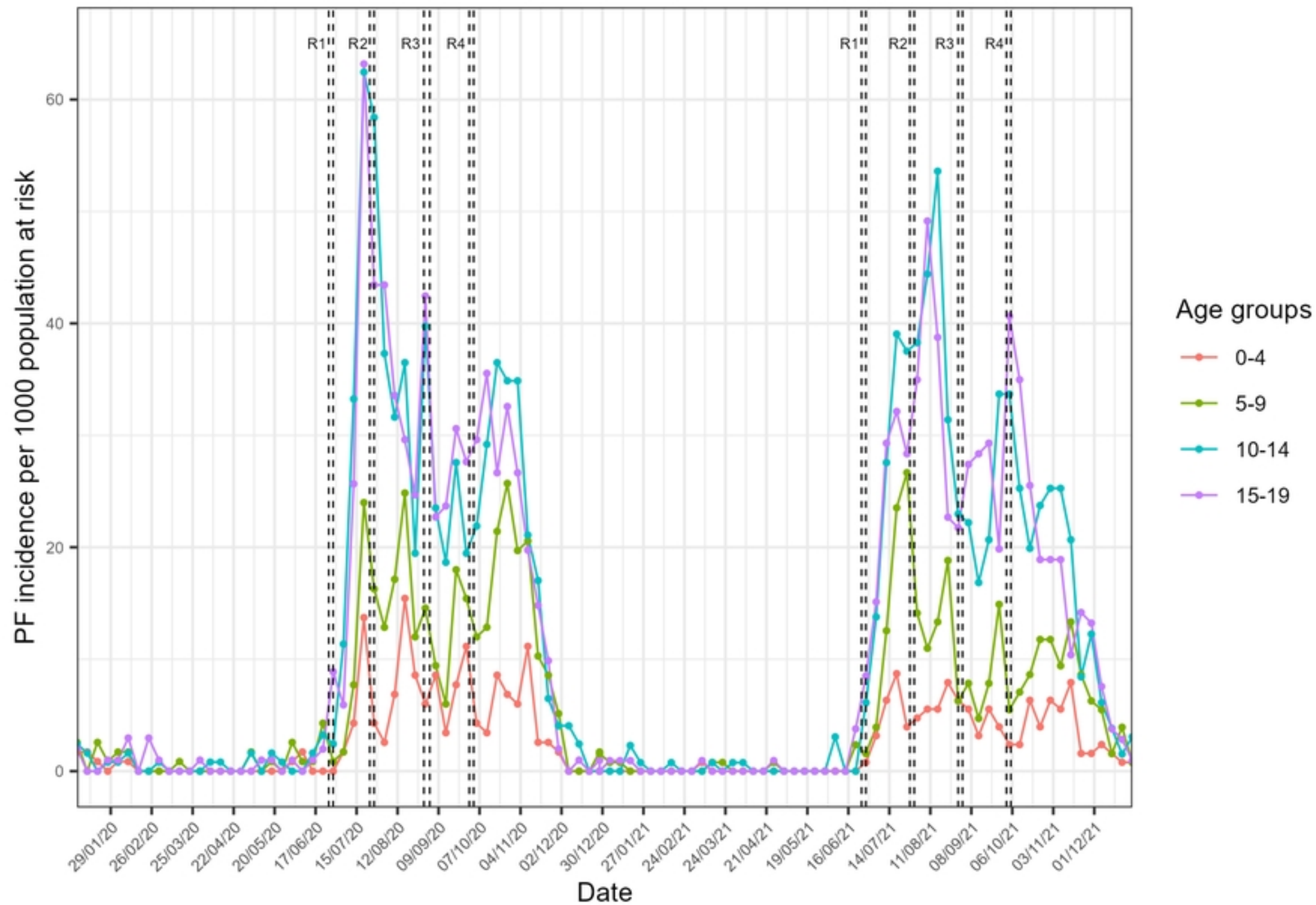


Fig 4

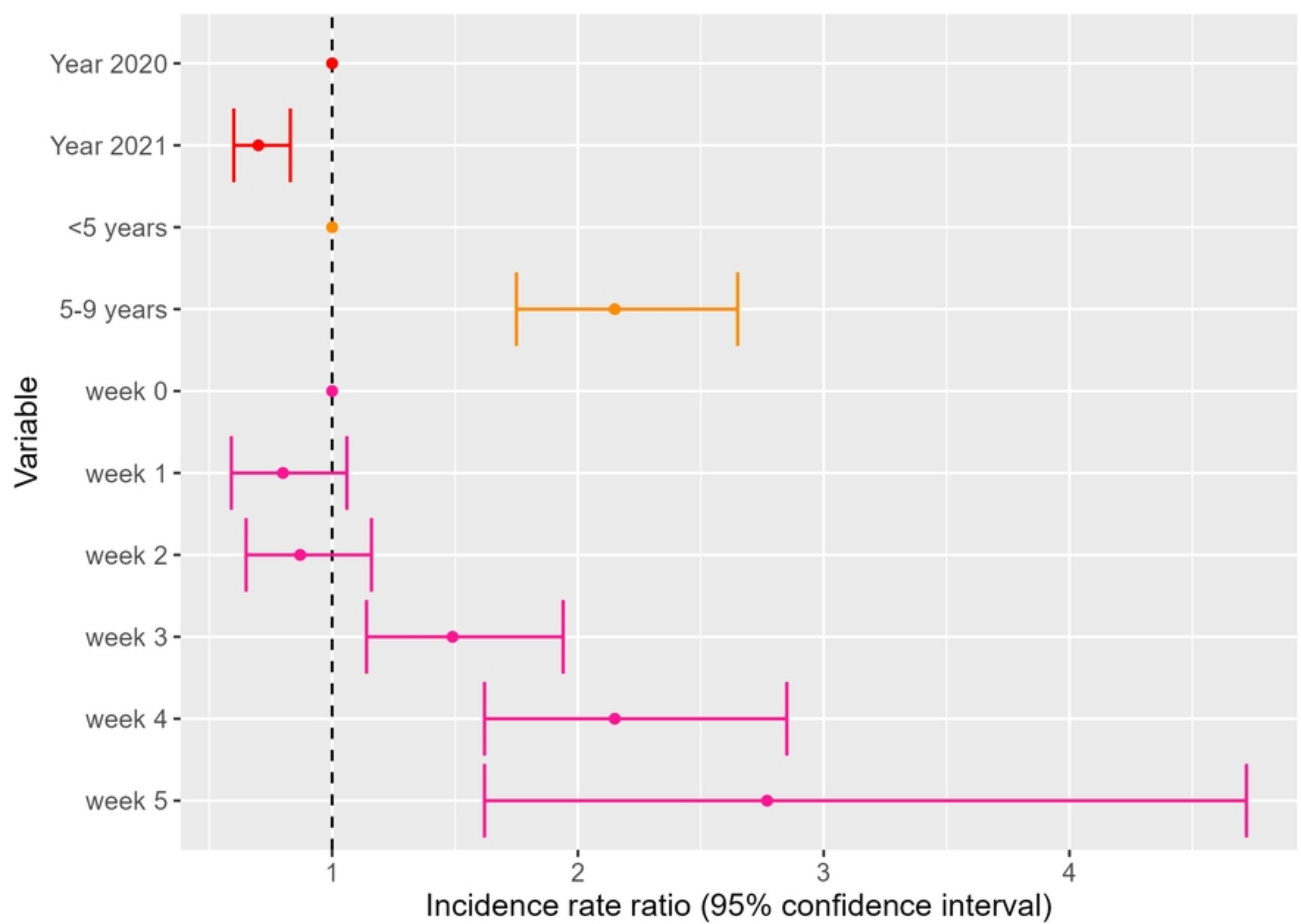


Fig 5

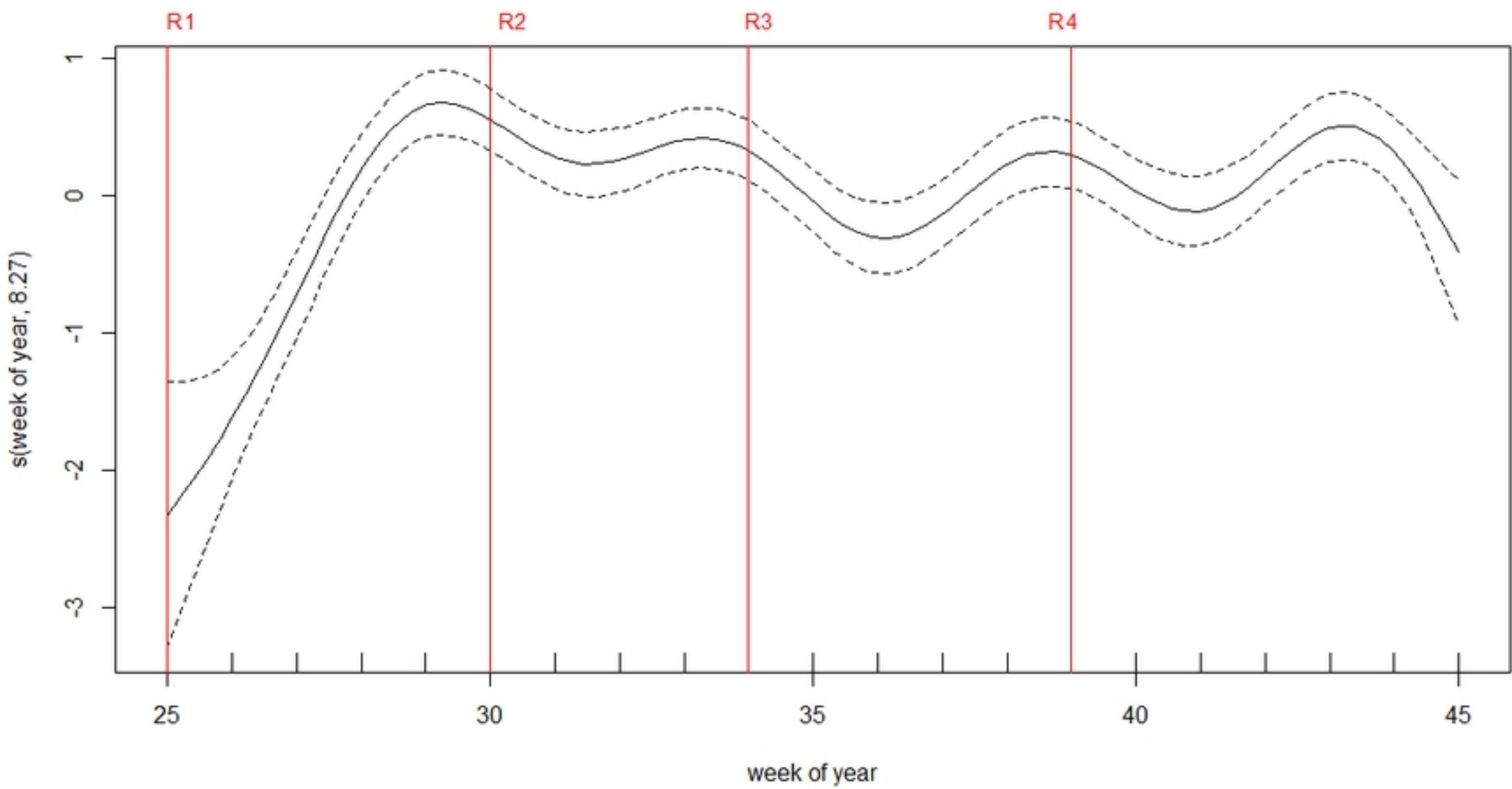


Fig 6a

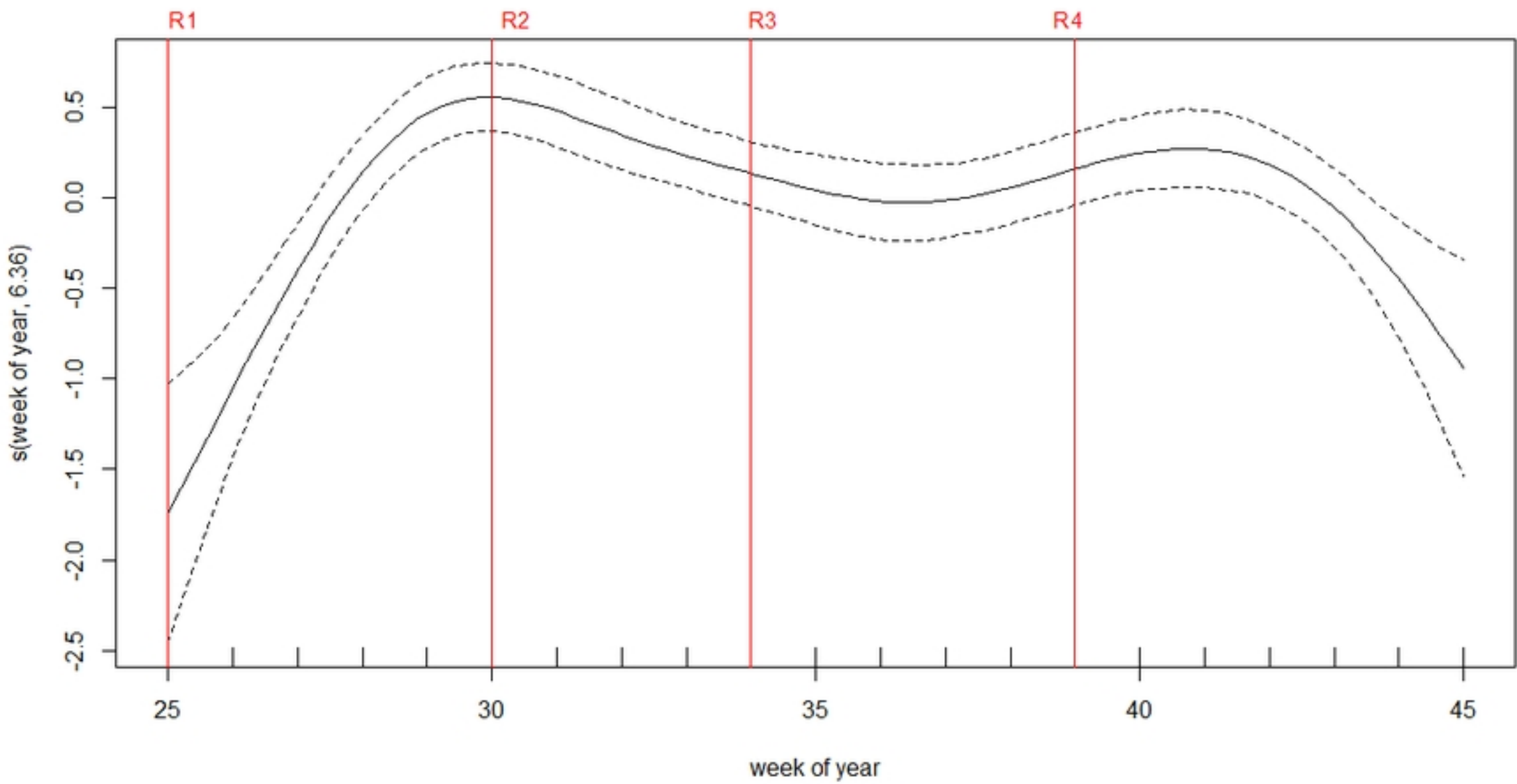


Fig 6b

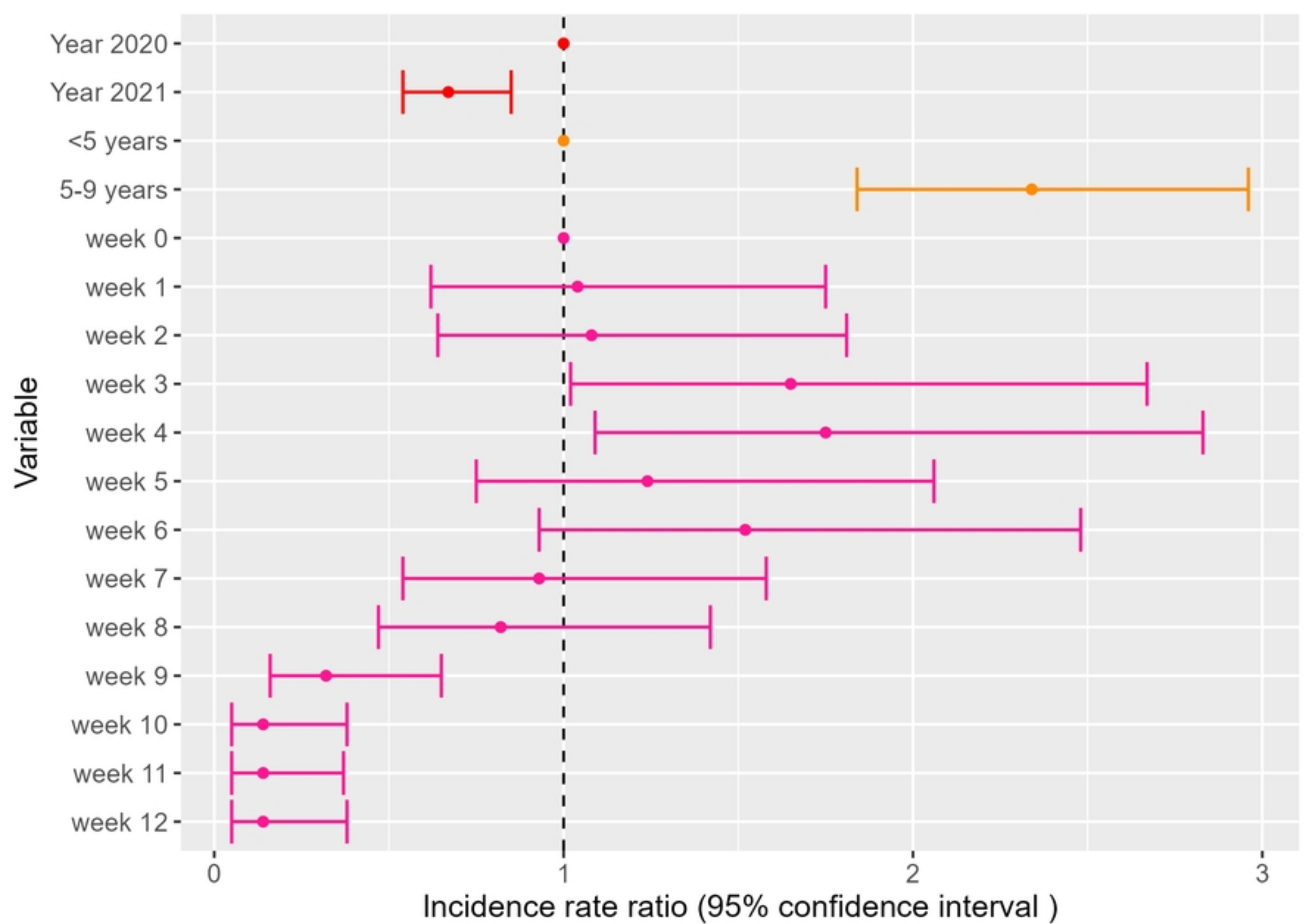


Fig 7

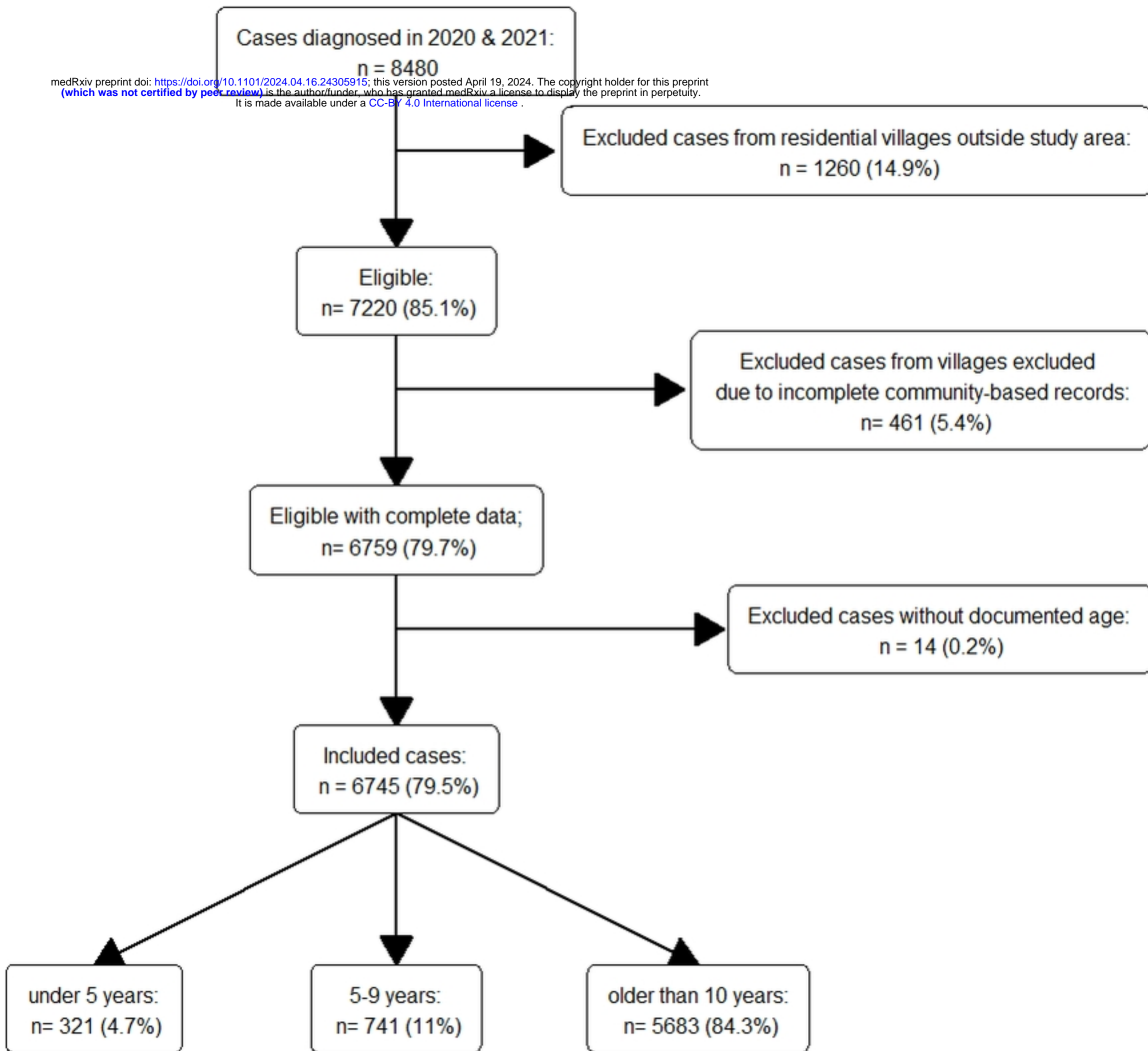


Fig 1