

Supplementary Information

Lassa fever outbreaks, mathematical models, and disease parameters: a systematic review and meta-analysis

Patrick Doohan¹, David Jorgensen¹, Tristan M. Naidoo¹, Kelly McCain¹, Joseph T. Hicks¹, Ruth McCabe^{1,2,3}, Sangeeta Bhatia^{1,4,5}, Kelly Charniga¹, Gina Cuomo-Dannenburg¹, Arran Hamlet¹, Rebecca K. Nash¹, Dariya Nikitin¹, Thomas Rawson¹, Richard Sheppard¹, H. Juliette T. Unwin^{1,6}, Sabine van Elsland¹, Anne Cori^{1,4}, Christian Morgenstern^{1,+,#}, and Natsuko Imai-Eaton^{1,+,#}, on behalf of the *Pathogen Epidemiology Review Group*^m

¹MRC Centre for Global Infectious Disease Analysis & WHO Collaborating Centre for Infectious Disease Modelling, Jameel Institute, School of Public Health, Imperial College London, UK

²Department of Statistics, University of Oxford, UK

³Health Protection Research Unit in Emerging and Zoonotic Infections

⁴Health Protection Research Unit in Modelling and Health Economics

⁵Modelling and Economics Unit, UK Health Security Agency, London, UK

⁶University of Bristol, Bristol, UK

+Contributed equally

^mMembership of group authorship is listed in the Supplementary Information

Corresponding authors: c.morgenstern@imperial.ac.uk, n.imai@imperial.ac.uk

March 2024

Contents

A Additional Information on Methods	2
A.1 Study Selection	2
A.2 Data Extraction	2
A.3 Meta-Analysis	3
B Additional Tables	4
C Additional Figures	22
D epireview	33
E PRISMA 2020 Checklists	34
F Other Systematic Reviews	37
G Excluded Studies	38
H Pathogen Epidemiology Review Group (PERG) Membership	66

A Additional Information on Methods

A.1 Study Selection

Original research papers in English were included if reporting on Lassa virus (LASV) transmission, evolution, natural history, severity, seroprevalence, size of previous outbreaks or published mathematical transmission models. Non-peer reviewed literature was excluded. Papers identified in the search were imported into *Covidence*, a software program used to manage systematic reviews. From a team of seven reviewers, two independent reviewers first screened titles and abstracts then full texts to assess eligibility for data extraction. Disagreements in eligibility determination were resolved by consensus between the two independent reviewers.

Search term: lassa AND ((transmission OR epidemiology) OR (model* NOT imag*) OR (burden OR severity OR "case fatality ratio" OR CFR) OR ("serial interval" OR "incubation period" OR "generation time") OR ("heterogeneity" OR "superspread*") OR ("reproduction number" OR "reproductive number" OR "R0") OR ("pre-existing immunity" OR "serological" OR "serology" OR "serosurveys") OR (diagnostic OR diagnosis OR test*) OR ("evolutionary rate" OR "genetic mutation" OR evolution) OR (outbreak OR cluster OR epidemic) OR ("risk factor*") OR ("case definition"))

A.2 Data Extraction

Outbreaks

It is difficult to define and demarcate outbreaks of LASV, given its endemicity and the frequency of rodent-human transmission events. Therefore, we only extract “outbreaks” or “epidemics” as described by study authors. Possible methods of case confirmation include rapid diagnostic tests (RDTs), polymerase chain reaction (PCR) tests or serological assays.

Models

Details of disease transmission models were extracted, including model type, whether it modelled deterministic or stochastic processes, transmission pathways included, and in the case of compartmental models, human health states (e.g., SIR, SEIR). Furthermore, we extracted information on underlying model assumptions, whether the model is theoretical or fitted to data, interventions considered and the availability of model code.

Parameters

For each parameter, we extracted all available information, including types of values (e.g., mean, median, standard deviation), uncertainty intervals (capturing the precision of estimates), and ranges (if, e.g., multiple estimates were obtained from different populations or using different methods). Study context for parameter values included survey location and dates, sample size, basic demographic information, and timing of the survey in relation to reported outbreaks.

For genomic data, we noted the gene studied if specified and if newly sequenced data were available. For reproduction numbers, we recorded the methods used for estimation (e.g. renewal equations, compartmental models, empirical methods). For case fatality ratios, we extracted whether the estimation approach accounted for cases with unknown final status or not [1]. For both case fatality ratios and seroprevalence, we additionally recorded numerators and denominators where available.

For risk factors, we extracted the outcome (e.g. infection or death), the risk factor for that outcome (e.g. age, sex or occupation), the type of occupation if specified, and whether the risk factor(s) estimates were statistically significant and/or adjusted. We chose not to extract odds ratio estimates because studies may have used different stratifications or reference groups, making it challenging to compare values across studies. The information we extract offers an overview of risk factors explored across studies that may affect the risk of infection and death, which may be useful to consider when designing LASV transmission models.

A.3 Meta-Analysis

The meta-analysis of CFRs and the mean onset-admission delay (in Figures 3 and 4 in the main text, respectively) followed a standard approach and was conducted using the `meta` R package [2].

A mixed-effects model is a linear model $y_i = \beta_0 + \sum_{j=1} \beta_j x_{ij} + u_i + \epsilon_i$, where y_i are the observed data, x_{ij} any explanatory variable, β_j are the fixed effects, u_i are the random effects (centered around zero and independent across i), and ϵ_i are error terms. Meta-analysis is a special case of the above mixed-effects model with only an intercept term β_0 (a fixed-effects/common-effects model) or only an intercept term β_0 and a random-effects term u_i associated with that intercept (a random-effects model).

For the CFR meta-analysis, a generalised logistic mixed-effects model was used, in which the individual CFR estimates are transformed using the logit-transformation $y_i = \log\left(\frac{CFR_i}{1-CFR_i}\right)$ to ensure that the distribution was approximately normal, and then a generalised linear mixed-effects model is applied to the transformed CFRs to estimate the pooled effect. A comprehensive overview of the methodology is provided by [3].

In Figure 3 of the main text, we perform a sub-group analysis of CFRs, in which estimates are grouped by lineage region, country, number of reported cases, and population group. The meta-analysis in panels A, C, D, and E reports the common and random effects for each sub-group to investigate any patterns between groups. We note that

- The overall common and random effects are the same across all different sub-group analyses, as the underlying estimates/studies are the same.
- We provide the same meta-analysis results plotting all underlying CFR estimates in figures C.5 to C.9.
- In Figure 3, we have removed both *known* and *assumed* duplicates in the CFR data. CFRs are considered known duplicates if they refer to the same underlying data (e.g. naive and adjusted CFRs, a subset of reported cases). CFRs are considered assumed duplicates if the report CFRs based on overlapping locations or time periods, for example. To assess the sensitivity of the results, we provide a CFR meta-analysis including known duplicates in figure C.10 and for all CFR data in figure C.11. We note that there is no substantial difference in the total common and random effects.

The mean onset-admission delay meta-analysis in Figure 4E requires paired mean and standard deviation estimates of the onset to admission delay. However, the underlying studies report several different parameter value types (e.g., means, medians, standard deviations, interquartile range, minimum/maximum), so we use the functionality of `metamean`, which is implemented in the `meta` package, to infer the means and standard deviations for each study. In particular, we use the method provided by Cai et al (2021) [4], which allows for unknown non-normal distributions.

In Figure C.4, we use the overall common and random effects, and the calculated standard error thereof, to display the probability density function for common probability distributions for delays (Gamma, Lognormal and Weibull).

The code to reproduce our results is available at <https://github.com/mrc-ide/priority-pathogens>.

B Additional Tables

Inclusion Criteria	Exclusion Criteria
Language: English	Language: not English
Form/Study Type: peer-reviewed, original research	Form/Study Type: not peer-reviewed (posters, conference proceedings, correspondence), not original research (literature reviews, meta-analyses)
Participants/Population: human (genomic studies with animal samples are included provided that the majority of samples are human), sample size ≥ 2 , case series ¹	Participants/Population: in-vitro studies, solely animal studies, sample size < 2 , i.e. case reports
Contents: any one of the following; (A) mention of any human outbreak – size, year, location, duration, spatial scale (local, regional, national, international) (B) mathematical or statistical model of transmission (C) measures/estimates of human: R, R0, Rt, r, Re, overdispersion, growth rate, attack rate, relative ratio of human-human vs. animal transmission, evolutionary rate, mutation rate, substitution rate, generation time, serial interval, incubation/latent period, other human delays, CFR, seroprevalence, risk factors (risk and the measure)	Contents: pathogen not primary focus of study, no inclusion criteria satisfied, qualitative studies (e.g., KAP studies)

Table B.1: Inclusion and exclusion criteria.

Theme	Question
Is the methodological/statistical approach suitable? (how the data are used)	1. Clear and reproducible
	2. Robust and appropriate for the aim [subjective criteria]
Are the assumptions appropriate? (input parameters/assumptions - what goes into the methodology)	3. Clear and reproducible
	4. Justified (published study or analysis of data)[objective criteria]
Are the data appropriate for the selected methodological approach?	5. Clearly described and reproducible
	6. Are issues in the data clearly discussed and acknowledged?
	7. Are issues in the data accounted for in the chosen methodological approach?

Table B.2: Quality assessment questionnaire: possible responses for each question listed were Yes, No, and NA (non-applicable).

Data field	Variable name	Expected data type	Notes
Article ID	article_id	integer	ID to connect to article form
Outbreak ID	outbreak_id	integer	ID assigned by database
Outbreak start day	outbreak_start_day	integer	Day of outbreak start if reported
Outbreak start month	outbreak_start_month	character	Month of outbreak start if reported
Outbreak start year	outbreak_start_year	integer	Year of outbreak start if reported
Outbreak end day	outbreak_end_day	integer	Day of outbreak end if reported
Outbreak end month	outbreak_end_month	character	Month of outbreak end if reported
Outbreak end year	outbreak_date_year	integer	Year of outbreak end if reported
Outbreak ongoing	ongoing	logical	Tick box to indicate if the outbreak is reported to be ongoing at the time of publication
Duration (months)	outbreak_duration_months	integer	Duration of outbreak in months if reported. No calculation of duration is done

¹As stated in the PROSPERO registration for the overall priority pathogen project, the inclusion of case reports and case series are determined on a case-by-case basis for each pathogen.

Outbreak country	outbreak.country	character	Country or countries where the outbreak took place - from dropdown list
Outbreak location	outbreak.location	character	Region/district/province/city where the outbreak took place
Pre-outbreak endemicity	pre_outbreak	character	Endemicity of the pathogen in the location pre-outbreak if reported
Cases suspected	cases_suspected	integer	Number of suspected cases as reported
Cases confirmed	cases_confirmed	integer	Number of confirmed cases as reported
Mode of detection of cases	cases_mode_detection	character	Method for case detection - from dropdown list
Asymptomatic transmission described	asymptomatic_transmission	logical	Tick box whether asymptomatic transmission is described in paper or not.
Asymptomatic cases	cases_asymptomatic	integer	Number of asymptomatic cases as reported
Severe cases	cases_severe	integer	Number of severe or hospitalized cases as reported
Deaths	deaths	integer	Number of deaths as reported

Table B.3: Outbreak data fields: refer to epreview in Supplement D for dropdown options.

Data field	Variable name	Expected data type	Notes
Article ID	article_id	integer	ID to connect to article form
Model data ID	model_data_id	integer	ID assigned by database
Model type	model_type	character	General type of model - from dropdown list
Stochastic or deterministic	stoch_deter	character	Stochastic or deterministic model as reported
Transmission route	transmission_route	character	Transmission route(s) modelled - from dropdown list
Assumptions	assumptions	character	General assumptions for the model - from dropdown list
Compartmental type	compartmental_type	character	Specific type of compartmental model - from dropdown list
Theoretical model	theoretical_model	logical	Tick box whether the model was fitted to data (NA) or just theoretical (TRUE)
Intervention type	interventions_type	character	Type of intervention(s) modelled - from dropdown list
Code available	code_available	logical	Tick box whether code for the model was publicly available and reported in paper

Table B.4: Model data fields: refer to epreview in Supplement D for dropdown options.

Data field	Variable name	Expected data type	Notes
Article ID	article_id	integer	ID to connect to article form
Parameter data ID	parameter_data_id	integer	ID assigned by database
Parameter type	parameter_type	character	Category of parameter - see dropdown list
Parameter value	parameter_value	numeric	Central parameter value
Parameter exponent	exponent	integer	Parameter value exponent (base 10)
Inverse parameter	inverse_param	logical	Tick box to indicate that only inverse of parameter is reported (e.g., recovery rate from fitted model instead of infectious period)
Parameter unit	parameter_unit	character	Units for parameter value, applies to central estimate and ranges/uncertainty intervals - see dropdown list
Parameter value type	parameter_value_type	character	Type of central parameter value - see dropdown list
Parameter lower bound	parameter_lower_bound	numeric	Lower bound of the parameter range if a range was reported or if data are disaggregated
Parameter upper bound	parameter_upper_bound	numeric	Upper bound of the parameter range if a range was reported or if data are disaggregated

Parameter uncertainty - single type	parameter_uncertainty_single_type	character	Type of uncertainty for the central parameter value if a single value was reported - see dropdown list
Parameter uncertainty - single value	parameter_uncertainty_single_value	numeric	Value for uncertainty for the central parameter value if a single value was reported (e.g., the value of the std. dev.)
Parameter uncertainty paired type	parameter_uncertainty_type	character	Type of uncertainty for the central parameter value if paired values were reported - see dropdown list
Parameter uncertainty - lower value	parameter_uncertainty_lower_value	numeric	Lower bound for uncertainty for the central parameter value if paired values were reported
Parameter uncertainty - upper value	parameter_uncertainty_upper_value	numeric	Upper bound for uncertainty for the central parameter value if paired values were reported
Distribution type	distribution_type	character	Type of distribution for the estimated parameter - see dropdown list
First distribution parameter type	distribution_par1_type	character	Type of value for the first distribution parameter - see dropdown list
First distribution parameter value	distribution_par1_value	numeric	Value for the first distribution parameter (e.g., shape or scale parameter for a gamma distribution)
First distribution parameter uncertainty	distribution_par1_uncertainty	logical	Tick box for whether uncertainty is estimated for the first distribution parameter (TRUE) or not (FALSE)
Second distribution parameter type	distribution_par2_type	character	Type of value for the second distribution parameter - see dropdown list
Second distribution parameter value	distribution_par2_value	numeric	Value for the second distribution parameter (e.g., shape or scale parameter for a gamma distribution)
Second distribution parameter uncertainty	distribution_par2_uncertainty	logical	Tick box for whether uncertainty is estimated for the second distribution parameter (TRUE) or not (FALSE)
Disaggregated data available	method_disaggregated	logical	Tick box if disaggregated estimates are available (TRUE) or not (FALSE)
Parameter estimates disaggregated by	method_disaggregated_by	character	Categories for disaggregation of parameter estimates
Only disaggregated data available	method_disaggregated_only	logical	Tick box if ONLY disaggregated estimates are available (TRUE) or if a central estimate is also available (FALSE)
Is parameter from supplement?	method_from_supplement	logical	Tick box for whether the parameter was extracted from a supplement (TRUE) or not (FALSE)
Is parameter in a figure only?	parameter_fromfigure	logical	Tick box to indicate that the parameter is plotted in a figure but not reported numerically in the text/table, and thus could not be extracted
Study population country	population_country	character	Country of the survey population - see dropdown list
Study population location	population_location	character	Region/district/province/city of the survey population - see dropdown list
Start day of study	population_study_start_day	integer	Study start day
Start month of study	population_study_start_month	character	Study start month - see dropdown list
Start year of study	population_study_start_year	integer	Study start year - see dropdown list
End day of study	population_study_end_day	integer	Study end day
End month of study	population_study_end_month	character	Study end month - see dropdown list
End year of study	population_study_end_year	integer	Study end year - see dropdown list
Survey timing related to outbreak	method_moment_value	character	Timing of the survey in relation to the outbreak, if specified in paper - see dropdown list
Study population sample size	population_sample_size	integer	Sample size of the population used for parameter estimation
Study population minimum age (years)	population_age_min	numeric	Minimum age of the survey population in years
Study population maximum age (years)	population_age_max	numeric	Maximum age of the survey population in years
Sex of study population	population_sex	character	Sex of survey population - see dropdown list
Population sample setting	population_sample_type	character	General setting of the survey - see dropdown list

Population group	population_group	character	Specific group of the survey population - see dropdown list
Genome site	genome_site	character	Site of genome or gene studied
Genomic sequence available?	genomic_sequence_available	logical	Tick box whether genomic sequence data are available (TRUE) or not (FALSE)
Reproduction number pathway	r_pathway	character	Transmission pathway that reproduction number is based on for vector-borne diseases
Method to estimate R	method_r	character	Method used for estimation of the reproduction number - see dropdown list
Other delay start point	other_delay_start	character	Start point for delays not in the parameter type dropdown list (e.g., delay from ... to ...)
Other delay end point	other_delay_end	character	End point for delays not in the parameter type dropdown list (e.g., delay from ... to ...)
Numerator	cfr_ifr_numerator	integer	Numerator of either CFR/IFR (deaths) or seroprevalence (number seropositive) estimates
Denominator	cfr_ifr_denominator	integer	Denominator of either CFR/IFR (cases) or seroprevalence (number tested) estimates
Is the CFR/IFR estimate adjusted?	cfr_ifr_method	character	Is the CFR/IFR estimate adjusted, unadjusted, or unspecified - see dropdown list
Outcome for risk factor(s)	riskfactor_outcome	character	Outcome for risk factor(s) - see dropdown list
Risk factor name	riskfactor_name	character	Risk factor name - see dropdown list
Risk factor occupation	riskfactor_occupation	character	If risk factor is an occupation, then specified occupation as risk factor - see dropdown list
Risk factor adjusted	riskfactor_adjusted	character	Adjustment status of risk factor(s)- see dropdown list
Risk factor significant	riskfactor_significant	character	Statistical significance of risk factor(s) - see dropdown list
Parameter class	parameter_class	character	General parameter class (delays, seroprevalence, reproduction numbers, mutations, severity, risk factors, relative contribution)

Table B.5: Parameter data fields: refer to epi-review in Supplement D for dropdown options.

Location	Outbreak Dates	Suspected Cases	Confirmed Cases	Confirmation Method	Severe Cases	Deaths	Source
Benin Borgou, Donga, Collines, Alibori, Plateau, Ouémé, Atlantique, Littoral Northern Benin	Dec 2015 - Mar 2016	3	18	Molecular		11	Yadouleton (2020)
	Oct 2014 - Nov 2014	11	2	Molecular		11	Yadouleton (2020)
Liberia Bong, Nimba, Montserrado Curran Lutheran Hospital, Zorzor Zorzor Zorzor	Jan 2016 - Jun 2016	14	14	Molecular		19	Hambillon (2018)
	Jul 1980 - Apr 1982 Mar 1972 - Apr 1972 Mar 1972 - Apr 1972	14 11 11	14 11 11	Molecular Unspecified Unspecified		4	Frane (1984b) Lo Iacono (2015) Mertens (1973)
Nigeria Edo, Ondo, Ebonyi Anambra, Bauchi, Benue, Delta, Ebonyi, Edo, Ekiti, FCT, Abuja, Gombe, Imo, Kaduna, Kogi, Lagos, Nasarawa, Ondo, Osun, Plateau, Rivers, Taraba	1 Jan 2019 - 29 Dec 2019 2018 - 2019	5057	833 1463	Molecular Molecular		174 344	Nwafor (2021) Olayinka (2022)
	1 Jan 2018 - 6 May 2018	10	423	Molecular		106	Ilori (2019b)
	1 Jan 2018 - 29 Apr 2018		420	Unspecified		106	Tuite (2019)
	1 Jan 2018 - 25 Mar 2018		394	Unspecified		104	Ilori (2019a)
	1 Jan 2018 - 18 Mar 2018	1495	376	Unspecified		95	Loyhinmi (2021)
	Dec 2017 - May 2018		431	Molecular			Siddle (2018)
	1 Jan 2017 - 25 Mar 2017		312	Unspecified		78	Joseph (2019)
	1 Dec 2015 - 30 Apr 2016		107	Unspecified		50	Ilori (2019a)
	Oct 2015 - Feb 2016		19	Molecular		12	Isere (2018)
	1 Jan 2012 - 25 Mar 2012	10	47	Molecular		28	Buba (2018)
Ondo State Taraba, Edo, Lagos, Bauchi, Rivers, Gombe, Ekiti Ebonyi State Oritsha Jos Plateau Jos Jos Lassa, Jos	Jan 1974 - Feb 1974		10	Molecular		6	Aljayi (2013)
	Jan 1970 - Jan 1970 - Feb 1970	26 13	3 13	Molecular Unspecified		1 10	Bowen (1975) Troup (1970)
	25 Dec 1969 - 12 Jan 1969 - 3 May 1969	3	15 23	Molecular Unspecified		13 2	Carey (1972) Lo Iacono (2015) Frame (1970)
	30 Oct 2019 - 16 Nov 2019	2	3	Molecular		3	Njunga (2022)
	27 Apr 2010 - 31 Jan 2012	1002		Unspecified			Lo Iacono (2016)
	27 Apr 2010 - 31 Jan 2012	1002	295	Molecular			Lo Iacono (2015)
	Jan 1997 - Apr 1997			Molecular	352		Allan (1999)
	23 Sep 1972 - 15 Oct 1972	20	12	Molecular			Fraser (1974)

Table B.6: Characteristics of extracted 'outbreaks' reported by study authors.

Parameter	Uncertainty	Disaggregated By	Gene	Method	Sample Size	Country	Study Dates	Study Setting	Study Group	Source
Reproduction Number										
0.73	Maximum: 11.7			Renewal Equations / Branching Process		Liberia, Nigeria	26 Dec 1969 - Apr 1972	Hospital	Persons Under Investigation	Lo Iacono (2015)
1.1299				Next Generation Matrix		Nigeria	3 Jan 2021 - 19 May 2021	Population	Persons Under Investigation	Ndenda (2022)
1.1868				Next Generation Matrix		Nigeria	2018 - 2022	Population	Persons Under Investigation	Collins (2023)
1.05 - 1.62		Method, Other, Region, Time		Growth Rate		Nigeria	Jan 2016 - Mar 2019	Population	General Population	Zhao (2020)
Growth Rate										
0.32 per day	CI95%: 0.23-0.64					Nigeria	29 Oct 2018 - 21 Jan 2019	Population	Persons Under Investigation	Musa (2020)
0.43 per day	CI95%: 0.23-0.72					Nigeria	30 Oct 2017 - 22 Jan 2018	Population	Persons Under Investigation	Musa (2020)
0.51 per day	CI95%: 0.17-1.06					Nigeria	31 Oct 2016 - 23 Jan 2017	Population	Persons Under Investigation	Musa (2020)
Attack Rate										
2.2 per 1000		Age, Sex				Sierra Leone	1 Oct 1970 - 1 Oct 1972	Population	General Population	Fraser (1974)
3.1 per 1000	CI95%: 2.5-3.8	Age, Sex			28882	Sierra Leone	Sep 2002 - Jul 2004	Household	Other	Bonner (2007)
0.56 %	CI95%: 0.35-0.77				5001	Nigeria	1 Jan 2018 - 6 May 2018	Contact	Persons Under Investigation	Ilori (2019b)
Human-Human Transmission Contribution										
20 %	IQR: 15-30					Sierra Leone	27 Apr 2010 - 31 Jan 2012	Hospital	Persons Under Investigation	Lo Iacono (2015)
22 %					1002	Sierra Leone	27 Apr 2010 - 31 Jan 2012	Hospital	Persons Under Investigation	Lo Iacono (2016)
18.5 - 26 %		Method				Sierra Leone	27 Apr 2010 - 31 Jan 2012	Hospital	Persons Under Investigation	Lo Iacono (2015)
Evolutionary Rate										
$7.7 s/s/y 10^{-4}$	CrI95%: 6.2-9.3		GPC		11	Nigeria	2012 - 2016	Hospital	Persons Under Investigation	Olomiyi (2018)
$8.4 s/s/y 10^{-4}$	CrI95%: 7.2-9.6		L		11	Nigeria	2012 - 2016	Hospital	Persons Under Investigation	Olomiyi (2018)
$10.1 s/s/y 10^{-4}$	CrI95%: 8.2-12.2		NP		11	Nigeria	2012 - 2016	Hospital	Persons Under Investigation	Olomiyi (2018)
$16.9 s/s/y 10^{-4}$	CrI95%: 8.6-25.9		Z		11	Nigeria	2012 - 2016	Hospital	Persons Under Investigation	Olomiyi (2018)
Substitution Rate										
$7.8 s/s/y 10^{-4}$	CrI95%: 5.4-10.2		L segment		219	Nigeria	1969 - 2018			Ehichioya (2019)
$8.4 s/s/y 10^{-4}$	CrI95%: 7.6-9.2		L segment							Wiley (2019)
$7.8 s/s/y 10^{-4}$	CrI95%: 6.3-9.1		S segment		219	Nigeria	1969 - 2018			Ehichioya (2019)
$8.2 s/s/y 10^{-4}$	CrI95%: 7.2-9.1		S segment							Wiley (2019)

Table B.8: Transmission parameters grouped by parameter type. Study characteristics are reported for each parameter estimate. Note that s/s/y stands for nucleotide substitutions per site per year.

Delay	Statistic	Uncertainty	Disaggregated By	Sample Size	Country	Study Dates	Study Setting	Study Group	Source
Incubation Period	Unspecified			62	Nigeria	1 Jan 2018 - 31 Mar 2018	Population	Persons Under Investigation	Joseph (2019)
	Mean	Range: 5-18		20	Nigeria	1 Jan 2012 - 25 Mar 2012	Hospital	Persons Under Investigation	Ajayi (2013)
				3	Nigeria	12 Jan 1969 - 20 Feb 1969	Hospital	Healthcare Workers	Frame (1970)
				11	Liberia	Mar 1972 - Apr 1972	Hospital	Persons Under Investigation	Mertens (1973)
12.8 days	Mean	Gamma SD: 4.6			Nigeria	2016 - 2018	Hospital	Persons Under Investigation	Akhmetzhanov (2019)
Onset - Testing	Median	Range: 0-31		14	Liberia	Jan 2016 - Jun 2016	Population	Persons Under Investigation	Hambion (2018)
	Median	Range: 0-19	Other	21	Benin	Dec 2015 - Mar 2016	Hospital	Persons Under Investigation	Yadoulleton (2020)
Testing - Test Result	Median	Range: 2-64		14	Liberia	Jan 2016 - Jun 2016	Population	Persons Under Investigation	Hambion (2018)
	Median			19	Nigeria	1 Dec 2015 - 30 Apr 2016	Hospital	Persons Under Investigation	Iseri (2018)
Onset - Admission	Mean	Range: 0-7		11	Liberia	Mar 1972 - Apr 1972	Hospital	Persons Under Investigation	Mertens (1973)
	Mean	Range: 1-14		12	Guinea		Hospital	Persons Under Investigation	ter Meulen (1998)
4.3 days	Mean	Range: 1-12		23	Nigeria	Jan 1970 - Feb 1970	Hospital	Persons Under Investigation	White (1972)
	Mean	SD: 2.6		14	Nigeria	1 Jan 2012 - 25 Mar 2012	Hospital	Other	Ajayi (2013)
6 days	Mean	SD: 3.1	Age, Disease Generation, Occupation, Other Region, Sex	19	Nigeria	2009 - 2018	Hospital	Other	Okogbenin (2019)
	Median	IQR: 4-10		389	Nigeria	Dec 2018 - Apr 2019	Population	Persons Under Investigation	Chandra (2021)
4 - 9 days	Median	IQR: 4-10		12	Sierra Leone	23 Sep 1972 - 15 Oct 1972	Hospital	Persons Under Investigation	Monath (1974)
	Median	IQR: 5-9	Other	71	Nigeria	Jan 2009 - Dec 2010	Hospital	Persons Under Investigation	Asogun (2012)
7 days	Median	IQR: 4-13		67	Nigeria	3 Jun 2019 - 28 Sep 2019	Hospital	Other	Akpogetenta (2021)
	Mean	SD: 4.9	Method	103	Liberia	Dec 2017 - Apr 2018	Hospital	Persons Under Investigation	Chika-Igwenyi (2021)
7.5 days	Median	IQR: 7-13		510	Nigeria	5 Apr 2018 - 15 Mar 2020	Hospital	Persons Under Investigation	Jetoh (2022)
	Mean	SE: 0.6		311	Guinea	Mar 1996 - Dec 1999	Hospital	Persons Under Investigation	Duvignaud (2021)
8.7 days	Mean			107	Nigeria	2008 - 2013	Hospital	Persons Under Investigation	Andersen (2015)
	Mean	SD: 3.5		11	Nigeria	2009 - 2018	Hospital	Other	Okogbenin (2019)
9.3 days	Median	IQR: 7-12	Method	9	Nigeria	Aug 2018 - Dec 2018	Hospital	Persons Under Investigation	Chika-Igwenyi (2021)
	Mean	SD: 3.5		6	Nigeria	1 Jan 2012 - 25 Mar 2012	Hospital	Other	Ajayi (2013)
Onset - Start of Treatment	Median	IQR: 7-13		510	Nigeria	5 Apr 2018 - 15 Mar 2020	Hospital	Persons Under Investigation	Duvignaud (2021)
8 days	Median			510	Nigeria	5 Apr 2018 - 15 Mar 2020	Hospital	Persons Under Investigation	Duvignaud (2021)
	Mean	IQR: 9-13		459	Nigeria	5 Apr 2018 - 15 Mar 2020	Hospital	Persons Under Investigation	Duvignaud (2021)
Duration of Antiviral Treatment	Median	IQR: 2-7		92	Nigeria	5 Apr 2018 - 15 Mar 2020	Hospital	Persons Under Investigation	Duvignaud (2021)
	Mean	SD: 3.8		14	Nigeria	1 Jan 2012 - 25 Mar 2012	Hospital	Other	Ajayi (2013)
Duration of Antibacterial Therapy	Median			14	Nigeria	Jan 1970 - Feb 1970	Hospital	Persons Under Investigation	Troup (1970)
	Mean								
Duration of Oxygen Therapy	Median								
	Mean								
Admission - Symptom Resolution	Median								
	Mean								
Symptomatic Period	Mean								
Admission - Recovery	Mean								

continued on next page

continued from previous page

Delay	Statistic	Uncertainty	Disaggregated By	Sample Size	Country	Study Dates	Study Setting	Study Group	Source
10 days	Median	IQR: 8-13		101	Nigeria	Jan 2009 - Dec 2010	Hospital	Persons Under Investigation	Asogun (2012)
10 days	Median	Range: 5-36		14	Nigeria	1 Jan 2012 - 25 Mar 2012	Hospital	Other	Ajayi (2013)
11 days	Median	IQR: 10-15		449	Nigeria	5 Apr 2018 - 15 Mar 2020	Hospital	Persons Under Investigation	Duvignaud (2021)
Admission - Death									
2 days	Median	IQR: 1-4		57	Nigeria	Jan 2009 - Dec 2010	Hospital	Persons Under Investigation	Asogun (2012)
3 days	Median	IQR: 1-6		61	Nigeria	5 Apr 2018 - 15 Mar 2020	Hospital	Persons Under Investigation	Duvignaud (2021)
3.3 days	Mean	SE: 1.2		22	Guinea	Mar 1996 - Dec 1999	Hospital	Persons Under Investigation	Bausch (2001)
7 days	Median	Range: 0-12		6	Nigeria	1 Jan 2012 - 25 Mar 2012	Hospital	Other	Ajayi (2013)
Time In Care									
11 days	Median	IQR: 5-14		20	Sierra Leone	1 Nov 2011 - 31 Oct 2012	Hospital	Persons Under Investigation	Roth (2015)
11.5 days	Mean	SD: 4.97			Nigeria	1 Jan 1989 - 31 Mar 1989	Hospital	Persons Under Investigation	Fisher-Hoch (1995)
Onset - Recovery									
14 days	Mean	Range: 11-21		11	Liberia	Mar 1972 - Apr 1972	Hospital	Persons Under Investigation	Mertens (1973)
16 days	Median	IQR: 13-23		98	Nigeria	Jan 2009 - Dec 2010	Hospital	Persons Under Investigation	Asogun (2012)
17.3 days	Mean	Range: 7-31		23	Nigeria	Jan 1970 - Feb 1970	Hospital	Persons Under Investigation	White (1972)
Onset - Death									
10 days	Median	IQR: 7-14		52	Nigeria	Jan 2009 - Dec 2010	Hospital	Persons Under Investigation	Asogun (2012)
1 - 2 weeks					Nigeria	Jan 1970 - Feb 1970	Hospital	Persons Under Investigation	Troup (1970)
11.6 days	Mean	Range: 7-26		23	Nigeria	Jan 1970 - Feb 1970	Hospital	Persons Under Investigation	White (1972)
12 days	Mean	Range: 12-15		11	Liberia	Mar 1972 - Apr 1972	Hospital	Persons Under Investigation	Mertens (1973)
13.8 days	Mean	Gamma SD: 7.6			Nigeria	2016 - 2018	Hospital	Persons Under Investigation	Akhmetzhanov (2019)
7 - 21 days					Guinea, Liberia, Sierra Leone	Jul 1978 - Apr 1979	Hospital	Persons Under Investigation	Knobloch (1980)

Table B.9: Delay parameters grouped by parameter type. Study characteristics are reported for each parameter estimate.

CFR (%)	Uncertainty	Disaggregated By	Method	Number of Deaths	Sample Size	Study Dates	Study Setting	Study Group	Source
Benin 44		Other	Adjusted	8	18	Dec 2015 - Mar 2016	Hospital	Persons Under Investigation	Yadoulleton (2020)
Guinea 18 33.3			Unspecified Naive	4 4	22 12	Mar 1996 - Dec 1999	Hospital Hospital	Persons Under Investigation Persons Under Investigation	Bausch (2001) ter Meulen (1998)
Guinea, Liberia, Sierra Leone 14			Unspecified		42	Jul 1978 - Apr 1979	Hospital	Persons Under Investigation	Knobloch (1980)
Liberia 9.3		Age, Other, Sex, Symptoms	Adjusted	23	246	1 Jul 1980 - 30 Apr 1986	Hospital	Persons Under Investigation	Frame (1989)
13.6		Age, Other, Sex	Unspecified	6	44	Jul 1980 - Apr 1982	Hospital	Persons Under Investigation	Monson (1984)
15.6			Adjusted	5	32	1 Jul 1980 - 30 Apr 1986	Hospital	Pregnant Women	Frame (1989)
17			Unspecified	3	18		Hospital	Pregnant Women	Monson (1987)
26.7			Adjusted	4	15	1 Jul 1980 - 30 Apr 1986	Hospital	Children	Frame (1989)
27			Unspecified	4	15		Hospital	Children	Monson (1987)
29		Region	Unspecified	4	14	Jan 2016 - Jun 2016	Population	Persons Under Investigation	Hambilton (2018)
36			Unspecified	4	11	Mar 1972 - Apr 1972	Hospital	Persons Under Investigation	Monath (1973)
36			Unspecified	4	11	Mar 1972 - Apr 1972	Hospital	Persons Under Investigation	Merrens (1973)
39.8		Time	Naive	41	103	Jan 2019 - Dec 2020	Hospital	Persons Under Investigation	Jetoh (2022)
66.7			Unspecified	2	3	Jul 1980 - Apr 1982	Hospital	Pregnant Women	Monson (1984)
100			Unspecified	2	2	Jul 1980 - Apr 1982	Hospital	Children	Monson (1984)
Nigeria 4.9	CI95%: 0-5.4		Unspecified			2016 - 2018	Hospital	Persons Under Investigation	Akhmetzhanov (2019)
12		Age, Other, Sex	Adjusted	62	510	5 Apr 2018 - 15 Mar 2020	Hospital	Persons Under Investigation	Duvignaud (2021)
13.8			Adjusted	100	724	Jan 2018 - Jun 2019	Population	Persons Under Investigation	Olayinka (2022)
17.4		Age, Occupation, Region, Sex, Time	Naive	550	3162	Jan 2018 - Dec 2021	Hospital	Persons Under Investigation	Dalhath (2022)
18.5			Naive	516	2787	Dec 2016 - Sep 2020	Hospital	Persons Under Investigation	Yaro (2021)
19		Occupation, Other	Unspecified	12	62	1 Jan 2018 - 31 Mar 2018	Population	Persons Under Investigation	Joseph (2019)
9.3 - 29.2		Time	Unspecified	174	833	Jan 2015 - 26 Sep 2021	Population	Persons Under Investigation	Grace (2021)
21			Unspecified	3	13	1 Dec 2009 - 30 Nov 2010	Population	Mixed Groups	Nwafor (2021)
24		Age, Region	Naive	68	284	1 Dec 2009 - 30 Nov 2010	Hospital	Children	Akhemokhan (2017)
25.1	CI95%: 20.9-29.2		Adjusted	106	423	Jan 2011 - Nov 2015	Hospital	Persons Under Investigation	Okokhere (2018)
25.8			Unspecified	362	1298	1 Jan 2018 - 6 May 2018	Hospital	Persons Under Investigation	Ilori (2019b)
27.9		Time	Unspecified	18	64	1 Jan 2018 - 25 Mar 2018	Population	Persons Under Investigation	Ilori (2019a)
28		Sex	Naive	16	57	2008 - 2018	Hospital	Persons Under Investigation	Akpede (2019)
28		Age, Disease Generation, Symptoms	Unspecified	16	64	Jan 2007 - Dec 2007	Hospital	Persons Under Investigation	Inegbenebor (2010)
29			Unspecified	20	67	Jan 2009 - Aug 2017	Hospital	Children	Adetunji (2021)
29.9			Adjusted	6	20	Nov 2005 - Feb 2008	Hospital	Persons Under Investigation	Ehichioya (2012)
30		Other	Naive	61	198	Dec 2017 - Apr 2018	Hospital	Persons Under Investigation	Chika-Igwenyi (2021)
31			Naive	5	16	1 Jan 2012 - 25 Mar 2012	Hospital	Persons Under Investigation	Ajayi (2013)
31.6		Occupation, Sex	Adjusted	61	170	Jan 2009 - Dec 2010	Hospital	Persons Under Investigation	Asogun (2012)
36			Unspecified	11	30	28 Dec 2017 - 2018	Hospital	Healthcare Workers	Dan-Nwafor (2019)
36			Adjusted	61	170	Jan 2009 - Aug 2016	Hospital	Persons Under Investigation	Shehu (2018)
36.7			Unspecified	11	30	Jan 2009 - Dec 2010	Hospital	Persons Under Investigation	Asogun (2012)
37.2		Age, Sex	Unspecified	42	113	Jan 2009 - 2018	Hospital	Pregnant Women	Okogbenin (2019)
37.6			Unspecified	115	306	1 Jan 2014 - 31 Mar 2019	Hospital	Persons Under Investigation	Nwafor (2020)
43.9		Other	Unspecified			Jan 2014 - Apr 2017	Hospital	Persons Under Investigation	Strampe (2021)
			Unspecified			1 Jan 2017 - 25 Mar 2017	Population	Persons Under Investigation	Ilori (2019a)

continued on next page

continued from previous page

CFR (%)	Uncertainty	Disaggregated By	Method	Number of Deaths	Sample Size	Study Dates	Study Setting	Study Group	Source
52			Naive	12	23	Jan 1970 - Feb 1970	Hospital	Persons Under Investigation	White (1972)
54		Age, Time	Unspecified	41	76	Jan 2015 - Dec 2018	Hospital	Persons Under Investigation	Abdulkarim (2020)
57			Adjusted	25	44	2016 - 2018	Hospital	Persons Under Investigation	Gomerep (2022)
59.6		Age, Other, Region, Sex, Time	Adjusted	28	47	Oct 2015 - Feb 2016	Hospital	Persons Under Investigation	Buba (2018)
60			Unspecified	24	40	2008 - 2013	Hospital	Persons Under Investigation	Andersen (2015)
63.2			Unspecified	12	19	1 Dec 2015 - 30 Apr 2016	Hospital	Persons Under Investigation	Iseri (2018)
65			Unspecified	22	34	1 Jan 1989 - 31 Mar 1989	Hospital	Persons Under Investigation	Fisher-Hoch (1995)
85.7			Adjusted	12	14	Aug 2018 - Dec 2018	Hospital	Persons Under Investigation	Chika-Igwenyi (2021)
Sierra Leone									
8			Unspecified	1	12	23 Sep 1972 - 15 Oct 1972	Hospital	Persons Under Investigation	Monath (1974)
8.8			Naive	8	90	Sep 2002 - Jul 2004	Hospital	Persons Under Investigation	Bonner (2007)
13		Age, Sex	Naive	6	51	Aug 1977 - Aug 1981	Hospital	Children	Webb (1986)
15.6		Other	Adjusted	10	79	1981 - 1985	Hospital	Other	Price (1988)
15.9			Naive	53	333	1977 -	Hospital	Persons Under Investigation	McCormick (1986)
16.5			Naive	22	138	Jan 1973 - Mar 1976	Hospital	Persons Under Investigation	Keane (1977)
16.6		Age, Sex	Unspecified	73	441	Feb 1977 - Jan 1979	Hospital	Persons Under Investigation	McCormick (1987a)
21			Naive	16	96	1975	Hospital	Persons Under Investigation	Keane (1977)
33		Other	Adjusted	14	68	1981 - 1985	Hospital	Pregnant Women	Price (1988)
14.8 - 56			Naive	6	18	Jan 1973 - Mar 1976	Hospital	Pregnant Women	Keane (1977)
38		Time	Unspecified			Jan 1996 - Dec 1997	Hospital	Persons Under Investigation	Allan (1999)
38.1		Age, Sex	Unspecified	24	63	1 Oct 1970 - 1 Oct 1972	Hospital	Persons Under Investigation	Fraser (1974)
60			Adjusted	8	21	1 Nov 2011 - 31 Oct 2012	Hospital	Persons Under Investigation	Roth (2015)
61		Age, Other, Sex, Symptoms	Unspecified	3	5	30 Oct 2019 - 16 Nov 2019	Hospital	Persons Under Investigation	Njuguna (2022)
63			Unspecified	22	36	Apr 2011 - Feb 2012	Hospital	Mixed Groups	Dahmane (2014)
67.3			Unspecified	36	57	1 Jan 2012 - 31 Dec 2018	Hospital	Children	Samuels (2021)
69		Method, Time	Unspecified	6	9	1 Oct 1970 - 1 Oct 1972	Hospital	Pregnant Women	Fraser (1974)
75		Method	Adjusted	165	245	2008 - 2016	Hospital	Persons Under Investigation	Shaffer (2019)
78.5		Other, Time	Naive	109	158	2008 - 2012	Hospital	Persons Under Investigation	Shaffer (2014)
81			Adjusted	9	12	1975	Hospital	Pregnant Women	Keane (1977)
			Unspecified	106	135	1 Jan 2012 - 31 Dec 2019	Hospital	Persons Under Investigation	Shaffer (2021)
			Unspecified	54	67	2008 - 2013	Hospital	Persons Under Investigation	Andersen (2015)

Table B.10: Case fatality ratios (CFRs) grouped by country. Study characteristics are reported for each CFR estimate.

Seroprevalence (%)	Uncertainty	Disaggregated By	Assay	Number Seropositive	Sample Size	Study Dates	Study Setting	Study Group	Source
Benin 9.9			IgG				Population	General Population	Emmerich (2008)
Botswana		Time, Other	IFA	0		Dec 1984 - Aug 1986	Community	Mixed Groups	Tessier (1987)
Cameroon, Central African Republic, Chad, Republic of the Congo, Equatorial Guinea, Gabon									
0.06		Region	IFA	3	5070	Jan 1985 - Jun 1987	Population	General Population	Gonzalez (1988)
Central African Republic									
			IFA	8	4295		Population	General Population	Johnson (1993)
		Region	IFA	5	715		Unspecified	Unspecified	Georges (1985)
Côte d'Ivoire									
20			IgG				Population	General Population	Emmerich (2008)
Democratic Republic of the Congo, Côte d'Ivoire, Ethiopia, Gabon, Guinea, Kenya, Liberia, Mali, Niger, Nigeria, Tanzania									
		Region	Unspecified	5	712		Other	Other	Henderson (1972)
Djibouti		Occupation, Symptoms	IFA	0	160	1987	Mixed	Mixed Groups	Salah (1988)
Ethiopia									
		Region	IFA	0		1961 - 1983	Unspecified	Unspecified	Tignor (1993)
Gabon									
			IFA	0	253	13 Feb 1980 - 19 Mar 1980	Population	General Population	Ivanoff (1982)
Germany									
0			IgG		94		Hospital	Other	ter Meulen (1998)
0			IgG		150		Unspecified	Other	ter Meulen (1998)
			IgG	0	200		Unspecified	Other	Emmerich (2006)
			IgM	0	100		Unspecified	Other	Emmerich (2006)
0.7			Unspecified	1	150		Unspecified	Other	ter Meulen (1998)
Ghana									
3			IgG	13	430		Unspecified	Unspecified	Emmerich (2006)
3.8			IgG		430		Population	General Population	Emmerich (2008)
4			IgG		430		Unspecified	Unspecified	Emmerich (2006)
5.2	CI95%: 3.6-7.2	Age, Other, Sex	IgG	34	657	Aug 2010 - Aug 2011	Population	General Population	Nimo-Paintsil (2019)
			IgM	0	200		Unspecified	Unspecified	Emmerich (2006)
Guinea									
2.6			IgG	6	232	Feb 1993 - Apr 1993	Population	General Population	ter Meulen (1996)

continued on next page

continued from previous page

Seroprevalence (%)	Uncertainty	Disaggregated By	Assay	Number Seropositive	Sample Size	Study Dates	Study Setting	Study Group	Source
2.6			IgG			1993	Population	General Population	ter Meulen (1998)
11.3	CI95%: 9.3-13.3	Method, Region	IgG			10 Apr 2000 - 22 Apr 2000	Population	General Population	Kerrels (2009)
11.9	CI95%: 9.7-14.5	Region	IgG	84	702	2016	Community	Other	Longet (2023)
12			IgG				Population	General Population	Emmerich (2008)
14		Age, Sex	IgG	105	751	Feb 1993 - Apr 1993	Population	General Population	ter Meulen (1996)
14			IgG	48	311	1993	Population	General Population	ter Meulen (1998)
15		Age, Region	IgG			Mar 1996 - Dec 1999	Hospital	Persons Under Investigation	Bausch (2001)
18.8			IgG	40	213		Unspecified	Unspecified	Emmerich (2006)
20			IgG				Population	General Population	Emmerich (2008)
2 - 40		Region	IgG			Jun 1990 - Jan 1992	Hospital	Healthcare Workers	Lukashovich (1993)
23.6		Age, Region	IgG	738	3126	Jun 1990 - Jan 1992	Community	General Population	Lukashovich (1993)
40.3		Region, Sex, Time	IgG	102	253	May 2004 - Oct 2004	Community	Other	Klempa (2013)
59.6	CI95%: 55.5-63.5	Region	IgG	348	584	2017 - 2018	Hospital	Persons Under Investigation	ter Meulen (1998)
			IgM	0	100		Community	Mixed Groups	Longet (2023)
2.8			IgM	7	253	May 2004 - Oct 2004	Community	Unspecified	Emmerich (2006)
7		Age, Region	IgM	22	311	Mar 1996 - Dec 1999	Hospital	Other	Klempa (2013)
14.9			IgM	7	47		Hospital	Persons Under Investigation	Bausch (2001)
75			IgM	9	12		Hospital	Other	ter Meulen (1998)
			IgM	6	7		Hospital	Persons Under Investigation	ter Meulen (1998)
91.7			IgM	11	12		Hospital	Persons Under Investigation	ter Meulen (1998)
Guinea, Nigeria									
24			IgG		75		Unspecified	Unspecified	Gunther (2001)
India									
0		Age, Region, Sex	Unspecified	0	1088		Unspecified	Unspecified	Rodrigues (1978)
Kenya									
			IFA	0	1899		Population	General Population	Johnson (1983a)
			IFA	0	741	Mar 1980 - Dec 1981	Community	Mixed Groups	Johnson (1983b)
Liberia									
1.5			IFA	2	135	Feb 1982 - Feb 1982	Hospital	Children	Monson (1987)
0.9 - 14.1		Age, Other, Region, Sex, Time	IFA			Sep 1980 - Jan 1982	Community	General Population	Valley-Ogunro (1984)
8.4		Occupation	IFA	71	844	Oct 1976 - Oct 1977	Hospital	Healthcare Workers	Frame (1979)
14.9		Other, Region	IFA	95	637	1979 - 1982	Hospital	Healthcare Workers	Frame (1984a)
6 - 28		Other, Region	IFA			Jul 1980 - Apr 1982	Hospital	Other	Frame (1984b)
1.3		Other, Time	IgG	3	225	Nov 1981 - Jan 1982	Community	Mixed Groups	Van Der Waals (1986)
12.1			IgG	99		1985	Unspecified	Unspecified	ter Meulen (1998)
			Unspecified	0	40	Mar 1972 - Apr 1972	Hospital	Healthcare Workers	Monath (1973)
3			Unspecified	0	22	Mar 1972 - Apr 1972	Contact	Persons Under Investigation	Monath (1973)
3.7			Unspecified	4	133	Mar 1972 - Apr 1972	Community	General Population	Monath (1973)
			Unspecified	6	165	Oct 1974 - Dec 1974	Hospital	Mixed Groups	Bloch (1978)
			Unspecified	2	17	Mar 1972 - Apr 1972	Hospital	Healthcare Workers	Monath (1973)
Madagascar									
0			IFA	0	381		Unspecified	Unspecified	Mathiot (1989)
Mali									
33.2	CI95%: 29.4-37.1	Age, Region, Sex	IgG	199	600	Feb 2015 - Feb 2015	Community	General Population	Sogoba (2016)
0.67		Region	IgM	4	600	Feb 2015 - Feb 2015	Community	General Population	Sogoba (2016)
Nigeria									
0			IFA	0	47	1 Jan 1989 - 31 Mar 1989	Hospital	Healthcare Workers	Fisher-Hoch (1995)

continued on next page

continued from previous page

Seroprevalence (%)	Uncertainty	Disaggregated By	Assay	Number Seropositive	Sample Size	Study Dates	Study Setting	Study Group	Source
1			IFA	6	415	1 Jan 1989 - 31 Mar 1989	Community	Unspecified	Fisher-Hoch (1995)
2			IFA	2	175	1 Jan 1989 - 31 Mar 1989	Hospital	Healthcare Workers	Fisher-Hoch (1995)
21.3		Region	IFA	5	240	1 Jan 1989 - 31 Mar 1989	Hospital	Healthcare Workers	Fisher-Hoch (1995)
0			IgG	357	1677		Population	General Population	Tomori (1988)
1.8			IgG	0	12		Hospital	Other	Shaibu (2021)
7.4			IgG	8	451		Hospital	Persons Under Investigation	Ehichioya (2012)
10.3			IgG	22	297	Sep 2011 - Feb 2012	Hospital	Other	Bukbuk (2014)
12.3		Occupation, Region	IgG	63	552	Dec 1992 - Mar 1993	Population	General Population	Emmerich (2008)
45.7	CI95%: 38.4-53.1		IgG	77	170	Dec 1992 - Mar 1993	Hospital	Healthcare Workers	Bajani (1997)
49.6	CI95%: 43.3-55.9	Other, Time	IgG	119	240	12 Feb 2019 - 20 Dec 2019	Hospital	Pregnant Women	Kayem (2023b)
50 - 64		Method	IgG			Feb 2019 - Dec 2019	Hospital	Pregnant Women	Kayem (2023a)
58.2			IgG	103	177	Oct 2018 - Oct 2020	Contact	Persons Under Investigation	Ugwu (2022)
48 - 77		Method	IgG			Oct 2018 - Oct 2020	Community	General Population	Tobin (2015)
0			IgM	0	451		Hospital	Other	Ugwu (2022)
0			IgM	0	12		Hospital	Persons Under Investigation	Ehichioya (2012)
1.1		Level of Exposure, Occupation, Other, Region	IgM	6	552	Dec 1992 - Mar 1993	Hospital	Other	Shaibu (2021)
8.6			IgM	2	177		Hospital	Healthcare Workers	Bajani (1997)
23 - 32		Method	IgM			Dec 1992 - Mar 1993	Community	General Population	Tobin (2015)
33 - 48			IgM	20	233	Mar 2018 - Apr 2019	Mixed	Mixed Groups	Shaibu (2021)
5.4		Age, Occupation, Region, Sex	PRNT	18	336	3 Mar 1971 - Mar 1971	Community	Other	Ugwu (2022)
5.8		Age, Occupation, Region, Sex	PRNT	25	434	24 Aug 1970 - 24 Aug 1970	Community	Persons Under Investigation	Ugwu (2022)
			Unspecified	0	22	Oct 2018 - Oct 2020	Hospital	Mixed Groups	Arnold (1977)
			Unspecified	0	258	Jan 1970 - Feb 1970	Hospital	Healthcare Workers	Troup (1970)
			Unspecified	10	458	1965 - 1966	Mixed	Mixed Groups	Bowen (1975)
			Unspecified	4	53	Jan 1970 - Feb 1970	Community	General Population	Henderson (1972)
		Age, Region	Unspecified	23	281	1965 - 1970	Contact	Persons Under Investigation	Troup (1970)
15.5		Age, Occupation, Sex	Unspecified	15	97	Aug 1976 - Aug 1976	Community	General Population	Henderson (1972)
16.1			Unspecified	10	62		Trade	Mixed Groups	Smith (1979)
36.1		Level of Exposure, Occupation, Other, Region	Unspecified	84	233	Mar 2018 - Apr 2019	Community	Unspecified	Bajani (1997)
Sierra Leone									
21			IFA	51	245	Aug 1977 - Aug 1981	Hospital	Children	Webb (1986)
22		Age, Level of Exposure, Occupation, Sex	IFA	108	496	1972 - 1983	Hospital	Healthcare Workers	Helmick (1986)
26		Level of Exposure	IFA	248	953		Household	Mixed Groups	Keenlyside (1983)
0 - 52		Age, Region, Sex	IFA	360	1024	1978 - 1981	Community	General Population	McCormick (1987b)
35		Age, Sex	IFA	339	3196	Jul 2015 - Jun 2018	Community	General Population	Helmick (1986)
10.61		Region	IgG	322	2278	Jul 2015 - Jun 2018	Community	General Population	Grant (2023)
14.14		Region	IgG	125	688	2011 - 2012	Community	General Population	Grant (2023)
18			IgG	1040	5168	Jul 2015 - Jun 2018	Hospital	Persons Under Investigation	Shaffer (2014)
20.12		Region	IgG	682	2051	1 Jan 2012 - 31 Dec 2019	Population	General Population	Grant (2023)
33.2		Other, Time	IgG				Hospital	Persons Under Investigation	Shaffer (2021)

continued on next page

continued from previous page

Seroprevalence (%)	Uncertainty	Disaggregated By	Assay	Number Seropositive	Sample Size	Study Dates	Study Setting	Study Group	Source
3 - 23		Method, Other, Time	IgM			2008 - 2012	Hospital	Persons Under Investigation	Shaffer (2014)
18 - 22		Disease	IgM			2008 - 2016	Hospital	Persons Under Investigation	Shaffer (2019)
25.6		Generation, Time	IgM	838	3277	1 Jan 2012 - 31 Dec 2019	Hospital	Persons Under Investigation	Shaffer (2021)
6		Other, Time	Unspecified	16	255	23 Sep 1972 - 15 Oct 1972	Household	General Population	Fraser (1974)
0 - 13		Age, Other, Region, Sex	Unspecified	12	170	23 Sep 1972 - 15 Oct 1972	Hospital	Healthcare Workers	Fraser (1974)
7		Region	Unspecified	5	50	Nov 1974 - Nov 1974	Mixed	Mixed Groups	Fabiyi (1975)
13		Age, Sex	Unspecified	27	206	23 Sep 1972 - 15 Oct 1972	Hospital	Children	Sharp (1982)
0 - 29.4		Age	Unspecified	12	72	20 May 2019 - 24 May 2019	Household	Persons Under Investigation	Fraser (1974)
22		Occupation	Unspecified	12	54	23 Sep 1972 - 15 Oct 1972	School	Children	Sharp (1982)
81.7			Unspecified	58	71	3 Jun 2019 - 28 Sep 2019	Hospital	General Population	Akpogheneta (2021)
			Unspecified	40	45	Jan 1973 - Mar 1976	Unspecified	Healthcare Workers	Fraser (1974)
Sweden							Hospital	Other	Akpogheneta (2021)
0			IgG	0	53	Mar 2016	Contact	Persons Under Investigation	Keane (1977)
Uganda							Contact	Healthcare Workers	Grahn (2018)
6		Region	IFA	8	132	May 1984 - May 1984	Hospital	Other	Rodhain (1989)
0.1			IgG	2	1744	2006 - 2007	Population	Other	Clements (2019)
United Kingdom									
0			Unspecified	0	159	1982	Contact	Mixed Groups	Cooper (1982)
United States									
0			IFA	0	29		Contact	Persons Under Investigation	Zweighaft (1977)
Unspecified			Unspecified	0	86	Nov 1975 - Jun 1977	Travel	Persons Under Investigation	Woodruff (1978)
Zimbabwe		Region	IFA	0	486	1980	School	Children	Blackburn (1982)

Table B.11: Seroprevalence grouped by country. Study characteristics are reported for each seroprevalence estimate.

Risk Factor	Significance	Method	Sample Size	Country	Study Dates	Study Setting	Study Group	Source
Occurrence								
Contact with Animal, Other	Significant	Adjusted	90	Sierra Leone	Sep 2002 - Jul 2004	Household	Other	Bonner (2007)
Contact with Animal, Other	Significant	Not Adjusted	90	Sierra Leone	Sep 2002 - Jul 2004	Household	Other	Bonner (2007)
Other	Significant	Adjusted	73	Liberia	2008 - 2012	Community	Outdoor Workers	Olugasa (2014)
Other	Significant	Adjusted	3096	Nigeria	2016 - 2019	Population	General Population	Redding (2021)
Other	Not Significant	Adjusted	73	Liberia	2008 - 2012	Community	Outdoor Workers	Olugasa (2014)
Other	Not Significant	Adjusted	90	Sierra Leone	Sep 2002 - Jul 2004	Household	Other	Bonner (2007)
Other	Not Significant	Not Adjusted	90	Sierra Leone	Sep 2002 - Jul 2004	Household	Other	Bonner (2007)
Infection								
Age	Significant	Not Adjusted		Nigeria	Jan 2009 - Dec 2010	Hospital	Persons Under Investigation	Asogun (2012)
Age, Hospitalisation, Other	Significant	Not Adjusted		Sierra Leone	1 Jan 2012 - 31 Dec 2019	Hospital	Persons Under Investigation	Shaffer (2021)
Age, Occupation	Significant	Adjusted	423	Nigeria	1 Jan 2018 - 6 May 2018	Hospital	Persons Under Investigation	Ilori (2019b)
Age, Occupation, Other, Sex	Significant	Adjusted	20027	Nigeria	2018 - 2021	Hospital	Persons Under Investigation	Ochu (2023)
Age, Occupation, Other, Sex	Significant	Not Adjusted	20027	Nigeria	2018 - 2021	Hospital	Persons Under Investigation	Ochu (2023)
Age, Occupation, Other, Sex	Significant	Not Adjusted	1991	Nigeria	Jan 2018 - Jun 2019	Population	Persons Under Investigation	Olayinka (2022)
Household Contact	Significant	Unspecified		Nigeria	3 Mar 1971 - Mar 1971	Community	Mixed Groups	Arnold (1977)
Occupation, Other, Sex	Significant	Adjusted	1991	Nigeria	Jan 2018 - Jun 2019	Population	Persons Under Investigation	Olayinka (2022)
Other	Significant	Not Adjusted		Nigeria	Mar 1996 - Dec 1999	Hospital	Persons Under Investigation	Bausch (2001)
Other	Significant	Unspecified	373	Guinea	1 Dec 2009 - 30 Nov 2010	Hospital	Children	Akhuemokhan (2017)
Other	Significant	Unspecified	2787	Nigeria	Dec 2016 - Sep 2020	Hospital	Persons Under Investigation	Yaro (2021)
Sex	Significant	Not Adjusted	245	Sierra Leone	Aug 1977 - Aug 1981	Hospital	Children	Webb (1986)
Age, Occupation, Other	Not Significant	Adjusted	20027	Nigeria	2018 - 2021	Hospital	Persons Under Investigation	Ochu (2023)
Age, Occupation, Other	Not Significant	Adjusted	1991	Nigeria	Jan 2018 - Jun 2019	Population	Persons Under Investigation	Olayinka (2022)
Age, Occupation, Other	Not Significant	Not Adjusted	20027	Nigeria	2018 - 2021	Hospital	Persons Under Investigation	Ochu (2023)
Age, Occupation, Other	Not Significant	Not Adjusted	34	Nigeria	Jan 2016 - Aug 2016	Hospital	Persons Under Investigation	Shehu (2018)
Age, Occupation, Other, Sex	Not Significant	Not Adjusted	1991	Nigeria	Jan 2018 - Jun 2019	Population	Persons Under Investigation	Olayinka (2022)
Age, Other	Not Significant	Unspecified	373	Nigeria	1 Dec 2009 - 30 Nov 2010	Hospital	Children	Akhuemokhan (2017)
Age, Other, Sex	Not Significant	Adjusted	423	Nigeria	1 Jan 2018 - 6 May 2018	Hospital	Persons Under Investigation	Ilori (2019b)
Contact with Animal, Funeral, Sex	Not Significant	Not Adjusted		Nigeria	Jan 2009 - Dec 2010	Hospital	Persons Under Investigation	Asogun (2012)
Occupation, Other, Sex	Not Significant	Not Adjusted		Sierra Leone	1 Jan 2012 - 31 Dec 2019	Hospital	Persons Under Investigation	Shaffer (2021)
Other, Sex	Unspecified	Unspecified	3162	Nigeria	Jan 2018 - Dec 2021	Hospital	Persons Under Investigation	Dalhat (2022)
Reproduction Number								
Other	Significant	Not Adjusted		Nigeria		Population	General Population	Zhao (2020)
Attack Rate								
Age	Significant	Not Adjusted		Sierra Leone	1 Oct 1970 - 1 Oct 1972	Population	General Population	Fraser (1974)
Age, Sex	Not Significant	Not Adjusted		Sierra Leone	1 Oct 1970 - 1 Oct 1972	Population	General Population	Fraser (1974)
Incidence								
Other	Significant	Adjusted	3096	Nigeria	2016 - 2019	Population	General Population	Redding (2021)
Onset-Admission Delay								
Age, Close Contact, Funeral, Household Contact, Non-household Contact, Occupation, Other, Sex	Not Significant	Not Adjusted	389	Nigeria	Dec 2018 - Apr 2019	Population	Persons Under Investigation	Chandra (2021)
Viremia								
Other	Not Significant	Unspecified		Sierra Leone	1977 -	Community	Persons Under Investigation	McCormick (1986)
Death								
Age	Significant	Not Adjusted	724	Nigeria	Jan 2009 - Dec 2010	Hospital	Persons Under Investigation	Asogun (2012)
Age, Occupation, Other	Significant	Not Adjusted	284	Nigeria	Jan 2018 - Jun 2019	Population	Persons Under Investigation	Olayinka (2022)
Age, Other	Significant	Adjusted	510	Nigeria	Jan 2011 - Nov 2015	Hospital	Persons Under Investigation	Okokhere (2018)
Age, Other	Significant	Adjusted	103	Liberia	5 Apr 2018 - 15 Mar 2020	Hospital	Persons Under Investigation	Duvignaud (2021)
Age, Other	Significant	Adjusted	724	Nigeria	Jan 2018 - Jun 2019	Hospital	Persons Under Investigation	Jetoh (2022)
Age, Other	Significant	Adjusted	47	Nigeria	Oct 2015 - Feb 2016	Population	Persons Under Investigation	Olayinka (2022)
Age, Other	Significant	Not Adjusted		Nigeria		Hospital	Persons Under Investigation	Buba (2018)

continued on next page

continued from previous page

Risk Factor	Significance	Method	Sample Size	Country	Study Dates	Study Setting	Study Group	Source
Age, Other	Significant	Not Adjusted	510	Nigeria	5 Apr 2018 - 15 Mar 2020	Hospital	Persons Under Investigation	Duvignaud (2021)
Other	Adjusted	Adjusted	76	Sierra Leone	1977 -	Hospital	Persons Under Investigation	McCormick (1986)
Other	Significant	Adjusted	423	Nigeria	Jan 2015 - Dec 2018	Hospital	Persons Under Investigation	Abdulkarim (2020)
Other	Significant	Adjusted	83	Nigeria	1 Jan 2018 - 6 May 2018	Hospital	Persons Under Investigation	Ilori (2019b)
Other	Significant	Adjusted	201	Nigeria	Dec 2017 - Dec 2018	Hospital	Persons Under Investigation	Chika-Igwanyi (2021)
Other	Significant	Adjusted	68	Sierra Leone	Jan 2014 - Apr 2017	Hospital	Persons Under Investigation	Strampe (2021)
Other	Not Adjusted	Not Adjusted	1298	Sierra Leone	1981 - 1985	Hospital	Pregnant Women	Price (1988)
Other	Not Adjusted	Not Adjusted	57	Nigeria	1 Jan 2012 - 31 Dec 2019	Hospital	Persons Under Investigation	Shaffer (2021)
Other	Significant	Not Adjusted	1740	Sierra Leone	2008 - 2018	Hospital	Persons Under Investigation	Akpede (2019)
Other	Significant	Not Adjusted	20	Sierra Leone	1 Jan 2012 - 31 Dec 2018	Hospital	Children	Samuels (2021)
Other	Significant	Unspecified	57	Nigeria	2008 - 2012	Hospital	Persons Under Investigation	Shaffer (2014)
Other	Significant	Unspecified	20	Nigeria	1 Jan 2012 - 25 Mar 2012	Hospital	Persons Under Investigation	Ajayi (2013)
Other	Significant	Unspecified	57	Nigeria	Jan 2009 - Aug 2017	Hospital	Children	Adetunji (2021)
Age, Hospitalisation, Other, Sex	Not Significant	Not Adjusted	76	Sierra Leone	1 Jan 2012 - 31 Dec 2019	Hospital	Persons Under Investigation	Shaffer (2021)
Age, Other, Sex	Not Significant	Adjusted	57	Nigeria	Jan 2015 - Dec 2018	Hospital	Persons Under Investigation	Abdulkarim (2020)
Age, Other, Sex	Not Significant	Not Adjusted	83	Sierra Leone	1 Jan 2012 - 31 Dec 2018	Hospital	Children	Samuels (2021)
Age, Sex	Not Significant	Unspecified	47	Nigeria	Dec 2017 - Dec 2018	Hospital	Persons Under Investigation	Chika-Igwanyi (2021)
Cornobidiy, Other, Sex	Not Significant	Not Adjusted	510	Nigeria	Oct 2015 - Feb 2016	Hospital	Persons Under Investigation	Buba (2018)
Cornobidiy, Other, Sex	Not Significant	Not Adjusted	724	Nigeria	5 Apr 2018 - 15 Mar 2020	Hospital	Persons Under Investigation	Duvignaud (2021)
Occupation, Other, Sex	Not Significant	Not Adjusted	103	Nigeria	Jan 2018 - Jun 2019	Population	Persons Under Investigation	Olayinka (2022)
Occupation, Sex	Not Significant	Adjusted	284	Liberia	Jan 2019 - Dec 2020	Hospital	Persons Under Investigation	Jetoh (2022)
Occupation, Sex	Not Significant	Not Adjusted	284	Nigeria	Jan 2009 - Dec 2010	Hospital	Persons Under Investigation	Asogun (2012)
Other	Not Significant	Adjusted	724	Nigeria	Jan 2011 - Nov 2015	Population	Persons Under Investigation	Okokhere (2018)
Other	Not Significant	Adjusted	147	Sierra Leone	Jan 2018 - Jun 2019	Hospital	Persons Under Investigation	Olayinka (2022)
Other	Not Significant	Not Adjusted	68	Sierra Leone	1981 - 1985	Hospital	Other	Price (1988)
Other	Not Significant	Not Adjusted	510	Sierra Leone	1977 -	Hospital	Persons Under Investigation	McCormick (1986)
Sex	Not Significant	Unspecified	245	Sierra Leone	1981 - 1985	Hospital	Pregnant Women	Price (1988)
Sex	Not Significant	Adjusted	284	Nigeria	5 Apr 2018 - 15 Mar 2020	Hospital	Persons Under Investigation	Duvignaud (2021)
Sex	Not Significant	Not Adjusted	1740	Sierra Leone	Aug 1977 - Aug 1981	Hospital	Children	Webb (1986)
Sex	Not Significant	Not Adjusted	3162	Nigeria	Jan 2011 - Nov 2015	Hospital	Persons Under Investigation	Okokhere (2018)
Age, Sex	Not Significant	Unspecified	953	Sierra Leone	2008 - 2012	Hospital	Persons Under Investigation	Shaffer (2014)
Age, Hospitalisation, Other	Significant	Not Adjusted	600	Nigeria	Jan 2018 - Dec 2021	Hospital	Persons Under Investigation	Dalhat (2022)
Age, Household Contact	Significant	Not Adjusted	702	Sierra Leone	1 Jan 2012 - 31 Dec 2019	Hospital	Persons Under Investigation	Shaffer (2021)
Age, Other	Significant	Adjusted	177	Mali	1 Jan 2012 - 31 Dec 2019	Household	Mixed Groups	Keenlyside (1983)
Age, Other	Significant	Adjusted	240	Guinea	Feb 2015 - Feb 2015	Community	General Population	Sogoba (2016)
Age, Other	Significant	Adjusted	240	Nigeria	2016	Community	Other	Longet (2023)
Close Contact, Occupation	Significant	Unspecified	72	Sierra Leone	3 Jun 2019 - 28 Sep 2019	Unspecified	Other	Akpogheneta (2021)
Contact with Animal, Other	Significant	Adjusted	206	Nigeria	1972 - 1983	Mixed	General Population	Tobin (2015)
Household Contact, Other	Significant	Adjusted	1424	Sierra Leone	Feb 2019 - Dec 2019	School	Mixed Groups	Helmitck (1986)
Household Contact, Other	Significant	Not Adjusted	584	Sierra Leone	20 May 2019 - 24 May 2019	Household	Pregnant Women	Kayem (2023a)
Occupation	Significant	Not Adjusted	1424	Sierra Leone	23 Sep 1972 - 15 Oct 1972	Mixed	General Population	Akpogheneta (2021)
Other	Significant	Not Adjusted	1424	Nigeria	1972 - 1983	Mixed	Mixed Groups	Fraser (1974)
Other	Significant	Adjusted	584	Guinea	Dec 1992 - Mar 1993	Hospital	Healthcare Workers	Helmitck (1986)
Other	Significant	Adjusted	1424	Guinea	10 Apr 2000 - 22 Apr 2000	Population	General Population	Helmitck (1986)
Other	Significant	Adjusted	1424	Guinea	2017 - 2018	Community	Mixed Groups	Bayani (1997)
Other	Significant	Not Adjusted	1424	Guinea	10 Apr 2000 - 22 Apr 2000	Population	General Population	Kerneis (2009)
Age, Contact with Animal, Funeral, Occupation, Other, Sex	Not Significant	Not Adjusted	1424	Guinea	Mar 1996 - Dec 1999	Hospital	General Population	Longet (2023)
	Not Significant	Not Adjusted	1424	Guinea	10 Apr 2000 - 22 Apr 2000	Population	General Population	Kerneis (2009)
	Not Significant	Not Adjusted	1424	Guinea	10 Apr 2000 - 22 Apr 2000	Population	General Population	Bausch (2001)
	Not Significant	Not Adjusted	1424	Guinea	10 Apr 2000 - 22 Apr 2000	Population	General Population	Kerneis (2009)

continued on next page

continued from previous page

Risk Factor	Significance	Method	Sample Size	Country	Study Dates	Study Setting	Study Group	Source
Age, Contact with Animal, Other, Sex	Not Significant	Adjusted	991	Guinea	Feb 1993 - Apr 1993	Population	General Population	ter Meulen (1996)
Age, Contact with Animal, Other, Sex	Not Significant	Not Adjusted	991	Guinea	Feb 1993 - Apr 1993	Population	General Population	ter Meulen (1996)
Age, Other, Sex	Not Significant	Adjusted	253	Guinea	May 2004 - Oct 2004	Community	Other	Klenpa (2013)
Age, Sex	Not Significant	Adjusted	584	Guinea	2017 - 2018	Community	Mixed Groups	Longet (2023)
Close Contact, Occupation	Not Significant	Adjusted		Sierra Leone	1972 - 1983	Mixed	Mixed Groups	Helmick (1986)
Contact with Animal	Not Significant	Adjusted	1424	Guinea	10 Apr 2000 - 22 Apr 2000	Population	General Population	Kerneis (2009)
Other	Not Significant	Adjusted	240	Nigeria	Feb 2019 - Dec 2019	Hospital Household	Pregnant Women	Kayem (2023a)
Other, Sex	Not Significant	Not Adjusted	953	Sierra Leone		Hospital	Mixed Groups	Keenlyside (1983)
Other, Sex	Not Significant	Not Adjusted	177	Nigeria	1 Jan 2012 - 31 Dec 2019	Community	Persons Under Investigation	Shaffer (2021)
Sex	Not Significant	Unspecified	600	Mali	Feb 2015 - Feb 2015	Community	General Population	Tobin (2015)
Sex	Not Significant	Adjusted	702	Guinea	2016	Community	Other	Sogoba (2016)
Sex	Not Significant	Adjusted	1677	Nigeria		Population	General Population	Longet (2023)
Age	Unspecified	Unspecified	1677	Nigeria		Population	General Population	Tomori (1988)
								Tomori (1988)

Table B.12: Risk factors grouped by outcome. Study characteristics are reported for each set of risk factors.

C Additional Figures

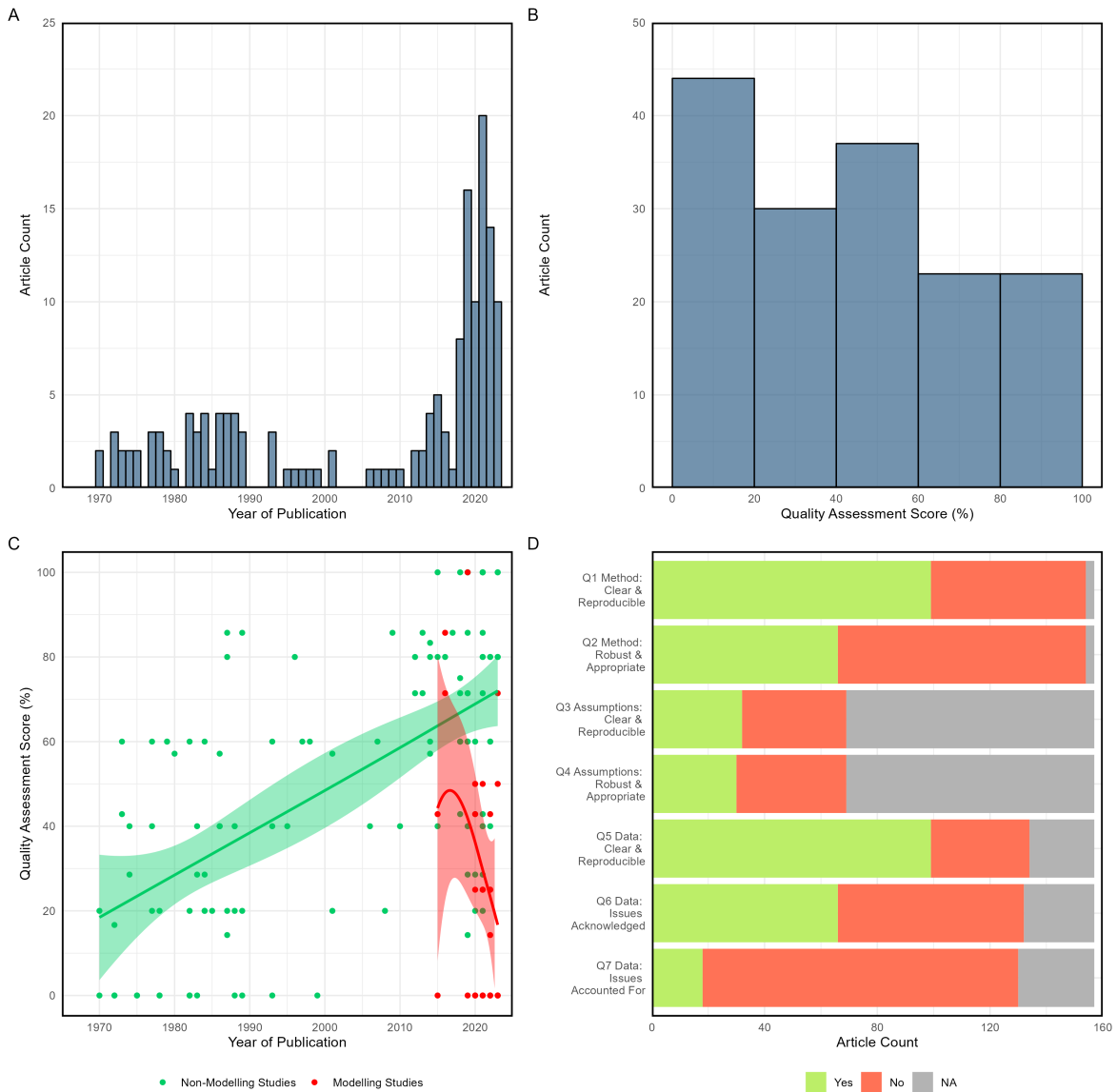


Figure C.1: (A) Article count by year of publication; (B) article count by quality assessment score (defined as percentage of ‘Yes’ answers relative to sum of ‘Yes’ and ‘No’ answers for each paper, removing ‘NAs’); (C) quality assessment score by year of publication (time trends for articles with and without transmission models fitted via local polynomial regression); (D) article count for each quality assessment question scoring ‘Yes’, ‘No’ or ‘Non-Applicable’.

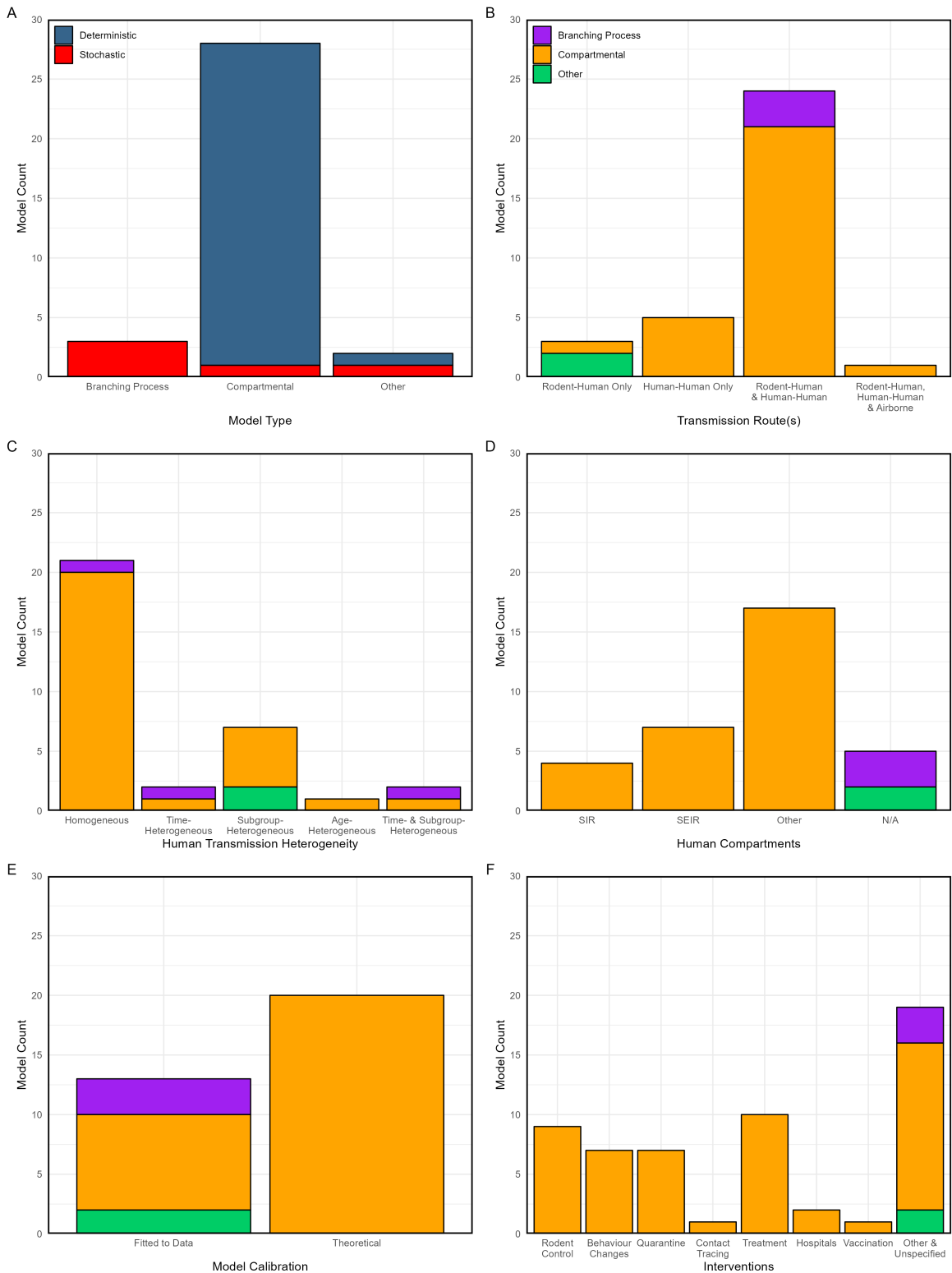


Figure C.2: Transmission model count by (A) model type, (B) transmission routes, (C) human transmission heterogeneity, (D) human compartments (where applicable, otherwise listed as NA for non-compartmental model types), (E) calibration of model outputs, (F) interventions incorporated. Colour corresponds to the deterministic or stochastic nature of the model in (A) and the model type in (B-F).

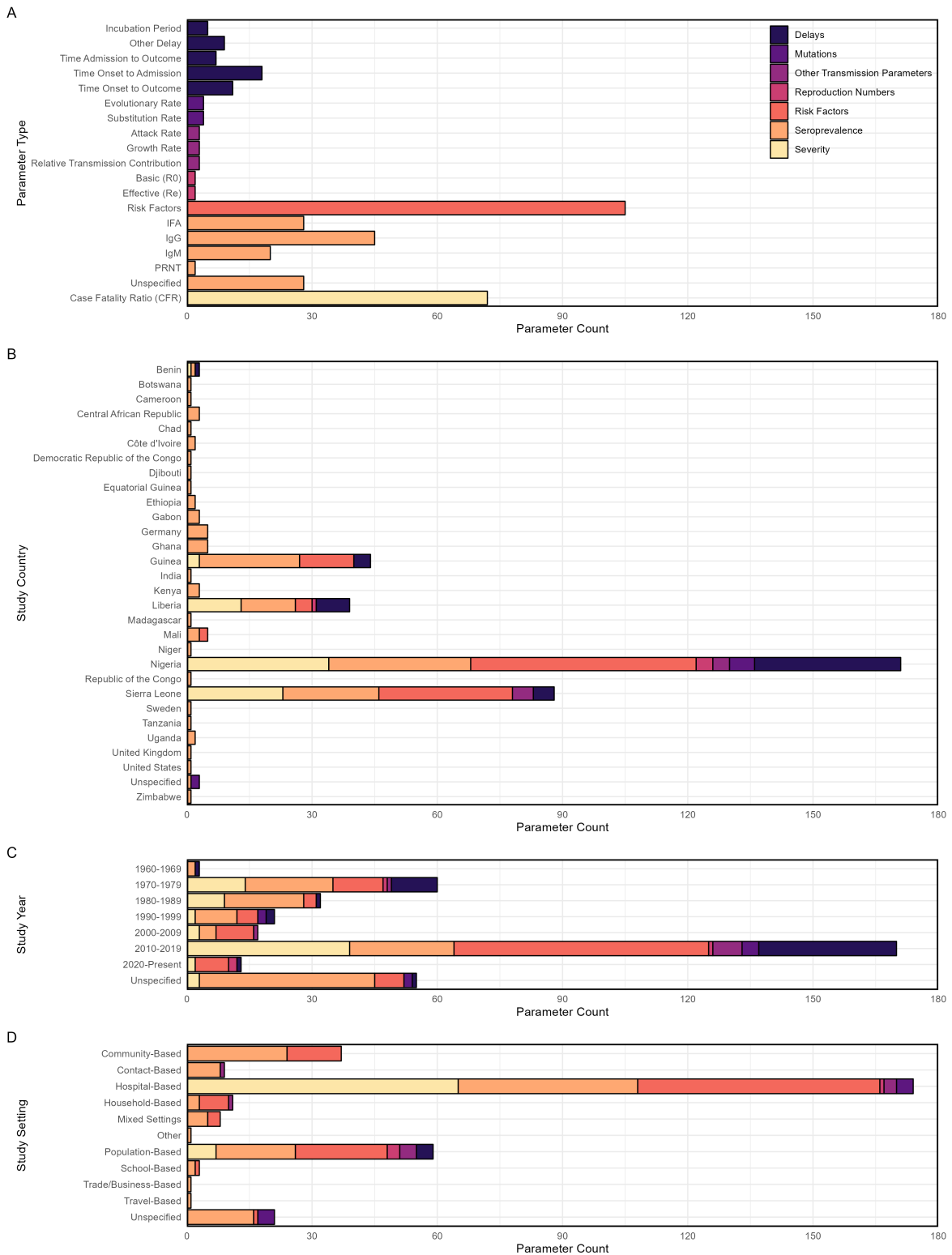


Figure C.3: Parameter type count by (A) parameter class, (B) survey country/countries, (C) survey decade (D) study setting. Colour corresponds to parameter class.

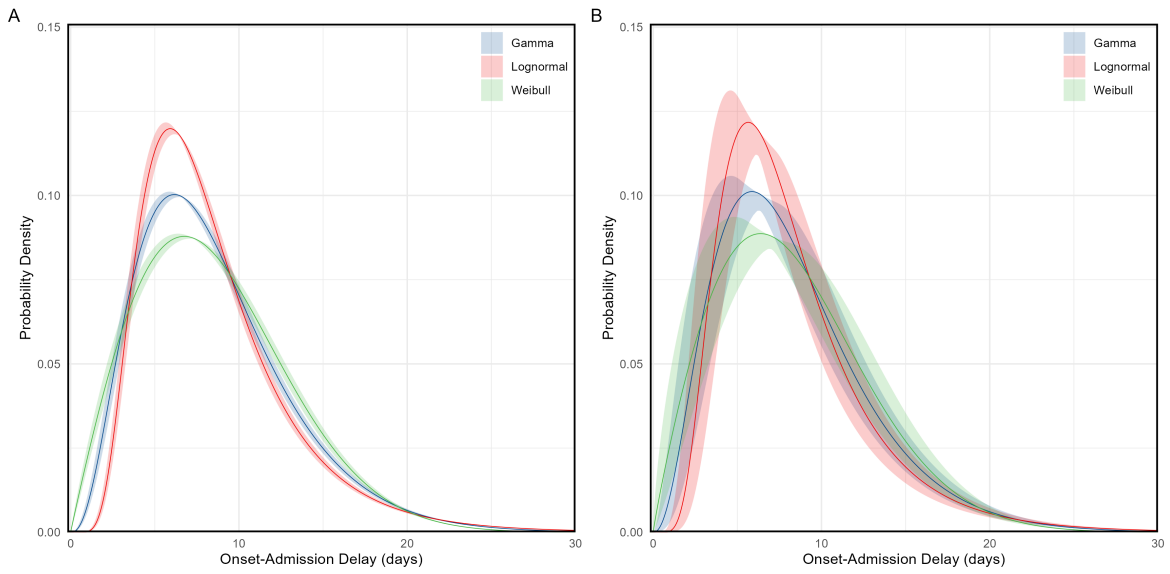


Figure C.4: Hypothetical symptom onset to hospital admission delay probability distributions for the (A) common- and (B) random-effects models. These are constructed using the pooled mean estimate and corresponding standard error from the meta-analysis (main text figure 4E) and the separately-calculated pooled standard deviation, and shown for Gamma, Lognormal and Weibull distributions for illustration. The shaded areas represent the 95% confidence in the mean value estimated in the meta-analysis.

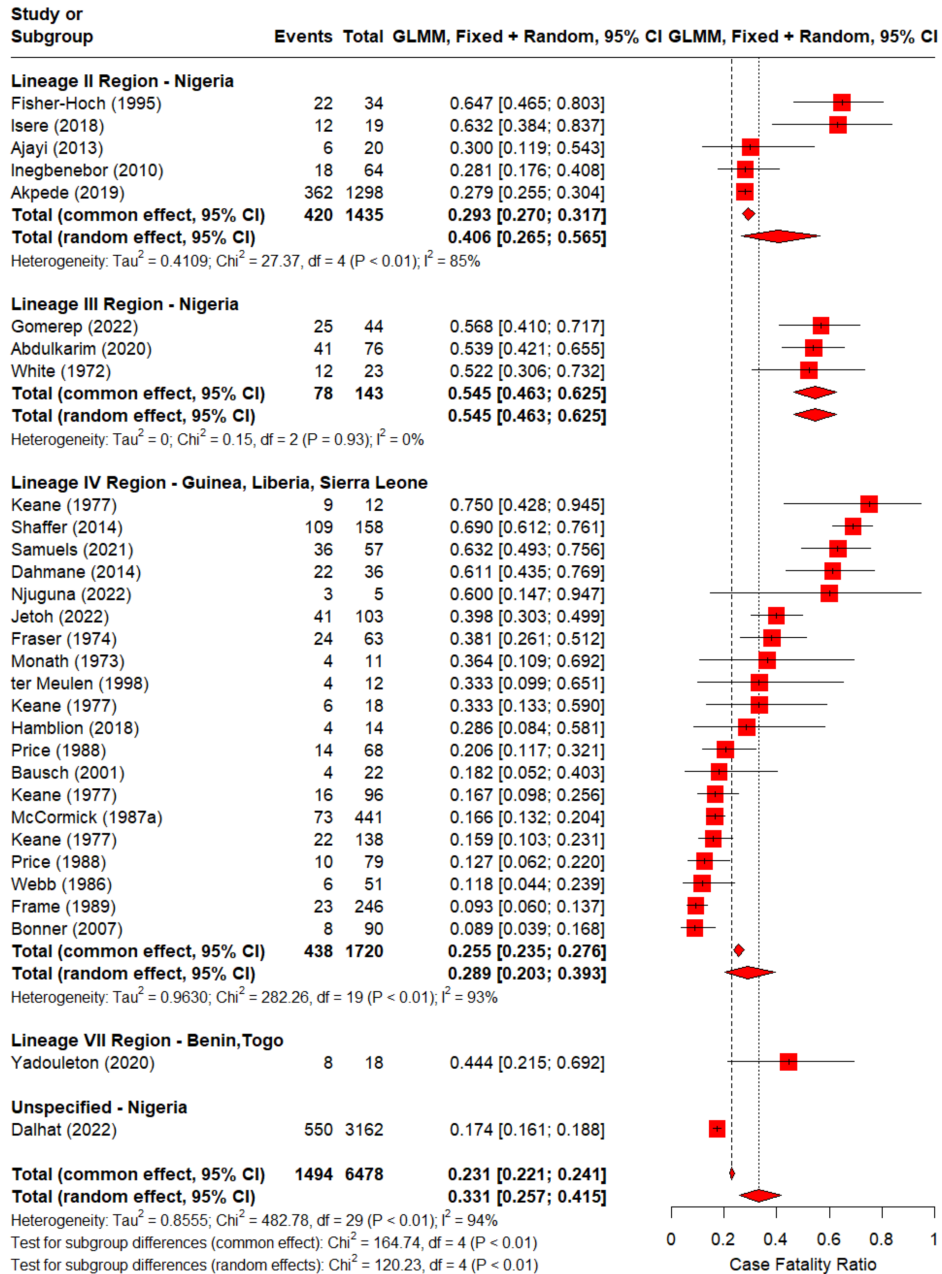


Figure C.5: Case fatality ratio (CFR) meta-analysis by lineage region (as shown in main text figure 3A), with individual study estimates. Plot includes additional lineage regions for which only one CFR estimate was available, for which meta-analysis was not performed. Red squares indicate individual study estimates, with black lines representing a 95% binomial confidence interval; common and random effects are shown with red diamonds for subgroups and overall pooled estimate.

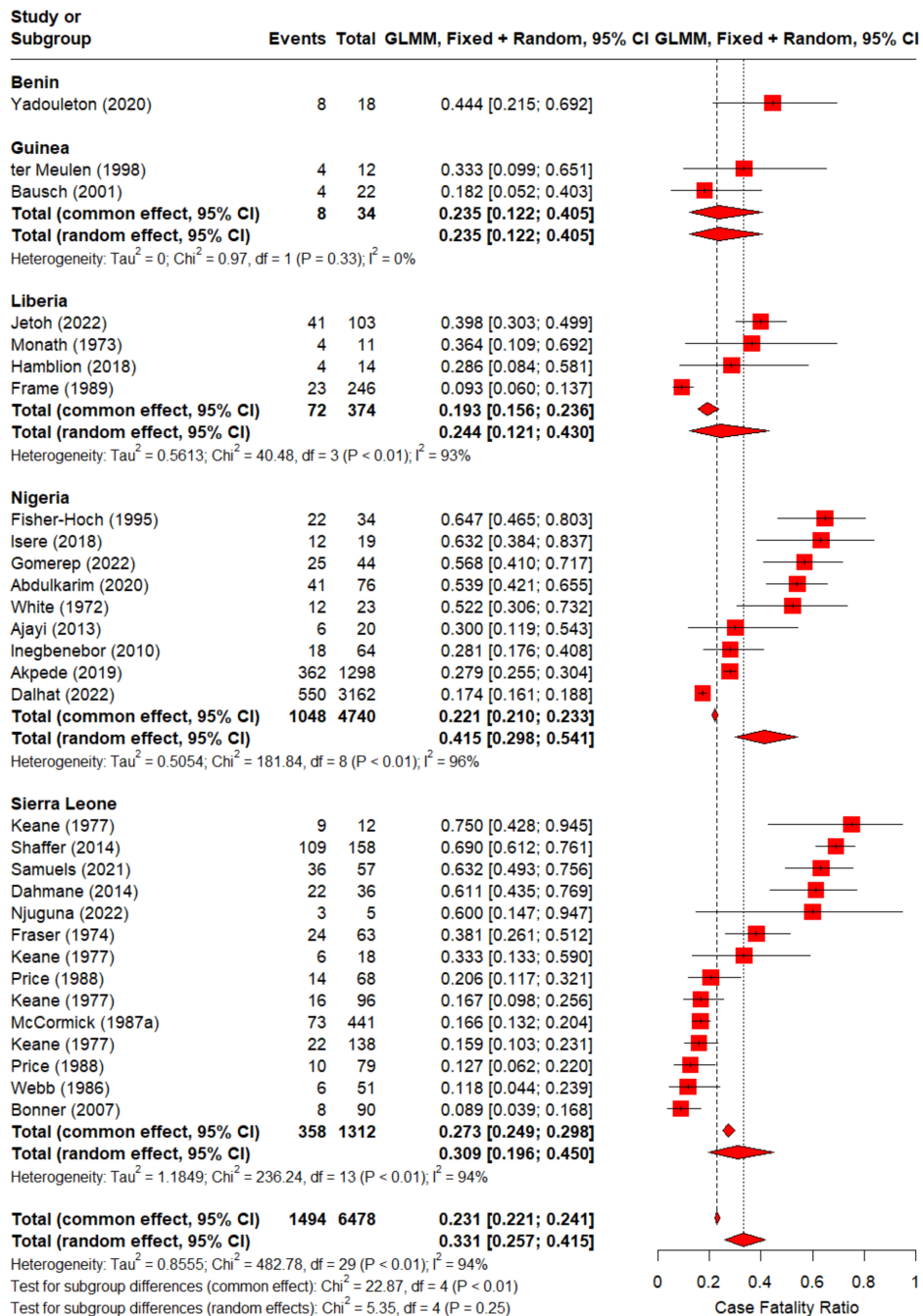


Figure C.6: Case fatality ratio (CFR) meta-analysis by country (as shown in main text figure 3C), with individual study estimates. Plot includes additional countries for which only one CFR estimate was available, for which meta-analysis was not performed. Red squares indicate individual study estimates, with black lines representing a 95% binomial confidence interval; common and random effects are shown with red diamonds for subgroups and overall pooled estimate.

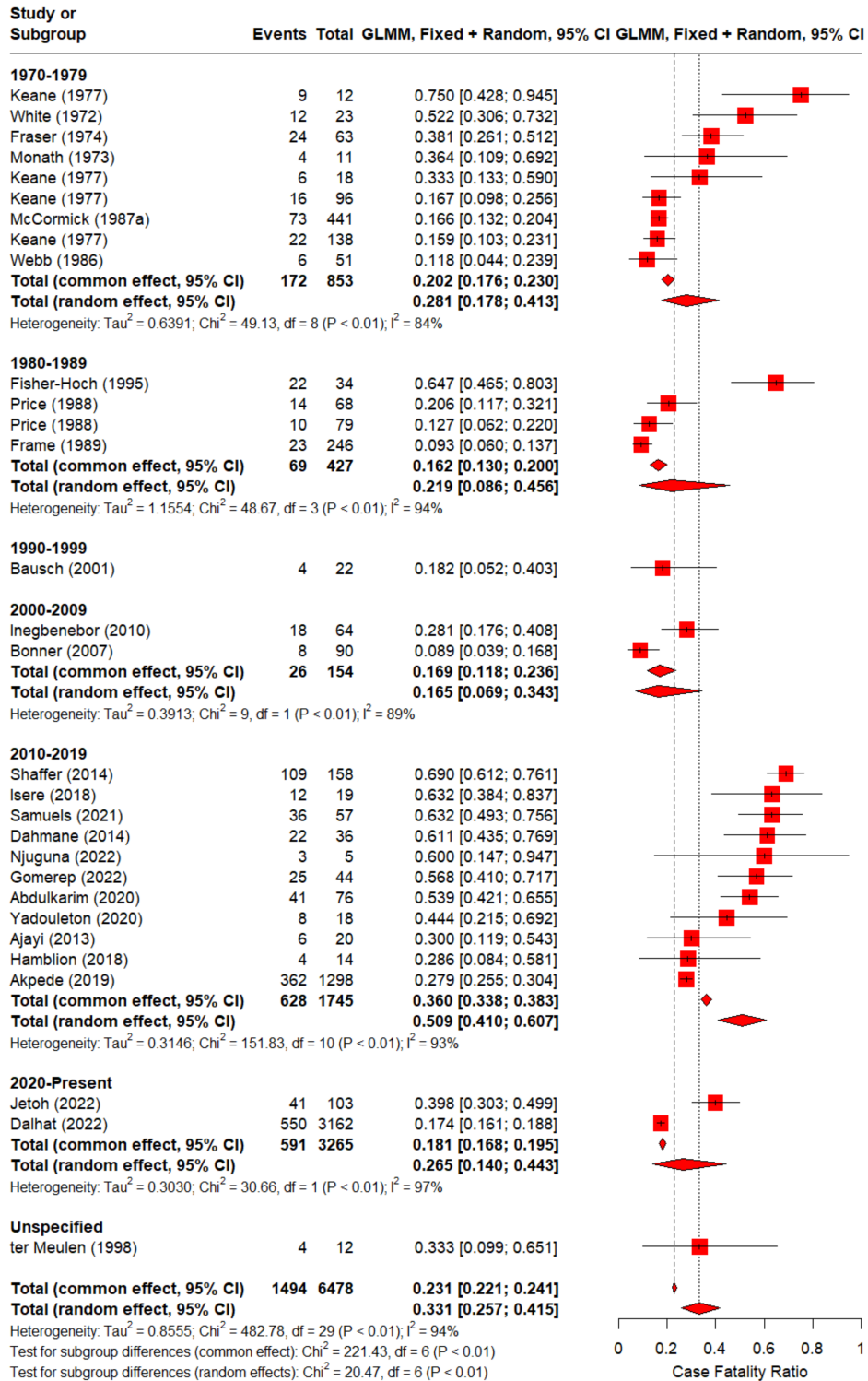


Figure C.7: Case fatality ratio (CFR) meta-analysis by decade, with individual study estimates. Red squares indicate individual study estimates, with black lines representing a 95% binomial confidence interval; common and random effects are shown with red diamonds for subgroups and overall pooled estimate.

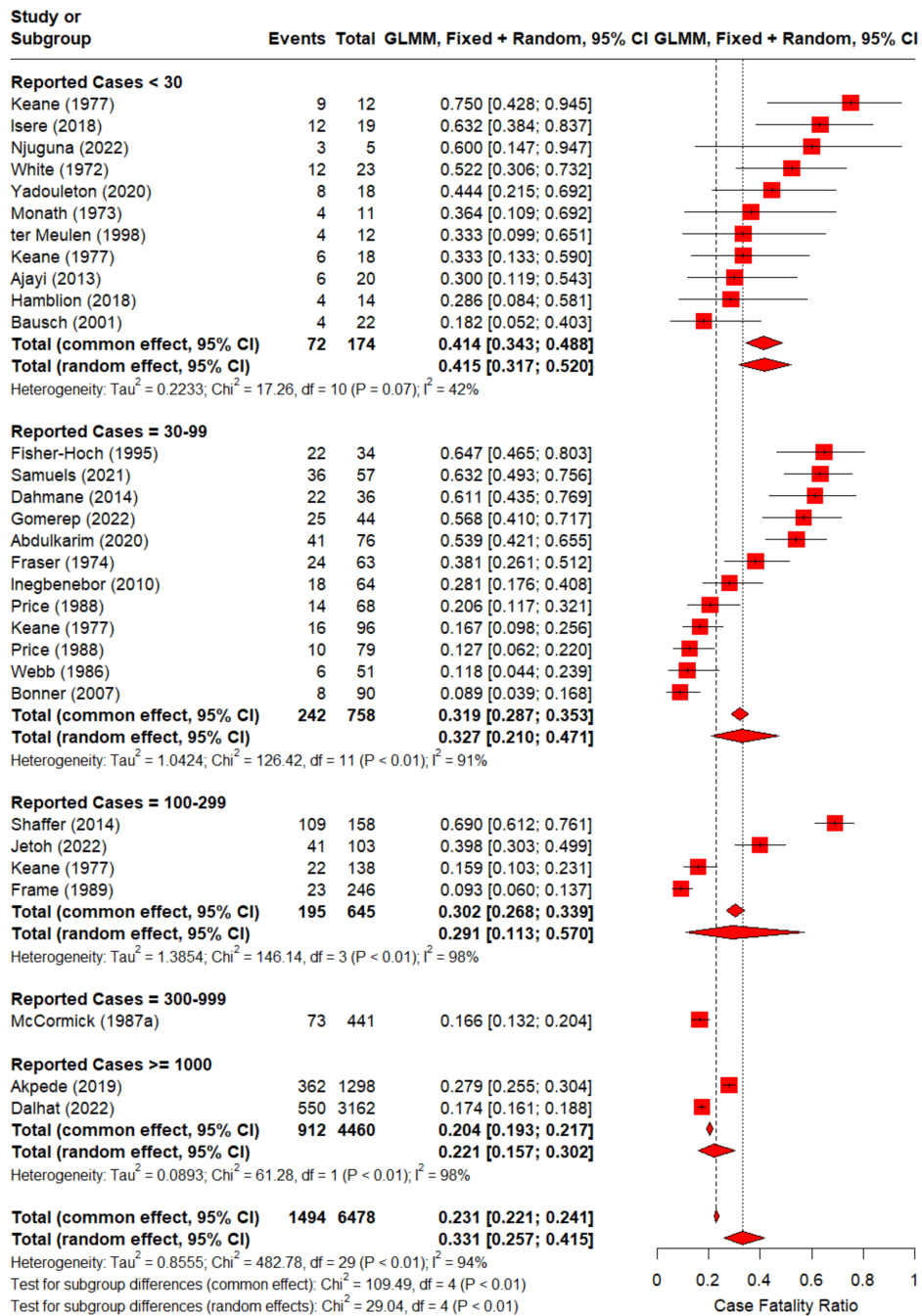


Figure C.8: Case fatality ratio (CFR) meta-analysis by number of reported cases (as shown in main text figure 3D), with individual study estimates. Plot includes additional ranges for which only one CFR estimate was available, for which meta-analysis was not performed. Red squares indicate individual study estimates, with black lines representing a 95% binomial confidence interval; common and random effects are shown with red diamonds for subgroups and overall pooled estimate.

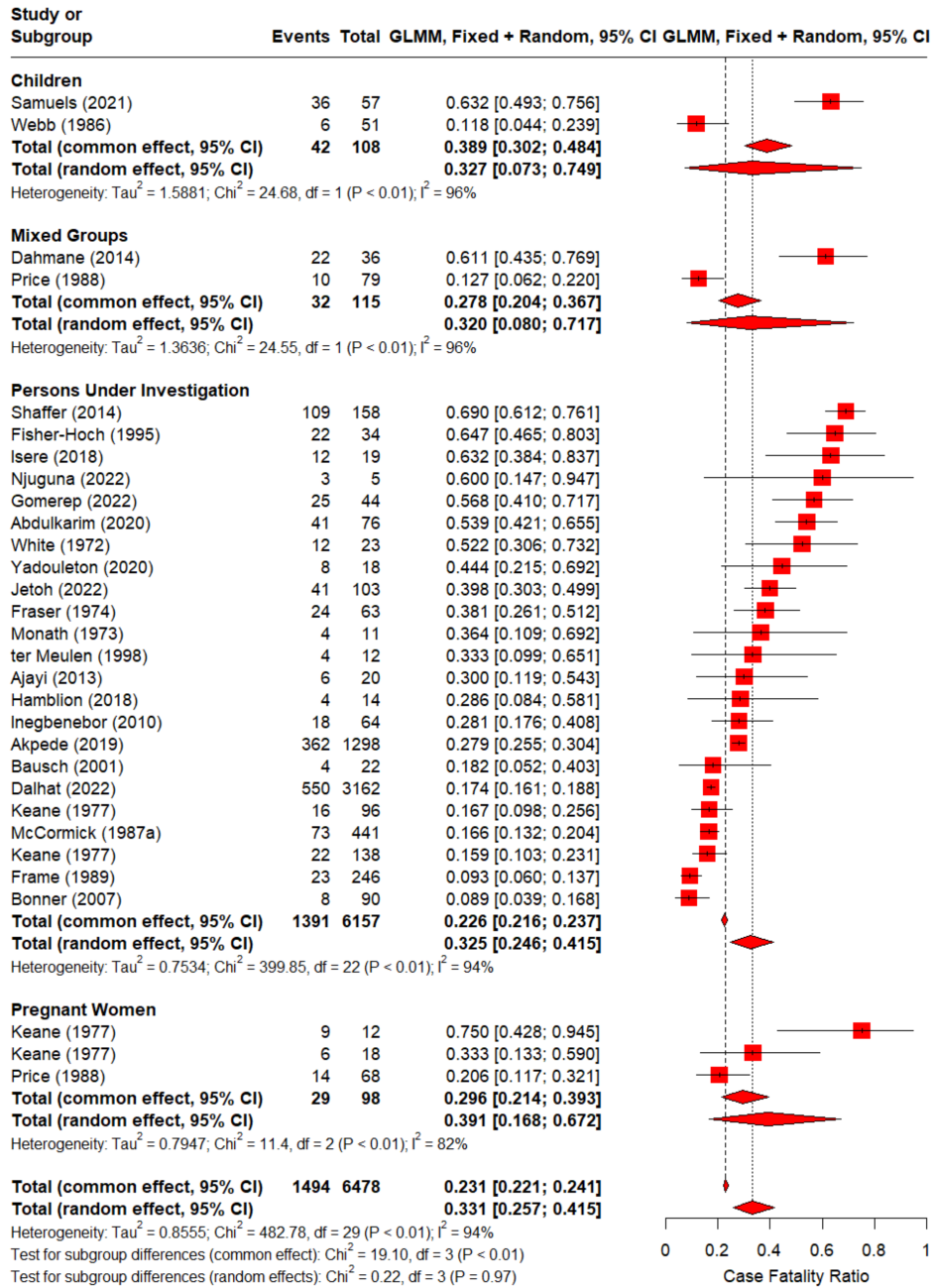
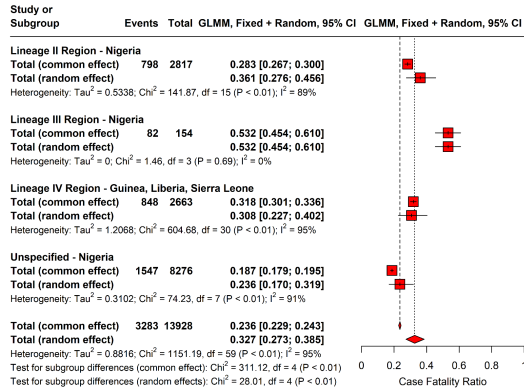
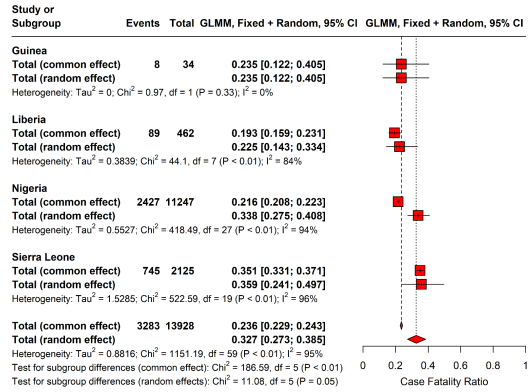


Figure C.9: Case fatality ratio (CFR) meta-analysis by population group (as shown in main text figure 3E), with individual study estimates. Red squares indicate individual study estimates, with black lines representing a 95% binomial confidence interval; common and random effects are shown with red diamonds for subgroups and overall pooled estimate.

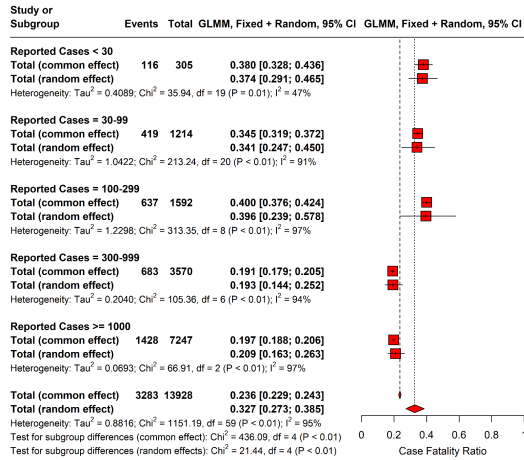
A



B



C



D

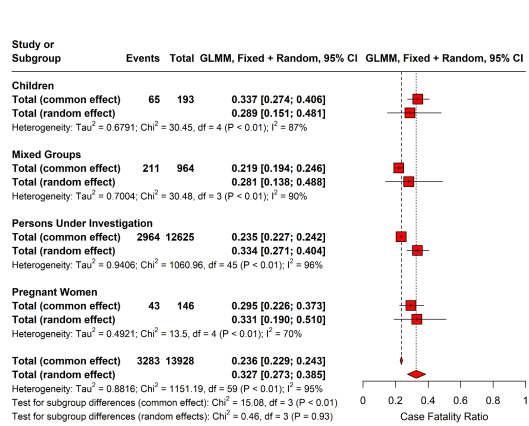
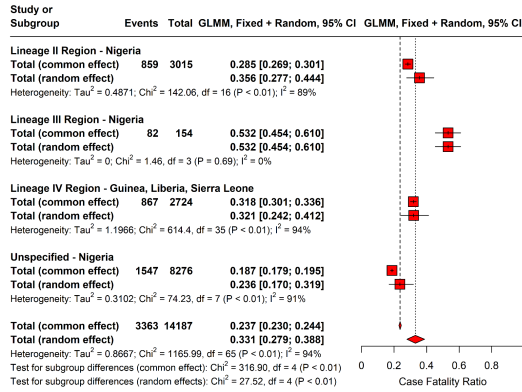
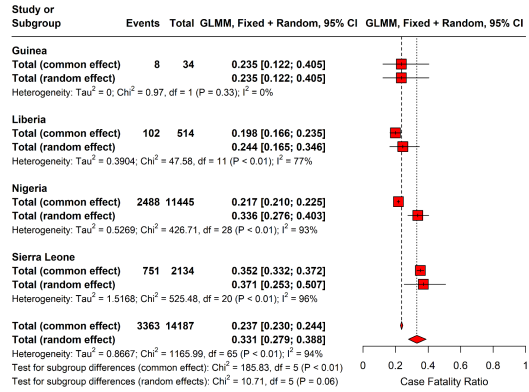


Figure C.10: Case fatality ratio (CFR) meta-analyses with only 'known duplicate' data removed, by (A) lineage region, (B) country, (C) number of reported cases, and (D) population group under study. CFR estimates are considered known duplicates if they refer to the same underlying data (e.g. naive and adjusted CFRs, a subset of reported cases). Here, 'assumed duplicate' data are included, for example CFRs with overlapping locations or time periods, in contrast with the stricter de-duplication carried out in the main text (described in appendix A.3). Red squares indicate common and random effects for each subgroup, and red diamonds overall common and random effects.

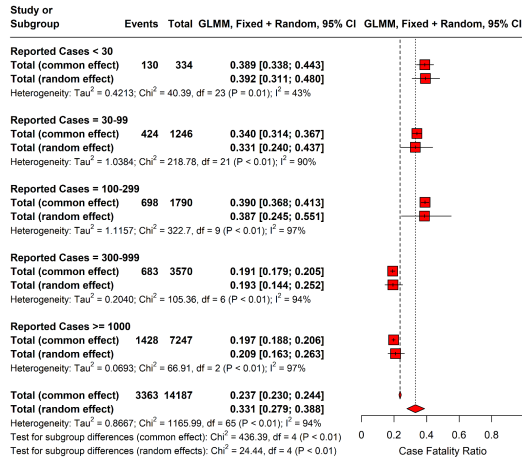
A



B



C



D

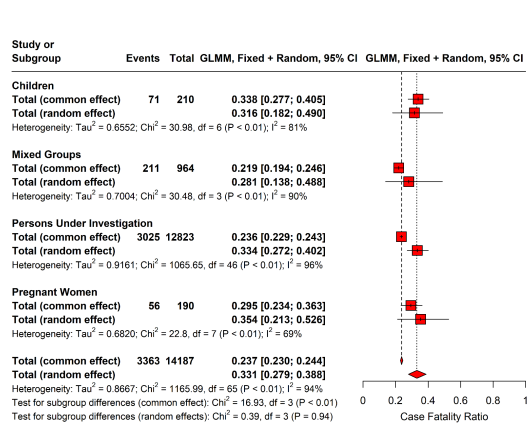


Figure C.11: Case fatality ratio (CFR) meta-analyses of all extracted data, by (A) lineage region, (B) country, (C) number of reported cases, and (D) population group under study. Here, no de-duplication is carried out and both 'known duplicates' (with the same underlying data, e.g. naive and adjusted CFRs, a subset of reported cases) and 'assumed duplicates' (with overlapping locations or time periods) are included, in contrast with the stricter de-duplication carried out in the main text (described in appendix A.3). Red squares indicate common and random effects for each subgroup, and red diamonds overall common and random effects.

D *epireview*

We developed an R package called *epireview* that provides a central location to host and access the extracted data for the nine priority pathogens, allows for submissions of outbreak, model, and parameter data from new peer-reviewed papers via pull requests, and includes functions to produce the tables and figures included in this paper and update them with any additional data. This package will be updated as the overall project by the Pathogen Epidemiology Review Group (PERG) continues to extract modelling parameters for the rest of the nine priority pathogens as defined by WHO.

There are several vignettes available:

- A vignette that lists the options for each outbreak, model, or parameter field and describes how to access them using a function in the package.
- A vignette to explain the process of updating the database with new article, outbreak, model, or parameter data.

E PRISMA 2020 Checklists

Section & Topic	Item #	Checklist item	Reported (Yes/No)
Title			
Title	1	Identify the report as a systematic review.	Yes
Background			
Objectives	2	Provide an explicit statement of the main objective(s) or question(s) the review addresses.	Yes
Methods			
Eligibility criteria	3	Specify the inclusion and exclusion criteria for the review.	Yes
Information sources	4	Specify the information sources (e.g. databases, registers) used to identify studies and the date when each was last searched.	Yes
Risk of bias	5	Specify the methods used to assess risk of bias in the included studies.	Yes
Synthesis of results	6	Specify the methods used to present and synthesise results.	Yes
Results			
Included studies	7	Give the total number of included studies and participants and summarise relevant characteristics of studies.	Yes
Synthesis of results	8	Present results for main outcomes, preferably indicating the number of included studies and participants for each. If meta-analysis was done, report the summary estimate and confidence/credible interval. If comparing groups, indicate the direction of the effect (i.e. which group is favoured).	Yes
Discussion			
Limitations of evidence	9	Provide a brief summary of the limitations of the evidence included in the review (e.g. study risk of bias, inconsistency and imprecision).	Yes
Interpretation	10	Provide a general interpretation of the results and important implications.	Yes
Other			
Funding	11	Specify the primary source of funding for the review.	Yes
Registration	12	Provide the register name and registration number.	Yes

Table E.13: PRISMA 2020 Abstracts Checklist. ([5])

Section & Topic	Item #	Checklist item	Location where item is reported
Title			
Title	1	Identify the report as a systematic review.	page 1
Abstract			
Abstract	2	See the PRISMA 2020 for Abstracts checklist.	Table E.13
Introduction			
Rationale	3	Describe the rationale for the review in the context of existing knowledge.	page 2
Objectives	4	Provide an explicit statement of the objective(s) or question(s) the review addresses.	page 2/3
Methods			
Eligibility criteria	5	Specify the inclusion and exclusion criteria for the review and how studies were grouped for the syntheses.	page 3
Information sources	6	Specify all databases, registers, websites, organisations, reference lists and other sources searched or consulted to identify studies. Specify the date when each source was last searched or consulted.	page 3
Search strategy	7	Present the full search strategies for all databases, registers and websites, including any filters and limits used.	page 3 + Figure 1

Table E.14: PRISMA 2020 Checklist. ([5])

Section & Topic	Item #	Checklist item	Location where item is reported
Selection process	8	Specify the methods used to decide whether a study met the inclusion criteria of the review, including how many reviewers screened each record and each report retrieved, whether they worked independently, and if applicable, details of automation tools used in the process.	page 3
Data collection process	9	Specify the methods used to collect data from reports, including how many reviewers collected data from each report, whether they worked independently, any processes for obtaining or confirming data from study investigators, and if applicable, details of automation tools used in the process.	page 3/4
Data items	10a	List and define all outcomes for which data were sought. Specify whether all results that were compatible with each outcome domain in each study were sought (e.g. for all measures, time points, analyses), and if not, the methods used to decide which results to collect.	page 3/4
	10b	List and define all other variables for which data were sought (e.g. participant and intervention characteristics, funding sources). Describe any assumptions made about any missing or unclear information.	page 3/4
Study risk of bias assessment	11	Specify the methods used to assess risk of bias in the included studies, including details of the tool(s) used, how many reviewers assessed each study and whether they worked independently, and if applicable, details of automation tools used in the process.	page 4
Effect measures	12	Specify for each outcome the effect measure(s) (e.g. risk ratio, mean difference) used in the synthesis or presentation of results.	page 3/4
Synthesis methods	13a	Describe the processes used to decide which studies were eligible for each synthesis (e.g. tabulating the study intervention characteristics and comparing against the planned groups for each synthesis (item #5)).	page 4
	13b	Describe any methods required to prepare the data for presentation or synthesis, such as handling of missing summary statistics, or data conversions.	page 4
	13c	Describe any methods used to tabulate or visually display results of individual studies and syntheses.	page 4
	13d	Describe any methods used to synthesize results and provide a rationale for the choice(s). If meta-analysis was performed, describe the model(s), method(s) to identify the presence and extent of statistical heterogeneity, and software package(s) used.	page 4
	13e	Describe any methods used to explore possible causes of heterogeneity among study results (e.g. subgroup analysis, meta-regression).	-
	13f	Describe any sensitivity analyses conducted to assess robustness of the synthesized results.	-
Reporting bias assessment	14	Describe any methods used to assess risk of bias due to missing results in a synthesis (arising from reporting biases).	page 4
Certainty assessment	15	Describe any methods used to assess certainty (or confidence) in the body of evidence for an outcome.	page 4
Results			
Study selection	16a	Describe the results of the search and selection process, from the number of records identified in the search to the number of studies included in the review, ideally using a flow diagram.	page 4
	16b	Cite studies that might appear to meet the inclusion criteria, but which were excluded, and explain why they were excluded.	Table G.16
Study characteristics	17	Cite each included study and present its characteristics.	pages 4-13
Risk of bias in studies	18	Present assessments of risk of bias for each included study.	page 7
Results of individual studies	19	For all outcomes, present, for each study: (a) summary statistics for each group (where appropriate) and (b) an effect estimate and its precision (e.g. confidence/credible interval), ideally using structured tables or plots.	pages 4-13
Results of syntheses	20a	For each synthesis, briefly summarise the characteristics and risk of bias among contributing studies.	page 6/7
	20b	Present results of all statistical syntheses conducted. If meta-analysis was done, present for each the summary estimate and its precision (e.g. confidence/credible interval) and measures of statistical heterogeneity. If comparing groups, describe the direction of the effect.	page 4-13
	20c	Present results of all investigations of possible causes of heterogeneity among study results.	page 4-13
	20d	Present results of all sensitivity analyses conducted to assess the robustness of the synthesized results.	page 4-13
Reporting biases	21	Present assessments of risk of bias due to missing results (arising from reporting biases) for each synthesis assessed.	page 7

Table E.14: PRISMA 2020 Checklist. ([5])

Section & Topic	Item #	Checklist item	Location where item is reported
Certainty of evidence	22	Present assessments of certainty (or confidence) in the body of evidence for each outcome assessed.	pages 4-13
Discussion			
Discussion	23a	Provide a general interpretation of the results in the context of other evidence.	page 14/15
	23b	Discuss any limitations of the evidence included in the review.	page 14-15
	23c	Discuss any limitations of the review processes used.	page 14-15
	23d	Discuss implications of the results for practice, policy, and future research.	page 14-15
Other Information			
Registration and protocol	24a	Provide registration information for the review, including register name and registration number, or state that the review was not registered.	page 14
	24b	Indicate where the review protocol can be accessed, or state that a protocol was not prepared.	page 16
	24c	Describe and explain any amendments to information provided at registration or in the protocol.	n/a
Support	25	Describe sources of financial or non-financial support for the review, and the role of the funders or sponsors in the review.	page 15/16
Competing interests	26	Declare any competing interests of review authors.	page 16
Availability of data, code and other materials	27	Report which of the following are publicly available and where they can be found: template data collection forms; data extracted from included studies; data used for all analyses; analytic code; any other materials used in the review.	page 16

Table E.14: PRISMA 2020 Checklist. ([5])

F Other Systematic Reviews

Systematic reviews were excluded from our analysis, but the systematic reviews that were identified in the database search and used for validation purposes are presented in Table F.15.

Study	Title	Journal	DOI
Monath 1975	Lassa Fever - Review of Epidemiology and Epi-zoology	Bulletin of the World Health Organization	
Wang 2021	The reproductive number of Lassa fever: a systematic review.	Journal of travel medicine	10.1093/jtm/taab029
Kenmoe 2020	Systematic review and meta-analysis of the epidemiology of Lassa virus in humans, rodents and other mammals in sub-Saharan Africa.	PLoS neglected tropical diseases	10.1371/journal.pntd.0008589
Merson 2021	Clinical characterization of Lassa fever: A systematic review of clinical reports and research to inform clinical trial design.	PLoS neglected tropical diseases	10.1371/journal.pntd.0009788
Eberhardt 2019	Ribavirin for the treatment of Lassa fever: A systematic review and meta-analysis.	International journal of infectious diseases : IJID : official publication of the International Society for Infectious Diseases	10.1016/j.ijid.2019.07.015
Agbonlahor 2021	52 Years of Lassa Fever Outbreaks in Nigeria, 1969-2020: An Epidemiologic Analysis of the Temporal and Spatial Trends.	The American journal of tropical medicine and hygiene	10.4269/ajtmh.20-1160
Kayem 2020	Lassa fever in pregnancy: a systematic review and meta-analysis.	Transactions of the Royal Society of Tropical Medicine and Hygiene	10.1093/trstmh/traa011
Wolf 2020	Fifty years of imported Lassa fever: a systematic review of primary and secondary cases.	Journal of travel medicine	10.1093/jtm/taaa035
Simons 2022	Lassa fever cases suffer from severe underreporting based on reported fatalities.	International health	10.1093/inthealth/ihac076
Alli 2021	Management of Lassa Fever: A Current Update	CUREUS JOURNAL OF MEDICAL SCIENCE	10.7759/cureus.14797
Belhadi 2022	The number of cases, mortality and treatments of viral hemorrhagic fevers: A systematic review	PLOS NEGLECTED TROPICAL DISEASES	10.1371/journal.pntd.0010889
Garry 2022	Lassa fever — the road ahead	Nature Reviews Microbiology	10.1038/s41579-022-00789-8
Balogun 2021	Lassa Fever: An Evolving Emergency in West Africa	The American journal of tropical medicine and hygiene	10.4269/ajtmh.20-0487

Table F.15: Other systematic reviews

G Excluded Studies

We list all excluded studies with reasons for exclusion in Table G.16

Study	Title	Journal	Notes
Weber 2016	Emerging infectious diseases: Focus on infection control issues for novel coronaviruses (Severe Acute Respiratory Syndrome-CoV and Middle East Respiratory Syndrome-CoV), hemorrhagic fever viruses (Lassa and Ebola), and highly pathogenic avian influenza viruses, A(H5N1) and A(H7N9)	American Journal of Infection Control	Exclusion reason: 6 not original estimates/ primary data;
Weber 2001	Risks and prevention of nosocomial transmission of rare zoonotic diseases	Clinical Infectious Diseases	Exclusion reason: 6 not original estimates/ primary data;
Webber 2009	Diseases transmitted via body fluids		Exclusion reason: 7 not peer reviewed; Natsuko Imai (2019-10-26 03:30:40)(Select): book, exclude;
Tomori 1999	Options for the control of rodent-borne viral diseases in West Africa		Exclusion reason: 7 not peer reviewed; Natsuko Imai (2019-10-26 03:30:22)(Select): conference proceedings exclude;
Tomori 1988	Lassa Fever and Other Viral Hemorrhagic Disorders	Impact of Science on Society	Exclusion reason: 6 not original estimates/ primary data; Natsuko Imai (2019-10-24 00:58:09)(Select): paper copy;
Tobin 2014	Risk factors for Lassa fever in endemic communities of Edo State, Nigeria	International Journal of Infectious Diseases	Exclusion reason: 7 not peer reviewed; David Jorgensen (2019-06-22 00:21:31)(Select): poster;
Meulen 2001	Lassa fever in Sierra Leone: UN peacekeepers are at risk	Tropical Medicine & International Health	Exclusion reason: 4 case report/study; Natsuko Imai (2019-03-28 03:31:48)(Screen)
Meulen 2000	Lassa fever: immunological approach to the study of an endemic viral haemorrhagic fever	Medecine tropicale : revue du Corps de sante colonial	Exclusion reason: 6 not original estimates/ primary data; Natsuko Imai (2019-10-24 00:56:45)(Select): paper copy;
Tambo 2018	Re-emerging Lassa fever outbreaks in Nigeria: Re-enforcing "One Health" community surveillance and emergency response practice	Infectious Diseases of Poverty	Exclusion reason: 6 not original estimates/ primary data;
Swaan 2002	Management of viral haemorrhagic fever in the Netherlands	Euro surveillance : bulletin Europeen sur les maladies transmissibles = European communicable disease bulletin	Exclusion reason: 5 no report of parameters ;
Sureau 1989	Recent findings on the African viral haemorrhagic fevers		Exclusion reason: 2 not English; Natsuko Imai (2019-10-28 20:17:11)(Select): exclude is in French; Natsuko Imai (2019-10-26 03:30:03)(Select): waiting on FT, from marburg group;
Stephenson 1984	Effect of Environmental-Factors on Aerosol-Induced Lassa Virus-Infection	Journal of Medical Virology	Exclusion reason: 5 no report of parameters ;

Table G.16: Excluded studies at full text review with exclusion reason

Study	Title	Journal	Notes
Speed 1996	Viral haemorrhagic fevers: Current status, future threats	Medical Journal of Australia	Exclusion reason: 6 not original estimates/ primary data;
Sogoba 2012	Lassa Fever in West Africa: Evidence for an Expanded Region of Endemicity	Zoonoses and Public Health	Exclusion reason: 1 duplicate;
Smith 1979	Epidemiological Aspect of the 1976 Pankshin Lassa Fever Outbreak	Nigerian Medical Journal	Exclusion reason: 6 not original estimates/ primary data; David Jorgensen (2019-03-29 04:18:37)(Screen): https://www.journalofinfection.com/article/S0163-4453(79)90977-0/abstract ;
Simpson 1980	Nasty Viruses - Lassa, Marburg, and Ebola	British Journal of Hospital Medicine	Exclusion reason: 6 not original estimates/ primary data;
Simpson 1978	Viral Hemorrhagic Fevers of Man	Bulletin of the World Health Organization	Exclusion reason: 6 not original estimates/ primary data; Natsuko Imai (2019-03-29 04:25:00)(Screen): This article reviews the current state of knowledge on the viral haemorrhagic fevers that infect man, namely smallpox, chikungunya fever, dengue fever, Rift Valley fever, yellow fever, Crimean haemorrhagic fever, Kyasanur Forest disease, Omsk haemorrhagic fever, Argentinian haemorrhagic fever (Junin virus), Bolivian haemorrhagic fever (Machupo virus), Lassa fever, haemorrhagic fever with renal syndrome, and Marburg and Ebola virus diseases.;
Shlaeffer 1988	Lassa Fever First Case Diagnosed in Israel	Harefuah	Exclusion reason: 2 not English; David Jorgensen (2019-06-22 00:06:09)(Select): Hebrew ;
Shelokov 1971	New Viruses Associated with the Hemorrhagic Fever Syndrome	Annals of the New York Academy of Sciences	Exclusion reason: 3 wrong pathogen / epi not main focus;
Seriki 2018	Descriptive analysis of Lassa fever outbreak data in Edo State, Nigeria, 2016	International Journal of Infectious Diseases	Exclusion reason: 7 not peer reviewed; David Jorgensen (2019-06-22 00:01:19)(Select): poster abstract ;
Seah 1978	Lassa, Marburg and Ebola - Newly Described African Fevers	Canadian Medical Association Journal	Exclusion reason: 6 not original estimates/ primary data;
Schoepp 2014	Undiagnosed Acute Viral Febrile Illnesses, Sierra Leone	Emerging Infectious Diseases	Exclusion reason: 5 no report of parameters ; David Jorgensen (2019-10-24 01:38:17)(Select): not a representative sample, only taken from those with LASV symptoms;
Schmitz 2002	Monitoring of clinical and laboratory data in two cases of imported Lassa fever	Microbes and Infection	Exclusion reason: 4 case report/study;
Schlaeffer 1988	Evidence against High Contagiousness of Lassa Fever	Transactions of the Royal Society of Tropical Medicine and Hygiene	Exclusion reason: 4 case report/study; Natsuko Imai (2019-03-28 04:06:33)(Screen): conference abstract;
Safronetz 2017	Annual Incidence of Lassa Virus Infection in Southern Mali	American Journal of Tropical Medicine and Hygiene	Exclusion reason: 5 no report of parameters ;
Safronetz 2010	Detection of Lassa Virus, Mali	Emerging Infectious Diseases	Exclusion reason: 5 no report of parameters ;
Robbins 1977	Algorithms in Diagnosis and Management of Exotic Diseases .19. Major Tropical Viral-Infections - Smallpox, Yellow-Fever, and Lassa Fever	Journal of Infectious Diseases	Exclusion reason: 6 not original estimates/ primary data; Natsuko Imai (2019-03-28 03:10:15)(Screen):

Table G.16: Excluded studies at full text review with exclusion reason

Study	Title	Journal	Notes
Richmond 2004	Lassa fever: epidemiology, clinical features, and social consequences (vol 327, pg 1271, 2003)	British Medical Journal	Exclusion reason: 1 duplicate; Natsuko Imai (2019-03-28 04:00:25)(Screen): potentially duplicate?;
Richmond 2004	Lassa fever: epidemiology, clinical features, and social consequences (vol 327, pg 1271, 2003)	British Medical Journal	Exclusion reason: 6 not original estimates/ primary data; Natsuko Imai (2019-10-03 00:23:45)(Select): including review as it summarises seroprevalence from other papers for easy ref;
Raeburn 1976	Lassa fever Lassa fever 1982	Nursing times British medical journal (Clinical research ed.)	Exclusion reason: 7 not peer reviewed; Exclusion reason: 4 case report/study; Natsuko Imai (2019-03-29 01:41:28)(Screen): https://www.bmj.com/content/287/6384/48 ;
Pontremoli 2018	Arenavirus genomics: novel insights into viral diversity, origin, and evolution	Current Opinion in Virology	Exclusion reason: 5 no report of parameters ;
Pigott 2017	Local, national, and regional viral haemorrhagic fever pandemic potential in Africa: a multistage analysis	Lancet	Exclusion reason: 6 not original estimates/ primary data;
Pigott 2005	Hemorrhagic fever viruses	Critical Care Clinics	Exclusion reason: 6 not original estimates/ primary data; Natsuko Imai (2019-10-23 23:32:49)(Select): review ; Natsuko Imai (2019-10-23 23:32:28)(Select): paper copy;
Peterson 2014	Mapping Transmission Risk of Lassa Fever in West Africa: The Importance of Quality Control, Sampling Bias, and Error Weighting	Plos One	Exclusion reason: 5 no report of parameters ;
Peters 1995	Arena virus diseases		Exclusion reason: 7 not peer reviewed; Natsuko Imai (2019-10-26 03:08:11)(Select): exclude book;
Patassi 2017	Emergence of Lassa Fever Disease in Northern Togo: Report of Two Cases in Oti District in 2016	Case Reports in Infectious Diseases	Exclusion reason: 4 case report/study;
Panning 2010	Laboratory Diagnosis of Lassa Fever, Liberia	Emerging Infectious Diseases	Exclusion reason: 5 no report of parameters ;
Zwizwai 2016	Infection disease surveillance update	Lancet Infectious Diseases	Exclusion reason: 7 not peer reviewed; David Jorgensen (2019-03-29 04:30:31)(Screen): Monthly bulletin ;
Yun 2012	Pathogenesis of Lassa Fever	Viruses-Basel	Exclusion reason: 6 not original estimates/ primary data;
Yalleygunro 1984	Endemic Lassa Fever in Liberia .6. Village Serological Surveys for Evidence of Lassa Virus Activity in Lofa County, Liberia	Transactions of the Royal Society of Tropical Medicine and Hygiene	Exclusion reason: 1 duplicate;
Wulff 1975	Recent Isolations of Lassa Virus from Nigerian Rodents	Bulletin of the World Health Organization	Exclusion reason: 5 no report of parameters ;
Wright 1978	Rare virus infections from the tropics	Nursing times	Exclusion reason: 6 not original estimates/ primary data; Natsuko Imai (2019-10-24 01:13:05)(Select): paper copy;
Winn 1975	Lassa Virus Hepatitis - Observations on a Fatal Case from 1972 Sierra Leone Epidemic	Archives of Pathology	Exclusion reason: 4 case report/study; Natsuko Imai (2019-10-24 01:06:13)(Select): paper copy;

Table G.16: Excluded studies at full text review with exclusion reason

Study	Title	Journal	Notes
Whitmer 2018	New Lineage of Lassa Virus, Togo, 2016	Emerging Infectious Diseases	Exclusion reason: 5 no report of parameters ; Natsuko Imai (2019-03-29 01:15:37)(Screen): from abstract, unsure whether it will report mutation rates. Including to be on the safe side.;
Paix 1988	A Sero-Epidemiological Study of Hemorrhagic-Fever Viruses in a Urban-Population of Cameroon	Bulletin De La Societe De Pathologie Exotique	Exclusion reason: 2 not English; David Jorgensen (2019-06-21 23:35:35)(Select): French;
Omilabu 2005	Lassa fever, Nigeria, 2003 and 2004	Emerging Infectious Diseases	Exclusion reason: 5 no report of parameters ;
Olugasa 2015	Development of a time-trend model for analyzing and predicting case-pattern of Lassa fever epidemics in Liberia, 2013-2017	Annals of African Medicine	Exclusion reason: 5 no report of parameters ;
Olugasa 2015	Mapping of Lassa fever cases in post-conflict Liberia, 2008-2012: A descriptive and categorical analysis of age, gender and seasonal pattern	Annals of African Medicine	Exclusion reason: 5 no report of parameters ;
Okokhere 2018	Clinical and laboratory predictors of Lassa fever outcome in a dedicated treatment facility in Nigeria: a retrospective, observational cohort study	The Lancet. Infectious diseases	Exclusion reason: 1 duplicate;
O'Hearn 2016	Serosurveillance of viral pathogens circulating in West Africa	Virology Journal	Exclusion reason: 5 no report of parameters ;
Ogunniyi 2014	Lassa fever outbreak investigation in a Nigerian bakery - August, 2012	International Journal of Infectious Diseases	Exclusion reason: 7 not peer reviewed; David Jorgensen (2019-06-21 23:27:51)(Select): Poster ;
Ogbu 2007	Lassa fever in West African sub-region: an overview	Journal of Vector Borne Diseases	Exclusion reason: 6 not original estimates/ primary data;
Niedrig 2001	Management and control of viral haemorrhagic fevers in Europe	Infection	Exclusion reason: 7 not peer reviewed; Natsuko Imai (2019-03-29 04:22:44)(Screen): http://www.enivd.de/NETZ.PDF ;
Nakounne 2001	Microbiological surveillance: viral haemorrhagic fevers in the Central African Republic; updated serological data for human beings	Bulletin De La Societe De Pathologie Exotique	Exclusion reason: 2 not English; David Jorgensen (2019-06-21 23:18:01)(Select): French ;
Mylne 2015	Mapping the zoonotic niche of Lassa fever in Africa	Transactions of the Royal Society of Tropical Medicine and Hygiene	Exclusion reason: 5 no report of parameters ; Natsuko Imai (2019-10-02 21:10:53)(Select): not entirely sure what to do with spatial modelling papers? including for now.;
Markin 2002	Viral haemorrhagic fevers: Evolution of the epidemic potential	Zhurnal Mikrobiologii i Immunologii	Exclusion reason: 2 not English; David Jorgensen (2019-06-21 21:52:27)(Select): Russian ;

Table G.16: Excluded studies at full text review with exclusion reason

Study	Title	Journal	Notes
Manning 2015	Lassa virus isolates from Mali and the Ivory Coast represent an emerging fifth lineage	Frontiers in Microbiology	Exclusion reason: 5 no report of parameters ;
Makinde 2016	As Ebola winds down, Lassa Fever reemerges yet again in West Africa	Journal of Infection in Developing Countries	Exclusion reason: 7 not peer reviewed; Natsuko Imai (2019-03-28 01:49:00)(Screen): commentary: https://jidc.org/index.php/journal/article/view/26927465/1465 ;
Mahdy 1989	Lassa fever: the first confirmed case imported into Canada	Canada diseases weekly report = Rapport hebdomadaire des maladies au Canada	Exclusion reason: 4 case report/study; Natsuko Imai (2019-10-24 01:21:38)(Select): paper copy; David Jorgensen (2019-06-21 21:50:42)(Select): weekly report;
Lukashevich 1993	Serologic Evidence of Lassa Virus Circulation in Guinea	Voprosy virusologii	Exclusion reason: 2 not English; David Jorgensen (2019-03-29 02:54:42)(Screen): Russian;
Li 2016	The etiology of Ebola virus disease-like illnesses in Ebola virus-negative patients from Sierra Leone	Oncotarget	Exclusion reason: 5 no report of parameters ;
Leduc 1989	Epidemiology of Hemorrhagic-Fever Viruses	Reviews of Infectious Diseases	Exclusion reason: 3 wrong pathogen / epi not main focus;
Lecompte 2006	Mastomys natalensis and Lassa fever, West Africa	Emerging Infectious Diseases	Exclusion reason: 5 no report of parameters ; Natsuko Imai (2019-10-02 20:52:30)(Select): reports human seroprevalence;
Lalis 2012	The Impact of Human Conflict on the Genetics of Mastomys natalensis and Lassa Virus in West Africa	Plos One	Exclusion reason: 5 no report of parameters ; Natsuko Imai (2019-10-02 20:51:57)(Select): Reports evolutionary rate (of LASV I think, not the rodent host);
Lacy 1996	Viral hemorrhagic fevers	Advances in pediatric infectious diseases	Exclusion reason: 6 not original estimates/ primary data;
Kyei 2015	Imported Lassa fever: a report of 2 cases in Ghana	Bmc Infectious Diseases	Exclusion reason: 4 case report/study;
Saluzzo 1982	Sero-Epidemiology of Arbovirus in the Southern Part of the Republic-of-Central-Africa	Annales De Microbiologie	Exclusion reason: 2 not English; Natsuko Imai (2019-10-26 03:18:08)(Select): abstract; David Jorgensen (2019-03-30 02:35:08)(Screen): arbovirus;
Saluzzo 1999	Outbreak of human diseases associated with hantaviruses and arenaviruses hosted by rodents	M S-Medecine Sciences	Exclusion reason: 2 not English; Christian Morgenstern (2023-09-06 00:26:28)(Select): French only, hence exclude; Christian Morgenstern (2023-09-02 18:25:19)(Select): requested from library again; Natsuko Imai (2019-10-26 03:12:58)(Select): waiting on full text;
Saluzzo 1988	Lassa Fever Virus in Senegal	Journal of Infectious Diseases	Exclusion reason: 5 no report of parameters ; Natsuko Imai (2019-03-28 03:15:31)(Screen): correspondence I think but include for now;
Kofman 2019	Lassa Fever in Travelers from West Africa, 1969-2016	Emerging Infectious Diseases	Exclusion reason: 6 not original estimates/ primary data;
Knobloch 1999	Importing dangerous pathogens	Internist	Exclusion reason: 2 not English;
Kitching 2009	A fatal case of Lassa fever in London, January 2009	Euro surveillance : bulletin European sur les maladies transmissibles = European communicable disease bulletin	Exclusion reason: 4 case report/study;
Kiley 1986	Serological and Biological Evidence That Lassa-Complex Arenaviruses Are Widely Distributed in Africa	Medical Microbiology and Immunology	Exclusion reason: 5 no report of parameters ;

Table G.16: Excluded studies at full text review with exclusion reason

Study	Title	Journal	Notes
Khan 2008	New opportunities for field research on the pathogenesis and treatment of Lassa fever	Antiviral Research	Exclusion reason: 6 not original estimates/ primary data;
Kemp 1975	Viruses Other Than Arenaviruses from West-African Wild Mammals - Factors Affecting Transmission to Man and Domestic-Animals	Bulletin of the World Health Organization	Exclusion reason: 3 wrong pathogen / epi not main focus; David Jorgensen (2019-03-30 01:20:00)(Screen): Other than AVs?; Natsuko Imai (2019-03-28 01:36:38)(Screen): At least thirty-seven different viruses have been isolated from wild mammals in West Africa since 1962. Some of these, including Lassa virus, are already known to cause serious human morbidity and mortality. Crimean haemorrhagic fever-Congo virus, Dugbe virus, Mokola virus, and a smallpox-like agent from a gerbil in Dahomey are briefly discussed. An account of social and ecologic factors affecting man, domestic animals, and their interaction with wild mammals is given.;
Kaslow 2014	Viral infections of humans: epidemiology and control		Exclusion reason: 7 not peer reviewed; David Jorgensen (2019-06-21 21:32:14)(Select): Book chapter ;
Kallio-Kokko 2005	Viral zoonoses in Europe	Fems Microbiology Reviews	Exclusion reason: 3 wrong pathogen / epi not main focus;
Johnson 1990	Imported Lassa Fever - Reexamining the Algorithms	New England Journal of Medicine	Exclusion reason: 6 not original estimates/ primary data; Natsuko Imai (2019-03-27 22:54:07)(Screen): https://www.nejm.org/doi/full/10.1056/NEJM199010183231611 ;
Johnson 1993	Emerging viruses in context: An overview of viral hemorrhagic fevers		Exclusion reason: 7 not peer reviewed; Natsuko Imai (2019-10-26 02:52:53)(Select): exclude, book;
Johnson 1990	Lymphocytic Choriomeningitis Virus Lassa Virus Lassa Fever and Other Arenaviruses		Exclusion reason: 7 not peer reviewed; Natsuko Imai (2019-10-26 02:52:24)(Select): book exclude;
Johnson 1980	Contagious Viral Hemorrhagic Fevers - Epidemiology of the Diseases and Cultures Involved and Potentially Involved with Them	American Journal of Epidemiology	Exclusion reason: 7 not peer reviewed; David Jorgensen (2019-06-21 21:27:45)(Select): conference abstract ;
Johnson 1979	Andromedas Kittens - Hemorrhagic Fevers Caused by Lassa, Marburg and Ebola Viruses	Australian and New Zealand Journal of Medicine	Exclusion reason: 3 wrong pathogen / epi not main focus; Natsuko Imai (2019-10-24 01:10:53)(Select): paper copy;
Johnson 1975	Arenaviruses - Some Priorities for Future Research	Bulletin of the World Health Organization	Exclusion reason: 3 wrong pathogen / epi not main focus;
Jay 2005	The arenaviruses	Javma-Journal of the American Veterinary Medical Association	Exclusion reason: 6 not original estimates/ primary data; Natsuko Imai (2019-03-27 22:43:18)(Screen): https://avmajournals.avma.org/doi/pdf/10.2460/javma.2005.227.904 ;
Jahrling 1986	Serology and Virulence Diversity among Old-World Arenaviruses, and the Relevance to Vaccine Development	Medical Microbiology and Immunology	Exclusion reason: 5 no report of parameters ;
Jahrling 1985	Arenaviruses		Exclusion reason: 7 not peer reviewed; Natsuko Imai (2019-10-26 02:44:09)(Select): exclude as book;

Table G.16: Excluded studies at full text review with exclusion reason

Study	Title	Journal	Notes
Jahrling 1985	Early Diagnosis of Human Lassa Fever by Elisa Detection of Antigen and Antibody	Lancet	Exclusion reason: 4 case report/study; David Jorgensen (2019-10-24 20:28:43)(Select): Progression of Ab titre? ; Natsuko Imai (2019-10-23 23:31:43)(Select): paper copy; Natsuko Imai (2019-03-28 03:45:00)(Screen): Sequential serum samples, beginning on the day of hospital admission, from three patients with Lassa fever were tested for the presence of Lassa-virus antigens and antibodies by means of an enzyme-linked immunosorbent assay. Lassa-virus antigens were detected in the first serum sample from each patient, thus providing an early definitive diagnosis. In contrast, seroconversion was not detectable by ELISA or indirect fluorescent antibody techniques until 3 days or more after admission. The antigen-detection ELISA has important advantages over conventional infectivity titrations; it takes only hours to carry out and can be accomplished safely, with beta-propiolactone-inactivated samples. Development of antibodies coincided with a decline in antigenaemia. All acute-phase Lassa-fever sera contained either antigen or IgM antibody, and most contained both, thus allowing early diagnosis with single serum samples. More extensive testing of these ELISA techniques is recommended in field hospitals where Lassa fever is endemic and rapid diagnostic tools are needed.; Exclusion reason: 7 not peer reviewed;
Jahrling 1992	Arenaviruses and Filoviruses		
Jahrling 1991	Filoviruses and Arenaviruses		Exclusion reason: 7 not peer reviewed; Natsuko Imai (2019-10-26 02:43:26)(Select): exclude as it is a book;
Izzah 2016	Geospatial Analysis of Urban Land Use Pattern Analysis for Hemorrhagic Fever Risk - a Review		Exclusion reason: 5 no report of parameters ;
Hallam 2018	Baseline mapping of Lassa fever virology, epidemiology and vaccine research and development	NPJ vaccines	Exclusion reason: 6 not original estimates/ primary data;
Haas 2003	Imported Lassa fever in Germany: Surveillance and management of contact persons	Clinical Infectious Diseases	Exclusion reason: 4 case report/study;
Gunther 2004	Lassa virus	Critical Reviews in Clinical Laboratory Sciences	Exclusion reason: 6 not original estimates/ primary data;
Grundy 1980	Isolated Case of Lassa Fever in Zaria, Northern Nigeria	Lancet	Exclusion reason: 7 not peer reviewed; Natsuko Imai (2019-10-23 23:30:29)(Select): paper copy; David Jorgensen (2019-06-21 20:51:03)(Select): letters;
Gratz 1997	The burden of rodent-borne diseases in Africa south of the Sahara	Belgian Journal of Zoology	Exclusion reason: 6 not original estimates/ primary data;
Gonzalez 1983	African Viral Hemorrhagic Fevers Studies in the Central-African-Republic	Cahiers O.R.S.T.O.M. (Office de la Recherche Scientifique et Technique Outre-Mer) Serie Entomologie Medicale et Parasitologie	Exclusion reason: 2 not English;

Table G.16: Excluded studies at full text review with exclusion reason

Study	Title	Journal	Notes
Gonzalez 1989	Antibody Prevalence against Hemorrhagic-Fever Viruses in Randomized Representative Central African Populations	Research in Virology	Exclusion reason: 1 duplicate;
Gonzalez 1986	Evolutionary Biology of a Lassa Virus Complex	Medical Microbiology and Immunology	Exclusion reason: 5 no report of parameters ;
Gonzales 1985	Genetic Variation among Lassa and Lassa Related Arenaviruses from Different African Origins	Virus Research	Exclusion reason: 3 wrong pathogen / epi not main focus;
Goeijenbier 2013	Rodent-borne hemorrhagic fevers: under-recognized, widely spread and preventable - epidemiology, diagnostics and treatment	Critical Reviews in Microbiology	Exclusion reason: 6 not original estimates/ primary data;
Gibb 2017	Understanding the cryptic nature of Lassa fever in West Africa	Pathogens and Global Health	Exclusion reason: 6 not original estimates/ primary data;
Getso 2014	Lassa fever outbreak involving healthcare workers in Taraba State, Nigeria, March 2012	International Journal of Infectious Diseases	Exclusion reason: 7 not peer reviewed; David Jorgensen (2019-06-21 20:36:04)(Select): poster ;
Gear 1977	Hemorrhagic Fevers of Africa - Account of 2 Recent Outbreaks	Journal of the South African Veterinary Association-Tydskrif Van Die Suid-Afrikaanse Veterinere Vereniging	Exclusion reason: 4 case report/study;
Galbraith 1980	Changing Patterns of Communicable Disease in England and Wales .1. Newly Recognized Diseases	Bmj-British Medical Journal	Exclusion reason: 6 not original estimates/ primary data; Natsuko Imai (2019-03-27 22:16:33)(Screen): https://www.ncbi.nlm.nih.gov/pmc/articles/PMC1713331/?page=1 ;
Galbraith 1978	Lassa Fever (Lf) and Marburg Disease (Mvd) - Public-Health Aspects of Viral Hemorrhagic Fevers in Britain	Royal Society of Health Journal	Exclusion reason: 6 not original estimates/ primary data;
Ftika 2013	Viral haemorrhagic fevers in healthcare settings	Journal of Hospital Infection	Exclusion reason: 6 not original estimates/ primary data;
Friedrich 2018	Nigerian Lassa Fever Outbreak Caused by Rodents	Jama-Journal of the American Medical Association	Exclusion reason: 5 no report of parameters ; Natsuko Imai (2019-03-27 22:11:09)(Screen): commentary;
Frame 1992	The Story of Lassa Fever .2. Learning More About the Disease	New York State Journal of Medicine	Exclusion reason: 6 not original estimates/ primary data; Christian Morgenstern (2023-09-06 03:41:06)(Select): page 382 out of 806 in online archive; Natsuko Imai (2019-10-26 02:30:16)(Select): waiting on full text;

Table G.16: Excluded studies at full text review with exclusion reason

Study	Title	Journal	Notes
Frame 1975	Surveillance of Lassa Fever in Missionaries Stationed in West-Africa	Bulletin of the World Health Organization	Exclusion reason: 5 no report of parameters ; Natsuko Imai (2019-03-27 23:23:35)(Screen): To determine the distribution of Lassa virus in West Africa, a serological survey was undertaken. A number of mission hospital supplied sera from patients admitted with a history of fever and specimens were also collected in New York from missionaries who had experienced an unusual febrile illness while working in Africa. More cases of Lassa fever were detected among missionaries than among Africans, possibly because many African patients had left hospital before the complement fixation tests had become positive. Although most adults had fairly high fever and some were prostrated, fever was less severe in the children examined. In general the findings confirm that not all Lassa fever patients have the severe syndrome described in the original reports;
Morens 1980	Longitudinal Surveillance of Lassa Fever in a West-African Village with Endemic Disease - a One-Year Report	American Journal of Epidemiology	Exclusion reason: 7 not peer reviewed; Natsuko Imai (2019-10-26 03:06:40)(Select): abstract exclude;
Moraz 2011	Pathogenesis of arenavirus hemorrhagic fevers	Expert Review of Anti-Infective Therapy	Exclusion reason: 6 not original estimates/ primary data;
Monath 1974	Lassa Virus Isolation from Mastomys Natalensis Rodents during an Epidemic in Sierra-Leone	Science	Exclusion reason: 5 no report of parameters ; Natsuko Imai (2019-03-28 01:59:13)(Screen): Lassa fever is a severe febrile illness of man, first recognized in West Africa in 1969. During an epidemic in Sierra Leone, Lassa virus was isolated for the first time from wild rodents of Mastomys natalensis. A high prevalence of infected Mastomys was found in houses occupied by patients with Lassa fever. The data presented provide the first demonstration of an extra-human cycle of Lassa virus transmission and suggest that rodent control may be an effective method of limiting the disease.;
Monath 1973	Lassa Fever Current Epidemiological and Clinico Pathological Concepts		Exclusion reason: 7 not peer reviewed; Natsuko Imai (2019-10-26 03:06:19)(Select): exclude book;
Monath 1987	Lassa Fever - New Issues Raised by Field Studies in West-Africa	Journal of Infectious Diseases	Exclusion reason: 6 not original estimates/ primary data;
Monath 1977	Lassa Fever Current Problems and Future Prospects	Vestnik Akademii Meditsinskikh Nauk SSSR	Exclusion reason: 2 not English; Natsuko Imai (2019-10-26 03:00:20)(Select): russian;
Monath 1977	Lassa Fever - Past, Present and Possible Future Status	Medicina-Buenos Aires	Exclusion reason: 6 not original estimates/ primary data;
Monath 1975	Lassa Fever - Review of Epidemiology and Epizootiology	Bulletin of the World Health Organization	Exclusion reason: 6 not original estimates/ primary data;
Monath 1974	Lassa Fever and Marburg Virus Disease	Who Chronicle	Exclusion reason: 7 not peer reviewed;
Monath 1973	Lassa fever: a new appraisal	Nigerian medical journal : journal of the Nigeria Medical Association	Exclusion reason: 7 not peer reviewed; Natsuko Imai (2019-11-01 03:08:12)(Select): can exclude – as not peer reviewed ; Natsuko Imai (2019-10-26 04:00:55)(Select): waiting on FT;
Monath 1973	Lassa fever	Tropical Doctor	Exclusion reason: 6 not original estimates/ primary data; Natsuko Imai (2019-10-24 01:17:26)(Select): paper copy;

Table G.16: Excluded studies at full text review with exclusion reason

Study	Title	Journal	Notes
Mofolorunsho 2016	Outbreak of lassa fever in Nigeria: measures for prevention and control	Pan African Medical Journal	Exclusion reason: 7 not peer reviewed;
Mills 2010	Small Mammal-Associated Zoonoses	Vector-Borne and Zoonotic Diseases	Exclusion reason: 5 no report of parameters ; Natsuko Imai (2019-03-28 01:58:46)(Screen): Recognition of viruses as a major contributor to vector-borne diseases and other zoonoses dates back many decades. The term arbovirus (arthropod-borne virus) is widely recognized even among the lay public. A few rodent-borne viruses recognized long ago (e.g., the arenaviruses associated with Lassa fever and South American hemorrhagic fevers, and the hantaviruses associated with hemorrhagic fever with renal syndrome in Asia and Europe) were discussed under the rubric of arboviruses and even listed in the Arbovirus Catalog. A turning point came 17 years ago with the discovery of the often-fatal hantavirus pulmonary syndrome in the Americas. This discovery stimulated interest, funding, and research on rodent hosts of viruses and led to the discovery of dozens of new hantaviruses and arenaviruses; ultimately, the study of roboviruses (rodent-borne viruses) became a discipline in itself. In the last few years, we have learned that a separate order of mammals, the insectivores, are also hosts to likely dozens of hantaviruses whose role in disease is uncertain. The roboviruses have become the rainboviruses (rodent- and insectivore-borne viruses). The discovery of this tremendous diversity of viruses and hosts and the desire to understand their relationships to human disease and to environmental change have spawned new theories, controversies, and terminology: coevolution, cospeciation, spillover, host-jumping, bottom-up trophic cascades, dilution effects, and delayed density-dependence. The development of these concepts and much of the rapid growth in understanding of host-virus-human disease relationships are due to a multidisciplinary approach that combines ecology, epidemiology, virology, and molecular biology.;
Meunier 1987	Current Serological Data on Viral Hemorrhagic Fevers in the Central-African-Republic	Bulletin De La Societe De Pathologie Exotique	Exclusion reason: 2 not English; David Jorgensen (2019-06-21 22:58:41)(Select): French;
Meunier 1987	Serological Study of Hemorrhagic Fevers in the Province of Haut-Ogooue, Gabon	Annales De L Institut Pasteur-Virology	Exclusion reason: 2 not English; David Jorgensen (2019-06-21 22:57:41)(Select): French;
Mertens 1973	Clinical Presentation of Lassa Fever Cases during Hospital Epidemic at Zorzor, Liberia, March-April 1972	American Journal of Tropical Medicine and Hygiene	Exclusion reason: 4 case report/study; Natsuko Imai (2019-10-24 00:44:52)(Select): case study fewer 10 cases; Natsuko Imai (2019-10-24 00:43:38)(Select): paper copy;
McCormick 1986	Lassa Virus Hepatitis - a Study of Fatal Lassa Fever in Humans	American Journal of Tropical Medicine and Hygiene	Exclusion reason: 5 no report of parameters ; Natsuko Imai (2019-10-24 01:16:15)(Select): paper copy;
McCormick 2002	Lassa fever		Exclusion reason: 7 not peer reviewed; David Jorgensen (2019-06-21 22:00:53)(Select): book chapter ;

Table G.16: Excluded studies at full text review with exclusion reason

Study	Title	Journal	Notes
McCormick 1999	Lassa fever		Exclusion reason: 7 not peer reviewed; Natsuko Imai (2019-10-26 02:53:46)(Select): book exclude;
McCormick 1988	Lassa fever: epidemiology, therapy and vaccine development	Kansenshogaku zasshi. The Journal of the Japanese Association for Infectious Diseases	Exclusion reason: 6 not original estimates/primary data; Natsuko Imai (2019-10-24 01:24:01)(Select): paper copy ;
McCormick 1987	Epidemiology and control of Lassa fever	Current Topics in Microbiology and Immunology	Exclusion reason: 7 not peer reviewed; Natsuko Imai (2019-10-02 22:50:20)(Select): book - excl;
McCormick 1986	Clinical, Epidemiologic, and Therapeutic Aspects of Lassa Fever	Medical Microbiology and Immunology	Exclusion reason: 7 not peer reviewed; David Jorgensen (2019-06-21 22:00:08)(Select): conference paper;
Mathiot 1990	Antibodies to Hemorrhagic-Fever Viruses and to Selected Arboviruses in Monkeys from the Central-African-Republic	Transactions of the Royal Society of Tropical Medicine and Hygiene	Exclusion reason: 5 no report of parameters ; Natsuko Imai (2019-10-24 00:53:48)(Select): paper copy; Natsuko Imai (2019-03-28 21:13:59)(Screen): https://academic.oup.com/trstmh/article-abstract/84/5/732/1915728?redirectedFrom=fulltext ;
Fichet-Calvet 2009	Risk Maps of Lassa Fever in West Africa	PLoS Neglected Tropical Diseases	Exclusion reason: 3 wrong pathogen / epi not main focus; Kelly McCain (2023-09-14 21:05:25)(Included): environmental paper - no new outbreaks or parameters, non-transmission models;
Fichet-Calvet 2007	Fluctuation of abundance and Lassa virus prevalence in <i>Mastomys natalensis</i> in Guinea, West Africa	Vector-Borne and Zoonotic Diseases	Exclusion reason: 5 no report of parameters ; Natsuko Imai (2019-03-27 21:54:27)(Screen): animal focus but talks about risk factors.;
Fichet-Calvet 2005	Spatial distribution of commensal rodents in regions with high and low Lassa fever prevalence in Guinea	Belgian Journal of Zoology	Exclusion reason: 6 not original estimates/primary data; Natsuko Imai (2019-10-26 02:28:57)(Select): seroprevalence in humans reported from previous study;
Fernandes 1984	Lassa fever in London: environmental health aspects	Community medicine	Exclusion reason: 5 no report of parameters ;
Fabiyi 1979	Lassa Fever Antibodies in Hospital Personnel in the Plateau State of Nigeria	Nigerian Medical Journal	Exclusion reason: 7 not peer reviewed; Natsuko Imai (2019-10-24 01:00:13)(Excluded): paper copy; David Jorgensen (2019-06-21 20:01:40)(Select): abstract only ;
Fabiyi 1975	Use of Complement-Fixation (Cf) Test in Lassa Fever Surveillance - Evidence for Persistent Cf Antibodies	Bulletin of the World Health Organization	Exclusion reason: 1 duplicate; Natsuko Imai (2019-09-17 01:52:58)(Select): duplicate;
Fabiyi 1979	Epidemiological significance of Lassa antibodies in <i>Mastomys natalensis</i> from several parts of Nigeria	Nigerian Journal of Medical Sciences	Exclusion reason: 5 no report of parameters ; Natsuko Imai (2019-10-24 01:26:10)(Select): seroprevalence in rodents; Natsuko Imai (2019-10-24 01:25:39)(Select): paper copy;
Fabiyi 1976	Lassa fever (arenaviruses) as a public health problem	Bulletin of the Pan American Health Organization	Exclusion reason: 6 not original estimates/primary data; David Jorgensen (2019-03-29 02:38:54)(Screen): incubation and shedding but w/o primary reference ; David Jorgensen (2019-03-29 02:37:41)(Screen):
Ethelwald 1978	Lassa Fever (Lf) and Marburg Disease (Mvd) - Occurrences, Origins and Diagnoses	Royal Society of Health Journal	Exclusion reason: 7 not peer reviewed; Kelly Charniga (2019-10-31 20:40:24)(Select): perspective, exclude; David Jorgensen (2019-10-24 20:57:07)(Select): can't access full text;
Emond 1986	Viral Hemorrhagic Fevers	Journal of Infection	Exclusion reason: 6 not original estimates/ primary data;

Table G.16: Excluded studies at full text review with exclusion reason

Study	Title	Journal	Notes
Emond 1980	Lassa Fever	Royal Society of Health Journal	Exclusion reason: 6 not original estimates/primary data; Natsuko Imai (2019-10-24 00:52:11)(Select): paper copy; Natsuko Imai (2019-03-27 23:21:17)(Screen): https://journals.sagepub.com/doi/abs/10.1177/146642408010000203 ;
El-Yuguda 2009	Peridomestic rodents and Lassa fever virus infection of humans in urban and rural communities in Borno state, Nigeria	Nigerian Veterinary Journal	Exclusion reason: 5 no report of parameters ;
El-Bahnasawy 2015	Lassa fever or lassa hemorrhagic fever risk to humans from rodent-borne zoonoses	Journal of the Egyptian Society of Parasitology	Exclusion reason: 8 No full text; Natsuko Imai (2019-10-24 19:46:10)(Select): full text not available from library exclude;
Ehlkes 2017	Management of a Lassa fever outbreak, Rhineland-Palatinate, Germany, 2016	Eurosurveillance	Exclusion reason: 3 wrong pathogen / epi not main focus;
Ehichioya 2008	Clinical and Serological Evidence of Lassa Fever in Edo State, Nigeria	International Journal of Infectious Diseases	Exclusion reason: 7 not peer reviewed; David Jorgensen (2019-06-21 19:36:29)(Select): poster ;
Ehichioya 2010	Lassa Fever, Nigeria, 2005-2008	Emerging Infectious Diseases	Exclusion reason: 4 case report/study; David Jorgensen (2019-03-29 02:07:20)(Screen): Letters;
Dowdle 1980	Exotic Viral Diseases	Yale Journal of Biology and Medicine	Exclusion reason: 6 not original estimates/primary data; Natsuko Imai (2019-03-27 21:44:50)(Screen): Marburg virus disease, Lassa fever, monkeypox, and Ebola virus diseases of humans have all been recognized since 1967. These are examples of some of the exotic virus diseases which through importation may present a potential public health problem in the United States. Some of these viruses are also highly hazardous to laboratory and medical personnel. This paper is a review of the general characteristics, the epidemiology, and laboratory diagnosis of the exotic viruses which have been described during the last 25 years.;
Davis 2005	Fluctuating rodent populations and risk to humans from rodent-borne zoonoses	Vector-Borne and Zoonotic Diseases	Exclusion reason: 3 wrong pathogen / epi not main focus; Natsuko Imai (2019-10-02 19:51:37)(Select): including for the foi model.;
Cummins 1990	Lassa Fever	British Journal of Hospital Medicine	Exclusion reason: 5 no report of parameters ; Natsuko Imai (2019-10-23 23:29:49)(Select): reviewish; Natsuko Imai (2019-10-23 23:29:34)(Select): paper copy; Natsuko Imai (2019-03-28 01:15:43)(Screen): Lassa fever is an acute viral illness which causes considerable morbidity and mortality in West Africa. The risk of importing the disease into the UK is small but real, and it continues to be a worldwide concern among public health officials. This article summarizes its epidemiology and clinical presentation, and discusses current theories of its pathogenesis.;
Coyle 2016	Lassa fever	Nursing	Exclusion reason: 6 not original estimates/primary data; Natsuko Imai (2019-03-28 01:14:04)(Screen): https://insights.ovid.com/pubmed?pmid=27333233 ;

Table G.16: Excluded studies at full text review with exclusion reason

Study	Title	Journal	Notes
Coulibaly 2000	Use of filter paper-collected blood specimens in a sero-survey for antibodies to Lassa virus in Guinea, West Africa: Validation of the technique and epidemiologic findings	American Journal of Tropical Medicine and Hygiene	Exclusion reason: 7 not peer reviewed; Natsuko Imai (2019-10-24 19:41:57)(Select): exclude - conf abstract;
Clayton 1979	Lassa Fever, Marburg and Ebola Virus Diseases and Other Exotic Diseases - Is There a Risk to Canada	Canadian Medical Association Journal	Exclusion reason: 6 not original estimates/ primary data; David Jorgensen (2019-03-29 01:26:52)(Screen): has an early history with references;
Choi 2018	A Case of Lassa Fever Diagnosed at a Community Hospital-Minnesota 2014	Open Forum Infectious Diseases	Exclusion reason: 4 case report/study;
Casals 1974	Lassa Fever		Exclusion reason: 6 not original estimates/ primary data; Natsuko Imai (2019-10-24 01:25:01)(Select): paper copy;
Isaacson 2001	Viral hemorrhagic fever hazards for travelers in Africa	Clinical Infectious Diseases	Exclusion reason: 6 not original estimates/ primary data;
Isa 2016	Postexposure prophylaxis for Lassa fever: Experience from a recent outbreak in Nigeria	Nigerian medical journal : journal of the Nigeria Medical Association	Exclusion reason: 5 no report of parameters ;
Iroezindu 2015	Lessons learnt from the management of a case of Lassa fever and follow-up of nosocomial primary contacts in Nigeria during Ebola virus disease outbreak in West Africa	Tropical Medicine & International Health	Exclusion reason: 4 case report/study;
Ike 2016	Detection of clusters and geographical hotspot for Lassa fever in Edo Central Senatorial district of Nigeria: A step into a nation-wide mapping of Lassa fever	International Journal of Infectious Diseases	Exclusion reason: 7 not peer reviewed; David Jorgensen (2019-06-21 21:05:25)(Select): poster ;
Idemiyor 2010	Lassa Virus Infection in Nigeria: Clinical Perspective Overview	Journal of the National Medical Association	Exclusion reason: 6 not original estimates/ primary data; Natsuko Imai (2019-10-23 23:36:34)(Select): paper copy;
Ibekwe 2012	Lassa fever: the challenges of curtailing a deadly disease	The Pan African medical journal	Exclusion reason: 6 not original estimates/ primary data;
Howard 1984	Viral Hemorrhagic Fevers - Properties and Prospects for Treatment and Prevention	Antiviral Research	Exclusion reason: 6 not original estimates/ primary data;
Holmes 1990	Lassa Fever in the United-States - Investigation of a Case and New Guidelines for Management	New England Journal of Medicine	Exclusion reason: 4 case report/study; Natsuko Imai (2019-03-27 22:34:28)(Screen): https://www.researchgate.net/publication/20939640_Lassa_fever_in_the_U

Table G.16: Excluded studies at full text review with exclusion reason

Study	Title	Journal	Notes
Hidalgo 2017	Viral hemorrhagic fever in the tropics: Report from the task force on tropical diseases by the World Federation of Societies of Intensive and Critical Care Medicine	Journal of Critical Care	Exclusion reason: 6 not original estimates/ primary data;
Hartnett 2015	Current and emerging strategies for the diagnosis, prevention and treatment of Lassa fever	Future Virology	Exclusion reason: 6 not original estimates/ primary data;
Hamblion 2016	The challenges of mounting a successful response to a Lassa Fever outbreak in a post-EVD resource limited setting, Liberia 2016	International Journal of Infectious Diseases	Exclusion reason: 7 not peer reviewed; David Jorgensen (2019-06-21 20:56:31)(Select): conf abs;
Burki 2018	Lassa fever in Nigeria: the great unknown	Lancet	Exclusion reason: 6 not original estimates/ primary data;
Burke 2012	A Review of Zoonotic Disease Surveillance Supported by the Armed Forces Health Surveillance Center	Zoonoses and Public Health	Exclusion reason: 5 no report of parameters ;
Bowen 2000	Genetic diversity among lassa virus strains	Journal of Virology	Exclusion reason: 5 no report of parameters ;
Bonney 2013	Hospital-Based Surveillance for Viral Hemorrhagic Fevers and Hepatitides in Ghana	PLoS Neglected Tropical Diseases	Exclusion reason: 5 no report of parameters ;
Boardman 2003	Viral hemorrhagic fever	Primary Care Update for Ob/Gyns	Exclusion reason: 6 not original estimates/ primary data;
Bhadelia 2019	Understanding Lassa fever	Science	Exclusion reason: 6 not original estimates/ primary data;
Bello 2016	Lassa Fever in Pregnancy: Report of 2 Cases Seen at the University College Hospital, Ibadan	Case reports in obstetrics and gynecology	Exclusion reason: 4 case report/study;
Bannister 2010	Viral haemorrhagic fevers imported into non-endemic countries: risk assessment and management	British Medical Bulletin	Exclusion reason: 6 not original estimates/ primary data;
Bangura 2009	Epidemiology of Lassa Fever in the Mano River Union Countries of West Africa, 2004-2008	American Journal of Tropical Medicine and Hygiene	Exclusion reason: 7 not peer reviewed; Natsuko Imai (2019-10-24 19:37:17)(Select): conf abstract; David Jorgensen (2019-06-21 19:04:03)(Select): probably a conference abstract, most of this issue is;
Banatvala 1986	Lassa Fever	British Medical Journal	Exclusion reason: 1 duplicate; Natsuko Imai (2019-03-27 00:43:59)(Screen): duplicate; David Jorgensen (2019-03-15 02:34:24)(Screen): https://www.jstor.org/stable/29525137?seq=2metadata ; <i>infotabcontent</i>
	Imported Lassa fever–New Jersey, 2004	MMWR. Morbidity and mortality weekly report	Exclusion reason: 4 case report/study;
Attar 2015	The history of Lassa virus	Nature Reviews Microbiology	Exclusion reason: 1 duplicate; David Jorgensen (2019-06-21 02:18:33)(Select): duplicate ;

Table G.16: Excluded studies at full text review with exclusion reason

Study	Title	Journal	Notes
Atkin 2009	The first case of Lassa fever imported from Mali to the United Kingdom, February 2009	Euro surveillance : bulletin Europeen sur les maladies transmissibles = European communicable disease bulletin	Exclusion reason: 4 case report/study;
Armignacco 2001	The model of response to viral haemorrhagic fevers of the National Institute for Infectious Diseases "Lazzaro Spallanzani"	Journal of Biological Regulators and Homeostatic Agents	Exclusion reason: 6 not original estimates/primary data; Natsuko Imai (2019-10-23 23:35:42)(Select): paper copy; David Jorgensen (2019-06-21 02:11:04)(Select): cant find - in spreadsheet ;
Amorosa 2010	Imported Lassa Fever, Pennsylvania, USA, 2010	Emerging Infectious Diseases	Exclusion reason: 4 case report/study;
Akpede 2018	Lassa fever outbreaks in Nigeria	Expert Review of Anti-Infective Therapy	Exclusion reason: 6 not original estimates/primary data; Natsuko Imai (2019-09-17 01:29:31)(Select): editorial;
Akpede 2010	Prevalence and presentation of Lassa fever in Nigerian children	International Journal of Infectious Diseases	Exclusion reason: 7 not peer reviewed; David Jorgensen (2019-06-21 01:54:20)(Select): poster abstract ;
Akpede 2010	Spatial and temporal trends of the Lassa fever epidemic in Nigeria 2001-2009, with particular reference to the Edo State experience	International Journal of Infectious Diseases	Exclusion reason: 7 not peer reviewed; David Jorgensen (2019-06-21 01:53:23)(Select): poster/conf abstract ;
Ajayi 2014	Lassa fever - full recovery without ribavirin treatment: a case report	African Health Sciences	Exclusion reason: 4 case report/study;
Agbonlahor 2017	Prevalence of Lassa virus among rodents trapped in three South-South States of Nigeria	Journal of Vector Borne Diseases	Exclusion reason: 5 no report of parameters ;
Adesina 2018	Phylogenetic analysis and prevalence of Lassa virus in multimammate mice within the highly endemic Edo-Ondo hotspot for Lassa fever, Nigeria	Julius-Kuhn-Archiv	Exclusion reason: 7 not peer reviewed; David Jorgensen (2019-06-21 01:45:03)(Select): poster ;
Adedire 2014	Outbreak of Lassa fever in a bakery: Investigation and epidemiological surveillance of contact persons - Ibadan, Oyo state Nigeria; August, 2012	International Journal of Infectious Diseases	Exclusion reason: 7 not peer reviewed; David Jorgensen (2019-06-21 01:39:48)(Select): poster ;
Adedire 2015	Investigation and Epidemiological Surveillance of Contact Persons During an Outbreak of Lassa Fever	International Journal of Epidemiology	Exclusion reason: 7 not peer reviewed; David Jorgensen (2019-06-21 01:38:46)(Select): this is a poster ;
Abdullahi 2015	Sensitivity Analysis in a Lassa Fever Deterministic Mathematical Model		Exclusion reason: 7 not peer reviewed;
	After the blood diamond conflict: lassa fever in Sierra Leone	Clinical infectious diseases : an official publication of the Infectious Diseases Society of America	Exclusion reason: 7 not peer reviewed; Natsuko Imai (2019-03-29 01:49:08)(Screen): commentary;
Dzotsi 2012	The first cases of Lassa fever in Ghana	Ghana medical journal	Exclusion reason: 4 case report/study;

Table G.16: Excluded studies at full text review with exclusion reason

Study	Title	Journal	Notes
Dzingirai 2017	Structural drivers of vulnerability to zoonotic disease in Africa	Philosophical Transactions of the Royal Society B-Biological Sciences	Exclusion reason: 6 not original estimates/ primary data;
Dzingirai 2017	Zoonotic diseases: who gets sick, and why? Explorations from Africa	Critical Public Health	Exclusion reason: 5 no report of parameters ;
Dyer 2019	Lassa outbreak: WHO warns of unusually rapid spread in Nigeria	Bmj-British Medical Journal	Exclusion reason: 7 not peer reviewed; David Jorgensen (2019-06-21 19:35:28)(Select): news ;
Durojaiye 1984	Viral Zoonoses in Nigeria .2. Non-Rabies Zoonoses	International Journal of Zoonoses	Exclusion reason: 5 no report of parameters ; Natsuko Imai (2019-10-24 01:20:54)(Select): paper copy;
	Viral haemorrhagic fevers	Public health	Exclusion reason: 7 not peer reviewed; David Jorgensen (2019-06-22 00:54:27)(Select): letter from the editor;
	Editorial: Lassa fever Haemorrhagic fevers	Lancet (London, England)	Exclusion reason: 7 not peer reviewed;
		South African medical journal = Suid-Afrikaanse tydskrif vir geneeskunde	Exclusion reason: 7 not peer reviewed; Natsuko Imai (2019-10-26 04:06:10)(Select): editorial;
	Unrecognized diseases in Africa. II. Lassa fever	International Journal of Epidemiology	Exclusion reason: 6 not original estimates/ primary data; Natsuko Imai (2019-03-29 01:27:43)(Screen): editorial include for references?
	Lassa Fever	British Medical Journal	Exclusion reason: 6 not original estimates/ primary data;
	Lassa fever	Lancet (London, England)	Exclusion reason: 5 no report of parameters ; Natsuko Imai (2019-10-24 01:03:15)(Select): paper copy;
	Epidemiology of hemorrhagic fever viruses. Haemorrhagic fever virus activity in equatorial Africa: distribution and prevalence of filovirus reactive antibody in the Central African Republic.	Reviews of infectious diseases Transactions of the Royal Society of Tropical Medicine and Hygiene	Exclusion reason: 1 duplicate;
Frame 1970	Lassa fever, a new virus disease of man from West Africa. I. Clinical description and pathological findings.	The American journal of tropical medicine and hygiene	Exclusion reason: 1 duplicate;
White 1972	Lassa fever. A study of 23 hospital cases.	Transactions of the Royal Society of Tropical Medicine and Hygiene	Exclusion reason: 1 duplicate;
Simpson 1978	Viral haemorrhagic fevers of man.	Bulletin of the World Health Organization	Exclusion reason: 1 duplicate;
Troup 1970	An outbreak of Lassa fever on the Jos plateau, Nigeria, in January-February 1970. A preliminary report.	The American journal of tropical medicine and hygiene	Exclusion reason: 1 duplicate;
	Arbovirus infections and viral haemorrhagic fevers in Uganda: a serological survey in Karamoja district, 1984.	Transactions of the Royal Society of Tropical Medicine and Hygiene	Exclusion reason: 1 duplicate;
Carey 1972	Lassa fever. Epidemiological aspects of the 1970 epidemic, Jos, Nigeria.	Transactions of the Royal Society of Tropical Medicine and Hygiene	Exclusion reason: 1 duplicate;

Table G.16: Excluded studies at full text review with exclusion reason

Study	Title	Journal	Notes
	Antibodies to haemorrhagic fever viruses in Madagascar populations.	Transactions of the Royal Society of Tropical Medicine and Hygiene	Exclusion reason: 1 duplicate;
	Antibody prevalence against haemorrhagic fever viruses in randomized representative Central African populations.	Research in virology	Exclusion reason: 1 duplicate;
Johnson 1983	Antibodies against haemorrhagic fever viruses in Kenya populations.	Transactions of the Royal Society of Tropical Medicine and Hygiene	Exclusion reason: 1 duplicate;
Galbraith 1978	Public health aspects of viral haemorrhagic fevers in Britain.	Royal Society of Health journal	Exclusion reason: 1 duplicate; Natsuko Imai (2019-10-24 00:55:14)(Select): paper copy;
Winn 1975	Lassa virus hepatitis. Observations on a fatal case from the 1972 Sierra Leone epidemic.	Archives of pathology	Exclusion reason: 1 duplicate;
Johnson 1975	The arenaviruses: some priorities for future research.	Bulletin of the World Health Organization	Exclusion reason: 1 duplicate;
	Clinical features of Lassa fever in Liberia.	Reviews of infectious diseases	Exclusion reason: 1 duplicate;
Emond 1980	Exotic infectious diseases: Lassa fever.	Royal Society of Health journal	Exclusion reason: 1 duplicate;
Simpson 1980	The nasty viruses—Lassa, Marburg, and Ebola.	British journal of hospital medicine	Exclusion reason: 1 duplicate;
Vella 1978	Lassa fever (LF) and Marburg disease (MVD): occurrences, origins and diagnoses.	Royal Society of Health journal	Exclusion reason: 1 duplicate;
Monson 1984	Endemic Lassa fever in Liberia. I. Clinical and epidemiological aspects at Curran Lutheran Hospital, Zorzor, Liberia.	Transactions of the Royal Society of Tropical Medicine and Hygiene	Exclusion reason: 1 duplicate;
Frame 1984	Endemic Lassa fever in Liberia. II. Serological and virological findings in hospital patients.	Transactions of the Royal Society of Tropical Medicine and Hygiene	Exclusion reason: 1 duplicate;
Keane 1977	Lassa fever in Panguma Hospital, Sierra Leone, 1973-6.	British medical journal	Exclusion reason: 1 duplicate;
Fisher-Hoch 1988	Hematologic dysfunction in Lassa fever.	Journal of medical virology	Exclusion reason: 5 no report of parameters ;
Frame 1992	The story of Lassa fever. Part III: The disease in the community.	New York state journal of medicine	Exclusion reason: 1 duplicate;
Fraser 1974	Lassa fever in the Eastern Province of Sierra Leone, 1970-1972. I. Epidemiologic studies.	The American journal of tropical medicine and hygiene	Exclusion reason: 1 duplicate;

Table G.16: Excluded studies at full text review with exclusion reason

Study	Title	Journal	Notes
Woodruff 1973	Lassa fever in Britain: an imported case.	British medical journal	Exclusion reason: 4 case report/study; Natsuko Imai (2019-03-29 01:59:22)(Screen): The diagnosis of Lassa fever has been made in a patient at the Hospital for Tropical Diseases, London, who arrived in Britain by air from West Africa and was at the time of admission suffering from pyrexia of unknown origin. The infection is among the most dangerous of those currently known; mortality rates of 36-52% have been reported for hospitalized cases in the few outbreaks so far known. This report is therefore made with the object of bringing to the notice of practitioners the main features of the disease, particularly in so far as they influence the recognition and management. The complement fixation tests on serum from this patient and on other sera that were examined at the time enabled it to be shown that an outbreak of fever present in Sierra Leone was caused by the Lassa virus. Another patient who recently arrived in Britain from West Africa has been admitted to the Hospital for Tropical Diseases, London, and it is probable that she has been infected ;
Monath 1974	Lassa fever in the Eastern Province of Sierra Leone, 1970-1972. II. Clinical observations and virological studies on selected hospital cases.	The American journal of tropical medicine and hygiene	Exclusion reason: 1 duplicate; Natsuko Imai (2019-03-28 02:00:02)(Screen): Twelve patients hospitalized with a confirmed diagnosis of Lassa fever were studied during an epidemic of this disease in Sierra Leone. Clinical observations confirmed and extended those made in previous outbreaks in Liberia and Nigeria. Two patients were treated with plasma containing antibodies to Lassa virus; both had a favorable response. Lassa virus was isolated from serum, throat swabs, or urine from all patients sampled during the first 15 days of illness. Virus was recovered from the pharynx of patients with circulating complement-fixing (CF) antibodies. CF antibodies were detectable by the 3rd week of illness. A strain of Lassa virus from one of the patients was compared with strains recovered in Liberia and Nigeria by CF test. Serum from convalescent patients infected with Nigerian virus did not fix complement in the presence of strains from Liberia or Sierra Leone; this result may indicate antigenic differences between Lassa virus strains which must be confirmed by neutralization test.;
Ivanoff 1982	Haemorrhagic fever in Gabon. I. Incidence of Lassa, Ebola and Marburg viruses in Haut-Ogooué.	Transactions of the Royal Society of Tropical Medicine and Hygiene	Exclusion reason: 1 duplicate;
Bloch 1978	A serological survey of Lassa fever in Liberia.	Bulletin of the World Health Organization	Exclusion reason: 1 duplicate; Natsuko Imai (2019-09-17 01:40:15)(Select): duplicate;
Frame 1984	Endemic Lassa fever in Liberia. V. Distribution of Lassa virus activity in Liberia: hospital staff surveys.	Transactions of the Royal Society of Tropical Medicine and Hygiene	Exclusion reason: 1 duplicate;
Monath 1973	A hospital epidemic of Lassa fever in Zorzor, Liberia, March-April 1972.	The American journal of tropical medicine and hygiene	Exclusion reason: 1 duplicate;

Table G.16: Excluded studies at full text review with exclusion reason

Study	Title	Journal	Notes
Mertens 1973	Clinical presentation of Lassa fever cases during the hospital epidemic at Zorzor, Liberia, March-April 1972.	The American journal of tropical medicine and hygiene	Exclusion reason: 1 duplicate;
Sogoba 2012	Lassa fever in West Africa: evidence for an expanded region of endemicity.	Zoonoses and public health	Exclusion reason: 6 not original estimates/ primary data;
Bond 2013	A historical look at the first reported cases of Lassa fever: IgG antibodies 40 years after acute infection.	The American journal of tropical medicine and hygiene	Exclusion reason: 4 case report/study; Christian Morgenstern (2023-08-30 03:37:40)(Included): Case report of 2 survivors after 40 years but no serostudy or other relevant parameters; Christian Morgenstern (2023-08-30 03:37:13)(Included): records long lasting IgG (40+ years);
Woodruff 1978	Viral infections in travellers from tropical Africa.	British medical journal	Exclusion reason: 1 duplicate;
Attar 2015	Viral evolution: The history of Lassa virus.	Nature reviews. Microbiology	Exclusion reason: 6 not original estimates/ primary data; David Jorgensen (2019-06-21 02:18:13)(Select): nature research highlight of a cell paper; check original is present ;
Smither 2023	Ecology of Lassa Virus.	Current topics in microbiology and immunology	Exclusion reason: 7 not peer reviewed;
Musa 2022	COVID-19 and Lassa fever in Nigeria: A deadly alliance?	International journal of infectious diseases : IJID : official publication of the International Society for Infectious Diseases	Exclusion reason: 5 no report of parameters ;
Wang 2021	The reproductive number of Lassa fever: a systematic review.	Journal of travel medicine	Exclusion reason: 6 not original estimates/ primary data;
Klitting 2022	Predicting the evolution of the Lassa virus endemic area and population at risk over the next decades.	Nature communications	Exclusion reason: 5 no report of parameters ; Juliette Unwin (2023-09-05 17:52:21)(Select): future risk;
Mohammed 2023	Inter-State Transmission of Lassa Fever during the 2015-2016 Lassa Outbreak in Nigeria: An Implication for Infection Prevention and Control Practices.	West African journal of medicine	Exclusion reason: 8 No full text; Christian Morgenstern (2023-09-09 01:47:20)(Select): Imperial College Library and British Library both unable to obtain Can't find full text online either; Christian Morgenstern (2023-09-02 18:43:02)(Select): requested from library;
Kenmoe 2020	Systematic review and meta-analysis of the epidemiology of Lassa virus in humans, rodents and other mammals in sub-Saharan Africa.	PLoS neglected tropical diseases	Exclusion reason: 6 not original estimates/ primary data;
Wada 2022	Knowledge of Lassa fever, its prevention and control practices and their predictors among healthcare workers during an outbreak in Northern Nigeria: A multi-centre cross-sectional assessment.	PLoS neglected tropical diseases	Exclusion reason: 5 no report of parameters ;

Table G.16: Excluded studies at full text review with exclusion reason

Study	Title	Journal	Notes
Happi 2022	Increased Prevalence of Lassa Fever Virus-Positive Rodents and Diversity of Infected Species Found during Human Lassa Fever Epidemics in Nigeria.	Microbiology spectrum	Exclusion reason: 3 wrong pathogen / epi not main focus; Christian Morgenstern (2023-08-17 00:04:15)(Screen): Keep for write-up / information on prevalence in rodents. (reject at full text screening stage);
Babalola 2019	Lassa virus RNA detection from suspected cases in Nigeria, 2011-2017.	The Pan African medical journal	Exclusion reason: 5 no report of parameters ; Kelly McCain (2023-09-25 23:41:19)(Included): Reports only PCR results not seroprevalence; Juliette Unwin (2023-09-02 00:24:47)(Select): wouldn't you show this from the context part of the form. It's sort of an attack rate. Happy to be overruled though; David Jorgensen (2023-08-22 19:37:54)(Screen): sero in suspected cases not in the population;
Baumann 2019	Lassa and Crimean-Congo Hemorrhagic Fever Viruses, Mali.	Emerging infectious diseases	Exclusion reason: 4 case report/study; Juliette Unwin (2023-09-02 00:40:34)(Select): it's a dispatch so unclear if peer reviewed. unsure what would extract its sort of a cases study 2/xx samples positive;
Li 2023	Genetic basis underlying Lassa fever epidemics in the Mano River region, West Africa.	Virology	Exclusion reason: 5 no report of parameters ;
Douno 2021	Hunting and consumption of rodents by children in the Lassa fever endemic area of Faranah, Guinea.	PLoS neglected tropical diseases	Exclusion reason: 3 wrong pathogen / epi not main focus;
Kakaf' 2020	Improving Cross-Border Preparedness and Response: Lessons Learned from 3 Lassa Fever Outbreaks Across Benin, Nigeria, and Togo, 2017-2019.	Health security	Exclusion reason: 3 wrong pathogen / epi not main focus;
Nuismer 2020	Bayesian estimation of Lassa virus epidemiological parameters: Implications for spillover prevention using wildlife vaccination.	PLoS neglected tropical diseases	Exclusion reason: 3 wrong pathogen / epi not main focus; Juliette Unwin (2023-09-05 17:46:12)(Select): rodent model ;
Sesay 2022	Late diagnosis of Lassa fever outbreak in endemic areas lead to high mortality, Kenema District, Sierra Leone, February - March 2019.	The Pan African medical journal	Exclusion reason: 4 case report/study;
Forni 2020	Population structure of Lassa Mammarenavirus in West Africa.	Viruses	Exclusion reason: 5 no report of parameters ; Christian Morgenstern (2023-08-30 22:22:26)(Select): Genetic diversity clustered geographically;
Thielebein 2022	Virus persistence after recovery from acute Lassa fever in Nigeria: a 2-year interim analysis of a prospective longitudinal cohort study.	The Lancet. Microbe	Exclusion reason: 5 no report of parameters ;

Table G.16: Excluded studies at full text review with exclusion reason

Study	Title	Journal	Notes
Merson 2021	Clinical characterization of Lassa fever: A systematic review of clinical reports and research to inform clinical trial design.	PLoS neglected tropical diseases	Exclusion reason: 6 not original estimates/primary data; David Jorgensen (2023-08-16 23:39:25)(Screen): systematic review of clinical reports ;
Penfold 2023	A prospective, multi-site, cohort study to estimate incidence of infection and disease due to Lassa fever virus in West African countries (the Enable Lassa research programme)-Study protocol.	PloS one	Exclusion reason: 3 wrong pathogen / epi not main focus;
Eberhardt 2019	Ribavirin for the treatment of Lassa fever: A systematic review and meta-analysis.	International journal of infectious diseases : IJID : official publication of the International Society for Infectious Diseases	Exclusion reason: 6 not original estimates/primary data; David Jorgensen (2023-08-16 19:36:42)(Screen): systematic review/meta;
Kulkarni 2018	Case Report: Imported Case of Lassa Fever - New Jersey, May 2015.	The American journal of tropical medicine and hygiene	Exclusion reason: 4 case report/study;
Mari´n 2019	Evaluation of rodent control to fight Lassa fever based on field data and mathematical modelling.	Emerging microbes & infections	Exclusion reason: 3 wrong pathogen / epi not main focus; Christian Morgenstern (2023-08-27 01:41:38)(Select): Rodent based study;
Clark 2021	Domestic risk factors for increased rodent abundance in a Lassa fever endemic region of rural Upper Guinea.	Scientific reports	Exclusion reason: 3 wrong pathogen / epi not main focus; Juliette Unwin (2023-09-05 17:33:56)(Select): risks for rodents not Lassa;
Kraft 2020	Serosurvey on health-care personnel caring for patients with Ebola virus disease and Lassa virus in the United States.	Infection control and hospital epidemiology	Exclusion reason: 4 case report/study;
Mari´n 2020	Households as hotspots of Lassa fever? Assessing the spatial distribution of Lassa virus-infected rodents in rural villages of Guinea.	Emerging microbes & infections	Exclusion reason: 3 wrong pathogen / epi not main focus; Juliette Unwin (2023-09-05 22:19:43)(Select): rodent study;
Adesina 2023	Circulation of Lassa virus across the endemic Edo-Ondo axis, Nigeria, with cross-species transmission between multimammate mice.	Emerging microbes & infections	Exclusion reason: 3 wrong pathogen / epi not main focus; David Jorgensen (2023-08-22 01:26:51)(Select): Phylo but only in rats, could be nice for a future phylo model though; David Jorgensen (2023-08-16 19:42:03)(Screen): think it only covers rats but check full text;
Min 2021	An exploration of the protective effect of rodent species richness on the geographical expansion of Lassa fever in West Africa.	PLoS neglected tropical diseases	Exclusion reason: 3 wrong pathogen / epi not main focus; David Jorgensen (2023-08-25 23:49:55)(Select): risk factors ;

Table G.16: Excluded studies at full text review with exclusion reason

Study	Title	Journal	Notes
Overbosch 2020	Public health response to two imported, epidemiologically related cases of Lassa fever in the Netherlands (ex Sierra Leone), November 2019.	Euro surveillance : bulletin Europeen sur les maladies transmissibles = European communicable disease bulletin	Exclusion reason: 4 case report/study;
Ipadeola 2020	Epidemiology and case-control study of Lassa fever outbreak in Nigeria from 2018 to 2019.	The Journal of infection	Exclusion reason: 7 not peer reviewed;
Okoro 2020	Descriptive epidemiology of Lassa fever in Nigeria, 2012-2017.	The Pan African medical journal	Exclusion reason: 5 no report of parameters ;
Agbonlahor 2021	52 Years of Lassa Fever Outbreaks in Nigeria, 1969-2020: An Epidemiologic Analysis of the Temporal and Spatial Trends.	The American journal of tropical medicine and hygiene	Exclusion reason: 6 not original estimates/ primary data;
Kajero 2019	New methodologies for the estimation of population vulnerability to diseases: a case study of Lassa fever and Ebola in Nigeria and Sierra Leone.	Philosophical transactions of the Royal Society of London. Series B, Biological sciences	Exclusion reason: 5 no report of parameters ; David Jorgensen (2023-08-30 20:43:14)(Select): included but is a strange model without normal epi parameters reported;
Kayem 2020	Lassa fever in pregnancy: a systematic review and meta-analysis.	Transactions of the Royal Society of Tropical Medicine and Hygiene	Exclusion reason: 6 not original estimates/ primary data; David Jorgensen (2023-08-16 23:43:58)(Screen): systematic review ;
Wolf 2020	Fifty years of imported Lassa fever: a systematic review of primary and secondary cases.	Journal of travel medicine	Exclusion reason: 6 not original estimates/ primary data; David Jorgensen (2023-08-16 18:59:22)(Screen): systematic - check for inclusion criteria;
Kolawole 2021	Phylogenetic and Mutational Analysis of Lassa Virus Strains Isolated in Nigeria: Proposal for an In Silico Study.	JMIR research protocols	Exclusion reason: 5 no report of parameters ;
Salu 2019	Molecular confirmation and phylogeny of Lassa fever virus in Benin Republic 2014-2016.	African journal of laboratory medicine	Exclusion reason: 5 no report of parameters ; David Jorgensen (2023-08-16 19:29:02)(Screen): only 5 sequences reconstructed;
Okokhere 2016	Aseptic Meningitis Caused by Lassa Virus: Case Series Report.	Case reports in neurological medicine	Exclusion reason: 4 case report/study;
Wood 2021	Detection of Lassa virus in wild rodent feces: Implications for Lassa fever burden within households in the endemic region of Faranah, Guinea.	One health (Amsterdam, Netherlands)	Exclusion reason: 5 no report of parameters ; Juliette Unwin (2023-09-02 00:32:09)(Select): don't think any parameters we want to extract;
Smither 2023	Novel Tools for Lassa Virus Surveillance in Peri-domestic Rodents.	medRxiv : the preprint server for health sciences	Exclusion reason: 3 wrong pathogen / epi not main focus; Christian Morgenstern (2023-08-23 03:52:12)(Screen): pre-print;

Table G.16: Excluded studies at full text review with exclusion reason

Study	Title	Journal	Notes
Olayemi 2020	Determining Ancestry between Rodent and Human-Derived Virus Sequences in Endemic Foci: Towards a More Integral Molecular Epidemiology of Lassa Fever within West Africa.	Biology	Exclusion reason: 5 no report of parameters ;
Tahmo 2023	Modeling the Lassa fever outbreak synchronously occurring with cholera and COVID-19 outbreaks in Nigeria 2021: A threat to Global Health Security.	PLOS global public health	Exclusion reason: 3 wrong pathogen / epi not main focus; Christian Morgenstern (2023-09-01 22:26:58)(Select): time series model without disease transmission mechanism ; David Jorgensen (2023-08-16 19:16:01)(Screen): co-modelled ;
Simons 2022	Lassa fever cases suffer from severe under-reporting based on reported fatalities.	International health	Exclusion reason: 6 not original estimates/primary data; Juliette Unwin (2023-09-02 00:47:30)(Select): Review uses data from other places;
Bangura 2021	Lassa Virus Circulation in Small Mammal Populations in Bo District, Sierra Leone.	Biology	Exclusion reason: 3 wrong pathogen / epi not main focus;
Obionu 2021	Evaluation of infection prevention and control practices in Lassa fever treatment centers in north-central Nigeria during an ongoing Lassa fever outbreak.	Journal of infection prevention	Exclusion reason: 5 no report of parameters ; David Jorgensen (2023-08-25 23:58:25)(Select): No outcome data;
Akpede 2019	Corrigendum: Caseload and Case Fatality of Lassa Fever in Nigeria, 2001-2018: A Specialist Center's Experience and Its Implications.	Frontiers in public health	Exclusion reason: 1 duplicate; David Jorgensen (2023-08-26 00:50:00)(Select): Author name correction to a paper we already have;
Grahn 2016	Imported Case of Lassa Fever in Sweden With Encephalopathy and Sensorineural Hearing Deficit.	Open forum infectious diseases	Exclusion reason: 4 case report/study; Christian Morgenstern (2023-08-24 03:54:00)(Select): Single case, 118 close contacts with no onwards transmission;
Gobir 2019	Hygiene Practices in a Nigerian rural Community during Lassa Fever Epidemic.	Saudi journal of medicine & medical sciences	Exclusion reason: 5 no report of parameters ; David Jorgensen (2023-08-26 00:01:20)(Select): also not a full article; David Jorgensen (2023-08-16 19:03:39)(Screen): risk factor but no link to outcome ;
Whitlock 2023	Identifying the genetic basis of viral spillover using Lassa virus as a test case.	Royal Society open science	Exclusion reason: 5 no report of parameters ; David Jorgensen (2023-08-26 00:56:21)(Select): identifying genetic variants rather than epi parameters to do with spillover;
Begeman 2023	The pathogenesis of zoonotic viral infections: Lessons learned by studying reservoir hosts.	Frontiers in microbiology	Exclusion reason: 3 wrong pathogen / epi not main focus;
Simons 2023	Rodent trapping studies as an overlooked information source for understanding endemic and novel zoonotic spillover.	PLoS neglected tropical diseases	Exclusion reason: 5 no report of parameters ; David Jorgensen (2023-08-22 19:52:18)(Screen): meta-analysis;

Table G.16: Excluded studies at full text review with exclusion reason

Study	Title	Journal	Notes
Gulumbe 2023	Recurring Outbreaks of Lassa Fever in Nigeria: Understanding the Root Causes and Strategies for the Future	SUDAN JOURNAL OF MEDICAL SCIENCES	Exclusion reason: 5 no report of parameters ;
Alli 2021	Management of Lassa Fever: A Current Update	CUREUS JOURNAL OF MEDICAL SCIENCE	Exclusion reason: 6 not original estimates/ primary data; David Jorgensen (2023-08-16 19:44:17)(Screen): systematic review ;
Adewole 2022	Lassa fever in pregnancy: Report of two maternal deaths in a tertiary center in the middle-belt region of Nigeria	AFRICAN JOURNAL OF REPRODUCTIVE HEALTH	Exclusion reason: 4 case report/study;
Balogun 2021	Lassa Fever: An Evolving Emergency in West Africa	AMERICAN JOURNAL OF TROPICAL MEDICINE AND HYGIENE	Exclusion reason: 6 not original estimates/ primary data;
MONATH 1975	LASSA FEVER - REVIEW OF EPIDEMIOLOGY AND EPIZOOTIOLOGY	BULLETIN OF THE WORLD HEALTH ORGANIZATION	Exclusion reason: 6 not original estimates/ primary data; David Jorgensen (2023-08-26 01:09:57)(Select): Seems to be some unpublished data but is zero seroprevalence data; David Jorgensen (2023-08-16 18:34:59)(Screen): review - check refs;
Uyigue 2018	IMMUNE RESPONSE PROFILING OF SUSPECTED LASSA FEVER CASES AT IRRUA SPECIALIST TEACHING HOSPITAL DURING 2018 LASSA FEVER OUTBREAK	AMERICAN JOURNAL OF TROPICAL MEDICINE AND HYGIENE	Exclusion reason: 7 not peer reviewed; Christian Morgenstern (2023-09-04 19:37:20)(Select): conference abstract; Christian Morgenstern (2023-09-02 18:16:27)(Select): requested from library; David Jorgensen (2023-08-25 23:50:49)(Select): can't find ;
Oyegoke 2020	Lassa fever outbreak in Bauchi state, Nigeria January to April 2019	INTERNATIONAL JOURNAL OF INFECTIOUS DISEASES	Exclusion reason: 7 not peer reviewed; Juliette Unwin (2023-09-02 00:49:55)(Select): outbreak data;
WULFF 1975	INDIRECT IMMUNOFLUORESCENCE FOR DIAGNOSIS OF LASSA FEVER INFECTION	BULLETIN OF THE WORLD HEALTH ORGANIZATION	Exclusion reason: 3 wrong pathogen / epi not main focus;
KILEY 1986	SEROLOGICAL AND BIOLOGICAL EVIDENCE THAT LASSA-COMPLEX ARENAVIRUSES ARE WIDELY DISTRIBUTED IN AFRICA	MEDICAL MICROBIOLOGY AND IMMUNOLOGY	Exclusion reason: 5 no report of parameters ; Christian Morgenstern (2023-08-22 21:00:26)(Select): sero study in rodent population only;
Mba 2020	A description of Lassa Fever mortality during the 2019 outbreak in Nigeria	INTERNATIONAL JOURNAL OF INFECTIOUS DISEASES	Exclusion reason: 8 No full text; Christian Morgenstern (2023-08-30 21:10:58)(Select): Abstract only in a supplement;
Ilesanmi 2019	MORTALITY AMONG CONFIRMED LASSA FEVER CASES DURING THE 2017-2019 OUTBREAK IN ONDO STATE, NIGERIA	TRANSACTIONS OF THE ROYAL SOCIETY OF TROPICAL MEDICINE AND HYGIENE	Exclusion reason: 7 not peer reviewed; David Jorgensen (2023-08-30 18:30:56)(Select): wrong journal for the article - probably a conference presentation?;

Table G.16: Excluded studies at full text review with exclusion reason

Study	Title	Journal	Notes
Siddle 2018	GENOMIC EPI-DEMOLOGY OF LASSA VIRUS IN NIGERIA DURING A SEASON OF UNUSUALLY HIGH INCIDENCE	AMERICAN JOURNAL OF TROPICAL MEDICINE AND HYGIENE	Exclusion reason: 7 not peer reviewed; Christian Morgenstern (2023-09-04 19:38:26)(Select): conference abstract; Christian Morgenstern (2023-09-02 18:17:52)(Select): requested from library to confirm; David Jorgensen (2023-08-26 00:30:50)(Select): Probably a conference title - seemed to come out in nejm with a different title;
Uzoma 2020	Increasing trend of Lassa fever outbreak in Nigeria: The more you look, the more you see	INTERNATIONAL JOURNAL OF INFECTIOUS DISEASES	Exclusion reason: 6 not original estimates/ primary data; Christian Morgenstern (2023-08-31 22:45:51)(Select): abstract in supplement; David Jorgensen (2023-08-16 18:29:57)(Screen): Review ; Natsuko Imai (2023-08-16 01:26:45)(Screen): Background: Lassa fever (LF) is an acute viral hemorrhagic fever endemic in Nigeria. The bane of endemicity of LF has reached an unprecedented proportion in recent years; with each yearly outbreak bigger in cases, deaths and spread, compared to the previous years. A critical review of the increase and associated factors are presented in this paper. Methods and materials: This study is based on desk review, analysis of secondary data, review of surveillance indicators and Key Informant Interviews (KII) with members of the National Lassa Fever Technical Working Group at the Nigeria Centre for Disease Control. Case definition for suspected and confirmed cases of Lassa fever were interpreted as contained in the National IDSR Guideline. Prevalence, Case Fatality Rate (CFR) and Timeliness of report were computed and compared across the three years. Results: The study observed that reliable Lassa fever data was unavailable at the national level before 2017. However, in 2017, 1022 suspected cases were identified in 19 states and 322 tested positive for Lassa fever. Between 2017 and 2018, states have received training and tools on Lassa fever surveillance, state surveillance and response structure had been standardized and preparedness assessment were carried out. Case detection started early in 2018 and by December, 3498 suspects were identified representing about three-fold increase over previous year, and 633 cases tested positive. With further strengthening of the surveillance system in 2019, a total of 4099 suspected cases were identified with 739 confirmed for weeks 1-41, 2019. Similarly, deaths among cases increased from 127 (39.4% CFR) to 171 (27% CFR) to 154 (20.8% CFR) over the same time period. Conclusion: The period between 2016 and 2019 signify the improvement of the surveillance system for infectious diseases in Nigeria. The result can be translated to mean increase in number of cases of Lassa fever detection. The percent increase from 2018 to 2019 is 17% and this would continue to reduce until we reach an equilibrium. Only until this happens can we speculate on the burden of LF or we can also conduct a seroprevalence study to determine the true burden of the infectious disease.;
Belhadi 2022	The number of cases, mortality and treatments of viral hemorrhagic fevers: A systematic review	PLOS NEGLECTED TROPICAL DISEASES	Exclusion reason: 6 not original estimates/ primary data; David Jorgensen (2023-08-16 19:47:45)(Screen): systematic review but covers multiple hemorrhagic fevers;

Table G.16: Excluded studies at full text review with exclusion reason

Study	Title	Journal	Notes
Agboeze 2020	Epidemiological investigation of Lassa fever outbreak in a resource limited setting: Lessons learnt. (January to March 2018)	INTERNATIONAL JOURNAL OF INFECTIOUS DISEASES	Exclusion reason: 7 not peer reviewed; David Jorgensen (2023-08-22 01:33:07)(Select): conference abstract; Natsuko Imai (2023-08-16 01:41:45)(Screen): Background: An outbreak of Lassa Fever (LF) reported and confirmed in Ebonyi state, Southwest Nigeria in January 2018 was investigated. This article provides the epidemiology of the LF and lessons learnt from the investigation of the outbreak. Methods and materials: The Emergency operational centre (EOC) model was used for the outbreak coordination. Cases and deaths were identified through the routine surveillance system using standard definitions for suspected and confirmed cases and deaths respectively. Blood specimens collected from suspected cases were sent for confirmation at the virology centre Abakaliki. Active case search was intensified, and identified contacts of confirmed cases were followed up for the maximum incubation period of the disease. Other public health responses included infection prevention and control, communication and advocacy as well as case management. Data collected were analysed using Epi info, by time, place and persons and important lessons drawn were discussed. Results: We identified 89 suspected LF cases of which 61 were confirmed with mean age of 35±16.2. More than half (59.7%) of the confirmed cases were females and the age group mostly affected was 30-39 years. Majority of the cases presented late. The Case Fatality Rate (CFR) was 68.5% among the laboratory confirmed cases. Among the health care workers 5 confirmed cases died. Three hundred and twenty-five contacts of the confirmed cases were identified, out of which 304(99.7%) completed the follow-up without developing any symptoms and 1(0.3%) developed symptoms consistent with LF and was confirmed by the laboratory. Conclusion: Key lessons learnt from the investigation were: high fatality rate in those presenting late to the hospital and especially in those presenting with complications underscore the need for intensive public enlightenment that encourages early presentation to hospital, majority of the confirmed cases were primary cases hence efforts should be intensified in breaking the chain of transmission in the animal-human interphase, death of health-care workers involved in management of Lassa fever raises the importance of providing life insurance. The presence of virology centre and the impact of both local and international partners contributed significantly in curbing the outbreak.;
Ulor 2020	Environmental determinants and markers of Lassa fever transmission in a low socioeconomic community in Akure, southwestern Nigeria	INTERNATIONAL JOURNAL OF INFECTIOUS DISEASES	Exclusion reason: 5 no report of parameters ; Christian Morgenstern (2023-08-17 00:18:46)(Select): Supplement, not the actual article; David Jorgensen (2023-08-16 18:52:46)(Screen): risk factor ;

Table G.16: Excluded studies at full text review with exclusion reason

Study	Title	Journal	Notes
Ejembi 2020	Knowledge and attitude of community members and health care workers on Lassa fever during an outbreak in Kogi State, Nigeria 2016	INTERNATIONAL JOURNAL OF INFECTIOUS DISEASES	Exclusion reason: 7 not peer reviewed; David Jorgensen (2023-08-30 18:34:04)(Select): supplement - conference presentation?;
Chika-Igwenyi 2020	Another form of Lassa fever? Early neurological symptoms and high mortality reveal differences in two outbreaks in Ebonyi State, Nigeria 2017-2019	INTERNATIONAL JOURNAL OF INFECTIOUS DISEASES	Exclusion reason: 7 not peer reviewed; Juliette Unwin (2023-09-05 22:46:48)(Select): conference; Natsuko Imai (2023-08-16 01:57:01)(Screen): Background: Lassa fever (LF) is an acute viral haemorrhagic illness with various clinical manifestations. Neurological symptoms are not commonly present at the early stage of the disease; however, early manifestation of central nervous system features depicts poor prognostication. In Ebonyi state, an unusual pattern was observed between two outbreaks with patients presenting early neurological symptoms and a high mortality rate in the second outbreak. The study described the epidemiological evolution, socio-demographic profiles, clinical characteristics and patients' outcomes. Methods and materials: A retrospective analytic analysis of routinely collected clinical data was conducted of all confirmed and probable LF patients admitted to the Virology Centre of the AEFUTHA in Ebonyi State, December 2017 to January 2019. Results: In a total of 83 cases, 70 were RT-PCR confirmed and 13 probable cases. In outbreak 1, 69 were seen with 53.6% being urban residents, 19% farmers, 15% students, and 10% health workers. Fourteen cases were seen in outbreak 2 with 92.9% rural residents, 58.3% being farmers and 49.9% students. There were differences in clinical and laboratory signs and symptoms between the two outbreaks with neurological symptoms present 43% of the time in outbreak 1 and 93% in outbreak 2 ($p=0.001$), with a shorter time of onset for these symptoms in outbreak 2. The mortality rate was 85.7% in outbreak 2 versus 29.9% in outbreak 1 ($p=0.001$). Patients with neurological symptoms, who were more common in outbreak 2 had a RR of dying of 8.5 compared to those without. Conclusion: This study revealed a different form of LF that is of great concern due to its high mortality rate. Further studies are needed to better define its characteristics;
Starnes 2021	Diagnosis and Management of Lassa Fever Among Children in Eastern Province, Sierra Leone: A 7-year Retrospective Analysis	PEDIATRICS	Exclusion reason: 7 not peer reviewed; Christian Morgenstern (2023-09-02 18:34:37)(Select): contains risk factors for children but is meeting / conference abstract;
Adeyemi 2019	LASSA FEVER SEROPREVALENCE IN PLATEAU STATE, NIGERIA	AMERICAN JOURNAL OF TROPICAL MEDICINE AND HYGIENE	Exclusion reason: 7 not peer reviewed; Christian Morgenstern (2023-09-04 19:41:59)(Select): conference abstract; Christian Morgenstern (2023-09-02 18:30:55)(Select): requested from library; Juliette Unwin (2023-09-02 02:26:11)(Select): I think this one is probably from a conference as one page; David Jorgensen (2023-08-22 01:30:43)(Select): can't find ;

Table G.16: Excluded studies at full text review with exclusion reason

Study	Title	Journal	Notes
FRAME 1992	THE STORY OF LASSA FEVER .3. THE DISEASE IN THE COMMUNITY	NEW YORK STATE JOURNAL OF MEDICINE	Exclusion reason: 6 not original estimates/primary data; Patrick Doohan (2023-09-06 02:43:14)(Select): Available in paper copy in the office; David Jorgensen (2023-08-16 18:33:36)(Screen): Can't find, could be some epi?;
Fichet-Calvet 2019	Estimation of Lassa virus emergence in Upper Guinea through a time-calibrated phylogeny	VIRUS EVOLUTION	Exclusion reason: 7 not peer reviewed; Christian Morgenstern (2023-08-30 22:43:03)(Select): Abstract in supplement only;
HOLMES 1990	LASSA FEVER IN THE UNITED-STATES - INVESTIGATION OF A CASE AND NEW GUIDELINES FOR MANAGEMENT	NEW ENGLAND JOURNAL OF MEDICINE	Exclusion reason: 4 case report/study; Christian Morgenstern (2023-08-24 04:18:11)(Select): single case report, 102 contacts with no onward transmission;
MORENS 1980	LONGITUDINAL SURVEILLANCE OF LASSA FEVER IN A WEST-AFRICAN VILLAGE WITH ENDEMIC DISEASE - A ONE-YEAR REPORT	AMERICAN JOURNAL OF EPIDEMIOLOGY	Exclusion reason: 7 not peer reviewed; Christian Morgenstern (2023-09-04 22:41:14)(Select): conference abstract;

Table G.16: Excluded studies at full text review with exclusion reason

H Pathogen Epidemiology Review Group (PERG) Membership

First Name	Surname	Affiliation
Aaron	Morris	University of Oxford
Alpha	Forna	University of Georgia
Amy	Dighe	Johns Hopkins
Anne	Cori	Imperial College London
Arran	Hamlet	Imperial College London
Ben	Lambert	Manchester University
Charlie	Whittaker	Imperial College London
Christian	Morgenstern	Imperial College London
Cyril	Geismar	Imperial College London
Dariya	Nikitin	Imperial College London
David	Jorgensen	Imperial College London
Ed	Knock	Imperial College London
Ettie	Unwin	Imperial College London
Gina	Cuomo-Dannenburg	Imperial College London
Hayley	Thompson	PATH
Isobel	Routledge	UCSF
Janetta	Skarp	Imperial College London
Joseph	Hicks	Imperial College London
Keith	Fraser	Imperial College London
Kelly	Charniga	Imperial College London
Kelly	McCain	Imperial College London
Lily	Geidelberg	Imperial College London
Lorenzo	Cattarino	UKHSA
Mara	Kont	Imperial College London
Marc	Baguelin	Imperial College London
Natsuko	Imai	Imperial College London
Nima	Moghaddas	Imperial College London
Patrick	Doohan	Imperial College London
Rebecca	Nash	Imperial College London
Ruth	McCabe	University of Oxford
Sabine	van Elsland	Imperial College London
Sangeeta	Bhatia	Imperial College London
Sreejith	Radhakrishnan	University of Glasgow
Zulma	Cucunuba Perez	Pontificia Universidad Javeriana
Jack	Wardle	Imperial College London
Thomas	Rawson	Imperial College
Richard	Sheppard	Imperial College
Tristan	Naidoo	Imperial College

Table H.17: Pathogen Epidemiology Review Group (PERG) membership

References

1. Lipsitch M, Donnelly CA, Fraser C, Blake IM, Cori A, Dorigatti I, Ferguson NM, Garske T, Mills HL, Riley S, et al. Potential biases in estimating absolute and relative case-fatality risks during outbreaks. *PLoS neglected tropical diseases* 2015; 9:e0003846
2. Balduzzi S, Rücker G, and Schwarzer G. How to perform a meta-analysis with R: a practical tutorial. *Evidence-Based Mental Health* 2019 :153–60
3. Harrer M, Cuijpers P, A FT, and Ebert DD. *Doing Meta-Analysis With R: A Hands-On Guide*. 1st. Boca Raton, FL and London: Chapman & Hall/CRC Press, 2021
4. Cai S, Zhou J, and Pan J. Estimating the sample mean and standard deviation from order statistics and sample size in meta-analysis. *Statistical methods in medical research* 2021; 30:2701–19
5. Page MJ, McKenzie JE, Bossuyt PM, Boutron I, Hoffmann TC, Mulrow CD, Shamseer L, Tetzlaff JM, Akl EA, Brennan SE, et al. The PRISMA 2020 statement: an updated guideline for reporting systematic reviews. *International journal of surgery* 2021; 88:105906