

1 Dissecting depression symptoms: 2 multi-omics clustering uncovers 3 immune-related subgroups and cell- 4 type specific dysregulation

5 Jonas Hagenberg^{a, b, c} jonas_hagenberg@psych.mpg.de,

6 BeCOME study group^a,

7 OPTIMA study group^a,

8 Tanja M. Brückl^a brueckl@psych.mpg.de,

9 Mira Erhart^{a, b} mira_erhart@psych.mpg.de,

10 Johannes Kopf-Beck^{a, d} Kopf-Beck@psy.lmu.de,

11 Maik Ködel^a koedel@psych.mpg.de,

12 Ghalia Rehawi^{a, c} ghalia_rehawi@psych.mpg.de,

13 Simone Röh-Karamihalev^a simone_roeh@psych.mpg.de,

14 Susann Sauer^a sauer@psych.mpg.de,

15 Natan Yusupov^{a, b} natan_yusupov@psych.mpg.de,

16 Monika Rex-Haffner^a rexhaffner@psych.mpg.de,

17 Victor I. Spoomaker^a spoomaker@psych.mpg.de,

18 Philipp Sämann^a saemann@psych.mpg.de,

19 Elisabeth Binder^{a, e} binder@psych.mpg.de,

20 Janine Knauer-Arloth^{a, c, #} arloth@psych.mpg.de

21

22 a Max Planck Institute of Psychiatry, Kraepelinstr. 2-10, 80804 Munich, Germany

NOTE: This preprint reports new research that has not been certified by peer review and should not be used to guide clinical practice.

23 b International Max Planck Research School for Translational Psychiatry, 80804 Munich,
24 Germany

25 c Institute of Computational Biology, Helmholtz Zentrum München, Ingolstädter Landstraße
26 1, 85764 Neuherberg, Germany

27 d Department of Psychology, LMU Munich, Leopoldstr. 13, 80802 Munich, Germany

28 e Department of Psychiatry and Behavioral Sciences, Emory University School of Medicine,
29 100 Woodruff Circle, Atlanta GA 30322, USA

30 # corresponding author

31 Additional information

32 - wordcount: 6666

33 - no color for figures in print

34 Abstract

35 In a subset of patients with mental disorders, such as depression, low-grade inflammation
36 and altered immune marker concentrations are observed. However, these immune
37 alterations are often assessed by only one data type and small marker panels. Here, we
38 used a transdiagnostic approach and combined data from two cohorts to define subgroups
39 of depression symptoms across the diagnostic spectrum through a large-scale multi-omics
40 clustering approach in 237 individuals. The method incorporated age, body mass index
41 (BMI), 43 plasma immune markers and RNA-seq data from peripheral mononuclear blood
42 cells (PBMCs). Our initial clustering revealed four clusters, including two immune-related
43 depression symptom clusters characterized by elevated BMI, higher depression severity and
44 elevated levels of immune markers such as interleukin-1 receptor antagonist (IL-1RA), C-
45 reactive protein (CRP) and C-C motif chemokine 2 (CCL2 or MCP-1). In contrast, the RNA-
46 seq data mostly differentiated a cluster with low depression severity, enriched in brain

47 related gene sets. This cluster was also distinguished by electrocardiography data, while
48 structural imaging data revealed differences in ventricle volumes across the clusters.
49 Incorporating predicted cell type proportions into the clustering resulted in three clusters,
50 with one showing elevated immune marker concentrations. The cell type proportion and
51 genes related to cell types were most pronounced in an intermediate depression symptoms
52 cluster, suggesting that RNA-seq and immune markers measure different aspects of immune
53 dysregulation. Lastly, we found a dysregulation of the *SERPINF1/VEGF-A* pathway that was
54 specific to dendritic cells by integrating immune marker and RNA-seq data. This shows the
55 advantages of combining different data modalities and highlights possible markers for further
56 stratification research of depression symptoms.

57

58 Keywords

59 Major depressive disorder; Immunopsychiatry; CRP; IL-1RA; Multi-omics; Transdiagnostic;
60 BMI; Chemokines; RNA-seq

61 1. Introduction

62 Mental disorders significantly impact human health, health care systems, and economies,
63 accounting for up to 16% of global disability-adjusted life years (Arias, Saxena, and Verguet
64 2022). Despite this substantial impact, the development of effective and innovative
65 treatments remains a challenge (O'Donnell et al. 2019). Major depressive disorder (MDD)
66 exemplifies these challenges, being the foremost psychiatric contributor to global disability
67 (Vos et al. 2020).

68

69 The difficulty in understanding the underlying molecular causes of MDD arises from its
70 biological heterogeneity. MDD manifests with a wide range of symptoms and is often

71 comorbid with other mental disorders (Kessler et al. 2017; Kaufman and Charney 2000),
72 which complicates its precise characterization. While the heritability of depression has been
73 known for decades (McGuffin et al. 1996), genome-wide associations studies (GWASs)
74 using minimal phenotyping have only yielded significant insights with extremely large sample
75 sizes (Howard et al. 2019). Adopting a transdiagnostic approach that includes disorders
76 across diagnostic categories and uses biological pathways, revealed associations between
77 GWAS findings from MDD, schizophrenia and bipolar disorder with cytokine and immune
78 pathways (O'Dushlaine et al. 2015).

79

80 Further evidence supports the pivotal role of the immune system in the pathology of MDD.
81 Stress, a risk factor for depression, can lead to increased inflammation (Hammen 2015;
82 Rohleder 2019). Accordingly, a subgroup of roughly 30% of MDD patients shows a
83 proinflammatory profile - often referred to as low-grade inflammation - characterized by
84 elevated levels of C-reactive protein (CRP) (Osimo et al. 2019). Our recent research
85 corroborated this observation of immune-related depression, demonstrating genetic
86 correlation between increased CRP level and depressive symptoms, e.g., tiredness,
87 changes in appetite, anhedonia and feelings of inadequacy (Kappelmann et al. 2021).
88 Immune markers such as interleukin (IL)-6, IL-1beta and tumor necrosis factor (TNF) are
89 often measured to evaluate immune dysregulation (Haapakoski et al. 2015) and contain
90 genetic variants relevant for depression (Barnes, Mondelli, and Pariante 2017). Several
91 studies have provided evidence that an inflammatory stimulus can lead to depressed mood,
92 and that the pre-existing inflammatory status can predict the severity (Lasselin et al. 2020;
93 Cho et al. 2019). For an overview on how cytokines and immune cells may mediate
94 depressive symptoms see Miller and Raison 2016.

95

96 Many studies have employed case-control designs to find differences in immune markers
97 between individuals with depression and healthy controls (Wittenberg et al. 2020; Sørensen
98 et al. 2023; Sforzini et al. 2023). At the same time, various studies have established the link

99 between specific depressive symptom profiles and inflammation. Increased inflammation has
100 been observed in patients with dysregulated metabolism (immuno-metabolic depression)
101 and linked to anhedonia (Lamers et al. 2013; Milaneschi et al. 2020; Felger et al. 2016;
102 Lucido et al. 2021). A study by Franklyn et al. 2022 found that inflammation is associated
103 with symptoms like altered eating patterns, appetite and tiredness. Lynall et al. 2020
104 focusing on immune cell counts, identified a subgroup of depressed patients with increased
105 levels of monocytes, CD4+ T cells and neutrophils. This subgroup also demonstrated
106 increased CRP and IL-6 levels, correlating with more severe depressive symptoms.

107

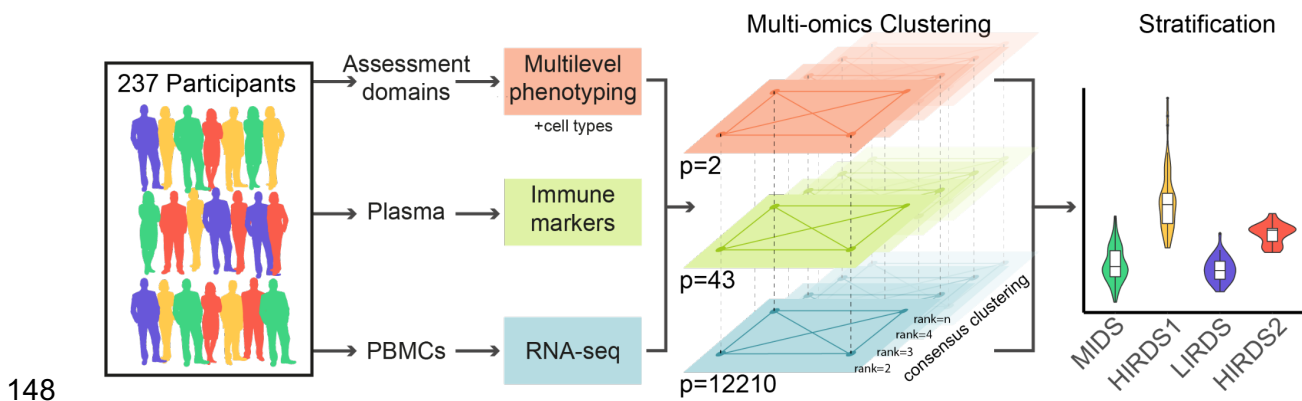
108 The potential of an inflammatory subtype goes beyond symptom profiles, as a study by
109 Cattaneo et al. 2020 identified differences in whole blood gene expression related to
110 inflammation that differentiate patients with treatment-resistant depression from those
111 responding to treatment. Such findings highlight the potential of precisely characterizing
112 immune dysfunction within MDD, aiming to identify patients who might benefit significantly
113 from targeted immunomodulation. In recent years, several randomized control trials
114 evaluated the effectiveness of adding an anti-inflammatory medication to antidepressants.
115 Some of these trials adopted elevated CRP concentration as an inclusion criterion or a
116 measure for secondary analyses. While there is some evidence for beneficial effects (Savitz
117 et al. 2018; Köhler-Forsberg et al. 2019; Nettis et al. 2021), several other studies reported no
118 discernible differences between patients treated with anti-inflammatory medication or those
119 receiving placebos (Husain et al. 2020; Hellmann-Regen et al. 2022), even when stratified
120 by CRP (Baune et al. 2021). Inspired by advancements in cancer research, Miller and
121 Raison 2023 suggest shifting from traditional diagnostic evaluations to focusing on
122 symptoms influenced by inflammation, such as anhedonia, changes in appetite and sleep
123 (Drevets et al. 2022). This shift underpins our use of a transdiagnostic cohort, aiming to
124 transcend diagnostic boundaries and explore common biological underpinnings across
125 psychiatric conditions.

126

127 This push towards a more integrative and holistic understanding aligns with the broader field
128 of psychoneuroimmunology. Traditionally, many studies in this area have relied on single
129 omics approaches (e.g., transcriptomics or protein concentrations of peripheral immune
130 markers). However, with the recent advancements in multi-omics techniques such as
131 clustering or factor analysis methods (Li et al. 2021), there is an opportunity to integrate
132 these individual omics data sets. Together with data from psychological assessments,
133 imaging, and wearable devices (Moshe et al. 2021; Seppälä et al. 2019), we can further
134 elucidate the complex interplay between the immune system and mental disorders by
135 correlating molecular disease pathologies with clinical data (Mengelkoch et al. 2023; Halaris
136 et al. 2019).

137 Building on this integrated approach, we selected a transdiagnostic sample of 237
138 individuals from two different cohorts with broad clinical assessments. Our goal was to
139 comprehensively explore the relationship between the immune system and depression
140 symptoms across the diagnostic spectrum utilizing multi-omics clustering techniques and
141 considering a range of diagnoses of mental disorders. We hypothesized that distinct
142 subgroups, defined by biological indicators of inflammation, would show different clinical and
143 behavioral profiles. Furthermore, we measured an immune marker panel ($p=43$ markers)
144 and the RNA-sequencing (seq) data ($p=12210$ genes) from their plasma and peripheral
145 blood mononuclear cells (PBMCs), respectively. Using both the immune markers and RNA-
146 seq data, we clustered the participants and characterized the unique clinical profiles of each

147 subgroup (Figure 1).



149 *Figure 1: Analysis overview: 237 participants with a DSM-IV (subthreshold) diagnosis according to the Munich-*
150 *Composite International Diagnostic Interview were clustered with a multi-omics clustering. The different layers*
151 *contained phenotypes (age and BMI, orange), 43 immune markers measured in plasma (green) and RNA-seq*
152 *from peripheral blood mononuclear cells (PBMCs, blue). The clustering was performed repeatedly as a*
153 *consensus clustering on subsets of the data to obtain stability metrics for the optimal number of clusters. The*
154 *stratification into clusters was characterized by several phenotypes. MIDS = mild depression symptoms cluster,*
155 *HIRDS = high immune-related depression symptoms cluster, LIRDS = low immune-related depression symptoms*
156 *cluster.*

157 2. Methods

158 For detailed methods see the Supplementary Methods.

159 2.1 Sample selection

160 The study sample comprised 246 participants from the Biological Classification of Mental
161 Disorders (BeCOME) study (ClinicalTrials.gov: NCT03984084, Bruckl et al. 2020) and 115
162 participants from the OPTimized Treatment Identification at the MAx Planck Institute
163 (OPTIMA) study (ClinicalTrials.gov: NCT03287362, Kopf-Beck et al. 2020). The Munich-
164 Composite International Diagnostic Interview (DIA-X/M-CIDI, Wittchen et al. 1995; Wittchen
165 and Pfister 1997) was employed to assess all participants. Out of these with immune marker
166 measurement, 237 affected participants (BeCOME=134, OPTIMA=103, Figure S1) met
167 either threshold or subthreshold DSM-IV DIA-X/M-CIDI criteria for any substance use,

168 affective or anxiety disorder including post-traumatic stress disorder and obsessive-
169 compulsive disorder within the last 12 months. 192 of these participants had a
170 (subthreshold) DSM-IV diagnosis of major depression or dysthymia. We also included 36
171 mentally healthy participants from the BeCOME study without any DSM-IV IDA-X/M-CIDI
172 diagnosis as controls.

173 2.2 Ethics approval and informed consent

174 The BeCOME and OPTIMA studies were approved by the ethics committee of the Ludwig
175 Maximilian University, in Munich, Germany, under the reference numbers 350–14 and 17–
176 395, respectively. Written informed consent was obtained from all participants before study
177 enrollment.

178 2.3 Assessments

179 2.3.1 Questionnaire data

180 All participants were assessed by the Beck Depression Inventory (BDI) II (Hautzinger, Keller,
181 and Kühner 2006) and the Montgomery–Åsberg Depression Rating Scale (MADRS,
182 Schmidtke et al. 1988). An overview about the sample characteristics for this subset are
183 provided in Table 1, for more details see Table S1.

184

185 *Table 1: Cohort overview with either percent of participants and absolute numbers in brackets or mean and*
186 *standard deviation in brackets. The depression diagnosis was assessed by the Munich-Composite International*
187 *Diagnostic Interview and includes full and subthreshold cases. Psychotropic drugs include antidepressants,*
188 *moodstabilizer, neuroleptics, tranquilizer and herbal psychotropics. BDI = Beck Depression Inventory. Information*

189 on other diagnoses of mental disorders are available in Figure S5, on somatic diseases and medication in Table
 190 S1. MDD = major depressive disorder

status	n	age	female	BMI	MDD or dysthymia diagnosis	BDI	psychotropic drugs
case	237	38.8 (13.3)	58% (138)	25 (5.2)	81% (192)	23.6 (13.2)	43% (103)
control	36	31.4 (9.4)	61% (22)	23.7 (2.8)	0% (0)	2 (2.9)	0% (0)

191 2.3.2 Blood collection

192 Blood was collected in the morning under fasted conditions, peripheral blood mononuclear
 193 cells (PBMCs) were extracted and stored at the biobank.

194 2.3.3 Immune marker measurements

195 We used the V-PLEX Human Biomarker 54-Plex Kit (Meso Scale Diagnostics (MSD),
 196 Rockville, USA, Cat. No. K15248G-2) to measure immune markers in plasma. In addition,
 197 enzyme-linked immunosorbent assay (ELISA) was used to measure the following markers:
 198 high-sensitivity C-reactive protein (hsCRP, Tecan Group Ltd., Männedorf, Switzerland, Cat.
 199 No. EU59151), cortisol (Tecan Group Ltd., Männedorf, Switzerland, Cat No. RE52061),
 200 interleukin (IL)-6 (Thermo Fisher Scientific, Waltham, USA, Cat. No. BMS213HS), IL-6
 201 soluble receptor (sIL-6R, Thermo Fisher Scientific, Waltham, USA, Cat. No. BMS214) and
 202 IL-13 (Thermo Fisher Scientific, Waltham, USA, Cat. No. BMS231-3). All assays were
 203 performed according to the manufacturer's instructions. Immune markers with high
 204 sensitivity alternatives or with more than 16% missing values, along with participants

205 showing hsCRP levels suggestive of acute infection, were excluded. This resulted in 43
206 markers and 273 participants remaining for analysis (Table S2 and Figure S1).

207 2.3.4 RNA extraction and sequencing

208 The RNA was extracted with the chemagic 360 instrument (PerkinElmer, Waltham, USA),
209 rRNA depleted, libraries prepared with the Lexogen CORALL total RNA-Seq Library Prep Kit
210 with UDIs 12 nt Sets A1-A4 (Cat. No. 117.96, 132.96, 133.96, 134.96) and sequenced on an
211 NovaSeq 6000 (Illumina, San Diego, USA) yielding an average of 30.6 million paired reads
212 per library.

213 2.3.5 Structural magnetic resonance imaging (MRI) data assessment

214 151 affected participants (BeCOME=117 and OPTIMA=34) and 29 healthy controls had high
215 resolution T1-weighted images with the identical sequence in both original studies (Sagittal
216 FSPGR 3D BRAVO, TE 2.3 ms, TR 6.2 ms, TI 450 ms, FA 12°, FOV 25.6 × 25.6 × 20.0
217 cm³, matrix 256 × 256, voxel size 1 × 1 × 1 mm³) available.

218 2.3.6 Electrocardiography data assessment

219 149 affected participants (BeCOME=108 and OPTIMA=41) and 32 healthy controls had an
220 electrocardiography (ECG) recording that spanned 24h including a sleeping period with the
221 portable ECG-device Faros 180 (Mega Electronics Ltd, Kuopio, Finland) at a sampling
222 frequency of 500 Hz available.

223 2.4 Data analysis

224 2.4.1 Immune marker analysis

225 The immune markers were quantile-normalized and corrected for the biobank storage
226 position. For each immune marker, a linear model was fitted in R version 4.0.2 (R Core

227 Team 2023) to regress out the batch variable. The residuals from this regression were then
228 used for downstream analysis.

229 2.4.2 RNA-seq analysis

230 The reads were aligned to GRCh38.p12 (Ensembl version 97, Martin et al. 2023) with STAR
231 version 2.7.7a (Dobin et al. 2013) and counted with featureCounts version 1.6.4 (Liao,
232 Smyth, and Shi 2014).
233 Quality control and exclusion of genes with few counts or high GC content influence left 229
234 affected participants, 33 controls and 12210 genes (Figure S1). The data was sequentially
235 corrected for the GC content and a preparation batch variable with ComBat_seq from the
236 sva package version 3.38.0 (Leek et al. 2021) and normalized with vst from DESeq2 version
237 1.30.1 (Love et al. 2021).

238 2.4.3 Cell type deconvolution

239 The filtered RNA-seq count data, which was not batch-corrected, was converted to TPM and
240 deconvoluted using the granulator package version 1.6.0 (Pfister, Kuettel, and Ferrero 2023)
241 in R version 4.2.0 (R Core Team 2023). All cell types with a standard variation of less than
242 0.5 were excluded, resulting in 14 cell types.

243 2.4.4 Multi-omics clustering and statistical analysis of cluster differences

244 Each variable of the normalized and batch corrected immune marker and RNA-seq data as
245 well as age and BMI was standardized, the distance between the participants calculated and
246 the clustering method SUMO version 0.3.0 (Sienkiewicz et al. 2022) was applied repeatedly
247 on a subsample to calculate stability metrics for selecting the number of clusters.

248 If not otherwise stated, we used R version 4.0.2 (R Core Team 2023) and determined the
249 variable importance based on the F-value from ANOVA tests. A higher variable importance
250 indicates a more distinct separation between the clusters. For continuous variables not used

251 in the clustering, we applied the Tukey Honest Significant Differences (TukeyHSD) test and
252 reported adjusted p-values, for categorical variables the Fisher's exact test.
253 We did not report p-values for group differences for variables that were used in the clustering
254 as differences were anticipated (Kriegeskorte et al. 2009).

255 2.4.5 Gene set analysis

256 For each participant, a score was calculated for every biological process and molecular
257 function GO term gene set using GSVA version 1.36.3. (Hänzelmann, Castelo, and Guinney
258 2013) based on the batch-corrected and normalized RNA-seq data. The distribution of these
259 gene set scores across clusters was tested using an ANOVA and F-values reported as
260 variable importance.

261 2.4.6 Prediction of responder status

262 The baseline values from gene expression data with accession number GSE45468 were
263 mapped to ENSEMBL IDs. 8431 genes overlapped with our data and were used in a lasso
264 model using glmnet version 4.1-8 (Friedman et al. 2023), the p-value was empirically
265 calculated based on random genes.

266 2.4.7 Imaging analysis

267 Morphological differences were investigated at the global, regional (FreeSurfer) and voxel
268 level. FreeSurfer v7.1.1 (Fischl 2012) based phenotypes were restricted to those with strong
269 meta-analytical evidence for an effect in MDD (Schmaal et al. 2016; 2017). Analysis of
270 covariance (ANCOVA) was applied to the clusters covarying for intracranial volume, age and
271 sex, and cluster effects were FDR corrected at 5%.

272 2.4.8 Electrocardiography analysis

273 Raw data was preprocessed using the PhysioNet Cardiovascular Signal Toolbox (Vest et al.
274 2018) in Matlab version 2020b (The MathWorks Inc. 2020). Time domain metrics were
275 calculated for every minute using a sliding window of 5 minutes.

276 2.4.9 Single-cell RNA-seq data analysis

277 Single cell PBMC RNA-seq data from 14 individuals with depression and other mental
278 disorders with accession number GSE185714 was processed with scanpy version 1.9.3
279 (Wolf, Angerer, and Theis 2018) according to Schmid et al. 2021 and their cell type labels
280 used.

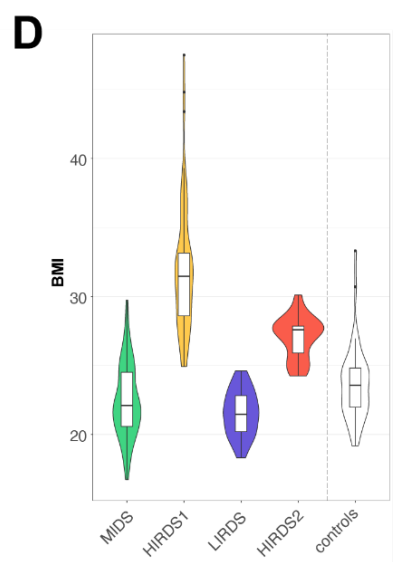
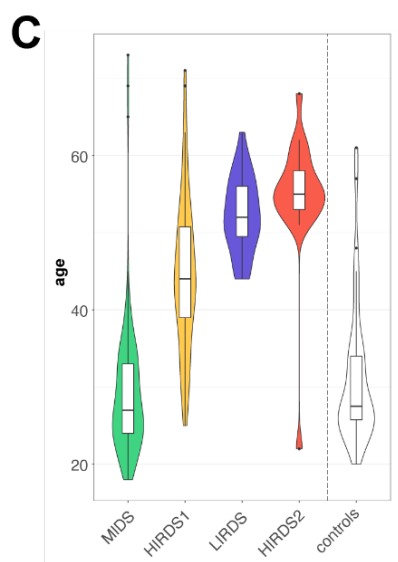
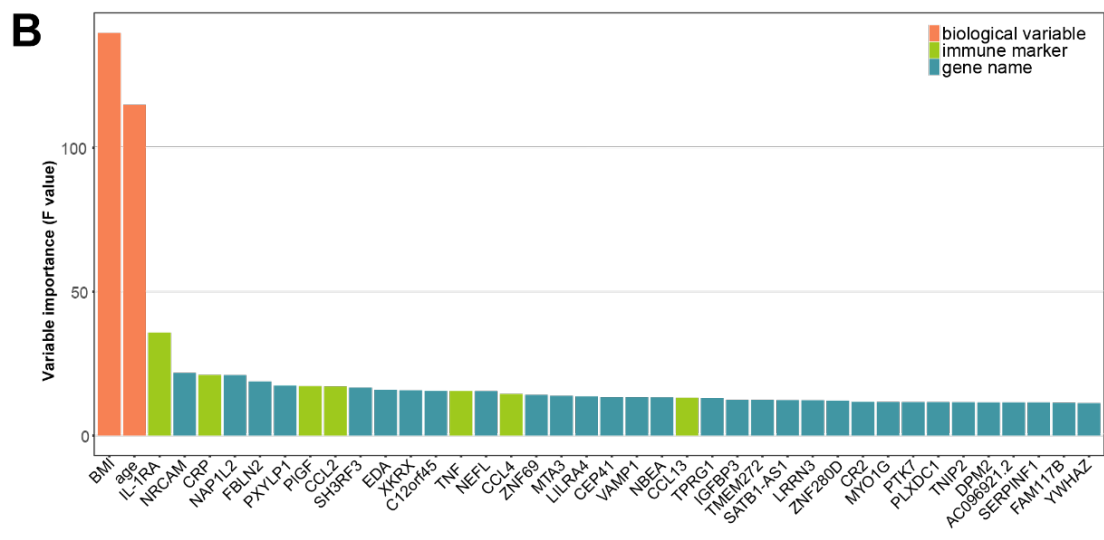
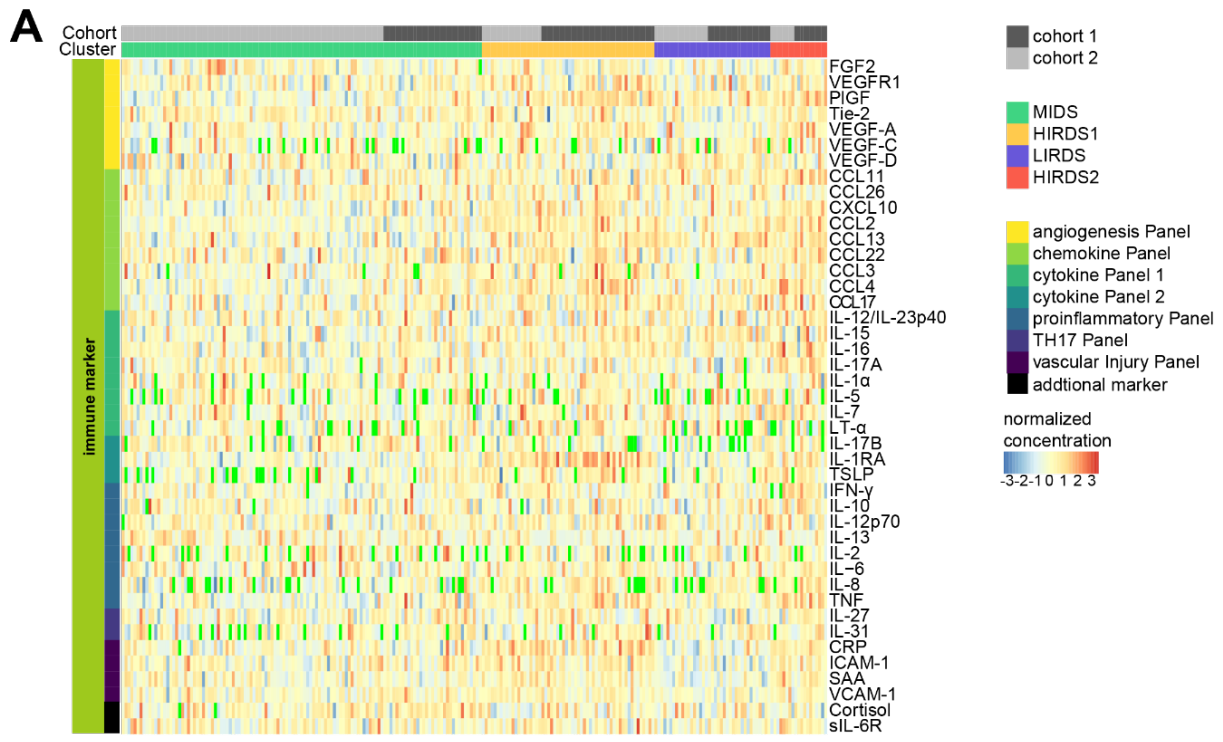
281 3. Results

282 3.1 Multi-omics clustering with age, BMI, immune markers and 283 RNA-seq data identified 4 clusters with different depression 284 severity and inflammation status

285 To discover subgroups with immune-related depression symptoms, we assessed a
286 comprehensive immune marker panel ($p = 43$ markers) along with matched RNA-seq data (p
287 $= 12210$ genes) in 237 participants (Figure S1) diagnosed with MDD or another stress-
288 related mental disorder within the last 12 months. The mean age of the affected participants
289 was 39 years and the mean BMI 25 (see Table 1 for sample characteristics). Besides the
290 biological data, the participants underwent phenotypic assessment. Our approach involved
291 clustering the participants based on multiple biological datasets and subsequently
292 characterizing these subgroups using psychometric data.

293

294 For multi-omics clustering, we employed SUMO (Sienkiewicz et al. 2022), a non-negative
295 matrix factorization based clustering algorithm, that provides cluster stability metrics via
296 consensus clustering. This method organizes variables into layers and computes the
297 distance between the participants within each layer, which subsequently informs the
298 clustering process. For our study, age and BMI were combined as one layer while the
299 immune markers and RNA-seq data were each defined as separate layers. According to the
300 built-in stability metrics (Figure S2A-B), this approach yielded a four cluster solution. These
301 clusters included 121, 58, 39 and 19 participants, respectively (Table S3). In light of the
302 findings described below, we termed cluster 1 *mild depression symptoms* cluster (MIDS),
303 cluster 2 *high immune-related depression symptoms* cluster (HIRDS) 1, cluster 3 *low*
304 *immune-related depression symptoms* cluster (LIRDS) and cluster 4 HIRDS2. Each of the
305 identified clusters showed a different pattern of immune markers and contained participants
306 from both the BeCOME and OPTIMA cohorts, which differ in the in- and outpatient ratio,
307 psychopharmacological drug use and sex distribution (see Figures 2A and S3). The
308 significantly different distribution of the cohorts across the clusters (Fisher's exact test, $p =$
309 0.000003) was driven by the MIDS cluster; between the LIRDS and HIRDS clusters there
310 was no different distribution (Fisher's exact test, $p = 0.507320$).



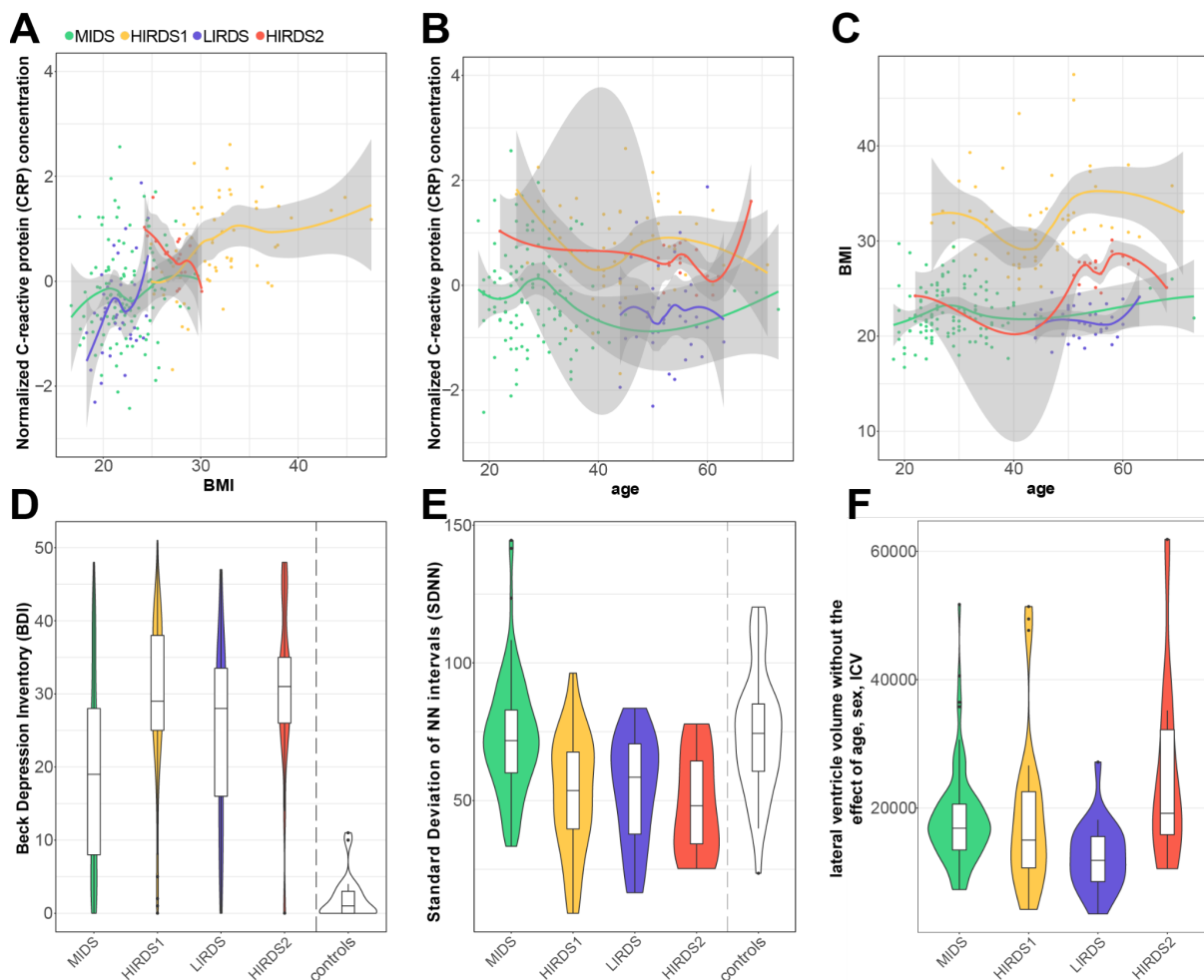
312 *Figure 2: Initial clustering with age, BMI, immune markers and RNA-seq data. (A) Heatmap of immune markers*
313 *where the columns are participants while the cohort and cluster are noted at the top. The color denotes the*
314 *normalized concentration with green values missing. (B) Barplot displaying the variable importance of the top 40*
315 *variables that most differentiate the clusters, calculated using the F-value from an ANOVA model with the*
316 *clusters as independent variables. These variable importance values should not be interpreted as p-values,*
317 *because the variables were used in the clustering themselves and therefore inflate the p-values. Violin plots*
318 *depicting the distribution of (C) age and (D) BMI across the clusters. N = 36 healthy controls not used in the*
319 *clustering, MIDS = mild depression symptoms cluster, HIRDS = high immune-related depression symptoms*
320 *cluster, LIRDS = low immune-related depression symptoms cluster, cohort 1 = OPTIMA, cohort 2 = BeCOME.*

321 3.1.1 BMI, age, IL-1RA, *NRCAM* and CRP identified as top 322 differentiating variables

323 In order to understand which variables drive the clustering, we calculated the variable
324 importance (VI) based on an ANOVA model (Table S4). Figure 2B illustrates that BMI (VI =
325 139.8) and age (VI = 114.8) were most important for the clustering, followed by interleukin 1
326 receptor antagonist (IL-1RA, VI = 35.7). Other important immune markers included high-
327 sensitivity C-reactive protein (CRP, VI = 21), placental growth factor (PIGF, VI = 17.1), C-C
328 motif chemokine 2 (CCL2 or MCP-1, VI = 17), tumor necrosis factor (TNF, VI = 15.4), CCL4
329 (MIP-1beta, VI = 14.4) and CCL13 (MCP-4, VI = 13.1). Among the genes, neuronal cell
330 adhesion molecule (*NRCAM*, VI = 21.8), nucleosome assembly protein 1 like 2 (*NAP1L2*, VI
331 = 21), fibulin 2 (*FBLN2*, VI = 18.7), 2-phosphoxylose phosphatase 1 (*PXYLP1*, VI = 17.4),
332 SH3 domain containing ring finger 3 (*SH3RF3*, VI = 16.6), ectodysplasin A (*EDA*, VI = 15.8)
333 and XK related X-linked (*XKRX*, VI = 15.7) were the most important. The genetic location of
334 these genes are noted in Table S5, compared to the overall chromosomal distribution the top
335 100 genes show an enrichment in chromosome 7 (Figure S4). The importance of age and
336 BMI in the clustering process was reflected in their distribution across clusters, as shown in
337 Figure 2C-D. Age demonstrated an increase from MIDS through to HIRDS2. Notably,
338 HIRDS2 and especially HIRDS1 showed elevated BMIs (mean BMI of 27 and 32,
339 respectively) compared to the other clusters.

340

341 Next, we aimed to provide insights into the distribution of age, BMI, and CRP concentration
342 across the clusters due to their importance in the clustering and the established role of CRP
343 as a standard marker for inflammation. Notably, in all clusters except HIRDS2, a positive
344 correlation was observed between CRP concentration and BMI. Specifically, for the MIDS
345 cluster the Pearson correlation was 0.13 (t-test, $p = 0.155$); for HIRDS1, it was 0.40 (t-test, p
346 $= 0.002$); for LIRDS, it was 0.39 (t-test, $p = 0.015$); and for HIRDS2 it was -0.61 (t-test, $p =$
347 0.006), as illustrated in Figure 3A. It also shows that the HIRDS clusters predominantly
348 contained individuals with elevated CRP concentration and elevated BMI. As illustrated in
349 Figure 3B, no significant correlation between age and CRP was discernible within the
350 clusters, with Pearson correlations ranging between -0.16 and 0.01. Interestingly, the LIRDS
351 cluster contained individuals with a restricted age range. Further examination revealed no
352 strong correlation between age and BMI except for HIRDS2, with Pearson correlations
353 ranging from 0.09 to 0.40, which were not significant (Figure 3C). Notably, while the
354 individuals with a high BMI in HIRDS1 spanned a wide age range, HIRDS2 consisted mostly
355 of individuals aged 50 or above.



356

357 *Figure 3: Distribution of biological and phenotype data across the clusters in the initial clustering with age, BMI,*
 358 *immune markers and RNA-seq data. (A) - (C) Scatterplots illustrate the associations between C-reactive protein*
 359 *(CRP), BMI and age across the four clusters, as determined by locally estimated scatterplot smoothing (LOESS).*
 360 *(D) Violin plots showing the distribution of Beck Depression Inventory (BDI)-II across the clusters. Significant*
 361 *differences ($p < 0.05$) were observed when comparing HIRDS1, LIRDS and HIRDS2 to the MIDS cluster. (E)*
 362 *Violin plots illustrating the Standard Deviation of normal-to-normal intervals (SDNN), a measure for heart rate*
 363 *variability, for 149 participants. The significant differences ($p < 0.05$) were observed between HIRDS1, LIRDS*
 364 *and HIRDS2 compared to the MIDS cluster. (F) Violin plots illustrating the the cluster-specific effect (global*
 365 *intercept + cluster-specific effect + residuals) of the lateral ventricle volume from a model including age, sex and*
 366 *intracranial volume (ICV) derived from structural magnetic resonance imaging for 151 participants. A significant*
 367 *difference ($p < 0.05$) was observed between the clusters. Because of the modeling approach, no value for the*
 368 *controls can be shown. MIDS = mild depression symptoms cluster, HIRDS = high immune-related depression*
 369 *symptoms cluster, LIRDS = low immune-related depression symptoms cluster.*

370 3.1.2 Clinical phenotypes, imaging features and heart rate data identified 371 clusters with elevated depression severity

372 Next, we explored how the clusters, which were defined solely based on biological data
373 (including immune markers, RNA-seq data, BMI, and age) without considering depression
374 severity or symptoms, corresponded to these measures of depression post-clustering.
375 Interestingly, the LIRDS and HIRDS clusters exhibited greater depression severity, as
376 measured by the Beck Depression Inventory-II (BDI), than the MIDS cluster (Tukey HSD test
377 with adjusted p values, $p = 0.028961$, $p = 0.000003$ and $p = 0.001172$, respectively). This
378 severity was especially pronounced in the HIRDS clusters (Figure 3D). A similar result was
379 observed using the Montgomery–Åsberg Depression Rating Scale (MADRS) with p-values
380 of 0.009829, 0.000466 and 0.003718 (Tukey HSD test with adjusted p values) for the LIRDS
381 and HIRDS clusters, respectively. The proportion of individuals with either no depression or
382 dysthymia diagnosis was not equal across the clusters (Fisher’s exact test, $p = 0.000500$,
383 Figure S5), the MIDS cluster had the highest proportion of participants without such a
384 diagnosis and also the lowest depression severity. While no single item of the BDI
385 differentiated the cluster, there was a trend towards increased sleeping and appetite in the
386 HIRDS clusters as indicated by the BDI (Figure S6A-B).

387

388 To further assess if the identified symptom differences were mirrored in other biological data,
389 we analyzed heart rate data collected from portable ECG devices ($n = 149$) and structural
390 imaging-derived features ($n = 151$) in a subset of the participants for whom these data were
391 available. While there were no discernable differences in the median minimum or maximum
392 normal-to-normal intervals between heartbeats between the clusters (Figure S6C), the heart
393 rate variability metrics - for short-term (RMSSD) and long-term (SDNN) - were lower in the
394 LIRDS and HIRDS clusters in comparison to the MIDS cluster (Figure 3E). The p-values for
395 these differences ranged from 0.000039 to 0.005874 for RMSSD and from 0.000112 to
396 0.005446 for SDNN (Tukey HSD test with adjusted p values). The clusters showed a trend of

397 different total brain volume (TBV) ($F = 2.406$, $p = 0.070$), with LIRDS showing higher TBV
398 compared to the MIDS and HIRDS clusters; a similar pattern was seen for gray matter (GM)
399 and white matter (WM) (Table S6). Regional analyses of 17 MDD-related phenotypes
400 revealed robust effects on the lateral ventricle volume ($F = 5.398$, FDR adjusted $p = 0.029$,
401 with the lowest volume in LIRDS, see Figure 3F), and nominal significant effects for the right
402 rostral anterior cingulate and the bilateral hippocampus (Table S7). Voxel-based
403 morphometry revealed no cluster main effects.

404 3.1.3 Immune markers and genes revealed differences in immune 405 system and brain related pathways between clusters

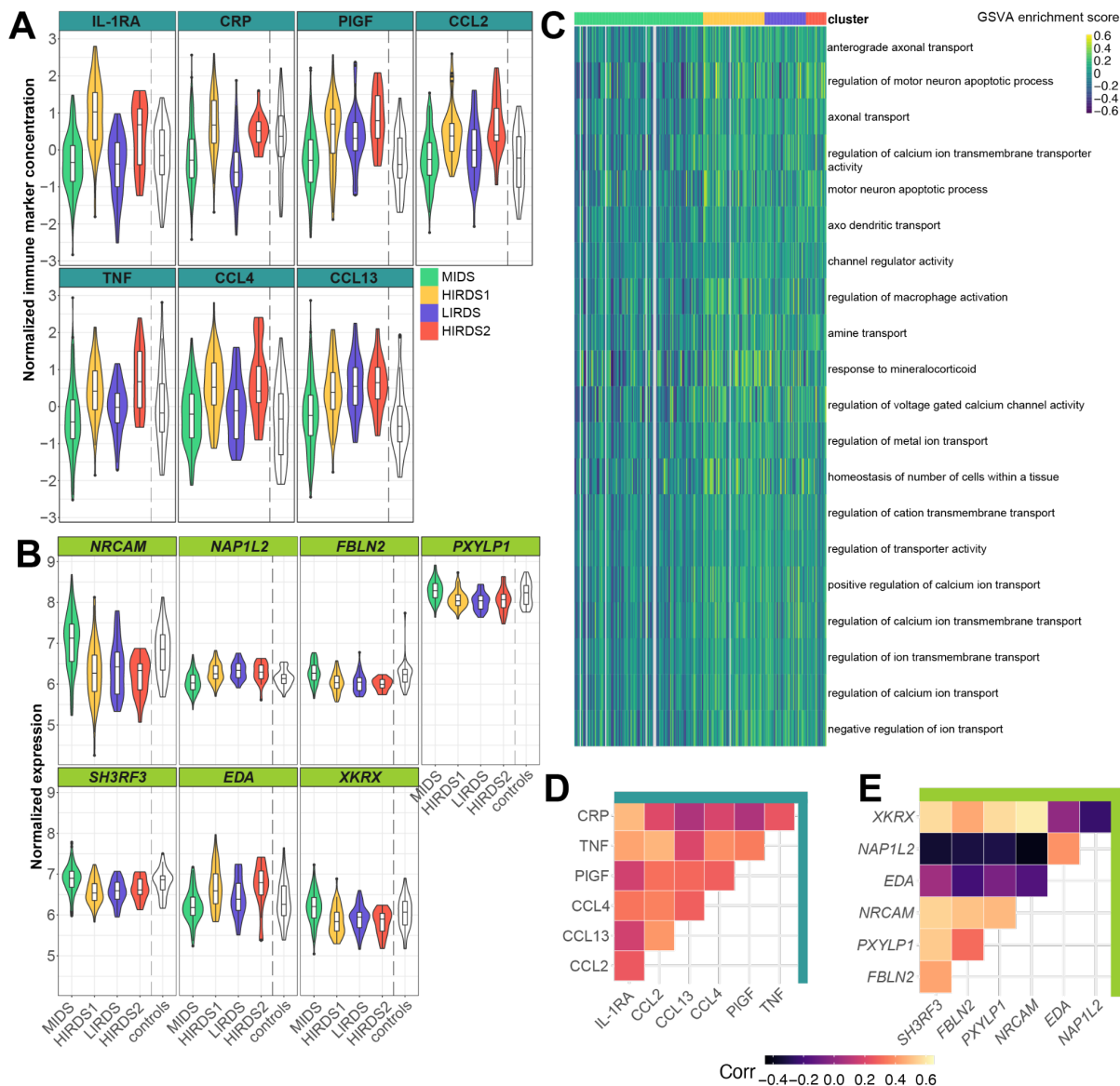
406 We wanted to understand how the immune markers and RNA-seq data each contributed to
407 defining the clusters, and if these different data types contained distinct information.

408 Interestingly, except for CCL13, all the top important immune markers were elevated in the
409 HIRDS clusters (Figure 4A). These clusters not only showed increased BMI but also the
410 highest BDI. This distinctive pattern was reflected in CCL13's low correlation with key
411 markers such as IL-1RA and CRP (Figure 4D). While still discriminating the HIRDS clusters
412 from the others, PIGF also had a similar low correlation with the top markers IL-1RA and
413 CRP (Figure 4D). All top immune markers showed a positive correlation with BMI (Figure
414 S7).

415

416 In contrast, the most discriminating genes mainly differentiated the MIDS cluster, defined by
417 a low depression severity, from the other clusters (Figure 4B). Accordingly, the correlations
418 between the genes were stronger than those among immune markers, with the exception of
419 the correlation between *EDA* and *NAP1L2*. On average, the absolute correlation between
420 the top genes was 0.36, while it was 0.27 between the top immune markers (Figure 4E). To
421 link the findings to clinical data, we investigated if the top discriminating genes could predict
422 the responder status in patients with depression to treatment with an antibody against TNF

423 in an external data set (Mehta et al. 2013). Based on the area under the curve (AUC), the
 424 top 10 and top 20 genes did not perform better than random genes (permutation test, $p =$
 425 0.139 and $p = 0.159$). The most important gene for the 20-gene-model was vesicle
 426 associated membrane protein 1 (*VAMP1*), which was also included in the 10-gene prediction
 427 model, although it was not statistically significant.



428
 429 *Figure 4: Immune marker and RNA-seq data contains complementary information in the initial clustering with*
 430 *age, BMI, immune markers and RNA-seq data. (A) Violin plots showing the distribution of the seven most*
 431 *differentiating immune markers across the clusters. (B) Violin plots showing the distribution of the seven most*
 432 *differentiating genes across the clusters. (C) Heatmap of the 20 most differentiating GO gene sets ordered by*
 433 *their variable importance that are enriched in the clusters. These gene sets were identified through Gene Set*

434 *Variation Analysis (GSVA). (D) Heatmap showing the Pearson correlation between the top immune markers. (E)*
435 *Heatmap showing the Pearson correlation between the top genes. MIDS = mild depression symptoms cluster,*
436 *HIRDS = high immune-related depression symptoms cluster, LIRDS = low immune-related depression symptoms*
437 *cluster.*

438 To understand the underlying molecular mechanisms, we analyzed not only individual genes
439 but also their coordinated expression patterns, examining these genes in the context of
440 pathways. We applied gene set enrichment analysis using GSVA (Hänzelmann, Castelo,
441 and Guinney 2013) to calculate gene set scores for every participant and compared the
442 distribution across clusters (Table S8). As depicted in Figure 4C, the gene sets that stood
443 out prominently were enriched in the LIRDS and HIRDS clusters. Interestingly, these gene
444 sets included those related to the brain (e.g., anterograde axonal transport, VI = 17.3, 38
445 genes), immune system (regulation of macrophage activation, VI = 12.5, 32 genes), stress
446 response (response to mineralocorticoid, VI = 12.4, 15 genes) and (ion) transport (e.g.,
447 regulation of calcium ion transmembrane transporter activity, VI = 13.1, 44 genes).

448 **3.2 Re-evaluating the initial clustering adjusted for age, BMI** 449 **and sex showed no phenotypic differences**

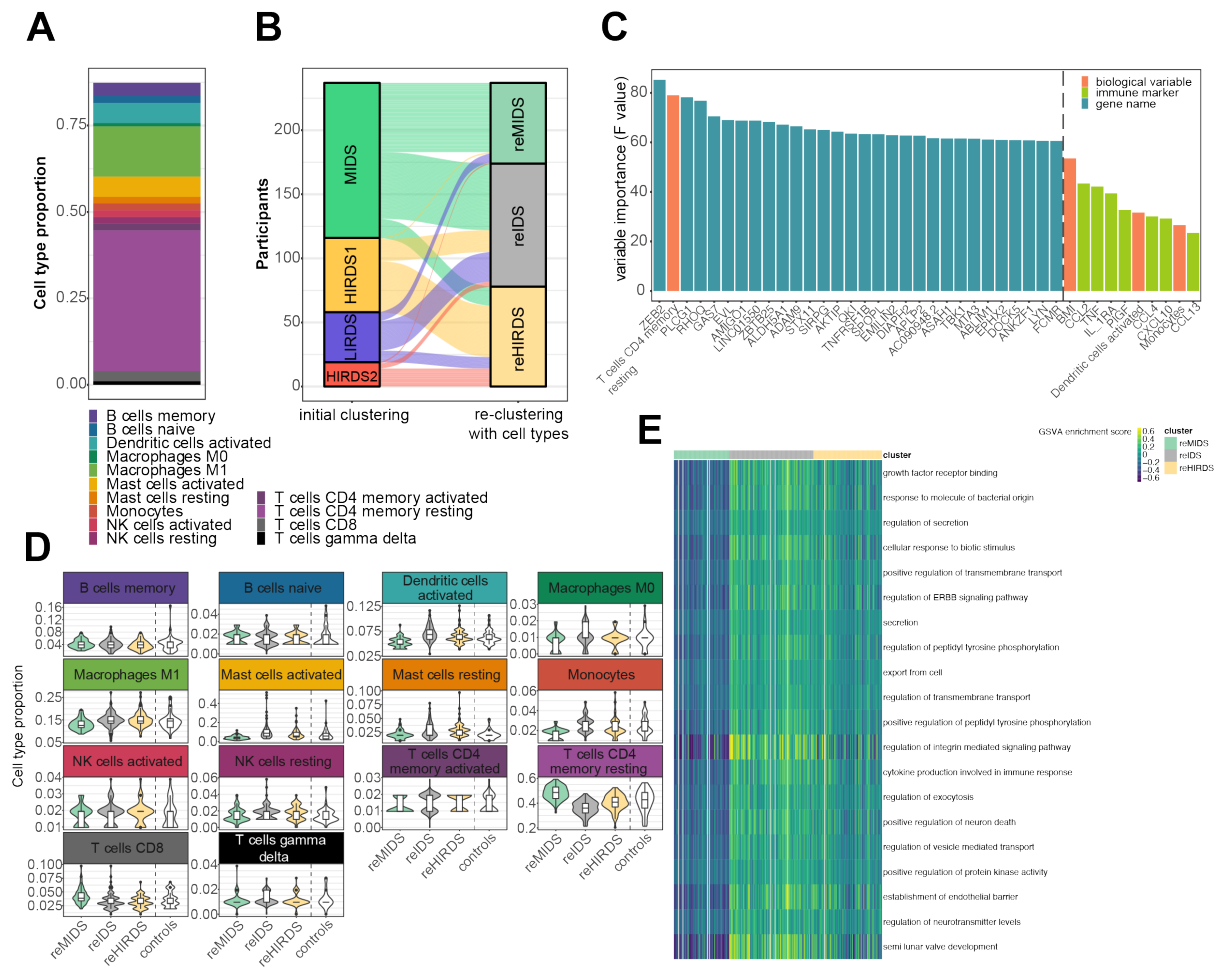
450 Considering the strong impact of BMI and age on the clustering outcomes, we re-evaluated
451 the clustering by first adjusting the biological data for age, BMI and sex using a linear model,
452 and then applying the clustering algorithm. After adjusting the data, we obtained a three
453 cluster solution (Figure S2C-D), which differed from the four clusters identified in the initial
454 analysis (Figure S8A). Notably, in the re-evaluated clustering, the variable importance of the
455 immune markers was diminished relative to the RNA-seq data (Table S9). Among the
456 immune makers, IL-27 stood out with the highest immune marker variable importance of 7.4.
457 Contrastingly, the gene CKLF like MARVEL transmembrane domain containing 6 (*CMTM6*)
458 showed a much higher variable importance of 77.4. Moreover, the primary discriminative
459 immune markers or genes in this analysis were different from those in our initial clustering

460 (Figure S8B). Compared to the genes, the distribution of the immune markers across the
461 clusters was more uniform (Figure S8C-D). There were no significant differences of age,
462 BMI, BDI or MADRS sum scores between the clusters (Figure S8E-G).

463 3.3 Re-evaluating the initial clustering including cell types

464 identified three clusters predominantly driven by RNA-seq data

465 Given the previous findings that highlight the significance of blood cell type composition in
466 discerning depression subgroups (Lynall et al. 2020), we integrated cell types into a new
467 clustering model aligning them in one layer with age and BMI. We did not have cell counts
468 available but deconvoluted cell type proportions from the RNA-seq data. The predominant
469 cell types in our sample were “T cells CD4 memory resting” (median fraction of 0.41) and
470 “Macrophages M1” (median fraction of 0.15, see Figure 5A). The new clustering led to a
471 three cluster solution (Figure S2E-F). Cluster 1 contained mostly (85.7%) individuals that
472 were assigned to the MIDS cluster in the initial clustering without the inclusion of cell types.
473 Cluster 3 contained predominantly individuals from the clusters with high BMI and high BDI
474 (HIRDS clusters, 69.2%) as determined from the initial clustering. Cluster 2 presented a mix,
475 drawing from different groups of the initial clustering: 54.2% from MIDS, 17.7% from
476 HIRDS1, 24% from LIRDS and 4.2% from HIRDS2 (Figure 5B). Accordingly, we termed the
477 clusters reMIDS, *intermediate depression symptoms* cluster (reIDS) and reHIRDS.



478

479 *Figure 5: Re-clustering with age, BMI, cell types, immune markers and RNA-seq data. (A) Stacked barplot*
 480 *illustrating the proportion of various cell types predicted from the RNA-seq data for all participants. (B) Mapping of*
 481 *the participants from the initial clustering to the re-evaluated clustering that additionally contains cell type*
 482 *proportions. (C) Barplot showing the variable importance of the top 30 variables that most differentiate the*
 483 *clusters, along with the 10 most differentiating biological variables and immune markers. (D) Violin plots*
 484 *illustrating the predicted cell type proportions across the clusters. (E) Heatmap of the 20 most differentiating GO*
 485 *gene sets, ordered by their variable importance, that are enriched in the clusters. These gene sets were identified*
 486 *through Gene Set Variation Analysis (GSEA). reMIDS = re mild depression symptoms cluster, reIDS = re*
 487 *intermediate depression symptoms cluster, reHIRDS = re high immune-related depression symptoms cluster, NK*
 488 *= natural killer cells.*

489 3.3.1 T cell proportions and RNA-seq data were important for the 490 clustering

491 The distribution of age and BMI demonstrated an increasing trend across the clusters,
492 especially BMI was markedly increased in the reHIRDS cluster, with 29.1 compared to 22 for
493 the reMIDS cluster and 23.7 for the reIDS cluster (Figure S9A-B). In line with the pattern
494 seen in the initial clustering, the reHIRDS cluster showed significantly elevated BDI
495 compared to the other clusters (Tukey HSD test with adjusted p values, $p = 0.000126$ for
496 cluster 1 and $p = 0.008659$ for cluster 2, Figure S9C), and the MADRS in the reHIRDS
497 cluster was elevated compared to the reMIDS cluster (Tukey HSD test with adjusted p
498 values, $p = 0.013896$) as well.

499

500 In reassessing the variables contributing to the clustering, we observed a shift from our initial
501 findings. While age and BMI were the most important variables in the initial clustering, their
502 impact reduced in the re-evaluation. BMI still remained the second most important biological
503 variable (VI = 53.5, Figure 5C and Table S10), ranking 77th overall, but age (VI = 19.5)
504 dropped to the 2037th position. The top 7 immune markers were the same as in the initial
505 clustering except CXCL10 (IP-10, VI = 29.3) replacing CRP (VI = 21.3). However, in the
506 reclustering the immune markers ranked 240th to 1484th in the variable importance,
507 whereas in the initial clustering 3rd to 24th. The cell type “T cells CD4 memory resting”
508 emerged as the most important biological variable (VI = 79.1), also being the most prevalent
509 cell type in our sample (Figure 5A). Other notable cell types included “Dendritic cells
510 activated” (VI = 31.7) and “Monocytes” (VI = 26.6). In the reMIDS cluster, “T cells CD4
511 memory resting” showed an increased mean proportion of 0.48 compared to 0.36 and 0.40
512 in the other clusters, while the “Dendritic cells activated” and “Monocytes” were decreased in
513 the reMIDS cluster (Figure 5D). Furthermore, Figure 5C shows that genes were the essential
514 variables to discriminate between the clusters (see Supplementary Results for more details).

515

516 3.3.2 Pathway analysis identified immune system involvement

517 Next, we performed gene set enrichment analysis to analyze the biological pathways that
518 differed between the cluster. As highlighted in Figure 5E, the most discriminative gene sets
519 were downregulated in the reMIDS cluster, upregulated in the reIDS cluster and moderately
520 upregulated in the reHIRDS cluster. Closer examination revealed that these gene sets were
521 enriched for terms related to the immune system (response to molecule of bacterial origin, VI
522 = 119, 186 genes), secretion (regulation of secretion, VI = 118.1, 297 genes),
523 transmembrane transport (regulation of transmembrane transport, VI = 108, 237 genes) and
524 neurons (positive regulation of neuron death, VI = 103.7, 58 genes) among others (Table
525 S11).

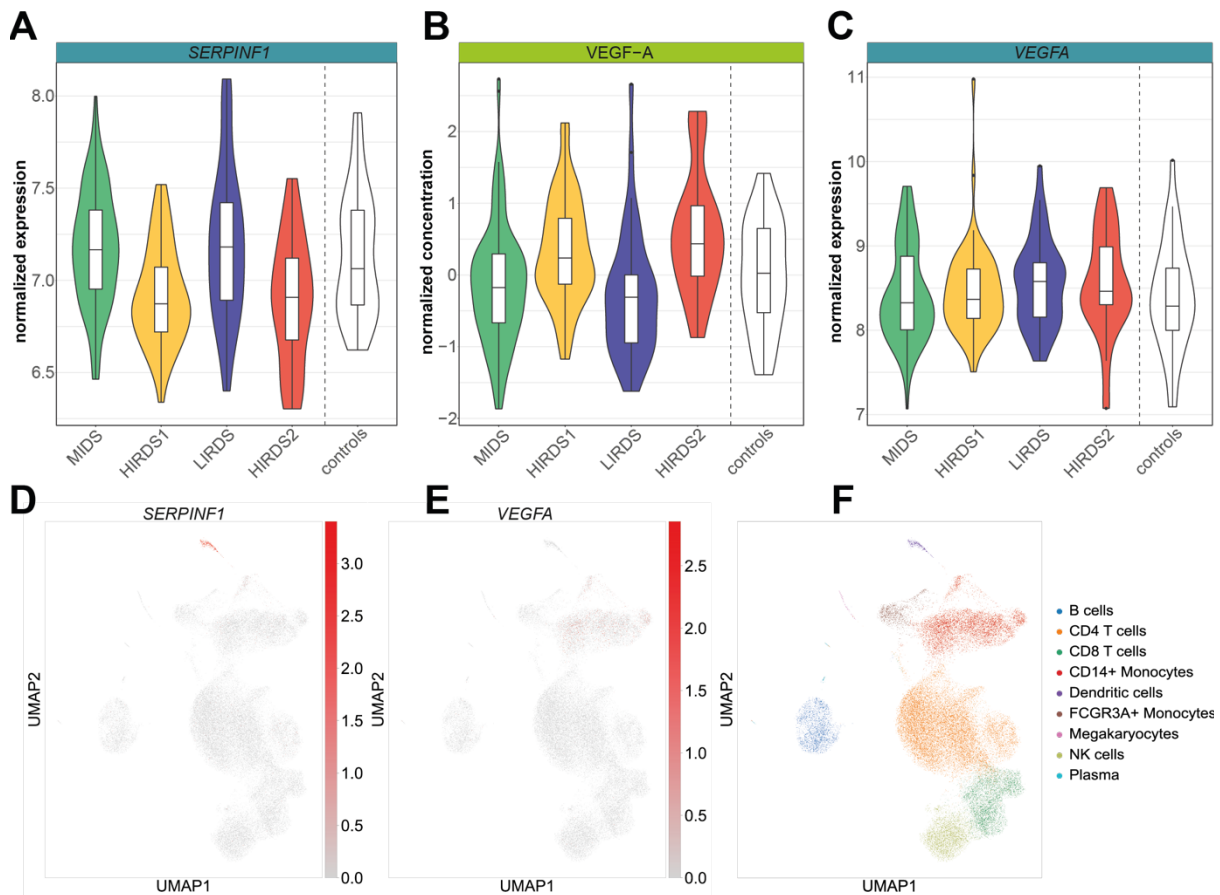
526 3.4 Integration of protein and RNA-seq data with single cell 527 expression showed cell type specific regulation of inflammation

528 To further elucidate the characteristics of the high depression severity clusters from our
529 initial clustering model delineated in Figure 2, we analyzed the genes and immune markers
530 that differentiated the LIRDS and HIRDS clusters. Two prominent variables emerged: the
531 gene serpin family F member 1 (*SERPINF1*, VI = 9.1) and the protein vascular endothelial
532 growth factor A (VEGF-A, VI = 10.1). As represented in Figure 6A and 6B, *SERPINF1*
533 expression was elevated in the MIDS and LIRDS clusters, coinciding with low VEGF-A
534 protein concentrations. In contrast, the HIRDS clusters displayed an opposite pattern.
535 Interestingly, we did not find differences in the gene expression of *VEGFA* between the
536 clusters (Figure 6C) and in general low correlation between RNA-seq and corresponding
537 protein level (see Supplementary Results and Figure S10 for more details).

538

539 The importance of different cell types was underlined by single cell gene expression
540 analysis. PBMC RNA-seq data from 14 individuals with depression and other mental

541 disorders indicated a predominant *SERPINF1* expression in dendritic cells (Figure 6D and
542 6F), while *VEGFA* was mainly expressed in monocytes (Figure 6E-F), showing the
543 importance of cell types even when not included directly in the clustering.



544
545 *Figure 6: Cell-type specific dysregulation in the initial clustering with age, BMI, immune markers and RNA-seq*
546 *data. Violin plots displaying: (A) the gene expression of SERPINF1 across the clusters, (B) normalized protein*
547 *concentration of VEGF-A across the clusters, and (C) gene expression of VEGFA across the clusters. (D) - (F)*
548 *Single-cell RNA-seq data of peripheral blood mononuclear cells (PBMCs) from 14 patients with depression and*
549 *other mental disorders visualized using UMAP plots. (D) Demonstrates the gene expression of SERPINF1. (E)*
550 *Shows the gene expression of VEGFA. (F) Illustrates the cell types identified within the PBMCs. NK = natural*
551 *killer cells, MIDS = mild depression symptoms cluster, HIRDS = high immune-related depression symptoms*
552 *cluster, LIRDS = low immune-related depression symptoms cluster.*

553 4. Discussion

554 In this study, we analyzed a transdiagnostic sample of individuals with stress-related mental
555 disorders from two cohorts to identify patterns of depression symptoms in relation to immune
556 alterations, thereby broadening the understanding of immune-related subgroups in
557 depression. Traditionally, such subgroups have been defined by specific immune markers
558 such as CRP or TNF, known to be increased in some depressed patients (Haapakoski et al.
559 2015; Osimo et al. 2020), especially those resistant to antidepressant treatment
560 (Chamberlain et al. 2019; Yang et al. 2019; Strawbridge et al. 2015). Our large-scale multi-
561 omics analysis, integrating gene expression data of 12210 genes with immune marker
562 profiling of 43 markers including CRP, suggests a more complex immune involvement in
563 depression symptoms than indicated by CRP alone. Our approach uncovered four distinct
564 clusters dissecting depression symptoms across the diagnostic spectrum: two *high immune-*
565 *related-depression symptoms* (HIRDS) clusters with increased immune markers, BMI, and
566 depression severity; a *mild depression symptoms* (MIDS) cluster, predominantly younger
567 participants with lower depression severity and minimal immune marker elevation; and a *low*
568 *immune-related-depression symptoms* (LIRDS) cluster with elevated depression severity but
569 without increased immune markers. This nuanced classification offers deeper insights into
570 the interplay between immune function and depression symptoms.

571

572 Incorporating a multi-omics integration clustering approach has clearly demonstrated its
573 value, providing unique insights through the combination of phenotypic data, immune
574 markers and RNA-seq data. This was especially evident in identifying HIRDS clusters with
575 elevated immune markers such as CRP, TNF, IL-1RA, PIGF, CCL2, CCL4, and CCL13.
576 Measuring IL-1 beta posed a challenge due to its low concentration, even with high-
577 sensitivity assays, highlighting the difficulties in detecting certain cytokines. Interestingly, IL-
578 1RA, typically anti-inflammatory, is produced under the same inflammatory conditions as the
579 proinflammatory IL-1 beta, linking it to an increased risk of developing depressive symptoms

580 in elderly (Osimo et al. 2020; Milaneschi et al. 2009). Consistent with this, we found
581 heightened IL-1RA levels in our HIRDS clusters, which also exhibit altered appetite patterns,
582 aligning with findings from Simmons et al. 2020. While specific BDI items like increased
583 appetite and hypersomnia showed only a trend, a clear elevation in overall depression
584 severity and BMI was observed. These patterns support the concept of immuno-metabolic
585 depression, where heightened inflammation correlates with disrupted energy balance,
586 manifesting as obesity and fatigue (Lamers et al. 2020; Milaneschi et al. 2020; Simmons et
587 al. 2020).

588 Our research sheds light on the role of less-studied chemokines in depression. Elevated
589 CCL2 in blood, CSF, and in post-mortem brain tissues of depressed patients (Young, Bruno,
590 and Pomara 2014; Eyre et al. 2016; Sørensen et al. 2023; Torres-Platas et al. 2014),
591 alongside mixed data for CCL4 (Camacho-Arroyo et al. 2021; Sørensen et al. 2023;
592 Leighton et al. 2018) and limited research on CCL13, with only one study that found lower
593 levels in suicide attempters (Janelidze et al. 2013), indicate their intricate roles in this
594 symptom spectrum. Additionally, it highlighted PIGF, part of the vascular endothelial growth
595 factor family (De Falco 2012), implicated in angiogenesis, the immune response, and
596 obesity-related processes (Oura et al. 2003; Lijnen et al. 2006), which was previously found
597 to have lower levels in depressed patients (Yue et al. 2016). By employing a multi-panel
598 approach to simultaneously measure a wide array of immune markers, we elucidated the
599 complex roles of chemokines and established markers in depression symptom spectrum.
600 This strategy not only identifies specific immune markers associated with depression
601 symptoms but also advances our understanding of the disorder's immunological aspects,
602 suggesting a promising direction for future research.

603

604 The immune markers were crucial for differentiating between the HIRDS clusters and others,
605 while key genes and the gene set analysis were instrumental in separating between clusters
606 of varying depression severity. The panel of important genes includes genes that are
607 associated with neurodevelopmental disorders (*NRCAM*, Kurolop et al. 2022), neuronal

608 development (*NAP1L2*, Attia et al. 2007) or that were downregulated in post mortem choroid
609 plexus from patients with MDD (*FBLN2*, Turner et al. 2014). This underlines that depression
610 not only affects the brain but other tissues as well and demonstrates our approach's
611 effectiveness at identifying genes differentiating depression severity. Our gene set analysis
612 further supports this, revealing a prevalence of pathways related to neurons and axonal
613 transport in the high depression severity clusters. While immune system pathways were
614 enriched in the genes differentiating the clusters, the immune marker data primarily defined
615 the immune-related depression symptom clusters, underscoring the value of this integrative
616 approach.

617

618 The significance of BMI and age in relation to depression symptoms in our analysis added to
619 the ongoing debate about whether BMI adjustments in immune marker analyses clarify or
620 confound the relationship with depression (Horn et al. 2018; Moriarity, Mengelkoch, and
621 Slavich 2023). Several studies suggest that CRP's association with depression is more
622 pronounced without BMI-adjustments (Horn et al. 2018; Chae et al. 2022; Figueroa-Hall et
623 al. 2022). Recently, a simulation study demonstrated that including BMI as a covariate can
624 lead to reduced precision in estimating the relationship of inflammation on depression
625 (Moriarity, Mengelkoch, and Slavich 2023). Consistently, our findings revealed no significant
626 differences in depression severity or inflammation status when adjusting for BMI, sex and
627 age, underscoring the complex interplay among these factors and emphasizing BMI's role as
628 an integral component of the depression phenotype.

629

630 Our analysis extended beyond clinical depression severity to heart rate variability and
631 neuroimaging, differentiating the clusters. While not corrected for covariates, heart rate
632 variability (SDNN) was lower in the LIRDS and HIRDS clusters and could discriminate them
633 from the MIDS cluster, aligning with previous findings that link reduced heart rate variability
634 to current and former depression, as well as dysphoria (Hartmann et al. 2019; Koch et al.
635 2019; Dell'Acqua et al. 2020), which suggests broader physiological implications of

636 depression. Structural neuroimaging revealed a trend of relatively higher total brain volume
637 in the LIRDS cluster compared with the HIRDS and MIDS clusters, with similar effects for
638 GM and WM analyzed separately. Regional analyses confirmed inverse changes of
639 cerebrospinal fluid (CSF), specifically of the lateral ventricle volume. In the presence of acute
640 depressive symptoms, it seems that the LIRDS constellation might protect from CSF
641 including ventricular enlargement. Larger ventricles have been observed in MDD with early
642 disease onset before 21 years of age (Schmaal et al. 2016) and in bipolar disease (Hibar et
643 al. 2016) which could suggest that stronger immune activation might take influence on
644 subclinical or masked bipolar traits. Regional effects as detected for the bilateral hippocampi
645 and the right rostral anterior cingulate cortex, were heterogeneous between the two HIRDS
646 clusters. While these structures were reported before in immune based stratifications (Savitz
647 et al. 2013) and are plausibly involved in stress response regulation (Herman et al. 2016),
648 larger samples are needed to fully map the anatomical characteristics of immune-related
649 depression.

650

651 Our analysis supports the hypothesis that depression is associated with alterations in cell
652 type composition and immune marker levels (Lynall et al. 2020; Foley et al. 2022).
653 Integrating cell type proportions refined our initial clusters, revealing three re-clusters with
654 varying depression severity and aligning well with the initial findings. This highlights the
655 robustness of our subgroups. The reHIRDS cluster, marked by elevated BMI and immune
656 markers, showed an intermediate alteration in T cells CD4 memory resting proportion
657 deviating from Foley et al. 2022 who reported no significant CD4+ T cells proportion
658 changes in depression. Conversely, our reHIRDS and *intermediate depression symptoms*
659 (reIDS) clusters reflected their findings of decreased lymphocyte percentage in depression.
660 In contrast to the results from Lynall et al. 2020 who observed elevated immune markers and
661 absolute immune cell counts in their immune-related depression cluster, our reHIRDS cluster
662 did not exhibit the strongest cell type phenotype. This discrepancy could stem from
663 methodological differences, such as direct cell counts versus deconvolution. This suggests a

664 complex interplay between immune markers and PBMC composition in depression. Possible
665 sources of immune markers like neutrophils (Tecchio, Micheletti, and Cassatella 2014) and
666 adipose tissue (Fain 2006; Shelton et al. 2015; Shelton and Miller 2011) highlight the
667 importance of obesity in immune-related depression. Our findings emphasize the need for
668 further research into the associations of immune cell composition and immune markers in
669 this context.

670

671 The advantages of a multi-omics integration were further demonstrated by revealing cell type
672 specific inflammation of immune-related depression symptom clusters. VEGF-A was
673 elevated in the HIRDS clusters, contrasting the *SERPINF1* expression, which showed the
674 opposite pattern. This aligns with its gene product, pigment epithelium-derived factor
675 (PEDF), known to inhibit VEGF-A (Dawson et al. 1999). Of note, PEDF is neurotrophic
676 (Tombran-Tink and Barnstable 2003) and was shown to ameliorate depression-like
677 symptoms in mice (Tian et al. 2020) and was increased in depression patients after
678 electroconvulsive treatment (Ryan et al. 2017). This suggests a link of the dysregulated
679 immune pathway in the HIRDS clusters and the observed elevated depression severity.
680 Furthermore, our single cell data revealed that *SERPINF1* is mainly expressed in dendritic
681 cells, suggesting a potential reduction of these cells within immune-related depression
682 symptom clusters. This finding merits additional exploration, as it could open new pathways
683 for understanding and potentially targeting the immune-related aspects of depression
684 symptoms.

685

686 Our study has some limitations worth noting. Firstly, the heterogeneity of our sample, which
687 includes a transdiagnostic sample of both in- and out-patients with varying medication usage
688 and comorbid conditions, may affect the generalizability of our findings. Secondly, the
689 imaging and psychophysiology data represents a proportion of the total samples (63%),
690 which requires caution in interpretation of these findings. Additionally, the cell type
691 composition in our study was inferred from the RNA-seq data rather than being directly

692 measured, which could impact the accuracy of these estimates. As there was no validation
693 sample, these limitations underscore the importance of further research to validate and
694 expand our findings.

695

696 Taken together, our multi-omics integration analysis successfully discovered two clusters
697 with immune-related depression symptoms, supporting the immuno-metabolic depression
698 hypothesis and highlighting the importance of biological variables such as age and BMI.
699 Incorporating single cell data, we uncovered cell type specific inflammation dysregulation
700 involving *SERPINF1* and VEGF-A, both previously implicated in depression. This integrated
701 approach, recognizing depression's heterogeneity, enhances our understanding of its
702 complexity by exploring symptoms across diagnoses. It highlights novel immune markers
703 and genes as potential targets for clinical stratification and new therapeutic intervention.

704 References

- 705 Arias, Daniel, Shekhar Saxena, and Stéphane Verguet. 2022. "Quantifying the Global
706 Burden of Mental Disorders and Their Economic Value." *eClinicalMedicine* 54
707 (December). <https://doi.org/10.1016/j.eclinm.2022.101675>.
- 708 Attia, Mikaël, Christophe Rachez, Antoine De Pauw, Philip Avner, and Ute Christine Rogner.
709 2007. "Nap112 Promotes Histone Acetylation Activity during Neuronal Differentiation."
710 *Molecular and Cellular Biology* 27 (17): 6093. <https://doi.org/10.1128/MCB.00789-07>.
- 711 Barnes, Jacob, Valeria Mondelli, and Carmine M. Pariante. 2017. "Genetic Contributions of
712 Inflammation to Depression." *Neuropsychopharmacology* 42 (1): 81–98.
713 <https://doi.org/10.1038/npp.2016.169>.
- 714 Baune, Bernhard T., Emma Sampson, Jennie Louise, Hikaru Hori, K. Oliver Schubert, Scott
715 R. Clark, Natalie T. Mills, and Celia Fourrier. 2021. "No Evidence for Clinical Efficacy
716 of Adjunctive Celecoxib with Vortioxetine in the Treatment of Depression: A 6-Week
717 Double-Blind Placebo Controlled Randomized Trial." *European*

- 718 *Neuropsychopharmacology* 53: 34–46.
- 719 Bruckl, T. M., V. I. Spoomaker, P. G. Samann, A. K. Brem, L. Henco, D. Czamara, I. Elbau,
720 et al. 2020. “The Biological Classification of Mental Disorders (BeCOME) Study: A
721 Protocol for an Observational Deep-Phenotyping Study for the Identification of
722 Biological Subtypes.” *BMC Psychiatry* 20 (1): 213. [https://doi.org/10.1186/s12888-](https://doi.org/10.1186/s12888-020-02541-z)
723 [020-02541-z](https://doi.org/10.1186/s12888-020-02541-z).
- 724 C. Shelton, Richard, and Andrew H. Miller. 2011. “Inflammation in Depression: Is Adiposity a
725 Cause?” *Dialogues in Clinical Neuroscience* 13 (1): 41–53.
726 <https://doi.org/10.31887/DCNS.2011.13.1/rshelton>.
- 727 Camacho-Arroyo, Ignacio, Mónica Flores-Ramos, Ismael Mancilla-Herrera, Fausto Moisés
728 Coronel Cruz, Joselin Hernández-Ruiz, Gabriela Pellón Diaz, Blanca Farfán
729 Labonne, María del Pilar Meza-Rodríguez, and Philippe Leff Gelman. 2021.
730 “Chemokine Profile in Women with Moderate to Severe Anxiety and Depression
731 during Pregnancy.” *BMC Pregnancy and Childbirth* 21 (1): 807.
732 <https://doi.org/10.1186/s12884-021-04225-2>.
- 733 Cattaneo, Annamaria, Clarissa Ferrari, Lorinda Turner, Nicole Mariani, Daniela Enache,
734 Caitlin Hastings, Melisa Kose, Giulia Lombardo, Anna P. McLaughlin, and Maria A.
735 Nettis. 2020. “Whole-Blood Expression of Inflammasome-and Glucocorticoid-Related
736 mRNAs Correctly Separates Treatment-Resistant Depressed Patients from Drug-
737 Free and Responsive Patients in the BIODep Study.” *Translational Psychiatry* 10 (1):
738 1–14.
- 739 Chae, Woo Ri, Julia Nübel, Jens Baumert, Stefan M. Gold, and Christian Otte. 2022.
740 “Association of Depression and Obesity with C-Reactive Protein in Germany: A Large
741 Nationally Representative Study.” *Brain, Behavior, and Immunity* 103 (July): 223–31.
742 <https://doi.org/10.1016/j.bbi.2022.04.024>.
- 743 Chamberlain, Samuel R., Jonathan Cavanagh, Peter de Boer, Valeria Mondelli, Declan N. C.
744 Jones, Wayne C. Drevets, Philip J. Cowen, et al. 2019. “Treatment-Resistant
745 Depression and Peripheral C-Reactive Protein.” *The British Journal of Psychiatry* 214

- 746 (1): 11–19. <https://doi.org/10.1192/bjp.2018.66>.
- 747 Cho, J. H., M. R. Irwin, N. I. Eisenberger, D. M. Lamkin, and S. W. Cole. 2019.
- 748 “Transcriptomic Predictors of Inflammation-Induced Depressed Mood.”
- 749 *Neuropsychopharmacology* 44 (5): 923–29. [https://doi.org/10.1038/s41386-019-](https://doi.org/10.1038/s41386-019-0316-9)
- 750 0316-9.
- 751 Dawson, D. W., O. V. Volpert, P. Gillis, S. E. Crawford, H.-J. Xu, W. Benedict, and N. P.
- 752 Bouck. 1999. “Pigment Epithelium-Derived Factor: A Potent Inhibitor of
- 753 Angiogenesis.” *Science* 285 (5425): 245–48.
- 754 <https://doi.org/10.1126/science.285.5425.245>.
- 755 De Falco, Sandro. 2012. “The Discovery of Placenta Growth Factor and Its Biological
- 756 Activity.” *Experimental & Molecular Medicine* 44 (1): 1–9.
- 757 <https://doi.org/10.3858/emm.2012.44.1.025>.
- 758 Dell’Acqua, Carola, Elisa Dal Bò, Simone Messerotti Benvenuti, and Daniela Palomba. 2020.
- 759 “Reduced Heart Rate Variability Is Associated with Vulnerability to Depression.”
- 760 *Journal of Affective Disorders Reports* 1 (December): 100006.
- 761 <https://doi.org/10.1016/j.jadr.2020.100006>.
- 762 Dobin, Alexander, Carrie A. Davis, Felix Schlesinger, Jorg Drenkow, Chris Zaleski, Sonali
- 763 Jha, Philippe Batut, Mark Chaisson, and Thomas R. Gingeras. 2013. “STAR:
- 764 Ultrafast Universal RNA-Seq Aligner.” *Bioinformatics* 29 (1): 15–21.
- 765 <https://doi.org/10.1093/bioinformatics/bts635>.
- 766 Drevets, Wayne C., Gayle M. Wittenberg, Edward T. Bullmore, and Husseini K. Manji. 2022.
- 767 “Immune Targets for Therapeutic Development in Depression: Towards Precision
- 768 Medicine.” *Nature Reviews Drug Discovery* 21 (3): 224–44.
- 769 <https://doi.org/10.1038/s41573-021-00368-1>.
- 770 Eyre, Harris A., Tracy Air, Alyssa Pradhan, James Johnston, Helen Lavretsky, Michael J.
- 771 Stuart, and Bernhard T. Baune. 2016. “A Meta-Analysis of Chemokines in Major
- 772 Depression.” *Progress in Neuro-Psychopharmacology & Biological Psychiatry* 68
- 773 (July): 1–8. <https://doi.org/10.1016/j.pnpbp.2016.02.006>.

- 774 Fain, John N. 2006. "Release of Interleukins and Other Inflammatory Cytokines by Human
775 Adipose Tissue Is Enhanced in Obesity and Primarily Due to the Nonfat Cells." In
776 *Vitamins & Hormones*, 74:443–77. Interleukins. Academic Press.
777 [https://doi.org/10.1016/S0083-6729\(06\)74018-3](https://doi.org/10.1016/S0083-6729(06)74018-3).
- 778 Felger, J. C., Z. Li, E. Haroon, B. J. Woolwine, M. Y. Jung, X. Hu, and A. H. Miller. 2016.
779 "Inflammation Is Associated with Decreased Functional Connectivity within
780 Corticostriatal Reward Circuitry in Depression." *Molecular Psychiatry* 21 (10): 1358–
781 65. <https://doi.org/10.1038/mp.2015.168>.
- 782 Figueroa-Hall, Leandra K., Bohan Xu, Rayus Kuplicki, Bart N. Ford, Kaiping Burrows, T.
783 Kent Teague, Sandip Sen, et al. 2022. "Psychiatric Symptoms Are Not Associated
784 with Circulating CRP Concentrations after Controlling for Medical, Social, and
785 Demographic Factors." *Translational Psychiatry* 12 (1): 1–12.
786 <https://doi.org/10.1038/s41398-022-02049-y>.
- 787 Fischl, Bruce. 2012. "FreeSurfer." *NeuroImage* 62 (2): 774–81.
788 <https://doi.org/10.1016/j.neuroimage.2012.01.021>.
- 789 Foley, Éimear M., Joel T. Parkinson, Ruth E. Mitchell, Lorinda Turner, and Golam M.
790 Khandaker. 2022. "Peripheral Blood Cellular Immunophenotype in Depression: A
791 Systematic Review and Meta-Analysis." *Molecular Psychiatry*, 1–16.
- 792 Franklyn, Sabina I., Jayme Stewart, Cecile Beaurepaire, Emily Thaw, and Robyn J.
793 McQuaid. 2022. "Developing Symptom Clusters: Linking Inflammatory Biomarkers to
794 Depressive Symptom Profiles." *Translational Psychiatry* 12 (1): 1–7.
- 795 Friedman, Jerome, Trevor Hastie, Rob Tibshirani, Balasubramanian Narasimhan, Kenneth
796 Tay, Noah Simon, Junyang Qian, and James Yang. 2023. "Glmnet: Lasso and
797 Elastic-Net Regularized Generalized Linear Models." [https://cran.r-](https://cran.r-project.org/web/packages/glmnet/index.html)
798 [project.org/web/packages/glmnet/index.html](https://cran.r-project.org/web/packages/glmnet/index.html).
- 799 Haapakoski, R., J. Mathieu, K. P. Ebmeier, H. Alenius, and M. Kivimaki. 2015. "Cumulative
800 Meta-Analysis of Interleukins 6 and 1beta, Tumour Necrosis Factor Alpha and C-
801 Reactive Protein in Patients with Major Depressive Disorder." *Brain Behav Immun* 49

- 802 (October): 206–15. <https://doi.org/10.1016/j.bbi.2015.06.001>.
- 803 Halaris, Angelos, Karl Bechter, Ebrahim Haroon, Brain E. Leonard, Andrew Miller, Carmine
804 Pariante, and Patricia Zunszain. 2019. “The Future of Psychoneuroimmunology:
805 Promises and Challenges.” In *Advances in Psychiatry*, edited by Afzal Javed and
806 Kostas N. Fountoulakis, 235–66. Cham: Springer International Publishing.
807 https://doi.org/10.1007/978-3-319-70554-5_15.
- 808 Hammen, Constance L. 2015. “Stress and Depression: Old Questions, New Approaches.”
809 *Current Opinion in Psychology*, Depression, 4 (August): 80–85.
810 <https://doi.org/10.1016/j.copsyc.2014.12.024>.
- 811 Hänzelmann, Sonja, Robert Castelo, and Justin Guinney. 2013. “GSVA: Gene Set Variation
812 Analysis for Microarray and RNA-Seq Data.” *BMC Bioinformatics* 14: 1–15.
- 813 Hartmann, Ralf, Frank M. Schmidt, Christian Sander, and Ulrich Hegerl. 2019. “Heart Rate
814 Variability as Indicator of Clinical State in Depression.” *Frontiers in Psychiatry* 9.
815 <https://www.frontiersin.org/articles/10.3389/fpsy.2018.00735>.
- 816 Hautzinger, Martin, Ferdinand Keller, and Christine Kühner. 2006. “BDI-II. Das Beck
817 Depressions-Inventar II. Revision.” Pearson Deutschland.
- 818 Hellmann-Regen, Julian, Vera Clemens, Michael Grözinger, Johannes Kornhuber, Andreas
819 Reif, David Prvulovic, Roberto Goya-Maldonado, et al. 2022. “Effect of Minocycline
820 on Depressive Symptoms in Patients With Treatment-Resistant Depression: A
821 Randomized Clinical Trial.” *JAMA Network Open* 5 (9): e2230367.
822 <https://doi.org/10.1001/jamanetworkopen.2022.30367>.
- 823 Herman, James P., Jessica M. McKlveen, Sriparna Ghosal, Brittany Kopp, Aynara Wulsin,
824 Ryan Makinson, Jessie Scheimann, and Brent Myers. 2016. “Regulation of the
825 Hypothalamic-Pituitary-Adrenocortical Stress Response.” *Comprehensive Physiology*
826 6 (2): 603–21. <https://doi.org/10.1002/cphy.c150015>.
- 827 Hibar, D P, L T Westlye, T G M van Erp, J Rasmussen, C D Leonardo, J Faskowitz, U K
828 Haukvik, et al. 2016. “Subcortical Volumetric Abnormalities in Bipolar Disorder.”
829 *Molecular Psychiatry* 21 (12): 1710–16. <https://doi.org/10.1038/mp.2015.227>.

- 830 Horn, Sarah R., Madison M. Long, Benjamin W. Nelson, Nicholas B. Allen, Philip A. Fisher,
831 and Michelle L. Byrne. 2018. "Replication and Reproducibility Issues in the
832 Relationship between C-Reactive Protein and Depression: A Systematic Review and
833 Focused Meta-Analysis." *Brain, Behavior, and Immunity* 73 (October): 85–114.
834 <https://doi.org/10.1016/j.bbi.2018.06.016>.
- 835 Howard, David M., Mark J. Adams, Toni-Kim Clarke, Jonathan D. Hafferty, Jude Gibson,
836 Masoud Shirali, Jonathan R. I. Coleman, et al. 2019. "Genome-Wide Meta-Analysis
837 of Depression Identifies 102 Independent Variants and Highlights the Importance of
838 the Prefrontal Brain Regions." *Nature Neuroscience* 22 (3): 343–52.
839 <https://doi.org/10.1038/s41593-018-0326-7>.
- 840 Husain, Muhammad Ishrat, Imran B. Chaudhry, Ameer B. Khoso, Muhammad Omair Husain,
841 John Hodsoll, Moin A. Ansari, Haider A. Naqvi, et al. 2020. "Minocycline and
842 Celecoxib as Adjunctive Treatments for Bipolar Depression: A Multicentre, Factorial
843 Design Randomised Controlled Trial." *The Lancet Psychiatry* 7 (6): 515–27.
844 [https://doi.org/10.1016/S2215-0366\(20\)30138-3](https://doi.org/10.1016/S2215-0366(20)30138-3).
- 845 Janelidze, Shorena, Filip Ventorp, Sophie Erhardt, Oskar Hansson, Lennart Minthon, John
846 Flax, Martin Samuelsson, Lil Traskman-Bendz, and Lena Brundin. 2013. "Altered
847 Chemokine Levels in the Cerebrospinal Fluid and Plasma of Suicide Attempters."
848 *Psychoneuroendocrinology* 38 (6): 853–62.
849 <https://doi.org/10.1016/j.psyneuen.2012.09.010>.
- 850 Kappelmann, Nils, Janine Arloth, Marios K. Georgakis, Darina Czamara, Nicolas Rost,
851 Symen Ligthart, Golam M. Khandaker, and Elisabeth B. Binder. 2021. "Dissecting the
852 Association Between Inflammation, Metabolic Dysregulation, and Specific
853 Depressive Symptoms: A Genetic Correlation and 2-Sample Mendelian
854 Randomization Study." *JAMA Psychiatry* 78 (2): 161–70.
855 <https://doi.org/10.1001/jamapsychiatry.2020.3436>.
- 856 Kaufman, Joan, and Dennis Charney. 2000. "Comorbidity of Mood and Anxiety Disorders."
857 *Depression and Anxiety* 12 (S1): 69–76. <https://doi.org/10.1002/1520->

- 858 6394(2000)12:1+<69::AID-DA9>3.0.CO;2-K.
- 859 Kessler, R. C., H. M. van Loo, K. J. Wardenaar, R. M. Bossarte, L. A. Brenner, D. D. Ebert,
860 P. de Jonge, et al. 2017. "Using Patient Self-Reports to Study Heterogeneity of
861 Treatment Effects in Major Depressive Disorder." *Epidemiology and Psychiatric
862 Sciences* 26 (1): 22–36. <https://doi.org/10.1017/S2045796016000020>.
- 863 Koch, Celine, Marcel Wilhelm, Stefan Salzmann, Winfried Rief, and Frank Euteneuer. 2019.
864 "A Meta-Analysis of Heart Rate Variability in Major Depression." *Psychological
865 Medicine* 49 (12): 1948–57. <https://doi.org/10.1017/S0033291719001351>.
- 866 Köhler-Forsberg, O., C. N. Lydholm, C. Hjorthøj, M. Nordentoft, O. Mors, and M. E. Benros.
867 2019. "Efficacy of Anti-Inflammatory Treatment on Major Depressive Disorder or
868 Depressive Symptoms: Meta-Analysis of Clinical Trials." *Acta Psychiatrica
869 Scandinavica* 139 (5): 404–19. <https://doi.org/10.1111/acps.13016>.
- 870 Kopf-Beck, Johannes, Petra Zimmermann, Samy Egli, Martin Rein, Nils Kappelmann, Julia
871 Fietz, Jeanette Tamm, Katharina Rek, Susanne Lucae, and Anna-Katharine Brem.
872 2020. "Schema Therapy versus Cognitive Behavioral Therapy versus Individual
873 Supportive Therapy for Depression in an Inpatient and Day Clinic Setting: Study
874 Protocol of the OPTIMA-RCT." *BMC Psychiatry* 20: 1–19.
- 875 Kriegeskorte, Nikolaus, W. Kyle Simmons, Patrick S. F. Bellgowan, and Chris I. Baker. 2009.
876 "Circular Analysis in Systems Neuroscience: The Dangers of Double Dipping."
877 *Nature Neuroscience* 12 (5): 535–40. <https://doi.org/10.1038/nn.2303>.
- 878 Kurolap, Alina, Florian Kreuder, Claudia Gonzaga-Jauregui, Morasha Plessner Duvdevani,
879 Tamar Harel, Luna Tammer, Baozhong Xin, et al. 2022. "Bi-Allelic Variants in
880 Neuronal Cell Adhesion Molecule Cause a Neurodevelopmental Disorder
881 Characterized by Developmental Delay, Hypotonia, Neuropathy/Spasticity."
882 *American Journal of Human Genetics* 109 (3): 518–32.
883 <https://doi.org/10.1016/j.ajhg.2022.01.004>.
- 884 Lamers, F., Y. Milaneschi, C. H. Vinkers, R. A. Schoevers, E. J. Giltay, and Bwjh Penninx.
885 2020. "Depression Profilers and Immuno-Metabolic Dysregulation: Longitudinal

- 886 Results from the NESDA Study.” *Brain Behav Immun* 88 (August): 174–83.
887 <https://doi.org/10.1016/j.bbi.2020.04.002>.
- 888 Lamers, F., N. Vogelzangs, K. R. Merikangas, P. de Jonge, A. T. F. Beekman, and B. W. J.
889 H. Penninx. 2013. “Evidence for a Differential Role of HPA-Axis Function,
890 Inflammation and Metabolic Syndrome in Melancholic versus Atypical Depression.”
891 *Molecular Psychiatry* 18 (6): 692–99. <https://doi.org/10.1038/mp.2012.144>.
- 892 Lasselin, Julie, Manfred Schedlowski, Bianka Karshikoff, Harald Engler, Mats Lekander, and
893 Jan Pieter Kopsman. 2020. “Comparison of Bacterial Lipopolysaccharide-Induced
894 Sickness Behavior in Rodents and Humans: Relevance for Symptoms of Anxiety and
895 Depression.” *Neuroscience & Biobehavioral Reviews* 115 (August): 15–24.
896 <https://doi.org/10.1016/j.neubiorev.2020.05.001>.
- 897 Leek, Jeffrey T., W. Evan Johnson, Hilary S. Parker, Elana J. Fertig, Andrew E. Jaffe,
898 Yuqing Zhang, John D. Storey, and Leonardo Collado Torres. 2021. “Sva: Surrogate
899 Variable Analysis.” Bioconductor version: 3.12. <https://doi.org/10.18129/B9.bioc.sva>.
- 900 Leighton, S. P., L. Nerurkar, R. Krishnadas, C. Johnman, G. J. Graham, and J. Cavanagh.
901 2018. “Chemokines in Depression in Health and in Inflammatory Illness: A
902 Systematic Review and Meta-Analysis.” *Molecular Psychiatry* 23 (1): 48–58.
903 <https://doi.org/10.1038/mp.2017.205>.
- 904 Li, Yunjin, Lu Ma, Duoqiao Wu, and Geng Chen. 2021. “Advances in Bulk and Single-Cell
905 Multi-Omics Approaches for Systems Biology and Precision Medicine.” *Briefings in
906 Bioinformatics* 22 (5): bbab024. <https://doi.org/10.1093/bib/bbab024>.
- 907 Liao, Yang, Gordon K. Smyth, and Wei Shi. 2014. “featureCounts: An Efficient General
908 Purpose Program for Assigning Sequence Reads to Genomic Features.”
909 *Bioinformatics* 30 (7): 923–30. <https://doi.org/10.1093/bioinformatics/btt656>.
- 910 Lijnen, H. Roger, Valerie Christiaens, Ilse Scroyen, Gabor Voros, Marc Tjwa, Peter
911 Carmeliet, and Désiré Collen. 2006. “Impaired Adipose Tissue Development in Mice
912 With Inactivation of Placental Growth Factor Function.” *Diabetes* 55 (10): 2698–2704.
913 <https://doi.org/10.2337/db06-0526>.

- 914 Love, Michael, Constantin Ahlmann-Eltze, Kwame Forbes, Simon Anders, and Wolfgang
915 Huber. 2021. "DESeq2: Differential Gene Expression Analysis Based on the
916 Negative Binomial Distribution." Bioconductor version: 3.12.
917 <https://doi.org/10.18129/B9.bioc.DESeq2>.
- 918 Lucido, Michael J., Mandy Bekhbat, David R. Goldsmith, Michael T. Treadway, Ebrahim
919 Haroon, Jennifer C. Felger, and Andrew H. Miller. 2021. "Aiding and Abetting
920 Anhedonia: Impact of Inflammation on the Brain and Pharmacological Implications."
921 *Pharmacological Reviews* 73 (3): 1084–1117.
- 922 Lynall, M. E., L. Turner, J. Bhatti, J. Cavanagh, P. de Boer, V. Mondelli, D. Jones, et al.
923 2020. "Peripheral Blood Cell-Stratified Subgroups of Inflamed Depression." *Biol*
924 *Psychiatry* 88 (2): 185–96. <https://doi.org/10.1016/j.biopsych.2019.11.017>.
- 925 Martin, Fergal J, M Ridwan Amode, Alisha Aneja, Olanrewaju Austine-Orimoloye, Andrey G
926 Azov, If Barnes, Arne Becker, et al. 2023. "Ensembl 2023." *Nucleic Acids Research*
927 51 (D1): D933–41. <https://doi.org/10.1093/nar/gkac958>.
- 928 McGuffin, Peter, Randy Katz, Sarah Watkins, and Joan Rutherford. 1996. "A Hospital-Based
929 Twin Register of the Heritability of DSM-IV Unipolar Depression." *Archives of General*
930 *Psychiatry* 53 (2): 129–36. <https://doi.org/10.1001/archpsyc.1996.01830020047006>.
- 931 Mehta, Divya, Charles L. Raison, Bobbi J. Woolwine, Ebrahim Haroon, Elisabeth B. Binder,
932 Andrew H. Miller, and Jennifer C. Felger. 2013. "Transcriptional Signatures Related
933 to Glucose and Lipid Metabolism Predict Treatment Response to the Tumor Necrosis
934 Factor Antagonist Infliximab in Patients with Treatment-Resistant Depression." *Brain,*
935 *Behavior, and Immunity, Inflammation and Mental Health*, 31 (July): 205–15.
936 <https://doi.org/10.1016/j.bbi.2013.04.004>.
- 937 Mengelkoch, Summer, Ziv Lautman, Jenna C. Alley, Lydia G. Roos, Benjamin Ehlert, Daniel
938 P. Moriarity, Samuel Lancaster, Sophia Miryam Schüssler-Fiorenza Rose, Michael P.
939 Snyder, and George M. Slavich. 2023. "Multi-Omics Approaches in
940 Psychoneuroimmunology and Health Research: Conceptual Considerations and
941 Methodological Recommendations." *Brain, Behavior, and Immunity*, August.

- 942 <https://doi.org/10.1016/j.bbi.2023.07.022>.
- 943 Milaneschi, Yuri, Anna Maria Corsi, Brenda W. Penninx, Stefania Bandinelli, Jack M.
944 Guralnik, and Luigi Ferrucci. 2009. "Interleukin-1 Receptor Antagonist and Incident
945 Depressive Symptoms Over 6 Years in Older Persons: The InCHIANTI Study."
946 *Biological Psychiatry, Stress, Aging, and Alzheimer's Disease*, 65 (11): 973–78.
947 <https://doi.org/10.1016/j.biopsych.2008.11.011>.
- 948 Milaneschi, Yuri, Femke Lamers, Michael Berk, and Brenda WJH Penninx. 2020.
949 "Depression Heterogeneity and Its Biological Underpinnings: Toward
950 Immunometabolic Depression." *Biological Psychiatry*.
- 951 Miller, A. H., and C. L. Raison. 2016. "The Role of Inflammation in Depression: From
952 Evolutionary Imperative to Modern Treatment Target." *Nat Rev Immunol* 16 (1): 22–
953 34. <https://doi.org/10.1038/nri.2015.5>.
- 954 Miller, Andrew H., and Charles L. Raison. 2023. "Burning down the House: Reinventing Drug
955 Discovery in Psychiatry for the Development of Targeted Therapies." *Molecular
956 Psychiatry* 28 (1): 68–75. <https://doi.org/10.1038/s41380-022-01887-y>.
- 957 Moriarity, Daniel P., Summer Mengelkoch, and George M. Slavich. 2023. "Incorporating
958 Causal Inference Perspectives into Psychoneuroimmunology: A Simulation Study
959 Highlighting Concerns about Controlling for Adiposity in Immunopsychiatry." *Brain,
960 Behavior, and Immunity* 113 (October): 259–66.
961 <https://doi.org/10.1016/j.bbi.2023.06.022>.
- 962 Moshe, Isaac, Yannik Terhorst, Kennedy Opoku Asare, Lasse Bosse Sander, Denzil
963 Ferreira, Harald Baumeister, David C. Mohr, and Laura Pulkki-Råback. 2021.
964 "Predicting Symptoms of Depression and Anxiety Using Smartphone and Wearable
965 Data." *Frontiers in Psychiatry* 12.
966 <https://www.frontiersin.org/articles/10.3389/fpsy.2021.625247>.
- 967 Nettis, Maria Antonietta, Giulia Lombardo, Caitlin Hastings, Zuzanna Zajkowska, Nicole
968 Mariani, Naghmeh Nikkheslat, Courtney Worrell, Daniela Enache, Anna McLaughlin,
969 and Melisa Kose. 2021. "Augmentation Therapy with Minocycline in Treatment-

970 Resistant Depression Patients with Low-Grade Peripheral Inflammation: Results from
971 a Double-Blind Randomised Clinical Trial.” *Neuropsychopharmacology* 46 (5): 939–
972 48.

973 O’Donnell, Patricio, Laura Rosen, Robert Alexander, Venkatesha Murthy, Ceri H Davies, and
974 Emiliangelo Ratti. 2019. “Strategies to Address Challenges in Neuroscience Drug
975 Discovery and Development.” *International Journal of Neuropsychopharmacology* 22
976 (7): 445–48. <https://doi.org/10.1093/ijnp/pyz027>.

977 O’Dushlaine, Colm, Lizzy Rossin, Phil H Lee, Laramie Duncan, Neelroop N Parikshak,
978 Stephen Newhouse, Stephan Ripke, et al. 2015. “Psychiatric Genome-Wide
979 Association Study Analyses Implicate Neuronal, Immune and Histone Pathways.”
980 *Nature Neuroscience* 18 (2): 199–209. <https://doi.org/10.1038/nn.3922>.

981 Osimo, Emanuele F., Toby Pillinger, Irene Mateos Rodriguez, Golam M. Khandaker,
982 Carmine M. Pariante, and Oliver D. Howes. 2020. “Inflammatory Markers in
983 Depression: A Meta-Analysis of Mean Differences and Variability in 5,166 Patients
984 and 5,083 Controls.” *Brain, Behavior, and Immunity* 87 (July): 901–9.
985 <https://doi.org/10.1016/j.bbi.2020.02.010>.

986 Osimo, Emanuele Felice, Luke James Baxter, Glyn Lewis, Peter B. Jones, and Golam M.
987 Khandaker. 2019. “Prevalence of Low-Grade Inflammation in Depression: A
988 Systematic Review and Meta-Analysis of CRP Levels.” *Psychological Medicine* 49
989 (12): 1958–70.

990 Oura, Hajimu, Jennifer Bertocini, Paula Velasco, Lawrence F. Brown, Peter Carmeliet, and
991 Michael Detmar. 2003. “A Critical Role of Placental Growth Factor in the Induction of
992 Inflammation and Edema Formation.” *Blood* 101 (2): 560–67.
993 <https://doi.org/10.1182/blood-2002-05-1516>.

994 Pfister, Sabina, Vincent Kuettel, and Enrico Ferrero. 2023. “Granulator: Rapid Benchmarking
995 of Methods for *in Silico* Deconvolution of Bulk RNA-Seq Data.” Bioconductor
996 version: 3.16. <https://doi.org/10.18129/B9.bioc.granulator>.

997 R Core Team. 2023. “R: A Language and Environment for Statistical Computing.” Vienna,

- 998 Austria: R Foundation for Statistical Computing. <https://www.R-project.org/>.
- 999 Rohleder, Nicolas. 2019. "Stress and Inflammation – The Need to Address the Gap in the
1000 Transition between Acute and Chronic Stress Effects." *Psychoneuroendocrinology*,
1001 Festschrift for Dirk Hellhammer, 105 (July): 164–71.
1002 <https://doi.org/10.1016/j.psyneuen.2019.02.021>.
- 1003 Ryan, K. M., A. Glaviano, S. M. O'Donovan, E. Kolshus, R. Dunne, A. Kavanagh, A. Jelovac,
1004 et al. 2017. "Electroconvulsive Therapy Modulates Plasma Pigment Epithelium-
1005 Derived Factor in Depression: A Proteomics Study." *Translational Psychiatry* 7 (3):
1006 e1073–e1073. <https://doi.org/10.1038/tp.2017.51>.
- 1007 Savitz, Jonathan B., T. Kent Teague, Masaya Misaki, Matt Macaluso, Brent E. Wurfel, Matt
1008 Meyer, Douglas Drevets, et al. 2018. "Treatment of Bipolar Depression with
1009 Minocycline and/or Aspirin: An Adaptive, 2x2 Double-Blind, Randomized, Placebo-
1010 Controlled, Phase IIA Clinical Trial." *Translational Psychiatry* 8 (1): 1–11.
1011 <https://doi.org/10.1038/s41398-017-0073-7>.
- 1012 Savitz, Jonathan, Mark Barton Frank, Teresa Victor, Melissa Bebak, Julie H. Marino, Patrick
1013 S. F. Bellgowan, Brett A. McKinney, Jerzy Bodurka, T. Kent Teague, and Wayne C.
1014 Drevets. 2013. "Inflammation and Neurological Disease-Related Genes Are
1015 Differentially Expressed in Depressed Patients with Mood Disorders and Correlate
1016 with Morphometric and Functional Imaging Abnormalities." *Brain, Behavior, and*
1017 *Immunity* 31 (July): 161–71. <https://doi.org/10.1016/j.bbi.2012.10.007>.
- 1018 Schmaal, L., D. P. Hibar, P. G. Sämann, G. B. Hall, B. T. Baune, N. Jahanshad, J. W.
1019 Cheung, et al. 2017. "Cortical Abnormalities in Adults and Adolescents with Major
1020 Depression Based on Brain Scans from 20 Cohorts Worldwide in the ENIGMA Major
1021 Depressive Disorder Working Group." *Molecular Psychiatry* 22 (6): 900–909.
1022 <https://doi.org/10.1038/mp.2016.60>.
- 1023 Schmaal, L., D. J. Veltman, T. G. M. van Erp, P. G. Sämann, T. Frodl, N. Jahanshad, E.
1024 Loehrer, et al. 2016. "Subcortical Brain Alterations in Major Depressive Disorder:
1025 Findings from the ENIGMA Major Depressive Disorder Working Group." *Molecular*

- 1026 *Psychiatry* 21 (6): 806–12. <https://doi.org/10.1038/mp.2015.69>.
- 1027 Schmid, Katharina T., Barbara Höllbacher, Cristiana Cruceanu, Anika Böttcher, Heiko
1028 Lickert, Elisabeth B. Binder, Fabian J. Theis, and Matthias Heinig. 2021. “scPower
1029 Accelerates and Optimizes the Design of Multi-Sample Single Cell Transcriptomic
1030 Studies.” *Nature Communications* 12 (1): 6625. [https://doi.org/10.1038/s41467-021-](https://doi.org/10.1038/s41467-021-26779-7)
1031 [26779-7](https://doi.org/10.1038/s41467-021-26779-7).
- 1032 Schmidtke, A, P Fleckenstein, W Moises, and H Beckmann. 1988. “Studies of the reliability
1033 and validity of the German version of the Montgomery-Asberg Depression Rating
1034 Scale (MADRS).” *Schweizer Archiv für Neurologie und Psychiatrie (Zurich,
1035 Switzerland* 139 (2): 51–65.
- 1036 Seppälä, Jussi, Ilaria De Vita, Timo Jämsä, Jouko Miettunen, Matti Isohanni, Katya
1037 Rubinstein, Yoram Feldman, et al. 2019. “Mobile Phone and Wearable Sensor-Based
1038 mHealth Approaches for Psychiatric Disorders and Symptoms: Systematic Review.”
1039 *JMIR Mental Health* 6 (2): e9819. <https://doi.org/10.2196/mental.9819>.
- 1040 Sforzini, Luca, Annamaria Cattaneo, Clarissa Ferrari, Lorinda Turner, Nicole Mariani,
1041 Daniela Enache, Caitlin Hastings, Giulia Lombardo, Maria A. Nettis, and Naghmeh
1042 Nikkheslat. 2023. “Higher Immune-Related Gene Expression in Major Depression Is
1043 Independent of CRP Levels: Results from the BIODEP Study.” *Translational
1044 Psychiatry* 13 (1): 185.
- 1045 Shelton, Richard C., Michael Falola, Li Li, John Zajecka, Maurizio Fava, and George I.
1046 Papakostas. 2015. “The Pro-Inflammatory Profile of Depressed Patients Is (Partly)
1047 Related to Obesity.” *Journal of Psychiatric Research* 70 (November): 91–97.
1048 <https://doi.org/10.1016/j.jpsychires.2015.09.001>.
- 1049 Sienkiewicz, Karolina, Jinyu Chen, Ajay Chatrath, John T. Lawson, Nathan C. Sheffield,
1050 Louxin Zhang, and Aakrosh Ratan. 2022. “Detecting Molecular Subtypes from Multi-
1051 Omics Datasets Using SUMO.” *Cell Reports Methods*, 100152.
- 1052 Simmons, W. Kyle, Kaiping Burrows, Jason A. Avery, Kara L. Kerr, Ashlee Taylor, Jerzy
1053 Bodurka, William Potter, T. Kent Teague, and Wayne C. Drevets. 2020. “Appetite

- 1054 Changes Reveal Depression Subgroups with Distinct Endocrine, Metabolic, and
1055 Immune States.” *Molecular Psychiatry* 25 (7): 1457–68.
- 1056 Sørensen, Nina Vindegaard, Nis Borbye-Lorenzen, Rune Haubo Bojesen Christensen,
1057 Sonja Orlovska-Waast, Rose Jeppesen, Kristin Skogstrand, and Michael Eriksen
1058 Benros. 2023. “Comparisons of 25 Cerebrospinal Fluid Cytokines in a Case–Control
1059 Study of 106 Patients with Recent-Onset Depression and 106 Individually Matched
1060 Healthy Subjects.” *Journal of Neuroinflammation* 20 (1): 1–11.
- 1061 Strawbridge, R., D. Arnone, A. Danese, A. Papadopoulos, A. Herane Vives, and A.J. Cleare.
1062 2015. “Inflammation and Clinical Response to Treatment in Depression: A Meta-
1063 Analysis.” *European Neuropsychopharmacology* 25 (10): 1532–43.
1064 <https://doi.org/10.1016/j.euroneuro.2015.06.007>.
- 1065 Tecchio, Cristina, Alessandra Micheletti, and Marco A. Cassatella. 2014. “Neutrophil-Derived
1066 Cytokines: Facts Beyond Expression.” *Frontiers in Immunology* 5.
1067 <https://www.frontiersin.org/articles/10.3389/fimmu.2014.00508>.
- 1068 The MathWorks Inc. 2020. “MATLAB Version: R2020b.” Natick, Massachusetts, United
1069 States: The MathWorks Inc. <https://www.mathworks.com>.
- 1070 Tian, Tian, Yongtao Yang, Bing Xu, Yinhua Qin, Guangchao Zang, Chanjuan Zhou, Peng
1071 Zheng, et al. 2020. “Pigment Epithelium-Derived Factor Alleviates Depressive-like
1072 Behaviors in Mice by Modulating Adult Hippocampal Synaptic Growth and Wnt
1073 Pathway.” *Progress in Neuro-Psychopharmacology and Biological Psychiatry* 98
1074 (March): 109792. <https://doi.org/10.1016/j.pnpbp.2019.109792>.
- 1075 Tombran-Tink, Joyce, and Colin J. Barnstable. 2003. “PEDF: A Multifaceted Neurotrophic
1076 Factor.” *Nature Reviews Neuroscience* 4 (8): 628–36.
1077 <https://doi.org/10.1038/nrn1176>.
- 1078 Torres-Platas, Susana G., Cristiana Cruceanu, Gary Gang Chen, Gustavo Turecki, and
1079 Naguib Mechawar. 2014. “Evidence for Increased Microglial Priming and
1080 Macrophage Recruitment in the Dorsal Anterior Cingulate White Matter of Depressed
1081 Suicides.” *Brain, Behavior, and Immunity* 42 (November): 50–59.

- 1082 <https://doi.org/10.1016/j.bbi.2014.05.007>.
- 1083 Turner, Cortney A., Robert C. Thompson, William E. Bunney, Alan F. Schatzberg, Jack D.
1084 Barchas, Richard M. Myers, Huda Akil, and Stanley J. Watson. 2014. "Altered
1085 Choroid Plexus Gene Expression in Major Depressive Disorder." *Frontiers in Human*
1086 *Neuroscience* 8. <https://www.frontiersin.org/articles/10.3389/fnhum.2014.00238>.
- 1087 Vest, Adriana N., Giulia Da Poian, Qiao Li, Chengyu Liu, Shamim Nemati, Amit J. Shah, and
1088 Gari D. Clifford. 2018. "An Open Source Benchmarked Toolbox for Cardiovascular
1089 Waveform and Interval Analysis." *Physiological Measurement* 39 (10): 105004.
1090 <https://doi.org/10.1088/1361-6579/aae021>.
- 1091 Vos, Theo, Stephen S. Lim, Cristiana Abbafati, Kaja M. Abbas, Mohammad Abbasi, Mitra
1092 Abbasifard, Mohsen Abbasi-Kangevari, et al. 2020. "Global Burden of 369 Diseases
1093 and Injuries in 204 Countries and Territories, 1990–2019: A Systematic Analysis for
1094 the Global Burden of Disease Study 2019." *The Lancet* 396 (10258): 1204–22.
1095 [https://doi.org/10.1016/S0140-6736\(20\)30925-9](https://doi.org/10.1016/S0140-6736(20)30925-9).
- 1096 Wittchen, H.-U., E. Beloch, E. Garzycynski, A. Holly, G. Lachner, A. Perkonigg, E.-M. Pfütze,
1097 et al. 1995. "Münchener Composite International Diagnostic Interview (M-CIDI)
1098 (Version 2.2 / 2 / 95)." Max-Planck-Institut für Psychiatrie, Klinisches Institut,
1099 München.
- 1100 Wittchen, H.-U., and H. Pfister. 1997. "DIA-X-Interviews: Manual für Screening-Verfahren
1101 und Interview; Interviewheft." [https://hdl.handle.net/11858/00-001M-0000-000E-](https://hdl.handle.net/11858/00-001M-0000-000E-AAAF-C)
1102 [AAAF-C](https://hdl.handle.net/11858/00-001M-0000-000E-AAAF-C).
- 1103 Wittenberg, G. M., J. Greene, P. E. Vertes, W. C. Drevets, and E. T. Bullmore. 2020. "Major
1104 Depressive Disorder Is Associated With Differential Expression of Innate Immune
1105 and Neutrophil-Related Gene Networks in Peripheral Blood: A Quantitative Review of
1106 Whole-Genome Transcriptional Data From Case-Control Studies." *Biol Psychiatry* 88
1107 (8): 625–37. <https://doi.org/10.1016/j.biopsych.2020.05.006>.
- 1108 Wolf, F. Alexander, Philipp Angerer, and Fabian J. Theis. 2018. "SCANPY: Large-Scale
1109 Single-Cell Gene Expression Data Analysis." *Genome Biology* 19 (1): 15.

1110 <https://doi.org/10.1186/s13059-017-1382-0>.

1111 Yang, Chenghao, Klaas J. Wardenaar, Fokko J. Bosker, Jie Li, and Robert A. Schoevers.

1112 2019. "Inflammatory Markers and Treatment Outcome in Treatment Resistant

1113 Depression: A Systematic Review." *Journal of Affective Disorders* 257 (October):

1114 640–49. <https://doi.org/10.1016/j.jad.2019.07.045>.

1115 Young, Juan Joseph, Davide Bruno, and Nunzio Pomara. 2014. "A Review of the

1116 Relationship between Proinflammatory Cytokines and Major Depressive Disorder."

1117 *Journal of Affective Disorders* 169 (December): 15–20.

1118 <https://doi.org/10.1016/j.jad.2014.07.032>.

1119 Yue, Yingying, Haitang Jiang, Rui Liu, Yingying Yin, Yuqun Zhang, Jinfeng Liang, Shenghua

1120 Li, et al. 2016. "Towards a Multi Protein and mRNA Expression of Biological

1121 Predictive and Distinguish Model for Post Stroke Depression." *Oncotarget* 7 (34):

1122 54329–38. <https://doi.org/10.18632/oncotarget.11105>.

1123 Data and Code availability

1124 The computational code has been made available on GitHub:

1125 <https://github.com/cellmapslab/ImmuneDepressionSymptoms>, while the RNA-seq data is

1126 accessible in the GEO repository under GSE260603 and the immune marker data in the

1127 Zenodo repository <https://zenodo.org/doi/10.5281/zenodo.10698978>.

1128 Conflict of interest

1129 VIS has provided consulting and advisory services for Roche and Sony. The other authors

1130 declare no conflict of interest.

1131 Acknowledgments

1132 We extend our gratitude to all participants of the BeCOME and OPTIMA studies without
1133 whom our research would not be possible. We thank the Biomaterial processing and
1134 repository unit (BioPrep) of the Max Planck Institute of Psychiatry for their handling of the
1135 biological samples and the RNA isolation.

1136 Dr. Knauer-Arloth's contributions were supported by the Brain & Behavior Research
1137 Foundation (NARSAD Young Investigator Grant, #28063).

1138

1139 Contributions

1140 Jonas Hagenberg: Conceptualization, Methodology, Software, Formal analysis, Writing -

1141 Original Draft, Visualization

1142 BeCOME study group: Resources

1143 OPTIMA study group: Resources

1144 Tanja Brückl: Data curation, Formal analysis, Writing - Review & Editing

1145 Mira Erhart: Formal analysis, Writing - Review & Editing

1146 Johannes Kopf-Beck: Data curation, Writing - Review & Editing

1147 Maik Ködel: Investigation

1148 Ghalia Rehawi: Software, Writing - Review & Editing

1149 Simone Röh-Karamihalev: Software

1150 Susann Sauer: Investigation

1151 Natan Yusupov: Data curation, Writing - Review & Editing

1152 Monika Rex-Haffner: Investigation

1153 Victor Spoomaker: Supervision, Writing - Review & Editing

1154 Philipp Sämann: Methodology, Formal Analysis, Writing - Review & Editing

1155 Elisabeth Binder: Supervision, Funding acquisition, Writing - Review & Editing

1156 Janine Knauer-Arloth: Conceptualization, Visualization, Supervision, Funding acquisition,
1157 Writing - Review & Editing
1158
1159 JH processed the immune marker and RNA-seq data, designed and carried out the
1160 clustering and the subsequent analyses, provided critical intellectual input and wrote the
1161 initial manuscript draft; BSG and OSG recruited participants, carried out the studies and
1162 provided data; TMB processed the phenotype data and provided critical intellectual input on
1163 the phenotypes; ME and VIS led the electrocardiography data analysis; JKB provided
1164 phenotype data; MK performed immune marker measurements; GR advised on cell type
1165 deconvolution; SRK advised on RNA-seq data analysis; NY processed phenotype data;
1166 MRH supported experimental procedures and project organization; PS led the imaging data
1167 analysis and contributed to the manuscript draft; EB supervised the project and acquired
1168 funding; JKA conceived the idea, acquired funding, supervised the project, designed
1169 experiments and analyses, provided critical intellectual input and contributed to the
1170 manuscript draft writing.
1171