

## Long-term exposure to wildfire smoke PM<sub>2.5</sub> and mortality in the contiguous United States

Yiqun Ma<sup>1,2</sup>, Emma Zang<sup>3</sup>, Yang Liu<sup>4</sup>, Jing Wei<sup>5</sup>, Yuan Lu<sup>6,7</sup>, Harlan M. Krumholz<sup>6,7</sup>, Michelle L. Bell<sup>8</sup>, Kai Chen<sup>1,2,\*</sup>

<sup>1</sup>Department of Environmental Health Sciences, Yale School of Public Health, New Haven, CT, USA

<sup>2</sup>Yale Center on Climate Change and Health, Yale School of Public Health, New Haven, CT, USA

<sup>3</sup>Department of Sociology, Yale University, New Haven, CT, USA

<sup>4</sup>Department of Environmental Health, Rollins School of Public Health, Emory University, Atlanta, GA, USA

<sup>5</sup>Department of Atmospheric and Oceanic Science, Earth System Science Interdisciplinary Center, University of Maryland, College Park, MD, USA

<sup>6</sup>Center for Outcomes Research and Evaluation, Yale New Haven Hospital, New Haven, CT, USA

<sup>7</sup>Section of Cardiovascular Medicine, Department of Medicine, Yale School of Medicine, New Haven, CT, USA

<sup>8</sup>School of the Environment, Yale University, New Haven, CT, USA

\*Corresponding author: Kai Chen

Email: [kai.chen@yale.edu](mailto:kai.chen@yale.edu)

**Author Contributions:** Y.M. conducted formal analyses and drafted the manuscript. K.C. conceived of and supervised the conduct of this study and edited the manuscript. K.C. and E.Z. applied and managed the mortality dataset. J.W. modelled the all-source PM<sub>2.5</sub> data and revised the manuscript. E.Z., Y.L., Y.L., H.M.K., and M.L.B. contributed to the interpretation of results and manuscript revision. All authors reviewed and approved the final version of this manuscript.

**Competing Interest Statement:** The authors declare no conflict of interests.

**Classification:** Biological Sciences, Environmental Sciences

**Keywords:** wildfire, mortality, fine particulate matter, United States

## Abstract

Despite the growing evidence on the health effects of short-term exposure to wildfire smoke fine particles (PM<sub>2.5</sub>), the impacts of long-term wildfire smoke PM<sub>2.5</sub> exposure remain unclear. We investigated the association between long-term exposure to wildfire smoke PM<sub>2.5</sub> and all-cause mortality and mortality from a wide range of specific causes in all 3,108 counties in the contiguous U.S., 2007–2020. Monthly county-level mortality data were collected from the National Center for Health Statistics. Wildfire smoke PM<sub>2.5</sub> concentration was derived from a 10×10 km<sup>2</sup> resolution spatiotemporal model. Controlling for non-smoke PM<sub>2.5</sub>, air temperature, and unmeasured spatial and temporal confounders, we found a non-linear association between 12-month moving average concentration of smoke PM<sub>2.5</sub> and monthly all-cause mortality rate. Relative to a month with the long-term smoke PM<sub>2.5</sub> exposure below 0.1 µg/m<sup>3</sup>, all-cause mortality increased by 0.40-1.54 and 3.65 deaths per 100,000 people per month when the 12-month moving average of PM<sub>2.5</sub> concentration was of 0.1-5 and 5+ µg/m<sup>3</sup>, respectively. Cardiovascular, ischemic heart disease, digestive, endocrine, diabetes, mental, suicide, and chronic kidney disease mortality were all found to be associated with long-term wildfire smoke PM<sub>2.5</sub> exposure. Smoke PM<sub>2.5</sub> contributed to approximately 30,180 all-cause deaths/year (95% CI: 21,449, 38,910) in the contiguous U.S. Higher smoke PM<sub>2.5</sub>-related increases in mortality rates were found for people aged 65 above and racial minority populations. Positive interaction effects with extreme heat were also observed. Our study identified the detrimental effects of long-term exposure to wildfire smoke PM<sub>2.5</sub> on a wide range of mortality outcomes, underscoring the need for public health actions and communication to prepare communities and individuals to mitigate smoke exposure.

## Introduction

Wildfire is a growing public health concern in the United States. As a result of the warming climate (1), a long history of fire suppression (2), and an increase in human-caused fire ignitions (3), the country has witnessed a marked increase in the area affected by wildfires over the past few decades, with the burned area roughly quadrupling (4). In recent years, wildfire contributed to up to 25% of fine particulate matter (PM<sub>2.5</sub>) across the U.S., and up to half in some Western regions (4). Under climate change, the prevalence, frequency, and intensity of wildfire activities are expected to increase in the future (5).

Among the various air pollutants emitted by wildfires, PM<sub>2.5</sub> has received great attention due to its ability to deeply penetrate the respiratory system and demonstrated links to public health (6). In addition, because of different chemical composition and smaller particle size, studies suggested that the toxicity of wildfire smoke PM<sub>2.5</sub> could be different from urban background PM<sub>2.5</sub>, potentially more lethal (7, 8). Previous studies on the health effects of wildfire smoke mostly focused on the western U.S., where the majority of large fires occurred (8-10). However, the pollutants from wildfire smoke can travel long distances from the source, potentially affecting human health thousands of kilometers away outside the West (11).

Previous studies on the health effects of wildfire exposure predominantly focused on the effects of short-term exposure. Most studies reported a positive relationship between short-term wildfire smoke exposure and all-cause mortality (10, 12-14). A growing number of studies linked short-term exposure to wildfire smoke to increased risks of respiratory mortality and presented mixed evidence regarding cardiovascular mortality (12-15). Recent studies have also documented worsened diabetic outcomes (16), higher mortality rates among patients with kidney failure (17), and impaired mental health (18, 19) associated with short-term wildfire smoke exposure.

However, given that climate change has contributed to an increase in wildfire season

length, increasing the duration of exposure, the health impacts of long-term wildfire smoke exposure should be a concern of growing importance (20-22). To date, little is known about the impacts of long-term exposure to wildfire smoke on human health (20, 22). Most previous studies focused on mental health, reporting associations between long-term wildfire exposure and mental outcomes, such as anger problems (23), posttraumatic stress disorder (24), depression (25), and anxiety (26). However, these studies could not distinguish between the effects of smoke and the overall impacts of wildfires. A few studies suggested that exposure to wildfires was associated with child mortality, COVID-19 mortality, cardiovascular disease mortality, and respiratory disease morbidity (22), but most of them did not measure the uncertainties of estimates. Given that short-term exposure to wildfire smoke has been linked to a wide range of mortality outcomes, exploring whether long-term wildfire smoke exposure is associated with these health effects is worthwhile.

Furthermore, the effects of wildfire smoke  $PM_{2.5}$  can be heterogeneous among population subgroups due to physiological, behavioral, and socioeconomic factors (27). Previous studies indicated that demographic factors such as sex, age, and race and ethnicity may modify the association between smoke  $PM_{2.5}$  and health outcomes (12, 27, 28). However, existing research mostly focused on the effects of short-term wildfire smoke exposure and generated mixed findings (10). To better prepare communities for smoke and tackle environmental justice issues, a deeper understanding of susceptibility to wildfire exposure, particularly long-term exposure, among specific subgroups is needed to help inform targeted public health outreach efforts.

Extreme heat is a well-documented threat to human health, leading to substantial mortality and morbidity (29-32). The co-occurrence of wildfires and extreme heat events is common in the U.S. and is expected to increase in the context of climate change (33). In addition, both extreme heat and  $PM_{2.5}$  were associated with impaired cardiopulmonary functions

(34, 35). Therefore, extreme heat may interact with wildfire smoke and further aggravate health effects. However, although a previous study suggested synergistic effects between extreme heat and wildfire smoke on cardiorespiratory hospitalizations in California (36), little is known about the potential interaction between extreme heat and long-term smoke  $PM_{2.5}$  exposure nationwide.

Constrained by a lack of nationwide validated data on pollutant concentrations attributable to wildfire smoke, many previous studies on the impact of wildfire smoke on health outcomes have been focusing on episodes with high wildfire smoke exposure (or smoke wave) using binary measures of smoke concentrations (37). Recently, a machine learning model was developed to estimate wildfire smoke  $PM_{2.5}$  concentrations for the contiguous U.S., using a combination of meteorological factors, fire variables, aerosol measurements, and land use and elevation data (38). This new, high-resolution wildfire smoke  $PM_{2.5}$  dataset ( $10 \times 10 \text{ km}^2$ ) enabled us to further examine the impact of wildfire smoke, ranging from the more common, low-level smoke concentrations to the increasingly frequent extremely high concentrations, and to explore its potentially non-linear effects on mortality.

Utilizing the nationwide monthly wildfire smoke  $PM_{2.5}$  and mortality data from 2007 to 2020, this study aimed to (a) estimate the potentially non-linear associations of long-term smoke  $PM_{2.5}$  exposure with county-level monthly all-cause and cause-specific mortality from a broad spectrum of diseases, (b) calculate the attributable cause-specific mortality burden in each county, (c) examine the associations in different sex, age, and racial and ethnic groups, and (d) explore the interaction effect between smoke  $PM_{2.5}$  and extreme heat on mortality.

## **Methods**

### ***Mortality and population data***

We obtained mortality data for all 3,108 counties or county equivalents in the contiguous U.S. from 2007 to 2020 from the National Center for Health Statistics. The mortality dataset includes the year and month of death, the primary cause of death (International Statistical Classification of Diseases and Related Health Problems, 10<sup>th</sup> Revision [ICD-10] codes), and the sex, age, race, and ethnicity of each deceased person. This study covered all-cause mortality (ICD-10 code: A00-Z99) and cause-specific mortality from major categories: cardiovascular diseases (I00-I99), respiratory diseases (J00-J99), endocrine diseases (E00-E90), genitourinary diseases (N00-N99), nervous diseases (G00-G99), mental and behavioral disorders (F00-F99), digestive diseases (K00-K93), and external causes (V01-Y98). Deaths from more specific causes, including ischemic heart disease (I20-I25), myocardial infarction (I20-I23), stroke (I60-I69), hypertensive disease (I10-I15), hypertensive heart disease (I11), COPD (J41-J44), diabetes (E10-E14), chronic kidney disease (N18), Alzheimer's disease (F00-F03, G30), and suicide (X60-X84, Y10-Y34) were also examined in this study.

County-level population data was collected from the Surveillance, Epidemiology, and End Results Program, National Cancer Institute (39). The total population and population estimate by sex, age, race, and Hispanic origin were extracted for each county, 2007–2020. We calculated the monthly county-level cause-specific mortality rates for different sex (male, female), age (0 to 64, 65 and above), and race and ethnicity (non-Hispanic White, non-Hispanic Black, and Hispanic) groups. All mortality rates, except those specific to age groups, were age adjusted by direct standardization using the 2000 U.S. Census population as the standard population. Using anonymized monthly county-level mortality data, this study was determined as a Not Human Subject research by the Yale Institutional Review Boards (protocol ID: 2000026808).

***Wildfire smoke PM<sub>2.5</sub> and non-smoke PM<sub>2.5</sub>***

Ambient wildfire smoke  $PM_{2.5}$  estimates for the contiguous U.S. was provided by a recent study by Childs et al. (38). In brief, smoke days were identified as days when smoke was overhead based on satellite imagery, and station-based ground smoke  $PM_{2.5}$  on those days was calculated as anomalies above the median on non-smoke days. Then, a model was trained to predict the station-based smoke  $PM_{2.5}$  using meteorological factors, fire variables, aerosol measurements, and land use and elevation data. Finally, the trained model was applied to produce daily estimates of smoke  $PM_{2.5}$  over the contiguous U.S. at a resolution of  $10 \times 10$  km<sup>2</sup> (38). This model performed well over the entire range of observed smoke  $PM_{2.5}$ , without saturation at very high daily  $PM_{2.5}$  levels (38). We additionally validated this model against a recently published wildfire-specific  $PM_{2.5}$  model in California, which applied a novel ensemble-based statistical approach to isolate wildfire-specific  $PM_{2.5}$  from other sources of emissions (40). This external validation showed a great consistency between the monthly county-level predictions from these two models in California, 2006–2020, with an R-squared ( $R^2$ ) value of 0.92 and a root-mean-square error (RMSE) of 1.14  $\mu\text{g}/\text{m}^3$  (**Supplemental Fig. S13**). The daily smoke  $PM_{2.5}$  concentrations were aggregated into monthly county-level average using population-weighted averaging to match with the mortality data. For months from January 2007 to December 2020, we calculated the 12-month moving average of smoke  $PM_{2.5}$  concentration for each county to represent the average exposure to smoke  $PM_{2.5}$  in the previous year. To account for the potentially non-linear effects, we divided the 12-month moving average smoke  $PM_{2.5}$  concentrations into 9 bins: 0-0.1 (reference), 0.1-0.2, 0.2-0.3, 0.3-0.4, 0.4-0.5, 0.5-0.7, 0.7-1, 1-5 and 5+  $\mu\text{g}/\text{m}^3$ . The distribution of samples across the bins is shown in **Supplemental Fig. S2**.

Data of daily total all-source  $PM_{2.5}$  concentrations at  $1 \times 1$  km<sup>2</sup> resolution were obtained from the USHighAirPollutants (USHAP) dataset (41). This daily surface  $PM_{2.5}$  concentration data was derived via a deep learning model that integrated big data from satellites, models, and

surface observations (41). Similar to smoke  $PM_{2.5}$ , we averaged the daily all-source  $PM_{2.5}$  concentrations into monthly county-level data. Non-smoke  $PM_{2.5}$  concentrations were then calculated by subtracting the smoke  $PM_{2.5}$  from the all-source  $PM_{2.5}$  concentrations. For negative values produced by this subtraction (0.07% of the total observations), the non-smoke  $PM_{2.5}$  concentrations were recoded as 0. We calculated the moving average non-smoke  $PM_{2.5}$  concentrations of the current and previous 11 months for months from January 2007 to December 2020. The cartographic boundary for counties in the contiguous U.S. was downloaded from the U.S. Census Bureau's TIGER/Line geodatabase (42).

### ***Meteorological factors***

Daily mean air temperature and mean dew point temperature data at  $4 \times 4$  km<sup>2</sup> were obtained from the PRISM Climate Group (43). Similar to the air pollution data, we generated monthly averages for these two variables for each county.

We also utilized the daily mean air temperature data from the PRISM Climate Group to detect extreme heat days (43). In each county, extreme heat was defined as days with daily mean air temperature higher than the county's 90<sup>th</sup> percentile warm season air temperature (May to September, 2007-2020). The monthly number of extreme heat days in each county were calculated. We also calculated the 12-month moving average number of extreme heat days in each county for each month to match the exposure window of smoke  $PM_{2.5}$ . In sensitivity analysis, temperature thresholds of 85<sup>th</sup> and 95<sup>th</sup> percentiles were used as alternative definitions of extreme heat.

### ***Distance to fire***

Daily active fire location data from 2006 to 2020 were obtained from the Hazard Mapping System (HMS). This system combines near real-time satellite observations into a common



framework in which trained satellite analysts perform quality control of automated fire detections (44). For each county, we calculated the distance from its population centroid to the nearest active fire point each day and aggregated the daily data to monthly level using the median value. Then, we calculated the 12-month moving average of this distance for each county to represent the average distance to active fires in the previous year. We classified the distance to fire into two categories: close ( $< 150$  km) and far ( $\geq 150$  km).

### **Statistical analysis**

To estimate the association between long-term exposure to wildfire smoke  $PM_{2.5}$  and monthly mortality rates, we applied a panel fixed effects model which exploits local temporal variation in both exposure and outcome. Panel fixed effects models have been increasingly applied in environmental epidemiology in recent years (45, 46). In our study, the main model can be expressed as

$$\begin{aligned} MortalityRate_{c,y,m} &= \alpha_c + \theta_{y,m} + \delta_{s,y} + \eta_{c,m} \\ &+ \sum_{b=1}^B (\beta_b SmokePM2.5Bins_{c,y,m}^b) + \beta NonSmokePM2.5_{c,y,m} \\ &+ ns(Temperature_{c,y,m}, df = 5) + \varepsilon_{c,y,m} \end{aligned}$$

where  $MortalityRate_{c,y,m}$  represents the all-cause or cause-specific age-adjusted mortality rate in county  $c$ , year  $y$ , and month  $m$ .  $SmokePM2.5Bins_{c,y,m}^b$  is a dummy for whether the moving average of smoke  $PM_{2.5}$  concentration of the current and previous 11 months in county  $c$ , year  $y$ , and month  $m$  falls into the concentration range of bin  $b$ .  $\alpha_c$  refers to time-invariant county effects and  $\theta_{y,m}$  refers to time-varying effects that are common in all counties. By introducing the indicators for each county and each year-month, this model can potentially control for all spatial confounders that only vary across counties (e.g., urbanicity) and all temporal

confounders that only vary by time (e.g., seasonality), either measured or unmeasured (47).

Fixed effects at the state by year level ( $\delta_{s,y}$ ) and at the county by month of year level ( $\eta_{c,m}$ )

account for regional long-term trend and seasonality in exposure and outcomes.

$NonSmokePM_{2.5,c,y,m}$  is the 12-month moving average of non-smoke  $PM_{2.5}$  concentrations in

county  $c$ , year  $y$ , and month  $m$ . Current-month air temperature was controlled by a flexible

natural cubic spline with five degrees of freedom (df).  $\varepsilon_{c,y,m}$  is the error term. We weighted

models using the population size in each county to improve the precision of our estimates (48).

Heteroskedasticity-robust standard-errors were used to compute 95% confidence intervals.

In subgroup analyses, to estimate the association between long-term smoke  $PM_{2.5}$  exposure and monthly mortality rates by sex, age, and race and ethnicity, we used an expanded dataset nesting the subgroups, interacted the subgroup variable with all terms in the model, and reported the statistical significance of the interaction term between the subgroup variable and smoke  $PM_{2.5}$ . Furthermore, we explored the interaction between extreme heat and smoke  $PM_{2.5}$  by interacting the 12-month moving average number of extreme heat days and bins of 12-month moving average concentration of smoke  $PM_{2.5}$  in the model. In addition, we also conducted stratified analysis by distance to fire (close, far) to investigate its potential modification effect. We tested the lag pattern in the effects of smoke  $PM_{2.5}$  by extending the 12-month moving average of smoke  $PM_{2.5}$  concentration to 24 and 36, representing longer-term smoke  $PM_{2.5}$  in the past up to 3 years.

Based on the estimated coefficients of smoke  $PM_{2.5}$  bins ( $\beta_b$ ) for each cause, which can be interpreted as the changes in mortality rate associated with being in those bins of smoke  $PM_{2.5}$  concentration compared to the reference bin (0-0.1  $\mu\text{g}/\text{m}^3$ ), we calculated the number of deaths attributable to smoke  $PM_{2.5}$  (attributable number, AN) in each county in each month by  $AN_{c,m} = \beta_b \times Population_{c,m}$ , where  $\beta_b$  is the estimated coefficient of the corresponding smoke  $PM_{2.5}$  bin ( $b$ ) in that month and  $Population_{c,m}$  is the total population in county  $c$ , month  $m$ . This

calculation relied on two key assumptions. First, this approach assumes homogeneity within each smoke  $PM_{2.5}$  bin, disregarding the variation within the bin. In this study, the 12-month moving average concentrations of smoke  $PM_{2.5}$  were divided into nine narrowly defined bins, each with a relatively small concentration range. Therefore, the estimate of each bin is likely to well represent the average effects of smoke  $PM_{2.5}$  within that specific concentration range. This assumption was further tested by using finer bins and a non-linear curve to smoke  $PM_{2.5}$  in sensitivity analyses (see below; **Supplemental Fig. S8-S9**). In addition, by using the regression coefficients to estimate attributable deaths, we assume a causal relationship between smoke  $PM_{2.5}$  concentration and mortality rates. Our statistical model accounted for unmeasured temporal and spatial confounders by the year-month and county fixed effects and unmeasured confounders that vary both over time and space by the space-time interaction terms. Therefore, the observed association is unlikely to be primarily driven by unmeasured confounding factors. Spatial and temporal randomization tests were performed to test this assumption (see below; **Supplemental Fig. S10**).

Several sensitivity analyses were performed to test the robustness of our results: (a) we used different choices of fixed effects in the model; (b) we additionally adjusted for dew point temperature in the model; (c) we removed non-smoke  $PM_{2.5}$  from the model; (d) an alternative four or six dfs was used in the natural cubic spline of air temperature; (e) we used finer bins of smoke  $PM_{2.5}$  concentration; and (f) we used a natural cubic spline with knots at 0, 0.1, 0.3, 0.5, 1, and 5  $\mu g/m^3$  to model wildfire smoke  $PM_{2.5}$  concentration.

In addition, to assess the likelihood of model misspecification influencing our main results, we performed a spatial randomization test and a temporal randomization test. In the spatial randomization test, we randomized the smoke  $PM_{2.5}$  exposure for 2,000 times across county while keeping their de facto year-month; in the temporal randomization test, we randomized the exposure variable for 2,000 times across year-month while keeping the

corresponding counties. Such placebo tests are commonly used to detect spatial and temporal dependence due to model misspecification in panel models (49, 50).

## Results

### ***Description of smoke PM<sub>2.5</sub> exposure and monthly mortality in the contiguous U.S.***

For months from January 2007 to December 2020, we calculated the moving average of smoke PM<sub>2.5</sub> concentration of the current and previous 11 months for each county to represent the average exposure to smoke PM<sub>2.5</sub> in the previous year. The average 12-month moving average concentration of smoke PM<sub>2.5</sub> across all county-months during the study period was 0.4 µg/m<sup>3</sup>, contributing to approximately 5% of all-source PM<sub>2.5</sub> (**Supplemental Table S1**).

From 2007 to 2020, all 3,108 counties in the contiguous U.S. experienced some amount of smoke PM<sub>2.5</sub>, with the western, north central, and southeastern counties being exposed to higher long-term exposure (12-month moving average concentration of smoke PM<sub>2.5</sub>) than other regions (**Fig. 1A**). The temporal variability in this exposure was also higher in these regions compared with other regions (**Fig. 1B**). The overall temporal trend of the 12-month moving average concentration of smoke PM<sub>2.5</sub> for all U.S. contiguous counties is displayed in **Supplemental Fig. S1**.

To account for the potentially non-linear health effects of smoke PM<sub>2.5</sub>, we categorized the 12-month moving average of smoke PM<sub>2.5</sub> concentrations into 9 bins: 0-0.1 (reference), 0.1-0.2, 0.2-0.3, 0.3-0.4, 0.4-0.5, 0.5-0.7, 0.7-1, 1-5 and 5+ µg/m<sup>3</sup>, corresponding to approximately 9.9%, 17.8%, 17.7%, 14.4%, 11.1%, 14.9%, 9.1%, 5.0%, and 0.1% of county-months in the study period (**Supplemental Fig. S2**). Only 15 county-months were not exposed to any smoke PM<sub>2.5</sub> in the current and previous 11 months.

A total of 37,225,590 deaths were included in this study, including 11,514,374 deaths from cardiovascular diseases, 3,584,654 from respiratory diseases, 1,624,915 from endocrine

diseases, 939,531 from genitourinary diseases, 2,465,890 from nervous diseases, 1,823,243 from mental and behavioral disorders (hereafter referred to as “mental disorders”), 1,406,184 from digestive diseases, and 2,972,476 from external causes. From 2007 to 2020, the mean age-adjusted all-cause mortality rate was 69.2 (SD: 26.7) deaths per 100,000 people per month in all counties in the contiguous U.S. The descriptive statistics of age-adjusted mortality rate for each population subgroup and each specific cause are listed in **Supplemental Table S1**.

### ***Association between long-term smoke PM<sub>2.5</sub> exposure and cause-specific mortality rate***

Using a panel fixed effects model to control for air temperature, non-smoke PM<sub>2.5</sub>, time-invariant spatial confounders, county-invariant temporal confounders, and regional long-term and seasonal trends, we found a non-linear association between 12-month moving average of smoke PM<sub>2.5</sub> concentration and monthly all-cause mortality rate (**Fig. 2**). Compared to a month in the same county with the long-term smoke PM<sub>2.5</sub> exposure below 0.1 µg/m<sup>3</sup>, all-cause mortality increased by 0.40 (95% confidence interval [CI]: 0.23, 0.56), 1.21 (95% CI: 0.90, 1.52), 0.89 (95% CI: 0.63, 1.15), 0.86 (95% CI: 0.59, 1.14), 1.13 (95% CI: 0.86, 1.40), 1.54 (95% CI: 1.18, 1.89), 1.38 (95% CI: 0.81, 1.95), and 3.65 (95% CI: 1.89, 5.42) deaths per 100,000 people per month when the 12-month moving average of smoke PM<sub>2.5</sub> concentration was in the range of 0.1-0.2, 0.2-0.3, 0.3-0.4, 0.4-0.5, 0.5-0.7, 1-5 and 5+ µg/m<sup>3</sup>, respectively (**Fig. 2**).

We observed significantly positive associations between 12-month moving average of smoke PM<sub>2.5</sub> concentrations and monthly mortality rates from cardiovascular diseases, ischemic heart diseases, digestive diseases, endocrine diseases, diabetes, mental disorders, suicide, and chronic kidney diseases (**Fig. 2**). Compared to a month with the long-term smoke PM<sub>2.5</sub> exposure below 0.1 µg/m<sup>3</sup>, cardiovascular mortality rates significantly increased when the 12-month moving average of smoke PM<sub>2.5</sub> concentration was from 0.5 to 1 µg/m<sup>3</sup> and above 5 µg/m<sup>3</sup>, and ischemic heart disease mortality rates significantly increased when the concentration

was from 0.1 to 5  $\mu\text{g}/\text{m}^3$ . A nearly linear association was observed for mortality rates from endocrine diseases, including diabetes: the central estimates were generally higher as the concentration bin increased. Digestive mortality was found sensitive to the 12-month moving average of smoke  $\text{PM}_{2.5}$  when the concentration was 0.5-0.7 and 5+  $\mu\text{g}/\text{m}^3$ . Mortality from mental disorders significantly increased in all concentration bins compared to a month with the 12-month moving average concentration below 0.1  $\mu\text{g}/\text{m}^3$ . Similarly, suicide mortality significantly increased when the smoke  $\text{PM}_{2.5}$  concentration was from 0.1 to 1  $\mu\text{g}/\text{m}^3$ . In addition, mortality from chronic kidney diseases was found sensitive to long-term smoke  $\text{PM}_{2.5}$  exposure when the 12-month moving average concentration was 0.3-0.4 and 0.5-1  $\mu\text{g}/\text{m}^3$ .

We also examined the associations between 12-month moving average of smoke  $\text{PM}_{2.5}$  concentrations and monthly mortality rates from other specific causes, including stroke, myocardial infarction, hypertensive diseases, hypertensive heart diseases, respiratory diseases, chronic obstructive pulmonary disease (COPD), nervous diseases, Alzheimer's disease, genitourinary diseases, and external causes (**Supplemental Fig. S3**). Although some of them were also found to be sensitive to long-term smoke  $\text{PM}_{2.5}$  exposure, such as mortality from stroke, myocardial infarction, respiratory diseases, Alzheimer's disease, and external causes, these specific causes were not presented in the main figures or included in further analysis because their estimates were either insignificant after the Bonferroni correction for multiple comparisons, or inconsistent in direction across smoke  $\text{PM}_{2.5}$  concentration bins. The detailed estimates for all examined specific causes are listed in **Supplemental Table S2**.

### ***Cause-specific mortality burden attributable to long-term smoke $\text{PM}_{2.5}$ exposure***

Assuming the homogeneity within each smoke  $\text{PM}_{2.5}$  bin and the causality of the estimated smoke  $\text{PM}_{2.5}$ -mortality relationships, we further quantified the mortality burden attributable to long-term smoke  $\text{PM}_{2.5}$  exposure. As non-smoke  $\text{PM}_{2.5}$  was adjusted for in the

model, the estimated smoke PM<sub>2.5</sub>-attributable mortality burden is in addition to the well-recognized burden from non-smoke PM<sub>2.5</sub>. On average, approximately 30,180 all-cause deaths (95% CI: 21,449, 38,910) were attributable to smoke PM<sub>2.5</sub> in the contiguous U.S. per year. The spatial distribution of this attributable burden was generally consistent with the distribution of smoke PM<sub>2.5</sub> concentration (**Fig. 3A**). The estimated attributable all-cause mortality burden for each year is displayed in **Supplemental Fig. S4**.

For cause-specific mortality, each year, long-term smoke PM<sub>2.5</sub> exposure contributed approximately 4,512 deaths (95% CI: 1,922, 7,102) from cardiovascular diseases, including 3,753 (95% CI: 1,915, 5,592) ischemic heart disease deaths, 1,142 deaths (95% CI: 285, 1,999) from endocrine diseases, including 858 (95% CI: 149, 1,566) diabetes deaths, 2,083 deaths (95% CI: 1,143, 3,022) from mental disorders, 537 deaths from digestive diseases (95% CI: -200, 1,273), 782 deaths (95% CI: 233, 1,332) from suicide, and 320 deaths (95% CI: -72, 713) from chronic kidney diseases. Among the total long-term smoke PM<sub>2.5</sub>-attributable deaths, approximately 25.6% were from cardiovascular diseases, mental disorders, and endocrine diseases (**Fig. 3B; Supplemental Table S3**).

### ***Association between long-term smoke PM<sub>2.5</sub> and monthly mortality rate by subgroup***

We examined the association between 12-month moving average of smoke PM<sub>2.5</sub> concentrations and monthly all-cause mortality rates across different sex, age, and race and ethnicity groups (**Table 1**). A higher effect estimate was found for males than females when smoke PM<sub>2.5</sub> concentration was from 0.4 to 0.5 ( $p=0.047$ ) and from 0.7 to 1 ( $p=0.015$ )  $\mu\text{g}/\text{m}^3$ . Compared with people aged 0 to 64, greater increases in mortality rates were observed among people who aged above 65 across all smoke PM<sub>2.5</sub> concentration bins. Among different racial and ethnic groups, compared with non-Hispanic White people, significantly higher associations were observed for non-Hispanic Black and Hispanic people in almost all concentration bins.

After considering multiple comparisons, the between-sex difference became insignificant, but the significant differences between age groups and racial and ethnic groups remained.

Subgroup analyses were also performed for major categories of mortality that showed consistent and significant sensitivity to long-term exposure to smoke  $PM_{2.5}$ : cardiovascular, endocrine, digestive, and mental mortality (**Supplemental Table S4**). In general, no significant difference between sex or race and ethnicity groups was detected for these four outcomes after considering multiple comparisons. Consistent with the findings for all-cause mortality, greater smoke  $PM_{2.5}$ -related increases in mortality rates from these four specific causes were observed among people who aged above 65.

### ***Interaction between long-term smoke $PM_{2.5}$ and extreme heat days***

Extreme heat commonly co-occurred with wildfire smoke  $PM_{2.5}$  in the contiguous U.S. Here, we examined the interaction effects of long-term smoke  $PM_{2.5}$  and extreme heat days. For each county, we defined extreme heat days as days with daily mean air temperature higher than the county's 90<sup>th</sup> percentile warm season air temperature (May to September, 2007-2020). From 2007 to 2020, a total of 657,402 extreme heat days were identified in the counties studied, spanning 126,237 county-months. We calculated the 12-month moving average number of extreme heat days in each county for each month to ensure the same exposure window as smoke  $PM_{2.5}$ . Based on the spatial distribution of 12-month moving average of smoke  $PM_{2.5}$  concentrations and number of extreme heat days (**Fig. 4A**), the Ohio Valley, South, Southeast, and Northwest regions experienced higher co-exposure to smoke  $PM_{2.5}$  and extreme heat than other regions.

By including an interaction term for the 12-month moving average number of extreme heat days and 12-month moving average of smoke  $PM_{2.5}$  concentration bins in our model, we found a significantly positive interaction between extreme heat and smoke  $PM_{2.5}$  at levels



ranging from 0.2 to 0.7  $\mu\text{g}/\text{m}^3$  and above 1  $\mu\text{g}/\text{m}^3$  (**Fig. 4B**). The interaction results in general remained robust when we used alternative temperature thresholds in the definition of extreme heat days (85<sup>th</sup> or 95<sup>th</sup> percentile of local warm-season temperature distribution). Among mortality of specific causes, positive interactions were found for mental disorder mortality (**Supplemental Fig. S5**). In addition, we also found positive interaction effects between the current-month number of extreme heat days and 12-month moving average concentration of smoke  $\text{PM}_{2.5}$  on all-cause mortality (**Supplemental Fig. S6**).

### ***Sensitivity analyses, placebo tests, and stratification by distance to fire***

Our results generally remained robust when we included different combinations of fixed effects, additionally adjusted for dew point temperature, did not adjust for non-smoke  $\text{PM}_{2.5}$ , or used alternative degrees of freedoms in the natural cubic spline of air temperature in the model (**Supplemental Fig. S7**). The estimated non-linear pattern also remained consistent when we used finer bins or a natural cubic spline for smoke  $\text{PM}_{2.5}$  in the model (**Supplemental Fig. S8 & S9**). The results of the spatial and temporal randomization tests indicated that the estimates in our study were unlikely driven by spatial or temporal dependence due to model misspecification (**Supplemental Fig. S10**). When the exposure period to smoke  $\text{PM}_{2.5}$  was extended from 12 months to 24 and 36 months, the model coefficients decreased in most bins, eventually becoming null at a 36-month exposure window (**Supplemental Fig. S11**).

In a stratified analysis by distance to fire, we observed that the effects of long-term smoke  $\text{PM}_{2.5}$  exposure were significantly higher in counties far away from the fire point ( $\geq 150$  km) in the current and past 11 months compared with those close to an active fire ( $< 150$  km) when the 12-month moving average of smoke  $\text{PM}_{2.5}$  concentrations was from 0.2 to 5  $\mu\text{g}/\text{m}^3$  (**Supplemental Fig. S12**). However, when the smoke  $\text{PM}_{2.5}$  concentrations were above 5  $\mu\text{g}/\text{m}^3$ , the estimate was only significantly positive in counties close to fire. This result suggests

that being close to a fire was unlikely to be a main driver of the estimated results in our study.

## Discussion

To the best of our knowledge, this is the first study comprehensively examining the associations between long-term exposure to wildfire smoke  $PM_{2.5}$  and mortality from a wide range of specific causes for all ages in the whole contiguous U.S. We found that average exposure to wildfire smoke  $PM_{2.5}$  in the past one year was associated with increases in all-cause, cardiovascular, ischemic heart disease, digestive, endocrine, diabetes, mental, suicide, and chronic kidney disease mortality. In addition to the well-documented mortality burden from non-smoke  $PM_{2.5}$ , in total, we estimated that smoke  $PM_{2.5}$  contributed to over 30,000 deaths in the contiguous U.S. each year. Higher smoke  $PM_{2.5}$ -related increases in mortality rates were found for people aged 65 above and racial and ethnic minority populations. In addition, positive interaction effects between smoke  $PM_{2.5}$  and extreme heat on all-cause mortality were observed.

The impacts of long-term wildfire smoke exposures on mortality are understudied in existing literature. However, our results are in general consistent with a few previous findings that long-term exposure to wildfire smoke is associated with increased premature mortality (22). For example, a study in Brazil observed a significant association between long-term exposure to forest fire  $PM_{2.5}$  and increases in cardiovascular disease mortality rates in older adults ( $\geq 65$  years) (51). A case-control study in low-income and middle-income countries reported that each  $1 \mu\text{g}/\text{m}^3$  increment of monthly fire-sourced  $PM_{2.5}$  was associated with a 2.31% increased risk of child mortality, but this estimate became statistically insignificant after extending the exposure time window from 1 month to 12 months (52). However, given the differences in study population and location, exposures (e.g., wildfire characteristics), study design, and outcome measures, estimates are not directly comparable across studies. More studies investigating the

long-term impacts of wildfire smoke exposure on mortality from a comprehensive spectrum of specific causes and conditions are needed in the future.

While the specific mechanisms linking wildfire smoke  $PM_{2.5}$  to mortality outcomes remain poorly understood, they are likely to align with those documented for all-source (i.e., total mass)  $PM_{2.5}$ .  $PM_{2.5}$  can travel into the respiratory tract and bloodstream and trigger oxidative stress and inflammation, leading to impaired lung and vascular function (53).  $PM_{2.5}$  may deposit in the kidney, contributing to the development of kidney diseases (54).  $PM_{2.5}$  can also enter the gastrointestinal tract, causing imbalances in the intestinal microecology (55). In addition,  $PM_{2.5}$  exposure has been associated with insulin resistance, which may progress to diabetes and other endocrine diseases (56). Furthermore, the oxidative stress, systemic and neuroinflammation, and hypothalamic-pituitary-adrenal axis dysregulation triggered by  $PM_{2.5}$  have been linked to psychological diseases (57). The aggravation of physical health conditions could also worsen mental health (58). A multi-level conceptual framework has also been proposed for understanding the pathways connecting wildfire smoke with mental health and well-being, which involves loss of nature, reduced access to livelihoods, reduced outdoor activities, and many other social and behavioral factors (18). More research is needed in the future to better understand the underlying mechanisms of the health impacts of wildfire smoke.

In our study, higher effect estimates were found for older adults compared with people aged 0-64 and racial and ethnic minority populations compared with non-Hispanic White people, which is consistent with the literature of all-source  $PM_{2.5}$ . The greater increases in mortality rates associated with smoke  $PM_{2.5}$  among older adults reflect both higher baseline mortality rates and higher susceptibility to air pollution in the older population as found in previous studies, due to decreased physiological, metabolic and compensatory processes, and a higher prevalence of comorbidities (59). Consistent with our findings, racial and ethnic minority populations were found to be at increased risk in several previous studies (27, 28), which could be explained by

pre-existing health conditions, restricted access to high-quality healthcare, and limited ability to take exposure reduction actions due to structural racism in the U.S. (60-62).

Furthermore, we observed a positive interaction effect between long-term exposure to wildfire smoke  $PM_{2.5}$  and extreme heat. To date, although research has highlighted the synergistic health impacts of heat and air pollution (63), only a limited number of studies have specifically examined the interaction with  $PM_{2.5}$  from wildfire smoke. A recent study in California found evidence of synergistic effects between extreme heat and wildfire smoke (36); however, since this study focused on short-term effects, its results are not directly comparable to those of our study. The positive interaction between wildfire smoke  $PM_{2.5}$  and extreme heat indicates an increasing mortality burden for U.S. populations in the future given that the co-exposure to both hazards is expected to increase under the changing climate (33). Further studies on the compounding effects of wildfires and other climate-related events, such as heatwaves and droughts, are warranted.

Our study estimated that over 30,000 deaths per year resulted from wildfire smoke  $PM_{2.5}$  in the contiguous U.S., which is over 3,000 times higher than the recorded wildfire deaths in the U.S. Billion-dollar Weather and Climate Disasters report by the National Oceanic and Atmospheric Administration's National Centers for Environmental Information (10 deaths/year due to the fire itself) (64). This indicates a great number of deaths brought by wildfires that could not be captured by official tolls. In addition, the U.S. Billion-dollar Weather and Climate Disasters report estimated that wildfire events cost about 3.1 billion dollars per year in the U.S. (64), but this estimate does not take into account the health care related losses or values associated with loss of life due to the fire itself or smoke (65). A recent study reported that the economic value of the health impacts of wildfire smoke could be in the tens to hundreds of billions of U.S. dollars, but the exposure-response function for the  $PM_{2.5}$ -mortality relationship they used was for all-source  $PM_{2.5}$ , not wildfire-specific  $PM_{2.5}$  (66). Our study suggests a

tremendous wildfire smoke-related mortality burden, and our effect estimates for the relationship between wildfire PM<sub>2.5</sub> and mortality could be applied in future estimates of the costs of wildfires to more fully account for the fire and smoke impacts.

The findings of our study have several key implications. First, wildfire smoke is a national concern in the U.S. Its health effects extend beyond the western regions where wildfires mostly occur, impacting the entire country. Second, the health impacts of wildfire smoke are not limited to short-term effects. Long-term exposure to smoke PM<sub>2.5</sub> contributed to substantial mortality burden in the U.S. and will become increasingly important in the future due to the prolonged wildfire seasons under climate change. Third, the health impacts of wildfire smoke cover a wide spectrum of causes of death ranging from cardiovascular and endocrine diseases to mental disorders and suicide. Furthermore, in addition to the well-recognized detrimental effects of extremely high concentrations of smoke PM<sub>2.5</sub>, even relatively low levels can be harmful. Finally, the relationship between wildfire smoke and mortality appears to be non-linear, underscoring the necessity for further research into the modifying factors of this association and highlighting the importance of utilizing concentration-specific exposure-response functions in future health impact assessments.

Some limitations of this study should be noted. First, the wildfire smoke PM<sub>2.5</sub> concentrations were modelled and subject to uncertainty. Because direct measurements of the smoke contribution to PM<sub>2.5</sub> pollution are not available, the smoke PM<sub>2.5</sub> prediction was based on PM<sub>2.5</sub> anomalies at monitoring stations, which may be an imprecise estimate of the concentrations of smoke (38). Additionally, the smoke PM<sub>2.5</sub> model did not specifically exclude smoke from prescribed fires. When the smoke from prescribed fires was substantial enough to be detected by the smoke plume data from the National Oceanic and Atmospheric Administration's Hazard Mapping System, the resulting increase in PM<sub>2.5</sub> levels from such smoke would be inadvertently included in the smoke PM<sub>2.5</sub> dataset. Second, we assumed that

the non-smoke PM<sub>2.5</sub> was the difference between the all-source PM<sub>2.5</sub> and the smoke PM<sub>2.5</sub> concentrations, but they were generated using different methods and may introduce measurement errors. Third, lacking detailed location information, this county-level ecological study is susceptible to ecological fallacy. We were also unable to analyze the influence of wildfire evacuation in this study. Fourth, the estimates of smoke PM<sub>2.5</sub> in our study may partially capture the health effects of other pollutants within the smoke mixture. Due to the absence of publicly available, full-spatial coverage data updated to 2020, we were unable to adjust for other wildfire-related air pollutants, such as nitrogen dioxide, ozone, carbon monoxide, and polycyclic aromatic hydrocarbons. In addition, we used the smoke PM<sub>2.5</sub> concentration range of 0-0.1 µg/m<sup>3</sup> as the reference due to the limited number of county-months with 0 µg/m<sup>3</sup> long-term exposure. This choice of reference could result in an underestimation of both the smoke PM<sub>2.5</sub>-related mortality changes and the attributable mortality burden. Finally, the calculation of attributable mortality burden was based on the assumptions of homogeneity and causality of the estimated smoke PM<sub>2.5</sub>-mortality relationships (see details in Methods). Violation of these assumptions may bias the results.

In conclusion, our study identified the detrimental effects of long-term wildfire smoke PM<sub>2.5</sub> exposure on a wide range of mortality outcomes in the U.S. With wildfire intensity and frequency anticipated to increase in the future driven by climate change (5), more effective public health actions and communication are urgently needed to prepare communities and individuals to mitigate smoke exposure both in and outside the areas where the wildfires occur.

## **Acknowledgments**

Research reported in this publication was supported by the National Heart, Lung, And Blood Institute of the National Institutes of Health under Award Number R01HL169171. Dr. E. Zang received support from the National Institute on Aging (R21AG074238-01), the Research Education Core of the Claude D. Pepper Older Americans Independence Center at Yale School of Medicine (P30AG021342), and the Institution for Social and Policy Studies at Yale University. Y. Ma, Dr. K. Chen, and Dr. Y Lu acknowledge support from the Yale Planetary Solutions seed grant. Dr. Y. Liu received support from the National Institute of Environmental Health Sciences (1R01ES034175). The content is solely the responsibility of the authors and does not necessarily represent the official views of the National Institutes of Health.

## References

1. Abatzoglou JT & Williams AP (2016) Impact of anthropogenic climate change on wildfire across western US forests. *Proc Natl Acad Sci U S A* 113(42):11770-11775.
2. Boisramé GF, Brown TJ, & Bachelet DM (2022) Trends in western USA fire fuels using historical data and modeling. *Fire Ecol* 18(1):8.
3. Balch JK, *et al.* (2017) Human-started wildfires expand the fire niche across the United States. *Proc Natl Acad Sci U S A* 114(11):2946-2951.
4. Burke M, *et al.* (2021) The changing risk and burden of wildfire in the United States. *Proc Natl Acad Sci U S A* 118(2):e2011048118.
5. Spracklen DV, *et al.* (2009) Impacts of climate change from 2000 to 2050 on wildfire activity and carbonaceous aerosol concentrations in the western United States. *J Geophys Res Atmos* 114(D20).
6. Kim K-H, Kabir E, & Kabir S (2015) A review on the human health impact of airborne particulate matter. *Environ Int* 74:136-143.
7. Xu R, *et al.* (2020) Wildfires, global climate change, and human health. *N Engl J Med* 383(22):2173-2181.
8. Liu JC, *et al.* (2017) Wildfire-specific fine particulate matter and risk of hospital admissions in urban and rural counties. *Epidemiology* 28(1):77.
9. Heft-Neal S, Driscoll A, Yang W, Shaw G, & Burke M (2022) Associations between wildfire smoke exposure during pregnancy and risk of preterm birth in California. *Environ Res* 203:111872.
10. Reid CE, *et al.* (2016) Critical review of health impacts of wildfire smoke exposure. *Environ Health Perspect* 124(9):1334-1343.
11. O'Dell K, *et al.* (2021) Estimated mortality and morbidity attributable to smoke plumes in the United States: Not just a western US problem. *GeoHealth* 5(9):e2021GH000457.
12. Ye T, *et al.* (2022) Short-term exposure to wildfire-related PM<sub>2.5</sub> increases mortality risks and burdens in Brazil. *Nat Commun* 13(1):1-9.
13. Chen G, *et al.* (2021) Mortality risk attributable to wildfire-related PM<sub>2.5</sub> pollution: a global time series study in 749 locations. *Lancet Planet Health* 5(9):e579-e587.
14. Gould CF, *et al.* (2023) Health effects of wildfire smoke exposure. *Annu Rev Med* 75.
15. Chen H, Samet JM, Bromberg PA, & Tong H (2021) Cardiovascular health impacts of wildfire smoke exposure. *Part Fibre Toxicol* 18(1):1-22.
16. Yao J, *et al.* (2020) Sub-daily exposure to fine particulate matter and ambulance dispatches during wildfire seasons: a case-crossover study in British Columbia, Canada. *Environ Health Perspect* 128(6):067006.
17. Xi Y, *et al.* (2020) Mortality in US hemodialysis patients following exposure to wildfire smoke. *J Am Soc Nephrol* 31(8):1824.
18. Eisenman DP & Galway LP (2022) The mental health and well-being effects of wildfire smoke: a scoping review. *BMC Public Health* 22(1):1-17.
19. Molitor D, Mullins JT, & White C (2023) Air pollution and suicide in rural and urban America: Evidence from wildfire smoke. *Proc Natl Acad Sci U S A* 120(38):e2221621120.
20. Grant E & Runkle JD (2022) Long-term health effects of wildfire exposure: a scoping review. *J Clim Chang Health* 6:100110.
21. USGCRP (U.S. Global Change Research Program) (2018) Impacts, risks, and adaptation in the United States: Fourth National Climate Assessment, volume II.
22. Gao Y, *et al.* (2023) Long-term impacts of non-occupational wildfire exposure on human health: A systematic review. *Environ Pollut*:121041.

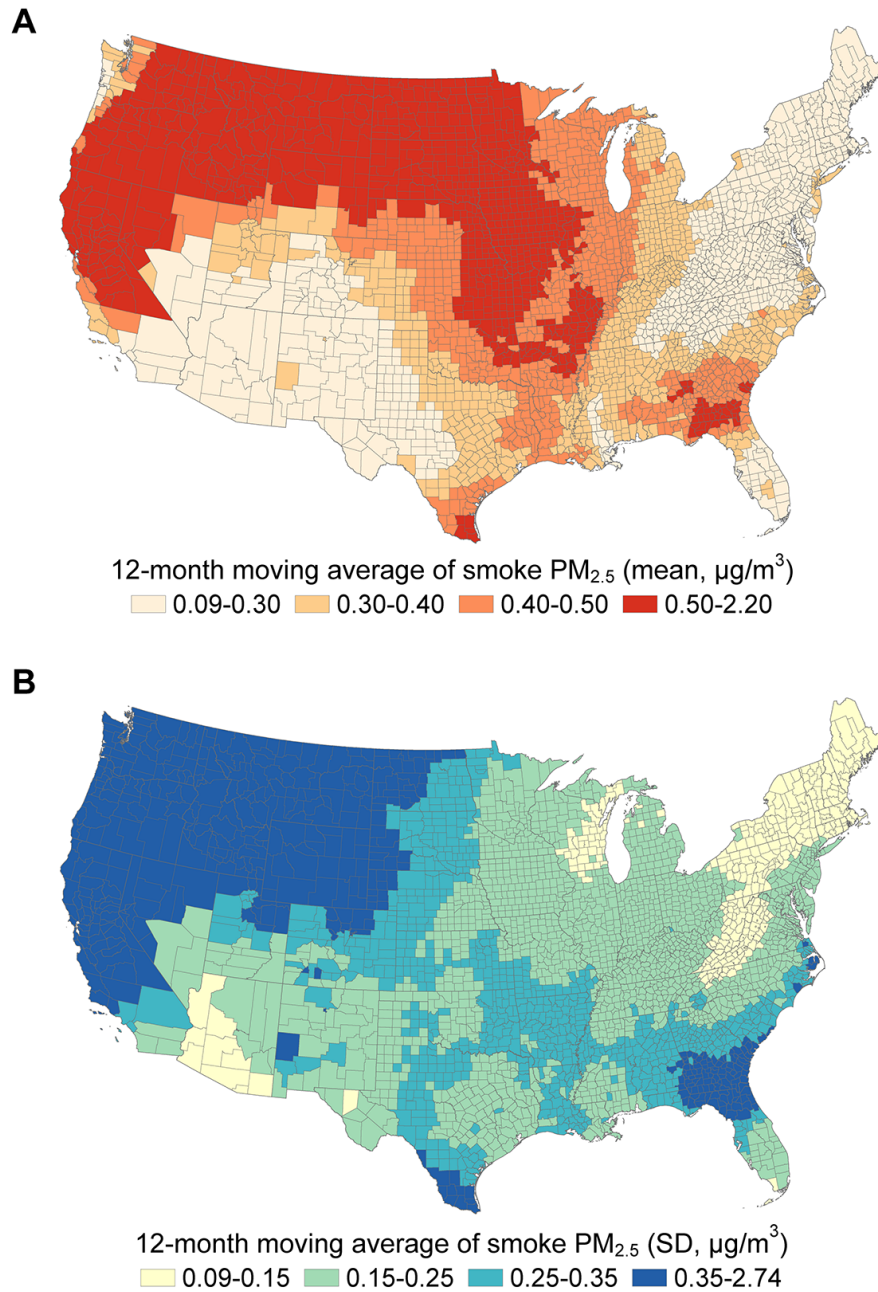


23. Cowlshaw S, *et al.* (2021) Anger dimensions and mental health following a disaster: Distribution and implications after a major bushfire. *J Trauma Stress* 34(1):46-55.
24. Bryant RA, *et al.* (2021) The dynamic course of psychological outcomes following the Victorian Black Saturday bushfires. *Aust N Z J Psychiatry* 55(7):666-677.
25. Bryant RA, *et al.* (2014) Psychological outcomes following the Victorian Black Saturday bushfires. *Aust N Z J Psychiatry* 48(7):634-643.
26. Brown MR, *et al.* (2019) After the Fort McMurray wildfire there are significant increases in mental health symptoms in grade 7–12 students compared to controls. *BMC psychiatry* 19:1-11.
27. Kondo MC, *et al.* (2019) Meta-analysis of heterogeneity in the effects of wildfire smoke exposure on respiratory health in North America. *Int J Environ Res Public Health* 16(6):960.
28. Liu JC, *et al.* (2017) Who among the elderly is most vulnerable to exposure to and health risks of fine particulate matter from wildfire smoke? *Am J Epidemiol* 186(6):730-735.
29. Khatana SAM, Werner RM, & Groeneveld PW (2022) Association of extreme heat with all-cause mortality in the contiguous US, 2008-2017. *JAMA Netw Open* 5(5):e2212957-e2212957.
30. Gasparrini A, *et al.* (2015) Mortality risk attributable to high and low ambient temperature: a multicountry observational study. *Lancet* 386(9991):369-375.
31. Ebi KL, *et al.* (2021) Hot weather and heat extremes: health risks. *Lancet* 398(10301):698-708.
32. Anderson GB & Bell ML (2011) Heat waves in the United States: mortality risk during heat waves and effect modification by heat wave characteristics in 43 US communities. *Environ Health Perspect* 119(2):210-218.
33. Hanberry BB (2020) Compounded heat and fire risk for future US populations. *Sustainability* 12(8):3277.
34. Zafeiratou S, *et al.* (2021) A systematic review on the association between total and cardiopulmonary mortality/morbidity or cardiovascular risk factors with long-term exposure to increased or decreased ambient temperature. *Sci Total Environ* 772:145383.
35. De Marco A, Amoatey P, Khaniabadi YO, Sicard P, & Hopke PK (2018) Mortality and morbidity for cardiopulmonary diseases attributed to PM<sub>2.5</sub> exposure in the metropolis of Rome, Italy. *Eur J Intern Med* 57:49-57.
36. Chen C, Schwarz L, Rosenthal N, Marlier ME, & Benmarhnia T (2024) Exploring spatial heterogeneity in synergistic effects of compound climate hazards: Extreme heat and wildfire smoke on cardiorespiratory hospitalizations in California. *Sci Adv* 10(5):eadj7264.
37. Liu JC, Pereira G, Uhl SA, Bravo MA, & Bell ML (2015) A systematic review of the physical health impacts from non-occupational exposure to wildfire smoke. *Environ Res* 136:120-132.
38. Childs ML, *et al.* (2022) Daily local-level estimates of ambient wildfire smoke PM<sub>2.5</sub> for the contiguous US. *Environ Sci Technol* 56(19):13607-13621.
39. The SEER Program (2022) U.S. County Population Data - 1969-2020.
40. Aguilera R, *et al.* (2023) A novel ensemble-based statistical approach to estimate daily wildfire-specific PM<sub>2.5</sub> in California (2006-2020). *Environ Int* 171:107719.
41. Wei J, *et al.* (2023) Long-term mortality burden trends attributed to black carbon and PM<sub>2.5</sub> from wildfire emissions across the continental USA from 2000 to 2020: a deep learning modelling study. *Lancet Planet Health* 7(12):e963-e975.
42. United States Census Bureau (2019) Cartographic Boundary Files.
43. PRISM Climate Group (2016) PRISM Climate Data Recent Years (Jan 1981 - Jan 2022).

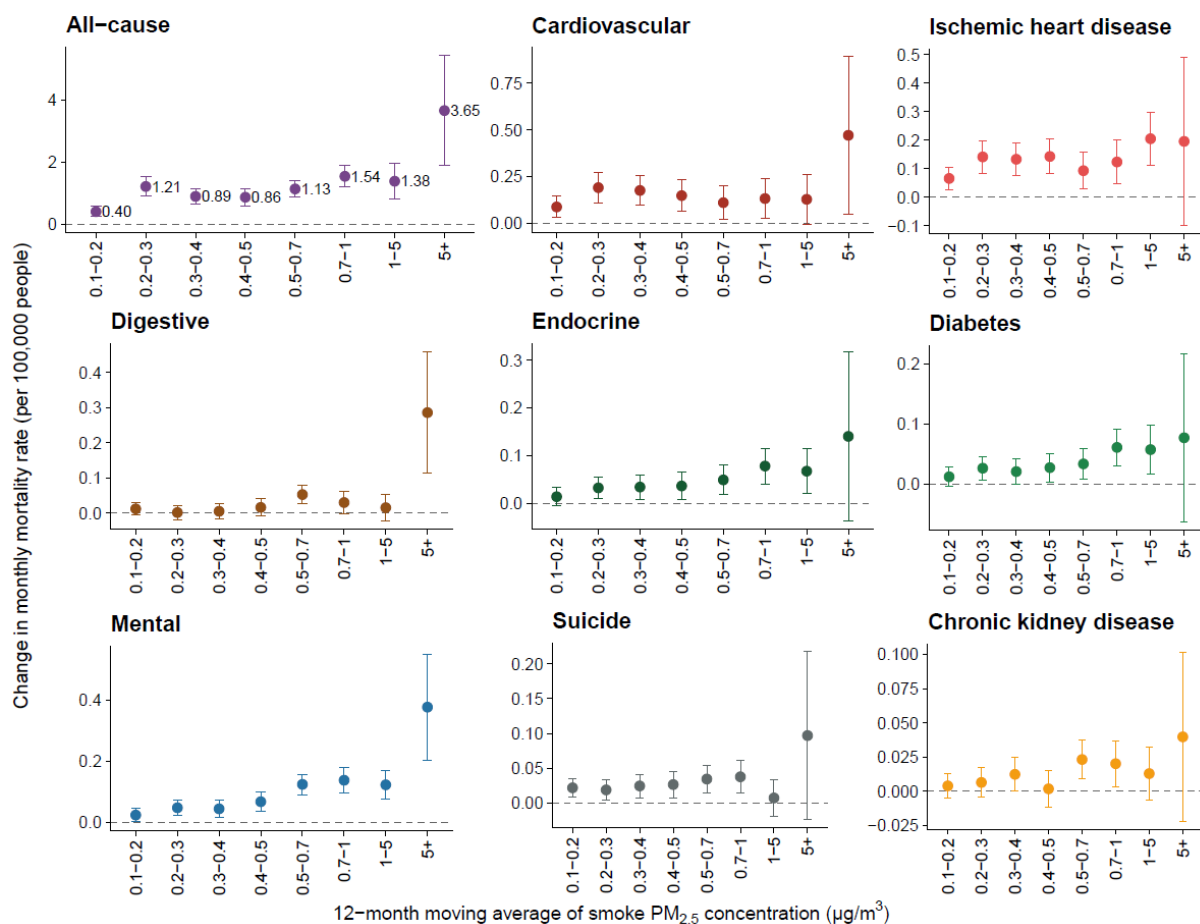
44. Brey SJ, Ruminski M, Atwood SA, & Fischer EV (2018) Connecting smoke plumes to sources using Hazard Mapping System (HMS) smoke and fire location data over North America. *Atmos Chem Phys* 18(3):1745-1761.
45. Wang Y, *et al.* (2016) Estimating causal effects of long-term PM<sub>2.5</sub> exposure on mortality in New Jersey. *Environ Health Perspect* 124(8):1182-1188.
46. Renzi M, *et al.* (2019) Long-term PM<sub>10</sub> exposure and cause-specific mortality in the Latium Region (Italy): a difference-in-differences approach. *Environ Health Perspect* 127(6):067004.
47. Goodman-Bacon A (2021) Difference-in-differences with variation in treatment timing. *J Econom* 225(2):254-277.
48. Zang E & Kim N (2021) Intergenerational upward mobility and racial differences in mortality among young adults: Evidence from county-level analyses. *Health Place* 70:102628.
49. Lam PH, Zang E, Chen D, Liu R, & Chen K (2023) Long-Term Exposure to Fine Particulate Matter and Academic Performance Among Children in North Carolina. *JAMA Netw Open* 6(10):e2340928-e2340928.
50. Benschaul-Tolonen A (2019) Local industrial shocks and infant mortality. *Econ J* 129(620):1561-1592.
51. Nunes KVR, Ignotti E, & Hacon SdS (2013) Circulatory disease mortality rates in the elderly and exposure to PM<sub>2.5</sub> generated by biomass burning in the Brazilian Amazon in 2005. *Cadernos de saude publica* 29:589-598.
52. Xue T, *et al.* (2021) Associations between exposure to landscape fire smoke and child mortality in low-income and middle-income countries: a matched case-control study. *Lancet Planet Health* 5(9):e588-e598.
53. Hadley MB, Henderson SB, Brauer M, & Vedanthan R (2022) Protecting cardiovascular health from wildfire smoke. *Circulation* 146(10):788-801.
54. Shubham S, *et al.* (2022) Role of air pollution in chronic kidney disease: an update on evidence, mechanisms and mitigation strategies. *Int Arch Occup Environ Health* 95(5):897-908.
55. Mutlu EA, *et al.* (2018) Inhalational exposure to particulate matter air pollution alters the composition of the gut microbiome. *Environ Pollut* 240:817-830.
56. Dang J, *et al.* (2018) Associations of exposure to air pollution with insulin resistance: a systematic review and meta-analysis. *Int J Environ Res Public Health* 15(11):2593.
57. Braithwaite I, Zhang S, Kirkbride JB, Osborn DPJ, & Hayes JF (2019) Air Pollution (Particulate Matter) Exposure and Associations with Depression, Anxiety, Bipolar, Psychosis and Suicide Risk: A Systematic Review and Meta-Analysis. *Environ Health Perspect* 127(12):126002.
58. Doherty AM & Gaughran F (2014) The interface of physical and mental health. *Soc Psychiatry Psychiatr Epidemiol* 49:673-682.
59. Shumake KL, Sacks JD, Lee JS, & Johns DO (2013) Susceptibility of older adults to health effects induced by ambient air pollutants regulated by the European Union and the United States. *Aging Clin Exp Res* 25:3-8.
60. Van Horne YO, *et al.* (2022) An applied environmental justice framework for exposure science. *J Expo Sci Environ Epidemiol*.
61. Seltnerich N (2022) The one-two-three punch: exposure, susceptibility, and disease burden among U.S. populations of color. *Environ Health Perspect* 130(3):034001.
62. Burke M, *et al.* (2022) Exposures and behavioural responses to wildfire smoke. *Nat Hum Behav* 6(10):1351-1361.

63. Anenberg SC, Haines S, Wang E, Nassikas N, & Kinney PL (2020) Synergistic health effects of air pollution, temperature, and pollen exposure: a systematic review of epidemiological evidence. *Environ Health* 19:1-19.
64. NOAA National Centers for Environmental Information (NCEI) (2023) U.S. Billion-Dollar Weather and Climate Disasters.
65. Smith AB & Katz RW (2013) US billion-dollar weather and climate disasters: data sources, trends, accuracy and biases. *Nat Hazards* 67(2):387-410.
66. Fann N, *et al.* (2018) The health impacts and economic value of wildland fire episodes in the U.S.: 2008–2012. *Sci Total Environ* 610-611:802-809.

## Figures

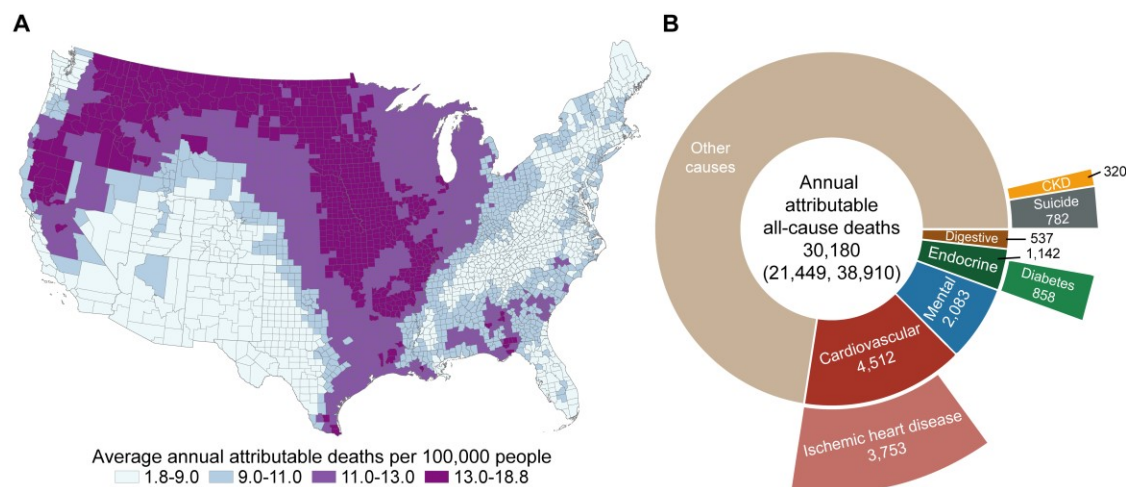


**Fig. 1. Spatial distribution of 12-month moving average of smoke  $PM_{2.5}$  concentration in the contiguous U.S., 2007–2020. A:** The distribution of the mean 12-month moving average concentration of smoke  $PM_{2.5}$  in the contiguous U.S. counties ( $\mu\text{g}/\text{m}^3$ ). **B:** The distribution of the standard deviation (SD) of the 12-month moving average concentration of smoke  $PM_{2.5}$  in the contiguous U.S. counties ( $\mu\text{g}/\text{m}^3$ ).



**Fig. 2. Association between 12-month moving average concentration of smoke PM<sub>2.5</sub> and monthly mortality rate.** This figure displays the estimated changes in monthly all-cause and cause-specific mortality rate (per 100,000 people) associated with each bin of 12-month moving average of smoke PM<sub>2.5</sub> concentration, relative to a month in the same county with the long-term smoke PM<sub>2.5</sub> exposure below 0.1 µg/m<sup>3</sup>. The error bars indicate 95% confidence intervals.

1



2

3

4

5

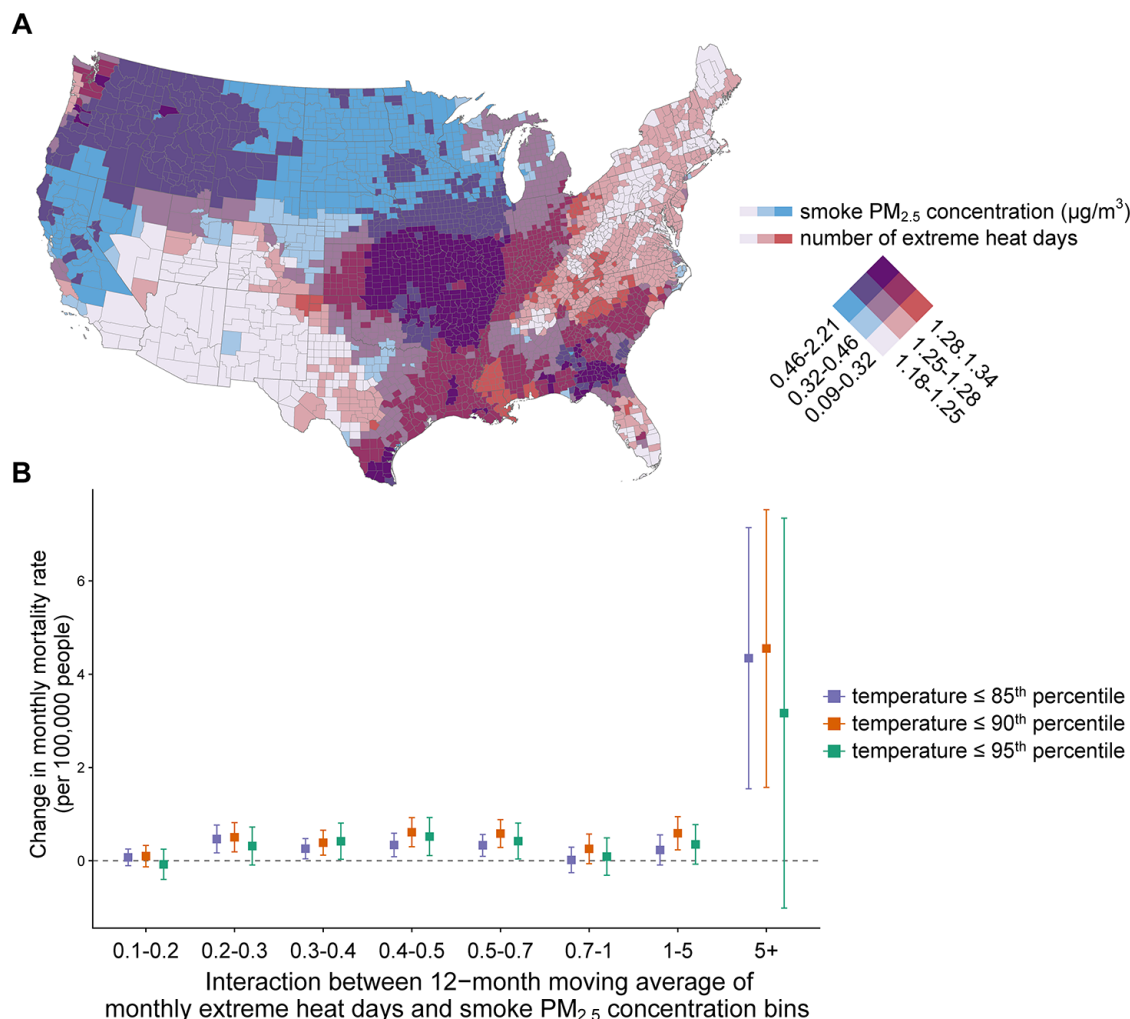
6

7

8

**Fig. 3. Average annual mortality burden attributable to long-term smoke PM<sub>2.5</sub> exposure. A:** The spatial distribution of average annual all-cause deaths (per 100,000 people) attributable to long-term smoke PM<sub>2.5</sub> exposure (12-month moving average). **B:** Estimated average annual all-cause and cause-specific deaths attributable to long-term smoke PM<sub>2.5</sub> exposure.

9



10

11

**Fig. 4. Interaction effects between extreme heat and smoke PM<sub>2.5</sub> on all-cause mortality rate.** **A:** This bivariate choropleth map shows the spatial distribution of 12-month moving average of smoke PM<sub>2.5</sub> concentrations and 12-month moving average number of extreme heat days in each county, 2007-2020. Darker blue indicates higher average smoke PM<sub>2.5</sub> concentrations; darker red indicates more average extreme heat days; and darker purple indicates higher values of both variables. **B:** The interaction effects between 12-month moving average number of extreme heat days (a continuous variable) and 12-month moving average of smoke PM<sub>2.5</sub> concentration bins (a categorical variable). The error bars indicate 95% confidence intervals. Extreme heat days were defined as days with daily mean air temperature higher than the county's 90<sup>th</sup> (main analysis), 85<sup>th</sup>, or 95<sup>th</sup> (sensitivity analyses) percentile warm season air temperature (May to September, 2007-2020).

23

24 **Table 1. Associations between 12-month moving average of smoke PM<sub>2.5</sub>**  
 25 **concentration bins and monthly all-cause mortality rate (per 100,000 people) in**  
 26 **population subgroups**

Subgroup	Smoke PM <sub>2.5</sub> concentration bin (µg/m <sup>3</sup> )	Associated change in monthly mortality rate (95% CI)	P value*	
<b>By sex</b>				
Male	0.1-0.2	0.42 (0.18, 0.65)	Reference	
	0.2-0.3	1.46 (1.03, 1.89)	Reference	
	0.3-0.4	1.01 (0.65, 1.37)	Reference	
	0.4-0.5	1.10 (0.71, 1.48)	Reference	
	0.5-0.7	1.29 (0.91, 1.67)	Reference	
	0.7-1	1.91 (1.42, 2.41)	Reference	
	1-5	1.67 (0.89, 2.45)	Reference	
	5+	4.34 (1.98, 6.69)	Reference	
		0.1-0.2	0.36 (0.21, 0.51)	0.703
		0.2-0.3	0.99 (0.74, 1.24)	0.066
Female	0.3-0.4	0.76 (0.54, 0.98)	0.239	
	0.4-0.5	0.64 (0.40, 0.88)	0.047	
	0.5-0.7	0.95 (0.71, 1.19)	0.139	
	0.7-1	1.19 (0.89, 1.49)	0.015	
	1-5	1.06 (0.61, 1.51)	0.183	
	5+	2.90 (1.37, 4.42)	0.315	
<b>By age</b>				
0-64	0.1-0.2	0.15 (0.07, 0.23)	Reference	
	0.2-0.3	0.40 (0.28, 0.52)	Reference	
	0.3-0.4	0.37 (0.26, 0.48)	Reference	
	0.4-0.5	0.31 (0.19, 0.43)	Reference	
	0.5-0.7	0.47 (0.34, 0.59)	Reference	
	0.7-1	0.61 (0.45, 0.77)	Reference	
	1-5	0.47 (0.22, 0.71)	Reference	
	5+	1.18 (0.42, 1.93)	Reference	
		0.1-0.2	2.06 (1.04, 3.08)	< 0.001
		0.2-0.3	7.15 (5.18, 9.13)	< 0.001
65+	0.3-0.4	4.32 (2.75, 5.90)	< 0.001	
	0.4-0.5	3.63 (1.96, 5.30)	< 0.001	
	0.5-0.7	4.98 (3.34, 6.62)	< 0.001	
	0.7-1	7.88 (5.77, 9.99)	< 0.001	
	1-5	6.75 (3.54, 9.96)	< 0.001	
	5+	11.84 (3.29, 20.39)	0.015	
<b>By race and ethnicity</b>				
Non-Hispanic White	0.1-0.2	0.19 (0.06, 0.32)	Reference	
	0.2-0.3	0.72 (0.54, 0.91)	Reference	
	0.3-0.4	0.52 (0.34, 0.70)	Reference	
	0.4-0.5	0.49 (0.30, 0.68)	Reference	
	0.5-0.7	0.74 (0.54, 0.94)	Reference	
	0.7-1	0.92 (0.68, 1.17)	Reference	
	1-5	0.18 (-0.12, 0.49)	Reference	
	5+	1.39 (0.17, 2.60)	Reference	
		0.1-0.2	0.70 (0.26, 1.13)	0.030



Non-Hispanic Black	0.2-0.3	1.96 (1.22, 2.70)	0.001
	0.3-0.4	1.41 (0.77, 2.05)	0.009
	0.4-0.5	1.31 (0.61, 2.01)	0.028
	0.5-0.7	1.74 (1.05, 2.43)	0.006
	0.7-1	1.98 (1.13, 2.83)	0.019
	1-5	2.22 (1.17, 3.28)	< 0.001
	5+	10.13 (5.00, 15.26)	0.001
	0.1-0.2	1.02 (0.61, 1.44)	< 0.001
	0.2-0.3	2.31 (1.60, 3.02)	< 0.001
	0.3-0.4	1.78 (1.14, 2.42)	< 0.001
Hispanic	0.4-0.5	1.94 (1.21, 2.67)	< 0.001
	0.5-0.7	1.92 (1.21, 2.64)	0.002
	0.7-1	2.86 (1.80, 3.93)	< 0.001
	1-5	4.49 (2.84, 6.14)	< 0.001
	5+	6.07 (1.25, 10.89)	0.065

\*The *P* value indicates the statistical significance of between-group difference, with males, people aged 0-64, and non-Hispanic White people as the reference group. We added an interaction term of the subgroup variable and smoke PM<sub>2.5</sub> variable into the main model and reported the *P* value of this interaction term.

27