

1 **Characteristics of children readmitted with severe pneumonia in Kenyan hospitals**

2 Diana Marangu-Boore¹, Paul Mwaniki², Lynda Isaaka², Teresiah Njoroge², Livingstone
3 Mumelo², Dennis Kimego², Achieng Adem³, Elizabeth Jowi⁴, Angeline Ithondeka⁵, Conrad
4 Wanyama², Ambrose Agweyu^{2,6} on behalf of the CIN Author Group*

5

6 Affiliations:

7 ¹ Paediatric Pulmonology Division, Department of Paediatrics and Child Health, University of
8 Nairobi, Nairobi, Kenya

9 ² Epidemiology and Demography Department, KEMRI-Wellcome Trust Research Programme,
10 Nairobi, Kenya

11 ³ Department of Health, Kisumu County, Kenya

12 ⁴ Department of Health, Nairobi County, Kenya

13 ⁵ Department of Health, Nakuru County, Kenya

14 ⁶ Department of Infectious Disease Epidemiology, London School of Hygiene and Tropical
15 Medicine, London, UK

16

17 *Correspondence:

18 Diana Marangu-Boore

19 dmarangu@uonbi.ac.ke

20

21

22

23

24

25

26

NOTE: This preprint reports new research that has not been certified by peer review and should not be used to guide clinical practice.

27 **Abstract**

28 **Background:** Pneumonia is a leading cause of childhood morbidity and mortality. Hospital re-
29 admission may signify missed opportunities for care or undiagnosed comorbidities.

30

31 **Methods:** We conducted a retrospective cohort study including children aged ≥ 2 months to
32 14 years hospitalised with severe pneumonia between 2013 and 2021 in a network of 22
33 primary referral hospitals in Kenya. Severe pneumonia was defined using the World Health
34 Organization criteria, and re-admission was based on clinical documentation from individual
35 patient case notes. We estimated the prevalence of re-admission, described clinical
36 management practices, and modelled risk factors for re-admission and inpatient mortality.

37

38 **Results:** Among 20,603 children diagnosed with severe pneumonia, 2,274 (11.0%, 95%
39 confidence interval (CI) 10.62 to 11.47) were readmitted. Re-admission was independently
40 associated with age (12-59 months vs 2-11 months: adjusted odds ratio (aOR) 1.70, 95%
41 confidence interval (CI) 1.55 to 1.88; >5 years vs 2-11 months: aOR 1.86, 95% CI 1.55 to
42 2.23), malnutrition (weight for age z-score (WAZ) <-3SD vs WAZ> -2SD: aOR 2.03, 95% 1.83
43 to 2.28); WAZ -2 to -3 SD vs WAZ> -2SD: aOR 1.37, 95% CI 1.20 to 1.56) and presence of a
44 concurrent neurological disorder (aOR 4.04, 95% CI 1.57 to 10.42) . Chest radiography was
45 ordered more frequently among those readmitted (540/2,274 vs 3,102/18,329, $p < 0.001$).
46 Readmitted patients were more likely to receive second-line antibiotics (808/2,256 vs
47 5,538/18,173 $p < 0.001$), TB medication (69/2,256 vs 298/18,173 $p < 0.001$), salbutamol
48 (530/2,256 vs 3,707/18,173 $p = 0.003$), and prednisolone (157/2,256 vs 764/18,173 $p < 0.001$).
49 Inpatient mortality was 2,354/18,329 (12.8%) among children admitted with a first episode of
50 severe pneumonia and 269/2,274 (11.8%) among those who were readmitted (adjusted
51 hazard ratio (aHR) 0.94, 95% CI 0.82-1.07). Age (12-59 months vs 2-11 months: aHR 0.62,
52 95% 0.57 to 0.67), female sex (aHR 1.23, 95% 1.14 to 1.33), malnutrition (WAZ <-3SD vs
53 WAZ> -2SD: aHR 1.90 95% CI 1.74 to 2.08); WAZ -2 to -3 SD vs WAZ> -2SD: aHR 1.48, 95%

54 CI 1.32 to 1.65), incomplete vaccination (aHR 1.43, 95% CI 1.16 to 1.75), and anaemia (aHR
55 2.16, 95% CI 1.90 to 2.45) were independently associated with mortality.

56

57 **Conclusions:** Children readmitted with severe pneumonia account for a substantial
58 proportion of pneumonia hospitalisations and deaths. Further research is required to develop
59 evidence-based approaches to screening, case management, and follow-up of children with
60 severe pneumonia, prioritising those with underlying risk factors for readmission and mortality.

61

62 **Keywords:** Lower respiratory tract infections; Paediatrics; Adolescents; Low-and-middle-
63 income countries; Africa; recurrent pneumonia; persistent pneumonia

64

65

66

67

68

69

70

71

72

73

74

75

76

77

78

79

80

81

82 **Background**

83 In many low-and-middle-income-countries (LMICs), children and adolescents
84 disproportionately face the double burden of acute respiratory infectious diseases and chronic
85 comorbidities, resulting in long-term impairment of lung function (1, 2), reduced quality of life
86 (3), and mortality (4). Presence of chronic comorbidities and prior severe pneumonia episodes
87 increase the risk of pneumonia re-admission and is associated with substantial costs (5, 6).
88 Almost 10% of children with community acquired pneumonia have recurrent pneumonia (7,
89 8). Recurrent pneumonia is defined as at least two episodes of pneumonia in one year or three
90 episodes ever, with interval radiographic clearing of opacities; whereas persistent pneumonia
91 is characterized by persistence of symptoms and radiographic abnormalities for more than
92 one month (9). Recurrent and persistent pneumonia have varied aetiologies that are known
93 antecedents to bronchiectasis or childhood interstitial lung disease (8, 10, 11), including rare
94 genetic conditions that are increasingly being reported in sub Saharan Africa (12-14).
95 Obstructive airway disease in children hospitalised with severe pneumonia may be
96 underdiagnosed, and other differential diagnoses may not be considered (15, 16). While
97 predictors of repeated acute hospitalisation for paediatric asthma which tends to co-exist with
98 pneumonia are known and relatively modifiable, those for severe pneumonia readmission in
99 sub-Saharan Africa are lacking (17).

100

101 The World Health Organization (WHO) guidelines for pneumonia used in many LMICs
102 comprise a syndromic approach to disease classification and management to enable health
103 workers at the first level referral hospitals to provide basic care for young children (18).
104 However, the validity of the syndromic approach to pneumonia classification and management
105 has yet to be tested among children presenting for severe illness after a previous episode of
106 hospitalisation. Robust data on inpatient management of children with repeated hospitalisation
107 for severe pneumonia are needed to guide appropriate policy recommendations on
108 preventive, diagnostic, treatment and follow-up measures to optimize care and outcomes.

109

110 The aims of this study were to: i) establish the proportion of children aged 2 months to 14
111 years who were re-admitted with severe pneumonia in an established network of Kenyan
112 public hospitals; ii) determine the factors associated with severe pneumonia re-admissions in
113 this population; iii) describe the investigations and treatment provided to children re-admitted
114 with severe pneumonia; and iv) explore the risk factors associated with mortality among these
115 children.

116

117 **Methods**

118 **Reporting**

119 The reporting of this observational study follows the Strengthening of Reporting of
120 Observational studies in Epidemiology (STROBE) statement (19).

121

122 **Ethics, consent and permissions**

123 The Kenya Medical Research Institute (KEMRI) Scientific and Ethics Review Unit approved
124 the collection of the deidentified data analysed in this study and waived the requirement for
125 individual informed consent from patients whose data were used for this research. The Clinical
126 Information Network (CIN) is run in collaboration with the Kenya Paediatric Association,
127 Ministry of Health, and participating hospitals with the aim to improving routine clinical
128 documentation for quality improvement, and for observational and interventional research
129 (20).

130

131 **Study design and setting**

132 We undertook a retrospective cohort study involving patients admitted to CIN hospitals. The
133 CIN was initiated in October 2013 and comprises 22 purposefully selected county hospitals
134 distributed across the densely populated central and western regions of Kenya (21, 22).
135 Patients are admitted by a junior clinician under the supervision of one or more hospital

136 paediatricians. CIN implements the use of structured clinical forms for all admitted children,
137 capturing biodemographic data, caregiver-reported medical history, including whether the
138 patient was readmitted and vaccination status according to the national routine schedule,
139 clinical signs, diagnoses, diagnostic tests ordered, treatment plan, and inpatient outcome.
140 Decisions on clinical and nursing management are made at the discretion of hospital staff with
141 access to basic laboratory and radiological services. Case management is based on the
142 Kenya national paediatric guidelines (23) adapted from WHO guidelines (18) as a reference.
143 Patients are reviewed at least once daily for clinical progress. At hospital discharge, caregivers
144 receive instructions on correct administration of continuing treatments and a follow up
145 outpatient clinic visit is scheduled typically within two weeks.

146

147 **Study participants, data sources and variables**

148 The study population comprised all children admitted to paediatric wards in CIN hospitals.
149 Children hospitalised with a documented diagnosis of pneumonia were included. Children
150 aged less than 2 months or more than 14 years, and those without severe pneumonia defined
151 using the World Health Organization criteria between 2013 and 2021 were excluded. Trained
152 data clerks extract deidentified individual patient data from routine hospital records into a
153 REDCap upon discharge (22, 24). For this analysis, data retrieved comprised: the patient's
154 unique identifier, age, sex, hospital unique identifier, prior pneumonia admission (we could not
155 compute the time from the first admission given the nature of the data), known comorbidities
156 or risk factors such as malnutrition, anaemia, chronic neurological disorder, asthma, cardiac
157 disease, renal disease, HIV, TB and sickle cell disease. We also extracted clinical data
158 comprising management instituted during hospitalisation such as routine laboratory
159 investigations e.g. full blood count; plain chest radiography; supportive treatment e.g. oxygen
160 supplementation; antimicrobials treatment (first line, second line, third line antibiotics,
161 coverage for atypical pathogens, antitubercular and antifungal medications); inhaled or
162 systemic corticosteroids; and outcomes including discharge, referral or death. It should be

163 noted that the structured forms used in CIN to document diagnostics and treatments only
164 record affirmative entries (i.e., "Yes," "Ordered," or "Prescribed"). As a result, we inferred that
165 entries which were not recorded on the forms were negative.

166

167 **Statistical analysis**

168 Data were exported to STATA (StataCorp. 2019. *Stata Statistical Software: Release 16.1*
169 College Station, TX: StataCorp LLC.) for statistical analysis. Descriptive statistics were
170 summarized as frequencies with percentages for categorical data, means with standard
171 deviations for continuous data that were normal and medians with interquartile range for
172 continuous data that were skewed. We estimated the proportion of severe pneumonia re-
173 admissions among children aged 2 months to 14 years hospitalised within the CIN.

174 A multivariable mixed-effects logistic model was fitted to determine factors associated with re-
175 admission among patients with severe pneumonia in this clinical cohort and we reported
176 adjusted risk ratios. CIN data are hierarchical because admission episodes are nested within
177 22 hospitals, thus we used a random intercept logistic regression model to account for
178 clustering (25). In the formula that follows, Y_{ij} denotes pneumonia readmission for the i^{th} child
179 admitted in the j^{th} hospital ($Y_{ij} = 1$ denotes pneumonia readmission, while $Y_{ij} = 0$ denotes no
180 pneumonia readmission); X_{1ij} , through X_{kij} denote the k explanatory variables measured on the
181 i^{th} child admitted in the j^{th} hospital (e.g., child's age); and α_{0j} denotes the unobserved cluster
182 effect. Our model had no hospital level variables. It incorporates cluster-specific random
183 effects to account for the within-cluster correlation of patient outcomes.

184 $\text{logit}(\text{Pr}(Y_{ij} = 1)) = \alpha_0 + \alpha_{0j} + \alpha_1 X_{1ij} + \dots + \alpha_k X_{kij}$ where $\alpha_{0j} \sim N(0, \tau^2)$.

185 The assumption is made that the random effects are independent of the model covariates (X).
186 Explanatory variables included age, sex, weight-for-age z- score (WAZ), vaccination status,

187 previous wheeze and comorbidities including anaemia, HIV, TB, and neurological disorders.

188 The Stata command “or:xtmelogit” was used to fit the random intercept model.

189 To determine factors associated with mortality among children with severe pneumonia
190 readmissions, we fitted a multivariable mixed-effects Cox proportional hazard model (shared
191 gamma frailty model) and reported adjusted hazard ratios with corresponding 95% confidence
192 intervals. In the formula that follows, α_j denotes the random effect associated with the j -th
193 hospital. The shared frailty term has a multiplicative effect on the baseline hazard function: h_j
194 $(t) = h_0(t) \exp(\alpha_j) \exp(\mathbf{X}_j \beta)$ (26). Explanatory variables included age, sex, weight-for-age z-
195 score (WAZ), vaccination status, previous wheeze and comorbidities including anaemia, HIV,
196 TB, and neurological disorders. We generated Cox proportional hazard regression plots for
197 survival by type of pneumonia admission (first episode pneumonia and pneumonia re-
198 hospitalisation); by age group (under 12 months, 12-59 months and over 5’s), gender, WAZ
199 category (<-3 SD, -2 to -3 SD, >-2SD), vaccination and anaemia status. The Stata command
200 “stcox” was used to fit the shared frailty Cox proportional hazard model. Censoring occurred
201 at the time of death, discharge or referral, whichever came first.

202 For all models, explanatory variables were selected *a priori* based on existing literature, clinical
203 relevance with regard to effect on outcome, ease of identification for risk stratification, and
204 biological plausibility. P-values were rounded to three decimal places and were deemed
205 statistically significant if they were <0.05 (2-sided). To handle missing data, we performed
206 multiple imputation by chained equations generating 10 imputed datasets under the
207 assumption that data were missing at random (27).

208 **Results**

209 Out of 49,872 children admitted with pneumonia during the study period, 29,269 (59%) were
210 excluded from the analysis. Exclusions were 27,977 children who did not have severe
211 pneumonia, and 1,292 children aged < 2 months or > 14 years. Figure 1 shows the study
212 population inclusion process. The main variables with missing values were gender, which was

213 missing for 127 children (0.62%), and vaccination status which was missing for 13,468 children
214 (65%).

215

216 Figure 1: STROBE Flow Chart

217 Flow diagram of eligible study participants.

218

219 ***Proportion of children re-admitted with severe pneumonia***

220 Of the population included in the analysis comprising 20,603 children aged 2 months to 14
221 years hospitalised with severe pneumonia over the study period, 2,274 were readmitted, giving
222 an estimated prevalence of 11.0% (95% 10.62-11.47) for readmissions among children with
223 severe pneumonia.

224

225 ***Characteristics of study participants***

226 The median age of the study population was 12 months (IQR 6.0-24.0), 9,907/20,603 (48%)
227 of children were under 12 months of age, 9,287/20,603 (45%) of the children were aged 12-
228 59 months and 1,409/20,603 (6.8%) were aged 5-14 years. The majority of children were
229 reported to be up to date with their vaccination status 6,950/7,135 (97%). However, most were
230 severely or moderately underweight 17,018/20,603 (83%). Compared to children admitted for
231 the first time with severe pneumonia, children re-admitted with severe pneumonia were slightly
232 older (median age 14.4 months vs 12 months), underweight (median WAZ score -1.7 vs -1.1),
233 were diagnosed with TB (1.8% vs 0.7%), and neurological disorders (0.4% vs 0.12%) more
234 frequently (Table 1).

235

236

237

238

239

240

241 Table 1: Admission characteristics of study participants

Indicator	Levels	Total	Severe Pneumonia 1 st Admission	Severe Pneumonia Readmission	p-value
		20,603	18,329	2,274	
Age months Median (IQR)		12.0 (6.0-24.0)	12.0 (6.0-24.0)	14.4 (9.6-28.8)	<0.001
	Missing	0	0	0	
(%)	<12mo	9,907 (48.1)	9,078 (49.5)	829 (36.5)	<0.001
	12-59mo	9,287 (45.1)	8,030 (43.8)	1,257 (55.3)	
	Over 5yrs	1,409 (6.8)	1,221 (6.7)	188 (8.3)	
	Missing	0	0	0	
Gender (%)	Male	11,334 (55.4)	10,049 (55.2)	1,285 (56.8)	0.13
	Missing	127 (0.62)	114 (0.63)	13 (0.57)	
WAZ Median (IQR)		-1.1(-2.46, -0.46)	-1.1(-2.40, -0.03)	-1.7(-3.25, -0.51)	<0.001
	Missing	812	718	94	
(%)	<-3SD	14,225 (69.0)	12,914 (70.5)	1,311 (57.7)	<0.001
	-2 to -3SD	2,793 (13.6)	2,443 (13.3)	350 (15.4)	
	>-2SD	3,584 (17.4)	2,972 (16.2)	613 (27.0)	
	Missing	0	0	0	
Vaccination	Up to date	6,950 (97.4)	6,145 (97.5)	805 (96.9)	0.3
	Missing	13,468 (65.37)	12,025 (65.61)	1,443 (63.46)	
Wheeze	Present	3,240 (16.2)	2,874 (16.1)	805 (16.6)	0.54
	Missing	545 (2.65)	475 (2.59)	70 (3.08)	
Anaemia	Present	1,000 (4.9)	909 (5.0)	91 (4.0)	0.045

	Missing	0	0	0	
HIV	Positive or Exposed	231 (1.1)	197 (1.1)	34 (1.5)	0.073
	Missing	1	1	0	
TB	Positive	161 (0.8)	120 (0.7)	41 (1.8)	<0.001
	Missing	0	0	0	
Neurological disorder	Present	22 (0.1)	12 (0.01)	10 (0.4)	<0.001
	Missing	0	0	0	
Saturations <90%		7,717 (37.5)	6,946 (37.9)	771 (33.9)	<0.001

242 WAZ weight-for-age Z-score; Abnormal WAZ <-2SD

243 Neurological disorder: cerebral palsy, convulsive disorder or epilepsy

244

245

246

247

248

249

250

251

252

253

254

255

256

257

258

259 ***Factors associated with severe pneumonia re-admissions***

260 Age (12-59 months vs 2-11 months: adjusted odds ratio (aOR) 1.70, 95% 1.55 to 1.88), over
261 5 years vs 2-11 months: aOR 1.86, 95% 1.55 to 2.23), severe malnutrition (WAZ <-3SD vs
262 WAZ> -2SD) (aOR 2.03, 95%1.83 to 2.28), moderate malnutrition (WAZ <-3SD vs WAZ> -
263 2SD) (aOR 1.37, 95%1.20 to 1.56), and neurological disorder (aOR 4.04, 95% 1.57 to 10.42)
264 were independent risk factors for re-admission adjusting for gender, vaccination status, any
265 wheeze, anaemia, HIV disease and TB (Table 2).

266

267

268

269

270

271

272

273

274

275

276

277

278

279

280

281

282

283

284

285

286

287 Table 2: Risk factors for readmission among study participants

288

Factor	Adjusted odds ratio (95% confidence interval)	p-value
Age (ref: <12 months)		
12-59 months	1.70 (1.55-1.88)	<0.0001
Over 5yrs	1.86 (1.55-2.23)	<0.0001
Gender (ref: female)	1.04 (0.95-1.14)	0.372
WAZ (ref: >-2SD)		
-2 to -3SD	1.37 (1.20-1.56)	<0.0001
<-3SD	2.04 (1.83-2.28)	<0.0001
Vaccination (ref: incomplete)	0.74 (0.50-1.08)	0.116
Wheeze (ref: absent)	1.49 (0.63-3.52)	0.367
Anaemia (ref: absent)	0.96 (0.76-1.22)	0.744
HIV (ref: negative)	1.15 (0.77-1.72)	0.492
TB (ref: absent)	1.36 (0.91-2.02)	0.129
Neurological disorder (ref: absent)	4.04 (1.57-10.42)	0.004

289 Number of imputations=10; Number of observations=20,602; Number of groups=20;

290 Outcome = severe pneumonia readmission.

291 Imputed variables = gender 127; vaccination 13,468.

292 WAZ weight-for-age Z-score

293

294

295

296

297 ***Investigations and treatment provided to study participants***

298 Compared to children admitted for the first time with severe pneumonia, children re-admitted
299 with severe pneumonia had chest radiography performed more frequently (24% vs 17%,
300 $p<0.001$); and more prescriptions for second line antibiotics, specifically ceftriaxone (36% vs
301 30%, $p<0.001$), TB treatment (3% vs 1.6%, $p<0.001$), salbutamol (23% vs 20%, $p=0.003$) and
302 prednisone (7% vs 4%, $p<0.001$) (Table 3).

303

304

305

306

307

308

309

310

311

312

313

314

315

316

317

318

319 Table 3: Diagnostics and treatments used among study participants

		Total(N=20,603)	Severe Pneumonia First Admission (N=18,329)	Severe Pneumonia Readmission (N=2,274)	p-value
INVESTIGATIONS (%)					
Pulse oximetry done	Yes	13,245 (64.3)	11,940 (65.1)	1,305 (57.4)	<0.001
	No	7,358 (35.7)	6,389 (34.9)	969 (42.7)	
Chest radiography	Yes	3,642 (17.7)	3,102 (16.9)	540 (23.8)	<0.001
	No	16,961 (82.3)	15,227 (83.1)	1,734 (76.3)	
TREATMENTS (%)					
Oxygen ordered	Yes	5,839 (28.3)	5,216 (28.5)	623(27.4)	0.540
	No	14,764 (71.7)	13,113 (71.5)	1,651 (72.6)	
First line antibiotics					
Crystalline penicillin	Yes	16,376 (79.5)	14,721 (80.3)	1,655 (72.8)	<0.001
	No	4,227 (20.5)	3,608 (19.7)	619 (27.2)	
Gentamicin	Yes	14,613 (70.9)	13,233 (72.2)	1,380 (60.7)	<0.001
	No	5,990 (29.1)	5,096 (27.8)	894 (39.3)	
Amoxicillin	Yes	1,220 (5.9)	1,104 (6.0)	116 (5.1)	0.20

	No	19,383 (94.1)	17,225 (94.0)	2,158 (94.9)	
Second line antibiotics					
Ceftriaxone	Yes	6,346 (30.8)	5,538 (30.2)	808 (35.5)	<0.001
	No	14,257 (69.2)	12,791 (69.8)	1,466 (64.5)	
Other antimicrobials					
Metronidazole	Yes	1,002 (4.9)	894 (4.9)	108 (4.7)	0.92
	No	19,601 (95.1)	17,435 (95.1)	2,166 (95.3)	
Cotrimoxazole	Yes	538 (2.6)	480 (2.6%)	58 (2.6)	0.94
	No	20,065 (97.4)	17,849 (97.4)	2,216 (97.4)	
TB medication	Yes	367 (1.8)	298 (1.6%)	69 (3.0)	<0.001
	No	20,236 (98.2)	17,875 (98.4)	2,205 (97.0)	
Other treatment					
Salbutamol	Yes	4,237 (20.6)	3,707 (20.2)	530 (23.3)	0.003
	No	16,366 (79.4)	14,622 (79.8)	1,744 (76.7)	
Prednisolone	Yes	921 (4.5)	764 (4.2%)	157 (6.9)	<0.001
	No	19,682 (95.5)	17,565 (95.8)	2,177 (93.1)	

320

321

322 ***Outcomes of study participants***

323 The median length of hospital stay was 4 days IQR (2-7) for children hospitalised with a severe
324 pneumonia for the first time; and 5 days IQR (3-8) for children readmitted with severe
325 pneumonia. We noted that children readmitted with severe pneumonia were hospitalised for
326 longer than seven days more frequently than those admitted for the first time with severe
327 pneumonia (34% vs 26%, $p < 0.001$). Among 18,329 children admitted with severe pneumonia
328 for the first time, 2,354 (12.8% [12.37-13.33]) died during their hospital stay, while 269 (11.8%
329 [10.56-13.22]) of 2,274 children readmitted with severe pneumonia died during their hospital
330 stay (Table 4).

331

332

333

334

335

336

337

338

339

340

341

342

343 Table 4: Outcomes of study participants

344

	Total(N=20,603)	Severe Pneumonia First Admission (N=18,329)	Severe Pneumonia Readmission (N=2,274)	p-value
Length of stay				
Median [IQR] (Range) days	4 [2-7] (1,401)	4 [2-7] (1,339)	5 [3-8] (1,401)	
Missing	1	1	0	
Less than 7 days	15,159 (73.6)	13,650 (74.5)	1,509 (66.4)	<0.001
7 days or more	5,444 (26.4)	4,679 (25.5)	765 (33.6)	
Missing	0	0	0	
Discharged	17,261 (83.8)	15,337 (83.7)	1,924 (84.6)	0.18
Referred	641 (3.1)	567 (3.1)	74 (3.3)	
Died	2,623 (12.7)	2,354 (12.8)	269 (11.8)	
Missing	78 (0.4)	71 (0.4)	7 (0.3)	

345

346 ***Risk factors associated with mortality***

347 Age <12 months (adjusted HR (aHR) 1.63, 95% 1.49 to 1.77), age >5 years (aHR 1.52, 95%
348 1.31 to 1.77), female gender (aHR 1.23, 95% 1.14 to 1.33), severe malnutrition (aHR 1.90
349 95% 1.74 to 2.08), moderate malnutrition (aHR 1.48, 95% 1.32 to 1.65), incomplete
350 vaccination (aHR 1.43, 95% 1.16 to 1.75) and anaemia (aHR 2.16, 95% 1.90 to 2.45) were
351 independently associated with mortality amongst children admitted with severe pneumonia
352 when adjusted for gender, any wheeze, HIV, TB and a neurological disorder (Table 5 and
353 Figure 2).

354

355 Figure 2: Cox proportional hazard plots for mortality among study participants

356

357

358

359

360

361

362

363

364

365

366

367

368

369

370

371

372

373 Table 5: Factors associated with mortality among children admitted with severe pneumonia in
 374 Kenyan hospitals within the Clinical Information Network (CIN)
 375

Factor	Adjusted hazard ratio (95% CI)	p-value
Pneumonia re-admission (ref: first episode pneumonia)	0.94 (0.82-1.07)	0.338
Age (ref: <12 months)		
12-59 months	0.62 (0.57-0.67)	<0.0001
Over 5yrs	0.94 (0.81-1.08)	0.379
Gender (ref: male)	1.23 (1.14-1.33)	<0.0001
WAZ (ref: >-2SD)		
-2 to -3SD	1.48 (1.32-1.65)	<0.0001
<-3SD	1.90 (1.74-2.08)	<0.0001
Vaccination not up to date (ref: complete)	1.43 (1.16-1.75)	0.001
Wheeze present (ref: absent)	0.21 (0.03-1.50)	0.120
Anaemia present (ref: absent)	2.16 (1.90-2.45)	<0.0001
HIV infected/exposed (ref: negative)	1.10 (0.84-1.45)	0.483
TB positive (ref: absent)	1.08 (0.74-1.58)	0.674
Neurological disorder (ref: absent)	1.48 (0.55-3.96)	0.219

376

377 WAZ weight-for-age Z-score

378

379

380

381

382

383

384 Discussion

385 Our analysis revealed a high proportion of children aged 2 months to 14 years with severe
386 pneumonia in Kenyan secondary-level health facilities had previously been admitted for care.
387 Risk factors for re-hospitalisation for severe pneumonia are age >12months, moderate/severe
388 undernutrition and neurological disorder. The proportion of children getting plain chest
389 radiography, second line antibiotics, TB medication, salbutamol and prednisone was higher
390 among those re-admitted compared to those hospitalised for the first time. Mortality among
391 children hospitalised with severe pneumonia is high, but not significantly different among those
392 readmitted compared to first admissions. Children who are <12 months, over 5 years, female,
393 with moderate/severe undernutrition or anaemia are at a higher risk of dying.

394

395 Publications on severe pneumonia readmission in children in LMICs are limited. Conversely,
396 financial incentives and penalties imposed by hospital readmission reduction programs seem
397 to drive such studies in high income countries (HICs), more so among adults (28). Re-
398 admissions can be classified as early (≤ 30 days) or late (≥ 31 days) (29). Re-admissions that
399 occur within 30-days often correspond to those that are potentially avoidable, most of which
400 are direct or indirect complications of underlying comorbidities (30). These are the
401 readmissions health facilities and insurance companies are keen on reducing, and which
402 hospitals in HICs are subject to penalties if unacceptable thresholds are reached (31). Large
403 longitudinal studies of various tertiary referral hospitals in the United States of America (USA),
404 reported a 30-day lower respiratory infection specific re-admission rate and paediatric
405 pneumonia specific re-admission rate of 2.7% (32) and 3.3% (5) respectively, almost four
406 times lower than in our study. A more recent analysis conducted in the USA using the 2018
407 Nationwide Readmissions Database reported a 30-day severe pneumonia specific re-
408 admission rate among children of 8.7%, while the re-admission rate in children with non-
409 severe pneumonia was 4.7% (33). The lower estimates found in the USA may be attributed to
410 the difference in income contexts, pneumonia definitions, and the fact that these were strictly
411 30-day outcomes. All the children in our analysis had severe pneumonia based on WHO

412 guidelines. Furthermore, we could only ascertain that they had a prior hospital admission but
413 we could neither determine the reason for the initial admission nor compute the time from the
414 first admission given the nature of the data. It is imperative to obtain this time variable in future
415 studies to report on comparable data with regard to early and late pneumonia readmissions.
416
417 Hospital re-admission may signal failure in the health system performance. However, its
418 interpretation may be complicated by observed and unobserved differences in the clinical risk
419 of patient populations and their survival rates. For example, health facilities with low childhood
420 mortality may have a higher unobserved volume of sick children at risk of re-admission (34).
421 In our study, mortality among children hospitalised with severe pneumonia was high, but not
422 significantly different among those readmitted compared to first admissions. Indeed, hospital
423 re-admissions are a more complex phenomenon than mortality, in that they arise from an
424 “interplay among patient-, hospital-, community-, and environmental-level factors” (35).
425 Comorbidities including neurological disorders and malnutrition, were risk factors for re-
426 hospitalisation for pneumonia similar to our study (5, 32). In a cross-sectional study conducted
427 at a Canadian tertiary hospital including almost 3,000 children, Owayed et al reported that
428 most children hospitalised with recurrent pneumonia have a predisposing factor, the most
429 common being oropharyngeal incoordination (36). This is a plausible explanation for the four-
430 fold increased risk with severe pneumonia re-hospitalisation observed in children with a
431 neurological disorder in our study. It calls for a high index of suspicion among clinicians from
432 the first point of patient contact and consideration of medical or surgical interventions early.
433 Immunosuppressive conditions have also been identified as a risk factor for pneumonia
434 readmission in children (33). Immunosuppression can be due to moderate/severe malnutrition
435 which was significantly associated with readmission in this study. However, in this analysis,
436 HIV was not associated with severe pneumonia readmission; perhaps due to timely initiation
437 of antiretroviral therapy within prevention of mother-to-child transmission services (37). Patient
438 data on other conditions that present with recurrent pneumonia such as primary
439 immunodeficiency, cystic fibrosis and primary ciliary dyskinesia that can lead to bronchiectasis

440 (38) were not available. Unlike our study, age less than 1 year (5, 32) and male gender (32)
441 have been identified as risk factors for re-hospitalisation for pneumonia. This could reflect
442 differences in our study population. Perhaps, older children living longer to have a pneumonia
443 readmission; or no actual particular gender risk for pneumonia rehospitalisation. Prior
444 respiratory syncytial virus lower respiratory tract infection (39), longer index hospitalisations
445 (5, 33), complicated pneumonia (5), and hospital case volume and teaching status (33) were
446 other risk factors for re-hospitalisation for pneumonia identified in the literature but were not
447 measured in this study. These are important variables that need to be examined in future
448 studies.

449
450 Interestingly, Baseer et al estimated that 11.4% of children admitted with pneumonia during a
451 one-year study in Egypt had recurrent pneumonia defined as ≥ 2 episodes of radiographically
452 confirmed pneumonia in a single year or ≥ 3 episodes at any time with a radiographic clearing
453 of densities between attack (40). In this analysis, almost 20% of children had a chest
454 radiograph, with a significantly higher frequency of requests among children who were
455 readmitted compared to those admitted with pneumonia for the first time. Data on interval
456 assessment of chest radiographs was not available. It may be useful in future studies to
457 document chest radiography findings and ascertain if children readmitted with severe
458 pneumonia have recurrent pneumonia/persistent pneumonia. Timely interventions could
459 potentially reverse, prevent or better manage chronic lung disease (8, 41).

460
461 Similar to our findings, other studies conducted in similar epidemiological and geographical
462 contexts, specifically Kilifi at the Kenyan coast, Bangladesh and India, have found malnutrition
463 (42-44) and incomplete vaccination (45) to be associated with mortality in children with severe
464 pneumonia. We found severe pallor to be associated with mortality in children severe
465 pneumonia (44, 46), consistent with previous findings among children with non-severe
466 pneumonia (6). This association in children with pneumonia may be indicative of a reduced
467 threshold for respiratory decompensation in this vulnerable population. Timely identification

468 and management of anaemia is needed to prevent death in children hospitalised with severe
469 pneumonia. Previous studies have described the association between higher mortality and
470 infants with severe pneumonia (47), which we also found in our analysis. Interestingly,
471 mortality in children over 5 years was similar to that observed among infants. Mortality among
472 children aged 5-14 years has received little attention (48), with those in sub-Saharan Africa
473 faring worse (49). Older children may have attendant complex comorbidities that put them at
474 risk for death. Evidence-based treatment algorithms for this neglected population are needed.
475 Moderate or severe malnutrition and neurological disorders in children with severe pneumonia
476 should signal a need for post-admission follow up and potential re-admission. Optimizing
477 nutrition may avert re-admission with severe pneumonia. Going forward, it will be important to
478 conduct studies that objectively assess possible aspiration/reflux in children with neurological
479 disorders readmitted with pneumonia in these settings perhaps using simple questionnaires
480 at district-level health facilities (50) or/and more elaborate tests such as videofluoroscopic
481 swallowing studies to assess swallowing (51) and scintigraphy, pH-metry and other studies to
482 quantify gastro-oesophageal reflux in referral centres (52). Establishing the multi-disciplinary
483 capacity necessary to improve care for children with neurologic disorders, specifically training
484 physiotherapists and speech therapists is an urgent requirement.

485 In this study, referral of patients with severe pneumonia who had been readmitted was quite
486 low at 3%, similar to those with a first hospitalisation with pneumonia. It is difficult to ascertain
487 whether clinicians are reluctant to refer patients; or whether patients would honour the referral
488 instructions. Exploring referral systems in future studies may prompt changes in patient
489 pathways for children with severe pneumonia who have been re-hospitalised. This may inform
490 the health facilities on the areas that could be improved, which could include increasing the
491 number of specialists and sub-specialists in the counties through models such as the African
492 Paediatric Fellowship Program (53). Remote consultation (54), among other solutions that
493 adopt a contextually appropriate reasoned diagnostic approach for children with
494 recurrent/persistent pneumonia may be considered (8).

495 To the best of our knowledge, this is the first published study to report on severe pneumonia
496 rehospitalisation in children in sub-Saharan Africa. The large sample size across multiple
497 settings provides a contemporary representation of paediatric severe pneumonia re-admission
498 in a high burden context, offering a foundation for research and interventions averting or
499 mitigating the clinical sequelae of pneumonia. The study is limited by its retrospective nature
500 and use of routinely collected data, which may result in missing data on variables of interest,
501 such as the interval between first admission and subsequent readmissions, challenges linking
502 records for patients with multiple episodes of readmission, specialised modalities of testing
503 employed (e.g., videofluoroscopy, echocardiography), and relevant complications (e.g.,
504 pleural effusions, abscess, air leaks).

505 **Conclusion**

506 The proportion of children re-hospitalised with severe pneumonia and their in-hospital
507 mortality is high. Age, nutritional status and neurological disorder are risk factors of severe
508 pneumonia recurrence; additionally, gender, incomplete vaccination and anaemia increase
509 risk of mortality. Optimal care for severe pneumonia will require carefully designed studies of
510 clinical algorithms for the screening, case management, and follow up of children, prioritising
511 those with underlying risk factors.

512

513

514

515

516

517

518

519

520

521

522 **List of abbreviations**

523 aHR – adjusted Hazard Ratio

524 aOR – adjusted Odds Ratio

525 CIN – Clinical Information Network

526 KEMRI – Kenya Medical Research Institute

527 LMIC – Low-and-middle-income country

528 TB – tuberculosis

529 WAZ – Weight-for-Age Z-score

530 WHO – World Health Organization

531

532

533

534

535

536

537

538

539

540

541

542

543

544

545

546

547

548

549

550 **Declarations**

551 *Ethics approval and consent to participate*

552 The Kenya Medical Research Institute (KEMRI) Scientific and Ethics Review Unit approved
553 the collection of the deidentified data analysed in this study. The CIN is run in collaboration
554 with the Ministry of Health and participating hospitals with the aim to improve the quality of
555 routine paediatric hospital data for use in audits, observational and interventional research.
556 Individual consent for access to deidentified patient data was not required.

557

558 *Consent for publication*

559 Not applicable.

560

561 *Availability of data and materials*

562 The data utilized in this work was made available to the research team by the participating
563 hospitals and the Ministry of Health, and thus we are not the primary data owners; our use for
564 these routine hospital data is approved as part of a specific ethical review process. Further
565 access to the data can be sought through a request to KEMRI Wellcome Trust Research
566 Programmes's Data Governance Committee through email: dgc@kemri-wellcome.org.

567 *Competing interests*

568 The authors declare that they have no competing interests.

569

570 *Funding*

571 The research reported is funded by a Joint Global Health Trials Award (MR/R006083/1) from
572 the Department of Health and Social Care (DHSC), the Foreign, Commonwealth &

573 Development Office (FCDO), the Medical Research Council (MRC) and the Wellcome Trust.

574 This UK funded award is part of the EDCTP2 programme supported by the European Union.

575

576 *Authors' contributions*

577 DM-B and AA conceived the study and DM-B performed the analysis with support from AA.

578 DM drafted the initial manuscript with support from AA, PM, LI, TN, LM, DK, AA, EJ, AI, and

579 CW. CIN authors contributed to the design of data collection tools, conduct of the work,

580 collection of the data, and data quality assurance that form the basis of this manuscript. All

581 authors read and approved the final version of the manuscript.

582

583 *Acknowledgements*

584 The authors would like to thank the Ministry of Health who gave permission for this work to be

585 developed and have supported the implementation of the Clinical Information Network (CIN)

586 together with the County Health Executives, Hospital Management Teams, the Kenya

587 Paediatric Association, the Kenya Ministry of Health, and the University of Nairobi for

588 promoting the aims of the CIN. Specifically, teams based in: Busia County Hospital (Emma

589 Sarah Namulala, Yuvane Maiyo); Bungoma County Hospital (Dickens Lubanga, Felistus

590 Makokha); Homabay County Hospital (Meshack Liru, Edith Ogada); Vihiga County Hospital

591 (Vitalis Juma); JOOTRH (Josephine Ojigo, Maureen Muchela); Kakamega CGTRH (Boniface

592 Nyumbile, Roselyn Malangachi, Ijusa Midecha); Kitale County Hospital (Rachel Inginia, Paul

593 J W Njanwe, Mwendu Mutunga); Kiambu County Hospital (Grace Ochieng, Lydia Thurania

594 and Catherine Muriangi); Mama Lucy Kibaki Hospital (Cecilia Mutiso, Celia Muturi, Elizabeth

595 Atieno Jowi); Machakos County Hospital (Charles Nzioki, Penina Musyoka); Kisumu County

596 Hospital (Achieng Adem, Sharon Ocharo); Embu County Hospital (Esther Mukami Njiru,

597 Mwangi Ngina, Patrick Lydia); Naivasha County Hospitals (Julie Barasa); Thika Level 5

598 Hospital (Bernadette Lusweti, Maureen Njoroge, Sylvia Mwathi, Patrick Mburugu); Nakuru
599 County Hospital (Angeline Ithondeka, Linda Ombito, Alice Nkirote Nyaribari, Elizabeth
600 Kibaru); Kerugoya County Hospital (Peninah Muthoni Mwangi); Mbagathi County Hospital
601 (Christine Manyasi, David Kimutai, Rukia Aden, Zanuba Mohammed); Nyeri County Hospital
602 (Wagura Mwangi, Agnes Mithamo); Pumwani Maternity Hospital (Catherine Mutinda, Beth
603 Maina, Rashid Musa, Caren Emadau, Maureen Muirithi, Esther Muthoni Ogolla); Migori
604 County Hospital (Joyce Akuka); Malindi Sub-County Hospital (Yusuf Rasheed); Kisii County
605 Hospital (Mourine Ikol); and Karatina Sub-County Hospital (Stella Mbuga).

606

607 The authors also acknowledge the other members of the CIN leadership: Jalemba Aluvaala,
608 Anthony Etyang, Samuel Akech, Muthoni Ogola, Jacquie Oliwa, Michuki Maina, David
609 Gathara, Fredrick Were, Grace Irimu, and Mike English, as well as technical and
610 administrative assistance provided by Metrine Saisi, Elizabeth Muthini, James Wafula, Cynthia
611 Khazenzi, Joyce Kigo, George Mbevi, Henry Gathuri, Wycliffe Nyachiro, and Frankline
612 Oketch. This work is published with the permission of the Director of KEMRI CGMRC.

613

614

615

616

617

618

619

620

621

622

623

624

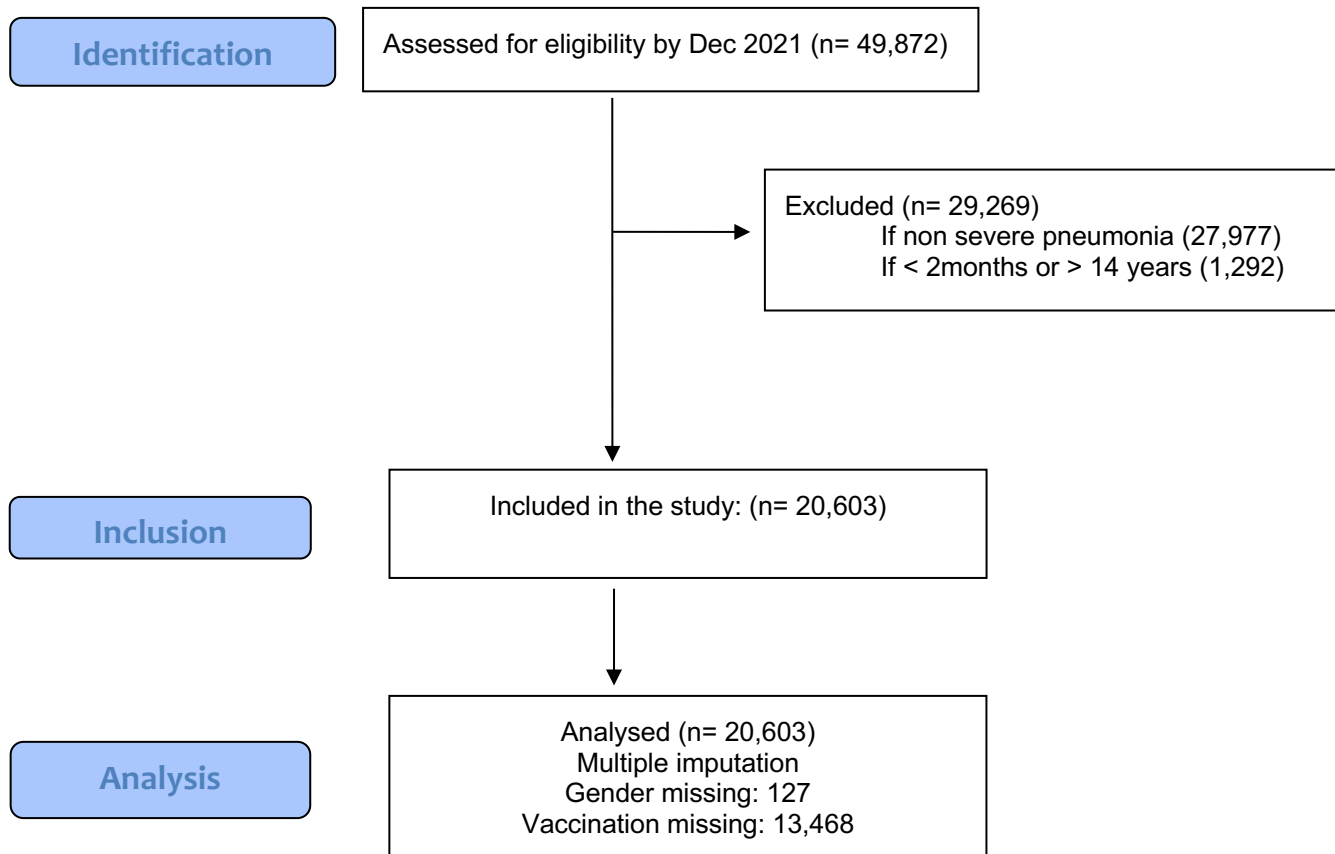
625

626 References

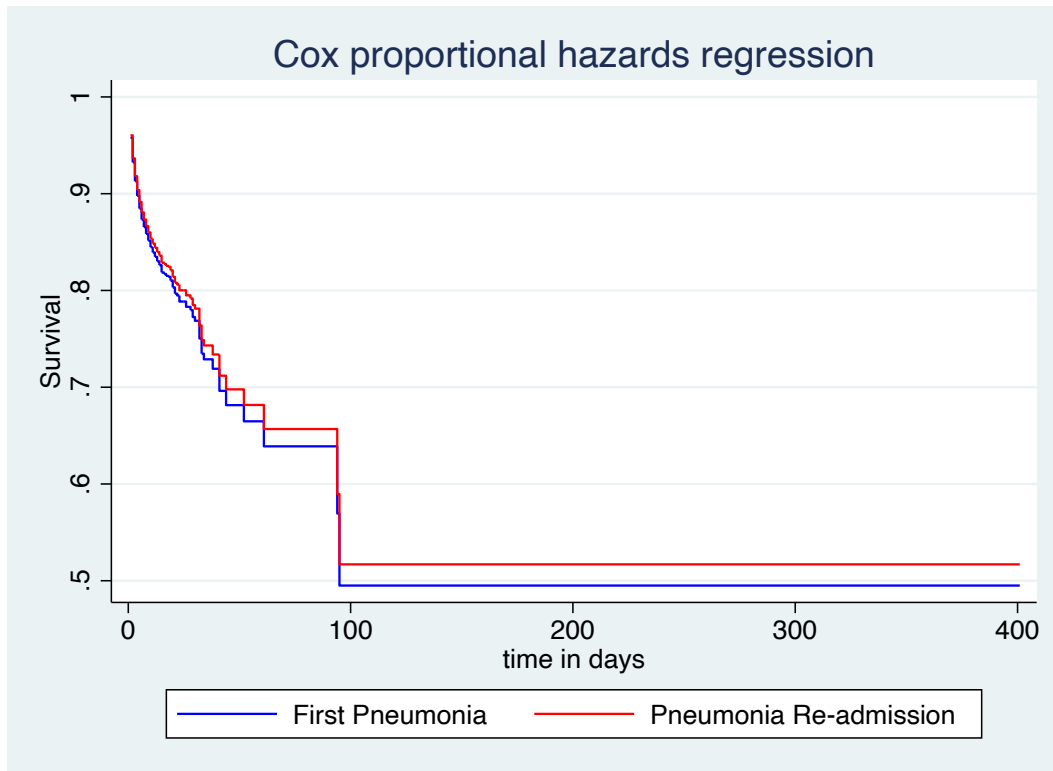
- 627 1. Gray DM, Turkovic L, Willemse L, Visagie A, Vanker A, Stein DJ, et al. Lung
628 Function in African Infants in the Drakenstein Child Health Study. Impact of Lower
629 Respiratory Tract Illness. *Am J Respir Crit Care Med*. 2017;195(2):212-20.
- 630 2. Gray D, Willemse L, Visagie A, Czovek D, Nduru P, Vanker A, et al. Determinants
631 of early-life lung function in African infants. *Thorax*. 2017;72(5):445-50.
- 632 3. Hadning I, Andayani TM, Endarti D, Triasih R. Health-Related Quality of Life
633 Among Children With Pneumonia in Indonesia Using the EuroQoL Descriptive System
634 Value Set for Indonesia. *Value Health Reg Issues*. 2021;24:12-6.
- 635 4. Jackson P, Muyanja SZ, Siddharthan T. Health Equity and Respiratory Diseases in
636 Low- and Middle-Income Countries. *Clin Chest Med*. 2023;44(3):623-34.
- 637 5. Neuman MI, Hall M, Gay JC, Blaschke AJ, Williams DJ, Parikh K, et al.
638 Readmissions among children previously hospitalized with pneumonia. *Pediatrics*.
639 2014;134(1):100-9.
- 640 6. Macpherson L, Ogero M, Akech S, Aluvaala J, Gathara D, Irimu G, et al. Risk factors
641 for death among children aged 5-14 years hospitalised with pneumonia: a retrospective cohort
642 study in Kenya. *BMJ Glob Health*. 2019;4(5):e001715.
- 643 7. Ciftci E, Gunes M, Koksall Y, Ince E, Dogru U. Underlying causes of recurrent
644 pneumonia in Turkish children in a university hospital. *Journal of tropical pediatrics*.
645 2003;49(4):212-5.
- 646 8. Montella S, Corcione A, Santamaria F. Recurrent Pneumonia in Children: A
647 Reasoned Diagnostic Approach and a Single Centre Experience. *Int J Mol Sci*. 2017;18(2).
- 648 9. Wald ER. Recurrent and nonresolving pneumonia in children. *Semin Respir Infect*.
649 1993;8(1):46-58.
- 650 10. Verwey C, Gray DM, Dangor Z, Ferrand RA, Ayuk AC, Marangu D, et al.
651 Bronchiectasis in African children: Challenges and barriers to care. *Frontiers in pediatrics*.
652 2022;10:954608.
- 653 11. Nathan N, Griese M, Michel K, Carlens J, Gilbert C, Emiralioglu N, et al. Diagnostic
654 workup of childhood interstitial lung disease. *Eur Respir Rev*. 2023;32(167).
- 655 12. Erjaee A, Bagherpour M, Van Rooyen C, Van den Berg S, Kinnear CJ, Green RJ, et
656 al. Primary immunodeficiency in Africa - a review. *South African medical journal = Suid-
657 Afrikaanse tydskrif vir geneeskunde*. 2019;109(8b):3-11.
- 658 13. Van Rensburg J, Alessandrini M, Stewart C, Pepper MS. Cystic fibrosis in South
659 Africa: A changing diagnostic paradigm. *South African medical journal = Suid-Afrikaanse
660 tydskrif vir geneeskunde*. 2018;108(8):624-8.
- 661 14. Fassad MR, Shoman WI, Morsy H, Patel MP, Radwan N, Jenkins L, et al. Clinical
662 and genetic spectrum in 33 Egyptian families with suspected primary ciliary dyskinesia. *Clin
663 Genet*. 2020;97(3):509-15.
- 664 15. Ardura-Garcia C, Kuehni CE. Reducing childhood respiratory morbidity and
665 mortality in low and middle income countries: a current challenge. *The European respiratory
666 journal*. 2019;54(1).
- 667 16. Nguyen PTK, Tran HT, Fitzgerald DA, Tran TS, Graham SM, Marais BJ.
668 Characterisation of children hospitalised with pneumonia in central Vietnam: a prospective
669 study. *The European respiratory journal*. 2019;54(1).
- 670 17. Ardura-Garcia C, Stolbrink M, Zaidi S, Cooper PJ, Blakey JD. Predictors of repeated
671 acute hospital attendance for asthma in children: A systematic review and meta-analysis.
672 *Pediatric pulmonology*. 2018;53(9):1179-92.
- 673 18. Organization WH. Pocket book of hospital care for children: guidelines for the
674 management of common childhood illnesses: World Health Organization; 2013.

- 675 19. von Elm E, Altman DG, Egger M, Pocock SJ, Gøtzsche PC, Vandenbroucke JP. The
676 Strengthening the Reporting of Observational Studies in Epidemiology (STROBE) statement:
677 guidelines for reporting observational studies. *PLoS Med.* 2007;4(10):e296.
- 678 20. English M, Irimu G, Agweyu A, Gathara D, Oliwa J, Ayieko P, et al. Building
679 Learning Health Systems to Accelerate Research and Improve Outcomes of Clinical Care in
680 Low- and Middle-Income Countries. *PLoS Med.* 2016;13(4):e1001991.
- 681 21. English M, Irimu G, Akech S, Aluvaala J, Ogero M, Isaaka L, et al. Employing
682 learning health system principles to advance research on severe neonatal and paediatric
683 illness in Kenya. *BMJ Glob Health.* 2021;6(3).
- 684 22. Ayieko P, Ogero M, Makone B, Julius T, Mbevi G, Nyachiro W, et al. Characteristics
685 of admissions and variations in the use of basic investigations, treatments and outcomes in
686 Kenyan hospitals within a new Clinical Information Network. *Archives of disease in*
687 *childhood.* 2016;101(3):223-9.
- 688 23. Ministry of Health K. Basic Paediatric Protocols 2016 [4th Edition:[Available from:
689 http://guidelines.health.go.ke:8000/media/Basic_Paediatric_Protocols_2016.pdf.
- 690 24. Research Electronic Data Capture (REDCap) [Available from: [https://www.project-](https://www.project-redcap.org/)
691 [redcap.org/](https://www.project-redcap.org/).
- 692 25. Austin PC, Merlo J. Intermediate and advanced topics in multilevel logistic regression
693 analysis. *Statistics in medicine.* 2017;36(20):3257-77.
- 694 26. Austin PC. A Tutorial on Multilevel Survival Analysis: Methods, Models and
695 Applications. *Int Stat Rev.* 2017;85(2):185-203.
- 696 27. Azur MJ, Stuart EA, Frangakis C, Leaf PJ. Multiple imputation by chained equations:
697 what is it and how does it work? *Int J Methods Psychiatr Res.* 2011;20(1):40-9.
- 698 28. Wallace SS, Quinonez RA. Solving the Readmissions Puzzle: How Do Variability
699 and Preventability Fit? *Pediatrics.* 2017;140(2).
- 700 29. Prescott HC, Sjoding MW, Iwashyna TJ. Diagnoses of early and late readmissions
701 after hospitalization for pneumonia. A systematic review. *Annals of the American Thoracic*
702 *Society.* 2014;11(7):1091-100.
- 703 30. Donzé J, Lipsitz S, Bates DW, Schnipper JL. Causes and patterns of readmissions in
704 patients with common comorbidities: retrospective cohort study. *Bmj.* 2013;347:f7171.
- 705 31. Medicare To Penalize 2,217 Hospitals For Excess Readmissions. *Kaiser Health News.*
706 2012 Oct 12 [press release].
- 707 32. Nakamura MM, Zaslavsky AM, Toomey SL, Petty CR, Bryant MC, Geanacopoulos
708 AT, et al. Pediatric Readmissions After Hospitalizations for Lower Respiratory Infections.
709 *Pediatrics.* 2017;140(2).
- 710 33. Lewis MO, Tran PT, Huang Y, Desai RA, Shen Y, Brown JD. Disease Severity and
711 Risk Factors of 30-Day Hospital Readmission in Pediatric Hospitalizations for Pneumonia.
712 *Journal of clinical medicine.* 2022;11(5).
- 713 34. Laudicella M, Li Donni P, Smith PC. Hospital readmission rates: signal of failure or
714 success? *J Health Econ.* 2013;32(5):909-21.
- 715 35. Weinreich M, Nguyen OK, Wang D, Mayo H, Mortensen EM, Halm EA, et al.
716 Predicting the Risk of Readmission in Pneumonia. A Systematic Review of Model
717 Performance. *Annals of the American Thoracic Society.* 2016;13(9):1607-14.
- 718 36. Owayed AF, Campbell DM, Wang EE. Underlying causes of recurrent pneumonia in
719 children. *Archives of pediatrics & adolescent medicine.* 2000;154(2):190-4.
- 720 37. Mwau M, Bwana P, Kithinji L, Ogollah F, Ochieng S, Akinyi C, et al. Mother-to-
721 child transmission of HIV in Kenya: A cross-sectional analysis of the national database over
722 nine years. *PLoS One.* 2017;12(8):e0183860.
- 723 38. Bush A, Floto RA. Pathophysiology, causes and genetics of paediatric and adult
724 bronchiectasis. *Respirology.* 2019;24(11):1053-62.

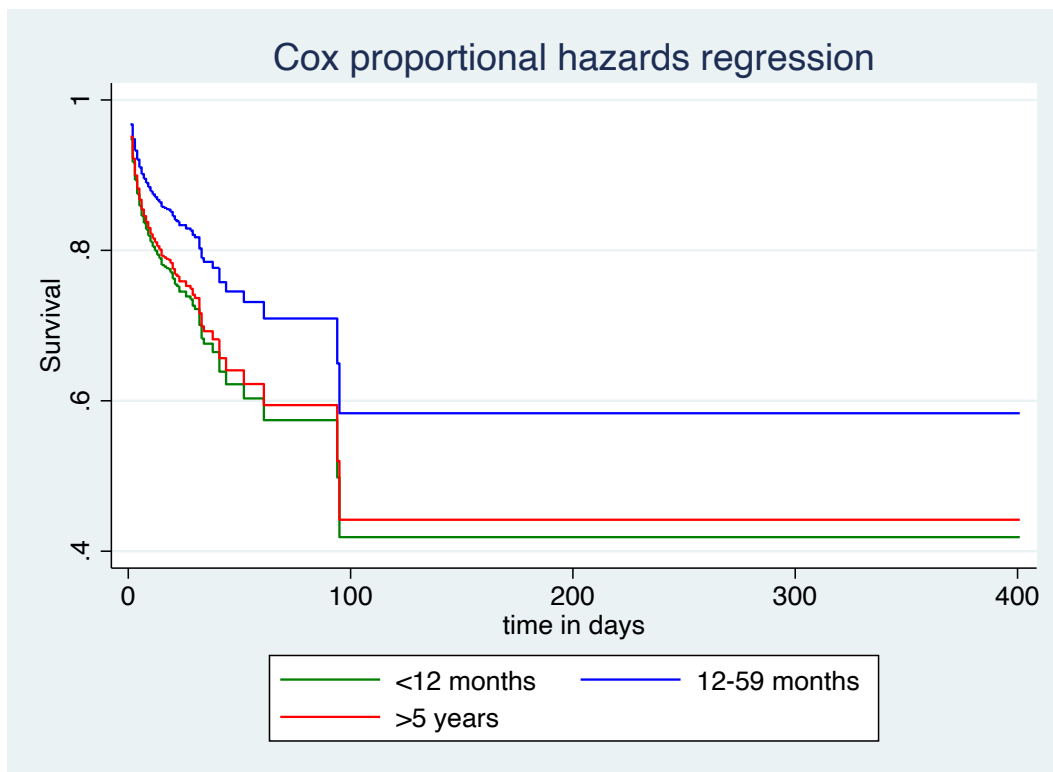
- 725 39. Munywoki PK, Ohuma EO, Ngama M, Bauni E, Scott JA, Nokes DJ. Severe lower
726 respiratory tract infection in early infancy and pneumonia hospitalizations among children,
727 Kenya. *Emerg Infect Dis*. 2013;19(2):223-9.
- 728 40. Abdel Baseer KA, Sakhr H. Clinical profile and risk factors of recurrent pneumonia in
729 children at Qena governorate, Egypt. *Int J Clin Pract*. 2021;75(4):e13695.
- 730 41. Patria F, Longhi B, Tagliabue C, Tenconi R, Ballista P, Ricciardi G, et al. Clinical
731 profile of recurrent community-acquired pneumonia in children. *BMC pulmonary medicine*.
732 2013;13:60.
- 733 42. Chisti MJ, Graham SM, Duke T, Ahmed T, Faruque AS, Ashraf H, et al. Post-
734 discharge mortality in children with severe malnutrition and pneumonia in Bangladesh. *PLoS*
735 *One*. 2014;9(9):e107663.
- 736 43. Ngari MM, Fegan G, Mwangome MK, Ngama MJ, Mturi N, Scott JAG, et al.
737 Mortality after Inpatient Treatment for Severe Pneumonia in Children: a Cohort Study.
738 *Paediatric and perinatal epidemiology*. 2017;31(3):233-42.
- 739 44. Kapoor A, Awasthi S, Kumar Yadav K. Predicting Mortality and Use of RISC
740 Scoring System in Hospitalized Under-Five Children Due to WHO Defined Severe
741 Community Acquired Pneumonia. *Journal of tropical pediatrics*. 2022;68(4).
- 742 45. Kasundriya SK, Dhaneria M, Mathur A, Pathak A. Incidence and Risk Factors for
743 Severe Pneumonia in Children Hospitalized with Pneumonia in Ujjain, India. *International*
744 *journal of environmental research and public health*. 2020;17(13).
- 745 46. Tiewsoh K, Lodha R, Pandey RM, Broor S, Kalaivani M, Kabra SK. Factors
746 determining the outcome of children hospitalized with severe pneumonia. *BMC Pediatr*.
747 2009;9:15.
- 748 47. Sonogo M, Pellegrin MC, Becker G, Lazzerini M. Risk factors for mortality from
749 acute lower respiratory infections (ALRI) in children under five years of age in low and
750 middle-income countries: a systematic review and meta-analysis of observational studies.
751 *PLoS One*. 2015;10(1):e0116380.
- 752 48. Patton GC, Azzopardi P. Missing in the middle: measuring a million deaths annually
753 in children aged 5-14 years. *The Lancet Global health*. 2018;6(10):e1048-e9.
- 754 49. Masquelier B, Hug L, Sharrow D, You D, Hogan D, Hill K, et al. Global, regional,
755 and national mortality trends in older children and young adolescents (5-14 years) from 1990
756 to 2016: an analysis of empirical data. *The Lancet Global health*. 2018;6(10):e1087-e99.
- 757 50. Duncan DR, DiFilippo C, Kane M, Lurie M, McSweeney ME, Rosen RL.
758 Overlapping Symptoms of Gastroesophageal Reflux and Aspiration Highlight the Limitations
759 of Validated Questionnaires. *Journal of pediatric gastroenterology and nutrition*.
760 2021;72(3):372-7.
- 761 51. Martin-Harris B, Canon CL, Bonilha HS, Murray J, Davidson K, Lefton-Greif MA.
762 Best Practices in Modified Barium Swallow Studies. *Am J Speech Lang Pathol*.
763 2020;29(2s):1078-93.
- 764 52. Rosen R. Novel Advances in the Evaluation and Treatment of Children With
765 Symptoms of Gastroesophageal Reflux Disease. *Frontiers in pediatrics*. 2022;10:849105.
- 766 53. Zar HJ, Vanker A, Gray D, Zampoli M. The African Pediatric Fellowship Training
767 Program in Pediatric Pulmonology: A Model for Growing African Capacity in Child Lung
768 Health. *Annals of the American Thoracic Society*. 2017;14(4):500-4.
- 769 54. Ambrosino N, Makhbah DN, Sutanto YS. Tele-medicine in respiratory diseases.
770 *Multidisciplinary respiratory medicine*. 2017;12:9.
771



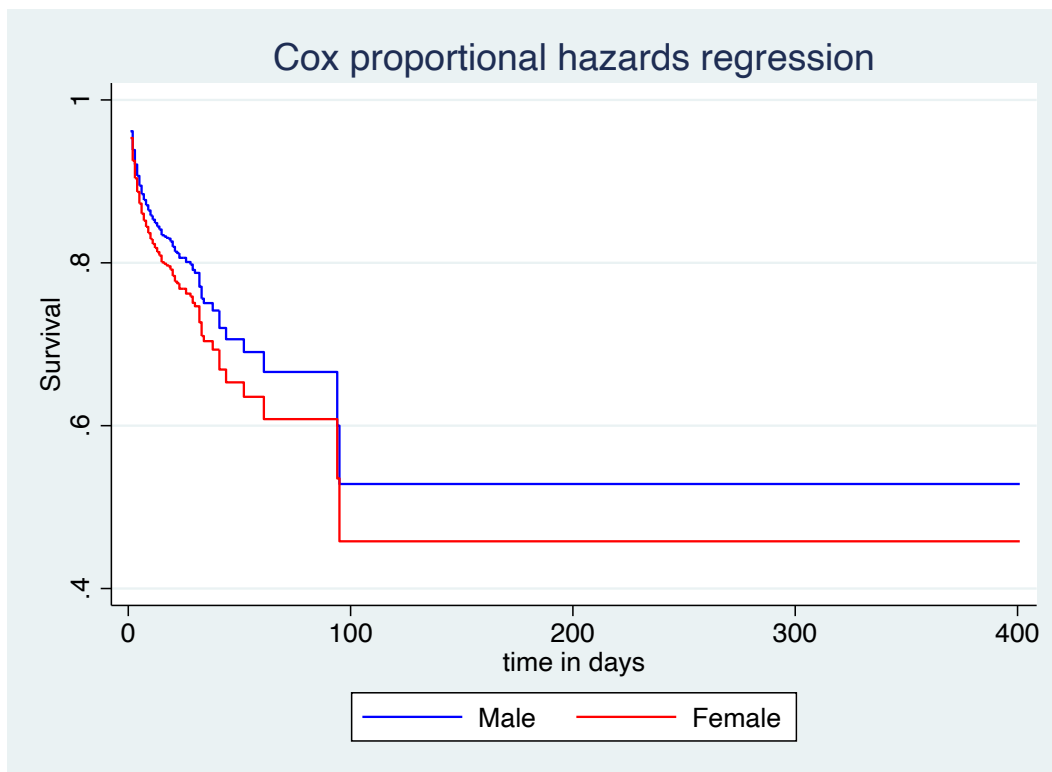
(A)



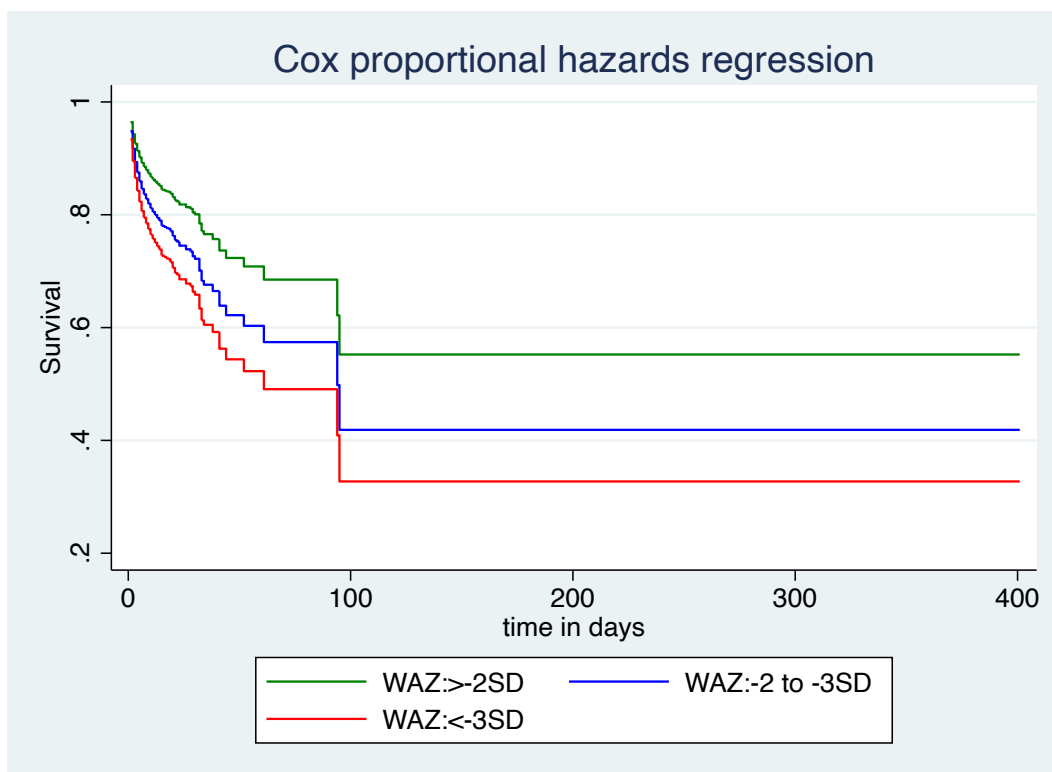
(B)



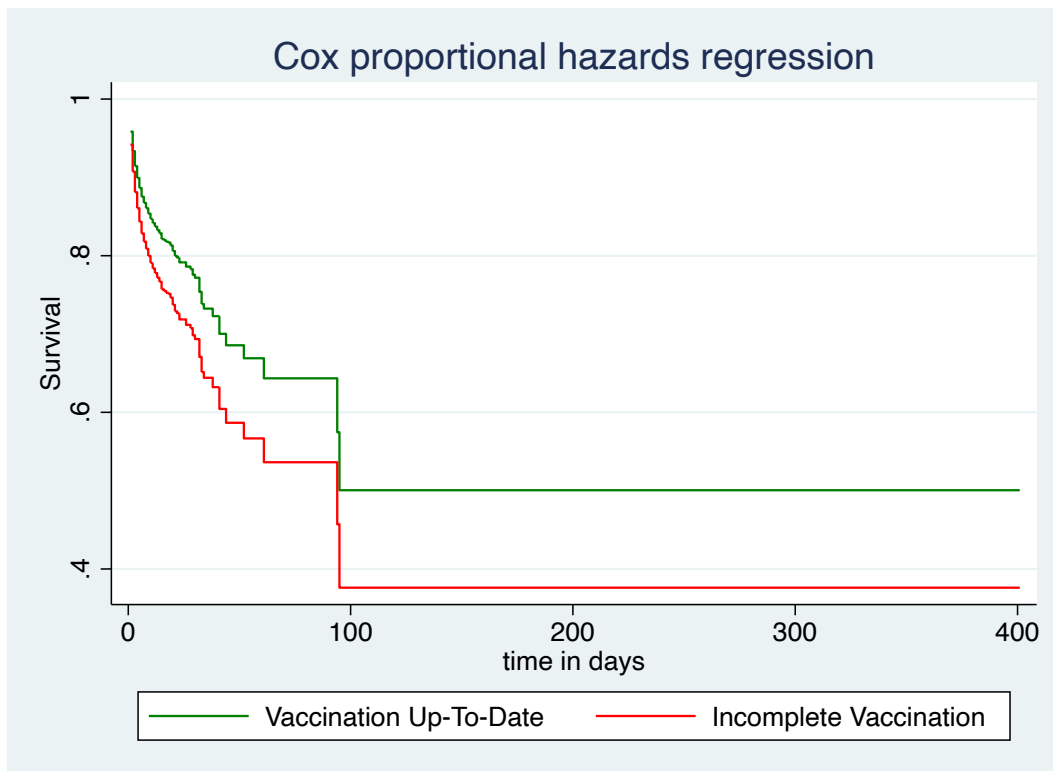
(C)



(D)



(E)



(F)

