

1 **Optimizing Stem Cell Infusion Timing in the Prevention of** 2 **Acute Graft versus Host Disease**

3 Yiwen Hou^{1,2,5}, Yue Wu^{1,3,4,5}, Zhonglin Zhang², Liang Wang², Zhiwei Liu², Baolin
4 Tang^{1,3,4}, Kaidi Song^{1,3,4}, Guangyu Sun^{1,3,4}, Xiaoyu Zhu^{1,3,4,*}, Cheng Zhan^{1,2,6,*}

5
6
7 ¹*Department of Hematology, The First Affiliated Hospital of USTC, Division of Life*
8 *Sciences and Medicine, University of Science and Technology of China, Hefei, 230001,*
9 *China.*

10 ²*Center for Advanced Interdisciplinary Science and Biomedicine of IHM, Hefei*
11 *National Research Center for Physical Sciences at the Microscale, Division of Life*
12 *Sciences and Medicine, University of Science and Technology of China, Hefei, 230001,*
13 *China.*

14 ³Anhui Provincial Key Laboratory of Blood Research and Applications, Hefei, China.

15 ⁴*Blood and Cell Therapy Institute, Division of Life Sciences and Medicine, University*
16 *of Science and Technology of China, Hefei, China.*

17 ⁵*These authors contributed equally to this article.*

18 ⁶*Lead contact*

19 **Co-Corresponding authors: Xiaoyu Zhu: xiaoyuz@ustc.edu.cn; Cheng Zhan:*

20 *zhancheng@ustc.edu.cn*

21

22 **SUMMARY**

23 Allogeneic hematopoietic stem cell transplantation (allo-HSCT) is a cornerstone
24 treatment for a broad spectrum of malignant and nonmalignant hematological disorders.
25 However, the success of allo-HSCT is often overshadowed by acute graft-versus-host
26 disease (aGVHD), a life-threatening complication with limited preventive options.
27 Here, we found that the incidence and severity of aGVHD after allo-HSCT are highly
28 dependent on the circadian timing of stem cell infusion. The incidence rate of aGVHD
29 in patients decreased by approximately 50% for early infusion (before 2:00 pm)
30 compared to later infusion (after 2:00 pm). Early-infused patients also experienced
31 significantly lower three-year transplant-related mortality and improved GVHD-free,
32 relapse-free survival. Animal studies using an aGVHD mouse model show that this
33 improvement is mainly due to the recipient's rhythm rather than the donor's.
34 Mechanistically, compared with late infusions, early infusions significantly reduced the
35 levels of the pro-inflammatory cytokine IL-1 α following the conditioning regimen and
36 subsequently suppressed T-cell activation and differentiation after transplantation. Our
37 study suggests that scheduling stem cell infusions early in the day could be a simple yet
38 transformative intervention for the prevention of aGVHD.

39

40 INTRODUCTION

41 A primary challenge in allo-HSCT is graft-versus-host disease (GVHD), stemming
42 from a potent immunologic assault on the recipient's organs or tissues, which accounts
43 for a considerable proportion of transplant-related mortality post-transplant(Blazar et
44 al., 2012; Ferrara et al., 2009). Current preventative strategies for GVHD include the
45 use of calcineurin inhibitors (CNIs), antimetabolites, and in vivo T cell depletion with
46 anti-thymocyte globulin (ATG)(Bacigalupo et al., 2001; Bolanos-Meade et al., 2023;
47 Ratanatharathorn et al., 1998; Storb et al., 1986; Zeiser and Blazar, 2017). Despite these
48 effective prophylactic measures, 30% to 50% of patients still suffer from acute GVHD
49 (aGVHD) after allogeneic transplantation(Zeiser and Blazar, 2017). Moreover, these
50 interventions can also dampen the beneficial graft-versus-leukemia effect, increasing
51 the risk of infection and disease relapse(Blazar et al., 2012; Shlomchik, 2007).
52 Consequently, there is an ongoing imperative to reduce both the incidence and severity
53 of aGVHD after allo-HSCT.

54 The circadian rhythm has emerged as a crucial regulator of immune functions and
55 immune-mediated diseases(Scheiermann et al., 2013). The circadian rhythm can
56 significantly influence various aspects of the hematopoietic system, including the yield,
57 release, migration, and engraftment potential of stem cells(Aardal and Laerum, 1983;
58 Abrahamsen et al., 1998; D'Hondt et al., 2004; Lucas et al., 2008; Mendez-Ferrer et al.,
59 2008). However, the implications of circadian rhythms for aGVHD management and
60 patient outcomes in allo-HSCT patients have not been explored. The present protocols
61 for allogeneic transplantation do not typically account for circadian considerations. In
62 this study, we conducted hybrid research involving both allo-HSCT patients and animal
63 models to investigate the impact of the timing of day of stem cell infusion on aGVHD.
64 Our findings underscore that the timing of stem cell infusion profoundly influences the
65 incidence and severity of aGVHD following allo-HSCT.

66 RESULTS

67 **The diagram of the clinical research and patient characteristics**

68 From January 2015 to May 2023, 230 consecutive patients who underwent
69 unmanipulated peripheral blood stem cell transplantation (PBSCT) at Anhui Provincial
70 Hospital were screened. All patients received mobilized peripheral blood stem cells as
71 a graft source. For patients who had no matched identical sibling donors or matched
72 unrelated donors, haplo-donors were considered. Patients who received their second
73 transplantation were excluded (n = 26). A total of 204 patients who underwent PBSCT
74 using an identical sibling donor (ISD) or haplo-identical donor (HID) were ultimately
75 enrolled in the analysis (**Figure S1**).

76 The patients were categorized based on the stem cell infusion time, which was
77 recorded as the beginning of infusion. The timing of stem cell infusion ranged between
78 11:00 am and 10:00 pm, and the median time for the whole cohort was 2:00 pm. Patients
79 who received infusions earlier than 2:00 pm were considered the early-infused group
80 (n = 97) with a 1:00 pm median time, and those who received infusions later than or
81 equal to 2:00 pm were considered the late-infused group (n = 107) with a 5:00 pm
82 median time. **Table S1** lists the patient demographics and transplantation features, and
83 the baseline characteristics were comparable between the early-infused group (before
84 2:00 pm) and the late-infused group (after 2:00 pm).

85 **Effect of the infusion timing on GVHD**

86 The cumulative incidence of grade II-IV and III-IV aGVHD by day 100 after allo-
87 HSCT was significantly lower (20.6% [95% CI, 13.2-29.2%] vs. 38.3% [95% CI, 29.1-
88 47.5%], $P = 0.009$ for grade II-IV aGVHD; 9.3% [95% CI, 4.5-16.1%] vs. 27.1% [95%
89 CI, 19.0-35.8%], $P < 0.001$ for grade III-IV aGVHD) in the early-infused group (**Figure**
90 **1**). In the early-infused group, 20 patients experienced Grade II-IV aGVHD; among
91 these, 11 met the criteria for Grade II aGVHD (8 of them with gastrointestinal
92 involvement and 4 with cutaneous involvement), the other 9 patients developed Grade
93 III-IV aGVHD (9 with gastrointestinal involvement, 4 with hepatic involvement and 1
94 with cutaneous involvement), and 2 patients died due to uncontrolled aGVHD. In

95 contrast, the late-infused group had 41 patients with Grade II-IV aGVHD, and 12 of
 96 those met the criteria for Grade II aGVHD (4 of them with gastrointestinal involvement
 97 and 8 with cutaneous involvement). A significant portion, 29 patients, progressed to
 98 grade III-IV aGVHD (28 with gastrointestinal involvement, 7 with hepatic involvement
 99 and 6 with cutaneous involvement), and there were 7 deaths attributable to uncontrolled
 100 aGVHD. None of the patients in either circadian infusion group met the criteria for late-
 101 onset aGVHD. These results clearly demonstrated a markedly lower incidence and
 102 severity of aGVHD in the early-infused group than in the late-infused group.

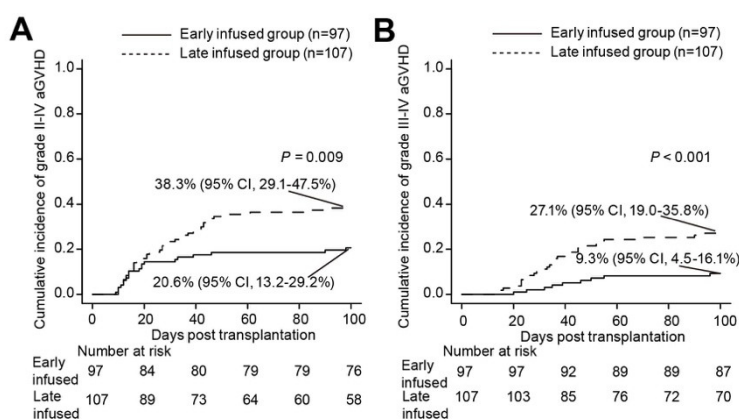


Fig. 1 Cumulative incidences of grade II-IV aGVHD (A) and grade III-IV aGVHD (B) in the early-infused group and late-infused group.

103 To further analyze whether the circadian timing of stem cell infusion is a risk
 104 factor for aGVHD, we performed both univariate and multivariate regression analyses
 105 considering variables such as age, recipient sex, disease diagnosis (malignant vs.
 106 benign), donor/recipient sex compatibility, HLA antibody, ABO compatibility, donor
 107 type (ISD vs. HID), conditioning regimen, GVHD prophylaxis regimen, counts of
 108 infused total nucleated cells (TNC), counts of infused CD34⁺ cells, usage of MTX, and
 109 occurrence of engraftment syndrome (ES) and timing of stem cell infusion. As shown in
 110 **Table 1**, the univariate analysis indicated that the development of Grade II-IV aGVHD
 111 was significantly associated with stem cell infusion timing (hazard ratio (HR) = 1.13,
 112 95% CI, 1.04-1.23, $P = 0.005$). All variables with a P value < 0.2 were included in the
 113 multivariate regression analysis, which identified stem cell infusion timing (HR = 1.13,
 114 95% CI, 1.04-1.23, $P = 0.005$) as the sole independent risk factor for Grade II-IV

115 aGVHD. Moreover, stem cell infusion timing was also a distinct risk factor for the
 116 development of Grade III-IV aGVHD according to both univariate and multivariate
 117 analyses (HR = 1.16, 95% CI, 1.05-1.27, $P = 0.003$ in univariate analysis, HR = 1.16,
 118 95% CI, 1.05-1.27, $P = 0.003$ in multivariate analysis). Consistent with the findings of
 119 previous reports(Flowers et al., 2011; Jagasia et al., 2012), another independent risk
 120 factor for Grade III-IV aGVHD was D/R sex compatibility (female to male) (HR = 2.34,
 121 95% CI, 1.24-4.42, $P = 0.01$ in univariate analysis, HR = 2.32, 95% CI, 1.24-4.35, $P =$
 122 0.009 in multivariate analysis). These findings underscore the significance of stem cell
 123 infusion timing as a pivotal risk factor for aGVHD in PBSCT patients.

124 **Table 1. Univariate and multivariate analyses of the factors associated with acute**
 125 **GVHD.**

Variable	Univariate analysis			Multivariate analysis		
	HR	95%CI	P	HR	95%CI	P
Grade II-IV acute GVHD						
Age, y	1.01	0.99-1.03	0.210			
Recipient sex						
Female	0.68	0.40-1.14	0.140	0.61	0.36-1.05	0.075
Diagnose						
Malignant	1.45	0.70-3.03	0.320			
D/R sex						
Female to Male	1.35	0.80-2.27	0.260			
HLA antibody						
Positive	0.99	0.51-1.91	0.980			
ABO compatibility	1.13	0.87-1.45	0.370			
Donor type						
ISD	1.21	0.70-2.08	0.50			
Conditioning regimen						

RIC	0.88	0.48-1.64	0.69			
GVHD Prophylaxis regimen						
without rATG or PT-Cy	1					
with rATG only	0.89	0.37-2.16	0.790			
with PT-Cy only	0.74	0.34-1.61	0.450			
with rATG and PT-Cy	0.90	0.37-2.21	0.820			
Infused TNC count	1.01	0.98-1.03	0.710			
Infused CD34 ⁺ cell count	0.97	0.94-1.01	0.180	0.97	0.93-1.01	0.170
MTX prophylaxis	0.74	0.31-1.73	0.480			
Engraftment syndrome	1.78	0.86-3.69	0.120	1.85	0.87-3.93	0.110
Infusion time	1.13	1.04-1.23	0.005	1.13	1.04-1.23	0.005
Grade III-IV acute GVHD						
Age, y	1.00	0.98-1.02	0.860			
Recipient sex						
Female	0.75	0.39-1.43	0.140	1.14	0.45-2.90	0.780
Diagnose						
Malignant	1.37	0.53-3.55	0.520			
D/R sex						
Female to Male	2.34	1.24-4.42	0.01	2.32	1.24-4.35	0.009
HLA antibody						
Positive	0.81	0.32-2.02	0.650			
ABO compatibility	1.09	0.80-1.50	0.580			
Donor type						
ISD	1.21	0.60-2.43	0.60			
Conditioning regimen						

RIC	0.89	0.40-1.96	0.77			
GVHD Prophylaxis regimen						
without rATG or PT-Cy	1					
with rATG only	0.69	0.20-2.30	0.540			
with PT-Cy only	0.70	0.25-1.97	0.500			
with rATG and PT-Cy	1.26	0.43-3.67	0.670			
Infused TNC count	1.01	0.99-1.04	0.250			
Infused CD34 ⁺ cell count	0.96	0.89-1.02	0.170	0.97	0.91-1.03	0.260
MTX prophylaxis	1.05	0.39-2.85	0.920			
Engraftment syndrome	1.85	0.75-4.54	0.180	2.06	0.80-5.31	0.140
Infusion time	1.16	1.05-1.27	0.003	1.16	1.05-1.27	0.003

126 GVHD, graft-versus-host disease; D/R, donor/recipient; HLA, human leucocyte antigen; ISD,
 127 identical sibling donor; rATG, rabbit anti-thymocyte globulin; PT-Cy, post-transplant
 128 cyclophosphamide; TNCs, total nucleated cells; MTX, methotrexate

129 The cumulative incidences of 3-year overall and moderate-to-severe chronic
 130 GVHD (cGVHD) did not significantly differ between the two groups ($P = 0.476$ and
 131 0.108 , respectively) (**Figure S2**). In the early-infused group, 13 patients developed
 132 moderate to severe cGVHD, while 24 patients were affected in the late-infused group.
 133 The predominant manifestation among these was sclerodermatous skin changes,
 134 present either as an isolated symptom or concomitant with pulmonary, hepatic, or
 135 gastrointestinal tract involvement.

136 **Effect of circadian rhythm on other transplantation outcomes**

137 While the probabilities of 3-year overall survival (OS) and disease-free survival (DFS)
 138 were not significantly different between the two groups (early-infused group vs. late-
 139 infused group: OS, 74.7% [95% CI, 64.4-82.5%] vs. 65.5% [95% CI, 55.5-73.8%]; DFS,
 140 70.9% [95% CI, 60.4-79.1%] vs. 61.6% [95% CI, 51.5-70.2%]; $P = 0.068$, 0.097 ,
 141 respectively), the probability of 3-year GVHD free, relapse-free survival (GRFS) was
 142 significantly greater in the early-infused group than in the late-infused group (52.9%

143 [95% *CI*, 42.4-62.4%] vs. 33.9% [95% *CI*, 25.0-43.0%], $P < 0.001$) (**Figure 2**). These
144 results suggest that stem cell infusion early in the day could significantly improve long-
145 term GRFS after allo-HSCT.

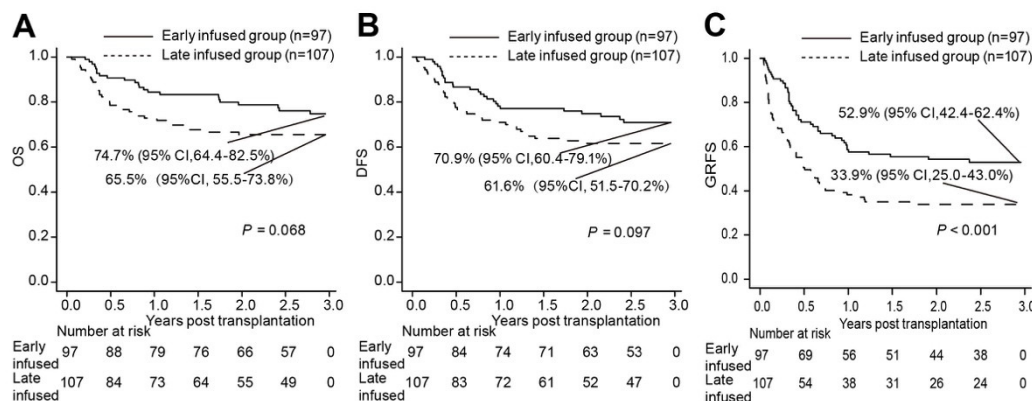


Fig. 2 Transplantation outcomes between the early-infused patients and late-infused patients.

(A) Probability of overall survival (OS).

(B) Probability of disease-free survival (DFS).

(C) Probability of graft-versus-host disease (GVHD) free, relapse-free survival (GRFS).

146 Among all the patients, 1 had primary graft failure (PGF), and 1 died in the early
147 phase posttransplantation. The cumulative incidence of neutrophil engraftment by day
148 30 was lower in the late-infused group compared to the early-infused group (98.1% [95%
149 *CI*, 91.3-99.6%] vs. 100.0%, $P = 0.048$) (**Figure S3A**). One patient in the early-infused
150 group and 5 patients in the late-infused group died before day 100 as a result of
151 transplant-related mortality (TRM) without obtaining platelet recovery. The cumulative
152 incidence of platelet recovery by day 100 was lower in the late-infused group compared
153 to the early-infused group (83.3% [95% *CI*, 74.5-89.3%] vs. 92.8% [95% *CI*, 85.1-
154 96.6%], $P = 0.029$) (**Figure S3B**). In general, early infusions promote the hematopoietic
155 recovery of patients post transplantation.

156 We then compared complications post transplantation between the two groups.
157 Other transplant-related outcomes, such as the incidence of hepatic veno-occlusive
158 disease (HVD), cytomegalovirus (CMV) antigenemia, hemorrhagic cystitis (HC),
159 bacterial septicemia, and engraftment syndrome (ES), did not significantly differ

160 between the two groups ($P > 0.05$). As shown in **Table S2**, the stem cell infusion timing
161 did not have a marked impact on other complications after transplantation.

162 The cumulative incidence of 3-year TRM was significantly lower in the early-
163 infused group (13.8% [95% CI, 7.7-21.7%] vs. 24.8% [95% CI, 16.9-33.4%], $P =$
164 0.041), while the incidence of relapse did not significantly differ between the two
165 groups (late-infused group vs. early-infused group, 13.6% [95% CI, 7.8-21.0%] vs. 15.2%
166 [95% CI, 8.7-23.4%] $P = 0.843$) (**Figure 3**). Twenty-three patients in the early-infused
167 group and 37 patients in the late-infused group died (**Table S3**). The primary causes of
168 mortality in the early-infused group were relapse (52.2%), multiorgan dysfunction
169 syndrome (MODS) (17.4%) and infection (13.0%). In the late-infused group, the
170 primary causes were relapse (29.7%), infection (21.6%) and uncontrolled aGVHD
171 (18.9%). Taken together, these results suggest that early infusions of stem cells
172 significantly reduce TRM posttransplantation.

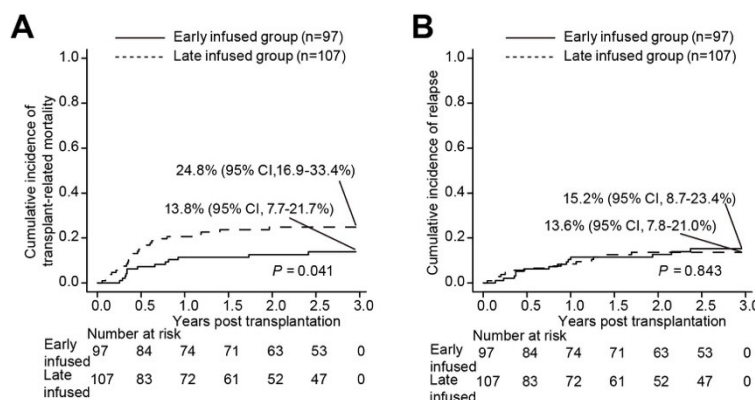


Figure 3. Cumulative incidences of 3-year transplant-related mortality (A) and relapse (B) in the early-infused group and late-infused group.

173 Stem cell infusion timing impacts aGVHD in mice

174 To investigate the underlying mechanisms by which stem cell infusion timing affects
175 aGVHD development and improves prognosis, we utilized an MHC-mismatched
176 allo-HSCT mouse model in which bone marrow cells and splenocytes were
177 transplanted from BALB/c (H2k^d) mice into lethally irradiated C57BL/6J (H2k^b)
178 recipients (i.e., BALB/c→C57BL/6J) at either Zeitgeber Time 5 (i.e., ZT5) or ZT14

179 **(Figure 4A)**. As nocturnal animals, mice are inactive during ZT0 (light onset) to ZT12
180 and active from ZT12 (dark onset) to ZT24. Thus, ZT14 corresponds to early in the day
181 in humans, while ZT5 corresponds late in the day.

182 Interestingly, mice transplanted at ZT14 (ZT14 group) exhibited a significantly
183 lower mortality rate **(Figure 4B)** and less severe weight loss **(Figure 4C)** than those
184 transplanted at ZT5 (ZT5 group). Crucially, the ZT14 group also had significantly
185 lower aGVHD scores **(Figure 4D, E)** and significantly lower cumulative incidences of
186 aGVHD of 2-6, 3-6, and 4-6 scores **(Figure 4F)**. Histopathologic analyses further
187 corroborated these findings, revealing decreased tissue injury and inflammation in the
188 skin, lungs, colon, and liver in the ZT14 group compared to the ZT5 group **(Figure 4G,**
189 **H)**. No significant differences were observed between the groups regarding donor
190 chimerism rates **(Figure S4)**. Collectively, these findings indicate a lower incidence
191 and severity of aGVHD in the ZT14 group relative to the ZT5 group.

192 **The Recipient's Circadian Rhythm is Crucial**

193 To ascertain whether aGVHD incidence is affected more by the circadian rhythmicity
194 of the recipient or donor, we administered stem cells from donors at ZT5 or ZT14 to
195 ZT5 and ZT14 recipients post-irradiation **(Figure 4I)**. Significant differences were
196 observed in survival rates and aGVHD scores based on the recipients' circadian rhythm,
197 with ZT14 recipients demonstrating substantially lower aGVHD scores than their ZT5
198 counterparts, regardless of the donor's circadian rhythm **(Figure 4J-L)**. Even when
199 donor rhythmicity was altered to ZT1 and ZT9, ZT14 recipients consistently exhibited
200 less severe aGVHD symptoms compared to ZT5 recipients **(Figure S5)**. Conversely,
201 modifications to only the donor's circadian rhythm did not significantly alter survival
202 rates, bodyweight, or aGVHD scores **(Figure 4J-L)**. Therefore, these results suggest
203 that the influence of the infusion timing on aGVHD is mainly due to the recipient's
204 rhythm rather than the donor's.

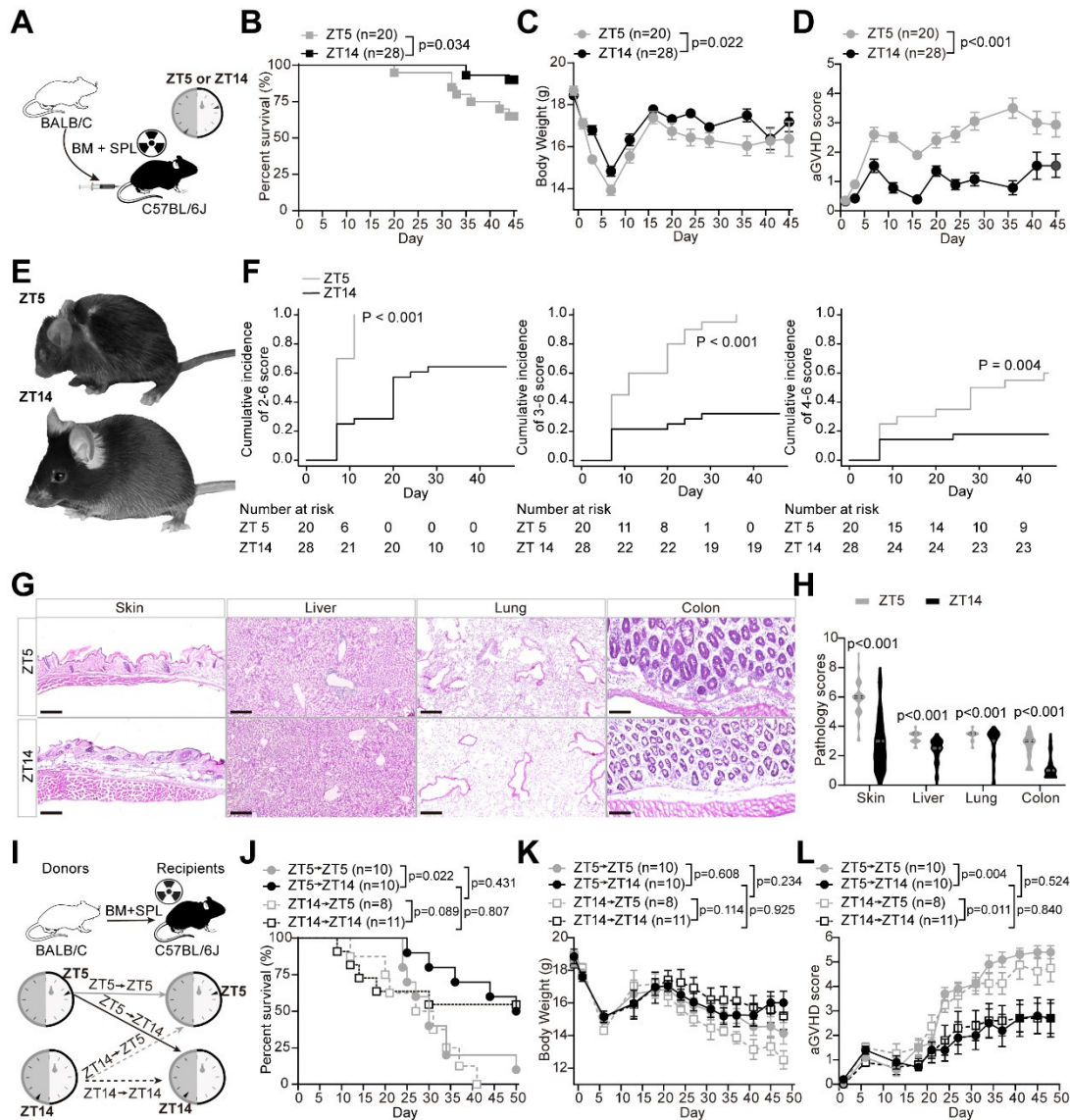


Fig. 4 The impacts of stem cell infusion timing on aGVHD in mice.

(A) Schematic of allo-HSCT in mice. C57BL/6J recipient mice at ZT5 and ZT14 received bone marrow cells and splenocytes (SPL) transplantation from BALB/c donor mice by tail vein injection following lethal total-body irradiation.

(B-D) Survival rate (B), body weight (C), and aGVHD score (D) of lethally irradiated recipients after allo-HSCT. Data shown derive from three independent experiments.

(E) Representative examples showing phenotypic differences on day 45 after allo-HSCT from the ZT5 (top) and ZT14 (bottom) groups.

(F) Cumulative incidences of aGVHD scores at 2-6 (left), 3-6 (middle) and 4-6 (right) in the ZT5 and ZT14 groups.

(G and H) Histopathologic analysis of skin, liver, lung, and colon section on day 45 after allo-HSCT. Representative images of hematoxylin and eosin staining (G) and quantification results (n=5-7 independent mice per group combined from three replicate experiments) (H). Scale bars, 200 μ m.

(I-L) The effects of recipient's and donor's rhythms on aGVHD. I, Experimental schematic. Both ZT5 and ZT14 recipient mice received transplantation from ZT5 or ZT14 donor mice.

Survival rate (**J**), body weight (**K**), and aGVHD score (**L**).

Data are presented as means \pm SEMs and analyzed by two-way ANOVA followed by Bonferroni post hoc test (**C**, **D**, **K** and **L**), unpaired *t* test (**H**) and log-rank test (**B** and **J**).

205 Cytokine levels and T-cell activation

206 The pathophysiology of aGVHD consists of three phases(Ferrara et al., 2009;
207 Schroeder and DiPersio, 2011): (1) initial production of danger signals, such as pro-
208 inflammatory cytokines, due to the conditioning regimen; (2) donor T cell activation
209 and cytokine release; and (3) resultant host tissue damage. Given the significant effect
210 of stem cell infusion timing on aGVHD outcomes, we hypothesized that these effects
211 predominantly occur during the early stages of aGVHD development. We began by
212 examining cytokine levels in murine serum following irradiation. Of the thirteen
213 cytokines assessed, only IL-1 α was significantly lower in the ZT14 recipients than in
214 the ZT5 recipients (**Figure 5A**), and no significant differences were observed for the
215 other cytokines. IL-1 α is a classic damage-associated molecular pattern (DAMP)
216 molecule produced in response to cell death and tissue damage(Malik and Kanneganti,
217 2018). These results suggest less pronounced tissue damage from irradiation in the
218 ZT14 group.

219 IL-1 α plays critical roles in inducing T cell activation(Ferrara et al., 1993). We
220 then examined whether donor T cell activation was affected by the timing of stem cell
221 infusion, using the activation marker CD38 (**Figure S6**). At 24 hours (day 1) after allo-
222 HSCT, both the percentages and absolute numbers of donor activated (H2k^{d+} CD38⁺)
223 CD4⁺ T cells were significantly lower in the ZT14 group than in the ZT5 group (**Figure**
224 **5B**). Although there was no significant difference in the percentage of donor activated
225 (H2k^{d+} CD38⁺) CD8⁺ T cells between the two groups, the absolute number of donor
226 activated CD8⁺ T cells was substantially lower in the ZT14 group than in the ZT5 group
227 (**Figure 5C**). IFN γ , released by activated T cells post-transplant, usually signals
228 heightened T cell activation(Schroeder and DiPersio, 2011). In line with this, post-
229 transplant IFN γ levels were significantly lower in the ZT14 group than in the ZT5 group

230 **(Figure 5D)**. These findings indicate substantially decreased T cell activation in the
 231 ZT14 group compared with the ZT5 group after transplantation.

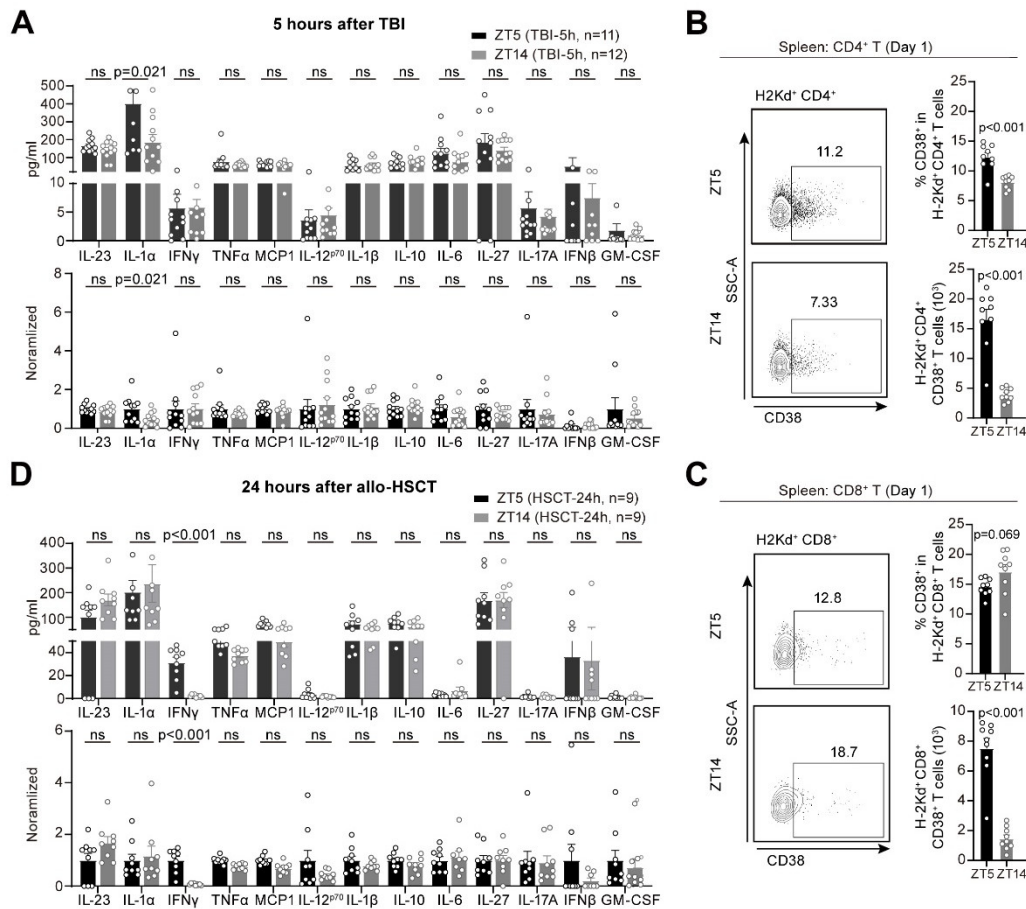


Fig. 5 The impacts of the stem cell infusion timing on cytokine levels and T cell activation.

(A) Absolute (top) and normalized (bottom) cytokine levels in the sera of recipient mice 5 hours after lethal irradiation. Mice were exposed to lethal irradiation at ZT0 and ZT9, with serum samples collected at ZT5 and ZT14 on the same day. For the bottom panel, cytokine levels in the ZT14 group were normalized to those in the ZT5 group for each cytokine.

(B and C) Representative dot plots (left), proportions (right top) and absolute counts (right bottom) of donor activated (H2k^{d+} CD38⁺) CD4⁺ T cells **(B)** and CD8⁺ T cells **(C)** in the spleen of recipient mice 24 hours (day 1) after allo-HSCT.

(D) Absolute (top) and normalized (bottom) cytokine levels in the sera of recipient mice 24 hours after allo-HSCT. Stem-cell infusions were performed allo-HSCT at ZT5 and ZT14, and serum samples were collected 24 hours later. For the bottom panel, cytokine levels in the ZT14 group were normalized to those in the ZT5 group for each cytokine.

Data are presented as means \pm SEMs and analyzed by unpaired *t* test. TBI, total body irradiation. ns, not significant.

232 We further identified the differentiation state of the donor T cells by examining
 233 CD44 and CD62L expression. On day 1 after allo-HSCT, the percentage of naïve
 234 ($CD44^- CD62L^+$) T cells was significantly greater in the ZT14 group than in the ZT5
 235 group (**Figure 6A, C**). In contrast, the percentages of donor central memory ($CD44^+$
 236 $CD62L^+$) and effector memory ($CD44^+ CD62L^-$) T cells (including both the $CD4^+$ and
 237 $CD8^+$ subsets) were significantly lower in the ZT14 group than in the ZT5 group
 238 (**Figure 6A, C**). Likewise Similarly, the percentage of donor effector memory T cells
 239 was significantly lower in the ZT14 group than in the ZT5 group 7 days after allo-
 240 HSCT (**Figure 6B, D**). Effector memory T cells can quickly produce cytokines and
 241 mediate immune responses against host tissue, which contributes to the pathology of
 242 aGVHD. Thus, these results suggest that early infusion (ZT14) may decrease the
 243 proportion of effector memory T cells, potentially creating an immune environment less
 244 conducive to the development of the harmful immune responses associated with
 245 aGVHD.

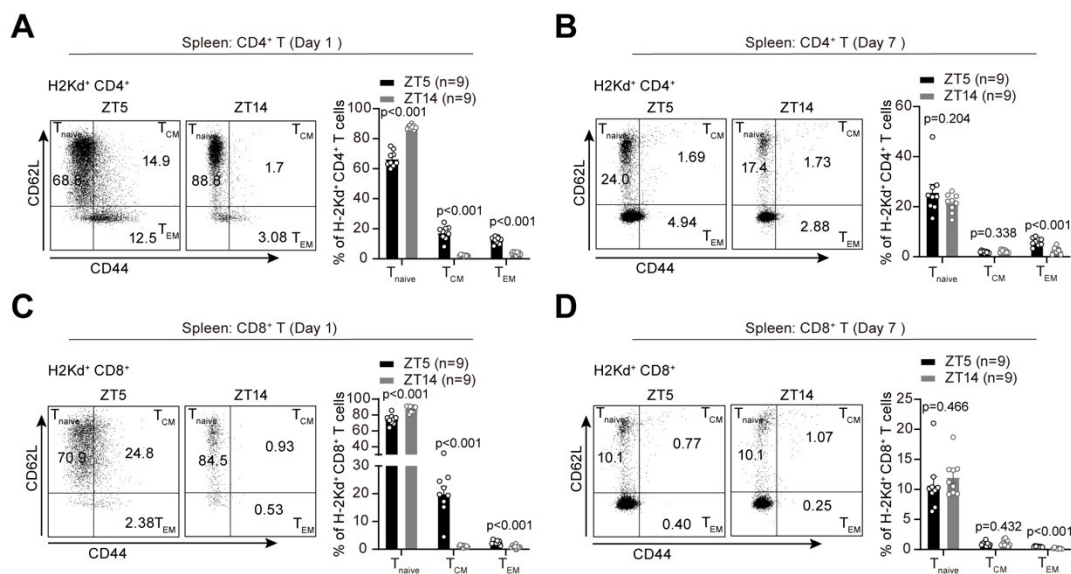


Fig. 6 Impacts of stem cell infusion timing on the status of T cells.

(A and B) Representative dot plots (left) and proportions (right) of $CD4^+$ T_{naive}, T_{CM}, and T_{EM} cells in the spleen of recipient mice on day one (A) and day seven (B) after allo-HSCT.

(C and D) Representative dot plots (left) and proportions (right) of $CD8^+$ T_{naive}, T_{CM}, and T_{EM} cells in the spleen of recipient mice on day one (C) and day seven (D) after allo-HSCT.

Data are presented as means \pm SEMs and analyzed by unpaired t test.

246 **DISCUSSION**

247 In this study, through retrospective analysis of clinical data, we found that altering the
248 timing of stem cell infusion can unexpectedly impact the incidence and severity of
249 aGVHD in patients receiving ISD or HID-HSCT. Notably, patients received stem cell
250 infusions before 2:00 pm had significantly less incidence and severity of aGVHD, lower
251 TRM and better survival than did those treated after 2:00 pm. Currently, in medical
252 practice, timing decisions for stem cell infusions typically hinge on staff convenience.
253 Our results suggest that, pending validation through prospective multicenter studies that
254 include varied graft types, prioritizing infusions before early afternoon could improve
255 outcomes in allo-HSCT procedures. Making such scheduling arrangements holds
256 promise for substantially improving patient prognosis and quality of life.

257 Our animal study corroborated that stem cell infusions administered early (ZT14)
258 in the day significantly attenuate the risk of aGVHD following allo-HSCT compared to
259 those administered late (ZT5) in the day. A key finding is that the recipient's circadian
260 rhythm plays a critical role in this dynamic. Mechanistically, compared with those in
261 the late-infused group, the mice in the early-infused group exhibited significantly lower
262 levels of the pro-inflammatory cytokine IL-1 α following the conditioning regimen and
263 subsequent reductions in T-cell activation and differentiation after transplantation.
264 Furthermore, we observed significantly lower percentages of effector memory T cells
265 in the ZT14 group than in the ZT5 group. These insights align with the current
266 understanding that the incidence and severity of aGVHD are intricately associated with
267 the levels of pro-inflammatory cytokines and T cell status (Blazar et al., 2012; Cooney
268 et al., 1991; Welniak et al., 2000). The immune system is highly regulated by the
269 circadian rhythm (Wang et al., 2022). In the future, exploring the mechanisms by which
270 circadian timing influences the production of pro-inflammatory cytokines and T cell
271 activation and differentiation in the context of allo-HSCT will be of substantial interest.

272 The often-neglected influence of circadian rhythms is emerging as a pivotal factor

273 in clinical practice(Klerman et al., 2022; Levi et al., 1997; McKenna et al., 2018). For
274 instance, a recent study of melanoma immunotherapy indicated that administering
275 immune checkpoint inhibitors prior to 4:30 pm markedly improved treatment outcomes
276 compared to later infusions(Qian et al., 2021). Our research bolsters the idea that
277 administering the appropriate intervention at the optimal time can improve patient
278 prognosis. To the best of our knowledge, this study is the first to identify the circadian
279 timing of stem cell infusion as an independent risk factor for aGVHD development.
280 Given the significant and far-reaching impact on aGVHD and long-term survival
281 achieved by simply altering the timing of stem cell infusion, we believe that the timing
282 of stem cell infusion itself may represent a critical window for clinical intervention.
283 Our findings also highlight the importance of considering circadian factors when
284 evaluating the effectiveness of drugs and treatments for aGVHD. Given that aGVHD
285 following allo-HSCT is inherently a transplant-related immune rejection condition—a
286 phenomenon prevalent in diverse organ transplant scenarios—it is of great interest to
287 investigate how circadian rhythms may affect immune rejection in other types of organ
288 transplantations.

289 **ACKNOWLEDGMENTS**

290 We thank Dr. Haiming Wei’s laboratory at the USTC for assisting in the development
291 of the aGVHD mouse model. We thank the animal facility and flow cytometry facility
292 at USTC for their technical support. We appreciate the insightful suggestions and
293 comments provided by the Neuroscience Pioneer Club to improve this manuscript.
294 Cheng Zhan is supported by grants from the Research Funds of Center for Advanced
295 Interdisciplinary Science and Biomedicine of IHM (QYPY20220018), the National
296 Natural Science Foundation of China (32271063, 31822026, 31500860), and the
297 National Science and Technology Innovation 2030 Major Project of China
298 (2021ZD0203900). Xiaoyu Zhu is supported by grants from the National Natural
299 Science Foundation of China (82270223), the Anhui Provincial Department of
300 Education Scientific Research Project (2023AH010079) and the Anhui Provincial

301 Natural Science Foundation (2308085J09).

302 **AUTHOR CONTRIBUTIONS**

303 Cheng Zhan and Xiaoyu Zhu conceived the study and wrote the manuscript. Yue Wu,
304 Baolin Tang, Kaidi Song, and Guangyu Sun contributed to the clinical data collection
305 and data analysis. Yiwen Hou, Zhonglin Zhang and Zhiwei Liu developed the aGVHD
306 mouse model and evaluated the pathological score. Yiwen Hou and Liang Wang
307 performed the flow cytometry experiments. The data analysis presented in this study
308 was carried out by Yue Wu and Yiwen Hou. Yue Wu and Yiwen Hou contributed equally
309 to this manuscript.

310 **DECLARATION OF INTERESTS**

311 The authors declare no competing interests.

312 **REFERENCES**

- 313 Aardal, N.P., and Laerum, O.D. (1983). Circadian variations in mouse bone marrow. *Exp Hematol*
314 *11*, 792-801.
- 315 Abrahamsen, J.F., Smaaland, R., Sothorn, R.B., and Laerum, O.D. (1998). Variation in cell yield and
316 proliferative activity of positive selected human CD34+ bone marrow cells along the circadian time
317 scale. *Eur J Haematol* *60*, 7-15.
- 318 Bacigalupo, A., Lamparelli, T., Bruzzi, P., Guidi, S., Alessandrino, P.E., di Bartolomeo, P., Oneto, R.,
319 Bruno, B., Barbanti, M., Sacchi, N., *et al.* (2001). Antithymocyte globulin for graft-versus-host
320 disease prophylaxis in transplants from unrelated donors: 2 randomized studies from Gruppo
321 Italiano Trapianti Midollo Osseo (GITMO). *Blood* *98*, 2942-2947.
- 322 Blazar, B.R., Murphy, W.J., and Abedi, M. (2012). Advances in graft-versus-host disease biology
323 and therapy. *Nat Rev Immunol* *12*, 443-458.
- 324 Bolanos-Meade, J., Hamadani, M., Wu, J., Al Malki, M.M., Martens, M.J., Runaas, L., Elmariah, H.,
325 Rezvani, A.R., Gooptu, M., Larkin, K.T., *et al.* (2023). Post-Transplantation Cyclophosphamide-
326 Based Graft-versus-Host Disease Prophylaxis. *N Engl J Med* *388*, 2338-2348.
- 327 Cooney, R., Owens, E., Jurasinski, C., Gray, K., Vannice, J., and Vary, T. (1991). Interleukin-1 receptor
328 antagonist prevents sepsis-induced inhibition of protein synthesis. *Am J Physiol* *267*, E636-641.
- 329 D'Hondt, L., McAuliffe, C., Damon, J., Reilly, J., Carlson, J., Dooner, M., Colvin, G., Lambert, J.F., Hsieh,
330 C.C., Habibian, H., *et al.* (2004). Circadian variations of bone marrow engraftability. *J Cell Physiol*
331 *200*, 63-70.
- 332 Ferrara, J.L., Abhyankar, S., and Gilliland, D.G. (1993). Cytokine storm of graft-versus-host disease:
333 a critical effector role for interleukin-1. *Transplant Proc* *25*, 1216-1217.
- 334 Ferrara, J.L., Levine, J.E., Reddy, P., and Holler, E. (2009). Graft-versus-host disease. *Lancet* *373*,

335 1550-1561.

336 Flowers, M.E., Inamoto, Y., Carpenter, P.A., Lee, S.J., Kiem, H.P., Petersdorf, E.W., Pereira, S.E., Nash,
337 R.A., Mielcarek, M., Fero, M.L., *et al.* (2011). Comparative analysis of risk factors for acute graft-
338 versus-host disease and for chronic graft-versus-host disease according to National Institutes of
339 Health consensus criteria. *Blood* *117*, 3214-3219.

340 Jagasia, M., Arora, M., Flowers, M.E., Chao, N.J., McCarthy, P.L., Cutler, C.S., Urbano-Ispizua, A.,
341 Pavletic, S.Z., Haagenson, M.D., Zhang, M.J., *et al.* (2012). Risk factors for acute GVHD and survival
342 after hematopoietic cell transplantation. *Blood* *119*, 296-307.

343 Klerman, E.B., Brager, A., Carskadon, M.A., Depner, C.M., Foster, R., Goel, N., Harrington, M.,
344 Holloway, P.M., Knauert, M.P., LeBourgeois, M.K., *et al.* (2022). Keeping an eye on circadian time
345 in clinical research and medicine. *Clin Transl Med* *12*, e1131.

346 Levi, F., Zidani, R., and Misset, J.L. (1997). Randomised multicentre trial of chronotherapy with
347 oxaliplatin, fluorouracil, and folinic acid in metastatic colorectal cancer. International Organization
348 for Cancer Chronotherapy. *Lancet* *350*, 681-686.

349 Lucas, D., Battista, M., Shi, P.A., Isola, L., and Frenette, P.S. (2008). Mobilized hematopoietic stem
350 cell yield depends on species-specific circadian timing. *Cell Stem Cell* *3*, 364-366.

351 Malik, A., and Kanneganti, T.D. (2018). Function and regulation of IL-1 α in inflammatory
352 diseases and cancer. *Immunol Rev* *281*, 124-137.

353 McKenna, H., van der Horst, G.T.J., Reiss, I., and Martin, D. (2018). Clinical chronobiology: a timely
354 consideration in critical care medicine. *Crit Care* *22*, 124.

355 Mendez-Ferrer, S., Lucas, D., Battista, M., and Frenette, P.S. (2008). Haematopoietic stem cell
356 release is regulated by circadian oscillations. *Nature* *452*, 442-447.

357 Qian, D.C., Kleber, T., Brammer, B., Xu, K.M., Switchenko, J.M., Janopaul-Naylor, J.R., Zhong, J.,
358 Yushak, M.L., Harvey, R.D., Paulos, C.M., *et al.* (2021). Effect of immunotherapy time-of-day
359 infusion on overall survival among patients with advanced melanoma in the USA (MEMOIR): a
360 propensity score-matched analysis of a single-centre, longitudinal study. *Lancet Oncol* *22*, 1777-
361 1786.

362 Ratanatharathorn, V., Nash, R.A., Przepiorka, D., Devine, S.M., Klein, J.L., Weisdorf, D., Fay, J.W.,
363 Nademane, A., Antin, J.H., Christiansen, N.P., *et al.* (1998). Phase III study comparing methotrexate
364 and tacrolimus (prograf, FK506) with methotrexate and cyclosporine for graft-versus-host disease
365 prophylaxis after HLA-identical sibling bone marrow transplantation. *Blood* *92*, 2303-2314.

366 Scheiermann, C., Kunisaki, Y., and Frenette, P.S. (2013). Circadian control of the immune system.
367 *Nat Rev Immunol* *13*, 190-198.

368 Schroeder, M.A., and DiPersio, J.F. (2011). Mouse models of graft-versus-host disease: advances
369 and limitations. *Dis Model Mech* *4*, 318-333.

370 Shlomchik, W.D. (2007). Graft-versus-host disease. *Nat Rev Immunol* *7*, 340-352.

371 Storb, R., Deeg, H.J., Whitehead, J., Appelbaum, F., Beatty, P., Bensinger, W., Buckner, C.D., Clift, R.,
372 Doney, K., Farewell, V., *et al.* (1986). Methotrexate and cyclosporine compared with cyclosporine
373 alone for prophylaxis of acute graft versus host disease after marrow transplantation for leukemia.
374 *N Engl J Med* *314*, 729-735.

375 Wang, C., Lutes, L.K., Barnoud, C., and Scheiermann, C. (2022). The circadian immune system. *Sci*
376 *Immunol* *7*, eabm2465.

377 Welniak, L.A., Blazar, B.R., Anver, M.R., Wiltrot, R.H., and Murphy, W.J. (2000). Opposing roles of
378 interferon-gamma on CD4+ T cell-mediated graft-versus-host disease: effects of conditioning.

379 Biol Blood Marrow Transplant 6, 604-612.
380 Zeiser, R., and Blazar, B.R. (2017). Acute Graft-versus-Host Disease - Biologic Process, Prevention,
381 and Therapy. N Engl J Med 377, 2167-2179.
382

Supplementary Figures and Tables

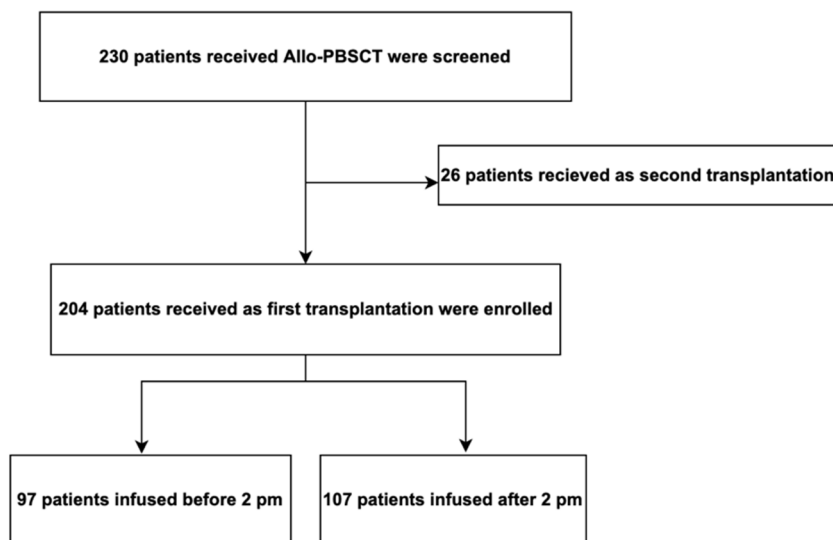


Figure S1. Diagram of patients enrolled in this study. Allo-PBSCT allogeneic peripheral blood stem cell transplantation.

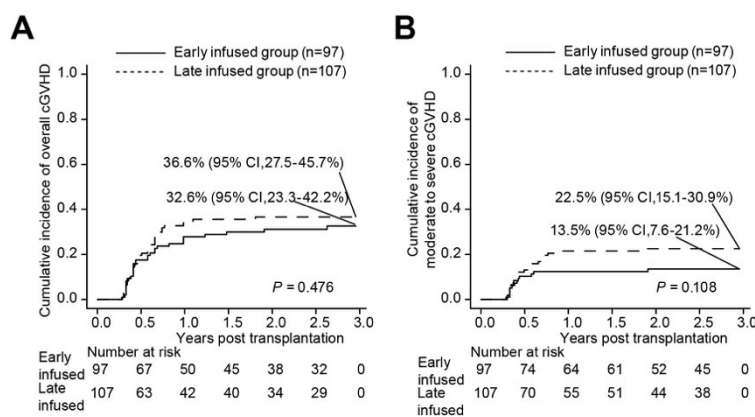


Figure S2. Cumulative incidences of overall cGVHD (A) and moderate to severe cGVHD (B) in the early infused group and late infused group.

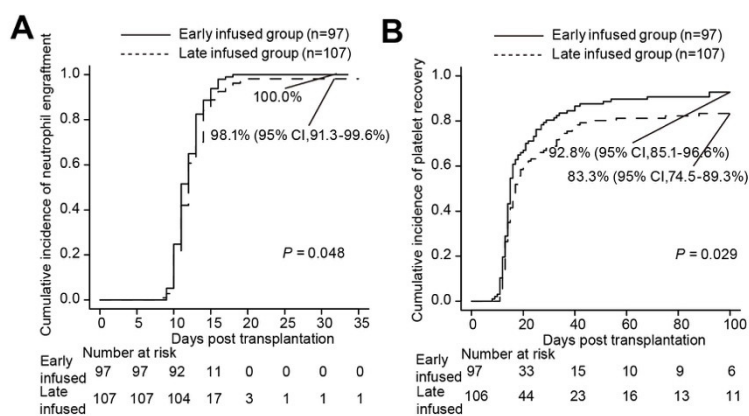


Figure S3. Cumulative incidences of neutrophil engraftment by day 42 (A) and platelet recovery by day 100 (B) in the early infused group and late infused group.

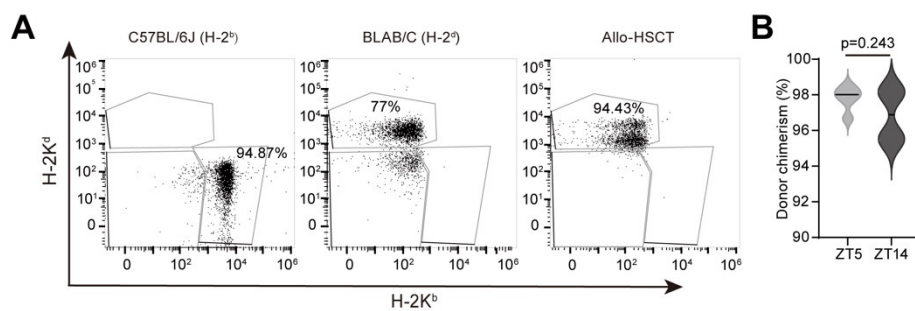


Figure S4. Impact of stem cell infusion timing on donor chimerism.

(A) H-2K^b and H-2K^d staining of peripheral blood in untransplanted C57BL/6J mice (left), BALB/c mice (middle), and transplanted C57BL/6J mice (right) on day14 following allo-HSCT.

(B) Donor chimerism in peripheral blood of ZT5 and ZT14 groups on day 14 after allo-HSCT (ZT5 n=5, ZT14 n=4).

Data are presented as means \pm SEM and analyzed using unpaired *t* test.

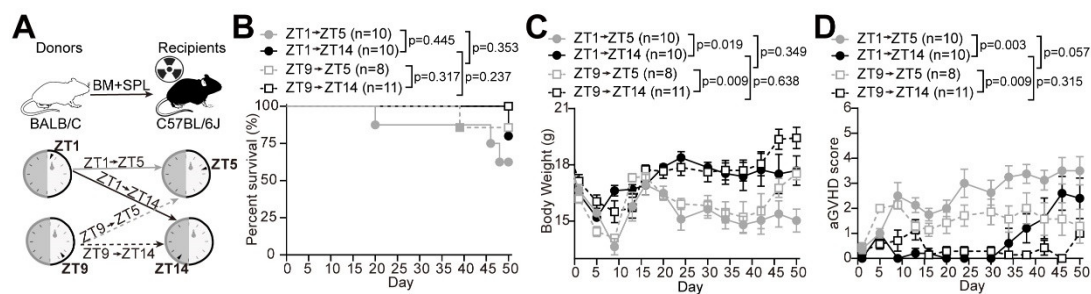


Figure S5. Impacts of the rhythms of recipient and donor mice on aGVHD development.

(A) Experimental schematic. Both ZT5 and ZT14 recipient mice received BM cells and splenocytes transplantation from ZT1 or ZT9 donor mice.

(B-D) Survival rate **(B)**, body weight **(C)** and aGVHD score **(D)** of recipient mice.

Data are presented as means \pm SEM and analyzed by two-way ANOVA followed by Bonferroni post hoc test **(C and D)** and log-rank test **(B)**.

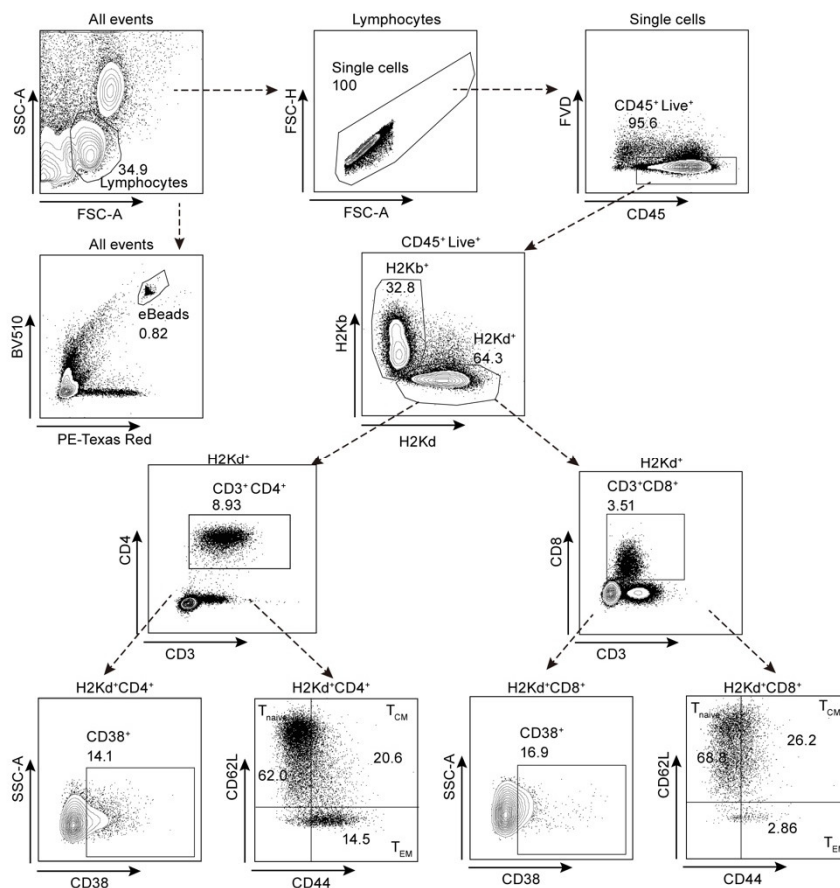


Figure S6. Gating strategy in flow cytometry analysis.

Starting from upper left panel and going down following the arrows in dotted lines, we gated successively: lymphocytes, CD45⁺ live cells, H2kd⁺ donor cells, and T (CD3⁺) cells. Donor T cells were subdivided into CD4⁺ T and CD8⁺ T-cell subsets. Naïve T cells (CD44⁻CD62L⁺, T_{naïve}), central memory T cells (CD44⁺CD62L⁺, T_{CM}), and effector memory T cells (CD44⁺CD62L⁻, T_{EM}) were gated according to the expression of CD44 and CD62L. CounteBeads were added to cell suspensions for absolute cell counting.

Table S1. Characteristics of patients between the early infused group and late infused group.

Characteristics	early infused group (n=97)	late infused group (n=107)	<i>P</i>
Sex, n (%)			0.780
Male	53 (54.6)	56 (52.3)	
Female	44 (45.4)	51 (47.7)	
Age (years), Median (Range)	32 (4-61)	32 (3-62)	0.279
Weight(kg), Median (Range)	60 (14-92)	62 (14-109)	0.967
Diagnostics, n (%)			0.385
AML	42 (43.3)	36 (33.6)	
ALL	19 (19.6)	17 (15.9)	
MDS/MPN	19 (19.6)	32 (29.9)	
AA	15 (15.5)	20 (18.7)	
Others*	2 (2.1)	2 (1.9)	
Donor type, n (%)			1.000
ISD	65 (67.0)	72 (67.3)	
HID	32 (33.0)	35 (32.7)	
CD34 ⁺ cell infused (10 ⁶ /kg)	5.62 (0.32-67.5)	4.90 (0.66-36.30)	0.375
TNCs infused (10 ⁸ /kg)	9.95 (2.50-101.32)	9.59 (2.35-56.95)	0.284
Female to male, n (%)			0.333
Yes	21 (21.6)	30 (28.0)	
No	76 (78.4)	77 (72.0)	
Conditioning regimen, n (%)			1.000
MAC	74 (76.3)	82 (76.6)	

RIC	23 (23.7)	25 (23.4)	
MTX prophylaxis, n (%)	8 (8.2)	12 (11.2)	0.638
Prophylaxis drug, n (%)			0.991
Without rATG or PT-Cy	65 (67.0)	72 (67.3)	
With rATG only	10 (10.3)	12 (11.2)	
With PT-Cy only	14 (14.4)	14 (13.1)	
With both rATG and PT-Cy	8 (8.2)	9 (8.4)	
ABO incompatibility, n (%)			0.844
Identical	51 (52.6)	60 (56.1)	
Minor incompatibility	19 (19.6)	24 (22.4)	
Major incompatibility	16 (16.5)	18 (16.8)	
Bidirectional incompatibility	11 (11.3)	5 (4.7)	
Follow-up time among survivors (month)	50.3 (7.1-106.1)	42.2 (7.5-101.9)	0.284

ISD identical sibling donor, HID haplo-identical donor, TNCs total nucleated cells, MAC myeloablative conditioning regimen, RIC reduced intensity conditioning, MTX methotrexate, rATG rabbit anti-thymocyte globulin, PT-Cy post-transplant cyclophosphamide, *MPAL, mixed phenotype acute leukemia; NHL, non-Hodgkin's lymphoma

Table S2. Complications post transplantation between the early infused group and late infused group.

Characteristics	early infused group (n=97)	late infused group (n=107)	<i>P</i>
HVOD	0 (0.0)	1 (1.4)	1.000
CMV antigenemia	22 (22.7)	28 (26.2)	0.626
Bacterial septicemia	16 (16.5)	24 (22.4)	0.297
ES	6 (6.2)	15 (14.0)	0.105
PRCA	1 (1.0)	4 (3.7)	0.372
HC	13 (13.4)	12 (11.2)	0.673

HVOD, hepatic veno-occlusive disease, CMV cytomegalovirus, ES engraftment syndrome, PRCA pure red cell aplasia, HC hemorrhagic cystitis

Table S3. Causes of death of the early infused group and late infused group.

Cause	early infused group	late infused group
Relapse	12 (52.2)	11 (29.7)
Uncontrolled acute GVHD	2 (8.7)	7 (18.9)
Extensive chronic GVHD	1 (4.3)	3 (8.1)
Infection	3 (13.0)	8 (21.6)
MODS	4 (17.4)	6 (16.2)
Others	1 (4.3)	2 (5.4)

GVHD graft-versus-host disease, MODS, multi-organ dysfunction syndrome



Key resources table

REAGENT or RESOURCE	SOURCE	IDENTIFIER
Antibodies		
InVivoMAb anti-mouse CD16/CD32(2.4G2)	BioXcell	BE0307
APC-CY7-anti mouse CD45 Monoclonal Antibody(30-F11)	BioLegend	103116
PE-Cy5-anti mouse CD3 Monoclonal Antibody (17A2)	eBioscience	15-0032-82
FITC-anti mouse CD4 Monoclonal Antibody(RM4-5)	eBioscience	11-0042-82
AF700-anti mouse CD8A Monoclonal Antibody(53-6.7)	eBioscience	56-0081-82
Super Bright 780 anti-CD44	eBioscience	78-0441-82
super bright 600 anti mouse CD62L (L-Selectin) Monoclonal Antibody (MEL-14)	ebioscience	63-0621-82
PE-Cyanine7 anti mouse CD38 Monoclonal Antibody (90)	ebioscience	25-0381-82
APC anti-mouse H-2Kd	Biolegend	116620
PE anti-mouse H-2Kb	Biolegend	116507
Fixable Viability Dye eFluor™ 506	eBioscience	65-0866-18
Biological samples		
Patient-derived allo-HSCT	The First Affiliated Hospital of the University of Science and Technology of China	N/A
Chemicals, peptides, and recombinant proteins		
Gentamicin Sulfate	BioSharp	BS143-5g
RPMI 1640 medium	Gibco	C22400500BT
Fetal bovine serum	Biological Industries	C04001-500
RBC Lysing Buffer	BD Pharm Lyse	555899
BSA	Thermo Fisher Scientific	No. 15260037
CounteBeads	eBioscience	01-1234-42
Critical commercial assays		
Cytometric Bead Array (CBA) mouse cytokine kit	BD Biosciences	560485
Experimental models: Organisms/strains		
Mouse: C57BL/6J	GemPharmatech Co., Ltd.	N000013
Mouse: BALB/c	Shanghai Silaike Experiment Animal Co., Ltd.	N/A
Software and algorithms		
FlowJo v10 software	FlowJo	https://flowjo.becton dickinson.cn
FCAP Array Software	BD Biosciences	https://legendplex.qognit.com/workflow
R software packages	R Foundation for Statistical Computing	https://www.r-project.org
GraphPad Prism 9.0	GraphPad Software	https://www.graphpad.com

1 **STAR★METHODS**

2 **RESOURCE AVAILABILITY**

3 **Lead contact**

4 Further information and requests for resources and reagents should be directed to and will be
5 fulfilled by the lead contact, Cheng Zhan (zhancheng@ustc.edu.cn).

6 **Materials availability**

7 This study did not generate any new unique reagents.

8 **Data and code availability**

9 The full dataset will be available on the Vivli platform (<https://vivli.org/>) with publication. This
10 paper does not report any original code. Any additional information required to reanalyze the
11 data reported in this paper is available from the lead contact upon request.

12 **EXPERIMENTAL MODEL AND STUDY PARTICIPANT DETAILS**

13 **Patient and transplantation characteristics**

14 All patients received mobilized peripheral blood stem cells as a graft source. The study included
15 169 patients with malignant hematologic diseases and 35 patients with aplastic anemia (AA),
16 with the most frequent diagnosis of hematological malignancies being acute leukemia (55.9%).
17 The median age of the whole cohort was 32 (range, 3-62) years, and 109 (53.4%) participants
18 were male. The median infused total nucleated cell (TNC) count was 9.73 (range, 2.35 to 101.32)
19 $\times 10^8/\text{kg}$, and the median infused CD34^+ cell count was 5.12 (range, 0.32 to 67.5) $\times 10^6/\text{kg}$.
20 Among all the patients, in addition to cyclosporine (CsA) and mycophenolate mofetil (MMF),
21 22 patients received rabbit anti-thymocyte globulin (rATG), 28 patients received post-transplant
22 cyclophosphamide (PT-Cy), 17 patients received both rATG and PT-Cy, and 20 patients
23 received short-term methotrexate (MTX) for GVHD prophylaxis. All surviving patients were
24 followed until 31 Dec 2023, and the median follow-up time was 47.5 (range, 7.1 to 106.1)
25 months.

26 The protocol was approved by the Ethics Committee of the First Affiliated Hospital of the
27 University of Science and Technology of China (USTC) (REC reference: 2024/RE/49). The
28 patients or guardians provided informed consent before transplantation for the use of their data
29 for research, in accordance with the Declaration of Helsinki.

30 **Mice**

31 C57BL/6J (H2k^b) and BALB/c (H2k^d) mice were purchased from GemPharmatech Co., Ltd.
32 (China) and Shanghai Silaike Experiment Animal Co., Ltd., respectively. The animals were
33 maintained in a specific pathogen-free animal facility for at least one week before any further
34 experiments were conducted. All mice were group-housed under a stable environment (22-25°C
35 ambient temperature, humidity 40%-70%) with a 12 h light/12 h dark cycle (lights on from 8
36 am to 8 pm) and *ad libitum* access to water and a standard chow diet (SPF Rodent Feed; 4%
37 fat, 18% protein, 5% crude Fiber; WQJX BIO-Technology, China). All the experiments were
38 performed on adult mice (9-17 weeks old). The care and use of animals in this study were
39 approved by the Institutional Animal Use and Care Committee of the University of Science and
40 Technology of China (USTC) (USTCACUC26110122040) and conformed to the institutional
41 guidelines of the USTC, as well as governmental regulations.

42 **METHOD DETAILS**

43 **HLA typing, stem cell mobilization and collection**

44 HLA typing of donors and patients was performed using real-time PCR with a high resolution
45 of 10 alleles for HLA-A, HLA-B, HLA-C, HLA-DRB1, and HLA-DQB1. The graft source was
46 unmanipulated mobilized PBSCs in all patients. The donors received four consecutive days of
47 granulocyte colony-stimulating factor (G-CSF) (filgrastim) (10 mg/kg/d) for peripheral stem
48 cell mobilization followed by apheresis on day 5. The target stem cell doses for collection and
49 infusion for patients were 5×10^8 total nucleated cells (TNCs)/kg (of recipient weight) and $2 \times$
50 10^6 CD34⁺ cells/kg, respectively. Once the stem cells were collected, they were immediately
51 infused into the patient through the central venous catheter.

52 **Conditioning regimen and GVHD prophylaxis**

53 A total of 156 of 204 (76.5%) patients received myeloablative conditioning (MAC), and 48
54 patients (23.5%) received a reduced-intensity conditioning (RIC) regimen. RIC conditioning
55 regimens were performed in patients who were either older than 40 years or had comorbid
56 severe infection before transplantation. For MAC, 146 patients received a busulfan
57 (Bu)/cyclophosphamide (Cy)-based regimen (Bu, 0.8 mg/kg every 6 hours for 3 or 4 days; Cy,
58 60 mg/kg daily for 2 days) supplemented with fludarabine (Flu) (30 mg/m² daily for 4 days),
59 and 10 patients received a fractionated total body irradiation (TBI) or total marrow irradiation
60 (TMI)/Cy regimen (TBI, total 12 Gy, 4 fractions or TMI total 15 Gy, 3 fractions; Cy, 60 mg/kg
61 daily for 2 days), of which 5 patients with cytarabine (Ara-C) added (2 g/m² daily for 4 days).
62 For RIC, 35 patients received an irradiation-based conditioning regimen consisting of Flu 30-
63 50 mg/m² for 4-5 days, Cy 14.5-60 mg/kg daily for 2 days and TBI/TMI total 3-4 Gy, 13 patients
64 received a Bu-based conditioning regimen consisting of Flu 30-50 mg/m² for 4-5 days, Cy 60
65 mg/kg daily for 2 days and Bu 0.8 mg/kg every 6 hours for 2 days.

66 To prevent GVHD, all patients were given a combination of cyclosporine (CsA) and
67 mycophenolate mofetil (MMF). Twenty-two (10.8%) patients received additional rabbit
68 antithymocyte globulin (rATG), 28 (13.7%) patients received additional post-transplant
69 cyclophosphamide (PT-Cy), 17 (8.3%) patients received both rATG and PT-Cy, and 20 (9.8%)
70 patients were given extra short-term methotrexate (MTX) for GVHD prevention. CsA was
71 started intravenously (2.5-3 mg/kg/day) on day -1 with a target level of 250-300 ng/mL for at
72 least one month before switching to oral intake, and this concentration was tapered by day +60
73 based on the presence of GVHD or disease conditions to maintain the trough concentration at
74 100-150 ng/mL and withdrawn by +100 in the absence of GVHD. MMF (25-30 mg/kg/day, p.o.
75 three times per day) was started on day +1 and continued until day +35. rATG (thymoglobulin)
76 was administered from day -6 to -4 at a total dose of 4.5-7.5 mg/kg. PT-Cy was administered
77 on days +3 and +4 at a total dose of 100 mg/kg. MTX was administered intravenously on day
78 +1 at 15 mg/m² and 10 mg/m² on days +3 and +6 post-transplantation. The other supportive
79 treatments adhered to standard protocols based on previously published criteria¹.

80 **Definitions**

81 Neutrophil recovery was defined as the first of three consecutive days with a neutrophil count
82 of at least $0.5 \times 10^9/L$, and primary platelet recovery was defined as the first day with a platelet
83 count of at least $50 \times 10^9/L$ for seven consecutive days without transfusion support. Primary graft
84 failure was defined as failure to achieve an absolute neutrophil count (ANC) of $0.5 \times 10^9/L$ with
85 the absence of donor hematopoiesis by 30 days after transplantation. aGVHD and cGVHD were
86 diagnosed and classified using published criteria^{2,3}. Disease recurrence was diagnosed using
87 clinical and pathological standards. Overall survival (OS) was defined as the time from the first
88 day of transplantation until death from any cause or the last follow-up date. Disease-free
89 survival (DFS) was defined as the interval between transplantation and disease recurrence,
90 death or the last follow-up date, whichever occurred first. The composite endpoint of GVHD-
91 free, relapse-free survival (GRFS) was defined as the first event occurring within 36 months
92 after transplantation among Grade III to IV aGVHD, moderate to severe cGVHD, relapse, or
93 death for any reason.

94 **Induction of aGVHD in mice**

95 Major histocompatibility complex (MHC)-mismatched transplants were performed using
96 BALB/c and C57BL/6J mice as donors and recipients, respectively. Female C57BL/6J mice (9
97 weeks old) received a single fraction of 1100 cGy (¹³⁷Cs source) irradiation 5-6 hours prior to
98 transplantation and were intravenously administered 1×10^7 bone marrow cells plus 6×10^7
99 splenocytes from male BALB/c mice (9 weeks old). Starting 2 days before irradiation and
100 continuing until 1 week after transplantation, gentamicin (320 mg/L) was added to the drinking
101 water of the recipients.

102 **Donor cell collection**

103 For the induction of aGVHD in mice, bone marrow cells were harvested from donor femurs
104 and tibias and resuspended in RPMI 1640 medium (C22400500BT, Gibco) supplemented with
105 2% fetal bovine serum (FBS) (C04001-500, Biological Industries, Israel). Splenocytes were
106 obtained by gently crushing the spleen through 40 μ m mesh filters in RPMI 1640 medium
107 supplemented with 2% FBS to release the cells. Erythrocytes were lysed by incubating the cells
108 in RBC Lysing Buffer (555899, BD Pharm Lyse) for 3 min at room temperature. The

109 preparations were then filtered through a 40 µm strainer to remove debris and washed twice in
110 DPBS. The cells were then counted using a cell counter (Counter star, China) and resuspended
111 in 0.2 mL of DPBS for injection.

112 **Flow cytometry**

113 To evaluate the activation and differentiation of T cells, the spleen was isolated and processed
114 through a 40-µm strainer in RPMI 1640 medium supplemented with 20 mg/ml BSA (Thermo
115 Fisher Scientific). After blocking with an anti-mouse CD16/CD32 mAb (1 µg/ ml, BE0307,
116 BioXcell) for 10 min at 4°C to prevent nonspecific antibody binding, the cell suspension was
117 co-incubated with APC-Cy7 anti-CD45 (1 µg/ ml, 30-F11), PE-Cy5 anti-CD3 (1 µg/ ml, 17A2),
118 FITC anti-CD4 (1 µg/ ml, RM4-5), AF700 anti-CD8 (1 µg/ ml, 53-6.7), Super Bright 780 anti-
119 CD44 (1 µg/ ml, IM7), Super Bright 600 anti-CD62L (L-selectin) (1 µg/ ml, MEL-14), PE-Cy7
120 anti-CD38 (1 µg/ ml, 90), APC anti-H-2K^d (1 µg/ ml, SF1-1.1) and PE anti-H-2K^b (1 µg/ ml,
121 AF6-88.5) for 30 min at 4 °C. Fixable viability dye (FVD, eFluor 506, eBioscience) staining
122 was used to exclude dead cells from viable cells. After erythrocytes were lysed with RBC Lysis
123 Buffer and washed once in fluorescence-activated cell sorting (FACS) buffer solution, the cells
124 were then passed through a 40 µm cell strainer. The cells were resuspended in 200 µl of FACS
125 buffer solution and analyzed by a FACS Aria II (BD Biosciences) and FlowJo v10 software
126 (FlowJo, Ashland, OR, USA). A total of 20 µl of microparticles per sample (CounteBeads, 01-
127 1234-42, eBioscience) was added to the cell suspensions for absolute counting by flow
128 cytometry. The following equation was used to calculate the absolute cell number
129 (cells / sample): $(\text{cell count} \times \text{eBeads volume} \times \text{eBeads concentration}) / \text{eBeads count}$.

130 For evaluation of peripheral chimerism, blood was first incubated with purified anti-mouse
131 CD16/CD32 mAb for 10 min at 4 °C and then co-incubated with APC anti-H-2K^d (1 µg/ ml)
132 and PE anti-H-2K^b (1 µg/ ml) for 30 min at 4 °C. After staining with fixable viability dye, the
133 cell suspensions were analyzed with a Beckman Coulter Cytoflex (Beckman Coulter, Brea, CA,
134 USA). The obtained data were analyzed using FlowJo v10 software (FlowJo, Ashland, OR,
135 USA). PE-H-2K^b and APC-H-2K^d single staining was performed on blood from naive
136 C57BL/6J and BALB/c mice as positive controls to establish compensatory parameters.

137 Unstained cells were used to establish the analysis area. The percentages of H-2K^{b+} and H-2K^{d+}
138 cell subpopulations were calculated. The donor chimerism was calculated according to the
139 equation: Donor chimerism (%) = H-2k^d% / (H-2K^b%+H-2K^d%) × 100%.

140 **aGVHD scoring**

141 Following transplantation, the recipients were monitored for survival once daily and for the
142 occurrence of aGVHD symptomatology twice weekly. The severity of aGVHD was assessed
143 by scoring weight loss, activity, posture (hunching), and fur-ruffling. Each criterion was scored
144 on a scale of 0 to 2, with 0 representing normal, 1 representing mildly abnormal, and 2
145 representing severely abnormal. The aGVHD clinical scores were calculated by summing the
146 four criteria scores. Mice that were moribund or scored above 5 were euthanized.

147 **Measurement of cytokine levels**

148 Blood was drawn from the retrobulbar intraorbital capillary plexus of the recipients and
149 collected in sterile tubes. A Cytometric Bead Array (CBA) mouse cytokine kit (560485, BD
150 Biosciences) was used to measure the serum cytokine levels according to the manufacturer's
151 instructions. FCAP Array Software (v3.0, 652099, BD Biosciences) was used for CBA data
152 analysis.

153 **Histology and imaging**

154 After an overdose of the anesthetic 2,2,2-tribromoethanol (> 400 mg/kg, i.p.) was injected, the
155 animals were cardiac-perfused with cold phosphate-buffered saline (PBS), followed by 4%
156 paraformaldehyde. The skin, liver, colon, and lungs were harvested and then postfixed in 4%
157 paraformaldehyde overnight with cryoprotection in 30% sucrose. The tissue sections (5 μm)
158 were cut with a freezing cryostat (Leica CR 1900) and stained with hematoxylin and eosin.
159 Montage images were acquired and stitched using an automated slider scanner (Exo, Meca
160 Scientific, China). The brightness, contrast, and pseudocolor were adjusted using SlideViewer
161 (Meca Scientific, China).

162 **Pathologic tissue scoring**

163 Histopathological assessments of the skin, liver, colon, and lungs were performed as

164 previously described^{4,5}. Skin clinical scores were calculated (0 to 10 grades) as the sum of
165 scores for the following criteria: epidermis (0, normal; 1, foci of interface damage in <20% of
166 sections with occasional necrotic keratinocytes; 2, widespread interface damage in >20% of
167 sections); dermis (0, normal; 1, slightly altered with mildly increased collagen density; 2,
168 markedly increased collagen density); inflammation (0, none; 1, focal infiltrates; 2, widespread
169 infiltrates); s.c., fat (0, normal; 1, reduced number of normal adipocytes; 2, serous fat atrophy);
170 and follicles (0, normal number of hair follicles, ~5 per linear millimeter; 1, between 1 and 5
171 follicles per linear millimeter; 2, <1 follicle per linear millimeter).

172 Liver sections were scored (0 to 4 grades) based on bile duct injury (manifest by nuclear
173 hyperchromasia, nuclear crowding, infiltrating lymphocytes, and cytoplasmic vacuolation) and
174 inflammation (infiltration with lymphocytes, neutrophils, and eosinophils) according to the
175 following criteria: the number of involved tracts and the severity of disease in each tract (0,
176 none; 1, few involved tracts with mild involvement; 2, numerous involved tracts but with only
177 mild disease; 3, injury in the majority of tracts; and 4, severe involvement of most tracts).

178 Colon sections were scored (0 to 4 grades) based on crypt apoptosis (0, rare to none; 1,
179 occasional apoptotic bodies per 10 crypts; 2, few apoptotic bodies per 10 crypts; 3, the majority
180 of crypts contain an apoptotic body; 4, the majority of crypts contain >1 apoptotic body) and
181 inflammation (0, none; 1, mild; 2, moderate; 3, severe, without ulceration; 4, severe, with
182 ulceration).

183 Lung sections were scored (0 to 4 grades) based on perivascular and peribronchiolar
184 cuffing and infiltration for the following criteria: 0, normal; 0.5, minimal perivascular cuffing;
185 1, perivascular cuffing; 1 to 2 cells in thickness, involving up to 15% of vessels; 1.5,
186 perivascular cuffing; 1 to 2 cells in thickness, involving up to 15% of vessels and infiltration
187 into parenchyma proper; 2, perivascular cuffing; 2 to 3 cells in thickness, involving up to 25%
188 of vessels and infiltration into parenchyma proper; 2.5, perivascular cuffing; 2 to 3 cells in
189 thickness, involving 25% to 50% of vessels and infiltration into parenchyma proper; 3,
190 perivascular cuffing; 4 to 5 cells in thickness, involving 25% to 50% of vessels, peribronchiolar
191 cuffing (2 to 3 cells) and infiltration into parenchyma proper; 3.5, perivascular cuffing; 6 to 7

192 cells in thickness, involving greater than 50% of vessels, peribronchiolar cuffing (4 to 5 cells);
193 and 4, perivascular cuffing, greater than 8 cells in thickness, involving greater than 50% of
194 vessels, peribronchiolar cuffing (>6 cells).

195 **QUANTIFICATION AND STATISTICAL ANALYSIS**

196 **Statistical analysis of clinical data**

197 The quantitative variables are represented by the median and range. The qualitative factors are
198 expressed as frequencies and proportions. Quantitative variables were calculated and compared
199 using Student's *t* test or the Mann–Whitney U test. Qualitative variables were analyzed using
200 the chi-square test or Fisher's exact test. Ordinal data were analyzed using the Cochran-
201 Armitage trend test. To calculate the cumulative incidence of engraftment, aGVHD, cGVHD,
202 transplant-related mortality (TRM), and relapse, cumulative incidence curves were constructed
203 in a competing risk setting, with death considered a competing event, and the results were
204 compared using Gray's test¹⁵. TRM and relapse were regarded as competing risk factors. The
205 Kaplan–Meier method and log-rank test were used to compare the probabilities of 3-year
206 overall survival (OS), disease-free survival (DFS), and GVHD free, relapse-free survival
207 (GRFS).

208 To determine the risk factors for Grade II-IV and Grade III-IV aGVHD, we conducted
209 univariate and multivariate analyses with a Fine-Gray proportional hazards regression model¹⁶.
210 In the regression model, we included the timing of stem cell infusion as an ordinal variable in
211 the univariate and multivariate analyses. All variables with a 2-sided *P* value less than 0.2 were
212 included in the multivariate analysis. The R software package, version 4.2.2 (R Foundation for
213 Statistical Computing, Vienna, Austria), was used for statistical analyses. A 2-sided *P* value less
214 than 0.05 was considered to indicate statistical significance.

215 **Statistical analysis of the mouse experiments**

216 Statistical analysis was performed using GraphPad Prism 9.0 (GraphPad Software, CA, USA).
217 Statistical differences in the data were determined using an unpaired Student's *t* test for two-
218 group comparisons, two-way analysis of variance (ANOVA) followed by the Bonferroni post

219 hoc test for multiple comparisons, and the log-rank test for survival (Kaplan–Meier survival
220 curves) difference comparisons, as indicated in all the figure legends. The data are shown as
221 the means \pm SEMs.

222

223 **References**

- 224 1. Sun G, Tang B, Song K, et al. Unrelated cord blood transplantation vs. HLA-matched sibling
225 transplantation for adults with B-cell acute lymphoblastic leukemia in complete remission: superior
226 OS for patients with long-term survival. *Stem Cell Res Ther* 2022;13(1):500. DOI: 10.1186/s13287-
227 022-03186-3.
- 228 2. Harris AC, Young R, Devine S, et al. International, Multicenter Standardization of Acute Graft-
229 versus-Host Disease Clinical Data Collection: A Report from the Mount Sinai Acute GVHD
230 International Consortium. *Biology of Blood and Marrow Transplantation : Journal of the American*
231 *Society For Blood and Marrow Transplantation* 2016;22(1) (In eng). DOI:
232 10.1016/j.bbmt.2015.09.001.
- 233 3. Jagasia MH, Greinix HT, Arora M, et al. National Institutes of Health Consensus Development
234 Project on Criteria for Clinical Trials in Chronic Graft-versus-Host Disease: I. The 2014 Diagnosis
235 and Staging Working Group report. *Biol Blood Marrow Transplant* 2015;21(3):389-401 e1. DOI:
236 10.1016/j.bbmt.2014.12.001.
- 237 4. Kaplan DH, Anderson BE, McNiff JM, Jain D, Shlomchik MJ, Shlomchik WD. Target antigens
238 determine graft-versus-host disease phenotype. *J Immunol* 2004;173(9):5467-75. (In eng). DOI:
239 10.4049/jimmunol.173.9.5467.
- 240 5. Blazar BR, Taylor PA, McElmurry R, et al. Engraftment of severe combined immune deficient
241 mice receiving allogeneic bone marrow via In utero or postnatal transfer. *Blood* 1998;92(10):3949-
242 59. (In eng).

243