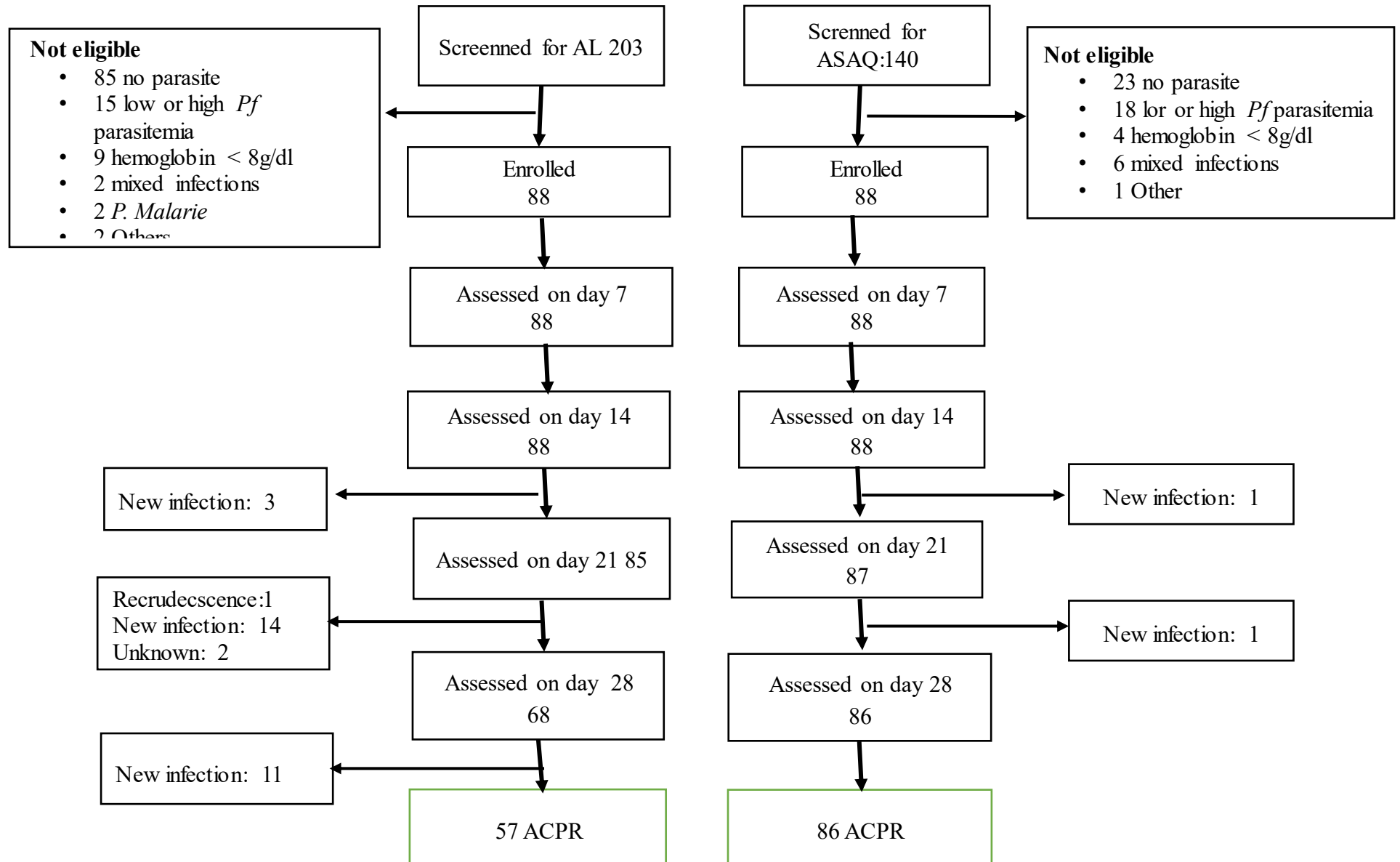


Supplementary Figure 1: Trial profile showing the flow of patients during screening, enrolment and follow-up



Supplemental Table 1: AL_genotyping results

SAMPLE ID	MSP1				MSP2			GLURP		Result;all markers
	K1	Mad20	RO33	Result;msp1	IC1	FC27	Result;msp2		Result;glurp	
T0905A D0	254	200	0	R	457	487	NI	929	NI	NI
T0905A D28	246	0	0		369	0		1023		
T0906A D0	225	0	0	R	498	638	R	1177	R	R
T0906A D21	220	0	113		502	0		1146		
T0908A D0	217	232	120	R	453	656	NI	994	NI	NI
T0908A D28	0	0	122		561	0		1175		
T0912A D0	231	236	0	NI	480	625	NI	1302	NI	NI
T0912A D21	257	0	0		441	0		1215		
T0914A D0	244	0	116	NI	473	673	NI	1181	NI	NI
T0914A D21	0	194	0		629	0		1285		
T0915A D0	271	0	126	NI	449	557	NI	1181	R	NI
T0915A D21	205	0	0		0	646		1194		
T0918A D0	258	0	128	NI	0	714	NI	1190	NI	NI
T0918A D21	239	0	0		0	643		1371		
T0924A D0	263	228	0	R	515	624	NI	986	NI	NI
T0924A D14	265	0	0		0	674		1445		
T0925A D0	0	0	137	NI	511	0	NI	1213	R	NI
T0925A D21	260	0	0		484	686		1229		
T0926A D0	283	0	0	NI	460	684	NI	1200	NI	NI
T0926A D28	0	241	0		535	0		1272		
T0933A D0	240	0	152	NI	499	608	NI	1230	NI	NI
T0933A D28	271	303	0		723,605	591		1160		

T0934A D0	311	294	0		0	713		1228		
T0934A D28	322	0	0	NI	496	0	NI	1169	NI	NI
T0935A D0	325	0	0		522	602		829		
T0935A D28	0	0	165	NI	0	560	NI	1028	NI	NI
T0936A D0	0	245	166		557	624		1355		
T0936A D28	370	0	166	R	567	633	R	1147	NI	NI
T0937A D0	247	272	0		584	0		1177		
T0937A D28	0	0	173	NI	634	611	NI	1091	NI	NI
T0939A D0	0	261	0		595	0		1373		
T0939A D28	0	0	164	NI	652,558	0	NI	1131	NI	NI
T0944A D0	202	0	0		0	616		1009		
T0944A D21	251	264	0	NI	431	541	NI	1057	R	NI
T0949A D0	228	0	0		0	548		1204		
T0949A D21	222	244	0	R	0	526	NI	1230	R	NI
T0950A D0	0	254	0		0	454		940		
T0950A D21	234	0	0	NI	433	0	NI	1033	NI	NI
T0951A D0	0	213	0		514	415	R	1042	NI	NI
T0951A D28	0	0	131	NI	573,510	0	NI	898	NI	NI
T0952A D0	214	274	301		630	566		917		
T0952A D14	208	0	0	R	0	530	NI	1037	NI	NI
T0953A D0	234	303	123		489	0		1035		
T0953A D28	225	296	302	R	666	537	NI	948	NI	NI
T0958A D0	283	0	131		0	547		1052		
T0958A D28	209	0	0	NI	632	0	NI	1077	R	NI
T0964A D0	237	219	0		609	454		987		
T0964A D21	0	225	0	R	661	0	NI	0	ND	NI
T0966A D0	262	0	0		670	0		1003		
T0966A D21	238	0	151	NI	611	0	NI	1005	R	NI
T0967A D0	245	299	0	ND	518,485	582	ND	990	ND	ND

T0967A D21	0	0	0		0	0		0		
T0968A D0	0	366	171	NI	0	498	R	1017	R	NI
T0968A D14	0	0	159		0	491		964		
T0977A D0	303	0	0	NI	648	589	NI	1053	R	NI
T0977A D21	0	0	169		531	0		1020		
T0981A D0	252	0	0	ND	658	534	ND	1018	ND	ND
T0981A D21	0	0	0		0	0		0		
T0982A D0	244	291	0	R	0	604	NI	992	NI	NI
T0982A D21	0	285	366		605	0		965		
T0984A D0	263	0	0	NI	718	627	NI	922	NI	NI
T0984A D21	290	0	0		643	606		860		

Supplemental Table 2: ASAQ genotyping results

<i>SAMPLE ID</i>	<i>MSP1</i>				<i>MSP2</i>			<i>GLURP</i>		<i>Result;all markers</i>
	<i>K1</i>	<i>Mad20</i>	<i>RO33</i>	<i>Result;msp1</i>	<i>IC1</i>	<i>FC27</i>	<i>Result;msp2</i>		<i>Result;glurp</i>	
T0928B D0	373	0	111	NI	405	437		868	NI	NI
T0928B D14	218	0	0		470	0	NI	641		
T0978B_D0	292	0	0	ND	399	301		941	NI	NI
T0978B_D21	200	0	0		619/565	0	NI	763		

