

1 **Multi-trait genetic analysis identifies novel pleiotropic loci for depression and SCZ in East**  
2 **Asians**

3  
4 Yingchao Song<sup>1,#</sup>, Linzehao Li<sup>1,#</sup>, Yue Jiang<sup>1</sup>, Bichen Peng<sup>1</sup>, Hengxuan Jiang<sup>1</sup>, Zhen Chao<sup>1</sup>, Xiao  
5 Chang<sup>1,\*</sup>.

6 1. College of Artificial Intelligence and Big Data for Medical Sciences, Shandong First Medical  
7 University & Shandong Academy of Medical Sciences, Shandong, China

8  
9  
10

11 \*. Correspondence to Xiao Chang, PhD, 6699 Qingdao Road, Jinan, China; e-mail:

12 [changxiao@sdfmu.edu.cn](mailto:changxiao@sdfmu.edu.cn)

13

14 Running title: multi-trait analysis of depression and SCZ in East Asians

15 Key words: multi-trait analysis of GWAS, depression, schizophrenia, East Asian

16 *Abstract*

17

18 *Background:* While genetic correlations, pleiotropic loci, and shared genetic mechanisms of  
19 psychiatric disorders have been extensively studied in European populations, the investigation of  
20 these factors in East Asian populations has been relatively limited.

21

22 *Methods:* To identify novel pleiotropic risk loci for depression and schizophrenia (SCZ) in East  
23 Asians. We utilized the most comprehensive dataset available for East Asians and quantified the  
24 genetic overlap between depression, SCZ, and their related traits via a multi-trait genome-wide  
25 association study. Global and local genetic correlations were estimated by LDSC and  $\rho$ -HESS.  
26 Pleiotropic loci were identified by the MTAG.

27

28 *Results:* Besides the significant correlation between depression and SCZ, our analysis revealed  
29 genetic correlations between depression and obesity-related traits, such as weight, BMI, T2D,  
30 and HDL. In SCZ, significant correlations were detected with HDL, heart diseases and use of  
31 various medications. Conventional meta-analysis of depression and SCZ identified a novel locus  
32 at 1q25.2 in East Asians. Further multi-trait analysis of depression, SCZ and related traits  
33 identified ten novel pleiotropic loci for depression, and four for SCZ.

34

35 *Conclusions:* Our findings demonstrate shared genetic underpinnings between depression and  
36 SCZ in East Asians, as well as their associated traits, providing novel candidate genes for the  
37 identification and prioritization of therapeutic targets specific to this population.

38

## 39 *Introduction*

40  
41 Psychiatric disorders comprise a range of severe illnesses that result in emotional, cognitive, or  
42 behavioral disturbances in individuals, making them a significant contributor to the global  
43 burden of disability [1]. Empirical studies indicate that psychiatric disorders result from the  
44 intricate interplay of genetic and environmental risk factors [2]. Heritability estimates, as  
45 determined by twin-based and genome-wide association studies (GWAS), emphasize the  
46 substantial role of genetic factors within the spectrum of psychiatric disorders [3-6]. Specifically,  
47 the heritability estimates for major depression are approximately 30%-40% [7], while for  
48 schizophrenia (SCZ), these estimates range from 65% to 80% [8-10].

49  
50 Depression and SCZ both exhibit a substantial degree of polygenicity, with numerous risk loci  
51 have been identified through genome-wide association studies (GWAS) in individuals of  
52 European ancestry [6, 11]. In a recent study, the largest GWAS of depression, involving more  
53 than 1.3 million individuals (including 371,184 with depression), identified a total of 243 risk  
54 loci. This study also unveiled a critical role of neurodevelopmental pathways associated with  
55 prenatal GABAergic neurons, astrocytes and oligodendrocyte lineages [12]. For SCZ, a total of  
56 287 significant loci have been identified in the largest GWAS encompassing 76,755 cases and  
57 243,649 controls. These identified associations predominantly cluster within genes that are  
58 actively expressed in both excitatory and inhibitory neurons within the central nervous system  
59 [13]. However, the majority of previous genetic studies have been performed in European  
60 ancestry cohorts, leaving a conspicuous research gap in Asian populations. The largest GWAS of  
61 depression in East Asians (15,771 cases and 178,777 controls) only identified two genetic loci  
62 [14]. Similarly, the largest GWAS conducted on SCZ among individuals of East Asian origin  
63 (with 22,778 cases and 35,362 controls) identified 19 genetic loci [15], which is significantly  
64 fewer than those observed in European studies.

65  
66 Recently, the emergence of multi-trait analysis of GWAS (MTAG) has brought forth a powerful  
67 approach to explore the genetic overlap and shared causality among complex traits [16]. By  
68 conducting meta-analysis of GWAS summary statistics for different genetically correlated traits,  
69 multi-trait analysis can enhance the statistical power and pinpoint pleiotropic genetic variants  
70 that influence interrelated traits. Moreover, it reveals the intricate genetic interplay existing

71 between these phenotypes and unveils the common biological pathways that underpin their  
72 development. Such cross-trait analysis methods have been successfully applied to the study of  
73 psychiatric disorders. For example, a multi-trait meta-analysis across eight psychiatric disorders  
74 identified 109 pleiotropic loci linked to at least two disorders, revealing the common genetic  
75 structures shared among different psychiatric disorders [6]. Besides, a multi-trait meta-analysis  
76 revealed a substantial number of pleiotropic genetic loci between psychiatric disorder and  
77 gastrointestinal tract diseases, emphasizing the shared biological mechanism concerning immune  
78 response, synaptic structure and function, and potential gut microbiome in these conditions [17].  
79 To the best of our knowledge, multi-trait analysis of GWAS has predominantly centered on  
80 European populations, and, no such analysis has been undertaken for psychiatric disorders within  
81 East Asian populations so far.

82

83 In this study, we conducted a comprehensive multi-trait analysis using GWAS data of depression  
84 and SCZ in cohorts of East Asian descent. We also investigated the deep-phenotype GWAS data  
85 encompassing a range of health aspects such as diseases, biomarkers and medication usage  
86 sourced from BioBank Japan (BBJ) [18]. Moreover, we performed analyses to quantify both  
87 overall and local genetic correlations, further identifying novel pleiotropic loci for depression  
88 and SCZ in East Asians.

89 *Methods*

90

91 GWAS data

92

93 The hitherto largest GWAS meta-analysis of depression among individuals of East Asia was  
94 performed among 194,548 individuals (15,771 cases and 178,777 controls), based on combined  
95 data from the China, Oxford, and Virginia Commonwealth University Experimental Research on  
96 Genetic Epidemiology (CONVERGE) consortium [19], China Kadoorie Biobank (CKB), and the  
97 Taiwan-Major Depressive Disorder (MDD) study, as well as studies conducted in the US and  
98 UK that included participants of East Asian ancestry [14]. And the largest GWAS of SCZ among  
99 individuals across East Asia were compiled 22,778 SCZ cases and 35,362 controls from 20  
100 sample collections from East Asia [15].

101

102 GWAS summary statistics of 96 phenotypes from East Asians including diseases, biomarkers  
103 and medication usage were downloaded from GWAS Catalog [20], information of all included  
104 GWAS data from East Asians is summarized in Table S1.

105

106

107 Meta-analysis between depression and SCZ

108

109 Inverse-variance weighted meta-analysis was performed on depression and SCZ using the basic  
110 meta-analysis function in PLINK (v1.90b7) and the fixed-effect meta-analysis p value and fixed-  
111 effect ORs were estimated. We prioritized significant SNPs that reached genome-wide  
112 significance ( $P < 5 \times 10^{-8}$ ) in the meta-analysis and suggestive significance ( $P < 0.01$ ) in the  
113 original single-trait GWAS.

114

115

116 Global genetic correlation analysis

117

118 Genetic correlation  $r_g$  between depression and SCZ was estimated by LD (Linkage  
119 Disequilibrium) score regression (LDSC) using GWAS summary statistic [21]. The LDSC

120 method is described by the following equation:  $E[\beta_j\gamma_j] = \frac{\sqrt{N_1N_2}r_g}{M} l_j + \frac{N_s r}{\sqrt{N_1N_2}}$ , where  $\beta_j$  and  $\gamma_j$   
121 denote the effect size of SNP  $j$  on the two tested traits,  $N_1$  and  $N_2$  are the sample sizes of two  
122 tested traits,  $N_s$  is the number of overlapping samples between two tested traits,  $r$  is the  
123 phenotypic correlation in overlapping samples and  $l_j$  is the LD score. Pre-computed linkage  
124 disequilibrium scores for HapMap3 SNPs calculated based on East-Asian-ancestry data from the  
125 1000 Genomes Project were used in the analysis.

126

127

128 Local genetic correlation analysis

129

130 Considering that genetic correlation estimated by LDSC aggregates information across all  
131 variants in the genome, we further estimated the pairwise local genetic correlation using  $\rho$ -HESS  
132 (heritability estimation from summary statistics) [22].  $\rho$ -HESS are designed to quantify the local  
133 genetic correlation between pairs of traits at each of the 1703 prespecified LD independent  
134 segments with an average length of 1.6 Mb. A Bonferroni corrected p value less than 0.05/1703  
135 was considered as statistically significant.

136

137

138 Multi-trait GWAS analysis

139

140 In addition to the above traditional meta-analysis method, the Multi-Trait Analysis of GWAS  
141 (MTAG) framework, a generalized meta-analysis method that outputs trait-specific SNP  
142 associations [16], was further conducted. MTAG can increase the power to detect loci from  
143 correlated traits by analyzing GWAS summary statistics jointly. It also accounts for sample  
144 overlap and incomplete genetic correlation, when comparing with the conventional inverse-  
145 variance weighted meta-analysis. The first step of MTAG is to filter variants by removing non  
146 common SNPs, duplicated SNPs, or SNPs with strand ambiguity. MTAG then estimates the  
147 pairwise genetic correlation between traits using LDSC [23] and uses these estimates to calibrate  
148 the variance-covariance matrix of the random effect component. MTAG next performs a  
149 random-effect meta-analysis to generate the SNP-level summary statistics. We prioritized

150 significant pleiotropic SNPs that reached genome-wide significance ( $P < 5 \times 10^{-8}$ ) in the multi-  
151 trait analysis and suggestive significance ( $P < 0.01$ ) in the original single-trait GWAS.

152

153

154 Genetic correlation analysis between psychiatric disorders and deep phenotypes

155

156 To investigate the potential risk factors for psychiatric disorders in East Asian populations, we  
157 included 96 GWAS summary statistics of deep phenotypes from the BioBank Japan (BBJ),  
158 including diseases, biomarkers and medication usage. Genetic correlation  $r_g$  between  
159 depression/SCZ and each phenotype was estimated by LD (Linkage Disequilibrium) score  
160 regression (LDSC) using GWAS summary statistic [21].

161

162

163 Multi-trait GWAS analysis of psychiatric disorders and risk factors

164

165 Multi-trait GWAS meta-analysis for psychiatric disorders and the corresponding genetically  
166 correlated deep phenotypes were performed by the MTAG framework. We prioritized significant  
167 pleiotropic SNPs that reached genome-wide significance ( $P < 5 \times 10^{-8}$ ) in the multi-trait analysis  
168 and suggestive significance ( $P < 0.01$ ) in the original single-trait GWAS.

169

170

171 *Results*

172

173 Meta-analysis between depression and schizophrenia

174

175 We conducted a comprehensive meta-analysis by combing summary statistics derived from the  
176 largest GWAS of depression and SCZ within East Asian populations. Our analysis yielded three  
177 pleiotropic loci surpassing the significance threshold of  $P < 5 \times 10^{-8}$ . Among them, 2p16.1  
178 (rs13016665) and 18q23 (rs58736086) loci were previously reported in the study of SCZ among  
179 East Asian populations [15], while none of them was identified in the GWAS of depression  
180 (Table 1, Figure S1). The lead variant rs12031894 of the only novel locus is located in the

181 intergenic region near gene *SOAT1*. It is worth mentioning that this locus reached genome-wide  
182 significance in the meta-analysis of SCZ data including both European and East Asian samples  
183 suggesting its potential relevance and impact in psychiatric disorders across diverse populations  
184 [15]. Additionally, the 1q25.2 locus (rs12031894) was identified as an expression quantitative  
185 trait locus (eQTL) for neighboring genes across multiple tissues (Table S2), particularly in brain  
186 tissues for genes *ABL2*, *FAM20B*, and *TDRD5* (Figure S2).

187

188

189 Genetic correlation between depression and schizophrenia

190

191 To further investigate the shared genetic mechanism between depression and SCZ in East Asian  
192 populations, we estimated the genetic correlation between the two psychiatric disorders using  
193 LDSC. In consistent with findings in European populations [5, 15, 24], we observed a significant  
194 positive genetic correlation between depression and SCZ in East Asian populations ( $r_g = 0.46$ ,  $P$   
195  $= 1.48 \times 10^{-6}$ ). In addition, heritability estimates on the observed scale using GWAS summary  
196 statistics of East Asians were 47.05% for SCZ which is comparable to the estimates calculated  
197 from Europeans. However, in the case of depression, heritability estimates among East Asians  
198 were notably lower at 0.78%, likely attributed to the relatively limited sample size of cases as  
199 compared to European studies.

200

201

202 Multi-trait analysis between depression and schizophrenia

203

204 We next applied MTAG to detect the potential pleiotropic loci shared between depression and  
205 SCZ in East Asians. MTAG differs from conventional meta-analysis in its capacity to enhance  
206 the statistical power of GWAS by incorporating information from effect estimates across  
207 genetically correlated traits, and generate trait-specific associations of each single nucleotide  
208 polymorphism (SNP). In assessing the augmented detection power, we compared the average  $\chi^2$   
209 test statistic for depression or SCZ derived from the multi-trait GWAS with that originating from  
210 the initial GWAS conducted in East Asian populations. The mean  $\chi^2$  statistics for the initial  
211 GWAS results are:  $\chi^2_{\text{GWAS-DEP}} = 1.027$  and  $\chi^2_{\text{GWAS-SCZ}} = 1.265$  and the mean  $\chi^2$  statistics for the



212 MTAG-GWAS results are:  $\chi^2_{\text{MTAG-DEP}} = 1.052$  and  $\chi^2_{\text{MTAG-SCZ}} = 1.267$ . We observed varying  
213 degrees of increase in the effective sample size for both depression and SCZ. Specifically, the  
214 effective sample size for SCZ (MTAG-SCZ) increased slightly from 58,140 to 58,759, while the  
215 effective sample size for depression (MTAG-DEP) experienced a substantial estimated increase  
216 of 94.61%, expanding from 194,548 to 378,607. In alignment with the conventional meta-  
217 analysis conducted using PLINK, the newly identified signal at 1q25.2 was observed in both the  
218 results of the MTAG-DEP and MTAG-SCZ analyses (Table S3, Figure S1). We also detected  
219 two additional loci at 2q33.1 (rs17590956) and 18q23(rs28735056), which were previously  
220 reported in East Asians (Table S3, Figure S1).

221

222

223 Genetic correlations between psychiatric disorders and deep phenotypes

224

225 To further elucidate the genetic correlations between psychiatric disorders and potential risk  
226 factors in East Asians, we analyzed GWAS data of 96 phenotypes sourced from BBJ, ranging  
227 from diseases, biomarkers and medication usage. Our analysis uncovered significant positive  
228 genetic correlations between depression and obesity-related traits. This encompassed variables  
229 like weight ( $r_g = 0.16$ ,  $P = 0.009$ ), body mass index (BMI,  $r_g = 0.24$ ,  $P = 8.0 \times 10^{-4}$ ), type 2  
230 diabetes (T2D,  $r_g = 0.24$ ,  $P = 0.003$ ), and the use of medications associated with diabetes ( $r_g =$   
231  $0.19$ ,  $P = 0.022$ ). Besides, serum alkaline phosphatase levels also exhibited a significant positive  
232 genetic correlation with depression. Conversely, our analysis unveiled significant negative  
233 genetic correlations between depression and two blood biomarkers: high-density lipoprotein  
234 (HDL) cholesterol and total bilirubin levels (Table S4, Figure 1A). Likewise, we detected  
235 significant negative correlations between SCZ and certain blood lipid markers, particularly HDL  
236 ( $r_g = -0.13$ ,  $P = 0.006$ ) and total cholesterol levels (TCL,  $r_g = -0.12$ ,  $P = 0.018$ ). In addition,  
237 significant negative genetic correlations were also detected between SCZ and chronic diseases  
238 including Chronic hepatitis C infection and Chronic sinusitis. In contrast, SCZ was significantly  
239 correlated with heart diseases such as angina pectoris. We also found significant genetic  
240 correlations between SCZ and the use of various medications, including those for peptic ulcer  
241 and gastro-esophageal reflux disease (GORD) ( $r_g = 0.34$ ,  $P = 0.003$ ), non-steroidal anti-  
242 inflammatory and antirheumatic products ( $r_g = 0.29$ ,  $P = 0.012$ ), among others (Table S4, Figure

243 1B).

244

245

246 Local genetic correlations between psychiatric disorders and corresponding risk factors

247

248 We next conducted a genome-wide scan to identify specific genomic regions that contribute to  
249 the shared heritability of genetically correlated traits. Despite the absence of statistically  
250 significant regions following Bonferroni correction, we observed that 12q23-q24 ( $P_{local} = 0.0019$ )  
251 and 16q21 ( $P_{local} = 0.0024$ ) displayed suggestive correlations between depression and HDL  
252 (Figure S3A). Additionally, 12q23 ( $P_{local} = 0.0012$ ) exhibited a suggestive correlation between  
253 SCZ and HDL (Figure S3B).

254

255

256 Multi-trait analysis of psychiatric disorders and corresponding risk factors

257

258 The insights garnered from our genetic correlation analysis served as a catalyst for a more in-  
259 depth exploration, aiming to pinpoint shared pleiotropic genetic loci that influence both  
260 psychiatric disorders and associated risk factors. Here, we conducted MTAG analyses for each  
261 genetically correlated trait pair, and prioritized SNPs that reached genome-wide significance ( $P$   
262  $< 5 \times 10^{-8}$ ). We identified two significant signals in the analysis of depression and BMI, neither of  
263 which had been previously reported in GWAS studies of depression within East Asian  
264 populations. Among them, locus at 19q13.32 near *GIPR* was also detected in the analysis of  
265 depression and weight. The lead SNP rs4802269 serves as an eQTL for the nearby gene *EML2* in  
266 tissues from cerebellar hemispheres. Furthermore, it functions as an eQTL for the nearby genes  
267 *DMPK*, *DMWD*, and *GIPR* in adipose tissues (Table S2), implying the potential relevance of this  
268 locus in regulating factors associated with both depression and weight. Additionally, in our  
269 exploration of the connection between depression and type 2 diabetes (T2D), we uncovered three  
270 shared loci, none of which had been previously identified in studies of depression within East  
271 Asian populations. Among these, the variant rs10974438 at 9p24.2, located within an intronic  
272 region of *GLIS3*, has been linked to mania, hypomania, bipolar disorder, or manic-depression in  
273 an analysis of UK Biobank data (UKB Neale v2, Table S5). Furthermore, rs11074451 at 16p12.3

274 serves as a splicing quantitative trait locus (sQTL,  $P = 1 \times 10^{-9}$ ) for the nearby gene *GP2* in the  
275 pancreas according to GTEx, suggesting its potential role in the interplay between depression  
276 and T2D. In addition to the above three loci, a novel locus at 18p11.22 was identified when  
277 analyzing depression and the measurement of diabetes medication usage. Besides, we identified  
278 two novel loci at 12q24.12 (rs11066015) and 16q12.2 (rs35626903) during the analysis of  
279 depression and HDL. The locus at 12q24.12 (rs11066015) is specific to East Asian populations  
280 and encompasses the pivotal *ALDH2* gene, which has been implicated in various metabolic  
281 quantitative traits. The rs35626903 variant, located at 16q12.2 within the intron of the *AMFR*  
282 gene, has been previously related to psychological or psychiatric problem in the study of  
283 Europeans [25]. We also identified two novel pleiotropic signals between depression and total  
284 bilirubin levels (Table 2, Figure S4).

285  
286 We next conducted a MTAG analysis to uncover pleiotropic variants impacting both SCZ and  
287 corresponding risk factors. We identified a total of seven significant loci shared between SCZ  
288 and HDL including six located in loci reported in SCZ GWAS in East Asian populations. The  
289 novel locus at 5q31.3 was also identified in the analysis between SCZ and TCL, as well as the  
290 analysis between SCZ and stable angina pectoris (Table 3, Figure S5). Notably, this locus is sited  
291 close to the protocadherin gamma gene cluster, which may play a critical role in the  
292 establishment and function of specific cell-cell connections in the brain. Particularly, the lead  
293 SNP rs11956411 is an eQTL of *PCDHGA3* in brain cortex (Table S2). Additionally, we detected  
294 four significant loci shared between SCZ and chronic diseases (Chronic hepatitis C infection and  
295 Chronic sinusitis), but all of them were reported in GWAS of SCZ conducted on East Asians  
296 (Table S6, Figure S7-S8). In the analysis of SCZ and the use of medications, we uncovered three  
297 novel loci at 1q25.2 (rs61824368), 4q13.1 (rs62297721), and 8p21.2 (rs117325001) (Table 3,  
298 Figure S5). The 1q25.2 and 8p21.2 loci had been reported in the meta-analysis of SCZ, including  
299 both European and East Asian populations [15].

300  
301

302 *Discussion*

303

304 To the best of our current understanding, this is the first genome-wide multi-trait analysis  
305 investigating genetic correlations, pleiotropic loci and shared genetic mechanisms of depression  
306 and SCZ within East Asian populations. Leveraging the known genetic correlation between these  
307 two psychiatric disorders, we pinpointed a novel locus via the inverse-variance weighted meta-  
308 analysis, and further validated this finding using MTAG. To explore the potential risk factors for  
309 psychiatric disorders among East Asian populations, we conducted an in-depth examination of  
310 96 distinct phenotypes from BBJ. This extensive exploration yielded the identification of several  
311 previously unreported risk loci for SCZ and depression, shedding new light on the distinctive  
312 genetic underpinnings of these psychiatric disorders within the East Asian populations.

313  
314 In previous research efforts conducted by the Psychiatric Genomics Consortium (PGC),  
315 conventional meta-analysis techniques were utilized to detect pleiotropic loci associated with  
316 psychiatric disorders, with a primary focus on European populations [6, 26]. However, recent  
317 progress in GWAS focused on SCZ and depression has led to a substantial increase in data  
318 concerning East Asian populations, which motivated us to initiate research endeavors focused  
319 exclusively on East Asian populations. Our meta-analysis of depression and SCZ identified a  
320 novel locus at 1q25.2 shared between depression and SCZ in East Asians. The lead single  
321 nucleotide polymorphism (SNP), rs12031894, has been identified as an eQTL influencing the  
322 activity of multiple nearby genes across various tissues. Notably, in a majority of brain tissues,  
323 rs12031894 functions as an eQTL for *ABL2*. *ABL2* encodes a member of the Abelson family of  
324 nonreceptor tyrosine protein kinases, which play pivotal roles in processes such as neurulation  
325 and neurite outgrowth. These kinases act as intermediaries, transmitting signals from axon  
326 guidance cues and growth factor receptors to facilitate cytoskeletal rearrangements. In mature  
327 neurons, Abl kinases are situated in both pre- and postsynaptic compartments, contributing to the  
328 regulation of synaptic stability and plasticity. Given that this locus exhibits an association with  
329 SCZ in European populations as well (Figure 2A), it suggests that the candidate gene *ABL2*  
330 could exert a widespread influence on SCZ, affecting both East Asians and Europeans. In  
331 contrast, the evidence from regional plot (Figure 2B) suggests that this locus might be  
332 exclusively linked to depression in East Asians but not in Europeans, implying the existence of a  
333 complex regulatory mechanism influencing depression across different populations. We then  
334 utilized MTAG to identify shared pleiotropic loci between depression and SCZ in East Asians.

335 MTAG enhances GWAS statistical power by integrating effect estimates from genetically related  
336 traits to derive trait-specific SNP associations, distinguishing it from conventional meta-analysis.  
337 As expected, the aforementioned 1q25.2 locus appeared in both MTAG-DEP and MTAG-SCZ  
338 results, demonstrating the reliability of this novel method.

339  
340 In addition to correlations among psychiatric disorders [27], LDSC analysis has consistently  
341 reported genetic correlations between psychiatric disorders and other diseases or risk factors in  
342 European populations [28, 29]. Therefore, we extended our investigations to East Asian  
343 populations by analyzing GWAS data encompassing 96 phenotypes from the BBJ dataset. Our  
344 analysis revealed positive genetic correlations between depression and obesity-related traits, such  
345 as weight, BMI, T2D, and diabetes medication usage. This aligns with findings from various  
346 epidemiological studies [30-33]. Intriguingly, serum alkaline phosphatase levels also displayed a  
347 positive genetic correlation with depression. This is consistent with the observations of Li et al.,  
348 who reported higher alkaline phosphatase levels in individuals with depression compared to a  
349 control group in their analysis of National Health and Nutrition Examination Survey (NHANES)  
350 data [34]. Furthermore, recent research on U.S. adults has indicated a significant association  
351 between higher alkaline phosphatase levels and an increased risk of depression [35]. Conversely,  
352 we identified negative genetic correlations between depression and two blood biomarkers: HDL  
353 and bilirubin. Low levels of HDL have been extensively studied in connection with depression in  
354 multiple research studies [36-38]. Notably, Liang et al. reported that low HDL levels may be  
355 linked to more severe depressive symptoms in East Asian populations [39]. Additionally, lower  
356 HDL levels have been associated with SCZ and psychosis in various studies [40-42]. Consistent  
357 with this, we observed negative genetic correlations between HDL and SCZ. In contrast, positive  
358 genetic correlations were noted with heart diseases such as angina pectoris, which is in line with  
359 the observation that cardiovascular diseases are prevalent among individuals with SCZ [43-45].  
360 These genetic correlations provide valuable insights into the intricate interplay among depression,  
361 SCZ, metabolic factors, and various health conditions in East Asian populations, guiding further  
362 research and facilitating the identification of shared pleiotropic loci influencing both psychiatric  
363 disorders and related risk factors.

364

365 We next performed MTAG analysis on depression, SCZ, and their associated traits in East Asian  
366 populations. We uncovered ten novel pleiotropic loci for depression through MTAG analysis.  
367 These loci demonstrated connections with traits such as BMI, weight, HDL, TBL, T2D, and  
368 diabetes medications. Seven of these loci exhibited evidence of association with psychiatric traits  
369 in Europeans, including four acting as eQTLs, implying their potential regulatory role in gene  
370 expression. For instance, the lead SNP rs4802269 of the 19q13.32 locus served as an eQTL for  
371 the nearby gene *EML2* in cerebellar hemispheres and for genes *DMPK*, *DMWD*, and *GIPR* in  
372 adipose tissues, hinting at its role in depression and weight regulation. Additionally, 18p11.22  
373 was identified in the analysis of depression and diabetes medication usage. This locus is near the  
374 *MTCLI* gene, which plays a vital role in maintaining Purkinje neuron axon initial segments [46].  
375 Furthermore, among the remaining genetic loci, the 12q24.12 locus is specifically presented in  
376 East Asian populations. Notably, the lead variant rs11066015 within this region exhibits a high  
377 level of LD with a missense variant of gene *ALDH2* (rs671,  $R^2 = 0.95$ ). Our analysis reveals that  
378 the MTAG P-value for rs671 ( $P = 4.46 \times 10^{-20}$ ) is slightly greater than that of rs11066015 ( $P =$   
379  $8.23 \times 10^{-21}$ ), suggesting that the 12q24.12 locus is likely influenced by rs671 in East Asians. This  
380 is of particular interest because the rs671 variant leads to a loss of ALDH2 enzymatic activity,  
381 resulting in adverse reactions to acetaldehyde, which effectively reduce alcohol consumption  
382 [47].

383  
384 In the investigation of SCZ and its related traits, we uncovered four new genetic loci, one of  
385 which was the previously mentioned 1q25.2 locus, shared between depression and SCZ. Notably,  
386 the 5q31.3 locus emerged consistently in the analysis of SCZ and its associated traits, which  
387 included HDL, TCL, and Stable angina pectoris. This locus is situated in close proximity to the  
388 protocadherin gamma gene cluster, which plays a potentially vital role in establishing and  
389 maintaining specific cell-cell connections in the brain. Particularly, the lead SNP rs11956411  
390 acts as an eQTL for *PCDHGA3* in the brain cortex. Moreover, the 4q13.1 locus is located around  
391 the *EPHA5* gene, known for its crucial involvement in brain development and synaptic plasticity.  
392 This locus may also be linked to brain disorders such as bipolar [48] and Dravet syndrome [49].  
393 Similar to the previously mentioned 1q25.2 locus, the 8p21.2 locus centered around the *BNIP3L*  
394 gene surpassed genome-wide significance in the meta-analysis of SCZ GWAS from both  
395 European and East Asian populations. Further investigation of both common and rare genetic

396 variants indicated that *BNIP3L* might serve as a susceptibility gene [50]. However, it's important  
397 to note that eQTL data from GTEx suggests that genotypes of the lead SNP rs117325001 are  
398 significantly associated with the expression level of *SDADIP1* in multiple brain tissues,  
399 implying a potential role of *SDADIP1* in SCZ.

400  
401 This study has limitations. Firstly, due to the constraints of available data within the East Asian  
402 population, our analysis was limited to depression and SCZ. As more comprehensive datasets  
403 become accessible, we will have the opportunity to explore and analyze a broader spectrum of  
404 psychiatric disorders in East Asians, including but not limited to ADHD, Autism, and Anorexia,  
405 which will contribute to a more comprehensive understanding of genetic correlations across  
406 various mental health conditions. Secondly, it's important to acknowledge that the eQTL data  
407 utilized in this study primarily stem from non-East Asian populations, predominantly Europeans.  
408 As a result, the potential cis-eQTL effects observed should ideally be subjected to further  
409 validation within East Asian populations once such data becomes available. This verification  
410 process will enhance the reliability and generalizability of our findings, ensuring that they are  
411 representative of the genetic landscape in East Asian individuals.

412  
413 In conclusion, our study advances our understanding of the genetic mechanisms of depression  
414 and SCZ within East Asian populations by introducing 14 previously undiscovered pleiotropic  
415 risk loci to the existing pool of genetic contributors to psychiatric disorders. It is evident from  
416 this study that additional genetic loci associated with psychiatric disorders in East Asian  
417 populations can be identified through standard GWAS or MTAG analysis with larger sample  
418 sizes. This study warrants further investigation to explore the genetic intricacies of mental health  
419 conditions within this specific population.

420  
421  
422 *Conflict of interest*

423  
424 The authors report no biomedical financial interests or potential conflicts of interest.

425  
426  
427

428 *Acknowledgements*

429

430 This work is supported by the Special Funds of Taishan Scholar Project, China (tsqn202211224),

431 All authors report no biomedical financial interests or potential conflicts of interest.



432 *Tables*

433

434

435 **Table 1. Meta-analysis between depression and schizophrenia in East Asians using PLINK.**

436

SNP	CHR	BP	A1	A2	Depression		Schizophrenia		Meta		Genes	Annotation
					OR	P-value	OR	P-value	OR	P-value		
rs12031894	1	179270314	T	C	0.948	0.001	0.928	1.24E-07	0.937	8.09E-10	SOAT1	new
rs13016665	2	57995348	A	C	1.058	4.11E-04	1.077	3.25E-06	1.067	7.03E-09	VRK2	known
rs58736086	18	77645575	T	C	1.066	0.003	1.097	2.30E-07	1.084	1.28E-08	SLC66A2	known

437

438

439  
440  
441

**Table 2. Multi-trait meta-analysis between depression and risk factors in East Asians.**

Risk factors	SNP	CHR	BP	A1	A2	Trait1		Trait2		MTAG		Genes	Annotation
						beta	P-value	beta	P-value	beta	P-value		
BMI	rs13029479	2	655222	A	G	0.101	0.007	-0.052	5.40E-17	0.035	1.31E-09	TMEM18	new
	rs4802269	19	46167469	G	A	-0.07	4.94E-04	0.042	4.60E-16	-0.021	5.01E-11	GIPR	new
Weight	rs4802269	19	46167469	G	A	-0.07	4.94E-04	0.037	4.30E-17	-0.021	1.25E-08	GIPR	new
HDL	rs11066015	12	112168009	A	G	-0.073	0.001	-0.122	1.60E-109	-0.033	8.23E-21	ALDH2	new
	rs35626903	16	56431613	G	A	-0.071	6.24E-06	-0.028	2.50E-09	-0.018	2.52E-09	AMFR	new
TBL	rs12993249	2	234479377	A	G	-0.055	1.40E-03	-0.123	1.60E-208	-0.044	2.55E-46	USP40	new
	rs10770745	12	20986617	T	G	-0.067	8.73E-04	-0.031	2.60E-13	-0.018	9.50E-09	SLCO1B3 - SLCO1B7	new
	rs11066015	12	112168009	A	G	-0.073	1.47E-03	-0.035	1.30E-15	-0.02	4.66E-09	ALDH2	new
Type 2 diabetes	rs10013800	4	71731236	T	C	-0.092	4.21E-05	0.081	2.21E-10	-0.023	1.19E-11	GRSF1	new
	rs10974438	9	4291928	A	C	0.045	0.005	0.078	2.35E-16	0.017	4.95E-12	GLIS3	new
	rs11074451	16	20336257	A	G	0.1	2.27E-04	0.103	9.12E-11	0.026	5.61E-11	GP2	new
Drugs used in diabetes use measurement	rs6850072	4	71725868	A	G	0.074	2.37E-04	-0.086	1.14E-12	0.022	1.25E-11	GRSF1	new
	rs10974438	9	4291928	A	C	0.045	0.005	0.072	1.91E-12	0.016	1.64E-09	GLIS3	new
	rs11074451	16	20336257	A	G	0.1	2.27E-04	0.114	2.00E-11	0.028	5.46E-11	GP2	new
	rs662872	18	8881068	T	C	-0.084	1.80E-06	0.038	7.27E-04	-0.016	2.02E-08	MTCL1	new

442  
443  
444  
445

Trait1: depression

Trait2: risk factors

446 **Table 3. Novel loci in the multi-trait meta-analysis between schizophrenia and risk factors in East Asians.**

447

Risk factors	SNP	CHR	BP	A1	A2	Trait1		Trait2		MTAG		Genes	Annotations
						beta	P-value	beta	P-value	beta	P-value		
HDL	rs11956411	5	140853856	C	T	-0.097	1.08E-07	-0.02	1.40E-03	-0.035	2.77E-08	PCDHGC3	new
TCL	rs11956411	5	140853856	T	C	0.097	1.08E-07	0.005	1.00E-03	0.036	1.54E-08	PCDHGC3	new
Stable angina pectoris	rs2237079	5	140877905	A	G	-0.085	1.24E-07	0.013	1.94E-03	-0.033	4.65E-08	PCDHGC3	new
Antihypertensive use measurement	rs62297721	4	66504803	A	G	0.074	6.44E-08	0.019	4.81E-03	0.033	1.78E-08	EPHA5	new
Antithrombotic agent use measurement	rs117325001	8	26242272	T	G	0.074	6.62E-08	0.008	8.98E-03	0.033	2.49E-08	BNIP3L	new
aspirin use measurement	rs117325001	8	26242272	T	G	0.074	6.62E-08	0.008	9.52E-04	0.033	2.44E-08	BNIP3L	new
Vasodilators used in cardiac diseases use measurement	rs61824368	1	179298809	T	C	-0.075	1.19E-07	0.013	2.51E-03	-0.033	3.26E-08	SOAT1	new

448

449 Trait1: depression

450 Trait2: risk factors

451 *Figures*

452

453

454 **Figure 1. Genetic correlation network between psychiatric disorders and risk factors.**

455 (A) genetic correlation network of depression. (B) genetic correlation network of SCZ.

456 Genetically correlated traits and diseases are clustered close together. Each circle represents a

457 trait, and each edge represents a significant genetic correlation ( $P < 0.05$ ). Positive and

458 negative genetic correlations are indicated by color according to the key. SCZ, SCZ; SAP

459 (biomarker), serum alkaline phosphatase levels; TBL, total bilirubin levels; T2D, Type 2

460 diabetes; DD, Drugs used in diabetes use measurement; TCL, total cholesterol levels; AP, angina

461 pectoris; CHC, chronic hepatitis C infection Chronic sinusitis; SAP (disease), stable angina

462 pectoris; AARS, agents acting on the renin-angiotensin system use measurement; NSIA, Non-

463 steroidal anti-inflammatory and antirheumatic product use measurement; AnUM,

464 Antihypertensive use measurement; AAUM, Antithrombotic agent use measurement; BBAU,

465 Beta blocking agent use measurement; CCBU, Calcium channel blocker use measurement;

466 PUGRD, Peptic ulcer and gastro-oesophageal reflux disease (GORD) drug use measurement;

467 HCRI, HMG CoA reductase inhibitor use measurement; Asum, Aspirin use measurement;

468 VUCD, Vasodilators used in cardiac diseases use measurement.

469

470

471 **Figure 2. Co-localization for psychiatric disorders in East Asians and Europeans at 1q25.2.**

472 Left panel showed the merged association plot for psychiatric disorder in East Asians and

473 Europeans, and right panel showed the regional plots for East Asians and Europeans respectively.

474 Panel A shows the regional plots for SCZ and points are colored by LD with respect to

475 rs12031894, which is labeled with a purple diamond. Panel B shows the regional plots for

476 depression and points are colored by LD with respect to rs12031894, which is labeled with a

477 purple diamond.

478

## 479 *References*

- 480 1. Cieza, A., et al., *Global estimates of the need for rehabilitation based on the Global*  
481 *Burden of Disease study 2019: a systematic analysis for the Global Burden of Disease*  
482 *Study 2019*. *Lancet*, 2021. **396**(10267): p. 2006-2017.
- 483 2. Plomin, R., M.J. Owen, and P. McGuffin, *The genetic basis of complex human behaviors*.  
484 *Science*, 1994. **264**(5166): p. 1733-9.
- 485 3. Polderman, T.J., et al., *Meta-analysis of the heritability of human traits based on fifty*  
486 *years of twin studies*. *Nat Genet*, 2015. **47**(7): p. 702-9.
- 487 4. Smoller, J.W., et al., *Psychiatric genetics and the structure of psychopathology*. *Mol*  
488 *Psychiatry*, 2019. **24**(3): p. 409-420.
- 489 5. Anttila, V., et al., *Analysis of shared heritability in common disorders of the brain*.  
490 *Science*, 2018. **360**(6395).
- 491 6. *Genomic Relationships, Novel Loci, and Pleiotropic Mechanisms across Eight Psychiatric*  
492 *Disorders*. *Cell*, 2019. **179**(7): p. 1469-1482.e11.
- 493 7. Sullivan, P.F., M.C. Neale, and K.S. Kendler, *Genetic epidemiology of major depression:*  
494 *review and meta-analysis*. *Am J Psychiatry*, 2000. **157**(10): p. 1552-62.
- 495 8. Lichtenstein, P., et al., *Common genetic determinants of schizophrenia and bipolar*  
496 *disorder in Swedish families: a population-based study*. *Lancet*, 2009. **373**(9659): p. 234-  
497 9.
- 498 9. Sullivan, P.F., K.S. Kendler, and M.C. Neale, *Schizophrenia as a complex trait: evidence*  
499 *from a meta-analysis of twin studies*. *Arch Gen Psychiatry*, 2003. **60**(12): p. 1187-92.
- 500 10. Owen, M.J., A. Sawa, and P.B. Mortensen, *Schizophrenia*. *Lancet*, 2016. **388**(10039): p.  
501 86-97.
- 502 11. Sullivan, P.F., et al., *Psychiatric Genomics: An Update and an Agenda*. *Am J Psychiatry*,  
503 2018. **175**(1): p. 15-27.
- 504 12. Als, T.D., et al., *Depression pathophysiology, risk prediction of recurrence and comorbid*  
505 *psychiatric disorders using genome-wide analyses*. *Nat Med*, 2023. **29**(7): p. 1832-1844.
- 506 13. Trubetskov, V., et al., *Mapping genomic loci implicates genes and synaptic biology in*  
507 *schizophrenia*. *Nature*, 2022. **604**(7906): p. 502-508.
- 508 14. Giannakopoulou, O., et al., *The Genetic Architecture of Depression in Individuals of East*  
509 *Asian Ancestry: A Genome-Wide Association Study*. *JAMA Psychiatry*, 2021. **78**(11): p.  
510 1258-1269.
- 511 15. Lam, M., et al., *Comparative genetic architectures of schizophrenia in East Asian and*  
512 *European populations*. *Nat Genet*, 2019. **51**(12): p. 1670-1678.
- 513 16. Turley, P., et al., *Multi-trait analysis of genome-wide association summary statistics*  
514 *using MTAG*. *Nat Genet*, 2018. **50**(2): p. 229-237.
- 515 17. Gong, W., et al., *Role of the Gut-Brain Axis in the Shared Genetic Etiology Between*  
516 *Gastrointestinal Tract Diseases and Psychiatric Disorders: A Genome-Wide Pleiotropic*  
517 *Analysis*. *JAMA Psychiatry*, 2023. **80**(4): p. 360-370.
- 518 18. Sakaue, S., et al., *A cross-population atlas of genetic associations for 220 human*  
519 *phenotypes*. *Nat Genet*, 2021. **53**(10): p. 1415-1424.

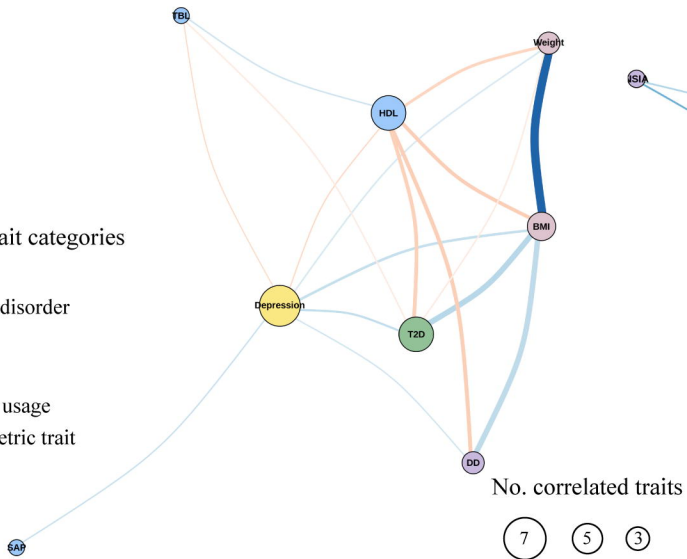
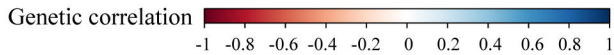
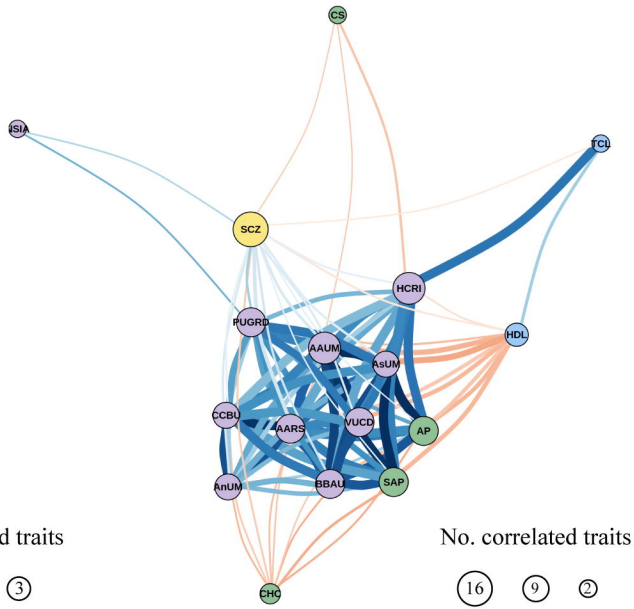
- 520 19. *Sparse whole-genome sequencing identifies two loci for major depressive disorder.*  
521 Nature, 2015. **523**(7562): p. 588-91.
- 522 20. Buniello, A., et al., *The NHGRI-EBI GWAS Catalog of published genome-wide association*  
523 *studies, targeted arrays and summary statistics 2019.* Nucleic Acids Res, 2019. **47**(D1): p.  
524 D1005-d1012.
- 525 21. Bulik-Sullivan, B.K., et al., *LD Score regression distinguishes confounding from*  
526 *polygenicity in genome-wide association studies.* Nat Genet, 2015. **47**(3): p. 291-5.
- 527 22. Shi, H., et al., *Local Genetic Correlation Gives Insights into the Shared Genetic*  
528 *Architecture of Complex Traits.* Am J Hum Genet, 2017. **101**(5): p. 737-751.
- 529 23. Bulik-Sullivan, B., et al., *An atlas of genetic correlations across human diseases and*  
530 *traits.* Nat Genet, 2015. **47**(11): p. 1236-41.
- 531 24. Lee, S.H., et al., *Genetic relationship between five psychiatric disorders estimated from*  
532 *genome-wide SNPs.* Nat Genet, 2013. **45**(9): p. 984-94.
- 533 25. Dönertaş, H.M., et al., *Common genetic associations between age-related diseases.* Nat  
534 Aging, 2021. **1**(4): p. 400-412.
- 535 26. *Identification of risk loci with shared effects on five major psychiatric disorders: a*  
536 *genome-wide analysis.* Lancet, 2013. **381**(9875): p. 1371-1379.
- 537 27. Romero, C., et al., *Exploring the genetic overlap between twelve psychiatric disorders.*  
538 Nat Genet, 2022. **54**(12): p. 1795-1802.
- 539 28. Pouget, J.G., et al., *Cross-disorder analysis of schizophrenia and 19 immune-mediated*  
540 *diseases identifies shared genetic risk.* Hum Mol Genet, 2019. **28**(20): p. 3498-3513.
- 541 29. Cheng, S., et al., *An atlas of genetic correlations between psychiatric disorders and*  
542 *human blood plasma proteome.* Eur Psychiatry, 2020. **63**(1): p. e17.
- 543 30. Jung, S.J., et al., *Association between body size, weight change and depression:*  
544 *systematic review and meta-analysis.* Br J Psychiatry, 2017. **211**(1): p. 14-21.
- 545 31. Quek, Y.H., et al., *Exploring the association between childhood and adolescent obesity*  
546 *and depression: a meta-analysis.* Obes Rev, 2017. **18**(7): p. 742-754.
- 547 32. Mannan, M., et al., *Is there a bi-directional relationship between depression and obesity*  
548 *among adult men and women? Systematic review and bias-adjusted meta analysis.*  
549 Asian J Psychiatr, 2016. **21**: p. 51-66.
- 550 33. Fulton, S., et al., *The menace of obesity to depression and anxiety prevalence.* Trends  
551 Endocrinol Metab, 2022. **33**(1): p. 18-35.
- 552 34. Li, X., et al., *Relationship between depressive disorders and biochemical indicators in*  
553 *adult men and women.* BMC Psychiatry, 2023. **23**(1): p. 49.
- 554 35. Liang, Y., et al., *Association of serum alkaline phosphatase and depression in US adults: a*  
555 *population-based cross-sectional study.* Front Psychiatry, 2023. **14**: p. 1131105.
- 556 36. Lehto, S.M., et al., *Low HDL cholesterol associates with major depression in a sample*  
557 *with a 7-year history of depressive symptoms.* Prog Neuropsychopharmacol Biol  
558 Psychiatry, 2008. **32**(6): p. 1557-61.
- 559 37. Melin, E.O., et al., *Lower HDL-cholesterol, a known marker of cardiovascular risk, was*  
560 *associated with depression in type 1 diabetes: a cross sectional study.* Lipids Health Dis,  
561 2019. **18**(1): p. 65.

- 562 38. Ramachandran Pillai, R., et al., *Low serum levels of High-Density Lipoprotein cholesterol*  
563 *(HDL-c) as an indicator for the development of severe postpartum depressive symptoms.*  
564 *PLoS One*, 2018. **13**(2): p. e0192811.
- 565 39. Liang, Y., et al., *Association between lipid profile and depressive symptoms among*  
566 *Chinese older people: mediation by cardiovascular diseases?* *Int J Behav Med*, 2014.  
567 **21**(4): p. 590-6.
- 568 40. Herceg, D., et al., *Aggression in Women with Schizophrenia Is Associated with Lower HDL*  
569 *Cholesterol Levels.* *Int J Mol Sci*, 2022. **23**(19).
- 570 41. Gjerde, P.B., et al., *Increase in serum HDL level is associated with less negative*  
571 *symptoms after one year of antipsychotic treatment in first-episode psychosis.* *Schizophr*  
572 *Res*, 2018. **197**: p. 253-260.
- 573 42. Anjum, S., et al., *Metabolic syndrome in drug naïve schizophrenic patients.* *Diabetes*  
574 *Metab Syndr*, 2018. **12**(2): p. 135-140.
- 575 43. Cohen, H., et al., *Association of autonomic dysfunction and clozapine. Heart rate*  
576 *variability and risk for sudden death in patients with schizophrenia on long-term*  
577 *psychotropic medication.* *Br J Psychiatry*, 2001. **179**: p. 167-71.
- 578 44. Mitchell, A.J., et al., *Is the prevalence of metabolic syndrome and metabolic*  
579 *abnormalities increased in early schizophrenia? A comparative meta-analysis of first*  
580 *episode, untreated and treated patients.* *Schizophr Bull*, 2013. **39**(2): p. 295-305.
- 581 45. Veeneman, R.R., et al., *Exploring the Relationship Between Schizophrenia and*  
582 *Cardiovascular Disease: A Genetic Correlation and Multivariable Mendelian*  
583 *Randomization Study.* *Schizophr Bull*, 2022. **48**(2): p. 463-473.
- 584 46. Satake, T., et al., *MTCL1 plays an essential role in maintaining Purkinje neuron axon*  
585 *initial segment.* *Embo j*, 2017. **36**(9): p. 1227-1242.
- 586 47. Chen, C.H., et al., *Targeting aldehyde dehydrogenase 2: new therapeutic opportunities.*  
587 *Physiol Rev*, 2014. **94**(1): p. 1-34.
- 588 48. Noor, A., et al., *Copy number variant study of bipolar disorder in Canadian and UK*  
589 *populations implicates synaptic genes.* *Am J Med Genet B Neuropsychiatr Genet*, 2014.  
590 **165b**(4): p. 303-13.
- 591 49. Lin, W.D., et al., *Molecular aspects of Dravet syndrome patients in Taiwan.* *Clin Chim*  
592 *Acta*, 2013. **421**: p. 34-40.
- 593 50. Zhou, J., et al., *Identification of rare and common variants in BNIP3L: a schizophrenia*  
594 *susceptibility gene.* *Hum Genomics*, 2020. **14**(1): p. 16.
- 595

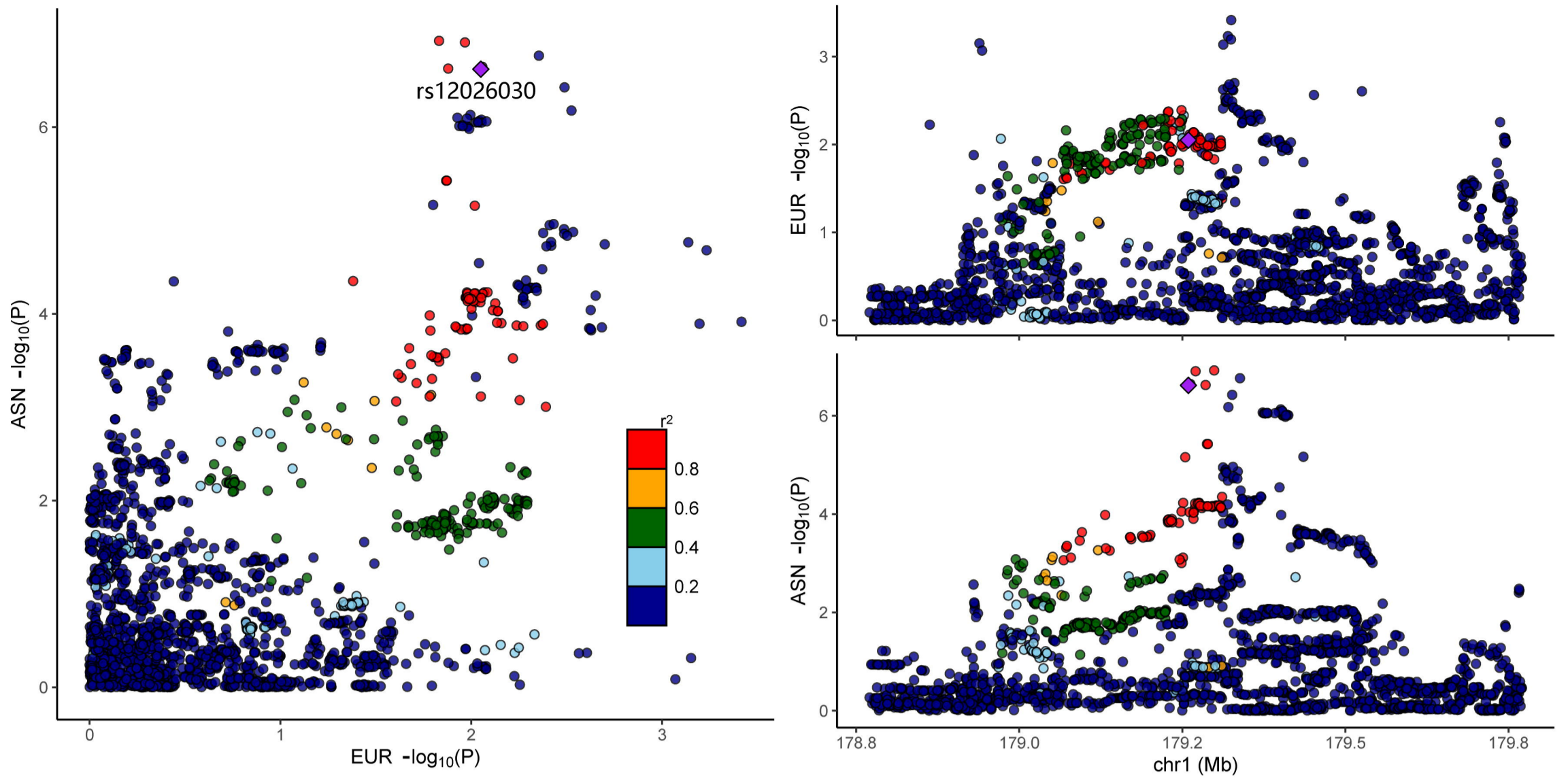
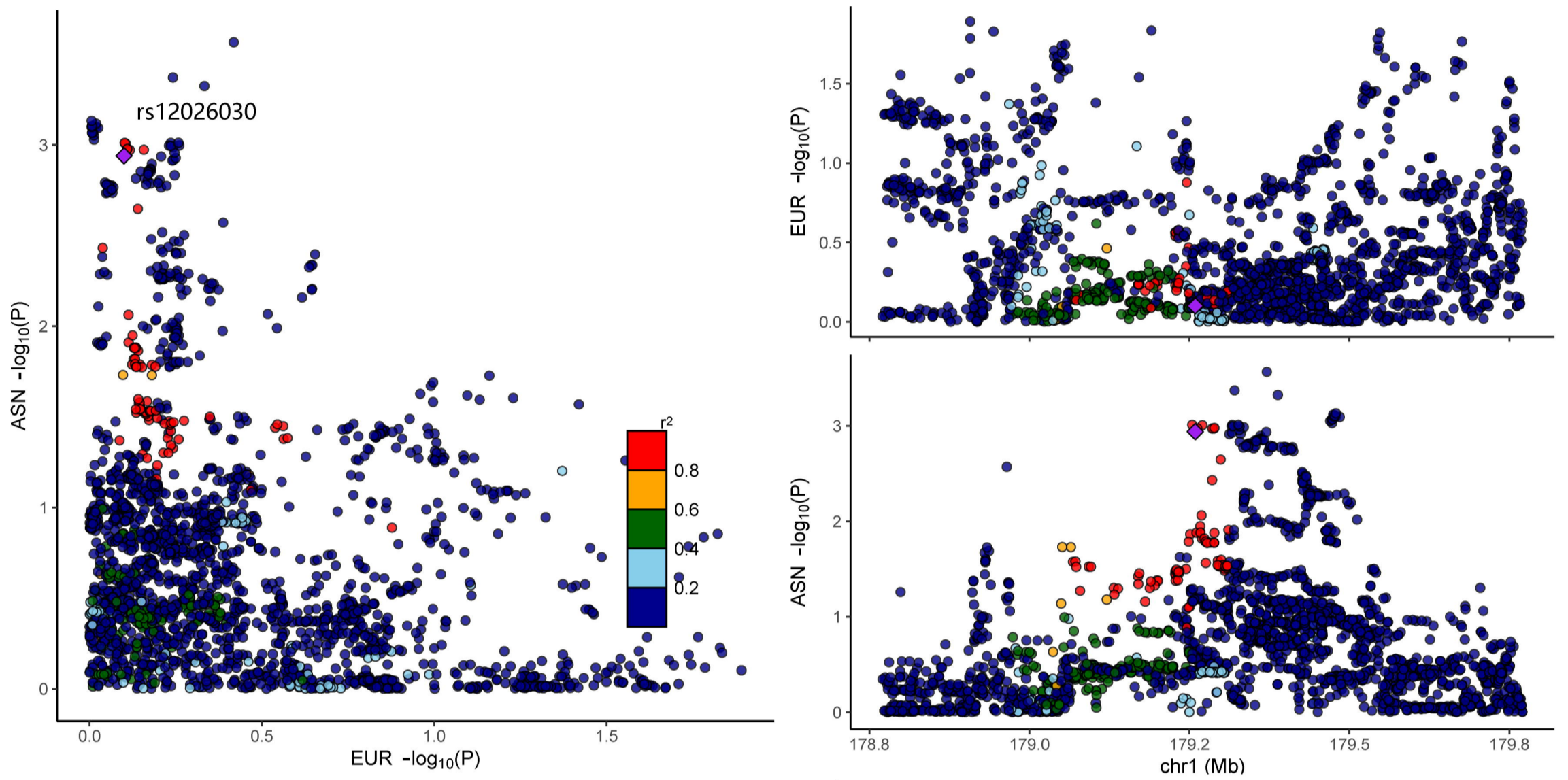
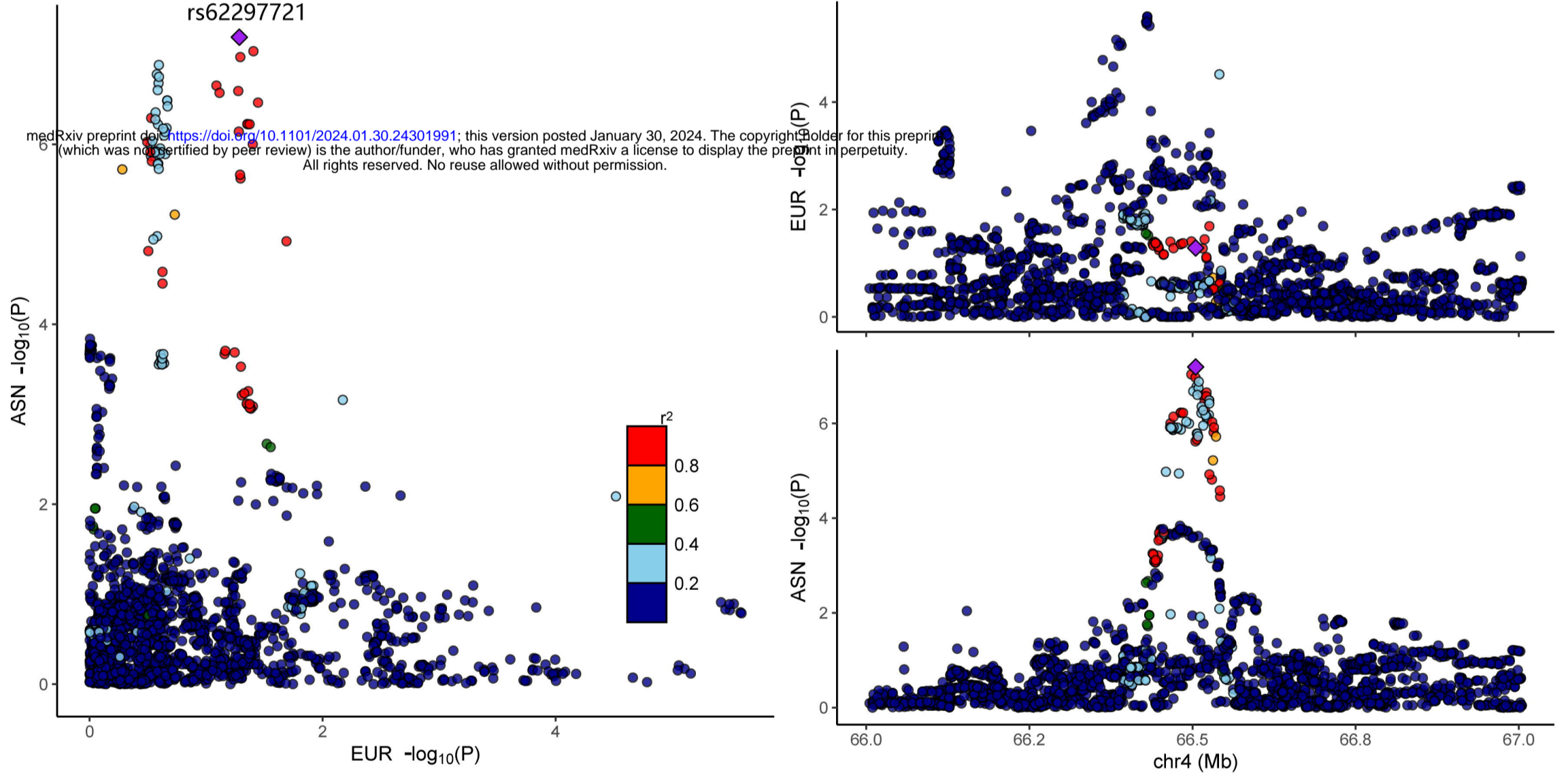
**A**

Quantitative trait categories  
and diseases

- Psychiatric disorder
- Disease
- Biomarker
- Medication usage
- Anthropometric trait

**B**



**A****B****C****D**