

1 Remote monitored physiological response to therapeutic escalation and clinical worsening in patients with  
2 pulmonary arterial hypertension

3  
4 Jennifer T Middleton,<sup>1,2,3</sup> Sarah Binmahfooz,<sup>1</sup> Hamza Zafar,<sup>1,2,3</sup> Junaid Patel,<sup>1</sup> Cameron Ashraf,<sup>1</sup> Jake,<sup>1</sup>  
5 Dharshan Neelam-Naganathan,<sup>1</sup> Christian Battersby,<sup>1,2</sup> Charlotte Pearson,<sup>1</sup> Chloe Roddis,<sup>2</sup> Stefan Roman,<sup>2</sup>  
6 Jenna Ablott,<sup>2</sup> Ashwin Reddy,<sup>4,5</sup> Lisa Watson,<sup>2</sup> Jennifer Dick,<sup>1</sup> Andreas Kyriacou,<sup>3</sup> Paul D Morris,<sup>1,3</sup>  
7 Frances Varian,<sup>1,2,3</sup> Neil Hamilton,<sup>2</sup> Iain Armstrong,<sup>2</sup> Judith Hurdman,<sup>1,2</sup> Abdul Hameed,<sup>1</sup> Athanasios  
8 Charalampopoulos,<sup>1,2</sup> Theophile Bigirimurame,<sup>6</sup> Shaun K. W. Hiu,<sup>6</sup> James M. S. Wason,<sup>6</sup> Andrew J  
9 Swift,<sup>1,2</sup> A A Roger Thompson,<sup>1,2</sup> Robin Condliffe,<sup>1,2</sup> Charlie Elliot,<sup>1,2</sup> David G Kiely,<sup>1,2</sup> Mark Toshner,<sup>4,5</sup>  
10 Alexander M K Rothman<sup>1,2,3</sup>

11  
12 On behalf of the United Kingdom Pulmonary Hypertension (UNIPHY) Clinical Trials Network and the  
13 National Cohort Study of Idiopathic and Heritable PAH

14 <sup>1</sup>Department of Clinical Medicine, The University of Sheffield, Sheffield, United Kingdom.

15 <sup>2</sup>Sheffield Pulmonary Vascular Disease Unit, Royal Hallamshire Hospital, Sheffield Teaching Hospitals  
16 NHS Foundation Trust, Sheffield, United Kingdom.

17 <sup>3</sup>Department of Cardiology, Northern General Hospital, Sheffield Teaching Hospitals NHS Foundation  
18 Trust, Sheffield, UK

19 <sup>4</sup>Heart and Lung Research Institute, Department of Medicine, University of Cambridge, Cambridge, UK

20 <sup>5</sup>Royal Papworth Hospital NHS Foundation Trust, Cambridgeshire, UK

21 <sup>6</sup>Population Health Sciences Institute, Newcastle University, UK

22 Corresponding author: [a.rothman@sheffield.ac.uk](mailto:a.rothman@sheffield.ac.uk)

23 The Medical School, Beech Hill Road, Sheffield, S10 2RX, United Kingdom

24

25 Main text (body, references and figure legends): words 4990; Figures: 7; Tables: 2

26

1 Funding

2 Wellcome Trust Clinical Research Career Development Fellowship (AMKR: 206632/Z/17/Z; AS:  
3 205188/Z/16/Z, PDM: 214567/Z/18/Z), BHF Intermediate Fellowship (AART: FS/18/13/33281), MRC  
4 Confidence in Concepts (AMKR), Medtronic External Research Program Award (AMKR), Donald Heath  
5 Research Fellowship (JM), MRC Experimental Medicine grant (AMKR/JTM/MT/DGK: MR/W026279/1),  
6 BHF Clinical Research Training Fellowship (HZ/AMKR: FS/CRTF/23/24465), NIHR Applied Research  
7 Collaboration North East and North Cumbria (TB: NIHR2001), National Institute for Health Research  
8 (SKWH: NIHR302746; JMSW: NIHR301614). The research was carried out at the National Institute for  
9 Health and Care Research (NIHR) Sheffield and Cambridge cardiorespiratory Biomedical Research  
10 Centres. AR is grateful to Richard Hughes, whose generous philanthropic support has helped to make this  
11 work possible.

12

13 Disclosures

14 AMKR: Research funding: Wellcome Trust Clinical Research Career Development Fellowship  
15 (206632/Z/17/Z), Medical Research Council (UK) Experimental Medicine Award (MR/W026279/1), NIHR  
16 Biomedical Research Centre Sheffield, Contribution in kind: Medtronic, Abbott, Endotronix, Novartis,  
17 Janssen. Research support and consulting: NXT Biomedical, Endotronix, SoniVie, Neptune, Gradient. MT:  
18 Research funding: NIHR Biomedical Research Centre Cambridge, NIHR HTA. Personal support: GCK and  
19 Jansen. DSMB: ComCov, FluCov. PDM: personal support: Abbott. DGK has received personal funding  
20 from the NIHR Biomedical Research Centre Sheffield, research funding from Ferrer, GSK and Janssen and  
21 consulting and educational funding from Acceleron, Altivant, Ferrer, Gossamer, Janssen, MSD and United  
22 Therapeutics. All others: none.

23

24 Author contributions: JTM and AMKR conceived and designed the study. JTM, SB, HZ, JP, CA, JT, DNN,  
25 CB, CP, CR, SR, JA, FV, NH, IA, JH, AH, AC, AJS, AART, RC, CA, DGK, MT and AMKR collected the  
26 data. JTM, SB, HZ, JP, CA, JT, DNN, CB, FV, AJS, TB, SKWH, JMSW, AART, RC, CE, DGK and

1 AMKR performed data analysis and interpretation. All authors provided substantial input to the manuscript  
2 and approved the final version.

3

#### 4 **Plain Language Summary**

5 This study was undertaken in 87 patients diagnosed with pulmonary arterial hypertension (PAH).  
6 Treatments in PAH are based on a risk classification system with the aim of achieving a low-risk group.  
7 The usual in-hospital method uses the COMPERA 2.0 risk model which combines a field walk test, NT-  
8 proBNP (blood test) and World Health Organisation Functional Classification (WHO FC) which  
9 categorises level of breathlessness during everyday activity. The evidence for this is linked to risk of death,  
10 classified into four groups: low, intermediate-low, intermediate-high, and high risk. The aim of this study  
11 was to see whether newer medical technologies could grade risk in a remote setting.

12

13 The two technologies used in this study are safe and approved for use. The first is a pulmonary artery  
14 pressure monitor (CardioMEMS) that measures the pressure in the lungs. It is implanted during right heart  
15 catheterisation (RHC). Measurements can be taken at home and sent securely to a medical database for the  
16 healthcare team to view. Please see the plain graphical summary figure for more information on the  
17 CardioMEMS device. The second technology is an insertable cardiac monitor (ICM), which is implanted  
18 under the skin using local anaesthetic, and sends remote readings such as physical activity and heart rate.  
19 Both technologies were implanted into a subgroup of patients to investigate whether these technologies  
20 could help classify risk from home, and whether they could detect response to new treatments, or signs that  
21 a condition may be getting worse. 28 patients with both these devices took part in the study and a further 59  
22 had an ICM only. A remote risk score was calculated using 3 things: physical activity, heart rate reserve  
23 (HRR: difference between maximum heart rate for age and resting heart rate) from the ICM and total  
24 pulmonary resistance (TPR: a measure of the pressure and flow through the lungs) from the CardioMEMS.  
25 The results showed that these measures could classify risk as well as the in-hospital COMPERA 2.0 model.  
26 The remote risk score detected response to treatment as early as 6 days and clinical worsening as early as  
27 12 days before an event (e.g. hospitalisation) in the group observed.

## 1 **Patient and Public Involvement and Engagement (PPIE)**

2 The study was developed following the 2017 Pulmonary Hypertension Association UK (PHA UK) survey  
3 in which 39% of patients reported difficulties attending hospital for appointments.<sup>1</sup> A subsequent remote  
4 monitoring survey (2021) was positively received, with key themes highlighting benefits of ‘improving  
5 [disease] understanding’, ‘personalising treatment’, and ‘reducing interruptions or unnecessary visits’.<sup>2</sup>  
6 Patients from the study and volunteers from PHA UK provided feedback on the results of the research.  
7 Amendments were made to the lay summary and a graphical summary was introduced following this  
8 feedback. There was universal agreement that participation in the study was beneficial to patients and future  
9 research. Participants involved in the study agreed the devices offer enhanced accessibility to non-invasive  
10 risk stratification and improvements in home-based care with minimal personal effort. Furthermore, the  
11 minimally invasive devices offered empowerment, confidence, and reassurance, with “opportunity to play  
12 an active role in [their] health and personal wellbeing” and “greater confidence with day-to-day living”. No  
13 incentives were offered for the PPIE in this study.

1 **Abstract**

2 *Background:* International guidelines recommend regular, hospital-based risk stratification to aid  
3 assessment and management of patients with pulmonary arterial hypertension. Technological advances  
4 enable daily, remote measurement of cardiopulmonary physiology and physical activity that have the  
5 potential to provide early evaluation of therapeutic efficacy and facilitate early intervention based on the  
6 physiological changes that precede clinical events. We sought to investigate the relationship between  
7 remote-monitored parameters and the COMPERA 2.0 4-strata risk score and evaluate physiological  
8 changes following therapeutic escalation and prior to clinical worsening events.

9  
10 *Methods:* Eighty-seven patients with pulmonary arterial hypertension were implanted with insertable  
11 cardiac monitors including a nested set of twenty-eight patients also implanted with a pulmonary artery  
12 pressure monitor. Hospital measured and remote monitored physiological parameters were evaluated by 4-  
13 strata COMPERA 2.0 risk score. A time stratified bidirectional case-crossover study was undertaken to  
14 evaluate physiological changes at the time of therapy escalation and clinical worsening events in the nested  
15 group with insertable cardiac and pulmonary artery pressure monitors. A summary measure of remote  
16 physiological risk was calculated as the sum of the z-score of physical activity, heart rate reserve and total  
17 pulmonary resistance and applied to remote monitoring data.

18  
19 *Results:* Insertable cardiac monitor-measured physical activity, heart rate variability and heart rate reserve  
20 were decreased and night heart rate increased in patients with increasing COMPERA 2.0 score ( $p < 0.0001$ ).  
21 Daily physical activity was related to incremental shuttle walk distance ( $p < 0.0001$ ) but not six-minute walk  
22 distance. Following therapeutic escalation mean pulmonary artery pressure and total pulmonary resistance  
23 were reduced and cardiac output, and physical activity increased at 7, 4, 22, and 42 days, respectively  
24 ( $p < 0.05$ ). Clinical worsening events were preceded by increased mean pulmonary artery pressure and total  
25 pulmonary resistance, reduced cardiac output and physical activity ( $p < 0.05$ ). Applying a remote  
26 physiological risk score to remote-monitored data demonstrated that following a clinically indicated

1 increase in therapy, a reduction in physiological risk was identifiable at day three, and preceding a clinical  
2 worsening event, an increase in adverse physiology was observable at day - 16.

3

4 *Conclusion:* Approved devices accurately identify change in physiology in patients with pulmonary arterial  
5 hypertension following therapeutic intensification and before clinical worsening. A remote assessment of  
6 haemodynamic and cardiac monitoring may facilitate personalised, proactive medicine and innovative  
7 clinical study designs.

1 Condensed Abstract

2 Technological advances provide the capacity to remotely measure cardiopulmonary physiology. In 87  
3 patients with insertable cardiac monitors and a nested group 28 patients with pulmonary arterial  
4 hypertension implanted with pulmonary artery pressure monitors, significant improvements in  
5 cardiopulmonary function and physical activity were observed following therapeutic escalation and  
6 preceding clinical worsening events. The study highlights the potential of remote monitoring for  
7 personalised management, early therapeutic evaluation, and innovative clinical trial designs in patients with  
8 pulmonary hypertension.

9

10 Twitter (X) post

11 #PHPEEPS Remote monitoring shows improved cardiopulmonary function just 7 days after therapy  
12 adjustments, and adverse changes 12 days before a worsening event. The future of personalised care?

13

14 Learning points

15 Pulmonary artery pressure monitor and insertable cardiac monitors offer safe and reliable data capture of  
16 physiological risk markers that change in response to therapy and preceding clinical worsening events.

17

18 Remote monitored measures of physiology differ between patients with low, int-low, int-high and high risk  
19 of one-year mortality stratified by COMPERA 2.0 4-strata risk model.

20

21 Remote risk evaluation may facilitate personalised medicine and proactive management for early evaluation  
22 of therapeutic efficacy and detection of clinical worsening.

## 1 **Introduction:**

2 Pulmonary arterial hypertension is a life-shortening condition driven by remodelling and constriction of  
3 pulmonary arterioles that leads to increased pulmonary vascular resistance and pulmonary artery pressure,  
4 and right heart failure.<sup>3</sup> Licensed therapies target vasoconstriction and vasodilatation of the pulmonary  
5 vasculature<sup>4</sup> and with treatment 5-year survival is ~70%.<sup>5-7</sup> However, not all patients respond to therapy,<sup>8</sup>  
6 side effects are common.<sup>9,10</sup>

7

8 European guidelines provide an expert-opinion-based risk-stratification score to aid treatment decisions  
9 based on hospital-based assessment of symptoms, exercise capacity, and right ventricular function.<sup>11</sup>

10 Patients who improve to a low-risk profile at follow-up have increased survival compared to those who fail  
11 to demonstrate clinical improvement.<sup>12</sup> Current clinical approaches aim to improve and maintain patients in  
12 the low-risk group<sup>13</sup> and as such, there is significant interest in the identification of remote measures that  
13 may offer the potential for frequent, early evaluation of clinical efficacy following treatment change or  
14 identify the physiological changes that precede clinical deterioration.

15

16 Technological advances have led to the development of minimally invasive devices that measure  
17 cardiopulmonary haemodynamics,<sup>14,15</sup> cardiac physiology<sup>16</sup> and physical activity,<sup>17</sup> daily, from the patient's  
18 home. In patients with pulmonary arterial hypertension, we undertook a preliminary study to evaluate the  
19 capacity of advanced haemodynamic and cardiac monitoring devices to detect changes in physiology  
20 following clinically indicated therapeutic escalation and prior to clinical worsening events.



1 **Methods:**

2 *Advanced haemodynamic and insertable cardiac monitoring*

3 Patients with a confirmed diagnosis of PAH, in WHO functional class (FC) III were enrolled in Feasibility  
4 of Novel Clinical Trial Infrastructure, Design and Technology for Early Phase Studies in Patients with  
5 Pulmonary Hypertension (FIT-PH, 19/YH/0354) and the UK National Cohort Study of Idiopathic and  
6 Heritable Pulmonary Arterial Hypertension (13/EE/0203). A pulmonary artery pressure monitor  
7 (CardioMems, Abbott) and insertable cardiac monitor (LinQ, Medtronic) were implanted using standard  
8 techniques and remote monitoring data collected via regulatory approved online portals.

9

10 Devices and data handling

11 Cardiac output was calculated using a proprietary algorithm (Abbott) based on the pulmonary artery  
12 pressure waveform, mean pulmonary artery pressure, heart rate, and a reference cardiac output measured at  
13 implant that has been tested against clinical right heart catheter data, demonstrating non-inferiority to  
14 clinically used cardiac output measurement,<sup>18,19</sup> and utility in patients with pulmonary arterial  
15 hypertension.<sup>20</sup> Physical activity was measured from the single axis accelerometer in the insertable cardiac  
16 monitor. A minute is considered active if a threshold is reached incorporating deflection number and  
17 magnitude, which has proven responsive in capturing activities of daily living that correlate with clinical  
18 events in patients with heart failure and/or atrial fibrillation.<sup>17,21–24</sup>

19

20 Clinical management and events

21 Assessment of baseline risk was made using the 4-strata COMPERA 2.0 criteria.<sup>11,12</sup> A multi-professional  
22 team (pulmonologist, cardiologist, pharmacist, and specialist nurse) reviewed data, adjudicated events and  
23 directed treatment. Disease progression/worsening was defined as disease-related hospitalisation, escalation  
24 of disease-specific therapy, or the need for lung transplantation as judged by the physician,<sup>9,10,25</sup> and as a  
25 decrease from baseline of at least 15% in the incremental shuttle walk test accompanied by a worsening in  
26 WHO-FC.<sup>9,10,25</sup>

27

1    Waveform evaluation

2    Suspected artefactual readings were identified by a proprietary automatic algorithm or those two SD from  
3    the rolling mean pulmonary artery pressure. Manual review of the pressure waveform was undertaken by  
4    two qualified physicians to identify those resulting from non-rested physiological state, post walk-test,  
5    ventricular ectopic beats, transmission failure, incorrect frequency detection or damped waveforms  
6    (Supplemental Figure 1).

7

8    Study Design

9    A time-stratified bidirectional case–crossover approach was taken to provide remote monitoring data from  
10   the time of clinical events and individual patient matched control periods.<sup>26</sup> Control data comprises  
11   randomly selected time periods of a matched duration not overlapping event periods (Supplemental Figure  
12   2).

13

14   Remote risk score

15   The remote risk score was calculated as  $z_{\text{total pulmonary resistance}} - z_{\text{heart rate reserve}} - z_{\text{heart rate}}$   
16    $z_{\text{variability}} - z_{\text{physical activity}}$  and applied to remote monitoring data at the time of clinical.

17

18   Statistical Analysis

19   Data were tested for normality using the Kolmogorov–Smirnov test and statistical comparisons made using  
20   Students' t-test and ANOVA as appropriate. Statistical analysis was performed using IBM SPSS version  
21   27 and Prism 9 for macOS (version 9.3.0).

1 **Results:**

2 *Study population device implantation*

3 Between 26<sup>th</sup> of Jan 2020 and 25<sup>th</sup> of May 2022, 87 patients with pulmonary arterial hypertension were  
4 implanted with an insertable cardiac monitor, 28 of whom were implanted with a pulmonary artery pressure  
5 monitor (table 1). The mean age was 48.9 years +/-18.1, 21 patients (75%) were women and 25 (89%) were  
6 Caucasian. There were no device-related serious adverse events and two device-related adverse events (one  
7 minor haemoptysis and one insertable cardiac monitor wound dehiscence at day 3, supplemental table 1).  
8 Following implantation, data completeness was 100% for the insertable cardiac monitor and 91.7% for the  
9 pulmonary artery pressure monitor (supplemental figure 3).

10

11 *Relationship of baseline haemodynamic measures to 4-strata COMPERA 2.0 risk model*

12 At enrolment, WHO functional class and NT-proBNP were increased with COMPERA 2.0 risk  
13 classification group (figure 1A-B), however ECG measured heart rate differentiated only those in  
14 intermediate-low risk compared to those at high risk (figure 1C). Similarly, pulmonary artery pressure was  
15 increased in the high-risk group compared to low and int-low groups and total pulmonary resistance was  
16 increased in the high-risk group compared to low, int-low and int-high groups. Cardiac output did not differ  
17 between risk groups (figure 1D-F).

18

19 *Relationship of remote monitored cardiac and physical activity measures to 4-strata COMPERA 2.0 risk*  
20 *model*

21 Over the six months following implantation, remote-monitored cardiac measures accurately identified  
22 differences in physiology in patient groups stratified by 4-strata COMPERA 2.0 risk model. Night heart  
23 rate increased, and heart rate reserve (day heart rate – night heart rate) and heart rate variability reduced  
24 with each COMPERA 2.0 risk group (figure 2). A u-shaped relationship was observed between increasing  
25 risk and day heart rate (figure 2). Notably a negative bias was observed when comparing ECG-measured  
26 heart rate and night heart rate measured by insertable cardiac monitor (figure 2E). Remote monitored  
27 physical activity was reduced with increased COMPERA 2.0 risk (Figure 3A). A correlation between

1 physical activity and incremental shuttle walk distance was present, however, no relationship was identified  
2 with 6-minute walk distance (figure 3B-C).

3  
4 *Physiological response to therapeutic escalation in patients with pulmonary arterial hypertension*

5 In patients implanted with both an insertable cardiac monitor and pulmonary artery pressure monitor  
6 survival was 96% at 6-months and 93% 12-months. Expected survival, estimated using individual patient  
7 data input into the French registry equation, was 89% and 83% at 6 and 12 months, respectively.<sup>27</sup> From  
8 implantation to follow-up there was no change in estimated glomerular filtration rate (76.3 +/-13.5  
9 ml/min/1.73 m<sup>2</sup> vrs 75.2 +/- 12.4 ml/min/1.73 m<sup>2</sup>; p = NS). At enrolment, 7 patients were within 6 weeks of  
10 treatment initiation and 21 patients were established on stable therapy. Three patients were receiving oral  
11 monotherapy with CCB, 14 patients were receiving dual oral therapy, 11 patients were receiving oral  
12 therapy plus inhaled or intravenous prostanoid or IP receptor agonist (table 2).

13  
14 To evaluate the changes in physiology following a clinically directed therapeutic escalation we examined  
15 remote monitoring data in the 30-days preceding, and 60 days following the addition or increase in disease  
16 specific therapy. Clinically indicated changes in therapy were: up titration of CCB (3), addition of PDE (3),  
17 addition of ERA (3), addition of IP receptor agonist (4) and initiation of parental prostanoid (5). Following  
18 clinician-directed initiation or increase in therapy ISWD (183m +/- 49 to 345m +/- 47, p<0.001), WHO  
19 functional class (p<0.001) and NT-proBNP (779 pg/ml +/-243 to 402 pg/ml +/-139, p<0.0001), were  
20 improved with a mean time to assessment of 4.4 months +/- 0.4 (Figure 4A-D). During periods without a  
21 therapeutic escalation or clinical worsening event (assessed by the multi professional team) remote  
22 monitored physiological parameters were stable. Consistent with identified improvements in established  
23 measures, remote monitored mean pulmonary artery pressure (day 0-30: -6.3, -4.6 to -8.2 mmHg,  
24 p<0.0001; day 30-60: -8.1, -5.1 to -11.2 mmHg, p<0.0001), total pulmonary resistance (day 0-30: -2.5, -1.4  
25 to -3.6 WU, p<0.0001; day 30-60: -3.2, -1.8 to -4.6 WU, p<0.0001) and night heart rate (day 0-30: -7 bmp,  
26 -2 to -12 bpm, p<0.05; day 30-60: - 9 bpm, -1 to -17 p<0.05) were reduced and cardiac output (day 0-30:  
27 0.4, 0.2-0.6 L/min, p<0.01; day 30-60: 0.7, 0.3-1.1 L/min, p<0.001) and physical activity (day 0-30: 15.2, -

1 10.3-40.7 min/day,  $p < NS$ ; day 30-60: 31.0, 1.0-62.0 min/day,  $p < 0.05$ ) increased 60 days following  
2 treatment change (Figure 4E-J,  $p < 0.05$ ). Daily measures of these parameters taken from the patients home  
3 demonstrate that mean pulmonary artery pressure and total pulmonary resistance were reduced, and cardiac  
4 output and physical activity increased at days 4, 7, 22 and 42 respectively.

5  
6 *Physiological response to clinical worsening in patients with pulmonary arterial hypertension*

7 To evaluate the changes related to disease worsening remote monitoring data was evaluated in the 30-days  
8 preceding and following clinical worsening events (defined in clinical management and events section of  
9 the methods). Following a clinical worsening event: ISWD (343m +/-71 to 241m +/-65,  $p < 0.001$ ), WHO  
10 functional class ( $p < 0.001$ ) and NT-proBNP (757 pg/ml +/- 319 to 2472 pg/ml +/- 1323,  $p < 0.01$ )  
11 deteriorated (Figure 5A-D). Consistent with identified decline in established measures, remote monitored  
12 mean pulmonary artery pressure (3.7, 1.8-5.5 mmHg,  $p < 0.001$ ), total pulmonary resistance (-1.7, -0.8- - 2.7  
13 WU,  $p < 0.01$ ) and night heart rate (3.5, 0.3-6.6 bpm,  $p < 0.05$ ) were increased and cardiac output (-0.4, -0.2- -  
14 0.7 L/min,  $p < 0.01$ ) and physical activity (-49.8, -46.9- - 65.0 min,  $p < 0.001$ ) decreased (Figure 5E-J). Daily  
15 measures of these parameters taken from the patients home demonstrate that mean pulmonary artery  
16 pressure and total pulmonary resistance as well as a reduction in cardiac output and physical activity at least  
17 ten days prior to a clinical worsening event. In 8 patients changes were apparent at least 15-days prior to a  
18 clinical worsening event.

19  
20 *Remote physiological risk score: early evaluation of clinical efficacy and detection of worsening*

21 To establish a summary measure, physiological parameters that change with initiation of disease-specific  
22 therapy and clinical worsening were combined to provide a remote physiological risk score. Following a  
23 clinically indicated increase in therapy, an improvement in physiology was identifiable at day three using a  
24 risk score of parameters from the insertable cardiac monitor and pulmonary artery pressure monitor  
25 compared with day 18 using parameters from the insertable cardiac monitor only. Preceding a clinical  
26 worsening event, adverse physiology was identifiable at day - 16 using a risk score of parameters from the

1 insertable cardiac monitor and pulmonary artery pressure monitor compared with day -4 using parameters  
2 from the insertable cardiac monitor only (Figure 6).

3

#### 4 *Physiological response to treatment initiation and transition in a patient with PAH*

5 As a demonstration of potential utility, we applied the remote risk score to a single patient's data through  
6 the initiation of disease specific therapy and the transition from intravenous prostanoid to oral therapy. A  
7 female in her early 30's was admitted to hospital following a 12-month period of increasing shortness of  
8 breath, reducing exercise tolerance and the recent development of pre-syncope. Following baseline  
9 catheterisation a diagnosis of pulmonary arterial hypertension is confirmed and devices implanted, and  
10 treatment initiated with sildenafil, ambrisentan and intravenous epoprostenol. TPR and physical activity  
11 improve over a one-year period with initiation and up-titration of therapy (Figure 7A). Following 14-  
12 months on IV therapy a patient led-decision is made to wean (day 410) and withdraw (day 580)  
13 epoprostenol and initiate triple oral therapy with selexipag (day 585, Figure 7B). During the initial dose  
14 reduction from 16 ng/kg/min of epoprostenol there is no change in remote measured physiology. Following  
15 an inpatient admission with reduction to 9 ng/kg/min there is a dose-dependent worsening in remote  
16 measured physiology and remote risk score with down-titration of epoprostenol. With initiation of  
17 selexipag there is a dose-dependent improvement in remote measured physiology and remote risk score.

1 **Discussion:**

2 Current guidelines for the diagnosis and management of patients with pulmonary arterial hypertension  
3 recommend hospital-based risk evaluation every 3-6 months to facilitate therapeutic optimisation.<sup>11</sup>

4 Despite this, a low risk profile is not achieved in most patients.<sup>28,29</sup> In studies investigating the efficacy of  
5 novel therapeutics hospital-based invasive and non-invasive testing are undertaken at baseline and after 3-6  
6 months of drug exposure.<sup>11</sup> As such, an early, remote means for the evaluation of therapeutic efficacy has  
7 the potential to facilitate therapeutic optimisation and personalised therapy and improve clinical study  
8 design.

9  
10 In patients with heart failure (not related to pulmonary arterial hypertension), implanted devices that  
11 provide daily, remote measures of cardiovascular physiology may be used for assessment of risk,  
12 therapeutic optimisation, and service prioritisation.<sup>14</sup> To establish a means for remote, early, identification  
13 of clinical efficacy and/or clinical worsening, patients with pulmonary arterial hypertension were implanted  
14 with two devices to collect remote physiological data. Constant with studies of approved therapies and  
15 changes in routine clinical evaluations (ISWD, NT-proBNP, WHO functional class and right ventricular  
16 ejection fraction ), following a clinically-indicated increase in therapy, a reduction in mean pulmonary  
17 artery pressure and total pulmonary resistance was observed at day 7 and 14, followed by increases in  
18 cardiac output and physical activity at day 22, and 42. This sequence may reflect a reduction in resistance  
19 as a consequence of pulmonary arterial vasodilatation followed by an improvement in cardiac function, that  
20 in turn permits increased physical activity. Of particular interest, all parameters were altered in advance of  
21 the recommended 3-6 month follow-up time period used in clinical practise and in clinical studies.<sup>11</sup>  
22 Additionally, clinical worsening events were preceded by altered physiology by 16 days, potentially  
23 allowing for more timely intervention in deteriorating patients.

24  
25 Patients with pulmonary hypertension are managed in referral centres often requiring significant travel for  
26 evaluation and follow-up. Remote evaluation offers the opportunity to prioritise services, directing  
27 resources to patients requiring increased therapy. In patients with heart failure summary scores of

1 physiological parameters measured by implanted devices facilitate assessment of risk, therapeutic  
2 optimisation, and service prioritisation.<sup>14</sup> To form a single summary measure of physiological indicators  
3 appropriate for the evaluation of patients with PH the z-score for total pulmonary resistance, heart rate  
4 reserve and physical activity were summed. Consistent with the performance of the individual components,  
5 a risk score of physiological parameters measured by the insertable cardiac monitor detected change 18  
6 days following an increase in therapy and four days before a clinical worsening event. The risk score of  
7 physiological parameters measured by both the insertable cardiac monitor and pulmonary artery pressure  
8 monitor improved detection to three days after therapy increase and 18 days before a clinical worsening  
9 event. The capacity to rapidly evaluate the effect of treatment decisions offers to impact on early phase  
10 clinical trial designs and to change the current care paradigm.

11  
12 The specific parameters measured in the study require implantation of minimally invasive devices,  
13 however, a more limited data set may be monitored using wrist worn or non-invasive technology. Both  
14 approaches have benefits and limitations: the implantation of minimally invasive devices is associated with  
15 a limited risk<sup>30</sup> and cost, however provides a secure reliable data collection and transfer system; wrist worn  
16 technology can provide an assessment of heart rate, heart rate variability, physical activity and derived  
17 measures, however, data collection is not secure and there are limitations with accurate heart rate/variability  
18 detection exacerbated by motion artifact, skin pigmentation and poor peripheral perfusion.<sup>31</sup> The most  
19 appropriate technology for the monitoring of patients with PH remains to be determined, however, a  
20 hierarchy of non-invasive, minimally invasive, and invasive technology may be appropriate when also  
21 considering patient preference, technological availability and access, and disease severity.

22  
23 In clinical research, the increased frequency of haemodynamic and physical capacity evaluation may permit  
24 study designs that are currently limited by the requirement for invasive/hospital-based investigations and  
25 provide valuable insight into individualised patient response, dose-response and time-to-effect.<sup>32,33</sup> This  
26 approach is being actively investigated in studies of approved<sup>34</sup> and repurposed therapies.<sup>35</sup> Currently  
27 approved therapies for the treatment of pulmonary arterial hypertension target vasodilatation and



1 vasoconstriction, however, novel therapies that target the vascular remodelling that drives disease are in  
2 development.<sup>36</sup> It may therefore be possible to demonstrate differential mechanism of action between  
3 approved and novel therapies by selective withdrawal of both drug types in individual patients.

4  
5 The capacity to evaluate the efficacy of a therapy remotely, in a time frame shorter than the recommended  
6 3-6 months offers the opportunity for a personalised approach to therapy balancing therapeutic efficacy  
7 against other important factors such as side effects and quality-of-life and to structure clinical studies in a  
8 way that provide increased information on dose-response and/or compares therapies head-to-head. Such an  
9 approach would reliably, remotely evaluate how a patient feels, functions and survives in real time.  
10 Importantly patients found the approach described acceptable and felt that care and evaluation were  
11 improved through the use of remote monitoring (PPIE summary).

## 12 13 Limitations

14 Changes in remote monitored data were observed preceding and following clinically indicated increases in  
15 therapy and clinical worsening events. There was no placebo group and the central Sheffield research team  
16 were not blinded. Remote-monitored physiological data from implanted devices was used to provide  
17 matched control data in a time-stratified bidirectional case–crossover study providing a study approach that  
18 is statistically powerful and efficient in terms of the burden placed on patients. Access to hospital services  
19 for scheduled visits was limited due to public health measures put in place to limit the effect of COVID-19  
20 meaning that follow up intervals differed between patients and not all patients with therapeutic escalation  
21 clinical worsening events underwent imaging assessment of right ventricular function.

## 22 23 Conclusions

24 In patients implanted with an insertable cardiac and pulmonary artery pressure monitor change in  
25 physiology was observed following clinically indicated therapeutic escalation and prior to clinical  
26 worsening. Remote haemodynamic and cardiac monitoring may facilitate personalised, proactive medicine  
27 and innovative clinical study designs.

1   References

- 2   1.    PHA UK. What it means to live with PH today. [https://www.phauk.org/research-survey-work/living-](https://www.phauk.org/research-survey-work/living-ph-report/)  
3        [ph-report/](https://www.phauk.org/research-survey-work/living-ph-report/).
- 4   2.    PHA UK. Helping people get the most from their PH treatments: Phoenix study proposal findings.  
5        <https://www.phauk.org/app/uploads/2021/04/Phoenix-study-research-report.pdf>.
- 6   3.    Kiely DG, Elliot CA, Sabroe I, Condliffe R. Pulmonary hypertension: diagnosis and management. *Br*  
7        *Med J* 2013;346–357.
- 8   4.    Humbert M, Sitbon O, Simonneau G. Treatment of Pulmonary Arterial Hypertension. *New England*  
9        *Journal of Medicine* 2004;**351**:1425–1436.
- 10  5.    Thenappan T, Shah SJ, Rich S, Tian L, Archer SL, Gomberg-Maitland M. Survival in pulmonary  
11        arterial hypertension: a reappraisal of the NIH risk stratification equation. *Eur Respir J*  
12        2010;**35**:1079–1087.
- 13  6.    Ling Y, Johnson MK, Kiely DG, Condliffe R, Elliot CA, Gibbs JSR, Howard LS, Pepke-Zaba J,  
14        Sheares KKK, Corris PA, Fisher AJ, Lordan JL, Gaine S, Coghlan JG, Wort SJ, Gatzoulis MA,  
15        Peacock AJ. Changing demographics, epidemiology, and survival of incident pulmonary arterial  
16        hypertension: Results from the pulmonary hypertension registry of the United Kingdom and Ireland.  
17        *Am J Respir Crit Care Med* 2012;**186**:790–796.
- 18  7.    Benza RL, Miller DP, Barst RJ, Badesch DB, Frost AE, McGoon MD. An Evaluation of Long-term  
19        Survival From Time of Diagnosis in Pulmonary Arterial Hypertension From the REVEAL Registry.  
20        *Chest* 2012;**142**:448–456.
- 21  8.    Halliday SJ, Hemnes AR. Identifying “super responders” in pulmonary arterial hypertension. *Pulm*  
22        *Circ* 2017;**7**:300–311.
- 23  9.    Pulido T, Adzerikho I, Channick RN, Delcroix M, Galiè N, Ghofrani H-A, Jansa P, Jing Z-C, Brun  
24        F-O Le, Mehta S, Mittelholzer CM, Perchenet L, Sastry BKS, Sitbon O, Souza R, Torbicki A, Zeng  
25        X, Rubin LJ, Simonneau G. Macitentan and Morbidity and Mortality in Pulmonary Arterial  
26        Hypertension. *New England Journal of Medicine* 2013;**369**:809–818.

- 1 10. Sitbon O, Channick RN, Chin KM, Frey A, Gaine S, Galie N, Ghofrani H-A, Hoeper MM, Lang IM,  
2 Preiss R, Rubin LJ, Scala L Di, Tapson V, Adzerikho I, Liu J, Moiseeva O, Zeng X, Simonneau G,  
3 McLaughlin V V. Selexipag for the treatment of pulmonary arterial hypertension. *New England*  
4 *Journal of Medicine* 2015;**373**:2522–2533.
- 5 11. Humbert M, Kovacs G, Hoeper MM, Badagliacca R, Berger RMF, Carlsen J, Mayer E, Nagavci B,  
6 Olsson KM, Pepke-zaba J, Quint JK, Simonneau G, Sitbon O, Toshner M. 2022 ESC / ERS  
7 Guidelines for the diagnosis and treatment of pulmonary hypertension Developed by the task force  
8 for the diagnosis and treatment of ( ESC ) and the European Respiratory Society ( ERS ). Endorsed  
9 by the International Society for Heart and Lu. *Eur Heart J* 2022:1–114.
- 10 12. Hoeper MM, Pausch C, Olsson KM, Huscher D, Pittrow D, Grünig E, Staehler G, Vizza CD, Gall H,  
11 Distler O, Opitz C, Gibbs JSR, Delcroix M, Ghofrani HA, Park D-H, Ewert R, Kaemmerer H, Kabitz  
12 H-J, Skowasch D, Behr J, Milger K, Halank M, Wilkens H, Seyfarth H-J, Held M, Dumitrescu D,  
13 Tsangaris I, Vonk-Noordegraaf A, Ulrich S, Klose H, Claussen M, Lange TJ, Rosenkranz S.  
14 COMPERA 2.0: A refined 4-strata risk assessment model for pulmonary arterial hypertension.  
15 *European Respiratory Journal* 2021:2102311.
- 16 13. Weatherald J, Boucly A, Sahay S, Humbert M, Sitbon O. The low-risk profile in pulmonary arterial  
17 hypertension: Time for a paradigm shift to goal-oriented clinical trial endpoints? *Am J Respir Crit*  
18 *Care Med* 2018;**197**:860–868.
- 19 14. Lindenfeld J, Zile MR, Desai AS, Bhatt K, Ducharme A, Horstmanshof D, Krim SR, Maisel A,  
20 Mehra MR, Paul S, Sears SF, Sauer AJ, Smart F, Zughuib M, Castaneda P, Kelly J, Johnson N, Sood  
21 P, Ginn G, Henderson J, Adamson PB, Costanzo MR. Haemodynamic-guided management of heart  
22 failure (GUIDE-HF): a randomised controlled trial. *The Lancet* 2021;**398**:991–1001.
- 23 15. Brugts JJ, Radhoe SP, Clephas PRD, Aydin D, Gent MWF van, Szymanski MK, Rienstra M, Heuvel  
24 MH van den, Fonseca CA da, Linssen GCM, Borleffs CJW, Boersma E, Asselbergs FW, Mosterd A,  
25 Brunner-La Rocca H-P, Boer RA de, Emans ME, Beeres SLMA, Heerebeek L, Kirchhof C,  
26 Ramshorst J Van, Spee R, Smilde T, Eck M Van, Kaplan E, Hazeleger R, Tukkie R, Feenema M,  
27 Kok W, Halm V Van, Handoko ML, Kimmenade R Van, Post M, Mieghem N Van, Manintveld OC.

- 1 Remote haemodynamic monitoring of pulmonary artery pressures in patients with chronic heart  
2 failure (MONITOR-HF): a randomised clinical trial. *The Lancet* 2023;**6736**:1–11.
- 3 16. Sanna T, Diener H-C, Passman RS, Lazzaro V Di, Bernstein RA, Morillo CA, Rymer MM, Thijs V,  
4 Rogers T, Beckers F, Lindborg K, Brachmann J. Cryptogenic Stroke and Underlying Atrial  
5 Fibrillation. *New England Journal of Medicine* 2014.
- 6 17. Bonnesen MP, Frodi DM, Haugan KJ, Kronborg C, Graff C, Højberg S, Køber L, Krieger D,  
7 Brandes A, Svendsen JH, Diederichsen SZ. Day-to-day measurement of physical activity and risk of  
8 atrial fibrillation. *Eur Heart J* 2021;**42**:3979–3988.
- 9 18. Tree M, White J, Midha P, Kiblinger S, Yoganathan A. Validation of cardiac output as reported by a  
10 permanently implanted wireless sensor. *Journal of Medical Devices, Transactions of the ASME*  
11 2016;**10**:1–7.
- 12 19. Karamanoglu M, Bennett T, Ståhlberg M, Splett V, Kjellström B, Linde C, Braunschweig F.  
13 Estimation of cardiac output in patients with congestive heart failure by analysis of right ventricular  
14 pressure waveforms. *Biomed Eng Online* 2011;**10**:1–13.
- 15 20. Benza RL, Doyle M, Lasorda D, Parikh KS, Correa-Jaque P, Badie N, Ginn G, Airhart S, Franco V,  
16 Kanwar MK, Murali S, Raina A, Agarwal R, Rajagopal S, White J, Biederman R. Monitoring  
17 Pulmonary Arterial Hypertension Using an Implantable Hemodynamic Sensor. *Chest*  
18 2019;**156**:1176–1186.
- 19 21. Conraads VM, Spruit MA, Braunschweig F, Cowie MR, Tavazzi L, Borggreffe M, Hill MRS, Jacobs  
20 S, Gerritse B, Veldhuisen DJ Van. Physical activity measured with implanted devices predicts  
21 patient outcome in chronic heart failure. *Circ Heart Fail* 2014;**7**:279–287.
- 22 22. Cowie MR, Sarkar S, Koehler J, Whellan DJ, Crossley GH, Tang WHW, Abraham WT, Sharma V,  
23 Santini M. Development and validation of an integrated diagnostic algorithm derived from  
24 parameters monitored in implantable devices for identifying patients at risk for heart failure  
25 hospitalization in an ambulatory setting. *Eur Heart J* 2013;**34**:2472–2480.

- 1 23. Shoemaker MJ, Cartwright K, Hanson K, Serba D, Dickinson MG, Kowalk A. Concurrent Validity  
2 of Daily Activity Data from Medtronic ICD/CRT Devices and the Actigraph GT3X Triaxial  
3 Accelerometer: A Pilot Study. *Cardiopulm Phys Ther J* 2017;**28**:3–11.
- 4 24. Pressler A, Danner M, Esefeld K, Haller B, Scherr J, Schömig A, Halle M, Kolb C. Validity of  
5 cardiac implantable electronic devices in assessing daily physical activity. *Int J Cardiol*  
6 2013;**168**:1127–1130.
- 7 25. Galiè N, Barberà JA, Frost AE, Ghofrani H-A, Hoeper MM, McLaughlin V V., Peacock AJ,  
8 Simonneau G, Vachiery J-L, Grünig E, Oudiz RJ, Vonk-Noordegraaf A, White RJ, Blair C, Gillies  
9 H, Miller KL, Harris JHN, Langley J, Rubin LJ. Initial Use of Ambrisentan plus Tadalafil in  
10 Pulmonary Arterial Hypertension. *New England Journal of Medicine* 2015;**373**:834–844.
- 11 26. Mostofsky E, Coull BA, Mittleman MA. Analysis of Observational Self-matched Data to Examine  
12 Acute Triggers of Outcome Events with Abrupt Onset. 2018;**29**.
- 13 27. Sitbon O, Benza RL, Badesch DB, Barst RJ, Elliott CG, Gressin V, Lemarié JC, Miller DP, Rouzic  
14 EM Le, Simonneau G, Frost AE, Farber HW, Humbert M, McGoon MD. Validation of two  
15 predictive models for survival in pulmonary arterial hypertension. *European Respiratory Journal*  
16 2015;**46**:152–164.
- 17 28. Boucly A, Weatherald J, Savale L, Jaïs X, Cottin V, Prevot G, Picard F, Groote P De, Jevnikar M,  
18 Bergot E, Chaouat A, Chabanne C, Bourdin A, Parent F, Montani D, Simonneau G, Humbert M,  
19 Sitbon O. Risk assessment, prognosis and guideline implementation in pulmonary arterial  
20 hypertension. *European Respiratory Journal* 2017;**50**:1–10.
- 21 29. Hoeper MM, Kramer T, Pan Z, Eichstaedt CA, Spiesshoefer J, Benjamin N, Olsson KM, Meyer K,  
22 Vizza CD, Vonk-Noordegraaf A, Distler O, Opitz C, Gibbs JSR, Delcroix M, Ghofrani HA, Huscher  
23 D, Pittrow D, Rosenkranz S, Grünig E. Mortality in pulmonary arterial hypertension: prediction by  
24 the 2015 European pulmonary hypertension guidelines risk stratification model. *European*  
25 *Respiratory Journal* 2017;**50**:1700740.

- 1 30. Lin AL, Hu G, Dhruva SS, Kinard M, Redberg RF. Quantification of Device-Related Event Reports  
2 Associated with the CardioMEMS Heart Failure System. *Circ Cardiovasc Qual Outcomes*  
3 2022;**15**:E009116.
- 4 31. Cabanas AM, Fuentes-Guajardo M, Latorre K, León D, Martín-Escudero P. Skin Pigmentation  
5 Influence on Pulse Oximetry Accuracy: A Systematic Review and Bibliometric Analysis. *Sensors*  
6 (*Basel*) 2022;**22**.
- 7 32. Kane PB, Bittlinger M, Kimmelman J. Individualized therapy trials: navigating patient care, research  
8 goals and ethics. *Nat Med* 2021;**27**:1679–1686.
- 9 33. Senn S. Statistical pitfalls of personalized medicine. *Nature* 2018;**563**:619–621.
- 10 34. NIH. Pulmonary Hypertension: Intensification and Personalisation of Combination Rx (PHoenix).  
11 *Clinicaltrials.gov*. <https://classic.clinicaltrials.gov/ct2/show/NCT05825417> (26 June 2023)
- 12 35. Wilkins MR, Mckie MA, Law M, Roussakis AA, Harbaum L, Church C, Coghlan JG, Condliffe R,  
13 Howard LS, Kiely DG. Positioning imatinib for pulmonary arterial hypertension: A phase I/II design  
14 comprising dose finding and single-arm efficacy. *Pulm Circ* 2021;**11**:20458940211052824.
- 15 36. Hoeper MM, Badesch DB, Ghofrani HA, Gibbs JSR, Gomberg-Maitland M, McLaughlin V V,  
16 Preston IR, Souza R, Waxman AB, Grünig E, Kopeć G, Meyer G, Olsson KM, Rosenkranz S, Xu Y,  
17 Miller B, Fowler M, Butler J, Koglin J, Oliveira Pena J de, Humbert M. Phase 3 Trial of Sotatercept  
18 for Treatment of Pulmonary Arterial Hypertension. *N Engl J Med* 2023;**388**:1478–1490.

19

20



1

**KEY FACTS**

- The CardioMEMS is about 4.5cm long (size of a paper clip)
- It communicates via radio frequency, you need to lie on a pillow to activate it
- A reading takes about 5 minutes to complete
- Because there is **no battery**, the CardioMEMS can last a very long time
- **Lifelong aspirin** is recommended to reduce the risk of blood sticking to the device and stopping it from working
- Data is kept on a secure medical server

**PATIENT**

*I have been unable to complete the incremental shuttle walk for some time [due to mobility issues]. So, this [risk score] would be far better for me...*

**A**

insertable cardiac monitor under the skin

CardioMEMS in the left pulmonary artery

Right heart border

Left heart border

**B**

Right heart border

CardioMEMS

+

4.9cm

Insertable cardiac monitor

**RIGHT HEART CATHETERISATION (RHC)**

**A:** X-ray picture of the heart taken during RHC to check the final position of the CardioMEMS. The device is then 'calibrated' using a special catheter to measure the PRESSURE inside the heart and lungs, AND HEART FUNCTION to make sure the readings are accurate. This **takes 20-30 minutes longer** compared to a standard RHC but may mean you won't need another one and your healthcare team can see readings remotely

**B:** Diagram of the heart and left pulmonary artery (purple) where the CardioMEMS device is placed, and the battery-operated insertable cardiac monitor

**FAQ**

**Is the CardioMEMS SAFE?**

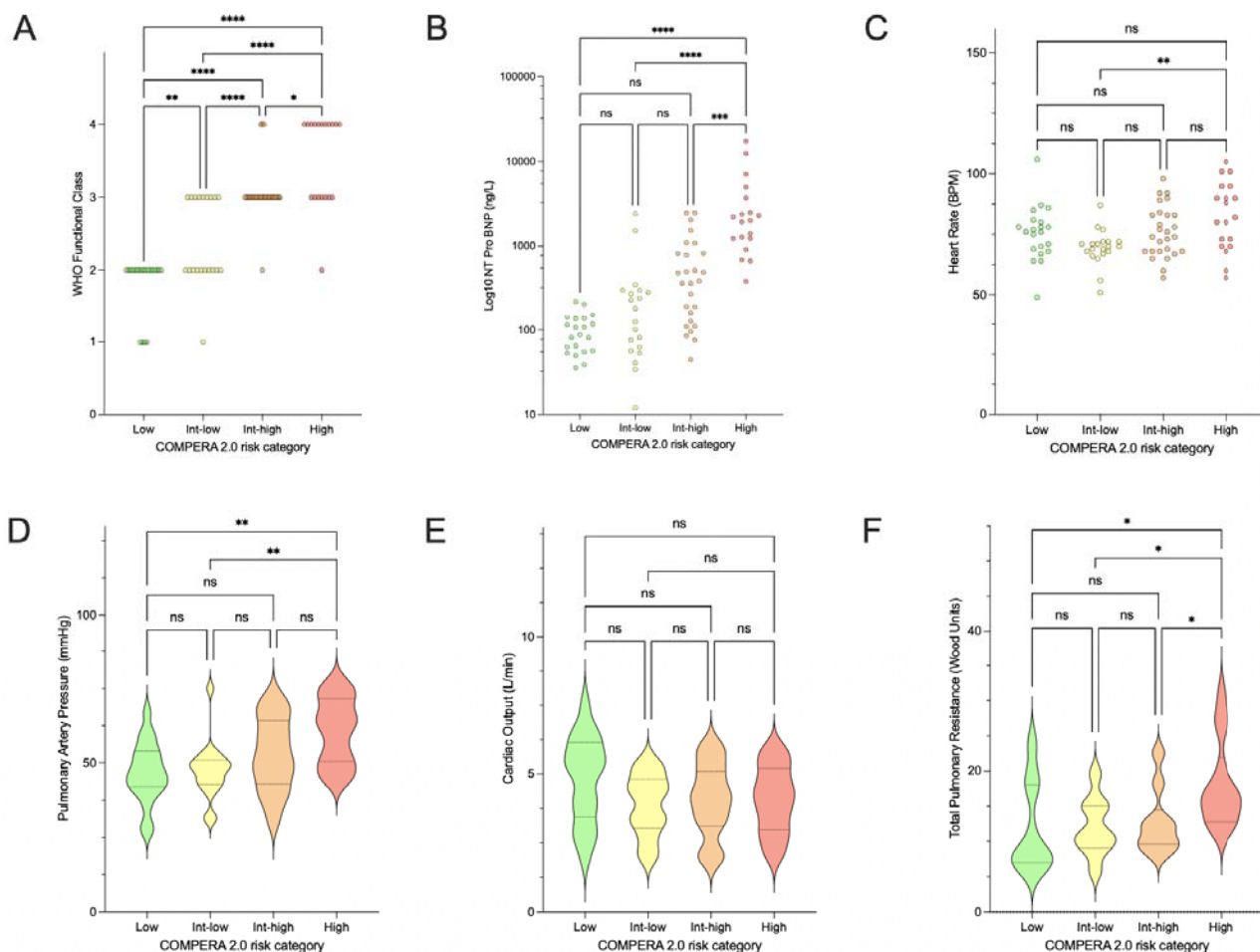
- It has been safely tested in 1500 patients in clinical studies and over 30,000 in clinical use.
- The infection risk is very low
- In this study one participant had some minor bleeding that needed no action. There were no specific complications related to the CardioMEMS in this study.

2

3 Plain Graphical Summary: CardioMEMS implantation covering frequently asked questions (FAQ). Created

4 with BioRender.com

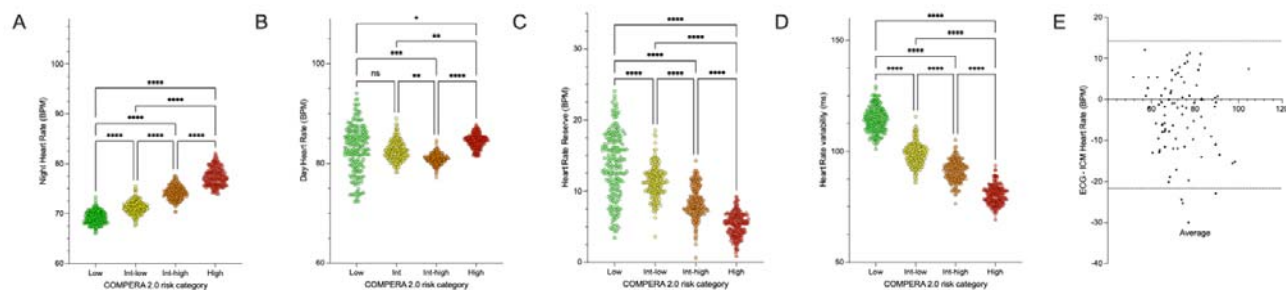
5



1  
2 Figure 1: Baseline in-hospital measures from patients with pulmonary arterial hypertension and an  
3 insertable cardiac monitor. In-hospital measures of WHO functional class (A), Ntpro-BNP (B) ECG heart  
4 rate (C) pulmonary artery pressure (D) cardiac output (E) total pulmonary resistance (F) by 4-strata  
5 COMPERA 2.0 score (n=87, two-way ANOVA with Tuckey correction, \*p<0.05, \*\*p<0.01, \*\*\*p<0.001,  
6 \*\*\*\*p<0.0001).  
7



1



2

3 Figure 2: Remote-monitored cardiac measures in patients with pulmonary arterial hypertension and an

4 insertable cardiac monitor. Daily remote measures of night heart rate (A), day heart rate (B), heart rate

5 reserve (C) and heart rate variability (D) over the first 6 months following implantation of insertable cardiac

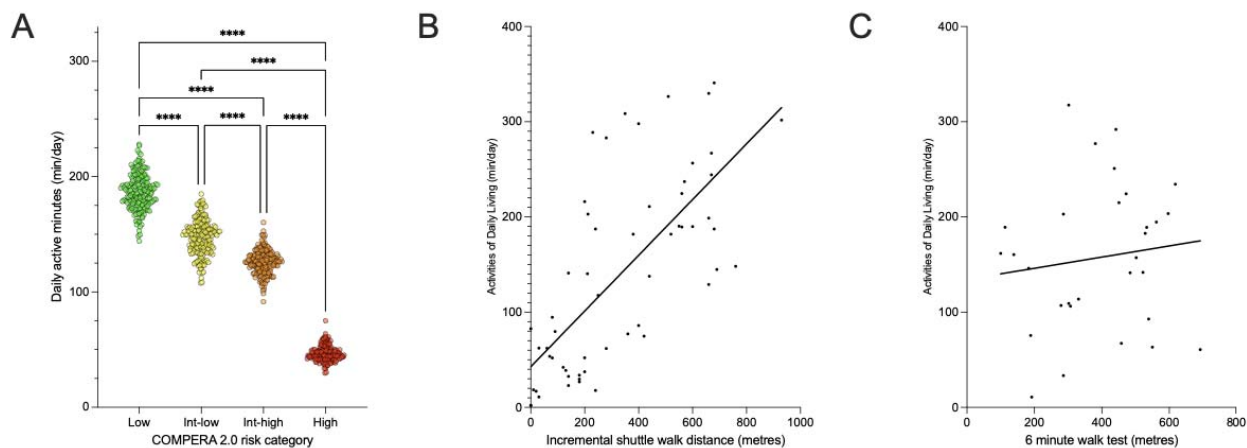
6 monitors in patients with pulmonary arterial hypertension by 4-strata COMPERA 2.0 score (n=87, two-way

7 ANOVA with Tuckey correction, \*p<0.05, \*\*p<0.01, \*\*\*p<0.001, \*\*\*\*p<0.0001). Bias of baseline ECG

8 and insertable cardiac monitor measured night heart rate (E).

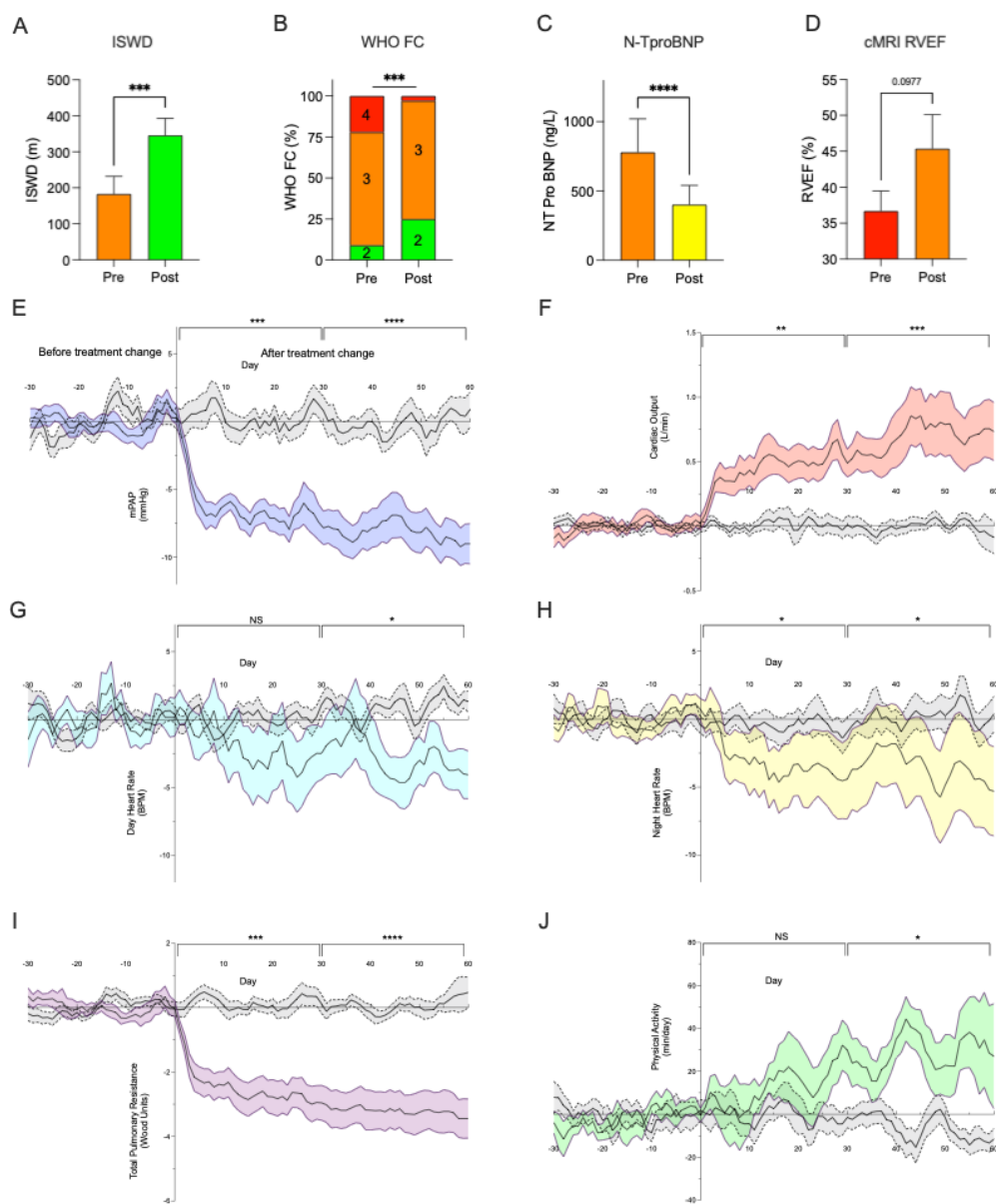
9

10



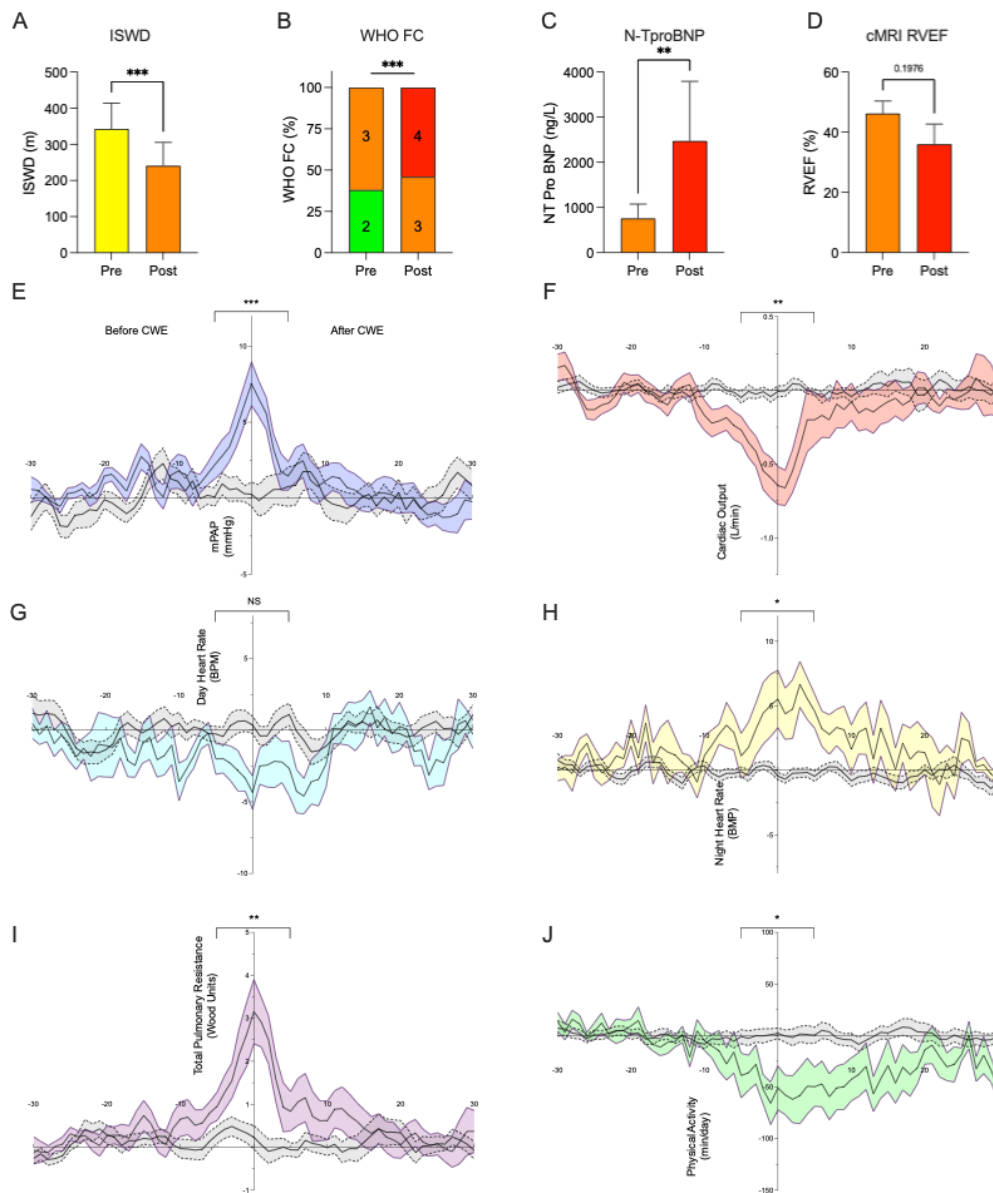
1  
2 Figure 3: Remote-monitored physical activity in patients with pulmonary arterial hypertension and an  
3 insertable cardiac monitor. A: Physical activity over the first 6 months following implantation of insertable  
4 cardiac monitors in patients with pulmonary arterial hypertension by 4-strata COMPERA 2.0 score (n=87,  
5 two-way ANOVA with Tuckey correction, \*\*\*\*p<0.0001). Relationship of physical activity to baseline  
6 incremental shuttle walk distance (F, Pearson,  $r^2=0.50$ ,  $p<0.0001$ ) and 6-minute walk distance (G, Pearson,  
7  $r^2=0.02$ ,  $p=NS$ ).

1

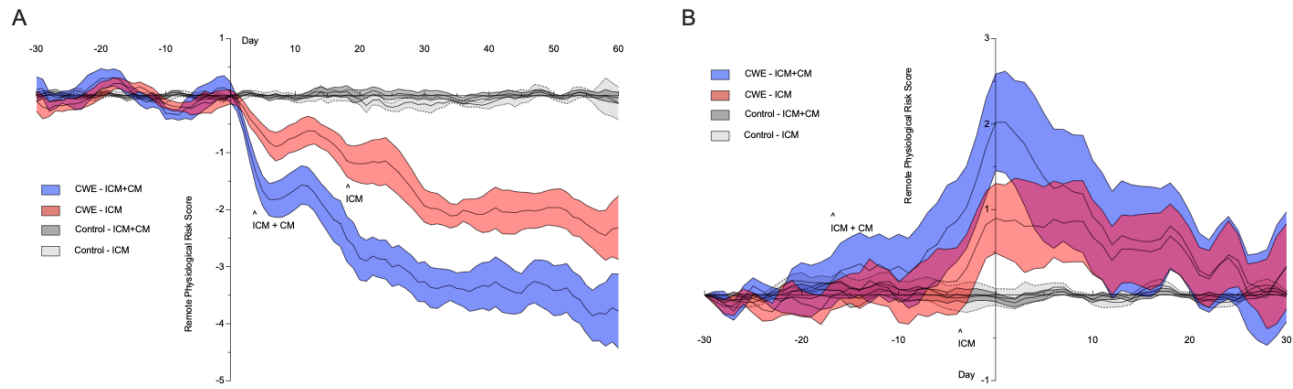


2

3 Figure 4: Established risk measures and remote-monitored physiology following clinically indicated  
4 treatment change. A. Incremental shuttle walk distance (ISWD), B. WHO functional class (WHO FC), C.  
5 NTProBNP and D. right ventricular ejection fraction from cardiac MRI (cMRI-RVEF). Mean +/-SEM,  
6 Wilcoxon, \*\*\*p<0.001, \*\*\*\*p<0.0001 A-C: n=18, D: n=9). E: mean pulmonary artery pressure, F: cardiac  
7 output, G: day heart rate, H: night heart rate; I total pulmonary resistance; J: physical activity. Data is  
8 presented with treatment change at day 0 with days -30 to day -1 as days preceding, and days +1 to day  
9 +60 as days following treatment change. Control group comprises matched 90-day periods on stable  
10 therapy (grey). Treatment change n=18, mean +/-SEM, \*p<0.05, p<0.01, \*\*\*p<0.001, \*\*\*\*p<0.0001 one-  
11 way ANOVA with Dunnett's correction.  
12



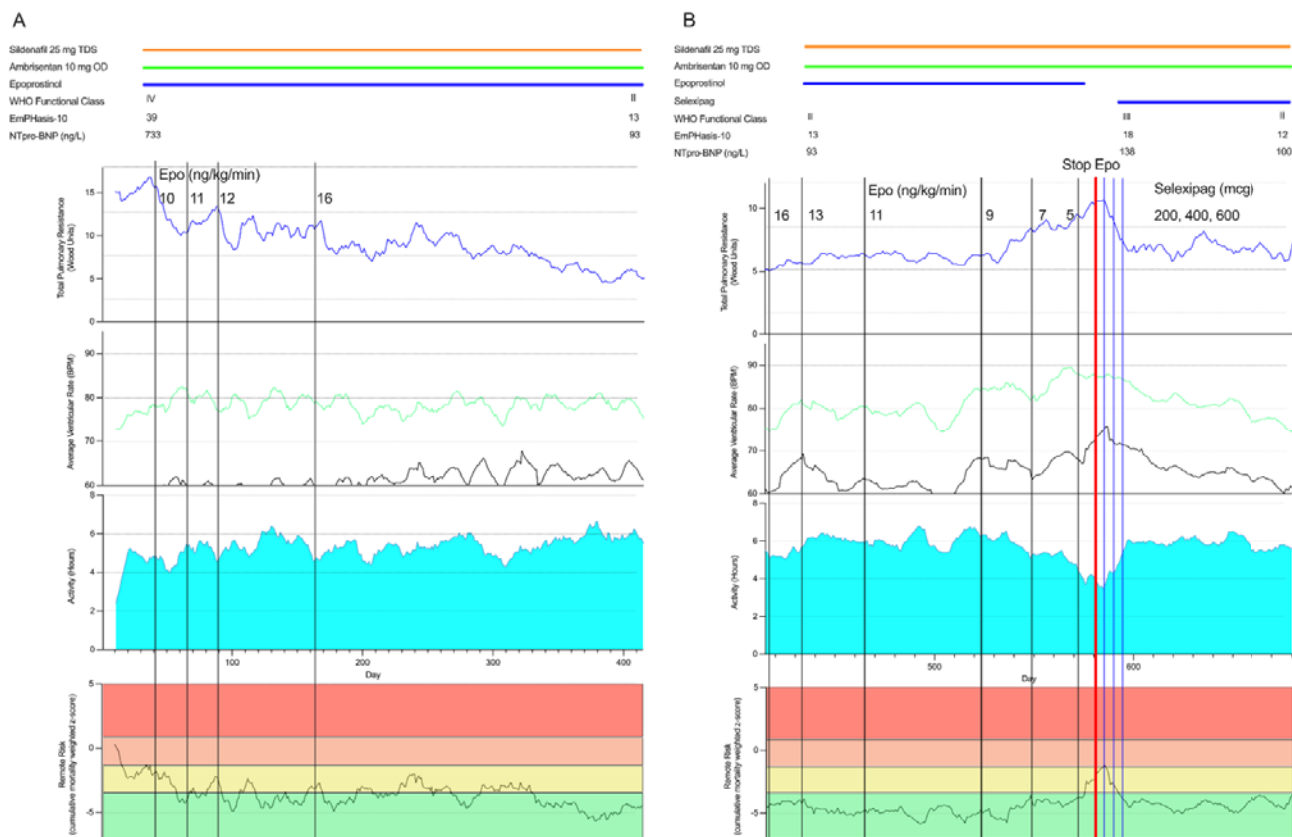
1  
 2 Figure 5: Established risk measures and remote-monitored physiology at the time of a clinically worsening  
 3 event. A. Incremental shuttle walk distance (ISWD), B. WHO functional class (WHO FC), C. NTProBNP  
 4 and D. right ventricular ejection fraction from cardiac MRI (cMRI-RVEF). Mean +/-SEM, Wilcoxon,  
 5 \*\*p<0.01, \*\*\*p<0.001 A-C: n=13, D: n=5). E: mean pulmonary artery pressure, F: cardiac output, G: day  
 6 heart rate, H: night heart rate; I total pulmonary resistance; J: physical activity. Data is presented with  
 7 treatment change at day 0 with days -30 to day -1 as days preceding, and days +1 to day +30 as days  
 8 following treatment change. Control group comprises matched 60-day periods without CWE (grey). CWE  
 9 n=13, mean +/-SEM, \*p<0.05, \*\*p<0.01, \*\*\*p<0.001 paired Student's t-test.  
 10



1

2 Figure 6: Remote risk score at the time of clinically indicated therapeutic escalation and clinical worsening  
3 events.

4 Therapeutic escalation (A) and clinical worsening event (B) occur at day 0 with days -30 to day -1 as days  
5 preceding, and days +1 to day +30 or +60 as days following. Control group comprises matched time  
6 periods with no TE or CWE (grey). TE n=18, CWE n=13, mean +/-SEM, two-way ANOVA with Dunnett's  
7 correction, ^ indicates earliest point of statistical significance.  
8



1  
 2 Figure 7: remote monitored physiology in clinical practise. A female in her early 30's is admitted to  
 3 hospital following a 12-month period of increasing shortness of breath, reducing exercise tolerance and the  
 4 recent development of pre-syncope. A: Following a diagnosis of PAH sildenafil, ambrisentan and  
 5 epoprostenol are started. TPR and physical activity improve gradually over a one-year period. B: A patient  
 6 led-decision is made to wean (day 410) and withdraw (day 580) epoprostenol and initiate selexipag (day  
 7 585). Dose-dependent changes are observed in remote measured physiology and risk with down-titration of  
 8 epoprostenol and initiation of selexipag. (TPR – blue; night heart rate – black; day heart rate -green;  
 9 physical activity – light blue; remote risk – bottom panel).

10  
 11

1 **Table 1:** Baseline demographics for patients with an implantable cardiac monitor

	Insertable Cardiac Monitor (n=87)	Insertable cardiac monitor and pulmonary artery pressure monitor (n=28)
Age (years)	53 ± 15	48.9 ± 18.1
Female (%)	66 (75.9)	21 (75)
BMI	30 ± 7	28 ± 6
Race (% of group)		
Caucasian	79 (90.8)	25 (89)
Asian	4 (4.6)	3 (11)
Black	4 (4.6)	-
Mutation positive (n, %)		
BMPR2	9 (10.3)	2 (7)
ALK1	4 (4.6)	1 (4)
TBX4	1 (1.1)	1 (4)
Years since diagnosis	8.1 ± 5.3	7.2 ± 4.6
Heart rate (bpm)	75 ± 12	76 ± 11
Resting SpO <sub>2</sub> (%)	96 ± 3	95 ± 4
WHO Functional class		
I	5 (5.7)	0
II	28 (32.2)	0
III	39 (44.8)	22 (79)
IV	15 (17.2)	6 (21)
NT-pro BNP (g/dl)	1064 ± 2474	1410 ± 3537
Positive vasodilator response to nitric oxide	15 (17.2)	10 (36)

testing at diagnosis		
Right Heart Catheter		
Mean RA (mmHg)	9.3 ± 5.2	9.4 ± 4.8
Systolic PAP (mmHg)	81.8 ± 23.2	78.6 ± 25
Diastolic PAP (mmHg)	32.4 ± 11.0	33.1 ± 11.2
PCWP (mmHg)	10.2 ± 3.1	10.4 ± 4.5
Mean PAP (mmHg)	50.4 ± 14.7	50.8 ± 11.2
CO (L/min)	4.3 ± 1.6	4.6 ± 1.6
PVR (Dynes.sec.cm)	11.3 ± 7.1	10.2 ± 6.1
CI (L/min/m <sup>2</sup> )	2.3 ± 0.8	2.5 ± 0.7
SVO <sub>2</sub> (%)	65.8 ± 14.6	63 ± 20.7
TPR (Dynes.sec.cm)	11.7 ± 7.8	12.9 ± 7.0
Pulmonary Function test		
FEV1/ FVC ratio	0.70 ± 0.10	75 ± 7

1  
2 6MWD six-minute walk distance BMI body mass index BP blood pressure CI cardiac index CO cardiac  
3 output FEV1 Forced Expiratory Volume in 1 second FVC Functional Vital Capacity ISWD incremental  
4 shuttle walk distance NT-pro BNP N-terminal pro-brain natriuretic peptide NO nitric oxide PAH  
5 pulmonary arterial hypertension PAP pulmonary artery pressure PCWP pulmonary capillary wedge  
6 pressure PVR pulmonary vascular resistance RA right atrium SVO<sub>2</sub> venous oxygen saturations TPR  
7 transpulmonary resistance WHO world health organisation

8

9



1 **Table 2:** Baseline therapy – FIT-PH

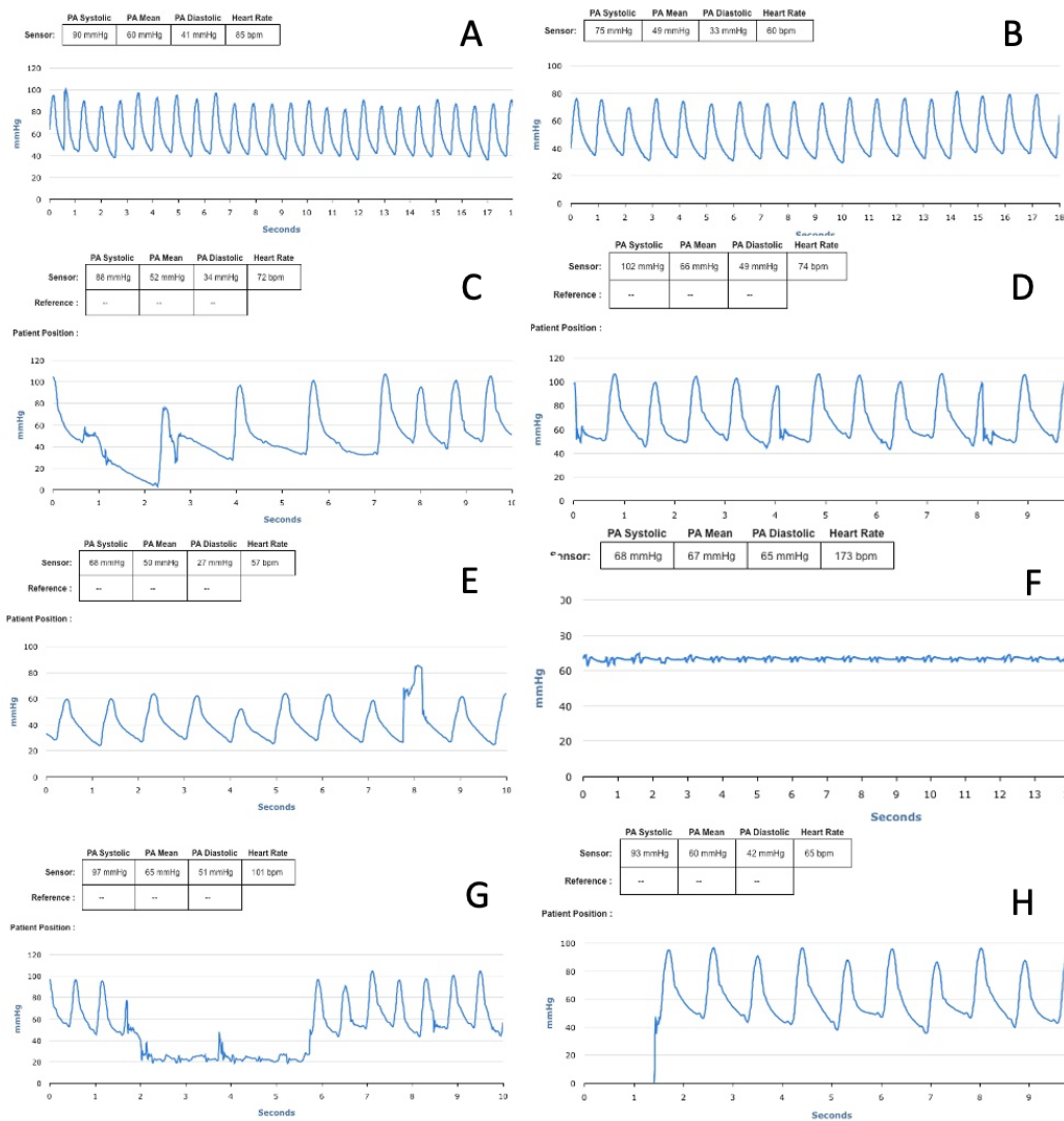
Baseline Therapy (n=28)	N (%) or mean $\pm$ SD
Single oral (CCB)	3 (11)
Dual oral	14 (50)
Oral plus prostanoid or IPA	11 (39)
Loop diuretic	16 (57)
MRA	7 (25)

2 CCB - calcium channel blocker, MRA - mineralocorticoid receptor antagonist, IPA – oral IP agonist

## Supplemental data

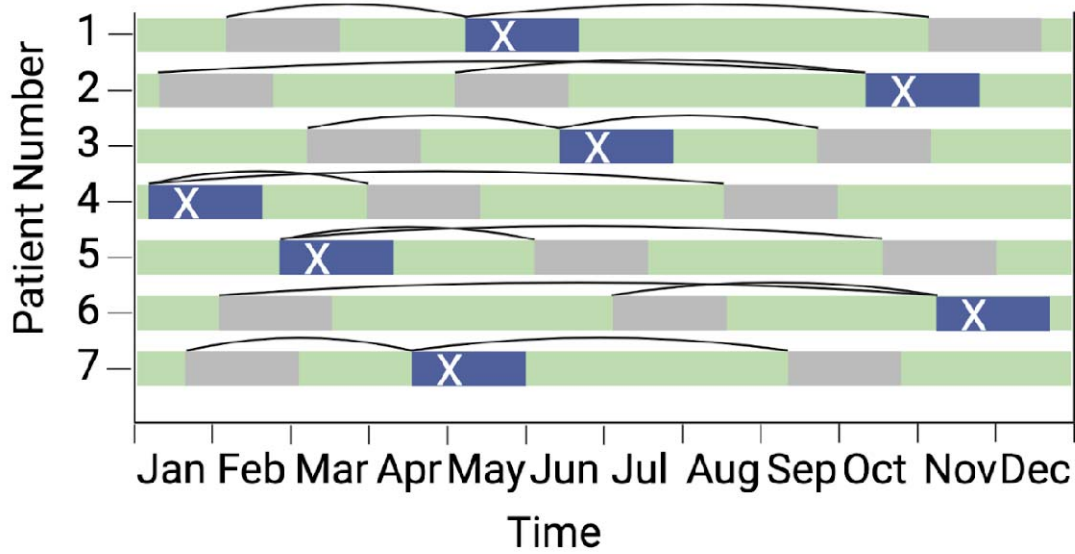
**Supplemental Table 1:** Serious adverse events and adverse events reported in the FIT-PH study.

Adverse Events	Number of occurrences	Action taken / further information
Serious Adverse Events	0	NA
Bleeding	1	Minor haemoptysis, resolved with no intervention
Device erosion	1	Explanted, allowed to heal and new device implanted
Infection	0	NA
Vascular injury	0	NA
Pulmonary Embolism	0	NA
Drug interaction	1	Selexipag and clopidogrel. Clopidogrel replaced with prasugrel.

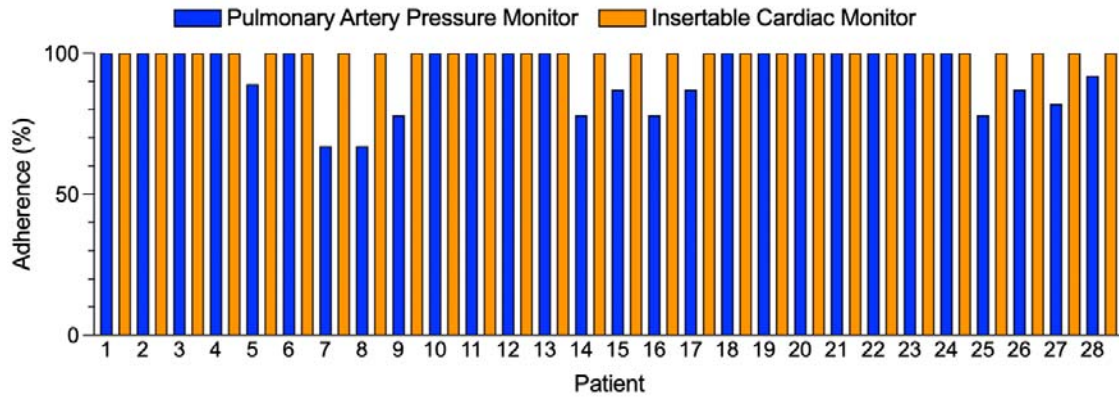


Supplemental Figure 1: Examples of non-clinically significant ‘suspect’ pulmonary artery pressure waveforms measured from a CardioMEMS device resulting from: A: Non-rested physiological state; B: rested physiological state in the same patient; C: a pause followed by a compensatory bradycardia; D: Frequent ventricular ectopy; E: Non physiological waveform; F: Incorrect waveform frequency detected; G: Waveform damping; H: Non transmission of waveforms.





Supplemental Figure 2: Representative sampling of remote monitoring data for event and control periods in time-stratified bidirectional case–crossover study. Period of remote monitoring is indicated by green. Timepoints of clinician-directed therapeutic escalation or clinical worsening events are indicated by white X with the time 30-days preceding and 30-days (CWE) or 60-days (TE) following the event indicated in blue. Control time periods are indicated in grey.



Supplemental Figure 3: Reading adherence in patients with insertable cardiac and pulmonary artery pressure monitors. Percentage of weekly readings completed by individual patients over the first three months following implantation for insertable cardiac monitor (orange) and pulmonary artery pressure monitor (blue).