

Supplemental information

Supplemental tables

Table S1

Table S1

DCE-MRI methodology used for measuring BBB permeability

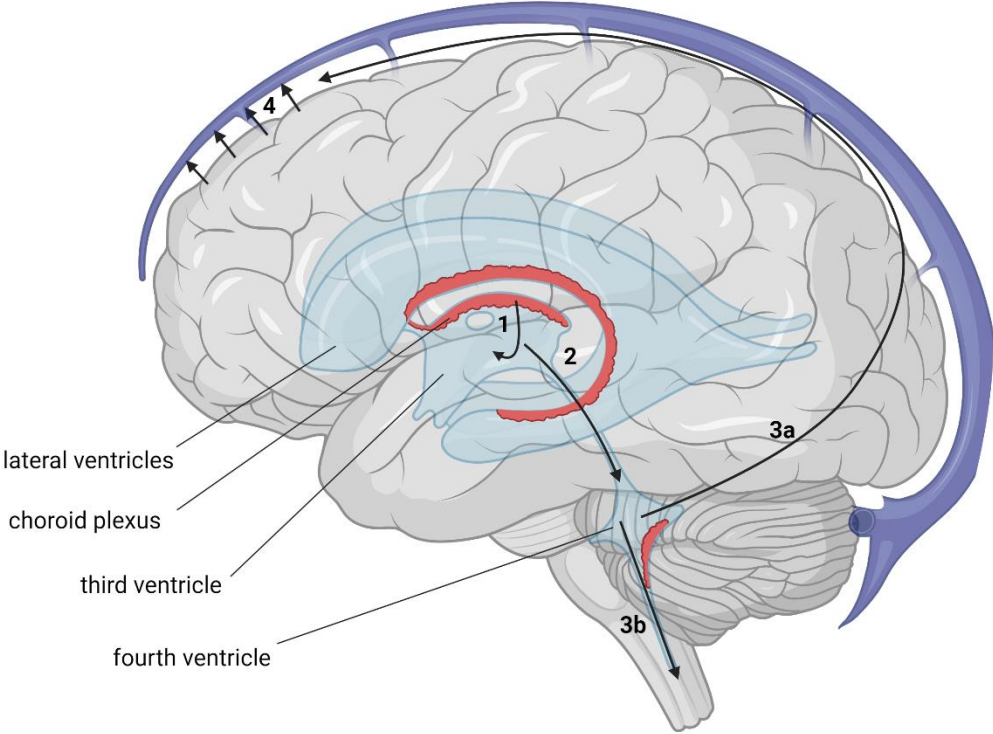
T1 mapping	
T1 mapping method used?	MPRAGE
Contrast agent	
Contrast agent used	Gadovist
CA dosage used	0.1 mmol/kg
CA infusion rate	3 ml/s
CA dosage varied?	No
Acquisition factors	
Scanner type	3T/Siemens MAGNETOM Prisma
Baseline measurements	Yes
Sequence details	Voxel size 1.8 x 1.8 x 1.8 mm, TR 5.00 ms, TE 2.21 ms, flip angle 15.0 deg, FOV 173 x 173 x189 mm, slice thickness 1.8mm, CA injected after 2 min, total duration 23 min
tracer-kinetic model	
Model selected	Patlak

TE= echo time, TR= repetition time, FOV= field of view, CA= contrast agent

Supplemental figures

Figure S1

CSF circulation



The CSF is produced by the choroid plexus and moves from the lateral, third and fourth ventricle, either upwards across the surface of the brain and through lymphatics and the arachnoid granulations back into the blood stream, or downwards into the spinal canal, limiting the direct relevance of Q_{AIB} in the context of BBB evaluation. Created with BioRender.com

Figure S2

Figure S2

DCE-MRI data acquisition and processing, Created with BioRender.com

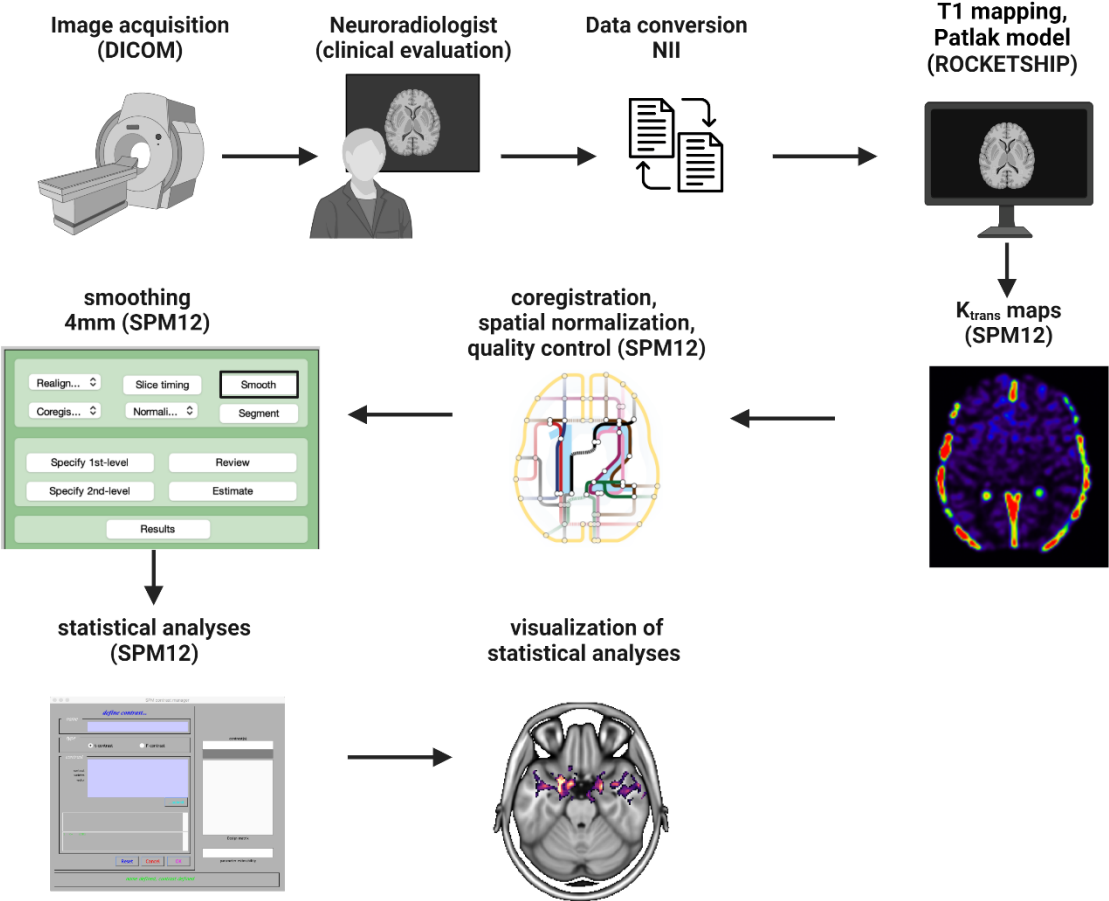


Figure S3

Figure S3

K_{trans} means SSD cohort (SPM12)

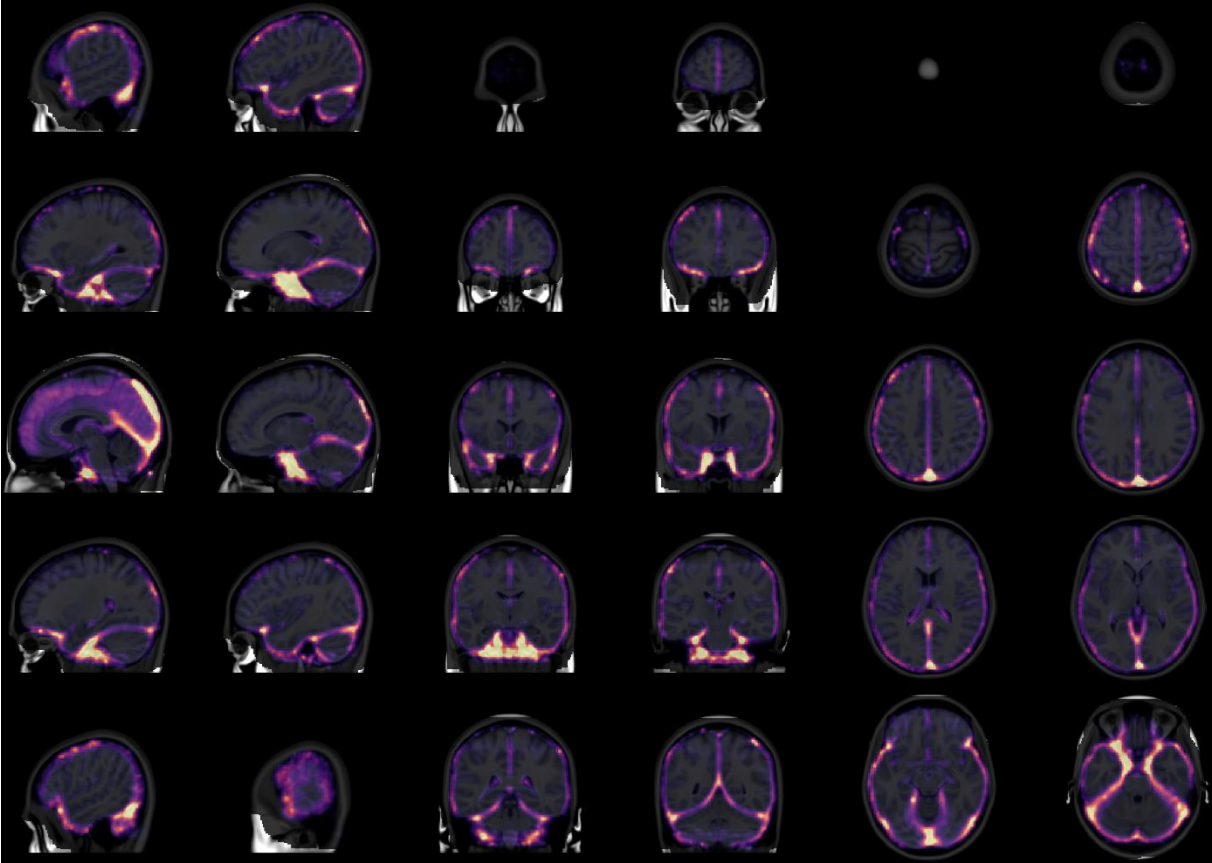


Figure S4

Figure S4

K_{trans} means HC cohort (SPM12)

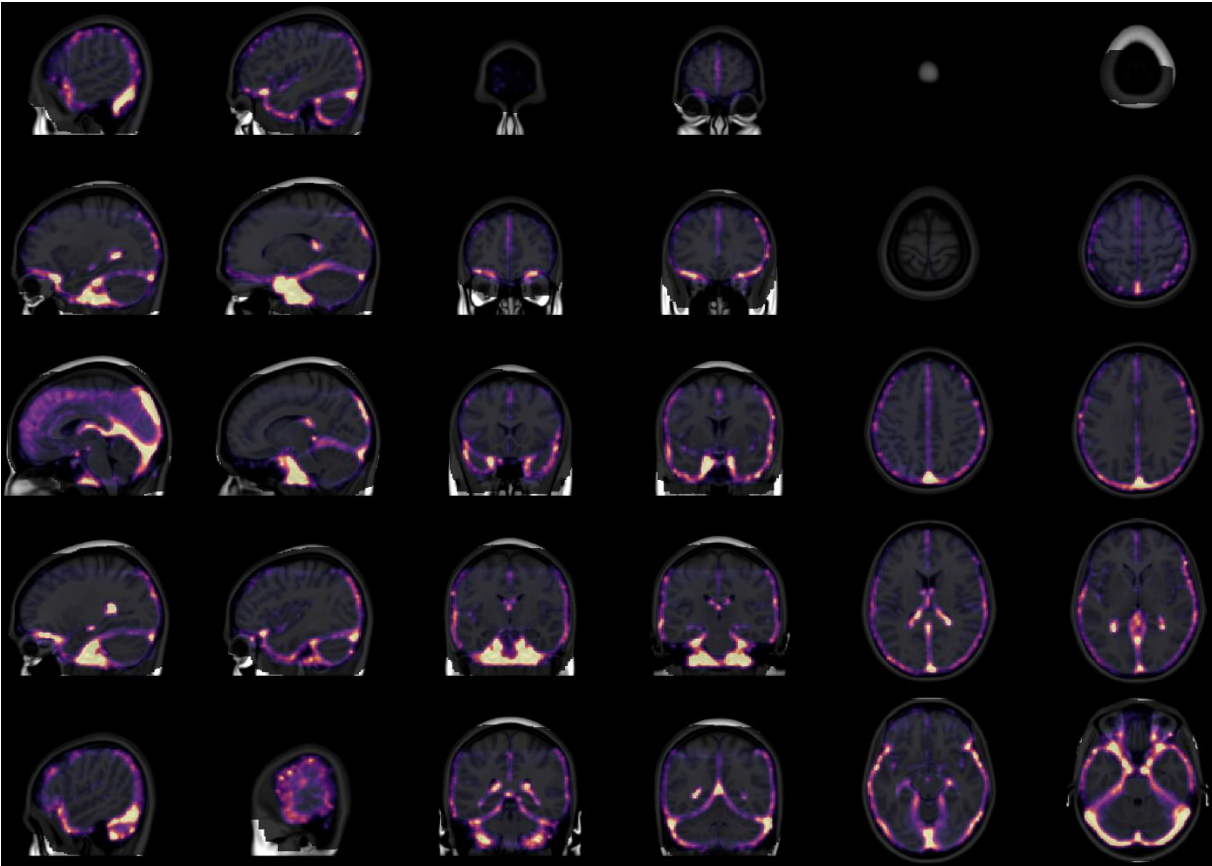
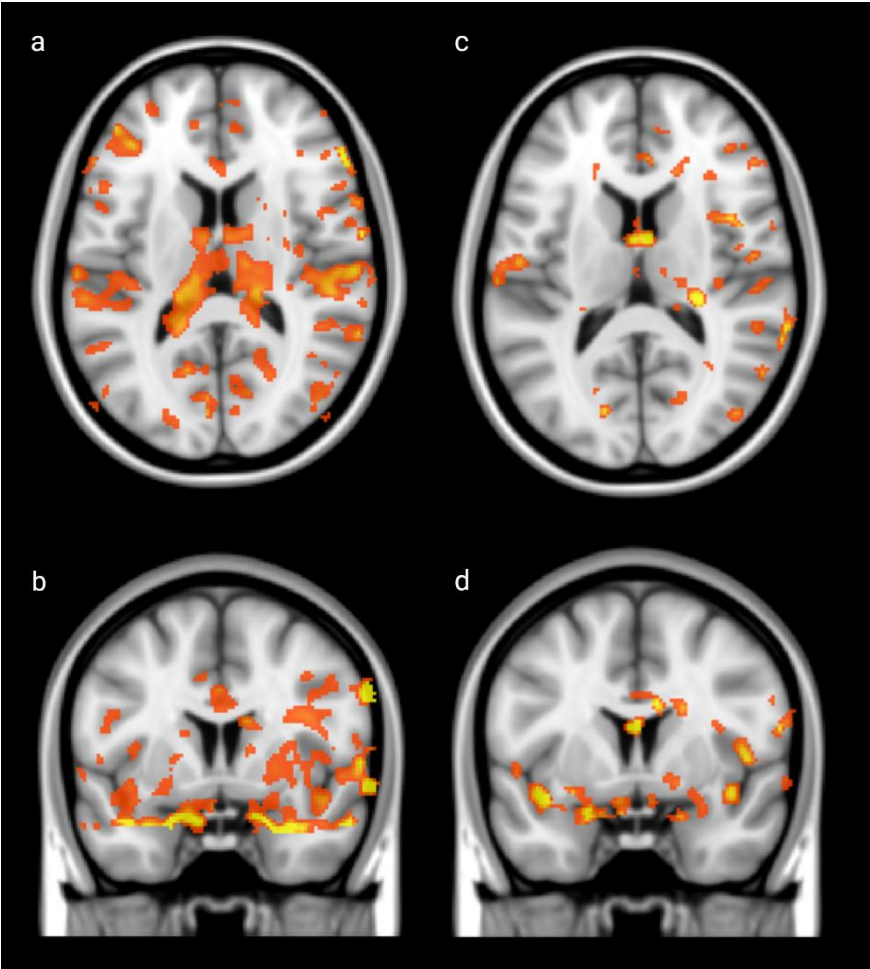


Figure S5

Figure S5

FEP vs. HC and MEP vs. HC (SPM12)

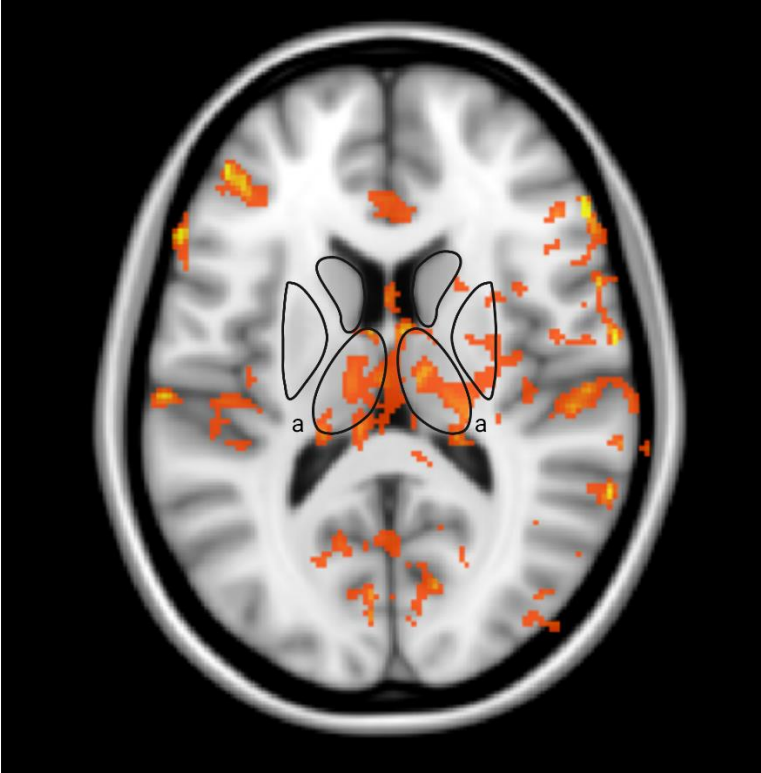


The effect of higher K_{trans} (leakage) in SSD patients compared to HC is stronger in first-episode SSD (a, b) than in multiple episode SSD (c, d)

Figure S6

Figure S6

K_{trans} map comparisons of first-episode SSD (FEP) vs. HC (SPM12) showing higher leakage in thalamus (a), Created with BioRender.com



Supplemental methods

Dropouts

Four individuals with SSD were excluded from the DCE-MRI analyses due to structural abnormality in the MRI (SSD-026), premature termination of the scan by the individual (SSD-021) and technical issues (SSD-029, SSD-077). Out of the healthy control group two individuals were excluded from the analyses due to an autoimmune (HC-017) and psychiatric condition (HC-018).

CSF autoantibodies

The CSF samples [total n = 25], were analyzed in the laboratory of our hospital by a cell-based assay from EUROIMMUN (Lübeck, Germany) for autoimmune encephalitis (antibodies tested: NMDAR [n = 25], α -amino-3-hydroxy-5-methyl-4-isoxazolepropionic acid receptor-1 (AMPA-1) [n = 25], α -amino-3-hydroxy-5-methyl-4-isoxazolepropionic acid receptor-2 (AMPA-2) ([n = 25], CASPR2 [n = 25], LGI1 [n = 25] and γ -amino-butyric acid receptor B1/B2 [n = 25]). No antibodies were detected in CSF and only one subject (SSD-047) manifested NMDAR antibodies in serum.

Quantification of the Blood-Brain Barrier Permeability

DCE-MRI analysis was performed using Rocketship software (version 1.2 2016) running with Matlab. To account for a possible confounding effect of blood flow on DCE-MRI measurements, we determined the arterial input function (AIF) curve for every individual, to provide a dynamic profile of GBCA concentration in the blood after the i.v. injection [1]. Due to the easy assessment (size, location and easier accessibility than for example internal carotid artery), the concentration of the tracer in plasma ($C_{pa}(t)$) was determined from the time course of the signal change in a pixel in the transverse sinus (TS), assuming proportionality to the arterial concentration of the GBCA [2]. Using the individual AIF dynamic profile measurements of the GBCA concentration in the blood self-corrects for possible differences in the blood flow that may affect delivery of the CA to the brain and could potentially affect the K_{trans} measurements [1]. The AIF, which was extracted from a region-of-interest (ROI) positioned

at the TS, was fitted with a bi-exponential function prior to fitting with the Patlak model [3]. The Patlak linearized regression mathematical analysis was used to generate the BBB permeability K_{trans} maps. This model requires that the CA diffusion across the BBB remains unidirectional during the acquisition time. The total tracer concentration in the tissue, $C_{tissue}(t)$, can be described as a function of the blood concentration, $C_{AIF}(t)$, the intravascular blood volume, v_p , and a blood-to-brain transfer constant, K_{trans} , that represents the flow from the intravascular to the extravascular extracellular space using the equation:

$$C_{tissue}(t) = K_{trans} \int_0^t C_{AIF}(u) du + v_p C_{AIF}(t) \quad [1, 4]$$

Supplemental references

1. Montagne, A., et al., *APOE4 leads to blood-brain barrier dysfunction predicting cognitive decline*. Nature, 2020. **581**(7806): p. 71-76.
2. Taheri, S., et al., *Quantitative measurement of blood-brain barrier permeability in human using dynamic contrast-enhanced MRI with fast T1 mapping*. Magn Reson Med, 2011. **65**(4): p. 1036-42.
3. Patlak, C.S., R.G. Blasberg, and J.D. Fenstermacher, *Graphical evaluation of blood-to-brain transfer constants from multiple-time uptake data*. J Cereb Blood Flow Metab, 1983. **3**(1): p. 1-7.
4. Nation, D.A., et al., *Blood-brain barrier breakdown is an early biomarker of human cognitive dysfunction*. Nat Med, 2019. **25**(2): p. 270-276.