

11 **Abstract**

12 A key goal of pertussis control is to protect infants too young to be vaccinated, the age
13 group most vulnerable to this highly contagious respiratory infection. In the last decade,
14 maternal immunization has been deployed in many countries, successfully reducing
15 pertussis in this age group. Because of immunological blunting, however, this strategy
16 may erode the effectiveness of primary vaccination at later ages. Here, we systematically
17 reviewed the literature on the relative risk (RR) of pertussis after primary immunization
18 of infants born to vaccinated vs. unvaccinated mothers. The four studies identified had
19 ≤ 6 years of follow-up and large statistical uncertainty (meta-analysis weighted mean RR:
20 0.71, 95% CI: 0.38–1.32). To interpret this evidence, we designed a new mathematical
21 model with explicit blunting mechanisms and evaluated maternal immunization's short-
22 and long-term impact on pertussis transmission dynamics. We show that transient
23 dynamics can mask blunting for at least a decade after rolling out maternal immunization.
24 Hence, the current epidemiological evidence may be insufficient to rule out modest
25 reductions in the effectiveness of primary vaccination. Irrespective of this potential
26 collateral cost, we predict that maternal immunization will remain effective at protecting
27 unvaccinated newborns, supporting current public health recommendations.

28

29 Introduction

30

31 Pertussis is a highly transmissible respiratory infection that is primarily caused by the
32 bacterium *Bordetella pertussis*^{1,2}. Pertussis was a leading cause of childhood mortality
33 until intense immunization programs, from the 1940s onwards, reduced pertussis
34 notifications by over 90% in many countries^{3,4}. However, in the last couple of decades,
35 pertussis has re-emerged in many populations with high long-term immunization
36 coverage, for reasons which remain highly debated⁵.

37

38 Newborns are the age group most vulnerable to pertussis. In high-income countries,
39 pertussis-related hospitalization rates in infants under 6 months are between 100 and
40 100,000 per year⁶, and data from the US⁷ and Australia⁸ show that over 60% of pertussis-
41 associated hospitalizations are under one year old. To reduce the burden of pertussis in
42 vulnerable newborns, since 2012, many countries have introduced maternal
43 immunization—*i.e.*, vaccinating pregnant individuals, usually during the second or third
44 trimester of pregnancy, with a low-dose tetanus toxoid, diphtheria toxoid, and acellular
45 pertussis (Tdap) vaccine. In 2015, the World Health Organization (WHO) issued an
46 official recommendation for maternal immunization with acellular vaccines against
47 pertussis (based on studies with acellular primary immunization)⁹, and by 2020 maternal
48 immunization against pertussis was recommended in 55 countries¹⁰.

49

50 Maternal immunization is highly effective at protecting newborns, with estimates of
51 reductions in the risk of pertussis infection ranging from 70 to 95%^{8,11-17}. However, the
52 downstream consequences of maternal immunization, when infants receive their routine
53 pertussis vaccines, are poorly understood. Specifically, there has been long-standing
54 concern regarding potential immunological blunting, *i.e.*, the interference of maternally
55 transferred antibodies with the infant immune response¹⁸⁻²⁰. Indeed, several studies and
56 meta-analyses have shown that, after infants received their primary immunization, the
57 antibody concentrations against several pertussis antigens were reduced by 30% to 60%
58 in infants from vaccinated mothers relative to infants from unvaccinated mothers²¹⁻²⁴.
59 Similarly, the avidity of pertussis antibodies is reduced in infants from vaccinated
60 mothers²⁵. Interestingly, the blunting response following maternal pertussis
61 immunization appears to be heterologous, also causing decreased antibody

62 concentration after infants received a polio vaccine²⁶ and the blunting response also
63 applies to other vaccines that contain (modified) diphtheria or tetanus toxins as carrier
64 proteins, such as pneumococcus conjugate vaccines ^{22,26}.

65

66 While immunological blunting is well documented, because the first maternal
67 immunization programs were implemented in 2012, the long-term consequences of
68 blunting on vaccine effectiveness (VE) and the ensuing epidemiology of pertussis remain
69 difficult to evaluate. Here, we assess the epidemiological evidence for blunting and
70 estimate the long-term consequences of maternal immunization in three steps. First, we
71 perform a systematic review of the literature for estimates of the impact of maternal
72 immunization on the relative risk of pertussis after primary pertussis immunization in
73 infants from vaccinated mothers relative to unvaccinated mothers. Second, we extend a
74 previously validated model of pertussis immunization^{4,27} to simulate over several
75 decades the short- and long-term epidemiological impact of maternal immunization with
76 various levels of blunting and maternal immunization coverages on the age-specific time
77 series of pertussis incidence. Third, to identify possible levels of blunting and the
78 consequences of maternal immunization, we match the relative risk estimates obtained
79 from the systematic review with those obtained from the modeling study.

80

81 **Results**

82

83 *A systematic review of empirical studies on the relative risk of pertussis after maternal and*
84 *infant primary immunization*

85

86 We identified 374 peer-reviewed articles and, after removing 146 duplicate records, we
87 screened 228 abstracts for a mention of maternal immunization with either a number of
88 cases, an odds ratio or a relative risk of pertussis and/or effectiveness of a pertussis
89 vaccine (Fig. 1). Based on these criteria, we identified and retrieved 69 articles that might
90 contain information (Table S4).

91

92 Our search identified four studies that reported five estimates of the relative risk of
93 pertussis in infants from vaccinated versus unvaccinated mothers and that specified the
94 dose of infant primary immunization (Fig. 1, Fig. 2, Table S1). Two studies were carried

95 out in the UK, one in Australia, and one in California, US. In all studies, maternal
96 immunization coverage was low right after the implementation of maternal
97 immunization but increased to reach >70% (Table S1). The studies' follow-up times
98 ranged from 2 to 6 years (Table S1). At the first dose of infant primary immunization,
99 these studies showed a weighted mean RR of 0.26 (Fig. 2, 95% CI: 0.11–0.67). At the
100 second dose of infant primary immunization, the RR increased to a weighted mean of 0.73
101 (Fig. 2, 95% CI: 0.39–1.34) and this was very similar to the weighted mean RR at the third
102 dose of infant primary immunization which had a value of 0.71 (Fig. 2, 95% CI: 0.38–
103 1.32).

104

105 *The model recapitulates the historical trends of pertussis, with a resurgence caused by a*
106 *honeymoon effect*

107

108 To interpret the RR estimates and assess the short- and long-term impact of blunting on
109 pertussis transmission dynamics, we extended an empirically validated model of
110 pertussis epidemiology^{4,27}, to incorporate maternal immunization and its dual effects of
111 protecting unvaccinated newborns and blunting vaccine effectiveness after infant
112 primary immunization. To assess the historical impact of routine immunization in infants,
113 we first examined the trends in overall incidence and age-specific susceptibility. Infant
114 immunization induced a strong decrease in pertussis incidence but was followed by a
115 rebound with a gradual buildup of susceptible individuals in adult age groups until a new
116 equilibrium—with lower incidence than in the pre-vaccine era—was reached several
117 decades later (Fig. 3 A & B). As previously demonstrated in the US, this resurgence was
118 explained as an “end-of-honeymoon” effect, a predictable consequence of incomplete
119 immunization with imperfect but highly effective vaccines. Hence, our model
120 recapitulated the historical dynamics of pertussis in the US, characterized by a
121 resurgence and shift of infections to adolescent and adult age groups⁴.

122

123 *Transient dynamics after the start of maternal immunization*

124

125 Second, we examined the impact of maternal immunization, which we introduced 100
126 years after the rollout of infant immunization, to disentangle the consequences of the two
127 immunization programs. Maternal immunization had the intended effect of decreasing

128 susceptibility to infection in unvaccinated newborns aged 0–2 months (Fig. 3B).
129 However, after the rollout of maternal immunization, the model predicted a transient
130 phase with lower pertussis incidence, lasting at least 5 years and followed by a rebound
131 (Fig. 4A). In newborns, pertussis incidence was lower after the start of maternal
132 immunization relative to before, but the benefit of maternal immunization was larger in
133 a scenario without blunting than in a scenario with blunting (Fig. 4A). Thus, maternal
134 immunization was predicted to be effective at protecting unvaccinated newborns, with
135 benefits by far outweighing any possible blunting-mediated increases in incidence.

136
137 By contrast, in the second age class of infants aged 3–18 months, (*i.e.*, after receipt of the
138 primary pertussis immunization), maternal immunization was followed by a decrease of
139 pertussis incidence, but only when blunting was low (<10%, Fig. 4B). At higher levels of
140 blunting, pertussis incidence was predicted to increase relative to before the start of
141 maternal immunization (Fig. 4B). Irrespective of the simulated blunting level, the second
142 age class also showed a clear transient phase, lasting at least 5 years (Fig. 4B). During this
143 transient phase, pertussis incidence was first predominantly driven by infants from
144 unvaccinated mothers (Fig. 4C), followed later on by incidence in infants from vaccinated
145 mothers, who dominated once incidence had reached equilibrium (Fig. 4D). These
146 dynamics persisted in children up to 5 years of age, but dissipated by age 10 years, after
147 which pertussis incidence remained low and the effects of both maternal immunization
148 and blunting on pertussis incidence were negligible (Fig. S3).

149
150 *Comparison with empirical estimates suggests that blunting cannot be ruled out*

151
152 Lastly, we estimated the impact of blunting on the RR of pertussis in vaccinated infants
153 born to mothers vaccinated during pregnancy. In newborns, our simulations show that
154 estimates of the effectiveness of maternal immunization (*i.e.*, based on incidence) have a
155 transient phase in a direction consistent with those deduced from the transient incidence
156 dynamics: the effectiveness of maternal immunization was high at first but decreased
157 with time, and equilibrium values were reached only after a transient phase that lasted
158 at least a decade (Fig. 5A). Hence, ignoring the transient dynamics results in an
159 overestimation of the effectiveness of maternal immunization, an effect most pronounced
160 during the first decade after implementation.

161

162 As expected, in the second age class of infants aged 3–18 months, (*i.e.*, after receipt of the
163 primary pertussis immunization), blunting resulted in RR equilibrium values above 1 (*i.e.*,
164 a higher risk of pertussis in infants born to vaccinated mothers relative to unvaccinated
165 mothers), which increased with the input blunting strength. However, these risks were
166 reached only after a transient phase that lasted more than a decade (Fig. 5B). During this
167 transient phase, even in scenarios with blunting, the RR was initially far below 1 and
168 gradually increased after the start of maternal immunization. Hence, ignoring these
169 transient dynamics and assuming that an RR of 1 indicates no blunting may result in
170 overestimating the effectiveness of maternal immunization in both unvaccinated
171 newborns and vaccinated infants (Fig. 5B). It is noteworthy that the transient phase for
172 the estimation of RR (Fig. 5 A & B) is longer than for the incidence (Fig. 4 A & B). This is
173 because RR (and hence VE) are cumulative estimates instead of instantaneous estimates
174 such as incidence (Fig. S4). Interestingly, depending on the contact matrix, the incidence
175 during the transient phase showed oscillating dynamics, which increases the variability
176 between estimates after 3, 6, or even 10 years (Figs. S12, S13), but these oscillations
177 disappeared in the RR estimates (Figs. S14, S15), likely thanks to their cumulative nature.
178 Interestingly, after the transient phase, a scenario without blunting resulted in RRs below
179 1, due to residual protection from maternal antibodies in infants who were vaccinated
180 but in whom the vaccine did not take. This result suggests that the usual assumption that
181 an RR of 1 indicates no blunting may be too optimistic.

182

183 Comparing our model predictions with the results of epidemiological studies, all current
184 empirical RR estimates fell well within the transient phase of our simulations (Fig. 5C).
185 Demographic stochasticity accounted for some of the variability in the predicted RR (Fig.
186 5B), but observation noise due to small sample sizes was by far the largest source of
187 uncertainty (Fig. 5C). Inspecting the overlap between confidence intervals, all the
188 empirical estimates were consistent with blunting, even though two estimates (in the UK
189 and California) were also consistent with no blunting. Hence, according to our
190 simulations, current empirical studies cannot yet detect the eventual epidemiological
191 consequences of blunting (Fig. 5B), because of the transient RR dynamics following the
192 rollout of maternal immunization. Hence, the model-data comparison suggests that

193 current empirical RR estimates cannot rule out a modest level of blunting of infant
194 primary immunization (Fig. 5C).

195

196 *Sensitivity analyses*

197

198 To assess the robustness of our results, we conducted a range of sensitivity analyses with
199 different hypotheses regarding model parameters, such as the coverage of maternal and
200 infant immunization, the average duration of maternal protection, age-specific contact
201 patterns, the age of primary immunization, and the basic reproduction number). To
202 assess the consequences of non-pharmaceutical interventions (NPIs) during the COVID-
203 19 pandemic, we further simulated scenarios with transient reductions in vaccine
204 coverage and pertussis transmission. In our simulations, variation in these parameters
205 sometimes had a substantial impact on pertussis incidence, e.g., Figs. S7, S9, S11, and S13.
206 However, our conclusions about blunting were robust in all the sensitivity analyses, and
207 the results presented in Figs. S5 to S34 were consistent with those presented in Fig. 4 and
208 Fig. 5.

209

210 The sensitivity analyses revealed a few noteworthy results. First, a considerable
211 reduction of the blunting effect on pertussis incidence was predicted when delaying the
212 age at the start of the infant's primary immunization by a few months (Fig. S11, S12).
213 Second, the empirical epidemiological studies with two or three years of monitoring
214 could match scenarios with blunting reducing vaccine effectiveness by up to 50% (Fig.
215 S22). However, such a high level of blunting could be ruled out by the 6-year study in the
216 UK. This indicates the need for larger sample sizes and longer monitoring to reliably
217 estimate vaccine effectiveness and the impact of new immunization programs. Third,
218 consistent with expectation and epidemiological observations, the COVID-19 pandemic
219 was predicted to have a substantial impact on pertussis dynamics, with a decline in
220 incidence followed by a rebound (e.g., Figs. S25 A&B, S27A&B, S29A&B, S31A&B, S34 A-
221 D). However, the temporal dynamics of RR remained consistent in this scenario (Figs.
222 S32, S33, S34 E-H), likely because in our model control measures equally affected infants
223 born from vaccinated or unvaccinated mothers.

224

225 **Discussion**

226

227 In this study, we aimed to review the epidemiological evidence regarding the impact of
228 maternal immunization on the effectiveness of pertussis vaccines in infants. We interpret
229 this evidence using a new mechanistic mathematical model that represented the effect of
230 blunting on pertussis transmission dynamics. Our systematic review identified four
231 observational epidemiological studies, which had a maximum monitoring time of 6 years
232 and were often combined with small sample sizes. Most studies suggested a reduced risk
233 of pertussis after receipt of the first vaccine dose in infants born to mothers immunized
234 during pregnancy. After receipt of the second or third vaccine dose, however, the
235 estimates had large uncertainty, consistent with a range of assumptions about blunting
236 levels. To interpret these empirical estimates, we performed a simulation study using an
237 age-structured model of pertussis transmission. This model predicted that the
238 introduction of maternal immunization was followed by a transient phase lasting at least
239 a decade, during which the blunting effect of maternal antibodies could be
240 underestimated. The model-data comparison suggested that a modest level of blunting
241 could not be ruled out, even though the large uncertainty in empirical estimates
242 prevented a definitive conclusion. Even in the presence of such blunting, however, our
243 model predicted that maternal immunization remained effective at reducing pertussis in
244 unvaccinated newborns. Hence, our results confirm that maternal immunization is an
245 effective strategy to protect this age group, but suggest it may eventually result in an
246 infection-control trade-off with older age groups.

247

248 Unvaccinated newborns are the age group most vulnerable to pertussis, both in terms of
249 infection and hospitalization risks^{6,7,8}. Our study suggests that, although blunting may
250 erode the benefits of immunization in infants, maternal immunization is highly effective
251 at protecting unvaccinated newborns. Hence, our results support the decision of many
252 public health authorities to introduce maternal immunization against pertussis, provided
253 that the main control objective is to protect newborns^{9,10}. More generally, given the
254 vulnerability of newborns to many pathogens, maternal immunization against other
255 infectious diseases is considered by public health authorities, and the pharmaceutical
256 industry is developing new vaccines for immunization during pregnancy. For example, a
257 maternal vaccine against RSV recently underwent successful phase 3 trial²⁸ and may soon
258 be rolled out²⁹. In addition to the Tdap and RSV vaccines, maternal immunization is

259 implemented or recommended for influenza, COVID-19, and several other infections³⁰⁻³².
260 Maternal immunization, therefore, also appears as a promising strategy to protect
261 newborns against these infections, but given that immunological blunting has been
262 documented for many infections^{18,33-36}, our results suggest the need to monitor its
263 impact on subsequent vaccination of infants carefully.

264

265 One of the main takeaways from our review was the large uncertainty around the
266 available empirical estimates, emphasizing the urgent need for more research on
267 blunting. However, if such blunting is confirmed by future evidence, there are ways to
268 mitigate its impact. Immunity in newborns conferred by maternal antibodies against
269 pertussis likely wanes quickly, on a timescale of months, according to our model. Given
270 the fast waning of maternal antibodies and the association between the maternal
271 antibody titers and the blunting of infant immune responses³⁷, delaying infant primary
272 immunization by a few months might greatly reduce the maternal blunting of infant
273 immunization³⁵. Pertussis immunization schedules vary greatly between countries, with
274 the age at first immunization of infants typically ranging between two and four months³⁸,
275 and the current variation in pertussis immunization schedule can significantly impact the
276 effectiveness of pertussis immunization in infants³⁹. If maternal blunting occurs, our
277 results suggest that the optimal age at first immunization is governed by a trade-off
278 between vaccinating too early (with the effect of reducing the susceptibility age window
279 in newborns but amplifying the impact of blunting in vaccinated infants) and too late
280 (with the opposite effect). As the costs of infection in unvaccinated newborns likely
281 exceed those in older age groups, the introduction of maternal immunization may thus
282 increase the optimal age at first immunization, in all infants or only in those born to
283 vaccinated mothers. The Dutch public health authorities take an interesting approach:
284 the recommended age for the first dose of primary immunization for children from
285 unvaccinated mothers is two months, while for children from vaccinated mothers the
286 recommendation is to start one month later, at three months⁴⁰. Identifying the optimal
287 pertussis immunization schedule for infants would be helpful for public health
288 authorities, especially given the vast between-country variation in pertussis
289 immunization schedules^{38,39,41}. Our new model could thus help future research on
290 optimal vaccine schedules.

291

292 After the roll-out of maternal immunization, our model predicted a transient phase
293 lasting approximately a decade, during which the incidence of pertussis—in both
294 unvaccinated newborns and vaccinated infants—initially dropped, but then bounced
295 back and increased to reach a new equilibrium. The duration of this transient phase is
296 consistent with that found in a previous modeling study⁴² and may be explained by the
297 time required for the first cohorts of blunted-vaccinated infants (*i.e.*, born to vaccinated
298 mothers) to reach primary school age and its associated high contacts. Thus, reduced
299 transmission from unvaccinated newborns may explain the initial decrease in incidence
300 across age groups, but this benefit gradually wears off as blunted-vaccinated, and
301 therefore less well-protected, children age.

302

303 From a practical perspective, the transient phase following maternal immunization has
304 at least two important implications. First, the current individual-based epidemiological
305 studies had ≤ 6 years of monitoring, which we predict is insufficient to capture the
306 consequences of maternal immunization that can only be detected with at least a decade
307 of data. Second, an RR of 1 is considered the baseline value indicating that maternal
308 immunization does not blunt vaccine effectiveness in infants. In the transient phase,
309 however, our model predicts that the baseline value under a no-blunting scenario starts
310 off close to 0 and gradually increases to an equilibrium just below 1. This equilibrium
311 value results from the residual protection from maternal antibodies, which partially
312 compensates for failures of primary immunization in infants born to vaccinated mothers.
313 These results suggest that the early empirical estimates of vaccine effectiveness may
314 overestimate the benefits of maternal immunization, both for newborns and for infants.
315 A testable prediction of our model, therefore, is that the benefits of maternal
316 immunization estimated in subsequent studies will be lower than those currently
317 reported, both in newborns and after the primary series. More broadly, as reflected in
318 some official guidelines for vaccine impact evaluation⁴³ and demonstrated for other
319 vaccines such as influenza and streptococcus, biased estimation of vaccine effectiveness
320 because of transient dynamics early after vaccine rollout is likely a more general
321 occurrence.

322

323 Epidemiological monitoring studies have, until now, not reported maternal
324 immunization-mediated rebounds in pertussis incidence (e.g.,⁴⁴). However, we believe

325 that the best way to quantify the clinical and epidemiological impact of blunting is by
326 more precise individual-level estimation of the RR (ideally after the transient phase
327 predicted by our model), instead of monitoring population-level changes in pertussis
328 incidence. This is for several reasons. First, we predict that the rebound a few years after
329 the roll-out of maternal immunization will be small compared to the large reduction
330 immediately after. Hence, detecting an increase in pertussis incidence resulting from
331 maternal immunization may be difficult. Second, many countries have reported pertussis
332 resurgence in the last decades⁵, so empirical studies of pertussis incidence may face the
333 challenge of disentangling pre-maternal immunization increases from a post-maternal
334 immunization rebound, which is challenging especially considering the multiannual
335 periodicity of pertussis. The interpretation of trends in pertussis incidence may be
336 further compounded by changes in national immunization schedules (e.g.,³⁹) and the
337 impact of NPIs during the COVID-19 pandemic. For the latter, we predict that the RR will
338 remain a more robust metric.

339

340 In addition to the monitoring time, other components of the design of current
341 epidemiological studies may affect their interpretation. First, as the mothers' decision to
342 receive Tdap during pregnancy is voluntary and likely related to other socioeconomic
343 factors that will affect—and presumably reduce—their infants' risk of pertussis, the
344 baseline comparability between groups in these observational studies is far from
345 obvious. Hence, estimates of the effectiveness of maternal immunization may have been
346 confounded by healthy user bias; interestingly, the study that controlled most thoroughly
347 for maternal characteristics¹⁶ had large statistical uncertainty around its RR estimates
348 and could not rule out blunting. In addition to this confounding problem, maternal
349 immunization may prevent mothers from transmitting pertussis to their infants, an
350 indirect effect that could lead to underestimating the risk of pertussis and masking the
351 effect of blunting in the group of infants vaccinated and born to vaccinated mothers (as
352 recognized by some investigators¹³). Because of these potential biases, current RR
353 estimates may have been underestimated. Our model does not account for such potential
354 biases and hence our model predictions regarding the level of blunting may be
355 conservative.

356

357 Our study has several limitations. First, our model was parameterized based on previous
358 estimates in Massachusetts, USA, and may only correctly represent pertussis
359 epidemiology in comparable high-income countries. To address this limitation, we have
360 performed sensitivity analyses with a range of basic reproduction numbers, and the
361 conclusions were consistent. Second, in the absence of serological correlates of protection
362 for pertussis⁴⁵⁻⁴⁷, the duration of maternally-derived protection—and in particular how
363 it connects to maternal antibody titers in the infant—is unknown. In our model, this
364 parameter was calibrated to reach empirical estimates of maternal immunization
365 effectiveness in newborns, with an average duration of maternally derived protection at
366 8.7 months resulting in vaccine effectiveness for newborns close to 80%. Even though
367 sensitivity analyses demonstrated that our main results were robust to variations in this
368 parameter, more accurate estimation will be important to inform future models and to
369 predict optimal vaccination schedules. Third, for simplicity, we did not model the direct,
370 protective effect of maternal immunization on mothers—only the indirect effect on their
371 newborns. This direct effect is an additional benefit of maternal immunization, but
372 because in high-income countries the proportion of women giving birth is small relative
373 to the total adult population ([the 2010–2021 EU average ranging between 1.50 and 1.57](#)
374 [live births per 1,000 individuals and the range among all EU-member states in 2021](#)
375 [between 1.1 and 1.8 live births per 1,000 individuals⁴⁸](#)), it is expected to have a minor
376 epidemiological impact. Fourth, in our simulations, maternal immunization coverage was
377 fixed at 70%, while in real-world settings it is often initially low and takes several years
378 to increase to the higher values described in Table S1 (e.g., Fig. 1 in¹⁴). However, such
379 temporal variations in immunization coverage are expected to increase the duration of
380 the transient phase and would thus reinforce our conclusions about the unreliability of
381 early empirical estimates.

382

383 To conclude, our study shows that maternal immunization is effective at protecting
384 newborns, even when blunting erodes some of its benefits. The degree of blunting, and
385 the extent to which it entails an epidemiological cost in older age groups, can not be
386 known yet, as we predict that the implementation of maternal immunization is followed
387 by a transient phase during which the epidemiological impact of blunting is masked.
388 Hence, current epidemiological studies may be insufficient to rule out blunting or grasp
389 the long-term epidemiological consequences of maternal immunization. Our results,

390 therefore, identify the need for more research to precisely estimate the degree of blunting
391 after primary immunization, if any. More generally, our study supports the use of
392 maternal immunization to reduce pertussis in newborns, but suggests this strategy may
393 be associated with an infection-control trade-off between different age groups.

394

395 **Methods**

396

397 *Systematic review and meta-analysis of empirical studies on the relative risk of pertussis*
398 *after maternal and infant primary immunization*

399

400 We searched the literature on Web of Science, PubMed, and Scopus on August 25, 2023.
401 We used the search terms “maternal immunization AND pertussis AND effectiveness OR
402 maternal vaccination AND pertussis AND effectiveness”. In Web of Science, we entered
403 these terms under ‘Topic’, in PubMed we entered these terms under ‘Title/Abstract’, and
404 in Scopus under ‘Article type, Abstract, Keywords’. In these three searches, we selected
405 the publication dates from January 1, 2012, which is the first complete year with
406 recommended maternal immunization in any country¹⁴, until August 25, 2023. To be
407 included in our review, studies had to provide an estimate of the relative risk (RR) of
408 pertussis in infants having received at least one dose of their primary immunization from
409 vaccinated vs. unvaccinated mothers. We selected only those studies that used
410 laboratory-confirmed diagnosis of pertussis. Because the RR of pertussis varies
411 substantially between doses of infant primary immunization, we selected only studies
412 that were explicit about the number of doses of primary immunization and we excluded
413 those studies that pooled estimates for various doses. For studies that provided more
414 than one estimate per dose, we used all estimates provided. When studies provided
415 estimates with and without known pertussis onset dates, we chose those estimates with
416 known onset dates.

417

418 To estimate the RR per dose of infant primary immunization, we performed the analyses
419 in two ways, which gave consistent results. First, we estimated the weighted means of RR
420 per dose. Second, we performed a meta-regression following⁴⁹ and as performed in⁵⁰. In
421 brief, in both analyses, we log-transformed the RR obtained from the studies and
422 weighted the estimates according to the inverse of the 95% CI of the RR estimate. We

423 preferred to use RR rather than the numbers of cases⁵¹ because there are two studies in
424 which RR estimates correct for participants' socio-demographic covariates. The meta-
425 regression allowed the inclusion of all doses (as a factor) into one model and to account
426 for estimates coming from the same studies by having the study identity as a random
427 intercept. To account for the fact that two studies were carried out in the same
428 population, we repeated the meta-regression by including the population as a random
429 intercept, which gave consistent results. We performed the meta-regression in R v. 4.2.0⁵²
430 with the function 'brm' from the package 'brms'⁵³ using flat uninformative priors with
431 100,000 iterations, 20,000 burn-in, and a thinning of 40. Model residuals fulfilled all
432 assumptions as checked with the function 'createDHARMA' of the package 'DHARMA'⁵⁴.
433 Meta-analyses usually control the heterogeneity between studies and most importantly
434 for publication bias⁴⁹, but given the low number of studies and sample sizes, this was not
435 possible here.

436

437 *Simulation: Model schematic*

438

439 We implemented an age-structured model of pertussis transmission, extending a
440 previous model empirically validated on data from Massachusetts, USA^{4,27}. In brief, the
441 model is based on the Susceptible-Exposed-Infected-Recovery (SEIR, Fig. S1) model in
442 which pertussis vaccines can fail by (i) failure in "take" (primary vaccine failure) and (ii)
443 failure in duration (waning of vaccine protection)⁵⁵. Based on immunological evidence
444 showing an immediate reduction in the antibody response to primary vaccination^{21,22,35},
445 we assumed that blunting from maternal immunization increased the probability of
446 primary vaccine failure. Previous results in⁴ found no evidence for failure in degree (or
447 leakiness, i.e., when vaccine-induced protection is imperfect and vaccinees remain
448 susceptible to infection, but at a lower degree than unvaccinated individuals), and hence
449 we ignored this possibility.

450

451 The model is designed such that we follow individuals grouped according to their
452 immunization history. For each immunization, individuals can go to either of three
453 compartments: one for successful immunization, one for failed immunization, and one for
454 immunization not received (Fig. S1). These three possible paths or compartments start
455 from their mother's immunization status during pregnancy, followed by an infant

456 immunization schedule that resembles that of the empirical studies in Table S1: the
457 infant's primary immunization occurs at the age of three months, and an infant booster
458 at the age of 1.5 years. Hence, newborns can be born in three possible compartments:
459 from vaccinated mothers whose immunization succeeded, mothers whose immunization
460 failed (i.e., who received the vaccine but whose infant remained unprotected), or
461 unvaccinated mothers. We model maternal immunization by transferring a fraction of
462 newborns to a protected class. Maternal immunization in itself is not modeled; hence our
463 model does not specify at which stage of pregnancy maternal immunization occurs. The
464 assumed high effectiveness of maternal immunization implies that it occurred at a timing
465 consistent with that used in the studies in Table S1 and in the empirical studies of the
466 systematic review, i.e., during the second or third trimester of pregnancy and at least one
467 week before giving birth.

468

469 Each of the three compartments is followed by a compartment for successful primary
470 infant immunization (Fig. S1) and a compartment for failed primary infant immunization,
471 thereby becoming susceptible (Fig. S1), or no immunization thereby also becoming
472 susceptible. Following the first booster, these susceptibles become immunized again at
473 an effectiveness of 96%, with a subsequent waning rate of vaccine protection of 0.011 yr^{-1}
474 (Table S3). For simplicity, as in earlier modeling studies⁴, we model the infant primary
475 immunization as one event and we do not consider the gradual effect of multiple vaccine
476 doses.

477

478 *Model parametrization*

479

480 Parametrization of the base model

481 Our model is based on⁴, which was fitted to pertussis incidence data from Massachusetts
482 to identify the model parameters that best matched the data. Hence, for the parameters
483 consistent between both models, we used the estimates from⁴ (Table S3), but note that
484 the sensitivity analyses explained below and shown in the supplementary information
485 create conditions that represent other populations.

486

487 By adding maternal immunization to this model, we also added three new parameters.
488 The first parameter is maternal immunization coverage, for which we use a baseline of

489 70%, consistent with the empirical estimates a few years after the rollout of maternal
490 immunization (Table S1). The second parameter is the duration of maternally derived
491 immunity, for which, there are no empirical estimates. One proxy is the half-life of
492 maternal antibodies, which ranges between 29 and 36 days^{56,57}, suggesting that the
493 duration of maternally-derived immunity is short. However, because of the absence of
494 definite correlates of protection⁴⁵⁻⁴⁷, the correspondence between the waning rate of
495 maternal antibodies and that of maternal immunity is unknown. For example, if both
496 waning rates are assumed equal and without the transfer of new maternal antibodies,
497 e.g., through breastfeeding, according to our model the effectiveness of maternal
498 immunization in the first two months after birth would be close to 50% (Fig. S1). This is
499 in contrast with the estimated effectiveness of maternal immunization in that age class,
500 which ranged from 78% (¹⁵ 95% CI: 48–90) to 93% (¹² 95% CI: 81–97). Thus, in our
501 model, we calibrated the average duration of maternal protection to reach these
502 empirical estimates of vaccine effectiveness and hence we show results with an average
503 duration of 8.7 months (Table S3, Fig. S2). The third parameter is the blunting of infant
504 immune protection, defined as the relative reduction in the effectiveness of the primary
505 series in infants born to vaccinated mothers (compared to infants born to unvaccinated
506 mothers). There are no empirical estimates of the degree of blunting of infant protection
507 following maternal immunization or how changes in IgG titers translate into changes in
508 protection. When infants receive their primary immunization, the antibody
509 concentrations of infants from vaccinated mothers are 30% to 60% lower compared to
510 those from unvaccinated mothers^{21,22}. To best match the empirical estimates of the
511 relative risk of pertussis, we chose a decrease in the effectiveness of primary
512 immunization from 0% (i.e., no blunting) to 20%. Formally, the blunting parameter b_1 is
513 modeled as a relative reduction in the initial effectiveness of infant immunization Σ ,
514 resulting in a blunted effectiveness $\underline{\varepsilon} = \varepsilon(1 - b_1)$.

515

516 Sensitivity analyses

517 We checked the sensitivity of our results to nine model changes:

- 518 (i) maternal immunization coverage, changed from a baseline value of 70% to
519 50% and to 90% (Fig. S5, S6), which is the range represented in Table S1;
- 520 (ii) infant immunization coverage, changed from a baseline value of 90% to 70%
521 and 80% (Fig. S7, S8);

- 522 (iii) the average duration of maternal protection changed from a baseline value of
523 8.7 months to 4 months and 1 year (Fig. S9, S10);
- 524 (iv) the start of primary immunization, changed from a baseline value of 3 months
525 to 2, 4, and 9 months (Fig. S11, S12);
- 526 (v) different social contact matrices, with that of the UK as baseline (in Figs. 4 and
527 5) and changed to those in 7 other European countries as described in^{58,59} (Fig.
528 S13-S18). A more detailed age-specific contact matrix is available for the UK⁶⁰,
529 but not for other countries and hence we used an age-structure that is
530 consistent across countries;
- 531 (vi) starting the maternal immunization program 60 years after the rollout of
532 primary immunization, instead of 100 years. This reflects an introduction of
533 maternal immunization during a honeymoon-mediated pertussis resurgence,
534 as was the case in many countries (Fig. S19, S20);
- 535 (vii) blunting the effectiveness of the infant primary immunization up to 60% (Fig.
536 S21, S22), instead of the baseline range of 0% to 20%;
- 537 (viii) $\pm 50\%$ variations in the basic reproduction number, to model different
538 transmission levels in a range of populations (Fig. S23, S24);
- 539 (ix) the impact of the COVID-19 pandemic, modeled as 3- to 9-month period
540 associated with lower vaccine coverage (20% reduction) and lower
541 transmission (20%, 50%, or 70% reduction, as a result of social distancing
542 measures, Fig. S25-S34). This sensitivity analysis is motivated by the
543 observation that COVID-19-associated social distancing measures
544 substantially decreased pertussis incidence^{61,62}. To model NPIs during the
545 COVID-19 pandemic, we followed the approach from a previous study which
546 reduced the transmission between 20% and 70% for a duration of 3 months
547 and 9 months⁶³. We obtained estimates of the changes in immunization
548 coverage during the COVID-19 pandemic from three empirical studies⁶⁴⁻⁶⁶. In
549 our model, we introduced these changes 8 years after the rollout of the
550 maternal immunization program because that matches the 8-year lag between
551 the first maternal immunization programs and the COVID-19 NPIs in most
552 countries.

553

554 *Estimation of relative risk of infection following maternal immunization*

555

556 To connect the model outputs with the empirical estimates of relative risk (RR)^{13,14,16,17},
557 we calculated the risk of contracting pertussis in infants born to vaccinated mothers
558 relative to that of infants born to unvaccinated mothers using the same approach as
559 in^{13,17}. These studies used the screening method following⁶⁷, in which the RR is estimated
560 as:

$$561 \quad RR = \frac{PCV}{(1 - PCV)} \cdot \frac{(1 - PPV)}{PPV}$$

562 where PCV (proportion of cases vaccinated) is the proportion of cases in vaccinated
563 infants born to vaccinated mothers among all cases in infants vaccinated, and PPV is the
564 proportion of the population vaccinated, here equal to the vaccine coverage of maternal
565 immunization. We validated the RR estimates of the simulations by setting the half-life of
566 maternally derived protection to infinity, which resulted in a RR of 0.05 in newborns and
567 matched the initial 95% effectiveness of maternal immunization against pertussis in
568 unvaccinated newborns fixed in the simulations (Fig. S2, Table S3). Hence, while the
569 screening method may have several limitations in real-world settings⁶⁸, it provided
570 reliable estimates of vaccine effectiveness in the context of our model.

571

572 *Numerical implementation*

573

574 We represented the process model as a continuous-time Markov process, approximated
575 via the tau-leap algorithm⁶⁹ with a fixed time step of 1 day. To compare the model outputs
576 to empirical estimates, we also added an observation model for the RR. This was done by
577 sampling the number of vaccinated cases born to vaccinated mothers from a Binomial
578 distribution with probability PCV and size equal to the number of cases described in the
579 empirical studies at the third dose (Table S1). The model was implemented and simulated
580 using the ‘pomp’ package v. 4.4.3.0⁷⁰, operating in R v. 4.2.0⁵².

581

582 **References**

- 583 1. Kilgore, P. E., Salim, A. M., Zervos, M. J. & Schmitt, H. J. Pertussis: Microbiology, Disease,
584 Treatment, and Prevention. *Clin. Microbiol. Rev.* **29**, 449–486 (2016).
- 585 2. Rohani, P. & Scarpino, S. V. *Pertussis: Epidemiology, Immunology & Evolution*. (Oxford

- 586 University Press, Oxford, 2019).
- 587 3. Amirthalingam, G., Gupta, S. & Campbell, H. Pertussis immunisation and control in England
588 and Wales, 1957 to 2012: a historical review. *Euro Surveill.* **18**, ii=20587 (2013).
- 589 4. Domenech de Cellès, M., Magpantay, F. M. G., King, A. A. & Rohani, P. The impact of past
590 vaccination coverage and immunity on pertussis resurgence. *Sci. Transl. Med.* **10**, eaaj1748
591 (2018).
- 592 5. Domenech de Cellès, M., Magpantay, F. M. G., King, A. A. & Rohani, P. The pertussis enigma:
593 reconciling epidemiology, immunology and evolution. *Proc. Biol. Sci. B* **283**, 20152309
594 (2016).
- 595 6. Kandeil, W. *et al.* A systematic review of the burden of pertussis disease in infants and the
596 effectiveness of maternal immunization against pertussis. *Expert Rev. Vaccines* **19**, 621–638
597 (2020).
- 598 7. Mbayei, S. A. *et al.* Severe Pertussis Infections in the United States, 2011–2015. *Clin. Infect.*
599 *Dis.* **69**, 218–226 (2019).
- 600 8. Quinn, H. E. *et al.* Pertussis disease and antenatal vaccine effectiveness in Australian
601 children. *Pediatr. Infect. Dis. J.* **41**, 180–185 (2022).
- 602 9. World Health Organization. Pertussis vaccines: WHO position paper – August 2015. (2015).
- 603 10. Abu-Raya, B. *et al.* Global perspectives on immunization during pregnancy and priorities for
604 future research and development: an international consensus statement. *Front. Immunol.*
605 **11**, 1282 (2020).
- 606 11. Amirthalingam, G. *et al.* Effectiveness of maternal pertussis vaccination in England: an
607 observational study. *Lancet* **384**, 1521–1528 (2014).
- 608 12. Dabrera, G. *et al.* A case-control study to estimate the effectiveness of maternal pertussis
609 vaccination in protecting newborn infants in England and Wales, 2012–2013. *Clin. Infect.*
610 *Dis.* **60**, 333–337 (2015).
- 611 13. Amirthalingam, G. *et al.* Sustained effectiveness of the maternal pertussis immunization
612 program in England 3 years following introduction. *Clin. Infect. Dis.* **63**, S236–S243 (2016).

- 613 14. Baxter, R., Bartlett, J., Fireman, B., Lewis, E. & Klein, N. P. Effectiveness of vaccination during
614 pregnancy to prevent infant pertussis. *Pediatrics* **139**, e20164091 (2017).
- 615 15. Skoff, T. H. *et al.* Impact of the US Maternal Tetanus, Diphtheria, and Acellular Pertussis
616 Vaccination Program on Preventing Pertussis in Infants <2 Months of Age: A Case-Control
617 Evaluation. *Clin. Infect. Dis.* **65**, 1977–1983 (2017).
- 618 16. Rowe, S. L. *et al.* Maternal vaccination and infant influenza and pertussis. *Pediatrics* **148**,
619 e2021051076 (2021).
- 620 17. Amirthalingam, G. *et al.* Optimization of Timing of Maternal Pertussis Immunization From 6
621 Years of Postimplementation Surveillance Data in England. *Clin. Infect. Dis.* **8**, e1129–e1139
622 (2023).
- 623 18. Albrecht, P., Ennis F. A., Saltzman, E. J. & Krugman, S. Persistence of maternal antibody in
624 infants beyond 12 months: mechanism of measles vaccine failure. *J. Pediatr.* **91**, 715–717
625 (1977).
- 626 19. Bento, A. I., King, A. A. & Rohani, P. Maternal pertussis immunisation: clinical gains and
627 epidemiological legacy. *Euro Surveill.* **22**, 30510 (2017).
- 628 20. Leuridan, E. Pertussis vaccination in pregnancy: State of the art. *Vaccine* **35**, 4453–4456
629 (2017).
- 630 21. Barug, D. *et al.* Maternal pertussis vaccination and its effects on the immune response of
631 infants aged up to 12 months in the Netherlands: an open-label, parallel, randomised
632 controlled trial. *Lancet Infect. Dis.* **19**, 392–401 (2019).
- 633 22. Abu-Raya, B. *et al.* The effect of Tetanus-Diphtheria-Acellular-Pertussis immunization
634 during pregnancy on infant antibody responses: individual-participant data meta-analysis.
635 *Front. Immunol.* **12**, 689394 (2021).
- 636 23. Jones, C. E. *et al.* A phase IV, multi-centre, randomized clinical trial comparing two
637 pertussis-containing vaccines in pregnant women in England and vaccine responses in
638 their infants. *BMC Med.* **19**, 138 (2021).
- 639 24. Sapuan, S. *et al.* An observational, cohort, multi-centre, open label phase IV extension study

- 640 comparing preschool DTAP-IPV booster vaccine responses in children whose mothers were
641 randomised to one of two pertussis-containing vaccines or received no pertussis-
642 containing vaccine in pregnancy in England. *Vaccine* **40**, 7050–7056 (2022).
- 643 25. Caboré, R. N. *et al.* Influence of maternal vaccination against diphtheria, tetanus, and
644 pertussis on the avidity of infant antibody responses to a pertussis containing vaccine in
645 Belgium. *Virulence* **8**, 1245–1254 (2017).
- 646 26. Zimmermann, P. *et al.* The effect of maternal immunisation during pregnancy on infant
647 vaccine responses. *EclinicalMedicine* **13**, 21–30 (2019).
- 648 27. Domenech de Cellès, M., Rohani, P. & King, A. A. Duration of Immunity and Effectiveness of
649 Diphtheria-Tetanus-Acellular Pertussis Vaccines in Children. *JAMA Pediatr.* **173**, 588–594
650 (2019).
- 651 28. Kampmann, B. *et al.* Bivalent Prefusion F Vaccine in Pregnancy to Prevent RSV Illness in
652 Infants. *N. Engl. J. Med.* **388**, 1451–1464 (2023).
- 653 29. Venkatesan, P. First RSV vaccine approvals. *Lancet Microbe* **4**, e577 (2023).
- 654 30. Omer, S. B. Maternal Immunization. *N. Engl. J. Med.* **376**, 1256–1267 (2017).
- 655 31. Halasa, N. B. *et al.* Effectiveness of Maternal Vaccination with mRNA COVID-19 Vaccine
656 During Pregnancy Against COVID-19-Associated Hospitalization in Infants Aged <6 Months
657 - 17 States, July 2021-January 2022. *MMWR Morb. Mortal. Wkly. Rep.* **71**, 264–270 (2022).
- 658 32. Etti, M. *et al.* Maternal vaccination: a review of current evidence and recommendations. *Am.*
659 *J. Obstet. Gynecol.* **226**, 459–474 (2022).
- 660 33. Gans, H. A. *et al.* Deficiency of the Humoral Immune Response to Measles Vaccine in Infants
661 Immunized at Age 6 Months. *JAMA* **280**, 527–532 (1998).
- 662 34. Mawa, P. A. *et al.* The impact of maternal infection with Mycobacterium tuberculosis on the
663 infant response to bacille Calmette–Guérin immunization. *Philos. Trans. R. Soc. Lond. B Biol.*
664 *Sci.* **3017**, 20140137 (2015).
- 665 35. Voysey, M. *et al.* The influence of maternally derived antibody and infant age at vaccination
666 on infant vaccine responses: an individual participant meta-analysis. *JAMA Pediatr.* **17**,

- 667 637–646 (2017).
- 668 36. Grassly, N. C. *et al.* Effect of maternal immunisation with multivalent vaccines containing
669 inactivated poliovirus vaccine (IPV) on infant IPV immune response: A phase 4, multi-
670 centre randomised trial. *Vaccine* **41**, 1299–1302 (2023).
- 671 37. Abu-Raya, B. *et al.* Factors affecting antibody responses to immunizations in infants born to
672 women immunized against pertussis in pregnancy and unimmunized women: Individual-
673 Participant Data Meta-analysis. *Vaccine* **39**, 6545–6552 (2021).
- 674 38. Perkins, T. A. & Tran, Q. M. Timing is everything when it comes to pertussis vaccination.
675 *Lancet Infect. Dis.* **22**, 158–159 (2022).
- 676 39. Paireau, J. *et al.* Impact of vaccine schedule change on pertussis epidemiology in France: a
677 modelling and serological study. *Lancet Infect. Dis.* **22**, 265–273 (2022).
- 678 40. Rijksinstituut_Voor_Volksgezondheid_en_Milieu. Rijksinstituut voor Volksgezondheid en
679 Milieu. *Dutch National Immunisation Programme*
680 <https://rijksvaccinatieprogramma.nl/english> (2021).
- 681 41. Riolo, M. A. & Rohani, P. Combating pertussis resurgence: One booster vaccination schedule
682 does not fit all. *Proc. Natl. Acad. Sci. U. S. A.* **112**, E472–E477 (2015).
- 683 42. Bento, A. I. & Rohani, P. Forecasting Epidemiological Consequences of Maternal
684 Immunization. *Clin. Infect. Dis.* **63**, S205–S212 (2016).
- 685 43. World Health Organization. *Measuring impact of streptococcus pneumoniae and*
686 *haemophilus influenzae type b conjugate vaccination.* (2012).
- 687 44. Skoff, T. H., Deng, L., Bozio, C. H. & Hariri, S. US Infant Pertussis Incidence Trends Before and
688 After Implementation of the Maternal Tetanus, Diphtheria, and Pertussis Vaccine. *JAMA*
689 *Pediatr.* In press (2023).
- 690 45. Van Rie, A., Wendelboe, A. M. & Englund, J. A. Role of maternal pertussis antibodies in
691 infants. *Pediatr. Infect. Dis. J.* **24**, S62–S65 (2005).
- 692 46. Diavatopoulos, D. A. *et al.* PERISCOPE: road towards effective control of pertussis. *Lancet*
693 *Infect. Dis.* **19**, e179–e186 (2019).

- 694 47. Chen, Z. *et al.* Evaluation of serum anti-pertussis toxin IgA antibodies for the diagnosis of
695 Bordetella pertussis infection in young children. *J. Infect. Public Health* **16**, 1167–1173
696 (2023).
- 697 48. Eurostat. How many children were born in the EU in 2021?
698 <https://ec.europa.eu/eurostat/en/web/products-eurostat-news/w/ddn-20230309-1>
699 (2023).
- 700 49. Nakagawa, S. & Santos, E. S. A. Methodological issues and advances in biological meta-
701 analysis. *Evol. Ecol.* **26**, 1253–1274 (2012).
- 702 50. Kärkkäinen, T., Briga, M., Laaksonen, T. & Stier, A. Within-individual repeatability in
703 telomere length: A meta-analysis in nonmammalian vertebrates. *Mol. Ecol.* **31**, 6339–6359
704 (2022).
- 705 51. Viechtbauer, W. Conducting Meta-Analyses in R with the metafor Package. *J. Stat. Softw.* **36**,
706 1–48 (2010).
- 707 52. R Core Team. *R: A Language and Environment for Statistical Computing*. [https://www.R-](https://www.R-project.org/)
708 [project.org/](https://www.R-project.org/) (2022).
- 709 53. Bürkner, P.-C. brms: An R Package for Bayesian Multilevel Models Using Stan. *J. Stat. Softw.*
710 **80**, 1–28 (2017).
- 711 54. Hartig, F. DHARMA: Residual Diagnostics for Hierarchical (Multi-Level / Mixed) Regression
712 Models. R package version 0.4.6. <http://florianhartig.github.io/DHARMA/> (2022).
- 713 55. McLean, A. R. & Blower, S. M. Imperfect vaccines and herd immunity to HIV. *Proc. R Soc B*
714 *Biol. Sci.* **253**, 9–13 (1993).
- 715 56. Healy, C. M. *et al.* Kinetics of maternal pertussis-specific antibodies in infants of mothers
716 vaccinated with tetanus, diphtheria and acellular pertussis (Tdap) during pregnancy.
717 *Vaccine* **38**, 5955–5961 (2020).
- 718 57. Oguti, B. *et al.* The half-life of maternal transplacental antibodies against diphtheria,
719 tetanus, and pertussis in infants: an individual participant data meta-analysis. *Vaccine* **40**,
720 450–458 (2022).

- 721 58. Mossong, J. *et al.* Social contacts and mixing patterns relevant to the spread of infectious
722 diseases. *PLoS Med.* **5**, e74 (2008).
- 723 59. Béraud, G. *et al.* The French Connection: The First Large Population-Based Contact Survey
724 in France Relevant for the Spread of Infectious Diseases. *PLoS One* **10**, e0133203 (2015).
- 725 60. van Hoek, A. J. *et al.* The Social Life of Infants in the Context of Infectious Disease
726 Transmission; Social Contacts and Mixing Patterns of the Very Young. *PLoS ONE* **8**, e76180
727 (2013).
- 728 61. Tessier, E. *et al.* Impact of the COVID-19 pandemic on Bordetella pertussis infections in
729 England. *BMC Public Health* **22**, 405 (2022).
- 730 62. Reicherz, F., Golding, L., Lavoie, P. M. & Abu-Raya, B. Decay of anti-Bordetella pertussis
731 antibodies in women of childbearing age following COVID-19 non-pharmaceutical
732 measures. *Vaccine* **40**, 3746–3751 (2022).
- 733 63. Brett, T. S. & Rohani, P. Transmission dynamics reveal the impracticality of COVID-19 herd
734 immunity strategies. *Proc. Natl. Acad. Sci. U. S. A.* **117**, 25897–25903 (2020).
- 735 64. Causey, K. *et al.* Estimating global and regional disruptions to routine childhood vaccine
736 coverage during the COVID-19 pandemic in 2020: a modelling study. *Lancet* **398**, 522–534
737 (2021).
- 738 65. Kim, S., Headley, T. Y. & Tozan, Y. Universal healthcare coverage and health service delivery
739 before and during the COVID-19 pandemic: A difference-in-difference study of childhood
740 immunization coverage from 195 countries. *PLoS Med.* **19**, e1004060 (2022).
- 741 66. Lai, X. *et al.* Estimating global and regional between-country inequality in routine childhood
742 vaccine coverage in 195 countries and territories from 2019 to 2021: a longitudinal study.
743 *EClinicalMedicine* **60**, 102042 (2023).
- 744 67. Farrington, C. P. Estimation of vaccine effectiveness using the screening method. *Int. J.*
745 *Epidemiol.* **22**, 742–746 (1993).
- 746 68. Minodier, L. *et al.* Influenza vaccine effectiveness: best practice and current limitations of
747 the screening method and their implications for the clinic. *Expert Rev. Vaccines* **13**, 1039–

- 748 1048 (2014).
- 749 69. He, D., Ionides, E. L. & King, A. A. Plug-and-play inference for disease dynamics: measles in
750 large and small populations as a case study. *J. R. Soc. Interface* **7**, 271–283 (2010).
- 751 70. King, A. A., Nguyen, D. & Ionides, E. L. Statistical Inference for Partially Observed Markov
752 Processes via the R Package pomp. *J. Stat. Softw.* **69**, 1–43 (2016).
- 753 71. Page, M. J. *et al.* The PRISMA 2020 statement: an updated guideline for reporting systematic
754 reviews. *BMJ* **372**, n71 (2021).

755 **Acknowledgements**

756 We thank the useful discussions with and feedback from Andrew Tredennick (University
757 of Georgia, USA), Christian Gunning (University of Georgia, USA), Denis Macina (Sanofi
758 Pasteur, France), Laurent Coudeville (Sanofi Pasteur, France), and Edward Thommes
759 (Sanofi Pasteur, Canada). We thank Laura Barrero Guevara for useful feedback on the
760 figures.

761

762 **Data Reproducibility**

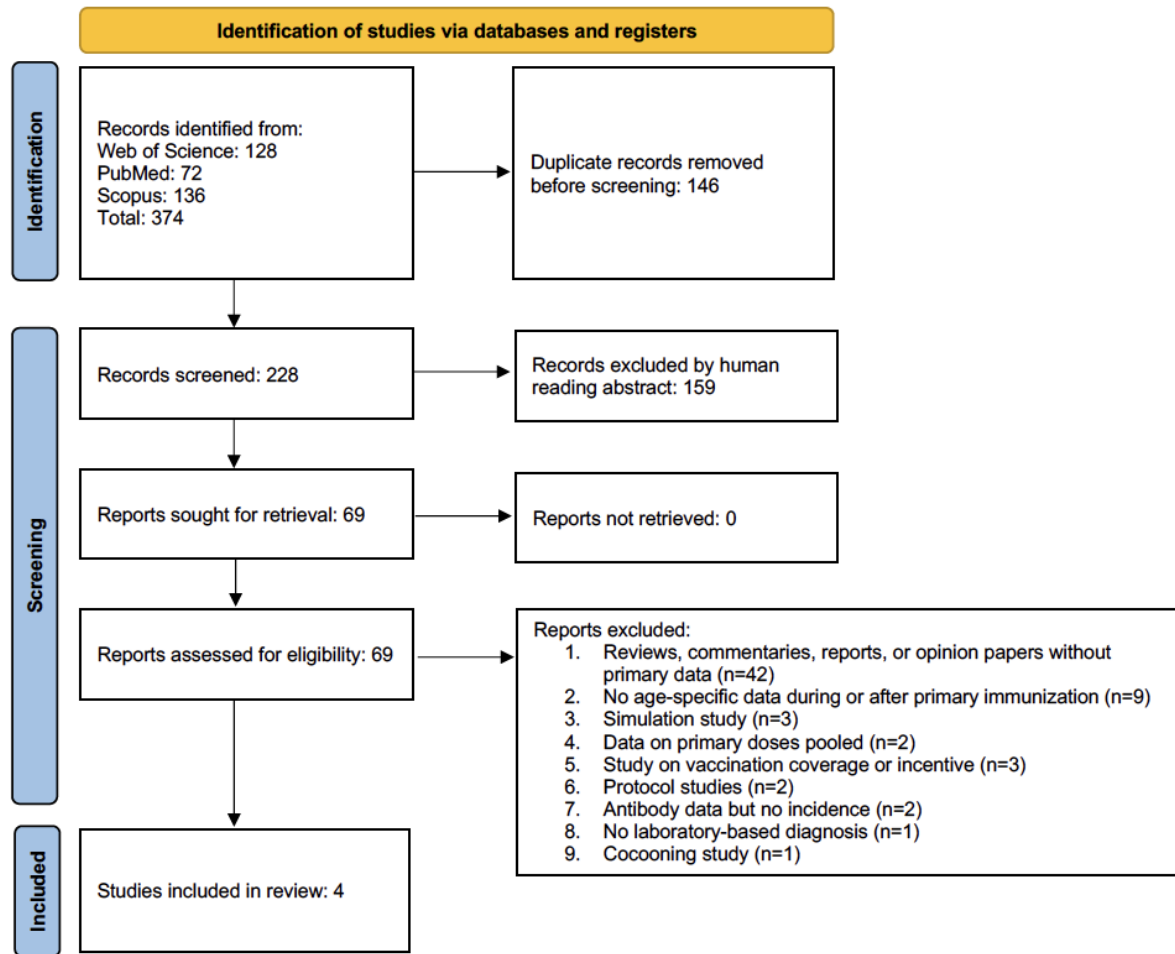
763 All R scripts are currently available at:

764 https://drive.google.com/drive/folders/1-tT3XaPYwPbviXe1OB7_hvN8SSYe9HYJ, and
765 will be made freely available upon publication via Edmond, the Open Data Repository of
766 the Max Planck Society.

767

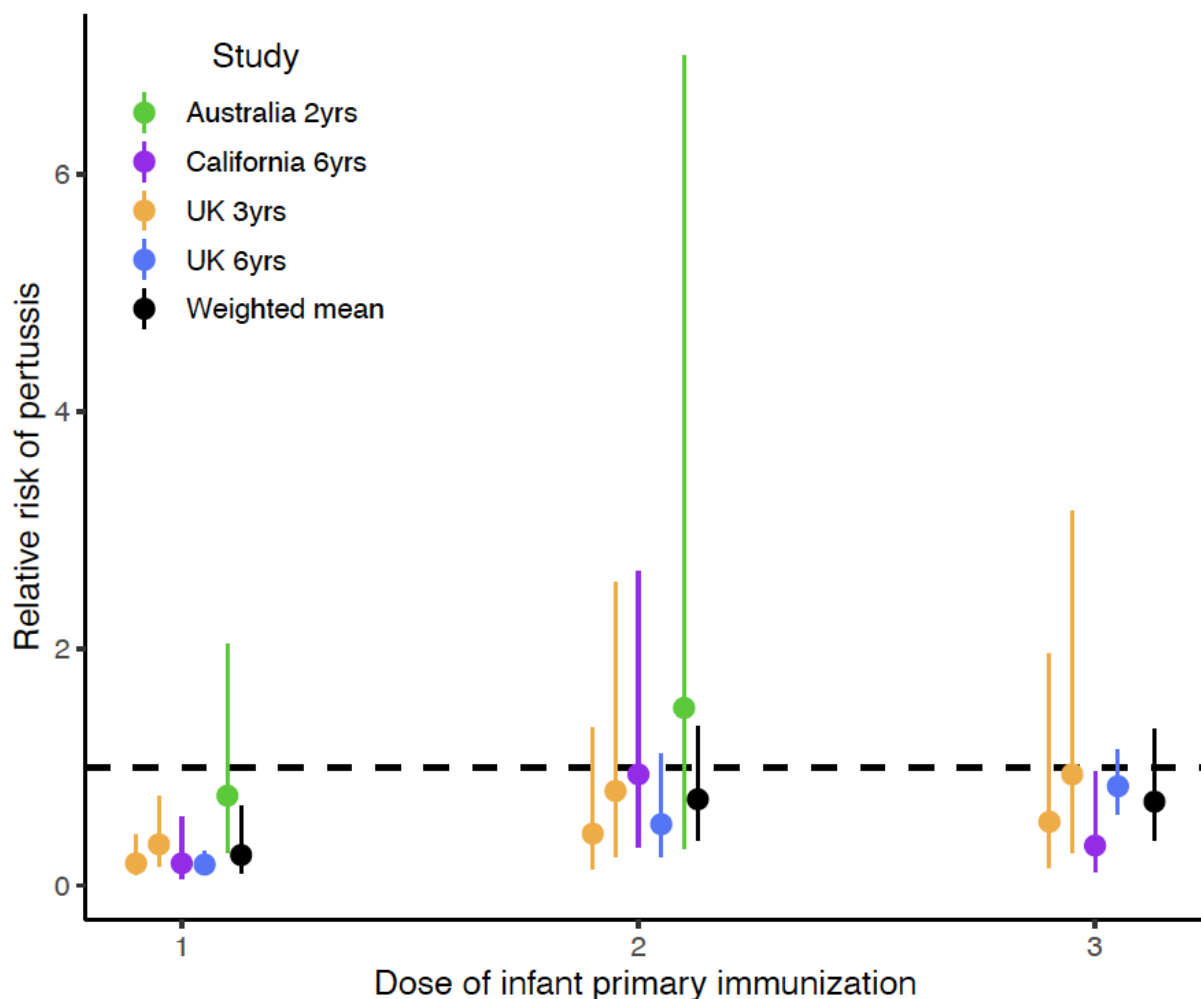
768 **Potential conflict of interests**

769 Prof. Pejman Rohani received funding from Sanofi France for another separate project.



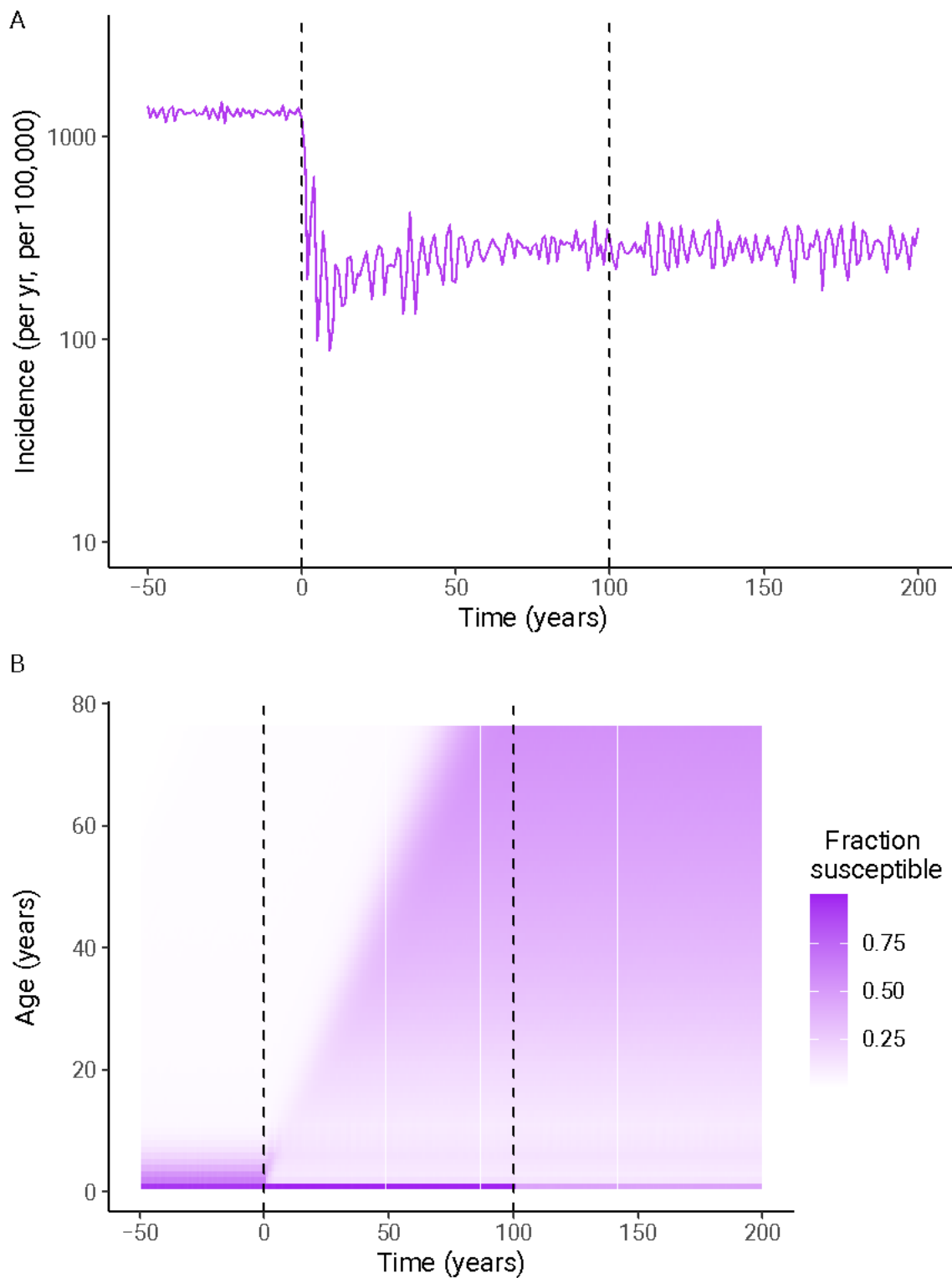
770

771 Fig. 1 Prisma flow chart, following⁷¹, of the literature search for empirical estimates of the
 772 relative risk (RR) of contracting pertussis following maternal immunization in children
 773 who had received at least one dose of infant primary immunization.



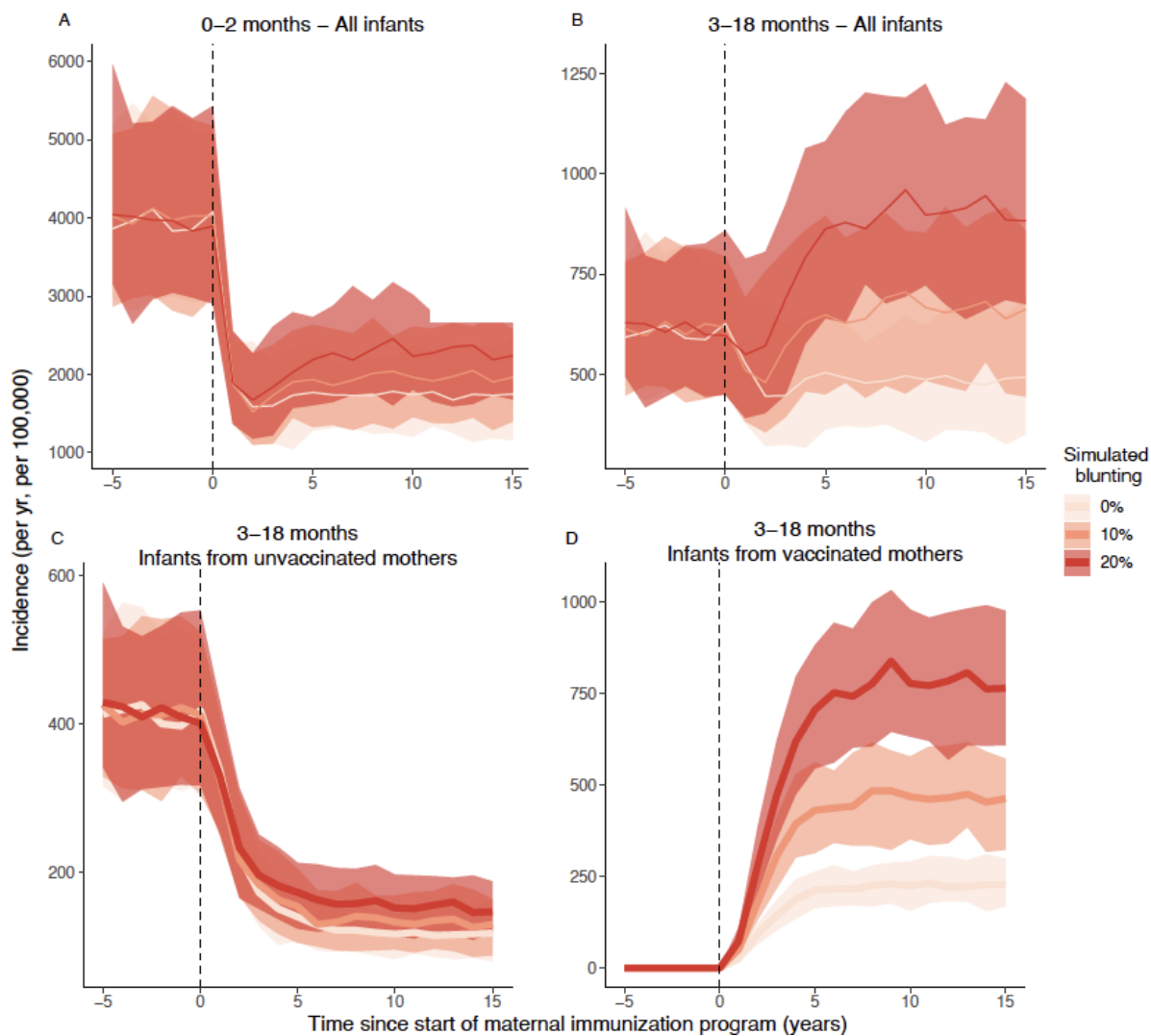
774

775 Fig. 2 Overview of the results from empirical epidemiologic studies of the relative risk of
776 contracting pertussis after 1–3 vaccine doses for primary immunization in infants from
777 vaccinated mothers relative to those of unvaccinated mothers during infant primary
778 immunization. The literature search protocol is shown in Fig. 1, and the data are available
779 in Table S1. The two lines for the UK 3-year study represent two estimates of maternal
780 immunization coverage. References: Australia 2 yrs¹⁶, California 6 yrs¹⁴, UK 3 yrs¹³, and
781 UK 6 yrs¹⁷.



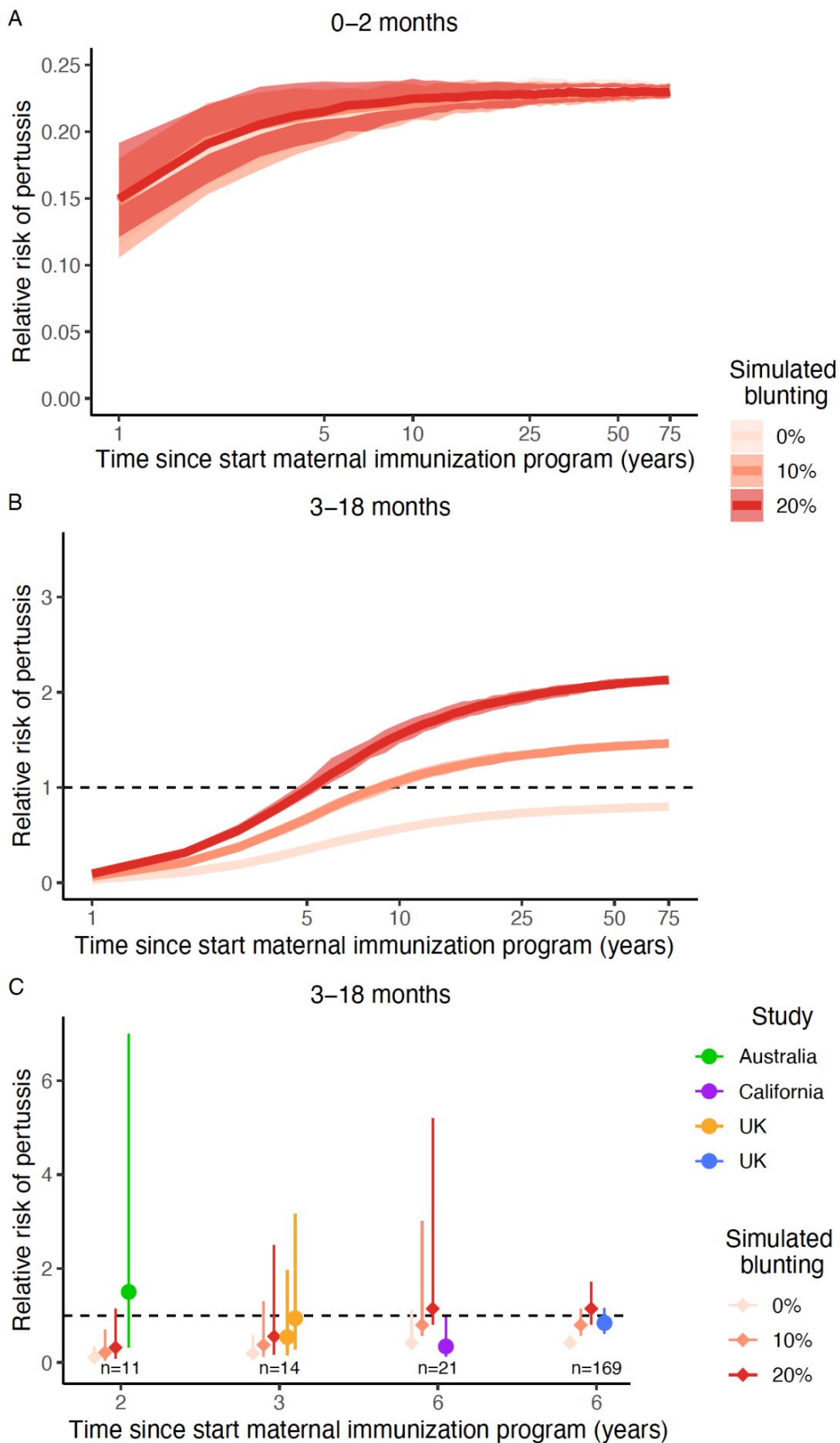
782

783 Fig. 3 Illustration of honeymoon effects and transient susceptible dynamics following the
784 start of infant immunization (vertical dashed line at time = 0 years) and maternal
785 immunization without blunting (vertical dashed line at time = 100 years) showing (A)
786 pertussis incidence and (B) the fraction susceptible for each age class from one stochastic
787 simulation.



788

789 Fig. 4 Model predictions of the consequences of maternal immunization and blunting for
790 pertussis incidence in (A) unvaccinated newborns (aged 0–2 mo) and (B) vaccinated
791 infants (aged 3–18 mo, after receipt of primary immunization). For this age class, during
792 the transient phase after maternal immunization, pertussis incidence is at first mostly
793 driven by (C) infants from unvaccinated mothers until (D) pertussis incidence is most
794 abundant in infants from vaccinated mothers. Panel (D) is consistent with the PCV-term
795 in the RR equation (see methods, ⁶⁷). Solid lines show the median incidence of 100
796 simulations and shaded areas represent the 95% CI. Pertussis incidence before the start
797 of the maternal immunization program is shown as a control, and variation in incidence
798 between simulations is the result of demographic stochasticity. In this figure, all
799 immunization coverages were set at 70%, which is close to the mean observed values in
800 empirical studies (e.g., Table S1). Note the different y-axis between panels.



802 Fig. 5 Temporal dynamics of the risk of contracting pertussis in (A) unvaccinated
803 newborns and (B, C) vaccinated infants from vaccinated mothers relative to those of
804 unvaccinated mothers.. (A, B) Solid lines show the median RR of 100 simulations and
805 shaded areas show 95% CI resulting from demographic stochasticity across simulations.
806 (C) Comparison between the results from model simulations (gradient red diamonds)
807 and the empirical studies (colored dots). In simulations, vertical lines show 95% CI due
808 to demographic stochasticity and observation uncertainty, resulting from the partial
809 sampling of the population with sample sizes matching those from empirical studies in
810 Fig. 2 (Table S1).