

1 **Long Title:**

2 **The frequency of typhoid carriage in patients undergoing cholecystectomy for**  
3 **gallbladder disease in Pakistan: A cross-sectional study**

4 **Short Title:**

5 **Typhoid carriage in cholecystectomy patients in Pakistan**

6 **Authors:**

7 **Sonia Qureshi**, Department of Pediatrics and Child Health, Aga Khan University,  
8 Karachi, Sindh, Pakistan. [sonia.qureshi@aku.edu](mailto:sonia.qureshi@aku.edu)

9 **Noshi Maria**, Department of Community Health Sciences, Aga Khan University,  
10 Karachi, Sindh, Pakistan. [mariaa.samuel@gmail.com](mailto:mariaa.samuel@gmail.com)

11 **Tabish Chawla**, Department of Surgery, Aga Khan University, Karachi, Sindh, Pakistan.  
12 [tabish.chawla@aku.edu](mailto:tabish.chawla@aku.edu)

13 **Junaid Iqbal**, Department of Pediatrics and Child Health, Aga Khan University, Karachi,  
14 Sindh, Pakistan. [junaid.iqbal@aku.edu](mailto:junaid.iqbal@aku.edu)

15 **Abdul Momin Kazi**, Department of Pediatrics and Child Health, Aga Khan University,  
16 Karachi, Sindh, Pakistan. [momin.kazi@aku.edu](mailto:momin.kazi@aku.edu)

17 **Mehreen Adnan**, Department of Pediatrics and Child Health, Aga Khan University,  
18 Karachi, Sindh, Pakistan. [mehreen.adnan@aku.edu](mailto:mehreen.adnan@aku.edu)

19 **Aneeta Hotwani**, Department of Pediatrics and Child Health, Aga Khan University,  
20 Karachi, Sindh, Pakistan. [aneeta.hotwani@aku.edu](mailto:aneeta.hotwani@aku.edu)

21 **Najeeb Rahman**, Department of Pediatrics and Child Health, Aga Khan University,  
22 Karachi, Sindh, Pakistan. [najeeb.rahman@aku.edu](mailto:najeeb.rahman@aku.edu)

23 **Muhammed Wahhaab Sadiq**, Department of Pediatrics and Child Health, Aga Khan  
24 University, Karachi, Sindh, Pakistan. [wahhaab.sadiq@aku.edu](mailto:wahhaab.sadiq@aku.edu)

25 **Richelle Charles**, Division of Infectious Diseases, Massachusetts General Hospital,  
26 Boston, MA, USA, Departments of Medicine and Pediatrics, Harvard Medical School,  
27 Boston, MA, USA, Department of Immunology and Infectious Diseases, Harvard T.H.  
28 Chan School of Public Health, Boston, MA, USA. [RCHARLES@mgh.harvard.edu](mailto:RCHARLES@mgh.harvard.edu)

29 **Stephen Baker**, University of Cambridge School of Clinical Medicine, Cambridge  
30 Biomedical Campus, Cambridge, UK, Department of Medicine, University of Cambridge  
31 School of Clinical Medicine, Cambridge Biomedical Campus, Cambridge, UK.  
32 [sgb47@cam.ac.uk](mailto:sgb47@cam.ac.uk)

33 **Farah Naz Qamar**, Department of Pediatrics and Child Health, Aga Khan University,  
34 Karachi, Sindh, Pakistan. [farah.qamar@aku.edu](mailto:farah.qamar@aku.edu)

35 **Corresponding Author:**

36 Farah Naz Qamar

37 Professor

38 Department of Pediatrics and Child Health

39 Aga Khan University Hospital, Stadium Road, Karachi, 74800, Pakistan

40 Email: [farah.qamar@aku.edu](mailto:farah.qamar@aku.edu)

41 **Disclaimer:**

42 The views expressed in the submitted article are the author(s)' own and not an official  
43 position of the institution or funder.

44 **Word Count (excluding abstract, tables, figure legends, and references):** 3061.

45 **Abstract Word Count:** 286.

46 **Number of Tables:** 3.

47 **Number of Figures:** 4.

48

49 **Abstract:**

50 **Background:** Enteric fever is caused by *Salmonella* enterica serovars Typhi (*S.*  
51 Typhi) and Paratyphi A, B, and C. It continues to be a significant cause of morbidity and  
52 mortality worldwide. In highly endemic areas, children are disproportionately affected,  
53 and antimicrobial resistance reduces therapeutic options. It is estimated that 2–5% of  
54 enteric fever patients develop chronic asymptomatic infection. These carriers may act  
55 as reservoirs of infection; therefore, the prospective identification and treatment of  
56 carriers are critical for long-term disease control. We aimed to find the frequency of  
57 *Salmonella* Typhi carriers in patients undergoing cholecystectomy. We also compared  
58 the detection limit of culturing versus qPCR in detecting *S.* Typhi, performed a  
59 geospatial analysis of the carriers identified using this study, and evaluated the  
60 accuracy of anti-Vi and anti-YncE in identifying chronic typhoid carriage.

61 **Methods:** We performed a cross-sectional study in two centers in Pakistan.  
62 Gallbladder specimens were subjected to quantitative PCR (qPCR) and serum samples  
63 were analyzed for IgG against YncE and Vi by ELISA. We also mapped the residential  
64 location of those with a positive qPCR result.

65 **Findings:** Out of 988 participants, 3.4% had qPCR-positive gallbladder samples (23  
66 *S.* Typhi and 11 *S.* Paratyphi). Gallstones were more likely to be qPCR positive than  
67 bile and gallbladder tissue. Anti-Vi and YncE were significantly correlated ( $r=0.78$   
68  $p<0.0001$ ) and elevated among carriers as compared to qPCR negative controls, except

69 for anti-Vi response in Paratyphi A. But the discriminatory values of these antigens in  
70 identifying carriers from qPCR negative controls were low.

71 **Conclusion:** The high prevalence of typhoid carriers observed in this study  
72 suggests that further studies are required to gain information that will help in controlling  
73 future typhoid outbreaks in a superior manner than they are currently being managed.

74

## 75 **Author Summary**

76 Enteric fever, caused by bacteria *Salmonella* Typhi or Paratyphi, is a serious global  
77 illness particularly affecting children in areas with inadequate hygiene and sanitation  
78 facilities. It is transmitted through the oral-fecal route. In Pakistan, prevalence of  
79 extensively drug resistant *S. Typhi* resistant strain further complicates its treatment.  
80 Some infected individuals develop chronic infections and become carriers of these  
81 pathogens. These asymptomatic carriers may potentially spread the disease by  
82 shedding the bacteria in urine or stool. To assess the frequency of the carrier state, we  
83 examined gallbladder specimens (bile, stones, and tissue) from patients who underwent  
84 gallbladder removal surgeries at Aga Khan University and Jinnah Post-graduate  
85 Medical Centre. We demonstrated that PCR had a higher sensitivity in detecting  
86 *Salmonella* carriage with a detection limit of  $10^2$  CFU/ml and identified 3.4% of typhoid  
87 carriers. Additionally, we investigated whether specific antibodies could identify these  
88 carriers using various serological tests. The results underscore the need for further  
89 research to promptly detect and appropriately treat this disease, thereby enhancing  
90 control and preventing future outbreaks.

91

## 92 **Introduction:**

93 Enteric fever, a collective term for typhoid and paratyphoid fevers, is caused by  
94 *Salmonella enterica serovars* Typhi (S. Typhi) and Paratyphi A, B, and C. It remains a  
95 major cause of morbidity and mortality worldwide, causing around 21 million new  
96 infections and 222,000 deaths annually (1). In highly endemic areas (Southeast Asia,  
97 South Central Asia, Latin America, and sub-Saharan Africa), children are  
98 disproportionately affected, and antimicrobial resistance reduces the therapeutic options  
99 available (2). In Pakistan, the annual typhoid incidence per 100,000 person-years is  
100 reported as 573.2 cases among 2-4 years and 412.9 cases among 5-15 years of age  
101 (3).

102 Enteric fever is acquired by ingestion of infecting microorganisms (4). After ingestion,  
103 the pathogens invade the intestinal epithelial barrier, where they are phagocytosed by  
104 macrophages, and then spread systematically to infect the liver, spleen, bone marrow,  
105 and gallbladder (5). It is estimated that 2–5% of enteric fever patients develop chronic  
106 asymptomatic infection (6). The chronic carriage can persist for years, and these  
107 individuals can intermittently shed the bacteria in stool or urine. It is estimated that  
108 ~25% of asymptomatic chronic carriers have no clinical history of enteric fever(7, 8).  
109 These carriers may act as reservoirs of infection, therefore, the prospective  
110 identification and treatment of these carriers are critical for long-term disease control  
111 (9).

112 The detection of *Salmonella* carriage can be performed by isolating the organism from  
113 the stool, bile/duodenal contents, urine, gallbladder tissue or by microbiological  
114 techniques; serological methods; or molecular techniques (polymerase chain reaction  
115 (PCR) amplification). The sensitivity of a single stool culture for detecting carriers has  
116 been reported as 30-35%; therefore, multiple samples are required, which is logistically  
117 difficult at a population level. The sensitivity of a urine culture for detecting carriers is  
118 estimated to be less than 10% (10). *S. Typhi* has been isolated from the bile of patients  
119 undergoing cholecystectomy, which may be considered the gold standard for detection.  
120 (11). However, this method may lack sensitivity in regions with excessive antimicrobial  
121 use (12, 13). Real-time quantitative PCR is a robust and sensitive method to detect and  
122 quantify bacteria in clinical samples and has been used to detect *S. Typhi* in blood,  
123 bone marrow, bile, and gallstones (14, 15). Additionally, the detection of IgG antibodies  
124 against Vi (anti-Vi) and YncE (anti-YncE) may provide an additional approach for  
125 diagnosing the carriage of invasive *Salmonella*.

126 Here, we aimed to measure the frequency and identify the associated factors of enteric  
127 fever carriers in patients undergoing cholecystectomy for gallbladder diseases in  
128 Pakistan by qPCR of bile, gallstones, and gallbladder tissue. An individual whose PCR  
129 was positive for *S. Typhi* or Paratyphi A in either of the specimens including bile,  
130 gallstone, or gallbladder tissue was considered a carrier. Moreover, we compared the  
131 detection limit of microbiology versus qPCR in detecting *Salmonella* organisms,  
132 performed a geospatial analysis of carriers identified using this study, and evaluated the  
133 accuracy of anti-Vi and anti-YncE in identifying chronic typhoid carriage.



## 134 **Methodology:**

### 135 **Study Design and Settings**

136 A cross-sectional study was conducted at the Aga Khan University Hospital (AKUH) and  
137 Jinnah Postgraduate Medical Center (JPMC) from January 2019-March 2020. AKUH is  
138 a private tertiary care hospital based on ~700 beds while JPMC is one of the largest  
139 government hospitals in Karachi city comprised of ~1600 beds. This study was  
140 approved by the Ethical Review Committee (ERC) of both institutions.

### 141 **Patient Selection**

142 Individuals of age  $\geq 10$  years who underwent cholecystectomy for gallbladder diseases  
143 were included in this analysis. Informed consent from participants/legal guardians and  
144 assent from children  $\leq 18$  years of age were obtained. Data was collected on a  
145 predesigned structured questionnaire that included information on participants'  
146 demographics, medical history, and questions related to other independent factors like  
147 hand hygiene, history of typhoid fever, antibiotic use at the time of typhoid fever illness,  
148 overcrowding, etc.

### 149 **Gallbladder Specimen Collection and Transportation:**

150 Bile, gallbladder tissue, and gallstones were collected during cholecystectomy by the  
151 surgeons from their respective hospitals (AKUH and JPMC) in pre-labeled sterile tubes.  
152 Samples were transferred to Juma Research Laboratory (JRL) at the AKUH, Karachi

153 maintaining 2-8°C. At JRL, all three specimens were stored at -80°C until further  
154 analysis.

### 155 **Assay for Determination of Limit of Detection of PCR:**

156 The pure culture of *S. Typhi* was grown overnight on Xylose Lysine Deoxycholate agar  
157 (XLD agar). A single colony was then inoculated in 4 mL of Luria Broth and incubated  
158 for 16 hours at 37°C to an optical density (OD) of 0.2 at 595 nm. This broth was then  
159 used to perform eight 10-fold serial dilutions in sterile Phosphate Buffer Saline (PBS). A  
160 10µL aliquot of each dilution was plated in triplicate on XLD media. After 24 – 28hrs. of  
161 incubation at 37°C, plates with 30 to 300 colonies were counted. For each dilution, the  
162 average of the triplicate plates was calculated and the exact number of colony-forming  
163 units per milliliter was determined.

164 *S. Typhi* was also spiked 1:1 in sterile PBS and *S. Typhi* negative human bile sample.  
165 900 µL of diluted bile was spiked with 100uL starting culture with an OD<sub>595</sub> value of 0.2.  
166 1mL of spiked bile sample was then 10-fold serially diluted fifteen times and then used  
167 for DNA extraction to perform qPCR.

### 168 **DNA extraction from gallbladder specimens:**

169 Bile, gallstone, and tissue samples once thawed at room temperature were subjected to  
170 DNA extraction. 25-30 mg of sample was used for extraction of DNA by Qiagen DNeasy  
171 blood & tissue kit (Qiagen, Hilden Germany) according to manufacturer's protocol with  
172 modifications as noted below. For bile, 1 mL of each specimen was diluted with an

173 equal volume of PBS, centrifuged at 13000 rpm for 10 minutes to concentrate bacterial  
174 cells in the pellet, the supernatant was discarded. Extracted DNA was stored at -80°C  
175 until qPCR was performed. For gallstone samples, the initial incubation with lysis buffer  
176 was optimized to 1 hour at 56°C.

## 177 **Primers and PCR Conditions:**

178 Real-time multiplex quantitative PCR was performed using primers and probes  
179 sequences as described by Nga et al, 2010. Primers and probes sequences were as  
180 follows; *S. Typhi*; ST-Frt 5' CGCGAAGTCAGAGTCGACATAG 3', ST-Rrt 5'  
181 AAGACCTCAACGCCGATCAC 3', ST-Probe 5' FAM-  
182 CATTGTTCTGGAGCAGGCTGACGG-TAMRA 3' and *S. Paratyphi A (SPA)*; Pa-Frt 5'  
183 ACGATGATGACTGATTTATCGAAC 3', Pa-Rrt 5' TGAAAAGATATCTCTCAGAGCTGG  
184 3', SPA-Probe 5' Cy5-CCCATACAATTTTCATTCTTATTGAGAATGCGC-BBQ-650 3'(16).

185 qPCR reactions were carried out in 20 µL reaction volumes in a 96-well plate consisting  
186 of 2X TaqMan Fast Advanced Master mix and 5 µL of template DNA. Reaction  
187 concentrations of the two primer and probe sets for *S. Typhi*, and *S. Paratyphi A* were  
188 0.4µM of each primer and 0.15µM of each probe. qPCR was performed on a Bio-Rad  
189 CFX96 real-time PCR system and fluorescence was released via the TaqMan 5' to 3'  
190 exonuclease activity. All qPCRs were cycled under the following conditions: 15 min at  
191 95°C and 45 cycles of 30 Sec at 95°C, 30 Sec at 57.4°C and 30 Sec at 72°C. Water  
192 (no-DNA) was used as a negative template control (NTC). *S. Typhi* pure culture DNA  
193 was used as a positive control. A Ct value of ≤ 35 was considered positive.

## 194 **Laboratory assay for Vi and YncE IgG**

195 An in-house kinetic ELISA was used to detect YncE antigen in serum as previously  
196 described (17). Briefly, 96-well plates were coated with YncE antigen (1µg/mL).  
197 Uncoated sites were blocked with 1% Bovine Serum Albumin (BSA). Following the  
198 washing phase, diluted serum samples (1:1000), blanks, and controls were added to the  
199 plate; controls included an internal typhoid-positive patient serum and a chimeric control  
200 (human anti-YncE IgG antibody). The Ag-Ab complex was subjected to goat anti-human  
201 IgG conjugated with horseradish peroxidase (Jackson Immuno Research), and  
202 peroxidase activity was measured at 405 nm using the ABTS substrate.

203 The concentration of anti Vi-IgG was measured using the VaccZyme Human anti-S  
204 Typhi Vi IgG Enzyme Immunoassay Kit (Binding site according to the manufacturer's  
205 instructions. We used a standard curve to calculate the concentration of anti-Vi  
206 expressed in U/mL.

## 207 **Data Analysis:**

208 Statistical analysis was carried out using Stata software (version 12.0). Factor analysis  
209 was performed for constructing a wealth index for socioeconomic status. The crowding  
210 index was reported as 'not crowded' if the crowding index was  $\leq 2$  persons/room and  
211 considered as 'crowded' if the index was  $>2$  persons/room. Cox proportional hazard  
212 algorithm was used to assess the association of typhoid carriers with independent  
213 variables. Multicollinearity among independent variables was assessed by using logistic  
214 commands. Results were reported as PR with 95% CI. p- values of  $\leq 0.25$  and  $\leq 0.05$

215 were considered significant for univariate and multivariable analysis respectively.  
216 Geographical location (GIS) mapping was done using Landsat satellite for visualizing  
217 the distribution of study participants. Patients residing in regions outside Karachi were  
218 identified and categorized according to the city. However, participants residing in  
219 Karachi were mapped according to their residential addresses. The relationship  
220 between anti-Vi and YncE responses was evaluated by Spearman's correlation  
221 coefficient and the Mann-Whitney U test was used to compare differences across  
222 groups.  $P \leq 0.05$  were considered significant.

## 223 **Results:**

224 Out of 1,136 eligible patients, 1000 participants consented to participate and were  
225 enrolled. Statistical analysis was performed on the 988 participants with a gallbladder  
226 specimen, of which 668 participants (66.8%) had all three sample types: bile, gallstone,  
227 and gallbladder tissue (**Fig 1**). Of the 988 participants, 34 (3.4%) were detected as  
228 *Salmonella* carriers by qPCR. *S. Typhi* or Paratyphi detection was highest in PCR  
229 performed from gallstones specimens. (**Table 1**). Most of the typhoid carriers were  $\leq 40$   
230 years of age (23/34, 67.6%) while the median (IQR) age in the typhoid carrier group  
231 was 37 (35-55) years compared to qPCR negative controls which had a median (IQR)  
232 of 45 (35-55) years. Most patients undergoing cholecystectomy were female, with no  
233 significant difference in percentage between *Salmonella* carriers and controls. Eight  
234 (23.5%) *Salmonella* carriers reported a history of having enteric fever or typhoid-like  
235 illness. The prevalence of a history of having enteric fever or typhoid-like illness was  
236 5.75 times among the typhoid carriers compared to non-typhoid carriers after adjusting

237 for other covariates. Most of the *Salmonella* carriers underwent cholecystectomy due to  
 238 chronic cholecystitis with or without cholelithiasis (**Table 2**). The majority 30/34  
 239 (88.23%) of the *Salmonella* carriers were residents of Karachi and they were widely  
 240 distributed all over the city (**Fig 2A, 2B and 2C**).

241 **Fig 1.** Study Flow.

242 **Fig 2A:** Geospatial map of Pakistan showing the distribution of study participants  
 243 according to their geographical location as green (non-typhoid carriers) and red (typhoid  
 244 carriers) dots.

245 **Fig 2B:** Geospatial map showing the distribution of typhoid carriers (red dots) and non-  
 246 typhoid carriers (green dots) in Karachi, Pakistan.

247 **Fig 2C:** Geospatial map showing the distribution of typhoid carriers in Karachi Pakistan;  
 248 blue dots (*Salmonella Typhi*) and pink dots (*Salmonella Paratyphi A*).

249 **Table 1: PCR results for Salmonella Typhi and Paratyphi according to specimen**  
 250 **type.**

S. No	Specimen Type	<i>Salmonella Typhi</i>	<i>Salmonella Paratyphi</i>	Total
		n/N (%)	n/N (%)	n/N (%)
<b>Aga Khan University Hospital (AKUH)</b>				
1	Bile	2/505 (0.40)	0/505 (0.00)	2/505 (0.40)
2	Gall stone	5/579 (0.86)	1/579 (0.17)	6/579 (1.04)
3	Gall bladder tissue	1/628 (0.16)	2/628 (0.32)	3/628 (0.48)
4	Stone and Tissue	1/469 (0.21)	1/469 (0.21)	2/469 (0.44)
5	Stone, Tissue, and Bile	2/469 (0.21)	1/469 (0.21)	3/469 (0.64)
	<b>Total</b>	<b>11/630 (1.75)</b>	<b>5/630 (0.79)</b>	<b>16/630 (2.54)</b>
<b>Jinnah Postgraduate Medical Center (JPMC)</b>				

1	Bile	0/243 (0.00)	0/243 (0.00)	0/243 (0.00)
2	Gall stone	1/322 (0.31)	3/322 (0.93)	4/322 (1.24)
3	Gall bladder tissue	4/358 (1.11)	0/358 (0.00)	4/358 (1.11)
4	Stone and Tissue	3/210 (1.42)	1/210 (0.48)	4/210 (1.90)
5	Bile and Tissue	1/210 (0.48)	0/210 (0.00)	1/210 (0.48)
6	Bile and Stone	1/210 (0.48)	1/210 (0.48)	2/210 (0.95)
7	Stone, Tissue, and Bile	2/210 (0.95)	1/210 (0.48)	3/210 (1.42)
	<b>Total</b>	<b>12/358 (3.35)</b>	<b>6/358 (1.68)</b>	<b>18/358 (5.02)</b>

251 **Table 2: Descriptive statistics, unadjusted and adjusted analysis for various**  
252 **factors for typhoid carriers among patients who underwent cholecystectomy for**  
253 **gall bladder diseases.**

S. No	Variables		qPCR negative controls n=954 (%)	Typhoid carrier n=34 (%)	Crude PR (95%CI)	p-value	Adj PR (95% CI)	p-value
1	Age (years)	≤40	417 (43.7)	23 (67.6)	0.37 (0.17- 0.77)	0.008	0.26 (0.08 - 0.80)	0.02
		>40	537 (56.3)	11 (32.4)	1.00	-	1.00	-
2	Gender	Female	742 (77.8)	25 (73.5)	0.79 (0.36 -1.73)	0.56	-	-
		*Male	212 (22.2)	-	1.00	-	-	-
3	Ethnicity	Sindhi	142 (14.9)	07 (20.6)	1.61 (0.65 - 3.98)	0.31	1.21 (0.25 - 5.96)	0.82
		Balochi	38 (4.0)	03 (8.8)	2.57 (0.72 - 9.21)	0.15	3.66 (0.69 - 19.4)	0.13
		Punjabi	98 (10.3)	02 (5.9)	0.66 (0.15 - 2.94)	0.59	0.53 (0.06 - 4.61)	0.56
		Pakhtun	90 (9.4)	04 (11.8)	1.45 (0.47 - 4.43)	0.52	1.03 (0.11 - 9.88)	0.98
		*Urdu speaking	521 (54.6)	16 (47.1)	1.00	-	1.00	-
		Others	65 (6.8)	02 (5.9)	1.00 (0.23 - 4.46)	0.99	0.91 (0.09 - 8.48)	0.93
4	Source of drinking water	Boiled water	236 (24.7)	08 (23.5)	-	-	-	-
		Filtered/Bott led water	220 (23.1)	08 (23.5)	-	-	-	-
		Others	498 (52.2)	18 (52.9)	-	-	-	-

5	<b><sup>a</sup>Diagnosis</b>	*Acute cholecystitis ± cholelithiasis	231 (24.2)	11 (32.4)	1.00	-	1.00	-
		Chronic cholecystitis ± cholelithiasis	718 (75.3)	23 (67.6)	0.67 (0.32 - 1.40)	0.29	0.64 (0.13 - 3.26)	0.59
		Gall bladder carcinoma	4 (0.4)	0 (0.0)	-	-	-	-
		Gall bladder Empyema	1 (0.1)	0 (0.0)	-	-	-	-
6	<b><sup>b</sup> Practice Hand hygiene</b>	937 (98.2)	34 (100)	-	-	-	-	
7	<b><sup>c</sup> Socio-economic status composite wealth index</b>	Low	351 (36.8)	16 (47.1)	1.84 (0.75 - 4.53)	0.19	1.65 (0.56 - 4.85)	0.36
		Middle	321 (33.6)	11 (32.4)	1.38 (0.53 - 3.61)	0.51	1.19 (0.44 - 3.22)	0.74
		*Upper class	282 (29.6)	7 (20.6)	1.00	-	1.00	-
10	<b><sup>d</sup> Crowding Index (Persons per room)</b>	*≤ 2	591 (61.9)	20 (58.8)	1.00	-	-	-
		> 2	363 (38.1)	14 (41.2)	4.07 (1.78 - 9.35)	0.71	-	-
11	<b>History of typhoid fever or typhoid-like illness</b>	67 (7.0)	08 (23.5)	4.07 (1.78 - 9.35)	0.001	5.75 (1.79 - 18.5)	0.003	
12	<b>Antibiotic use at the time of typhoid fever illness</b>	54 (81.0)	08 (100)	-	-	-	-	
13	<b>Duration of antibiotic at the time of typhoid fever illness (days)</b>	<14 days	12 (22.2)	01 (12.5)	-	-	-	-
		≥14 days	02 (3.7)	01 (12.5)	-	-	-	-
		Don't Remember	40 (74.1)	06 (75.0)	-	-	-	-



14	<b>Antibiotic Use in the last two weeks</b>	911 (95.5)	32 (94.1)	0.76 (0.18 - 3.26)	0.71	-	-
----	---	---------------	--------------	-----------------------	------	---	---

254 <sup>a</sup> *Diagnosis was based on admitting diagnosis of cholecystectomy and histopathology*  
255 *findings.*

256 <sup>b</sup> *Hand washing of any duration with soap and water after defecation.*

257 <sup>c</sup> *Factor analysis was performed for constructing a wealth index*

258 <sup>d</sup> *Overcrowding was assessed by estimating the crowding index defined as the number*  
259 *of people living in a household regularly since the last 1 year divided by the number of*  
260 *bedrooms in the house*

261 *\*Reference Category*

## 262 **YncE and Vi antibody responses:**

263 YncE IgG ELISAs were performed on all patients with available serum (33 carriers, 919

264 PCR negative controls) and Vi IgG was measured in 33 carriers and 32 PCR negative

265 age ( $\pm 01$  years) and gender matched controls. A positive correlation was observed

266 between serum Vi and YncE antibody responses among carriers ( $r=0.78$ ,  $p<0.0001$ ),

267 and the correlation was highest in patients that were PCR positive. This was observed

268 from multiple sites (**Fig 3A**). This correlation was weaker when including the full cohort

269 of qPCR negative and positive patients ( $r=0.55$ ,  $p<0.0001$ ) (**Fig 3A**). YncE and Vi

270 values were significantly higher in PCR-positive patients compared to PCR-negative

271 controls (**Fig 3B**), except for anti-Vi levels in *S. Paratyphi A* carriers where no difference

272 was seen between groups.

273 **Fig 3. Anti-YncE and Vi IgG levels in *S. Typhi* or *S. Paratyphi A* qPCR positive**

274 **and negative individuals. (A) Spearman correlation (B) Distribution of anti YncE**

275 **and Vi levels by PCR status and site of positivity.** Data are shown as median with

276 IQR. Statistical analysis by Mann-Whitney U test. \*  $p<0.05$ ; \*\*  $p<0.01$  \*\*\* $p<0.001$ ;

277 \*\*\*\* $p<0.0001$

278 We assessed the classification accuracy of each antigen using the receiver operating  
 279 characteristic (ROC) area under the curve (AUC). We found that both antigens had  
 280 relatively poor accuracy in distinguishing PCR-positive carriers from PCR-negative  
 281 controls underwent cholecystectomy (**Table 3**). The AUC for YncE for the following  
 282 carrier cohorts compared to PCR negative controls was 0.73 for all carriers, 0.70 for  
 283 Typhi carriers, and 0.78 for Paratyphi A carriers. For Vi, the AUC was 0.66 for all  
 284 carriers, 0.75 for Typhi carriers, and 0.52 for Paratyphi A carriers. The discrimination  
 285 accuracy for YncE and Vi did differ by the type of sample that was PCR positive. For *S.*  
 286 Paratyphi A carriers, PCR positive by bile and stone with an AUC of 0.85 and 0.81,  
 287 respectively for YncE and the discriminatory accuracy of Vi was highest for *S. Typhi*  
 288 carriers, PCR positive by stone or tissue, AUC 0.83 and 0.84, respectively. This sub-  
 289 analysis, however, was limited by low numbers.

290 **Table 3: Accuracy of distinguishing Typhi carriers (*S. Typhi* or *S. Paratyphi A*)**  
 291 **from qPCR negative controls using anti-YncE and Vi IgG responses.**

		All carriers	<i>S. Typhi</i> carriers	<i>S. Paratyphi A</i> carriers
<b>Antigen</b>	<b>Site</b>	<b>AUC (95% CI)</b>	<b>AUC (95% CI)</b>	<b>AUC (95% CI)</b>
YncE	Any	0.73 (0.65 - 0.82)	0.70 (0.59 - 0.83)	0.78 (0.67 - 0.90)
Vi		0.66 (0.53 - 0.79)	0.75 (0.61 - 0.88)	0.52 (0.32 - 0.71)
YncE	Bile	0.73 (0.57 - 0.88)	0.68 (0.49 - 0.87)	0.85 (0.62 - 1.00)
Vi		0.60 (0.39 - 0.82)	0.69 (0.43 - 0.94)	0.61 (0.43 - 0.80)
YncE	Stone	0.79 (0.70 - 0.89)	0.78 (0.65 - 0.91)	0.81 (0.68 - 0.95)
Vi		0.68 (0.54 - 0.83)	0.83 (0.71 - 0.95)	0.55 (0.33 - 0.76)

YncE	Tissue	0.78 (0.69 - 0.88)	0.79 (0.67 - 0.91)	0.77 (0.64 - 0.91)
Vi		0.76 (0.62 - 0.89)	0.84 (0.71 - 0.98)	0.57 (0.37 - 0.77)

292

293 **Analytical sensitivity of bile qPCR:**

294 The detection limit of qPCR using bile samples was determined using bile samples  
 295 spiked with decreasing 10-fold concentrations of *in-vitro-grown* *S. Typhi* (**Fig 4**). The  
 296 limit of detection of the assay was found to be 16 cells.

297 **Fig 4: Cycle Quantification (Cq) values and colony forming unit (CFU/ml) count at**  
 298 **different dilutions of *S. Typhi* in Bile.**

299 **Discussion:**

300 Currently, there are no available methods to predict who will become a carrier after  
 301 acute infection (18). Recovery from the acute phase of the illness is possible with  
 302 appropriate antimicrobial treatment, however, a small fraction of individuals develop  
 303 persistent asymptomatic infection (19) and may serve as the source of outbreaks in  
 304 endemic communities.

305 In this study, we demonstrated that PCR had a higher sensitivity to detect *Salmonella*  
 306 carriage with a detection limit of 10<sup>2</sup> CFU/ml. Of the 988 enrolled participants, we  
 307 identified 34 (3.4%) typhoid carriers by PCR. This prevalence is in line with the results  
 308 of studies conducted in other endemic regions i.e., 2-5 % (20, 21). Other PCR-based  
 309 studies from the high endemic region have reported a higher prevalence 17.5% and

310 10.1% with zero and one culture positivity, respectively (22, 23). These findings confirm  
311 the presence of nonculturable *S. Typhi* and *S. Paratyphi* persisting in the gallbladder,  
312 which may be due to prior antibiotic exposure, presence in a viable but nonculturable  
313 state in the biliary system; or they may be present in sparse numbers and thus sensitive  
314 to sampling bias (24).

315 There were higher anti-Vi and YncE responses between carriers and qPCR negative  
316 controls, with a significant positive correlation between these antibody responses  
317 amongst carriers. Anti-Vi, however, was not elevated in *S. Paratyphi A* carriers as this  
318 organism does not express Vi. These findings are in line with prior studies that showed  
319 promise for these antigens to detect typhoid carriers (17, 24-27). However, the  
320 diagnostic accuracy of anti-Vi IgG and YncE IgG to distinguish PCR-positive typhoid  
321 biliary carriers from PCR-negative individuals undergoing elective cholecystectomy was  
322 low. The performance of anti-Vi was comparable to the prior study of bile culture-  
323 confirmed patients underwent elective cholecystectomy, but YncE IgG did not perform  
324 well in this cohort (26, 28). PCR-positive, culture-negative carriers may have a lower  
325 burden of disease, leading to lower-level antibody responses. We did see higher  
326 antibody positivity in patients that were positive by multiple sample types which would  
327 support this hypothesis. The limited specificity observed for these antigens could be  
328 due to various factors, including potential misclassification of carriers as PCR negative  
329 due to the assay's detection limit. Moreover, other factors beyond carriage, such as  
330 recent infections or cross-reactivity with other organisms carrying similar genes (i.e.  
331 *Citrobacter* for Vi or *E. coli* for YncE) could contribute to elevated Vi and YncE  
332 responses among PCR negative carriers. It is also possible that the PCR-positive

333 individuals may represent recently infected individuals, rather than chronic carriers since  
334 this was a cross-sectional analysis. A large community-based study in Vietnam showed  
335 a prevalence of elevated Vi responses of 3%, however, *S. Typhi* was never detected in  
336 stool. This study suggests that in endemic zones, Vi responses may be detected in  
337 both chronic carriers and recently infected individuals (28). YncE is expressed in a small  
338 percentage of acutely infected individuals as well. Thus, the utility for identifying carriers  
339 using available serological techniques, including both YncE and Vi, in general endemic  
340 populations and even in this higher-risk cohort, remains unclear. These antigens may  
341 still be useful in outbreak studies for the detection of chronic carriers when a small  
342 number of participants are implicated (e.g., food handlers).

343 Like prior studies, our data demonstrates that the majority of carriers are female (>70%)  
344 (6, 18), Since there was no difference between the percentage of female *Salmonella*  
345 carriers and non-carriers, this association is likely due to the increased incidence of  
346 cholecystitis and cholelithiasis among women (29, 30). 23.5% of patients that were  
347 diagnosed as *Salmonella* carriers reported a history of enteric fever or enteric fever-like  
348 illness. This low prevalence might be due to recall bias, getting antibiotic prescriptions  
349 without laboratory diagnosis (only 61 participants reported that they did the blood  
350 culture investigation when they acquired typhoid fever in past and none could recall a  
351 positive culture), or subclinical infections. Despite this, having a history of enteric fever  
352 or enteric fever-like illness was 5.75 times higher among *Salmonella* carriers compared  
353 to non-*Salmonella* carriers after adjusting for other covariates.

354 A limitation of our analysis is that we have an overrepresentation in our cohort of  
355 patients recruited from The Aga Khan university hospital (AKUH), a private hospital,  
356 compared to Jinnah Postgraduate Medical Centre (JPMC), a government hospital. The  
357 socioeconomic status of the populations served in these two tertiary care hospitals  
358 differs significantly. Despite this, we were able to detect a difference in the prevalence  
359 of carriers, which was higher in JPMC (5.02%) compared to AKUH (2.54%). This  
360 reflects the need for future studies in low socioeconomic regions to obtain a better  
361 estimate of the true prevalence of *Salmonella* carriage and associated risk factors.

## 362 **Conclusion:**

363 The current study has demonstrated the significant prevalence of biliary *S. Typhi* and  
364 *Paratyphi* carriage in Karachi, Pakistan which is alarming for further outbreaks.  
365 Although anti-Vi and YncE IgG are elevated in typhoid carriers, the diagnostic accuracy  
366 of these antigens in detecting *Salmonella* carriage in a general endemic population  
367 undergoing elective cholecystectomy was low. Improved strategies for simple, rapid  
368 identification of carriers within a community for timely identification and appropriate  
369 treatment of this preventable risk factor can play a significant role in typhoid  
370 amelioration.

371

372 **Author Contributions:**

373 This study was conceptualized by SQ, SB, and FNQ. Contribution in design of the study  
374 was done by SQ, JI, RC, SB, and FNQ. Data collection and data management were  
375 handled by SQ, TC, NM, MA, AH, and NR. Data analyses and interpretation were  
376 carried out by SQ, NR, NM, JI, AMK, RC, SB, and FNQ. The manuscript was drafted by  
377 SQ and NM with input from MA, AH, RC, MWS and FNQ. All the authors reviewed  
378 manuscript drafts, provided inputs, and approved the final version.

379 **Acknowledgments:**

380 We are grateful to the surgeons, surgery trainees, staff members, technicians, and  
381 nurses of AKUH and JPMC for providing gallbladder specimens for this research. We  
382 are thankful to our co-workers, data collectors, data entry operators, and data  
383 management team for showing their dedication and determination throughout this study.

384 **Conflict of interest:**

385 None.

386 **Ethical Approval:**

387 This study was approved by the Ethical Review Committees (ERC) of Aga Khan  
388 University Hospital and Jinnah Postgraduate Medical Center.

389

**References:**

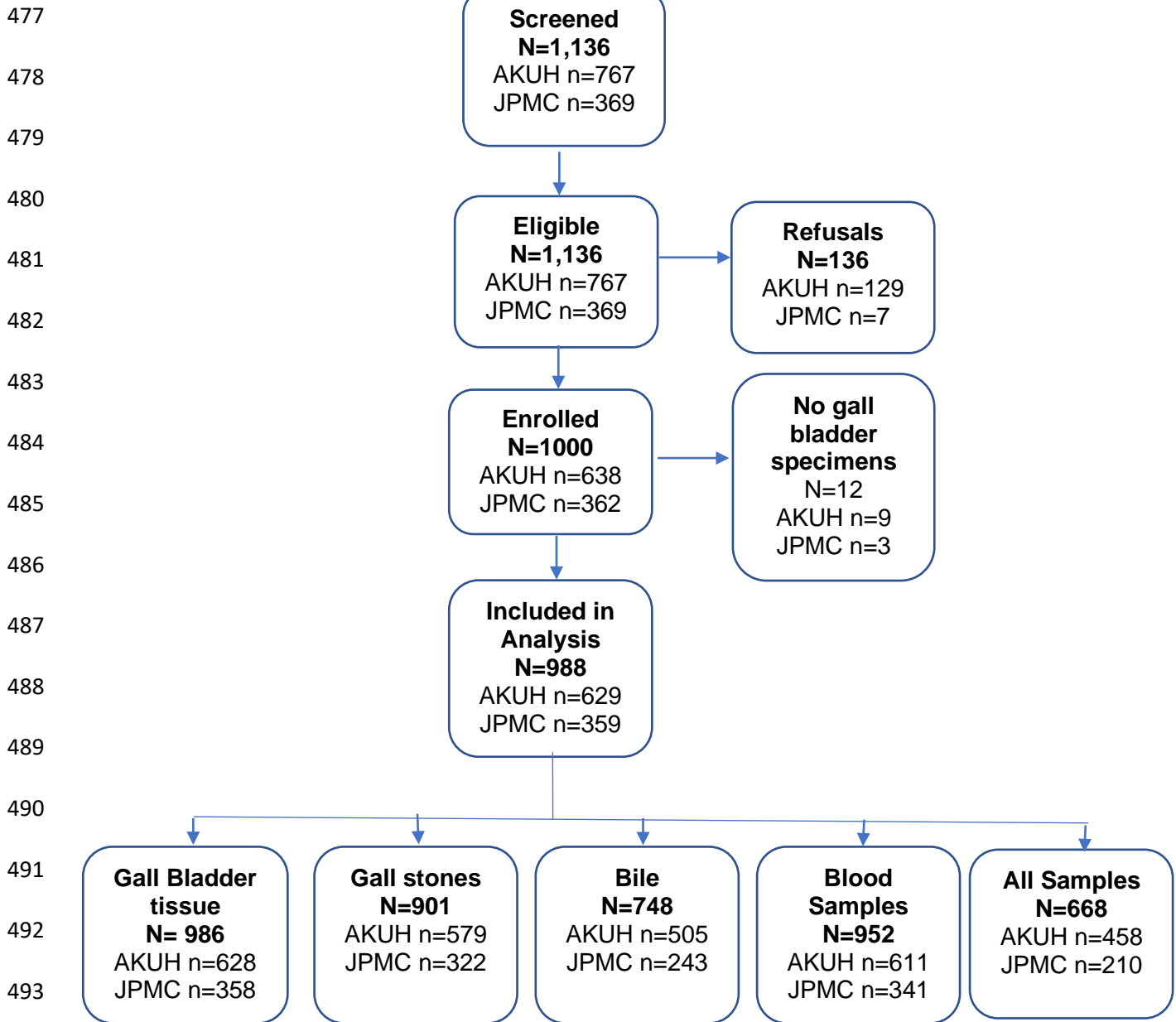
- 391 1. Crump JA, Mintz ED. Global trends in typhoid and paratyphoid Fever. *Clin Infect*  
392 *Dis.* 2010;50(2):241-6.
- 393 2. Typhoid vaccines: WHO position paper. *Wkly Epidemiol Rec.* 2008;83(6):49-59.
- 394 3. Khatri NS, Maskey P, Poudel S, Jaiswal VK, Karkey A, Koirala S, et al.  
395 Gallbladder carriage of *Salmonella paratyphi A* may be an important factor in the  
396 increasing incidence of this infection in South Asia. *Ann Intern Med.* 2009;150(8):567-8.
- 397 4. Hald T, Aspinall W, Devleesschauwer B, Cooke R, Corrigan T, Havelaar AH, et  
398 al. World Health Organization Estimates of the Relative Contributions of Food to the  
399 Burden of Disease Due to Selected Foodborne Hazards: A Structured Expert Elicitation.  
400 *PLoS One.* 2016;11(1):e0145839.
- 401 5. Neiger MR, Gonzalez JF, Gonzalez-Escobedo G, Kuck H, White P, Gunn JS.  
402 Pathoadaptive Alteration of *Salmonella* Biofilm Formation in Response to the  
403 Gallbladder Environment. *J Bacteriol.* 2019;201(14).
- 404 6. Gunn JS, Marshall JM, Baker S, Dongol S, Charles RC, Ryan ET. *Salmonella*  
405 chronic carriage: epidemiology, diagnosis, and gallbladder persistence. *Trends*  
406 *Microbiol.* 2014;22(11):648-55.
- 407 7. Parry CM, Hien TT, Dougan G, White NJ, Farrar JJ. Typhoid fever. *N Engl J*  
408 *Med.* 2002;347(22):1770-82.
- 409 8. Mortimer PP. Mr N the milker, and Dr Koch's concept of the healthy carrier.  
410 *Lancet.* 1999;353(9161):1354-6.
- 411 9. Bhan MK, Bahl R, Bhatnagar S. Typhoid and paratyphoid fever. *Lancet.*  
412 2005;366(9487):749-62.
- 413 10. Vallenias C, Hernandez H, Kay B, Black R, Gotuzzo E. Efficacy of bone marrow,  
414 blood, stool and duodenal contents cultures for bacteriologic confirmation of typhoid  
415 fever in children. *Pediatr Infect Dis.* 1985;4(5):496-8.
- 416 11. Ismail A. New advances in the diagnosis of typhoid and detection of typhoid  
417 carriers. *Malays J Med Sci.* 2000;7(2):3-8.
- 418 12. A. KK. Detection of serum IgM against *salmonella typhi*: a rapid diagnostic  
419 technique. *J Coll Physicians Surg Pak.* 1998;8(4):170-3.
- 420 13. Nizami SQ, Khan IA, Bhutta ZA. Paediatric prescribing in Karachi. *J Pak Med*  
421 *Assoc.* 1997;47(1):29-32.
- 422 14. Martin FE, Nadkarni MA, Jacques NA, Hunter N. Quantitative microbiological  
423 study of human carious dentine by culture and real-time PCR: association of anaerobes  
424 with histopathological changes in chronic pulpitis. *J Clin Microbiol.* 2002;40(5):1698-  
425 704.
- 426 15. Lyons SR, Griffen AL, Leys EJ. Quantitative real-time PCR for *Porphyromonas*  
427 *gingivalis* and total bacteria. *J Clin Microbiol.* 2000;38(6):2362-5.
- 428 16. Nga TV, Karkey A, Dongol S, Thuy HN, Dunstan S, Holt K, et al. The sensitivity  
429 of real-time PCR amplification targeting invasive *Salmonella* serovars in biological  
430 specimens. *BMC Infect Dis.* 2010;10:125.
- 431 17. Charles RC, Sultana T, Alam MM, Yu Y, Wu-Freeman Y, Bufano MK, et al.  
432 Identification of immunogenic *Salmonella enterica* serotype Typhi antigens expressed in



- 433 chronic biliary carriers of *S. Typhi* in Kathmandu, Nepal. *PLoS Negl Trop Dis*.  
434 2013;7(8):e2335.
- 435 18. Vaishnavi C, Kochhar R, Singh G, Kumar S, Singh S, Singh K. Epidemiology of  
436 typhoid carriers among blood donors and patients with biliary, gastrointestinal and other  
437 related diseases. *Microbiol Immunol*. 2005;49(2):107-12.
- 438 19. Gonzalez-Escobedo G, Marshall JM, Gunn JS. Chronic and acute infection of the  
439 gall bladder by *Salmonella Typhi*: understanding the carrier state. *Nat Rev Microbiol*.  
440 2011;9(1):9-14.
- 441 20. Dongol S, Thompson CN, Clare S, Nga TVT, Duy PT, Karkey A, et al. The  
442 microbiological and clinical characteristics of invasive *Salmonella* in gallbladders from  
443 cholecystectomy patients in Kathmandu, Nepal. 2012.
- 444 21. Levine MM, Black RE, Lanata C. Precise estimation of the numbers of chronic  
445 carriers of *Salmonella typhi* in Santiago, Chile, an endemic area. *The Journal of*  
446 *infectious diseases*. 1982;146(6):724-6.
- 447 22. Lovane L, Martinez MJ, Massora S, Mandomando I, Ussene E, Jordao D, et al.  
448 Carriage prevalence of *Salmonella enterica* serotype *Typhi* in gallbladders of adult  
449 autopsy cases from Mozambique. *J Infect Dev Ctries*. 2016;10(4):410-2.
- 450 23. Walawalkar YD, Gaiind R, Nayak V. Study on *Salmonella Typhi* occurrence in  
451 gallbladder of patients suffering from chronic cholelithiasis-a predisposing factor for  
452 carcinoma of gallbladder. *Diagn Microbiol Infect Dis*. 2013;77(1):69-73.
- 453 24. Nath G, Singh YK, Maurya P, Gulati AK, Srivastava RC, Tripathi SK. Does  
454 *Salmonella Typhi* primarily reside in the liver of chronic typhoid carriers? *J Infect Dev*  
455 *Ctries*. 2010;4(4):259-61.
- 456 25. Franklin F, Chong CW, Chua LH, Anthony AA, Liew MWO, Aziah I, et al.  
457 Evaluation of *Salmonella Typhi* antigen *YncE* alongside *HlyE* for the detection of typhoid  
458 fever and its carriers. *Med Microbiol Immunol*. 2020;209(5):593-601.
- 459 26. Nath G, Mauryal P, Gulati AK, Singh TB, Srivastava R, Kumar K, et al.  
460 Comparison of *Vi* serology and nested PCR in diagnosis of chronic typhoid carriers in  
461 two different study populations in typhoid endemic area of India. *Southeast Asian J Trop*  
462 *Med Public Health*. 2010;41(3):636-40.
- 463 27. Hang L, John M, Asaduzzaman M, Bridges EA, Vanderspurt C, Kirn TJ, et al.  
464 Use of in vivo-induced antigen technology (IVIAT) to identify genes uniquely expressed  
465 during human infection with *Vibrio cholerae*. *Proc Natl Acad Sci U S A*.  
466 2003;100(14):8508-13.
- 467 28. Gupta A, My Thanh NT, Olsen SJ, Sivapalasingam S, My Trinh TT, Phuong Lan  
468 NT, et al. Evaluation of community-based serologic screening for identification of  
469 chronic *Salmonella typhi* carriers in Vietnam. *Int J Infect Dis*. 2006;10(4):309-14.
- 470 29. Novacek G. Gender and gallstone disease. *Wien Med Wochenschr*.  
471 2006;156(19-20):527-33.
- 472 30. Sun H, Tang H, Jiang S, Zeng L, Chen EQ, Zhou TY, et al. Gender and  
473 metabolic differences of gallstone diseases. *World J Gastroenterol*. 2009;15(15):1886-  
474 91.

475

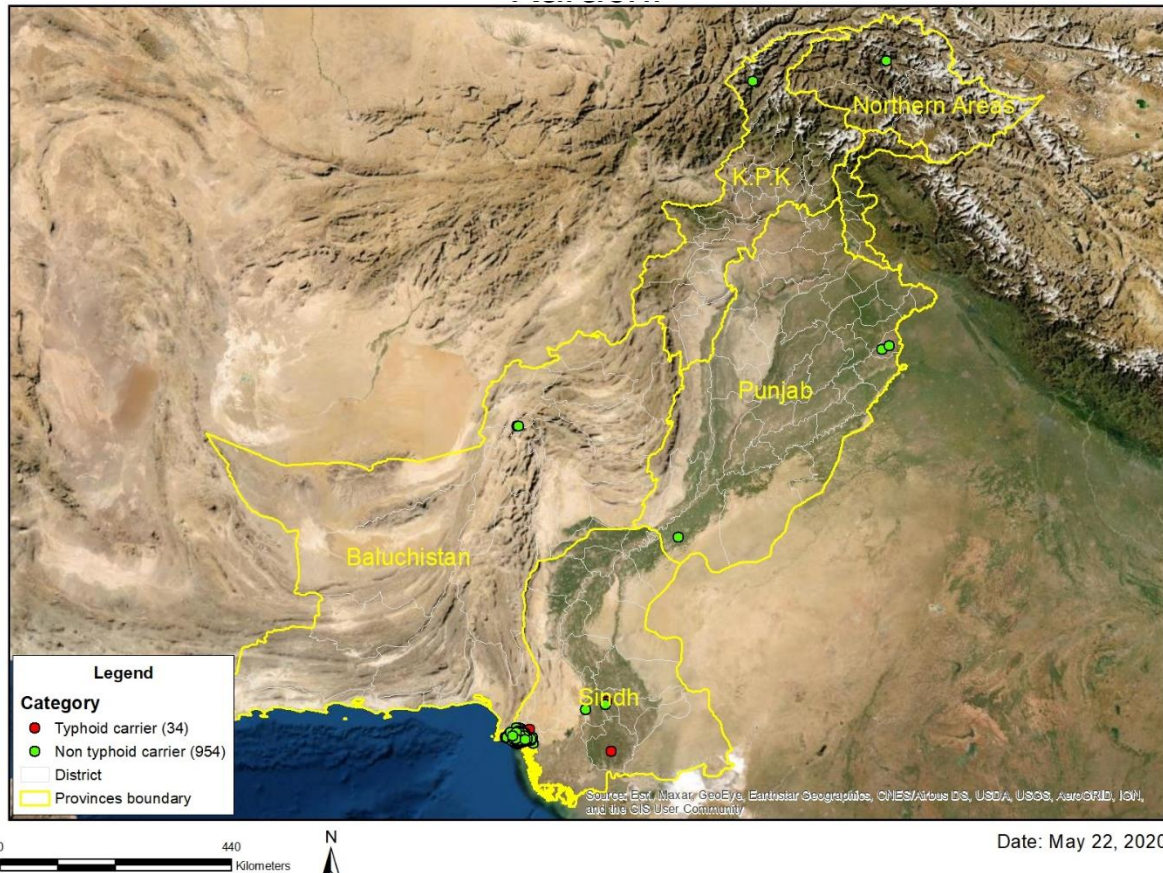
476 **Fig 1: Study Flow**



491  
492  
493  
494  
495  
496  
497  
498

499 **Fig 2A: Geospatial map of Pakistan showing the distribution of study participants**  
500 **according to their geographical location as green (non-typhoid carriers) and red**  
501 **(typhoid carriers) dots.**

502



503

504

505

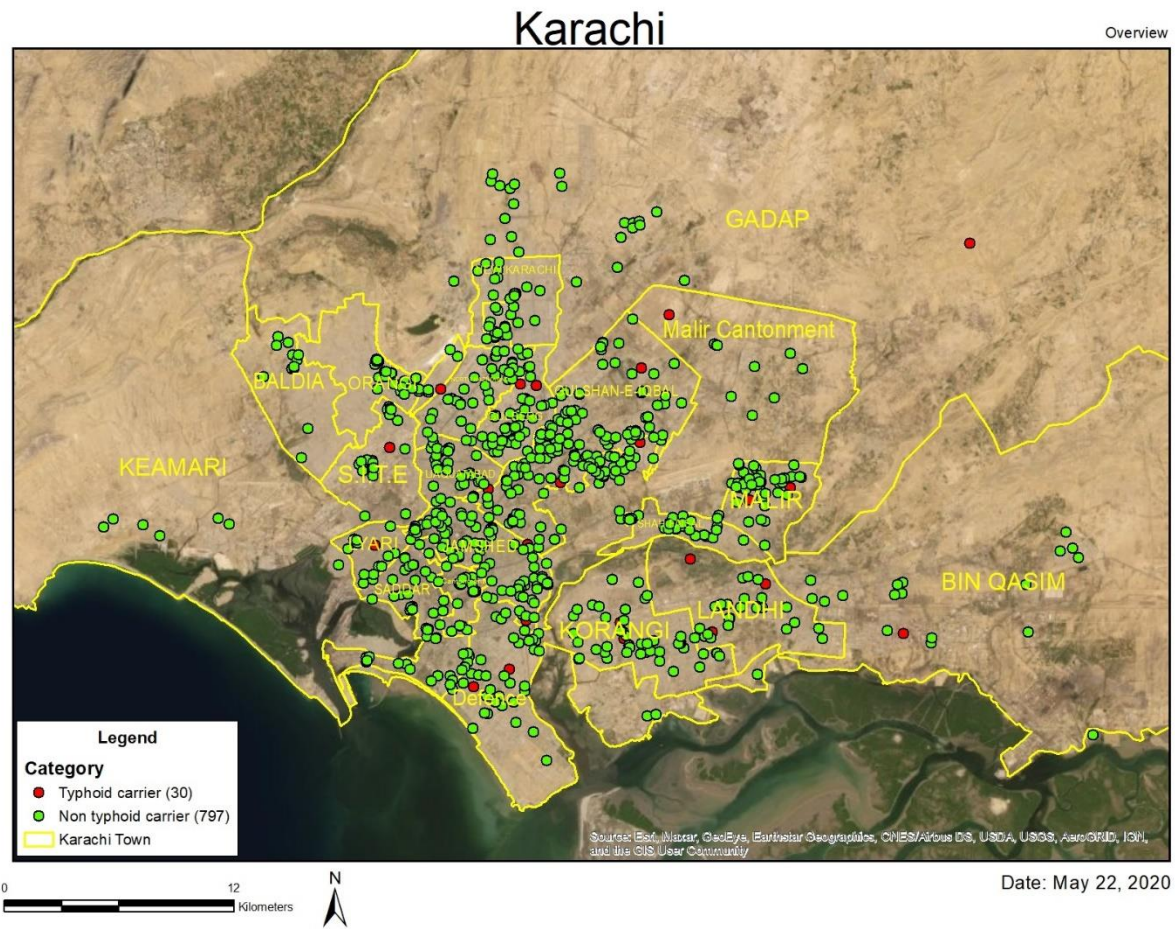
506

507

508

509

510 Fig 2B: Geospatial map showing the distribution of typhoid carriers (red dots)  
511 and non-typhoid carriers (green dots) in Karachi, Pakistan.



512

513

514

515

516

517

518

519

520

521

522

523

524

525

526

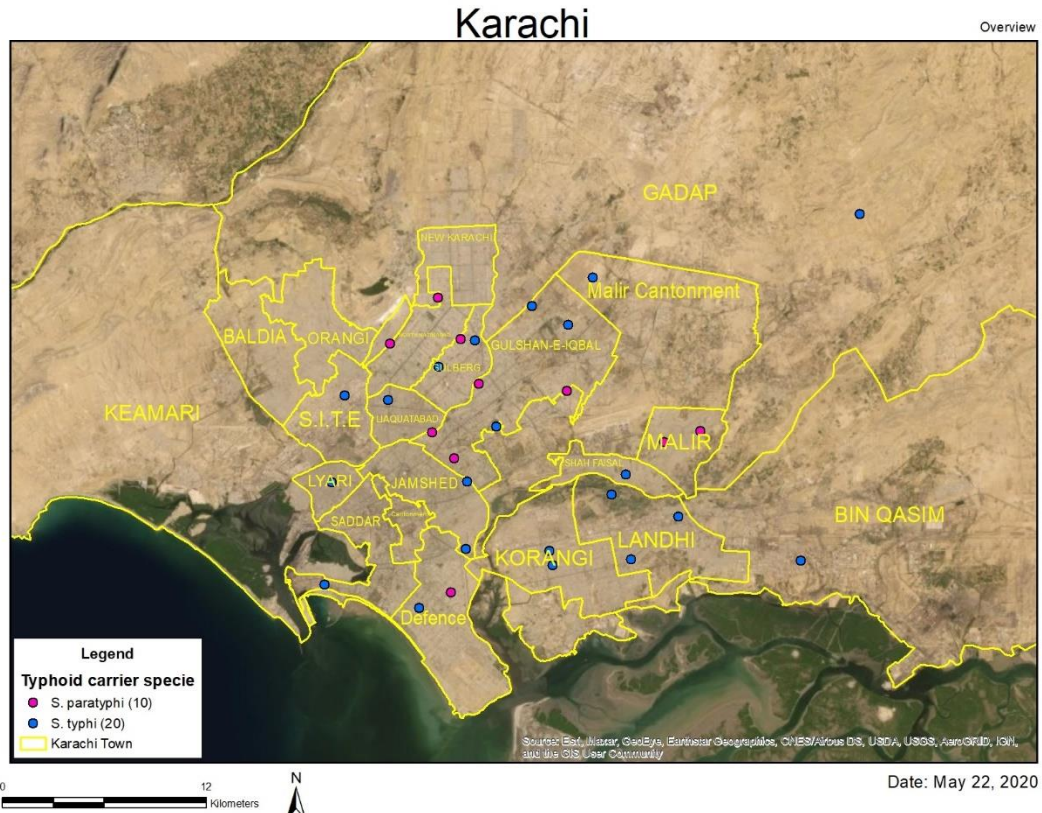
527

528



529 **Fig 2C: Geospatial map showing the distribution of typhoid carriers in Karachi**  
 530 **Pakistan; blue dots (*Salmonella Typhi*) and pink dots (*Salmonella Paratyphi A*).**

531



532  
 533

534

535

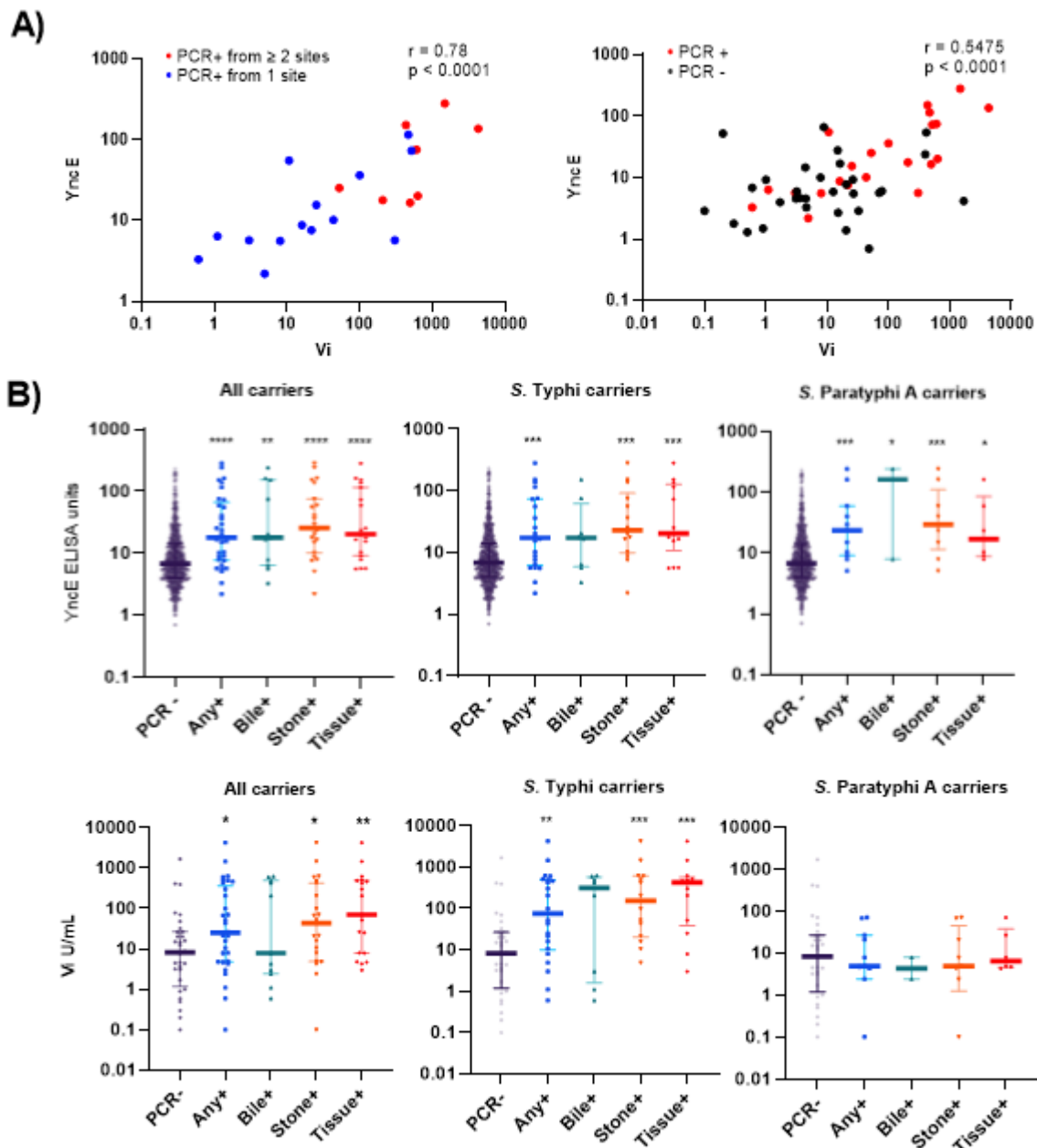
536

537

538

539

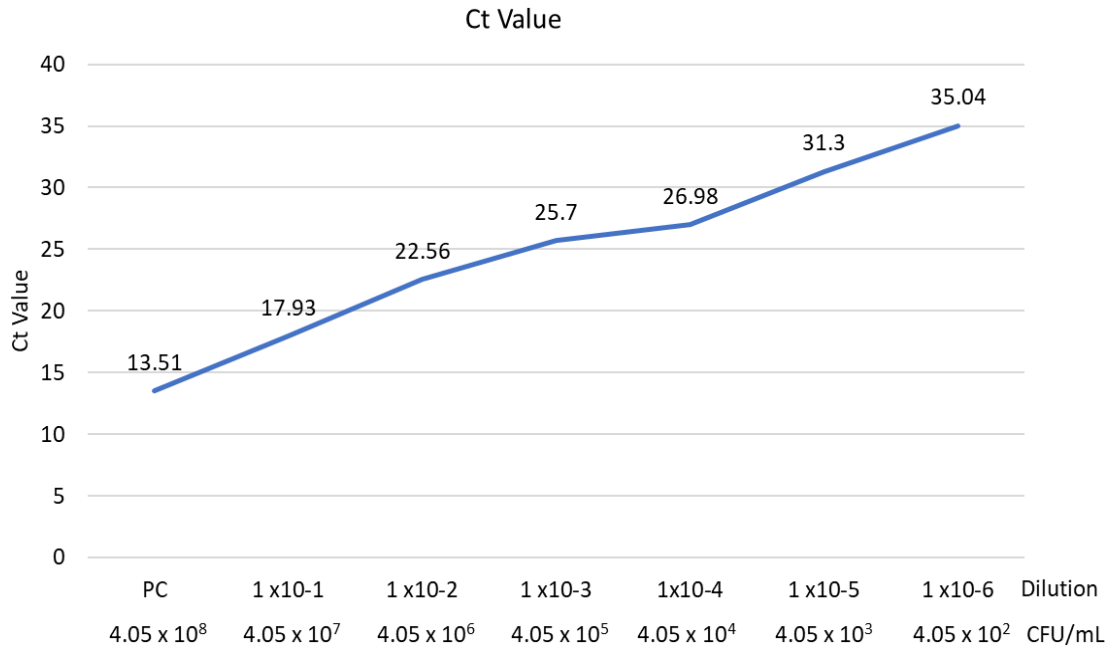
540 **Fig 3: Anti-YncE and Vi IgG levels in *S. Typhi* or *S. Paratyphi A* qPCR positive**  
 541 **and negative individuals. A) Spearman correlation B) Distribution of anti YncE**  
 542 **and Vi levels by PCR status and site of positivity. Data are shown as median with**  
 543 **IQR. Statistical analysis by Mann-Whitney U test. \*  $p < 0.05$ ; \*\*  $p < 0.01$  \*\*\* $p < 0.001$ ;**  
 544 **\*\*\*\* $p < 0.0001$**



545

546 **Fig 4: Cycle Quantification (Cq) values and colony forming unit (CFU/ml) count at**  
547 **different dilutions of S. Typhi in Bile.**

548



549

550

551

552

553

554

555

556

557

558