

ORIGINAL ARTICLE

Patterns of opioid use after surgical discharge: a multicentre, prospective cohort study in 25 countries

Authors and institutions

TASMAN Collaborative* (full list of PubMed-citable authors are listed in the appendix)

Corresponding author

Chris Varghese, MBChB, BMedSc(Hons)

Department of Surgery

University of Auckland

Auckland, New Zealand

cvar706@aucklanduni.ac.nz

@chrisvarghese98

Conflicts of interest

None to declare.

Funding source

OPERAS has received funding from the Maurice and Phyllis Paykel Trust (Ref: 213122) and Surgical Research Funds, University of Newcastle.

Abstract

Background

Excessive post-surgical opioid prescribing is contributing to the growing opioid crisis. Prescribing practices are modifiable, yet data to guide appropriate prescription of opioids at surgical discharge remain sparse. We therefore aimed to evaluate the factors associated with opioid consumption following discharge from surgery.

Methods

We performed an international, prospective, multicentre, cohort study between 4 April 2022 and 4 September 2022 among adult patients undergoing common general, orthopaedic, gynaecological and urological operations, with follow-up 7 days after hospital discharge. The primary outcome measure was the quantity of prescribed and consumed opioids in oral morphine equivalents (OMEs). Descriptive and multivariable analyses were performed to investigate factors associated with OME quantities prescribed and consumed.

Findings

This analysis includes 4273 patients across 144 hospitals in 25 countries. Overall, 30.7% (n=1311) of patients were prescribed opioids at discharge. For those prescribed opioids, a median of 100 OMEs (IQR 60 - 200) were prescribed but only a median of 40 OMEs (IQR 7.5 - 100; p<0.001) were consumed at follow-up 7 days after discharge. After risk-adjustment, an increased amount of opioids prescribed was independently associated with increased opioid consumption in the follow up period ($\beta = 0.33$, 95% CI 0.31 - 0.34, p<0.001), and side-effects. The risk of prescribing more opioids than patients' consumed increased as quantities of opioids prescribed exceeded 100 OMEs, independent of patient comorbidity, procedure, and pain.

Interpretation

Patients were prescribed more than twice the quantity of opioids they consumed in the 7 days following discharge from surgery. Prescription quantity was associated with increased consumption of opioids even after adjusting for pain levels, suggesting that prescribing practice is a modifiable risk factor to curtailing excessive opioid consumption. Current quantities of opioids provided are in excess of patient needs and may contribute to increasing community opioid use and circulation.

Funding

Maurice and Phyllis Paykel Trust, Surgical Research Funds University of Newcastle.

Research in context

Evidence before this study

Opioids are frequently prescribed at discharge after surgery, yet little is understood about the drivers of opioid use in this setting. We conducted a literature search between November 2020 and February 2021 for studies reporting on opioid prescription and consumption after discharge from surgery. We used the search terms “opioid”, “surgery”, “discharge”, and applied no language or date restrictions. Several global studies examined variations in opioid prescribing, however, little data exists specific to surgical practice. Several single centre and retrospective surgical series examined the independent role of prescribing practice on opioid consumption; however, these data are not globally generalisable. A recent systematic review and meta-analysis suggests the analgesic efficacy of opioids in the post-surgical-discharge setting may be overstated, exposing populations to their adverse events with minimal improvements in pain management. Given the lack of global, generalisable, high-quality data in the setting of post-surgical discharge, practice is predominantly guided by clinician preferences, dogma, and health system cultures.

Added value of this study

This prospective, international, cohort study provides high-quality, cross-specialty, patient-reported data after surgical discharge following a variety of common surgical procedures, including both emergency and elective, minor and major, surgeries. This study includes 4273 patients from 144 centres across 25 countries. Among those prescribed opioids, the median prescription of opioids was 100 oral morphine equivalents (OMEs; IQR 60 - 200) and median consumption at 7-days follow-up was 40 OME (IQR 7.5 - 100; $p < 0.001$). Prescription and consumption of opioids varied by specialty, but predominantly prescribed quantities were in excess of what was consumed by patients within the first 7 days after hospital discharge. This was particularly evident for patients prescribed over 100 OMEs. The quantity of opioids

prescribed was associated with higher patient-reported opioid consumption at surgical discharge, and increasing quantities of opioids prescribed and consumed were associated with increased risk of opioid-related harm.

Implications of all the available evidence

Overprescribing opioids increases absolute consumption of opioids, even after adjusting for patients' pain levels, with an associated increase in opioid-related side effects. The value of opioids after surgical discharge has been questioned, and when prescribed, are frequently in excessive quantities. Prescribing practices need to be altered with a more cautious approach to prescribing opioids after surgical procedures. When required, quantities should be rationalised to minimise opioid-related harm, community circulation of opioids, dependence, misuse, and overdose. Our study bridges a crucial knowledge gap and offers guidance on opioid prescribing across a range of common surgical procedures.

Introduction

The opioid epidemic is a major public health crisis. The age-standardised prevalence of opioid dependence has been estimated to be 510 per 100,000, with the highest prevalence in the United States of America (USA), the Middle East, and East Asia.¹ This translated to approximately 109,500 opioid overdose deaths worldwide in 2017.¹ Post-surgical opioid prescribing is a significant contributor to the global opioid crisis,² with overprescribing being an ongoing source of community diversion of unused opioids, misuse, abuse and dependence.^{3,4}

Opioid analgesia, though commonly prescribed to manage postoperative pain, entails a significant potential for harm,⁵ and is therefore facing increasing global scrutiny. A recent systematic review of 47 randomised trials found that opioid prescribing at surgical discharge following minor and moderate elective surgeries did not reduce patients' pain intensity but did increase adverse events such as vomiting.⁶ Amidst growing awareness of the contribution of excessive and unsafe opioid prescribing to the current opioid crisis,⁷⁻¹¹ further data are urgently required to guide their clinical use following surgery. As the second highest prescribers of opioids, surgical teams are an important target group for improving prescribing practices.²

The Opioid PrEscRiptions and Usage After Surgery (OPERAS) study therefore aimed to quantify the current global practice of opioid prescribing and consumption patterns after discharge from common surgical procedures, and identify factors associated with increased opioid consumption.

Methods

Ethical approval

Ethical approvals were obtained according to the requirements at each participating centre and verified by the central steering committee. The Hunter New England Human Research Ethics Committee (2021/ETH11508) approved the protocol as the lead site.

Study design

This was an international, prospective, multicentre, observational cohort study. Analyses were based on a prespecified, published, protocol and the study was registered in the Australian New Zealand Clinical Trials Registry (ANZCTR: ACTRN12621001451897p).¹² This study is reported in accordance with the STROBE guidelines.¹³

All hospitals routinely performing general, orthopaedic, gynaecological and urological procedures were eligible to enrol. Prospective data was collected from inpatient clinical records and a standardised patient telephone interview undertaken at 7 days post-discharge.¹⁴ Data collection took place over six predefined 14-day data collection periods between 4 April 2022 and 4 September 2022. Centres could choose to participate in multiple 14-day consecutive recruitment periods.

Eligibility criteria

Participating centres prospectively screened and approached all consecutive patients that met eligibility criteria to obtain informed participant consent where this was a requirement of the site ethics approval. Participants could withdraw at any stage. Consecutive adult patients aged ≥ 18 years undergoing either elective (planned) or emergency (unplanned) common general surgical (cholecystectomy, appendicectomy, inguinal hernia repair, colon resection, fundoplication, or sleeve gastrectomy), orthopaedic (total or reverse shoulder arthroplasty, rotator cuff or labral

repair, anterior cruciate ligament repair, or hip or knee arthroplasty), gynaecological (hysterectomy, oophorectomy, or salpingectomy and oophorectomy), and urological procedures (prostatectomy, cystectomy or nephrectomy) were eligible to be included.¹² Only patients discharged home or to a non-healthcare setting were included. Patients receiving medication-assisted treatment of opioid dependence with methadone, suboxone, or buprenorphine, discharged to rehabilitation, nursing supported care services, another hospital, or discharged with palliative intent were excluded. Patients undergoing multivisceral resections or who required return to theatre were also excluded.

Outcome and explanatory variables

The primary outcome was the proportion of prescribed opiates that were consumed within 7-days post-discharge.^{15,16} This is in line with guideline-based recommendations for duration of post-surgical discharge opioid prescriptions.^{16,17} Data were also collected on patient demographics (age, gender, tobacco use, vaping status, alcohol use, BMI, Society of Anesthesiologists (ASA) physical status classification), comorbidities, diagnosis and procedure specific details (indication, surgical approach, and urgency), opioid use in the 24 hours prior to hospital discharge, opioid prescription at the time of discharge from hospital (including opioid type, dose, and quantity of pills), patient reported outcomes (including patient-reported opioid consumption including type, dose, and quantity of pills), post-operative complications; and requirement for further analgesia. Data on opioid doses were converted to oral morphine equivalents (OME) to account for the potencies of different medications and allow comparison. OME conversion ratios were calculated using conversion ratios defined by the Australian and New Zealand College of Anaesthetics (ANZCA) Faculty of Pain Medicine.¹⁸ Where opioid conversion ratios were not defined by ANZCA, accepted conversion ratios were identified through a literature search and agreed upon by consensus from members of the OPERAS Scientific Advisory Group.¹² Methods for calculation of OMEs are further detailed in **Table S1**.

Cumulative OME doses were used to enable pragmatic comparisons; irrespective of intended duration of prescriptions this represents the quantity of opioids provided to patients. Opioid side effects were defined as one or more of the following: nausea or vomiting, drowsiness, itching, dizziness, or constipation at the 7-day follow-up phone call. Demographics and opioid prescribing practices were compared between high income countries (HIC) and low and middle income countries (LMIC) as defined by Organisation for Economic Co-operation and Development (OECD).¹⁹

Statistical analysis

All statistical analyses were performed with R version 4.2.0 (R Foundation for Statistical Computing, Vienna, Austria) using the *tidyverse*, *rms* and *finalfit* packages. An *a priori* sample size calculation was performed, necessitating a minimum sample size of 852.¹²

Factors collected for patients lost to follow-up (but not those who withdrew consent) were compared with the included cohort to assess any selection bias in those lost to follow-up. Missing data were explored via visual inspection. The *mice* package was used to perform multiple imputation by chained equations for ASA grade, alcohol consumption, and BMI categories which were assumed to be missing at random, and imputed models were pooled per Rubin's rules.²⁰

Descriptive statistics were used to compare demographic and prescription-specific variables based on whether or not patients were prescribed opioids at discharge using the χ^2 test for categorical variables and the Kruskal-Wallis test for continuous variables. The univariable correlation between quantity of opioid in OME prescribed and consumed at 7-days follow-up was depicted using a generalised additive model. The risk of opioid-related side effects was modelled using binomial logistic regression and the independent variables; total OMEs

prescribed at discharge, and total OMEs consumed at follow-up were plotted with a spline term. Factors associated with the quantity of opioids prescribed and consumed were modelled using separate mixed-effects hierarchical linear regression with the country, and hospital as the random effect. The model predicting quantity consumed was bootstrapped and applied at the patient-level to quantify with 95% confidence intervals for the adjusted rate of overprescription. Residual, Q-Q plots, and variance inflation factors were interrogated to assess model assumptions.

Multivariable binary logistic regression models for the risk of overprescription (defined as prescribed OME quantity exceeding consumed OME quantity at follow-up) were generated. Sensitivity analyses for various thresholds of overprescription, including prescribed OME quantity exceeding 25%, 50% and 100% of consumed OME quantity, were also performed. Thereafter, the multivariable risk-adjusted odds ratio for overprescription was plotted against the quantity of OME prescribed at discharge, quantity of OMEs consumed 24 hours prior to discharge, and severity of pain experienced in the week after discharge, each with a spline term. Covariate selection for adjusted analyses was considered *a priori* and guided by clinical plausibility, AIC criteria, and model parsimony.¹² A two-tailed α level was set at 5% for interpretation of significance.

Results

Between 4 April 2022 and 4 September 2022, data from 4273 patients across 144 hospitals in 25 countries were collected and analysed (2271 women, 53.1%; median age 50 years; **Figure 1** and **Table 1 and S7**). Some 1923 (45.0%) patients were recruited from high-income countries, and 2350 (55.0%) from low- and middle-income countries (**Table S2**). A third of patients were prescribed opioid analgesia at discharge after one of 19 eligible surgical procedures (30.7% [n=1311] overall; **Table 1**). Patients were followed up at a median of 7 days (IQR 7 - 8).

Opioid prescriptions at surgical discharge

Patients who received opioids at discharge tended to be slightly older, with a higher ASA, increased BMI, cancer or kidney disease, smoke or vape, and consume more alcohol ($p < 0.05$; **Table 1**). After risk-adjustment, age ($\beta = -0.30$, 95% CI $-0.57 - 0.03$, $p = 0.031$), specialty of surgery ($\beta > 20$, $p < 0.02$) and total OME consumed 24 hours prior to discharge ($\beta 0.6$, 95% CI $0.1 - 0.21$, $p < 0.001$) were associated with increased quantity of opioid prescribed at discharge (**Table S3**).

Notably, patients were likely to be prescribed significantly more opioid after orthopaedic ($\beta = 89.12$, 95% CI $75.29 - 102.94$, $p < 0.001$) and gynaecological procedures ($\beta = 20.11$, 95% CI $3.47 - 36.75$, $p = 0.018$), compared to general surgical procedures. Of note, following all procedures except arthroplasty, fewer than 50% of patients were prescribed an opioid at discharge (**Figure 2A**). The total amount of opioids consumed 24 hours prior to discharge was also positively associated with larger opioid prescriptions at discharge ($\beta = 0.16$, 95% CI $0.1 - 0.21$, $p < 0.001$). This mean of the imputed models for the quantity of opioids prescribed had a good fit with conditional $R^2 = 0.39$ and the pooled model is summarised in **Table S3**.

Importantly, of 1952 patients who received no opioids prior to discharge, 197 (10.1%) received an opioid prescription on discharge.

Patients prescribed opioids at discharge tended to have longer operations ($p < 0.001$), more complications ($p < 0.001$), and were more frequently referred to an acute pain service (8.2% vs 4.7%, $p < 0.001$), but had similar lengths of stay (median 2 days (IQR 1-3) vs 2 days (IQR 1-3), $p = 0.698$) to those not prescribed opioids. Regarding co-analgesics, patients prescribed opioids were more often discharged with paracetamol (89.4% vs 71.4%, $p < 0.001$), gabapentinoids (4.6% vs 1.3%, $p < 0.001$), and tricyclic antidepressants (2.4% vs 0.5%, $p < 0.001$). In the 7-days post-discharge, patients prescribed opioids experienced more pain (median visual analogue rating 20 (IQR 5-40) vs 10 (IQR 0-30), $p < 0.001$). These data are summarised in **Table 2**.

Of those prescribed opioids, the vast majority were given a single opioid (89.5%), and the majority used this prescription (79%). The majority (85%) of these patients also used paracetamol after discharge. Of note only 37% of patients prescribed an opioid were discharged with laxatives, and 22.5% with antiemetics (**Table 3**). Only 30.5% received documented advice regarding safe disposal of unused opioids.

Comparison of prescription quantities to consumption quantities

When prescribed, the median quantity of opioids was 100 OME (IQR 60 - 200). In comparison, at 7 days follow-up, the median quantity consumed by patients was 40 OME (IQR 7.5 - 100; $p < 0.001$; **Figure 3**). The average ratio of the quantity of OMEs predicted to be consumed to what was prescribed was 2.22 (95% CI 2.13 - 2.30; **Table S4**). This trend of prescribing opioids in excess of that consumed by 7 days was evident across most procedures (**Figure 2B**).

Increasing quantities of opioids prescribed at discharge was associated with a linear increase in risk of opioid side effects (**Figure 4A**).

Additionally, there was a steep increase in risk of opioid-related side effects with increasing opioid consumption to approximately 50 OMEs, beyond which the risk of side effects was roughly triple that of <10 OMEs (**Figure 4B**). Consumption of opioids at follow-up increased linearly with the quantity of opioids prescribed at discharge ($r = 0.57$, $p < 0.001$, **Figure S1**). After risk-adjustment, pain severity ($\beta = 0.19$, 95% CI 0.10 - 0.27, $p < 0.001$), total amount of opioids prescribed ($\beta = 0.33$, 95% CI 0.31 - 0.34, $p < 0.001$), and total amount of opioids consumed 24 hours prior to discharge ($\beta = 0.07$, 95% CI 0.04 - 0.1, $p < 0.001$) were independently and positively associated with increased opioid consumption. This mean of the imputed models for the quantity of opioids consumed had a good fit with conditional $R^2 = 0.60$ and the pooled model is summarised in **Table S4**.

Overprescription was evident after appendectomy, inguinal hernia surgery, cholecystectomy, sleeve gastrectomy, fundoplication, colorectal resections, hip arthroplasty, knee arthroplasty, hysterectomy, oophorectomy and salpingectomy, prostatectomy, and nephrectomy ($p < 0.05$; **Figure 2** and **Table 4**). However, 59 (1.4%) patients consumed more opioids than they were initially prescribed (e.g., sources other than the discharge prescription). The risk of overprescribing opioids increases linearly as larger quantities are prescribed at discharge, particularly over 100 OMEs (**Figure 5A**). Below 100 OMEs, the risk of overprescribing progressively reduces (**Figure 5A**). Similarly, consumption of less than 35 OMEs in the 24 hours prior to discharge was predictive of likely overprescription (**Figure 5B**). Risk of overprescription was present irrespective of varying pain levels after discharge (**Figure 5C**). These findings persisted in subgroup analyses where overprescription was defined as prescriptions more than 25%, 50%, and 100% more than what was consumed (**Figure S2**).

Geographical variation

Overall, 54.5% of patients from HIC as defined by OECD (n = 1923) were prescribed opioids, at a median quantity of 37.5 OME (IQR 0 - 112.5). This compared to only 12.5% of patients from LMIC (n = 2350) with a median quantity of 0 OME (IQR 0 to 0; $p < 0.001$). Median consumption of opioids at 7 days was clinically similar (0 OME [IQR 0 - 0] in LMIC vs 0 OME [IQR 0 - 30] in HIC, $p = 0.002$). Notably there was significant variation in rates of opioid prescription by hospital centre, but after adjusting for patient factors, clear differences between LMIC and HIC centres were evident (**Figure 8**). These data are summarised in **Table S5, S6** and **Figure 7**.

Discussion

In this multinational cohort study opioids were widely prescribed in excess of what patients consumed at 7 day follow up after discharge from common general, urological, gynaecological, and orthopaedic surgical procedures. Prescribing higher quantities of opioids after discharge from surgery was associated with a higher risk of experiencing opioid-related side effects. The quantity of opioids prescribed by clinicians at discharge was associated with increased opioid consumption even after adjusting for post-discharge pain severity and pre-discharge opioid consumption. Excess opioid prescribing was evident across a geographically diverse cohort, particularly in high income countries. These findings confirm that urgent improvements in prescribing practice are needed to mitigate the globally escalating opioid crisis.

Excess opioid prescribing has been described across many surgical specialties.^{9-11,21-25} Our data corroborate a vast literature predominantly originating from the USA, showing that excess volumes of opioids are prescribed at surgical discharge globally (frequently in excess of 100 OME).^{7,10,24-26} We found fewer than 50% of opioids prescribed are actually consumed within 7 days, findings similar to the results of a systematic review of USA studies, which found that only 29-58% of prescribed opioids were consumed post discharge.⁹ This demonstrates that opioid overprescribing at surgical discharge is more widespread than previously accepted. This work also highlights important inequities in global practice, with individuals from HIC being more likely to be prescribed opioids, at higher quantities, compared to patients from LMICs. As efforts are put in place to improve opioid stewardship globally, care must be taken to ensure equitable global prescribing practices at surgical discharge.²⁷

Overprescription poses a key risk for increased unregulated circulation of opioids in the community. Safe disposal of excess opioids is known to be low,²⁸ and further evidenced by our findings that fewer than one-third of patients received documented advice about safe disposal of

opioids. The retention of what is frequently 60% of an individual's prescription quantity in the community significantly increases the risk of opioid misuse. Lipari *et al* have shown that peers and family remain a much more widespread source of opioids for non-medical use in the community than the black market or “doctor shopping” strategies.²⁹ This highlights the responsibility that falls on clinicians to ensure appropriate prescription quantities.

When prescribing opioids after surgery, clinical care standards emphasise a patient-centred approach limiting the duration of usual discharge opioid prescriptions to less than 7 days of short-acting opioids for acute pain,^{17,30} and this is consistent with the most recent published international multidisciplinary consensus statement on the prevention of opioid-related harm in adult surgical patients.³¹ Providing large quantities of opioids for longer durations poses a substantially increased risk for chronic use, misuse, and overdose.¹⁵ The duration of the first opioid analgesic prescription has been found to be more strongly related to misuse in the early postoperative period than the dosage, with each refill and week of opioid analgesic prescription associated with 20% increase in opioid misuse among opioid-naïve patients.³² Ongoing pain management in the community beyond the first post discharge week should involve the transfer of care to primary healthcare professionals, who are well positioned to ensure appropriate review and to implement weaning plans as appropriate.¹⁷ Additionally, guideline-based strategies to optimise analgesia at surgical discharge should include using non-opioid analgesia as first-line and utilising multimodal analgesia.^{31,33} Though we found paracetamol was co-prescribed with opioids in close to 90% of patients discharged with opioids, NSAIDs were co-prescribed in only 50%. Concerningly, 10% of patients not requiring opioids prior to discharge were discharged with opioid analgesia. As previously reported, this variability suggests prescribing practices remain dogmatic, habit-driven, and are in urgent need of reform.^{11,34}

We also show that a key driver of excess opioid prescribing and the subsequent harms are driven by prescriber choices. The quantity of opioids prescribed at discharge is associated with the quantity of opioids consumed, even after adjusting for pre-discharge opioid consumption and post-discharge pain levels. Numerous regional series have identified this trend,^{7,35–37} and we verify the persistence of such trends in an international multi-specialty cohort. Our data demonstrate the risk of overprescription increases significantly beyond 100 OMEs, even when overprescription was defined as double the quantity of opioids that patients consumed. Our data offers a useful quantitative guide for prescribing. Firstly, as fewer than 50% of patients were prescribed opioids at discharge in this cohort, the decision to prescribe opioids at all should be individualised. Secondly, care should be taken prior to prescribing opioids in excess of the average consumed quantity for each respective procedure (as visualised in **Figure 2**). And finally, particular care should be taken when prescribing in excess of 100 OMEs, as the risk of overprescription increases significantly beyond this point.

Strategies suggested to curtail the volume of opioid prescriptions at surgical discharge in the literature include defining patient needs using surveys, generating operation-specific guidelines, and statistical models to predict patient needs, all of which have been trialled without increases in opioid refills.^{26,36,38} It is widely accepted that opioid prescribing should be individualised, however reliably determining patient-needs remains challenging. In the setting of plastic surgery, Zhang *et al* proposed a predictive model for postoperative discharge opioid requirements based on inpatient opioid consumption trends, and whose accuracy is not influenced by age, gender identity, procedure type, length of stay, or preoperative opioid use.³⁷ While this was derived from a small cohort of plastic surgery patients, such a data-driven approach seems a promising intervention to guide opioid prescribing. Building a predictive model for consumption that is generalisable to a diverse range of patients irrespective of geography and procedure is the focus of ongoing work with the OPERAS dataset.

This is a global, prospective, multi-specialty study assessing opioid prescriptions and patient-reported opioid consumption. We had high levels of data-completion and minimal loss to follow-up (<20%) for a study requiring telephone interviews of patients at such a scale. Nevertheless, there are several limitations to our study, including need for care interpreting causality owing to the observational nature of the data. In addition, elements of subjectivity and recall bias are inevitable with patient-reported data points, but are mitigated by the short, 7-day follow-up time point after discharge. Guidelines recommend no longer than a week's supply of opioids should be prescribed after surgery,^{16,17} to encourage patients with inadequately managed pain to seek help and to mitigate large opioid prescription volumes. Hence, our 7-day follow-up is both clinically and pragmatically optimal.^{15,16} Further, we do not explore long-term clinical outcomes and dependence beyond patient-reported pain in the acute post-discharge setting. This data also amalgamates a geographically diverse cohort where opioid prescribing practices vary, but this is also a strength of the study that adds to the generalisability of the findings.

Our findings have direct implications for clinical practice, highlighting the importance of appropriate post-discharge opioid prescribing to reduce opioid-related harm, such as excess diversion of unused opioids into the community, dependence, misuse, and overdose. As suggested by Howard *et al*, our multi-centre data can define “consumption norms” to generate procedure-specific guidelines for widespread use;⁷ these should then be disseminated through professional bodies such as ‘NPS MedicineWise’ to improve clinical practice. Targeting prescribing education and change interventions at early career prescribers, who frequently organise post-surgical discharges, will be pivotal.

Opioid prescribing after surgery is a global issue, with significant implications for patients. We prescribe nearly double the quantity of opioids patients consume in the post-discharge period,

exposing them to opioid-related harm. Individualised opioid prescribing at discharge remains important; however, the quantities currently provided are in excess of patient needs and are driving increased consumption of opioids. While patient pain levels, and pre-discharge opioid consumption influence opioid consumption at discharge, the quantity of opioids prescribed remains a modifiable factor to curtailing excessive prescriptions of unused opioids .

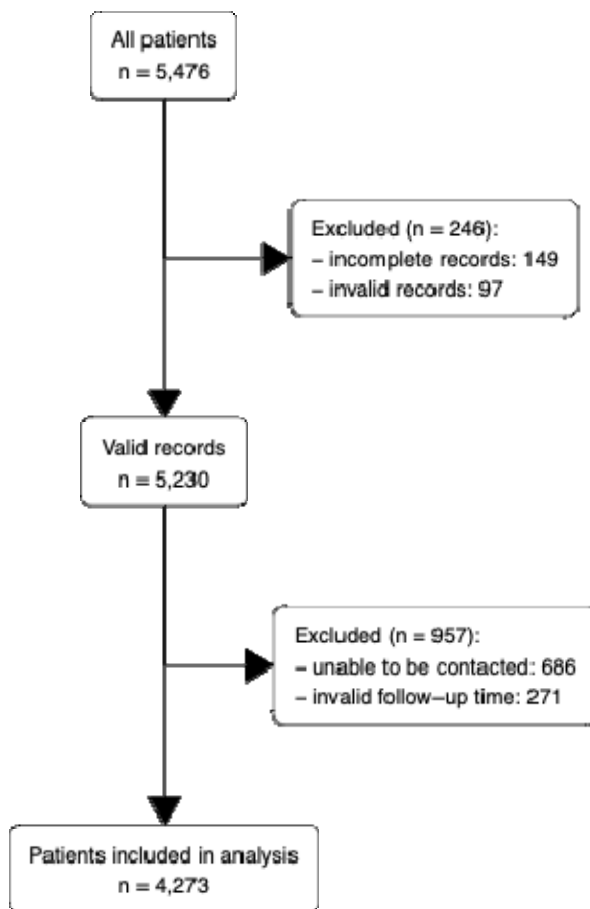
References

- 1 Degenhardt L, Grebely J, Stone J, *et al*. Global patterns of opioid use and dependence: harms to populations, interventions, and future action. *Lancet* 2019; **394**: 1560–79.
- 2 Levy B, Paulozzi L, Mack KA, Jones CM. Trends in Opioid Analgesic-Prescribing Rates by Specialty, U.S., 2007-2012. *Am J Prev Med* 2015; **49**: 409–13.
- 3 Lalic S, Ilomäki J, Bell JS, Korhonen MJ, Gisev N. Prevalence and incidence of prescription opioid analgesic use in Australia. *Br J Clin Pharmacol* 2019; **85**: 202–15.
- 4 Shadbolt C, Abbott JH, Camacho X, *et al*. The Surgeon's Role in the Opioid Crisis: A Narrative Review and Call to Action. *Front Surg* 2020; **7**: 4.
- 5 Gan TJ. Poorly controlled postoperative pain: prevalence, consequences, and prevention. *J Pain Res* 2017; **10**: 2287–98.
- 6 Fiore JF Jr, El-Kefraoui C, Chay M-A, *et al*. Opioid versus opioid-free analgesia after surgical discharge: a systematic review and meta-analysis of randomised trials. *Lancet* 2022; **399**: 2280–93.
- 7 Howard R, Fry B, Gunaseelan V, *et al*. Association of Opioid Prescribing With Opioid Consumption After Surgery in Michigan. *JAMA Surg* 2019; **154**: e184234.
- 8 Makary MA, Overton HN, Wang P. Overprescribing is major contributor to opioid crisis. *BMJ* 2017; **359**: j4792.
- 9 Bicket MC, Long JJ, Pronovost PJ, Alexander GC, Wu CL. Prescription Opioid Analgesics Commonly Unused After Surgery: A Systematic Review. *JAMA Surg* 2017; **152**: 1066–71.
- 10 Kaafarani HMA, Han K, El Moheb M, *et al*. Opioids After Surgery in the United States Versus the Rest of the World: The International Patterns of Opioid Prescribing (iPOP) Multicenter Study. *Ann Surg* 2020; **272**: 879–86.
- 11 Ladha KS, Neuman MD, Broms G, *et al*. Opioid Prescribing After Surgery in the United States, Canada, and Sweden. *JAMA Netw Open* 2019; **2**: e1910734.
- 12 TASMAN Collaborative Project Management Group. Opioid Prescriptions and usage After Surgery (OPERAS): protocol for a prospective multicentre observational cohort study of opioid use after surgery. *BMJ Open* 2022; **12**: e063577.
- 13 Elm E von, von Elm E, Altman DG, *et al*. The Strengthening the Reporting of Observational Studies in Epidemiology (STROBE) statement: guidelines for reporting observational studies. *Journal of Clinical Epidemiology*. 2008; **61**: 344–9.
- 14 Peters LE, Zhao J, Gelzinnis S, Smith SR, Martin J, Pockney P. Use of caller ID and text messaging from cell phones to increase response rates in patient surveys. *Research Methods in Medicine & Health Sciences* 2023; : 26320843231167496.
- 15 Robert Bree Collaborative and Washington State Agency Medical Director's Group in collaboration with academics, pain experts, and practicing surgeons. Prescribing Opioids for Postoperative Pain - Supplemental Guidance. Agency Medical Director's Group.
- 16 Wilkinson P, Devjit S. Surgery and Opioids: Best Practice Guidelines 2021. Faculty of Pain Medicine of the Royal College of Anaesthetists https://fpm.ac.uk/sites/fpm/files/documents/2021-03/surgery-and-opioids-2021_4.pdf.
- 17 Australian Commission on Safety and Quality in Health Care. Opioid Analgesic Stewardship in Acute Pain - Clinical Care Standard - Acute Care Edition. Australian Commission on Safety and Quality in Health Care, 2022 <https://www.safetyandquality.gov.au/sites/default/files/2022-04/opioid-analgesic-stewardship-in-acute-pain-clinical-care-standard.pdf>.
- 18 ANZCA. Opioid Dose Equivalence Calculation Table. ANZCA, 2021 [https://www.anzca.edu.au/getattachment/6892fb13-47fc-446b-a7a2-11cdfc1c9902/PS01\(PM\)-\(Appendix\)-Opioid-Dose-Equivalence-Calculation-Table](https://www.anzca.edu.au/getattachment/6892fb13-47fc-446b-a7a2-11cdfc1c9902/PS01(PM)-(Appendix)-Opioid-Dose-Equivalence-Calculation-Table).
- 19 OECD Income (IDD) and Wealth (WDD) Distribution Databases - OECD. <https://www.oecd.org/social/income-distribution-database.htm> (accessed April 15, 2023).
- 20 mice: Multivariate Imputation by Chained Equations in R. *J Stat Softw*.
- 21 Abbott JH, Camacho X, Clarke P, Lohmander LS. The surgeon's role in the opioid crisis: a narrative review and call to action. *Int Surg* 2020. <https://www.frontiersin.org/articles/10.3389/fsurg.2020.00004/full>.
- 22 Bates C, Laciak R, Southwick A, Bishoff J. Overprescription of postoperative narcotics: a look at postoperative pain medication delivery, consumption and disposal in urological practice. *J Urol* 2011; **185**: 551–5.
- 23 Harris K, Curtis J, Larsen B, *et al*. Opioid pain medication use after dermatologic surgery: a prospective observational study of 212 dermatologic surgery patients. *JAMA Dermatol* 2013; **149**: 317–21.
- 24 Hill MV, McMahon ML, Stucke RS, Barth RJ Jr. Wide Variation and Excessive Dosage of Opioid Prescriptions for Common

- General Surgical Procedures. *Ann Surg* 2017; **265**: 709–14.
- 25 Fujii MH, Hodges AC, Russell RL, *et al.* Post-Discharge Opioid Prescribing and Use after Common Surgical Procedure. *J Am Coll Surg* 2018; **226**: 1004–12.
 - 26 Fearon NJ, Benfante N, Assel M, *et al.* Standardizing Opioid Prescriptions to Patients After Ambulatory Oncologic Surgery Reduces Overprescription. *Jt Comm J Qual Patient Saf* 2020; **46**: 410–6.
 - 27 Ju C, Wei L, Man KKC, *et al.* Global, regional, and national trends in opioid analgesic consumption from 2015 to 2019: a longitudinal study. *Lancet Public Health* 2022; **7**: e335–46.
 - 28 Hasak JM, Roth Bettlach CL, Santosa KB, Larson EL, Stroud J, Mackinnon SE. Empowering Post-Surgical Patients to Improve Opioid Disposal: A Before and After Quality Improvement Study. *J Am Coll Surg* 2018; **226**: 235-240.e3.
 - 29 Lipari RN, Hughes A. How People Obtain the Prescription Pain Relievers They Misuse: The CBHSQ Report. Rockville, MD. *Substance Abuse and Mental Health Services*.
 - 30 Schug SA, Palmer GM, Scott DA, Alcock M, Halliwell R, Mott JF. Acute Pain Management Scientific Evidence. Australian and New Zealand College of Anaesthetists, 2020.
 - 31 Levy N, Quinlan J, El-Boghdady K, *et al.* An international multidisciplinary consensus statement on the prevention of opioid-related harm in adult surgical patients. *Anaesthesia* 2021; **76**: 520–36.
 - 32 Brat GA, Agniel D, Beam A, *et al.* Postsurgical prescriptions for opioid naive patients and association with overdose and misuse: retrospective cohort study. *BMJ* 2018; **360**: j5790.
 - 33 Allen ML, Leslie K, Parker AV, *et al.* Post-surgical opioid stewardship programs across Australia and New Zealand: Current situation and future directions. *Anaesth Intensive Care* 2019; **47**: 548–52.
 - 34 Thiels CA, Anderson SS, Ubl DS, *et al.* Wide Variation and Overprescription of Opioids After Elective Surgery. *Ann Surg* 2017; **266**: 564–73.
 - 35 Bateman BT, Cole NM, Maeda A, *et al.* Patterns of Opioid Prescription and Use After Cesarean Delivery. *Obstet Gynecol* 2017; **130**: 29–35.
 - 36 Hill MV, Stucke RS, McMahon ML, Beeman JL, Barth RJ Jr. An Educational Intervention Decreases Opioid Prescribing After General Surgical Operations. *Ann Surg* 2018; **267**: 468–72.
 - 37 Zhang KK, Blum KM, Chu JJ, *et al.* A Personalized Opioid Prescription Model for Predicting Postoperative Discharge Opioid Needs. *Plast Reconstr Surg* 2023; **151**: 450–60.
 - 38 Sada A, Thiels CA, Britain MK, *et al.* Optimizing Discharge Opioid Prescribing Practices After Mastectomy With Immediate Reconstruction. *Mayo Clin Proc Innov Qual Outcomes* 2019; **3**: 183–8.
 - 39 Opioid Equivalence Chart. Gloucestershire Hospitals NHS Foundation Trust. <https://www.gloshospitals.nhs.uk/gps/treatment-guidelines/opioid-equivalence-chart/> (accessed April 20, 2023).
 - 40 Arnold R, Weissman DE. Calculating opioid dose conversions, 2nd edn. Fast Facts and Concepts, 2003.
 - 41 Nielsen S, Degenhardt L, Hoban B, Gisev N. Comparing opioids: A guide to estimating oral morphine equivalents (OME) in research. Technical Report No. 329. Sydney: National Drug and Alcohol Research Centre, University of NSW., 2014 <https://ndarc.med.unsw.edu.au/sites/default/files/ndarc/resources/TR.329.pdf>.
 - 42 Ma PFMD, Rathmell JP, Shafer SL. Stoelting's Pharmacology & Physiology in Anesthetic Practice, Fifth edition. LWW, 2014.
 - 43 Opiate Equianalgesic Dosing Chart. UNC health care guideline. <https://www.med.unc.edu/aging/wp-content/uploads/sites/753/2018/06/Analgesic-Equivalent-Chart.pdf> (accessed April 20, 2023).
 - 44 Approximate dose conversions for commonly used opioids (refer to important note below). <https://www.uptodate.com/contents/image?imageKey=PALC%2F111216> (accessed April 20, 2023).

Figures

Figure 1: Patients included in analysis and reasons for exclusion



Comparison of pre-discharge factors such as age, gender, comorbidity, indication, and specialty showed similar proportions across these factors between those lost to follow-up and those included in analysis (Table S7)

Figure 2: A) Proportion of patients prescribed an opioid at discharge stratified by specialty and surgical procedure (n = 4273). B) Mean and standard error for oral morphine equivalents of opioid prescribed at discharge after surgery and consumed within 7-days follow-up stratified by specialty and surgical procedure (n = 4273). ACL; anterior cruciate ligament.

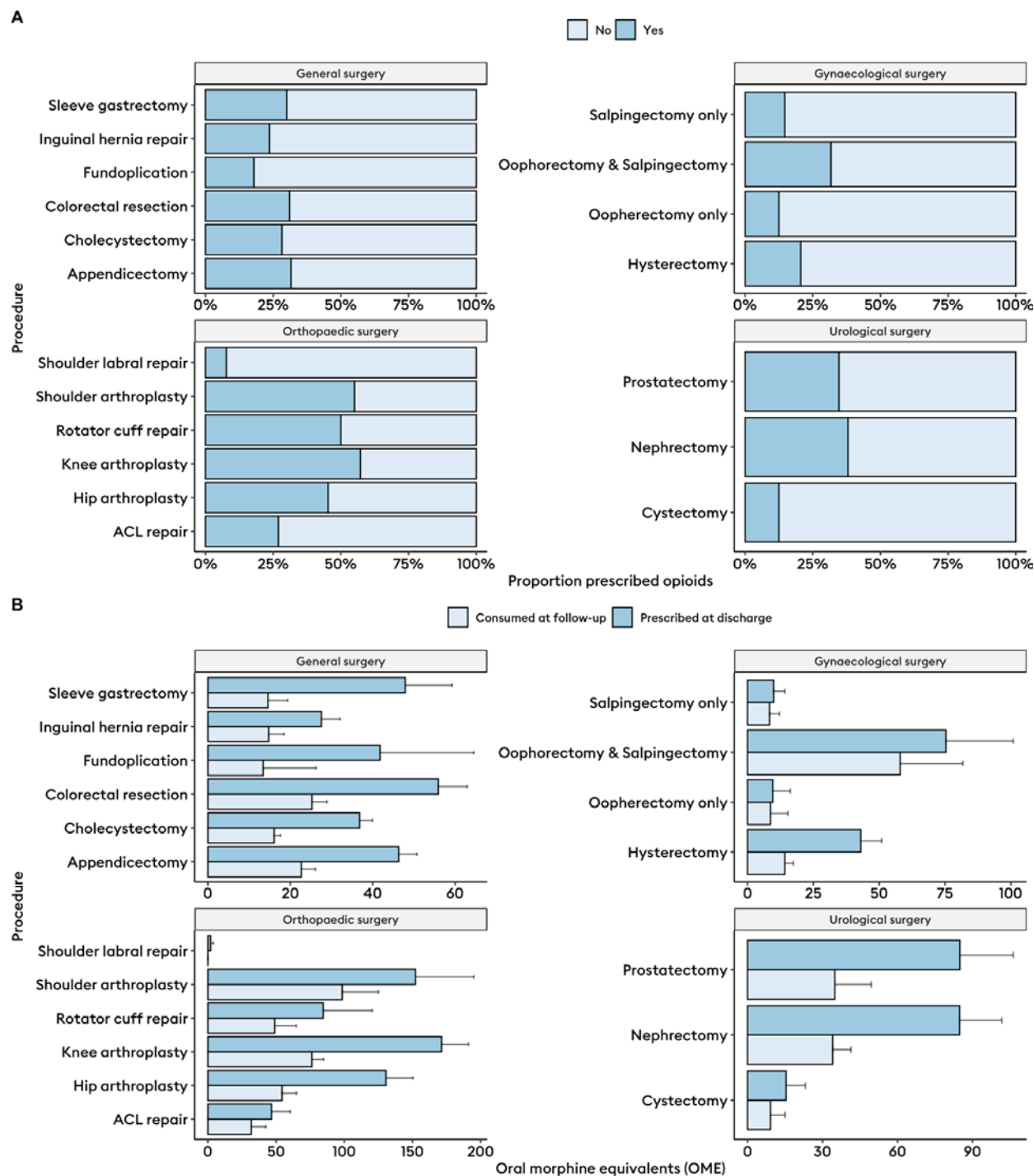


Figure 3: Box and violin plots of total amount of oral morphine equivalents of opioid prescribed at discharge after surgery and consumed within 7-days follow-up

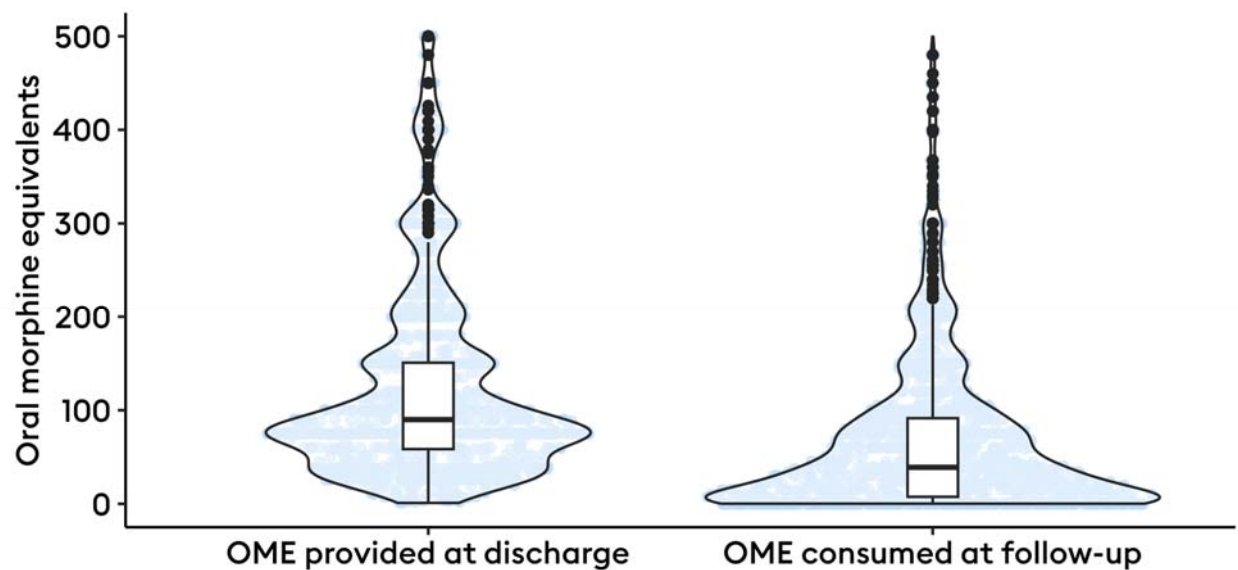


Figure 4: Restricted cubic splines with 4 knots plotting odds ratios of the risk of opioid-related side effects against a spectrum of oral morphine equivalent (OME) totals prescribed at discharge (A) and consumed at follow-up (B). The risk of opioid-related side effects (in odds ratios) is plotted against the total amount of opioids prescribed at discharge and consumed at follow-up (in OMEs) with associated 95% confidence intervals. The red dashed line represents the no-effect line.

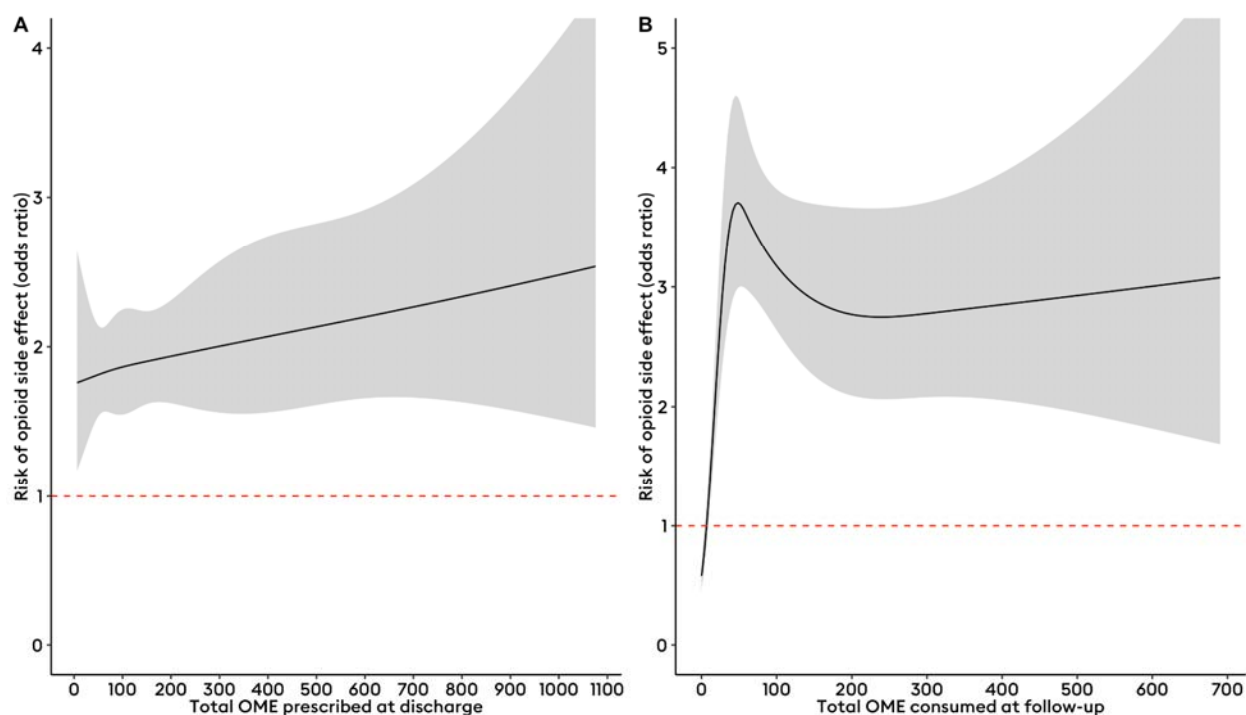


Figure 5: Restricted cubic spline plots with 3 knots for a binary logistic regression model for the risk of over-prescribing opioids (prescribing more than what is consumed at 7-days follow-up).

A) Plots risk of overprescription across a spectrum of OMEs prescribed at discharge; B) plots risk of overprescription across a spectrum of OMEs consumed 24 hours prior to discharge; and C) plots risk of overprescription across a spectrum of numeric rating scale pain scores.

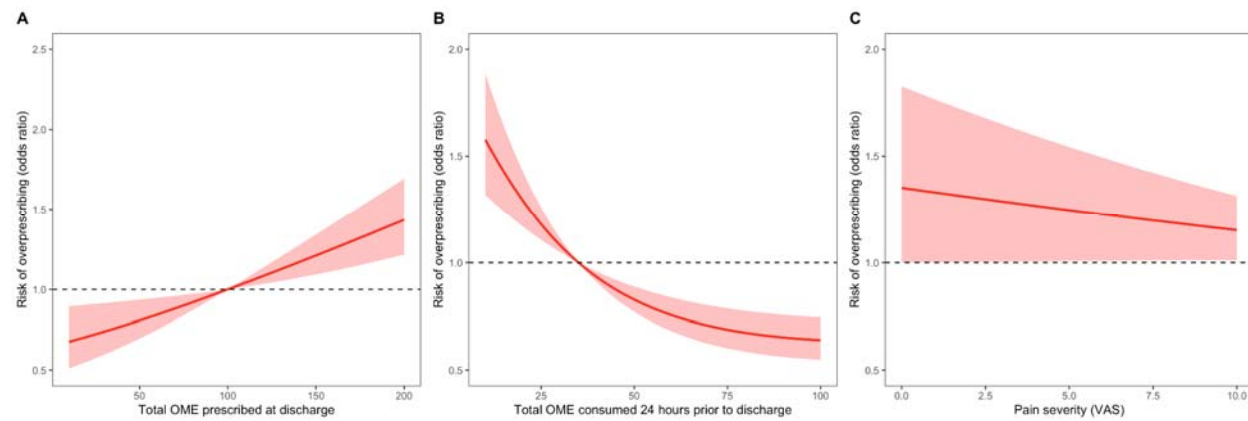


Figure 7: Global variation in A) prescription, B) consumption, and C) differences in prescription and consumption quantities of opioids in oral morphine equivalents (OME)

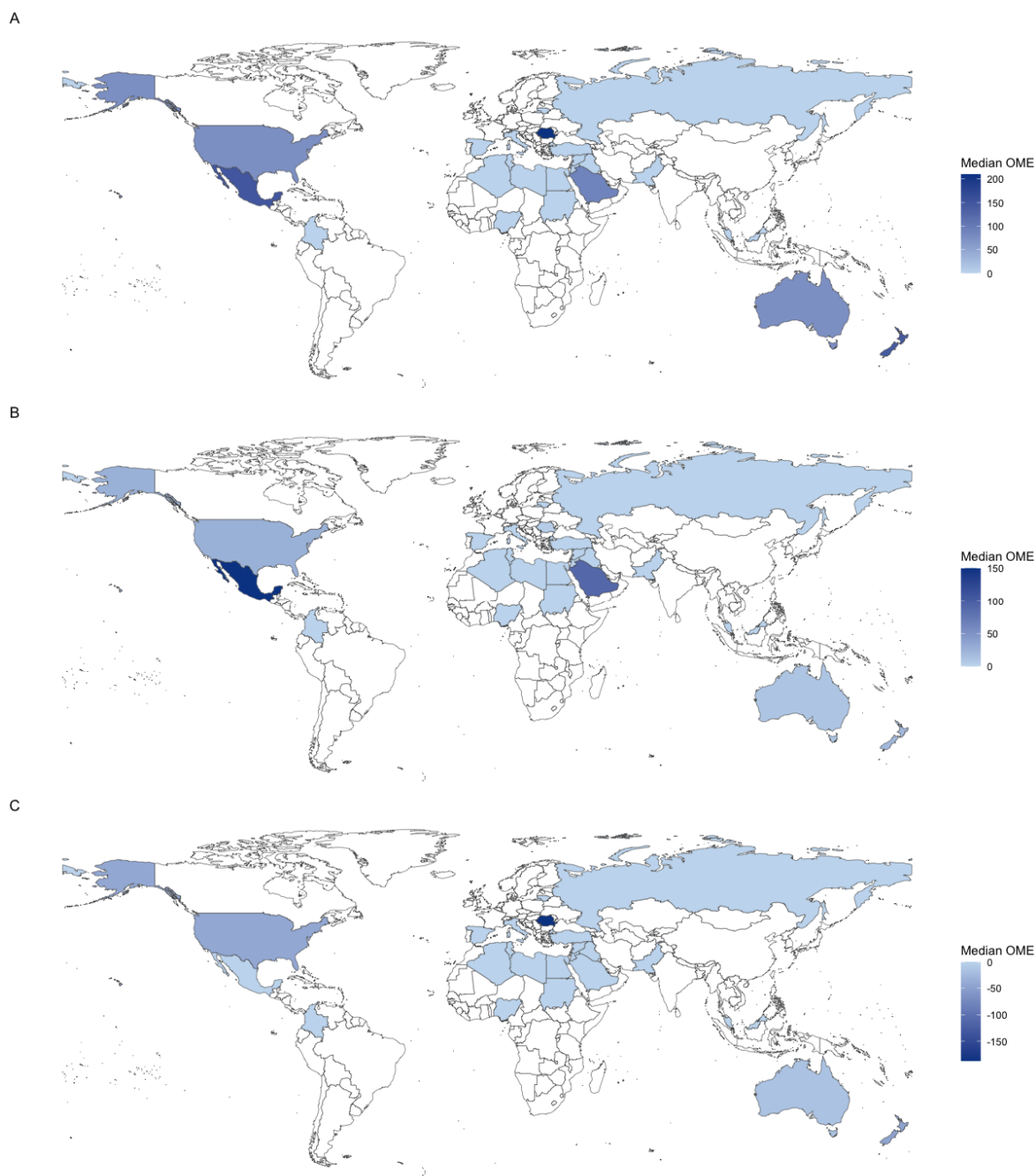
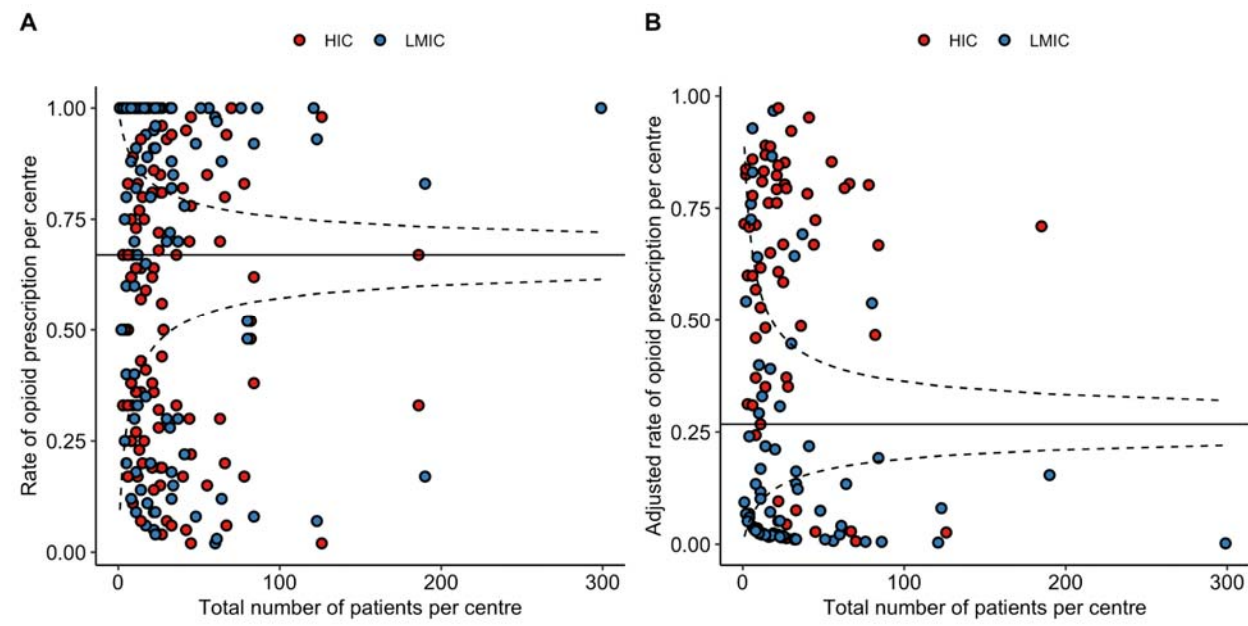


Figure 8: Global variation in rate of opioid prescription by centre, stratified by country income group. A) Unadjusted rates of opioid prescription per centre and B) adjusted rates of opioid prescription per centre (using data from the same model shown in **Table S4**).



Tables

Table 1: Demographic comparison by opioid prescription at discharge

Variable	Category	No opioid prescribed at discharge	Yes, opioid prescribed at discharge	Total	p
Total N (%)		2962 (69.3)	1311 (30.7)	4273	
Age	Median (IQR)	48.0 (33.0 to 64.0)	52.0 (37.0 to 66.0)	50.0 (34.0 to 64.0)	<0.001
Gender	Female	1579 (53.3)	692 (52.8)	2271 (53.1)	0.033
	Male	1383 (46.7)	616 (47.0)	1999 (46.8)	
	Other		3 (0.2)	3 (0.1)	
ASA	I-II	2558 (86.4)	1051 (80.4)	3609 (84.6)	<0.001
	III - V	402 (13.6)	257 (19.6)	659 (15.4)	
BMI	Normal (18.5 - 24.9)	835 (31.1)	327 (28.4)	1162 (30.3)	<0.001
	Obese (31-40)	603 (22.5)	333 (28.9)	936 (24.4)	
	Overweight (25-30)	1078 (40.2)	385 (33.4)	1463 (38.1)	
	Severely obese (>40)	111 (4.1)	94 (8.2)	205 (5.3)	
	Underweight (< 18.5)	56 (2.1)	13 (1.1)	69 (1.8)	
MI or CHF	No	2808 (94.8)	1227 (93.6)	4035 (94.4)	0.13
	Yes	154 (5.2)	84 (6.4)	238 (5.6)	
PVD	No	2877 (97.1)	1276 (97.3)	4153 (97.2)	0.791
	Yes	85 (2.9)	35 (2.7)	120 (2.8)	
CVA or TIA	No	2903 (98.0)	1285 (98.0)	4188 (98.0)	1
	Yes	59 (2.0)	26 (2.0)	85 (2.0)	
PUD	No	2900 (97.9)	1285 (98.0)	4185 (97.9)	0.907
	Yes	62 (2.1)	26 (2.0)	88 (2.1)	
Diabetes	No	2559 (86.4)	1115 (85.0)	3674 (86.0)	0.263
	Yes	403 (13.6)	196 (15.0)	599 (14.0)	
CKD	No	2913 (98.3)	1268 (96.7)	4181 (97.8)	0.001
	Yes	49 (1.7)	43 (3.3)	92 (2.2)	
Liver disease	No	2910 (98.2)	1283 (97.9)	4193 (98.1)	0.47
	Yes	52 (1.8)	28 (2.1)	80 (1.9)	
Comorbid Cancer	No	2749 (92.8)	1153 (87.9)	3902 (91.3)	<0.001
	Yes	213 (7.2)	158 (12.1)	371 (8.7)	
Smoking	Current smoker	550 (20.0)	182 (15.0)	732 (18.5)	<0.001
	Ex-smoker < 12	67 (2.4)	37 (3.1)	104 (2.6)	

	months				
	Ex-smoker >12 months	288 (10.5)	270 (22.3)	558 (14.1)	
	Never smoked	1841 (67.0)	723 (59.7)	2564 (64.8)	
Vaping	Current vaper	55 (1.9)	40 (3.1)	95 (2.2)	<0.001
	Ex-vaper < 12 months	19 (0.6)	3 (0.2)	22 (0.5)	
	Ex-vaper >12 months	20 (0.7)	6 (0.5)	26 (0.6)	
	Never vaped	2451 (82.7)	834 (63.8)	3285 (76.9)	
	Unknown status	417 (14.1)	425 (32.5)	842 (19.7)	
Alcohol	Heavy (11+)	24 (0.9)	48 (4.6)	72 (2.0)	<0.001
	Light (1-5)	406 (15.4)	341 (32.7)	747 (20.3)	
	Moderate (6-10)	72 (2.7)	69 (6.6)	141 (3.8)	
	Non-drinker (0)	2134 (81.0)	585 (56.1)	2719 (73.9)	
Indication	Benign	2601 (87.8)	1144 (87.3)	3745 (87.7)	0.63
	Malignancy	360 (12.2)	167 (12.7)	527 (12.3)	
Urgency	Elective	2098 (70.9)	818 (62.4)	2916 (68.3)	<0.001
	Emergency	863 (29.1)	493 (37.6)	1356 (31.7)	
Procedure	ACL repair	57 (1.9)	21 (1.6)	78 (1.8)	<0.001
	Appendicectomy	522 (17.6)	241 (18.4)	763 (17.9)	
	Cholecystectomy	880 (29.7)	346 (26.4)	1226 (28.7)	
	Colorectal resection	271 (9.1)	122 (9.3)	393 (9.2)	
	Cystectomy	28 (0.9)	4 (0.3)	32 (0.7)	
	Hip arthroplasty	110 (3.7)	91 (6.9)	201 (4.7)	
	Hysterectomy	228 (7.7)	59 (4.5)	287 (6.7)	
	Inguinal hernia repair	440 (14.9)	136 (10.4)	576 (13.5)	
	Knee arthroplasty	110 (3.7)	147 (11.2)	257 (6.0)	
	Nephrectomy	62 (2.1)	38 (2.9)	100 (2.3)	
	Fundoplication	23 (0.8)	5 (0.4)	28 (0.7)	
	Oophorectomy and Salpingectomy	28 (0.9)	13 (1.0)	41 (1.0)	
	Oophorectomy only	21 (0.7)	3 (0.2)	24 (0.6)	
	Prostatectomy	66 (2.2)	35 (2.7)	101 (2.4)	
	Rotator cuff repair	11 (0.4)	11 (0.8)	22 (0.5)	
	Salpingectomy only	35 (1.2)	6 (0.5)	41 (1.0)	

	Shoulder arthroplasty	9 (0.3)	11 (0.8)	20 (0.5)	
	Shoulder labral repair	12 (0.4)	1 (0.1)	13 (0.3)	
	Sleeve gastrectomy	49 (1.7)	21 (1.6)	70 (1.6)	

Table 2: Clinical and analgesic outcomes by opioid prescription at discharge

Variable	Levels	No opioid prescribed at discharge	Yes opioid prescribed at discharge	Total	p
Total N (%)		2962 (69.3)	1311 (30.7)	4273	
Pain severity	Median (IQR)	10.0 (0.0 to 30.0)	20.0 (5.0 to 40.0)	10.0 (1.0 to 30.0)	<0.001
Operative duration (min)	Median (IQR)	80.0 (55.0 to 120.0)	98.0 (66.0 to 135.0)	87.0 (60.0 to 120.0)	<0.001
Postoperative complications	I	380 (12.8)	218 (16.6)	598 (14.0)	<0.001
	II	107 (3.6)	47 (3.6)	154 (3.6)	
	IIIa/IIIb/IVa/IVb	21 (0.7)	20 (1.5)	41 (1.0)	
	None	2450 (82.8)	1025 (78.2)	3475 (81.4)	
Length of stay (days)	Median (IQR)	2.0 (1.0 to 3.0)	2.0 (1.0 to 3.0)	2.0 (1.0 to 3.0)	0.698
Referral to acute pain service	No	2823 (95.3)	1203 (91.8)	4026 (94.2)	<0.001
	Yes	139 (4.7)	108 (8.2)	247 (5.8)	
Discharged with paracetamol	No	847 (28.6)	139 (10.6)	986 (23.1)	<0.001
	Yes	2113 (71.4)	1172 (89.4)	3285 (76.9)	
Discharged with NSAIDs	No	1502 (50.7)	687 (52.4)	2189 (51.3)	0.321
	Yes	1458 (49.3)	623 (47.6)	2081 (48.7)	
Discharged with gabapentinoids	No	2922 (98.7)	1251 (95.4)	4173 (97.7)	<0.001
	Yes	38 (1.3)	60 (4.6)	98 (2.3)	
Discharged with tricyclic antidepressants	No	2945 (99.5)	1279 (97.6)	4224 (98.9)	<0.001
	Yes	14 (0.5)	31 (2.4)	45 (1.1)	

Table 3: Prescribing factors of those prescribed an opioid at discharge

Number of opioids prescribed at discharge	<i>n</i>
1	1174 (89.5)
2	131 (10.0)
3	6 (0.5)
Total OME prescribed, median (IQR)	100.0 (60.0 to 200.0)
Total OME consumed, median (IQR)	40.0 (7.5 to 100.0)
Paracetamol used	1114 (85.0)
NSAID used	506 (38.6)
D/C with laxatives	485 (37.0)
D/C with antiemetics	295 (22.5)
Safety net advice given	377 (30.5)
Prescribed opioids used	1035 (79.0)

Table 4: Difference between quantities of opioids prescribed at discharge and consumed at follow-up by procedure; p-values adjusted using Benjamini-Hochberg correction

Procedure	n	Mean difference	Adjusted p value	Significance
ACL repair	78	-1.6602635	0.101	ns
Appendectomy	763	-5.9886527	3.26E-09	****
Cholecystectomy	1226	-8.2838667	3.09E-16	****
Colorectal resection	393	-5.5354394	5.69E-08	****
Cystectomy	32	-1.2955701	0.205	ns
Hip arthroplasty	201	-5.5205941	1.04E-07	****
Hysterectomy	287	-4.5066117	9.61E-06	****
Inguinal hernia repair	576	-5.1066892	4.47E-07	****
Knee arthroplasty	257	-6.126131	3.38E-09	****
Nephrectomy	100	-3.6260453	0.000457	***
Fundoplication	28	-2.0720403	0.048	*
Oophorectomy and Salpingectomy	41	-2.7921709	0.008	**
Oophorectomy only	24	-1	0.328	ns
Prostatectomy	101	-3.9550139	0.000143	***
Rotator cuff repair	22	-1.6152028	0.121	ns
Salpingectomy only	41	-1.061003	0.295	ns
Shoulder arthroplasty	20	-1.4645411	0.159	ns
Shoulder labral repair	13	-1	0.337	ns
Sleeve gastrectomy	70	-3.0008082	0.004	**

SUPPLEMENTARY MATERIAL

Drivers of opioid use after surgical discharge: an international prospective cohort study

Authors and institutions

TASMAN Collaborative* (full list of PubMed-citable authors are listed in the appendix)

Supplementary Methods

Variations to prespecified protocol:

- Other aims stated in the protocol, including impact of opioid prescription and consumption on patient-reported outcomes and quality of life, are reported in a separate manuscript.

OPERAS Opioid prescription and consumption calculations

OPERAS Opioid Calculations

The following values were calculated for OPERAS data analysis.

- A. Opioid consumption in 24 hours prior to discharge (as oral morphine equivalents (OME))
- B. Total quantity of opioids prescribed on discharge (as OME)
- C. Opioid consumption in 7 days after discharge (as OME)

A. Opioid consumption in 24 hours prior to discharge (as OME)

Calculation: For each opioid: Total quantity consumed (mg/mcg) x relevant conversion factor (depending on opioid type and route of administration, see **Table 1**) = OME for that opioid. Sum of all individual OMEs = total opioid consumption in 24 hours prior to discharge (as OME).

B. Total quantity of opioids prescribed on discharge (as OME)

Calculation: For each opioid: Total quantity of medication prescribed (number of tablets/ patches/ injections/ volume of liquid) x dose (mg/mcg) x relevant conversion factor = OME for that opioid. Sum of all OMEs = total opioid prescription at discharge (as OME).

C. Opioid consumption in 7 days after discharge (as OME)

Calculation: For each opioid: Total quantity of medication consumed (number of tablets/ patches/ injections/ volume of liquid) x dose (mg/mcg) x relevant conversion factor = OME for that opioid. Sum of all OMEs = total opioid consumption in 24 hours prior to discharge (as OME).

Oral Morphine Equivalent (OME) Calculation

In order to calculate the OME for a given opioid, the opioid dose is multiplied by the relevant conversion factor (listed in Table 1).

For example, oral oxycodone can be converted to oral morphine using a conversion factor of 1.5. Therefore, the OME of oxycodone 5mg is $5 \times 1.5 = 7.5\text{mg}$.

OMEs with corresponding ANZCA FPM conversion factors were integrated with the REDCap data collection tool. Other OMEs were calculated using R.

Opioid combination products such as Oxycodone/ Naloxone were coded according to the opioid component.

Table S1: Opioid Oral Morphine Equivalent Conversion Factors used in OPERAS and corresponding source

Opioid	Route	Conversion factor	Source
Morphine (mg)	PO (tablet/ liquid)	1	ANZCA FPM ¹⁸
	SC/ IM/ IV	3	ANZCA FPM ¹⁸
Tramadol (mg)	PO (tablet/ liquid)	0.2	ANZCA FPM ¹⁸
	SC/ IM/ IV	0.4	NHS ³⁹
Oxycodone (mg)	PO (tablet/ liquid)	1.5	ANZCA FPM ¹⁸
	SC/ IM/ IV	3	ANZCA FPM ¹⁸
Fentanyl (mcg)	PO (tablet/ liquid)	0.33	Arnold & Weissman ⁴⁰
	TD (patch)	3	ANZCA FPM ¹⁸
	SC/ IM/ IV	0.2	ANZCA FPM ¹⁸
Codeine (mg)	PO (tablet/ liquid)	0.13	ANZCA FPM ¹⁸
	SC/ IM/ IV	0.25	ANZCA FPM ¹⁸
Buprenorphine (mcg)	Sublingual	0.04	ANZCA FPM ¹⁸
	TD (patch)	2	ANZCA FPM ¹⁸
	IM/ IV	0.075	Nielsen et al. 2014 ⁴¹
Pethidine (mg)	PO (tablet/ liquid)	0.125	NHS ³⁹
	SC/ IM/ IV	0.4	ANZCA FPM ¹⁸
Hydromorphone (mg)	PO (tablet/ liquid)	5	ANZCA FPM ¹⁸
	SC/ IM/ IV	15	ANZCA FPM ¹⁸
Tapentadol (mg)	PO (tablet/ liquid)	0.3	ANZCA FPM ¹⁸
Dextro-propoxyphene (mg)	PO (tablet/ liquid)	0.1	ANZCA FPM ¹⁸
Pentazocine	Oral	0.16	Stoelting's Pharmacology & Physiology ⁴²
	SC/ IM/ IV	2.5	Stoelting's Pharmacology & Physiology ⁴²
Nalbuphine	IV	3	UNC ⁴³
Alfentanil (mg)	IV	35	NHS ³⁹
Remifentanil (mg)	IV	33	Arnold & Weissman ⁴⁰
Butorphanol	IV	15	UNC ⁴³
Hydrocodone	PO	1	Broglio et al ⁴⁴

Table S2: Contributions to study by country

Country	Number of centres	Cases	OECD classification
Australia	41	813	HIC
Egypt	10	594	MIC
New Zealand	12	560	HIC
Libya	10	372	MIC
Türkiye	14	296	MIC
Jordan	5	225	MIC
Palestinian Territories	3	218	MIC
Greece	6	207	HIC
Italy	5	187	HIC
Pakistan	4	136	MIC
Russia	1	121	MIC
Sudan	9	119	LIC
Nigeria	7	99	MIC
Spain	2	94	HIC
Algeria	3	56	MIC
Iraq	1	33	MIC
United States	2	28	HIC
Malaysia	2	27	MIC
Saudi Arabia	1	22	HIC
Romania	1	18	MIC
Colombia	1	12	MIC
Lithuania	1	12	HIC
Tunisia	1	11	MIC
Mexico	1	9	MIC
Syria	1	4	MIC

HIC: high income country, MIC: middle income country, LIC: low income country

Table S3: Mixed effects hierarchical linear regression model for the quantity of opioids (OME) prescribed to patients at discharge after surgery

Factors	β coefficient	95% CI	p value
Age	-0.3	-0.57 - -0.03	0.031
Gender			
Male	2.67	-6.45 - 11.79	0.566
Smoking status			
Current smoker	-5.84	-18.34 - 6.67	0.361
Ex-smoker < 12 months	-7.89	-34.58 - 18.8	0.563
Ex-smoker >12 months	-3.25	-17 - 10.51	0.644
Alcohol status			
Heavy (11+)	-1.52	-40.46 - 37.43	0.94
Light (1-5)	8.55	-5.8 - 22.9	0.246
Moderate (6-10)	2.17	-21.05 - 25.4	0.855
Indication			
Malignant	13.28	-0.71 - 27.28	0.063
BMI			
Obese (31-40)	4.39	-7.25 - 16.02	0.46
Overweight (25-30)	7.84	-2.22 - 17.91	0.127
Severely obese (>40)	18.45	-1.34 - 38.25	0.068
Underweight (< 18.5)	-1.43	-35.47 - 32.6	0.934
ASA			
III-V	-4.45	-16.58 - 7.67	0.471
Specialty of operation			
Gynaecological surgery	20.11	3.47 - 36.75	0.018
Orthopaedic surgery	89.12	75.29 - 102.94	<0.001
Urological surgery	32.91	12.39 - 53.43	0.002
Total amount of opioids prescribed 24 hours prior to discharge (OME)	0.16	0.1 - 0.21	<0.001

Table S4: Mixed effects hierarchical linear regression model for the quantity of opioids (OME) consumed by patients at follow-up after surgical discharge

Factors	β coefficient	95% CI	p value)
Age	-0.13	-0.27 - 0.02	0.081
Gender			
Male	2.41	-2.25 - 7.07	0.31
Smoking			
Current smoker	4.71	-1.32 - 10.73	0.127
Ex-smoker < 12 months	5.47	-7.28 - 18.22	0.401
Ex-smoker >12 months	4.43	-1.95 - 10.81	0.174
Alcohol use			
Light (1-5)	2.9	-3.77 - 9.56	0.396
Moderate (6-10)	13.88	-0.51 - 28.27	0.068
Heavy (11+)	-1.33	-18.51 - 15.85	0.88
Procedure			
Appendectomy	-3.65	-19.8 - 12.49	0.657
Cholecystectomy	-6.98	-22.6 - 8.65	0.381
Colorectal resection	-6.03	-23.59 - 11.52	0.501
Cystectomy	-5	-32.04 - 22.03	0.717
Hip arthroplasty	0.81	-17.1 - 18.72	0.929
Hysterectomy	-11.38	-28.74 - 5.99	0.199
Inguinal hernia repair	-6.59	-22.6 - 9.42	0.42
Knee arthroplasty	3.38	-13.87 - 20.62	0.701
Nephrectomy	-6.39	-26.61 - 13.84	0.536
Fundoplication	-10.9	-38.43 - 16.63	0.438
Oophorectomy and Salpingectomy	27.78	3.42 - 52.14	0.025
Oophorectomy only	-1.99	-32.8 - 28.83	0.899
Prostatectomy	-5.43	-25.66 - 14.79	0.598
Rotator cuff repair	3.52	-26.66 - 33.71	0.819
Salpingectomy only	-9.39	-34.11 - 15.32	0.456
Shoulder arthroplasty	33.27	1.09 - 65.45	0.043
Shoulder labral repair	-5.76	-43.02 - 31.5	0.762
Sleeve gastrectomy	-17.95	-39.96 - 4.05	0.11
Indication			
Malignancy	2.59	-5.73 - 10.92	0.541
BMI			
Obese (31-40)	2.05	-3.59 - 7.69	0.475
Overweight (25-30)	6.25	1.18 - 11.31	0.016

Severely obese (>40)	6.06	-4.07 - 16.2	0.241
Underweight (< 18.5)	-2.88	-16.87 - 11.11	0.687
ASA			
III-V	2.25	-3.55 - 8.04	0.447
Urgency			
Emergency	-3.27	-9.16 - 2.63	0.278
Pain severity (0-10)	0.19	0.1 - 0.27	p<0.001
Total amount of opioids prescribed (OME)	0.33	0.31 - 0.34	p<0.001
Total amount of opioids prescribed 24 hours prior to discharge (OME)	0.07	0.04 - 0.1	p<0.001

Table S5: Variations in demographics by region

Variable		East Asia & Oceania	Europe & Central Asia	Latin America & Caribbean	Middle East & North Africa	North America	South Asia	Sub-Saharan Africa	Total	p
Total N (%)		1400 (32.8)	935 (21.9)	21 (0.5)	1535 (35.9)	28 (0.7)	136 (3.2)	218 (5.1)	4273	
Age	Median (IQR)	55.0 (37.0 to 68.0)	60.0 (47.0 to 70.0)	41.0 (31.0 to 55.0)	42.0 (30.0 to 56.0)	53.5 (41.5 to 62.2)	40.0 (30.0 to 52.2)	42.0 (32.0 to 54.0)	50.0 (34.0 to 64.0)	<0.001
Gender	Female	745 (53.2)	391 (41.8)	13 (61.9)	894 (58.2)	18 (64.3)	76 (55.9)	134 (61.5)	2271 (53.1)	<0.001
	Male	652 (46.6)	544 (58.2)	8 (38.1)	641 (41.8)	10 (35.7)	60 (44.1)	84 (38.5)	1999 (46.8)	
	Other	3 (0.2)							3 (0.1)	
ASA	I	361 (25.8)	229 (24.5)	8 (38.1)	937 (61.0)	0 (0.0)	87 (64.0)	141 (64.7)	1763 (41.3)	<0.001
	II-III	1023 (73.1)	704 (75.3)	13 (61.9)	580 (37.8)	28 (100.0)	47 (34.6)	71 (32.6)	2466 (57.7)	
	IV - V	13 (0.9)	2 (0.2)	0 (0.0)	16 (1.0)	0 (0.0)	2 (1.5)	6 (2.8)	39 (0.9)	
	(Missing)	3 (0.2)	0 (0.0)	0 (0.0)	2 (0.1)	0 (0.0)	0 (0.0)	0 (0.0)	5 (0.1)	
BMI	Normal (18.5 - 24.9)	318 (22.7)	275 (29.4)	9 (42.9)	406 (26.4)	5 (17.9)	51 (37.5)	98 (45.0)	1162 (27.2)	<0.001
	Overweight (25-30)	389 (27.8)	408 (43.6)	7 (33.3)	553 (36.0)	7 (25.0)	47 (34.6)	52 (23.9)	1463 (34.2)	
	Obese (31-40)	372 (26.6)	153 (16.4)	5 (23.8)	341 (22.2)	14 (50.0)	29 (21.3)	22 (10.1)	936 (21.9)	
	Severely obese (>40)	115 (8.2)	27 (2.9)	0 (0.0)	55 (3.6)	2 (7.1)	4 (2.9)	2 (0.9)	205 (4.8)	
	Underweight (< 18.5)	13 (0.9)	19 (2.0)	0 (0.0)	27 (1.8)	0 (0.0)	4 (2.9)	6 (2.8)	69 (1.6)	
	(Missing)	193 (13.8)	53 (5.7)	0 (0.0)	153 (10.0)	0 (0.0)	1 (0.7)	38 (17.4)	438 (10.3)	
MI or CHF	No	1313 (93.8)	857 (91.7)	21 (100.0)	1472 (95.9)	25 (89.3)	131 (96.3)	216 (99.1)	4035 (94.4)	<0.001
	Yes	87 (6.2)	78 (8.3)		63 (4.1)	3 (10.7)	5 (3.7)	2 (0.9)	238 (5.6)	

PVD	No	1379 (98.5)	908 (97.1)	21 (100.0)	1470 (95.8)	28 (100.0)	130 (95.6)	217 (99.5)	4153 (97.2)	<0.001
	Yes	21 (1.5)	27 (2.9)		65 (4.2)		6 (4.4)	1 (0.5)	120 (2.8)	
CVA or TIA	No	1362 (97.3)	910 (97.3)	21 (100.0)	1515 (98.7)	27 (96.4)	136 (100.0)	217 (99.5)	4188 (98.0)	0.014
	Yes	38 (2.7)	25 (2.7)		20 (1.3)	1 (3.6)		1 (0.5)	85 (2.0)	
PUD	No	1390 (99.3)	917 (98.1)	20 (95.2)	1491 (97.1)	27 (96.4)	135 (99.3)	205 (94.0)	4185 (97.9)	<0.001
	Yes	10 (0.7)	18 (1.9)	1 (4.8)	44 (2.9)	1 (3.6)	1 (0.7)	13 (6.0)	88 (2.1)	
Diabetes	No	1243 (88.8)	786 (84.1)	19 (90.5)	1288 (83.9)	25 (89.3)	110 (80.9)	203 (93.1)	3674 (86.0)	<0.001
	Yes	157 (11.2)	149 (15.9)	2 (9.5)	247 (16.1)	3 (10.7)	26 (19.1)	15 (6.9)	599 (14.0)	
CKD	No	1346 (96.1)	919 (98.3)	21 (100.0)	1517 (98.8)	26 (92.9)	135 (99.3)	217 (99.5)	4181 (97.8)	<0.001
	Yes	54 (3.9)	16 (1.7)		18 (1.2)	2 (7.1)	1 (0.7)	1 (0.5)	92 (2.2)	
Liver disease	No	1364 (97.4)	913 (97.6)	21 (100.0)	1517 (98.8)	28 (100.0)	134 (98.5)	216 (99.1)	4193 (98.1)	0.085
	Yes	36 (2.6)	22 (2.4)		18 (1.2)		2 (1.5)	2 (0.9)	80 (1.9)	
Comorbid Cancer	No	1211 (86.5)	820 (87.7)	21 (100.0)	1484 (96.7)	25 (89.3)	136 (100.0)	205 (94.0)	3902 (91.3)	<0.001
	Yes	189 (13.5)	115 (12.3)		51 (3.3)	3 (10.7)		13 (6.0)	371 (8.7)	
Smoking	Never smoked	740 (52.9)	455 (48.7)	13 (61.9)	1048 (68.3)	18 (64.3)	115 (84.6)	175 (80.3)	2564 (60.0)	<0.001
	Current smoker	153 (10.9)	253 (27.1)	3 (14.3)	298 (19.4)	2 (7.1)	13 (9.6)	10 (4.6)	732 (17.1)	
	Ex-smoker	364 (26.0)	155 (16.6)	2 (9.5)	117 (7.6)	8 (28.6)	3 (2.2)	13 (6.0)	662 (15.5)	
	(Missing)	143 (10.2)	72 (7.7)	3 (14.3)	72 (4.7)	0 (0.0)	5 (3.7)	20 (9.2)	315 (7.4)	
Procedure	Appendectomy	327 (23.4)	124 (13.3)	3 (14.3)	269 (17.5)	6 (21.4)	11 (8.1)	23 (10.6)	763 (17.9)	<0.001

	Cholecystectomy	384 (27.4)	232 (24.8)	9 (42.9)	477 (31.1)	17 (60.7)	47 (34.6)	60 (27.5)	1226 (28.7)	
	Colorectal resection	152 (10.9)	163 (17.4)	0 (0.0)	67 (4.4)	3 (10.7)	0 (0.0)	8 (3.7)	393 (9.2)	
	Inguinal hernia repair	113 (8.1)	222 (23.7)	0 (0.0)	171 (11.1)	2 (7.1)	41 (30.1)	27 (12.4)	576 (13.5)	
	Nissen fundoplication	8 (0.6)	7 (0.7)	0 (0.0)	12 (0.8)	0 (0.0)	0 (0.0)	1 (0.5)	28 (0.7)	
	Sleeve gastrectomy	19 (1.4)	14 (1.5)	0 (0.0)	37 (2.4)	0 (0.0)	0 (0.0)	0 (0.0)	70 (1.6)	
	ACL repair	14 (1.0)	3 (0.3)	2 (9.5)	58 (3.8)	0 (0.0)	0 (0.0)	1 (0.5)	78 (1.8)	
	Knee arthroplasty	115 (8.2)	43 (4.6)	4 (19.0)	87 (5.7)	0 (0.0)	7 (5.1)	1 (0.5)	257 (6.0)	
	Hip arthroplasty	89 (6.4)	46 (4.9)	2 (9.5)	44 (2.9)	0 (0.0)	0 (0.0)	20 (9.2)	201 (4.7)	
	Rotator cuff repair	2 (0.1)	9 (1.0)	1 (4.8)	8 (0.5)	0 (0.0)	0 (0.0)	2 (0.9)	22 (0.5)	
	Shoulder arthroplasty	10 (0.7)	0 (0.0)	0 (0.0)	10 (0.7)	0 (0.0)	0 (0.0)	0 (0.0)	20 (0.5)	
	Shoulder labral repair	0 (0.0)	1 (0.1)	0 (0.0)	12 (0.8)	0 (0.0)	0 (0.0)	0 (0.0)	13 (0.3)	
	Cystectomy	8 (0.6)	4 (0.4)	0 (0.0)	14 (0.9)	0 (0.0)	0 (0.0)	6 (2.8)	32 (0.7)	
	Nephrectomy	38 (2.7)	22 (2.4)	0 (0.0)	32 (2.1)	0 (0.0)	4 (2.9)	4 (1.8)	100 (2.3)	
	Prostatectomy	46 (3.3)	18 (1.9)	0 (0.0)	29 (1.9)	0 (0.0)	0 (0.0)	8 (3.7)	101 (2.4)	
	Hysterectomy	53 (3.8)	21 (2.2)	0 (0.0)	152 (9.9)	0 (0.0)	14 (10.3)	47 (21.6)	287 (6.7)	
	Oophorectomy and Salpingectomy	13 (0.9)	4 (0.4)	0 (0.0)	17 (1.1)	0 (0.0)	4 (2.9)	3 (1.4)	41 (1.0)	
	Oophorectomy only	2 (0.1)	0 (0.0)	0 (0.0)	14 (0.9)	0 (0.0)	7 (5.1)	1 (0.5)	24 (0.6)	
	Salpingectomy	7 (0.5)	2 (0.2)	0 (0.0)	25 (1.6)	0 (0.0)	1 (0.7)	6 (2.8)	41 (1.0)	

	only									
Surgical approach	MIS	1012 (72.3)	455 (48.7)	17 (81.0)	694 (45.2)	23 (82.1)	66 (48.5)	34 (15.6)	2301 (53.8)	<0.001
	Open	388 (27.7)	480 (51.3)	4 (19.0)	839 (54.7)	5 (17.9)	70 (51.5)	184 (84.4)	1970 (46.1)	
	(Missing)	0 (0.0)	0 (0.0)	0 (0.0)	2 (0.1)	0 (0.0)	0 (0.0)	0 (0.0)	2 (0.0)	
Indication	Benign	1220 (87.1)	755 (80.7)	20 (95.2)	1407 (91.7)	26 (92.9)	131 (96.3)	186 (85.3)	3745 (87.6)	<0.001
	Malignancy	180 (12.9)	180 (19.3)	1 (4.8)	127 (8.3)	2 (7.1)	5 (3.7)	32 (14.7)	527 (12.3)	
	(Missing)	0 (0.0)	0 (0.0)	0 (0.0)	1 (0.1)	0 (0.0)	0 (0.0)	0 (0.0)	1 (0.0)	
Urgency	Elective	765 (54.6)	678 (72.5)	9 (42.9)	1166 (76.0)	7 (25.0)	122 (89.7)	169 (77.5)	2916 (68.2)	<0.001
	Emergency	634 (45.3)	257 (27.5)	12 (57.1)	369 (24.0)	21 (75.0)	14 (10.3)	49 (22.5)	1356 (31.7)	
	(Missing)	1 (0.1)	0 (0.0)	0 (0.0)	0 (0.0)	0 (0.0)	0 (0.0)	0 (0.0)	1 (0.0)	
Surgical duration	Median (IQR)	100.0 (71.0 to 140.0)	85.0 (56.0 to 120.0)	60.0 (45.0 to 165.0)	70.0 (50.0 to 110.0)	114.5 (85.5 to 132.5)	45.0 (35.0 to 120.0)	90.0 (50.0 to 120.0)	87.0 (60.0 to 120.0)	<0.001
Opioid use pre-surgery	No	1259 (89.9)	917 (98.1)	19 (90.5)	1515 (98.7)	27 (96.4)	135 (99.3)	217 (99.5)	4089 (95.7)	<0.001
	Yes	141 (10.1)	18 (1.9)	2 (9.5)	20 (1.3)	1 (3.6)	1 (0.7)	1 (0.5)	184 (4.3)	
Non-opioid analgesia use pre-surgery	No	1049 (74.9)	816 (87.3)	15 (71.4)	1134 (73.9)	24 (85.7)	117 (86.0)	174 (79.8)	3329 (77.9)	<0.001
	Yes	351 (25.1)	119 (12.7)	6 (28.6)	401 (26.1)	4 (14.3)	19 (14.0)	44 (20.2)	944 (22.1)	
Clavien Dindo complication	None	1097 (78.4)	745 (79.7)	16 (76.2)	1274 (83.0)	28 (100.0)	127 (93.4)	188 (86.2)	3475 (81.3)	<0.001
	I-II	277 (19.8)	176 (18.8)	5 (23.8)	256 (16.7)	0 (0.0)	8 (5.9)	30 (13.8)	752 (17.6)	
	III-IV	23 (1.6)	14 (1.5)	0 (0.0)	3 (0.2)	0 (0.0)	1 (0.7)	0 (0.0)	41 (1.0)	
	(Missing)	3 (0.2)	0 (0.0)	0 (0.0)	2 (0.1)	0 (0.0)	0 (0.0)	0 (0.0)	5 (0.1)	
Length of	Median (IQR)	2.0 (1.0 to	3.0 (1.0 to	1.0 (0.0 to 1.0)	1.0 (1.0 to 2.0)	0.0 (0.0 to 1.0)	2.0 (1.0 to	3.0 (2.0 to	2.0 (1.0 to	<0.001

Stay		3.0)	6.0)				3.0)	5.0)	3.0)	
Paracetamol on discharge	No	152 (10.9)	276 (29.5)	0 (0.0)	424 (27.6)	3 (10.7)	68 (50.0)	63 (28.9)	986 (23.1)	<0.001
	Yes	1247 (89.1)	659 (70.5)	21 (100.0)	1110 (72.3)	25 (89.3)	68 (50.0)	155 (71.1)	3285 (76.9)	
	(Missing)	1 (0.1)	0 (0.0)	0 (0.0)	1 (0.1)	0 (0.0)	0 (0.0)	0 (0.0)	2 (0.0)	
NSAIDs on discharge	No	788 (56.3)	592 (63.3)	9 (42.9)	688 (44.8)	13 (46.4)	21 (15.4)	78 (35.8)	2189 (51.2)	<0.001
	Yes	610 (43.6)	343 (36.7)	12 (57.1)	846 (55.1)	15 (53.6)	115 (84.6)	140 (64.2)	2081 (48.7)	
	(Missing)	2 (0.1)	0 (0.0)	0 (0.0)	1 (0.1)	0 (0.0)	0 (0.0)	0 (0.0)	3 (0.1)	
OMEs consumed 24h before discharge	Median (IQR)	22.5 (0.0 to 50.0)	0.0 (0.0 to 0.0)	20.0 (10.0 to 20.0)	2.0 (0.0 to 40.0)	14.2 (8.6 to 24.8)	9.0 (9.0 to 20.0)	0.0 (0.0 to 150.0)	9.0 (0.0 to 40.0)	<0.001

Table S6: Opioid prescription and consumption quantities by country income group

Variable	Measure	HIC	LMIC	Total	p
Total n (%)		1923 (45.0)	2350 (55.0)	4273	
Quantity of opioids prescribed (OME)	Median (IQR)	37.5 (0.0 to 112.5)	0.0 (0.0 to 0.0)	0.0 (0.0 to 40.0)	<0.001
Quantity of opioids consumed at 7-days (OME)	Median (IQR)	0.0 (0.0 to 50.0)	0.0 (0.0 to 0.0)	0.0 (0.0 to 0.0)	<0.001

HIC = high income country, LMIC = low and middle income country

Table S7: Comparison of those lost-to-follow-up *versus* those included in the final cohort

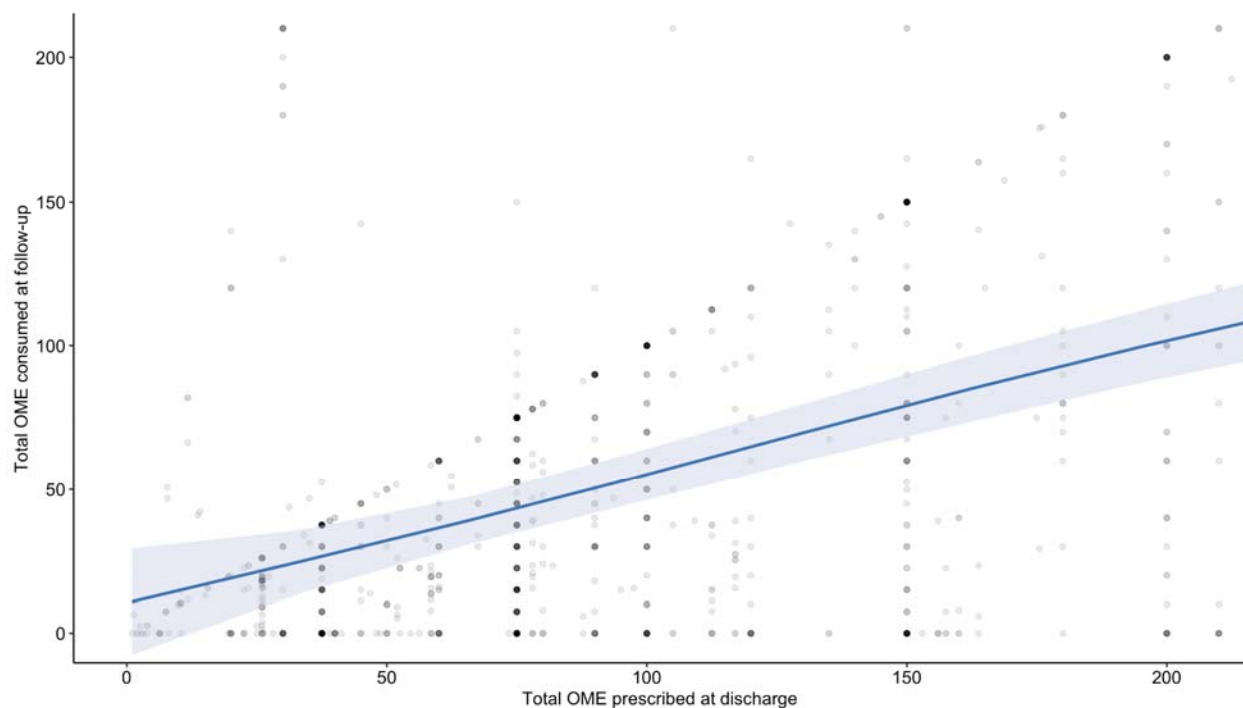
Variable	Label	Lost-to-follow-up	Included Cohort	Total	p
Total N (%)		957 (18.3)	4273 (81.7)	5230	
Age	Median (IQR)	53.0 (35.0 to 66.0)	50.0 (34.0 to 64.0)	50.0 (34.0 to 65.0)	0.016
Gender	Female	521 (54.4)	2271 (53.1)	2792 (53.4)	0.558
	Male	436 (45.6)	1999 (46.8)	2435 (46.6)	
	Other		3 (0.1)	3 (0.1)	
ASA	I	327 (34.5)	1763 (41.3)	2090 (40.1)	<0.001
	II-III	605 (63.9)	2466 (57.8)	3071 (58.9)	
	IV - V	15 (1.6)	39 (0.9)	54 (1.0)	
BMI	Normal (18.5 -24.9)	237 (25.4)	1162 (27.4)	1399 (27.0)	<0.001
	Obese (31-40)	238 (25.5)	936 (22.1)	1174 (22.7)	
	Overweight (25-30)	242 (25.9)	1463 (34.5)	1705 (32.9)	
	Severely obese (>40)	47 (5.0)	205 (4.8)	252 (4.9)	
	Underweight (< 18.5)	19 (2.0)	69 (1.6)	88 (1.7)	
	Unknown / Not Recorded	151 (16.2)	406 (9.6)	557 (10.8)	
Comorbid cancer	No	858 (89.7)	3902 (91.3)	4760 (91.0)	0.118

	Yes	99 (10.3)	371 (8.7)	470 (9.0)	
Smoking	Current smoker	163 (17.1)	732 (17.1)	895 (17.1)	0.003
	Ex-smoker < 12 months	21 (2.2)	104 (2.4)	125 (2.4)	
	Ex-smoker >12 months	118 (12.4)	558 (13.1)	676 (12.9)	
	Never smoked	542 (57.0)	2564 (60.0)	3106 (59.5)	
	Unknown status	107 (11.3)	315 (7.4)	422 (8.1)	
Procedure	ACL repair	10 (1.0)	78 (1.8)	88 (1.7)	<0.001
	Appendectomy	160 (16.7)	763 (17.9)	923 (17.6)	
	Cholecystectomy	291 (30.4)	1226 (28.7)	1517 (29.0)	
	Colorectal resection	91 (9.5)	393 (9.2)	484 (9.3)	
	Cystectomy	6 (0.6)	32 (0.7)	38 (0.7)	
	Hip arthroplasty	62 (6.5)	201 (4.7)	263 (5.0)	
	Hysterectomy	49 (5.1)	287 (6.7)	336 (6.4)	
	Inguinal hernia repair	89 (9.3)	576 (13.5)	665 (12.7)	
	Knee arthroplasty	70 (7.3)	257 (6.0)	327 (6.3)	
	Nephrectomy	33 (3.4)	100 (2.3)	133 (2.5)	
	Nissen fundoplication	6 (0.6)	28 (0.7)	34 (0.7)	

	Oophorectomy and Salpingectomy	6 (0.6)	41 (1.0)	47 (0.9)	
	Oophorectomy only	4 (0.4)	24 (0.6)	28 (0.5)	
	Prostatectomy	31 (3.2)	101 (2.4)	132 (2.5)	
	Rotator cuff repair	4 (0.4)	22 (0.5)	26 (0.5)	
	Salpingectomy only	5 (0.5)	41 (1.0)	46 (0.9)	
	Shoulder arthroplasty	19 (2.0)	20 (0.5)	39 (0.7)	
	Shoulder labral repair	1 (0.1)	13 (0.3)	14 (0.3)	
	Sleeve gastrectomy	20 (2.1)	70 (1.6)	90 (1.7)	
Surgical approach	MIS	546 (57.5)	2301 (53.9)	2847 (54.5)	0.048
	Open	404 (42.5)	1970 (46.1)	2374 (45.5)	
Indication	Benign	821 (86.5)	3745 (87.7)	4566 (87.5)	0.36
	Malignancy	128 (13.5)	527 (12.3)	655 (12.5)	
Urgency	Elective	637 (67.1)	2916 (68.3)	3553 (68.0)	0.495
	Emergency	313 (32.9)	1356 (31.7)	1669 (32.0)	
Specialty	General surgery	657 (68.7)	3056 (71.5)	3713 (71.0)	<0.001
	Gynaecological surgery	64 (6.7)	393 (9.2)	457 (8.7)	
	Orthopaedic surgery	166 (17.3)	591 (13.8)	757 (14.5)	

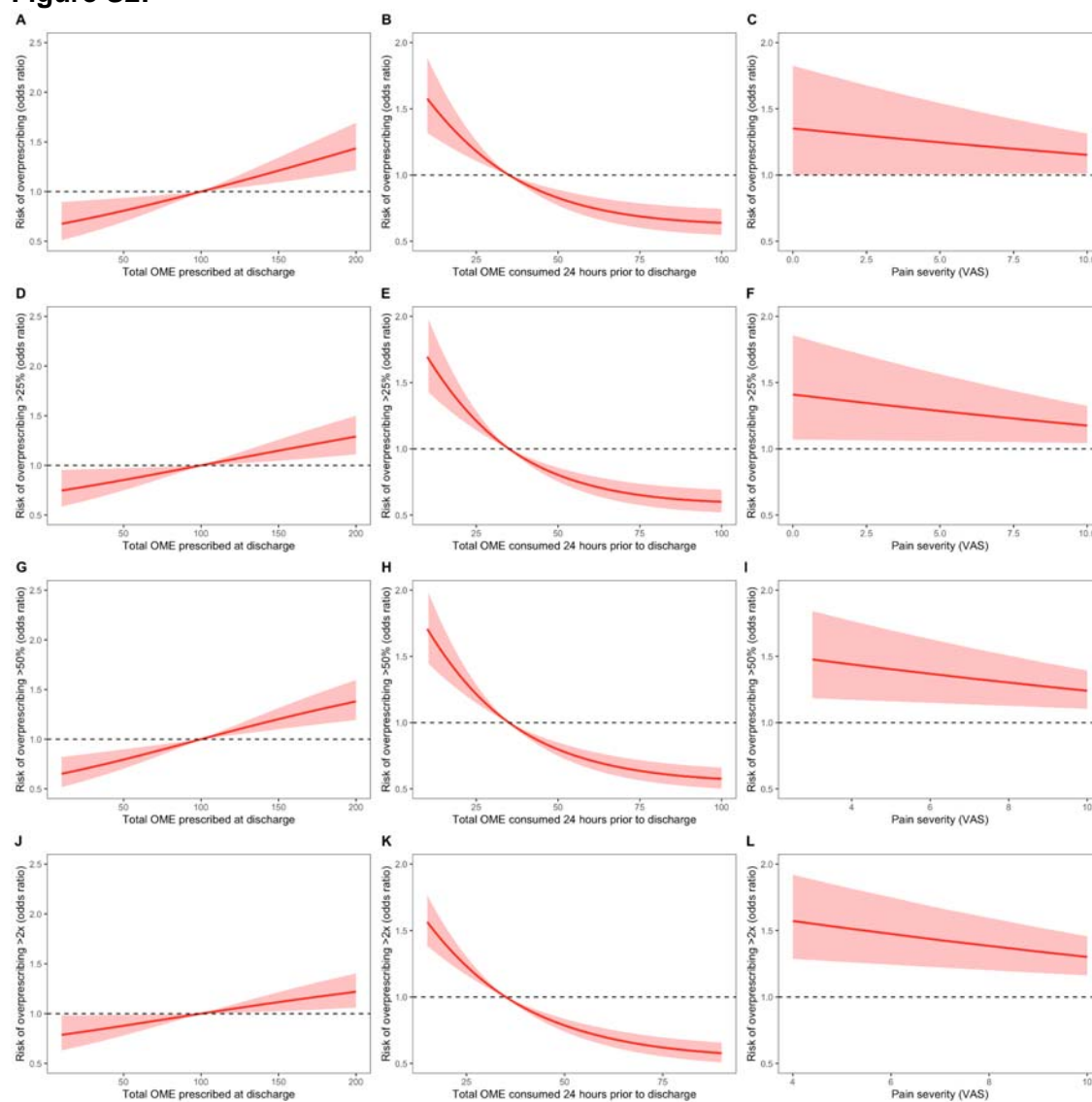
	Urological surgery	70 (7.3)	233 (5.5)	303 (5.8)	
Discharged with opioid	No	585 (61.1)	2962 (69.3)	3547 (67.8)	<0.001
	Yes	372 (38.9)	1311 (30.7)	1683 (32.2)	

Figure S1:



Total amount of oral morphine equivalents (OME) consumed within 7 days and total amount of OMEs prescribed at discharge. Plotted line represents a smoothed conditional mean from a fitted generalised additive model. The shaded area denotes bounds of the 95% CI.

Figure S2:



Restricted cubic spline plots with 3 knots for a binary logistic regression model for the risk of overprescribing opioids (prescribing more than what is consumed at 7-days follow-up). A) Plots risk of overprescription across a spectrum of OMEs prescribed at discharge; B) plots risk of overprescription across a spectrum of OMEs consumed 24 hours prior to discharge; and C) plots risk of overprescription across a spectrum of numeric rating scale pain scores. Sensitivity analyses were performed thresholding differences between prescription and consumption quantities of OMEs (D, E, F: prescriptions 25% more than consumed; G, H, I: prescriptions 50% more than consumed; J, K, L: prescription 100% more than consumed).

PubMed Citable Authors:

Writing group: Lorane Gaborit* [Australian National University, Canberra, Australia]; Kaviya Kalyanasundaram [University of Adelaide, Adelaide, Australia]; Jennifer Vu [Sydney University, Sydney, Australia]; Aya Basam [Monash University, Melbourne, Australia]; Muhammed Elhadi [University of Tripoli, Tripoli, Libya]; Deborah Wright [University of Otago, Otago, New Zealand]; Jennifer Martin, Melissa Park, Peter Pockney [University of Newcastle, Newcastle, Australia]; Maria Ntalouka [Larissa University Hospital, Larisa, Greece]; Noora Abubaker [Ibn-Sina Hospital, Khartoum, Sudan]; Muhammed Elhadi [University of Tripoli, Tripoli, Libya]; Umar Saeed [International Center of Medical Sciences Research, Islamabad, Pakistan]; Eman Abdulwahed [University of Tripoli, Tripoli, Libya]; Mohamed Alsori, Ghaliya Mohamed H Alrifae [Tripoli Medical Center/ Tripoli University Hospital, Tripoli, Libya]; Michael Farrell [Lehigh Valley Health Network, Pennsylvania, United States of America]; Gordon Liu, Nicholas Smith, William Xu, Chris Varghese** [University of Auckland, Auckland, New Zealand]

*First author

**Senior author (overall guarantor)

Statistical analysis: Chris Varghese** [University of Auckland, Auckland, New Zealand], Ewen Harrison [University of Edinburgh, Edinburgh, United Kingdom]

OPERAS Steering committee: Aya Basam, Sarah Goh, Jiting Li, Jainil Shah, Abdullah Waraich [Monash University, Melbourne, Australia]; Lorane Gaborit, Upasana Pathak [Australian National University, Canberra, Australia]; Amie Hilder [Deakin University, Melbourne, Australia]; Muhammed Elhadi [University of Tripoli, Tripoli, Libya]; Aiden Jabur [Griffith University, Gold Coast, Australia]; Kaviya Kalyanasundaram [University of Adelaide, Adelaide, Australia]; Christina Ohis [Western Sydney University, Sydney, Australia]; Chui Foong [Kelly Ong [Melbourne Training Circuit, Melbourne, Australia]; Melissa Park, Venesa Siribaddana [University of Newcastle, Newcastle, Australia]; Kyle Raubenheimer [Perth Metro Training Circuit, Perth, Australia]; Jennifer Vu [Sydney University, Sydney, Australia]; Cameron Wells, Gordon Liu, Liam Ferguson, William Xu, Chris Varghese [University of Auckland, Auckland, New Zealand]

Scientific advisory group: Peter Pockney, Kristy Atherton, Amanda Dawson, Jennifer Martin [University of Newcastle, Newcastle, Australia]; Arnab Banerjee [Australian National University, Canberra, Australia]; Nagendra Dudi-Venkata [Royal Australasian College of Surgeons, Adelaide, Australia]; Nicholas Lightfoot [University of Auckland, Auckland, New Zealand]; Isabella Ludbrook [Hunter New England Network, Newcastle, Australia]; Luke Peters [Royal Australasian College of Surgeons, Sydney, Australia]; Rachel Sara [Counties Manukau Health, Manukau City, New Zealand]; David Watson [Flinders University, Adelaide, Australia]; Deborah Wright [University of Otago, Otago, New Zealand]

OPERAS National Leads: Ademola Adeyeye [Afe Babalola University Multisystem Hospital, Ado-Ekiti, Nigeria]; Luis Adrian Alvarez-Lozada [Autonomous University of Nuevo León, Monterrey, Mexico]; Semra Demirli Atici [University of Health Sciences Tepecik Training and Research Hospital, Izmir, Turkey]; Milos Buhavac [Texas Tech University Health Sciences Center, Lubbock, United States of America]; Giacomo Calini [University Hospital of Udine, Udine, Italy]; Muhammed Elhadi [University of Tripoli, Tripoli, Libya]; Orestis Ioannidis [George Papanikolaou Hospital, Thessaloniki, Greece]; Mustafa Deniz Tepe [Karadeniz Technical University, Trabzon, Turkey]; Upanmanyu Nath [Nilratan Sircar Medical College and Hospital, Kolkata, India]; Ahmad Uzair [King Edward Medical University Hospital, Lahore, Pakistan]; Wah

Yang [The First Affiliated Hospital of Jinan University, Guangzhou, China]; Faseeh Zaidi, Surya Singh [University of Auckland, Auckland, New Zealand]; Bahiyah Abdullah [Hospital Universiti Teknologi MARA, Malaysia (HUiTM)], Diana Sofia Garces Palacios* [Hospital Susana Lopez De Velencia], Ahmed Ragab [Alexandria University, Alexandria, Egypt]

OPERAS Australian State Leads: Kyle Raubenheimer [Royal Perth Hospital, Perth, Australia]; Davina Daudu [University of Western Australia, Perth, Australia]; Sarah Goh, Simran Vinod Benyani, Nandini Karthikeyan [Monash University, Melbourne, Australia]; Laure Taher Mansour [University of Adelaide, Adelaide, Australia]; Warren Seow [University of Adelaide, Adelaide, Australia]; Zoya Tasi [University of Tasmania, Hobart, Australia]; Aiden Jabur [Griffith University, Gold Coast, Australia]; Upasana Pathak [Australian National University, Canberra, Australia]; Melissa Park [University of Newcastle, Newcastle, Australia]

Algeria: Dhia Errahmane Abdelmelek*, Ikram Fatima Zohra Boussahel, Oumelaz Kaabache, Naoual Lemdaoui, Oualid Nebbar [Center Anti Cancer, Sétif]; Mounira Rais*, Meriem Abdoun*, Aya Tinhinane Kouicem, Souad Bouaoud, Kamel Bouchenak, Hind Saada, Amel Ouyahia, Wassila Messai [CHU Saadna Abdennour Hospital, Sétif]

Australia: Zhi Shyuan Choong*, Clarissa Ting, Michelle Larkin, Pei Jun Fong, Isabel Soh, Alyssia De Grandi, Hareem Iftikhar, Akansha Sinha, Dhruv Kapoor, Tara Chlebicka [Albury Wodonga Health]; David Singer*, Kim Goddard, Lisa Matthews [Armada Health Service, Mount Nasura]; Rosalina Lin*, Jessica Chambers, Juliet Chan, Brooke Macnab, John Barker, Morgan Mckenzie, Neil Ferguson [Armidale Rural Referral Hospital, Armidale]; Ghanisht Juwaheer*, Vijayaragavan Muralidharan, Sonia Gill, Nakjun Sung, Rohan Patel, Chris Walters, Kevin Nguyen, David Liu, Carlos Cabalag, Jennifer Lee, San-Hui Anita Leow, Suat Li Ng, Hamza Ashraf, Fraizer Mulder, Jonathan Loo, David Proud, Samantha Wong, Yida Zhou, Qi Rui Soh, David Chye, Sean Stevens, Patrick Tang, Stephen Kritharides, Jason Dong, Oscar Morice, Dora Huang, Andrew Hardidge, Mishka Amarasekara, Aleah Kink, Damien Bolton [Austin Hospital, Melbourne]; Alisha Rawal*, Jasraaj Singh*, Matthew Heard*, Yusuf Hassan*, Ahmed Naqeeb, Andrew Cobden, Duron Prinsloo, Dwain Quadros, Emma Gunn, Ha Jin Kim, Jennifer Ekwebelam, James Shanahan, Mustafa Alkazali, Mariyah Hoosenally, Naveen Nara, Peter Nguyen, Sally Barker [Ballarat Base Hospital, Ballarat]; Amie Hilder*, Ally Hui, Antara Karmakar, Bill Wang, Janindu Goonawardena, King Tung Cheung, Nicholas Chan, Ragul Natarajan, Richard Cade, Rong Jin, Shomik Sengupta, Ruth Snider [Box Hill Hospital, Melbourne]; Harsha Morisetty*, Lewis Weeda, Phoebe Sun, Lalitya Chilaka, Jacinta Cover [Bunbury Hospital]; Aashrinee De Silva Abeweera Gunasekara*, Rahavi Senthilrajan, Anas Alwahaib, Alexandra Limmer, Bushra Zamanbandhon [Campbelltown Hospital]; Kumail Jaffry [Casey Hospital, Melbourne]; Yijia Shen*, Alan Chua, Saifulla Syed [Central Gippsland Health]; Sushanth Saha*, John Glynatsis*, Lori Aitchison, Bernard Lagana, Mason Crossman, David Watson, Abby Dawson, Bryan Fong, Ella Harrison, Eleanor Horsburgh, John Glynatsis, Michael Khoo, Kritika Mishra, Lewis Hewton, Alex Mesecke, Hien Tu, Than Tun, Jason Wong [Flinders Medical Centre, Adelaide]; Elynn Ong*, Tara-Nyssa Law*, Ashlee Landy, Alyssa Leano, Andrea Li, Akshay Soni, Benjamin Dowdle, Charles Pilgrim, Dewmi Abeyirigunawardana, Deepak Rajan Jeyarajan, Diya Patel, Kyle Mckinnon, Madeline Gould, Paul Gilmore, Ruxi Geng, Rachael Loughnan, Sarahjane Norton-Smith, Solomon Nyame, Sarah Tan, Si Woo Yoon, Yantong Wang, Yichi Zhang, Zixuan Wang [Frankston Hospital]; Hans Mare*, Indrajith Withanage [Geraldton Regional Hospital]; Mitali Khattar*, Alexandra Toft, Goutham Sivasuthan, Hailin Zhao, Jordan Addley, Lucinda O'brien, Muhammad Raza, Randipsingh Bindra, Sonakshi Sharma [Gold Coast University Hospital, Southport]; Charlotte Cornwell*, Aditya Patil, Aiden Cheung, Ashleigh Lown, Amanda Dawson, Aneel Blassey, Benjamin Ochigbo, Felicity Cheng, Aleeza Fatima, Edward Zhang, Henry Kocatekin, Charles Roth, Dani Brewster, Kelvin Kwok,

Paul Chen, Sharon Laura, Dominic Tynan, Edward Latif, Elizabeth Lun, Elodie Honore, Felix Ziergiebel, Jessica Blake, Karan Chandiok, Katie Bird, Lynette Ngothan, Melissa Lee, Mariam El-Masry, Peter Hamer, Ramanathan Rm Palaniappan, Richard Mcgee, Sarah Huang, Shane Zhang, Shubhang Hariharan, Yannick De Silva, Celeste Lee, Penelope Fotheringham, Ian Incoll, Timothy Cordingley, Felicity Cheng, Matthew Brown, Leannedra Kang, Rivindu Wijayarathne, Parisse Moore, Gemma Qian, Yara Elgindy [Gosford Hospital, Gosford]; Emma Carnuccio*, Hamish Rae, Mena Shehata [Goulburn Base Hospital]; Mingchun Liu*, Brodee Lockwood, John Van Bockxmeer [Hedland Health Campus]; Ali Alsoudani*, Daniel Swan, Justin Hsieh [Ipswich Hospital]; Francesca Orchard-Hall*, Kai Yun Jodene Tay*, Raagini Mehra*, Alpha Gebeh, Ashley Bailey, Georgia Brown, Ashley Colaco, Hemashree Gopal, Jessica Boyley, Varun Changati, Joseph Fletcher, Tanishq Khandelwal, Colin House, Chris O'neil, Emily Jaarsma, Victor Ly, Zsolt Balogh, Amanda Shui, Vinogi Sathasivam, Hannah Legge-Wilkinson [John Hunter Hospital, Newcastle]; King Ho Wong*, Andrew Chen, Anthony Tran, Peter Rehfisch, Grace Wang, Jonathan Nguyen, Joshua Peker, Kayla Gallert, Mia Komesaroff, Manideep Namburi [Latrobe Regional Hospital]; Elisabeth Goldfinch*, Ropafadzo Muchabaiwa*, Aishwarya Jangam, Isobel Taylor, Iulian Nusem, Jin Hyuk (David) Park, Justin Gundara, Rachael Heigan, Tam Tran, Thomas Mackay, Yasmine Butterworth, Tomas Sadauskas, Melody Tung, Hasthika Ellepola [Logan Hospital, Meadowbrook]; Christine Gan*, Hakim Fong*, Ankita Das, Leshya Naicker, Samantha Hauptman, Aditi Kamath, Anthea Yew, Anupam Parange, Katie Kim, Sahil Kharwadkar, Tharushi Gamage [Lyell Mcewin Hospital]; Lucille Vance*, Alexandra Seldon, Moheb Ghaly [Manning Base Hospital]; Victoria Phan [Maroondah Hospital, Melbourne]; Karanjeet Chauhan*, Ahmad Bassam, Beverley Vollenhoven, Kumail Jaffry, Kajal Mandhan, Mithra Sritharan, Mahesh Sakthivel, Natalie Evans, Samuel Robinson, Seiyon Sivakumar [Monash Medical Centre, Clayton]; Liberty Marrison*, David Jollow, Krishma Joshi, Steve Tao, Pallavi Shrestha, Sai Keerthana Nukala [Northern Beaches Hospital]; Russell Hodgson*, Anna Crotty, Adriana Esho, Alasdair Harris, Amy Surkitt, Laura Bland, Blake Mcleod, Chonghao Yin, Cambo Keng, Emily Greenwood, Grace Yuan, Emma Haege, Hongyi Wu, Haotian Xiao, Isabella Pozzi, Jeff Fu, Jessica Stott Ross, Juliette Gentle, Kathy Gan, Kelvin Chang, Kexin Sun, Madhavi Singh, Maria Xie, Nicholas McCabe, Mark Slavec, Nick Clarnette, Behzad Niknami, Peishan Zou, Sean Flintoft, Shenuka Jayatilleke, Rumnea Sok, Suqi Tan, Sanya Wadhwa, Will Swansson [Northern Hospital, Melbourne]; Daniel Abulafia*, Jian Blundell*, Amie Sweetapple, Caitlin Del Solar, Cameron Martin, David Bell, Isuru Fernando, Jared Chang, Katie Vanzuylekom, Katie Van Zuylekom, Kate Van Zuylekom, Katie Hobbs, Richard Liang [Orange Base Hospital]; Aiden Jabur*, Jazmina Tarmidi, Mahmoud Ugool, Nicholas Beatson, Sarah Bowman, Sophie Moin [Queen Elizabeth II Jubilee Hospital, Coopers Plains]; Wen Po Jonathan Tan*, Seevakan Chidambaram*, Siang Wei Gan, Pengnan Wang, Leshya Naicker, Katie Kim, Nicole Qiwen Wang, Yi Xin Kwan, Chinmai Patil, Divyanshu Joshi, Aditi Kamath, Aishath Hanan, Arfaan Sheriff, Jaime Duffield, Leshya Naiker, Peter Smitham, Eu Ling Neo, Matthew Chua, Shalvin Prasad, Armitesh Nagarathnam, Tarik Sammour, Yuxin Lin, Christine Lee, Eve Hopping, Muskan Jangra, Ankita Das, Ken Lin, Zachary Bunjo [Royal Adelaide Hospital, Adelaide]; Kyle Raubenheimer*, Mohamed Haseef Mohamed Yunos, Kar Long Yeung, Rachel Phu, Aisling Betts, Benjamin Just, Sahil Gera, Hilary Leeson, Jodie Jamieson, Katie Wang, Emily Luu, Michael Innes [Royal Perth Hospital]; Jennifer Vu*, Jonathan Hong, Stephen Dzator, Aki Flame, Vincent Jiang, Jianing Kwok, Aaron Lawrence, Kate Meads, Liam Pearce, Pavatharane Sarangadasa, Haylee Shaw, Victor Yu, [Royal Prince Alfred Hospital]; Elizabeth Crostella*, James Wong, Sriya Bobba, Maddison Muller, Yin Chi Hebe Hau, Thomas Wilson, Aleksandra Markovic, Jemma Green, Clara Forbes, Emalee Burrows, Lachlan Hou, Clare O'sullivan, Jonathon Foo [Sir Charles Gairdner Hospital, Perth]; Hannah Greig*, A-J Collins, Callum Chandler, Emily Heaney, Hannah Gross, Monica Morgan, Rebecca Loder, Krishnankutty Rajesh [New South Wales Local Health District Site Bega Hospital]; Shravankrishna Ananthapadmanabhan*, Akeedh Razmi, Crystal Vong, Prasanna Pothukuchi,

Mary Theophilus, Roshni Sriranjani, Sharon Kaur, Marcelo Kanczuk [St John Of God Midland Public And Private Hospital, Perth]; Julia De Groot*, Angela Corrigan, Damon Li, Danniell Badri, Dominico Ciranni, Elangovan Thaya Neeadi, Matthew Clanfield, Nicolas Copertino, William Rumble [Sunshine Coast University Hospital]; Maria Kristina Vanguardia*, Chen Lew*, Rami Dennaoui*, Jainil Shah*, Joseph Kong, Imogen Koh, Raymond Zeng, Kristian Baziotis-Kalfas, Hannah Denby, Andy Li, Will Tran, Abhinav Singh, Olivia Lin, Michelle Chau, Olivia Donaldson, Christina (Seojung) Min, Shirahn Ballah, Sonia Ching Ting Tsui, Nathania Yong, Lucy Standish, Sarah Tan, AsukaFujihara, Lily Davies, Ramin Odisho, Anjana Ravi, Josh Collins, Pooja Chandra, Rana Abdelmeguid, GopalSingh, Xireaili Feierdaiweisi, Dharani Seneviratne, Shambhavi Srivastava, Michelle Yao, Cherilyn Teng, Nebula Chowdhury, Sasini Vidanagama, Charles Lin, Tharushi Sampatha-Waduge, Erica Wang, Chatnapa Yodkitydomying, Imogen Koh, Julia Silverii, AaronLam, Raymond Zeng, Krishna Solanki, Angus Franks, Liam Edwards, Ridvan Atilhan, Rohan Nandurkar, Oliver Wells, Kristina Vanguardia, Dennis King, Elton Edwards, Liam Edwards, Quang Tran, Michelle Chau, Seojung Min [The Alfred Hospital, Melbourne]; Abdul Rauf*, Yangzirui Fu*, Hodo Haximolla, Mengge Shang, Sharrada Segaran, Shelley Wang, Gananadha Sivakumar [The Canberra Hospital]; Jaspreet Kaur Sandhu*, Neel Mishra, Samantha Hauptman, Alyssa Chua, Danielle Chene, Guy Maddern, Henry Shaw, Qiwen Wang [The Queen Elizabeth Hospital, Adelaide]; Siyuan Pang*, Christine Lu, James Fung, Kathryn Cyr, Karen Lu, Ming Zhou How, Nelson Hu, Paul Anderson, Philip Jakanovski [The Royal Melbourne Hospital, Melbourne]; Arkan Youssef*, Howard Tang*, Rory Keenan*, Alex Chan, Mitch Canny, Farah Tahir, James Egerton, Justin Yeung, Justin Chan, Lea Tiffany, Michael Bei, Mariolyn Raj, Peter Williams, Sakshar Nagpal, Tim Outhred, Russel Krawitz [Western Health, Melbourne]; Khadijah Younus*, Mary Giurgius*, Rosemary Kirk, Amanda Gonzalez Pegorer, Pattarapan Tang-Ieam, Jack Ward, Asanka Wijetunga, Caitlin Zhang, Chris Nahm, Christine Wang, Damian Golja, Gregory Jenkins, Helena Qian, Jason Luong, Kim Nguyen, Sean Suttor, Sherman Lai, Vanessa Ma, Yan Chen [Westmead Hospital, Westmead]; Hoi Hang Yu*, Amos Lee, Antonio Barbaro, Cameron Mcguinness, Guy Maddern, Stevie Young [Whyalla Hospital & Health Services, Whyalla]; Ye Fang Lim*, Georgina Trotta, Phoebe Chao, George Ding, Carol Fang, Andi Lu, Prabhath Wagaarachchi [Women's And Children's Hospital]; Charlotte Cornwell*, Amy Gojnich, Peter Stewart, Isabella Dong, Kenneth Wong, Luca Burruso, Lucinda Hogan, Nathan Mcorist, Ramnik Singh, Ragavi Jeyamohan, Zhen Hou, William Lai, Emily Taylor [Wyong Public Hospital, Wyong]

Colombia: Diana Sofia Garces Palacios*, Maria Alejandra Nanez Pantoja, Daniel Mauricio Bolanos Nanez, Gilmer Omar Perez Hernandez, Lia Jasmin Jimenez Ramirez [Hospital Susana Lopez De Velencia]

Egypt: Mohamed Mohamed*, Ahmed Kamal El-Taher, Ahmed Elewa, Mahmoud Ayman Soliman, Menna Diab, Radwa Ali [Al Tayseer Hospital, Zagazig]; Ahmed Ahmed*, Adham Galal, Ahmed Elkhodary, Ali Alaa, Arwa Faisal, Asmaa Badawy, Donia Eldomiaty, Mohamed Al Sayed, Esraa Rasslan, Mohamed Ramadan, Gamal Elsayed Fares, Hashem Altabbaa, Humam Emad, Muneera Alboridy, Mahmoud Mongy, Osama Albarhomy, Osama Selim, Rawan Rafei, Raneem Atta, Ahmad Altaweel, Yara Sherif, Youssef Elghoul, Yousef Tarek [Alexandria Main University Hospital, Alexandria]; Dina Atef*, Ahmed Mahmoud*, Mahmoud Saad*, Mohamed Ragab, Aya Hussien, Mostafa Abdelbaky, Ismail Muhammad, Afnan Morad, Ahmed Ali, Ahmed Hussien, Ahmed Shipa, Ahmed Aboulfotouh, Ahmed Mohamed Hashem, Ahmed Morsi, Alshymaa Ebrahim, Ahmed Mohamed Sayed, Amira Abdelrahman, Aml Ali, Samah Abdelnaeam, Asmaa Emam, Aya Shaban, Fady Barsoum, Esraa Mostafa, Doaa Abdelbaset, Dina Othman, Safaa Othman, Nour Salah Khairallah, Salma Morsi, Armia Azer, Enas Abdelbaset Abdelsamed, Islam Ibrahim, Esraa Abdelbaset, Esraa Hamoda, Fatma Monib, Fatma Harb, Hager Maher, Haitham Mohammed, Kerollos Henes, Kerollos Shamshoon,

Mahmoud Hassanein, Magdy Mahdy, Mahmoud Khalil, Manal Ali, Mansour Khalifa, Marwa Amary, Merna Ezz Suliman, Mohammed Saif Al Nasr, Michael Elia, Michael Adly, Mo'men Roshdy, Mohammed Al-Quossi, Mohammed Fargaly, Mona Saber, Mostafa Abbas, Ola Haroon, Omima Khalil, Omnia Talaat, Rahma Elnagar, Randa Soliman, Reham Aboelela, Salem Salah, Samia Abdelgawad, Tarek Hussien, George Sobhy, Yasmeen Sayed, Yousra Othman [Assiut University Hospital, Assiut]; Reham Silem*, Ali Dawood, Tarek Hemaida, Reem Ahmed [Aswan University Hospital, Aswan]; Ebrahim Salem, Osama Fathy Ali Ali Rashed, Mohamed Halawa [El Tadamon Specialised Hospital, Portsaid]; Hossam Elfeki*, Abdelrahman Mosaad, Abdelrahman Shaaban, Hebatalla Abdelsalam, Ahmed Sakr, Aly Sanad, Amr Elsayy, Bassant Maged Maged, Dana Hegazy, Mohamed Abdelmaksoud, Mahmoud Laymon, Mohamed Taman, Esraa R Moawad, Hadeer Aboelfarh, Karim Elkenawi, Manar Osama, Mirna Sadek, Mohamed Abdelaziz Elghazy, Mohammed Attiah, Mohamed Nader, Mostafa Shalaby, Omar Attiya, Osama Samir Gaarour, Ahmed Zaghloul [Mansoura University Hospital, Mansoura]; Pola Mikhail*, Karim Badr, Hatem Soltan, Mohamed Donia, Mohammed Gaafar [Menofia University Hospital, Menofia]; Khaled Abdelwahab*, Abdelaziz Sallam, Ahmed Eid, Mohamed Yousri, Omar Hamdy [Oncology Center Mansoura University, Mansoura]; Aiman Al-Touny*, Abdelrhman Alshawadfy, Ahmed Hamdy, Ahmed Ellilly, Ahmed Mahdy, Ahmed El-Sakka, Hamdy Hendawy, Asmaa Salah, Bassma Raslan, Eman Teema, Eslam Albayadi, Esraa Nasser, Hanaa Mohamed, Mohamed Mahmoud, Mostafa Elsaied, Omima Taha, Shaimaa Dahshan, Shimaa Al-Touny, Ahmed Karrar, Ahmed Khairy [Suez Canal University Hospital, Ismailia]; Alaa Mohamed Ads*, Rabiaa Alomar, Issa AbuShawareb, Abdallah Saeed, Abdelhafeez Mashaal, Adel Mohamed Ads, Sohila Ghanem, Ahmed Elghamry, Eman Ayman Nada, Youssef Ali Noureldin, Mohamed Fayez Fouda, Nourhan Shaheen, Shereen Allam, Ibrahim Mazrou, Ali Fahmy Shehab, Wesam Kussaili [Tanta University Hospital, Tanta]

Greece: Dimitrios Korkolis*, Evangelos Fradelos, Aikaterini Sarafi [Agius Savvas Anticancer Hospital Of Athens]; Nikolaos Machairas*, Konstantinos S. Giannakopoulos, Fotios Stavratidis, Georgios Korovesis, Gerasimos Tsourouflis, Myrto D. Keramida, Nikolaos Kydonakis, Stylianos Kykalos, Athanasios Syllaios, Panagiotis Dorovinis, Dimitrios Schizas [General Hospital Of Athens "Laiko"]; Orestis Ioannidis*, Anastasia Malliora, Elissavet Anestiadou, Konstantinos Zapsalis, Fotios Kontidis, Lydia Loutzidou, Nikolaos Ouzounidis, Stefanos Bitsianis, Savvas Symeonidis, Smaragda Skalidou, Orestis Ioannidis, Olga Maria Valaroutsou [General Hospital Of Thessaloniki "George Papanikolaou"]; Themistoklis Dagklis*, Alexandra Arvanitaki, Apostolos Mamopoulos, Apostolos Athanasiadis, Stergios Kopatsaris, Ioannis Kalogiannidis, Ioannis Tsakiridis, Georgios Kapetanios, Evangelos Papanikolaou, Nikolaos Tsakiridis, Fotios Zachomitros [Hippokratio General Hospital Of Thessaloniki]; Andreas Larentzakis*, Argyrios Gyftopoulos, Konstantinos Albanopoulos, Apostolos Champipis, Christos Yiannakopoulos, Gavriella Zoi Vrakopoulou, Konstantinos Saliaris, Konstantinos Lathouras, Spyridon Skoufias, Georgia Doulami [Iaso]; Metaxia Bareka*, Eleni Arnaoutoglou, Fragkiskos Angelis, Fragkiskos Angeleslis, Michael Hantes, Maria Ntalouka [Larissa University Hospital]

Iraq: Maytham A. Al-Juaifari*, Mohammed Alwash, Rasool Maala, Yasir Adnan Zwain, Sara Ahmed Saleh, Mohammed Khorsheed [Al-Najaf Al-Ashraf Teaching Hospital, Najaf]

Italy: Antonio Pesce, Carlo V. Feo*, Massimiliano Bernabei*, Francesca Petrarulo, Nicolò Fabbri, Raffaele Labriola, Silvia Jasmine Barbara [Azienda Unità Sanitaria Locale di Ferrara-University of Ferrara, Ferrara]; Simone Bosi*, Angela Romano, Anna Canavese, Caterina Catalioto, Claudio Isopi, Cristina Larotonda, Gerti Dajti, Matteo Rottoli, Iris Shari Russo, Stefano Cardelli [Ircs Azienda Ospedaliero, Bologna]; Francesco Castagnini*, Francesco Traina, Giulia Guizzardi, Giulia Guizzardi, Mara Gorgone, Marco Maestri [IRCCS Istituto Ortopedico Rizzoli, Bologna]; Pasquale Cianci*, Ivana Conversano, Enrico Restini, Domenico Gattulli, Giorgia

Grillea, Marco Varesano [Lorenzo Bonomo, Andria]; Giacomo Calini*, Adelaide Andriani, Davide Gattesco, Giovanni Terrosu, Mattia Zambon, Pietro Matucci Cerinic, Luisa Moretti, Davide Muschitiello, Samantha Polo, Vittorio Bresadola [University Hospital Of Udine, Udine]

Jordan: Salah Abu Wardeh*, Mahmoud Al-Baw*, Saif Alhaleeq*, Subhi Al-Issawi*, Abdalqader Al Smadi, Esmat Alsaify, Farah Banihani, Noor Massadeh, Nada Massadeh, Dima Al-issawi, Basel Elyan, Qotadah Al-Shami, Yazan Alomari [Al Basheer Hospital, Amman]; Abed Alazeez Alkhatib*, Bader Alzghoul, Ahmad Saleh, Jamal Yaghmour, Mahmoud Shahin, Mohammed Maali [Al Istiklal Hospital, Amman]; Dawood Alatefi*, Heba Al-Smirat, Abdulhakim Hezam, Nassar Alathameen [Alkarak Governmental Hospital, Alkarak]; Amr Al Hammoud*, Abdulrahim Al Kaddah*, Salem Ayasrah, Hamza Abuuqteish, Tesneem Al-Mwajeh, Reena Makableh, Saad Bataineh, Amin Shabaneh, Wesam Alnatsheh, Marwan Aldeges, Huda Hamad, Sireen Shehahda, Dima Khassawneh, Osama Alzyoud, Risan Alrosan, Hasan Awad, Tariq Khaldoon, Rabab Shannaq, Mohammad Al hamoud, Bader Abo fadalah, Mo'ath Al-Hazaimah, Wail Khraise [King Abdullah University Hospital, Irbid]; Lara Alnajjar*, Majid Alnajjar*, Sohaib Al-Omary*, Adnan Ababneh, Alaa Albashaireh, Mohammad Khadrawi, Mohammad Aljamal*, Tayseer Athamneh, Ro-a Muqbel, Maryam Al-jammal, Ahmad Masarrat, Alia Al-zawaydeh, Ibrahim Taha, Taima' Qattawi, Rayyan Smadi, Ayah Alhaleem, Mosab Alboon, Omar Hazaymeh, Leen Karasneh, Safa' Al-Haek [Princess Basma Teaching Hospital, Irbid]

Libya: Marin Almahroush*, Tamam Alfrijat, Aya Elporgay, Hadeel Shanag, Hamza Agilla, Hind Alameen, Marya Bensalem, Mawadda Altair, Malak Ghemmied, Rehab Alarabi, Sara Alhudhairi [Abu Saleem Trauma Hospital, Tripoli]; Rima Gweder*, Amal Alzarroug, Ebtihal Alabed, Fadwa Elreaid, Omar A Elkharaz, Fatma Fathi Elreaid, Safa Sasi Albatni [Alkhadra Hospital, Tripoli]; Haitham Elmehdawi*, Milad Gahwagi*, Ayman Mohamed, Tariq Alfrjani, Khaled Khafifi, Ayat Rasheed, Ayoub Akwaisah, Hassan Bushaala, Mustafa Elfadli, Mohamed Mofteh, Salima Algabbasi, Salma Esaiti, Sara Elfallah, Abtisam Alharam, Fatima Alariby, Mohamed Isweesi, Tarik Ahmed Eldarat, Ayman Arhuma Dabas [Benghazi Medical Center, Benghazi]; Akram Alkaseek*, Ahmed Mohammed Abodina, Aya Alqaarh, Hibah Bileid Bakeer, Hoda Salem Alhaddad, Husein Aboudlal, Sawsan Alsaih [Gharyan Central Hospital, Gharyan]; Noora Abubaker, Najwa Abdelrahim*, Ali Alzarga, Basma Omar, Farah Faris, Qamrah Alhadad [Ibn Sina Teaching Hospital, Sirt]; Asma Abufanas*, Hussameddin Badi*, Israa Benismai*, Hawa Obeid*, Abdulwahab Abdalei, Ahmed Abdulrahman, Aisha Swalem, Ebtisam Alzarouq, Amna Safar, Esra Shagroun, Boshra Hashem, Fatheia Elrishi, Fatima Abdulali, Habeeba Ahmed, Ibrahim Eltaib, Joma Elzoubia, Aisha Albarki, Hoda El Mugassabi, Fatima Abushaala, Amany Abuzaho, Nida Juha, Raneem Egzait, Sundes Shetwan, Alzahra Lemhaishi, Faisel Matoug [Misurata Central Hospital, Misurata]; Eman Abdulwahed*, Aamal Askar, Abir Ben Ashur, Adel Bezweek, Bushra Altughar, David Emhimmied, Donia Elferis, Laila Elgherwi, Enas Soula, Doaa Gidiem, Maren Grada, Khawla Derwish, Maram Alameen, Nassib Algatanesh, Ahlam Elkheshebi, Reem Ghmagh, Sharf Barka, Sultan Ahmeed, Sarah Aljamal, Zahra Alragig, Mohamed Addalla, Ahmed Atia, Atab Kharim, Fathia Mahmoud, Muhannud Binnawara, Entisar Alshareea [Tripoli Central Hospital, Tripoli]; Mohamed Alsoni*, Aisha Alshawesh, Ghaliya Mohamed H Alrifae, Amira Ashour, Anwaar Abozid, Asil Omar Saleh Alflite, Anwar Mohamed, Jaber Arebi, Fatma Alagelli, Hana Yousef Gineeb, Rawia Ghmagh, Rihab Mohammed Bin Omar, Retaj Alaqoubi, Sara mohammed, Serien Hossain Bensalem, Tahani Elgadi, Wesam Sami, Yara Bariun, Abdulhadi Mohammed Alhadi Alhashimi, Dheba Almukhtar Abdulla, Heba Rhuma, Husam Enaami, Asraa Ali Alboueishi [Tripoli Medical Center/ Tripoli University Hospital, Tripoli]; Hayat Ben Hasan* [Zliten Medical Centre, Zliten]

Lithuania: Narimantas Samalavicius*, Vitalijus Eismontas, Jonas Jurgaitis, Oleg Aliosin, Vitalija Nutautiene [Klaipeda University Hospital]

Malaysia: Andee Dzulkarnaen Zakaria*, Anil Kumar Sree Kumar Pillai, Dinesh Kumar Vadioaloo, Mohamed Ashraf Mohamed Daud, Jien Yen Soh, Mohd Zaim Zakaria [School of Medical Sciences & Hospital USM, Universiti Sains Malaysia]; Siti Mayuha Rusli*, Nur Ayuni Khirul Ashar*, Zatul Akmar Ahmad*, Afiq Aizat Ramlee, Sharifah Nor Amirah Syed Abdul Latiff Alsagoff, Ahmad Anuar Sofian, Muhammad Badrul Hisyam Mohamad Jamil, Bahiyah Abdullah, Mohamad Faiz Noorman, Muhammad Fihmi Zainal Abidin, Mohamed Izzad Isahak, Siti Nasyirah Nisya Adnan, Zaidatul Husna Mohamad Noor, [Hospital Universiti Teknologi Mara (HUiTM)]

Mexico: Luis Adrian Alvarez-Lozada*, Alejandro Quiroga Garza, Andrea Aguilar Leal, Bernardo Alfonso Fernández Reyes, Ethel Valeria Orta Guerra, Francisco Javier Arrambide Garza, Héctor Erasmo Alcocer Mey, Jorge Arath Rosales Isais, Juventino Tadeo Guerrero Zertuche, Patricia Ludivina González García, Luis Antonio Heredia Sánchez, Marcela Patricia Flores Mercado, Oscar Alonso Verduzco Sierra, Pedro Emiliano Ramos Morales, Stephie Oyervides Fuentes, Víctor Manuel Peña Martínez [University Hospital Dr. Jose Eleuterio Gonzalez, Monterrey, Nuevo Leon]

New Zealand: Surya Singh*, Arwa Hadi, Christian Woodbridge, David Thornton-Hume, Jack Forsythe, Isini Dharmaratne, Vivian Pai, John Windsor, Kamran Zargar, Lucy Waldin, Lily Winthrop, Matias Alvarez, Meileen Huang, Matt Kumove, Marta Simonetti, Namisha Chand, Oliver Goldsmith, Oscar Guo, Paul Monk, Karen Zhou, Sai Harshitha Penneru, Shaamnil Prasad, Seifei Ren, Terrence Hill, Vyoma Mistry, Selena Sun [Nz, Auckland, Auckland City Hospital]; Ashley Pereira*, Scott Mclaughlin*, Andrew Stokes, Avinash Sathiyaseelan, Jeremy Rossaak, Janice Lim, Kenya Brooke, Liam Quinlan, Mark Pottier, Nayanika Podder, Puja Jinu, Shanay Ramphal, Wikus Vermeulen [Nz, Bay Of Plenty, Tauranga Hospital]; Fraser Jeffery, Ibrahim S. Al Busaidi, Janelle Divinagracia, William Ju, Yizhuo Liu, Tamara Glyn, Nasya Thompson* [Nz, Canterbury, Christchurch Hospital]; Vivien Graziadei*, Joshua Canton*, Joseph Furey*, Horim Choi, Grace Coomber, Tanya Divekar, Tessa English, Erin Gernhoefer, Tom Healy, Justin Chou, Dikshya Parajuli, Catherine Reed, Rod Studd, Anthony Lin [Nz, Capital And Coast, Wellington Hospital]; Cameron Wells*, Cindy Xu*, Arwa Hadi, Andrew Maccormick, Heejun Park, Athulya Rathnayake, Brittany Williams, Ashley Chan, Corinne Smith, Francesca Casciola, Jainey Bhikha, Jonathan Luo, Kevin Yi, Megan Singhal, Ria George, Rosie Luo, Taylor Frost [Nz, Counties Manukau, Middlemore]; Fatima Hakak*, Akhita George, Angela Carlos, Annie Ho, Connor Mcrae, Jonathan Lescheid, Jenny Soek, Andrew Pham, Sophie St Clair, Su-Ann Yee, Jennifer Lim [Nz, Lakes, Rotorua Hospital]; Taehoon Kim*, Anne Qi Chua, Christopher Harmston, Hamish Boyes, Holly Cook, Jamie Struthers, Jess Radovanovich, Nicholas Quek [Nz, Northland, Whangarei Base Hospital]; Chekodi Fearnley-Fitzgerald*, Deborah Wright, Kushan Ghandi, Natalie Matheson [Nz, Southern, Dunedin Hospital]; Matthew James McGuinness*, Brian Chen, Rebecca Indiana Douglas, Konrad Richter, Nisha Bianca Soliman, Scott Matthew Bolam, Vineeth Vimalan, William Currie [Nz, Southern, Invercargill (Kew) Hospital]; Mitchell Cuthbert*, Poppy Ross*, Amy Nicholson, Briar Garton, Emilie Agnew, Niamh Conlon, Nicholas Waaka, Ritwik Kejriwal, Sean Nguyen, Edmund Leung [Nz, Taranaki, New Plymouth Hospital]; Milidu Ratnayake*, Quintin Smith*, Nejo Joseph*, Bosco Yue, Calvin Fraser, Charles Lam, Ethan Figgitt, Gordon Liu, Kevin Tan, Ha Seong You, Helen Zheng, Jenny Luo, James Sharp, Kabir Khanna, Levi Simiona, Michel Luo, Milidu Ratnayake, Patrick Wong, Rebecca Luu, Rohit Paul, Shiva Nair, Shadie Asadyari-Lupo, Wing Hung, Geoffrey Ying [Nz, Waikato, Waikato Hospital]; Jess Ho*, Alan Wu, Eamon Walsh, Jouyee Lee, Jessie Liu, Sunny Yao, Omar Nosseir, Jennifer Dang, Simon Young, Sof'ya Zyul'korneeva, Theresa Boyd [Nz, Waitemata, North Shore Hospital]; Jess Ho*, Alan Wu, Sunny Yao, [Nz, Waitemata, Waitakere Hospital]

Nigeria: Abdullahi Musa Kirfi*, Adamu Bala Ningi, Mohammad Albuhamdi Garba, Makama Baje Salihu, Ohia Ernest Ukwuoma, Abdullahi Ibrahim, Isa Mienda Sajo, Muhammad Baffah Aminu, Liman Haruna Usman, Oloko Nasirudeen Lanre, Ibrahim Shaphat Shuaibu, Stephen Yusuf, Tiamiyu Ismail, Gabi Ibrahim Umar [Abubakar Tafawa Balewa University Teaching Hospital Bauchi, Bauchi]; Ademola Adeyeye*, Ehis Afeikhena, Favour Nnaji, Joy Agu, Temi Maxwell, Tosin Motajo, Karo Ifoto, Seubong Okon [Afe Babalola University Multisystem Hospital, Ado Ekiti]; Jerry Godfrey Makama*, Amina Abosedo Mohammed-Durosinlorun, Bashiru Aminu, Polite Iwedike Onwuhafua, Caleb Mohammed, Lubabatu Abdulrasheed, Joel Amwe Adze, Khadijah Richifa Suleiman, Lydia Regina Airede, Mathew Chum Taingson, Stephen Bodam Bature, Stephen Akau Kache, Uchechukwu Ohijie Ogbonna [Barau Dikko Teaching Hospital, Kaduna]; Mohammed Bello Fufore*, Abdulkarim Iya, Adeshina A Ajulo, Ahmad Mahmud, Bilal Shuaibu Yahya, Farida Onimisi-Yusuf, Hope Isaac, Timothy Jawa, Fashe Joseph, Bemini Kala, Maisaratu A Bakari, David Wujika Ngwan, Abubakar Umar, Abraham L Filikus, Daniel Wycliff [Modibbo Adama University Teaching Hospital, Yola]; Abiodun Okunlola*, Olukayode Abiola, Adebayo Adeniyi, Olabisi Adeyemo, Babatunde Awoyinka, Olakunle Babalola, Adewumi Bakare, Taiwo Buari, Cecilia Okunlola, Gbadebo Adeleye, Adedayo Salawu, Henry Abiyere, Adetolu Ogidi, Tesleem Orewole [Federal Teaching Hospital, Ido Ekiti]; Habiba Ibrahim Abdullahi*, Godwin Akaba, Arome Achem, Asi-oqua Bassey, Emeka Ayogu, Bilal Sulaiman, Dennis Anthony Isah, Chukwunonso Nnamdi Akpamgbo, Felicia Asudo, Nathaniel Adewole, Omachoko Oguiche, Peter Ejembi, Samuel Ali Sani, Paul Chimezie Andrew, AliyuYabagi Isah, Bolarinwa Eniola, Zumnan Songden, Teddy Agida, Terkaa Atim [University Of Abuja Teaching Hospital, Gwagwalada]; Taofiq Olayinka Mohammed*, Hadijat Olaide Raji*, Femi Ibiyemi, Hafeez Salawu, Olushola Fasiku, Remi Sanyaolu Solagbade, Mariam Motunrayo Shiru, Gbadebo Hakeem Ibraheem, Justina Oruade, Grace Ezeoke [University Of Ilorin Teaching Hospital, Ilorin]

Pakistan: Tabish Chawla*, Aliya Begum Aziz, Anoosha Marium, Ayesha Akbar Waheed, Faiqa Binte Aamir, Faiza Qureshi, M Hammad Ather, Iqra Fatima Munawar Ali, Izza Tahir, Maha Ghulam Akbar, Ronika Devi Ukrani, Sajjan Raja, Sehar Salim Virani, Shahryar Noordin, Saif Ur Rehman, Shalni Golani, Syed Roohan Aamir, Syed Musa Mufarrih, Usama Waqar, Maliha Taufiq [Aga Khan University Hospital]; Ahmed Siddique Ammar*, Adya Ejaz*, Albash Sarwar, Ahmed Usman Khalid, Shehrbano Khattak [Bahria International Hospital Lahore]; Aliza Imran, Omer Bin Khalid, Urauba Kaleem, Urwah Muneer, Yumna Kashaf [Creek General Hospital]; Fatima Zafar*, Adil Zaheer, Muhammad Ali, Amna Shafaat, Arisha Qazi, Asjad Imran, Mahnoor Tariq, Muhammad Nadeem Aslam, Shehroz Ali, Tabish Atiq, Tayyiba Wasim, Daniyal Babar, Ahmad Zain, Muhammad Ibtisam [Services Hospital Lahore]; Uzair Ahmed, Syed Talha Bin Aqeel, Muhammad Muhib, Muhammad Anas Abbal, Nasar Ahmad Khan, Imran Javed [United Hospital]

Palestine: Layth Alkaraja*, Dana Amro, Ghaida Manasrah, Ibraheem Hammouri, Ihab Abu Hilail, Jihad Zalloum, Laith Alamlah, Mahmoud Nasereddin, Munia Rajabi, Sa'ed Shalalfeh, Zeinab Natsheh [Hebron Government Hospital, Hebron]; Khamis Elessi*, Mustafa Abu Jayyab*, Mohammed Astal, Mosheer Al-Dahdouh [Nasser Medical Complex, Gaza]; Alaa Eddin Salameh*, Alaa Ayyad, Nimatee Dawod, Hamza Alsaid, Iyas Matar, Majd Hassan, Mohammed Bakeer, Mohammad Malasah, Shehab Abubashem, Mohammed Salem, [Palestine Medical Complex, Ramallah]

Romania: Sorinel Lunca*, Mihail Gabriel Dimofte, Stefan Morarasu, Ana Maria Musina, Cristian Ene Roata, Natalia Velenciuc [Regional Institute Of Oncology Iasi, Iasi]

Russia: Aleksandr Butyrskii*, Maxim Bozhko, Amet Ametov [Emergency Municipal Hospital No.6]

Saudi Arabia: Sharfuddin Chowdhury*, Doaa Bagazi [King Saud Medical City, Riyadh]

Spain: Julio Domenech*, Alejandro Rosello-Añon, Ana Monis, Caterina Chiappe, Beatriz Cuneo, Pablo Clemente-Navarro, Jorge Febre, Jorge Sanz-Romera, Marcos Lopez-Vega, Ignacio Miranda, Rocio Valverde-Vazquez, Sara Garcia, Maria Jose Sanguesa, Zutoia Balciscueta [Hospital Arnau De Vilanova]; Enrique Ruiz*, Eduardo Marco, Elena Talavera, Joan Farre, Loreto Bacariza, Mireia Duarte, Violeta Ureña, Xenia Carre [Hospital Sant Joan Reus]

Sudan: Hytham K. S. Hamid*, Montasir A. Abd-Albain, Sami Galal-Eldin [Al-Moalem Medical City]; Monira Sarih*, Eithar Adam, Samir Ismail, Malaz Azhari, Tawfieg Hassan [Alandalus Clinic, Elduiem]; Mohamed Salaheldein*, Zainab Abdalla, Wahiba Ahmed [Bashair Teaching Hospital, Khartoum]; Monzer Abdulatif Mohamed Alhassan*, Hozifa Mohamed Abdalla Suliman, Hozifa Mohamed Bdalla Suliman [Education Karima Hospital, Merowe]; Rogia Ahmed Abdalla Ahmed*, Enas Mohammedtom Abdulhameed Babekir, Munya Ali Talab Khairy, Maha Mukhtar Ahmed Mukhtar, Rzan Ali Hamedelneel Ali, Yasir Babkir Ali Al-Shambaty [Elduiem Teaching Hospital, Elduiem]; Fatima Imad Yousif*, Hawa Mohammed Hassan Mohammed, Lana Osher, Lana Osher, Menhag Abdelbast, Mohamed Yassin, Noon Moawia, Rowa Abdalsadeg [Gadarif Teaching Hospital, Gadarif City]; Abrar Husein, Baraa Elhassan, Alnazeer Y. Abdelbagi, Mohammed A. Adam, Eithar M. Ali, Ibrahim A.b. Mohammed, Maab Mohamed, Mohamed Abdulaziz, Mazin Akasha, Muaz Hassan, Nadir Hilal, Noon Abdalla Abdelrahman Mohamed, Noora Abubaker, Omeralfarouk Mohammed, Shakir Mohamed, Walaa Osman, Fatima Mustafa, Alaa A Salih [Ibn-Sina Hospital, Khartoum]; Doua Ali*, Doha Mohammed Ahmed Almakki, Hanan Elnour Mohamed, Abdelhadi Elmubark, Mohamed Hassan, Ammar Alnour, Amna Elaagib, Ayman Abdelrahman, Mubarak Abdelkhalig, Khalid Nour Eldaim, Afra Babiker, Entisar Ahmed, Maab Ali, Eman Hussain, Mansour Wedatalla, Alaaaldeen Ahmed, Alla Aldeen Hamza, Mohab Mohammed, Omer Osman, Reham Ibrahim, Rihab Ahmed, Ruaa Ahmed, Ruaa Yasir, Safaa Awadallah, Sara Mohmmmed, Suhaib Hassan [Ibrahim Malik Teaching Hospital, Khartoum]; Walid Shaban*, Aisha Hussein, Reem Rafea, Ahmed Abdalla, Abdalla Ahmed, Khalid Mohamed, Mansour Mohammed, Mohamed Altahir, Mohammed Adam, Omer Mohamed, Walaa Abdullah [Khartoum North Teaching Hospital (Bahri Hospital)]; Hammad Fadlalmola*, Ahmed Yassir Abdalla, Ahmed Ali Omer, Ahmed Alfatih Mustafa, Rawan Elhadi, Essam Eldien Abuobaida Banaga, Fatima Osman, Mohamed Abdalla, Hala Abdelhalim Mohamed Taha, Noon Ezzeldien Abdalmahmoud, Rofuida Hussien Nafie, Sami Jamal, Sharwany Ahmed [National Ribat University Hospital, Khartoum]

Syria: Rawan Alsheikh Ali*, Abdallah Aladna, Abdullah Aljoumaa, Hamdi Nawfal, Salma Jamali, Fatima Khouja, Ammar Niazi, Toka Al Rawashdeh [Aleppo University Hospital, Aleppo]

Tunisia: Nahla Kechiche*, Mouna Gara, Mouna Nasr, Marwen Baccar, Oumayma Benamor, Sawssen Chakroun [University Hospital Fattouma Bourguiba, University Of Monastir]

Turkey: Ahmet Necati Sanli*, Ahmet Yildiz, Mehmet Ali Demirkiran, Yildiz Buyukdereli Atadag, Yusuf Iskender Tandogan [Abdulkadir Yuksel State Hospital]; Esin Ozkan*, Yildirim Ozer, Esin Ozkan, Muhammed Miran Oncel, Senad Kalkan [Bezmialem Vakif University, Faculty Of Medicine, Istanbul]; Tolga Gover*, Berke Manoglu, Ilayda Oksak, Ipek Kurt, Kerem Rifaioglu, Selman Sokmen, Tayfun Bisgin, Yasemin Yildirim, Abdil Yetkin Keskin [Dokuz Eylul Univ. Hospital, Izmir]; Tugce Dogan*, Berfin Ilgaz Sahin, Cemil Aydin, Duygu Ece Benek, Hale Nur Tiras, Mert Arslangilay, Mert Aslangilay, Muhammet Yaytokgil, Mehmet Ali Capar, Yasemin

Yazgan [Hitit University Faculty Of Medicine Çorum Research And Training Hospital]; Sebnem Bektas*, Ahmet Can Alagoz, Alara Ece Dagsali, Aylin Izzgis, Kadir Uzel, Mustafa Soytas, Niyazi Cakir, Abdullah Emre Askin, Ibrahim Azboy, Kubilay Sabuncu, Merve Aslan, Melek Sahin, Mustafa Oncel, Nuri Okkabaz, Ramazan Kemal Sivrikaya, Alparslan Saylar, Dr. Alparslan Saylar, Meltem Yasar [Istanbul Medipol University Hospital, Istanbul]; Ergin Erginoz*, Haktan Ovul Bozkir, Kagan Zengin, Mehmet Faik Ozcelik, Server Sezgin Uludag, Zeynep Ozdemir [Istanbul University Cerrahpasa - Cerrahpasa School Of Medicine]; Osman Sibic*, Hatice Telci, Mehmet Abdussamet Bozkurt, Yasin Kara [Kanuni Sultan Suleyman Training And Research Hospital, Istanbul]; Mustafa Deniz Tepe*, Adnan Gündoğdu, Bilge Akın, Dilan Pehlivan, Ali Guner, Duygu Baysallar, Berkay Yıldız, Hale Cepe, Murat Emre Reis, Ayse Nilufer Yuzgec, Nurtac Kırallı, Taha Anıl Kodalak, Mehmet Ulusahin [Karadeniz Technical University Farabi Hospital, Trabzon]; Kamar Selim*, Ahmet Kale, Mehmet Emre Gecici, Melis Ozbilen [Kartal Dr. Lutfi Kırdar Training And Research Hospital, Istanbul]; Zeynep Düzyol*, Aylin Gemici, Elzem Korkmaz, Eminenur Şen, Muhammed Enes Taşçı, Elif Camkıran, Güşta Elieyioğlu, İkbâl Kayabaş, Tefik Kivılcım Uprak, Canan Aral, Ayten Saraçoğlu, Mustafa Ümit Uğurlu, Zeynep Hazal Baltacı [Marmara University, School Of Medicine, Istanbul]; Ege Nur Akkaya*, Cem Fergar, Elif Zeynep Tabak, Guldane Zehra Kocuyigit, Ilgaz Kayilioglu [Mugla Training And Research Hospital, Mugla]; Süleyman Polat*, Elif Çolak, Mehmet Emin Kara, Mert Candan, Mustafa Safa Uyanık, Ahmet Can Sarı [Samsun Training And Research Hospital, Samsun]; Attila Ulkucu*, Alperen Taha Certel, Arzu Dindar, Beyza Durdu, Cigdem Bayram, Eslem Kaya, Hakan Akdere, Ibrahim Ethem Cakcak, İkranur Yavuz, Mert Omur, Mirac Ajredini, Erhan Onur Aydoğdu, Eylül Şenödeyici [Trakya University Faculty Of Medicine]; Ulku Ceren Koksoy*, Baturay Kansu Kazbek, Deniz Serim Korkmaz, Dogancan Yavuz, Hakan Yilmaz, Zeynep Sahan Cetinkaya, Elif Durmus, Filiz Tuzuner, Furkan Hokelekli, Mucahid Mutlu, Seyma Orcan Akbuz, Ziya Can Kus, Ziya Can Kus [Ufuk Üniversitesi Tıp Fakültesi Dr.Rıdvan Ege Sağlık Araştırma Uygulama Merkezi Hastanesi, Ankara]

United States of America: Michael Farrell*, Alayna Craig-Lucas, Matthew Painter, [Lehigh Valley Health Network]; Ashley Titan*, Aditya Narayan, Bunmi Fariyike, Lisa Knowlton, Tiffany Yue [Stanford Health Care, Palo Alto, California]; Emily Benham*, Abdelrahman Nimeri, Hope Werenski, Nicole Kaiser, Caroline Reinke [Atrium Health]

*Local lead

STROBE Statement—Checklist of items that should be included in reports of *cohort studies*

	Item No	Recommendation	Page No
Title and abstract	1	(a) Indicate the study’s design with a commonly used term in the title or the abstract	1-2
		(b) Provide in the abstract an informative and balanced summary of what was done and what was found	2-3
Introduction			
Background/rationale	2	Explain the scientific background and rationale for the investigation being reported	6
Objectives	3	State specific objectives, including any prespecified hypotheses	6 (+ protocol)
Methods			
Study design	4	Present key elements of study design early in the paper	7
Setting	5	Describe the setting, locations, and relevant dates, including periods of recruitment, exposure, follow-up, and data collection	7
Participants	6	(a) Give the eligibility criteria, and the sources and methods of selection of participants. Describe methods of follow-up	7-9
		(b) For matched studies, give matching criteria and number of exposed and unexposed	N/A
Variables	7	Clearly define all outcomes, exposures, predictors, potential confounders, and effect modifiers. Give diagnostic criteria, if applicable	8-9

Data sources/measurement	8*	For each variable of interest, give sources of data and details of methods of assessment (measurement). Describe comparability of assessment methods if there is more than one group	8-9 + supplementary appendix
Bias	9	Describe any efforts to address potential sources of bias	7-10
Study size	10	Explain how the study size was arrived at	9
Quantitative variables	11	Explain how quantitative variables were handled in the analyses. If applicable, describe which groupings were chosen and why	8-10
Statistical methods	12	(a) Describe all statistical methods, including those used to control for confounding	8-10
		(b) Describe any methods used to examine subgroups and interactions	8-10
		(c) Explain how missing data were addressed	9-10
		(d) If applicable, explain how loss to follow-up was addressed	9-10
		(e) Describe any sensitivity analyses	9-10
Results			
Participants	13*	(a) Report numbers of individuals at each stage of study—eg numbers potentially eligible, examined for eligibility, confirmed eligible, included in the study, completing follow-up, and analysed	11 + 22
		(b) Give reasons for non-participation at each stage	11 + 22
		(c) Consider use of a flow diagram	22
Descriptive data	14*	(a) Give characteristics of study participants (eg demographic, clinical, social) and information on	Table 1, 2, supplementary

		exposures and potential confounders	ry appendix, 11.
		(b) Indicate number of participants with missing data for each variable of interest	Supplementary appendix
		(c) Summarise follow-up time (eg, average and total amount)	11
Outcome data	15*	Report numbers of outcome events or summary measures over time	11-14
Main results	16	(a) Give unadjusted estimates and, if applicable, confounder-adjusted estimates and their precision (eg, 95% confidence interval). Make clear which confounders were adjusted for and why they were included	11-14
		(b) Report category boundaries when continuous variables were categorized	11-14
		(c) If relevant, consider translating estimates of relative risk into absolute risk for a meaningful time period	N/A
Other analyses	17	Report other analyses done—eg analyses of subgroups and interactions, and sensitivity analyses	11-14
Discussion			
Key results	18	Summarise key results with reference to study objectives	15-17
Limitations	19	Discuss limitations of the study, taking into account sources of potential bias or imprecision. Discuss both direction and magnitude of any potential bias	18
Interpretation	20	Give a cautious overall interpretation of results considering objectives, limitations, multiplicity of analyses, results from similar studies, and other relevant evidence	18-19
Generalisability	21	Discuss the generalisability (external validity) of the study results	18-19

Other information			
Funding	22	Give the source of funding and the role of the funders for the present study and, if applicable, for the original study on which the present article is based	1

*Give information separately for exposed and unexposed groups.

Note: An Explanation and Elaboration article discusses each checklist item and gives methodological background and published examples of transparent reporting. The STROBE checklist is best used in conjunction with this article (freely available on the Web sites of PLoS Medicine at <http://www.plosmedicine.org/>, Annals of Internal Medicine at <http://www.annals.org/>, and Epidemiology at <http://www.epidem.com/>). Information on the STROBE Initiative is available at <http://www.strobe-statement.org>.

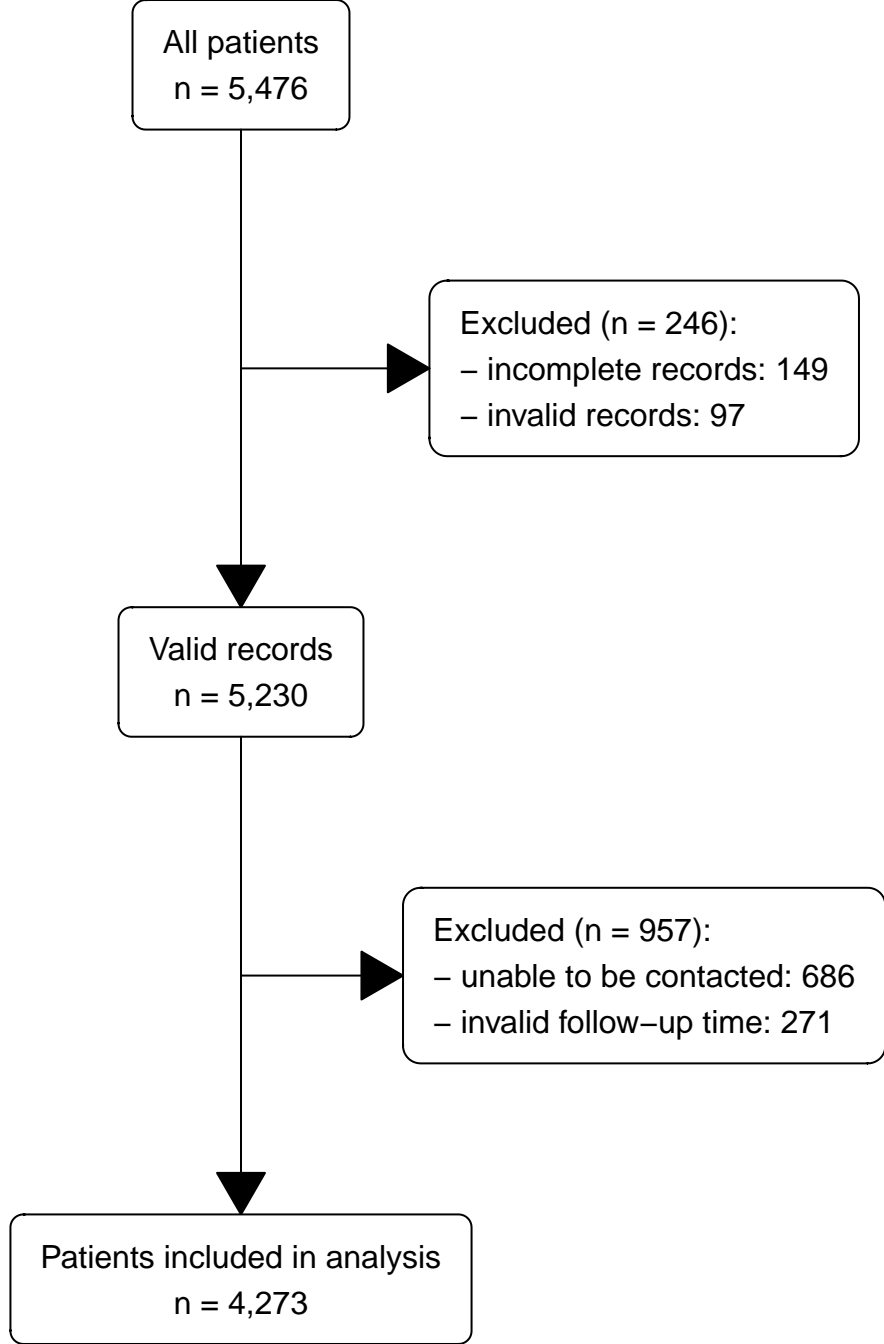
All patients
n = 5,476

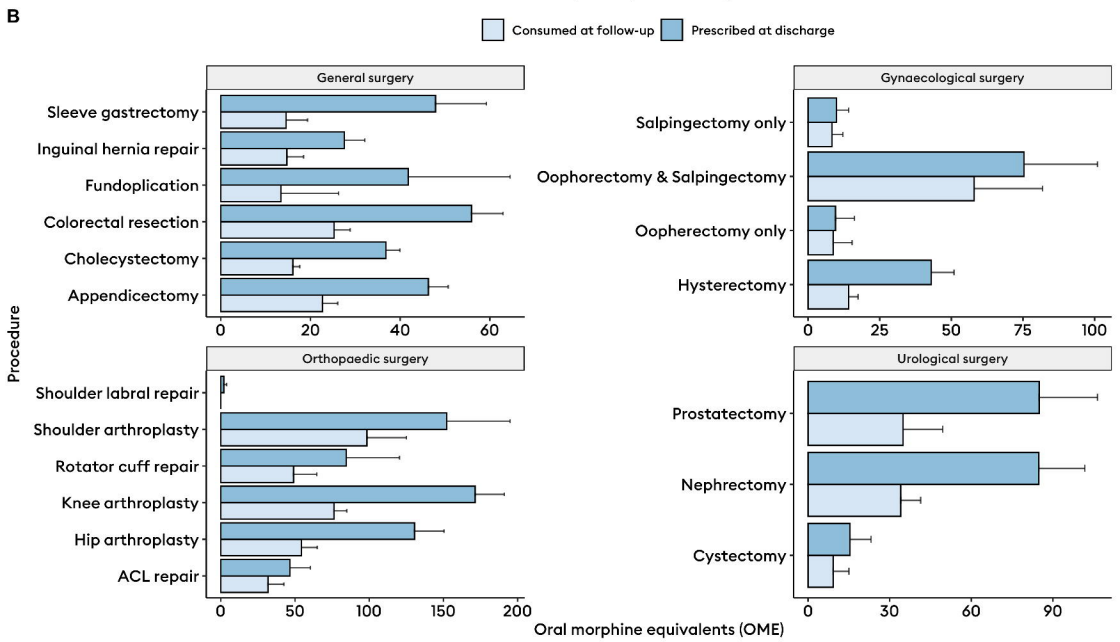
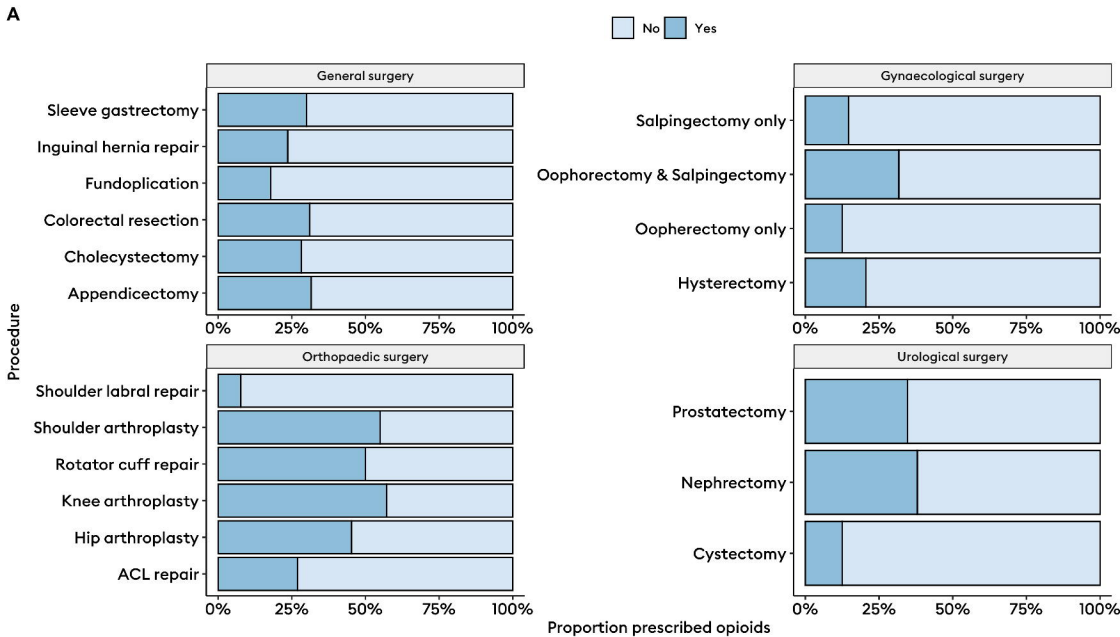
Excluded (n = 246):
– incomplete records: 149
– invalid records: 97

Valid records
n = 5,230

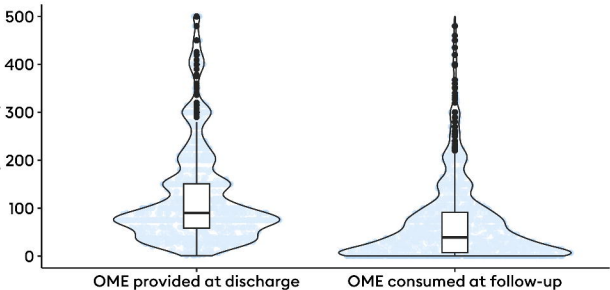
Excluded (n = 957):
– unable to be contacted: 686
– invalid follow-up time: 271

Patients included in analysis
n = 4,273



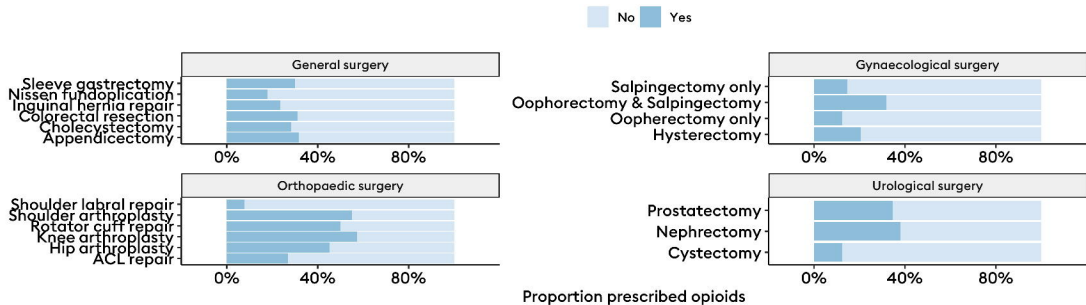


Oral morphine equivalents

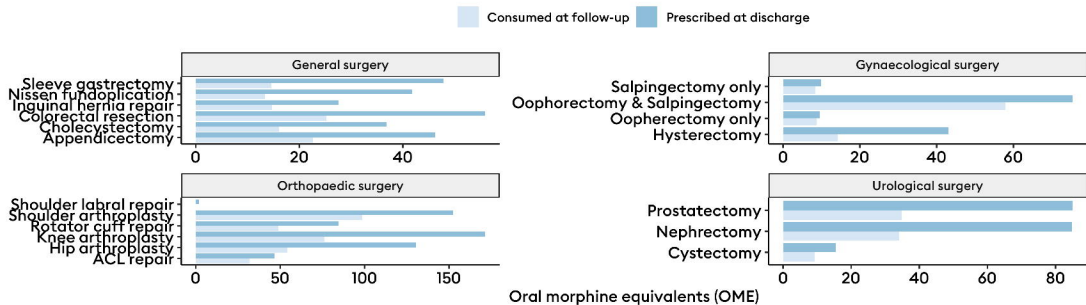


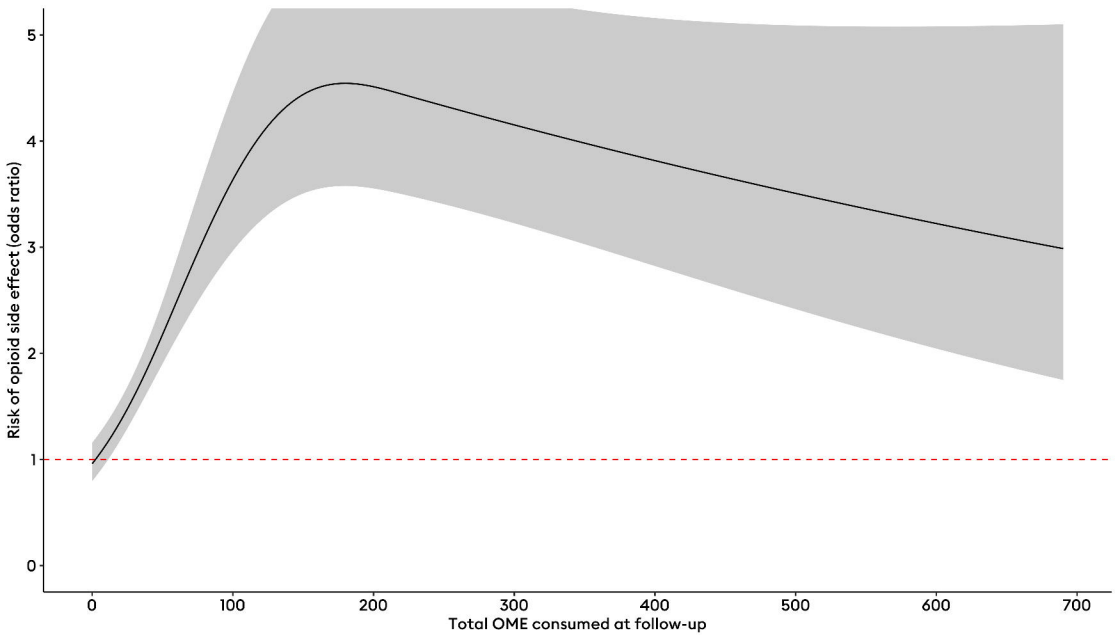
A

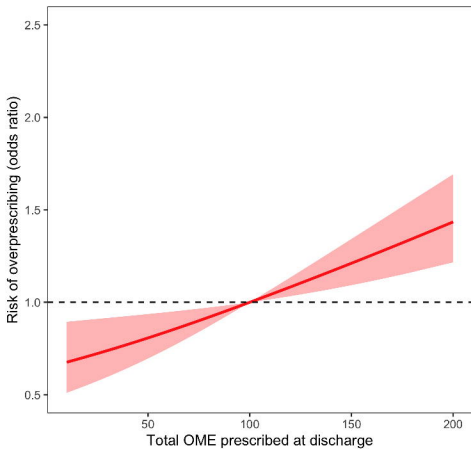
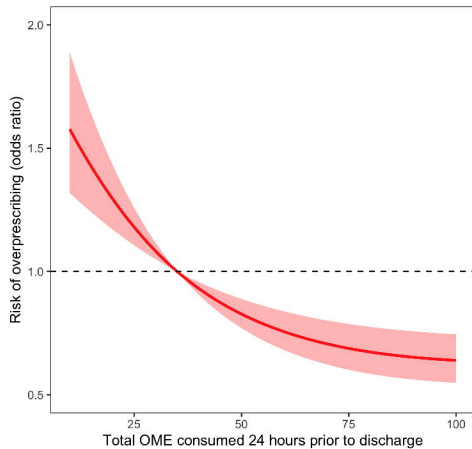
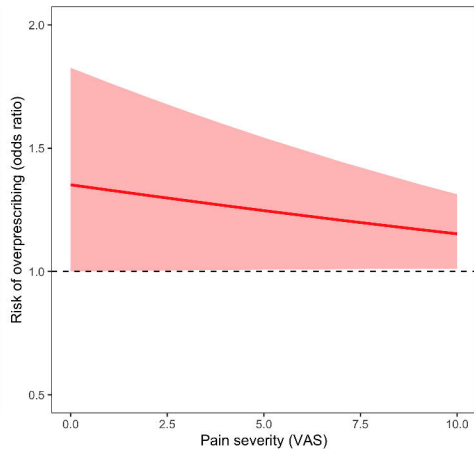
Procedure

**B**

Procedure





A**B****C**

A

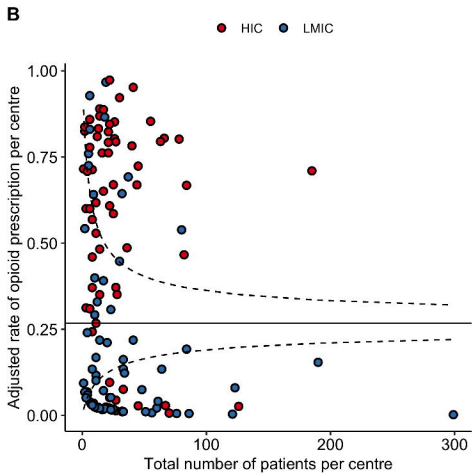
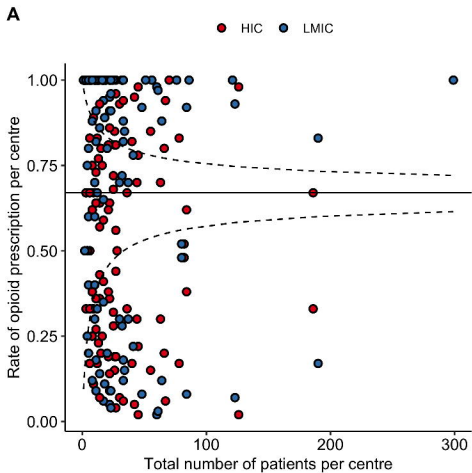


B



C





A



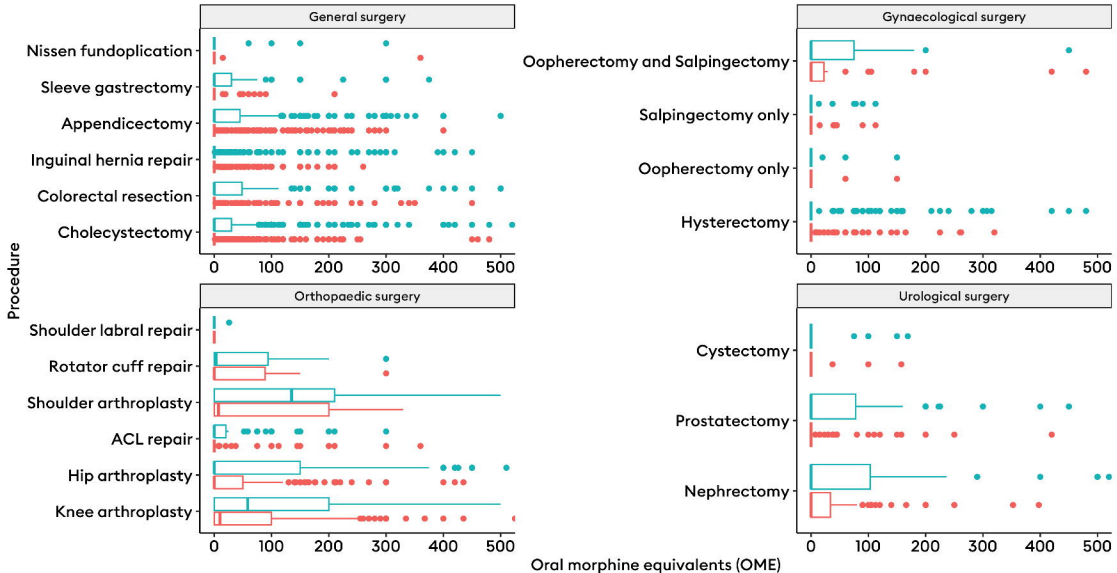
B



C



timing  total_ome_consumed_recalc_final  total_ome_dc_recalc_final



$t_{\text{Student}}(1309) = 25.20$, $p = 1.36\text{e-}114$, $\hat{r}_{\text{Pearson}} = 0.57$, $\text{CI}_{95\%} [0.53, 0.61]$, $n_{\text{pairs}} = 1,311$

