

1 **Most Hospitalized Patients with Significant Tricuspid Regurgitation Have Advanced**
2 **Disease Preventing Transcatheter Tricuspid Valve Intervention**

3
4 **Short Title:** Most Significant TR Patients Not TTVI Candidates

5
6 Allison O. Dumitriu Carcoana, B.A.^a, Christopher B. Scoma, M.D.^b, Sebastian N. Maletz, B.S.^a,
7 Jose A. Malavet, B.S.^a, Daniela R. Crousillat, M.D.^{a,b}, and Fadi A. Matar, M.D.^{a,b}

8
9 The University of South Florida Health Morsani College of Medicine, Tampa, FL, USA^a and The
10 Heart & Vascular Institute, Tampa General Hospital, Tampa, FL, USA^b

11
12 **Total word count:** 7,020

13
14
15
16
17 **Address for correspondence**

18 Fadi A. Matar, MD, FACC, FSCAI

19 Associate Professor of Medicine,
20 Associate Director of Clinical Services
21 University of South Florida Morsani College of Medicine
22 Chief of Cardiology & Cath Lab Director
23 Tampa General Hospital
24 509 South Armenia Avenue
25 Tampa, FL 33609

26
27 Telephone: 813-917-4752

28 E-mail: fmatar@usf.edu

29

30

31 **ABSTRACT**

32 **Background:** More than moderate tricuspid regurgitation (TR) is associated with high mortality.
33 Surgical tricuspid valve repair and replacements are rarely performed due to high operative
34 mortality risk, mainly attributed to late presentation. Novel transcatheter tricuspid valve
35 intervention (TTVI) devices are being developed as an alternative to surgery. The population of
36 patients presenting to tertiary care centers who can benefit from TTVI has not been well defined.
37 Our objective was to study the characteristics of these patients and to define the sub-population
38 who may be candidates for TTVI.

39 **Methods:** We analyzed 12,677 consecutive 2D echocardiograms completed at our tertiary care
40 center between March 2021 and March 2022 and identified 581 inpatients with more than
41 moderate TR. Clinical and echocardiographic data were collected by individual chart review.
42 The 2021 European Society of Cardiology (ESC) guidelines on the management of valvular
43 disease are currently the only guidelines that include TTVI. We used these guidelines to
44 retrospectively assign the 581 patients to medical therapy, surgery, or TTVI treatment.

45 **Results:** 470 patients (80.9%) were assigned to medical therapy, 57 (9.8%) were assigned to
46 TTVI, and 54 (9.3%) were assigned to tricuspid valve surgery. Of note, 76.2% (443/581) of
47 patients were precluded from any intervention due to advanced disease or anatomic ineligibility,
48 and only 4.6% (27/581) presented too early for intervention, being both asymptomatic and
49 without RV dilatation.

50 **Conclusion:** Only 9.8 percent of patients presenting to a tertiary care center with significant TR
51 would be hypothetical candidates for TTVI when these technologies are approved in the United
52 States. Earlier identification and treatment of TR could increase the number of patients who may
53 benefit from interventions including TTVI.

54 **CLINICAL PERSPECTIVE**

55 **What is New?**

- 56 • Most patients presenting to a tertiary care center with significant TR are too advanced for
57 any intervention and have high in-hospital and late mortality rates.
- 58 • Tertiary care centers planning to offer TTVI should expect that, based on the current ESC
59 guidelines and late presentation of TR, approximately 10% of patients with more than
60 moderate TR will be TTVI candidates.

61

62 **What are the clinical implications?**

- 63 • There is a need to improve care for patients with TR through earlier detection and referral
64 for intervention.
- 65 • Future clinical trials with longer follow up will be needed to assess TTVI devices in
66 patients at earlier or even asymptomatic stages of TR when there may be a greater
67 likelihood of improving survival.

68 INTRODUCTION

69 More than moderate tricuspid regurgitation (TR) is associated with high operative
70 mortality.¹⁻⁸ Due to significant operative risk, surgical TVR is uncommonly performed due in
71 part to late clinical presentation.⁹⁻¹² Several new transcatheter tricuspid valve intervention
72 (TTVI) devices are being developed as a lower-risk alternative to surgery. Many of these devices
73 are in use in Europe and are in the process of being evaluated for approval in the United States.¹³
74 The prevalence of moderate and severe TR in the United States is estimated at 1,600,000.¹⁴
75 However, the population of TR patients who can benefit from TTVI is yet to be defined.
76 Furthermore, The European Society of Cardiology (ESC) 2021 guidelines for the management of
77 valvular heart disease are the only guidelines that currently include TTVI as a treatment option.¹⁵
78 As these therapies become available in the United States¹³, it is essential to understand the
79 patient populations who may best benefit. In this study, we examined the clinical and
80 echocardiographic variables of patients with significant TR presenting to a tertiary care center
81 and defined the sub-population who may be candidates for TTVI, based on the ESC guidelines.

82

83 METHODS

84 We retrospectively identified 12,677 consecutive patients age ≥ 18 years who had a
85 transthoracic echocardiogram performed at our center between March 2021 and March 2022. Of
86 these, we collected the clinical and demographic information of 581 patients with more than
87 moderate TR. A consistent group of cardiologists graded TR severity. To further justify our
88 analysis, two cardiologists (C.B.S., D.R.C.) independently re-reviewed 10% of the
89 echocardiograms. The difference of proportions was calculated to validate reliability of
90 categorical parameters prone to some degree of subjectivity. The potentially subjective

91 parameters of importance to our study were the presence of more than moderate TR and the
92 presence of severe right ventricular (RV) dysfunction. For TR severity, the difference of
93 proportions was 0.05 with a standard error of 0.03 and a p-value of 0.0793. For RV dysfunction,
94 the standard error was 0.12 ± 0.07 with a p-value of 0.0791. Thus, we cannot conclude that there
95 was a significant difference between the original and repeated echocardiogram reviews,
96 substantiating consistent grading of these parameters.

97 We used the process described below to place patients into one of three retrospectively
98 assigned treatment groups: medical therapy, surgery, or TTVI (Figure 1).¹⁵ The retrospectively
99 assigned treatments were not necessarily those applied in actual practice. Our Institutional
100 Review Board (USF IRB Administrative Review; FWA No. 00001669) determined that this
101 protocol met the criteria for exemption from IRB review. One author (F.A.M.) had full access to
102 all the data in the study and takes responsibility for its integrity and the data analysis.

103

104 **Definitions**

105 *Modified ESC Algorithm*

106 The ESC guidelines recommend that a multidisciplinary Heart Team should determine patients'
107 candidacy for surgery vs. TTVI. In clinical practice, all patients under consideration for TV
108 surgery would be evaluated based on their clinical characteristics. However, the ESC guidelines
109 do not specify the criteria that should be used for surgical candidacy. Our hypothetical Heart
110 Team identified patients with age ≥ 80 or prior history of open-heart surgery, valve surgery,
111 cirrhosis, or end-stage renal disease as too high risk for surgery. Patients considered for surgery
112 based on ESC criteria who were too high risk based on Heart Team criteria were assigned to
113 TTVI. Patients with primary TR who were too high-risk for surgery and not anatomically viable

114 candidates for TTVI based on endocarditis or congenital TR etiology were assigned to medical
115 therapy. Our modifications to the ESC algorithm are depicted in Figure 2 and Figure 3.

116

117 *Need for Left-Sided Valve Surgery*

118 The first step was to determine whether patients needed left-sided valve surgery, criteria
119 not well-defined in the ESC guidelines. We defined qualification for left-sided valve surgery as
120 >moderate mitral or aortic valve regurgitation or stenosis plus meeting Heart Team criteria. The
121 patients who did not qualify were then divided by primary and secondary TR etiologies.

122

123 *Primary TR Without Left Sided Valve Dysfunction*

124 Primary TR included endocarditis, carcinoid, lead impingement, and congenital causes.
125 The ESC guidelines recommend first determining whether these patients had symptoms of right
126 heart failure (RHF). NYHA class was not available for over half of our cohort, therefore; we
127 defined signs of RHF as lower extremity edema or ascites around the time of the
128 echocardiogram. Asymptomatic patients were then assessed for RV dilatation. RV dilatation was
129 determined in accordance with the 2015 American Society of Echocardiography (ASE)
130 recommendations for cardiac chamber quantification, including basal diameter >41mm, mid
131 diameter >35mm, or longitudinal diameter >83mm.¹⁶ Asymptomatic patients without RV
132 dilatation were assigned to medical therapy. Patients with symptoms or RV dilatation were
133 evaluated for surgical candidacy. Those who qualified were assigned to tricuspid valve surgery,
134 while those at too high a surgical risk were assigned to TTVI.

135

136 *Secondary TR Without Left Sided Valve Dysfunction*

137 The ESC guidelines recommend that for the patients who do not qualify for left-sided
138 surgery and have secondary TR: severe RV dysfunction, severe LV dysfunction, and severe
139 pulmonary hypertension are exclusion criteria from any intervention, surgical or transcatheter.
140 We assessed the degree of dysfunction based on the echocardiograms using criteria from the
141 2015 ASE recommendations.¹⁶ Severe RV dysfunction was qualitatively described and
142 confirmed quantitatively with a TAPSE <17 mm or an S' <10 cm/s. Severe LV dysfunction was
143 defined as LVEF <30%. Severe pulmonary hypertension was defined as right ventricular systolic
144 pressure >55 mmHg or TR jet velocity >3.6m/s with systolic septal flattening. The patients who
145 met at least one criterion had advanced disease preventing the use of any intervention and were
146 assigned to the medical therapy group.

147 Of the remaining patients, those who were asymptomatic with no RV dilatation were
148 assigned to medical therapy. Those who were symptomatic or asymptomatic with RV dilatation
149 were assigned to either surgery or TTVI based on Heart Team criteria.

150

151 *Early vs. Late Presentation*

152 We divided the medical therapy group by early and late presenters, so that TR etiology
153 and mortality data could be more accurately assessed with respect to disease severity. Patients
154 without need for left-sided valve surgery who have secondary TR without severe LV
155 dysfunction, severe RV dysfunction, severe pulmonary hypertension, symptoms of RHF, and RV
156 dilatation were assigned to medical therapy. Similarly, patients with primary TR without
157 symptoms of RHF and without RV dilatation were assigned to medical therapy. These two
158 groups were therefore assigned to medical therapy due to early presentation.

159 On the other hand, patients with severe LV or RV dysfunction or severe pulmonary
160 hypertension were precluded from any intervention and were therefore assigned to medical
161 therapy due to advanced stage disease. In our modified ESC algorithm, we also considered the
162 primary TR patients assigned to medical therapy due to high surgical risk and anatomical
163 unviability for TTVI as advanced.

164

165 **TR Etiology**

166 We determined the subtype of functional TR based on the process described by Topilsky
167 et al.¹⁷ Left-sided valvular disease was defined as greater than moderate mitral or aortic valve
168 regurgitation or stenosis. LV systolic dysfunction was defined as LVEF <40% and the absence of
169 moderate-severe left valvular disease. Severe pulmonary hypertension was defined as pulmonary
170 arterial pressure >55 mmHg or TR jet velocity >3.6m/s with systolic septal flattening and the
171 absence of both moderate-severe left sided valvular disease and LV systolic dysfunction. Isolated
172 TR was defined by the absence of severe pulmonary hypertension, moderate-severe left valvular
173 disease, and LV systolic dysfunction.

174

175 **Statistics**

176 The standard error of proportions was calculated between the original and repeated
177 assessments of TR severity and RV dysfunction for 10% of the echocardiograms included in this
178 study. This was done to validate the reliability of these parameters because they may be prone to
179 some degree of subjectivity. We reported mean \pm standard deviation or median and first and third
180 quartile (Q1, Q3) values for continuous variables and frequency (percentage) for categorical
181 variables. Variables that did not follow a normal distribution curve were reported as median (Q1,

182 Q3). Cox regression analysis was used for survival analysis, presented as the median survival
183 time with standard deviation and 95% confidence intervals. Kaplan-Meier curves were generated
184 to compare overall survival between the whole cohort compared to survival curves of each
185 treatment group, with medical therapy divided into early and advanced groups. IBM SPSS
186 Statistics for Macintosh, Version 29.0, was used for survival analysis.

187

188 **RESULTS**

189 **Patient Characteristics**

190 Table 1 displays a summary of all clinical data collected for the 581 patients with more
191 than moderate TR. In this cohort, 52.3% (304/581) were women, 56.3% (325/577) were White,
192 and the average age was 65.7 years. Of note, lower extremity edema was present in 67.8%
193 (394/581), ascites in 34.3% (199/581), cirrhosis in 17.7% (103/581), and atrial fibrillation or
194 flutter in 60.9% (354/581). Of the patients who had NYHA class noted in their chart, 78.5%
195 (234/298) were NYHA class III or IV. Table 2 displays the echocardiographic parameters of the
196 581 patients. 92.8% (539/581) had functional TR. The median TAPSE was 15 mm, median
197 RVSP 58 mmHg, and 57.0% (306/537) had severe pulmonary hypertension.

198

199 **Treatment Groups Assigned Using the ESC 2021 Guidelines**

200 Figure 3 displays the numbers of patients who were assigned to each treatment group of
201 the modified ESC algorithm.

202

203 *Need for Left-Sided Valve Surgery*

204 64 patients had >moderate mitral regurgitation, mitral stenosis, aortic regurgitation, or
205 aortic stenosis. Of these, 25 qualified for surgery and 39 were too high risk.

206

207 *Primary TR Without Left Sided Valve Dysfunction*

208 40 of the 556 patients who did not qualify for left-sided valve surgery had primary TR.
209 Of these, 23 had symptoms of RHF, and 17 did not. Of the 23 symptomatic patients, 12 were too
210 high risk for surgery. Of these 12, seven had endocarditis (n = 6) or congenital (n = 1) TR
211 etiologies, characterizing anatomic ineligibility for percutaneous treatment via TTVI, and were
212 therefore assigned to medical therapy. The remaining five were appropriate for TTVI with
213 carcinoid (n = 4) or lead impingement (n = 1) TR etiologies.

214 The 17 asymptomatic patients were assessed for RV dilatation. Eight had RV dilatation,
215 and of these, three were appropriate for surgery. The other five had endocarditis, so they were
216 assigned to medical therapy. The nine remaining patients who were both asymptomatic and
217 without RV dilatation were assigned to medical therapy based on the ESC guidelines.

218

219 *Secondary TR Without Left Sided Valve Dysfunction*

220 The remaining 516 patients who did not qualify for left-sided valve surgery had
221 secondary (functional) TR. Of these, 431 had severe LV or RV dysfunction or severe pulmonary
222 hypertension and were assigned to medical therapy. Of the 85 patients without severe
223 dysfunction, 55 patients were symptomatic; 12 were appropriate for surgery, and 43 were
224 assigned to TTVI instead. Regarding the 30 asymptomatic patients, 18 had no RV dilatation and

225 were assigned to medical therapy. The remaining 12 underwent assessment by Heart Team
226 criteria, and three were ultimately appropriate for surgery, while nine were assigned to TTVI.

227

228 *Assigned Treatment Groups*

229 In total, 470 patients (80.9%) were assigned to medical therapy, 57 (9.8%) were assigned
230 to TTVI, and 54 (9.3%) were assigned to tricuspid valve surgery. TV surgery can be further
231 divided into concomitant (n = 25/54, 46.3.0%) and isolated tricuspid valve surgeries (n = 29/54,
232 53.7%). Of note, 76.2% (443/581) of patients were precluded from any intervention due to
233 advanced ventricular dysfunction, severe pulmonary hypertension, or anatomic ineligibility, and
234 only 4.6% (27/581) presented too early for intervention, being both asymptomatic and without
235 RV dilatation.

236 Table S1 describes the clinical characteristics of each assigned treatment group, and
237 Table S2 presents their echocardiographic parameters. Table 3 displays the TR etiologies in each
238 treatment group. In Table 3, we divide the medical therapy group by early and late presentation.

239

240 **Concomitant CABG**

241 In clinical practice, TV surgery is also performed with concomitant Coronary Artery
242 Bypass Graft surgery (CABG), but it is not included in the 2021 ESC guidelines. In our cohort,
243 2.9% (17/581) of patients were possible candidates for CABG based on coronary angiography
244 performed within six months of the index echocardiogram. Of these 17 patients, only three
245 remained surgical candidates after applying the Heart Team criteria. Two of these three were
246 already assigned to TV surgery, and the remaining patient had been assigned to medical therapy

247 due to advanced stage. Thus, the addition of concomitant CABG as a consideration for assigning
248 treatment groups in our cohort would result in approximately equal cohort numbers. One patient
249 in our cohort (whom we assigned to surgery) underwent surgical TVR with concomitant CABG
250 during the follow-up period.

251

252 **Survival**

253 Each patient in the study had a follow-up time of at least six months or until death. In-
254 hospital and 18-month mortality were highest amongst the patients assigned to TTVI (19.3%,
255 28.1%) and medical therapy with late presentation (18.5%, 28.9%; Table 4).

256 In Figure 4, we present the survival curves for the whole cohort compared to survival
257 curves of each treatment group, with medical therapy divided into early and advanced groups.
258 The mean overall survival time in the total cohort was 14.5 months \pm a standard error of 0.4
259 months (95% confidence interval [CI] = 13.74 – 15.31 months). Survival time was shortest in
260 those assigned to TTVI (13.3 \pm 1.2 months, 95% CI = 11.0 – 15.6) and medical therapy with
261 advanced stage (14.0 \pm 0.5 months, 95% CI = 13.1 – 14.9). Those assigned to medical therapy
262 with early presentation had the longest overall survival (18.1 \pm 1.0 months, 95% CI = 16.1 –
263 20.0), followed by those assigned to surgery (15.1 \pm 1.0 months, 95% CI = 13.2 – 17.0).

264

265 **TR Management in Actual Practice**

266 Of the 470 patients retrospectively assigned to medical therapy by the ESC guidelines,
267 97.7% (459/470) received medical therapy, nine underwent TV surgery, and two underwent
268 TTVI. Our center currently performs heterotopic caval valve implantation (TricValve®) on a
269 compassionate-use basis. Of the 54 patients assigned to TV surgery, 79.6% (43/54) received

270 medical therapy, and 20.4% (11/54) underwent TV surgery, one of which was concomitant TVR
271 with CABG. One of the patients assigned to TTVI underwent TricValve® implantation, two
272 underwent TV surgery, and the remaining 54 received medical therapy. In total, 556 of the
273 patients received medical therapy, 22 underwent TV surgery, and three received TTVI during the
274 study's follow-up period.

275

276 **DISCUSSION**

277 In this retrospective study of consecutive patients with more than moderate TR presenting to
278 a tertiary care center, we showed that a minority (9.8%) could qualify for TTVI, and 76.2% had
279 advanced left or right ventricular dysfunction or severe pulmonary hypertension precluding any
280 surgical or transcatheter intervention. The in-hospital and 18-month mortality rates were grimly
281 high in the advanced stage medical therapy and TTVI cohorts at 18.5%, 28.9% and 19.3%,
282 28.1%, respectively. Although we are unable to comment on which specific TTVI device
283 patients are candidates for, our study sheds light on the clinical and echocardiographic
284 characteristics of this patient population and their outcomes at a tertiary care center.

285 There are currently four categories of TTVI, which are at various developmental stages:
286 coaptation devices (TriClip®, Pascal®, Dragonfly®, FORMA®), annuloplasty devices
287 (cardioband®, K-Clip®, Trialign®, TriCinch®) orthotopic replacement (Evoque®, Lux®, Intrepid®)
288 and heterotopic replacement (TricValve®, Trillium®). The first three devices aim to reduce TR
289 severity, and the last one reduces venous congestion caused by it. There are no commercially
290 available TR-reducing transcatheter devices in the United States, and the TricValve® is only
291 available for compassionate use. Some coaptation (TriClip® and Pascal®) and annuloplasty
292 devices (cardioband®) are commercially available in Europe, and the TriClip is expected to get

293 approval from the Food and Drug Administration in the United States following the Trial to
294 Evaluate Treatment with Abbott Transcatheter Clip Repair System in Patients with Moderate or
295 Greater Tricuspid Regurgitation (TRILUMINATE) meeting its primary endpoint.¹⁸⁻¹⁹

296 Although several non-randomized controlled trials (RCT's)²⁰⁻²⁷ using various types of TTVI
297 devices showed symptomatic relief, the ideal timing of intervention to impact survival remains to
298 be defined.²⁸⁻²⁹ The TRILUMINATE study on tricuspid edge-to-edge repair is the only RCT
299 testing a TTVI device.¹⁹ It showed that TriClip met its primary composite endpoint of all-cause
300 mortality, tricuspid valve surgery, heart failure hospitalizations, and quality-of-life improvement
301 using the Kansas City Cardiomyopathy Questionnaire (KCCQ) score at 12 months, but that was
302 mainly driven by improvements in the KCCQ score. It is unclear at this stage if mortality would
303 be reduced by Triclip after the two-year follow-up planned for this trial is completed.

304 While heterotopic TV replacement is a catheter-based device, it is generally a non-corrective
305 procedure, and for the purposes of our study, we did not consider it TTVI. Except for the three
306 patients who underwent TricValve implantation, none underwent TTVI because we did not have
307 access to these therapies during the study period. Therefore, the 28.1% mortality rate of the
308 patients allocated to the TTVI group reflects the untreated mortality rate of this cohort. This rate
309 is almost threefold higher than the 10.6% mortality rate seen in the control arm of the
310 TRILUMINATE trial, which is not surprising given the higher prevalence of comorbidities and
311 advanced-stage disease in our TTVI group (liver cirrhosis 36.6%, CKD 65.9%, ESRD 19.3%)
312 compared to the control group enrolled in TRILUMINATE (liver disease 9.1%, CKD 35.4%,
313 ESRD 0%).¹⁹

314 The characteristics of the patients who are candidates for TTVI in our study mirror those of
315 the TriValve registry patients.³⁰ This registry is an ongoing, prospective database of all patients

316 undergoing TTVI outside of RCT's. In 2017, they reported on 107 patients with clinically
317 significant TR treated with various TTVI devices, mainly the MitraClip device. The mean age
318 was 76 years, atrial fibrillation 79%, female 60%, ascites 27%, NYHA class III or IV 95%, prior
319 left-sided valve surgery 26%, mean LVEF 51%, and mean TAPSE 16 mm. These demographics
320 and clinical variables were very similar to our TTVI patient cohort; mean age of 75 years, atrial
321 arrhythmia 79%, female 56%, ascites 35%, NYHA class III or IV 82%, prior valve surgery 26%,
322 mean LVEF 54%, and mean TAPSE 20 mm.

323 The TTVI treatment group in our study was derived from a pool of patients who presented to
324 our tertiary care center with an already high burden of comorbidities and end-organ disease (liver
325 cirrhosis 17.7%, CKD 64.0%, ESRD 19.8%) and a 26.7% mortality rate. There is a direct
326 association between TR severity and mortality^{8, 31-33}, but comorbidities, which are indicators of
327 late presentation and end-organ failure, predict mortality independent of TR severity.¹⁷
328 Breitninger et al. showed that age, male gender, renal dysfunction, presence of CHF, liver
329 disease, lung disease, and TR severity were independently associated with mortality.²² Topilsky
330 et al. showed that left sided valvular disease and LV systolic dysfunction were associated with
331 the poorest survival in patients with functional TR, followed by pulmonary hypertension and
332 primary TR.¹⁷

333 As discussed above, our study's patient population had a high burden of comorbidities and
334 signs of end-stage disease than the TRILUMINATE population. Therefore, TTVI performed at
335 the advanced stage noted in our inpatient cohort may not impact survival although it could
336 improve quality of life. A suggestion that this might be the case comes from the Mayo Clinic
337 study by Breitinger et al. done in 13,608 with moderate to severe TR and a median follow-up of
338 6.5 years.³³ In patients with significant comorbidities, the severity of TR was not associated with

339 differences in survival. In contrast, in those with fewer comorbidities, increasing TR severity was
340 associated with worse survival. Another study showed similar results. Neuhold et al. studied 576
341 patients with heart failure and noted that TR severity was predictive of poor outcomes in those
342 with mildly to moderately impaired LV function but not in those with a severely depressed EF.³⁴
343 Nonetheless, it is reassuring that the TriValve registry reported a low all-cause 30-day mortality
344 rate of 3.7% in 106 patients who underwent TTVI, despite a high prevalence of comorbidities.³⁰
345 It is unclear, however, if there are unreported factors that led to a selection bias in the TriValve
346 registry, resulting in a more favorable 30-day mortality rate.

347 Tricuspid regurgitation is a complex disease with etiology having an impact on management
348 and outcomes. Most TR is functional, thus the rate of progression and success of treatment
349 depends on non-tricuspid valve drivers, such as aortic and mitral valvular disease, ventricular
350 function, and arrhythmia control.³⁵ Clinical trials of TTVI devices aiming to reduce TR will
351 need to account for these diseases. Adding to the complexity is the fragile nature of the right
352 ventricle that is not designed to withstand chronic pressure and volume overload. Seventy six
353 percent of the patients in our study had disease too advanced for any intervention with a
354 mortality rate just under 30% by 18 months. This rate stresses the importance of early detection
355 that should initiate a comprehensive management plan for all factors contributing to TR, and
356 early referral for intervention.³⁶

357 Therefore, future clinical trials using TTVI devices should not only focus on patients with
358 advanced stages but also on those at earlier or even asymptomatic stages of TR where early
359 intervention may confer a survival benefit in addition to symptomatic benefit.³⁷ The Mayo Clinic
360 reported that patients with a low TRIO (Tricuspid Regurgitation Impact on Outcomes) score with

361 few comorbidities might benefit the most from interventions to correct TR, based on 10-year all-
362 cause mortality.³³ Provided that evidence of improved survival may be realized with longer
363 follow-up, we expect that TTVI guidelines would eventually evolve to include lower-risk
364 patients, analogous to the evolution of the guidelines for the transcatheter aortic valve
365 implantation (TAVI) procedure.

366 Limitations of this retrospective, single-center analysis merit consideration. NYHA
367 functional class was not defined for over half of our cohort, and thus physical exam history of
368 lower extremity edema or ascites was used to indicate signs of RHF instead. Due to differences
369 in patients' transthoracic echocardiogram imaging, some echocardiographic parameters, such as
370 the S' or TAPSE were not measurable for all patients. Furthermore, the ESC 2021 guidelines do
371 not specifically define parameters for determining appropriateness for surgery, so we used our
372 own criteria, which may have underestimated the number of patients who were too high risk for
373 surgery.

374 The present study findings show that most patients presenting to a tertiary care center
375 with more than moderate TR are too advanced for any intervention and have high in-hospital and
376 late mortality rates. We illustrated that a minority of these patients would clinically qualify for
377 TTVI. There is a need to improve care for patients with TR through earlier detection that should
378 initiate a comprehensive management plan for all factors contributing to TR, and early referral
379 for intervention. Future clinical trials with longer follow up will be needed to assess TTVI
380 devices in patients at earlier or even asymptomatic stages of TR when there may be a greater
381 likelihood of improving survival.

382

383 **ACKNOWLEDGEMENTS**

384 The authors acknowledge the invaluable assistance of the structural cardiology team at the
385 Tampa General Hospital Heart and Vascular Institute in the conduct of this study.

386 Conceptualization and methodology: A.O.D.C., C.B.S, D.R.C., and F.A.M. Investigation:
387 A.O.D.C., C.B.S, S.N.M., and J.A.M. Formal analysis and interpretation: A.O.D.C., C.B.S,
388 D.R.C., and F.A.M. Writing: A.O.D.C., C.B.S, and F.A.M. Writing–review and editing and
389 supervision: A.O.D.C., C.B.S, S.N.M., J.A.M., D.R.C., and F.A.M.

390

391 **SOURCES OF FUNDING**

392 This study did not include any sources of funding.

393

394 **DISCLOSURES**

395 None.

396

397 **REFERENCES**

- 398 1. Nath J, Foster E, Heidenreich PA. Impact of tricuspid regurgitation on long-term survival. *J*
399 *Am Coll Cardiol*. 2004 Feb 4;43(3):405-9. doi: 10.1016/j.jacc.2003.09.036.
400
- 401 2. Agricola E, Stella S, Gullace M, Ingallina G, D'Amato R, Slavich M, Oppizzi M, Ancona MB,
402 Margonato A. Impact of functional tricuspid regurgitation on heart failure and death in patients
403 with functional mitral regurgitation and left ventricular dysfunction. *Eur J Heart Fail*. 2012
404 Aug;14(8):902-8. doi: 10.1093/eurjhf/hfs063.
405
- 406 3. Dahou A, Magne J, Clavel MA, Capoulade R, Bartko PE, Bergler-Klein J, Sénéchal M,
407 Mundigler G, Burwash I, Ribeiro HB, et al. Tricuspid Regurgitation Is Associated With
408 Increased Risk of Mortality in Patients With Low-Flow Low-Gradient Aortic Stenosis and
409 Reduced Ejection Fraction: Results of the Multicenter TOPAS Study (True or Pseudo-Severe
410 Aortic Stenosis). *JACC Cardiovasc Interv*. 2015 Apr 20;8(4):588-96. doi:
411 10.1016/j.jcin.2014.08.019.
412
- 413 4. Fujisawa T, Kimura T, Ikemura N, Miyama H, Katsumata Y, Ueda I, Tanimoto K, Kanki H,
414 Fukuda K, Kohsaka S, et al. Effect of Tricuspid Regurgitation on the Reported Quality of Life
415 and Subsequent Outcomes in Patients With Atrial Fibrillation. *J Am Heart Assoc*. 2022 Apr
416 19;11(8):e022713. doi: 10.1161/JAHA.121.022713.
417
- 418 5. Hu K, Liu D, Störk S, Herrmann S, Oder D, Ertl G, Voelker W, Weidemann F, Nordbeck P.
419 Echocardiographic Determinants of One-Year All-Cause Mortality in Patients With Chronic

420 Heart Failure Complicated by Significant Functional Tricuspid Regurgitation. *J Card Fail.* 2017
421 Jun;23(6):434-443. doi: 10.1016/j.cardfail.2016.11.005.
422

423 6. Mutlak D, Lessick J, Khalil S, Yalonetsky S, Agmon Y, Aronson D. Tricuspid regurgitation in
424 acute heart failure: is there any incremental risk? *Eur Heart J Cardiovasc Imaging.* 2018 Sep
425 1;19(9):993-1001. doi: 10.1093/ehjci/jex343. PMID: 29346535.
426

427 7. Santas E, Chorro FJ, Miñana G, Méndez J, Muñoz J, Escribano D, García-Blas S, Valero E,
428 Bodí V, Núñez E, et al. Tricuspid Regurgitation and Mortality Risk Across Left Ventricular
429 Systolic Function in Acute Heart Failure. *Circ J.* 2015;79(7):1526-33. doi: 10.1253/circj.CJ-15-
430 0129.
431

432 8. Wang N, Fulcher J, Abeysuriya N, McGrady M, Wilcox I, Celermajer D, Lal S. Tricuspid
433 regurgitation is associated with increased mortality independent of pulmonary pressures and
434 right heart failure: a systematic review and meta-analysis. *Eur Heart J.* 2019 Feb 1;40(5):476-
435 484. doi: 10.1093/eurheartj/ehy641.
436

437 9. Zack CJ, Fender EA, Chandrashekar P, Reddy YNV, Bennett CE, Stulak JM, Miller VM,
438 Nishimura RA. National Trends and Outcomes in Isolated Tricuspid Valve Surgery. *J Am Coll*
439 *Cardiol.* 2017 Dec 19;70(24):2953-2960. doi: 10.1016/j.jacc.2017.10.039.
440

- 441 10. Weiss T, Villadsen PR, Jensen JK, Lehnert P, Nielsen PH, Modrau IS. Outcomes of isolated
442 tricuspid valve surgery in contemporary practice. *Eur J Cardiothorac Surg*. 2022 Jul
443 11;62(2):ezac077. doi: 10.1093/ejcts/ezac077.
- 444
- 445 11. Axtell AL, Bhambhani V, Moonsamy P, Healy EW, Picard MH, Sundt TM 3rd, Wasfy JH.
446 Surgery Does Not Improve Survival in Patients With Isolated Severe Tricuspid Regurgitation. *J*
447 *Am Coll Cardiol*. 2019 Aug 13;74(6):715-725. doi: 10.1016/j.jacc.2019.04.028.
- 448
- 449 12. Brescia AA, Ward ST, Watt TMF, Rosenbloom LM, Baker M, Khan S, Ziese E, Romano
450 MA, Bolling SF; Michigan Mitral Research Group (MMRG). Outcomes of Guideline-Directed
451 Concomitant Annuloplasty for Functional Tricuspid Regurgitation. *Ann Thorac Surg*. 2020
452 Apr;109(4):1227-1232. doi: 10.1016/j.athoracsur.2019.07.035.
- 453
- 454 13. Blusztajn DI, Hahn RT. New therapeutic approach for tricuspid regurgitation: Transcatheter
455 tricuspid valve replacement or repair. *Front Cardiovasc Med*. 2023 Feb 23;10:1080101. doi:
456 10.3389/fcvm.2023.1080101.
- 457
- 458 14. Stuge O, Liddicoat J. Emerging opportunities for cardiac surgeons within structural heart
459 disease. *J Thorac Cardiovasc Surg*. 2006 Dec;132(6):1258-61. doi: 10.1016/j.jtcvs.2006.08.049.
- 460
- 461 15. Vahanian A, Beyersdorf F, Praz F, Milojevic M, Baldus S, Bauersachs J, Capodanno D,
462 Conradi L, De Bonis M, De Paulis R, et al. 2021 ESC/EACTS Guidelines for the management of
463 valvular heart disease. *Eur Heart J*. 2022 Feb 12;43(7):561-632. doi: 10.1093/eurheartj/ehab395.

464

465 16. Lang RM, Badano LP, Mor-Avi V, Afilalo J, Armstrong A, Ernande L, Flachskampf FA,
466 Foster E, Goldstein SA, Kuznetsova T, et al. Recommendations for cardiac chamber
467 quantification by echocardiography in adults: an update from the American Society of
468 Echocardiography and the European Association of Cardiovascular Imaging. *J Am Soc*
469 *Echocardiogr*. 2015 Jan;28(1):1-39.e14. doi: 10.1016/j.echo.2014.10.003.

470

471 17. Topilsky Y, Maltais S, Medina Inojosa J, Oguz D, Michelena H, Maalouf J, Mahoney DW,
472 Enriquez-Sarano M. Burden of Tricuspid Regurgitation in Patients Diagnosed in the Community
473 Setting. *JACC Cardiovasc Imaging*. 2019 Mar;12(3):433-442. doi: 10.1016/j.jcmg.2018.06.014.

474

475 18. Hahn RT, Nabauer M, Zuber M, Nazif TM, Hausleiter J, Taramasso M, Pozzoli A, George I,
476 Kodali S, Bapat V, et al. Intraprocedural Imaging of Transcatheter Tricuspid Valve
477 Interventions. *JACC Cardiovasc Imaging*. 2019 Mar;12(3):532-553. doi:
478 10.1016/j.jcmg.2018.07.034.

479

480 19. Sorajja P, Whisenant B, Hamid N, Naik H, Makkar R, Tadros P, Price MJ, Singh G, Fam N,
481 Kar S, et al. Transcatheter Repair for Patients with Tricuspid Regurgitation. *N Engl J Med*. 2023
482 May 18;388(20):1833-1842. doi: 10.1056/NEJMoa2300525.

483

484 20. Sorajja P, Cavalcante JL, Gossel M, Bae R. Transcatheter repair of tricuspid regurgitation
485 with MitraClip. *Prog Cardiovasc Dis*. 2019 Nov-Dec;62(6):488-492. doi:
486 10.1016/j.pcad.2019.10.001.

487

488 21. Fam NP, Braun D, von Bardeleben RS, Nabauer M, Ruf T, Connelly KA, Ho E, Thiele H,
489 Lurz P, Weber M, et al. Compassionate Use of the PASCAL Transcatheter Valve Repair System
490 for Severe Tricuspid Regurgitation: A Multicenter, Observational, First-in-Human Experience.
491 *JACC Cardiovasc Interv.* 2019 Dec 23;12(24):2488-2495. doi: 10.1016/j.jcin.2019.09.046.

492

493 22. Lurz P, Besler C, Noack T, Forner AF, Bevilacqua C, Seeburger J, Rommel KP, Blazek S,
494 Hartung P, Zimmer M, et al. Transcatheter treatment of tricuspid regurgitation using edge-to-
495 edge repair: procedural results, clinical implications and predictors of success. *EuroIntervention.*
496 2018 Jun 8;14(3):e290-e297. doi: 10.4244/EIJ-D-17-01091.

497

498 23. Mehr M, Taramasso M, Besler C, Ruf T, Connelly KA, Weber M, Yzeiraj E, Schiavi D,
499 Mangieri A, Vaskelyte L, et al. 1-Year Outcomes After Edge-to-Edge Valve Repair for
500 Symptomatic Tricuspid Regurgitation: Results From the TriValve Registry. *JACC Cardiovasc*
501 *Interv.* 2019 Aug 12;12(15):1451-1461. doi: 10.1016/j.jcin.2019.04.019. PMID: 31395215.

502

503 24. Braun D, Orban M, Orban M, Hagl C, Massberg S, Nabauer M, Hausleiter J. Transcatheter
504 Edge-to-Edge Repair for Severe Tricuspid Regurgitation Using the Triple-Orifice Technique
505 Versus the Bicuspidalization Technique. *JACC Cardiovasc Interv.* 2018 Sep 10;11(17):1790-
506 1792. doi: 10.1016/j.jcin.2018.05.049.

507

508 25. Braun D, Löw K, Orban M, Mehr M, Gmeiner J, Massberg S, Nabauer M, Hausleiter J.
509 Mitraclip XTR VS. pascal transcatheter valve repair system for edge-to-edge repair of severe

510 tricuspid regurgitation. *J Am College Cardiol.* (2020) 75:1135. doi: 10.1016/S0735-
511 1097(20)31762-9.

512

513 26. Perlman G, Praz F, Puri R, Ofek H, Ye J, Philippon F, Carrel T, Pibarot P, Attinger A, Htun
514 NM. Transcatheter Tricuspid Valve Repair With a New Transcatheter Coaptation System for the
515 Treatment of Severe Tricuspid Regurgitation: 1-Year Clinical and Echocardiographic Results.
516 *JACC Cardiovasc Interv.* 2017 Oct 9;10(19):1994-2003. doi: 10.1016/j.jcin.2017.06.036.

517

518 27. Asmarats L, Perlman G, Praz F, Hensey M, Chrissoheris MP, Philippon F, Ofek H, Ye J, Puri
519 R, Pibarot P, et al. Long-Term Outcomes of the FORMA Transcatheter Tricuspid Valve Repair
520 System for the Treatment of Severe Tricuspid Regurgitation: Insights From the First-in-Human
521 Experience. *JACC Cardiovasc Interv.* 2019 Aug 12;12(15):1438-1447. doi:
522 10.1016/j.jcin.2019.04.038. PMID: 31395213.

523

524 28. Bocchino PP, Angelini F, Vairo A, Andreis A, Fortuni F, Franchin L, Frea S, Raineri C,
525 Pidello S, Conrotto F, et al. Clinical Outcomes Following Isolated Transcatheter Tricuspid Valve
526 Repair: A Meta-Analysis and Meta-Regression Study. *JACC Cardiovasc Interv.* 2021 Oct
527 25;14(20):2285-2295. doi: 10.1016/j.jcin.2021.08.050.

528

529 29. Sannino A, Ilardi F, Hahn RT, Lancellotti P, Lurz P, Smith RL, Esposito G, Grayburn PA.
530 Clinical and Echocardiographic Outcomes of Transcatheter Tricuspid Valve Interventions: A
531 Systematic Review and Meta-Analysis. *Front Cardiovasc Med.* 2022 Jul 11;9:919395. doi:
532 10.3389/fcvm.2022.919395. PMID: 35898276; PMCID: PMC9309386.

533

534 30. Taramasso M, Hahn RT, Alessandrini H, Latib A, Attinger-Toller A, Braun D, Brochet E,
535 Connelly KA, Denti P, Deuschl F, et al. The International Multicenter TriValve Registry: Which
536 Patients Are Undergoing Transcatheter Tricuspid Repair? *JACC Cardiovasc Interv.* 2017 Oct
537 9;10(19):1982-1990. doi: 10.1016/j.jcin.2017.08.011. PMID: 28982563.

538

539 31. Chorin E, Rozenbaum Z, Topilsky Y, Konigstein M, Ziv-Baran T, Richert E, Keren G, Banai
540 S. Tricuspid regurgitation and long-term clinical outcomes. *Eur Heart J Cardiovasc Imaging.*
541 2020 Feb 1;21(2):157-165. doi: 10.1093/ehjci/jez216.

542

543 32. Bartko PE, Arfsten H, Frey MK, Heitzinger G, Pavo N, Cho A, Neuhold S, Tan TC, Strunk
544 G, Hengstenberg C, et al. Natural History of Functional Tricuspid Regurgitation: Implications of
545 Quantitative Doppler Assessment. *JACC Cardiovasc Imaging.* 2019 Mar;12(3):389-397. doi:
546 10.1016/j.jcmg.2018.11.021.

547

548 33. Lara-Breitinger KM, Scott CG, Nkomo VT, Pellikka PA, Kane GC, Chaliki HP, Shapiro BP,
549 Eleid MF, Alkhouli M, Greason KL, et al. Tricuspid Regurgitation Impact on Outcomes (TRIO):
550 A Simple Clinical Risk Score. *Mayo Clin Proc.* 2022 Aug;97(8):1449-1461. doi:
551 10.1016/j.mayocp.2022.05.015.

552

553 34. Neuhold S, Huelsmann M, Pernicka E, Graf A, Bonderman D, Adlbrecht C, Binder T,
554 Maurer G, Pacher R, Mascherbauer J. Impact of tricuspid regurgitation on survival in patients

555 with chronic heart failure: unexpected findings of a long-term observational study. *Eur Heart J*.
556 2013 Mar;34(11):844-52. doi: 10.1093/eurheartj/ehs465.

557

558 35. Hahn RT. Tricuspid Regurgitation. *N Engl J Med*. 2023 May 18;388(20):1876-1891. doi:
559 10.1056/NEJMra2216709.

560

561 36. Otto CM, Nishimura RA, Bonow RO, Carabello BA, Erwin JP 3rd, Gentile F, Jneid H,
562 Krieger EV, Mack M, McLeod C, et al. 2020 ACC/AHA Guideline for the Management of
563 Patients With Valvular Heart Disease: Executive Summary: A Report of the American College
564 of Cardiology/American Heart Association Joint Committee on Clinical Practice Guidelines.
565 *Circulation*. 2021 Feb 2;143(5):e35-e71. doi: 10.1161/CIR.0000000000000932.

566

567 37. Grubb, KJ and Malaisrie, SC. Illuminating the TRILUMINATE Trial. American College of
568 Cardiology Expert Review, May 23, 2023. Accessed August 26 2023.

569 [https://www.acc.org/latest-in-cardiology/articles/2023/05/23/10/26/illuminating-the-triluminate-](https://www.acc.org/latest-in-cardiology/articles/2023/05/23/10/26/illuminating-the-triluminate-trial)
570 [trial](https://www.acc.org/latest-in-cardiology/articles/2023/05/23/10/26/illuminating-the-triluminate-trial).

571

572 38. Bocchino PP, Angelini F, Alushi B, Conrotto F, Cioffi GM, Tersalvi G, Senatore G,
573 Pedrazzini G, De Ferrari GM, Biasco L. Transcatheter Aortic Valve Replacement in Young
574 Low-Risk Patients With Severe Aortic Stenosis: A Review. *Front Cardiovasc Med*. 2020 Dec
575 14;7:608158. doi: 10.3389/fcvm.2020.608158.

576

577 TABLES

578 **Table 1.** Baseline clinical characteristics of the total cohort.

Variables	N = 581
Male	277 (47.7)
Female	304 (52.3)
Age, years	65.67 ± 17.35
BMI, kg/m ²	28.0 ± 8.36
Race	
White	325 (55.9)
Black	174 (29.9)
Arab or Middle Eastern	2 (0.3)
Haitian	4 (0.7)
Puerto Rican	14 (2.4)
Cuban	6 (1.0)
Asian	7 (1.2)
Other	49 (8.4)
Ethnicity	
Hispanic or Latino	66 (11.4)
Other	515 (88.6)
Symptoms of right heart failure	
LE edema	394 (67.8)
Ascites	199 (34.3)
NYHA Class	
0	4/298 (1.3)
I	17/298 (5.7)
II	43/298 (14.4)
III	175/298 (58.7)
IV	59/298 (19.8)

Past medical history

Hypertension	466 (80.2)
Valve surgery	124 (21.3)
CABG	12 (2.1)
Open heart surgery	172 (29.6)
A-fib or A-flutter	354 (60.9)
Pacemaker or ICD	197 (33.9)
COPD	179 (30.8)
Cirrhosis	103 (17.7)
Diabetes Mellitus	279 (48.0)
CKD	372 (64.0)
ESRD	115 (19.8)

eGFR*

eGFR \geq 60 mL/min	187/391 (47.8)
eGFR <60 mL/min	203/391 (51.9)
eGFR if <60, mL/min	31.0 [15.0, 46.0]

579 Values are n (%) mean \pm SD, n/N (%), or median [first quartile, third quartile]. * eGFR was not
580 available for patients of age >70 years.

581 A-fib or A-flutter = atrial fibrillation or atrial flutter; BMI = body mass index; CABG = coronary
582 artery bypass graft; CKD = chronic kidney disease; COPD = chronic obstructive pulmonary
583 disease; eGFR = estimated glomerular filtration rate; ERSR = end-stage renal disease; ICD =
584 implantable cardiac defibrillator; LE edema = lower extremity edema.

585

586

587

588 **Table 2.** Echocardiographic parameters of the total cohort.

Variables	N = 581
Peak TR velocity, m/s (N = 573)	3.40 [2.93, 3.89]
RA Pressure, mmHg (N = 519)	15.0 [8.0, 15.0]
Tricuspid valve vegetation	19 (3.3)
Prior TVR	9 (1.6)
Prior TV annuloplasty	7 (1.2)
Secondary TR	539 (92.8)
Primary TR	42 (7.2)
Primary TR type: Endocarditis	33/42 (78.6)
Primary TR type: Carcinoid	2/42 (4.8)
Primary TR type: Lead impingement	6/42 (14.3)
Primary TR type: Congenital	1/42 (2.4)
Pacemaker lead present	121 (20.8)
Right Ventricle	
TAPSE, mm (N = 461)	15.0 [12.0, 20.0]
S', cm/s (N = 276)	9.60 [7.45, 11.70]
RVSP, mmHg (N = 517)	58.0 [44.75, 72.0]
Base size, cm (N = 526)	4.40 [3.80, 5.10]
Mid-cavitary size, cm (N = 489)	3.80 [3.30, 4.40]
Longitudinal size, cm (N = 525)	7.20 [6.30, 8.20]
HV flow reversal	149/279 (53.4)
Pulmonary hypertension	
None, ≤ 34 mmHg	45/537 (8.4)
Mild, 35 – 44 mmHg	86/537 (16.0)
Moderate, 45 – 54 mmHg	100/537 (18.6)
Severe, ≥ 55 mmHg	306/537 (57.0)
TAPSE/PASP, mm/mmHg (N = 432)	0.27 [0.19, 0.38]

Left heart valve dysfunction

>Moderate MR	51 (8.8)
>Moderate MS	5 (0.9)
>Moderate AR	9 (1.5)
>Moderate AS	6 (1.0)
Any of the above	64 (11.0)
None of the above	517 (89.0)
Qualified for left-sided valve surgery	25 (4.3)

Left ventricular dysfunction by LVEF

None, LVEF 50% – 75%	337 (58.0)
Mild, LVEF 40% – 49%	53 (9.1)
Moderate, LVEF 30% – 39%	40 (6.9)
Severe, LVEF <30%	151 (26.0)

589 Values are median [first quartile, third quartile], n (%), or n/N (%).

590 AR = aortic regurgitation; AS = aortic stenosis; LVEF = left ventricular ejection fraction; MR =
591 mitral regurgitation; MS = mitral stenosis; RA Pressure = right atrial pressure; RVSP = right
592 ventricular systolic pressure; TAPSE = tricuspid annular plane systolic excursion; TAPSE/PASP
593 = Tricuspid annular plane systolic excursion/pulmonary artery systolic pressure; TR = tricuspid
594 regurgitation; TV = tricuspid valve; TVR = tricuspid valve repair or replacement.

595

596 **Table 3.** TR Etiology in the total cohort and by assigned treatment group.

Parameters	Total cohort	Medical therapy		Surgery	TTVI
		Advanced stage	Early stage		
	N = 581	N = 443	N = 27	N = 54	N = 57
Primary TR	42 (7.2)	12 (2.7)	9 (33.3)	16 (29.6)	5 (8.8)
Functional TR	539 (92.8)	431 (97.3)	18 (66.7)	38 (70.4)	52 (91.2)
Left valvular disease	60 (10.3)	33 (7.4)	2 (7.4)	23 (41.8)	2 (3.5)
LV systolic dysfunction	157 (27.0)	150 (33.9)	1 (3.7)	1 (1.8)	5 (8.8)
Severe pulmonary HTN	197 (33.9)	197 (44.5)	0	0	0
Isolated TR	125 (21.5)	51 (11.5)	15 (55.6)	14 (25.5)	45 (61.6)

597 Values are n (%). Left valvular disease was defined as greater than moderate mitral or aortic
 598 valve regurgitation or stenosis. LV systolic dysfunction was defined as LV ejection fraction
 599 <40% and absence of moderate-severe left valvular disease. Severe pulmonary hypertension was
 600 defined as pulmonary arterial pressure > 55 mmHg or TR jet velocity >3.6m/s with systolic
 601 septal flattening and absence of both moderate-severe left valvular disease and LV systolic
 602 dysfunction. Isolated TR was defined by the absence of severe pulmonary hypertension,
 603 moderate-severe left valvular disease, and LV systolic dysfunction.

604 HTN = hypertension; LV = left ventricular; TR = tricuspid regurgitation.

605

606

607 **Table 4.** In-hospital and late mortality by treatment group.

Mortality	Total cohort	Medical therapy			TTVI
		Advanced stage	Early stage	Surgery	
	N = 581	N = 443	N = 27	N = 54	N = 57
In-hospital	98 (16.9)	82 (18.5)	1 (3.7)	4 (7.4)	11 (19.3)
Late	57 (9.8)	46 (10.4)	1 (3.7)	5 (9.3)	5 (8.8)
Total	155 (26.7)	128 (28.9)	2 (7.4)	9 (16.7)	16 (28.1)

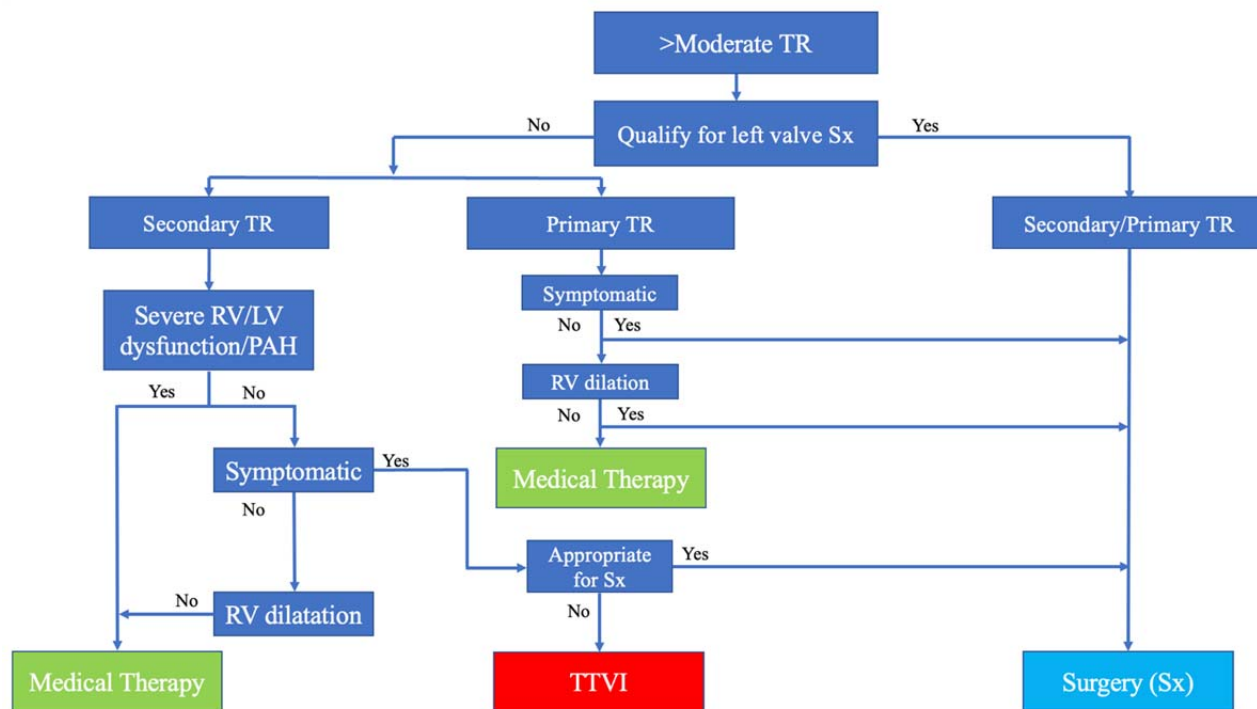
608 Values are n (%).

609 TTVI = transcatheter tricuspid valve intervention.

610

611

612 **FIGURES**
613



614
615

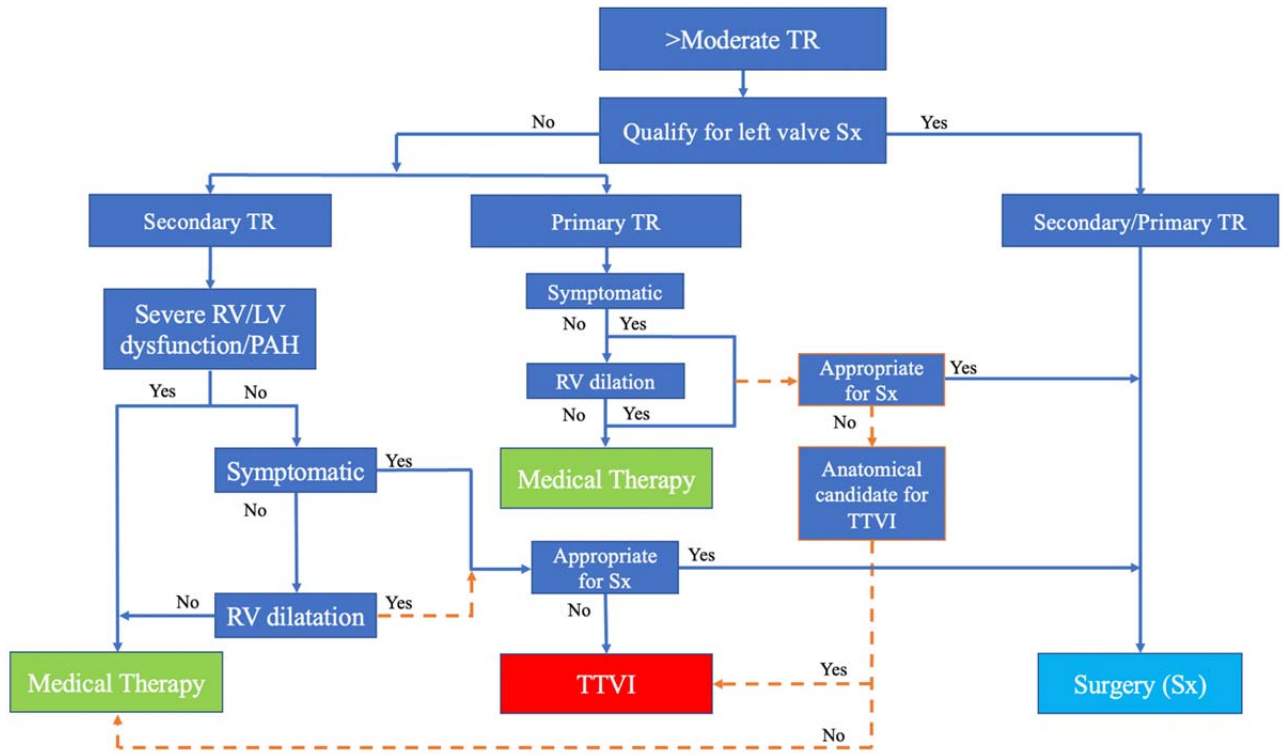
616 **Figure 1.** Management of tricuspid regurgitation based on the 2021 ESC guidelines

617 The 2021 European Society of Cardiology (ESC) guidelines for the management of valvular
618 disease include an algorithm for determining the management of tricuspid regurgitation (TR):
619 medical therapy, transcatheter tricuspid valve intervention (TTVI) or surgery (Sx).

620 RV dilatation = right ventricular dilatation; Severe RV/LV dysfunction/PAH= severe right
621 ventricular or left ventricular dysfunction or severe pulmonary arterial hypertension.

622

623



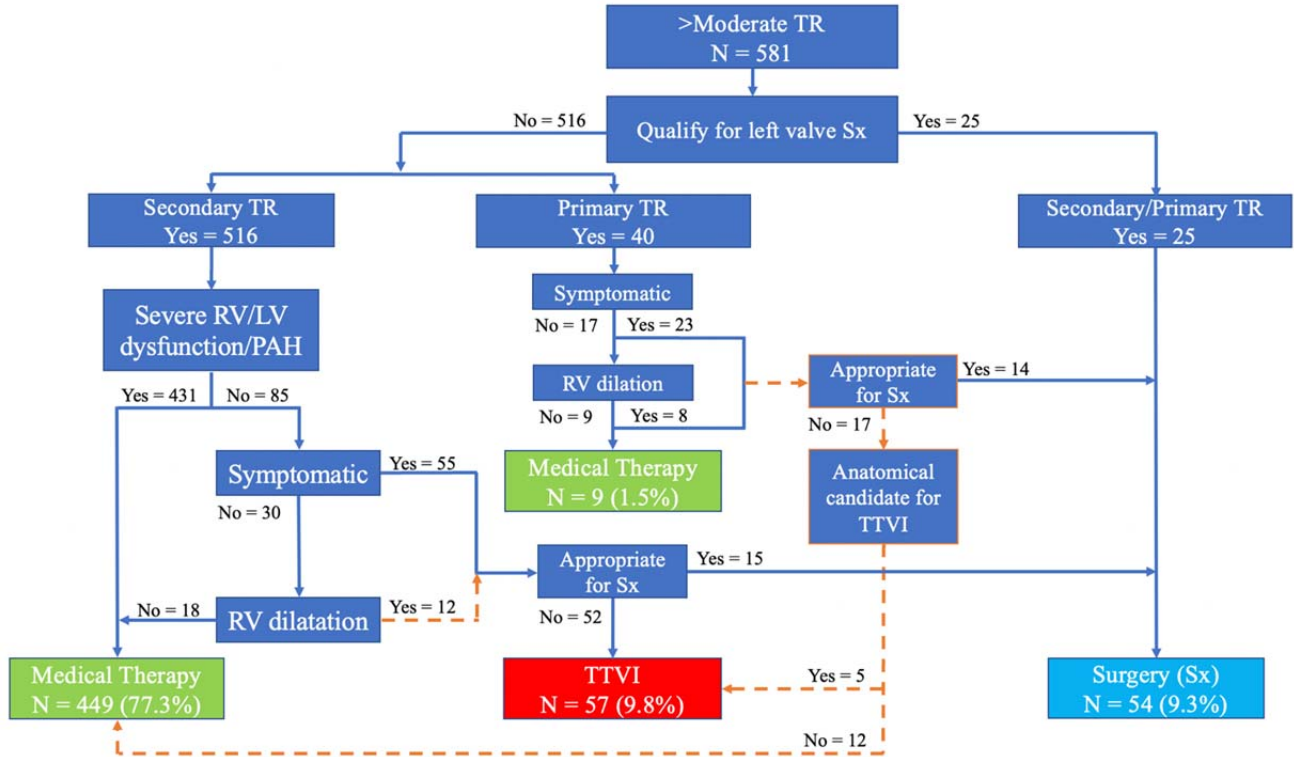
624

625 **Figure 2.** The modified ESC algorithm

626 We modified the 2021 ESC algorithm for determining the management of tricuspid regurgitation
 627 (orange dashed lines and orange borders). Abbreviations as in Figure 1.

628

629



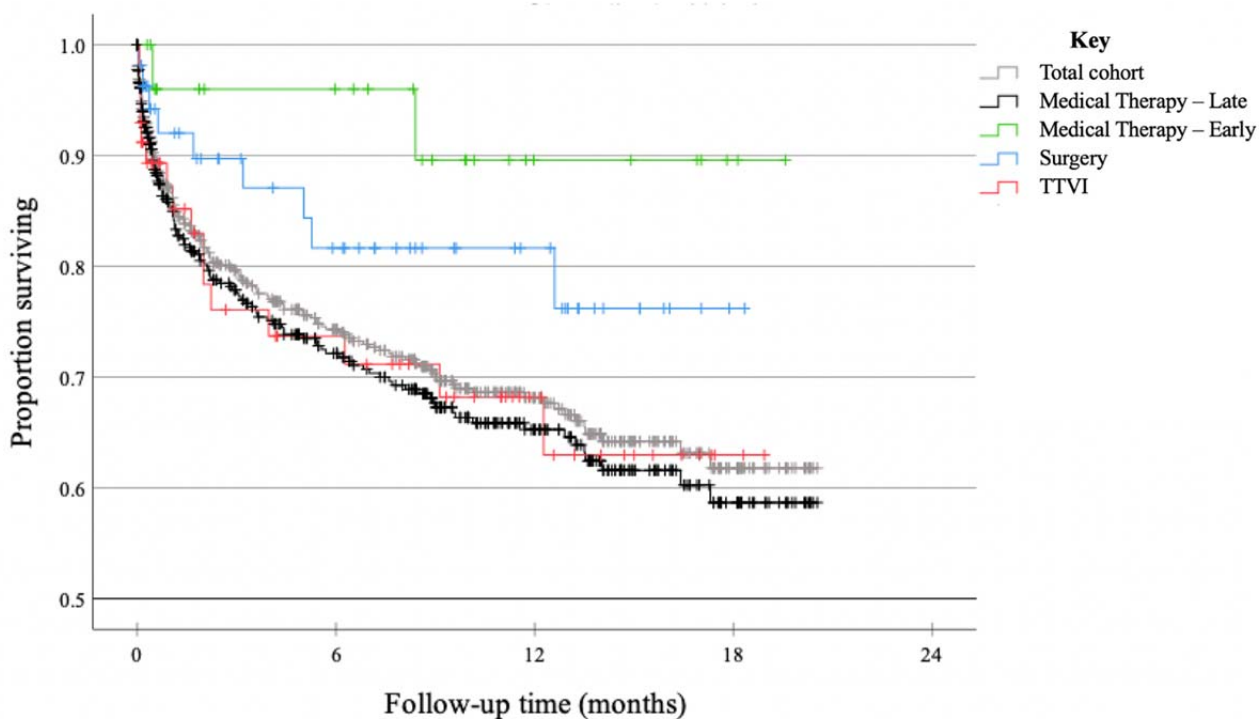
630

631 **Figure 3.** Applying the modified ESC algorithm

632 We applied the modified European Society of Cardiology (ESC) algorithm to our cohort of 581
 633 patients with more than moderate TR and determined the numbers of patients who were
 634 candidates for medical therapy, TTVI, or Sx. Abbreviations as in Figure 1.

635

636



637

638 **Figure 4.** Overall survival in the total cohort and by assigned treatment group.

639 Kaplan-Meier curves of overall survival in the total cohort and by assigned treatment group, with
 640 medical therapy divided into early and late stage (see Methods for definition of early vs. late).

641 The mean overall survival time in the total cohort was 14.5 months \pm a standard error of 0.4
 642 months (95% confidence interval [CI] = 13.74 – 15.31 months). The mean overall survival time
 643 was shortest in the groups assigned to TTVI (13.3 \pm 1.2 months, 95% CI = 11.0 – 15.6) and
 644 medical therapy with advanced stage (14.0 \pm 0.5 months, 95% CI = 13.1 – 14.9). The 27 patients
 645 assigned to medical therapy with early presentation had the longest overall survival (18.1 \pm 1.0
 646 months, 95% CI = 16.1 – 20.0), followed by those assigned to surgery (15.1 \pm 1.0 months, 95%
 647 CI = 13.2 – 17.0).

648

649