

Supplementary Material – Table of Contents

Supplementary Methods.....	2
sTable 1. Hospitals providing data for the study.....	3
sTable 2. Summary characteristics of Cohort 1	4
sTable 3. Summary characteristics of Cohort 2	5
sTable 4. Comparison of Cohort 1 and Cohort 2.....	6
sTable 5. Summary characteristics of Cohort 1 at 14 weeks.....	8
sTable 6. Summary characteristics of Cohort 1 at 20 weeks.....	10
sTable 7. Summary characteristics of Cohort 1 at 24 weeks.....	12
sTable 8. Summary characteristics of Cohort 1 at 28 weeks.....	14
sTable 9. Summary characteristics of Cohort 1 at 32 weeks.....	16
sTable 10. Summary characteristics of Cohort 1 at 36 weeks.....	18
sTable 11. Summary characteristics of Cohort 1 at 39 weeks.....	20
sTable 12. Summary characteristics of Cohort 1 on admission.....	22
sTable 13. Cohort 1 Model Performance.....	24
Supplementary Results. External Validation	25
sTable 14. Cohort 2 Model Performance.....	26
Results. Racial Bias Investigation	27
sFigure 1. Performance in racial groups.....	28
Results. Individual patient predictions	29
sFigure 2. Individual patient predictions.....	30
sFigure 3. Individual variables relationships.....	31
Supplementary Discussion.....	32
References	33

Supplementary Methods

External validation cohort

As data were available from eight hospitals, we developed all models using data from six hospitals (Cohort 1) and reserved the data from two hospitals (Cohort 2) for external validation. These two hospitals were chosen because they contain a representative sample of the entire population both in size and amount of data available.

Neural Networks

After processing the EHR to feature engineer, select relevant features, balance, and normalize the data, we fed the processed data into a fully connected deep neural network. We found that small changes to the network architecture could result in large changes in the results and thus used Optuna¹ and the built-in TPE Sampler to search the hyperparameter space and determine the best-performing model. Hyperparameters include the number of layers, number of nodes per layer, dropout rate, learning rate, batch size, and epochs. Skip connections were used to concatenate prior layers to ensure the passing of relevant information to subsequent layers.² RELU activation functions were applied between layers until the output layer, where we used a sigmoid function to produce a single risk score. The model was optimized using ADAM and a binary cross-entropy loss function.

Table S1. Data availability from all hospitals from the Mass General Brigham (MGB) Healthcare system.

	N (%)
Brigham and Women's Hospital	49606 (41.1)
Newton-Wellesley Hospital	28021 (23.2)
Massachusetts General Hospital	26134 (21.6)
Salem Hospital	7550 (6.3)
Wentworth-Douglass Hospital	4738 (3.9)
Cooley Dickinson Hospital	2967 (2.5)
Martha Vineyard Hospital	808 (0.7)
Nantucket Cottage Hospital	764 (0.6)
Not Specified	151 (0.1)

Table S2. Summary characteristics of Cohort 1.

	Preeclampsia (n=6464)	No preeclampsia (n=106583)	P-value
Maternal age at delivery, y	33.04 (29.64 - 36.67)	33.02 (30.01 - 35.92)	0.12
Self-reported race, White	3825 (59.17%)	71039 (66.65%)	< 0.01
Self-reported race, Black	1166 (18.04%)	10283 (9.65%)	< 0.01
Self-reported race, other	1517 (23.47%)	25798 (24.2%)	0.24
Self-reported ethnicity, Hispanic	1263 (19.54%)	16704 (15.67%)	< 0.01
Self-reported ethnicity, non-Hispanic	5201 (80.46%)	89879 (84.33%)	< 0.01
Tertiary hospital	4712 (72.9%)	71028 (66.64%)	< 0.01
Community hospital	1752 (27.1%)	35555 (33.36%)	< 0.01
Gravidity	2.0 (1.0 - 3.0)	2.0 (1.0 - 3.0)	0.29
Parity	1.0 (0.0 - 1.75)	1.0 (1.0 - 1.0)	< 0.01
Gestational age at delivery, weeks	37.57 (36.14 - 39.14)	39.29 (38.57 - 40.14)	< 0.01
BMI at delivery (kg/m ²)	33.2 (29.2 - 38.4)	29.9 (26.8 - 33.7)	< 0.01
Maximal SBP during pregnancy, mmHg	150.0 (140.0 - 160.0)	129.0 (120.0 - 138.0)	< 0.01
Maximal DBP during pregnancy, mmHg	93.0 (86.0 - 99.0)	80.0 (74.0 - 86.0)	< 0.01
Family history of chronic hypertension	2907 (44.97%)	38883 (36.48%)	< 0.01
Family history of preeclampsia	144 (2.23%)	2135 (2.0%)	0.22
Past history of chronic hypertension	1868 (28.9%)	5726 (5.37%)	< 0.01
Past history of gestational hypertension	500 (7.74%)	3452 (3.24%)	< 0.01
Past history of preeclampsia	525 (8.12%)	2179 (2.04%)	< 0.01
Preterm delivery (<37 weeks)	2143 (33.15%)	7446 (6.99%)	< 0.01
Antihypertensive medications	4507 (69.72%)	6044 (5.67%)	< 0.01
Proteinuria	3940 (60.95%)	801 (0.75%)	< 0.01
SGA or IUGR	536 (8.29%)	9241 (8.67%)	0.32

Median (IQR) for continuous variables; n (%) for categorical variables; p-values for continuous variables based on Kruskal-Wallis rank sum test; for categorical variables based on Fisher's exact or Chi-squared test.

Abbreviations: SBP, systolic blood pressure; DBP, diastolic blood pressure, BMI, body mass index, SGA, small for gestational age; IUGR, intrauterine growth restriction.

Table S3. Summary characteristics of Cohort 2.

	Preeclampsia (n=456)	No preeclampsia (n=7249)	P-value
Maternal age at delivery, y	30.71 (27.18 - 34.4)	31.19 (27.51 - 34.28)	0.85
Self-reported race, White	415 (91.01%)	6251 (86.23%)	0.29
Self-reported race, Black	6 (1.32%)	209 (2.88%)	0.052
Self-reported race, other	36 (7.89%)	828 (11.42%)	0.029
Self-reported ethnicity, Hispanic	26 (5.7%)	392 (5.41%)	0.79
Self-reported ethnicity, non-Hispanic	430 (94.3%)	6857 (94.59%)	0.95
Gravidity	1.5 (1.0 - 3.0)	2.0 (1.0 - 3.0)	0.015
Parity	1.0 (0.0 - 1.0)	1.0 (0.0 - 1.0)	< 0.01
Gestational age at delivery, weeks	38.57 (37.14 - 39.86)	39.57 (39.0 - 40.43)	< 0.01
BMI at delivery (kg/m ²)	33.62 (29.43 - 39.02)	31.2 (27.8 - 35.73)	< 0.01
Maximal SBP during pregnancy, mmHg	148.0 (141.0 - 158.0)	130.0 (122.0 - 139.0)	< 0.01
Maximal DBP during pregnancy, mmHg	95.0 (88.0 - 101.0)	82.0 (78.0 - 88.0)	< 0.01
Family history of chronic hypertension	168 (36.84%)	2394 (33.03%)	0.17
Family history of preeclampsia	5 (1.1%)	27 (0.37%)	0.02
Past history of chronic hypertension	28 (6.14%)	128 (1.77%)	< 0.01
Past history of gestational hypertension	11 (2.41%)	76 (1.05%)	< 0.01
Past history of preeclampsia	5 (1.1%)	26 (0.36%)	0.016
Preterm delivery (<37 weeks), number of patients	74 (16.23%)	301 (4.15%)	< 0.01
Antihypertensive medications	260 (57.02%)	311 (4.29%)	< 0.01
Proteinuria	346 (75.88%)	85 (1.17%)	< 0.01
SGA or IUGR	43 (9.43%)	522 (7.2%)	0.088

Median (IQR) for continuous variables; n (%) for categorical variables; p-values for continuous variables based on Kruskal-Wallis rank sum test; for categorical variables based on Fisher's exact or Chi-squared test.

Abbreviations: SBP, systolic blood pressure; DBP, diastolic blood pressure, BMI, body mass index, SGA, small for gestational age; IUGR, intrauterine growth restriction.

Table S4. Comparison of Cohort 1 and Cohort 2.

	Cohort 1 (n=113,047)	Cohort 2 (n=7,705)	P-Value
Maternal age at delivery, y	33.02 (29.99 - 35.96)	31.16 (27.49 - 34.3)	< 0.01
Self-reported race, White	74864 (66.22%)	6666 (86.52%)	< 0.01
Self-reported race, Black	11449 (10.13%)	215 (2.79%)	< 0.01
Self-reported race, other	27315 (24.16%)	864 (11.21%)	< 0.01
Self-reported ethnicity, Hispanic	17967 (15.89%)	418 (5.43%)	< 0.01
Self-reported ethnicity, non-Hispanic	95080 (84.11%)	7287 (94.57%)	< 0.01
Tertiary hospital	75740 (67.0%)	0 (0.0%)	< 0.01
Community hospital	37307 (33.0%)	7705 (100.0%)	< 0.01
Alcohol use	29334 (25.95%)	1167 (15.15%)	< 0.01
Smoking	11542 (10.21%)	939 (12.19%)	< 0.01
Illicit drugs	4925 (4.36%)	727 (9.44%)	< 0.01
Gravidity	2.0 (1.0 - 3.0)	2.0 (1.0 - 3.0)	< 0.01
Parity	1.0 (1.0 - 1.0)	1.0 (0.0 - 1.0)	0.063
Nulliparous	14973 (13.24%)	1016 (13.19%)	0.89
Gestational age at delivery, weeks	39.29 (38.43 - 40.14)	39.43 (38.86 - 40.43)	< 0.01
Interpregnancy interval, y	2.32 (1.83 - 3.04)	2.0 (1.62 - 2.5)	< 0.01
Maximal SBP during pregnancy, mmHg	130.0 (121.0 - 140.0)	130.0 (122.0 - 141.0)	0.015
Maximal DBP during pregnancy, mmHg	80.0 (75.0 - 87.0)	82.0 (78.0 - 90.0)	< 0.01
Maximal heart rate during pregnancy, bpm	95.0 (85.0 - 105.0)	96.0 (86.0 - 107.0)	< 0.01
Body mass index at delivery (kg/m ²)	30.0 (26.9 - 34.0)	31.3 (27.9 - 36.0)	< 0.01
Weight at delivery, kg	79.83 (71.49 - 90.72)	83.91 (73.94 - 96.89)	< 0.01
Family history of chronic hypertension	41790 (36.97%)	2562 (33.25%)	< 0.01
Family history of heart disease	1891 (1.67%)	46 (0.6%)	< 0.01
Family history of preeclampsia	2279 (2.02%)	32 (0.42%)	< 0.01
Past history of chronic hypertension	7594 (6.72%)	156 (2.02%)	< 0.01
Past history of gestational hypertension	3952 (3.5%)	87 (1.13%)	< 0.01
Past history of preeclampsia	2704 (2.39%)	31 (0.4%)	< 0.01
Past history of diabetes	4978 (4.4%)	261 (3.39%)	< 0.01
Gestational hypertension	12328 (10.91%)	600 (7.79%)	< 0.01
Anemia during pregnancy	18084 (16.0%)	395 (5.13%)	< 0.01
Headaches during pregnancy	13973 (12.36%)	277 (3.6%)	< 0.01
Autoimmune history	5537 (4.9%)	163 (2.12%)	< 0.01
High risk pregnancy	57251 (50.64%)	2822 (36.63%)	< 0.01
Gestational diabetes	14649 (12.96%)	486 (6.31%)	< 0.01
Baby oligohydramnios	2346 (2.08%)	58 (0.75%)	< 0.01
Preterm delivery (<37 weeks)	9589 (8.48%)	375 (4.87%)	< 0.01
Hyperemesis gravidarum	8992 (7.95%)	152 (1.97%)	< 0.01
Pregnancy related fatigue	21030 (18.6%)	1604 (20.82%)	< 0.01
Preeclampsia	6464 (5.72%)	456 (5.92%)	0.48
Maximal lactate dehydrogenase during pregnancy	206.0 (176.0 - 251.0)	188.0 (163.0 - 228.0)	< 0.01
Maximal PT/INR during pregnancy	1.0 (1.0 - 1.1)	1.0 (1.0 - 1.1)	0.13
Proteinuria	4741 (4.19%)	431 (5.59%)	< 0.01
Maximal AST during pregnancy	20.0 (17.0 - 27.0)	19.0 (15.0 - 26.0)	0.024
Maximal uric acid during pregnancy	4.8 (4.0 - 5.8)	4.8 (4.0 - 5.8)	0.71
Maximal white blood count during pregnancy	9.44 (8.67 - 9.94)	9.59 (8.76 - 12.44)	< 0.01
Maximal ALT during pregnancy	15.0 (10.0 - 24.0)	18.0 (13.0 - 27.0)	< 0.01
Maximal serum calcium during pregnancy	9.3 (9.1 - 9.6)	9.1 (8.8 - 9.4)	< 0.01
Maximal serum creatinine during pregnancy	0.64 (0.56 - 0.74)	0.6 (0.51 - 0.7)	< 0.01
Maximal eosinophils during pregnancy	1.2 (0.7 - 2.0)	1.1 (0.6 - 1.8)	0.078
Maximal serum glucose during pregnancy	89.0 (81.0 - 96.0)	90.0 (83.0 - 97.0)	< 0.01
Minimal hemoglobin during pregnancy	11.1 (10.5 - 11.7)	11.1 (10.5 - 11.8)	< 0.01
Maximal lymphocytes during pregnancy	22.6 (18.4 - 27.2)	18.0 (15.0 - 23.0)	< 0.01
Maximal platelets during pregnancy	257.0 (218.0 - 301.0)	254.0 (215.0 - 299.0)	0.22
Minimal red blood cell count during pregnancy	3.59 (3.28 - 3.86)	3.57 (3.23 - 3.86)	< 0.01
Antihypertensive medications	10551 (9.33%)	571 (7.41%)	< 0.01
SGA or IUGR	9777 (8.65%)	565 (7.33%)	< 0.01

Median (IQR) for continuous variables; n (%) for categorical variables; p-values for continuous variables based on Kruskal-Wallis rank sum test; for categorical variables based on Fisher's exact or Chi-squared test.

Abbreviations: SBP, systolic blood pressure; DBP, diastolic blood pressure, BMI, body mass index, PT/INR, prothrombin time/international normalized ratio; AST, aspartate transferase; ALT, alanine transaminase; SGA, small for gestational age; IUGR, intrauterine growth restriction.

Table S5. Summary characteristics of Cohort 1 patient data at 14 weeks gestation.

	Preeclampsia (n=6464)	No preeclampsia (n=106581)	P-Value
Maternal age, y	33.03 (29.66 - 36.65)	32.99 (30.03 - 35.9)	0.12
Self-reported race, White	3825 (59.17%)	71037 (66.65%)	< 0.01
Self-reported race, Black	1166 (18.04%)	10283 (9.65%)	< 0.01
Self-reported race, other	1517 (23.47%)	25798 (24.2%)	0.24
Self-reported ethnicity, Hispanic	1263 (19.54%)	16704 (15.67%)	< 0.01
Self-reported ethnicity, non-Hispanic	5201 (80.46%)	89879 (84.33%)	< 0.01
Private insurance	5085 (78.67%)	90488 (84.9%)	< 0.01
Public insurance	1851 (28.64%)	22076 (20.71%)	< 0.01
Alcohol use history	1577 (24.4%)	24164 (22.67%)	< 0.01
Smoking history	877 (13.57%)	10403 (9.76%)	< 0.01
Illicit drugs history	317 (4.9%)	3213 (3.01%)	< 0.01
Gravidity	2.0 (1.0 - 3.0)	2.0 (1.0 - 3.0)	0.61
Parity	1.0 (1.0 - 1.0)	1.0 (1.0 - 1.0)	< 0.01
In vitro fertilization	396 (6.13%)	4141 (3.89%)	< 0.01
Nulliparous	1183 (18.3%)	13790 (12.94%)	< 0.01
Interpregnancy interval, y	2.3 (2.3 - 2.3)	2.3 (2.3 - 2.3)	0.93
Multiple gestation	479 (7.41%)	2870 (2.69%)	< 0.01
Maximal SBP 0-14 weeks, mmHg	120.0 (118.0 - 130.0)	118.0 (112.0 - 120.0)	< 0.01
Maximal DBP 0-14 weeks, mmHg	72.0 (71.0 - 81.0)	71.0 (68.0 - 74.0)	< 0.01
Maximal heart rate 0-14 weeks, bpm	85.0 (85.0 - 85.0)	85.0 (85.0 - 85.0)	< 0.01
Maximal body mass index 0-14 weeks (kg/m ²)	25.1 (25.1 - 30.5)	25.1 (23.8 - 26.0)	< 0.01
Maximal weight 0-14 weeks, kg	67.31 (67.31 - 82.49)	67.31 (63.05 - 70.85)	< 0.01
Family history of chronic hypertension	2907 (44.97%)	38881 (36.48%)	< 0.01
Family history of heart disease	2980 (46.1%)	40548 (38.04%)	< 0.01
Family history of preeclampsia	144 (2.23%)	2135 (2.0%)	0.22
Family history of diabetes	329 (5.09%)	4078 (3.83%)	< 0.01
Family history of hyperlipidemia	120 (1.86%)	1571 (1.47%)	0.015
Family history of stroke	157 (2.43%)	1854 (1.74%)	< 0.01
Past history of diabetes	507 (7.84%)	3036 (2.85%)	< 0.01
Past history of gestational diabetes	359 (5.55%)	4260 (4.0%)	< 0.01
Past history of cesarean delivery	1458 (22.56%)	19675 (18.46%)	< 0.01
Past history of preterm birth	510 (7.89%)	4582 (4.3%)	< 0.01
Past history of gynecologic surgery	780 (12.07%)	13528 (12.69%)	0.17
Past history of asthma	949 (14.68%)	11136 (10.45%)	< 0.01
Past history of chronic hypertension	1868 (28.9%)	5725 (5.37%)	< 0.01
Past history of gestational hypertension	500 (7.74%)	3451 (3.24%)	< 0.01
Past history of high-risk pregnancy	1166 (18.04%)	18472 (17.33%)	0.19
Past history of hyperemesis gravidarum	1037 (16.04%)	17344 (16.27%)	0.66
Past history of migraine	900 (13.92%)	10867 (10.2%)	< 0.01
Past history of obesity	2050 (31.71%)	16482 (15.46%)	< 0.01
Past history of preeclampsia	525 (8.12%)	2179 (2.04%)	< 0.01
Past history of pregnancy related fatigue	522 (8.08%)	9311 (8.74%)	0.08
Past history of sexually transmitted disease	345 (5.34%)	5163 (4.84%)	0.081
Chronic hypertension	810 (12.53%)	2312 (2.17%)	< 0.01
Anemia during pregnancy	715 (11.06%)	10315 (9.68%)	< 0.01
Headaches during pregnancy	950 (14.7%)	10861 (10.19%)	< 0.01
Autoimmune disease	635 (9.82%)	4902 (4.6%)	< 0.01
High risk pregnancy	2806 (43.41%)	37505 (35.19%)	< 0.01
Hyperemesis gravidarum	304 (4.7%)	3848 (3.61%)	< 0.01
Pregnancy related fatigue	474 (7.33%)	6917 (6.49%)	0.01
Proteinuria 0-14 weeks	69 (1.07%)	37 (0.03%)	< 0.01
Maximal AST 0-14 weeks	17.0 (17.0 - 17.0)	17.0 (17.0 - 17.0)	< 0.01
Maximal white blood count 0-14 weeks	8.51 (8.1 - 9.62)	8.51 (7.9 - 9.2)	< 0.01
Maximal ALT 0-14 weeks	15.0 (15.0 - 15.0)	15.0 (15.0 - 15.0)	< 0.01
Maximal serum calcium 0-14 weeks	9.3 (9.3 - 9.3)	9.3 (9.3 - 9.3)	< 0.01
Maximal serum creatinine 0-14 weeks	0.62 (0.62 - 0.62)	0.62 (0.62 - 0.62)	< 0.01
Maximal eosinophils 0-14 weeks	1.0 (1.0 - 1.0)	1.0 (1.0 - 1.0)	0.089
Maximal serum glucose 0-14 weeks	89.0 (89.0 - 89.0)	89.0 (89.0 - 89.0)	< 0.01
Minimal hemoglobin 0-14 weeks	12.7 (12.2 - 13.0)	12.7 (12.3 - 13.0)	0.082
Maximal lymphocytes 0-14 weeks	23.4 (23.4 - 23.4)	23.4 (23.4 - 23.4)	0.28
Maximal platelets 0-14 weeks	258.0 (250.0 - 298.0)	258.0 (239.0 - 276.0)	< 0.01
Minimal red blood cell count 0-14 weeks	4.24 (4.14 - 4.42)	4.24 (4.12 - 4.34)	< 0.01
Antihypertensive medications 0-14 weeks	40 (0.62%)	26 (0.02%)	< 0.01

Median (IQR) for continuous variables; n (%) for categorical variables; p-values for continuous variables based on Kruskal-Wallis rank sum test; for categorical variables based on Fisher's exact or Chi-squared test.

Abbreviations: SBP, systolic blood pressure; DBP, diastolic blood pressure, BMI, body mass index, PT/INR, prothrombin time/international normalized ratio; AST, aspartate transferase; ALT, alanine transaminase; SGA, small for gestational age; IUGR, intrauterine growth restriction.

Table S6. Summary characteristics of Cohort 1 patient data at 20 weeks gestation.

	Preeclampsia (n=6464)	No preeclampsia (n=106581)	P-Value
Maternal age, y	33.03 (29.66 - 36.65)	32.99 (30.03 - 35.9)	0.12
Self-reported race, White	3825 (59.17%)	71037 (66.65%)	< 0.01
Self-reported race, Black	1166 (18.04%)	10283 (9.65%)	< 0.01
Self-reported race, other	1517 (23.47%)	25798 (24.2%)	0.24
Self-reported ethnicity, Hispanic	1263 (19.54%)	16704 (15.67%)	< 0.01
Self-reported ethnicity, non-Hispanic	5201 (80.46%)	89879 (84.33%)	< 0.01
Private insurance	5085 (78.67%)	90488 (84.9%)	< 0.01
Public insurance	1851 (28.64%)	22076 (20.71%)	< 0.01
Alcohol use history	1577 (24.4%)	24164 (22.67%)	< 0.01
Smoking history	877 (13.57%)	10403 (9.76%)	< 0.01
Illicit drugs history	317 (4.9%)	3213 (3.01%)	< 0.01
Gravidity	2.0 (1.0 - 3.0)	2.0 (1.0 - 3.0)	0.61
Parity	1.0 (1.0 - 1.0)	1.0 (1.0 - 1.0)	< 0.01
In vitro fertilization	396 (6.13%)	4141 (3.89%)	< 0.01
Nulliparous	1183 (18.3%)	13790 (12.94%)	< 0.01
Interpregnancy interval, y	2.3 (2.3 - 2.3)	2.3 (2.3 - 2.3)	0.93
Multiple gestation	479 (7.41%)	2870 (2.69%)	< 0.01
Maximal SBP 0-20 weeks, mmHg	122.0 (120.0 - 135.0)	120.0 (113.0 - 122.0)	< 0.01
Maximal DBP 0-20 weeks, mmHg	76.0 (72.0 - 83.0)	72.0 (70.0 - 77.0)	< 0.01
Maximal heart rate 0-20 weeks, bpm	87.0 (87.0 - 87.0)	87.0 (87.0 - 87.0)	< 0.01
Maximal body mass index 0-20 weeks (kg/m ²)	25.9 (25.9 - 31.9)	25.9 (24.3 - 27.2)	< 0.01
Maximal weight 0-20 weeks, kg	69.4 (69.12 - 86.18)	69.4 (64.41 - 74.0)	< 0.01
Family history of chronic hypertension	2907 (44.97%)	38881 (36.48%)	< 0.01
Family history of heart disease	2980 (46.1%)	40548 (38.04%)	< 0.01
Family history of preeclampsia	144 (2.23%)	2135 (2.0%)	0.22
Family history of diabetes	329 (5.09%)	4078 (3.83%)	< 0.01
Family history of hyperlipidemia	120 (1.86%)	1571 (1.47%)	0.015
Family history of stroke	157 (2.43%)	1854 (1.74%)	< 0.01
Past history of diabetes	507 (7.84%)	3036 (2.85%)	< 0.01
Past history of cesarean delivery	1458 (22.56%)	19675 (18.46%)	< 0.01
Past history of preterm birth	510 (7.89%)	4582 (4.3%)	< 0.01
Past history of gynecologic surgery	780 (12.07%)	13528 (12.69%)	0.17
Past history of asthma	949 (14.68%)	11136 (10.45%)	< 0.01
Past history of chronic hypertension	1868 (28.9%)	5725 (5.37%)	< 0.01
Past history of gestational hypertension	500 (7.74%)	3451 (3.24%)	< 0.01
Past history of high-risk pregnancy	1166 (18.04%)	18472 (17.33%)	0.19
Past history of hyperemesis gravidarum	1037 (16.04%)	17344 (16.27%)	0.66
Past history of migraine	900 (13.92%)	10867 (10.2%)	< 0.01
Past history of obesity	2050 (31.71%)	16482 (15.46%)	< 0.01
Past history of preeclampsia	525 (8.12%)	2179 (2.04%)	< 0.01
Past history of pregnancy related fatigue	522 (8.08%)	9311 (8.74%)	0.08
Past history of sexually transmitted disease	345 (5.34%)	5163 (4.84%)	0.081
Chronic hypertension	942 (14.57%)	2673 (2.51%)	< 0.01
Gestational diabetes	420 (6.5%)	4612 (4.33%)	< 0.01
Anemia during pregnancy	767 (11.87%)	10805 (10.14%)	< 0.01
Headaches during pregnancy	976 (15.1%)	11245 (10.55%)	< 0.01
Autoimmune disease	635 (9.82%)	4902 (4.6%)	< 0.01
High risk pregnancy	3099 (47.94%)	41091 (38.55%)	< 0.01
Hyperemesis gravidarum	402 (6.22%)	5166 (4.85%)	< 0.01
Pregnancy related fatigue	682 (10.55%)	9591 (9.0%)	0.01
Proteinuria 0-20 weeks	126 (1.95%)	69 (0.06%)	< 0.01
Maximal AST 0-20 weeks	17.0 (17.0 - 17.0)	17.0 (17.0 - 17.0)	< 0.01
Maximal white blood count 0-20 weeks	8.57 (8.1 - 9.73)	8.57 (7.88 - 9.33)	< 0.01
Maximal ALT 0-20 weeks	15.0 (15.0 - 15.0)	15.0 (15.0 - 15.0)	< 0.01
Maximal serum calcium 0-20 weeks	9.3 (9.3 - 9.3)	9.3 (9.3 - 9.3)	< 0.01
Maximal serum creatinine 0-20 weeks	0.6 (0.6 - 0.6)	0.6 (0.6 - 0.6)	< 0.01
Maximal eosinophils 0-20 weeks	1.0 (1.0 - 1.0)	1.0 (1.0 - 1.0)	0.037
Maximal serum glucose 0-20 weeks	89.0 (89.0 - 89.0)	89.0 (89.0 - 89.0)	< 0.01
Minimal hemoglobin 0-20 weeks	12.6 (12.0 - 12.9)	12.6 (12.2 - 12.9)	0.028
Maximal lymphocytes 0-20 weeks	23.2 (23.2 - 23.2)	23.2 (23.2 - 23.2)	0.58
Maximal platelets 0-20 weeks	258.0 (247.0 - 300.0)	258.0 (236.0 - 278.0)	< 0.01
Minimal red blood cell count 0-20 weeks	4.21 (4.08 - 4.41)	4.21 (4.08 - 4.33)	< 0.01
Antihypertensive medications 0-20 weeks	74 (1.14%)	51 (0.05%)	< 0.01

Median (IQR) for continuous variables; n (%) for categorical variables; p-values for continuous variables based on Kruskal-Wallis rank sum test; for categorical variables based on Fisher's exact or Chi-squared test.

Abbreviations: SBP, systolic blood pressure; DBP, diastolic blood pressure, BMI, body mass index, PT/INR, prothrombin time/international normalized ratio; AST, aspartate transferase; ALT, alanine transaminase; SGA, small for gestational age; IUGR, intrauterine growth restriction.

Table S7. Summary characteristics of Cohort 1 patient data at 24 weeks gestation.

	Preeclampsia (n=6464)	No preeclampsia (n=106581)	P-Value
Maternal age, y	33.03 (29.66 - 36.65)	32.99 (30.03 - 35.9)	0.12
Self-reported race, White	3825 (59.17%)	71037 (66.65%)	< 0.01
Self-reported race, Black	1166 (18.04%)	10283 (9.65%)	< 0.01
Self-reported race, other	1517 (23.47%)	25798 (24.2%)	0.24
Self-reported ethnicity, Hispanic	1263 (19.54%)	16704 (15.67%)	< 0.01
Self-reported ethnicity, non-Hispanic	5201 (80.46%)	89879 (84.33%)	< 0.01
Private insurance	5085 (78.67%)	90488 (84.9%)	< 0.01
Public insurance	1851 (28.64%)	22076 (20.71%)	< 0.01
Alcohol use history	1577 (24.4%)	24164 (22.67%)	< 0.01
Smoking history	877 (13.57%)	10403 (9.76%)	< 0.01
Illicit drugs history	317 (4.9%)	3213 (3.01%)	< 0.01
Gravidity	2.0 (1.0 - 3.0)	2.0 (1.0 - 3.0)	0.61
Parity	1.0 (1.0 - 1.0)	1.0 (1.0 - 1.0)	< 0.01
In vitro fertilization	396 (6.13%)	4141 (3.89%)	< 0.01
Nulliparous	1183 (18.3%)	13790 (12.94%)	< 0.01
Interpregnancy interval, y	2.3 (2.3 - 2.3)	2.3 (2.3 - 2.3)	0.93
Multiple gestation	479 (7.41%)	2870 (2.69%)	< 0.01
Maximal SBP 0-24 weeks, mmHg	124.0 (120.0 - 136.0)	120.0 (114.0 - 123.0)	< 0.01
Maximal DBP 0-24 weeks, mmHg	78.0 (73.0 - 84.0)	73.0 (70.0 - 78.0)	< 0.01
Maximal heart rate 0-24 weeks, bpm	88.0 (88.0 - 89.0)	88.0 (88.0 - 88.0)	< 0.01
Maximal body mass index 0-24 weeks, (kg/m ²)	26.62 (26.6 - 32.8)	26.6 (24.9 - 28.1)	< 0.01
Maximal weight 0-24 weeks, kg	71.67 (70.74 - 88.38)	71.21 (65.95 - 76.29)	< 0.01
Family history of chronic hypertension	2907 (44.97%)	38881 (36.48%)	< 0.01
Family history of heart disease	2980 (46.1%)	40548 (38.04%)	< 0.01
Family history of preeclampsia	144 (2.23%)	2135 (2.0%)	0.22
Family history of diabetes	329 (5.09%)	4078 (3.83%)	< 0.01
Family history of hyperlipidemia	120 (1.86%)	1571 (1.47%)	0.015
Family history of stroke	157 (2.43%)	1854 (1.74%)	< 0.01
Past history of diabetes	507 (7.84%)	3036 (2.85%)	< 0.01
Past history of cesarean delivery	1458 (22.56%)	19675 (18.46%)	< 0.01
Past history of preterm birth	510 (7.89%)	4582 (4.3%)	< 0.01
Past history of gynecologic surgery	780 (12.07%)	13528 (12.69%)	0.17
Past history of asthma	949 (14.68%)	11136 (10.45%)	< 0.01
Past history of chronic hypertension	1868 (28.9%)	5725 (5.37%)	< 0.01
Past history of gestational hypertension	500 (7.74%)	3451 (3.24%)	< 0.01
Past history of high-risk pregnancy	1166 (18.04%)	18472 (17.33%)	0.19
Past history of hyperemesis gravidarum	1037 (16.04%)	17344 (16.27%)	0.66
Past history of migraine	900 (13.92%)	10867 (10.2%)	< 0.01
Past history of obesity	2050 (31.71%)	16482 (15.46%)	< 0.01
Past history of preeclampsia	525 (8.12%)	2179 (2.04%)	< 0.01
Past history of pregnancy related fatigue	522 (8.08%)	9311 (8.74%)	0.08
Past history of sexually transmitted disease	345 (5.34%)	5163 (4.84%)	0.081
Chronic or gestational hypertension	1045 (16.17%)	2943 (2.76%)	< 0.01
Gestational diabetes	449 (6.95%)	4936 (4.63%)	< 0.01
Anemia during pregnancy	789 (12.21%)	11097 (10.41%)	< 0.01
Headaches during pregnancy	992 (15.35%)	11383 (10.68%)	< 0.01
Autoimmune disease	635 (9.82%)	4902 (4.6%)	< 0.01
High risk pregnancy	3255 (50.36%)	43013 (40.36%)	< 0.01
Hyperemesis gravidarum	445 (6.88%)	5960 (5.59%)	< 0.01
Pregnancy related fatigue	793 (12.27%)	11426 (10.72%)	< 0.01
Proteinuria 0-24 weeks,	151 (2.34%)	78 (0.07%)	< 0.01
Maximal AST 0-24 weeks,	17.0 (17.0 - 17.0)	17.0 (17.0 - 17.0)	< 0.01
Maximal white blood count 0-24 weeks	8.63 (8.14 - 9.8)	8.63 (7.9 - 9.39)	< 0.01
Maximal ALT 0-24 weeks	15.0 (15.0 - 15.0)	15.0 (15.0 - 15.0)	< 0.01
Maximal serum calcium 0-24 weeks	9.3 (9.3 - 9.3)	9.3 (9.3 - 9.3)	< 0.01
Maximal serum creatinine 0-24 weeks	0.6 (0.6 - 0.6)	0.6 (0.6 - 0.6)	< 0.01
Maximal eosinophils 0-24 weeks	1.1 (1.1 - 1.1)	1.1 (1.1 - 1.1)	0.036
Maximal serum glucose 0-24 weeks	89.0 (89.0 - 89.0)	89.0 (89.0 - 89.0)	< 0.01
Minimal hemoglobin 0-24 weeks	12.5 (11.9 - 12.9)	12.5 (12.1 - 12.9)	< 0.01
Maximal lymphocytes 0-24 weeks	23.1 (23.1 - 23.1)	23.1 (23.1 - 23.1)	0.84
Maximal platelets 0-24 weeks	258.0 (246.0 - 302.0)	258.0 (236.0 - 279.0)	< 0.01
Minimal red blood cell count 0-24 weeks	4.18 (4.03 - 4.38)	4.18 (4.05 - 4.32)	0.19
Antihypertensive medications 0-24 weeks	107 (1.66%)	71 (0.07%)	< 0.01

Median (IQR) for continuous variables; n (%) for categorical variables; p-values for continuous variables based on Kruskal-Wallis rank sum test; for categorical variables based on Fisher's exact or Chi-squared test.

Abbreviations: SBP, systolic blood pressure; DBP, diastolic blood pressure, BMI, body mass index, PT/INR, prothrombin time/international normalized ratio; AST, aspartate transferase; ALT, alanine transaminase; SGA, small for gestational age; IUGR, intrauterine growth restriction.

Table S8. Summary characteristics of Cohort 1 patient data at 28 weeks gestation.

	Preeclampsia (n=6464)	No preeclampsia (n=106581)	P-Value
Maternal age, y	33.03 (29.66 - 36.65)	32.99 (30.03 - 35.9)	0.12
Self-reported race, White	3825 (59.17%)	71037 (66.65%)	< 0.01
Self-reported race, Black	1166 (18.04%)	10283 (9.65%)	< 0.01
Self-reported race, other	1517 (23.47%)	25798 (24.2%)	0.24
Self-reported ethnicity, Hispanic	1263 (19.54%)	16704 (15.67%)	< 0.01
Self-reported ethnicity, non-Hispanic	5201 (80.46%)	89879 (84.33%)	< 0.01
Private insurance	5085 (78.67%)	90488 (84.9%)	< 0.01
Public insurance	1851 (28.64%)	22076 (20.71%)	< 0.01
Alcohol use history	1577 (24.4%)	24164 (22.67%)	< 0.01
Smoking history	877 (13.57%)	10403 (9.76%)	< 0.01
Illicit drugs history	317 (4.9%)	3213 (3.01%)	< 0.01
Gravidity	2.0 (1.0 - 3.0)	2.0 (1.0 - 3.0)	0.61
Parity	1.0 (1.0 - 1.0)	1.0 (1.0 - 1.0)	< 0.01
In vitro fertilization	396 (6.13%)	4141 (3.89%)	< 0.01
Nulliparous	1183 (18.3%)	13790 (12.94%)	< 0.01
Interpregnancy interval, y	2.3 (2.3 - 2.3)	2.3 (2.3 - 2.3)	0.93
Multiple gestation	479 (7.41%)	2870 (2.69%)	< 0.01
Maximal SBP 0-28 weeks, mmHg	126.0 (120.0 - 139.0)	120.0 (116.0 - 124.0)	< 0.01
Maximal DBP 0-28 weeks, mmHg	80.0 (74.0 - 86.0)	74.0 (70.0 - 78.0)	< 0.01
Maximal heart rate 0-28 weeks, bpm	89.0 (89.0 - 92.0)	89.0 (89.0 - 89.0)	< 0.01
Maximal body mass index 0-28 weeks, (kg/m ²)	28.0 (27.5 - 33.8)	27.5 (25.7 - 29.2)	< 0.01
Maximal weight 0-28 weeks, kg	75.18 (72.57 - 91.17)	73.71 (68.04 - 79.29)	< 0.01
Family history of chronic hypertension	2907 (44.97%)	38881 (36.48%)	< 0.01
Family history of heart disease	2980 (46.1%)	40548 (38.04%)	< 0.01
Family history of preeclampsia	144 (2.23%)	2135 (2.0%)	0.22
Family history of diabetes	329 (5.09%)	4078 (3.83%)	< 0.01
Family history of hyperlipidemia	120 (1.86%)	1571 (1.47%)	0.015
Family history of stroke	157 (2.43%)	1854 (1.74%)	< 0.01
Past history of diabetes	507 (7.84%)	3036 (2.85%)	< 0.01
Past history of cesarean delivery	1458 (22.56%)	19675 (18.46%)	< 0.01
Past history of preterm birth	510 (7.89%)	4582 (4.3%)	< 0.01
Past history of gynecologic surgery	780 (12.07%)	13528 (12.69%)	0.17
Past history of asthma	949 (14.68%)	11136 (10.45%)	< 0.01
Past history of chronic hypertension	1868 (28.9%)	5725 (5.37%)	< 0.01
Past history of gestational hypertension	500 (7.74%)	3451 (3.24%)	< 0.01
Past history of high-risk pregnancy	1166 (18.04%)	18472 (17.33%)	0.19
Past history of hyperemesis gravidarum	1037 (16.04%)	17344 (16.27%)	0.66
Past history of migraine	900 (13.92%)	10867 (10.2%)	< 0.01
Past history of obesity	2050 (31.71%)	16482 (15.46%)	< 0.01
Past history of preeclampsia	525 (8.12%)	2179 (2.04%)	< 0.01
Past history of pregnancy related fatigue	522 (8.08%)	9311 (8.74%)	0.08
Past history of sexually transmitted disease	345 (5.34%)	5163 (4.84%)	0.081
Chronic or gestational hypertension	1239 (19.17%)	3389 (3.18%)	< 0.01
Gestational diabetes	817 (12.64%)	9424 (8.84%)	< 0.01
Anemia during pregnancy	900 (13.92%)	12490 (11.72%)	< 0.01
Headaches during pregnancy	1016 (15.72%)	11514 (10.8%)	< 0.01
Autoimmune disease	635 (9.82%)	4902 (4.6%)	< 0.01
High risk pregnancy	3255 (50.36%)	43013 (40.36%)	< 0.01
Hyperemesis gravidarum	445 (6.88%)	5960 (5.59%)	< 0.01
Pregnancy related fatigue	793 (12.27%)	11426 (10.72%)	< 0.01
Proteinuria 0-28 weeks	195 (3.02%)	87 (0.08%)	< 0.01
Maximal AST 0-28 weeks,	17.0 (17.0 - 17.0)	17.0 (17.0 - 17.0)	< 0.01
Maximal white blood count 0-28 weeks	9.0 (8.48 - 9.86)	9.0 (8.33 - 9.6)	< 0.01
Maximal ALT 0-28 weeks	15.0 (15.0 - 15.0)	15.0 (15.0 - 15.0)	< 0.01
Maximal serum calcium 0-28 weeks	9.3 (9.3 - 9.3)	9.3 (9.3 - 9.3)	< 0.01
Maximal serum creatinine 0-28 weeks	0.59 (0.59 - 0.59)	0.59 (0.59 - 0.59)	< 0.01
Maximal eosinophils 0-28 weeks	1.1 (1.1 - 1.1)	1.1 (1.1 - 1.1)	0.019
Maximal serum glucose 0-28 weeks	87.0 (87.0 - 87.0)	87.0 (87.0 - 87.0)	< 0.01
Minimal hemoglobin 0-28 weeks	11.6 (11.1 - 12.1)	11.6 (11.2 - 12.1)	0.24
Maximal lymphocytes 0-28 weeks	22.7 (22.7 - 22.7)	22.7 (22.7 - 22.7)	0.65
Maximal platelets 0-28 weeks	258.0 (244.0 - 306.0)	258.0 (233.0 - 283.0)	< 0.01
Minimal red blood cell count 0-28 weeks	3.82 (3.69 - 4.1)	3.82 (3.68 - 4.01)	< 0.01
Antihypertensive medications 0-28 weeks	167 (2.58%)	117 (0.11%)	< 0.01

Median (IQR) for continuous variables; n (%) for categorical variables; p-values for continuous variables based on Kruskal-Wallis rank sum test; for categorical variables based on Fisher's exact or Chi-squared test.

Abbreviations: SBP, systolic blood pressure; DBP, diastolic blood pressure, BMI, body mass index, PT/INR, prothrombin time/international normalized ratio; AST, aspartate transferase; ALT, alanine transaminase; SGA, small for gestational age; IUGR, intrauterine growth restriction.

Table S9. Summary characteristics of Cohort 1 patient data at 32 weeks gestation.

	Preeclampsia (n=6464)	No preeclampsia (n=106581)	P-Value
Maternal age, y	33.03 (29.66 - 36.65)	32.99 (30.03 - 35.9)	0.12
Self-reported race, White	3825 (59.17%)	71037 (66.65%)	< 0.01
Self-reported race, Black	1166 (18.04%)	10283 (9.65%)	< 0.01
Self-reported race, other	1517 (23.47%)	25798 (24.2%)	0.24
Self-reported ethnicity, Hispanic	1263 (19.54%)	16704 (15.67%)	< 0.01
Self-reported ethnicity, non-Hispanic	5201 (80.46%)	89879 (84.33%)	< 0.01
Private insurance	5085 (78.67%)	90488 (84.9%)	< 0.01
Public insurance	1851 (28.64%)	22076 (20.71%)	< 0.01
Alcohol use history	1577 (24.4%)	24164 (22.67%)	< 0.01
Smoking history	877 (13.57%)	10403 (9.76%)	< 0.01
Illicit drugs history	317 (4.9%)	3213 (3.01%)	< 0.01
Gravidity	2.0 (1.0 - 3.0)	2.0 (1.0 - 3.0)	0.61
Parity	1.0 (1.0 - 1.0)	1.0 (1.0 - 1.0)	< 0.01
In vitro fertilization	396 (6.13%)	4141 (3.89%)	< 0.01
Nulliparous	1183 (18.3%)	13790 (12.94%)	< 0.01
Interpregnancy interval, y	2.3 (2.3 - 2.3)	2.3 (2.3 - 2.3)	0.93
Multiple gestation	479 (7.41%)	2870 (2.69%)	< 0.01
Maximal SBP 0-32 weeks, mmHg	130.0 (122.0 - 142.0)	122.0 (117.0 - 126.0)	< 0.01
Maximal DBP 0-32 weeks, mmHg	80.0 (75.0 - 88.0)	75.0 (70.0 - 80.0)	< 0.01
Maximal heart rate 0-32 weeks, bpm	91.0 (91.0 - 96.0)	91.0 (91.0 - 91.0)	< 0.01
Maximal body mass index 0-32 weeks, (kg/m ²)	29.3 (28.3 - 35.1)	28.3 (26.3 - 30.2)	< 0.01
Maximal weight 0-32 weeks, kg	78.47 (74.57 - 93.9)	75.75 (69.58 - 81.65)	< 0.01
Family history of chronic hypertension	2907 (44.97%)	38881 (36.48%)	< 0.01
Family history of heart disease	2980 (46.1%)	40548 (38.04%)	< 0.01
Family history of preeclampsia	144 (2.23%)	2135 (2.0%)	0.22
Family history of diabetes	329 (5.09%)	4078 (3.83%)	< 0.01
Family history of hyperlipidemia	120 (1.86%)	1571 (1.47%)	0.015
Family history of stroke	157 (2.43%)	1854 (1.74%)	< 0.01
Past history of diabetes	507 (7.84%)	3036 (2.85%)	< 0.01
Past history of cesarean delivery	1458 (22.56%)	19675 (18.46%)	< 0.01
Past history of preterm birth	510 (7.89%)	4582 (4.3%)	< 0.01
Past history of gynecologic surgery	780 (12.07%)	13528 (12.69%)	0.17
Past history of asthma	949 (14.68%)	11136 (10.45%)	< 0.01
Past history of chronic hypertension	1868 (28.9%)	5725 (5.37%)	< 0.01
Past history of gestational hypertension	500 (7.74%)	3451 (3.24%)	< 0.01
Past history of high-risk pregnancy	1166 (18.04%)	18472 (17.33%)	0.19
Past history of hyperemesis gravidarum	1037 (16.04%)	17344 (16.27%)	0.66
Past history of migraine	900 (13.92%)	10867 (10.2%)	< 0.01
Past history of obesity	2050 (31.71%)	16482 (15.46%)	< 0.01
Past history of preeclampsia	525 (8.12%)	2179 (2.04%)	< 0.01
Past history of pregnancy related fatigue	522 (8.08%)	9311 (8.74%)	0.08
Past history of sexually transmitted disease	345 (5.34%)	5163 (4.84%)	0.081
Chronic or gestational hypertension	1534 (23.73%)	4052 (3.8%)	< 0.01
Gestational diabetes	1087 (16.82%)	12544 (11.77%)	< 0.01
Anemia during pregnancy	1027 (15.89%)	14487 (13.59%)	< 0.01
Headaches during pregnancy	1040 (16.09%)	11681 (10.96%)	< 0.01
Autoimmune disease	635 (9.82%)	4902 (4.6%)	< 0.01
High risk pregnancy	3620 (56.0%)	47635 (44.69%)	< 0.01
Hyperemesis gravidarum	536 (8.29%)	7324 (6.87%)	< 0.01
Pregnancy related fatigue	1149 (17.78%)	16390 (15.38%)	< 0.01
Proteinuria 0-32 weeks	305 (4.72%)	130 (0.12%)	< 0.01
Maximal AST 0-32 weeks	17.0 (17.0 - 17.0)	17.0 (17.0 - 17.0)	< 0.01
Maximal uric acid 0-32 weeks	3.6 (3.6 - 3.6)	3.6 (3.6 - 3.6)	< 0.01
Maximal white blood count 0-32 weeks	9.1 (8.57 - 9.9)	9.1 (8.45 - 9.67)	< 0.01
Maximal ALT 0-32 weeks	15.0 (15.0 - 15.0)	15.0 (15.0 - 15.0)	< 0.01
Maximal serum calcium 0-32 weeks	9.3 (9.3 - 9.3)	9.3 (9.3 - 9.3)	< 0.01
Maximal serum creatinine 0-32 weeks	0.59 (0.59 - 0.6)	0.59 (0.59 - 0.59)	< 0.01
Maximal eosinophils 0-32 weeks	1.1 (1.1 - 1.2)	1.1 (1.1 - 1.1)	0.017
Maximal serum glucose 0-32 weeks	86.0 (86.0 - 89.0)	86.0 (86.0 - 86.0)	< 0.01
Minimal hemoglobin 0-32 weeks	11.5 (10.9 - 11.9)	11.5 (11.0 - 11.9)	0.48
Maximal lymphocytes 0-32 weeks	22.6 (22.6 - 22.6)	22.6 (22.6 - 22.6)	0.74
Maximal platelets 0-32 weeks	261.5 (242.0 - 308.0)	258.0 (231.0 - 285.0)	0.025
Minimal red blood cell count 0-32 weeks	3.75 (3.62 - 4.01)	3.75 (3.61 - 3.91)	< 0.01
Antihypertensive medications 0-32 weeks	263 (4.07%)	185 (0.17%)	< 0.01

Median (IQR) for continuous variables; n (%) for categorical variables; p-values for continuous variables based on Kruskal-Wallis rank sum test; for categorical variables based on Fisher's exact or Chi-squared test.

Abbreviations: SBP, systolic blood pressure; DBP, diastolic blood pressure, BMI, body mass index, PT/INR, prothrombin time/international normalized ratio; AST, aspartate transferase; ALT, alanine transaminase; SGA, small for gestational age; IUGR, intrauterine growth restriction.

Table S10. Summary characteristics of Cohort 1 patient data at 36 weeks gestation.

	Preeclampsia (n=6464)	No preeclampsia (n=106581)	P-Value
Maternal age, y	33.03 (29.66 - 36.65)	32.99 (30.03 - 35.9)	0.12
Self-reported race, White	3825 (59.17%)	71037 (66.65%)	< 0.01
Self-reported race, Black	1166 (18.04%)	10283 (9.65%)	< 0.01
Self-reported race, other	1517 (23.47%)	25798 (24.2%)	0.24
Self-reported ethnicity, Hispanic	1263 (19.54%)	16704 (15.67%)	< 0.01
Self-reported ethnicity, non-Hispanic	5201 (80.46%)	89879 (84.33%)	< 0.01
Private insurance	5085 (78.67%)	90488 (84.9%)	< 0.01
Public insurance	1851 (28.64%)	22076 (20.71%)	< 0.01
Alcohol use history	1577 (24.4%)	24164 (22.67%)	< 0.01
Smoking history	877 (13.57%)	10403 (9.76%)	< 0.01
Illicit drugs history	317 (4.9%)	3213 (3.01%)	< 0.01
Gravidity	2.0 (1.0 - 3.0)	2.0 (1.0 - 3.0)	0.61
Parity	1.0 (1.0 - 1.0)	1.0 (1.0 - 1.0)	< 0.01
In vitro fertilization	396 (6.13%)	4141 (3.89%)	< 0.01
Nulliparous	1183 (18.3%)	13790 (12.94%)	< 0.01
Interpregnancy interval, y	2.3 (2.3 - 2.3)	2.3 (2.3 - 2.3)	0.93
Multiple gestation	479 (7.41%)	2870 (2.69%)	< 0.01
Maximal SBP 0-36 weeks, mmHg	136.0 (124.0 - 150.0)	124.0 (118.0 - 128.0)	< 0.01
Maximal DBP 0-36 weeks, mmHg	84.0 (78.0 - 93.0)	77.0 (71.0 - 80.0)	< 0.01
Maximal heart rate 0-36 weeks, bpm	93.0 (93.0 - 100.0)	93.0 (93.0 - 93.0)	< 0.01
Maximal body mass index 0-36 weeks, (kg/m ²)	30.8 (29.2 - 36.3)	29.2 (27.0 - 31.2)	< 0.01
Maximal weight 0-36 weeks, kg	82.1 (76.66 - 97.52)	78.02 (71.3 - 84.37)	< 0.01
Family history of chronic hypertension	2907 (44.97%)	38881 (36.48%)	< 0.01
Family history of heart disease	2980 (46.1%)	40548 (38.04%)	< 0.01
Family history of preeclampsia	144 (2.23%)	2135 (2.0%)	0.22
Family history of diabetes	329 (5.09%)	4078 (3.83%)	< 0.01
Family history of hyperlipidemia	120 (1.86%)	1571 (1.47%)	0.015
Family history of stroke	157 (2.43%)	1854 (1.74%)	< 0.01
Past history of diabetes	507 (7.84%)	3036 (2.85%)	< 0.01
Past history of cesarean delivery	1458 (22.56%)	19675 (18.46%)	< 0.01
Past history of preterm birth	510 (7.89%)	4582 (4.3%)	< 0.01
Past history of gynecologic surgery	780 (12.07%)	13528 (12.69%)	0.17
Past history of asthma	949 (14.68%)	11136 (10.45%)	< 0.01
Past history of chronic hypertension	1868 (28.9%)	5725 (5.37%)	< 0.01
Past history of gestational hypertension	500 (7.74%)	3451 (3.24%)	< 0.01
Past history of high-risk pregnancy	1166 (18.04%)	18472 (17.33%)	0.19
Past history of hyperemesis gravidarum	1037 (16.04%)	17344 (16.27%)	0.66
Past history of migraine	900 (13.92%)	10867 (10.2%)	< 0.01
Past history of obesity	2050 (31.71%)	16482 (15.46%)	< 0.01
Past history of preeclampsia	525 (8.12%)	2179 (2.04%)	< 0.01
Past history of pregnancy related fatigue	522 (8.08%)	9311 (8.74%)	0.08
Past history of sexually transmitted disease	345 (5.34%)	5163 (4.84%)	0.081
Chronic or gestational hypertension	2115 (32.72%)	5558 (5.21%)	< 0.01
Gestational diabetes	1160 (17.95%)	13122 (12.31%)	< 0.01
Anemia during pregnancy	1121 (17.34%)	15649 (14.68%)	< 0.01
Headaches during pregnancy	1092 (16.89%)	11925 (11.19%)	< 0.01
Autoimmune disease	635 (9.82%)	4902 (4.6%)	< 0.01
High risk pregnancy	3813 (58.99%)	50232 (47.13%)	< 0.01
Hyperemesis gravidarum	564 (8.73%)	7964 (7.47%)	< 0.01
Pregnancy related fatigue	1271 (19.66%)	18368 (17.23%)	< 0.01
Proteinuria 0-36 weeks	589 (9.11%)	211 (0.2%)	< 0.01
Maximal AST 0-36 weeks	18.0 (18.0 - 21.0)	18.0 (18.0 - 18.0)	< 0.01
Maximal lactate dehydrogenase 0-36 weeks	181.0 (181.0 - 181.0)	181.0 (181.0 - 181.0)	< 0.01
Maximal uric acid 0-36 weeks	4.0 (4.0 - 4.4)	4.0 (4.0 - 4.0)	< 0.01
Maximal white blood count 0-36 weeks	9.16 (8.61 - 9.9)	9.14 (8.47 - 9.7)	< 0.01
Maximal ALT 0-36 weeks	15.0 (15.0 - 17.0)	15.0 (15.0 - 15.0)	< 0.01
Maximal serum calcium 0-36 weeks	9.3 (9.3 - 9.3)	9.3 (9.3 - 9.3)	< 0.01
Maximal serum creatinine 0-36 weeks	0.59 (0.59 - 0.65)	0.59 (0.59 - 0.59)	< 0.01
Maximal eosinophils 0-36 weeks	1.1 (1.1 - 1.2)	1.1 (1.1 - 1.1)	0.11
Maximal serum glucose 0-36 weeks	87.0 (87.0 - 92.0)	87.0 (87.0 - 87.0)	< 0.01
Minimal hemoglobin 0-36 weeks	11.4 (10.8 - 11.9)	11.4 (11.0 - 11.9)	< 0.01
Maximal lymphocytes 0-36 weeks	22.5 (22.5 - 22.5)	22.5 (22.5 - 22.5)	0.75
Maximal platelets 0-36 weeks	264.0 (239.0 - 310.0)	257.0 (230.0 - 286.0)	0.045
Minimal red blood cell count 0-36 weeks	3.75 (3.6 - 4.0)	3.75 (3.6 - 3.91)	< 0.01
Antihypertensive medications 0-36 weeks	518 (8.01%)	1128 (1.06%)	< 0.01

Median (IQR) for continuous variables; n (%) for categorical variables; p-values for continuous variables based on Kruskal-Wallis rank sum test; for categorical variables based on Fisher's exact or Chi-squared test.

Abbreviations: SBP, systolic blood pressure; DBP, diastolic blood pressure, BMI, body mass index, PT/INR, prothrombin time/international normalized ratio; AST, aspartate transferase; ALT, alanine transaminase; SGA, small for gestational age; IUGR, intrauterine growth restriction.

Table S11. Summary characteristics of Cohort 1 patient data at 39 weeks gestation.

	Preeclampsia (n=6464)	No preeclampsia (n=106581)	P-Value
Maternal age, y	33.03 (29.66 - 36.65)	32.99 (30.03 - 35.9)	0.12
Self-reported race, White	3825 (59.17%)	71037 (66.65%)	< 0.01
Self-reported race, Black	1166 (18.04%)	10283 (9.65%)	< 0.01
Self-reported race, other	1517 (23.47%)	25798 (24.2%)	0.24
Self-reported ethnicity, Hispanic	1263 (19.54%)	16704 (15.67%)	< 0.01
Self-reported ethnicity, non-Hispanic	5201 (80.46%)	89879 (84.33%)	< 0.01
Private insurance	5085 (78.67%)	90488 (84.9%)	< 0.01
Public insurance	1851 (28.64%)	22076 (20.71%)	< 0.01
Alcohol use history	1577 (24.4%)	24164 (22.67%)	< 0.01
Smoking history	877 (13.57%)	10403 (9.76%)	< 0.01
Illicit drugs history	317 (4.9%)	3213 (3.01%)	< 0.01
Gravidity	2.0 (1.0 - 3.0)	2.0 (1.0 - 3.0)	0.61
Parity	1.0 (1.0 - 1.0)	1.0 (1.0 - 1.0)	< 0.01
In vitro fertilization	396 (6.13%)	4141 (3.89%)	< 0.01
Nulliparous	1183 (18.3%)	13790 (12.94%)	< 0.01
Interpregnancy interval, y	2.3 (2.3 - 2.3)	2.3 (2.3 - 2.3)	0.93
Multiple gestation	479 (7.41%)	2870 (2.69%)	< 0.01
Maximal SBP 0-39 weeks, mmHg	144.0 (130.0 - 158.0)	127.0 (120.0 - 132.0)	< 0.01
Maximal DBP 0-39 weeks, mmHg	90.0 (82.0 - 98.0)	80.0 (74.0 - 82.0)	< 0.01
Maximal heart rate 0-39 weeks, bpm	94.0 (91.0 - 104.0)	94.0 (92.0 - 96.0)	< 0.01
Maximal body mass index 0-39 weeks, (kg/m ²)	31.83 (29.8 - 37.2)	29.9 (27.5 - 32.2)	< 0.01
Maximal weight 0-39 weeks, kg	84.37 (77.56 - 99.34)	79.83 (72.67 - 86.91)	< 0.01
Family history of chronic hypertension	2907 (44.97%)	38881 (36.48%)	< 0.01
Family history of heart disease	2980 (46.1%)	40548 (38.04%)	< 0.01
Family history of preeclampsia	144 (2.23%)	2135 (2.0%)	0.22
Family history of diabetes	329 (5.09%)	4078 (3.83%)	< 0.01
Family history of hyperlipidemia	120 (1.86%)	1571 (1.47%)	0.015
Family history of stroke	157 (2.43%)	1854 (1.74%)	< 0.01
Past history of diabetes	507 (7.84%)	3036 (2.85%)	< 0.01
Past history of cesarean delivery	1458 (22.56%)	19675 (18.46%)	< 0.01
Past history of preterm birth	510 (7.89%)	4582 (4.3%)	< 0.01
Past history of gynecologic surgery	780 (12.07%)	13528 (12.69%)	0.17
Past history of asthma	949 (14.68%)	11136 (10.45%)	< 0.01
Past history of chronic hypertension	1868 (28.9%)	5725 (5.37%)	< 0.01
Past history of gestational hypertension	500 (7.74%)	3451 (3.24%)	< 0.01
Past history of high-risk pregnancy	1166 (18.04%)	18472 (17.33%)	0.19
Past history of hyperemesis gravidarum	1037 (16.04%)	17344 (16.27%)	0.66
Past history of migraine	900 (13.92%)	10867 (10.2%)	< 0.01
Past history of obesity	2050 (31.71%)	16482 (15.46%)	< 0.01
Past history of preeclampsia	525 (8.12%)	2179 (2.04%)	< 0.01
Past history of pregnancy related fatigue	522 (8.08%)	9311 (8.74%)	0.08
Past history of sexually transmitted disease	345 (5.34%)	5163 (4.84%)	0.081
Chronic or gestational hypertension	2660 (41.15%)	7893 (7.41%)	< 0.01
Gestational diabetes	1181 (18.27%)	13379 (12.55%)	< 0.01
Anemia during pregnancy	1179 (18.24%)	16301 (15.29%)	< 0.01
Headaches during pregnancy	1119 (17.31%)	12163 (11.41%)	< 0.01
Autoimmune disease	635 (9.82%)	4902 (4.6%)	< 0.01
High risk pregnancy	3938 (60.92%)	52532 (49.29%)	< 0.01
Hyperemesis gravidarum	578 (8.94%)	8339 (7.82%)	< 0.01
Pregnancy related fatigue	1323 (20.47%)	19439 (18.24%)	< 0.01
Gestational diabetes	1181 (18.27%)	13379 (12.55%)	< 0.01
Oligohydramnios	144 (2.23%)	1805 (1.69%)	< 0.01
Proteinuria 0-39 weeks	1130 (17.48%)	339 (0.32%)	< 0.01
Maximal AST 0-39 weeks	18.0 (18.0 - 24.0)	18.0 (18.0 - 18.0)	< 0.01
Maximal lactate dehydrogenase 0-39 weeks	186.0 (186.0 - 189.0)	186.0 (186.0 - 186.0)	< 0.01
Maximal uric acid 0-39 weeks	4.4 (4.4 - 5.3)	4.4 (4.4 - 4.4)	< 0.01
Maximal white blood count 0-39 weeks	9.28 (8.63 - 9.9)	9.2 (8.51 - 9.75)	< 0.01
Maximal ALT 0-39 weeks	14.0 (13.0 - 20.0)	14.0 (14.0 - 14.0)	< 0.01
Maximal serum calcium 0-39 weeks	9.3 (9.3 - 9.3)	9.3 (9.3 - 9.3)	< 0.01
Maximal serum creatinine 0-39 weeks	0.6 (0.6 - 0.7)	0.6 (0.6 - 0.6)	< 0.01
Maximal eosinophils 0-39 weeks	1.1 (1.1 - 1.2)	1.1 (1.1 - 1.1)	0.11
Maximal serum glucose 0-39 weeks	87.0 (86.0 - 93.0)	87.0 (87.0 - 87.0)	< 0.01
Minimal hemoglobin 0-39 weeks	11.4 (10.7 - 11.82)	11.4 (10.9 - 11.9)	< 0.01
Maximal lymphocytes 0-39 weeks	22.5 (22.5 - 22.5)	22.5 (22.5 - 22.5)	0.65
Maximal platelets 0-39 weeks	265.0 (235.0 - 311.0)	257.0 (229.0 - 287.0)	0.048

Minimal red blood cell count 0-39 weeks	3.75 (3.58 - 4.01)	3.75 (3.6 - 3.92)	< 0.01
Antihypertensive medications 0-39 weeks	760 (11.76%)	1587 (1.49%)	< 0.01

Median (IQR) for continuous variables; n (%) for categorical variables; p-values for continuous variables based on Kruskal-Wallis rank sum test; for categorical variables based on Fisher's exact or Chi-squared test.

Abbreviations: SBP, systolic blood pressure; DBP, diastolic blood pressure, BMI, body mass index, PT/INR, prothrombin time/international normalized ratio; AST, aspartate transferase; ALT, alanine transaminase; SGA, small for gestational age; IUGR, intrauterine growth restriction.

Table S12. Summary characteristics of Cohort 1 patient data on admission.

	Preeclampsia (n=6464)	No preeclampsia (n=106581)	P-Value
Maternal age, y	33.03 (29.66 - 36.65)	32.99 (30.03 - 35.9)	0.12
Self-reported race, White	3825 (59.17%)	71037 (66.65%)	< 0.01
Self-reported race, Black	1166 (18.04%)	10283 (9.65%)	< 0.01
Self-reported race, other	1517 (23.47%)	25798 (24.2%)	0.24
Self-reported ethnicity, Hispanic	1263 (19.54%)	16704 (15.67%)	< 0.01
Self-reported ethnicity, non-Hispanic	5201 (80.46%)	89879 (84.33%)	< 0.01
Private insurance	5085 (78.67%)	90488 (84.9%)	< 0.01
Public insurance	1851 (28.64%)	22076 (20.71%)	< 0.01
Alcohol use history	1577 (24.4%)	24164 (22.67%)	< 0.01
Smoking history	877 (13.57%)	10403 (9.76%)	< 0.01
Illicit drugs history	317 (4.9%)	3213 (3.01%)	< 0.01
Gravidity	2.0 (1.0 - 3.0)	2.0 (1.0 - 3.0)	0.61
Parity	1.0 (1.0 - 1.0)	1.0 (1.0 - 1.0)	< 0.01
In vitro fertilization	396 (6.13%)	4141 (3.89%)	< 0.01
Nulliparous	1183 (18.3%)	13790 (12.94%)	< 0.01
Interpregnancy interval, y	2.3 (2.3 - 2.3)	2.3 (2.3 - 2.3)	0.93
Multiple gestation	479 (7.41%)	2870 (2.69%)	< 0.01
Maximal SBP 0 weeks-admission, mmHg	148.0 (139.0 - 160.0)	130.0 (122.0 - 137.0)	< 0.01
Maximal DBP 0 weeks-admission, mmHg	92.0 (85.0 - 99.0)	80.0 (75.0 - 85.0)	< 0.01
Maximal heart rate 0 weeks-admission, bpm	95.0 (90.0 - 106.0)	95.0 (89.0 - 100.0)	< 0.01
Maximal body mass index 0 weeks-admission, (kg/m ²)	32.4 (29.7 - 37.5)	30.1 (27.5 - 32.7)	< 0.01
Maximal weight 0 weeks-admission, kg	85.28 (77.56 - 100.12)	80.29 (72.67 - 88.0)	< 0.01
Family history of chronic hypertension	2907 (44.97%)	38881 (36.48%)	< 0.01
Family history of heart disease	2980 (46.1%)	40548 (38.04%)	< 0.01
Family history of preeclampsia	144 (2.23%)	2135 (2.0%)	0.22
Family history of diabetes	329 (5.09%)	4078 (3.83%)	< 0.01
Family history of hyperlipidemia	120 (1.86%)	1571 (1.47%)	0.015
Family history of stroke	157 (2.43%)	1854 (1.74%)	< 0.01
Past history of diabetes	507 (7.84%)	3036 (2.85%)	< 0.01
Past history of cesarean delivery	1458 (22.56%)	19675 (18.46%)	< 0.01
Past history of preterm birth	510 (7.89%)	4582 (4.3%)	< 0.01
Past history of gynecologic surgery	780 (12.07%)	13528 (12.69%)	0.17
Past history of asthma	949 (14.68%)	11136 (10.45%)	< 0.01
Past history of chronic hypertension	1868 (28.9%)	5725 (5.37%)	< 0.01
Past history of gestational hypertension	500 (7.74%)	3451 (3.24%)	< 0.01
Past history of high-risk pregnancy	1166 (18.04%)	18472 (17.33%)	0.19
Past history of hyperemesis gravidarum	1037 (16.04%)	17344 (16.27%)	0.66
Past history of migraine	900 (13.92%)	10867 (10.2%)	< 0.01
Past history of obesity	2050 (31.71%)	16482 (15.46%)	< 0.01
Past history of preeclampsia	525 (8.12%)	2179 (2.04%)	< 0.01
Past history of pregnancy related fatigue	522 (8.08%)	9311 (8.74%)	0.08
Past history of sexually transmitted disease	345 (5.34%)	5163 (4.84%)	0.081
Chronic or gestational hypertension	2780 (43.01%)	8597 (8.07%)	< 0.01
Gestational diabetes	1185 (18.33%)	13440 (12.61%)	< 0.01
Anemia during pregnancy	1205 (18.64%)	16841 (15.8%)	< 0.01
Headaches during pregnancy	1121 (17.34%)	12257 (11.5%)	< 0.01
Autoimmune disease	635 (9.82%)	4902 (4.6%)	< 0.01
High risk pregnancy	3960 (61.26%)	53235 (49.95%)	< 0.01
Hyperemesis gravidarum	580 (8.97%)	8407 (7.89%)	< 0.01
Pregnancy related fatigue	1328 (20.54%)	19687 (18.47%)	< 0.01
Gestational diabetes	1185 (18.33%)	13440 (12.61%)	< 0.01
Oligohydramnios	157 (2.43%)	2157 (2.02%)	0.027
Proteinuria 0 weeks-admission	1430 (22.12%)	419 (0.39%)	< 0.01
Maximal AST 0 weeks-admission	19.0 (18.0 - 25.0)	19.0 (19.0 - 19.0)	< 0.01
Maximal lactate dehydrogenase 0 weeks-admission	187.0 (187.0 - 200.0)	187.0 (187.0 - 187.0)	< 0.01
Maximal uric acid 0 weeks-admission	4.5 (4.5 - 5.5)	4.5 (4.5 - 4.5)	< 0.01
Maximal white blood count 0 weeks-admission	9.35 (8.66 - 9.92)	9.29 (8.55 - 9.81)	< 0.01
Maximal ALT 0 weeks-admission	14.0 (12.0 - 21.0)	14.0 (14.0 - 14.0)	< 0.01
Maximal serum calcium 0 weeks-admission	9.3 (9.3 - 9.3)	9.3 (9.3 - 9.3)	< 0.01
Maximal serum creatinine 0 weeks-admission	0.61 (0.6 - 0.72)	0.6 (0.6 - 0.6)	< 0.01
Maximal eosinophils 0 weeks-admission	1.1 (1.1 - 1.2)	1.1 (1.1 - 1.1)	0.1
Maximal serum glucose 0 weeks-admission	87.0 (86.0 - 94.0)	87.0 (87.0 - 87.0)	< 0.01
Minimal hemoglobin 0 weeks-admission	11.3 (10.7 - 11.9)	11.4 (10.9 - 11.9)	< 0.01
Maximal lymphocytes 0 weeks-admission	22.5 (22.5 - 22.5)	22.5 (22.5 - 22.5)	0.63
Maximal platelets 0 weeks-admission	266.0 (233.0 - 311.0)	255.0 (225.0 - 288.0)	0.027

Minimal red blood cell count 0 weeks-admission	3.77 (3.57 - 4.03)	3.77 (3.59 - 3.95)	< 0.01
Antihypertensive medications 0 weeks-admission	821 (12.7%)	1790 (1.68%)	< 0.01

Median (IQR) for continuous variables; n (%) for categorical variables; p-values for continuous variables based on Kruskal-Wallis rank sum test; for categorical variables based on Fisher's exact or Chi-squared test.

Abbreviations: SBP, systolic blood pressure; DBP, diastolic blood pressure, BMI, body mass index, PT/INR, prothrombin time/international normalized ratio; AST, aspartate transferase; ALT, alanine transaminase; SGA, small for gestational age; IUGR, intrauterine growth restriction.

Table S13. Predictive performance metrics of all models in the test dataset from Cohort 1 by gestational age of model creation.

		AUC	specificity	sensitivity	PPV	NPV	accuracy	F1
XGBoost	14weeks	0.79	0.78	0.62	0.15	0.97	0.77	0.24
	20weeks	0.79	0.79	0.64	0.15	0.97	0.78	0.25
	24weeks	0.78	0.79	0.62	0.15	0.97	0.78	0.24
	28weeks	0.78	0.79	0.63	0.15	0.97	0.78	0.25
	32weeks	0.81	0.8	0.67	0.17	0.98	0.79	0.27
	36weeks	0.84	0.84	0.68	0.2	0.98	0.83	0.31
	39weeks	0.89	0.87	0.75	0.25	0.98	0.86	0.38
	admission	0.91	0.88	0.79	0.29	0.99	0.88	0.42
Neural Network	14weeks	0.77	1	0	1	0.94	0.94	0
	20weeks	0.77	0.99	0.1	0.53	0.95	0.93	0.17
	24weeks	0.53	0	1	0.06	0.95	0.06	0.11
	28weeks	0.77	1	0.04	0.73	0.95	0.94	0.08
	32weeks	0.79	1	0.1	0.69	0.95	0.94	0.17
	36weeks	0.82	1	0.16	0.68	0.95	0.93	0.26
	39weeks	0.86	1	0.22	0.74	0.95	0.93	0.34
	admission	0.9	1	0.27	0.77	0.96	0.93	0.4
Elastic Net	14weeks	0.77	1	0.02	0.84	0.94	0.94	0.04
	20weeks	0.77	1	0	1	0.94	0.94	0
	24weeks	0.78	1	0.02	0.67	0.94	0.94	0.04
	28weeks	0.79	1	0.04	0.72	0.94	0.94	0.07
	32weeks	0.8	1	0.07	0.77	0.95	0.95	0.13
	36weeks	0.82	1	0.11	0.76	0.95	0.95	0.2
	39weeks	0.86	1	0.18	0.76	0.95	0.95	0.29
	admission	0.89	1	0.23	0.77	0.96	0.95	0.35
Random Forest	14weeks	0.76	1	0.06	0.64	0.95	0.94	0.11
	20weeks	0.77	1	0.06	0.7	0.95	0.94	0.11
	24weeks	0.77	1	0.06	0.65	0.95	0.94	0.12
	28weeks	0.78	1	0.08	0.68	0.95	0.95	0.15
	32weeks	0.79	1	0.11	0.77	0.95	0.95	0.18
	36weeks	0.81	1	0.18	0.75	0.95	0.95	0.29
	39weeks	0.86	1	0.27	0.82	0.96	0.95	0.41
	admission	0.88	1	0.31	0.83	0.96	0.96	0.45
Linear Regression	14weeks	0.77	1	0.02	0.67	0.94	0.94	0.04
	20weeks	0.78	1	0.03	0.73	0.94	0.94	0.06
	24weeks	0.78	1	0.03	0.64	0.94	0.94	0.06
	28weeks	0.78	1	0.04	0.69	0.95	0.94	0.08
	32weeks	0.79	1	0.07	0.75	0.95	0.95	0.13
	36weeks	0.82	1	0.13	0.75	0.95	0.95	0.23
	39weeks	0.86	1	0.2	0.77	0.95	0.95	0.32
	admission	0.89	1	0.24	0.78	0.96	0.95	0.37

Abbreviations: AUC, area under the curve, PPV, positive predictive value, NPV, negative predictive value.

Supplementary Results

External validation of all predictive models

We further investigated the performance of our models using data from two community hospitals that were included in Cohort 2, 6.4% of all data (N=7,705); those were not used for model development and served to externally validate the results after all models were created and internally validated. The comparison of patient characteristics between Cohort 1 and Cohort 2 is shown in appendix pp 8-9. Cohort 2 had a similar incidence of preeclampsia as Cohort 1, 5.7% (N=421), but a larger proportion of patients with missing data, especially in the early gestational weeks.

We determined the generalizability of all models using Cohort 2 as an external validation dataset. While these two community hospitals are part of our healthcare system, each hospital is independent in its clinical management, and the physicians in each of the hospitals included in Cohort 2 practice only in that hospital. As a result, this Cohort 2 is sufficiently different from Cohort 1. In early pregnancy, at 14 weeks, the AUC range was 0.64-0.66. As the gestational age advanced, the predictive power of the models increased progressively, AUC range of 0.66-0.90 (appendix p 26).

Table S14. Predictive performance metrics of all models in the external validation dataset from Cohort 2 by gestational age of model creation.

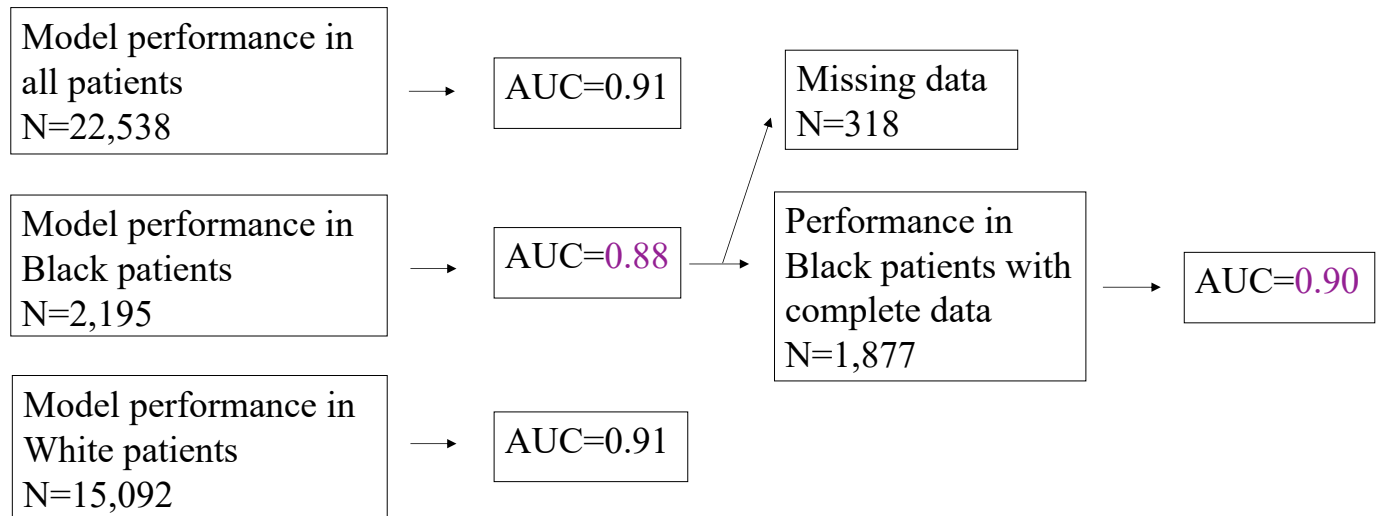
	Gestational age	AUC	Specificity	Sensitivity	PPV	NPV	accuracy	F1
XGBoost	14weeks	0.66	0.86	0.33	0.13	0.95	0.83	0.18
	20weeks	0.66	0.85	0.35	0.12	0.96	0.82	0.18
	24weeks	0.67	0.85	0.37	0.13	0.96	0.82	0.19
	28weeks	0.69	0.84	0.4	0.13	0.96	0.81	0.2
	32weeks	0.71	0.83	0.44	0.14	0.96	0.81	0.21
	36weeks	0.76	0.85	0.49	0.17	0.96	0.83	0.25
	39weeks	0.86	0.88	0.66	0.25	0.98	0.86	0.36
	admission	0.9	0.88	0.75	0.28	0.98	0.87	0.41
Neural Network	14weeks	0.64	1	0	0	0.94	0.94	0
	20weeks	0.65	1	0.01	0.5	0.94	0.94	0.01
	24weeks	0.66	1	0.02	0.41	0.94	0.94	0.03
	28weeks	0.66	1	0.02	0.39	0.94	0.94	0.03
	32weeks	0.69	1	0.05	0.48	0.94	0.94	0.09
	36weeks	0.73	1	0.07	0.69	0.95	0.94	0.13
	39weeks	0.84	1	0.02	1	0.94	0.94	0.04
	admission	0.89	1	0.18	0.86	0.95	0.93	0.3
Elastic Net	14weeks	0.64	1	0	0	0.94	0.94	0
	20weeks	0.64	1	0	0	0.94	0.94	0
	24weeks	0.66	1	0	0.5	0.94	0.94	0
	28weeks	0.68	1	0	0.4	0.94	0.94	0.01
	32weeks	0.69	1	0	0.4	0.94	0.94	0.01
	36weeks	0.74	1	0.05	0.75	0.94	0.94	0.09
	39weeks	0.83	1	0.18	0.74	0.95	0.95	0.29
	admission	0.87	0.99	0.26	0.73	0.96	0.95	0.39
Random Forest	14weeks	0.64	1	0	0.33	0.94	0.94	0.01
	20weeks	0.64	1	0	0.25	0.94	0.94	0
	24weeks	0.66	1	0.01	0.38	0.94	0.94	0.01
	28weeks	0.68	1	0.01	0.67	0.94	0.94	0.03
	32weeks	0.68	1	0.01	0.5	0.94	0.94	0.01
	36weeks	0.72	1	0.05	0.9	0.94	0.94	0.09
	39weeks	0.83	1	0.18	0.83	0.95	0.95	0.3
	admission	0.88	1	0.26	0.84	0.96	0.95	0.4
Linear Regression	14weeks	0.64	1	0	0.17	0.94	0.94	0
	20weeks	0.65	1	0	0.17	0.94	0.94	0
	24weeks	0.66	1	0	0.17	0.94	0.94	0
	28weeks	0.69	1	0	0.22	0.94	0.94	0.01
	32weeks	0.69	1	0	0.2	0.94	0.94	0.01
	36weeks	0.74	1	0.05	0.77	0.95	0.94	0.1
	39weeks	0.83	1	0.18	0.73	0.95	0.95	0.29
	admission	0.87	0.99	0.27	0.73	0.96	0.95	0.39

Abbreviations: AUC, area under the curve, PPV, positive predictive value, NPV, negative predictive value.

Performance based on racial and sociodemographic factors

As our patient population was multi-racial and multi-ethnic, we explored the contribution of race and ethnicity to the model predictions. We selected the xgboost model for all experiments due to its high performance in our datasets. Initially, using all variables, including self-reported race and ethnicity, the model had an AUC of 0.91; the Shapley values demonstrated that Black race was the seventh most significant predictive feature at 14 weeks and remained in the top 20 features throughout pregnancy. Moreover, when evaluated in patients with self-reported Black race in the test dataset, the model had an AUC of 0.88; in contrast, the model had an AUC of 0.91 in patients with self-reported White race. We found that these differences in performance are due to a larger proportion of missing data in patients of Black race. When we evaluated the model performance in the subset of patients of Black race who had a similar rate of missingness to the rest of the cohort data, the performance of the model slightly improved, AUC of 0.90 (appendix p 28). Next, when we excluded race and ethnicity, the performance of the model slightly deteriorated, AUC of 0.90. As the model had the best performance when race and ethnicity were included, AUC of 0.91, we did all subsequent analyses using all variables available, including race and ethnicity.

Fig. S1 Including patients with complete data improves the performance of the xgboost model at preadmission in patients of different races. Initially, the model had AUC of 0.91 in all and White patients, but only 0.88 in Black patients. After removing 318 patients with more than 15% missing data, the AUC in Black patients increased to 0.90.



Examples of individual patient predictions

The models can also provide an individual prediction for a given patient at every time point. Using Shapley values, the features contributing to the prediction can be highlighted (appendix p 29). For example, one of the patients who subsequently developed preeclampsia had systolic and diastolic blood pressure, uric acid, and chronic hypertension as the most significant factors contributing to the model's predictions. In another example, a patient who remained normotensive throughout pregnancy had systolic and diastolic blood pressure and uric acid as the most important features contributing to the prediction.

Fig. S2. Examples of individual patient predictions A. Patient who developed preeclampsia B. Patient who was normotensive.

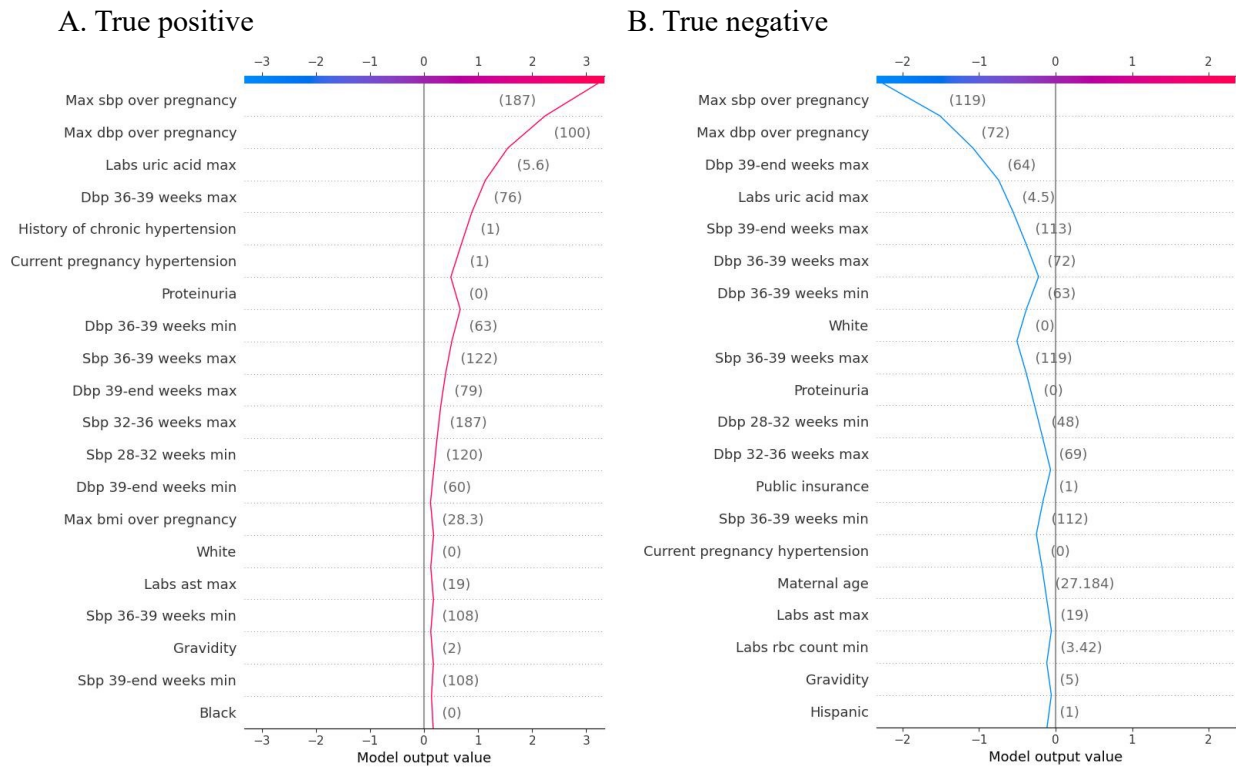
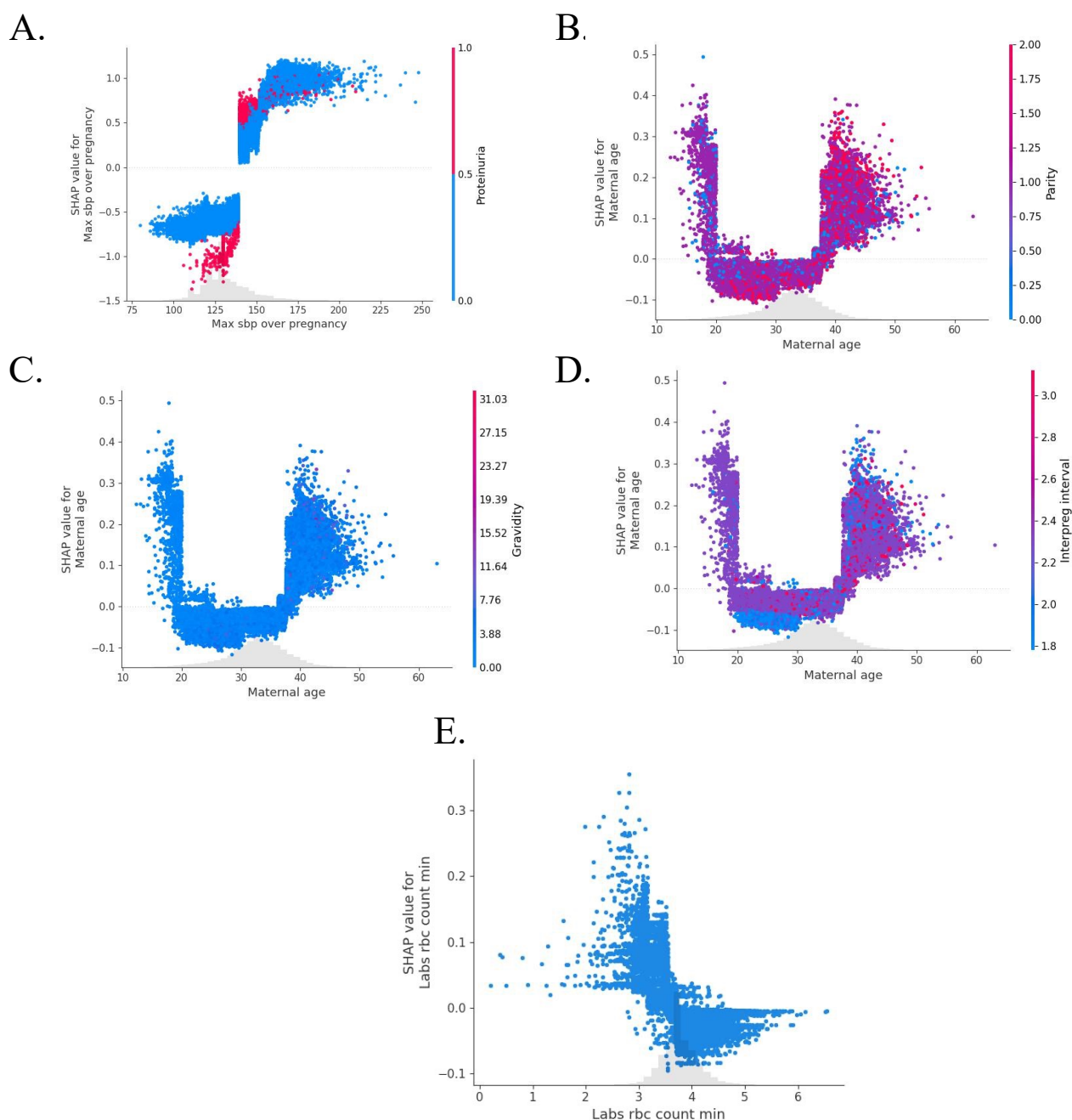


Fig. S3. Shapley values can be plotted by individual feature to show how the value of that feature affected the final model output. Every point is an individual delivery, and higher SHAP values show an increased effect toward a positive preeclampsia prediction. A variation on the y-axis at the same point on the x-axis reflects feature interaction. **A.** Relationship between the maximal systolic blood pressure during pregnancy, proteinuria, and risk for preeclampsia **B.** Relationship between maternal age, parity, and risk for preeclampsia. **C.** Relationship between maternal age, gravidity, and risk for preeclampsia. **D.** Relationship between maternal age, interpregnancy interval, and risk for preeclampsia. **E.** Relationship between RBC count during pregnancy and risk for preeclampsia



Supplementary Discussion

In light of AI bias and the selective disadvantage of individuals with self-reported Black race, multiple strategies have been developed to ameliorate the perpetuation of racial bias, including removing race as a variable. One study designed a novel method to account for the disproportionately higher risk of preeclampsia in Black patients; however, a major limitation of that work is the lack of data about medications, laboratory results, height, and weight of the patients.³ We investigated the role of race in combination with other sociodemographic variables and employed best practices to develop highly performant and equitable tools. Black individuals are at higher risk for preeclampsia-related morbidity and mortality compared to White and Asian individuals.^{4,5} Thus, we evaluated the predictive power of our models when using sociodemographic variables like type of insurance, quality of prenatal care, and substance use. The fact that the predictive power of the algorithm slightly increased with the addition of race suggests that Black individuals may be at higher risk for preeclampsia due to factors other than the sociodemographic and clinical variables we used. Another study has also demonstrated that removing race from machine learning models for preeclampsia risk prediction decreases the accuracy of the predictions.⁶ Other prior work has shown that the elevated preeclampsia risk remains in Black individuals with higher income and socioeconomic status, suggesting the role of stress, innate biologic factors (e.g., genetic predisposition), and additional factors associated with systemic racism.⁷ In addition, Black patients tend to have a higher proportion of missing data which may make research findings challenging to interpret.³ We also find higher missingness in Black patients compared to the rest, which could be related to receiving care outside of the system or presenting later in pregnancy. When investigating the predictive power of the models, we found that they are highly performant in Black patients with lower levels of data missingness, suggesting that access to care and improving data availability in this patient population will be important strategies for the successful and equitable implementation of our models.

External validation is a major concern in modeling studies,⁸ and most published models have lower predictive power in external validation due to changes in the feature definitions and overfitting of the model in the original population.⁸ Thus, to mitigate the risk of overfitting, we selected AUC as a measure of the performance of the models and monitored the effects of techniques such as regularization and cross-validation, which reduce overfitting. In addition, as the models were developed using structured EHR data, we maintained uniform variable definitions and data processing strategies when we tested our tool on data from two independent community hospitals. This strategy has also demonstrated reproducible results.⁹ The slight decrease in performance metrics in Cohort 2 as compared to Cohort 1 is due to a larger proportion of missing data in Cohort 2, potentially due to some outpatient offices using paper medical records.

Supplementary References

1. Akiba T SS, Yanase T, Ohta T, Koyama M. Optuna: A Next-generation Hyperparameter Optimization Framework. *arXiv* 2019; **1907.10902**.
2. He K, Zhang X, Ren S, Sun J. Deep Residual Learning for Image Recognition. *arXiv* 2015; **1512.03385**.
3. Bennett R, Mulla ZD, Parikh P, Hauspurg A, Razzaghi T. An imbalance-aware deep neural network for early prediction of preeclampsia. *PLoS One* 2022; **17**(4): e0266042.
4. Wright D, Syngelaki A, Akolekar R, Poon LC, Nicolaides KH. Competing risks model in screening for preeclampsia by maternal characteristics and medical history. *Am J Obstet Gynecol* 2015; **213**(1): e1- e10.
5. Sandstrom A, Snowden JM, Bottai M, Stephansson O, Wikstrom AK. Routinely collected antenatal data for longitudinal prediction of preeclampsia in nulliparous women: a population-based study. *Sci Rep* 2021; **11**(1): 17973.
6. Ansbacher-Feldman Z, Syngelaki A, Meiri H, Cirkin R, Nicolaides KH, Louzoun Y. Machine-learning-based prediction of pre-eclampsia using first-trimester maternal characteristics and biomarkers. *Ultrasound Obstet Gynecol* 2022; **60**(6): 739-45.
7. Fasanya HO, Hsiao CJ, Armstrong-Sylvester KR, Beal SG. A Critical Review on the Use of Race in Understanding Racial Disparities in Preeclampsia. *J Appl Lab Med* 2021; **6**(1): 247-56.
8. Snell KIE, Allotey J, Smuk M, et al. External validation of prognostic models predicting pre-eclampsia: individual participant data meta-analysis. *BMC Med* 2020; **18**(1): 302.
9. Li S, Wang Z, Vieira LA, et al. Improving preeclampsia risk prediction by modeling pregnancy trajectories from routinely collected electronic medical record data. *NPJ Digit Med* 2022; **5**(1): 68.