

1 **Integrating Mental Health and Psycho-Social Support (MHPSS) into infectious**  
2 **disease outbreak and epidemic response: an umbrella review and**  
3 **operational framework**

4

5 Muhammad Alkasaby<sup>1,2\*</sup>, Sharad Philip<sup>3</sup>, Zain Douba<sup>4</sup>, Hanna Tu<sup>5</sup>, Julian Eaton<sup>1,2,6</sup>, Muftau  
6 Mohammed<sup>2</sup>, Mohammad Yasir Essar<sup>7</sup>, Manar Ahmed Kamal<sup>8</sup>, Mehr Muhammad Adeel  
7 Riaz<sup>9</sup>, Marianne Moussallem<sup>10</sup>, William K Bosu<sup>11\*\*</sup>, and Ian Walker<sup>1,12\*\*</sup>

8

9 1 UK Public Health Rapid Support Team, UK Health Security Agency/London School of  
10 Hygiene & Tropical Medicine, London, UK

11 2 Centre for Global Mental Health, London School of Hygiene and Tropical Medicine,  
12 London, UK

13 3 Department of Psychiatry, Clinical Neurosciences, and Addiction Medicine, All India  
14 Institute of Medical Sciences, Guwahati, India

15 4 Faculty of Medicine, University of Aleppo, Aleppo, Syria

16 5 Faculty of Medicine, University of Leuven (KU Leuven), Leuven, Belgium

17 6 CBM Global, Cambridge, UK

18 7 Department of Global Health, McMaster University, Hamilton, ON, Canada

19 8 Faculty of Medicine, Benha University, Benha, Egypt

20 9 Punjab Medical College, Faisalabad, Pakistan

21 10 Higher Institute of Public Health, Saint-Joseph University of Beirut

22 11 Department of Public Health and Research, West African Health Organisation, Bobo-  
23 Dioulasso, Burkina Faso

24 12 Office for Health Improvement and Disparities, Department of Health and Social Care,  
25 London, UK

26

27 \*Corresponding Author

28 Muhammad Alkasaby

29 [Muhammad.alkasaby@lshtm.ac.uk](mailto:Muhammad.alkasaby@lshtm.ac.uk)

30 London School of Hygiene and Tropical Medicine, WC1E 7HT London, UK

31

32 \*\* William K Bosu and Ian Walker should be considered joint senior author

33

34

35 **Abstract**

36 **Introduction:** Infectious disease outbreaks have a substantial impact on people’s psychosocial  
37 well-being. Yet, mental health and psychosocial support (MHPSS) interventions are not  
38 systemically integrated into outbreak and epidemic response. Our review aims to synthesise  
39 evidence on the effectiveness of MHPSS interventions in outbreaks and propose a framework  
40 for systematically integrating MHPSS into outbreak response. **Methods:** We conducted an  
41 umbrella review in accordance with the Joanna Briggs Institute (JBI) methodology for  
42 umbrella reviews. **Results:** We identified 23 systematic literature reviews, 6 of which involved  
43 meta-analysis, and only 30% (n=7) were of high quality. Most of the available literature was  
44 produced during COVID-19 and focused on clinical case management and medical staff well-  
45 being, with scarce evidence on the well-being of other outbreak responders and MHPSS in  
46 other outbreak response pillars. **Conclusion:** Despite the low quality of the majority of the  
47 existing evidence, MHPSS interventions have the potential to improve the psychological well-  
48 being of those affected by and those responding to outbreaks. They also can improve the  
49 outcomes of the outbreak response activities such as contact tracing, infection prevention  
50 and control, and clinical case management. Our proposed framework would facilitate  
51 integrating MHPSS into outbreak response and hence mitigate the mental health impact of  
52 outbreaks.

53 **Review registration:** PROSPERO CRD42022297138.

54 **Keywords:** Mental Health, Psychological Support, Outbreak, Epidemic, Pandemic,  
55 Emergency preparedness and response, Mental Health and Psychosocial Support

56

## 57 **Introduction**

58 On 4<sup>th</sup> May 2023, the World Health Organisation (WHO) announced that COVID-19 no longer  
59 constitutes a public health emergency of international concern (PHEIC)(1). This declaration  
60 came after more than three years, during which time the virus has accounted for more than  
61 6.9 million deaths and nearly 760 million infections worldwide (2). Since it started, the COVID-  
62 19 pandemic has had a considerable impact on people’s mental health (3). To reduce the  
63 number of infections and deaths, governments all over the world took precautionary  
64 measures such as travel and movement restrictions, and physical distancing. Paradoxically,  
65 physical distancing inadvertently exacerbated the impact of the COVID-19 pandemic on  
66 mental health (3–6).

67 The substantial effect of infectious disease outbreaks on mental health is not exclusive to the  
68 COVID-19 pandemic, as evidence linking mental health problems to earlier epidemics is  
69 widespread (7). Studies from Ebola Virus Disease (EVD) outbreaks document an increased  
70 incidence of mental health conditions such as depression, anxiety, stress, and post-traumatic  
71 stress disorder (PTSD) among the affected population, such as EVD survivors and their  
72 families, and healthcare workers, burial teams, etc. (8,9). Similarly, during the Middle Eastern  
73 Respiratory Syndrome (MERS) epidemic, a study from South Korea reported more than half  
74 of the survivors had at least one symptom of PTSD or depression and more than a quarter  
75 continued to have sleep difficulties even a year later (10). Healthcare providers were similarly  
76 affected (11). Following the severe acute respiratory syndrome (SARS) outbreak in 2002-03,  
77 a meta-analysis revealed that 28%, 20%, and 19% of the survivors were affected by clinical  
78 PTSD, depressive and anxiety disorders, respectively (10). Thus, there is clear evidence that

79 mental health problems occur much more frequently amongst both survivors and healthcare  
80 workers during and after such epidemics compared with background rates in the population.  
81 However, it must be noted that none of these epidemics became a pandemic and disrupted  
82 life as much as COVID-19. In 2020, there was an estimated increase of 25% (more than 100  
83 million cases) in the global prevalence of both major depressive and anxiety disorders due to  
84 COVID-19 (12). The pandemic has also had a disruptive impact on mental health services  
85 worldwide. In a WHO survey, over 90% of 130 member states reported significant disruptions  
86 to their mental health services during the COVID-19 crisis (13). This ranged from difficulties in  
87 maintaining community supports, to medical service disruption and repurposing of mental  
88 health beds to COVID-19 wards. These profound impacts prompted the United Nations (UN),  
89 WHO, and other institutions providing normative guidance to recommend the inclusion of  
90 mental health and psychosocial support (MHPSS) in the COVID-19 response (14,15).

91 Despite this guidance, MHPSS was not systemically integrated into the COVID-19 response in  
92 many countries (16). In the WHO survey, although 89% of countries reported that MHPSS was  
93 part of their national COVID-19 response plans, only 17% of them ensured that full additional  
94 funding was available for MHPSS activities, demonstrating a gap between planning, funding,  
95 and implementation. In 28 countries across Africa, the degree of implementation of MHPSS  
96 activities recommended by the Inter-Agency Standing Committee (IASC) was less than 50% in  
97 most countries (16,17).

98 The COVID-19 pandemic has prompted many literature reviews on MHPSS interventions  
99 during infectious disease outbreaks. However, we are not aware of any published umbrella  
100 review of the evidence from these systematic reviews. Moreover, the existing literature rarely  
101 maps on to the coordination structure of outbreak response (pillars of the Incident

102 management system) which is different to the structure used in humanitarian settings (the  
103 cluster approach), most common to MHPSS studies. We therefore aimed to (1) synthesise  
104 findings from systematic reviews and meta-analyses on the effectiveness of MHPSS  
105 interventions in the context of infectious disease outbreaks, (2) identify the different MHPSS  
106 interventions in relation to outbreak response pillars, and (3) propose a framework for  
107 systematically integrating MHPSS into infectious disease outbreak response.

## 108 **Review Questions**

109 We had two main review questions:

- 110 • What are the MHPSS interventions that are deemed effective and feasible in the  
111 context of infectious disease outbreaks?
- 112 • How can these MHPSS interventions be integrated into the recognised outbreak  
113 response pillars?

## 114 **Inclusion Criteria**

### 115 *Types of participants*

116 Review articles in which the study participants included people of all age groups and  
117 professions affected by infectious disease outbreaks, whether infected or not. The  
118 participants included (but was not limited to) children, adults, health care providers,  
119 volunteers, people with existing mental illness, people with disability, infectious disease  
120 patients (cases) and their carers/household/family, as well as the wider community.

### 121 *Interventions*

122 MHPSS interventions included any type of intervention that aims to protect or promote  
123 psycho-social well-being and/or prevent or treat mental disorders (18) and mitigate the effect  
124 of infectious disease outbreaks on mental health.

#### 125 *Context*

126 The current umbrella review covered interventions implemented in the context of infectious  
127 disease outbreaks of different scales (e.g. EVD and SARS) up to a global pandemic such as  
128 COVID-19.

#### 129 *Outcomes*

130 We included Systematic literature reviews that reported mental health-related outcomes.  
131 The main outcomes included (but were not limited to) stress, depression, anxiety, and post-  
132 traumatic stress disorder (PTSD). Other outcomes were resilience, coping, and quality of life.  
133 Measures of these outcomes included self-reports of mental health and well-being, use of  
134 mental health and psychological screening instruments, and psychiatric diagnostic interviews.  
135 We also included implementation outcomes related to the acceptability and feasibility of  
136 interventions (if available).

#### 137 *Types of studies*

138 We limited our selection to peer-reviewed systematic literature reviews and meta-analyses.  
139 Reviews that did not report a systematic method of literature search and selection were  
140 excluded. Only reviews that exclusively or partially covered interventional studies were  
141 included. We included only reviews that had a full-text in English.

#### 142 **Materials and Methods**

143 Umbrella reviews synthesise review-level evidence from the published literature and are  
144 increasingly common in public health research to summarise evidence for a given topic. This  
145 umbrella review was conducted in accordance with the Joanna Briggs Institute (JBI)  
146 methodology for umbrella reviews (19). The review protocol was registered with PROSPERO  
147 (PROSPERO CRD42022297138).

#### 148 *Search Strategy*

149 We identified keywords for mental health interventions, outbreaks, and mental health-  
150 related outcomes and conducted a preliminary search on PubMed to test our strategy. After  
151 that, we searched the following electronic databases: PubMed, Scopus, Web of Science,  
152 CINAHL, Cochrane, Embase, Epistemonikos, Global Health, MEDLINE, and PsycInfo for  
153 relevant studies published until January 2022. Furthermore, We searched the reference lists  
154 of the included review for potentially relevant articles. We did not use time or language limits  
155 in our search strategy (though were unable to analyse if full text was not available in English).  
156 The detailed search strategy for each database and the number of studies retrieved can be  
157 found in the Supplemental Files (S1).

#### 158 *Study screening and selection*

159 After removing duplicate citations using the EndNote reference management software,  
160 reviewers, working in pairs, independently screened the titles and abstracts of the included  
161 studies guided by the eligibility criteria. A senior reviewer (IW) was consulted to resolve any  
162 conflicts in the screening results and made the final decisions about retrieval for full-text  
163 review. The pairs of reviewers continued to screen the retrieved full-text articles  
164 independently, and the senior reviewer consulted to resolve any conflict.

165 *Assessment of methodological quality/critical appraisal*

166 To assess the methodological quality of the included reviews, we used the JBI critical appraisal  
167 instrument for Systematic Reviews and Research Syntheses (19). We agreed upon the  
168 following cut-off scores based on fulfilling the 11 items of the instrument: less than 6 (low  
169 quality), 6-8 (moderate quality), and over 8 (high quality). Two reviewers independently  
170 assessed the quality of the included study and a third reviewer resolved any conflicts.

171 *Data collection*

172 We developed an data extraction tool using an Excel template. After discussing it with all  
173 reviewers, we piloted it before starting the actual extraction of data to maximize consistency  
174 between all reviewers and to ensure that all relevant information was extracted. Pairs of  
175 researchers extracted the data from the included studies and resolved any discrepancies by  
176 consensus. The extracted data included first named authors, year published, objectives of  
177 the included review, participants' characteristics, context or geographic setting, date of  
178 database searching, type of study, countries of origin of the included primary studies,  
179 instrument used to appraise the primary studies and their quality rating, the outcomes  
180 reported that were relevant, and the method of synthesis/analysis employed to synthesize  
181 the evidence.

182 *Data Summary*

183 As the data in the included reviews were too heterogenous to synthesize quantitatively  
184 through meta-analysis, we used narrative synthesis to summarise the findings. To identify  
185 effective MHPSS interventions in the context of outbreaks, we extracted findings - reported  
186 in the included reviews - from RCTs of MHPSS interventions targeting different population



187 groups affected by an outbreak. We then conducted a qualitative synthesis for the included  
188 reviews grouping interventions according to the outbreak response pillars and the target  
189 population. We sought to develop a model of MHPSS interventions from the findings that  
190 could be applied to outbreak response pillars.

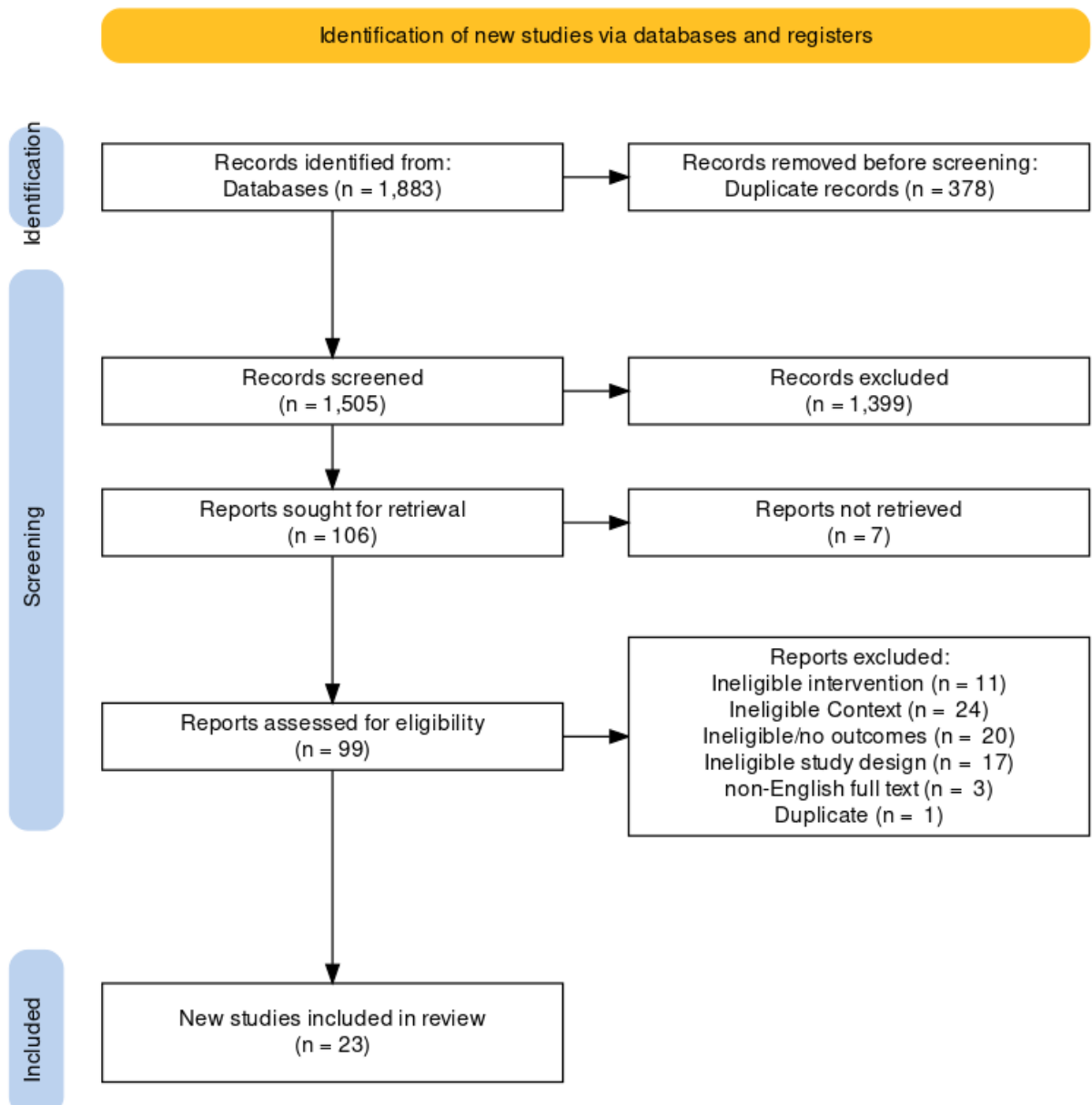
#### 191 *Deviations from the review protocol*

192 Initially, we planned to group interventions according to target population, but after  
193 consulting subject matter experts, and given our goal, which is integrating MHPSS into  
194 outbreak response, we decided to group interventions according to outbreak response pillars.

## 195 **Results**

### 196 *Study inclusion*

197 We initially identified 1,883 records, out of which 106 potentially met our inclusion criteria  
198 for full-text screening (Figure 1). Of the latter, 23 records met the inclusion criteria and were  
199 finally included in the qualitative synthesis.



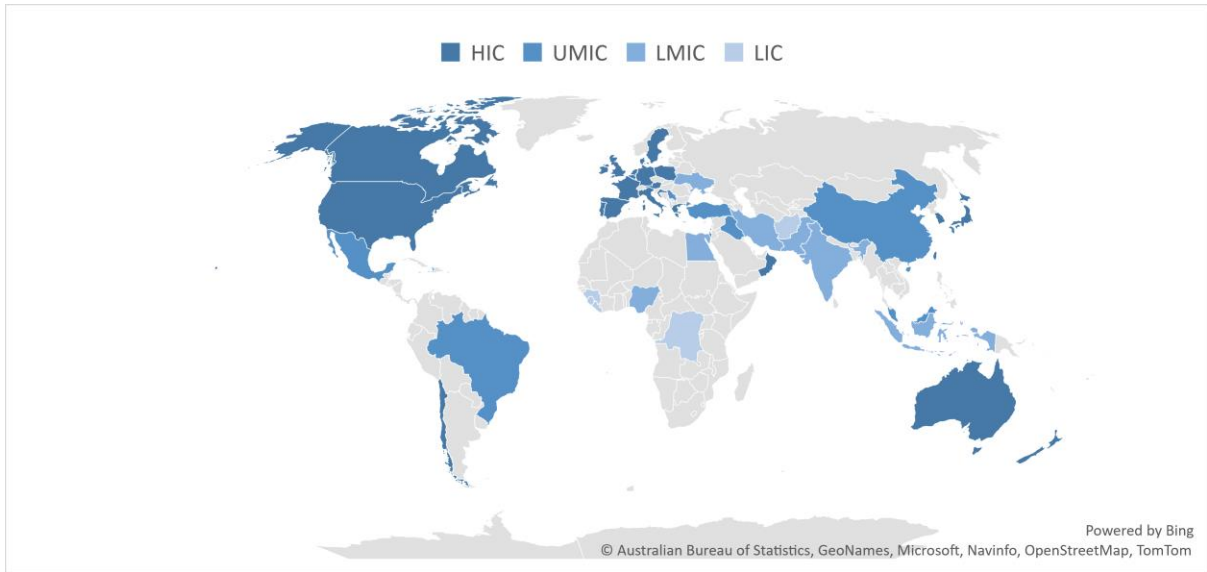
200

201 Figure 1: PRISMA Flow Diagram

202

203 *Characteristics of the included study*

204 All the included studies were systematic literature reviews, with six of them involving meta-  
 205 analysis (Table 1). Only three reviews included RCTs exclusively (20–22). The included studies  
 206 covered 47 countries; 27 of them (57%) were high-income countries (HIC), while 11% were  
 207 low-income countries (LIC) (Figure 2).



208

209 Figure 2: Countries covered by the included reviews according to the income category

210 All the included reviews addressed exclusively or partially MHPSS intervention in the context  
 211 of outbreaks. Some of the reviews included interventions from other contexts that have the  
 212 potential to be effective in the context of outbreaks (such as incarceration, which resembles  
 213 quarantine) (23–27).

**Table 1:** Summary of the Included Reviews

Author, Year	Type of Review	Objective	Setting	Conclusion and Recommendations	Overall Quality Assessment
(Bertuzzi <i>et al.</i> , 2021) (28)	Systematic Review	To provide a summary of the evidence for the available psychological support interventions and strategies for HCWs and informal caregivers during COVID-19.	COVID-19	Digital interventions were feasible and efficient in providing psychological support. Usability and digital literacy should be considered when designing digital interventions	High Quality
(Bursky <i>et al.</i> , 2021) (27)	Systematic Review	To summarize the findings and draw research-based recommendations for the application of meditation interventions for prisoners and individuals in quarantine or lockdown during the current pandemic.	COVID-19 and other settings that resembles quarantine and isolation in outbreaks	Meditation can be utilized during quarantine to mitigate negative feelings of loneliness, fear, and worry, improve psychopathological symptoms such as depression and anxiety, bolster physiological functioning, and increase overall well-being, allowing for a potentially positive transformative quarantine experience.	Moderate Quality
(Cénat, Felix, <i>et al.</i> , 2020) (9)	Systematic Review	To describe the implementation of MHPSS programs following the past EVD outbreaks	Ebola	There is a need to systematically document and evaluate the implemented MHPSS programs. Research could help understand the complex relationship between the perception of a threat, the associated psychological distress and the adoption of preventive behaviours in specific social and cultural environments.	Low Quality
(Damiano <i>et al.</i> , 2021) (29)	Systematic Review & Meta-analysis	To review the most common mental health strategies aimed at alleviating and/or preventing mental health problems in individuals during the coronavirus disease 2019 (COVID-19) and other coronavirus pandemics.	COVID-19, SARS, and MERS	The meta-analysis (of 3 RCTs) revealed that the interventions promoted better overall mental health outcomes as compared to control groups. The review identified a large body of expert recommendations, however, most articles had a low level of evidence	Moderate Quality
(Davison <i>et al.</i> , 2021) (30)	Scoping Review	To describe the effective health promotion, primary prevention, screening, and treatment interventions to enhance mental	COVID-19	Only one pilot study targeted the mental health of those with chronic health conditions. Patient navigator programs,	Moderate Quality

Author, Year	Type of Review	Objective	Setting	Conclusion and Recommendations	Overall Quality Assessment
		health outcomes and reduce the risk of substance use for populations with chronic physical health conditions who are at risk of contracting COVID-19 and having severe symptoms		group online medical visits, peer support, and social prescribing may support those with complex needs. Future policies need to address digital health access inequities and the implementation of multi-integrated health and social care.	
(Ding <i>et al.</i> , 2021) (20)	Systematic Review & Meta-analysis	To evaluate the effects of non-drug interventions on anxiety, depression and sleep in patients with COVID-19	COVID-19	This meta-analysis found that non-drug interventions can reduce the anxiety and depression scores of COVID-19 patients.	High Quality
(Doherty <i>et al.</i> , 2021) (21)	Systematic Review & Meta-analysis	To assess the effectiveness of psychological interventions in the general population and healthcare workers exposed to infectious disease outbreaks	COVID-19 and SARS	Meta-analysis showed that psychological interventions had a statistically significant benefit in managing depression and depression. Psychological interventions are needed for those vulnerable to the mental health consequences of outbreaks	High Quality
(Gómez <i>et al.</i> , 2021) (23)	Rapid systematic review	To review evidence on mental health interventions for children exposed to community crises or disasters	COVID-19, conflicts, and natural disasters	Involve different actors from the education sector in developing develop interdisciplinary and participative mental health strategies. Training teachers to implement interventions could increase the system capacity to reach and follow the children over a long time period.	Low quality
(Hooper <i>et al.</i> , 2021) (24)	Systematic Review	To identify and summaries recent early psychological intervention programs that were administered to prevent or minimize psychological harm in frontline responders	COVID-19	PFA, EMDR, and trauma risk management showed effectiveness across at least two studies each with frontline workers. Organisations have a duty of care to support their staff and equip them with psychological skills to help them cope with the mental health impact of crises	Low Quality
(Kunzler <i>et al.</i> , 2021) (31)	Scoping Review	to identify and summarize the available literature on interventions that target the	Ebola, MERS, SARS,	Most interventions delivered focused on healthcare workers and crisis personnel and	Moderate Quality

Author, Year	Type of Review	Objective	Setting	Conclusion and Recommendations	Overall Quality Assessment
		distress of people in the face of highly contagious disease outbreaks	COVID-19, and Influenza	combined psychoeducation with training on coping strategies. There is a need for pandemic preparedness interventions and interventions that target specific target groups (e.g., children)	
(Meherali <i>et al.</i> , 2021) (32)	A Rapid Systematic Review	To advise public health and policymakers on strategies and interventions to improve mental health among children and adolescents during pandemics	Ebola, Equine Influenza, H1N1, and COVID-19	Interventions such as art-based programs, support services, and clinician-led mental health and psychosocial services effectively decrease mental health issues among children and adolescents. Age-appropriateness and channel of delivery should be considered	Moderate Quality
(Pollock <i>et al.</i> , 2020) (33)	Systematic Review	To assess the effects of interventions aimed at supporting the resilience and mental health of frontline health and social care professionals during and after a disease outbreak, epidemic or pandemic and identify barriers and facilitators that may impact on the implementation of these interventions	Ebola, SARS, MERS, COVID-19	MHPSS interventions for HCWs should address organisational, social, personal, and psychological factors. PFA training can strengthen HCWs' capacity to provide psychosocial support in disasters and humanitarian crises.	High Quality
(Puyat <i>et al.</i> , 2020) (25)	A Rapid Systematic Review	To examine activities that can promote mental wellness during pandemics, quarantines, social isolation, or other stress-inducing Events.	COVID-19 and other settings that resembles quarantine and isolation in outbreaks	Physical activity such as exercise and yoga can improve mental well-being during outbreaks. Such interventions should be offered in conjunction with conventional mental health services when directed towards persons with pre-existing mental health conditions.	Moderate Quality
(Rivera-Torres <i>et al.</i> , 2021) (34)	Scoping Review	To map evidence on the types of leisure and recreation activities (LRA) older adults, 60 years and older, are engaged in for their	COVID-19	Older adults benefited from both digital (such as social networks) and physical (such as walking outside, aerobics, gardening) LRA activities. Social connectedness was	Low Quality

Author, Year	Type of Review	Objective	Setting	Conclusion and Recommendations	Overall Quality Assessment
		mental health during the COVID-19 pandemic.		beneficial, especially for those at higher risk for social isolation and loneliness.	
(Serrano-Ripoll <i>et al.</i> , 2020) (35)	Systematic Review & Meta-analysis	To examine the impact of health emergencies caused by a viral pandemic or epidemic outbreak on HCWs' mental health; ii) to identify factors associated with worse impact; and iii) to assess the effectiveness of interventions to reduce such impact.	COVID-19, SARS, MERS, H1N1 Influenza, H7N9 Influenza, and Ebola	Four studies reported interventions for frontline HCW: two educational interventions increased confidence in pandemic self-efficacy and in interpersonal problems solving (very low certainty), whereas one multifaceted intervention improved anxiety, depression, and sleep quality (very low certainty).	High Quality
(Shatri <i>et al.</i> , 2021) (36)	Clinical Review	To conduct a clinical review of the role of online psychotherapy in patients with COVID-19.	COVID-19	Providing mental health support, especially via telehealth, is likely to help patients maintain psychological well-being and better cope with health impacts of COVID-19	Low quality
(Soklaridis <i>et al.</i> , 2020) (37)	A Rapid Systematic Review	To Report on implementation, evaluation, and outcomes regarding mental health interventions during medical pandemics within the last two decades.	MERS, SARS, Influenza Pandemics, Ebola, And COVID-19	Attention needs to be paid to cultural considerations when designing and implementing mental health interventions and training. Training non-specialists empowers communities to deliver mental health interventions.	Moderate Quality
(Strudwick <i>et al.</i> , 2021) (38)	Rapid systematic review	What digital interventions could be used to support the mental health of the Canadian general population during the COVID-19 pandemic?	COVID-19 and other disasters	Indigenous peoples should be included at every stage of the intervention development. Ensure cultural relevance, equity and access when developing digital interventions	Moderate Quality
(Sun <i>et al.</i> , 2021) (22)	Systematic Review & Meta-analysis	To evaluate the effect of psychological interventions on HCWs with PTSD due to their exposure to life-threatening pandemics	Life-Threatening Pandemics such as COVID-19	The most effective and feasible treatment option for HCWs with PTSD is still unclear, but CBT and MBX have displayed the most significant effects based on currently limited evidence.	Moderate Quality
(Williams <i>et al.</i> , 2021) (26)	Rapid systematic review	To evaluate the current evidence base for interventions deemed compatible with shielding/social distancing measures	Settings that resemble quarantine	A combination of educational and psychological approaches that target the root cause of one's loneliness, in addition to social facilitation initiatives, to create and maintain	Moderate Quality

Author, Year	Type of Review	Objective	Setting	Conclusion and Recommendations	Overall Quality Assessment
			and isolation in COVID-19	relationships, represent the best opportunities to improve loneliness and decrease the impact of public health measures during outbreaks	
(Yang <i>et al.</i> , 2021) (39)	Systematic Review & Networking Meta-analysis	To compare the different psychological interventions and identify the most effective way to treat the psychological manifestations in people affected by COVID-19	COVID-19	A comprehensive analysis of the results indicated that supportive therapy was the most commonly used therapy and showed a better performance in anxiety and depression measurement scales	Moderate Quality
(Yue <i>et al.</i> , 2020) (40)	A Rapid Systematic Review	To synthesize the data on mental health services and interventions for the infectious disease epidemics and to enhance knowledge and improve the quality and effectiveness of the mental health response to COVID-19 and future infectious disease epidemics.	COVID-19, SARS, EVD, and MERS	Group-based CBT, PFA, community-based psychosocial arts program, and other culturally adapted interventions are effective against the mental health impacts of outbreaks. Mental health strategies integrated into public health emergency response can enhance response capacity for outbreaks.	Moderate Quality
(Zaçe <i>et al.</i> , 2021) (41)	Systematic review	To describe interventions that have been implemented to tackle mental health issues in HCWs during infectious disease outbreaks and measure the efficacy of these interventions	SARS, Influenza A, H1N1, Ebola, COVID-19	Facilitators and barriers to the implementation of interventions should be identified and considered in the outbreak planning process. Interventions for HCWs should not only focus on the individual-level factors, but should also target organisational and system-related factors	Moderate Quality
CBT= Cognitive Behavioural therapy EMDR= Eye Movement Desensitisation and Reprocessing; EVD= Ebola Virus Disease; HCWs= Healthcare workers; LRA= Leisure and Recreation Activities; MHPSS; Mental Health and Psychosocial Support; MBX = Mindfulness-Based Stretching and Deep Breathing Exercise; PFA= Psychological First Aid; PTSD= Post-Traumatic Stress Disorder; RCTs= Randomized Controlled Trials; SARS= Severe Acute Respiratory Syndrome					



### *Methodological quality appraisal*

Based on our quality appraisal criteria, we judged that 21.7% of the included reviews (n=5) were of high quality, 56.5% were of moderate quality (n=13), and 21.7% were of low quality (n=5). The overall quality appraisal result of each study is shown in Table 1. The quality appraisal tool and detailed quality appraisal results for the included studies can be found in the Supplemental Files (S2). Most of the primary studies included in the reviews were not randomised controlled trials (RCTs) and included a wide range of study designs, such as quasi-experimental and observational studies. The quality of evidence from the included primary studies was generally low, as reported by the included reviews' authors. Limitations included small sample sizes, lack of randomisation and blinding, and high loss of follow-up.

Table 2. Summary of RCTs reporting MHPSS interventions in the context of infectious disease outbreaks

Author, year	Intervention	Participants	Comparator	Design	Country	Outbreak	Outcome measures	Summary of Findings & Conclusion	Quality *
<b>Interventions for infected and suspected cases of infectious disease outbreak (clinical case management)</b>									
(Kong et al., 2020)(42)	Psychological Behavioural Intervention included breathing exercises and psychosocial support for 10 days. Breathing exercises performed daily for 20 mins in the morning. Psychosocial support lasted about 15 mins.	Patients with COVID-19 (N=26)	Usual care	RCT	China	COVID-19	HADS-A and HADS-D; Perceived Social Support Scale (PSSS)	HADS-A score (Mean 6.15 +/- 3.579) and the HADS-D score (5.92 +/- 3.730) were significantly reduced in the Intervention Group (both p < 0.001)	RoB = some concerns
(Li et al., 2020)(43)	Intervention consists of cognitive intervention, relaxation techniques training, problem-solving training, and social support strategy. Performed once a day in the morning, taking 30 mins to complete. Delivered face-to-face and adjusted to suit individual patient's needs.	Patients with COVID-19 (N=93)	Routine Care	RCT	China	COVID-19	Depression, Anxiety and Stress Scale (DASS-21)	A significant decrease in the means for scales of depression, anxiety and total DASS-21 in both intervention (p < 0.001) and control groups (p=0.001). Participants in the Intervention Group had a larger reduction on means for DASS-21, but no statistical differences were found between both groups.	RoB = some concerns
(Liu, Chen, et al., 2020) (44)	Progressive muscle relaxation performed 20-30 minutes/day for 5 consecutive days	Patients with COVID-19 (n=51)	Routine care	RCT	China	COVID-19	State-Trait Anxiety Inventory (STAI), Self-rating scale of sleep (SRSS)	The average anxiety score (STAI) and the average sleep quality score (SRSS) after intervention were statistically significant (P < 0.001)	High Risk of bias
(Liu, Zhang, et al., 2020)(45)	Respiratory rehabilitation 6-week respiratory rehabilitation training, performed 10 minutes/session, 2 sessions/week	Patients aged ≥ 65, with a definite COVID-19 diagnosis (N=72)	Routine care	RCT	China	COVID-19	Self-rating depression scale (SDS) and self-rating anxiety scale (SAS) . Quality of life (QoL)	QoL test scores were statistically significant within the intervention group (pre-post) and between the two groups (Post-intervention), SAS and SDS scores decreased after the intervention in the intervention group, but only anxiety (SAS) was statistically significant.	
(Özlü et al., 2021) (46)	Progressive muscle relaxation exercises. CD was provided to the intervention group. Exercises are performed twice	COVID-19 patients (N=67)	Routine care	RCT	Turkey	COVID-19	State-Trait Anxiety Inventory (STAI) State Anxiety Scale (SAS)	No statistically significant differences were found between the two groups before intervention. The mean post-test	High Risk of bias

Author, year	Intervention	Participants	Comparator	Design	Country	outbreak	Outcome measures	Summary of Findings & Conclusion	Quality *
	a day for 5 days and take 20-30 min to perform.	44.77% female						SAS score of the experimental group was lower than that of the control group ( $p < 0.05$ ).	
(Parizad et al., 2021)(47)	Guided imagery under a psychiatrist's supervision. Ten sessions for 5 consecutive days, twice a day for 1.5 hour. Delivered by audio track via headphones, administered by a nurse. Instructional guided imagery tracks last about 25 mins.	Patients with COVID-19 (N=110)	Routine care	RCT	Iran	COVID-19	State-Trait Anxiety Inventory (STAI)	A significant difference between scores of the STAI in the intervention group (pre- vs post-intervention). The mean scores of the state ( $p=0.214$ ) and the trait anxiety ( $p=0.629$ ) did not have a statistically significant difference in the control group (pre- vs postintervention).	RoB = High Risk of bias
(Sotoudeh et al., 2020)(48)	Brief Crisis Intervention package. 60-min weekly session for 1 month. Weekly sessions comprised: (1) greetings and introduction to the package; (2) adjustments skills; (3) responsibility and factualism; (4) spirituality.	COVID-19 patients (N=30)	Routine care	RCT	Iran	COVID-19	DASS-21, symptom checklist (SCL-25), the World Health Organisation Quality of Life Assessment (WHO-QOL)	The t-test results showed that the average score of depression, anxiety and stress after the intervention was statistically significant compared to the pretest ( $p < 0.05$ ).	RoB = High risk of bias
(Thombs et al., 2021) (49)	Scleroderma Patient centered Intervention Network COVID-19 Home-isolation Activities Together (SPIN-CHAT) intervention comprising three 90-min sessions per week for 4 weeks. Video-conferencing group intervention providing education and practice with mental health coping strategies and social support to reduce isolation.	Patients with self-reported systemic sclerosis diagnosis (N=172)	Waiting list Participants received the SPIN-CHAT intervention after the end of the follow up period.	RCT	Australia, Canada, France, Mexico, Spain, UK and USA	COVID-19	Patient-Reported Outcomes Measurement Information System (PROMIS). The primary outcome analysed was anxiety symptoms (PROMIS Anxiety 4a version 1.0)	The intervention did not significantly improve anxiety symptoms or other mental health outcomes post-intervention. However, anxiety and depression symptoms were significantly lower 6 weeks later. Anxiety (score difference: -2.36 points; 95% CI: -4.56 to -0.16). Depression (score difference: -1.64 points, 95% CI: -2.91 to -0.37)	RoB = High Risk of bias
(Wei et al., 2020)(50)	An internet-based intervention focusing on relaxation, self-care, and raising sense of security. It consists of 4 components,	COVID-19 patients (N=26) with moderate psychological	Supportive care	RCT	China	COVID-19	17-HAMD and HAMA	Significant decrease in the 17-HAMD scores in the intervention group in the first week ( $t = -2.381$ ; $p = 0.026$ ) and second ( $t = -3.089$ ; $p = 0.005$ ). Decrease in the value of	

Author, year	Intervention	Participants	Comparator	Design	Country	outbreak	Outcome measures	Summary of Findings & Conclusion	Quality *
	namely breathing relaxation exercises, mindfulness, “refuge” skills, and the butterfly hug method.	l distress scores						HAMA at the end of the first week (t = -2,263 ; p = 0.033) and second week (t = -3.746; p = 0.001)	
(Y. Liu et al., 2021)(51)	Intervention included daily broadcasts providing knowledge about COVID-19 – including prevention, treatment, and recovery measures. Participants were encouraged, through WeChat app, to introduce themselves, make friends, share experiences, help each other build confidence, satisfy spiritual issues, and soothe stress.	Patients with COVID-19 (N=140)	Routine care	RCT	China	COVID-19	State Anxiety Inventory (SAI)	Average SAI score of the trial group was 38.5±13.2, and it was 15.9% lower than the control group (45.8±10.4) resulting in a statistically significant difference (p < 0.001).	RoB = High Risk of bias
(Z. Liu et al., 2021)(52)	A self-help intervention delivered through 10 min of self-directed individual therapy per day for 1 week. The computerised CBT-based intervention was installed on an iPad to be used by participants	Patients with COVID-19 (N=273)	Treatment as usual	RCT	China	COVID-19	HAMD, HAMA, Self-Rating Depression Scale, Self-Rating Anxiety Scale	A mixed-effects repeated measures model revealed statistically significant improvement in depression (p < 0.001), anxiety (p < 0.001), during the post-intervention and follow-up periods	RoB = High Risk of bias
<b>Interventions for healthcare workers (Staff health and well-being)</b>									
(Dincer and Inangil, 2021)(53)	Brief online form of Emotional Freedom Techniques (EFT) aimed at prevention of stress and anxiety in nurses involved in treatment of COVID-19 patients. One session (only) lasting 20 min.	Hospital-based nurses (N=72)	Control group received no intervention.	RCT	Turkey	COVID-19	Subjective Units of Distress (SUD) scale, State-Trait Anxiety Inventory (STAI), burnout scale via online survey	The mean anxiety score reduction on the post-test for the intervention group was highly significant (p < 0.001), while the mean post-test anxiety score for the control group was not statistically significantly different.	RoB = some concerns
(Fiol-DeRoque et al., 2021) (54)	PsyCovidApp: a psychoeducational, mindfulness-based mHealth intervention for Two-week duration.	Healthcare workers (N=482)	Control app has brief information about healthcare	Parallel RCT	Spain	COVID-19	Depression Anxiety and Stress Scale (DASS-21)	The Intervention Group presented significantly lower overall DASS-21 scores at 2 weeks than the Control Group (adjusted standardized mean difference-0.29; 95% CI: -	RoB = some concerns

Author, year	Intervention	Participants	Comparator	Design	Country	Outbreak	Outcome measures	Summary of Findings & Conclusion	Quality *
			workers, mental health during COVID-19					0.48 to -0.09; p=0.004). It significantly improved Anxiety and PTSD symptoms, but no significant differences for depression symptoms	
(Perri et al., 2021)(55)	Eye Movement Desensitization and Reprocessing (EMDR). Dispensed online by 8 experienced psychotherapists. Seven-sessions therapy: two sessions per week for a duration of approximately 3 weeks.	Healthcare professionals (N=38)	Trauma-focused cognitive behavioural therapy (TF-CBT). Delivered online. Seven sessions, 2 sessions per week.	RCT	Italy	COVID-19	Post Traumatic Syndrome Disorder (PTSD) Checklist for DSM-V (PCL-5); STAI-Y1; BDI-II	No intervention was found to be superior to the other. State anxiety decreased by approximately 30% in both intervention groups after the seven-session treatment. Traumatic and depressive symptoms reduced by approximately 55% after the seven-sessions in both interventions.	RoB = High Risk of bias
(Procaccia et al., 2021) (56)	Expressive Writing (EW) Intervention. Participants were asked to write for three consecutive days at home for 20mins each describing their thoughts, feelings, and moods.	Healthcare workers (caring for patients with COVID-19) (N=55)	Neutral writing (NW) task.	RCT	Italy	COVID-19	BDI-II, Los Angeles Symptom Checklist	For the EW group – Statistically significant interaction effects were found for PTSD symptoms, depression symptoms, and Global Severity Index. No effects for social support and resilience were found.	RoB = High Risk of bias
(Sijbrandij et al., 2020) (57)	Training in delivery of psychological first aid (PFA): 1-day, face-to-face PFA group training	Healthcare workers (N=408)	No training	RCT + qualitative interviews	Sierra Leone and Liberia	EVD	Knowledge about psychosocial support, understanding how to apply appropriate skills and response strategies, professional attitude, confidence in caring for people affected by crisis, and ProQOL-5	The PFA group had a stronger increase in PFA knowledge and understanding at the post-PFA training assessment (d = 0.50; p < 0.001) and follow-up (d = 0.43; p = 0.001), and showed better responses to the scenarios at six-months follow-up (d = 0.38; p = 0.0002) but not at the post-assessment (d = 0.04; p = 0.26). No significant differences in professional attitude, confidence, and professional quality of life.	Certainty of Evidence (GRADE) = very low
<b>Interventions for the general population, children, and people with chronic health conditions ( maintaining health services delivery)</b>									

Author, year	Intervention	Participants	Comparator	Design	Country	outbreak	Outcome measures	Summary of Findings & Conclusion	Quality *
(Al-Alawi et al., 2021) (58)	Internet-based therapist-guided intervention. One online session per week for 6 weeks from certified psychotherapists, Utilising CBT and ACT, and focusing on anxiety and depression symptoms	Adult general population (N=60) data available for N=46	Weekly newsletter via email containing information on self-help and coping	RCT	Oman	COVID-19	Patient Health Questionnaire-9 (PHQ-9) and General Anxiety Disorder-7 (GAD-7) scale	A reduction in the average GAD-7 and PHQ-9 scores for both group. Levels of anxiety and depression were reduced in both study groups, but the reduction was higher in the intervention group (statistically significant difference between both groups).	RoB = some concerns
(Bossche et al., 2021) (59)	Psychosocial support: Community Health Worker (CHW) matched with N=67 pairs of patients. 8 weeks of tailored psychosocial support for the intervention group.	Patients known by a family physician working in the same urban area (N=135).	Usual care	RCT	Belgium	COVID-19	Patient-Reported Outcomes Measurement Information System (PROMIS)	No significant effect of the intervention on the prespecified psychosocial health measures. However, Patients in the intervention group reported a positive change in self-rated emotional support, social isolation, social participation, anxiety and fear of COVID-19	RoB = Some concerns
(Carbone et al., 2022) (60)	Online Counselling. A single Online counselling session (60 min) to reduce reducing anxiety symptoms and increase wellbeing	Adult general population (N=53)	waiting list	RCT	Italy	COVID-19	Brief Symptom Inventory (BSI); PANAS, STICSA, WEMWBS	Compared to the control group, the intervention group showed a significant reduction in anxiety symptoms (M±SD 36.65M±8.35 SD) vs (48.04±11.51)	RoB = some concerns
(Malboeuf-Hurtubise et al., 2021) (61)	Emotion-based directed drawing, online, group-based intervention for 5 weeks, 1 session/week. Each session lasts for 45 mins. Intervention included story of a virus; drawings on feelings and concerns; drawing viruses with funny names.	School children (N=22)	Mandala drawing intervention. Group-based, delivered online	RCT	Canada	COVID-19	Behaviour Assessment Scale for Children-3rd edition (BASC-3)	No statistically significant impact on levels of anxiety or depression in either the intervention or control group as measured by ANCOVA (p=0.26 for anxiety; p=0.68 for depression).	RoB = High Risk of bias
(Ng et al., 2006) (62)	Strength-Focused and Meaning-Oriented Approach for Resilience and Transformation (SMART) debriefing intervention for people exposed to SARS. One-	Community Rehabilitation Network for participants with chronic	No intervention	RCT	Hong Kong	SARS	Brief Symptom inventory (BSI)	Group effects were found in Personal-Positive (p < 0.01) and Social-Negative scores (p < 0.05); Depression was the only subscale in BSI which had statistically significant group effect (p < 0.05).	RoB = High Risk of bias

Author, year	Intervention	Participants	Comparator	Design	Country	outbreak	Outcome measures	Summary of Findings & Conclusion	Quality *
	day psycho-educational intervention.	disease (N=51)							
(Shabahang, 2020) (63)	Cognitive Behavioural intervention. Ten 90 min sessions, 5 days / week. Delivered by two CBT experts.	College students (N=150)	Unclear	RCT	Iran	COVID-19	Short Health Anxiety Inventory, adapted to COVID anxiety, SSAS, and BDI-II	Significant reductions in health anxiety, somatosensory amplification, and depression ( $p < 0.01$ ) for the experimental group. Small effect sizes were obtained for anxiety and depression	RoB = some concerns
(Vukčević Marković, Bječić and Priebe, 2020) (64)	Expressive writing (EW) intervention. 5 EW sessions, each lasting 20 mins, set 3 days apart, over a 2 weeks period. Participants are asked to disclose their deepest thoughts and feelings about stressful events.	General population (N=135)	Usual care	RCT	Serbia	CoVID-19	Depression Anxiety Stress Scale (DASS-21); WHO well-being index; Manchester Short Assessment of Quality of Life	The study found no evidence remote EW generate benefits in lowering depression, anxiety, and stress, and increasing overall well-being. On the contrary, the results showed that engaging in EW during the pandemic elevates the stress level of participants.	RoB = Low Risk of bias
(Wahlund et al., 2021) (65)	Brief self-guided online psychological intervention. Three-week duration, completely self-guided via encrypted website and organised into five brief modules.	Adult general population (N=670)	Waiting list. Control group received the intervention after the study period	RCT	Sweden	CoVID-19	COVID-19 adapted version of the Generalised Anxiety Disorder 7-item scale	Both groups improved significantly over time ( $\beta=0.74-1.89$ ; $Z=9.36-19.84$ ; $p < 0.001$ ) but the intervention group had a larger reduction in COVID-19-related worry than the control group ( $\beta=1.14$ ; $Z=9.27$ ; $p < 0.001$ ).	RoB = low Risk of bias
(Zheng et al., 2020) (66)	A daily mindfulness practice	General Population N = 97	a daily mind-wandering practice	RCT	China	COVID-19	Sleep quantity was Self-reported every day	Increased sleep duration	Low RoB
(Zheng et al., 2021) (67)	Digital behaviour change intervention which included: health education information promoting exercise and ocular relaxation, access to digital behaviour change intervention, with live streaming and peer sharing of promoted activities.	Children. (N=954)	Health education information only.	RCT	China	CoVID-19	Self-reported Spence Children's Anxiety Scale (SCAS) and a parent questionnaire	In linear regression models, Intervention was associated with a statistically significant reduction in self-reported anxiety compared to the controls ( $\beta=-0.36$ ; 95% CI: $-0.63$ to $-0.08$ ; $p=0.02$ ), after adjusting for sex and household income	RoB = High Risk of bias

\*Quality of the interventional study as indicated in the included reviews.

BDI-II=Beck's Depression Inventory- Second Edition; BSI= Brief Symptom Inventory; CD = Compact Disk; DASS-21= Depression, Anxiety and Stress Scale; HADS-A= Hospital Anxiety and Depression Scale-Anxiety; HADS-D= Hospital Anxiety and Depression Scale-Depression; HAMA= Hamilton Anxiety Scale; HAMD= Hamilton Depression Rating Scale-17; PANAS=

Author, year	Intervention	Participants	Comparator	Design	Country	outbreak	Outcome measures	Summary of Findings & Conclusion	Quality *
Positive and Negative Affect Schedule; PCL-5= Post-Traumatic Syndrome Disorder Checklist for DSM-V; PFA= Psychological First Aid; ProQOL-5= Professional quality of life SAS= State Anxiety Scale; SSAS= Somatosensory Amplification Scale; STAI=State-Trait Anxiety Inventory; STICSA =State-Trait Inventory of Cognitive and Somatic Anxiety; WEMWBS= Warwick-Edinburgh Mental Wellbeing Scale									



### *Findings in relation to infectious disease outbreak response pillars*

The included reviews reported the results of 26 RCTs (Table 2), in addition to other types of experimental and non-experimental studies. To facilitate the integration of MHPSS into outbreak response, we present findings of this umbrella review in relation to the infectious disease outbreak response pillars.

#### ***1. Multisector and Partner coordination***

Partner coordination is essential to ensure the appropriate coverage and quality of services for the affected population, especially vulnerable groups. It also ensures the appropriate use of limited resources available, avoids duplication (68) and coordinates the response across multiple sectors (17,69).

Education was one of the sectors identified in our review that implemented MHPSS activities during outbreak response. One review reported interventions for children returning to school after crisis (23). Out of the 18 included interventions, 12 (66.7%) were school-based and only one intervention was conducted in an outbreak context. Evidence from other health crises was used to inform recovery and back-to-school strategies after the COVID-19 pandemic (23). Most of the interventions were school-based, used cognitive-behavioural therapy (CBT) techniques, and were delivered by teachers, therapists, and clinicians (23). Another review reported an example of multisectoral collaboration during Ebola outbreak in West Africa, where mental health clinicians and law enforcement forces worked collaboratively to improve the outbreak response (40). Healthcare workers and police forces were trained on Psychological First Aid (PFA) and nonviolent de-escalation techniques that could be used for agitated patients, especially those in Ebola Treatment Units (ETUs), and improve their engagement with the public (40). This coordination also facilitated referrals to mental health

services for those needing further intervention (40,70). Overall, the health sector generated most of the MHPSS evidence in outbreak response, with little evidence from other sectors on cross-sectoral activities.

## *2. Staff health and well-being*

Six (26.1%) reviews addressed frontline staff well-being (22,24,28,33,35,41). While most of the reviews on frontline workers focussed on health care workers' well-being, one review included other frontline (non-health) responders (24). In a Cochrane review that investigated MHPSS interventions for health and social care professionals during outbreaks, one interventional study that assessed the impact of PFA training on healthcare workers was included. According to the authors, the included study provided a very low certainty of evidence on the impact of workplace interventions on burnout among healthcare workers (33). The Cochrane review found no interventions for social care workers' well-being during outbreaks. Authors suggested considering evidence from other emergencies due to the lack of available evidence from studies conducted in the context of outbreaks (33).

Training frontline workers in PFA has a potential benefit not only for those who will receive PFA but also for those who are trained to provide it. In one included review, PFA was reported to improve the positive mental health outcomes of health care workers and other first responders, such as resilience, coping, self-efficacy, perceived social support, and reduced perceived self-stigma (24). It also improved the trainees' knowledge, understanding, and skills regarding providing support to affected individuals (24).

PFA training was not limited to medical staff only, but it also included others involved in the outbreak response. In the Ebola outbreak in west Africa, community and faith leaders, police,

contact tracers, volunteers, Ebola survivors, social mobilization agents, and food providers to quarantined households were trained in PFA (71).

Peer-support was one of the frequently recommended approaches for staff well-being (72–75). The “buddy system” is a peer support model where two people who work together are able to monitor and support each other. In addition to the psychosocial benefits for the workers, peer support can have a technical benefit where less experienced personnel can learn quickly and closely from experienced colleagues (72).

In terms of disorder-specific interventions, a review (22) investigating MHPSS interventions for health personnel working in hospitals and emergency services who suffer from PTSD symptoms, reported significant improvement in the PTSD symptoms following exposure-based CBT and Mindfulness-Based Stretching and Deep Breathing Exercises (76,77). However, the level of evidence reported in that review was evaluated as low.

### *3. Infection prevention and control (IPC) measures*

IPC involves the measures taken to prevent the transmission of an infectious agent. This includes the use of personal protective equipment (PPE), hand hygiene, and environmental cleaning. It also includes safe burial practices in some outbreaks, such as Ebola. Included reviews reported some adaptations to MHPSS activities to be delivered safely during outbreaks. For instance, in addition to following IPC protocols, mental health services postponed unnecessary outpatient visits and replaced them with check-ins via phones; group activities were suspended or delivered remotely (e.g., using Zoom); family visits to in-patients were restricted (40,78). Since staff might be the only people in contact with patients in mental health facilities, electronic tracking of staff movement was applied in one of the studies to facilitate contact tracing (40,79). Another study reported a home hospitalisation model where

people with severe mental illness who need admission were taken care of at home by a mental health team (40,80).

The use of remote interventions has witnessed a remarkable increase during COVID-19, in line with infection prevention and control measures. Many psychiatric and counselling services shifted to digital provision. One review summarised that providing psychotherapy and counselling services online can reduce anxiety and depression, especially in patients experiencing mild to moderate symptoms (36). Remote interventions included in reviews varied regarding length, delivery agent, and content. However, a 60-minute single online counselling session delivered by a clinical psychologist and focused on psycho-education, anxiety management strategies, and empathic listening was found to be effective in reducing anxiety and negative affect (60).

In some infectious disease outbreaks, such as Ebola, where deceased patients are highly infectious, MHPSS interventions included providing support to families of the deceased and ensuring safe and dignified burials (71).

#### **4. Case management:**

Case management focuses on providing care and treatment for infected individuals and suspected cases who have been in contact with infected individuals. Integrating MHPSS into case management includes providing MHPSS to infected individuals and their contacts, especially those who are socially isolated. This can be provided remotely or in person (for those in healthcare facilities) after taking the necessary IPC measures to limit transmission.

Eleven RCTs of MHPSS interventions for infected patients were identified and extracted from the included reviews, all of which were conducted during the COVID-19 pandemic. A

systematic review and meta-analysis that included five RCTs conducted in China with a total of 768 COVID-19 patients found that non-pharmacological interventions can improve symptoms of depression and anxiety in COVID-19 patients (20). Interventions included progressive muscle relaxation, respiratory rehabilitation, life intervention, nursing with traditional Chinese medicine and internet-based integrated interventions (20). Progressive muscle relaxation exercises effectively reduced anxiety and improved sleep quality in a sample of patients with COVID-19 in Turkey (46). Other interventions included CBT, guided imagery, and self-help interventions (21). While some interventions were provided in person, others used technology such as recordings or tablets.

Training for staff working with infected people and their contacts is an essential component of MHPSS interventions for case management, and it was reported frequently in the included reviews (70,71,81). During the Ebola outbreak in West Africa, those working in ETUs, Ebola survivors, police, and Psychosocial Support Teams received MHPSS training, including PFA and self-care (70,71,81).

##### *5. Maintaining essential health services:*

Outbreaks cause a significant increase in the prevalence of mental health conditions and disrupt mental health services (3,12). This necessitates integrating MHPSS into essential health services to ensure that people with existing mental health conditions, those with other co-morbid chronic conditions, and those who newly develop a mental health condition receive appropriate care. However, despite the high prevalence of mental health problems among patients with chronic health conditions, one review addressing the mental health of this population group during COVID-19 found only one intervention study targeting COVID-19 patients, among whom 35% had chronic health conditions (30). Another review reported

a video-conferencing group intervention for scleroderma patients during COVID-19 (49), and a group debriefing intervention for people with chronic diseases affected by SARS (62). Another important consideration to deliver MHPSS services within essential services during outbreaks is that services should be adapted to the existing IPC measures to limit the risk of transmission and ensure the safety of patients and services providers (see section under the IPC pillar above).

#### **6. *Risk communication and Community Engagement (RCCE)***

The RCCE pillar in an outbreak involves the effective communication of information about the outbreak to the public, as well as engagement with the community to mitigate the impact of outbreaks on their well-being and livelihood. During outbreaks, public health authorities might impose some measures to control the infection. Those measures can be associated with negative mental health impacts. Integrating MHPSS into RCCE includes communicating the risk of outbreaks on people's psychosocial well-being and how to mitigate this risk (e.g., stress management and coping mechanisms). In general, there was a lack of literature on RCCE activities targeting vulnerable groups such as children and adolescents, older persons, caregivers, and people with psychosocial and physical disabilities.

In one of the primary studies, healthcare workers were trained to increase their preparedness for the H1N1 influenza pandemic (31,35,41,82). Training included information about the infectious agent, normal stress response, and coping mechanisms (82). The percentage of healthcare workers who felt confident about dealing with the pandemic increased from 35 % to 76% (82). Another review included studies that used text messages to support populations affected by the COVID-19 pandemic (40). Subscribers received free daily supportive messages for three months. Messages were prepared by a team of mental health professionals and

service users (83,84). Participants in the intervention group receiving these messages had lower prevalence of stress and depression compared to the control group (84).

Given the impact of quarantine and lockdown on well-being, RCCE activities should address the psychosocial impact and provide evidence-based recommendations to mitigate the negative impact of these measures. Several reviews identified interventions that can be performed, in adherence to the IPC measures, to mitigate the negative impact of lockdown and isolation (25–27). In their review, Williams *et al.* (2021) investigated interventions for loneliness and social isolation that can be applied in the context of the COVID-19 lockdown. Mindfulness-based interventions, meditation, and laughter therapy were among the most effective interventions for loneliness and social isolation. Puyat *et al.* (2020) explored similar contexts to lockdown, such as prisons and summarised that activities such as exercise and yoga have beneficial effects on the mental health of prisoners.

Another review (27) investigated the effectiveness of meditation and mindfulness-based interventions for prisoners and people affected by lockdown and summarised that meditation and mindfulness-based interventions were effective in reducing symptoms related to stress and trauma among prisoners. Such activities could be performed at home easily with a little guidance and could be suggested as ways to reduce the negative impact of lockdown and other infection control measures.

## **Discussion**

This umbrella review identified limited evidence on MHPSS interventions in the context of outbreaks, epidemics, and pandemics. Many interventions were identified, but few were

considered to demonstrate strong evidence. Despite experiencing several epidemics and pandemics in the last two decades, most of the available literature was produced during the recent COVID-19 pandemic. Moreover, the majority of studies were carried out only in healthcare settings which limits the scope of our findings. Research on MHPSS in outbreaks often focuses on healthcare staff well-being and providing psychological support for infected patients as part of clinical case management. In the sections below, we discuss the review findings according to outbreak response pillars and propose a model for integrating MHPSS into outbreak response in light of the existing literature, guidelines and our technical expertise.

#### *MHPSS activities in outbreaks response*

Despite the significant impact of public health emergencies on those involved in the response, the majority of the existing evidence we found focused on medical staff's well-being, with little attention to others involved in the response (e.g., police, social services). The peer support approaches (e.g., buddy system) for staff well-being, which have important psychological, social, and technical benefits, are frequently mentioned in the literature (72–75). The buddy system was also used by the WHO during the Ebola outbreak in West Africa as a part of a holistic approach to ensure the occupational health and safety of emergency response personnel (85,86).

Healthcare workers are at high risk of contracting and transmitting the infection, which further exposes them to stigma and social isolation. Therefore, WHO recommends that public awareness campaigns address outbreak-related stigma and encourage the public to value the role of frontline workers in protecting people's health (86). For example, local community



members could send support and appreciation messages to healthcare workers (87). In addition, Healthcare workers should be fairly remunerated for their work. Mechanisms should be in place to ensure responders' safety and well-being pre-, during, and post-deployment in an outbreak (86). In Table (3), we summarise the recommended actions derived from the existing literature and guidelines, that need to be in place to ensure the well-being of all responders involved in an outbreak response.

Table 3: Recommended actions to ensure the well-being of responders before, during, and after deployment in an outbreak

Deployment phase	Recommended actions
Pre-deployment	<ul style="list-style-type: none"> <li>• Screening and assessing the capacity of staff to respond to the emergency.</li> <li>• Selecting the right persons with the right set of skills required for the posting.</li> <li>• Capacity-strengthening including basic psychosocial skills and stress management/self-care skills besides technical skills required for the job.</li> <li>• Risk communication including providing responders with up-to-date information about the outbreak, infectious agent, protection measures, available support mechanisms, and other information relevant to their safety and well-being.</li> </ul>
During deployment	<ul style="list-style-type: none"> <li>• Monitoring the outbreak's impact on responders' physical and mental health and managing these impacts, including through psychological support.</li> <li>• Buddy system to provide both psychosocial and technical support for responders.</li> <li>• Providing PPE and other tools needed to perform the job safely and appropriately.</li> <li>• Ensuring that support is in place when needed and that responders are aware of these mechanisms (e.g., 24/7 helplines) and referral pathways to clinical services if required.</li> </ul>
Post-deployment	<ul style="list-style-type: none"> <li>• Post-deployment debriefing session for responders to share their experiences, feelings and thoughts and to assess if further support is needed.</li> <li>• Monitoring possible delayed impacts of the stressful experience.</li> </ul>
General considerations	<ul style="list-style-type: none"> <li>• Valuing responders' efforts and reducing social stigma (e.g., appreciation and support from their organisations and local communities and remuneration for their work).</li> </ul>

Our review identified a lack of RCCE interventions targeting vulnerable groups in the context of outbreaks. This finding is consistent with that of Bailey *et al.* (2023), who analysed 141 COVID-19 risk communication messages and found that less than 9 % of those messages are directed to vulnerable groups (i.e., older persons, people with psychosocial or physical

disabilities), and less than 3 % of the messages addressed mental health. In addition, only two of the 26 RCTs identified in this review addressed children and adolescents, and none of the included RCTs addressed the caregivers' MHPSS needs.

Several studies identified communication inequalities during outbreaks which led to considerable disparities in exposure to risk communication messages and hence in the adoption of IPC measures and the impact of the outbreak on different population groups (89–92). Communication inequality was associated with several factors such as age, income, education, ethnicity, disability, and language (89–92). Therefore, we recommend that RCCE interventions should consider these factors and be tailored to the needs of different population groups.

Inappropriate risk communication messages can trigger fear and anxiety among community members (93). During the Ebola outbreak in West Africa, risk communication messages focused on the lethality of the virus (such as “Ebola kills”) triggered fear, anxiety and hopelessness among affected community members. In contrast, messages focused on the importance of early treatment and survival improved health-seeking behaviours (93). Therefore, community representatives and different population groups should be involved in developing and delivering RCCE messages to ensure their appropriateness and acceptability.

Per the IASC recommendations, MHPSS activities implemented as a part of outbreak response should be adapted to minimise the risk of infection and ensure the continuity of services (17).

In this review, we have presented examples from the literature where some adaptations and restrictions were made to ensure the safety of patients and providers (78–80). Although the use of technology to provide MHPSS interventions was found to be effective as it facilitates access to service, there is a concern that heavy reliance on technology may increase the

disparity in health services, especially for people who are socially and digitally disadvantaged (30). Accordingly, this issue should be considered while developing and delivering MHPSS interventions.

In some outbreaks, such as EVD, MHPSS has a role in ensuring that burial is carried out in a safe and dignified manner. The IASC guidance for Ebola stresses that people should be allowed to mourn and practice their rituals without compromising IPC measures (e.g., from a safe distance without touching the body) (94). As a part of the International Federation of Red Cross and Red Crescent Societies (IFRC)'s response to the Ebola outbreak, staff trained in PFA provide condolence during burials and home visits to the families of deceased patients. This helps to gain trust and access to local communities (95).

Outbreaks challenge healthcare service efforts to provide care for infected individuals and simultaneously maintain services for other conditions. An assessment conducted by the WHO during COVID-19 found 93 % of countries reported disruption of mental health services due to the pandemic partially due to the diversion of the health system's resources to COVID-19 (13). In many cases, mental health professionals were reallocated to work in Intensive Care Units and COVID-19 wards (96). In addition, several studies reported the suspension of mental health services to control and prevent infection (78–80). Such decisions will likely affect people with severe or acute mental health conditions who might need hospital admission. This indicates the importance of integrating MHPSS into general health services and exploring innovative ways to deliver MHPSS services. Despite their negative impact on mental health, emergencies such as outbreaks also present an opportunity to 'Build Back Better' mental health systems (97). Therefore, the role of MHPSS should not be limited to the response phase of public health emergencies but should also include preparedness and long-term recovery.

Despite the long-term psychosocial impacts of infection, most reviews focused on the acute response to infectious disease outbreaks, and none of the included interventions addressed long-term impacts. Therefore, attention should be given to those suffering from the long-term health effects of the infection. Active monitoring for psychological symptoms and referral to mental health services, when needed, were among the recommendations for post-COVID-19 rehabilitation (98).

Outbreaks and pandemics perpetuate the long-standing inequalities in healthcare among low-income communities and vulnerable groups (e.g., minority ethnic groups, children, refugees, migrants, and people with physical or psychosocial disabilities). This is evident when comparing COVID-19 deaths among minority ethnic groups. For instance, Black Americans accounted for 34% of confirmed COVID-19 cases, despite only comprising 13% of the US population (99). In the UK, the Bangladeshi group had the highest COVID-19 mortality rates during the second wave, which was 4-5 times higher than the White British group (100). Seemingly, children and young people were among the most affected by the COVID-19 pandemic, given the closure of schools, limited physical activity, lockdown, loss of loved ones due to infection, limited understanding of the situation, and spending hours online, which might have an impact on their mental health (32). Overall, there was a lack of MHPSS interventions targeting marginalised and vulnerable groups. Therefore, community-based MHPSS interventions should be developed to target marginalised and vulnerable groups, especially those who might not have access to health services.

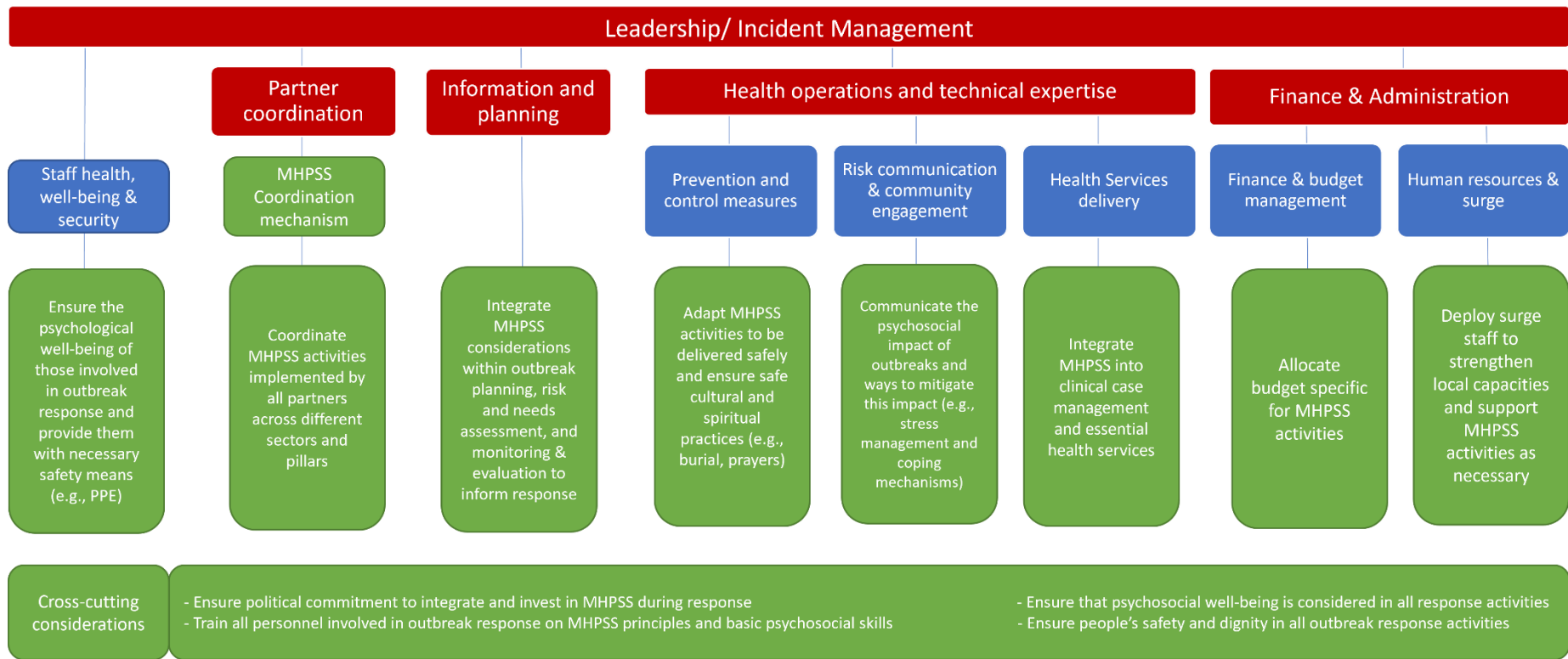
Table (4) summarises research gaps we identified and the recommendations to narrow these gaps.

Table 4 . Identified research gaps and recommendations

<b>Research gap</b>	<b>Recommendations</b>
The majority of studies were conducted during the acute phase of outbreaks	Researchers should develop and evaluate interventions to address the long-term impact of outbreaks on well-being, as well as effectiveness of preparedness interventions
Most of the RCTs identified were conducted in healthcare settings targeting patients or healthcare workers.	Develop community-based interventions that target different population groups especially vulnerable groups
Research targeting frontline workers focused mainly on medical staff	Research targeting frontline workers should expand beyond healthcare to include others involved in outbreak response such as police and community volunteers
Technology was used heavily during COVID-19 to deliver MHPSS services, which might exclude disadvantaged population groups from accessing these services	Research needed to assess the acceptability and feasibility of those interventions and address the accessibility issues among vulnerable population groups

*Integrating MHPSS into outbreak response: a proposed framework*

Given the immense impact of the COVID-19 pandemic, the WHO has stressed the importance of MHPSS “as an integral component in public health emergency response that must be addressed across a range of response pillars, including case management, risk communication and community engagement, and the maintenance of safe and accessible essential health services” (69). The WHO’s Incident Management System (IMS) is a standardised, yet flexible structure to managing a public health emergency response (68). As the IMS is the recognised structure for managing public health emergencies, including outbreaks, we used it to inform our proposed framework for integrating MHPSS into outbreak response (Figure 3). The framework summarises MHPSS operational considerations in relation to relevant IMS functions/sub-functions and outbreak response pillars.



■ IMS critical functions   
 ■ IMS sub-functions   
 ■ MHPSS considerations during outbreak response

Figure 3: Operational framework to integrate MHPSS considerations into WHO's Incident Management System (IMS)

Given that outbreak response is usually multi-sectoral, coordination becomes a necessity. For a better coordination between different actors involved in outbreak response, the IASC guidelines recommend establishing an intersectoral coordination group for MHPSS to ensure that psychological well-being is considered in all response activities (18). This becomes more evident during outbreaks, where many control measures can affect psychosocial well-being (e.g. quarantine and lockdown). While coordination can happen more readily between MHPSS actors, MHPSS actors need to work harder with non-MHPSS actors to ensure they integrate MHPSS considerations into their work. In Table 5, we recommend a set of actions to improve the MHPSS component of outbreaks preparedness and response, and hence mitigate their psychosocial impact.

Table 5. Recommendations for policy and practice

Recommendations	Examples from the literature
<b>General considerations</b>	
Train all those involved in the outbreak response on PFA and basic psychosocial skills	In the Ebola outbreak in West Africa, health workers, community and faith leaders, police, contact tracers, volunteers, Ebola survivors, social mobilization agents and, food providers to quarantined households were trained in PFA (71)
Ensure that psychological well-being is considered in all outbreak response activities	Providing information and support during ambulance pick-ups, speaking to families of suspected and confirmed EVD patients, facilitating communication between families and patients, support to families of deceased patients, and ensure safe burials in a dignified manner (81)
<b>Coordination</b>	
Establish clear multisectoral coordination mechanism to coordinate MHPSS across all response pillars and facilitate collaboration between different stakeholders. Link with IASC MHPSS Technical Working Group where established	Police forces were trained on PFA and nonviolent de-escalation techniques for agitated patients, especially those in Ebola Treatment Units (ETUs), and improved engagement with the public. The coordination between police and mental health staff facilitated referrals to mental health services for those needing further intervention (70).
<b>Staff/responders' well-being</b>	
Establish support mechanisms for staff involved in outbreak response.	Peer support mechanisms, such as the "buddy system", can provide both psychosocial and technical support (72).
<b>Case management</b>	
Ensure that MHPSS considerations are included in the clinical management guidelines for infected cases.	The guidance for clinical management of COVID-19 stated that "Basic psychosocial support skills are at the core of any clinical intervention for COVID-19. Such skills are indispensable for all involved in the COVID-19 clinical response, whether they identify as mental health and psychosocial providers or not." (101).

Address the long-term psychological impact of infection on the affected population.	Active monitoring for psychological symptoms and referral to mental health services, when needed, were among the recommendations for post-COVID-19 rehabilitation (98).
Train staff involved in clinical case management on basic psychosocial skills.	Those working in Ebola Treatment Units (ETUs), such as medical staff, Ebola survivors, police, and the Psychosocial support team received MHPSS training including PFA and self-care (70,71,81).
<b>Maintaining essential health services</b>	
Ensure the integration of MHPSS into general health services to address the psychological needs of people with mental health and other chronic health conditions.	Nurses working in general hospitals were trained in PFA, case identification and referral pathways and provided basic counselling and problem-solving therapy for individuals needing mental healthcare (102).
<b>Community engagement and risk communications</b>	
Communicate the psychosocial impact of outbreaks and ways to mitigate this impact (e.g., stress management). Adapt the messages to the different population groups' needs (e.g., children, people with disabilities, refugees). Involve community members in developing and delivering risk communication messages.	Text messages to support the population affected by the COVID-19 pandemic. Subscribers received free daily supportive messages for three months. Service users were involved in the development of these messages (83).
<b>Infection prevention and control</b>	
Ensure that IPC measures are followed when delivering MHPSS interventions and adapt interventions to be delivered safely.	Adaptation of mental health services included postponing unnecessary outpatient visits and replacing them with check-ins via phones; restricting family visits; group activities were suspended or delivered remotely (e.g. using Zoom). Home hospitalisation model where people with severe mental illness who need admission were cared for at home by a mental health team (78–80).
Ensure safe and dignified burials and allow people to mourn and practice their rituals without compromising IPC measures.	Providing support to families of the deceased and ensuring safe and dignified burials (71)

## Strengths and Limitations

To our knowledge, this is the first umbrella review to summarise review-level evidence. It is also the first review to address MHPSS interventions in relation to infectious disease outbreak response pillars. We believe that our findings and the proposed framework can guide the process of integrating MHPSS into future infectious disease outbreaks. However, our review has several limitations. The majority of the reviews included were of low quality, and the majority of included primary evidence included in those reviews was also of low quality. To mitigate the impact of this limitation, we focused on the evidence obtained from RCTs. (as



reported in the included review). We did not carry out a quality appraisal for primary studies, but we included their quality as reported in the included reviews. Heterogeneity regarding study designs, interventions, and outcome measures was a major limitation for most of the included studies. The main causes of bias in the primary studies include lack of randomisation and blinding, small sample sizes, attrition bias, and selective reporting.

## **Conclusion**

Outbreaks have a substantial psychological impact on individuals, communities, and frontline workers. Therefore MHPSS should be an essential component of the outbreak response. Despite the low quality of the majority of the existing evidence, MHPSS interventions have the potential to improve the psychosocial well-being of those affected by and those responding to outbreaks. They also can improve the outcomes of the outbreak response activities such as contact tracing, infection prevention and control, and clinical case management. We proposed a framework for integrating MHPSS into outbreak response informed by the WHO's IMS. The framework addresses MHPSS operational considerations that can help mitigate the mental health impact of outbreaks. Further research is needed to deepen the evidence for MHPSS interventions in infectious disease outbreaks.

## **Acknowledgements**

We would like to thank members of the Africa public mental health consortium; Dr Florence Baingana (WHO AFRO), Dr. Mohammed Abdulaziz, Dr Adelard Kakunz, and Dumsani Njobo Mamba (Africa CDC) , and Rosemary Mwaisaka (ECSA-HC) for providing technical support throughout the project.

This review was conducted as a part of a project funded by the UK Public Health Rapid Support Team (UK-PHRST). The UK-PHRST is funded by UK Aid from the Department of Health and Social Care and is jointly run by UK Health Security Agency and the London School of Hygiene & Tropical Medicine. The views expressed in this publication are those of the author(s) and not necessarily those of the Department of Health and Social Care.

**Conflict of interest:** none

### Supplemental Files

S1: Detailed search strategy

S2: Detailed Quality appraisal results

### References

1. World Health Organization. Statement on the fifteenth meeting of the IHR (2005) Emergency Committee on the COVID-19 pandemic [Internet]. 2023 [cited 2023 Jul 11]. Available from: [https://www.who.int/news/item/05-05-2023-statement-on-the-fifteenth-meeting-of-the-international-health-regulations-\(2005\)-emergency-committee-regarding-the-coronavirus-disease-\(covid-19\)-pandemic](https://www.who.int/news/item/05-05-2023-statement-on-the-fifteenth-meeting-of-the-international-health-regulations-(2005)-emergency-committee-regarding-the-coronavirus-disease-(covid-19)-pandemic)
2. World Health Organization. WHO Coronavirus (COVID-19) Dashboard [Internet]. 2023 [cited 2023 Jul 3]. Available from: <https://covid19.who.int/>
3. World Health Organization. Mental Health and COVID-19: Early evidence of the pandemic's impact: Scientific brief, 2 March 2022 [Internet]. 2022 [cited 2022 Jun 22]. Available from: [https://www.who.int/publications/i/item/WHO-2019-nCoV-Sci\\_Brief-Mental\\_health-2022.1](https://www.who.int/publications/i/item/WHO-2019-nCoV-Sci_Brief-Mental_health-2022.1)
4. Fisher JRW, Tran TD, Hammarberg K, Sastry J, Nguyen H, Rowe H, et al. Mental health of people in Australia in the first month of COVID-19 restrictions: a national survey. *Med J Aust* [Internet]. 2020 Nov 1 [cited 2022 Oct 6];213(10):458–64. Available from: <https://onlinelibrary.wiley.com/doi/full/10.5694/mja2.50831>
5. Kochhar AS, Bhasin R, Kochhar GK, Dadlani H, Mehta VV, Kaur R, et al. Lockdown of 1.3 billion people in India during Covid-19 pandemic: A survey of its impact on mental health. *Asian J Psychiatr* [Internet]. 2020 Dec 1 [cited 2022 Oct 6];54:102213. Available from: </pmc/articles/PMC7301781/>
6. Loades ME, Chatburn E, Higson-Sweeney N, Reynolds S, Shafran R, Brigden A, et al. Rapid Systematic Review: The Impact of Social Isolation and Loneliness on the Mental Health of Children and Adolescents in the Context of COVID-19. *J Am Acad Child Adolesc Psychiatry*. 2020 Nov 1;59(11):1218-1239.e3.
7. Esterwood E, Saeed SA. Past Epidemics, Natural Disasters, COVID19, and Mental Health: Learning from History as we Deal with the Present and Prepare for the Future. *Psychiatr Q*

- [Internet]. 2020 Dec 1 [cited 2022 Oct 6];91(4):1121. Available from: [/pmc/articles/PMC7429118/](#)
8. Jalloh MF, Li W, Bunnell RE, Ethier KA, O’Leary A, Hageman KM, et al. Impact of Ebola experiences and risk perceptions on mental health in Sierra Leone, July 2015. *BMJ Glob Heal* [Internet]. 2018 Mar 1 [cited 2022 Oct 6];3(2):e000471. Available from: <https://gh.bmj.com/content/3/2/e000471>
  9. Cénat JM, Felix N, Blais-Rochette C, Rousseau C, Bukaka J, Derivois D, et al. Prevalence of mental health problems in populations affected by the Ebola virus disease: A systematic review and meta-analysis. *Psychiatry Res*. 2020 Jul 1;289:113033.
  10. Park HY, Park WB, Lee SH, Kim JL, Lee JJ, Lee H, et al. Posttraumatic stress disorder and depression of survivors 12 months after the outbreak of Middle East respiratory syndrome in South Korea. *BMC Public Health* [Internet]. 2020 May 15 [cited 2022 Oct 6];20(1). Available from: [/pmc/articles/PMC7224724/](#)
  11. Chau SWH, Wong OWH, Ramakrishnan R, Chan SSM, Wong EKY, Li PYT, et al. History for some or lesson for all? A systematic review and meta-analysis on the immediate and long-term mental health impact of the 2002–2003 Severe Acute Respiratory Syndrome (SARS) outbreak. *BMC Public Health* [Internet]. 2021 Dec 1 [cited 2022 Oct 6];21(1):1–23. Available from: <https://bmcpublichealth.biomedcentral.com/articles/10.1186/s12889-021-10701-3>
  12. Santomauro DF, Mantilla Herrera AM, Shadid J, Zheng P, Ashbaugh C, Pigott DM, et al. Global prevalence and burden of depressive and anxiety disorders in 204 countries and territories in 2020 due to the COVID-19 pandemic. *Lancet* [Internet]. 2021 Nov 6 [cited 2022 Oct 6];398(10312):1700–12. Available from: <http://www.thelancet.com/article/S0140673621021437/fulltext>
  13. World Health Organization. The impact of COVID-19 on mental, neurological and substance use services : results of a rapid assessment. 2020;
  14. World Health Organization. Mental health and psychosocial considerations during the COVID-19 outbreak [Internet]. 2020 [cited 2022 Oct 6]. Available from: <https://www.who.int/publications/i/item/WHO-2019-nCoV-MentalHealth-2020.1>
  15. UN Sustainable Development Group. UNSDG | Policy Brief: COVID-19 and the Need for Action on Mental Health [Internet]. 2020 [cited 2022 Jun 5]. Available from: <https://unsdg.un.org/resources/policy-brief-covid-19-and-need-action-mental-health>
  16. Walker A, Alkasaby MA, Baingana F, Bosu WK, Abdulaziz M, Westerveld R, et al. Challenges and Opportunities for Mental Health and Psychosocial Support in the COVID-19 Response in Africa: A Mixed-Methods Study. *Int J Environ Res Public Heal* 2022, Vol 19, Page 9313 [Internet]. 2022 Jul 29 [cited 2022 Oct 6];19(15):9313. Available from: <https://www.mdpi.com/1660-4601/19/15/9313/htm>
  17. Inter-Agency Standing Committee. Interim Briefing Note addressing mental health and psychosocial aspects of COVID-19 outbreak, IASC Reference Group on Mental Health and Psychosocial Support in Emergency Settings. 2020 [cited 2022 Mar 1]; Available from: <https://www.who.int/emergencies/diseases/novelcoronavirus-2019>
  18. Inter-Agency Standing Committee. IASC guidelines on mental health and psychosocial support in emergency settings. 2007; Available from: <https://interagencystandingcommittee.org/iasc-task-force-mental-health-and-psychosocial-support-emergency-settings/iasc-guidelines-mental-health-and-psychosocial-support-emergency-settings-2007>

19. Aromataris E, Fernandez R, Godfrey CM, Holly C, Khalil H, Tungpunkom P. Summarizing systematic reviews: Methodological development, conduct and reporting of an umbrella review approach. *Int J Evid Based Healthc* [Internet]. 2015 Sep 1 [cited 2022 Apr 14];13(3):132–40. Available from: [https://journals.lww.com/ijebh/Fulltext/2015/09000/Summarizing\\_systematic\\_reviews\\_\\_methodological.4.aspx](https://journals.lww.com/ijebh/Fulltext/2015/09000/Summarizing_systematic_reviews__methodological.4.aspx)
20. Ding H, He F, Lu YG, Hao SW, Fan XJ. Effects of non-drug interventions on depression, anxiety and sleep in COVID-19 patients: a systematic review and meta-analysis. *Eur Rev Med Pharmacol Sci* [Internet]. 2021 [cited 2022 Jun 18];25(2):1087–96. Available from: <https://pubmed.ncbi.nlm.nih.gov/33577065/>
21. Doherty A, Benedetto V, Harris C, Boland P, Christian DL, Hill J, et al. The effectiveness of psychological support interventions for those exposed to mass infectious disease outbreaks: a systematic review. *BMC Psychiatry* [Internet]. 2021 Dec 1 [cited 2022 Jun 18];21(1):1–28. Available from: <https://bmcp psychiatry.biomedcentral.com/articles/10.1186/s12888-021-03602-7>
22. Sun Z, Yu C, Zhou Y, Liu Z. Psychological Interventions for Healthcare Providers With PTSD in Life-Threatening Pandemic: Systematic Review and Meta-Analysis. *Front Psychiatry*. 2021 Jul 29;12:1218.
23. Gómez G, Basagoitia A, Burrone MS, Rivas M, Solís-Soto MT, Dy Juanco S, et al. Child-Focused Mental Health Interventions for Disasters Recovery: A Rapid Review of Experiences to Inform Return-to-School Strategies After COVID-19. *Front Psychiatry* [Internet]. 2021 Oct 5 [cited 2022 Jun 19];12:713407. Available from: </pmc/articles/PMC8524184/>
24. Hooper JJ, Saulsman L, Hall T, Waters F. Addressing the psychological impact of COVID-19 on healthcare workers: learning from a systematic review of early interventions for frontline responders. *BMJ Open* [Internet]. 2021 May 1 [cited 2022 Jun 20];11(5):e044134. Available from: <https://bmjopen.bmj.com/content/11/5/e044134>
25. Puyat JH, Ahmad H, Avina-Galindo AM, Kazanjian A, Gupta A, Ellis U, et al. A rapid review of home-based activities that can promote mental wellness during the COVID-19 pandemic. *PLoS One* [Internet]. 2020 Dec 1 [cited 2022 Jun 19];15(12). Available from: <https://pubmed.ncbi.nlm.nih.gov/33270755/>
26. Williams CYK, Townson AT, Kapur M, Ferreira AF, Nunn R, Galante J, et al. Interventions to reduce social isolation and loneliness during COVID-19 physical distancing measures: A rapid systematic review. *PLoS One* [Internet]. 2021 Feb 1 [cited 2022 Jun 19];16(2):e0247139. Available from: <https://journals.plos.org/plosone/article?id=10.1371/journal.pone.0247139>
27. Bursky M, Kosuri M, Walsh Carson K, Babad S, Iskhakova A, Nikulina V. The Utility of Meditation and Mindfulness-Based Interventions in the Time of COVID-19: A Theoretical Proposition and Systematic Review of the Relevant Prison, Quarantine and Lockdown Literature: <https://doi.org/10.1177/003329412111048734> [Internet]. 2021 Dec 10 [cited 2022 Jul 11];0(0):1–44. Available from: [https://journals.sagepub.com/doi/10.1177/003329412111048734?url\\_ver=Z39.88-2003&rfr\\_id=ori%3Arid%3Acrossref.org&rfr\\_dat=cr\\_pub++0pubmed](https://journals.sagepub.com/doi/10.1177/003329412111048734?url_ver=Z39.88-2003&rfr_id=ori%3Arid%3Acrossref.org&rfr_dat=cr_pub++0pubmed)
28. Bertuzzi V, Semonella M, Bruno D, Manna C, Edbrook-childs J, Giusti EM, et al. Psychological Support Interventions for Healthcare Providers and Informal Caregivers during the COVID-19 Pandemic: A Systematic Review of the Literature. *Int J Environ Res Public Health* [Internet]. 2021 Jul 1 [cited 2022 Jul 14];18(13). Available from: <https://pubmed.ncbi.nlm.nih.gov/34203529/>

29. Damiano RF, Di Santi T, Beach S, Pan PM, Lucchetti AL, Smith FA, et al. Mental health interventions following COVID-19 and other coronavirus infections: a systematic review of current recommendations and meta-analysis of randomized controlled trials. *Brazilian J Psychiatry* [Internet]. 2021 [cited 2022 Aug 15];43(6):665. Available from: [/pmc/articles/PMC8639008/](#)
30. Davison KM, Thakkar V, Lin S, Stabler L, Macphee M, Carroll S, et al. Interventions to Support Mental Health among Those with Health Conditions That Present Risk for Severe Infection from Coronavirus Disease 2019 (COVID-19): A Scoping Review of English and Chinese-Language Literature. *Int J Environ Res Public Heal* 2021, Vol 18, Page 7265 [Internet]. 2021 Jul 7 [cited 2022 Jul 7];18(14):7265. Available from: <https://www.mdpi.com/1660-4601/18/14/7265/htm>
31. Kunzler AM, Stoffers-Winterling J, Stoll M, Mancini AL, Lehmann S, Blessin M, et al. Mental health and psychosocial support strategies in highly contagious emerging disease outbreaks of substantial public concern: A systematic scoping review. *PLoS One* [Internet]. 2021 Feb 1 [cited 2022 Jul 13];16(2). Available from: <https://pubmed.ncbi.nlm.nih.gov/33534786/>
32. Meherali S, Punjani N, Louie-Poon S, Rahim KA, Das JK, Salam RA, et al. Mental Health of Children and Adolescents Amidst COVID-19 and Past Pandemics: A Rapid Systematic Review. *Int J Environ Res Public Heal* 2021, Vol 18, Page 3432 [Internet]. 2021 Mar 26 [cited 2022 Jul 14];18(7):3432. Available from: <https://www.mdpi.com/1660-4601/18/7/3432/htm>
33. Pollock A, Campbell P, Cheyne J, Cowie J, Davis B, McCallum J, et al. Interventions to support the resilience and mental health of frontline health and social care professionals during and after a disease outbreak, epidemic or pandemic: a mixed methods systematic review. *Cochrane database Syst Rev* [Internet]. 2020 Nov 5 [cited 2022 Jun 19];11(11). Available from: <https://pubmed.ncbi.nlm.nih.gov/33150970/>
34. Rivera-Torres S, Mpofu E, Jean Keller M, Ingman S. Older Adults' Mental Health Through Leisure Activities During COVID-19: A Scoping Review. *Gerontol Geriatr Med* [Internet]. 2021 [cited 2022 Jul 13];7:1–10. Available from: <https://pubmed.ncbi.nlm.nih.gov/34395816/>
35. Serrano-Ripoll MJ, Meneses-Echavez JF, Ricci-Cabello I, Fraile-Navarro D, Fiol-deRoque MA, Pastor-Moreno G, et al. Impact of viral epidemic outbreaks on mental health of healthcare workers: a rapid systematic review and meta-analysis. *J Affect Disord* [Internet]. 2020 Dec 12 [cited 2022 Aug 15];277:347. Available from: [/pmc/articles/PMC7443314/](#)
36. Shatri H, Prabu OG, Tetraswi EN, Faisal E, Putranto R, Ismail RI. The Role of Online Psychotherapy in COVID-19: An Evidence Based Clinical Review. *Acta Med Indones*. 2021;53(3):352–9.
37. Soklaridis S, Lin E, Lalani Y, Rodak T, Sockalingam S. Mental health interventions and supports during COVID- 19 and other medical pandemics: A rapid systematic review of the evidence. *Gen Hosp Psychiatry* [Internet]. 2020 Sep 1 [cited 2022 Jul 14];66:133. Available from: [/pmc/articles/PMC7442905/](#)
38. Strudwick G, Sockalingam S, Kassam I, Sequeira L, Bonato S, Youssef A, et al. Digital Interventions to Support Population Mental Health in Canada During the COVID-19 Pandemic: Rapid Review. *JMIR Ment Heal* 2021;8(3)e26550 <https://mental.jmir.org/2021/3/e26550> [Internet]. 2021 Mar 2 [cited 2022 Aug 15];8(3):e26550. Available from: <https://mental.jmir.org/2021/3/e26550>
39. Yang Y, Sun S, Hu S, Tang C, Zhang Y, Lin H. Comparative Effectiveness of Multiple Psychological Interventions for Psychological Crisis in People Affected by Coronavirus Disease 2019: A Bayesian Network Meta-Analysis. *Front Psychol*. 2021 Feb 22;12:252.

40. Yue JL, Yan W, Sun YK, Yuan K, Su SZ, Han Y, et al. Mental health services for infectious disease outbreaks including COVID-19: a rapid systematic review. *Psychol Med* [Internet]. 2020 Nov 1 [cited 2022 Jun 21];50(15):2498–513. Available from: <https://www.cambridge.org/core/journals/psychological-medicine/article/mental-health-services-for-infectious-disease-outbreaks-including-covid19-a-rapid-systematic-review/97AC466C1B5D0400574455CB9F33685A>
41. Zaçe D, Hoxhaj I, Orfino A, Viteritti AM, Janiri L, Di Pietro ML. Interventions to address mental health issues in healthcare workers during infectious disease outbreaks: A systematic review. *J Psychiatr Res* [Internet]. 2021 Apr 1 [cited 2022 Jun 19];136:319–33. Available from: <https://pubmed.ncbi.nlm.nih.gov/33636688/>
42. Kong X, Kong F, Zheng K, Tang M, Chen Y, Zhou J, et al. Effect of Psychological–Behavioral Intervention on the Depression and Anxiety of COVID-19 Patients. *Front Psychiatry*. 2020 Nov 20;11:1241.
43. Li J, Li X, Jiang J, Xu X, Wu J, Xu Y, et al. The Effect of Cognitive Behavioral Therapy on Depression, Anxiety, and Stress in Patients With COVID-19: A Randomized Controlled Trial. *Front Psychiatry*. 2020 Oct 30;11:1096.
44. Liu K, Chen Y, Wu D, Lin R, Wang Z, Pan L. Effects of progressive muscle relaxation on anxiety and sleep quality in patients with COVID-19. *Complement Ther Clin Pract*. 2020 May 1;39:101132.
45. Liu K, Zhang W, Yang Y, Zhang J, Li Y, Chen Y. Respiratory rehabilitation in elderly patients with COVID-19: A randomized controlled study. *Complement Ther Clin Pract* [Internet]. 2020 May 1 [cited 2022 Jun 18];39. Available from: <https://pubmed.ncbi.nlm.nih.gov/32379637/>
46. Özlü İ, Öztürk Z, Karaman Özlü Z, Tekin E, Gür A. The effects of progressive muscle relaxation exercises on the anxiety and sleep quality of patients with COVID-19: A randomized controlled study. *Perspect Psychiatr Care* [Internet]. 2021 Oct 1 [cited 2022 Jun 18];57(4):1791–7. Available from: <https://onlinelibrary.wiley.com/doi/full/10.1111/ppc.12750>
47. Parizad N, Goli R, Faraji N, Mam-Qaderi M, Mirzaee R, Gharebaghi N, et al. Effect of guided imagery on anxiety, muscle pain, and vital signs in patients with COVID-19: A randomized controlled trial. *Complement Ther Clin Pract* [Internet]. 2021 May 1 [cited 2022 Jun 18];43. Available from: <https://pubmed.ncbi.nlm.nih.gov/33647676/>
48. Sotoudeh HG, Alavi SS, Akbari Z, Jannatifard F, Artounian V. The Effect of Brief Crisis Intervention Package on Improving Quality of Life and Mental Health in Patients with COVID-19. *Iran J Psychiatry* [Internet]. 2020 Jul 20 [cited 2022 Jun 18];15(3):205–12. Available from: <https://ijps.tums.ac.ir/index.php/ijps/article/view/2237>
49. Thombs BD, Kwakkenbos L, Levis B, Bourgeault A, Henry RS, Levis AW, et al. Effects of a multi-faceted education and support programme on anxiety symptoms among people with systemic sclerosis and anxiety during COVID-19 (SPIN-CHAT): a two-arm parallel, partially nested, randomised, controlled trial. *Lancet Rheumatol* [Internet]. 2021 Jun 1 [cited 2022 Jun 18];3(6):e427–37. Available from: <http://www.thelancet.com/article/S2665991321000606/fulltext>
50. Wei N, Huang B, Chao Lu S, Jia Hu J, Bo Zhou X, Yi Hu C, et al. Efficacy of internet-based integrated intervention on depression and anxiety symptoms in patients with COVID-19. *J Zhejiang Univ Sci B* [Internet]. 2020 May 1 [cited 2022 Jun 19];21(5):400. Available from: </pmc/articles/PMC7203540/>

51. Liu Y, Yang YQ, Liu Y, Pei SL, Yang HH, Wu JJ, et al. Effects of group psychological intervention combined with pulmonary rehabilitation exercises on anxiety and sleep disorders in patients with mild coronavirus disease 2019 (COVID-19) infections in a Fangcang hospital. <https://doi.org/10.1080/1354850620211916956> [Internet]. 2021 [cited 2022 Jun 18];27(2):333–42. Available from: <https://www.tandfonline.com/doi/abs/10.1080/13548506.2021.1916956>
52. Liu Z, Qiao D, Xu Y, Zhao W, Yang Y, Wen D, et al. The Efficacy of Computerized Cognitive Behavioral Therapy for Depressive and Anxiety Symptoms in Patients With COVID-19: Randomized Controlled Trial. *J Med Internet Res* 2021;23(5)e26883 <https://www.jmir.org/2021/5/e26883> [Internet]. 2021 May 14 [cited 2022 Jun 18];23(5):e26883. Available from: <https://www.jmir.org/2021/5/e26883>
53. Dincer B, Inangil D. The effect of Emotional Freedom Techniques on nurses' stress, anxiety, and burnout levels during the COVID-19 pandemic: A randomized controlled trial. *EXPLORE*. 2021 Mar 1;17(2):109–14.
54. Fiol-DeRoque MA, Serrano-Ripoll MJ, Jiménez R, Zamanillo-Campos R, Yáñez-Juan AM, Bennasar-Veny M, et al. A Mobile Phone–Based Intervention to Reduce Mental Health Problems in Health Care Workers During the COVID-19 Pandemic (PsyCovidApp): Randomized Controlled Trial. *JMIR Mhealth Uhealth* 2021;9(5)e27039 <https://mhealth.jmir.org/2021/5/e27039> [Internet]. 2021 May 18 [cited 2022 Jun 18];9(5):e27039. Available from: <https://mhealth.jmir.org/2021/5/e27039>
55. Perri RL, Castelli P, La Rosa C, Zucchi T, Onofri A. COVID-19, Isolation, Quarantine: On the Efficacy of Internet-Based Eye Movement Desensitization and Reprocessing (EMDR) and Cognitive-Behavioral Therapy (CBT) for Ongoing Trauma. *Brain Sci* 2021, Vol 11, Page 579 [Internet]. 2021 Apr 30 [cited 2022 Jun 18];11(5):579. Available from: <https://www.mdpi.com/2076-3425/11/5/579/htm>
56. Procaccia R, Segre G, Tamanza G, Manzoni GM. Benefits of Expressive Writing on Healthcare Workers' Psychological Adjustment During the COVID-19 Pandemic. *Front Psychol*. 2021 Feb 25;12:360.
57. Sijbrandij M, Horn R, Esliker R, O'may F, Reiffers R, Ruttenberg L, et al. The Effect of Psychological First Aid Training on Knowledge and Understanding about Psychosocial Support Principles: A Cluster-Randomized Controlled Trial. *Int J Environ Res Public Heal* 2020, Vol 17, Page 484 [Internet]. 2020 Jan 11 [cited 2022 Jun 7];17(2):484. Available from: <https://www.mdpi.com/1660-4601/17/2/484/htm>
58. Al-Alawi M, McCall RK, Sultan A, Al Balushi N, Al-Mahrouqi T, Al Ghailani A, et al. Efficacy of a Six-Week-Long Therapist-Guided Online Therapy Versus Self-help Internet-Based Therapy for COVID-19–Induced Anxiety and Depression: Open-label, Pragmatic, Randomized Controlled Trial. *JMIR Ment Heal* 2021;8(2)e26683 <https://mental.jmir.org/2021/2/e26683> [Internet]. 2021 Feb 12 [cited 2022 Jun 18];8(2):e26683. Available from: <https://mental.jmir.org/2021/2/e26683>
59. Bossche D Vanden, Lagaert S, Willems S, Decat P. Community Health Workers as a Strategy to Tackle Psychosocial Suffering Due to Physical Distancing: A Randomized Controlled Trial. *Int J Environ Res Public Heal* 2021, Vol 18, Page 3097 [Internet]. 2021 Mar 17 [cited 2022 Jun 18];18(6):3097. Available from: <https://www.mdpi.com/1660-4601/18/6/3097/htm>
60. Carbone GA, Zarfati A, Nicoli MS, Paulis A, Tourjansky G, Valenti G, et al. Online psychological counselling during lockdown reduces anxiety symptoms and negative affect: Insights from Italian framework. *Clin Psychol Psychother* [Internet]. 2022 Jan 1 [cited 2022 Jun

- 18];29(1):367–72. Available from: <https://onlinelibrary.wiley.com/doi/full/10.1002/cpp.2608>
61. Malboeuf-Hurtubise C, Léger-Goodes T, Mageau GA, Taylor G, Herba CM, Chadi N, et al. Online art therapy in elementary schools during COVID-19: results from a randomized cluster pilot and feasibility study and impact on mental health. *Child Adolesc Psychiatry Ment Health* [Internet]. 2021 Dec 1 [cited 2022 Jun 18];15(1):1–11. Available from: <https://capmh.biomedcentral.com/articles/10.1186/s13034-021-00367-5>
  62. Ng SM, Chan THY, Chan CLW, Lee AM, Yau JKY, Chan CHY, et al. Group debriefing for people with chronic diseases during the SARS pandemic: Strength-Focused and Meaning-Oriented Approach for Resilience and Transformation (SMART). *Community Ment Health J* [Internet]. 2006 Feb 21 [cited 2022 Jun 18];42(1):53–63. Available from: <https://link.springer.com/article/10.1007/s10597-005-9002-y>
  63. Shabahang R. Cognitive behavioural intervention for health anxiety, somatosensory amplification, and depression in coronavirus disease 2019 anxiety: an interventional study in Iran. *Psychiatr i Psychol Klin*. 2020;20(2):87–93.
  64. Vukčević Marković M, Bjekić J, Priebe S. Effectiveness of Expressive Writing in the Reduction of Psychological Distress During the COVID-19 Pandemic: A Randomized Controlled Trial. *Front Psychol*. 2020 Nov 10;11:2936.
  65. Wahlund T, Mataix-Cols D, Olofsdotter Lauri K, De Schipper E, Ljótsson B, Aspvall K, et al. Brief Online Cognitive Behavioural Intervention for Dysfunctional Worry Related to the COVID-19 Pandemic: A Randomised Controlled Trial. *Psychother Psychosom* [Internet]. 2021 Apr 1 [cited 2022 Jun 18];90(3):191–9. Available from: <https://www.karger.com/Article/FullText/512843>
  66. Zheng MX, Masters-Waage TC, Yao J, Lu Y, Tan N, Narayanan J. Stay Mindful and Carry on: Mindfulness Neutralizes COVID-19 Stressors on Work Engagement via Sleep Duration. *Front Psychol*. 2020 Dec 21;11:3638.
  67. Zheng Y, Wang W, Zhong Y, Wu F, Zhu Z, Tham YC, et al. A Peer-to-Peer Live-Streaming Intervention for Children During COVID-19 Homeschooling to Promote Physical Activity and Reduce Anxiety and Eye Strain: Cluster Randomized Controlled Trial. *J Med Internet Res* 2021;23(4)e24316 <https://www.jmir.org/2021/4/e24316> [Internet]. 2021 Apr 30 [cited 2022 Jun 18];23(4):e24316. Available from: <https://www.jmir.org/2021/4/e24316>
  68. World Health Organization. Emergency response framework (ERF). 2017; Available from: <https://www.who.int/publications/i/item/9789241512299>
  69. World Health Organization. COVID-19 Strategic Preparedness and Response Plan (SPRP 2021) [Internet]. Geneva; 2021 [cited 2023 Mar 14]. Available from: <https://www.who.int/publications/i/item/WHO-WHE-2021.02>
  70. Kohrt BA, Blasingame E, Compton MT, Dakana SF, Dossen B, Lang F, et al. Adapting the crisis intervention team (CIT) Model of police-mental health collaboration in a low-income, post-conflict country: Curriculum development in Liberia, West Africa. *Am J Public Health*. 2015 Mar 1;105(3):e73–80.
  71. Cénat JM, Mukunzi JN, Noorishad PG, Rousseau C, Derivois D, Bukaka J. A systematic review of mental health programs among populations affected by the Ebola virus disease. *J Psychosom Res* [Internet]. 2020 Apr 1 [cited 2022 Jun 21];131. Available from: <https://pubmed.ncbi.nlm.nih.gov/32087433/>
  72. Albott CS, Wozniak JR, McGlinch BP, Wall MH, Gold BS, Vinogradov S. Battle Buddies: Rapid



- Deployment of a Psychological Resilience Intervention for Health Care Workers During the COVID-19 Pandemic. *Anesth Analg* [Internet]. 2020 Jul 1 [cited 2023 Mar 20];131(1):43–54. Available from: [https://journals.lww.com/anesthesia-analgesia/Fulltext/2020/07000/Battle\\_Buddies\\_\\_Rapid\\_Deployment\\_of\\_a.9.aspx](https://journals.lww.com/anesthesia-analgesia/Fulltext/2020/07000/Battle_Buddies__Rapid_Deployment_of_a.9.aspx)
73. Donnelly PD, Davidson M, Dunlop N, McGale M, Milligan E, Worrall M, et al. Well-Being during Coronavirus Disease 2019: A PICU Practical Perspective. *Pediatr Crit Care Med* [Internet]. 2020 Aug 1 [cited 2023 Mar 24];21(8):E584–6. Available from: [https://journals.lww.com/pccmjournals/Fulltext/2020/08000/Well\\_Being\\_During\\_Coronavirus\\_Disease\\_2019\\_\\_A\\_PICU.37.aspx](https://journals.lww.com/pccmjournals/Fulltext/2020/08000/Well_Being_During_Coronavirus_Disease_2019__A_PICU.37.aspx)
  74. Cheng W, Zhang F, Liu Z, Zhang H, Lyu Y, Xu H, et al. A psychological health support scheme for medical teams in COVID-19 outbreak and its effectiveness. *Gen Psychiatry* [Internet]. 2020 Oct 1 [cited 2023 Mar 24];33(5):e100288. Available from: <https://gpsych.bmj.com/content/33/5/e100288>
  75. Rastegar Kazerooni AA, Amini M, Tabari P, Moosavi M. Peer mentoring for medical students during the COVID-19 pandemic via a social media platform. *Med Educ* [Internet]. 2020 Aug 1 [cited 2023 Mar 24];54(8):762–3. Available from: <https://onlinelibrary.wiley.com/doi/full/10.1111/medu.14206>
  76. Bryant RA, Kenny L, Rawson N, Cahill C, Joscelyne A, Garber B, et al. Efficacy of exposure-based cognitive behaviour therapy for post-traumatic stress disorder in emergency service personnel: a randomised clinical trial. *Psychol Med* [Internet]. 2019 Jul 1 [cited 2022 Jul 14];49(9):1565–73. Available from: <https://www.cambridge.org/core/journals/psychological-medicine/article/abs/efficacy-of-exposurebased-cognitive-behaviour-therapy-for-posttraumatic-stress-disorder-in-emergency-service-personnel-a-randomised-clinical-trial/7A241B49AC3B951E1E5D3401DFC398DA>
  77. Kim SH, Schneider SM, Bevans M, Kravitz L, Mermier C, Qualls C, et al. PTSD symptom reduction with mindfulness-based stretching and deep breathing exercise: randomized controlled clinical trial of efficacy. *J Clin Endocrinol Metab* [Internet]. 2013 Jul [cited 2022 Jul 14];98(7):2984–92. Available from: <https://pubmed.ncbi.nlm.nih.gov/23720785/>
  78. Starace F, Ferrara M. COVID-19 disease emergency operational instructions for Mental Health Departments issued by the Italian Society of Epidemiological Psychiatry. *Epidemiol Psychiatr Sci* [Internet]. 2020 [cited 2023 Mar 22];29:e116. Available from: <https://www.cambridge.org/core/journals/epidemiology-and-psychiatric-sciences/article/covid19-disease-emergency-operational-instructions-for-mental-health-departments-issued-by-the-italian-society-of-epidemiological-psychiatry/C478CBAB0C399F4EEF192747B7082B33>
  79. Poremski D, Subner SH, Lam GFK, Dev R, Mok YM, Chua HC, et al. Effective infection prevention and control strategies in a large, accredited, psychiatric facility in Singapore. *Infect Control Hosp Epidemiol* [Internet]. 2020 Oct 1 [cited 2023 Mar 22];41(10):1238–40. Available from: <https://www.cambridge.org/core/journals/infection-control-and-hospital-epidemiology/article/effective-infection-prevention-and-control-strategies-in-a-large-accredited-psychiatric-facility-in-singapore/D3C53436736AEF313E458E11E856FE34>
  80. Garriga M, Agasi I, Fedida E, Pinzón-Espinosa J, Vazquez M, Pacchiarotti I, et al. The role of mental health home hospitalization care during the COVID-19 pandemic. *Acta Psychiatr Scand* [Internet]. 2020 May 1 [cited 2023 Mar 22];141(5):479–80. Available from: <https://onlinelibrary.wiley.com/doi/full/10.1111/acps.13173>
  81. Weissbecker I, Roshania R, Cavallera V, Mallow M, Leichner A, Antigua J, et al. Integrating

- psychosocial support at Ebola treatment units in Sierra Leone and Liberia. *Intervention* [Internet]. 2018 Jul 1 [cited 2023 Mar 22];16(2):69. Available from: <http://www.interventionjournal.org/article.asp?issn=1571-8883;year=2018;volume=16;issue=2;spage=69;epage=78;aulast=Weissbecker>
82. Aiello A, Young-Eun Khayeri M, Raja S, Peladeau N, Romano D, Leszcz M, et al. Resilience training for hospital workers in anticipation of an influenza pandemic. *J Contin Educ Health Prof* [Internet]. 2011 Dec [cited 2023 Mar 23];31(1):15–20. Available from: [https://journals.lww.com/jcehp/Fulltext/2011/31010/Resilience\\_Training\\_for\\_Hospital\\_Workers\\_in.3.aspx](https://journals.lww.com/jcehp/Fulltext/2011/31010/Resilience_Training_for_Hospital_Workers_in.3.aspx)
  83. Agyapong VIO. Coronavirus Disease 2019 Pandemic: Health System and Community Response to a Text Message (Text4Hope) Program Supporting Mental Health in Alberta. *Disaster Med Public Health Prep* [Internet]. 2020 Oct 1 [cited 2023 Mar 23];14(5):1. Available from: </pmc/articles/PMC7198462/>
  84. Agyapong VIO, Shalaby R, Hrabok M, Vuong W, Noble JM, Gusnowski A, et al. Mental Health Outreach via Supportive Text Messages during the COVID-19 Pandemic: Improved Mental Health and Reduced Suicidal Ideation after Six Weeks in Subscribers of Text4Hope Compared to a Control Population. *Int J Environ Res Public Heal* 2021, Vol 18, Page 2157 [Internet]. 2021 Feb 23 [cited 2023 Jun 18];18(4):2157. Available from: <https://www.mdpi.com/1660-4601/18/4/2157/htm>
  85. World Health Organization. WHO Ebola outbreak response handbook for health and safety in the field [Internet]. Geneva; 2014 [cited 2023 Mar 24]. Available from: [https://www.humanitarianresponse.info/sites/www.humanitarianresponse.info/files/documents/files/Ebola\\_PEC\\_Deploiement\\_healthandsafetyhandbook\\_Eng.pdf](https://www.humanitarianresponse.info/sites/www.humanitarianresponse.info/files/documents/files/Ebola_PEC_Deploiement_healthandsafetyhandbook_Eng.pdf)
  86. World Health Organization, International Labour Organization. Occupational safety and health in public health emergencies: a manual for protecting health workers and responders. 2018;
  87. Gonzalez A, Cervoni C, Lochner M, Marangio J, Stanley C, Marriott S. Supporting health care workers during the COVID-19 pandemic: Mental health support initiatives and lessons learned from an academic medical center. *Psychol Trauma Theory, Res Pract Policy*. 2020;12(S1):S168.
  88. Bailey A, Harris MA, Bogle D, Jama A, Muir SA, Miller S, et al. Coping With COVID-19: Health Risk Communication and Vulnerable Groups. *Disaster Med Public Health Prep* [Internet]. 2023 Jul 12 [cited 2023 Mar 25];17:e22. Available from: <https://www.cambridge.org/core/journals/disaster-medicine-and-public-health-preparedness/article/abs/coping-with-covid19-health-risk-communication-and-vulnerable-groups/02A22532721F07EF198AED229CACA369>
  89. Lin L, Savoia E, Agboola F, Viswanath K. What have we learned about communication inequalities during the H1N1 pandemic: A systematic review of the literature. *BMC Public Health* [Internet]. 2014 May 21 [cited 2023 Mar 26];14(1):1–13. Available from: <https://bmcpublichealth.biomedcentral.com/articles/10.1186/1471-2458-14-484>
  90. Lin L, McCloud RF, Bigman CA, Viswanath K. Tuning in and catching on? Examining the relationship between pandemic communication and awareness and knowledge of MERS in the USA. *J Public Health (Oxf)* [Internet]. 2017 Jun 1 [cited 2023 Mar 26];39(2):282–9. Available from: <https://pubmed.ncbi.nlm.nih.gov/27084759/>
  91. Lin L, Jung M, McCloud RF, Viswanath K. Media Use and Communication Inequalities in a Public Health Emergency: A Case Study of 2009–2010 Pandemic Influenza A Virus Subtype

- H1N1. <http://dx.doi.org/10.1177/003335491412965408> [Internet]. 2014 Nov 1 [cited 2023 Mar 26];129:49–60. Available from: [https://journals.sagepub.com/doi/10.1177/003335491412965408?url\\_ver=Z39.88-2003&rfr\\_id=ori%3Arid%3Acrossref.org&rfr\\_dat=cr\\_pub++0pubmed](https://journals.sagepub.com/doi/10.1177/003335491412965408?url_ver=Z39.88-2003&rfr_id=ori%3Arid%3Acrossref.org&rfr_dat=cr_pub++0pubmed)
92. Wang X, Lin L, Xuan Z, Xu J, Wan Y, Zhou X. Risk communication on behavioral responses during COVID-19 among general population in China: A rapid national study. *J Infect*. 2020 Dec 1;81(6):911–22.
  93. Franklin SI. ‘It was organized from the bottom’: the response from community-based institutions during the 2014 Ebola epidemic. *J Institutional Econ* [Internet]. 2023 Apr 3 [cited 2023 Jul 18];1–16. Available from: [https://www.cambridge.org/core/product/identifier/S1744137423000085/type/journal\\_article](https://www.cambridge.org/core/product/identifier/S1744137423000085/type/journal_article)
  94. IASC Reference Group on Mental Health and Psychosocial Support in Emergency Settings. *Mental health and psychosocial support in Ebola virus disease outbreaks: A guide for public health programme planners*. 2015;
  95. International Federation of Red Cross Red Crescent Societies. *Psychosocial support in Ebola: Lessons learned* [Internet]. 2016 [cited 2023 Mar 26]. Available from: <https://reliefweb.int/report/sierra-leone/lessons-learned-psychosocial-support-ebola-july-2016>
  96. Alkasaby MA, Philip S, Agrawal A, Jakhar J, Ojeahere MI, Ori D, et al. Early career psychiatrists advocate reorientation not redeployment for COVID-19 care: <https://doi.org/10.1177/00207640211057734> [Internet]. 2021 Nov 21 [cited 2021 Dec 12];002076402110577. Available from: <https://journals.sagepub.com/doi/10.1177/00207640211057734>
  97. World Health Organization. *Building back better: sustainable mental health care after emergencies*. World Health Organization; 2013.
  98. Barker-Davies RM, O’Sullivan O, Senaratne KPP, Baker P, Cranley M, Dharm-Datta S, et al. The Stanford Hall consensus statement for post-COVID-19 rehabilitation. *Br J Sports Med* [Internet]. 2020 Aug 1 [cited 2022 Oct 3];54(16):949–59. Available from: <https://pubmed.ncbi.nlm.nih.gov/32475821/>
  99. Holmes L, Enwere M, Williams J, Ogundele B, Chavan P, Piccoli T, et al. Black–White Risk Differentials in COVID-19 (SARS-COV2) Transmission, Mortality and Case Fatality in the United States: Translational Epidemiologic Perspective and Challenges. *Int J Environ Res Public Health* [Internet]. 2020 Jun 2 [cited 2023 Mar 26];17(12):1–18. Available from: </pmc/articles/PMC7345143/>
  100. Office for National Statistics. *Updating ethnic contrasts in deaths involving the coronavirus (COVID-19), England* [Internet]. 2021 [cited 2023 Mar 26]. Available from: <https://www.ons.gov.uk/peoplepopulationandcommunity/birthsdeathsandmarriages/deaths/articles/updatingethniccontrastsindeathsinvolvingthecoronaviruscovid19englandandwales/24january2020to31march2021>
  101. World Health Organization. *Living guidance for clinical management of COVID-19*. World Health Organization Geneva; 2021.
  102. Kamara S, Walder A, Duncan J, Kabbedijk A, Hughes P, Muana A. Mental health care during the Ebola virus disease outbreak in Sierra Leone. *Bull World Health Organ* [Internet]. 2017 Dec 12 [cited 2023 Mar 27];95(12):842. Available from: </pmc/articles/PMC5710077/>

