

Improvement in Delivery of Ischemic Stroke Treatments but Stagnation of Clinical Outcomes in Young Adults in South Korea

SUPPLEMENTAL MATERIAL

Table S1. Selected Variables, Their Definition, and Missing Counts.

Table S2. Proportions of Other Determined Etiology Subtypes.

Table S3. IV Thrombolysis or Mechanical Thrombectomy Rate According to Initial Stroke Severity.

Table S4. IV Thrombolysis or Mechanical Thrombectomy Rate According to Time from Last Normal to Hospital Arrival.

Table S5 Secular Trends in Discharge Antithrombotics According to Ischemic Stroke Subtypes

Table S6. Clinical Presentation and Treatments in Young Adults with Ischemic Stroke Stratified by Sex

Table S7. Clinical Outcomes Stratified by Sex.

Table S8. Comparison between patients with and without 3 month mRS.

Table S9. 3-months Functional Outcome and Case-fatality After Stroke According to a Mode of Reperfusion Therapy.

Table S10. 3-months Functional Outcome and Case-fatality After Stroke According to Initial Stroke Severity.

Table S11. Subgroup analysis of stroke recurrence stratified by ischemic stroke subtype.

Figure S1. Stroke Recurrence In Cardioembolic Stroke According to Discharge Medication (Warfarin vs. Others).

Figure S2. Stroke Recurrence In Other Determined Etiologies According to Discharge Medication (Warfarin vs. Others).

Table S1. Selected Variables, Their Definition, and Missing Counts.

Variables	Definition	Missing
Sex	The biological sex of patient (men or women)	0
Age	The age of patient at the time of index stroke admission	0
Admission year	The calendar year of the patient's admission	0
First abnormal to arrival time	The time interval (in minutes) from the first recognized symptoms of stroke to the patient's arrival at the hospital.	0
Last normal to arrival time	The time interval (in minutes) from the patient's last identified baseline state before the index stroke to their arrival at the hospital.	0
Prior disability	The patient's functional state before the index stroke as measured by the modified Rankin scale (mRS)	145
Initial NIHSS	The initial stroke severity as measured by the NIH Stroke Scale (NIHSS)	0
History of past TIA or stroke	A history of any previous transient ischemic attacks (TIAs) or strokes	0
History of hypertension	The patient's hypertension status based on following criteria: 1) patients who was prescribed antihypertensive before index stroke, 2) patients who had been diagnosed hypertension before index stroke, 3) when patient's blood pressure was 140/90 or higher after acute period, requiring long-term antihypertensive.	0
Aware hypertension	The number of patients diagnosed with hypertension before index stroke admission	0
'On medication' hypertension	The number of patients who treated with antihypertensive medication before index stroke admission	0
History of diabetes	The patient's diabetes status based on following criteria: 1) patients who was prescribed antidiabetic agent before index stroke, 2) patients who had been diagnosed diabetes before index stroke, 3) when patient's fasting glucose level was 126 mg/dL or higher, or postprandial glucose level 200 mg/dL or higher after acute phase, or when patient's glucose level 200 mg/dL with diabetic symptoms.	0
Aware diabetes	The number of patients diagnosed with diabetes before index stroke admission	0
'On medication' diabetes	The number of patients who treated with diabetes medication before index stroke admission	0
History of hyperlipidemia	The patient's hyperlipidemia status based on following criteria: 1) patients who was prescribed statin or other hyperlipidemia medicine before index stroke, 2) patients who had been diagnosed hyperlipidemia before index stroke, 3) when patient's fasting LDL cholesterol level was 160 mg/dL or higher, or total cholesterol level 240 mg/dL or higher after acute phase.	0
Aware hyperlipidemia	The number of patients diagnosed with hyperlipidemia before index stroke admission	0
'On medication' hyperlipidemia	The number of patients who treated with hyperlipidemia medication before index stroke admission	0
History of atrial fibrillation	A history of atrial fibrillation, including both persistent and paroxysmal forms	0
Aware atrial fibrillation	The number of patients diagnosed with atrial fibrillation before index stroke admission	0
'On medication' atrial fibrillation	The number of patients who treated with anticoagulants before index stroke admission	0
Current smoking	The patient's current smoking status (not including ex-smokers)	1
Obesity	Obesity was defined as a calculated BMI of 30 kg/m ² or higher	129
Systolic blood pressure /diastolic blood pressure	The patient's blood pressure measured in mmHg at the initial days of hospitalization	27

HDL cholesterol	HDL cholesterol level measured at the initial days of hospitalization (in mg/dL)	251
LDL cholesterol	LDL cholesterol level measured at the initial days of hospitalization (in mg/dL)	251
Triglyceride	Triglyceride level measured at the initial days of hospitalization (in mg/dL)	213
Random glucose	Blood glucose level measured at the initial days of hospitalization (in mg/dL)	80
Length of hospitalization	The length of hospital stay from admission to discharge (in days)	2
TOAST classification	The stroke etiology as classified by the Trial of Org 10172 in Acute Stroke Treatment (TOAST): Large artery occlusion, small vessel occlusion, cardioembolic stroke, other determined etiology, undetermined etiology (two or more, negative result on evaluation, incomplete evaluation)	1
Detailed diagnosis of other determined etiology	Since MRI-based TOAST classification algorithm was introduced in our registry in July 2011, detailed diagnoses of other determined etiology stroke were captured as following categories: 1) Arterial dissection, 2) infectious or inflammatory disorder, 3) intrinsic vascular disorder such as Moyamoya disease, 4) hemostatic disorder, 5) migraine-related stroke, 6) hereditary disease such as CASASIL, 7) hypoperfusional stroke, 8) iatrogenic, and 9) others.	69/814
MRI	The rate of MRI conduction during hospitalization	0
CTA or MRA	The rate of either CT or MR angiography conduction during hospitalization	0
Transthoracic echocardiography	The rate of TTE conduction during hospitalization	0
Transesophageal echocardiography	The rate of TEE conduction during hospitalization	0
Holter monitor	The rate of Holter monitor conduction during hospitalization	0
Mode of perfusion therapy	The type of acute reperfusion therapy, including none, intravenous (IV) thrombolysis only, mechanical thrombectomy only, or both IV thrombolysis and mechanical thrombectomy	0
Arrival to IV thrombolysis time	The time interval (in minutes) from patient arrival at the hospital to the start of IV thrombolysis for patients who received this therapy in participating hospitals.	3/927
Arrival to mechanical thrombectomy time	The time interval (in minutes) from patient arrival at the hospital to the start of mechanical thrombectomy for patients who received this therapy in participating hospitals	7/487
Discharge antiplatelet use	The type and number of antiplatelet drugs prescribed at discharge, including aspirin, clopidogrel, aspirin + dipyridamole, cilostazol, triflusal, ticlopidine, or others	0
Discharge anticoagulant use	The type and number of anticoagulants prescribed at discharge, including warfarin, apixaban, dabigatran, rivaroxaban, edoxaban, or others	0
Discharge statin use	Whether a statin was prescribed at discharge or not	4
In-hospital death	The number of all-cause deaths that occurred during hospitalization for the index stroke	0
3-month functional outcome	The patient's functional status as measured by the modified Rankin Scale (mRS) collected 3 months after the index stroke. The mRS was used in the analysis as an ordinal variable or dichotomized into 0-1 and 0-2.	248/6057
Recurrent stroke event	The occurrence of first recurrent stroke, including ischemic stroke, hemorrhagic stroke, or transient ischemic attack (TIA), was captured at discharge, 3 months, and 1 year after the index	0/6057

	stroke.	
Time to stroke recurrence	The time interval (in days) from the index stroke to the recurrent stroke	0/6057
All-cause death	The occurrence of deaths, including both vascular and nonvascular events, was captured at discharge, 3 months, and 1 year after the index stroke.	0/6057
Time to all-cause death	The time interval (in days) from the index stroke to all-cause death	0/6057

Table S2. Presumed Causes of Stroke in Patients with Other Determined Etiology*

	Sex	2011-2013 (n=1116)	2014-2016 (n=1904)	2017-2019 (n=2102)	P for trend†
Arterial dissection	All	4.9%	8.3%	9.8%	< .001
	Men	5.7%	7.9%	10.4%	< .001
	Women	3.1%	9.2%	8.2%	0.02
Intrinsic disease of arterial wall	All	2.6%	2.7%	4.5%	.001
	Men	1.4%	1.4%	3.1%	.002
	Women	5.6%	5.9%	7.9%	0.14
Hemostatic disease/coagulopathy	All	0.2%	0.4%	1.2%	<.001
	Men	0.1%	0.4%	0.7%	0.03
	Women	0.3%	0.5%	2.3%	.003
Cancer-related coagulopathy	All	0%	0.4%	1.0%	<.001
	Men	0%	0.4%	0.9%	.005
	Women	0%	0.4%	1.2%	0.02
Cerebral venous thrombosis	All	0.6%	0.2%	0.8%	0.34
	Men	0.4%	0.1%	0.1%	0.52
	Women	1.2%	0.4%	1.5%	0.48
Genetic/Hereditary disease	All	0.5%	0.6%	0.7%	0.67
	Men	0.6%	0.7%	0.5%	0.73
	Women	0.3%	0.5%	1.0%	0.20
Infectious disease	All	0.4%	0.3%	0.4%	0.69
	Men	0.3%	0.1%	0.3%	0.58
	Women	0.6%	0.7%	0.7%	0.98
Iatrogenic	All	1.0%	0.2%	0.2%	.004
	Men	0.8%	0.2%	0.2%	.046
	Women	1.6%	0.2%	0.3%	0.04
Migraine-related	All	0.2%	0.1%	0.1%	0.93
	Men	0%	0.1%	0.1%	0.29
	Women	0.6%	0%	0.2%	0.23
Hypoperfusion syndrome	All	0.5%	0.2%	0%	<.001
	Men	0%	0%	0%	-
	Women	1.9%	0.5%	0%	<.001

* Among patients who were investigated specific diagnosis by Magnetic resonance imaging-based diagnostic

Algorithm for acute Ischemic stroke subtype Classification (MAGIC) protocol.

† P for trend by Cochran-Armitage trend test

Table S3. IV Thrombolysis or Mechanical Thrombectomy Rate According to Time from Last Normal to Hospital Arrival.

Reperfusion therapy	<i>Last known normal-to-door time</i>	2008-2010 (n=993)	2011-2013 (n=1753)	2014-2016 (n=2055)	2017-2019 (n=2249)	P for trend*
IVT	≤ 3 h	30.8%	42.4%	43.6%	42.1%	0.02
	3 ~ 4.5 h	5.8%	19.7%	22.1%	21.1%	0.06
	> 4.5 h	1.6%	2.0%	2.8%	2.4%	0.18
MT	≤ 6 h	6.4%	11.4%	16.8%	18.7%	<.001
	6 ~ 12 h	2.8%	2.8%	6.0%	9.5%	<.001
	> 12 h	1.0%	1.3%	1.4%	2.1%	0.08

* P-value by Cochran-Armitage trend test

IVT, intravenous thrombolysis; MT, mechanical thrombectomy.

Table S4. IV Thrombolysis or Mechanical Thrombectomy Rate According to Baseline Stroke Severity.

Reperfusion therapy	Initial stroke severity	2008-2010 (n=993)	2011-2013 (n=1753)	2014-2016 (n=2055)	2017-2019 (n=2249)	P for trend*
IVT	Mild (0-4)	2.3%	4.5%	5.2%	5.0%	0.02
	Moderate (5-15)	21.4%	34.4%	34.5%	31.8%	0.02
	Severe (16-42)	27.9%	37.8%	38.2%	47.3%	0.01
MT	Mild (0-4)	0.3%	1.2%	1.7%	1.9%	0.01
	Moderate (5-15)	5.7%	11.0%	16.6%	21.1%	<.001
	Severe (16-42)	20.6%	33.7%	43.6%	53.6%	<.001

* P-value by Cochran-Armitage trend test

IVT, intravenous thrombolysis; MT, mechanical thrombectomy.

Table S5 Secular Trends in Discharge Antithrombotics According to Ischemic Stroke Subtypes

Stroke subtype	Discharge prescription	2008–2010	2011–2013	2014–2016	2017–2019	<i>p</i> for trend*
Large artery atherosclerosis (n=2155)	Antiplatelet	88.6%	93.2%	95.0%	97.2%	<0.001
	Aspirin + clopidogrel	38.6%	36.0%	46.6%	61.9%	<0.001
	Anticoagulant	7.8%	4.9%	1.9%	1.3%	<0.001
	Warfarin	7.5%	3.6%	1.8%	0.6%	<0.001
	DOAC	0%	0%	0%	0.5%	0.03
Small vessel occlusion (n=1609)	Antiplatelet	97.4%	96.0%	96.9%	98.7%	0.08
	Aspirin + clopidogrel	22.9%	17.5%	30.2%	49.0%	<0.001
	Anticoagulant	2.3%	2.5%	0.2%	0.8%	0.03
	Warfarin	1.9%	1.8%	0%	0.6%	0.02
	DOAC	0%	0%	0.2%	0.2%	0.30
Cardioembolic stroke (n=781)	Antiplatelet	38.1%	56.5%	51.1%	49.1%	0.24
	Aspirin + clopidogrel	11.5%	10.4%	12.6%	16.1%	0.12
	Anticoagulant	55.4%	49.2%	46.8%	49.5%	0.30
	Warfarin	54.0%	47.7%	32.9%	23.4%	<0.001
	DOAC	0%	1.0%	13.0%	23.9%	<0.001
Other determined etiology (n=929)	Antiplatelet	56.7%	76.4%	83.8%	86.4%	<0.001
	Aspirin + clopidogrel	22.4%	25.3%	35.3%	42.7%	<0.001
	Anticoagulant	38.8%	25.3%	13.5%	9.1%	<0.001
	Warfarin	38.8%	23.6%	11.3%	5.8%	<0.001
	DOAC	0%	0%	0.8%	1.8%	0.26
Undetermined etiology (n=1576)	Antiplatelet	86.6%	83.9%	85.6%	87.3%	0.43
	Aspirin + clopidogrel	25.9%	22.3%	25.5%	43.3%	<0.001
	Anticoagulant	8.6%	12.6%	8.6%	7.5%	0.09
	Warfarin	7.6%	10.5%	4.8%	2.9%	<0.001
	DOAC	0%	0.5%	2.9%	4.3%	<0.001

* *p*-value by Cochran–Armitage trend test.

DOAC, direct oral anticoagulants

Table S6. Clinical Presentation and Treatments in Young Adults with Ischemic Stroke Stratified by Sex.

Variables		2008-2010 (n=993)	2011-2013 (n=1753)	2014-2016 (n=2055)	2017-2019 (n=2249)	p for trend*
LKW-to-door within 3.5 h	All	27.7%	27.8%	26.5%	28.1%	0.92
	Men	25.4%	26.6%	26.0%	28.2%	0.17
	Women	34.1%	31.1%	27.7%	27.8%	0.04
Stroke severity Mild stroke (NIHSS≤4)	All	64.9%	71.0%	70.7%	69.8%	0.06
	Men	66.8%	72.4%	72.1%	70.1%	0.44
	Women	59.4%	67.5%	67.2%	69.1%	0.02
Moderate stroke (5-15)	All	28.3%	23.4%	24.0%	25.3%	0.39
	Men	25.8%	22.1%	23.5%	25.0%	0.69
	Women	35.2%	26.7%	25.2%	26.0%	0.02
Severe stroke (16-42)	All	6.8%	5.6%	5.4%	4.9%	0.03
	Men	7.4%	5.5%	4.5%	4.9%	0.02
	Women	5.4%	5.8%	7.6%	4.8%	0.74
Reperfusion therapy						
IVT	All	9.5%	13.3%	14.0%	13.8%	.004
	Men	9.0%	12.0%	14.5%	14.4%	<.001
	Women	10.7%	16.8%	12.8%	12.4%	0.57
DTN≤ 45 min	All	28.1%	61.1%	69.4%	64.8%	<.001
	Men	27.0%	63.6%	73.9%	65.8%	<.001
	Women	30.8%	56.8%	56.2%	62.0%	0.03
DTN≤ 60 min	All	56.2%	84.2%	86.3%	81.5%	<.001
	Men	55.6%	86.0%	88.0%	81.9%	.002
	Women	57.7%	81.1%	81.2%	80.3%	0.11
Mechanical thrombectomy	All	3.2%	5.3%	7.5%	9.2%	<.001
	Men	3.6%	4.6%	6.6%	9.0%	<.001
	Women	2.3%	7.0%	9.7%	9.8%	<.001
DTP≤ 90 min	All	26.1%	23.5%	31.2%	30.9%	0.28
	Men	22.2%	32.1%	31.8%	30.8%	0.74
	Women	40.0%	9.4%	30.0%	31.0%	0.14
Discharge prescription						
DAPT on mild noncardiogenic stroke	All	28.4%	23.5%	34.2%	50.4%	<.001
	Men	29.3%	23.7%	36.1%	53.0%	<.001
	Women	25.8%	22.8%	29.3%	43.9%	<.001
Warfarin on AF	All	75.0%	72.4%	41.0%	14.6%	<.001
	Men	68.4%	72.2%	36.8%	8.7%	<.001
	Women	86.4%	72.7%	54.2%	29.6%	<.001
DOAC on AF	All	0.0%	4.6%	30.0%	56.2%	<.001
	Men	0.0%	5.6%	32.9%	60.9%	<.001
	Women	0.0%	3.0%	20.8%	44.4%	<.001
Statin	All	71.5%	79.9%	86.9%	91.2%	<.001
	Men	73.1%	81.9%	88.4%	92.5%	<.001
	Women	67.0%	74.7%	83.2%	88.2%	<.001

* P-value by Cochran-Armitage trend test

AF, Atrial fibrillation; DTN, Door-to-needle time; DTP, Door-to-puncture time; IVT, Intravenous thrombolysis; MT, Mechanical thrombectomy; NIHSS, National Institution of Health Stroke Scale.

Table S7. Clinical Outcomes Stratified by Sex.

Variables		2011-2013 (n=1753)	2014-2016 (n=2055)	2017-2019 (n=2249)	P for Trend*
In-hospital Death	All	0.90%	1.50%	1.00%	0.71
	Men	1.0%	1.6%	0.9%	0.96
	Women	0.4%	1.2%	1.2%	0.21
3-month mRS 0-1	All	67.2%	67.8%	68.6%	0.37
	Men	68.5%	68.7%	68.3%	0.90
	Women	63.7%	65.7%	69.2%	0.06
3-month mRS 0-2	All	83.5%	84.2%	83.0%	0.64
	Men	84.5%	84.6%	82.7%	0.19
	Women	80.9%	83.3%	83.8%	0.24
1-year Mortality	All	2.52 (1.77 - 3.28)	2.93 (2.19 - 3.68)	2.32 (1.69 - 2.95)	0.50
	Men	2.57 (1.66 - 3.48)	2.68 (1.82 - 3.53)	2.00 (1.30 - 2.68)	0.42
	Women	2.27 (0.87 - 3.66)	3.22 (1.75 - 4.68)	3.06 (1.69 - 4.40)	0.78
1-year Cumulative Incidence of Recurrent Stroke	All	4.13 (3.17 - 5.09)	3.70 (2.86 - 4.55)	5.47 (4.51 - 6.44)	0.04
	Men	4.06 (2.91 - 5.19)	2.98 (2.06 - 3.88)	5.71 (4.53 - 6.86)	0.02
	Women	4.63 (2.62 - 6.60)	5.32 (3.42 - 7.19)	4.77 (3.06 - 6.45)	0.95

* P-value by Mantel-Haenszel Chi-square test for ordinal variable, Cochran-Armitage trend test for categorical variables, linear contrast test in ANOVA for continuous variables, and linear contrast test in log-rank test for survival variables.

Table S8. Comparison between patients with and without 3 month mRS.

Variables	With 3 month mRS (n=5809)	No 3 month mRS (n=248)	Total (n=6057)	<i>p-value</i>*
Men	71.6%	70.6%	71.6%	0.72
Mean age (SD), years	43.1 (6.6)	42.3 (7.3)	43.0 (6.6)	0.07
Risk factors				
Current smoking	46.7%	45.3%	46.7%	0.67
Obesity (BMI ≥30 kg/m ²)	10.3%	8.5%	10.3%	0.36
Hypertension	42.8%	35.9%	42.5%	0.03
Diabetes mellitus	20.2%	21.4%	20.3%	0.66
Hyperlipidemia	27.3%	23.0%	27.1%	0.13
Atrial fibrillation	4.6%	5.2%	4.7%	0.66
Ischemic stroke subtypes				
Large artery atherosclerosis	30.5%	31.5%	30.5%	0.75
Small vessel occlusion	22.2%	21.8%	22.2%	0.88
Cardioembolic stroke	10.6%	9.7%	10.6%	0.63
Other determined etiology	14.0%	11.3%	13.9%	0.22
Undetermined etiology	22.8%	25.8%	22.9%	0.24
Onset-to-door time				
Median FAT-to- door (IQR), h	8.47 (2.12-32.78)	7.27 (2.30-34.93)	8.35 (2.12- 32.85)	0.52
Median LKW- to-door (IQR), h	11.68 (2.97-37.03)	9.73 (3.04-36.70)	11.63 (2.97- 37.03)	0.28
Initial Stroke severity				
Mean initial NIHSS score (SD)	4.0 (5.0)	5.3 (5.8)	4.1 (5.1)	.002
Median initial NIHSS score (IQR)	2 (1-5)	3 (1-7)	2 (1-5)	
Reperfusional therapy				
IVT rate	13.8%	12.5%	13.8%	0.56
Median DNT (IQR), min	38 (29-53)	39 (29.5-49.25)	38 (29-53)	0.60
DNT ≤60 min	83.7%	89.3%	83.9%	0.62
MT rate	7.4%	9.3%	7.5%	0.28
Median DPT (IQR), min	110 (87-155)	122 (92.75-145.75)	110 (87-154)	0.62
DPT ≤90 min	29.8%	22.7%	29.4%	0.48
Discharge medications				
Dual antiplatelet therapy	42.6%	35.9%	42.3%	0.16
Anticoagulation	10.4%	8.5%	10.2%	0.41
Statin	86.9%	76.7%	86.5%	<.001

* P-value by chi-square test for categorical variables and t-test for continuous variables.

FAT, first abnormal time; LKW, last known well; IVT, intravenous thrombolysis; DNT, door to needle time; MT, mechanical thrombectomy; DPT, door to puncture time.

Table S9. 3-months Functional Outcome and Mortality After Stroke According to Reperfusion Therapy.

Reperfusion Therapy	Outcomes	2011-2013 (n=1631)	2014-2016 (n=1980)	2017-2019 (n=2198)	P for trend*
None (n= 4824)	Mean mRS (SD)	2.14 (1.38)	2.11 (1.27)	2.15 (1.31)	0.642
	Median mRS (IQR)	2 (1-3)	2 (1-3)	2 (1-3)	-
	mRS 0-1	70.4%	71.3%	71.7%	0.420
	mRS 0-2	85.9%	87.3%	86.0%	0.948
	Mortality (mRS = 6)	1.9%	1.2%	1.6%	0.508
IVT (n=927)	Mean mRS (SD)	2.65 (1.46)	2.75 (1.65)	2.67 (1.66)	0.760
	Median mRS (IQR)	2 (1-4)	2 (1-4)	2 (1-4)	
	mRS 0-1	51.8%	52.7%	57.4%	0.185
	mRS 0-2	71.8%	72.0%	71.3%	0.883
	Mortality (mRS = 6)	2.2%	5.3%	3.6%	0.475
MT (n=487)	Mean mRS (SD)	3.29 (1.65)	3.05 (1.93)	3.12 (1.93)	0.628
	Median mRS (IQR)	3 (2-4)	3 (1-4)	3 (1-4)	-
	mRS 0-1	33.7%	47.7%	48.7%	0.036*
	mRS 0-2	57.0%	67.1%	62.9%	0.528
	Mortality (mRS = 6)	5.8%	10.7%	8.6%	0.621

* P-value by Cochran-Armitage trend test for categorical variables and ANOVA test for continuous variable.

IVT, Intravenous thrombolysis; MT, Mechanical thrombectomy.

Table S10. 3-months Functional Outcome and Mortality After Stroke According to Baseline Stroke Severity.

Initial Stroke Severity	Outcomes	2011-2013 (n=1631)	2014-2016 (n=1980)	2017-2019 (n=2198)	P for trend*
Mild (NIHSS 0-4, n=4117)	Mean mRS (SD)	1.82 (1.06)	1.83 (1.01)	1.91 (1.08)	0.046
	Median mRS (IQR)	2 (1-2)	2 (1-2)	2 (1-2)	-
	mRS 0-1	79.7%	80.9%	79.2%	0.672
	mRS 0-2	93.8%	94.2%	91.5%	0.015
	Mortality (mRS = 6)	0.80%	0.69%	0.64%	0.605
Moderate (NIHSS 5-15, n=1393)	Mean mRS (SD)	2.96 (1.50)	3.04 (1.55)	2.91 (1.56)	0.395
	Median mRS (IQR)	3 (2-4)	3 (2-4)	3 (2-4)	-
	mRS 0-1	41.1%	39.5%	47.1%	0.045*
	mRS 0-2	66.2%	64.5%	68.6%	0.387
	Mortality (mRS = 6)	3.17%	3.25%	2.81%	0.728
Severe (NIHSS 16-42, n=299)	Mean mRS (SD)	4.64 (1.63)	4.18 (1.92)	4.26 (2.04)	0.204
	Median mRS (IQR)	5 (4-6)	4 (3-6)	4 (2.75-6)	-
	mRS 0-1	13.2%	20.2%	25.0%	0.039*
	mRS 0-2	22.0%	38.5%	33.7%	0.094
	Mortality (mRS = 6)	10.2%	15.5%	14.6%	0.374

* P-value by Cochran-Armitage trend test for categorical variables and ANOVA test for continuous variable.

NIHSS, National Institute of Health Stroke Scale, IVT, intravenous thrombolysis; MT, mechanical thrombectomy.

Table S11. Subgroup analysis of cumulative incidence of recurrent stroke stratified by ischemic stroke subtype.

Ischemic Stroke Subtypes	2011-2013	2014-2016	2017-2019	p for trend
Large artery atherosclerosis				0.30
recurrent stroke 30d	2.62 (1.31-3.93)	2.93 (1.60-4.27)	1.60 (0.62-2.58)	
recurrent stroke 60d	3.70 (2.15-5.25)	3.27 (1.86-4.68)	1.76 (0.73-2.79)	
recurrent stroke 365d	5.01 (3.20-6.81)	4.71 (3.00-6.41)	3.30 (1.87-4.72)	
Small vessel occlusion				0.85
recurrent stroke 30d	1.02 (0.03-2.01)	1.34 (0.27-2.40)	1.46 (0.39-2.53)	
recurrent stroke 60d	2.07 (0.65-3.48)	1.57 (0.42-2.73)	1.88 (0.66-3.09)	
recurrent stroke 365d	3.45 (1.60-5.29)	2.55 (1.06-4.03)	3.41 (1.76-5.05)	
Cardioembolic stroke				0.02
recurrent stroke 30d	1.04 (0.00-2.48)	0.44 (0.00-1.30)	3.26 (0.88-5.64)	
recurrent stroke 60d	1.61 (0.00-3.41)	0.91 (0.00-2.17)	4.72 (1.86-7.58)	
recurrent stroke 365d	2.24 (0.06-4.41)	2.50 (0.33-4.67)	6.74 (3.33-10.16)	
Other determined etiology				0.20
recurrent stroke 30d	3.43 (0.73-6.13)	2.29 (0.48-4.11)	3.31 (1.54-5.09)	
recurrent stroke 60d	5.85 (2.33-9.38)	2.68 (0.72-4.65)	5.40 (3.15-7.65)	
recurrent stroke 365d	6.46 (2.76-10.16)	6.82 (3.69-9.96)	9.52 (6.56-12.49)	
Undetermined etiology				0.03
recurrent stroke 30d	1.88 (0.50-3.26)	0.22 (0.00-0.64)	3.82 (2.14-5.51)	
recurrent stroke 60d	1.88 (0.50-3.26)	0.88 (0.02-1.75)	4.85 (2.95-6.74)	
recurrent stroke 365d	3.35 (1.48-5.21)	2.32 (0.90-3.74)	6.52 (4.33-8.70)	

Figure S1. Stroke Recurrence In Cardioembolic Stroke According to Discharge Medication (Warfarin vs. Others).

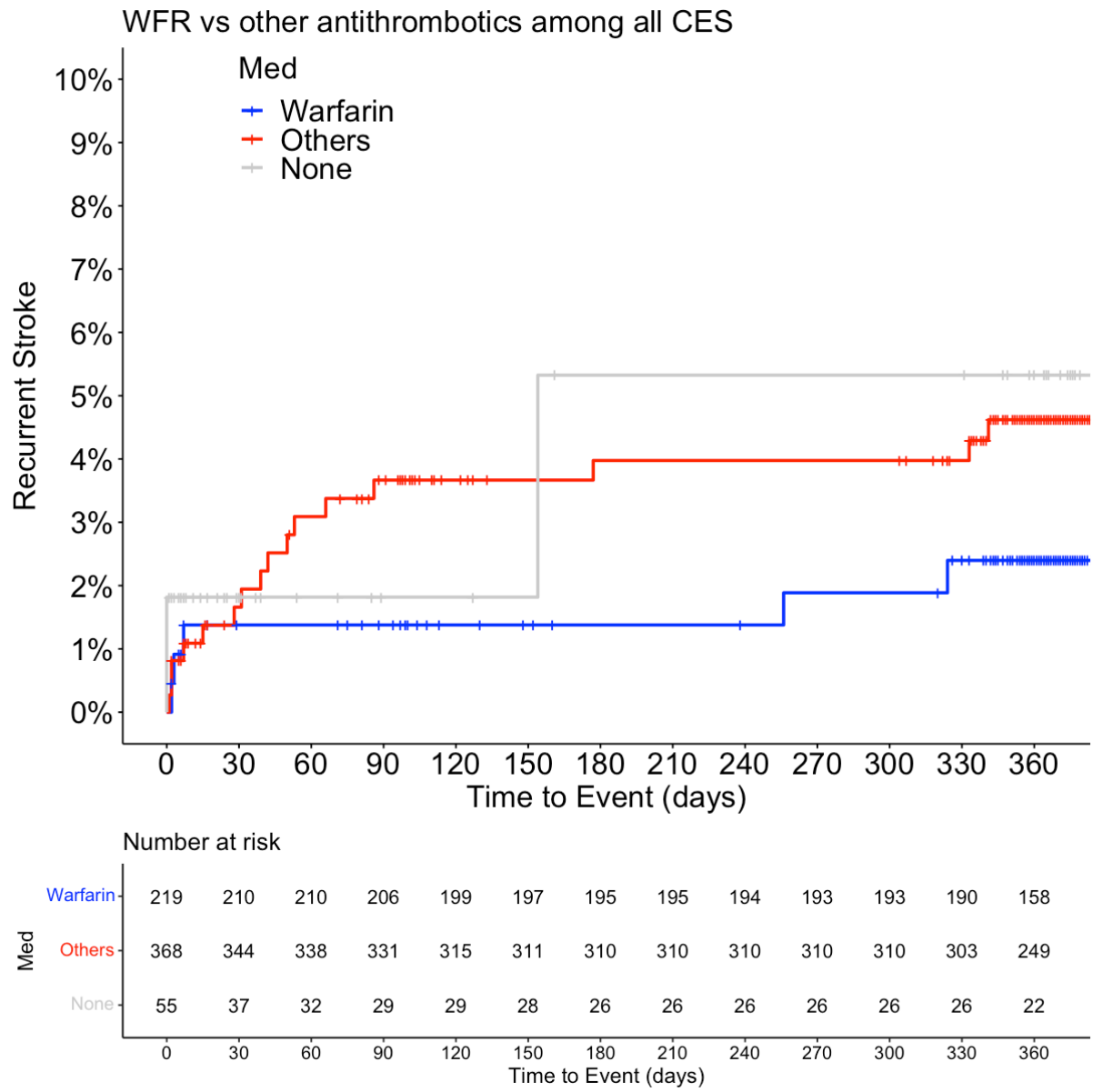


Figure S2. Stroke Recurrence In Other Determined Etiologies According to Discharge Medication (Warfarin vs. Others).

