

In preparation for:  
*BioRxiv*

## **Welding fume exposure is associated with medial temporal lobe microstructural features resembling early Alzheimer disease**

Eun-Young Lee<sup>1</sup>, Juhee Kim<sup>1</sup>, Janina Manziери Prado-Rico<sup>2</sup>, Guangwei Du<sup>2</sup>, Mechelle M. Lewis<sup>2,3</sup>, Lan Kong<sup>4</sup>, Jeff D. Yanosky<sup>4</sup>, Paul J. Eslinger<sup>2</sup>, Byoung-Gwon Kim<sup>5</sup>, Young-Seoub Hong<sup>5</sup>, Richard B. Mailman<sup>2,3</sup>, Xuemei Huang<sup>2,3,6,7,8</sup>

**Running Head:** Asymptomatic welders have medial temporal microstructural features resembling early Alzheimer disease

Department of Health Care and Science<sup>1</sup>, Dong-A University, Busan, South-Korea;  
Departments of Neurology<sup>2</sup>, Pharmacology<sup>3</sup>, Public Health Sciences<sup>4</sup>, Radiology<sup>6</sup>,  
Neurosurgery<sup>7</sup>, and Kinesiology<sup>8</sup>, Pennsylvania State University-Milton S. Hershey  
Medical Center, Hershey PA 17033, USA

Department of Preventive Medicine, College of Medicine<sup>5</sup>, Dong-A University, Busan, South Korea

### **Corresponding Authors:**

Eun-Young Lee [enyoungee@dau.ac.kr](mailto:enyoungee@dau.ac.kr)

Xuemei Huang [xuemei@psu.edu](mailto:xuemei@psu.edu)

**Key Words:** welding; Alzheimer's disease; medial temporal lobe; cortical thickness; diffusion tensor imaging; episodic memory

### **Word Count (Journal limits):**

	Current	Journal allowed
Running Head:	117	
Abstract (words):	250	
Key words	6	
Main Text	6,062	7,000
Tables & Figures (number):	4 & 7	
References:	146	
Supplementary Materials	1	

27  
28

29 **Abstract**

30 **Introduction:** Welding fumes contain a mixture of metals and are an epitope for  
31 environmental metal-related neurotoxicity. Past studies of welders focused largely on basal ganglia  
32 regions and their association with parkinsonism. This study evaluated medial temporal lobe (MTL)  
33 structures that play a key role in Alzheimer's disease-like pathology.

34 **Methods:** Exposure history and whole blood metal levels were obtained from subjects  
35 with/without a history of welding (42 welders; 31 controls). MTL regions of interest (ROI)  
36 (hippocampus, entorhinal and parahippocampal cortices) were assessed by morphologic (volume  
37 and cortical thickness) and diffusion tensor imaging [mean (MD), axial (AD), radial diffusivity  
38 (RD) and fractional anisotropy (FA)] metrics. Cognition was evaluated using standard  
39 neuropsychological tests.

40 **Results:** Welders had higher blood levels of Cu, Fe, K, Mn, Pb, Se, and Zn ( $p$ 's<0.026)  
41 than controls. Welders had higher MD, AD, and RD in all MTL ROIs ( $p$ 's<0.040) and lower FA  
42 in the entorhinal and parahippocampal cortices ( $p$ 's<0.033) without significant morphologic  
43 differences. Welders also exhibited lower performance on processing/psychomotor speed,  
44 executive, and visuospatial function domains ( $p$ 's<0.046). Greater welding years predicted lower  
45 parahippocampal FA ( $p=0.011$ ), where greater short-term welding intensity (E90) predicted worse  
46 Symbol coding digit scores ( $p=0.019$ ). Blood Mn and Cu levels demonstrated robust relationships  
47 with entorhinal diffusivity ( $p$ 's<0.009) and story recall performance ( $p=0.003$ ), respectively,  
48 throughout correlation, semi-parametric regression, and Bayesian kernel machine regression  
49 analyses.

50 **Discussion:** Welding fumes and related metal exposures are associated with MTL features  
51 of early Alzheimer's disease. Given the ubiquitous nature of metal exposure, future studies are  
52 warranted and may have public health implications.

53

## 54 Introduction

55 There is significant concern about health consequences of environmental exposure to toxic  
56 metals found in ambient air pollution including vehicle emissions, contaminated land, and  
57 occupation-related activities.<sup>1-4</sup> Essential metals can be neurotoxic in high dosages,<sup>5,6</sup> whereas non-  
58 essential metals can be neurotoxic even with low exposures.<sup>7</sup> Welding fumes contain a variety of  
59 both essential (e.g., Cu, Fe, Mn) and non-essential (e.g., Pb) metals that can cross the blood-brain  
60 barrier, accumulate in specific brain regions, and affect cellular functions.<sup>7-9</sup> Thus, welders have  
61 been an epitome human population for translational research of environmental metal exposure-  
62 related neurotoxicity.

63 Triggered by the early report of neurobehavioral disorders in Mn miners,<sup>10</sup> welding-related  
64 neurotoxicity studies had focused largely on Mn accumulation in the basal ganglia and its  
65 association with parkinsonism.<sup>11,12</sup> Thus, there has been a great deal of research into Mn  
66 neurotoxicity using cellular and animal models.<sup>13-23</sup> The clinical syndrome called manganism  
67 consists initially of reduced response speed, irritability, intellectual deficits, mood changes, and  
68 compulsive behaviors that progresses into more prominent, irreversible neurological dysfunction  
69 upon protracted exposure.<sup>24-28</sup> Because of some similarities to Parkinson's disease, these  
70 syndromes have been termed Mn-induced parkinsonism, although they are distinct clinically from  
71 sporadic Parkinson's disease.<sup>29-32</sup>

72 Alzheimer's disease is the most common age-related neurodegenerative disorder,  
73 comprising about 50-70% of dementia cases.<sup>33</sup> It is characterized pathologically by accumulations  
74 of  $\beta$ -amyloid plaques and tau tangles in the brain, with the most prominent neuronal damage noted  
75 in the hippocampus.<sup>34,35</sup> Although the major and early disease-related behavioral deficits entail  
76 learning/memory problems,<sup>36</sup> the disease also affects executive, attentional, and language  
77 functions<sup>37</sup> and progresses relentlessly. The clinical diagnosis of dementia is based on a substantial  
78 reduction from previous performance levels in more than one cognitive domain that sufficiently  
79 interferes with independent daily living.<sup>38</sup> At the time of clinical diagnosis of Alzheimer's disease,  
80 hippocampal atrophy (representing significant neuronal loss) is apparent.<sup>39</sup> The recent approval of  
81 drugs like lecanemab may somewhat slow progression,<sup>40,41</sup> but they do not mitigate the widely  
82 recognized need to identify addressable causes of dementia.

83 Preclinical animal studies have shown that metal exposure (e.g., Cu, Mn, and Fe) in brain  
84 can lead to Alzheimer's disease-like A $\beta$  production and cognitive impairment.<sup>42-47</sup>  
85 Epidemiological studies also reported higher plasma metal levels (e.g., Al, Cd, Cu, Fe, Hg, Pb,  
86 and Se) in Alzheimer's disease and related disorder (ADRD) populations.<sup>48-53</sup> Despite the basic  
87 science and epidemiological data, linking chronic life-long metal exposure to age-related  
88 neurodegenerative diseases in humans, individually or in subgroups, is challenging. This is due to  
89 the difficulty of ascertaining exposure accurately (both distant or cumulative), the long-latency of  
90 the diseases, and the fact that many early disease-related changes may be subtle and resemble  
91 normal aging.

92 These challenges motivated research that used brain MRI to gauge Alzheimer's disease-  
93 related early changes. For example, T1-weighted MR imaging has been utilized to estimate cortical  
94 thinning or volume loss that may reflect neuronal death.<sup>54,55</sup> Recent studies suggested distributed  
95 brain structures (e.g., fornix, cingulum, entorhinal and parahippocampal cortices, posterior  
96 cingulate, and precuneus) may exhibit changes early in the Alzheimer's disease process.<sup>56-58</sup>  
97 Among these brain regions, medial temporal lobe (MTL) memory areas that include the

98 hippocampus and entorhinal and parahippocampal cortices may play a key role in Alzheimer's  
99 disease-related cognitive processes, particularly learning/memory.<sup>59,60</sup> Previous MRI studies  
100 reported MTL morphometric (e.g., atrophy, shape) and diffusivity (reflecting microstructural  
101 integrity) changes in early-stage Alzheimer's disease or at-risk populations (e.g., MCI; mild  
102 cognitive impairment) who subsequently converted to Alzheimer's disease.<sup>61-63</sup> Some reported  
103 entorhinal, rather than hippocampal, areas may better predict future Alzheimer's disease  
104 conversion.<sup>63,64</sup>

105 Previously, we and others have reported hippocampal differences in metabolite ratios,  
106 water molecule diffusivity, and volume<sup>65-68</sup> and learning/memory performance-decline in welders  
107 or other subjects with metal exposures.<sup>69-72</sup> We sought to understand better how welding fume  
108 exposure affects MTL structural metrics and cognition. Our overall hypothesis was that welding  
109 fume exposure is associated with MTL structural and cognitive changes as seen in early  
110 Alzheimer's disease. We tested three specific hypotheses: **H1**) Welders will have higher medial  
111 (MD), axial (AD), radial (RD) diffusivity, and lower fractional anisotropy (FA) values in MTL  
112 structures than controls; **H2**) Welders will have lower performance on processing/psychomotor  
113 speed, executive, and learning/memory tasks than controls; and **H3**) In welders, MTL diffusion  
114 features will link welding fume exposure to neurobehavioral measures. We also explored the  
115 effects of mixed-metal exposures in welding fumes on MTL structural and cognitive metrics using  
116 whole blood metal levels as surrogate markers.

## 117 **Methods**

### 118 *Study subjects*

119 Eighty subjects were recruited from central Pennsylvania (USA). Welders were defined as  
120 subjects who had welded at any point in their lifetime, whereas controls had no such history.  
121 Enrollment occurred between 2011-2013 and overlapped such that participants were recruited  
122 equally over this timeframe. All subjects answered negatively for past Parkinson's disease  
123 diagnosis or other neurological disorders and had Movement Disorder Society Unified Parkinson's  
124 disease Rating Scale<sup>73</sup> motor exam sub scores (UPDRS-III) < 15. Global cognition was measured  
125 by the Montreal Cognitive Assessment battery (MoCA). All subjects were male with a Mini-  
126 Mental Status Examination (MMSE) scores >24 or MoCA >19. Age and years of education also  
127 were acquired. Forty-two welders and 31 controls completed the MRI acquisition with good  
128 quality images (five welders and two controls were excluded). Written informed consent was  
129 obtained in accordance with the Declaration of Helsinki and approved by the Penn State Hershey  
130 Internal Review Board.

### 131 *Ascertainment of welding fume exposure and metal blood levels*

132 We utilized established exposure questions<sup>65</sup> to estimate the following metrics: 1) recent  
133 exposure in the 90 days prior to the study visit including hours welding [ $HrsW_{90} = (\text{weeks worked})$   
134  $\times (\text{h/week}) \times (\text{fraction of time worked related directly to welding})$ ] and  $E_{90}$  (an estimate of the  
135 cumulative exposure to welding fumes)], and 2) lifetime exposure including welding years  
136 [( $YrsW = \text{years spent welding during the subjects' life}$ ) and  $ELT$  (an estimate of cumulative  
137 exposure to welding fumes over the individual's life)].<sup>65</sup>

138 We obtained whole blood the morning of the study (ca. 0800 h), the same day that cognitive  
139 tests and brain MRI were obtained. After digestion, the samples were analyzed for trace minerals

140 including Ca, Cr, Cu, Fe, K, Mg, Mn, Na, Pb, Se, Sr, and Zn using the Thermo (Bremen, Germany)  
141 Element 2 SF-ICP-MS equipped with a concentric glass nebulizer and Peltier-cooled glass  
142 cyclonic spray chamber. Bulk mineral concentrations were determined by ICP-OES (Optical  
143 Emission Spectrometry) analysis on the Thermo iCAP equipped with a polypropylene cyclonic  
144 spray chamber at the University of North Carolina, Chapel Hill, NC, USA.<sup>65</sup>

#### 145 ***Neuropsychological tests (NPTs) and scores***

146 Six neurobehavioral domains were examined: (1) processing/psychomotor speed; (2)  
147 executive function; (3) language; (4) learning/memory; (5) visuospatial processing; and (6)  
148 attention/working memory. Subtests from the *Repeatable Battery for the Assessment of*  
149 *Neuropsychological Status (RBANS)*<sup>74</sup> were used to assess language, visuospatial processing, and  
150 learning and memory. Processing/psychomotor speed, executive function, and attention/working  
151 memory domains were evaluated using subtests from the *Wechsler Adult Intelligence Scale- Third*  
152 *Edition (WAIS-III)*,<sup>75</sup> *Trail Making Tests (A and B)*,<sup>76</sup> *Stroop Test*,<sup>77</sup> *Delis-Kaplan Executive*  
153 *Function System (D-KEFS)*,<sup>78</sup> and *Wechsler Memory Scale- Third Edition (WMS-III)*.<sup>79</sup> Tests were  
154 administered by an experienced examiner. Specific domains and tests follow.

155 ***Processing/psychomotor speed:*** During the *Symbol Search* subtest, subjects were  
156 presented with a set of symbols and asked to report whether the provided set contained a particular  
157 symbol. In the *Stroop-Word* test,<sup>80</sup> color words (e.g., “RED,” “GREEN,” and “BLUE”) were  
158 presented randomly in black ink. Subjects were asked to read the words as quickly as possible. In  
159 the *Stroop-Color* test,<sup>80</sup> each item was written as “XXXX” printed either in red, green, or blue ink.  
160 Subjects were asked to name the colors as quickly as possible. During the *Trail Making-A* test,  
161 subjects were required to connect numbers from 1 to 25 consecutively on a worksheet as quickly  
162 as possible.

163 ***Executive function:*** In the *Symbol-Digit Coding* subtest, subjects performed a timed task  
164 to match symbols to designated numbers. During the *Stroop-Color-Word* subtest, the words “RED,”  
165 “GREEN,” and “BLUE” were printed in non-corresponding colors (e.g., the word “RED” printed  
166 in green ink). Subjects were asked to name the ink color of the printed words. In the *Trail Making-*  
167 *B*, subjects were required to connect numbers (from 1 to 13) and letters (from A to L) consecutively  
168 in an alternating sequence (e.g., 1-A-2-B etc.). During the *Phonemic Fluency* subtest from *D-KEFS*,  
169 subjects generated words beginning with a particular letter (e.g., “F”) within one minute.

170 ***Language:*** In the *Picture Naming* test, subjects were asked to name 10 familiar objects.  
171 During the *Semantic Fluency* test, subjects generated as many words within a restricted category  
172 (fruits/vegetables or zoo animals) as possible within one minute.

173 ***Learning/memory:*** In the *List Learning* test, a non-organized list of 10 words was  
174 presented orally and subjects immediately recalled the word list. Four learning trials were  
175 performed where subjects were encouraged to recall the words in any order. During the *Delayed*  
176 *List Recall* test, subjects recalled the same word list after ca. 20-min delay. For the *Immediate*  
177 *Story Recall* test, subjects were presented with a short prose passage and immediately reproduced  
178 the story they heard. In the *Delayed Story Recall* test, subjects recalled the story after ca. 20-min  
179 delay. For the *Delayed Figure Recall* test, subjects reproduced a figure after a ca. 20-min delay.

180 ***Visuospatial processing:*** This was evaluated with *Line Orientation* and *Figure Copy*  
181 subtests from the *RBANS*. In the *Line Orientation* test, subjects were presented with a pair of angled

182 lines and asked to match them to two numbered lines on the display. During the *Figure Copy*  
183 subtest, subjects copied a complex figure.

184 **Attention/working memory:** In the *Digit Span* test, subjects orally were presented with a  
185 series of increasing digits, and asked to recite the digits in the presented or reversed order. In the  
186 *Spatial Span* test, a three-dimensional board with ten blocks was used and a series of increasing  
187 blocks were presented in a specific, predetermined pattern. Subjects were asked to reproduce the  
188 same pattern by pointing to the blocks in forward or reverse order. In the *Letter-Number*  
189 *Sequencing* test, subjects orally were presented with mixed sequences of digits and letters and  
190 asked to reproduce the digits in ascending order, followed by the letters in alphabetical order.

191 Individual raw neuropsychological test scores were converted to age-adjusted norm scores  
192 (e.g., T-scores or scaled scores). In order to unify these scores, the normative scores then were  
193 converted to z-scores [(individual norm-based scores – mean norm score) / (standard deviation of  
194 the norm score)]. Z-scores for the *Stroop (Stroop-Word, Stroop-Color, and Stroop-Color-Word)*,  
195 *Trail Making- A and -B, Phonemic Fluency, Digit Span* tests were calculated based on age- and  
196 education-adjusted normed scores.<sup>76,80-83</sup> *Phonemic Fluency* subtest scores additionally were  
197 adjusted for race.<sup>82</sup>

### 198 ***MRI acquisition and processing***

199 All MR images were acquired using a Siemens 3 T scanner (Magnetom Trio, Erlangen,  
200 Germany) with an 8-channel head coil. First, high-resolution T1-weighted (T1W) and T2-weighted  
201 (T2W) images were acquired for anatomical segmentation. For T1W images, MPRAGE sequences  
202 with Repetition Time (TR)/Echo Time (TE)=1540/2.3 ms, FoV/matrix=256x256/256x256 mm,  
203 slice thickness=1 mm, slice number=176 (with no gap), and voxel spacing 1x1x1 mm were used.  
204 T2W images were obtained using fast-spin-echo sequences with TR/TE=2500/316 ms and the  
205 same spatial resolution as the T1W images. For R1, TR/TE=15/1.45 ms, flip angles=4/25°,  
206 FoV/matrix=250x250/160x160 mm, slice thickness=1 mm, slice number=192, and voxel  
207 spacing=1.56x1.56x1 mm were used. R2\* images were acquired using five TEs ranging from 8-  
208 40 ms with an interval of 8 ms, TR=51 ms, flip angle=15°, FoV/matrix=230x230/256x256 mm,  
209 slice thickness=1.6 mm, and slice number=88 were used. For DTI, TR/TE=8300/82 ms, b  
210 value=1000 s/mm<sup>2</sup>, diffusion gradient directions=42 and 7 b=0 scans,  
211 FoV/matrix=256x256/128x128 mm, slice thickness=2 mm, and slice number=65 were used.

212 ***Regions of Interest:*** Medial temporal brain regions that previously had reported Alzheimer  
213 disease-related early changes (hippocampus, and entorhinal and parahippocampal cortices; Figure  
214 1) were selected as regions-of-interest (ROIs). ROIs were defined for each subject using  
215 Freesurfer.<sup>84</sup> Segmentation quality then was confirmed visually by a reviewer blinded to group  
216 assignment.

217 ***Morphologic Metrics:*** Hippocampal volume segmentation and cortical parcellation for  
218 thickness calculation were performed with the Freesurfer image analysis suite  
219 (<http://surfer.nmr.mgh.harvard.edu/>). Processing included motion correction, removal of non-  
220 brain tissue using a hybrid watershed/surface deformation procedure<sup>85</sup>, and automated Talairach  
221 transformation. Deep gray matter volumetric structures including the hippocampus then were  
222 segmented and cortical gray matter structures including entorhinal and parahippocampal cortices  
223 were parcellated.<sup>86,87</sup>

224 **Diffusion Metrics:** DTI quality control and tensor reconstruction were performed using  
225 DTIPrep<sup>88</sup> that first checks diffusion images for appropriate quality by calculating the inter-slice  
226 and inter-image intra-class correlation, and then corrects for the distortions induced by eddy  
227 currents and head motion. DTI maps then were estimated via weighted least squares. The DTI  
228 maps were co-registered onto T1/T2W images using ANTS, and the transformation matrix was  
229 applied inversely to bring the hippocampal region to the DTI maps. Four DTI indices [fractional  
230 anisotropy (FA), AD (axial diffusivity), RD (radial diffusivity), and MD (mean diffusivity)] were  
231 calculated out of three diffusivity eigenvalues ( $\lambda_1, \lambda_2, \lambda_3$ ).<sup>89</sup> FA is a weighted average of pairwise  
232 differences of the three eigenvalues and may represent the degree of diffusion anisotropy. AD is  
233 the largest eigenvalue ( $\lambda_1$ ) and RD is an average of the remaining two eigenvalues, both of which  
234 may indicate the orientation of the diffusion. MD is an average of the three eigenvalues, providing  
235 the overall diffusion magnitude<sup>89</sup>.

### 236 **Statistical analysis**

237 Group comparisons of demographic data were conducted using one-way analysis of  
238 variance (ANOVA). For group comparisons of exposure metrics and whole blood metal levels,  
239 multivariate analysis of variance (MANOVA) was used to control intercorrelations among  
240 dependent variables. Whole blood metal levels were log-transformed to attenuate the impact of  
241 potential extreme values. Group comparisons of neuropsychological and neuroimaging metrics  
242 were conducted using multivariate analysis of covariance (MANCOVA). Adjusted  
243 neuropsychological z-scores were used for the group analyses, with adjustment for education level  
244 if it was not adjusted individually. For cortical thickness and DTI measures, analyses included  
245 adjustment for age and education level. When comparing hippocampal volume, total intracranial  
246 volume (TIV) also was used as a covariate.

247 Multiple statistical analyses were conducted to understand the relationship between  
248 exposure (welding fumes and related metals), MRI, and cognitive metrics. **First**, Spearman partial  
249 correlation analyses were used with adjustment for potential confounders. For the associations of  
250 neuropsychological/MRI metrics with exposure metrics, age and education level were used as  
251 covariates. For the associations of neurobehavioral/MRI metrics with individual blood metal levels,  
252 we adjusted for other blood metal levels in addition to age and education level. For the associations  
253 between neurobehavioral and MRI metrics, age and education level were used as covariates.  
254 **Second**, semi-parametric regression analyses were conducted using generalized additive models  
255 that utilized both linear and spline terms.<sup>90</sup> For these analyses, neuropsychological and MRI  
256 metrics were treated as outcome variables, whereas exposure metrics and blood metal levels were  
257 treated as predictors with adjustment for age and education level. The linear or spline relationship  
258 between dose (exposure)-response (MRI/cognition) variables was determined based on loess plots.  
259 For neuropsychological scores, semi-parametric regression analyses additionally were conducted  
260 while treating MRI metrics as predictors with adjustments of age and education level. **Third**,  
261 Bayesian kernel machine regression (BKMR) analyses<sup>91</sup> were conducted that flexibly model non-  
262 linear and non-additive associations between predictors (multiple metals) and outcome variables  
263 (MRI/cognition) using a Markov Chain Monte Carlo (MCMC) algorithm while treating covariates-  
264 MRI/cognition relationships as linear. These analyses allow testing of potential metal mixture  
265 effects and interactions among blood metal variables and identifying a certain metal exposure  
266 responsible for any significant exposure effect. **Lastly**, causal mediation analyses<sup>92-95</sup> were  
267 conducted to test whether neurobehavioral metrics were linked to metal exposure measurements  
268 1) directly or 2) indirectly via medial temporal structural metrics, with age and education level

269 included as covariates (Figure 2). To test mediation effects of blood metal levels on  
270 neurobehavioral metrics, other blood metal levels additionally were used as covariates.

271 A statistical significance level of  $\alpha=0.05$  was used. Correlation analyses of  
272 neuropsychological and MRI structural metrics with metal exposure measures were corrected for  
273 multiple comparisons using the Stepdown Bonferroni method<sup>96</sup> to control the familywise error rate  
274 (*FWER*) at  $p=0.05$ . We report uncorrected raw  $p$ -values but indicate significant results with *FWER*-  
275 correction. SAS 9.4 or R was used for statistical analyses. We conducted all association analyses  
276 in controls and welders separately since the range of some metal exposure metrics may differ  
277 substantially between controls and welders. Thus, associations of pooled data may be influenced  
278 by the control/welder difference rather than the exposure effect. We report the results from welders  
279 in the main text and included results from controls in the supplementary material.

## 280 **Results**

### 281 ***Demographics and exposure features of study participants***

282 Welders were older ( $p=0.048$ ) and had lower education years ( $p<0.001$ ) than controls.  
283 There was no significant group difference in UPDRS-III or MoCA scores ( $p=0.326$  and  $p=0.797$ ,  
284 respectively; Table 1a). Welders displayed significantly higher composite metrics of welding fume  
285 exposure ( $p$ 's $<0.001$ ) and whole blood metal levels of Cu, Fe, K, Mn, Pb, Se, and Zn ( $p$ 's $<0.026$ ;  
286 Table 1b).

### 287 ***Group comparison of medial temporal MRI and neurobehavioral metrics***

288 There were no significant group differences in morphological metrics including  
289 hippocampal volume and cortical thickness in entorhinal and parahippocampal cortices with age  
290 and education level included as covariates ( $p$ 's $> 0.117$ ; Figure 3a-b). Welders displayed higher  
291 diffusivity (MD, AD, and RD) values in all ROIs ( $p$ 's $<0.040$ ; Figure 4a-c). FA values were  
292 significantly lower in entorhinal and parahippocampal cortices ( $p$ 's  $<0.033$ ), but not in the  
293 hippocampus ( $p=0.501$ ; Figure 4d).

294 Welders showed overall lower cognitive performance than controls, but this did not reach  
295 statistical significance ( $p=0.063$ ; Table 2). In domain-wise analyses, welders performed worse in  
296 processing/psychomotor speed, executive function, and visuospatial processing than controls ( $p$ 's  
297  $<0.046$ ), but similarly on language ( $p=0.487$ ) and attention/working memory ( $p=0.126$ ) tests.  
298 Welders also performed poorer on learning and memory tasks, but the difference did not reach  
299 statistical significance ( $p=0.055$ ). For individual subtests, welders performed worse on *Stroop-*  
300 *Color* and *Stroop-Word* processing/psychomotor speed and *Symbol-Digit Coding*, *Phonemic*  
301 *Fluency*, and *Trail Making-B* executive function tasks than controls. They also had lower scores  
302 on *Complex Figure-Copy* visuospatial processing and *Delayed Story Recall* learning/memory tasks  
303 ( $p$ 's  $<0.049$ ). There were no significant group differences in the remaining individual subtests ( $p$ 's  
304  $\geq 0.131$ ).

### 305 ***The relationship of MRI metrics and neuropsychological scores with exposures in welders***

#### 306 Welding history as exposure of interest

307 ***Diffusion MRI metrics:*** Spearman correlation analyses showed that lower  
308 parahippocampal FA correlated with greater YrsW ( $R=-0.347$ ,  $p=0.026$ ). DTI in other ROIs did



309 not correlate with any exposure metrics ( $p$ 's  $>0.134$ ; Supplementary Table S1b). Subsequent semi-  
310 parametric regression analysis confirmed that YrsW was a significant linear predictor of lower  
311 parahippocampal FA ( $\beta=-0.0011$ ,  $t=-2.69$ ,  $p=0.011$ ; Figure 5a). Higher ELT was a significant  
312 linear predictor of higher hippocampal MD and RD ( $\beta$ 's  $>0.0227$ ,  $t$ 's  $>2.08$ ,  $p$ 's  $<0.045$ ).

313 **Neuropsychological test scores:** Spearman correlation analyses revealed that lower  
314 *Symbol-Digit Coding* scores correlated with higher E<sub>90</sub> ( $R=-0.371$ ,  $p=0.018$ ; Supplementary Table  
315 2b), whereas lower *Picture Naming* scores were associated with lower HrsW ( $R=0.327$ ,  $p=0.039$ ).  
316 In addition, lower *Judgement of Line Orientation* scores were associated with higher YrsW ( $R=-$   
317  $0.347$ ,  $p=0.028$ ). The remaining neuropsychological scores did not correlate with any other  
318 exposure metrics ( $p$ 's  $>0.057$ ). Semi-parametric regression analysis (Table 3) revealed that higher  
319 E<sub>90</sub> was a significant linear predictor of lower *Symbol-Digit Coding* scores ( $\beta=-0.1605$ ,  $t=-2.46$ ,  
320  $p=0.019$ ; Figure 5b).

321 Welding-related blood metal levels as exposures of interest

322 **Diffusion MRI metrics:** Spearman correlation analyses showed that higher values of all  
323 entorhinal diffusivity metrics correlated with higher Mn ( $R$ 's  $>0.372$ ,  $p$ 's  $<0.030$ , Supplementary  
324 Table S1b). Higher entorhinal FA correlated with higher Pb and Zn ( $R=0.369$ ,  $p=0.029$  for Pb and  
325  $R=0.434$ ,  $p=0.009$  for Zn). None of the DTI metrics in other ROIs correlated with any blood metal  
326 levels ( $p$ 's  $>0.054$ ). Subsequent semi-parametric regression analysis (Table 3b) revealed that higher  
327 Mn values were significant linear predictors of higher entorhinal diffusivity ( $\beta$ 's  $>0.2230$ ,  $t$ 's  $>3.01$ ,  
328  $p$ 's  $<0.009$ ). Higher Pb significantly predicted higher hippocampal diffusivity (MD, AD, RD,  
329  $\beta$ 's  $>0.0374$ ,  $t$ 's  $>2.43$ ,  $p$ 's  $<0.035$ ), whereas Fe level predicted lower hippocampal AD ( $\beta=-0.3707$ ,  
330  $t=-2.51$ ,  $p=0.031$ ).

331 **Neuropsychological test scores:** Spearman analyses revealed that lower *Stroop-Word*  
332 scores were associated with lower Zn ( $R=0.400$ ,  $p=0.021$ , Supplementary Table S2b). Moreover,  
333 lower *Symbol-Digit Coding* scores correlated with lower Pb but higher Cu ( $R=0.436$ ,  $p=0.011$  for  
334 Pb and  $R=-0.430$ ,  $p=0.013$  for Cu). The lower *Symbol-Digit Coding*-blood Pb association remained  
335 significant after *FWER* correction. Lower *List Learning* scores correlated with lower Fe but higher  
336 Mn ( $R=0.387$ ,  $p=0.026$  for Fe and  $R=-0.347$ ,  $p=0.048$  for Mn). In addition, lower *Immediate* and  
337 *Delayed Story Recall* scores correlated with higher Cu ( $R$ 's  $<-0.366$ ,  $p$ 's  $<0.036$ ). Lower *Delayed*  
338 *Figure Recall* scores correlated with lower Fe ( $R=0.444$ ,  $p=0.010$ ) but higher Mn and Zn ( $R$ 's  $<-$   
339  $0.386$ ,  $p$ 's  $<0.026$ ). The *Delayed Figure Recall*-blood Mn association remained significant after  
340 *FWER* correction. The remaining neuropsychological test scores did not correlate with any other  
341 blood metal levels ( $p$ 's  $>0.055$ ). Semi-parametric regression analyses (Table 3b) revealed that  
342 higher Cu levels were a significant linear predictor of lower *Symbol-Digit Coding scores* ( $\beta=-$   
343  $3.1322$ ,  $t=-2.66$ ,  $p=0.017$ ). Lower blood Fe and higher Mn were significant predictors of lower  
344 *List Learning* and *Delayed List Recall* scores ( $\beta$ 's  $>6.5299$ ,  $t$ 's  $>2.95$ ,  $p$ 's  $<0.008$  for Fe and  $\beta$ 's  $<-$   
345  $1.0018$ ,  $t$ 's  $<-2.54$ ,  $p$ 's  $<0.025$  for Mn). Higher Cu was a significant linear predictor of lower  
346 *Immediate* and *Delayed Story Recall* scores ( $\beta$ 's  $<-3.7790$ ,  $t$ 's  $<-2.29$ ,  $p$ 's  $<0.039$ ; Figure 6d). Higher  
347 Mn levels were a significant predictor of lower *Delayed Figure Recall* scores ( $\beta=-3.1825$ ,  $t=-4.50$ ,  
348  $p<0.001$ ).

349 **BKMR analyses of mixed metal effects:** Higher Mn levels were significant predictors of  
350 higher entorhinal AD, MD, and RD values ( $p$ 's  $<0.05$ ; Figure 6a-c). Higher Fe levels were a  
351 significant predictor of higher *List Learning* scores ( $p<0.05$ ; Figure 6d). Higher Cu levels were a  
352 significant predictor of lower *Delayed Story Recall* scores ( $p<0.05$ ; Figure 6e). None of the blood

353 metal levels were significant predictors of hippocampal DTI metrics. There were also neither  
354 significant metal mixture nor interaction effects among multiple blood metals on DTI and  
355 neurobehavioral metrics.

### 356 ***The relationship between MTL diffusivity and neuropsychological test scores in welders***

357 ***Spearman correlation analyses:*** Higher entorhinal diffusivity correlated with lower  
358 *Delayed List Recall* scores ( $R^2 < 0.383$ ,  $p < 0.018$ , Supplementary Table S3b). The entorhinal  
359 MD-*Delayed List Recall* association remained significant after *FWER* correction. Higher  
360 parahippocampal diffusivity correlated with lower *Immediate Story Recall* scores ( $R^2 < 0.354$ ,  
361  $p < 0.025$ ), with the parahippocampal RD-*Immediate Story Recall* association remaining  
362 significant after *FWER* correction. Lower parahippocampal FA correlated with lower *Symbol*  
363 *Search* and *Trail Making-A* scores ( $R^2 > 0.429$ ,  $p < 0.006$ ) that remained significant after *FWER*  
364 correction. Lower parahippocampal FA also correlated with lower *Spatial Span* ( $R = 0.354$ ,  
365  $p = 0.025$ ). Higher hippocampal MD and RD correlated with lower *Trail Making-A* scores ( $R^2 <$   
366  $0.305$ ,  $p < 0.025$ ). Other DTI metrics did not correlate with any neurobehavioral scores  
367 ( $p > 0.054$ ).

368 ***Semi-parametric regression analyses:*** Higher entorhinal diffusivities were significant  
369 linear predictors of *Delayed List Recall* scores ( $\beta < -3.7692$ ,  $t < -2.87$ ,  $p < 0.007$ ; Figure 7a and  
370 Table 4b). Higher parahippocampal diffusivity metrics were significant linear predictors of  
371 *Immediate Story Recall* scores ( $\beta < -5.7229$ ,  $t < -2.64$ ,  $p < 0.012$ ; 7b). Lower parahippocampal  
372 FA was a significant linear predictor of lower *Symbol Search* and *Trail Making-A* scores  
373 ( $\beta = 14.2616$ ,  $t = -2.67$ ,  $p = 0.012$  and  $\beta = 15.7459$ ,  $t = 2.31$ ,  $p = 0.027$ , respectively; Figure 7c-d). Higher  
374 hippocampal AD was a significant linear predictor of lower *List Learning* scores ( $\beta = -4.7280$ ,  $t =$   
375  $2.18$ ,  $p = 0.035$ ; Figure 7e). Higher hippocampal MD and RD were significant linear predictors of  
376 lower *Trail Making-A* scores ( $\beta = -4.4631$ ,  $t = -2.10$ ,  $p = 0.043$  and  $\beta = -4.9733$ ,  $t = -2.16$ ,  $p = 0.038$ ,  
377 respectively).

### 378 ***Causal mediation analyses: from exposure to neurobehavioral scores via MTL MRI*** 379 ***metrics in welders***

#### 380 Welding history as exposure of interest

381 There were significant indirect effects of higher YrsW on lower *Symbol Search* and *Trail*  
382 *Making-A* scores that were mediated by lower parahippocampal FA values ( $\beta = -0.0252$ ,  $z = -2.29$ ,  
383  $p = 0.022$  for *Symbol Search* and  $\beta = -0.0282$ ,  $z = -2.27$ ,  $p = 0.023$  for *Trail Making-A*) but no  
384 significant direct or total effects ( $p > 0.055$ ). There were significant total and direct effects of  
385 higher  $E_{90}$  values on lower *Symbol-Digit Coding* scores ( $\beta < -0.1531$ ,  $z < -2.44$ ,  $p < 0.014$ ) but  
386 no significant indirect effects ( $p > 0.647$ ). There were no significant direct or indirect effects of  
387 other exposure metrics on neurobehavioral scores ( $p > 0.065$ ).

#### 388 Welding related blood metal levels as exposures of interest

389 There were significant indirect effects of higher blood Fe on higher *List Learning* and  
390 *Recall* scores via lower hippocampal AD ( $\beta > 7.5372$ ,  $z > 2.11$ ,  $p < 0.035$ ), and significant total  
391 effects ( $\beta > 4.4794$ ,  $z > 2.16$ ,  $p < 0.031$ ) without direct effects ( $p > 0.726$ ). There, however, were  
392 no significant indirect effects of other metal levels on neurobehavioral scores via MTL DTI metrics  
393 ( $p > 0.109$ ). Blood Cu, Mn, and Pb levels had significant total and direct effects without  
394 significant indirect effects: For Cu, these effects resulted in lower *Symbol-Digit Coding* and

395 *Delayed Story Recall* scores ( $\beta$ 's<-3.1633,  $z$ 's<-1.97,  $p$ 's<0.049). For Mn, the effects were on  
396 lower *List Learning*, *Delayed List*, and *Figure Recall* scores ( $\beta$ 's<-1.4742,  $z$ 's<-2.01,  $p$ 's<0.045).  
397 For Pb, the effects led to higher *Symbol-Digit Coding* scores ( $\beta$ 's>0.4989,  $z$ 's>1.97,  $p$ 's<0.048).

## 398 **Discussion**

399 This is the first in-depth examination that used multimodal structural MRI to study multiple  
400 MTL regions in welders. Consistent with our hypothesis H1, we observed a reliable pattern across  
401 MTL areas of DTI features (higher AD, RD, MD, lower FA) that is consistent with findings in  
402 ADRD populations. The persistent MTL DTI features in the absence of morphometric differences  
403 (markers of significant macroscopic neuronal loss) suggest that these DTI metrics may serve as  
404 sensitive markers for gauging early disease processes probably representing microstructural  
405 integrity. Consistent with our hypothesis H2, we replicated prior findings that welders have lower  
406 performance in processing/psychomotor speed and executive function domains that are associated  
407 with welding history. In addition, we conducted a comprehensive analysis to understand the  
408 relationship of the MTL MRI metrics with welding-related metal exposure and neuropsychiatric  
409 changes and whether MTL MRI metrics may mediate metal-exposure to cognitive outcomes. We  
410 noted that greater welding years (YrsW) predicted lower parahippocampal FA, whereas greater  
411 short-term welding intensity (E90) predicted worse Symbol coding digit scores. MTL DTI metrics  
412 (microstructural changes) mediate, at least partially, the effects of welding fumes on cognitive  
413 performance, consistent with our hypothesis H3. Together, the results of the current study are  
414 consistent with our key scientific premise that welding fume exposures are associated with MTL  
415 microstructural features resembling early ADRD.

416 The explorative analyses on associations of seven blood metal levels (higher in welders  
417 than in controls) with MRI metrics or neuropsychologic scores yielded mixed and inconsistent  
418 results. This may be, in part, due to low sample size with multiple metals of interest and that blood  
419 metals only represent recent, ongoing, and short-term (~3 m) exposure. In addition, different  
420 metals may have different exposure-effect curves (which potentially may be non-monotonic),  
421 depending on the dose level and the brain regions and cognitive metrics of interest. Nonetheless,  
422 higher blood Mn and Cu levels demonstrated the most robust relationships with higher entorhinal  
423 diffusivity values and lower *Delayed Story Recall* performance, respectively, analyzed using  
424 multiple statistical approaches including correlations, semi-parametric regression, and Bayesian  
425 kernel machine regression. Given the ubiquitous nature of low-level metal exposure and their  
426 broader public health impact, future studies are warranted.

### 427 ***Welders' medial temporal microstructural features are consistent with ADRD-at risk*** 428 ***populations***

429 The hippocampus and entorhinal/parahippocampal cortices are key structures for medial  
430 temporal memory tasks. The parahippocampal cortex receives inputs from widespread associative  
431 cortical areas including frontal, temporal, parietal, occipital, and cingulate cortices.<sup>97,98</sup> It then  
432 passes information to the entorhinal cortex that, in turn, has reciprocal connections with the  
433 hippocampus. Thus, the entorhinal cortex serves as a major information relay station to and from  
434 the hippocampus, although the hippocampus also is connected with white matter (e.g., fornix) and  
435 diencephalic structures serving particularly long-term memory formation.<sup>60</sup> The entorhinal outputs  
436 then are projected back to various cortical regions through the parahippocampal cortex.<sup>99,100</sup>

437 As noted in the Introduction, there have been substantial efforts towards finding reliable  
438 and early markers to predict future AD conversion. Consistent with its cardinal role in memory,  
439 MTL areas appear to be one of the first regions affected by AD-related pathological changes.<sup>56,101-</sup>  
440 <sup>103</sup> Decreased hippocampal and entorhinal volume and/or thickness have been reported as  
441 predictors for AD conversion.<sup>104,105</sup> Recent studies suggested other imaging metrics such as shape,  
442 texture, functional networks, or water molecule diffusion in neuronal tissues may be even more  
443 sensitive in capturing early AD-related alterations.<sup>63,106-110</sup> Our finding of welding fume exposure  
444 relating to altered DTI metrics in all MTL areas included in the current study is consistent with the  
445 concept that early ADRD-related changes are occurring without apparent volume reduction or  
446 cortical thinning in these areas.

447 The exact neuropathological substrates underlying DTI metrics are unclear. It is speculated,  
448 however, that they reflect microstructural disorganization (e.g., cytoarchitectural degeneration or  
449 demyelination processes).<sup>111</sup> Future studies with state-of-the-art MRI methods such as multi-shell  
450 diffusion imaging that utilizes multiple b-values to minimize motion or other artifacts and  
451 accurately model more detailed cellular features<sup>112,113</sup> may help dissect these neural mechanisms.

#### 452 ***Neuropsychological features in welders may be consistent with ADRD-at-risk populations***

453 Our study is consistent with prior findings that welders performed worse on several  
454 neuropsychological tests.<sup>114-116</sup> We note that our welders had lower performance on the *Delayed*  
455 *Story Recall* subtest but not learning/memory tests or *List Learning/Recall* and *Figure Recall*  
456 subtests that typically estimate episodic memory in laboratory settings.<sup>117</sup> Episodic memory  
457 involves consciously retrieving information (e.g. events) that was acquired in a particular time and  
458 space.<sup>118</sup> ADRD-related neurobehavioral deficits comprise various cognitive functions including  
459 executive, attentional, and language functions. In particular, difficulties with learning/memory  
460 tasks have a robust relationship to early ADRD.<sup>117,119</sup> Our finding of lower *Delayed Story Recall*  
461 performance in our “asymptomatic” welders suggests ADRD-related early episodic memory  
462 decline may occur in a task-specific way. Therefore, the earliest decline may be detected more  
463 sensitively with a *Story Recall* task rather than other types of episodic memory tasks (e.g., word  
464 list or visuospatial figure recall).

465 Our robust associations of higher entorhinal and parahippocampal diffusivity values with  
466 lower (worse) learning/memory performance is consistent with previous findings reporting MTL  
467 involvement in episodic memory.<sup>120</sup> Although episodic memory is considered a crucial function  
468 of the hippocampus,<sup>121</sup> the current association is not surprising since the parahippocampal and  
469 entorhinal cortices provide major inputs to the hippocampus.<sup>60</sup> Consistent with our finding,  
470 previous studies reported that lower entorhinal cortex volume, but not hippocampal volume, was  
471 associated with lower *Delayed List* and *Story Recall* scores in Alzheimer’s patients.<sup>60,120</sup> In  
472 addition, MTL DTI metrics have been associated with memory scores in both healthy elderly and  
473 Alzheimer’s patients.<sup>122,123</sup> In these previous studies, DTI metrics were examined either in the  
474 hippocampus alone or in conjunction with MTL white matter. This study extended previous work  
475 to entorhinal and parahippocampal areas and demonstrated, for the first time to our knowledge, a  
476 robust association of entorhinal and parahippocampal diffusivity with episodic memory  
477 performance among welders.

478 Interestingly, MTL regions seem to be involved not only in memory but also in  
479 processing/psychomotor speed performance. The underlying mechanism is not clear, but the  
480 results are consistent with previous reports of significant associations between parahippocampal

481 gyrus thickness and processing speed scores, particularly when performing visuospatial  
482 tasks.<sup>124,125</sup> Speedy information processing may be crucial for various functional abilities including  
483 attention, encoding and retrieval of to-be-remembered information, reasoning, decision making,  
484 and visuospatial perceptions.<sup>126</sup> Recent structural and functional neuroimaging studies also  
485 suggested that the hippocampus may be involved in various neuropsychological tasks such as  
486 working memory, executive function, spatial processing, and sensorimotor integration.<sup>111,127-130</sup>  
487 Given previous findings reporting associations between slowed psychomotor speed and risk for  
488 dementia development,<sup>131-133</sup> the present results may provide potential neural correlates  
489 responsible for ADRD-related slowed psychomotor speed. Collectively, our findings are  
490 consistent with the concept that our welders display cognitive deficits/patterns reported in ADRD-  
491 at-risk populations and support ADRD-related early changes in welders.<sup>107,117</sup>

#### 492 ***Understanding the path from metal exposure to MTL MRI and cognitive performance***

493 We employed multiple analytical steps and statistical methods to understand the complex  
494 relationship between welding fume-related metal exposure and MTL MRI and cognitive findings.  
495 First, we found that long-term exposure metrics (e.g., ELT and YrsW) were significant predictors  
496 of hippocampal and parahippocampal DTI metrics, validating that MTL microstructural features  
497 are indeed related to long-term welding exposure. In addition, mediation analyses suggested that  
498 YrsW indirectly impaired processing/psychomotor speed tasks (lower *Symbol Search* and *Trail*  
499 *Making-A* scores) via lower parahippocampal FA values.

500 Second, we also noted a short-term exposure metric that takes exposure intensity into  
501 account ( $E_{90}$ ) predicted lower *Symbol-Digit Coding* scores, a task where subjects matched symbols  
502 to designated numbers under time pressure. This task can be demanding for adults, particularly  
503 elderly adults, because it requires executive function skills to some degree in addition to  
504 appropriate psychomotor speed. Our result suggests that even short-term metal exposure with  
505 higher intensity may interfere with proper performance on executive function tasks. The finding  
506 motivated the exploration of metal levels in blood, usually, depending on the metal, a surrogate  
507 marker for short-term metal exposure. We considered seven metals in our exploration because they  
508 are higher in welders, acknowledging that our statistical power was limited if we rely on  
509 significance after *FWER*-correction of multiple comparisons. Thus, we employed multiple  
510 approaches, and use the level of consistency in results to inform our conclusions.

511 Blood Mn and Cu levels demonstrated robust relationships with entorhinal diffusivity and  
512 *Delayed Story Recall* performance, respectively. The association persisted throughout semi-  
513 parametric regression, and BKMR analyses. The finding of blood Mn-entorhinal diffusivity  
514 association is not surprising, given that Mn has been the metal of focus on welding-related toxicity,  
515 as we reviewed in Introduction. Lower FA values in white matter regions (e.g., corpus callosum  
516 and frontal white matter areas) have been reported in both welders and controls.<sup>134</sup> It is however,  
517 unclear whether the blood Mn represents the long-term occupational exposure or short-term  
518 intensity. However, the finding of the association between blood Cu and cognitive performance  
519 among welders is novel. Chronic Cu exposure has been associated with increased brain Cu  
520 accumulation in the basal ganglia and hippocampus<sup>46</sup> and increased risk for Alzheimer's  
521 disease.<sup>135</sup> Cu in brain has a high affinity for  $\beta$ -amyloid plaques that may enhance inflammatory  
522 responses, reactive oxygen species (ROS) generation, and fibril formation leading to increased  $\beta$ -  
523 amyloid aggregates that is a characteristic feature of ADRD.<sup>136</sup> Future studies of welding fume  
524 exposure need to include Cu as an important factor worthy of consideration.

525 Our analyses also yield two serendipitous observations which were unexpected but  
526 intriguing. *First*, higher blood Fe levels in welders predicted a better *List Learning/Recall* score.  
527 Subsequent mediation analyses suggested that higher blood Fe is linked to higher *List*  
528 *Learning/Recall* scores via lower hippocampal AD values. These results imply that higher  
529 peripheral Fe may be a protective factor against microstructural changes and subsequent  
530 performance deficits. This finding appears contradictory to previously reported neurotoxic effects  
531 of Fe exposure,<sup>9,137</sup> yet consistent with reports of complexed relationship between peripheral Fe  
532 levels and cognitive functions.<sup>138-140</sup> It is also worth noting that higher brain Fe accumulation,  
533 which has a very different pathophysiological context than blood Fe, was reported in subjects with  
534 AD pathology or cognitive impairments<sup>141,142</sup> but this is not well established in asymptomatic  
535 populations.<sup>143,144</sup> *Second*, we observed that blood Pb levels predicted higher hippocampal  
536 diffusivity (AD, RD, MD) and Entorhinal AD ( $p < 0.036$ ) in semi-parametric regression analyses,  
537 yet directly linked to higher symbol-digit coding scores in causal medication analyses. The results  
538 of the two analyses may appear contradictory at first, but reasonable given the unique distribution  
539 and kinetics of Pb in the human body, as distinct from short-term levels of metals such as Fe in the  
540 blood. Greater than 90% of Pb deposits in bone with a half-life on the order of decades.<sup>145,146</sup> In  
541 addition, Pb deposited in bone is itself a source of endogenous exposure as it gradually is mobilized  
542 into circulation, exposing critical organs to Pb even with no recent exposure.<sup>147</sup> Thus, blood Pb  
543 levels may represent both long-term and short term exposure. Based on this, we speculated that as  
544 a long-term exposure metric, Pb may negative impact MLT structures, yet as a short-term exposure  
545 metric, Pb may competing with transport of other toxic metals (such as Cu) into the brain and  
546 preventing its negative impact on cognitive performance of our welders. Together, these findings  
547 suggest the importance that future studies need to consider the dynamics and reversibility of  
548 mixtures of welding-related metals, as well as separately analyzing each brain region and metric  
549 of cognitive outcomes, in both welders and controls.

### 550 ***Limitations and conclusions***

551 This study has several limitations. First, the sample sizes were relatively small, and future  
552 validation research should, where possible, utilize larger cohorts. Second, we measured several  
553 blood metal levels, but it might be possible that the effects observed were due to an unmeasured  
554 metal or a co-occurring environmental factor. Additional studies assessing alternative metals may  
555 provide further insight into the actions of metal co-exposures, something of both scientific and  
556 public health relevance. Lastly, it is notable that our welder cohort, though many participants had  
557 long histories of welding work, had relatively lower welding fume exposure levels compared to  
558 many other prior studies (*i.e.*, 11.0 vs. >14.2  $\mu\text{g/L}$  for mean blood Mn; 22.7 vs. >30-50  $\mu\text{g/L}$  for  
559 mean blood Pb).<sup>67,71,148-150</sup> This suggests that other groups with relatively low but chronic exposure  
560 to the same metals in the welding-fume profile may suffer similar sequelae as a result of  
561 environmental exposure.

562 **Funding**

563 This work was supported by NIH grants R01 ES019672, R01 NS060722, U01s NS082151  
564 and NS112008, the Hershey Medical Center General Clinical Research Center (National Center  
565 for Research Resources, UL1 TR002014), the Penn State College of Medicine Translational Brain  
566 Research Center, the PA Department of Health Tobacco CURE Funds, the National Research  
567 Foundation of Korea (2019R1G1A109957511; RS-2023-00247689), and Dong-A University  
568 Research Fund.

569 **Acknowledgements**

570 We would like to thank all of the volunteers who participated in this study. In addition, we  
571 are indebted to many individuals who helped make this study possible, including: Melissa Santos,  
572 Tyler Corson, Lauren Deegan, and Susan Kocher for subject coordination, recruitment, blood  
573 sample handling, and data entry; Pam Susi and Pete Stafford of CPWR; Mark Garrett, John Clark,  
574 and Joe Jacoby of the International Brotherhood of Boilermakers; Fred Cosenza and all members  
575 of the Safety Committee for the Philadelphia Building and Construction Trades Council; Ed  
576 McGehean of the Steamfitters Local Union 420; Jim Stewart of the Operating Engineers; Sean  
577 Gerie of the Brotherhood of Maintenance of Way Employees Division Teamsters Rail Conference;  
578 and Terry Peck of Local 520 Plumbers, Pipefitters and HVAC.

579 **Conflicts of interest**

580 The authors report no financial interests that relate to this research.

581

582 **References**

- 583 1. Crous-Bou M, Gascon M, Gispert JD, Cirach M, Sanchez-Benavides G, Falcon C,  
584 Arenaza-Urquijo EM, Gotsens X, Fauria K, Sunyer J, Nieuwenhuijsen MJ, Luis  
585 Molinuevo J & Study A (2020) Impact of urban environmental exposures on cognitive  
586 performance and brain structure of healthy individuals at risk for Alzheimer's dementia.  
587 *Environ Int* **138**, 105546. PMID: 32151419;  
588 <https://doi.org/10.1016/j.envint.2020.105546>.
- 589 2. Delgado-Saborit JM, Guercio V, Gowers AM, Shaddick G, Fox NC & Love S (2021) A  
590 critical review of the epidemiological evidence of effects of air pollution on dementia,  
591 cognitive function and cognitive decline in adult population. *Sci Total Environ* **757**,  
592 143734. PMID: 33340865; <https://doi.org/10.1016/j.scitotenv.2020.143734>.
- 593 3. Swartjes FA (2015) Human health risk assessment related to contaminated land: state of  
594 the art. *Environ Geochem Health* **37**, 651-673. PMID: 25809961;  
595 <https://doi.org/10.1007/s10653-015-9693-0>.
- 596 4. Lee EY, Flynn MR, Lewis MM, Mailman RB & Huang X (2018) Welding-related brain  
597 and functional changes in welders with chronic and low-level exposure. *Neurotoxicology*  
598 **64**, 50-59. PMID: 28648949; <https://doi.org/10.1016/j.neuro.2017.06.011>.
- 599 5. Teleanu DM, Chircov C, Grumezescu AM, Volceanov A & Teleanu RI (2018) Impact of  
600 Nanoparticles on Brain Health: An Up to Date Overview. *J Clin Med* **7**, 490. PMID:  
601 30486404; <https://doi.org/10.3390/jcm7120490>.
- 602 6. Zhou Y, Peng Z, Seven ES & Leblanc RM (2018) Crossing the blood-brain barrier with  
603 nanoparticles. *J Control Release* **270**, 290-303. PMID: 29269142;  
604 <https://doi.org/10.1016/j.jconrel.2017.12.015>.
- 605 7. Sanders T, Liu Y, Buchner V & Tchounwou PB (2009) Neurotoxic effects and  
606 biomarkers of lead exposure: a review. *Rev Environ Health* **24**, 15-45. PMID: 19476290;  
607 <https://doi.org/10.1515/reveh.2009.24.1.15>.
- 608 8. Pajarillo E, Nyarko-Danquah I, Adinew G, Rizor A, Aschner M & Lee E (2021)  
609 Neurotoxicity mechanisms of manganese in the central nervous system. *Adv Neurotoxicol*  
610 **5**, 215-238. PMID: 34263091; <https://doi.org/10.1016/bs.ant.2020.11.003>.
- 611 9. Yarjanli Z, Ghaedi K, Esmaeili A, Rahgozar S & Zarrabi A (2017) Iron oxide  
612 nanoparticles may damage to the neural tissue through iron accumulation, oxidative  
613 stress, and protein aggregation. *BMC neuroscience* **18**, 51. PMID: 28651647;  
614 <https://doi.org/10.1186/s12868-017-0369-9>.
- 615 10. Couper J (1837) On the effects of black oxide of manganese when inhaled into the lungs.  
616 *Br Ann Med Pharmacol* **1**, 41-42. PMID:
- 617 11. Guilarte TR & Gonzales KK (2015) Manganese-Induced Parkinsonism Is Not Idiopathic  
618 Parkinson's Disease: Environmental and Genetic Evidence. *Toxicol Sci* **146**, 204-212.  
619 PMID: 26220508; <https://doi.org/10.1093/toxsci/kfv099>.
- 620 12. Colosimo C & Guidi M (2009) Parkinsonism due to ephedrone neurotoxicity: a case  
621 report. *European journal of neurology* **16** PMID: 19453409;
- 622 13. Benedetto A, Au C & Aschner M (2009) Manganese-induced dopaminergic  
623 neurodegeneration: insights into mechanisms and genetics shared with Parkinson's  
624 disease. *Chem Rev* **109**, 4862-4884. PMID: 19534496;  
625 <https://doi.org/10.1021/cr800536y>.



- 626 14. Aschner M & Dorman DC (2006) Manganese: pharmacokinetics and molecular  
627 mechanisms of brain uptake. *Toxicol Rev* **25**, 147-154. PMID: 17192121;  
628 <https://doi.org/10.2165/00139709-200625030-00002>.
- 629 15. Iavicoli I, Fontana L & Bergamaschi A (2009) The effects of metals as endocrine  
630 disruptors. *J Toxicol Environ Health B Crit Rev* **12**, 206-223. PMID: 19466673;  
631 <https://doi.org/10.1080/10937400902902062>.
- 632 16. Wright RO & Baccarelli A (2007) Metals and neurotoxicology. *J Nutr* **137**, 2809-2813.  
633 PMID: 18029504; <https://doi.org/10.1093/jn/137.12.2809>.
- 634 17. Norenberg MD & Rao KV (2007) The mitochondrial permeability transition in  
635 neurologic disease. *Neurochem Int* **50**, 983-997. PMID: 17397969;  
636 <https://doi.org/10.1016/j.neuint.2007.02.008>.
- 637 18. Levy BS & Nassetta WJ (2003) Neurologic effects of manganese in humans: a review.  
638 *Int J Occup Environ Health* **9**, 153-163. PMID: 12848244;  
639 <https://doi.org/10.1179/oeh.2003.9.2.153>.
- 640 19. Takeda A (2003) Manganese action in brain function. *Brain Res Brain Res Rev* **41**, 79-  
641 87. PMID: 12505649; [https://doi.org/10.1016/s0165-0173\(02\)00234-5](https://doi.org/10.1016/s0165-0173(02)00234-5).
- 642 20. Dobson AW, Erikson KM & Aschner M (2004) Manganese neurotoxicity. *Ann N Y Acad*  
643 *Sci* **1012**, 115-128. PMID: 15105259; <https://doi.org/10.1196/annals.1306.009>.
- 644 21. Erikson KM, Dorman DC, Fitsanakis V, Lash LH & Aschner M (2006) Alterations of  
645 oxidative stress biomarkers due to in utero and neonatal exposures of airborne  
646 manganese. *Biol Trace Elem Res* **111**, 199-215. PMID: 16943606;  
647 <https://doi.org/10.1385/BTER:111:1:199>.
- 648 22. Yokel RA (2006) Blood-brain barrier flux of aluminum, manganese, iron and other  
649 metals suspected to contribute to metal-induced neurodegeneration. *J Alzheimers Dis* **10**,  
650 223-253. PMID: 17119290; <https://doi.org/10.3233/jad-2006-102-309>.
- 651 23. Jones DC & Miller GW (2008) The effects of environmental neurotoxicants on the  
652 dopaminergic system: A possible role in drug addiction. *Biochem Pharmacol* **76**, 569-  
653 581. PMID: 18555207; <https://doi.org/10.1016/j.bcp.2008.05.010>.
- 654 24. Huang CC, Lu CS, Chu NS, Hochberg F, Lilienfeld D, Olanow W & Calne DB (1993)  
655 Progression after chronic manganese exposure. *Neurology* **43**, 1479-1483. PMID:  
656 8351000; <https://doi.org/10.1212/wnl.43.8.1479>.
- 657 25. Hauser RA, Zesiewicz TA, Martinez C, Rosemurgy AS & Olanow CW (1996) Blood  
658 manganese correlates with brain magnetic resonance imaging changes in patients with  
659 liver disease. *Can J Neurol Sci* **23**, 95-98. PMID: 8738919;  
660 <https://doi.org/10.1017/s0317167100038786>.
- 661 26. Mergler D & Baldwin M (1997) Early manifestations of manganese neurotoxicity in  
662 humans: an update. *Environ Res* **73**, 92-100. PMID: 9311535;  
663 <https://doi.org/10.1006/enrs.1997.3710>.
- 664 27. Pal PK, Samii A & Calne DB (1999) Manganese neurotoxicity: a review of clinical  
665 features, imaging and pathology. *Neurotoxicology* **20**, 227-238. PMID: 10385886;
- 666 28. Guilarte TR (2013) Manganese neurotoxicity: new perspectives from behavioral,  
667 neuroimaging, and neuropathological studies in humans and non-human primates. *Front*  
668 *Aging Neurosci* **5**, 23. PMID: 23805100; <https://doi.org/10.3389/fnagi.2013.00023>.
- 669 29. Kwakye GF, Paoliello MM, Mukhopadhyay S, Bowman AB & Aschner M (2015)  
670 Manganese-Induced Parkinsonism and Parkinson's Disease: Shared and Distinguishable

- 671 Features. *International journal of environmental research and public health* **12**, 7519-  
672 7540. PMID: 26154659; <https://doi.org/10.3390/ijerph120707519>.
- 673 30. Aschner M, Erikson KM, Herrero Hernandez E & Tjalkens R (2009) Manganese and its  
674 role in Parkinson's disease: from transport to neuropathology. *Neuromolecular medicine*  
675 **11**, 252-266. PMID: 19657747; <https://doi.org/10.1007/s12017-009-8083-0>.
- 676 31. Cersosimo MG & Koller WC (2006) The diagnosis of manganese-induced parkinsonism.  
677 *Neurotoxicology* **27**, 340-346. PMID: [https://doi.org/S0161-813X\(05\)00185-3](https://doi.org/S0161-813X(05)00185-3)  
678 [pii];10.1016/j.neuro.2005.10.006 [doi].
- 679 32. Perl DP & Olanow CW (2007) The neuropathology of manganese-induced Parkinsonism.  
680 *Journal of neuropathology and experimental neurology* **66**, 675-682. PMID: 17882011;  
681 <https://doi.org/10.1097/nen.0b013e31812503cf>.
- 682 33. Brookmeyer R, Evans DA, Hebert L, Langa KM, Heeringa SG, Plassman BL & Kukull  
683 WA (2011) National estimates of the prevalence of Alzheimer's disease in the United  
684 States. *Alzheimer's & Dementia* **7**, 61-73. PMID:
- 685 34. Sorensen L, Igel C, Liv Hansen N, Osler M, Lauritzen M, Rostrup E & Nielsen M (2016)  
686 Early detection of Alzheimer's disease using MRI hippocampal texture. *Hum Brain Mapp*  
687 **37**, 1148-1161. PMID: 26686837; <https://doi.org/10.1002/hbm.23091>.
- 688 35. Li H, Habes M, Wolk DA & Fan Y (2019) A deep learning model for early prediction of  
689 Alzheimer's disease dementia based on hippocampal magnetic resonance imaging data.  
690 *Alzheimers Dement* **15**, 1059-1070. PMID: 31201098;  
691 <https://doi.org/10.1016/j.jalz.2019.02.007>.
- 692 36. Backman L, Jones S, Berger AK, Laukka EJ & Small BJ (2005) Cognitive impairment in  
693 preclinical Alzheimer's disease: a meta-analysis. *Neuropsychology* **19**, 520-531. PMID:  
694 16060827; <https://doi.org/10.1037/0894-4105.19.4.520>.
- 695 37. Galton CJ, Patterson K, Xuereb JH & Hodges JR (2000) Atypical and typical  
696 presentations of Alzheimer's disease: a clinical, neuropsychological, neuroimaging and  
697 pathological study of 13 cases. *Brain* **123 Pt 3**, 484-498. PMID: 10686172;  
698 <https://doi.org/10.1093/brain/123.3.484>.
- 699 38. Arvanitakis Z, Shah RC & Bennett DA (2019) Diagnosis and Management of Dementia:  
700 Review. *JAMA* **322**, 1589-1599. PMID: 31638686;  
701 <https://doi.org/10.1001/jama.2019.4782>.
- 702 39. Halliday G (2017) Pathology and hippocampal atrophy in Alzheimer's disease. *Lancet*  
703 *Neurol* **16**, 862-864. PMID: 29029840; [https://doi.org/10.1016/S1474-4422\(17\)30343-5](https://doi.org/10.1016/S1474-4422(17)30343-5).
- 704 40. van Dyck CH, Swanson CJ, Aisen P, Bateman RJ, Chen C, Gee M, Kanekiyo M, Li D,  
705 Reyderman L, Cohen S, Froelich L, Katayama S, Sabbagh M, Vellas B, Watson D,  
706 Dhadda S, Irizarry M, Kramer LD & Iwatsubo T (2023) Lecanemab in Early Alzheimer's  
707 Disease. *N Engl J Med* **388**, 9-21. PMID: 36449413;  
708 <https://doi.org/10.1056/NEJMoa2212948>.
- 709 41. Bateman RJ, Cummings J, Schobel S, Salloway S, Vellas B, Boada M, Black SE,  
710 Blennow K, Fontoura P, Klein G, Assuncao SS, Smith J & Doody RS (2022)  
711 Gantenerumab: an anti-amyloid monoclonal antibody with potential disease-modifying  
712 effects in early Alzheimer's disease. *Alzheimers Res Ther* **14**, 178. PMID: 36447240;  
713 <https://doi.org/10.1186/s13195-022-01110-8>.
- 714 42. Guilarte TR (2010) APLP1, Alzheimer's-like pathology and neurodegeneration in the  
715 frontal cortex of manganese-exposed non-human primates. *Neurotoxicology* **31**, 572-574.  
716 PMID: 20188756; <https://doi.org/10.1016/j.neuro.2010.02.004>.

- 717 43. Schroder N, Figueiredo LS & de Lima MN (2013) Role of brain iron accumulation in  
718 cognitive dysfunction: evidence from animal models and human studies. *J Alzheimers*  
719 *Dis* **34**, 797-812. PMID: 23271321; <https://doi.org/10.3233/JAD-121996>.
- 720 44. Schneider JS, Williams C, Ault M & Guilarte TR (2013) Chronic manganese exposure  
721 impairs visuospatial associative learning in non-human primates. *Toxicology letters* **221**,  
722 146-151. PMID: 23778301; <https://doi.org/10.1016/j.toxlet.2013.06.211>.
- 723 45. Sobolewski M, Conrad K, Marvin E, Eckard M, Goeke CM, Merrill AK, Welle K,  
724 Jackson BP, Gelein R, Chalupa D, Oberdorster G & Cory-Slechta DA (2022) The  
725 potential involvement of inhaled iron (Fe) in the neurotoxic effects of ultrafine particulate  
726 matter air pollution exposure on brain development in mice. *Part Fibre Toxicol* **19**, 56.  
727 PMID: 35945578; <https://doi.org/10.1186/s12989-022-00496-5>.
- 728 46. Pal A, Badyal RK, Vasishta RK, Attri SV, Thapa BR & Prasad R (2013) Biochemical,  
729 histological, and memory impairment effects of chronic copper toxicity: a model for non-  
730 Wilsonian brain copper toxicosis in Wistar rat. *Biol Trace Elem Res* **153**, 257-268.  
731 PMID: 23613148; <https://doi.org/10.1007/s12011-013-9665-0>.
- 732 47. Kitazawa M, Hsu HW & Medeiros R (2016) Copper Exposure Perturbs Brain  
733 Inflammatory Responses and Impairs Clearance of Amyloid-Beta. *Toxicol Sci* **152**, 194-  
734 204. PMID: 27122238; <https://doi.org/10.1093/toxsci/kfw081>.
- 735 48. Gerhardsson L, Lundh T, Minthon L & Londos E (2008) Metal concentrations in plasma  
736 and cerebrospinal fluid in patients with Alzheimer's disease. *Dement Geriatr Cogn*  
737 *Disord* **25**, 508-515. PMID: 18463412; <https://doi.org/10.1159/000129365>.
- 738 49. Vural H, Demirin H, Kara Y, Eren I & Delibas N (2010) Alterations of plasma  
739 magnesium, copper, zinc, iron and selenium concentrations and some related erythrocyte  
740 antioxidant enzyme activities in patients with Alzheimer's disease. *J Trace Elem Med*  
741 *Biol* **24**, 169-173. PMID: 20569929; <https://doi.org/10.1016/j.jtemb.2010.02.002>.
- 742 50. Hare DJ, Faux NG, Roberts BR, Volitakis I, Martins RN & Bush AI (2016) Lead and  
743 manganese levels in serum and erythrocytes in Alzheimer's disease and mild cognitive  
744 impairment: results from the Australian Imaging, Biomarkers and Lifestyle Flagship  
745 Study of Ageing. *Metallomics* **8**, 628-632. PMID: 26962965;  
746 <https://doi.org/10.1039/c6mt00019c>.
- 747 51. Park JH, Lee DW & Park KS (2014) Elevated serum copper and ceruloplasmin levels in  
748 Alzheimer's disease. *Asia Pac Psychiatry* **6**, 38-45. PMID: 23857910;  
749 <https://doi.org/10.1111/appy.12077>.
- 750 52. Basun H, Forssell LG, Wetterberg L & Winblad B (1991) Metals and trace elements in  
751 plasma and cerebrospinal fluid in normal aging and Alzheimer's disease. *J Neural*  
752 *Transm Park Dis Dement Sect* **3**, 231-258. PMID: 1772577;
- 753 53. Xu J, Church SJ, Patassini S, Begley P, Kellett KAB, Vardy E, Unwin RD, Hooper NM  
754 & Cooper GJS (2018) Plasma metals as potential biomarkers in dementia: a case-control  
755 study in patients with sporadic Alzheimer's disease. *Biometals* **31**, 267-276. PMID:  
756 29516299; <https://doi.org/10.1007/s10534-018-0089-3>.
- 757 54. McRae-McKee K, Evans S, Hadjichrysanthou C, Wong MM, de Wolf F & Anderson RM  
758 (2019) Combining hippocampal volume metrics to better understand Alzheimer's disease  
759 progression in at-risk individuals. *Sci Rep* **9**, 7499. PMID: 31097733;  
760 <https://doi.org/10.1038/s41598-019-42632-w>.
- 761 55. Koval I, Bone A, Louis M, Lartigue T, Bottani S, Marcoux A, Samper-Gonzalez J,  
762 Burgos N, Charlier B, Bertrand A, Epelbaum S, Colliot O, Allasonniere S & Durrleman

- 763 S (2021) AD Course Map charts Alzheimer's disease progression. *Sci Rep* **11**, 8020.  
764 PMID: 33850174; <https://doi.org/10.1038/s41598-021-87434-1>.
- 765 56. Echavarri C, Aalten P, Uylings HB, Jacobs HI, Visser PJ, Gronenschild EH, Verhey FR  
766 & Burgmans S (2011) Atrophy in the parahippocampal gyrus as an early biomarker of  
767 Alzheimer's disease. *Brain structure & function* **215**, 265-271. PMID: 20957494;  
768 <https://doi.org/10.1007/s00429-010-0283-8>.
- 769 57. Berron D, van Westen D, Ossenkoppele R, Strandberg O & Hansson O (2020) Medial  
770 temporal lobe connectivity and its associations with cognition in early Alzheimer's  
771 disease. *Brain* **143**, 1233-1248. PMID: 32252068; <https://doi.org/10.1093/brain/awaa068>.
- 772 58. Lacalle-Aurioles M & Iturria-Medina Y (2023) Fornix degeneration in risk factors of  
773 Alzheimer's disease, possible trigger of cognitive decline. *Cereb Circ Cogn Behav* **4**,  
774 100158. PMID: 36703699; <https://doi.org/10.1016/j.cccb.2023.100158>.
- 775 59. Sugar J & Moser MB (2019) Episodic memory: Neuronal codes for what, where, and  
776 when. *Hippocampus* **29**, 1190-1205. PMID: 31334573;  
777 <https://doi.org/10.1002/hipo.23132>.
- 778 60. Eichenbaum H & Lipton PA (2008) Towards a functional organization of the medial  
779 temporal lobe memory system: role of the parahippocampal and medial entorhinal  
780 cortical areas. *Hippocampus* **18**, 1314-1324. PMID: 19021265;  
781 <https://doi.org/10.1002/hipo.20500>.
- 782 61. Lancaster MA, Seidenberg M, Smith JC, Nielson KA, Woodard JL, Durgerian S & Rao  
783 SM (2016) Diffusion Tensor Imaging Predictors of Episodic Memory Decline in Healthy  
784 Elders at Genetic Risk for Alzheimer's Disease. *Journal of the International  
785 Neuropsychological Society : JINS* **22**, 1005-1015. PMID: 27903333;  
786 <https://doi.org/10.1017/S1355617716000904>.
- 787 62. Gerardin E, Chetelat G, Chupin M, Cuingnet R, Desgranges B, Kim HS, Niethammer M,  
788 Dubois B, Lehericy S, Garnero L, Eustache F, Colliot O & Alzheimer's Disease  
789 Neuroimaging I (2009) Multidimensional classification of hippocampal shape features  
790 discriminates Alzheimer's disease and mild cognitive impairment from normal aging.  
791 *Neuroimage* **47**, 1476-1486. PMID: 19463957;  
792 <https://doi.org/10.1016/j.neuroimage.2009.05.036>.
- 793 63. Leandrou S, Petroudi S, Kyriacou PA, Reyes-Aldasoro CC & Pattichis CS (2018)  
794 Quantitative MRI Brain Studies in Mild Cognitive Impairment and Alzheimer's Disease:  
795 A Methodological Review. *IEEE Rev Biomed Eng* **11**, 97-111. PMID: 29994606;  
796 <https://doi.org/10.1109/RBME.2018.2796598>.
- 797 64. Killiany RJ, Hyman BT, Gomez-Isla T, Moss MB, Kikinis R, Jolesz F, Tanzi R, Jones K  
798 & Albert MS (2002) MRI measures of entorhinal cortex vs hippocampus in preclinical  
799 AD. *Neurology* **58**, 1188-1196. PMID: 11971085; <https://doi.org/10.1212/wnl.58.8.1188>.
- 800 65. Lee EY, Flynn MR, Du G, Lewis MM, Fry R, Herring AH, Van Buren E, Van Buren S,  
801 Smeester L, Kong L, Yang Q, Mailman RB & Huang X (2015) T1 Relaxation Rate (R1)  
802 Indicates Nonlinear Mn Accumulation in Brain Tissue of Welders With Low-Level  
803 Exposure. *Toxicol Sci* **146**, 281-289. PMID: 25953701;  
804 <https://doi.org/10.1093/toxsci/kfv088>.
- 805 66. Liang G, Qin H, Zhang L, Ma S, Huang X, Lv Y, Qing L, Li Q, Xiong Y, Huang Y, Chen  
806 K, Huang Y, Shen Y, Nong J, Yang X & Zou Y (2015) Effects of chronic manganese  
807 exposure on the learning and memory of rats by observing the changes in the

- 808 hippocampal cAMP signaling pathway. *Food Chem Toxicol* **83**, 261-267. PMID:  
809 26164403; <https://doi.org/10.1016/j.fct.2015.07.005>.
- 810 67. Wu J, Zhang Q, Sun P, Zhang H, Gao M, Ma M, Dong Y, Liu P & Wu X (2022) Gray  
811 matter microstructural alterations in manganese-exposed welders: a preliminary  
812 neuroimaging study. *Eur Radiol* **32**, 8649-8658. PMID: 35739284;  
813 <https://doi.org/10.1007/s00330-022-08908-y>.
- 814 68. Weisskopf MG, Hu H, Sparrow D, Lenkinski RE & Wright RO (2007) Proton magnetic  
815 resonance spectroscopic evidence of glial effects of cumulative lead exposure in the adult  
816 human hippocampus. *Environ Health Perspect* **115**, 519-523. PMID: 17450218;  
817 <https://doi.org/10.1289/ehp.9645>.
- 818 69. Lee EY, Flynn MR, Du G, Lewis MM, Kong L, Yanosky JD, Mailman RB & Huang X  
819 (2019) Higher Hippocampal Mean Diffusivity Values in Asymptomatic Welders. *Toxicol*  
820 *Sci* **168**, 486-496. PMID: 30629252; <https://doi.org/10.1093/toxsci/kfz011>.
- 821 70. Chang Y, Woo ST, Kim Y, Lee JJ, Song HJ, Lee HJ, Kim SH, Lee H, Kwon YJ, Ahn JH,  
822 Park SJ, Chung IS & Jeong KS (2010) Pallidal index measured with three-dimensional  
823 T1-weighted gradient echo sequence is a good predictor of manganese exposure in  
824 welders. *J Magn Reson Imaging* **31**, 1020-1026. PMID: 20373449;  
825 <https://doi.org/10.1002/jmri.22104>.
- 826 71. Jiang YM, Long LL, Zhu XY, Zheng H, Fu X, Ou SY, Wei DL, Zhou HL & Zheng W  
827 (2008) Evidence for altered hippocampal volume and brain metabolites in workers  
828 occupationally exposed to lead: a study by magnetic resonance imaging and (1)H  
829 magnetic resonance spectroscopy. *Toxicology letters* **181**, 118-125. PMID: 18692119;  
830 <https://doi.org/10.1016/j.toxlet.2008.07.009>.
- 831 72. Shi Y, Yang Y, Li W, Zhao Z, Yan L, Wang W, Aschner M, Zhang J, Zheng G & Shen X  
832 (2023) High blood lead level correlates with selective hippocampal subfield atrophy and  
833 neuropsychological impairments. *Ecotoxicol Environ Saf* **257**, 114945. PMID: 37105093;  
834 <https://doi.org/10.1016/j.ecoenv.2023.114945>.
- 835 73. Goetz CG, Tilley BC, Shaftman SR, Stebbins GT, Fahn S, Martinez-Martin P, Poewe W,  
836 Sampaio C, Stern MB, Dodel R, Dubois B, Holloway R, Jankovic J, Kulisevsky J, Lang  
837 AE, Lees A, Leurgans S, LeWitt PA, Nyenhuis D, Olanow CW, Rascol O, Schrag A,  
838 Teresi JA, van Hilten JJ, LaPelle N & Movement Disorder Society URTF (2008)  
839 Movement Disorder Society-sponsored revision of the Unified Parkinson's Disease  
840 Rating Scale (MDS-UPDRS): scale presentation and clinimetric testing results. *Mov*  
841 *Disord* **23**, 2129-2170. PMID: 19025984; <https://doi.org/10.1002/mds.22340>.
- 842 74. Randolph C, Tierney MC, Mohr E & Chase TN (1998) The Repeatable Battery for the  
843 Assessment of Neuropsychological Status (RBANS): preliminary clinical validity. *J Clin*  
844 *Exp Neuropsychol* **20**, 310-319. PMID: 9845158;  
845 <https://doi.org/10.1076/jcen.20.3.310.823>.
- 846 75. Wechsler D (1997) *WAIS-III: Administration and scoring manual: Wechsler adult*  
847 *intelligence scale*. third edn, (Psychological Corporation).
- 848 76. Tombaugh TN (2004) Trail Making Test A and B: normative data stratified by age and  
849 education. *Archives of clinical neuropsychology : the official journal of the National*  
850 *Academy of Neuropsychologists* **19**, 203-214. PMID: 15010086;  
851 [https://doi.org/10.1016/S0887-6177\(03\)00039-8](https://doi.org/10.1016/S0887-6177(03)00039-8).
- 852 77. Golden CJ (1978) A manual for the clinical and experimental use of the Stroop color and  
853 word test. PMID:

- 854 78. Delis DC, Kaplan E & Kramer JH (2001) *Delis-Kaplan executive function system (D-*  
855 *KEFS)*. (Psychological Corporation).
- 856 79. Wechsler D (1998) *Wechsler Memory Scale - 3rd edition (WMS-III)*. (The Psychological  
857 Corporation).
- 858 80. Golden CJ (1978) *A manual for clinical and experimental use of the Stroop Color and*  
859 *Word Test*: . (Stoelting).
- 860 81. Ruff RM & Parker SB (1993) Gender- and age-specific changes in motor speed and eye-  
861 hand coordination in adults: normative values for the Finger Tapping and Grooved  
862 Pegboard Tests. *Percept Mot Skills* **76**, 1219-1230. PMID: 8337069;  
863 <https://doi.org/10.2466/pms.1993.76.3c.1219>.
- 864 82. Gladsjo JA, Schuman CC, Evans JD, Peavy GM, Miller SW & Heaton RK (1999) Norms  
865 for letter and category fluency: demographic corrections for age, education, and ethnicity.  
866 *Assessment* **6**, 147-178. PMID: 10335019; <https://doi.org/10.1177/107319119900600204>.
- 867 83. Monaco M, Costa A, Caltagirone C & Carlesimo GA (2013) Forward and backward span  
868 for verbal and visuo-spatial data: standardization and normative data from an Italian adult  
869 population. *Neurol Sci* **34**, 749-754. PMID: 22689311; [https://doi.org/10.1007/s10072-](https://doi.org/10.1007/s10072-012-1130-x)  
870 [012-1130-x](https://doi.org/10.1007/s10072-012-1130-x).
- 871 84. Anonymous (2013) *FreeSurfer*.
- 872 85. Segonne F, Dale AM, Busa E, Glessner M, Salat D, Hahn HK & Fischl B (2004) A  
873 hybrid approach to the skull stripping problem in MRI. *Neuroimage* **22**, 1060-1075.  
874 PMID: 15219578; <https://doi.org/10.1016/j.neuroimage.2004.03.032>.
- 875 86. Fischl B, Salat DH, Busa E, Albert M, Dieterich M, Haselgrove C, van der Kouwe A,  
876 Killiany R, Kennedy D, Klaveness S, Montillo A, Makris N, Rosen B & Dale AM (2002)  
877 Whole brain segmentation: automated labeling of neuroanatomical structures in the  
878 human brain. *Neuron* **33**, 341-355. PMID: 11832223; [https://doi.org/10.1016/s0896-](https://doi.org/10.1016/s0896-6273(02)00569-x)  
879 [6273\(02\)00569-x](https://doi.org/10.1016/s0896-6273(02)00569-x).
- 880 87. Fischl B, Salat DH, van der Kouwe AJ, Makris N, Segonne F, Quinn BT & Dale AM  
881 (2004) Sequence-independent segmentation of magnetic resonance images. *Neuroimage*  
882 **23 Suppl 1**, S69-84. PMID: 15501102;  
883 <https://doi.org/10.1016/j.neuroimage.2004.07.016>.
- 884 88. Oguz I, Farzinfar M, Matsui J, Budin F, Liu Z, Gerig G, Johnson HJ & Styner M (2014)  
885 DTIPrep: quality control of diffusion-weighted images. *Front Neuroinform* **8**, 4. PMID:  
886 24523693; <https://doi.org/10.3389/fninf.2014.00004>.
- 887 89. Le Bihan D, Mangin JF, Poupon C, Clark CA, Pappata S, Molko N & Chabriat H (2001)  
888 Diffusion tensor imaging: concepts and applications. *J Magn Reson Imaging* **13**, 534-546.  
889 PMID: 11276097; <https://doi.org/10.1002/jmri.1076>.
- 890 90. Hastie T & Tibshirani R (1990) Exploring the nature of covariate effects in the  
891 proportional hazards model. *Biometrics* **46**, 1005-1016. PMID: 1964808;
- 892 91. Bobb JF, Valeri L, Claus Henn B, Christiani DC, Wright RO, Mazumdar M, Godleski JJ  
893 & Coull BA (2015) Bayesian kernel machine regression for estimating the health effects  
894 of multi-pollutant mixtures. *Biostatistics* **16**, 493-508. PMID: 25532525;  
895 <https://doi.org/10.1093/biostatistics/kxu058>.
- 896 92. Valeri L & Vanderweele TJ (2013) Mediation analysis allowing for exposure-mediator  
897 interactions and causal interpretation: theoretical assumptions and implementation with  
898 SAS and SPSS macros. *Psychol Methods* **18**, 137-150. PMID: 23379553;  
899 <https://doi.org/10.1037/a0031034>.

- 900 93. VanderWeele T (2015) *Explanation in causal inference: methods for mediation and*  
901 *interaction*. (Oxford University Press).
- 902 94. Ding P & VanderWeele TJ (2016) Sensitivity Analysis Without Assumptions.  
903 *Epidemiology* **27**, 368-377. PMID: 26841057;  
904 <https://doi.org/10.1097/EDE.0000000000000457>.
- 905 95. Zhang Z, Zheng C, Kim C, Van Poucke S, Lin S & Lan P (2016) Causal mediation  
906 analysis in the context of clinical research. *Ann Transl Med* **4**, 425. PMID: 27942516;  
907 <https://doi.org/10.21037/atm.2016.11.11>.
- 908 96. Holm S (1979) A Simple Sequentially Rejective Multiple Test Procedure. *Scandinavian*  
909 *Journal of Statistics* **6**, 65-70. PMID: WOS:A1979JY78700003;
- 910 97. Suzuki WA (2009) Comparative analysis of the cortical afferents, intrinsic projections,  
911 and interconnections of the parahippocampal region in monkeys and rats: in *The*  
912 *cognitive neurosciences* (eds M.S. Gazzaniga *et al.*) 659–674 (American Psychological  
913 Association).
- 914 98. Aminoff EM, Kveraga K & Bar M (2013) The role of the parahippocampal cortex in  
915 cognition. *Trends Cogn Sci* **17**, 379-390. PMID: 23850264;  
916 <https://doi.org/10.1016/j.tics.2013.06.009>.
- 917 99. Raslau FD, Mark IT, Klein AP, Ulmer JL, Mathews V & Mark LP (2015) Memory part  
918 2: the role of the medial temporal lobe. *AJNR Am J Neuroradiol* **36**, 846-849. PMID:  
919 25414002; <https://doi.org/10.3174/ajnr.A4169>.
- 920 100. Wixted JT & Squire LR (2011) The medial temporal lobe and the attributes of memory.  
921 *Trends Cogn Sci* **15**, 210-217. PMID: 21481629;  
922 <https://doi.org/10.1016/j.tics.2011.03.005>.
- 923 101. Devanand DP, Pradhaban G, Liu X, Khandji A, De Santi S, Segal S, Rusinek H, Pelton  
924 GH, Honig LS, Mayeux R, Stern Y, Tabert MH & de Leon MJ (2007) Hippocampal and  
925 entorhinal atrophy in mild cognitive impairment: prediction of Alzheimer disease.  
926 *Neurology* **68**, 828-836. PMID: 17353470;  
927 <https://doi.org/10.1212/01.wnl.0000256697.20968.d7>.
- 928 102. Braak H & Braak E (1991) Neuropathological staging of Alzheimer-related changes.  
929 *Acta Neuropathol* **82**, 239-259. PMID: 1759558; <https://doi.org/10.1007/BF00308809>.
- 930 103. Scahill RI, Schott JM, Stevens JM, Rossor MN & Fox NC (2002) Mapping the evolution  
931 of regional atrophy in Alzheimer's disease: unbiased analysis of fluid-registered serial  
932 MRI. *Proceedings of the National Academy of Sciences of the United States of America*  
933 **99**, 4703-4707. PMID: 11930016; <https://doi.org/10.1073/pnas.052587399>.
- 934 104. De Santi S, de Leon MJ, Rusinek H, Convit A, Tarshish CY, Roche A, Tsui WH, Kandil  
935 E, Boppana M, Daisley K, Wang GJ, Schlyer D & Fowler J (2001) Hippocampal  
936 formation glucose metabolism and volume losses in MCI and AD. *Neurobiol Aging* **22**,  
937 529-539. PMID: 11445252; [https://doi.org/10.1016/s0197-4580\(01\)00230-5](https://doi.org/10.1016/s0197-4580(01)00230-5).
- 938 105. Apostolova LG, Dutton RA, Dinov ID, Hayashi KM, Toga AW, Cummings JL &  
939 Thompson PM (2006) Conversion of mild cognitive impairment to Alzheimer disease  
940 predicted by hippocampal atrophy maps. *Arch Neurol* **63**, 693-699. PMID: 16682538;  
941 <https://doi.org/10.1001/archneur.63.5.693>.
- 942 106. Kantarci K, Petersen RC, Boeve BF, Knopman DS, Weigand SD, O'Brien PC, Shiung  
943 MM, Smith GE, Ivnik RJ, Tangalos EG & Jack CR, Jr. (2005) DWI predicts future  
944 progression to Alzheimer disease in amnesic mild cognitive impairment. *Neurology* **64**,  
945 902-904. PMID: 15753434; <https://doi.org/10.1212/01.wnl.0000153076.46126.e9>.

- 946 107. Douaud G, Menke RA, Gass A, Monsch AU, Rao A, Whitcher B, Zamboni G, Matthews  
947 PM, Sollberger M & Smith S (2013) Brain microstructure reveals early abnormalities  
948 more than two years prior to clinical progression from mild cognitive impairment to  
949 Alzheimer's disease. *J Neurosci* **33**, 2147-2155. PMID: 23365250;  
950 <https://doi.org/10.1523/JNEUROSCI.4437-12.2013>.
- 951 108. Nir TM, Jahanshad N, Villalon-Reina JE, Toga AW, Jack CR, Weiner MW, Thompson  
952 PM & Alzheimer's Disease Neuroimaging I (2013) Effectiveness of regional DTI  
953 measures in distinguishing Alzheimer's disease, MCI, and normal aging. *NeuroImage*.  
954 *Clinical* **3**, 180-195. PMID: 24179862; <https://doi.org/10.1016/j.nicl.2013.07.006>.
- 955 109. Weston PSJ, Poole T, Nicholas JM, Toussaint N, Simpson IJA, Modat M, Ryan NS,  
956 Liang Y, Rossor MN, Schott JM, Ourselin S, Zhang H & Fox NC (2020) Measuring  
957 cortical mean diffusivity to assess early microstructural cortical change in  
958 presymptomatic familial Alzheimer's disease. *Alzheimers Res Ther* **12**, 112. PMID:  
959 32943095; <https://doi.org/10.1186/s13195-020-00679-2>.
- 960 110. Leandrou S, Lamnisis D, Mamais I, Kyriacou PA, Pattichis CS, Alzheimer's D &  
961 Neuroimaging I (2020) Assessment of Alzheimer's Disease Based on Texture Analysis of  
962 the Entorhinal Cortex. *Front Aging Neurosci* **12**, 176. PMID: 32714177;  
963 <https://doi.org/10.3389/fnagi.2020.00176>.
- 964 111. Basser PJ & Pierpaoli C (2011) Microstructural and physiological features of tissues  
965 elucidated by quantitative-diffusion-tensor MRI. *J Magn Reson* **213**, 560-570. PMID:  
966 22152371; <https://doi.org/10.1016/j.jmr.2011.09.022>.
- 967 112. Pines AR, Cieslak M, Larsen B, Baum GL, Cook PA, Adebimpe A, Davila DG, Elliott  
968 MA, Jirsaraie R, Murtha K, Oathes DJ, Piiwaa K, Rosen AFG, Rush S, Shinohara RT,  
969 Bassett DS, Roalf DR & Satterthwaite TD (2020) Leveraging multi-shell diffusion for  
970 studies of brain development in youth and young adulthood. *Dev Cogn Neurosci* **43**,  
971 100788. PMID: 32510347; <https://doi.org/10.1016/j.dcn.2020.100788>.
- 972 113. Jha RR, Jaswal G, Bhavsar A & Nigam A (2022) Single-shell to multi-shell dMRI  
973 transformation using spatial and volumetric multilevel hierarchical reconstruction  
974 framework. *Magn Reson Imaging* **87**, 133-156. PMID: 35017034;  
975 <https://doi.org/10.1016/j.mri.2021.12.011>.
- 976 114. Meyer-Baron M, Schaper M, Knapp G, Lucchini R, Zoni S, Bast-Pettersen R, Ellingsen  
977 DG, Thomassen Y, He S, Yuan H, Niu Q, Wang XL, Yang YJ, Iregren A, Sjogren B,  
978 Blond M, Laursen P, Netterstrom B, Mergler D, Bowler R & van Thriel C (2013) The  
979 neurobehavioral impact of manganese: results and challenges obtained by a meta-analysis  
980 of individual participant data. *Neurotoxicology* **36**, 1-9. PMID: 23419685;  
981 <https://doi.org/10.1016/j.neuro.2013.02.003>.
- 982 115. Chang Y, Kim Y, Woo ST, Song HJ, Kim SH, Lee H, Kwon YJ, Ahn JH, Park SJ, Chung  
983 IS & Jeong KS (2009) High signal intensity on magnetic resonance imaging is a better  
984 predictor of neurobehavioral performances than blood manganese in asymptomatic  
985 welders. *Neurotoxicology* **30**, 555-563. PMID: 19376157; [https://doi.org/S0161-](https://doi.org/S0161-813X(09)00084-9)  
986 [813X\(09\)00084-9](https://doi.org/10.1016/j.neuro.2009.04.002) [pii];10.1016/j.neuro.2009.04.002 [doi].
- 987 116. Akila R, Stollery BT & Riihimaki V (1999) Decrements in cognitive performance in  
988 metal inert gas welders exposed to aluminium. *Occup Environ Med* **56**, 632-639. PMID:  
989 10615297; <https://doi.org/10.1136/oem.56.9.632>.



- 990 117. Backman L, Small BJ & Fratiglioni L (2001) Stability of the preclinical episodic memory  
991 deficit in Alzheimer's disease. *Brain* **124**, 96-102. PMID: 11133790;  
992 <https://doi.org/10.1093/brain/124.1.96>.
- 993 118. Tulving E (1984) *Precis of Tulving Elements of Episodic Memory* (Oxford-University-  
994 Press, 1983). *Behavioral and Brain Sciences* **7**, 223-238. PMID:  
995 WOS:A1984SX97600028; <https://doi.org/Doi> 10.1017/S0140525x0004440x.
- 996 119. Tromp D, Dufour A, Lithfous S, Pebayle T & Despres O (2015) Episodic memory in  
997 normal aging and Alzheimer disease: Insights from imaging and behavioral studies.  
998 *Ageing Res Rev* **24**, 232-262. PMID: 26318058; <https://doi.org/10.1016/j.arr.2015.08.006>.
- 999 120. Di Paola M, Macaluso E, Carlesimo GA, Tomaiuolo F, Worsley KJ, Fadda L &  
1000 Caltagirone C (2007) Episodic memory impairment in patients with Alzheimer's disease  
1001 is correlated with entorhinal cortex atrophy. A voxel-based morphometry study. *J Neurol*  
1002 **254**, 774-781. PMID: 17404777; <https://doi.org/10.1007/s00415-006-0435-1>.
- 1003 121. Tulving E & Markowitsch HJ (1998) Episodic and declarative memory: role of the  
1004 hippocampus. *Hippocampus* **8**, 198-204. PMID: 9662134;  
1005 [https://doi.org/10.1002/\(SICI\)1098-1063\(1998\)8:3<198::AID-HIPO2>3.0.CO;2-G](https://doi.org/10.1002/(SICI)1098-1063(1998)8:3<198::AID-HIPO2>3.0.CO;2-G).
- 1006 122. Carlesimo GA, Cherubini A, Caltagirone C & Spalletta G (2010) Hippocampal mean  
1007 diffusivity and memory in healthy elderly individuals: a cross-sectional study. *Neurology*  
1008 **74**, 194-200. PMID: 20054010; <https://doi.org/10.1212/WNL.0b013e3181cb3e39>.
- 1009 123. Mayo CD, Garcia-Barrera MA, Mazerolle EL, Ritchie LJ, Fisk JD, Gawryluk JR &  
1010 Alzheimer's Disease Neuroimaging I (2018) Relationship Between DTI Metrics and  
1011 Cognitive Function in Alzheimer's Disease. *Front Aging Neurosci* **10**, 436. PMID:  
1012 30687081; <https://doi.org/10.3389/fnagi.2018.00436>.
- 1013 124. Takahashi E, Ohki K & Miyashita Y (2002) The role of the parahippocampal gyrus in  
1014 source memory for external and internal events. *Neuroreport* **13**, 1951-1956. PMID:  
1015 12395098; <https://doi.org/10.1097/00001756-200210280-00024>.
- 1016 125. Kraft JN, O'Shea A, Albizu A, Evangelista ND, Hausman HK, Boutzoukas E, Nissim  
1017 NR, Van Etten EJ, Bharadwaj PK, Song H, Smith SG, Porges E, DeKosky S, Hishaw  
1018 GA, Wu S, Marsiske M, Cohen R, Alexander GE & Woods AJ (2020) Structural Neural  
1019 Correlates of Double Decision Performance in Older Adults. *Front Aging Neurosci* **12**,  
1020 278. PMID: 33117145; <https://doi.org/10.3389/fnagi.2020.00278>.
- 1021 126. Salthouse TA (1996) The processing-speed theory of adult age differences in cognition.  
1022 *Psychological review* **103**, 403. PMID: 8759042;
- 1023 127. O'Shea A, Cohen RA, Porges EC, Nissim NR & Woods AJ (2016) Cognitive Aging and  
1024 the Hippocampus in Older Adults. *Front Aging Neurosci* **8**, 298. PMID: 28008314;  
1025 <https://doi.org/10.3389/fnagi.2016.00298>.
- 1026 128. Reuben A, Brickman AM, Muraskin J, Steffener J & Stern Y (2011) Hippocampal  
1027 atrophy relates to fluid intelligence decline in the elderly. *Journal of the International*  
1028 *Neuropsychological Society : JINS* **17**, 56-61. PMID: 21092387;  
1029 <https://doi.org/10.1017/S135561771000127X>.
- 1030 129. Papp KV, Kaplan RF, Springate B, Moscufo N, Wakefield DB, Guttmann CR & Wolfson  
1031 L (2014) Processing speed in normal aging: effects of white matter hyperintensities and  
1032 hippocampal volume loss. *Neuropsychol Dev Cogn B Aging Neuropsychol Cogn* **21**, 197-  
1033 213. PMID: 23895570; <https://doi.org/10.1080/13825585.2013.795513>.

- 1034 130. Yamamoto N, Philbeck JW, Woods AJ, Gajewski DA, Arthur JC, Potolicchio SJ, Jr.,  
1035 Levy L & Caputy AJ (2014) Medial temporal lobe roles in human path integration. *PLoS*  
1036 *One* **9**, e96583. PMID: 24802000; <https://doi.org/10.1371/journal.pone.0096583>.
- 1037 131. Kuate-Tegueu C, Avila-Funes JA, Simo N, Le Goff M, Amieva H, Dartigues JF &  
1038 Tabue-Tegu M (2017) Association of Gait Speed, Psychomotor Speed, and Dementia. *J*  
1039 *Alzheimers Dis* **60**, 585-592. PMID: 28869468; <https://doi.org/10.3233/JAD-170267>.
- 1040 132. Andriuta D, Diouf M, Roussel M & Godefroy O (2019) Is Reaction Time Slowing an  
1041 Early Sign of Alzheimer's Disease? A Meta-Analysis. *Dement Geriatr Cogn Disord* **47**,  
1042 281-288. PMID: 31408867; <https://doi.org/10.1159/000500348>.
- 1043 133. Bailon O, Roussel M, Boucart M, Krystkowiak P & Godefroy O (2010) Psychomotor  
1044 slowing in mild cognitive impairment, Alzheimer's disease and lewy body dementia:  
1045 mechanisms and diagnostic value. *Dement Geriatr Cogn Disord* **29**, 388-396. PMID:  
1046 20484908; <https://doi.org/10.1159/000305095>.
- 1047 134. Kim Y, Jeong KS, Song HJ, Lee JJ, Seo JH, Kim GC, Lee HJ, Kim HJ, Ahn JH, Park SJ,  
1048 Kim SH, Kwon YJ & Chang Y (2011) Altered white matter microstructural integrity  
1049 revealed by voxel-wise analysis of diffusion tensor imaging in welders with manganese  
1050 exposure. *Neurotoxicology* **32**, 100-109. PMID: 21111757;  
1051 <https://doi.org/10.1016/j.neuro.2010.11.004>.
- 1052 135. Patel R & Aschner M (2021) Commonalities between Copper Neurotoxicity and  
1053 Alzheimer's Disease. *Toxics* **9**, 4. PMID: 33430181;  
1054 <https://doi.org/10.3390/toxics9010004>.
- 1055 136. Bagheri S, Squitti R, Haertle T, Siotto M & Saboury AA (2017) Role of Copper in the  
1056 Onset of Alzheimer's Disease Compared to Other Metals. *Front Aging Neurosci* **9**, 446.  
1057 PMID: 29472855; <https://doi.org/10.3389/fnagi.2017.00446>.
- 1058 137. Salvador GA, Uranga RM & Giusto NM (2010) Iron and mechanisms of neurotoxicity.  
1059 *Int J Alzheimers Dis* **2011**, 720658. PMID: 21234369;  
1060 <https://doi.org/10.4061/2011/720658>.
- 1061 138. Hosking DE, Ayton S, Beckett N, Booth A & Peters R (2018) More evidence is needed.  
1062 Iron, incident cognitive decline and dementia: a systematic review. *Ther Adv Chronic Dis*  
1063 **9**, 241-256. PMID: 30719269; <https://doi.org/10.1177/2040622318788485>.
- 1064 139. Li S, Sun W & Zhang D (2019) Association of Zinc, Iron, Copper, and Selenium Intakes  
1065 with Low Cognitive Performance in Older Adults: A Cross-Sectional Study from  
1066 National Health and Nutrition Examination Survey (NHANES). *J Alzheimers Dis* **72**,  
1067 1145-1157. PMID: 31683474; <https://doi.org/10.3233/JAD-190263>.
- 1068 140. Gong Z, Song W, Gu M, Zhou X & Tian C (2021) Association between serum iron  
1069 concentrations and cognitive impairment in older adults aged 60 years and older: A dose-  
1070 response analysis of National Health and Nutrition Examination Survey. *PloS one* **16**,  
1071 e0255595. PMID: 34339453;
- 1072 141. Spence H, McNeil CJ & Waiter GD (2020) The impact of brain iron accumulation on  
1073 cognition: A systematic review. *PLoS One* **15**, e0240697. PMID: 33057378;  
1074 <https://doi.org/10.1371/journal.pone.0240697>.
- 1075 142. Ayton S, Wang Y, Diouf I, Schneider JA, Brockman J, Morris MC & Bush AI (2020)  
1076 Brain iron is associated with accelerated cognitive decline in people with Alzheimer  
1077 pathology. *Molecular psychiatry* **25**, 2932-2941. PMID: 30778133;  
1078 <https://doi.org/10.1038/s41380-019-0375-7>.

- 1079 143. Hect JL, Daugherty AM, Hermez KM & Thomason ME (2018) Developmental variation  
1080 in regional brain iron and its relation to cognitive functions in childhood. *Dev Cogn*  
1081 *Neurosci* **34**, 18-26. PMID: 29894887; <https://doi.org/10.1016/j.dcn.2018.05.004>.
- 1082 144. Ghadery C, Pirpamer L, Hofer E, Langkammer C, Petrovic K, Loitfelder M,  
1083 Schwingenschuh P, Seiler S, Duering M, Jouvent E, Schmidt H, Fazekas F, Mangin JF,  
1084 Chabriat H, Dichgans M, Ropele S & Schmidt R (2015) R2\* mapping for brain iron:  
1085 associations with cognition in normal aging. *Neurobiol Aging* **36**, 925-932. PMID:  
1086 25443291; <https://doi.org/10.1016/j.neurobiolaging.2014.09.013>.
- 1087 145. Brito JA, McNeill FE, Chettle DR, Webber CE & Vaillancourt C (2000) Study of the  
1088 relationships between bone lead levels and its variation with time and the cumulative  
1089 blood lead index, in a repeated bone lead survey. *J Environ Monit* **2**, 271-276. PMID:  
1090 11256712; <https://doi.org/10.1039/b002855j>.
- 1091 146. Leggett RW (1993) An age-specific kinetic model of lead metabolism in humans.  
1092 *Environ Health Perspect* **101**, 598-616. PMID: 8143593;  
1093 <https://doi.org/10.1289/ehp.93101598>.
- 1094 147. Nie H, Sanchez BN, Wilker E, Weisskopf MG, Schwartz J, Sparrow D & Hu H (2009)  
1095 Bone lead and endogenous exposure in an environmentally exposed elderly population:  
1096 the normative aging study. *J Occup Environ Med* **51**, 848-857. PMID: 19528829;  
1097 <https://doi.org/10.1097/JOM.0b013e3181aa0106>.
- 1098 148. Criswell SR, Perlmutter JS, Huang JL, Golchin N, Flores HP, Hobson A, Aschner M,  
1099 Erikson KM, Checkoway H & Racette BA (2012) Basal ganglia intensity indices and  
1100 diffusion weighted imaging in manganese-exposed welders. *Occup Environ Med* **69**, 437-  
1101 443. PMID: 22447645; <https://doi.org/10.1136/oemed-2011-100119>.
- 1102 149. Choi DS, Kim EA, Cheong HK, Khang HS, Ryoo JW, Cho JM, Sakong J & Park I  
1103 (2007) Evaluation of MR signal index for the assessment of occupational manganese  
1104 exposure of welders by measurement of local proton T1 relaxation time. *Neurotoxicology*  
1105 **28**, 284-289. PMID: 16828869; <https://doi.org/10.1016/j.neuro.2006.05.020>.
- 1106 150. Ko JL, Cheng YJ, Liu GC, Hsin IL & Chen HL (2017) The association of occupational  
1107 metals exposure and oxidative damage, telomere shortening in fitness equipments  
1108 manufacturing workers. *Ind Health* **55**, 345-353. PMID: 28420806;  
1109 <https://doi.org/10.2486/indhealth.2016-0148>.

1110

1111

1112 **Tables**

1113 **Table 1. Summary statistics for demographics (a) and overall exposure measures (b) for controls**  
 1114 **and welders**

	<b>Controls (N=31)</b>	<b>Welders (N=42)</b>	<b>Raw p-values</b>
<b><i>a. Demographics</i></b>			
Age (y)	43.6 ± 11.4	48.9 ± 10.7	0.048
Education (y)	16.2 ± 2.2	12.9 ± 1.6	< 0.001
MoCA	26.2 ± 2.5	26.3 ± 2.1	0.797
UPDRS-III	1.5 ± 2.1	2.0 ± 2.5	0.326
<b><i>b. Metal exposure measures</i></b>			
<b><i>Overall exposure metrics</i></b>			<b>&lt; 0.001</b>
HrsW <sub>90</sub> (hours)	0 ± 0	241 ± 200	< 0.001
E <sub>90</sub> (mg-days/m <sup>3</sup> )	0.003 ± 0	2.3 ± 2.0	< 0.001
YrsW (y)	0 ± 0	26.2 ± 10.9	< 0.001
ELT (mg-y/m <sup>3</sup> )	0.001 ± 0.0003	1.1 ± 0.7	< 0.001
<b><i>Overall blood metal levels</i></b>			<b>&lt; 0.001</b>
Ca (mg/L)	57.8 ± 8.75	58.4 ± 9.16	0.766
Cr (µg/L)	7.91 ± 20.5	29.1 ± 148	0.102
Cu (µg/L)	749 ± 133	894 ± 124	< 0.001
Fe (mg/L)	498 ± 76	556 ± 53	0.002
K (mg/L)	1765 ± 342	2085 ± 394	0.001
Mg (mg/L)	35.7 ± 5.17	38.4 ± 6.48	0.070
Mn (µg/L)	8.9 ± 2.5	11.0 ± 3.2	0.002
Na (mg/L)	2037 ± 370	2191 ± 389	0.134
Pb (µg/L)	8.5 ± 4.8	22.7 ± 18.5	< 0.001
Se (µg/L)	149 ± 69.8	220 ± 105	0.001
Sr (µg/L)	13.9 ± 5.17	14.0 ± 6.26	0.928
Zn (µg/L)	5.62 ± 1.57	6.44 ± 1.47	0.026

1115 *Data represent the mean ± SD for each measure. Groups were compared using one-way analysis*  
 1116 *of variance (ANOVA). Metal exposure measures were compared using multivariate analysis of*  
 1117 *variance (MANOVA). Abbreviations: y = years; MoCA =Montreal Cognitive Assessment; UPDRS*  
 1118 *= Unified PD Rating Scale; HrsW<sub>90</sub> =Hours welding, 90 days; E<sub>90</sub> = Cumulative 90 day exposure*  
 1119 *to Mn; YrsW =Years welding, lifetime; ELT = Cumulative exposure to Mn, lifetime;*

1120  
 1121

1122 **Table 2. Neuropsychological test results for controls and welders**

<i>Test</i>	<i>Controls (n=31)</i>	<i>Welders (n=42)</i>	<i>P-value</i>
<b>Overall Cognition</b> .....			0.063
<b>Processing/Psychomotor speed</b> .....			<b>0.046</b>
Stroop-Color <sup>b</sup>	-0.35 ± 1.16	-0.80 ± 1.03	<b>0.034</b>
Stroop-Word <sup>b</sup>	-0.03 ± 1.05	-0.84 ± 1.19	<b>0.004</b>
Symbol Search <sup>a</sup>	0.88 ± 0.99	0.43 ± 0.67	<b>0.011</b>
Trail Making-A <sup>b</sup>	0.69 ± 0.79	0.50 ± 0.75	0.203
<b>Executive function</b> < <b>0.001</b>			
Color-word <sup>b</sup>	0.12 ± 0.58	0.06 ± 0.70	0.512
Symbol-Digit Coding <sup>a</sup>	0.46 ± 1.06	-0.10 ± 0.78	<b>0.010</b>
Phonemic Fluency <sup>b</sup>	0.36 ± 0.87	-0.31 ± 0.73	< <b>0.001</b>
Trail Making-B <sup>b</sup>	0.51 ± 0.83	-0.35 ± 1.41	<b>0.004</b>
<b>Language</b> .....			0.487
Picture Naming <sup>a</sup>	0.24 ± 1.13	0.59 ± 0.24	0.468
Semantic Fluency <sup>a</sup>	0.04 ± 1.06	-0.23 ± 0.99	0.365
<b>Visuospatial Processing</b> .....			<b>0.045</b>
Judgement of Line Orientation <sup>a</sup>	0.69 ± 0.94	0.55 ± 0.82	0.858
Complex Figure Copy <sup>a</sup>	-0.22 ± 0.86	-1.09 ± 1.35	<b>0.013</b>
<b>Learning/Memory</b> .....			0.055
List Learning <sup>a</sup>	-0.64 ± 0.93	-0.76 ± 1.00	0.493
Immediate Story Recall <sup>a</sup>	0.06 ± 0.93	-0.42 ± 1.04	0.151
Delayed List Recall <sup>a</sup>	-0.73 ± 0.98	-0.52 ± 1.01	0.192
Delayed Story Recall <sup>a</sup>	0.13 ± 0.90	-0.46 ± 1.04	<b>0.049</b>
Delayed Figure Recall <sup>a</sup>	-0.13 ± 1.10	0.01 ± 1.16	0.261
<b>Attention/working memory</b> .....			0.126
Letter Number Sequencing <sup>a</sup>	0.30 ± 1.00	0.03 ± 0.94	0.906
Digit Span <sup>a</sup>	0.81 ± 1.11	0.09 ± 0.83	0.131
Spatial Span <sup>a</sup>	0.34 ± 0.65	-0.10 ± 0.93	0.176

1123 *Data represent the mean ± SD. Test scores were converted to z-scores based on age- (denoted as <sup>a</sup>)*  
 1124 *or age- and education- (denoted as <sup>b</sup>) adjusted norm (t- or scaled) scores. Higher scores indicate*  
 1125 *better performance. Multivariate analysis of covariance (MANCOVA) was conducted with Group*  
 1126 *as the independent variable and individual subtests of each cognitive domain as the dependent*  
 1127 *variables. Bold numbers indicate significant result at p<0.05. Education level was additionally*  
 1128 *adjusted for the cognitive domains language, visuospatial processing, learning/memory, and*  
 1129 *attention/working memory.*

**Table 3. Semi-parametric regression analyses evaluating the influence of exposure measures on medial temporal MRI and neurobehavioral metrics for controls (a) and welders (b)**

<i>Outcome variables</i>	<i>Selected Predictors</i>	<i>Linear <math>\beta</math></i>	<i>T-value</i>	<i>p-value</i>
<i>a. Controls (N=31)</i>				
<i>Delayed List Recall</i>				
	K	-11.7869	-3.03	0.029
	Se	3.1201	2.90	0.034
<i>b. Welders (N=42)</i>				
<b><i>Composite metrics of exposure metrics</i></b>				
Parahippocampal FA	YrsW	-0.0011	-2.69	0.011
Hippocampal MD	ELT	0.0227	2.08	0.045
Hippocampal RD	ELT	0.0218	2.20	0.035
<i>Symbol-Digit Coding</i>	E <sub>90</sub>	-0.161	-2.46	0.019
<b><i>Blood Metal Levels</i></b>				
Entorhinal MD	Mn	0.238	3.04	0.008
Entorhinal AD	Mn	0.266	3.04	0.008
Entorhinal RD	Mn	0.223	3.01	0.009
Hippocampal MD	Pb	0.041	2.48	0.033
Hippocampal AD	Fe	-0.371	-2.51	0.031
	Pb	0.048	2.43	0.035
Hippocampal RD	Pb	0.037	2.44	0.035
<i>Symbol-Digit Coding</i>	Cu	-3.13	-2.66	0.017
<i>List Learning</i>	Fe	7.58	5.15	<0.001
	Mn	-1.00	-2.54	0.025
<i>Delayed List Recall</i>	Fe	6.53	2.95	0.008
	Mn	-1.65	-2.79	0.012
<i>Immediate Story Recall</i>	Cu	-3.78	-2.29	0.039
<i>Delayed Story Recall</i>	Cu	-4.21	-3.50	0.003
<i>Delayed Figure Recall</i>	Mn	-3.18	-4.50	<0.001

*Data represent parameter estimates and corresponding T- and p-values of exposure measurements to predict MTL MRI and neurobehavioral metrics.*

**Table 4. Semi-parametric regression analyses to determine medial temporal structural MRI predicting neurobehavioral metrics for controls (a) and welders (b)**

<i>Outcome variables</i>	<i>Selected Predictors</i>	<i>Linear <math>\beta</math></i>	<i>T-value</i>	<i>p-value</i>
<i>a. Controls (N=31)</i>				
<i>Stroop-Word</i>	Parahippocampal AD	-4.80	-2.18	0.041
<i>Symbol Search</i>	Parahippocampal MD	-4.75	-2.10	0.047
	Parahippocampal AD	-4.76	-2.37	0.027
<i>Symbol-Digit Coding</i>	Parahippocampal AD	-4.64	-2.43	0.024
<i>Trail Making-B</i>	Parahippocampal AD	-3.92	-2.25	0.034
<i>Delayed List Recall</i>	Entorhinal MD	-5.04	-2.11	0.046
<i>Delayed Story Recall</i>	Entorhinal MD	-5.40	-2.77	0.011
	Entorhinal AD	-5.53	-2.76	0.012
	Entorhinal RD	-6.23	-3.10	0.005
	Entorhinal FA	19.92	2.34	0.028
	Parahippocampal MD	-4.78	-2.39	0.026
<i>Spatial Span</i>	Parahippocampal AD	-4.11	-2.13	0.045
	Parahippocampal RD	-4.85	-2.39	0.028
	Hippocampal AD	-5.32	-2.58	0.017
<i>b. Welders (N=42)</i>				
<i>Symbol Search</i>	Parahippocampal FA	14.26	2.67	0.012
<i>Trail Making-A</i>	Parahippocampal FA	15.75	2.31	0.027
	Hippocampal MD	-4.46	-2.10	0.043
	Hippocampal RD	-4.97	-2.16	0.038
<i>Immediate Story Recall</i>	Parahippocampal MD	-5.72	-2.64	0.012
	Parahippocampal AD	-5.54	-2.72	0.010
	Parahippocampal RD	-6.61	-3.14	0.004
<i>List Learning</i>	Hippocampal AD	-4.73	-2.18	0.035
<i>Delayed List Recall</i>	Entorhinal MD	-4.18	-3.09	0.004
	Entorhinal AD	-3.54	-2.96	0.006
	Entorhinal RD	-3.77	-2.87	0.007

*Data represent parameter estimates and corresponding T- and p-values of MTL MRI metrics to predict neurobehavioral metrics.*

## Figures and legends

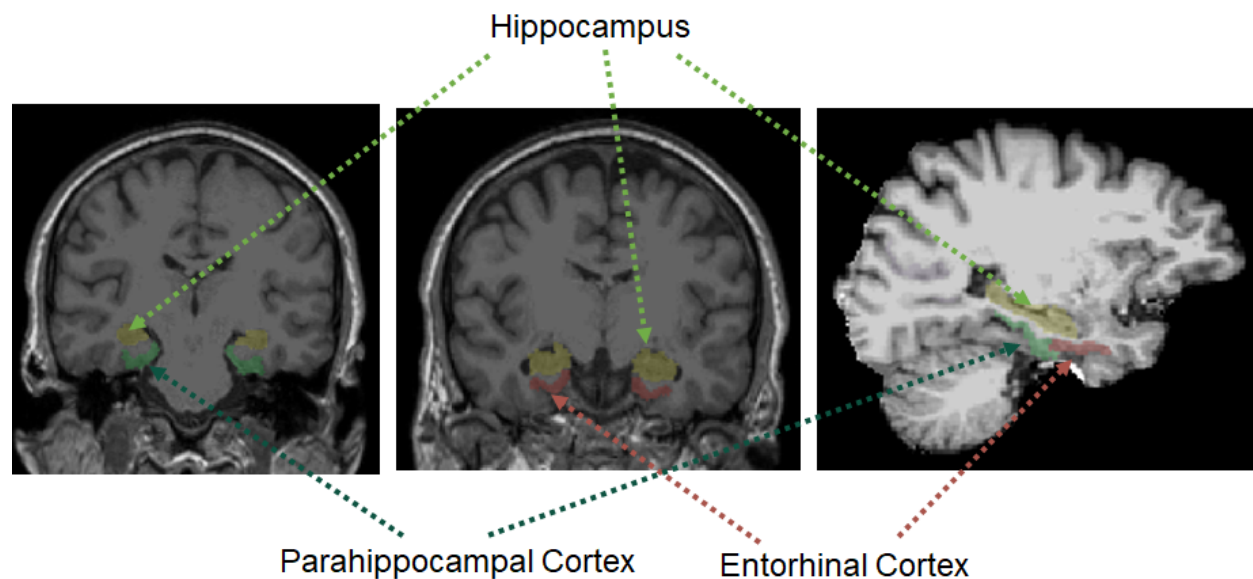


Figure 1. Automatically segmented regions of interest [hippocampus, entorhinal and parahippocampal cortices] on T1-weighted MPRAGE images.



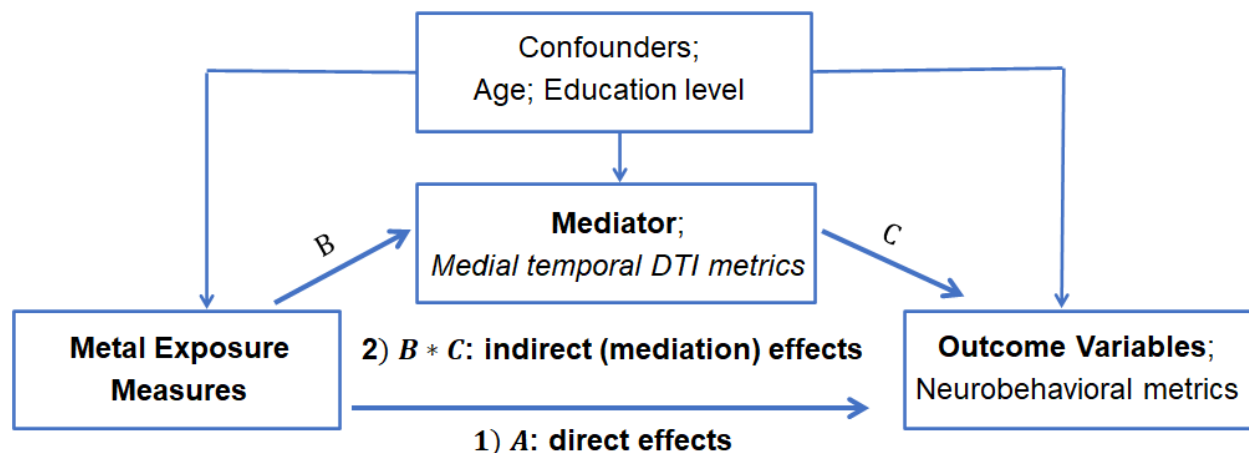


Figure 2. Mediation models to test effects of exposure (composite metrics of welding exposure; blood metal levels) on neurobehavioral metrics while medial temporal DTI metrics serve as mediators after controlling for potential confounders (age; education level; blood levels of other metals): 1) A indicates direct effects of exposure on neurobehavioral metrics that are not mediated by medial temporal DTI metrics; 2) B\*C indicates mediation effects of exposure on neurobehavioral metrics that are mediated by medial temporal DTI metrics.

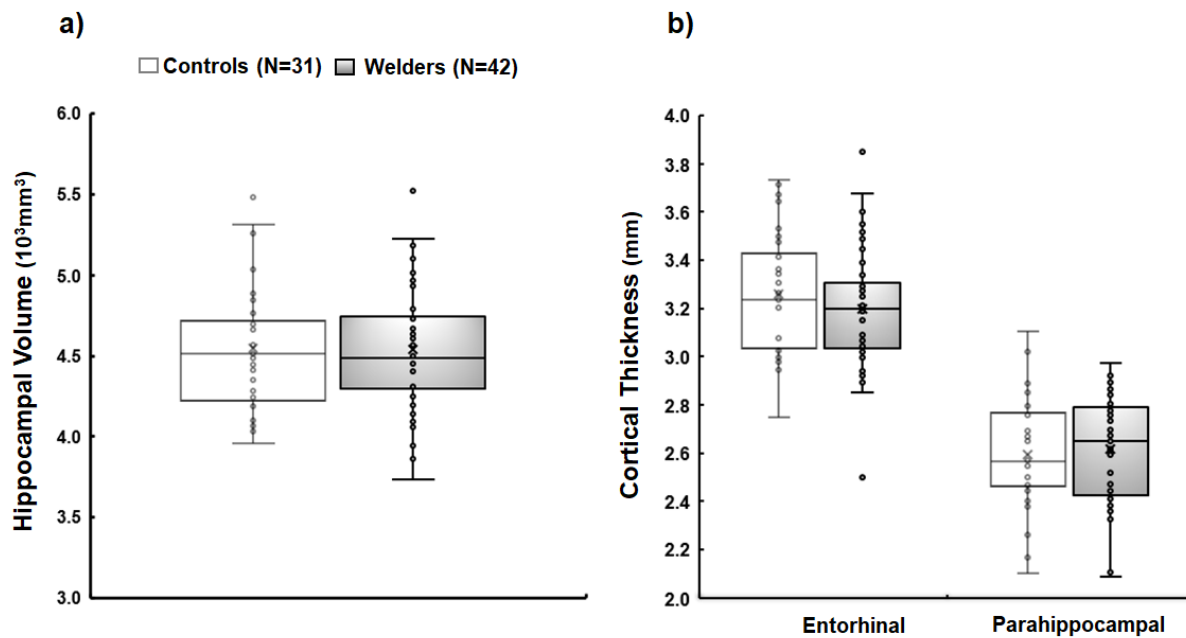


Figure 3. Morphologic MRI measures in welders and controls: a) hippocampal volume; b) cortical thickness in entorhinal and parahippocampal cortices.

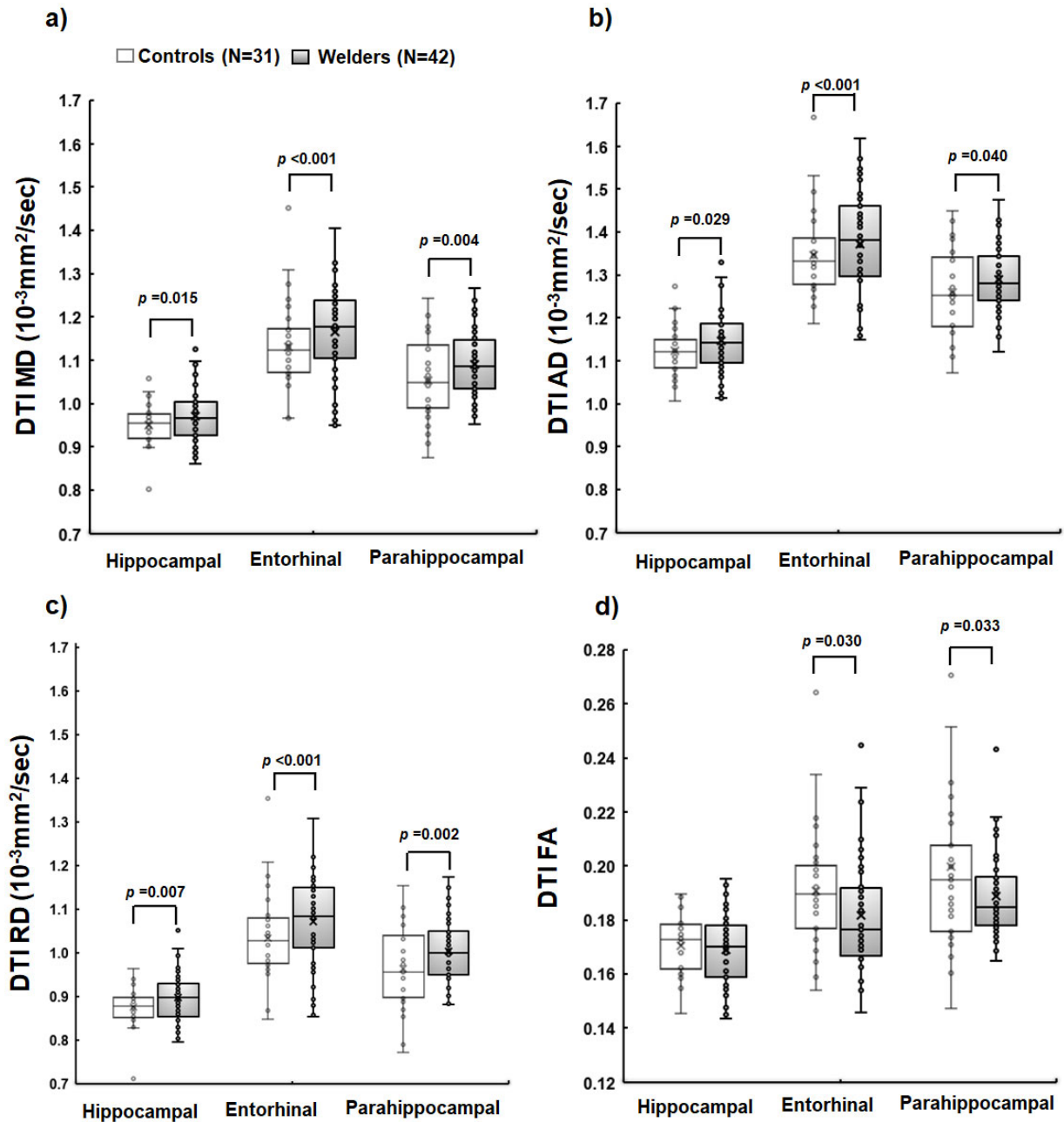


Figure 4. Diffusion tensor imaging (DTI) a) mean (MD); b) axial (AD), c) radial (RD) diffusivity, and d) fractional anisotropy (FA) of medial temporal structures for welders and controls.

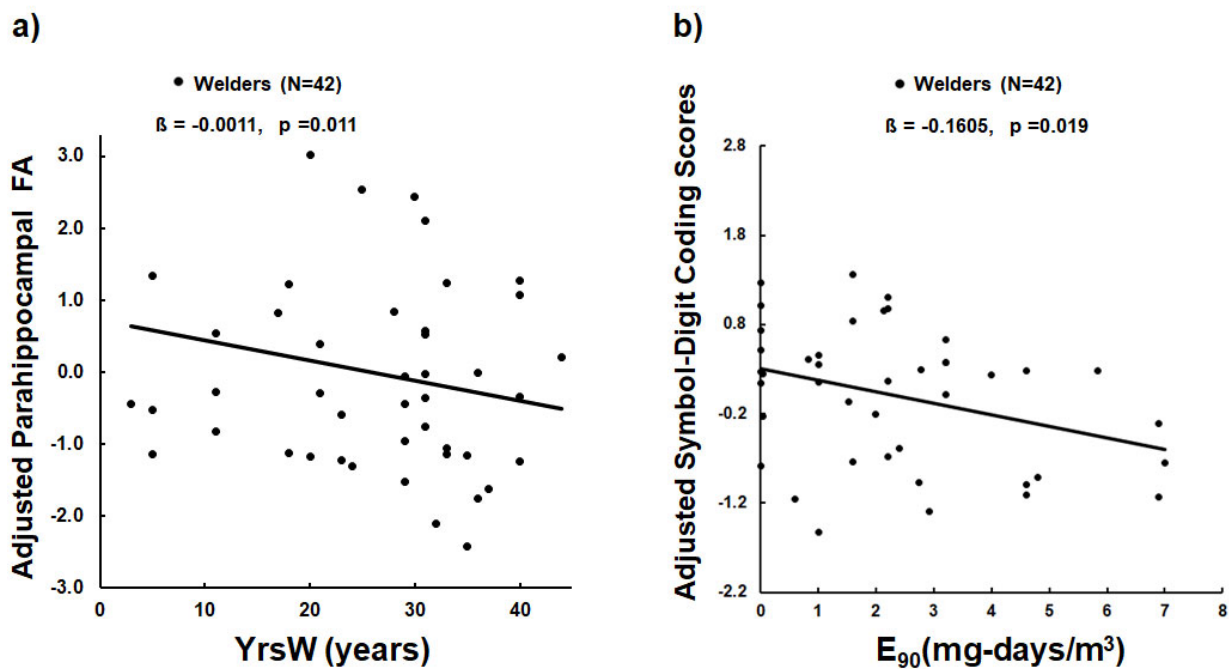


Figure 5. Scatter plots show a) adjusted parahippocampal FA values (y-axis) vs. YrsW (x-axis) in welders; b) adjusted *Symbol-Digit Coding* scores (y-axis) vs.  $E_{90}$  (x-axis). Adjusted values indicate values after controlling for age and education level.

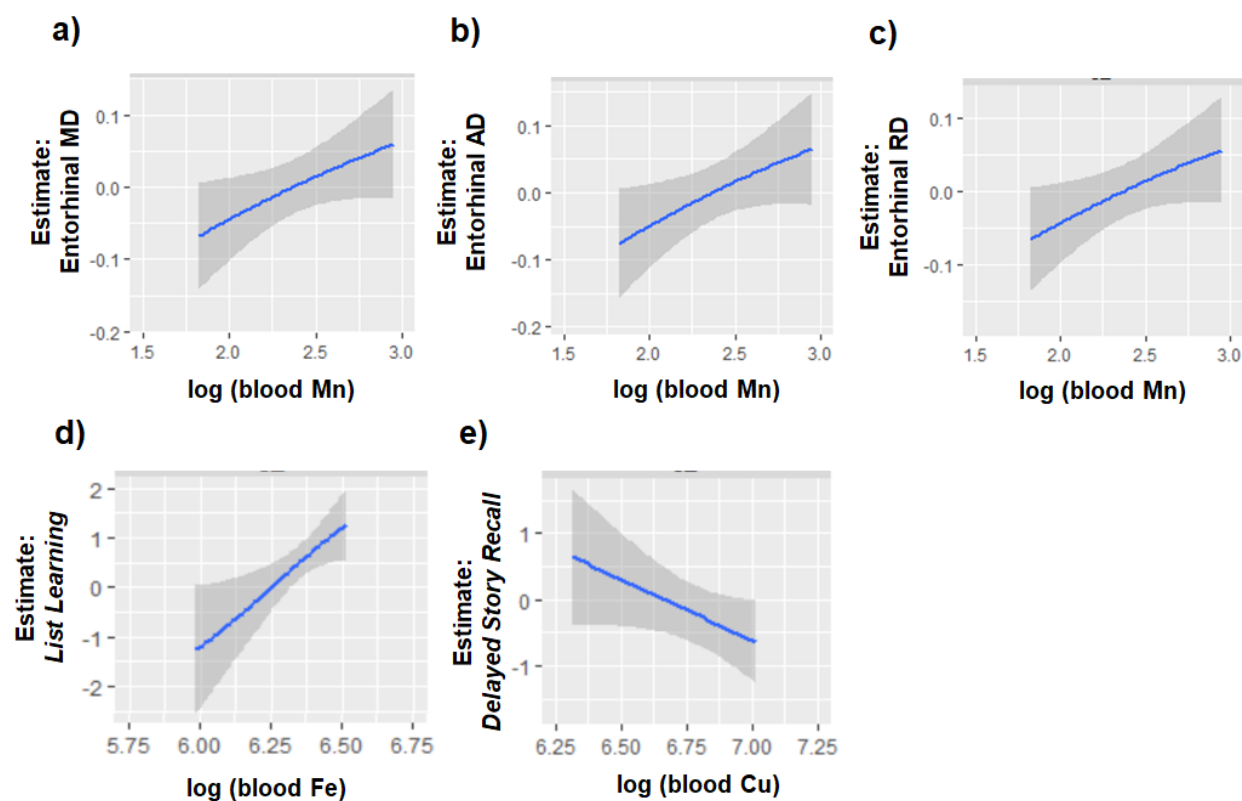


Figure 6. BKMR (Bayesian kernel machine regression) univariate dose-response associations of metal mixture components with medial temporal DTI and neurobehavioral scores with 95% confidence interval band; a) estimate of entorhinal MD values (y-axis) vs. log-transformed blood Mn (x-axis) in welders; b) estimate of entorhinal AD values (y-axis) vs. log-transformed blood Mn (x-axis) in welders; c) estimate of entorhinal RD values (y-axis) vs. log-transformed blood Mn (x-axis) in welders; d) estimate of *List Learning* scores (y-axis) vs. log-transformed blood Fe (x-axis) in welders; e) estimate of *Delayed Story Recall* scores (y-axis) vs. log-transformed blood Cu (x-axis) in welders. Age and education level were used as covariates. Other blood metal levels than the metal of interest in the analysis were fixed at the median on the y-axis.

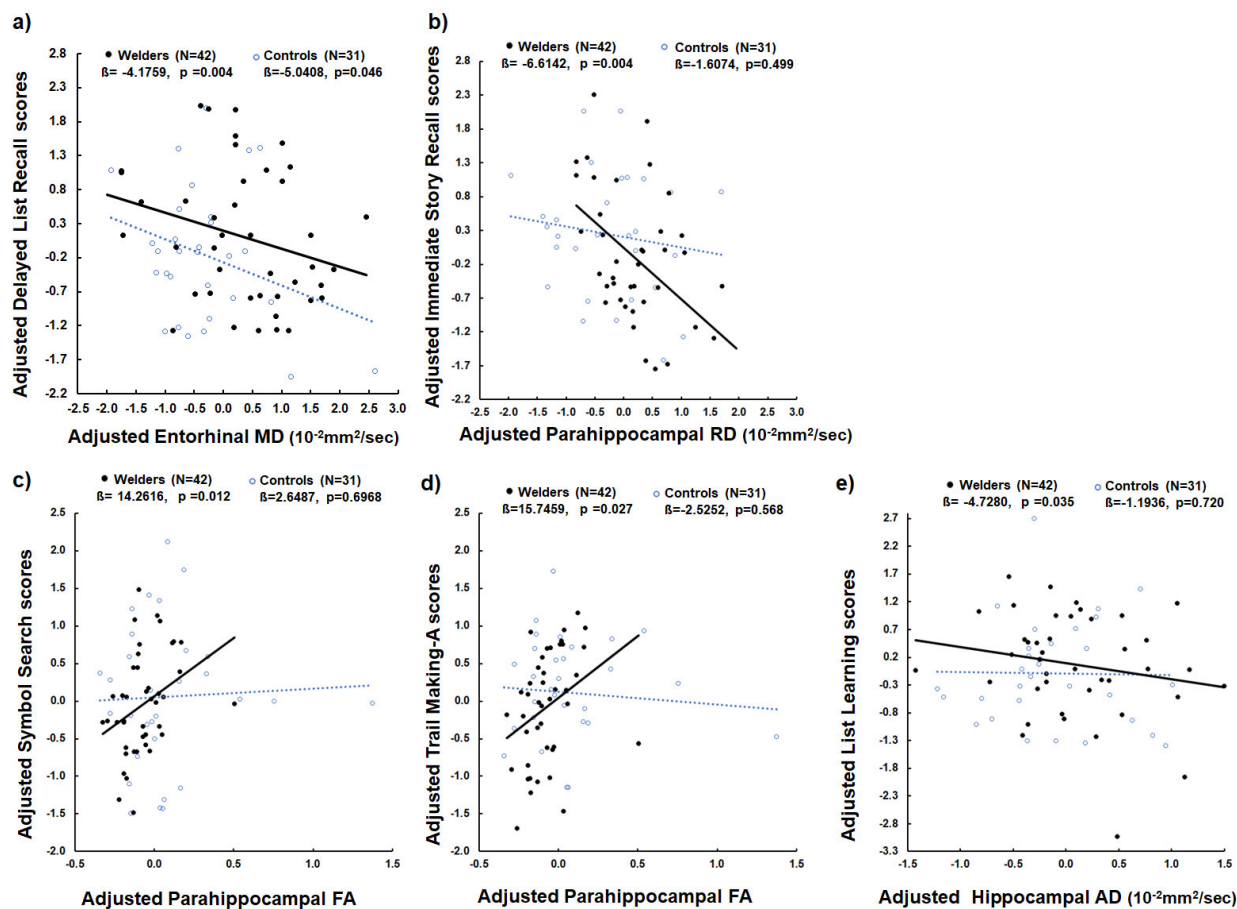


Figure 7. Scatter plots show a) adjusted *Delayed List Recall* scores (y-axis) vs. adjusted entorhinal MD values (x-axis); b) adjusted *Immediate Story Recall* scores (y-axis) vs. adjusted parahippocampal RD values (x-axis); c) *Symbol Search* scores (y-axis) vs. adjusted parahippocampal FA values (x-axis); d) adjusted *Trail Making-A* scores (y-axis) vs. adjusted parahippocampal FA values (x-axis); e) adjusted *List Learning* scores (y-axis) vs. adjusted hippocampal AD values (x-axis) in both welders and controls.