

## Early oral switch in low-risk *Staphylococcus aureus* bloodstream infection

Achim J. Kaasch, M.D.<sup>1</sup>, Luis Eduard López-Cortés, M.D.<sup>2</sup>, Jesús Rodríguez-Baño, M.D.<sup>2</sup>, José Miguel Cisneros, M.D.<sup>3</sup>, M. Dolores Navarro, M.D.<sup>3</sup>, Gerd Fätkenheuer, M.D.<sup>4</sup>, Norma Jung, M.D.<sup>4</sup>, Siegbert Rieg, M.D.<sup>5</sup>, Raphaël Lepeule, M.D.<sup>6</sup>, Laetitia Coutte, M.D.<sup>6</sup>, Louis Bernard, M.D.<sup>7</sup>, Adrien Lemaigen, M.D.<sup>7</sup>, Katrin Kösters, M.D.<sup>8</sup>, Colin R. MacKenzie, M.D.<sup>9</sup>, Alex Soriano, M.D.<sup>10</sup>, Stefan Hagel, M.D.<sup>11</sup>, Bruno Fantin, M.D.<sup>12</sup>, Matthieu Lafaurie, M.D.<sup>13</sup>, Jean-Philippe Talarmin, M.D.<sup>14</sup>, Aurélien Dinh, M.D.<sup>15</sup>, Thomas Guimard, M.D.<sup>16</sup>, David Boutoille, M.D.<sup>17</sup>, Tobias Welte, M.D.<sup>18</sup>, Stefan Reuter, M.D.<sup>19</sup>, Jan Kluytmans, M.D.<sup>20</sup>, Maria Luisa Martin, M.D.<sup>21</sup>, Emmanuel Forestier, M.D.<sup>22</sup>, Hartmut Stocker, M.D.<sup>23</sup>, Virginie Vitrat, M.D.<sup>24</sup>, Pierre Tattevin, M.D.<sup>25</sup>, Anna Rommerskirchen<sup>9</sup>, Marion Noret<sup>26</sup>, Anne Adams<sup>27</sup>, Winfried V. Kern, M.D.<sup>5</sup>, Martin Hellmich, PhD<sup>27</sup>, Harald Seifert, M.D.<sup>28,29</sup> for the SABATO study group (members and affiliations listed in Acknowledgement, linked to pubmed record)

<sup>1</sup>Institute of Medical Microbiology and Hospital Hygiene, Medical Faculty of the Otto-von-Guericke University, Leipziger Straße 44, 39120 Magdeburg, Germany

<sup>2</sup>Clinical Unit of Infectious Diseases and Microbiology, Biomedicine Institute of Sevilla (IBiS), Hospital Universitario Virgen Macarena; Department of Medicine, School of Medicine, University of Sevilla, CSIC; and CIBER de Enfermedades Infecciosas (CIBERINFEC), Instituto de Salud Carlos III, Madrid, Spain

<sup>3</sup>Clinical Unit of Infectious Diseases, Microbiology and Parasitology, Virgen del Rocío University Hospital; Institute of Biomedicine of Seville (IBiS)/CSIC/University of Seville, Seville, Spain; and Center for Biomedical Research Network (CIBER) on Infectious Diseases, Madrid, Spain

<sup>4</sup>Department I of Internal Medicine, University Clinics, Faculty of Medicine, University of Cologne, Kerpener Str. 62, 50937 Cologne, Germany

<sup>5</sup>Division of Infectious Diseases, Department of Medicine II, Faculty of Medicine and University Medical Centre Freiburg, 79106 Freiburg, Germany

<sup>6</sup>Antimicrobial Stewardship Team, Department of Prevention, Diagnosis, and Treatment of Infections, Henri-Mondor University Hospital, AP-HP, 94000 Creteil, France.

<sup>7</sup>Service de Médecine Interne et Maladies Infectieuses, Centre Hospitalier Régional Universitaire de Tours, 37000 Tours, France

<sup>8</sup>Medical Clinic II – Clinic for Gastroenterology, Hepatology, Neurogastroenterology, Infectious Diseases, Hematology, Oncology and Palliative Medicine, Helios Klinikum Krefeld, Lutherplatz 40, 47805 Krefeld, Germany

<sup>9</sup>Institute of Medical Microbiology and Hospital Hygiene, University Hospital Düsseldorf, Moorenstraße 5, 40225 Düsseldorf, Germany

<sup>10</sup>Department of Infectious Diseases, Hospital Clínic, IDIBAPS, CIBERINF, Barcelona, Spain

<sup>11</sup>Institute for Infectious Diseases and Infection Control, Jena University Hospital – Friedrich Schiller University Jena, Jena, Germany

<sup>12</sup>Service de Médecine Interne, Hôpital Beaujon, AP-HP, 100, boulevard du Général-Leclerc, 92110 Clichy, France; Inserm, IAME, UMR 1137, 75018 Paris, France; Université Paris Diderot, Sorbonne Paris Cité, 75018 Paris, France

<sup>13</sup>Infectious Diseases Department, Saint-Louis hospital, 1 avenue Claude Vellefaux 75010, Paris, France.

<sup>14</sup>Department of Infectious Diseases, Centre Hospitalier de Cornouaille, Quimper, France

<sup>15</sup>Infectious diseases department, Raymond-Poincaré University Hospital, 104 bd R. Poincaré, 92380 Garches, France

<sup>16</sup>Infectious diseases department, CHD Vendée, Boulevard Stéphane Moreau, 85000 La Roche-sur-Yon, France

<sup>17</sup>Unité maladies infectieuses et tropicales, Centre Hospitalier Universitaire Nantes, INSERM, CIC 1413, Nantes, France

<sup>18</sup>Clinic for Pneumology, Medical School Hannover, Carl-Neuberg-Str. 1, 30625 Hannover, Germany.

<sup>19</sup>Note: This preprint reports new research that has not been certified by peer review and should not be used to guide clinical practice.

<sup>19</sup>Department of Infectious Diseases and General Internal Medicine, Klinikum Leverkusen, Leverkusen, Germany; Department of Infection Control, Klinikum Leverkusen, Leverkusen, Germany

<sup>20</sup>Department of Medical Microbiology, University Medical Center Utrecht, Utrecht University, Heidelberglaan 100, 3584 CX Utrecht, The Netherlands

<sup>21</sup>Infectious Diseases Unit, Internal Medicine Department, Hospital Universitari Son Espases, Fundació Institut d'Investigació Sanitària Illes Balears (IdISBa), 07120 Palma de Mallorca, Spain

<sup>22</sup>Service de maladies infectieuses, Centre Hospitalier Metropole Savoie, France

<sup>23</sup>St. Joseph Hospital Berlin Tempelhof, Wüsthoffstraße 15, 12101 Berlin, Germany

<sup>24</sup>Infectious Diseases Unit, Centre Hospitalier d'Annecy Genevois, 1 Avenue de l'Hôpital, 74370 Epagny Metz-Tessy France

<sup>25</sup>Infectious Diseases and Intensive Care Unit, Pontchaillou University Hospital, Rennes, France

<sup>26</sup>French National Network of Clinical Research in Infectious Diseases (RENARCI), Assistance Publique-Hôpitaux de Paris, Paris, France

<sup>27</sup>Institute of Medical Statistics and Computational Biology, Faculty of Medicine and University Hospital Cologne, University of Cologne, Kerpener Str. 62, 50937 Cologne, Germany

<sup>28</sup>Institute for Medical Microbiology, Immunology and Hygiene, Faculty of Medicine and University Hospital Cologne, University of Cologne, Cologne, Germany

<sup>29</sup>German Center for Infection Research (DZIF), Partner Site Bonn-Cologne, Cologne, Germany

#### **Contact information corresponding author**

Prof. Dr. med. Achim J. Kaasch

Institute of Medical Microbiology and Hospital Hygiene

Medical Faculty, Otto-von-Guericke University

Leipziger Straße 44

39120 Magdeburg, Germany

Tel +49 391-67 13392

Fax +49 391-67 13384

## Abstract

**Background:** *Staphylococcus aureus* bloodstream infection (SAB) is treated with at least 14 days of intravenously administered antimicrobials. We assessed the efficacy and safety of an early oral switch therapy in patients at low risk for SAB-related complications.

**Methods:** In an international non-inferiority trial, we randomized patients with SAB after 5 to 7 days of intravenous antimicrobial therapy to either switch to an oral antimicrobial or to continue with intravenous standard therapy. Main exclusion criteria were signs and symptoms of complicated SAB, non-removable foreign devices, and severe comorbidity. Composite primary endpoint was the occurrence of any SAB-related complication (relapsing SAB, deep-seated infection, and mortality attributable to SAB) within 90 days.

**Results:** 213 patients were randomized into the intention-to-treat population. In the oral switch group, 14/108 (13%) participants reached the primary endpoint versus 13/105 (12%) in the standard therapy group (adjusted difference 0.7%, 95% confidence interval [CI] -7.8% to 9.1%). Participants in the oral switch group were discharged earlier (median hospital stay from SAB onset of 12 days versus 16 days; adjusted difference -3.1 days [95% CI -7.5 to 1.4]). There was no statistical difference in 30-day survival and complications of intravenous administration. More participants in the oral group experienced at least one serious adverse event (34% versus 26%,  $p=0.292$ ).

**Conclusion:** Oral switch was non-inferior to intravenous standard therapy in participants with low-risk SAB. However, a careful assessment of patients for signs and symptoms of complicated SAB at time of presentation and thereafter is necessary before considering early oral switch therapy.

The trial was registered as NCT01792804 in ClinicalTrials.gov, as DRKS00004741 in the German Clinical trials register, and as EudraCT 2013-000577-77.

## Introduction

*Staphylococcus aureus* bloodstream infection (SAB) affects 20 to 30 persons per 100.000 population annually and has a 3 month mortality between 20% and 30%.<sup>1,2</sup> Metastatic foci, late metastatic complications, and relapse are common.<sup>3</sup> Low-risk SAB defines a subset of patients where risk factors and the clinical course do not point towards an elevated risk for the presence or development of complicated SAB (such as deep-seated infection, prolonged bacteremia, and metastatic foci).<sup>4-6</sup>

The optimal antimicrobial therapy in patients with SAB has been a matter of considerable debate. Guidelines recommend at least 14 days of intravenous antimicrobial therapy in patients with low-risk SAB.<sup>7-9</sup> An early oral switch antimicrobial therapy has the potential benefit of an abbreviated hospital stay and a reduction of infusion-related complications. However, there is the potential risk of clinical failure if adequate serum concentrations are not reached by oral medication. Furthermore, an earlier outpatient management could potentially lead to a lower compliance with the prescribed drug regimen and to a delayed identification of complications.

Randomized controlled trials directly addressing an early oral switch in SAB are lacking and previous trials have included few participants with SAB receiving oral therapy.<sup>10</sup> Two recent trials demonstrated non-inferiority of an oral switch in patients with endocarditis<sup>11</sup> and bone and joint infection.<sup>12</sup> However, the first trial mainly included participants with other organisms and in the second trial, patients with SAB were excluded. Recent retrospective, observational studies found similar outcomes for oral switch therapy in patients with SAB.<sup>5,6,13-19</sup> However, retrospective studies have a high risk of confounding by indication. Consequently, less than 20% of infectious disease physicians from the US and Canada felt comfortable with switching to oral medication in SAB as two recent surveys demonstrated.<sup>20,21</sup>

Here we report results of the SABATO trial, a randomized non-inferiority trial to evaluate the efficacy and safety of early oral switch antimicrobial therapy in patients with low-risk SAB as compared to standard intravenous antimicrobial therapy.

## Methods

### TRIAL DESIGN AND OVERSIGHT

We conducted a randomized, parallel-group, open-label, non-inferiority trial. In-patients with low-risk SAB were recruited in 31 sites in four European countries from 20 December 2013 to 22 December 2019 (**Figure 1** and **Supplementary Table S1**). The study protocol was published and approved by the Ethics Committees of all participating centers and the respective competent authorities.<sup>22,23</sup> All participants gave written informed consent before enrolment. An independent data monitoring committee periodically assessed the safety of the trial participants. The trial was registered as NCT01792804 in ClinicalTrials.gov, as DRKS00004741 in the German clinical trials register, and as EudraCT 2013-000577-77.

### PARTICIPANTS

Adult patients (≥18 years) with *S. aureus* isolated from at least one blood culture were eligible, if they had received five to seven days of appropriate intravenous antimicrobial therapy, initiated within 72h after the first positive blood culture was drawn; and follow-up blood cultures obtained within 24-96 hours after the start of appropriate antimicrobial therapy were persistently negative.

Patients were excluded if signs and symptoms of complicated *S. aureus* infection were present prior to enrolment, *i.e.*, deep-seated focus (*e.g.*, endocarditis, pneumonia, infected implant, undrained abscess, empyema, and osteomyelitis), septic shock within 4 days before randomization, prolonged bacteremia (defined as a positive blood culture obtained more than 72 hours after start of adequate antimicrobial therapy), and body temperature >38°C on two separate days within 48 hours before

randomization. Patients were excluded, if intravascular catheters were not removed within 4 days after the first positive blood culture was drawn. Patients with a higher *a priori* risk for SAB-related complications were also excluded, namely patients with a recent history of SAB within the preceding 3 months, injection drug use, severe immunodeficiency or immunosuppression, presence of a prosthetic heart valve or deep-seated vascular graft.

Patients with end-stage renal disease, severe liver disease, prosthetic joint, or pacemaker (if implanted more than 6 months prior) were eligible if the infective focus was either a removable intravascular catheter or a skin or soft-tissue infection. In patients with end-stage renal disease or a pacemaker, echocardiography was needed to rule out endocarditis. For details see **Supplementary Table S7**.

#### RANDOMIZATION AND MASKING

Participants were randomly allocated to treatment groups (1:1) not earlier than one day before starting study drug through a central internet randomization service TENALEA (stratified by study center, permuted blocks of varying length). Participants and investigators were unmasked regarding treatment. The clinical review committee (CRC), who made the final adjudication, was masked to group assignment.

#### PROCEDURES

Participants either received oral switch therapy or intravenous standard therapy. The duration of study therapy was 5 to 7 days to yield a total duration of 14 days of pre-randomization antimicrobial therapy plus study medication.

Antimicrobials were selected by the study physician according to susceptibility results, suspected allergy or intolerance in the following order: oral trimethoprim-sulfamethoxazole 160/800 mg q12h for methicillin-susceptible (MSSA) or methicillin-resistant *S. aureus* (MRSA), clindamycin 600mg q8h for MSSA, and oral linezolid 600mg q12h for MRSA in the oral switch group; intravenous flucloxacillin 2g q6h (cloxacillin 2g q6h in Spain and France), cefazolin 2g q8h, or vancomycin 1g q12h for MSSA, vancomycin 1g q12h or daptomycin 6-10mg/kg q24h for MRSA in the intravenous standard therapy group. The local hospital pharmacy provided the study drug as marketed. Individual adjustments of dosing were possible.

#### OUTCOMES

The composite primary endpoint was SAB-related complications within 90 days, defined as relapsing SAB, deep-seated infection with *S. aureus*, or death attributable to SAB. Secondary outcomes were length of hospital stay from the date the first positive blood culture was drawn to hospital discharge, complications of intravenous therapy from start of study drug to end of study, *C. difficile* infection, and 14-, 30-, and 90-day survival. The median length of stay was measured from the first positive blood culture until discharge or death in hospital.

Safety analysis assessed adverse events and serious adverse events. Events were graded according to the Common Terminology Criteria for Adverse Events version 4.0.<sup>24</sup> Events graded 3 or above were recorded from start of study drug to end of study.

#### OUTCOME ASSESSMENT AND STATISTICAL ANALYSIS

The sample size of and the non-inferiority margin were derived as described in the **Supplementary Material**. Due to slow recruitment, the final analysis was performed at half of the initial target sample size, which still accommodated a 10% non-inferiority margin (one-sided  $\alpha = 0.05$ ,  $\beta = 0.2$ , expected event rate 2.5%, hierarchical testing with Zhao's test).<sup>25</sup> According to recommendations from the European Medicines Agency, we initially selected the clinical evaluable population (termed per protocol population in the statistical analysis plan) as primary analysis and the intention-to-treat population as coprimary.<sup>26,27</sup> However, recently updated guidance recommends the intention-to-

treat population for the primary analysis,<sup>28</sup> and we therefore report both populations side-by-side, with a focus on the intention-to-treat population.

The intention-to-treat population included all randomly assigned participants. The modified intention-to-treat population comprised participants that were randomized AND received any study drug, excluding participants in whom an inclusion criterion incompatible with low-risk SAB was violated before starting study drug (e.g., persistent positive blood cultures). In both intention-to-treat populations, data were analyzed as assigned with indeterminate and missing outcomes counted as failures.

The clinically evaluable population included all study subjects who were treated according to protocol with study drug, were observed until end-of-follow-up or reached the primary endpoint and did not receive antimicrobial therapy during follow-up that could have masked the primary endpoint. Study drug was considered according to protocol when the total duration of antimicrobial therapy was between 12 and 16 days with at least 5 days of initial intravenous therapy. A masked, independent Clinical Review Committee carefully evaluated study outcomes and treatment.

The safety population included all study subjects who received any study drug. Specifically, participants who ever received an oral antimicrobial agent were compared to participants who never received an oral antimicrobial agent.

A Kaplan-Meier analysis was performed to assess differences in time to SAB-related complications. Hazard ratios were estimated from Cox regression and compared with an unstratified log-rank test. Competing risks were calculated according to Fine *et al* considering non-attributable mortality as competing event.<sup>29</sup> Statistical calculations were done with the software SAS 9.4 (SAS Inc., Cary, NC, USA) and Stata 17.0 (Stata/SE, College Station, TX, USA).

#### ROLE OF THE FUNDING SOURCE

The funding organization, Deutsche Forschungsgemeinschaft, had no role in study design, data collection, data analysis, data interpretation, or writing of the report.

## Results

### PARTICIPANTS

From December 2013 through December 2019, 213 participants were enrolled into the intention-to-treat population at 31 sites in four countries (**Figure 1** and **Supplementary Table S1 to S3**). The clinically evaluable population consisted of 165 participants, with 86 participants in the oral switch group and 79 participants in the intravenous standard therapy group. The safety population comprised 210 participants who received at least one dose of study drug.

In the intention-to-treat population, baseline characteristics were largely balanced between groups and participants were overall representative of low-risk SAB (**Table 1**). Catheter-related infection and skin-soft-tissue infection were the most prevalent foci, and 16 (7.5%) participants had a MRSA bloodstream infection. There were more participants in the oral switch group with moderate or severe liver disease (10.2% versus 3.8%) and diabetes mellitus (40.7% versus 26.6%). Before starting study medication, participants received a median of 6 days of intravenous antimicrobials in both groups.

### ANTIMICROBIAL TREATMENT

Participants were treated with study medication for a median duration of 8 days in both groups, resulting in a full treatment course of antimicrobial medication with a median of 14-days (**Supplementary Table S4**). The most frequently chosen study medications in the oral switch group were trimethoprim-sulfamethoxazole in 63 (58.3%) participants and clindamycin in 35 (32.4%)



participants. In the intravenous group, 46 (43.8%) participants received cefazolin and 45 (42.9%) participants received intravenous flucloxacillin or cloxacillin. In 9 (4.2%) participants, initially started study medication was switched to the alternative study medication; 3 (1.4%) participants did not receive study medication.

## OUTCOMES

In the ITT population, the primary composite outcome, *i.e.*, SAB-related complication or a missing outcome within 90 days, occurred in 14/108 participants in the oral switch group and 13/105 in the intravenous standard therapy group (**Table 2**). The treatment-control difference was 0.7 percentage points (95% confidence interval [CI], -7.8% to 9.1%). In the clinical evaluable population, SAB-related complications occurred in 3/86 participants in the oral group versus 4/79 participants in the intravenous group (treatment-control difference -2.9 percentage points; 95% CI, -9.6% to 3.9%). Non-inferiority was achieved in both populations. The results proved robust in a number of sensitivity analyses, which addressed the influence of non-attributable mortality, missing outcome measures, the contribution of SAB-related complications occurring more than 7 days after randomization, and whether SAB-related complications were microbiologically confirmed (**Supplementary Figure S2**). Cumulative incidence plots for the primary outcome with and without non-attributable death as competing risk are shown in **Figure 2**. Details of all participants with SAB-related complications are presented in **Supplementary Table S5**.

The length of stay after the first positive blood culture was shorter in the oral switch group with a median stay of 12 days versus 16 days (mean difference -3.1 days [95% CI, -7.5 to 1.4], **Table 2**). Orally treated participants had fewer complications of intravenous therapy (treatment difference -7.9% [95% CI, -17.6% to 1.9%]). The incidence of *C. difficile* infection was similar in both groups. Survival was lower in the oral switch group than in the intravenous group with a treatment difference of -1.73% [95% CI, -7.61 to 4.15] at 30 days, and -5.36% [95% CI, -14.75 to 4.03] at 90 days.

## SUBGROUP ANALYSIS

Analyses of the primary endpoint were similar, regardless of whether the bacterial isolate was methicillin-susceptible or resistant, or whether the participants had different foci at baseline, a Charlson comorbidity index <3 or ≥3, had echocardiography performed or not, or were enrolled in different countries (**Supplementary Figure S1**).

## SAFETY OUTCOMES

The safety population consisted of 210 participants who received at least one dose of study drug. Overall, 94 (44.8%) participants reported an adverse event; 63 (30.0%) were serious adverse events (**Table 3, Supplementary Table S6**). The most common adverse events were infections with 45 events recorded in 40 (19.0%) participants. Participants in the oral group reported more adverse events and serious adverse events than participants in the intravenous group. Serious adverse events occurred with a rate of 0.21 per person-month (95% CI, 0.15 to 0.29) in the oral group and 0.14 (95% CI, 0.10 to 0.20) in the intravenous group, with a risk ratio of 0.65 (95% CI, 0.40 to 1.05;  $p=0.079$ ).

## Discussion

In this multicenter randomized trial of patients with low-risk SAB, early oral switch antimicrobial therapy was non-inferior to intravenous standard therapy with regard to the primary endpoint. Participants on oral medication were discharged from hospital earlier than participants on intravenous medication, as expected from previous trials on oral switch antimicrobial therapy in patients with various infections.<sup>11,30</sup> We further found that a switch to oral medication reduced the rate of complications of intravenous administration by 7.9 percentage points (95% CI, -17.6 to 1.9).

Survival at 90 days was slightly lower in the oral switch group across all analyses (**Table 2**), albeit not statistically significant. The two participants with death attributable to SAB were in the oral group.

Both had catheter-related SAB and developed disseminated infection within 3 weeks after starting study medication. One participant was discharged and declined readmission when her general condition deteriorated. This highlights the importance of monitoring patients with SAB closely for developing complications.

We further observed a higher incidence of adverse events and serious adverse events in the oral switch group, with the overall incidence being in the range of previous trials.<sup>31,32</sup> A large proportion of adverse events were infections not caused by *S. aureus*, which underscores that the participant population is generally at risk for infections.

Assigning the low-risk category to patients with SAB can be challenging. In a RCT in patients with uncomplicated staphylococcal bacteremia, Holland *et al.* found that one-third of patients without suspected metastatic infection at enrollment were ultimately diagnosed with complicated SAB.<sup>32</sup> With our criteria for low-risk SAB, we observed 14 (7%) SAB-related complications, of which more than half became apparent during the intervention phase, i.e. during the second week of illness. These early complications may have been present at baseline and – unlike in our study – it has been proposed not to consider them as treatment failures in RCTs.<sup>33</sup> When we excluded early complications from the primary endpoint, we confirmed non-inferiority (**Supplementary Table S2**).

The strengths of the trial were the pragmatic approach with globally available oral medication as first choice, the strict definition of low-risk SAB, and the choice of a composite primary endpoint specific to SAB.

The trial has several limitations. It was open-label, since intravenous administration of placebo in the oral switch group would have interfered with the aim of facilitating early discharge. The large number of patients screened raises the question, whether low-risk SAB is a clinically relevant entity. However, screening-to-enrolment ratios above 1:25 are typical for trials on uncomplicated SAB,<sup>33</sup> and upcoming platform trials may allow more efficient recruitment.<sup>34</sup> Further, the trial was terminated due to slow recruitment and did not reach the initially planned sample size. Nevertheless, results were sufficiently precise to draw robust conclusions.

Possibly, a more aggressive diagnostic approach, *e.g.* involving FDG-PET/CT,<sup>35</sup> a more stringent evaluation of the need for echocardiography such as the VIRSTA score,<sup>36</sup> or novel biomarkers<sup>37</sup> may allow to more accurately identify and predict deep-seated infections. Nevertheless, careful assessment of the individual patient, preferably by consulting an infectious diseases expert, is necessary to correctly assign a patient to the low-risk group and close monitoring for early detection of complications and potential prolongation of antimicrobial therapy is advised.

In summary, we found that an early oral switch was non-inferior to standard intravenous antimicrobial therapy in low-risk SAB. Provided a rigorous clinical assessment and close monitoring for complications, this study supports a change in treatment guidelines to allow for the possibility of an early oral switch antimicrobial therapy in patients with thoroughly documented low-risk SAB.



## Contributors

AJK was the Coordinating Principal Investigator and sponsor's representative. GF served as "Leiter klinische Prüfung" until July 2016. AJK, HS, WVK, SR, MH conceived and designed the study. AJK, AR, MN managed the trial. AJK, LELC, JRB, JMC, MDN, GF, NJ, WVK, SR, RL, LC, LB, AL, KK, CM, AS, SH, BF, ML, JPT, AD, TG, DB, TW, SR, JK, MLM, EF, HS, FM, and PT were site investigators, involved in participant recruitment and data collection. MH, AA, and AJK developed the statistical analysis plan. AJK, AR, AA, and MH performed data curation. MH and AA did the formal statistical analysis. AJK, MH, AA, and HS wrote the first draft of the manuscript, which was reviewed by all authors.

## **Further Members of the SABATO trial group with linked authorship in pubmed:**

Adoración Valiente, Marina de Cueto (Clinical Unit of Infectious Diseases and Microbiology, Hospital Universitario Virgen Macarena, Department of Medicine, University of Sevilla, Biomedicine Institute of Sevilla (IBiS) / CSIC, CIBER de Enfermedades Infecciosas (CIBERINFEC), Spain), Ángel Rodríguez (Clinical Microbiology Department (UCEIMP), Virgen del Rocío University Hospital / Institute of Biomedicine of Seville (IBiS)/CSIC/University of Seville/CIBERINFEC, Seville, Spain), José Molina (Infectious Diseases Department (UCEIMP), Virgen del Rocío University Hospital / Institute of Biomedicine of Seville (IBiS) / CSIC / University of Seville / CIBERINFEC, Seville, Spain), Julia Fischer (Department I of Internal Medicine, Division of Infectious Diseases, University of Cologne, Kerpener Str. 62, 50937 Köln, Germany), Gregor Paul (Department I of Internal Medicine, Division of Infectious Diseases, University of Cologne, Kerpener Str. 62, 50937 Köln, Germany), Reinhild Prinz-Langenohl (Clinical Trials Centre Cologne (CTCC), University of Cologne, Gleueler Str. 269, 50924 Cologne, Germany), Gabriele Peyerl-Hoffmann, Daniel Hornuß (Division of Infectious Diseases, Department of Medicine II, Faculty of Medicine and University Medical Centre Freiburg, 79106 Freiburg, Germany), Sébastien Gallien (Infectious Diseases Department, Henri-Mondor University Hospital, AP-HP, 94000 Creteil, France), Vincent Fihman (Bacteriology and Infection Control Unit, Department of Prevention, Diagnosis, and Treatment of Infections, Henri-Mondor University Hospital, AP-HP, 94000 Creteil, France), Marion Lacasse (Service de Médecine Interne et Maladies Infectieuses, Centre Hospitalier Régional Universitaire de Tours, 37000 Tours, France), Francois Coustillères (Service de Médecine Interne et Maladies Infectieuses, Centre Hospitalier Régional Universitaire de Tours, 37000 Tours, France), Christian Becker (Helios Klinikum Krefeld, Lutherplatz 40, 47805 Krefeld, Germany), André Fuchs (Internal Medicine III - Gastroenterology and Infectious Diseases, University Hospital of Augsburg, Germany), Laura Morata (Department of Infectious Diseases, Hospital Clínic, IDIBAPS, Barcelona, Spain), Sebastian Weis (Institute for Infectious Diseases and Infection Control, Jena University Hospital – Friedrich Schiller University Jena, Am Klinikum 1, 07747 Jena, Germany), Diane Ponscarne (Infectious Diseases Department, Saint-Louis hospital, 1 avenue Claude Vellefaux 75010, Paris, France), Lydie Khatchatourian (Department of Infectious Diseases, Centre Hospitalier de Cornouaille, Quimper, France), Elisabeth Rouveix (Internal Medicine Department, Ambroise Paré University Hospital, 92100 Boulogne-Billancourt, France), Dominique Merrien (Infectious diseases department, CHD Vendée, Boulevard Stéphane Moreau, 85925 La Roche-sur-Yon, France), Raphaël Lecomte (Unité maladies infectieuses et tropicales, CHU de Nantes, 1, Place Alexis Ricordeau, Nantes, France), Jacobien Veenemans (Department of Medical Microbiology, Amphia Hospital Breda, Molengracht 21, 4818 CK Breda, The Netherlands), Helem H. Vilchez (Infectious Diseases Unit, Internal Medicine Department, Hospital Universitari Son Espases, Fundació Institut d'Investigació Sanitària Illes Balears (IdISBa), 07120 Palma de Mallorca, Spain), Violaine Tolsma (Service de maladies infectieuses, Centre Hospitalier d'Annecy Genevois, 1 Avenue de l'Hôpital, 74370 Epagny Metz-Tessy France), Johanna Kessel (Medical Clinic: Haematology, Oncology, Haemostaseology, Rheumatology, Infectious Diseases, University Hospital Frankfurt, Theodor-Stern-Kai 7, 60590 Frankfurt, Germany), Marc J.M. Bonten (Julius Center for Health Sciences and Primary Care, UMC Utrecht, Utrecht University, Utrecht, The Netherlands), Jan Rupp (Clinic for Infectious Diseases and Microbiology, University Hospital Schleswig-Holstein, Campus Lübeck, Ratzeburger Allee 160, 23538 Lübeck, Germany), Laurent Hocqueloux (Service des Maladies Infectieuses, Centre Hospitalier Régional, Orléans, France), Frederic Lucht (Clinical investigation center-Inserm-CIC1408, hôpital Nord, CHU de Saint-Étienne, 42055 Saint-Étienne cedex 02, France), Jean-Paul Stahl (Infectious diseases, CHU

Grenoble, 38043 Grenoble, France), Anne L.M. Vlek (Department of Medical Microbiology and Immunology, Diaconessenhuis, Utrecht, The Netherlands)

### **Declaration of Interests**

AJK received funding for this study from the Deutsche Forschungsgemeinschaft and is chairperson of the German Sepsis Society. HSe received grants or research support from the Bundesministerium für Bildung und Forschung (BMBF), Germany and the German Center for Infection Research (DZIF), and has been a consultant for Debiopharm, Gilead, MSD, and Shionogi. JF has received travel support by Pfizer. JRB has received grants or research support from the Spanish Network for Research in Infectious Diseases (REIPI) and CIBERINFEC, Instituto de Salud Carlos III, Spanish Ministry of Science and Innovation. JRB received research support by Plan Nacional de I+D+i 2013-2016 and Instituto de Salud Carlos III, Ministerio de Ciencia e Innovación, Spanish Network for Research in Infectious Diseases (REIPI RD16/0016/00001) and CIBERINFEC (CB21/13/00012), co-financed by European Development Regional Fund “A way to achieve Europe”, Operative Program Intelligence Growth 2014-2020. SH received honoraria and travel support from Shionogi, Pfizer, Infectopharm, and AdvanzPharma. All other authors declared no conflicting interests.

### **Data sharing**

Data collected for the study will be available (for Details see Supplementary Material).

### **Acknowledgements**

The trial was funded by the Deutsche Forschungsgemeinschaft (project number 217917502 to A.J.K.). We thank participants and staff from all sites who contributed to the trial (listed in the **Supplementary Material**). We thank Vance G. Fowler, Stephan Harbarth, and Guy Thwaites for expert opinion in the Trial Steering Committee, Vincent LeMoing, Miquel Pujol Rojo, and Estée Török for participation in the Clinical Review Committee, and Walter E. Häfeli, Alexandra Heininger, Geraldine Rauch for participation in the Data Monitoring Committee.

### **Supplement**

Supplementary Material  
Study Protocol  
Statistical Analysis Plan

## References

- 1 Kern WV, Rieg S. Burden of bacterial bloodstream infection—a brief update on epidemiology and significance of multidrug-resistant pathogens. *Clin Microbiol Infect* 2020; **26**: 151–57. <https://doi.org/10.1016/j.cmi.2019.10.031>.
- 2 Bai AD, Lo CKL, Komorowski AS, et al. Staphylococcus aureus bacteraemia mortality: a systematic review and meta-analysis. *Clin Microbiol Infect* 2022. <https://doi.org/10.1016/j.cmi.2022.03.015>.
- 3 Kaasch AJ, Barlow G, Edgeworth JD, et al. Staphylococcus aureus bloodstream infection: a pooled analysis of five prospective, observational studies. *J Infect* 2014; **68**: 242–51. <https://doi.org/10.1016/j.jinf.2013.10.015>.
- 4 Kaasch AJ, Kern WV, Joost I, Hellmich M, Seifert H, Rieg S. Effect of Clinically Uninfected Orthopedic Implants and Pacemakers/AICDs in Low-Risk Staphylococcus aureus Bloodstream Infection on Crude Mortality Rate: A Post Hoc Analysis of a Large Cohort Study. *Open Forum Infect Dis* 2019; **6**: ofz170. <https://doi.org/10.1093/ofid/ofz170>.
- 5 Bupha-Intr O, Blackmore T, Bloomfield M. Efficacy of Early Oral Switch with  $\beta$ -Lactams for Low-Risk Staphylococcus aureus Bacteremia. *Antimicrob Agents Chemother* 2020; **64**: e02345-19. <https://doi.org/10.1128/AAC.02345-19>.
- 6 Willekens R, Puig-Asensio M, Ruiz-Camps I, et al. Early Oral Switch to Linezolid for Low-risk Patients with Staphylococcus aureus Bloodstream Infections: A Propensity-matched Cohort Study. *Clin Infect Dis* 2019; **69**: 381–87. <https://doi.org/10.1093/cid/ciy916>.
- 7 Liu C, Bayer A, Cosgrove SE, et al. Clinical practice guidelines by the Infectious Diseases Society of America for the treatment of methicillin-resistant Staphylococcus aureus infections in adults and children. *Clin Infect Dis* 2011; **52**: e18-55. <https://doi.org/10.1093/cid/ciq146>.
- 8 Brown NM, Goodman AL, Horner C, Jenkins A, Brown EM. Treatment of methicillin-resistant Staphylococcus aureus (MRSA): updated guidelines from the UK. *JAC Antimicrob Resist* 2021; **3**: dlaa114. <https://doi.org/10.1093/jacamr/dlaa114>.
- 9 Gudiol F, Aguado JM, Almirante B, et al. Executive summary of the diagnosis and treatment of bacteremia and endocarditis due to Staphylococcus aureus. A clinical guideline from the Spanish Society of Clinical Microbiology and Infectious Diseases (SEIMC). *Enferm Infecc Microbiol Clin* 2015; **33**: 626–32. <https://doi.org/10.1016/j.eimc.2015.03.014>.
- 10 Dagher M, Fowler VG, Wright PW, Staub MB. A Narrative Review of Early Oral Stepdown Therapy for the Treatment of Uncomplicated Staphylococcus aureus Bacteremia: Yay or Nay? *Open Forum Infect Dis* 2020; **7**: ofaa151. <https://doi.org/10.1093/ofid/ofaa151>.
- 11 Iversen K, Ihlemann N, Gill SU, et al. Partial Oral versus Intravenous Antibiotic Treatment of Endocarditis. *N Engl J Med* 2019; **380**: 415–24. <https://doi.org/10.1056/NEJMoa1808312>.
- 12 Li H-K, Rombach I, Zambellas R, et al. Oral versus Intravenous Antibiotics for Bone and Joint Infection. *N Engl J Med* 2019; **380**: 425–36. <https://doi.org/10.1056/NEJMoa1710926>.
- 13 Jorgensen SCJ, Lagnf AM, Bhatia S, Shamim M-D, Rybak MJ. Sequential intravenous-to-oral outpatient antibiotic therapy for MRSA bacteraemia: one step closer. *J Antimicrob Chemother* 2019; **74**: 489–98. <https://doi.org/10.1093/jac/dky452>.
- 14 Kouijzer IJE, van Leerdam EJ, Gompelman M, et al. Intravenous to Oral Switch in Complicated Staphylococcus aureus Bacteremia without Endovascular Infection: A Retrospective Single-Center Cohort Study. *Clin Infect Dis* 2021; **73**: 895–98. <https://doi.org/10.1093/cid/ciab156>.
- 15 Mun SJ, Kim S-H, Huh K, et al. Oral step-down therapy in patients with uncomplicated Staphylococcus aureus primary bacteremia and catheter-related bloodstream infections. *J Chemother* 2022: 1–7. <https://doi.org/10.1080/1120009X.2022.2031469>.
- 16 Yeager SD, Oliver JE, Shorman MA, Wright LR, Veve MP. Comparison of linezolid step-down therapy to standard parenteral therapy in methicillin-resistant Staphylococcus aureus bloodstream infections. *Int J Antimicrob Agents* 2021; **57**: 106329. <https://doi.org/10.1016/j.ijantimicag.2021.106329>.
- 17 Pérez-Rodríguez MT, Sousa A, Moreno-Flores A, et al. The benefits and safety of oral sequential antibiotic therapy in non-complicated and complicated Staphylococcus aureus bacteremia. *Int J Infect Dis* 2021; **102**: 554–60. <https://doi.org/10.1016/j.ijid.2020.10.097>.

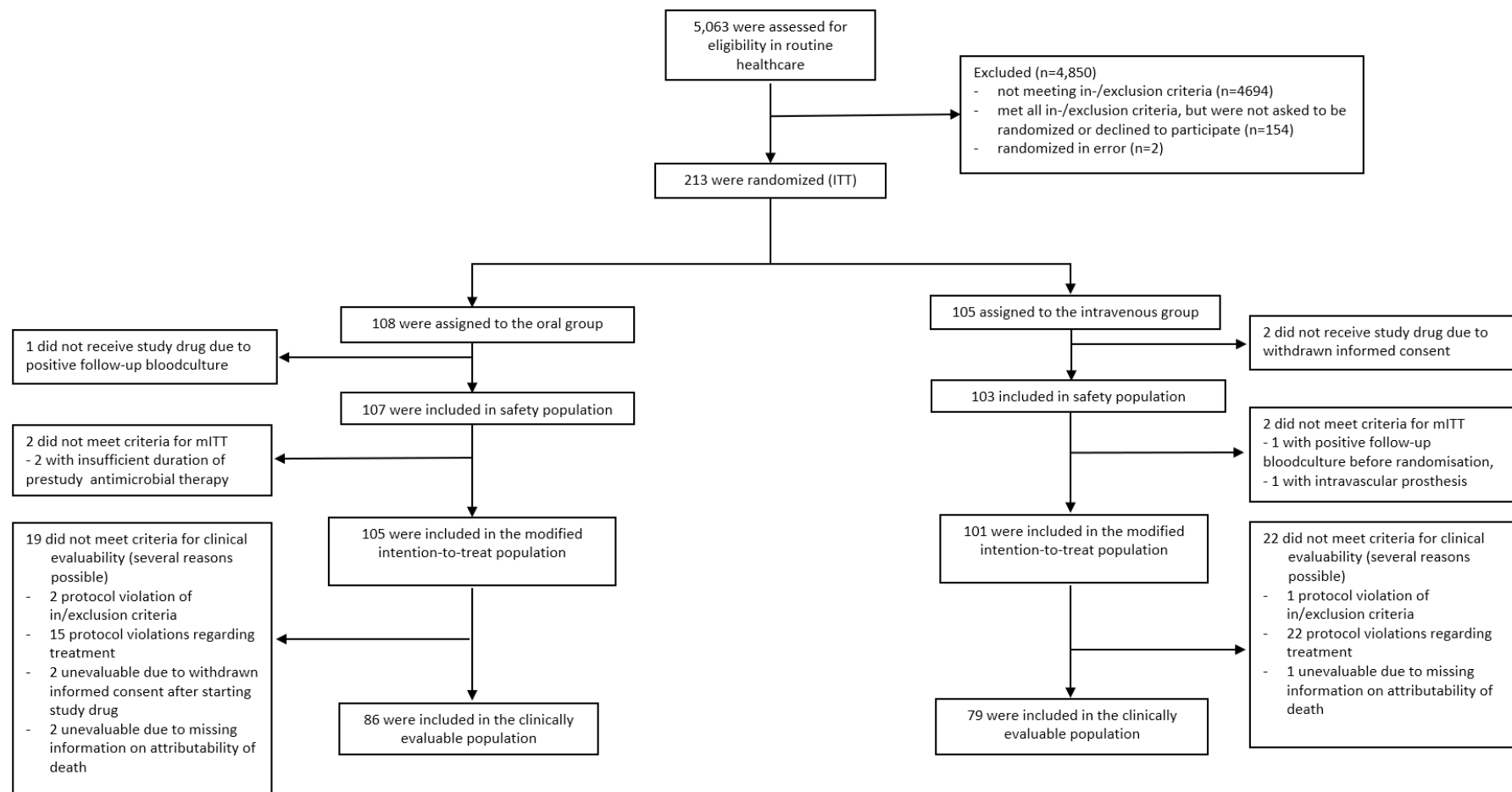
- 18 Itoh N, Hadano Y, Saito S, Myokai M, Nakamura Y, Kurai H. Intravenous to oral switch therapy in cancer patients with catheter-related bloodstream infection due to methicillin-sensitive *Staphylococcus aureus*: A single-center retrospective observational study. *PLoS One* 2018; **13**: e0207413. <https://doi.org/10.1371/journal.pone.0207413>.
- 19 Diego-Yagüe I, Mora-Vargas A, Vázquez-Comendador JM, et al. Sequential oral antibiotic in uncomplicated *Staphylococcus aureus* bacteraemia: a propensity-matched cohort analysis. *Clin Microbiol Infect* 2023; **29**: 744–50. <https://doi.org/10.1016/j.cmi.2023.02.001>.
- 20 Liu C, Strnad L, Beekmann SE, Polgreen PM, Chambers HF. Clinical Practice Variation Among Adult Infectious Disease Physicians in the Management of *Staphylococcus aureus* Bacteremia. *Clin Infect Dis* 2019; **69**: 530–33. <https://doi.org/10.1093/cid/ciy1144>.
- 21 Hospenthal DR, Waters CD, Beekmann SE, Polgreen PM. Practice Patterns of Infectious Diseases Physicians in Transitioning from Intravenous to Oral Therapy in Patients with Bacteremia. *Open Forum Infect Dis* 2020; **7**: ofz386. <https://doi.org/10.1093/ofid/ofz386>.
- 22 Kaasch AJ, Fätkenheuer G, Prinz-Langenohl R, et al. Early oral switch therapy in low-risk *Staphylococcus aureus* bloodstream infection (SABATO): study protocol for a randomized controlled trial. *Trials* 2015; **16**: 450. <https://doi.org/10.1186/s13063-015-0973-x>.
- 23 Kaasch AJ, Rommerskirchen A, Hellmich M, et al. Protocol update for the SABATO trial: a randomized controlled trial to assess early oral switch therapy in low-risk *Staphylococcus aureus* bloodstream infection. *Trials* 2020; **21**: 175. <https://doi.org/10.1186/s13063-020-4102-0>.
- 24 U.S. Department of Health and Human Services, National Institutes of Health, National Cancer Institute. Common Terminology Criteria for Adverse Events Version 4.0 (CTCAE), 2009.
- 25 Zhao G. Tests of non-null hypothesis on proportions for stratified data. *Stat Med* 2008; **27**: 1429–46. <https://doi.org/10.1002/sim.3023>.
- 26 Committee for Medicinal Products for Human Use. Guideline on the evaluation of medicinal products indicated for treatment of bacterial infections (CPMP/EWP/558/95 rev 2)., 2011.
- 27 Committee for Medicinal Products for Human Use. Points to consider on switching between superiority and non-inferiority (CPMP/EWP/482/99)., 2000.
- 28 Committee for Medicinal Products for Human Use. Guideline on the evaluation of medicinal products indicated for treatment of bacterial infections (CPMP/EWP/558/95 Rev 3)., 2022.
- 29 Fine JP, Gray RJ. A Proportional Hazards Model for the Subdistribution of a Competing Risk. *Journal of the American Statistical Association* 1999; **94**: 496–509. <https://doi.org/10.1080/01621459.1999.10474144>.
- 30 Schrenzel J, Harbarth S, Schockmel G, et al. A randomized clinical trial to compare fleroxacin-rifampicin with flucloxacillin or vancomycin for the treatment of staphylococcal infection. *Clin Infect Dis* 2004; **39**: 1285–92. <https://doi.org/10.1086/424506>.
- 31 Thwaites GE, Scarborough M, Szubert A, et al. Adjunctive rifampicin for *Staphylococcus aureus* bacteraemia (ARREST): a multicentre, randomised, double-blind, placebo-controlled trial. *Lancet* 2018; **391**: 668–78. [https://doi.org/10.1016/S0140-6736\(17\)32456-X](https://doi.org/10.1016/S0140-6736(17)32456-X).
- 32 Holland TL, Raad I, Boucher HW, et al. Effect of Algorithm-Based Therapy vs Usual Care on Clinical Success and Serious Adverse Events in Patients with Staphylococcal Bacteremia: A Randomized Clinical Trial. *JAMA* 2018; **320**: 1249–58. <https://doi.org/10.1001/jama.2018.13155>.
- 33 Holland TL, Chambers HF, Boucher HW, et al. Considerations for Clinical Trials of *Staphylococcus aureus* Bloodstream Infection in Adults. *Clin Infect Dis* 2019; **68**: 865–72. <https://doi.org/10.1093/cid/ciy774>.
- 34 Tong SYC, Mora J, Bowen AC, et al. The *Staphylococcus aureus* Network Adaptive Platform Trial Protocol: New Tools for an Old Foe. *Clin Infect Dis* 2022; **75**: 2027–34. <https://doi.org/10.1093/cid/ciac476>.
- 35 Ghanem-Zoubi N, Kagna O, Abu-Elhija J, et al. Integration of FDG-PET/CT in the Diagnostic Workup for *Staphylococcus aureus* Bacteremia: A Prospective Interventional Matched-cohort Study. *Clin Infect Dis* 2021; **73**: e3859-e3866. <https://doi.org/10.1093/cid/ciaa929>.
- 36 Tubiana S, Duval X, Alla F, et al. The VIRSTA score, a prediction score to estimate risk of infective endocarditis and determine priority for echocardiography in patients with *Staphylococcus aureus* bacteremia. *J Infect* 2016; **72**: 544–53. <https://doi.org/10.1016/j.jinf.2016.02.003>.

- 37 Cao Y, Guimaraes AO, Peck MC, et al. Risk stratification biomarkers for *Staphylococcus aureus* bacteraemia. *Clin Transl Immunology* 2020; **9**: e1110. <https://doi.org/10.1002/cti2.1110>.

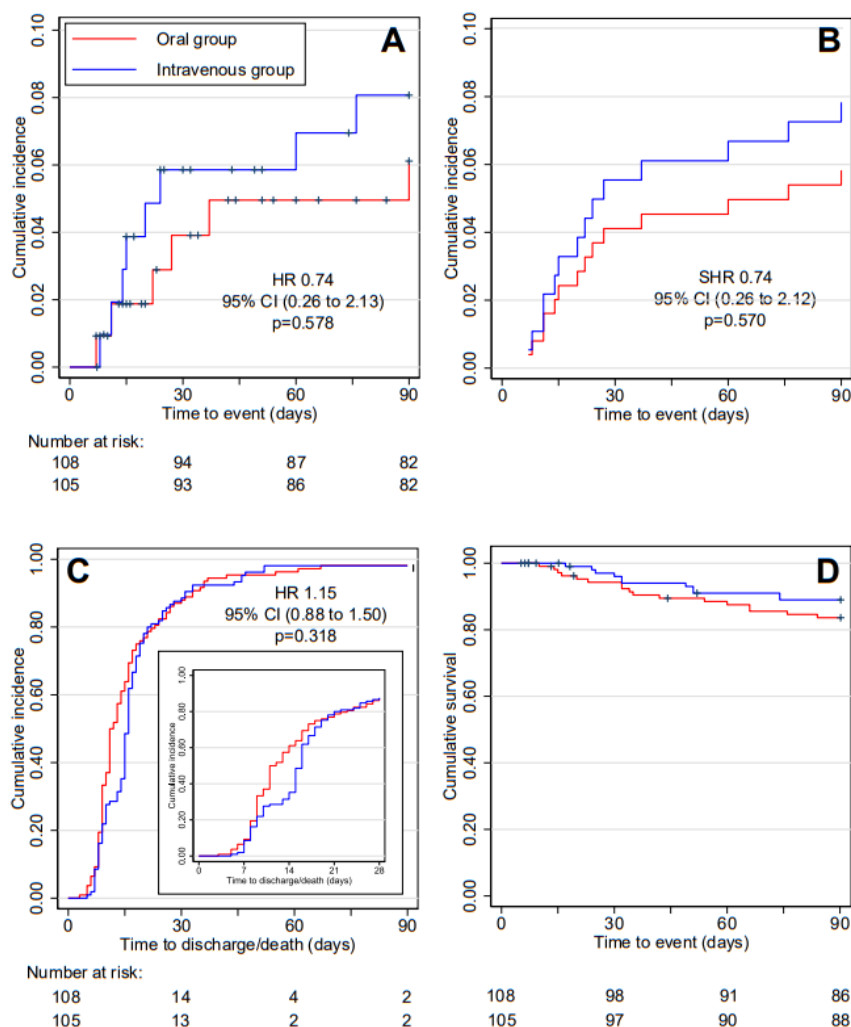
## Figures and Tables



**Figure 1: Study flow chart**



**Figure 2:** Time course of the primary and secondary outcomes in the intention-to-treat population from onset of SAB. (A) Cumulative incidence of the primary endpoint (SAB-related complications within 90 days) with hazard ratio (HR) estimated from Cox regression. Participants who died from non-attributable death were censored; (B) cumulative incidence of the primary endpoint accounting for non-attributable death as competing event with subdistribution hazard ratio (SHR) estimated from the Fine and Gray model for competing risks; (C) Kaplan-Meier estimates for the length of hospital stay from onset of SAB; discharged participants and participants who died in hospital were counted as events, with hazard ratio estimated from Cox regression; inset: enlarged part that illustrates differences in discharge between study arms. (D) Cumulative survival with hazard ratio (HR) estimated from Cox regression.



**Table 1:** Baseline characteristics of the intention-to-treat (ITT) and the clinically evaluable (CE) population. The number of missing values is given when applicable.

Characteristic	Intention-to-treat population		Clinically evaluable population	
	Oral switch group (n=108)	Intravenous group (n=105)	Oral switch group (n=86)	Intravenous group (n=79)
Age in years – mean $\pm$ SD	64.4 $\pm$ 16.8	62.6 $\pm$ 17.6	62.4 $\pm$ 17.1	62.1 $\pm$ 17.8
Male sex – no. (%)	71 (65.7%)	77 (73.3%)	59 (68.6%)	58 (73.4%)
Body mass index – mean $\pm$ SD*	27.6 $\pm$ 6.7	25.6 $\pm$ 5.4	27.4 $\pm$ 6.5	26.1 $\pm$ 5.3
Length of hospital stay before randomization – days				
Median	10	11	10	10
Interquartile range	7-14	7-15	7-13	7-13
Intervention performed to remove or drain the infective focus – no. (%)	9 (8.3%)	14 (13.3%)	5 (5.8%)	10 (12.7%)
Echocardiography (TTE and/or TEE) performed at randomization $\pm$ 7 days – no. (%)	69 (63.9%)	60 (57.1%)	55 (64.0%)	46 (58.2%)
CRP at baseline visit – mg/L†				
Median	35	23	35	20
Interquartile range; no. missing values	13-70; 13	10-59; 15	14-64; 11	11-52; 13
Resistance of <i>S. aureus</i> isolate to				
Methicillin – no. (%)	6 (5.6%)	10 (9.5%)	4 (4.7%)	5 (6.3%)
Clindamycin – no. (%); no. missing values	12 (11.5%); 4	11 (11.0%); 5	10 (12.2%); 4	7 (9.5%); 5
Trimethoprim-sulfamethoxazole – no. (%); no. missing values	1 (0.9%); 2	3 (2.9%); 1	0 (0%); 2	2 (2.5%)

Main focus of infection				
Peripheral venous catheter	47 (43.5%)	46 (43.8%)	41 (47.7%)	35 (44.3%)
Central venous catheter	24 (22.2%)	25 (23.8%)	18 (20.9%)	16 (20.3%)
Skin and soft tissue infection	26 (24.1%)	22 (21.0%)	19 (22.1%)	19 (24.1%)
Other focus‡	5 (4.6%)	4 (3.8%)	4 (4.7%)	3 (3.8%)
Focus not identified	6 (5.6%)	8 (7.6%)	4 (4.7%)	6 (7.6%)
Comorbidities – no. (%); no. missing values				
Moderate or severe liver disease	11 (10.2%)	4 (3.8%)	8 (9.3%)	2 (2.5%)
Chronic renal failure	17 (15.7%); 1	18 (17.1%)	10 (11.8%); 1	12 (15.4%)
End-stage renal disease	9 (8.4%); 1	5 (4.8%)	5 (5.9%); 1	4 (5.1%)
Chronic lung disease	14 (13.1%); 1	17 (16.2%)	10 (11.6%)	11 (13.9%)
Diabetes without end-organ damage	25 (23.1%)	18 (17.1%)	21 (24.4%)	11 (13.9%)
Diabetes with end-organ damage	19 (17.6%)	10 (9.5%)	13 (15.1%)	9 (11.4%)
Any immunosuppression§	16 (14.8%)	16 (15.4%); 1	12 (14.0%)	14 (17.9%); 1
Charlson Comorbidity Index				
Median	3	3	2	3
Interquartile range	1-5	1-4	1-4	1-4
Intravenous antimicrobials before randomization – days				
Median	6	6	7	6
Interquartile range	6-7	5-7	6-7	5-7

\* The body mass index was calculated as weight in kilograms divided by the square of the height in meters.

† Laboratory results were from the day of randomization. If not available, the closest result within 3 days before start of study drug treatment was accepted.

‡ In the intention-to-treat population the sites of “other focus” were for the oral switch group: urinary tract (n=2), suspected pulmonary focus (n=2), and cholecystitis (n=1); and for the intravenous group: urinary tract (n=4).

§ Any immunosuppression comprises systemic corticosteroid therapy for more than one week, current anti-neoplastic chemotherapy, any other immuno-suppressive therapy, and organ transplant. A transplanted organ (kidney) was present in a single participant, which would have been an exclusion criterion. The CRC decided to include the participant in the CE population since the transplant was present for more than 10 years.

**Table 2:** Primary and secondary outcome variables for the intention-to-treat and the clinically evaluable population. Estimates denote the treatment difference between the oral and intravenous group; negative values favour oral treatment (except for survival). SAB, *Staphylococcus aureus* bloodstream infection

End point	Intention-to-treat population			Clinically evaluable population		
	Oral switch group (n=108)	Intravenous group (n=105)	Estimate, 95% CI	Oral switch group (n=86)	Intravenous group (n=79)	Estimate, 95% CI
<b>Primary end point</b>						
SAB-related complication within 90 days – no. (%)	14 (13.0%)	13 (12.4%)	0.7 [-7.8 to 9.1] %	3 (3.5%)	4 (5.1%)	-2.9 [-9.6 to 3.9] %
<b>Primary endpoint reason for failure – no. (%)</b>						
SAB-related complication diagnosed	6 (5.6%)	8 (7.6%)	-2.1 [-9.7 to 5.5] %	3 (3.5%)	4 (5.1%)	-1.6 [-9.0 to 5.8] %
Relapsing SAB	3 (2.8%)	4 (3.8%)	-1.0 [-6.8 to 4.7] %	2 (2.3%)	2 (2.5%)	-0.2 [-5.1 to 4.7] %
Deep-seated infection with <i>S. aureus</i>	5 (4.6%)	8 (7.6%)	-3.0 [-10.4 to 4.4] %	3 (3.5%)	4 (5.1%)	-1.6 [-9.0 to 5.8] %
Death attributable to SAB	2 (1.9%)	0 (0%)	1.9 [-1.6 to 5.3] %	1 (1.2%)	0 (0%)	1.2 [-2.3 to 4.6] %
Failure due to missing outcome data	8 (7.4%)	5 (4.8%)	2.7 [-4.7 to 10.0] %			
Attributability of death non-evaluable	3 (2.8%)	1 (1.0%)	1.8 [-2.7 to 6.4] %			
<b>Secondary endpoints</b>						
Length of hospital stay from SAB onset – days						
Median	12	16	-3.1 [-7.5 to 1.4]**	11	15	-3.0 [-7.3 to 1.4]**
Interquartile range	9-19	10-19		9-16	10-18	
Participants with complications of intravenous administration – no. (%); missing*						
Any complication	9 (9.3%); 11	17 (17.0%); 5	-7.9 [-17.6 to 1.9] %	6 (7.2%); 3	13 (16.9%); 2	-9.5 [-20.5 to 1.5] %
Chemical phlebitis	7 (7.2%)	9 (9.0%)	-2.1 [-10.1 to 5.9] %	5 (6.0%)	8 (10.4%)	-4.3 [-13.8 to 5.2] %
Infectious (thrombo)-phlebitis	0 (0%)	2 (2.0%)	-1.9 [-5.5 to 1.7] %	0 (0%)	2 (2.6%)	-2.5 [-7.2 to 2.2] %
Other†	2 (2.1%)	6 (6.0%)	-3.9 [-9.9 to 2.2] %	1 (1.2%)	3 (3.9%)	-2.6 [-8.6 to 3.4] %
Participants with <i>C. difficile</i> infection – no. (%); no. missing‡						
	2 (2.0%); 8	2 (2.0%); 7	-0.001 [-3.8 to 3.7] %	2 (2.5%); 7	1 (1.4%); 5	1.1 [-4.0 to 6.2] %



Survival (Kaplan-Meier method)						
14-day survival – % (number of deaths)	98.1±1.3% (2)	100.0±0.0% (0)	-1.9 [-4.5 to 0.7] %	98.8±1.2% (1)	100.0±0.0% (0)	-1.2 [-3.4 to 1.1] %
30-day survival – % (number of deaths)	94.3±2.3% (6)	96.0±2.0% (4)	-1.7 [-7.6 to 4.2] %	98.8±1.2% (1)	98.7±1.3% (1)	0.1 [-3.3 to 3.5] %
90-day survival – % (number of deaths)	83.6±3.6% (17)	89.0±3.1% (11)	-5.4 [-14.8 to 4.0] %	92.9±2.8% (6)	94.8±2.5% (4)	-1.9 [-9.3 to 5.5] %

\* Complications of intravenous administrations may be caused by study drug as well as non-study drug.

† In the intention-to-treat population “other” complications of intravenous therapy were for the oral switch group: hematoma (n=1), inflammation at a previous peripheral catheter insertion site (n=1); and for the intravenous group: extravasation (n=1), refusal of renewed catheter placement (n=3), clogged intravenous access (n=2).

‡ “Missings” were participants with diarrhea that did not undergo *C. difficile* testing.

\*\* Difference of the mean length of hospital stay

**Table 3:** Adverse events and serious adverse events in the safety population occurring within 90 days. Common Terminology Criteria for Adverse Events (CTCAE) were recorded from grade 3 and above and listed by system organ class and preferred term. System organ class terms for serious adverse events occurring in more than 5% of participants and preferred terms with at least two serious adverse events are shown. Preferred terms were aggregated as denoted. P: Fisher’s exact test comparing the number of participants with at least one event.

Event	Oral switch group (n=107)		Intravenous group (n=103)		p
	Participants with events – no. (%)	Total events – no.	Participants with events – no. (%)	Total events – no.	
<b>Any adverse event</b>	52 (48.6%)	89	42 (40.8%)	61	0.270
<b>Any serious adverse event</b>	36 (33.6%)	60	27 (26.2%)	40	0.292
Drug-related*	3 (2.8%)	3	0	0	
<b>Infections and infestations</b>	23 (21.5%)	27	17 (16.5%)	18	0.384
Sepsis, septic shock, bacteraemia, endocarditis		7		5	
Urinary tract infection, cystitis		5		3	
Respiratory tract infection, pneumonia, bronchitis		4		2	
Wound infection, skin infection		4		2	
Arthritis, osteomyelitis		2		2	
<i>C. difficile</i> infection		1		1	
<b>General disorders and administration site conditions</b>	11 (10.3%)	13	4 (3.9%)	4	0.106
Fever		5		1	
Oedema		3		0	
Asthenia, general physical deterioration		2		1	
Severe Pain		2		0	
<b>Cardiac disorders</b>	9 (8.4%)	9	5 (4.9%)	5	0.409
Cardio-(respiratory) arrest		4		1	
Cardiac failure		1		3	
Myocardial ischemia, myocardial infarction		2		0	
<b>Respiratory, thoracic and mediastinal disorders</b>	4 (3.7%)	4	10 (9.7%)	10	0.101
Pulmonary embolism		1		2	
Dyspnoea		1		1	
Exacerbated chronic obstructive pulmonary disease		1		1	

\* Drug related serious adverse events (classified as certain or probable/likely) were cardiac failure, *C. difficile* colitis, and fever.