

# Impact of PET reconstruction on A $\beta$ -amyloid quantitation in cross-sectional and longitudinal analyses

Gihan P. Ruwanpathirana<sup>1,2</sup>, Robert C. Williams<sup>2</sup>, Colin L. Masters<sup>3,4</sup>, Christopher C. Rowe<sup>3,4,5</sup>, Catherine E. Davey<sup>1,2</sup>, Leigh A. Johnston<sup>1,2</sup>

1 Department of Biomedical Engineering, The University of Melbourne, Melbourne, VIC, Australia.

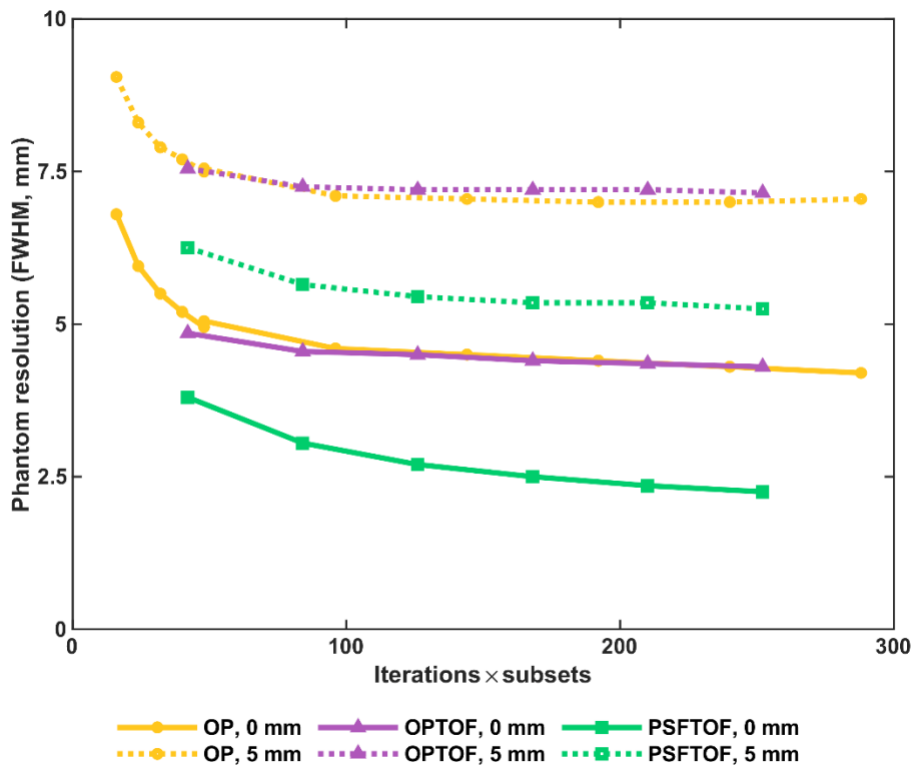
2 Melbourne Brain Centre Imaging Unit, The University of Melbourne, Melbourne, VIC, Australia

3 Florey Institute of Neurosciences and Mental Health, The University of Melbourne, Melbourne, VIC, Australia

4 The Australian Dementia Network (ADNET), Melbourne, Australia

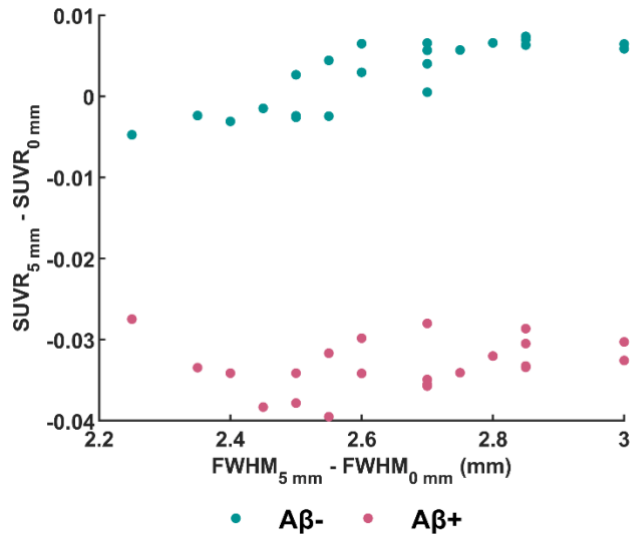
5 Department of Molecular Imaging & Therapy, Melbourne, Austin Health, VIC, Australia

## SUPPLEMENTARY MATERIALS

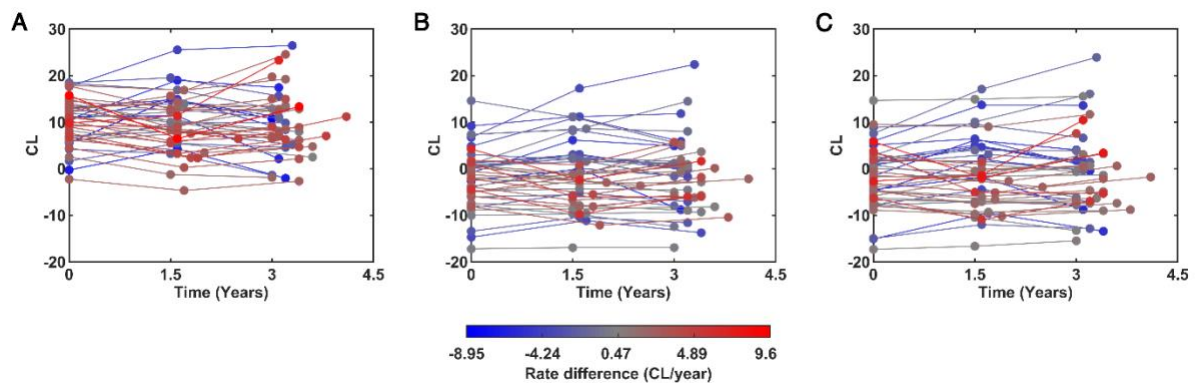


**FIGURE S1: Iteration update vs phantom resolution.** Comparison of the barrel phantom calculated

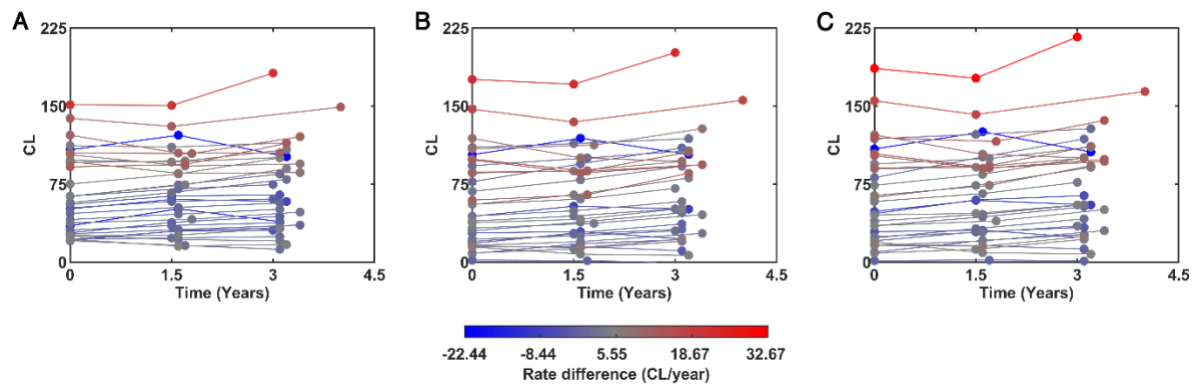
spatial resolution (FWHM) with the iteration update while using a post-reconstruction Gaussian smoothing of 0 mm and 5 mm.



**FIGURE S2: The impact of post-reconstruction smoothing on Aβ SUVR.** Change in mean SUVR for each reconstruction group after the application of a 5 mm post-reconstruction Gaussian smoothing. Aβ- and Aβ+ groups are shown separately. Note: Error bars are not included as they are too small to be legible.



**FIGURE S3: Summary of Aβ- longitudinal data reconstructed with low-, medium- and high-resolution reconstruction configurations.** The impact of PET spatial resolution on the Aβ accumulation rate difference



**FIGURE S4: Summary of Aβ+ longitudinal data reconstructed with low-, medium- and high-resolution reconstruction configurations.** The impact of PET spatial resolution on the Aβ accumulation rate difference.

**TABLE S1:** Demographics of Cross-sectional and Longitudinal study datasets.

Study Type	Cross-sectional		Longitudinal	
	A $\beta$ -	A $\beta$ +	A $\beta$ -	A $\beta$ +
<b>A<math>\beta</math> group</b>	A $\beta$ -	A $\beta$ +	A $\beta$ -	A $\beta$ +
<b>Sample size</b>	44	45	46	33
<b>Sex. F (%)</b>	26 (59)	26 (58)	22 (47.83)	13 (39.39)
<b>Age <math>\pm</math> SD</b>	71 $\pm$ 3.77	70.78 $\pm$ 3.96	71.91 $\pm$ 4.51	74.00 $\pm$ 5.59
<b>% Right hand</b>	91	91	89*	84*
<b>% APOE4</b>	21*	70**	15	39
<b>CU, MCI, AD</b>	41, 0, 0***	37, 4, 0****	41, 4, 1	24, 4, 4*
<b>MMSE <math>\pm</math> SD</b>	27.9 $\pm$ 1.22	27.71 $\pm$ 1.33	29.09 $\pm$ 0.98	27.52 $\pm$ 2.83
<b>CDR <math>\pm</math> SD</b>	0 $\pm$ 0*	0.03 $\pm$ 0.13	0.05 $\pm$ 0.19	0.17 $\pm$ 0.30
<b>CDR-SoB <math>\pm</math> SD</b>	0.01 $\pm$ 0.08*	0.09 $\pm$ 0.22	0.18 $\pm$ 1.03	0.79 $\pm$ 1.90

Demographics marked with \* are missing values from some subjects, where the number of \* corresponds to the number of subjects missing. F = Female, SD = Standard Deviation, APOE4 = Apolipoprotein E4, CU = Cognitively unimpaired, MCI = Mild Cognitively Unimpaired, AD = Alzheimer's Disease, MMSE = Mini-Mental State Examination, CDR = Clinical Dementia Rating, CDR-SoB = Clinical Dementia Rating Scale Sum of Boxes.

**TABLE S2:** Reconstruction configurations used in the cross-sectional analysis and their relevant A $\beta$ -PET SUVR and FWHM values.

Reconstruction method	Iterations	Subsets	Filter size (mm)	FWHM (mm)	Mean SUVR of A $\beta$ -group	SD of A $\beta$ -group	Mean SUVR of A $\beta$ + group	SD of A $\beta$ -group
PSFTOF	12	21	0	2.25	0.933	0.077	1.438	0.215
PSFTOF	10	21	0	2.35	0.932	0.079	1.439	0.216
PSFTOF	12	21	1	2.35	0.934	0.077	1.439	0.214
PSFTOF	10	21	1	2.45	0.932	0.077	1.439	0.215
PSFTOF	8	21	0	2.5	0.933	0.077	1.438	0.215
PSFTOF	8	21	1	2.55	0.934	0.077	1.439	0.216
PSFTOF	6	21	0	2.7	0.932	0.077	1.438	0.215
PSFTOF	6	21	1	2.75	0.932	0.077	1.438	0.216
PSFTOF	4	21	0	3.05	0.937	0.076	1.434	0.214
PSFTOF	4	21	1	3.1	0.937	0.075	1.435	0.215
PSFTOF	2	21	0	3.8	0.936	0.073	1.415	0.214
PSFTOF	2	21	1	3.9	0.935	0.073	1.414	0.213
OP	2	24	0	4.2	0.936	0.073	1.419	0.211
OPTOF	12	21	0	4.3	0.934	0.073	1.404	0.202
OP	10	24	0	4.3	0.936	0.072	1.419	0.212
OPTOF	10	21	0	4.35	0.934	0.073	1.405	0.201
OP	12	24	1	4.35	0.936	0.072	1.419	0.211
OPTOF	12	21	1	4.4	0.934	0.072	1.402	0.202

OP	8	24	0	4.4	0.935	0.073	1.418	0.210
OPTOF	8	21	0	4.4	0.938	0.073	1.404	0.202
OPTOF	10	21	1	4.45	0.934	0.073	1.402	0.202
OP	10	24	1	4.45	0.935	0.072	1.418	0.211
OP	8	24	1	4.5	0.935	0.073	1.418	0.210
OPTOF	6	21	0	4.5	0.935	0.073	1.405	0.200
OP	6	24	0	4.5	0.937	0.071	1.419	0.211
OPTOF	8	21	1	4.5	0.938	0.074	1.401	0.200
OPTOF	4	21	0	4.55	0.935	0.071	1.400	0.202
OPTOF	6	21	1	4.6	0.935	0.072	1.401	0.201
OP	6	24	1	4.6	0.937	0.071	1.417	0.210
OP	4	24	0	4.6	0.939	0.072	1.417	0.211
OPTOF	4	21	1	4.65	0.935	0.071	1.400	0.202
OP	4	24	1	4.7	0.939	0.072	1.416	0.211
OPTOF	2	21	0	4.85	0.937	0.070	1.393	0.201
OPTOF	2	21	1	4.9	0.937	0.070	1.391	0.200
OP	2	24	0	4.95	0.950	0.069	1.415	0.208
OP	12	4	0	5.05	0.951	0.069	1.419	0.210
OP	2	2	1	5.1	0.950	0.068	1.417	0.209
OP	12	4	1	5.15	0.951	0.070	1.418	0.208
OP	10	4	0	5.2	0.955	0.069	1.418	0.208
PSFTOF	12	21	5	5.25	0.940	0.073	1.408	0.203
PSFTOF	10	21	5	5.35	0.938	0.072	1.406	0.201
PSFTOF	8	21	5	5.35	0.939	0.072	1.405	0.202
OP	10	4	1	5.35	0.955	0.068	1.416	0.209
PSFTOF	6	21	5	5.45	0.938	0.071	1.404	0.202
OP	8	4	0	5.5	0.962	0.071	1.416	0.203
OP	8	4	1	5.55	0.961	0.070	1.416	0.202
PSFTOF	4	21	5	5.65	0.939	0.069	1.399	0.203
OP	6	4	0	5.95	0.975	0.070	1.413	0.197
OP	6	4	1	6	0.975	0.070	1.413	0.196
PSFTOF	2	21	5	6.25	0.934	0.066	1.376	0.198
OP	4	4	0	6.8	0.999	0.073	1.405	0.180
OP	4	4	1	6.85	0.998	0.072	1.405	0.179
OP	8	24	5	7	0.942	0.065	1.388	0.199
OP	10	24	5	7	0.942	0.064	1.391	0.199
OP	12	24	5	7.05	0.943	0.064	1.390	0.199
OP	6	24	5	7.05	0.942	0.063	1.387	0.200
OP	4	24	5	7.1	0.942	0.063	1.383	0.199
OPTOF	12	21	5	7.15	0.942	0.065	1.373	0.190
OPTOF	6	21	5	7.2	0.940	0.065	1.371	0.189
OPTOF	10	21	5	7.2	0.941	0.065	1.371	0.188
OPTOF	8	21	5	7.2	0.945	0.067	1.372	0.188
OPTOF	4	21	5	7.25	0.939	0.064	1.365	0.186

OP	2	24	5	7.5	0.948	0.060	1.376	0.191
OPTOF	2	21	5	7.55	0.938	0.062	1.357	0.184
OP	12	4	5	7.55	0.948	0.061	1.377	0.196
OP	10	4	5	7.7	0.953	0.061	1.380	0.192
OP	8	4	5	7.9	0.959	0.062	1.382	0.189
OP	6	4	5	8.3	0.973	0.064	1.380	0.182
OP	4	4	5	9.05	0.994	0.066	1.377	0.168