

1 **Association between Fine Particulate Matter Exposure and Cerebrospinal Fluid**
2 **Biomarkers of Alzheimer's Disease among a Cognitively Healthy Population-based**
3 **Cohort**

4 Emma Casey¹, Zhenjiang Li², Donghai Liang^{1,2}, Stefanie Ebel^{1,2}, Allan I. Levey³, James J. Lah³,
5 Thomas S. Wingo^{3,4}, Anke Hüls^{1,2}

6
7 ¹ Department of Epidemiology, Rollins School of Public Health, Emory University, Atlanta, GA, USA

8 ² Gangarosa Department of Environmental Health, Rollins School of Public Health, Emory
9 University, Atlanta, GA, USA

10 ³ Department of Neurology, School of Medicine, Emory University, Atlanta, GA, USA

11 ⁴ Department of Human Genetics, School of Medicine, Emory University, Atlanta, GA, USA

12

13 **Corresponding author:**

14 Anke Hüls, PhD

15 Rollins School of Public Health, Emory University

16 1518 Clifton Road, Atlanta, GA, 30322

17 E-mail: anke.huels@emory.edu

18

19 **Funding and Sources of support:** This work used data collected by the Emory Healthy Brain Study
20 and was supported by the National Institute on Aging (NIA) [R01AG070937 (Lah) and
21 R01AG079170 (Hüls/Wingo)] and a HERCULES Pilot Project via National Institute of Environmental
22 Health Sciences (NIEHS) P30ES019776 (Hüls). The traffic-related air pollution exposure
23 assessment was supported by Pilot Grant via NIA P50AG025688 (Hüls/Liang) and the NIH grant
24 R21ES032117 (Liang).

25

26 **Acknowledgments:** We would like to thank Lihua Shi and her team who provided us with
27 guidance for the air pollution assignments of ambient PM_{2.5}. We also want to thank Dr. Jeremy A.
28 Sarnat (Emory), Dr. Armistead Russell (Georgia Tech), Ms. Kyung-Hwa Kim, and Ms. Abby Marinelli
29 from the Atlanta Regional Commission for providing data and guidance towards the traffic-related air
30 pollution exposure assessment.

31

32 **Conflicts of interest:** The authors declare they have nothing to disclose.

33 **Abstract**

34

35 **Background:** Epidemiological evidence suggests air pollution adversely affects cognition and
36 increases the risk of Alzheimer's disease (AD), but little is known about the biological effects of fine
37 particulate matter (PM_{2.5}) on early predictors of future disease risk.

38

39 **Objectives:** We investigated the association between 1, 3, and 5-year exposure to ambient and
40 traffic-related PM_{2.5} and cerebrospinal fluid (CSF) biomarkers of AD.

41

42 **Methods:** We conducted a cross-sectional analysis using data from 1,113 cognitively healthy adults
43 (aged 45-75 years) from the Emory Healthy Brain Study in Georgia, USA. CSF biomarker
44 concentrations of A β ₄₂, tTau, and pTau, were collected at enrollment (between 2016-2020) and
45 analyzed with the Roche Elecsys system. Annual ambient and traffic-related residential PM_{2.5}
46 concentrations were estimated at a 1km and 250m resolution, respectively, and 3- and 5-year
47 average exposures were computed for each participant based on time of specimen collection.
48 Associations between PM_{2.5} and CSF biomarker concentrations, considering continuous and
49 dichotomous (dichotomized at clinical cut-offs for AD-biomarker positivity) outcomes, were estimated
50 with multiple linear/logistic regression, respectively, controlling for potential confounders (age,
51 gender, race/ethnicity, body mass index, and neighborhood socioeconomic status).

52

53 **Results:** Interquartile range (IQR; IQR=0.845) increases in 1-year [β : -0.101; 95%-confidence
54 interval (CI): -0.18, -0.02] and 3-year (β : -0.078; 95%-CI: -0.15, -0.00) ambient fine PM_{2.5} exposures
55 were negatively associated with A β ₄₂ CSF concentrations. Associations between ambient PM_{2.5} and
56 A β ₄₂ were similar for 5-year estimates, but not significant (β : -0.076; 95%-CI: -0.160, 0.005).
57 Dichotomized CSF variables revealed similar and significant associations between ambient PM_{2.5}
58 and A β ₄₂. Associations with traffic-related PM_{2.5} were similar but not significant. PM_{2.5} exposures
59 were not associated with tTau, pTau, tTau/A β ₄₂, or pTau/A β ₄₂ levels at enrollment.

60

61 **Conclusion:** In our cross-sectional study, PM_{2.5} exposure was associated with a significant
62 decrease in CSF A β ₄₂ which suggests an accumulation of amyloid plaques in the brain and an
63 increased risk of developing AD.

64

65 300/300

66 Introduction

67
68 As life expectancy rises and the U.S. population pyramid continues to age, we are seeing an
69 increase in chronic non-communicable age-related conditions, including Alzheimer's disease and
70 related dementias (AD/ADRD). With the multifactorial nature of AD pathogenesis, building evidence
71 around preventable environmental exposures may ultimately reduce inequities and improve health
72 outcomes. In this regard, accumulating epidemiological evidence demonstrates an association
73 between exposure to air pollution and the prevalence of AD/ADRD. Most of the evidence to date has
74 focused on links between fine particulate matter (PM_{2.5}), a mixture of fine particles in the air, and
75 cognitive function, incident cognitive impairment, or dementia.¹⁻⁴ Incident dementia is often studied
76 using diagnostic codes on insurance billing claims and medical records, facilitating studies with large
77 sample sizes; however, billing data are known to miss true dementia cases^{1,5} and there are no
78 diagnostic codes for the preclinical stages of dementia. In addition, PM_{2.5} can pass through the lung-
79 gas-blood barrier, the gut-brain axis or directly enter brain tissue via the olfactory nerve to promote
80 oxidative stress and inflammation, processes directly related to the characteristic pathology of AD.^{6,7}
81 Since PM_{2.5} is a heterogeneous mixture, different sources of exposure often have varying degrees of
82 toxicity and most existing studies have focused on ambient exposure, rather than those merely from
83 traffic-related emissions. Understanding the impact of PM_{2.5}, from both ambient and traffic-related
84 sources, on preclinical stages of dementia in older at-risk adults is crucial from a public health
85 perspective, as it will improve the estimation of the burden of disease in association with air pollution
86 by identifying more affected individuals.

87
88 Recent systematic reviews highlight the need to expand the scope of current studies on air pollution
89 and dementia risk to include neuropathologically relevant outcomes, such as early indicators of
90 dementia, including AD cerebrospinal fluid (CSF) and plasma-based biomarkers, which can be
91 assessed at the late stage of the preclinical phase.^{1,4,8} A recent study found positive associations
92 between PM_{2.5} and amyloid β -protein (A β)1-40 from plasma in longitudinal analyses, but no
93 associations were detected between PM_{2.5} and A β 1-42 or the ratio of A β 1-42/A β 1-40.⁹ Blood-based
94 biomarkers of protein pathology are less predictive of brain pathology and have shown insignificant
95 changes in A β levels as compared to CSF A β biomarkers in AD patients.¹⁰ In this light, three
96 clinically validated CSF biomarkers: A β ₄₂, total tau (tTau), and phosphorylated tau (pTau) have been
97 noted as valid proxies for neuropathological changes of AD,^{8,11} and specifically, A β ₄₂ has been
98 linked to the abnormal pathologic state of cerebral A β in both animal and human models. Since
99 pathological changes related to AD can begin decades before symptoms appear,¹² quantifying the
100 relationship between both ambient and traffic-related PM_{2.5} pollution and CSF biomarkers reflective
101 of AD-positive changes will elucidate how exposure influences dementia risk.¹³

102
103 So far, two epidemiological studies have reported associations between PM_{2.5} and A β ₄₂ in cognitively
104 healthy individuals whereas no relationships with tTau or pTau have been noted.^{14,15} However, there
105 are several limitations with these prior studies, including 1) the exposure assessments in Alemany *et*
106 *al.* (2021) and Li *et al.* (2022) only focused on 1- or 2-year average PM_{2.5} prior to the biomarker
107 assessment; 2) the relatively small sample size (N=156) in Alemany *et al.* (2021),¹⁵ and 3) the
108 outcome assessment in Li *et al.* (2022)¹⁴ which relied on the Innotech-AMYLOID(1-42) ELISA assay,
109 an unstandardized manual method, showing a high correlation with the automated Elecsys® method
110 but higher intra- and inter-laboratory variations.^{16,17}

111

112 To address these limitations in prior studies and grow our understanding of the impact of air pollution
113 on preclinical dementia risk, here, we characterized the cross-sectional association between long-
114 term ambient and traffic-related PM_{2.5} exposure (1, 3, and 5 years prior to biomarker assessment)
115 and CSF biomarker composition (Aβ₄₂, tTau, and pTau, assessed with Elecsys® AD CSF assays) in
116 a dementia-free, aging population, as part of the Emory Healthy Brain Study (EHBS). We also tested
117 for effect modification by several well-known risk factors for AD/ADRD-related outcomes, including
118 *APOE-ε4* status, the strongest genetic risk factor for AD.

119

120 **Methods**

121

122 *Study Design and Population*

123

124 The EHBS is a gerontology-based prospective research study focusing on the cognitive health of
125 older adults. The EHBS is nested within the Emory Healthy Aging Study (EHAS) and includes
126 participants from the metro-Atlanta region in Georgia, USA. Our cross-sectional analysis includes
127 data from the baseline visits, which were conducted between 2016 and 2020. The primary aim of the
128 EHBS is to characterize psychological and psychosocial factors associated with normal and
129 abnormal aging through assessment of the central nervous system among adults 45-75 years old
130 who were free of cognitive impairment in addition to several other chronic conditions (e.g. congestive
131 heart failure, multiple sclerosis, HIV) at enrollment; more details on recruitment and eligibility have
132 been published elsewhere.¹⁸

133

134 Demographic characteristics were collected with the online Health History Questionnaire (HHQ).¹⁸
135 Individual-level information was self-reported for gender, age, race/ethnicity, educational attainment,
136 and residential address. Participants could choose one or more race(s) from a 5-item list
137 (White/Caucasian, Black/African American, Asian, American Indian/Alaska Native, Hawaiian/Other
138 Pacific Islander). Hispanic ethnicity (Yes/No) was addressed in a separate HHQ question. Data on
139 educational attainment were also self-reported with 7 possible categories ranging from less than
140 high school to professional or doctorate degree. EHBS biennial study visits include neuropsychology
141 tests, biospecimen collection (blood, cerebrospinal fluid), cardiovascular measures, and brain
142 imaging. All measures, including anthropometric, are collected by trained clinical research staff for
143 use in the diagnosis and prediction of chronic illness.¹⁸

144

145 *PM_{2.5} Exposure Assessment*

146

147 Due to evidence suggesting a relationship between both ambient PM_{2.5} and traffic-related PM_{2.5}
148 exposure and cognitive decline, and because traffic-related PM_{2.5} is a major exposure source in
149 urban environments like Atlanta, GA,¹⁹ we used both measures of PM_{2.5} in our analyses.

150

151 We obtained ambient PM_{2.5} exposure data from the publicly available Socioeconomic Data and
152 Application Center (SEDAC) air quality data set for health-related applications.²⁰ The data set
153 consists of yearly ambient PM_{2.5} levels (in µg/m³) estimated at a 1 km spatial resolution using a well-
154 validated ensemble-based prediction model for the contiguous United States (2000-2016). As
155 described by Di *et al.* (2019), three machine-learning algorithms: random forest, neural network, and
156 gradient boosting, were used to predict ambient PM_{2.5} and included a variety of predictor variables
157 from satellite data, land use, meteorological variables, and chemical transport model simulations.²¹

158 The ensemble model then combined these PM_{2.5} predictions with a generalized additive model that
159 allowed for the contribution of each machine-learning algorithm to vary by location.²¹ The ensemble
160 model was trained on PM_{2.5} levels measured at 2,156 U.S. EPA monitors, validated with 10-fold
161 cross-validation, and produced high-resolution annual PM_{2.5} predictions with an average R² of 0.89.²¹
162

163 As described previously,²² traffic-related PM_{2.5} exposure concentrations (in µg/m³) for the metro-
164 Atlanta area for the period 2002 to 2019 were generated by two approaches. Briefly, for the 2002-
165 2011 period, annual traffic-related PM_{2.5} concentrations at 250 m resolution were generated by the
166 Research LINE-sources dispersion (R-LINE) model and calibrated by measurements from local
167 PM_{2.5} ground monitoring sites.^{23,24} For the 2012-2019 period, annual traffic-related PM_{2.5}
168 concentrations at 200-250 m resolution were predicted via a land-use random forest model built on
169 training data comprised of the 2015 annual concentrations of traffic-related PM_{2.5} from Atlanta
170 Regional Commission, road inventory and traffic monitoring data based on measurements from the
171 Georgia Department of Transportation which considered road geometry and traffic volume, land
172 cover data from the National Land Cover Database, and ambient PM_{2.5} data from Atmospheric
173 Composition Analysis. The random forest model was trained with the R package *randomForest*. The
174 resulting 200-250m resolution annual traffic-related PM_{2.5} predictions had an average R² of 0.80.
175 Both databases had spatial coverage of approximately 20 counties in GA. Given the reduced
176 coverage of the traffic-related PM_{2.5} exposure estimates compared to the ambient PM_{2.5} data and the
177 geographic spread of our study population, the analysis sample for these models included only the
178 participants located within the metro-Atlanta area.
179

180 For both ambient and traffic-related exposures, we spatially matched geocoded residential
181 addresses to the closest centroid of grids (based on 1 km² or 200-250 m² grids) to assign annual
182 exposures. We then calculated individual 3- and 5-year exposures by averaging yearly predictions
183 prior to specimen collection.
184

185 *AD CSF Biomarker Concentrations*

186

187 CSF biospecimens were collected by EHBS research staff via lumbar puncture, CSF collection
188 protocol has been previously described.²⁵ Aβ₄₂, tTau, and pTau CSF levels were quantified using the
189 ElectroChemiLuminescence Immunoassay (ECLIA) Elecsys® AD CSF portfolio on an automated
190 Roche Diagnostics instrument (F. Hoffman-La Roche Ltd). The assays have measuring ranges of
191 200–1700 pg/mL (Aβ₄₂), 80–1300 pg/mL (tTau) and 8–120 pg/mL (pTau). tTau and pTau levels were
192 log-base₁₀ transformed for normality in linear models in the statistical analyses. We also examined
193 CSF biomarker ratio outcomes, namely, tTau/Aβ₄₂ and pTau/Aβ₄₂, which are highly predictive of
194 amyloid positivity based on concordance with amyloid-PET, including for cognitively normal
195 participants.²⁶ All AD CSF biomarker outcomes were kept as continuous variables for linear
196 regression analyses and separately dichotomized based on the Elecsys® AD CSF portfolio positive
197 (+) cut-offs for logistic regression analyses (Aβ₄₂ ≤1030 pg/mL; tTau >300 pg/mL; pTau >27 pg/mL;
198 tTau/Aβ₄₂ >0.28pg/mL; pTau/Aβ₄₂ >0.023pg/mL).^{8,27} The cut-off values for Aβ₄₂, tTau/Aβ₄₂, and
199 pTau/Aβ₄₂ CSF were established and validated to demonstrate CSF biomarker concordance with
200 amyloid-β PET visual read in the BioFINDER and ADNI studies, respectively.²⁸ Cut-off values for
201 single tau biomarkers, tTau and pTau, were derived and validated in a separate study based on the
202 separation between mild cognitive impairment (MCI) patients with a higher versus lower risk of
203 cognitive decline, and optimized for identification of AD patients versus normal controls.²⁹

204

205 *Covariates*

206

207 Sources of potential confounding were identified with a directed acyclic graph (DAG; **Figure S1**).
208 Individual-level confounders were conceptualized as factors impacting both residential PM_{2.5}
209 exposure and the outcome measure. Potential confounding factors included in the analysis were
210 gender, age, neighborhood socioeconomic status (N-SES), race/ethnicity, educational attainment,
211 and body mass index (BMI). Due to historic racism and discriminatory land-use practices such as
212 redlining, environmental exposures disproportionately affect low-income and minority populations.
213 For this reason, neighborhood deprivation characteristics were also included as potential
214 confounding variables and effect modifiers as done in our previous work.³⁰ Race has also been
215 noted as an important factor when interpreting CSF biomarker results.³¹ In addition, BMI influences
216 biomarker concentrations and is also related to N-SES through characteristics such as neighborhood
217 walkability, greenspace, and food access.^{32,33}

218

219 Due to the presence of multi-ancestral groups and small categories in self-reported race/ethnicity,
220 we used a 3-level race variable in the analysis: White/Caucasian, Black/African American, and
221 Other, as well as a dichotomous ethnicity variable indicating Hispanic origin. Similarly, educational
222 attainment was included as a 3-level variable: master or higher, college, less than college. Height
223 and weight measurements were used to calculate body mass index (BMI, weight in kilograms
224 divided by height in meters squared) which was used as a continuous variable in all models. N-SES
225 for each participant was established in this study with census-tract level American Community
226 Survey (ACS) defined principal components of neighborhood deprivation (see Li *et al.*³⁰ for details)
227 and the Area Deprivation Index (ADI). As described previously in Li *et al.*,³⁰ three principal
228 components of neighborhood deprivation were calculated based on estimates for 5-year ACS
229 census-tract-level data, including 16 indicators of six socioeconomic domains (poverty/income, racial
230 composition, education, employment, occupation, and housing properties) (**Figure S2**).³⁰ The ADI is
231 provided in national percentile rankings at the block group level from 1 to 100, where 100 represents
232 the most deprived neighborhood, and was calculated using census block group-level indicators and
233 factor analysis to cluster indicators based on their ability to explain the variance between block
234 groups.³⁴

235

236 *Statistical Analyses*

237

238 We implemented multiple linear and logistic regression models to estimate the relationship between
239 residential PM_{2.5} exposure and AD CSF biomarker levels at enrollment. In these models, biomarker
240 concentrations (linear regression models) or dichotomized AD positive variables (logistic regression
241 models) were assigned as dependent variables and PM_{2.5} exposures along with the selected
242 confounding variables as independent variables. Since the biomarkers were measured on the same
243 scales, but with different ranges, we standardized all continuous biomarker measures by converting
244 them to z-scores prior to employing regression analysis to increase comparability of results across
245 different biomarkers. Z-scores were computed for each observation by subtracting the sample mean
246 from each individual value and subsequently dividing by the sample standard deviation. Further, we
247 standardized the PM_{2.5} estimates according to its distribution by dividing all PM_{2.5} exposures of
248 interest by the IQR of 1-year ambient or traffic-related PM_{2.5} exposure respectively. The general form
249 of the model for all analyses appears below:

250

251 AD CSF Biomarker Outcome = $\alpha_0 + \beta_1 PM_{2.5} + \gamma_1 Age + \gamma_2 Gender + \gamma_3 Education +$
252 $\gamma_4 Ethnicity + \gamma_5 BMI + \gamma_6 ADI + \gamma_7 nSES PC_1 + \gamma_8 nSES PC_2 + \gamma_9 nSES PC_3 + \varepsilon$

253

254 Where $PM_{2.5}$ represents either ambient or traffic-related $PM_{2.5}$ averages 1, 3, or 5 years prior to
255 specimen collection and ε represents the random error term, with an assumed mean of zero and
256 constant variance $\sim N(0, \sigma^2)$.

257

258 *Effect Modification Analyses*

259

260 We tested for effect modification by several well-established risk factors for AD, adding an
261 interaction term between $PM_{2.5}$ and each risk factor in individual regression models. These risk
262 factors included whether a participant had at least one *APOE-ε4* allele, family history of AD
263 (indicated by parent or first-sibling diagnosis), gender, age, and ADI. Despite a hypothesized
264 additive genetic effect of the $\varepsilon 4$ allele, statistical interaction was assessed dichotomously due to the
265 small number of homozygous $\varepsilon 4$ carriers (2.1%; **Table 1**). Family history of AD (no/yes), gender
266 (male/female), and ADI (<50/≥50) were also added as dichotomous variables while interaction with
267 age was assessed continuously. Using the models with interaction, we then tested for effect
268 modification with the *interplot* R package and n=100,000 simulations.

269

270 For all statistical analysis, we used R Statistical Software version 4.2.2, and the significance level
271 $\alpha=0.05$.

272

273 **Results**

274

275 *Study Population*

276

277 After excluding EHBS participants with missing demographic data (n=46), the analytic sample
278 included 1,113 individuals (**Table 1**). Participants lived primarily around the Atlanta metropolitan
279 area, spanning 489 census blocks in the state of Georgia (detailed neighborhood characteristics are
280 summarized in **Table S6**). The average age of our sample was 61.7 years (SD=6.73), 69.9% were
281 females, and 84.7% identified as White/Caucasian, 10.9% identified as Black/African American, and
282 only 2.9% identified as Hispanic. The average BMI was 25.5 kg/m² (SD=3.55). Our sample was
283 highly educated with 86.7% having received an associate degree or higher. The ADI was right
284 skewed with a median of 25, indicating half of the sample is in 25% lower deprivation than the
285 national average.

286

287 There was spatial variability in ambient $PM_{2.5}$ levels in our study area, with the highest quintile of
288 exposure (10.1-13.21 $\mu\text{g}/\text{m}^3$) localized to the south of the city of Atlanta and lowest quintile of
289 exposure (5.63-8.98 $\mu\text{g}/\text{m}^3$) localized to communities north of Atlanta such as Marietta and Roswell
290 (**Figure 1, Table 1**). Traffic-related $PM_{2.5}$ exposure levels had lower concentrations (since we only
291 estimated the traffic-related component of $PM_{2.5}$) but higher variability with annual average
292 exposures of 1.15 $\mu\text{g}/\text{m}^3$ (SD=0.46) compared with annual average ambient exposures of 9.52
293 $\mu\text{g}/\text{m}^3$ (SD=0.76). Traffic-related $PM_{2.5}$ estimates had a maximum of 5.10 $\mu\text{g}/\text{m}^3$ and these levels
294 were localized exclusively to the city of Atlanta. Annual ambient and traffic-related $PM_{2.5}$ exposure
295 concentrations were weakly correlated (Pearson correlation = 0.36). More details on the distribution

296 of and relation between ambient and traffic-related PM_{2.5} exposure concentrations are provided in
297 the supplemental material (**Figures S3 and S4**).

298
299 We observed a wide spread of concentrations for CSF A β ₄₂ in the study population (median A β ₄₂
300 level = 1210, IQR = 692.3). A β ₄₂ concentrations did not show a major departure from normality,
301 except for the highest level which had a very high frequency, indicating normal A β ₄₂ concentrations
302 in most participants, but tTau and pTau distributions were skewed (**Figure S5**). After log
303 transformation, Tau concentrations were approximately normally distributed (**Figure S6**).
304 Approximately 36% of participants had A β ₄₂ concentrations less than or equal to 1030 pg/mL which
305 corresponds, on average, to a positive reading for AD as indicated by Elecsys[®] AD CSF portfolio
306 positive (+) cut-offs. We observed AD positive readings for tTau and pTau cut-offs in 6% of the study
307 population. Based on the pTau/A β ₄₂ ratio AD (+) positive cut-off, we detected amyloid-positivity in
308 10.6% of participants. Details on the distributions of AD CSF biomarker concentrations and the
309 frequency of biomarker-positivity detected among participants are provided in **Table 2**.

310
311 *PM_{2.5} and AD CSF biomarkers*

312
313 Among the continuous AD CSF biomarkers, higher levels of 1- and 3-year ambient PM_{2.5} exposures
314 were associated with lower A β ₄₂ CSF concentrations at baseline after adjusting for potential
315 confounding variables (**Figure 2A**). Specifically, an IQR (0.845 $\mu\text{g}/\text{m}^3$) increase in the 1- or 3-year
316 ambient PM_{2.5} exposure was significantly associated with a -0.09 (95% CI: -0.15, -0.02) and -0.07
317 (95% CI: -0.13, -0.005) decrease in A β ₄₂ CSF z-score, respectively, after confounder-adjustment.
318 The associations of 5-year ambient PM_{2.5} (**Figure 2A**) and traffic-related PM_{2.5} (**Figure 2F**) and A β ₄₂
319 CSF were similar, but not significant. No significant associations were detected between ambient
320 (**Figure 2B-E**) or traffic-related (**Figure 2G-J**) PM_{2.5} exposures and tTau, pTau, tTau/A β ₄₂, or
321 pTau/A β ₄₂ CSF concentrations at enrollment, but associations with tTau/A β ₄₂ and pTau/A β ₄₂ were
322 similar to those of A β ₄₂ and consistent with AD-related pathology (**Figure 2I-J**).

323
324 For the AD CSF biomarker positive cut-off outcomes, higher residential ambient PM_{2.5} exposures
325 were associated with increased prevalence of an AD positive (+) A β ₄₂ portfolio reading at baseline
326 with statistically significant associations for an IQR (0.845 $\mu\text{g}/\text{m}^3$) increase in 1-year (OR=1.23; 95%
327 CI: 1.07, 1.42), 3-year (OR=1.20; 95% CI: 1.04, 1.37), and 5-year (OR=1.21; 95% CI: 1.04, 1.40)
328 average ambient PM_{2.5} exposure (**Figure 3A**). The associations between traffic-related PM_{2.5}
329 exposures and an AD positive (+) A β ₄₂ portfolio reading at enrollment were similar but not significant
330 (**Figure 3F**). We further observed significant associations between 3- and 5-year traffic-related PM_{2.5}
331 exposures and an AD (+) pTau/A β ₄₂ ratio reading at enrollment, but not for 1-year traffic-related
332 PM_{2.5} exposure (**Figure 3J**) or ambient PM_{2.5} exposure (**Figure 3E**), and while not significant, these
333 results were consistent with those of tTau/A β ₄₂ (**Figure 3I, Figure 3D**). We did not observe
334 statistically significant associations between ambient (**Figure 3B-C**) or traffic-related (**Figure 3G-H**)
335 PM_{2.5} exposures and AD positive (+) tTau or pTau cut-offs.

336
337 The associations between ambient PM_{2.5} and A β ₄₂ CSF concentrations and AD positive (+) A β ₄₂
338 portfolio reading remained significant even after restricting our sample size to only those located in
339 the metro-Atlanta area (**Figure S7, Tables S1, S2, and S3**), which is the subsample for which traffic-
340 related PM_{2.5} exposures estimates were available (sample size reduced from N_{ambient}=1,113 to
341 N_{traffic}=1,080).

342
343 *Effect modification by other common risk factors for AD*
344

345 The association of annual average ambient PM_{2.5} exposure and concentrations of Aβ₄₂ CSF was not
346 significantly modified by APOE-ε4 carriership (p = 0.59), AD family history (p = 0.37), ADI (p = 0.62)
347 or gender (p = 0.67) (**Figure 4A-D, Table S4**). Similarly, the association of annual average ambient
348 PM_{2.5} exposure and AD positive (+) Aβ₄₂ portfolio reading was not significantly modified by APOE-ε4
349 carriership (p = 0.80), AD family history (p = 0.27), ADI (p = 0.12) or gender (p = 0.72) (**Figure S8A-**
350 **D, Table S5**). Effect modification by age was also not statistically significant (p=0.17), but we
351 observed an increasing negative effect of PM_{2.5} on Aβ₄₂ CSF levels with increasing age, and
352 significant associations between PM_{2.5} and Aβ₄₂ CSF levels starting around 60 years of age (**Figure**
353 **4E**); a similar pattern was revealed when looking at the stratified effects of PM_{2.5} on AD positive (+)
354 Aβ₄₂ portfolio reading by age (interaction p=0.34) (**Figure S8E**).

355
356

357 Discussion

358

359 In the present study, we examined the impacts of both ambient PM_{2.5} exposure and traffic-related
360 PM_{2.5}, a major source of ambient PM_{2.5} in urban environments, on CSF biomarkers of AD in 1,113
361 cognitively healthy individuals. Our findings show associations between long-term ambient PM_{2.5}
362 concentrations and decreased Aβ₄₂ AD CSF biomarker concentrations (significant for 1- and 3-year
363 average exposures), as well as increased likelihood of an Aβ₄₂ AD (+) positive portfolio reading
364 (significant for 1-, 3- and 5-year average exposures). We further found significant associations
365 between 3- and 5-year traffic-related PM_{2.5} exposure estimates and a pTau/Aβ₄₂ (+) positive portfolio
366 reading at enrollment, but not with ambient PM_{2.5} exposure. We found no associations between
367 ambient or traffic-related PM_{2.5} exposures and pTau or tTau continuous concentrations or their ratios
368 with Aβ₄₂, however, the directions of effect for pTau/Aβ₄₂ and tTau/Aβ₄₂ continuous ratio outcomes
369 were consistent with AD-related amyloid pathology. Further, while not statistically significant, the
370 strength of the association between annual ambient PM_{2.5} exposure and Aβ₄₂ AD CSF
371 concentrations differed by age and was particularly pronounced for individuals over the age of 60.

372

373 The observed associations between PM_{2.5} exposure and the Aβ₄₂ AD CSF biomarker as well as
374 pTau/Aβ₄₂ positive portfolio readings, which are equally predictive of amyloid PET status (+/-) as Aβ
375 ratio outcomes,³⁵ among cognitively healthy older adults is consistent with evidence from existing
376 literature. Signs of AD can be detected in the early stages of the AD continuum,¹⁷ and decreases in
377 CSF concentrations of Aβ₄₂ (a marker of amyloidosis) and elevation in tau species (phosphorylated
378 and total tau) are well-established as pathogenic biomarkers in AD diagnosis.³⁶ To date, there have
379 been few studies estimating the effects of PM_{2.5} exposure on certified biomarkers of AD in healthy,
380 aging populations. One study found a similar relationship between air pollution exposure and Aβ₄₂,
381 although they used CSF Aβ_{42/40} ratio to reflect Aβ pathology rather than the individual biomarker
382 measurements.¹⁵ Their estimates were similarly negative, but did not reach significance, likely owing
383 to the relatively small sample size (N=147).¹⁵ Another study¹⁴ found a statistically significant total
384 effect of ambient PM_{2.5} on Aβ₄₂ CSF as well as pTau/Aβ₄₂ concentrations among N=1,131
385 cognitively healthy older individuals, which was further mediated by a CSF biomarker of
386 neuroinflammation, sTREM2.¹⁴

387

388 We found mostly null associations between 1-, 3-, and 5-year average ambient and traffic-related
389 PM_{2.5} exposures and tTau as well as pTau concentrations at enrollment, except for the model with 3-
390 year ambient PM_{2.5} and tTau levels, in which we found a significant negative association. The
391 direction of estimates for tau biomarkers are expected to be positive for AD-related change.
392 Associations between PM_{2.5} and tau biomarkers diminished when taking AD CSF cut-offs into
393 account, suggesting that the negative association with the continuous tTau levels was a false

394 positive finding. Other studies examining the associations between air pollution and CSF biomarkers
395 of AD in cognitively healthy adults report similar findings, where both Alemany *et al.* (2021) and Li *et*
396 *al.* (2022) found null associations between PM_{2.5} and pTau as well as tTau CSF concentrations.^{14, 15}
397

398 Stronger associations were detected between ambient PM_{2.5} and AD CSF biomarkers as compared
399 with traffic-related PM_{2.5} exposure. Ambient PM_{2.5} contains emissions from traffic, industry, domestic
400 fuel burning, natural sources including soil dust and sea salt, as well as unspecific sources of human
401 origin.³⁷ On the other hand, traffic-related PM_{2.5} is a source of ambient PM_{2.5} that includes emissions
402 of organic and inorganic gaseous PM precursors from the combustion of fuels and lubricants.³⁷
403 Since both sources contain organic and often toxic particles, we expected to see relationships
404 between both sources of PM_{2.5} and AD CSF biomarkers, and while not significant for A β ₄₂, the
405 associations between traffic-related PM_{2.5} and AD CSF biomarkers were similar to associations with
406 ambient PM_{2.5}. More research needs to be done to determine which PM_{2.5} mixtures are particularly
407 harmful to the central nervous system.
408

409 While we did not find effect modifications by *APOE*- ϵ 4 carriership or other common risk factors for
410 AD, the association between ambient PM_{2.5} exposure and A β ₄₂ CSF became stronger with
411 increasing age (though not statistically significant). These results could suggest that AD CSF
412 biomarkers might not be sensitive enough to detect AD-related changes in participants < 60 years
413 old, but more research in the population will clarify the most clinically relevant age for biomarker
414 measurement. Previous research suggests that biomarker patterns of A β ₄₂ consistent with stage 1
415 AD (amyloid pathology only) are first detectable during early middle age (45-54 years), while
416 increases in tTau and pTau are typically not apparent until later (ages \geq 55 years).³⁸ However, this
417 previous study used an unstandardized assay, the INNOTEST ELISA, which often yields systematic
418 variability in comparison to the Elecsys assay. Another potential explanation for the stronger
419 associations among participants older than 60 years could be the higher accumulative PM_{2.5}
420 exposure over the lifetime among older individuals. In line with this hypothesis, one study examining
421 the relationship between PM_{2.5} exposure and AD prevalence found a stronger effect of PM_{2.5} on AD
422 prevalence among those at or above 70 years of age.³
423

424 There are several strengths to be noted, such as, the exposure assessment which included two
425 sources of PM_{2.5}, ambient and traffic-related, which were estimated at a high spatial resolution of up
426 to 200m; our outcome assessment which relied on a recommended assay for AD CSF biomarker
427 measurement,¹⁶ and for which we observed consistent associations using continuous biomarker
428 concentrations as well as AD positivity cut-offs; our inclusion of several well-known confounders and
429 methods to reduce confounding by neighborhood-level characteristics; and our relatively large
430 sample size (N=1,113) of CSF measurements from cognitively healthy older adults free of chronic
431 illness.
432

433 In addition to its strengths, this study has several limitations. Given that ADRD progresses over the
434 course of several years or decades, we evaluated the associations with 3- and 5-year average PM_{2.5}
435 concentrations prior to enrollment in addition to the 1-year averages. However, given that exposure
436 was assigned based on the baseline residence and some participants could have relocated in the
437 years prior to the study, the 3- and 5-year estimates may be affected by exposure misclassification.
438 Such exposure misclassification is also a potential explanation for the weaker associations between
439 the 3- and 5-year PM_{2.5} exposures and A β ₄₂ CSF concentrations in comparison to the 1-year
440 exposure concentrations. Our study also only used cross-sectional CSF measurements; longitudinal
441 repeated measures analyses may provide a better understanding of the long-term effect of air
442 pollution on CSF biomarker trajectories of AD. Further, our sample was not representative of the

443 Atlanta metropolitan area, the target population, as it was mainly high SES and white, which limits
444 both the generalizability and transportability of our estimates. Finally, while we looked at two different
445 sources of PM_{2.5}, we did not examine the relationship between AD pathology and specific
446 components of PM_{2.5}. Future studies should consider the components of PM_{2.5} as they are dynamic
447 between ambient and traffic-related sources with different toxicity³⁹ and could reveal important and
448 undiscovered relationships between exposure and disease pathogenesis.

449
450 In conclusion, our results suggest that exposure to ambient and traffic-related PM_{2.5}, even at levels
451 below current primary and secondary standards defined by the Environmental Protection Agency
452 (EPA) for PM_{2.5} (annual average standards with levels of 12.0 µg/m³ and 15.0 µg/m³, respectively),
453 increases the risk of future AD development. Additionally, our results add to the growing body of
454 evidence which suggests that air pollution directly contributes to neurodegeneration by accelerating
455 Aβ₄₂ accumulation in the brain.^{2,40}

456 **References**

- 457
- 458 1. Weuve, J., et al., *Exposure to Air Pollution in Relation to Risk of Dementia and Related Outcomes: An Updated Systematic Review of the Epidemiological Literature*. *Environ Health Perspect*, 2021. 459 **129**(9): p. 96001.
 - 460
 - 461 2. Thiankhw, K., N. Chattipakorn, and S.C. Chattipakorn, *PM2.5 exposure in association with AD-* 462 *related neuropathology and cognitive outcomes*. *Environ Pollut*, 2022. **292**(Pt A): p. 118320.
 - 463 3. Yang, L., et al., *Associations between PM(2.5) exposure and Alzheimer's Disease prevalence* 464 *Among elderly in eastern China*. *Environ Health*, 2022. **21**(1): p. 119.
 - 465 4. Delgado-Saborit, J.M., et al., *A critical review of the epidemiological evidence of effects of air* 466 *pollution on dementia, cognitive function and cognitive decline in adult population*. *Sci Total* 467 *Environ*, 2021. **757**: p. 143734.
 - 468 5. Goodman, R.A., et al., *Prevalence of dementia subtypes in United States Medicare fee-for-service* 469 *beneficiaries, 2011-2013*. *Alzheimers Dement*, 2017. **13**(1): p. 28-37.
 - 470 6. Li, W., et al., *A review of respirable fine particulate matter (PM(2.5))-induced brain damage*. 471 *Front Mol Neurosci*, 2022. **15**: p. 967174.
 - 472 7. Huang, W.J., X. Zhang, and W.W. Chen, *Role of oxidative stress in Alzheimer's disease*. *Biomed* 473 *Rep*, 2016. **4**(5): p. 519-522.
 - 474 8. Jack, C.R., Jr., et al., *NIA-AA Research Framework: Toward a biological definition of Alzheimer's* 475 *disease*. *Alzheimers Dement*, 2018. **14**(4): p. 535-562.
 - 476 9. Hajat, A., et al., *Air pollution and plasma amyloid beta in a cohort of older adults: Evidence from* 477 *the Ginkgo Evaluation of Memory study*. *Environ Int*, 2023. **172**: p. 107800.
 - 478 10. Klyucherev, T.O., et al., *Advances in the development of new biomarkers for Alzheimer's disease*. 479 *Transl Neurodegener*, 2022. **11**(1): p. 25.
 - 480 11. Bartels, C., et al., *Use of Cerebrospinal Fluid Biomarkers of Alzheimer's Disease Risk in Mild* 481 *Cognitive Impairment and Subjective Cognitive Decline in Routine Clinical Care in Germany*. *J* 482 *Alzheimers Dis*, 2020. **78**(3): p. 1137-1148.
 - 483 12. Bateman, R.J., et al., *Clinical and biomarker changes in dominantly inherited Alzheimer's disease*. 484 *N Engl J Med*, 2012. **367**(9): p. 795-804.
 - 485 13. Bouwman, F.H., et al., *Clinical application of CSF biomarkers for Alzheimer's disease: From* 486 *rationale to ratios*. *Alzheimers Dement (Amst)*, 2022. **14**(1): p. e12314.
 - 487 14. Li, M., et al., *Association between air pollution and CSF sTREM2 in cognitively normal older* 488 *adults: The CABLE study*. *Ann Clin Transl Neurol*, 2022. **9**(11): p. 1752-1763.
 - 489 15. Alemany, S., et al., *Associations between air pollution and biomarkers of Alzheimer's disease in* 490 *cognitively unimpaired individuals*. *Environ Int*, 2021. **157**: p. 106864.
 - 491 16. Dakterzada, F., et al., *Assessment of the Concordance and Diagnostic Accuracy Between Elecsys* 492 *and Lumipulse Fully Automated Platforms and Innostest*. *Front Aging Neurosci*, 2021. **13**: p. 493 604119.
 - 494 17. Schindler, S.E., et al., *Cerebrospinal fluid biomarkers measured by Elecsys assays compared to* 495 *amyloid imaging*. *Alzheimers Dement*, 2018. **14**(11): p. 1460-1469.
 - 496 18. Goetz, M.E., et al., *Rationale and Design of the Emory Healthy Aging and Emory Healthy Brain* 497 *Studies*. *Neuroepidemiology*, 2019. **53**(3-4): p. 187-200.
 - 498 19. Kheirbek, I., et al., *The contribution of motor vehicle emissions to ambient fine particulate matter* 499 *public health impacts in New York City: a health burden assessment*. *Environ Health*, 2016. **15**(1): 500 p. 89.
 - 501 20. Di, Q., et al., *Daily and Annual PM2.5 Concentrations for the Contiguous United States, 1-km* 502 *Grids, v1 (2000 - 2016)*. 2021, NASA Socioeconomic Data and Applications Center (SEDAC): 503 Palisades, New York.

- 504 21. Di, Q., et al., *An ensemble-based model of PM(2.5) concentration across the contiguous United States with high spatiotemporal resolution*. Environ Int, 2019. **130**: p. 104909.
- 505
- 506 22. Christensen, G.M., et al., *Fine particulate air pollution and neuropathology markers of*
- 507 *Alzheimer's disease in donors with and without APOE epsilon4 alleles - results from an autopsy*
- 508 *cohort*. medRxiv, 2023.
- 509 23. Jeremy A. Sarnat, A.T.R., Donghai Liang, Jennifer L. Moutinho, Rachel Golan, Rodney J. Weber,
- 510 Dong Gao, Stefanie Ebel Sarnat, Howard H. Chang, Roby Greenwald, Tianwei Yu, *Developing*
- 511 *Multipollutant Exposure Indicators of Traffic Pollution: The Dorm Room Inhalation to Vehicle*
- 512 *Emissions (DRIVE) Study*. Res Rep Health Eff Inst., 2018. **Research Report 196**.
- 513 24. Zhai, X.R., G. A.; Sampath, P.; Mulholland, A. J.; Kim, B; Kim, Y.; D'Onofrio, D., *Calibrating R-LINE*
- 514 *model results with observational data to develop annual mobile source air pollutant fields at fine*
- 515 *spatial resolution: Application in Atlanta*. Atmospheric Environment, 2016. **147**: p. 446-457.
- 516 25. Teunissen, C.E., et al., *A consensus protocol for the standardization of cerebrospinal fluid*
- 517 *collection and biobanking*. Neurology, 2009. **73**(22): p. 1914-22.
- 518 26. Doecke, J.D., et al., *Elecsys CSF biomarker immunoassays demonstrate concordance with*
- 519 *amyloid-PET imaging*. Alzheimers Res Ther, 2020. **12**(1): p. 36.
- 520 27. Ltd, F.H.-L.R. *The Power of Elecsys® in Alzheimer's disease*. 2023; Available from:
- 521 [https://diagnostics.roche.com/global/en/article-listing/health-topics/neurology/the-power-of-](https://diagnostics.roche.com/global/en/article-listing/health-topics/neurology/the-power-of-elecsys-in-alzheimers-disease.html)
- 522 [elecsys-in-alzheimers-disease.html](https://diagnostics.roche.com/global/en/article-listing/health-topics/neurology/the-power-of-elecsys-in-alzheimers-disease.html).
- 523 28. Hansson, O., et al., *CSF biomarkers of Alzheimer's disease concord with amyloid-beta PET and*
- 524 *predict clinical progression: A study of fully automated immunoassays in BioFINDER and ADNI*
- 525 *cohorts*. Alzheimers Dement, 2018. **14**(11): p. 1470-1481.
- 526 29. Blennow, K., et al., *Predicting clinical decline and conversion to Alzheimer's disease or dementia*
- 527 *using novel Elecsys Abeta(1-42), pTau and tTau CSF immunoassays*. Sci Rep, 2019. **9**(1): p. 19024.
- 528 30. Li, Z., et al., *Neighborhood characteristics as confounders and effect modifiers for the association*
- 529 *between air pollution exposure and subjective cognitive functioning*. Environ Res, 2022. **212**(Pt
- 530 A): p. 113221.
- 531 31. Garrett, S.L., et al., *Racial Disparity in Cerebrospinal Fluid Amyloid and Tau Biomarkers and*
- 532 *Associated Cutoffs for Mild Cognitive Impairment*. JAMA Netw Open, 2019. **2**(12): p. e1917363.
- 533 32. Ewers, M., et al., *Body mass index is associated with biological CSF markers of core brain*
- 534 *pathology of Alzheimer's disease*. Neurobiol Aging, 2012. **33**(8): p. 1599-608.
- 535 33. Fan, J.X., M. Wen, and K. Li, *Associations between obesity and neighborhood socioeconomic*
- 536 *status: Variations by gender and family income status*. SSM Popul Health, 2020. **10**: p. 100529.
- 537 34. Singh, G.K., *Area deprivation and widening inequalities in US mortality, 1969-1998*. Am J Public
- 538 Health, 2003. **93**(7): p. 1137-43.
- 539 35. Campbell, M.R., et al., *P-tau/Abeta42 and Abeta42/40 ratios in CSF are equally predictive of*
- 540 *amyloid PET status*. Alzheimers Dement (Amst), 2021. **13**(1): p. e12190.
- 541 36. Hansson, O., et al., *Advantages and disadvantages of the use of the CSF Amyloid beta (Abeta)*
- 542 *42/40 ratio in the diagnosis of Alzheimer's Disease*. Alzheimers Res Ther, 2019. **11**(1): p. 34.
- 543 37. Karagulian, F., et al., *Contributions to cities' ambient particulate matter (PM): A systematic*
- 544 *review of local source contributions at global level*. Atmospheric Environment, 2015. **120**: p. 475-
- 545 483.
- 546 38. Sutphen, C.L., et al., *Longitudinal Cerebrospinal Fluid Biomarker Changes in Preclinical Alzheimer*
- 547 *Disease During Middle Age*. JAMA Neurol, 2015. **72**(9): p. 1029-42.
- 548 39. Xu, J., et al., *Photochemical impacts on the toxicity of PM2.5*. Critical Reviews in Environmental
- 549 Science and Technology, 2022. **52**(1): p. 130-156.
- 550 40. You, R., Y.S. Ho, and R.C. Chang, *The pathogenic effects of particulate matter on*
- 551 *neurodegeneration: a review*. J Biomed Sci, 2022. **29**(1): p. 15.
- 552

553 **Table 1** Baseline descriptive characteristics for EHBS study participants (≥45 years of age).

Characteristics ^d	Overall (N=1113)
Age (years)	
Mean (SD)	61.7 (6.73)
Median [Min, Max]	62.0 [45.0, 77.0]
Gender	
Female	775 (69.6%)
Body Mass Index (kg/m²)	
Mean (SD)	25.5 (3.55)
Median [Min, Max]	25.3 [16.8, 38.4]
Race/Ethnicity^a	
White/Caucasian	943 (84.7%)
Black/African American	121 (10.9%)
Other	49 (4.4%)
Hispanic	
Yes	32 (2.9%)
Educational Attainment^b	
Less than college	147 (13.2%)
College	478 (42.9%)
Master or higher	488 (43.8%)
Area Deprivation Index^c	
Mean (SD)	29.4 (20.1)
Median [Min, Max]	25.0 [1.00, 93.0]
APOE-ε4 allele carriership	
No allele	591 (53.1%)
1 allele	241 (21.7%)
2 alleles	23 (2.1%)
Missing	258 (23.2%)
<u>Air pollution concentration</u>	
1 yr. ambient PM_{2.5} (µg/m³)	
Mean (SD)	9.52 (0.764)
Median [Min, Max]	9.52 [5.63, 13.2]
IQR	0.845
3 yr. ambient PM_{2.5} (µg/m³)	
Mean (SD)	9.85 (0.832)

Characteristics ^d	Overall (N=1113)
Median [Min, Max]	9.96 [5.99, 12.0]
IQR	1.10
5 yr. ambient PM_{2.5} (µg/m³)	
Mean (SD)	9.96 (0.735)
Median [Min, Max]	10.1 [6.41, 12.0]
IQR	0.945
1 yr. traffic PM_{2.5} (µg/m³)	
Mean (SD)	1.15 (0.464)
Median [Min, Max]	1.10 [0.155, 5.06]
IQR	0.523
Missing <i>n</i> (%)	33 (3.0%)
3 yr. traffic PM_{2.5} (µg/m³)	
Mean (SD)	1.26 (0.455)
Median [Min, Max]	1.23 [0.175, 5.56]
IQR	0.479
Missing <i>n</i> (%)	33 (3.0%)
5 yr. traffic PM_{2.5} (µg/m³)	
Mean (SD)	1.25 (0.432)
Median [Min, Max]	1.21 [0.168, 5.38]
IQR	0.447
Missing <i>n</i> (%)	33 (3.0%)

554 ^aSelf-reported race/ethnicity was categorized into 3 groups: White/Caucasian,
 555 Black/African American, and Other which includes both minority and mixed ancestry
 556 groups.

557 ^bEducational attainment was self-report and included less than high school, high
 558 school/GED, some college, associate's degree, bachelor's degree, master's degree, and
 559 a professional degree (e.g., Ph.D.).

560 ^cDerived from factor analysis and validated to the Census Block Group neighborhood
 561 level with factors for the theoretical domains of income, education, employment, and
 562 housing quality; higher scores indicate higher levels of "disadvantage."

563 ^dAbbreviations: yr., Year; SD, standard deviation; Min, minimum; Max, maximum; IQR,
 564 interquartile range; µg, Microgram; m³, meters cubed.

565

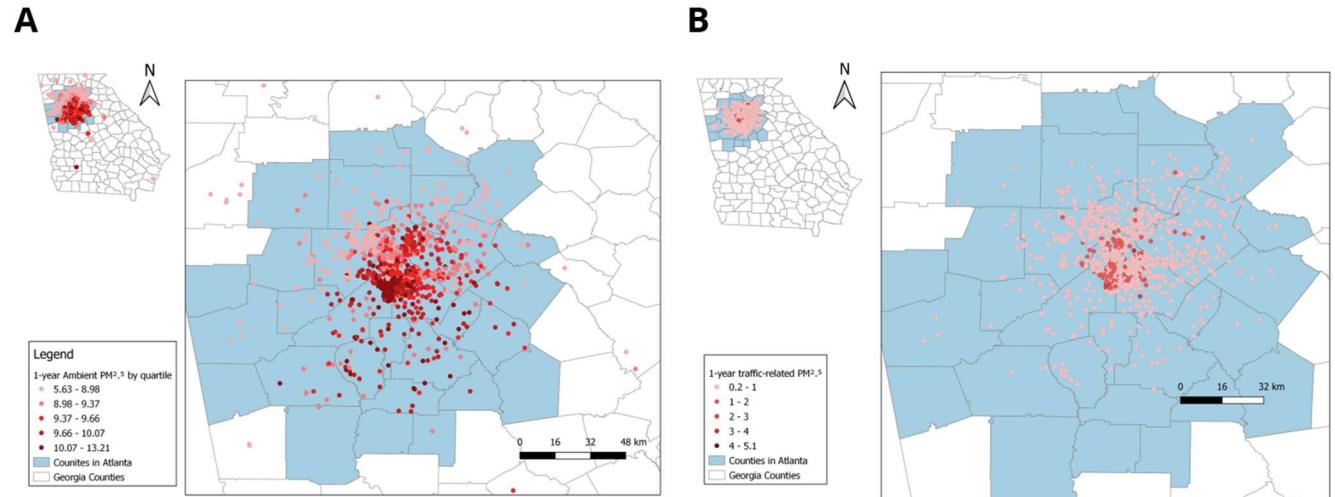
566 **Table 2** Baseline AD CSF Outcomes at enrollment between 2016 and 2020.

AD CSF concentrations and (+) cut-off	Total (N=1113)
Aβ₄₂ (pg/mL)	
Mean (SD)	1200 (382)
Median [Min, Max]	1210 [200, 1700]
IQR	692.3
tTau (pg/mL)	
Mean (SD)	187 (70.9)
Median [Min, Max]	174 [80.0, 799]
IQR	79.6
pTau (pg/mL)	
Mean (SD)	16.7 (7.16)
Median [Min, Max]	15.2 [8.00, 83.8]
IQR	7.63
tTau/Aβ₄₂ (pg/mL)	
Mean (SD)	0.171 (0.107)
Median [Min, Max]	0.141 [0.0818, 1.72]
pTau/Aβ₄₂ (pg/mL)	
Mean (SD)	0.0154 (0.0116)
Median [Min, Max]	0.0123 [0.00692, 0.200]
Aβ₄₂	
(+)	402 (36.1%)
tTau	
(+)	68 (6.1%)
pTau	
(+)	65 (5.8%)
tTau/Aβ₄₂	
(+)	87 (7.8%)
pTau/Aβ₄₂	
(+)	118 (10.6%)

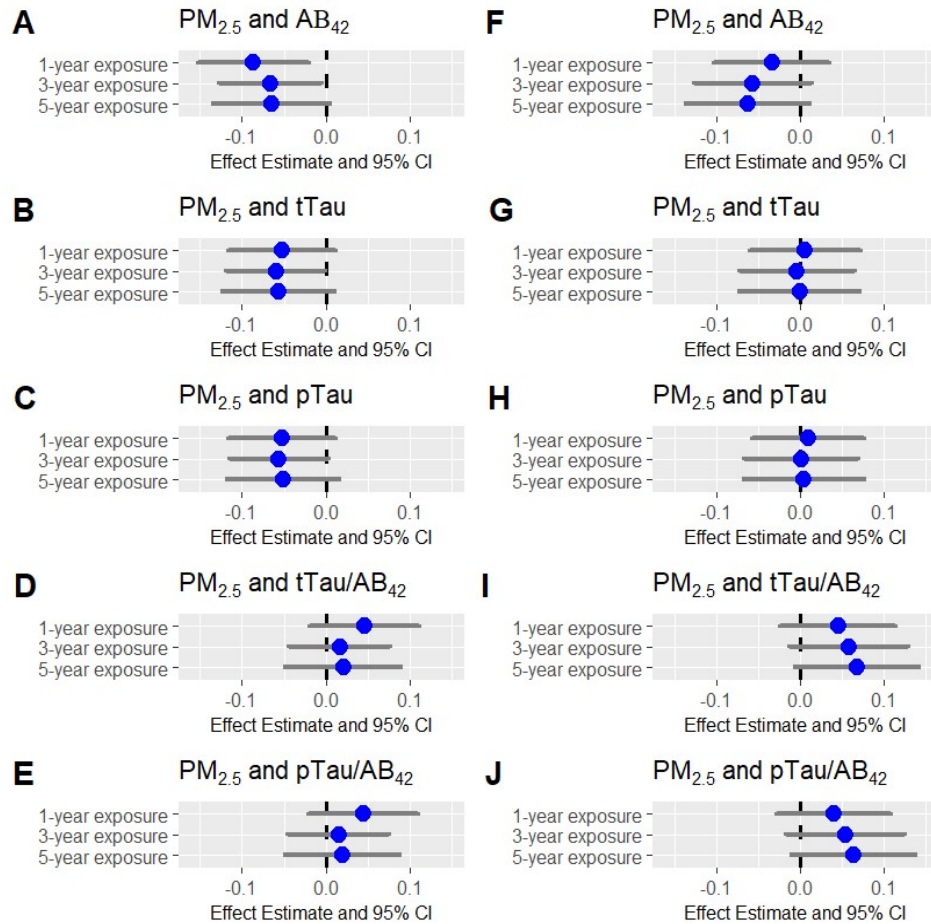
567 ^aAD CSF portfolio positive (+) vs (-) cut-offs (A β ₄₂ ≤1030 pg/ml; tTau >300 pg/mL;

568 pTau >27 pg/mL; tTau/A β ₄₂ >0.28pg/mL; pTau/A β ₄₂ >0.023pg/mL)

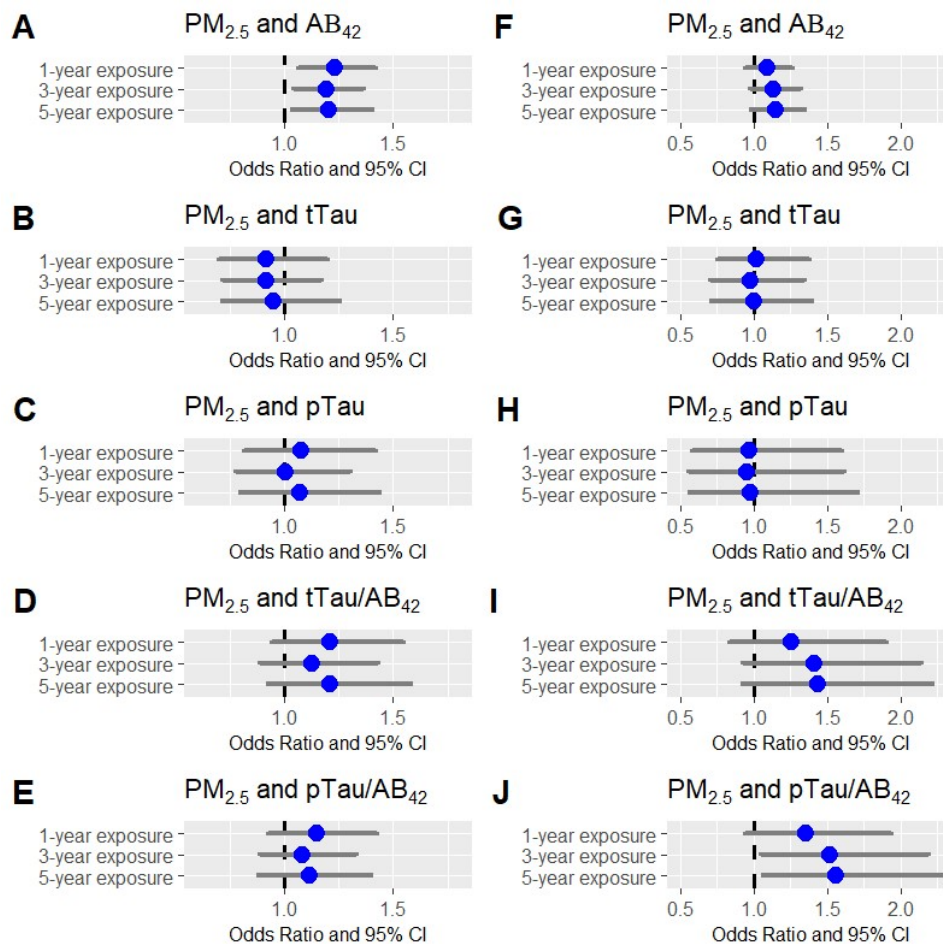
569



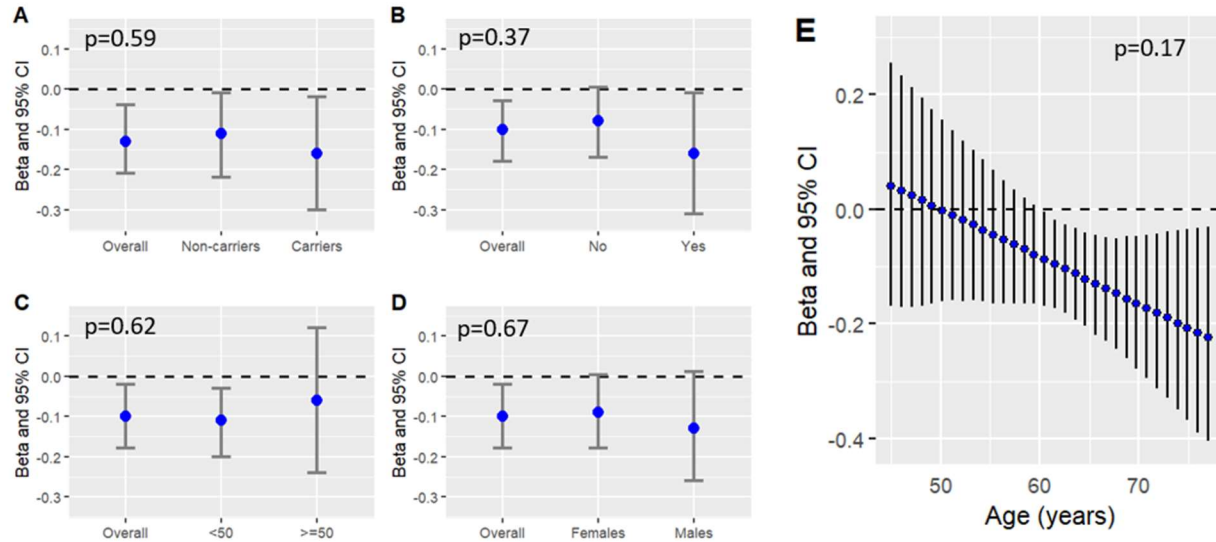
570
571 **Figure 1** Map of the geographic distribution, each dot representing a study participant, of our study
572 population and annual ambient residential $PM_{2.5}$ (in $\mu g/m^3$) exposure by quartile **(A)** (N=1,113) or
573 annual traffic-related residential $PM_{2.5}$ exposure (min-max) with easy breaks **(B)** (N=1,080).
574
575
576
577



578
579 **Figure 2** Effect Estimate (\pm 95% CI) of 1, 3, and 5-year ambient (**A–E**) (N=1,113) and traffic-related
580 (**F–J**) (N=1,080) $PM_{2.5}$ exposure on AD CSF Biomarker concentrations (in pg/mL) ($A\beta_{42}$, tTau, pTau,
581 tTau/ $A\beta_{42}$, and pTau/ $A\beta_{42}$). All estimates are standardized and adjusted for gender, age, N-SES,
582 ethnicity, educational attainment, and BMI. The dashed line indicates the significance threshold: 0
583 for linear regression.
584



586
 587 **Figure 3** Odds ratio (\pm 95% CI) for the association between 1, 3, and 5-year ambient (A–E)
 588 (N=1,113) and traffic-related (F–J) (N=1,080) $PM_{2.5}$ exposure and AD CSF Biomarkers positive (+)
 589 cut-offs ($A\beta_{42}$, tTau, pTau, tTau/ $A\beta_{42}$, and pTau/ $A\beta_{42}$). All estimates are adjusted for gender, age, N-
 590 SES, ethnicity, educational attainment, and BMI. The dashed line indicates the significance
 591 threshold: 1 for logistic regression.
 592



593
594 **Figure 4** Effect (\pm 95% CI) of yearly ambient PM_{2.5} exposure on Aβ₄₂ CSF concentrations (in pg/mL)
595 by APOE-ε4 carriership (**A**), AD family history (**B**), ADI (**C**), Gender (**D**), and Age (**E**). Presented as
596 overall and stratified effects for dichotomous variables and as continuous for Age, with interaction p-
597 values depicted on each graph. The dashed line indicates the significance threshold: 0 for linear
598 regression. The overall effect in **Figure 4A** (N=855) differs slightly from **Figure 4B-D** (N=1113) due
599 to the decreased sample size after including only participants with APOE genotype data.