

1 **Molecular Investigation of DENV serotypes in the dengue outbreak of 2022 in Nepal**

2

3 Nishan Katuwal^{1,2,3}, Aastha Shrestha^{1,3}, Urusha Ranjitkar^{1,3}, Suraj Jakibanjar^{1,3}, Surendra Kumar
4 Madhup⁴, Dipesh Tamrakar^{1,3,5}, Rajeev Shrestha^{1,2,3,6*}

5

6 1 Center for Infectious Disease Research and Surveillance, Dhulikhel Hospital, Kathmandu University
7 Hospital, Nepal

8 2 Molecular and Genome Sequencing Research Lab, Dhulikhel Hospital, Kathmandu University
9 Hospital, Nepal

10 3 Research and Development Division, Dhulikhel Hospital, Kathmandu University Hospital, Nepal

11 4 Department of Microbiology, Kathmandu University School of Medical Sciences, Dhulikhel, Nepal

12 5 Department of Community Medicine, Kathmandu University School of Medical Sciences, Nepal

13 6 Department of Pharmacology, Kathmandu University School of Medical Sciences, Dhulikhel, Nepal

14

15 *Corresponding Author

16

17 **Word Count (Introduction, Methods, Results, Discussion and Conclusion): 2705**

18 **Abstract Word Count: 315**

19 **Figures: 3**

20 **Tables: 4**

21

22 **Correspondence:**

23 Prof. Dr. Rajeev Shrestha

24 Chief, Research and Development Division, Dhulikhel Hospital Kathmandu University Hospital

25 Department of Pharmacology, Kathmandu University School of Medical Sciences

26 Email: rajeev.shrestha@kusms.edu.np

27

28

29

30

31

32

33 **Abstract**

34 **Introduction**

35 Dengue, a viral infection highly prevalent in tropical regions, exhibits local variations in risk that are
36 influenced by a combination of climatic, socioeconomic, and environmental factors. The disease is
37 caused by four distinct yet closely related serotypes of the dengue virus: DENV-1, DENV-2, DENV-3,
38 and DENV-4.

39 **Objectives**

40 The objective of this study is to identify the different serotypes of dengue virus responsible for the 2022
41 outbreak in Nepal, where dengue has been prevalent since 2006 but with limited availability of molecular
42 information on the serotypes.

43 **Methodology**

44 Serum samples from suspected dengue patients visiting Dhulikhel Hospital were analyzed using Dengue
45 Ag and IgM/IgG Ab Kit test, for the presence of IgG/IgM antibodies or NS1 Ag. The positive samples
46 were stored at -80 °C, and 89 samples were selected for further analysis. RNA was extracted from those
47 positive samples using the Zymo Quick RNA Viral Kit, and RT-PCR was performed using the Sacace
48 Dengue Real Genotype qPCR kit to identify the dengue virus serotypes present.

49 **Results**

50 The study included 89 samples, of which a higher percentage of sero-positivity was observed in females
51 (52%) compared to males. Positive cases were distributed in 14 different districts, with the highest
52 percentage (58.4%) in Kavre. Molecular investigation, of 53 out of 89 serologically positive samples, by
53 qPCR revealed that DENV1 was the predominant serotype, followed by DEN3 (24.5%) and DENV2
54 (16.9%). DENV4 was not detected in any of the samples. The average Ct value of all serotypes was 17.6,
55 with DENV3 having the lowest Ct value of 16.6, indicating a high viremia.

56 **Conclusion**

57 Our study, although limited in its coverage of Nepal, has provided molecular information on the serotypes
58 responsible for the 2022 dengue outbreak. The high prevalence of DENV1 was observed, while
59 prevalence of DENV3 was accompanied by high viral load. This information provided valuable insight
60 into the circulating serotypes of the virus in the region.

61

62

63

64

65 **Introduction**

66 Dengue Fever, caused by Dengue Virus (DENV), and transmitted by *Aedes aegypti* or *Aedes albopictus*,
67 is a major cause of morbidity and mortality worldwide.¹ The infection could vary from asymptomatic to
68 acute febrile illness and to severe hemorrhagic fever/dengue shock syndromes (DHF/DSS).² About 4
69 billion people are at risk of infection globally¹ and the risk profile is increasing with climate change with
70 spread to new geographical areas.³⁻⁵

71 At the local level, urbanization (especially unplanned), is associated with dengue transmission through
72 multiple social and environmental factors including population density, human mobility, water storage
73 practices.⁶ Consequently, disease risks change and shift with climate change in tropical and subtropical
74 areas, and vectors might adapt to new environment and climate.⁷ Nepal is at higher risk, for dengue, due
75 to its extensive altitudinal and climatic variations, with new infections being observed at higher altitude.⁸⁻
76 ¹⁰ In Nepal, dengue epidemic outbreaks occur in every 2 to 3 year-interval, with cases increasing every
77 year. In 2019, there were more than 14,000 cases with six reported deaths. In current outbreak of 2022,
78 until October, there have already been around 34,000 cases with forty-four reported deaths.^{8,9}

79 DENV belongs to the family Flaviviridae with four different serotypes (DENV-1, DENV-2, DENV-3,
80 and DENV4). Infection by one serotype could confer long-term immunity to that serotype but subsequent
81 infection by another serotype causes severe disease including DHF/DSS.¹¹⁻¹² Some studies have shown
82 that DENV2 and DENV3 cause more severe illness than other serotypes.¹³ Therefore, DENV serotyping
83 is important for disease management and public health surveillance.

84 Several methods can be used to diagnose of DENV infection and their utility depends on what a patient
85 presents after symptom onset. However, due to limited availability of accurate diagnostics, many cases
86 are also misdiagnosed, further underestimating the burden of disease.¹⁴ Virus isolation are technically
87 challenging, expensive and require sophisticated biosafety.¹⁵ Serological methods, such as enzyme-linked
88 immunosorbent assays (ELISA), may confirm the presence of a recent (IgM) or past infection (IgG)
89 (through the detection of anti-dengue antibodies) but cannot identify the serotype and in some cases, the
90 antibody can remain undetectable.^{2,14} Nucleic acid tests on the other hand, have relatively higher
91 specificity and sensitivity and are also recommended by WHO.¹⁶⁻¹⁷ Additionally, molecular tests such as
92 qPCR (quantitative Polymerase Chain Reaction or real-time PCR) are also capable for differential
93 diagnosis of dengue, where there are other clinically indistinguishable infectious diseases such as
94 malaria, leptospira and rickettsia.¹⁸ Some studies in Nepal have utilised Polymerase Chain Reaction (PCR)
95 and sequencing to identify the circulating DENV serotype in previous outbreaks.^{8,19-21} However, regular
96 molecular investigation is essential, when it has been reported that there are possibilities of replacement

97 of one DENV serotype by another.^{12,22} For instance, in Sri Lanka, DENV3 was replaced by DENV1 in
98 severe dengue epidemic of 2009.^{12, 22,23}
99 Nepal has faced periodic but major outbreaks in 2006, 2010, 2013, 2018 and 2019, there has been very
100 limited molecular data on the circulating serotypes in the country (dominant serotypes: DENV-1/2,
101 DENV-2, DENV-1, DENV-2, and DENV-2/3, respectively in 2010, 2013, 2016, 2017, and 2019).^{9,24-26}
102 Therefore, in this study, we have aimed to perform molecular investigation of DENV cases, of the
103 ongoing outbreak, through the utilisation of multiplex-qPCR /Reverse Transcriptase PCR which will fill
104 the information void and provide insights to the progression of dengue outbreaks.

105

106 **Methodology**

107 **Samples Selection**

108 In this study, we selected 100 dengue-positive serum samples, which were stored in -80C at Dhulikhel
109 Hospital. The samples belonged to the dengue outbreak of 2022, collected between September-October
110 2022. They were, first, tested by serology and upon testing positive, were stored in the freezer.

111 **Dengue Serology**

112 The serum samples were evaluated using Dengue NS1 Ag and IgM/IgG Ab Kit (Biotrol Laboratories).
113 The samples were evaluated as dengue positive if they tested positive for either NS1 and/or IgM and/or
114 IgG.

115 **Extraction and qPCR**

116 Viral RNA was extracted from the serum samples using Zymo Quick RNA Viral Kit (Zymo, Cat: R1034-
117 1034E). The extracted RNA (Ribo-Nucleic Acid) was evaluated using Sacace Dengue Real Genotype
118 qPCR kit (Sacace, Cat: V63-50FRT) with use of proper controls. Negative process controls were used
119 during extraction and PCR. The following master-mix recipe and thermocycling was used for serotyping:

120

Table 1: Master-mix Preparation for Sacace Dengue Real Genotype qPCR kit

| Master-mix Component | Volume |
|---------------------------|---------|
| PCR- mix-FRT DV | 10 µl |
| RT- PCR-mix-2-TM | 5 µl |
| RT-G-mix-2 | 0.25 µl |
| Hot Start TaqF Polymerase | 0.5 µl |
| MMLV Revertase | 0.25 µl |

121

122 After preparation, 15ul of the above master-mix was added to 10ul of extracted RNA.

123

Table 2: Thermocycling parameters for qPCR

| Temperature (°C) | Time | Cycles |
|------------------|--------------------------------|--------|
| 50 | 30 mins | 1 |
| 95 | 15 mins | 1 |
| 95 | 10 secs | 5 |
| 56 | 40 secs | |
| 72 | 20 secs | |
| 95 | 10 secs | 40 |
| 54 | 40 secs (Fluorescence Capture) | |
| 72 | 20 secs | |

124

125 **Data Interpretation**

126 The kit detects presence of four serotypes through four separate channels in a single multiplex reaction
127 as: DENV genotype 1 cDNA is detected in the FAM/Green channel; genotype 2 cDNA in the
128 JOE/HEX/Yellow channel; genotype 3 in the Rox/Texas Red/Orange channel; genotype 4 in the Cy5/Red
129 channel and Internal Control (IC) is detected in the Cy5.5/Crimson/ Quasar705 channel. As per the kit,
130 the results were interpreted by the instance of crossing or not crossing of the threshold line by the
131 fluorescence curve. The result of amplification was considered positive if the fluorescence curve was
132 characteristic of sigmoidal curve and crossed the threshold line once in the significant fluorescence
133 increase section and if the Ct value detected in the channel was below 38. Similarly, the result of
134 amplification was considered negative if the fluorescence curve was not sigmoidal and if it did not cross
135 the threshold line. The result was considered invalid if Ct value in the channel for the Cy5.5 fluorophore
136 was not determined (was absent) or greater than the specified boundary Ct value.

137

138 **Results**

139 **Samples**

140 Out of 100 samples, only 89 dengue sero-positive samples were selected. The remaining 11 samples were
141 excluded because either they did not have associated information or did not have sufficient volume.

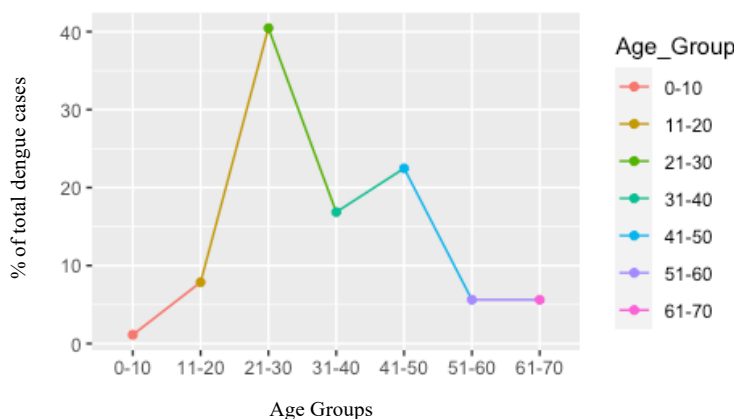
142

143 **Subject Demography**

144 Among the selected 89 subjects, 46 (52%) were female and the median age was 31 years (IQR, 7 to 68
145 years). Age wise positive cases of dengue was observed highest in age group between 21-30 years which

146 constituted 40.4% of total cases whereas lowest was observed in age group above 51-60 and 61-70 years
147 each of which comprised of 5.6% of the total cases. (Figure 1)

148



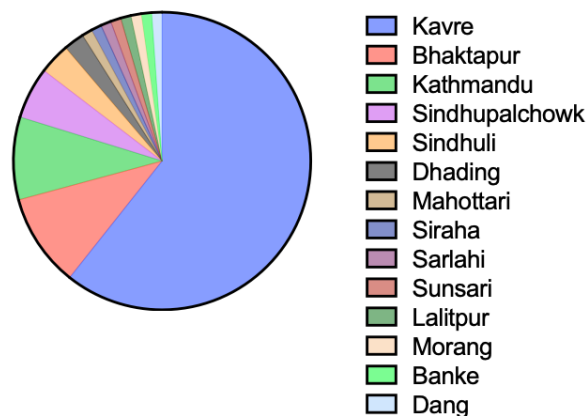
149

150

151

Figure 1: Distribution of sero-positive Dengue cases among age groups

152 The participants were from different districts of Bagmati Province such as Kavre (54), Bhaktapur (9),
153 Kathmandu (8), Sindhupalchowk (5), Sindhuli (3). The positivity was highest in Kavre District (58.4%).
154 (Figure 2).



155

156

Figure 2: Distribution of sero-positive dengue cases by districts

157

158 Dengue Serology

159 Out of 89 samples, 76.4% (n=68) tested positive for NS1 only, 7.8% (n=7) tested for IgM only, while
160 2.2% (n=2) tested for IgG only. Similarly, 4.4% (n=4) tested positive for NS1 and IgM both, 2.2% (n=2)
161 tested for NS1 and IgG both, 2.2% (n=2) tested for IgM and IgG both, while 4.4% (n=4) tested positive
162 for all three.

163

164

165 **Dengue qPCR**

166 The qPCR investigation confirmed the presence of 3 dengue serotypes: DENV1-3. Dengue serotype 4
167 was not detected in any sample. (Table 3)

168 **Table 3: Distribution of several DENV serotypes**

| SN | Serotypes | Number (%) |
|----|-----------|------------|
| 1 | DENV1 | 31 (58.4%) |
| 2 | DENV2 | 9 (16.9%) |
| 3 | DENV3 | 13 (24.5%) |
| 4 | DENV4 | N/A |

169

170 The average Ct value of all serotypes was found to be 17.6, indicating high viral load. Additionally, the
171 average Ct values were similar for different serotypes. The average Ct value for each serotype has been
172 shown in the table below:

173 **Table 4: Average Ct value, indicating subsequent viral load for each serotype**

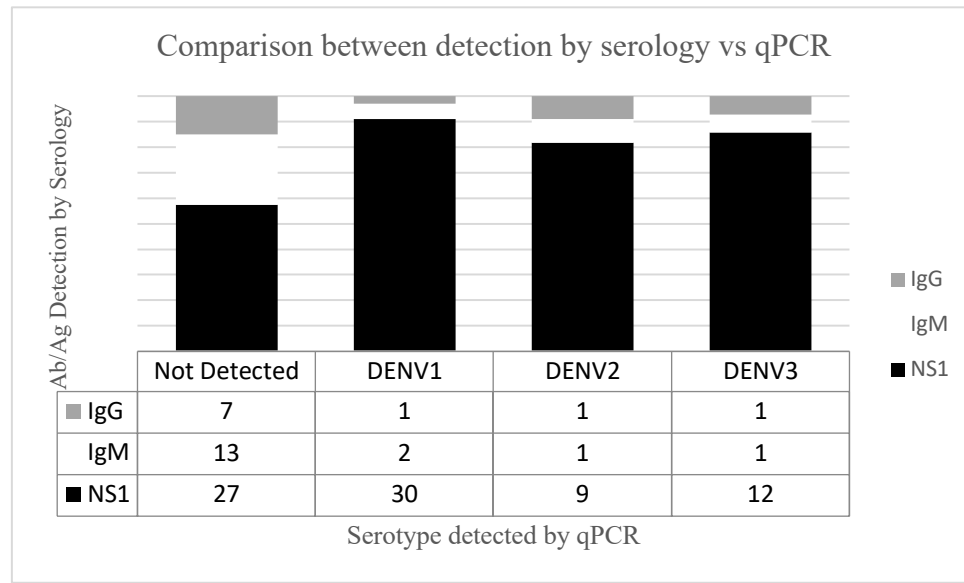
| SN | Serotypes | Average Ct Value |
|----|-----------|------------------|
| 1 | DENV1 | 18.07 |
| 2 | DENV2 | 17.3 |
| 3 | DENV3 | 16.6 |
| 4 | DENV4 | N/A |

174

175 **Dengue Serology vs qPCR**

176 When compared to prior serology, only 53 samples, out of 89, tested positive for Dengue by qPCR. From
177 the comparison of 53 samples, it was observed that all (except one) of the sero-positive but qPCR
178 negative samples were positive for either NS1 or IgM or both, while 27 NS1 sero-positive were negative
179 by qPCR. (Figure 3)

180
181
182
183
184
185
186
187
188
189
190



191 **Figure 3: Comparison between dengue detection by serology (NS1, IgM and IgG) and qPCR (for**
192 **each serotype) including not detected by qPCR**

193

194 Discussion

195 Subject Demography

196 Several studies have shown that risk of dengue fever and DHF varies by age.²⁷⁻³⁰ Though dengue is
197 considered to be pediatric disease in most of South East Asia³¹, most adult patients present with dengue
198 fever instead of DHF.³² Another study in Brazil also found that adults are more likely to have dengue
199 compared to children.³³ In our study, the median age of dengue positives was 31 years with 21-30 age
200 group representing highest number of cases, while in other studies this has ranged from 6.8 to 24.3
201 years.^{31,34,35} Similar study in Nepal, however, showed adult median age (37 years).³⁶ Interestingly, studies
202 have shown that median age of infection, from dengue, has increased throughout the years.^{34,36-38} The
203 increase in median age could be due to changes in surveillance practices, reduced mosquito-human
204 contacts as well as shift in population demographics.³⁹ There could also be change in age specific
205 reporting and clinical presentation of dengue infection. Additionally, aging could have effects on the
206 adaptive and cell mediated immunity leading to poor cytokine responses against dengue infection.⁴⁰
207 Moreover, there could be other several factors such as virus serotype that could influence the correlation
208 between age and prevalence of dengue.^{27,33,41}

209 In our study, dengue positivity was found to be slightly higher in female. However, the correlation of
210 dengue fever with gender have been variable in several studies. Some studies have shown higher
211 prevalence among male⁴²⁻⁴⁴, while some have not found any correlation.³⁵ However, the gender related

212 correlation could change over time and could differ across countries based on different socio-cultural
213 practices.⁴⁵ Around our study site, female tend to work with household chores while male have tendency
214 to work in nearer urban areas. This could possibly lead to exposure to environmental risk factors of
215 dengue, in female.

216 In our study, the dengue-infected individuals were mostly from Kavre district which consists of sub-
217 tropical and temperate regions.⁴⁶ Traditionally, dengue infection has also been prevalent in tropical and
218 sub-tropical regions, worldwide.³ However, the vectors can adapt to new environment and climate. The
219 vectors for dengue have gained tolerance against colder climates, as an egg and adult.^{47,48} In Nepal,
220 previously, in the first outbreak in 2006, only nine districts were affected by dengue, which increased to
221 45 districts in 2018 and 68 districts in 2019. These dengue cases, which were found at lower altitudes
222 (lowland Terai), had spread to all of 77 districts in the outbreak of 2022, which now included high altitude
223 regions.^{8-10,49,50} In 2019, Kavre district constituted of 0.3% of total the cases, which increased to 1% in
224 2022. Similarly, this percentage increased from 10.79% to 26.11% in Kathmandu.^{51,52} The reason behind
225 this could be due to adaptation of mosquito responsible for dengue and increase in temperature in Nepal,
226 resulting in ability to survive and breed even at altitudes of 2100m, which was not observed in prior
227 years.⁵³ One estimate suggested that high elevated mid hills have warmed up by 1.5 °C in the last 25
228 years, which is much higher than global average.⁵⁴ Thus, there is higher risk of dengue expanding more
229 northwards in the future.²⁶

230 **Dengue serotyping**

231 In this study, DENV1 was predominant, followed by DENV3 with absence of DENV4. There was no
232 observable correlation in the serotype when compared to demography (age, gender) and geography.
233 Unfortunately, the role of socio-demography is context specific in relation of DENV serotypes.⁵⁵
234 Nevertheless, the overall distribution of serotypes, from this study, was similar to other studies in Nepal,
235 done during epidemic of 2022, where DENV1 was observed to be highly prevalent followed by
236 DENV3.⁵⁶⁻⁵⁸ Though Nepal has previously reported all four serotypes in the past, DENV1 and DENV2
237 have historically contributed to highest burden.^{20,51} In 2010 and 2016, DENV1 appeared while DENV2
238 was responsible for the outbreak in 2013.⁵⁹ Similarly, only DENV1 and DENV2 were observed in
239 outbreak of 2019.⁵¹ The re-emergence of DENV3 in 2022 is very alarming because the subsequent cross
240 infection could lead to severe conditions of DHF and DSS.^{11,12}

241 This study observed the average Ct value from qPCR to be 17.6. This low Ct value indicates that higher
242 viremia which could propel the severity of dengue infection.⁶⁰ Furthermore, the infection with DENV3
243 had slightly higher viremia levels (lower Ct value) compared to other serotypes. This could have been

244 due to re-emergence of DENV3 after several years.^{56,61,62} But the difference was not significant enough
245 to confirm this hypothesis.

246 **Dengue Serology vs qPCR**

247 In this study, 69.5% of the serology positive serum samples were positive by qPCR. The discrepancy is
248 unlikely due to procedural error because the Internal Control (during RNA extraction) and qPCR controls
249 were all present, valid and in range with manufacturer manual.⁶³

250 The difference in detection between the two methods is plausible as the sensitivity of the approaches vary
251 with test principles and the time of sample collection during the infection period.⁶⁴ Although the detection
252 of viral RNA and NS1 antigens are generally suitable markers for DENV infection, NS1 antigen and IgM
253 detection perform superior to RNA detection from day 6 to 7.⁶⁵ Additionally, the time of sample collection
254 from onset of fever is important because the antibody produced could lead to neutralization of virus,
255 during late period of infection.⁶⁶ This neutralization could result in lack of detection by qPCR. As our
256 study included the retrospective samples, we could not identify the time of sample collection during the
257 infection period. Another plausible explanation could be RNA degradation during storage and transport,
258 causing lowered RNA concentration and negative result.⁶⁷

259 Additionally, the observation of NS1 and IgM sero-positive but qPCR negative samples could indicate
260 RNA degradation in samples.⁶⁸ A similar study in Nepal also observed only one positive in qPCR out of
261 18 IgM positive samples.⁶⁹ This study hypothesized degradation of viral particles, due to thawing,
262 transportation and storage, as possible reason behind the discrepancy. Furthermore, the observation of
263 qPCR negativity for two IgG only cases is plausible as IgG indicates past infection, implying that the
264 samples may not have any viral particles (at the time of sample collection).^{70,71,72} Interestingly, there have
265 also been studies that observed cross-reactivity between DENV and SARSCoV-2 antibodies.⁷³⁻⁷⁶ Such
266 cross reactivity could have provided false positive in serological tests.

267 One of the limitations in this study was absence of information regarding clinical manifestation and thus,
268 its association with DENV serotype could not be established.⁷⁵ The incorporation of retrospective
269 samples was the reason behind this limitation. Owing to the same reason, we could not identify the risk
270 factors associated with DENV. However, our study was not designed to understand the associated risk
271 factors. On the contrary, there are several strengths of this study. Firstly, the participants included
272 individuals from young to old age group, which help address the epidemiological gap of age-specific
273 serotype prevalence.^{76,77} Secondly, the population incorporated in the study was from outbreak, therefore
274 represented general population visiting the hospital. Thirdly, the coverage of patients visiting the study
275 site was diverse. The study site, Dhulikhel Hospital, hosts patients from wide range of geographical (terai

276 and hilly region), social (mixed castes and ethnicity) and economic areas (urban and peri-urban).⁷⁸
277 Nevertheless, this study was still able to overcome the gap posed by limited molecular data on circulating
278 serotypes in Nepal.

279

280 **Conclusion**

281 Dengue fever possess higher risk than ever with new cases emerging in higher altitude due to climate
282 change. The risks posed in correlation to age and gender has been variable, with older age posing higher
283 risk for dengue. Interestingly, there has been variation in detection of dengue through serology and qPCR,
284 owing to the difference in sensitivity, time of sample collection, RNA degradation or cross-reactivity.
285 The current outbreak showed highest prevalence of DENV1 followed by DENV3. The re-emergence of
286 DENV3, with high viral load, compared to preceding outbreak of 2019 could cause cross-infection
287 leading to severe conditions of dengue hemorrhagic fever/dengue shock syndrome. Thus, the findings
288 from this study, of dengue outbreak of 2022, was able to fill the void due to limited molecular data on
289 the circulating serotypes.

290

291 **Declaration of competing interest**

292 We declare that we have no potential conflicts of interest.

293

294 **Acknowledgements**

295 We sincerely thank Nepal Health Research Council for funding this study through Provincial Health
296 Research Grant 2079/80. We appreciate Department of Microbiology, Dhulikhel Hospital for providing
297 the samples and related information.

298

299

300

301

302

303

304

305

306

307

308 **References**

- 309 1. Center for Disease Control and Prevention. Dengue. Accessed on 12 May 2023. Available at:
310 <https://www.cdc.gov/dengue/index.html>
- 311 2. WHO. World Health Organization. Dengue guidelines for diagnosis, treatment, prevention and control:
312 New Edition. 2009
- 313 3. WHO. Dengue and severe dengue. 2022. Accessed: 16 May 2023. Available at:
314 [https://www.who.int/news-room/fact-sheets/detail/dengue-and-severe-](https://www.who.int/news-room/fact-sheets/detail/dengue-and-severe-dengue#:~:text=Another%20study%20on%20the%20prevalence,actual%20burden%20is%20in%20Asia)
315 [dengue#:~:text=Another%20study%20on%20the%20prevalence,actual%20burden%20is%20in%20Asia](https://www.who.int/news-room/fact-sheets/detail/dengue-and-severe-dengue#:~:text=Another%20study%20on%20the%20prevalence,actual%20burden%20is%20in%20Asia)
316 a.
- 317 4. WHO. World Health Organization—Geneva.Global strategy for dengue prevention and control 2012–
318 2020. WHO Library Cataloguing-in-Publication Data, Switzerland: 2012.
- 319 5. Cucunawangsih Lugito NPH. Trends of dengue disease epidemiology. *Virology: research and*
320 *treatment*. 2017;8:1178122X17695836.
- 321 6. Gubler DJ. Dengue, Urbanization and Globalization: The Unholy Trinity of the 21(st) Century. *Trop*
322 *Med Health*. 2011 Dec;39(4 Suppl):3-11. doi: 10.2149/tmh.2011-S05. Epub 2011 Aug 25
- 323 7. Bhatt, S., Gething, P., Brady, O. The global distribution and burden of dengue. *Nature*. 2013; 496,
324 504–507. <https://doi.org/10.1038/nature12060>
- 325 8. Poudyal P, Sharma K, Dumre SP, Bastola A, Chalise BS, Shrestha B, Poudel A, Giri A, Bhandari P,
326 Shah Y, Poudel RC, Khadka D, Maharjan J, Ngwe Tun MM, Morita K, Pandey BD, Pandey K. Molecular
327 study of 2019 dengue fever outbreaks in Nepal. *Trans R Soc Trop Med Hyg*. 2021;115(6):619-626.
- 328 9. Ngwe Tun, M.M.; Pandey, K.; Nabeshima, T.; Kyaw, A.K.; Adhikari, M.; Raini, S.K.; Inoue, S.;
329 Dumre, S.P.; Pandey, B.D.; Morita, K. An Outbreak of Dengue Virus Serotype 2 Cosmopolitan Genotype
330 in Nepal, 2017. *Viruses*.2021; 13, 1444. <https://doi.org/10.3390/v13081444>
- 331 10. Guzman MG, Alvarez M, Halstead SB. Secondary infection as a risk factor for dengue hemorrhagic
332 fever/dengue shock syndrome: An historical perspective and role of antibody-dependent enhancement of
333 infection. *Arch Virol*. 2013;158:1445–59.
- 334 11. Ocwieja KE, Fernando AN, Sherrill-Mix S, Sundararaman SA, Tennekoon RN, Tippalagama R, et
335 al. Phylogeography and molecular epidemiology of an epidemic strain of dengue virus type 1 in Sri
336 Lanka. *The American journal of tropical medicine and hygiene*. 2014;91(2):225–34. 10.4269/ajtmh.13-
337 0523

- 338 12. Nisalak A, Endy TP, Nimmannitya S, Kalayanaroj S, Scott RM, Burke DS, et al. Serotype-specific
339 dengue virus circulation and dengue disease in Bangkok, Thailand from 1973 to 1999. *The American*
340 *journal of tropical medicine and hygiene*. 2003;68(2):191–202.
- 341 13. Gyawali, N., & Taylor-Robinson, A. W. Diagnosis of Dengue: Strengths and Limitations of Current
342 Techniques and Prospects for Future Improvements. In (Ed.), *Dengue - Immunopathology and Control*
343 *Strategies*. IntechOpen. 2017.
- 344 14. Philip Samuel P, Tyagi B. Diagnostic methods for detection & isolation of dengue viruses from vector
345 mosquitoes. *Indian Journal of Medical Research*. 2006; 123: 615-628.
- 346 15. Gaikwad S, Sawant SS, Shastri JS. Comparison of nonstructural protein-1 antigen detection by rapid
347 and enzyme-linked immunosorbent assay test and its correlation with polymerase chain reaction for early
348 diagnosis of dengue. *J Lab Physicians*. 2017;9(3):177–81. Epub 2017/07/15. [pii]. 10.4103/0974-
349 2727.208265
- 350 16. Waggoner JJ, Abeynayake J, Sahoo MK, Gresh L, Tellez Y, Gonzalez K, et al. Comparison of the
351 FDA-approved CDC DENV-1-4 real-time reverse transcription-PCR with a laboratory-developed assay
352 for dengue virus detection and serotyping. *J Clin Microbiol*. 2013;51(10):3418–20. 10.1128/JCM.01359-
353 13
- 354 17. Gurukumar KR, Priyadarshini D, Patil JA, Bhagat A, Singh A, Shah PS, Cecilia D. Development of
355 real time PCR for detection and quantitation of Dengue Viruses. *Virol J*. 2009;6:10.
- 356 18. Prajapati, Sabita & Napit, Rajindra & Bastola, Anup & Rauniyar, Ramanuj & Shrestha, Srijan &
357 Lamsal, Mahesh & Adhikari, Anurag & Bhandari, Parmananda & Yadav, Sanjay & Manandhar, Krishna.
358 (2020). Molecular phylogeny and distribution of dengue virus serotypes circulating in Nepal in 2017.
359 *PLOS ONE*. 15. e0234929. 10.1371/journal.pone.0234929.
- 360 19. Khetan, R.P., Stein, D.A., Chaudhary, S.K. et al. Profile of the 2016 dengue outbreak in Nepal. *BMC*
361 *Res Notes*. 2018; 11: 423.
- 362 20. Malla S, Thakur GD, Shrestha SK, Banjeree MK, Thapa LB, Gongal G, Ghimire P, Upadhyay BP,
363 Gautam P, Khanal S, Nisalak A, Jarman RG, Gibbons RV. Identification of all dengue serotypes in Nepal.
364 *Emerg Infect Dis*. 2008 Oct;14(10):1669-70.
- 365 21. Chan K-S, Chang J-S, Chang K, Lin C-C, Huang J-H, Lin W-R, et al. Effect of serotypes on clinical
366 manifestations of dengue fever in adults. *Journal of microbiology, immunology, and infection = Wei mian*
367 *yu gan ran za zhi*. 2009;42(6):471–8
- 368 22. Fried JR, Gibbons RV, Kalayanaroj S, Thomas SJ, Srikiatkachorn A, Yoon I-K, et al. Serotype-
369 specific differences in the risk of dengue hemorrhagic fever: an analysis of data collected in Bangkok,

- 370 Thailand from 1994 to 2006. *PLoS neglected tropical diseases*. 2010;4(3):e617
371 10.1371/journal.pntd.0000617
- 372 23. Tissera HA, Ooi EE, Gubler DJ, Tan Y, Logendra B, Wahala WM, de Silva AM, Abeysinghe MR,
373 Palihawadana P, Gunasena S, Tam CC, Amarasinghe A, Letson GW, Margolis HS, De Silva AD. New
374 dengue virus type 1 genotype in Colombo, Sri Lanka. *Emerg Infect Dis*. 2011;17(11):2053-5.
- 375 24. Dumre, S.P.; Bhandari, R.; Shakya, G.; Shrestha, S.K.; Cherif, M.S.; Ghimire, P.; Klungthong, C.;
376 Yoon, I.K.; Hirayama, K.; Na-Bangchang, K.; et al. Dengue virus serotypes 1 and 2 responsible for major
377 dengue outbreaks in Nepal: Clinical, laboratory, and epidemiological features. *Am. J. Trop. Med. Hyg.*
378 2017, 97, 1062–1069.
- 379 25. Dumre, S.P.; Acharya, D.; Lal, B.K.; Brady, O.J. Dengue virus on the rise in Nepal. *Lancet Infect.*
380 *Dis*. 2020, 20, 889–890.
- 381 26. Acharya, B.K.; Cao, C.; Xu, M.; Khanal, L.; Naeem, S.; Pandit, S. Present and future of dengue fever
382 in nepal: Mapping climatic suitability by ecological niche model. *Int. J. Environ. Res. Public Health*
383 2018, 15, 187
- 384 27. Halstead SB. Epidemiology of dengue and dengue hemorrhagic fever. In: Gubler D, Kuno G, editors.
385 *Dengue and dengue hemorrhagic fever*. Wallingford (UK): CAB International; 1997. p. 23–44.
- 386 28. Burke DS, Nisalak A, Johnson DE, Scott RM. A prospective study of dengue infections in Bangkok.
387 *Am J Trop Med Hyg*. 1988; 38:172–180.
- 388 29. Hammond SN, Balmaseda A, Perez L, Tellez Y, Saborio SI, et al. Differences in dengue severity in
389 infants, children, and adults in a 3-year hospital-based study in Nicaragua. *Am J Trop Med Hyg*. 2005;
390 73:1063–1070.
- 391 30. Guzman MG, Kouri G, Bravo J, Valdes L, Vazquez S, et al. Effect of age on outcome of secondary
392 dengue 2 infections. *Int J Infect Dis*. 2002; 6:118–124.
- 393 31. Thai KT, Nishiura H, Hoang PL, Tran NT, Phan GT, Le HQ, Tran BQ, Nguyen NV, de Vries PJ. Age-
394 specificity of clinical dengue during primary and secondary infections. *PLoS Negl Trop Dis*. 2011
395 Jun;5(6): e1180
- 396 32. Wilder-Smith A, Yoksan S, Earnest A, Subramaniam R, Paton NI. Serological evidence for the co-
397 circulation of multiple dengue virus serotypes in Singapore. *Epidemiol Infect*. 2005;133:667–671
- 398 33. Egger JR, Coleman PG. Age and clinical dengue illness. *Emerg Infect Dis*. 2007;13:924–925.]
- 399 34. K. Limkittikul, J. Brett, M. L’Azou, Epidemiological trends of dengue disease in Thailand (2000-
400 2011): A systematic literature review. *PLoS Negl. Trop. Dis*. 2014. 8, e3241.

- 401 35. Kalayanarooj S, Vaughn DW, Nimmannitya S, et al. Early clinical and laboratory indicators of acute
402 dengue illness. *J Infect Dis* 1997; 176:313-21.
- 403 36. Bhuvan Saud, Saroj Adhikari, Laxman Maharjan, Govinda Paudel, Neetu Amatya, Shristi Amatya,
404 An epidemiological prospective of focal outbreak of dengue infection in Kathmandu, Nepal, *Journal of*
405 *Clinical Virology Plus*,2022.2(1). 100063, ISSN 2667-0380
- 406 37. O. Chareonsook, H. M. Foy, A. Teeraratkul, N. Silarug, Changing epidemiology of dengue
407 hemorrhagic fever in Thailand. *Epidemiol. Infect.*1999; 122, 161–166.
- 408 38. Huang AT, Takahashi S, Salje H, Wang L, Garcia-Carreras B, Anderson K, Endy T, Thomas S,
409 Rothman AL, Klungthong C, Jones AR, Fernandez S, Iamsirithaworn S, Doung-Ngern P, Rodriguez-
410 Barraquer I, Cummings DAT. Assessing the role of multiple mechanisms increasing the age of dengue
411 cases in Thailand. *Proc Natl Acad Sci U S A.* 2022 ;119(20):e2115790119
- 412 39. D. A. T. Cummings et al., The impact of the demographic transition on dengue in Thailand: Insights
413 from a statistical analysis and mathematical modeling. *PLoS Med.*2009; 6, e1000139
- 414 40. Lin RJ, Lee TH, Leo YS. Dengue in the elderly: a review. *Expert Rev Anti Infect Ther [Internet].*
415 2017;15(8):729–35. <https://doi.org/10.1080/14787210.2017.1358610>
- 416 41. Kuno G. Review of the factors modulating dengue transmission. *Epidemiol Rev.* 1995;17:321–35.
- 417 42. Mishra S, Ramanathan R, Agarwalla SK. Clinical profile of dengue fever in Children: A study from
418 Southern Odisha, India *Scientifica.* 2016; 2016:6391594
- 419 43. Shah GS, Islam S, Das BK. Clinical and laboratory profile of dengue infection in children Kathmandu
420 *Univ Med J.* 2006;4:40–3
- 421 44. Kumar M, Verma RK, Mishra B. Prevalence of dengue fever in Western Uttar Pradesh, India: A
422 Gender-Based Study. *Int J Appl Basic Med Res.* 2020; 10:8–11
- 423 45. Anker M, Arima Y. Male-female differences in the number of reported incident dengue fever cases
424 in six Asian countries. *Western Pac Surveill Response J.* 2011 Jun 30;2(2):17-23.
- 425 46. Barnekow Lillesø J-P, Shrestha TB, Dhakal LP, Nayaju RP, Shrestha R. The map of potential
426 vegetation of Nepal: a forestry/agro-ecological/biodiversity classification system. Hørsholm: Center for
427 Skov, Landskab og Planlægning/Københavns Universitet, 2005. 76 p. (Development and Environment;
428 No. 2/2005).
- 429 47. Medlock, J.M., et al., Analysis of the potential for survival and seasonal activity of *Aedes albopictus*
430 (*Diptera: Culicidae*) in the United Kingdom. *Journal of Vector Ecology*, 2006. 31(2): p. 292-304.
- 431 48. Romi, R., F. Severini, and L. Toma, Cold acclimation and overwintering of female *Aedes albopictus*
432 in Roma. *Journal of the American Mosquito Control Association*, 2006. 22(1): p. 149-151.)

- 433 49. HRW. Nepal: Dengue Surge Exposes Climate Risk. Relief Web. OCHA Services. 2022. Accessed:
434 15 May 2023. Available at: [https://reliefweb.int/report/nepal/nepal-dengue-surge-exposes-climate-](https://reliefweb.int/report/nepal/nepal-dengue-surge-exposes-climate-risk#:~:text=Whereas%20in%20previous%20years%20dengue,higher%20altitudes%2C%E2%80%9D%20said%20Dr.)
435 [risk#:~:text=Whereas%20in%20previous%20years%20dengue,higher%20altitudes%2C%E2%80%9D](https://reliefweb.int/report/nepal/nepal-dengue-surge-exposes-climate-risk#:~:text=Whereas%20in%20previous%20years%20dengue,higher%20altitudes%2C%E2%80%9D%20said%20Dr.)
436 [%20said%20Dr.](https://reliefweb.int/report/nepal/nepal-dengue-surge-exposes-climate-risk#:~:text=Whereas%20in%20previous%20years%20dengue,higher%20altitudes%2C%E2%80%9D%20said%20Dr.)
- 437 50. Koirala, P., & Tamrakar, D. (2020). Threat of Dengue Outbreak in Nepal in Context of COVID-19
438 Pandemic. *Journal of Lumbini Medical College*, 8(1), 169–170.
- 439 51. Epidemiology and Disease Control Division. Situation update of Dengue 2019. Accessed: 21 May
440 2023.
- 441 52. Epidemiology and Disease Control Division. Situation update of Dengue 2022. 11th Dec 2022.
442 Accessed: 21 May 2023.
- 443 53. Joshi AR. In temperate Nepal, climate change paves way for tropical dengue fever. Mongabay.
444 Accessed: 16 May 2023. Available at: [https://news.mongabay.com/2022/10/in-temperate-nepal-climate-](https://news.mongabay.com/2022/10/in-temperate-nepal-climate-change-paves-way-for-tropical-dengue-fever/)
445 [change-paves-way-for-tropical-dengue-fever/](https://news.mongabay.com/2022/10/in-temperate-nepal-climate-change-paves-way-for-tropical-dengue-fever/)
- 446 54. Khadka, D.; Pathak, D. Climate change projection for the marsyangdi river basin, Nepal using
447 statistical downscaling of GCM and its implications in geodisasters. *Geoenviron. Disasters* 2016, 3
- 448 55. Cheng Y-L, Chao C-H, Lai Y-C, Hsieh K-H, Wang J-R, Wan S-W, Huang H-J, Chuang Y-C, Chuang
449 W-J and Yeh T-M. Antibodies against the SARS-CoV-2 S1-RBD crossreact with dengue virus and hinder
450 dengue pathogenesis. *Front. Immunol.* 2022; 13:941923
- 451 56. Ng RJ, Chong ZL, Abdul Mutalip MH, Ng C-W. Dengue Seroprevalence and Factors Associated
452 with Dengue Seropositivity in Petaling District, Malaysia. *International Journal of Environmental*
453 *Research and Public Health.* 2022; 19(12):7170.
- 454 57. Rimal S, Shrestha S, Pandey K, Nguyen TV, Bhandari P, Shah Y, Acharya D, Adhikari N, Rijal KR,
455 Ghimire P, Takamatsu Y, Pandey BD, Fernandez S, Morita K, Ngwe Tun MM, Dumre SP. Co-Circulation
456 of Dengue Virus Serotypes 1, 2, and 3 during the 2022 Dengue Outbreak in Nepal: A Cross-Sectional
457 Study. *Viruses.* 2023; 15(2):507. <https://doi.org/10.3390/v15020507>
- 458 58. Poudel A. Nepal disease control body to study high dengue mortality. *The Kathmandu Post.*
459 Accessed: 20 May 2023. Available at: [https://kathmandupost.com/health/2022/12/02/nepal-disease-](https://kathmandupost.com/health/2022/12/02/nepal-disease-control-body-to-study-high-dengue-mortality)
460 [control-body-to-study-high-dengue-mortality](https://kathmandupost.com/health/2022/12/02/nepal-disease-control-body-to-study-high-dengue-mortality)
- 461 59. TRN Online. Dengue Serotype 3 cases increase this year. *The Rising Nepal Daily.* Accessed: 20 May
462 2023. Available at: <https://risingnepaldaily.com/news/21489>
- 463 60. Gupta, B.P., Tuladhar, R., Kurmi, R. et al. Dengue periodic outbreaks and epidemiological trends in
464 Nepal. *Ann Clin Microbiol Antimicrob.* 2018; 17, 6. <https://doi.org/10.1186/s12941-018-0258-9>

- 465 61. Morsy, S.; Hashan, M.R.; Hieu, T.H.; Mohammed, A.T.; Elawady, S.S.; Ghosh, P.; Elgendy, M.A.;
466 Le, H.H.; Hamad, W.M.A.; Iqtadar, S.; et al. The association between dengue viremia kinetics and dengue
467 severity: A systemic review and meta-analysis. *Rev. Med. Virol.* 2020, 30, 1–10.
- 468 62. Montoya, M.; Gresh, L.; Mercado, J.C.; Williams, K.L.; Vargas, M.J.; Gutierrez, G.; Kuan, G.;
469 Gordon, A.; Balmaseda, A.; Harris, E. Symptomatic Versus Inapparent Outcome in Repeat Dengue Virus
470 Infections Is Influenced by the Time Interval between Infections and Study Year. *PLoS Negl. Trop. Dis.*
471 2013, 7, e2357
- 472 63. New Dengue Virus Genotyping Kit. V36-50FRT. Sacace Biotechnologies. Available at:
473 <https://sacace.com/new-dengue-virus-genotyping.htm>
- 474 64. Barkham TM, Chung YK, Tang KF, Ooi EE. The performance of RT-PCR compared with a rapid
475 serological assay for acute dengue fever in a diagnostic laboratory. *Trans R Soc Trop Med Hyg.*
476 2006 .100(2):142-8.
- 477 65. Halstead SB, Dengue. *Lancet* 2007;370(9599):1644–52.
- 478 66. Gupta G, Shah Y, Poudel A, Pun R, Pant K, Kshetri R, et al. Serological and Molecular Study of
479 Dengue Viruses in Different Hospitals of Nepal. *Nepal J Med Sci.* 2013;2(1):20–5.
- 480 67. Huhtamo E, Hasu E, Uzcátegui NY, Erra E, Nikkari S, Kantele A, et al. Early diagnosis of dengue in
481 travelers: Comparison of a novel real-time RT-PCR, NS1 antigen detection and serology. *J Clin Virol.*
482 2010;47(1):49–53.
- 483 68. Guzman M.G., Harris E. Dengue. *Lancet.* 2015; 385:453–465. doi: 10.1016/S0140-6736(14)60572-
484 9.
- 485 69. Nascimento E.J.M., Huleatt J.W., Cordeiro M.T., Castanha P.M.S., George J.K., Grebe E., Welte A.,
486 Brown M., Burke D.S., Marques E.T.A. Development of antibody biomarkers of long term and recent
487 dengue virus infections. *J. Virol. Methods.* 2018; 257:62–68.
- 488 70. Wu Q, Jing Q, Wang X, Yang L, Li Y, Chen Z, Ma M, Yang Z. Kinetics of IgG Antibodies in Previous
489 Cases of Dengue Fever-A Longitudinal Serological Survey. *Int J Environ Res Public Health.*
490 2020;17(18):6580
- 491 71. Yan G, Lee CK, Lam LTM, Yan B, Chua YX, Lim AYN, et al. Covert COVID-19 and false-positive
492 dengue serology in Singapore. *Lancet Infect Dis.* 2020; 20:536
- 493 72. Lustig Y, Keler S, Kolodny R, Ben-Tal N, Atias-Varon D, Shlush E, Gerlic M, Munitz A, Doolman
494 R, Asraf K, Shlush LI, Vivante A. Potential Antigenic Cross-reactivity Between Severe Acute
495 Respiratory Syndrome Coronavirus 2 (SARS-CoV-2) and Dengue Viruses. *Clin Infect Dis.* 2021;
496 73(7):e2444-e2449

- 497 73. Machado MEA, Kimura E. Coinfection and cross-reaction of dengue and COVID-19: a case series
498 analysis. *Rev Soc Bras Med Trop.* 2022; 55: e02432022.
- 499 74. Katzelnick, L.C.; Fonville, J.M.; Gromowski, G.D.; Arriaga, J.B.; Green, A.; James, S.L.; Lau, L.;
500 Montoya, M.; Wang, C.; Van Blargan, L.A.; et al. Dengue viruses cluster antigenically but not as discrete
501 serotypes. *Science* 2015, 349, 1338–1343
- 502 75. Halsey ES, Marks MA, Gotuzzo E, Fiestas V, Suarez L, Vargas J, Aguayo N, Madrid C, Vimos C,
503 Kochel TJ, Laguna-Torres VA. Correlation of serotype-specific dengue virus infection with clinical
504 manifestations. *PLoS Negl Trop Dis.* 2012;6(5): e1638
- 505 76. Mohd-Zaki, A.H.; Brett, J.; Ismail, E.; L’Azou, M. Epidemiology of Dengue Disease in Malaysia
506 (2000–2012): A Systematic Literature Review. *PLoS Negl. Trop. Dis.* 2014, 8, e3159.
- 507 77. Azami, N.A.M.; Moi, M.L.; Salleh, S.A.; Neoh, H.; Kamaruddin, M.A.; Jalal, N.A.; Ismail, N.;
508 Takasaki, T.; Kurane, I.; Jamal, R. Dengue epidemic in Malaysia: Urban versus rural comparison of
509 dengue immunoglobulin G seroprevalence among Malaysian adults aged 35–74 years. *Trans. R. Soc.*
510 *Trop. Med. Hyg.* 2020, 114, 798–811.
- 511 78. Dhulikhel Hospital Website (<https://dhulikhelhospital.org/>)