

Supplementary file 1 to Effect of COVID-19 vaccination on mortality by COVID-19 and on mortality by other causes, the Netherlands, January 2021- January 2022

Table S1. VE estimates of primary and booster vaccination against COVID-19 mortality, with 95% confidence interval, per stratum of long-term care use and birth cohort, crude, adjusted for sex, year of birth and country of origin (adjusted 1) and adjusted for sex, year of birth, country of origin and medical risk (adjusted 2). Numbers below 10 are not shown to prevent disclosure of groups or persons.

Stratum	Vaccination status	Person-time (x 1000 days)	COVID-19 deaths	VE (95% CI) crude	VE (95% CI) adjusted 1	VE (95% CI) adjusted 2
<b>LTC high 70+</b>	Unvaccinated	10778	3282	[ref]	[ref]	[ref]
<b>LTC high 70+</b>	Primary series partly	6368	589	62.3% (58.4-65.8)	63.2% (59.4-66.6)	63.1% (59.3-66.5)
<b>LTC high 70+</b>	Primary series m1	3361	42	90.4% (86.8-93)	90.8% (87.3-93.3)	90.7% (87.2-93.2)
<b>LTC high 70+</b>	Primary series m2	3291	31	90.4% (86-93.4)	90.6% (86.3-93.6)	90.6% (86.3-93.6)
<b>LTC high 70+</b>	Primary series m3	3338	34	82.8% (75.1-88.1)	82.6% (74.8-88)	82.6% (74.8-88)
<b>LTC high 70+</b>	Primary series m4	3311	41	79.1% (71-84.9)	78.9% (70.8-84.8)	79% (70.9-84.9)
<b>LTC high 70+</b>	Primary series m5	3368	125	67.6% (60.3-73.6)	67% (59.5-73.1)	67% (59.5-73.2)
<b>LTC high 70+</b>	Primary series m6	3310	151	68.5% (62.3-73.7)	66.3% (59.7-71.9)	66.5% (59.8-72)
<b>LTC high 70+</b>	Primary series m7	3113	198	69.2% (63.9-73.7)	68.9% (63.5-73.5)	69.1% (63.8-73.6)
<b>LTC high 70+</b>	Primary series m8	2779	468	58.5% (53.3-63.1)	60.9% (56-65.3)	61.1% (56.2-65.4)
<b>LTC high 70+</b>	Primary series m9	1917	793	38.7% (32-44.7)	41.8% (35.4-47.6)	41.9% (35.5-47.6)
<b>LTC high 70+</b>	Primary series m10	933	203	35.8% (24.2-45.6)	38.2% (26.9-47.7)	38.2% (26.9-47.7)
<b>LTC high 70+</b>	Booster m1	2629	151	86.5% (83.8-88.8)	87.2% (84.6-89.4)	87.2% (84.5-89.4)
<b>LTC high 70+</b>	Booster m2	1401	27	84.9% (76.8-90.2)	85.8% (78.2-90.8)	85.8% (78.2-90.8)
<b>LTC low 70+</b>	Unvaccinated	3159	525	[ref]	[ref]	[ref]
<b>LTC low 70+</b>	Primary series partly	1556	54	71% (61.1-78.5)	72.1% (62.5-79.3)	72.3% (62.7-79.4)
<b>LTC low 70+</b>	Primary series m1	783	<10	91.3% (80.1-96.2)	91.9% (81.3-96.5)	91.9% (81.4-96.5)
<b>LTC low 70+</b>	Primary series m2	767	<10	95% (79.4-98.8)	95.3% (80.3-98.9)	95.3% (80.3-98.9)
<b>LTC low 70+</b>	Primary series m3	765	<10	79.1% (47-91.8)	78.6% (45.6-91.6)	78.7% (45.9-91.7)

<b>LTC low 70+</b>	Primary series m4	763	13	60% (26.8-78.1)	58.8% (24.6-77.5)	59.5% (25.9-77.9)
<b>LTC low 70+</b>	Primary series m5	764	12	79.9% (63.1-89.1)	79.7% (62.6-89)	80% (63.2-89.2)
<b>LTC low 70+</b>	Primary series m6	744	16	79.5% (65.5-87.9)	77.9% (62.5-86.9)	78.3% (63.3-87.2)
<b>LTC low 70+</b>	Primary series m7	702	32	72.5% (59.3-81.4)	70.9% (56.8-80.4)	71.7% (58-80.9)
<b>LTC low 70+</b>	Primary series m8	596	65	67.7% (56.3-76.1)	69% (58.1-77.1)	69.7% (59-77.6)
<b>LTC low 70+</b>	Primary series m9	324	71	51% (34.1-63.5)	55.6% (40.3-67)	56.2% (41-67.4)
<b>LTC low 70+</b>	Primary series m10	122	12	54.8% (16-75.7)	60% (25.5-78.5)	60.4% (26.2-78.7)
<b>LTC low 70+</b>	Booster m1	657	10	94.5% (89.2-97.1)	94.9% (90.2-97.4)	95% (90.2-97.4)
<b>LTC low 70+</b>	Booster m2	302	<10	94.8% (77.5-98.8)	95.4% (80.2-99)	95.5% (80.3-99)
<b>Disability care</b>	Unvaccinated	18128	206	[ref]	[ref]	[ref]
<b>Disability care</b>	Primary series partly	5744	28	47.8% (21.7-65.3)	67.8% (51.4-78.6)	67.3% (50.7-78.3)
<b>Disability care</b>	Primary series m1	2948	<10	>99% (--)	>99% (--)	>99% (--)
<b>Disability care</b>	Primary series m2	2895	<10	86.3% (43.7-96.7)	92.1% (66.8-98.1)	91.9% (65.9-98.1)
<b>Disability care</b>	Primary series m3	2861	<10	93.7% (54.6-99.1)	94.6% (60.3-99.3)	94.5% (59.8-99.3)
<b>Disability care</b>	Primary series m4	2827	<10	94.9% (63.1-99.3)	95% (63.6-99.3)	95.2% (64.6-99.3)
<b>Disability care</b>	Primary series m5	2770	<10	65.7% (24.4-84.4)	76.5% (47.4-89.5)	77.1% (49-89.8)
<b>Disability care</b>	Primary series m6	2468	<10	58.1% (7.4-81.1)	78.2% (51.5-90.2)	79% (53.4-90.5)
<b>Disability care</b>	Primary series m7	2150	<10	73.2% (37.2-88.5)	86.7% (68.8-94.3)	87% (69.7-94.5)
<b>Disability care</b>	Primary series m8	1913	18	49.5% (13.4-70.5)	76.5% (59.7-86.3)	76.4% (59.6-86.3)
<b>Disability care</b>	Primary series m9	1497	37	-9.6% (-68.7-28.8)	53.5% (28.5-69.8)	51.7% (25.6-68.7)
<b>Disability care</b>	Primary series m10	794	15	-46.7% (-168.9-20)	45.7% (0.3-70.4)	42.3% (-6.4-68.7)
<b>Disability care</b>	Booster m1	1918	<10	82.1% (39.8-94.7)	93.5% (78.2-98.1)	93.3% (77.3-98)
<b>Disability care</b>	Booster m2	580	<10	>99% (--)	>99% (--)	>99% (--)
<b>&lt;1931 (90+)</b>	Unvaccinated	7375	899	[ref]	[ref]	[ref]
<b>&lt;1931 (90+)</b>	Primary series partly	3857	129	67.1% (59.7-73.1)	66.1% (58.5-72.3)	66.6% (59.1-72.7)
<b>&lt;1931 (90+)</b>	Primary series m1	2004	13	91.9% (85.6-95.4)	91.5% (85-95.2)	91.6% (85.2-95.3)
<b>&lt;1931 (90+)</b>	Primary series m2	1936	<10	94.3% (87.6-97.4)	94.1% (87.1-97.3)	94.2% (87.3-97.3)
<b>&lt;1931 (90+)</b>	Primary series m3	1915	<10	88.3% (72.3-95.1)	87.9% (71.4-94.9)	88.2% (72.1-95)
<b>&lt;1931 (90+)</b>	Primary series m4	1853	<10	86.3% (72.5-93.2)	86% (72-93)	86.4% (72.7-93.2)

<b>&lt;1931 (90+)</b>	Primary series m5	1835	24	81.2% (70.4-88)	80.9% (69.9-87.8)	81.4% (70.8-88.2)
<b>&lt;1931 (90+)</b>	Primary series m6	1732	26	74.6% (60.8-83.6)	74.1% (60-83.2)	75% (61.5-83.8)
<b>&lt;1931 (90+)</b>	Primary series m7	1567	45	67.3% (53.5-77.1)	66.1% (51.7-76.2)	67.7% (54-77.3)
<b>&lt;1931 (90+)</b>	Primary series m8	1413	111	70.1% (61.4-76.8)	68.9% (59.9-75.9)	70.3% (61.6-77)
<b>&lt;1931 (90+)</b>	Primary series m9	671	138	44.7% (29.8-56.4)	42.8% (27.4-55)	45.2% (30.4-56.9)
<b>&lt;1931 (90+)</b>	Primary series m10	157	32	-31.4% (-100.7-14)	-33.3% (-103.6-12.8)	-25.4% (-91.8-18)
<b>&lt;1931 (90+)</b>	Booster m1	1462	40	89.4% (84.8-92.6)	89.1% (84.3-92.4)	89.5% (85-92.7)
<b>&lt;1931 (90+)</b>	Booster m2	891	<10	96% (88.6-98.6)	95.9% (88.4-98.5)	96.1% (88.8-98.6)
<b>1931-1950 (70-89)</b>	Unvaccinated	250627	5591	[ref]	[ref]	[ref]
<b>1931-1950 (70-89)</b>	Primary series partly	108277	696	71.7% (68.9-74.2)	75.3% (73-77.3)	76.1% (73.9-78.1)
<b>1931-1950 (70-89)</b>	Primary series m1	59638	57	93.2% (91.1-94.8)	95.9% (94.6-96.8)	96% (94.8-97)
<b>1931-1950 (70-89)</b>	Primary series m2	59665	38	94.5% (92.3-96)	96% (94.5-97.1)	96.2% (94.8-97.3)
<b>1931-1950 (70-89)</b>	Primary series m3	59546	51	94.2% (92.2-95.7)	92.2% (89.6-94.2)	92.7% (90.3-94.6)
<b>1931-1950 (70-89)</b>	Primary series m4	58656	94	89.6% (87-91.7)	87.2% (84-89.8)	88.1% (85.2-90.5)
<b>1931-1950 (70-89)</b>	Primary series m5	58535	149	91.6% (90-93)	88.1% (85.8-90.1)	89.1% (86.9-90.8)
<b>1931-1950 (70-89)</b>	Primary series m6	57014	419	89.9% (88.7-91)	84.2% (82.3-85.9)	85.5% (83.7-87.1)
<b>1931-1950 (70-89)</b>	Primary series m7	46666	550	84.7% (83-86.2)	83.6% (81.8-85.2)	85% (83.4-86.4)
<b>1931-1950 (70-89)</b>	Primary series m8	20076	543	68.2% (64.7-71.3)	81.1% (79.1-83)	82.9% (81.1-84.6)
<b>1931-1950 (70-89)</b>	Primary series m9	4768	305	15.6% (3.8-25.9)	63.2% (58-67.8)	67.8% (63.3-71.8)
<b>1931-1950 (70-89)</b>	Primary series m10	801	56	-99.4% (-163.9--50.6)	18.9% (-7.7-38.9)	37.3% (16.6-52.8)
<b>1931-1950 (70-89)</b>	Booster m1	48724	109	94.9% (93.8-95.9)	96.3% (95.5-97)	96.4% (95.6-97.1)
<b>1931-1950 (70-89)</b>	Booster m2	13454	11	96.7% (93.8-98.2)	98.2% (96.6-99)	98.2% (96.7-99)
<b>1951-1970 (50-69)</b>	Unvaccinated	748546	2009	[ref]	[ref]	[ref]
<b>1951-1970 (50-69)</b>	Primary series partly	265532	145	75.6% (70.8-79.6)	82.6% (79.1-85.6)	84.2% (81-86.9)
<b>1951-1970 (50-69)</b>	Primary series m1	119387	<10	96.5% (92.6-98.4)	96.8% (93.2-98.5)	97.2% (94.1-98.7)
<b>1951-1970 (50-69)</b>	Primary series m2	118579	<10	97.1% (94.1-98.6)	97.4% (94.8-98.7)	97.7% (95.2-98.9)
<b>1951-1970 (50-69)</b>	Primary series m3	116455	20	93.2% (89.2-95.7)	94.2% (90.7-96.3)	94.8% (91.7-96.7)
<b>1951-1970 (50-69)</b>	Primary series m4	115809	36	92.4% (89.3-94.6)	92.2% (89-94.5)	93.1% (90.2-95.1)
<b>1951-1970 (50-69)</b>	Primary series m5	113602	81	91.2% (88.8-93)	91.6% (89.3-93.4)	92.5% (90.4-94.1)

<b>1951-1970 (50-69)</b>	Primary series m6	93957	123	85.3% (82-88)	89.4% (87-91.4)	90.6% (88.5-92.3)
<b>1951-1970 (50-69)</b>	Primary series m7	36851	62	75.4% (67.8-81.2)	84.9% (80.1-88.5)	88.1% (84.4-90.9)
<b>1951-1970 (50-69)</b>	Primary series m8	9481	44	9.5% (-23.5-33.7)	31.5% (6.3-50)	63.9% (50.3-73.7)
<b>1951-1970 (50-69)</b>	Primary series m9	5119	38	4.4% (-33.5-31.5)	-17.8% (-64.4-15.6)	23.7% (-6.9-45.6)
<b>1951-1970 (50-69)</b>	Primary series m10	3725	<10	74.5% (50.6-86.8)	60.7% (23.8-79.7)	65.5% (33.2-82.2)
<b>1951-1970 (50-69)</b>	Booster m1	76888	17	95.7% (93-97.4)	96.8% (94.7-98.1)	96.9% (94.9-98.1)
<b>1951-1970 (50-69)</b>	Booster m2	7503	<10	91.5% (72.9-97.3)	93.5% (79.2-98)	93.6% (79.5-98)
<b>1971-2009 (12-49)</b>	Unvaccinated	1992705	154	[ref]	[ref]	[ref]
<b>1971-2009 (12-49)</b>	Primary series partly	366041	<10	74.6% (47.4-87.8)	75.9% (49.6-88.5)	77.7% (53.5-89.3)
<b>1971-2009 (12-49)</b>	Primary series m1	164614	<10	94.4% (59.4-99.2)	95.8% (68.9-99.4)	95.8% (69.1-99.4)
<b>1971-2009 (12-49)</b>	Primary series m2	157578	<10	94.3% (58.5-99.2)	95.9% (69.8-99.4)	96.3% (72.8-99.5)
<b>1971-2009 (12-49)</b>	Primary series m3	153765	<10	89% (54.9-97.3)	89.8% (57.2-97.6)	91.2% (63.4-97.9)
<b>1971-2009 (12-49)</b>	Primary series m4	146518	<10	87.7% (65.9-95.6)	89.5% (70.5-96.3)	89.8% (71.6-96.4)
<b>1971-2009 (12-49)</b>	Primary series m5	134024	<10	93.5% (73.2-98.4)	96.2% (84.3-99.1)	96.5% (85.6-99.2)

Figure S1. Four-week moving average of number of COVID-19 deaths per week (A) and incidence per 100,000 person-days (B), per stratum of long-term care use and birth cohort. Data points based on fewer than 10 deaths are not shown to prevent disclosure of groups or persons.

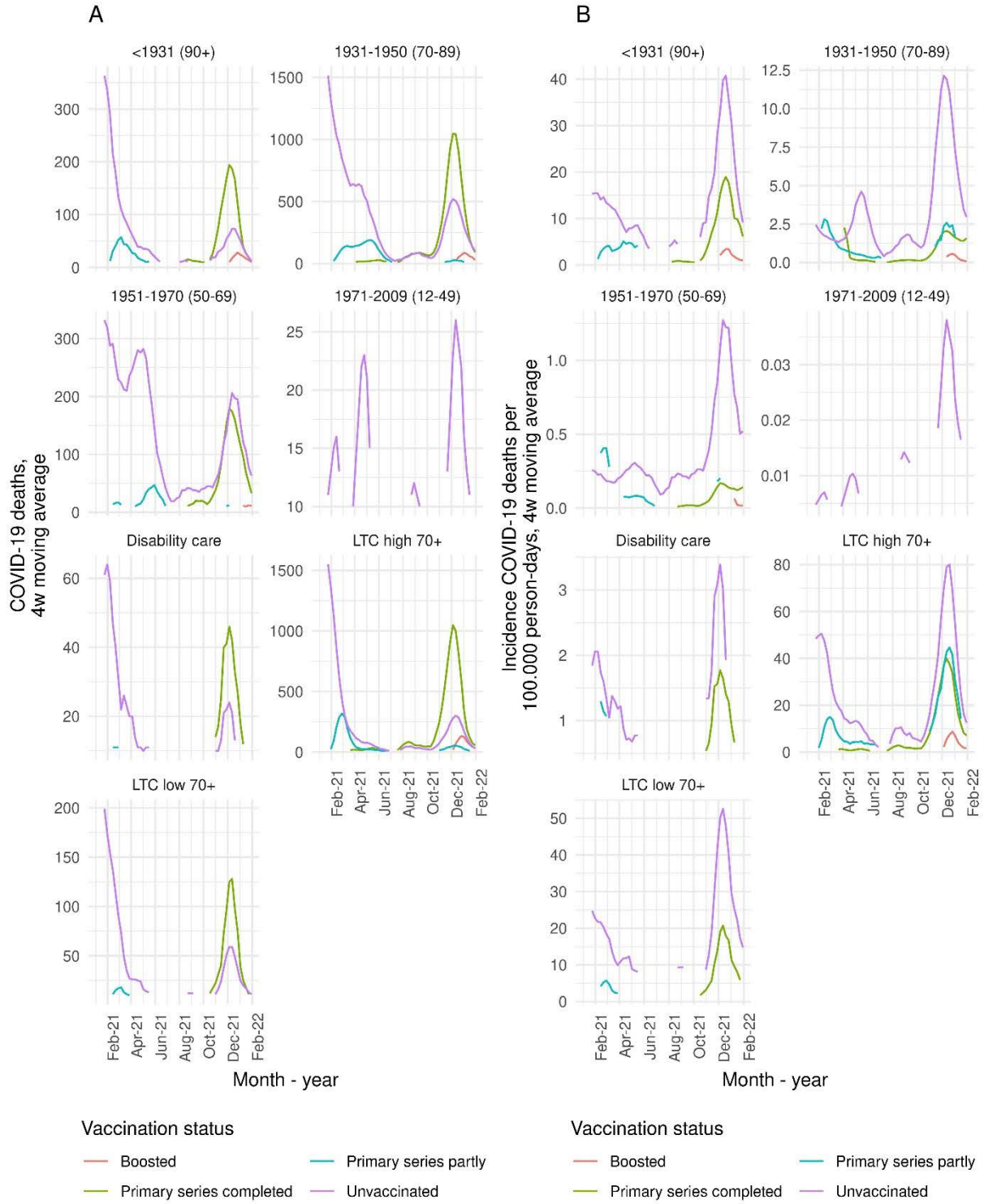


Figure S2. VE estimates of primary and booster vaccination against all-cause mortality, with 95% confidence interval, per stratum of long-term care use and birth cohort, adjusted for sex, year of birth, medical risk and country of origin. Underlying numbers can be found in Table S2 (as VE adjusted2).

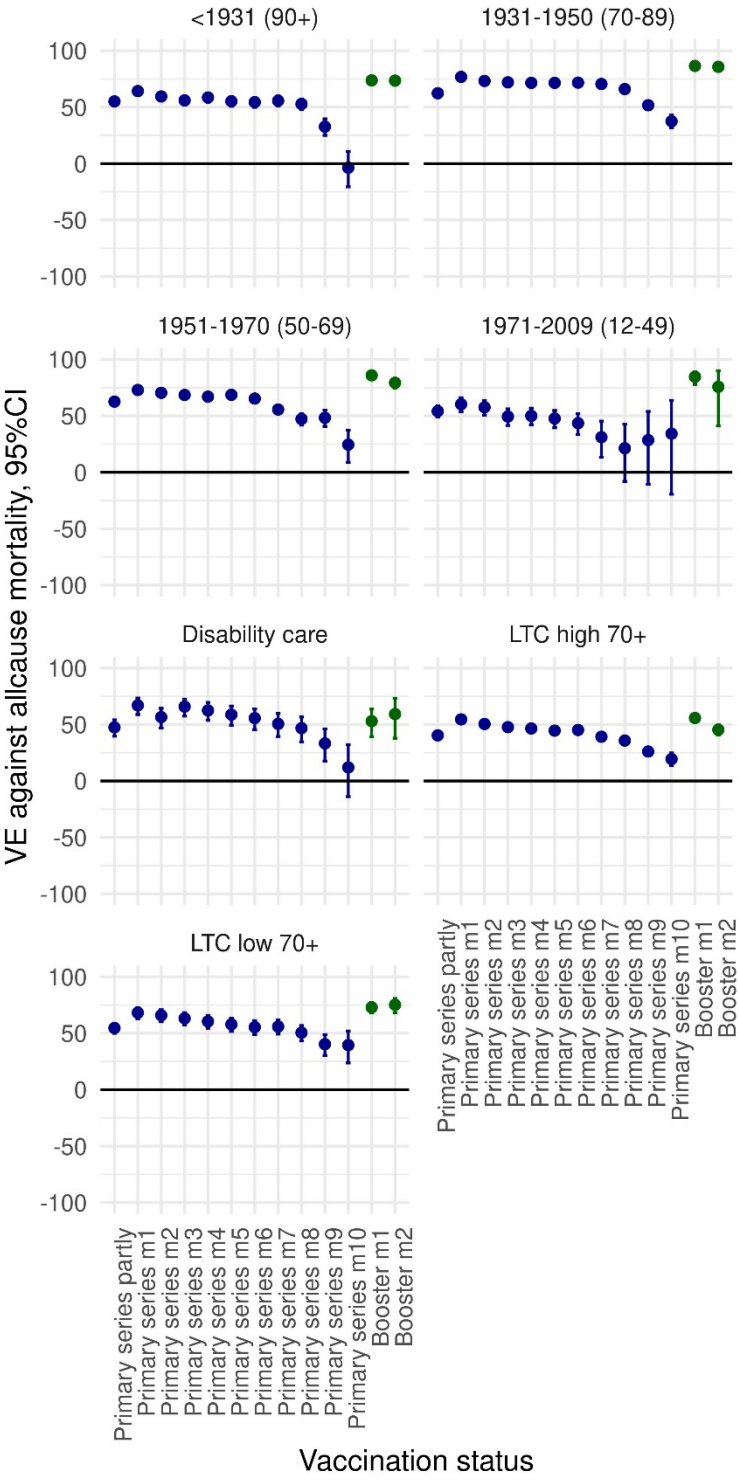


Figure S3. Four-week moving average of number of non-COVID-19 deaths per week (A) and incidence per 100.000 person-days (B), per stratum of long-term care use and birth cohort. Data points based on fewer than 10 deaths are not shown to prevent disclosure of groups or persons.

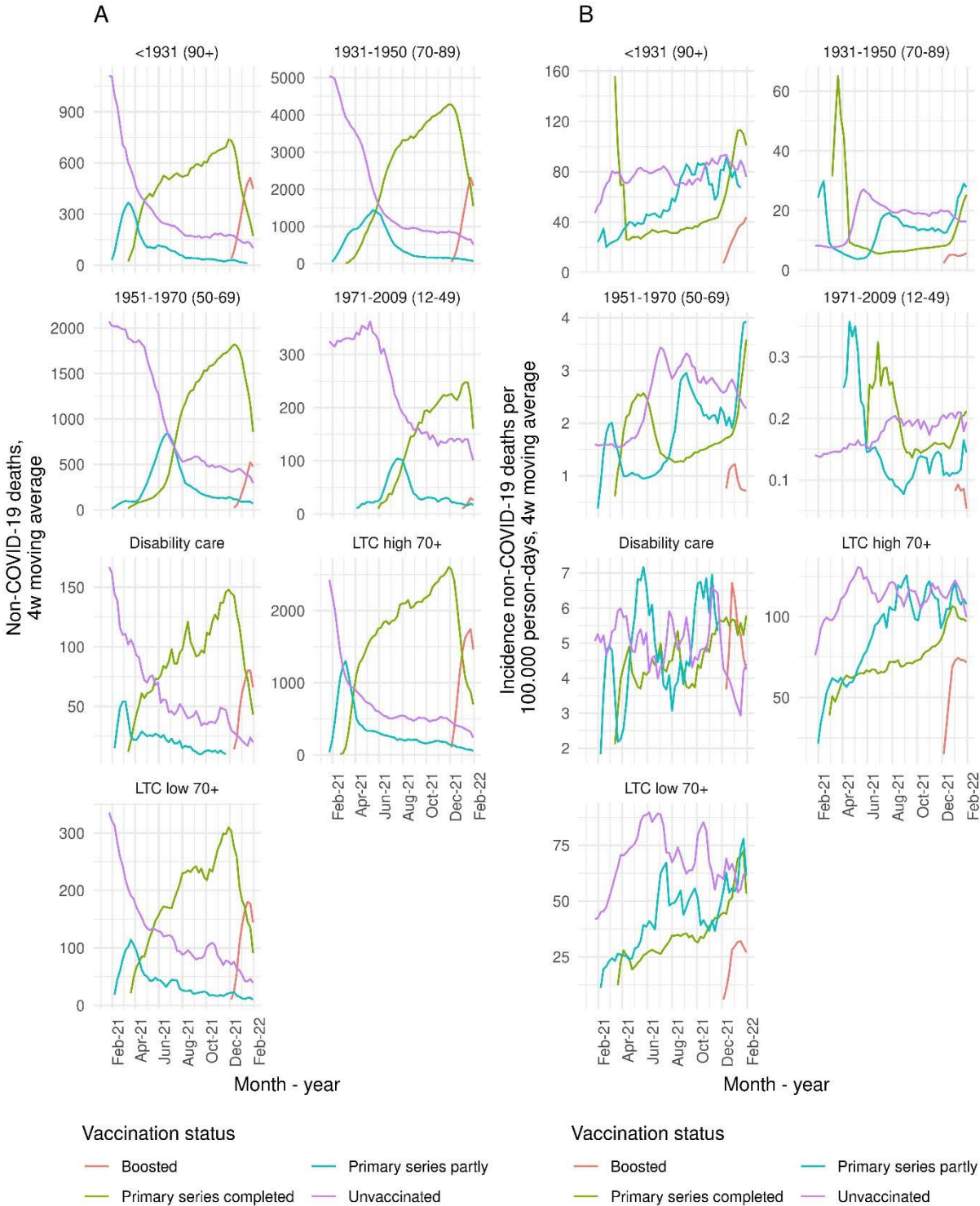


Table S2. VE estimates of primary and booster vaccination against all-cause mortality, with 95% confidence interval, per stratum of long-term care use and birth cohort, crude, adjusted for sex, year of birth and country of origin (adjusted1) and adjusted for sex, year of birth, country of origin and medical risk (adjusted2). Numbers below 10 are not shown to prevent disclosure of groups or persons.

Stratum	Vaccination status	Person-time (x 1000 days)	Deaths	VE (95% CI) crude	VE (95% CI) adjusted1	VE (95% CI) adjusted2
<b>LTC high 70+</b>	Unvaccinated	10778	13973	[ref]	[ref]	[ref]
<b>LTC high 70+</b>	Primary series partly	6368	4959	39.6% (37.4-41.7)	40.5% (38.3-42.5)	40.4% (38.3-42.5)
<b>LTC high 70+</b>	Primary series m1	3361	2001	53.9% (51.4-56.3)	54.7% (52.2-57)	54.6% (52.2-57)
<b>LTC high 70+</b>	Primary series m2	3291	2156	49.9% (47.2-52.5)	50.5% (47.8-53.1)	50.5% (47.8-53)
<b>LTC high 70+</b>	Primary series m3	3338	2296	47.3% (44.5-49.9)	47.7% (44.9-50.4)	47.7% (44.9-50.4)
<b>LTC high 70+</b>	Primary series m4	3311	2335	45.9% (43.1-48.6)	46.5% (43.7-49.2)	46.5% (43.7-49.2)
<b>LTC high 70+</b>	Primary series m5	3368	2558	43.8% (40.9-46.5)	44.6% (41.7-47.3)	44.6% (41.7-47.3)
<b>LTC high 70+</b>	Primary series m6	3310	2531	44.4% (41.5-47.1)	45.1% (42.3-47.8)	45.2% (42.3-47.8)
<b>LTC high 70+</b>	Primary series m7	3113	2700	37.4% (34.3-40.4)	39.1% (36.1-42.1)	39.2% (36.1-42.2)
<b>LTC high 70+</b>	Primary series m8	2779	2912	31.7% (28.3-35)	35.8% (32.5-38.9)	35.8% (32.5-38.9)
<b>LTC high 70+</b>	Primary series m9	1917	2670	20.2% (15.9-24.3)	26.2% (22.2-30)	26.1% (22.1-29.9)
<b>LTC high 70+</b>	Primary series m10	933	1285	12% (5.6-18)	19.6% (13.8-25.1)	19.4% (13.5-24.8)
<b>LTC high 70+</b>	Booster m1	2629	2069	52.5% (49.5-55.3)	56% (53.2-58.6)	55.8% (53-58.4)
<b>LTC high 70+</b>	Booster m2	1401	1179	40% (34.7-44.8)	45.8% (41-50.1)	45.4% (40.7-49.8)
<b>LTC low 70+</b>	Unvaccinated	3159	2386	[ref]	[ref]	[ref]
<b>LTC low 70+</b>	Primary series partly	1556	550	53.5% (48.7-57.9)	54.1% (49.4-58.4)	54.6% (49.9-58.9)
<b>LTC low 70+</b>	Primary series m1	783	200	67.4% (61.9-72.1)	68% (62.6-72.6)	68.2% (62.9-72.8)
<b>LTC low 70+</b>	Primary series m2	767	216	65.3% (59.5-70.2)	65.6% (59.9-70.5)	65.9% (60.2-70.8)
<b>LTC low 70+</b>	Primary series m3	765	239	62.6% (56.6-67.7)	62.8% (56.9-68)	63.2% (57.3-68.3)
<b>LTC low 70+</b>	Primary series m4	763	258	59.8% (53.6-65.2)	60.1% (53.9-65.4)	60.5% (54.4-65.8)
<b>LTC low 70+</b>	Primary series m5	764	278	57% (50.6-62.6)	57.4% (51-63)	57.9% (51.6-63.4)
<b>LTC low 70+</b>	Primary series m6	744	289	54.5% (47.7-60.3)	54.7% (48-60.6)	55.4% (48.8-61.2)
<b>LTC low 70+</b>	Primary series m7	702	291	54.3% (47.5-60.3)	55.2% (48.5-61)	55.9% (49.3-61.7)
<b>LTC low 70+</b>	Primary series m8	596	331	46.2% (38.3-53.1)	49.7% (42.3-56.1)	50.5% (43.2-56.8)



<b>LTC low 70+</b>	Primary series m9	324	251	32.1% (20.8-41.8)	39.5% (29.4-48.1)	40.3% (30.3-48.8)
<b>LTC low 70+</b>	Primary series m10	122	97	28.3% (9.7-43.1)	38.6% (22.6-51.3)	39.5% (23.7-52)
<b>LTC low 70+</b>	Booster m1	657	224	69.8% (64.1-74.6)	72.8% (67.7-77.1)	72.9% (67.9-77.2)
<b>LTC low 70+</b>	Booster m2	302	96	70.9% (62.5-77.5)	75.2% (68-80.8)	75.2% (68-80.8)
<b>Disability care</b>	Unvaccinated	18128	1116	[ref]	[ref]	[ref]
<b>Disability care</b>	Primary series partly	5744	273	21.9% (10.5-31.8)	47.5% (39.7-54.2)	47.5% (39.7-54.2)
<b>Disability care</b>	Primary series m1	2948	94	47.5% (34.8-57.8)	67.6% (59.6-74)	67% (58.9-73.5)
<b>Disability care</b>	Primary series m2	2895	123	27.3% (11.6-40.2)	57.2% (47.7-65)	56.6% (46.9-64.4)
<b>Disability care</b>	Primary series m3	2861	99	41% (26.8-52.4)	66.4% (58.1-73.1)	65.9% (57.5-72.6)
<b>Disability care</b>	Primary series m4	2827	112	32.3% (16.7-45)	62.9% (54.2-70)	62.5% (53.7-69.6)
<b>Disability care</b>	Primary series m5	2770	121	20.1% (2-34.8)	59.4% (50.1-67)	58.8% (49.4-66.4)
<b>Disability care</b>	Primary series m6	2468	123	4.6% (-17.3-22.4)	56.5% (46.5-64.7)	55.7% (45.5-64)
<b>Disability care</b>	Primary series m7	2150	133	-14.2% (-40.3-7)	52% (41.2-60.9)	50.6% (39.4-59.8)
<b>Disability care</b>	Primary series m8	1913	140	-27% (-56.2--3.3)	49.8% (38.4-59.1)	46.8% (34.7-56.7)
<b>Disability care</b>	Primary series m9	1497	140	-63.3% (-102--32.1)	39.5% (25.4-51)	33.3% (17.6-46.1)
<b>Disability care</b>	Primary series m10	794	91	-142% (-212.7--87.3)	23.7% (1.5-40.9)	12% (-13.9-32.1)
<b>Disability care</b>	Booster m1	1918	108	-26.7% (-64-2.1)	57.1% (44.6-66.8)	53% (39.2-63.7)
<b>Disability care</b>	Booster m2	580	32	-29.5% (-97.9-15.3)	64.4% (45.7-76.7)	59.3% (37.9-73.4)
<b>&lt;1931 (90+)</b>	Unvaccinated	7375	5766	[ref]	[ref]	[ref]
<b>&lt;1931 (90+)</b>	Primary series partly	3857	1368	55.8% (52.9-58.6)	54.5% (51.4-57.3)	55.1% (52.2-57.9)
<b>&lt;1931 (90+)</b>	Primary series m1	2004	570	65.3% (61.8-68.5)	63.7% (60-67)	64.2% (60.6-67.5)
<b>&lt;1931 (90+)</b>	Primary series m2	1936	625	60.7% (56.8-64.3)	58.8% (54.6-62.5)	59.5% (55.5-63.3)
<b>&lt;1931 (90+)</b>	Primary series m3	1915	687	57.2% (52.9-61.1)	55% (50.5-59)	56% (51.6-59.9)
<b>&lt;1931 (90+)</b>	Primary series m4	1853	631	59.6% (55.4-63.4)	57.5% (53.1-61.5)	58.6% (54.3-62.5)
<b>&lt;1931 (90+)</b>	Primary series m5	1835	687	56.1% (51.6-60.1)	53.9% (49.3-58.1)	55.2% (50.7-59.3)
<b>&lt;1931 (90+)</b>	Primary series m6	1732	690	55.3% (50.8-59.5)	53% (48.2-57.4)	54.4% (49.8-58.6)
<b>&lt;1931 (90+)</b>	Primary series m7	1567	672	56.8% (52.2-60.9)	54.2% (49.3-58.6)	55.7% (51.1-60)
<b>&lt;1931 (90+)</b>	Primary series m8	1413	751	53.9% (49-58.3)	50.9% (45.7-55.6)	52.8% (47.8-57.3)
<b>&lt;1931 (90+)</b>	Primary series m9	671	600	33.4% (25.8-40.2)	29.6% (21.6-36.9)	32.7% (25-39.6)

<b>&lt;1931 (90+)</b>	Primary series m10	157	244	-7.9% (-25.4-7.1)	-12.7% (-31-3)	-3.7% (-20.6-10.8)
<b>&lt;1931 (90+)</b>	Booster m1	1462	536	74.1% (71.1-76.8)	72.8% (69.6-75.7)	73.7% (70.6-76.5)
<b>&lt;1931 (90+)</b>	Booster m2	891	331	74.1% (70-77.6)	72.7% (68.4-76.4)	73.5% (69.4-77.1)
<b>1931-1950 (70-89)</b>	Unvaccinated	250627	32578	[ref]	[ref]	[ref]
<b>1931-1950 (70-89)</b>	Primary series partly	108277	7316	61.6% (60.4-62.7)	60.6% (59.5-61.7)	62.3% (61.2-63.3)
<b>1931-1950 (70-89)</b>	Primary series m1	59638	3030	76% (75-77)	75.6% (74.6-76.6)	76.8% (75.8-77.7)
<b>1931-1950 (70-89)</b>	Primary series m2	59665	3713	71.7% (70.5-72.8)	71.7% (70.5-72.7)	73.2% (72.2-74.3)
<b>1931-1950 (70-89)</b>	Primary series m3	59546	3951	69.9% (68.7-71.1)	70.2% (69-71.3)	72% (70.9-73.1)
<b>1931-1950 (70-89)</b>	Primary series m4	58656	4074	68.2% (67-69.5)	69.4% (68.2-70.5)	71.5% (70.4-72.6)
<b>1931-1950 (70-89)</b>	Primary series m5	58535	4273	66.7% (65.4-68)	69.1% (68-70.3)	71.5% (70.4-72.6)
<b>1931-1950 (70-89)</b>	Primary series m6	57014	4590	63.9% (62.4-65.2)	68.9% (67.7-70)	71.7% (70.6-72.7)
<b>1931-1950 (70-89)</b>	Primary series m7	46666	4663	54.4% (52.5-56.2)	67.3% (66-68.5)	70.5% (69.3-71.6)
<b>1931-1950 (70-89)</b>	Primary series m8	20076	3577	20.6% (17.1-24)	60.6% (59-62.3)	66% (64.5-67.4)
<b>1931-1950 (70-89)</b>	Primary series m9	4768	1737	-65.2% (-74.8--56.1)	38.8% (35.4-42.2)	51.7% (48.9-54.3)
<b>1931-1950 (70-89)</b>	Primary series m10	801	573	-204.2% (-233.1--177.7)	8.9% (0.3-16.7)	37.5% (31.6-42.9)
<b>1931-1950 (70-89)</b>	Booster m1	48724	2464	78.1% (76.8-79.2)	86.5% (85.8-87.2)	86.5% (85.8-87.2)
<b>1931-1950 (70-89)</b>	Booster m2	13454	1057	67.5% (64.8-69.9)	86.1% (85-87.1)	85.7% (84.6-86.8)
<b>1951-1970 (50-69)</b>	Unvaccinated	748546	16411	[ref]	[ref]	[ref]
<b>1951-1970 (50-69)</b>	Primary series partly	265532	3576	50% (47.9-52.1)	59.3% (57.5-61)	62.6% (60.9-64.1)
<b>1951-1970 (50-69)</b>	Primary series m1	119387	1369	62.7% (60.3-65)	69.7% (67.7-71.6)	72.9% (71.1-74.6)
<b>1951-1970 (50-69)</b>	Primary series m2	118579	1590	58% (55.4-60.4)	66.4% (64.3-68.4)	70.4% (68.6-72.1)
<b>1951-1970 (50-69)</b>	Primary series m3	116455	1718	52.9% (50-55.6)	63.2% (60.9-65.3)	68.5% (66.6-70.3)
<b>1951-1970 (50-69)</b>	Primary series m4	115809	1828	49.6% (46.6-52.4)	60.2% (57.8-62.5)	67% (65-68.8)
<b>1951-1970 (50-69)</b>	Primary series m5	113602	1826	51.1% (48.1-53.9)	61.9% (59.6-64.1)	68.6% (66.7-70.4)
<b>1951-1970 (50-69)</b>	Primary series m6	93957	1842	41% (37.4-44.4)	56.9% (54.2-59.5)	65.3% (63.2-67.3)
<b>1951-1970 (50-69)</b>	Primary series m7	36851	1176	5% (-1.8-11.4)	37.8% (33.2-42)	55.6% (52.4-58.6)
<b>1951-1970 (50-69)</b>	Primary series m8	9481	490	-55.2% (-70.7--41.1)	-13.8% (-25.3--3.3)	47.2% (41.8-52.1)
<b>1951-1970 (50-69)</b>	Primary series m9	5119	223	-29.4% (-48.3--12.8)	-21.5% (-39.3--6)	48.3% (40.6-55)
<b>1951-1970 (50-69)</b>	Primary series m10	3725	114	10.3% (-8.3-25.6)	2.8% (-17.3-19.5)	24.5% (8.8-37.4)

<b>1951-1970 (50-69)</b>	Booster m1	76888	628	77.2% (75-79.3)	84.8% (83.4-86.2)	85.9% (84.6-87.2)
<b>1951-1970 (50-69)</b>	Booster m2	7503	107	65.5% (57.7-71.8)	78.1% (73.2-82.2)	79.3% (74.6-83.1)
<b>1971-2009 (12-49)</b>	Unvaccinated	1992705	3424	[ref]	[ref]	[ref]
<b>1971-2009 (12-49)</b>	Primary series partly	366041	447	38% (31-44.3)	50.7% (45-55.7)	54.1% (49-58.8)
<b>1971-2009 (12-49)</b>	Primary series m1	164614	194	41% (31.2-49.5)	55.8% (48.3-62.3)	60.3% (53.7-66.1)
<b>1971-2009 (12-49)</b>	Primary series m2	157578	203	34.4% (23.5-43.7)	51.4% (43.1-58.4)	57.6% (50.6-63.6)
<b>1971-2009 (12-49)</b>	Primary series m3	153765	238	19.1% (6.5-30.1)	40.3% (30.8-48.5)	49.4% (41.5-56.2)
<b>1971-2009 (12-49)</b>	Primary series m4	146518	237	15.5% (2.1-27.1)	40.9% (31.4-49.2)	50% (42.1-56.8)
<b>1971-2009 (12-49)</b>	Primary series m5	134024	248	1.8% (-13.8-15.3)	36.5% (26.3-45.4)	47.6% (39.4-54.7)
<b>1971-2009 (12-49)</b>	Primary series m6	68084	190	-48.4% (-75.1--25.8)	20.8% (6.3-33)	43.5% (33.4-52)
<b>1971-2009 (12-49)</b>	Primary series m7	18495	83	-134.2% (-194.1--86.5)	-37.4% (-72.9--9.1)	31.1% (13.3-45.3)
<b>1971-2009 (12-49)</b>	Primary series m8	7506	41	-188.7% (-295.3--110.8)	-94.4% (-166.4--41.8)	21.3% (-8.1-42.7)
<b>1971-2009 (12-49)</b>	Primary series m9	4890	21	-123.7% (-245.9--44.7)	-51.4% (-134.3-2.2)	28.5% (-10.6-53.9)
<b>1971-2009 (12-49)</b>	Primary series m10	4509	11	-29.4% (-135.1-28.8)	11% (-61.8-51.1)	34.2% (-19.5-63.8)
<b>1971-2009 (12-49)</b>	Booster m1	48508	34	62% (45.7-73.4)	81.3% (73.2-86.9)	84.6% (77.9-89.2)
<b>1971-2009 (12-49)</b>	Booster m2	5199	<10	48.9% (-24-78.9)	70.4% (28.2-87.8)	75.7% (41-90)

Table S3. Hazard ratio (HR) estimates of the risk of non-COVID-19 mortality after a first dose of COVID-19 mRNA vaccine, compared to unvaccinated, with 95% confidence interval, per stratum of long-term care use and birth cohort, crude, adjusted for sex, year of birth and country of origin (adjusted1) and adjusted for sex, year of birth, country of origin and medical risk (adjusted2). Numbers below 10 are not shown to prevent disclosure of groups or persons.

Stratum	Risk period	Person-time (x 1000 days)	Non-COVID-19 deaths	HR (95% CI) crude	HR (95% CI) adjusted1	HR (95% CI) adjusted2
<b>LTC high 70+</b>	reference	10772	10361	[ref]	[ref]	[ref]
<b>LTC high 70+</b>	week 1	761	212	0.3 (0.2-0.3)	0.3 (0.2-0.3)	0.3 (0.2-0.3)
<b>LTC high 70+</b>	week 2	761	394	0.5 (0.4-0.5)	0.5 (0.4-0.5)	0.5 (0.4-0.5)
<b>LTC high 70+</b>	week 3	760	455	0.6 (0.5-0.6)	0.6 (0.5-0.6)	0.6 (0.5-0.6)
<b>LTC high 70+</b>	week 4	720	420	0.6 (0.5-0.6)	0.5 (0.5-0.6)	0.5 (0.5-0.6)
<b>LTC high 70+</b>	week 5	266	258	0.9 (0.8-1)	0.9 (0.8-1)	0.9 (0.8-1)
<b>LTC low 70+</b>	reference	3157	1791	[ref]	[ref]	[ref]
<b>LTC low 70+</b>	week 1	179	22	0.2 (0.1-0.3)	0.2 (0.1-0.3)	0.2 (0.1-0.3)
<b>LTC low 70+</b>	week 2	178	32	0.3 (0.2-0.4)	0.3 (0.2-0.4)	0.3 (0.2-0.4)
<b>LTC low 70+</b>	week 3	177	33	0.3 (0.2-0.4)	0.3 (0.2-0.4)	0.3 (0.2-0.4)
<b>LTC low 70+</b>	week 4	171	51	0.5 (0.4-0.6)	0.5 (0.4-0.6)	0.5 (0.3-0.6)
<b>LTC low 70+</b>	week 5	110	33	0.4 (0.3-0.6)	0.4 (0.3-0.6)	0.4 (0.3-0.6)
<b>Disability care</b>	reference	18126	869	[ref]	[ref]	[ref]
<b>Disability care</b>	week 1	666	<10	0.2 (0.1-0.4)	0.1 (0.1-0.3)	0.1 (0.1-0.3)
<b>Disability care</b>	week 2	660	15	0.4 (0.3-0.7)	0.3 (0.2-0.5)	0.3 (0.2-0.5)
<b>Disability care</b>	week 3	656	27	0.8 (0.5-1.2)	0.5 (0.4-0.8)	0.6 (0.4-0.8)
<b>Disability care</b>	week 4	572	18	0.6 (0.4-1)	0.4 (0.3-0.7)	0.4 (0.3-0.7)
<b>Disability care</b>	week 5	285	13	1 (0.6-1.7)	0.7 (0.4-1.1)	0.6 (0.4-1.1)
<b>&lt;1931 (90+)</b>	reference	7374	4718	[ref]	[ref]	[ref]
<b>&lt;1931 (90+)</b>	week 1	443	49	0.2 (0.1-0.2)	0.2 (0.1-0.2)	0.2 (0.1-0.2)
<b>&lt;1931 (90+)</b>	week 2	441	98	0.3 (0.3-0.4)	0.3 (0.3-0.4)	0.3 (0.3-0.4)
<b>&lt;1931 (90+)</b>	week 3	438	96	0.3 (0.2-0.4)	0.3 (0.2-0.4)	0.3 (0.2-0.4)
<b>&lt;1931 (90+)</b>	week 4	433	109	0.4 (0.3-0.4)	0.4 (0.3-0.4)	0.4 (0.3-0.4)
<b>&lt;1931 (90+)</b>	week 5	416	114	0.4 (0.3-0.5)	0.4 (0.3-0.5)	0.4 (0.3-0.5)

<b>1931-1950 (70-89)</b>	reference	250621	25637	[ref]	[ref]	[ref]
<b>1931-1950 (70-89)</b>	week 1	13833	312	0.2 (0.2-0.2)	0.2 (0.2-0.2)	0.2 (0.2-0.2)
<b>1931-1950 (70-89)</b>	week 2	13821	454	0.3 (0.2-0.3)	0.2 (0.2-0.3)	0.2 (0.2-0.2)
<b>1931-1950 (70-89)</b>	week 3	13808	564	0.3 (0.3-0.3)	0.3 (0.2-0.3)	0.3 (0.2-0.3)
<b>1931-1950 (70-89)</b>	week 4	13722	599	0.3 (0.3-0.3)	0.3 (0.2-0.3)	0.3 (0.2-0.3)
<b>1931-1950 (70-89)</b>	week 5	13427	652	0.3 (0.3-0.3)	0.3 (0.3-0.3)	0.3 (0.3-0.3)
<b>1951-1970 (50-69)</b>	reference	748541	13458	[ref]	[ref]	[ref]
<b>1951-1970 (50-69)</b>	week 1	19105	94	0.2 (0.2-0.3)	0.2 (0.2-0.2)	0.2 (0.1-0.2)
<b>1951-1970 (50-69)</b>	week 2	19096	131	0.3 (0.3-0.4)	0.3 (0.2-0.3)	0.2 (0.2-0.3)
<b>1951-1970 (50-69)</b>	week 3	19085	163	0.4 (0.3-0.4)	0.3 (0.2-0.3)	0.2 (0.2-0.3)
<b>1951-1970 (50-69)</b>	week 4	18206	165	0.4 (0.3-0.4)	0.3 (0.2-0.3)	0.2 (0.2-0.3)
<b>1951-1970 (50-69)</b>	week 5	17241	181	0.4 (0.4-0.5)	0.3 (0.3-0.4)	0.3 (0.2-0.3)
<b>1971-2009 (12-49)</b>	reference	1992704	2967	[ref]	[ref]	[ref]
<b>1971-2009 (12-49)</b>	week 1	36934	28	0.5 (0.3-0.7)	0.4 (0.3-0.6)	0.3 (0.2-0.5)
<b>1971-2009 (12-49)</b>	week 2	36893	31	0.5 (0.4-0.8)	0.4 (0.3-0.6)	0.4 (0.2-0.5)
<b>1971-2009 (12-49)</b>	week 3	36831	31	0.5 (0.4-0.8)	0.4 (0.3-0.6)	0.3 (0.2-0.5)

<b>1971-2009 (12-49)</b>	week 4	33513	38	0.7 (0.5-1)	0.5 (0.3-0.7)	0.4 (0.3-0.6)
<b>1971-2009 (12-49)</b>	week 5	30261	41	0.9 (0.6-1.2)	0.5 (0.4-0.7)	0.5 (0.3-0.7)

Table S4. Hazard ratio (HR) estimates of the risk of non-COVID-19 mortality after a first dose of COVID-19 vector vaccine, compared to unvaccinated, with 95% confidence interval, per stratum of long-term care use and birth cohort, crude, adjusted for sex, year of birth and country of origin (adjusted1) and adjusted for sex, year of birth, country of origin and medical risk (adjusted2). Numbers below 10 are not shown to prevent disclosure of groups or persons.

<b>Stratum</b>	<b>Risk period</b>	<b>Person-time (x 1000 days)</b>	<b>Non-COVID-19 deaths</b>	<b>HR (95% CI) crude</b>	<b>HR (95% CI) adjusted1</b>	<b>HR (95% CI) adjusted2</b>
<b>LTC high 70+</b>	reference	10772	10361	[ref]	[ref]	[ref]
<b>LTC high 70+</b>	week 1	18	<10	0.3 (0.1-0.6)	0.3 (0.1-0.6)	0.3 (0.1-0.6)
<b>LTC high 70+</b>	week 2	18	13	0.6 (0.3-1.0)	0.6 (0.3-1.0)	0.6 (0.3-1.0)
<b>LTC high 70+</b>	week 3	18	10	0.5 (0.2-0.9)	0.4 (0.2-0.8)	0.4 (0.2-0.8)
<b>LTC high 70+</b>	week 4	18	15	0.7 (0.4-1.2)	0.6 (0.4-1.1)	0.6 (0.4-1.1)
<b>LTC high 70+</b>	week 5	18	14	0.7 (0.4-1.1)	0.6 (0.4-1.1)	0.6 (0.4-1.1)
<b>LTC high 70+</b>	week 6	17	15	0.8 (0.5-1.3)	0.7 (0.4-1.2)	0.7 (0.4-1.2)
<b>LTC high 70+</b>	week 7	16	18	1 (0.6-1.6)	0.9 (0.6-1.5)	0.9 (0.6-1.5)
<b>LTC high 70+</b>	week 8	15	12	0.7 (0.4-1.3)	0.7 (0.4-1.2)	0.7 (0.4-1.2)
<b>LTC low 70+</b>	reference	3157	1791	[ref]	[ref]	[ref]
<b>LTC low 70+</b>	week 1	7	<10	0.2 (0-1.3)	0.2 (0-1.2)	0.2 (0-1.2)
<b>LTC low 70+</b>	week 2	7	<10	0.7 (0.3-1.9)	0.7 (0.2-1.7)	0.6 (0.2-1.7)
<b>LTC low 70+</b>	week 3	7	<10	0.2 (0-1.3)	0.2 (0-1.2)	0.2 (0-1.1)
<b>LTC low 70+</b>	week 4	7	<10	0.3 (0.1-1.4)	0.3 (0.1-1.3)	0.3 (0.1-1.2)
<b>LTC low 70+</b>	week 5	7	<10	0.2 (0-1.2)	0.2 (0-1.1)	0.2 (0-1.1)
<b>LTC low 70+</b>	week 6	7	<10	0.5 (0.2-1.6)	0.5 (0.2-1.5)	0.5 (0.2-1.5)
<b>LTC low 70+</b>	week 7	6	<10	0.4 (0.1-1.6)	0.4 (0.1-1.4)	0.4 (0.1-1.4)
<b>LTC low 70+</b>	week 8	6	<10	0.4 (0.1-1.7)	0.4 (0.1-1.6)	0.4 (0.1-1.5)
<b>Disability care</b>	reference	18126	869	[ref]	[ref]	[ref]

<b>Disability care</b>	week 1	35	<10	1.7 (0.5-5.2)	1.1 (0.4-3.4)	1 (0.3-3.2)
<b>Disability care</b>	week 2	35	<10	0.6 (0.1-4.1)	0.4 (0.1-2.6)	0.3 (0-2.4)
<b>Disability care</b>	week 3	35	<10	<0.01 (--)	<0.01 (--)	<0.01 (--)
<b>Disability care</b>	week 4	35	<10	1.8 (0.6-5.6)	1.1 (0.3-3.3)	1 (0.3-3.0)
<b>Disability care</b>	week 5	34	<10	0.6 (0.1-4.0)	0.3 (0-2.5)	0.3 (0-2.3)
<b>Disability care</b>	week 6	34	<10	0.6 (0.1-4.3)	0.4 (0.1-2.7)	0.3 (0-2.4)
<b>Disability care</b>	week 7	33	<10	0.6 (0.1-4.3)	0.4 (0.1-2.7)	0.3 (0-2.4)
<b>Disability care</b>	week 8	33	<10	0.7 (0.1-4.8)	0.4 (0.1-3)	0.4 (0.1-2.7)
<b>&lt;1931 (90+)</b>	reference	7374	4718	[ref]	[ref]	[ref]
<b>&lt;1931 (90+)</b>	week 1	42	13	0.4 (0.2-0.7)	0.4 (0.2-0.7)	0.4 (0.2-0.7)
<b>&lt;1931 (90+)</b>	week 2	42	<10	0.2 (0.1-0.5)	0.2 (0.1-0.5)	0.2 (0.1-0.5)
<b>&lt;1931 (90+)</b>	week 3	41	12	0.4 (0.2-0.7)	0.4 (0.2-0.6)	0.4 (0.2-0.6)
<b>&lt;1931 (90+)</b>	week 4	41	<10	0.3 (0.1-0.5)	0.3 (0.1-0.5)	0.3 (0.1-0.5)
<b>&lt;1931 (90+)</b>	week 5	39	17	0.6 (0.3-0.9)	0.5 (0.3-0.9)	0.5 (0.3-0.9)
<b>&lt;1931 (90+)</b>	week 6	38	11	0.4 (0.2-0.7)	0.4 (0.2-0.7)	0.4 (0.2-0.7)
<b>&lt;1931 (90+)</b>	week 7	35	17	0.6 (0.4-1.0)	0.6 (0.4-1.0)	0.6 (0.4-1.0)
<b>&lt;1931 (90+)</b>	week 8	32	15	0.6 (0.4-1.0)	0.6 (0.3-1.0)	0.6 (0.3-1.0)
<b>1931-1950 (70-89)</b>	reference	250621	25637	[ref]	[ref]	[ref]
<b>1931-1950 (70-89)</b>	week 1	225	27	0.7 (0.5-1.1)	0.5 (0.3-0.7)	0.4 (0.3-0.6)
<b>1931-1950 (70-89)</b>	week 2	222	41	1 (0.7-1.3)	0.7 (0.5-0.9)	0.6 (0.4-0.8)
<b>1931-1950 (70-89)</b>	week 3	220	43	0.9 (0.7-1.3)	0.7 (0.5-0.9)	0.6 (0.5-0.8)
<b>1931-1950 (70-89)</b>	week 4	217	74	1.5 (1.2-1.9)	1.2 (0.9-1.5)	1 (0.8-1.3)
<b>1931-1950 (70-89)</b>	week 5	212	40	0.8 (0.6-1.1)	0.6 (0.5-0.9)	0.6 (0.4-0.8)

<b>1931-1950 (70-89)</b>	week 6	204	58	1.2 (1-1.6)	1 (0.8-1.3)	0.9 (0.7-1.2)
<b>1931-1950 (70-89)</b>	week 7	193	61	1.4 (1.1-1.8)	1.2 (0.9-1.5)	1 (0.8-1.3)
<b>1931-1950 (70-89)</b>	week 8	180	62	1.6 (1.2-2)	1.3 (1-1.7)	1.2 (0.9-1.5)
<b>1951-1970 (50-69)</b>	reference	748541	13458	[ref]	[ref]	[ref]
<b>1951-1970 (50-69)</b>	week 1	9301	27	0.2 (0.1-0.2)	0.1 (0.1-0.2)	0.1 (0.1-0.2)
<b>1951-1970 (50-69)</b>	week 2	9254	74	0.4 (0.3-0.5)	0.3 (0.3-0.4)	0.3 (0.3-0.4)
<b>1951-1970 (50-69)</b>	week 3	9221	84	0.5 (0.4-0.6)	0.4 (0.3-0.5)	0.4 (0.3-0.4)
<b>1951-1970 (50-69)</b>	week 4	9195	72	0.4 (0.3-0.5)	0.3 (0.2-0.4)	0.3 (0.2-0.4)
<b>1951-1970 (50-69)</b>	week 5	9104	81	0.4 (0.3-0.5)	0.3 (0.2-0.4)	0.3 (0.2-0.4)
<b>1951-1970 (50-69)</b>	week 6	8937	95	0.5 (0.4-0.6)	0.3 (0.3-0.4)	0.3 (0.3-0.4)
<b>1951-1970 (50-69)</b>	week 7	8647	96	0.5 (0.4-0.6)	0.3 (0.3-0.4)	0.3 (0.3-0.4)
<b>1951-1970 (50-69)</b>	week 8	8278	93	0.5 (0.4-0.6)	0.3 (0.3-0.4)	0.3 (0.2-0.4)
<b>1971-2009 (12-49)</b>	reference	1992704	2967	[ref]	[ref]	[ref]
<b>1971-2009 (12-49)</b>	week 1	4373	<10	0.6 (0.2-1.6)	0.5 (0.2-1.3)	0.5 (0.2-1.3)
<b>1971-2009 (12-49)</b>	week 2	4366	<10	0.4 (0.1-1.3)	0.4 (0.1-1.1)	0.4 (0.1-1.1)
<b>1971-2009 (12-49)</b>	week 3	4363	<10	0.3 (0.1-1.2)	0.2 (0.1-1)	0.2 (0.1-0.9)



<b>1971-2009 (12-49)</b>	week 4	4358	<10	0.6 (0.2-1.5)	0.5 (0.2-1.2)	0.5 (0.2-1.2)
<b>1971-2009 (12-49)</b>	week 5	4339	<10	1.2 (0.6-2.4)	0.9 (0.5-1.9)	0.9 (0.5-1.9)
<b>1971-2009 (12-49)</b>	week 6	4310	<10	0.1 (0-1.0)	0.1 (0-0.8)	0.1 (0-0.8)
<b>1971-2009 (12-49)</b>	week 7	4281	<10	0.9 (0.4-2)	0.7 (0.3-1.5)	0.7 (0.3-1.5)
<b>1971-2009 (12-49)</b>	week 8	4249	<10	0.6 (0.2-1.6)	0.5 (0.2-1.3)	0.5 (0.2-1.2)

Table S5. Hazard ratio (HR) estimates of the risk of non-COVID-19 mortality after a second dose of COVID-19 vaccine, compared to person-time at least 2 weeks post-first dose, with 95% confidence interval, per stratum of long-term care use and birth cohort, crude, adjusted for sex, year of birth and country of origin (adjusted1) and adjusted for sex, year of birth, country of origin and medical risk (adjusted2). Numbers below 10 are not shown to prevent disclosure of groups or persons.

Stratum	Risk period	Person-time (x 1000 days)	Non-COVID-19 deaths	HR (95% CI) crude	HR (95% CI) adjusted1	HR (95% CI) adjusted2
<b>LTC high 70+</b>	reference	3327	3086	[ref]	[ref]	[ref]
<b>LTC high 70+</b>	week 1	749	214	0.3 (0.2-0.3)	0.3 (0.3-0.3)	0.3 (0.3-0.3)
<b>LTC high 70+</b>	week 2	750	373	0.5 (0.4-0.5)	0.5 (0.4-0.5)	0.5 (0.4-0.5)
<b>LTC high 70+</b>	week 3	751	396	0.5 (0.5-0.6)	0.6 (0.5-0.6)	0.6 (0.5-0.6)
<b>LTC high 70+</b>	week 4	751	436	0.6 (0.5-0.7)	0.6 (0.5-0.7)	0.6 (0.5-0.7)
<b>LTC high 70+</b>	week 5	749	450	0.6 (0.5-0.7)	0.6 (0.6-0.7)	0.6 (0.6-0.7)
<b>LTC high 70+</b>	week 6	748	455	0.6 (0.6-0.7)	0.6 (0.6-0.7)	0.6 (0.6-0.7)
<b>LTC high 70+</b>	week 7	748	463	0.7 (0.6-0.7)	0.7 (0.6-0.7)	0.7 (0.6-0.7)
<b>LTC high 70+</b>	week 8	4451	2917	0.7 (0.7-0.7)	0.7 (0.7-0.7)	0.7 (0.7-0.7)
<b>LTC low 70+</b>	reference	858	359	[ref]	[ref]	[ref]
<b>LTC low 70+</b>	week 1	176	21	0.3 (0.2-0.5)	0.3 (0.2-0.5)	0.3 (0.2-0.5)
<b>LTC low 70+</b>	week 2	175	44	0.7 (0.5-0.9)	0.7 (0.5-0.9)	0.7 (0.5-0.9)
<b>LTC low 70+</b>	week 3	175	36	0.5 (0.4-0.8)	0.5 (0.4-0.8)	0.5 (0.4-0.8)
<b>LTC low 70+</b>	week 4	174	39	0.6 (0.4-0.8)	0.6 (0.4-0.8)	0.6 (0.4-0.8)
<b>LTC low 70+</b>	week 5	173	39	0.6 (0.4-0.8)	0.6 (0.4-0.8)	0.6 (0.4-0.8)
<b>LTC low 70+</b>	week 6	172	48	0.7 (0.5-0.9)	0.7 (0.5-0.9)	0.7 (0.5-1.0)
<b>LTC low 70+</b>	week 7	172	44	0.6 (0.4-0.9)	0.6 (0.4-0.9)	0.6 (0.4-0.9)
<b>LTC low 70+</b>	week 8	1020	297	0.7 (0.6-0.8)	0.6 (0.5-0.8)	0.6 (0.5-0.8)
<b>Disability care</b>	reference	3216	181	[ref]	[ref]	[ref]
<b>Disability care</b>	week 1	658	10	0.2 (0.1-0.4)	0.3 (0.1-0.5)	0.3 (0.1-0.5)
<b>Disability care</b>	week 2	655	22	0.5 (0.3-0.7)	0.5 (0.3-0.8)	0.5 (0.3-0.8)
<b>Disability care</b>	week 3	653	15	0.4 (0.2-0.6)	0.4 (0.2-0.7)	0.4 (0.2-0.7)
<b>Disability care</b>	week 4	650	15	0.4 (0.2-0.6)	0.4 (0.2-0.7)	0.4 (0.2-0.7)

<b>Disability care</b>	week 5	644	25	0.7 (0.4-1.0)	0.7 (0.4-1.0)	0.7 (0.4-1.0)
<b>Disability care</b>	week 6	642	24	0.6 (0.4-0.9)	0.6 (0.4-0.9)	0.6 (0.4-0.9)
<b>Disability care</b>	week 7	640	19	0.5 (0.3-0.8)	0.5 (0.3-0.8)	0.5 (0.3-0.8)
<b>Disability care</b>	week 8	3805	153	0.7 (0.5-0.9)	0.6 (0.5-0.8)	0.6 (0.5-0.8)
<b>&lt;1931 (90+)</b>	reference	1959	872	[ref]	[ref]	[ref]
<b>&lt;1931 (90+)</b>	week 1	461	49	0.2 (0.2-0.3)	0.2 (0.2-0.3)	0.2 (0.2-0.3)
<b>&lt;1931 (90+)</b>	week 2	459	111	0.4 (0.4-0.6)	0.5 (0.4-0.6)	0.5 (0.4-0.6)
<b>&lt;1931 (90+)</b>	week 3	457	102	0.4 (0.3-0.5)	0.4 (0.3-0.5)	0.4 (0.3-0.5)
<b>&lt;1931 (90+)</b>	week 4	454	121	0.5 (0.4-0.6)	0.5 (0.4-0.6)	0.5 (0.4-0.6)
<b>&lt;1931 (90+)</b>	week 5	452	129	0.5 (0.4-0.6)	0.5 (0.4-0.6)	0.5 (0.4-0.6)
<b>&lt;1931 (90+)</b>	week 6	449	128	0.5 (0.4-0.6)	0.5 (0.4-0.6)	0.5 (0.4-0.6)
<b>&lt;1931 (90+)</b>	week 7	447	123	0.5 (0.4-0.6)	0.5 (0.4-0.6)	0.5 (0.4-0.6)
<b>&lt;1931 (90+)</b>	week 8	2696	888	0.6 (0.5-0.7)	0.6 (0.6-0.7)	0.6 (0.6-0.7)
<b>1931-1950 (70-89)</b>	reference	53088	4805	[ref]	[ref]	[ref]
<b>1931-1950 (70-89)</b>	week 1	13728	327	0.3 (0.2-0.3)	0.3 (0.2-0.3)	0.3 (0.2-0.3)
<b>1931-1950 (70-89)</b>	week 2	13715	470	0.4 (0.3-0.4)	0.4 (0.3-0.4)	0.4 (0.3-0.4)
<b>1931-1950 (70-89)</b>	week 3	13702	558	0.5 (0.4-0.5)	0.4 (0.4-0.4)	0.4 (0.4-0.4)
<b>1931-1950 (70-89)</b>	week 4	13687	623	0.5 (0.5-0.6)	0.4 (0.4-0.4)	0.4 (0.4-0.5)
<b>1931-1950 (70-89)</b>	week 5	13670	692	0.6 (0.6-0.7)	0.4 (0.4-0.5)	0.4 (0.4-0.5)
<b>1931-1950 (70-89)</b>	week 6	13650	719	0.7 (0.6-0.8)	0.4 (0.4-0.5)	0.4 (0.4-0.5)
<b>1931-1950 (70-89)</b>	week 7	13627	818	0.8 (0.8-0.9)	0.5 (0.4-0.5)	0.5 (0.4-0.5)
<b>1931-1950 (70-89)</b>	week 8	82892	4907	0.8 (0.8-0.9)	0.4 (0.3-0.4)	0.4 (0.3-0.4)

<b>1951-1970 (50-69)</b>	reference	205705	2803	[ref]	[ref]	[ref]
<b>1951-1970 (50-69)</b>	week 1	25384	137	0.4 (0.3-0.4)	0.3 (0.3-0.4)	0.3 (0.3-0.4)
<b>1951-1970 (50-69)</b>	week 2	25342	170	0.5 (0.4-0.5)	0.4 (0.3-0.5)	0.4 (0.3-0.4)
<b>1951-1970 (50-69)</b>	week 3	25309	261	0.7 (0.6-0.8)	0.6 (0.5-0.7)	0.6 (0.5-0.6)
<b>1951-1970 (50-69)</b>	week 4	25274	272	0.8 (0.7-0.9)	0.6 (0.5-0.7)	0.6 (0.5-0.6)
<b>1951-1970 (50-69)</b>	week 5	25233	279	0.8 (0.7-1.0)	0.6 (0.5-0.7)	0.6 (0.5-0.6)
<b>1951-1970 (50-69)</b>	week 6	25174	328	1.0 (0.9-1.2)	0.7 (0.6-0.8)	0.6 (0.6-0.7)
<b>1951-1970 (50-69)</b>	week 7	25119	321	1.1 (0.9-1.2)	0.7 (0.6-0.8)	0.6 (0.5-0.7)
<b>1951-1970 (50-69)</b>	week 8	152506	2043	1.2 (1.1-1.3)	0.7 (0.7-0.8)	0.6 (0.5-0.6)
<b>1971-2009 (12-49)</b>	reference	292775	393	[ref]	[ref]	[ref]
<b>1971-2009 (12-49)</b>	week 1	34400	13	0.3 (0.1-0.5)	0.3 (0.2-0.5)	0.3 (0.1-0.4)
<b>1971-2009 (12-49)</b>	week 2	34315	21	0.4 (0.3-0.7)	0.4 (0.3-0.7)	0.4 (0.3-0.6)
<b>1971-2009 (12-49)</b>	week 3	34220	30	0.7 (0.5-1.0)	0.7 (0.5-1.0)	0.6 (0.4-0.9)
<b>1971-2009 (12-49)</b>	week 4	34099	40	1.0 (0.7-1.4)	1.0 (0.7-1.4)	0.9 (0.6-1.2)
<b>1971-2009 (12-49)</b>	week 5	33971	43	1.1 (0.8-1.6)	1.1 (0.8-1.6)	0.9 (0.7-1.3)
<b>1971-2009 (12-49)</b>	week 6	33842	40	1.1 (0.8-1.5)	1.1 (0.8-1.5)	0.9 (0.6-1.2)

<b>1971-2009 (12-49)</b>	week 7	33659	40	1.1 (0.8-1.6)	1.1 (0.8-1.5)	0.9 (0.6-1.2)
<b>1971-2009 (12-49)</b>	week 8	200360	254	1.3 (1.1-1.6)	1.1 (0.9-1.4)	0.9 (0.7-1.0)

Table S6. Hazard ratio (HR) estimates with 95% confidence interval, for risk of non-COVID-19 mortality after a booster dose of COVID-19 vaccine, compared to person-time at least 3 months post-second dose, per stratum of long-term care use and birth cohort, crude, adjusted for sex, year of birth and country of origin (adjusted1) and adjusted for sex, year of birth, country of origin and medical risk (adjusted2). Numbers below 10 are not shown to prevent disclosure of groups or persons.

<b>Stratum</b>	<b>Risk period</b>	<b>Person-time (x 1000 days)</b>	<b>Non-COVID-19 deaths</b>	<b>HR (95% CI) crude</b>	<b>HR (95% CI) adjusted1</b>	<b>HR (95% CI) adjusted2</b>
<b>LTC high 70+</b>	reference	17187	14837	[ref]	[ref]	[ref]
<b>LTC high 70+</b>	week 1	600	253	0.3 (0.3-0.4)	0.3 (0.3-0.4)	0.3 (0.3-0.4)
<b>LTC high 70+</b>	week 2	596	377	0.5 (0.5-0.6)	0.5 (0.4-0.5)	0.5 (0.4-0.5)
<b>LTC high 70+</b>	week 3	590	411	0.6 (0.5-0.6)	0.5 (0.5-0.6)	0.5 (0.5-0.6)
<b>LTC high 70+</b>	week 4	579	417	0.6 (0.5-0.7)	0.6 (0.5-0.7)	0.6 (0.5-0.7)
<b>LTC high 70+</b>	week 5	562	393	0.7 (0.6-0.8)	0.6 (0.6-0.7)	0.6 (0.6-0.7)
<b>LTC high 70+</b>	week 6	532	353	0.7 (0.6-0.8)	0.6 (0.6-0.7)	0.6 (0.6-0.7)
<b>LTC high 70+</b>	week 7	470	296	0.7 (0.6-0.8)	0.6 (0.6-0.7)	0.6 (0.6-0.7)
<b>LTC high 70+</b>	week 8	372	233	0.7 (0.6-0.8)	0.6 (0.5-0.7)	0.6 (0.5-0.7)
<b>LTC low 70+</b>	reference	3485	1510	[ref]	[ref]	[ref]
<b>LTC low 70+</b>	week 1	152	27	0.3 (0.2-0.4)	0.3 (0.2-0.4)	0.3 (0.2-0.4)
<b>LTC low 70+</b>	week 2	151	37	0.4 (0.3-0.5)	0.4 (0.3-0.5)	0.4 (0.3-0.5)
<b>LTC low 70+</b>	week 3	149	51	0.5 (0.4-0.7)	0.5 (0.3-0.6)	0.5 (0.3-0.6)
<b>LTC low 70+</b>	week 4	145	47	0.5 (0.3-0.6)	0.4 (0.3-0.6)	0.4 (0.3-0.6)
<b>LTC low 70+</b>	week 5	138	39	0.4 (0.3-0.6)	0.4 (0.3-0.5)	0.4 (0.3-0.5)
<b>LTC low 70+</b>	week 6	127	31	0.4 (0.3-0.6)	0.4 (0.2-0.5)	0.4 (0.2-0.5)

<b>LTC low 70+</b>	week 7	105	20	0.3 (0.2-0.5)	0.3 (0.2-0.5)	0.3 (0.2-0.5)
<b>LTC low 70+</b>	week 8	73	24	0.6 (0.4-1.0)	0.5 (0.3-0.9)	0.5 (0.3-0.9)
<b>Disability care</b>	reference	13753	717	[ref]	[ref]	[ref]
<b>Disability care</b>	week 1	495	13	0.5 (0.3-0.9)	0.4 (0.2-0.7)	0.4 (0.2-0.7)
<b>Disability care</b>	week 2	484	22	0.9 (0.6-1.4)	0.6 (0.4-1)	0.7 (0.4-1.0)
<b>Disability care</b>	week 3	458	17	0.8 (0.5-1.4)	0.5 (0.3-0.9)	0.5 (0.3-0.9)
<b>Disability care</b>	week 4	408	19	1.1 (0.7-1.9)	0.7 (0.4-1.1)	0.7 (0.4-1.2)
<b>Disability care</b>	week 5	357	19	1.4 (0.8-2.4)	0.8 (0.5-1.4)	0.8 (0.5-1.4)
<b>Disability care</b>	week 6	295	<10	0.9 (0.4-1.9)	0.5 (0.2-1.0)	0.5 (0.2-1.1)
<b>Disability care</b>	week 7	210	14	2.3 (1.2-4.4)	1.1 (0.6-2.2)	1.2 (0.7-2.3)
<b>Disability care</b>	week 8	127	<10	2.1 (0.9-4.9)	1.0 (0.4-2.2)	1.0 (0.4-2.4)
<b>&lt;1931 (90+)</b>	reference	9566	3816	[ref]	[ref]	[ref]
<b>&lt;1931 (90+)</b>	week 1	346	63	0.2 (0.2-0.3)	0.2 (0.2-0.3)	0.2 (0.2-0.3)
<b>&lt;1931 (90+)</b>	week 2	342	97	0.3 (0.2-0.4)	0.3 (0.3-0.4)	0.3 (0.3-0.4)
<b>&lt;1931 (90+)</b>	week 3	336	89	0.3 (0.2-0.3)	0.3 (0.2-0.3)	0.3 (0.2-0.3)
<b>&lt;1931 (90+)</b>	week 4	327	103	0.3 (0.2-0.4)	0.3 (0.2-0.4)	0.3 (0.2-0.4)
<b>&lt;1931 (90+)</b>	week 5	316	101	0.3 (0.2-0.3)	0.3 (0.2-0.3)	0.3 (0.2-0.3)
<b>&lt;1931 (90+)</b>	week 6	297	96	0.3 (0.2-0.3)	0.3 (0.2-0.3)	0.3 (0.2-0.3)
<b>&lt;1931 (90+)</b>	week 7	267	85	0.3 (0.2-0.3)	0.3 (0.2-0.3)	0.3 (0.2-0.3)
<b>&lt;1931 (90+)</b>	week 8	221	52	0.2 (0.1-0.3)	0.2 (0.2-0.3)	0.2 (0.2-0.3)
<b>1931-1950 (70-89)</b>	reference	251070	20489	[ref]	[ref]	[ref]
<b>1931-1950 (70-89)</b>	week 1	11964	298	0.2 (0.2-0.2)	0.2 (0.2-0.2)	0.2 (0.2-0.2)
<b>1931-1950 (70-89)</b>	week 2	11868	418	0.2 (0.2-0.3)	0.2 (0.2-0.2)	0.2 (0.2-0.2)
<b>1931-1950 (70-89)</b>	week 3	11665	495	0.3 (0.2-0.3)	0.2 (0.2-0.2)	0.2 (0.2-0.2)
<b>1931-1950 (70-89)</b>	week 4	11119	463	0.2 (0.2-0.3)	0.2 (0.2-0.2)	0.2 (0.2-0.2)

<b>1931-1950 (70-89)</b>	week 5	9998	417	0.2 (0.2-0.3)	0.2 (0.2-0.2)	0.2 (0.2-0.2)
<b>1931-1950 (70-89)</b>	week 6	8122	382	0.3 (0.3-0.3)	0.2 (0.2-0.2)	0.2 (0.2-0.2)
<b>1931-1950 (70-89)</b>	week 7	5346	288	0.3 (0.3-0.4)	0.2 (0.2-0.2)	0.2 (0.2-0.2)
<b>1931-1950 (70-89)</b>	week 8	2533	159	0.4 (0.3-0.5)	0.2 (0.1-0.2)	0.2 (0.1-0.2)
<b>1951-1970 (50-69)</b>	reference	363851	6339	[ref]	[ref]	[ref]
<b>1951-1970 (50-69)</b>	week 1	22072	94	0.2 (0.2-0.3)	0.2 (0.1-0.2)	0.2 (0.2-0.2)
<b>1951-1970 (50-69)</b>	week 2	21621	125	0.3 (0.2-0.3)	0.2 (0.2-0.3)	0.2 (0.2-0.3)
<b>1951-1970 (50-69)</b>	week 3	20457	128	0.3 (0.2-0.3)	0.2 (0.2-0.3)	0.2 (0.2-0.3)
<b>1951-1970 (50-69)</b>	week 4	17578	118	0.3 (0.2-0.4)	0.2 (0.2-0.3)	0.2 (0.2-0.3)
<b>1951-1970 (50-69)</b>	week 5	12669	93	0.3 (0.3-0.4)	0.2 (0.2-0.3)	0.2 (0.2-0.3)
<b>1951-1970 (50-69)</b>	week 6	6633	38	0.3 (0.2-0.4)	0.2 (0.1-0.2)	0.2 (0.1-0.2)
<b>1951-1970 (50-69)</b>	week 7	2447	23	0.4 (0.3-0.6)	0.3 (0.2-0.5)	0.3 (0.2-0.5)
<b>1951-1970 (50-69)</b>	week 8	1104	18	0.7 (0.5-1.2)	0.7 (0.4-1.1)	0.7 (0.5-1.2)
<b>1971-2009 (12-49)</b>	reference	383635	719	[ref]	[ref]	[ref]
<b>1971-2009 (12-49)</b>	week 1	19518	10	0.3 (0.2-0.6)	0.2 (0.1-0.4)	0.2 (0.1-0.4)
<b>1971-2009 (12-49)</b>	week 2	18253	14	0.5 (0.3-0.9)	0.4 (0.2-0.6)	0.3 (0.2-0.6)

<b>1971-2009 (12-49)</b>	week 3	15397	<10	0.2 (0.1-0.5)	0.1 (0.1-0.4)	0.1 (0.1-0.4)
<b>1971-2009 (12-49)</b>	week 4	9390	<10	0.2 (0.1-0.6)	0.1 (0-0.4)	0.1 (0-0.4)
<b>1971-2009 (12-49)</b>	week 5	4144	<10	0.6 (0.2-1.6)	0.4 (0.1-1.0)	0.4 (0.1-1.0)
<b>1971-2009 (12-49)</b>	week 6	2459	<10	0.2 (0-1.8)	0.2 (0-1.4)	0.2 (0-1.3)
<b>1971-2009 (12-49)</b>	week 7	1747	<10	0.7 (0.2-2.9)	0.6 (0.1-2.3)	0.6 (0.1-2.2)
<b>1971-2009 (12-49)</b>	week 8	1181	<10	<0.01 (--)	<0.01 (--)	<0.01 (--)