

SUPPLEMENT

Randomization Methods.

Participants were randomized in a 1:1:1 ratio to receive one intramuscular injection of NVX-CoV-2373 from one of three different manufacturing lots. Randomization was done using an Interactive Web Response System to allocate randomization numbers to individual participants. Both clinical study personnel and participants were blinded to the lot assignment.

Table S1. 2019nCoV-307 Study group members (Pubmed Listed, in alphabetical order of institution affiliation).

Affiliation	Individuals	Location
Accel Clinical Research	Bruce Rankin	Deland, FL
Benchmark Research	Laurence Chu; William Seger; David Ferrera	Austin, TX; Fort Worth, TX; Sacramento, CA
Cen/Excel ACMR	Robert Riesenber	Atlanta, GA
CRA Headlands	Jon Finley	Stockbridge, GA
CTI	Antoinette Pragalos	Cincinnati, OH
Jacksonville Center for Clinical Research	Jeffrey Jacqme	Jacksonville, FL
Long Beach Clinical Trial Services Inc.	Suzanne Fussell, Apinya Vutikullird	Long Beach, CA
Lynn Health Science Institute	Carl Griffin	Oklahoma City, OK
MedPharmics	Paul Matherne	Gulfport, MS
Meridian Clinical Research	Charles Harper; Paul Bradley; David Ensz; Katherine Pearce; Fritz Raiser; Suchet Patel	Norfolk, NE; Savannah, GA; Sioux City, IA; Baton Rouge, LA; Omaha, NE; Endwell, NY
Multi-Specialty Research Associates, Inc.	Guy Strauss	Lake City, FL
OnSite Clinical Solutions, LLC	Arin Piramzadian	Charlotte, NC
Research Centers of America	Howard Schwartz	Hollywood, FL
Research Your Health	Jeffrey Adelglass	Plano, TX
Rochester Clinical Research	Matthew Davis	Rochester, NY
Sundance Clinical Research	Larkin Wadsworth	St. Louis, MO

Tekton Research	Paul Pickrell; Jara McDonald; Robert Lockwood	Austin, TX; San Antonio, TX; Yukon, OK
Velocity Clinical Research	David Fried; John Delgado; Margaret Rhee; Marian Shaw	East Greenwich, RI; Grants Pass, OR; Cleveland, OH; Boise, ID

Table S2. Baseline demographics and characteristics (Safety Analysis Set^a).

n (%)	Group 1 N=298	Group 2 N=303	Group 3 N=304	Total N=905
Age (years)^b				
N	298	303	304	905
Mean (SD)	36.2 (8.31)	36.5 (8.80)	36.6 (8.06)	36.4 (8.39)
Median	37.0	38.0	38.0	38.0
Min, Max	(19, 49)	(18, 49)	(18, 49)	(18, 49)
Sex, n (%)				
Male	123 (41.3)	138 (45.5)	118 (38.8)	379 (41.9)
Female	175 (58.7)	165 (54.5)	186 (61.2)	526 (58.1)
Ethnicity, n (%)				
Hispanic or Latino	50 (16.8)	41 (13.5)	52 (17.1)	143 (15.8)
Not Hispanic or Latino	245 (82.2)	259 (85.5)	248 (81.6)	752 (83.1)
Not Reported/Specified	3 (1.0)	3 (1.0)	4 (1.3)	10 (1.1)
Race, n (%)				
American Indian or Alaska Native	3 (1.0)	1 (0.3)	3 (1.0)	7 (0.8)
Asian	11 (3.7)	10 (3.3)	9 (3.0)	30 (3.3)
Black or African American	54 (18.1)	61 (20.1)	51 (16.8)	166 (18.3)
Native Hawaiian or Other Pacific Islander	0	0	3 (1.0)	3 (0.3)
White	219 (73.5)	223 (73.6)	228 (75.0)	670 (74.0)
Other	8 (2.7)	3 (1.0)	9 (3.0)	20 (2.2)
Not Reported/Specified	3 (1.0)	5 (1.7)	1 (0.3)	9 (1.0)
BMI, n (%)				
Underweight (<18.5)	5 (1.7)	4 (1.3)	4 (1.3)	13 (1.4)
Healthy (18.5-24.9)	61 (20.5)	82 (27.1)	72 (23.7)	215 (23.8)
Overweight (25.0-29.9)	82 (27.5)	86 (28.4)	64 (21.1)	232 (25.6)
Obese (≥30.0)	150 (50.3)	131 (43.2)	164 (53.9)	445 (49.2)
Prior or concomitant medications, n (%)	204 (68.5)	196 (64.7)	220 (72.4)	620 (68.5)
Time between first dose of previous COVID vaccine and Day 1 dose (weeks)				

n	298	303	304	905
Mean (SD)	66.7 (13.11)	68.0 (14.12)	67.7 (12.39)	67.5 (13.22)
Median	67.7	67.6	68.3	68.0
Min - Max	(26, 102)	(29, 101)	(9, 102)	(9, 102)
Previous SARS-CoV-2 infection, n (%)				
Yes	17 (5.7)	13 (4.3)	14 (4.6)	44 (4.9)
PCR, n (%)				
Positive	7 (2.3)	8 (2.6)	6 (2.0)	21 (2.3)
Negative	282 (94.6)	288 (95.0)	289 (95.1)	859 (94.9)
Missing	9 (3.0)	7 (2.3)	9 (3.0)	25 (2.8)
Regimen of previous COVID vaccines received before the study, n (%)				
NVX-CoV2373				
Primary vaccination series (no booster)	3 (1.0)	4 (1.3)	2 (0.7)	9 (1.0)
Primary series + NVX-CoV2373 booster (homologous boost)	1 (0.3)	2 (0.7)	1 (0.3)	4 (0.4)
Primary series + other booster (heterologous boost)	4 (1.3)	4 (1.3)	4 (1.3)	12 (1.3)
mRNA-1273				
Primary vaccination series (no booster)	49 (16.4)	45 (14.9)	52 (17.1)	146 (16.1)
Primary series + mRNA-1273 booster (homologous boost)	51 (17.1)	46 (15.2)	43 (14.1)	140 (15.5)
Primary series + other booster (heterologous boost)	6 (2.0)	7 (2.3)	11 (3.6)	24 (2.7)
BNT162b2				
Primary vaccination series (no booster)	70 (23.5)	73 (24.1)	60 (19.7)	203 (22.4)
Primary series + BNT162b2 booster (homologous boost)	79 (26.5)	89 (29.4)	103 (33.9)	271 (29.9)
Primary series + other booster (heterologous boost)	12 (4.0)	13 (4.3)	15 (4.9)	40 (4.4)

Ad26.COVS.S				
Primary vaccination series (no booster)	7 (2.3)	7 (2.3)	8 (2.6)	22 (2.4)
Primary series + Ad26.COVS.S booster (homologous boost)	4 (1.3)	1 (0.3)	1 (0.3)	6 (0.7)
Primary series + other booster (heterologous boost)	7 (2.3)	9 (3.0)	3 (1.0)	19 (2.1)
Other	5 (1.7)	3 (1.0)	1 (0.3)	9 (1.0)

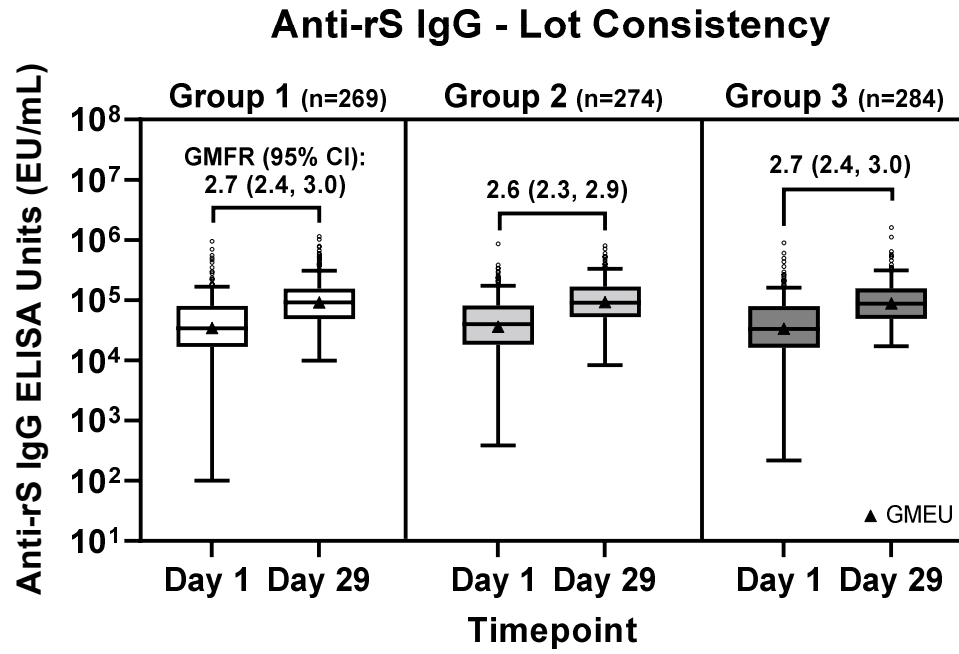
BMI, body mass index; PCR, polymerase chain reaction; SD, standard deviation.

^aSafety Analysis Set includes all participants who receive the study vaccine. Treatment group is based on the actual treatment received. N is the number of participants in Safety Analysis Set; n is the number of participants in each specified category.

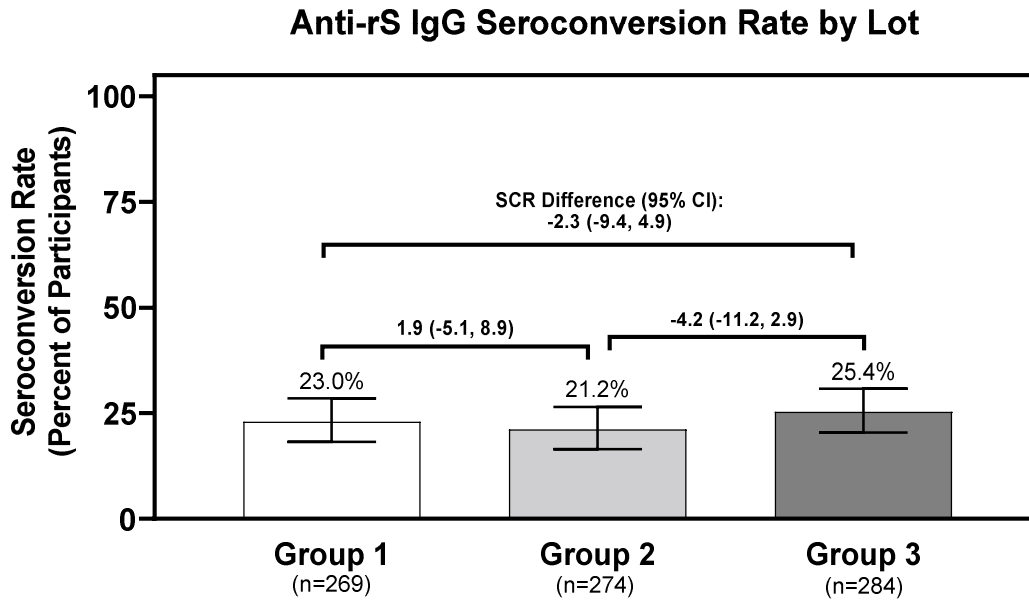
^bAge is calculated as the lowest integer result of (Date of Study Day 1 – Date of Birth + 1)/365.25.

Fig. S1. IgG ELISA responses and neutralizing antibodies in Per-Protocol Analysis Set before and after boosting with NVX-CoV2373, shown by manufacturing lot.

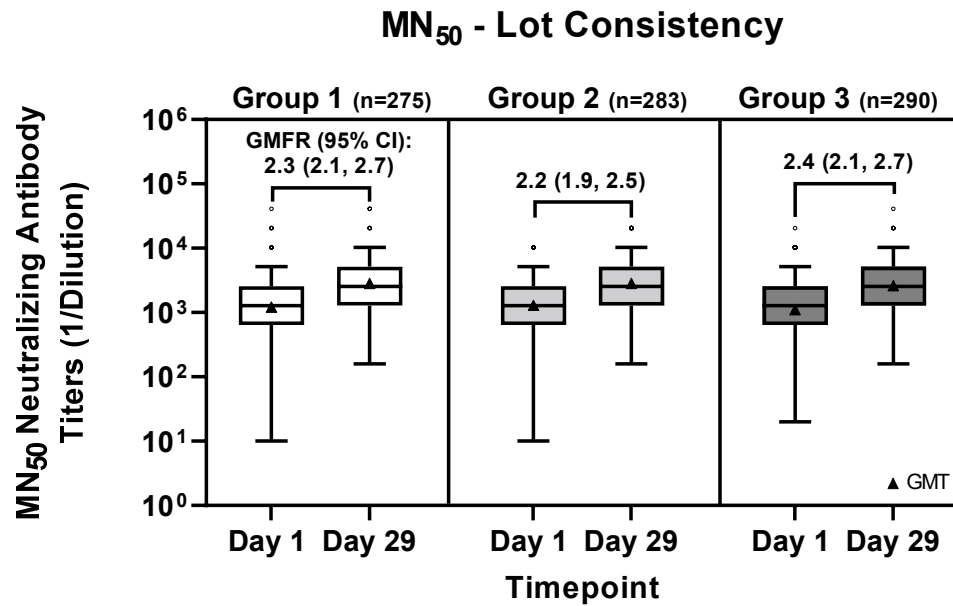
(A)



(B)



(C)



(D)

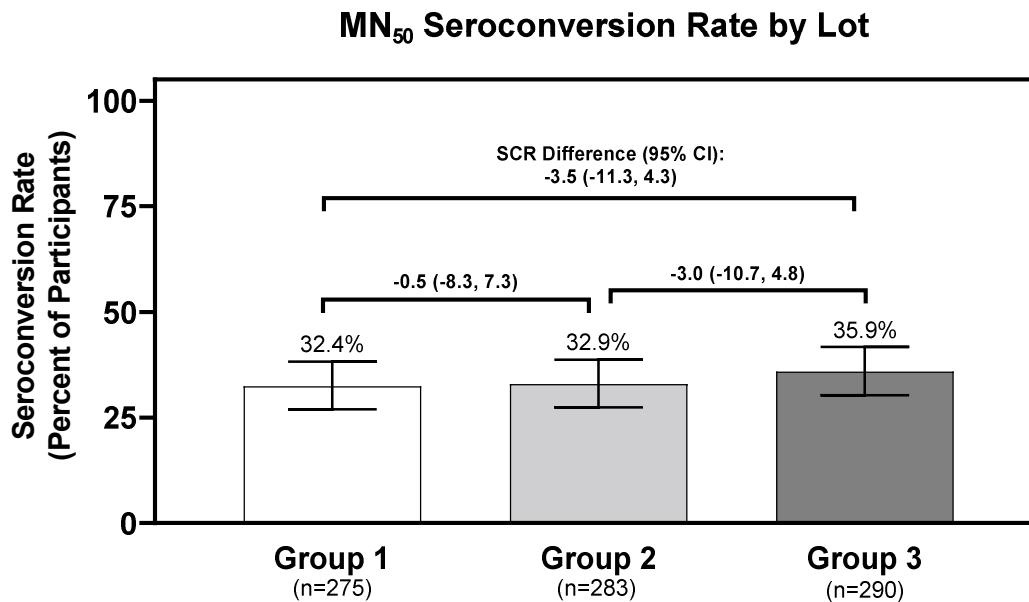


Fig. S1. Immunogenicity of NVX-CoV2373 based on anti-rS IgG responses and neutralizing antibodies (MN₅₀) was assessed for each of three different manufacturing lots. (A) IgG responses measured by ELISA and (B) seroconversion rates of IgG responses for the three lots are shown. (C) Neutralizing antibody responses measured by microneutralization assay and (D) seroconversion rates of neutralizing antibody responses for the three lots are shown. For IgG and antibody responses, ELISA units or titers are graphed as boxplots with GMEU/GMT as triangles (whiskers drawn using the Tukey method, values outside the whiskers are shown as open circles), and GMFRs with 95% CIs are shown above the boxes. For seroconversion, percentages are graphed with 95% CI, and rate differences with 95% CIs are shown for each lot comparison.

Abbreviations: CI, confidence interval; ELISA, enzyme-linked immunosorbent assay; IgG, immunoglobulin G; MN, microneutralization.

Table S3. Geometric mean, geometric mean fold rise, baseline adjusted geometric mean ratio and seroconversion rate of IgG ELISA Units Specific for SARS-CoV-2 rS, by manufacturing lot (Per-Protocol Analysis Set).

Parameter^a	Group 1 N=275	Group 2 N=283	Group 3 N=290	Total N=848
Baseline (Day 1)				
N	269	274	284	827
GMEU	34294.3	36142.6	33233.4	34521.4
95% CI	(29549.6, 39800.9)	(31430.8, 41560.8)	(28863.0, 38265.4)	(31792.6, 37484.5)
Day 29				
N	269	274	284	827
GMEU	91945.8	93084.2	88811.3	91228.2
95% CI	(82821.7, 102075.0)	(84250.8, 102843.7)	(80851.9, 97554.2)	(86164.5, 96589.6)
Day 29 vs Baseline				
N	269	274	284	827
GMFR	2.7	2.6	2.7	2.6
95% CI	(2.4, 3.0)	(2.3, 2.9)	(2.4, 3.0)	(2.5, 2.8)
GMEUR ^b		Group 1 vs. Group 2	Group 1 vs. Group 3	
Estimate		1.01	1.02	
95% CI		(0.90, 1.13)	(0.91, 1.15)	
			Group 2 vs. Group 3	
			1.01	
			(0.91, 1.13)	

Day 29				
N	269	274	284	827
SCR ^c	62 (23.0)	58 (21.2)	72 (25.4)	192 (23.2)
95% CI	(18.2, 28.5)	(16.5, 26.5)	(20.4, 30.8)	(20.4, 26.2)
		Group 1 vs. Group 2	Group 1 vs. Group 3	
SCRs Diff		1.9	-2.3	
95% CI		(-5.1, 8.9)	(-9.4, 4.9)	
			Group 2 vs. Group 3	
			-4.2	
			(-11.2, 2.9)	

GMEU, geometric mean ELISA unit; GMEUR, geometric mean ELISA unit ratio (between groups); GMFR, geometric mean fold rise (Day 29 / Baseline within groups); SCR, seroconversion rate; CI, confidence interval; N, number of participants in Per Protocol Analysis Set; n, number of participants with non-missing results at each visit.

^aIndividual antibody values recorded as below the lower limit of quantitation (LLoQ) will be set to half LLoQ.

^bGMEUR is obtained from a mixed effects model with study vaccine group and baseline IgG ELISA unit as covariate. The ratios of geometric least square (LS) means and 95% confidence intervals for the ratios are calculated by back transforming mean differences and 95% confidence limits for the differences of log transformed IgG ELISA units between two vaccine groups.

^cSCR is defined as the percentage of participants with post vaccination IgG ELISA ≥ 4 times the baseline value; Percentages are based on the number of participants with non-missing IgG ELISA units in Per Protocol Analysis Set. Clopper-Pearson method is applied to calculate CIs of SCR for each group. CIs of the difference in SCRs for paired comparisons is based on the Miettinen and Nurminen method.

Table S4. Summary of geometric mean, geometric mean fold rise and baseline adjusted geometric mean ratio of neutralizing antibody titers for SARS-CoV-2 wildtype virus, by manufacturing lot (Per Protocol Analysis Set).

Parameter^a	Group 1 N=275	Group 2 N=283	Group 3 N=290	Total N=848
Baseline (Day 1)				
N	275	283	290	848
GMT	1211.0	1289.4	1103.7	1198.0
95% CI	(1028.9, 1425.2)	(1114.2, 1492.3)	(950.1, 1282.1)	(1097.0, 1308.2)
Day 29				
N	275	283	290	848
GMT	2838.7	2823.5	2603.2	2750.9
95% CI	(2532.6, 3181.8)	(2529.0, 3152.4)	(2341.2, 2894.6)	(2582.1, 2930.8)
Day 29 vs Baseline				
n	275	283	290	848
GMFR	2.3	2.2	2.4	2.3
95% CI	(2.1, 2.7)	(1.9, 2.5)	(2.1, 2.7)	(2.1, 2.5)
GMTR^b		Group 1 vs. Group 2	Group 1 vs. Group 3	
Estimate		1.03	1.05	
95% CI		(0.91, 1.17)	(0.93, 1.19)	
			Group 2 vs. Group 3	
			1.02	
			(0.90, 1.15)	
Day 29				
n	275	283	290	848

Parameter^a	Group 1 N=275	Group 2 N=283	Group 3 N=290	Total N=848
SCR^c	89 (32.4)	93 (32.9)	104 (35.9)	286 (33.7)
95% CI	(26.9, 38.2)	(27.4, 38.7)	(30.3, 41.7)	(30.5, 37.0)
		Group 1 vs. Group 2	Group 1 vs. Group 3	
SCRs Diff		-0.5	-3.5	
95% CI		(-8.3, 7.3)	(-11.3, 4.3)	
			Group 2 vs. Group 3	
			-3.0	
			(-10.7, 4.8)	

GMFR, geometric mean fold rise (Day 29 / Baseline within groups); GMT, geometric mean titer; GMTR, geometric mean titer ratio (between groups); SCR, seroconversion rate; CI, confidence interval; N, number of participants in Per Protocol Analysis Set; n, number of participants with non-missing results at each visit.

^aIndividual antibody values recorded as below the lower limit of quantitation (LLoQ) will be set to half LLoQ.

^bGMTR is obtained from a mixed effects model with study vaccine group and baseline antibody titer as covariate. The ratios of geometric least square (LS) means and 95% confidence intervals for the ratios are calculated by back transforming mean differences and 95% confidence limits for the differences of log transformed antibody titers between two vaccine groups.

^cSCR is defined as the percentage of participants with post vaccination MN50 titers ≥ 4 times the baseline value; Percentages are based on the number of participants with non-missing IgG ELISA units in Per Protocol Analysis Set. Clopper-Pearson method is applied to calculate CIs of SCR for each group. CIs of the difference in SCRs for paired comparisons is based on the Miettinen and Nurminen method.

Table S5. Summary of geometric mean, geometric mean fold rise, baseline adjusted geometric mean ratio, and seroconversion rate of IgG ELISA units specific for SARS-CoV-2 rS (no prior booster).

Parameter^a	BNT162b Primary Series N=190	mRNA-1273 Primary Series N=131	Ad26.COVS.S Primary Series N=19	NVX-CoV2373 Primary Series N=7
Baseline (Day 1)				
n	187	125	19	7
GMEU	24487.8	32717.2	12632.2	33086.9
95% CI	(20577.6, 29141.1)	(25419.5, 42110.1)	(7995.0, 19959.0)	(7807.0, 140225.4)
Day 29				
n	187	125	19	7
GMEU	75135.7	88669.9	47455.9	263387.4
95% CI	(66853.4, 84444.1)	(75395.8, 104281.1)	(35971.4, 62607.1)	(187909.7, 369182.3)
Day 29 vs Baseline				
n	187	125	19	7
GMFR	3.1	2.7	3.8	8.0
95% CI	(2.6, 3.6)	(2.2, 3.3)	(2.5, 5.7)	(1.7, 37.1)
Day 29				
n	187	125	19	7
SCR ^b	49 (26.2)	30 (24.0)	8 (42.1)	4 (57.1)
95% CI	(20.1, 33.1)	(16.8, 32.5)	(20.3, 66.5)	(18.4, 90.1)

GMEU, geometric mean ELISA unit; GMFR, geometric mean fold rise (Day 29 / Baseline within groups); SCR, seroconversion rate; CI, confidence interval; N, number of participants in Per Protocol Analysis Set; n, number of participants with non-missing results at each visit.

^aIndividual antibody values recorded as below the lower limit of quantitation (LLoQ) will be set to half LLoQ.

^bSCR is defined as the percentage of participants with post vaccination IgG ELISA ≥ 4 times the baseline value; Percentages are based on the number of participants with non-missing IgG ELISA units in Per Protocol Analysis Set. Clopper-Pearson method is applied to calculate CIs of

SCR for each group. CIs of the difference in SCRs for paired comparisons is based on the Miettinen and Nurminen method.

Table S6. Summary of geometric mean, geometric mean fold rise, baseline adjusted geometric mean ratio, and seroconversion rate of neutralizing antibody titers for SARS-CoV-2 wildtype virus (no prior booster).

Parameter^a	BNT162b Primary Series N=190	mRNA-1273 Primary Series N=131	Ad26.COVS.2.S Primary Series N=19	NVX-CoV2373 Primary Series N=7
Baseline (Day 1)				
n	190	131	19	7
GMT	918.4	1226.9	740.6	1050.0
95% CI	(753.0, 1120.1)	(956.5, 1573.9)	(458.2, 1196.8)	(253.9, 4342.9)
Day 29				
n	190	131	19	7
GMT	2486.4	2906.6	1983.1	4200.1
95% CI	(2190.8, 2821.8)	(2430.7, 3475.8)	(1365.8, 2879.2)	(2282.7, 7728.2)
Day 29 vs Baseline				
n	190	131	19	7
GMFR	2.7	2.4	2.7	4.0
95% CI	(2.3, 3.2)	(1.9, 2.9)	(1.6, 4.4)	(1.0, 16.0)
Day 29				
n	190	131	19	7
SCR ^b	70 (36.8)	42 (32.1)	8 (42.1)	3 (42.9)
95% CI	(30.0, 44.1)	(24.2, 40.8)	(20.3, 66.5)	(9.9, 81.6)

GMFR, geometric mean fold rise (Day 29 / Baseline within groups); GMT, geometric mean titer; SCR, seroconversion rate; CI, confidence interval; N, number of participants in Per Protocol Analysis Set; n, number of participants with non-missing results at each visit.

^aIndividual antibody values recorded as below the lower limit of quantitation (LLoQ) will be set to half LLoQ.

^bSCR is defined as the percentage of participants with post vaccination MN50 titers ≥ 4 times the baseline value; Percentages are based on the number of participants with non-missing IgG ELISA units in Per Protocol Analysis Set. Clopper-Pearson method is applied to calculate CIs of SCR for each group. CIs of the difference in SCRs for paired comparisons is based on the Miettinen and Nurminen method.

Table S7. Summary of geometric mean, geometric mean fold rise, baseline adjusted geometric mean ratio, and seroconversion rate of IgG ELISA units specific for SARS-CoV-2 rS (homologous primary series and prior booster).

Parameter^a	BNT162b Primary Series + Booster N=260	mRNA-1273 Primary Series + Booster N=134	Ad26.COVS.2.S Primary Series + Booster N=6	NVX-CoV2373 Primary Series + Booster N=4
Baseline (Day 1)				
n	254	130	6	4
GMEU	35622.4	57835.8	17724.5	45521.4
95% CI	(31105.3, 40795.4)	(48687.0, 68703.8)	(1994.9, 157480.7)	(1784.0, 1161528.4)
Day 29				
n	254	130	6	4
GMEU	91465.3	116472.6	93596.5	294763.2
95% CI	(83279.9, 100455.3)	(100957.3, 134372.2)	(38821.0, 225659.0)	(66014.8, 1316148.7)
Day 29 vs Baseline				
n	254	130	6	4
GMFR	2.6	2.0	5.3	6.5
95% CI	(2.3, 2.8)	(1.8, 2.3)	(1.2, 24.1)	(0.1, 661.3)
Day 29				
n	254	130	6	4
SCR ^b	68 (26.8)	16 (12.3)	2 (33.3)	2 (50.0)
95% CI	(21.4, 32.7)	(7.2, 19.2)	(4.3, 77.7)	(6.8, 93.2)

GMEU, geometric mean ELISA unit; GMFR, geometric mean fold rise (Day 29 / Baseline within groups); SCR, seroconversion rate; CI, confidence interval; N, number of participants in Per Protocol Analysis Set; n, number of participants with non-missing results at each visit.

^aIndividual antibody values recorded as below the lower limit of quantitation (LLoQ) will be set to half LLoQ.

^bSCR is defined as the percentage of participants with post vaccination IgG ELISA ≥ 4 times the baseline value; Percentages are based on the number of participants with non-missing IgG ELISA units in Per Protocol Analysis Set. Clopper-Pearson method is applied to calculate CIs of

SCR for each group. CIs of the difference in SCRs for paired comparisons is based on the Miettinen and Nurminen method.

Table S8. Summary of geometric mean, geometric mean fold rise, baseline adjusted geometric mean ratio, and seroconversion rate of IgG ELISA units specific for SARS-CoV-2 rS (heterologous primary series and prior booster).

Parameter^a	BNT162b Primary Series + Other Booster N=37	mRNA-1273 Primary Series + Other Booster N=24	Ad26.COVS.S Primary Series + Other Booster N=18	NVX-CoV2373 Primary Series + Other Booster N=12
Baseline (Day 1)				
n	35	24	18	12
GMEU	40782.5	40649.9	21727.4	141217.8
95% CI	(29491.1, 56397.0)	(25046.5, 65974.0)	(15555.9, 30347.2)	(100615.4, 198204.8)
Day 29				
n	35	24	18	12
GMEU	80799.0	105222.4	70966.2	308747.2
95% CI	(61426.2, 106281.5)	(74241.1, 149132.3)	(50212.3, 100298.2)	(225871.1, 422031.9)
Day 29 vs Baseline				
n	35	24	18	12
GMFR	2.0	2.6	3.3	2.2
95% CI	(1.6, 2.4)	(1.9, 3.5)	(2.1, 5.1)	(1.5, 3.1)
Day 29				
n	35	24	18	12
SCR ^b	4 (11.4)	4 (16.7)	4 (22.2)	1 (8.3)
95% CI	(3.2, 26.7)	(4.7, 37.4)	(6.4, 47.6)	(0.2, 38.5)

GMEU, geometric mean ELISA unit; GMFR, geometric mean fold rise (Day 29 / Baseline within groups); SCR, seroconversion rate; CI, confidence interval; N, number of participants in Per Protocol Analysis Set; n, number of participants with non-missing results at each visit.

^aIndividual antibody values recorded as below the lower limit of quantitation (LLoQ) will be set to half LLoQ.

^bSCR is defined as the percentage of participants with post vaccination IgG ELISA \geq 4 times the baseline value; Percentages are based on the number of participants with non-missing IgG

ELISA units in Per Protocol Analysis Set. Clopper-Pearson method is applied to calculate CIs of SCR for each group. CIs of the difference in SCRs for paired comparisons is based on the Miettinen and Nurminen method.

Table S9. Summary of geometric mean, geometric mean fold rise, baseline adjusted geometric mean ratio, and seroconversion rate of neutralizing antibody titers for SARS-CoV-2 wildtype virus (homologous primary series and prior booster).

Parameter^a	BNT162b Primary Series + Booster N=260	mRNA-1273 Primary Series + Booster N=134	Ad26.COVS.S Primary Series + Booster N=6	NVX-CoV2373 Primary Series + Booster N=4
Baseline (Day 1)				
n	260	134	6	4
GMT	1111.3	1754.9	905.1	1810.2
95% CI	(955.2, 1293.0)	(1442.1, 2135.4)	(117.2, 6992.4)	(58.7, 55848.9)
Day 29				
n	260	134	6	4
GMT	2499.3	3264.6	4063.7	12177.5
95% CI	(2236.4, 2793.2)	(2771.2, 3845.7)	(1238.9, 13329.3)	(3039.6, 48785.8)
Day 29 vs Baseline				
n	260	134	6	4
GMFR	2.2	1.9	4.5	6.7
95% CI	(2.0, 2.5)	(1.6, 2.1)	(0.7, 29.0)	(0.1, 686.2)
Day 29				
n	260	134	6	4
SCR ^b	96 (36.9)	36 (26.9)	2 (33.3)	1 (25.0)
95% CI	(31.0, 43.1)	(19.6, 35.2)	(4.3, 77.7)	(0.6, 80.6)

GMFR, geometric mean fold rise (Day 29 / Baseline within groups); GMT, geometric mean titer; SCR, seroconversion rate; CI, confidence interval; N, number of participants in Per Protocol Analysis Set; n, number of participants with non-missing results at each visit.

^aIndividual antibody values recorded as below the lower limit of quantitation (LLoQ) will be set to half LLoQ.

^bSCR is defined as the percentage of participants with post vaccination MN50 titers ≥ 4 times the baseline value; Percentages are based on the number of participants with non-missing IgG ELISA units in Per Protocol Analysis Set. Clopper-Pearson method is applied to calculate CIs of

SCR for each group. CIs of the difference in SCRs for paired comparisons is based on the Miettinen and Nurminen method.

Table S10. Summary of geometric mean, geometric mean fold rise, baseline adjusted geometric mean ratio, and seroconversion rate of neutralizing antibody titers for SARS-CoV-2 wildtype virus (heterologous primary series and prior booster).

Parameter^a	BNT162b Primary Series + Other Booster N=37	mRNA-1273 Primary Series + Other Booster N=24	Ad26.COVS.S Primary Series + Other Booster N=18	NVX-CoV2373 Primary Series + Other Booster N=12
Baseline (Day 1)				
N	37	24	18	12
GMT	1487.0	1140.4	1097.3	6088.7
95% CI	(1019.0, 2169.8)	(691.1, 1881.6)	(721.7, 1668.2)	(4368.7, 8485.9)
Day 29				
N	37	24	18	12
GMT	2759.2	2712.2	2463.3	9122.8
95% CI	(2115.5, 3598.8)	(1810.7, 4062.6)	(1622.5, 3739.8)	(6650.4, 12514.3)
Day 29 vs Baseline				
N	37	24	18	12
GMFR	1.9	2.4	2.2	1.5
95% CI	(1.4, 2.5)	(1.6, 3.5)	(1.4, 3.6)	(1.0, 2.3)
Day 29				
N	37	24	18	12
SCR ^b	13 (35.1)	8 (33.3)	5 (27.8)	1 (8.3)
95% CI	(20.2, 52.5)	(15.6, 55.3)	(9.7, 53.5)	(0.2, 38.5)

GMFR, geometric mean fold rise (Day 29 / Baseline within groups); GMT, geometric mean titer; SCR, seroconversion rate; CI, confidence interval; N, number of participants in Per Protocol Analysis Set; n, number of participants with non-missing results at each visit.

^aIndividual antibody values recorded as below the lower limit of quantitation (LLoQ) will be set to half LLoQ.

^bSCR is defined as the percentage of participants with post vaccination MN50 titers ≥ 4 times the baseline value; Percentages are based on the number of participants with non-missing IgG ELISA units in Per Protocol Analysis Set. Clopper-Pearson method is applied to calculate CIs of

SCR for each group. CIs of the difference in SCRs for paired comparisons is based on the Miettinen and Nurminen method.

.

Table S11. Summary of geometric mean, geometric mean fold rise, and seroconversion rate of IgG ELISA units specific for variant SARS-CoV-2 rS (no prior booster).

Parameter ^a	Ancestral			Omicron BA.1			Omicron BA.5		
	mRNA-1273	BNT162b2	NVX-CoV2373	mRNA-1273	BNT162b2	NVX-CoV2373	mRNA-1273	BNT162b2	NVX-CoV2373
Baseline (Day 1)									
n	40	64	7	40	64	7	40	64	7
GMEU	26307.7	26321.8	33086.9	13163.2	11778.9	15974.0	9909.2	9606.6	13719.8
95% CI	(15649.7, 44224.2)	(19153.0, 36173.9)	(7807.0, 140225.4)	(8345.7, 20761.7)	(8526.2, 16272.6)	(3621.7, 70455.3)	(6023.4, 16301.7)	(6993.5, 13196.2)	(3050.0, 61715.5)
Day 29									
n	40	64	7	40	64	7	40	64	7
GMEU	96562.4	82897.0	263387.4	54965.3	41935.9	161257.6	44533.9	36721.1	127912.8
95% CI	(70145.2, 132928.5)	(67445.2, 101888.8)	(187909.7, 369182.3)	(39393.3, 76692.9)	(33480.6, 52526.6)	(101349.9, 256576.6)	(32005.1, 61967.3)	(29716.4, 45376.8)	(83403.7, 196174.4)
Day 29 vs Baseline									
n	40	64	7	40	64	7	40	64	7
GMFR	3.7	3.1	8.0	4.2	3.6	10.1	4.5	3.8	9.3
95% CI	(2.3, 5.8)	(2.3, 4.3)	(1.7, 37.1)	(2.6, 6.6)	(2.6, 4.8)	(2.2, 47.4)	(2.9, 7.0)	(2.8, 5.2)	(2.2, 39.3)
Day 29									
n	40	64	7	40	64	7	40	64	7
SCR ^b	15 (37.5)	18 (28.1)	4 (57.1)	18 (45.0)	24 (37.5)	5 (71.4)	19 (47.5)	24 (37.5)	5 (71.4)
95% CI	(22.7, 54.2)	(17.6, 40.8)	(18.4, 90.1)	(29.3, 61.5)	(25.7, 50.5)	(29.0, 96.3)	(31.5, 63.9)	(25.7, 50.5)	(29.0, 96.3)

GMEU, geometric mean ELISA unit; GMFR, geometric mean fold rise (Day 29 / Baseline within groups); SCR, seroconversion rate; CI, confidence interval; N, number of participants in Per Protocol Analysis Set; n, number of participants with non-missing results at each visit.

^aIndividual antibody values recorded as below the lower limit of quantitation (LLoQ) will be set to half LLoQ.

^bSCR is defined as the percentage of participants with post vaccination IgG ELISA ≥ 4 times the baseline value; Percentages are based on the number of participants with non-missing IgG ELISA units in Per Protocol Analysis Set. Clopper-Pearson method is applied to calculate CIs of SCR for each group. CIs of the difference in SCRs for paired comparisons is based on the Miettinen and Nurminen method.

Table S12. Summary of geometric mean, geometric mean fold rise, and seroconversion rate of IgG ELISA units specific for variant SARS-CoV-2 rS (homologous primary series and prior booster).

Parameter ^a	Ancestral		Omicron BA.1		Omicron BA.5	
	mRNA-1273	BNT162b2	mRNA-1273	BNT162b2	mRNA-1273	BNT162b2
Baseline (Day 1)						
n	60	60	60	59	60	59
GMEU	56256.2	32892.6	24253.9	13541.2	19862.4	10733.0
95% CI	(43589.9, 72603.0)	(24828.7, 43575.4)	(18720.6, 31422.7)	(10133.8, 18094.3)	(15401.4, 25615.7)	(8119.3, 14187.9)
Day 29						
n	60	60	59	60	59	60
GMEU	117410.6	85188.6	52503.7	39696.8	43471.3	33938.2
95% CI	(94291.6, 146198.1)	(71045.3, 102147.6)	(42403.6, 65009.5)	(32975.2, 47788.5)	(34794.5, 54311.9)	(27704.0, 41575.3)
Day 29 vs Baseline						
n	60	60	59	59	59	59
GMFR	2.1	2.6	2.2	2.9	2.2	3.2
95% CI	(1.7, 2.6)	(2.1, 3.2)	(1.8, 2.8)	(2.4, 3.6)	(1.8, 2.8)	(2.6, 3.9)
Day 29						
n	60	60	59	59	59	59
SCR ^b	10 (16.7)	15 (25.0)	10 (16.9)	18 (30.5)	13 (22.0)	18 (30.5)
95% CI	(8.3, 28.5)	(14.7, 37.9)	(8.4, 29.0)	(19.2, 43.9)	(12.3, 34.7)	(19.2, 43.9)

GMEU, geometric mean ELISA unit; GMFR, geometric mean fold rise (Day 29 / Baseline within groups); SCR, seroconversion rate; CI, confidence interval; N, number of participants in Per Protocol Analysis Set; n, number of participants with non-missing results at each visit.

^aIndividual antibody values recorded as below the lower limit of quantitation (LLoQ) will be set to half LLoQ.

^bSCR is defined as the percentage of participants with post vaccination IgG ELISA ≥ 4 times the baseline value; Percentages are based on the number of participants with non-missing IgG ELISA units in Per Protocol Analysis Set. Clopper-Pearson method is applied to calculate CIs of SCR for each group. CIs of the difference in SCRs for paired comparisons is based on the Miettinen and Nurminen method.

Table S13. Overall summary of unsolicited TEAEs during the study by manufacturing lot (Safety Analysis Set).

Parameter, participant n (%)^a	Group 1 N=298	Group 2 N=303	Group 3 N=304	Overall N=905
TEAEs ^b	15 (5.0)	12 (4.0)	12 (3.9)	39 (4.3)
Related TEAEs ^c	2 (0.7)	2 (0.7)	2 (0.7)	6 (0.7)
Headache	0	1 (0.3)	0	1 (0.1)
Presyncope	0	0	1 (0.3)	1 (0.1)
Nausea	0	1 (0.3)	1 (0.3)	2 (0.2)
Diarrhea	0	0	1 (0.3)	1 (0.1)
Urticaria	0	1 (0.3)	0	1 (0.1)
Body temperature fluctuation	0	0	1 (0.3)	1 (0.1)
Lymphadenopathy	1 (0.3)	0	0	1 (0.1)
Myofascial pain syndrome	1 (0.3)	0	0	1 (0.1)
Hot flush	0	1 (0.3)	0	1 (0.1)
Severe TEAEs	0	1 (0.3)	1 (0.3)	2 (0.2)
Post procedural infection	0	0	1 (0.3)	1 (0.1)
Non-cardiac chest pain	0	1 (0.3)	0	1 (0.1)
Severe Related TEAEs	0	0	0	0
Serious TEAEs	0	1 (0.3)	1 (0.3)	2 (0.2)
Escherichia infection	0	0	1 (0.3)	1 (0.1)
Non-cardiac chest pain	0	1 (0.3)	0	1 (0.1)
Serious Related TEAEs	0	0	0	0
AESIs	0	0	0	0

Parameter, participant n (%)^a	Group 1 N=298	Group 2 N=303	Group 3 N=304	Overall N=905
AESIs: PIMMC (Protocol Defined or Per CRF)	0	0	0	0
AESIs: relevant to COVID-19	0	0	0	0
AESIs: myocarditis or pericarditis	0	0	0	0
MAAEs ^d	15 (5.0)	12 (4.0)	12 (3.9)	39 (4.3)
Related MAAEs	2 (0.7)	2 (0.7)	2 (0.7)	6 (0.7)
TEAEs Leading to Study Discontinuation	0	0	0	0
Death	0	0	0	0

AESI, adverse event of special interest; MAAE, medically attended adverse event; PIMMC, potential immune-mediated medical conditions; TEAE, treatment-emergent adverse event.

^aParticipants with multiple events within a category are counted only once. MedDRA Version 25.0. N is the number of participants who received study vaccine at Day 1; n is the number of participants in each specified category of adverse event.

^bTEAEs are defined as any AE occurring or worsening on or after the first dose of study vaccine.

^cSpecific AEs are listed here by preferred term.

^dThis study did not collect non-MAAEs, so TEAEs and MAAEs are the same.