

397 Demographic and co-morbidity characteristics of patients tested for SARS-CoV-2
398 from March 2020 to January 2022 in a national clinical research network: results
399 from PCORnet®

400

401 Short Title: Characteristics of patients tested for SARS-CoV-2 in a national research network

402 Jason P. Block, MD, MPH^{1*}; Keith A. Marsolo, PhD²; Kshema Nagavedu, MPH¹; L. Charles
403 Bailey, MD, PhD³; Tegan K. Boehmer, PhD^{4,5}; Julia Fearrington¹; Aaron M. Harris, MD,
404 MPH^{4,5}; Nedra Garrett, MS⁴; Alyson B. Goodman, MD, MPH^{4,5}; Adi V. Gundlapalli, MD, PhD,
405 MS⁴; Rainu Kaushal, MD, MPH⁶; Abel Kho, MD⁷; Kathleen M. McTigue, MD, MPH, MS⁸;
406 Vinit P. Nair, BPharm, MS⁹; Jon Puro, MPA/HA¹⁰; Elizabeth Shenkman, PhD¹¹; Mark G.
407 Weiner, MD³; Neely Williams, EdD¹²; Thomas W. Carton, PhD, MS¹³ on behalf of PCORnet®
408 Network Partners†

409 ¹Department of Population Medicine, Harvard Pilgrim Health Care Institute, Harvard Medical
410 School, Boston, Massachusetts, United States of America

411 ²Department of Population Health Sciences, Duke University, Durham, North Carolina, United
412 States of America

413 ³Applied Clinical Research Center, Department of Pediatrics, Children’s Hospital of
414 Philadelphia, Philadelphia, Pennsylvania, United States of America

415 ⁴US Centers for Disease Control and Prevention, Atlanta, Georgia, United States of America

416 ⁵US Public Health Service, Rockville, Maryland, United States of America

417 ⁶Department of Population Health Sciences, Weill Cornell Medicine, New York, New York,
418 United States of America

419 ⁷Center for Health Information Partnerships, Northwestern University, Chicago, Illinois, United
420 States of America

421 ⁸Department of Medicine, University of Pittsburgh, Pittsburgh, Pennsylvania, United States of
422 America

423 ⁹PRACnet, Sharon, MA, United States of America

424 ¹⁰OCHIN, Inc., Portland, OR, United States of America

425 ¹¹Health Outcomes & Biomedical Informatics, College of Medicine, University of Florida,
426 Gainesville, Florida, United States of America

427 ¹²Community Partners Network Inc, Nashville, Tennessee, United States of America

428 ¹³Louisiana Public Health Institute, New Orleans, LA, United States of America

429

430

431 †Collaborative authors are listed in an Appendix

432

433 ***Corresponding author:** jblock1@partners.org (JPB)

434

435

436 Abbreviations: EHR – electronic health record, CDM – Common Data Model, ETL – extract-
437 transfer-load procedure to move data from a clinical data warehouse to the PCORnet Common
438 Data Model; Arrhyth – arrhythmia, CAD – coronary artery disease, CHF – congestive heart
439 failure, CKD – chronic kidney disease, Chron pulm – chronic pulmonary disease, Coag –
440 Coagulopathy, DM2 – type 2 diabetes mellitus, HTN – hypertension, Mental – mental health
441 disorder; Amb – ambulatory care setting, ED –emergency department, Inpt – inpatient, Vent –
442 inpatient with procedure codes indicating use of mechanical ventilation; conv plasma –
443 convalescent plasma, dex – dexamethasone, HCQ – hydroxychloroquine, remdes – remdesivir,
444 steroids – corticosteroids other than dexamethasone, tocili - tocilizumab

445

446 Manuscript Word Count: 4096

447

Abstract Word Count: 413

448 **Abstract**

449

450 **Background:** Prior studies have documented differences in the age, racial, and ethnic
451 characteristics among patients with SARS-CoV-2 infection. However, little is known about how
452 these characteristics changed over time during the pandemic and whether racial, ethnic, and age
453 disparities evident early in the pandemic were persistent over time. This study reports on trends
454 in SARS-CoV-2 infections among U.S. adults from March 1, 2020 to January, 31 2022, using
455 data from electronic health records.

456 **Methods and Findings:** We captured repeated cross-sectional information from 43 large
457 healthcare systems in 52 U.S. States and territories, participating in PCORnet[®], the National
458 Patient-Centered Clinical Research Network. Using distributed queries executed at each
459 participating institution, we acquired information for all patients ≥ 20 years of age who were
460 tested for SARS-CoV-2 (both positive and negative results), including care setting, age, sex,
461 race, and ethnicity by month as well as comorbidities (assessed with diagnostic codes).

462 During this time period, 1,325,563 patients had positive (13% inpatient) and 6,705,868 patients
463 had negative (25% inpatient) viral tests for SARS-CoV-2. Disparities in testing positive were
464 present across racial and ethnic groups, especially in the inpatient setting. Compared to White
465 patients, Black or African American and other race patients had relative risks for testing positive
466 of 1.5 or greater in the inpatient setting for 12 of the 23-month study period. Compared to non-
467 Hispanic patients, Hispanic patients had relative risks for testing positive in the inpatient setting
468 of 1.5 or greater for 16 of 23. Ethnic and racial differences were present in emergency
469 department and ambulatory settings but were less common across time than in inpatient settings.
470 Trends in infections by age group demonstrated higher test positivity for older patients in the
471 inpatient setting only for most months, except for June and July of 2020, April to August 2021,
472 and January 2022. Comorbidities were common, with much higher rates among those
473 hospitalized; hypertension (38% of patients SARS-CoV-2 positive vs. 29% for those negative)
474 and type 2 diabetes mellitus (22% vs. 13%) were the most common.

475 **Conclusion and Relevance:** Racial and ethnic disparities changed over time among persons
476 infected with SARS-CoV-2. These trends highlight potential underlying mechanisms, such as
477 poor access to care and differential vaccination rates, that may have contributed to greater
478 disparities, especially early in the pandemic. Monitoring data on characteristics of patients
479 testing positive in real time could allow public health officials and policymakers to tailor
480 interventions to ensure that patients and communities most in need are receiving adequate
481 testing, mitigation strategies, and treatment.

482 Multiple studies have documented the substantial differences in characteristics of patients with
483 SARS-CoV-2 early in the pandemic, with individuals of minority race or ethnicity and older age
484 bearing a much higher burden of severe COVID-19 illness (1–4). The US Centers for Disease
485 Control and Prevention (CDC) has provided detailed information about cases and deaths by
486 demographic characteristics, over time, gathered from data provided by state and local health
487 departments and reference laboratories (5). These data have shown that rates of deaths per
488 100,000 spiked among non-Hispanic Black individuals early in the pandemic, followed by a
489 decline compared to other racial and ethnic groups in the Summer and Fall 2020 and another
490 increase starting in early 2021. Similarly, death rates among Hispanic individuals have remained
491 higher than non-Hispanic individuals throughout the pandemic. However, to date, there has been
492 limited information about patient characteristics and disparities among COVID-19 patients
493 across care settings over time, compared to non-COVID-19 patients, such as those testing
494 negative for SARS-CoV-2. These comparisons can help determine whether characteristics of
495 patients and temporal trends were unique to patients with COVID-19 or were consistent with
496 trends among patients with other illnesses. Further, this information can foster understanding of
497 pandemic dynamics, both for ongoing public health response and to help determine how best to
498 prepare for future public health crises.

499
500 Analyzing trends over time across care settings requires availability of longitudinal information
501 on large populations throughout the entire course of the pandemic with detailed information
502 about individuals, which is typically not available from public health authorities and public
503 health departments. Research networks fill this void by using granular data from many healthcare
504 systems, providing real-world information on diverse populations, followed for long periods.

505 Funded by the Patient-Centered Outcomes Research Network[®] (PCORI[®]), PCORnet[®], the
506 National Patient-Centered Clinical Research Network, is a network-of-networks that facilitates
507 research using electronic health record (EHR), administrative health plan claims, and other
508 healthcare data (6,7). PCORnet currently has participation from more than 60 data contributing
509 sites (i.e., individual health systems) embedded within nine Clinical Research Networks (8).
510 Using data from 23 months of the pandemic (March 2020 through January 2022) in 43
511 institutions participating in PCORnet, we describe demographic trends over time of one of the
512 largest US national sample of patients testing positive or negative for SARS-CoV-2.

513

514 **Methods**

515 *PCORnet[®] Common Data Model*

516 PCORnet[®] operates as a distributed research network, where data are held locally behind
517 institutional firewalls, with queries sent to institutions from a central PCORnet[®] Coordinating
518 Center. The participating sites utilize the PCORnet[®] Common Data Model, in which each data
519 contributing site maps its clinical and/or administrative claims data into a standardized
520 representation (9). These data are normally updated quarterly by sites, coinciding with data
521 quality curation cycles in which data are examined for conformance with the Common Data
522 Model specifications as well as data plausibility and data completeness.

523

524 Prompted by the COVID-19 pandemic, PCORnet[®] sites agreed to rapidly implement
525 supplemental data extraction/curation procedures to allow for rapid capture of information on
526 patients with COVID-19. Starting in early April 2020, sites began updating COVID-related data
527 at least monthly (as often as daily) instead of quarterly. Rather than doing this for all patients

528 (which requires considerable processing time and effort), PCORnet[®] sites included a subset of all
529 patients, including only those who had at least one International Classification of Diseases, 10th
530 revision, Clinical Modification (ICD-10-CM) diagnostic code for a potential viral illness,
531 including COVID-19, or had a lab result for a SARS-CoV-2 test recorded beginning January 1,
532 2020 (**Supplemental Figure 1**) (10). Through January 31, 2022, this database included
533 16,317,253 individual patients 20+ years of age.

534

535 *Queries and Patient Characterization*

536 From this larger population of patients, we used existing modular programs to characterize all
537 patients tested for SARS-CoV-2 (**Supplemental Methods Note**). These programs return only
538 aggregate data from sites. Submission, and use of these data are covered by a PCORnet-wide
539 Data Sharing Agreement and individual site Institutional Review Board approvals for their
540 PCORnet Common Data Model data. Using designated Logical Observation Identifiers Names
541 and Codes (LOINC) (11), we captured information on patients with results of “positive,”
542 “presumptive positive,” or “detected” on nuclear acid amplification (NAAT)/polymerase chain
543 reaction (PCR) or antigen viral tests for SARS-CoV-2 (referred to as “testing positive” or
544 “positive viral test” hereafter) as well as those with results of “negative (“testing negative” or
545 “negative viral test”). Patients included in the negative viral test strata had only records of
546 negative tests and no positive tests. We stratified patients based on the setting of their viral test:
547 1) all, 2) ambulatory, 3) emergency department, and 4) inpatient. The latter three categories were
548 mutually exclusive. We assigned a care setting by determining the setting for encounters before
549 and after the test was performed (1 day before and 16 days following). To make care settings
550 exclusive, we removed patients from a lower care setting stratum if they had encounters in a

551 higher care setting (for ambulatory strata, we assessed emergency and inpatient encounters)
552 before and after their positive test (21 days before and 16 days following the date of the test)
553 **(Supplemental Note)**. Patients identified as receiving care in the emergency department
554 included patients who were discharged directly from this setting and not admitted to the hospital
555 within 16 days; those admitted directly from the emergency department or soon thereafter were
556 characterized with the inpatient care setting cohort. One-third of patients did not have a care
557 setting associated with their positive test, perhaps because many patients were tested in drive-
558 thru testing settings that might not have registered an encounter; some of these tests might also
559 have been ordered during telehealth or virtual visits that were not specifically assessed in our
560 queries. We captured all information with respect to the date for an index viral laboratory test,
561 which was the first positive test for patients testing positive and the first negative test for patients
562 testing negative. All codes for case definitions, comorbidities, treatments, and labs were posted
563 on GitHub.

564

565 *Demographics, Comorbidities, and Disease Severity*

566 Using information available at the time of the test, we assessed demographic characteristics of
567 patients (i.e., age group, sex, race, and ethnicity) using value sets defined in the PCORnet
568 Common Data Model. Sex categories allowed for Male, Female, and Other. Several race
569 categories (i.e., Multiple race, Other race, Native Hawaiian/Other Pacific Islander, and Alaskan
570 Native/American Indian) were less common and typically <1% for all strata; these were grouped
571 together under “Other Race.” Ethnicity was defined as Hispanic or not Hispanic, with a separate
572 missing category. We assessed monthly trends by age group, race, and ethnicity by care setting.
573 We assessed disparities by calculating monthly patient positivity as the total number of patients

574 testing positive separately for each racial, ethnic and age group, divided by the total number of
575 patients tested in that month by care setting. We calculated relative risks (RRs) by month as the
576 percentage of patients testing positive by racial, ethnic, and age group divided by the percentage
577 in a reference group (White; non-Hispanic; age 20-39 years, respectively for each assessment of
578 patient characteristics); these calculations were done separately for race, ethnicity, and age. We
579 noted that disparities were present when RRs were ≥ 1.5 .

580

581 We included a detailed assessment of comorbidities, which were selected based on information
582 presented in publications regarding the association of comorbidities with COVID-19 outcomes
583 (12–15). Patients were considered to have a comorbidity if they had at least two ICD-9-CM or
584 ICD-10-CM codes for the disease/condition recorded any time over a three-year period prior to
585 the index date of their viral test. We also captured use of critical care procedure/billing Current
586 Procedural Terminology (CPT) codes (99291, 99292) during this period and mechanical
587 ventilation usage through presence of ICD-10-CM, Healthcare Common Procedure Coding
588 System (HCPCS) and CPT codes any time from the index date of the SARS-CoV-2 test through
589 21 days after the index date. Lastly, we categorized weight status using the most recent height
590 and weight available within the year prior to the index date. This study was reviewed by the
591 Institutional Review Board of Harvard Pilgrim Health Care, Inc., which deemed it exempt from
592 review because it was a public health surveillance project, conducted under the direction of a
593 public health authority. This activity was reviewed by the CDC and was conducted consistent
594 with applicable federal law and CDC policy.

595

596

597 **Results**

598 *Characteristics of patients testing positive for SARS-CoV-2*

599 The query captured aggregate data on 1,325,563 patients who tested positive for SARS-CoV-2
600 and 6,705,868 patients who tested negative from March 1, 2020 through January 31, 2022.

601 Across the 43 sites, percent contributions to the overall sample ranged from <1% to 15% with 15
602 sites each contributing $\geq 3\%$ of the total; these 15 sites included 73% of all patients testing
603 positive for SARS-CoV-2. Of patients testing positive, 38% were treated in the ambulatory
604 setting, 15% were seen and discharged from the emergency department, and 13% were
605 hospitalized (**Table 1**). Among hospitalized patients, 10% and 19% were documented as
606 receiving mechanical ventilation and critical care treatment, respectively. Test positivity among
607 patients (not tests) was 17% overall and 15%, 20%, and 9% in the ambulatory, emergency
608 department, and inpatient setting, respectively.

609
610 Black or African American patients were 16% of all patients testing positive but were 12%, 28%,
611 and 23% of patients testing positive in the ambulatory, emergency department, and inpatient
612 settings, respectively (**Table 1**). Other Race patients were 10% of all patients testing positive but
613 were 8%, 16%, and 15% in the ambulatory, emergency department, and inpatient settings. The
614 RR for testing positive for Black or African American patients vs. White patients was 1.0, 1.2,
615 and 1.5 across the care settings, and RR for Other Race patients was 1.1, 1.3, and 1.8 (**Table 1**).
616 Compared to non-Hispanic patients, the RR for testing positive in the ambulatory, emergency
617 department, and inpatient settings for Hispanic patients was 1.5, 1.5, and 1.8 (**Table 1**).

618

619 Overall, more patients testing positive were in the 20 to 39 years age group (41%) than other age
620 groups, primarily driven by patients testing positive in the ambulatory setting (**Table 1**). Patients
621 20-39 years of age comprised the largest proportion of patients testing positive in the ambulatory
622 and emergency department settings, but 55-74 year old patients comprised the largest proportion
623 in the inpatient setting (Table 1). Compared to patients who were 20-39 years, the RR for testing
624 positive in the inpatient setting was 1.7 for patients 40 to <55 years, 1.8 for patients 55 to <65
625 years, 1.7 for patients 65 to <75 years, 1.9 for patients 75-<85 years, and 2.2 for patients 85+
626 years. Women comprised a larger proportion of patients testing positive overall (56%), with men
627 more likely to test positive only in the inpatient setting (RR 1.4).

628 **Fig 1. Monthly relative risks for testing positive for SARS-CoV-2 by race and ethnicity and**
629 **care setting, March 1, 2020 to January 31, 2022.**

630 These figures show the relative risk for testing positive by month for Black or African American,
631 Asian, Other Race or Missing Race compared to White race as a reference in the (A) ambulatory
632 or (B) inpatient setting and those who were Hispanic, or had Missing Hispanic ethnicity
633 compared to Not Hispanic as a reference in the (C) ambulatory or (D) inpatient setting. Care
634 settings are mutually exclusive. Proportions of patients testing positive by care setting are
635 available in Supplemental Figures 2 and 4; relative risks for testing positive in the emergency
636 department are available in Supplemental Figures 3 and 5. Abbreviations: Hisp-Hispanic; Not
637 Hisp-Not Hispanic; Miss-Missing.

638

639 *Trends by race, ethnicity, and age*

640 Disparities by race were most apparent during the early phase of the pandemic, especially in the
641 inpatient setting. Among patients hospitalized with SARS-CoV-2 in March and April 2020,
642 Black or African American, Other race, and White patients comprised nearly an equal proportion
643 of patients (**Supplemental Figure 2**). Black or African American patients still comprised more
644 than 20% of patients hospitalized for 17 of the 23 months examined. When we calculated relative
645 risks by month, we demonstrated that hospitalized Black or African American patients were
646 twice as likely to test positive for SARS-CoV-2 compared to White hospitalized patients from

647 April through August 2020 and 1.5 times as likely to tested positive for 12 of the 23 months,
648 with the lowest RRs from September 2020 to January 2021 and again from June to November
649 2021 (**Figure 1**). Patients with “Other Race” had similar patterns when compared to patients of
650 White race, with relative risks of 1.5 or greater for 12 of the 23 months. Patients with Missing or
651 Asian race followed a similar pattern to Black and Other Race groups early in the pandemic and
652 from December 2020 through April 2021. These disparities were similar in the emergency
653 department, with lower relative risks than the inpatient setting (**Supplemental Figure 3**).
654 Disparities also were noted in the ambulatory setting but only in the early months of the
655 pandemic (**Figure 1**).

656
657 Trends were similar when examined by ethnicity, with a disproportionate number of patients
658 with Hispanic ethnicity testing positive across all care settings; these disparities persisted through
659 mid-2021 in the emergency department in inpatient settings (**Figure 1; Supplemental Figures**
660 **4- 5**). Compared to non-Hispanic patients, Hispanic patients had relative risks for testing positive
661 in the inpatient setting of 1.5 or greater for 16 months.

662 **Fig 2. Monthly relative risks for testing positive for SARS-CoV-2 by age group and care**
663 **setting, March 1, 2020 to January 31, 2022.**

664 These figures show the relative risks for testing positive by month and age group in the (A)
665 ambulatory and (B) inpatient setting; reference was 20-39 years of age. Proportions of patients
666 testing positive by care setting are available in Supplemental Figure 6; relative risks for testing
667 positive in the emergency department are available in Supplemental Figure 7. Care settings are
668 mutually exclusive.

669
670 Trends in infections by age demonstrated consistently higher test positivity for 20-39-year-olds
671 in the ambulatory setting (**Figure 2, Supplemental Figures 6-7**). In the emergency department,
672 younger patients were more likely to test positive than older patients in most months except for
673 March to April 2020 (**Supplemental Figure 7**). Patients in older age groups (55 years and

674 higher) were more likely to test positive in the inpatient setting than patients who were 20-39
675 years, with RRs ≥ 1.5 consistently except in June-July 2020, April-July 2021, and December
676 2021-January 2022 (**Figure 2, Supplemental Figure 6**); patients who were 40 to 54 years had
677 RRs ≥ 1.5 for nearly all months of the pandemic compared to patients 20-39 years, except
678 December 2021-January 2022.

679

680 *Comorbidities*

681 Among patients testing positive for SARS-CoV-2, hypertension was the most common
682 comorbidity (19% for all patients) followed by type 2 diabetes (DM2) (9%), chronic pulmonary
683 disease (7%), and mental health disorders (8%); 7% of patients had hypertension and either Type
684 1 (T1DM) or T2DM (**Figure 3; Supplemental Table 3**). These diagnoses were more common
685 among patients with SARS-CoV-2 treated in the inpatient setting, with hypertension present in
686 38% and DM2 in 22% (19% had hypertension and either DM1 or DM2) of inpatients. The
687 prevalence of obesity also was high at 46% among all patients testing positive but was similar
688 across care settings (45% to 48%). Patients testing negative while inpatient had a lower
689 prevalence of hypertension (29% vs. 38%), diabetes (13% vs. 22%), and obesity (41% vs. 47%)
690 compared with those testing positive (**Supplemental Table 4**); prevalence was similar for
691 coronary artery disease (10% vs. 13%), mental health disorders (11% vs. 12%), or chronic
692 pulmonary disease (11% vs. 14%).

693 **Fig 3. Comorbidities for patients with positive viral tests for SARS-CoV-2 across care**
694 **settings, March 1, 2020 to January 31, 2022.**

695 These figures show prevalence of various comorbidities for patients with positive viral tests for
696 SARS-CoV-2 across care settings. Each condition includes a broad capture of ICD-9-CM and
697 ICD-10-CM codes, with codes lists available on Github. For example, mental health codes
698 include those for a large number associated with psychotic and mood disorders. Care settings
699 were mutually exclusive. Abbreviations: AV-ambulatory visit; ED-emergency department; IP-
700 inpatient or hospitalized; HTN-hypertension; DM2-diabetes mellitus type 2, DM-diabetes

701 mellitus Types 1 and 2, Arrhythmia; Chron Pulm-Chronic Pulmonary Disease; CAD-
702 coronary artery disease; CKD-chronic kidney disease; MH Dis-mental health disease; CHF-
703 congestive heart failure.

704

705 **Discussion**

706 Using real world electronic health care data, we examined a large population of patients with
707 SARS-CoV-2 infection, using information on 1.3 million in 43 institutions testing positive for
708 SARS-CoV-2 infection and 6.7 million who tested negative without any positive tests through
709 January 2022. Unlike most other studies, we compared patients across care settings, with rich
710 demographic and comorbidity data by ambulatory, emergency department, and inpatient settings;
711 we also compared patients who tested positive to those who tested negative. Trends by race,
712 ethnicity and age revealed important information about health inequities during the COVID-19
713 pandemic. While variable over time, individuals who were Black or African American or
714 Hispanic were more likely to test positive compared to White and non-Hispanic patients in the
715 inpatient setting for most months.

716

717 Beyond basic demographic trends in cases and death overall, as reported by public health
718 authorities, few studies have reported demographic trends in infections. Studies that have
719 reported on these trends have covered short-term trends early in the pandemic; this study covers
720 23 months of the pandemic. Using data from a national reference laboratory (ARUP
721 Laboratories, with nearly half of the sample of 19,320 patients from Utah), investigators at the
722 US Centers for Disease Control and Prevention (CDC) found a changing age distribution of
723 patients infected with SARS-CoV-2, with a decline in median age in June and July 2020 of 35.8
724 years compared to 40.5 in March and April 2020 (16). From May to August 2020, state
725 electronic laboratory reporting data from 37 states showed similar trends by age, with 20-to-29-

726 year-olds having the highest incidence of SARS-CoV-2 among all age groups from June through
727 August (4). This increase in incidence among young people continued through early September,
728 as 18- to 22-year-olds started to return to colleges (3). In our study, we found peaks in test
729 positivity of young people during the Summer of 2020 and 2021.

730

731 In our study, racial and ethnic disparities in infections, especially among those hospitalized, were
732 evident throughout the pandemic but were most evident early in the pandemic. Disparities by
733 race, defined by test positivity, in the inpatient setting were highest early in the pandemic and
734 during the Winters of 2020/21 and 2021/22. Ethnic disparities were persistent for most of the
735 pandemic in the inpatient setting, with a higher proportion of Hispanic individuals testing
736 positive when hospitalized compared to non-Hispanic patients; this trend ended in Fall 2021.

737 Other studies have found similar patterns for shorter periods. In COVID-19 mortality data from
738 the National Vitals Statistics System, disparities were evident from May to August 2020, with
739 some differences over time (1). Overall, 19% of individuals who died from COVID-19 were
740 Black or African American, with a reduction in proportion from 20% in May 2020 to 17% in
741 August; 24% of all people who died were Hispanic, with an increase from 16% to 26% during
742 this same time period. From January 26 to October 3, 2020, there were nearly 300,000 excess
743 deaths in the United States; this rate summarizes all-cause mortality compared to expected rates
744 from prior years, in this case 2015 to 2019 (2). Substantial disparities were present. The excess
745 death rate was 11.9% for Whites but 29% to 37% for racial minorities and 53% for Hispanic
746 persons; this was highest in March and April 2020 with a second peak among Hispanics in July
747 and August 2020.

748

749 Among all conditions assessed, we found higher prevalence of hypertension, type 2 diabetes
750 mellitus, and obesity among adults treated in the inpatient setting with SARS-CoV-2 compared
751 to those testing negative. These differences could reflect the demographic differences, including
752 age, found between those testing negative and positive or an increased risk of severe disease
753 among patients with these conditions. Diabetes has been found to be an independent risk factor
754 for severe COVID-19, including mortality, likely secondary to underlying physiologic
755 mechanisms, such as immune effects from diabetes and a higher affinity for cellular binding of
756 the virus in patients with diabetes (17–20). The high prevalence of diabetes especially in our
757 study is further evidence of a greater burden of severe SARS-CoV-2 in this population.

758
759 COVID-19 surveillance in PCORnet provides several unique opportunities. Obtaining real-
760 world, comprehensive information on a diverse, national population of patients with COVID-19
761 is critical to help guide policymakers as well as clinical and public health leaders regarding
762 planning for future COVID-19 response. The network infrastructure and large samples allows for
763 creation of research-ready cohorts and in-depth assessment of patients, based on demographic or
764 clinical characteristics. Analyses can be done in a distributed fashion without sharing patient-
765 level data, including predictive modeling, and aggregation across diverse sites can increase
766 generalizability. Large sample sizes with granular clinical information will be increasingly
767 important to capture information on patient subgroups, defined by demographics or less common
768 presentations or outcomes of COVID-19, such as rare complications of SARS-CoV-2. Prior
769 PCORnet surveillance studies have examined disparities in use of monoclonal antibodies (21),
770 the occurrence of post-acute sequelae of COVID-19 (22), and the incidence of myocarditis and
771 pericarditis after SARS-CoV-2 infection and COVID-19 vaccination (23). The investment in

772 changing the processes for data management – moving to frequent updates for patients with
773 respiratory illnesses from a quarterly update – prepared the network to make ongoing
774 contributions to the investigation of COVID-19. Other national initiatives, such as The National
775 COVID Cohort Collaborative (N3C) are gathering similar information from institutions, with
776 patient-level data extracts, to allow for varied research on COVID-19 over time (24).

777

778 *Limitations*

779 Several limitations are inherent to working with structured healthcare data. First, electronic
780 health records and administrative claims data may not have complete data on some patients,
781 especially patients tested and treated entirely outside of a PCORnet health system or outside of
782 the health plan insurance coverage. In such cases, the PCORnet Common Data Model may not
783 have any information about a SARS-CoV-2 infection or inadequate information on chronic
784 diseases and medication use. For example, some institutions had less data on symptomatic
785 ambulatory patients, who may have been referred to outside facilities for testing; other
786 institutions did their own testing for symptomatic ambulatory patients. Most importantly,
787 missing information could have led to misclassification, such as when a patient only had
788 negative tests in the healthcare system but tested positive at an outside institution or on a home
789 test, results that would not be captured in the PCORnet Common Data Model. If missingness
790 was differential by demographic characteristics, proportions reported could be inaccurate.

791 Second, even for patients who received all care within a PCORnet institution, missing data were
792 still possible, as we found for variables such as race, weight status, and care setting. If
793 missingness was non-random, which could be the case if data were less available on patients of
794 certain race categories, our results could provide some incomplete conclusions. Third, the results

795 we report are descriptive and unadjusted for potential confounders. We discovered higher rates
796 of several chronic conditions among patients with SARS-CoV-2 compared to those without;
797 these differences might be explained by demographic or age differences. We required at least
798 two ICD-10-CM codes for chronic conditions, which may have led to an undercount, especially
799 for those patients who were not seen often in the healthcare system prior to their SARS-CoV-2
800 test. Fourth, we report differences based on race/ethnicity information available in the EHR. We
801 do not have further information in the Common Data Model, such as socioeconomic status or
802 other information that underlie disparities, such as exposure to racism or other social
803 determinants. We also do not have access to payer status, which could provide some information
804 on disparities by type of insurance, such as governmental or private. Finally, PCORnet does not
805 allow for representative estimates of overall COVID-19 cases across the U.S. Because PCORnet
806 has a fixed number of institutions and is not designed to be representative of the U.S. population,
807 the prevalence of cases across states in PCORnet is not equivalent to the actual state prevalence
808 of patients who have been tested for SARS-CoV-2.

809

810 *Conclusion*

811 PCORnet has captured information on one of the largest samples to date of patients tested for
812 SARS-CoV-2 infection. Racial and ethnic minority patients have borne a disproportionate
813 burden of the pandemic, making up a larger proportion of those infected than other groups,
814 especially for those hospitalized. Monitoring these data in real time could allow public health
815 officials and policymakers to develop messaging and targeted programs for these communities to
816 ensure that they are receiving adequate testing, mitigation strategies, and treatment. Patients

817 diagnosed with COVID-19 were found to have a high burden of underlying conditions,
818 especially among those hospitalized.

819

820 **Acknowledgement**

821 This study was funded through a cooperative agreement to the Task Force for Global Health,
822 through the US Centers for Disease Control and Prevention: COVID-19 Electronic Healthcare
823 Data Initiative. Each of the institutions received funding through this agreement.

824 The Clinical Research Networks and Coordinating Center reported in this publication are
825 Network Partners in PCORnet, the National Patient-Centered Clinical Research Network.
826 PCORnet has been developed with funding from the Patient-Centered Outcomes Research
827 Institute (PCORI). The Network Partners' participation in PCORnet is funded through the
828 following PCORI Awards: Coordinating Center (PCORI-CC2-Duke-2016); ADVANCE (RI-
829 CRN-2020-001); CaPriCORN (RI-CRN-2020-002); GPC (RI-CRN-2020-003); HealthCore (HP-
830 1510-32545); Insight (RI-CRN-2020-004); OneFlorida (RI-CRN-2020-005); PaTH (RI-CRN-
831 2020-006); PEDSnet (RI-CRN-2020-007); REACHnet (RI-CRN-2020-008); and, STAR (RI-
832 CRN-2020-009). Authors report no competing interests associated with this publication.

833 The funder provided support in the form of salaries or stipends for all authors. As the funding
834 organization of the network infrastructure for PCORnet, PCORI participates in discussions and
835 high-level decision-making about the network and its strategic priorities. With this participation,
836 PCORI provided support and approval for the initiative to alter the PCORnet infrastructure and
837 support queries related to COVID-19. However, PCORI but had no specific role in the study
838 design, data collection and analysis, decision to publish, or preparation of the manuscript. The
839 specific roles of these authors are articulated in the 'author contributions' section.

840 The findings and conclusions in this report are those of the authors and do not necessarily
841 represent the official position of CDC or the US Public Health Service.

842

843

844 **Collaborative Authors: *PCORnet*[®] Network Partners**

845 Faraz S. Ahmad, MD, MS, Northwestern University Feinberg School of Medicine; Saul Blecker,
846 NYU Grossman School of Medicine; H. Ryan Carnahan, PharmD, MS, The University of Iowa
847 College of Public Health, Department of Epidemiology; Olveen Carrasquillo, MD, MPH,
848 University of Miami Miller School of Medicine; Bernard P. Chang, MD, PhD, Columbia
849 University Irvine Medical Center; Katherine Chung-Bridges, MD, MPH, Health Choice
850 Network; Lindsay G. Cowell, MS, PHD, UT Southwestern Medical Center; Janis L. Curtis,
851 MSPH, MA, Duke University School of Medicine; Christine Draper, Department of Population
852 Medicine, Harvard Pilgrim Health Care Institute, Harvard Medical School; Soledad A.
853 Fernandez, PhD, The Ohio State University; Christopher B. Forrest, MD, PhD, Children's
854 Hospital of Philadelphia; Nidhi Ghildayal, PhD, Department of Population Medicine, Harvard
855 Pilgrim Health Care Institute, Harvard Medical School; David A Hanauer, MD, MS, University
856 of Michigan; Rachel Hess, MD, MS, University of Utah; Benjamin D. Horne, PhD, MStat, MPH,
857 Intermountain Medical Center Heart Institute, Stanford University School of Medicine; Philip
858 Giordano, MD, FACEP, Orlando Health, Inc.; William Hogan, MD, MS, University of Florida;
859 Wenke Hwang, PhD, Penn State University College of Medicine; Harold P. Lehmann MD,

860 PhD, Johns Hopkins School of Medicine; Abel Kho, MD, MS, Northwestern University; Scott
861 Mackey, DO, LCMC Health; Kenneth H. Mayer MD, Fenway Health; Narayana Mazumder, MS,
862 Allina Health; James C. McClay, MD, University of Nebraska Medical Center; J. Greg Merritt,
863 PhD, Patient is Partner, LLC; Abu Saleh Mohammad Mosa, Phd, MS, FAMIA, University of
864 Missouri; Samyuktha Nandhakumar, MS, North Carolina Translational and Clinical Sciences
865 Institute, UNC School of Medicine; Bridget Nolan, Department of Population Medicine, Harvard
866 Pilgrim Health Care Institute; Jihad S. Obeid, MD, FAMIA, Medical University of South
867 Carolina; Brian Ostasiewski, Wake Forest School of Medicine; Anuradha Paranjape, MD, MPH,
868 Lewis Katz School of Medicine at Temple University; Lav Parshottambhai Patel, BS, MS,
869 University of Kansas Medical Center; Patricia S. Robinson, PhD, APRN, AdventHealth
870 Research Institute; Alexander Stoddard, MS, CTSI, Medical College of Wisconsin; William E.
871 Trick, Cook County Health; Russell L. Rothman, MD, MPP, Vanderbilt University Medical
872 Center; Neely Williams, MDiv, EdD
873

References

- 874
875
- 876 1. Gold JAW, Rossen LM, Ahmad FB, Sutton P, Li Z, Salvatore PP, et al. Race, Ethnicity,
877 and Age Trends in Persons Who Died from COVID-19 - United States, May-August 2020.
878 MMWR Morbidity and mortality weekly report. 2020;69(42):1517-21.
 - 879 2. Rossen LM, Branum AM, Ahmad FB, Sutton P, Anderson RN. Excess Deaths
880 Associated with COVID-19, by Age and Race and Ethnicity - United States, January 26-October
881 3, 2020. MMWR Morbidity and mortality weekly report. 2020;69(42):1522-7.
 - 882 3. Salvatore PP, Sula E, Coyle JP, Caruso E, Smith AR, Levine RS, et al. Recent Increase in
883 COVID-19 Cases Reported Among Adults Aged 18-22 Years - United States, May 31-
884 September 5, 2020. MMWR Morbidity and mortality weekly report. 2020;69(39):1419-24.
 - 885 4. Boehmer TK, DeVies J, Caruso E, van Santen KL, Tang S, Black CL, et al. Changing
886 Age Distribution of the COVID-19 Pandemic - United States, May-August 2020. MMWR
887 Morbidity and mortality weekly report. 2020;69(39):1404-9.
 - 888 5. CDC COVID data tracker 2021 [Available from: <https://covid.cdc.gov/covid-data-tracker/#demographicsvertime>].
 - 890 6. Collins FS, Hudson KL, Briggs JP, Lauer MS. PCORnet: turning a dream into reality.
891 Journal of the American Medical Informatics Association : JAMIA. 2014;21(4):576-7.
 - 892 7. Fleurence RL, Curtis LH, Califf RM, Platt R, Selby JV, Brown JS. Launching PCORnet,
893 a national patient-centered clinical research network. Journal of the American Medical
894 Informatics Association : JAMIA. 2014;21(4):578-82.
 - 895 8. Forrest C, McTigue K, Hernandez A, Cohen L, Cruz H, Haynes K, et al. PCORnet 2020:
896 current state, accomplishments, and future directions. Submitted for publication. 2020.
 - 897 9. Greene DN, Jackson ML, Hillyard DR, Delgado JC, Schmidt RL. Decreasing median age
898 of COVID-19 cases in the United States-Changing epidemiology or changing surveillance? PloS
899 one. 2020;15(10):e0240783.
 - 900 10. Qualls LG, Phillips TA, Hammill BG, Topping J, Louzao DM, Brown JS, et al.
901 Evaluating Foundational Data Quality in the National Patient-Centered Clinical Research
902 Network (PCORnet(R)). EGEMS (Washington, DC). 2018;6(1):3.
 - 903 11. International Classification of Diseases, Tenth Revision, Clinical Modification (ICD-10-
904 CM) 2020 [Available from: <https://www.cdc.gov/nchs/icd/icd10cm.htm>].
 - 905 12. Fu L, Wang B, Yuan T, Chen X, Ao Y, Fitzpatrick T, et al. Clinical characteristics of
906 coronavirus disease 2019 (COVID-19) in China: A systematic review and meta-analysis. The
907 Journal of infection. 2020.
 - 908 13. Guan WJ, Ni ZY, Hu Y, Liang WH, Ou CQ, He JX, et al. Clinical Characteristics of
909 Coronavirus Disease 2019 in China. The New England journal of medicine. 2020;382(18):1708-
910 20.
 - 911 14. Liang WH, Guan WJ, Li CC, Li YM, Liang HR, Zhao Y, et al. Clinical characteristics
912 and outcomes of hospitalised patients with COVID-19 treated in Hubei (epicenter) and outside
913 Hubei (non-epicenter): A Nationwide Analysis of China. The European respiratory journal.
914 2020.
 - 915 15. Richardson S, Hirsch JS, Narasimhan M, Crawford JM, McGinn T, Davidson KW, et al.
916 Presenting Characteristics, Comorbidities, and Outcomes Among 5700 Patients Hospitalized
917 With COVID-19 in the New York City Area. Jama. 2020.
 - 918 16. Muniyappa R, Gubbi S. COVID-19 pandemic, coronaviruses, and diabetes mellitus.
919 American journal of physiology Endocrinology and metabolism. 2020;318(5):E736-e41.

- 920 17. Barron E, Bakhai C, Kar P, Weaver A, Bradley D, Ismail H, et al. Associations of type 1
921 and type 2 diabetes with COVID-19-related mortality in England: a whole-population study. *The lancet Diabetes & endocrinology*. 2020;8(10):813-22.
- 922
923 18. Holman N, Knighton P, Kar P, O'Keefe J, Curley M, Weaver A, et al. Risk factors for
924 COVID-19-related mortality in people with type 1 and type 2 diabetes in England: a population-
925 based cohort study. *The lancet Diabetes & endocrinology*. 2020;8(10):823-33.
- 926 19. Navaratnam AV, Gray WK, Day J, Wendon J, Briggs TWR. Patient factors and temporal
927 trends associated with COVID-19 in-hospital mortality in England: an observational study using
928 administrative data. *The Lancet Respiratory medicine*. 2021;9(4):397-406.
- 929 20. Helms J, Kremer S, Merdji H, Clere-Jehl R, Schenck M, Kummerlen C, et al. Neurologic
930 Features in Severe SARS-CoV-2 Infection. *The New England journal of medicine*. 2020.
- 931 21. Weiland NL, S. Zimmer, C. U.S. calls for pause on Johnson & Johnson vaccine after
932 clotting cases. *New York Times*. 2021 13 April 2021.
- 933 22. Haendel MA, Chute CG, Bennett TD, Eichmann DA, Guinney J, Kibbe WA, et al. The
934 National COVID Cohort Collaborative (N3C): Rationale, design, infrastructure, and deployment.
935 *Journal of the American Medical Informatics Association : JAMIA*. 2021;28(3):427-43.

936

937

938 Table 1: Characteristics of patients positive for SARS-CoV-2 on polymerase chain reaction or antigen laboratory tests, March 1, 2020
 939 – January 30, 2022, 43 PCORnet Data Contributing Institutions

	All SARS-CoV-2 +			SARS-CoV-2 +, Ambulatory			SARS-CoV-2 +, Emergency Department			SARS-CoV-2 +, Inpatient		
	1,325,563			499,370			202,241			172,673		
	N	%	RR	N	%	RR	N	%	RR	N	%	RR
Age (years)												
20-<40	540,033	41%	Ref	221,535	44%	Ref	85,360	42%	Ref	31,125	18%	Ref
40-<55	346,074	26%	1.0	138,259	28%	0.9	53,762	27%	1.0	33,280	19%	1.7
55-<65	204,153	15%	0.8	74,873	15%	0.6	29,682	15%	0.9	34,186	20%	1.8
65-<75	135,503	10%	0.6	43,829	9%	0.5	18,926	9%	0.7	34,580	20%	1.7
75-<85	70,592	5%	0.6	17,017	3%	0.4	10,162	5%	0.6	25,748	15%	1.9
85+	29,208	2%	0.7	3,857	1%	0.4	4,349	2%	0.5	13,754	8%	2.2

940

Sex												
<i>Female</i>	736,587	56%	Ref	284,413	57%	Ref	112,905	56%	Ref	86,107	50%	Ref
<i>Male</i>	588,459	44%	1.1	214,851	43%	1.0	89,312	44%	1.0	86,545	50%	1.4
<i>Other⁶</i>	511	0%	*	102	0%	*	24	0%	*	20	0%	*
Race												
<i>Asian</i>	37,423	3%	0.9	13,153	3%	0.9	4,935	2%	1.0	5,594	3%	1.2
<i>Black or African American</i>	214,540	16%	1.1	62,218	12%	1.0	56,796	28%	1.2	39,384	23%	1.5
<i>White</i>	831,180	63%	Ref	343,881	69%	Ref	100,859	50%	Ref	91,793	53%	Ref
<i>Other</i>	126,993	10%	1.1	38,029	8%	1.1	32,338	16%	1.3	26,716	15%	1.8
<i>Missing</i>	115,427	9%	1.0	42,089	8%	1.2	7,313	4%	1.1	9,186	5%	1.5

941

Hispanic Ethnicity												
<i>Yes</i>	217,931	16%	1.5	69,250	14%	1.5	45,620	23%	1.5	33,254	19%	1.8
<i>No</i>	937,127	71%	Ref	370,700	74%	Ref	139,387	69%	Ref	126,686	73%	Ref
<i>Other/Missing</i>	170,505	13%	0.9	59,420	12%	0.9	17,234	9%	1.2	12,733	7%	1.2
Month												
<i>March 2020</i>	19,823	1%		4,121	1%		4,007	2%		7,157	4%	
<i>April 2020</i>	39,561	3%		10,117	2%		6,257	3%		13,462	8%	
<i>May 2020</i>	25,207	2%		9,416	2%		4,989	2%		4,849	3%	
<i>June 2020</i>	36,650	3%		16,635	3%		6,045	3%		4,559	3%	
<i>July 2020</i>	60,330	5%		28,146	6%		8,698	4%		7,299	4%	
<i>August 2020</i>	37,832	3%		18,200	4%		4,552	2%		4,915	3%	
<i>September 2020</i>	34,122	3%		19,109	4%		3,247	2%		3,897	2%	

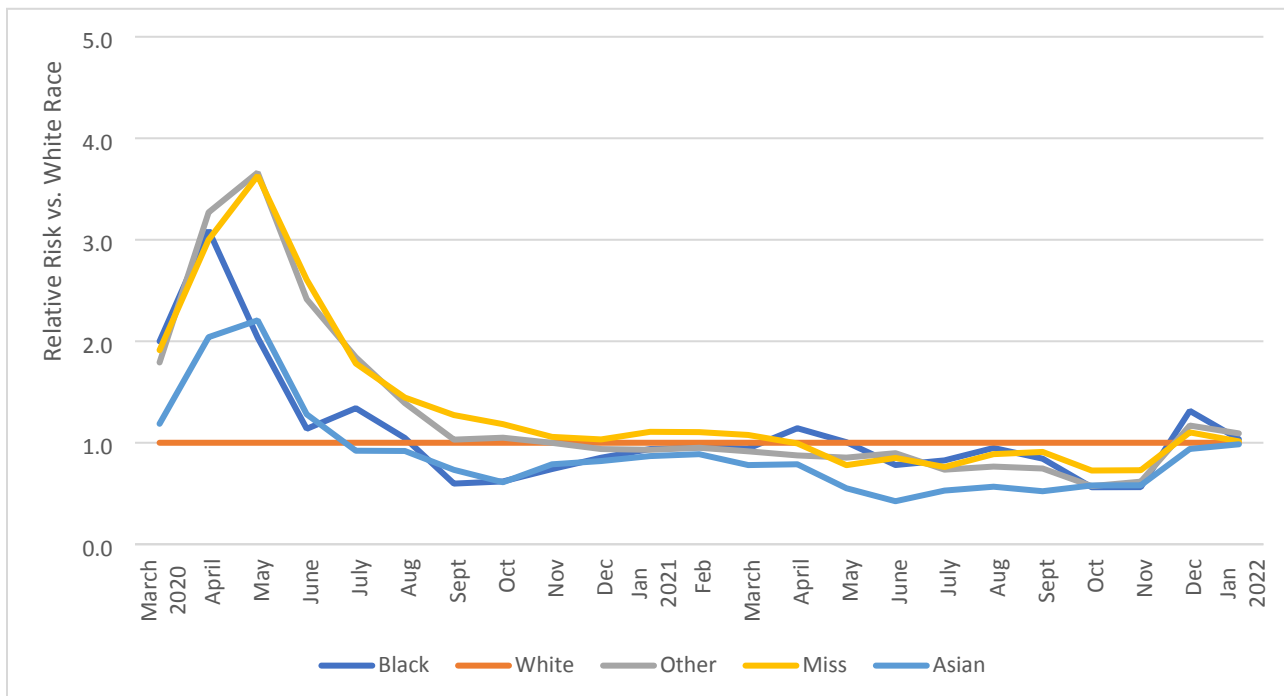
<i>October 2020</i>	60,474	5%		26,828	5%		6,386	3%		6,178	4%	
<i>November 2020</i>	125,513	9%		48,605	10%		13,789	7%		11,149	6%	
<i>December 2020</i>	131,017	10%		46,042	9%		14,255	7%		14,713	9%	
<i>January 2021</i>	97,096	7%		31,522	6%		12,466	6%		14,481	8%	
<i>February 2021</i>	39,816	3%		12,239	2%		5,749	3%		7,972	5%	
<i>March 2021</i>	32,802	2%		9,016	2%		5,905	3%		6,889	4%	
<i>April 2021</i>	32,097	2%		8,490	2%		6,735	3%		6,499	4%	
<i>May 2021</i>	15,190	1%		3,993	1%		3,631	2%		3,488	2%	
<i>June 2021</i>	8,414	1%		2,555	1%		1,815	1%		2,118	1%	
<i>July 2021</i>	22,919	2%		7,511	2%		6,776	3%		4,420	3%	
<i>August 2021</i>	62,668	5%		22,775	5%		14,955	7%		9,832	6%	
<i>September 2021</i>	52,779	4%		20,113	4%		10,079	5%		7,964	5%	

<i>October 2021</i>	33,004	2%		12,400	2%		5,478	3%		5,130	3%	
<i>November 2021</i>	35,651	3%		13,750	3%		6,220	3%		4,654	3%	
<i>December 2021</i>	109,629	8%		42,197	8%		21,346	11%		7,857	5%	
<i>January 2022</i>	212,969	16%		85,590	17%		28,861	14%		13,191	8%	

942

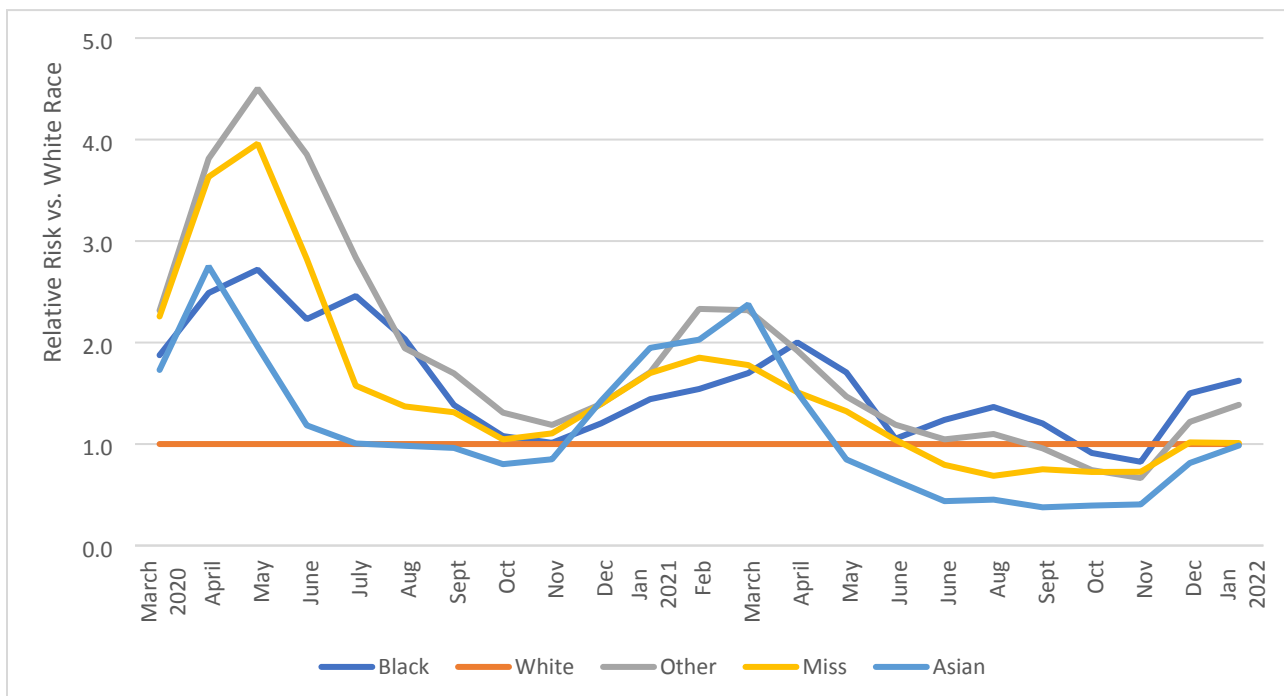
943 **Figure 1: Relative Risks by Race and Ethnicity of Patients with Positive SARS-CoV-2 Test**
 944 **Result, by Care Setting and Month, March 2020—January 2022**

945 **A. Relative Risks by Race among SARS-CoV-2 Positive Patients in Ambulatory Setting**



946

947 **B. Relative Risks by Race among SARS-CoV-2 Positive Patients in Inpatient Setting**

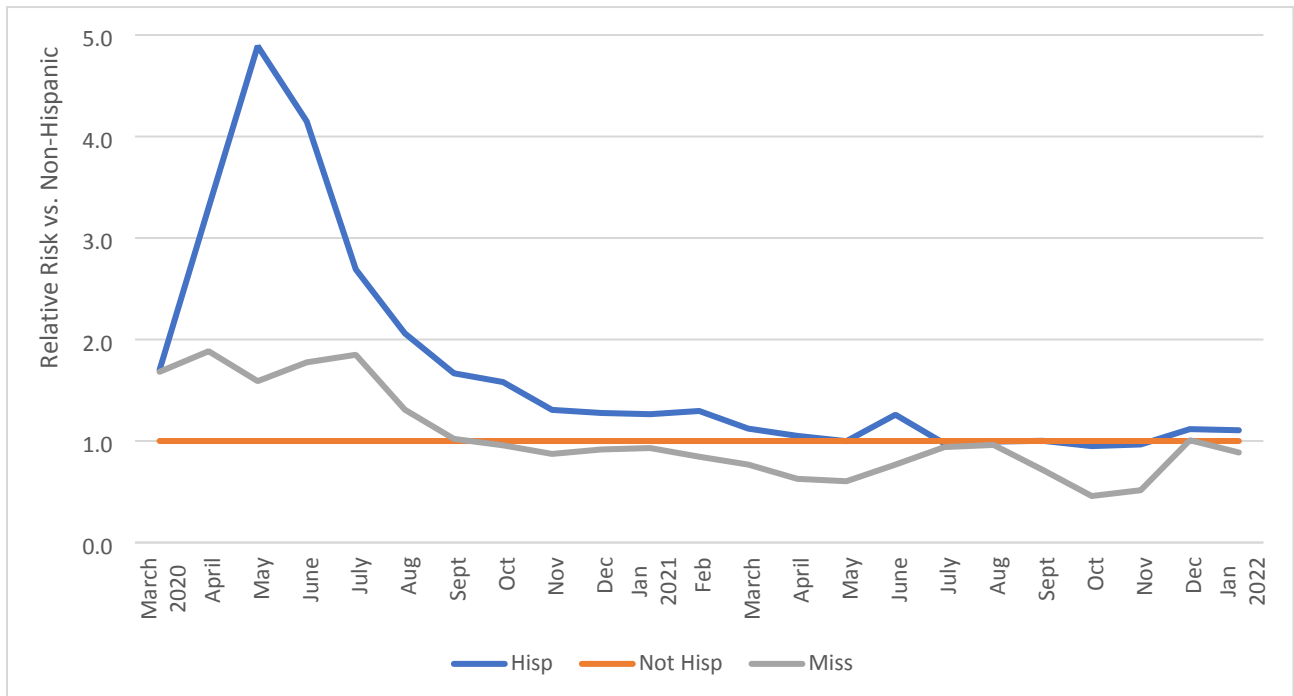


948

949

950

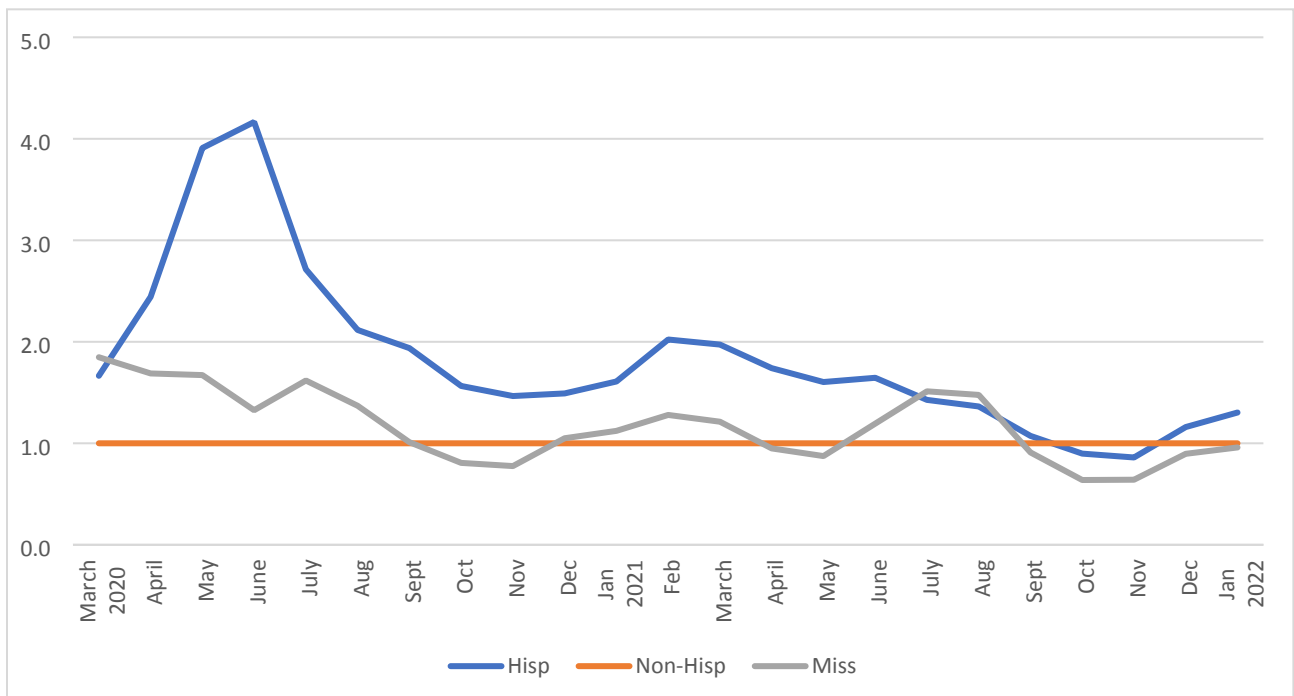
C. Ethnicity Distribution among SARS-CoV-2 Positive Patients in Ambulatory Setting



951

952

D. Ethnicity Distribution among SARS-CoV-2 Positive Patients in Inpatient Setting



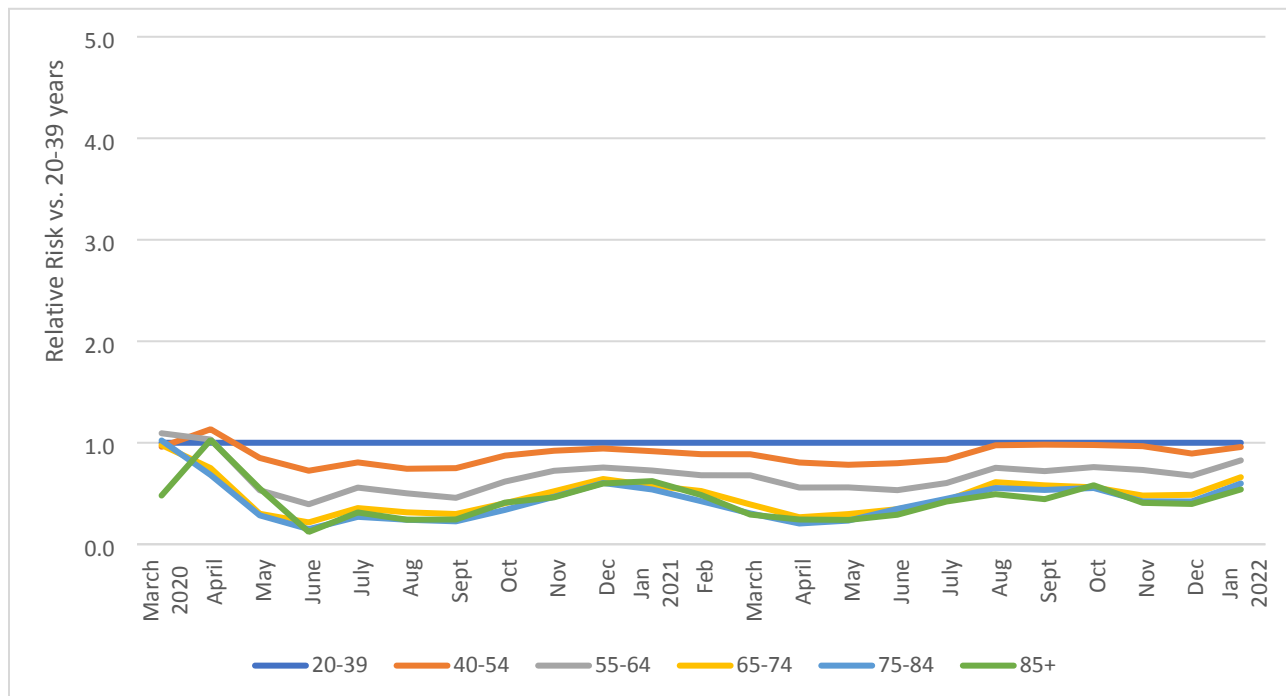
953

954

955

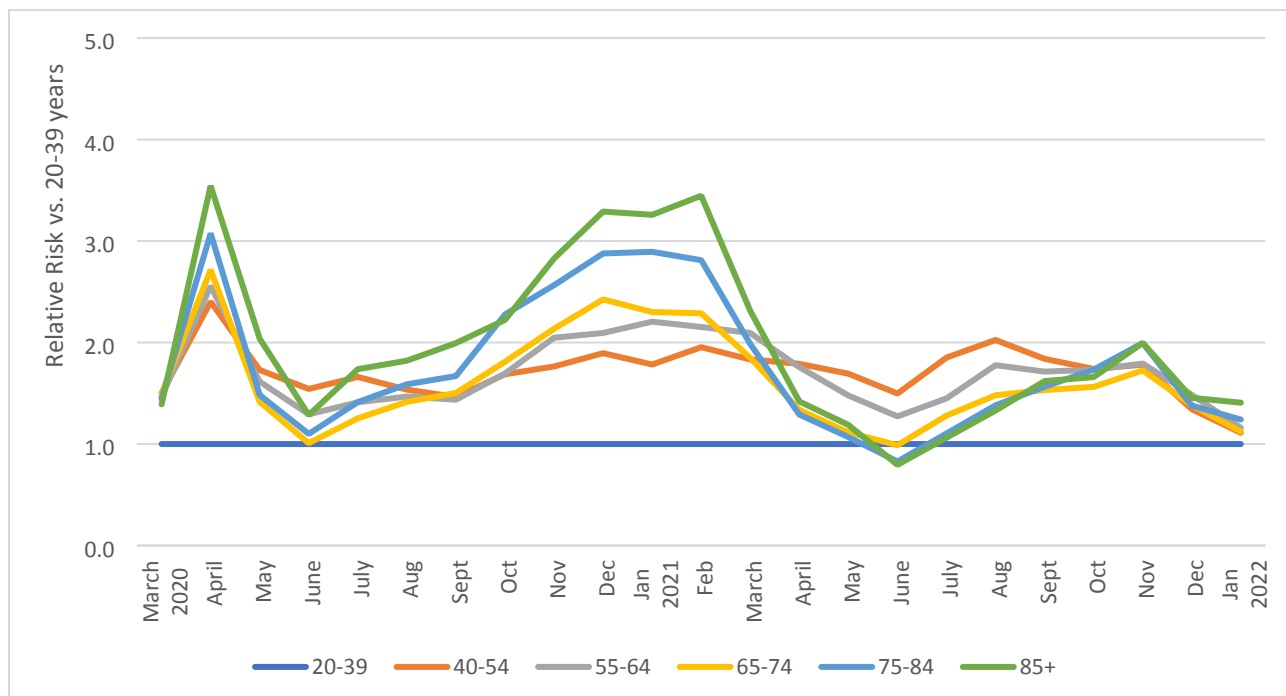
956 **Figure 2: Age Distribution of Patients with Positive SARS-CoV-2 Test Result, by Care**
 957 **Setting and Month, March 2020—January 2022**

958 A. Age Distribution of SARS-CoV-2 Positive Patients in Ambulatory Setting



959

960 B. Age Distribution of SARS-CoV-2 Positive Patients in Inpatient Setting

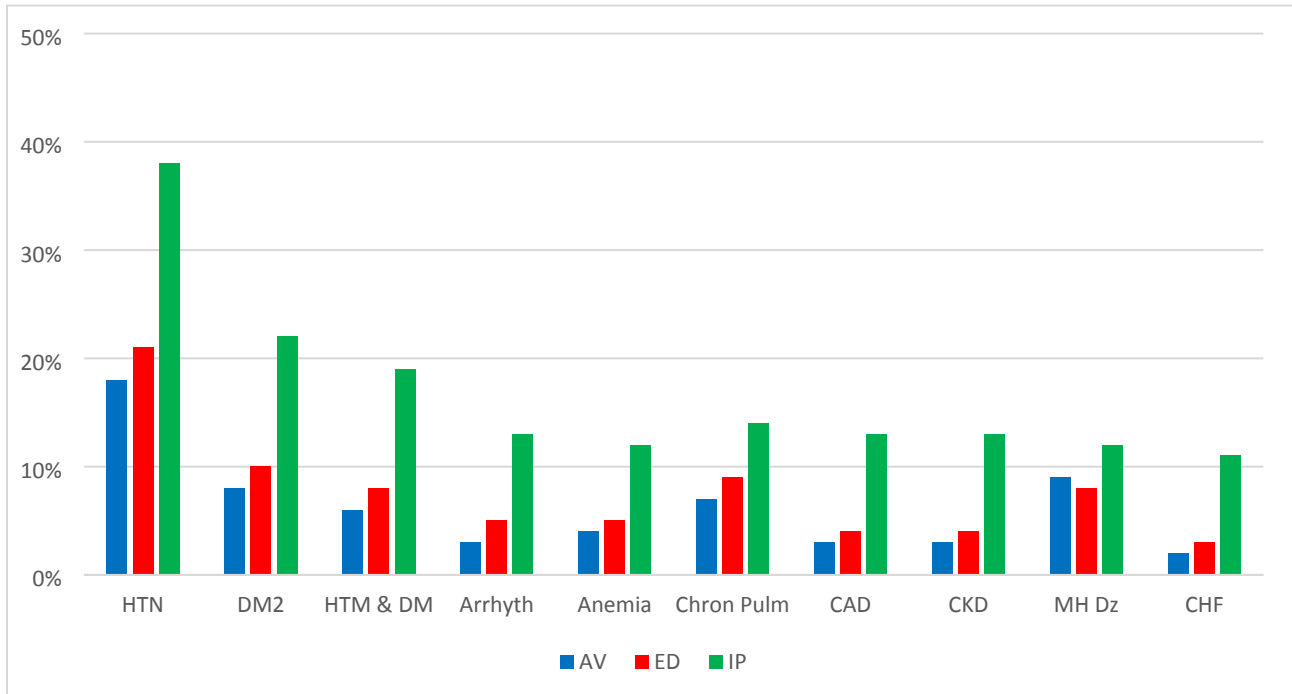


961

962

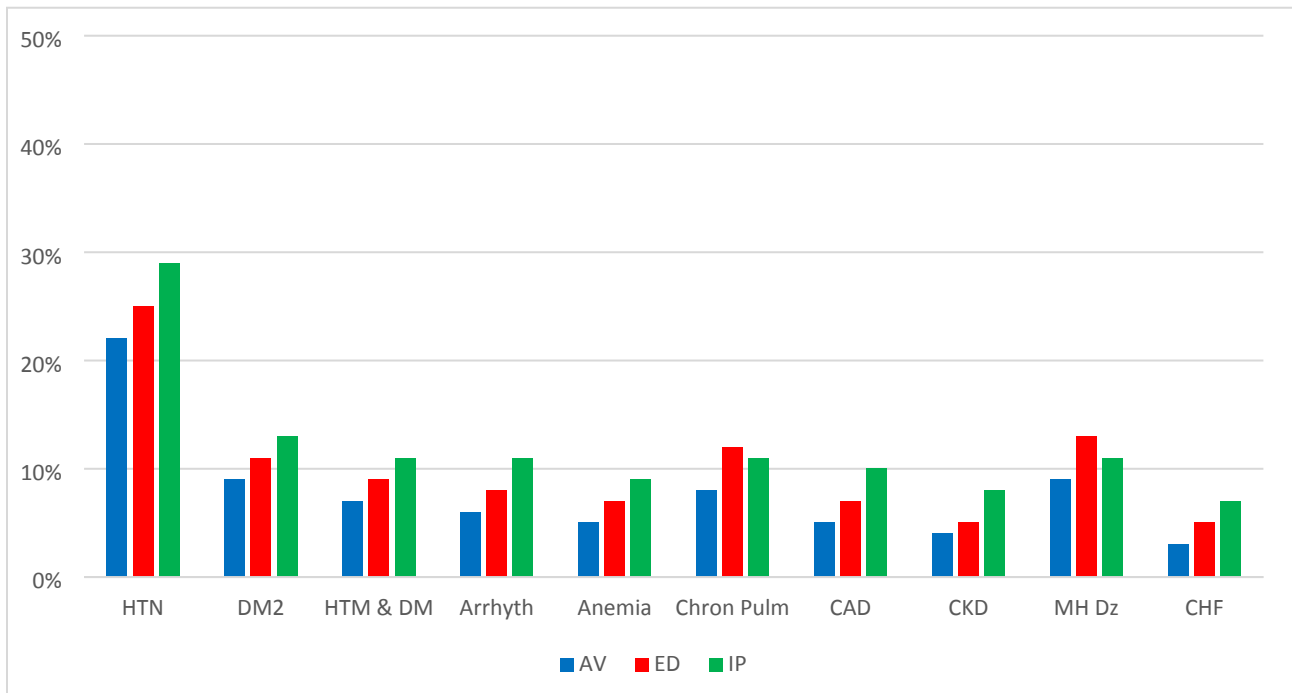
963 **Figure 3: Presence of Comorbidities among Patients Tested for SARS-CoV-2, by Care Setting and**
 964 **Month, March 2020—January 2022**

965 A. Patients Testing Positive for SARS-CoV-2



966

967 B. Patients Testing Negative for SARS-CoV-2



968

969

970 **Captions for Supporting Information**

971 **S Methods Note:** Describes process of code list generation, COVID-19 code-based case
972 definitions, and sensitivity analyses for the assessment of comorbidities

973
974 **S1 Table: Responding PCORnet Healthcare Institutions**

975
976 **S2 Table: Characteristics of Patients Testing Negative for SARS-CoV-2 with No Positive**
977 **Tests, March 1, 2020 to January 31, 2022**

978 **S3 Table: Comorbidities among Patients SARS-CoV-2 +, by Care Setting**

979
980 **S4 Table: Comorbidities among Patients SARS-CoV-2 -, by Care Setting**

981
982 **S Figures**

983
984 **S Fig 1. PCORnet Common Data Models, including standard and COVID-19 Common**
985 **Data Model.**

986 The PCORnet Common Data Model includes information collected through various clinical data
987 systems, including electronic health records (EHR) and health insurance claims or pharmacy
988 dispensing records. Once data are entered by the user, systems transfer data to a data warehouse
989 that is unique to their own health system and system vendor (e.g., Epic, Cerner). The typical
990 process for populating the PCORnet Common Data Model is through an extraction-transfer-
991 loading (ETL) procedure that allows for transformation of raw information into a form that is
992 compliant with the Common Data Model specifications. This transformation, which is done by
993 each individual institution in keeping with PCORnet’s federated data infrastructure, allows for
994 consistency across health systems and centralized querying of data, and the PCORnet ETL and
995 Common Data Model data refresh occurs quarterly. The PCORnet COVID-19 Common Data
996 Model utilizes a similar process but rather than including information on all patients, it includes
997 information only on patients who have had at least one respiratory illness diagnostic code or a
998 lab test ordered for SARS-CoV-2 since January 1, 2020. This process occurs frequently (as often
999 as daily) and includes data with lag times between 1 day to 7 days, depending on the site.

1000
1001 **S Fig 2. Monthly Proportion of Patients Testing Positive for SARS-CoV-2 by Race and**
1002 **Care Setting**

1003 These figures show the proportion of patients by month who were White, Black or African
1004 American, Asian, Other Race or Missing Race in the (A) Ambulatory, (B) Emergency
1005 Department, (C) Inpatient, and (D) Non-Emergency or Inpatient Setting (includes all patients
1006 except for those who were directly connected to an emergency department or inpatient
1007 encounter). We included (D) to account for the approximately 1/3 of patients who had no care
1008 setting connected to their positive test; patients may not have had a care setting if they had a test
1009 done in a drive-thru setting without an encounter or if the test was ordered in a virtual care
1010 setting.

1011
1012

1013 **S Fig 3. Monthly relative risks for testing positive for SARS-CoV-2 by Race in the**
1014 **Emergency Department, March 1, 2020 to January 31, 2022.**

1015 These figures show the relative risks for testing positive by month and racial group in the
1016 emergency department; reference was White Race. Care settings are mutually exclusive.

1017
1018 **S Fig 4. Monthly Proportion of Patients Testing Positive for SARS-CoV-2 by Ethnicity and**
1019 **Care Setting**

1020 These figures show the proportion of patients by month who were Hispanic, Not Hispanic, or
1021 had Missing Hispanic ethnicity information in the (A) Ambulatory, (B) Emergency Department,
1022 (C) Inpatient, and (D) Non-Emergency or Inpatient Setting (includes all patients except for those
1023 who were directly connected to an emergency department or inpatient encounter). We included
1024 (B) to account for the approximately 1/3 of patients who had no care setting connected to their
1025 positive test; patients may not have had a care setting if they had a test done in a drive-thru
1026 setting without an encounter or if the test was ordered in a virtual care setting.

1027
1028 **S Fig 5. Monthly relative risks for testing positive for SARS-CoV-2 by Ethnicity in the**
1029 **Emergency Department, March 1, 2020 to January 31, 2022.**

1030 These figures show the relative risks for testing positive by month and ethnicity group in the
1031 emergency department; reference was White Race. Care settings are mutually exclusive.

1032
1033 **S Fig 6. Monthly Proportion of Patients Testing Positive for SARS-CoV-2 by Age and Care**
1034 **SettingSARS-CoV-2 +, Patients in Emergency Departments and Patients in the Non-**
1035 **Emergency or Inpatient Settings, Age by Month**

1036 These figures show the proportion of patients by month and age group in the (A) Ambulatory,
1037 (B) Emergency Department, (C) Inpatient, and (D) Non-Emergency or Inpatient Setting
1038 (includes all patients except for those who were directly connected to an emergency department
1039 or inpatient encounter). We included (B) to account for the approximately 1/3 of patients who
1040 had no care setting connected to their positive test; patients may not have had a care setting if
1041 they had a test done in a drive-thru setting without an encounter or if the test was ordered in a
1042 virtual care setting.

1043
1044 **S Fig 7. Monthly relative risks for testing positive for SARS-CoV-2 by Age in the**
1045 **Emergency Department, March 1, 2020 to January 31, 2022.**

1046 These figures show the relative risks for testing positive by month and age group in the
1047 emergency department; reference was 20-39-year-olds. Care settings are mutually exclusive.

1048
1049
1050
1051
1052
1053