

1 **The relationship of early-life diseases with lifetime childlessness: Evidence**
2 **from Finland and Sweden**

3 Aoxing Liu^{1,2}, Evelina T Akimova³, Xuejie Ding³, Sakari Jukarainen¹, Pekka Vartiainen¹,
4 Tuomo Kiiskinen^{1,4}, Sara Kuitunen¹, Aki S Havulinna^{1,4}, Mika Gissler^{4,5,6,7}, Stefano
5 Lombardi⁸, Tove Fall⁹, Melinda C Mills^{3,10,11*}, Andrea Ganna^{1,2,12*}

6
7 ¹Institute for Molecular Medicine Finland, FIMM, University of Helsinki, Helsinki, Finland.

8 ²Program in Medical and Population Genetics, Broad Institute of MIT and Harvard,
9 Cambridge, MA, USA.

10 ³Leverhulme Centre for Demographic Science and Nuffield College, University of Oxford,
11 Oxford, United Kingdom.

12 ⁴Finnish Institute for Health and Welfare, THL, Helsinki, Finland.

13 ⁵Research Centre for Child Psychiatry and Invest Research Flagship, University of Turku,
14 Turku, Finland.

15 ⁶Academic Primary Health Care Centre, Stockholm, Sweden.

16 ⁷Department of Molecular Medicine and Surgery, Karolinska Institutet, Stockholm, Sweden.

17 ⁸Institute for Economic Research, VATT, Finland.

18 ⁹Molecular Epidemiology, Department of Medical Sciences, and Science for Life Laboratory,
19 Uppsala University, Uppsala, Sweden.

20 ¹⁰Department of Economics, Econometrics & Finance, Faculty of Economics and Business,
21 University of Groningen, the Netherlands.

22 ¹¹Department of Genetics, University Medical Centre Groningen, the Netherlands.

23 ¹²Analytic and Translational Genetics Unit, ATGU, Massachusetts General Hospital, Boston,
24 MA, USA.

25

26 *Corresponding authors: Melinda C Mills (melinda.mills@demography.ox.ac.uk) and Andrea
27 Ganna (aganna@broadinstitute.org).

28 **NOTE: This preprint reports new research that has not been certified by peer review and should not be used to guide clinical practice.**

29 **Abstract**

30 The percentage of women born 1965-1975 remaining childless is ~20% in many Western
31 European and ~30% in some East Asian countries. Around a quarter of childless women do
32 that voluntarily, suggesting a remaining role for disease. Single diseases have been linked to
33 childlessness, mostly in women, yet we lack a comprehensive picture of the effect of early-
34 life diseases on lifetime childlessness. We examined all individuals born 1956-1968 (men)
35 and 1956-1973 (women) in Finland (n=1,035,928) and Sweden (n=1,509,092) to completion
36 of reproduction in 2018 (age 45 women; 50 men). Leveraging nationwide registers, we
37 associated sociodemographic and reproductive information with 414 diseases across 16
38 categories, using a population and matched pair case-control design of siblings discordant for
39 childlessness (71,524 full-sisters, 77,622 full-brothers). The strongest associations were
40 mental-behavioural, particularly amongst men (schizophrenia, acute alcohol intoxication),
41 congenital anomalies and endocrine-nutritional-metabolic disorders (diabetes), strongest
42 amongst women. We identified novel associations for inflammatory (e.g., myocarditis) and
43 autoimmune diseases (e.g., juvenile idiopathic arthritis). Associations were dependent on age
44 at onset, earlier in women (21-25 years) than men (26-30 years). Disease association was
45 mediated by singlehood, especially in men and by educational level. Evidence can be used to
46 understand how disease contributes to involuntary childlessness.
47

48 **Text box: Defining Childlessness**

49 We use the term childlessness to describe individuals that have had no live-born children by
50 the end of their reproductive lifespan (age 45 for women; 50 for men). Childlessness is
51 defined in the literature as being both involuntary, related to biology and fecundity (e.g.,
52 infertility, inability to find a partner) and voluntary or ‘childfree’¹ (e.g., active choice,
53 preference²). It has been estimated that 4-5% of the current 15-20% women who are childless
54 in Europe are voluntary childless³. Childless individuals are subjected to discrimination and
55 marginalization in many societies⁴, with infertile women globally experiencing multiple types
56 of violence and coercion⁵. A parallel line of work, which is not the position of this paper or
57 authors, is to problematize and stigmatize childless individuals as egoistic and place blame on
58 this group for producing a so-called ‘demographic disaster’ of shrinking and ageing
59 populations and collapse of social security systems⁶. The approach of this paper is to provide
60 a neutral, data-driven, and factual examination of early-life diseases related to childlessness,
61 with the aim to design a better understanding of health to prevent childlessness among those
62 who want to have children.

63

64 **Main**

65 In Western European countries, around 20% of women born around 1965 remained childless,
66 with the highest levels of permanent childlessness now in East Asia, ranging from 28%
67 (Japan) to 35% (Hong Kong) for women born in 1975^{7,8}. There has also been a sharp increase
68 in childlessness over the last decades in countries such as in Finland, increasing since the
69 1970s from 14% to 22% (women aged 40 years) and 22% to 32% (men)^{9,10}. Demographic
70 research has isolated core factors linked to the rise in contemporary levels of childlessness.
71 Access to effective contraception at the end of the 1960s in many countries and more
72 recently, emergency post-coital contraception in the late 1990s, provided couples with more
73 abilities to control their reproduction⁷. Women’s opportunities also vastly changed in many
74 industrialised nations since the 1980s, with gains in higher levels of education and entry into
75 the labour market accompanied with shifts in gender norms and equity^{11,12}. At the same time,
76 couples faced work-life reconciliation constraints when planning to have children including
77 lack of access to childcare, challenging housing conditions, economic uncertainty, inability to
78 find a partner, and the general absence of supportive family policies¹². Given that women
79 entered the labour market while still taking on the bulk of household labour, this ‘incomplete

80 gender revolution' resulted in women often being forced to decide between a career and
81 parenthood^{13,14}. Higher levels of job strain and lack of work-life reconciliation has also been
82 found to reduce fertility intentions¹⁵. Another shift has been the growth of precarious,
83 temporary, and uncertain employment, leading many to postpone or forgo entering
84 partnerships and parenthood^{16,17}. Many of these changes resulted in a general postponement
85 of children to later ages¹². This in turn meant that individuals were having children at ages
86 when they had lower fecundity (reproductive capacity), leading to infertility-related issues
87 and having fewer children¹⁸. This also resulted in an increase in involuntary childlessness
88 (see **Text Box**).

89 Although economic, societal, and cultural freedom has been linked to individuals who
90 remained 'childfree' or voluntarily childless¹⁹, the individuals who report that they never
91 intended to have children, however, has remained low and is estimated to be around 5% in
92 Europe³. Rather than being planned at an early age, becoming voluntarily childfree appears to
93 be a mix of unforeseen circumstances, often related to postponement of childbearing and
94 adaptation to a childfree life^{20,21}. This makes the decomposition of measuring voluntary
95 versus involuntary childlessness challenging. A longitudinal study measuring fertility
96 intentions of childless women (questioned from age 14 to their late 40s) found that they
97 engaged in repeated postponement of childbearing and the subsequent adoption of a childless
98 expectation at older ages or had indecision about parenthood evidenced by changing childless
99 expectations across various ages.

100 The majority of childless individuals are thus involuntarily childless and wanted to have
101 children. From the standpoint of public health, involuntary childlessness may impact other
102 health domains, with childless women more likely to suffer from relationship dissolution,
103 lower levels of self-esteem and isolation, and higher risks of clinical depression¹². A recent
104 systematic review found that infertile women globally are also more likely to experience
105 psychological, physical, and sexual violence as well as economic coercion⁵.

106 While the aforementioned demographic and socioeconomic literature has shown social,
107 economic, and structural factors as having a major effect on childlessness, the fact that a large
108 proportion of individuals are still involuntarily childless suggests that biology and diseases
109 likely have a considerable influence on individuals' chances of being childless or having a
110 particular number of children over their lifetime (**Figure S1**). First, diseases may directly
111 influence childlessness through medical conditions that affect the fecundity, co-morbidities
112 and mortality of the individual, as well as the risk of stillbirth²². Second, diseases can impact

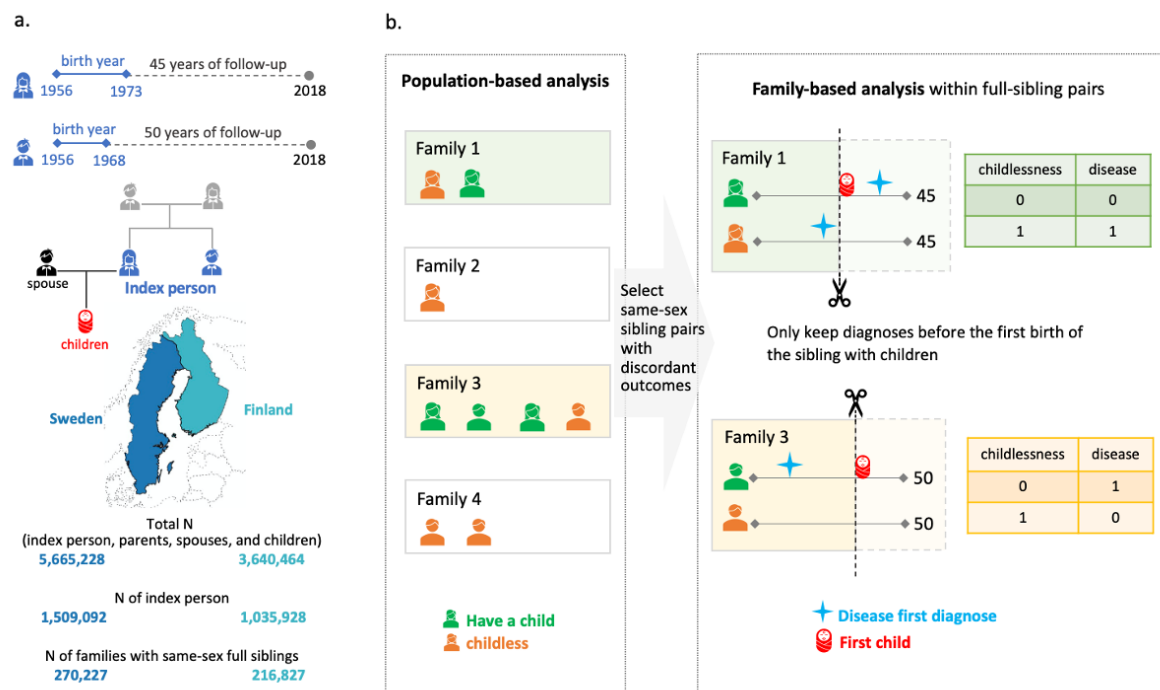
113 selection into a partnership, which in turn lowers the chance of being partnered and thus
114 having children²³. Also, some may choose to be childfree due to knowledge or concerns of
115 intergenerational transmission of certain known genetic conditions²⁴. Finally, many diseases
116 are associated with lower socioeconomic status, unemployment, and economic uncertainty,
117 which may amplify the psychosocial impact of diseases on childlessness²⁵.

118 A review of the literature linking disease to childlessness can be found in **Table S1**. Previous
119 medical studies largely only examined a limited selection of diseases directly associated with
120 reproductive biology such as recurrent miscarriage²⁶, polycystic ovary syndrome²⁷, and
121 endometriosis²⁸. Another large area of research has been the study of infertility and
122 inflammatory bowel disease (IBD). A systematic review found that up to one-third of IBD
123 patients opted to be voluntarily childless, often related to lack of knowledge related to
124 pregnancy-related IBD issues²⁹, with clinical studies finding that women with moderate to
125 severe IBD had higher incidences of adverse pregnancy outcomes³⁰. Multiple sclerosis has
126 also been associated with higher levels of childlessness, linked to fewer being in a stable
127 relationship, fear of genetically transmitting multiple sclerosis, or discontinuation of
128 treatments³¹. Another line of study has examined fecundity in patients with major psychiatric
129 disorders³², and those with a genetic liability for schizophrenia, with the later finding no clear
130 association with childlessness³³.

131 Current research has examined singular diseases in parallel and thus lacks a systematic
132 assessment of the role of multiple diseases on childlessness and their relative importance.
133 Moreover, the association of diseases can be sex-specific, given that men and women differ
134 regarding both reproductive patterns (men have a higher chance of being childless, higher
135 parity, and a longer reproductive lifespan than women³⁴) and the prevalence and severity of
136 diseases. For men, comparatively limited information has been collected on the causes and
137 consequences of infertility and having children^{35,36}, despite infertility being a major public
138 health concern. Finally, previous studies have had a limited time horizon to follow
139 participants and the methodological tools to control for unmeasured familial confounding,
140 either genetic or environmental.

141 We address these limitations of previous research by studying the entire reproductive and
142 health history of a cohort of Finnish and Swedish men and women until the end of their
143 reproductive period using high-quality nationwide population registers. The current study
144 determines to what extent diseases are associated with childlessness, whether such
145 associations vary between sexes, differ by the age at disease onset, or stratify by parity, and

146 the role that partnership formation and educational level plays in mediating the results. To
 147 answer these questions, we used a disease-agnostic family-based approach which allows us to
 148 robustly evaluate the relative importance of 414 disease diagnoses in relation to childlessness
 149 while providing public-health-relevant metrics to interpret the relative importance and
 150 contextualize the results of our study.
 151



152
 153 **Fig. 1: Schematic overview of the study**

154 Panel A shows the birth cohorts, the follow-up period, and the number of Finns and Swedes
 155 included in the analyses. A total of three generations of familial relationships were considered
 156 for the index persons, with the parental information used to match sibling pairs, the children's
 157 information to define the main outcome of childlessness, and the registered spouse's
 158 information to determine the secondary outcome of singlehood. Panel B shows the statistical
 159 approach used in the main analyses, where only families with same-sex siblings discordant
 160 for childlessness are included. Within each family, we randomly selected one childless
 161 sibling as a case, and, as control, the sibling with children that was the closest for birth order
 162 with the case. Within a sibling pair, disease diagnoses are only considered if they occurred at
 163 least one year before the birth of the first child or within the corresponding age at which the
 164 sibling was childless, since sibling ages will differ.

165

166 **Results**

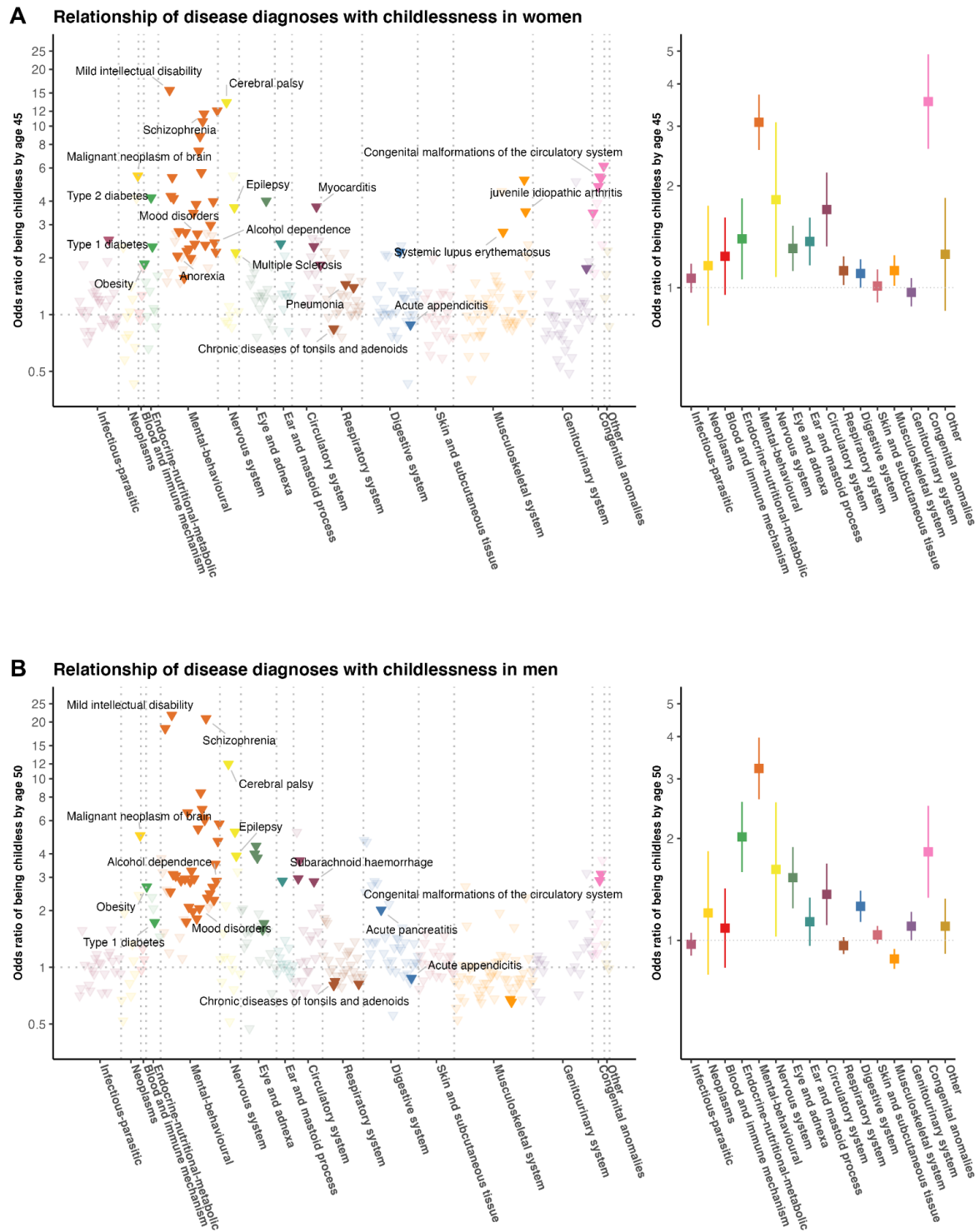
167 **Study population**

168 Our study population included 1,425,640 women and 1,119,380 men, born after 1956 and
169 alive by age 16, did not emigrate, and largely completed their reproductive period at the end
170 of 2018 (**Fig. 1A**). Among them, 230,198 women and 279,454 men were childless. The
171 proportion of childless individuals – those with no live-born children – was higher in men
172 (25.4%) than women (16.6%), higher amongst Finns (23.3%) than Swedes (18.7%), and
173 slightly higher in the general population than in individuals who had same-sex full-siblings
174 (0.9% and 0.5% higher in women and men, respectively). Among individual with children, a
175 two-child parity was most prevalent in men (47.1%) and women (48.9%), amongst both
176 Finns (44.0%) and Swedes (50.8%) (**Table S2**). Both women and men with the lowest
177 educational attainment were more likely to be childless (e.g., in Finland, 24.2% were
178 childless in women and 37.4% in men) than the general population (e.g., in Finland, 18.8%
179 were childless in women and 27.7% in men) (**Table S3-S4**). When looking across
180 generations, the education level of parents was correlated with an individual's childless status
181 (**Table S3-S4**). For example, among index persons whose parents had completed the first
182 stage of tertiary education, men were less likely to be childless (e.g., in Finland, 25.3%)
183 compared to the general population (e.g., in Finland, 27.7%) while women behaved in the
184 opposite way (e.g., in Finland, 21.3%, compared to 18.8% in the general population).

185 For the entire study population, we have information from nationwide registers covering 414
186 disease diagnoses across 16 main categories (**Figure S2; Table S5**). Disease prevalence
187 across the entire follow-up was highly comparable between Finland and Sweden (**Figure S3**)
188 and we presented meta-analysis results between the two countries. Our main analysis focused
189 on 71,524 full-sister and 77,622 full-brother pairs who were discordant on childlessness (**Fig.**
190 **1B**).

191

192 **Disease diagnoses associated with childlessness**



193

194 **Fig. 2: Relationship of 403 disease diagnoses with childlessness by age 45 in women**
 195 **(panel A) and 50 in men (panel B) in 71,524 full-sister and 77,622 full-brother pairs who**
 196 **were discordant on childlessness, using a matched case-control design**

197 Odds ratios are computed for each disease diagnosis (left figures of each panel) and averaged
198 over disease categories (right figures of each panel). Only disease diagnoses that are
199 significantly associated with childlessness after multiple-testing correction ($P < 1.5 \times 10^{-4}$) are
200 colored. Labels are assigned only for certain disease diagnoses that are described in the text.

201

202 Eleven rare diseases were associated with an almost complete lack of children (e.g., severe
203 intellectual disability, childhood leukemia, and muscular dystrophy) (**Table S6**) and were
204 therefore not included in all the remaining analyses. Out of the remaining 403 diseases (328
205 in women; 325 in men), 74 were significantly associated with childlessness in at least one sex
206 ($P < 1.5 \times 10^{-4}$, after multiple-testing correction), with 33 disease diagnoses shared among
207 women and men (**Fig. 2**). A full list of the results can be found in **Table S7** or in an
208 interactive dashboard: <https://dsgelrs.shinyapps.io/DiseaseSpecificLRS/>. More than half of
209 the significant associations were mental-behavioral disorders (26/53 (49%) in women and
210 30/54 (55.5%) in men), which was, together with congenital anomalies, the disease categories
211 with the strongest associations with childlessness (OR=3.1 [95% CI: 2.6-3.7] in women
212 compared to men (OR=3.2 [CI: 2.6-4.0]), averaging over all mental-behavioral disorders
213 (**Fig. 2** and **Table S8**). There was substantial heterogeneity among different mental-
214 behavioral disorders ($P = 4.5 \times 10^{-71}$ in women and 7.9×10^{-128} in men in a heterogeneity test).
215 For example, mild intellectual disability was the condition with the strongest association with
216 childlessness (e.g., OR=21.7 [10.8-43.5] in men), while smaller effects were observed for
217 mood disorders (e.g., 2.1 [1.8-2.3] in men). Severe diseases of the brain such as cerebral
218 palsy (OR=13.4 [7.9-22.7] in women and 12.0 [6.5-22.2] in men) and malignant neoplasm of
219 the brain (5.5 [2.8-10.8] in women and 5.0 [2.8-8.9] in men), which impair health and
220 functioning in several ways but can also result in behavioral and personality disorders^{37,38},
221 were also strongly associated with childlessness. For individuals with severe mental disorders
222 or physical disabilities (e.g., intellectual disability), especially amongst women, involuntary
223 sterilization was historically carried out in Finland (from 1935 to 1970) and Sweden (1934 to
224 1976)³⁹.

225 Another disease category strongly associated with childlessness, in both sexes, encompassed
226 the endocrine-nutritional-metabolic disorders (OR=1.4 [1.1-1.8] in women and 2.0 [1.6-2.6]
227 in men, averaging over all endocrine-nutritional-metabolic disorders). For example, a
228 diagnosis of obesity (OR=1.8 [1.5-2.4] in women and OR=2.7 [2.0-3.6] in men), which is
229 normally recorded in the secondary healthcare registers only in severe cases, and type 1 and

230 type 2 diabetes (e.g., in women, OR=2.3 [2.0-2.6] for type 1 diabetes and 4.2 [2.2-8.1] for
231 type 2 diabetes) were among the diseases with the strongest associations with childlessness.

232 We found several inflammatory diseases to be significantly associated with childlessness
233 across multiple organ systems including respiratory, circulatory, genitourinary, digestive,
234 nervous, and musculoskeletal systems. For example, a diagnosis of pneumonia (OR=1.4 [1.3-
235 1.6]), myocarditis (3.7 [2.3-6.1]), chronic tubulo-interstitial nephritis (1.8 [1.3-2.3]), multiple
236 sclerosis (2.1 [1.5-3.1]), systemic lupus erythematosus (2.7 [1.6-4.6]), and juvenile idiopathic
237 arthritis (3.5 [2.6-4.9]) significantly increased subsequent childlessness in women.

238 Puzzlingly, but consistently with previous findings⁴⁰, we observed that chronic diseases of
239 tonsils and adenoids and acute appendicitis, were associated with reduced, rather than an
240 increased odds of childlessness for women and men (e.g., for chronic diseases of tonsils and
241 adenoids, OR=0.84 [0.80-0.88] in women and 0.84 [0.80-0.89] in men), with similar effect
242 sizes in Finns and Swedes (P for heterogeneity=0.60 between two countries in both sexes).

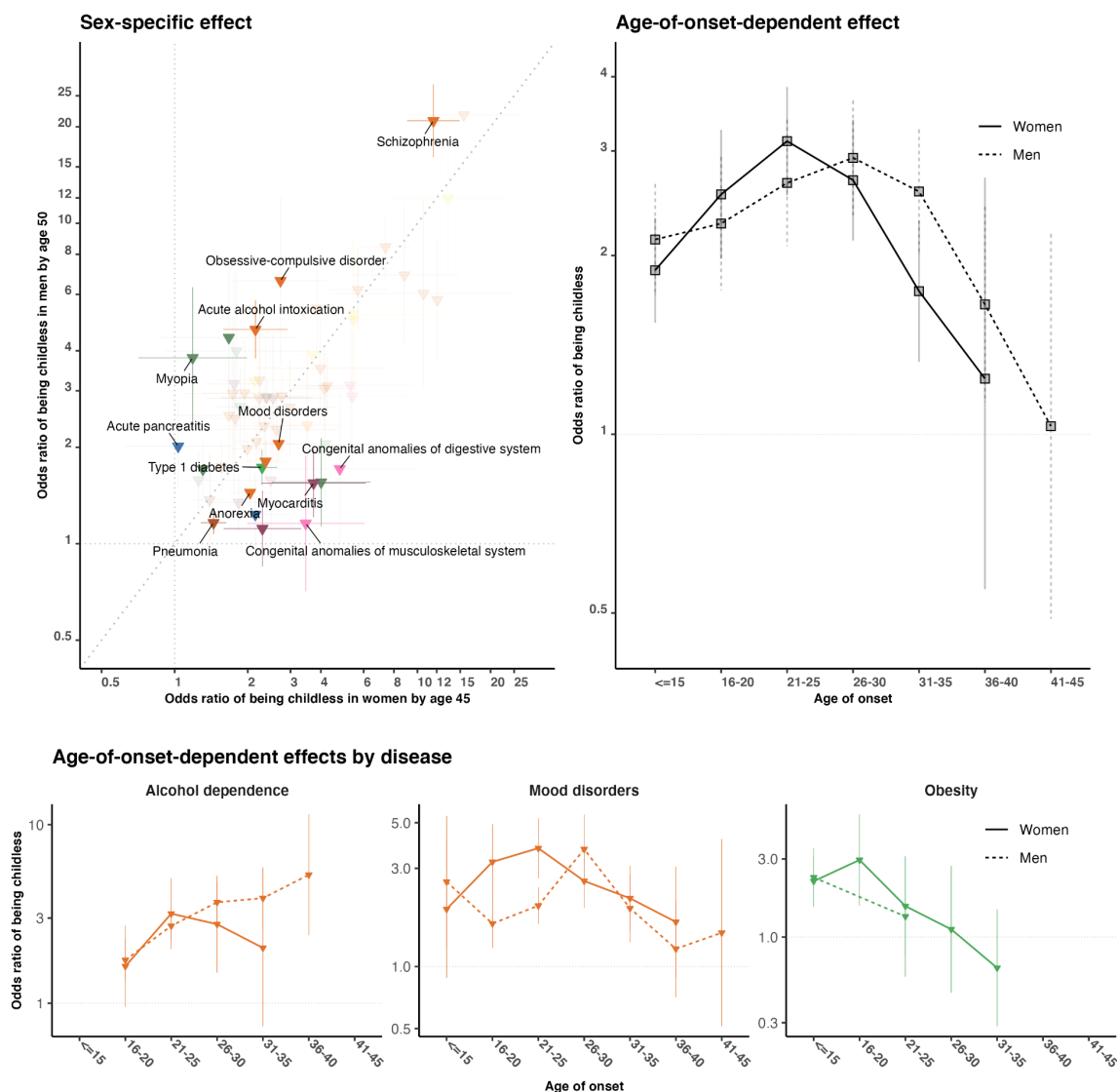
243

244 **Sex-specific effects**

245 The disease category encompassing congenital anomalies showed markedly different effects
246 between sexes (OR=3.5 [95% CI: 2.6-4.9] in women and men [OR=1.8 [1.3-2.5], P for sex
247 difference= 3.7×10^{-3}). Overall, malformations of the digestive system (4.8 [2.2-10.3] in
248 women and 1.7 [1.0-3.0] in men, P=0.03) and musculoskeletal system (3.5 [2.0-6.1] in
249 women and 1.2 [0.7-1.9] in men, P= 3.7×10^{-3}) were more strongly associated with
250 childlessness in women than men.

251 Significant sex-dependent effects were also observed for several mental-behavioral and
252 endocrine-nutritional-metabolic disorders (**Fig. 3A**). For example, diagnoses of schizophrenia
253 (OR=11.6 [9.1-14.9] in women and 20.8 [16.1-27.0] in men, P for sex difference= 1.5×10^{-3})
254 and acute alcohol intoxication (2.2 [1.6-2.9] in women and 4.7 [3.8-5.7] in men, P= 4.0×10^{-5})
255 had stronger associations with childlessness in men compared to women. Diagnosis of type 1
256 diabetes showed stronger association in women than in men (2.3 [2.0-2.6] in women and 1.7
257 [1.5-2.0] in men, P= 3.9×10^{-3}). The stronger association in women might be due to the fact
258 that, in the observational period, women with type 1 diabetes were recommended against
259 pregnancies if under poor glycemic control⁴¹.

260



261
 262 **Fig. 3: Sex-specific (panel A) and age-of-onset-dependent effects (panel B and C) for the**
 263 **association between disease diagnoses and childlessness in 71,524 full-sister and 77,622**
 264 **full-brother pairs who were discordant on childlessness**

265 In panel A, we compare the odds ratio for 60 disease diagnoses that significantly increased
 266 the odds of childlessness either in men or women. Only disease diagnoses that are
 267 significantly different between sexes at a nominal P value are colored. In Panel B we report,
 268 for each age category, the average effect associated with childlessness across 30 disease
 269 diagnoses in women and 31 in men as obtained from an age-of-onset-stratified analysis. In
 270 Panel C, we report age-of-onset-stratified odds ratios associated with childlessness for three
 271 major diseases/disorders for which we observe a significant trend. Estimates for each age

272 category are computed only if the number of individuals with this disease within the age
273 group is more than five.

274

275 **Age-of-onset of disease effects**

276 We hypothesized that the age when the disease was first diagnosed, a proxy for the age of
277 onset, would influence the chances of being childless by either capturing disease severity or
278 directly impacting factors underlying individuals' reproductive trajectory. We first evaluated
279 if there was a general trend across disease diagnoses (30 in women and 31 in men) that were
280 associated with childlessness and for which we had enough individuals to estimate age-of-
281 onset-stratified effects (**Fig. 3B** and **Table S9-S10**). We observed a non-linear effect, with the
282 strongest association with childlessness occurring when the disease was first diagnosed
283 between 21-25 years old in women (OR=3.1 [2.5-3.8]) and later, between 26-30 years old, in
284 men (3.1 [2.4-3.9]). Smaller effects were observed at younger ages (e.g., in women, OR=1.9
285 [1.6-2.3] for onset before 16 years old, $P=7.1 \times 10^{-4}$) and, especially, older ages of onset (e.g.,
286 in women, 1.2 [0.5-2.8] for onset between 36-40 years old, $P=0.04$). Despite this broader
287 trend, there was substantial heterogeneity between disease diagnoses (**Fig. 3C**). For example,
288 among women diagnosed with obesity, the group that received their first diagnoses between
289 16-20 years old had higher levels of childlessness than those diagnosed at later ages (OR=3.0
290 [1.6-5.6] for diagnosed between 16-20 years old and 1.1 [0.5-2.7] between 26-30 years old, P
291 differences=0.08).

292

293 **Stratification by parity for individuals with children**

294 In the main analyses we compared childless individuals to their siblings with children,
295 regardless of parity. We reasoned that childless siblings might be more phenotypically similar
296 to their siblings with fewer children (lower parity) compared to siblings who had multiple
297 children (higher parity). When comparing childless individuals to their siblings with just one
298 child, 14 disease diagnoses in women and six in men had significantly reduced ORs (**Figure**
299 **S4A-B**) compared to the main analysis. For example, in women, the OR of schizophrenia on
300 childlessness dropped from 11.6 [9.1-14.9] to 5.1 [3.7-7.0] (P difference= 6.9×10^{-5}) when we
301 compared childless individuals with their siblings with just one child. For individuals with
302 higher parities, such as having exactly two children (**Figure SC-D**) or those with at least
303 three or more children (**Figure S4E-F**), limited differences in ORs were observed compared

304 to the main analyses. Jointly, these results indicated that childless individuals were more
305 similar to their siblings with one child with regard to risk for childlessness-associated early-
306 life diseases compared to siblings with higher parities.

307

308 **Number of unborn children and completed fertility rate reduction related to disease** 309 **diagnoses**

310 Having identified a set of disease diagnoses that conferred a larger relative odds of
311 childlessness, we estimated the number of ‘missing children’ not born in the observational
312 period due to the disease diagnoses by combining relative risk, disease prevalence, and parity.
313 We estimated that 2,728 [2,586-2,871] children per 100,000 men and 1,489 [1,376-1,605] per
314 100,000 women were missing or not born due to their parents having at least one mental-
315 behavioral disorder (**Table S13-S14**). Accordingly, this disease category was associated with
316 68% of total unborn children related to disease diagnoses among males and 59% among
317 female participants. Disease-specific analyses revealed that schizophrenia was linked to the
318 largest number of children that were not born between both sexes (893 [848-930] children per
319 100,000 men, 612 [549-669] per 100,000 women) followed by anxiety disorders among men
320 (569 [475-665]) and mood disorders among women (389 [313-470]). We note that the
321 estimates of the number of children not born or ‘missing’ due to disease diagnoses could be
322 slightly biased because of the use of only individuals with same-sex full siblings in our main
323 analyses.

324 The completed total fertility rate (TFR), partitioned as the sum of disease and non-disease
325 age-specific fertility rates for each sex, was markedly lower among individuals who carry any
326 of the disease diagnoses significantly associated with childlessness (TFR=1.5 for women and
327 1.1 for men) compared to the unaffected individuals (2.0 for women and 1.8 for men),
328 resulting in an overall TFR reduction of 38% in women and 21% in men (**Table S15-S16**).
329 Overall, affected women and men accounted for 5.4% and 4.6% of overall observed
330 population-level TFR, respectively.

331

332 **Mediation effect by singlehood**

333 There were 83.0% women and 77.0% men having registered partners before age 45 and 50,
334 respectively. Restricting to childless individuals, the proportion dropped to 36.3% in women
335 and 29.4% in men. We therefore examined to what degree the associations between disease

336 diagnoses and childlessness were mediated by singlehood. First, we estimated the effect of
337 disease diagnoses on the chance of being without a partner by age 45 in women and 50 in
338 men (**Figure S5-S6**). We then compared log ORs on singlehood with log ORs on
339 childlessness and observed a high correlation between these two estimates in both women
340 ($R^2=0.71$, $P=1.0\times 10^{-15}$) and men ($R^2=0.85$, $P=3.5\times 10^{-23}$) (**Figure S7**). A causal mediation
341 analysis performed for each disease also indicated the mediation role of partnership
342 formation, with 29.3% (median) of the disease effects on childlessness in women and 37.9%
343 in men mediated by singlehood (**Table S17**). Different patterns were observed across
344 diseases. For example, singlehood was a significant mediator for women diagnosed with
345 schizophrenia (OR=2.1 [2.0-2.2] for indirect and 6.8 [5.0-9.2] for direct effect) but not for
346 women with hypertension (1.2 [1.1-1.4] for indirect and 2.4 [1.6-3.5] for direct effect).

347 Next, we investigated if some of the associations between disease diagnoses and
348 childlessness remained significant among partnered individuals. We considered 133 disease
349 diagnoses in women and 123 in men, which had more than 30 affected individuals with
350 registered partners in the sibling-based analysis. Some diseases that were strongly associated
351 with singlehood (e.g., mild intellectual disability) could not be included in the analyses
352 because they were too rare among partnered individuals. Nonetheless, we observed six
353 diseases in women and eleven in men that remained associated with childlessness among
354 partnered individuals (**Figure S8**). Compared to the estimates obtained from both partnered
355 and unpartnered individuals, the effects on childlessness were largely reduced for most
356 disease diagnoses (**Figure S9**), such as epilepsy (e.g., from OR=3.7 [3.2-4.3] for all women
357 to 1.8 [1.4-2.4] for partnered women) and acute alcohol intoxication in men (from 4.7 [3.8-
358 5.7] for all men to 2.4 [1.5-3.8] for partnered men). Several endocrine-nutritional-metabolic
359 diseases retained a strong association with childlessness among partnered individuals, such as
360 obesity in men (OR=2.7 [2.0-3.6] for all men and 3.3 [1.9-5.7] for partnered men) and type 1
361 diabetes in women (2.3 [2.0-2.6] for all women and 2.5 [2.0-3.2] for partnered women).

362

363 **Population-based and sensitivity analyses**

364 We performed several sensitivity analyses to determine the robustness of our estimation.
365 First, our main results were based on within-sibling analysis, which can account for
366 unmeasured familial factors but also made several assumptions, including siblings being
367 generalizable to the population. Thus, we also obtained population-based estimates from a

368 matched case-control design controlling for several potential confounders (**Figure S10**).

369 Overall, the population-based design resulted in larger sample sizes, similar ORs, and smaller

370 CIs compared to the sibling-based design (**Figure S11**). However, stronger associations were

371 observed from the population-based design in men for psychoactive substance abuse (e.g., for

372 alcohol dependence, OR=2.9 [2.5-3.2] from sibling-based design and 3.8 [3.5-4.0] from

373 population-based design, P differences= 1.4×10^{-4}) and mood disorders (2.1 [1.8-2.3] from

374 sibling-based design and 2.7 [2.5-2.9] from population-based design, P= 2.0×10^{-4}).

375 Second, in the main analysis, we included individuals who died before the end of follow-up

376 (affecting 7.4% full-sisters and 15.0% full-brothers) thus including reproductive-age

377 mortality as one of the possible mechanisms explaining childlessness. To understand the

378 overall effect of reproductive-age mortality, we also conducted an analysis only considering

379 individuals alive by the end of follow-up (**Figure S12**). Overall, the results were consistent

380 (**Figure S13**), but we observed two disease diagnoses in men for which the main effects on

381 childlessness were partially explained by reproductive age mortality: acute alcohol

382 intoxication (OR=4.7 [3.8-5.8] for all men and 3.9 [2.2-3.8] for men alive by age 50, P

383 differences=0.006) and subarachnoid hemorrhage (2.9 [1.8-4.5] for all men and 0.9 [0.4-1.8]

384 for men alive by age 50, P=0.005). Third, in the main analysis, we opted for conditional

385 logistic regression because the length of follow-up would be identical to the sibling pairs if

386 ignoring reproductive-age mortality (**Fig. 1 and 2**). When using a Cox proportional hazards

387 model that captured both time-varying and death (**Figure S14**), we observed similar results

388 with reductions in some disease diagnoses (**Figure S15**).

389 Fourth, research has found that individuals who remain childless in Finland, particularly men,

390 have lower levels of education, suggesting it may be important to adjust for educational

391 level^{1,42}. In the sibling-based analysis, we adjusted for differences in individuals' education

392 level between siblings but did not find substantial differences in our results compared to the

393 unadjusted main analysis (**Figure S16**). In the population-based analysis, we adjusted for the

394 individuals' highest education level in the population-based analysis and observed significant

395 changes in ORs for many diseases, in both women and men (**Figure S17**). For example, in

396 men, after adjusting for the highest education level, many disease diagnoses had significantly

397 reduced ORs (16 out of 45 (35.5%) disease diagnoses with increased risk of childlessness),

398 while obesity (OR increased from 3.2 [2.8-3.7] to 4.4 [3.7-5.2], P differences= 3.5×10^{-3}) and

399 acute pancreatitis (OR increased from 1.9 [1.6-2.3] to 2.5 [2.1-3.0], P differences=0.04) were

400 the only disease diagnoses exhibiting stronger associations.

401

402 **Discussion**

403 The rich longitudinal Finnish and Swedish nationwide population registers provided a unique
404 resource to comprehensively assess the role and relative importance of multiple diseases on
405 childlessness. In addition to the results summarized here, all findings can be explored on the
406 interactive online dashboard available: <https://dsgelrs.shinyapps.io/DiseaseSpecificLRS/>.

407 Our study uses a hypothesis-free approach to estimate the associations between early-life
408 diseases and childlessness across the entire reproductive lifespan. Importantly, we identified
409 several novel disease-childlessness associations such as autoimmune (e.g., juvenile idiopathic
410 arthritis, multiple sclerosis, systemic lupus erythematosus) and inflammatory diseases (e.g.,
411 myocarditis). For certain diseases, treatments such as methotrexate (immunosuppressant,
412 widely used for rheumatoid arthritis and multiple sclerosis, and occasionally used for
413 systemic lupus erythematosus) were reported to have side effects on fertility in women⁴³.

414 Amongst all disease categories, mental-behavioral disorders had the strongest associations
415 with childlessness and were associated with 68% of the total ‘missing’ or unborn children
416 among males and 59% among females attributable to these diseases. Previous literature has
417 given much attention to the role that diseases play in childlessness among women, while men
418 have been understudied⁴⁴. We observed substantial sex differences for disease-childlessness
419 associations. For example, mental-behavioral disorders such as schizophrenia and acute
420 alcohol intoxication had stronger associations with childlessness in men than women, while
421 diabetes-related diseases and congenital anomalies had stronger associations amongst
422 women. These sex-specific effects may potentially be explained by differences in disease
423 severity, bias in diagnostic practices, partner choices, and direct biological effects on fertility.
424 Sex differences were also observed in the impact that age-of-onset of disease has on
425 childlessness. Overall, diseases diagnosed between 21-25 years old in women and, later,
426 between 26-30 years old in men, tend to have the strongest association with childlessness.
427 This is also consistent with the sex difference in age at union formation, which occurs later in
428 men⁴⁵.

429 Our analyses highlight the important effects that many diseases have on partnership
430 formation. Childless individuals are twice as likely to be single, in line with previous research
431 showing the importance of selection into partnership on fertility²³. Singlehood represents a
432 major mediator for the odds of being childless, especially in men, and we estimated that

433 29.3% (median) of the disease effect on childlessness in women and 37.9% in men was
434 mediated by partnership formation. The effects of disease diagnoses on partnership formation
435 are mediated by complex socio-cultural factors, social norms, and sex-specific behavioral
436 preferences. For example, mental-behavioral disorders such as schizophrenia and acute
437 alcohol intoxication were strongly associated with singlehood in men, but the effects were
438 substantially smaller in women likely reflecting how different social and individual
439 preferences for behavioral phenotypes correlated to mental-behavioral disorders impact
440 partner choice in the two sexes. Nonetheless, we also identify several diseases that impact
441 childlessness among partnered individuals. Some of these diseases are more likely to exert a
442 direct biological effect on fertility or pregnancy complications as in the case of diabetes and
443 obesity, whereas others such as some mental-health disorders, might impact family stability
444 or delay the age at family formation.

445 Our study has several strengths. First, for the majority of the study participants, we have
446 virtually complete coverage of health and reproductive information until the end of their
447 reproductive period. This allows us to estimate public-health-relevant metrics such as the
448 total number of unborn or ‘missing’ children related to diseases, which cannot be estimated
449 with incomplete follow-up.

450 Second, we considered more than 400 diseases across both men and women, allowing us to
451 compare relative effects on childlessness both between diseases and between sexes. The use
452 of nationwide data from two countries provided a large sample of 2.5 million, and most
453 importantly, allowed us to assess how robust our findings were in different healthcare
454 systems and diagnostic practices. Finland has had a marked increase in childlessness since the
455 1970s of up to 22% for women and 32% for men^{9,10}, with our analyses revealing potential
456 underlying mechanisms such as the wider detrimental effects of alcohol dependence in men
457 and endocrine-nutritional-metabolic disorders.

458 Third, by leveraging the information about family formation and singlehood, we could
459 explore to what extent this information, which has been described as an important mediator
460 of childlessness⁴⁶, mediated the association between disease and childlessness. Fourth, we
461 used a matched-sibling design to limit confounding from a shared familial environment. In
462 our study, individuals with siblings had only a slightly lower proportion of childlessness
463 compared to the general population. Sibling designs have been extensively used in analyses
464 of Nordic registers and have several advantages compared to population-based estimates^{47,48}.

465 Our study also reveals the legacy of a troubled and unjust past of reproductive rights, often
466 stemming from eugenic thinking and discrimination related disability and gender^{38,49,50}. We
467 found that intellectual disability was the condition with the strongest association in men, but
468 also high levels of childlessness associated with cerebral palsy and behavioural and
469 personality disorders. Until 1970 in Finland and up to 1976 in Sweden, individuals
470 categorized as having severe mental disorders or physical disabilities – particularly women –
471 were subjected to involuntary sterilization³⁸. We also acknowledge that women with existing
472 diseases, such as women with heart disease, can experience serious complications from
473 pregnancy, thereby noting that strategies for high-risk individuals need further
474 development⁵¹.

475 Our study also has several limitations. First, disease diagnoses are largely obtained from
476 registers covering secondary and tertiary healthcare in hospitals that capture more severe
477 disease cases (e.g., mental health and behavioral conditions), and thus, lack of the onset and
478 occurrence of major diseases included in primary healthcare data (e.g., low-grade metabolic
479 conditions). Moreover, disease diagnoses have changed over time; we have defined disease
480 outcomes by harmonizing three versions of International Classification of Diseases (ICD)
481 codes that might capture diseases with different accuracy. Our findings are based on
482 individuals born between 1956 and 1973 and results may thus not be entirely generalizable to
483 more recent cohorts, because reproductive and partnering practices have changed and because
484 better treatments might alleviate the effect of some diseases on childlessness.

485 Second, as with previous studies to date, we were unable to partition the impacts that diseases
486 have into voluntary and involuntary childlessness due to a lack of data on reproductive
487 preferences and intentions and difficulties in differentiating the two^{22,52,53}. Given that
488 estimates of the voluntary childfree group are around a quarter of total childless, we note that
489 public health interventions should take this group of voluntary childfree individuals into
490 account. Among factors that impact involuntary childlessness, the effect of long-term
491 institutionalization and disease-related treatments are two aspects that future registry-based
492 studies might be able to explore. For example, medications for epilepsy are known to be
493 associated with pregnancy complications⁵⁴.

494 Third, assortative mating may lead to an overestimation of the disease impact of childlessness
495 among partnered couples.

496 Fourth, despite our attempt to use a study design that minimizes confounding and reverse
497 causality, these biases might challenge the interpretation of the results. For example, although
498 full siblings share roughly half of their genetic materials and similar family of origin
499 characteristics and only siblings with the closest birth order were considered, siblings can still
500 experience different childhood conditions and even be influenced by each other's
501 conditions⁵⁵. Also, the use of only individuals with same-sex full siblings may introduce
502 selection bias, although for most disease diagnoses their effects obtained from sibling-based
503 analyses were not significantly different from those obtained from population-based analyses.
504 Finally, there is the question of the generalisability of our results to other nations. The Nordic
505 countries have been the forerunners of demographic change in the realm of partnerships and
506 fertility^{56,57}, making these results relevant for other industrialised nations. There are also
507 important socioeconomic fertility gradients in Sweden and Finland that mirror changes in
508 many industrialised nations. In the Nordic countries, there has been a positive association
509 between men's higher education and fertility^{58,59}. For Nordic women, there was initially the
510 reverse gradient (i.e., higher levels of childlessness amongst those with higher education), but
511 this has shifted over time with women increasingly similar to men⁵⁸. This 'new Nordic'
512 fertility regime links higher socioeconomic status to higher fertility⁶⁰ but also multi-partner
513 fertility⁶¹, a trend that has emerged in other nations as well.

514 In conclusion, we comprehensively described the effects different diseases, particularly those
515 with onset prior to the peak reproductive age have on the chance of being childless over a
516 lifetime. This evidence can be used as a basis for future studies focusing on prioritizing health
517 interventions to counter involuntary childlessness.

518

519 **References**

- 520 1. Kreyenfeld, M. and Konietzka, D., 2017. Analyzing childlessness (pp. 3-15). Springer
521 International Publishing.
- 522 2. Tanturri, M.L. and Mencarini, L., 2008. Childless or childfree? Paths to voluntary
523 childlessness in Italy. *Population and development review*, 34(1), pp.51-77.
- 524 3. Miettinen, A. and Szalma, I., 2014. Childlessness intentions and ideals in Europe. *Finnish*
525 *Yearbook of Population Research*, 49, pp.31-55.

- 526 4. Dykstra, P.A. and Hagestad, G.O., 2007. Roads less taken: Developing a nuanced view of
527 older adults without children. *Journal of family issues*, 28(10), pp.1275-1310.
- 528 5. Wang, Y., Fu, Y., Ghazi, P., Gao, Q., Tian, T., Kong, F., Zhan, S., Liu, C., Bloom, D.E.
529 and Qiao, J., 2022. Prevalence of intimate partner violence against infertile women in low-
530 income and middle-income countries: a systematic review and meta-analysis. *The Lancet*
531 *Global Health*, 10(6), pp.e820-e830.
- 532 6. Last, J.V., 2013. What to expect when no one's expecting: America's coming demographic
533 disaster. Encounter Books.
- 534 7. Sobotka T. Childlessness in Europe: Reconstructing long-term trends among women born
535 in 1900–1972. In: Kreyenfeld M, Konietzka D, eds. *Childlessness in Europe: Contexts,*
536 *causes, and consequences*. Cham: Springer, 2017: 17-53.
- 537 8. Sobotka, T., 2021. World's highest childlessness levels in East Asia. *Population Societies*,
538 595(11), pp.1-4.
- 539 9. Rotkirch A, Miettinen A. Childlessness in Finland. In: Kreyenfeld M, Konietzka D, eds.
540 *Childlessness in Europe: Contexts, causes, and consequences*. Cham: Springer, 2017: 139-
541 158.
- 542 10. Saarela J, Skirbekk V. Childlessness and union histories: evidence from Finnish
543 population register data. *J Biosoc Sci* 2020; **52**: 78-96.
- 544 11. Balbo N, Billari FC, Mills MC. Fertility in advanced societies: A review of research. *Eur*
545 *J Popul* 2013; **29**: 1-38.
- 546 12. Mills M, Rindfuss RR, McDonald P, Te Velde E. Why do people postpone parenthood?
547 Reasons and social policy incentives. *Hum Reprod Update* 2011; **17**: 848-860.
- 548 13. Esping-Andersen, G., 2009. Incomplete revolution: Adapting welfare states to women's
549 new roles. Polity.
- 550 14. Thévenon, O., 2009. Increased women's labour force participation in Europe: Progress in
551 the work-life balance or polarization of behaviours?. *Population*, 64(2), pp.235-272.
- 552 15. Begall, K. and Mills, M., 2011. The impact of subjective work control, job strain and
553 work–family conflict on fertility intentions: A European comparison. *European journal of*
554 *population= Revue europeenne de demographie*, 27(4), p.433.

- 555 16. Mills, M. and Blossfeld, H.P., 2006. Globalization, Uncertainty and the Early Life
556 Course: A Theoretical Framework1. In Globalization, uncertainty and youth in society (pp.
557 1-23). Routledge.
- 558 17. Hofmann, B. and Hohmeyer, K., 2013. Perceived economic uncertainty and fertility:
559 Evidence from a labor market reform. *Journal of Marriage and Family*, 75(2), pp.503-521.
- 560 18. Te Velde, E., Habbema, D., Leridon, H. and Eijkemans, M., 2012. The effect of
561 postponement of first motherhood on permanent involuntary childlessness and total
562 fertility rate in six European countries since the 1970s. *Human reproduction*, 27(4),
563 pp.1179-1183.
- 564 19. Merz, E.M. and Liefbroer, A.C., 2012. The attitude toward voluntary childlessness in
565 Europe: Cultural and institutional explanations. *Journal of Marriage and Family*, 74(3),
566 pp.587-600.
- 567 20. Berrington, A., 2004. Perpetual postponers? Women's, men's and couple's fertility
568 intentions and subsequent fertility behaviour. *Population trends*, 117, pp.9-19.
- 569 21. Gray, E., Evans, A. and Reimondos, A., 2013. Childbearing desires of childless men and
570 women: When are goals adjusted?. *Advances in life course research*, 18(2), pp.141-149.
- 571 22. Stephansson O, Dickman PW, Johansson AL, Cnattingius S. The influence of
572 socioeconomic status on stillbirth risk in Sweden. *Int J Epidemiol* 2001; **30**: 1296-1301.
- 573 23. Briley DA, Tropf FC, Mills MC. What explains the heritability of completed fertility?
574 Evidence from two large twin studies. *Behav Genet* 2017; **47**: 36-51.
- 575 24. Alwan S, Yee IM, Dybalski M, et al. Reproductive decision making after the diagnosis of
576 multiple sclerosis (MS). *Mult Scler J* 2013; **19**: 351-358.
- 577 25. Currie J, Schwandt H. Short-and long-term effects of unemployment on fertility. *PNAS*
578 2014; **111**: 14734-14739.
- 579 26. Coomarasamy A, Dhillon-Smith RK, Papadopoulou A, et al. Recurrent miscarriage:
580 evidence to accelerate action. *Lancet* 2021; **397**: 1675-1682.
- 581 27. Hull MGR. Epidemiology of infertility and polycystic ovarian disease: endocrinological
582 and demographic studies. *Gynecol Endocrinol* 1987; **1**: 235-245.
- 583 28. Bulletti C, Coccia ME, Battistoni S, Borini A. Endometriosis and infertility. *J Assist*
584 *Reprod Genet* 2010; **27**: 441-447.

- 585 29. Purewal, S., Chapman, S., Czuber-Dochan, W., Selinger, C., Steed, H. and Brookes, M.J.,
586 2018. Systematic review: the consequences of psychosocial effects of inflammatory bowel
587 disease on patients' reproductive health. *Alimentary Pharmacology & Therapeutics*, 48(11-
588 12), pp.1202-1212.
- 589 30. Lee, H.H., Bae, J.M., Lee, B.I., Lee, K.M., Wie, J.H., Kim, J.S., Cho, Y.S., Jung, S.A.,
590 Kim, S.W., Choi, H. and Choi, M.G., 2020. Pregnancy outcomes in women with
591 inflammatory bowel disease: a 10-year nationwide population-based cohort study.
592 *Alimentary pharmacology & therapeutics*, 51(9), pp.861-869.
- 593 31. Ferraro, D., Simone, A.M., Adani, G., Vitetta, F., Mauri, C., Strumia, S., Senesi, C.,
594 Curti, E., Baldi, E., Santangelo, M. and Montepietra, S., 2017. Definitive childlessness in
595 women with multiple sclerosis: a multicenter study. *Neurological Sciences*, 38, pp.1453-
596 1459.
- 597 32. Power RA, Kyaga S, Uher R, et al. Fecundity of patients with schizophrenia, autism,
598 bipolar disorder, depression, anorexia nervosa, or substance abuse vs their unaffected
599 siblings. *JAMA Psychiatry* 2013; **70**: 22-30.
- 600 33. Lawn, R.B., Sallis, H.M., Taylor, A.E., Wootton, R.E., Smith, G.D., Davies, N.M.,
601 Hemani, G., Fraser, A., Penton-Voak, I.S. and Munafo, M.R., 2019. Schizophrenia risk
602 and reproductive success: a Mendelian randomization study. *Royal Society Open Science*,
603 6(3), p.181049.
- 604 34. Mills MC, Tropf FC. The biodemography of fertility: a review and future research
605 frontiers. *KZfSS Kölner Zeitschrift für Soziologie und Sozialpsychologie* 2015; **67**: 397-
606 424.
- 607 35. Tanturri ML, Mills MC, Rotkirch A, et al. State-of-the-art report: Childlessness in
608 Europe. *Fam Soc* 2015; **32**: 1-53.
- 609 36. Goldscheider, F.K. and Kaufman, G., 1996. Fertility and commitment: Bringing men
610 back in. *Population and Development Review*, 22, pp.87-99.
- 611 37. Pruitt DW, Tsai T. Common medical comorbidities associated with cerebral palsy. *Phys*
612 *Med Rehabil Clin N Am* 2009; **20**: 453-467.
- 613 38. Alias H, Morthy SK, Zakaria SZS, Muda Z, Tamil AM. Behavioral outcome among
614 survivors of childhood brain tumor: a case control study. *BMC Pediatr* 2020; **20**: 1-10.

- 615 39. Broberg G, Roll-Hansen N, eds. Eugenics and the welfare state: Norway, Sweden,
616 Denmark, and Finland. East Lansing: *Michigan State University Press*, 2005.
- 617 40. Wei L, MacDonald T, Shimi S. Association between prior appendectomy and/or
618 tonsillectomy in women and subsequent pregnancy rate: a cohort study. *Fertil Steril* 2016;
619 **106**: 1150-1156.
- 620 41. Jonasson, JM, Brismar K, Sparen P, et al. Fertility in women with type 1 diabetes: a
621 population-based cohort study in Sweden. *Diabetes care* 2007. **30**: 2271-2276.
- 622 42. Miettinen, A., 2010. Voluntary or involuntary childlessness? Socio-demographic factors
623 and childlessness intentions among childless Finnish men and women aged 25-44. *Finnish*
624 *Yearbook of Population Research*, pp.5-24.
- 625 43. Lloyd ME, Carr M, McElhatton P, Hall GM, Hughes RA. The effects of methotrexate on
626 pregnancy, fertility and lactation. *QJM* 1999; **92**: 551-563.
- 627 44. Agarwal, A., Mulgund, A., Hamada, A. and Chyatte, M.R., 2015. A unique view on male
628 infertility around the globe. *Reproductive biology and endocrinology*, 13(1), pp.1-9.
- 629 45. Esteve, A., Cortina, C. and Cabré, A., 2009. Long term trends in marital age homogamy
630 patterns: Spain, 1922-2006. *Population*, 64(1), pp.173-202.
- 631 46. Keizer R, Dykstra PA, Jansen MD. Pathways into childlessness: Evidence of gendered
632 life course dynamics. *J Biosoc Sci* 2008; **40**: 863-878.
- 633 47. Furu K, Kieler H, Haglund B, et al. Selective serotonin reuptake inhibitors and
634 venlafaxine in early pregnancy and risk of birth defects: population based cohort study and
635 sibling design. *BMJ* 2015; **350**: 1798.
- 636 48. Obel C, Zhu JL, Olsen J, et al. The risk of attention deficit hyperactivity disorder in
637 children exposed to maternal smoking during pregnancy a re-examination using a sibling
638 design. *J Child Psychol Psychiatry* 2016; **57**: 532-537.
- 639 49. Spektorowski, A. and Mizrachi, E., 2004. Eugenics and the welfare state in Sweden: The
640 politics of social margins and the idea of a productive society. *Journal of Contemporary*
641 *History*, 39(3), pp.333-352.
- 642 50. Stern, A.M., 2016. Eugenic nation: Faults and frontiers of better breeding in modern
643 America (Vol. 17). Univ of California Press.

- 644 51. Pfaller, B., Sathananthan, G., Grewal, J., Mason, J., D’Souza, R., Spears, D., Kiess, M.,
645 Siu, S.C. and Silversides, C.K., 2020. Preventing complications in pregnant women with
646 cardiac disease. *Journal of the American College of Cardiology*, 75(12), pp.1443-1452.
- 647 52. Verweij, R.M., Stulp, G., Snieder, H. and Mills, M.C., 2021. Explaining the Associations
648 of Education and Occupation with Childlessness: The Role of Desires and Expectations to
649 Remain Childless. *Population Review*, 60(2), pp.166-194.
- 650 53. Rybińska, A. and Morgan, S.P., 2019. Childless expectations and childlessness over the
651 life course. *Social Forces*, 97(4), pp.1571-1602.
- 652 54. Meador K, Reynolds MW, Crean S, Fahrback K, Probst C. Pregnancy outcomes in
653 women with epilepsy: a systematic review and meta-analysis of published pregnancy
654 registries and cohorts. *Epilepsy Res* 2008; **81**: 1-13.
- 655 55. Morosow, K. and Kolk, M., 2020. How does birth order and number of siblings affect
656 fertility? A within-family comparison using Swedish register data. *European Journal of*
657 *Population*, 36(2), pp.197-233.
- 658 56. Surkyn, J. and Lesthaeghe, R., 2004. Value orientations and the second demographic
659 transition (SDT) in Northern, Western and Southern Europe: An update. *Demographic*
660 *research*, 3, pp.45-86.
- 661 57. Sobotka, T., and L. Toulemon. 2008. Overview Chapter 4: Changing family and
662 partnership behaviour: Common trends and persistent diversity across Europe,
663 *Demographic R*
- 664 58. Jalovaara, M., G. Neyer, G. Andersson, J. Dahlberg, L. Dommermuth, P. Fallesen, and T.
665 Lappegård. 2018. Education, gender, and cohort fertility in the Nordic countries, *European*
666 *Journal of Population* 35(3): 563–586. doi:<https://doi.org/10.1007/s10680-018-9492-2>.
- 667 59. Lappegård, T., and M. Rønsen. 2013. Socioeconomic differences in multipartner fertility
668 among Norwegian men, *Demography* 50(3): 1135–1153.
669 doi:<https://doi.org/10.1007/s13524-012-0165-1>.
- 670 60. Kolk, M. 2019. The relationship between lifecourse accumulated income and
671 childbearing of Swedish men and women born 1940–1970, *Stockholm Research Reports*
672 *in Demography* 19. doi:<https://doi.org/10.17045/sthlmuni.8283368.v1>.

673 61. Jalovaara, M., L. Andersson and A. Miettinen. (2022). Parity disparity: Educational
674 differences in Nordic fertility across parities and number of reproductive partners,
675 *Population Studies*, 76(1): 119-136. <https://doi.org/10.1080/00324728.2021.1887506>.

676

677 **Online Methods**

678 **Study population**

679 We considered all individuals born in Finland and Sweden between 1956 and 1968 (men) or
680 between 1956 and 1973 (women) as index persons, for whom the vast majority completed
681 their reproductive lifespan (45 years old for women, 50 for men) by 31 December 2018 (**Fig.**
682 **1A**). Individuals who emigrated during the study period were excluded to avoid incomplete
683 follow-up for disease diagnoses and reproductive information. We further excluded
684 individuals who died before the age of 16 to eliminate the impact of diseases on pre-
685 reproductive survival. In total, we considered 1,425,640 index women (572,518 Finns and
686 853,122 Swedes) and 1,119,380 men (463,410 Finns and 655,970 Swedes). For these index
687 individuals, we also obtained information for parents, spouses, siblings, and children for a
688 total of 9,305,692 individuals (3,640,464 Finns and 5,665,228 Swedes).

689

690 **Childlessness (main outcome)**

691 The primary reproductive outcome of this study is childlessness, defined as having no live-
692 born children by the age 45 for women and 50 for men. For every index person, we extracted
693 demographic information of all biological children born before 31 December 2018 in Finland
694 from the Population Information System and in Sweden from the Multi-Generation Register.
695 Medical birth information including stillbirth and the use of assisted reproductive techniques
696 was obtained from the Medical Birth Register available since 1987 in Finland and 1973 in
697 Sweden. We excluded children conceived by assisted reproductive techniques (0.3% Finland,
698 0.8% Sweden) to control for potential confounding from social inequalities in medical help-
699 seeking for infertility, especially during the observational period.

700

701 **Marriage and partnership (secondary outcome)**

702 For index individuals in Finland, we obtained their longitudinal marriage and partnership
703 information between 11 April 1971 and 31 December 2018 from the Population Information
704 System. In Sweden, we collected information of married couples and cohabiting unions with
705 biological children between 1 January 1977 and 31 December 2017 from Statistics Sweden.
706 We defined individuals as partnerless if they did not have any abovementioned marriage or
707 partnership registered by age 45 (women) or 50 (men).

708

709 **Disease diagnosis (exposure)**

710 A wide variety of disease endpoints were defined by clinical expert groups⁶², through
711 International Classification of Diseases (ICD) codes of version 8 (1969-1986), 9 (1987-1995
712 in Finland, 1987-1996 in Sweden), and 10 (1996-2018 in Finland, 1997-2018 in Sweden).
713 We collected main diagnoses (ICD codes) and admission dates for secondary healthcare
714 inpatient hospital treatments (since 1969, but in Sweden, nation-wide coverage began in 1973
715 for psychiatric diagnoses and 1987 for others⁶³) and specialist outpatient visits in Finland
716 from the Care Register for Health Care (since 1998) and in Sweden from the National Patient
717 Register (since 2001). In Finland, we obtained cancer diagnoses (International Classification
718 of Diseases for Oncology, 3rd Edition) and corresponding dates of diagnoses from the
719 Finnish Cancer Registry, available since 1953. Additionally, for all individuals who died
720 before the end of follow-up, we collected the date of death and basic, immediate, and
721 contributing causes of death from Statistics Finland and Statistics Sweden to capture
722 additional disease diagnoses that were missing from hospital inpatient and outpatient
723 registers. The age of onset was defined as the first record of a disease diagnosis.

724 In total, we considered 16 disease categories, with infectious-parasitic diseases and
725 congenital anomalies defined only in Finland and all remaining categories defined in both
726 countries. To remove highly correlated disease diagnoses, we estimated tetrachoric
727 correlations between every two disease endpoints using individual-level data and only kept
728 the one with the highest prevalence if a group of disease diagnoses had tetrachoric
729 correlations higher than 0.7. After removing highly correlated disease diagnoses, we
730 considered 414 diseases for which we had more than 30 affected individuals in the sibling-
731 based analysis for each sex, in Finland or Sweden.

732

733 **Sibling-based analysis (main analysis)**

734 There were 274,205 pairs of full-sisters (118,978 in Finland and 155,227 in Sweden) and
735 212,849 full-brothers (97,849 in Finland and 115,000 in Sweden) among index persons (**Fig.**
736 **1A**), which allowed us to control for potential confounding from genetic and environmental
737 factors by performing a matched pair case-control study design (**Fig. 1B**). First, we kept only
738 families having at least two same-sex full-siblings discordant for childlessness (at least one
739 sibling with children and one childless). Then, within each family, we randomly selected one
740 childless sibling as a case, and, as control, the sibling with children that was the closest for
741 birth order with the case. Childless siblings were of similar age as siblings with children
742 (absolute mean age difference=0.3 (SD=4.0) and 0.5 (4.4) for full-sisters and full-brothers,
743 respectively). Finally, within each sibling pair, for both the case and the control, we only
744 considered disease diagnoses that had their onset at least one year before the age at first birth
745 for the sibling with children, to eliminate the impact of diseases triggered by pregnancy. With
746 the matched design, we excluded diseases diagnosed after the reproductive lifespan in order
747 to avoid reverse causation. We used a conditional logistic regression model to investigate the
748 association between a disease and childlessness. Full siblings were likely to share
749 environmental factors, especially during the pre-reproductive period. Therefore, we only
750 adjusted for birth year effects. A similar model was used to calculate the association between
751 diseases and singlehood. We applied Bonferroni correction ($P=0.05/328=1.5\times 10^{-4}$ for
752 women, $0.05/325=1.5\times 10^{-4}$ for men, where 328 and 325 are the numbers of unique diseases
753 considered in women and men, respectively) to control for the familywise error rate.

754 Additionally, for disease diagnoses that were significantly associated with childlessness, we
755 assessed whether there were any age-of-onset-dependent effects by considering the age of
756 onset (8 groups ≤ 15 , 16-20, 21-25, 26-30, 31-35, 36-40, 41-45, or unaffected for both sexes
757 and an additional group (46-50) for men) as fixed effects. For individuals with children, we
758 further assessed whether the effects of disease diagnoses were consistent across parities by
759 comparing childless individuals to their siblings with one child, two children, or more than
760 two children.

761

762 **Population-based analysis (secondary analysis)**

763 To estimate the population-level effect of diseases on childlessness we performed a nested
764 incident-matched case-control design which matched each childless case to one control based
765 on sex, birth year, municipality of birth (545 from Finland and 1,091 from Sweden), and the

766 highest parental education level (International Standard Classification of Education 1997)
767 (**Supplementary Materials p 52**). Parental education level was used instead of the index
768 person education level to avoid confounding between an individual's educational attainment
769 and medical conditions³². We used conditional logistic regression analysis with no additional
770 covariates in the model. In total, we used 226,860 matched pairs of women (107,375 in
771 Finland and 119,485 in Sweden) and 274,941 of men (127,689 in Finland and 147,252 in
772 Sweden) for the population-based analysis.

773

774 **Number of unborn children and completed fertility rate reduction related to disease** 775 **diagnoses**

776 To quantify the total fertility deficit related to diseases, for the studied cohort, we calculated
777 the total number of unborn children per 100,000 people and partitioned the total fertility rate
778 (TFR) as the sum of disease and non-disease age-specific fertility rates for each sex
779 (**Supplementary Materials p 46**).

780

781 **Mediation effect by singlehood**

782 To assess the role that partnership formation plays in mediating the observed associations, we
783 performed a causal mediation analysis⁶⁴ to partition the association between disease diagnosis
784 and childlessness into indirect (mediated by singlehood) and direct components
785 (**Supplementary Materials p 46**).

786

787 **Sensitivity analysis**

788 First, to eliminate the impact of diseases on reproductive age mortality, we used the sibling
789 design framework described above but restricted the analysis to 66,255 full-sister pairs
790 (33,556 in Finland and 32,699 in Sweden) alive by age 45 and 66,009 full-brother pairs
791 (32,996 in Finland and 33,013 in Sweden) alive by age 50. Second, we used the sibling
792 design framework described above but instead of conditional logistic regression we
793 performed a stratified Cox proportional hazards regression model considering chronological
794 age as the time scale and disease status as a time (age) varying exposure (unaffected until
795 disease onset and affected afterward). Follow-up started at age 16, the estimated start of the
796 reproductive lifespan, and was censored at death or one year before the age at first birth of the

797 control, whichever occurs first. Third, to quantify to what extent the identified associations
798 between diseases and childlessness were mediated by social characteristics such as
799 educational attainment, we further adjusted for individual's highest education level for both
800 sibling- and population-based analyses.

801

802 **References for Methods**

803 62. Kurki et al. FinnGen: Unique genetic insights from combining isolated population and
804 national health register data. *medRxiv* 2022-03.

805 63. Ludvigsson JF, Andersson E, Ekbom A. External review and validation of the Swedish
806 national inpatient register. *BMC Public Health* 2011; **11**: 1-16.

807 64. Kim YM, Cologne JB, Jang E, et al. Causal mediation analysis in nested case-control
808 studies using conditional logistic regression. *Biom J* 2020; **62**: 1939-1959.

809

810 **Acknowledgments**

811 This work was supported by the European Research Council (835079, 945733), The
812 Leverhulme Trust, Leverhulme Centre for Demographic Science and ESRC/UKRI
813 (ES/W002116/1). The computations for the Swedish data were enabled by resources in
814 project sens2019018 provided by the Swedish National Infrastructure for Computing (SNIC)
815 at UPPMAX, partially funded by the Swedish Research Council through grant agreement no.
816 2018-05973. We thank Therese Andersson (Karolinska Institutet), Amir Sariaslan (University
817 of Helsinki), and Guosheng Su (Aarhus University) for valuable advice on statistical
818 modeling, Gianmarco Mignogna (Massachusetts General Hospital and University of
819 Helsinki) and David Brazel (University of Oxford) for useful discussions during project
820 planning, and Vincent Llorens (University of Helsinki) for suggestions on disease coding and
821 applying Cox proportional hazards regression.

822 **Author contributions**

823 AL, MCM, and AG designed the study and wrote the manuscript. AL conducted the
824 statistical analysis and generated the figures and tables. ETA calculated the number of unborn
825 children related to diseases and total fertility rates and wrote the relevant paragraph. XD
826 helped in performing sensitivity analysis and drafted Figure S1. SJ, PV, and TK assisted in
827 interpreting the results from a clinical standpoint. TK and ASH defined disease endpoints.
828 SK, AG, and AL developed the R shiny application. TF and MG coordinated data application
829 and extraction for Swedish and Finnish nationwide registers. SL contributed to the editing of
830 socio-economic data and statistical modeling. All authors discussed the results, revised the
831 manuscript, and had final responsibility for the decision to submit for publication.

832 **Competing interests**

833 We declare no competing interests.

834 **Data availability**

835 All results (aggregated data) can be explored on the interactive online dashboard available at
836 <https://dsgelrs.shinyapps.io/DiseaseSpecificLRS/>. Due to data protection regulations, we are
837 not allowed to share individual-level data directly. However, all Finnish and Swedish register
838 data used in this study can be applied from national data agencies listed in **Supplementary**
839 **Materials p 3**.

840