

1 **Low-attenuation Coronary Plaque Volume and Cardiovascular Events in Patients with**  
2 **Distinct Metabolic Phenotypes**

3  
4 Kenichiro Otsuka, MD, PhD<sup>1\*</sup>; Hirotoishi Ishikawa, MD, PhD<sup>2</sup>; Kenei Shimada, MD, PhD<sup>2</sup>;  
5 Kana Hojo, MD<sup>2</sup>; Hiroki Yamaura, MD<sup>2</sup>; Yasushi Kono, MD, PhD<sup>2</sup>; Noriaki Kasayuki, MD,  
6 PhD<sup>2</sup>; Daiju Fukuda, MD, PhD<sup>1</sup>

7  
8 **Affiliations:**

9 <sup>1</sup>Department of Cardiovascular Medicine, Osaka Metropolitan University Graduate School of  
10 Medicine, Osaka, Japan

11 <sup>2</sup>Department of Cardiovascular Medicine, Fujiikai Kashibaseiki Hospital, Kashiba, Japan

12  
13 **Short title:** High-risk plaque and patient prognosis

14  
15 **\*Corresponding author:** Kenichiro Otsuka

16 Department of Cardiovascular Medicine

17 Osaka Metropolitan University Graduate School of Medicine

18 1-4-3 Asahi-cho, Abeno-ku, Osaka 545-8585, Japan

19 Tel.: +81-666453801

20 Fax: +81-6646-6808

21 Email: [otsukakenichiro1@gmail.com](mailto:otsukakenichiro1@gmail.com)

22  
23 **Word count:** 6,193 words, including text, figure legends, and reference

24 **Abstract**

25 **Background:** This study aimed to investigate the association between diabetes mellitus (DM),  
26 high-risk coronary plaque burden, and risk of cardiovascular outcomes across metabolic  
27 phenotypes in patients with suspected coronary artery disease (CAD) who underwent coronary  
28 computed tomography angiography (CCTA).

29 **Methods:** We included 530 patients who underwent CCTA. Metabolic syndrome (MetS) was  
30 defined as the presence of a visceral adipose tissue area  $\geq 100 \text{ cm}^2$  in patients with DM (n = 58),  
31 or two or more MetS components excluding DM (n = 114). Remaining patients were categorized  
32 into non-MetS patients with DM (n = 52) and non-MetS patients without DM (n = 306). CCTA-  
33 based high-risk plaque was defined as low-attenuation plaque (LAP) volume  $> 4 \%$ . Primary  
34 endpoint was presence of a major cardiovascular event (MACE), which was defined as a  
35 composite of cardiovascular death, acute coronary syndrome, and coronary revascularization.

36 **Results:** Incidence of MACE was highest in the non-MetS with DM group, followed  
37 hierarchically by the MetS with DM, MetS without DM, and non-MetS without DM groups. In  
38 the multivariable Cox hazard model analysis, DM as a predictor was associated with MACE  
39 independent of LAP volume  $> 4 \%$  (hazard ratio, 2.68; 95% confidence interval, 1.16–6.18; p =  
40 0.02), although MetS did not remain an independent predictor. LAP volume  $> 4 \%$  remained a  
41 predictor of MACE independent of each metabolic phenotype or DM.

42 **Conclusions:** This study demonstrated that DM, rather than MetS, is a predictor of coronary  
43 events independent of high-risk plaque volume in patients who underwent CCTA.

44

45 **Keywords**

46 acute coronary syndrome, adipose tissue, computed tomography angiography, coronary artery  
47 disease, diabetes mellitus

48

## 49 **Clinical Perspective**

### 50 1) What Is New?

51 • This study investigated the association between diabetes mellitus (DM), high-risk coronary  
52 plaque burden, and major adverse cardiovascular events (MACE) across metabolic  
53 phenotypes stratified by the presence or absence of metabolic syndrome (MetS) and DM in  
54 patients with suspected coronary artery disease (CAD) who underwent coronary computed  
55 tomography angiography (CCTA).

56 • Among the four metabolic phenotypes, incidence of MACE was highest in the non-MetS  
57 with DM group, followed hierarchically by the MetS with DM, MetS without DM, and non-  
58 MetS without DM groups. Low-attenuation coronary plaque (LAP) volume > 4% was a  
59 robust predictor of MACE among the metabolic phenotypes. Furthermore, DM, independent  
60 of LAP volume > 4%, was a predictor of MACE, while MetS did not show a significant  
61 predictive value.

### 62 2) What Are the Clinical Implications?

63 • Our results demonstrate that individuals with DM alone have a significantly higher risk of  
64 developing cardiovascular events than those with MetS, indicating that DM is an  
65 independent predictor of cardiovascular events irrespective of the presence of obstructive  
66 CAD or LAP volume greater than 4%.

67

## 68 **Non-standard Abbreviations and Acronyms.**

- 69 ACS- acute coronary syndrome
- 70 ASCVD- Atherosclerotic cardiovascular disease
- 71 CACS- Coronary artery calcium score
- 72 CAD- coronary artery disease
- 73 CCTA- coronary computed tomography angiography
- 74 CP- Calcified plaques
- 75 DM- diabetes mellitus
- 76 LAP- Low-attenuation plaque
- 77 MACE- Major adverse cardiovascular events
- 78 MetS- Metabolic Syndrome
- 79 NCP- noncalcified plaque

80

## 81 **Introduction**

82 The global prevalence of diabetes mellitus (DM) and metabolic syndrome (MetS) has  
83 increased significantly over the past decades, contributing to an increased risk of atherosclerotic  
84 cardiovascular disease (ASCVD) <sup>1</sup>. Clinical studies have demonstrated that an overweight status  
85 (25–29.9 kg/m<sup>2</sup>) or obesity ( $\geq 30$  kg/m<sup>2</sup>), defined by body mass index (BMI) alone, reflects  
86 heterogeneous body fat distribution and distinct metabolic conditions <sup>2</sup>. This raises questions  
87 about the relationship between BMI and ASCVD risk, which leads to the obesity paradox.  
88 Although visceral adiposity, a modifiable risk factor for MetS, helps identify metabolically  
89 unhealthy individuals <sup>1-4</sup>, coronary plaque features associated with ASCVD events in individuals  
90 with distinct metabolic phenotypes remain largely unknown.

91           Coronary computed tomography angiography (CCTA) facilitates the diagnosis of  
92 coronary artery disease (CAD) and offers a prognostic value based on high-risk coronary plaque  
93 features beyond stenosis severity <sup>5</sup>. Furthermore, a recent CCTA study demonstrated that low-  
94 attenuation non-calcified coronary plaque burden is the strongest prognostic marker among other  
95 clinical factors, such as the presence of CAD and coronary artery calcium score (CACs) <sup>6</sup>. This  
96 finding suggests the utility of CCTA in identifying high-risk patients. In a sub-analysis of a large  
97 clinical CCTA trial of patients with chest pain and distinct metabolic phenotypes, Kammerlander  
98 et al. demonstrated that metabolically unhealthy individuals without obesity were at a high risk  
99 for ASCVD events<sup>7</sup>. Although DM plays a key role in the pathophysiology of MetS <sup>8</sup>, there is  
100 limited knowledge on its association with high-risk plaque volume detected on CCTA and  
101 consequent cardiovascular outcomes. In this CCTA study, we aimed to investigate the  
102 association between MetS with and without DM, imaging findings, and the risk of outcomes  
103 across MetS phenotypes.

104

## 105 **Methods**

106 The data that support the findings of this study are available from the corresponding author on  
107 reasonable request.

108

## 109 **Study population and metabolic phenotypes**

110           This study included patients who underwent CCTA between January 2018 and December  
111 2020 and were clinically indicated for stable chest symptoms, along with an abdominal  
112 computed tomography (CT) scan to assess abdominal obesity. The exclusion criteria were as  
113 follows: (1) acute coronary syndrome; (2) previous history of coronary artery bypass graft or

114 open-heart surgery; (3) congestive heart failure; (4) previous history of percutaneous coronary  
115 intervention; (5) insufficient patient information; and (6) loss to follow-up. Figure 1 illustrates  
116 the flowchart of the study population comprising 530 patients. All participants provided written  
117 informed consent for the use of de-identified data, including clinical information, laboratory tests,  
118 and CCTA imaging. The Fujiikai Kashibaseiki Hospital Institutional Review Board approved  
119 pooled data analysis (2021-A).

120 Non-contrast-enhanced abdominal CT imaging was performed before CCTA to measure  
121 the visceral adipose tissue (VAT) areas. VAT areas were measured at the L2–L3 level using a  
122 dedicated software (SYNAPSE VINCENT, Fujifilm Inc., Tokyo, Japan). In the present study,  
123 abdominal obesity was defined as a VAT area  $\geq 100$  cm<sup>2</sup>, corresponding to an abdominal  
124 circumference  $\geq 85$  cm for men and  $\geq 90$  cm for women <sup>9</sup>. MetS was defined based on the  
125 Japanese Committee for the Diagnostic Criteria of Metabolic Syndrome <sup>10</sup>. MetS was defined as  
126 the presence of abdominal obesity with DM (MetS with DM) or two or more of the following  
127 components in the absence of DM: (1) systolic blood pressure (BP)  $\geq 130$  mmHg or diastolic BP  
128  $\geq 85$  mmHg; (2) fasting plasma glucose  $\geq 110$  mg/dL; and (3) triglycerides  $\geq 150$  mg/dL or high-  
129 density lipoprotein cholesterol  $\leq 40$  mg/dL. In addition, medical therapy using antihypertensive,  
130 antidiabetic, and lipid-lowering drugs was considered an MetS component. Patients were further  
131 categorized into four groups according to the presence or absence of metabolic equivalents  
132 (MetS) and DM. The triglyceride-glucose (TyG) index was used to estimate the insulin  
133 resistance in the four groups <sup>11</sup>.

134 Pharmacological treatment and lifestyle modifications were recommended for all patients  
135 according to the guidelines for hypertension, dyslipidemia, and diabetes, if present <sup>12</sup>. In addition,  
136 patients underwent invasive coronary angiography or coronary revascularization based on the

137 results of the CCTA and noninvasive stress tests<sup>13</sup>. According to the Japanese Atherothrombosis  
138 Society guidelines, the treatment targets of low-density lipoprotein cholesterol (LDL-C) for the  
139 primary prevention of ASCVD were <100 mg/dL for high-risk, 120 mg/dL for moderate-risk, or  
140 140 mg/dL for low-risk patients<sup>12</sup>. The treatment target for the fasting triglyceride (TG) level  
141 was < 150 mg/dL. For hypertensive patients, the treatment target for blood pressure is <140/90  
142 mmHg, particularly for patients with diabetes or CKD with albuminuria <130/80 mmHg<sup>14</sup>. The  
143 target glycemic control was HbA1c < 7.0% for preventing diabetic complications and < 8.0% for  
144 those with difficulties in glycemic control for hypoglycemia<sup>15</sup>.

145

#### 146 **CCTA imaging and analysis**

147 CCTA was performed using a 320-row multi-detector CT scanner (Aquilion  
148 ONE/NATURE Edition, Canon Medical Systems, Inc., Japan)<sup>16</sup>. The scan parameters included a  
149 detector collimation of 0.5 × 320 mm, gantry rotation time of 350 ms, tube voltage of 120 kV,  
150 and tube current of 130–600 mA. An electrocardiogram-triggered prospective gating method was  
151 used for CCTA. CACS was evaluated using the Agatston method at a fixed thickness of 3 mm<sup>17</sup>.  
152 Images were reconstructed using forward projected model-based iterative reconstruction solution  
153 for coronary artery analysis, with a cross-sectional thickness of 0.5 mm and a reconstruction  
154 increment of 0.25 mm.

155 The Agatston score categories were as follows: 0, 1–100, 101–400, and >400 Agatston  
156 units, using a software (SYNAPSE VINCENT version 4.6., Fujifilm inc., Tokyo, Japan).  
157 Coronary artery diameter stenosis was reported based on a 16-segment American Heart  
158 Association model by two observers (K.O. and H.I.). Obstructive CAD was defined as the  
159 presence of coronary plaques with diameter stenosis of ≥ 50% in one or more major epicardial

160 vessels, and/or  $\geq 50\%$  in the left main coronary segment. Non-obstructive CAD was defined as  
161 having less than 50% diameter stenosis of epicardial coronary arteries. Patients who did not fall  
162 in either categories were categorized as not having CAD.

163 For coronary plaque analysis, coronary artery centerlines were identified semi-  
164 automatically; the proximal and distal portions of the coronary plaque lesions were manually  
165 defined; and the vessel wall, lumen, and plaque components were auto-segmented and manually  
166 adjusted. Lesions were categorized based on their composition into calcified plaques (CP) ( $> 150$   
167 Hounsfield units [HU]) and non-CP (NCP) ( $< 150$  HU). Furthermore, a low-attenuation plaque  
168 (LAP) was defined as a region with a CT value  $< 30$  HU<sup>16</sup>. The percentage of plaque volume for  
169 each component was calculated as the plaque volume divided by the vessel volume.

170 The epicardial adipose tissue (EAT) volume was measured from contrast-enhanced CT  
171 images using the VINCENT software, cited previously<sup>16,18</sup>. Several equidistant axial planes  
172 were extracted based on the heart size. The upper limit of the slice was set at the bifurcation of  
173 the pulmonary artery trunk, whereas the lower limit was set at the last slice containing any  
174 structure of the heart. In each plane, the software autodetected a smooth, closed pericardial  
175 contour as the region of interest; adipose tissue was identified with CT attenuation values  
176 ranging from -250 to -30 HU within the pericardial sac<sup>16,18</sup>. Finally, EAT volume was calculated  
177 as the sum of the EAT areas in each slice. The mean CT value within the measured EAT volume  
178 was reported.

179

## 180 **Endpoints**

181 The primary endpoint was major adverse cardiovascular events (MACE) defined by a  
182 composite of cardiovascular death, nonfatal myocardial infarction, unstable angina, or symptom-



183 or ischemia-driven coronary revascularization. Cardiovascular death was defined as death due to  
184 cardiovascular causes including myocardial infarction, sudden cardiac arrest, heart failure, and  
185 stroke<sup>19</sup>. Non-fatal myocardial infarction was defined as typical persistent chest pain with  
186 elevated cardiac enzymes<sup>19</sup>. Unstable angina was defined as new-onset angina, exacerbation of  
187 angina with light exertion, or angina at rest without elevated cardiac enzyme levels. Symptom- or  
188 ischemia-driven coronary revascularization was defined as coronary revascularization >3 months  
189 after CCTA imaging at baseline, with >75% diameter stenosis with symptoms, or positive  
190 functional tests, or with a  $\geq 90\%$  diameter stenosis with symptoms.

191

## 192 **Statistical analysis**

193 All statistical analyses were performed using SPSS version 24 software (IBM Corp.,  
194 Armonk, NY, USA). Categorical variables were presented as absolute and relative frequencies,  
195 and continuous variables were presented as mean ( $\pm$ standard deviation). Subject characteristics  
196 were compared using one-way analysis of variance for numerical variables. Categorical variables  
197 were analyzed using the chi-square or Fisher's exact tests. Multivariate Cox proportional hazards  
198 analysis was used to estimate hazard ratios (HRs) with 95% confidence intervals (CIs). To test  
199 the hypothesis that DM or MetS serve as a predictor of MACE independent of high-risk plaque  
200 volume, DM (or MetS) and LAP volume > 4% were entered into the multivariate Cox  
201 proportional hazards models adjusted for the Suita CVD risk score (model 1 and model 2).  
202 Furthermore, to test the hypothesis that each metabolic phenotype remains as a predictor of  
203 MACE independent of high-risk plaque volume, each metabolic phenotype, as compared with  
204 non-DM without MetS and LAP volume > 4%, were entered into the multivariate Cox  
205 proportional hazards models adjusted for the Suita CVD risk score (models 3, 4, and 5).

206 Additionally, multivariable models were constructed. Variables entered into the multivariate  
207 models were selected on the basis of clinical plausibility, multicollinearity, and known  
208 association with CV death and acute coronary syndrome (ACS), with the adjustment for Suita  
209 CVD risk score: Model 1, LAP volume > 4% and TyG index; Model 2, LAP volume > 4% and  
210 CKD; Model 3, LAP volume > 4% and CRP; and Model 4, LAP volume > 4% and obstructive  
211 CAD (any vessels) (supplementary Table 1).

212 Kaplan–Meier curves and log-rank tests were used to depict and assess the differences in  
213 cumulative event rates among the four groups. Analyses were initiated at the time of CCTA  
214 imaging and terminated at the earliest occurrence of the primary endpoint or at the median  
215 follow-up (2.91 years). Analyses were censored at the last follow-up or at a composite event,  
216 whichever occurred earlier. Statistical significance was set at  $p < 0.05$  (two-sided).

217

## 218 **Results**

219 All CCTA images of the 530 patients qualified for analysis. The mean age of the patients  
220 was  $64 \pm 14$  years, and 299 (56%) patients were men. Baseline characteristics stratified by  
221 metabolic phenotype are presented in Table 1. MetS were present in 172 of the 530 patients  
222 (32%), and DM was observed in 110 (21%). Of these, DM was present in 52 patients in the non-  
223 MetS (15%) and 58 in the MetS group (44%). The highest TyG index was observed in the  
224 patients with metabolic equivalents (MetS) and DM, followed by those without DM, non-MetS  
225 with DM, and non-MetS without DM.

226 Table 2 shows the baseline CCTA findings of the four groups. The prevalence of CACS  
227 > 400 was greatest in the MetS with DM (22%) and non-MetS with DM groups (21%, overall  $p$   
228 < 0.001). The frequency of obstructive CAD was the highest in the non-MetS with DM group

229 (58%), sequentially followed by the MetS with DM (46%), MetS without DM (39%), and non-  
230 MetS without DM groups (36%). The MetS with DM group featured greater NCP, LAP, and CP  
231 volumes than those without DM. While significantly greater EAT volumes were observed in  
232 individuals with MetS than in those without MetS, there was no significant difference in DM.  
233 Non-MetS with DM had the lowest mean CT values among the four groups ( $p < 0.001$ ).

234

### 235 **Primary outcome**

236 During a mean follow-up period of  $2.7 \pm 0.9$  years (median 2.91 years), MACE was  
237 observed in 25 patients (4.7%). The primary outcome was observed in seven patients in the non-  
238 MetS without DM group, eight in the non-MetS with DM group, six in the MetS without DM  
239 group, and four in the MetS with DM group. The incidence rate for the composite endpoint was  
240 highest in the non-MetS with DM group, followed hierarchically by the MetS with DM, MetS  
241 without DM, and non-MetS without DM group ( $p < 0.001$ , log-rank test; Figure 2).

242 Table 3 summarizes the unadjusted Cox proportional hazards models used to predict the  
243 primary endpoint. CACS  $> 400$  ( $p < 0.001$ ), LAP volume  $> 4\%$  ( $p < 0.001$ ), obstructive CAD  
244 (patient-level and vessel-level,  $p < 0.05$ ), and DM ( $p < 0.001$ ) were significantly associated with  
245 the primary endpoint. Patients with angiographically confirmed MACE ( $n = 20$ ) exhibited  
246 significantly higher prevalence of LAP volume  $> 4\%$  in LAD (45% versus 23.5%;  $p = 0.036$ )  
247 and RCA (40% versus 18%;  $p = 0.035$ ) and tended to have higher prevalence of LAP volume  $>$   
248 4% in LCX (20% vs. 9.3%;  $p = 0.09$ ) compared to those without MACE. In the multivariable  
249 Cox proportional hazards model analysis (Table 4), DM as a predictor was associated with the  
250 primary endpoint, independent of LAP volume  $> 4\%$  (HR for DM in model 1; HR, 2.68; 95% CI,  
251 1.16–6.18;  $p = 0.02$ ), although MetS did not remain an independent predictor (model 2 in Table

252 4). For the subgroup analysis of each metabolic phenotype (non-DM without MetS as reference),  
253 DM without MetS remained as a predictor of MACE independent of LAP volume > 4% (model  
254 3), whereas DM with MetS (model 4) or non-DM with MetS (model 5) did not reach statistical  
255 significance. Finally, we examined the association of MACEs with parameters other than DM or  
256 MetS. In the multivariable models, TyG index (HR, 1.78; 95% CI, 1.10–2.89;  $p = 0.019$ ) or  
257 obstructive CAD (HR, 5.49; 95% CI, 1.84–16.38;  $p = 0.002$ ) was independently associated with  
258 MACE even after adjusting for the Suita CVD risk score, but CKD or CRP did not remain as a  
259 predictor (supplementary Table 1).

260

## 261 **Discussion**

262 This study investigated the association between distinct metabolic phenotypes according  
263 to the presence or absence of MetS and DM, and cardiovascular outcomes in symptomatic  
264 patients undergoing CCTA. The major findings of this study were as follows: (1) among the four  
265 groups, the worst prognosis was observed in non-MetS patients with DM compared to MetS  
266 patients with or without DM; (2) LAP volume > 4% was a robust predictor of MACE among the  
267 metabolic phenotypes; and (3) DM, independent of LAP volume > 4%, was a predictor of the  
268 primary endpoint; while MetS did not show a significant predictive value.

269

## 270 **Metabolic disorders, high-risk plaque burden, and outcomes**

271 Several large clinical trials have demonstrated that myocardial ischemia is an important  
272 surrogate marker for improving outcomes in patients with stable CAD, whereas ischemia-guided  
273 management has a limited ability to prevent acute coronary events compared with optimized  
274 medical therapy<sup>20,21</sup>. These findings question the credibility of ischemia-guided management of

275 patients with stable CAD, thus redirecting attention towards coronary microvascular dysfunction  
276 and high-risk plaque burden <sup>22-24</sup>. An increased plaque burden, especially of non-calcified  
277 plaques, has been reported in patients with MetS <sup>25</sup>. Yonetsu et al. used optical coherence  
278 tomography to demonstrate that MetS were associated with an increased burden of lipid-rich  
279 plaques <sup>25</sup>. Although these findings indicate a potential link between obesity, metabolic disorders,  
280 and unfavorable coronary plaque features, there is limited knowledge regarding coronary plaque  
281 burden in distinct metabolic phenotypes with and without DM.

282 Previous clinical studies have reported an inverse association between BMI and  
283 cardiovascular prognosis (obesity paradox) <sup>7,26,27</sup>. In patients with ASCVD and DM, Pagidipati et  
284 al. demonstrated that overweight or obese individuals had a lower cardiovascular risk than those  
285 with normal weight <sup>27</sup>. In a sub-analysis of a large clinical CCTA trial of patients with chest pain,  
286 among distinct metabolic phenotypes, Kammerlander et al. demonstrated that metabolically  
287 unhealthy individuals without obesity exhibited an increased high-risk plaque burden and a high  
288 risk of ASCVD events <sup>7</sup>. This paradoxically benign effect of obesity may be explained by its  
289 protective effect against atherosclerosis. Obese patients lack sarcopenia, have limited capacity  
290 for exercise, and have reduced mobility, all of which are associated with an increased incidence  
291 of cognitive decline, heart failure, and mortality <sup>28</sup>. In addition, we observed increased fasting  
292 plasma glucose levels in patients with non-MetS DM. Hyperglycemia and insulin resistance have  
293 been reported to be key drivers of calcification in DM <sup>8,11,29</sup>. Liu et al. showed that higher  
294 glucose levels and their variability are associated with plaque rupture in patients with ST-  
295 segment elevation myocardial infarction <sup>30</sup>. These findings suggest that metabolic phenotypes  
296 can help identify patients at high risk of cardiovascular events in addition to a high-risk plaque  
297 burden.

298

## 299 **Epicardial adipose tissue, plaque characteristics, and outcomes**

300 CAD is a chronic inflammatory disease with an underlying risk of metabolic disorders <sup>31</sup>.

301 A close relationship between abdominal visceral obesity and an increased coronary

302 atherosclerotic burden has been reported <sup>4,32</sup>. Our results demonstrated that MetS patients with or

303 without DM had increased EAT and LAP volumes, whereas non-MetS patients with DM had the

304 worst outcomes, with lower EAT and LAP volumes, indicating an alternate pathophysiology of

305 acute coronary syndromes in the latter. Our findings are consistent with the observations of

306 Kammerlander et al., who demonstrated that both metabolically unhealthy obese and non-obese

307 subjects exhibited increased high-risk plaques <sup>7</sup>. The increased prevalence of obstructive CAD

308 and vascular calcification (CP) in patients with DM offers a possible explanation for this finding

309 <sup>33</sup>. Distinct plaque characteristics may reflect different (advanced or less advanced) stages of

310 coronary atherosclerosis, resulting in different responses to lipid-lowering therapy <sup>34</sup>.

311 Furthermore, previous studies investigating plaque structural stress have demonstrated that

312 microcalcifications contribute to increased stress, leading to plaque rupture and myocardial

313 infarction <sup>35,36</sup>. These observations explain the poor outcomes of patients with DM without MetS

314 in this study.

315 Although we found that the EAT volume was not correlated with outcomes, the mean CT

316 value of the EAT was associated with cardiovascular outcomes (Table 3). EAT has been

317 associated with coronary atherosclerosis, calcification, and cardiovascular outcomes, and has

318 attracted attention as a therapeutic target <sup>18,37-40</sup>. This has motivated the development of imaging

319 methods that enable the assessment of inflammation in the pericoronary adipose tissue, which

320 interacts with the underlying vascular wall by producing proinflammatory adipokines <sup>41</sup>. In a

321 retrospective CCTA study, Oikonomou et al. demonstrated that a fat attenuation index  $> -70$  HU  
322 around the epicardial coronary arteries predicts cardiovascular outcomes <sup>42</sup>. Higher CT  
323 attenuation of the EAT indicates an increased inflammatory status, which supports our finding  
324 that non-MetS patients with DM have the worst prognosis.

325 In addition to plaque burden and metabolic disorders, coronary microvascular  
326 dysfunction may explain the association between non-MetS patients with DM and poorer  
327 outcomes <sup>43,44</sup>. In a systematic analysis, Kelshiker et al. demonstrated that patients with DM were  
328 more likely to have impaired coronary microvascular function, which presumably indicates a  
329 poor prognosis <sup>44</sup>. Although the assessment of coronary microvascular dysfunction is appreciated,  
330 routine non-invasive evaluation methods are not available in daily clinical practice. Noninvasive  
331 assessment of the coronary plaque burden and metabolic phenotypes allows for further risk  
332 stratification of symptomatic patients undergoing CCTA.

333

### 334 **Study limitations**

335 This study included a relatively small number of patients, and the event rates during  
336 follow-up were relatively low ( $< 5\%$ ). Our findings should be interpreted with caution since the  
337 DM with MET group was significantly older than the other groups with more obstructive CAD.  
338 Further studies are required to confirm these findings. Furthermore, although a unified definition  
339 is needed, the criteria for abdominal obesity vary among races <sup>45</sup>. In the present study, we used  
340 quantitative VAT values obtained from CT scans to define abdominal obesity. Lastly, we did not  
341 perform laboratory tests such as HOMA-IR to measure insulin resistance, which is associated  
342 with inflammation <sup>46</sup> and plaque vulnerability <sup>8</sup>. Instead, we calculated the TyG index and  
343 reported its significant association with the primary endpoint, independent of LAP volume  $> 4\%$

344 (HR for TyG index, 1.78; 95% CI, 1.10–2.89;  $p = 0.019$ ) (Model 1, in the supplementary Table  
345 1).

346

### 347 **Conclusions**

348 Individuals with DM alone have a significantly higher risk of developing MACE than  
349 those with MetS. This indicates that DM is an independent predictor of ASCVD events  
350 irrespective of the presence of obstructive CAD or high-risk plaque volume.

351

### 352 **Acknowledgements**

353 Not applicable

### 354 **Sources of Funding**

355 None

### 356 **Disclosures**

357 The authors declare that they have no competing interests.

### 358 **Supplemental Material**

359 Supplementary table 1

360

361

362

363

364

### 365 **References**



- 366 1. Powell-Wiley TM, Poirier P, Burke LE, Després JP, Gordon-Larsen P, Lavie CJ, Lear SA,  
367 Ndumele CE, Neeland IJ, Sanders P, St-Onge MP. Obesity and Cardiovascular Disease: A  
368 Scientific Statement from the American Heart Association. *Circulation*. 2021;143:E984–  
369 E1010.
- 370 2. Kramer CK, Zinman B, Retnakaran R. Are metabolically healthy overweight and obesity  
371 benign conditions?: A systematic review and meta-analysis. *Ann Intern Med*.  
372 2013;159:758–769.
- 373 3. DeMarco VG, Aroor AR, Sowers JR. The pathophysiology of hypertension in patients  
374 with obesity. *Nat Rev Endocrinol*. 2014;10:364–376.
- 375 4. Eckel N, Li Y, Kuxhaus O, Stefan N, Hu FB, Schulze MB. Transition from metabolic  
376 healthy to unhealthy phenotypes and association with cardiovascular disease risk across  
377 BMI categories in 90 257 women (the Nurses’ Health Study): 30 year follow-up from a  
378 prospective cohort study. *Lancet Diabetes Endocrinol*. 2018;6:714–724.
- 379 5. Otsuka K, Fukuda S, Tanaka A, Nakanishi K, Taguchi H, Yoshikawa J, Shimada K,  
380 Yoshiyama M. Napkin-ring sign on coronary CT angiography for the prediction of acute  
381 coronary syndrome. *JACC Cardiovasc Imaging*. 2013;6:448–457.
- 382 6. Williams MC, Kwiecinski J, Doris M, McElhinney P, D’Souza MS, Cadet S, Adamson  
383 PD, Moss AJ, Alam S, Hunter A, Shah ASV, Mills NL, Pawade T, Wang C, Weir McCall  
384 J, Bonnici-Mallia M, Murrills C, Roditi G, Van Beek EJR, Shaw LJ, Nicol ED, Berman  
385 DS, Slomka PJ, Newby DE, Dweck MR, Dey D. Low-Attenuation Noncalcified Plaque on  
386 Coronary Computed Tomography Angiography Predicts Myocardial Infarction: Results  
387 from the Multicenter SCOT-HEART Trial (Scottish Computed Tomography of the  
388 HEART). *Circulation*. 2020;141:1452–1462.

- 389 7. Kammerlander AA, Mayrhofer T, Ferencik M, Pagidipati NJ, Karady J, Ginsburg GS, Lu  
390 MT, Bittner DO, Puchner SB, Bihlmeyer NA, Meyersohn NM, Emami H, Shah SH,  
391 Douglas PS, Hoffmann U. Association of Metabolic Phenotypes With Coronary Artery  
392 Disease and Cardiovascular Events in Patients With Stable Chest Pain. *Diabetes Care*.  
393 2021;44:1038–1045.
- 394 8. Iguchi T, Hasegawa T, Otsuka K, Matsumoto K, Yamazaki T, Nishimura S, Nakata S,  
395 Ehara S, Kataoka T, Shimada K, Yoshiyama M. Insulin resistance is associated with  
396 coronary plaque vulnerability: insight from optical coherence tomography analysis. *Eur*  
397 *Hear Journal Cardiovasc Imaging*. 2014;15:284–291.
- 398 9. New criteria for “obesity disease” in Japan. *Circ J*. 2002;66:987–992.
- 399 10. Matsuzawa Y. Metabolic syndrome--definition and diagnostic criteria in Japan. *J*  
400 *Atheroscler Thromb*. 2005;12:301.
- 401 11. Zhao Q, Zhang TY, Cheng YJ, Ma Y, Xu YK, Yang JQ, Zhou YJ. Impacts of triglyceride-  
402 glucose index on prognosis of patients with type 2 diabetes mellitus and non-ST-segment  
403 elevation acute coronary syndrome: Results from an observational cohort study in China.  
404 *Cardiovasc Diabetol*. 2020;19:1–19.
- 405 12. Kinoshita M, Yokote K, Arai H, Iida M, Ishigaki Y, Ishibashi S, Umemoto S, Egusa G,  
406 Ohmura H, Okamura T, Kihara S, Koba S, Saito I, Shoji T, Daida H, Tsukamoto K,  
407 Deguchi J, Dohi S, Dobashi K, Hamaguchi H, Hara M, Hiro T, Biro S, Fujioka Y,  
408 Maruyama C, Miyamoto Y, Murakami Y, Yokode M, Yoshida H, Rakugi H, Wakatsuki A,  
409 Yamashita S. Japan Atherosclerosis Society (JAS) Guidelines for Prevention of  
410 Atherosclerotic Cardiovascular Diseases 2017. *J Atheroscler Thromb*. 2018;25:846–984.

- 411 13. Nakamura M, Yaku H, Ako J, Arai H, Asai T, Chikamori T, Daida H, Doi K, Fukui T, Ito  
412 T, Kadota K, Kobayashi J, Komiya T, Kozuma K, Nakagawa Y, Nakao K, Niinami H,  
413 Ohno T, Ozaki Y, Sata M, Takanashi S, Takemura H, Ueno T, Yasuda S, Yokoyama H,  
414 Fujita T, Kasai T, Kohsaka S, Kubo T, Manabe S, Matsumoto N, Miyagawa S, Mizuno T,  
415 Motomura N, Numata S, Nakajima H, Oda H, Otake H, Otsuka F, Sasaki K-I, Shimada K,  
416 Shimokawa T, Shinke T, Suzuki T, Takahashi M, Tanaka N, Tsuneyoshi H, Tojo T, Une  
417 D, Wakasa S, Yamaguchi K, Akasaka T, Hirayama A, Kimura K, Kimura T, Matsui Y,  
418 Miyazaki S, Okamura Y, Ono M, Shiomi H, Tanemoto K. JCS/JSCVS 2018 Guideline on  
419 Revascularization of Stable Coronary Artery Disease. *Circ J.* 2022;86:477–588.
- 420 14. Umemura S, Arima H, Arima S, Asayama K, Dohi Y, Hirooka Y, Horio T, Hoshide S,  
421 Ikeda S, Ishimitsu T, Ito M, Ito S, Iwashima Y, Kai H, Kamide K, Kanno Y, Kashihara N,  
422 Kawano Y, Kikuchi T, Kitamura K, Kitazono T, Kohara K, Kudo M, Kumagai H,  
423 Matsumura K, Matsuura H, Miura K, Mukoyama M, Nakamura S, Ohkubo T, Ohya Y,  
424 Okura T, Rakugi H, Saitoh S, Shibata H, Shimosawa T, Suzuki H, Takahashi S, Tamura K,  
425 Tomiyama H, Tsuchihashi T, Ueda S, Uehara Y, Urata H, Hirawa N. The Japanese  
426 Society of Hypertension Guidelines for the Management of Hypertension (JSH 2019).  
427 *Hypertens Res.* 2019;42:1235–1481.
- 428 15. Araki E, Goto A, Kondo T, Noda M, Noto H, Origasa H, Osawa H, Taguchi A, Tanizawa  
429 Y, Tobe K, Yoshioka N. Japanese Clinical Practice Guideline for Diabetes 2019. *Diabetol*  
430 *Int.* 2020;11:165–223.
- 431 16. Yamaura H, Otsuka K, Ishikawa H, Shirasawa K, Fukuda D, Kasayuki N. Determinants of  
432 Non-calcified Low-Attenuation Coronary Plaque Burden in Patients Without Known

- 433 Coronary Artery Disease: A Coronary CT Angiography Study. *Front Cardiovasc Med*.  
434 2022;9:824470.
- 435 17. Hecht HS, Blaha MJ, Kazerooni EA, Cury RC, Budoff M, Leipsic J, Shaw L. CAC-DRS:  
436 Coronary Artery Calcium Data and Reporting System. An expert consensus document of  
437 the Society of Cardiovascular Computed Tomography (SCCT). *J Cardiovasc Comput*  
438 *Tomogr*. 2018;12:185–191.
- 439 18. Nakanishi K, Fukuda S, Tanaka A, Otsuka K, Jissho S, Taguchi H, Yoshikawa J, Shimada  
440 K. Persistent epicardial adipose tissue accumulation is associated with coronary plaque  
441 vulnerability and future acute coronary syndrome in non-obese subjects with coronary  
442 artery disease. *Atherosclerosis*. 2014;237:353–360.
- 443 19. Garcia-Garcia HM, McFadden EP, Farb A, Mehran R, Stone GW, Spertus J, Onuma Y,  
444 Morel M-A, van Es G-A, Zuckerman B, Fearon WF, Taggart D, Kappetein A-P, Krucoff  
445 MW, Vranckx P, Windecker S, Cutlip D, Serruys PW. Standardized End Point Definitions  
446 for Coronary Intervention Trials: The Academic Research Consortium-2 Consensus  
447 Document. *Eur Heart J*. 2018;39:2192–2207.
- 448 20. Shaw LJ, Berman DS, Maron DJ, Mancini GBJ, Hayes SW, Hartigan PM, Weintraub WS,  
449 O'Rourke RA, Dada M, Spertus JA, Chaitman BR, Friedman J, Slomka P, Heller G V.,  
450 Germano G, Gosselin G, Berger P, Kostuk WJ, Schwartz RG, Knudtson M, Veledar E,  
451 Bates ER, McCallister B, Teo KK, Boden WE. Optimal medical therapy with or without  
452 percutaneous coronary intervention to reduce ischemic burden: results from the Clinical  
453 Outcomes Utilizing Revascularization and Aggressive Drug Evaluation (COURAGE) trial  
454 nuclear substudy. *Circulation*. 2008;117:1283–1291.

- 455 21. Maron DJ, Hochman JS, Reynolds HR, Bangalore S, O'Brien SM, Boden WE, Chaitman  
456 BR, Senior R, López-Sendón J, Alexander KP, Lopes RD, Shaw LJ, Berger JS, Newman  
457 JD, Sidhu MS, Goodman SG, Ruzyllo W, Gosselin G, Maggioni AP, White HD, Bhargava  
458 B, Min JK, Mancini GBJ, Berman DS, Picard MH, Kwong RY, Ali ZA, Mark DB,  
459 Spertus JA, Krishnan MN, Elghamaz A, Moorthy N, Hueb WA, Demkow M, Mavromatis  
460 K, Bockeria O, Peteiro J, Miller TD, Szwed H, Doerr R, Keltai M, Selvanayagam JB, Steg  
461 PG, Held C, Kohsaka S, Mavromichalis S, Kirby R, Jeffries NO, Harrell FE, Rockhold  
462 FW, Broderick S, Ferguson TB, Williams DO, Harrington RA, Stone GW, Rosenberg Y.  
463 Initial Invasive or Conservative Strategy for Stable Coronary Disease. *N Engl J Med*.  
464 2020;382:1395–1407.
- 465 22. Otsuka K, Fukuda S, Tanaka A, Nakanishi K, Taguchi H, Yoshiyama M, Shimada K,  
466 Yoshikawa J. Prognosis of vulnerable plaque on computed tomographic coronary  
467 angiography with normal myocardial perfusion image. *Eur Heart J Cardiovasc Imaging*.  
468 2014;15:332–340.
- 469 23. Reynolds HR, Picard MH, Spertus JA, Peteiro J, Lopez Sendon JL, Senior R, El-Hajjar  
470 MC, Celutkiene J, Shapiro MD, Pellikka PA, Kunichoff DF, Anthopolos R, Alfakih K,  
471 Abdul-Nour K, Khouri M, Bershtein L, De Belder M, Poh KK, Beltrame JF, Min JK, Fleg  
472 JL, Li Y, Maron DJ, Hochman JS. Natural History of Patients with Ischemia and No  
473 Obstructive Coronary Artery Disease: The CIAO-ISCHEMIA Study. *Circulation*.  
474 2021;144:1008–1023.
- 475 24. Newby DE, Williams MC, Dweck MR. Forget Ischemia: It's All about the Plaque.  
476 *Circulation*. 2021;144:1039–1041.

- 477 25. Yonetsu T, Kato K, Uemura S, Kim BK, Jang Y, Kang SJ, Park SJ, Lee S, Kim SJ, Jia H,  
478 Vergallo R, Abtahian F, Tian J, Hu S, Yeh RW, Sakhuja R, McNulty I, Lee H, Zhang S,  
479 Yu B, Kakuta T, Jang IK. Features of coronary plaque in patients with metabolic  
480 syndrome and diabetes mellitus assessed by 3-vessel optical coherence tomography. *Circ*  
481 *Cardiovasc Imaging*. 2013;6:665–673.
- 482 26. Costanzo P, Cleland JGF, Pellicori P, Clark AL, Hepburn D, Kilpatrick ES, Perrone-  
483 Filardi P, Zhang J, Atkin SL. The obesity paradox in type 2 diabetes mellitus: relationship  
484 of body mass index to prognosis: a cohort study. *Ann Intern Med*. 2015;162:610–618.
- 485 27. Pagidipati NJ, Zheng Y, Green JB, McGuire DK, Mentz RJ, Shah S, Aschner P, Delibasi  
486 T, Rodbard HW, Westerhout CM, Holman RR, Peterson ED. Association of obesity with  
487 cardiovascular outcomes in patients with type 2 diabetes and cardiovascular disease:  
488 Insights from TECOS. *Am Heart J*. 2020;219:47–57.
- 489 28. Roubenoff R. Sarcopenia and its implications for the elderly. *Eur J Clin Nutr*. 2000;54  
490 Suppl 3:S40-7.
- 491 29. Nishimoto S, Fukuda D, Sata M. Emerging roles of Toll-like receptor 9 in cardiometabolic  
492 disorders. *Inflamm Regen*. 2020;40:18.
- 493 30. Liu J, Wang S, Cui C, Cai H, Sun R, Pan W, Fang S, Yu B. The association between  
494 glucose-related variables and plaque morphology in patients with ST-segment elevated  
495 myocardial infarction. *Cardiovasc Diabetol*. 2020;19:109.
- 496 31. Libby P. The changing landscape of atherosclerosis. *Nature*. 2021;592:524–533.
- 497 32. Tanaka T, Kishi S, Ninomiya K, Tomii D, Koseki K, Sato Y, Okuno T, Sato K, Koike H,  
498 Yahagi K, Komiyama K, Aoki J, Tanabe K. Impact of abdominal fat distribution, visceral

- 499 fat, and subcutaneous fat on coronary plaque scores assessed by 320-row computed  
500 tomography coronary angiography. *Atherosclerosis*. 2019;287:155–161.
- 501 33. Jin H-Y, Weir-McCall JR, Leipsic JA, Son J-W, Sellers SL, Shao M, Blanke P, Ahmadi A,  
502 Hadamitzky M, Kim Y-J, Conte E, Andreini D, Pontone G, Budoff MJ, Gottlieb I, Lee  
503 BK, Chun EJ, Cademartiri F, Maffei E, Marques H, de Araujo Goncalves P, Shin S, Choi  
504 JH, Virmani R, Samady H, Stone PH, Berman DS, Narula J, Shaw LJ, Bax JJ, Chinnaiyan  
505 K, Raff G, Al-Mallah MH, Lin FY, Min JK, Sung JM, Lee S-E, Chang H-J. The  
506 Relationship Between Coronary Calcification and the Natural History of Coronary Artery  
507 Disease. *JACC Cardiovasc Imaging*. 2021;14:233–242.
- 508 34. Almeida SO, Budoff M. Effect of statins on atherosclerotic plaque. *Trends Cardiovasc*  
509 *Med*. 2019;29:451–455.
- 510 35. Kelly-Arnold A, Maldonado N, Laudier D, Aikawa E, Cardoso L, Weinbaum S. Revised  
511 microcalcification hypothesis for fibrous cap rupture in human coronary arteries. *Proc*  
512 *Natl Acad Sci U S A*. 2013;110:10741–10746.
- 513 36. Doradla P, Otsuka K, Nadkarni A, Villiger M, Karanasos A, Zandvoort LJC van, Dijkstra  
514 J, Zijlstra F, Soest G van, Daemen J, Regar E, Bouma BE, Nadkarni SK. Biomechanical  
515 Stress Profiling of Coronary Atherosclerosis: Identifying a Multifactorial Metric to  
516 Evaluate Plaque Rupture Risk. *JACC Cardiovasc Imaging*. 2020;13:804–816.
- 517 37. Iacobellis G. Epicardial adipose tissue in contemporary cardiology. *Nat Rev Cardiol*.  
518 2022;19:593–606.
- 519 38. Hwang I-C, Park HE, Choi S-Y. Epicardial Adipose Tissue Contributes to the  
520 Development of Non-Calcified Coronary Plaque: A 5-Year Computed Tomography  
521 Follow-up Study. *J Atheroscler Thromb*. 2017;24:262–274.

- 522 39. Mancio J, Azevedo D, Saraiva F, Azevedo AI, Pires-Morais G, Leite-Moreira A, Falcao-  
523 Pires I, Lunet N, Bettencourt N. Epicardial adipose tissue volume assessed by computed  
524 tomography and coronary artery disease: a systematic review and meta-analysis. *Eur*  
525 *Hear journal Cardiovasc Imaging*. 2018;19:490–497.
- 526 40. Madonna R, Massaro M, Scoditti E, Pescetelli I, De Caterina R. The epicardial adipose  
527 tissue and the coronary arteries: Dangerous liaisons. *Cardiovasc Res*. 2019;115:1013–  
528 1025.
- 529 41. Antonopoulos AS, Sanna F, Sabharwal N, Thomas S, Oikonomou EK, Herdman L,  
530 Margaritis M, Shirodaria C, Kampoli A-M, Akoumianakis I, Petrou M, Sayeed R,  
531 Krasopoulos G, Psarros C, Ciccone P, Brophy CM, Digby J, Kelion A, Uberoi R, Anthony  
532 S, Alexopoulos N, Tousoulis D, Achenbach S, Neubauer S, Channon KM, Antoniades C.  
533 Detecting human coronary inflammation by imaging perivascular fat. *Sci Transl Med*.  
534 2017;9. doi:10.1126/scitranslmed.aal2658.
- 535 42. Oikonomou EK, Marwan M, Desai MY, Mancio J, Alashi A, Hutt Centeno E, Thomas S,  
536 Herdman L, Kotanidis CP, Thomas KE, Griffin BP, Flamm SD, Antonopoulos AS,  
537 Shirodaria C, Sabharwal N, Deanfield J, Neubauer S, Hopewell JC, Channon KM,  
538 Achenbach S, Antoniades C. Non-invasive detection of coronary inflammation using  
539 computed tomography and prediction of residual cardiovascular risk (the CRISP CT  
540 study): a post-hoc analysis of prospective outcome data. *Lancet (London, England)*.  
541 2018;392:929–939.
- 542 43. Del Buono MG, Montone RA, Camilli M, Carbone S, Narula J, Lavie CJ, Niccoli G, Crea  
543 F. Coronary Microvascular Dysfunction Across the Spectrum of Cardiovascular Diseases:  
544 JACC State-of-the-Art Review. *J Am Coll Cardiol*. 2021;78:1352–1371.



- 545 44. Kelshiker MA, Seligman H, Howard JP, Rahman H, Foley M, Nowbar AN, Rajkumar CA,  
546 Shun-Shin MJ, Ahmad Y, Sen S, Al-Lamee R, Petraco R. Coronary flow reserve and  
547 cardiovascular outcomes: a systematic review and meta-analysis. *Eur Heart J*.  
548 2022;43:1582–1593.
- 549 45. Alberti KGMM, Eckel RH, Grundy SM, Zimmet PZ, Cleeman JI, Donato KA, Fruchart  
550 JC, James WPT, Loria CM, Smith SC. Harmonizing the metabolic syndrome: A joint  
551 interim statement of the international diabetes federation task force on epidemiology and  
552 prevention; National heart, lung, and blood institute; American heart association; World  
553 heart federation; International . *Circulation*. 2009;120:1640–1645.
- 554 46. Nishimoto S, Fukuda D, Higashikuni Y, Tanaka K, Hirata Y, Murata C, Kim-Kaneyama  
555 J-R, Sato F, Bando M, Yagi S, Soeki T, Hayashi T, Imoto I, Sakaue H, Shimabukuro M,  
556 Sata M. Obesity-induced DNA released from adipocytes stimulates chronic adipose tissue  
557 inflammation and insulin resistance. *Sci Adv*. 2016;2:e1501332.  
558

**Table 1. Patient characteristics according to metabolic phenotypes**

	Non-MetS		MetS		P value
	DM (-)	DM (+)	DM (-)	DM (+)	
	(n = 306)	(n = 52)	(n = 114)	(n = 58)	
Age	64 (15)	69 (10)	62 (13)	66 (12)	<0.001
Male, n (%)	158 (52%)	32 (62%)	70 (61%)	39 (67%)	0.062
BMI, kg/mm <sup>2</sup>	22.7 (3.4)	22.1 (2.8)	26.6 (4.2)	27.7 (4.6)	<0.001
VAT area, cm <sup>2</sup>	78 (41)	66 (32)	148 (45)	168 (62)	<0.001
Subcutaneous fat area, cm <sup>2</sup>	137 (70)	105 (67)	200 (98)	192 (82)	<0.001
Systolic BP, mmHg	136 (21)	145 (22)	148 (24)	148 (25)	<0.001
Diastolic BP, mmHg	76 (13)	79 (17)	84 (14)	81 (13)	<0.001
Triglyceride, mg/dL	134 (141)	125 (98)	221 (244)	241 (488)	0.001
HDL-C, mg/dL	67 (19)	65 (17)	56 (15)	50 (13)	<0.001
LDL-C, mg/dL	124 (33)	110 (38)	135 (36)	115 (32)	<0.001
Fasting plasma glucose, g/dL	105 (18)	178 (86)	113 (21)	157 (58)	<0.001

Hemoglobin A1c, %	5.6 (0.3)	7.1 (1.7)	5.7 (0.3)	7.2 (1.8)	<0.001
CRP (LogCRP)	0.31 (0.86)	0.20 (0.34)	0.31 (0.71)	0.35 (0.49)	<0.001
TyG index	8.6 (0.56)	9.0 (0.81)	9.1 (0.66)	9.4 (0.79)	<0.001
Hypertension	168 (55%)	44 (85%)	107 (94%)	54 (93%)	<0.001
Diabetes mellitus	0 (0%)	52 (100%)	0 (%)	58 (100%)	-
Dyslipidemia	155 (51%)	36 (69%)	113 (99%)	49 (84%)	<0.001
Current or former tobacco use	38 (12%)	10 (19%)	21 (18%)	10 (17%)	0.306
CKD	72 (24%)	14 (27%)	29 (25%)	16 (28%)	0.883
Suita CVD risk score	23.5 (10.8)	35.5 (9.3)	26.0 (9.0)	33.9 (9.0)	<0.001
Atrial fibrillation	27 (8.8%)	10 (19%)	9 (7.8%)	9 (16%)	0.056
Medications					
ACE inhibitor or ARB	47 (15%)	15 (29%)	34 (30%)	21 (36%)	<0.001
Calcium channel blocker	61 (20%)	18 (35%)	39 (34%)	21 (36%)	0.002
$\beta$ -blocker	11 (3.5%)	5 (9.6%)	10 (8.8%)	4 (6.8%)	0.102
Statins	39 (13%)	18 (35%)	42 (37%)	23 (40%)	<0.001

561 Values are given as mean ± standard deviation or number (%).

562 ACE, angiotensin converting enzyme; ARB, angiotensin II receptor blocker; BMI, body mass index; BP, blood pressure; CKD,  
563 chronic kidney disease; CRP, C-reactive protein; CVD, cardiovascular disease; TyG, triglyceride-glucose; VAT, visceral adipose  
564 tissue; HDL, high-density lipoprotein; LDL, low-density lipoprotein; DM (-), without diabetes mellitus; DM (+), with diabetes  
565 mellitus; MetS: metabolic syndrome

566

**Table 2. CCTA findings according to metabolic phenotypes**

	Non-MetS		MetS		P value
	DM (-) (n = 306)	DM (+) (n = 52)	DM (-) (n = 114)	DM (+) (n = 58)	
<b>CACS</b>					
CACS 0	153 (50%)	13 (25%)	49 (43%)	14 (24%)	<0.001
CACS 1-100	77 (25%)	13 (25%)	36 (32%)	14 (24%)	0.569
CACS 101-400	54 (18%)	15 (29%)	19 (17%)	17 (29%)	0.056
CACS >400	22 (7.2%)	11 (21%)	10 (8.8%)	13 (22%)	<0.001

**Stenosis severity on CCTA**

No CAD	64 (21 %)	5 (9.6%)	19 (17%)	5 (8.6%)	0.048
Non-obstructive CAD	131 (43 %)	17 (33%)	51 (45%)	26 (45%)	0.490
Obstructive CAD	111 (36 %)	30 (58%)	44 (39%)	27 (46%)	0.021

**Coronary plaque burden**

NCP volume, %	19.7 (5.7)	20.6 (6.6)	21.2 (6.9)	23.4 (8.4)	<0.001
LAP volume, %	2.4 (1.7)	3.2 (2.6)	3.3 (2.9)	4.4 (5.0)	0.001
CP volume, %	0.7 (2.4)	2.1 (3.9)	0.9 (2.9)	1.6 (3.7)	0.002
EAT volume, ml	105 (42)	107 (40)	148 (46)	176 (46)	<0.001
EAT mean CT value, HU	-79.0 (5.3)	-77.7 (5.3)	-80.7 (4.0)	-79.5 (5.0)	0.001

---

567 Values are given as mean ± standard deviation or number (%).

568 CACS, coronary artery calcium score; CAD, coronary artery disease; CP, calcified plaque; DM (-), without diabetes mellitus; DM (+),  
569 with diabetes mellitus; EAT, epicardial adipose tissue; MetS, metabolic syndrome; NCP, non-calcified plaque; LAP, low-attenuation  
570 plaque; CCTA, coronary computed tomography angiography; CT, computed tomography; HU, Hounsfield unit

571

**Table 3. Unadjusted Cox proportional hazards model to predict the primary outcome**

	Non- adjusted HR	95% CI	P	Non-adjusted HR	95% CI	P	Non-adjusted HR	95% CI	P
	All patients (n = 530)			Women (n = 231)			Men (n = 299)		
Age	1.03	1.002–1.070	0.040	1.05	0.98–1.12	0.147	1.03	0.99–1.07	0.085
Male	1.65	0.72–3.88	0.229						
CACS >400	5.09	2.25–11.54	<0.001	8.96	2.14–37.5	0.003	3.68	1.36–9.97	0.010
LAP volume > 4%	6.03	2.70–13.4	<0.001	17.5	3.54–87.2	<0.001	3.52	1.36–9.14	0.009
Obstructive CAD	8.45	2.90–24.60	<0.001	13.2	1.63–107.7	0.016	6.51	1.87–22.6	0.003
Obstructive CAD in LAD	4.40	2.16-8.99	<0.001	3.90	1.31-11.6	0.014	1.98	0.91-4.29	0.082
Obstructive CAD in LCX	2.47	1.10-5.54	0.027	1.53	0.341-6.94	0.575	2.70	1.20-6.09	0.016
Obstructive	3.13	1.43-6.82	0.004	4.05	1.23-13.3	0.021	3.05	1.35-6.88	0.007

CAD in RCA									
EAT volume	1.001	0.993–1.008	0.853	1.01	0.99–1.02	0.138	0.99	0.98–1.005	0.374
EAT mean	1.03	0.99–1.083	0.126	1.02	0.95–1.10	0.442	1.06	0.96–1.18	0.222
CT vale									
BMI	0.45	0.16–1.20	0.111	0.02	0.000–13.16	0.252	0.68	0.24–1.94	0.477
$\geq 25 \text{kg/m}^2$									
VAT $\geq 100$	1.28	0.58–2.80	0.535	1.18	0.28–4.96	0.815	1.16	0.44–3.06	0.761
$\text{cm}^2$									
MetS	1.39	0.627–3.10	0.415	1.62	0.38–6.80	0.506	1.23	0.46–3.23	0.673
DM	3.74	1.70–8.20	0.001	5.22	1.30–20.9	0.019	3.02	1.16–7.83	0.023
Chronic	1.64	0.800-3.39	0.175	1.30	0.403-4.248	0.655	1.89	0.86-4.18	0.113
kidney									
disease									
CRP	1.25	0.70-2.23	0.449	1.34	0.54-3.29	0.522	1.39	0.77-2.52	0.273
TyG index	1.80	1.24-2.62	0.002	2.29	0.89-5.89	0.084	1.34	0.86-2.07	0.192

---

BMI, body mass index; CACS, coronary artery calcium score; CAD, coronary artery disease; EAT, epicardial adipose tissue; VAT, visceral adipose tissue;

HDL, high-density lipoprotein; LDL, low-density lipoprotein; DM, diabetes mellitus; MetS: metabolic syndrome

CRP was log transformed for analysis.

**Table 4. Cox proportional hazards analysis to predict major cardiovascular adverse events**

	<b>Predictor</b>	<b>Hazard ratio</b>	<b>95% confidence interval</b>	<b>P value</b>
<b>Model 1</b>	DM (Reference, non-DM)	2.68	1.16–6.18	0.02
	Low-attenuation plaque volume > 4%	5.41	2.42–12.11	<0.001
<b>Model 2</b>	MetS (Reference, non-MetS)	0.99	0.44–2.23	0.99
	Low-attenuation plaque volume > 4%	5.83	2.59–13.10	<0.001
<b>Model 3</b>	DM without MetS (Reference, non-DM without MetS)	6.89	2.33–20.39	0.001
	Low-attenuation plaque volume > 4%	9.66	3.29–28.35	<0.001
<b>Model 4</b>	DM with MetS (Reference, non-DM without MetS)	1.69	0.56–5.09	0.34
	Low-attenuation plaque volume > 4%	9.24	2.82–30.27	<0.001



<b>Model 5</b>	Non-DM without MetS	2.24	0.58–8.53	0.23
	(Reference, non-DM without MetS)			
	Low-attenuation plaque volume > 4%	4.62	1.37–15.51	0.013

---

Models 1–5 were adjusted by Suita CVD risk score. DM, diabetes mellitus; MetS, Metabolic syndrome

574

575

576

577

578

579

580

581

582

583

584

585

586

587 **Figure Legends**

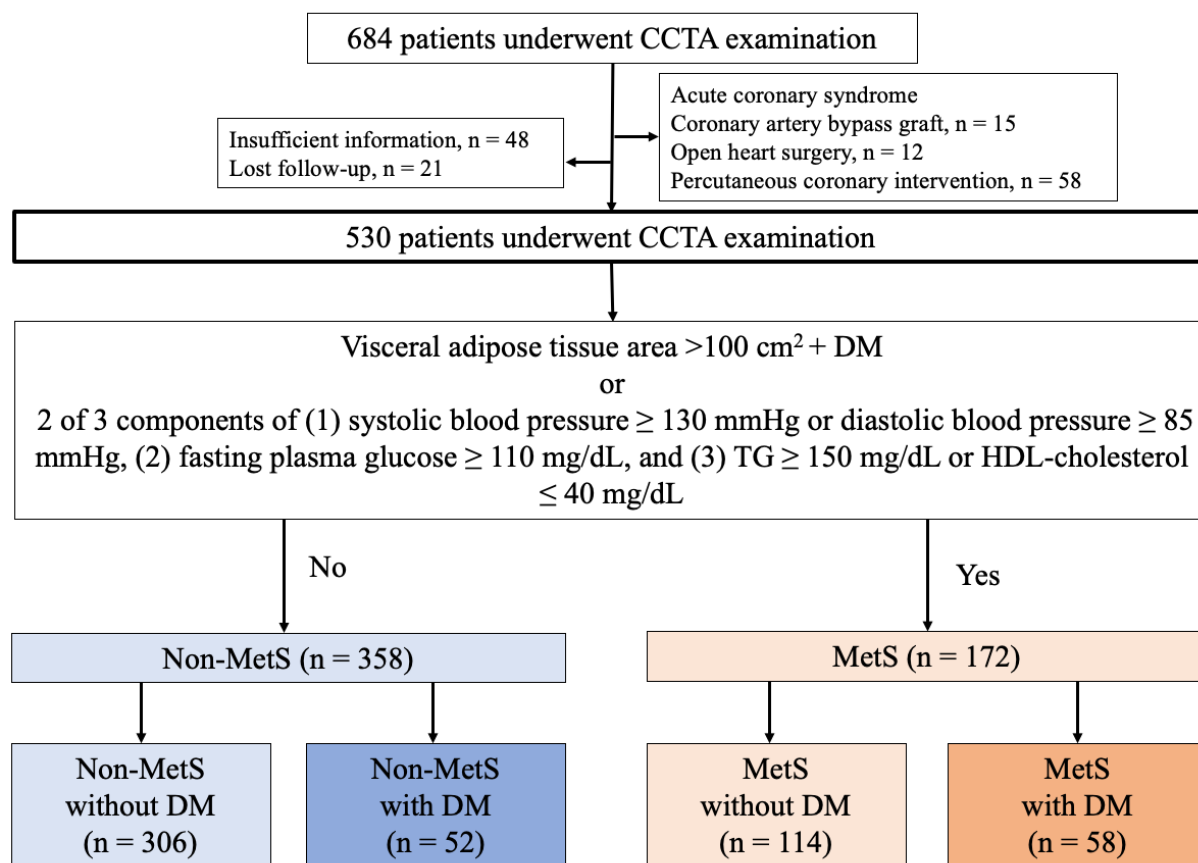
588 **Figure 1. Flow chart of study patients**

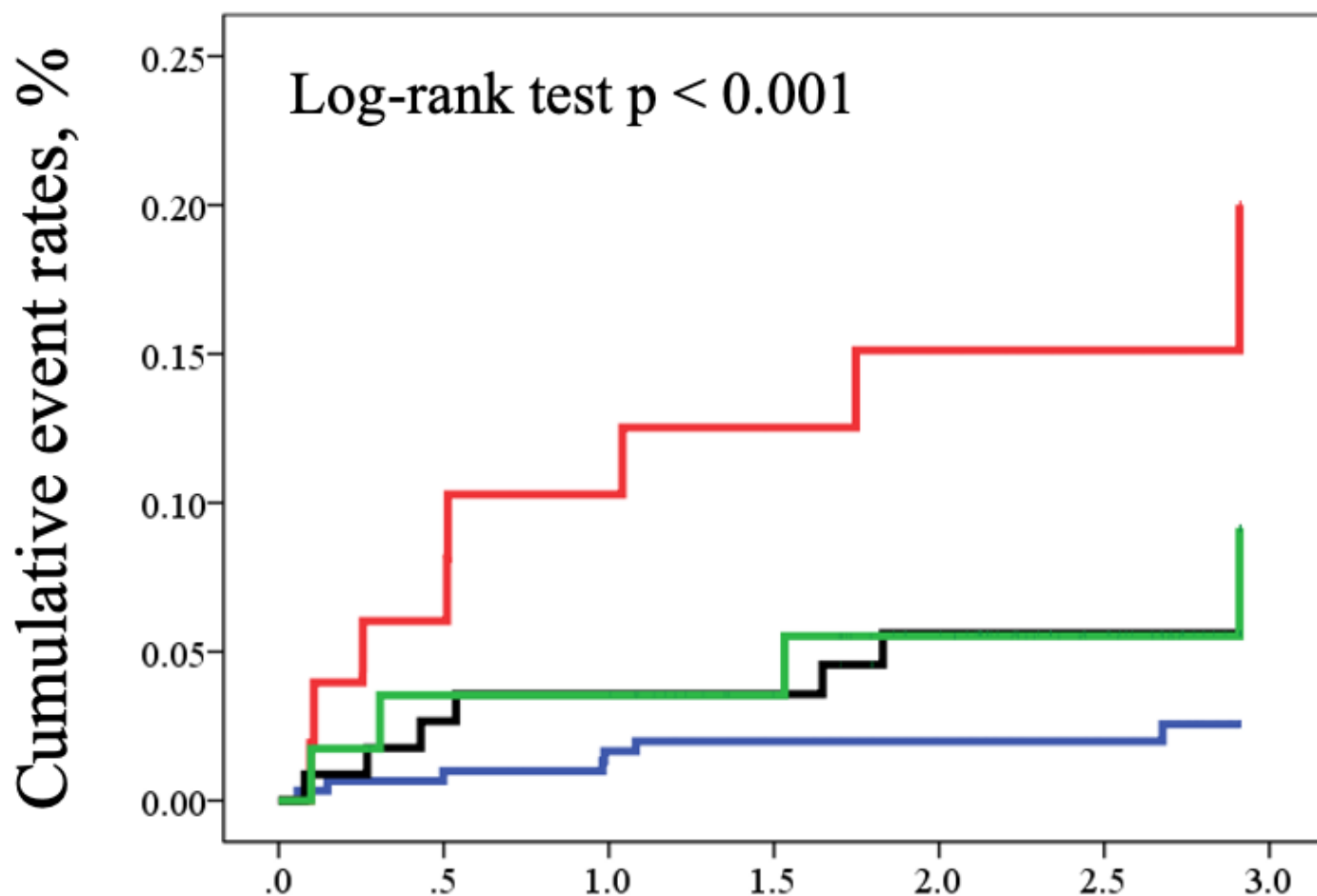
589 A flowchart depicting the 530 patients who underwent CCTA examination and how they were divided into No-MetS and MetS groups.  
590 Patients were further categorized into four groups according to the presence or absence of metabolic equivalents (MetS) and DM.  
591 CCTA, coronary computed tomography angiography; DM, diabetes mellitus; MetS, metabolic syndrome.

592

593 **Figure 2. Kaplan–Meier analysis for prediction of MACE stratified by metabolic phenotypes**

594 Kaplan–Meier curves demonstrating significant differences between metabolic phenotypes in cumulative event rates, using a  
595 composite endpoint of cardiovascular death, acute coronary syndrome, and symptom- or ischemia-driven coronary revascularization.  
596 Higher event rates were present in non-MetS patients with DM (log-rank test,  $p < 0.001$ ), followed by MetS with DM (log-rank test,  $p$   
597  $< 0.001$ ). DM, diabetes mellitus; MetS, metabolic syndrome; MACE, major adverse cardiovascular event.





0 year 1 year 2 year 3 year

— Non-MetS without DM	306	296	248	139
— Non-MetS with DM	52	44	32	21
— MetS without DM	114	109	91	52
— MetS with DM	58	54	44	23