

1 **Campus Sewage Water Surveillance based dynamics and infection trends of**  
2 **SARS-CoV-2 variants during third wave of COVID-19 in Pune, India**

3 Vinita Malik<sup>a,1</sup>, Vinay Rajput<sup>a,b,1</sup>, Rinka Pramanik<sup>a,1</sup>, Rachel Samson<sup>a,b</sup>, Rakesh

4 kumar Yadav<sup>a,b</sup>, Pradnya Kadam<sup>c</sup>, Nikita Shah<sup>c</sup>, Rutuja Sawant<sup>c</sup>, Unnati Bhalerao<sup>c</sup>,

5 Manisha Tupekar<sup>c</sup>, Soumen Khan<sup>c</sup>, Priyanki Shah<sup>e</sup>, LS Shashidhara<sup>c,e</sup>, Sanjay

6 Kamble<sup>d</sup>, Syed Dastager<sup>a,b</sup>, Krishanpal Karmodiya<sup>c</sup>, Mahesh Dharme<sup>a,b\*</sup>

7 <sup>a</sup>National Collection of Industrial Microorganisms (NCIM), Biochemical Sciences

8 Division, CSIR-National Chemical Laboratory, Pune 411008, Maharashtra, India

9 <sup>b</sup>Academy of Scientific and Innovative Research (AcSIR), Ghaziabad 201002, Uttar

10 Pradesh, India

11 <sup>c</sup>Department of Biology, Indian Institute of Science Education and Research, Pune

12 411008, Maharashtra, India

13 <sup>d</sup>Chemical Engineering and Process Development Division (CEPD), CSIR-National

14 Chemical Laboratory, Pune 411008, Maharashtra, India

15 <sup>e</sup>The Pune Knowledge Cluster (PKC), Savitribai Phule Pune University, Pune 411007,

16 Maharashtra, India

17 <sup>1</sup> These authors contributed equally

18 Corresponding author: National Collection of Industrial Microorganisms (NCIM),

19 Biochemical Sciences Division, CSIR-National Chemical Laboratory, Pune 411008,

20 India. E-mail address: [ms.dharme@ncl.res.in](mailto:ms.dharme@ncl.res.in) (M.S. Dharme).

21

## 22 **Highlights**

- 23 • The first study on campus sewage water for SARS-CoV-2 surveillance in  
24 India
- 25 • Early detection of Omicron VOC signals during early November 2021
- 26 • Sequencing revealed the presence of Omicron VOC fragments prior to clinical  
27 cases reported on campus
- 28 • Genomic analysis indicated transition of Delta to Omicron lineage in late  
29 December 2021 and potentially led to the third wave
- 30 • Combining qRT-PCR and sequencing could be useful for on-campus tracking  
31 of variants using wastewater surveillance

32

## 33 **Abstract**

34 The wastewater-based epidemiology (WBE) of SARS-CoV-2 is a quick and cost-  
35 effective method of tracking virus transmission. However, few studies reported on  
36 campus or in academic or residential settings worldwide. In this study, we  
37 demonstrated the WBE approach to detect, monitor, and evaluate genomic variants of  
38 SARS-CoV-2 fragments in a sewage treatment plant (STP) located on the campus of  
39 CSIR National Chemical Laboratory, Pune, India. Herein we describe the early  
40 warning capability of WBE, with viral load rise in campus sewage water up to 14  
41 days before its clinical detection. This was supported further by a significant  
42 correlation between SARS-CoV-2 RNA concentration and clinically reported  
43 COVID-19 cases on campus. Additionally, we comprehended the probable targets  
44 missed by the quantitative qRT-PCR using amplicon-based sequencing due to low  
45 viral load. The analysis revealed the presence of signature mutations of the Omicron

46 (S:N679K, S:N764K, S:D796Y, N:P13L, ORF1a:T3255I, ORF1a:K856R,  
47 ORF1a:P3395H, and N:S413R) before the lineage was first detected globally. Further,  
48 we used Lineage decomposition (LCS) tool to detect the Variant of Concern  
49 (VOC)/Variant of Interest (VOI) signals upto a month earlier in sewage water samples.  
50 The analysis also indicated the transition of lineage from Delta to Omicron in late  
51 Decemeber,2021. This is the first study in India highlighting the use of on-campus  
52 STP to evaluate the local spread of SARS-CoV-2, which could aid in preventing  
53 COVID-19 in academic institutes/universities. This study proves the usefulness of  
54 WBE as an early warning system for detecting, tracking and tracing VOCs using the  
55 sequencing approach. The current study could aid in taking critical decisions to tackle  
56 the pandemic scenario on campus.

57 **Keywords:** SARS-CoV-2, wastewater-based epidemiology, Early warning, on-  
58 campus surveillance, Next-generation sequencing.

59

## 60 **1. Introduction**

61 Following the detection of the first SARS-CoV-2 infection (Severe Acute Respiratory  
62 Syndrome Coronavirus 2) in late December 2019, several variants of this virus have  
63 been reported globally. The constantly changing genome of SARS-CoV-2 has  
64 challenged healthcare systems worldwide (Zhu et al., 2020). SARS-CoV-2 had  
65 infected over 44 million people and killed over 0.5 million people in India as of  
66 November 1, 2022 (Worldometer 2022). Despite administrating more than two  
67 million doses of the Covid-19 vaccine (<https://www.mohfw.gov.in/>), the government  
68 is still taking action to speed up the immunization campaign to contain the virus.  
69 However, the major obstacle for public health is the emergence of new variants of

70 SARS-CoV-2 due to rapid mutations in its genome. The World Health Organization  
71 (WHO) has categorized SARS-CoV-2 variants into Variants of Interest (VOIs) and  
72 Variants of Concern (VOCs) based on their characteristics and impact on the global  
73 community. Monitoring the occurrence of the variants in the population is critical for  
74 timely public health interventions. The Alpha (B.1.1.7), B.1.351 (Beta), P.1 (Gamma),  
75 B.1.617.2 (Delta), and B.1.1.529 (Omicron) are examples of notable VOCs of SARS-  
76 CoV-2 (Brief, 2021; Fujino et al., 2021; Galloway et al., 2020; Tegally et al., 2021;  
77 WHO, 2021). In October 2020, the Delta variant surfaced in India, resulting in the  
78 devastating second COVID-19 outbreak in the summer of 2021. During the Delta  
79 wave, India's average death rate of 3 percent doubled over only three months (Jha et  
80 al., 2022). The Omicron variant caused the surge in COVID-19 infection, which was  
81 reported first in South Africa in late November 2021 (He et al., 2021). Infectiousness  
82 and transmission rates for the Omicron variant were more than those of the earlier  
83 lineages (Duong et al., 2022; Wolter et al., 2022). Omicron is reportedly highly  
84 resistant to antibody-directed inactivation by vaccine-triggered sera and antibodies  
85 from both vaccinated and SARS-CoV-2 infected individuals (Hoffman et al., 2022;  
86 Tada et al., 2022; Wilhelm et al., 2021).

87 Primarily, genomic surveillance of SARS-CoV-2 is accomplished through  
88 clinical sample sequencing (Grimaldi et al., 2022). It has been observed and widely  
89 accepted that sequencing all clinically positive samples is not economically feasible  
90 (Tyson et al., 2020). Even though SARS-CoV-2 is primarily a respiratory virus, its  
91 genome can also be found in infected patients' respiratory tract, stool, and  
92 urine (Wölfel et al., 2020). Both symptomatic and asymptomatic cases shed the virus  
93 in their stool, eventually reaching sewage treatment plants (STPs) (Mizumoto et al.,  
94 2020; Nishiura et al., 2020; Treibel et al., 2020; Wan et al., 2020). Based on the above

95 findings, implementing WBE is an inexpensive virus surveillance approach that does  
96 not infringe on human rights (Carducci et al., 2020; O'Brien and Xagorarakis, 2019). In  
97 the recent past, WBE has been demonstrated to be instrumental during the H1N1  
98 influenza outbreak and in detecting the prevalence of Poliovirus, Norovirus, Hepatitis  
99 A and E virus, adenovirus, and rotavirus (Ahmed et al., 2021; Hellmér et al., 2014;  
100 Lago et al., 2003). SARS-CoV-2 RNA is detected and quantified in wastewater using  
101 quantitative reverse transcription polymerase chain reaction (qRT-PCR) (Hillary et al.,  
102 2020). However, the qRT-PCR-based method for detecting variants in SARS-CoV-2  
103 positive samples is only practical for already identified variants and cannot be utilized  
104 to identify novel variants (Dikdan et al., 2022; Harper et al., 2021; Shen et al., 2021).  
105 Wastewater surveillance is one of the most effective complementary epidemiological  
106 methods for detecting the presence and evolution of SARS-CoV-2 variants (Amman  
107 et al., 2022). Wastewater has been used to track SARS-CoV-2 quite early in the  
108 pandemic (Randazzo et al., 2020; Sherchan et al., 2020). Several researchers have  
109 asserted that SARS-CoV-2 can be found in wastewater from all over the world (Markt  
110 et al., 2022; Pecia et al., 2022; Wurtz et al., 2021; Wurtzer et al., 2021). WBE allows  
111 the detection of mutations before clinical testing is done (Bar-Or et al., 2021;  
112 Karthikeyan et al., 2022). The Centers for Disease Control and Prevention (CDC),  
113 Atlanta, USA, has also acknowledged the use of environmental wastewater  
114 surveillance techniques to track and identify circulating SARS-CoV-2 variants and  
115 issued guidelines on its use in the community National Wastewater Surveillance  
116 System, CDC, USA).

117 In this study, we present the applicability of WBE to test the presence of  
118 SARS-CoV-2 and its variants in sewage water from a research campus-based STP in  
119 India. We collected samples from the STP inlet of the CSIR-National Chemical

120 Laboratory (CSIR-NCL) campus in Pune, India. To determine the SARS-CoV-2  
121 frequency and genetic diversity of variants in campus sewage water, all samples were  
122 analyzed using high-throughput next-generation sequencing (NGS) technology. We  
123 also demonstrated that sewage water-based genomic surveillance could be a  
124 preventive measure for averting outbreaks and a reliable tool for identifying novel  
125 variants that would otherwise escape from variant-specific qRT-PCR assays.

## 126 **2. Material and Methods**

### 127 **2.1 Sample collection and downstream processing**

128 CSIR-National Chemical Laboratory, Pune, India (18°32'31.2"N; 73°48'43.2"E) is a  
129 federal research institution and home to a closed society of approximately 5,000  
130 employees and students (Fig.1). Domestic water is treated via a sewerage line  
131 connected to a Phytorid STP with a capacity of 0.15 million liters per day (MLD).  
132 The sample collection included a grab-sampling method, executed following the CDC,  
133 USA guidelines of COVID-19 wastewater sampling, and approved by the Institutional  
134 Biosafety Committee (IBSC). Between November 2021 and April 2022, one litre of  
135 each of the 38 samples was collected from the inlet in a sterile plastic container  
136 between 09:00 am and 10:00 am. All the samples were processed immediately after  
137 collection per CDC, USA guidelines of COVID-19 sewage water sampling. The  
138 sampling bottle was wiped with 70% ethanol and promptly subjected to 1h  
139 pasteurization at 60°C. Of the total 1L of the sample, an aliquot of 160 ml was used  
140 for the concentration of the RNA fragments of SARS-CoV-2 using the polyethylene  
141 glycol (PEG) precipitation method (Ahmed et al., 2020). Briefly, the sample was  
142 centrifuged at 5000xg (5910 R, Eppendorf, Germany) for 10 minutes at 4°C to collect  
143 the larger debris as a pellet. Filtration was done twice, first with Whatman qualitative

144 filter paper grade 1 with a diameter of 47 mm (Merck, USA), and then with 0.22  $\mu$ m  
145 PES filter membrane (diameter 47mm) using vacuum filtration assembly (Tarsons,  
146 India). The resulting filtrate was added to a 250ml HDPE bottle (HiMedia, India),  
147 containing 8% (w/v) PEG 8000 (HiMedia, India) and 1.7% of molecular biology  
148 grade NaCl (w/v) (HiMedia, India). This mixture was incubated for 16 h at 4°C in a  
149 rotating shaker water bath (Equitron medica, India) at 175 rpm. It was centrifuged at  
150 10000xg for 1 h at 4°C to collect the viral pellet. The supernatant was removed, and  
151 the pellet was resuspended in 560  $\mu$ L of TE buffer (pH 7.0). One part of the  
152 resuspended pellet (280  $\mu$ L) was stored at -80°C for future use, and the remaining  
153 (280  $\mu$ L) was used to extract viral RNA. QiagenQIAmp Viral RNA Minikit (Qiagen,  
154 Germany) was used for viral RNA extraction according to the manufacturer's  
155 instructions. The RNA was eluted in 80  $\mu$ L of elution buffer and stored at -80°C for  
156 downstream analysis. After obtaining permission from the Institutional Biosafety  
157 Committee (IBSC), the used materials were disposed off.

## 158 **2.2 Molecular detection**

159 The qRT-PCR approach was used for SARS-CoV-2 RNA detection in sewage water  
160 samples. The experiment was conducted using an ICMR-approved GenePath  
161 Diagnostics qRT-PCR kit (GenePath DxCoVIdx One v2.1.1TK-Quantitative). It is a  
162 one-tube multiplex qRT-PCR assay that includes E, N and RdRP genes of SARS-  
163 CoV-2, with the RNase P gene serving as a nucleic acid isolation control. Each  
164 sample was tested in triplicates, wherein the PCR cocktail for individual reaction  
165 contained 9.25  $\mu$ L of master mix, 0.75  $\mu$ L of a primer-probe mix, and 5  $\mu$ L of  
166 template in a 15  $\mu$ L total reaction volume. The thermal cycling protocol consisted of  
167 pre-incubation at 37°C for 5 min, reverse transcription for 7 min at 52°C, RT

168 inactivation at 95°C for 3 min 30 sec and 40 amplification cycles of denaturation at  
169 95°C for 5 sec, and extension at 58 °C for 35 sec. All qRT-PCR experiments were  
170 conducted using an Applied Biosystems 7500 Fast Real-Time PCR system (USA).  
171 Viral load in samples was quantified using an online Covid-19 Viral Load Calculation  
172 Tool provided by the kit's manufacturer.

### 173 **2.3 SARS-CoV-2 whole genome sequencing**

174 All the samples were sequenced at the Next Generation Genomics facility at the  
175 Indian Institute of Science Education and Research (IISER), Pune, India. Sample  
176 libraries were prepared using Illumina Covid seq RUO kits (Illumina, USA). Post-  
177 annealing with random hexamers, the first strand synthesis reaction was carried out,  
178 followed by cDNA amplification in two separate multiplex PCR reactions, including  
179 primers designed to cover the entire genome of SARS-CoV-2. Using the Illumina  
180 PCR Indexes, the amplified products were further processed for tagmentation and  
181 adapter ligation, followed by enrichment and clean-up of amplicons as per the  
182 manufacturer's instructions. Pooled libraries were quantified using the Qubit 4.0  
183 fluorometer (Invitrogen, USA). All the pools were normalized to a final concentration  
184 of 4.0nM using the Illumina Pooling calculator. For sequencing, the final pooled  
185 library was denatured, neutralized, and adjusted to a final concentration of 1.4pM, and  
186 paired-end sequencing was performed using the Illumina NextSeq 550 sequencing  
187 platform (Illumina, USA).

### 188 **2.4 Bioinformatic analysis**

189 A dedicated in-house bioinformatics pipeline was used for analyzing raw data to  
190 identify the main circulating lineages in sewage water. In the first step, raw reads  
191 were checked for quality and filtered using fastp (Chen et al., 2018). After that, the



192 reference genome of SARS-CoV-2 (MN908947.3) was used to align the filtered reads  
193 by BWA Mem (Li and Durbin, 2009).

194 Basic alignment and coverage statistics were determined by SAM tools  
195 coverage/bedcov (Li et al., 2009; Quinlan and Hall, 2010). iVar was used for single  
196 nucleotide variant (SNV) calling using a minimum base quality score of 20, minimum  
197 frequency 0.03, and minimum read depth of 10 (Grubaugh et al., 2019). To predict the  
198 lineage composition, we used LCS- a mixture model for determining SARS-CoV-2  
199 variant composition in environmental samples (Valieris et al., 2022). Scripting was  
200 done in Python/Bash to manually check variant-associated mutations, followed by  
201 data plotting in R Studio.

## 202 **3. Results**

### 203 **3.1 SARS-CoV-2 quantification**

204 The goals of our study were to (i) detect and quantify SARS-CoV-2 genetic material  
205 in campus sewage water, (ii) monitor SARS-CoV-2 infection trend on campus, (iii)  
206 monitor viral variants of SARS-CoV-2 through NGS, and (iv) implement sewage  
207 water surveillance within the campus, incorporating it as a component of the  
208 pandemic response system. Overall, 38 sewage water samples collected from the  
209 campus STP inlet from November 2021 to April 2022 were investigated for the  
210 occurrence of SARS-CoV-2 RNA. Samples were considered positive when any two  
211 of three target genes for SARS-CoV-2 showed Ct value  $\leq 35$  as per kit instructions.  
212 Nineteen samples were positive, with Ct values ranging between 29.23 and 34.52,  
213 representing a 50% overall positive detection rate (Supplementary Table 1). The  
214 remaining 19 samples were negative.

215 Further, to understand the transmission dynamics of SARS-CoV-2 in sewage water at  
216 the community level, we calculated the viral load of each sample in copies/ml using  
217 the calculation tool provided by the qRT-PCR kit manufacturer (Fig.2). The first  
218 significant increase in viral load was observed in sample PR-41 (111.44 copies/ml)  
219 collected on November 22, 2021 (Supplementary Table1), two weeks before the first  
220 positive case was reported on campus. Viral load was later observed to increase  
221 exponentially from January 03, 2022 (PR-50) and the highest viral load was detected  
222 on January 20, 2022 in sample PR-55 (526 copies/mL). SARS-CoV-2 RNA copies  
223 continued to be found from February 2022 to April 2022, with a relatively higher viral  
224 load in sample PR-62 (229 copies/mL). A total of 184 positive cases of COVID-19  
225 were reported between November 2021 and April 2022 among the students, staff, and  
226 faculty, or their family members residing on the CSIR-NCL campus (Supplementary  
227 Table 2). However, the first case of COVID-19 on campus was reported to authorities  
228 on December 06, 2021. This correlates with our experimental data showing an  
229 increase in viral load 14 days before its first reporting. Pearson's correlation for viral  
230 load showed a significant correlation ( $R^2=0.68$ ,  $p\text{-value}>7.9e^{-11}$ ) with COVID-19  
231 cases reported on campus (Fig.2B). Although no new COVID-19 cases were reported  
232 on campus after February 07, 2022, the SARS-CoV-2 RNA sustained with few spikes  
233 in the concentration of viral load during February 2022 to April 2022.

### 234 **3.2 Overview of SARS-CoV-2 sequencing, detected nucleotide substitutions and** 235 **deletions**

236 All 38 sewage water samples collected during the third wave of Omicron from  
237 November 2021 to April 2022 were sequenced using the Illumina Next Seq 500  
238 platform. Samples were grouped into positive (n=19) and negative (n=19) categories

239 based on SARS-CoV-2 qRT-PCR (Supplementary Table 1). Since the qRT-PCR  
240 method uses primer pairs that target specific viral fragments and the SARS-CoV-2  
241 virus is susceptible to degradation in wastewater, that would eventually make  
242 capturing viral fragments with limited qRT-PCR primer pairs challenging. As a result,  
243 when wastewater is processed for qRT-PCR-based detection, the probability  
244 phenomenon may pose a challenge to the limited qRT-PCR primers. Currently, the  
245 whole genome NGS protocols use multiple primers targeting the entire genome, thus  
246 increasing the probability of detecting the minute amount of nucleic acid fragments in  
247 sewage water. Therefore, we sequenced all the samples regardless of qRT-PCR  
248 results to find the SARS-CoV-2 fragments and to understand the mutation profile of  
249 SARS-CoV-2 better.

250 A total of 124.16 million reads were generated from sequencing, of which  
251 26.46 million reads were mapped to the SARS-CoV-2 reference genome  
252 (MN908947.3). Out of 38 sequenced samples, 27 showed mean genomic coverage  
253 above 50% ranging between 99.81% and 57.2%. At the same time, 16 out of 27  
254 samples showed mean genome coverage uniformity above 90% (Supplementary  
255 Table1). Sequencing results of qRT-PCR positive (n=19) and negative samples (n=19)  
256 showed significant evidence for the presence of COVID-19 genomic material in the  
257 samples, supported by the linear regression analysis between viral concentration and  
258 reference genome coverage (Pearson correlation coefficient:  $R^2 = 0.18$ , p-value>0.003)  
259 (Fig.2.C). Their reads mapped ranged between 1.7 million and 34 thousand (Fig. 3).

260 Overall, 2108 unique nucleotide substitutions (Supplementary Fig.1) were  
261 found compared with the reference Wuhan genome of SARS-CoV-2 (MN908947.3).  
262 Among the nucleotide substitutions found: 941 mutations were in ORF1a polyprotein;

263 519 in ORF1ab polyprotein; 88 in ORF3a protein; 323 in spike protein; 19 in  
264 envelope protein; 48 in membrane protein; 10 in ORF6 protein; 19 in ORF7a protein;  
265 15 in ORF7b protein; 17 in ORF8 protein; 101 in nucleocapsid phosphoprotein and 08  
266 in ORF10 protein. A total of 119 deletions were detected in samples, 61 in ORF1a, 22  
267 in ORF1ab, 6 in ORF3a, 22 in spike protein; 03 in membrane glycoprotein; 01 in  
268 ORF7a protein; 01 in ORF7b protein; and 03 in nucleocapsid phosphoprotein.

### 269 **3.3 Early detection of Omicron signature mutations**

270 Sequencing data were analyzed and searched for the presence of signature mutations  
271 of different lineages of SARS-CoV-2 VOCs, Alpha (B.1.1.7), Beta (B.1.351), Gamma  
272 (P.1), Delta (B.1.617.2) and Omicron (B.1.1.529) and VOIs, Kappa (B.1.617.1),  
273 Epsilon (B.1.427, B.1.429), Eta (B.1.525), Iota (B.1.526) and Lambda (C.37) (Fig. 4).  
274 A total of 5214 signature mutations were detected, representing 16 highly  
275 transmissible variants of COVID-19. Samples collected from November to December  
276 2021 were highly dominated by Delta lineage (Fig.5A). The transition of Omicron  
277 lineage over delta lineage was observed in late December 2021, which is supported by  
278 the detection of a higher number of Omicron-associated signature mutations from  
279 January 2022 onwards (Fig. 5B), Omicron mutations ranging between 30-42  
280 nucleotide substitutions per sample, followed by continuous detection till March 2022.  
281 The Omicron lineage of SARS-CoV-2 contains 62 characteristic deletions and non-  
282 synonymous nucleotide substitutions, including 30 substitutions on the spike region  
283 (Dejnirattisai et al., 2022). We detected the first signal of Omicron in sample PR-39  
284 collected on November 08, 2021. A total of 11 signature mutations were detected, 09  
285 from the spike gene (S:P681H, S:T478K, S:D614G, S:H655Y, S:N679K, S:N764K,  
286 S:L452R, S:D796Y, S:T478K;), 01 from N gene (N:P13L) and 01 from ORF1a gene

287 (ORF1a:K856R). Similarly, 05 markers were detected in sample PR-40 (S:L452R,  
288 S:T478K, S:D614G, ORF1a:T3255I, ORF1a:P3395H), 06 in PR-41 (S:L452R,  
289 S:T478K, S:D614G, N:P13L, ORF1a:T3255I, ORF1a:P3395H) and 04 in PR-42  
290 (S:L452R, S:T478K, S:D614G, ORF1a:T3255I) (Supplementary Tables 3 and 4).

### 291 **3.4 SARS-CoV-2 prevalence and lineage trends in sewage water**

292 LCS was used to ascertain the relative frequencies of SARS-CoV-2 variants in  
293 sewage water. A total of 426 lineages were detected, representing 16 highly  
294 transmissible variants of SARS-CoV-2 (VOCs and VOIs). We found that the Delta  
295 lineage dominated in (B.1.617.2) November 2021 (68%) and December 2021 (61%);  
296 after that Kappa (10% and 18%), BA.3 (5% and 7%), BA.2 (3%), BA.1 (2% and 0.1%)  
297 and others (8%) (Fig.5).The Omicron family lineages increased exponentially from  
298 January 2022 onwards and fully replaced Delta lineage by February 2022. BA.2.X  
299 was the most dominant lineage (53.6% and 55%), followed by BA.1 (17% and 4%),  
300 BA.2 (2% and 12%), BA.2.12 (0% and 12%), BA.5 (1% and 9%) and Iota (3% and  
301 0.4%) respectively in January and February 2022. Finally, the linear-mixed effect  
302 model was employed to understand the lineage trend from November 2021 to April  
303 2022. The Omicron lineages (BA.1, BA.2, BA.4, and BA.5) showed an increasing  
304 trend, whereas the Delta lineage (B.1.617.2) showed a decreasing trend from  
305 November 2021 to February 2022(Fig. 6). **Fig.6:** Linear mixed model based monthly  
306 proportion of SARS-CoV-2 lineages/sub-lineages

### 307 **Discussion**

308 Wastewater surveillance provides information on the viral load of SARS-  
309 CoV-2 and the introduction of new variants (VOI/VOC) in the community (Johnson  
310 et al., 2022; Oloye et al., 2022). WBE can be highly prioritised in India, especially

311 with the emergence of new variants and limited COVID-19 testing. Our study  
312 demonstrates how genomic surveillance of sewage water from on-campus STP can be  
313 utilised for detection, monitoring, and evaluation of the spread of SARS-CoV-2,  
314 which effectively helps to take decisions for the protection against SARS-CoV-2 in  
315 academic institutes/universities as documented by Betancourt et al., 2021; Corchis-  
316 Scott et al., 2021; Gibas C et al., 2021; Kantor et al., 2022; Karthikeyan et al., 2021;  
317 Mangwana et al., 2022; Wang et al., 2022; and Vo et al., 2022 across the world.  
318 Several studies have revealed the detection of SARS-CoV-2 from wastewater in India  
319 (Arora et al., 2022; Dharmadhikari et al., 2022; Joshi et al., 2022). However, to the  
320 best of our knowledge, this is the first study from the country to use the WBE  
321 technique to prevent the spread of SARS-CoV-2 on an academic campus.

322 A higher viral load of SARS-CoV-2 is strongly linked to increased disease  
323 virulence, progression, and death rate (Fajnzylber et al., 2020; Kawasuji et al., 2022).  
324 Serosurveillance of COVID-19 in Pune city showed a rise in daily new cases from the  
325 last week of December, 2021 (Supplementary Fig.3). Whereas by the end of January,  
326 2022 the pick of daily active and new cases were observed, which decreased by the  
327 end of March, 2022 (<http://cms.unipune.ac.in/~bspujari/Covid19/Pune2/>). The trend  
328 of daily active and new cases reported in the serosurveillance complements the  
329 clinical case reported on campus. We observed an increase in the viral load of SARS-  
330 CoV-2 in sewage water prior to the first clinical case reported on campus. Recent  
331 studies from the USA (Al-Falsity et al., 2022; Karthikeyan et al., 2021; Wu et al.,  
332 2022), Mexico (Padilla-Reyes et al., 2022); Greece (Galani et al., 2022), England  
333 (Martin et al., 2020; Morvan et al., 2022), South Africa (Johnson et al., 2022), Brazil  
334 (de Araújo et al., 2022); Japan (Malla et al., 2022), and India (Joshi et al., 2022) also  
335 revealed similar results which are consistent with our findings. The strong link

336 between SARS-CoV-2 viral load in sewage water and reports of newly confirmed  
337 COVID-19 cases per day suggests that these infected people contribute substantial  
338 viral load to the sewage water (Hasan et al., 2021). These findings demonstrate  
339 WBE's early warning capability (Kirby et al., 2022; Lastra et al., 2022; Wang et al.,  
340 2022).

341 In most locations, the epidemic caused by the Omicron variant had a lower  
342 impact on health than previous COVID-19 waves due to increased herd immunity and  
343 possibly diminished nature of SARS-CoV-2 infections (Nealon and Cowling, 2022).  
344 Nyberg and colleagues also found that the Omicron variant is less severe than the  
345 Delta lineage of SARS-CoV-2 in terms of mortality and hospitalization (Nyberg et al.,  
346 2022; Post and Lorenzo-Redondo, 2022). Although the viral load was higher and  
347 continuously detected in the on-campus STP sewage water, the reported COVID-19-  
348 positive cases were low. The aforementioned higher viral load could be correlated  
349 with the incidence of several asymptomatic COVID-19-positive individuals on  
350 campus who did not test themselves for the underlying condition. Another attribute  
351 could be the overestimation of the number of COVID-19-positive cases. Therefore,  
352 our study supports using the WBE approach as a realistic indicator for monitoring  
353 SARS-CoV-2 and future outbreaks.

354 The qRT-PCR method has been established as a standard for assessing viral  
355 nucleic acid from patients and has also been used for environmental studies with its  
356 utility in WBE studies (Ahmed et al., 2022; Johnson et al., 2022). Initially,  
357 researchers depended on qRT-PCR and Sanger sequencing to establish the existence  
358 of viral fragments of SARS-CoV-2 in wastewater. WBE studies are founded on  
359 SARS-CoV-2 fecal shedding (Crank et al., 2022; Li et al., 2022); however, the fecal

360 matter would be vastly diluted by the addition of household sewage water and rain,  
361 establishing a probability framework for detecting viral fragments (Novoa et al., 2022;  
362 Wade et al., 2022). We detected SARS-CoV-2 in 100% of qRT-PCR negative  
363 samples, concluding that the amplicon sequencing protocol is much more sensitive in  
364 detecting the SARS-CoV-2 fragments in sewage water than qRT-PCR. Therefore, our  
365 study emphasizes the efforts of sequencing, irrespective of the qRT-PCR result, not  
366 only for viral detection but the monitoring of newly emerging variants, novel  
367 mutations, and evolutionary studies of SARS-CoV-2.

368 Variant tracking from wastewater cannot confirm the presence of a specific  
369 variant because COVID-19 genetic material in wastewater is often fragmented  
370 (Gregory et al., 2022; Wolfe et al., 2022); as a result, it poses a significant challenge  
371 to detect all characteristic mutations of a particular variant linked to a single genome.  
372 However, detecting multiple mutations associated with a variant or unique mutations  
373 absent in others increases the confidence of the presence of a specific variant in  
374 wastewater (Kirby et al., 2022; Zahmatkesh et al., 2022). Therefore, we also analyzed  
375 all the samples manually using the iVar SNP calling pipeline to gain in-depth insights  
376 into the mutation profile of low-sequenced samples. Surprisingly, we found Omicron  
377 signals in early November 2021, whereas Omicron was discovered for the first time in  
378 Botswana on November 11, 2021 (Rahmani and Rezaei, 2022). Later, WHO  
379 designated variant B.1.1529 as a VOC on November 26, 2021. India reported the first  
380 case of Omicron on December 02, 2021, in Karnataka state, followed by the first  
381 detection of Omicron in Maharashtra state on December 04, 2021. However, we  
382 detected several unique Omicron-associated mutations in our data in early November  
383 2021 (S:N679K, S:N764K, S:D796Y, N:P13L, ORF1a:T3255I, ORF1a:K856R,  
384 ORF1a:P3395H, N:S413R) which provides substantial evidence that Omicron variant



385 was likely present earlier on campus in India before it was first detected clinically  
386 across the globe. Similar reports from the USA and France also provide strong  
387 evidence for the presence of the Omicron variant in early November 2021 in  
388 community wastewater before the first detection from the clinical sample (Ferré et al.,  
389 2022; Kirby et al., 2022).

390 Wastewater testing captures contributions from all residents within a locality,  
391 which provides a less skewed outcome of viral genetic diversity and public health  
392 (Karthikeyan et al., 2021; Safford et al., 2022; Sims and Kasprzyk-Hordern, 2020).  
393 Clinical testing has limitations such as providing data only on those who agree to be  
394 tested, missing asymptomatic cases, resource allocation, and affordability concerns.  
395 We used LCS, a statistical model for estimating SARS-CoV-2 variants composition in  
396 pooled samples (Valieris et al., 2022). Our samples showed significant SARS-CoV-2  
397 lineage diversity across months, including lineages that were not reported from  
398 clinical samples, highlighting the discrepancies in clinical testing and sequencing. We  
399 identified the shift around January and February 2022, defined by a sharp rise of  
400 Omicron lineages (BA.1, BA.2, BA.3, BA.4, BA.5) and a decrease of previously  
401 dominant lineages (Delta and Kappa).

402 Furthermore, BA.4 and BA.5 signals were detected in January and February  
403 2022, two months earlier than their first report from a Telangana, India clinical  
404 sample in late March 2022. Hence, the emergence of variants in wastewater indicates  
405 that a sizeable number of people were infected with specific variants, contributing to  
406 the total viral load. One limitation of our study is the lack of sequencing data of  
407 clinically reported positive cases from campus, which could have aided in correlating  
408 with the emerging and prevailing variants of SARS-CoV-2 circulating on the campus.

409                   Throughout the surveillance period, we informed decision makers (COVID-  
410 19 task force) about SARS-CoV-2 detection in sewage water of campus-STP  
411 approximately 48 h after sample collection, which helped in policy-making decisions  
412 to alert the community on campus. Last, our work illustrates the utility of WBE for  
413 monitoring COVID-19 on campus, and similar settings could help manage SARS-  
414 CoV-2 and other future emerging pathogens of concern.

#### 415 **4. Conclusions**

416 This study concludes that the use of WBE at the community level would be an  
417 effective means of preventing SARS-CoV-2 outbreaks. An increase in viral load in  
418 the community detected early with the help qRT-PCR approach indicates its  
419 importance as an alarming feature of WBE. The amplicon sequencing protocol can be  
420 sensitive in detecting the fragments of SARS-CoV-2 in wastewater, which were failed  
421 to get caught in qRT-PCR. It can also be concluded that to provide comprehensive  
422 information about population infection dynamics; more emphasis should be on the  
423 amplicon sequencing-based approaches to gain information on the emerging variants.  
424 Overall, this work has shown that implementing real-time WBE on-campus and  
425 integrating it with the response system would effectively prevent and contain future  
426 outbreaks.

427 **Data availability:** All data produced in the present study are available upon  
428 reasonable request to the authors. Clinical COVID-19 data was used from CMS  
429 dashboard (<http://cms.unipune.ac.in/~bspujari/Covid19/Pune2/>)

#### 430 **Credit authorship contribution statement**

431 **Vinita Malik:** Conceptualization, Data curation, Formal analysis, Investigation,  
432 Methodology, Validation, Roles/Writing - original draft

- 433 **Vinay Rajput:** Data curation, Formal analysis, Investigation, Methodology, Software,  
434 Visualization, Roles/Writing - original draft
- 435 **Rinka Pramanik:** Investigation, Methodology, Visualization, Roles/Writing -  
436 original draft
- 437 **Rachel Samson:** Writing - review & editing
- 438 **Rakeshkumar Yadav:** Writing - review & editing
- 439 **Pradnya Kadam:** Methodology
- 440 **Nikita Shah:** Methodology
- 441 **Rutuja Sawant:** Methodology
- 442 **Unnati Bhalerao:** Methodology
- 443 **Manisha Tupekar:** Methodology
- 444 **Soumen Khan:** Methodology
- 445 **Priyanki Shah:** Funding acquisition, Project administration, Supervision
- 446 **LS Shashidhara:** Funding acquisition, Project administration, Supervision
- 447 **Sanjay Kamble:** Investigation, Formal analysis
- 448 **Syed Dastager:** Investigation, Formal analysis
- 449 **Krishanpal Karmodiya:** Formal analysis
- 450 **Mahesh Dharne:** Conceptualization, Funding acquisition, Investigation, Project  
451 administration, Resources, Supervision, Writing - review & editing.
- 452 **Declaration of competing interest:** The authors declare that they have no known  
453 competing financial interests or personal relationships that could have appeared to  
454 influence the work reported in this paper.

455

456 **Acknowledgments**

457 This work is funded by a grant from Rockefeller Foundation, USA (Project code GAP  
458 332926). The authors express their gratitude to the Director General, Council of  
459 Scientific and Industrial Research (CSIR), New Delhi; Directors of CSIR-NCL,,  
460 IISER-Pune and Pune Knowledge Cluster, for encouragement and support. Authors  
461 are indebted to Prof. Aurnab Ghose (IISER-Pune for grant administration support and  
462 discussions). Thanks to Dr. Narendra Kadoo (Chair, NCL Covid task force) and Dr.  
463 Chetan Gadgil (CSIR-NCL) for their valuable suggestions. Thanks to the  
464 Administrative office for providing on-campus case records and the Engineering and  
465 Civil services section of CSIR-NCL for all the support during study. The manuscript  
466 has been thoroughly checked for plagiarism content using iThenticate software.

467

468 **References**

469 Ahmed, W., Angel, N., Edson, J., Bibby, K., Bivins, A., O'Brien, J.W., Choi, P.M.,  
470 Kitajima, M., Simpson, S.L., Li, J., 2020. First confirmed detection of SARS-  
471 CoV-2 in untreated wastewater in Australia: a proof of concept for the  
472 wastewater surveillance of COVID-19 in the community. *Science of the Total*  
473 *Environment* 728, 138764.  
474 Ahmed, W., Smith, W.J.M., Metcalfe, S., Jackson, G., Choi, P.M., Morrison, M.,  
475 Field, D., Gyawali, P., Bivins, A., Bibby, K., 2022. Comparison of RT-qPCR  
476 and RT-dPCR platforms for the trace detection of SARS-CoV-2 RNA in  
477 wastewater. *ACS ES&T Water*.

- 478 Ahmed, W., Tschärke, B., Bertsch, P.M., Bibby, K., Bivins, A., Choi, P., Clarke, L.,  
479 Dwyer, J., Edson, J., Nguyen, T.M.H., 2021. SARS-CoV-2 RNA monitoring in  
480 wastewater as a potential early warning system for COVID-19 transmission in  
481 the community: A temporal case study. *Science of The Total Environment* 761,  
482 144216.
- 483 Al-Faliti, M., Kotlarz, N., McCall, C., Harris, A.R., Smith, A.L., Stadler, L.B., de los  
484 Reyes, F.L.I.I.I., Delgado Vela, J., 2022. Comparing Rates of Change in SARS-  
485 CoV-2 Wastewater Load and Clinical Cases in 19 Sewersheds Across Four  
486 Major Metropolitan Areas in the United States. *ACS ES&T Water*.  
487 <https://doi.org/10.1021/acsestwater.2c00106>
- 488 Amman, F., Markt, R., Endler, L., Hupfau, S., Agerer, B., Schedl, A., Richter, L.,  
489 Zechmeister, M., Bicher, M., Heiler, G., 2022. Viral variant-resolved wastewater  
490 surveillance of SARS-CoV-2 at national scale. *Nat Biotechnol* 1–9.
- 491 Bar-Or, I., Weil, M., Indenbaum, V., Bucris, E., Bar-Ilan, D., Elul, M., Levi, N.,  
492 Aguvaev, I., Cohen, Z., Shirazi, R., 2021. Detection of SARS-CoV-2 variants by  
493 genomic analysis of wastewater samples in Israel. *Science of The Total*  
494 *Environment* 789, 148002.
- 495 Chen, R.E., Zhang, X., Case, J.B., Winkler, E.S., Liu, Y., VanBlargan, L.A., Liu, J.,  
496 Errico, J.M., Xie, X., Suryadevara, N., 2021. Resistance of SARS-CoV-2  
497 variants to neutralization by monoclonal and serum-derived polyclonal  
498 antibodies. *Nat Med* 27, 717–726.
- 499 Chen, S., Zhou, Y., Chen, Y., Gu, J., 2018. fastp: an ultra-fast all-in-one FASTQ  
500 preprocessor. *Bioinformatics* 34, i884–i890.

- 501 Clark, A.E., Wang, Z., Cantarel, B., Kanchwala, M., Xing, C., Chen, L., Irwin, P., Xu,  
502 Y., Oliver, D., Lee, F., 2021. Multiplex fragment analysis identifies SARS-CoV-  
503 2 variants. MedRxiv.
- 504 Crank, K., Chen, W., Bivins, A., Lowry, S., Bibby, K., 2022. Contribution of SARS-  
505 CoV-2 RNA shedding routes to RNA loads in wastewater. Science of The Total  
506 Environment 806, 150376.
- 507 Crits-Christoph, A., Kantor, R.S., Olm, M.R., Whitney, O.N., Al-Shayeb, B., Lou,  
508 Y.C., Flamholz, A., Kennedy, L.C., Greenwald, H., Hinkle, A., 2021. Genome  
509 sequencing of sewage detects regionally prevalent SARS-CoV-2 variants. mBio  
510 12, e02703-20.
- 511 de Araújo, J.C., Mota, V.T., Teodoro, A., Leal, C., Leroy, D., Madeira, C., Machado,  
512 E.C., Dias, M.F., Souza, C.C., Coelho, G., Bressani, T., Morandi, T., Freitas,  
513 G.T.O., Duarte, A., Perdigão, C., Tröger, F., Ayrimoraes, S., de Melo, M.C.,  
514 Laguardia, F., Reis, M.T.P., Mota, C., Chernicharo, C.A.L., 2022. Long-term  
515 monitoring of SARS-CoV-2 RNA in sewage samples from specific public places  
516 and STPs to track COVID-19 spread and identify potential hotspots. Science of  
517 The Total Environment 838, 155959.  
518 <https://doi.org/https://doi.org/10.1016/j.scitotenv.2022.155959>
- 519 Dejnirattisai, W., Huo, J., Zhou, D., Zahradník, J., Supasa, P., Liu, C., Duyvesteyn,  
520 H.M.E., Ginn, H.M., Mentzer, A.J., Tuekprakhon, A., 2022. SARS-CoV-2  
521 Omicron-B. 1.1. 529 leads to widespread escape from neutralizing antibody  
522 responses. Cell 185, 467–484.
- 523 Dharmadhikari, T., Rajput, V., Yadav, R., Boargaonkar, R., Patil, D., Kale, S.,  
524 Kamble, S.P., Dastager, S.G., Dharne, M.S., 2022. High throughput sequencing

525 based direct detection of SARS-CoV-2 fragments in wastewater of Pune, West  
526 India. *Science of The Total Environment* 807, 151038.

527 Duong, D.B., King, A.J., Grépin, K.A., Hsu, L.Y., Lim, J.F.Y., Phillips, C., Thai, T.T.,  
528 Venkatachalam, I., Vogt, F., Yam, E.L.Y., 2022. Strengthening national  
529 capacities for pandemic preparedness: a cross-country analysis of COVID-19  
530 cases and deaths. *Health Policy Plan* 37, 55–64.

531 Fajnzylber, J., Regan, J., Coxen, K., Corry, H., Wong, C., Rosenthal, A., Worrall, D.,  
532 Giguel, F., Piechocka-Trocha, A., Atyeo, C., 2020. SARS-CoV-2 viral load is  
533 associated with increased disease severity and mortality. *Nat Commun* 11, 1–9.

534 Galani, A., Aalizadeh, R., Kostakis, M., Markou, A., Alygizakis, N., Lytras, T.,  
535 Adamopoulos, P.G., Peccia, J., Thompson, D.C., Kontou, A., 2022. SARS-CoV-  
536 2 wastewater surveillance data can predict hospitalizations and ICU admissions.  
537 *Science of The Total Environment* 804, 150151.

538 Gregory, D.A., Trujillo, M., Rushford, C., Flury, A., Kannoly, S., San, K.M., Lyfoung,  
539 D., Wiseman, R.W., Bromert, K., Zhou, M.-Y., 2022. Genetic Diversity and  
540 Evolutionary Convergence of Cryptic SARS-CoV-2 Lineages Detected Via  
541 Wastewater Sequencing. medRxiv.

542 Grimaldi, A., Panariello, F., Annunziata, P., Giuliano, T., Daniele, M., Pierri, B.,  
543 Colantuono, C., Salvi, M., Bouché, V., Manfredi, A., 2022. Improved SARS-  
544 CoV-2 sequencing surveillance allows the identification of new variants and  
545 signatures in infected patients. *Genome Med* 14, 1–15.

546 Grubaugh, N.D., Gangavarapu, K., Quick, J., Matteson, N.L., de Jesus, J.G., Main,  
547 B.J., Tan, A.L., Paul, L.M., Brackney, D.E., Grewal, S., 2019. An amplicon-  
548 based sequencing framework for accurately measuring intrahost virus diversity  
549 using PrimalSeq and iVar. *Genome Biol* 20, 1–19.

- 550 He, X., Hong, W., Pan, X., Lu, G., Wei, X., 2021. SARS-CoV-2 Omicron variant:  
551 characteristics and prevention. *MedComm (Beijing)* 2, 838–845.
- 552 Hillary, L.S., Malham, S.K., McDonald, J.E., Jones, D.L., 2020. Wastewater and  
553 public health: the potential of wastewater surveillance for monitoring COVID-19.  
554 *Curr Opin Environ Sci Health* 17, 14–20.
- 555 Izquierdo-Lara, R., Elsinga, G., Heijnen, L., Munnink, B.B.O., Schapendonk, C.M.E.,  
556 Nieuwenhuijse, D., Kon, M., Lu, L., Aarestrup, F.M., Lycett, S., 2021.  
557 Monitoring SARS-CoV-2 circulation and diversity through community  
558 wastewater sequencing, the Netherlands and Belgium. *Emerg Infect Dis* 27, 1405.
- 559 Jha, P., Deshmukh, Y., Tumbe, C., Suraweera, W., Bhowmick, A., Sharma, S.,  
560 Novosad, P., Fu, S.H., Newcombe, L., Gelband, H., 2022. COVID mortality in  
561 India: National survey data and health facility deaths. *Science* (1979) 375, 667–  
562 671.
- 563 Johnson, R., Sharma, J.R., Ramharack, P., Mangwana, N., Kinnear, C., Viraragavan,  
564 A., Glanzmann, B., Louw, J., Abdelatif, N., Reddy, T., 2022. Tracking the  
565 circulating SARS-CoV-2 variant of concern in South Africa using wastewater-  
566 based epidemiology. *Sci Rep* 12, 1–12.
- 567 Joshi, M., Kumar, M., Srivastava, V., Kumar, D., Rathore, D.S., Pandit, R., Graham,  
568 D.W., Joshi, C.G., 2022. Genetic sequencing detected the SARS-CoV-2 delta  
569 variant in wastewater a month prior to the first COVID-19 case in Ahmedabad  
570 (India). *Environmental Pollution* 310, 119757.
- 571 Karthikeyan, S., Nguyen, A., McDonald, D., Zong, Y., Ronquillo, N., Ren, J., Zou, J.,  
572 Farmer, S., Humphrey, G., Henderson, D., 2021. Rapid, large-scale wastewater  
573 surveillance and automated reporting system enable early detection of nearly 85%  
574 of COVID-19 cases on a university campus. *mSystems* 6, e00793-21.



- 575   Kawasuji, H., Morinaga, Y., Tani, H., Yoshida, Y., Takegoshi, Y., Kaneda, M., Murai,  
576    Y., Kimoto, K., Ueno, A., Miyajima, Y., 2022. SARS-CoV-2 RNAemia with a  
577    higher nasopharyngeal viral load is strongly associated with disease severity and  
578    mortality in patients with COVID-19. *J Med Virol* 94, 147–153.
- 579   Kirby, A.E., Welsh, R.M., Marsh, Z.A., Alexander, T.Y., Vugia, D.J., Boehm, A.B.,  
580    Wolfe, M.K., White, B.J., Matzinger, S.R., Wheeler, A., 2022. Notes from the  
581    field: early evidence of the SARS-CoV-2 B. 1.1. 529 (Omicron) variant in  
582    community wastewater—United States, November–December 2021. *Morbidity  
583    and Mortality Weekly Report* 71, 103.
- 584   Lastra, A., Botello, J., Pinilla, A., Urrutia, J.I., Canora, J., Sánchez, J., Fernández, P.,  
585    Candel, F.J., Zapatero, A., Ortega, M., 2022. SARS-CoV-2 detection in  
586    wastewater as an early warning indicator for COVID-19 pandemic. Madrid  
587    region case study. *Environ Res* 203, 111852.
- 588   Li, H., Durbin, R., 2009. Fast and accurate short read alignment with Burrows–  
589    Wheeler transform. *bioinformatics* 25, 1754–1760.
- 590   Li, H., Handsaker, B., Wysoker, A., Fennell, T., Ruan, J., Homer, N., Marth, G.,  
591    Abecasis, G., Durbin, R., 2009. The sequence alignment/map format and  
592    SAMtools. *Bioinformatics* 25, 2078–2079.
- 593   Li, X., Kulandaivelu, J., Guo, Y., Zhang, S., Shi, J., O’Brien, J., Arora, S., Kumar, M.,  
594    Sherchan, S.P., Honda, R., 2022. SARS-CoV-2 shedding sources in wastewater  
595    and implications for wastewater-based epidemiology. *J Hazard Mater* 432,  
596    128667.
- 597   Malla, B., Thakali, O., Shrestha, S., Segawa, T., Kitajima, M., Haramoto, E., 2022.  
598    Application of a high-throughput quantitative PCR system for simultaneous

599 monitoring of SARS-CoV-2 variants and other pathogenic viruses in wastewater.  
600 Science of the Total Environment 853, 158659.

601 Mangwana, N., Archer, E., Muller, C.J.F., Preiser, W., Wolfaardt, G., Kasprzyk-  
602 Hordern, B., Carstens, A., Brocker, L., Webster, C., McCarthy, D., 2022.  
603 Sewage surveillance of SARS-CoV-2 at student campus residences in the  
604 Western Cape, South Africa. Science of The Total Environment 851, 158028.

605 Markt, R., Endler, L., Amman, F., Schedl, A., Penz, T., Büchel-Marxer, M.,  
606 Grünbacher, D., Mayr, M., Peer, E., Pedrazzini, M., 2022. Detection and  
607 abundance of SARS-CoV-2 in wastewater in Liechtenstein, and the estimation of  
608 prevalence and impact of the B. 1.1. 7 variant. J Water Health 20, 114–125.

609 Martin, J., Klapsa, D., Wilton, T., Zambon, M., Bentley, E., Bujaki, E., Fritzsche, M.,  
610 Mate, R., Majumdar, M., 2020. Tracking SARS-CoV-2 in sewage: evidence of  
611 changes in virus variant predominance during COVID-19 pandemic. Viruses 12,  
612 1144.

613 Mizumoto, K., Kagaya, K., Zarebski, A., Chowell, G., 2020. Estimating the  
614 asymptomatic proportion of coronavirus disease 2019 (COVID-19) cases on  
615 board the Diamond Princess cruise ship, Yokohama, Japan, 2020.  
616 Eurosurveillance 25, 2000180.

617 Morvan, M., Lojacom, A., Souque, C., Wade, M., Hoffmann, T., Pouwels, K.,  
618 Singer, A., Bunce, J., Engeli, A., Grimsley, J., 2022. Estimating SARS-CoV-2  
619 prevalence from large-scale wastewater surveillance: insights from combined  
620 analysis of 44 sites in England. International Journal of Infectious Diseases 116,  
621 S24.

622 Nealon, J., Cowling, B.J., 2022. Omicron severity: milder but not mild. Lancet 399,  
623 412.

- 624 Nishiura, H., Kobayashi, T., Miyama, T., Suzuki, A., Jung, S., Hayashi, K., Kinoshita,  
625 R., Yang, Y., Yuan, B., Akhmetzhanov, A.R., 2020. Estimation of the  
626 asymptomatic ratio of novel coronavirus infections (COVID-19). *International*  
627 *journal of infectious diseases* 94, 154–155.
- 628 Novoa, B., Ríos-Castro, R., Otero-Muras, I., Gouveia, S., Cabo, A., Saco, A., Rey-  
629 Campos, M., Pájaro, M., Fajar, N., Aranguren, R., 2022. Wastewater and marine  
630 bioindicators surveillance to anticipate COVID-19 prevalence and to explore  
631 SARS-CoV-2 diversity by next generation sequencing: One-year study. *Science*  
632 *of the Total Environment* 833, 155140.
- 633 Nyberg, T., Ferguson, N.M., Nash, S.G., Webster, H.H., Flaxman, S., Andrews, N.,  
634 Hinsley, W., Bernal, J.L., Kall, M., Bhatt, S., 2022. Comparative analysis of the  
635 risks of hospitalisation and death associated with SARS-CoV-2 omicron (B. 1.1.  
636 529) and delta (B. 1.617. 2) variants in England: a cohort study. *The Lancet* 399,  
637 1303–1312.
- 638 Padilla-Reyes, D.A., Álvarez, M.M., Mora, A., Cervantes-Avilés, P.A., Kumar, M.,  
639 Loge, F.J., Mahlkecht, J., 2022. Acquired insights from the long-term  
640 surveillance of SARS-CoV-2 RNA for COVID-19 monitoring: The case of  
641 Monterrey Metropolitan Area (Mexico). *Environ Res* 210, 112967.  
642 <https://doi.org/https://doi.org/10.1016/j.envres.2022.112967>
- 643 Pérez-Cataluña, A., Chiner-Oms, Á., Cuevas-Ferrando, E., Díaz-Reolid, A., Falcó, I.,  
644 Randazzo, W., Girón-Guzmán, I., Allende, A., Bracho, M.A., Comas, I., 2022.  
645 Spatial and temporal distribution of SARS-CoV-2 diversity circulating in  
646 wastewater. *Water Res* 211, 118007.
- 647 Post, L.A., Lorenzo-Redondo, R., 2022. Omicron: fewer adverse outcomes come with  
648 new dangers. *The Lancet* 399, 1280–1281.

- 649 Quinlan, A.R., Hall, I.M., 2010. BEDTools: a flexible suite of utilities for comparing  
650 genomic features. *Bioinformatics* 26, 841–842.  
651 <https://doi.org/10.1093/bioinformatics/btq033>
- 652 Rahmani, S., Rezaei, N., 2022. SARS-CoV-2 Omicron (B. 1.1. 529) Variant: No  
653 Time to Wait! *Acta Bio Medica: Atenei Parmensis* 93.
- 654 Randazzo, W., Cuevas-Ferrando, E., Sanjuán, R., Domingo-Calap, P., Sánchez, G.,  
655 2020. Metropolitan wastewater analysis for COVID-19 epidemiological  
656 surveillance. *Int J Hyg Environ Health* 230, 113621.
- 657 Safford, H.R., Shapiro, K., Bischel, H.N., 2022. Wastewater analysis can be a  
658 powerful public health tool—if it’s done sensibly. *Proceedings of the National  
659 Academy of Sciences* 119, e2119600119.
- 660 Scott, L.C., Aubee, A., Babahaji, L., Vigil, K., Tims, S., Aw, T.G., 2021. Targeted  
661 wastewater surveillance of SARS-CoV-2 on a university campus for COVID-19  
662 outbreak detection and mitigation. *Environ Res* 200, 111374.
- 663 Sherchan, S.P., Shahin, S., Ward, L.M., Tandukar, S., Aw, T.G., Schmitz, B., Ahmed,  
664 W., Kitajima, M., 2020. First detection of SARS-CoV-2 RNA in wastewater in  
665 North America: a study in Louisiana, USA. *Science of The Total Environment*  
666 743, 140621.
- 667 Sims, N., Kasprzyk-Hordern, B., 2020. Future perspectives of wastewater-based  
668 epidemiology: monitoring infectious disease spread and resistance to the  
669 community level. *Environ Int* 139, 105689.
- 670 Tada, T., Zhou, H., Dcosta, B.M., Samanovic, M.I., Chivukula, V., Herati, R.S.,  
671 Hubbard, S.R., Mulligan, M.J., Landau, N.R., 2022. Increased resistance of  
672 SARS-CoV-2 Omicron variant to neutralization by vaccine-elicited and  
673 therapeutic antibodies. *EBioMedicine* 78, 103944.

- 674 Treibel, T.A., Manisty, C., Burton, M., McKnight, Á., Lambourne, J., Augusto, J.B.,  
675 Couto-Parada, X., Cutino-Moguel, T., Noursadeghi, M., Moon, J.C., 2020.  
676 COVID-19: PCR screening of asymptomatic health-care workers at London  
677 hospital. *The Lancet* 395, 1608–1610.
- 678 Tyson, J.R., James, P., Stoddart, D., Sparks, N., Wickenhagen, A., Hall, G., Choi, J.H.,  
679 Lapointe, H., Kamelian, K., Smith, A.D., 2020. Improvements to the ARTIC  
680 multiplex PCR method for SARS-CoV-2 genome sequencing using nanopore.  
681 *BioRxiv*.
- 682 Valieris, R., Drummond, R.D., Defelicibus, A., Dias-Neto, E., Rosales, R.A., Tojal da  
683 Silva, I., 2022. A mixture model for determining SARS-Cov-2 variant  
684 composition in pooled samples. *Bioinformatics* 38, 1809–1815.
- 685 Vo, V., Tillett, R.L., Chang, C.-L., Gerrity, D., Betancourt, W.Q., Oh, E.C., 2022.  
686 SARS-CoV-2 variant detection at a university dormitory using wastewater  
687 genomic tools. *Science of The Total Environment* 805, 149930.
- 688 Vogels, C.B.F., Breban, M.I., Ott, I.M., Alpert, T., Petrone, M.E., Watkins, A.E.,  
689 Kalinich, C.C., Earnest, R., Rothman, J.E., Goes de Jesus, J., 2021. Multiplex  
690 qPCR discriminates variants of concern to enhance global surveillance of SARS-  
691 CoV-2. *PLoS Biol* 19, e3001236.
- 692 Wade, M.J., Jacomo, A. lo, Armenise, E., Brown, M.R., Bunce, J.T., Cameron, G.J.,  
693 Fang, Z., Gilpin, D.F., Graham, D.W., Grimsley, J.M.S., 2022. Understanding  
694 and managing uncertainty and variability for wastewater monitoring beyond the  
695 pandemic: Lessons learned from the United Kingdom national COVID-19  
696 surveillance programmes. *J Hazard Mater* 424, 127456.

- 697 Wan, Y., Shang, J., Graham, R., Baric, R.S., Li, F., 2020. Receptor recognition by the  
698 novel coronavirus from Wuhan: an analysis based on decade-long structural  
699 studies of SARS coronavirus. *J Virol* 94, e00127-20.
- 700 Wang, H., Miller, J.A., Verghese, M., Sibai, M., Solis, D., Mfuh, K.O., Jiang, B., Iwai,  
701 N., Mar, M., Huang, C., 2021. Multiplex SARS-CoV-2 genotyping PCR for  
702 population-level variant screening and epidemiologic surveillance. medRxiv.
- 703 Wang, Y., Liu, P., Zhang, H., Ibaraki, M., VanTassell, J., Geith, K., Cavallo, M.,  
704 Kann, R., Saber, L., Kraft, C.S., 2022. Early warning of a COVID-19 surge on a  
705 university campus based on wastewater surveillance for SARS-CoV-2 at  
706 residence halls. *Science of The Total Environment* 821, 153291.
- 707 Wilhelm, A., Widera, M., Grikscheit, K., Toptan, T., Schenk, B., Pallas, C., Metzler,  
708 M., Kohmer, N., Hoehl, S., Helfritz, F.A., 2021. Reduced neutralization of  
709 SARS-CoV-2 Omicron variant by vaccine sera and monoclonal antibodies.  
710 MedRxiv.
- 711 Wolfe, M., Hughes, B., Duong, D., Chan-Herur, V., Wigginton, K.R., White, B.J.,  
712 Boehm, A.B., 2022. Detection of SARS-CoV-2 Variants Mu, Beta, Gamma,  
713 Lambda, Delta, Alpha, and Omicron in Wastewater Settled Solids Using  
714 Mutation-Specific Assays Is Associated with Regional Detection of Variants in  
715 Clinical Samples. *Appl Environ Microbiol* 88, e00045-22.
- 716 Wölfel, R., Corman, V.M., Guggemos, W., Seilmaier, M., Zange, S., Müller, M.A.,  
717 Niemeyer, D., Jones, T.C., Vollmar, P., Rothe, C., 2020. Author Correction:  
718 Virological assessment of hospitalized patients with COVID-2019. *Nature* 588,  
719 E35–E35.
- 720 Wolter, N., Jassat, W., Walaza, S., Welch, R., Moultrie, H., Groome, M., Amoako,  
721 D.G., Everatt, J., Bhiman, J.N., Scheepers, C., 2022. Early assessment of the

722 clinical severity of the SARS-CoV-2 omicron variant in South Africa: a data  
723 linkage study. *The Lancet* 399, 437–446.

724 Wu, F., Xiao, A., Zhang, J., Moniz, K., Endo, N., Armas, F., Bonneau, R., Brown,  
725 M.A., Bushman, M., Chai, P.R., 2022. SARS-CoV-2 RNA concentrations in  
726 wastewater foreshadow dynamics and clinical presentation of new COVID-19  
727 cases. *Science of The Total Environment* 805, 150121.

728 Wurtz, N., Penant, G., Jardot, P., Duclos, N., la Scola, B., 2021. Culture of SARS-  
729 CoV-2 in a panel of laboratory cell lines, permissivity, and differences in growth  
730 profile. *European Journal of Clinical Microbiology & Infectious Diseases* 40,  
731 477–484.

732 Xagorarakis, I., O’Brien, E., 2020. Wastewater-based epidemiology for early detection  
733 of viral outbreaks, in: *Women in Water Quality*. Springer, pp. 75–97.

734 Zahmatkesh, S., Sillanpaa, M., Rezakhani, Y., Wang, C., 2022. Review of Concerned  
735 SARS-CoV-2 Variants Like Alpha (B. 1.1. 7), Beta (B. 1.351), Gamma (P. 1),  
736 Delta (B. 1.617. 2), and Omicron (B. 1.1. 529), as well as Novel Methods for  
737 Reducing and Inactivating SARS-CoV-2 Mutants in Wastewater Treatment  
738 Facilities. *Journal of Hazardous Materials Advances* 100140.

739 Zhu, N., Zhang, D., Wang, W., Li, X., Yang, B., Song, J., Zhao, X., Huang, B., Shi,  
740 W., Lu, R., 2020. A novel coronavirus from patients with pneumonia in China,  
741 2019. *New England journal of medicine*.

742

743

744 **Fig.1:** Sampling site-campus STP (18°32'31.2"N; 73°48'43.2"E)

745 **Fig.2:** Analysis of SARS-CoV-2 viral load in WW against reported COVID-19 cases  
746 on campus. **A.** SARS-CoV-2 viral load dynamics in sewage water and reported  
747 COVID-19 cases on campus. **B.** Linear regression correlation plot of viral  
748 concentration in wastewater with reported COVID-19 cases on-campus. (Pearson  
749 correlation coefficient:  $R^2 = 0.68$ ,  $p\text{-value} > 7.9e^{-11}$ ). **C.** Linear regression correlation  
750 plot of viral concentration in wastewater with genome coverage (Pearson correlation  
751 coefficient:  $R^2 = 0.18$ ,  $p\text{-value} > 0.003$ )

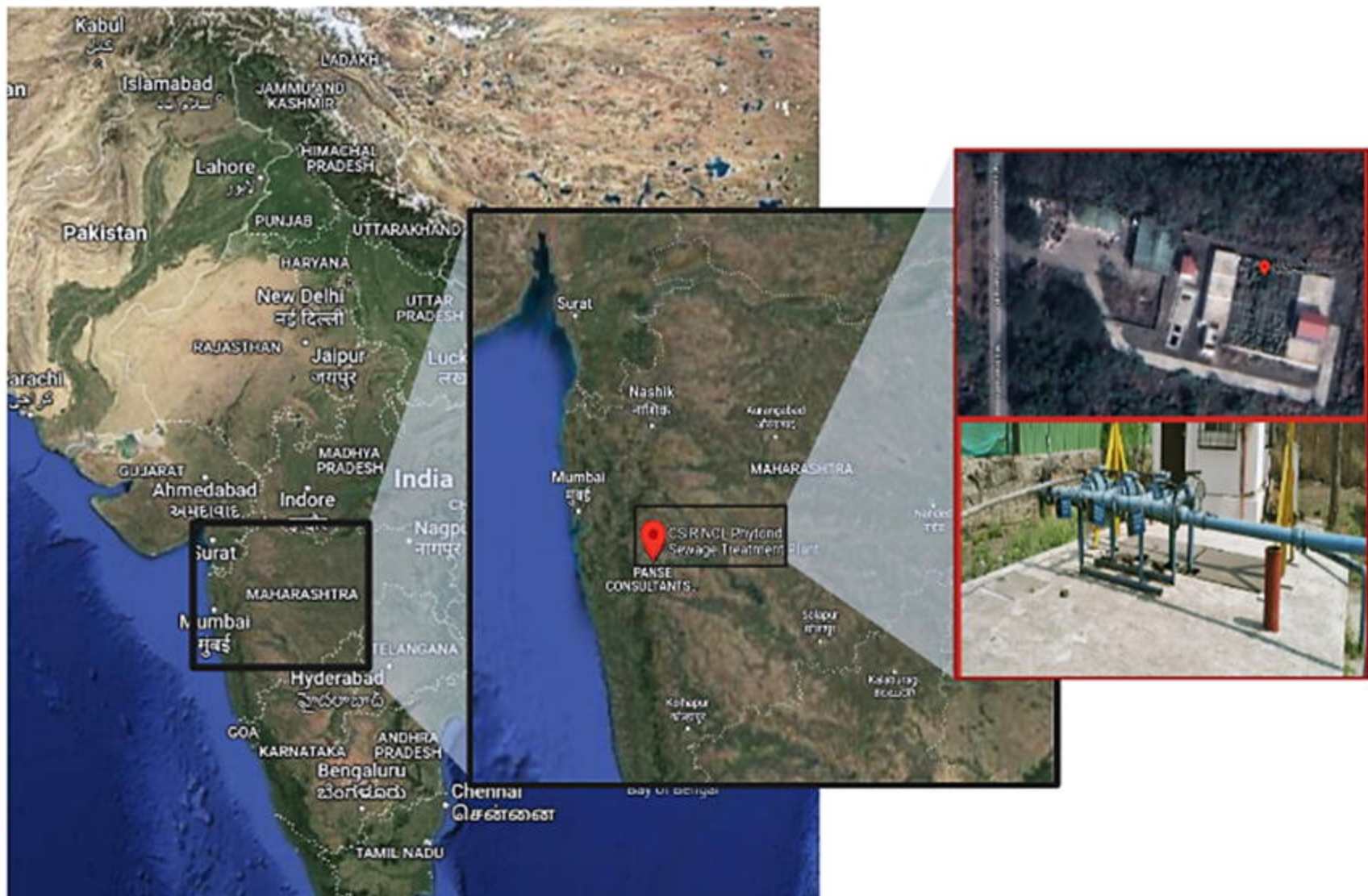
752 **Fig. 3:** Distribution of the number of reads mapped to the SARS-CoV-2 reference  
753 genome per sample (MN908947.3)

754 **Fig. 4:** Detection of transition between SARS-CoV-2 VOC Delta and Omicron by  
755 sewage water genomic surveillance.

756 **Fig. 5:** LCS analysis-based distribution of different lineages/sub-lineages of SARS-  
757 CoV-2. **A.** Relative abundance in the percentage of the identified SARS-CoV-2  
758 lineages/sub-lineages. **B.** Proportion of SARS-CoV-2 lineages from November 2021-  
759 February, 2022.

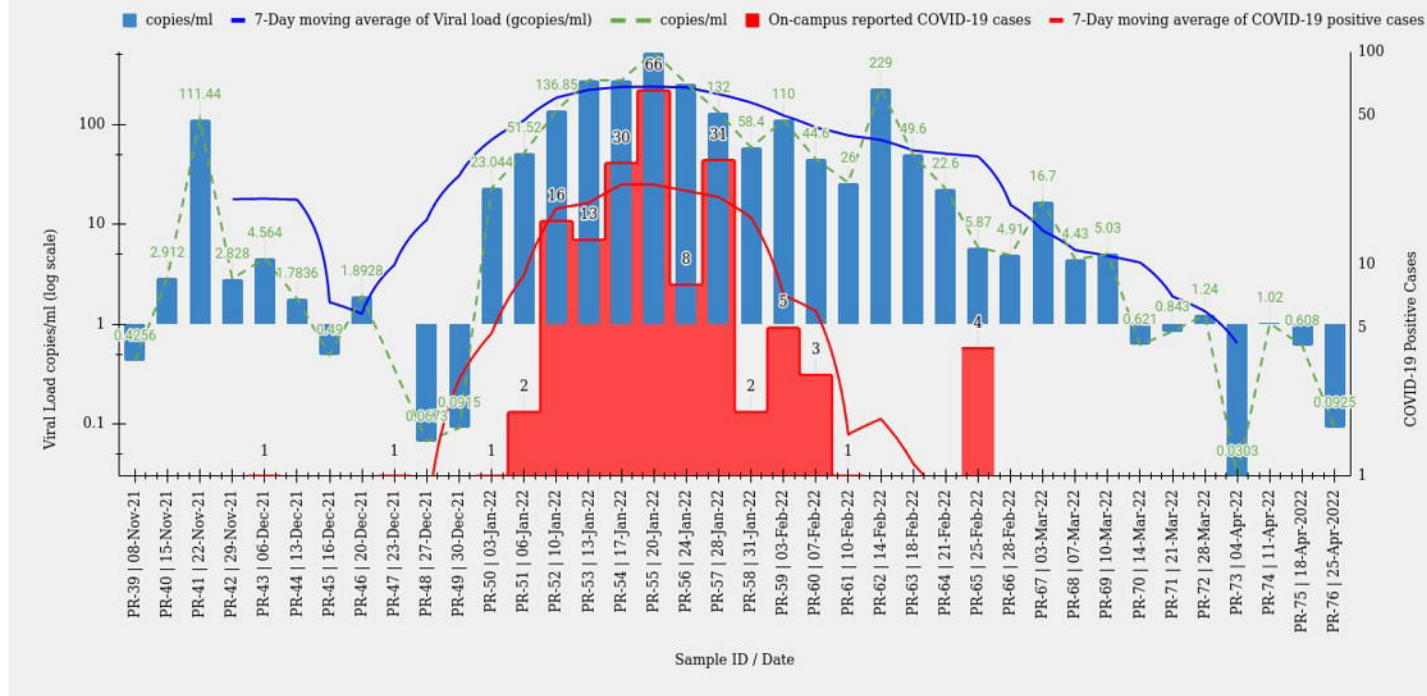
760 **Fig.6:** Linear mixed model based monthly proportion of SARS-CoV-2 lineages/sub-  
761 lineages



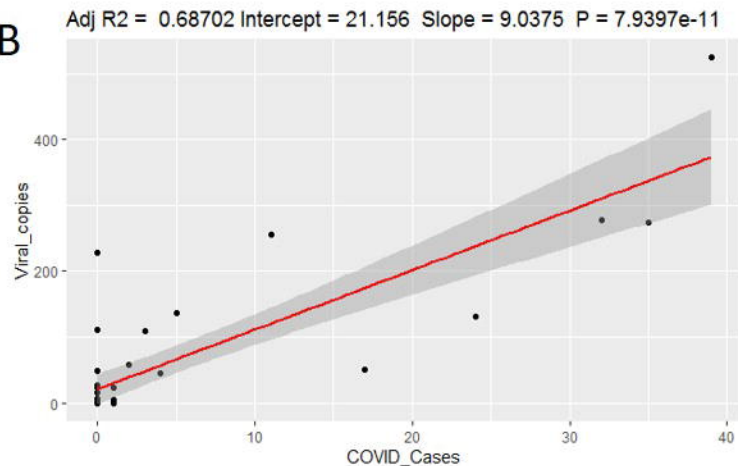


**Fig.1: Sampling site-campus STP (18°32'31.2"N 73°48'43.2"E)**

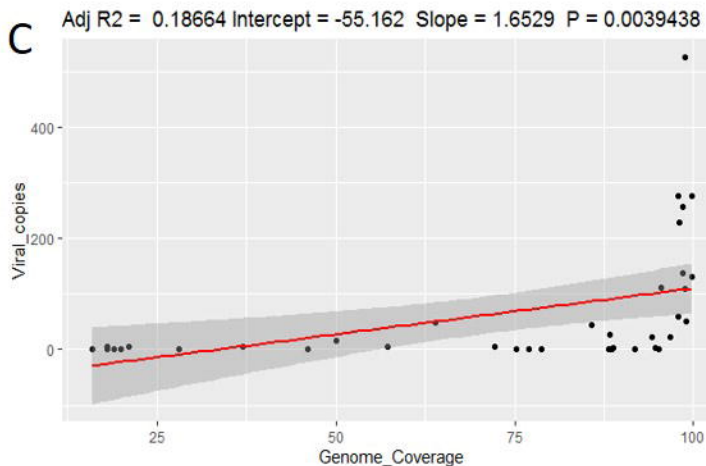
A



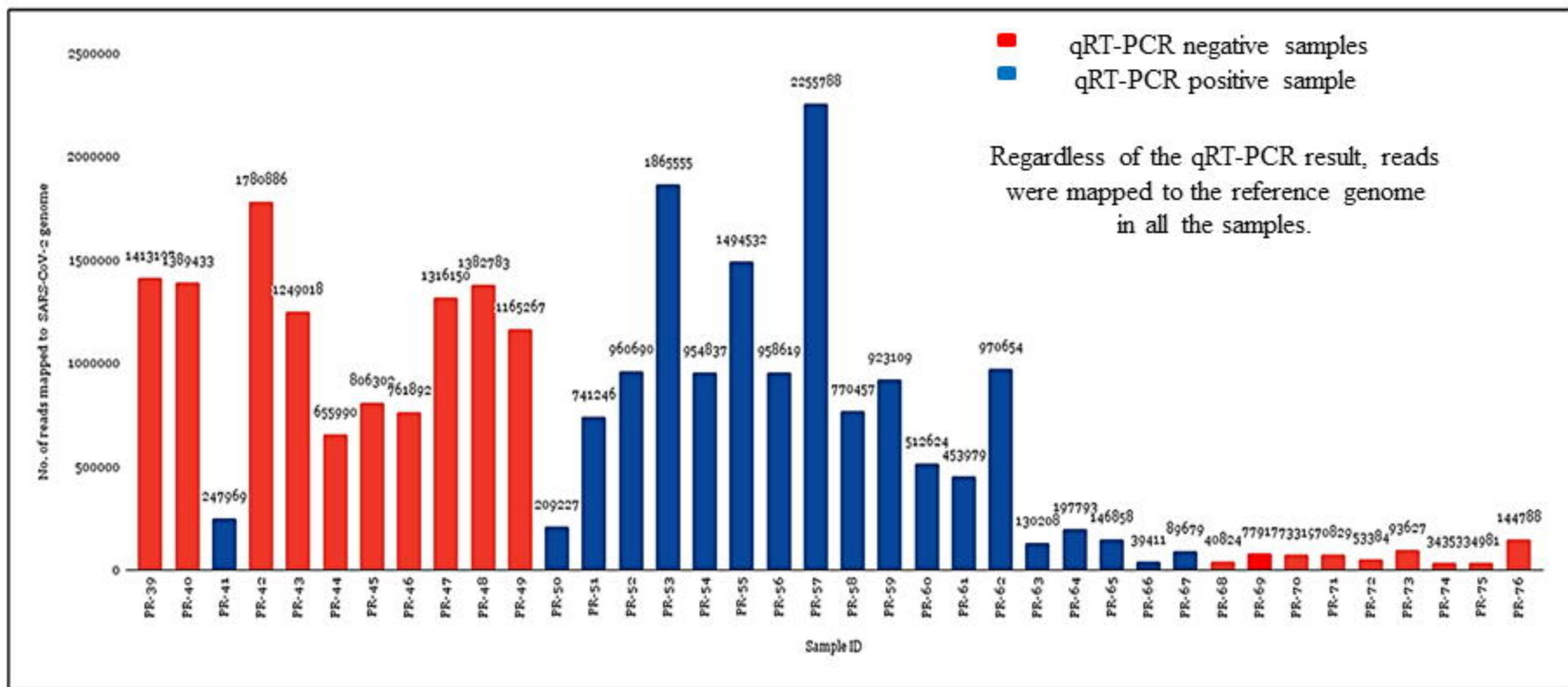
B



C

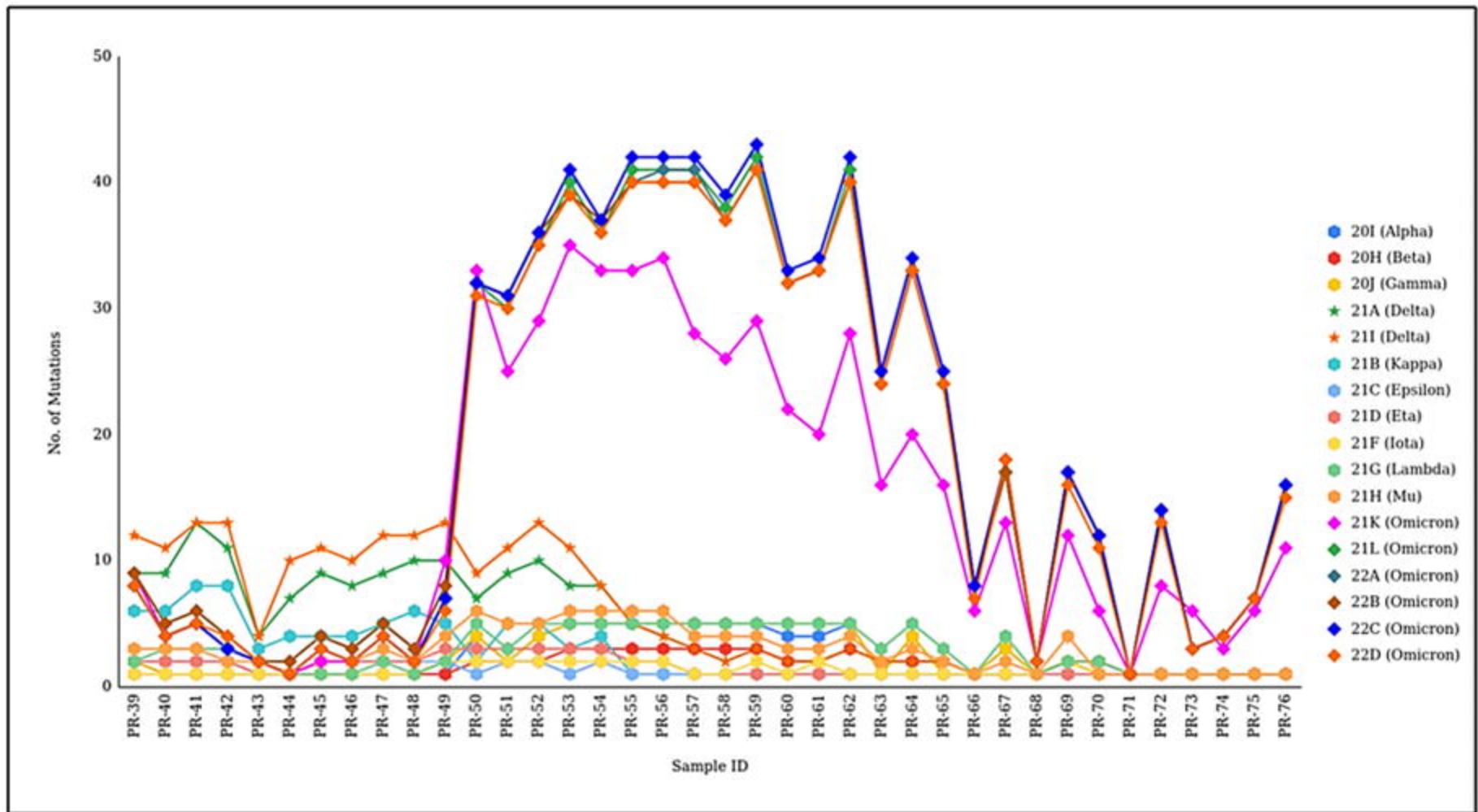


**Fig.2** Analysis of SARS-CoV-2 viral load in WW against reported COVID-19 cases on campus. **A.** SARS-CoV-2 viral load dynamics in sewage water and reported COVID-19 cases on campus. **B.** Linear regression correlation plot of viral concentration in wastewater with reported COVID-19 cases on-campus. (Pearson correlation coefficient:  $R^2 = 0.68$ ,  $p$ -value  $> 7.9e-11$ ). **C.** Linear regression correlation plot of viral concentration in wastewater with genome coverage (Pearson correlation coefficient:  $R^2 = 0.18$ ,  $p$ -value  $> 0.003$ )



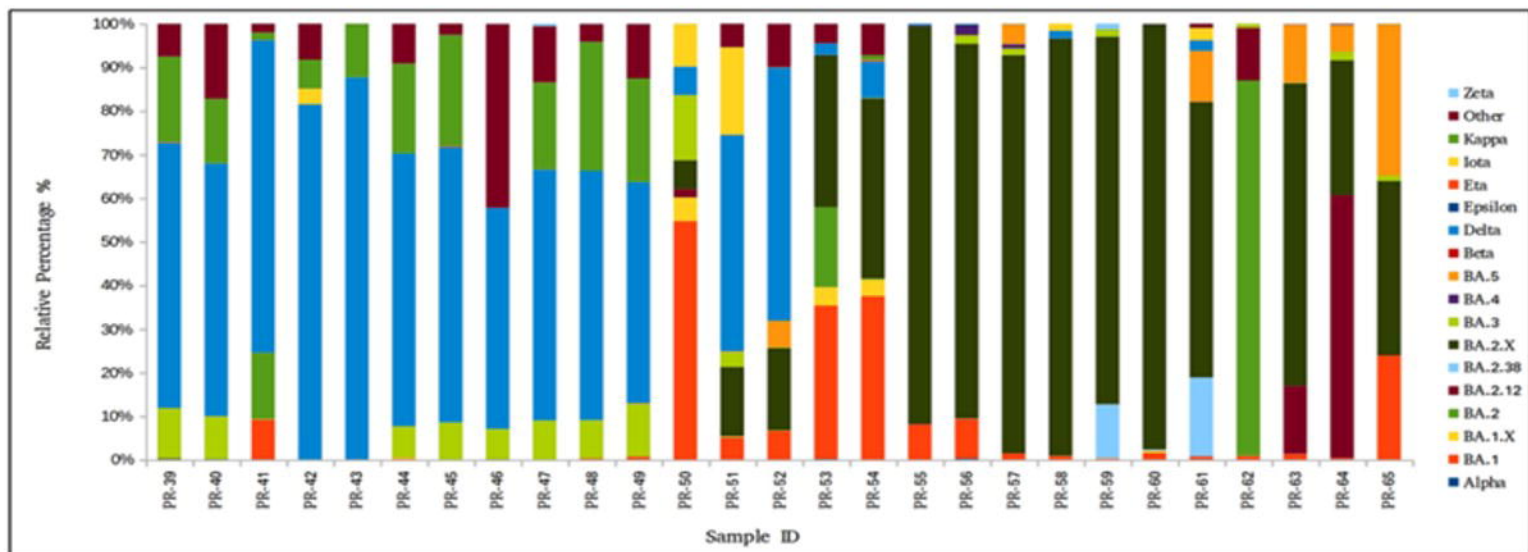
**Fig. 3:** Distribution of the number of reads mapped to SARS-CoV-2 reference genome per sample (MN908947.3).



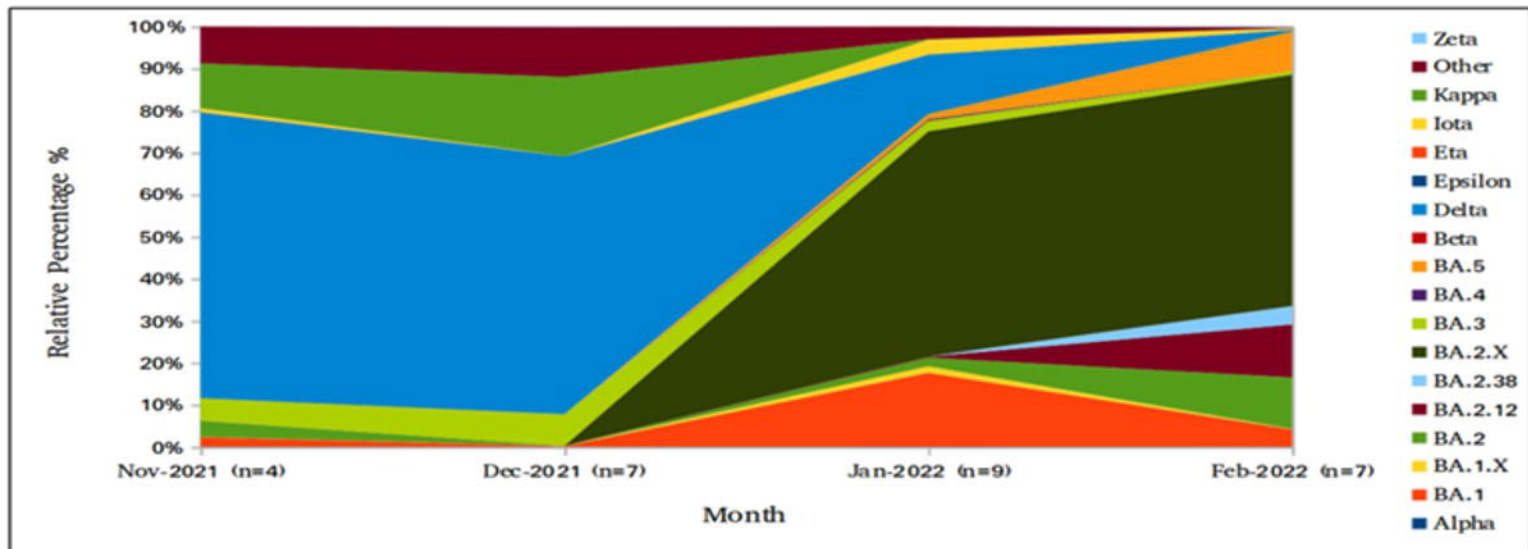


**Fig. 4:** Detection of transition between SARS-CoV-2 VOC Delta and Omicron by sewage water genomic surveillance

A

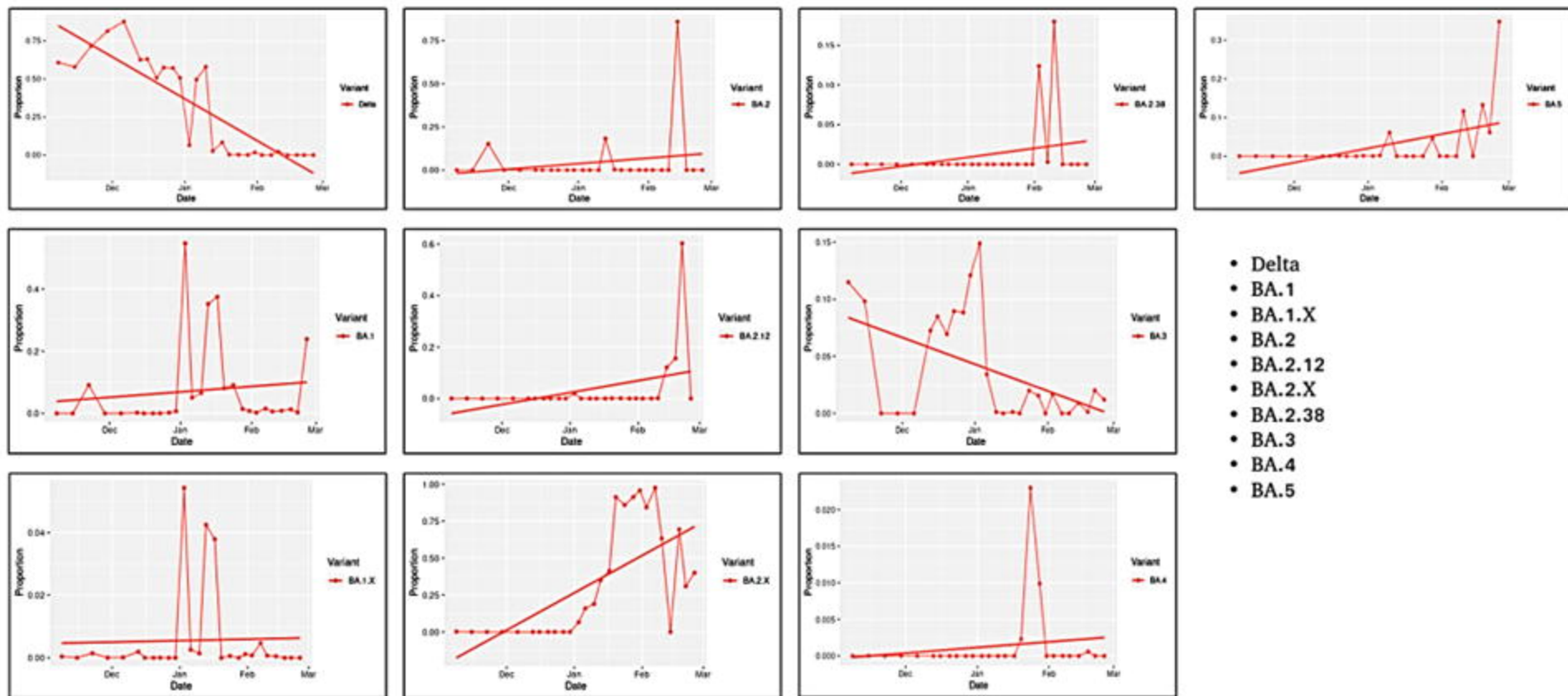


B



Samples chosen have more than 50% of genome coverage with the reference genome (MN908947.3).

**Fig. 5:** LCS analysis-based distribution of different lineages/sub-lineages of SARS-CoV-2. **A.** Relative abundance in the percentage of the identified SARS-CoV-2 lineages/sub-lineages. **B.** Proportion of SARS-CoV-2 lineages from November 2021-February, 2022.



Each box represents different variants and each line represents its trend.

**Fig. 6:** Linear mixed model based monthly proportion of SARS-CoV-2 lineages/sub-lineages.