

Figure S1: **Schematic and descriptions of the SEIR-type model.** This model is designed to integrate multiple data sources. States that correspond to categories of the datasets were marked with colored texts.

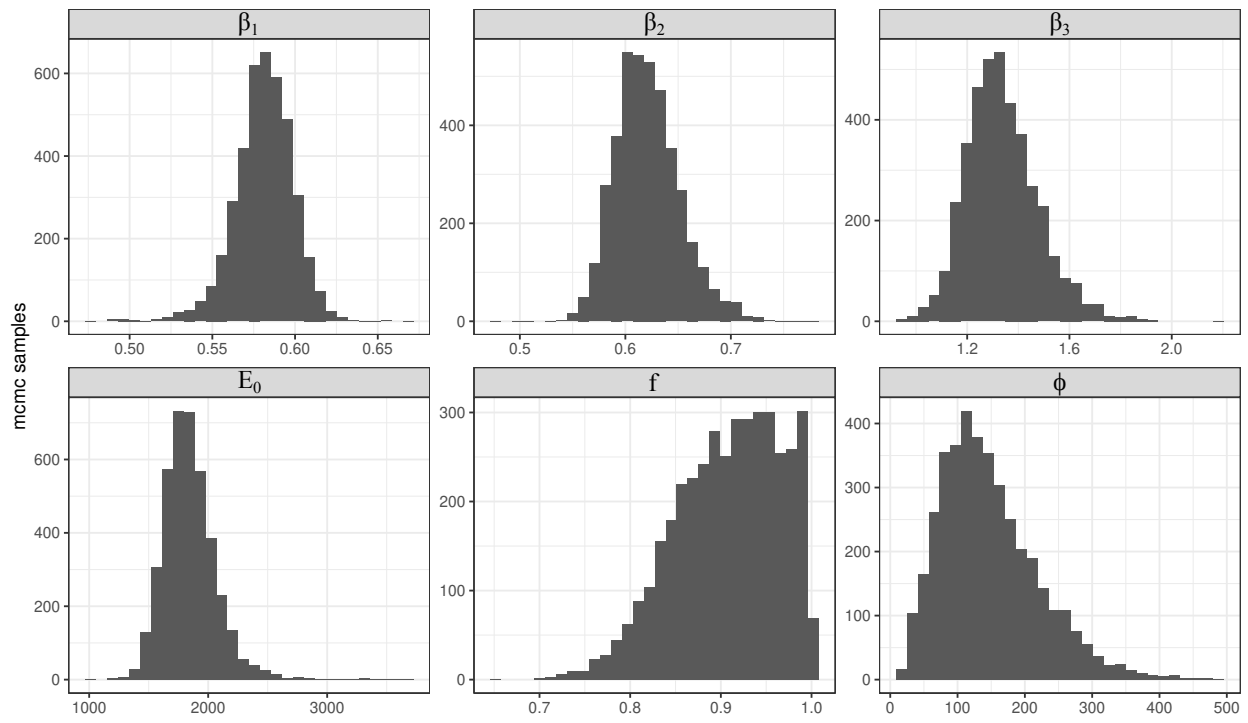


Figure S2: **Posterior distributions of model parameters.** The free parameters in our model were the transmission rate for each time period (β_i), an initial condition on the number of exposed people on Oct. 22 (E_0), the proportion of infected people who eventually develop symptoms (f), and an overdispersion parameter for the count data (ϕ).

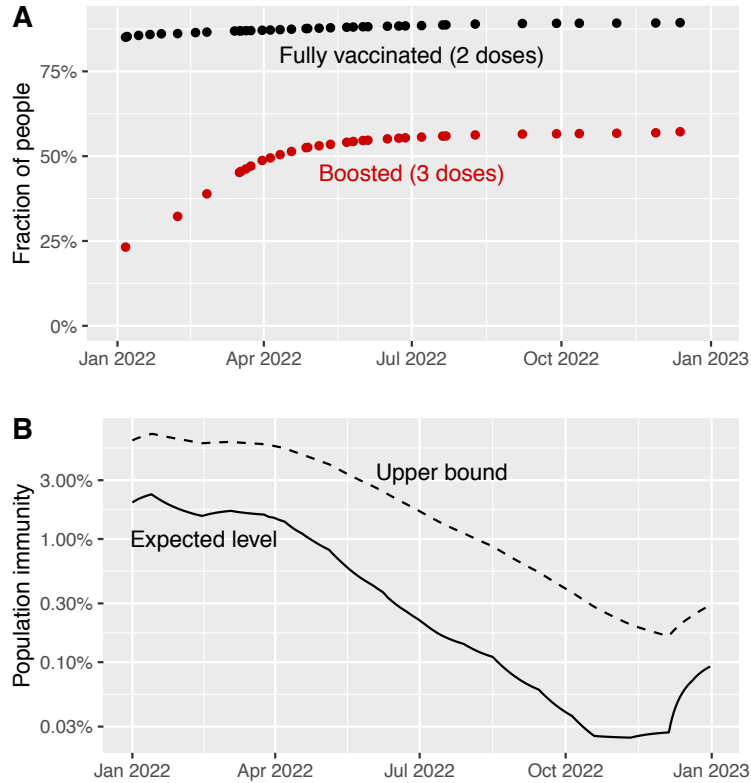


Figure S3: **Population immunity induced by vaccination in China was very low against Omicron infection.** Most individuals received their second or third dose of vaccine prior to 2022 or Apr. 2022, respectively. Combined with relatively low vaccine effectiveness, this led to overall low population immunity, despite efforts to increase vaccination coverage in late 2022. **(A)** Fraction of people vaccinated according to the number of doses received, as reported in Ref. [14]. **(B)** Estimated levels of population immunity against Omicron infection in China using data in (A) and the vaccine effectiveness function in Ref. [15]. Expected values and upper bound values were shown as solid and dashed lines, respectively. Note that the vertical axis is plotted on a log scale.

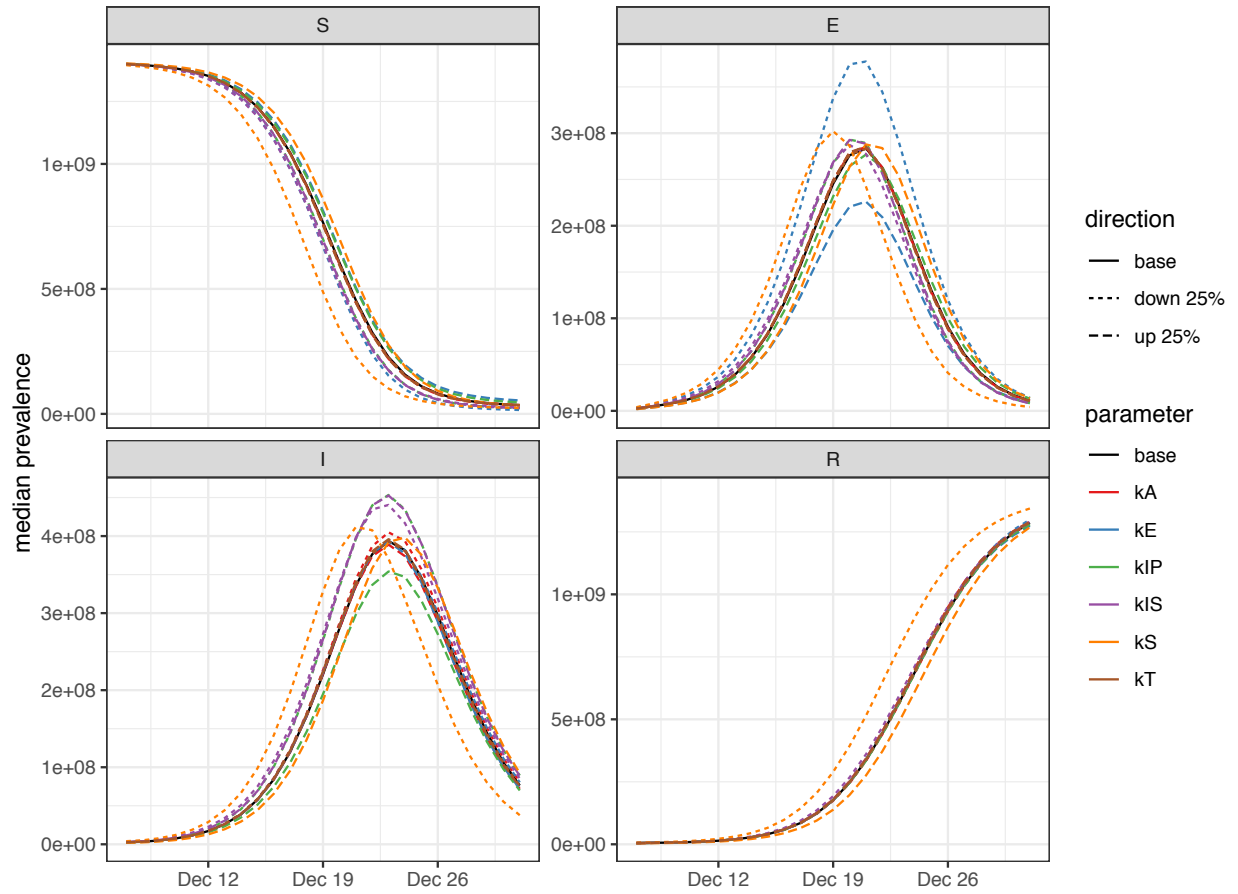


Figure S4: **Sensitivity of inferred epidemiological dynamics to perturbations of the parameter values.** Model parameters are defined in Fig. S1 and Eq. (1), and baseline parameter values are stated in the Methods.

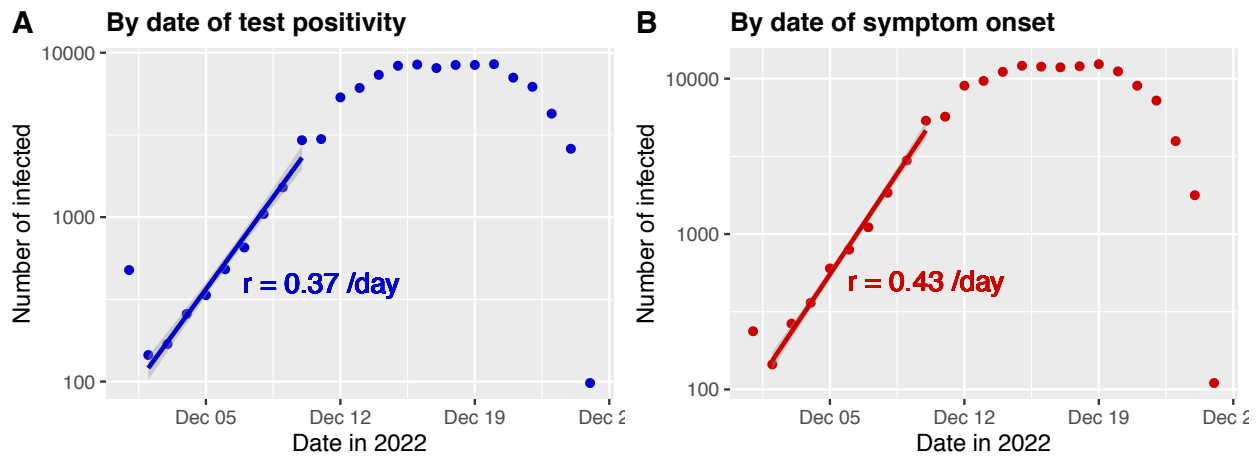


Figure S5: **Number of infected individuals by date of test positivity (A) or by date of symptom onset (B) in the Sichuan survey data.** The exponential growth rates, r , were estimated using data between Dec. 2 and 10, during which the number of infected people grew exponentially. Data on Dec. 1 was not used in estimation, because the numbers on the day likely include individuals who tested positive or had symptom onset before Dec. 1.

period	increase parameter	median [95% CrI]
Oct 28 – Nov 11	β	0.582 [0.546, 0.615]
	r	0.148 [0.129, 0.164]
	R	1.57 [1.49, 1.64]
Nov 11 – Dec 7	β	0.618 [0.563, 0.681]
	r	0.165 [0.138, 0.195]
	R	1.65 [1.53, 1.79]
Dec 7 – Dec 26	β	1.32 [1.09, 1.65]
	r	0.421 [0.351, 0.508]
	R	3.13 [2.66, 3.79]

Table S1: **Estimated values for the transmission rate (β), intrinsic rate of increase (r) and reproductive number (R) during each modeled time period.** Note that the values of r and R reported for the period between Dec. 7 and Dec. 26 represent the growth rate and the reproductive number during the exponential growth of the outbreak.

Province	Uninfected	Asymptomatic	Symptomatic	Recovered	Population Size (2021)
Anhui	0.23	0.04	0.48	0.25	61,027,171
Beijing	0.19	0.01	0.24	0.56	21,893,095
Chongqing	0.20	0.03	0.31	0.46	32,054,159
Fujian	0.49	0.03	0.41	0.06	41,540,086
Gansu	0.22	0.03	0.39	0.36	25,019,831
Guangdong	0.30	0.02	0.45	0.23	126,012,510
Guangxi	0.31	0.04	0.46	0.19	50,126,804
Guizhou	0.26	0.03	0.56	0.15	38,562,148
Hainan	0.55	0.00	0.33	0.12	10,081,232
Hebei	0.19	0.01	0.26	0.53	74,610,235
Heilongjiang	0.24	0.02	0.53	0.21	31,850,088
Henan	0.19	0.02	0.36	0.43	99,365,519
Hubei	0.19	0.03	0.29	0.49	57,752,557
Hunan	0.20	0.04	0.51	0.25	66,444,864
Inner Mongolia	0.28	0.04	0.49	0.20	24,049,155
Jiangsu	0.27	0.02	0.53	0.18	84,748,016
Jiangxi	0.20	0.02	0.53	0.25	45,188,635
Jilin	0.29	0.01	0.39	0.31	24,073,453
Liaoning	0.24	0.02	0.45	0.29	42,591,407
Ningxia	0.22	0.04	0.52	0.22	7,202,654
Qinghai	0.25	0.01	0.42	0.32	5,923,957
Shaanxi	0.24	0.02	0.45	0.29	39,528,999
Shandong	0.30	0.02	0.47	0.21	101,527,453
Shanghai	0.36	0.02	0.44	0.18	24,870,895
Shanxi	0.28	0.02	0.44	0.27	34,915,616
Sichuan	0.18	0.02	0.33	0.47	83,674,866
Tianjin	0.23	0.02	0.36	0.39	13,866,009
Xinjiang	0.25	0.04	0.41	0.30	25,852,345
Xizang	0.26	0.03	0.45	0.26	3,648,100
Yunnan	0.35	0.03	0.34	0.29	47,209,277
Zhejiang	0.32	0.03	0.49	0.15	64,567,588

Table S2: Dec. 26, 2022 prevalence survey data, reported by RenSheTong [12]. Population sizes were taken from the National Bureau of Statistics of China (http://www.stats.gov.cn/english/PressRelease/202105/t20210510_1817188.html).

Q: Have you been infected with COVID-19? (If no test conducted, please reply based on your judgement.)		
Options	Votes	Percentage
Not yet infected.	12,671	26%
Infected without symptoms.	1264	2%
Infected with symptoms.	19,345	40%
Infected and recovered.	14,617	30%

Q: For symptomatic infections, how severe was it?	
Options	Percentage
Severe.	35%
Relatively severe.	41.1%
I felt okay.	15.9%
Relatively mild.	6.9%
Mild.	1%

Q: For recovered patients, how long did the symptoms last?	
Options	Percentage
1-2 days	10%
3-4 days	22.5%
5-6 days	28.2%
7-8 days	26.8%
9-10 days	8.1%
11+ days	4.4%

Table S3: Questions, options, and response results in the Dec. 26 nation-wide survey, reported by RenSheTong [12].