

## Modelling mpox vaccination and behavior

### 1 **Modelling the impact of vaccination and sexual behavior change on reported cases of mpox** 2 **in Washington D.C.**

3 Patrick A. Clay<sup>a,\*</sup>, Jason M. Asher<sup>b</sup>, Neal Carnes<sup>c</sup>, Casey E. Copen<sup>a</sup>, Kevin P. Delaney<sup>c</sup>, Daniel  
4 C. Payne<sup>d</sup>, Emily D. Pollock<sup>a</sup>, Jonathan Mermin<sup>f</sup>, Yoshinori Nakazawa<sup>e</sup>, William Still<sup>g</sup>, Anil T.  
5 Mangla<sup>g</sup>, Ian H. Spicknall<sup>a</sup>

6  
7 <sup>a</sup> Division of STD Prevention, National Center for HIV, Viral Hepatitis, STD, and TB  
8 Prevention, Centers for Disease Control and Prevention, 1600 Clifton Rd., Atlanta, Georgia,  
9 USA.

10 <sup>b</sup> Center for Forecasting and Outbreak Analytics, Office of the Director, Centers for Disease  
11 Control and Prevention, 1600 Clifton Rd., Atlanta, Georgia, USA.

12 <sup>c</sup> Division of HIV Prevention, National Center for HIV, Viral Hepatitis, STD, and TB  
13 Prevention, Centers for Disease Control and Prevention, 1600 Clifton Rd., Atlanta, Georgia,  
14 USA.

15 <sup>d</sup> Division of Foodborne, Waterborne & Environmental Diseases, National Center for Emerging  
16 & Zoonotic Infectious Diseases, Centers for Disease Control and Prevention, 1600 Clifton Rd.,  
17 Atlanta, Georgia, USA.

18 <sup>e</sup> Division of High Consequence Pathogens & Pathology, National Center for Emerging &  
19 Zoonotic Infectious Diseases, Centers for Disease Control and Prevention, 1600 Clifton Rd.,  
20 Atlanta, Georgia, USA.

21 <sup>f</sup> Office of the Director, National Center for HIV, Viral Hepatitis, STD, and TB Prevention,  
22 Centers for Disease Control and Prevention, 1600 Clifton Rd., Atlanta, Georgia, USA.

23 <sup>g</sup> DC Department of Health, 899 North Capitol St NE, Washington, DC 20002, USA

24 \*Corresponding Author, [ruq9@cdc.gov](mailto:ruq9@cdc.gov), 713-443-4845

25

### 26 **Abstract**

27 **Background:** The 2022 mpox outbreak infected over 30,000 people in the United States.

28 Infections were commonly associated with sexual contact between men. Interventions included

29 vaccination and reductions in sexual partnerships. We estimated the averted infections

30 attributable to each intervention using mathematical modeling.

## Modelling mpox vaccination and behavior

31 **Methods:** We fit a dynamic network transmission model to mpox cases reported by the District  
32 of Columbia through January 2023. We incorporated vaccine administration data and reported  
33 reductions in sexual partnerships among gay, bisexual, or other men who have sex with men  
34 (MSM). Model output consisted of predicted cases over time with or without vaccination and/or  
35 behavior change.

36 **Results:** We estimated initial case reductions were due to behavior change. Vaccination alone  
37 averted 64% [IQR:57%-72%] and behavior change alone averted 21% [IQR:11%-29%] of cases.  
38 Vaccination and behavior change together averted 80% [IQR:74%-85%] of cases. In the absence  
39 of vaccination, behavior change reduced cumulative cases but also prolonged the outbreak.

40 **Conclusions:** Initial case declines were likely caused by behavior change, but vaccination averted  
41 more cases overall. Overall, this indicates that encouraging individuals to protect themselves was  
42 vital in the early outbreak, but that combination with a robust vaccination program was  
43 ultimately required for control.

44

45 **Keywords:** Mpox, Monkeypox, Outbreak, Modelling, Vaccination, MSM, Washington D.C.,

46 Poxvirus

## Modelling mpox vaccination and behavior

### 47 **Introduction**

48           Since May 2022, over 30,000 cases of mpox have been reported to the Centers for  
49 Disease Control and Prevention (CDC). The majority of infections have been among gay,  
50 bisexual, and other men who have sex with men (MSM) and have been associated with sexual  
51 contact<sup>1,2</sup>. Incidence decreased by >80% from a peak of 440 daily cases in mid-August to 70 in  
52 mid-October and fewer than 4 daily cases nationally as of January 2023<sup>3</sup>. In response to the  
53 mpox outbreak, CDC and other public health authorities recommended sexual behavioral change  
54 and after the JYNNEOS™ (Modified Vaccinia Ankara vaccine, Bavarian Nordic) mpox vaccine  
55 became increasingly available, preventive vaccination. In early June, CDC developed messaging  
56 for individuals seeking to reduce their chances of acquiring mpox (updated on August 5)<sup>4</sup>. CDC  
57 additionally worked with partner organizations, media, and digital apps to communicate this  
58 information to MSM, the most affected population<sup>2</sup>. Later surveys reported that 50% of MSM  
59 who engaged in one-time sexual encounters had reduced their frequency of these encounters  
60 since the beginning of the mpox outbreak<sup>5</sup>. In addition to behavioral interventions, JYNNEOS™  
61 vaccine became available from the Strategic National Stockpile for post-exposure prophylaxis  
62 shortly after the first confirmed case of mpox on May 17<sup>th6,7</sup>, and for pre-exposure prophylaxis  
63 for impacted communities in late June.

64           Understanding the relative effects of sexual behavior change and vaccine-induced  
65 immunity on mpox cases can inform public health efforts for this and future outbreaks. A  
66 previous study suggested that mpox outbreaks in the United States and other countries could  
67 have ended due to infection-driven herd immunity alone, but did not incorporate the potential  
68 role of behavioral change or vaccination in outbreak trajectory<sup>8</sup>. We used data from Washington,  
69 DC, and a dynamic network model of sexually transmitted infection (STI) transmission to

## Modelling mpox vaccination and behavior

70 estimate the relative effects of behavior change and vaccination on the outbreak, and the  
71 theoretical impact if vaccines had been more fully available earlier in the outbreak.

72

### 73 **Methods**

#### 74 *Model Overview*

75 We adapted a previously published dynamic network model of STI transmission in  
76 MSM<sup>9,10</sup> to mpox transmission<sup>11</sup> and added behavioral change and vaccination. The contact  
77 structure of the network is based on surveys of MSM recruited through websites<sup>9</sup> or at Lesbian,  
78 Gay, Bisexual, Transgender, Queer, and other gender and sexual minorities (LGBTQ+) serving  
79 establishments in Atlanta, Georgia<sup>12</sup>. Participants were asked whether they had a “main” partner  
80 (defined as an enduring sexual partner who took priority over others), how many “casual”  
81 partners they had (defined as enduring sexual partners other than “main” partners), and how  
82 many one-time sexual contacts they had had in the past three months. Based on survey results,  
83 individuals in the model have a set probability of having 0 or 1 main partners with a mean  
84 relationship duration of 477 days, and 0-2 casual partners with a mean relationship duration of  
85 166 days. Additionally, individuals in the model are assigned to 1 of 6 sexual activity groups,  
86 depending on their probability per day of engaging in one-time sexual partnerships, with activity  
87 group 1 representing the lowest sexual activity level (never engaging in one-time partnerships)  
88 and activity group 6 representing the highest sexual activity level (29% chance of engaging in  
89 one-time partnership per day). Individuals have a probability of forming one-time partnerships  
90 during each model timestep based on their activity group and their number of main and casual

## Modelling mpox vaccination and behavior

91 partnerships (Table S1). Individuals choose partners based on age and preferred sexual position  
92 during intercourse (purely insertive, purely receptive, or versatile).

93 Individuals in the model can exist in the following states: susceptible to infection ( $S$ ),  
94 infected but pre-symptomatic and non-infectious ( $E$ ), pre-symptomatic and infectious ( $P$ ),  
95 symptomatic and infectious ( $I$ ), recovered and resistant ( $R$ ), and vaccinated with one ( $V1$ ) or 2  
96 ( $V2$ ) doses of JYNNEOS. We assume that symptom onset lowers the probability of an  
97 individual engaging in one-time sexual contact, modeled as individuals temporarily moving to  
98 one lower sexual activity level. We further assume that symptoms reduce the probability of  
99 sexual contact with main and casual partners by half. At each timestep, the probability that an  
100 infectious individual will infect a susceptible partner is the product of the probability of sexual  
101 contact per timestep in each relationship type and the probability of infection per sexual contact  
102 ( $\mu$ ). Upon infection, an individual enters the  $E$  state, after which they have a probability per  
103 timestep of entering the  $P$  and then  $I$  and  $R$  states. Individuals have a probability of seeking  
104 medical attention upon symptom onset ( $\rho$ ); we assume those who seek care become aware of  
105 their infectious status, and so do not engage in one-time or casual sexual partnerships until they  
106 recover. We assume that individuals who learn their infection status also decrease contact with  
107 their main partners such that they have a 10% chance of infecting their main partner over the  
108 duration of the infection, reflecting prior estimates of household transmission<sup>13</sup>. Infected  
109 individuals who seek medical care are reported as diagnosed cases, hereafter referred to as *cases*.

110 Our model represents an outbreak in a single well-connected population, and thus best  
111 represents outbreak dynamics within a single city, rather than at the national scale. We  
112 parameterized the model to represent the mpox outbreak in Washington D.C., which reported its  
113 final case on Nov. 22, 2022. Thus, we set the population size to be 37,400, roughly equal to the

## Modelling mpox vaccination and behavior

114 population of MSM in Washington D.C.<sup>14</sup>. We additionally ran our analysis for a population size  
115 of 20,000, as not all MSM may be in the relevant sexual mixing pool (Fig. S4), and found that  
116 our qualitative results do not change. The model begins with 5 newly infectious individuals  
117 randomly selected from the 8,976 individuals in activity groups 5 and 6 on May 21<sup>st</sup>. This  
118 produced a median of 5 cumulative cases in the model on June 6<sup>th</sup>, matching D.C. data. The  
119 length of time between symptom onset and medical attention seeking is derived from the average  
120 time between symptom onset and orthopoxvirus test reported by Washington D.C. (Fig. S3).

### 121 *Vaccination*

122 As input for our model, we took first and second doses administered in Washington D.C.  
123 through December 10, at which time vaccination rates had dropped from an approximate  
124 maximum of 4,500 doses given per week to fewer than 100 doses given per week. Pre-exposure  
125 vaccination for MSM began the week of June 26<sup>th</sup> and peaked the week of July 31<sup>st</sup> for first  
126 doses, and peaked the week of August 28<sup>th</sup> for second doses (Table S2). As vaccines were  
127 originally offered primarily to MSM with multiple recent sexual partners<sup>15</sup>, we model vaccine  
128 distribution as limited to only the top two sexual activity groups for the first four weeks of  
129 vaccination, as limited to the top four sexual activity groups for the next four weeks of  
130 vaccination, and as limited to any individuals with a non-zero probability of engaging in one-  
131 time sexual contacts for the rest of the time period. In our model, we vaccinate susceptible ( $S$ )  
132 and pre-symptomatic ( $E, P$ ) individuals. Individuals who receive the vaccine while in the  $E$  or  $P$   
133 class are not prevented from becoming infectious. For second dose vaccination, we randomly  
134 draw individuals from the pool of those who have received their first dose at least four weeks in  
135 the past. We assume that the vaccine has no efficacy for two weeks after the first dose, at which  
136 time efficacy jumps to 37%, and that efficacy increases again to 69% two weeks after the second

## Modelling mpox vaccination and behavior

137 dose based on U.S. data<sup>16</sup>, though we run a sensitivity analysis based on an 85% first dose  
138 efficacy based on data from Israel<sup>17</sup> (Fig. S8). In the case of breakthrough infections, individuals  
139 enter the pre-symptomatic ( $E$ ) class and prior vaccination has no further effect on subsequent  
140 contagiousness or pathogenicity. We assume that some reported vaccinations are administered to  
141 non-msm or non-resident commuters rather than the modeled population. Thus, we fit the total  
142 proportion of reported vaccines given to the modeled population to case data, as described  
143 below.

### 144 *Behavior Change*

145 Individuals may change sexual behavior in response to perceived risk level<sup>18</sup>. In our  
146 model, we assume that MSM reduced their probability of one-time sexual contacts per day by a  
147 time-varying relative percentage. For tractability, we assume all individuals reduce their  
148 probability of one-time contact by the same relative amount, resulting in the largest reduction in  
149 sexual partner numbers among high-activity individuals. To measure risk perception, we  
150 identified LGBTQ+ focused communities on the social media discussion site Reddit  
151 (“subreddits”) that contained multiple discussions about mpox. We used the number of posts and  
152 comments in these subreddits containing the terms “monkeypox”, “mpox”, or “mpx” over time  
153 (hereafter “Reddit activity”) as a proxy for risk perception (appendix). The relative reduction in  
154 sexual activity per day in our model was set equal to relative Reddit activity. We fit maximum  
155 reductions in sexual activity to case data (described below).

### 156 *Modelling Process*

157 We fit five parameters to D.C. case data: the probability of transmission per contact ( $\mu$ ),  
158 the average length of the pre-symptomatic infectious period ( $l$ ), the number of individuals

## Modelling mpox vaccination and behavior

159 infected with mpox virus at Capital Pride Parade/Festival, occurring on June 11-12 ( $\epsilon$ ), the  
160 maximum percent reduction in probability of one-time sexual contact per day in response to the  
161 mpox outbreak ( $\omega$ ), and the proportion of reported vaccine doses given to the modeled  
162 population ( $\theta$ ) (see appendix for details). We additionally fit our model to case data assuming no  
163 interventions to test the likelihood that the outbreak ended due to infection-driven herd immunity  
164 alone.

165 We then estimated what proportion of cases have been averted by either behavior change  
166 or vaccination. We ran the model with no vaccination and no behavior change. This represents a  
167 scenario in which no interventions had taken place. We then compare the cumulative cases in  
168 this model until May 21<sup>st</sup> 2023 with cases in models where we include behavior change, include  
169 vaccination, or include both interventions. Differences in cumulative cases between intervention  
170 scenarios and the no intervention scenario represent cases averted by these interventions. We  
171 additionally estimated cumulative cases if vaccinations had been rolled out 28 days earlier or  
172 later, and if available vaccine doses were increased or decreased by 50% (behavior change was  
173 included in this sensitivity analysis). For each intervention scenario, we calculated median and  
174 interquartile ranges for cumulative case data over time for 120 model runs.

## 175 **Results** (currently 978/3,265 words. 3,500 allowed total)

176 Fitting the model with vaccination and behavior change to cumulative case data from  
177 Washington D.C., we find that an 87.5% probability of transmission per sex act ( $\mu$ ), a pre-  
178 symptomatic infectious period ( $l$ ) lasting 4 days, 40 individuals infected at D.C. Pride ( $\omega$ ), a  
179 40% maximum reduction in probability of one-time sexual contacts in response to the mpox  
180 outbreak ( $\epsilon$ ), and 100% of reported vaccines being administered to the modeled population ( $\theta$ )



## Modelling mpox vaccination and behavior

181 generates the best fit between model output and empirical data (Figure 1A). This indicates that  
182 mpox virus is highly transmissible, and that MSM substantially adjusted their behavior to reduce  
183 onward transmission of mpox virus. While it is implausible that 100% of reported vaccine doses  
184 were administered to resident MSM in D.C. rather than healthcare workers and non-resident  
185 MSM, a fit  $\theta$  value of 100% indicates that a negligible amount of reported vaccine doses were  
186 administered to non-modelled populations (see Fig. S5 for proportion population vaccinated over  
187 time). We found a relatively low likelihood that the outbreak ended due to infection-driven herd  
188 immunity alone (Fig. 1, A vs. B).

### 189 Cumulative Cases

190 We estimated that initial reductions in mpox cases were due to behavioral change. The  
191 trajectory of the “behavior change only” model matches the “vaccine and behavior” model until  
192 September for cumulative cases, indicating that until this point, reductions in case reports were  
193 due primarily to behavior change (Figure 2A). The “vaccine only” scenario, on the other hand,  
194 closely matched the “no intervention” scenario until September for cumulative cases, indicating  
195 that behavior change altered the epidemic trajectory before vaccination. Behavior change has an  
196 earlier impact on cases than vaccination for two reasons. First, we find that Reddit activity, and  
197 thus behavior change, began when cases first appeared in D.C. (Fig. S1), whereas vaccine supply  
198 did not reach more than 400 doses per week until July. Second, reductions in sexual partnerships  
199 immediately reduce transmission, whereas we assume no protection from vaccination until 14  
200 days after the first dose.

201 We estimated that one year into the outbreak, vaccination will have prevented more cases  
202 than behavior change. We estimated that by May 21<sup>st</sup> 2023, we would have 2,700 [IQR 2,550 –  
203 2,950] cumulative case reports in the absence of both interventions. The model estimated that

## Modelling mpox vaccination and behavior

204 behavior change alone would have prevented 21% [IQR 11% - 29%] of cases, vaccination alone  
205 would have prevented 64% [IQR 57% - 72%] of cases, and both interventions together will have  
206 prevented 80% [IQR 74% - 85%] (Fig. 2A).

207 In our model, behavior change helped vaccination avert more infections by allowing  
208 more individuals to remain free of infection and therefore be vaccinated. The model estimates  
209 that with behavior change, 91% of individuals with the highest frequency of one-time sexual  
210 partnerships who were able/willing to be vaccinated were vaccinated, while without behavior  
211 change only 84% of these individuals were vaccinated. These estimates indicate that individuals  
212 with a high frequency of engaging in one-time partnerships were more likely to contract mpox  
213 virus before they had a chance to be vaccinated, and by delaying transmission, behavior change  
214 allowed for additional high-activity individuals to be vaccinated (Fig. S6).

### 215 Infection Prevalence

216 Our analyses suggest that the outbreak will only end within a year with vaccination (Fig.  
217 2B). After 1 year, we would have 77 [IQR 48 - 119] prevalent infections (defined as the number  
218 of infectious individuals on a given day) in the absence of any intervention. We estimated that  
219 vaccination would lower prevalent infections to 2 [IQR 0 - 4] , or 0 [IQR 0 - 2] when paired  
220 with behavior change. Alternatively, behavior change alone would increase prevalent infection to  
221 180 [IQR 116 - 292] one year into the outbreak. Behavior change can increase prevalence late in  
222 the outbreak because unlike vaccination, behavior change does not provide long-term protection.  
223 Vaccination replaces infection-driven herd immunity with vaccine-driven herd immunity,  
224 whereas behavior change only delays herd immunity. Thus, one year into the outbreak, more  
225 individuals are resistant to infection in the “no intervention” scenario” than in the “behavior  
226 change only” scenario, resulting in higher transmission, and thus infection prevalence. If

## Modelling mpox vaccination and behavior

227 vaccinations were not available, individuals may have reduced their sexual activity for longer  
228 periods of time than we observed. However, behavior change alone cannot end the outbreak  
229 within a year even when we extend the period of maximum behavior change by an additional  
230 two months (Fig. S7).

### 231 Varying Vaccine Administration

232 The number and timing of vaccine allocations varied between jurisdictions, and there is  
233 uncertainty around vaccine efficacy. We estimated how changes in availability and timing could  
234 have impacted cases. We estimated that by one year into the outbreak, moving the initiation of  
235 vaccination earlier by 28 days would have decreased cumulative cases by 31% [IQR 46% -  
236 13%], and moving the vaccination timeline later by 28 days would have increased cumulative  
237 cases by 29% [IQR 1% - 68%] (Fig. 3A). Increasing available vaccine doses by 50% would have  
238 decreased cumulative cases by 12% [IQR -23% - 33%], and decreasing doses by 50% would  
239 have increased cumulative cases by 52% [IQR 15% - 87%] (Fig. 3A). (Fig. 3B). Thus, for the  
240 parameter space explored, distributing vaccines earlier would linearly decrease cases, whereas  
241 increasing available vaccine doses would have diminishing returns.

### 242 **Discussion** (currently 876/3,265 words. 3,500 allowed total)

243 We estimated the relative importance of vaccination and reductions in one-time sexual  
244 partnerships among MSM for averting mpox cases. We found that the majority of averted cases  
245 through October were averted by behavior change, but that vaccination began having an effect in  
246 September, was key to ending the outbreak in Washington D.C., and averted more cases overall.  
247 These results have several implications for the current mpox outbreak and for future outbreaks of  
248 sexually associated infections. First, national vaccine distribution is logistically time-consuming,

## Modelling mpox vaccination and behavior

249 and vaccines are not immediately effective. Thus, behavioral interventions can temporarily slow  
250 transmission, protecting communities from infection before vaccination takes effect. Partnering  
251 with affected communities is key to effective communication on behavioral interventions<sup>19</sup>.  
252 During this outbreak, MSM, community-based organizations, digital and traditional media, and  
253 the public health community worked together in disseminating public health messaging and  
254 expanding vaccination<sup>20–22</sup>. The enthusiasm of MSM to protect themselves and the health of their  
255 communities<sup>23</sup> highlights the effectiveness of public health efforts that manifest collaborations  
256 between affected communities and public health. Second, without vaccine administration,  
257 temporary behavioral interventions can reduce, but not eliminate, infection prevalence. This  
258 means that regions with low vaccine uptake might benefit from a focus on increasing vaccine  
259 administration even if cases are decreasing, and that behavior change alone is unlikely to  
260 successfully control future mpox outbreaks. Third, at early stages of an outbreak, administering  
261 vaccines sooner will provide substantial benefit in preventing cases over time and potentially  
262 have more impact than delayed administration of broader vaccination efforts that might lead to  
263 higher overall vaccine coverage.

264 Consistent with the current mpox outbreak, our model indicated that a combination of  
265 vaccination and behavior change would end the outbreak within a year. This may not be the case  
266 if (a) vaccines do not reach certain segments of the population, and (b) individuals who do not or  
267 cannot access vaccination preferentially partner with one another. We assumed in our model that  
268 only age and sexual positioning determines who individuals choose to partner with, and that  
269 neither of these factors influenced vaccination or treatment seeking. However, MSM partner with  
270 same-race individuals roughly 90% of the time<sup>12</sup>, and initial administration of the mpox vaccine  
271 was lower in Black individuals than in other racial groups<sup>5</sup>. Thus, mpox transmission might

## Modelling mpox vaccination and behavior

272 persist at a low but steady level in certain populations, mirroring our “behavior change only”  
273 scenario (Figure 2B), if vaccine equity is not improved.

274 Our results suggest that the outbreak ended in D.C. in large part due to vaccination and  
275 behavior change, rather than ending solely due to infection-driven herd immunity, shown to be a  
276 possibility in recent work<sup>8</sup>. Specifically, we find that without vaccination and behavior change,  
277 model fits that match the rapid early increase in cases overestimate the final number of cases,  
278 and model fits that match the final number of cases underestimate the initial growth of the  
279 epidemic. Possible differences in conclusions from these studies may arise from assumptions  
280 about the natural history of mpox (e.g. per-act transmission probability is assumed to be within  
281 the range of household transmission in<sup>13</sup>, much lower than our fitted parameter), or differences in  
282 the underlying sexual network.

### 283 *Limitations*

284 The sexual network used here was primarily parameterized by surveys distributed in  
285 Atlanta in 2010<sup>12</sup>. The sexual networks of other cities may differ from that in Atlanta due to  
286 differences in demography, socioeconomic status, or cultural beliefs. Further, sexual networks in  
287 MSM may have changed in the last ten years due to increased prevalence of HIV pre-exposure  
288 prophylaxis and internet-based dating applications<sup>24,25</sup>. Thus, collecting new, regionally  
289 dispersed data on sexual networks of MSM and other populations experiencing high rates of  
290 sexually associated infections would improve modelling capabilities in future outbreaks. Another  
291 assumption we made is that sexual networks in D.C. are separate from neighboring jurisdictions.  
292 In reality, transmission in the network would be influenced by individuals traveling in and out of  
293 D.C., or by individuals who work in D.C. but live elsewhere.

## Modelling mpox vaccination and behavior

294           Although substantial changes in sexual behavior by MSM in response to mpox have been  
295 documented<sup>5</sup>, we were unable to directly measure changes in one-time partnership behavior  
296 among MSM. Despite this, the initial decline in daily case reports was likely due to behavior  
297 changes among MSM because all parameter sets that fit the initial exponential increase in cases  
298 predicted that cases would have continued to sharply rise throughout the fall of 2022 unless we  
299 invoke behavior change. Our behavior analysis is further limited as we were only able to collect  
300 behavior proxies at the national, rather than regional level. However, it may be that MSM  
301 responded to national cases and news coverage, similar to how general interest in mpox (by  
302 Google search proxies) responded to national rather than local events. If the sexual activity levels  
303 of MSM respond to national rather than local events, then we expect that behavior change will  
304 have had a different impact on outbreaks in different cities, depending on the relative timing of  
305 the outbreak and national perception of mpox risk.

### 306           *Conclusions*

307           This study indicates synergistic effects of sexual behavior change and vaccination in  
308 controlling the mpox outbreak. By changing their behavior gay, bisexual, and other men who  
309 have sex with men reduced transmission before vaccines were widely available, and those  
310 reductions in sexual behavior continue to protect individuals who are not vaccinated. We  
311 estimated that vaccination in turn will more effectively reduce infections later in the outbreak by  
312 providing long-term protection. The synergies observed when combining behavioral harm  
313 reduction and vaccination serve as a reminder for those administering mpox vaccination to use  
314 this clinical encounter to reinforce the importance of behavioral harm reduction strategies in a  
315 culturally appropriate way<sup>4</sup>.

### 316           **Acknowledgements**

## Modelling mpox vaccination and behavior

317           The findings and conclusions in this report are those of the authors and do not necessarily  
318 represent the views of the Centers for Disease Control and Prevention or the National Cancer  
319 Institute.

### 320 **Author Contributions**

321           Manuscript concept was designed by PAC, IHS, JM, YN. Model was designed by PAC,  
322 IHS, and EDP. JMA advised on model structure. NC, CEC, and KPD, provided input on  
323 modeling of behavior. DCP provided input on modeling of vaccination. WS and ATM provided  
324 epidemiological data from D.C. Manuscript was primarily written by PAC, with input from all  
325 authors.

### 326 **Citations**

- 327 1.     2022 U.S. Map & Case Count | Monkeypox | Poxvirus | CDC.  
328       <https://www.cdc.gov/poxvirus/monkeypox/response/2022/us-map.html>.
- 329 2.     Philpott, D. *et al.* Epidemiologic and Clinical Characteristics of Monkeypox Cases —  
330       United States, May 17–July 22, 2022. *MMWR. Morb. Mortal. Wkly. Rep.* **71**, 1018–1022  
331       (2022).
- 332 3.     U.S. Monkeypox Case Trends Reported to CDC | Monkeypox | Poxvirus | CDC.  
333       <https://www.cdc.gov/poxvirus/monkeypox/response/2022/mpx-trends.html>.
- 334 4.     Safer Sex, Social Gatherings, and Monkeypox | Monkeypox | Poxvirus | CDC.  
335       <https://www.cdc.gov/poxvirus/monkeypox/prevention/sexual-health.html>.
- 336 5.     Delaney, K. P. *et al.* Strategies Adopted by Gay, Bisexual, and Other Men Who Have Sex  
337       with Men to Prevent Monkeypox virus Transmission — United States, August 2022.  
338       *MMWR. Morb. Mortal. Wkly. Rep.* **71**, (2022).
- 339 6.     Minhaj, F. S. *et al.* Monkeypox Outbreak — Nine States, May 2022. *Morb. Mortal. Wkly.*  
340       *Rep.* **71**, 764 (2022).
- 341 7.     Kriss, J. L. *et al.* Receipt of First and Second Doses of JYNNEOS Vaccine for Prevention  
342       of Monkeypox — United States, May 22–October 10, 2022. *MMWR. Morb. Mortal. Wkly.*  
343       *Rep.* **71**, (2022).
- 344 8.     Endo, A. *et al.* Heavy-tailed sexual contact networks and monkeypox epidemiology in the  
345       global outbreak, 2022. *Science (80-. ).* **378**, (2022).
- 346 9.     Weiss, K. M. *et al.* Egocentric sexual networks of men who have sex with men in the

## Modelling mpox vaccination and behavior

- 347 United States: Results from the ARTnet study. *Epidemics* **30**, 100386 (2020).
- 348 10. Jenness, S. M. *et al.* Impact of the Centers for Disease Control’s HIV Preexposure  
349 Prophylaxis Guidelines for Men Who Have Sex With Men in the United States. *J. Infect.*  
350 *Dis.* **214**, 1800–1807 (2016).
- 351 11. Spicknall, I. H. *et al.* Modeling the impact of sexual networks in the transmission of  
352 Monkeypox virus among gay, bisexual, and other men who have sex with men — United  
353 States, 2022. vol. 71 (2022).
- 354 12. Hernández-Romieu, A. C. *et al.* Heterogeneity of HIV prevalence among the sexual  
355 networks of Black and White MSM in Atlanta: illuminating a mechanism for increased  
356 HIV risk for young Black MSM. *Sex. Transm. Dis.* **42**, 505 (2015).
- 357 13. Beer, E. M. & Bhargavi Rao, V. A systematic review of the epidemiology of human  
358 monkeypox outbreaks and implications for outbreak strategy. *PLoS Negl. Trop. Dis.* **13**,  
359 e0007791 (2019).
- 360 14. Grey, J. A. *et al.* Estimating the Population Sizes of Men Who Have Sex With Men in US  
361 States and Counties Using Data From the American Community Survey. *JMIR Public*  
362 *Heal. Surveill* 2016;2(1)e14 <https://publichealth.jmir.org/2016/1/e14> **2**, e5365 (2016).
- 363 15. FACT SHEET: Biden-Harris Administration’s Monkeypox Outbreak Response | The  
364 White House. [https://www.whitehouse.gov/briefing-room/statements-](https://www.whitehouse.gov/briefing-room/statements-releases/2022/06/28/fact-sheet-biden-harris-administrations-monkeypox-outbreak-response/)  
365 [releases/2022/06/28/fact-sheet-biden-harris-administrations-monkeypox-outbreak-](https://www.whitehouse.gov/briefing-room/statements-releases/2022/06/28/fact-sheet-biden-harris-administrations-monkeypox-outbreak-response/)  
366 [response/](https://www.whitehouse.gov/briefing-room/statements-releases/2022/06/28/fact-sheet-biden-harris-administrations-monkeypox-outbreak-response/).
- 367 16. Preliminary JYNNEOS Vaccine Effectiveness Estimates Against Medically Attended  
368 Mpox Disease in the U.S., August 15, 2022 – October 29, 2022 | Mpox| Poxvirus | CDC.  
369 [https://www.cdc.gov/poxvirus/monkeypox/cases-data/mpx-JYENNOS-vaccine-](https://www.cdc.gov/poxvirus/monkeypox/cases-data/mpx-JYENNOS-vaccine-effectiveness.html)  
370 [effectiveness.html](https://www.cdc.gov/poxvirus/monkeypox/cases-data/mpx-JYENNOS-vaccine-effectiveness.html).
- 371 17. Sagy, Y. W. *et al.* Real-world effectiveness of a single dose of mpox vaccine in males.  
372 *Nat. Med.* 2023 1–1 (2023) doi:10.1038/s41591-023-02229-3.
- 373 18. Eaton, L. A. & Kalichman, S. C. Risk compensation in HIV prevention: Implications for  
374 vaccines, microbicides, and other biomedical HIV prevention technologies. *Curr.*  
375 *HIV/AIDS Reports* 2007 44 **4**, 165–172 (2007).
- 376 19. CDC’s Response to the 2022 Monkeypox Outbreak | Monkeypox | Poxvirus | CDC.  
377 <https://www.cdc.gov/poxvirus/monkeypox/about/cdc-response.html>.
- 378 20. Gonsalves, G. S., Mayer, K. & Beyrer, C. Déjà vu All Over Again? Emergent  
379 Monkeypox, Delayed Responses, and Stigmatized Populations. *J. Urban Heal.* 2022 994  
380 **99**, 603–606 (2022).
- 381 21. Soelaeman, R. H. *et al.* Characteristics of JYNNEOS Vaccine Recipients Before and  
382 During a Large Multiday LGBTQIA+ Festival — Louisiana, August 9–September 5,  
383 2022. *MMWR. Morb. Mortal. Wkly. Rep.* **71**, 1379–1381 (2022).
- 384 22. Millman, A. J. *et al.* A Health Equity Approach for Implementation of JYNNEOS  
385 Vaccination at Large, Community-Based LGBTQIA+ Events — Georgia, August 27–



## Modelling mpox vaccination and behavior

- 386           September 5, 2022. *MMWR. Morb. Mortal. Wkly. Rep.* **71**, 1382–1883 (2022).
- 387    23.    McNaghten, A. D. *et al.* COVID-19 Vaccination Coverage and Vaccine Confidence by  
388           Sexual Orientation and Gender Identity — United States, August 29–October 30, 2021.  
389           *Morb. Mortal. Wkly. Rep.* **71**, 171 (2022).
- 390    24.    Paz-Bailey, G. *et al.* Trends in Internet Use Among Men Who Have Sex With Men in the  
391           United States. *J. Acquir. Immune Defic. Syndr.* **75**, S288 (2017).
- 392    25.    Wu, H. *et al.* Uptake of HIV Preexposure Prophylaxis Among Commercially Insured  
393           Persons—United States, 2010–2014. *Clin. Infect. Dis.* **64**, 144–149 (2017).
- 394    26.    Loosier, P. S. *et al.* Reddit on PrEP: Posts About Pre-exposure Prophylaxis for HIV from  
395           Reddit Users, 2014–2019. *AIDS Behav.* **26**, 1084–1094 (2022).

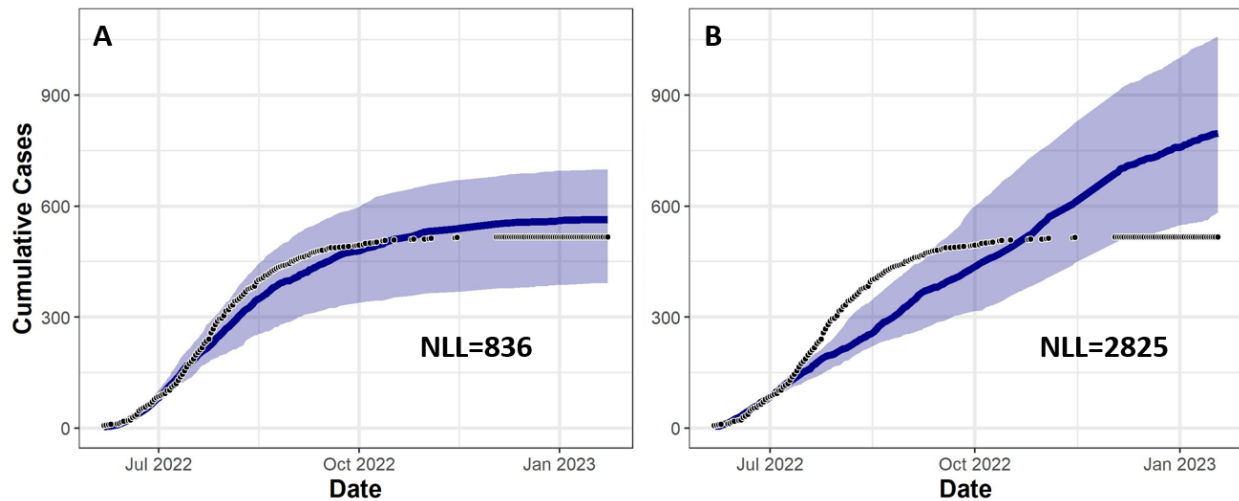
396

397

## Modelling mpox vaccination and behavior

### 398 **Figures**

399



400

401 Figure 1: Model output fit to cumulative cases from Washington D.C. Y-axis shows cumulative

402 cases, over date on the X-axis. Black dots represent cumulative case reports from Washington

403 D.C., while the blue line represents median cumulative cases over 120 model runs for the best

404 fitting parameter set, and the blue band represents the interquartile range, when (A) we fit all

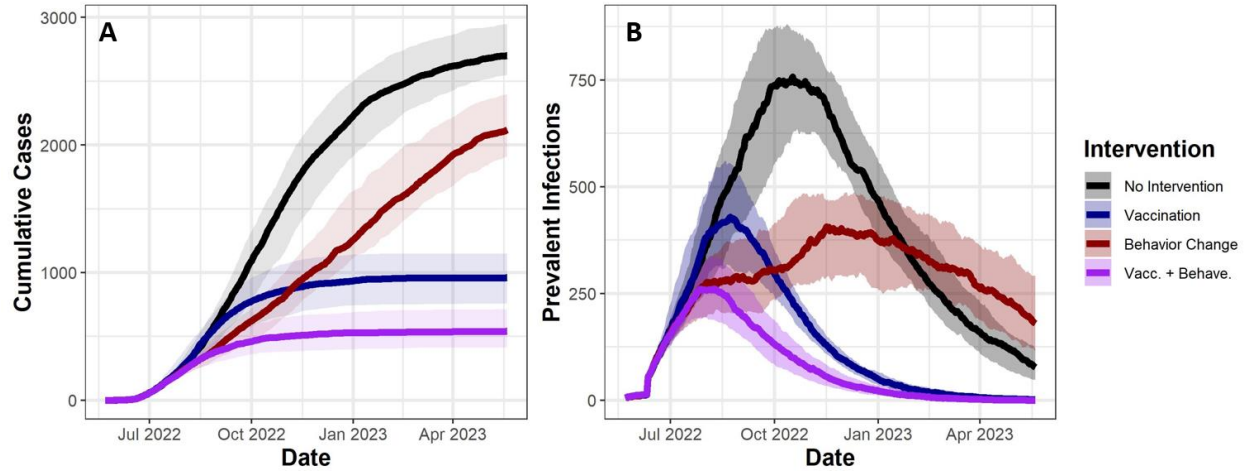
405 parameters, including effectiveness of interventions, and (B) we assume no intervention

406 effectiveness. NLL indicates negative log likelihood, with lower values indicating a higher

407 likelihood.

408

## Modelling mpox vaccination and behavior

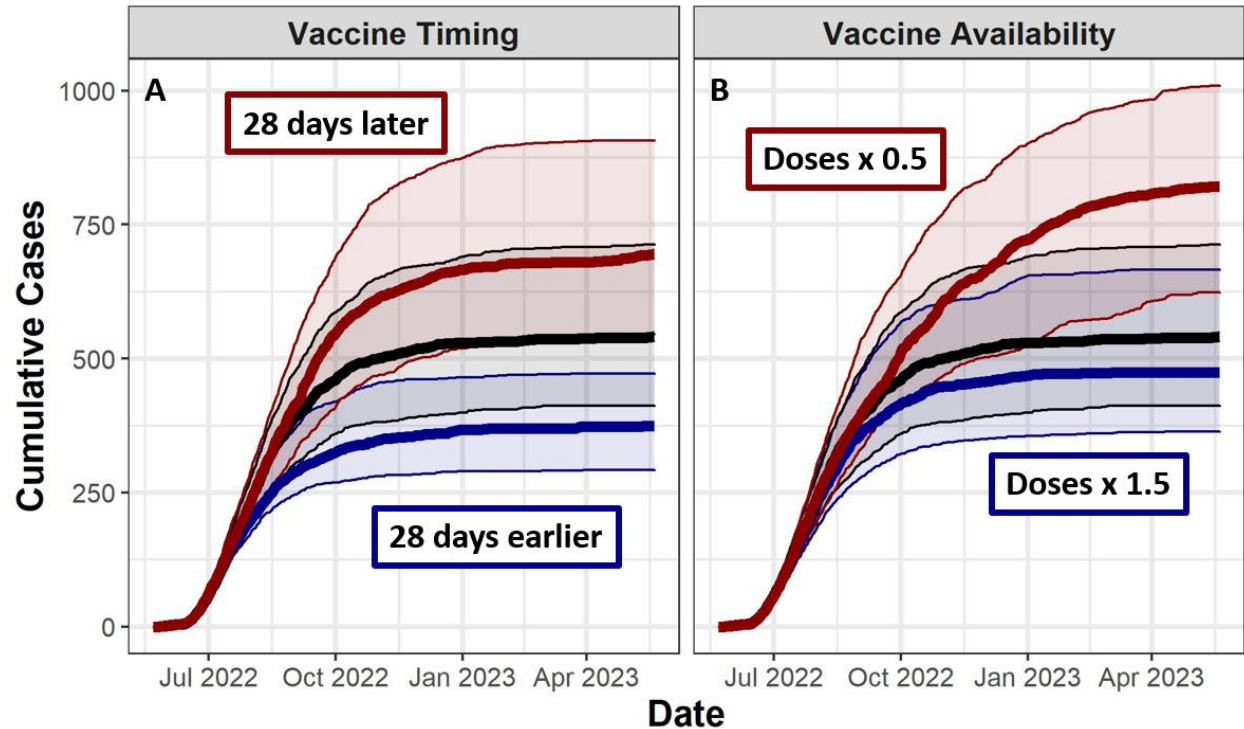


409

410 **Figure 2:** Vaccination and behavior change both reduce estimated cumulative cases and  
411 prevalent infections. (A) Y-axis shows model estimates of cumulative cases (i.e. individuals who  
412 are diagnosed with mpox), over time on the X-axis from May 21<sup>st</sup> 2022 to May 21<sup>st</sup> 2023. (B) Y-  
413 axis shows prevalent infections, over time on the X-axis. Solid lines indicate median values from  
414 120 simulations, while transparent bands represent interquartile ranges. Colors indicate  
415 intervention combinations.

416

### Modelling mpox vaccination and behavior



417

418 **Figure 3:** Changing number of administered doses and timing of vaccine administration can  
419 influence case reports. (A) Y-axis shows model estimates of cumulative case counts, over time  
420 on the X-axis from May 21<sup>st</sup>, 2022 to May 21<sup>st</sup>, 2023. Solid lines indicate median values from  
421 120 simulations, while transparent bands outlined by thin lines represent interquartile ranges.  
422 Black lines show model results based on actual vaccine administration and a maximum vaccine  
423 efficacy of 90%, while red and blue lines represent more pessimistic and more optimistic  
424 scenarios, respectively. All scenarios shown here include behavior change.