

# **Wastewater-based surveillance can be used to model COVID-19-associated workforce absenteeism**

Nicole Acosta<sup>a</sup>, Xiaotian Dai<sup>b</sup>, Maria A. Bautista<sup>c</sup>, Barbara J. Waddell<sup>a</sup>, Jangwoo Lee<sup>a</sup>, Kristine Du<sup>a</sup>, Janine McCalder<sup>a,c</sup>, Puja Pradhan<sup>a,c</sup>, Chloe Papparis<sup>a,c</sup>, Xuewen Lu<sup>b</sup>, Thierry Chekouo<sup>b,d</sup>, Alexander Krusina<sup>e,f</sup>, Danielle Southern<sup>e,f</sup>, Tyler Williamson<sup>e-g</sup>, Rhonda G. Clark<sup>c</sup>, Raymond A. Patterson<sup>h</sup>, Paul Westlund<sup>i</sup>, Jon Meddings<sup>f</sup>, Norma Ruecker<sup>j</sup>, Christopher Lammiman<sup>k</sup>, Coby Duerr<sup>k</sup>, Gopal Achari<sup>l</sup>, Steve E. Hrudey<sup>m,n</sup>, Bonita E. Lee<sup>o-q</sup>, Xiaoli Pang<sup>m,q,r</sup>, Kevin Frankowsk<sup>s</sup>, Casey R.J. Hubert<sup>c</sup>, Michael D. Parkins<sup>a,f,t\*</sup>

<sup>a</sup> Department of Microbiology, Immunology and Infectious Diseases, University of Calgary, 3330 Hospital Drive NW, Calgary, Alberta, T2N 4N1, Canada

<sup>b</sup> Department of Mathematics and Statistics, University of Calgary, 3330 Hospital Drive NW, Calgary, Alberta, T2N 4N1, Canada

<sup>c</sup> Department of Biological Sciences, University of Calgary, 3330 Hospital Drive NW, Calgary, Alberta, T2N 4N1, Canada

<sup>d</sup> Division of Biostatistics, School of Public Health, University of Minnesota, 420 Delaware St. S.E., Minneapolis, MN 55455, USA

<sup>e</sup> Department of Community Health Sciences, University of Calgary, 3330 Hospital Drive NW, Calgary, Alberta, T2N 4N1, Canada

<sup>f</sup> Department of Medicine, University of Calgary and Alberta Health Services, 3330 Hospital Drive NW, Calgary, Alberta, T2N 4N1, Canada

22 <sup>g</sup> O'Brien Institute for Public Health, University of Calgary, 3280 Hospital Dr NW, Calgary,  
23 Alberta, T2N 4Z6, Canada

24 <sup>h</sup> Haskayne School of Business, University of Calgary, SH 250, 2500 University Drive NW,  
25 Calgary, Alberta, T2N 1N4, Canada

26 <sup>i</sup> C.E.C. Analytics Ltd., Calgary, Canada

27 <sup>j</sup> Water Services, City of Calgary, 625 25 Ave SE, Calgary, Alberta, T2G 4k8, Canada

28 <sup>k</sup> Calgary Emergency Management Agency (CEMA), City of Calgary, 673 1 St NE, Calgary,  
29 Alberta, T2E 6R2 Canada

30 <sup>l</sup> Department of Civil Engineering, University of Calgary, 3330 Hospital Drive NW, Calgary,  
31 Alberta, T2N 4N1, Canada

32 <sup>m</sup> Department of Laboratory Medicine and Pathology, University of Alberta, 116 St. and 85 Ave,  
33 Edmonton, Alberta, T6G 2R3, Canada

34 <sup>n</sup> Analytical and Environmental Toxicology, University of Alberta, 116 St. and 85 Ave,  
35 Edmonton, Alberta, T6G 2R3, Canada

36 <sup>o</sup> Department of Pediatrics, University of Alberta, 116 St. and 85 Ave, Edmonton, Alberta, T6G  
37 2R3, Canada

38 <sup>p</sup> Women & Children's Health Research Institute, 116 St. and 85 Ave, Edmonton, Alberta, T6G  
39 2R3, Canada

40

<sup>q</sup> Li Ka Shing Institute of Virology, University of Alberta, 116 St. and 85 Ave, Edmonton,  
Alberta, T6G 2R3, Canada

<sup>r</sup> Alberta Precision Laboratories, Public Health Laboratory, Alberta Health Services, 116 St. and  
85 Ave, Edmonton, Alberta, T6G 2R3, Canada

<sup>s</sup> Advancing Canadian Water Assets, University of Calgary, 3131 210 Ave SE, Calgary, Alberta,  
T0L 0X0, Canada

<sup>t</sup> Snyder Institute for Chronic Diseases, University of Calgary and Alberta Health Services, 3330  
Hospital Drive NW, Calgary, Alberta, T2N 4N1, Canada

**Keywords:** Epidemiology, sewage, SARS-CoV-2, staffing, labour scheduling, prediction

**Abstract word count:** 300

**Manuscript word count:** 3719

**Figures:** 4

**Supplemental Tables:** 1

**Supplemental Figures:** 5

**\*Corresponding author:**

Michael D. Parkins, Professor, Departments of Medicine and Microbiology, Immunology &  
Infectious Diseases, Cumming School of Medicine, University of Calgary.

Section Chief, Infectious Diseases, Calgary Zone, Alberta Health Services

60    Postal address: 3330 Hospital Drive, NW, Calgary, Alberta, T2N 2V5. CANADA.

61    e-mail: [mdparkin@ucalgary.ca](mailto:mdparkin@ucalgary.ca)

62    Phone: 403-220-5951, Fax: 403-270-2772.

63

64

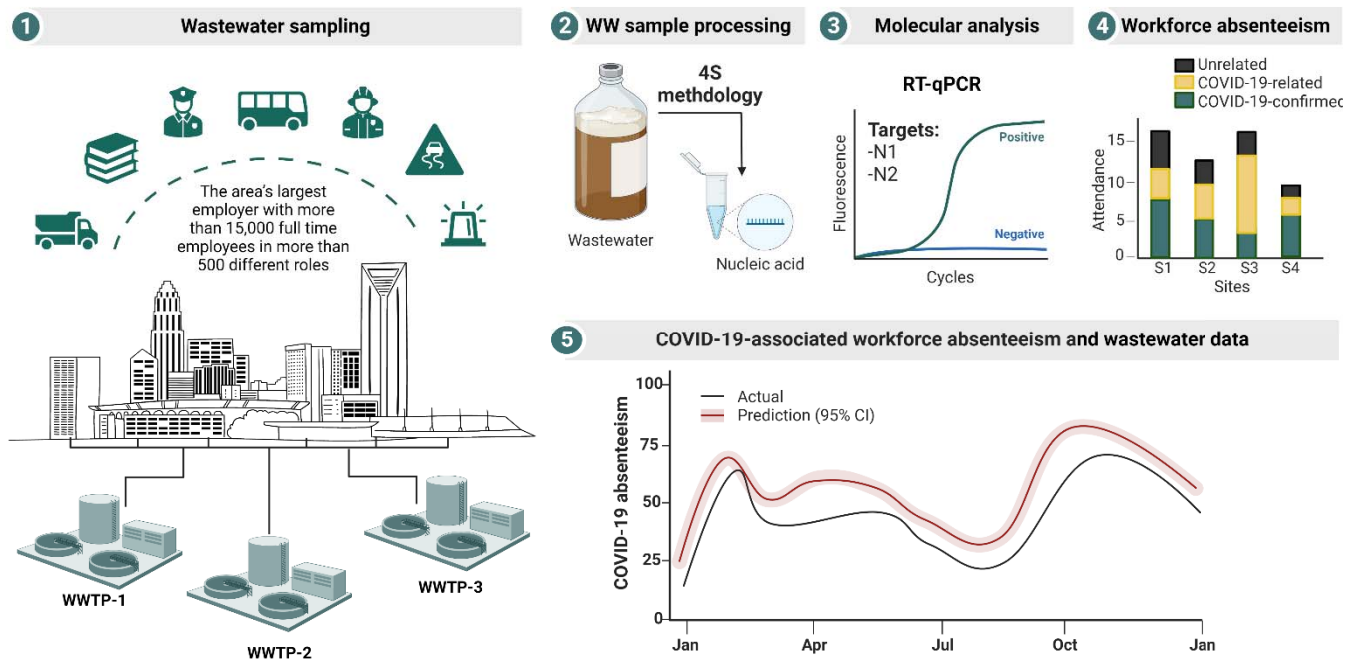
65   **Highlights:**

- 66       •   WBS is a useful strategy for monitoring infectious diseases in workers
- 67       •   SARS-CoV-2 RNA in wastewater correlated with workforce absenteeism
- 68       •   Workplace absenteeism secondary to COVID-19 can be predicted using WBS
- 69       •   WBS can be used by employers to anticipate and mitigate work force absenteeism

## Abstract

Wastewater-based surveillance (WBS) is a powerful tool for understanding community COVID-19 disease burden and informing public health policy. The potential of WBS for understanding COVID-19's impact in non-healthcare settings has not been explored to the same degree. Here we examined how SARS-CoV-2 measured from municipal wastewater treatment plants (WWTPs) correlates with local workforce absenteeism. SARS-CoV-2 RNA N1 and N2 were quantified three times per week by RT-qPCR in samples collected at three WWTPs servicing Calgary and surrounding areas, Canada (1.3 million residents) between June 2020 and March 2022. Wastewater trends were compared to workforce absenteeism using data from the largest employer in the city (>15,000 staff). Absences were classified as being COVID-19-related, COVID-19-confirmed, and unrelated to COVID-19. Poisson regression was performed to generate a prediction model for COVID-19 absenteeism based on wastewater data. SARS-CoV-2 RNA was detected in 95.5% (85/89) of weeks assessed. During this period 6592 COVID-19-related absences (1896 confirmed) and 4,524 unrelated absences COVID-19 cases were recorded. Employee absences significantly increased as wastewater signal increased through the pandemic's waves. Strong correlations between COVID-19-confirmed absences and wastewater SARS-CoV-2 signals (N1 gene:  $r=0.824$ ,  $p<0.0001$  and N2 gene:  $r=0.826$ ,  $p<0.0001$ ) were observed. Linear regression with adjusted  $R^2$ -value demonstrated a robust association (adjusted  $R^2=0.783$ ), when adjusted by 7 days, indicating wastewater provides a one-week leading signal. A generalized linear regression using a Poisson distribution was performed to predict COVID-19-confirmed absences out of the total number of absent employees using wastewater data as a leading indicator ( $P<0.0001$ ). We also assessed the variation of predictions when the regression model was applied to new data, with the predicted values and corresponding confidence intervals

93 closely tracking actual absenteeism data. Wastewater-based surveillance has the potential to be  
94 used by employers to anticipate workforce requirements and optimize human resource allocation  
95 in response to trackable respiratory illnesses like COVID-19.



97

98



## 1. INTRODUCTION

Wastewater-based surveillance (WBS) has emerged as a useful strategy enabling real-time monitoring of the incidence and prevalence of several infectious diseases at the population level (Arora et al. 2022; Asghar et al. 2014; Hellmér et al. 2014). The strength of WBS relates to its ability to provide longitudinal objective and inclusive information on the burden of disease in monitored populations that is independent of clinical testing and other healthcare system resources. Furthermore, WBS represents an intrinsically comprehensive and inclusive strategy that captures all individuals served by the sewer system, irrespective of symptoms or capacity to seek testing (Tang et al. 2020; Wu et al. 2020; Amirian 2020). With the emergence of the Severe Acute Respiratory Syndrome Coronavirus 2 (SARS-CoV-2) pandemic and the recognition that its genomic viral RNA is shed in the feces of infected individuals, WBS to monitor for COVID-19-related disease burden became an intense research focus (Kitajima et al. 2020; Wölfel et al. 2020; Ling et al. 2020; Medema et al. 2020).

Researchers around the world have demonstrated WBS can provide a leading indicator of many clinically relevant parameters, including; community diagnosed COVID-19 cases, COVID-19-related hospitalizations and ICU admissions, and even deaths (Acosta et al. 2021; Acosta et al. 2022; Peccia et al. 2020; Randazzo et al. 2020; Miyani et al. 2021; Zhu et al. 2021; Xiao et al. 2021; Zhan et al. 2022; Galani et al. 2022; Hegazy et al. 2022). Recognizing the tremendous potential of WBS to help shape and inform public health policy and actions including healthcare resource allocation, WBS programs have developed all over the world (Naughton et al. 2021). However, the utility of WBS-derived data to other areas of society beyond public health has not been well explored. Given the profound influence workplace COVID-19 related absenteeism has on the ability of private and public organizations to fulfill their mandate and deliver services, we

sought to explore its relationship with SARS-CoV-2 signals measured in municipal wastewater. Our data demonstrate that workplace absenteeism at the largest employer in Canada's fourth largest city correlated strongly with and can be predicted using wastewater data.

## **2. MATERIAL AND METHODS**

### **2.1 Wastewater collection and processing**

Wastewater was collected from all three wastewater treatment plants (WWTPs) servicing Calgary and surrounding communities, Alberta, Canada. City of Calgary staff collected samples from WWTP-1, WWTP-2 and WWTP-3 between June 29, 2020, and March 28, 2022. Autosamplers were programmed to collect 24-hour composite samples at each WWTP (Acosta et al. 2022), and delivered to the City of Calgary lab where a sub-sample was aliquoted from the bulk sample. The sub-samples were immediately transported to the University of Calgary's Advancing Canadian Water Assets (ACWA) laboratory for processing and nucleic acid extraction as detailed elsewhere (Whitney et al. 2021; Acosta et al. 2021). All samples were spiked with an external bovine coronavirus control (BCoV; Bovilis, Merck) to ensure consistency in processing. Extracted nucleic acids were transported to the Health Sciences Center at the University of Calgary on dry ice. This project was approved by the Conjoint Regional Health Ethics Board (REB20-1252).

RT-qPCR was used to quantify the SARS-CoV2 RNA in wastewater using a QuantStudio-5 Real-Time PCR System (Applied Biosystems). SARS-CoV-2 RNA concentration was measured utilizing nucleocapsid N1 and N2 targets (CDC 2020b; Acosta et al. 2021), with both genes being analyzed for comparison. 2019-nCoV\_N positive control plasmid (Integrated DNA Technologies, Catalogue # 10006625) was used as an RT-PCR standard. The BCoV external

control was quantified following a previously described protocol (Acosta et al. 2021). Each sample was measured in triplicate, and each RT-qPCR run included no-template controls (NTCs). Samples were considered positive for the presence of SARS-CoV-2 RNA-target if amplification passed a detection cycle threshold in <40 cycles (Acosta et al. 2021; Randazzo et al. 2020). Gene abundances for both targets (i.e., N1 and N2) per volume of wastewater for each WWTP were calculated and then combined as a single city-wide metric encompassing all three WWTPs using a validated approach that combines flow rate at each WWTP (Acosta et al. 2022). The flow rate of each WWTP was used to normalize the SARS-CoV-2 RNA concentration and reported as viral gene abundance per day.

## **2.2 Determining absenteeism rates among municipal employees**

Calgary is Canada's fourth largest city (1.3 million residents) and third most ethnically diverse. The City of Calgary is Calgary's largest individual employer, with more than 15,000 full-time employees in more than 500 different roles (i.e., Calgary Transit >3000 staff, Calgary Police Services >2600 staff, etc.)(City-of-Calgary 2022). During the pandemic, data on employee absenteeism was monitored by the Calgary Emergency Management Agency (CEMA) team and was classified as COVID-19-related, COVID-19-confirmed or unrelated to COVID-19. Unrelated cases were any cause for absenteeism that was not directly related to COVID-19 (i.e., injuries, etc.) (Figure 1 and Table 1S). Cases that were COVID-19-related included those manifesting from potential exposure to a suspected/confirmed individual at home or work and those employees with respiratory symptoms themselves, whether confirmed to be COVID-19 or not, thereby excluding the employee from safely returning to the workplace. COVID-19-confirmed were the subset of COVID-19-related cases that were ultimately verified with a clinical diagnostic test. Clinical case confirmation came from the single provincial health

provider Alberta Health Services, using standard clinical testing protocols evaluating RT-qPCR of nasopharyngeal/nasal swabs (Feb 2020-March 2022) and then supplemented with self-collected home diagnostic tests (Dec 2021-March 2022). Anonymized weekly numbers of absent employees due to COVID-19-related were collected over 89 weeks (June 2020 to March 2022).

Waves of COVID-19 in Calgary were defined by Alberta Health (AH) and AHS Public Health surveillance teams based on active case counts. During the 89-week study period, six COVID-19 waves were reported in Alberta: wave-1 (March 8, 2020, to July 10, 2020), wave-2 (July 10, 2020, to February 25, 2021), wave-3 (February 25, 2021, to July 1, 2021), wave-4 (July 1, 2021, to December 12, 2021), wave-5 (December 12, 2021, to March 6, 2022) and wave-6 (March 6, 2022, to June 26, 2022).

### **2.3 Statistical analysis**

All data analyses were performed in GraphPad Prism-8 software (La Jolla, CA) and R (V4.0.4) using the olsrr-package. The 7-day rolling average of the viral gene abundance per day was established using aggregate city-wide SARS-CoV-2 burden in wastewater determined three times each week at each WWTPs for both N1 and N2 gene targets used for quantifying SARS-CoV-2 RNA. Spearman's rank correlation was used to evaluate the relationship between the weekly averaged viral gene abundance per day in wastewater and absenteeism attributed to confirmed COVID-19 among municipal employees. Cross-correlation function (CCF) analysis was performed using SARS-CoV-2 RNA concentration (gene abundance/day) values as the independent variable and COVID-19-confirmed absenteeism as the dependent variable. Linear regression with  $R^2$  was performed to evaluate how much the measured wastewater signal could explain the variation of COVID-19-confirmed absences. Generalized Poisson regression model was performed to predict the number of COVID-19-confirmed absences out of the total number

of absent employees using the wastewater signal using 1 lag (week) and the number of absent employees . One week lag was chosen because COVID-19-confirmed absences had the strongest positive correlation with SARS-CoV2 RNA concentration in wastewater collected 1 week prior – and is the most clinically relevant. The Poisson regression model can be formulated as;

$$\log(\mathbb{E}(Y|X)) = \log(\mathcal{O}) + \beta X,$$

where  $Y$  is the number of cases of COVID-19-confirmed absences out of the total number of absent employees in the current week,  $X$  is the wastewater signal (e.g., N1 or N2) 1 week prior,  $\mathcal{O}$  is the offset term and represents the number of absent employees in the current week, and  $\mathbb{E}(Y|X)$  is the expected COVID-19 absenteeism given wastewater signals. It can be assumed  $Y$  follows a Poisson distribution because absenteeism data is a non-negative integer. When performing predictions, standard errors of predictions can be calculated using the *predict.glm* function in R (R Core Team, 2013). We then obtain the 95% confidence interval of one predicted value  $\hat{Y} \pm 1.96 \times SE$ , where  $SE$  is the standard error of the predicted value. The predictive model was built on 2020 data.

### 3. RESULTS

#### 3.1 COVID-19 absenteeism among municipal staff during the pandemic

Between June 15, 2020 and March 28, 2022 there were 11,116 municipal staff absences. Of those, 4,524 were unrelated to COVID-19, with the other 6,592 absences (59.3%) classified as COVID-19-related (Figure 1). Among COVID-19-related absences, 1,896 were confirmed by clinical testing, for a 20.2% weekly average positivity rate. There was an uneven distribution of COVID-19-confirmed absences during the different pandemic waves: Wave-1, 3/120 (2.5 %); wave-2, 248/2274 (10.9 %); wave-3: 317/1441 (21.9%); wave-4: 180/1077 (16.7%); wave-5:

1056/1573 (67.13%) and wave-6: 92/107 (85.9%). The maximum number of weekly COVID-19-confirmed absences (i.e., 169) was observed during the first week of 2022, which corresponded to wave-5 (Omicron/BA.1) in Calgary (Figure 1).

### **3.2 Wastewater measured SARS-CoV-2 across the City**

Wastewater samples were analyzed up to three times per week from June 29, 2020, to March 28, 2022 (Supplementary Figure 1). A total of 524 wastewater samples were collected at Calgary's wastewater treatment plants (WWTPs) (WWTP-1: 174, WWTP-2: 176, and WWTP-3: 174). Of the total wastewater samples tested using the N1, and N2 assays, 517 (98.7%) samples were positive for N1 and 496 (94.7%) were positive for N2. We combined wastewater-measured SARS-CoV-2 RNA concentration into a single city-wide metric after the daily flow rate of each WWTP was used to normalize the RNA concentration and reported as viral gene abundance per day. The SARS-CoV-2 RNA combined signal measured with either N1 or N2 targets was used for all analyses (Figures 2 and 3). SARS-CoV-2 RNA concentration was low (black lines) during the summer to fall of 2020 (June to November 2020) and rapidly increased during Alberta's second wave in December 2020.

### **3.3 Correlating absenteeism among municipal service workers and wastewater measured SARS-CoV-2 RNA**

The weekly number of COVID-19-related (Figure 2) and COVID-19-confirmed absences (Figure 3) declined from mid-January to March 2021, accompanied by a decrease in the total SARS-CoV-2 wastewater RNA concentration. The changing dynamics of employee absenteeism during waves 3 to 6 were mirrored by the changes in SARS-CoV-2 wastewater RNA signal. When weekly averaged N1, and N2 SARS-CoV-2 RNA concentration in wastewater were

compared with the total workforce absences (i.e., COVID-19-related, and unrelated), and COVID-19-confirmed absences, we found a relationship between employee absenteeism and city SARS-CoV-2 wastewater levels. Because city-wide wastewater levels were collected up to three times per week (on Mondays, Wednesdays and Thursdays), weekly averaged signals were established and paired with the weekly number of total absences. A moderate association between total absences and the SARS-CoV-2 genomic RNA signal in wastewater (N1: Spearman correlation  $r=0.529$ , 95% CI for correlation coefficient: 0.355 - 0.667,  $P<0.0001$ ; N2: Spearman correlation  $r=0.495$ , 95% CI for correlation coefficient: 0.314 - 0.641,) was found. When we assessed the association between weekly COVID-19-related absence and wastewater measured N1 or N2 signal, we observed a similar trend [(N1; Spearman correlation  $r=0.518$ , 95% CI for correlation coefficient: 0.343 - 0.660,  $P<0.0001$ ) (Figure 2A) and N2 (Spearman correlation  $r=0.479$ , 95% CI for correlation coefficient: 0.295 - 0.629,  $P<0.0001$ )] (Figure 2B) signal. Notably, N1 and N2 measured SARS-CoV-2 explained a smaller proportion of COVID-19-related absenteeism at the beginning of the pandemic (waves 1 and 2) relative to later in the monitoring period (waves 3 to 6). To evaluate the effect of the COVID-19 pandemic waves over time, the weekly SARS-CoV-2 RNA concentration was paired with weekly COVID-19-related absenteeism as a function of the waves, and the cross-correlation function was applied. Wave-1 and 6 were not included in the analysis because too few data points were available. The correlation between absenteeism and SARS-CoV-2 concentration was the strongest when using - 1 week lag (correlation value at -1 lag for wave-2: 0.516, wave-3: 0.869, wave-4: 0.74; and wave-5: 0.494) (Supplementary Figure 2). The number of spikes was smaller in later waves, which could be explained by the fact that as the pandemic evolved there could be a higher rate of vaccination and immunity among the employees.

When Spearman's rank correlation was performed to assess COVID-19-confirmed absenteeism as a function of wastewater viral RNA levels, even stronger associations were observed (Figure 3). There was a strong correlation between weekly COVID-19-confirmed absenteeism and the weekly average SARS-CoV-2 signal for both N1 (Spearman correlation  $r=0.824$ , 95% CI for correlation coefficient: 0.741 - 0.883,  $P<0.0001$ ) (Figure 3A) and N2 (Spearman correlation  $r=0.826$ , 95% CI for correlation coefficient: 0.744 - 0.884,  $P<0.0001$ ) (Figure 3B). Correlation coefficients showed that SARS-CoV-2 RNA concentration in wastewater increased in accordance with employee absenteeism rates. Overall, there was a linear association between WBS data and COVID-19-confirmed absenteeism. To evaluate the temporal effect, the weekly SARS-CoV-2 RNA concentration was paired with weekly COVID-19-confirmed absences, and the cross-correlation function applied. We found a positive correlation between the SARS-CoV-2 concentrations, measured with either N1 (correlation value at -1:0.800, 0: 0.900 and 1:0.815 lag) or N2 (correlation value at -1: 0.822, 0: 0.888 and 1: 0.843 lag) targets and absenteeism within a difference of -1 and 1 lag (weeks) (Supplementary Figure 3).

### **3.4 Predictive model for COVID-19-confirmed absenteeism**

Given the strongest correlation between COVID-19-confirmed absenteeism and wastewater measured SARS-CoV-2 N1 and N2 (Figure 3), we proceeded with modelling using this parameter alone. A linear regression model with adjusted  $R^2$  was performed to investigate the goodness of fit of a predictive model using a normal distribution. The model had a very strong predictive capacity using either SARS-CoV-2 gene target in wastewater: N1 (adjusted  $R^2 = 0.783$  (for linear regression model);  $P\text{-value} < 0.0001$ ) and N2 (adjusted  $R^2 = 0.756$  (for linear regression model);  $P\text{-value} < 0.0001$ ). Nearly 80% of the total variation in COVID-19-confirmed absenteeism is explained by the wastewater signals measured by either target. Autocorrelation,



partial autocorrelation and normality (Quantile-quantile) plots of the residuals of the model suggested that the correlation among residuals is reasonable small and there was not obvious outlier in the data (Supplementary Figure 4). A generalized linear regression with a Poisson distribution was performed to better understand what proportion of COVID-19-confirmed absenteeism could be estimated by the wastewater signal. As the N1 wastewater signal gave a better Adjusted  $R^2$  coefficient and N1 and N2 correlated well (Supplementary Figure 5), we proceeded only with this prediction model measuring the regression of COVID-confirmed absenteeism (Y) on SARS-CoV-2 N1 measured in wastewater collected one week prior (1-week leading signal). The predictive model was built on 2020 data, and then it was used to predict COVID-19-confirmed absenteeism with associated 95% confidence intervals from January 2021 to March 2022 (Figure 3A). We found that the model can predict COVID-confirmed absenteeism using SARS-CoV-2 N1 abundance in wastewater. The model predictions closely track the actual absences (Figure 4). As shown in Figure 4, the interval width is relatively small compared to the scale of predicted Y values, which suggests the predictions and estimated regression coefficients have low variations and the predictions are reliable. The final model predictions track the overall trend of actual COVID-19 absences very well.

#### **4. DISCUSSION**

To date, WBS studies have primarily focused on understanding the temporal changes in COVID-19 in communities by measuring SARS-CoV-2 RNA concentration in wastewater derived from WWTP (Pang et al. 2022; Acosta et al. 2022; Ahmed et al. 2020; de Sousa et al. 2022; Hasan et al. 2021; Karthikeyan et al. 2021; Wartell et al. 2022; Tandukar et al. 2022; Acosta et al. 2021; Gonçalves et al. 2021; Wang et al. 2020; Zhou et al. 2021; Gibas et al. 2021; Betancourt et al. 2021; Dai et al. 2022). These data have enabled evidence-informed decisions by public health

officials as well as members of the public. Few studies, however, have looked to harness wastewater-based surveillance as a tool to influence business policy. There have been a modest number of reports of wastewater from select high-risk facilities such as hospitals and university dormitories being monitored for SARS-CoV-2 RNA enabling decisions on a more local level (Tandukar et al. 2022; Acosta et al. 2021; Gonçalves et al. 2021; Wang et al. 2020; Zhou et al. 2021; Gibas et al. 2021; Betancourt et al. 2021; Dai et al. 2022). However, studies assessing how WBS may be harnessed to affect other societal factors remain lacking. Absenteeism is one such area relevant to all industries and employers. For example, the high and unpredictable rates of workforce absenteeism associated with the COVID-19 pandemic have stifled job growth and economic recovery (Faramarzi et al. 2021).

COVID-19 absenteeism has predominantly been explored based on its impact on the healthcare workforce. Studies have invariably demonstrated a marked increase in absenteeism rates relative to pre-pandemic periods (de Paiva, Dos Santos, and de Lima Dalmolin 2022; Grandi, Silva, and Barbosa 2022; Challener et al. 2021). Indeed, these have been significant contributing factors manifesting in record-high rates of fatigue, burnout and workers prematurely leaving the workforce relative to pre-pandemic times (Maunder et al. 2021; Murthy 2022). However, absenteeism in general populations have also had profound socioeconomic impacts. Some of the best data tracking these trends come from the US Centres for Disease Control's National Institute for Occupational Safety and Health (NIOSH), which monitors the prevalence of health-related absenteeism among full-time workers. Higher absenteeism rates early in the pandemic relative to prior flu seasons were confirmed (peaking in December 2021-January 2022 at 5.4% vs ~2.5%) (CDC 2020a; Groenewold et al. 2020). Absenteeism was most significantly increased in production, service provision and transportation industries. Critically, several categories of

“essential workers” (those whose jobs were considered critical to societal functioning and cannot be performed remotely) (Government-of-Canada 2021) include those working for municipalities (i.e., transportation, social services and policing) and have been disproportionately impacted with COVID-19 based on serosurveys (Shah et al. 2022).

Here, we found a positive relationship between weekly SARS-CoV-2 RNA concentrations in wastewater treatment plants servicing Calgary and confirmed absences reported in the week following sampling collection, confirming that wastewater provides a leading signal for workplace absenteeism. This relationship was not as strong at the beginning of the pandemic (waves 1 and 2) compared to later waves. This may be in part relate to the lower incidence of COVID-19 and greater uncertainty at the beginning of the pandemic as wastewater-based surveillance has been shown to be sensitive to an incidence rate of  $\sim 2/100,000$  populations (Li et al. 2023; Acosta et al. 2022). In addition, the detection of SARS-CoV-2 RNA in wastewater using either gene N1 or N2 showed a good correlation. Still, as the N1-signal gave a better Adjusted  $R^2$  coefficient, it was only included in the final prediction model. Previous studies utilizing wastewater data had focused on models to describe, estimate, and interpret SARS-CoV-2 RNA concentrations across general populations (de Sousa et al. 2022; Karthikeyan et al. 2021; Krivoňáková et al. 2021; Vallejo et al. 2022; Ahmed et al. 2020; Hasan et al. 2021; Saththasivam et al. 2021). Simulation of infection prevalence based on the viral RNA concentration in sewage has been developed using different modeling approaches, including Monte Carlo simulations, susceptible-exposed-infectious-recovered (SEIR) model, autoregressive integrated moving average (ARIMA) models (de Sousa et al. 2022; McMahan et al. 2021; Karthikeyan et al. 2021; Wu et al. 2022). Here, the estimation of the number of absent workers due to COVID-19 infections was performed via a Poisson regression model. Other studies also have shown the

trends and strong correlation of clinical data with the SARS-CoV-2 RNA abundance in wastewater on a weekly basis (Wartell et al. 2022; Fahrenfeld et al. 2022; Halwatura et al. 2022; Krivoňáková et al. 2021).

Strategies to mitigate the impact of absenteeism in the workforce generally involve worker replacement, redistributing work among healthy workers (extra shifts and overtime), and new recruitment and training (Aguilar et al. 2021). However, tools that independently forecast future absenteeism rate changes based on objective and independent data, such as that delivered by WBS still need to be improved. In addition to ensuring workplaces have the human resources to fulfill their mandate, such a model can be used to optimize costs associated with a dynamic workforce. Indeed, the indirect costs related to absenteeism along with the workforce during the COVID-19 pandemic were estimated by the Integrated Benefits Institute to have cost US employers almost \$1 billion each week (paid as a combination of excess overtime and other employee benefits, or sick leave and disability) (Schiavo 2021). Another important aspect related to absenteeism at the workplace is its impact on shift scheduling. Alongside wages, shift scheduling unpredictability may have negative impact on health and economic insecurity from the employee perspective (Harknett, Schneider, and Irwin 2021). Therefore, models that establish thresholds in wastewater SARS-CoV-2 signal one week in advance could be used as triggers for internal actions like absence recovery policies (i.e., holdover overtime, call-ins, cross-training, and temporary workers) (Easton and Goodale 2005; Maass et al. 2017; Easton 2011; Harknett, Schneider, and Irwin 2021). The prediction models, such as the one we developed, could be used to identify wastewater SARS-CoV-2 thresholds that can be used to trigger internal compensatory actions.

This study has several notable limitations. First, the estimation of the true rate of COVID-19 absenteeism in our study population could be affected by different factors. Asymptomatic infection in some workers or clinical testing hesitancy could result in wastewater signals without corresponding absences from work. Second, owing to changes in testing availability and the perception of COVID-19-associated risk among populations, the proportion of positive COVID-19 cases out of the total absenteeism cases varied throughout the study (being especially low at the start of the pandemic). However, by March 2020 (Wave-1), the Province of Alberta had the highest per capita rate of COVID-19 clinical testing performed of all Canadian Provinces (1371 per 100,000 vs 791 per 100,000) (Fletcher 2022). While the workforce studied represented the largest employer in the city, this prediction model may not be directly generalized to other workplaces and policies may differ across different institutions. Furthermore, within the workforce of this study, we could not distinguish the role individual affected workers fulfilled, and this may be an important future aspect to study as the risks of COVID-19 acquisition is heavily influenced by occupation (Shah et al. 2022).

## **5. CONCLUSIONS**

These findings highlight the potential of WBS as a novel and objective approach that can monitor and predict workforce absenteeism related to COVID-19 infections with a one-week lead time. This model could be used to optimize workforce distribution to ensure efficiency and cost-effectiveness. WBS is an objective, inclusive, independent and cost-effective tool which can be leveraged to benefit society well beyond its currently focused healthcare-associated applications.



## AUTHOR CONTRIBUTIONS

**Nicole Acosta:** Formal analysis, Investigation, Methodology, Validation, Data Curation, Visualization, Writing - Original Draft, Writing - Review & Editing. **Xiaotian Dai:** Methodology, Formal analysis, Investigation, Writing - Review & Editing. **María A. Bautista:** Methodology, Validation, Investigation. **Barbara J. Waddell:** Methodology, Validation, Investigation. **Jangwoo Lee:** Investigation. **Kristine Du:** Investigation. **Janine McCalder:** Investigation. **Puja Pradhan:** Investigation. **Chloe Papparis:** Investigation. **Xuewen Lu:** Formal analysis. **Thierry Chekouo:** Formal analysis. **Alexander Krusina:** Investigation, Writing - Review & Editing. **Danielle Southern:** Investigation, Writing - Review & Editing. **Tyler Williamson:** Investigation, Writing - Review & Editing. **Rhonda G Clark:** Funding Acquisition, Project Administration. **Raymond Patterson:** Writing - Review & Editing. **Paul Westlund:** Writing - Review & Editing. **Jon Meddings:** Project administration, Writing - Review & Editing. **Norma J. Ruecker:** Project administration, Funding acquisition, Investigation, Writing - Review & Editing. **Christopher Lammiman:** Conceptualization, Investigation, Data Curation, Writing - Review & Editing. **Coby Duerr:** Conceptualization, Investigation, Data Curation, Writing - Review & Editing. **Gopal Achari:** Writing - Review & Editing. **Steve E. Hrudey:** Funding Acquisition, Formal analysis, Writing - Review & Editing. **Bonita E. Lee:** Funding Acquisition, Formal analysis, Writing - Review & Editing. **Xiaoli Pang:** Funding Acquisition, Formal analysis, Writing - Review & Editing. **Kevin Frankowski:** Conceptualization, Formal analysis, Writing - Review & Editing. **Casey RJ Hubert:** Conceptualization, Formal analysis, Funding acquisition, Writing - Review & Editing. **Michael D. Parkins:** Conceptualization, Formal analysis, Funding acquisition, Supervision, Writing - Review & Editing.

417

418 **FUNDING**

419 This work was supported by grants from the Canadian Institutes of Health Research [448242 to  
420 M.D.P.]; and from Alberta Health [M.D.P., K.F., C.R.J.H., X.P., B.L. and S.E.H.].

421 **DECLARATION OF COMPETING INTEREST**

422 The authors have declared no conflicts of interest.

423 **ACKNOWLEDGMENTS**

424 The investigators are grateful to the staff of the City of Calgary Water Services for their support  
425 in providing wastewater samples for assessment. We would also like to also thank the Calgary  
426 Emergency Management Agency (CEMA) team for collecting and sharing anonymous  
427 absenteeism case data. The authors are grateful for the efforts of the sample collection and  
428 preparation team including Alex Buchner Beaudet, Lawrence Man, Navid Sedaghat, Jennifer  
429 Van Doorn, Kevin Xiang, Leslie Chan, Laura Vivas, Kashtin Low and Andra Bacanu. The team  
430 would also like to acknowledge the efforts of Dr Jordan Hollman and Dr Jianwei Chen.

431



## REFERENCES

- Acosta, Nicole, María A. Bautista, Jordan Hollman, Janine McCalder, Alexander Buchner Beaudet, Lawrence Man, Barbara J. Waddell, Jianwei Chen, Carmen Li, Darina Kuzma, Srijak Bhatnagar, Jenine Leal, Jon Meddings, Jia Hu, Jason L. Cabaj, Norma J. Ruecker, Christopher Naugler, Dylan R. Pillai, Gopal Achari, M. Cathryn Ryan, John M. Conly, Kevin Frankowski, Casey R. J. Hubert, and Michael D. Parkins. 2021. 'A Multicenter Study Investigating SARS-CoV-2 in Tertiary-Care Hospital Wastewater. Viral burden correlates with increasing hospitalized cases as well as hospital-associated transmissions and outbreaks', *Water Research*: 117369.
- Acosta, Nicole, María A. Bautista, Barbara J. Waddell, Janine McCalder, Alexander Buchner Beaudet, Lawrence Man, Puja Pradhan, Navid Sedaghat, Chloe Papparis, Andra Bacanu, Jordan Hollman, Alexander Krusina, Danielle A. Southern, Tyler Williamson, Carmen Li, Srijak Bhatnagar, Sean Murphy, Jianwei Chen, Darina Kuzma, Rhonda Clark, Jon Meddings, Jia Hu, Jason L. Cabaj, John M. Conly, Xiaotian Dai, Xuewen Lu, Thierry Chekouo, Norma J. Ruecker, Gopal Achari, M. Cathryn Ryan, Kevin Frankowski, Casey R. J. Hubert, and Michael D. Parkins. 2022. 'Longitudinal SARS-CoV-2 RNA wastewater monitoring across a range of scales correlates with total and regional COVID-19 burden in a well-defined urban population', *Water Research*, 220: 118611.
- Aguilar, Elliot, Nicholas J. Roberts, Ismail Uluturk, Patrick Kaminski, John W. Barlow, Andreas G. Zori, Laurent Hébert-Dufresne, and Benjamin D. Zusman. 2021. 'Adaptive staffing can mitigate essential worker disease and absenteeism in an emerging epidemic', *Proceedings of the National Academy of Sciences*, 118: e2105337118.
- Ahmed, W., N. Angel, J. Edson, K. Bibby, A. Bivins, J. W. O'Brien, P. M. Choi, M. Kitajima, S. L. Simpson, J. Li, B. Tschärke, R. Verhagen, W. J. M. Smith, J. Zaugg, L. Dierens, P. Hugenholtz, K. V. Thomas, and J. F. Mueller. 2020. 'First confirmed detection of SARS-CoV-2 in untreated wastewater in Australia: A proof of concept for the wastewater surveillance of COVID-19 in the community', *Sci Total Environ*, 728: 138764.
- Amirian, E. Susan. 2020. 'Potential fecal transmission of SARS-CoV-2: Current evidence and implications for public health', *International Journal of Infectious Diseases*, 95: 363-70.
- Arora, Sudipti, Devanshi Sutaria, Ekta Meena, and Aditi Nag. 2022. 'Fundamentals of SARS-CoV-2 Detection in Wastewater for Early Epidemic Prediction and Key Learnings on Treatment Processes for Removal of Viral Fragments.' in Sudipti Arora, Ashwani Kumar, Shinjiro Ogita and Yuan Yeu Yau (eds.), *Biotechnological Innovations for Environmental Bioremediation* (Springer Nature Singapore: Singapore).
- Asghar, Humayun, Ousmane M Diop, Goitom Weldegebriel, Farzana Malik, Sushmitha Shetty, Laila El Bassioni, Adefunke O Akande, Eman Al Maamoun, Sohail Zaidi, and Adekunle J Adeniji. 2014. 'Environmental surveillance for polioviruses in the Global Polio Eradication Initiative', *The Journal of infectious diseases*, 210: S294-S303.
- Betancourt, Walter Q., Bradley W. Schmitz, Gabriel K. Innes, Sarah M. Prasek, Kristen M. Pogreba Brown, Erika R. Stark, Aidan R. Foster, Ryan S. Sprissler, David T. Harris, Samendra P. Sherchan, Charles P. Gerba, and Ian L. Pepper. 2021. 'COVID-19 containment on a college campus via wastewater-based epidemiology, targeted clinical testing and an intervention', *Science of The Total Environment*, 779: 146408.
- CDC. 2020a. 'Absenteeism in the Workplace', Accessed December 13. <https://www.cdc.gov/niosh/topics/absences/default.html>.
- . 2020b. 'Research use only 2019—novel coronavirus (2019-nCoV) real-time RT-PCR primers and probes (2020)', Accessed January 11 2023. <https://stacks.cdc.gov/view/cdc/88834>.

- Challener, D. W., L. E. Breeher, J. Frain, M. D. Swift, P. K. Tosh, and J. O'Horo. 2021. 'Healthcare personnel absenteeism, presenteeism, and staffing challenges during epidemics', *Infect Control Hosp Epidemiol*, 42: 388-91.
- City-of-Calgary. 2022. 'Calgary', Accessed December 9. <https://www.calgary.ca/home.html>.
- Dai, Xiaotian, David Champredon, Aamir Fazil, Chand S. Mangat, Shelley W. Peterson, Edgard M. Mejia, Xuewen Lu, and Thierry Chekouo. 2022. 'Statistical framework to support the epidemiological interpretation of SARS-CoV-2 concentration in municipal wastewater', *Scientific Reports*, 12: 13490.
- de Paiva, Larissa Garcia, Wendel Mombaque Dos Santos, and Grazielle de Lima Dalmolin. 2022. 'The impact of the SARS-CoV-2 pandemic on sickness absenteeism among hospital workers', *Revista Brasileira de Medicina do Trabalho*, 20: 65.
- de Sousa, Adriano Roberto Vieira, Lívia do Carmo Silva, Juliana Santana de Curcio, Hugo Delleon da Silva, Carlos Eduardo Anunciação, Silvia Maria Salem Izacc, Flavio Olimpio Sanches Neto, and Elisângela de Paula Silveira Lacerda. 2022. "'pySewage": a hybrid approach to predict the number of SARS-CoV-2-infected people from wastewater in Brazil', *Environmental Science and Pollution Research*, 29: 67260-69.
- Easton, Fred F. 2011. 'Cross-training performance in flexible labor scheduling environments', *IIE Transactions*, 43: 589-603.
- Easton, Fred F., and John C. Goodale. 2005. 'Schedule Recovery: Unplanned Absences in Service Operations\*', *Decision Sciences*, 36: 459-88.
- Fahrenfeld, N. L., William R. Morales Medina, Stephanie D'Elia, Maureen Modica, Alejandro Ruiz, and Mark McLane. 2022. 'Comparison of residential dormitory COVID-19 monitoring via weekly saliva testing and sewage monitoring', *Science of The Total Environment*, 814: 151947.
- Faramarzi, Ahmad, Javad Javan-Noughabi, Seyed Saeed Tabatabaee, Ali Asghar Najafpoor, and Aziz Rezapour. 2021. 'The lost productivity cost of absenteeism due to COVID-19 in health care workers in Iran: a case study in the hospitals of Mashhad University of Medical Sciences', *BMC Health Services Research*, 21: 1169.
- Fletcher, Robson. 2022. 'Alberta still leads all provinces in COVID-19 testing but limited supplies mean tests are changing', CBC News, Accessed December 16. <https://www.cbc.ca/news/canada/calgary/alberta-covid-19-tests-reagent-materials-limited-1.5510946>.
- Galani, Aikaterini, Reza Aalizadeh, Marios Kostakis, Athina Markou, Nikiforos Alygizakis, Theodore Lytras, Panagiotis G. Adamopoulos, Jordan Peccia, David C. Thompson, Aikaterini Kontou, Apostolos Karagiannidis, Evi S. Lianidou, Margaritis Avgeris, Dimitrios Paraskevis, Sotirios Tsiodras, Andreas Scorilas, Vasilis Vasiliou, Meletios-Athanasios Dimopoulos, and Nikolaos S. Thomaidis. 2022. 'SARS-CoV-2 wastewater surveillance data can predict hospitalizations and ICU admissions', *Science of The Total Environment*, 804: 150151.
- Gibas, Cynthia, Kevin Lambirth, Neha Mittal, Md Ariful Islam Juel, Visva Bharati Barua, Lauren Roppolo Brazell, Keshawn Hinton, Jordan Lontai, Nicholas Stark, Isaiah Young, Cristine Quach, Morgan Russ, Jacob Kauer, Bridgette Nicolosi, Don Chen, Srinivas Akella, Wenwu Tang, Jessica Schlueter, and Mariya Munir. 2021. 'Implementing building-level SARS-CoV-2 wastewater surveillance on a university campus', *Science of The Total Environment*, 782: 146749.
- Gonçalves, José, Tom Koritnik, Verica Mioč, Marija Trkov, Maja Bolješić, Nataša Berginc, Katarina Prosenc, Tadeja Kotar, and Metka Paragi. 2021. 'Detection of SARS-CoV-2 RNA in hospital wastewater from a low COVID-19 disease prevalence area', *Science of The Total Environment*, 755: 143226.

- Government-of-Canada. 2021. 'Guidance on Essential Services and Functions in Canada During the COVID-19 Pandemic', Accessed January 9 2023. <https://www.publicsafety.gc.ca/cnt/ntnl-scr/crtcl-nfrstrctr/esf-sfe-en.aspx>.
- Grandi, J. L., C. O. Silva, and D. A. Barbosa. 2022. 'Work absences among hospital cleaning staff during the SARS-CoV-2 (COVID-19) pandemic', *Rev Bras Med Trab*, 20: 45-54.
- Groenewold, M. R., S. L. Burrer, F. Ahmed, A. Uzicanin, H. Free, and S. E. Luckhaupt. 2020. 'Increases in Health-Related Workplace Absenteeism Among Workers in Essential Critical Infrastructure Occupations During the COVID-19 Pandemic - United States, March-April 2020', *MMWR Morb Mortal Wkly Rep*, 69: 853-58.
- Halwatura, Lahiruni M., Isabella S. McLerran, Daniel L. Weglarski, Zia U. Ahmed, Yinyin Ye, Ian M. Bradley, and Diana S. Aga. 2022. 'Complementing RNA Detection with Pharmaceutical Monitoring for Early Warning of Viral Outbreaks through Wastewater-Based Epidemiology', *Environmental Science & Technology Letters*, 9: 567-74.
- Harknett, Kristen, Daniel Schneider, and Véronique Irwin. 2021. 'Improving health and economic security by reducing work schedule uncertainty', *Proceedings of the National Academy of Sciences*, 118: e2107828118.
- Hasan, Shadi W., Yazan Ibrahim, Marianne Daou, Hussein Kannout, Nila Jan, Alvaro Lopes, Habiba Alsafar, and Ahmed F. Yousef. 2021. 'Detection and quantification of SARS-CoV-2 RNA in wastewater and treated effluents: Surveillance of COVID-19 epidemic in the United Arab Emirates', *Science of The Total Environment*, 764: 142929.
- Hegazy, Nada, Aaron Cowan, Patrick M. D'Aoust, Élisabeth Mercier, Syeda Tasneem Towhid, Jian-Jun Jia, Shen Wan, Zhihao Zhang, Md Pervez Kabir, Wanting Fang, Tyson E. Graber, Alex E. MacKenzie, Stéphanie Guilherme, and Robert Delatolla. 2022. 'Understanding the dynamic relation between wastewater SARS-CoV-2 signal and clinical metrics throughout the pandemic', *Science of The Total Environment*, 853: 158458.
- Hellmér, Maria, Nicklas Paxéus, Lars Magnus, Lucica Enache, Birgitta Arnholm, Annette Johansson, Tomas Bergström, and Heléne Norder. 2014. 'Detection of pathogenic viruses in sewage provided early warnings of hepatitis A virus and norovirus outbreaks', *Applied and Environmental Microbiology*, 80: 6771-81.
- Karthikeyan, Smruthi, Nancy Ronquillo, Pedro Belda-Ferre, Destiny Alvarado, Tara Javidi, Christopher A. Longhurst, and Rob Knight. 2021. 'High-Throughput Wastewater SARS-CoV-2 Detection Enables Forecasting of Community Infection Dynamics in San Diego County', *mSystems*, 6: e00045-21.
- Kitajima, Masaaki, Warish Ahmed, Kyle Bibby, Annalaura Carducci, Charles P. Gerba, Kerry A. Hamilton, Eiji Haramoto, and Joan B. Rose. 2020. 'SARS-CoV-2 in wastewater: State of the knowledge and research needs', *Science of The Total Environment*, 739: 139076.
- Krivoňáková, Naďa, Andrea Šoltýsová, Michal Tamáš, Zdenko Takáč, Ján Krahulec, Andrej Ficek, Miroslav Gál, Marián Gall, Miroslav Fehér, Anna Krivjanská, Ivana Horáková, Noemi Belišová, Paula Bímová, Andrea Butor Škulcová, and Tomáš Mackuľák. 2021. 'Mathematical modeling based on RT-qPCR analysis of SARS-CoV-2 in wastewater as a tool for epidemiology', *Scientific Reports*, 11: 19456.
- Li, Qiaozhi, Bonita E. Lee, Tiejun Gao, Yuanyuan Qiu, Erik Ellehoj, Jiaao Yu, Mathew Diggle, Graham Tipples, Rasha Maal-Bared, Deena Hinshaw, Christopher Sikora, Nicholas J. Ashbolt, James Talbot, Steve E. Hrudehy, and Xiaoli Pang. 2023. 'Number of COVID-19 cases required in a population to detect SARS-CoV-2 RNA in wastewater in the province of Alberta, Canada: Sensitivity assessment', *Journal of Environmental Sciences*, 125: 843-50.
- Ling, Yun, Shui-Bao Xu, Yi-Xiao Lin, Di Tian, Zhao-Qin Zhu, Fa-Hui Dai, Fan Wu, Zhi-Gang Song, Wei Huang, Jun Chen, Bi-Jie Hu, Sheng Wang, En-Qiang Mao, Lei Zhu, Wen-Hong Zhang, and Hong-

- Zhou Lu. 2020. 'Persistence and clearance of viral RNA in 2019 novel coronavirus disease rehabilitation patients', *Chinese Medical Journal*, 133.
- Maass, Kayse Lee, Boying Liu, Mark S. Daskin, Mary Duck, Zhehui Wang, Rama Mwenesi, and Hannah Schapiro. 2017. 'Incorporating nurse absenteeism into staffing with demand uncertainty', *Health Care Management Science*, 20: 141-55.
- Maunder, Robert G. , Natalie D. Heeney, Gillian Strudwick, Hwayeon Danielle Shin, Braden O'Neill, Nancy Young, Lianne P. Jeffs, Kali Barrett, Nicolas S. Bodmer, Karen B. Born, Jessica Hopkins, Peter Jüni, Anna Perkhun, David J. Price, Fahad Razak, Christopher J. Mushquash, and Linda Mah. 2021. 'Burnout in hospital-based healthcare workers during COVID-19', *Science Briefs of the Ontario COVID-19 Science Advisory Table*, Accessed December 13. <https://covid19-sciencetable.ca/sciencebrief/burnout-in-hospital-based-healthcare-workers-during-covid-19/>.
- McMahan, Christopher S., Stella Self, Lior Rennert, Corey Kalbaugh, David Kriebel, Duane Graves, Cameron Colby, Jessica A. Deaver, Sudeep C. Popat, Tanju Karanfil, and David L. Freedman. 2021. 'COVID-19 wastewater epidemiology: a model to estimate infected populations', *The Lancet Planetary Health*, 5: e874-e81.
- Medema, G., F. Been, L. Heijnen, and S. Pettersen. 2020. 'Implementation of environmental surveillance for SARS-CoV-2 virus to support public health decisions: Opportunities and challenges', *Current opinion in environmental science & health*, 17: 49-71.
- Miyani, Brijen, Liang Zhao, Maddie Spooner, Sejal Buch, Zachary Gentry, Anna Mehrotra, John Norton, and Irene Xagorarakis. 2021. 'Early Warnings of COVID-19 Second Wave in Detroit', *Journal of Environmental Engineering*, 147: 06021004.
- Murthy, Vivek H. 2022. 'Confronting Health Worker Burnout and Well-Being', *New England Journal of Medicine*, 387: 577-79.
- Naughton, Colleen C., Fernando A. Roman, Ana Grace F. Alvarado, Arianna Q. Tariqi, Matthew A. Deeming, Kyle Bibby, Aaron Bivins, Joan B. Rose, Gertjan Medema, Warish Ahmed, Panagis Katsivelis, Vajra Allan, Ryan Sinclair, Yihan Zhang, and Maureen N. Kinyua. 2021. 'Show us the Data: Global COVID-19 Wastewater Monitoring Efforts, Equity, and Gaps', *medRxiv*: 2021.03.14.21253564.
- Pang, Xiaoli, Tiejun Gao, Erik Ellehoj, Qiaozhi Li, Yuanyuan Qiu, Rasha Maal-Bared, Christopher Sikora, Graham Tipples, Mathew Diggle, Deena Hinshaw, Nicholas J. Ashbolt, James Talbot, Steve E. Hrudey, and Bonita E. Lee. 2022. 'Wastewater-Based Surveillance Is an Effective Tool for Trending COVID-19 Prevalence in Communities: A Study of 10 Major Communities for 17 Months in Alberta', *ACS ES&T Water*.
- Peccia, J., A. Zulli, D. E. Brackney, N. D. Grubaugh, E. H. Kaplan, A. Casanovas-Massana, A. I. Ko, A. A. Malik, D. Wang, M. Wang, J. L. Warren, D. M. Weinberger, W. Arnold, and S. B. Omer. 2020. 'Measurement of SARS-CoV-2 RNA in wastewater tracks community infection dynamics', *Nat Biotechnol*, 38: 1164-67.
- Randazzo, Walter, Pilar Truchado, Enric Cuevas-Ferrando, Pedro Simón, Ana Allende, and Gloria Sánchez. 2020. 'SARS-CoV-2 RNA in wastewater anticipated COVID-19 occurrence in a low prevalence area', *Water Research*, 181: 115942-42.
- Saththasivam, Jayaprakash, Shimaa S. El-Malah, Tricia A. Gomez, Khadeeja A. Jabbar, Reshma Remanan, Arun K. Krishnankutty, Oluwaseun Ogunbiyi, Kashif Rasool, Sahel Ashhab, Sergey Rashkeev, Meryem Bensaad, Ayeda A. Ahmed, Yasmin A. Mohamoud, Joel A. Malek, Laith J. Abu Raddad, Andrew Jeremijenko, Hussein A. Abu Halaweh, Jenny Lawler, and Khaled A. Mahmoud. 2021. 'COVID-19 (SARS-CoV-2) outbreak monitoring using wastewater-based epidemiology in Qatar', *Science of The Total Environment*, 774: 145608.
- Schiavo, Amanda. 2021. 'COVID is costing employers nearly \$1 billion per week', Accessed December 11. <https://www.benefitnews.com/news/covid-is-costing-employers-nearly-1-billion-per-week>.

- Shah, Melisa M, Bryan R Spencer, Leora R Feldstein, James M Haynes, Tina J Benoit, Sharon H Saydah, Matthew R Groenewold, Susan L Stramer, and Jefferson M Jones. 2022. 'Occupations Associated with SARS-CoV-2 Infection and Vaccination, U.S. Blood Donors, July 2021–December 2021', *Clinical Infectious Diseases*.
- Tandukar, Sarmila, Niva Sthapit, Ocean Thakali, Bikash Malla, Samendra P. Sherchan, Bijay Man Shakya, Laxman P. Shrestha, Jeevan B. Sherchand, Dev Raj Joshi, Bhupendra Lama, and Eiji Haramoto. 2022. 'Detection of SARS-CoV-2 RNA in wastewater, river water, and hospital wastewater of Nepal', *Science of The Total Environment*, 824: 153816.
- Tang, An, Zhen-Dong Tong, Hong-Ling Wang, Ya-Xin Dai, Ke-Feng Li, Jie-Nan Liu, Wen-Jie Wu, Chen Yuan, Meng-Lu Yu, Peng Li, and Jian-Bo Yan. 2020. 'Detection of Novel Coronavirus by RT-PCR in Stool Specimen from Asymptomatic Child, China', *Emerging infectious diseases*, 26: 1337-39.
- Vallejo, Juan A., Noelia Trigo-Tasende, Soraya Rumbo-Feal, Kelly Conde-Pérez, Ángel López-Oriona, Inés Barbeito, Manuel Vaamonde, Javier Tarrío-Saavedra, Rubén Reif, Susana Ladra, Bruno K. Rodiño-Janeiro, Mohammed Nasser-Ali, Ángeles Cid, María Veiga, Antón Acevedo, Carlos Lamora, Germán Bou, Ricardo Cao, and Margarita Poza. 2022. 'Modeling the number of people infected with SARS-COV-2 from wastewater viral load in Northwest Spain', *Science of The Total Environment*, 811: 152334.
- Wang, Jie, Haiting Feng, Sheng Zhang, Zuowei Ni, Lingmei Ni, Yu Chen, Lixin Zhuo, Zifeng Zhong, and Tingting Qu. 2020. 'SARS-CoV-2 RNA detection of hospital isolation wards hygiene monitoring during the Coronavirus Disease 2019 outbreak in a Chinese hospital', *International Journal of Infectious Diseases*, 94: 103-06.
- Wartell, Brian A., Sudheer Ballare, Shahrzad Saffari Ghandehari, Patricia Dotingco Arcellana, Camila Proano, Devrim Kaya, Debra Niemeier, and Birthe V. Kjellerup. 2022. 'Relationship between SARS-CoV-2 in wastewater and clinical data from five wastewater sheds', *Journal of Hazardous Materials Advances*, 8: 100159.
- Whitney, Oscar N., Lauren C. Kennedy, Vinson B. Fan, Adrian Hinkle, Rose Kantor, Hannah Greenwald, Alexander Crits-Christoph, Basem Al-Shayeb, Mira Chaplin, Anna C. Maurer, Robert Tjian, and Kara L. Nelson. 2021. 'Sewage, Salt, Silica, and SARS-CoV-2 (4S): An Economical Kit-Free Method for Direct Capture of SARS-CoV-2 RNA from Wastewater', *Environmental Science & Technology*, 55: 4880-88.
- Wölfel, Roman, Victor M. Corman, Wolfgang Guggemos, Michael Seilmaier, Sabine Zange, Marcel A. Müller, Daniela Niemeyer, Terry C. Jones, Patrick Vollmar, Camilla Rothe, Michael Hoelscher, Tobias Bleicker, Sebastian Brünink, Julia Schneider, Rosina Ehmann, Katrin Zwirgmaier, Christian Drosten, and Clemens Wendtner. 2020. 'Virological assessment of hospitalized patients with COVID-2019', *Nature*, 581: 465-69.
- Wu, Fuqing, Amy Xiao, Jianbo Zhang, Katya Moniz, Noriko Endo, Federica Armas, Richard Bonneau, Megan A. Brown, Mary Bushman, Peter R. Chai, Claire Duvallet, Timothy B. Erickson, Katelyn Foppe, Newsha Ghaeli, Xiaoqiong Gu, William P. Hanage, Katherine H. Huang, Wei Lin Lee, Mariana Matus, Kyle A. McElroy, Jonathan Nagler, Steven F. Rhode, Mauricio Santillana, Joshua A. Tucker, Stefan Wuertz, Shijie Zhao, Janelle Thompson, and Eric J. Alm. 2022. 'SARS-CoV-2 RNA concentrations in wastewater foreshadow dynamics and clinical presentation of new COVID-19 cases', *Science of The Total Environment*, 805: 150121.
- Wu, Yongjian, Cheng Guo, Lantian Tang, Zhongsi Hong, Jianhui Zhou, Xin Dong, Huan Yin, Qiang Xiao, Yanping Tang, Xiujuan Qu, Liangjian Kuang, Xiaomin Fang, Nischay Mishra, Jiahai Lu, Hong Shan, Guanmin Jiang, and Xi Huang. 2020. 'Prolonged presence of SARS-CoV-2 viral RNA in faecal samples', *The Lancet Gastroenterology & Hepatology*, 5: 434-35.
- Xiao, A., F. Wu, M. Bushman, J. Zhang, M. Imakaev, P. R. Chai, C. Duvallet, N. Endo, T. B. Erickson, F. Armas, B. Arnold, H. Chen, F. Chandra, N. Ghaeli, X. Gu, W. P. Hanage, W. L. Lee, M. Matus, K. A.

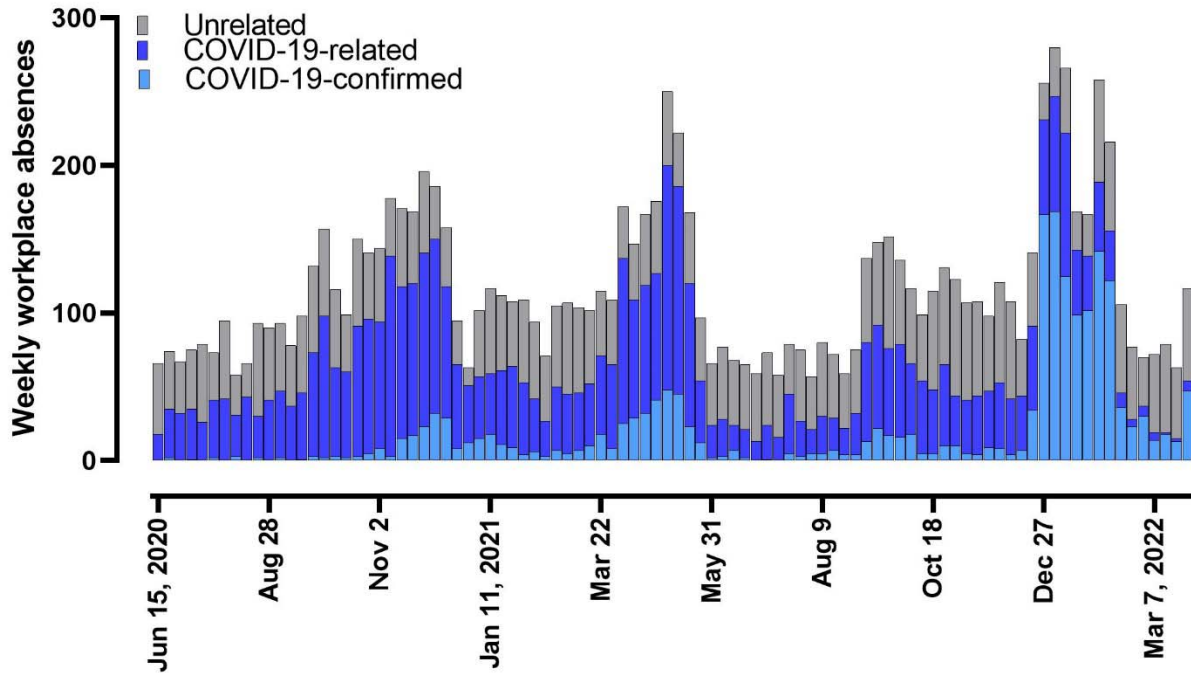
McElroy, K. Moniz, S. F. Rhode, J. Thompson, and E. J. Alm. 2021. 'Metrics to relate COVID-19 wastewater data to clinical testing dynamics', *medRxiv*.

Zhan, Qingyu, Kristina M. Babler, Mark E. Sharkey, Ayaaz Amirali, Cynthia C. Beaver, Melinda M. Boone, Samuel Comerford, Daniel Cooper, Elena M. Cortizas, Benjamin B. Currall, Jonathan Foox, George S. Grills, Erin Kobetz, Naresh Kumar, Jennifer Laine, Walter E. Lamar, Alejandro M. A. Mantero, Christopher E. Mason, Brian D. Reding, Maria Robertson, Matthew A. Roca, Krista Ryon, Stephan C. Schürer, Bhavarth S. Shukla, Natasha Schaefer Solle, Mario Stevenson, John J. Tallon Jr, Collette Thomas, Tori Thomas, Dušica Vidović, Sion L. Williams, Xue Yin, and Helena M. Solo-Gabriele. 2022. 'Relationships between SARS-CoV-2 in Wastewater and COVID-19 Clinical Cases and Hospitalizations, with and without Normalization against Indicators of Human Waste', *ACS ES&T Water*, 2: 1992-2003.

Zhou, Jun-Bo, Wen-Hua Kong, Sheng Wang, Yi-Bing Long, Lian-Hua Dong, Zhen-Yu He, and Man-Qing Liu. 2021. 'Detection of SARS-CoV-2 RNA in Medical Wastewater in Wuhan During the COVID-19 Outbreak', *Virologica Sinica*, 36: 1077-79.

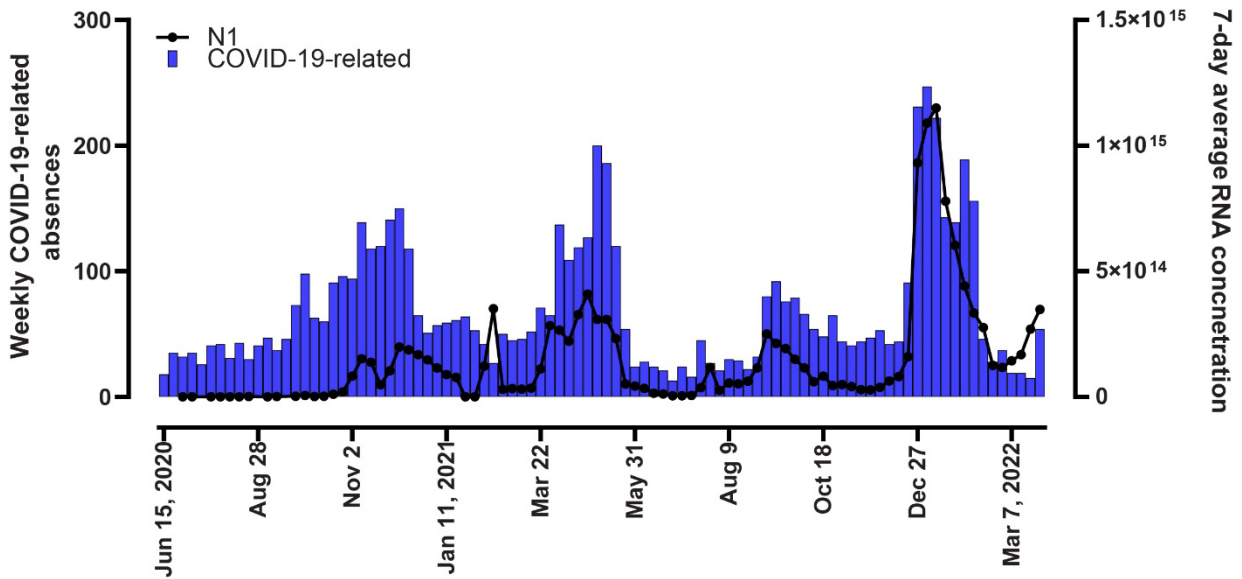
Zhu, Yifan, Wakana Oishi, Chikako Maruo, Mayuko Saito, Rong Chen, Masaaki Kitajima, and Daisuke Sano. 2021. 'Early warning of COVID-19 via wastewater-based epidemiology: potential and bottlenecks', *Science of The Total Environment*, 767: 145124.

## FIGURES

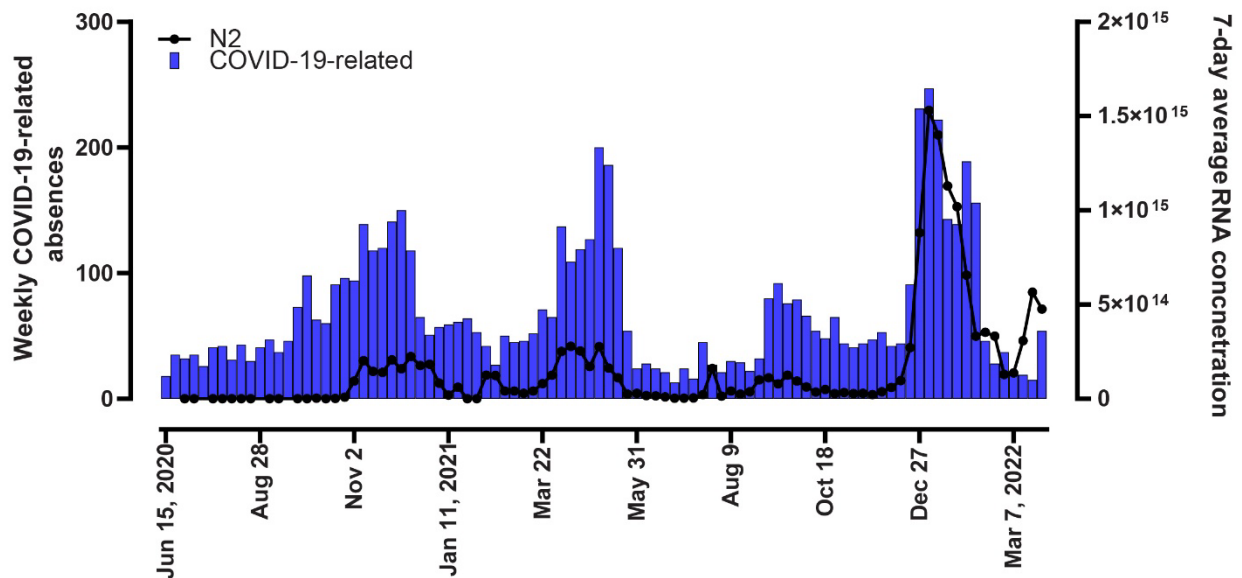


**Figure 1. Municipal workforce absenteeism from June 2020 to March 2022.** Employee absences as measured weekly categorized as unrelated (grey bars), or COVID-19- related (blue bars). COVID-19-related absences (dark blue bars) include those associated with known exposure to an infected individual or symptoms. COVID-19-confirmed absences (light blue bars) correspond to a clinical PCR test result.

A



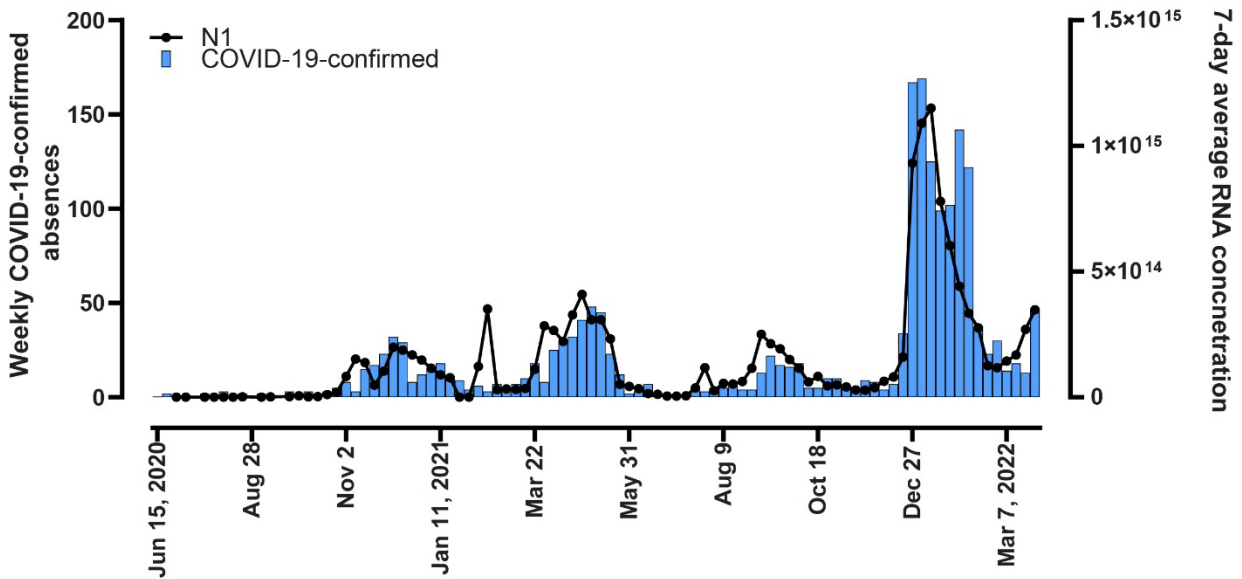
B



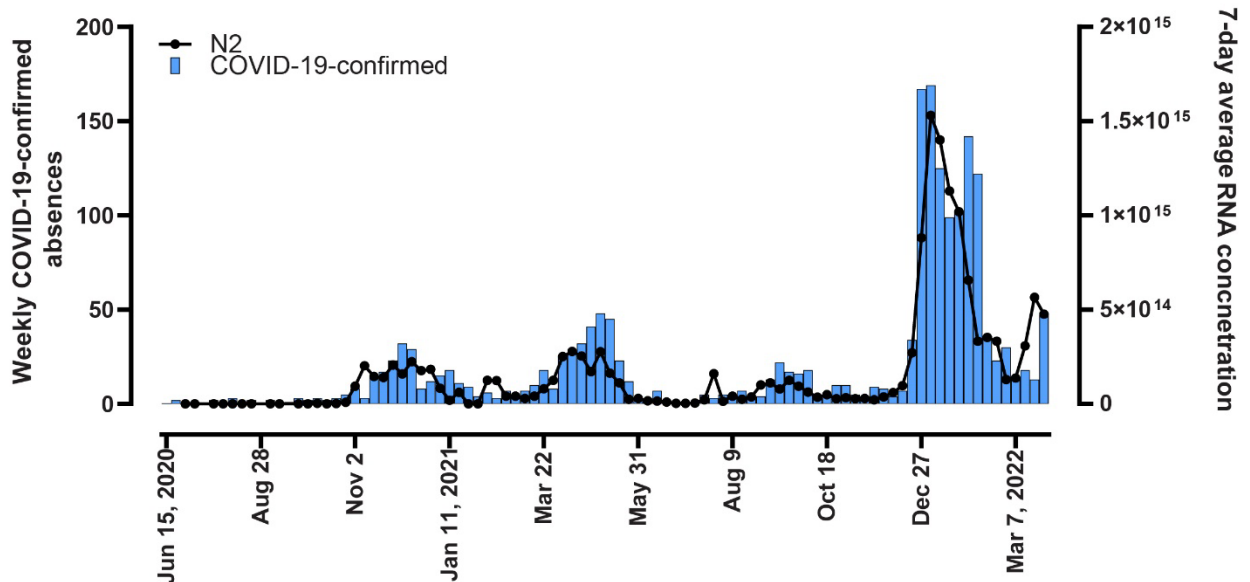
**Figure 2. Comparing SARS-CoV-2 RNA concentration in wastewater to COVID-19-related municipal absenteeism.** The figure demonstrates the correlation between the weekly wastewater averaged gene abundance per day and the weekly rate of employee absenteeism attributed as COVID-19-related (dark blue bars). Flow-adjusted values for wastewater concentrations of SARS-CoV-2 genes N1 (A) and N2 (B) over the study duration are shown as black dotted lines.



A



B

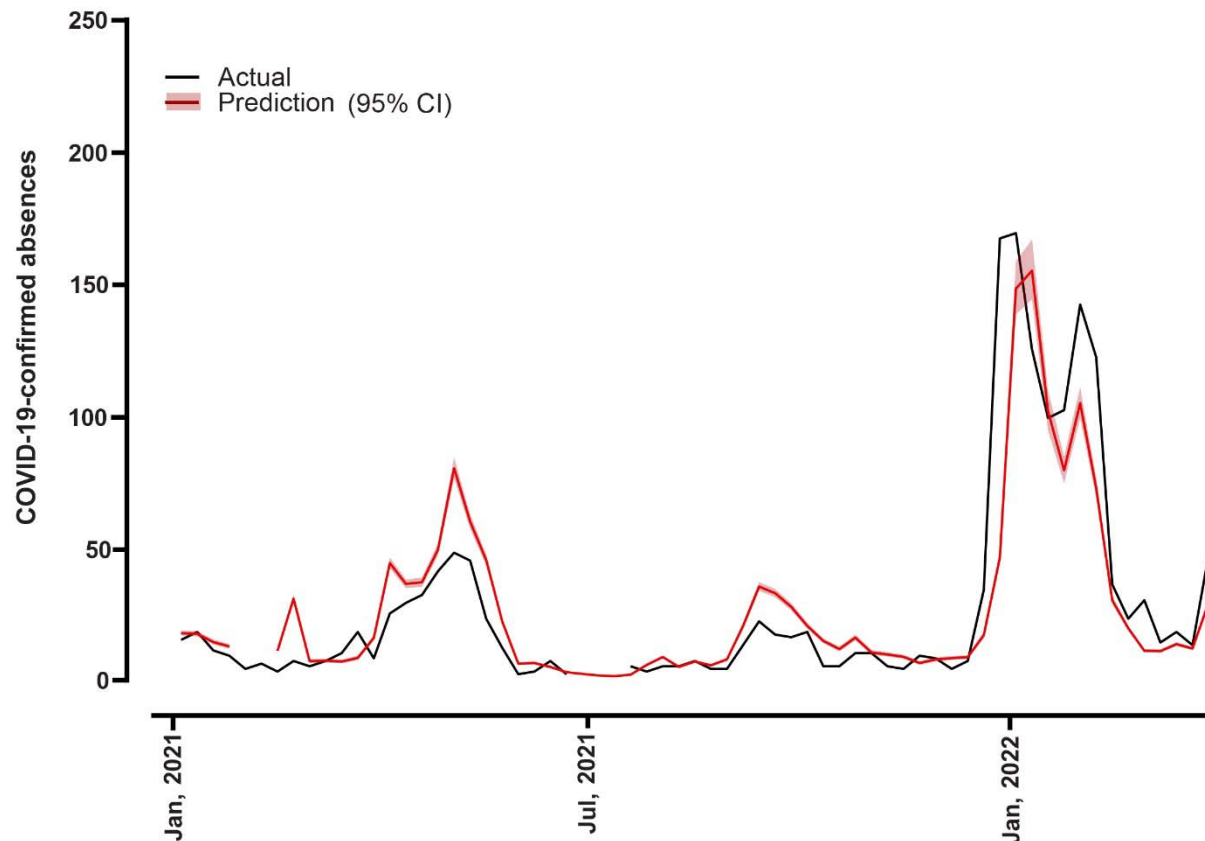


**Figure 3. Comparison of SARS-CoV-2 RNA concentration in wastewater to municipal absenteeism rates attributable to confirmed COVID-19.** The figure demonstrates the correlation between the weekly wastewater averaged gene abundance per day and the number of new municipal employee absenteeism rates attributed to confirmed COVID-19 (light blue bars).

706 Flow-adjusted values for wastewater concentrations of SARS-CoV-2 genes N1 (A) and N2 (B)  
707 over the study duration are shown as black dotted lines.

708

709



**Figure 4. Predictive model for COVID-19 absenteeism in the municipal workforce.** Plot of Poisson regression model (95% confidence limits) for the prediction of COVID-19 absenteeism amongst municipal workers as determined through city-wide SARS-CoV-2 N1 gene abundance measured in the preceding week's wastewater. The model was built using the 2020 data and verified using COVID-19-confirmed absenteeism data from January 2021 to March 2022