

# **Effect of the Friendship Bench intervention on antiretroviral therapy outcomes and mental health symptoms in rural Zimbabwe: A cluster randomized trial**

Andreas D Haas, PhD<sup>1</sup>, Cordelia Kunzekwenyika, MD<sup>2</sup>, Josphat Manzero, BSc<sup>2</sup>, Stefanie Hossmann, MSc<sup>1</sup>, Andreas Limacher, PhD<sup>3</sup>, Janneke H van Dijk, PhD<sup>2</sup>, Ronald Manhibi, PhD<sup>2</sup>, Per von Groote, PhD<sup>1</sup>, Michael A Hobbins, PhD<sup>4</sup>, Ruth Verhey, PhD<sup>5</sup>, Matthias Egger, MD<sup>1,6,7</sup> for the Friendship Bench ART trial group<sup>§</sup>

§ Members of the Friendship Bench ART trial group are listed at the end of the article

- 1) Institute of Social & Preventive Medicine (ISPM), University of Bern, Bern, Switzerland
- 2) SolidarMed, Masvingo, Zimbabwe
- 3) CTU Bern, University of Bern, Bern, Switzerland
- 4) SolidarMed, Luzern, Switzerland
- 5) Friendship Bench, Harare, Zimbabwe
- 6) Centre for Infectious Disease Epidemiology and Research, University of Cape Town, Cape Town, South Africa
- 7) Population Health Sciences, Bristol Medical School, University of Bristol, Bristol, United Kingdom

Correspondence to:

Andreas D Haas  
Institute of Social & Preventive Medicine  
University of Bern  
Mittelstrasse 43  
CH-3012 Bern, Switzerland  
andreas.haas@ispm.unibe.ch

Word count: Main text: 3095 words

Display items: Tables: 3, Figures: 2

References: 48

Supplementary materials: 4

## Key points

### Question

- Does the Friendship Bench intervention improve antiretroviral therapy (ART) adherence, viral suppression and mental health symptoms in people living with HIV in rural Zimbabwe?

### Findings

- In this cluster-randomized trial, participants in the intervention group had a significantly greater decrease in symptoms of common mental disorders than those in the control group, but the intervention showed no significant effect on antiretroviral therapy (ART) adherence or viral suppression.

### Meaning

- The intervention did not affect adherence and viral suppression and the effect of the intervention on mental health symptoms was smaller than previously shown.

## Abstract

**Importance** Common mental disorders (CMD) are prevalent in people living with HIV and associated with suboptimal antiretroviral therapy (ART) adherence.

**Objective** To assess the effect of a lay health worker-led psychological intervention on adherence to ART, virologic suppression and mental health symptoms.

**Design** Pragmatic cluster trial with block randomization of health facilities. Treatment assignment was known to participants, providers, evaluators, and data analysts. Recruitment started in October 2018 and the last follow-up visit was done in December 2020. Participants were followed up for 12 months.

**Setting** Sixteen public health care facilities in Bikita, a rural district in Masvingo Province, about 300 km south of Harare.

**Participants** Men and non-pregnant women aged 18 years or older who spoke English or Shona, screened positive for CMD (Shona Symptoms Questionnaire [SSQ]-14 score  $\geq 9$ ), had received first-line ART for at least six months, had no WHO clinical stage 4 disease, no psychotic symptoms, and gave informed consent.

**Intervention** The Friendship Bench, a lay health worker-led intervention consisting of six weekly individual counselling sessions of problem-solving therapy and optional peer-led group support.

**Main Outcomes and Measures** The primary outcome was Medication Event Monitoring System (MEMS) mean adherence between 2-6 months of follow-up. Secondary outcomes included mean adherence between 1-12 months, change from baseline SSQ-14 and Patient Health Questionnaire (PHQ-9) score at 3, 6, 9, and 12 months and change in viral load suppression (viral load  $<1000$  copies per mL) at months 6 and 12.

**Results** We recruited 516 participants, 244 in Friendship bench and 272 in standard care facilities. The mean age was 45.6 years (SD 10.9), and most participants were women (84.9%). In the Friendship Bench group, 88.1% of participants attended all six individual counselling sessions. Rates of adherence ( $>85\%$ ) and virologic suppression ( $>90\%$ ) were high in both groups. The intervention had no statistically significant effect on adherence or viral suppression. Declines in SSQ-14 scores from baseline to 3 months (-1.65, 95% CI -3.07 to -0.24), 6 months (-1.57, 95% CI -2.98 to -0.15), and 9 months (-1.63, 95% CI -3.05 to -0.22) were greater in the Friendship Bench than the standard care group ( $p < 0.05$ ). There were no differences in the decline in the SSQ-14 scores from baseline to 12 months and in declines in PHQ-9 scores from baseline to 3, 6, 9, and 12 months.

**Conclusions and Relevance** The Friendship Bench intervention is a feasible and acceptable approach to closing the treatment gap in mental health care in rural Zimbabwe. The intervention improved CMD symptoms but the intervention effect was smaller than previously shown in an urban setting. The intervention had no effect on adherence and viral suppression, possibly due to the absence of skill-based adherence training and ceiling effect.

**Trial registration** ClinicalTrials.gov Identifier: NCT03704805

## Introduction

Zimbabwe carries a high HIV burden, with an estimated 1.2 million adults living with HIV in 2020.<sup>1</sup> Most of them receive antiretroviral treatment (ART),<sup>1</sup> which can dramatically improve the life expectancy of people living with HIV.<sup>2</sup> The long-term effectiveness of ART depends on lifelong retention on ART and high levels of adherence.<sup>3,4</sup> Mental health problems often create challenges in treating HIV. They are associated with adverse HIV treatment outcomes, including suboptimal adherence,<sup>5–7</sup> inadequate viral suppression,<sup>8–12</sup> low retention in care,<sup>13</sup> and premature mortality.<sup>12</sup> Systematic reviews and meta-analyses consistently found strong associations between depression and anxiety and low adherence.<sup>5–7</sup> The relationship between mental health problems and virologic treatment outcomes is less clear. Some studies showed associations between mental health disorders and poor viral suppression,<sup>8–12</sup> while others found no association.<sup>14–18</sup>

Effective treatment of mental disorders among people living with HIV is critical to both improving mental health<sup>19–22</sup> and managing HIV.<sup>22–26</sup> However, there is a treatment gap in mental health care: mental disorders in people living with HIV in low- and middle-income countries often remain undiagnosed and untreated.<sup>27,28</sup> In many settings, access to mental health services decreased during the COVID pandemic.<sup>29,30</sup> The Friendship Bench (FB) intervention is a lay health worker-led psychological intervention developed to close the treatment gap for common mental disorders (CMD) such as anxiety and depression in Zimbabwe.<sup>31</sup> The intervention reduced CMD symptoms in a cluster-randomized controlled trial in urban Zimbabwe,<sup>31</sup> where the prevalence of depression or anxiety is high.<sup>32,33</sup> However, the effectiveness of the FB intervention in rural settings and in improving adherence to ART and virologic suppression is unknown. In this cluster-randomized trial, we assessed the effect of the FB intervention on mental health symptoms and ART outcomes among adults living with HIV in the rural district of Bikita, where one in five adults living with HIV screened positive for CMD.<sup>34</sup>

## Methods

We conducted a pragmatic cluster-randomized open-label superiority trial in 16 health facilities in Bikita district in rural Zimbabwe (see [Supplement 1](#) for study protocol, [Supplement 2](#) for statistical analysis plan and ClinicalTrials.gov for trial registration NCT03704805). Participants were followed up every three months for one year between Oct 5, 2018, and Dec 18, 2020.

### Setting

Bikita is a rural district in Masvingo Province, about 300 km south of Harare. We selected 15 public facilities from the pool of 18 facilities participating in the International epidemiology Databases to Evaluate AIDS Southern Africa (IeDEA-SA).<sup>35</sup> Three facilities were excluded because of low patient numbers, and one hospital site was added to balance intervention and control sites.

ART followed national treatment guidelines, except for one additional CD4 count at enrolment (baseline) and additional viral load testing (baseline, 6 and 12 months).<sup>36</sup> Until April 2019, first-line regimens contained one non-nucleoside reverse transcriptase inhibitor (NNRTI) (efavirenz or nevirapine) and two nucleoside/nucleotide reverse transcriptase inhibitors (NRTI).<sup>36</sup> Subsequently, individuals on ART with viral loads below 1000 copies/mL were switched to a dolutegravir-based regimen. Participants with a viral load > 1000 copies/mL received enhanced adherence counselling and an additional viral load test to confirm virologic failure.<sup>37</sup> See [Supplement 3](#) and [Supplement 4](#) for further details.

### Randomization and masking

We randomized the 16 health facilities in a 1:1 ratio to intervention or control group. Randomization was stratified by the size of the health facility (three strata). We used block randomization with a block size of two within each stratum. Treatment assignment was known to participants, providers, evaluators, and data analysts. See [Supplement 4](#) for further details.

### Participants

The eligibility of interested individuals waiting for their ART clinic appointment was assessed using standardized questionnaires. Men and non-pregnant women aged 18 years or older from Bikita who spoke English or Shona, screened positive for CMD (Shona Symptoms Questionnaire [SSQ]-14 score  $\geq 9$ ), had received first-line ART for at least six months, had no WHO clinical stage 4 disease, no psychotic symptoms, and gave informed consent were eligible.

## Interventions

Participants in the intervention arm were offered the FB intervention in addition to enhanced standard of care (SC). Participants in the control arm received SC only.

The FB intervention consisted of weekly individual counselling sessions over six weeks and optional peer-led group support. Trained lay health workers delivered sessions, following a structured approach to identify problems, including adherence issues, and foster a positive attitude towards resolving them. After four sessions, participants were invited to join a peer-led group activity where they were trained in income-generating skills (e.g. producing bags from recycled plastic). The FB intervention is described in detail elsewhere.<sup>31,38</sup>

SC consisted of nurse-led brief counselling, education, and support regarding CMD. Prescription of an antidepressant (fluoxetine) or referral to a psychiatric facility followed standard operating procedures (see [Supplement 3](#)). The nurses were trained in managing mental, neurological and substance use disorders.<sup>39</sup>

## Data collection

We used the Medication Event Monitoring System (MEMS) electronic pill box (AARDEX, Sion, Switzerland) to measure adherence. We calculated monthly mean adherence as the percentage of days participants opened the box once or twice (depending on the regimen). We treated adherence <10% as missing, assuming participants did not use their MEMS device. We assessed self-reported baseline adherence based on 30-day recall. [Supplement 3](#) provides further details.

Research assistants administered the SSQ-14<sup>32,40</sup> and the Patient Health Questionnaire (PHQ-9)<sup>32,41</sup> at the eligibility assessment and the 3, 6, 9, and 12-month visits. The SSQ-14 is a locally developed brief screening tool for CMD symptoms, including sleep disturbance, suicidal ideations, tearfulness, perceptual symptoms, and impaired functioning in the past seven days,<sup>32</sup> with the score ranging from 0 (no symptom) to 14 (all symptoms present).<sup>40</sup> The PHQ-9 is a brief screening tool for depression symptoms over the past two weeks. The SSQ-14 and the PHQ-9 have good psychometric properties in Zimbabwe's HIV-positive and HIV-negative urban populations.<sup>32,34</sup>

At baseline, research assistants administered structured questionnaires on participants' sociodemographic characteristics, perceived general health perception, ART knowledge, alcohol use (Alcohol Use Disorders Identification Test C [AUDIT-C]<sup>42</sup>), food insecurity (Household Food Insecurity Scale [HFIS]), and social support (Medical Outcomes Study Social Support Survey [MOS-SS]).

## Outcomes

The primary outcome was mean adherence between 2-6 months of follow-up. Secondary outcomes included mean adherence 1-12 months, change from baseline SSQ-14 and PHQ-9 score at 3, 6, 9, and 12 months and change in viral suppression (viral load <1000 copies per mL) at months 6 and 12, and positive screening for CMD (SSQ-14 score  $\geq 9$ ) and depression (PHQ-9 score  $\geq 11$ ) at 3, 6, 9, and 12 months.

## Sample size

The study was powered to detect a 10% difference in mean adherence<sup>25</sup> between months 2-6, assuming a standard deviation of 20, an intra-cluster coefficient (ICC) of 0.05, and a type I error of 5% (see [Supplement 1](#)). Sixteen clusters with 25 participants provide 92% power to detect such a difference. To allow for attrition, we set the target sample size at 480 participants (16 clusters with 30 participants).

## Statistical analysis

The primary analysis was per intention to treat (ITT). We used linear mixed-effects models to assess the difference in mean adherence. Models included a random intercept and slope at the participant level to account for the correlation within participants. A random intercept accounted for the clustering of individuals in health facilities, and indicators defined treatment assignment, the month of analysis time, and interactions between the two. We estimated marginal odds ratios for the difference in the proportion of participants with viral suppression at 6 and 12 months using logistic mixed-effect models. We conducted prespecified adjusted analyses of mean adherence and viral suppression, controlling for facility size, age, and sex. In posthoc sensitivity analyses, we adjusted for facility size, age, sex, self-reported baseline adherence, baseline SSQ-14 score, ART regimen, PHQ-9 score, WHO clinical stage, CD4 cell count, viral suppression, AUDIT-C score, MOS-SS score, and travel cost. We also assessed the difference in change from baseline in SSQ-14 and PHQ-9 scores. We used the same mixed-effect models to assess the difference in the proportion of participants with common-mental disorders (SSQ-14  $> 9$ ) and with depression (PHQ-9  $> 11$ ) at 3, 6, 9, and 12 months. We repeated analyses of primary and secondary outcomes using a per-protocol analysis, excluding participants who did not receive the allocated intervention and those with missing adherence data between months 2 to 6. Missing data were imputed using multiple imputation by chained equations.<sup>43</sup> Analyses were run on 30 imputed datasets, and results combined using Rubin's rule.<sup>43</sup> [Supplement 3](#) provides further details.

## **Ethics statement**

The ethics committees of the Medical Research Council of Zimbabwe (MRCZ/A/2287), the Research Council of Zimbabwe, and the Canton of Bern, Switzerland (2018-00396) approved the study protocol. Individuals provided written informed consent to participate in the study.



## Results

Between Oct 5, 2018, and Dec 19, 2019, we assessed the eligibility of 3,706 individuals and excluded 3,190 participants (86.1%) ([Figure 1](#)). The most common reason for exclusion was an SSQ-14 score <9. Of the 595 participants who met inclusion criteria, 79 (13.3%) refused to participate or were lost to follow-up before the baseline visit ([Table 1](#)). The remaining 516 individuals (244 participants in eight clusters in the FB and 272 participants in eight clusters in the control group) were included. The last 12-month follow-up visit was on Dec 18, 2020.

### Baseline characteristics

The mean age was 45.6 years (SD 10.9), and most participants were women (84.9%), married or cohabitating (51.4%) and had completed primary (44.4%) or primary and secondary education (46.7%). The mean SSQ-14 score at baseline was 10.0 (SD 1.1), and the mean PHQ-9 was 7.7 (SD 3.5). At enrolment, participants had been on ART for a median duration of 7.0 years (interquartile range [IQR] 4.8-9.1). Most (97.1%) were on an ART regimen containing tenofovir, lamivudine and efavirenz and in WHO clinical stage 1 (27.5%) or 2 (29.5%). The median CD4 cell count was 544 cells/ $\mu$ L (IQR 399-715), few participants (5.8%) had a viral load of  $\geq 1000$  copies/mL, and most (78.5%) reported optimal adherence (i.e. not having missed a single dose) in the 30 days before enrolment.

Participants in the intervention group had a higher baseline mean PHQ-9 score, were more likely to be in WHO clinical stage 1, had lower MOS-SS and AUDIT-C scores, and had lower transportation costs than participants in the control group ([Table 1](#)).

### Retention

Retention in the FB and adherence interventions was high ([Table 2](#)). All except two participants in the intervention group received the nurse-led brief support counselling. In both groups, the median time from the baseline visit to the date of the counselling session was 0 days (IQR 0-0). Few participants (2.5% in the FB arm and 6.3% in the SC arm) received antidepressants. The median time from baseline to the first FB session was 3 days (IQR 0-8). The median number of sessions received among participants in the intervention group was 6 (IQR, 6-6); 88.1% of participants received all six sessions. In the intervention group, the proportion of participants who attended at least one group support session within a 3-month interval decreased from 67.6% to 51.2% from the first to the last interval. Most participants with  $\geq 1000$  copies/mL at the baseline visit (72.7% and 76.9% in FB and SC groups, respectively) attended all three adherence counselling sessions.

## Outcomes

In unadjusted analyses, mean ART adherence between months 2 and 6 was slightly higher in the FB than in the SC group: mean difference 1.93%, 95% CI -1.20 to 5.06,  $P=0.23$ , but there was little difference in mean ART adherence after month 6 ([Figure 1A](#), [Table 3](#)). Overall, between months 1 and 12, mean ART adherence was similar (mean difference 0.79%, 95% CI -2.14 to 3.71,  $P=0.60$ ) ([Table 3](#)). The odds of virologic suppression at 6 months (OR 2.20, 95% CI 0.79 to 6.14,  $P=0.13$ ) and 12 months (OR 1.60, 95% CI 0.42 to 6.05,  $P=0.49$ ) were higher in the FB than in the SC group, but differences failed to reach conventional levels of statistical significance ([Figure 1B](#), [Table 3](#)). Declines in SSQ-14 scores were more pronounced ( $P<0.05$ ) in the FB than in the SC group up to month 9, with scores converging by month 12 ([Figure 1C](#), [Table 3](#)) whereas declines in PHQ-9 scores were similar ([Figure 1D](#), [Table 3](#)). There was little evidence for a difference in the odds of screening positively for common mental disorders (SSQ-14  $>9$ ) or depression (PHQ-9  $>11$ ) at 3, 6, 9 or 12 months ([Table 3](#)). Results were similar in the prespecified adjusted ([Table 3](#)) and post hoc sensitivity analyses for the ITT and per-protocol populations ([Supplement 3](#)).

In total, 16 participants reported self-harm or attempted self-harm: 11 (4.5%) in the FB arm and 5 (1.8%) in the SC arm. In the FB group, 9 (3.7%) participants reported a history of self-harm before baseline, and 2 (0.8%) participants reported a new incident self-harm event after baseline. No new incident self-harm event after baseline was reported in the SC group. No psychiatric hospitalizations occurred. Five participants died in the FB arm and one in the SC arm. All deaths were unrelated to study procedures, and no suicides were recorded or suspected ([Supplement 3](#)).

## Discussion

In this cluster-randomized trial, we examined the effect of the FB intervention on ART outcomes and mental health symptoms in adults living with HIV in rural Zimbabwe. Implementing this psychological intervention led by lay health workers in rural health facilities proved feasible. The intervention was well accepted by participants, with almost 90% attending all six individual counselling sessions. Participants in the FB group had a more pronounced decrease in symptoms of CMD (SSQ-14 scores) than those in the control group. However, the intervention showed no clear effect on symptoms of depression (PHQ-9 scores), ART adherence or viral suppression. Our study documents a substantial need for mental health services among people living with HIV in rural Zimbabwe. About one in five adults living with HIV in our study had significant symptoms of CMDs.<sup>34</sup>

With the present study, three trials now show that the FB intervention can reduce symptoms of CMDs ([eFigure 1 in Supplement 3](#)). The first was a cluster-randomized trial in primary care facilities in Harare.<sup>31</sup> Participants in the intervention group had a greater decrease in CMD and depression symptoms from baseline to 6 months than participants in the enhanced usual care group.<sup>31</sup> In our trial in rural Zimbabwe, the difference in CMD symptoms was less pronounced, and there was no effect on symptoms of depression. The first trial was done in an urban setting and included people with and without HIV: 42% were known to be HIV-negative.<sup>31</sup> Also, the Harare population was about 10 years younger than the rural study population. Interestingly, decreases in the intervention group in symptoms of CMD and depression (SSQ-14 or PHQ-9 scores) between baseline and 6 months were similar in the two studies. The lower effectiveness in the present study was due to differences in the rate of change in the control group: in the urban trial,<sup>31</sup> the scores remained high at the 6-month assessment, whereas in the rural setting, the mean scores decreased both in the intervention and control arms. In the rural population, enhanced usual care appears to have been more effective than in the urban setting. The third trial included adolescents living with HIV and symptoms of CMDs in Zimbabwe.<sup>44</sup> The intervention improved symptoms of CMDs and depression compared to standard care among adolescents living with HIV in Zimbabwe.<sup>44</sup> Of note, differences in SSQ-14 and PHQ-9 scores were relatively small, with about 1 score point difference favoring the intervention at 48 weeks.<sup>44</sup>

Two of the three trials examined virologic suppression (this study and the trial among adolescents<sup>44</sup>), and both failed to demonstrate any statistically significant effect ([eFigure 1 in Supplement 3](#)). The present study also examined adherence and equally showed no robust intervention effect. A ceiling effect may have played a role in our study, as over 90% of participants had viral suppression and

adherence was close to 90%. Given the well-established association between CMD and poor HIV outcomes,<sup>5–12</sup> we expected lower baseline viral suppression and adherence rates. The large proportion of women in our study and the relatively old age will have contributed to these high rates. In a recent analysis of a large South African ART program, we found considerably higher viral suppression and adherence rates in women than men and higher rates in older than in younger people.<sup>45</sup> A ceiling effect is less likely for the trial among adolescents where more than one-third of participants had a viral load of 1000 copies/ml or above.<sup>44</sup> Indeed, the nature of the FB intervention, which does not include skill-based adherence training, might be a more pervasive explanation for the lack of effect on viral suppression. Mental health interventions with integrated skill-based adherence training have been effective.<sup>45</sup> For example, a recent randomized controlled trial of South African adults with depression and unsuppressed viral load showed that nurse-delivered cognitive-behavioral therapy improved depression scores, ART adherence, and viral suppression.<sup>26</sup> Of note, a small pilot trial in Zimbabwe of a version of the FB intervention that incorporated skill-based training in adherence showed promising results regarding improved adherence, viral load suppression and depression.<sup>46</sup>

The large sample size and pragmatic study design, which closely resembled real-world conditions in rural Zimbabwe, are strengths of our study that add to the generalisability of findings. Apart from the initial support provided by the study team during the training, the lay health workers operated under real-world conditions. Further strengths of our study include using electronic pill bottles for adherence monitoring and using the SSQ-14, a screening tool to measure CMD symptoms in Shona people.<sup>32</sup> There is concern that electronic monitoring may affect adherence, but little evidence supports this contention.<sup>47,48</sup> Men were underrepresented in our study (and the Harare study<sup>31</sup>), and it remains unclear how well the FB intervention works for them. The poor representation of men may reflect a lack of interest in mental health interventions. Finally, the mental health screening tools used in this study (SSQ-14 and PHQ-9) have been validated in people living with HIV in Zimbabwe's capital Harare but not in the rural study setting.<sup>32</sup>

## Conclusion

The FB intervention is feasible and acceptable in rural Zimbabwe to closing the treatment gap in mental health care in rural Zimbabwe. The FB intervention improved CMD symptoms but the intervention effect was smaller than previously shown in an urban setting. We could not demonstrate an effect of the intervention on adherence and viral suppression. More work is needed to evaluate the effect of the approach on HIV outcomes in different populations, including young adults and men, and populations

with more severe symptoms at higher risk of non-adherence and virologic failure. The further development of the FB intervention to incorporate adherence training may be a promising approach to reach those at high risk of poor HIV outcomes.

## Article information

**Open Access:** This is an open access article distributed under the terms of the CC-BY License. © Haas AD et al. JAMA Network Open.

**Corresponding Author:** Andreas D Haas, PhD, Institute of Social & Preventive Medicine, University of Bern  
Mittelstrasse 43, CH-3012 Bern, Switzerland (andreas.haas@ispm.unibe.ch)

**Members of the FB-ART Trial Group:** Study sponsor: Prof Matthias Egger; Principal investigators: Dr Andreas D Haas and Dr Cordelia Kunzekwenyika; Project manager: Stefanie Hossmann; Study coordinator: Josphat Manzero; Senior statistician: Dr Andreas Limacher; Statistician: Dr Andreas Haas; Friendship Bench: Dr Ruth Verhey (Lead of Global Training & Research); SolidarMed: Dr Janneke H van Dijk (Country Director, Zimbabwe), Dr Michael André Hobbins (Head of Research), Dr Ronald Manhibi (IT manager), Joseph Bishi (IT manager); leDEA Southern Africa: Dr Per von Groote (Program Manager); Research assistants (RAs): Amos Kateta, Cuthbert Matonhodza, Favourite Machiha, Ntandoyenkosi Mhlanga, Shingai Matuturu, Tatenda Gombirwo, Millicent Gweredza, Josephine Saide, Beauty Muchakubvura, Kudzai Mhlanga, Dennis Mwakasa, Fungai Nyikadzino Zvekare, Yvonne Maumbe, Boldwin Maposa, Sibongile Gumbo, Shingai Matutururu, Japhet Kamusha, Morris Tshuma, Rejoyce Runyowa, Abigail Pikai, Fredrick Mbiva, Elizabeth Mutungama, Waraidzo Mukuwapasi, Rudorwashe Mandabva

**Authors and contributors:** AH, SH, JvD, RV and ME conceptualized the study. ME acquired the funding. AH, JM, SH and RM developed electronic case report forms. CK, JM, SH, RM, and RV developed SOPs and training materials. RAs enrolled study participants and collected data. AH, CK, JM, SH and RM curated the dataset. CK, JM, SH, JvD, PvG, and MH contributed to project administration. AH, CK, JM, SH, JvD, RV, PvG, MH, and ME trained or supervised members of the study team or lay health workers. AH did statistical analysis. AL advised on statistical methods and independently reproduced statistical analysis. AH, and ME wrote the original draft. All authors critically revised the manuscript for important intellectual content. AH had full access to all data in the study and takes responsibility for the integrity of the data and the accuracy of the data analysis.

**Conflict of Interest Disclosures:** No disclosures were reported.

**Funding/Support:** The research reported in this publication was supported by the U.S. National Institutes of Health's National Institute of Allergy and Infectious Diseases, the Eunice Kennedy Shriver National Institute of Child Health and Human Development, the National Cancer Institute, the National Institute of Mental Health, the National Institute on Drug Abuse, the National Heart, Lung, and Blood Institute, the National Institute on Alcohol Abuse and Alcoholism, the National Institute of Diabetes and Digestive and Kidney Diseases and the Fogarty International Center under Award Number U01AI069924. AH was supported by an Ambizione fellowship (193381) and ME by special project funding (189498) from the Swiss National Science Foundation. The content is solely the responsibility of the authors and does not necessarily represent the official views of the National Institutes of Health or the Swiss National Science Foundation.

**Role of the Funder/Sponsor:** The funders had no role in the design and conduct of the study; collection, management, analysis, and interpretation of the data; preparation, review, or approval of the manuscript; and decision to submit the manuscript for publication.

**Disclaimer:** The views and conclusions contained herein are those of the authors and should not be interpreted as necessarily representing the official policies or endorsements, either expressed or implied, of the NIH or the US government.

**Data Sharing Statement:** Data cannot be made available online because of legal and ethical restrictions. To request data, readers may contact leDEA-SA for consideration.

## References

1. Ministry of Health and Child Care (MOHCC) Zimbabwe. Zimbabwe Population-based HIV Impact Assessment (ZIMPHIA 2020). Published 2020. Accessed December 9, 2021. <https://phia.icap.columbia.edu/zimbabwe-2020-summary-sheet/>
2. Johnson LF, Mossong J, Dorrington RE, et al. Life expectancies of South African adults starting antiretroviral treatment: collaborative analysis of cohort studies. *PLoS Med*. 2013;10(4):e1001418. doi:10.1371/journal.pmed.1001418
3. Haas AD, Zaniewski E, Anderegg N, et al. Retention and mortality on antiretroviral therapy in sub-Saharan Africa: collaborative analyses of HIV treatment programmes. *J Int AIDS Soc*. 2018;21(2):e25084. doi:10.1002/jia2.25084
4. Ford N, Darder M, Spelman T, Maclean E, Mills E, Boule A. Early Adherence to Antiretroviral Medication as a Predictor of Long-Term HIV Virological Suppression: Five-Year Follow Up of an Observational Cohort. Ndhlovu LC, ed. *PLoS One*. 2010;5(5):e10460. doi:10.1371/journal.pone.0010460
5. Wykowski J, Kemp CG, Velloza J, Rao D, Drain PK. Associations Between Anxiety and Adherence to Antiretroviral Medications in Low- and Middle-Income Countries: A Systematic Review and Meta-analysis. *AIDS Behav*. 2019;23(8):2059-2071. doi:10.1007/s10461-018-02390-8
6. Uthman OA, Magidson JF, Safren SA, et al. Depression and adherence to antiretroviral therapy in low-, middle- and high-income countries: a systematic review and meta-analysis. *Curr HIV/AIDS Rep*. 2015;11(3):291-307. doi:10.1007/s11904-014-0220-1. Depression
7. Nakimuli-Mpungu E, Bass JK, Alexandre P, et al. Depression, Alcohol Use and Adherence to Antiretroviral Therapy in Sub-Saharan Africa: A Systematic Review. *AIDS Behav*. 2012;16(8):2101-2118. doi:10.1007/s10461-011-0087-8
8. Haas AD, Technau KG, Pahad S, et al. Mental health, substance use and viral suppression in adolescents receiving ART at a paediatric HIV clinic in South Africa. *J Int AIDS Soc*. 2020;23(12):e25644. doi:10.1002/jia2.25644
9. Lesko CR, Hutton HE, Fojo AT, Shen NM, Moore RD, Chander G. Depression and HIV viral nonsuppression among people engaged in HIV care in an urban clinic, 2014–2019. *AIDS*. 2021;35(12):2017-2024. doi:10.1097/QAD.0000000000003005
10. Rosenthal MA, Wanje G, Richardson BA, et al. A Prospective Study of Depressive Symptoms, Condomless Sex, and HIV Viral Load in HIV-Positive Female Sex Workers in Kenya. *AIDS Behav*. 2021;25(10):3047-3056. doi:10.1007/s10461-021-03258-0
11. Regan M, Muhihi A, Nagu T, et al. Depression and Viral Suppression Among Adults Living with HIV in Tanzania. *AIDS Behav*. 2021;25(10):3097-3105. doi:10.1007/s10461-021-03187-y
12. Haas AD, Ruffieux Y, Heuvel LL Van Den, et al. Excess mortality associated with mental illness in people living with HIV in Cape Town, South Africa: a cohort study using linked electronic health records. *Lancet Glob Health*. 2020;8(10):e1326-e1334. doi:10.1016/S2214-109X(20)30279-5



13. Rooks-Peck CR, Adegbite AH, Wichser ME, et al. Mental health and retention in HIV care: A systematic review and meta-analysis. *Health Psychology*. 2018;37(6):574-585. doi:10.1037/hea0000606
14. Nguyen MX, McNaughton Reyes HL, Pence BW, et al. The longitudinal association between depression, anxiety symptoms and HIV outcomes, and the modifying effect of alcohol dependence among ART clients with hazardous alcohol use in Vietnam. *J Int AIDS Soc*. 2021;24(S2). doi:10.1002/jia2.25746
15. Filiatreau LM, Pettifor A, Edwards JK, et al. Associations Between Key Psychosocial Stressors and Viral Suppression and Retention in Care Among Youth with HIV in Rural South Africa. *AIDS Behav*. 2021;25(8):2358-2368. doi:10.1007/s10461-021-03198-9
16. Govender K, Durevall D, Cowden RG, et al. Depression symptoms, HIV testing, linkage to ART, and viral suppression among women in a high HIV burden district in KwaZulu-Natal, South Africa: A cross-sectional household study. *J Health Psychol*. Published online December 31, 2020:135910532098204. doi:10.1177/1359105320982042
17. Levintow SN, Pence BW, Powers KA, et al. Depression, antiretroviral therapy initiation, and HIV viral suppression among people who inject drugs in Vietnam. *J Affect Disord*. 2021;281:208-215. doi:10.1016/j.jad.2020.12.024
18. Stockton MA, Gaynes BN, Hosseinipour MC, et al. Association Between Depression and HIV Care Engagement Outcomes Among Patients Newly Initiating ART in Lilongwe, Malawi. *AIDS Behav*. 2021;25(3):826-835. doi:10.1007/s10461-020-03041-7
19. van der Heijden I, Abrahams N, Sinclair D. Psychosocial group interventions to improve psychological well-being in adults living with HIV. *Cochrane Database of Systematic Reviews*. Published online March 14, 2017. doi:10.1002/14651858.CD010806.pub2
20. van Luenen S, Garnefski N, Spinhoven P, Spaan P, Dusseldorp E, Kraaij V. The Benefits of Psychosocial Interventions for Mental Health in People Living with HIV: A Systematic Review and Meta-analysis. *AIDS Behav*. 2018;22(1):9-42. doi:10.1007/s10461-017-1757-y
21. Brown LK, Kennard BD, Emslie GJ, et al. Effective Treatment of Depressive Disorders in Medical Clinics for Adolescents and Young Adults Living With HIV. *JAIDS Journal of Acquired Immune Deficiency Syndromes*. 2016;71(1):38-46. doi:10.1097/QAI.0000000000000803
22. Passchier RV, Abas MA, Ebuonyi ID, Pariente CM. Effectiveness of depression interventions for people living with HIV in Sub-Saharan Africa: A systematic review & meta-analysis of psychological & immunological outcomes. *Brain Behav Immun*. 2018;73:261-273. doi:10.1016/j.bbi.2018.05.010
23. Shi Y, Zhao M, Chen S, et al. Effects of cognitive behavioral therapy on people living with HIV and depression: A systematic review and meta-analysis. *Psychol Health Med*. 2019;24(5):578-594. doi:10.1080/13548506.2018.1549739

24. Sin NL, DiMatteo MR. Depression Treatment Enhances Adherence to Antiretroviral Therapy: a Meta-Analysis. *Annals of Behavioral Medicine*. 2014;47(3):259-269. doi:10.1007/s12160-013-9559-6
25. Safren SA, Bedoya CA, O’Cleirigh C, et al. Cognitive behavioural therapy for adherence and depression in patients with HIV: a three-arm randomised controlled trial. *Lancet HIV*. 2016;3(11):e529-e538. doi:10.1016/S2352-3018(16)30053-4
26. Safren SA, O’Cleirigh C, Andersen LS, et al. Treating depression and improving adherence in HIV care with task-shared cognitive behavioural therapy in Khayelitsha, South Africa: a randomized controlled trial. *J Int AIDS Soc*. 2021;24(10):e25823. doi:10.1002/jia2.25823
27. Ruffieux Y, Efthimiou O, Van Den Heuvel LL, et al. The treatment gap for mental disorders in adults enrolled in HIV treatment programmes in South Africa: A cohort study using linked electronic health records. *Epidemiol Psychiatr Sci*. Published online 2021. doi:10.1017/S2045796021000196
28. Kohn R, Saxena S, Levav I, Saraceno B. The treatment gap in mental health care. *Bull World Health Organ*. 2004;82(11):858-866. doi:/S0042-96862004001100011
29. Wettstein A, Tlali M, Joska JA, et al. The effect of the COVID-19 lockdown on mental health care use in South Africa: an interrupted time-series analysis. *Epidemiol Psychiatr Sci*. 2022;31:e43. doi:10.1017/S2045796022000270
30. Seo JH, Kim SJ, Lee M, Kang JI. Impact of the COVID-19 pandemic on mental health service use among psychiatric outpatients in a tertiary hospital. *J Affect Disord*. 2021;290(May):279-283. doi:10.1016/j.jad.2021.04.070
31. Chibanda D, Weiss HA, Verhey R, et al. Effect of a Primary Care–Based Psychological Intervention on Symptoms of Common Mental Disorders in Zimbabwe. *JAMA*. 2016;316(24):2618. doi:10.1001/jama.2016.19102
32. Chibanda D, Verhey R, Gibson LJ, et al. Validation of screening tools for depression and anxiety disorders in a primary care population with high HIV prevalence in Zimbabwe. *J Affect Disord*. 2016;198:50-55. doi:10.1016/j.jad.2016.03.006
33. Chibanda D, Cowan F, Gibson L, Weiss HA, Lund C. Prevalence and correlates of probable common mental disorders in a population with high prevalence of HIV in Zimbabwe. *BMC Psychiatry*. 2016;16(1):55. doi:10.1186/s12888-016-0764-2
34. Haas AD, Kunzekwenyika C, Hossmann S, et al. Symptoms of common mental disorders and adherence to antiretroviral therapy among adults living with HIV in rural Zimbabwe: a cross-sectional study. *BMJ Open*. 2021;11(7):e049824. doi:10.1136/bmjopen-2021-049824
35. Chammartin F, Dao Ostinelli CH, Anastos K, et al. International epidemiology databases to evaluate AIDS (IeDEA) in sub-Saharan Africa, 2012–2019. *BMJ Open*. 2020;10(5):e035246. doi:10.1136/bmjopen-2019-035246

36. National Medicines and Therapeutics Policy Advisory Committee (NMTPAC) and The AIDS and TB Directorate; Ministry of Health and Child Care; Zimbabwe. *Guidelines for Antiretroviral Therapy for the Prevention and Treatment*.; 2016.
37. AIDS & TB Programme Ministry of Health and Child Care Zimbabwe. *Operational and Service Delivery Manual for the Prevention, Care and Treatment of HIV in Zimbabwe*.; 2017.
38. Chibanda D, Bowers T, Verhey R, et al. The Friendship Bench programme: A cluster randomised controlled trial of a brief psychological intervention for common mental disorders delivered by lay health workers in Zimbabwe. *Int J Ment Health Syst*. 2015;9:1-7. doi:10.1186/s13033-015-0013-y
39. World Health Organization. *MhGAP Intervention Guide. Version 2.0*.; 2016.
40. Patel V, Simunyu E, Gwanzura F, Lewis G, Mann A. The Shona Symptom Questionnaire: the development of an indigenous measure of common mental disorders in Harare. *Acta Psychiatr Scand*. 1997;95(6):469-475. doi:10.1111/j.1600-0447.1997.tb10134.x
41. Kroenke K, Spitzer RL, Williams JB. The PHQ-9: validity of a brief depression severity measure. *J Gen Intern Med*. 2001;16(9):606-613. doi:10.1046/j.1525-1497.2001.016009606.x
42. Bush K, Kivlahan DR, McDonell MB, Fihn SD, Bradley KA. The AUDIT alcohol consumption questions (AUDIT-C): an effective brief screening test for problem drinking. Ambulatory Care Quality Improvement Project (ACQUIP). Alcohol Use Disorders Identification Test. *Arch Intern Med*. 1998;158(16):1789-1795. doi:10.1001/archinte.158.16.1789
43. Rubin DBD. *Multiple Imputation for Nonresponse in Surveys*. (Rubin DB, ed.). John Wiley & Sons, Inc.; 1987. doi:10.1002/9780470316696
44. Simms V, Weiss HA, Chinoda S, et al. Peer-led counselling with problem discussion therapy for adolescents living with HIV in Zimbabwe: A cluster-randomised trial. Bor J, ed. *PLoS Med*. 2022;19(1):e1003887. doi:10.1371/journal.pmed.1003887
45. Safren SA, Otto MW, Worth JL. Life-steps: Applying cognitive behavioral therapy to HIV medication adherence. *Cogn Behav Pract*. 1999;6(4):332-341. doi:10.1016/S1077-7229(99)80052-2
46. Abas M, Nyamayaro P, Bere T, et al. Feasibility and Acceptability of a Task-Shifted Intervention to Enhance Adherence to HIV Medication and Improve Depression in People Living with HIV in Zimbabwe, a Low Income Country in Sub-Saharan Africa. *AIDS Behav*. Published online 2017:1-16. doi:10.1007/s10461-016-1659-4
47. Wagner G, Ghosh-Dastidar B. Electronic monitoring: Adherence assessment or intervention? *HIV Clin Trials*. 2002;3(1):45-51. doi:10.1310/XGXU-FUDK-A9QT-MPTF
48. Claxton AJ, Cramer J, Pierce C. A systematic review of the associations between dose regimens and medication compliance. *Clin Ther*. 2001;23(8):1296-1310. doi:10.1016/S0149-2918(01)80109-0

## TABLES

**Table 1: Sociodemographic and clinical characteristics of participants at baseline**

	Friendship Bench N=244	Standard of Care N=272	Total N=516	p-value
Age, mean (SD)	45.6 (11.3)	45.5 (10.5)	45.6 (10.9)	0.93
Sex				0.34
Female	211 (86.5)	227 (83.5)	438 (84.9)	
Male	33 (13.5)	45 (16.5)	78 (15.1)	
Marital status				0.13
Married/Living together	119 (48.8)	146 (53.7)	265 (51.4)	
Widowed/Divorced/Separated	111 (45.5)	120 (44.1)	231 (44.8)	
Single	13 (5.3)	6 (2.2)	19 (3.7)	
Missing	1 (0.4)	0 (0.0)	1 (0.2)	
Education				0.13
Primary	114 (46.7)	115 (42.3)	229 (44.4)	
Secondary or higher	110 (45.1)	146 (53.7)	256 (49.6)	
Missing	20 (8.2)	11 (4.0)	31 (6.0)	
SSQ-14 score, mean (SD)	10.1 (1.1)	9.9 (1.1)	10.0 (1.1)	0.09
PHQ-9 score				<0.001
Missing	1 (0.4)	0 (0.0)	1 (0.2)	
Years on ART, median (IQR)	7.9 (5.0-9.7)	6.6 (4.4-8.6)	7.0 (4.8-9.1)	0.001
Median (IQR)				
Missing	9 (3.7)	8 (2.9)	17 (3.3)	
WHO clinical stage				<0.001
Stage 1	86 (35.2)	56 (20.6)	142 (27.5)	
Stage 2	55 (22.5)	97 (35.7)	152 (29.5)	
Stage 3	103 (42.2)	119 (43.8)	222 (43.0)	
ART regimen				0.09
NNRTI-based	237 (97.1)	270 (99.3)	507 (98.3)	
Dolutegravir-based	7 (2.9)	2 (0.7)	9 (1.7)	
CD4 count in cells/ $\mu$ L, median (IQR)	527 (368-697)	572 (410-731)	552 (401-721)	0.04
Missing	69 (28.3)	73 (26.8)	151 (28.2)	
Viral load				0.08
$\geq 1000$ copies/mL	9 (3.7)	20 (7.4)	29 (5.6)	
<1000 copies/mL	182 (74.6)	200 (73.5)	382 (74.0)	
Missing	53 (21.7)	52 (19.1)	105 (20.3)	
Self-reported adherence, %				
Mean (SD)	98 (6)	98 (4)	98 (5)	0.08
Missing	0 (0.0)	1 (0.4)	1 (0.2)	
Comprehensive ART knowledge				0.21
No	41 (16.8)	35 (12.9)	76 (14.7)	
Yes	203 (83.2)	237 (87.1)	440 (85.3)	
HFIS score (median, IQR)	3 (0-8)	3 (0-7)	3 (0-7)	0.41
MOS-SS score (median, IQR)	26 (18-35)	32 (24-36)	30 (20-36)	<0.001
AUDIT-C screening outcome				0.06
Negative	232 (95.1)	251 (92.3)	483 (93.6)	
Positive	8 (3.3)	19 (7.0)	27 (5.2)	
Missing	4 (1.6)	2 (0.7)	6 (1.2)	
AUDIT-C score, mean (SD)	0.3 (0.9)	0.5 (1.4)	0.4 (1.2)	0.04
Cost of transportation to facility (return)				<0.001
0 USD	126 (51.6)	111 (40.8)	237 (45.9)	
<2 USD	34 (13.9)	14 (5.1)	48 (9.3)	
2-5 USD	52 (21.3)	67 (24.6)	119 (23.1)	
>5 USD	32 (13.1)	80 (29.4)	112 (21.7)	

SD=standard deviation, IQR=interquartile range, WHO=World Health Organization, ART=antiretroviral therapy, NNRTI=Non-nucleoside reverse transcriptase inhibitors; HFIS=Household Food Insecurity Access Scale; MOS-SS= Medical Outcomes Study Social Support, AUDIT-C= Alcohol Use Disorders Identification Test-Concise Test. P-values for categorical variables are from chi-square tests (missing categories were excluded). P values for continuous variables are from t-tests or Wilcoxon signed ranks test.

**Table 2: Fidelity to mental health and adherence interventions**

	Friendship Bench		Standard of Care		Total	
	N=244		N=272		N=516	
Received allocated intervention	223	(91.4)	272	(100)	495	(95.9)
<b>Friendship Bench intervention</b>						
Individual counseling session 1 attended	235	(96.3)	-	-	235	(45.5)
Individual counseling session 2 attended	230	(94.3)	-	-	230	(44.6)
Individual counseling session 3 attended	229	(93.9)	-	-	29	(44.4)
Individual counseling session 4 attended	224	(91.8)	-	-	224	(43.4)
Individual counseling session 5 attended	219	(89.8)	-	-	219	(42.4)
Individual counseling session 6 attended	215	(88.1)	-	-	215	(41.7)
Group support attended						
Between months 0 and 3	165	(67.6)	-	-	165	(32.0)
Between months 4 and 6	146	(59.8)	-	-	146	(28.3)
Between months 7 and 9	141	(57.8)	-	-	141	(27.3)
Between months 10 and 12	125	(51.2)	-	-	125	(24.2)
<b>Standard of care</b>						
Nurse-led counseling attended	242	(99.2)	272	(100)	514	(99.6)
Antidepressant prescribed	6	(2.5)	17	(6.3)	23	(4.5)
<b>Enhanced adherence counselling</b>						
VL ≥1000 copies/mL at baseline visit	11	(100)	26	(100)	37	(100)
1-2 sessions attended	2	(18.2)	5	(19.2)	7	(18.9)
3 sessions attended	8	(72.7)	20	(76.9)	28	(75.7)
No session attended	1	(9.1)	0	(0.0)	1	(2.7)
Unknown	0	(0.0)	1	(3.8)	1	(2.7)
VL ≥1000 copies/mL 6-month visit	6	(100)	17	(100)	23	(100)
1-2 sessions attended	0	(0.0)	5	(29.4)	5	(21.7)
3 sessions attended	5	(83.3)	10	(58.8)	15	(65.2)
No session attended	1	(16.7)	1	(5.9)	2	(8.7)
Unknown	0	(0.0)	1	(5.9)	1	(4.3)
VL ≥1000 copies/mL at 12-month visit	3	(100)	9	(100)	12	(100)
1-2 sessions attended	0	(0.0)	2	(22.2)	2	(16.7)
3 sessions attended	0	(0.0)	2	(22.2)	2	(16.7)
Unknown	3	(100)	5	(55.6)	8	(66.7)

VL=viral load

**Table 3. Effect of the friendship bench intervention on adherence, viral load and mental health**

<b>Outcome</b>	<b>Unadjusted analyses</b>		<b>Adjusted analyses*</b>	
<b>Adherence (electronic pill box)</b>	<b>Mean difference (95% CI)</b>	<b>p-value</b>	<b>Mean difference (95% CI)</b>	<b>p-value</b>
Months 2-6	1.93 (-1.20 to 5.06)	0.23	1.79 (-1.71 to 5.29)	0.32
Months 1-12	0.79 (-2.14 to 3.71)	0.60	0.64 (-2.67 to 3.94)	0.71
<b>Viral suppression (&lt;1000 copies/ml)</b>	<b>Odds ratio (95% CI)</b>		<b>Odds ratio (95% CI)</b>	
Month 6	2.20 (0.79 to 6.14)	0.13	2.26 (0.79 to 6.45)	0.13
Month 12	1.60 (0.42 to 6.05)	0.49	1.75 (0.47 to 6.49)	0.40
<b>SSQ-14 score</b>	<b>Mean difference (95% CI)</b>		<b>Mean difference (95% CI)</b>	
Month 3	-1.65 (-3.07 to -0.24)	0.02	-1.65 (-3.13 to -0.16)	0.03
Month 6	-1.57 (-2.98 to -0.15)	0.03	-1.56 (-3.05 to -0.07)	0.04
Month 9	-1.63 (-3.05 to -0.22)	0.02	-1.63 (-3.11 to -0.15)	0.03
Month 12	-0.78 (-2.19 to 0.63)	0.28	-0.77 (-2.25 to 0.71)	0.31
<b>PHQ-9 score</b>	<b>Mean difference (95% CI)</b>		<b>Mean difference (95% CI)</b>	
Month 3	-0.35 (-1.68 to 0.99)	0.61	-0.49 (-1.82 to 0.85)	0.47
Month 6	0.01 (-1.33 to 1.34)	0.99	-0.14 (-1.47 to 1.20)	0.84
Month 9	-0.04 (-1.39 to 1.30)	0.95	-0.19 (-1.53 to 1.15)	0.78
Month 12	0.74 (-0.60 to 2.08)	0.28	0.60 (-0.74 to 1.93)	0.38
<b>SSQ-14 <math>\geq 9</math></b>	<b>Odds ratio (95% CI)</b>		<b>Odds ratio (95% CI)</b>	
Month 3	0.38 (0.09 to 1.59)	0.19	0.28 (0.07 to 1.12)	0.07
Month 6	0.41 (0.09 to 1.83)	0.25	0.30 (0.07 to 1.30)	0.11
Month 9	0.34 (0.07 to 1.59)	0.17	0.25 (0.05 to 1.13)	0.07
Month 12	1.54 (0.33 to 7.15)	0.58	1.12 (0.25 to 5.01)	0.88
<b>PHQ-9 <math>\geq 11</math></b>	<b>Odds ratio (95% CI)</b>		<b>Odds ratio (95% CI)</b>	
Month 3	3.24 (0.60 to 17.46)	0.17	2.16 (0.47 to 9.98)	0.33
Month 6	3.17 (0.47 to 21.37)	0.24	2.10 (0.35 to 12.47)	0.41
Month 9	3.84 (0.49 to 30.30)	0.20	2.55 (0.37 to 17.74)	0.34
Month 12	3.11 (0.47 to 20.49)	0.24	2.06 (0.36 to 11.85)	0.42

All analyses were prespecified and accounted for clustering of individuals in health facilities. \* adjusted for facility size, age, and sex

## SUPPLEMENTARY APPENDIX

### Supplement 1

Trial protocol

### Supplement 2

Statistical analysis plan

### Supplement 3

**eMethods** Additional information on standard care, randomization, adherence measures, and statistical analyses

**eTable 1** Effect of the Friendship Bench intervention on adherence, viral load and mental health: results from prespecified and posthoc sensitivity intention to treat analyses

**eTable 2** Effect of the Friendship Bench intervention on adherence, viral load and mental health: results from prespecified and posthoc sensitivity per protocol analyses

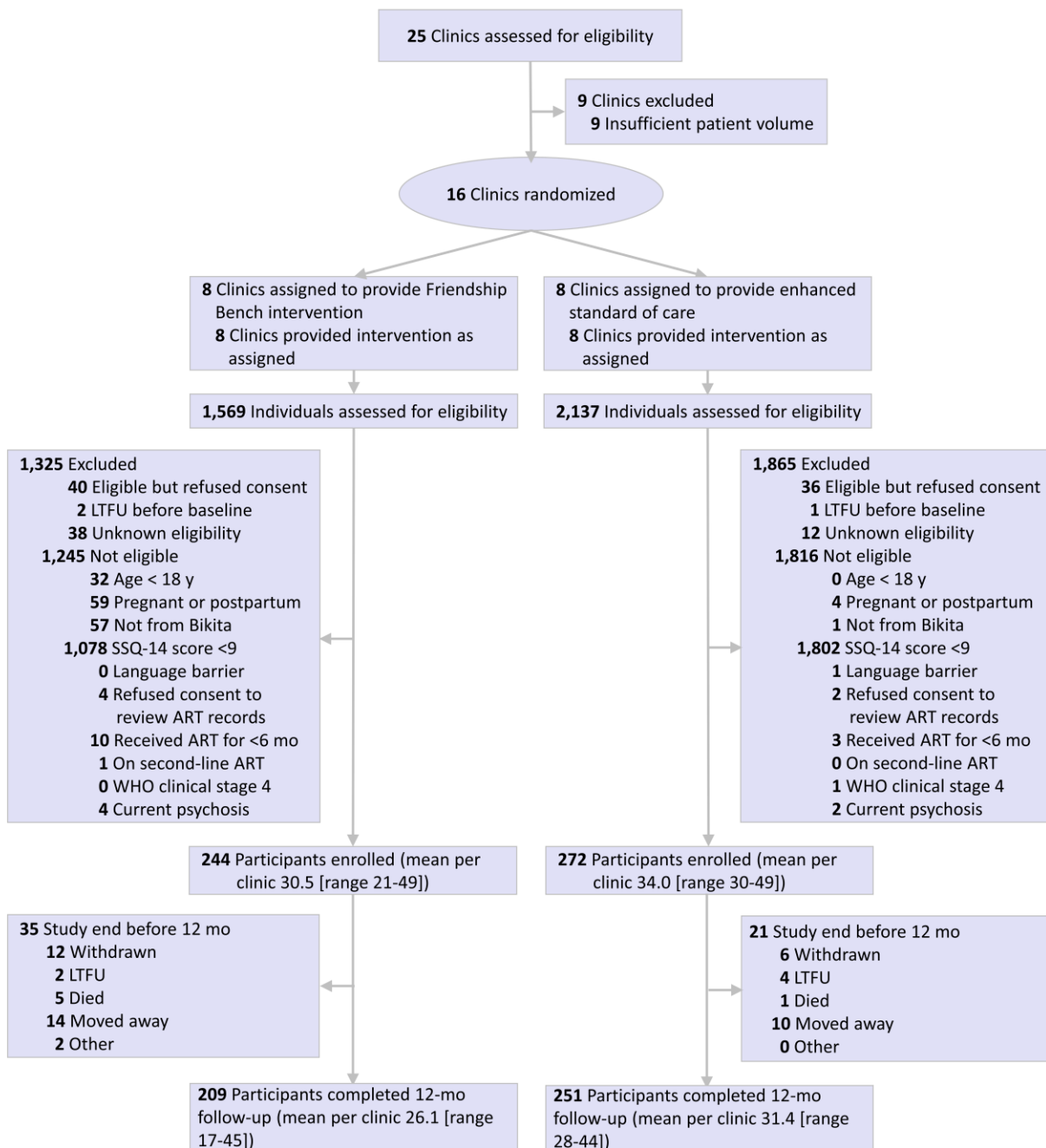
**eTable 3** Number of participants with safety-relevant outcomes by trial arm

**eFigure 1** Forest plot of available evidence of the effect of the Friendship Bench intervention on SSQ-14 scores, PHQ-9 scores, and viral suppression from three trials

### Supplement 4

Operational and service delivery Manual for the prevention, care and treatment of HIV in Zimbabwe

**Figure 1. Trial profile**





**Table 1: Sociodemographic and clinical characteristics of participants at baseline**

	Friendship Bench N=244	Standard of Care N=272	Total N=516	p-value
Age, mean (SD)	45.6 (11.3)	45.5 (10.5)	45.6 (10.9)	0.93
Sex				0.34
Female	211 (86.5)	227 (83.5)	438 (84.9)	
Male	33 (13.5)	45 (16.5)	78 (15.1)	
Marital status				0.13
Married/Living together	119 (48.8)	146 (53.7)	265 (51.4)	
Widowed/Divorced/Separated	111 (45.5)	120 (44.1)	231 (44.8)	
Single	13 (5.3)	6 (2.2)	19 (3.7)	
Missing	1 (0.4)	0 (0.0)	1 (0.2)	
Education				0.13
Primary	114 (46.7)	115 (42.3)	229 (44.4)	
Secondary or higher	110 (45.1)	146 (53.7)	256 (49.6)	
Missing	20 (8.2)	11 (4.0)	31 (6.0)	
SSQ-14 score, mean (SD)	10.1 (1.1)	9.9 (1.1)	10.0 (1.1)	0.09
PHQ-9 score				<0.001
Missing	1 (0.4)	0 (0.0)	1 (0.2)	
Years on ART, median (IQR)	7.9 (5.0-9.7)	6.6 (4.4-8.6)	7.0 (4.8-9.1)	0.001
Median (IRQ)				
Missing	9 (3.7)	8 (2.9)	17 (3.3)	
WHO clinical stage				<0.001
Stage 1	86 (35.2)	56 (20.6)	142 (27.5)	
Stage 2	55 (22.5)	97 (35.7)	152 (29.5)	
Stage 3	103 (42.2)	119 (43.8)	222 (43.0)	
ART regimen				0.09
NNRTI-based	237 (97.1)	270 (99.3)	507 (98.3)	
Dolutegravir-based	7 (2.9)	2 (0.7)	9 (1.7)	
CD4 count in cells/ $\mu$ L, median (IQR)	527 (368-697)	572 (410-731)	552 (401-721)	0.04
Missing	69 (28.3)	73 (26.8)	151 (28.2)	
Viral load				0.08
$\geq 1000$ copies/mL	9 (3.7)	20 (7.4)	29 (5.6)	
<1000 copies/mL	182 (74.6)	200 (73.5)	382 (74.0)	
Missing	53 (21.7)	52 (19.1)	105 (20.3)	
Self-reported adherence, %				
Mean (SD)	98 (6)	98 (4)	98 (5)	0.08
Missing	0 (0.0)	1 (0.4)	1 (0.2)	
Comprehensive ART knowledge				0.21
No	41 (16.8)	35 (12.9)	76 (14.7)	
Yes	203 (83.2)	237 (87.1)	440 (85.3)	
HFIS score (median, IQR)	3 (0-8)	3 (0-7)	3 (0-7)	0.41
MOS-SS score (median, IQR)	26 (18-35)	32 (24-36)	30 (20-36)	<0.001
AUDIT-C screening outcome				0.06
Negative	232 (95.1)	251 (92.3)	483 (93.6)	
Positive	8 (3.3)	19 (7.0)	27 (5.2)	
Missing	4 (1.6)	2 (0.7)	6 (1.2)	
AUDIT-C score, mean (SD)	0.3 (0.9)	0.5 (1.4)	0.4 (1.2)	0.04
Cost of transportation to facility (return)				<0.001
0 USD	126 (51.6)	111 (40.8)	237 (45.9)	
<2 USD	34 (13.9)	14 (5.1)	48 (9.3)	
2-5 USD	52 (21.3)	67 (24.6)	119 (23.1)	
>5 USD	32 (13.1)	80 (29.4)	112 (21.7)	

SD=standard deviation, IQR=interquartile range, WHO=World Health Organization, ART=antiretroviral therapy, NNRTI=Non-nucleoside reverse transcriptase inhibitors; HFIS=Household Food Insecurity Access Scale; MOS-SS= Medical Outcomes Study Social Support, AUDIT-C= Alcohol Use Disorders Identification Test-Concise Test. P-values for categorical variables are from chi-square tests (missing categories were excluded). P values for continuous variables are from t-tests or Wilcoxon signed ranks test.

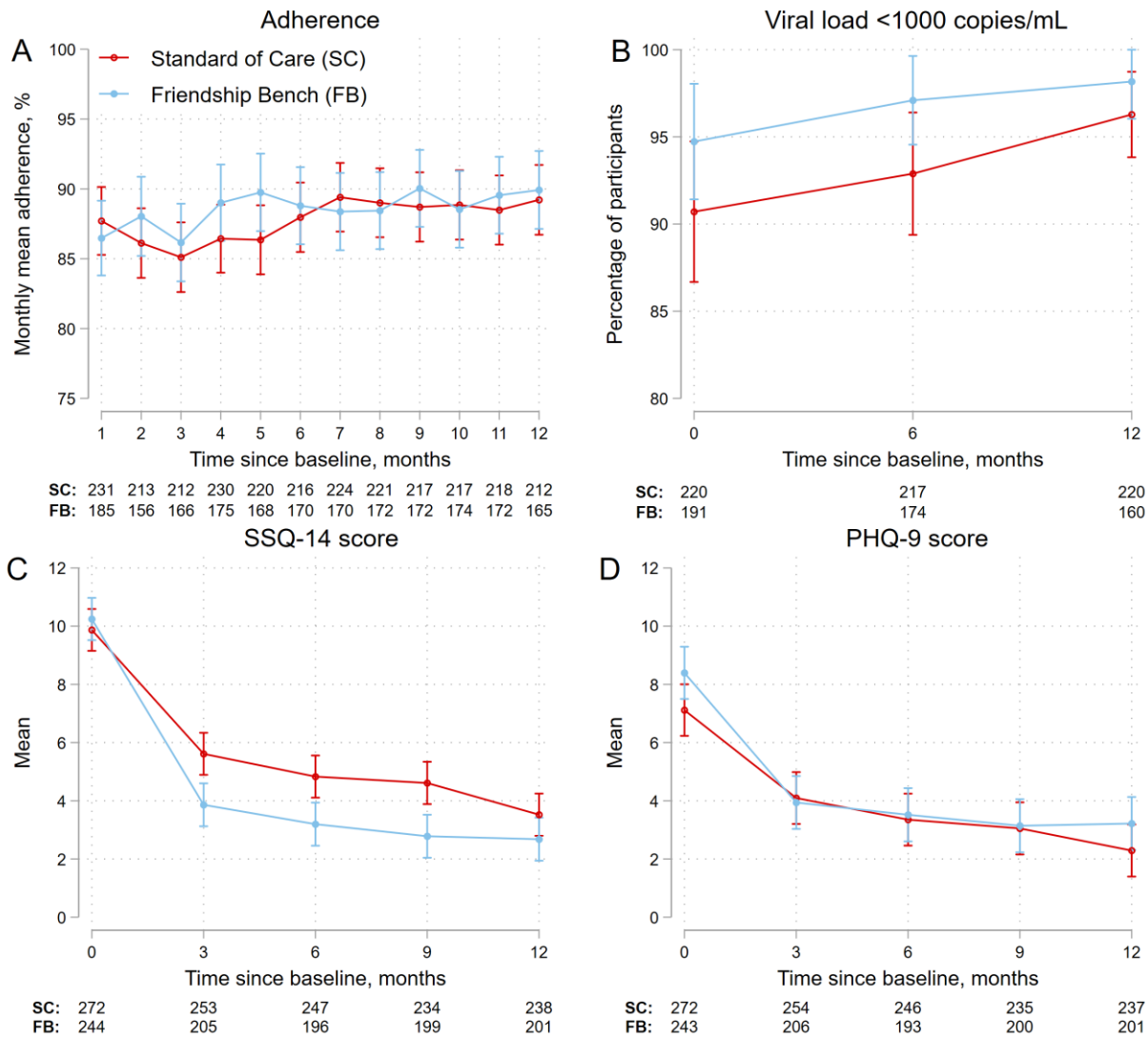
**Table 2: Fidelity to mental health and adherence interventions**

	<b>Friendship Bench</b>		<b>Standard of Care</b>		<b>Total</b>	
	N=244		N=272		N=516	
Received allocated intervention	223	(91.4)	272	(100)	495	(95.9)
<b>Friendship Bench intervention</b>						
Individual counseling session 1 attended	235	(96.3)	-	-	235	(45.5)
Individual counseling session 2 attended	230	(94.3)	-	-	230	(44.6)
Individual counseling session 3 attended	229	(93.9)	-	-	29	(44.4)
Individual counseling session 4 attended	224	(91.8)	-	-	224	(43.4)
Individual counseling session 5 attended	219	(89.8)	-	-	219	(42.4)
Individual counseling session 6 attended	215	(88.1)	-	-	215	(41.7)
Group support attended						
Between months 0 and 3	165	(67.6)	-	-	165	(32.0)
Between months 4 and 6	146	(59.8)	-	-	146	(28.3)
Between months 7 and 9	141	(57.8)	-	-	141	(27.3)
Between months 10 and 12	125	(51.2)	-	-	125	(24.2)
<b>Standard of care</b>						
Nurse-led counseling attended	242	(99.2)	272	(100)	514	(99.6)
Antidepressant prescribed	6	(2.5)	17	(6.3)	23	(4.5)
<b>Enhanced adherence counselling</b>						
VL ≥1000 copies/mL at baseline visit	11	(100)	26	(100)	37	(100)
1-2 sessions attended	2	(18.2)	5	(19.2)	7	(18.9)
3 sessions attended	8	(72.7)	20	(76.9)	28	(75.7)
No session attended	1	(9.1)	0	(0.0)	1	(2.7)
Unknown	0	(0.0)	1	(3.8)	1	(2.7)
VL ≥1000 copies/mL 6-month visit	6	(100)	17	(100)	23	(100)
1-2 sessions attended	0	(0.0)	5	(29.4)	5	(21.7)
3 sessions attended	5	(83.3)	10	(58.8)	15	(65.2)
No session attended	1	(16.7)	1	(5.9)	2	(8.7)
Unknown	0	(0.0)	1	(5.9)	1	(4.3)
VL ≥1000 copies/mL at 12-month visit	3	(100)	9	(100)	12	(100)
1-2 sessions attended	0	(0.0)	2	(22.2)	2	(16.7)
3 sessions attended	0	(0.0)	2	(22.2)	2	(16.7)
Unknown	3	(100)	5	(55.6)	8	(66.7)

VL=viral load

**Figure 2. Adherence, viral load suppression, SSQ-14 score and PHQ-9 score by group**

Figure shows mean monthly adherence scores (A), proportions of participants with viral load <1000 copies/mL (B), mean SSQ-14 scores, and mean PHQ-9 scores. Error bars represent 95% confidence intervals for means and proportions.



**Table 3. Effect of the friendship bench intervention on adherence, viral load and mental health**

Outcome	Unadjusted analyses		Adjusted analyses*	
Adherence (electronic pill box)	Mean difference (95% CI)	p-value	Mean difference (95% CI)	p-value
Months 2-6	1.93 (-1.20 to 5.06)	0.23	1.79 (-1.71 to 5.29)	0.32
Months 1-12	0.79 (-2.14 to 3.71)	0.60	0.64 (-2.67 to 3.94)	0.71
Viral suppression (<1000 copies/ml)	Odds ratio (95% CI)		Odds ratio (95% CI)	
Month 6	2.20 (0.79 to 6.14)	0.13	2.26 (0.79 to 6.45)	0.13
Month 12	1.60 (0.42 to 6.05)	0.49	1.75 (0.47 to 6.49)	0.40
SSQ-14 score	Mean difference (95% CI)		Mean difference (95% CI)	
Month 3	-1.65 (-3.07 to -0.24)	0.02	-1.65 (-3.13 to -0.16)	0.03
Month 6	-1.57 (-2.98 to -0.15)	0.03	-1.56 (-3.05 to -0.07)	0.04
Month 9	-1.63 (-3.05 to -0.22)	0.02	-1.63 (-3.11 to -0.15)	0.03
Month 12	-0.78 (-2.19 to 0.63)	0.28	-0.77 (-2.25 to 0.71)	0.31
PHQ-9 score	Mean difference (95% CI)		Mean difference (95% CI)	
Month 3	-0.35 (-1.68 to 0.99)	0.61	-0.49 (-1.82 to 0.85)	0.47
Month 6	0.01 (-1.33 to 1.34)	0.99	-0.14 (-1.47 to 1.20)	0.84
Month 9	-0.04 (-1.39 to 1.30)	0.95	-0.19 (-1.53 to 1.15)	0.78
Month 12	0.74 (-0.60 to 2.08)	0.28	0.60 (-0.74 to 1.93)	0.38
SSQ-14 $\geq 9$	Odds ratio (95% CI)		Odds ratio (95% CI)	
Month 3	0.38 (0.09 to 1.59)	0.19	0.28 (0.07 to 1.12)	0.07
Month 6	0.41 (0.09 to 1.83)	0.25	0.30 (0.07 to 1.30)	0.11
Month 9	0.34 (0.07 to 1.59)	0.17	0.25 (0.05 to 1.13)	0.07
Month 12	1.54 (0.33 to 7.15)	0.58	1.12 (0.25 to 5.01)	0.88
PHQ-9 $\geq 11$	Odds ratio (95% CI)		Odds ratio (95% CI)	
Month 3	3.24 (0.60 to 17.46)	0.17	2.16 (0.47 to 9.98)	0.33
Month 6	3.17 (0.47 to 21.37)	0.24	2.10 (0.35 to 12.47)	0.41
Month 9	3.84 (0.49 to 30.30)	0.20	2.55 (0.37 to 17.74)	0.34
Month 12	3.11 (0.47 to 20.49)	0.24	2.06 (0.36 to 11.85)	0.42

All analyses were prespecified and accounted for clustering of individuals in health facilities. \* adjusted for facility size, age, and sex