

Supplementary materials for
White matter tract integrity is reduced in major depression and in
individuals with genetic liability for depression

David Nothdurfter, Philippe Jawinski, Sebastian Markett
Humboldt-Universität zu Berlin

1. Supplementary Methods

1.1. Exclusion criteria and covariates

Imaging quality was assessed by noise contrast rating, inhomogeneity contrast ratio, and resolution rating (per voxel fraction root mean square (RMS) error) as implemented in the Computational Anatomy Toolbox CAT12 (<http://www.neuro.uni-jena.de/cat/>). A quality rating of > 3 was set as threshold. If participants were related to each other (kinship coefficient < 0.0443), only one of them was included in the analysis.

If participants' hospital inpatient data (datafield 41270), data about self-reported diseases (datafield 20002) or their mental health questionnaire (datafield 20544) included any psychiatric disorders other than depression, social phobia or anxiety, panic attacks and generalized anxiety disorder, they were excluded from the analysis.

Participants answered a set of questions to screen for bipolar disorder during the imaging visit (see Smith et al., 2016). If they fulfilled the criteria for a bipolar disorder as described in Smith et al. (2016), they were excluded from this study.

In addition to psychiatric disorders, participants with multiple sclerosis, Parkinson's disease, dementia, Alzheimer's, cognitive impairment, other demyelinating disease (not multiple sclerosis), neurological injury/trauma, chronic/degenerative neurological problem or head injury were excluded from the analysis. These diagnoses were assessed via hospital inpatient data and self-reported diseases (datafields 41270 and 20002). Participants with the following ICD-10 diagnoses were excluded from the analyses:

F00, F000, F001, F002, F009, F01, F010, F011, F012, F013, F018, F019, F02, F020, F021, F022, F023, F024, F028, F03, F06, F060, F061, F062, F063, F064, F065, F066, F067, F068, F069, F070, F078, F079, F09, F102, F112, F122, F132, F142, F162, F182, F192, F20, F200, F201, F202, F203, F204, F205, F206, F208, F209, F21, F22, F220, F228, F229, F23, F230, F231, F232, F233, F238, F239, F25, F250, F251, F252, F258, F259, F28, F29, F30, F301, F302,

F308, F309, F31, F310, F311, F312, F313, F314, F315, F316, F317, F318, F319, F44, F441, F442, F443, F444, F445, F446, F447, F448, F449, F840, F841, F45, F450, F451, F452, F453, F453, F454, F458, F459, F48, F480, F481, F488, F489, F60, F601, F602, F603, F604, F605, F606, F607, F608, F609, F61, F70, F701, F702, F708, F709, F71, F710, F711, F718, F719, F72, F720, F721, F728, F729, F73, F730, F731, F738, F739, F78, F780, F781, F788, F789, F79, F790, F791, F798, F799.

Additionally, for the never-depressed group participants with the following diagnoses were also excluded: F32, F320, F321, F322, F323, F328, F329, F33, F331, F332, F333, F334, F338, F339, F34, F340, F341, F348, F349, F38, F380, F381, F388, F39, F40, F400, F401, F403, F408, F409, F41, F410, F411, F412, F413, F418, F419, F42, F420, F421, F422, F428, F429, F431.

Antidepressants intake was confirmed if participants took any of the following medications (all antidepressants currently available in the United Kingdom): agomelatine, amitriptyline, citalopram, clomipramine, desipramine, dosulepin, doxepin, duloxetine, escitalopram, fluoxetine, fluvoxamine, imipramine, isocarboxazid, lofepramine, mianserin, mirtazapine, moclobemide, nortriptyline, paroxetine, phenelzine, reboxetine, sertraline, tranylcypromine, trazodone, trimipramine, venlafaxine, vortioxetine.

1.2. Group assignment

Participants in the group *depressed without current symptoms* had experienced feelings of depression or anhedonia for at least two weeks once in their life, had seen a general practitioner or psychiatrist for ‘nerves, anxiety or depression’, and had experienced depressive symptoms only “several days” or “not at all” in the 14 days prior to the imaging visit. Participants in the *currently depressed group* had felt depressed or experienced anhedonia “nearly every day” in the last 14 days and additionally affirmed to having seen a general practitioner or psychiatrist for nerves, anxiety or depression. Participants were classified in the *healthy control group* if they did not fulfill all of the above described criteria for a history of depression and if they only felt down for “several days” or “not at all” in the last 14 days prior to the imaging visit. Participants were excluded from the healthy control group if they reported ever getting any psychiatric diagnosis by a professional, if their hospital inpatient data included any psychiatric disorder, or if depression was part of their self-reported diagnoses.

1.3. MRI processing and calculation of PCs

Diffusion data (2 mm isotropic voxels, 104*104*72 matrix, TR = 3600 ms, TE = 92 ms, multiband factor 3) were acquired with diffusion gradients in 100 distinct directions (50 with $b = 1000 \text{ s/m}^2$ and 50 with $b = 2000 \text{ s/m}^2$) in anterior-posterior direction.

DTI data were first corrected for eddy currents and head motion by use of FSL's Eddy Tool. Then, tractography-based analysis was performed by first modelling within-voxel multi-fiber tract orientation structure using the BEDPOSTx tool. Probabilistic tractography was performed via PROBTRACKx (Behrens et al., 2007; Jbabdi et al., 2012). The pipeline mapped 27 major fiber tracts using standard-space start/stop ROI masks generated by AutoPtx (de Groot et al., 2013). The weighted-mean value of fractional anisotropy within each of these tracts was used as an indicator for structural connectivity in this study - the weighting was determined by the tractography output (see Smith, Almagro, & Miller, 2020).

A global FA component was extracted from the 27 tracts of interest via principal component analysis (PCA) and factor scores of the first principal component (PC) were used to quantify global fiber integrity. The same procedure was implemented for association/ commissural fibers, thalamic radiations and projection fibers, respectively. If fiber tracts loaded negatively on the first component of the PCAs, PCs were sign-adjusted, so that higher factor scores represent higher fiber tract integrity.

1.4. Matching procedure

Matching was conducted via propensity score matching using the R package *MatchIt*. To keep a high percentage of data, groups were not matched 1:1, as each included a different number of participants (287, 5536 and 13360 for the depressed group with and without current symptoms and the healthy group, respectively). The currently depressed group was matched 1:16 with the depressed group without current symptoms and the resulting matched group (depressed participants without current symptoms) was matched 1:1 with the healthy control group. *Nearest neighbor* in R packages *MatchIt* was used as matching algorithm. *Nearest neighbor* matching selects the best control(s) for each treatment unit, i.e. the match with the closest distance measure (logit). For this method, different calipers can be specified – when setting a caliper, only those control units are selected that are within a certain number of standard deviations of the distance measure (the caliper) from the to be matched unit (Ho et al., 2013). The matching was performed using 46 different calipers (between 0.05 and 0.50 with an interval of 0.01). The matching algorithm yielding the highest percent balance improvement (nearest neighbor with caliper 0.05) was selected for the subsequent analyses. However, the global PC

extracted from all fiber tracts was also analyzed with the other matching outcomes to ensure robustness of the results.

For the outcome of every caliper, a multiple regression with the PC extracted from all fiber tracts as dependent variable was performed. Of these 46 regressions, 26 (56.52 %) revealed significantly lower values on the PC extracted from all fiber tracts in depressed participants without current symptoms than in healthy participants ($p < .05$). For 9 other regressions, the p value was below .10.

For the comparison of healthy and depressed individuals with current symptoms, two of the regressions yielded a significant difference, for 20 regression the p values was below .10. None of the comparisons between depressed participants with and without current symptoms showed a significant difference. For a detailed overview of the various outcomes see table T6.

1.5. Calculations of polygenic risk scores

PrSice 2 (Choi et al., 2019) was used to calculate polygenic risk scores for the UK Biobank sample. If base files included info scores or minor allele frequencies (MAF), only variants with an info score ≥ 0.9 and a MAF ≥ 0.05 were included. Also, variants in linkage disequilibrium were clumped, so that only independent variants remained – the variant with the lowest p value in the base file was selected. Polygenic risk scores were calculated for ten different p value thresholds (5e-08, 1e-06, 0.0001, 0.001, 0.01, 0.05, 0.1, 0.2, 0.5, 1) and then z standardized. Polygenic risk scores based on Baselmans et al. (2019) were inverted to match the other two polygenic risk scores, because the originally reported summary statistics in the paper are poled towards well-being instead of depression.

1.6. Analyses accounting for sample overlap

The three GWAS discovery samples showed varying sample overlap (6.19, 44.74 and 59.58%) with the full UKB cohort from which we selected a subsample for the present study. Even partial overlap between the GWAS discovery and the PGS target sample can dramatically inflate associations (Wray et al., 2015). This, however, should only apply for cases where the same phenotype is studied in the discovery and the target sample, and where the GWAS summary statistics are derived from a case/control comparison, and where both cases and controls are included in the target sample. Since our present design focused on a different phenotype (white matter integrity instead of depression status) in healthy individuals, the partial sample overlap should be less of a concern. To affirm this conjecture we ran a set of simulations

that explored the relationship between polygenic scores and synthetic variables with varying intercorrelations with depression status in a sample that contained either depression cases and controls or controls only. Using the *R* package *faux*, we created normally-distributed random variables that correlated with depression status (healthy vs. life-time depressed; r between 0.1 and 0.9 in an interval of 0.1). We created 10,000 different random variables for each correlation strength. We followed a 10-fold cross-validation scheme and calculated partial correlations (controlling for the same variables as in the main analysis) between polygenic risk scores and these variables in a random draw of 10 % of the sample (both depressed without current symptoms and healthy participants) as well as in a healthy subsample.

We observed a spurious increase in polygenic associations when including both patients and controls. With increasing intercorrelations between depression status and random data, partial correlations between polygenic risk scores and simulated random variables increased as well. This was particularly pronounced for the polygenic scores derived from GWAS with higher sample overlap (for the different polygenic risk thresholds: r between 0.032 and 0.173 for Wray et al. (2018), r between 0.046 and 0.362 for Howard et al. (2019), and r between 0.059 and 0.279 for Baselmans et al. (2019)). However, such artificial inflation was not apparent when we limited our analysis to healthy controls. In this case, all partial correlations were around zero irrespective of the correlation strength between depression status and the random data (all r 's < $|1e-15|$; see tables T15 to T20 and figure S2).

In a second validation step, we created 10,000 random variables that correlated to the same extent with depression status as the empirical partial correlations found between polygenic risk and white matter integrity (for all tract groups that differed between groups). We then calculated the partial correlations between these simulated variables and polygenic risk for depression in the healthy group. This resulted in 10,000 partial correlations (reflecting PGS association with random data) for each fiber tract group and for each of the three PGS (based on three discovery GWAS). We then determined in how many cases the empirical PGS association with white matter integrity was more substantial (i.e. more negative) than the random association, and calculated a p-value, reflecting the probability to observe a similar correlation in meaningless (i.e. random) data with a similar dependency structure. Results are presented in main figure 4C and in supplementary figure S3.

Table T1 Distribution of age, sex, education level, image quality rating, intake of antidepressants, assessment center and FA components for all participants

	Healthy participants (<i>N</i> = 13360)				Depressed participants without current symptoms (<i>N</i> = 5536)				Depressed participants with current symptoms (<i>N</i> = 287)			
	<i>M</i> /Percent	<i>SD</i>	Median	Range	<i>M</i> /Percent	<i>SD</i>	Median	Range	<i>M</i> /Percent	<i>SD</i>	Median	Range
Sex: Men	55.60 %			0/1	38.30 %			0/1	33.40 %			0/1
Age (in years)	64.81	7.52	65.53	46-82	62.51	7.23	62.42	45-81	60.65	7	59.80	48-80
Education level												
Incomplete	6.3 %				4 %				8.7 %			
Compulsory	12.9 %				11.6 %				13.6 %			
Continued	6.1 %				6.1 %				5.2 %			
College	26.1 %				24.4 %				28.2 %			
University	48.6 %				53.9 %				44.3 %			
Image Quality Rating	2.05	0.16	2	1.67-2.99	2.03	0.14	1.99	1.62-2.99	2.04	0.17	1.99	1.86-2.87
Antidepressants intake	0.9 %				12.2 %				25.8 %			
Assessment center												
Cheadle	60.59 %				62.57 %				59.23 %			
Reading	13.93 %				12.05 %				14.29 %			
Newcastle	25.48 %				25.38 %				26.48 %			
Principal component (all fiber tracts)	-0.12	3.12	-0.2	-8.76 - 8.53	-0.09	3.07	-0.19	-8.43- 8.29	-0.09	3.22	-0.49	-8.42- 8.77
Principal component (association/ commissural)	-0.06	2.5	-0.14	-6.95- 6.92	-0.12	2.46	-0.17	-6.81- 6.71	-0.09	2.53	-0.49	-6.95 - 7.13
Principal component (thalamic)	-0.09	1.71	-0.13	-4.81- 4.67	-0.02	1.7	-0.05	-4.66- 4.64	-0.01	1.73	0.02	4.43-4.56
Principal component (projection)	-0.08	1.51	-0.1	-4.21- 4.05	0.06	1.46	0.05	-3.93- 4.06	0.12	1.54	0.22	-3.65- 4.26

Table T2 Results of *nearest neighbor* matching with different calipers

Caliper	percent balance improvement 1	percent balance improvement 2	b_1	p_1	b_2	p_2	b_3	p_3
0.05	99.175	99.057	-0.184	0.008	-0.372	0.067	-0.114	0.545
0.06	99.124	98.702	-0.103	0.129	-0.350	0.078	-0.138	0.464
0.07	98.738	98.276	-0.107	0.112	-0.208	0.294	-0.103	0.581
0.08	98.634	98.119	-0.256	0.000	-0.431	0.032	-0.101	0.592
0.09	98.588	98.052	-0.108	0.096	-0.349	0.072	-0.166	0.356
0.10	98.253	97.781	-0.235	0.000	-0.352	0.069	-0.097	0.593
0.11	97.682	97.551	-0.110	0.095	-0.227	0.248	-0.125	0.496
0.12	97.504	97.038	-0.095	0.151	-0.241	0.218	-0.166	0.365
0.13	97.035	96.665	-0.162	0.011	-0.360	0.059	-0.138	0.440
0.14	96.966	96.506	-0.021	0.749	-0.166	0.393	-0.132	0.463
0.15	97.097	96.187	-0.107	0.099	-0.248	0.202	-0.124	0.492
0.16	95.828	95.801	-0.186	0.004	-0.351	0.066	-0.122	0.496
0.17	95.073	95.524	-0.181	0.005	-0.320	0.101	-0.114	0.532
0.18	96.003	95.517	-0.159	0.015	-0.281	0.142	-0.120	0.518
0.19	95.986	94.862	-0.162	0.011	-0.286	0.135	-0.105	0.556
0.20	95.092	94.692	-0.131	0.046	-0.334	0.091	-0.126	0.487
0.21	93.491	94.226	-0.173	0.007	-0.371	0.052	-0.151	0.405
0.22	92.860	93.884	-0.147	0.024	-0.343	0.077	-0.140	0.442
0.23	93.256	93.778	-0.073	0.265	-0.248	0.209	-0.157	0.390
0.24	92.309	93.345	-0.063	0.330	-0.255	0.187	-0.177	0.339
0.25	91.796	93.065	-0.163	0.014	-0.402	0.042	-0.165	0.377
0.26	90.984	92.403	-0.108	0.093	-0.325	0.095	-0.138	0.447
0.27	90.966	91.814	-0.132	0.039	-0.228	0.233	-0.108	0.548
0.28	91.122	91.910	-0.100	0.121	-0.307	0.112	-0.140	0.436
0.29	90.341	91.143	-0.129	0.051	-0.334	0.092	-0.151	0.417
0.30	88.890	90.947	-0.078	0.233	-0.243	0.216	-0.138	0.453
0.31	87.539	90.736	-0.098	0.125	-0.308	0.109	-0.141	0.437
0.32	86.975	91.442	-0.213	0.001	-0.365	0.061	-0.102	0.574
0.33	85.661	89.960	-0.117	0.062	-0.214	0.260	-0.098	0.579
0.34	87.167	89.892	-0.157	0.017	-0.302	0.125	-0.119	0.517
0.35	85.833	89.756	-0.123	0.060	-0.298	0.130	-0.112	0.548
0.36	85.063	88.465	-0.105	0.110	-0.271	0.175	-0.139	0.448
0.37	85.365	87.365	-0.128	0.048	-0.344	0.078	-0.167	0.361
0.38	84.088	87.085	-0.117	0.066	-0.335	0.078	-0.129	0.474
0.39	82.910	88.565	-0.131	0.043	-0.322	0.099	-0.129	0.478
0.40	82.484	87.119	-0.156	0.015	-0.314	0.109	-0.136	0.448
0.41	82.294	86.514	-0.177	0.007	-0.359	0.067	-0.130	0.493
0.42	81.542	86.643	-0.139	0.032	-0.268	0.172	-0.116	0.525
0.43	81.326	86.562	0.174	0.007	0.324	0.096	0.082	0.652
0.44	81.600	86.074	0.143	0.027	0.283	0.147	0.167	0.360
0.45	78.784	85.010	-0.164	0.012	-0.271	0.169	-0.128	0.490
0.46	79.407	83.940	-0.159	0.014	-0.349	0.074	-0.118	0.516
0.47	78.835	83.780	-0.119	0.061	-0.314	0.105	-0.140	0.438
0.48	75.930	84.324	-0.125	0.048	-0.356	0.063	-0.137	0.445
0.49	77.789	82.184	-0.138	0.027	-0.338	0.071	-0.137	0.441
0.50	77.361	83.422	-0.072	0.261	-0.270	0.166	-0.122	0.497

Note for Table T2: percent balance improvement 1 = matching of depressed group with current symptoms to depressed group without current symptoms; percent balance improvement 2 = matching of depressed group without current symptoms (matched subgroup) to healthy group; b_1/p_1 = unstandardized Betas and p values for the comparison of healthy group and depressed group without current symptoms, dependent variable is global FA component (based on all fiber tracts); b_2/p_2 = unstandardized Betas and p values for the comparison of healthy group and depressed group with current symptoms, dependent variable is global FA component (based on all fiber tracts); b_3/p_3 = unstandardized Betas and p values for the comparison of the two depressed groups, dependent variable is global FA component (based on all fiber tracts)

2. Supplementary Results

2.1 Descriptive statistics for fiber tracts and loadings on principal components

Table T3 Descriptive statistics for individual fiber tracts (all participants)

Fiber tract	Healthy participants				Depressed participants without current symptoms				Depressed participants with current symptoms			
	<i>M</i>	<i>SD</i>	Median	Range	<i>M</i>	<i>SD</i>	Median	Range	<i>M</i>	<i>SD</i>	Median	Range
Acoustic radiation (left)	0.423	0.022	0.423	0.364-0.483	0.423	0.021	0.423	0.365-0.483	0.423	0.020	0.422	0.373-0.483
Acoustic radiation (right)	0.411	0.021	0.411	0.354-0.469	0.409	0.020	0.409	0.354-0.469	0.410	0.020	0.411	0.356-0.469
Anterior thalamic radiation (left)	0.398	0.018	0.398	0.349-0.446	0.398	0.018	0.398	0.350-0.446	0.399	0.017	0.400	0.355-0.446
Anterior thalamic radiation (right)	0.391	0.017	0.391	0.343-0.438	0.390	0.017	0.391	0.344-0.438	0.391	0.017	0.390	0.345-0.438
Cingulate gyrus part of cingulum (left)	0.533	0.033	0.534	0.441-0.625	0.531	0.033	0.532	0.440-0.625	0.533	0.034	0.534	0.439-0.625
Cingulate gyrus part of cingulum (right)	0.495	0.033	0.495	0.404-0.586	0.494	0.032	0.494	0.407-0.586	0.497	0.030	0.500	0.415-0.586
Parahippocampal part of cingulum (left)	0.313	0.026	0.314	0.240-0.384	0.312	0.026	0.312	0.242-0.384	0.312	0.028	0.313	0.237-0.384
Parahippocampal part of cingulum (right)	0.310	0.028	0.311	0.233-0.387	0.309	0.028	0.310	0.232-0.387	0.309	0.029	0.309	0.233-0.387
Corticospinal tract (left)	0.545	0.021	0.546	0.486-0.605	0.544	0.021	0.545	0.485-0.605	0.543	0.023	0.545	0.479-0.605
Corticospinal tract (right)	0.537	0.022	0.538	0.475-0.598	0.535	0.022	0.536	0.473-0.598	0.535	0.022	0.535	0.480-0.598
Forceps major	0.583	0.025	0.584	0.513-0.651	0.582	0.025	0.584	0.514-0.651	0.581	0.027	0.583	0.513-0.651
Forceps minor	0.463	0.020	0.463	0.407-0.518	0.463	0.020	0.464	0.408-0.518	0.464	0.020	0.464	0.409-0.518
Inferior fronto-occipital fasciculus (left)	0.477	0.021	0.477	0.418-0.535	0.478	0.020	0.478	0.422-0.535	0.479	0.021	0.481	0.420-0.535
Inferior fronto-occipital fasciculus (right)	0.464	0.020	0.464	0.409-0.519	0.464	0.019	0.465	0.411-0.519	0.464	0.020	0.464	0.408-0.519
Inferior longitudinal fasciculus (left)	0.461	0.020	0.462	0.407-0.514	0.462	0.019	0.463	0.409-0.514	0.461	0.021	0.462	0.406-0.514
Inferior longitudinal fasciculus (right)	0.450	0.019	0.451	0.398-0.501	0.451	0.018	0.451	0.400-0.501	0.450	0.019	0.451	0.398-0.501
Middle cerebellar peduncle	0.482	0.026	0.482	0.411-0.554	0.481	0.026	0.481	0.409-0.554	0.481	0.024	0.480	0.409-0.554
Medial lemniscus (left)	0.425	0.024	0.425	0.360-0.491	0.424	0.023	0.423	0.360-0.491	0.423	0.023	0.422	0.366-0.491

Medial lemniscus (right)	0.426	0.024	0.426	0.360-0.493	0.424	0.023	0.424	0.360-0.493	0.421	0.024	0.419	0.365-0.493
Posterior thalamic radiation (left)	0.460	0.020	0.461	0.403-0.516	0.460	0.020	0.461	0.406-0.516	0.459	0.021	0.461	0.403-0.516
Posterior thalamic radiation (right)	0.455	0.019	0.455	0.401-0.509	0.455	0.019	0.455	0.400-0.509	0.453	0.021	0.454	0.393-0.509
Superior longitudinal fasciculus (left)	0.444	0.020	0.445	0.388-0.499	0.445	0.020	0.446	0.388-0.499	0.445	0.021	0.446	0.391-0.499
Superior longitudinal fasciculus (right)	0.425	0.020	0.425	0.370-0.479	0.425	0.019	0.426	0.372-0.479	0.426	0.019	0.425	0.375-0.479
Superior thalamic radiation (left)	0.424	0.018	0.423	0.374-0.473	0.422	0.017	0.422	0.375-0.473	0.421	0.018	0.423	0.375-0.473
Superior thalamic radiation (right)	0.421	0.018	0.421	0.369-0.472	0.419	0.018	0.419	0.371-0.472	0.419	0.018	0.418	0.370-0.472
Uncinate fasciculus (left)	0.386	0.023	0.386	0.323-0.449	0.387	0.022	0.387	0.324-0.449	0.388	0.024	0.389	0.329-0.449
Uncinate fasciulus (right)	0.385	0.020	0.386	0.330-0.441	0.386	0.020	0.386	0.330-0.441	0.386	0.021	0.385	0.334-0.441

Table T4 Descriptive statistics for individual fiber tracts (matched subgroups)

Fiber tract	Healthy participants				Depressed participants without current symptoms				Depressed participants with current symptoms			
	<i>M</i>	<i>SD</i>	Median	Range	<i>M</i>	<i>SD</i>	Median	Range	<i>M</i>	<i>SD</i>	Median	Range
Acoustic radiation (left)	0.423	0.021	0.423	0.367-0.479	0.423	0.021	0.423	0.366-0.479	0.423	0.021	0.422	0.373-0.479
Acoustic radiation (right)	0.410	0.020	0.410	0.353-0.467	0.409	0.020	0.409	0.355-0.467	0.410	0.020	0.411	0.356-0.467
Anterior thalamic radiation (left)	0.400	0.017	0.400	0.353-0.447	0.399	0.017	0.399	0.351-0.447	0.399	0.017	0.400	0.355-0.447
Anterior thalamic radiation (right)	0.392	0.017	0.392	0.346-0.438	0.391	0.017	0.392	0.346-0.438	0.391	0.017	0.390	0.345-0.438
Cingulate gyrus part of cingulum (left)	0.534	0.033	0.536	0.443-0.624	0.532	0.032	0.533	0.443-0.624	0.532	0.034	0.534	0.439-0.624
Cingulate gyrus part of cingulum (right)	0.495	0.033	0.495	0.404-0.586	0.495	0.032	0.495	0.408-0.586	0.497	0.031	0.500	0.414-0.586
Parahippocampal part of cingulum (left)	0.313	0.026	0.314	0.241-0.381	0.312	0.026	0.312	0.241-0.381	0.312	0.028	0.313	0.237-0.381
Parahippocampal part of cingulum (right)	0.309	0.027	0.310	0.235-0.381	0.309	0.028	0.309	0.232-0.381	0.309	0.029	0.309	0.236-0.381
Corticospinal tract (left)	0.544	0.021	0.545	0.485-0.603	0.544	0.021	0.545	0.485-0.603	0.543	0.023	0.544	0.479-0.603
Corticospinal tract (right)	0.535	0.022	0.536	0.473-0.597	0.535	0.022	0.536	0.472-0.597	0.534	0.022	0.535	0.480-0.597
Forceps major	0.584	0.024	0.584	0.518-0.646	0.583	0.024	0.584	0.516-0.646	0.581	0.027	0.584	0.513-0.646
Forceps minor	0.465	0.019	0.466	0.413-0.517	0.464	0.020	0.465	0.410-0.517	0.464	0.020	0.464	0.409-0.517
Inferior fronto-occipital fasciculus (left)	0.480	0.020	0.480	0.422-0.536	0.479	0.020	0.479	0.423-0.536	0.479	0.021	0.481	0.420-0.536
Inferior fronto-occipital fasciculus (right)	0.466	0.019	0.467	0.413-0.518	0.465	0.019	0.465	0.412-0.518	0.464	0.021	0.464	0.408-0.518
Inferior longitudinal fasciculus (left)	0.464	0.019	0.465	0.413-0.515	0.463	0.019	0.464	0.412-0.515	0.461	0.021	0.462	0.406-0.515
Inferior longitudinal fasciculus (right)	0.453	0.018	0.453	0.403-0.501	0.451	0.018	0.452	0.401-0.501	0.450	0.019	0.451	0.398-0.501
Middle cerebellar peduncle	0.481	0.025	0.481	0.412-0.548	0.481	0.025	0.481	0.409-0.548	0.481	0.024	0.480	0.409-0.548
Medial lemniscus (left)	0.423	0.023	0.423	0.359-0.487	0.423	0.023	0.423	0.361-0.487	0.423	0.023	0.422	0.366-0.487
Medial lemniscus (right)	0.424	0.023	0.424	0.362-0.487	0.424	0.023	0.423	0.360-0.487	0.421	0.024	0.419	0.365-0.487
Posterior thalamic radiation (left)	0.463	0.019	0.464	0.412-0.515	0.461	0.019	0.462	0.408-0.515	0.459	0.021	0.461	0.403-0.515
Posterior thalamic radiation (right)	0.457	0.018	0.457	0.406-0.508	0.455	0.019	0.456	0.403-0.508	0.453	0.021	0.454	0.393-0.508
Superior longitudinal fasciculus (left)	0.446	0.019	0.447	0.394-0.499	0.446	0.020	0.446	0.389-0.499	0.445	0.021	0.446	0.391-0.499

Nothdurfter et al. Supplementary Materials

Superior longitudinal fasciculus (right)	0.426	0.019	0.427	0.374-0.479	0.426	0.019	0.427	0.373-0.479	0.426	0.019	0.426	0.375-0.479
Superior thalamic radiation (left)	0.423	0.017	0.422	0.377-0.469	0.422	0.017	0.421	0.376-0.469	0.421	0.018	0.422	0.375-0.469
Superior thalamic radiation (right)	0.420	0.017	0.420	0.374-0.466	0.419	0.017	0.419	0.371-0.466	0.419	0.018	0.418	0.370-0.466
Uncinate fasciculus (left)	0.388	0.022	0.388	0.327-0.451	0.387	0.022	0.387	0.327-0.451	0.388	0.024	0.388	0.329-0.451
Uncinate fasciculus (right)	0.387	0.020	0.388	0.355-0.440	0.386	0.020	0.386	0.330-0.44	0.386	0.021	0.385	0.334-0.44

Table T5 Loadings of individual fiber tracts on the four PCs (for all participants)

Tract	All	Association/ commissural fibers	Thalamic radiations	Projection fibers
Cingulate gyrus part of cingulum (left)	-0.1504	-0.2044		
Cingulate gyrus part of cingulum (right)	-0.1443	-0.1972		
Inferior fronto-occipital fasciculus (left)	-0.2452	-0.3256		
Inferior fronto-occipital fasciculus (right)	-0.2519	-0.33		
Inferior longitudinal fasciculus (left)	-0.2385	-0.3211		
Inferior longitudinal fasciculus (right)	-0.2453	-0.3257		
Parahippocampal part of cingulum (left)	-0.1048	-0.1385		
Parahippocampal part of cingulum (right)	-0.0916	-0.1185		
Superior longitudinal fasciculus (left)	-0.2203	-0.2976		
Superior longitudinal fasciculus (right)	-0.2297	-0.3039		
Uncinate fasciculus (left)	-0.1918	-0.26		
Uncinate fasciculus (right)	-0.1964	-0.2674		
Forceps major	-0.1699	-0.221		
Forceps minor	-0.2319	-0.3052		
Anterior thalamic radiation (left)	-0.2323		-0.4331	
Anterior thalamic radiation (right)	-0.2331		-0.4394	
Posterior thalamic radiation (left)	-0.2069		-0.3802	
Posterior thalamic radiation (right)	-0.2182		-0.4038	
Superior thalamic radiation (left)	-0.195		-0.3908	
Superior thalamic radiation (right)	-0.1972		-0.3988	
Acoustic radiation (left)	-0.1876			-0.393
Acoustic radiation (right)	-0.1853			-0.4022
Corticospinal tract (left)	-0.1859			-0.4765
Corticospinal tract (right)	-0.1842			-0.4753
Medial lemniscus (left)	-0.0727			-0.2723
Medial lemniscus (right)	-0.0753			-0.275
Middle cerebellar peduncle	-0.1126			-0.2846

Note. Values represent loadings of individual fiber tracts on the first principal components from the PCAs. Scores on principal components were sign-adjusted for the analyses, so higher values represent higher fiber tract integrity.

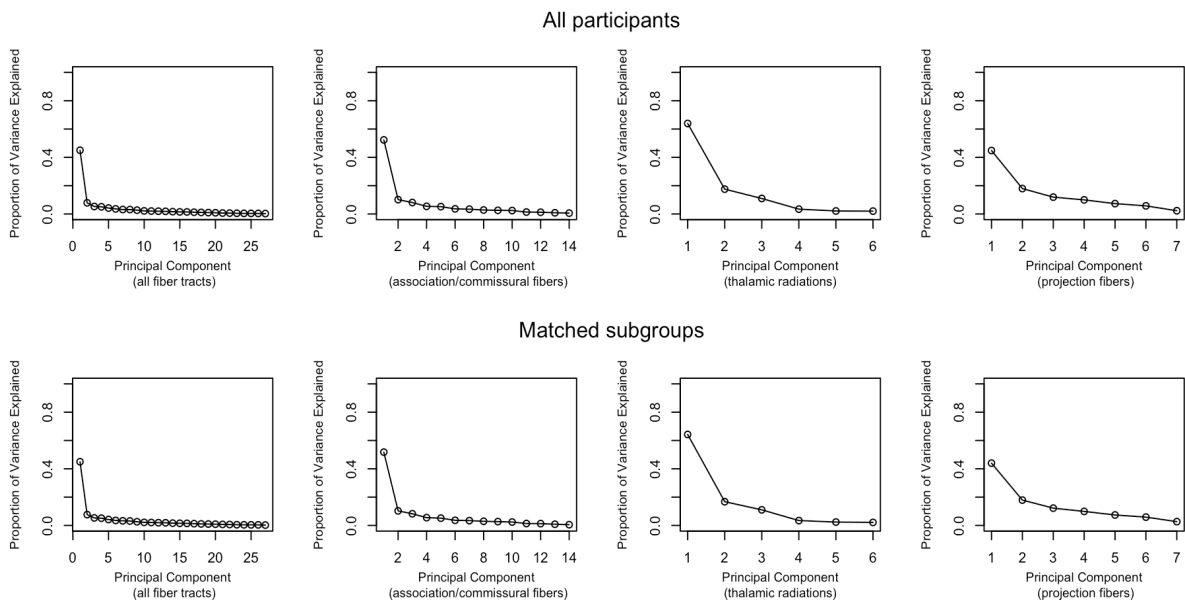
Table T6 Loadings of individual fiber tracts on the four PCs (for matched subsample)

Tract	All	Association/ commissural fibers	Thalamic radiation	Projection fibers
Cingulate gyrus part of cingulum (left)	0.1431	-0.1977		
Cingulate gyrus part of cingulum (right)	0.1367	-0.1915		
Inferior fronto-occipital fasciculus (left)	0.2487	-0.3296		
Inferior fronto-occipital fasciculus (right)	0.2546	-0.3325		
Inferior longitudinal fasciculus (left)	0.2393	-0.3219		
Inferior longitudinal fasciculus (right)	0.2443	-0.3252		
Parahippocampal part of cingulum (left)	0.1020	-0.1341		
Parahippocampal part of cingulum (right)	0.0901	-0.1175		
Superior longitudinal fasciculus (left)	0.2202	-0.3001		
Superior longitudinal fasciculus (right)	0.2309	-0.3075		
Uncinate fasciculus (left)	0.1896	-0.2579		
Uncinate fasciculus (right)	0.197	-0.2684		
Forceps major	0.1658	-0.2186		
Forceps minor	0.2311	-0.305		
Anterior thalamic radiation (left)	0.2336		-0.4299	
Anterior thalamic radiation (right)	0.2351		-0.4371	
Posterior thalamic radiation (left)	0.2087		-0.3893	
Posterior thalamic radiation (right)	0.2168		-0.4054	
Superior thalamic radiation (left)	0.1971		-0.3859	
Superior thalamic radiation (right)	0.2007		-0.3991	
Acoustic radiation (left)	0.1858			0.3821
Acoustic radiation (right)	0.1858			0.3986
Corticospinal tract (left)	0.1841			0.4749
Corticospinal tract (right)	0.1805			0.4747
Medial lemniscus (left)	0.0776			0.2772
Medial lemniscus (right)	0.0794			0.2811
Middle cerebellar peduncle	0.1179			0.2973

Note. Values represent loadings of individual fiber tracts on the first principal components from the PCAs. Scores on principal components for association/commissural fibers and thalamic fibers were sign-adjusted for the analyses, so higher values represent higher fiber tract integrity.

2.2 Multiple regression analyses for global FA measures

Figure S1 Scree plots for the principal component analyses



Note. The upper four plots depict the explained variance of the PCAs including all participants, the lower four the explained variance of the PCAs including the matched subsample (propensity score matching, method: *nearest neighbor*, caliper = 0.05).

Table T7 Multiple regression analyses with global FA components as dependent variables (healthy vs. depressed without current symptoms; all participants)

DV: integrity of all fiber tracts

	<i>b</i>	<i>SE</i>	<i>t</i> value
Depression status	-0.137	0.05	-2.738*
Age	0.069	0.046	1.479
Age ²	-0.001	0	-3.469*
Sex: Male	0.518	0.031	16.496*
Image Quality Rating	-2.18	0.148	-14.715*
Education status	0.047	0.018	2.691*
Antidepressant intake: true	-0.152	0.112	-1.354
Assessment center 1	0.716	0.066	10.841*
Assessment center 2	-0.267	0.051	-5.207*
<i>R</i> ² overall	0.088*		
<i>F</i> (9,18663)*	200.9		

DV: integrity of association/commissural fibers

	<i>b</i>	<i>SE</i>	<i>t</i> value
Depression status	-0.096	0.04	-2.398*
Age	0.118	0.037	3.189*
Age ²	-0.002	0	-5.628*
Sex: Male	0.229	0.025	9.162*
Image Quality Rating	-1.333	0.118	-11.313*
Education status	0.022	0.014	1.560
Antidepressant intake: true	-0.117	0.089	-1.314
Assessment center 1	0.369	0.053	7.024*
Assessment center 2	-0.268	0.041	-6.565*
<i>R</i> ² overall	0.097*		
<i>F</i> (9,18694)*	224.3		

DV: integrity of thalamic radiations

	<i>b</i>	<i>SE</i>	<i>t</i> value
Depression status	-0.101	0.028	-3.807*
Age	0.024	0.026	0.918
Age ²	-0.001	0	-2.649*
Sex: Male	0.245	0.017	14.088*
Image Quality Rating	-1.345	0.082	-16.360*
Education status	0.034	0.01	3.463*
Antidepressant intake: true	-0.149	0.089	-1.314
Assessment center 1	0.598	0.037	16.348*
Assessment center 2	-0.006	0.028	-0.212
<i>R</i> ² overall	0.081*		
<i>F</i> (9,18622)*	183.5		

DV: integrity of projection fibers

	<i>b</i>	<i>SE</i>	<i>t</i> value
Depression status	-0.02	0.024	-0.841
Age	-0.06	0.022	-2.705*
Age ²	0.000	0	2.533*
Sex: Male	0.58	0.015	38.454*
Image Quality Rating	-1.319	0.071	-18.524*
Education status	0.035	0.008	4.208*
Antidepressant intake: true	-0.007	0.054	-0.125
Assessment center 1	0.357	0.032	11.258*
Assessment center 2	-0.11	0.025	-4.464
<i>R</i> ² overall	0.098*		
<i>F</i> (9,18648)*	226.4		

Note. DV = dependent variable; Depression status: 0 = healthy, 1 = depressed without current symptoms; sex: 0 = female, 1 = male; Education status: 0 = incomplete, 1 = compulsory, 2 = continued, 3 = college, 4 = university; Assessment center is dummy-coded. **p* < .05.

Table T8 Multiple regression analyses with global FA components as dependent variables (healthy vs. depressed with current symptoms; all participants)

DV: integrity of all fiber tracts

	<i>b</i>	<i>SE</i>	<i>t</i> value
Depression status	-0.303	0.188	-1.617
Age	0.059	0.055	1.083
Age ²	-0.001	0	-2.761*
Sex: Male	0.518	0.037	14.038*
Image Quality Rating	-2.28	0.171	-13.331*
Education status	0.052	0.02	2.564*
Antidepressant intake: true	0.196	0.226	0.863
Assessment center 1	0.781	0.077	10.197*
Assessment center 2	-0.219	0.061	-3.609*
<i>R</i> ² overall	0.092		
<i>F</i> (9, 13473)*	151.1		

DV integrity of association/commissural fibers

	<i>b</i>	<i>SE</i>	<i>t</i> value
Depression status	-0.308	0.15	-2.060*
Age	0.108	0.043	2.495*
Age ²	-0.002	0	-4.593*
Sex: Male	0.229	0.029	7.814*
Image Quality Rating	-1.399	0.136	-10.296*
Education status	0.029	0.016	1.791
Antidepressant intake: true	0.201	0.179	1.118
Assessment center 1	0.394	0.061	6.456*
Assessment center 2	-0.241	0.0484	-4.991*
<i>R</i> ² overall	0.102		
<i>F</i> (9, 13486)*	170.6		

DV integrity of thalamic radiations

	b	SE	t value
Depression status	-0.181	0.104	-1.735
Age	0.025	0.03	0.830
Age ²	-0.001	0	-2.238*
Sex: Male	0.242	0.02	11.865*
Image Quality Rating	-1.408	0.095	-14.842*
Education status	0.037	0.011	3.244*
Antidepressant intake: true	-0.016	0.125	-0.128
Assessment center 1	0.624	0.042	14.692*
Assessment center 2	0.011	0.034	0.335
<i>R</i> ² overall	0.082		
<i>F</i> (9, 13440)*	135.1		

DV integrity of projection fibers

	b	SE	t value
Depression status	0.003	0.09	0.035
Age	-0.059	0.026	-2.230*
Age ²	< 0.001	0	2.168*
Sex: Male	0.578	0.018	32.444*
Image Quality Rating	-1.379	0.082	-16.724*
Education status	0.031	0.01	3.210*
Antidepressant intake: true	-0.099	0.109	-0.910
Assessment center 1	0.391	0.037	10.546*
Assessment center 2	-0.096	0.029	-3.288*
<i>R</i> ² overall	0.099		
<i>F</i> (9, 13478)*	164.5		

Note. DV = dependent variable; Depression status: 0 = healthy, 1 = depressed without current symptoms; sex: 0 = female, 1 = male; Education status: 0 = incomplete, 1 = compulsory, 2 = continued, 3 = college, 4 = university; Assessment center is dummy-coded. **p* < .05.

Table T9 Multiple regression analyses with global FA components as dependent variables (depressed with current symptoms vs. depressed without current symptoms; all participants)

DV: integrity of all fiber tracts

	b	SE	t value
Depression status	-0.101	0.18	-0.564
Age	0.119	0.086	1.376
Age ²	-0.002	0.001	-2.540*
Sex: Male	0.555	0.057	9.734*
Image Quality Rating	-1.68	0.278	-6.032*
Education status	0.016	0.033	0.492
Antidepressant intake: true	-0.243	0.117	-2.08*
Assessment center 1	0.717	0.123	5.822*
Assessment center 2	-0.36	0.091	-3.942*
<i>R</i> ² overall	0.088		
<i>F</i> (9, 5750)*	61.67		

DV: integrity of association/commissural fibers

	<i>b</i>	<i>SE</i>	<i>t</i> value
Depression status	-0.143	0.144	-0.995
Age	0.156	0.069	2.255*
Age ²	-0.002	0.001	-3.579*
Sex: Male	0.256	0.046	5.628*
Image Quality Rating	-0.998	0.222	-4.501*
Education status	-0.009	0.026	-0.329
Antidepressant intake: true	-0.155	0.093	-1.664
Assessment center 1	0.379	0.098	3.867*
Assessment center 2	-0.316	0.073	-4.338*
<i>R</i> ² overall	0.09		
<i>F</i> (9, 5766)*	63.62		

DV: integrity of thalamic radiations

	<i>b</i>	<i>SE</i>	<i>t</i> value
Depression status	-0.069	0.01	-0.695
Age	0.059	0.048	1.233
Age ²	-0.001	0	-2.335
Sex: Male	0.271	0.032	8.567*
Image Quality Rating	-1.086	0.154	-7.048*
Education status	0.02	0.018	1.106
Antidepressant intake: true	-0.172	0.065	-2.659*
Assessment center 1	0.62	0.068	9.084*
Assessment center 2	-0.045	0.051	-0.895
<i>R</i> ² overall	0.086		
<i>F</i> (9, 5736)*	60.27		

DV: integrity of projection fibers

	<i>b</i>	<i>SE</i>	<i>t</i> value
Depression status	-0.021	0.085	-0.247
Age	-0.056	0.041	-1.351
Age ²	< 0.001	0	1.025
Sex: Male	0.575	0.027	21.153*
Image Quality Rating	-0.985	0.133	-7.405*
Education status	0.042	0.016	2.709*
Antidepressant intake: true	-0.035	0.055	-0.605
Assessment center 1	0.352	0.058	6.032*
Assessment center 2	-0.133	0.044	-3.058*
<i>R</i> ² overall	0.093		
<i>F</i> (9, 5732)*	65.07		

Note. DV = dependent variable; Depression status: 0 = healthy, 1 = depressed without current symptoms; sex: 0 = female, 1 = male; Education status: 0 = incomplete, 1 = compulsory, 2 = continued, 3 = college, 4 = university; Assessment center is dummy-coded. **p* < .05.

Table T10 Multiple regression analyses with global FA components as dependent variables (healthy vs. depressed without current symptoms; matched subgroups)

DV: integrity of all fiber tracts

	<i>b</i>	<i>SE</i>	<i>t</i> value
Depression status	-0.184	0.069	-2.673*
Age	0.114	0.079	1.450
Age ²	-0.002	0.001	-2.592*
Sex: Male	0.453	0.05	8.999*
Image Quality Rating	-2.413	0.252	-9.589*
Education status	0.009	0.028	0.315
Antidepressant intake: true	0.141	0.14	-1.012
Assessment center 1	0.797	0.107	7.481*
Assessment center 2	-0.193	0.079	-2.438*
<i>R</i> ² overall	0.077*		
<i>F</i> (9, 8277)*	76.76		

DV integrity of association/commissural fibers

	<i>b</i>	<i>SE</i>	<i>t</i> value
Depression status	-0.129	0.055	-2.372*
Age	0.11	0.062	1.764
Age ²	-0.002	0.001	-3.079*
Sex: Male	0.17	0.04	4.273*
Image Quality Rating	-1.477	0.199	-7.427*
Education status	0.002	-0.002	0.087
Antidepressant intake: true	-0.17	0.11	-1.545
Assessment center 1	0.431	0.084	5.124*
Assessment center 2	-0.189	0.063	-3.013*
<i>R</i> ² overall	0.077*		
<i>F</i> (9, 8278)*	76.35		

DV integrity of thalamic fibers

	<i>b</i>	<i>SE</i>	<i>t</i> value
Depression status	-0.132	0.038	-3.480
Age	0.052	0.043	1.209
Age ²	-0.001	0	-2.264
Sex: Male	0.202	0.028	7.288
Image Quality Rating	-1.384	0.139	-9.980
Education status	0.012	0.016	0.774
Antidepressant intake: true	-0.136	0.077	-1.781
Assessment center 1	0.65	0.059	11.081
Assessment center 2	0.026	0.0435	0.604
<i>R</i> ² overall	0.075*		
<i>F</i> (9, 8247)*	74.67		

DV: integrity of projection fibers

	<i>b</i>	<i>SE</i>	<i>t</i> value
Depression status	-0.015	0.033	-0.448
Age	-0.052	0.038	-1.350
Age ²	<0.001	0	1.158
Sex: Male	0.563	0.024	23.123
Image Quality Rating	-1.466	0.122	-12.033
Education status	0.019	0.014	1.359
Antidepressant intake: true	0.02	0.067	0.299
Assessment center 1	0.383	0.051	7.416
Assessment center 2	-0.111	0.038	-2.899
<i>R</i> ² overall	0.083*		
<i>F</i> (9, 8263)*	82.85		

Note. DV = dependent variable; Depression status: 0 = healthy, 1 = depressed without current symptoms; sex: 0 = female, 1 = male; Education status: 0 = incomplete, 1 = compulsory, 2 = continued, 3 = college, 4 = university; Assessment center is dummy-coded. **p* < .05.

Table T11 Multiple regression analyses with PCs as dependent variables (healthy vs. depressed with current symptoms; matched subgroups)

DV: integrity of all fiber tracts

	<i>b</i>	<i>SE</i>	<i>t</i> value
Depression status	-0.372	0.203	-1.830
Age	0.053	0.107	0.491
Age ²	-0.001	0.001	-1.266
Sex: Male	0.439	0.069	6.368*
Image Quality Rating	-2.716	0.34	-7.990*
Education status	0.01	0.038	0.274
Antidepressant intake: true	0.191	0.314	0.610
Assessment center 1	1.065	0.143	7.435*
Assessment center 2	-0.035	0.109	-0.322
<i>R</i> ² overall	0.078*		
<i>F</i> (9, 4418)*	41.63		

DV: integrity of association/commissural fibers

	<i>b</i>	<i>SE</i>	<i>t</i> value
Depression status	-0.38	0.161	-2.356*
Age	0.066	0.085	0.781
Age ²	-0.001	0.001	-1.683
Sex: Male	0.156	0.055	2.866*
Image Quality Rating	-1.715	0.269	-6.383*
Education status	0.023	0.03	0.765
Antidepressant intake: true	0.248	0.248	0.999
Assessment center 1	0.546	0.113	4.816*
Assessment center 2	-0.065	0.086	-0.760
<i>R</i> ² overall	0.074*		
<i>F</i> (9, 4413)*	39.6		

DV: integrity of thalamic fibers

	<i>b</i>	<i>SE</i>	<i>t</i> value
Depression status	-0.252	0.111	-2.271*
Age	0.034	0.058	0.581
Age ²	-0.001	0	-1.282
Sex: Male	0.191	0.038	5.089*
Image Quality Rating	-1.446	0.185	-7.798*
Education status	0.011	0.021	0.553
Antidepressant intake: true	0.058	0.171	0.340
Assessment center 1	0.788	0.078	10.129*
Assessment center 2	0.086	0.059	1.463
<i>R</i> ² overall	0.076*		
<i>F</i> (9, 4397)*	40.54		

DV: integrity of projection fibers

	<i>b</i>	<i>SE</i>	<i>t</i> value
Depression status	0.01	0.099	0.106
Age	-0.066	0.052	-1.259
Age ²	< 0.001	0	1.172
Sex: Male	0.533	0.033	15.800*
Image Quality Rating	-1.634	0.167	-9.804*
Education status	0.009	0.018	0.500
Antidepressant intake: true	-0.172	0.153	-1.121
Assessment center 1	0.505	0.07	7.181*
Assessment center 2	-0.077	0.053	-1.447
<i>R</i> ² overall	0.083*		
<i>F</i> (9, 4422)*	44.5		

Note. DV = dependent variable; Depression status: 0 = healthy, 1 = depressed without current symptoms; sex: 0 = female, 1 = male; Education status: 0 = incomplete, 1 = compulsory, 2 = continued, 3 = college, 4 = university; Assessment center is dummy-coded. **p* < .05.

Table T12 Multiple regression analyses with global FA components as dependent variables (depressed without current symptoms vs. depressed with current symptoms; matched subgroups)

DV: integrity of all fiber tracts

	<i>b</i>	<i>SE</i>	<i>t</i> value
Depression status	-0.114	0.189	-0.606
Age	0.195	0.109	1.796
Age ²	-0.002	0.001	-2.801*
Sex: Male	0.524	0.069	7.596*
Image Quality Rating	-1.689	0.343	-4.922*
Education status	-0.006	0.039	-0.159
Antidepressant intake: true	-0.198	0.138	-1.434
Assessment center 1	0.757	0.147	5.115*
Assessment center 2	-0.333	0.108	-3.073*
<i>R</i> ² overall	0.088*		
<i>F</i> (9, 4417)*	47.42		

DV: integrity of association/commissural fibers

	<i>b</i>	<i>SE</i>	<i>t value</i>
Depression status	-0.165	0.149	-1.101
Age	0.187	0.086	2.175*
Age ²	-0.002	0.001	-3.293*
Sex: Male	0.227	0.055	4.157*
Image Quality Rating	-0.954	0.271	-3.517*
Education status	-0.028	0.031	-0.914
Antidepressant intake: true	-0.172	0.109	-1.585
Assessment center 1	0.41	0.117	3.521*
Assessment center 2	-0.3	0.086	-3.509*
<i>R</i> ² overall	0.089*		
<i>F</i> (9, 4421)*	47.72		

DV: integrity of thalamic radiations

	<i>b</i>	<i>SE</i>	<i>t value</i>
Depression status	-0.076	0.105	-0.724
Age	0.095	0.061	1.570
Age ²	-0.001	0	-2.507
Sex: Male	0.243	0.038	6.331
Image Quality Rating	-1.14	0.191	-5.973
Education status	0.009	0.022	0.425
Antidepressant intake: true	-0.156	0.077	-2.044
Assessment center 1	0.628	0.082	7.632
Assessment center 2	-0.036	0.06	-0.596
<i>R</i> ² overall	0.085*		
<i>F</i> (9, 4402)*	45.57		

DV: integrity of projection fibers

	<i>b</i>	<i>SE</i>	<i>t value</i>
Depression status	-0.023	0.09	-0.256
Age	-0.054	0.052	-1.029
Age ²	< 0.001	0	0.713
Sex: Male	0.581	0.033	17.531*
Image Quality Rating	-1.03	0.164	-6.272*
Education status	0.028	0.019	1.505
Antidepressant intake: true	-0.01	0.066	-0.155
Assessment center 1	0.369	0.071	5.217*
Assessment center 2	-0.135	0.052	-2.596*
<i>R</i> ² overall	0.086*		
<i>F</i> (9, 4401)*	45.87		

Note. DV = dependent variable; Depression status: 0 = healthy, 1 = depressed without current symptoms; sex: 0 = female, 1 = male; Education status: 0 = incomplete, 1 = compulsory, 2 = continued, 3 = college, 4 = university; Assessment center is dummy-coded. **p* < .05.

2.3 Multiple regression analyses for individual fiber tracts

Table T13 Effects of depression status on FA of individual fiber tracts (analyses with all participants)

Fiber tract	b_1	p_1	b_2	p_2	b_3	p_3
Acoustic radiation (left)	0.0000	0.9128	0.0004	0.7415	0.0002	0.8693
Acoustic radiation (right)	-0.0005	0.1434	0.0003	0.8091	0.0007	0.5382
Anterior thalamic radiation (left)	-0.0006	0.0476	-0.0012	0.2574	0.0000	0.9616
Anterior thalamic radiation (right)	-0.0008	0.0062*	-0.0010	0.3665	-0.0001	0.8998
Cingulate gyrus part of cingulum (left)	-0.0018	0.0008*	-0.0028	0.1666	0.0000	0.9927
Cingulate gyrus part of cingulum (right)	-0.0008	0.1543	0.0005	0.7886	0.0024	0.2131
Parahippocampal part of cingulum (left)	-0.0003	0.4855	-0.0008	0.6340	-0.0002	0.9227
Parahippocampal part of cingulum (right)	-0.0002	0.6470	-0.0002	0.9085	0.0002	0.9191
Corticospinal tract (left)	-0.0002	0.4795	-0.0001	0.9150	-0.0006	0.6230
Corticospinal tract (right)	-0.0005	0.1771	0.0004	0.7879	-0.0002	0.8761
Forceps major	-0.0006	0.1449	-0.0020	0.2007	-0.0013	0.3833
Forceps minor	-0.0008	0.0100*	-0.0017	0.1589	-0.0002	0.8283
Inferior fronto-occipital fasciculus (left)	-0.0005	0.1413	-0.0011	0.3683	-0.0002	0.8884
Inferior fronto-occipital fasciculus (right)	-0.0008	0.0104*	-0.0028	0.0197	-0.0014	0.2247
Inferior longitudinal fasciculus (left)	-0.0006	0.0634	-0.0032	0.0068*	-0.0025	0.0266
Inferior longitudinal fasciculus (right)	-0.0006	0.0358	-0.0034	0.0023*	-0.0019	0.0782
Middle cerebellar peduncle	0.0001	0.8785	0.0003	0.8316	-0.0006	0.7096
Medial lemniscus (left)	-0.0002	0.6707	-0.0006	0.6617	-0.0006	0.6735
Medial lemniscus (right)	-0.0009	0.0173	-0.0023	0.1163	-0.0025	0.0709
Posterior thalamic radiation (left)	-0.0012	0.0002*	-0.0036	0.0039*	-0.0026	0.0261
Posterior thalamic radiation (right)	-0.0014	0.0000*	-0.0039	0.0009*	-0.0022	0.0530
Superior longitudinal fasciculus (left)	-0.0002	0.5333	-0.0016	0.1813	-0.0013	0.2854
Superior longitudinal fasciculus (right)	-0.0006	0.0787	-0.0009	0.4280	0.0000	0.9665
Superior thalamic radiation (left)	-0.0007	0.0104*	-0.0001	0.8987	-0.0001	0.9451
Superior thalamic radiation (right)	-0.0008	0.0076*	0.0001	0.9640	0.0005	0.6182
Uncinate fasciculus (left)	-0.0004	0.2842	0.0005	0.7179	0.0015	0.2596
Uncinate fasciculus (right)	-0.0006	0.0575	-0.0015	0.2141	0.0000	0.9897

Note. b_1/p_1 : Unstandardized Betas and p values for depression status derived from multiple regression analyses in the comparison of healthy and depressed participants without current symptoms; b_2/p_2 : Unstandardized Betas and p values for depression status derived from multiple regression analyses in the comparison of healthy and depressed participants with current symptoms; b_3/p_3 : Unstandardized Betas and p values for depression status derived from multiple regression analyses in the comparison of depressed participants with and without current symptoms. *Significant after correction for multiple comparisons (Benjamini-Hochberg procedure, false discovery rate: 5 %)

Table T14 Effects of depression status on FA of individual fiber tracts (analyses with matched subgroups)

Fiber tract	b_1	p_1	b_2	p_2	b_3	p_3
Acoustic radiation (left)	0.0003	0.5101	0.0007	0.6165	0.0002	0.8840
Acoustic radiation (right)	-0.0005	0.2450	0.0004	0.7413	0.0007	0.5386
Anterior thalamic radiation (left)	-0.0007	0.0556	-0.0016	0.1480	-0.0001	0.8880
Anterior thalamic radiation (right)	-0.0007	0.0451	-0.0015	0.1588	-0.0004	0.6597
Cingulate gyrus part of cingulum (left)	-0.0021	0.0034*	-0.0035	0.1006	-0.0004	0.8277
Cingulate gyrus part of cingulum (right)	-0.0002	0.7896	0.0002	0.9315	0.0020	0.2961
Parahippocampal part of cingulum (left)	-0.0008	0.1914	-0.0017	0.3259	0.0000	0.9804
Parahippocampal part of cingulum (right)	-0.0008	0.2107	-0.0008	0.6555	0.0005	0.7867
Corticospinal tract (left)	-0.0002	0.5965	-0.0002	0.8895	-0.0007	0.5740
Corticospinal tract (right)	-0.0004	0.4408	0.0004	0.7961	-0.0002	0.8639
Forceps major	-0.0005	0.3143	-0.0021	0.1922	-0.0013	0.3761
Forceps minor	-0.0011	0.0073*	-0.0021	0.0849	-0.0003	0.7960
Inferior fronto-occipital fasciculus (left)	-0.0006	0.2036	-0.0015	0.2519	-0.0002	0.8758
Inferior fronto-occipital fasciculus (right)	-0.0012	0.0034*	-0.0034	0.0058*	-0.0013	0.2466
Inferior longitudinal fasciculus (left)	-0.0008	0.0645	-0.0035	0.0037*	-0.0025	0.0244
Inferior longitudinal fasciculus (right)	-0.0010	0.0071*	-0.0039	0.0007*	-0.0018	0.0871
Middle cerebellar peduncle	0.0003	0.5812	0.0001	0.9408	-0.0005	0.7385
Medial lemniscus (left)	0.0004	0.4126	0.0001	0.9293	-0.0006	0.6530
Medial lemniscus (right)	-0.0007	0.1451	-0.0025	0.0945	-0.0024	0.0870
Posterior thalamic radiation (left)	-0.0015	0.0005*	-0.0042	0.0007*	-0.0024	0.0405
Posterior thalamic radiation (right)	-0.0015	0.0002*	-0.0041	0.0006*	-0.0021	0.0717
Superior longitudinal fasciculus (left)	-0.0003	0.4409	-0.0021	0.0906	-0.0013	0.2874
Superior longitudinal fasciculus (right)	-0.0005	0.1967	-0.0011	0.3841	0.0000	0.9968
Superior thalamic radiation (left)	-0.0008	0.0260	-0.0005	0.6601	0.0000	0.9938
Superior thalamic radiation (right)	-0.0010	0.0086*	-0.0003	0.7512*	0.0006	0.5513
Uncinate fasciculus (left)	-0.0009	0.0831	0.0008	0.5909	0.0012	0.3756
Uncinate fasciculus (right)	-0.0012	0.0045*	-0.0019	0.1284	-0.0001	0.9613

Note. b_1/p_1 : Unstandardized Betas and p values for depression status derived from multiple regression analyses in the comparison of healthy and depressed participants without current symptoms; b_2/p_2 : Unstandardized Betas and p values for depression status derived from multiple regression analyses in the comparison of healthy and depressed participants with current symptoms; b_3/p_3 : Unstandardized Betas and p values for depression status derived from multiple regression analyses in the comparison of depressed participants with and without current symptoms. *Significant after correction for multiple comparisons (Benjamini-Hochberg procedure, false discovery rate: 5 %)

2.4 Sample overlap analyses

Table T15 Partial correlations between polygenic risk for depression and simulated variables (depressed and healthy participants, Wray et al. (2018))

	1.00	0.5	0.2	0.1	0.05	0.01	1E-3	1E-4	1E-6	5E-8
0.1	.0169	.017	.0171	.0167	.016	.0135	.0094	.0067	.0036	.0034
0.2	.0335	.0336	.0338	.0331	.0319	.027	.0191	.0135	.007	.0065
0.3	.0503	.0504	.0506	.0497	.0478	.0405	.0288	.0203	.0104	.0096
0.4	.0672	.0673	.0675	.0664	.0639	.0542	.0385	.0272	.0138	.0127
0.5	.0843	.0845	.0846	.0833	.0802	.068	.0485	.0342	.0173	.0159
0.6	.1017	.1018	.102	.1004	.0968	.082	.0585	.0412	.0208	.0191
0.7	.1194	.1196	.1197	.1179	.1136	.0964	.0688	.0485	.0244	.0224
0.8	.1375	.1377	.1378	.1358	.1309	.111	.0793	.0559	.028	.0258
0.9	.1561	.1563	.1564	.1542	.1486	.1261	.0901	.0635	.0318	.0292

Table T16 Partial correlations between polygenic risk for depression and simulated variables (healthy participants only, Wray et al. (2018))

	1.00	0.5	0.2	0.1	0.05	0.01	1E-3	1E-4	1E-6	5E-8
0.1	<-.0001	<-.0001	<-.0001	<-.0001	<-.0001	-.0001	-.0002	-.0002	<-.0001	<-.0001
0.2	<-.0001	<-.0001	<-.0001	<-.0001	<-.0001	-.0001	-.0002	-.0002	<-.0001	<-.0001
0.3	<-.0001	<-.0001	<-.0001	<-.0001	<-.0001	-.0001	-.0002	-.0002	<-.0001	<-.0001
0.4	<-.0001	<-.0001	<-.0001	<-.0001	<-.0001	-.0001	-.0002	-.0002	<-.0001	<-.0001
0.5	<-.0001	<-.0001	<-.0001	<-.0001	<-.0001	-.0001	-.0002	-.0002	<-.0001	<-.0001
0.6	<-.0001	<-.0001	<-.0001	<-.0001	<-.0001	-.0001	-.0002	-.0002	<-.0001	<-.0001
0.7	<-.0001	<-.0001	<-.0001	<-.0001	<-.0001	-.0001	-.0002	-.0002	<-.0001	<-.0001
0.8	<-.0001	<-.0001	<-.0001	<-.0001	<-.0001	-.0001	-.0002	-.0002	<-.0001	<-.0001
0.9	<-.0001	<-.0001	<-.0001	<-.0001	<-.0001	-.0001	-.0002	-.0002	<-.0001	<-.0001

Table T17 Partial correlations between polygenic risk for depression and simulated variables (depressed and healthy participants, Howard et al. (2019))

	1.00	0.5	0.2	0.1	0.05	0.01	1E-3	1E-4	1E-6	5E-8
0.1	.0349	.0348	.0339	.0326	.0309	.0265	.0197	.0129	.007	.0048
0.2	.0696	.0694	.0675	.065	.0617	.0529	.0392	.026	.014	.0093
0.3	.1045	.1042	.1014	.0976	.0927	.0793	.0588	.0391	.021	.0137
0.4	.1398	.1394	.1356	.1305	.124	.1061	.0785	.0524	.0281	.0183
0.5	.1755	.175	.1702	.1639	.1557	.1331	.0985	.0658	.0352	.0228
0.6	.2117	.2111	.2054	.1977	.1879	.1606	.1189	.0795	.0425	.0275
0.7	.2487	.248	.2412	.2322	.2207	.1886	.1396	.0934	.0499	.0322
0.8	.2864	.2857	.2778	.2675	.2543	.2173	.1608	.1076	.0575	.037
0.9	.3252	.3243	.3155	.3037	.2887	.2466	.1825	.1222	.0652	.042

Table T18 Partial correlations between polygenic risk for depression and simulated variables (healthy participants only, Howard et al. (2019))

	1.00	0.5	0.2	0.1	0.05	0.01	1E-3	1E-4	1E-6	5E-8
0.1	.0001	.0001	.0001	< .0001	< -.0001	< -.0001	-.0001	-.0002	< -.0001	.0001
0.2	.0001	.0001	.0001	< .0001	< -.0001	< -.0001	-.0001	-.0002	< -.0001	.0001
0.3	.0001	.0001	.0001	< .0001	< -.0001	< -.0001	-.0001	-.0002	< -.0001	.0001
0.4	.0001	.0001	.0001	< .0001	< -.0001	< -.0001	-.0001	-.0002	< -.0001	.0001
0.5	.0001	.0001	.0001	< .0001	< -.0001	< -.0001	-.0001	-.0002	< -.0001	.0001
0.6	.0001	.0001	.0001	< .0001	< -.0001	< -.0001	-.0001	-.0002	< -.0001	.0001
0.7	.0001	.0001	.0001	< .0001	< -.0001	< -.0001	-.0001	-.0002	< -.0001	.0001
0.8	.0001	.0001	.0001	< .0001	< -.0001	< -.0001	-.0001	-.0002	< -.0001	.0001
0.9	.0001	.0001	.0001	< .0001	< -.0001	< -.0001	-.0001	-.0002	< -.0001	.0001

Table T19 Partial correlations between polygenic risk for depression and simulated variables (depressed and healthy participants, Baselmans et al. (2019))

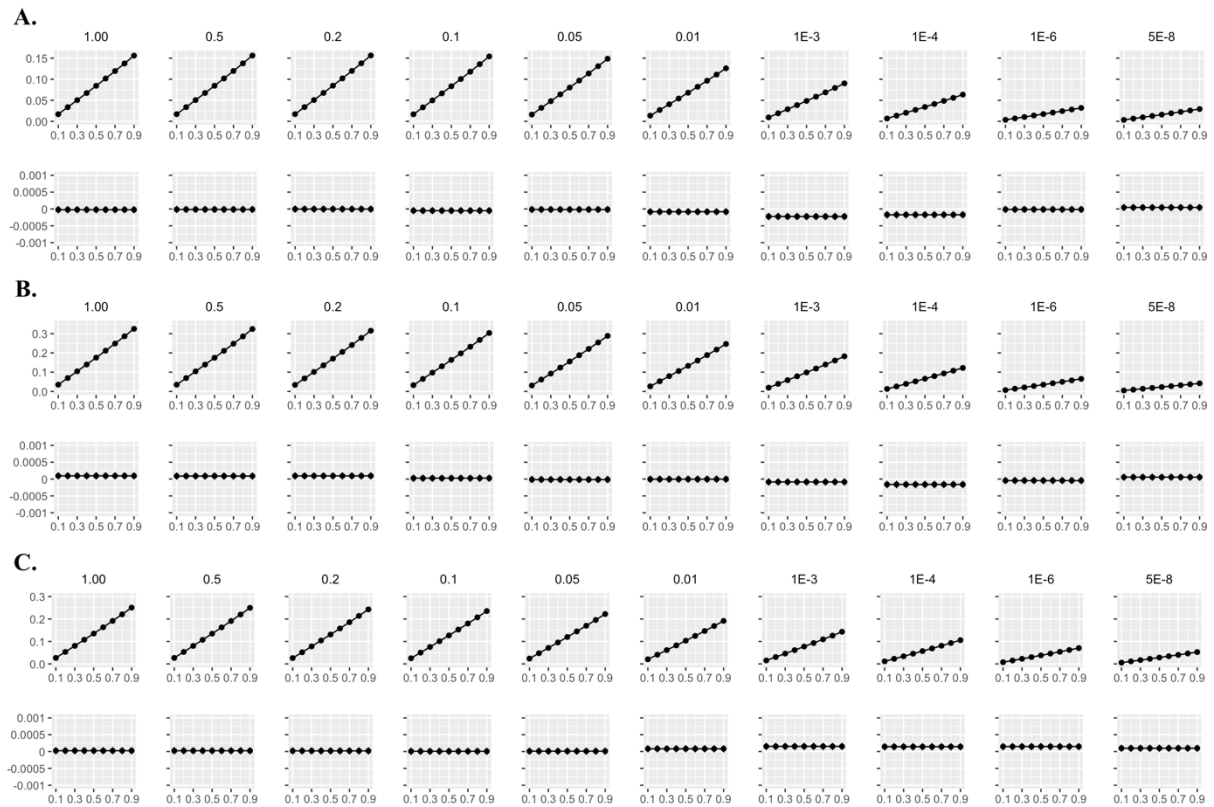
	1.00	0.5	0.2	0.1	0.05	0.01	1E-3	1E-4	1E-6	5E-8
0.1	.0268	.0267	.026	.0251	.0238	.0206	.0153	.0113	.0076	.0057
0.2	.0535	.0534	.0519	.0503	.0475	.041	.0306	.0226	.0151	.0113
0.3	.0805	.0802	.078	.0756	.0714	.0616	.046	.034	.0227	.017
0.4	.1077	.1073	.1043	.1011	.0955	.0824	.0615	.0455	.0304	.0227
0.5	.1352	.1347	.131	.1269	.1199	.1034	.0772	.0571	.0381	.0285
0.6	.1631	.1626	.1581	.1532	.1447	.1247	.0932	.0689	.046	.0343
0.7	.1916	.191	.1857	.1799	.1699	.1465	.1094	.0809	.054	.0403
0.8	.2208	.2201	.2139	.2073	.1957	.1687	.1261	.0932	.0622	.0464
0.9	.2507	.2499	.2429	.2354	.2222	.1916	.1432	.1058	.0706	.0527

Table T20 Partial correlations between polygenic risk for depression and simulated variables (healthy participants only, Baselmans et al. (2019))

	1.00	0.5	0.2	0.1	0.05	0.01	1E-3	1E-4	1E-6	5E-8
0.1	< -.0001	< -.0001	< -.0001	< -.0001	< -.0001	-.0001	-.0002	-.0001	-.0001	-.0001
0.2	< -.0001	< -.0001	< -.0001	< -.0001	< -.0001	-.0001	-.0002	-.0001	-.0001	-.0001
0.3	< -.0001	< -.0001	< -.0001	< -.0001	< -.0001	-.0001	-.0002	-.0001	-.0001	-.0001
0.4	< -.0001	< -.0001	< -.0001	< -.0001	< -.0001	-.0001	-.0002	-.0001	-.0001	-.0001
0.5	< -.0001	< -.0001	< -.0001	< -.0001	< -.0001	-.0001	-.0002	-.0001	-.0001	-.0001
0.6	< -.0001	< -.0001	< -.0001	< -.0001	< -.0001	-.0001	-.0002	-.0001	-.0001	-.0001
0.7	< -.0001	< -.0001	< -.0001	< -.0001	< -.0001	-.0001	-.0002	-.0001	-.0001	-.0001
0.8	< -.0001	< -.0001	< -.0001	< -.0001	< -.0001	-.0001	-.0002	-.0001	-.0001	-.0001
0.9	< -.0001	< -.0001	< -.0001	< -.0001	< -.0001	-.0001	-.0002	-.0001	-.0001	-.0001

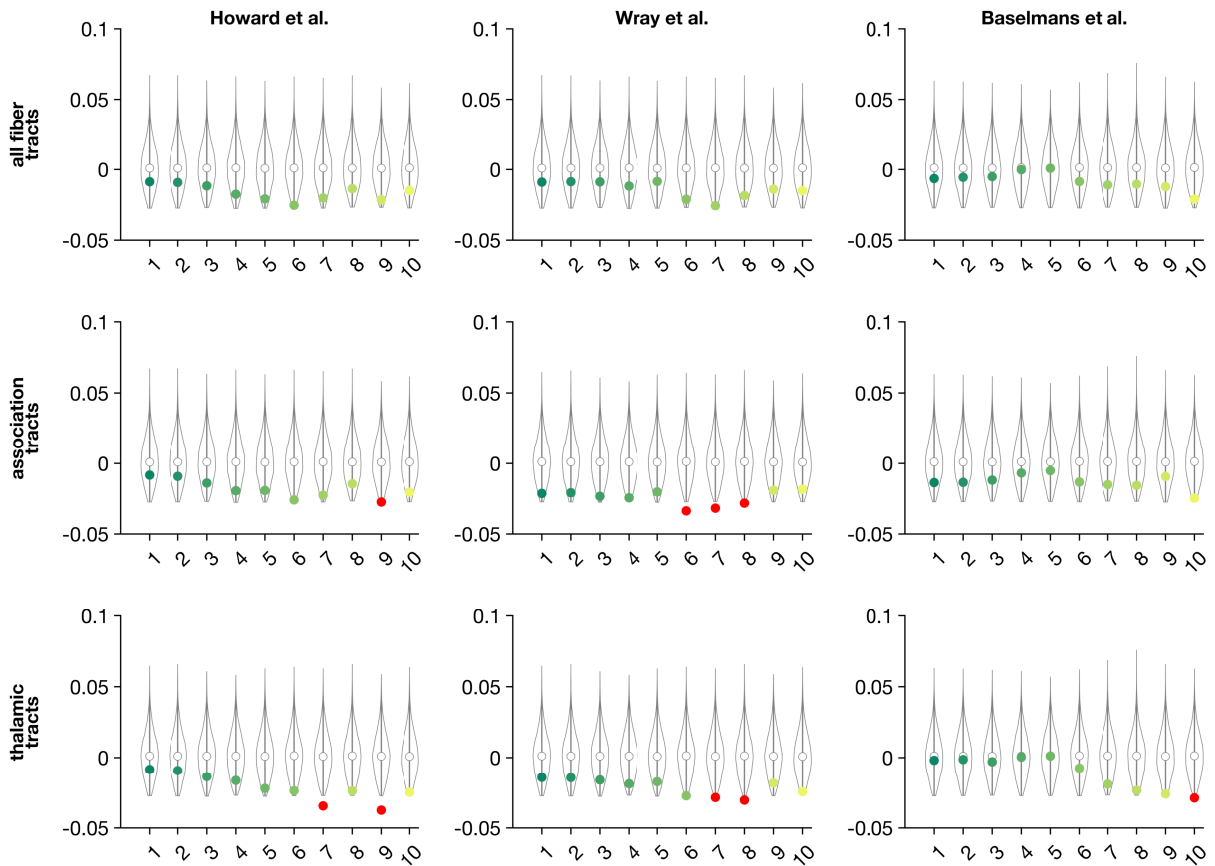
Note. The tables 15 to 20 show the partial correlations for the different correlations strengths between simulated variables and depression (0.1 to 0.9) and for the different polygenic risk thresholds. The data presented here is also presented in main figure 4AB.

Figure S2 Partial correlation between simulated variables (correlated with depression status) and polygenic risk scores



Note. Figure A shows the partial correlation for the polygenic risk scores based on Wray et al. (2018), B for the polygenic risk scores based on Howard et al. (2019) and C for the polygenic risk score based on Baselmans et al. (2019). Upper figures include healthy and depressed participants, lower figures only healthy participants. A more compact depiction is presented in main figure 4AB.

Figure S3: Detailed results from the non-parametric test



Note: The violins summarize the distribution of random PGS associations (largest 9950, lower cutoff at $p < .05$) for each fiber tract group (in rows), each PGS (in columns), and each threshold (x-axis). Empirical PGS associations are superimposed in shades of green, and highlighted in red when significantly smaller (i.e. more substantial) than in comparable random data ($p < .05$).

2.5 Genetic correlations**Table T21** SNP-based heritabilities for FA phenotypes

Tract type/ Fiber tract	h^2_{SNP}	<i>SE</i>
PC derived from all fiber tract	0.320	0.030
PC derived from association/commissural fibers	0.318	0.030
PC derived from thalamic radiations	0.296	0.027
Anterior thalamic radiation (right)	0.281	0.025
Cingulate gyrus part of cingulum (left)	0.191	0.021
Forceps minor	0.327	0.028
Inferior fronto-occipital fasciculus (right)	0.311	0.027
Inferior longitudinal fasciculus (left)	0.248	0.028
Inferior longitudinal fasciculus (right)	0.276	0.028
Posterior thalamic radiation (left)	0.212	0.025
Posterior thalamic radiation (right)	0.208	0.023
Superior thalamic radiation (left)	0.239	0.026
Superior thalamic radiation (right)	0.241	0.023
Uncinate fasciculus (right)	0.263	0.023

Table T22 Genetic correlations between depression and FA of individual fiber tracts

Tract type	GWAS Depression	<i>rg</i>	<i>se (rg)</i>	<i>z</i>	<i>p</i>
Anterior thalamic radiation (right)	Wray et al. (2018)	-.04	.037	-1.056	.291
	Howard et al. (2018)	-.027	.034	-0.801	.422
	Baselmans et al. (2019)	-.023	.035	-0.654	.513
Cingulate gyrus part of cingulum (left)	Wray et al. (2018)	-.118	.043	-2.774	.006
	Howard et al. (2018)	-.08	.037	-2.109	.035
	Baselmans et al. (2019)	-.033	.047	-0.67	.484
Forceps minor	Wray et al. (2018)	-.095	.036	-2.664	.008
	Howard et al. (2018)	-.058	.032	-1.809	.07
	Baselmans et al. (2019)	-.054	.033	-1.621	.105
Inferior fronto-occipital fasciculus (right)	Wray et al. (2018)	-.02	.034	-0.58	.562
	Howard et al. (2018)	-.029	.03	-0.946	.344
	Baselmans et al. (2019)	-.01	.035	0.278	.781
Inferior longitudinal fasciculus (left)	Wray et al. (2018)	<.001	.037	0.011	.991
	Howard et al. (2018)	.009	.035	0.266	.79
	Baselmans et al. (2019)	0.01	.04	0.251	.802
Inferior longitudinal fasciculus (right)	Wray et al. (2018)	-.028	.036	-0.758	.448
	Howard et al. (2018)	.006	.033	0.193	.847
	Baselmans et al. (2019)	.013	.037	-0.254	.724
Posterior thalamic radiation (left)	Wray et al. (2018)	-.048	.039	-1.209	.227
	Howard et al. (2018)	-.066	.034	-1.943	.052
	Baselmans et al. (2019)	-.075	.038	-1.991	.047
Posterior thalamic radiation (right)	Wray et al. (2018)	-.018	.042	-0.432	.666
	Howard et al. (2018)	-.037	.032	-1.136	.256
	Baselmans et al. (2019)	-.037	.038	-0.975	.33
Superior thalamic radiation (left)	Wray et al. (2018)	-.046	.04	-1.172	.241
	Howard et al. (2018)	.007	.034	0.197	.844
	Baselmans et al. (2019)	.013	.039	0.337	.736
Superior thalamic radiation (right)	Wray et al. (2018)	-.052	.039	-1.34	.181
	Howard et al. (2018)	-.019	.034	-0.553	.58
	Baselmans et al. (2019)	-.007	.039	0.172	.863
Uncinate fasciculus (right)	Wray et al. (2018)	-.037	.036	-1.032	.302
	Howard et al. (2018)	-.05	.03	-1.637	.102
	Baselmans et al. (2019)	-.022	.037	0.593	.553