

1 **Detecting Heart Failure using novel bio-signals and a** 2 **Knowledge Enhanced Neural Network**

3

4 ¹Marta Afonso Nogueira, MD

5 ²Simone Calcagno, MD

6 ³Niall Campbell, MD, PhD, FRCP

7 ⁴Azfar Zaman, MD, Prof

8 ⁵Georgios Koulaouzidis, MD

9 ⁶Anwar Jalil, MD

10 ⁶Firdous Alam, MD

11 ⁷Tatjana Stankovic, MD

12 ⁸Erzsebet Szabo, MD

13 ⁸Aniko B. Szabo, MD

14 ⁹Istvan Kecskes, PhD

15

16 ¹ Consultant Cardiologist Heart Failure and Cardiomyopathies, Department of Cardiology, Cascais Hospital, Lusíadas
17 Saúde - UnitedHealth Group, Lisbon, Portugal

18 ² Division of Cardiology, Santa Maria Goretti Hospital, Via Canova Snc, 04100, Latina Italy

19 ³ Manchester University NHS Foundation Trust, Department of Cardiology, Manchester, UK

20 ⁴ Prof of Cardiology, Freeman Hospital, Newcastle University, and Newcastle upon Tyne Hospitals NHS Trust,
21 Newcastle, UK

22 ⁵ Georgios Koulaouzidis, MD, PhD, Consulting Cardiologist NHS, UK, Pomeranian Medical University, Szczecin,
23 Poland

24 ⁶ Cardiology of Karachi, Hill Park General Hospital, Karachi, Pakistan

25 ⁷ Division of Cardiology, Regional Hospital Dr Radivoj Simonovic Sombor, Sombor, Serbia

26 ⁸ Division of Cardiology, Senta General Hospital, Senta, Serbia

27 ⁹ Dir. Cardiology Research and Scientific Advancements, UVA Research Corp.,
28 24000 Subotica, Henrike Sjenkjevica 14, Serbia.

29 Corresponding author: istvan.kecskes@uvaresearch.com , +381-642636882

30

1 Abstract

2 **Background:** Clinical decisions about Heart Failure (HF) are frequently based on measurements
3 of left ventricular ejection fraction (LVEF), relying mainly on echocardiography measurements for
4 evaluating structural and functional abnormalities of heart disease. As echocardiography is not
5 available in primary care, this means that HF cannot be detected on initial patient presentation.
6 Instead, physicians in primary care must rely on a clinical diagnosis that can take weeks, even
7 months of costly testing and clinical visits. As a result, the opportunity for early detection of HF is
8 lost.

9 **Methods and results:** The standard 12-Lead ECG provides only limited diagnostic evidence for
10 many common heart problems. ECG findings typically show low sensitivity for structural heart
11 abnormalities and low specificity for function abnormalities, e.g., systolic dysfunction. As a result,
12 structural and functional heart abnormalities are typically diagnosed by echocardiography in
13 secondary care, effectively creating a diagnostic gap between primary and secondary care. This
14 diagnostic gap was successfully reduced by an AI solution, the Cardio-HART™ (CHART), which
15 uses Knowledge-enhanced Neural Networks to process novel bio-signals. Cardio-HART reached
16 higher performance in prediction of HF when compared to the best ECG-based criteria: sensitivity
17 increased from 53.5% to 82.8%, specificity from 85.1% to 86.9%, positive predictive value from
18 57.1% to 70.0%, the F-score from 56.4% to 72.2%, and area under curve from 0.79 to 0.91. The
19 sensitivity of the HF-indicated findings is doubled by the AI compared to the best rule-based ECG-
20 findings with a similar specificity level: from 38.6% to 71%.

21 **Conclusion:** Using an AI solution to process ECG and novel bio-signals, the CHART algorithms
22 are able to predict structural, functional, and valve abnormalities, effectively reducing this
23 diagnostic gap, thereby allowing for the early detection of most common heart diseases and HF in
24 primary care.

25
26 **Keywords:** Heart Failure, HFpEF, HFmrEF, HFrEF, Bio-signal, Primary Care, Early Detection

27

28

1 2 Introduction

2 Cardiovascular disease (CVD) remains the leading cause of disease burden in the world, with 18.6
3 million CVD deaths registered in 2019 [1]. Heart Failure (HF) affects a large spectrum of this
4 population, occurring at all ages and equally in both genders, with 38 million people affected
5 globally [2]. HF increases with age, high blood pressure, obesity, and diabetes. Early detection is
6 critical to accessing appropriate and timely treatment to achieve the best possible outcomes [3].
7 Nearly 80% of all HF diagnoses are initially made in emergency care [4], and this is despite over
8 60% of these same patients presenting to primary care with signs and symptoms of HF in the 6
9 months before their diagnosis. Delay and missed diagnoses are common, typically confirmed only
10 after symptoms have become obvious and severe damage has set in. Estimates for delays for a
11 HF_{rEF} diagnosis ranges from several months in Germany to up to a year in Ireland, with serious
12 delays in France, Netherlands, Sweden, and the UK [5]. For HF_{pEF}, in an ongoing study of AF in
13 the UK, it was reported as 12+ months [6].

14 ECG and natriuretic peptide testing play a role in the clinical decision leading to a HF diagnosis,
15 but they have limitations that contribute to high false positive and low detection rates in the early
16 phase. Access to echocardiography is all too often delayed due to backlogs and long waiting lists.

17 HF is characterized mainly by echocardiography measurements, and to a much lesser extent, ECG
18 measurements, that can identify functional and structural heart abnormalities [7], which underpin
19 the HF condition. LVEF, LV global longitudinal strain (GLS) [7][8][9] or LV volume or stroke
20 volume (SV) [8] could be useful for early detection of HF, but these echocardiography
21 measurements are only available in secondary care, not in primary care. Due to the lack of a non-
22 invasive medical device for use in primary care able to provide echocardiography equivalent
23 findings, the opportunity for early detection of HF is missed.

24 This research analyses the use of novel bio-signals enhanced with AI, to provide echocardiography
25 equivalent findings for use in primary care settings, enabling the early detection of HF. Such bio-
26 signals can provide a more precise estimation of structural and functional cardiac abnormalities
27 that include LVEF, GLS, SV, LV mass index (LVMI), and left atrial volume index (LAVI)
28 parameters for detecting and predicting HF.

29 A breakthrough technology from Cardio-Phoenix™, Cardio-HART™, based on complementing
30 and augmenting ECG and PCG with a novel bio-signal of a physiological nature, is analysed in this
31 paper. It is a low-cost, non-invasive, cardiac assessment system for use in patient care settings, for

1 the early detection of CVD, including myocardial infarction, functional and valve abnormalities,
2 and HF, including its phenotype, HFpEF, HFmrEF, or HFrEF.

3 2.1 Characteristic Nature of Heart Failure

4 HF is mainly categorized based on LVEF, including HFpEF ($50 \leq \text{LVEF}$), HFmrEF
5 ($50 > \text{LVEF} > 40$), and HFrEF ($40 \geq \text{LVEF}$) as confirmed by the recent guidelines [3][10]. However,
6 HF diagnostic rules and algorithms include structural heart disease criteria according to guidelines
7 [3][10][11]. To achieve a clinically meaningful outcome, each HF category should be characterized
8 by its characteristic dysfunctions, for which LVEF has limitations [12]. LVEF alone is
9 insufficiently sensitive for subtle LV systolic dysfunction caused by regional wall motion
10 abnormality (WMA), which is better detected by mitral annular systolic excursion or systolic
11 velocities or LV global longitudinal strain (GLS) [7][8][9]; LVEF correlates less with long-axis
12 functional reserve of the LV or with peripheral blood flow. Still, LVEF, GLS, or SV could be
13 useful for the early detection of HF with the extension of structural criteria [13].

14 2.1.1 HFpEF characteristics

15 HFpEF should be suspected in patients with typical HF symptoms and signs (S3 heart sound,
16 displaced apical pulse, and jugular venous distension) of chronic heart failure [14].

17 HFpEF is suspected when an echocardiography finding of a normal LVEF is paired with relevant
18 structural heart disease or diastolic dysfunction (DD) [3][10][14]. However, HFpEF cannot be
19 diagnosed from a single echocardiographic parameter, but inclusion of functional and structural
20 parameters (AF, E/e' , RVSP, GLS, LAVI, LVMI) with risk factors (Elder Age, Hypertensive,
21 Obesity) together with a natriuretic peptide test can better define this heterogeneous disorder
22 [11][15]. Additionally, HFpEF patients are also likely to have QRS, QTc, and PR interval
23 prolongation or pacemaker on ECG, compared to non-HF patients [15].

24 2.1.2 HFmrEF characteristics

25 Patients with HFmrEF have a different clinical profile, but more similar to patients with HFpEF
26 [16], primarily mild LVSD, but with features of DD. The diagnostic criteria for HFmrEF include
27 any relevant structural heart disease, such as LVH or LAE or DD besides symptoms and the mildly
28 reduced EF (LVEF of 40-49%) [10]. HFmrEF patient's typical structural abnormality is mild
29 DCM, the typical functional abnormality is WMA with either MI or ST-T deviation, and the
30 typical electrophysiological problem is AFib, PAC, and lower T wave axis (valve diseases are less
31 typical when compared to HFpEF) [13].

1 2.1.3 HFrEF characteristics

2 HFrEF is most commonly associated with DCM or CAD [17]. LVSD and moderate AS commonly
3 occur together; patients with moderate AS and concomitant LVSD are at high risk for clinical
4 events including all-cause death, hospitalization for HF, and aortic valve replacement [18]. HFrEF
5 group of patients have the highest levels of comorbidity and severity: the typical structural
6 abnormalities are the DCM, left and right atrial and ventricular enlargement; the typical functional
7 abnormality is LVSD, the typical hemodynamical problem is mitral/tricuspid regurgitation and PH,
8 and all the common ECG abnormalities show higher prevalence, including LVH and RVH criteria
9 [13].

10 2.2 Bio-Signal Characteristics

11 Diagnosing HF related abnormalities using synchronized bio-signals depends on the prediction
12 capability of the underlying echocardiographic characteristics associated with HF. This article
13 demonstrates that other non-invasive bio-signals, phonocardiography, and mechano-physiological,
14 can be used to augment and complement ECG in such a way that they can provide comparable
15 accuracy and reproducibility estimation of LV systolic and diastolic function, regarding
16 echocardiography, with clinically acceptable diagnostic power.

17 The bio-signal capabilities to assess systolic dysfunction and typical signs and comorbidities of HF
18 are discussed in the following subsections.

19 2.2.1 Electrocardiogram

20 ECG interpretation can reach high performance if the condition is related to the electrophysiology
21 of the heart, such as specific arrhythmias, premature beats, atrioventricular blocks, and bundle-
22 branch blocks. But ECG is less clear in the case of mechano-physiological or hemodynamical
23 abnormalities.

24 ECG has some signs for the mechano-physiological diseases, typically the repolarization
25 abnormalities, (abnormal ST-T) associated to CAD, the abnormally high QRS voltages as a
26 manifestation of ventricular hypertrophy and abnormal P-wave voltages related to atrial
27 enlargement.

28 The standard reading of ECG shows low sensitivity (20-50%) with moderate-high specificity (85-
29 90%) for ventricular hypertrophy [19][20] and atrial enlargement [21][22], where these structural
30 abnormalities are defined by standard LVMI, IVSd, RWT, LAVI, and RAVI echocardiographic
31 parameters. In practice, this results in high levels of FN.

1 Some recent ECG processing, shows the prediction capability for severe systolic dysfunction and
2 moderate/severe aortic stenosis (AS) [23], but the results demonstrate that the ECG signs
3 (essentially inverted T-waves) are not sufficiently specific for any disease and the PPV remains
4 low, 10-30%, again leading to higher levels of FP. ECG signals processed with state-of-the-art
5 NNs can arguably reach workable sensitivity for patients having LVEF<35% [24]. However, the
6 positive predictive value (PPV) is typically low (10-30%), because ECG signs for low EF do not
7 have sufficient specificity.

8 2.2.2 Phonocardiography

9 Phonocardiography (PCG) signals capture heart sounds that contain useful and familiar
10 information about the condition of the heart for the early detection and diagnosis of some heart
11 diseases [25], in particular, valve diseases [26] and HF [27]. The acoustic waveform of PCG
12 caused by the movement of blood in the cardiovascular system is considered an important indicator
13 in the diagnosis of several CVDs [28] and hemodynamic findings, such as Atrial Stenosis, or “AS”
14 [29]. Advanced electronic stethoscopes can detect heart murmurs [26] with higher performance,
15 including some valve diseases, and with moderate performance for mitral and aortic regurgitation
16 [30].

17 2.2.3 Mechano-physiological force

18 Bio-signal measuring mechanical physiological force correlates to cardiac activity [31], which has
19 similar measurement characteristics to GLS and SV [32][33], because it can capture both wall
20 motion at four different auscultation points and myocardial contractility. The characteristics of
21 these signals contain useful information that correlates with cardiovascular physiological and
22 pathological processes [34] and dysfunctions. This method can predict systolic and diastolic left
23 ventricular function in ischemic heart disease, as indicated by basic research [35][36]. For
24 example, one study resulted in a high correlation between the change in signal derived “g-value”
25 and the change in EF% ($r=0.87$) [37].

26 Extensive research and development has resulted in a bio-signal that measures cardiac
27 characteristics of a mechano-physiological nature (MCG). Together, when this novel bio-signal is
28 synchronized and combined with ECG and PCG bio-signals, they can provide sufficient
29 characteristic information about cardiac dysfunctions associated with various CVDs, including HF.
30 However, the extraction of cardiac dysfunction from these signals requires effective processing
31 techniques by an advanced AI system.

1 2.2.4 Systolic Time Intervals

2 Systolic time intervals are an alternative bio-signal-based evaluation of abnormal LV systolic
3 function [38], which can be measured by synchronized bio-signals of an electrical, hemodynamic,
4 and physiological nature: systolic ejection time (SET) [39], systolic performance index
5 (PEP/LVET) [40], and electromechanical activation time (EMAT) [41].

6 Research pairing bio-signals with ECG has been shown to predict some cardiovascular diseases
7 [35], e.g., systolic and diastolic function in ischemic heart disease [36]. The measurement of PEP
8 and LVET is a common point between ECHO and bio-signals, and a study resulted in a 0.6-0.8
9 correlation between ECHO-based and bio-signal based PEP measurements [42].

10 2.3 Organization of the Article

11 In the introduction, we share background knowledge about how the bio-signals are able to detect
12 heart failure. In methods, a brief summary of the Cardio-HART algorithm is provided, focusing on
13 its unique modeling. Then, in the results, the performance of the Cardio-HART solution is
14 presented and compared to a traditional ECG. The discussion looks at the implications of the
15 solution in health care systems and is followed by a conclusion.

16 3 Methods

17 The CHART system captures and its AI processes three types of bio-signals. Each bio-signal has
18 its own strengths:

- 19 • ECG – Electro-physiological abnormalities: arrhythmias, premature beats, atrioventricular
20 blocks, bundle-branch blocks, etc.
- 21 • MCG – Mechano-physiological abnormalities: hypertrophy, atrial enlargement, systolic or
22 diastolic dysfunction, cardiomyopathy, myocarditis, myocardial infarction, ischemia, or
23 other wall motion problems
- 24 • PCG - Hemodynamic diseases: valve stenosis, valve regurgitation, hypertension (arterial or
25 pulmonary hypertension)

26 CHART's AI, synchronously combines and processes the ECG, PCG, and MCG bio-signals to
27 predict, with high probability, LV systolic and diastolic dysfunctions, as well as structural and
28 valve related abnormalities connected to HF, similarly to ECHO in the form of HART-findings.

1 HART-findings™ are disease equivalent to ECHO-findings, but derived using bio-signals rather
2 than from images as in Echocardiography¹.
3 As abnormalities and comorbidities of HF are essentially diagnosed primarily by ECHO and to a
4 much lesser extent by ECG, the classification of HF can be commonly resolved by CHART’s AI.
5 As ECHO is only available in secondary care, the prediction of HF lacks an appropriate device for
6 use in primary care.

7 3.1 Cardio-HART Algorithm

8 Cardio-HART is an AI-powered, cardiac diagnostic system for use in clinical care settings,
9 including primary and secondary care. It starts in a clinical care setting where the CHART device
10 first captures the bio-signals, ECG, PCG, and MCG, and then uploads them to the cloud for AI
11 processing. The CHART AI then outputs a wide range of medical findings or endpoints, consistent
12 with cardiac dysfunction.

13 As a result, Cardio-HART has the diagnostic functionality characteristic of three different cardiac
14 devices combined, including: 1) 12-lead ECG; 2) eStethoscope (Phonocardiography); and 3)
15 Echocardiography.

16 Uniquely, Cardio-HART can diagnose 14 HART-findings, typically only diagnosed by
17 echocardiography in cardiology. The HART-findings are disease equivalent to ECHO-findings.
18 They are classified as “Normal/Mild/Abnormal” for the 14 common abnormalities listed in Table I,
19 including: structural problems (LVH, DCM, RVE, LAE, RAE), functional problems (WMA,
20 LVSD, DDIM), and valve problems (AS, MS, AR, MR, TR, PH).

21 From these HART findings, HF is then classified into 4 phenotypes, consistent with their medical
22 context: HF Unlikely, HFpEF, HFmrEF, and HFrfEF.

23 3.1.1 Cardio-HART AI

24 Cardio-HART AI is an extensive set of interconnected and related algorithms that prepare, process,
25 and analyze the medical information (see Fig. 1), to extract both signal-based findings and machine
26 learning findings that together contribute to the final outputs related to heart disease and cardiac
27 status, including:

- 28 1. **Signal preprocessing:** cleaning the bio-signals using digital filters, artifact removal, and
29 3D stabilization techniques.
- 30 2. **Signal segmentation** – Heart cycles are segmented into characteristics points and into
31 typical beats, taking advantage of synchronized bio-signals. The ECG is segmented

¹ FDA requested that HART findings be used instead of Echo-findings to better indicate their bio-signal origin.

- 1 according to standards: P- Q-, R-, R'-, S-, S'-, T-wave. Heart sounds segmented on PCG
 2 signals as: S1-onset, S1-peak, S1-offset, S2-onset, S2-peak, S2-offset. Aortic opening AO
 3 and closure AC, mitral opening MO and closure MC are detected on the MCG signals.
- 4 3. **Signal measurements** – Extracts measurement from the segmented bio-signals including
 5 amplitudes, intervals, time-frequency representation, cross-power spectrum density and
 6 statistical features. The important systolic time intervals can be calculated thanks to the
 7 synchronized and segmented bio-signals, such as PQ-, QRS-, QT-interval, Q-S1, Q-S2
 8 intervals, EMAT, PEP, LVET, etc.
 - 9 4. **Signal-based findings:** Medically important abnormalities are detected based on known
 10 medical rules. PCG sound amplitude measurements use semi-supervised parameters, e.g.
 11 for systolic murmur. It uses dynamic thresholds in function of patient characteristics, e.g.
 12 prolonged PQ interval using gender and heart rate normalized thresholding.
 - 13 5. **Signal Transformation:** This prepares the processed signals for the neural networks using
 14 digital signal processing, segmentation-based alignment, and normalization. It reduces the
 15 number of network layers and, indirectly, the required number of samples, which is key in
 16 avoiding overlearning. Three main transformations are applied:
 17 1) typical beat averaging, which strongly reduces noise;
 18 2) aligned beat sequence (21 beats), which preserves beat variability;
 19 3) time-frequency representation, which highlights the frequency domain of the
 20 signals.
 - 21 6. **Feature compression** – This supervised process reduces the number of features to produce
 22 disease-specific features. State-of-the-art feature compression methods are then used in
 23 multi-layer convolution neural networks to extract the medically useful information from
 24 the complex or multi-dimensional data (bio-signal). See Fig. 3 for architecture details.
 25 a. ECG: Convolutional long-short-term memory (LSTM) and convolutional capsule
 26 networks are utilized for processing the transformed ECG signal and its softmax
 27 classification layer is trained for the reference ECG findings (e.g., MI
 28 presence/absence).
 29 b. HART: Same architecture networks are applied as at ECG, but used PCG and MCG
 30 signals too and trained for fitting 12 key echocardiographic measurements (LVEF,
 31 LVMI, LAVI, E/A, etc.). Regularization techniques are implemented to prevent
 32 overlearning, and Pearson correlation is calculated as the ultimate performance
 33 metric, which reaches 0.5-0.8 values on the validation datasets.
 - 34 7. **Machine-learning-based findings**
 35 a. ECG: Knowledge-enhanced neural networks (KENN, similar to [52]) are used for
 36 classifying the complex multi-parameter² ECG-findings (when the reference
 37 standard is not ECG), and the rest are rule-based according to ECG standards.
 38 KENN is a type of hybrid model, similarly to physics-enhanced neural networks,
 39 where the knowledge base rules are the primary model and NN (described in point
 40 6) is the secondary or complementary model, which resolves borderline cases. The
 41 KENN successfully regularized the NN and the NN becomes active only in specific
 42 cases when the rule is uncertain. The decision is based on maximum probability,
 43 which comes, first, from sigmoid probability-based rules,

$$PO(x, t, s) = \frac{1}{1 + e^{-\left(\frac{x-t}{s}\right)}}$$

² multi-parameters mean more than one measurement is considered or required in the practical application of

1 where x denotes measurements, t is the threshold of abnormal x , and s is a
2 scale factor) and second, from NN softmax layer

$$\sigma(\mathbf{z})_i = \frac{e^{z_i}}{\sum_{j=1}^K e^{z_j}}$$

3
4 calculated for $i=1..K$ classes, where z is the previous layer output.

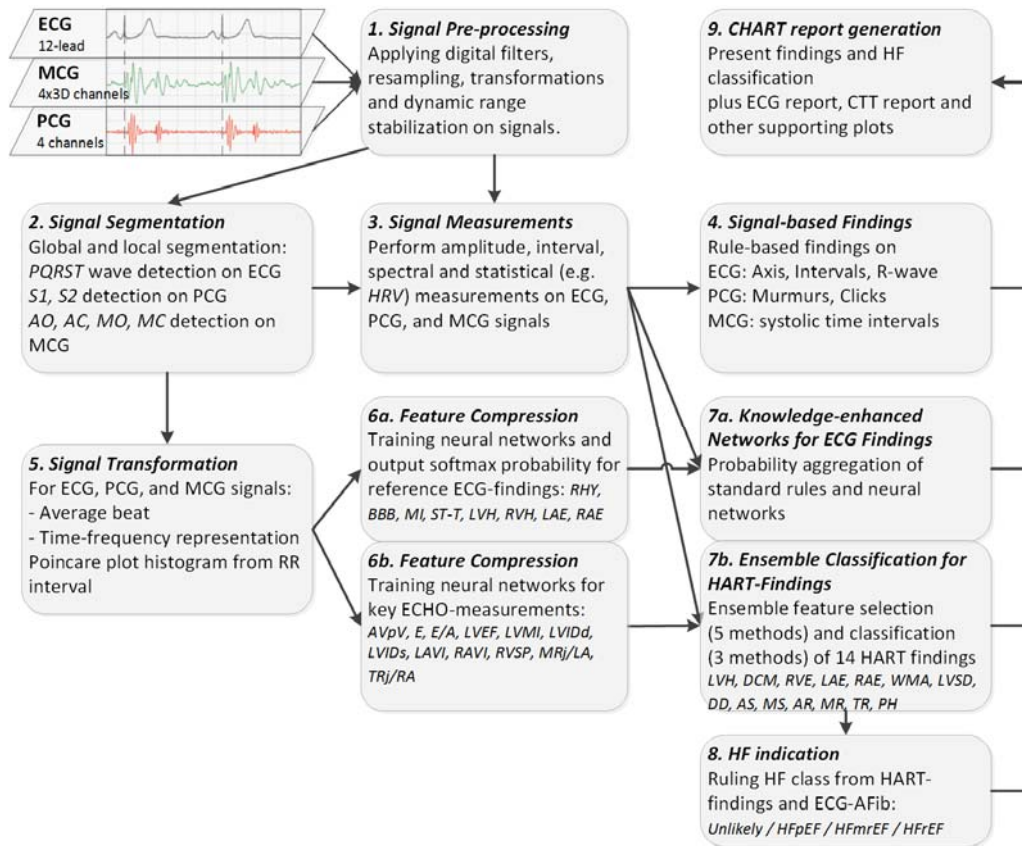
- 5
6 b. **HART**: Using both signal measurements and compressed features, the machine
7 learning models address the echo-equivalence findings in triple-class format
8 (Normal/Mild/Abnormal) as the top-level interpretation of heart failure and CVD –
9 called HART-findings. Five feature selection methods are utilized, two are based on
10 joint mutual information, one is based on Markov-blanket, one is eigenvector-based
11 and one embedded in feature selection methods. Naïve Bayes, Discriminant
12 Analysis, and Shallow Neural Network methods are used for classification. At the
13 end of training, a wrapper-type feature selection method is used to prune the
14 features. Ensemble learning selects the best combination from $5 \times 3 = 15$ models based
15 on performance, overfitting, and expert supervision of selected features.
- 16 8. **HF indication** – It is a head layer on Cardio-HART-findings, which uses rules related to
17 classifying HF. It is described in the next section of 3.2.
- 18 9. **Cardio-HART report generation**: Finally, the algorithm generates a colorful and multi-
19 page report demonstrating how the segmented signals result in the measurements and
20 findings. The report additionally provides HF classification with estimated LVEF and
21 decision support for primary care users.

22 Given its overall size, parts of the algorithm (e.g., points 1-4) are not detailed in this paper. More
23 details can be found in the Cardio-HART whitepaper, available by request on the official website³.

24 3.1.2 Training and Validation

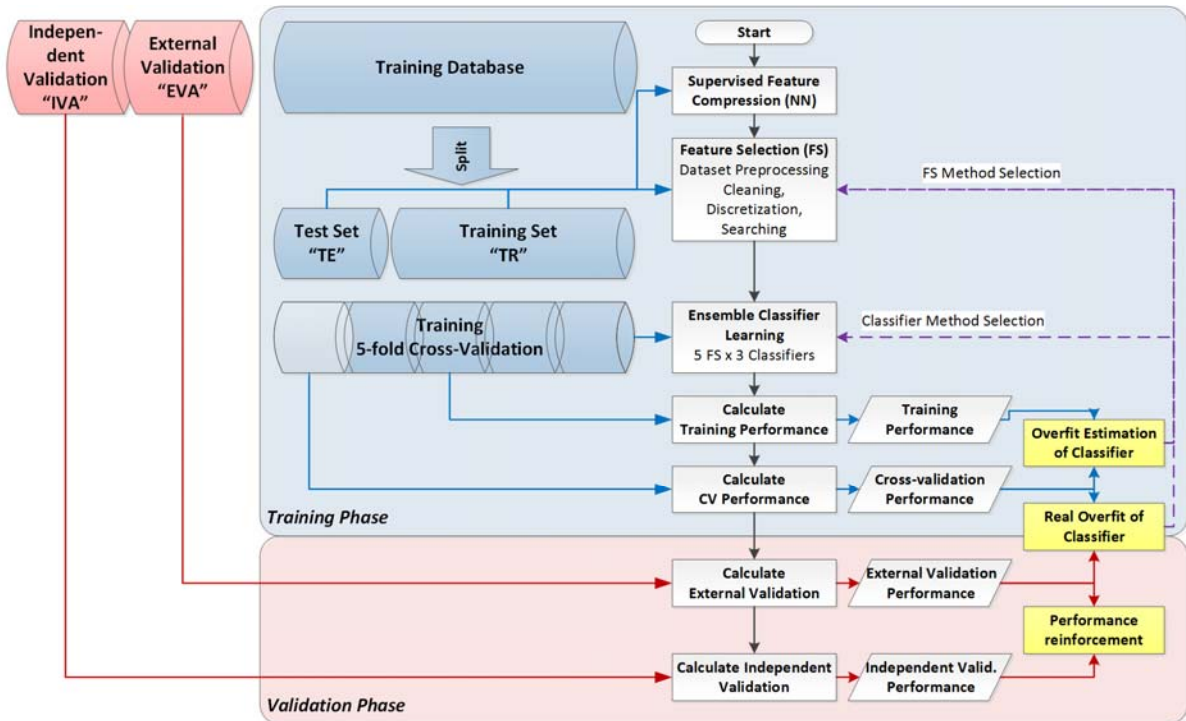
25 Separate training and validation datasets were used. Training was provided using a unique training
26 dataset of 14150 records, which was not used for performance validation. The neural networks split
27 the training dataset into two, a training set and a test set. The ensemble feature selection and
28 classification use a 5-fold cross-validation method on the training dataset to estimate performance.
29 The finale classifiers are selected based on the maximum cross-validation performance and
30 minimum estimated overfit. The overfit is estimated between training and cross-validation, but
31 ultimately between cross-validation and external validation performance, see Fig. 2.

³ <https://www.cardiophoenix.com/>



1

2 Figure 1 – Main modules of Complete Cardio-HART algorithm that predicts HART-Findings and indicates HF



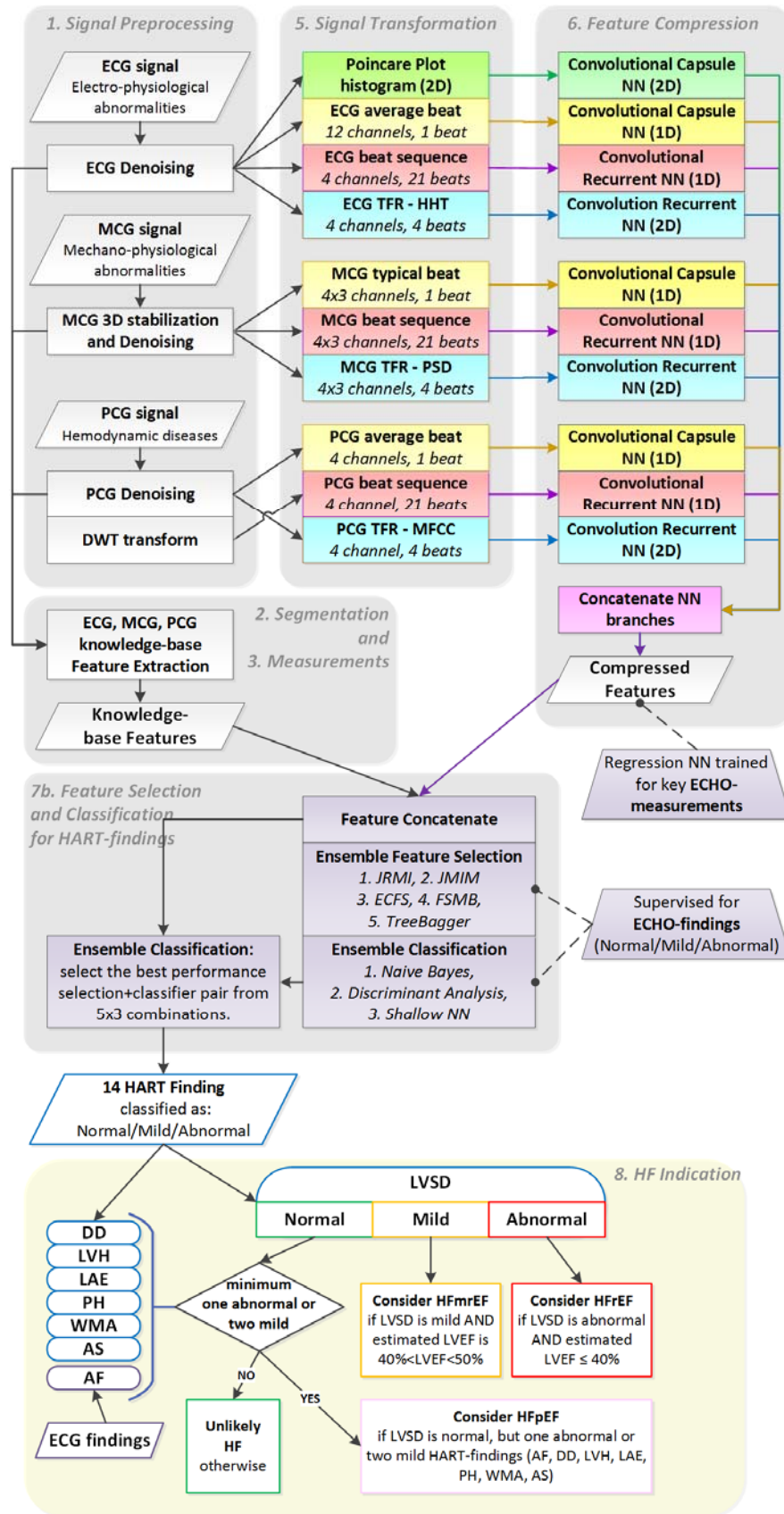
3

4

Figure 2 - Splitting database for training and validation and checking overfit of classification

1 3.2 HF indication model from HART-findings

2 The innovation analyses three types of bio-signals (mentioned in Table 1) to identify characteristics
3 for each disease measured at four cardiac auscultation points. Using state-of-the-art neural network
4 techniques such as Convolutional Recurrent Network (LSTM) and Convolutional Capsule Network
5 (CapsNet), it extracts the hidden, synchronized and localized medical information from the signals.
6 The supervised training of these networks is made for key echocardiographic measurements,
7 including LVEF, as it detailed in point 6b. These compressed features provide the main prediction
8 capability based on the estimated LVEF and LVSD findings and other HART-findings, HF
9 categories are indicated using rules, as demonstrated on the bottom part of Fig. 3.



1
2

Figure 3 – Cardio-HART block diagram for HART machine learning models and indicating HF

1 3.3 Performance evaluation

2 The common binary performance metrics are calculated for the HART-findings validation,
3 presented in section 4.1: sensitivity ($SE=TP/(TP+FN)$)⁴, specificity ($SP=TN/(TN+FP)$), positive
4 and negative predictive value ($PPV=TP/(TP+FP)$, $NPV=TN/(TN+FN)$), plus the prevalence is
5 provided ($PREV=(TP+FP)/(TP+FP+TN+FN)$).

6 In the ECG versus HART comparison, we chose appropriate ECG performance metrics to make a
7 fair comparison because ECG-findings have low specificity, typically for LVSD. The prevalence
8 of ECG and ECHO-findings is imbalanced for the target population (typically 1-20%). Hence, the
9 sensitivity (a.k.a. recall) is relevant, but the PPV (a.k.a. precision) is more representative compared
10 to specificity. This is the reason for Precision-Recall Curve (PRC) analysis in addition to Receiver
11 Operating Characteristic (ROC) analyses. The F-score is a combination of precision and recall and
12 is an appropriate scalar performance metric for binary classification to choose the best predictive
13 ECG-finding for ECHO-findings. The F-score is an appropriate scalar performance metric for
14 binary classification to choose the best predictive ECG-finding for ECHO-findings as the F-score
15 is a combination of precision and recall. Because of the imbalanced case (prevalence smaller than
16 50%), the beta was chosen to $\beta=0.5$ to regularize the too many false positives and ensure the
17 prevalence-based balanced classification (denoted as “F05” on figures).

$$18 \quad F_{\beta} = (1 + \beta^2) \cdot \frac{PPV \cdot SE}{(\beta^2 \cdot PPV) + SE}, F_{0.5} = 1.25 \cdot \frac{PPV \cdot SE}{(0.25 \cdot PPV) + SE}$$

19 4 Results

20 4.1 Diagnostic Performance of HART-Findings™

21 The validation procedure of HART-findings is based on an ECHO-based ground truth. HART-
22 findings were validated with a database having both parallel bio-signals and ECHO assessment.
23 The performance shows sensitivity ranging between 65-90% with 90%+ specificity and 5-20%
24 disease prevalence (see Table 1).

25 Independent validation was provided using two additional, external and independent, datasets
26 reserved strictly for validation: the external validation (EVA) is on 6962 records and the
27 independent validation (IVA) is on 2878 records. The independent datasets used for validation
28 were collected in different medical centers with different cardiologists from the training dataset.

1 **Table 1 – External (EVA) and Independent (IVA) validation performance of 14 HART-findings by Cardio-**
 2 **HART**

| HART Finding | SE% | | SP% | | PPV% | | NPV% | | PREV% | |
|----------------|-------------|-------------|-------------|-------------|-------------|-------------|-------------|-------------|-------------|-------------|
| | EVA | IVA | EVA | IVA | EVA | IVA | EVA | IVA | EVA | IVA |
| LVH | 80.9 | 77.2 | 81.1 | 95.7 | 60.6 | 77.9 | 92.2 | 95.5 | 26.5 | 16.5 |
| DCM | 78.1 | 70.7 | 90.4 | 98.2 | 61.5 | 81.9 | 95.4 | 96.7 | 16.4 | 10.2 |
| RVE | 67.1 | 69.7 | 94.9 | 97.9 | 49.4 | 44.2 | 97.5 | 99.3 | 6.9 | 2.3 |
| LAE | 97.2 | 95.9 | 92.4 | 97.5 | 64.7 | 73.8 | 99.6 | 99.7 | 12.5 | 6.7 |
| RAE | 85.9 | 61.8 | 92.6 | 96.9 | 50.4 | 50.0 | 98.7 | 98.1 | 8.0 | 4.7 |
| WMA | 87.4 | 81.8 | 90.0 | 95.6 | 49.8 | 69.9 | 98.4 | 97.7 | 10.2 | 11.0 |
| LVSD | 70.0 | 66.7 | 96.2 | 98.0 | 63.3 | 74.5 | 97.2 | 97.2 | 8.5 | 7.9 |
| DDIM | 74.8 | 77.5 | 80.4 | 78.6 | 61.3 | 72.8 | 88.5 | 82.5 | 29.3 | 42.5 |
| AS | 89.5 | 85.4 | 97.3 | 98.3 | 70.1 | 63.1 | 99.2 | 99.5 | 6.6 | 3.3 |
| MS | 64.9 | NA* | 98.0 | NA* | 48.5 | NA* | 99.0 | NA* | 2.8 | 0* |
| AR | 64.6 | 69.9 | 86.9 | 94.5 | 57.1 | 62.4 | 89.9 | 96.0 | 21.4 | 11.5 |
| MR | 70.3 | 83.3 | 84.6 | 97.2 | 60.7 | 70.9 | 89.4 | 98.6 | 25.3 | 7.5 |
| TR | 72.5 | 64.0 | 89.7 | 96.6 | 61.6 | 58.7 | 93.5 | 97.3 | 18.5 | 6.9 |
| PH | 67.0 | 79.5 | 95.9 | 99.0 | 52.4 | 71.4 | 97.8 | 99.4 | 6.2 | 3.1 |
| Average | 76.4 | 75.6 | 90.7 | 95.7 | 58.0 | 67.0 | 95.5 | 96.7 | 14.2 | 10.3 |

3 *EV database has not sufficient positive for MS

4 4.2 ECG findings versus HART-Findings

5 ECG’s limited diagnostic capability for the mentioned HF related structural abnormalities is
 6 confirmed by the literature, as is summarized in section 2.2.1. All too often, the ECG is
 7 nondiagnostic (inconclusive), and echocardiography confirmation is required. For example,
 8 patients with a classic description of anginal chest pain may have normal or non-specifically
 9 abnormal ECG, but evaluation of wall motion by echocardiography makes the diagnosis clear
 10 [43][44].

11 HART-findings diagnostic capability for HF related ECHO-findings is demonstrated by its higher
 12 diagnostic performance compared to the standard ECG interpretation. This comparison is shown in
 13 Table 2 by 8 ECHO-findings, and the results confirm that the Cardio-HART solution is better
 14 when compared to the best ECG-findings.

15 The most important and preselected rule-based ECG-findings are evaluated in this comparison:

- 16 • Atrial Fibrillation (AF)
- 17 • Leftward Axis (LAX)
- 18 • Bundle Branch Block (BBB) including both Left and Right BBB
- 19 • ST-T deviation (ST-T) when ST interval and T abnormal at the same time, but excluding
 20 non-specific ST deviation
- 21 • T-wave abnormalities (TWA), including ischemic T-wave inversion,

- 1 • Atrial Abnormality ECG criteria (AA Crit.), including both Left and Right Atrial
- 2 Abnormality
- 3 • LV Hypertrophy ECG criteria (LVH Crit.)
- 4 • Ventricular Hypertrophy (VH Crit.), including both LVH and RVH criteria
- 5 • Myocardial Infarction ECG criteria (MI Crit.) including STEMI and pathological Q wave
- 6 criteria
- 7 • Minimum 3 HF indicator (Min.3HF_i): minimum 3 abnormality occurs together from the
- 8 following 9 HF indicator findings: AF, LAX, BBB, ST-T, TWA, AA Crit., VH Crit., MI
- 9 Crit., or Tachycardia
- 10 • Minimum 2 HF indicator (Min.2HF_i): minimum 2 abnormality occurs together from the 9
- 11 HF indicator findings.
- 12 • Minimum 1 HF indicator (Min.1HF_i): minimum 1 abnormality occurs together from the 9
- 13 HF indicator findings.

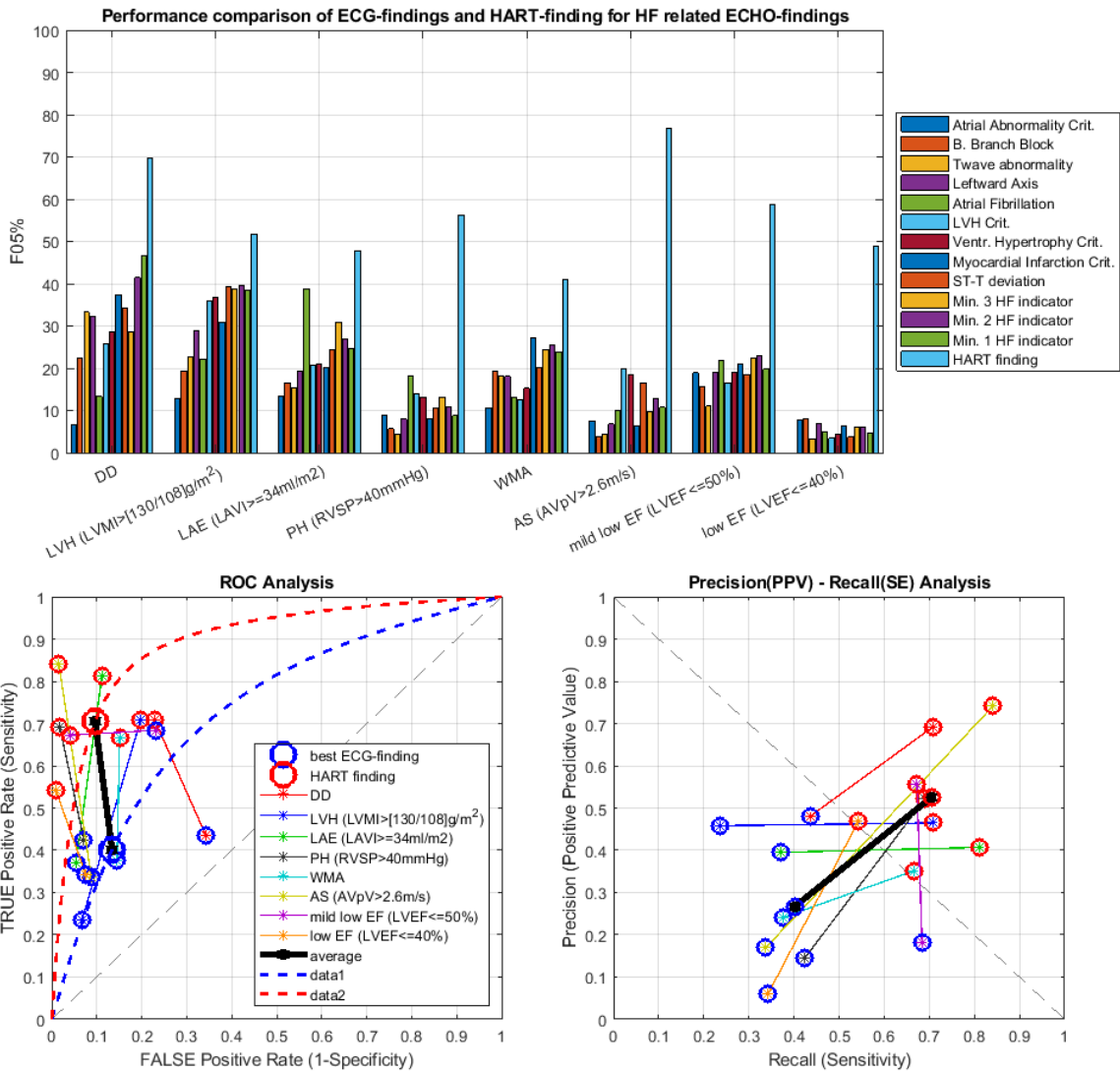
14 The top graph of Fig. 4 shows the F_{0.5}-score performance comparison of all the examined ECG-
 15 findings and HART-findings. The two bottom graphs compare the best ECG and HART-Findings
 16 in ROC and PRC. The area under the curve (AUC) is estimated based on the average sensitivity
 17 and specificity, which show a significant increase from ECG to HART as listed in Table 2: HART
 18 has higher sensitivity, specificity, and PPV, almost double the F_{0.5}-score.

19 HART-Findings resolve half of the FP or FN, and uncertainties in the detection of HF-related
 20 abnormalities compared to ECG findings, a breakthrough for the non-invasive and bio-signal-based
 21 HF screening task.

22 **Table 2 – List of HF related ECHO-findings and diagnostic performance of the best ECG-findings and HART-**
 23 **findings**

| HF category | ECHO-finding | ECHO criteria | Prev. | Best ECG-finding (by F _{0.5}) | Best ECG-finding performance | | | | HART-finding performance | | | |
|-----------------|--------------|------------------------------|-------|---|------------------------------|-------------|-------------|------------------|--------------------------|-------------|-------------|------------------|
| | | | | | SE | SP | PPV | F _{0.5} | SE | SP | PPV | F _{0.5} |
| Consider HFpEF | DD | E/A<0.75 or E/A>2 or E/e'>14 | 42.1% | Min.1HF _i | 43.6 | 65.8 | 48.0 | 46.6 | 70.9 | 77.1 | 69.2 | 70.0 |
| | LVH | LVMl>130/108g/m ² | 19.5% | LVH Crit.* | 23.6 | 93.2 | 45.8 | 35.8 | 70.7 | 80.3 | 46.5 | 51.8 |
| | LAE | LAVl>34ml/m ² | 8.6% | AF | 37.1 | 94.6 | 39.5 | 38.8 | 81.2 | 88.8 | 40.7 | 47.8 |
| | PH | RVSP>40mmHg | 2.8% | AF | 42.5 | 92.9 | 14.6 | 18.2 | 69.1 | 98.2 | 52.2 | 56.3 |
| | WMA | Hypo-/Dys-/Akinesis | 13.3% | MI Crit. | 37.7 | 85.5 | 24.2 | 27.1 | 66.8 | 86.2 | 42.6 | 52.0 |
| | AS | AVpV>2.6m/s | 5.0% | LVH | 33.7 | 91.2 | 16.9 | 19.9 | 84.1 | 98.4 | 74.1 | 76.8 |
| Consider HFmrEF | mild low EF | LVEF≤50% | 6.9% | Min.2HF _i | 68.4 | 76.9 | 18.0 | 23.1 | 67.3 | 96.0 | 55.6 | 58.6 |
| Consider HFrEF | low EF | LVEF≤40% | 1.5% | B. Branch Block | 34.3 | 92.6 | 6.1 | 8.0 | 54.3 | 99.1 | 46.9 | 48.9 |
| <i>average</i> | | | | | <i>40.1</i> | <i>86.6</i> | <i>26.6</i> | <i>27.2</i> | 70.5 | 90.4 | 52.6 | 56.3 |

24 * The ECG LVH criteria was manually selected despite the other ECG endpoints have higher F-score.



1

2 **Figure 4 – Performance comparison of ECG-findings and HART-findings for HF related ECHO-findings**
 3 **A) F-score the overall prediction capability of the examined findings for ECHO-findings and average**
 4 **B) ROC comparison between ECG and HART, C) PRC comparison between ECG and HART**

5 **4.3 HF performance by HART-findings**

6 The prediction of HF categories by the HART-findings is evaluated with the help of ground truth
 7 HF categories. To estimate the performance, validation datasets were used as mentioned in section
 8 4.1.

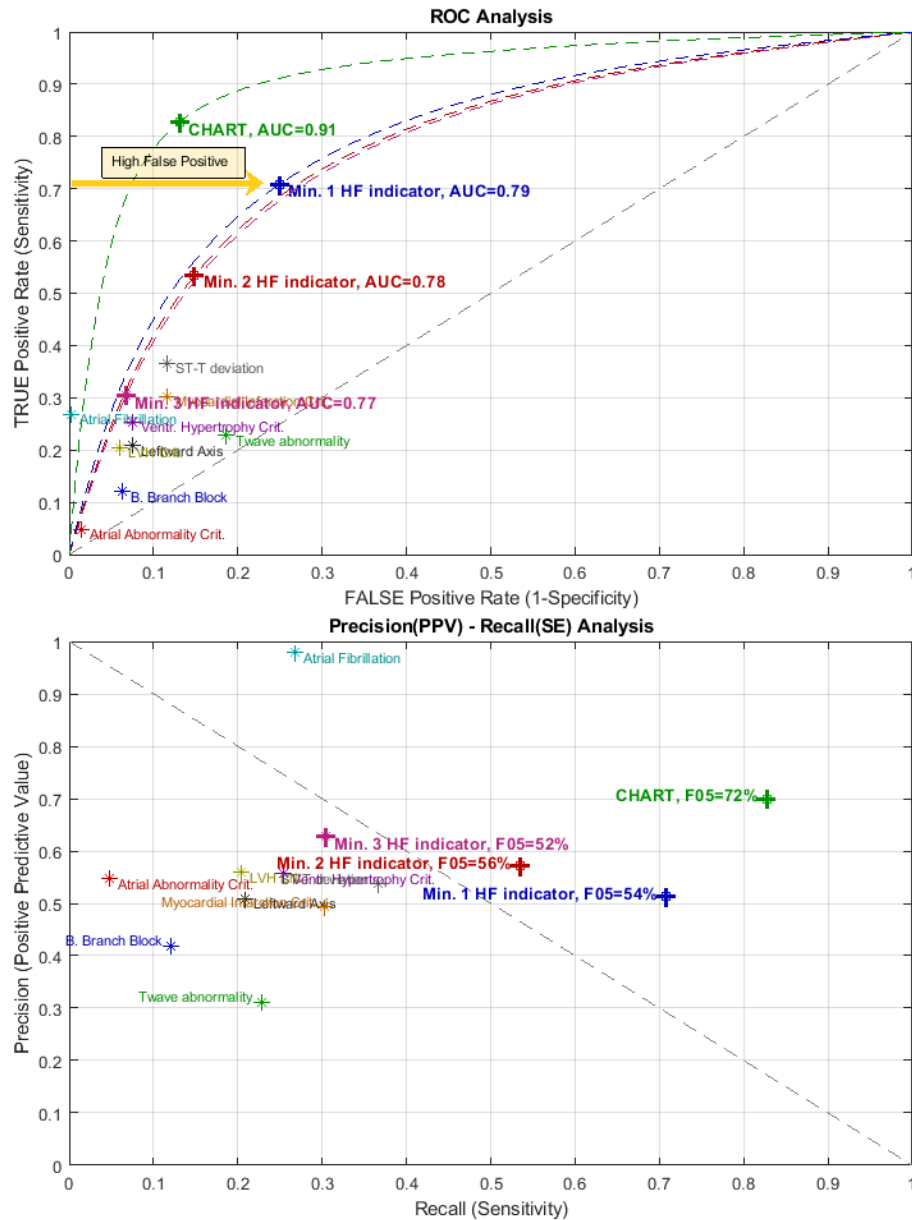
9 Table 3 shows the HF quad-format confusion matrix for an external (EVA) and independent
 10 validation (IVA) dataset, and HF binary performance on these two datasets is compared to ECG
 11 summary performance. The joined validation (EVA+IVA) database is a multi-center database,
 12 which allows for enhancement of reproducibility and generalizability [45].

1 Cardio-HART reached higher performance in prediction of HF when compared to the best ECG-
 2 based criteria: sensitivity increased from 53.5% to 82.8%, specificity from 85.1% to 86.9%,
 3 positive predictive value from 57.1% to 70.0%, and the F_{0.5}-score from 56.4% to 72.2%. -
 4 calculated for combined validation sets, see performance under EVA+IVA in Table 3.

5 **Table 3 - Confusion matrix on HF classification by the Cardio-HART system and Binary Performance**
 6 **Evaluation of HF classification by Cardio-HART system compared to ECG's best HF criteria (Min.2HF)**

| Confusion Matrix – External Validation (EVA) Cardio-HART | | HF indication by signal-based Cardio-HART findings | | | | | |
|--|-----------------|--|-------|---------|--|-------------|-------------|
| | | Absent | HFpEF | HFmrEF | HFrEF | Summa | |
| Reference HF by consensus ECHO- and ECG-finding | Absent (non-HF) | 4,090 | 752 | 74 | 0 | 4,916 | |
| | Consider HFpEF | 288 | 920 | 126 | 10 | 1,344 | |
| | Consider HFmrEF | 32 | 222 | 284 | 16 | 554 | |
| | Consider HFrEF | 0 | 26 | 56 | 66 | 148 | |
| | Summa | 4,410 | 1,920 | 540 | 92 | 6,962 | |
| Confusion Matrix – Independent Validation (IVA) Cardio-HART | | HF indication by signal-based Cardio-HART findings | | | | | |
| | | Absent | HFpEF | HFmrEF | HFrEF | Summa | |
| Reference HF by consensus ECHO- and ECG-finding | Absent (non-HF) | 2,146 | 118 | 0 | 0 | 2,264 | |
| | Consider HFpEF | 108 | 196 | 32 | 12 | 348 | |
| | Consider HFmrEF | 30 | 94 | 66 | 6 | 196 | |
| | Consider HFrEF | 0 | 18 | 14 | 38 | 70 | |
| | Summa | 2,284 | 426 | 112 | 56 | 2,878 | |
| Binary Performances Cardio-HART vs. ECG | | Minimum 2 HF indicator by ECG | | | Consider HF prediction by Cardio-HART | | |
| | | EVA | IVA | EVA+IVA | EVA | IVA | EVA+IVA |
| Sensitivity (SE%) | | 55.4 | 47.2 | 53.5 | 84.4 | 77.5 | 82.8 |
| Specificity (SP%) | | 82.1 | 91.6 | 85.1 | 83.2 | 94.8 | 86.9 |
| Positive Predictive Value (PPV%) | | 56.4 | 60.4 | 57.1 | 67.6 | 80.1 | 70.0 |
| Negative Predictive Value (NPV%) | | 81.6 | 86.5 | 83.2 | 92.7 | 94.0 | 93.2 |
| F _{0.5} -score (F05%) | | 56.2 | 57.2 | 56.4 | 70.4 | 79.6 | 72.2 |
| HF Prevalence (PREV%) | | 29.4 | 21.3 | 27.0 | 29.4 | 21.3 | 27.0 |

7 Fig. 5 shows the parametric ROC and PRC comparison of HF prediction between selected ECG-
 8 findings and the Cardio-HART (CHART) HF model, which is based on its own signal-based
 9 HART-findings. On the sensitivity/1-specificity plane (ROC), the individual ECG-findings have
 10 conspicuously low sensitivity from 5 to 35%, such as Atrial Fibrillation, ST-T deviation, MI, or B.
 11 Branch Block. The Minimum 1 HF indicator ECG criteria shows lower specificity, which means
 12 high false positives in the real-world situation. A more acceptable low false positive rate was
 13 provided by the Minimum 2 HF indicator ECG criteria, which reached 53.5% sensitivity
 14 (evaluated in Table 3). The minimum 3 HF indicator has a high specificity of 93% but reaches only
 15 poor sensitivity of 31%. The PRC confirms the ROC results but complements them with PPV,
 16 which makes it more visible, showing that both the PPV and sensitivity are increased by Cardio-
 17 HART compared to the best ECG criteria.



1

2 **Figure 5 – ROC and PRC analysis of Cardio-HART (CHART) and various ECG criteria for HF detection**

3 **5 Discussion**

4 The HFmrEF and HFrEF categories of HF can be successfully detected with models that predict
 5 low LVEF or simply LVSD. In contrast, HFpEF is a complex and diversified condition that cannot
 6 be classified as only diastolic HF or as an abnormal ECG patient. HFpEF detection relies on
 7 simultaneous abnormalities such as arrhythmias, structural heart diseases (LVH, LAE), valve
 8 diseases (most prevalent are AR, AS, MR, TR) and diastolic dysfunction. HART-findings can

1 effectively detect these underlying conditions using multiple but synchronized bio-signals that can
2 define HF.

3 5.1 Implications

4 HFpEF is where the greatest beneficial treatments can be made to improve HF [3][46]. Although
5 studies have shown that the death rate for HFpEF is comparable to HFmrEF, it is lower than
6 HFrfEF [47][48]. Yet, HFpEF accounts for half of all hospitalizations of patients over 65 [49],
7 posing a significant burden to healthcare.

8 The implications of this breakthrough technology will resonate throughout the healthcare system
9 starting in Primary Care, where this low-cost, non-invasive, immediate use on initial patient
10 presentation will, 1) drastically reduce time to diagnosis from months, to one day; 2) enable early
11 detection of HF, by phenotype; which in turn 3) provide access to treatments earlier, 4) reduce the
12 damage caused by delayed diagnosis; 5) reduce failures to diagnose, especially in women patients
13 [50]; and, 6) clinically proven to reduce unnecessary referrals to cardiology [51]. The potential
14 costs savings to healthcare are significant.

15 The impact also accrues to cardiology; they will get a better patient. As a direct substitute for ECG,
16 prior to conducting a full echo examination, the implications are [51]: 1) screening for true
17 negative patients that don't need an echo; 2) screening for the presence of HF, valve disease, and
18 myocardial infarctions, when the incoming referral fails to indicate these conditions; and critically,
19 3) providing a "big picture" of a patient's overall cardiac status and revealing potential
20 comorbidities that might otherwise be missed.

21 Cardio-HART is not a substitute for echocardiography when echocardiography is indicated.
22 However, where echocardiography might not be available, CHART can provide substantially
23 equivalent insight into the patient's condition that can help determine the patient's pathway and its
24 priority based on urgency and severity. Various uses in secondary care include: 1) pre-surgery to
25 determine if the patient has a cardiac abnormality, in particular HF, that might put the patient at
26 risk during surgery; 2) respiratory care, where COPD and CVD often exist together; 3) Oncology,
27 for early diagnosis of radiation induced heart disease, especially HF; 4) Emergency, after
28 stabilization, confirm first if heart related or not, and then determine appropriate patient pathway;
29 and 5) cardiology in general, where patient rounds could be done on the basis of ECHO findings,
30 including HF, and not merely ECG.

31 Abnormalities associated with the right heart side are indicative of HFrfEF, especially right atrial
32 and ventricular enlargement. The bio-signal diagnostic capability for the right side of the heart has
33 already been indicated by various research, e.g., TR prediction through ECG RAE criteria and

1 PCG/MCG murmurs [59] or analysis of second heart sound splitting in evaluation of PH [60].
2 Compared to ECG RVH criteria, HART RAE and HART RVE findings are far more sensitive
3 criteria, relevant for COPD patients, in particular those at risk of HF.
4 In all cases, CHART AI, in the form of HART findings, provides for a more immediate
5 determination of a patient's cardiac status and access to treatment.

6 5.2 Conclusion

7 Detection of HF should be on initial patient presentation to primary care, provided by non-
8 cardiologists [3]. The standard ECG has limitations and is not sufficiently sensitive or specific for
9 physiological cardiac dysfunction and, as a result, generates many false positives. There is an
10 urgent, unmet medical need in primary care for diagnosing HF, in particular the heart structural,
11 functional, and hemodynamic abnormalities that define the specific condition, as this would allow
12 for the immediate start of treatment as per the guidelines, thereby stopping disease progression. In
13 a world of backlogs and long wait-times, this is critical to better patient outcomes.

14 HART-findings have been shown to address this unmet medical need. Cardio-Phoenix's Cardio-
15 HART solution provides an understanding of both left heart side abnormalities (LVH, LAE, MR,
16 and WMA) and right heart side abnormalities (RVE, RAE, TR, and PH) and can detect the origin
17 and severity of HF. That enhances diagnosis, risk stratification, and prioritization for patients.
18 Cardio-HART HF prediction reaches significantly higher overall performance compared to the best
19 ECG criteria, with sensitivity of 83%, specificity of 87% and a positive predictive value of 70%.
20 Higher sensitivity means lower false negatives and early detection. Similar specificity means a not
21 higher rate of false positives, typically a major problem for CNN-like solutions.

22 These clinically meaningful results are thanks to the fact that Cardio-HART's complex machine
23 learning system processes not only ECG signals but also two other bio-signals, PCG and MCG,
24 that together combine to help provide a multi-dimensional perspective of cardiac dysfunctions
25 critical in identifying HF and other major CHART findings. Significantly, Cardio-HART's AI
26 strategy is based on learning networks that incorporate the last 50 years of knowledge about these
27 bio-signals and cardiac dysfunctions, which we call Knowledge-enhanced Neural Networks.

28 6 Acknowledgments

29 The collection of the data used in this paper was previously collected in clinical investigations
30 funded in part by UVA Research Corp. No other outside funding was involved.

1 6.1 Conflict of interest statement

2 Istvan Kecskes disclosure: research director at UVA Research Corp., no other industry
3 connections.

4 Other authors have no financial or personal relationships with other people or organizations that
5 could inappropriately influence their work.

6 7 References

- [1] Roth, Gregory A., et al. "Global burden of cardiovascular diseases and risk factors, 1990–2019: update from the GBD 2019 study." *Journal of the American College of Cardiology* 76.25 (2020): 2982-3021.
- [2] Sliwa, Karen. "Heart failure can affect everyone: the ESC Geoffrey Rose lecture." *European Heart Journal* 41.12 (2020): 1298-1306.
- [3] Bozkurt, Biykem, et al. "Universal Definition and Classification of Heart Failure: A Report of the Heart Failure Society of America, Heart Failure Association of the European Society of Cardiology, Japanese Heart Failure Society and Writing Committee of the Universal Definition of Heart Failure." *Journal of cardiac failure* (2021).
- [4] Long, B., Koyfman, A., & Gottlieb, M. (2019). Diagnosis of acute heart failure in the emergency department: an evidence-based review. *Western Journal of Emergency Medicine*, 20(6), 875.
- [5] Hfpolicynetwork.org. 2022. [online] Available at: <<https://www.hfpolicynetwork.org/wp-content/uploads/HFPN-State-of-Play-Diagnosis.pdf>> [Accessed 2 March 2022].
- [6] Bhf.org.uk. 2022. My heart appointment or surgery is delayed – what can I do?. [online] Available at: <<https://www.bhf.org.uk/information-support/heart-matters-magazine/news/coronavirus-and-your-health/appointment-and-surgery-delays-coronavirus>> [Accessed 2 March 2022].
- [7] Bshiebish, Hasanain Ali Hameed, Ali Hussein Al-Musawi, and Safaa Ali Khudeir. "Role of global longitudinal strain in assessment of left ventricular systolic function in patients with heart failure with preserved ejection fraction." *Journal of the Saudi Heart Association* 31.2 (2019): 100-105.
- [8] Kraigher-Krainer, Elisabeth, et al. "Impaired systolic function by strain imaging in heart failure with preserved ejection fraction." *Journal of the American College of Cardiology* 63.5 (2014): 447-456.
- [9] Sahlen, Anders, and Reidar Winter. "How should we measure global and regional left ventricular systolic function?." *Journal of echocardiography* 9.2 (2011): 41-50.
- [10] McDonagh, Theresa A., et al. "2021 ESC Guidelines for the diagnosis and treatment of acute and chronic heart failure: Developed by the Task Force for the diagnosis and treatment of acute and chronic heart failure of the European Society of Cardiology (ESC) With the special contribution of the Heart Failure Association (HFA) of the ESC." *European heart journal* 42.36 (2021): 3599-3726.
- [11] Pieske, Burkert, et al. "How to diagnose heart failure with preserved ejection fraction: the HFA-PEFF diagnostic algorithm: a consensus recommendation from the Heart Failure Association (HFA) of the European Society of Cardiology (ESC)." *European heart journal* 40.40 (2019): 3297-3317.
- [12] Pellikka PA et al. Variability in ejection fraction measured by echocardiography, gated single-photon emission computed tomography, and cardiac magnetic resonance in patients with coronary artery disease and left ventricular dysfunction. *JAMA Netw Open* 2018 Aug 31; 1:e181456. (<https://doi.org/10.1001/jamanetworkopen.2018.1456>)
- [13] Zaman, Azfar, et al. "Unraveling diagnostic co-morbidity makeup of each HF category as characteristically derived by ECG-and ECHO-findings, a prevalence analysis." *medRxiv* (2021).
- [14] Gazewood, John D., and Patrick L. Turner. "Heart failure with preserved ejection fraction: diagnosis and management." *American family physician* 96.9 (2017): 582-588.

- [15] Reddy, Yogesh NV, et al. "A simple, evidence-based approach to help guide diagnosis of heart failure with preserved ejection fraction." *Circulation* 138.9 (2018): 861-870.
- [16] Delepaul, Benoit, et al. "Who are patients classified within the new terminology of heart failure from the 2016 ESC guidelines?." *ESC heart failure* 4.2 (2017): 99-104.
- [17] McCrohon, J. A., et al. "Differentiation of heart failure related to dilated cardiomyopathy and coronary artery disease using gadolinium-enhanced cardiovascular magnetic resonance." *Circulation* 108.1 (2003): 54-59.
- [18] van Gils, Lennart, et al. "Prognostic implications of moderate aortic stenosis in patients with left ventricular systolic dysfunction." *Journal of the American College of Cardiology* 69.19 (2017): 2383-2392.
- [19] Burgos, P. F. M., Luna, B., Costa, F. D. A., Bombig, M. T. N., Souza, D. D., Bianco, H. T., ... & Póvoa, R. (2016). Electrocardiogram performance in the diagnosis of left ventricular hypertrophy in hypertensive patients with left bundle branch block. *Arquivos brasileiros de cardiologia*, 108, 47-52.
- [20] Schröder, J., Nuding, S., Müller-Werdan, U., Werdan, K., Kluttig, A., Russ, M., ... & Medenwald, D. (2015). Performance of Sokolow-Lyon index in detection of echocardiographically diagnosed left ventricular hypertrophy in a normal Eastern German population-results of the CARLA study. *BMC cardiovascular disorders*, 15(1), 1-7.
- [21] Erdei, T., Rodrigues, J. C., McIntyre, B., Dastidar, A. G., Burchell, A. E., Ratcliffe, L., ... & Manghat, N. E. (2016). Diagnostic performance of ECG detection of left atrial enlargement in patients with arterial hypertension relative to the cardiac magnetic resonance gold-standard: Impact of obesity.
- [22] Tsao, C. W., Josephson, M. E., Hauser, T. H., O'Halloran, T. D., Agarwal, A., Manning, W. J., & Yeon, S. B. (2008). Accuracy of electrocardiographic criteria for atrial enlargement: validation with cardiovascular magnetic resonance. *Journal of Cardiovascular Magnetic Resonance*, 10(1), 1-7.
- [23] Kwon, Joon-Myoung, et al. "Deep learning-based algorithm for detecting aortic stenosis using electrocardiography." *Journal of the American Heart Association* 9.7 (2020): e014717.
- [24] Attia, Zachi I., et al. "Screening for cardiac contractile dysfunction using an artificial intelligence-enabled electrocardiogram." *Nature medicine* 25.1 (2019): 70-74.
- [25] Singh, Mandeep, and Amandeep Cheema. "Heart sounds classification using feature extraction of phonocardiography signal." *International Journal of Computer Applications* 77.4 (2013).
- [26] Chorba, John S., et al. "Deep Learning Algorithm for Automated Cardiac Murmur Detection via a Digital Stethoscope Platform." *Journal of the American Heart Association* 10.9 (2021): e019905.
- [27] Khor, S., Kovacs, I., Fugedi, K., Horvath, G., Domijan, E., & Domijan, M. (2007). Telemedicine digital phonocardiography: Cost-effective strategies in heart failure screening and monitoring. In 2007 Computers in Cardiology (pp. 649-652). IEEE.
- [28] Li, Fan, et al. "Classification of heart sounds using convolutional neural network." *Applied Sciences* 10.11 (2020): 3956.
- [29] White, Brent E., et al. "Handheld Wireless Digital Phonocardiography for Machine Learning-Based Detection of Mitral Regurgitation." *Circulation* 140.Suppl_1 (2019): A13831-A13831.
- [30] Thiagaraja, Shanti R., et al. "A novel heart-mobile interface for detection and classification of heart sounds." *Biomedical Signal Processing and Control* 45 (2018): 313-324.
- [31] Taebi, Amirtahà, et al. "Recent advances in seismocardiography." *Vibration* 2.1 (2019): 64-86.
- [32] Tavakolian, Kouhyar. Characterization and analysis of seismocardiogram for estimation of hemodynamic parameters. Diss. Applied Science: School of Engineering Science, 2010.
- [33] Tavakolian, Kouhyar, et al. "Myocardial contractility: A seismocardiography approach." 2012 Annual International Conference of the IEEE Engineering in Medicine and Biology Society. IEEE, 2012.
- [34] Taebi, A.; Mansy, H.A. Time-frequency Analysis of Vibrocardiographic Signals. In Proceedings of the 2015 BMES Annual Meeting, Tampa, FL, USA, 7–10 October 2015.
- [35] Sahoo, Prasan Kumar, et al. "On the design of an efficient cardiac health monitoring system through combined analysis of ECG and SCG signals." *Sensors* 18.2 (2018): 379.

- [36] Korzeniowska-Kubacka, Iwona, et al. "Seismocardiography-a non-invasive method of assessing systolic and diastolic left ventricular function in ischaemic heart disease." *Cardiology Journal* 13.4 (2006): 319-325.
- [37] Koch, A., et al. "Noninvasive myocardial contractility monitoring with seismocardiography during simulated dives." (2003).
- [38] Reant, Patricia, et al. "Systolic time intervals as simple echocardiographic parameters of left ventricular systolic performance: correlation with ejection fraction and longitudinal two-dimensional strain." *European Journal of Echocardiography* 11.10 (2010): 834-844.
- [39] Njoroge, Joyce N., and John R. Teerlink. "Systolic time intervals in patients with heart failure: time to teach new dogs old tricks." *European journal of heart failure* 22.7 (2020): 1183.
- [40] Ahmed, S. Sultan, et al. "Systolic time intervals as measures of the contractile state of the left ventricular myocardium in man." *Circulation* 46.3 (1972): 559-571.
- [41] Chao, Tze-Fan, et al. "Electromechanical activation time in the prediction of discharge outcomes in patients hospitalized with acute heart failure syndrome." *Internal Medicine* 49.19 (2010): 2031-2037.
- [42] Paiva, R. P., et al. "Beat-to-beat systolic time-interval measurement from heart sounds and ECG." *Physiological measurement* 33.2 (2012): 177.
- [43] Sia, Y. T., O'Meara, E., & Ducharme, A. (2008). Role of echocardiography in acute myocardial infarction. *Current heart failure reports*, 5(4), 189-196.
- [44] Brady, W. J., Roberts, D., & Morris, F. (1999). The nondiagnostic ECG in the chest pain patient: normal and nonspecific initial ECG presentations of acute MI. *The American journal of emergency medicine*, 17(4), 394-397.
- [45] Jo, D. (2020). The interpretation bias and trap of multicenter clinical research. *The Korean Journal of Pain*, 33(3), 199-200.
- [46] Afsin Oktay, A., and Sanjiv J Shah. "Diagnosis and management of heart failure with preserved ejection fraction: 10 key lessons." *Current cardiology reviews* 11.1 (2015): 42-52.
- [47] Lam, Carolyn SP, et al. "Mortality associated with heart failure with preserved vs. reduced ejection fraction in a prospective international multi-ethnic cohort study." *European heart journal* 39.20 (2018): 1770-1780.
- [48] Vergaro, Giuseppe, et al. "Noncardiac versus cardiac mortality in heart failure with preserved, midrange, and reduced ejection fraction." *Journal of the American Heart Association* 8.20 (2019): e013441.
- [49] Sharma, Kavita, et al. "Predictors of Mortality by Sex and Race in Heart Failure With Preserved Ejection Fraction: ARIC Community Surveillance Study." *Journal of the American Heart Association* 9.19 (2020): e014669.
- [50] Bhf.org.uk. 2022. Misdiagnosis of heart attacks in women. [online] Available at: <<https://www.bhf.org.uk/information-support/heart-matters-magazine/medical/women/misdiagnosis-of-heart-attacks-in-women>> [Accessed 2 March 2022].
- [51] Calcagno, S., Biondi-Zoccai, G., Stankovic, T., Szabo, E., Szabo, A. B., & Kecskes, I. (2022). Novel tech throws knock-out punch to ECG improving GP referral decisions to cardiology. *Open Heart*, 9(1), e001852.
- [52] Daniele, A., & Serafini, L. (2022). Knowledge Enhanced Neural Networks for relational domains. arXiv preprint arXiv:2205.15762.

1 8 Appendices

2 8.1 Abbreviations

| | |
|--------|---|
| ECG | Electrocardiography |
| ECHO | Echocardiography |
| PCG | Phonocardiography |
| MCG | Mechanical force bio-signal |
| CHART | Cardio-HART™ from Cardio-Phoenix |
| HART | ECHO-like findings estimated by Cardio-HART AI system |
| HF | Heart Failure |
| HFpEF | HF with preserved ejection fraction |
| HFmrEF | HF with mildly reduced ejection fraction |
| HFrEF | HF with reduced ejection fraction |
| LSTM | Long short-term memory network |
| HHT | Hilbert–Huang transform |
| PSD | Windowed Power Spectrum Density |
| MFCC | Mel-frequency cepstral coefficients |
| JMIM | Joint Mutual Information Maximization |
| JRMI | Renyi entropy-based Joint Mutual Information |
| ECFS | Eigenvector Centrality Feature Selection |
| FSMB | Markov blanket-based Feature Selection |
| KENN | Knowledge-enhanced neural networks |
| BNP | Natriuretic peptides |
| LVSD | Left Ventricular Systolic Dysfunction |
| ALVSD | Asymptomatic LVSD |
| DD | Diastolic Dysfunction |
| DDIM | Impaired Relaxation type DD |
| LVH | Left Ventricular Hypertrophy |
| RVH | Right Ventricular Hypertrophy |
| DCM | Dilated Cardiomyopathy |
| RVE | Right Ventricular Enlargement |
| LAE | Left Atrial Enlargement |
| RAE | Right Atrial Enlargement |
| WMA | Wall Motion Abnormality |
| AS | Aortic Stenosis |
| MS | Mitral Stenosis |
| MR | Mitral Regurgitation |
| AR | Aortic Regurgitation |
| TR | Tricuspid regurgitation |
| PH | Pulmonary Hypertension |
| CAD | Coronary Artery Disease |
| AF | Atrial Fibrillation |
| LAX | Leftward Axis |
| BBB | Bundle Brach Block |
| ST-T | ST interval and T abnormal |
| MI | Myocardial Infarction |
| LVH | LV Hypertrophy |
| RVH | RV Hypertrophy |
| LVEF | Left Ventricular Ejection Fraction [%] |
| GLS | Global longitudinal strain |
| SV | Stroke Volume |
| FP | False positive |
| FN | False negative |
| SE | Sensitivity |

| | |
|--------|---|
| SP | Specificity |
| PPV | Positive Predictive Value |
| F05 | F-score with $\beta=0.5$ |
| AVpV | Aortic Valve Peak Velocity [m/s] |
| MV-E | Mitral Inflow E Wave Velocity [m/s] |
| E/A | E/A Wave Velocity on Mitral Valve [m/s/m/s] |
| LVMi | Left Ventricular Mass Index [g/m ²] |
| LVIDd | End-diastolic Left Ventricular Diameter [mm] |
| LVIDs | Endsystolic Left Ventricular Diameter [mm] |
| LAVI | Left Atrial Volume Index [mL/m ²] |
| RAVI | Right Atrial Volume Index [mL/m ²] |
| RVSP | Right Ventricular Systolic Pressure [mmHg] |
| MRj/LA | Mitral Regurgitation Jet Ratio in Left Atrium [%] |
| TRj/RA | Tricuspid Regurgitation Jet Ratio in Right Atrium [%] |

1 8.2 Declaration of Helsinki

2 All patients were recruited in accordance with the Helsinki protocol and each provided written
3 informed consent to participate.

4 8.3 Copyrights

5 All copyrights and trademarks are owned by their respective owners, and all rights are attributed to
6 them. Cardio-Phoenix, Cardio-HART, C.H.A.R.T, Cardio-TriTest, are trademarks of Cardio-
7 Phoenix Inc. (all rights are reserved worldwide).

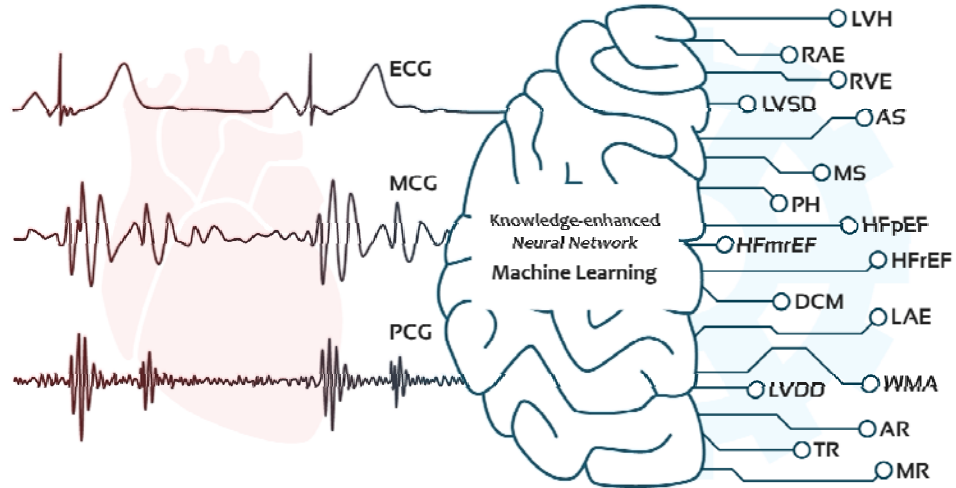
8 8.4 Author Contributors

- 9 • Consultant cardiologists in research: Marta Afonso Nogueira, Simone Calcagno
- 10 • Final approval of the article: Niall Campbell, Georgios Koulaouzidis
- 11 • Literature research: Azfar Zaman, Istvan Kecskes
- 12 • Acquisition of data and ground truth definition: Tatjana Stankovic, Erzsebet Szabo, Aniko
13 B. Szabo
- 14 • Data verification: Anwar Jalil, Firdous Alam
- 15 • Statistical analysis and administration: Istvan Kecskes

16 All authors have approved the final article.

1 8.5 Graphical Abstract

Cardio-HART™



2

3