

Figure S1

A

Checklist

Diagnosis

- ALL (15;21; iAMP21; low hypodiploid; relapse with mutated *TP53*), JMML, MDS
- Blastoma (Hemangio-, Hepato- (*CTNNB1* Wildtype), Gonado-, Pleuro-pulmonary-, Pineo-, Retino-, Pituitary blastoma or adenoma)
- Carcinoma (Hepatocellular-, Choroid plexus-, Medullary and non-medullary thyroid-, Small cell carcinoma of the ovary, Squamous cell-, Basal cell-, Colorectal-, Renal cell-, Parathyroid carcinoma or adenoma)
- Medulloblastoma (*SHH* activated; *WNT* activated/*CTNNB1* Wildtype), Medulloepithelioma
- Rhabdoid tumor, Botryoid RMS of the cervix or bladder (Fusion-negative), Fetal rhabdomyomas
- Gastrointestinal stromal tumor, Germ-strand stromal tumor
- Adrenocortical carcinoma
 - Cystic nephroma
- Atypical teratoid rhabdoid tumor
 - Infantile myofibromatosis
- Chondromesenchymal hamartoma
 - Melanoma
- Endolymphatic sac tumors
 - Meningioma
- Large cell calcifying Sertoli cell tumor
 - Myxoma
- Malignant peripheral nerve sheath tumor
 - Nephroblastoma
- Neuroendocrine tumor, carcinoid
 - Neurofibroma
- Optic glioma (with clinical *NF1* signs)
 - Schwannoma
- Paranglioma / Pheochromocytoma
 - Sertoli-leydig cell tumor
- Subependymal giant cell astrocytoma
- Other extremely rare childhood cancer entities or typical adult tumors with early onset

Family History

- including a three-generation pedigree
- ≥ 2 malignancies ≤ 18 years of age
- first-degree relative (parent or sibling) with cancer < 45 years of age
- ≥ 2 second-degree relatives with cancer < 45 years of age (on the same side of the family)
- parents are consanguineous

Phenotype

- Congenital anomalies (e.g. organs, bones, oral clefting, teeth, eyes, ears, brain, urogenital anomalies)
- Facial dysmorphism
- Growth (e.g. length, head circumference, birth weight, asym. growth)
- Skin anomalies (e.g. aberrant pigmentation i.e. > 2 café-au-lait spots, vascular skin changes, hypersensitivity for sunlight, multiple benign tumors of the skin)
- Immune deficiency
- Endocrine anomalies (e.g. primary hyperparathyroidism, premature puberty, gigantism/ acromegaly, Cushing Syndrome)

> 1 Cancer

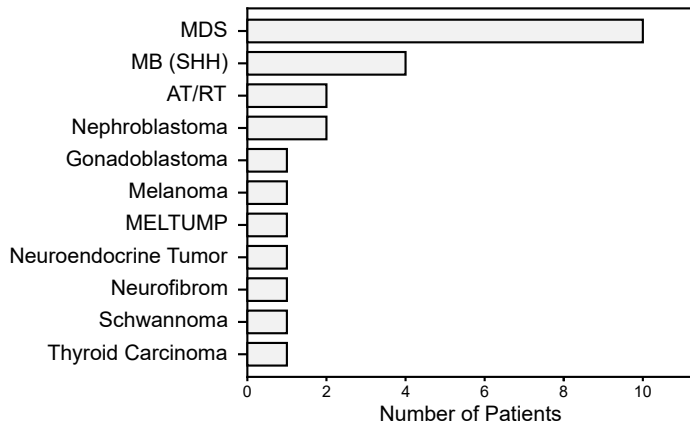
= Child with ≥ 2 malignancies (secondary, bilateral, multifocal, metachronal)

Somatic Mutation

= Tumor analysis with underlying predisposition (e.g. *TP53*)

B

Checklist: Diagnosis (n=25)



C

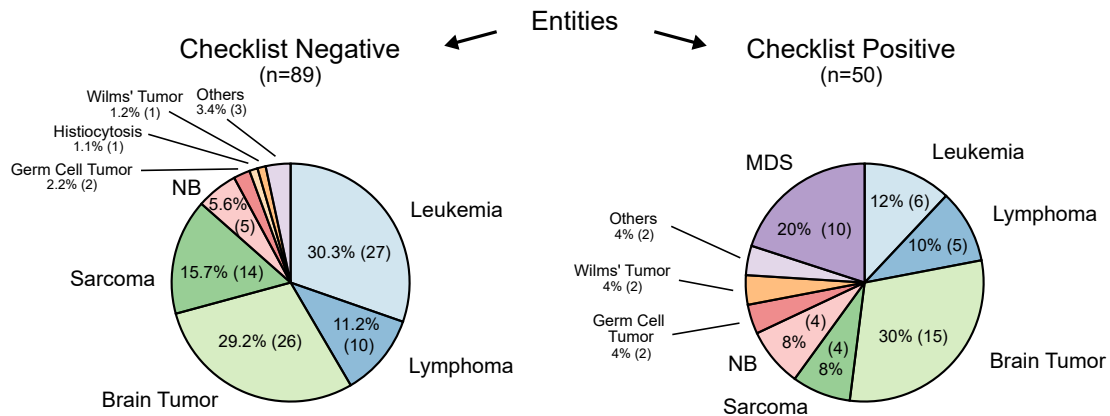


Figure S2

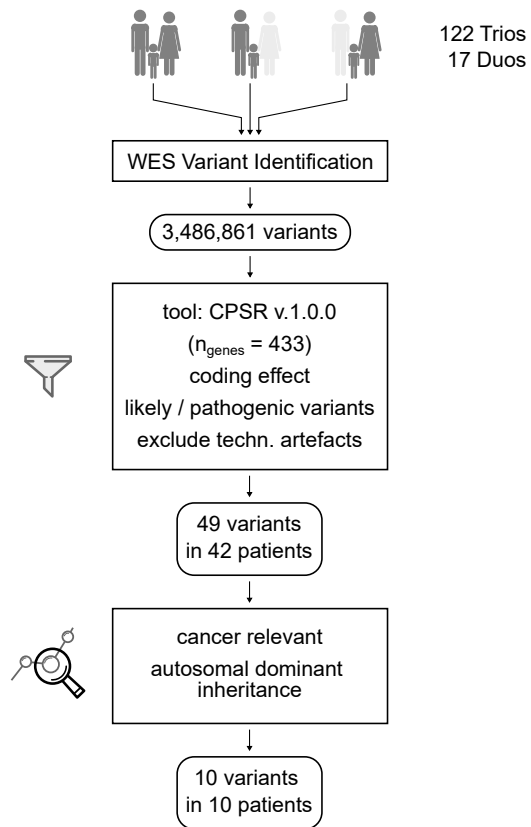


Figure S3

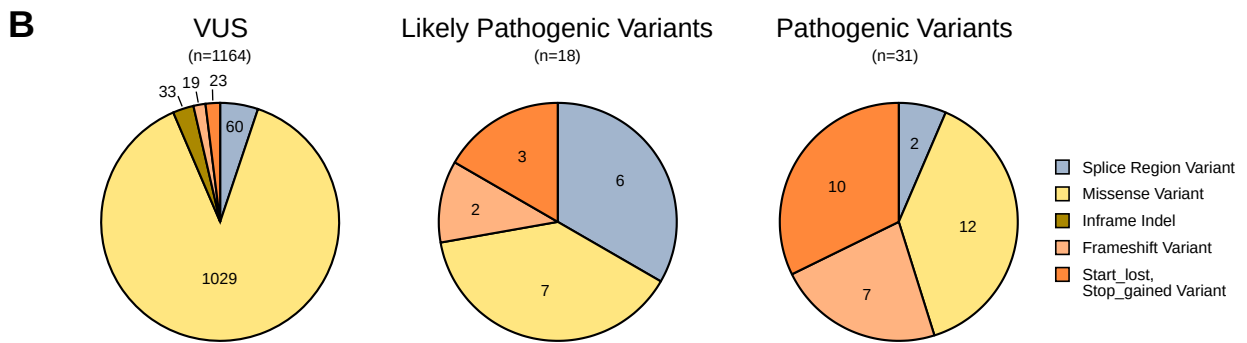
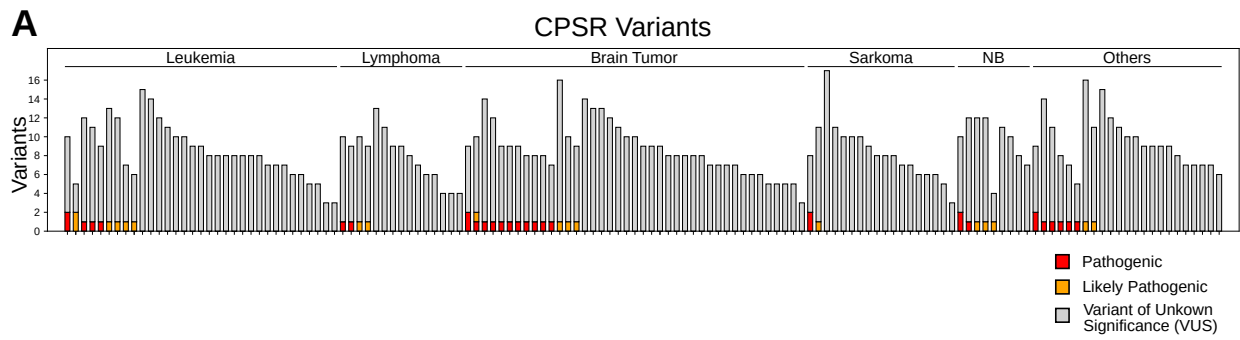
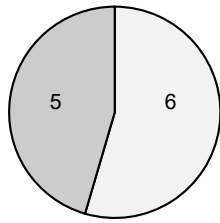
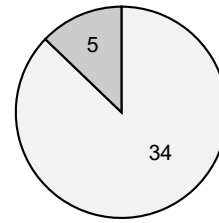


Figure S4

Patients with cancer
predisposing variant
(n = 11)



Patients without cancer
predisposing variant
(n = 39)



Positive Checklist
Categories / Patient:
□ one
■ multiple

Figure S5