

Increased levels of inflammatory molecules in blood of Long COVID patients point to thrombotic endotheliitis

Simone Turner¹, Caitlin A Naidoo¹, Thomas J Usher ¹, Arneaux Kruger¹, Chantelle Venter¹, Gert Jacobus Laubscher³, M Asad Khan ⁴, Douglas B Kell^{1,5,6*}, Etheresia Pretorius^{1,4*}

¹Department of Physiological Sciences, Faculty of Science, Stellenbosch University, Stellenbosch, Private Bag X1 Matieland, 7602, South Africa

²Central Analytical Facility: Mass Spectrometry Stellenbosch University, Tygerberg Campus, Room 6054, Clinical Building, Francie van Zijl Drive Tygerberg, CAPE TOWN, 7505

³Mediclinic Stellenbosch, Stellenbosch 7600, South Africa

⁴Directorate of Respiratory Medicine, Manchester University Hospitals, Wythenshawe Hospital, Manchester M23 9LT, United Kingdom

⁵Department of Biochemistry and Systems Biology, Institute of Systems, Molecular and Integrative Biology, Faculty of Health and Life Sciences, University of Liverpool, L69 7ZB, UK

⁶The Novo Nordisk Foundation Centre for Biosustainability, Technical University of Denmark, Kemitorvet 200, 2800 Kgs Lyngby, Denmark

*Corresponding authors:

*Etheresia Pretorius

Department of Physiological Sciences, Stellenbosch University, Private Bag X1 Matieland, 7602, SOUTH AFRICA

resiap@sun.ac.za

<http://www.resiapretorius.net/>

ORCID: 0000-0002-9108-2384

*Douglas B. Kell

Department of Biochemistry and Systems Biology, Institute of Systems, Molecular and Integrative Biology, Faculty of Health and Life Sciences, University of Liverpool, L69 7ZB, UK.

dbk@liv.ac.uk

ORCID: 0000-0001-5838-7963

SENTENCE SUMMARY

The presence of fibrinoid microclots and multiple inflammatory molecules in the soluble part of blood points to thrombotic endotheliitis as a key pathological process in Long COVID.

ABSTRACT

The prevailing hypotheses for the persistent symptoms of Long COVID have been narrowed down to immune dysregulation and autoantibodies, widespread organ damage, viral persistence, and fibrinoid microclots (entrapping numerous inflammatory molecules) together with platelet hyperactivation. Here we demonstrate significantly increased concentrations of Von Willebrand Factor, platelet factor 4, serum amyloid A, α -2antiplasmin E-selectin, and platelet endothelial cell adhesion molecule-1, in the soluble part of the blood. It was noteworthy that the mean level of α -2-antiplasmin exceeded the upper limit of the laboratory reference range in Long COVID patients, and the other 5 were significantly elevated in Long COVID patients as compared to the controls. This is alarming if we take into consideration that a significant amount of the total burden of these inflammatory molecules has previously been shown to be entrapped inside fibrinolysis-resistant microclots (thus decreasing the apparent level of the soluble molecules). We also determined that by individually adding E-selectin and PECAM-1 to healthy blood, these molecules may indeed be involved in protein-protein interactions with plasma proteins (contributing to microclot formation) and platelet hyperactivation. This investigation was performed as a laboratory model investigation and the final exposure concentration of these molecules was chosen to mimic concentrations found in Long COVID. We conclude that presence of microclotting, together with relatively high levels of six inflammatory molecules known to be key drivers of endothelial and clotting pathology, points to thrombotic endotheliitis as a key pathological process in Long COVID. This has implications for the choice of appropriate therapeutic options in Long COVID.

Keywords: Long COVID; Von Willebrand Factor; platelet factor 4; serum amyloid A; α -2antiplasmin; E-selectin; PECAM-1; Thrombotic endotheliitis

INTRODUCTION

Post-Acute Sequelae of COVID-19 (PASC) or Long COVID is a major global health burden with its symptoms significantly impacting physical and cognitive function, health-related quality of life, and participation in society (1-9). The mechanisms for the persistent symptoms can be narrowed down to 1) viral persistence, 2) microclotting and platelet hyperactivation, 3) autoantibodies, 4) immune dysregulation, 5) widespread organ damage, and the 6) reactivation of dormant viruses (9-12).

SARS-CoV-2 (COVID-19) viral remnants including RNA and spike protein have been identified in patients with Long COVID. Increases in antibody responses directed against non-SARS-CoV-2 viral pathogens, particularly Epstein-Barr virus, have been noted and are likely to be related to reactivation of dormant viruses (13, 14). There is also increasing evidence that autoantibodies may be involved in the lingering symptoms of individuals with Long COVID (15, 16). We have demonstrated that individuals with Long COVID have a significant fibrin amyloid microclot load in their circulation (2, 10, 17). These clots can be induced in normal plasma by (recombinant) SARS-CoV-2 spike protein (18), and are resistant to fibrinolysis (10, 19). Microclots are microscopic (fibrin-amyloid-containing) clots present in the plasma of recruited individuals (10, 19). Entrapped in these fibrinolysis-resistant microclots are numerous inflammatory molecules, including alpha 2-antiplasmin (α 2AP), various fibrinogen chains, Von Willebrand factor (VWF), platelet factor 4 (PF4), Serum Amyloid A (SAA), as well as numerous antibodies (10, 19). If the coagulopathy present in the acute phase of the disease, is not adequately treated, it is likely that both tissue hypoxia and impaired oxygen exchange may linger for months (10, 11, 17, 19, 20). Recently it was noted that the incidence of vascular events remains elevated up to 49 weeks after COVID-19 diagnosis (21). The published evidence so far points to widespread endothelial inflammation (22-24), and the underlying causes are a failed (i.e. inadequate) fibrinolytic system and persistent coagulopathy (9).

Although characterizing the inflammatory molecule content of the fibrinolytic-resistant microclots is of considerable interest and value (2, 10, 17, 20), patients desperately need more readily accessible diagnostic markers at general pathology laboratories. In this paper we focus on identifying biomarkers in the soluble fraction of blood that could be used as a suite to confirm the widespread endothelial damage and coagulation pathologies seen in Long Covid patient. The soluble molecules that were chosen for this study, were chosen from previously published research that found these molecules entrapped inside solubilized microclots, as well as two additional molecules. The previously identified molecules include VWF, PF4, SAA and α -2AP, with the two new markers, that are well known endothelial damage markers, include

endothelial-leukocyte adhesion molecule 1 (E-selectin), and the platelet endothelial cell adhesion molecule1 (PECAM-1).

Von Willebrand Factor

Following damage to the endothelial layers, VWF is released by endothelial cells (25) and megakaryocytes; it mediates platelet adhesion to the damaged vascular surface, and the aggregation of platelets (26, 27). We included VWF as it is stored in endothelial Weibel-Palade bodies (28) and platelet α -granules (29), and is also secreted during platelet activation and endothelial damage (30, 31). Back in 2020, we and other researchers discussed the importance of VWF as a disease marker in acute COVID-19 (22, 32-36). It has also been noted that VWF/ADAMTS-13 imbalance persists in endothelial cell activation and angiogenic disturbance in Long COVID (37).

Platelet Factor 4

Another important inflammatory molecule driving coagulation and platelet pathology, is PF4 (38-40). Platelets produce and store PF4 in platelet α -granules bound to the glycosaminoglycan (GAG) chains of serglycin (41). Heparin can bind to PF4 and thereby promotes PF4 aggregation, resulting in the formation of PF4/heparin complexes, which have antigenic properties (38). PF4 and VWF may also form complexes that are involved in thrombus propagation (39).

α -2-antiplasmin

Central to the persistent nature of microclots in Long COVID (in addition to the simple resistance to proteolysis of amyloid-like proteins (42) entrapping inflammatory molecules), is a plasmin and antiplasmin imbalance in individuals with Long COVID. We have found that α -2AP is trapped inside microclots (10, 19). This molecule prevents the fibrinolytic system from functioning optimally and impedes the digestion of pathological thrombi that cause microvascular thrombosis, thereby increasing the risk of thromboembolic events (10, 19). High blood levels of α -2AP, an ultrafast, covalent inhibitor of plasmin- increase the risk of a poor outcome in cardiovascular diseases (43).

Serum amyloid A

We also included, as part of our suite of soluble inflammatory markers, the more general inflammatory marker, SAA. The human SAA protein family comprises the acute phase SAA1 and SAA2, involved in innate and adaptive immunity and the constitutive SAA4 (44, 45). SAA activates the complement system and the nucleotide-binding domain, leucine-rich repeat

(NLR) family pyrin domain containing 3 (NLRP3) inflammasome, alters vascular function, affects HDL function, and increases thrombosis (46).

Endothelial factors

As endothelial dysfunction is central in persistent symptoms of Long COVID, we also chose to include two well-known endothelial damage markers, namely, CD62 antigen-like family member E (CD62E) a commonly known as E-selectin (sometimes also called endothelial-leukocyte adhesion molecule 1 (ELAM-1), and the platelet endothelial cell adhesion molecule-1 (PECAM-1). E-selectin is a glycoprotein cell adhesion receptor that is expressed on endothelial cells activated by cytokines (47), and can be used as a marker to evaluate endothelial dysfunction (48, 49). Platelet endothelial cell adhesion molecule-1 (PECAM-1), also referred to as CD31, functions as an inhibitory receptor in circulating platelets and is highly expressed at endothelial cell-cell junctions, where it functions as an adhesive stress-response protein to both maintain endothelial cell junctional integrity (50). As PECAM-1 is also expressed on platelets and leukocytes, it is at the nexus of thrombosis and inflammation (51).

In addition to determining if E-selectin and PECAM-1 are upregulated in the soluble part of the blood, we also wished to determine if these they may indeed be involved in protein-protein interactions with plasma proteins to cause the formation of (amyloid) protein misfolding (resulting in microclot formation). Furthermore, we investigated if these two molecules can interact with and bind to platelet receptors to cause platelet hyperactivation. This part of the investigation was planned as a laboratory model investigation and the final exposure concentration was chosen to mimic concentrations found in Long COVID.

MATERIALS AND METHODS

Ethical clearance

Ethical clearance for the study was obtained from the Health Research Ethics Committee (HREC) of Stellenbosch University (South Africa) (references: B21/03/001_COVID-19, project ID: 21911 (long COVID registry) and N19/03/043, project ID 9521 with yearly re-approval). Participants were either recruited via the Long COVID registry or identified from our clinical collaborator's practice. The experimental objectives, risks, and details were explained to volunteers and informed consent was obtained prior to blood collection. Strict compliance to ethical guidelines and principles of the Declaration of Helsinki, South African Guidelines for Good Clinical Practice, and Medical Research Council Ethical Guidelines for Research were kept for the duration of the study and for all research protocols.

Patient demographics

Participant identification for ELISA analysis

For the enzyme-linked immunosorbent assay (ELISA) analysis, we randomly selected a subset of stored Long COVID and healthy samples, where we previously confirmed entrapped inflammatory molecules using proteomics analysis (10) (see Table 1). The sample included blood collected from 15 healthy individuals to serve as controls (1 male; 14 females; median age 42 [27-61]) and 25 Long COVID patients (9 males; 16 females; median age 52 [22-76]). Healthy participants did not smoke, did not suffer from coagulopathies, and were not pregnant. The questionnaire contained information regarding their age, gender, pre-existing comorbid conditions, chronic medication, information regarding the onset, diagnosis, and severity of their acute COVID-19 illness, self-reported long COVID symptoms, as well as their COVID-19 vaccination history.

Participant identification for blood laboratory model

Blood was collected from six healthy individuals [1 male and 5 females; 41(±15)]. We used these blood samples to study the effects of two inflammatory molecules that originate from damaged endothelial cells. These individuals were all previously vaccinated. Two of the controls developed pericarditis after their vaccination but was effectively treated and had no clinical features of vaccine injury at time the blood was drawn (more than a year later).

Table 1: Sample demographics and considerations.

| Previously stored PPP and serum | |
|---|------------------------------------|
| Mean age [and standard deviation (SD)] of controls and Long COVID | |
| Controls (n=15) | 42 (± 8) |
| Long COVID (n=25) | 52 (±14) |
| Vaccination status of controls and Long COVID patients before blood collection | |
| Percentage of controls vaccinated (n=15) | 33% |
| Percentage of Long COVID/PASC patients vaccinated (n=25) | 24% |
| Co-morbidities of Long COVID patients (n=25) | |
| Co-morbidity | % In 25 Long COVID patients |
| Hypertension | 36% |
| Hyperlipidaemia | 40% |
| Type 2 Diabetes Mellitus | 12% |
| Rosacea | 0% |
| Thrombosis (previous blood clots) | 8% |

| | |
|---|----------|
| Cardiovascular disease | 8% |
| Psoriasis | 4% |
| Rheumatoid arthritis | 4% |
| Previous stroke | 0% |
| Previous myocardial infarction | 4% |
| COPD | 4% |
| Cancer | 12% |
| Gout | 4% |
| Laboratory study of healthy whole blood and platelet poor plasma | |
| Mean age [and standard deviation (SD)] of controls | |
| Mean age [and standard deviation (SD)] (n=6) | 41(±15) |
| Vaccination status of controls before blood collection | |
| Percentage of controls vaccinated (n=6) | 100% |

Blood sample collection and sample preparation

Either a qualified phlebotomist or medical practitioner drew blood samples. To obtain platelet poor plasma (PPP), whole blood (WB) from sodium citrate tubes was centrifuged at 3000xg for 15 min at room temperature and the supernatant PPP samples were collected in 1.5 mL Eppendorf tubes and stored at -80°C . To obtain plasma, WB from rapid serum tubes was centrifuged at 3000xg for 15 min at room temperature and the supernatant plasma samples were collected in 1.5 mL Eppendorf tubes and stored at -80°C .

Enzyme-linked immunosorbent assays (ELISA)

Enzyme-linked immunosorbent assay (ELISA) were performed on all the biomarkers except VWF. The ELISA recognizes and quantitatively measures the molecule of interest in samples using the Sandwich-ELISA principle. The 96 well plate that is provided in the kit is pre-coated with an antibody specific to the molecule of interest. The samples were then diluted according to each ELISA kit detection range. After the samples were correctly diluted, 100 μL of the diluted samples and standards were added to the wells and combined with the specific antibody. Next, the biotinylated detection antibody specific for the molecule of interest and Avidin-Horseradish Peroxidase (HRP) conjugate were added successively to each micro plate well and incubated. After the wash step, the substrate solution is added to each well. The enzyme-substrate reaction is terminated by the addition of stop solution. The optical density was measured spectrophotometrically at a wavelength of 450 ± 2 nm with the BioTek Synergy HTX Multi-Mode Microplate Reader (Santa Clara, United States). The concentrations were calculated using Graphpad Prism 8 (version 9.1.1).

Serum Amyloid A was measured using Abcam's Human SAA ELISA Kit (ab100635) using a dilution factor of 500x. α -2 antiplasmin (α -2AP) was measured using Abcam's Human alpha-2 antiplasmin SimpleStep ELISA[®] Kit (ab254502) using a dilution factor of 20 000x. Platelet factor 4 was measured using Elabscience's Human PF4 ELISA Kit (E-EL-H6107) using a dilution factor of 10x. E-selectin was measured using Elabscience's E-selectin ELISA Kit (E-EL-H0876) using a dilution factor of 20x. Platelet endothelial cell adhesion molecule (PECAM) was measured using Elabscience's PECAM ELISA Kit (E-EL-H1640) using a dilution factor of 50x. Only PECAM-1 and E-selectin were measured using serum, the rest of the molecules were measured used PPP.

Von Willebrand Factor antigen

VWF was analysed by a pathology service laboratory known as PathCare, located in Mediclinic Stellenbosch, South Africa. We chose to test for VWF % antigen at Pathcare as VWF is the only molecule out of the six inflammatory molecules that is a standard test that

can be performed in a pathology laboratory. This also makes the test more assessable to patients and doctors.

For sample analysis, Siemens VWF Ag reagent was used for the immunoturbidimetric determination, using the Sysmex CS2500 instrument. Approximately 0.5mL PPP was utilized for the analysis. The Sysmex CS2500 instrument was calibrated according to standard protocol and the facility is accredited in accordance with the international ISO 15189:2012 standard.

Fluorescence microscopy

Platelet poor plasma (PPP) analysis of the Long COVID samples

Fluorescence microscopy to study the presence of microclot formation in PPP was performed on some of our samples as described in our previous papers (52). Stored PPP samples were exposed to Thioflavin T (ThT), a fluorogenic dye that binds to amyloid protein (42) after reached room temperature. A final concentration of 0.005mM was used (Sigma-Aldrich, St. Louis, MO, USA). Plasma was exposed for 30 minutes (protected from light) at room temperature (42, 53-56), whereafter 3 μ L stained PPP was placed on a glass slide and covered with a coverslip.

Healthy blood samples with added E-selectin and PECAM-1

Whole blood drawn from six healthy participants was centrifuged and PPP and haematocrit samples were prepared as described in the above paragraphs. Microclot formation and platelet activation were studied in the naïve samples. For this analysis, the PPP was exposed to ThT as described in the previous paragraph. The remaining haematocrit samples were retained and were incubated for 30 minutes at room temperature, with the two fluorescent markers, CD62P (PE-conjugated) (platelet surface P-selectin) (IM1759U, Beckman Coulter, Brea, CA, USA) and PAC-1 (FITC-conjugated) (340507, BD Biosciences, San Jose, CA, USA) (17). CD62P is a marker for P-selectin that is either found on the membrane of platelets or inside them. PAC-1 identifies platelets through marking the glycoprotein II β /III α (gpII β /III α) on the platelet membrane.

Both the PPP and the haematocrit samples from the 6 healthy individuals were then also exposed for 30 minutes, at room temperature, to E-selectin and PECAM-1 at a final concentration of 30 ng.ml⁻¹. Recombinant Human E-Selectin/SELE Protein (His Tag) (Catalog No. PKSH032403) and Recombinant Platelet/Endothelial Cell Adhesion Molecule (PECAM-1) (Catalog No. RPA363Hu01) was purchased from Biocom Africa (Centurion, South Africa). After the 30 minute exposure time, the E-selectin and PECAM-1-exposed, PPP samples were incubated with ThT. The E-selectin and PECAM-1-exposed haematocrit samples were also

incubated with the two platelet markers, CD62P and PAC-1 (as described in the above paragraphs).

To view ThT exposed PPP samples, the excitation wavelength was set at 450nm to 488nm and the emission wavelength at 499nm to 529nm. The excitation wavelength for the hematocrit samples exposed to PAC-1 was set at 450nm to 488nm and the emission at 499 to 529nm and for the CD62P marker the excitation wavelength was set at 540nm to 570nm and the emission 577nm to 607nm. All samples were viewed using a Zeiss Axio Observer 7 fluorescent microscope with a Plan-Apochromat 63x/1.4 Oil DIC M27 objective (Carl Zeiss Microscopy, Munich, Germany).

Statistical analysis

GraphPad Prism software (version 9.1.1) was used to perform statistical analysis on all data. To determine whether data is normally distributed, the Shapiro-Wilk normality test was applied. Parametric data was analysed using an unpaired, one-tailed t-tests with the Welch's correction in order to test for statistical significance. For non-parametric data, an unpaired, one-tailed Mann-Whitney test was utilized to test for statistical significance. Statistical significance was established at $p < 0.05$ (* = $p < 0.05$; ** = $p < 0.01$). Data is either represented as either mean \pm standard deviation (parametric data) or as median \pm [Q1-Q3] (non-parametric data).

RESULTS

Enzyme-linked immunosorbent assays (ELISAs)

Results of our five ELISA experiments (SAA, α -2AP, PF4, E-selectin and PECAM-1) and VWF measured at a pathology laboratory, are shown in Figure 1. All six inflammatory molecules were significantly upregulated in the soluble part of the blood that was measured (See Table 2).

Figure 1: Inflammatory molecule concentration [or % antigen in the case of Von Willebrand Factor (VWF)] in controls and Long COVID within systemic circulation. **(A)** SAA-, (***p<0.05**), **(B)** α 2AP- (****p<0.01**), **(C)** PF4- (***p<0.05**) and **(D)** VWF concentrations in controls and Long COVID using PPP (***p<0.05**). **(E)** E-selectin- and (****p<0.01**). **(F)** PECAM-1 concentrations in controls and Long COVID using serum (***p<0.05**). **Abbreviations:** SAA: Serum Amyloid A, α -2AP: α -2 antiplasmin, PF4: Platelet factor 4, VWF: Von Willebrand Factor, E-selectin: endothelial-leukocyte adhesion molecule 1, PECAM-1: Platelet endothelial cell adhesion molecule-1, PPP: Platelet poor plasma.

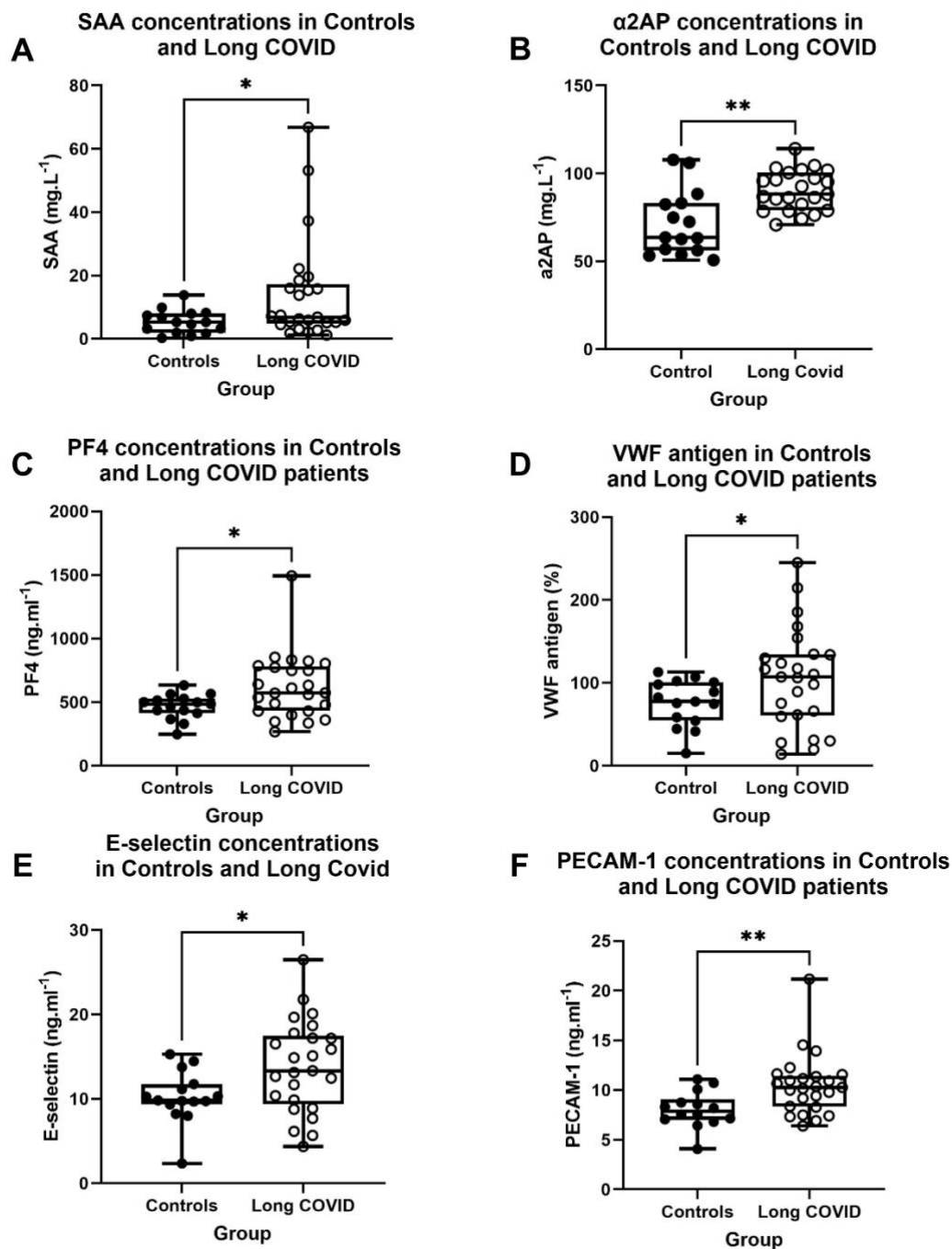


Table 2: Inflammatory molecule concentration [or % antigen in the case of Von Willebrand Factor (VWF)] data of 15 controls and 25 Long COVID patients. Parametric data is expressed as Mean (SD), and non-parametric data as Median(Q1-Q3). **Abbreviations:** SD: standard deviation.

| Inflammatory molecule | Reference range | Controls (n=15): Mean (SD) OR Median (Q1-Q3) | Long COVID(n=25): Mean (SD) OR Median (Q1-Q3) | Unit | P-value |
|-----------------------|-----------------|--|---|---------------------|--------------------|
| SAA | 0-10 | 5.3(1.9-8.0) | 6.9(4.8-17.25) | mg.L ⁻¹ | *p<0.05 |
| α-2AP | 60-80 | 71.73(±18.48) | 90.28(±11.31) | mg.L ⁻¹ | **p<0.01 |
| PF4 | 197-1390 | 484.2(412.8-526.8) | 572.4(430.6-779.9) | ng.ml ⁻¹ | *p<0.05 |
| VWF | 55.9 - 161.6 | 76.6(±28.03) | 104.8(±60.1) | % | *p<0.05 |
| E-selectin | 8.5-26 | 10.26(±3.07) | 13.86(±5.4) | ng.ml ⁻¹ | **p<0.01 |
| PECAM-1 | 5.3-15 | 8.19(7.06-10.08) | 10.27(8.32-11.45) | ng.ml ⁻¹ | *p<0.05 |

Fluorescence microscopy

Figure 2 show representative micrographs of the Long COVID samples. These results are in line with previous reports, with major microclot formation noted in these individuals. Figures 3 and 4 show representative micrographs of healthy PPP and haematocrit samples exposed to either E-selectin or PECAM-1, that resulted in considerable plasma protein aggregation and platelet activation after addition of both these two inflammatory molecules.

Figure 2: Micrographs of platelets and platelet poor plasma (PPP) [with added thioflavin T (ThT)] from patients with Long COVID/PASC, showing widespread microclot formation.

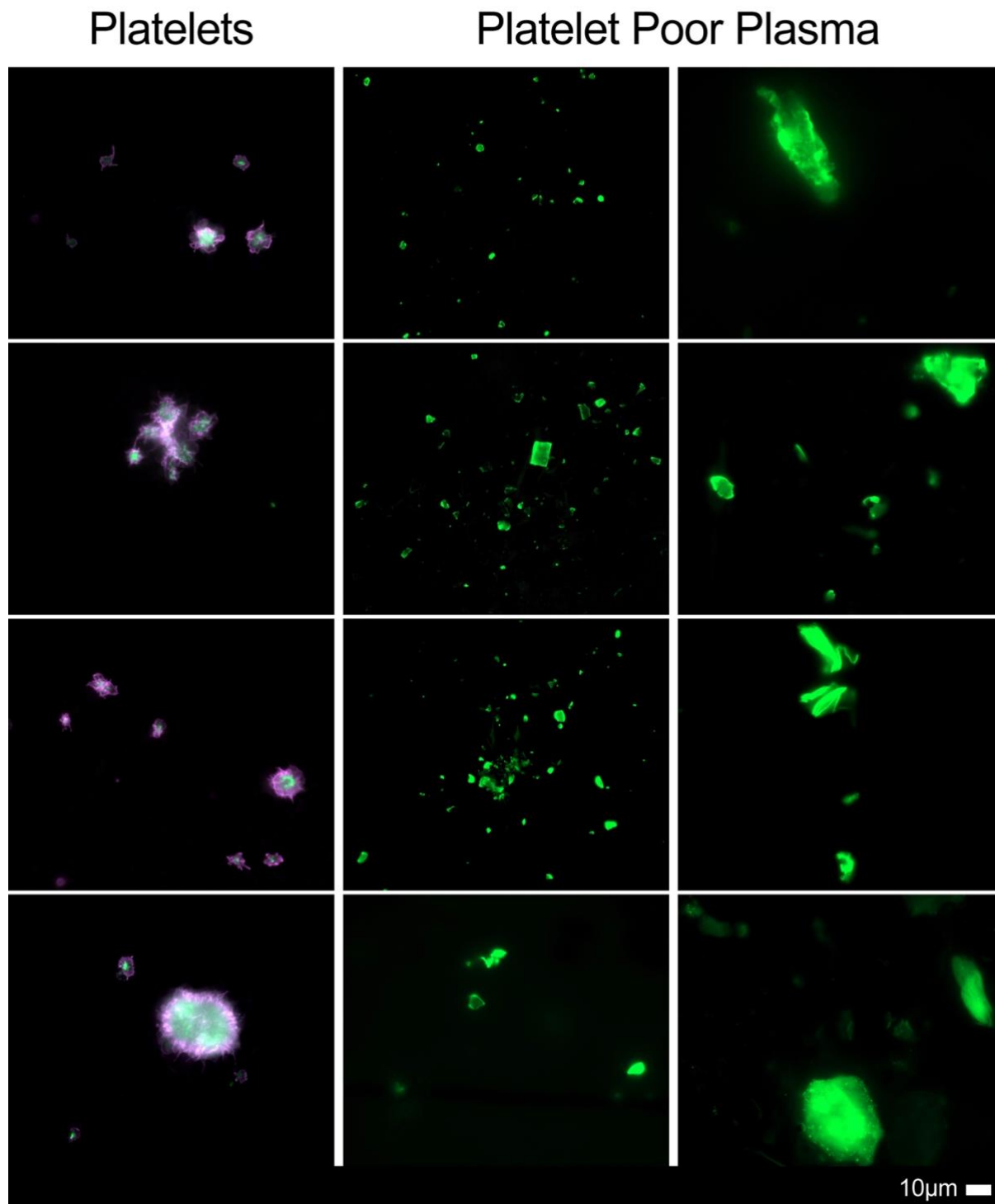


Figure 3: Micrographs of platelet poor plasma (PPP) from healthy individuals exposed to either E-selectin (final exposure concentration of 30 ng.ml^{-1}) or PECAM-1 (final exposure concentration 30 ng.ml^{-1}) followed by exposure to thioflavin T (ThT), showing the effects of the two molecules on the plasma.

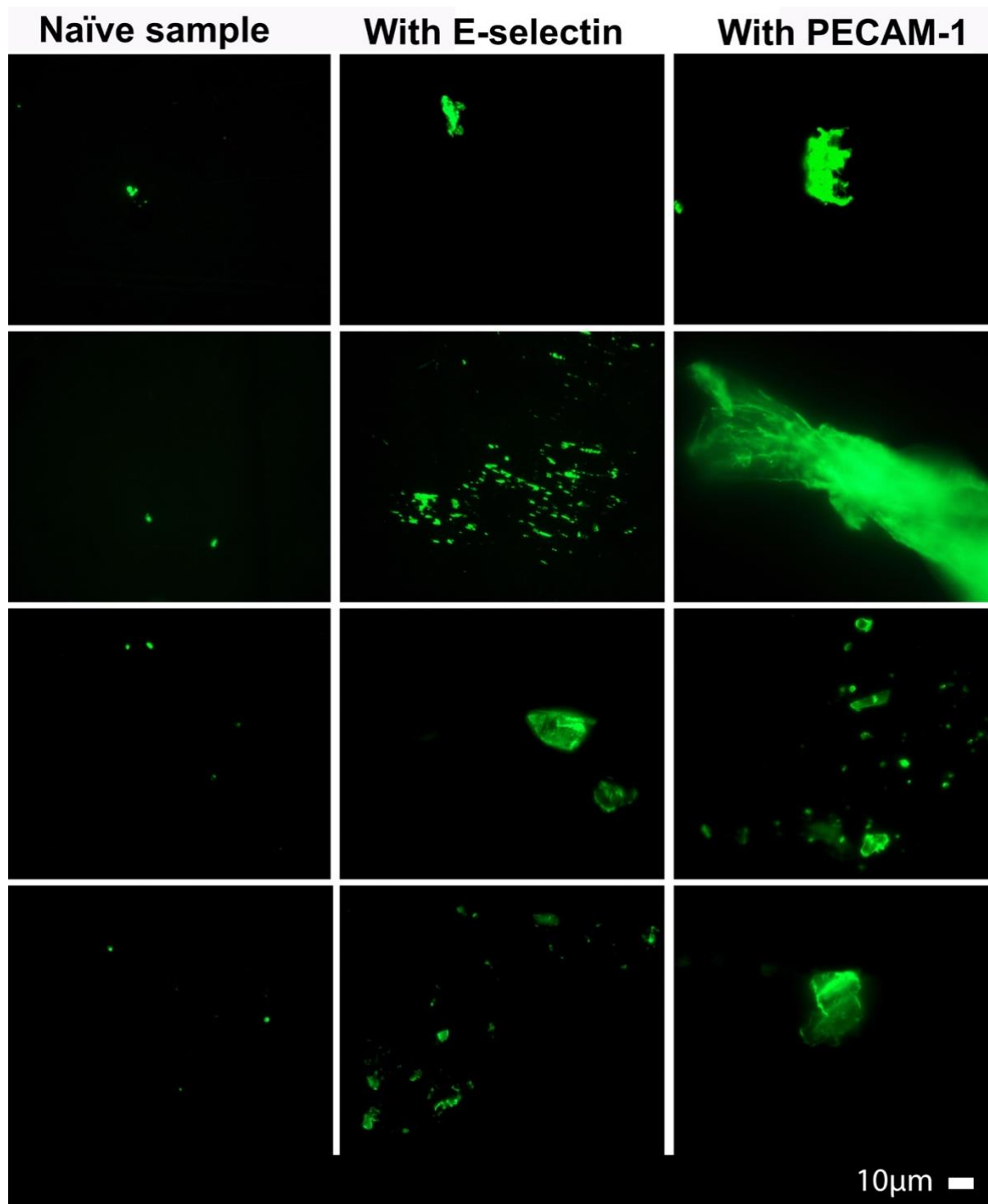
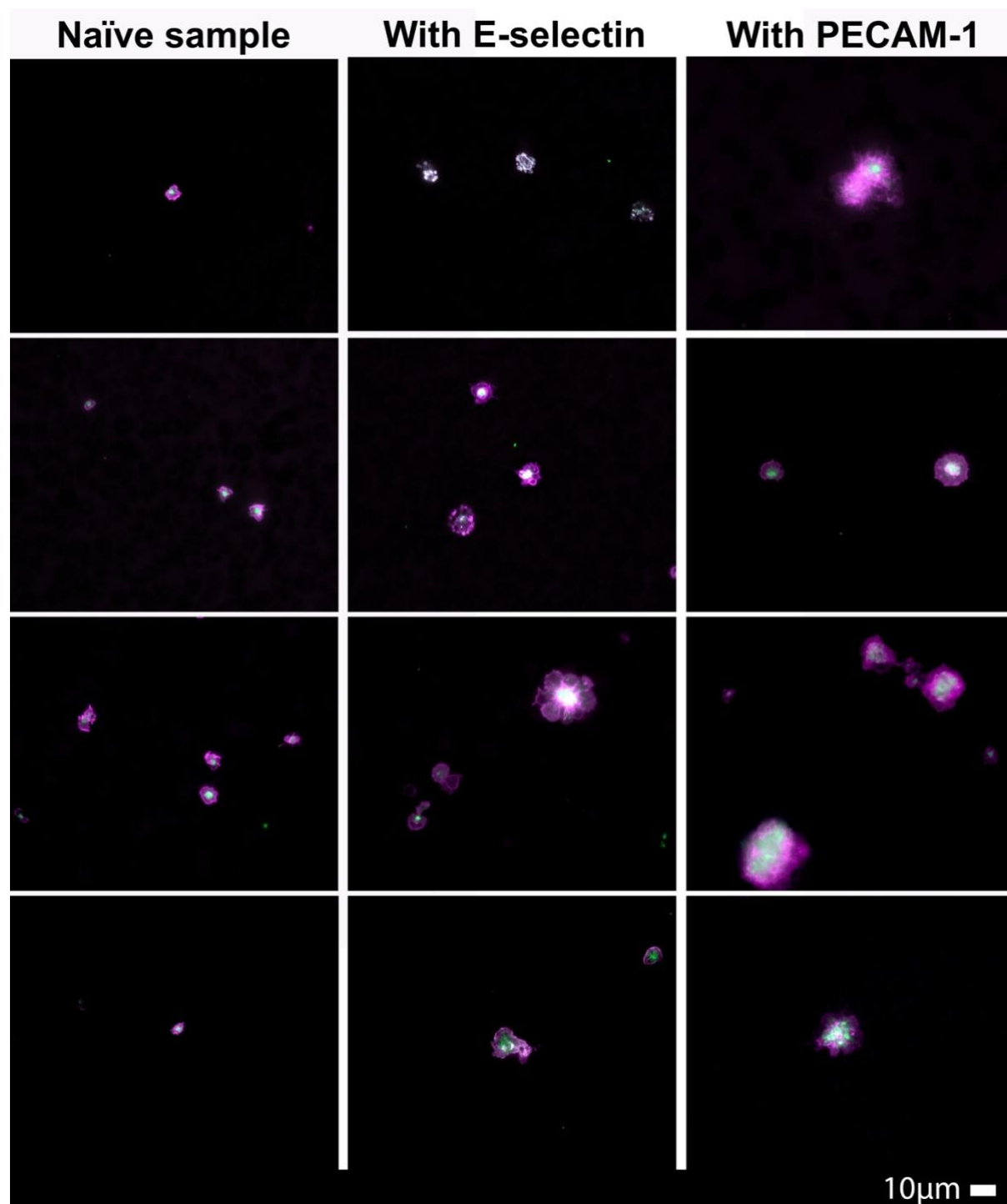


Figure 4: Micrographs of haematocrit from healthy individuals exposed to either E-selectin (final exposure concentration of 30 ng.ml⁻¹) or PECAM-1 (final exposure concentration of 30 ng.ml⁻¹) followed by exposure two platelet markers, PAC-1 (green) and CD62P (pink).



DISCUSSION

We have previously determined that various inflammatory molecules are entrapped inside fibrinolysis-resistant microclots in individuals with Long COVID (10, 19). We undertook proteomics analysis and with a double digestion method to liberate these molecules. We identified, amongst others, VWF, α -2AP, SAA and PF4 entrapped inside these microclots (10, 19). Interestingly, Captur and co-authors more recently also noted that the plasma proteomic signature predicts who will get persistent symptoms following SARS-CoV-2 infection (57). They also found that SAA and α -2AP were upregulated in their cohorts (57). These molecules and similar such molecules are also well-known to activate platelets, by binding to their receptors (58, 59). Both microclots and hyperactivated platelets, may interact with damaged endothelial cells and further perpetuate widespread vascular damage. In addition, E-selectin and PECAM-1 are well-known markers of endothelial damage, that was also analysed in this paper.

In the current paper, we have chosen to determine if the concentrations of the above 6 inflammatory markers are also upregulated in the soluble part of blood (serum and plasma). We have also shown (Figures 3 and 4) that both E-selectin and PECAM-1 can trigger considerable microclot formation as well as platelet hyperactivation similar to that previously noted in samples from individuals suffering from Long COVID (See Figure 2).

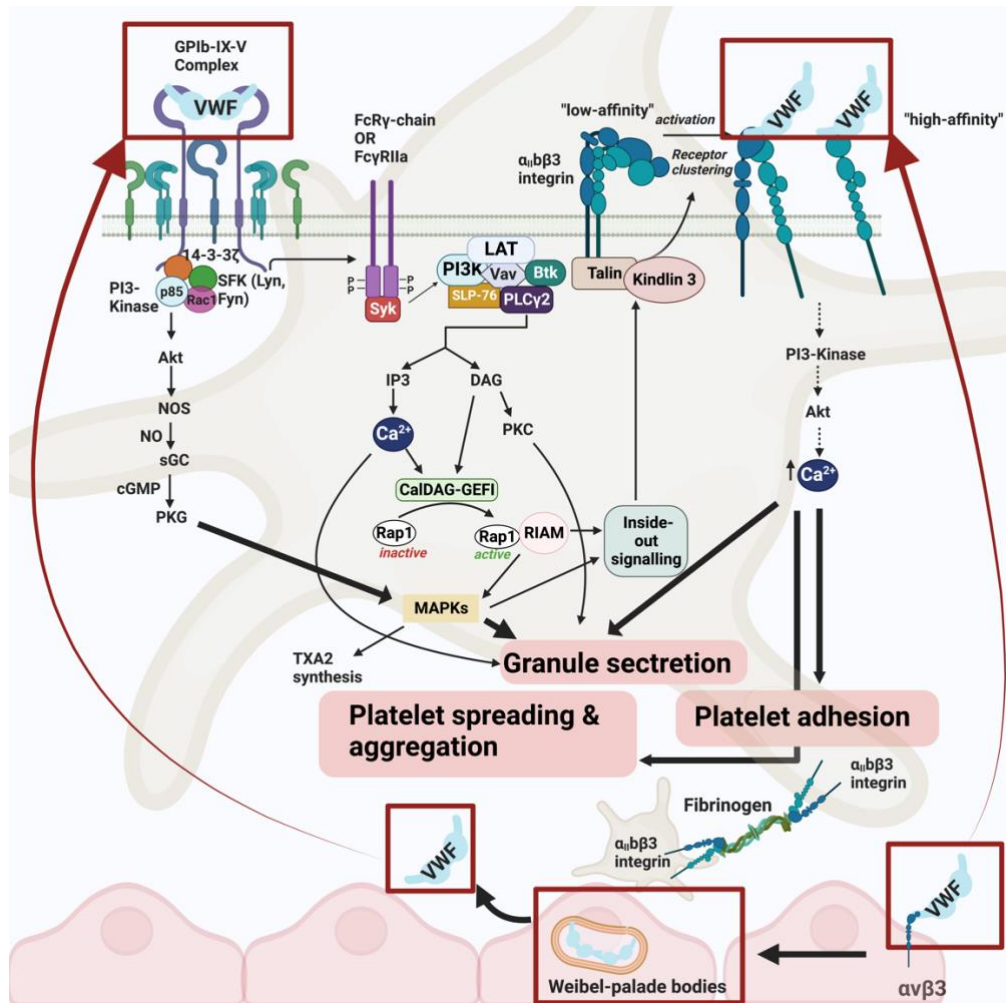
To understand how these six molecules may be central in perpetuating widespread endothelial damage and persistent coagulation pathology noted in Long COVID, we need to turn our attention to the physiological pathways that are affected by them. We focus on receptor activation pathways in endothelial cells and platelets.

Von Willebrand Factor

VWF is well-known inflammatory molecule that is widely used as a marker of inflammation and vascular damage (25), and is commonly available in pathology laboratories. We have found VWF to be trapped inside microclots and also upregulated in the soluble part of the plasma (10, 19). When in circulation, it binds to two main receptors on the platelet membrane, including, GPIb α (in the GPIb-IX-V complex) and integrin α IIb β 3 (in the GPIIb-IIIa complex) (60) (see Figure 5). When VWF binds to GPIb α in the GPIb-IX-V complex, tyrosine protein kinases LYN and FYN are activated (61). When these kinases are activated, they promote tyrosine phosphorylation of the immunoreceptor tyrosine-based activation motif (ITAM) on the FcR γ or Fc γ RII α (61). Once the GPIb-IX-V complex is engaged, it activates intracellular signalling events that instigate platelet activation and aggregation through the α IIb β 3 integrin

(61). This also allows for more VWF to bind to $\alpha\text{IIb}\beta\text{3}$ as binding of VWF to GPIIb-IX-V further upregulates $\alpha\text{IIb}\beta\text{3}$ integrin affinity (62). When additional VWF molecules bind to $\alpha\text{IIb}\beta\text{3}$, platelet adhesion and platelet aggregation are upregulated. This ultimately contributes to thrombus formation by binding to fibrinogen, which is mediated via different pathways (62) (see Figure 5). Whilst the fundamental role of VWF is to activate platelets, VWF can also bind to endothelial cells via the integrin $\alpha\text{v}\beta\text{3}$ receptor (63). An important function of VWF is to ensure endothelial cell adhesion, migration, proliferation, differentiation, and survival (Bryckaert et al., 2015). In addition, when VWF binds to the $\alpha\text{v}\beta\text{3}$ integrin on endothelial cells, it encourages Weibel-Palade bodies to secrete additional VWF into the circulation (64). The $\alpha\text{v}\beta\text{3}$ receptor on endothelial cells also binds fibrinogen and fibronectin (63).

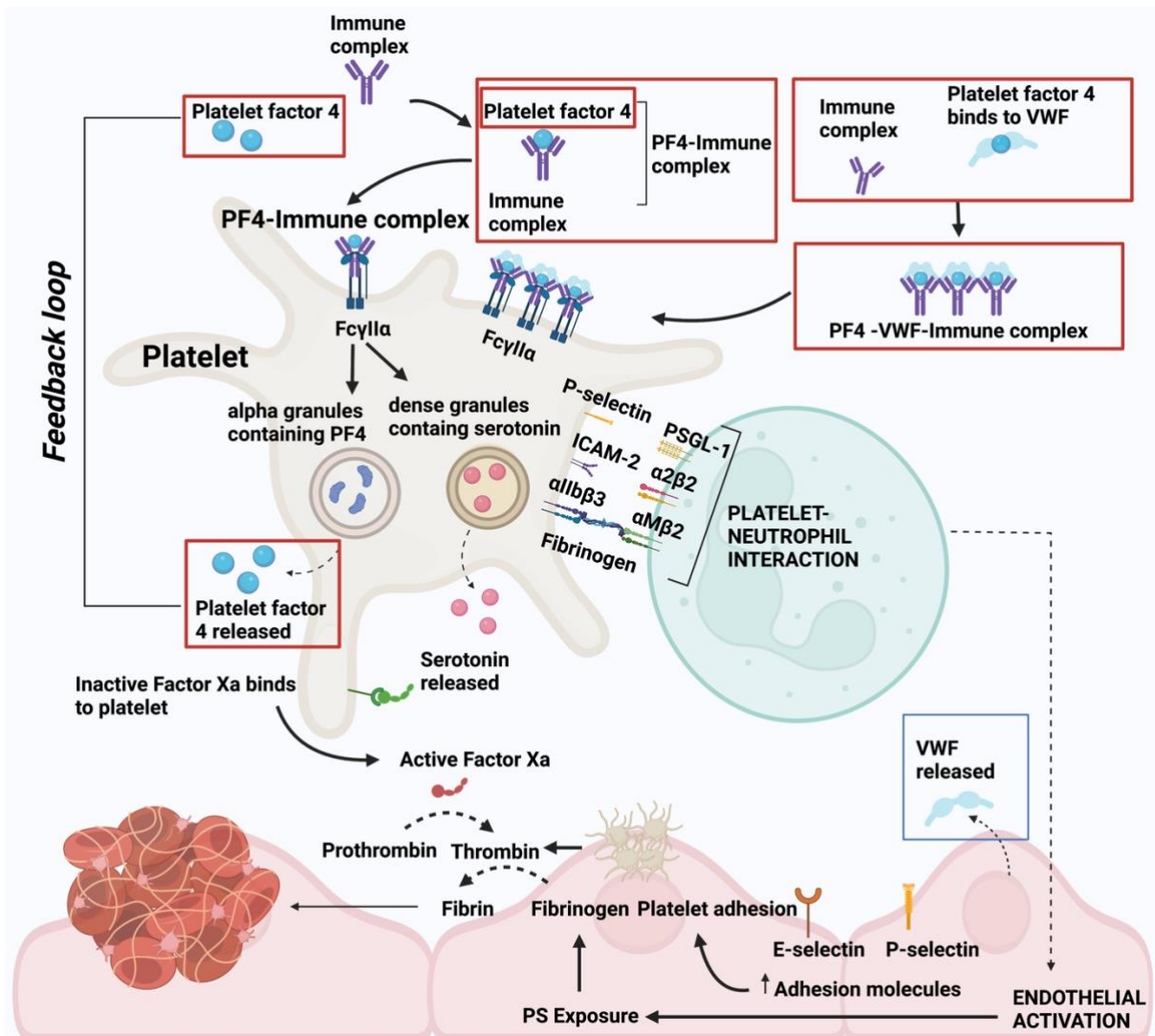
Figure 5: The receptors and signalling pathways of Von Willebrand factor (VWF) in platelets and endothelial cells. VWF binds to the GPIb-IX-V complex leading to integrin $\alpha_{IIb}\beta_3$ activation. Subsequently, various pathways are activated that ultimately lead to granule secretion, platelet adhesion, platelet spreading, and platelet aggregation that promote clot formation. VWF may also bind to endothelial cells via the $\alpha_v\beta_3$ integrin, which causes Weibel-palade bodies within endothelial cells to release VWF into circulation. **Abbreviations:** ADP, adenosine triphosphate; Btk, Bruton tyrosine kinase; Ca/DAG-GEFI, Ca^{2+} -dependent guanine nucleotide exchange factor; DAG, diacylglycerol; IP3, inositol triphosphate; LAT, linker of activated T-cells; MAPK, mitogen-activated protein kinase; NO, nitric oxide; NOS, nitric oxide synthase; PI3K, phosphoinositide 3; PLC- γ 2, phospholipase C- γ 2, PKC, protein kinase C; PKG, protein kinase G; Rac 1, Ras-related C3 botulinum toxin substrate 1; Rap1, Ras-related protein 1; RIAM, Rap1-GTP-interacting adaptor molecule; SFK, Src family kinases; SLP-76, SH2 domain-containing leukocyte phosphorylation of 76 kDa; SYK, spleen tyrosine kinase; sGC, soluble guanine cyclase; TXA2, thromboxane A2; VWF, Von Willebrand factor. This image was created with BioRender (<https://biorender.com/>).



Platelet Factor 4

We also noted a significant upregulation of PF4 in our Long COVID samples. PF4 is released from the α -granules of activated platelets as a complex with a chondroitin sulfate proteoglycan carrier (65, 66). After secretion from platelets, PF4 quickly transfers to higher affinity heparan sulfate on endothelial cells where it inhibits local antithrombin activity and promotes coagulation (41). When heparin-induced thrombocytopenia antibodies bind to PF4/heparin complexes, these immune complexes can activate platelets via the Fc γ II α receptor, further promoting thrombin generation and increased coagulation (67). Interestingly, PF4 does not directly bind to endothelial cells, but rather enhances platelet–neutrophil interactions that activate the vascular endothelium (Walenga et al., 2004) (see Figure 6).

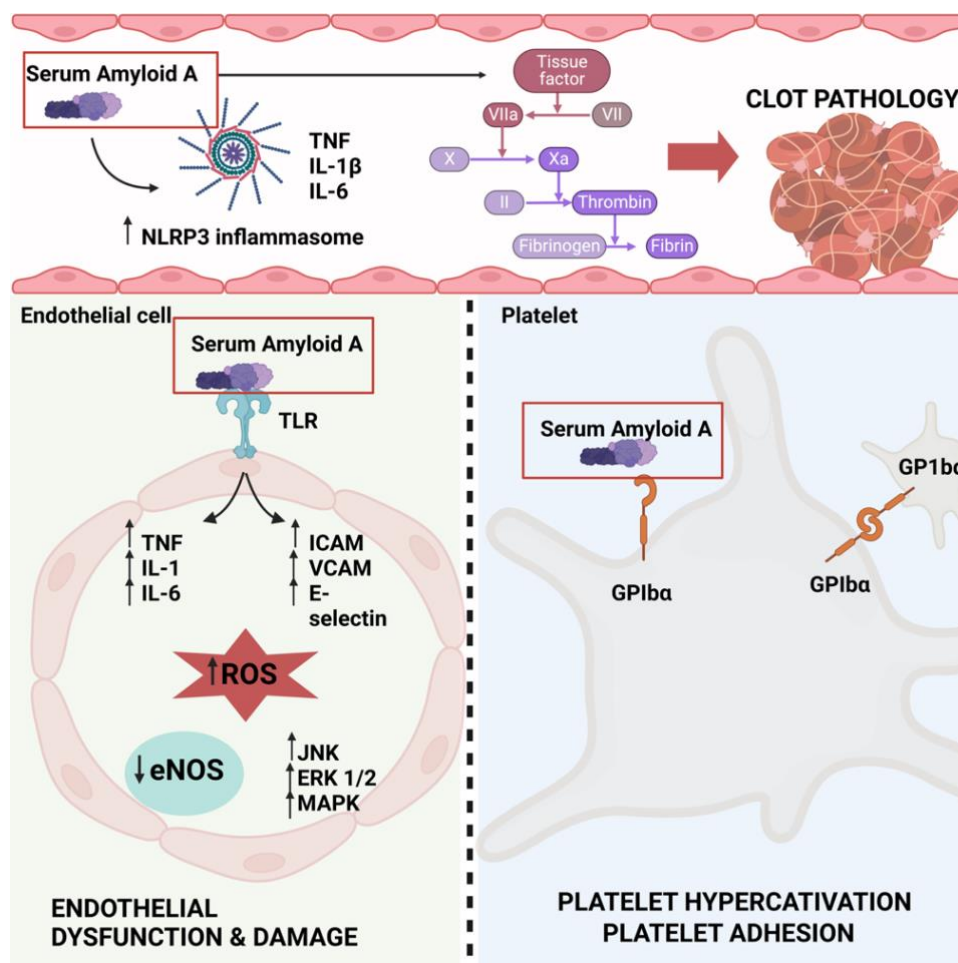
Figure 6: Platelet factor 4 and its receptor and signalling pathways in platelets and endothelial cells. PF4 binds to an immune complex and thereby binds to the Fcγ11a receptor on platelets. PF4 can also bind to VWF and subsequently form larger VWF strands. This PF4-VWF-Immune complex can also bind to the Fcγ11a receptor on platelets. Once bound to platelets, it causes alpha granules to release PF4, and dense granules to release serotonin. This causes further platelet activation and aggregation. Subsequently, neutrophils are recruited and bind to platelets via various receptors. The platelet-neutrophil interactions cause endothelial activation and an increase in expression of adhesion molecules and inflammatory molecules such as VWF. Endothelial activation also promotes PS Exposure and platelet adhesion to the endothelium, which promotes the production of thrombin. Thrombin then converts fibrinogen into fibrin, increasing the risk of clotting pathology. **Abbreviations:** PF4: platelet factor 4, VWF: Von Willebrand factor, PS: phosphatidylserine, ICAM-2: intracellular cell adhesion molecule, PSGL-1: P-selectin glycoprotein ligand-1. This image was created with BioRender (<https://biorender.com/>).



Serum Amyloid A

SAA was also significantly upregulated in our Long COVID samples. SAA contains binding sites for the extracellular matrix components, laminin and heparin/heparan sulfate, as well as the RGD-like (arginine-glycine aspartic acid) adhesion motif (58). Immobilized SAA also binds to the $\alpha\text{IIb}\beta\text{3}$ receptor on platelets (58) and may also directly bind to toll-like receptors (TLR) on endothelial cells (68). Dysregulated SAA is associated with endothelial dysfunction and early-stage atherogenesis (69). SAA binding to on endothelial cells results these cells express ICAM-1, VCAM-1, E-selectin, TNF- α , IL-1, and IL-6, together with pro-thrombotic factors (68) (see Figure 7).

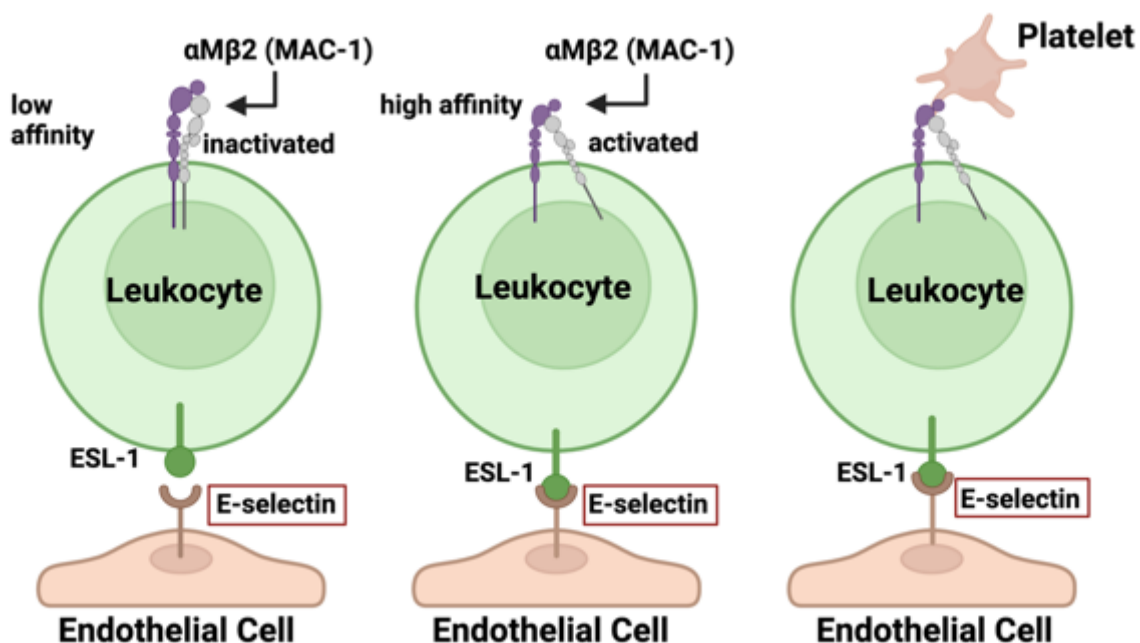
Figure 7: Serum Amyloid A and its receptor and signalling in endothelial cells and platelets. In circulation, SAA activates the NLRP3 inflammasome, promoting the production of inflammatory molecules. SAA also directly promotes TF, that activates the coagulation cascade to produce thrombin. SAA directly binds to endothelial cells via the Toll-like receptor. This instigates the increase of inflammatory molecules and adhesion molecules that ultimately increases the production of ROS. When ROS is increased in endothelial cells, it downregulates eNOS and upregulates JNK, ERK1/2, and MAPK. This sequence of events may cause endothelial dysfunction and damage. Alternatively, SAA bind to the GP1b α receptor on platelets and cause platelet hyperactivation and platelet adhesion. Endothelial damage and platelet hyperactivation are also directly involved in coagulation pathology. **Abbreviations:** SAA: Serum Amyloid A, NLRP3: NLR family pyrin domain containing 3, TLR: toll like receptor, TNF: tissue necrosis factor, IL: interleukin, ICAM: Intercellular adhesion molecule-1, VCAM: Vascular cell adhesion molecule, ROS: reactive oxygen species, eNOS: endothelial nitric oxide synthase, JNK: Jun N-terminal kinase, ERK: extracellular receptor kinase, MAPK: Mitogen-activated protein kinases, GPIb α : platelet glycoprotein Ib alpha. This image was created with BioRender (<https://biorender.com/>).



E-selectin

We also found that E-selectin is significantly upregulated in serum from individuals with Long COVID. This is a notable finding as E-selectin is typically undetected in endothelial cells that have not yet been activated (70). Upon inflammatory stimulation, E-selectin acts as an adhesion molecule and tethers leukocytes to endothelial cells (71) through supporting the initial rolling of leukocytes on activated endothelium (72). Several adhesion molecules including E-selectin, are induced and upregulated on endothelial cells during inflammation (49, 73, 74). The rolling of leukocytes on E-selectin engages P-selectin glycoprotein ligand-1 (PSGL-1) and cluster of differentiation 44 (CD44) to initiate signalling through a common pathway that requires lipid rafts, the cytoplasmic domain of PSGL-1, all 3 Src family kinases (SFKs), the immunoreceptor tyrosine-based activation motif (ITAM) adaptors, DNAX activating protein of 12 kDa (DAP12) and Fc receptor (FcR) γ , the Tec family kinase Btk, and lastly, p38 (75). This signalling cascade subsequently activates integrin leukocyte function-associated antigen 1 (LFA-1) to a conformation that enables slow rolling to occur (75). Rolling and adhesion of leukocytes due to E-selectin signals, result in an increase of CD11b/CD18 (Mac-1), ultimately indirectly facilitating binding of leukocytes to platelets (76) (see Figure 8).

Figure 8: Mechanism by which E-selectin affects platelet adhesion to leukocytes (adapted from (76)). Abbreviations: ESL-1, E-selectin ligand-1; MAC-1, macrophage-1 antigen. This image was created with BioRender (<https://biorender.com/>).



PECAM-1

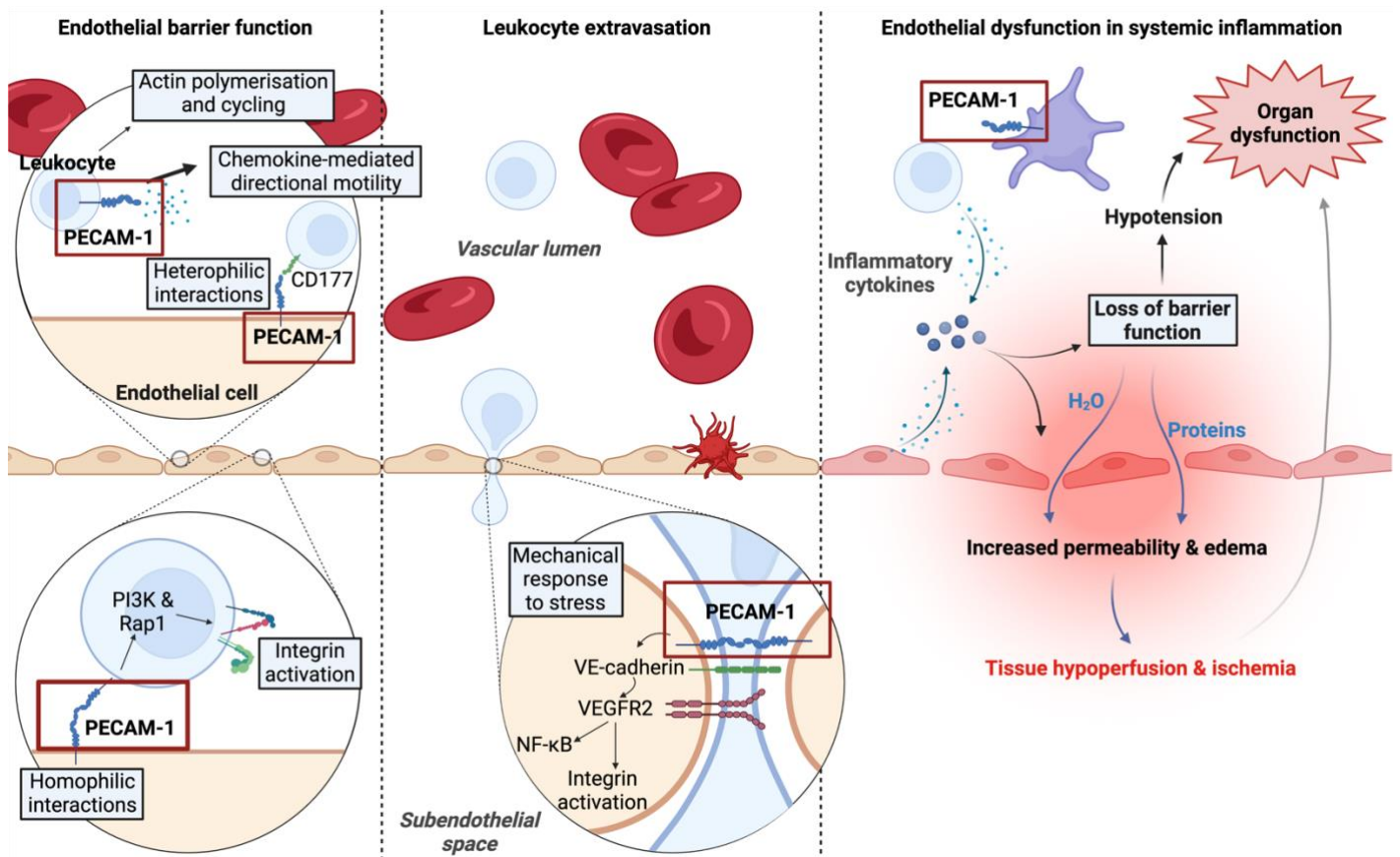
We also found a significant upregulation of PECAM-1 in serum from individuals with Long COVID. PECAM-1 has been found to be expressed on endothelial cell membranes, platelets,

and leukocytes (51, 77-81). In endothelial cells, PECAM-1 signals through the Syk/PECAM-1 signaling pathway (79) as a response to shear stress, causing tension changes across the junctional proteins VE-cadherin and PECAM-1. Onset of flow results in decreased force across VE-cadherin, and a simultaneous increase in force across PECAM-1 (82). The changes in tension across VE-cadherin and PECAM-1, activate vascular endothelial growth factor receptor 2 (VEGFR2) (82), followed by PI3K activation and the transcription of pro-inflammatory genes through the NF- κ B pathway (83).

Even though PECAM-1 is known to be expressed on platelets (81), its role in platelets is still unclear. Unlike the other inflammatory markers, PECAM-1 is thought to function as a selective inhibitor for platelet aggregation and signalling (84). Mice models with decreased platelet-derived PECAM-1 showed increased responsiveness to collagen stimulation and led to larger thrombus formation in vitro, further implicating PECAM-1 in the inhibition of platelet function (81). In addition, PECAM-1 has shown to inhibit platelet protein tyrosine phosphorylation stimulated by thrombin, leading to inhibition of calcium mobilisation from intracellular stores (81, 84).

Apart from showing that both E-selectin and PECAM-1 are upregulated in blood from individuals with Long COVID, we were also able to induce significant microclot formation and platelet hyperactivation when adding these two purified molecules to healthy samples. These results suggest that when both E-selectin and PECAM-1 are in circulation, they may interact with soluble plasma proteins by engaging in direct protein-protein interactions. This protein-protein interaction results in misfolding of the plasma proteins and microclot formation. Both the molecules were also found to trigger platelet activation, suggesting direct platelet receptor-molecule interactions. These results further provide evidence of significant interactions between circulating inflammatory molecules in individuals with Long COVID.

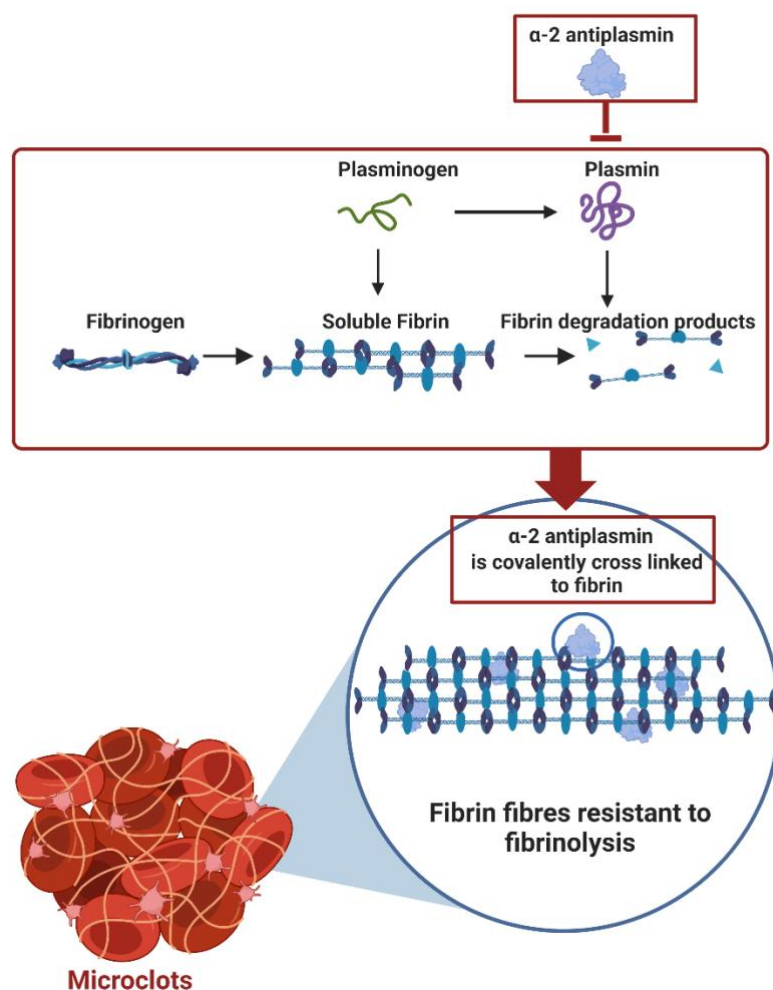
Figure 9: The functions of PECAM-1 in leukocyte binding and motility as well as the regulation of vascular permeability and maintenance of the endothelial barrier functioning (adapted from (Privratsky et al., 2010) and (Hellenthal et al., 2022) **Abbreviations:** PECAM-1, platelet endothelial cell adhesion molecule-1; Rap1, repressor/activator protein 1; PI3K, phosphatidylinositol-3-kinase; VE-cadherin, vascular endothelial-cadherin; VEGFR2, vascular endothelial growth factor receptor 2; NF- κ B, nuclear factor-kappa B. This image was created with BioRender (<https://biorender.com/>).



α -2-antiplasmin

We have previously found that α -2AP is significantly upregulated inside microclots found in samples from individuals suffering from Long COVID (10, 19). Here we also report a significant upregulation of α -2AP in the soluble part of the blood. This antifibrinolytic protein covalently binds to plasmin, and in so doing inhibits its function to solubilize fibrin polymers (85). When α -2AP is increased in circulation and comes in contact with plasmin, the C-terminal lysine residue of α -2AP binds non-covalently to the kringle domains of plasmin and forms a 1:1 stoichiometric complex (86). Increased levels of α -2AP therefore prevent the fibrinolytic system from dissolving pathologic thrombi resulting in venous thrombosis, pulmonary embolism, arterial thrombosis, and ischemic stroke (43) (see Figure 10).

Figure 10: Alpha 2 antiplasmin binds covalently to plasmin, thereby inhibiting its fibrinolytic properties. Alpha 2 antiplasmin also covalently cross links to fibrin fibres within the thrombus. Collectively, this endorses insoluble fibrin fibres that ultimately causes insoluble microclots. This image was created with BioRender (<https://biorender.com/>).



CONCLUSION

Dysregulation of coagulation, and in particular the formation of fibrin amyloid microclots that are resistant to proteolysis and can then cause ischaemia-reperfusion injury (9, 11), is a key part of the pathogenesis of Long COVID. In fact, we would argue that whilst there may be many mechanisms at play in the pathogenesis of Long COVID, the common pathological process is *thrombotic endotheliitis*. This may be characterised by the formation of anomalous fibrinoid microclots, hyperactivated platelets, endotheliitis and elevated levels of prothrombotic inflammatory molecules which interact with each other as well as with platelets and the endothelium.

In this paper we have demonstrated significantly increased concentrations of VWF, PF4, SAA, α -2AP, E-selectin, and PECAM-1 in the soluble fraction of blood from individuals with Long COVID when compared to those without Long COVID. Each of the individual molecules can cause significant endothelial dysfunction and platelet activation, ultimately resulting in severe clotting imbalance and endothelial pathology. Figure 11 provides an overview diagram of the receptors and signalling pathways of our chosen molecules.

Figure 11: Overview diagram of the receptors and signalling pathways of Von Willebrand Factor (VWF), Platelet Factor 4 (PF4), Serum Amyloid A (SAA), α -2 antiplasmin (α -2AP), endothelial-leukocyte adhesion molecule 1(E-selectin) and Platelet endothelial cell adhesion molecule (PECAM).

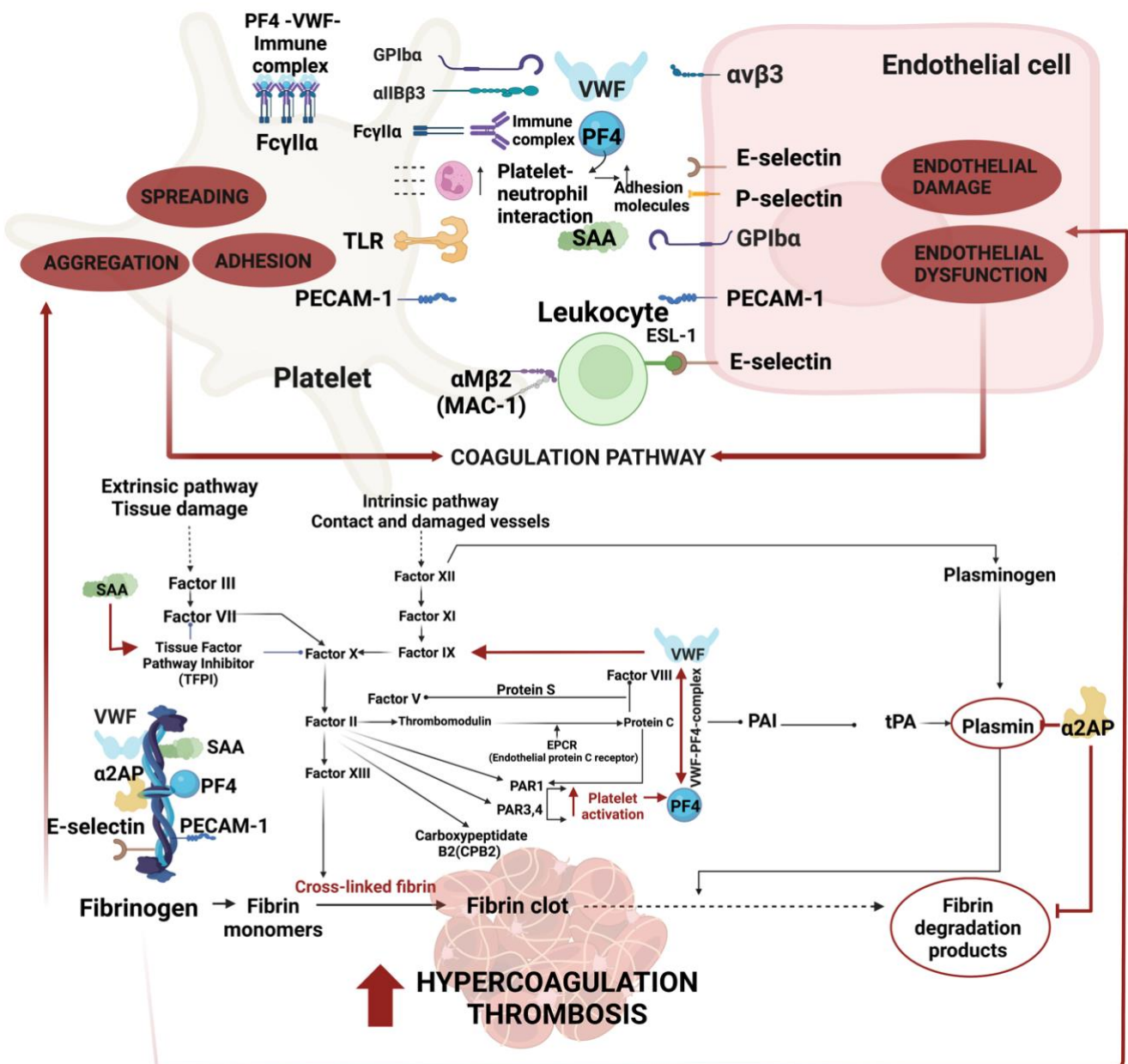


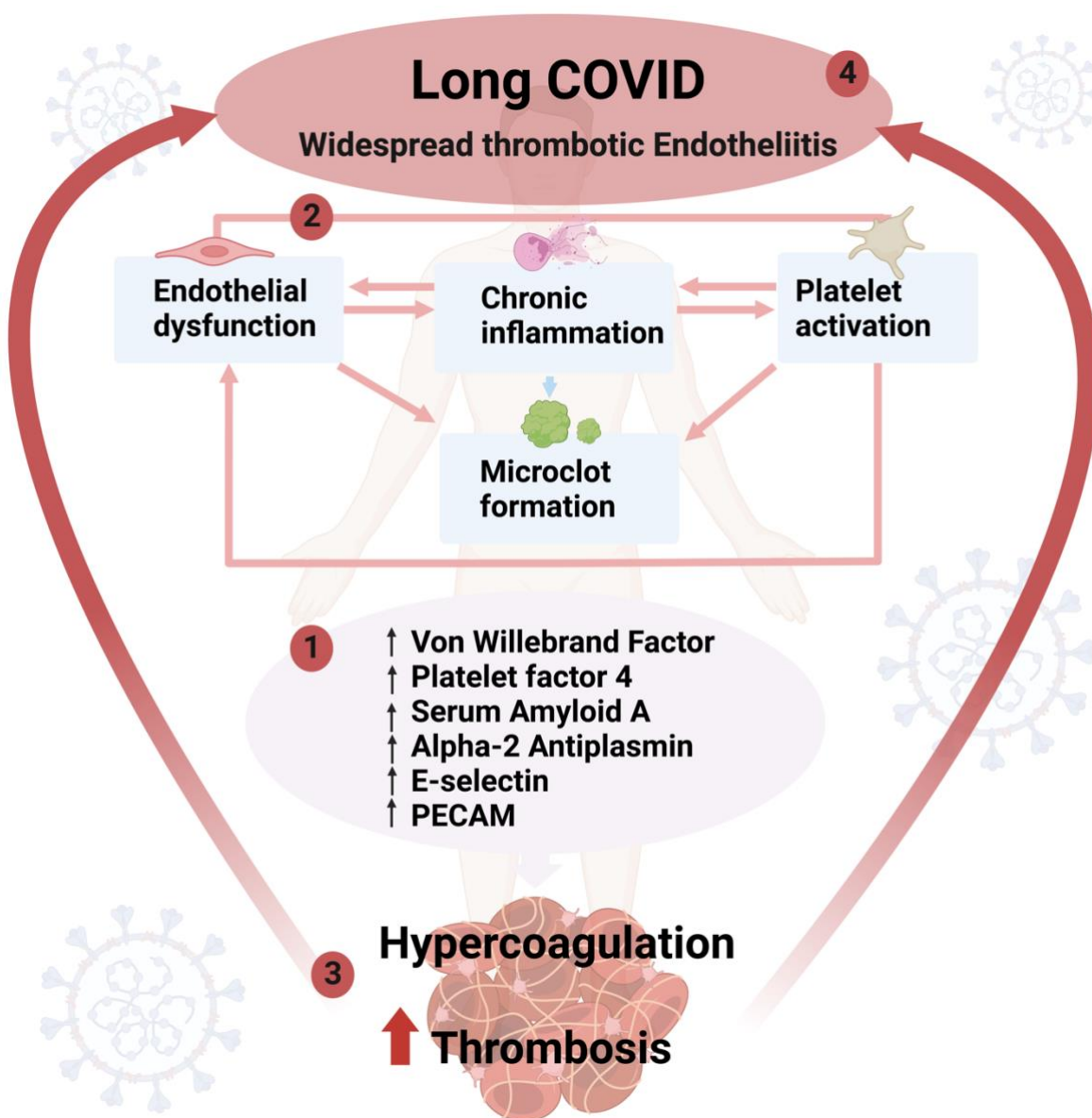
Figure 12 provides an overview of the vascular damage these molecules may cause when in circulation.

Up to now, we have demonstrated significant microclot formation and platelet activation in all Long COVID patients whom we have studied using fluorescence microscopy (2, 10, 17), as well as detailed proteomics analysis revealing several-fold increased concentrations of inflammatory molecules entrapped within the microclots. Unfortunately, both fluorescence microscopy and proteomics are complex techniques usually only available in research facilities and are not currently available in clinical laboratories.

In the current paper, whilst only the mean level of alpha-2-antiplasmin exceeded the upper limit of the laboratory reference range in Long COVID patients, it was noteworthy that the average levels of the other 5 molecules measured were significantly higher in Long COVID patients as compared to the controls- even though technically they were within the 'normal' range. This is alarming if we take into consideration that a significant proportion of the total burden of these inflammatory molecules is entrapped inside fibrinolysis-resistant microclots (2, 10, 17).

Given the significant increase in the rates of thrombotic events following even a mild COVID-19 infection (7), it is imperative that the thrombotic endotheliitis is treated urgently. There is an immediate need for a microclot detection method that can be rolled out for clinical use. We argue that such a microclot detection method together with the demonstration of relatively high levels of the six molecules described in this paper, would be good evidence for an ongoing thrombotic endotheliitis. The optimal therapeutic regimen is yet to be defined; however given the complex pathophysiology, such therapy is likely to incorporate antiplatelet drugs, as well as agents acting on the enzymatic pathway of coagulation.

Figure 12: Overview of pathologies in Long COVID that develop as a direct response to the presence of **1)** the suit of six molecules (Von Willebrand Factor (VWF), platelet factor 4 (PF4), serum amyloid A (SAA), α -2-antiplasmin (α -2AP), PECAM-1 and E-selectin) that we propose as markers to identify **2)** endothelial damage, chronic inflammation and platelet activation, that drives **3)** clotting and ultimately is central in **4)** widespread thrombotic endotheliitis individuals with Long COVID.



Author Contributions: “Conceptualization, E.P. and D.B.K.; Methodologies, S.T., E.P., C.N., T.U. Sample curation, C.V. Clinician input: G.J.L. A.K. and M.A.K.; E.P. and S.T. writing of paper. All authors reviewed and edited the paper.

Funding: D.B.K. thanks the Novo Nordisk Foundation for funding (grant NNF20CC0035580). The funders had no role in study design, data collection and analysis, decision to publish, or preparation of the manuscript. E.P. thanks the NRF of South Africa (grant number 142142) and SA MRC (self-initiated research (SIR) grant). The content and findings reported and illustrated are the sole deduction, view and responsibility of the researchers and do not reflect the official position and sentiments of the funders.

Institutional Review Board Statement: The study was conducted in accordance with the Declaration of Helsinki, and approved by the Institutional Review Board of Stellenbosch University (B21/03/001_ COVID-19, project ID: 21911 (Long COVID registry) and N19/03/043, project ID 9521 with yearly re-approval).

Informed Consent Statement: Informed consent was obtained from all subjects involved in the study.

Conflicts of Interest: E.P. is the managing director of BioCODE Technologies. The other author has no competing interests to declare. The funders had no role in the design of the study; in the collection, analyses, or interpretation of data; in the writing of the manuscript; or in the decision to publish the results”.

REFERENCES

1. L. Tabacof, J. Tosto-Mancuso, J. Wood, M. Cortes, A. Kontorovich, D. McCarthy, D. Rizk, G. Rozanski, E. Breyman, L. Nasr, C. Kellner, J. E. Herrera, D. Putrino, Post-acute COVID-19 Syndrome Negatively Impacts Physical Function, Cognitive Function, Health-Related Quality of Life, and Participation. *Am J Phys Med Rehabil* **101**, 48-52 (2022); published online EpubJan 1 (10.1097/phm.0000000000001910).
2. E. Pretorius, M. Vlok, C. Venter, J. A. Bezuidenhout, G. J. Laubscher, J. Steenkamp, D. B. Kell, Persistent clotting protein pathology in Long COVID/Post-Acute Sequelae of COVID-19 (PASC) is accompanied by increased levels of antiplasmin. *Cardiovasc Diabetol* **20**, 172 (2021); published online EpubAug 23 (10.1186/s12933-021-01359-7).
3. A. D. Proal, M. B. VanElzakker, Long COVID or Post-acute sequelae of COVID-19 (PASC): An overview of 1 biological factors that may contribute to persistent symptoms. *Frontiers in Microbiology In Press*, (2021).
4. R. R. Deer, M. A. Rock, N. Vasilevsky, L. Carmody, H. Rando, A. J. Anzalone, M. D. Basson, T. D. Bennett, T. Bergquist, E. A. Boudreau, C. T. Bramante, J. B. Byrd, T. J. Callahan, L. E. Chan, H. Chu, C. G. Chute, B. D. Coleman, H. E. Davis, J. Gagnier, C. S. Greene, W. B. Hillegass, R. Kavuluru, W. D. Kimble, F. M. Korashy, S. Köhler, C. Liang, F. Liu, H. Liu, V. Madhira, C. R. Madlock-Brown, N. Matentzoglou, D. R. Mazzotti, J. A. McMurry, D. S. McNair, R. A. Moffitt, T. S. Monteith, A. M. Parker, M. A. Perry, E. Pfaff, J. T. Reese, J. Saltz, R. A. Schuff, A. E. Solomonides, J. Solway, H. Spratt, G. S. Stein, A. A. Sule, U. Topaloglu, G. D. Vavougiou, L. Wang, M. A. Haendel, P. N. Robinson, Characterizing Long COVID: Deep Phenotype of a Complex Condition. *EBioMedicine* **74**, 103722 (2021); published online EpubDec (10.1016/j.ebiom.2021.103722).
5. H. E. Davis, G. S. Assaf, L. McCorkell, H. Wei, R. J. Low, Y. Re'em, S. Redfield, J. P. Austin, A. Akrami, Characterizing long COVID in an international cohort: 7 months of symptoms and their impact. *EClinicalMedicine* **38**, 101019 (2021); published online EpubAug (10.1016/j.eclinm.2021.101019).
6. Z. Al-Aly, Y. Xie, B. Bowe, High-dimensional characterization of post-acute sequelae of COVID-19. *Nature* **594**, 259-264 (2021); published online EpubJun (10.1038/s41586-021-03553-9).
7. Z. Al-Aly, B. Bowe, Y. Xie, Long COVID after breakthrough SARS-CoV-2 infection. *Nat Med* **28**, 1461-1467 (2022); published online EpubJul (10.1038/s41591-022-01840-0).
8. Y. Xie, E. Xu, B. Bowe, Z. Al-Aly, Long-term cardiovascular outcomes of COVID-19. *Nat Med* **28**, 583-590 (2022); published online EpubMar (10.1038/s41591-022-01689-3).
9. D. B. Kell, G. J. Laubscher, E. Pretorius, A central role for amyloid fibrin microclots in long COVID/PASC: origins and therapeutic implications. *Biochem J* **479**, 537-559 (2022); published online EpubFeb 17 (10.1042/bcj20220016).
10. A. Kruger, M. Vlok, S. Turner, C. Venter, G. J. Laubscher, D. B. Kell, E. Pretorius, Proteomics of fibrin amyloid microclots in long COVID/post-acute sequelae of COVID-19 (PASC) shows many entrapped pro-inflammatory molecules that may also contribute to a failed fibrinolytic system. *Cardiovasc Diabetol* **21**, 190 (2022); published online EpubSep 21 (10.1186/s12933-022-01623-4).
11. D. B. Kell, E. Pretorius, The potential role of ischaemia-reperfusion injury in chronic, relapsing diseases such as rheumatoid arthritis, Long COVID, and ME/CFS: evidence, mechanisms, and therapeutic implications. *Biochem J* **479**, 1653-1708 (2022); published online EpubAug 31 (10.1042/bcj20220154).
12. GAO. (2022).
13. J. Klein, J. Wood, J. Jaycox, P. Lu, R. M. Dhodapkar, J. R. Gehlhausen, A. Tabachnikova, L. Tabacof, A. A. Malik, K. Kamath, K. Greene, V. S. Monteiro, M. Peña-Hernandez, T. Mao, B. Bhattacharjee, T. Takahashi, C. Lucas, J. Silva, D. McCarthy, E. Breyman, J. Tosto-Mancuso, Y. Dai, E. Perotti, K. Akduman, T. J. Tzeng, L. Xu, I. Yildirim, H. M. Krumholz, J. Shon, R. Medzhitov, S. B. Omer, D. van Dijk, A. M. Ring, D. Putrino, A. Iwasaki, Distinguishing features of Long COVID

- identified through immune profiling. *medRxiv*, (2022); published online EpubAug 10 (10.1101/2022.08.09.22278592).
14. Z. Swank, Y. Senussi, Z. Manickas-Hill, X. G. Yu, J. Z. Li, G. Alter, D. R. Walt, Persistent circulating SARS-CoV-2 spike is associated with post-acute COVID-19 sequelae. *Clin Infect Dis*, (2022); published online EpubSep 2 (10.1093/cid/ciac722).
 15. G. Wallukat, B. Hohberger, K. Wenzel, J. Fürst, S. Schulze-Rothe, A. Wallukat, A. S. Hönicke, J. Müller, Functional autoantibodies against G-protein coupled receptors in patients with persistent Long-COVID-19 symptoms. *J Transl Autoimmun* **4**, 100100 (2021)10.1016/j.jtauto.2021.100100).
 16. D. Bertin, E. Kaphan, S. Weber, B. Babacci, R. Arcani, B. Faucher, A. Ménard, A. Brodovitch, J. L. Mege, N. Bardin, Persistent IgG anticardiolipin autoantibodies are associated with post-COVID syndrome. *Int J Infect Dis* **113**, 23-25 (2021); published online EpubDec (10.1016/j.ijid.2021.09.079).
 17. E. Pretorius, C. Venter, G. J. Laubscher, M. J. Kotze, S. O. Oladejo, L. R. Watson, K. Rajaratnam, B. W. Watson, D. B. Kell, Prevalence of symptoms, comorbidities, fibrin amyloid microclots and platelet pathology in individuals with Long COVID/Post-Acute Sequelae of COVID-19 (PASC). *Cardiovascular Diabetology* **21**, 148 (2022); published online Epub2022/08/06 (10.1186/s12933-022-01579-5).
 18. L. M. Grobbelaar, C. Venter, M. Vlok, M. Ngoepe, G. J. Laubscher, P. J. Lourens, J. Steenkamp, D. B. Kell, E. Pretorius, SARS-CoV-2 spike protein S1 induces fibrin(ogen) resistant to fibrinolysis: implications for microclot formation in COVID-19. *Biosci Rep* **41**, (2021); published online EpubAug 27 (10.1042/bsr20210611).
 19. E. Pretorius, M. Vlok, C. Venter, J. A. Bezuidenhout, G. J. Laubscher, J. Steenkamp, D. B. Kell, Persistent clotting protein pathology in Long COVID/ Post-Acute Sequelae of COVID-19 (PASC) is accompanied by increased levels of antiplasmin. *medRxiv*, 2021.2005.2021.21257578 (2021)10.1101/2021.05.21.21257578).
 20. E. Pretorius, C. Venter, G. J. Laubscher, P. J. Lourens, J. Steenkamp, D. B. Kell, Prevalence of readily detected amyloid blood clots in 'unclotted' Type 2 Diabetes Mellitus and COVID-19 plasma: a preliminary report. *Cardiovasc Diabetol* **19**, 193 (2020); published online EpubNov 17 (10.1186/s12933-020-01165-7).
 21. R. Knight, V. Walker, S. Ip, J. A. Cooper, T. Bolton, S. Keene, R. Denholm, A. Akbari, H. Abbasizanjani, F. Torabi, E. Omigie, S. Hollings, T. L. North, R. Toms, X. Jiang, E. D. Angelantonio, S. Denaxas, J. H. Thygesen, C. Tomlinson, B. Bray, C. J. Smith, M. Barber, K. Khunti, G. Davey Smith, N. Chaturvedi, C. Sudlow, W. N. Whiteley, A. M. Wood, J. A. C. Sterne, Association of COVID-19 With Major Arterial and Venous Thrombotic Diseases: A Population-Wide Cohort Study of 48 Million Adults in England and Wales. *Circulation* **146**, 892-906 (2022); published online EpubSep 20 (10.1161/circulationaha.122.060785).
 22. C. Grobler, S. C. Maphumulo, L. M. Grobbelaar, J. C. Bredenkamp, G. J. Laubscher, P. J. Lourens, J. Steenkamp, D. B. Kell, E. Pretorius, Covid-19: The Rollercoaster of Fibrin(Ogen), D-Dimer, Von Willebrand Factor, P-Selectin and Their Interactions with Endothelial Cells, Platelets and Erythrocytes. *Int J Mol Sci* **21**, (2020); published online EpubJul 21 (10.3390/ijms21145168).
 23. B. Martínez-Salazar, M. Holwerda, C. Stüdle, I. Piragyte, N. Mercader, B. Engelhardt, R. Rieben, Y. Döring, COVID-19 and the Vasculature: Current Aspects and Long-Term Consequences. *Front Cell Dev Biol* **10**, 824851 (2022)10.3389/fcell.2022.824851).
 24. M. Haffke, H. Freitag, G. Rudolf, M. Seifert, W. Doehner, N. Scherbakov, L. Hanitsch, K. Wittke, S. Bauer, F. Konietschke, F. Paul, J. Bellmann-Strobl, C. Kedor, C. Scheibenbogen, F. Sotzny, Endothelial dysfunction and altered endothelial biomarkers in patients with post-COVID-19 syndrome and chronic fatigue syndrome (ME/CFS). *J Transl Med* **20**, 138 (2022); published online EpubMar 22 (10.1186/s12967-022-03346-2).
 25. C. Freitas, M. C. Assis, A. M. Saliba, V. M. Morandi, C. C. Figueiredo, M. Pereira, M. C. Plotkowski, The infection of microvascular endothelial cells with ExoU-producing

Pseudomonas aeruginosa triggers the release of von Willebrand factor and platelet adhesion. *Mem Inst Oswaldo Cruz* **107**, 728-734 (2012); published online EpubSep (10.1590/s0074-02762012000600004).

26. C. O. Umerah, Momodu, II, in *StatPearls*. (StatPearls Publishing

Copyright © 2022, StatPearls Publishing LLC., Treasure Island (FL), 2022).

27. T. Kalagara, T. Moutsis, Y. Yang, K. I. Pappelbaum, A. Farken, L. Cladder-Micus, Y. S. S. Vidal, A. John, A. T. Bauer, B. M. Moerschbacher, S. W. Schneider, C. Gorzelanny, The endothelial glycocalyx anchors von Willebrand factor fibers to the vascular endothelium. *Blood Adv* **2**, 2347-2357 (2018); published online EpubSep 25 (10.1182/bloodadvances.2017013995).

28. D. P. Kaufman, T. Sanvictores, M. Costanza, in *StatPearls*. (StatPearls Publishing

Copyright © 2022, StatPearls Publishing LLC., Treasure Island (FL), 2022).

29. N. Zhang, P. J. Newman, Packaging functionally important plasma proteins into the α -granules of human-induced pluripotent stem cell-derived megakaryocytes. *J Tissue Eng Regen Med* **13**, 244-252 (2019); published online EpubFeb (10.1002/term.2785).

30. A. Löf, J. P. Müller, M. A. Brehm, A biophysical view on von Willebrand factor activation. *J Cell Physiol* **233**, 799-810 (2018); published online EpubFeb (10.1002/jcp.25887).

31. A. Yee, C. A. Kretz, Von Willebrand factor: form for function. *Semin Thromb Hemost* **40**, 17-27 (2014); published online EpubFeb (10.1055/s-0033-1363155).

32. J. Zhang, K. M. Tecson, P. A. McCullough, Endothelial dysfunction contributes to COVID-19-associated vascular inflammation and coagulopathy. *Rev Cardiovasc Med* **21**, 315-319 (2020); published online EpubSep 30 (10.31083/j.rcm.2020.03.126).

33. D. M. Smadja, S. J. Mentzer, M. Fontenay, M. A. Laffan, M. Ackermann, J. Helms, D. Jonigk, R. Chocron, G. B. Pier, N. Gendron, S. Pons, J. L. Diehl, C. Margadant, C. Guerin, E. J. M. Huijbers, A. Philippe, N. Chapuis, P. Nowak-Sliwinska, C. Karagiannidis, O. Sanchez, P. Kümpers, D. Skurnik, A. M. Randi, A. W. Griffioen, COVID-19 is a systemic vascular hemopathy: insight for mechanistic and clinical aspects. *Angiogenesis*, 1-34 (2021); published online EpubJun 28 (10.1007/s10456-021-09805-6).

34. I. Nazy, S. D. Jevtic, J. C. Moore, A. Huynh, J. W. Smith, J. G. Kelton, D. M. Arnold, Platelet-activating immune complexes identified in critically ill COVID-19 patients suspected of heparin-induced thrombocytopenia. *J Thromb Haemost* **19**, 1342-1347 (2021); published online EpubMay (10.1111/jth.15283).

35. I. Mancini, L. Baronciani, A. Artoni, P. Colpani, M. Biganzoli, G. Cozzi, C. Novembrino, M. Boscolo Anzoletti, V. De Zan, M. T. Pagliari, R. Gualtierotti, S. Aliberti, M. Panigada, G. Grasselli, F. Blasi, F. Peyvandi, The ADAMTS13-von Willebrand factor axis in COVID-19 patients. *J Thromb Haemost* **19**, 513-521 (2021); published online EpubFeb (10.1111/jth.15191).

36. S. Choudhary, K. Sharma, P. K. Singh, Von Willebrand factor: A key glycoprotein involved in thrombo-inflammatory complications of COVID-19. *Chem Biol Interact* **348**, 109657 (2021); published online EpubSep 10 (10.1016/j.cbi.2021.109657).

37. H. Fogarty, S. E. Ward, L. Townsend, E. Karampini, S. Elliott, N. Conlon, J. Dunne, R. Kiersey, A. Naughton, M. Gardiner, M. Byrne, C. Bergin, J. M. O'Sullivan, I. Martin-Loeches, P. Nadarajan, C. Bannan, P. W. Mallon, G. F. Curley, R. J. S. Preston, A. M. Rehill, R. I. Baker, C. N. Cheallaigh, J. S. O'Donnell, Sustained VWF-ADAMTS-13 axis imbalance and endotheliopathy in long COVID syndrome is related to immune dysfunction. *J Thromb Haemost* **20**, 2429-2438 (2022); published online EpubOct (10.1111/jth.15830).

38. T. A. Nevzorova, E. R. Mordakhanova, A. G. Daminova, A. A. Ponomareva, I. A. Andrianova, G. Le Minh, L. Rauova, R. I. Litvinov, J. W. Weisel, Platelet factor 4-containing immune complexes induce platelet activation followed by calpain-dependent platelet death. *Cell Death Discov* **5**, 106 (2019)10.1038/s41420-019-0188-0).

39. I. Johnston, A. Sarkar, V. Hayes, G. T. Koma, G. M. Arepally, J. Chen, D. W. Chung, J. A. López, D. B. Cines, L. Rauova, M. Poncz, Recognition of PF4-VWF complexes by heparin-induced

- thrombocytopenia antibodies contributes to thrombus propagation. *Blood* **135**, 1270-1280 (2020); published online EpubApr 9 (10.1182/blood.2018881607).
40. J. Brodard, J. A. Kremer Hovinga, P. Fontana, J. D. Studt, Y. Gruel, A. Greinacher, COVID-19 patients often show high-titer non-platelet-activating anti-PF4/heparin IgG antibodies. *J Thromb Haemost* **19**, 1294-1298 (2021); published online EpubMay (10.1111/jth.15262).
 41. M. S. Lord, B. Cheng, B. L. Farrugia, S. McCarthy, J. M. Whitelock, Platelet Factor 4 Binds to Vascular Proteoglycans and Controls Both Growth Factor Activities and Platelet Activation. *J Biol Chem* **292**, 4054-4063 (2017); published online EpubMar 10 (10.1074/jbc.M116.760660).
 42. D. B. Kell, E. Pretorius, Proteins behaving badly. Substoichiometric molecular control and amplification of the initiation and nature of amyloid fibril formation: lessons from and for blood clotting. *Prog Biophys Mol Biol* **123**, 16-41 (2017); published online EpubJan (10.1016/j.pbiomolbio.2016.08.006).
 43. S. Singh, S. Saleem, G. L. Reed, Alpha2-Antiplasmin: The Devil You Don't Know in Cerebrovascular and Cardiovascular Disease. *Front Cardiovasc Med* **7**, 608899 (2020)10.3389/fcvm.2020.608899).
 44. C. Jumeau, F. Awad, E. Assrawi, L. Cobret, P. Duquesnoy, I. Giurgea, D. Valeyre, G. Grateau, S. Amselem, J. F. Bernaudin, S. A. Karabina, Expression of SAA1, SAA2 and SAA4 genes in human primary monocytes and monocyte-derived macrophages. *PLoS One* **14**, e0217005 (2019)10.1371/journal.pone.0217005).
 45. G. H. Sack, Jr., Serum amyloid A - a review. *Mol Med* **24**, 46 (2018); published online EpubAug 30 (10.1186/s10020-018-0047-0).
 46. P. Shridas, L. R. Tannock, Role of serum amyloid A in atherosclerosis. *Curr Opin Lipidol* **30**, 320-325 (2019); published online EpubAug (10.1097/mol.0000000000000616).
 47. J. Panés, M. Perry, D. N. Granger, Leukocyte-endothelial cell adhesion: avenues for therapeutic intervention. *Br J Pharmacol* **126**, 537-550 (1999); published online EpubFeb (10.1038/sj.bjp.0702328).
 48. S. Balta, Endothelial Dysfunction and Inflammatory Markers of Vascular Disease. *Curr Vasc Pharmacol* **19**, 243-249 (2021)10.2174/1570161118666200421142542).
 49. S. R. Barthel, J. D. Gavino, L. Descheny, C. J. Dimitroff, Targeting selectins and selectin ligands in inflammation and cancer. *Expert Opin Ther Targets* **11**, 1473-1491 (2007); published online EpubNov (10.1517/14728222.11.11.1473).
 50. P. Lertkiatmongkol, D. Liao, H. Mei, Y. Hu, P. J. Newman, Endothelial functions of platelet/endothelial cell adhesion molecule-1 (CD31). *Curr Opin Hematol* **23**, 253-259 (2016); published online EpubMay (10.1097/moh.0000000000000239).
 51. J. R. Privratsky, P. J. Newman, PECAM-1: regulator of endothelial junctional integrity. *Cell Tissue Res* **355**, 607-619 (2014); published online EpubMar (10.1007/s00441-013-1779-3).
 52. G. J. Laubscher, P. J. Lourens, C. Venter, D. B. Kell, E. Pretorius, TEG[®], Microclot and Platelet Mapping for Guiding Early Management of Severe COVID-19 Coagulopathy. *Journal of Clinical Medicine* **10**, (2021)10.3390/jcm10225381).
 53. M. J. Page, G. J. A. Thomson, J. M. Nunes, A. M. Engelbrecht, T. A. Nell, W. J. S. de Villiers, M. C. de Beer, L. Engelbrecht, D. B. Kell, E. Pretorius, Serum amyloid A binds to fibrin(ogen), promoting fibrin amyloid formation. *Sci Rep* **9**, 3102 (2019); published online EpubFeb 28 (10.1038/s41598-019-39056-x).
 54. E. Pretorius, S. Mbotwe, D. B. Kell, Lipopolysaccharide-binding protein (LBP) reverses the amyloid state of fibrin seen in plasma of type 2 diabetics with cardiovascular co-morbidities. *Sci Rep* **7**, 9680 (2017); published online EpubAug 29 (10.1038/s41598-017-09860-4).
 55. E. Pretorius, M. J. Page, L. Engelbrecht, G. C. Ellis, D. B. Kell, Substantial fibrin amyloidogenesis in type 2 diabetes assessed using amyloid-selective fluorescent stains. *Cardiovasc Diabetol* **16**, 141 (2017); published online EpubNov 2 (10.1186/s12933-017-0624-5).
 56. E. Pretorius, S. Mbotwe, J. Bester, C. J. Robinson, D. B. Kell, Acute induction of anomalous and amyloidogenic blood clotting by molecular amplification of highly substoichiometric levels of

- bacterial lipopolysaccharide. *J R Soc Interface* **13**, (2016); published online EpubSep (10.1098/rsif.2016.0539).
57. G. Captur, J. C. Moon, C.-C. Topriceanu, G. Joy, L. Swadling, J. Hallqvist, I. Doykov, N. Patel, J. Spiewak, T. Baldwin, M. Hamblin, K. Menacho, M. Fontana, T. A. Treibel, C. Manisty, B. O'Brien, J. M. Gibbons, C. Pade, T. Brooks, D. M. Altmann, R. J. Boyton, Á. McKnight, M. K. Maini, M. Noursadeghi, K. Mills, W. E. Heywood, Plasma proteomic signature predicts who will get persistent symptoms following SARS-CoV-2 infection. *eBioMedicine*, 104293 (2022); published online Epub2022/09/28/ (<https://doi.org/10.1016/j.ebiom.2022.104293>).
 58. S. Urieli-Shoval, G. Shubinsky, R. P. Linke, M. Fridkin, I. Tabi, Y. Matzner, Adhesion of human platelets to serum amyloid A. *Blood* **99**, 1224-1229 (2002); published online EpubFeb 15 (10.1182/blood.v99.4.1224).
 59. E. F. Plow, D. Collen, The presence and release of alpha 2-antiplasmin from human platelets. *Blood* **58**, 1069-1074 (1981); published online EpubDec (
 60. F. Denorme, K. Vanhoorelbeke, S. F. De Meyer, von Willebrand Factor and Platelet Glycoprotein Ib: A Thromboinflammatory Axis in Stroke. *Front Immunol* **10**, 2884 (2019)10.3389/fimmu.2019.02884).
 61. Y. Ozaki, K. Suzuki-Inoue, O. Inoue, Platelet receptors activated via multimerization: glycoprotein VI, GPIb-IX-V, and CLEC-2. *J Thromb Haemost* **11 Suppl 1**, 330-339 (2013); published online EpubJun (10.1111/jth.12235).
 62. J. M. Gibbins, Platelet adhesion signalling and the regulation of thrombus formation. *J Cell Sci* **117**, 3415-3425 (2004); published online EpubJul 15 (10.1242/jcs.01325).
 63. M. Bryckaert, J. P. Rosa, C. V. Denis, P. J. Lenting, Of von Willebrand factor and platelets. *Cell Mol Life Sci* **72**, 307-326 (2015); published online EpubJan (10.1007/s00018-014-1743-8).
 64. L. Oggianu, S. Lancellotti, D. Pitocco, F. Zaccardi, P. Rizzo, F. Martini, G. Ghirlanda, R. De Cristofaro, The oxidative modification of von Willebrand factor is associated with thrombotic angiopathies in diabetes mellitus. *PLoS One* **8**, e55396 (2013)10.1371/journal.pone.0055396).
 65. M. M. Prechel, J. M. Walenga, Emphasis on the Role of PF4 in the Incidence, Pathophysiology and Treatment of Heparin Induced Thrombocytopenia. *Thromb J* **11**, 7 (2013); published online EpubApr 5 (10.1186/1477-9560-11-7).
 66. S. S. Huang, J. S. Huang, T. F. Deuel, Proteoglycan carrier of human platelet factor 4. Isolation and characterization. *J Biol Chem* **257**, 11546-11550 (1982); published online EpubOct 10 (
 67. A. Greinacher, M. Gopinadhan, J. U. Günther, M. A. Omer-Adam, U. Strobel, T. E. Warkentin, G. Papastavrou, W. Weitschies, C. A. Helm, Close approximation of two platelet factor 4 tetramers by charge neutralization forms the antigens recognized by HIT antibodies. *Arterioscler Thromb Vasc Biol* **26**, 2386-2393 (2006); published online EpubOct (10.1161/01.Atv.0000238350.89477.88).
 68. C. Fourie, P. Shridas, T. Davis, W. J. S. de Villiers, A. M. Engelbrecht, Serum amyloid A and inflammasome activation: A link to breast cancer progression? *Cytokine Growth Factor Rev* **59**, 62-70 (2021); published online EpubJun (10.1016/j.cytogfr.2020.10.006).
 69. A. Vallejo, B. Chami, J. M. Dennis, M. Simone, G. Ahmad, A. I. Abdo, A. Sharma, W. A. Shihata, N. Martin, J. P. F. Chin-Dusting, J. B. de Haan, P. K. Witting, NFκB Inhibition Mitigates Serum Amyloid A-Induced Pro-Atherogenic Responses in Endothelial Cells and Leukocyte Adhesion and Adverse Changes to Endothelium Function in Isolated Aorta. *Int J Mol Sci* **20**, (2018); published online EpubDec 28 (10.3390/ijms20010105).
 70. K. Auvinen, S. Jalkanen, M. Salmi, Expression and function of endothelial selectins during human development. *Immunology* **143**, 406-415 (2014); published online EpubNov (10.1111/imm.12318).
 71. I. Y. Oh, C. H. Yoon, J. Hur, J. H. Kim, T. Y. Kim, C. S. Lee, K. W. Park, I. H. Chae, B. H. Oh, Y. B. Park, H. S. Kim, Involvement of E-selectin in recruitment of endothelial progenitor cells and angiogenesis in ischemic muscle. *Blood* **110**, 3891-3899 (2007); published online EpubDec 1 (10.1182/blood-2006-10-048991).

72. D. N. Granger, Senchenkova, E. , in *Inflammation and the Microcirculation*. (San Rafael (CA): Morgan & Claypool Life Sciences, 2010), chap. 7, pp. <https://www.ncbi.nlm.nih.gov/books/NBK53380/>.
73. D. Wong, K. Dorovini-Zis, Regulation by cytokines and lipopolysaccharide of E-selectin expression by human brain microvessel endothelial cells in primary culture. *J Neuropathol Exp Neurol* **55**, 225-235 (1996); published online EpubFeb (10.1097/00005072-199602000-00011).
74. H. Harjunpää, M. Lloret Asens, C. Guenther, S. C. Fagerholm, Cell Adhesion Molecules and Their Roles and Regulation in the Immune and Tumor Microenvironment. *Front Immunol* **10**, 1078 (2019)10.3389/fimmu.2019.01078).
75. T. Yago, B. Shao, J. J. Miner, L. Yao, A. G. Klopocki, K. Maeda, K. M. Coggeshall, R. P. McEver, E-selectin engages PSGL-1 and CD44 through a common signaling pathway to induce integrin alphaLbeta2-mediated slow leukocyte rolling. *Blood* **116**, 485-494 (2010); published online EpubJul 22 (10.1182/blood-2009-12-259556).
76. S. D. Chase, J. L. Magnani, S. I. Simon, E-selectin ligands as mechanosensitive receptors on neutrophils in health and disease. *Ann Biomed Eng* **40**, 849-859 (2012); published online EpubApr (10.1007/s10439-011-0507-y).
77. A. Kalinowska, J. Losy, PECAM-1, a key player in neuroinflammation. *Eur J Neurol* **13**, 1284-1290 (2006); published online EpubDec (10.1111/j.1468-1331.2006.01640.x).
78. E. Rijcken, R. B. Mennigen, S. D. Schaefer, M. G. Laukoetter, C. Anthoni, H. U. Spiegel, M. Bruewer, N. Senninger, C. F. Kriegstein, PECAM-1 (CD 31) mediates transendothelial leukocyte migration in experimental colitis. *Am J Physiol Gastrointest Liver Physiol* **293**, G446-452 (2007); published online EpubAug (10.1152/ajpgi.00097.2007).
79. L. Xia, B. Zhang, Y. Sun, B. Chen, Z. Yu, Analysis of Syk/PECAM-1 signaling pathway in low shear stress induced atherosclerosis based on ultrasound imaging. *Comput Methods Programs Biomed* **201**, 105953 (2021); published online EpubApr (10.1016/j.cmpb.2021.105953).
80. C. Paddock, D. Zhou, P. Lertkiatmongkol, P. J. Newman, J. Zhu, Structural basis for PECAM-1 homophilic binding. *Blood* **127**, 1052-1061 (2016); published online EpubFeb 25 (10.1182/blood-2015-07-660092).
81. S. Falati, S. Patil, P. L. Gross, M. Stapleton, G. Merrill-Skoloff, N. E. Barrett, K. L. Pixton, H. Weiler, B. Cooley, D. K. Newman, P. J. Newman, B. C. Furie, B. Furie, J. M. Gibbins, Platelet PECAM-1 inhibits thrombus formation in vivo. *Blood* **107**, 535-541 (2006); published online EpubJan 15 (10.1182/blood-2005-04-1512).
82. D. E. Conway, M. A. Schwartz, Mechanotransduction of shear stress occurs through changes in VE-cadherin and PECAM-1 tension: implications for cell migration. *Cell Adh Migr* **9**, 335-339 (2015)10.4161/19336918.2014.968498).
83. E. Tzima, M. Irani-Tehrani, W. B. Kiosses, E. Dejana, D. A. Schultz, B. Engelhardt, G. Cao, H. DeLisser, M. A. Schwartz, A mechanosensory complex that mediates the endothelial cell response to fluid shear stress. *Nature* **437**, 426-431 (2005); published online EpubSep 15 (10.1038/nature03952).
84. M. Cicmil, J. M. Thomas, M. Leduc, C. Bon, J. M. Gibbins, Platelet endothelial cell adhesion molecule-1 signaling inhibits the activation of human platelets. *Blood* **99**, 137-144 (2002); published online EpubJan 1 (10.1182/blood.v99.1.137).
85. D. C. Rijcken, S. Uitte de Willige, Inhibition of Fibrinolysis by Coagulation Factor XIII. *Biomed Res Int* **2017**, 1209676 (2017)10.1155/2017/1209676).
86. B. G. Lu, T. Sofian, R. H. Law, P. B. Coughlin, A. J. Horvath, Contribution of conserved lysine residues in the alpha2-antiplasmin C terminus to plasmin binding and inhibition. *J Biol Chem* **286**, 24544-24552 (2011); published online EpubJul 15 (10.1074/jbc.M111.229013).