

Appendix Tables and Figures

Number	Item	Page
Figure 1.	Birth weight-specific morbidity/mortality at 37 weeks' gestation	2
Figure 2.	Birth weight-specific morbidity/mortality at 38 weeks' gestation	3
Figure 3.	Birth weight-specific morbidity/mortality at 39 weeks' gestation	4
Figure 4.	Birth weight-specific morbidity/mortality at 40 weeks' gestation	5
Figure 5.	Birth weight-specific morbidity/mortality at 41 weeks' gestation	6
Table 1.	Morbidity/mortality-based birth weight cut-offs, female singletons	7
Table 2.	Morbidity/mortality-based birth weight cut-offs, male singletons	8
Table 3.	Clinical performance of birth weight cut-offs at 37 weeks' gestation	9
Table 4.	Clinical performance of birth weight cut-offs at 38 weeks' gestation	10
Table 5.	Clinical performance of birth weight cut-offs at 39 weeks' gestation	11
Table 6.	Clinical performance of birth weight cut-offs at 40 weeks' gestation	12
Table 7.	Clinical performance of birth weight cut-offs at 41 weeks' gestation	13
Table 8.	Clinical performance of birth weight cut-offs for identifying 5-min Apgar<4	14
Table 9.	Clinical performance of birth weight cut-offs for identifying asst. ventilation	15
Table 10.	Clinical performance of birth weight cut-offs for identifying seizures	16
Table 11.	Clinical performance of birth weight cut-offs for identifying neonatal death	17
Table 12.	Epidemiologic performance of birth weight cut-offs for 5-min Apgar <4	18
Table 13.	Epidemiologic performance of birth weight cut-offs for asst. ventilation	19
Table 14.	Epidemiologic performance of birth weight cut-offs for seizures	20
Table 15.	Epidemiologic performance of birth weight cut-offs for neonatal deaths	21
Figure 6.	Birth weight distribution of live births and infants with 5-min Apgar<4	22
Figure 7.	Birth weight distribution of live births and infants requiring asst. ventilation	23
Figure 8.	Birth weight distribution of live births and infants with seizures	24
Figure 9.	Birth weight distribution of live births and neonatal deaths	25

Figure 1. Penalized B-spline modeling of birth weight-specific composite severe neonatal morbidity and neonatal mortality (SNMM) among female and male singletons at 37 weeks' gestation, United States, 2003 to 2017.

Singletons at 37 weeks' gestation

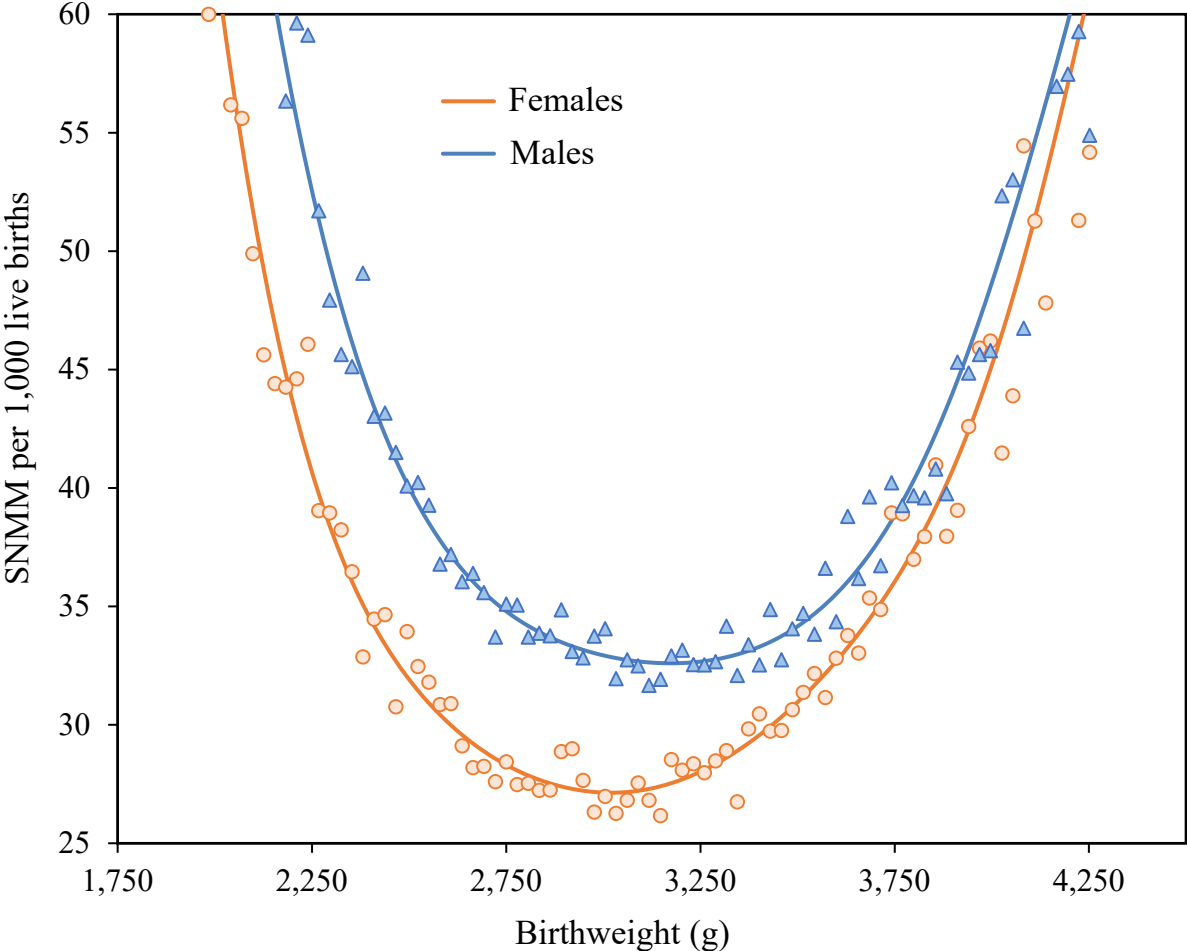


Figure 2. Penalized B-spline modeling of birth weight-specific composite severe neonatal morbidity and neonatal mortality (SNMM) among female and male singletons at 38 weeks' gestation, United States, 2003 to 2017.

Singletons at 38 weeks' gestation

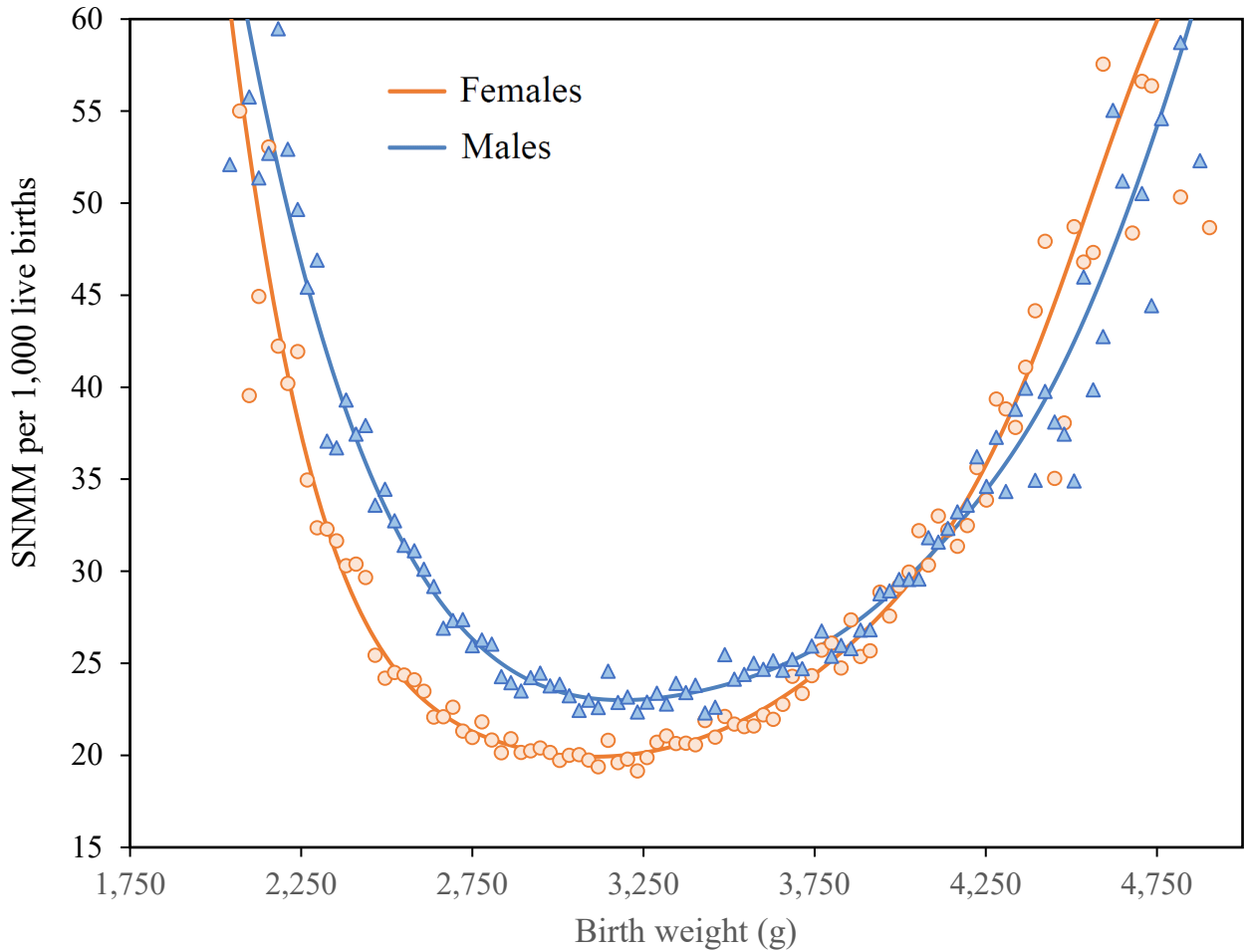


Figure 3. Penalized B-spline modeling of birth weight-specific composite severe neonatal morbidity and neonatal mortality (SNMM) among female and male singletons at 39 weeks' gestation, United States, 2003 to 2017.

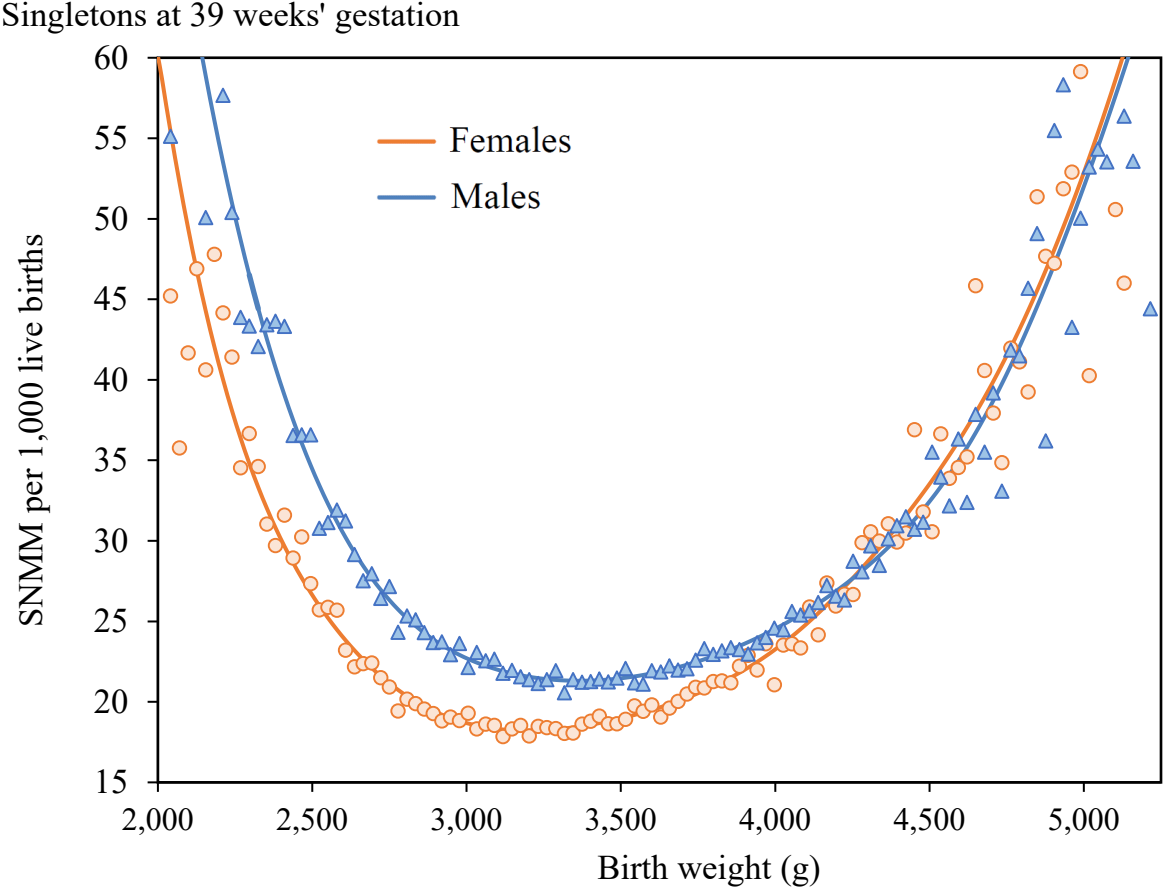


Figure 4. Penalized B-spline modeling of birth weight-specific composite severe neonatal morbidity and neonatal mortality (SNMM) among female and male singletons at 40 weeks' gestation, United States, 2003 to 2017.

Singletons at 40 weeks' gestation

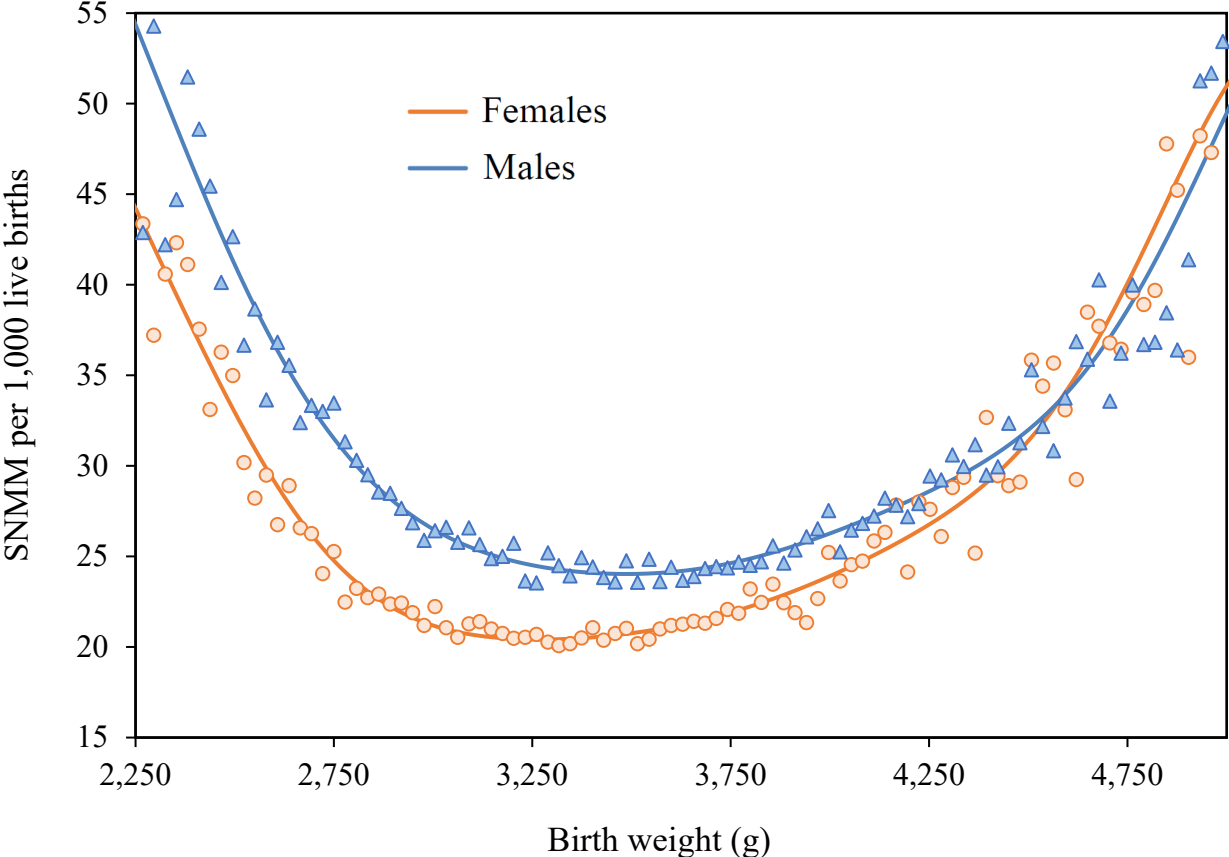


Figure 5. Penalized B-spline modeling of birth weight-specific composite severe neonatal morbidity and neonatal mortality (SNMM) among female and male singletons at 41 weeks' gestation, United States, 2003 to 2017.

Singletons at 41 weeks' gestation

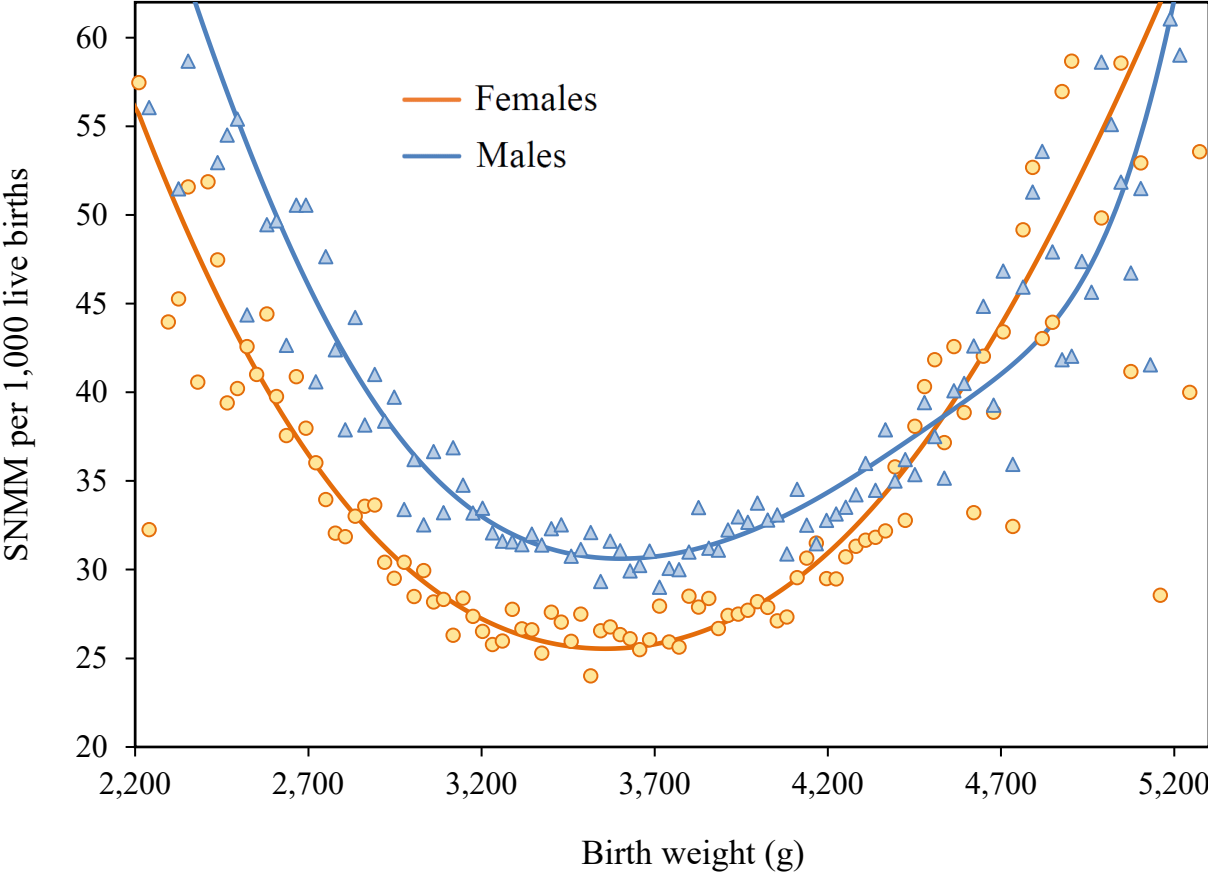


Table 1. Birth weight at which severe neonatal morbidity and neonatal mortality (SNMM) odds were lowest, and at which the odds of SNMM were increased by 10%, 50 and 100%, female singleton live births at 37 to 41 weeks' gestation, United States, 2003 to 2017.

Gestational age	Birth weight (g)*	Reference centiles	Intergrowth standard centiles	WHO standard centiles	Severe neonatal morbidity/mortality per 1,000 live births	Odds Ratio
37 weeks	2,098	1.9	1.8	4.4	51.7	2.0
	2,268	4.8	4.8	9.6	39.7	1.5
	2,637	22.1	25.7	29.6	29.6	1.1
	3,033	58.0	65.6	70.2	27.1	1.0
	3,430	85.9	91.0	95.3	29.9	1.1
	3,884	97.0	98.9	99.9	40.2	1.5
	4,139	98.8	99.7	99.9	53.2	2.0
38 weeks	2,240	1.0	1.6	2.5	38.2	2.0
	2,381	2.5	3.8	4.3	29.5	1.5
	2,693	11.9	17.2	19.5	21.9	1.1
	3,118	46.6	57.7	54.7	19.9	1.0
	3,544	81.9	88.7	89.3	22.0	1.1
	4,026	96.9	98.7	99.8	29.4	1.5
	4,337	99.1	99.7	99.9	39.2	2.0
39 weeks	2,268	0.4	0.8	1.0	36.4	2.0
	2,495	1.6	3.3	3.1	26.8	1.5
	2,835	10.6	17.3	15.2	20.0	1.1
	3,203	39.5	51.7	46.1	18.2	1.0
	3,685	81.7	88.4	84.8	20.0	1.1
	4,224	97.8	99.0	99.8	27.1	1.5
	4,593	99.6	99.9	99.9	36.2	2.0
40 weeks	2,353	0.4	0.7	0.9	39.8	2.0
	2,551	1.3	2.3	1.8	30.8	1.5
	2,863	7.4	11.7	7.1	22.5	1.1
	3,317	40.5	50.7	41.8	20.5	1.0
	3,856	85.5	90.1	84.8	22.5	1.1
	4,423	98.7	99.3	99.9	30.3	1.5
	4,819	99.8	99.9	99.9	40.4	2.0
41 weeks	2,325	0.2	0.3	0.8	50.2	2.0
	2,665	1.6	2.6	1.0	37.5	1.5
	3,118	16.0	22.0	10.8	28.1	1.1
	3,572	55.9	65.1	53.2	25.5	1.0
	3,997	87.0	91.3	85.3	28.0	1.1
	4,508	98.5	99.1	99.9	37.9	1.5
	4,876	99.8	99.9	99.9	50.2	2.0

* Birth weight-specific SNMM rates were modeled at each gestational week with birth weight grouped into 28 g categories (to address ounce and digit preference in the data). Birth weights in the table refer to the midpoint of the birth weight category at issue. Grey shading identified the birth weight and centiles with the lowest SNMM rate at each gestational week.

Table 2. Birth weight at which severe neonatal morbidity and neonatal mortality (SNMM) odds were lowest, and at which the odds of SNMM were increased by 10%, 50 and 100%, male singleton live births at 37 to 41 weeks' gestation, United States, 2003 to 2017.

Gestational age	Birth weight (g)*	Reference centiles	Intergrowth standard centiles	WHO standard centiles	Severe neonatal morbidity/mortality per 1,000 live births	Odds Ratio
37 weeks	2,126	1.5	1.8	3.0	63.3	2.0
	2,325	4.0	5.2	6.5	47.7	1.5
	2,693	18.2	23.9	19.9	35.6	1.1
	3,175	59.7	68.6	66.7	32.6	1.0
	3,600	87.7	92.4	92.0	35.5	1.1
	3,997	96.9	98.7	98.9	48.5	1.5
	4,252	98.7	99.6	99.9	63.1	2.0
38 weeks	2,268	0.8	1.5	1.0	45.5	2.0
	2,466	2.4	4.4	3.1	34.7	1.5
	2,807	12.2	19.3	15.2	25.4	1.1
	3,175	40.0	52.7	43.9	23.0	1.0
	3,685	82.3	89.4	86.1	25.2	1.1
	4,252	97.7	99.1	99.6	34.4	1.5
	4,564	99.4	99.8	99.9	44.8	2.0
39 weeks	2,353	0.4	1.0	0.9	42.5	2.0
	2,580	1.6	3.5	1.8	31.2	1.5
	2,920	9.5	16.4	12.0	23.5	1.1
	3,374	43.6	56.9	45.4	21.3	1.0
	3,884	84.5	91.1	85.8	23.5	1.1
	4,479	98.5	99.4	99.9	31.9	1.5
	4,791	99.6	99.9	99.9	42.0	2.0
40 weeks	2,381	0.3	0.5	0.9	46.6	2.0
	2,608	1.1	1.9	1.1	36.1	1.5
	3,033	10.1	14.9	11.8	26.2	1.1
	3,515	47.3	57.3	44.6	24.0	1.0
	3,997	85.1	90.2	81.4	26.2	1.1
	4,678	99.2	99.6	99.9	35.7	1.5
	4,961	99.8	99.9	99.9	47.4	2.0
41 weeks	2,410	0.3	0.3	0.9	59.9	2.0
	2,722	1.3	1.8	1.9	45.2	1.5
	3,147	11.1	14.3	13.6	33.8	1.1
	3,600	45.3	53.8	41.4	30.6	1.0
	4,139	86.3	91.0	79.8	33.7	1.1
	4,904	99.5	99.7	99.6	45.3	1.5
	5,160	99.9	99.9	99.9	58.7	2.0

* Birth weight-specific SNMM rates were modeled at each gestational week with birth weight grouped into 28.5 g categories (to address ounce and digit preference in the data). Birth weights in the table refer to the midpoint of the birth weight category at issue. Grey shading identified the birth weights and centiles with the lowest SNMM rate at each gestational week.

Table 3. Clinical performance of birth weight cut-offs/categories/centiles for identifying small- and large-for-gestational infants and associated sensitivity (Se), specificity (Sp), likelihood ratios (LR+ and LR-), and positive and negative predictive values (PPV and NPV) for composite serious neonatal morbidity and neonatal mortality (SNMM), singletons at **37 weeks' gestation**, United States, 2003 to 2017.

Birth weight cut-offs, categories and corresponding centiles					No. of live births†	SNMM		Se†	Sp†	LR+†	LR-†	PPV†	NPV†
Cut-offs (g)*	Categories (g)*	Population centile	Intergrowth centile	WHO centile		Number	Rate/1,000						
Singleton females at 37 weeks													
2,098	≤2,112	1.9	1.8	4.4	34,169	2,496	73.0	4.5	98.2	2.42	0.97	73.0	969.3
2,268	2,113-2,282	4.8	4.8	9.6	50,609	2,208	43.6	8.4	95.3	1.81	0.96	55.5	969.7
2,637	2,283-2,651	22.1	25.7	29.6	306,882	10,032	32.7	26.4	78.0	1.20	0.94	37.6	970.3
3,033	2,652-3,415	58.0	65.6	70.2	1,106,043	30,684	27.7	-	-	-	-	-	-
3,430	3,416-3,869	85.9	91.0	95.3	213,394	7,045	33.0	18.5	84.7	1.21	0.96	37.9	969.7
3,884	3,870-4,124	97.0	98.9	99.9	34,457	1,505	43.7	5.9	96.8	1.81	0.97	55.7	969.3
4,139	≥4,125	98.8	99.7	99.9	24,157	1,758	72.8	3.2	98.7	2.41	0.98	72.8	969.1
All	All	-	-	-	1,769,711	55,728	31.5	-	-	-	-	-	-
Singleton males at 37 weeks													
2,126	≤2,140	1.5	1.8	3.0	28,932	2,437	84.2	3.3	98.6	2.39	0.98	84.2	963.6
2,325	2,141-2,339	4.0	5.2	6.5	49,341	2,630	53.3	7.0	96.1	1.80	0.97	64.7	964.1
2,693	2,340-2,707	18.2	23.9	19.9	278,372	10,886	39.1	21.9	82.0	1.22	0.95	44.7	964.6
3,175	2,708-3,585	59.7	68.6	66.7	1,341,664	44,731	33.3	-	-	-	-	-	-
3,600	3,586-3,982	87.7	92.4	92.0	195,997	7,667	39.1	16.6	86.7	1.25	0.96	45.8	964.3
3,997	3,983-4,237	96.9	98.7	98.9	39,912	2,147	53.8	6.1	96.6	1.80	0.97	64.8	963.9
4,252	≥4,238	98.7	99.6	99.9	28,270	2,274	80.4	3.1	98.6	2.27	0.98	80.4	963.6
All	All	-	-	-	1,962,488	72,772	37.1	-	-	-	-	-	-

* Birth weight cut-offs identify the mid-point of 28 g subcategories at which odds of SNMM were minimized and elevated by 10%, 50% and 100%. Cut-offs were used to create broader mutually exclusive and all-inclusive birth weight categories (cut-offs and category boundaries differ by 14 g).

† Indices assessing the performance of birth weight cut-offs for identifying SNMM cases e.g., Sensitivity of using ≤2,112 g (i.e., Intergrowth centile 1.8 /WHO centile 4.4) for defining small-for-gestational age among females = $2,496 \times 100 / 55,728 = 4.5\%$; Sensitivity of using ≤2,651 g (i.e., Intergrowth centile 25.7/WHO centile 29.6) for defining small-for-gestational age = $(2,496 + 2,208 + 10,032) \times 100 / 55,728 = 26.4\%$, etc.

Table 4. Clinical performance of birth weight cut-offs/categories/centiles for identifying small- and large-for-gestational infants and associated sensitivity (Se), specificity (Sp), likelihood ratios (LR+ and LR-), and positive and negative predictive values (PPV and NPV) for composite serious neonatal morbidity and neonatal mortality (SNMM), singletons at **38 weeks' gestation**, United States, 2003 to 2017.

Birth weight cut-offs, categories and corresponding centiles					No. of live births†	SNMM		Se†	Sp†	LR+†	LR-†	PPV†	NPV†
Cut-offs (g)*	Categories (g)*	Population centile	Intergrowth centile	WHO centile		Number	Rate/1,000						
Singleton females at 38 weeks													
2,240	≤2,254	1.0	1.6	2.5	39,180	2,211	56.4	2.6	99.0	2.60	0.98	56.4	977.8
2,381	2,255-2,396	2.5	3.8	4.3	55,601	1,780	32.0	4.6	97.6	1.91	0.98	42.1	978.0
2,693	2,397-2,707	11.9	17.2	19.5	362,537	8,713	24.0	14.7	88.2	1.24	0.97	27.8	978.2
3,118	2,708-3,529	46.6	57.7	54.7	2,629,080	53,736	20.4						
3,544	3,530-4,010	81.9	88.7	89.3	622,392	14,920	24.0	23.1	80.4	1.18	0.96	26.5	978.5
4,026	4,011-4,322	96.9	98.7	99.8	93,755	3,068	32.7	5.9	96.6	1.73	0.97	38.3	978.1
4,337	4,323-6,000	99.1	99.7	99.9	39,016	2,022	51.8	2.3	99.0	2.37	0.99	51.8	977.8
All	All	-	-	-	3,841,561	86,450	22.5	-	-	-	-	-	-
Singleton males at 38 weeks													
2,268	≤2,282	0.8	1.5	1.0	32,477	2,098	64.6	2.0	99.2	2.61	0.99	64.6	974.5
2,466	2,283-2,481	2.4	4.4	3.1	67,754	2,552	37.7	4.3	97.6	1.84	0.98	46.4	974.7
2,807	2,482-2,821	12.2	19.3	15.2	407,504	11,449	28.1	15.1	87.8	1.24	0.97	31.7	975.1
3,175	2,822-3,670	40.0	52.7	43.9	2,837,796	66,999	23.6	-	-	-	-	-	-
3,685	3,671-4,237	82.3	89.4	86.1	701,117	19,274	27.5	22.3	80.7	1.15	0.96	29.6	975.2
4,252	4,238-4,549	97.7	99.1	99.6	75,032	2,800	37.3	4.3	97.5	1.73	0.98	43.7	974.7
4,564	4,550-6,000	99.4	99.8	99.9	29,893	1,782	59.6	1.7	99.3	2.40	0.99	59.6	974.5
All	All	-	-	-	4,151,573	106,954	25.8	-	-	-	-	-	-

* Birth weight cut-offs identify the mid-point of 28 g subcategories at which odds of SNMM were minimized and elevated by 10%, 50% and 100%. Cut-offs were used to create broader mutually exclusive and all-inclusive birth weight categories (cut-offs and category boundaries differ by 14 g).

† Indices assessing the performance of birth weight cut-offs for identifying SNMM cases e.g., Sensitivity of using ≤2,254 g (i.e., Intergrowth centile 1.6 /WHO centile 2.5) for defining small-for-gestational age among females = $2,211 \times 100 / 86,450 = 2.6\%$; Sensitivity of using ≤2,707 g (i.e., Intergrowth centile 17.2/WHO centile 19.5) for defining small-for-gestational age = $(2,211+1,780+8,713) \times 100 / 86,450 = 14.7\%$, etc.

Table 5. Clinical performance of birth weight cut-offs/categories/centiles for identifying small- and large-for-gestational infants and associated sensitivity (Se), specificity (Sp), likelihood ratios (LR+ and LR-), and positive and negative predictive values (PPV and NPV) for composite serious neonatal morbidity and neonatal mortality (SNMM), singletons at **39 weeks' gestation**, United States, 2003 to 2017.

Birth weight cut-offs, categories and corresponding centiles					No. of live births†	SNMM		Se†	Sp†	LR+†	LR-†	PPV†	NPV†
Cut-offs (g)*	Categories (g)*	Population centile	Intergrowth centile	WHO centile		Number	Rate/1,000						
Singleton females at 39 weeks													
2,268	≤2,282	0.4	0.8	1.0	29,028	1,580	54.4	1.0	99.6	2.80	0.99	54.4	980.0
2,495	2,283-2,509	1.6	3.3	3.1	93,191	2,830	30.4	2.9	98.4	1.82	0.99	36.1	980.1
2,835	2,510-2,849	10.6	17.3	15.2	684,441	14,749	21.5	12.5	89.4	1.18	0.98	23.8	980.3
3,203	2,850-3,670	39.5	51.7	46.1	5,254,261	98,291	18.7	-	-	-	-	-	-
3,685	3,671-4,209	81.7	88.4	84.8	1,328,715	29,086	21.9	23.1	80.0	1.16	0.96	23.3	980.6
4,224	4,210-4,577	97.8	99.0	99.8	154,974	4,666	30.1	4.1	97.5	1.65	0.98	32.8	980.2
4,593	≥4,578	99.6	99.9	99.9	36,537	1,625	44.5	1.1	99.5	2.26	0.99	44.5	980.0
All	All	-	-	-	7,581,147	152,827	20.2	-	-	-	-	-	-
Singleton males at 39 weeks													
2,353	≤2,367	0.4	1.0	0.9	33,423	1,981	59.3	1.1	99.6	2.64	0.99	59.3	976.8
2,580	2,368-2,594	1.6	3.5	1.8	89,499	3,113	34.8	2.8	98.5	1.81	0.99	41.4	977.0
2,920	2,595-2,934	9.5	16.4	12.0	619,727	15,770	25.4	11.5	90.5	1.21	0.98	28.1	977.2
3,374	2,935-3,869	43.6	56.9	45.4	5,736,492	125,545	21.9	-	-	-	-	-	-
3,884	3,870-4,464	84.5	91.1	85.8	1,191,010	30,409	25.5	19.5	83.1	1.16	0.97	26.9	977.4
4,479	4,465-4,776	98.5	99.4	99.9	98,240	3,409	34.7	2.8	98.4	1.71	0.99	39.2	976.9
4,791	≥4,777	99.6	99.9	99.9	32,269	1,713	53.1	0.9	99.6	2.35	0.99	53.1	976.8
All	All	-	-	-	7,800,660	181,940	23.3	-	-	-	-	-	-

* Birth weight cut-offs identify the mid-point of 28 g subcategories at which odds of SNMM were minimized and elevated by 10%, 50% and 100%. Cut-offs were used to create broader mutually exclusive and all-inclusive birth weight categories (cut-offs and category boundaries differ by 14 g).

† Indices assessing the performance of birth weight cut-offs for identifying SNMM cases e.g., Sensitivity of using ≤2,282 g (i.e., Intergrowth centile 0.8 /WHO centile 1.0) for defining small-for-gestational age among females = $1,580 \times 100 / 152,827 = 1.0\%$; Sensitivity of using ≤2,849 g (i.e., Intergrowth centile 17.3/WHO centile 15.2) for defining small-for-gestational age = $(1,580 + 2,830 + 14,749) \times 100 / 152,827 = 12.5\%$, etc.

Table 6. Clinical performance of birth weight cut-offs/categories/centiles for identifying small- and large-for-gestational infants and associated sensitivity (Se), specificity (Sp), likelihood ratios (LR+ and LR-), and positive and negative predictive values (PPV and NPV) for composite serious neonatal morbidity and neonatal mortality (SNMM), singletons at **40 weeks' gestation**, United States, 2003 to 2017.

Birth weight cut-offs, categories and corresponding centiles					No. of live births†	SNMM		Se†	Sp†	LR+†	LR-†	PPV†	NPV†
Cut-offs (g)*	Categories (g)*	Population centile	Intergrowth centile	WHO centile		Number	Rate/1,000						
Singleton females at 40 weeks													
2,353	≤2,367	0.4	0.7	0.9	19,494	1,011	51.9	0.9	99.6	2.41	0.99	51.9	978.0
2,580	2,368-2,594	1.5	2.7	2.1	54,715	1,776	32.5	2.5	98.5	1.72	0.99	37.6	978.1
2,892	2,595-2,906	8.6	13.3	8.1	353,824	8,454	23.9	10.2	91.4	1.19	0.98	26.3	978.2
3,260	2,907-3,812	34.9	44.9	36.2	3,675,352	77,139	21.0	-	-	-	-	-	-
3,827	3,813-4,436	84.0	88.9	83.0	818,857	19,847	24.2	20.0	82.4	1.13	0.97	25.1	978.5
4,451	4,437-4,719	98.9	99.4	99.9	47,767	1,579	33.1	2.0	98.8	1.64	0.99	35.9	978.0
4,734	≥4,720	99.7	99.9	99.9	14,806	665	44.9	0.6	99.7	2.07	1.00	44.9	977.9
All	All	-	-	-	4,984,815	110,471	22.2	-	-	-	-	-	-
Singleton males at 40 weeks													
2,381	≤2,396	0.3	0.5	0.9	16,372	955	58.3	0.7	99.7	2.33	1.00	58.3	974.2
2,637	2,397-2,651	1.3	2.2	1.3	47,800	1,829	38.3	2.2	98.7	1.70	0.99	43.4	974.3
3,005	2,652-3,019	8.9	13.2	10.3	378,839	10,845	28.6	10.5	91.2	1.19	0.98	30.8	974.6
3,487	3,020-4,010	44.5	54.5	42.2	3,807,483	93,932	24.7						
4,026	4,011-4,634	86.5	91.3	83.1	688,977	19,625	28.5	16.9	85.2	1.14	0.98	29.4	974.7
4,649	4,635-4,918	99.1	99.5	99.6	40,345	1,505	37.3	1.7	99.0	1.64	0.99	41.9	974.3
4,933	≥4,919	99.8	99.9	99.9	12,530	712	56.8	0.6	99.8	2.26	1.00	56.8	974.2
All	All	-	-	-	4,992,346	129,403	25.9	-	-	-	-	-	-

* Birth weight cut-offs identify the mid-point of 28 g subcategories at which odds of SNMM were minimized and elevated by 10%, 50% and 100%. Cut-offs were used to create broader mutually exclusive and all-inclusive birth weight categories (cut-offs and category boundaries differ by 14 g).

† Indices assessing the performance of birth weight cut-offs for identifying SNMM cases e.g., Sensitivity of using ≤2,367 g (i.e., Intergrowth centile 0.7 /WHO centile 0.9) for defining small-for-gestational age among females = $1,011 \times 100 / 110,471 = 0.9\%$; Sensitivity of using ≤2,906 g (i.e., Intergrowth centile 13.3/WHO centile 8.1) for defining small-for-gestational age = $(1,011 + 1,776 + 8,454) \times 100 / 110,471 = 10.2\%$, etc.

Table 7. Clinical performance of birth weight cut-offs/categories/centiles for identifying small- and large-for-gestational infants and associated sensitivity (Se), specificity (Sp), likelihood ratios (LR+ and LR-), and positive and negative predictive values (PPV and NPV) for composite serious neonatal morbidity and neonatal mortality (SNMM), singletons at **41 weeks' gestation**, United States, 2003 to 2017.

Birth weight cut-offs, categories and corresponding centiles					No. of live births†	SNMM		Se†	Sp†	LR+†	LR-†	PPV†	NPV†
Cut-offs (g)*	Categories (g)*	Population centile	Intergrowth centile	WHO centile		Number	Rate/1,000						
Singleton females at 41 weeks													
2,325	≤2,339	0.2	0.3	0.8	3,634	255	70.2	0.6	99.8	2.60	1.00	70.2	971.9
2,665	2,340-2,679	1.6	2.6	1.0	20,671	862	41.7	2.6	98.4	1.66	0.99	46.0	972.1
3,118	2,680-3,133	16.0	22.0	10.8	221,616	6,678	30.1	18.0	84.0	1.13	0.98	31.7	972.5
3,572	3,134-3,982	55.9	65.1	53.2	1,069,368	28,549	26.7						
3,997	3,983-4,492	87.0	91.3	85.3	194,060	5,831	30.0	16.1	85.7	1.13	0.98	31.6	972.4
4,508	4,493-4,861	98.5	99.1	99.9	21,882	887	40.5	2.6	98.4	1.57	0.99	43.7	972.1
4,876	≥4,862	99.8	99.9	99.9	3,711	231	62.2	0.5	99.8	2.29	1.00	62.2	971.9
All	All	-	-	-	1,534,942	43,293	28.2	-	-	-	-	-	-
Singleton males at 41 weeks													
2,410	≤2,424	0.3	0.3	0.9	3,992	313	78.4	0.6	99.8	2.49	1.00	78.4	967.0
2,722	2,425-2,736	1.3	1.8	1.9	16,421	800	48.7	2.2	98.7	1.68	0.99	54.5	967.2
3,147	2,737-3,161	11.1	14.3	13.6	153,244	5,626	36.7	13.0	88.9	1.18	0.98	38.8	967.6
3,600	3,162-4,124	45.3	53.8	41.4	1,151,134	36,315	31.5						
4,139	4,125-4,889	86.3	91.0	79.8	226,755	8,105	35.7	16.6	85.0	1.11	0.98	36.5	967.5
4,904	4,890-5,144	99.5	99.7	99.6	6,469	316	48.8	0.9	99.4	1.70	1.00	55.1	967.0
5,160	≥5,145	99.9	99.9	99.9	2,405	173	71.9	0.3	99.9	2.26	1.00	71.9	967.0
All	All	-	-	-	1,560,420	51,648	33.1	-	-	-	-	-	-

* Birth weight cut-offs identify the mid-point of 28 g subcategories at which odds of SNMM were minimized and elevated by 10%, 50% and 100%. Cut-offs were used to create broader mutually exclusive and all-inclusive birth weight categories (cut-offs and category boundaries differ by 14 g).

† Indices assessing the performance of birth weight cut-offs for identifying SNMM cases e.g., Sensitivity of using ≤2,339 g (i.e., Intergrowth centile 0.3 /WHO centile 0.8) for defining small-for-gestational age among females = $255 \times 100 / 43,293 = 0.6\%$; Sensitivity of using ≤3,133 g (i.e., Intergrowth centile 22.0 /WHO centile 10.8) for defining small-for-gestational age = $(255 + 862 + 6,678) \times 100 / 43,293 = 18.0\%$, etc.

Table 8. Clinical performance of birth weight cut-offs/categories/centiles for identifying small- and large-for-gestational infants and associated sensitivity (Se), specificity (Sp), likelihood ratios (LR+ and LR-), and positive and negative predictive values (PPV and NPV) for infants with a **5-minute Apgar<4**, singletons at 39 weeks' gestation, United States, 2003 to 2017.

Birth weight cut-offs, categories and corresponding centiles					No. of live births†	5-min Apgar<4		Se†	Sp†	LR+†	LR-†	PPV†	NPV†
Cut-offs (g)*	Categories (g)*	Population centile	Intergrowth centile	WHO centile		Number	Rate/1,000						
Singleton females at 39 weeks													
2,268	≤2,282	0.4	0.8	1.0	29,028	212	7.30	1.8	99.6	4.75	0.99	7.3	998.5
2,495	2,283-2,509	1.6	3.3	3.1	93,191	304	3.26	4.4	98.4	2.74	0.97	4.2	998.5
2,835	2,510-2,849	10.6	17.3	15.2	684,441	1,397	2.04	16.3	89.4	1.54	0.94	2.4	998.6
3,203	2,850-3,670	39.5	51.7	46.1	5,254,261	7,342	1.40	-	-	-	-	-	-
3,685	3,671-4,209	81.7	88.4	84.8	1,328,715	1,946	1.46	21.0	79.9	1.05	0.99	1.6	998.5
4,224	4,210-4,577	97.8	99.0	99.8	154,974	362	2.34	4.4	97.5	1.74	0.98	2.7	998.5
4,593	≥4,578	99.6	99.9	99.9	36,537	153	4.19	1.3	99.5	2.72	0.99	4.2	998.5
All	All	-	-	-	7,581,147	11,716	1.55	-	-	-	-	-	-
Singleton males at 39 weeks													
2,353	≤2,367	0.4	1.0	0.9	33,423	273	8.17	1.7	99.6	4.10	0.99	8.2	998.0
2,580	2,368-2,594	1.6	3.5	1.8	89,499	387	4.32	4.2	98.4	2.69	0.97	5.4	998.0
2,920	2,595-2,934	9.5	16.4	12.0	619,727	1,588	2.56	14.4	90.5	1.51	0.95	3.0	998.1
3,374	2,935-3,869	43.6	56.9	45.4	5,736,492	10,639	1.85	-	-	-	-	-	-
3,884	3,870-4,464	84.5	91.1	85.8	1,191,010	2,313	1.94	17.7	83.1	1.04	0.99	2.1	998.0
4,479	4,465-4,776	98.5	99.4	99.9	98,240	289	2.94	2.9	98.3	1.72	0.99	3.4	998.0
4,791	≥4,777	99.6	99.9	99.9	32,269	161	4.99	1.0	99.6	2.49	0.99	5.0	998.0
All	All	-	-	-	7,800,660	15,650	2.01	-	-	-	-	-	-

* Birth weight cut-offs identify the mid-point of 28 g subcategories at which odds of SNMM were minimized and elevated by 10%, 50% and 100%. Cut-offs were used to create broader mutually exclusive and all-inclusive birth weight categories (cut-offs and category boundaries differ by 14 g).

† Indices assessing the performance of birth weight cut-offs for identifying infants with a 5-min Apgar<4 e.g., Sensitivity of using ≤2,282 g (i.e., Intergrowth centile 0.8/WHO centile 1.0) for defining small-for-gestational age among females = $212 \times 100 / 11,716 = 1.8\%$; Sensitivity of using ≤2,849 g (i.e., Intergrowth centile 17.3/WHO centile 15.2) for defining small-for-gestational age = $(212 + 304 + 1,397) \times 100 / 11,716 = 16.3\%$, etc.

Table 9. Clinical performance of birth weight cut-offs/categories/centiles for identifying small- and large-for-gestational infants and associated sensitivity (Se), specificity (Sp), likelihood ratios (LR+ and LR-), and positive and negative predictive values (PPV and NPV) for infants requiring **assisted ventilation**, singletons at 39 weeks' gestation, United States, 2003 to 2017.

Birth weight cut-offs, categories and corresponding centiles					No. of live births†	Asst. ventilation		Se†	Sp†	LR+†	LR-†	PPV†	NPV†
Cut-offs (g)*	Categories (g)*	Population centile	Intergrowth centile	WHO centile		Number	Rate/1,000						
Singleton females at 39 weeks													
2,268	≤2,282	0.4	0.8	1.0	29,028	1,423	49.0	1.0	99.6	2.68	0.99	49.0	981.3
2,495	2,283-2,509	1.6	3.3	3.1	93,191	2,550	27.4	2.8	98.4	1.75	0.99	32.5	981.4
2,835	2,510-2,849	10.6	17.3	15.2	684,441	13,568	19.8	12.3	89.4	1.16	0.98	21.7	981.5
3,203	2,850-3,670	39.5	51.7	46.1	5,254,261	92,086	17.5	-	-	-	-	-	-
3,685	3,671-4,209	81.7	88.4	84.8	1,328,715	27,468	20.7	23.3	80.0	1.17	0.96	22.0	981.9
4,224	4,210-4,577	97.8	99.0	99.8	154,974	4,398	28.4	4.1	97.5	1.66	0.98	30.9	981.4
4,593	≥4,578	99.6	99.9	99.9	36,537	1,519	41.6	1.1	99.5	2.26	0.99	41.6	981.2
All	All	-	-	-	7,581,147	143,012	18.9	-	-	-	-	-	-
Singleton males at 39 weeks													
2,353	≤2,367	0.4	1.0	0.9	33,423	1,757	52.6	1.0	99.6	2.50	0.99	52.6	978.4
2,580	2,368-2,594	1.6	3.5	1.8	89,499	2,829	31.6	2.7	98.4	1.75	0.99	37.3	978.5
2,920	2,595-2,934	9.5	16.4	12.0	619,727	14,429	23.3	11.2	90.5	1.18	0.98	25.6	978.7
3,374	2,935-3,869	43.6	56.9	45.4	5,736,492	116,902	20.4	-	-	-	-	-	-
3,884	3,870-4,464	84.5	91.1	85.8	1,191,010	28,656	24.1	19.8	83.1	1.17	0.97	25.3	979.0
4,479	4,465-4,776	98.5	99.4	99.9	98,240	3,220	32.8	2.9	98.4	1.74	0.99	37.1	978.5
4,791	≥4,777	99.6	99.9	99.9	32,269	1,623	50.3	1.0	99.6	2.39	0.99	50.3	978.4
All	All	-	-	-	7,800,660	169,416	21.7	-	-	-	-	-	-

* Birth weight cut-offs identify the mid-point of 28 g subcategories at which odds of SNMM were minimized and elevated by 10%, 50% and 100%. Cut-offs were used to create broader mutually exclusive and all-inclusive birth weight categories (cut-offs and category boundaries differ by 14 g).

† Indices assessing the performance of birth weight cut-offs for identifying infants requiring assisted ventilation e.g., Sensitivity of using ≤2,282 g (i.e., Intergrowth centile 0.8/WHO centile 1.0) for defining small-for-gestational age among females = $1,423 \times 100 / 143,012 = 1.0\%$; Sensitivity of using ≤2,849 g (i.e., Intergrowth centile 17.3/WHO centile 15.2) for defining small-for-gestational age = $(1,423 + 2,550 + 13,568) \times 100 / 143,012 = 12.3\%$, etc.

Table 10. Clinical performance of birth weight cut-offs/categories/centiles for identifying small- and large-for-gestational infants and associated sensitivity (Se), specificity (Sp), likelihood ratios (LR+ and LR-), and positive and negative predictive values (PPV and NPV) for **neonatal seizures**, singletons at 39 weeks' gestation, United States, 2003 to 2017.

Birth weight cut-offs, categories and corresponding centiles					No. of live births†	Neonatal seizures		Se†	Sp†	LR+†	LR-†	PPV†	NPV†
Cut-offs (g)*	Categories (g)*	Population centile	Intergrowth centile	WHO centile		Number	Rate/1,000						
Singleton females at 39 weeks													
2,268	≤2,282	0.4	0.8	1.0	29,028	17	0.59	1.0	99.6	2.60	0.99	0.6	999.8
2,495	2,283-2,509	1.6	3.3	3.1	93,191	51	0.55	4.0	98.4	2.47	0.98	0.6	999.8
2,835	2,510-2,849	10.6	17.3	15.2	684,441	163	0.24	13.5	89.4	1.27	0.97	0.3	999.8
3,203	2,850-3,670	39.5	51.7	46.1	5,254,261	1,123	0.21	-	-	-	-	-	-
3,685	3,671-4,209	81.7	88.4	84.8	1,328,715	279	0.21	20.8	79.9	1.04	0.99	0.2	999.8
4,224	4,210-4,577	97.8	99.0	99.8	154,974	52	0.34	4.5	97.5	1.78	0.98	0.4	999.8
4,593	≥4,578	99.6	99.9	99.9	36,537	25	0.68	1.5	99.5	3.03	0.99	0.7	999.8
All	All	-	-	-	7,581,147	1,710	0.23	-	-	-	-	-	-
Singleton males at 39 weeks													
2,353	≤2,367	0.4	1.0	0.9	33,423	20	0.60	1.0	99.6	2.31	0.99	0.6	999.7
2,580	2,368-2,594	1.6	3.5	1.8	89,499	46	0.51	3.3	98.4	2.07	0.98	0.5	999.7
2,920	2,595-2,934	9.5	16.4	12.0	619,727	210	0.34	13.6	90.5	1.43	0.95	0.4	999.8
3,374	2,935-3,869	43.6	56.9	45.4	5,736,492	1,401	0.24	-	-	-	-	-	-
3,884	3,870-4,464	84.5	91.1	85.8	1,191,010	301	0.25	17.1	83.1	1.01	1.00	0.3	999.7
4,479	4,465-4,776	98.5	99.4	99.9	98,240	32	0.33	2.2	98.3	1.30	0.99	0.3	999.7
4,791	≥4,777	99.6	99.9	99.9	32,269	12	0.37	0.6	99.6	1.43	1.00	0.4	999.7
All	All	-	-	-	7,800,660	2,022	0.26	-	-	-	-	-	-

* Birth weight cut-offs identify the mid-point of 28 g subcategories at which odds of SNMM were minimized and elevated by 10%, 50% and 100%. Cut-offs were used to create broader mutually exclusive and all-inclusive birth weight categories (cut-offs and category boundaries differ by 14 g).

† Indices assessing the performance of birth weight cut-offs for identifying neonatal deaths e.g., Sensitivity of using ≤2,282 g (i.e., Intergrowth centile 0.8/WHO centile 1.0) for defining small-for-gestational age among females = $17 \times 100 / 1,710 = 1.0\%$; Sensitivity of using ≤2,849 g (i.e., Intergrowth centile 17.3/WHO centile 15.2) for defining small-for-gestational age = $(17+51+163) \times 100 / 1,710 = 13.5\%$, etc.

Table 11. Clinical performance of birth weight cut-offs/categories/centiles for identifying small- and large-for-gestational infants and associated sensitivity (Se), specificity (Sp), likelihood ratios (LR+ and LR-), and positive and negative predictive values (PPV and NPV) for **neonatal death**, singletons at 39 weeks' gestation, United States, 2003 to 2017.

Birth weight cut-offs, categories and corresponding centiles					No. of live births†	Neonatal deaths		Se†	Sp†	LR+†	LR-†	PPV†	NPV†
Cut-offs (g)*	Categories (g)*	Population centile	Intergrowth centile	WHO centile		Number	Rate/1,000						
Singleton females at 39 weeks													
2,268	≤2,282	0.4	0.8	1.0	29,028	50	1.72	3.1	99.6	7.98	0.97	1.7	999.8
2,495	2,283-2,509	1.6	3.3	3.1	93,191	79	0.85	7.9	98.4	4.89	0.94	1.1	999.8
2,835	2,510-2,849	10.6	17.3	15.2	684,441	269	0.39	24.3	89.4	2.28	0.85	0.5	999.8
3,203	2,850-3,670	39.5	51.7	46.1	5,254,261	969	0.18	-	-	-	-	-	-
3,685	3,671-4,209	81.7	88.4	84.8	1,328,715	215	0.16	16.5	79.9	0.83	1.04	0.2	999.8
4,224	4,210-4,577	97.8	99.0	99.8	154,974	32	0.21	3.4	97.5	1.35	0.99	0.3	999.8
4,593	≥4,578	99.6	99.9	99.9	36,537	24	0.66	1.5	99.5	3.04	0.99	0.7	999.8
All	All	-	-	-	7,581,147	1,638	0.22	-	-	-	-	-	-
Singleton males at 39 weeks													
2,353	≤2,367	0.4	1.0	0.9	33,423	74	2.21	3.8	99.6	8.78	0.97	2.2	999.8
2,580	2,368-2,594	1.6	3.5	1.8	89,499	74	0.83	7.5	98.4	4.77	0.94	1.2	999.8
2,920	2,595-2,934	9.5	16.4	12.0	619,727	270	0.44	21.2	90.5	2.23	0.87	0.6	999.8
3,374	2,935-3,869	43.6	56.9	45.4	5,736,492	1,314	0.23						
3,884	3,870-4,464	84.5	91.1	85.8	1,191,010	199	0.17	12.1	83.1	0.72	1.06	0.2	999.7
4,479	4,465-4,776	98.5	99.4	99.9	98,240	19	0.19	2.0	98.3	1.21	1.00	0.3	999.7
4,791	≥4,777	99.6	99.9	99.9	32,269	21	0.65	1.1	99.6	2.58	0.99	0.7	999.7
All	All	-	-	-	7,800,660	1,971	0.25	-	-	-	-	-	-

* Birth weight cut-offs identify the mid-point of 28 g subcategories at which odds of SNMM were minimized and elevated by 10%, 50% and 100%. Cut-offs were used to create broader mutually exclusive and all-inclusive birth weight categories (cut-offs and category boundaries differ by 14 g).

† Indices assessing the performance of birth weight cut-offs for identifying neonatal deaths e.g., Sensitivity of using ≤2,282 g (i.e., Intergrowth centile 0.8/WHO centile 1.0) for defining small-for-gestational age among females = $50 \times 100 / 1,638 = 3.1\%$; Sensitivity of using ≤2,849 g (i.e., Intergrowth centile 17.3/WHO centile 15.2) for defining small-for-gestational age = $(50+79+269) \times 100 / 1,638 = 24.3\%$, etc.

Table 12. Epidemiologic (population-level) performance of birth weight cut-offs/categories for identifying small- and large-for-gestational infants and associated odds ratios, rate ratios, risk differences (per 1,000 live births) and population attributable fractions (PAF) for **5-minute Apgar<4**, singletons at 39 weeks' gestation, United States, 2003 to 2017.

Birth weight		No. of live births	5-min Apgar<4		Odds ratio	Rate ratio	Rate difference/1000	Population attributable fraction (%)
Cutoffs (g)*	Categories (g)*		Number	Rate/1,000				
Singleton females at 39 weeks								
2,268	≤2,282	29,028	212	7.3	5.3	5.2	5.9	1.43
2,495	2,283-2,509	93,191	304	3.26	2.3	2.3	1.86	2.8
2,835	2,510-2,849	684,441	1,397	2.04	1.5	1.5	0.64	6.4
3,203	2,850-3,670†	5,254,261	7,342	1.4	1.0	1.0	0.0	0.0
3,685	3,671-4,209	1,328,715	1,946	1.46	1.0	1.0	0.06	1.2
4,224	4,210-4,577	154,974	362	2.34	1.7	1.7	0.94	1.9
4,593	≥4,578	36,537	153	4.19	3.0	3.0	2.79	0.83
All	All	7,581,147	11,716	1.55	-	-	-	-
Singleton males at 39 weeks								
2,353	≤2,367	33,423	273	8.17	4.4	4.4	6.3	1.32
2,580	2,368-2,594	89,499	387	4.32	2.3	2.3	2.5	2.7
2,920	2,595-2,934	619,727	1,588	2.56	1.4	1.4	0.7	5.4
3,374	2,935-3,869†	5,736,492	10,639	1.85	1.0	1.0	0.0	0.0
3,884	3,870-4,464	1,191,010	2,313	1.94	1.0	1.0	0.1	0.9
4,479	4,465-4,776	98,240	289	2.94	1.6	1.6	1.1	1.2
4,791	≥4,777	32,269	161	4.99	2.7	2.7	3.1	0.62
All	All	7,800,660	15,650	2.01	-	-	-	-

* Birth weight cut-offs identify the mid-point of 28 g subcategories at which odds of SNMM were minimized and elevated by 10%, 50% and 100%. Cut-offs (and 28 g subcategories) were used to create broader mutually exclusive and all-inclusive birth weight categories (cut-offs and adjacent boundary differ by 14 g).

† Measures of association and impact assessing the performance of birth weight cut-offs for identifying SNMM cases used birth weight 2,850 g to 3,670 g as the reference category for females and birth weight 2,935 to 3,869 as the reference category for males.

Table 13. Epidemiologic (population-level) performance of birth weight cut-offs/categories for identifying small- and large-for-gestational infants and associated odds ratios, rate ratios, risk differences (per 1,000 live births) and population attributable fractions (PAF) for **assisted ventilation**, singletons at 39 weeks' gestation, United States, 2003 to 2017.

Birth weight		No. of live births	Asst. ventilation		Odds ratio	Rate ratio	Rate difference/ 1000	Population attributable fraction (%)
Cutoffs (g)*	Categories (g)*		Number	Rate/ 1,000				
Singleton females at 39 weeks								
2,268	≤2,282	29,028	1,423	49	2.9	2.8	31.5	0.6
2,495	2,283-2,509	93,191	2,550	27.4	1.6	1.6	9.9	1.2
2,835	2,510-2,849	684,441	13,568	19.8	1.1	1.1	2.3	1.8
3,203	2,850-3,670†	5,254,261	92,086	17.5	1.0	1.0	0.0	0.0
3,685	3,671-4,209	1,328,715	27,468	20.7	1.2	1.2	3.2	4.1
4,224	4,210-4,577	154,974	4,398	28.4	1.6	1.6	10.9	1.7
4,593	≥4,578	36,537	1,519	41.6	2.4	2.4	24.1	0.6
All	All	7,581,147	143,012	18.9	-	-	-	-
Singleton males at 39 weeks								
2,353	≤2,367	33,423	1,757	52.6	2.7	2.6	32.2	0.61
2,580	2,368-2,594	89,499	2,829	31.6	1.6	1.5	11.2	1.1
2,920	2,595-2,934	619,727	14,429	23.3	1.1	1.1	2.9	1.9
3,374	2,935-3,869†	5,736,492	116,902	20.4	1.0	1.0	0.0	0.0
3,884	3,870-4,464	1,191,010	28,656	24.1	1.2	1.2	3.7	3.4
4,479	4,465-4,776	98,240	3,220	32.8	1.6	1.6	12.4	1.2
4,791	≥4,777	32,269	1,623	50.3	2.5	2.5	29.9	0.6
All	All	7,800,660	169,416	21.7	-	-	-	-

* Birth weight cut-offs identify the mid-point of 28 g subcategories at which odds of SNMM were minimized and elevated by 10%, 50% and 100%. Cut-offs (and 28 g subcategories) were used to create broader mutually exclusive and all-inclusive birth weight categories (cut-offs and adjacent boundary differ by 14 g).

† Measures of association and impact assessing the performance of birth weight cut-offs for identifying SNMM cases used birth weight 2,850 g to 3,670 g as the reference category for females and birth weight 2,935 to 3,869 as the reference category for males.

Table 14. Epidemiologic (population-level) performance of birth weight cut-offs/categories for identifying small- and large-for-gestational infants and associated odds ratios, rate ratios, risk differences (per 1,000 live births) and population attributable fractions (PAF) for **neonatal seizures**, singletons at 39 weeks' gestation, United States, 2003 to 2017.

Birth weight		No. of live births	Neonatal seizures		Odds ratio	Rate ratio	Rate difference/1000	Population attributable fraction (%)
Cutoffs (g)*	Categories (g)*		Number	Rate/1,000				
Singleton females at 39 weeks								
2,268	≤2,282	29,028	17	0.59	2.7	2.8	0.38	0.6
2,495	2,283-2,509	93,191	51	0.55	2.6	2.6	0.34	2.4
2,835	2,510-2,849	684,441	163	0.24	1.1	1.1	0.03	3.2
3,203	2,850-3,670†	5,254,261	1,123	0.21	1.0	1.0	0.0	0.0
3,685	3,671-4,209	1,328,715	279	0.21	1.0	1.0	0.0	1.0
4,224	4,210-4,577	154,974	52	0.34	1.6	1.6	0.13	2.0
4,593	≥4,578	36,537	25	0.68	3.2	3.2	0.47	1.0
All	All	7,581,147	1,710	0.23	-	-	-	-
Singleton males at 39 weeks								
2,353	≤2,367	33,423	20	0.6	2.5	2.5	0.4	0.56
2,580	2,368-2,594	89,499	46	0.51	2.1	2.1	0.3	1.7
2,920	2,595-2,934	619,727	210	0.34	1.4	1.4	0.1	4.6
3,374	2,935-3,869†	5,736,492	1,401	0.24	1.0	1.0	0.0	0.0
3,884	3,870-4,464	1,191,010	301	0.25	1.0	1.0	0.0	0.1
4,479	4,465-4,776	98,240	32	0.33	1.3	1.4	0.1	0.5
4,791	≥4,777	32,269	12	0.37	1.5	1.5	0.1	0.18
All	All	7,800,660	2,022	0.26	-	-	-	-

* Birth weight cut-offs identify the mid-point of 28 g subcategories at which odds of SNMM were minimized and elevated by 10%, 50% and 100%. Cut-offs (and 28 g subcategories) were used to create broader mutually exclusive and all-inclusive birth weight categories (cut-offs and adjacent boundary differ by 14 g).

† Measures of association and impact assessing the performance of birth weight cut-offs for identifying SNMM cases used birth weight 2,850 g to 3,670 g as the reference category for females and birth weight 2,935 to 3,869 as the reference category for males.

Table 15. Epidemiologic (population-level) performance of birth weight cut-offs/categories for identifying small- and large-for-gestational infants and associated odds ratios, rate ratios, risk differences (per 1,000 live births) and population attributable fractions (PAF) for **neonatal death**, singletons at 39 weeks' gestation, United States, 2003 to 2017.

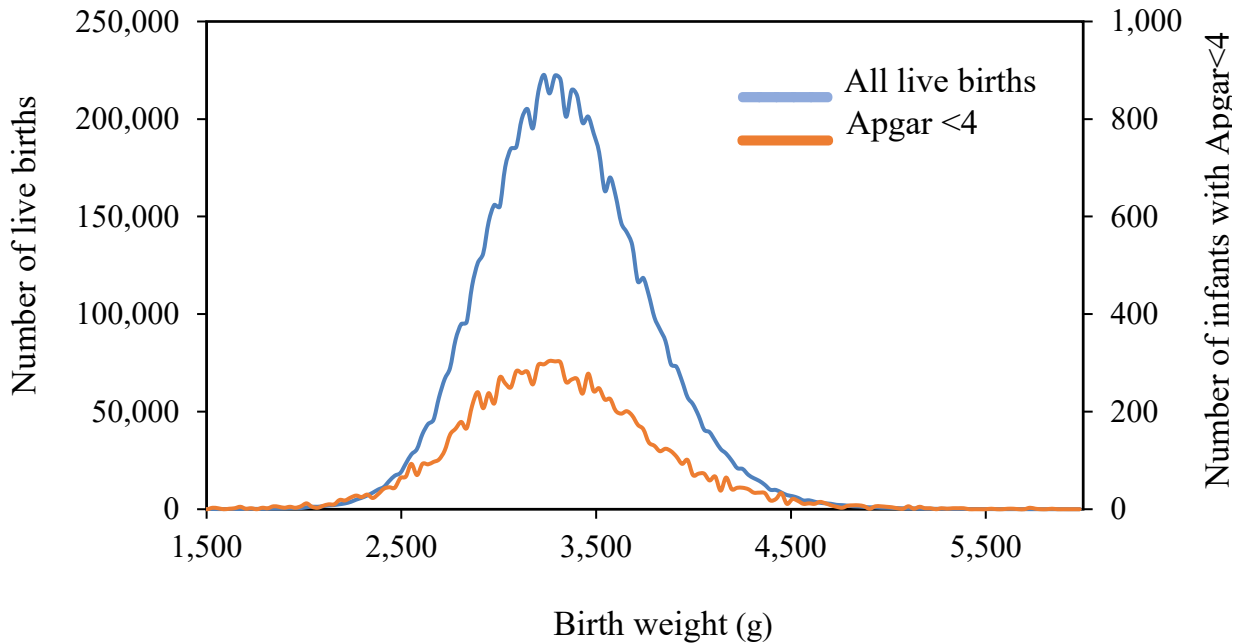
Birth weight		No. of live births	Neonatal death		Odds ratio	Rate ratio	Rate difference/1000	Population attributable fraction
Cutoffs (g)*	Categories (g)*		Number	Rate/1,000				
Singleton females at 39 weeks								
2,268	≤2,282	29,028	50	1.72	9.4	9.6	1.54	2.7
2,495	2,283-2,509	93,191	79	0.85	4.6	4.7	0.67	6.4
2,835	2,510-2,849	684,441	269	0.39	2.1	2.2	0.21	15.3
3,203	2,850-3,670†	5,254,261	969	0.18	1.0	1.0	0.0	0.0
3,685	3,671-4,209	1,328,715	215	0.16	0.9	0.9	-0.02	-4.4
4,224	4,210-4,577	154,974	32	0.21	1.1	1.2	0.03	0.9
4,593	≥4,578	36,537	24	0.66	3.6	3.7	0.48	1.0
All	All	7,581,147	1,638	0.22	-	-	-	-
Singleton males at 39 weeks								
2,353	≤2,367	33,423	74	2.21	9.7	9.6	2.0	3.3
2,580	2,368-2,594	89,499	74	0.83	3.6	3.6	0.6	6.0
2,920	2,595-2,934	619,727	270	0.44	1.9	1.9	0.2	12.9
3,374	2,935-3,869†	5,736,492	1,314	0.23	1.0	1.0	0.0	0.0
3,884	3,870-4,464	1,191,010	199	0.17	0.7	0.7	-0.1	-5.8
4,479	4,465-4,776	98,240	19	0.19	0.8	0.8	0.0	0.4
4,791	≥4,777	32,269	21	0.65	2.8	2.8	0.4	0.7
All	All	7,800,660	1,971	0.25	-	-	-	-

* Birth weight cut-offs identify the mid-point of 28 g subcategories at which odds of SNMM were minimized and elevated by 10%, 50% and 100%. Cut-offs (and 28 g subcategories) were used to create broader mutually exclusive and all-inclusive birth weight categories (cut-offs and adjacent boundary differ by 14 g).

† Measures of association and impact assessing the performance of birth weight cut-offs for identifying SNMM cases used birth weight 2,850 g to 3,670 g as the reference category for females and birth weight 2,935 to 3,869 as the reference category for males.

Figure 6. Birth weight-specific frequency distribution of live births (primary y-axis) and infants with a 5-minute Apgar score <4 (secondary y-axis), female (upper panel) and male singletons (lower panel) at 39 weeks' gestation, United States, 2003 to 2017.

Female singletons at 39 week's gestation



Male singletons at 39 week's gestation

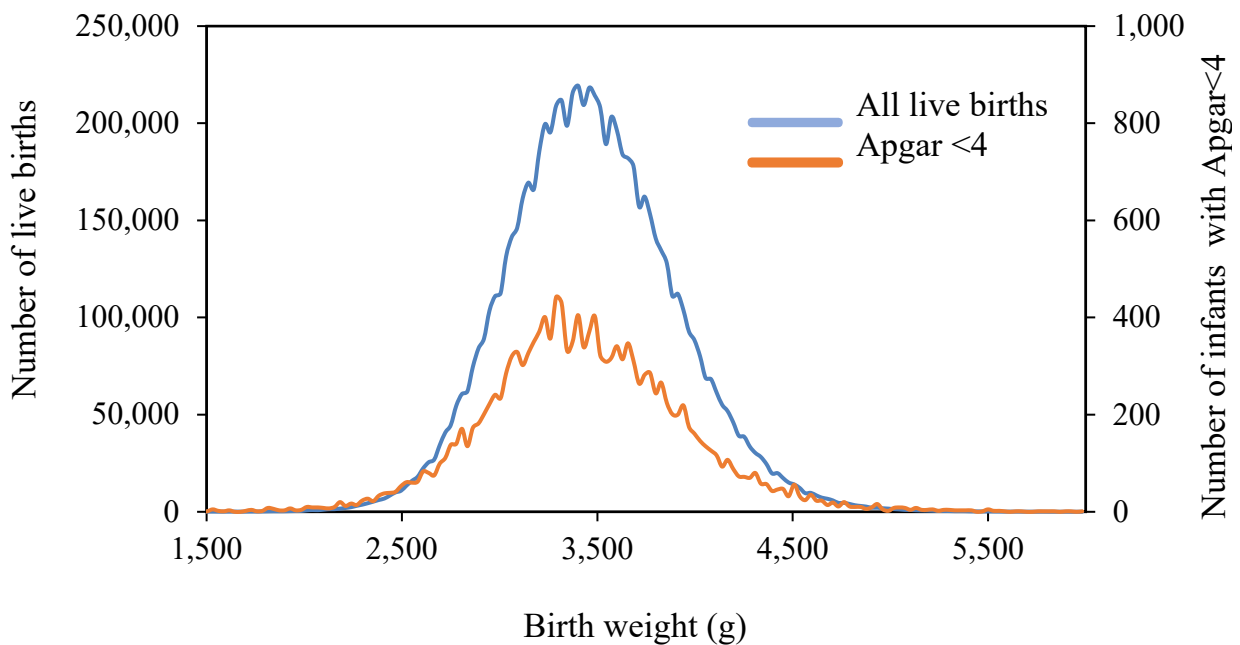
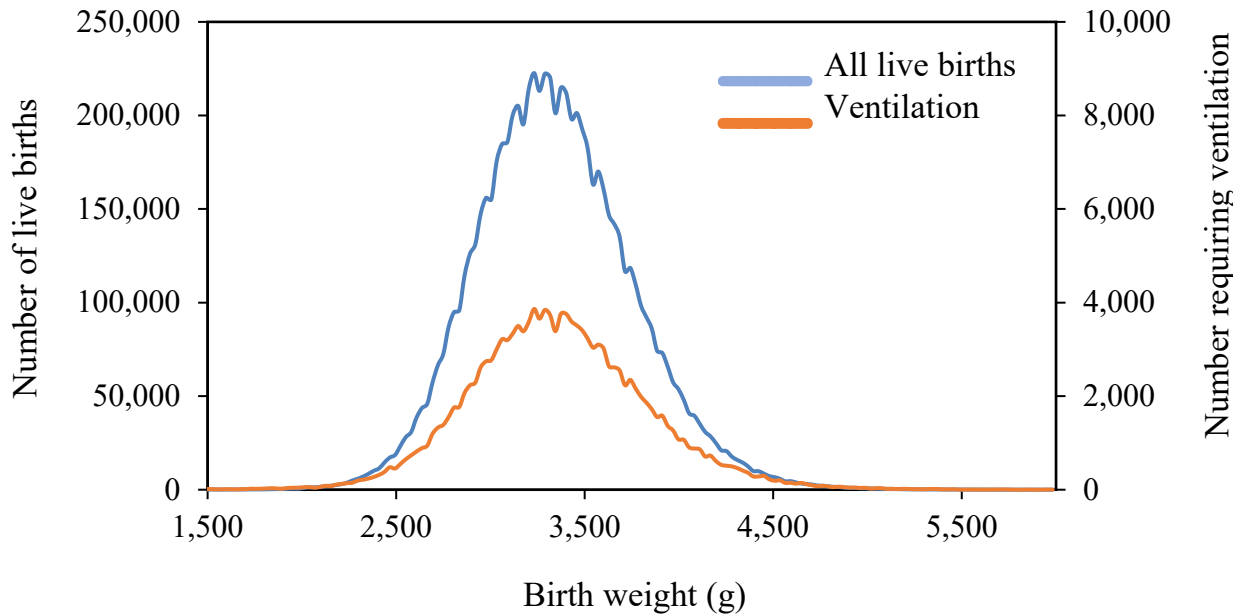


Figure 7. Birth weight-specific frequency distribution of live births (primary y-axis) and infants requiring assisted ventilation (secondary y-axis), female (upper panel) and male singletons (lower panel) at 39 weeks' gestation, United States, 2003 to 2017.

Female singletons at 39 week's gestation



Male singletons at 39 week's gestation

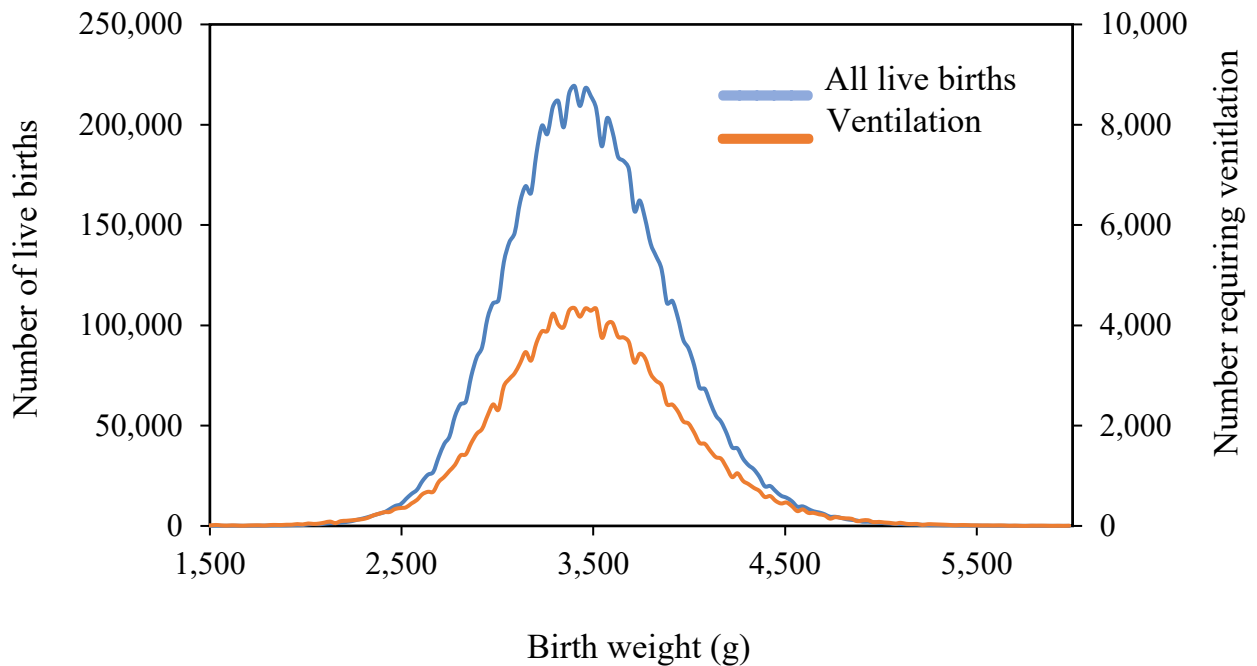
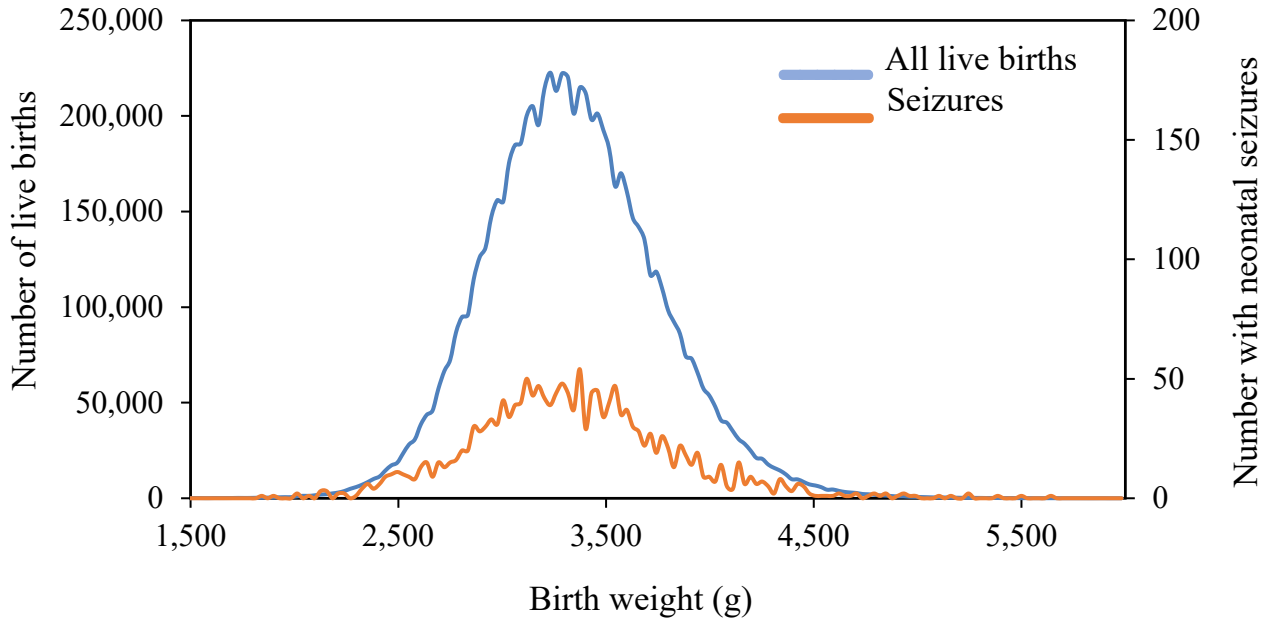


Figure 8. Birth weight-specific frequency distribution of live births (primary y-axis) and infants with neonatal seizures (secondary y-axis), female (upper panel) and male singletons (lower panel) at 39 weeks' gestation, United States, 2003 to 2017.

Female singletons at 39 weeks' gestation



Male singletons at 39 weeks' gestation

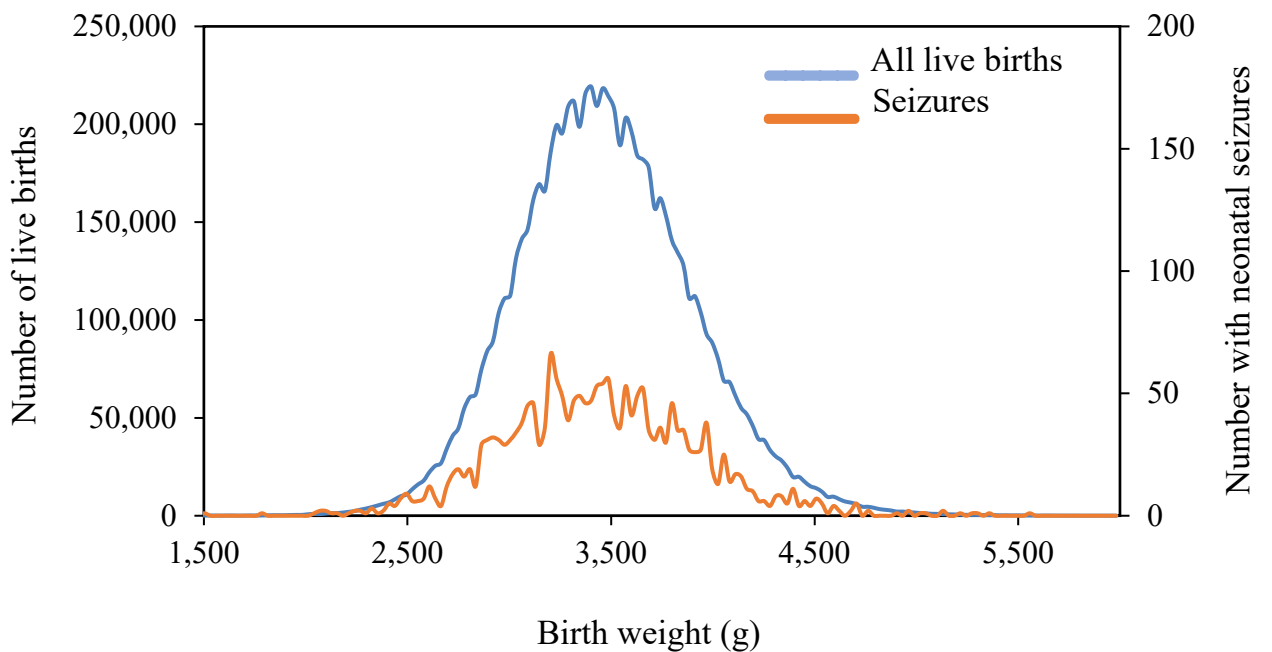
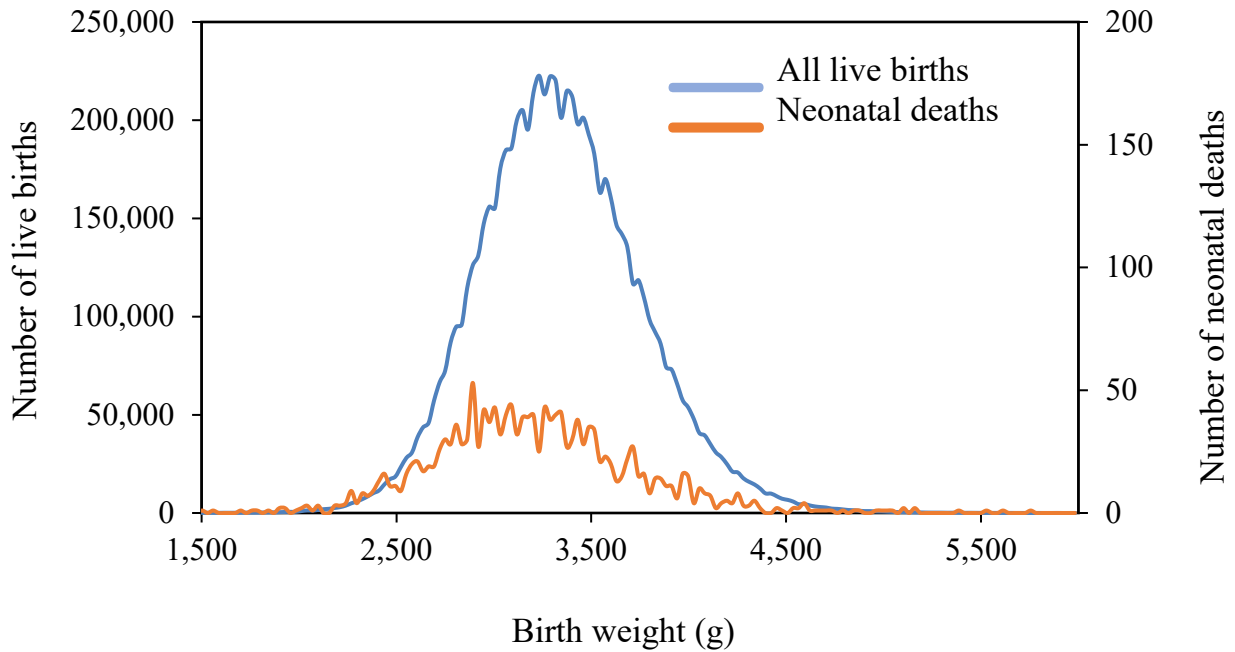


Figure 9. Birth weight-specific frequency distribution of live births (primary y-axis) and neonatal deaths (secondary y-axis), female (upper panel) and male singletons (lower panel) at 39 weeks' gestation, United States, 2003 to 2017.

Female singletons at 39 weeks' gestation



Male singletons at 39 weeks' gestation

