

Title: Rare and common variant analyses of amyotrophic lateral sclerosis in the French-Canadian genome

Jay P. Ross, B.Sc.^{1,2}, Fulya Akçimen, Ph.D.^{1,2}, Calwing Liao, Ph.D.^{3,4,5}, Karina Kwan, B.Sc.⁶, Daniel E. Phillips^{2,7}, Zoe Schmilovich, B.Sc.^{1,2}, Dan Spiegelman, M.Sc. M.A.^{2,8}, Angela Genge, M.D., FRCP(C)², Nicolas Dupré, MD, Ph.D.^{9,10}, Patrick A. Dion, Ph.D.^{2,8}, Sali M.K. Farhan, Ph.D.^{1,8}, Guy A. Rouleau, MD, Ph.D., FRCP(C), FRSC^{1,2,8}

Author affiliations

1. Department of Human Genetics, McGill University, Montréal, QC, Canada
2. Montréal Neurological Institute and Hospital, McGill University, Montréal, QC, Canada
3. Department of Medicine, Harvard Medical School, Cambridge, MA, USA
4. Center for Genomic Medicine, Massachusetts General Hospital, Boston, MA, USA
5. Broad Institute of MIT and Harvard, Cambridge, MA, USA
6. Department of Epidemiology, Biostatistics, and Occupational Health, McGill University, Montréal, QC, Canada
7. Department of Biology, McGill University, Montréal, QC, Canada
8. Department of Neurology and Neurosurgery, McGill University, Montréal, QC, Canada
9. Division of Neurosciences, CHU de Québec, Université Laval, Québec City, QC, Canada
10. Department of Medicine, Faculty of Medicine, Université Laval, Québec City, QC, Canada

*** Corresponding Author:**

Dr. Guy A. Rouleau, MD, PhD, FRCPC
Department of Neurology and Neurosurgery
McGill University
Montréal, Québec, Canada
H3A 2B4
Telephone: +1 514 398 2690
Fax: +1 514 398 8248
E-mail: guy.rouleau@mcgill.ca

Keywords: Amyotrophic Lateral Sclerosis, Polygenic Risk Score, Rare Variant

Word Count: Abstract: 164, Main text: 3177.

References: 47.

Figures: 5.

Tables: 1.

ABSTRACT

The genetic etiology of ALS includes few rare, large-effect variants and potentially many common, small-effect variants per case. The genetic risk liability for ALS might require a threshold comprised of a certain amount of variants. Here, we tested the degree to which risk for ALS was affected by rare variants in ALS genes, polygenic risk score, or both. 335 ALS cases and 356 controls from Québec, Canada were concurrently tested by SNP-chip genotyping and targeted sequencing of known ALS genes. ALS GWAS summary statistics were used to estimate an ALS PRS. Cases and controls were subdivided into rare variant carriers and non-carriers. Risk for ALS was significantly associated with PRS and rare variants independently, but the interaction was not significant. ALS PRS affected risk only in those not carrying a rare variant, suggesting that rare variants in ALS genes are generally sufficient for disease risk. Rather than modifying the penetrance of rare variants, ALS PRS is most informative in the absence of these variants.

INTRODUCTION

Amyotrophic lateral sclerosis (ALS) is a genetically heterogeneous neurodegenerative disease. Several biological pathways have been identified by which genetic variants can affect the pathogenesis of ALS¹. However, phenotype is difficult to predict from single risk variants, and factors such as environmental exposures, occupation, ethnicity, and family history can modify the underlying risk, severity and onset of disease².

Genetic analyses in ALS have been conducted in cohorts collected from ethnically diverse populations. These studies can highlight the unique genetic background of ALS in a given population; they can also help show how the genetic causes of a disease can be similar. There are several recent examples of population-specific examinations of ALS-associated genetic variants. In screening known ALS genes for variants in familial ALS cases from Germany, Muller et al. demonstrated phenotype/genotype correlations with previously reported as well as described novel variants in known genes³. A Turkish ALS population study found that 45% of familial ALS and 10% of sporadic ALS patients carried a variant in a previously reported gene; somewhat less than other European population screenings, indicating that differences between relatively close geographic regions can impart substantial effects on panel screening utility⁴. For example, in this Turkish cohort, expansion in *C9orf72* was the most common observed variant, but at a rate lower than expected based on Northern European prevalence estimates. Screening ALS genes originating from European studies becomes less practical in cohorts from Southern Africa⁵ or Japan⁶, for example, as fewer ALS cases may be genetically explained, or common genetic causes may be completely absent from the population (*C9orf72* expansion, notably). As unique genetic risk factors may occur in populations with diverse genetic ancestries, the identification of ALS genes and associated variants within them across a wide variety of populations is important if medical genetics is to be equitable for all individuals⁷.

The French-Canadian (FC) population of Québec has long been a focus of study in genetic epidemiology. Geographic and sociological factors throughout the history of Québec have resulted in a “founder effect,” by which certain alleles have been propagated within the population⁸. Multidimensional scaling of individual FC genetic variation has suggested that the geographic migration history of the region can still be captured by shared variants in the population⁹. Rare variants observed at a higher than expected frequency in the FC population have been observed to cause certain diseases⁸; some examples include autosomal recessive spastic ataxia of Charlevoix-Saguenay¹⁰, deafblindness from Usher syndrome¹¹, and variants in the LDL receptor leading to familial hypercholesterolemia¹². Rare variants found exclusively or at higher frequencies in the FC population could help better define ALS genetic risks.

In addition to rare ALS variants, the study of common variants can describe variability in disease risk. Several genome-wide association studies (GWAS) have been performed in ALS, with varying estimates explaining association and heritability¹³⁻¹⁶. Polygenic risk score (PRS) analysis is an approach to condense the association values obtained from GWAS into a per-sample score. Each variant has an associated level of risk or protection with the disease outcome, and variants can be summed into a PRS by the number of alleles and their quantitative weights (effect size). PRS for traits possibly related to ALS, such as schizophrenia¹⁷, epilepsy¹⁸, multiple sclerosis¹⁹, or blood

lipids²⁰ have had suggested associations, but few studies have examined the specificities of polygenic risk for ALS.

The intersection of rare and common variants can be informative for overall disease risk. Patients with low PRS could be considered a priority for rare variant screening²¹. Conversely, an individual without a rare, monogenic variant could have their disease partially explained by a high PRS²². Rare variants are often studied in terms of their combined burden across a gene; adding PRS to the statistical model can improve the fidelity of association by accounting for the inherited genetic liability^{23,24}. In some diseases, such as hypertriglyceridemia, a high percentile of PRS can be equally or more predictive of disease outcome than the presence of a disease-associated rare variant²⁵. In the context of ALS, this reasoning leads us to question if rare variants require common variants to be sufficiently pathogenic, and if polygenic risk is important in the context of penetrant rare variants.

In the current study, we aimed to describe the genetic architecture of ALS in the Québec FC population while testing the risk contributions of rare and common variants. We hypothesized that rare variants would be sufficient to impart risk for ALS without requiring increased PRS. We used targeted next-generation sequencing of known genes associated with ALS (as of the creation of the panel) and genome-wide SNP-chip genotyping to interrogate the contributions of both rare variants in coding regions with evidence of ALS risk and common variants across the genome, respectively. Our results characterize the specific genetics of ALS in the cohort, the distribution of rare variants in ALS genes of which several may be unique to the population, and the interplay between polygenic risk for ALS and rare risk variants in ALS genes.

RESULTS

Population structure of the FC genome

Following quality control (QC), relatedness, and genetic ancestry assessment, 327 cases and 344 controls remained for analysis. A total of 488,270 SNPs were included as input for imputation, and 29,359,578 SNPs remained after imputation QC. Principal component analysis (PCA) with 1000 Genomes Project (1KGP) data was performed using 78,170 common (MAF > 0.05) overlapping SNPs between cohort and 1KGP datasets. PCA plots showed a majority of the cohort overlapped with European individuals from 1KGP (Fig 1A-C). The contribution of different genetic backgrounds was shown in Admixture graphs (Fig 1D), with predominant proportions matching that of Northern and Western European (CEU) and British from England or Scotland (GBR) reference populations. A majority of the cohort was observed to have fewer than two genetic backgrounds from the admixture analysis, suggesting substantial genetic homogeneity.

Rare variants are found throughout ALS genes

Following QC of sequencing data, 295 cases and 330 controls remained to test for rare protein-altering variants. 105 variants were observed across all individuals tested (Table 1), 23 of which had not previously been observed in the gnomAD Non-Finnish European (NFE) population²⁶. Rare variants were observed in 36.3% of cases and 11.1% of controls (Figure 2). The *C9orf72* expansion was detected in 55 ALS cases (18.6%) and no controls.

Polygenic risk score explains slight but significant variability between ALS cases and unaffected controls

Following rare variant analysis, cases and controls were subsequently subset into carriers and non-carriers (Figure 3). After QC of genotyping, sequencing, and *C9orf72* results, 295 cases and 321 controls had sufficient data for both common and rare variant modalities and were included in PRS analysis. 6,635,680 variants were available from the ALS GWAS summary statistics, of which 5,251,483 variants overlapped with the imputed study dataset. After LD clumping using the 1KGP European samples²⁷, 256,607 SNPs were used as input data for the PRS calculation. A PRS for ALS risk was generated for all cases and controls in our study cohort (model fit $p = 8.21 \times 10^{-3}$) (Figure 4A). This PRS explained 1.06% of variance between cases and controls, using a summary statistic threshold of $p \leq 2.95 \times 10^{-3}$ and including 4,309 SNPs. The distribution of PRS in cases was significantly different from controls ($t(607.52) = 3.13$, $p = 1.836 \times 10^{-3}$) (Figure 4A), and individuals with PRS in the upper quartile (154 individuals per quartile) had a 1.92 odds ratio (95%CI = 1.14-3.26, $p = 0.015$) compared to individuals with PRS in the lowest quartile (Figure 4B). We assessed the distribution of SNPs across different functional genomic regions, and tested for biological process enrichment across the genes near which the SNPs were located (Figure 4C). We found that SNPs were enriched in genes that had ontology terms of cell migration, lipoprotein transport, and axon guidance.

Impact of polygenic risk for ALS depends on absence of rare variants

The predictive utility of PRS was different depending on the presence of rare variants. Logistic regression (including covariates of sex, genotyping batch, and the first 10 principal components (PC)) showed that both rare variant status and PRS were significantly associated with ALS outcome (OR = 5.10, 95%CI = 3.11-8.37, $p = 1.06 \times 10^{-10}$ for rare variants and OR = 1.35, 95%CI = 1.08-1.69, $p = 9.96 \times 10^{-3}$ for PRS), but not the interaction term of rare variants and PRS (OR = 0.871, 95%CI = 0.53-1.37, $p = 0.551$). ALS cases without a rare variant in ALS genes were the only subgroup to have a mean scaled PRS above the overall mean PRS (Figure 5A), suggesting that PRS is most informative in those cases without a known causal variant. Further, the OR for ALS of rare variant carriers was significantly above 1 for all quartiles of rare variant carriers, while only the third and fourth PRS quartiles of non-carriers had elevated OR compared to the reference of lowest quartile non-carriers (Figure 5B). Receiver operating characteristic (ROC) curve analysis showed that a model including an interaction between PRS and rare variant carrier status (including all previously mentioned covariates) was similarly predictive of ALS outcome as rare variants alone (AUC = 0.8363 and 0.8321, respectively), further supporting that rare variants and PRS contribute separately to ALS risk (Figure 5C). PRS varied between carriers with variants in different ALS genes, with a wide distribution across *C9orf72* expansion carriers (Figure 5D).

DISCUSSION

ALS has been studied as a monogenic or oligogenic disease, in which one or few concurrent rare variants are considered sufficient to instigate the disease²⁸. However, the GWAS^{14,16} conducted for ALS have demonstrated substantial common variant associations. While the small effect sizes of most common variant associations likely do not lead to disease, inheriting several common variants may increase the overall disease risk. Our results suggest that this additive risk from common variants might play a role in risk for ALS in non-monogenic inheritance.

The PRS calculated from the current cohort showed a slight but significant difference in distribution between cases and controls. By subsetting the cohort into variant carriers and those without variants in ALS genes, the difference in PRS distribution was most apparent in those without rare variants. Since the PRS was not informative for variant carriers, the variants observed in these cases are likely sufficient to instigate disease *per se*. Conversely, the variants observed in controls may have been tolerated or coincidental. This interpretation aligns with the liability threshold (or multi-step) model of ALS, in which one or many genetic or environmental events are required to instigate disease. In this case, as the risk for ALS in rare variant carriers was not strongly affected by increased PRS, it could be viewed that the risk threshold is reached by rare variant alone, thus supporting sufficiency of rare variants in ALS genes.

ALS cases with a *C9orf72* expansion had a broad range of PRS. Currently it is difficult to assess large *C9orf72* expansion lengths, even with advancements in sequencing technology²⁹. It is indeed likely that larger repeat lengths are more deleterious and penetrant than smaller lengths^{30,31}, and future studies with accurate sizing data could evaluate the association between ALS PRS and *C9orf72* expansion length.

While the Québec FC population has been studied for founder effect variants, it does not appear that population-specific variants in known ALS genes play a large role in ALS risk. While we observed 23 variants that had not been reported in the gnomAD v2.1.1 NFE population, most of these variants were singletons, suggesting that variants in currently established ALS genes are likely not due to a founder effect. If such an effect plays a role in ALS, it could be due to genes that were not examined in this study, and could be yet unknown in ALS research.

Our study has several limitations. Our sample size was limited, and as such we might not have observed certain rare variants that had interactions with PRS. We observed that the interaction term between PRS and rare variants was not significant; however, it may be that only a certain type of variant interacts with PRS to modify ALS risk. Because exome sequencing was available only for cases, there may be an underestimation of variants in the control cohort, as ES is generally more sensitive to detect variants. We used the older gnomAD v2.1.1 as a variant frequency reference while v3.1.2 is currently available. The matched genomic assembly and increased ES use of v2.1.1 allowed a better comparison between our dataset and the gnomAD reference. We examined whether novel variants in our cohort were observed in the latest gnomAD version to account for this limitation. Finally, the PRS analysis used GWAS summary statistics from the 2016 ALS GWAS¹⁴. While there has recently been a more recent GWAS with a larger sample size¹⁶, the samples included in the current study were also included in the newest GWAS, and therefore overfitting of the PRS model would occur.

As increasingly monogenic, rare causes of ALS are uncovered, and other well-powered GWAS are performed, the contribution of genetics in ALS will be better understood. The interplay between rare and common variants might differ between genetic ancestries, as certain rare variants are ancestry-specific and common variants are affected by population drift and geographic distance. Future studies could also incorporate other types of variants, such as structural or copy-number, as new technologies allow for better sequencing accuracy. ALS remains a heterogeneous disease, and with deeper phenotyping from large cohorts, a more complete understanding of genetic impacts on disease onset and progression may be attained.

METHODS

Sample cohorts

In total, 335 ALS cases and 356 controls from clinics across Québec, Canada were included in this study. All samples were sequenced by either custom-design targeted panel, whole exome sequencing, and were tested for the *C9orf72* repeat expansion in order to detect rare variants in ALS genes. Samples with a *C9orf72* expansion were not subjected to further sequencing. Of these samples, 329 cases and 349 controls were genotyped by SNP-chip genotyping. Sample details are summarized in Table S1.

Cases were included agnostic of symptom presentation, family history, or presence of a disease-causing variant. Controls were included if they had no known relative with ALS, were at least 50 years old at time of sampling, and did not have a clinical diagnosis of a neurodegenerative or psychiatric disorder. Average ages of cases and controls across the cohort were 60.5 ± 12.2 years and 62.2 ± 9.0 years, respectively. Sex ratios (male:female) for cases and controls were 1.61 and 0.967, respectively. All individuals signed informed consent and samples were collected following approved ethics protocols from ethics review boards of all institutions involved. Blood DNA was extracted using standard salting out procedures.

Genotyping

All genotyping was performed using the Global Screening Array version 2 (Illumina, Inc.) at the McGill University and Génome Québec Innovation Centre (MUGQIC). QC was performed using the default settings of the RICOPILO QC module (v2019_Oct_15.001)³². Briefly, the criteria were: $\geq 98\%$ call rate for variants, $\geq 98\%$ call rate for samples, ≤ 0.02 call rate difference between cases and controls, Hardy-Weinberg Equilibrium (HWE) $p > 1 \times 10^{-6}$ in controls and HWE $p > 1 \times 10^{-10}$ in cases, and inbreeding coefficient outside of ± 0.2 .

Samples were tested for relatedness using the KING algorithm in the SNPRelate³³ R package, and pairwise exclusion of samples was performed for kinship above 0.125 (second degree relatives). Samples were limited to those of inferred European descent by comparison with the 1KGP superpopulations²⁷ using PCA calculated using SNPRelate³³. The first four PCs were used to exclude samples that did not overlap with samples of known European ancestry. PCA was then performed on the case control cohort without 1KGP data to calculate principal components for use as covariates. Admixture analysis was performed after QC using the software ADMIXTURE³⁴. The 1KGP dataset was used to perform a supervised analysis, with each of the 26 populations set as a known ethnicity and the case-control cohort set as unknown.

Following QC, genotyping data was imputed on the Sanger Imputation Service using the Haplotype Reference Consortium (release 1.1) panel with EAGLE2 pre-phasing³⁵. Imputed SNPs were filtered for imputation $R^2 > 0.3$ and for HWE $p > 1 \times 10^{-5}$. The program BCFtools v.1.10 from the SAMtools software suite³⁶ was used for both VCF imputation preparation and post-imputation filtering.

Rare variant analysis

Sequencing was performed using targeted sequencing by Molecular Inversion Probe Sequencing (MIPS) or Exome Sequencing (ES). All sequencing was generated at the McGill University and

Génome Québec Innovation Centre (MUGQIC). Sequencing data was aligned to the GRCh37 reference genome. ES variant calls were limited to the same genomic regions as the MIPS. MIPS and ES processing was performed similarly to previous studies^{37,38}, with minor changes described here. For ES, the Genome Analysis ToolKit (GATK) v3.7^{39,40} was used to joint genotype samples into a combined dataset, while for MIPS VarScan v2.3.9 was used⁴¹. Variants called from GATK were required to have GQ ≥ 30 , DP ≥ 20 , and call rate $\geq 90\%$. Variants called from MIPS with VarScan were required to have minimum quality ≥ 20 , minimum coverage ≥ 20 , and minimum allele balance ≥ 0.25 for heterozygous calls. Samples were limited to those with $\geq 70X$ average sequencing depth and that had $\geq 90\%$ call rate of post-QC variants in both MIPS and ES. Variants included following quality control were annotated for frequency and functional consequences using VEP version 98⁴². Variants were limited to those with a minor allele frequency ≤ 0.001 in the NFE from gnomAD version 2.1.1²⁶ and that were predicted to be missense, stop-lost, stop-gained, or splice site altering. Samples were tested for *C9orf72* repeat expansion as previously described^{43,44}. Samples that passed both genotyping and sequencing QC were assigned to a subtype of cases or controls (Figure 1). Variants were plotted on gene diagrams using PeCan (<https://pecan.stjude.cloud/proteinpaint>). All bioinformatic analyses were performed on the Béluga and Narval computing clusters of Compute Canada and Calcul Québec.

Polygenic risk score calculation

ALS PRS was calculated with PRSice-2⁴⁵, using the summary statistics from a meta-analysis of ALS-GWAS¹⁴. The first 10 PCs, sex, genotyping batch, and rare variant carrier status were included as covariates in the PRS calculation. Because age was used as a threshold for controls it was not included in the model. The 1KGP European cohort was used to account for linkage disequilibrium.

Statistical analyses

All statistical analyses were performed using R v3.5.1. A Welch's two-sample t-test was used to test for difference in mean PRS between cases and controls. The association between ALS outcome and PRS or rare variant status was assessed using a logistic regression. Covariates included in the model were the first 10 PCs, sex, genotyping batch, and the interaction between PRS and carrier status. Logistic regression was similarly used to assess the odds ratio of each intersection between PRS quartile and rare variant status. ROC curves were calculated using the R package pROC⁴⁶ to test between model of ALS \sim PRS or ALS \sim PRS*carrier-status, including all covariates. Pathway enrichment analysis of the SNPs comprising the PRS was performed using EnrichR⁴⁷. SNP functional consequences were annotated using vep (cache version 98)⁴².

Data availability

Raw sequencing results will be available on the NCBI SRA database (accession to be determined after publication). Calculated PRS per sample are provided as raw values in Table S1. Genomic regions targeted by MIPS probes are listed in Table S2.

ACKNOWLEDGEMENTS

We would like to thank the participants of the study. We thank H el ene Catoire and Vessela Zaharieva for assistance in clinical coordination and Cynthia V. Bourassa and Sandra Laurent for technical assistance. J.P.R. has received a doctoral student fellowship from the ALS Society of Canada and a Canadian Institutes of Health Research Frederick Banting & Charles Best Canada

Graduate Scholarship (FRN 159279). We thank the ALS Society of Canada, Brain Canada, the Canadian Institutes of Health Research, and the Radala Foundation for ALS Research for research funding.

FIGURES

Figure 1

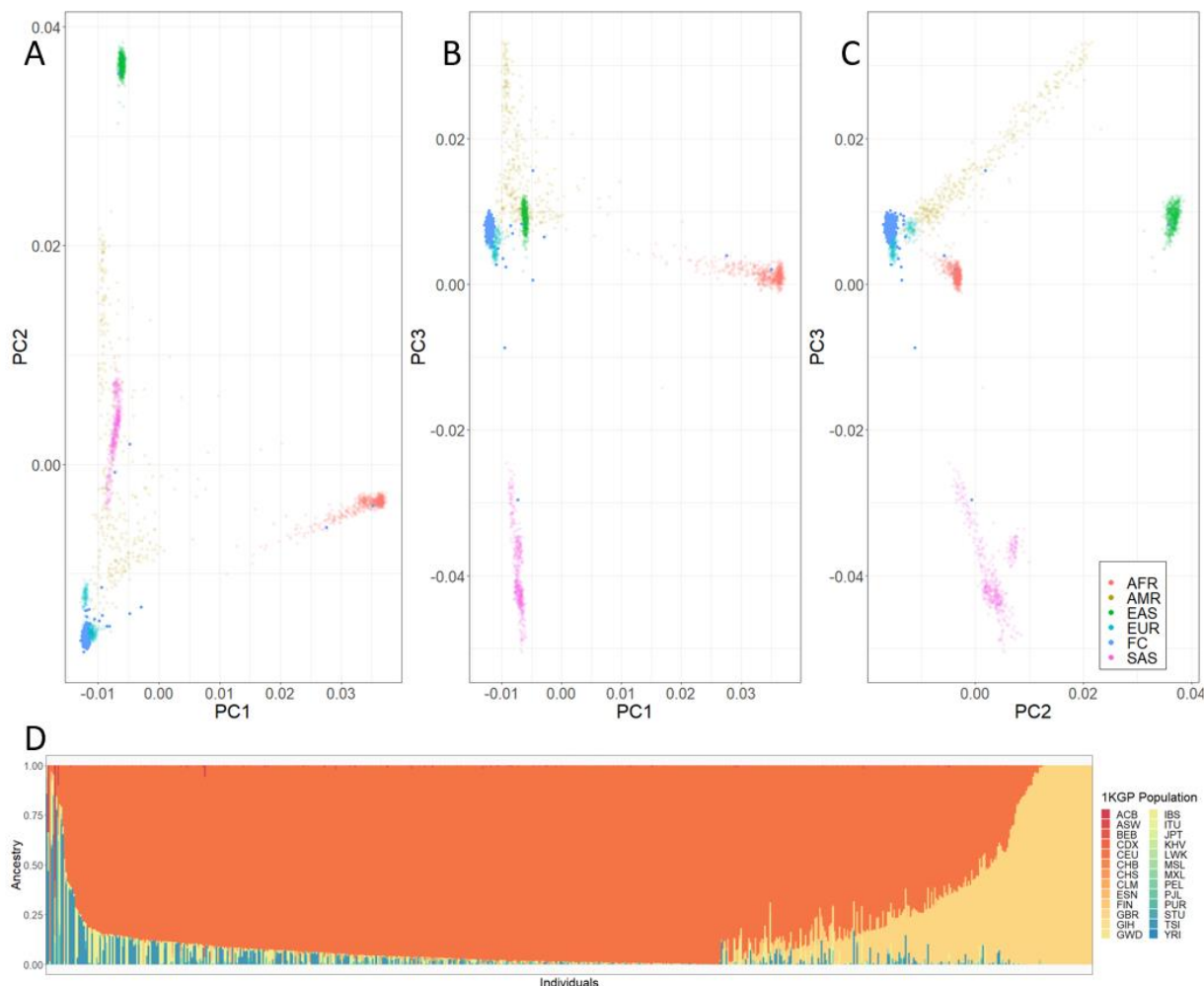


Figure 1: Common variant assessment of the Québec FC ALS cohort. A-C) Principal component analysis of common (minor allele frequency > 0.05) in the Québec ALS and unaffected control cohort compared to the 1000 Genomes Project (1KGP) reference populations. Samples in the Québec cohort cluster near the European super-population of the 1KGP cohort across the first three combinations of principal components (A: PC1 vs PC2, B: PC1 vs PC3, C: PC2 vs PC3). D) Admixture analysis of the Québec FC cohort using the 26 1KGP populations as references in a supervised analysis. Each vertical line of the stacked barplot represents a single cohort sample, with colours showing estimated reference population contributions.

Figure 2

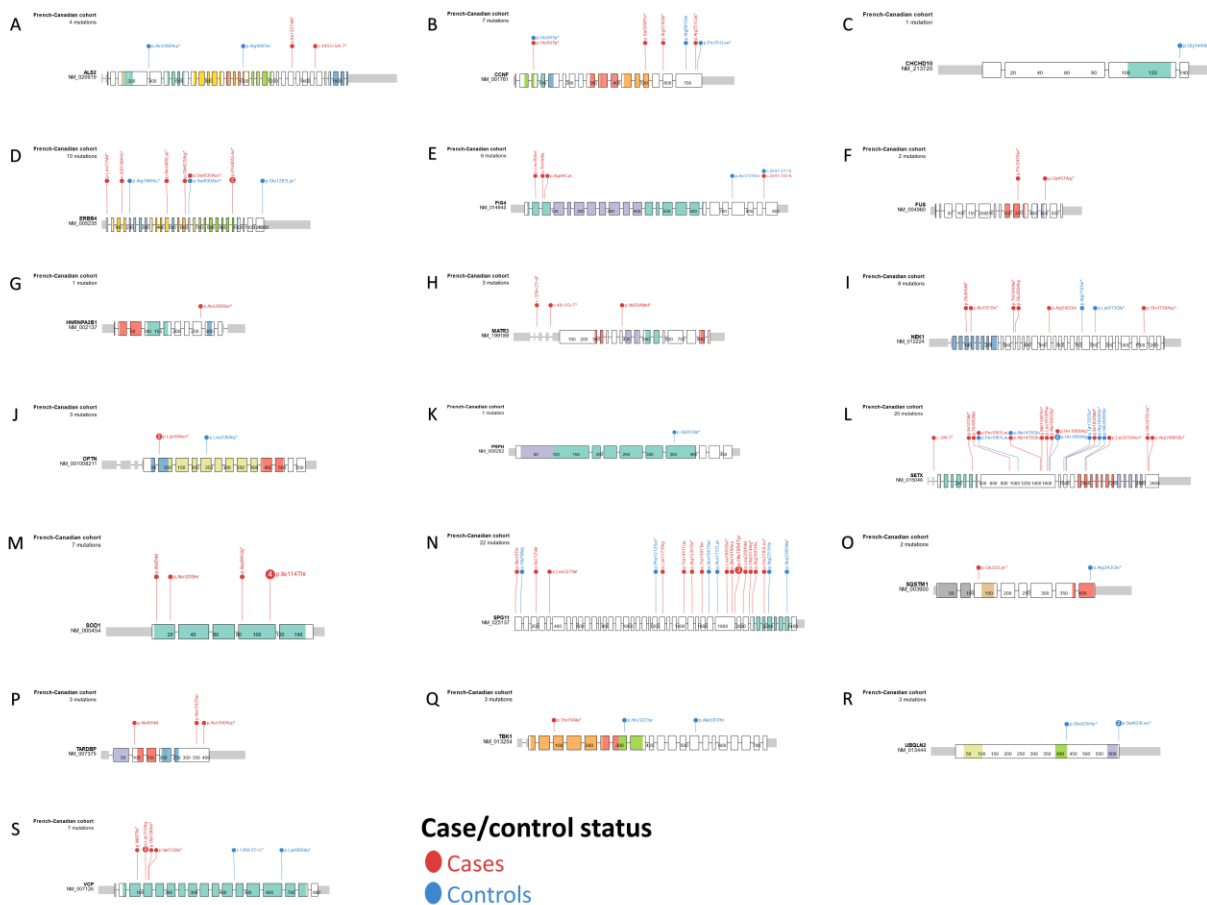


Figure 2: Rare variants observed in cases and controls of the FC ALS cohort. Gene profiles are shown with the locations of rare variants in ALS cases (red) or controls (blue). Exons are denoted by thicker boxes, while functional domains are indicated by coloured exons.

Figure 3

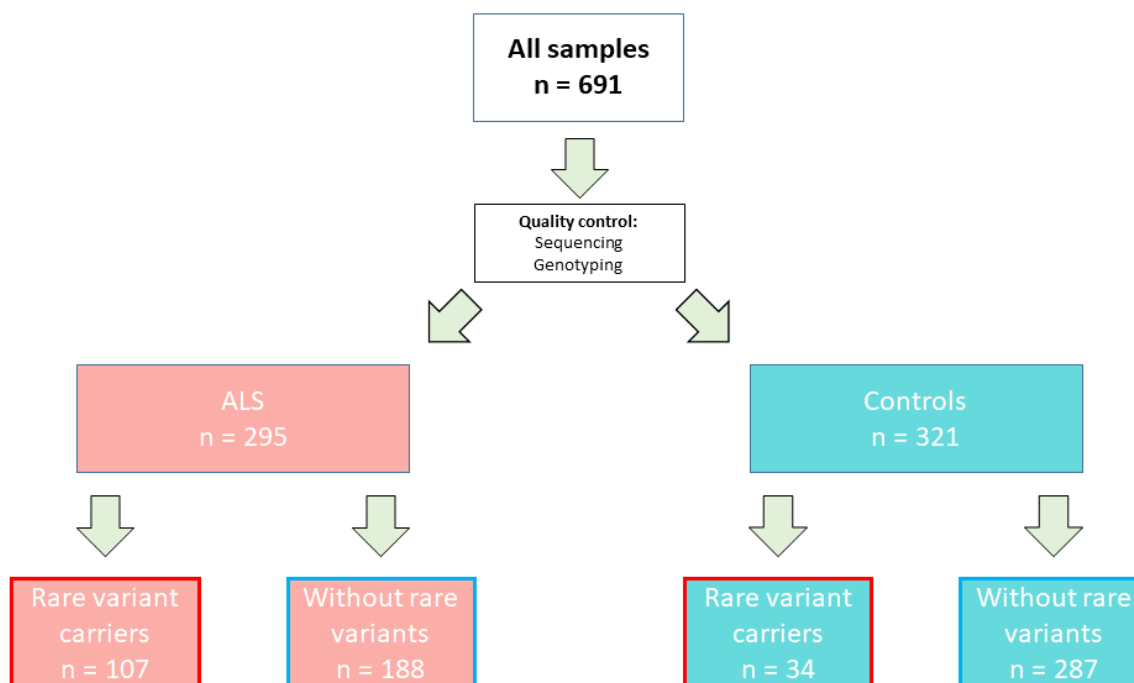


Figure 3: Flowchart of cohort sample types and division into rare variant subtypes. Sample numbers are given for the number of individuals included in the final overlapping PRS and rare variants analyses.

Figure 4

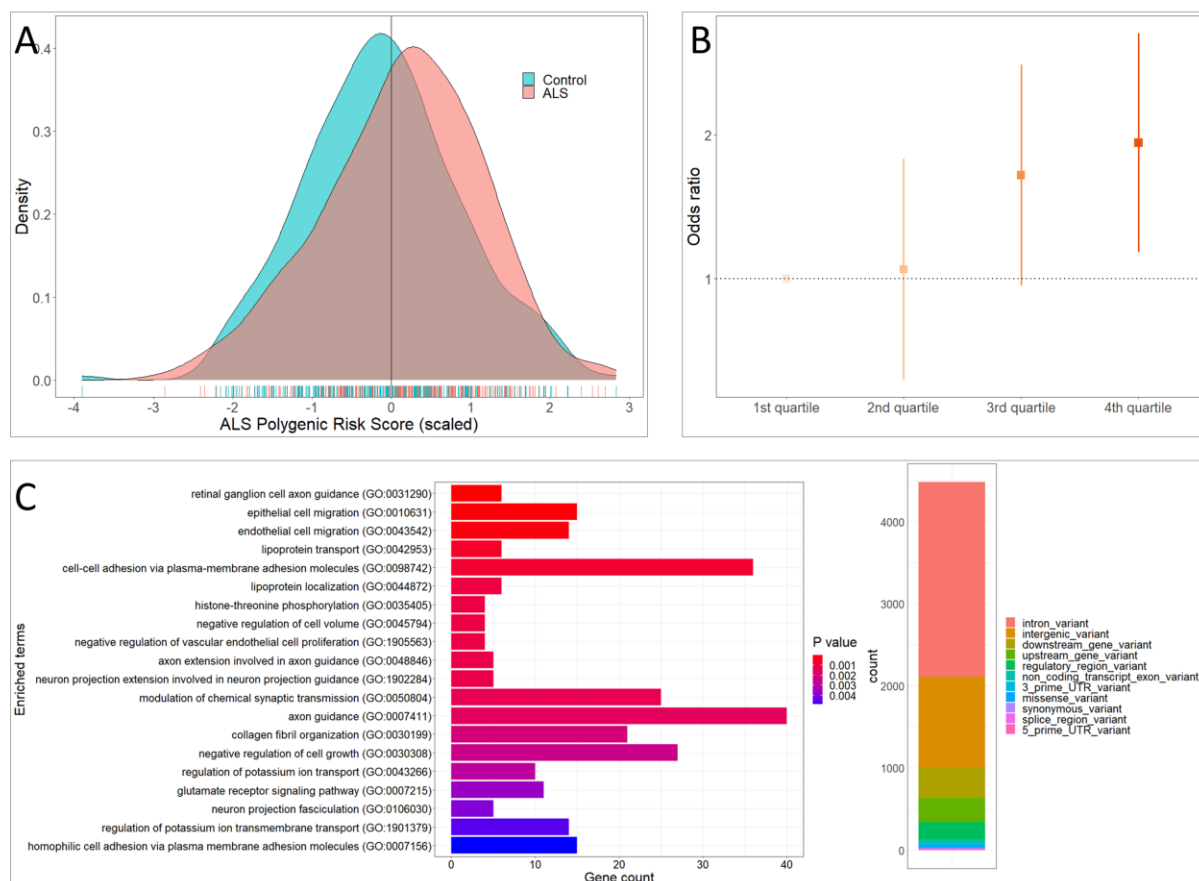


Figure 4: Polygenic risk score for ALS. A) Distribution of PRS between ALS cases and controls. PRS is shown as a Z-score scaled distribution, with the vertical line indicating the mean PRS in the cohort. Individual PRS are shown in the rugplot underneath the density graph. B) Odds ratios (OR) for each quartile (25%) of PRS distribution. Error bars represent the 95% confidence interval of the OR. OR values are relative to the first quartile as a baseline. 2nd quartile PRS OR = 1.05 (95%CI = 0.61-1.78, $p = 0.87$), 3rd quartile PRS OR = 1.65 (95%CI = 0.97-2.80, $p = 0.067$), and 4th quartile PRS OR = 1.92 (95%CI = 1.14-3.26, $p = 0.015$) C) Distribution of SNP type and pathway enrichment of genes in which SNPs are nearest.

Figure 5

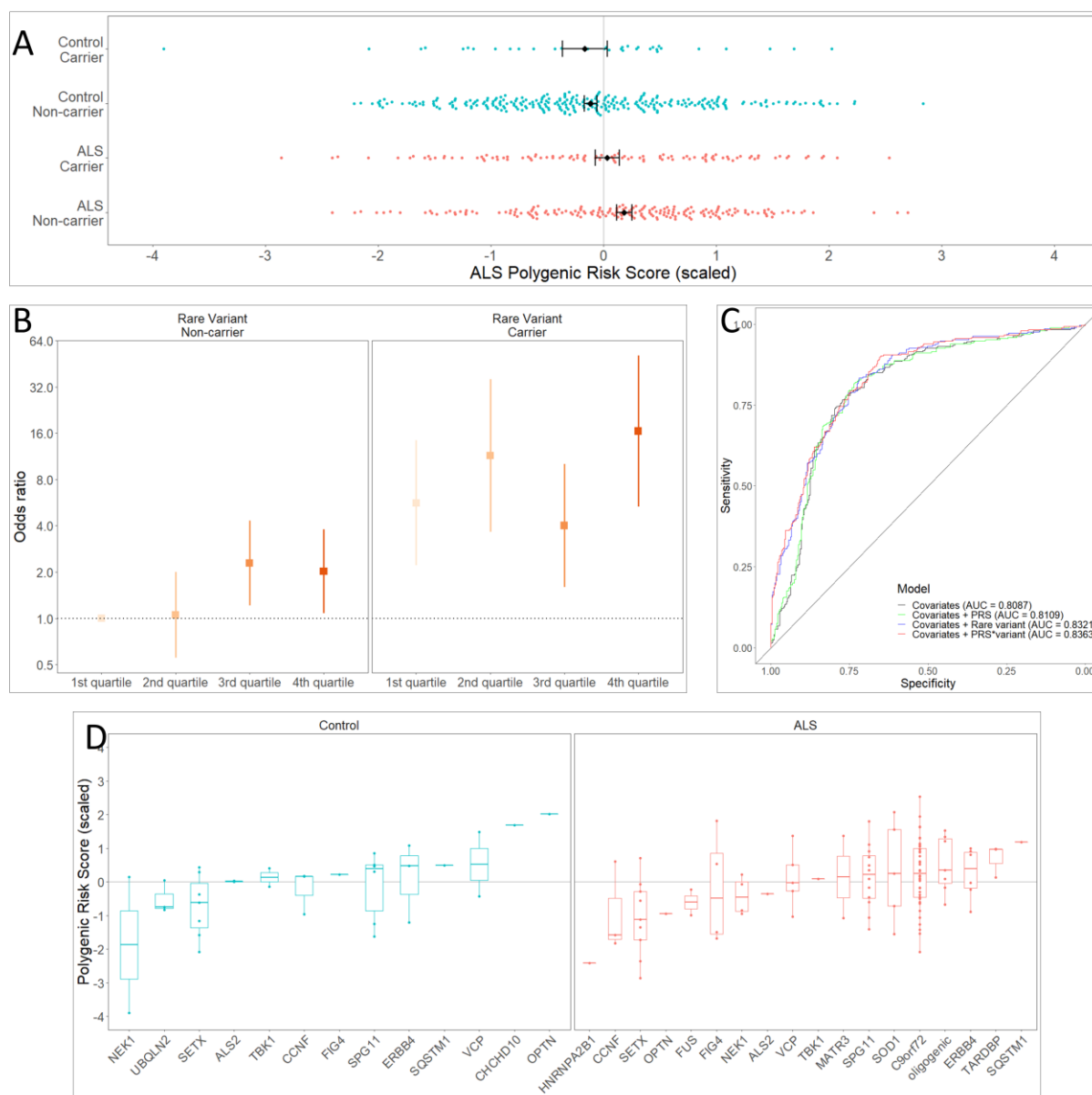


Figure 5: Polygenic risk score distributions by rare variant carrier status in ALS cases and controls. A) Distribution of PRS in each rare variant status subtype. PRS is Z-score scaled, with zero representing the cohort mean (grey vertical line). Black points overlaid on distributions represent the mean value of the subtype, and error bars represent the standard error of the mean. B) OR for each PRS quartile split by rare variant carrier status. Error bars represent the 95% confidence interval of the OR. OR values are relative to the first (lowest) quartile of the non-carrier subgroup. C) Receiver-operating characteristic (ROC) curves for models of PRS and ALS risk. Line colour represents different models incorporating various predictor variables, with area under the curve (AUC) listed for each. D) Distribution of PRS by gene in which a variant is observed. “Oligogenic” indicates that more than one variant in the same sample was observed.

Table 1

Variant	Description	dbSNP	gnomAD NFE	Sequencing	Variant type	Cases	Controls
ALS2_A1322V	ENST00000264276.6:c.3965C>T	NA	0	MIPS	missense	1	0
ALS2_c.4403+5A>T	ENST00000264276.6:c.4403+5A>T	rs766580828	3.55E-05	MIPS	PTV	1	0
ALS2_I1321V	ENST00000264276.6:c.3961A>G	rs1249361729	8.87E-06	WES	missense	1	0
ALS2_N386D	ENST00000467448.1:c.1156A>G	rs763518739	5.76E-05	MIPS	missense	0	1
ALS2_R998X	ENST00000264276.6:c.2992C>T	rs121908137	0	MIPS	PTV	0	1
CCNF_H69Y	ENST00000397066.4:c.205C>T	rs369245530	2.66E-05	MIPS	missense	1	1
CCNF_P761L	ENST00000397066.4:c.2282C>T	rs760181877	3.53E-05	MIPS	missense	0	1
CCNF_R574Q	ENST00000397066.4:c.1721G>A	rs369730776	1.81E-05	WES	missense	1	0
CCNF_R691Q	ENST00000397066.4:c.2072G>A	rs148419125	0.0002851	MIPS	missense	0	1
CCNF_R751C	ENST00000397066.4:c.2251C>T	rs142532028	0.0003079	WES	missense	1	0
CCNF_S509P	ENST00000397066.4:c.1525T>C	rs760953006	2.64E-05	WES	missense	1	0
CHCHD10_G144V	ENST00000401675.3:c.431G>T	rs1197865297	0 (0.00002940)	MIPS	missense	0	1
ERBB4_c.420+8A>G	ENST00000260943.6:c.420+8A>G	rs772267165	5.31E-05	WES	PTV	1	0
ERBB4_E1287K	ENST00000342788.4:c.3859G>A	rs367568427	3.53E-05	MIPS	missense	0	1
ERBB4_L13V	ENST00000260943.6:c.36C>G	rs749917244	1.77E-05	MIPS	missense	1	0
ERBB4_N465K	ENST00000260943.6:c.1394C>A	rs200755699	0.0001582	MIPS	missense	1	0
ERBB4_P377R	ENST00000260943.6:c.1129C>G	rs750910473	2.64E-05	MIPS	missense	0	1
ERBB4_P965L	ENST00000342788.4:c.2894C>T	rs756460001	8.81E-06	MIPS	missense	2	0
ERBB4_Q623R	ENST00000260943.6:c.1867A>G	rs763788454	5.27E-05	MIPS	missense	2	0
ERBB4_R196H	ENST00000260943.6:c.586G>A	rs369165560	0.0001494	MIPS	missense	0	1
ERBB4_S630N	ENST00000342788.4:c.1889G>A	NA	0	MIPS	missense	1	1
FIG4_c.2547-1G>A	ENST00000230124.3:c.2547-1G>A	rs769858739	6.19E-05	WES	PTV	1	0
FIG4_c.2547-5T>G	ENST00000230124.3:c.2547-5T>G	rs200267243	0.0006547	MIPS	PTV	0	1
FIG4_L39S	ENST00000230124.3:c.116T>C	rs373630745	4.40E-05	WES	missense	1	0
FIG4_N731S	ENST00000230124.3:c.2192A>G	rs1467094847	0	MIPS	missense	0	1
FIG4_R69C	ENST00000230124.3:c.205C>T	rs540674198	6.15E-05	WES	missense	1	0
FIG4_T59A	ENST00000230124.3:c.175A>G	rs748869342	2.64E-05	WES	missense	1	0
FUS_G457R	ENST00000254108.7:c.1369G>C	NA	0	MIPS	missense	1	0
FUS_P345S	ENST00000254108.7:c.1033C>T	rs1420340059	8.79E-06	MIPS	missense	1	0
HNRNPA2B1_N289S	ENST00000354667.4:c.866A>G	rs367958673	4.66E-05	WES	missense	1	0
MATR3_c.-339+2T>A	ENST00000361059.2:c.-339+2T>A	rs539017488	0.0001892	WES	PTV	1	0
MATR3_c.48+1G>T	ENST00000503811.1:c.48+1G>T	rs766117433	0.0005795	WES	PTV	1	0
MATR3_V394M	ENST00000361059.2:c.1180G>A	rs1482158829	8.81E-06	WES	missense	1	0
NEK1_E1139D	ENST00000439128.2:c.3417G>C	rs754030272	4.43E-05	MIPS	missense	1	0
NEK1_E360D	ENST00000439128.2:c.1080G>C	rs765591688	7.82E-05	MIPS	missense	1	0
NEK1_E84V	ENST00000439128.2:c.251A>T	rs754427159	8.86E-06	MIPS	missense	1	0
NEK1_I105T	ENST00000439128.2:c.314T>C	rs1333590290	0	MIPS	missense	1	0
NEK1_K813E	ENST00000439128.2:c.2437A>G	rs755436817	6.22E-05	MIPS	missense	0	1
NEK1_R542Q	ENST00000439128.2:c.1625G>A	rs1032792680	3.55E-05	MIPS	missense	2	0

NEK1_R710X	ENST00000439128.2:c.2128C>T	rs780469027	1.27E-05	MIPS	PTV	0	1
NEK1_T344A	ENST00000439128.2:c.1030A>G	rs780547342	6.25E-05	MIPS	missense	1	0
OPTN_K59N	ENST00000263036.5:c.177G>C	rs1487584331	3.52E-05	WES	missense	2	0
OPTN_L238R	ENST00000263036.5:c.713T>G	NA	0	MIPS	missense	0	1
OPTN_R545Q	ENST00000263036.5:c.1634G>A	rs75654767	0.0002551	MIPS	missense	1	0
PRPH_G353V	ENST00000257860.4:c.1058G>T	rs777418543	0 (0.00001470)	MIPS	missense	0	1
SETX_A1478E	ENST00000224140.5:c.4433C>A	rs143661911	0.0005014	WES	missense	1	1
SETX_A1645G	ENST00000224140.5:c.4934C>G	rs1253978998	8.79E-06	MIPS	missense	1	0
SETX_c.-9A>T	ENST00000224140.5:c.-9A>T	NA	0	MIPS	PTV	1	0
SETX_D2496E	ENST00000224140.5:c.7488C>G	rs1240185024	1.76E-05	MIPS	missense	1	0
SETX_H1660R	ENST00000224140.5:c.4979A>G	rs371894414	7.03E-05	MIPS	missense	1	2
SETX_I1830M	ENST00000224140.5:c.5490A>G	rs1396976525	8.80E-06	WES	missense	1	0
SETX_I331V	ENST00000224140.5:c.991A>G	rs572884359	4.40E-05	MIPS	missense	1	0
SETX_K2019N	ENST00000224140.5:c.6057A>T	NA	0	MIPS	missense	1	0
SETX_K781E	ENST00000224140.5:c.2341A>G	NA	0	MIPS	missense	1	0
SETX_L1610F	ENST00000224140.5:c.4828C>T	rs749891883	0.0001055	WES	missense	1	0
SETX_M1506T	ENST00000224140.5:c.4517T>C	rs199974622	0.0001145	WES	missense	1	0
SETX_P1061L	ENST00000224140.5:c.3182C>T	rs12352982	7.93E-05	MIPS	missense	2	1
SETX_Q2000E	ENST00000224140.5:c.5998C>G	rs142917412	0.0003956	MIPS	missense	0	1
SETX_Q2470L	ENST00000224140.5:c.7409A>T	NA	0	MIPS	missense	1	0
SETX_Q653K	ENST00000224140.5:c.1957C>A	rs116333061	7.07E-05	MIPS	missense	1	0
SETX_R1845H	ENST00000224140.5:c.5534G>A	rs750996673	2.64E-05	MIPS	missense	0	1
SETX_S512C	ENST00000224140.5:c.1535C>G	rs533943279	8.80E-06	WES	missense	1	0
SETX_T900A	ENST00000224140.5:c.2698A>G	rs1320466105	8.82E-06	WES	missense	1	0
SETX_Y1793X	ENST00000224140.5:c.5379T>G	NA	0	MIPS	PTV	0	1
SOD1_A5V	ENST00000270142.6:c.14C>T	rs121912442	7.96E-05	MIPS	missense	1	0
SOD1_D84G	ENST00000270142.6:c.251A>G	NA	0	MIPS	missense	1	0
SOD1_I114T	ENST00000270142.6:c.341T>C	rs121912441	0.0001055	MIPS	missense	4	0
SOD1_N20S	ENST00000270142.6:c.59A>G	rs768029813	0.0001769	WES	missense	1	0
SPG11_A10T	ENST00000261866.7:c.28G>A	rs372658867	0.0001258	MIPS	missense	1	0
SPG11_A1918D	ENST00000261866.7:c.5753C>A	rs368992436	7.92E-05	MIPS	missense	1	0
SPG11_D2360A	ENST00000261866.7:c.7079A>C	rs373463137	0	MIPS	missense	0	1
SPG11_F1212S	ENST00000261866.7:c.3635T>C	NA	0	MIPS	missense	0	1
SPG11_G2074R	ENST00000558319.1:c.6220G>A	rs531916143	2.65E-05	WES	missense	1	0
SPG11_G76R	ENST00000261866.7:c.226G>C	rs944158756	3.07E-05	MIPS	missense	0	1
SPG11_H1954Y	ENST00000261866.7:c.5860C>T	rs368382627	4.40E-05	WES	missense	3	0
SPG11_H2183L	ENST00000261866.7:c.6548A>T	NA	0	MIPS	missense	1	0
SPG11_I212V	ENST00000261866.7:c.634A>G	rs758638438	5.28E-05	MIPS	missense	1	0
SPG11_K1273R	ENST00000261866.7:c.3818A>G	rs76389165	0.0008715	MIPS	missense	2	0
SPG11_K2419R	ENST00000261866.7:c.7256A>G	rs76116949	3.52E-05	MIPS	missense	1	0
SPG11_L1855S	ENST00000261866.7:c.5564T>C	rs138009927	3.52E-05	WES	missense	1	0

SPG11_L2004V	ENST00000261866.7:c.6010T>G	rs200220848	0.000194	MIPS	missense	1	0
SPG11_L327V	ENST00000261866.7:c.979C>G	rs146109825	0.0001935	MIPS	missense	1	0
SPG11_N1657S	ENST00000261866.7:c.4970A>G	rs376207036	8.80E-06	MIPS	missense	0	1
SPG11_N1737K	ENST00000261866.7:c.5211T>A	rs1024346199	0	MIPS	missense	0	1
SPG11_R1530T	ENST00000261866.7:c.4589G>C	rs747289701	2.64E-05	WES	missense	1	0
SPG11_R2093H	ENST00000261866.7:c.6278G>A	rs376817637	6.15E-05	WES	missense	1	0
SPG11_R2211H	ENST00000261866.7:c.6632G>A	rs144165094	0.000765	MIPS	missense	0	2
SPG11_W1457C	ENST00000261866.7:c.4371G>C	rs886819382	1.77E-05	WES	missense	1	0
SPG11_W1597X	ENST00000261866.7:c.4790G>A	rs753920931	1.76E-05	MIPS	PTV	1	0
SQSTM1_E32K	ENST00000360718.5:c.94G>A	rs756209668	8.82E-06	MIPS	missense	1	0
SQSTM1_R343Q	ENST00000510187.1:c.1028G>A	rs143977783	0.0001846	MIPS	missense	0	1
TARDBP_A90V	ENST00000240185.3:c.269C>T	rs80356715	0.0004396	WES	missense	1	0
TARDBP_N352S	ENST00000240185.3:c.1055A>G	rs80356734	0	MIPS	missense	1	0
TARDBP_N390D	ENST00000240185.3:c.1168A>G	rs80356741	9.42E-06	MIPS	missense	1	0
TBK1_A535T	ENST00000331710.5:c.1603G>A	rs199905735	0.0001233	MIPS	missense	0	1
TBK1_H322Y	ENST00000331710.5:c.964C>T	rs145905497	0.0002829	MIPS	missense	0	1
TBK1_T79A	ENST00000331710.5:c.235A>G	NA	0	MIPS	missense	1	0
UBQLN2_Q425H	ENST00000338222.5:c.1275G>T	rs140167423	6.13E-05	MIPS	missense	0	1
UBQLN2_S624L	ENST00000338222.5:c.1871C>T	rs1388882458	1.39E-05	MIPS	missense	0	2
VCP_c.1360-5T>C	ENST00000358901.6:c.1360-5T>C	NA	0	MIPS	PTV	0	1
VCP_G128S	ENST00000358901.6:c.382G>A	NA	0	MIPS	missense	1	0
VCP_K112R	ENST00000358901.6:c.335A>G	rs766787045	2.64E-05	WES	missense	2	0
VCP_K668E	ENST00000358901.6:c.2002A>G	NA	0	MIPS	missense	0	1
VCP_V133I	ENST00000358901.6:c.397G>A	rs775567003	8.79E-06	WES	missense	1	0
VCP_V87I	ENST00000358901.6:c.259G>A	NA	0	MIPS	missense	1	0

Table 1: Rare variants observed in the Québec FC cohort. Variants are listed as Gene_Position. Description = Detailed description in the recommended format of Sequence Variant Nomenclature (HGVS). dbSNP = existing variation by rsID in dbSNP. gnomAD_NFE = frequency of variant in the Non-Finnish European population of the gnomAD database v.2.1.1. Values in parentheses are updated frequencies for the variant in the updated gnomAD v.3.1.2 database. Sequencing = Type of sequencing in which variant is observed, targeted (MIPS) or exome sequencing (ES). Variant_type = consequence of variant on protein sequence, either protein truncating variant (PTV) or missense. Case and control counts are the number of individuals carrying the variant.

REFERENCES

- 1 Taylor, J. P., Brown, R. H., Jr. & Cleveland, D. W. Decoding ALS: from genes to mechanism. *Nature* **539**, 197-206, doi:10.1038/nature20413 (2016).
- 2 Vasta, R., Chia, R., Traynor, B. J. & Chio, A. Unraveling the complex interplay between genes, environment, and climate in ALS. *EBioMedicine* **75**, 103795, doi:10.1016/j.ebiom.2021.103795 (2022).
- 3 Muller, K. *et al.* Comprehensive analysis of the mutation spectrum in 301 German ALS families. *J Neurol Neurosurg Psychiatry* **89**, 817-827, doi:10.1136/jnnp-2017-317611 (2018).
- 4 Tunca, C. *et al.* Revisiting the complex architecture of ALS in Turkey: Expanding genotypes, shared phenotypes, molecular networks, and a public variant database. *Hum Mutat* **41**, e7-e45, doi:10.1002/humu.24055 (2020).
- 5 Nel, M. *et al.* Revealing the Mutational Spectrum in Southern Africans With Amyotrophic Lateral Sclerosis. *Neurol Genet* **8**, e654, doi:10.1212/NXG.0000000000000654 (2022).
- 6 Nishiyama, A. *et al.* Comprehensive targeted next-generation sequencing in Japanese familial amyotrophic lateral sclerosis. *Neurobiol Aging* **53**, 194 e191-194 e198, doi:10.1016/j.neurobiolaging.2017.01.004 (2017).
- 7 Jooma, S., Hahn, M. J., Hindorff, L. A. & Bonham, V. L. Defining and Achieving Health Equity in Genomic Medicine. *Ethn Dis* **29**, 173-178, doi:10.18865/ed.29.S1.173 (2019).
- 8 Bchetnia, M. *et al.* Genetic burden linked to founder effects in Saguenay-Lac-Saint-Jean illustrates the importance of genetic screening test availability. *J Med Genet* **58**, 653-665, doi:10.1136/jmedgenet-2021-107809 (2021).
- 9 Low-Kam, C. *et al.* Whole-genome sequencing in French Canadians from Quebec. *Hum Genet* **135**, 1213-1221, doi:10.1007/s00439-016-1702-6 (2016).
- 10 Engert, J. C. *et al.* ARSACS, a spastic ataxia common in northeastern Quebec, is caused by mutations in a new gene encoding an 11.5-kb ORF. *Nature Genetics* **24**, 120-125, doi:10.1038/72769 (2000).
- 11 Ebermann, I. *et al.* Deafblindness in French Canadians from Quebec: a predominant founder mutation in the USH1C gene provides the first genetic link with the Acadian population. *Genome Biol* **8**, R47, doi:10.1186/gb-2007-8-4-r47 (2007).
- 12 Leitersdorf, E., Tobin, E. J., Davignon, J. & Hobbs, H. H. Common low-density lipoprotein receptor mutations in the French Canadian population. *J Clin Invest* **85**, 1014-1023, doi:10.1172/JCI114531 (1990).
- 13 van Es, M. A. *et al.* Genome-wide association study identifies 19p13.3 (UNC13A) and 9p21.2 as susceptibility loci for sporadic amyotrophic lateral sclerosis. *Nat Genet* **41**, 1083-1087, doi:10.1038/ng.442 (2009).
- 14 van Rheenen, W. *et al.* Genome-wide association analyses identify new risk variants and the genetic architecture of amyotrophic lateral sclerosis. *Nat Genet* **48**, 1043-1048, doi:10.1038/ng.3622 (2016).
- 15 Benyamin, B. *et al.* Cross-ethnic meta-analysis identifies association of the GPX3-TNIP1 locus with amyotrophic lateral sclerosis. *Nat Commun* **8**, 611, doi:10.1038/s41467-017-00471-1 (2017).
- 16 van Rheenen, W. *et al.* Common and rare variant association analyses in amyotrophic lateral sclerosis identify 15 risk loci with distinct genetic architectures and neuron-

- specific biology. *Nature Genetics* **53**, 1636-1648, doi:10.1038/s41588-021-00973-1 (2021).
- 17 McLaughlin, R. L. *et al.* Genetic correlation between amyotrophic lateral sclerosis and schizophrenia. *Nat Commun* **8**, 14774, doi:10.1038/ncomms14774 (2017).
- 18 Schijven, D. *et al.* Analysis of shared common genetic risk between amyotrophic lateral sclerosis and epilepsy. *Neurobiol Aging* **92**, 153 e151-153 e155, doi:10.1016/j.neurobiolaging.2020.04.011 (2020).
- 19 Goris, A. *et al.* No evidence for shared genetic basis of common variants in multiple sclerosis and amyotrophic lateral sclerosis. *Hum Mol Genet* **23**, 1916-1922, doi:10.1093/hmg/ddt574 (2014).
- 20 Chen, X., Yazdani, S., Piehl, F., Magnusson, P. K. E. & Fang, F. Polygenic link between blood lipids and amyotrophic lateral sclerosis. *Neurobiol Aging* **67**, 202 e201-202 e206, doi:10.1016/j.neurobiolaging.2018.03.022 (2018).
- 21 Lu, T. *et al.* Individuals with common diseases but with a low polygenic risk score could be prioritized for rare variant screening. *Genet Med*, doi:10.1038/s41436-020-01007-7 (2020).
- 22 Choi, S. H. *et al.* Monogenic and Polygenic Contributions to Atrial Fibrillation Risk: Results From a National Biobank. *Circ Res* **126**, 200-209, doi:10.1161/CIRCRESAHA.119.315686 (2020).
- 23 Jurgens, S. J. *et al.* Adjusting for Common Variant Polygenic Scores Improves Yield in Rare Variant Association Analyses. *BioRxiv*, doi:10.1101/2021.10.18.464866 (2021).
- 24 Fahed, A. C. *et al.* Polygenic background modifies penetrance of monogenic variants conferring risk for coronary artery disease, breast cancer, or colorectal cancer. *medRxiv*, doi:10.1101/19013086 (2019).
- 25 Gill, P. K. *et al.* Ancestry-specific profiles of genetic determinants of severe hypertriglyceridemia. *J Clin Lipidol* **15**, 88-96, doi:10.1016/j.jacl.2020.11.007 (2021).
- 26 Karczewski, K. J. *et al.* The mutational constraint spectrum quantified from variation in 141,456 humans. *Nature* **581**, 434-443, doi:10.1038/s41586-020-2308-7 (2020).
- 27 Genomes Project, C. *et al.* A global reference for human genetic variation. *Nature* **526**, 68-74, doi:10.1038/nature15393 (2015).
- 28 Goutman, S. A. *et al.* Emerging insights into the complex genetics and pathophysiology of amyotrophic lateral sclerosis. *The Lancet Neurology*, doi:10.1016/s1474-4422(21)00414-2 (2022).
- 29 Ebbert, M. T. W. *et al.* Long-read sequencing across the C9orf72 'GGGGCC' repeat expansion: implications for clinical use and genetic discovery efforts in human disease. *Mol Neurodegener* **13**, 46, doi:10.1186/s13024-018-0274-4 (2018).
- 30 Fournier, C. *et al.* Relations between C9orf72 expansion size in blood, age at onset, age at collection and transmission across generations in patients and presymptomatic carriers. *Neurobiol Aging* **74**, 234 e231-234 e238, doi:10.1016/j.neurobiolaging.2018.09.010 (2019).
- 31 Pattamatta, A. *et al.* Repeat length increases disease penetrance and severity in C9orf72 ALS/FTD BAC transgenic mice. *bioRxiv*, doi:10.1101/2020.05.21.107425 (2020).
- 32 Lam, M. *et al.* RICOPILI: Rapid Imputation for COnsortias PipeLine. *Bioinformatics* **36**, 930-933, doi:10.1093/bioinformatics/btz633 (2020).

- 33 Zheng, X. *et al.* A high-performance computing toolset for relatedness and principal component analysis of SNP data. *Bioinformatics* **28**, 3326-3328, doi:10.1093/bioinformatics/bts606 (2012).
- 34 Alexander, D. H., Novembre, J. & Lange, K. Fast model-based estimation of ancestry in unrelated individuals. *Genome Res* **19**, 1655-1664, doi:10.1101/gr.094052.109 (2009).
- 35 McCarthy, S. *et al.* A reference panel of 64,976 haplotypes for genotype imputation. *Nat Genet* **48**, 1279-1283, doi:10.1038/ng.3643 (2016).
- 36 Li, H. *et al.* The Sequence Alignment/Map format and SAMtools. *Bioinformatics* **25**, 2078-2079, doi:10.1093/bioinformatics/btp352 (2009).
- 37 Ross, J. P. *et al.* Oligogenicity, C9orf72 expansion, and variant severity in ALS. *Neurogenetics* **21**, 227-242, doi:10.1007/s10048-020-00612-7 (2020).
- 38 Leblond, C. S. *et al.* Replication study of MATR3 in familial and sporadic amyotrophic lateral sclerosis. *Neurobiol Aging* **37**, 209 e217-221, doi:10.1016/j.neurobiolaging.2015.09.013 (2016).
- 39 DePristo, M. A. *et al.* A framework for variation discovery and genotyping using next-generation DNA sequencing data. *Nat Genet* **43**, 491-498, doi:10.1038/ng.806 (2011).
- 40 McKenna, A. *et al.* The Genome Analysis Toolkit: a MapReduce framework for analyzing next-generation DNA sequencing data. *Genome Res* **20**, 1297-1303, doi:10.1101/gr.107524.110 (2010).
- 41 Koboldt, D. C. *et al.* VarScan 2: somatic mutation and copy number alteration discovery in cancer by exome sequencing. *Genome Res* **22**, 568-576, doi:10.1101/gr.129684.111 (2012).
- 42 McLaren, W. *et al.* The Ensembl Variant Effect Predictor. *Genome Biol* **17**, 122, doi:10.1186/s13059-016-0974-4 (2016).
- 43 Renton, A. E. *et al.* A hexanucleotide repeat expansion in C9ORF72 is the cause of chromosome 9p21-linked ALS-FTD. *Neuron* **72**, 257-268, doi:10.1016/j.neuron.2011.09.010 (2011).
- 44 DeJesus-Hernandez, M. *et al.* Expanded GGGGCC hexanucleotide repeat in noncoding region of C9ORF72 causes chromosome 9p-linked FTD and ALS. *Neuron* **72**, 245-256, doi:10.1016/j.neuron.2011.09.011 (2011).
- 45 Choi, S. W. & O'Reilly, P. F. PRSice-2: Polygenic Risk Score software for biobank-scale data. *Gigascience* **8**, doi:10.1093/gigascience/giz082 (2019).
- 46 Robin, X. *et al.* pROC: an open-source package for R and S+ to analyze and compare ROC curves. *BMC Bioinformatics* **12**, 77, doi:10.1186/1471-2105-12-77 (2011).
- 47 Chen, E. Y. *et al.* Enrichr: interactive and collaborative HTML5 gene list enrichment analysis tool. *BMC Bioinformatics* **14**, 128, doi:10.1186/1471-2105-14-128 (2013).