

Change in incidence of cardiovascular diseases during the covid-19 pandemic and vaccination campaign: data from the nationwide French hospital discharge database

Supplemental material

eTable 1 – ICD10 codes used to identify the targeted cardiovascular pathologies (when used as the principal diagnosis)

eTable 2 – Percentile of length of stay for the targeted pathologies

eTable 3 – ICD10 codes used to identify stays with Covid (used as principal or secondary diagnosis)

eTable 4 – Comparison of case numbers between 2019 and 2020 for the period running from March 1st to May 10th, differentiating positive and negative changes

eFigure 1. Myocarditis cases and vaccination. Difference in cases with or without Covid between 2020 and 2021, men aged 10 to 29, put in perspective with the first dose of vaccination curve

eFigure 2. Pulmonary embolism cases and vaccination. Difference in cases with or without Covid between 2020 and 2021, women aged 70 and over, put in perspective with the first dose of vaccination curve

Hierarchical Data Exploration System

Data model for data provided

eTable1

Group	Pathology	Principal Diagnosis	
Heart – Ischemic	ANG – Angina pectoris	I20 Angina pectoris	
	INF – Myocardial infarction	I21 Acute myocardial infarction	
Heart – Inflammation	MYOC – Myocarditis	I40 Acute myocarditis	
	PERIC – Pericarditis	I30 Acute pericarditis	
Cerebrovascular	TIA – Transient ischaemic attack	G45 Transient cerebral ischaemic attacks and related syndromes	
	STROKE – Stroke	I61 Intracerebral haemorrhage I63 Cerebral infarction I64 Stroke, not specified as haemorrhage or infarction	
Arterial embolism and thrombosis	THRB_EMB_ART – Arterial embolism and thrombosis	I74 Arterial embolism and thrombosis	
Venous embolism and thrombosis	DVT – Deep vein thrombosis	I801 Phlebitis and thrombophlebitis of femoral vein I802 Phlebitis and thrombophlebitis of other deep vessels of lower extremities I822 Embolism and thrombosis of vena cava	
		EMB – Pulmonary embolism	I26 Pulmonary embolism
		OTH_VT – Other venous thromboses	I803 Phlebitis and thrombophlebitis of lower extremities, unspecified I808 Phlebitis and thrombophlebitis of other sites I809 Phlebitis and thrombophlebitis of unspecified site I828 Embolism and thrombosis of other specified veins I829 Embolism and thrombosis of unspecified vein

eTable 1 – ICD10 codes used to identify the targeted cardiovascular pathologies (when used as the principal diagnosis)

eTable2

TypePath	Year	# stays	Q95	Q96	Q97	Q98	Q99	Q100
ANG – Angina pectoris	2019	60,387	8	9	11	13	17	316
	2020	53,163	8	9	10	12	16	117
	2021	51,689	8	8	10	12	15	118
INF – Myocardial infarction	2019	86,059	16	18	20	23	29	391
	2020	83,204	15	17	19	22	28	182
	2021	85,544	15	16	18	21	27	217
PERIC – Pericarditis	2019	7,956	14	15	18	21	26	98
	2020	7,121	14	16	18	21	27	113
	2021	7,237	15	17	19	22	28	129
MYOC – Myocarditis	2019	2,579	12	14	16	18	26	123
	2020	2,481	14	15	19	23	31	114
	2021	3,325	12	14	15	19	26	215
TIA – Transient ischaemic attack	2019	35,176	11	13	14	16	20	119
	2020	32,749	11	12	14	15	20	109
	2021	32,281	11	12	13	15	20	124
STROKE – Stroke	2019	97,574	29	33	37	43	55	488
	2020	94,786	29	32	36	43	56	747
	2021	96,022	30	33	37	44	55	386
THRB_EMB_ART – Arterial embolism and thrombosis	2019	39,573	20	22	26	31	41	458
	2020	35,736	19	22	25	30	42	445
	2021	37,666	19	22	25	31	42	216
EMB – Pulmonary embolism	2019	39,226	20	21	23	27	33	197
	2020	41,715	19	21	23	27	33	226
	2021	44,200	20	21	24	27	34	263
DVT – Deep vein thrombosis	2019	9,682	17	19	21	24	30	182
	2020	8,155	18	20	22	25	33	121
	2021	7,737	17	19	21	24	31	114
OTH_VT – Other venous thromboses	2019	7,529	14	15	18	20	25	90
	2020	6,798	13	14	16	20	25	141
	2021	6,991	13	15	17	20	27	127

eTable 2 – Percentile of length of stay for the targeted pathologies

eTable3

Code	Label
U0710	COVID-19, respiratory symptoms with identification
U0711	COVID-19, respiratory symptoms without testing
U0714	COVID-19, other symptoms with identification
U0715	COVID-19, other symptoms without testing

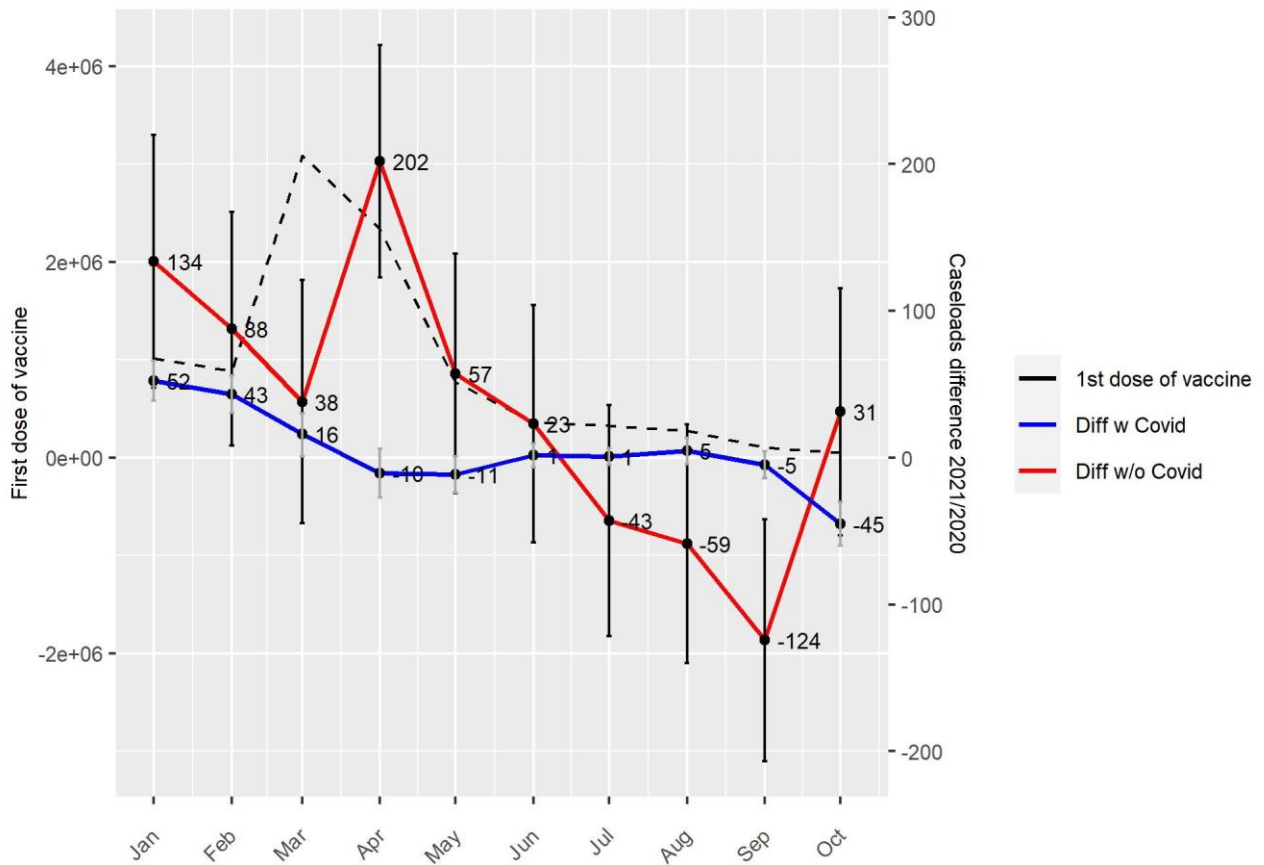
eTable 3 – ICD10 codes used to identify stays with Covid (used as principal or secondary diagnosis)

eTable4

Morbidity	N2020-N2019 (95%CI) p	(N2020-N2019)/N2019 (95%CI) p
Angina pectoris	-4,598 (-4,881 to -4,316) p<0.001	-36% (-39% to -34%) p<0.001
Myocardial infarction	-3,177 (-3,524 to -2,831) p<0.001	-19% (-21% to -17%) p<0.001
Pericarditis	-220 (-326 to -114) p<0.001	-14% (-21% to -7%) p<0.001
Myocarditis – Neg	-107 (-165 to -48) p<0.001	-22% (-34% to -10%) p<0.001
Myocarditis – Pos	2 (-18 to 22) p=0.941	4% (-40% to 48%) p=0.941
Myocarditis – Tot	-105 (-167 to -44) p<0.001	-20% (-31% to -8%) p<0.001
Transient ischemic attack	-1,630 (-1,851 to -1,409) p<0.001	-23% (-26% to -20%) p<0.001
Stroke	-2,569 (-2,941 to -2,197) p<0.001	-13% (-15% to -11%) p<0.001
Arterial embolism and thrombosis	-2,944 (-3,169 to -2,719) p<0.001	-37% (-40% to -34%) p<0.001
Pulmonary embolism – Neg	-786 (-959 to -613) p<0.001	-19% (-23% to -14%) p<0.001
Pulmonary embolism – Pos	484 (317 to 652) p<0.001	14% (9% to 19%) p<0.001
Pulmonary embolism – Tot	-301 (-542 to -61) p=0.014	-4% (-7% to -1%) p=0.014
Deep vein thrombosis	-564 (-677 to -450) p<0.001	-29% (-35% to -23%) p<0.001
Other venous thromboses	-455 (-556 to -354) p<0.001	-30% (-36% to -23%) p<0.001

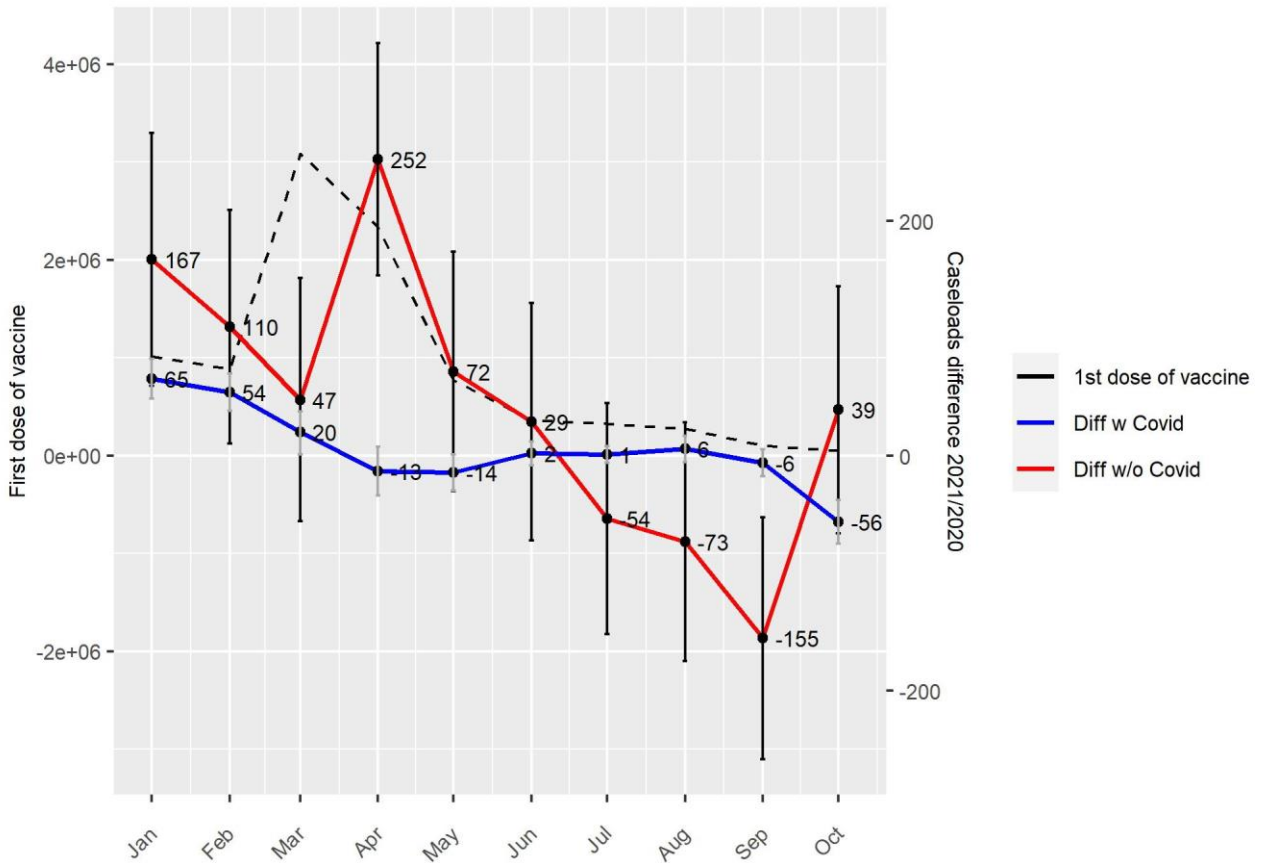
eTable 4 – Comparison of case numbers between 2019 and 2020 for the period running from March 1st to May 10th, differentiating positive and negative changes

eFigure1



eFigure 1. Myocarditis cases and vaccination. Difference in cases with or without Covid between 2020 and 2021, men aged 10 to 29, put in perspective with the first dose of vaccination curve

eFigure2



eFigure 2. Pulmonary embolism cases and vaccination. Difference in cases with or without Covid between 2020 and 2021, women aged 70 and over, put in perspective with the first dose of vaccination curve

Hierarchical Data Exploration System

The hierarchical data exploration system (HDES) is a set of figure files navigable through html files. It is available as a compressed file (hierarchical_data_exploration_system.7z) for download at <https://osf.io/2b7hk/>.

Data model for data provided

Two files (sex_age_year.csv and diff_month.csv) are provided, available for download at <https://osf.io/2b7hk/> (data.7z).

1. sex_age_year.csv - Number of patients per sex and age group per year.

Field name	Description
Patho	Pathology
Sex	Sex
Age	Age group
Nb2019	Number of patients for Sex and Age Group in 2019
Nb2020	Standardized number of patients for Sex and Age Group in 2020
Nb2020_min	Standardized number of patients for Sex and Age Group in 2020, lower bound
Nb2020_max	Standardized number of patients for Sex and Age Group in 2020, upper bound
Nb2021	Standardized number of patients for Sex and Age Group in 2021
Nb2021_min	Standardized number of patients for Sex and Age Group in 2021, lower
Nb2021_max	Standardized number of patients for Sex and Age Group in 2021, upper bound

Then a series of fields named according to the following X_Y pattern, X and Y being the years compared. For instance:

Diff_X_Y	Number of patients year Y - Number of patients year X
Diff_X_Y_min	Number of patients year Y - Number of patients year X, lower bound
Diff_X_Y_max	Number of patients year Y - Number of patients year X, upper bound
Diff_X_Y_p	Number of patients year Y - Number of patients year X, significance
Diff_X_Y_Dir	If p is significant, sign of the difference (- or +), else 0
RR_X_Y	Relative Risk of hospitalization on year Y compared to year X
RR_X_Y_min	Relative Risk of hospitalization on year Y compared to year, lower bound
RR_X_Y_max	Relative Risk of hospitalization on year Y compared to year, upper bound
RR_X_Y_p	Relative Risk of hospitalization on year Y compared to year, significance
RR_X_Y_Dir	If p is significant, impact of the RR (- or +), else 0

Example:

Diff_19_20 – Number of patients year 2020 - Number of patients year 2019

RR_19_2020 – Relative Risk of hospitalization on year 2020 compared to year 2019

2. diff_month.csv - Patients per sex, age group and month: Number per year and difference and RR between each dyad of years

Field name	Description
Patho	Pathology
Sex	Sex
Month	Month of admission
Nb2019	Number of patients for Sex and Month in 2019
Nb2020	Standardized number of patients for Sex and Month in 2020
Nb2020_min	Standardized number of patients for Sex and Month in 2020, lower bound
Nb2020_max	Standardized number of patients for Sex and Month in 2020, upper bound
Nb2021	Standardized number of patients for Sex and Month in 2021
Nb2021_min	Standardized number of patients for Sex and Month in 2021, lower
Nb2021_max	Standardized number of patients for Sex and Month in 2021, upper bound

Then a series of fields named according to the following X_Y pattern, X and Y being the years compared. For instance:

Diff_X_Y	Number of patients year Y - Number of patients year X
Diff_X_Y_min	Number of patients year Y - Number of patients year X, lower bound
Diff_X_Y_max	Number of patients year Y - Number of patients year X, upper bound
Diff_X_Y_p	Number of patients year Y - Number of patients year X, significance
Diff_X_Y_Dir	If p is significant, sign of the difference (- or +), else 0
RR_X_Y	Relative Risk of hospitalization on year Y compared to year X
RR_X_Y_min	Relative Risk of hospitalization on year Y compared to year, lower bound
RR_X_Y_max	Relative Risk of hospitalization on year Y compared to year, upper bound
RR_X_Y_p	Relative Risk of hospitalization on year Y compared to year, significance
RR_X_Y_Dir	If p is significant, impact of the RR (- or +), else 0

Example:

Diff_19_20 – Number of patients year 2020 - Number of patients year 2019

RR_19_2020 – Relative Risk of hospitalization on year 2020 compared to year 2019