

1 Supplementary Material for

2

3 **SARS-CoV-2 booster vaccination rescues attenuated IgG1 memory B**
4 **cell response in primary antibody deficiency patients**

5

6 Frank J. Lin^{1,9}, Alexa Michelle Altman Doss^{2,9}, Hannah G. Davis-Adams¹, Lucas J. Adams³,
7 Christopher H. Hanson¹, Laura A. VanBlargan¹, Chieh-Yu Liang^{1,3}, Rita. E. Chen^{1,3}, Jennifer Marie
8 Monroy¹, H. James Wedner¹, Anthony Kulczycki¹, Tarisa L. Mantia¹, Caitlin C. O’Shaughnessy¹,
9 Saravanan Raju³, Fang R. Zhao¹, Elise Rizzi¹, Christopher J. Rigell¹, Tiffany Biason Dy¹, Andrew
10 L. Kau^{1,4}, Zhen Ren¹, Jackson Turner³, Jane A. O’Halloran¹, Rachel M. Presti^{1, 6}, Daved H.
11 Fremont³, Peggy L. Kendall¹, Ali H. Ellebedy^{3, 5, 6}, Philip A. Mudd^{6, 8}, Michael S. Diamond^{1,3,5,6, 7},
12 Ofer Zimmerman^{*1}, and Brian J. Laidlaw^{*1}

13

14

15 * Correspondence should be addressed to Brian Laidlaw (brian.laidlaw@wustl.edu) and Ofer
16 Zimmerman (zimmero@wustl.edu)

17

18 **This PDF includes:**

19 Supplementary methods

20 Supplementary references

21 Fig. S1. Baseline phenotype of PAD patients and healthy donor cohorts.

22 Fig S2. COVID-19-experienced PAD patients display elevated RBD-specific B cell response
23 following primary vaccination series.

24 Fig. S3. COVID-19-naive PAD patients display elevated RBD-specific B cell response following
25 booster vaccination.

26 Fig. S4. Isotype composition of SARS-CoV-2 RBD-specific memory B cell response following
27 vaccination in PAD patients.

28 Fig. S5. RBD-specific memory B cells from PAD patients display reduced CD11c expression
29 class.

30 Table S1. Characteristics of patient cohort

31 Table S2. Cellular phenotype of patient cohort

32 Table S3. PAD patient laboratory values

33 Table S4. PAD patient responses to other vaccine antigens at time of diagnosis

34 **SUPPLEMENTARY METHODS**

35 **Preparation of peripheral blood mononuclear cells.** Patient blood was collected in sodium
36 citrate cell preparation tubes (BD Biosciences). Tubes were centrifuged at room temperature for
37 30 minutes at 1650 x *g* without brake. The mononuclear cells and plasma layer were then
38 transferred to a 50mL conical and centrifuged at room temperature for 10 minutes at 256 x *g*.
39 Supernatant was removed without disturbing the cell pellet. Cells were resuspended in PBS and
40 all cells of the same subject were combined into one 15-mL conical tube. Cells were centrifuged
41 as above. Supernatant was removed without disturbing the cell pellet and cells were
42 resuspended in 5mL of ACK lysing buffer (Thermo Fisher) for 5 minutes. Cells were washed
43 with PBS, counted, washed again with PBS, resuspended in 10% dimethylsulfoxide in FBS at
44 10⁶ cells per mL and aliquoted into cryovials. Cryovials were transferred to a freezing container
45 (Daigger Scientific, Mr. Frosty) and placed in a -80°C freezer overnight before being transferred
46 to liquid nitrogen for storage.

47
48 **Antibodies for flow cytometry staining.** Staining for flow cytometry was performed using
49 cryopreserved PBMC samples. Cryopreserved samples were thawed in a 37 °C water bath and
50 added to tube containing RPMI with 10% FBS and 1% Penicillin Streptomycin solution (Fisher).
51 Cells were then centrifuged at 300x *g* at room temperature, resuspended in 10% RPMI, and
52 counted. Cells were then aliquoted to a 96 well plate and centrifuged at 810 x *g* for 2 minutes at
53 4 °C. The cells were then washed with PBS containing 2% FBS, centrifuged, and then incubated
54 with the primary antibody mix for 30 minutes on ice. Samples that were stained with tetramer
55 containing antibody cocktail were incubated for 45 minutes. Cells were then washed three times
56 with 2% PBS and incubated with secondary antibody mix for an additional 30 minutes. Samples
57 were then washed an additional three times with 2% PBS before being resuspended for flow
58 cytometry analysis. Flow cytometry data were acquired on a Cytex Aurora and were analyzed
59 with FlowJo software (TreeStar).

60
61 The following antibodies were used for flow cytometry staining: Brilliant Violet 711(BV711) anti-
62 CD11c (301630), BV750 anti-CD19 (302262), allophycocyanin (APC)/Fire 810 anti-CD3
63 (344858), BV510 anti-IgD (348220), BV605 anti-IgM (314524), phycoerythrin (PE)/Dazzle 594
64 anti-CXCR5 (356928), APC anti-his (362605), PE/Fire 810 anti-CD27 (302859), APC/Fire 750
65 anti-CD20 (302358), Zombie NIR (423106), phycoerythrin-indotricarbocyanine (PE-Cy7) anti-
66 CD71 (334112), BV650 BV570 anti-CD45RO (304226), FITC anti-CCR7 (353216), BV605 anti-

67 HLA-DR (307640), Alexa Fluor 700 anti-CD4 (344622), Alexa Fluor 594 anti-CD8 (301056),
68 peridinin chlorophyll protein Cy5.5 (PerCpCy5.5) (304122), PE/Fire 810 anti-CD27 (302859),
69 BV421 anti-ICOS (313524) (all from Biolegend); Biotin anti-IgG3 (OB9210-08), Alexa Fluor 555
70 anti-IgG2 (OB907032), PE anti-IgG1 (OB905409), FITC anti-IgA (CBL114FMI), Brilliant Blue 700
71 (BB700) anti-CD38 (BDB566445), PE-Cy7 anti-PD1 (BDB561272) (all from Fisher).

72 **His-tagged SARS-CoV-2 protein purification.** Genes encoding SARS-CoV-2 Wuhan-Hu-1
73 spike protein (residues 1-1213, GenBank: MN908947.3), the Wuhan-Hu-1 RBD (residues 319-
74 514), and B.1.1.529 (BA.1) spike protein were cloned into a pCAGGS mammalian expression
75 vector with a C-terminal hexahistidine tag. Both spike proteins were prefusion stabilized and
76 expression optimized with six proline substitutions (F817P, A892P, A899P, A942P, K986P,
77 V987P), with a disrupted S1/S2 furin cleavage site and a C-terminal foldon trimerization motif
78 (YIPEAPRDGQAYVRKDGWVLLSTFL) (50). Expi293F cells were transiently transfected, and
79 proteins were recovered via cobalt-charged resin chromatography (G-Biosciences) as
80 previously described (34, 35) .

81 **HLA class II tetramers.** HLA class II tetramers representing the HLA-DPA1*01:03/HLA-
82 DPB1*04:01-restricted SARS-CoV-2 spike (S) protein epitopes S₁₆₇₋₁₈₀ (TFEYVSQLMDLE)
83 and S₈₁₆₋₈₃₀ (SFIEDLLFNKVTLD) were constructed by cloning the relevant peptides into an
84 AbVec vector system containing the appropriate HLA alpha and beta chains linked to the
85 peptide of interest via a flexible linker at the N-terminus of the beta chain (41–43). This system
86 includes corresponding leucine zipper motifs on the alpha and beta chains to promote HLA
87 monomer stability. Proteins were expressed in 293F cells transfected with the appropriate
88 AbVec vector. Purified HLA monomer was biotinylated with BioA enzyme in biotinylation buffer
89 (0.2 M NaCl, 0.1 M Tris pH7.5, 5 mM MgCl₂, 5 mM ATP, 0.4 mM Biotin, 5 uM Leupeptin, 1 uM
90 Pepstatin, and 0.2 mM PMSF). The monomer was then tetramerized and fluorochrome labeled
91 by adding Streptavidin-R-Phycoerythrin (Agilent) to the S₁₆₇₋₁₈₀ monomer or Streptavidin-
92 Allophycocyanin (Agilent) to the S₈₁₆₋₈₃₀ monomer (51).

93 **Focus reduction neutralization test.** Neutralizing antibody titers were performed with
94 authentic SARS-CoV-2 strains and variants as previous described (24).

95

96 **SUPPLEMENTAL REFERENCES**

- 97 51. C.-L. Hsieh, J. A. Goldsmith, J. M. Schaub, A. M. DiVenere, H.-C. Kuo, K. Javanmardi, K. C.
98 Le, D. Wrapp, A. G. Lee, Y. Liu, C.-W. Chou, P. O. Byrne, C. K. Hjorth, N. V. Johnson, J. Ludes-
99 Meyers, A. W. Nguyen, J. Park, N. Wang, D. Amengor, J. J. Lavinder, G. C. Ippolito, J. A.
100 Maynard, I. J. Finkelstein, J. S. McLellan, Structure-based design of prefusion-stabilized SARS-
101 CoV-2 spikes. *Science*. 369, eabd0826 (2020).
- 102 52. R. A. Willis, V. Ramachandiran, J. C. Shires, G. Bai, K. Jeter, D. L. Bell, L. Han, T. Kazarian,
103 K. C. Ugwu, O. Laur, S. Contreras-Alcantara, D. L. Long, J. D. Altman, Production of Class II
104 MHC Proteins in Lentiviral Vector-Transduced HEK-293T Cells for Tetramer Staining Reagents.
105 *Curr Protoc.* 1, e36 (2021).

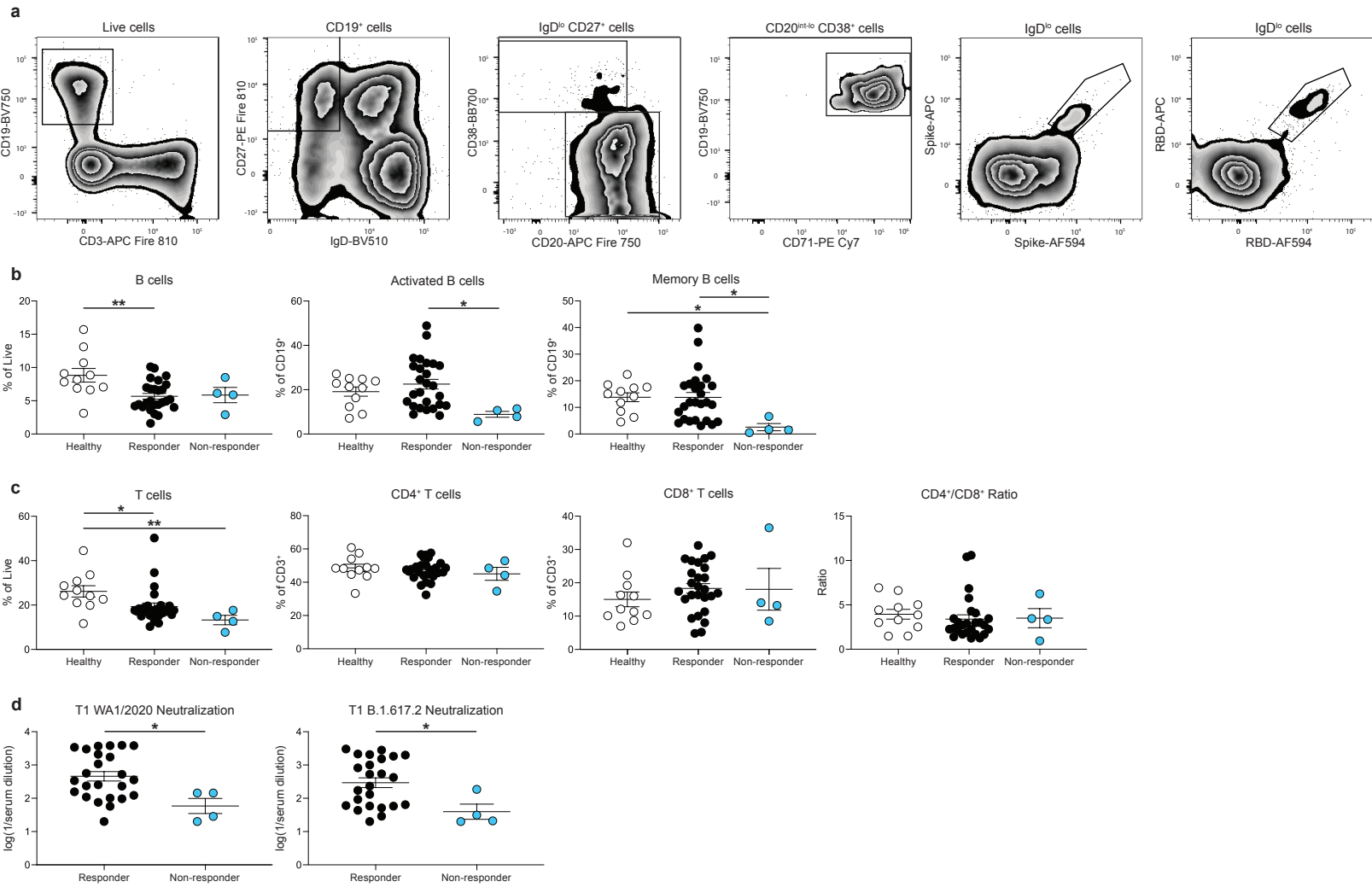


Figure S1

106 **Figure S1. Baseline phenotype of PAD patients and healthy donor cohorts. (a)**
107 Representative B cell flow cytometry gating scheme. **(b)** Percentage of live cells that are B
108 (CD19⁺CD3⁻) cells at T1 in patient cohorts (left). Percentage of B cells that are activated (IgD^{lo})
109 cells in patient cohorts (middle) Percentage of B cells that are memory (IgD^{lo}CD27⁺) cells in
110 patient cohorts. (right). **(c)** Percentage of live cells that are T (CD3⁺CD19⁻) cells at T1 in patient
111 cohorts. (left) Percentage of T cells that are CD4⁺ (CD4⁺CD8⁻) cells in patient cohorts (middle left).
112 Percentage of T cells that are CD8⁺ (CD8⁺CD4⁻) in patient cohorts (middle right). Ratio of CD4⁺
113 to CD8⁺ T cells (right). **(d)** Serum neutralizing activity against WA1/2020 (left) and B.1.617.2 (right)
114 at T1. Non-responder defined as PAD patients in which the CD19⁺ IgD^{lo} Spike⁺ B cells response
115 was <0.02% of total B cells at T1. Statistical analyses were performed using a one-way ANOVA
116 with Fisher's least significant difference testing in b, c; or using an unpaired t-test in d. Error bars
117 were calculated based on the standard error of the mean. (*, $p < 0.05$; **, $p < 0.01$).
118

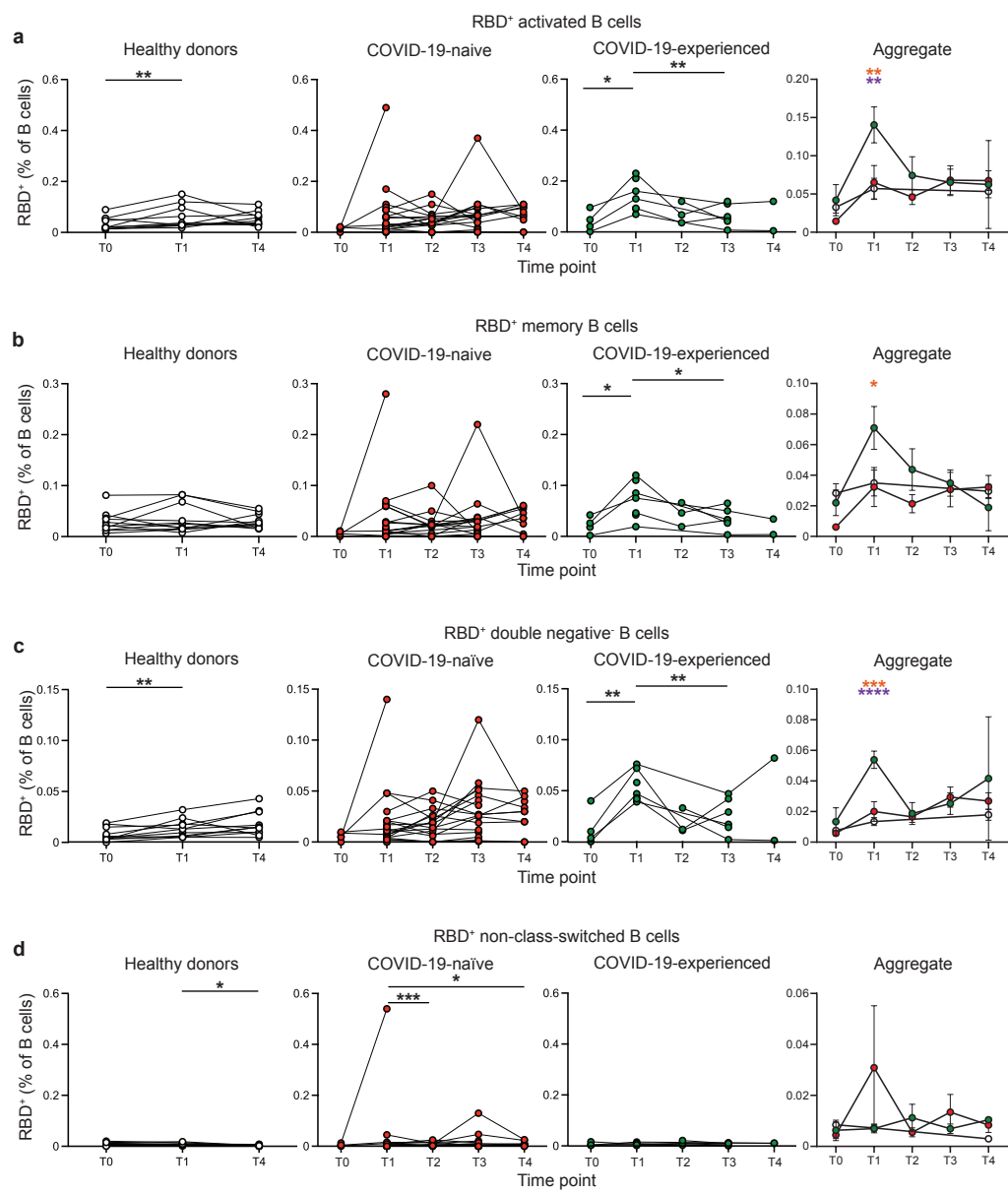


Figure S2

119 **Figure S2. COVID-19-experienced PAD patients display elevated RBD-specific B cell**
120 **response following primary vaccination series.** (a) Percentage of activated RBD⁺ cells
121 amongst the B (Live CD19⁺ CD3⁻) cell population in the healthy donor (left, white), COVID-19-
122 naïve PAD (middle left, red), and COVID-19-experienced PAD (middle right, green) cohorts.
123 Aggregate of mean percentage of B cells that are RBD⁺ activated cells in all groups is shown on
124 right. (b) Percentage of memory (IgD^{lo} CD20⁺ CD38^{int-lo} CD27⁺) RBD⁺ cells amongst the B cell
125 population in the healthy donor (left, white), COVID-19-naïve PAD (middle, red), and COVID-19-
126 experienced PAD (middle, green) cohorts. Aggregate of mean percentage of B cells that are RBD⁺
127 memory cells in all groups is shown on right. (c) Percentage of double negative (IgD^{lo} CD20⁺
128 CD38^{int-lo} CD27⁻) RBD⁺ cells amongst the B cell population in the healthy donor (left, white),
129 COVID-19-naïve PAD (middle, red), and COVID-19-experienced PAD (middle, green) cohorts.
130 Aggregate of mean percentage of B cells that are double negative RBD⁺ cells in all groups is
131 shown on right. (d) Percentage of non-class-switched (IgD⁺ CD20⁺ CD38^{int-lo} CD27⁺) RBD⁺ cells
132 amongst the B cell population in the healthy donor (left, white), COVID-19-naïve PAD (middle,
133 red), and COVID-19-experienced PAD (middle, green) cohorts. Aggregate of mean percentage
134 of B cells that are RBD⁺ non-class-switched cells in all groups is shown on right. Statistical
135 analyses were performed using a mixed effects model (for trends found between time points) or
136 two-way ANOVA (for trends found between groups in the aggregate graphs) with Fisher's least
137 significant difference testing. Significance testing between time points was limited to comparisons
138 relative to T1. On the aggregate graphs, all error bars were calculated based on the standard
139 error of the mean. Above the aggregate graphs, an orange asterisk indicates a comparison
140 between the COVID-19-naïve and COVID-19-experienced groups, and a purple asterisk indicates
141 a comparison between the COVID-19-experienced and healthy donor groups (*, $p < 0.05$; **, $p <$
142 0.01 ; ***, $p < 0.001$; ****, $p < 0.001$).

143

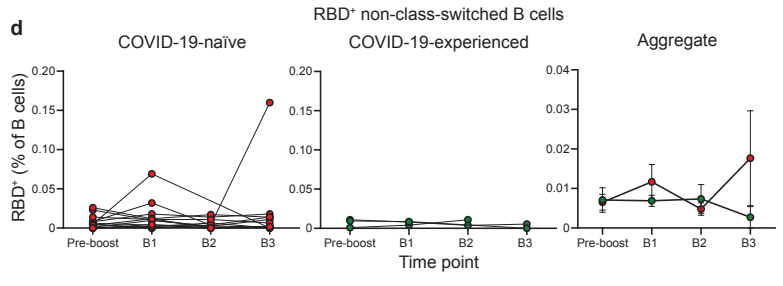
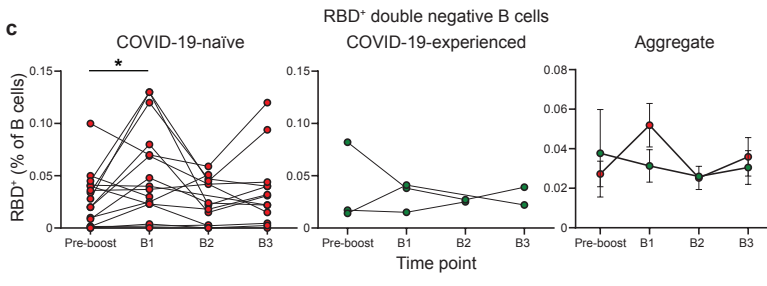
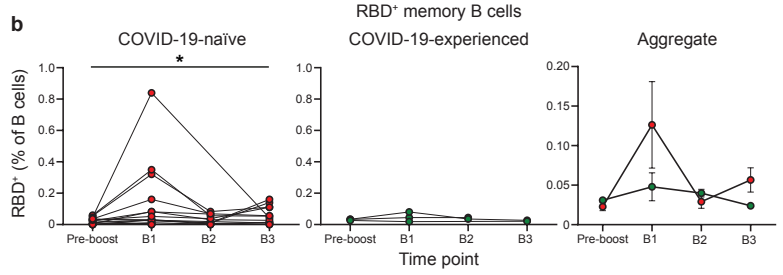
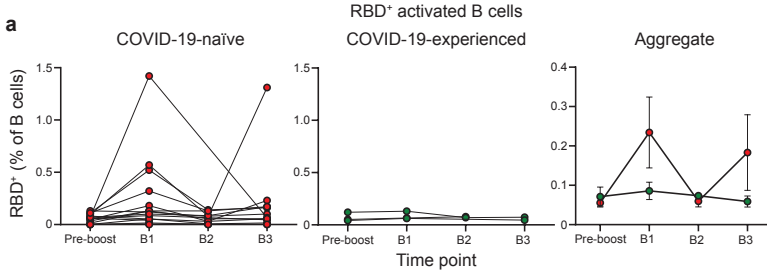


Figure S3

144 **Figure S3. COVID-19-naïve PAD patients display elevated RBD-specific B cell response**
145 **following booster vaccination.** (a) Percentage of activated RBD⁺ cells amongst the B (Live
146 CD19⁺ CD3⁻) cell population in the healthy donor (left, white), COVID-19-naïve PAD (middle left,
147 red), and COVID-19-experienced PAD (middle right, green) cohorts. Aggregate of mean
148 percentage of B cells that are RBD⁺ activated cells in all groups is shown on right. (b)
149 Percentage of memory (IgD^{lo} CD20⁺ CD38^{int-lo} CD27⁺) RBD⁺ cells amongst the B cell population
150 in the healthy donor (left, white), COVID-19-naïve PAD (middle, red), and COVID-19-
151 experienced PAD (middle, green) cohorts. Aggregate of mean percentage of B cells that are
152 RBD⁺ memory cells in all groups is shown on right. (c) Percentage of double negative (IgD^{lo}
153 CD20⁺ CD38^{int-lo} CD27⁻) RBD⁺ cells amongst the B cell population in the healthy donor (left,
154 white), COVID-19-naïve PAD (middle, red), and COVID-19-experienced PAD (middle, green)
155 cohorts. Aggregate of mean percentage of B cells that are double negative Spike⁺ cells in all
156 groups is shown on right. (d) Percentage of non-class-switched (IgD⁺ CD20⁺ CD38^{int-lo} CD27⁺)
157 RBD⁺ cells amongst the B cell population in the healthy donor (left, white), COVID-19-naïve
158 PAD (middle, red), and COVID-19-experienced PAD (middle, green) cohorts. Aggregate of
159 mean percentage of B cells that are RBD⁺ non-class-switched cells in all groups is shown on
160 right. pre-boost group consists of the last sample obtained from each patient prior to booster
161 vaccination. Statistical analyses were performed using a mixed effects model (for trends found
162 between time points) with Fisher's least significant difference testing. Significance testing
163 between time points was limited to comparisons relative to pre-boost (*, $p < 0.05$). On the
164 aggregate graphs, error bars were calculated based on the standard error of the mean.
165

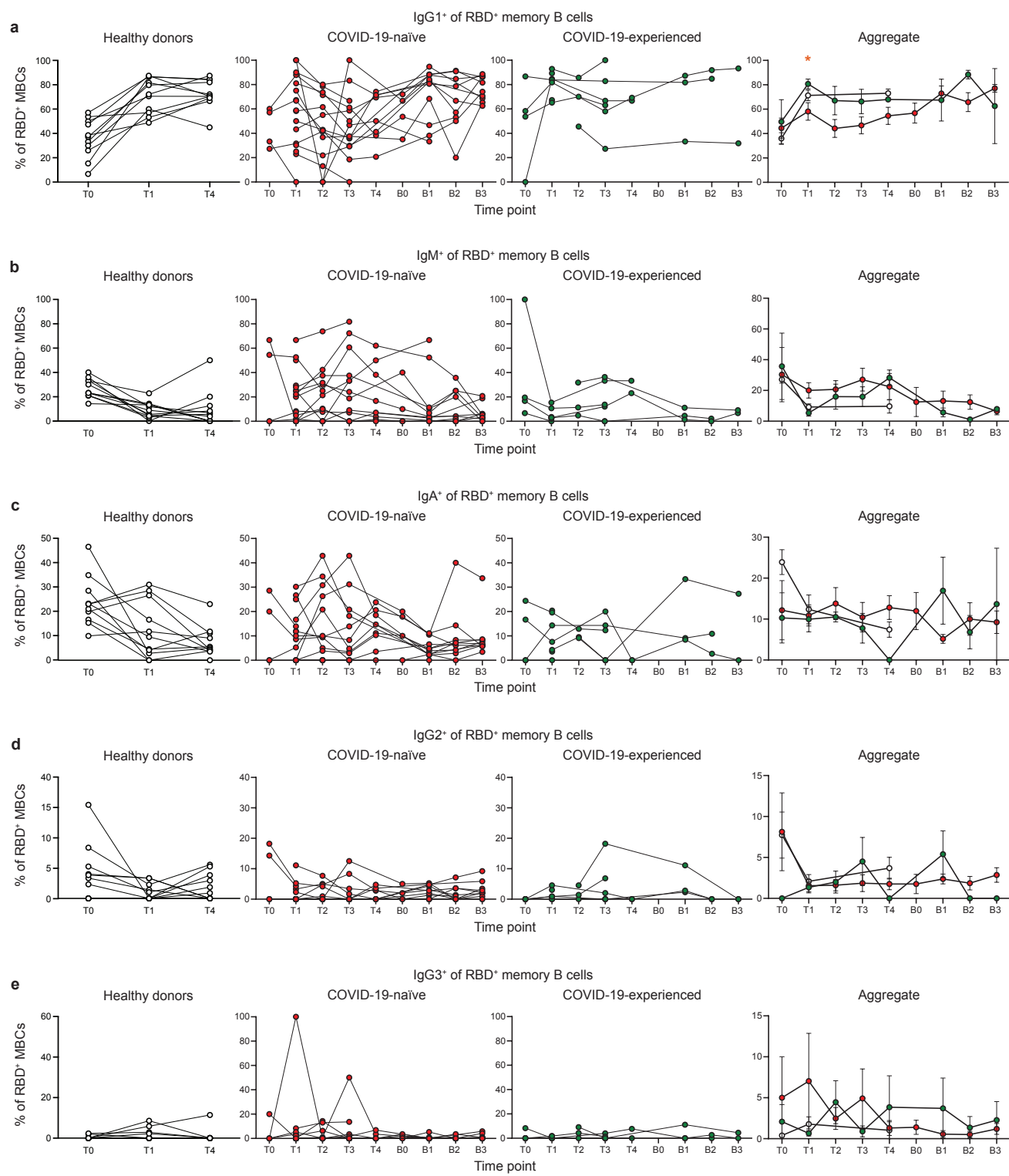


Figure S4

166 **Figure S4. Isotype composition of SARS-CoV-2 RBD-specific memory B cell response**
167 **following vaccination in PAD patients.** (a) Percentage of RBD⁺ memory B cells that are IgG1⁺
168 in the healthy donor (left, white), COVID-19-naïve PAD (middle left, red), and COVID-19-
169 experienced PAD (middle right, green) cohorts. Aggregate of mean percentage of IgG1⁺ cells in
170 all groups is shown on right. (b) Percentage of RBD⁺ memory B cells that are IgM⁺ in the healthy
171 donor (left, white), COVID-19-naïve PAD (middle left, red), and COVID-19-experienced PAD
172 (middle right, green) cohorts. Aggregate of mean percentage of IgM⁺ cells in all groups is shown
173 on right. (c) Percentage of RBD⁺ memory B cells that are IgA⁺ in the healthy donor (left, white),
174 COVID-19-naïve PAD (middle left, red), and COVID-19-experienced PAD (middle right, green)
175 cohorts. Aggregate of mean percentage of IgA⁺ cells in all groups is shown on right. (d)
176 Percentage of RBD⁺ memory B cells that are IgG2⁺ in the healthy donor (left, white), COVID-19-
177 naïve PAD (middle left, red), and COVID-19-experienced PAD (middle right, green) cohorts.
178 Aggregate of mean percentage of IgG2⁺ cells in all groups is shown on right. (e) Percentage of
179 RBD⁺ memory B cells that are IgG3⁺ in the healthy donor (left, white), COVID-19-naïve PAD
180 (middle left, red), and COVID-19-experienced PAD (middle right, green) cohorts. Aggregate of
181 mean percentage of IgG3⁺ cells in all groups is shown on right. Statistical analyses were
182 performed using a two-way ANOVA (for trends found between groups in the aggregate graphs)
183 with Fisher's least significant difference testing. On the aggregate graphs, error bars were
184 calculated based on the standard error of the mean. Above the aggregate graphs, an orange
185 asterisk indicates a comparison between the COVID-19-naïve and COVID-19-experienced
186 groups (*, $p < 0.05$).
187

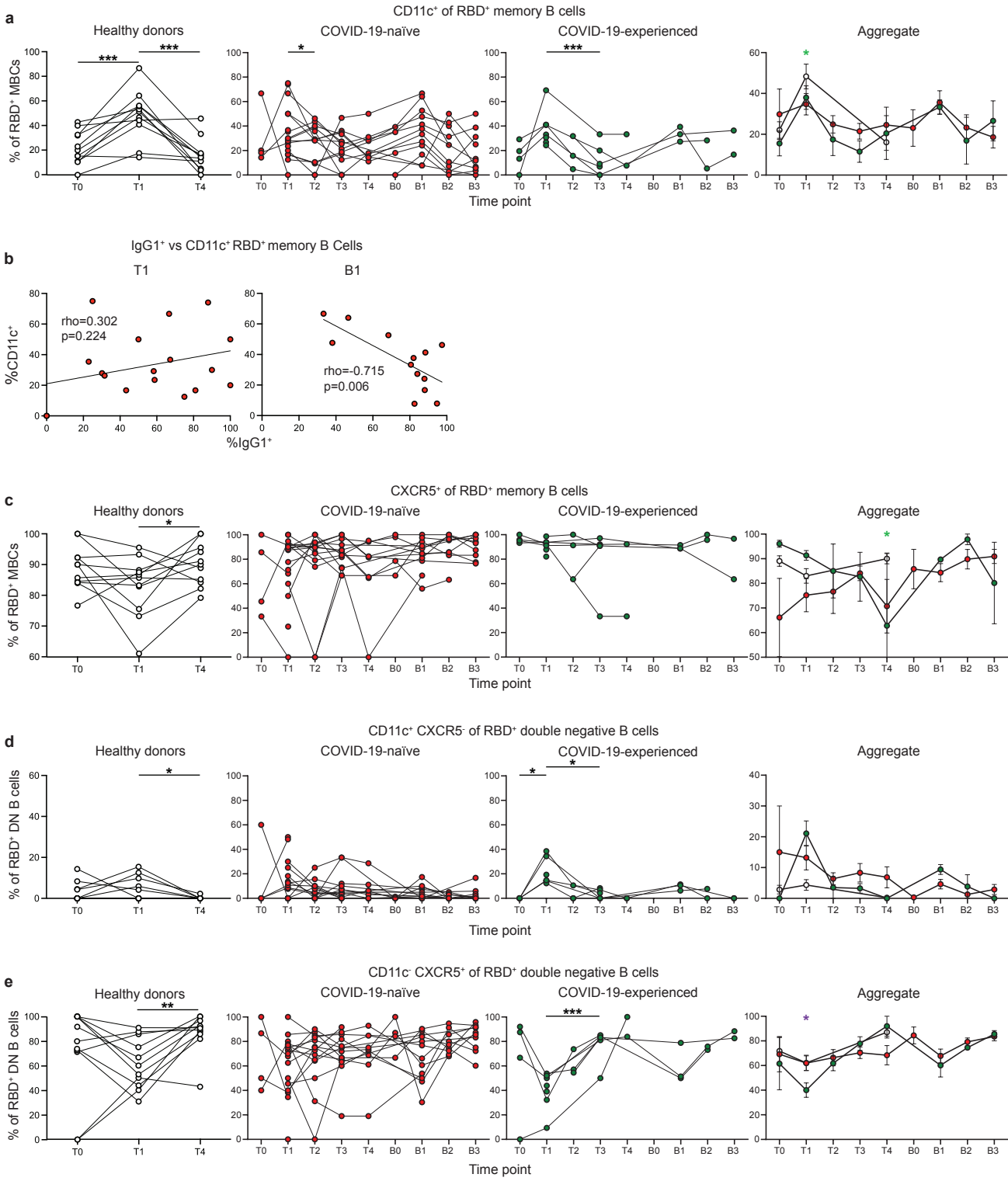


Figure S5

188 **Figure S5. RBD-specific memory B cells from PAD patients display reduced CD11c**
189 **expression class.** (a) Percentage of RBD⁺ memory B cells that are CD11c⁺ in the healthy
190 donor (left, white), COVID-19-naïve PAD (middle left, red), and COVID-19-experienced PAD
191 (middle right, green) cohorts. Aggregate of mean percentage of CD11c⁺ cells in all groups is
192 shown on right. (b) Correlation between percentage of RBD⁺ memory B cells that are IgG1⁺ and
193 CD11c⁺ at T1 (left) or B1 (right). Associations for **b** are calculated using Pearson rank
194 correlation and are shown with Pearson trend lines for visualization. (c) Percentage RBD⁺
195 memory B cells that are CXCR5⁺ in the healthy donor (left, white), COVID-19-naïve PAD
196 (middle left, red), and COVID-19-experienced PAD (middle right, green) cohorts. Aggregate of
197 mean percentage of CXCR5⁺ cells in all groups is shown on right. (d) Percentage of RBD⁺
198 double negative B cells that are CD11c⁺ CXCR5⁻ in the healthy donor (left, white), COVID-19-
199 naïve PAD (middle left, red), and COVID-19-experienced PAD (middle right, green) cohorts.
200 Aggregate of mean percentage of are CD11c⁺ CXCR5⁻ cells in all groups is shown on right. (e)
201 Percentage of RBD⁺ double negative B cells that are CD11c⁻ CXCR5⁺ in the healthy donor (left,
202 white), COVID-19-naïve PAD (middle left, red), and COVID-19-experienced PAD (middle right,
203 green) cohorts. Aggregate of mean percentage of are CD11c⁻ CXCR5⁺ cells in all groups is
204 shown on right. Statistical analyses in a, c-e were performed using mixed effects model (for
205 trends found between time points) or a two-way ANOVA (for trends found between groups in the
206 aggregate graphs) with Fisher's least significant difference testing. Significance testing between
207 time points was limited to comparisons relative to T1. On the aggregate graphs, error bars were
208 calculated based on the standard error of the mean. Above the aggregate graphs, a green
209 asterisk indicates a comparison between the COVID-19-naïve and healthy donor groups, a
210 purple asterisk indicates a comparison between the COVID-19-experienced and healthy donor
211 groups (*, $p < 0.05$; **, $p < 0.01$; ***, $p < 0.001$).

Patient Number	Age range	Sex	Vaccine Type	Booster Type	Diagnosis	COVID-19 infection to 1st vaccine (days)
101	56-60	F	Pfizer	Pfizer	CVID	--
102	21-25	F	Pfizer	Pfizer	CVID	--
103	56-60	F	Pfizer	--	CVID	--
104	41-45	F	Pfizer	Pfizer	CVID	--
105	26-30	M	Pfizer	Pfizer	CVID	--
106	61-65	F	Pfizer	--	CVID	--
107	71-75	F	Pfizer	Pfizer	SAB	96
108	61-65	F	Pfizer	Pfizer	CVID	--
109	36-40	F	J&J	Pfizer	SAB	--
110	46-50	F	Pfizer	Pfizer	CVID	--
111	56-60	F	Pfizer	Pfizer	CVID	--
112	41-45	M	Moderna	Moderna	CVID	--
114	31-35	F	Pfizer	--	SAB	90
115	16-20	F	Moderna	--	CVID	181
116	26-30	F	J&J	--	SAB	--
117	81-85	F	Moderna	--	CVID	--
118	61-65	F	Moderna	--	CVID	--
119	21-25	F	Pfizer	Pfizer	Hypogam	276
120	41-45	F	Moderna	Moderna	CVID	--
121	66-70	F	Pfizer	Pfizer	SAB	--
122	46-50	F	Pfizer	--	CVID	117
123	66-70	F	Pfizer	Pfizer	Hypogam	--
124	51-55	F	Moderna	--	CVID	222
125	56-60	F	Moderna	--	Hypogam	106
126	56-60	M	J&J	Pfizer	CVID	--
127	56-60	F	Pfizer	Pfizer	CVID	--
128	61-65	F	Pfizer	Pfizer	Hypogam	--
129	36-40	F	Pfizer	Pfizer	CVID	--
130	46-50	F	Moderna	Moderna	SAB	144
131	26-30	F	Pfizer	--	CVID	36
368-05	36-40	M	Pfizer	--	Healthy donor	--
368-17	36-40	M	Pfizer	--	Healthy donor	--
368-24	51-55	F	Pfizer	--	Healthy donor	--
368-25	41-45	F	Pfizer	--	Healthy donor	--
368-27	46-50	M	Pfizer	--	Healthy donor	--
368-29	26-30	F	Pfizer	--	Healthy donor	--
368-34	26-30	M	Pfizer	--	Healthy donor	--
368-36	46-50	F	Pfizer	--	Healthy donor	--
368-37	41-45	M	Pfizer	--	Healthy donor	--
368-38	41-45	F	Pfizer	--	Healthy donor	--
368-40	31-35	F	Pfizer	--	Healthy donor	--

Table S1. Characteristics of patient cohort

F, female; M, male; CVID, common variable immune deficiency; hypogam, hypogammaglobulinemia; SAB, specific antibody deficiency disorder.

Patient Number	B cells (% of Live)	IgD ^{lo} (% of CD19 ⁺)	IgD ^{lo} CD27 ⁺ (% of CD19 ⁺)	CD3 ⁺ T cells (% of Live)	CD4 ⁺ T cells (% of CD3 ⁺)	CD8 ⁺ T cells (% of CD3 ⁺)	CD4 ⁺ /CD8 ⁺ Ratio
101	4.07	34.3	18.8	34.6	57.6	10	5.76
102	5.21	12.5	5.16	28.3	47.4	28.2	1.68
103	4.74	11.7	4.61	50.2	51.4	24.5	2.10
104*	2.9	7.81	0.53	7.72	44.2	13.2	3.35
105	4.21	11.4	5.51	10.3	32.4	26.1	1.24
106*	6.13	5.63	1.68	12.7	52.9	8.48	6.24
107	3.02	27.1	15.1	17.1	42.9	18.9	2.27
108	4.42	30.6	17.1	11.8	45.7	15.1	3.03
109	9.89	12.8	8.27	16.5	48.6	16.9	2.88
110	3.61	32	18.1	18.1	49.3	18	2.74
111	4.01	44.5	34.5	15.2	47.8	16	2.99
112*	8.5	10.7	1.53	14.9	34.6	36.5	0.95
114	6.65	30.9	20.1	24.9	56.4	16.3	3.46
115	6.78	24.6	18.1	15	43.6	22.9	1.90
116	1.61	18.8	11.9	15.7	38.1	27.3	1.40
117	4.45	14.5	4.97	17.2	50.1	4.8	10.4
118	4.67	14.7	10.3	17.6	46.5	15.6	2.98
119	4.95	22.8	11.9	15.3	47.5	17.4	2.73
120	6.99	31.7	11.9	17.6	46.1	11.3	4.08
121	7.43	21.8	18.2	19.6	54.9	8.01	6.85
122	6.54	48.9	11	18.6	39.9	9.3	4.29
123	8.75	10.9	39.8	17.6	55	5.18	10.6
124	8.08	17.9	4.09	17.2	48.6	21.5	2.26
125	10.1	13.3	11.3	19.9	50.3	21.5	2.34
126*	5.89	11.4	6.62	17.7	48.5	14	3.46
127	4.92	17.1	4.82	19.6	56.7	16.4	3.46
128	2.77	29.5	3.09	16.3	44.9	19.9	2.26
129	8.45	8.89	20.8	17.5	44.1	26.6	1.66
130	6.74	33.9	3.54	18.4	46	27.2	1.69
131	4.43	8.39	25.3	12.7	39.1	31.2	1.25
368-05	10.7	12.3	8.52	30.8	47.3	32	1.48
368-17	8.85	25.1	15.1	19.9	57.5	8.68	6.62
368-24	7.82	16.3	11.8	28.7	60.8	12.1	5.02
368-25	13.1	22.9	17.3	21	48.9	10.4	4.70
368-27	3.12	24.8	22.4	44.5	33.3	22.3	1.49
368-29	8.19	21.3	14.1	26.6	48.3	19.2	2.52
368-34	15.7	8.93	6.25	33.6	43.7	11.3	3.87
368-36	6.64	20.8	16	24.2	54	16.3	3.31
368-37	6.88	23.9	18.5	22.6	48.4	6.98	6.93
368-38	7.05	7.13	4.5	11.7	44.7	10.1	4.43
368-40	9.09	27.1	17.6	24.3	48.2	16	3.01

Table S2. Cellular phenotype of patient cohort

* Patients classified as non-responders (IgD^{lo} Spike⁺ B cell response <0.02% of total B cells at day 7 to 28 post vaccination).

Patient number	Most Recent CBC		Lymphocyte Subpopulation at the Time of Diagnosis					Immunoglobulin levels at the Time of Diagnosis			Most Recent IgG
	WBC	ALC	CD3	CD4	CD8	CD19	CD16/56	IgG	IgA	IgM	
Normal range	3.8 - 9.9 (1000s per mm³)	1,000 - 3,300 (per mm³)	661 - 1963 (per mm³)	490 - 1294 (per mm³)	187 - 781 (per mm³)	110 - 488 (per mm³)	76 - 467 (per mm³)	700 - 1600 mg/dL	75 - 400 mg/dL	40 - 230 mg/dL	mg/dL
101	5.8	2400	2118	1668	470	283	258	477	53	62	1065
102	4	1000	895	426	432	227	127	560	62	24	1134
103	4.5	1674	1450	934	456	187	180	566	140	106	828
104*	5.1	1000	818	601	193	251	18	<40	<4	<5	725
105	12	1500	974	384	487	280	221	<300	<10	<25	947
106*	7.2	1600	--	--	--	--	--	432	89	95	830
107	6.5	1900	1109	775	294	80	88	514	72	165	505
108	9.5	3500	Reported normal in immunology clinic note					529	188	35	938
109	6.4	1100	--	--	--	--	--	895	142	105	1345
110	4.8	1700	1632	859	738	184	59	1304	82	37	1462
111	5.2	860	--	--	--	--	--	465	--	--	836
112*	4.3	1000	1162	375	663	134	151	1850	<25	<19	1303
114	8.3	1900	1702	1054	547	243	41	911	221	58	1291
115	15.6	2400	--	--	--	--	--	340	12	reported nl	1261
116	8	2400	1974	1167	690	262	71	983	162	52	983
117	5.4	1600	2194	1646	549	462	144	553	175	49	1143
118	7.3	1700	Reported normal in immunology clinic note					647	<4	<5	758
119	5	2200	2055	1396	790	211	79	473	120	167	877
120	8.3	2600	1848	1282	501	157	199	528	136	155	1164
121	6.2	2400	859	716	119	95	227	622	133	137	989
122	10.6	2720	3300	2274	1026	580	446	606	204	30	743
123	8	1500	1055	835	205	315	158	665	162	45	887
124	9.1	1190	Reported low NK cells only in immunology clinic note					502	42	95	547
125	4.9	2000	1837	1086	725	475	308	656	270	10	657
126*	4.5	1600	Reported low CD19 at 39, all others normal in immunology note					<200	66	<25	860
127	3.8	1400	925	638	287	64	43	516	<25	521	781
128	7.2	800	655	389	236	209	78	629	196	80	990
129	5	1420	--	--	--	--	--	261	<10	<25	1240
130	6.27	1610	--	--	--	--	--	814	99	198	1145
131	10.79	1700	--	--	--	--	--	346	<10	<25	1036

Table S3. PAD patient laboratory values

CBC - complete blood count; WBC - white blood count, ALC - absolute lymphocyte count; Ig - immunoglobulin; dL - deciliter. Empty cells (dashed lines) indicate that the test was not performed.

* Patients classified as non-responders (IgDlo Spike+ B cell response <0.02% of total B cells at day 7 to 28 post vaccination).

Patient	<i>S. pneumoniae</i> Titer**	Tetanus Titer IU/ml****	Diphtheria Titer IU/ml****
101	8/23	N/A	--
102	7/23	0.51	--
103	10/23	Positive	Positive
104*	0/23	Positive	--
105	0/23***	Negative	--
106*	4/13	4.59	--
107	14/23	0.97	0.09
108	2/23	0.06	0.01
109	6/23	>7	2.34
110	5/23	N/A	--
111	9/14	0.98	--
112*	---	N/A	--
114	12/23	1.56	--
115	Unprotective	--	--
116	14/23	0.36	Positive
117	11/23	0.01	--
118	--	--	--
119	19/23	0.45	--
120	14/23	>2.24	--
121	8/23	0.46	--
122	10/23	0.72	--
123	20/23	>2.24	--
124	2/24	--	--
125	7/23	2.2	--
126*	3/24***	0.24	Undetectable
127	0/13	--	--
128	14/23	0.87	0.07
129	Unprotective	--	--
130	0/23	2.75	--
131	--	1.73	0.35

Table S4. PAD patient responses to other vaccine antigens at the time of diagnosis

IU - international unit. N/A - data was obtained but not available in the medical record. Dashed lines indicate that the test was not performed.

* Patients classified as non-responders (IgDlo Spike+ B cell response <0.02% of total B cells at day 7 to 28 post vaccination).

** Indicates the number of tested anti-*Streptococcus pneumoniae* serotypes with a level above 1.3 µg/ml for ≥17 tested serotypes.

*** Pre-pneumovax booster values; patient started on immunoglobulin replacement prior to post-booster recheck.

**** A value of ≥ 0.01 IU/ml is considered positive. In some records, a positive notation was indicated but no value was provided.