

1 **B cell response six months after SARS-CoV-2 mRNA vaccination in people living with HIV under**  
2 **antiretroviral therapy**

3 Jacopo Polvere MSc 1, Massimiliano Fabbiani MD 3, Gabiria Pastore PhD 1, Ilaria Rancan MD 2,3, Barbara  
4 Rossetti MD 3, Miriam Durante PhD 2, Sara Zirpoli MSc 1, Enrico Morelli 2, Elena Pettini PhD 1, Simone  
5 Lucchesi PhD 1, Fabio Fiorino PhD 1, Mario Tumbarello MD 2,3, Annalisa Ciabattini PhD 1, Francesca  
6 Montagnani MD 2,3\* and Donata Medaglini PhD 1\*

7  
8 1 Laboratory of Molecular Microbiology and Biotechnology, Department of Medical Biotechnologies,  
9 University of Siena; Siena, Italy.

10 2 Department of Medical Biotechnologies, University of Siena; Siena, Italy

11 3 Department of Medical Sciences, Infectious and Tropical Diseases Unit, University Hospital of Siena;  
12 Siena, Italy

13

14 **\* Correspondence:**

15 Donata Medaglini: [donata.medaglini@unisi.it](mailto:donata.medaglini@unisi.it), +39 0577 233307

16 Francesca Montagnani: [francesca.montagnani@unisi.it](mailto:francesca.montagnani@unisi.it), +39 0577 586562

17 **Keywords:** HIV, vaccination, SARS-CoV-2, COVID-19, memory B cells.

18

19 **Abstract**

20 **Background**

21 SARS-CoV-2 mRNA vaccines have demonstrated high immunogenicity in healthy subjects and preliminary  
22 results for people living with HIV (PLWHIV) are promising too. We have previously reported the persistence  
23 of spike-specific circulating IgG and memory B cells in healthy adults up to six months after mRNA SARS-  
24 CoV-2 vaccination. Unfortunately, limited longitudinal data are available for PLWHIV and no evidence of  
25 persistent spike-specific B cells have been reported yet.

26 **Methods**

27 We investigated the humoral response and the persistence of spike-specific memory B cells up to six  
28 months after vaccination with two doses of mRNA vaccines in 84 PLWHIV under ART and compared them  
29 to healthy controls (HCs). Humoral response was analyzed with enzyme-linked immunosorbent assay and  
30 with an angiotensin-converting enzyme 2 (ACE2) and receptor binding domain (RBD) inhibition assay.  
31 PBMCs were analyzed with a cytofluorimetric approach for B cell phenotyping.

32 **Findings**

33 Spike-specific IgG peaked 1 month after second dose and persisted up to six months after vaccination with  
34 no significant differences compared to HCs. The stratification of patients according to CD4+ T cell count  
35 showed a significantly lower IgG response in case of CD4<350/ $\mu$ l, remarking the relevance of immune  
36 reconstitution. The ability of IgG of blocking the binding between ACE2 and RBD was detected in 58.4% of  
37 PLWHIV, compared to 86.2% in HCs. The amount of circulating spike-specific memory B cells detected in  
38 PLWHIV six months after vaccination was not significantly different from HCs, while there was prevalence  
39 of antigen-specific double negative (IgD-/CD27-) cells, compared to controls.

40 **Interpretation**

41 In conclusion, the majority of PLWHIV developed spike-specific humoral and B cell responses that persist  
42 for at least six months after SARS-CoV-2 mRNA vaccination. However, hints of HIV-dependent immune  
43 impairment were revealed by altered spike-specific B cell phenotypes and by reduced spike-specific  
44 humoral response in patients with low CD4+ T cell count (<350/ $\mu$ l).

45

## 46 **Introduction**

47 People affected by immunodeficiency conditions, such as HIV infection, are known to be more susceptible  
48 to infections but the effect of impaired immunity in SARS-CoV-2 infection and COVID-19 progression is still  
49 hard to be stated (1). There is no consensus on the role of chronic HIV infection in COVID-19 outcome, since  
50 in some cohorts it appears as a negligible risk factor but other studies highlight the higher rate of  
51 hospitalization and death in PLWHIV, especially for patients with low CD4+ T cells count and with  
52 detectable viremia (2–4). From an immunological point of view, the CD4+ T cells/ $\mu$ l count and the  
53 CD4+/CD8+ T cell ratio, as well the antiretroviral regimens (ART) and compliance, are relevant factors to  
54 mount an effective immune response in PLWHIV (5,6). A recent study demonstrated that SARS-CoV-2  
55 infected PLWHIV under effective ART, with a good immunological recovery and adequate virological  
56 control, can develop immune responses that are similar to healthy controls, both at humoral and T cell level  
57 (7).

58 Differently from other immunocompromised cohorts, most PLWHIV present high immune responsiveness  
59 for SARS-CoV-2 mRNA vaccine platforms (8,9), yet the anti-Spike immunity can even be absent in PLWHIV  
60 with profound immune dysfunction vaccinated with two doses (10).

61 As a consequence of waning immune protection against SARS-CoV-2 infection and the emerging viral  
62 variants of concerns, the FDA have recently approved a fourth dose with mRNA vaccines for  
63 immunocompromised (11). Whether or when to globally plan other future booster doses in PLWHIV, is a  
64 burning question. Immunological studies on healthy subjects vaccinated with nanoparticles-based mRNA  
65 formulations (12) clearly show the persistence of circulating Spike-specific antibodies and immune memory  
66 cells at least after six months from vaccination (13,14). Up to date, longitudinal data regarding SARS-CoV-2  
67 vaccine humoral response in PLWHIV do not suggest a reduced persistence of circulating antibody  
68 compared to healthy subjects (15–17). However, considering HIV-induced immunological impairments (18),  
69 It is of primary importance to investigate the induction and persistence of spike-specific memory B cells in  
70 PLWHIV upon vaccination. Indeed, there are no published studies that address the memory B cell  
71 compartment, which is considered essential to guarantee a long-term immunity and reactivation at the  
72 antigen encounter (13).

73 In this longitudinal study, we evaluated the B cell response and the kinetic of the humoral response against  
74 SARS-CoV-2 for six months after the mRNA vaccination in PLWHIV, that are currently on ART, and we  
75 compared data with healthy controls.

76

## 77 **Methods**

### 78 **Study cohort**

79 Plasma and peripheral blood mononuclear cells (PBMC) samples were obtained from adult PLWHIV under  
80 different ART regimens and from healthy controls (HCs), who received two doses of mRNA vaccines, either  
81 mRNA-1273 (Moderna) or BNT162b2 (Pfizer), 3 or 4 weeks apart according to national schedules. History of  
82 SARS-CoV-2 infection before or after vaccination were reasons for exclusion. All participants provided  
83 written informed consent before participation to the study. Study participants were recruited at the  
84 Infectious and Tropical Diseases Unit, Azienda Ospedaliera Universitaria Senese (Siena, Italy). The study was  
85 performed in compliance with all relevant ethical regulations and the protocol was approved by local  
86 Ethical Committee for Clinical experimentation of Regione Toscana Area Vasta Sud Est (CEASVE), protocol  
87 code 19479 PATOVAC v1.0 of 03 Mar 2021, approved on 15 Mar 2021 and protocol code 18869  
88 IMMUNO\_COV v1.0 of 18 Nov 2020, approved on 21 Dec 2020 for HCs.

### 89 **Plasma and Peripheral Blood Mononuclear Cells Isolation**

90 Venous blood samples were collected in heparin-coated blood tubes (BD Vacutainer) at baseline (pre v1),  
91 before the second dose (pre v2), and 1, 2 and 5 months post the second dose (+30 v2, +60 v2 and +150 v2,  
92 respectively. PBMCs were isolated by density-gradient sedimentation, using Ficoll-Paque (Lymphoprep,  
93 Meda, Italy). Isolated PBMC were then cryopreserved in a cell recovery medium [10% DMSO (Thermo  
94 Fisher Scientific) and 90% heat inactivated fetal bovine serum (Sigma Aldrich)] and stored in liquid nitrogen  
95 until used. Plasma samples were stored at -80°C.

### 96 **ELISA**

97 Humoral spike-specific IgG were tested on Maxisorp microtiter plates (Nunc, Denmark) coated with  
98 recombinant SARS-CoV-2 Spike S1+S2 ECD (1 µg/ml protein; Sino Biological), as previously reported (19).  
99 Briefly, plates were blocked (PBS and 5% skimmed milk powder, 0.05% Tween 20) and the added with heat-  
100 inactivated plasma samples and titrated in twofold dilutions in duplicate. Anti-human horseradish  
101 peroxidase (HRP)-conjugated IgG was added in diluent buffer for 1 h at RT, and then plates were developed  
102 with 3,3',5,5'-Tetramethylbenzidine (TMB; Thermo Fisher Scientific) substrate for 10 min at RT, followed by  
103 addition of 1M stop solution. Absorbance at 450 nm was measured on Multiskan FC Microplate  
104 Photometer (Thermo Fisher Scientific).

### 105 **ACE2/RBD inhibition assay**

106 ACE2/RBD inhibition was tested with a SARS-CoV-2 surrogate virus neutralization test (svNT) kit (cPass™,  
107 Genscript), according to the manufacturer protocol and as previously reported (13). Results are reported as  
108 follows: percentage inhibition =  $(1 - \text{sample OD value} / \text{negative control OD value}) * 100$ . Inhibition values

109  $\geq 30\%$  are regarded as positive results, while values  $< 30\%$  as negative results, as indicated by the  
110 manufacturer.

### 111 **Multiparametric flow cytometry**

112 Two million of PBMCs incubated with BD human FC block (BD Biosciences) and stained with biotinylated  
113 spike S1+S2 ECD-His recombinant biotinylated-protein (Sino Biological) conjugated with SA-R-Phycoerythrin  
114 (PE) and RBD recombinant biotinylated-protein (BioLegend) conjugated with SA-Allophycocyanin (APC),  
115 together with the following fluorescent antibodies: CD3-BV650 (clone OKT3); CD21-FITC (clone B-LY4),  
116 CD19-BUV395 (clone SJ25C1), CD10-PECF594 (clone HI10A), IgM-BV605 (clone G20-127), IgD-BV711 (clone  
117 IA6-2), CD27-BV786 (clone O323), CD11c-BB700 (clone 3.9), CD20-APCH7 (clone 2H7), CD38-BUV737 (clone  
118 HB7), IgG-PE-Cy7 (clone G18-145, all from Becton Dickinson), IgA-Vio blue (clone IS11-8E10, Miltenyi  
119 Biotec). All antibodies were titrated for optimal dilution. Following surface staining, cells were washed once  
120 with PBS and labeled with Zombie Aqua Fixable Viability Kit (Thermofisher) according to the manufacturer  
121 instruction. Cells were fixed in BD fixation solution (BD Biosciences) and acquired with SO LSRFortessa X20  
122 flow cytometer (BD Biosciences). Data analysis was performed using FlowJo v10 (TreeStar, USA).

### 123 **t-SNE visualization**

124 The B cell population analyzed in our data set was gated as live, singlet, CD3<sup>-</sup>/CD19<sup>+</sup> cells using FlowJo v10  
125 (TreeStar, USA) while antigen specific B cells were gated as Spike<sup>+</sup>/RBD<sup>+</sup> cells. B cell files were then  
126 exported as .fcs file and imported in R environment as flowSet object, that was then compensated with  
127 FlowCore package 2.6.0 and logicle transformed (20). t-Distributed Stochastic Neighbor Embedding (t-SNE)  
128 dimensionality reduction (21) was performed with Rtsne package v0.15. Expression values of each marker  
129 were normalized as z-scores (mean=0 and standard deviation=1). An equal number of cells (25000) were  
130 downsampled from PLWHIV and healthy donor samples, then Rtsne function was run setting perplexity =  
131 100, selected as optimal parameter value in a range between 5 and 200. B cells were analyzed with manual  
132 gating and labels of different B cell populations were imported in R environment using GetFlowJoLabels  
133 function from FlowSOM package (v2.2.0) and visualized with function Contour from FlowViz package  
134 (v1.58.0).

### 135 **Statistical Analysis**

136 Descriptive statistics [number, proportion, median, interquartile range (IQR), 95% confidence intervals (CI)]  
137 were used to describe the baseline characteristics of patients. Categorical variables were compared  
138 between groups using the Chi-square test or Fisher's exact test, as appropriate. Continuous variables were  
139 compared using the non-parametric Mann-Whitney U test. The Kruskal-Wallis test, followed by Dunn's  
140 post-test for multiple comparisons, was used to assess the statistical differences of ELISA titers and B cell  
141 subpopulations among different groups of subjects for each time point. Fisher's exact test was used to

142 assess the statistical differences in percentages of ACE2/RBD inhibition positive subjects between groups.  
143 Clinical and laboratory variables of PLWHIV, potentially associated with log-transformed ELISA titers,  
144 ACE2/RBD inhibition percentage and with inhibition value  $\geq 30\%$  were investigated by linear or logistic  
145 regression models, as appropriate. Factors associated with the dependent variables at univariate analysis,  
146 together with absolute CD4+ T cells count, CD4+ T cells percentage and CD4+/CD8+ ratio, were include in a  
147 multivariate model. A  $p$ -value  $\leq 0.05$  was considered significant. Analyses were performed using GraphPad  
148 Prism v9 (GraphPad Software, San Diego, CA, USA) and SPSS Software, version 23.0 (SPSS Inc., Chicago, IL).

#### 149 **Role of the funding source**

150 The sponsor of the study had no role in study design, data collection, data analysis, data interpretation, or  
151 writing of the report. The sponsor approved the decision to submit the paper for publication.

#### 152 **Results**

153 A total of 84 PLWHIV with a median age of 52 years (IQR 46-58) were enrolled in the study, of whom 64  
154 (76.2%) were male and 20 (23.8%) were female. Among them, 57 (67.9%) had  $>500$  CD4+ T cells/ $\mu\text{l}$  (High  
155 CD4+), 13 (15.5%) were in the 350-500 CD4+ T cells/ $\mu\text{l}$  range (Average CD4+) and 14 (16.7%) had values  
156  $<350$  CD4+ T cells/ $\mu\text{l}$  (Low CD4+). At baseline, 28 (33.3%) PLWHIV showed optimal immunological recovery,  
157 defined as CD4+ T cells count  $\geq 500$  cell/ $\mu\text{l}$  plus CD4+ T cells %  $\geq 30\%$  plus CD4/CD8 ratio  $\geq 1$  (22,23). Clinical  
158 and demographic data of PLWHIV cohorts were collected before the first dose for the statistical analysis  
159 and reported in Supplementary table 1. No changes in treatment or significant variation in CD4+ T cells  
160 count were observed during the study. The HCs group was composed of 79 healthy volunteers with a  
161 median age of 52 years (IQR 45-60) of whom 22 (27.8%) were males and 57 (72.2%) were females. A slightly  
162 higher body mass index (BMI) (25.1 vs 23.7,  $p=0.037$ ) was observed in PLWHIV. Moreover, HCs were more  
163 frequently vaccinated with BNT162b2 vaccine when compared to PLWHIV who mostly received mRNA-1273  
164 (87.3% vs 48.8%,  $p<0.001$ .)

#### 165 **Spike-specific antibody response following SARS-CoV-2 mRNA vaccination in PLWHIV**

166 Spike-specific IgG induced by SARS-CoV-2 vaccination were assessed by ELISA on plasma samples collected  
167 from PLWHIV at different time points (figure 1). Anti-spike IgG significantly increased after the first dose,  
168 reaching a geometric mean titer (GMT) of 2105 at pre v2 [95% CI 1514 to 2928; titers range 320–20480;  
169  $P\leq 0.001$  vs. pre v1; Figure 2A]. Antibody titres increased again after the second dose, reaching a peak at  
170 +30 v2, with a GMT of 14482 (95% CI 10531 to 19915; titers range 640–81920;  $P\leq 0.001$  vs. pre v1 and pre  
171 v2). Significant antibody titers were still observed 2 months post boost (+60 v2) (GMT 6684; 95% CI 5086 to  
172 8785; titers range 320-40960;  $P\leq 0.001$  vs. pre v1 and  $P\leq 0.01$  vs. pre v2) and 5 months post boost (+150 v2)  
173 (GMT 4974; 95% CI 3218 to 7690; titers range 320-20480;  $P\leq 0.001$  vs. pre v1) despite a progressive  
174 physiological decline over time. No statistically significant differences were observed between 2 months

175 (+60 v2) and 5 months (+150 v2) post-boost ( $P>0.99$ ), as well as between GMT at pre-boost (pre v2) and at  
176 5 months post-boost (+150 v2) ( $P=0.46$ ).

177 The curve of spike-specific IgG observed in PLWHIV perfectly overlaid to the one measured in HC (figure 2B)  
178 Both cohorts reached their maximum titers after the second dose (HCs GMT at +7 v2: 19677; 95% CI 14183  
179 to 27300) and their response progressively declined over time. No statistically significant differences were  
180 observed between the two groups for any time point of the study.

181 A stratification based on CD4+ T cell/ $\mu\text{l}$  ( $\leq 350$  Low CD4+, 350-500 Average CD4+ and  $\geq 500$  High CD4+) was  
182 done to highlight a possible predictive value for the humoral response (figure S1). The statistical analysis  
183 revealed a significant difference in antibody response at +30 v2 between the High CD4+ (GMT 19038; 95%  
184 CI 14328 to 25297) and Low CD4+ (GMT 1612; 95% CI 539 to 4821) ( $P\leq 0.001$ ) and between Average CD4+  
185 (GMT 22119; 95% CI 11248 to 43499) and Low CD4+ ( $P\leq 0.001$ ; figure S1). Pearson test was used to assess  
186 the correlation between absolute CD4+ T cells/ $\mu\text{l}$  and ELISA IgG titers. A significant positive correlation was  
187 found at pre v2 ( $r=0.4421$ ;  $P\leq 0.01$ ), +30 v2 ( $r=0.4473$ ;  $P\leq 0.001$ ) and at +60 v2 ( $r=0.2987$ ;  $P\leq 0.05$ ) but not at  
188 +150 v2.

189 We also investigate HIV-related variables associated to IgG titers at +30 v2 by linear regression analysis  
190 (Table 1). At multivariate analysis, patients with  $<350$  cells/ $\mu\text{l}$  confirmed to elicit lower IgG titers (mean  
191 change -1.02, 95% CI -1.39 to -0.65,  $p<0.001$  when compared to those with CD4+ $>350$  cells/ $\mu\text{l}$ ) after  
192 adjusting for having CD4+ T cells %  $\geq 30\%$  and CD4+/CD8+ ratio  $\geq 1$ .

193 A surrogate virus neutralization assay was employed to evaluate the persistence of the ability of vaccine-  
194 induced antibodies to block the ACE2/RBD interaction at +60 v2 and +150 v2. Results were reported as  
195 percentages of ACE2/RBD inhibition (figure 2C) and as percentage of patients with inhibition values  $\geq 30\%$   
196 (figure 2D). PLWHIV cohort registered a significant reduction in the percentage of patients with a positive  
197 value of inhibiting antibodies overtime (84.6% at +60 v2 vs 58.4% at +150 v2;  $P\leq 0.05$ , figure 2D), while the  
198 HCs group, maintained a stable value (92.1% at +60 v2 vs 86.2% at +150 v2;  $P>0.9999$ ). The frequency of  
199 inhibition positive PLWHIV at 5 months post-second dose was significantly lower compared to HCs (58.4%  
200 vs 86.2%, respectively;  $P\leq 0.01$ ).

201 We also investigated HIV-related variables associated to ACE2/RBD inhibition percentage at 2 months post  
202 second dose (+60 v2) by linear regression analysis (Supplementary table 2). A trend toward an association  
203 between having CD4+ T cell count at baseline  $\leq 350$  cell/ $\mu\text{l}$  and a lower inhibition percentage was observed  
204 at univariate analysis (mean change -19.30%, 95% CI -40.99 / 2.40,  $P=0.080$ ), but this was not confirmed  
205 after adjusting for having CD4+ %  $\geq 30\%$  and CD4/CD8 ratio  $\geq 1$ .

206 Moreover, we explored variables associated to the percentage of inhibition positive PLWHIV at 2 months  
207 post boost dose (+60 v2) by logistic regression analysis (Table 2). At multivariate analysis, a higher CD4+ %  
208 was associated with a higher probability to obtain inhibition (adjusted odd ratio 1.12, 95% CI 1.00-1.25,  
209  $P=0.047$ ), after adjusting for absolute CD4+ count and CD4/CD8 ratio.

## 210 **Spike-specific memory B cells following SARS-CoV-2 mRNA vaccination in PLWHIV**

211 The immune memory induced by SARS-CoV-2 vaccination was evaluated on PBMCs samples collected at  
212 +150 v2, by multiparametric flow cytometry (Figure 3). Circulating spike-specific cells were identified using  
213 fluorescent tetramerized full-spike protein (S) and receptor binding domain (RBD). Spike-specific (S+RBD+)  
214 B cells were identified applying the gating strategy reported in Figure 3A. The mean values of S<sup>+</sup>RBD<sup>+</sup> B cells  
215 observed in blood of PLWHIV patients at +150 v2 were not significantly different with HCs ( $0.343 \pm 0.547\%$   
216 vs  $0.171 \pm 0.179\%$ ;  $P=0.9345$ ) even though 42% of subjects PLWHIV showed a very low amount of spike-  
217 specific B cells (<0.1 % over all B cells) (Figure 3B).

218 S<sup>+</sup>RBD<sup>+</sup> B cells were dissected again to identify different populations of memory B cells according to IgD and  
219 CD27 expression (Figure 3C). Ig-switched (IgD<sup>-</sup>/CD27<sup>+</sup>) and unswitched memory B cells (IgD<sup>+</sup>/CD27<sup>+</sup>) were  
220 recorded at a significant lower rate in PLWHIV compared to HCs ( $28.09 \pm 20.50\%$  vs  $47.32 \pm 19.35\%$  and  
221  $2.608 \pm 7.067\%$  vs  $3.509 \pm 4.514\%$ ; respectively  $P \leq 0.05$ ), indicating a limited induction of these populations  
222 or a reduced survival through time (Figure 3D). On the contrary, the double negative memory B cells (IgD<sup>-</sup>-  
223 /CD27<sup>-</sup>), also known as atypical or exhausted memory, represented a significantly higher population in  
224 PLWHIV compared to HCs ( $58.90 \pm 31.26\%$  vs  $41.17 \pm 19.07\%$ ;  $P \leq 0.05$ ). The phenotypic distribution was  
225 confirmed by the t-SNE dimensionality reduction analysis (Figure 3 E), which showed a higher frequency of  
226 double negative memory B cells in PLWHIV, while switched and unswitched memory were more abundant  
227 in HCs. A higher number of spike-specific B cells (dark spot) felled in double negative region in PLWHIV  
228 compared with healthy controls where the switched memory phenotype is predominant.

## 229 **Discussion**

230 In the present study, we characterized the antibody and memory B cell responses in PLWHIV on ART  
231 vaccinated with two doses of a SARS-CoV-2 mRNA vaccine in the 6 months following vaccination and we  
232 compared them to HCs.

233 Almost all PLWHIV developed significant plasma IgG titers after the first administration that significantly  
234 increased upon the second dose, remarking the immunogenicity of mRNA vaccines for these patients.  
235 Interestingly, anti-spike plasma IgG titers were still significant after 6 months post priming compared to  
236 baseline in most patients. Differently from what observed by Portillo and colleagues for anti-RBD  
237 antibodies, we did not find any statistical difference when comparing PLWHIV antibody titres to the HCs at  
238 all time-points, though it could be influenced by the different assay technology or different mRNA  
239 formulations (17). More than 80% of the percentage of PLWHIV showed a positive ACE2/RBD inhibition  
240 activity at +60 v2, that declined up to 54% at +150 v2. The reduced performance of neutralizing antibodies  
241 in HIV-infected patients, also compared to HC, can theoretically reflect their chronic immune impairment  
242 and may be a hint of reduced immune persistence.



243 A critical point in the persistence of vaccinal immunity overtime is the induction of cellular immune  
244 memory. Recent works have demonstrated the presence of spike-specific T cells in PLWHIV vaccinated with  
245 two doses of mRNA vaccine, no different compared to HCs (9,24). Here, we demonstrated that spike-  
246 specific B cells were at a comparable rate in PLWHIV and HCs. Among these cells, we identified the Ig-  
247 switched (IgD-/CD27+), and the unswitched (IgD+/CD27+) memory cells, that maintain IgM and IgD  
248 expression. These two populations of spike-specific B memory cells have been observed in SARS-CoV-2  
249 infected as well as in vaccinated subjects and were associated to fast antibody production at future antigen  
250 encounter and long-term protection against severe COVID-19 (13,25,26). In PLWHIV both memory cell  
251 subsets were significantly lower compared to HC, probably as a consequence of the immune impairment  
252 caused by HIV involving both reduced generation and lifespan of memory B cells (18,27). On the other  
253 hand, the rate of spike-specific double negative B (IgD-/CD27-) memory cells was significantly higher for  
254 PLWHIV. This cell population, also known as terminal memory cells or atypical memory, has been  
255 associated to precocious immune ageing and reduced functionality of memory cell compartment and has  
256 been already reported in case of HIV infection (28). As this is the first time that memory B cells are  
257 evaluated in PLWHIV after mRNA COVID-19 vaccine, the clinical effect of impaired B memory is not known  
258 yet.

259 Stratifying patients according to evidence of enhanced morbidity and mortality for COVID-19 in PLWHIV  
260 with low CD4+ T cell count (29), we found that anti-SARS-CoV-2 IgG response of people in the Low CD4+ T  
261 cell ( $\leq 350/\mu\text{l}$ ) subgroup was generally low, in line to what reported previously (10), maybe reflecting a  
262 reduced ability to develop a strong antibody response after the boost. We also found a significant positive  
263 correlation, according to Pearson test, between CD4+ T cells/ $\mu\text{l}$  and antibody titers at pre v2, +30 v2 and  
264 +60 v2. Moreover, when stratified according to CD4+ T cell count no significant differences were observed  
265 for mean ACE2/RBD inhibition percentages nor for percentage of neutralization-positive samples. However,  
266 the percentage of inhibition positive PLWHIV seemed to be correlated to the CD4+ T cells percentage.

267 Even though the two cohorts of PLWHIV and HCs showed a different sex ratio and BMI, when we analyzed  
268 correlates of immunological endpoints in PLWHIV, gender and BMI did not show an association with any  
269 outcome. Due to the small number of subjects in the  $<350$  and 350-500 subgroups, we could only make  
270 speculations on reduced ability in mounting a humoral immune response. Our cohort represents the  
271 general condition of PLWHIV in high income countries, nevertheless a larger study on people with low CD4+  
272 T cells count, uncontrolled HIV and AIDS would be beneficial to describe a more complete scenario.

273 In summary, our study provides real-world data on immunogenicity of SARS-CoV-2 mRNA vaccines in  
274 PLWHIV up to 6 months after vaccination. These results corroborate the opinion that PLWHIV with an  
275 adequate CD4+ T cells population ( $>350$  cells/ $\mu\text{l}$ ) and under ART can mount a significant humoral immune  
276 response after vaccination. Interestingly, the longevity of spike-specific humoral immunity in PLWHIV is  
277 comparable to healthy controls for the period analysed. Nevertheless, the HIV chronic infection impairs the

278 immune system at different levels and hints of altered immune responsiveness has been observed with  
279 ACE2/RBD binding inhibition assay and by spike-specific B cell phenotype.

280 Findings on other immunocompromised subjects suggest that a third dose can induce a strong immune  
281 response even in patients who did not develop immunity after the second dose (30,31). New studies are  
282 required to elucidate memory cell longevity and the effect of vaccine boosting. These data are of critical  
283 importance to guide vaccination policies and strategies tailored for PLWHIV.

#### 284 **Contributions**

285 AC, DM, GP, MF and FM conceived the study. AC, DM, GP, MF, FM and MD wrote the protocol. MD and FM  
286 looked after ethical approval procedures. IR, BR, MF, MT and FM enrolled patients. MF, EM and GP  
287 collected and computerized data. GP, JP, SZ and FF processed the samples. JP, AC, GP, SZ, FF and EP carried  
288 out the immunological analysis. AC, MF, JP, GP, SL and DM analyzed the data. MF and FM contribute to  
289 data interpretation. JP, MF, AC, BR, FM and DM wrote the manuscript. AC, DM, GP, FM and MF supervised  
290 the study. DM provided financial support. All the authors edited and approved the final version of the  
291 manuscript.

#### 292 **Competing interests**

293 MF received speakers' honoraria, support for travel to meetings, and/or fees for attending advisory boards  
294 from Bristol Myers Squibb (BMS), Gilead, Janssen-Cilag, Merck Sharp and Dohme (MSD), and ViiV  
295 Healthcare. FM received support for travel to meetings from Angelini, she is principal investigator in  
296 sponsor study by TLS (Toscana Life Science) and by GSK Vaccine SRL and she is the contact person for a  
297 service contract between GSK Vaccine SRL and Department of Medical Biotechnologies, University of Siena,  
298 without receiving any personal remuneration. The other authors declare no conflict of interest regarding  
299 this study.

#### 300 **Funding**

301 This study was supported by the Department of Medical Biotechnologies of the University of Siena (D.M.)

#### 302 **Data availability**

303 Individual participant data that underlie the results reported in this article, after de-identification, are  
304 available upon request.

#### 305 **Acknowledgments**

306 We would like to thank all the volunteers who participated to the study, the Infectious Diseases Unit  
307 Nursing staff who chose to cooperate for blood withdrawal. We thank Giorgio Montesi for data  
308 management.

## 309 References

310

- 311 1. Fung M, Babik JM. COVID-19 in Immunocompromised Hosts: What We Know So Far. *Clinical Infectious*  
312 *Diseases*. 2021 Jan 15;72(2):340–50.
- 313 2. Nomah DK, Reyes-Urueña J, Díaz Y, Moreno S, Aceiton J, Bruguera A, et al. Sociodemographic, clinical,  
314 and immunological factors associated with SARS-CoV-2 diagnosis and severe COVID-19 outcomes in  
315 people living with HIV: a retrospective cohort study. *The Lancet HIV*. 2021 Nov;8(11):e701–10.
- 316 3. Yang X, Sun J, Patel RC, Zhang J, Guo S, Zheng Q, et al. Associations between HIV infection and clinical  
317 spectrum of COVID-19: a population level analysis based on US National COVID Cohort Collaborative  
318 (N3C) data. *The Lancet HIV*. 2021 Nov;8(11):e690–700.
- 319 4. del Amo J, Polo R, Moreno S, Jarrín I, Hernán MA. SARS-CoV-2 infection and coronavirus disease 2019  
320 severity in persons with HIV on antiretroviral treatment. *AIDS*. 2022 Feb 1;36(2):161–8.
- 321 5. Fabbiani M, Sidella L, Corbi M, Martucci R, Sali M, Colafigli M, et al. HIV-infected patients show  
322 impaired cellular immune response to influenza vaccination compared to healthy subjects. *Vaccine*.  
323 2013 Jun 19;31(28):2914–8.
- 324 6. Lombardi F, Belmonti S, Fabbiani M, Morandi M, Rossetti B, Tordini G, et al. Immunogenicity and  
325 Safety of the 13-Valent Pneumococcal Conjugate Vaccine versus the 23-Valent Polysaccharide Vaccine  
326 in Unvaccinated HIV-Infected Adults: A Pilot, Prospective Controlled Study. *PLoS One*. 2016 Jun  
327 3;11(6):e0156523.
- 328 7. Alrubayyi A, Gea-Mallorquí E, Touizer E, Hameiri-Bowen D, Kopycinski J, Charlton B, et al.  
329 Characterization of humoral and SARS-CoV-2 specific T cell responses in people living with HIV. *Nat*  
330 *Commun*. 2021 Oct 5;12(1):5839.
- 331 8. Ruddy JA, Boyarsky BJ, Bailey JR, Karaba AH, Garonzik-Wang JM, Segev DL, et al. Safety and antibody  
332 response to two-dose SARS-CoV-2 messenger RNA vaccination in persons with HIV. *AIDS*. 2021 Nov  
333 15;35(14):2399–401.
- 334 9. Antinori A, Cicalini S, Meschi S, Bordoni V, Lorenzini P, Vergori A, et al. Humoral and Cellular Immune  
335 Response Elicited by mRNA Vaccination Against Severe Acute Respiratory Syndrome Coronavirus 2  
336 (SARS-CoV-2) in People Living With Human Immunodeficiency Virus Receiving Antiretroviral Therapy  
337 Based on Current CD4 T-Lymphocyte Count. *Clinical Infectious Diseases*. 2022 Apr 2;ciac238.
- 338 10. Hassold N, Brichtler S, Ouedraogo E, Leclerc D, Carroue S, Gater Y, et al. Impaired antibody response to  
339 COVID-19 vaccination in advanced HIV infection. *AIDS*. 2022 Mar 15;36(4):F1–5.
- 340 11. US Food and Drug Administration. Coronavirus (COVID-19) update: FDA authorizes second booster  
341 dose of two COVID-19 vaccines for older and immunocompromised individuals. 2022.
- 342 12. Guerrini G, Magri D, Medagliani D, Calzolari L. Characterization of nanoparticles-based vaccines for  
343 COVID-19. *Nat Nanotechnology*. 2022 Mar 23;
- 344 13. Ciabattini A, Pastore G, Fiorino F, Polvere J, Lucchesi S, Pettini E, et al. Evidence of SARS-CoV-2-Specific  
345 Memory B Cells Six Months After Vaccination With the BNT162b2 mRNA Vaccine. *Frontiers in*  
346 *Immunology*. 2021;12:3751.

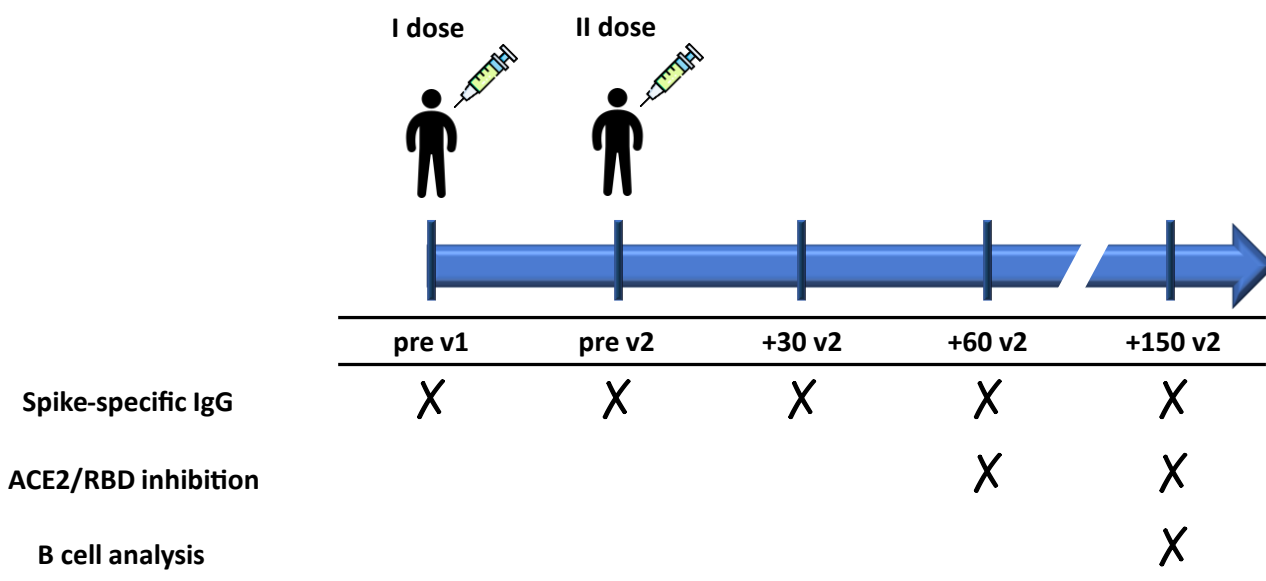
- 347 14. Goel RR, Painter MM, Apostolidis SA, Mathew D, Meng W, Rosenfeld AM, et al. mRNA vaccines induce  
348 durable immune memory to SARS-CoV-2 and variants of concern. *Science* [Internet]. 2021 Oct 14  
349 [cited 2022 Jan 18]; Available from: <https://www.science.org/doi/abs/10.1126/science.abm0829>
- 350 15. Brumme ZL, Mwimanzi F, Lapointe HR, Cheung PK, Sang Y, Duncan MC, et al. Humoral immune  
351 responses to COVID-19 vaccination in people living with HIV receiving suppressive antiretroviral  
352 therapy. *npj Vaccines*. 2022 Feb 28;7(1):1–12.
- 353 16. Milano E, Ricciardi A, Casciaro R, Pallara E, De Vita E, Bavaro DF, et al. Immunogenicity and safety of  
354 the BNT162b2 COVID-19 mRNA vaccine in PLWH: A monocentric study in Bari, Italy. *J Med Virol*. 2022  
355 May;94(5):2230–6.
- 356 17. Portillo V, Fedeli C, Ustero Alonso P, Petignat I, Mereles Costa EC, Sulstarova A, et al. Impact on HIV-1  
357 RNA Levels and Antibody Responses Following SARS-CoV-2 Vaccination in HIV-Infected Individuals.  
358 *Frontiers in Immunology* [Internet]. 2022 [cited 2022 Apr 7];12. Available from:  
359 <https://www.frontiersin.org/article/10.3389/fimmu.2021.820126>
- 360 18. Hu Z, Luo Z, Wan Z, Wu H, Li W, Zhang T, et al. HIV-associated memory B cell perturbations. *Vaccine*.  
361 2015 May 21;33(22):2524–9.
- 362 19. Fiorino F, Sicuranza A, Ciabattini A, Santoni A, Pastore G, Simoncelli M, et al. The Slower Antibody  
363 Response in Myelofibrosis Patients after Two Doses of mRNA SARS-CoV-2 Vaccine Calls for a Third  
364 Dose. *Biomedicines*. 2021 Oct;9(10):1480.
- 365 20. Parks DR, Roederer M, Moore WA. A new “Logicle” display method avoids deceptive effects of  
366 logarithmic scaling for low signals and compensated data. *Cytometry Part A*. 2006;69A(6):541–51.
- 367 21. Maaten L van der, Hinton G. Visualizing Data using t-SNE. *Journal of Machine Learning Research*.  
368 2008;9(86):2579–605.
- 369 22. Muscatello A, Nozza S, Fabbiani M, De Benedetto I, Ripa M, Dell’acqua R, et al. Enhanced  
370 Immunological Recovery With Early Start of Antiretroviral Therapy During Acute or Early HIV  
371 Infection-Results of Italian Network of ACuTe HIV InfectiON (INACTiON) Retrospective Study. *Pathog*  
372 *Immun*. 2020;5(1):8–33.
- 373 23. Fabbiani M, Borghetti A, Squillace N, Colafigli M, Taramasso L, Lombardi A, et al. Integrase Inhibitors  
374 Use and Cytomegalovirus Infection Predict Immune Recovery in People Living With HIV Starting First-  
375 Line Therapy. *JAIDS Journal of Acquired Immune Deficiency Syndromes*. 2021 Jan 1;86(1):119–27.
- 376 24. Tau L, Turner D, Adler A, Marom R, Ahsanov S, Matus N, et al. SARS-CoV-2 Humoral and Cellular  
377 Immune Responses of Patients With HIV After Vaccination With BNT162b2 mRNA COVID-19 Vaccine  
378 in the Tel-Aviv Medical Center. *Open Forum Infectious Diseases*. 2022 Apr 1;9(4):ofac089.
- 379 25. Newell KL, Clemmer DC, Cox JB, Kayode YI, Zoccoli-Rodriguez V, Taylor HE, et al. Switched and  
380 unswitched memory B cells detected during SARS-CoV-2 convalescence correlate with limited  
381 symptom duration. *PLOS ONE*. 2021 Jan 28;16(1):e0244855.
- 382 26. Terreri S, Piano Mortari E, Vinci MR, Russo C, Alteri C, Albano C, et al. Persistent B cell memory after  
383 SARS-CoV-2 vaccination is functional during breakthrough infections. *Cell Host & Microbe*. 2022  
384 Mar;30(3):400-408.e4.
- 385 27. Moir S, Fauci AS. B cells in HIV infection and disease. *Nat Rev Immunol*. 2009 Apr;9(4):235–45.

- 386 28. Rinaldi S, Pallikkuth S, George VK, de Armas LR, Pahwa R, Sanchez CM, et al. Paradoxical aging in HIV:  
387 immune senescence of B Cells is most prominent in young age. *Aging (Albany NY)*. 2017 Apr  
388 27;9(4):1307–22.
- 389 29. Hoffmann C, Casado JL, Härter G, Vizcarra P, Moreno A, Cattaneo D, et al. Immune deficiency is a risk  
390 factor for severe COVID-19 in people living with HIV. *HIV Medicine*. 2021;22(5):372–8.
- 391 30. Azzolini E, Pozzi C, Germagnoli L, Oresta B, Carriglio N, Calleri M, et al. mRNA COVID-19 vaccine  
392 booster fosters B- and T-cell responses in immunocompromised patients. *Life Science Alliance*  
393 [Internet]. 2022 Jun 1 [cited 2022 Mar 15];5(6). Available from: [https://www.life-science-](https://www.life-science-alliance.org/content/5/6/e202201381)  
394 [alliance.org/content/5/6/e202201381](https://www.life-science-alliance.org/content/5/6/e202201381)
- 395 31. Pettini E, Ciabattini A, Pastore G, Polvere J, Lucchesi S, Fiorino F, et al. A third dose of mRNA-1273  
396 vaccine improves SARS-CoV-2 immunity in HCT recipients with low antibody response after 2 doses.  
397 *Blood Advances*. 2022 Jan 24;bloodadvances.2021006599.

398

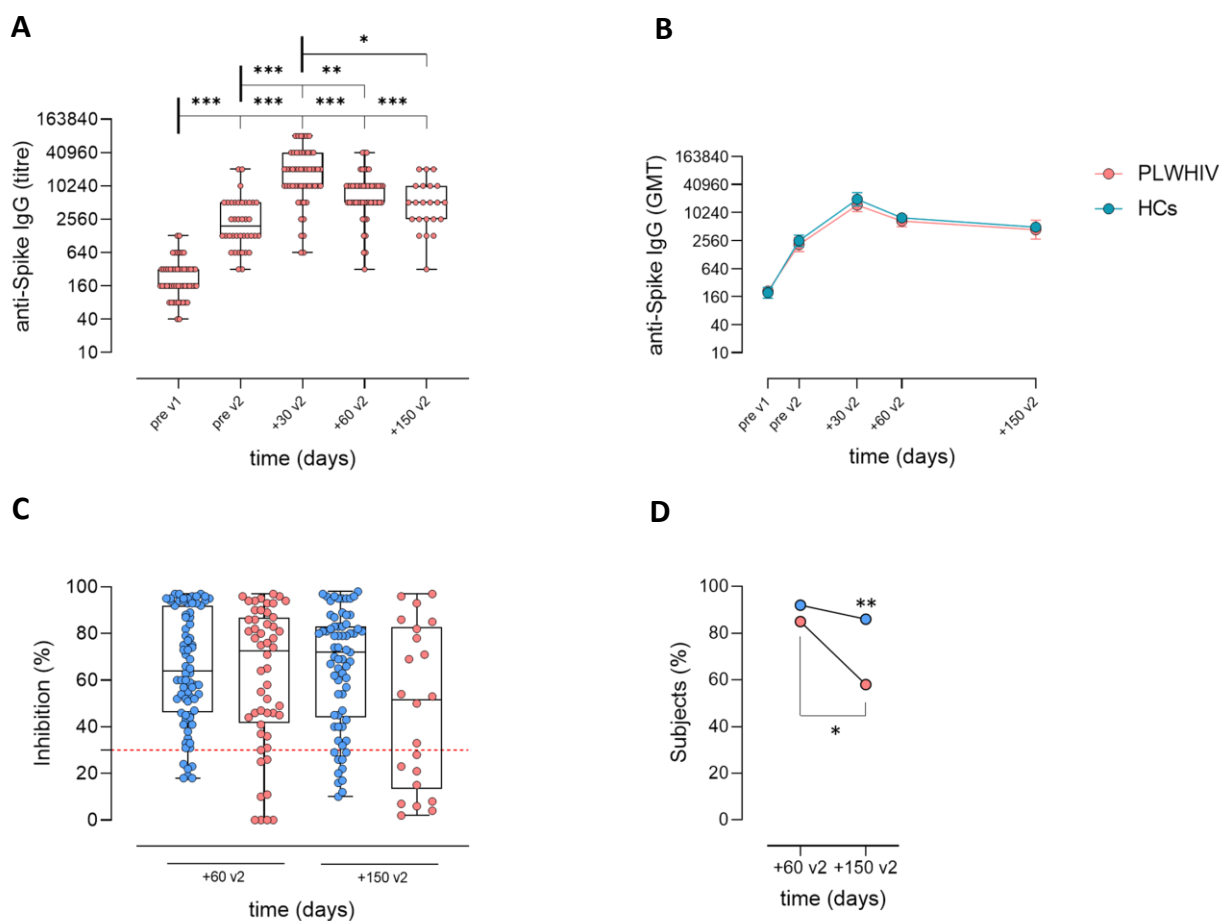
399

400



401

402 **Figure 1. Schematic representation of the study design.** PLWHIV (84 subjects) and healthy controls (HCs,  
 403 79 subjects) vaccinated with two doses of a SARS-CoV-2 mRNA vaccine (BNT162b2 Pfizer-BioNTech or  
 404 mRNA-1273 Moderna) 3-4 weeks apart, respectively, were enrolled in the study. Blood samples were  
 405 collected at pre v1 (day 0, baseline), pre v2, +30 v2 (1 month post second dose), +60 v2 (2 months post  
 406 second dose), and +150 v2 (5 months post second dose). Plasma samples were tested for spike-specific IgG  
 407 and ACE2/RBD inhibition while peripheral blood mononuclear cells (PBMCs) were analyzed for spike-  
 408 specific B cell response.



409

410

**Figure 2. Spike-specific antibody response following SARS-CoV-2 mRNA vaccination detected in plasma.**

411

A) IgG anti-Spike detected at pre v1, pre v2, +30 v2, +60 v2 and +150 v2 in PLWHIV. Data are presented as box and whiskers diagram showing the minimum and maximum of all the data. Kruskal-Wallis test, followed by Dunn's post test for multiple comparisons, was used for assessing statistical differences between groups.

412

413 \* $P \leq 0.05$ ; \*\* $P \leq 0.01$ ; \*\*\* $P \leq 0.001$ . B) IgG titers comparison between HCs and PLWHIV. Antibody titres are expressed as the reciprocal of the dilution of sample reporting a double OD value compared to the background.

414

415 Data are presented as geometric mean titers (GMT) with error. Kruskal-Wallis test was used for assessing statistical differences between groups.

416

417 C, D) Surrogate virus neutralization assay (sVN) performed at +60 v2 and +150 v2. C) Data are reported as ACE2/RBD binding inhibition percentage with box and whiskers diagram showing the minimum and maximum of all the data. A threshold (dotted red line) was placed at 30% inhibition percentage to discriminate between positive and negative samples.

418

419 Kruskal-Wallis test, followed by Dunn's post-test for multiple comparisons, was used for assessing statistical differences between groups.

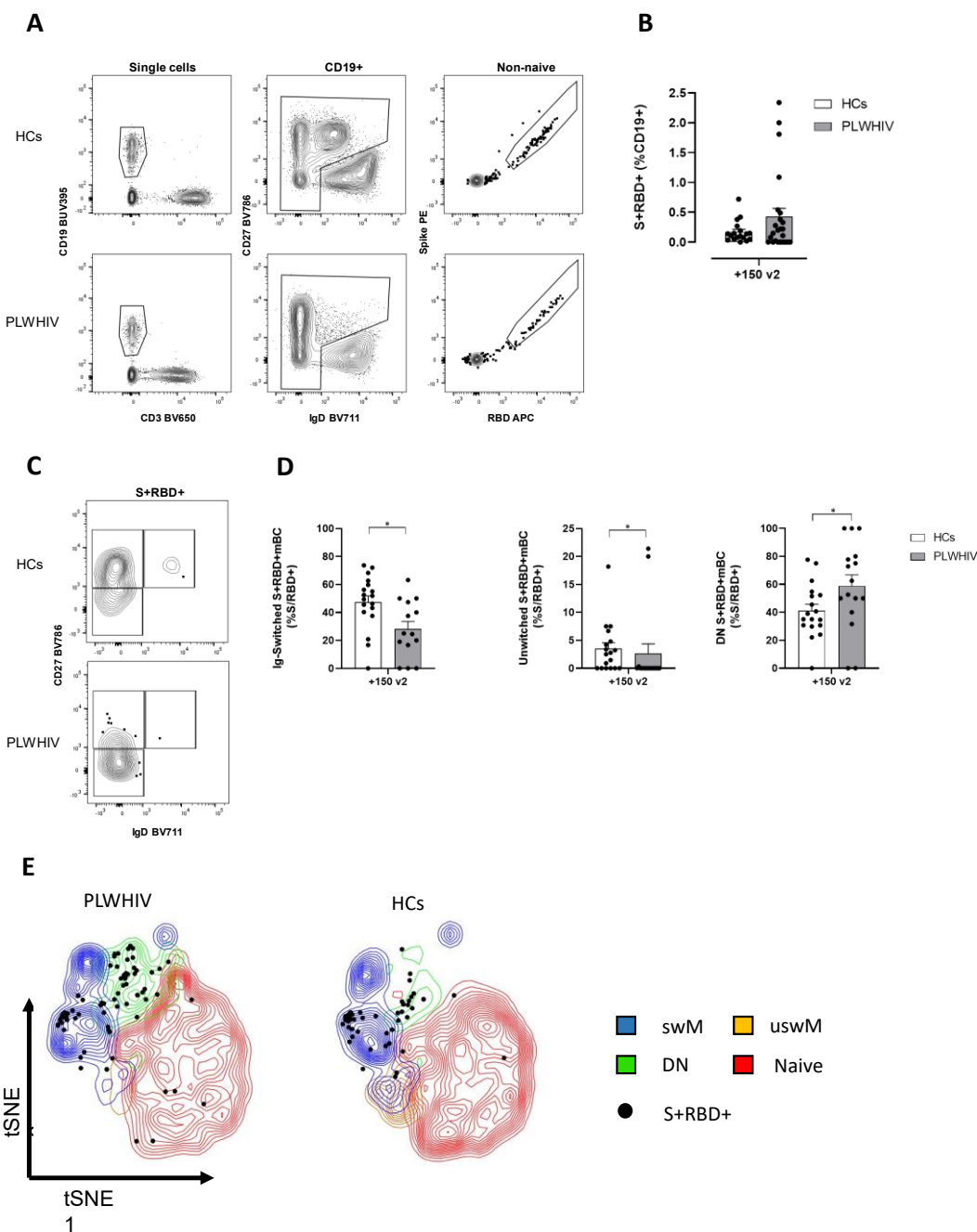
420

421 D) Data are reported as percentage of positive subjects over all samples tested at each time point. Fisher's Exact Test was used to assessing statistical differences between groups. \* $P \leq 0.05$ ; \*\* $P \leq 0.01$ .

422

423

424



425

426 **Figure 3. Analysis of Spike-specific memory B cells at 6 months after the beginning of the vaccination**  
 427 **cycle (+150 v2).** A) Gating strategy applied for identifying non-naïve Spike-specific B cells (S+/RBD+) in  
 428 PLWHIV and HCs. B) Percentages of S+RBD+ cells identified within CD19+ cells pool in each group. C)  
 429 Contour plot analysis of CD27 versus IgD within non-naïve S+RBD+ B cells, for identifying Ig-switched (IgD-  
 430 /CD27+), Unswitched (IgD+/CD27+) and Double negative (DN)(IgD-/CD27-) memory B cells (mBC). D)  
 431 Percentages of S+RBD+ mBCs of different subsets within S+RBD+ cells pool. Contour plot in A and C are  
 432 representative from a single subject from each group. Statistical difference was assessed by Kruskal-Wallis  
 433 test, followed by Dunn's post-test for multiple comparisons; \*P ≤ 0.05; \*\*P ≤ 0.01. E) t-SNE visualization of B  
 434 cells and antigen specific B cells in PLWHIV and healthy donors. t-SNE dimensionality reduction was used to  
 435 visualize in a bidimensional space a multiparametric dataset. Major B cell subsets (switched memory, swM;  
 436 unswitched memory uswM; double negative, DN; and naïve) from people living with HIV (PLWHIV; left) and  
 437 healthy donors (right) were displayed as contour plots in t-SNE map according to the expression of all  
 438 analyzed markers. Antigen specific B cells (S+/RBD+) were highlighted as dots.



439

440 **Tables 1.** Variables associated to log-transformed IgG titer at 1 month post boost dose (+30 v2) (univariable and  
441 multivariable linear regression analysis).

	Univariable analysis		Multivariable analysis	
	Mean change (95% CI)	p	Adjusted mean change (95% CI)	p
Age, per +10 years	0.11 (-0.05 / 0.26)	0.169		
Male gender	-0.10 (-0.43 / 0.23)	0.563		
Type of vaccine (mRNA-1273 vs BNT162b2)	-0.07 (-0.37 / 0.22)	0.623		
BMI, Kg/m <sup>2</sup>	-0.00 (-0.03 / 0.02)	0.836		
IDU	0.03 (-0.36 / 0.43)	0.864		
Years from HIV infection, per +10 years	0.03 (-0.12 / 0.17)	0.731		
CDC stage C	-0.15 (-0.53 / 0.23)	0.426		
HBV or HCV coinfection	-0.05 (-0.36 / 0.25)	0.736		
Zenith HIV-RNA, per +1 log copies/mL	-0.01 (-0.28 / 0.27)	0.946		
CD4 cell count at nadir, per +100 cell/mm <sup>3</sup>	0.07 (-0.02 / 0.16)	0.124		
Years from first ART, per +10 years	0.06 (-0.12 / 0.23)	0.526		
InSTI + 2NRTI	-0.10 (-0.40 / 0.20)	0.503		
Baseline HIV-RNA <50 cp/mL	0.25 (-0.28 / 0.79)	0.347		
Time from last HIV-RNA >50 copies/mL, per +10 years	-0.02 (-0.47 / 0.44)	0.942		
CD4 cell count at baseline, per +100 cell/mm <sup>3</sup>	0.04 (-0.01 / 0.08)	0.102		
CD4 cell count at baseline $\leq$ 350 cell/mm <sup>3</sup>	-1.08 (-1.41 / -0.75)	<b>&lt;0.001</b>	-1.02 (-1.39 / -0.65)	<b>&lt;0.001</b>
CD4% $\geq$ 30%	0.36 (0.09 / 0.64)	<b>0.009</b>	0.01 (-0.30 / 0.32)	0.947
CD4/CD8 ratio $\geq$ 1	0.33 (0.06 / 0.60)	<b>0.019</b>	0.11 / -0.19 / 0.40)	0.459

442

443 **Abbreviations:** ART, antiretroviral therapy; BMI, body mass index; CI, confidence intervals; HBV, hepatitis B virus;  
444 HCV, hepatitis C virus; IDU, injecting drug users; InSTI, integrase strand transfer inhibitors; MSM, men who have sex  
445 with men; NRTI, nucleoside reverse transcriptase inhibitors; NNRTI, non nucleoside reverse transcriptase inhibitors;  
446 OIR, optimal immunological recovery; PI, protease inhibitors.

447

448

449 **Tables 2.** Variables associated to the percentage of inhibition positive PLWHIV at 2 months post boost dose (+60 v2)  
 450 (univariable and multivariable logistic regression analysis).

	Univariable analysis		Multivariable analysis	
	OR (95% CI)	p	Adjusted OR (95% CI)	p
Age, per +10 years	1.36 (0.67-2.79)	0.395		
Male gender	1.00 (0.18-5.70)	1.000		
Type of vaccine (mRNA-1273 vs BNT162b2)	1.43 (0.30-6.88)	0.655		
BMI, Kg/m <sup>2</sup>	1.07 (0.84-1.37)	0.577		
IDU	0.90 (0.09-8.89)	0.926		
Years from HIV infection, per +10 years	1.09 (0.52-2.26)	0.819		
CDC stage C	0.32 (0.06-1.63)	0.169		
HBV or HCV coinfection	2.06 (0.23-18.78)	0.522		
Zenith HIV-RNA, per +1 log copies/mL	0.46 (0.10-2.10)	0.315		
CD4 cell count at nadir, per +100 cell/mm <sup>3</sup>	1.20 (0.74-1.93)	0.450		
Years from first ART, per +10 years	1.73 (0.46-6.51)	0.418		
Type of ART:				
-InSTI + 2NRTI	Ref			
-PI + 2NRTI	1.56 (0.15-16.72)	0.712		
-NNRTI + 2NRTI	1.40 (0.23-8.78)	0.715		
Baseline HIV-RNA <50 cp/mL	1.95 (0.18-21.54)	0.585		
Time from last HIV-RNA >50 copies/mL, per +10 years	4.27 (0.24-76.54)	0.325		
CD4 cell count at baseline, per +100 cell/mm <sup>3</sup>	0.85 (0.66-1.09)	0.193	0.89 (0.67-1.17)	0.389
CD4 cell count at baseline ≤350 cell/mm <sup>3</sup>	0.26 (0.05-1.40)	0.117		
CD4%, per +1% increase	1.09 (0.01-1.18)	<b>0.029</b>	1.12 (1.00-1.25)	<b>0.047</b>
CD4% ≥30%	2.41 (0.51-11.37)	0.267		
CD4/CD8 ratio, per +1 increase	1.99 (0.45-8.85)	0.369	0.55 (0.14-2.13)	0.387
CD4/CD8 ratio ≥1	2.08 (0.38-11.48)	0.402		

451

452 **Abbreviations:** ART, antiretroviral therapy; BMI, body mass index; CI, confidence intervals; HBV, hepatitis B virus;  
 453 HCV, hepatitis C virus; IDU, injecting drug users; InSTI, integrase strand transfer inhibitors; MSM, men who have sex  
 454 with men; NRTI, nucleoside reverse transcriptase inhibitors; NNRTI, non nucleoside reverse transcriptase inhibitors;  
 455 OIR, optimal immunological recovery; PI, protease inhibitors.

456