

Mid-life leukocyte telomere length and dementia risk: a prospective cohort study of 435,046 UK Biobank participants

Rui Liu¹, Meiruo Xiang², Luke C. Pilling³, David Melzer³, Lihong Wang⁴, Kevin J. Manning⁴, David C. Steffens⁴, Jack Bowden⁵, Richard H. Fortinsky⁶, George A. Kuchel⁶, Taeho G Rhee^{4,7}, Breno S. Diniz^{4,6}, Chia-Ling Kuo^{2,6,7}

¹Department of Health Sciences, Sacred Heart University, Connecticut, USA.

²Connecticut Convergence Institute for Translation in Regenerative Engineering, University of Connecticut Health, Connecticut, USA.

³Epidemiology and Public Health Group, College of Medicine and Health, University of Exeter, Exeter, UK.

⁴Department of Psychiatry, University of Connecticut Health, Connecticut, USA.

⁵Exeter Diabetes Group (ExCEED), College of Medicine and Health, University of Exeter, Exeter, UK.

⁶UConn Center on Aging, University of Connecticut Health, Connecticut, USA.

⁷Department of Public Health Sciences, University of Connecticut Health, Connecticut, USA

Corresponding:

Chia-Ling Kuo, PhD

Associate Professor

kuo@uchc.edu

Connecticut Convergence Institute for Translation in Regenerative Engineering

195 Farmington Avenue, Suite 2080

Farmington, Connecticut, USA

Abstract (150 words)

Introduction: While aging is the strongest overall risk factor for Alzheimer’s disease (AD), it is unclear whether telomere shortening, a hallmark of accelerated biological aging, plays a role in development of AD.

Methods: Data from the large prospective UK Biobank cohort (n=435,046) were used to evaluate whether mid-life leukocyte telomere length (TL) is associated with AD/AD-related dementia (AD/ADRD) over a mean follow-up of 12.2 years. In a subsample without AD/ADRD and with brain imaging data (n=43,390), we linked TL to brain magnetic resonance imaging phenotypes with indications of AD or vascular dementia pathology.

Results: Longer TL was associated with a lower risk of AD/ADRD, larger hippocampus volume, lower total volume of white matter hyperintensities, higher fractional anisotropy and lower mean diffusivity in the fornix.

Discussion: Longer TL in midlife may play a protective role against AD/ADRD. A better understanding of underlying mechanisms may help improve diagnosis and management of dementia.

KEYWORDS

dementia, cognitive tests, magnetic resonance imaging, fractional anisotropy, mean diffusivity, *APOE* genotypes, volume of hippocampus, white matter hyperintensities

HIGHLIGHTS

1. Longer telomere length is associated with a lower risk of incident Alzheimer's Disease or Alzheimer's Disease Related Dementia (AD/ADRD), similarly with subtypes Alzheimer's disease and vascular dementia, and in subsamples of *APOE* e3e3, e2, and e4 genotypes.
2. Longer telomere length also is associated with better cognitive performance in specific cognitive domains, larger hippocampus volume, lower total volume of white matter hyperintensities, and higher fractional anisotropy and lower mean diffusivity in the fornix.
3. Longer telomere length, however, is associated with lower fractional anisotropy and higher mean diffusivity in several white matter tracts such as sagittal stratum, retrolenticular part of internal capsule, and posterior corona radiata.

RESEARCH IN CONTEXT

1. **Systematic Review:** The authors conducted a literature review using PubMed. Previous studies reported unclear and at times, contradictory associations of telomere length with Alzheimer's disease (AD) and cognitive performance. Few studies investigated associations between telomere length and brain magnetic resonance imaging features and their focuses were limited to brain structures. Relevant publications were properly cited.
2. **Interpretation:** Our findings suggest that longer TL is associated with a lower risk of AD or AD Related Dementia (AD/ADRD), which is also revealed by better cognitive performance and less severe atrophy in brain structures but microstructural differences from tensor diffusion imaging show conflicting results.
3. **Future Directions:** Further investigation is needed to understand 1) the conflicting associations between telomere length and brain magnetic resonance imaging markers and their impacts on health outcomes; 2) by which mechanisms telomere length can have protective or harmful effects on AD/ADRD.

1 | BACKGROUND

Telomeres are nucleoprotein structures that cap the end regions of chromosomes with repetitive base pair sequences of TTAGGG. They are crucial in protecting DNA from damage and preserving genome stability [1]. In somatic cells, telomeres progressively shorten with each successive cell division. Telomere length (TL) is maintained by the telomerase enzyme activity, which is most active at early developmental stages but almost completely inactive in somatic tissues during adulthood and older age [2]. Critically short TL signals cells to stop replicating and can trigger cellular senescence changes [3]. A significant consequence of cellular senescence is the change in the cellular secretome and a shift towards a pro-inflammatory state (i.e., the Senescence-Associated Secretory Phenotype, SASP) that can exert deleterious effects in different tissues and organs, including the brain [4]. The accumulation of senescent cells can lead to accelerated aging phenotypes, increased incidence of age-related diseases, and a higher mortality risk [5]. Additionally, shorter leukocyte TL is associated with increased mortality risks [6] and cardiovascular disease [7]. In contrast, longer TL is associated with increased risks of certain cancers, including glioma, ovarian, and lung cancer [8]. More recently, an expanding body of literature suggests that TL may also play an important role in the development of neurodegeneration and neurodegenerative disorders [9].

Alzheimer's disease (AD) is the most prevalent neurodegenerative disease associated with aging. The association between TL and AD remains unclear and at times conflicting. In a recent meta-analysis of 13 retrospective case-control studies, eight showed a significantly shorter mean TL in AD patients, one showed a longer mean TL in AD patients, and four reported no significant difference between AD patients and controls [10]. The conflicting results may be explained by small samples, pathology of other neurodegenerative disorders in AD patients, and controls including possible preclinical AD cases. Due to shared pathological features, AD,

frontotemporal, Lewy body, vascular, and mixed dementia are classified as AD/AD-related dementia (ADRD) for research purposes [11].

Cognitive decline and brain changes occur many years before AD diagnosis [12]. Previous studies examined the association between TL and cognitive function using general population samples or cognitively unimpaired samples. Despite some inconsistent results, recent meta-analyses reported that longer TL was associated with better general cognition [13] and performance in several cognitive domains, including processing speed, memory, and executive functioning [14,15]. In addition, a prospective study showed that shorter leukocyte TL significantly predicted memory decline over a 20-year follow-up period [16].

Few population-based studies have explored TL in relation to brain MRI imaging features. All such studies found in the literature were cross-sectional with a limited sample size, which makes causal inference difficult. Two studies reported positive associations with regional and global brain volumes [15,17] and inverse associations with the presence of white matter hyperintensities (WMH) and ventricular enlargement [18]. Another study, however, observed an unexpected positive association between longer leukocyte TL and greater load and score of WMH [15].

Given previous inconsistent results, we designed this study to better assess the causal relationship between TL and AD/ADRD. We leveraged the unprecedentedly large population-based cohort UK Biobank (UKB) to not only estimate associations between TL and risk of incident AD/ADRD, but to also assess associations with early indications of AD/ADRD, including cognitive performance and brain imaging derived phenotypes (IDPs) [19,20] in participants who were dementia-free at the time of multi-modality imaging assessment. We analyzed incident AD/ADRD overall and by *APOE* genotype or subtype of AD/ADRD, namely

AD or vascular dementia, plus brain MRI markers sensitive to AD or vascular pathology.

Finally, as a means of avoiding any possibility of confounding, we also carried out genetics-based Mendelian randomization (MR) analyses to estimate causal effects of genetically determined TL on AD/ADRD and related measures.

2 | METHODS

2.1 | UK Biobank

UKB is a large population-based prospective study recruiting volunteers aged 40 to 69 years between 2006 and 2010 [21,22]. At recruitment, participants completed an extensive questionnaire and provided biological samples for genetic and other future assays. Since 2014, UKB re-invited participants from the baseline cohort to undergo a multimodal imaging assessment of the brain, heart, and body. During the visit, baseline and additional cognitive tests were administered online.

2.2 | Inclusion and Exclusion Criteria

Data were from active UKB participants excluding dropouts. We excluded from our analysis participants with 1) non-European ancestry based on genome-wide genotype data (n=51,131) to compare with genetics-based MR analysis results using genetic variants identified from populations of European descent (genome-wide association studies (GWASs) using other ancestries remain scarce); 2) TL outside the range of the 0.01th to 99.9th percentile (n=15,644): extreme TL of participants outside of this range was likely due to diseases strongly associated with TL; 3) diagnosed AD/ADRD prior to or at baseline (n=393); 4) diagnosed with other cause-dementia at any time before the last follow-up (n=190). After these exclusions, we had a total of 435,046 participants in the baseline cohort. Additionally, we restricted to the subsample of participants who attended the first imaging visit between 2014 and 2019 and were free of

AD/ADRD at the imaging visit (termed “imaging cohort”) (n=43,390) (Figure 1). The baseline cohort was used to assess associations of TL with incident AD/ADRD and baseline cognitive performance. The imaging cohort was used to test for associations of TL with IDPs and performance of cognitive tests first implemented at the first imaging visit. For specific analyses, participants with any missing outcome or covariates were further excluded.

2.3 | Data

2.3.1 | Telomere Length Measurement

Using DNA extracted from peripheral blood leukocytes, data of leukocyte TL were produced on behalf of UKB [23]. TL was measured using a multiplex quantitative polymerase chain-reaction-based technique by comparing the amount of the telomere amplification product (T) to that of a single-copy gene (S). A T/S ratio was derived representing the mean TL that was adjusted for the influence of technical parameters and was log- and z-transformed among the included samples before analysis.

2.3.2 | Genotype Data

UKB participants were genotyped using DNA extracted from the baseline blood samples [21]. Genetic principal components (PCs) to account for ancestry differences were derived within participants of European descent using the genome-wide genotype data. *APOE* genotypes were determined based on the genotypes of the two single nucleotide polymorphisms (SNPs), rs429358 and rs7412, on chromosome 19. Genetic variants strongly associated with leukocyte TL at the genome-wide significance level ($p < 8.31 \times 10^{-9}$, threshold for GWASs incorporating variants with minor allele frequencies $< 0.1\%$) in the UKB GWAS [24] were selected as genetic instruments (n=130) (Table SA.1) to estimate TL-outcome associations using MR methods.

These genetic variants were uncorrelated and robust to pleiotropy, and they were enriched with functional variants near genes underlying telomere and telomerase biology [24].

2.4 | Assessment of Outcomes

2.4.1 | AD/ADRD

AD/ADRD was confirmed using the first occurrence data of UKB by mapping multi-source data to 3-character ICD codes (Table SB.1). A dementia case was first diagnosed with AD/ADRD or other-cause dementia (ICD-10: F02) depending on which occurred first. Other-cause dementia as described previously was excluded from our analyses. AD and vascular dementia as subtypes of AD/ADRD were analyzed, allowing the cases to have other diagnoses in AD/ADRD, e.g., a patient may have both AD and vascular dementia diagnoses.

2.4.2 | Cognitive Tests

We selected UKB cognitive tests *a priori*, previously shown to have moderate to high concurrent validity with well-validated reference tests and test-retest reliability (specifically, reaction time, numeric memory, symbol digit substitution, trail making part B, and matrix pattern completion) [25]. We also included tests mostly correlated with general cognitive ability, i.e., fluid intelligence [25], and derived general cognitive ability scores combining five baseline cognitive test scores via the first principal component from Fawns-Ritchie et al. [25]. Data were from baseline or the first imaging visit depending on when the cognitive test was first implemented. Cognitive assessments are detailed in Text SC.1. Their associated cognitive domains, data field IDs, and weblinks are provided in Table SB.2.

2.4.3 | Image-Derived Phenotypes (IDPs)

We utilized the IDPs generated by an image-processing pipeline developed and run on behalf of UKB [26]. Specifically, we selected IDPs showing evidence of association with dementia [19,20]: 1) AD-signature region volumes from T1-weighted structural imaging: hippocampus, parahippocampal cortex, entorhinal cortex, inferior parietal lobule, precuneus, and cuneus; 2) total volume of WMH derived from combined T1 and T2-weighted fluid-attenuated inversion recovery (FLAIR) structural imaging; and 3) weighted mean FA and MD of white matter tracts from diffusion-weighted imaging. Left and right hemisphere measurements for the same tract were averaged before analysis. A description of the selected IDPs is provided in Table SB.3.

2.5 | Covariates

Baseline covariates included demographics (age, sex, assessment center near residence), socioeconomic status (education, Townsend deprivation index), lifestyle factors (BMI, smoking status, alcohol intake frequency, physical activity), *APOE* genotype, and top 10 genetic PCs (PC1-PC10) based on genome-wide genotype data to account for ancestry differences. Townsend deprivation index score was a measure of material deprivation at the postcode level based on the preceding national census data. Higher scores represent greater levels of deprivation. Smoking status and alcohol intake frequency were accessed through a touchscreen questionnaire. Physical activity (low, moderate, or high) was self-reported and measured following the short International Physical Activity Questionnaire guidelines [27].

2.6 | Statistical Methods

The association between TL and time from baseline to first incident AD/ADRD diagnosis was estimated using a Cox proportional hazards model, adjusting for the covariates previously

described. Participants who did not develop AD/ADRD but died during follow-up were censored at date of death; otherwise, at the last follow-up date (March 31, 2021). Sensitivity analyses were performed by *APOE* genotype (e3e3, e4, or e2), for AD and vascular dementia, separately.

Linear regression models were used to examine the associations of TL with cognitive measures and IDPs adjusting for the same covariates as for AD/ADRD and head size additionally for IDPs. Before modelling, each continuous outcome was transformed by the rank-based inverse normal transformation to correct for the distributional skewness, followed by a z-transformation to unify the scales.

To estimate the causal effects of TL on AD/ADRD and related outcomes, we applied several MR methods to ensure our results are robust to MR assumptions: 1) inverse-variance weighting (IVW) method [28] (primary) that meta-analyzes causal estimates from individual genetic instruments; 2) a weighted median-based method [29] that assumes that the majority of genetic variants are valid instrumental variables; 3) MR-Egger [30] that allows us to assess horizontal pleiotropy additionally; 4) robust adjusted profile score (MR-RAPS) method [31], accounting for any residual weak instrument bias, pleiotropy, and extreme outliers. Both instrument-TL associations and instrument-outcome associations from the present study were adjusted for age, sex, genotyping array and the first ten genetic principal components (PC1-PC10).

Prior to the MR analysis, the instrument-TL associations (regression coefficients and standard errors) were adjusted for winner's curse using (see the method in Text SC.2 and R code in Text SC.3). Before and after winner's curse adjustment, we calculated the mean F-statistic [32] and percent of variance in TL attributed to the genetic instruments to evaluate the weak

instrument bias, and the I^2 -statistic [33] to evaluate the no measurement error (NOME) assumption of MR-Egger.

Observational p-values or MR p-values from the primary IVW method were evaluated at the level of false discovery rate less than 5%. All the statistical analyses were performed in R version 3.4.1.

3 | RESULTS

Participant characteristics at recruitment of the baseline cohort (n=435,046) are presented in Table 1. The mean follow-up time from baseline to first imaging visit for participants in the imaging cohort (n=43,390) was 8.97 years (SD=1.75). Participants who subsequently underwent the first imaging visit were healthier than the baseline sample (Table 1), which had also been shown by a previous study [34], and similarly AD/ADRD cases versus non-AD/ADRD controls (Table SB.4).

3.1 | Observational Association Analysis

3.1.1 | Telomere length and risk of incident AD/ADRD

During a mean follow-up of 12.2 years, we identified 6,424 incident AD/ADRD cases (mean age at diagnosis 72.8 years, SD=6.06): 2527 AD cases (mean age at diagnosis 73.5 years, SD=5.09) and 1,330 vascular dementia cases (mean age at diagnosis 73.5 years, SD=5.03). The incidence of AD/ADRD or its subtype linearly decreased as TL increased (Figure SB.1). Compared with non-AD/ADRD controls (0.83 ± 0.13), AD/ADRD cases (0.80 ± 0.12 , $p < 2.2 \times 10^{-16}$) had a shorter mean TL and similarly, AD (0.80 ± 0.12 , $p < 2.2 \times 10^{-16}$) and vascular dementia (0.79 ± 0.12 , $p < 2.2 \times 10^{-16}$) cases.

Longer leukocyte TL at baseline was associated with a lower risk of incident AD/ADRD (Figure 2). The hazard ratio (HR) of AD/ADRD was 0.93 per SD longer in TL ($p = 3.37 \times 10^{-7}$),

after adjusting for the covariates. Similar results were found for different *APOE* genotypes, as well as for vascular dementia and AD (Figure 2). One SD of TL corresponds to approximately 650 base pairs in a European adult population, which is approximately 26 years of telomere attrition given the telomere shortening rate in the population is about 25 base pairs per year [35].

3.1.2 | Telomere length and cognitive performance

Longer TL was significantly associated with better cognitive performance at baseline, including faster reaction time (mean SD change per SD longer in TL (β)= -0.005, p =0.003), higher fluid intelligence (β =0.011, p = 1.41×10^{-5}), and higher numeric memory (β =0.013, p =0.009). Although not statistically significant at the level of FDR<5%, longer TL was suggestive of higher general cognitive ability (β =0.009, p =0.066) [25] (Figure 3). For cognitive tests measured at the first imaging visit (but not implemented at the baseline visit), each SD increase in TL was associated with better scores on tests of processing speed/executive functioning, including more symbol digit substitution (β =0.012, p =0.029) and shorter duration to complete trail making part B (β = -0.013, p =0.022). Additionally, each SD increase in TL was associated with better non-verbal reasoning measured with matrix pattern completion (β =0.013, p =0.027).

3.1.3 | Telomere length and regional brain MRI features

Figure 4 presents the associations between TL and volumetric IDPs of AD signature regions [19,20] and total WMH volume. Longer TL was significantly associated with higher hippocampus volume (β =0.012, p =0.012) and lower total WMH volume (β = -0.015, p =0.002). There were no significant associations between TL and other AD signature volumes (Figure 4).

We also evaluated the associations between TL and markers of white matter microstructural damage assessed by diffusion tensor imaging. Longer TL was associated with higher FA (indicating better white matter fiber integrity) and lower MD (indicating more glial cellularity and lower inflammatory burden) in the fornix. Interestingly, most of the other white matter tracts analyzed showed the opposite direction of association between TL and FA or MD. (Figures 5 and 6).

3.2 | Mendelian Randomization Analysis

The effect sizes of genetic variants associated with TL and their standard errors were corrected for winner's curse (Table SA.1). A single instrument (rs35671754) was dropped from the analysis after this correction due to its sign reversing. The mean F-statistics before and after winner's curse adjustment were 127.11 and 120.25, respectively, indicating that our instrument set remained strong. The uncorrected and corrected coefficients explained 3.61% and 3.42% of the variance in TL, respectively. Additionally, the I^2 statistic before and after winner's curse adjustment were close to 1 (97.6% and 97.4%, respectively), suggesting a low risk of violating the NOME assumption of MR-Egger.

Using the IVW MR method, there was no evidence showing that genetically determined TL was associated with AD/ADRD or its subtypes (Figure SB.2). Genetically determined TL was not associated with any of the cognitive measures (Figure SB.3), volumetric IDPs of AD signatures, or total volume of WMH (Figure SB.4). Genetically determined TL was not associated with FA or MD in the fornix. The MR analysis, however, confirmed observational associations between longer TL and lower FA in tracts such as sagittal stratum, posterior corona radiata, and retrolenticular part of internal capsule (Figure SB.5), as well as those between longer TL and higher MD in tracts, e.g., sagittal stratum, superior longitudinal fasciculus, and posterior

thalamic radiation (Figure SB.6). Different MR methods showed consistent results (Figures SB.7-SB.11). MR-Egger tended to produce a larger effect size than the other methods, which may be inflated by horizontal pleiotropy (indicated by an estimated intercept significantly different from zero; see Figures SD.1-SD.71). MR-RAPS accounted for pleiotropy and the results of IVW and MR-RAPS were similar across outcomes.

4 | DISCUSSION

Using middle-aged adults with a mean follow-up of 12.2 years, we found that longer leukocyte TL was associated with a lower risk of AD/ADRD, and specifically of AD and vascular dementia. In the population without dementia diagnoses, longer TL was associated with better performance across multiple cognitive domains. We also found that longer TL was associated with brain MRI features linked to a lower risk of dementia, including higher hippocampus volume, lower total volume of WMH, along with higher FA and lower MD in the fornix.

Our results are consistent with previous observational studies suggesting a protective effect of longer TL on AD, including those reported in recent meta-analyses of case-control studies [10]. Contrary to our findings, Fani et al. [36] reported a U-shaped relationship between TL and risk of AD, where both shorter and longer TL were associated with a higher AD risk. Significantly higher risk of AD with shorter leukocyte TL was also reported in non-*APOE* ϵ 4-carriers only in a prospective population cohort [37]. While previous MR studies reported a protective effect of genetically determined longer TL on AD risk [38,39], we did not find significant genetic associations with AD/ADRD or its subtypes in our MR analyses. Our samples were younger and we used more genetic instruments of TL to increase statistical power. However, the percent of variance in TL explained by the genetic instruments is still not sufficient

to power the outcomes due to limited numbers of cases in this young cohort. Our analysis was of leukocyte TL. Perhaps TL in brain or other tissues may show a stronger causal effect.

The relationship we observed between TL and alterations in the fornix is commensurate with the study by Staffaroni et al. [40] that showed TL attrition over time was associated with decreased fornix FA, increased fornix MD, and greater hippocampal volume loss. The fornix is a white matter bundle in the limbic system that functions as the principal outflow pathway from the hippocampus [41]. Microstructural changes in the fornix had been reported as an early predictor of cognitive decline in older adults with normal cognition and an indicator of AD progression [42]. Moreover, reduced FA and increased MD in the fornix have been suggested as promising imaging markers for AD [41]. Our findings on associations of longer TL with lower FA and higher MD in several white matter tracts suggest that longer TL may also have deleterious effects on related health outcomes including dementia. Further investigation is needed to understand the conflicting associations between TL and brain MRI markers.

The mechanism linking leukocyte TL with AD/ADRD and related brain MRI markers is still unclear. Telomere dysfunction has a major impact on stem cell exhaustion and genomic instability, where the biological changes including reduced neurogenesis and increased mosaic DNA content variation have been linked to AD [43–45]. Additionally, shorter TL may reflect an increased pool of senescent cells, which is associated with SASP [4]. Neuroinflammation plays an important role in exacerbating amyloid- β burden and tau hyperphosphorylation that are two core pathologies of AD [46]. Pro-inflammatory cytokines and other SASP factors are associated with brain structural abnormalities, cerebrovascular pathology, cognitive impairment, and elevated risk of AD [47,48]. Taken together, TL can be linked to AD/ADRD and related brain

MRI markers through direct and indirect pathways. Future studies are necessary to address by which mechanisms TL can have protective or harmful effects.

Several limitations need to be considered when interpreting the results of the current study. First, TL was measured in leukocytes in peripheral blood, which may not represent TL in the brain. However, peripheral blood TL is positively correlated with cerebellum TL and plays a direct role in AD pathogenesis [49]. Second, while we attempted to investigate AD and vascular dementia, we included cases with diagnosis of other AD/ADRD. However, we also included volumetric AD signatures and brain IDPs that have indications for vascular dementia. Third, study participants were relatively young, with many not yet old enough to have developed AD/ADRD. Lastly, our results may not be generalized to non-European populations. Healthy volunteers are over-represented in our baseline and imaging cohorts, which could lead to underestimated exposure-outcome associations. However, the impact is alleviated by the large sample size and significant heterogeneity of exposures [50]. Moreover, we believe that the above limitations would diminish rather than enhance our ability to reject the null hypothesis, thus raising the robustness of our statistically significant findings.

Together with our findings that longer TL is associated with better cognitive performance and lower risks of incident AD, vascular dementia, and their related brain markers, this suggests that TL is a robust indicator of neurodegeneration or cognitive impairment toward the development of AD/ADRD. Further research is needed to elucidate the biological mechanisms linking TL and dementia and to understand the health impact of lower FA and higher MD associated with longer TL in several white matter tracts.

ACKNOWLEDGEMENTS

This research was conducted using the UK Biobank resources under application no. 14631 and was funded by the National Institute of Nursing Research, National Institutes of Health, USA (R21NR018963-01A1S1). K.J.M., D.C.S, R.H.F., G.A.K. and C.L.K. were supported by P30AG067988. All the authors have no conflict of interest to disclose.

AUTHOR CONTRIBUTIONS

C.L.K., L.C.P, D.M., L.W., D.C.S, and R.L. designed the study; M.X. and C.L.K. performed statistical analyses; J.B. guided Mendelian randomization analyses and developed the method to adjust for the winner's curse; R.L. and C.L.K drafted the initial manuscript, and all the authors reviewed the manuscript.

REFERENCES

1. Blackburn EH, Epel ES, Lin J. Human telomere biology: A contributory and interactive factor in aging, disease risks, and protection. *Science*. Department of Biochemistry and Biophysics, University of California, San Francisco, CA 94143, USA. elizabeth.blackburn@ucsf.edu; Department of Psychiatry, University of California, San Francisco, CA 94143, USA.; Department of Biochemistry and Biophysics, American Association for the Advancement of Science; 2015; 350: 1193–8.
2. Collins K, Mitchell JR. Telomerase in the human organism. *Oncogene* [Internet]. *Oncogene*; 2002 [cited 2022 Mar 15]; 21: 564–79. Available from: <https://pubmed.ncbi.nlm.nih.gov/11850781/>
3. Bernardes de Jesus B, Blasco MA. Telomerase at the intersection of cancer and aging. *Trends Genet* [Internet]. *Trends Genet*; 2013 [cited 2022 Mar 15]; 29: 513–20. Available from: <https://pubmed.ncbi.nlm.nih.gov/23876621/>
4. Ovadya Y, Krizhanovsky V. Senescent cells: SASPected drivers of age-related

- pathologies. *Biogerontology* [Internet]. *Biogerontology*; 2014 [cited 2022 Mar 22]; 15: 627–42. Available from: <https://pubmed.ncbi.nlm.nih.gov/25217383/>
5. Borghesan M, Hoogaars WMH, Varela-Eirin M, Talma N, Demaria M. A Senescence-Centric View of Aging: Implications for Longevity and Disease. *Trends Cell Biol* [Internet]. *Trends Cell Biol*; 2020 [cited 2022 Mar 22]; 30: 777–91. Available from: <https://pubmed.ncbi.nlm.nih.gov/32800659/>
 6. Wang Q, Zhan Y, Pedersen NL, Fang F, Hägg S. Telomere Length and All-Cause Mortality: A Meta-analysis. *Ageing Research Reviews*. 2018. p. 11–20.
 7. PC H, EE H, S K, AS B, A T, P W. Leucocyte telomere length and risk of cardiovascular disease: systematic review and meta-analysis. *BMJ* [Internet]. *BMJ*; 2014 [cited 2021 Nov 3]; 349. Available from: <https://pubmed.ncbi.nlm.nih.gov/25006006/>
 8. X Z, Q Z, W Z, T L, SH X, LX Z, YY C, XN L, M L, W C, QS H, B Z. The Association of Telomere Length in Peripheral Blood Cells with Cancer Risk: A Systematic Review and Meta-analysis of Prospective Studies. *Cancer Epidemiol Biomarkers Prev* [Internet]. *Cancer Epidemiol Biomarkers Prev*; 2017 [cited 2021 Nov 3]; 26: 1381–90. Available from: <https://pubmed.ncbi.nlm.nih.gov/28619828/>
 9. Levstek T, Kozjek E, Dolžan V, Trebušak Podkrajšek K. Telomere Attrition in Neurodegenerative Disorders. *Front Cell Neurosci*. *Frontiers Media S.A.*; 2020; 14: 219.
 10. Forero DA, González-Giraldo Y, López-Quintero C, Castro-Vega LJ, Barreto GE, Perry G. Meta-analysis of Telomere Length in Alzheimer’s Disease. *Journals Gerontol Ser A* [Internet]. *Oxford Academic*; 2016 [cited 2021 Nov 9]; 71: 1069–73. Available from: <https://academic.oup.com/biomedgerontology/article/71/8/1069/2465837>
 11. Corriveau RA, Koroshetz WJ, Gladman JT, Jeon S, Babcock D, Bennett DA, Carmichael

- ST, Dickinson SLJ, Dickson DW, Emr M, Fillit H, Greenberg SM, Hutton ML, et al. Alzheimer's Disease–Related Dementias Summit 2016: National research priorities. *Neurology* [Internet]. Wolters Kluwer Health, Inc. on behalf of the American Academy of Neurology; 2017 [cited 2021 Nov 9]; 89: 2381–91. Available from: <https://n.neurology.org/content/89/23/2381>
12. Jack CR, Holtzman DM. Biomarker modeling of alzheimer's disease. *Neuron* [Internet]. Elsevier Inc.; 2013; 80: 1347–58. Available from: <http://dx.doi.org/10.1016/j.neuron.2013.12.003>
 13. Zhan Y, Clements MS, Roberts RO, Vassilaki M, Druliner BR, Boardman LA, Petersen RC, Reynolds CA, Pedersen NL, Hägg S. Association of telomere length with general cognitive trajectories: a meta-analysis of four prospective cohort studies. *Neurobiol Aging*. 2018; 69.
 14. Hägg S, Zhan Y, Karlsson R, Gerritsen L, Ploner A, Van Der Lee SJ, Broer L, Deelen J, Marioni RE, Wong A, Lundquist A, Zhu G, Hansell NK, et al. Short telomere length is associated with impaired cognitive performance in European ancestry cohorts. *Transl Psychiatry*. 2017; 7.
 15. Gampawar P, Schmidt R, Schmidt H. Leukocyte Telomere Length Is Related to Brain Parenchymal Fraction and Attention/Speed in the Elderly: Results of the Austrian Stroke Prevention Study. *Front Psychiatry*. 2020; 11.
 16. Pudas S, Josefsson M, Adolfsson AN, Landfors M, Kauppi K, Veng-Taasti LM, Hultdin M, Adolfsson R, Degerman S. Short Leukocyte Telomeres, But Not Telomere Attrition Rates, Predict Memory Decline in the 20-Year Longitudinal Betula Study. *Journals Gerontol Ser A* [Internet]. Oxford Academic; 2021 [cited 2021 Nov 9]; 76: 955–63.

Available from: <https://academic.oup.com/biomedgerontology/article/76/6/955/6053754>

17. King KS, Kozlitina J, Rosenberg RN, Peshock RM, McColl RW, Garcia CK. Effect of leukocyte telomere length on total and regional brain volumes in a large population-based cohort. *JAMA Neurol.* 2014; 71.
18. Suchy-Dicey AM, Muller CJ, Madhyastha TM, Shibata D, Cole SA, Zhao J, Longstreth WT, Buchwald D. Telomere Length and Magnetic Resonance Imaging Findings of Vascular Brain Injury and Central Brain Atrophy: The Strong Heart Study. *Am J Epidemiol.* 2018; 187.
19. Wu A, Sharrett AR, Gottesman RF, Power MC, Mosley TH, Jack CR, Knopman DS, Windham BG, Gross AL, Coresh J. Association of brain magnetic resonance imaging signs with cognitive outcomes in persons with nonimpaired cognition and mild Cognitive Impairment. *JAMA Netw Open.* 2019; 2: 1–12.
20. Bordes C, Sargurupremraj M, Mishra A, Debette S. Genetics of common cerebral small vessel disease. *Nat Rev Neurol.* 2022; 0123456789.
21. Bycroft C, Freeman C, Petkova D, Band G, Elliott LT, Sharp K, Motyer A, Vukcevic D, Delaneau O, O'Connell J, Cortes A, Welsh S, Young A, et al. The UK Biobank resource with deep phenotyping and genomic data. *Nature.* 2018; 562: 203–9.
22. Sudlow C, Gallacher J, Allen N, Beral V, Burton P, Danesh J, Downey P, Elliott P, Green J, Landray M, Liu B, Matthews P, Ong G, et al. UK Biobank: An Open Access Resource for Identifying the Causes of a Wide Range of Complex Diseases of Middle and Old Age. *PLOS Med [Internet]. Public Library of Science; 2015 [cited 2021 Jul 29]; 12: e1001779.*
Available from:
<https://journals.plos.org/plosmedicine/article?id=10.1371/journal.pmed.1001779>

23. Codd V, Denniff M, Swinfield C, Warner SC, Papakonstantinou M, Sheth S, Nanus DE, Budgeon CA, Musicha C, Bountziouka V, Wang Q, Bramley R, Allara E, et al. Measurement and initial characterization of leukocyte telomere length in 474,074 participants in UK Biobank. *Nat Aging* 2022 22 [Internet]. Nature Publishing Group; 2022 [cited 2022 Mar 3]; 2: 170–9. Available from: <https://www.nature.com/articles/s43587-021-00166-9>
24. Codd V, Wang Q, Allara E, Musicha C, Kaptoge S, Stoma S, Jiang T, Hamby SE, Braund PS, Bountziouka V, Budgeon CA, Denniff M, Swinfield C, et al. Polygenic basis and biomedical consequences of telomere length variation. *Nat Genet* [Internet]. Springer US; 2021; 53: 1425–33. Available from: <http://dx.doi.org/10.1038/s41588-021-00944-6>
25. Fawns-Ritchie C, Deary I. Reliability and validity of the UK Biobank cognitive tests. *PLoS One* [Internet]. PLoS One; 2020 [cited 2021 Oct 21]; 15. Available from: <https://pubmed.ncbi.nlm.nih.gov/32310977/>
26. Alfaro-Almagro F, Jenkinson M, Bangerter NK, Andersson JLR, Griffanti L, Douaud G, Sotiropoulos SN, Jbabdi S, Hernandez-Fernandez M, Vallee E, Vidaurre D, Webster M, McCarthy P, et al. Image processing and Quality Control for the first 10,000 brain imaging datasets from UK Biobank. *Neuroimage*. Academic Press; 2018; 166: 400–24.
27. Cassidy S, Chau JY, Catt M, Bauman A, Trenell MI. Cross-sectional study of diet, physical activity, television viewing and sleep duration in 233 110 adults from the UK Biobank; The behavioural phenotype of cardiovascular disease and type 2 diabetes. *BMJ Open* [Internet]. British Medical Journal Publishing Group; 2016 [cited 2021 Nov 9]; 6: e010038. Available from: <https://bmjopen.bmj.com/content/6/3/e010038>
28. Burgess S, Butterworth A, Thompson SG. Mendelian randomization analysis with

- multiple genetic variants using summarized data. *Genet Epidemiol.* 2013; 37: 658–65.
29. Bowden J, Davey Smith G, Haycock PC, Burgess S. Consistent Estimation in Mendelian Randomization with Some Invalid Instruments Using a Weighted Median Estimator. *Genet Epidemiol.* 2016; 40: 304–14.
 30. Bowden J, Smith GD, Burgess S. Mendelian randomization with invalid instruments: Effect estimation and bias detection through Egger regression. *Int J Epidemiol.* 2015; 44: 512–25.
 31. Zhao Q, Wang J, Hemani G, Bowden J, Small DS. Statistical inference in two-sample summary-data Mendelian randomization using robust adjusted profile score. *Ann Stat [Internet].* 2020; 48: 1742–69. Available from: <https://doi.org/10.1214/19-AOS1866>
 32. Burgess S, Thompson SG. Avoiding bias from weak instruments in mendelian randomization studies. *Int J Epidemiol.* 2011; 40: 755–64.
 33. Bowden J, Fabiola Del Greco M, Minelli C, Smith GD, Sheehan NA, Thompson JR. Assessing the suitability of summary data for two-sample mendelian randomization analyses using MR-Egger regression: The role of the I^2 statistic. *Int J Epidemiol.* 2016; 45: 1961–74.
 34. Lyall D, Quinn T, Lyall LM, Ward J, Anderson J, Smith D, Stewart W, Strawbridge RJ, Bailey M, Cullen B. Quantifying bias in psychological and physical health in the UK Biobank imaging sub-sample. *PsyArXiv*; [cited 2022 Feb 28]; . Available from: <https://psyarxiv.com/upvb9/>
 35. Kuo CL, Pilling LC, Kuchel GA, Ferrucci L, Melzer D. Telomere length and aging-related outcomes in humans: A Mendelian randomization study in 261,000 older participants. *Aging Cell.* 2019; 18.

36. Fani L, Hilal S, Sedaghat S, Broer L, Licher S, Arp PP, van Meurs JBJ, Ikram MK, Ikram MA. Telomere Length and the Risk of Alzheimer's Disease: The Rotterdam Study. *J Alzheimer's Dis.* 2020; 73: 707–14.
37. Hackenhaar FS, Josefsson M, Adolfsson AN, Landfors M, Kauppi K, Hultdin M, Adolfsson R, Degerman S, Pudas S. Short leukocyte telomeres predict 25-year Alzheimer's disease incidence in non-APOE ϵ 4-carriers. *Alzheimer's Res Ther* [Internet]. BioMed Central Ltd; 2021 [cited 2021 Nov 9]; 13: 1–13. Available from: <https://alzres.biomedcentral.com/articles/10.1186/s13195-021-00871-y>
38. Yu G, Lu L, Ma Z, Wu S. Genetically Predicted Telomere Length and Its Relationship With Alzheimer's Disease. *Front Genet.* 2021; 12.
39. Zhan Y, Song C, Karlsson R, Tillander A, Reynolds CA, Pedersen NL, Hägg S. Telomere length shortening and Alzheimer disease-A mendelian randomization study. *JAMA Neurol.* 2015; 72: 1202–3.
40. Staffaroni AM, Tosun D, Lin J, Elahi FM, Casaletto KB, Wynn MJ, Patel N, Neuhaus J, Walters SM, Epel ES, Blackburn EH, Kramer JH. Telomere attrition is associated with declines in medial temporal lobe volume and white matter microstructure in functionally independent older adults. *Neurobiol Aging.* 2018; 69: 68–75.
41. Oishi K, Lyketsos CG, Reddy PH, Parra M, Swerdlow RH, Morgan RH. AGING NEUROSCIENCE MINI REVIEW ARTICLE Alzheimer's disease and the fornix. *Front Aging Neurosci* [Internet]. 2014 [cited 2022 Feb 27]; 6. Available from: www.frontiersin.org
42. Fletcher E, Raman M, Huebner P, Liu A, Mungas D, Carmichael O, Decarli C. Loss of Fornix White Matter Volume as a Predictor of Cognitive Impairment in Cognitively

- Normal Elderly Individuals. *JAMA Neurol.* 2013; 70: 1389–95.
43. Arendt T, Brückner MK, Lösche A. Regional mosaic genomic heterogeneity in the elderly and in Alzheimer’s disease as a correlate of neuronal vulnerability. *Acta Neuropathol* [Internet]. Springer Verlag; 2015 [cited 2022 Mar 29]; 130: 501–10. Available from: <https://link.springer.com/article/10.1007/s00401-015-1465-5>
 44. Cosacak M, Bhattarai P, Kizil C. Alzheimer’s disease, neural stem cells and neurogenesis: cellular phase at single-cell level. *Neural Regen Res* [Internet]. *Neural Regen Res*; 2020 [cited 2022 Mar 29]; 15: 824–7. Available from: <https://pubmed.ncbi.nlm.nih.gov/31719242/>
 45. Lidzbarsky G, Gutman D, Shekhidem HA, Sharvit L, Atzmon G. Genomic Instabilities, Cellular Senescence, and Aging: In Vitro, In Vivo and Aging-Like Human Syndromes. *Front Med* [Internet]. *Front Med (Lausanne)*; 2018 [cited 2022 Mar 29]; 5. Available from: <https://pubmed.ncbi.nlm.nih.gov/29719834/>
 46. Kinney JW, Bemiller SM, Murtishaw AS, Leisgang AM, Salazar AM, Lamb BT. Inflammation as a central mechanism in Alzheimer’s disease. *Alzheimer’s Dement (New York, N Y)* [Internet]. *Alzheimers Dement (N Y)*; 2018 [cited 2022 Mar 22]; 4: 575–90. Available from: <https://pubmed.ncbi.nlm.nih.gov/30406177/>
 47. Wallin A, Kapaki E, Boban M, Engelborghs S, Hermann DM, Huisa B, Jonsson M, Kramberger MG, Lossi L, Malojcic B, Mehrabian S, Merighi A, Mukaetova-Ladinska EB, et al. Biochemical markers in vascular cognitive impairment associated with subcortical small vessel disease - A consensus report. *BMC Neurol* [Internet]. *BMC Neurol*; 2017 [cited 2022 Mar 22]; 17. Available from: <https://pubmed.ncbi.nlm.nih.gov/28535786/>
 48. Diniz BS, Teixeira AL, Ojopi EB, Talib LL, Mendonça VA, Gattaz WF, Forlenza OV.

- Higher serum sTNFR1 level predicts conversion from mild cognitive impairment to Alzheimer's disease. *J Alzheimers Dis* [Internet]. *J Alzheimers Dis*; 2010 [cited 2022 Mar 22]; 22: 1305–11. Available from: <https://pubmed.ncbi.nlm.nih.gov/20930310/>
49. Lukens JN, Van Deerlin V, Clark CM, Xie SX, Johnson FB. Comparisons of telomere lengths in peripheral blood and cerebellum in Alzheimer's disease. *Alzheimers Dement*. 2009; 5: 463–9.
50. Fry A, Littlejohns TJ, Sudlow C, Doherty N, Adamska L, Sprosen T, Collins R, Allen NE. Comparison of Sociodemographic and Health-Related Characteristics of UK Biobank Participants With Those of the General Population. *Am J Epidemiol* [Internet]. Oxford Academic; 2017 [cited 2022 Feb 28]; 186: 1026–34. Available from: <https://academic.oup.com/aje/article/186/9/1026/3883629>

Table 1 Baseline characteristics of participants in the baseline or imaging cohort

Characteristics	Baseline Cohort (n=435,046)	Imaging Cohort (N=43,390)
Baseline age, years (mean ± SD)	56.8 ± 8	55.3 ± 7.5
Sex, female (%)	236,117 (54%)	22,373 (52%)
Death (%)	30,504 (7%)	425 (1%)
Age at death (mean ± SD)	71.1 ± 7.3	71.6 ± 6.4
Education (%)		
None	75,541 (18%)	2,984 (7%)
CSEs or equivalent	16,231 (4%)	1,122 (3%)
O levels/GCSEs or equivalent	59,497 (13%)	4,705 (11%)
A/AS levels/NVQ/HND/HNC	79,609 (18%)	7,778 (18%)
Other professional qualifications	64,394 (15%)	6,946 (16%)
College or university degree	137,941 (32%)	19,721 (46%)
Townsend deprivation index	-1.5 ± 3	-1.9 ± 2.7
BMI, kg/m² (mean ± SD)	27.4 ± 4.8	26.6 ± 4.3
Smoking status (%)		
Never	234,004 (54%)	26,022 (60%)
Previous	154,156 (36%)	14,596 (34%)
Current	45,343 (10%)	2,687 (6%)
Alcohol intake frequency (%)		
Never	29,060 (7%)	1,847 (4%)
Special occasions only	46,553 (11%)	3,323 (8%)
1-3 times a month	48,359 (11%)	4,619 (11%)
1-2 times a week	114,513 (26%)	11,195 (26%)
3-4 times a week	104,311 (24%)	12,345 (28%)
Daily or almost daily	91,947 (21%)	10,053 (23%)
IPAQ activity group (%)		
Low	57,696 (14%)	5,742 (14%)
Moderate	177,073 (44%)	18,504 (45%)
High	163,435 (41%)	16,902 (41%)
APOE genotype (%)		
e3e3	254,331 (58.46%)	25,619 (59.04%)
e2e3	53,573 (12.31%)	5,388 (12.42%)
e2e2	2,766 (0.64%)	250 (0.58%)
e2e4	10,931 (2.51%)	1,036 (2.39%)
e3e4	103,077 (23.69%)	10,122 (23.33%)
e4e4	10,350 (2.38%)	975 (2.25%)
e1e2	3 (<0.01%)	0 (0.00%)
Telomere length (T/S ratio), adjusting for technical parameters	0.83 ± 0.13	0.84 ± 0.13

Abbreviations: SD, standard deviation; *APOE*, apolipoprotein E; CSE, certificate of secondary education; GCSE, general certificate of secondary education; NVQ, national vocational qualification; HND, higher national diploma; HNC, higher national certificate. BMI, body mass index; IPAQ, International Physical Activity Questionnaire.

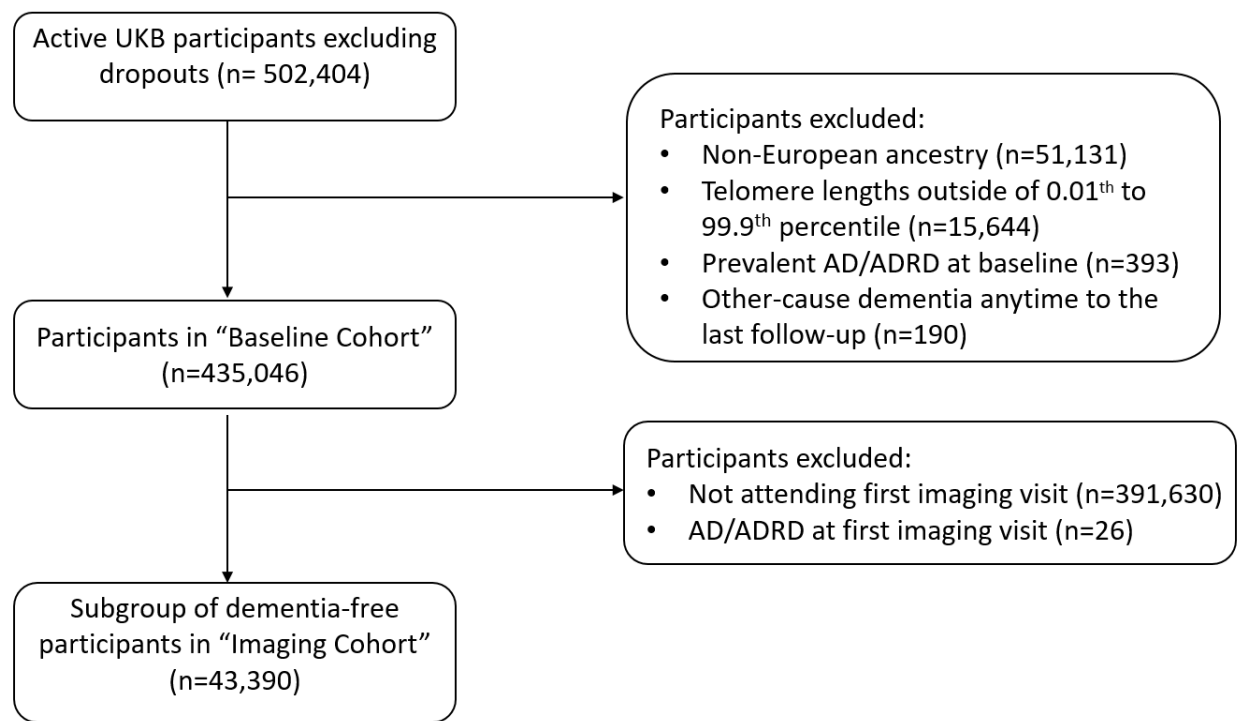


Figure 1 Flowchart of study participant selection.

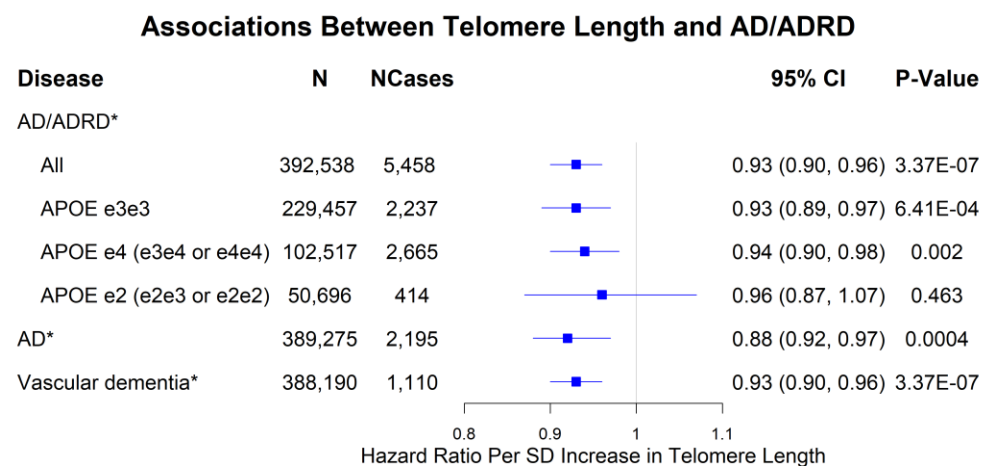


Figure 2 Associations between telomere length and AD/ADRD or related phenotypes.

*Significant at the false discovery rate < 0.05 level; AD is defined as AD or dementia in AD; N: sample size; NCases: number of cases; Hazard Ratios (HRs) per Standard Deviation (SD) longer in Telomere Length (TL) from Cox proportional hazards models adjusting for age, sex, education, Townsend deprivation index, BMI, smoking status, alcohol intake frequency, and IPAQ physical activity group, *APOE* genotype, PC1-PC10, and baseline assessment center; P-Value: unadjusted p-value for multiple testing.

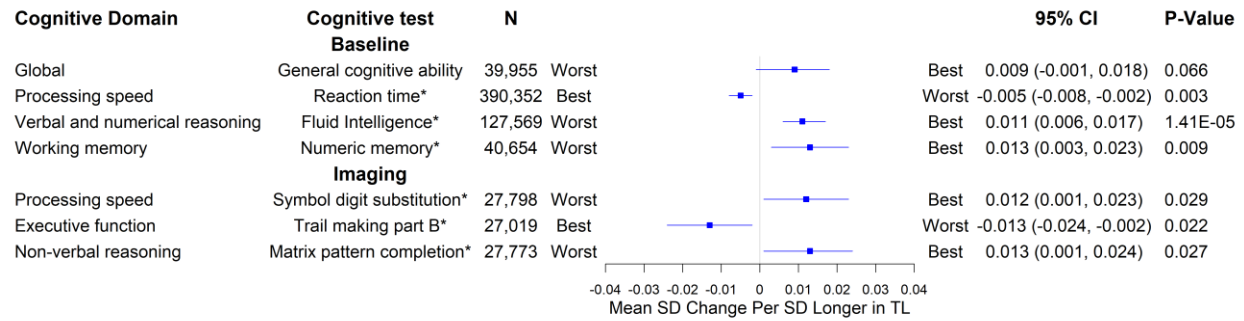


Figure 3 Associations between telomere length and cognitive function measures.

*Significant at the false discovery rate <0.05 level; N: sample size; Mean Standard Deviation (SD) changes per SD longer in Telomere Length (TL) from linear regression models adjusting for age, sex, education, Townsend deprivation index, BMI, smoking status, alcohol intake frequency, and IPAQ physical activity group, *APOE* genotype, PC1-PC10, and baseline assessment center; P-Value: unadjusted p-value for multiple testing. The two ends representing best and worst performance are labelled.

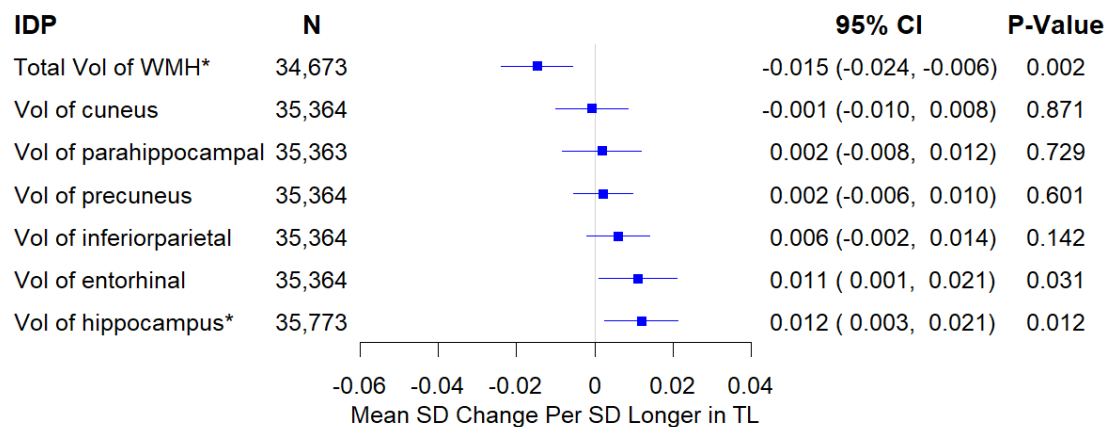


Figure 4 Associations between telomere length and volumetric IDPs of AD signatures and white matter hyperintensities (WMH).

*Significant at the false discovery rate < 0.05 level; N: sample size; Mean Standard Deviation (SD) changes per SD longer in Telomere Length (TL) from linear regression models adjusting for age, sex, education, Townsend deprivation index, BMI, smoking status, alcohol intake frequency, IPAQ physical activity group, *APOE* genotype, PC1-PC10, baseline assessment center, and head size; P-Value: unadjusted p-value for multiple testing.

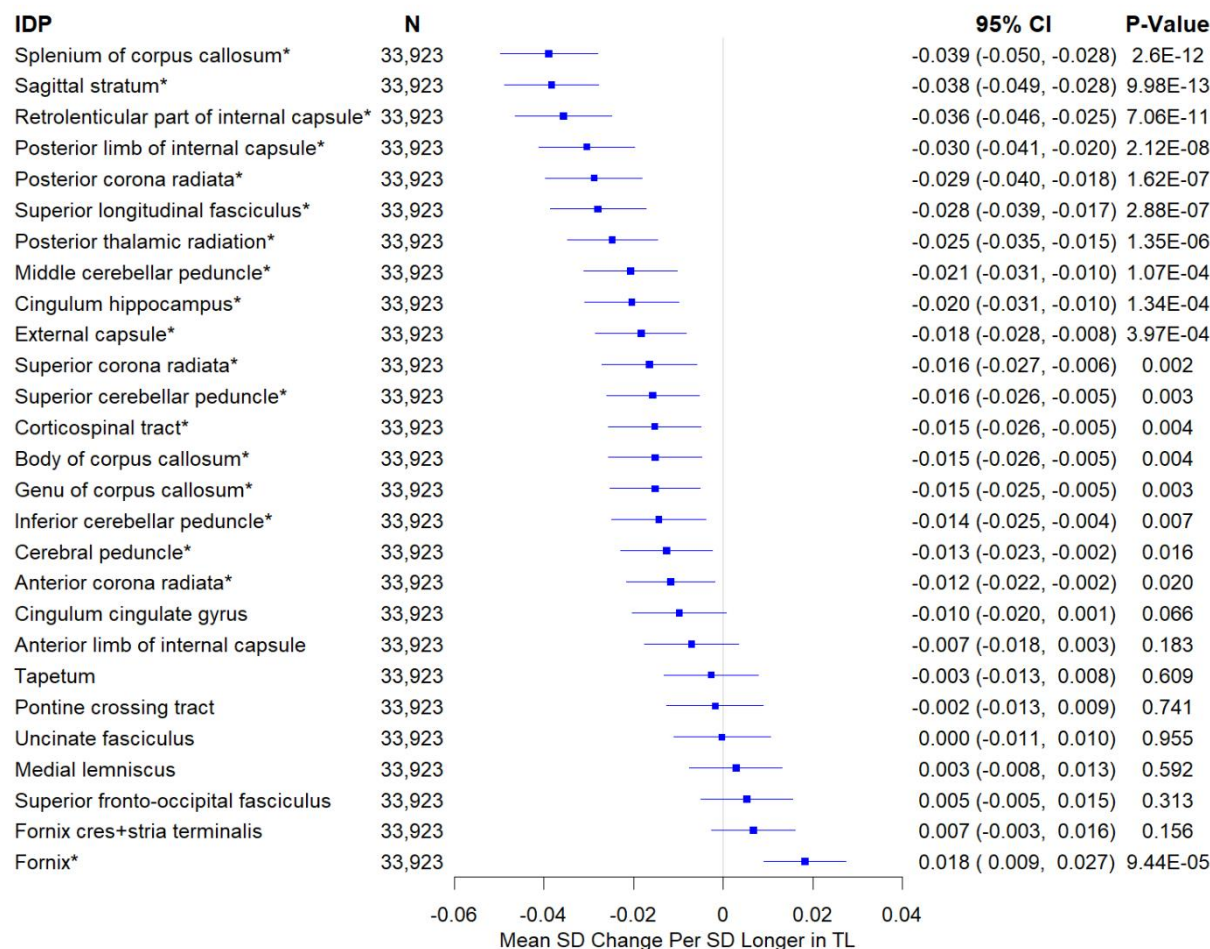


Figure 5 Associations between telomere length and weighted-mean fractional anisotropy IDPs.

*Significant at the false discovery rate < 0.05 level; N: sample size; Mean Standard Deviation (SD) changes per SD longer in Telomere Length (TL) from linear regression models adjusting for age, sex, education, Townsend deprivation index, BMI, smoking status, alcohol intake frequency, IPAQ physical activity group, *APOE* genotype, PC1-PC10, baseline assessment center, and head size; P-Value: unadjusted p-value for multiple testing.

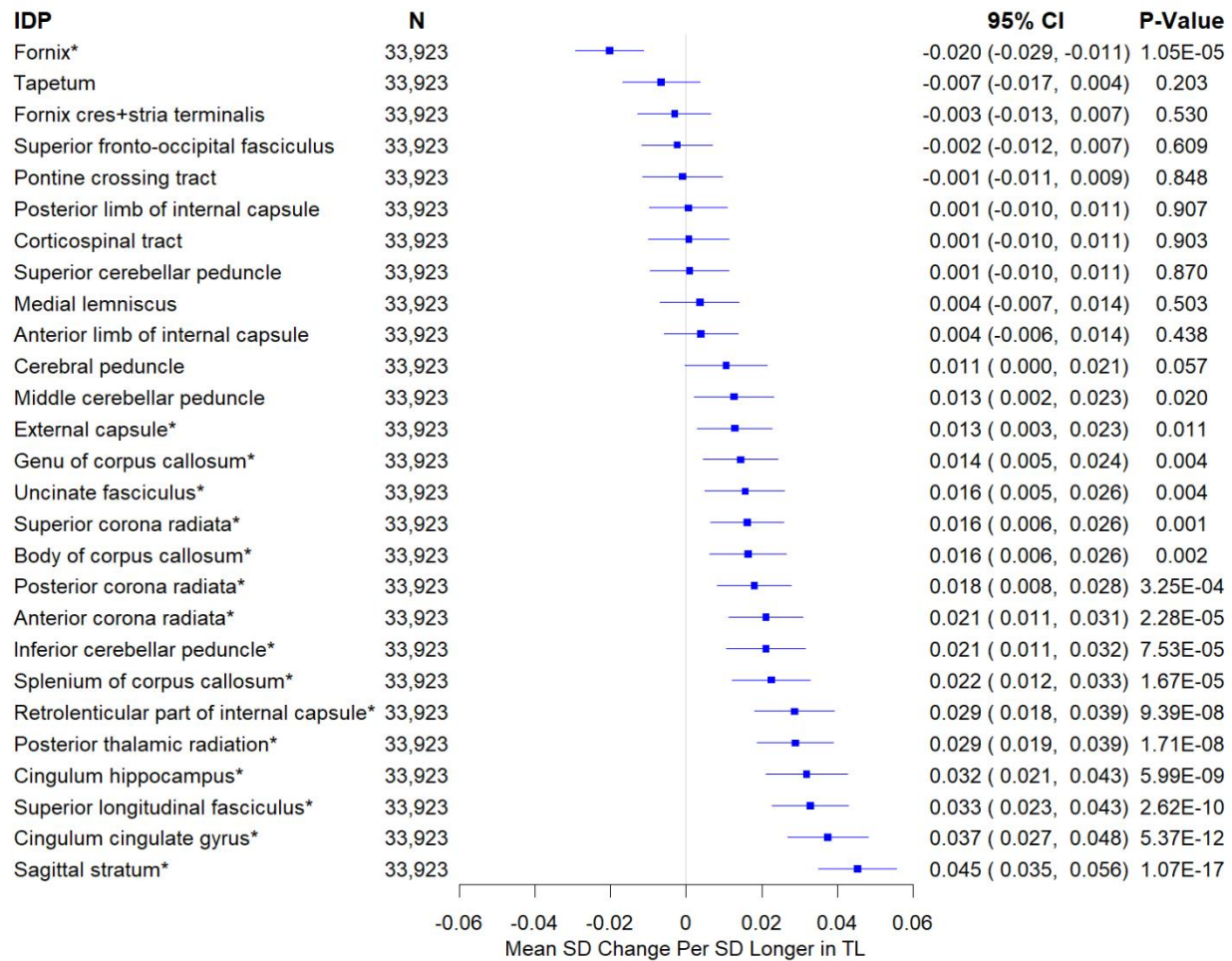


Figure 6 Associations between telomere length and weighted-mean mean diffusivity IDPs.

*Significant at the false discovery rate < 0.05 level; N: sample size; Mean Standard Deviation (SD) changes per SD longer in Telomere Length (TL) from linear regression models adjusting for age, sex, education, Townsend deprivation index, BMI, smoking status, alcohol intake frequency, IPAQ physical activity group, *APOE* genotype, PC1-PC10, baseline assessment center, and head size; P-Value: unadjusted p-value for multiple testing.