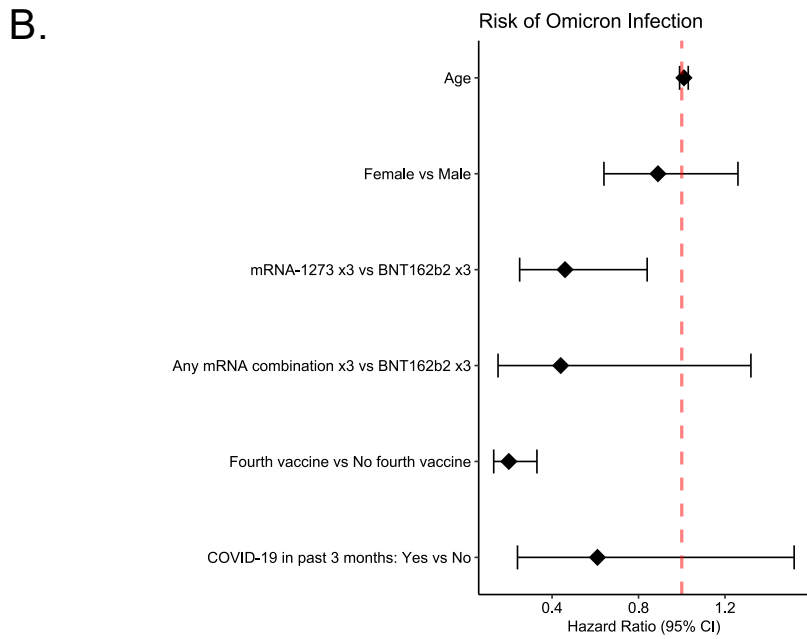
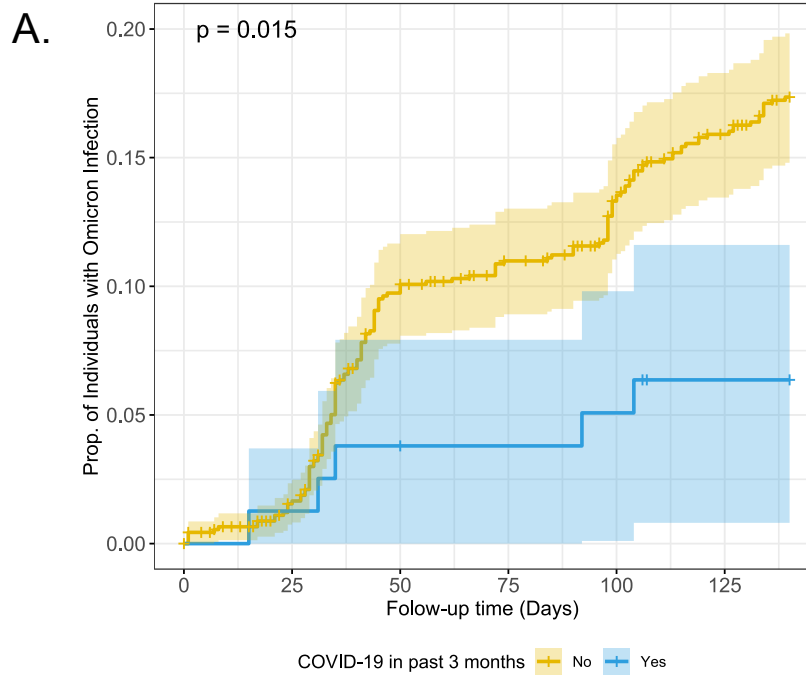


Supplementary Figure 1. Alternate antibody threshold Kaplan-Meier curves and Cox regression analyses of risk of Omicron infection in nursing and retirement homes.



(A) Kaplan-Meier curve of incidence of Omicron infection in nursing and retirement homes by recent SARS-CoV-2 infection. (B) Cox regression of factors contributing to risk of Omicron infection in nursing and retirement homes. Anti-nucleocapsid seropositivity threshold was set at 0.642.

Supplementary Table 1. Analysis of maximum likelihood estimates of risk of Omicron infection in nursing and retirement homes.

Parameter	Estimate	Standard Error	Chi-Square	Pr > ChiSq	Hazard Ratio	95% Hazard Ratio Confidence Limits	
Age	0.0057	0.0088	0.43	0.51	1.01	0.99	1.02
Sex (Female vs Male)	-0.035	0.17	0.044	0.83	0.97	0.70	1.34
Vaccine Type (mRNA-1273 x3 vs BNT162b2 x3)	-0.63	0.27	5.48	0.019	0.53	0.31	0.90
Vaccine Type (mRNA x3 vs BNT162b2 x3)	-0.61	0.50	1.49	0.22	0.54	0.21	1.45
Fourth mRNA Vaccine (Yes vs No)	-1.65	0.23	49.82	<0.001	0.19	0.12	0.30
COVID-19 in past 3 months (Yes vs No)	-0.66	0.33	3.96	0.047	0.52	0.27	0.99

Supplementary Table 2. Alternate antibody threshold study cohort characteristics.

Antibody Threshold 0.642				
	Total	Omicron Infection?		P
		Yes	No	
	(N = 987)	(N = 152)	(N = 835)	
Age				
Mean (SD)	84.6 (9.94)	85.2 (9.00)	84.4 (10.1)	0.41
Median (IQR)	87.0 (80.0 – 91.0)	87.0 (80.0 – 92.0)	87.0 (80.0 – 91.0)	0.54
Sex				
Female	664 (66.6%)	102 (65.0%)	562 (66.9%)	0.64
Male	333 (33.4%)	55 (35.0%)	278 (33.1%)	
Vaccine combination				
mRNA-1273 x3	420 (42.1%)	36 (22.9%)	384 (45.7%)	<0.001
BNT162b2 x3	478 (47.9%)	114 (72.6%)	364 (43.3%)	
mRNA combination x3	99 (9.93%)	7 (4.46%)	92 (11.0%)	
COVID-19 in past 3 months				
No	918 (92.1%)	152 (96.8%)	766 (91.2%)	0.017
Yes	79 (7.92%)	5 (3.18%)	74 (8.81%)	

Supplementary Table 3. Alternate antibody threshold analysis of maximum likelihood estimates of risk of Omicron infection in nursing and retirement homes.

Antibody Threshold 0.642							
Parameter	Estimate	Standard Error	Chi-Square	Pr > ChiSq	Hazard Ratio	95% Hazard Ratio Confidence Limits	
Age	0.012	0.0094	1.54	0.22	1.01	0.99	1.03
Sex (Female vs Male)	-0.11	0.17	0.39	0.54	0.90	0.64	1.26
Vaccine Type (mRNA-1273 x3 vs BNT162b2 x3)	-0.78	0.31	6.31	0.012	0.46	0.25	0.84
Vaccine Type (mRNA x3 vs BNT162b2 x3)	-0.82	0.56	2.16	0.14	0.44	0.15	1.32
Fourth mRNA Vaccine (Yes vs No)	-1.60	0.25	42.89	<0.001	0.20	0.13	0.33
COVID-19 in past 3 months (Yes vs No)	-0.50	0.47	1.14	0.29	0.61	0.24	1.52