

Supplementary Material

Smieszek et al., 2022

Figure 1A and 1B

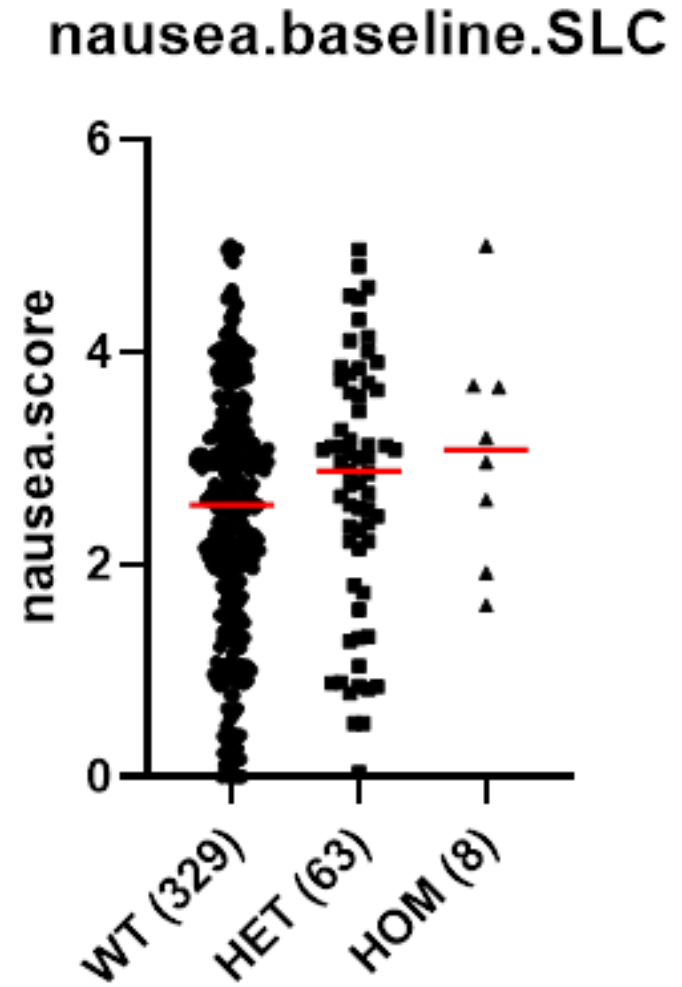
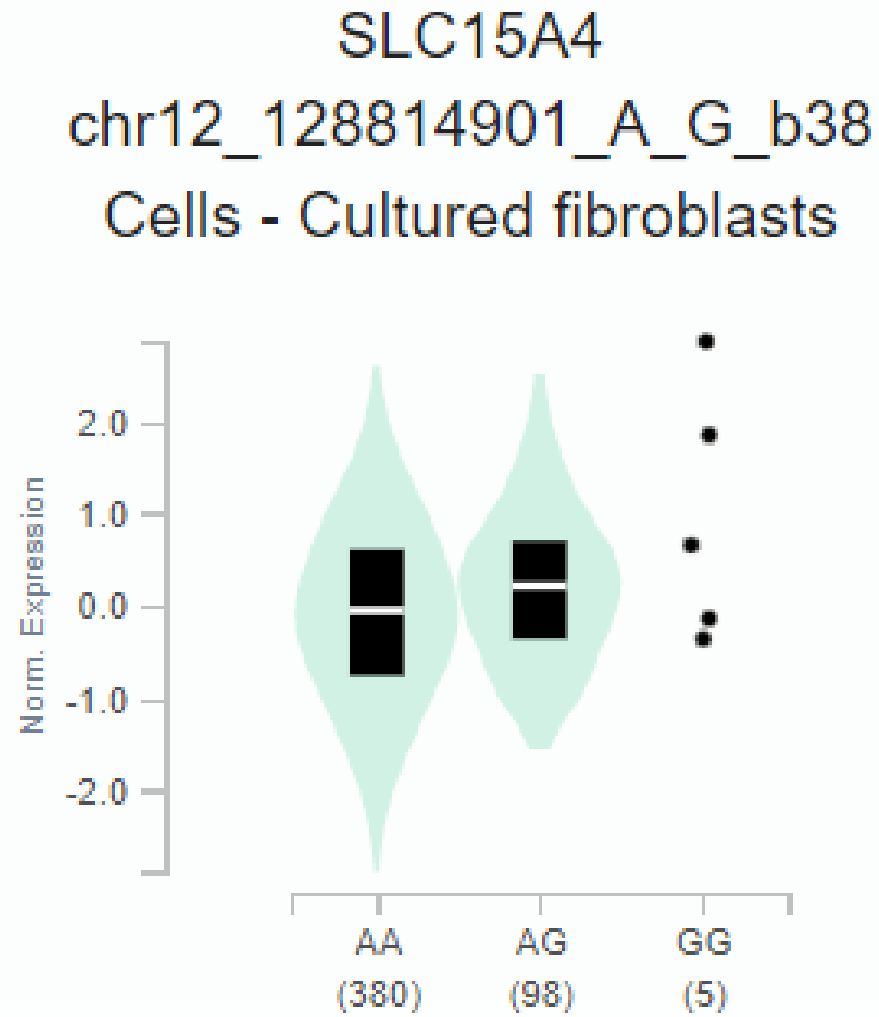
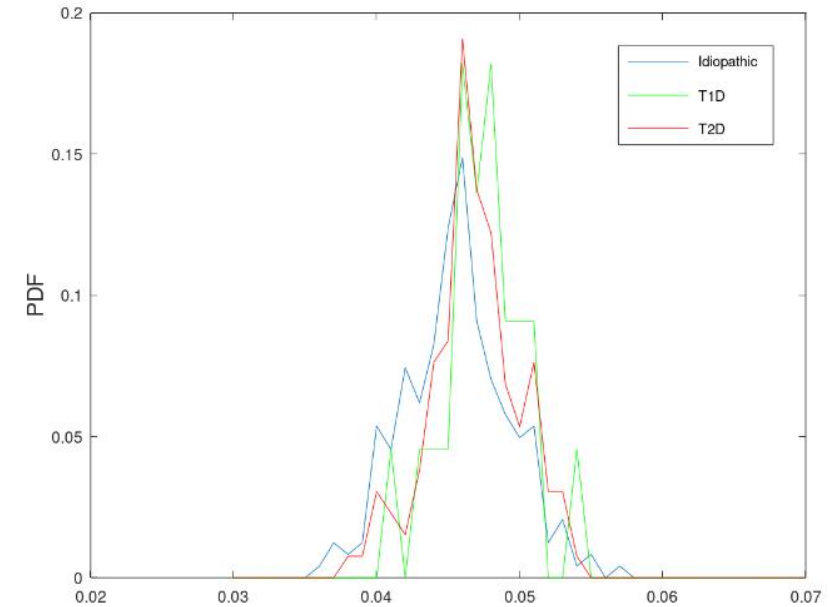
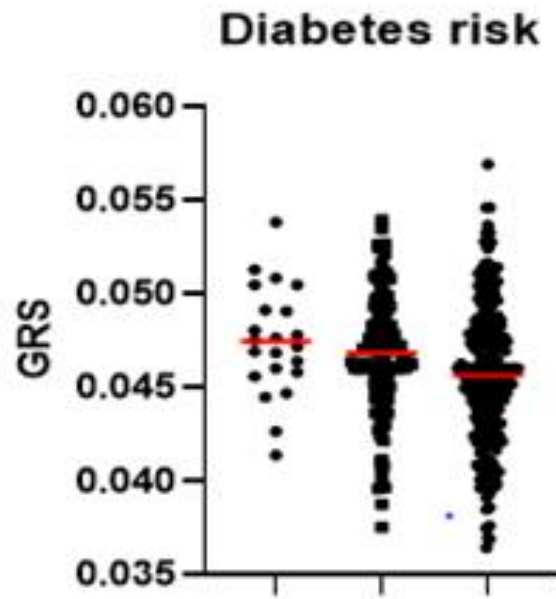
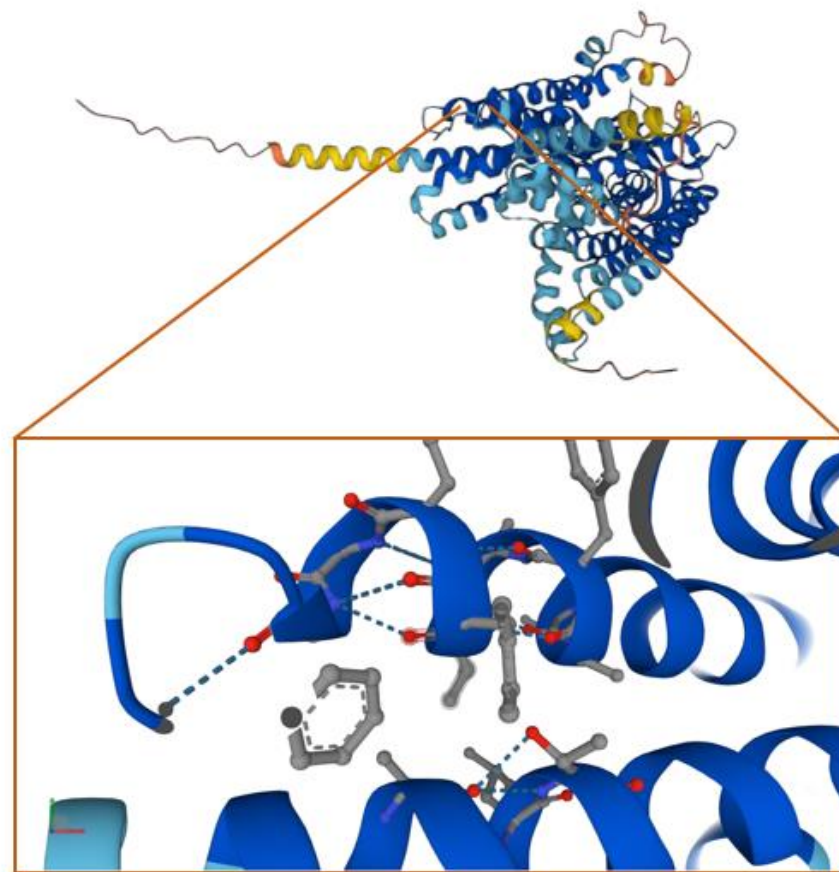


Figure 2A and 2B: Genetic risk score

- Polygenic scores were constructed for diabetes by summing the number of risk alleles carried by each individual, weighted by the effect size estimates from well-established genome-wide significant associations derived from Li et al., (60 SNPs)
- We differentiate idiopathic from diabetic gastroparesis with a diabetes genetic risk score, - result that is statistically significant ($p\text{-value} < 0.0004$).
- We also recapitulate a number of known significant loci implicated in diabetes risk including (HLA-DQB1, HLA-DQA2, EXOC6B) in the idiopathic versus diabetic gastroparesis analysis.



SLC15A4 ns variant **rs33990080**



Functional Dyspepsia GWAS - Garcia-Etxebarria et al., - 2021

chr	bp	rsID	Nearestgene	effect.allele	OR	P.logistic	MAF.gastro.all	MAF.non-gastro	MAF.diabetic	MAF.idiopathic	Mappedgenes
1	204977799	rs2595968	NFASC	A	0.74	0.0045	0.240	0.299	0.229	0.245	NFASC, CNTN2, TMEM81, CDK18, MDM4, LRRN2
2	223923219	rs6719560	KCNE4	T	1.13	0.3645	0.129	0.115	0.138	0.124	KCNE4, FARSB, PAX3, CCDC140, MOGAT1, SCG2, AP1S3
3	22296260	rs144885331	ZNF385D	C	0.97	0.8946	0.033	0.034	0.024	0.037	ZNF385D
3	131682621	rs9868674	CPNE4	T	1.09	0.3625	0.436	0.415	0.467	0.421	CPNE4, ASTE1, NEK11, MRPL3
3	172649336	rs80062354	SPATA16	T	1.07	0.5601	0.205	0.195	0.181	0.217	SPATA16, NLGN1, NAALADL2
5	2703856	rs961136	IRX2	T	0.65	0.3066	0.011	0.017	0.010	0.012	ADAMTS16
6	128345371	rs17245411	PTPRK	C	1.07	0.7672	0.049	0.046	0.048	0.049	PTPRK, THEMIS, LAMA2, TMEM244, L3MBTL3
7	8892730	rs6463848		T	1.00	0.9689	0.398	0.399	0.386	0.404	NXPH1, NDUFA4, PHF14, THSD7A
9	22206559	rs9696092	CDKN2B	C	0.97	0.7137	0.425	0.433	0.395	0.439	MTAP, RP11-145E5.5, C9orf53, CDKN2A, CDKN2B
15	52868845	rs184132620	ARPP19	C	1.85	0.1182	0.017	0.009	0.024	0.014	ARPP19, FAM214A, LYSMD2, SCG3
19	32610710	rs17597505		T	1.50	0.0383	0.066	0.045	0.076	0.061	VSTM2B, POP4, C19orf12, CCNE1, URI1, ZNF536
20	61585706	rs2093045	SLC17A9	C	0.95	0.5891	0.364	0.376	0.314	0.388	DIDO1, GID8, SLC17A9, COL9A3, TCLF5, BHLHE23