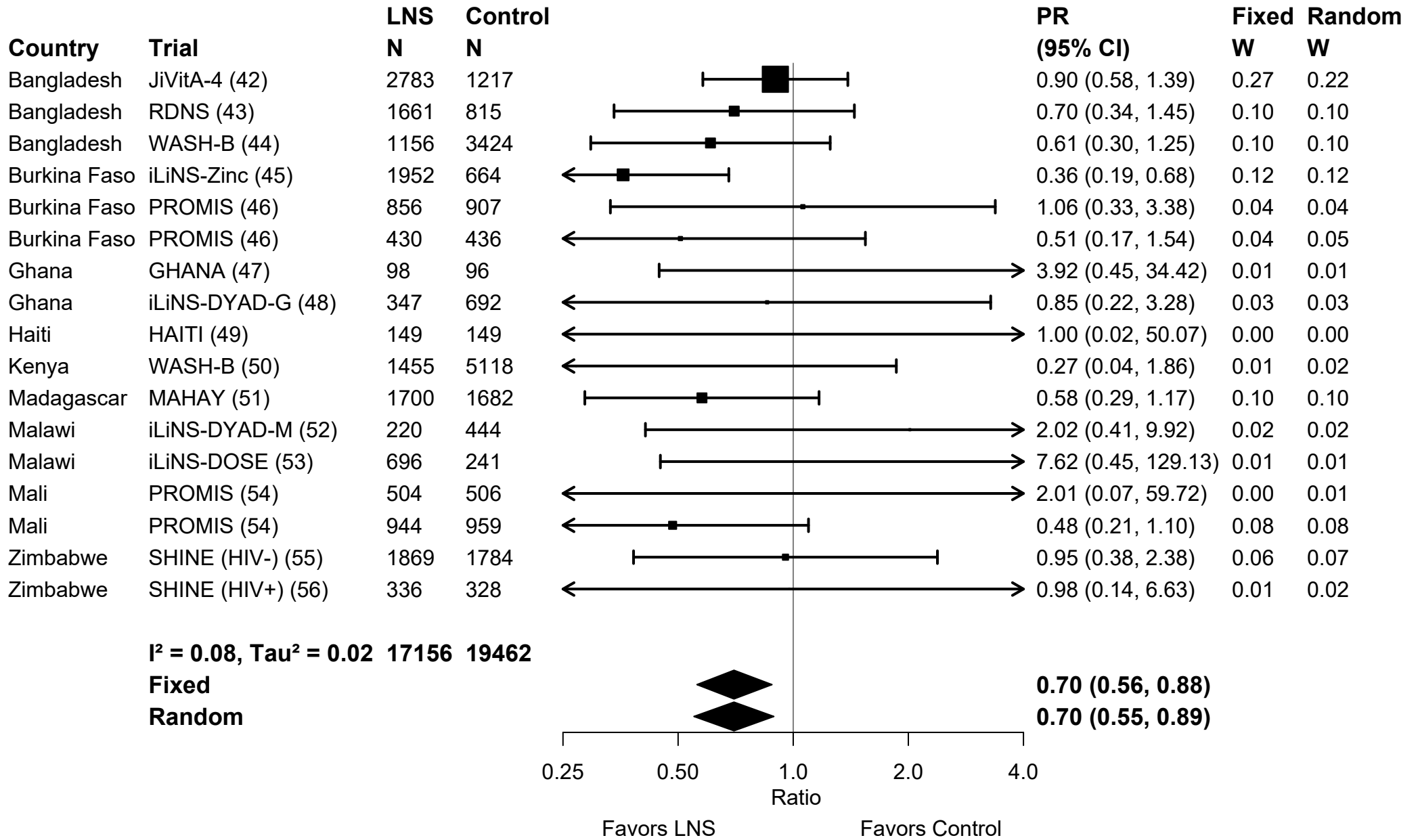


Supplemental Figure 7: Forest plot of effect of SQ-LNS on severe wasting prevalence using the rare events sensitivity analysis, with estimates generated for certain trials in which 0.5 is substituted for the 0 value in analysis



LNS, lipid-based nutrient supplements; PR, prevalence ratio.

Individual study estimates were generated from log-binomial regression controlling for baseline measure when available and with clustered observations using robust standard errors for cluster-randomized trials. Pooled estimates were generated using inverse-variance weighting with both fixed and random effects.